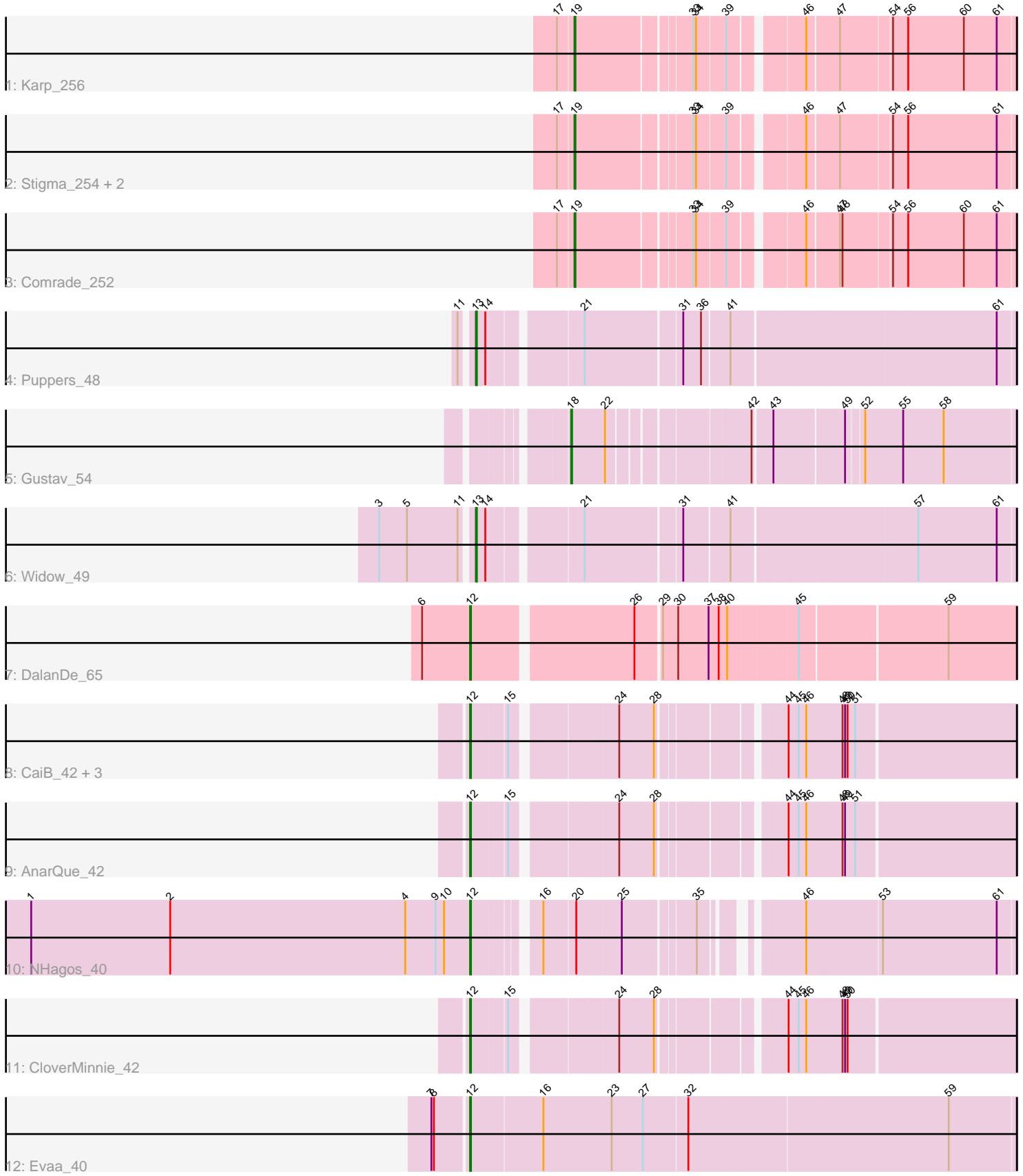


Pham 158223



Note: Tracks are now grouped by subcluster and scaled. Switching in subcluster is indicated by changes in track color. Track scale is now set by default to display the region 30 bp upstream of start 1 to 30 bp downstream of the last possible start. If this default region is judged to be packed too tightly with annotated starts, the track will be further scaled to only show that region of the ORF with annotated starts. This action will be indicated by adding "Zoomed" to the title. For starts, yellow indicates the location of called starts comprised solely of Glimmer/GeneMark auto-annotations, green indicates the location of called starts with at least 1 manual gene annotation.

Pham 158223 Report

This analysis was run 04/13/24 on database version 558.

Pham number 158223 has 17 members, 1 are drafts.

Phages represented in each track:

- Track 1 : Karp_256
- Track 2 : Stigma_254, Belfort_257, SparkleGoddess_256
- Track 3 : Comrade_252
- Track 4 : Puppies_48
- Track 5 : Gustav_54
- Track 6 : Widow_49
- Track 7 : DalanDe_65
- Track 8 : CaiB_42, MossRose_42, MakoManhole_42, Wooper_42
- Track 9 : AnarQue_42
- Track 10 : NHagos_40
- Track 11 : CloverMinnie_42
- Track 12 : Evaa_40

Summary of Final Annotations (See graph section above for start numbers):

The start number called the most often in the published annotations is 12, it was called in 8 of the 16 non-draft genes in the pham.

Genes that call this "Most Annotated" start:

- AnarQue_42, CaiB_42, CloverMinnie_42, DalanDe_65, Evaa_40, MakoManhole_42, MossRose_42, NHagos_40, Wooper_42,

Genes that have the "Most Annotated" start but do not call it:

-

Genes that do not have the "Most Annotated" start:

- Belfort_257, Comrade_252, Gustav_54, Karp_256, Puppies_48, SparkleGoddess_256, Stigma_254, Widow_49,

Summary by start number:

Start 12:

- Found in 9 of 17 (52.9%) of genes in pham
- Manual Annotations of this start: 8 of 16

- Called 100.0% of time when present
- Phage (with cluster) where this start called: AnarQue_42 (DR), CaiB_42 (DR), CloverMinnie_42 (DR), DalanDe_65 (DQ), Evaa_40 (DR), MakoManhole_42 (DR), MossRose_42 (DR), NHagos_40 (DR), Wooper_42 (DR),

Start 13:

- Found in 2 of 17 (11.8%) of genes in pham
- Manual Annotations of this start: 2 of 16
- Called 100.0% of time when present
- Phage (with cluster) where this start called: Puppies_48 (CD), Widow_49 (CD),

Start 18:

- Found in 1 of 17 (5.9%) of genes in pham
- Manual Annotations of this start: 1 of 16
- Called 100.0% of time when present
- Phage (with cluster) where this start called: Gustav_54 (CD),

Start 19:

- Found in 5 of 17 (29.4%) of genes in pham
- Manual Annotations of this start: 5 of 16
- Called 100.0% of time when present
- Phage (with cluster) where this start called: Belfort_257 (BK1), Comrade_252 (BK1), Karp_256 (BK1), SparkleGoddess_256 (BK1), Stigma_254 (BK1),

Summary by clusters:

There are 4 clusters represented in this pham: DQ, DR, BK1, CD,

Info for manual annotations of cluster BK1:

- Start number 19 was manually annotated 5 times for cluster BK1.

Info for manual annotations of cluster CD:

- Start number 13 was manually annotated 2 times for cluster CD.
- Start number 18 was manually annotated 1 time for cluster CD.

Info for manual annotations of cluster DQ:

- Start number 12 was manually annotated 1 time for cluster DQ.

Info for manual annotations of cluster DR:

- Start number 12 was manually annotated 7 times for cluster DR.

Gene Information:

Gene: AnarQue_42 Start: 35868, Stop: 35293, Start Num: 12

Candidate Starts for AnarQue_42:

(Start: 12 @35868 has 8 MA's), (15, 35829), (24, 35718), (28, 35679), (44, 35556), (45, 35544), (46, 35535), (48, 35493), (49, 35490), (51, 35478),

Gene: Belfort_257 Start: 123112, Stop: 123585, Start Num: 19

Candidate Starts for Belfort_257:

(17, 123094), (Start: 19 @123112 has 5 MA's), (33, 123238), (34, 123241), (39, 123274), (46, 123349), (47, 123385), (54, 123442), (56, 123460), (61, 123565),

Gene: CaiB_42 Start: 35854, Stop: 35279, Start Num: 12

Candidate Starts for CaiB_42:

(Start: 12 @35854 has 8 MA's), (15, 35815), (24, 35704), (28, 35665), (44, 35542), (45, 35530), (46, 35521), (48, 35479), (49, 35476), (50, 35473), (51, 35464),

Gene: CloverMinnie_42 Start: 35794, Stop: 35219, Start Num: 12

Candidate Starts for CloverMinnie_42:

(Start: 12 @35794 has 8 MA's), (15, 35755), (24, 35644), (28, 35605), (44, 35482), (45, 35470), (46, 35461), (48, 35419), (49, 35416), (50, 35413),

Gene: Comrade_252 Start: 123254, Stop: 123727, Start Num: 19

Candidate Starts for Comrade_252:

(17, 123236), (Start: 19 @123254 has 5 MA's), (33, 123380), (34, 123383), (39, 123416), (46, 123491), (47, 123527), (48, 123530), (54, 123584), (56, 123602), (60, 123668), (61, 123707),

Gene: DalanDe_65 Start: 59026, Stop: 59634, Start Num: 12

Candidate Starts for DalanDe_65:

(6, 58969), (Start: 12 @59026 has 8 MA's), (26, 59206), (29, 59233), (30, 59251), (37, 59287), (38, 59299), (40, 59308), (45, 59386), (59, 59554),

Gene: Evaa_40 Start: 34989, Stop: 34357, Start Num: 12

Candidate Starts for Evaa_40:

(7, 35028), (8, 35025), (Start: 12 @34989 has 8 MA's), (16, 34905), (23, 34824), (27, 34788), (32, 34737), (59, 34434),

Gene: Gustav_54 Start: 38579, Stop: 38097, Start Num: 18

Candidate Starts for Gustav_54:

(Start: 18 @38579 has 1 MA's), (22, 38540), (42, 38393), (43, 38372), (49, 38291), (52, 38273), (55, 38228), (58, 38180),

Gene: Karp_256 Start: 124709, Stop: 125182, Start Num: 19

Candidate Starts for Karp_256:

(17, 124691), (Start: 19 @124709 has 5 MA's), (33, 124835), (34, 124838), (39, 124871), (46, 124946), (47, 124982), (54, 125039), (56, 125057), (60, 125123), (61, 125162),

Gene: MakoManhole_42 Start: 35872, Stop: 35297, Start Num: 12

Candidate Starts for MakoManhole_42:

(Start: 12 @35872 has 8 MA's), (15, 35833), (24, 35722), (28, 35683), (44, 35560), (45, 35548), (46, 35539), (48, 35497), (49, 35494), (50, 35491), (51, 35482),

Gene: MossRose_42 Start: 35851, Stop: 35276, Start Num: 12

Candidate Starts for MossRose_42:

(Start: 12 @35851 has 8 MA's), (15, 35812), (24, 35701), (28, 35662), (44, 35539), (45, 35527), (46, 35518), (48, 35476), (49, 35473), (50, 35470), (51, 35461),

Gene: NHagos_40 Start: 34451, Stop: 33894, Start Num: 12

Candidate Starts for NHagos_40:

(1, 34970), (2, 34805), (4, 34526), (9, 34490), (10, 34481), (Start: 12 @34451 has 8 MA's), (16, 34388), (20, 34352), (25, 34301), (35, 34226), (46, 34136), (53, 34049), (61, 33914),

Gene: Puppies_48 Start: 36822, Stop: 36238, Start Num: 13

Candidate Starts for Puppies_48:

(11, 36834), (Start: 13 @36822 has 2 MA's), (14, 36813), (21, 36717), (31, 36612), (36, 36591), (41, 36561), (61, 36258),

Gene: SparkleGoddess_256 Start: 123985, Stop: 124458, Start Num: 19

Candidate Starts for SparkleGoddess_256:

(17, 123967), (Start: 19 @123985 has 5 MA's), (33, 124111), (34, 124114), (39, 124147), (46, 124222), (47, 124258), (54, 124315), (56, 124333), (61, 124438),

Gene: Stigma_254 Start: 123698, Stop: 124171, Start Num: 19

Candidate Starts for Stigma_254:

(17, 123680), (Start: 19 @123698 has 5 MA's), (33, 123824), (34, 123827), (39, 123860), (46, 123935), (47, 123971), (54, 124028), (56, 124046), (61, 124151),

Gene: Widow_49 Start: 37464, Stop: 36880, Start Num: 13

Candidate Starts for Widow_49:

(3, 37569), (5, 37536), (11, 37476), (Start: 13 @37464 has 2 MA's), (14, 37455), (21, 37359), (31, 37254), (41, 37203), (57, 36993), (61, 36900),

Gene: Wooper_42 Start: 35889, Stop: 35314, Start Num: 12

Candidate Starts for Wooper_42:

(Start: 12 @35889 has 8 MA's), (15, 35850), (24, 35739), (28, 35700), (44, 35577), (45, 35565), (46, 35556), (48, 35514), (49, 35511), (50, 35508), (51, 35499),