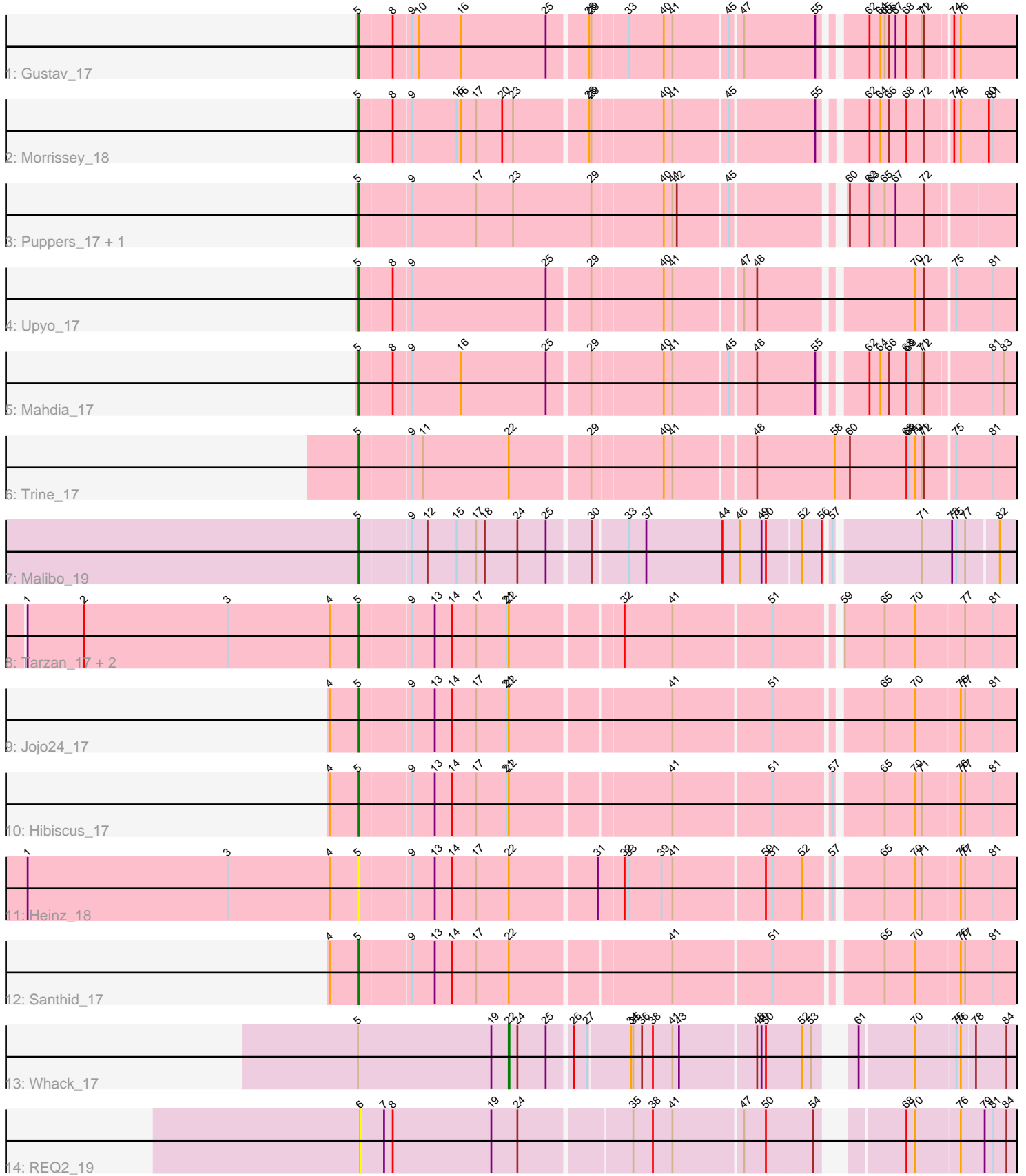


Pham 158229



Note: Tracks are now grouped by subcluster and scaled. Switching in subcluster is indicated by changes in track color. Track scale is now set by default to display the region 30 bp upstream of start 1 to 30 bp downstream of the last possible start. If this default region is judged to be packed too tightly with annotated starts, the track will be further scaled to only show that region of the ORF with annotated starts. This action will be indicated by adding "Zoomed" to the title. For starts, yellow indicates the location of called starts comprised solely of Glimmer/GeneMark auto-annotations, green indicates the location of called starts with at least 1 manual gene annotation.

Pham 158229 Report

This analysis was run 04/13/24 on database version 558.

Pham number 158229 has 17 members, 3 are drafts.

Phages represented in each track:

- Track 1 : Gustav_17
- Track 2 : Morrissey_18
- Track 3 : Puppies_17, Widow_17
- Track 4 : Upyo_17
- Track 5 : Mahdia_17
- Track 6 : Trine_17
- Track 7 : Malibo_19
- Track 8 : Tarzan_17, DonkeyMan_17, Reyja_18
- Track 9 : Jojo24_17
- Track 10 : Hibiscus_17
- Track 11 : Heinz_18
- Track 12 : Santhid_17
- Track 13 : Whack_17
- Track 14 : REQ2_19

Summary of Final Annotations (See graph section above for start numbers):

The start number called the most often in the published annotations is 5, it was called in 13 of the 14 non-draft genes in the pham.

Genes that call this "Most Annotated" start:

- DonkeyMan_17, Gustav_17, Heinz_18, Hibiscus_17, Jojo24_17, Mahdia_17, Malibo_19, Morrissey_18, Puppies_17, Reyja_18, Santhid_17, Tarzan_17, Trine_17, Upyo_17, Widow_17,

Genes that have the "Most Annotated" start but do not call it:

- Whack_17,

Genes that do not have the "Most Annotated" start:

- REQ2_19,

Summary by start number:

Start 5:

- Found in 16 of 17 (94.1%) of genes in pham
- Manual Annotations of this start: 13 of 14
- Called 93.8% of time when present
- Phage (with cluster) where this start called: DonkeyMan_17 (DY), Gustav_17 (CD), Heinz_18 (DY), Hibiscus_17 (DY), Jojo24_17 (DY), Mahdia_17 (CD), Malibo_19 (DW), Morrissey_18 (CD), Puppies_17 (CD), Reyja_18 (DY), Santhid_17 (DY), Tarzan_17 (DY), Trine_17 (CD), Upyo_17 (CD), Widow_17 (CD),

Start 6:

- Found in 1 of 17 (5.9%) of genes in pham
- No Manual Annotations of this start.
- Called 100.0% of time when present
- Phage (with cluster) where this start called: REQ2_19 (singleton),

Start 22:

- Found in 9 of 17 (52.9%) of genes in pham
- Manual Annotations of this start: 1 of 14
- Called 11.1% of time when present
- Phage (with cluster) where this start called: Whack_17 (singleton),

Summary by clusters:

There are 4 clusters represented in this pham: DW, singleton, CD, DY,

Info for manual annotations of cluster CD:

- Start number 5 was manually annotated 7 times for cluster CD.

Info for manual annotations of cluster DW:

- Start number 5 was manually annotated 1 time for cluster DW.

Info for manual annotations of cluster DY:

- Start number 5 was manually annotated 5 times for cluster DY.

Gene Information:

Gene: DonkeyMan_17 Start: 14102, Stop: 14944, Start Num: 5

Candidate Starts for DonkeyMan_17:

(1, 13646), (2, 13724), (3, 13922), (4, 14063), (Start: 5 @14102 has 13 MA's), (9, 14171), (13, 14201), (14, 14222), (17, 14255), (21, 14297), (Start: 22 @14300 has 1 MA's), (32, 14441), (41, 14507), (51, 14639), (59, 14714), (65, 14768), (70, 14810), (77, 14876), (81, 14915),

Gene: Gustav_17 Start: 14305, Stop: 15132, Start Num: 5

Candidate Starts for Gustav_17:

(Start: 5 @14305 has 13 MA's), (8, 14350), (9, 14374), (10, 14383), (16, 14437), (25, 14554), (28, 14605), (29, 14608), (33, 14653), (40, 14701), (41, 14713), (45, 14782), (47, 14797), (55, 14890), (62, 14938), (64, 14953), (65, 14959), (66, 14965), (67, 14974), (68, 14989), (71, 15010), (72, 15013), (74, 15046), (76, 15055),

Gene: Heinz_18 Start: 14187, Stop: 15035, Start Num: 5

Candidate Starts for Heinz_18:

(1, 13731), (3, 14007), (4, 14148), (Start: 5 @14187 has 13 MA's), (9, 14256), (13, 14286), (14, 14307), (17, 14340), (Start: 22 @14385 has 1 MA's), (31, 14499), (32, 14532), (33, 14538), (39, 14583), (41, 14598), (50, 14721), (51, 14730), (52, 14769), (57, 14802), (65, 14859), (70, 14901), (71, 14910), (76, 14961), (77, 14967), (81, 15006),

Gene: Hibiscus_17 Start: 14141, Stop: 14983, Start Num: 5

Candidate Starts for Hibiscus_17:

(4, 14102), (Start: 5 @14141 has 13 MA's), (9, 14210), (13, 14240), (14, 14261), (17, 14294), (21, 14336), (Start: 22 @14339 has 1 MA's), (41, 14546), (51, 14678), (57, 14750), (65, 14807), (70, 14849), (71, 14858), (76, 14909), (77, 14915), (81, 14954),

Gene: Jojo24_17 Start: 14138, Stop: 14980, Start Num: 5

Candidate Starts for Jojo24_17:

(4, 14099), (Start: 5 @14138 has 13 MA's), (9, 14207), (13, 14237), (14, 14258), (17, 14291), (21, 14333), (Start: 22 @14336 has 1 MA's), (41, 14543), (51, 14675), (65, 14804), (70, 14846), (76, 14906), (77, 14912), (81, 14951),

Gene: Mahdia_17 Start: 13987, Stop: 14814, Start Num: 5

Candidate Starts for Mahdia_17:

(Start: 5 @13987 has 13 MA's), (8, 14032), (9, 14056), (16, 14119), (25, 14236), (29, 14290), (40, 14383), (41, 14395), (45, 14464), (48, 14497), (55, 14572), (62, 14620), (64, 14635), (66, 14647), (68, 14671), (69, 14674), (71, 14692), (72, 14695), (81, 14782), (83, 14797),

Gene: Malibo_19 Start: 15676, Stop: 16518, Start Num: 5

Candidate Starts for Malibo_19:

(Start: 5 @15676 has 13 MA's), (9, 15745), (12, 15766), (15, 15802), (17, 15829), (18, 15841), (24, 15886), (25, 15925), (30, 15979), (33, 16024), (37, 16048), (44, 16153), (46, 16177), (49, 16207), (50, 16213), (52, 16255), (56, 16282), (57, 16288), (71, 16396), (73, 16438), (75, 16444), (77, 16456), (82, 16498),

Gene: Morrissey_18 Start: 15201, Stop: 16028, Start Num: 5

Candidate Starts for Morrissey_18:

(Start: 5 @15201 has 13 MA's), (8, 15246), (9, 15270), (15, 15327), (16, 15333), (17, 15354), (20, 15390), (23, 15405), (28, 15501), (29, 15504), (40, 15597), (41, 15609), (45, 15678), (55, 15786), (62, 15834), (64, 15849), (66, 15861), (68, 15885), (72, 15909), (74, 15942), (76, 15951), (80, 15990), (81, 15996),

Gene: Puppies_17 Start: 14309, Stop: 15142, Start Num: 5

Candidate Starts for Puppies_17:

(Start: 5 @14309 has 13 MA's), (9, 14378), (17, 14462), (23, 14513), (29, 14621), (40, 14714), (41, 14726), (42, 14732), (45, 14798), (60, 14924), (62, 14951), (63, 14954), (65, 14972), (67, 14987), (72, 15026),

Gene: REQ2_19 Start: 18255, Stop: 19085, Start Num: 6

Candidate Starts for REQ2_19:

(6, 18255), (7, 18288), (8, 18300), (19, 18435), (24, 18471), (35, 18618), (38, 18642), (41, 18669), (47, 18762), (50, 18792), (54, 18852), (68, 18936), (70, 18948), (76, 19008), (79, 19041), (81, 19053), (84, 19071),

Gene: Reyja_18 Start: 14313, Stop: 15155, Start Num: 5

Candidate Starts for Reyja_18:

(1, 13857), (2, 13935), (3, 14133), (4, 14274), (Start: 5 @14313 has 13 MA's), (9, 14382), (13, 14412), (14, 14433), (17, 14466), (21, 14508), (Start: 22 @14511 has 1 MA's), (32, 14652), (41, 14718), (51,

14850), (59, 14925), (65, 14979), (70, 15021), (77, 15087), (81, 15126),

Gene: Santhid_17 Start: 14146, Stop: 14988, Start Num: 5

Candidate Starts for Santhid_17:

(4, 14107), (Start: 5 @14146 has 13 MA's), (9, 14215), (13, 14245), (14, 14266), (17, 14299), (Start: 22 @14344 has 1 MA's), (41, 14551), (51, 14683), (65, 14812), (70, 14854), (76, 14914), (77, 14920), (81, 14959),

Gene: Tarzan_17 Start: 14116, Stop: 14958, Start Num: 5

Candidate Starts for Tarzan_17:

(1, 13660), (2, 13738), (3, 13936), (4, 14077), (Start: 5 @14116 has 13 MA's), (9, 14185), (13, 14215), (14, 14236), (17, 14269), (21, 14311), (Start: 22 @14314 has 1 MA's), (32, 14455), (41, 14521), (51, 14653), (59, 14728), (65, 14782), (70, 14824), (77, 14890), (81, 14929),

Gene: Trine_17 Start: 13911, Stop: 14768, Start Num: 5

Candidate Starts for Trine_17:

(Start: 5 @13911 has 13 MA's), (9, 13980), (11, 13995), (Start: 22 @14109 has 1 MA's), (29, 14214), (40, 14307), (41, 14319), (48, 14421), (58, 14523), (60, 14544), (68, 14622), (69, 14625), (70, 14634), (71, 14643), (72, 14646), (75, 14685), (81, 14736),

Gene: Upyo_17 Start: 14116, Stop: 14946, Start Num: 5

Candidate Starts for Upyo_17:

(Start: 5 @14116 has 13 MA's), (8, 14161), (9, 14185), (25, 14365), (29, 14419), (40, 14512), (41, 14524), (47, 14608), (48, 14626), (70, 14812), (72, 14824), (75, 14863), (81, 14914),

Gene: Whack_17 Start: 16453, Stop: 17082, Start Num: 22

Candidate Starts for Whack_17:

(Start: 5 @16246 has 13 MA's), (19, 16429), (Start: 22 @16453 has 1 MA's), (24, 16465), (25, 16504), (26, 16534), (27, 16552), (34, 16609), (35, 16612), (36, 16624), (38, 16639), (41, 16666), (43, 16675), (48, 16777), (49, 16783), (50, 16789), (52, 16837), (53, 16849), (61, 16876), (70, 16948), (75, 17002), (76, 17008), (78, 17026), (84, 17068),

Gene: Widow_17 Start: 14300, Stop: 15133, Start Num: 5

Candidate Starts for Widow_17:

(Start: 5 @14300 has 13 MA's), (9, 14369), (17, 14453), (23, 14504), (29, 14612), (40, 14705), (41, 14717), (42, 14723), (45, 14789), (60, 14915), (62, 14942), (63, 14945), (65, 14963), (67, 14978), (72, 15017),