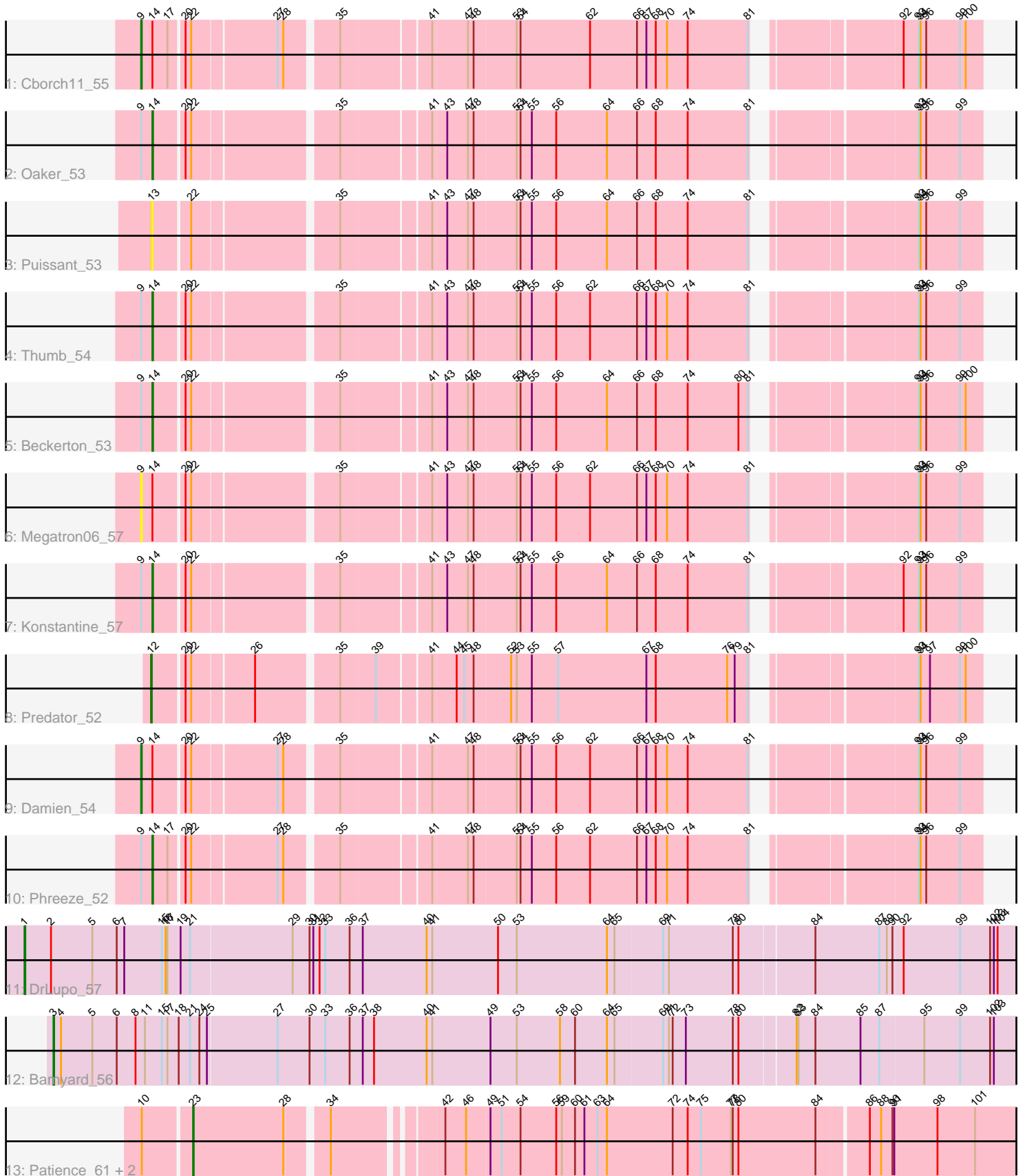


# Pham 158256



Note: Tracks are now grouped by subcluster and scaled. Switching in subcluster is indicated by changes in track color. Track scale is now set by default to display the region 30 bp upstream of start 1 to 30 bp downstream of the last possible start. If this default region is judged to be packed too tightly with annotated starts, the track will be further scaled to only show that region of the ORF with annotated starts. This action will be indicated by adding "Zoomed" to the title. For starts, yellow indicates the location of called starts comprised solely of Glimmer/GeneMark auto-annotations, green indicates the location of called starts with at least 1 manual gene annotation.

## Pham 158256 Report

This analysis was run 04/13/24 on database version 558.

Pham number 158256 has 15 members, 2 are drafts.

Phages represented in each track:

- Track 1 : Cborch11\_55
- Track 2 : Oaker\_53
- Track 3 : Puissant\_53
- Track 4 : Thumb\_54
- Track 5 : Beckerton\_53
- Track 6 : Megatron06\_57
- Track 7 : Konstantine\_57
- Track 8 : Predator\_52
- Track 9 : Damien\_54
- Track 10 : Phreeze\_52
- Track 11 : DrLupo\_57
- Track 12 : Barnyard\_56
- Track 13 : Patience\_61, Madruga\_59, Labelle\_60

### ***Summary of Final Annotations (See graph section above for start numbers):***

The start number called the most often in the published annotations is 14, it was called in 5 of the 13 non-draft genes in the pham.

Genes that call this "Most Annotated" start:

- Beckerton\_53, Konstantine\_57, Oaker\_53, Phreeze\_52, Thumb\_54,

Genes that have the "Most Annotated" start but do not call it:

- Cborch11\_55, Damien\_54, Megatron06\_57,

Genes that do not have the "Most Annotated" start:

- Barnyard\_56, DrLupo\_57, Labelle\_60, Madruga\_59, Patience\_61, Predator\_52, Puissant\_53,

### **Summary by start number:**

Start 1:

- Found in 1 of 15 ( 6.7% ) of genes in pham
- Manual Annotations of this start: 1 of 13

- Called 100.0% of time when present
- Phage (with cluster) where this start called: DrLupo\_57 (H2),

Start 3:

- Found in 1 of 15 ( 6.7% ) of genes in pham
- Manual Annotations of this start: 1 of 13
- Called 100.0% of time when present
- Phage (with cluster) where this start called: Barnyard\_56 (H2),

Start 9:

- Found in 8 of 15 ( 53.3% ) of genes in pham
- Manual Annotations of this start: 2 of 13
- Called 37.5% of time when present
- Phage (with cluster) where this start called: Cborch11\_55 (H1), Damien\_54 (H1), Megatron06\_57 (H1),

Start 12:

- Found in 1 of 15 ( 6.7% ) of genes in pham
- Manual Annotations of this start: 1 of 13
- Called 100.0% of time when present
- Phage (with cluster) where this start called: Predator\_52 (H1),

Start 13:

- Found in 1 of 15 ( 6.7% ) of genes in pham
- No Manual Annotations of this start.
- Called 100.0% of time when present
- Phage (with cluster) where this start called: Puissant\_53 (H1),

Start 14:

- Found in 8 of 15 ( 53.3% ) of genes in pham
- Manual Annotations of this start: 5 of 13
- Called 62.5% of time when present
- Phage (with cluster) where this start called: Beckerton\_53 (H1), Konstantine\_57 (H1), Oaker\_53 (H1), Phreeze\_52 (H1), Thumb\_54 (H1),

Start 23:

- Found in 3 of 15 ( 20.0% ) of genes in pham
- Manual Annotations of this start: 3 of 13
- Called 100.0% of time when present
- Phage (with cluster) where this start called: Labelle\_60 (U), Madruga\_59 (U), Patience\_61 (U),

### **Summary by clusters:**

There are 3 clusters represented in this pham: H2, H1, U,

Info for manual annotations of cluster H1:

- Start number 9 was manually annotated 2 times for cluster H1.
- Start number 12 was manually annotated 1 time for cluster H1.
- Start number 14 was manually annotated 5 times for cluster H1.

Info for manual annotations of cluster H2:

- Start number 1 was manually annotated 1 time for cluster H2.

- Start number 3 was manually annotated 1 time for cluster H2.

Info for manual annotations of cluster U:

- Start number 23 was manually annotated 3 times for cluster U.

### **Gene Information:**

Gene: Barnyard\_56 Start: 40405, Stop: 41949, Start Num: 3

Candidate Starts for Barnyard\_56:

(Start: 3 @40405 has 1 MA's), (4, 40417), (5, 40465), (6, 40504), (8, 40534), (11, 40549), (15, 40576), (17, 40585), (18, 40603), (21, 40621), (24, 40636), (25, 40648), (27, 40756), (30, 40807), (33, 40831), (36, 40870), (37, 40888), (38, 40906), (40, 40990), (41, 40999), (49, 41092), (53, 41134), (58, 41203), (60, 41227), (64, 41278), (65, 41290), (69, 41365), (71, 41374), (72, 41380), (73, 41401), (78, 41476), (80, 41485), (82, 41569), (83, 41572), (84, 41599), (85, 41671), (87, 41701), (95, 41770), (99, 41827), (102, 41875), (103, 41881),

Gene: Beckerton\_53 Start: 43209, Stop: 44420, Start Num: 14

Candidate Starts for Beckerton\_53:

(Start: 9 @43191 has 2 MA's), (Start: 14 @43209 has 5 MA's), (20, 43254), (22, 43263), (35, 43473), (41, 43602), (43, 43623), (47, 43656), (48, 43665), (53, 43731), (54, 43737), (55, 43755), (56, 43794), (64, 43875), (66, 43923), (68, 43953), (74, 44004), (80, 44085), (81, 44100), (93, 44319), (94, 44322), (96, 44331), (99, 44385), (100, 44394),

Gene: Cborch11\_55 Start: 42707, Stop: 43936, Start Num: 9

Candidate Starts for Cborch11\_55:

(Start: 9 @42707 has 2 MA's), (Start: 14 @42725 has 5 MA's), (17, 42749), (20, 42770), (22, 42779), (27, 42905), (28, 42914), (35, 42989), (41, 43118), (47, 43172), (48, 43181), (53, 43247), (54, 43253), (62, 43364), (66, 43439), (67, 43454), (68, 43469), (70, 43487), (74, 43520), (81, 43616), (92, 43811), (93, 43835), (94, 43838), (96, 43847), (99, 43901), (100, 43910),

Gene: Damien\_54 Start: 42670, Stop: 43899, Start Num: 9

Candidate Starts for Damien\_54:

(Start: 9 @42670 has 2 MA's), (Start: 14 @42688 has 5 MA's), (20, 42733), (22, 42742), (27, 42868), (28, 42877), (35, 42952), (41, 43081), (47, 43135), (48, 43144), (53, 43210), (54, 43216), (55, 43234), (56, 43273), (62, 43327), (66, 43402), (67, 43417), (68, 43432), (70, 43450), (74, 43483), (81, 43579), (93, 43798), (94, 43801), (96, 43810), (99, 43864),

Gene: DrLupo\_57 Start: 40796, Stop: 42391, Start Num: 1

Candidate Starts for DrLupo\_57:

(Start: 1 @40796 has 1 MA's), (2, 40838), (5, 40904), (6, 40943), (7, 40955), (15, 41015), (16, 41021), (17, 41024), (19, 41045), (21, 41060), (29, 41219), (30, 41246), (31, 41252), (32, 41261), (33, 41270), (36, 41309), (37, 41327), (40, 41429), (41, 41438), (50, 41543), (53, 41573), (64, 41717), (65, 41729), (69, 41804), (71, 41813), (78, 41915), (80, 41924), (84, 42038), (87, 42140), (89, 42152), (90, 42161), (92, 42176), (99, 42266), (102, 42314), (103, 42320), (104, 42326),

Gene: Konstantine\_57 Start: 43519, Stop: 44730, Start Num: 14

Candidate Starts for Konstantine\_57:

(Start: 9 @43501 has 2 MA's), (Start: 14 @43519 has 5 MA's), (20, 43564), (22, 43573), (35, 43783), (41, 43912), (43, 43933), (47, 43966), (48, 43975), (53, 44041), (54, 44047), (55, 44065), (56, 44104), (64, 44185), (66, 44233), (68, 44263), (74, 44314), (81, 44410), (92, 44605), (93, 44629), (94, 44632), (96, 44641), (99, 44695),

Gene: Labelle\_60 Start: 43530, Stop: 44834, Start Num: 23

Candidate Starts for Labelle\_60:

(10, 43458), (Start: 23 @43530 has 3 MA's), (28, 43674), (34, 43731), (42, 43878), (46, 43911), (49, 43947), (51, 43965), (54, 43995), (56, 44052), (59, 44061), (60, 44082), (61, 44097), (63, 44118), (64, 44133), (72, 44238), (74, 44262), (75, 44283), (77, 44331), (78, 44334), (80, 44343), (84, 44466), (86, 44541), (88, 44559), (90, 44577), (91, 44580), (98, 44649), (101, 44709),

Gene: Madruga\_59 Start: 43183, Stop: 44487, Start Num: 23

Candidate Starts for Madruga\_59:

(10, 43111), (Start: 23 @43183 has 3 MA's), (28, 43327), (34, 43384), (42, 43531), (46, 43564), (49, 43600), (51, 43618), (54, 43648), (56, 43705), (59, 43714), (60, 43735), (61, 43750), (63, 43771), (64, 43786), (72, 43891), (74, 43915), (75, 43936), (77, 43984), (78, 43987), (80, 43996), (84, 44119), (86, 44194), (88, 44212), (90, 44230), (91, 44233), (98, 44302), (101, 44362),

Gene: Megatron06\_57 Start: 43247, Stop: 44476, Start Num: 9

Candidate Starts for Megatron06\_57:

(Start: 9 @43247 has 2 MA's), (Start: 14 @43265 has 5 MA's), (20, 43310), (22, 43319), (35, 43529), (41, 43658), (43, 43679), (47, 43712), (48, 43721), (53, 43787), (54, 43793), (55, 43811), (56, 43850), (62, 43904), (66, 43979), (67, 43994), (68, 44009), (70, 44027), (74, 44060), (81, 44156), (93, 44375), (94, 44378), (96, 44387), (99, 44441),

Gene: Oaker\_53 Start: 42980, Stop: 44191, Start Num: 14

Candidate Starts for Oaker\_53:

(Start: 9 @42962 has 2 MA's), (Start: 14 @42980 has 5 MA's), (20, 43025), (22, 43034), (35, 43244), (41, 43373), (43, 43394), (47, 43427), (48, 43436), (53, 43502), (54, 43508), (55, 43526), (56, 43565), (64, 43646), (66, 43694), (68, 43724), (74, 43775), (81, 43871), (93, 44090), (94, 44093), (96, 44102), (99, 44156),

Gene: Patience\_61 Start: 44078, Stop: 45382, Start Num: 23

Candidate Starts for Patience\_61:

(10, 44006), (Start: 23 @44078 has 3 MA's), (28, 44222), (34, 44279), (42, 44426), (46, 44459), (49, 44495), (51, 44513), (54, 44543), (56, 44600), (59, 44609), (60, 44630), (61, 44645), (63, 44666), (64, 44681), (72, 44786), (74, 44810), (75, 44831), (77, 44879), (78, 44882), (80, 44891), (84, 45014), (86, 45089), (88, 45107), (90, 45125), (91, 45128), (98, 45197), (101, 45257),

Gene: Phreeze\_52 Start: 42285, Stop: 43496, Start Num: 14

Candidate Starts for Phreeze\_52:

(Start: 9 @42267 has 2 MA's), (Start: 14 @42285 has 5 MA's), (17, 42309), (20, 42330), (22, 42339), (27, 42465), (28, 42474), (35, 42549), (41, 42678), (47, 42732), (48, 42741), (53, 42807), (54, 42813), (55, 42831), (56, 42870), (62, 42924), (66, 42999), (67, 43014), (68, 43029), (70, 43047), (74, 43080), (81, 43176), (93, 43395), (94, 43398), (96, 43407), (99, 43461),

Gene: Predator\_52 Start: 40537, Stop: 41748, Start Num: 12

Candidate Starts for Predator\_52:

(Start: 12 @40537 has 1 MA's), (20, 40582), (22, 40591), (26, 40681), (35, 40801), (39, 40852), (41, 40930), (44, 40966), (45, 40978), (48, 40993), (52, 41050), (53, 41059), (55, 41083), (57, 41125), (67, 41266), (68, 41281), (76, 41395), (79, 41407), (81, 41428), (93, 41647), (94, 41650), (97, 41665), (99, 41713), (100, 41722),

Gene: Puissant\_53 Start: 42359, Stop: 43570, Start Num: 13

Candidate Starts for Puissant\_53:

(13, 42359), (22, 42413), (35, 42623), (41, 42752), (43, 42773), (47, 42806), (48, 42815), (53, 42881), (54, 42887), (55, 42905), (56, 42944), (64, 43025), (66, 43073), (68, 43103), (74, 43154), (81, 43250), (93, 43469), (94, 43472), (96, 43481), (99, 43535),

Gene: Thumb\_54 Start: 42720, Stop: 43931, Start Num: 14

Candidate Starts for Thumb\_54:

(Start: 9 @42702 has 2 MA's), (Start: 14 @42720 has 5 MA's), (20, 42765), (22, 42774), (35, 42984), (41, 43113), (43, 43134), (47, 43167), (48, 43176), (53, 43242), (54, 43248), (55, 43266), (56, 43305), (62, 43359), (66, 43434), (67, 43449), (68, 43464), (70, 43482), (74, 43515), (81, 43611), (93, 43830), (94, 43833), (96, 43842), (99, 43896),