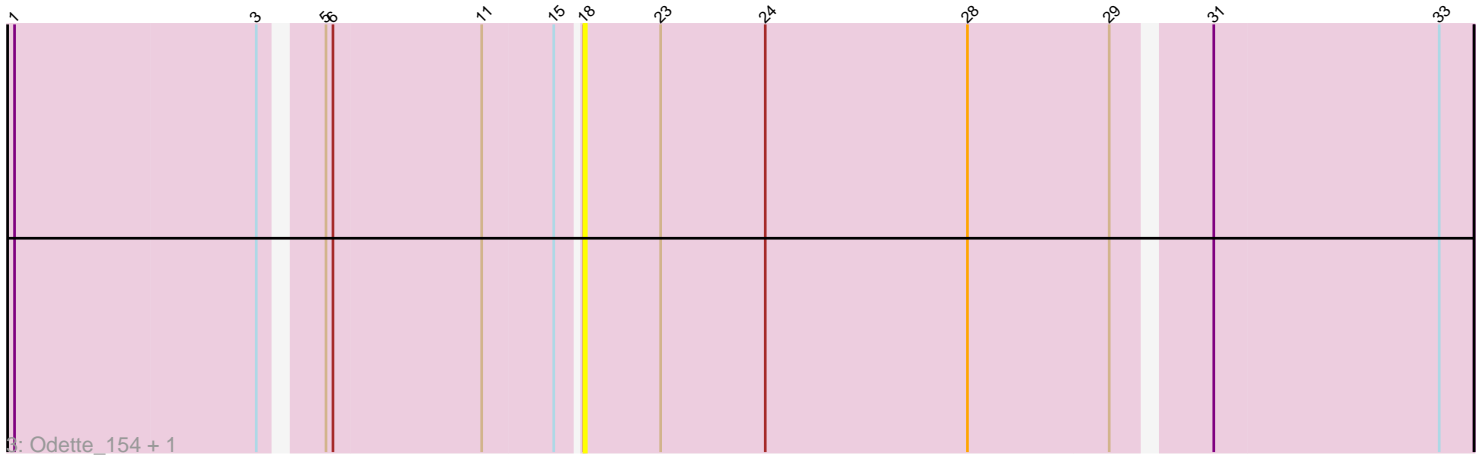
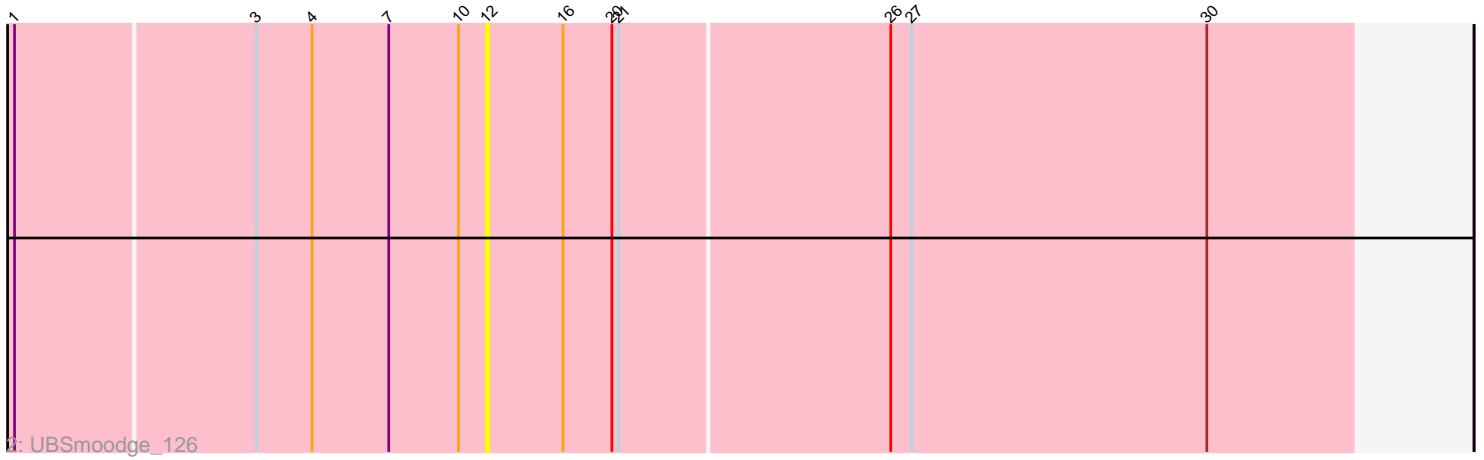
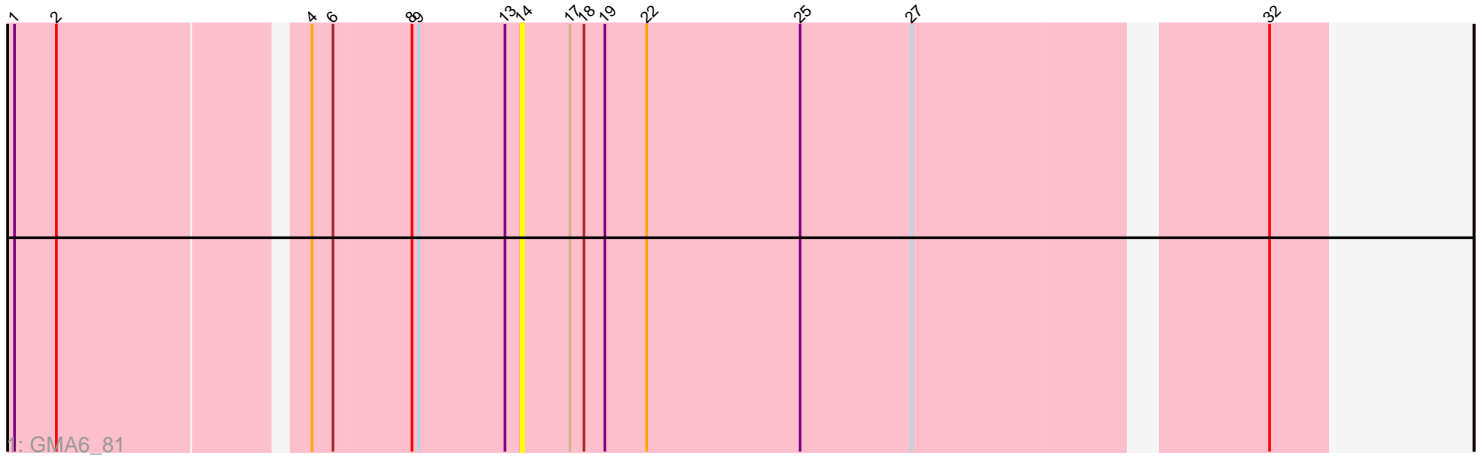


Pham 158552



Note: Tracks are now grouped by subcluster and scaled. Switching in subcluster is indicated by changes in track color. Track scale is now set by default to display the region 30 bp upstream of start 1 to 30 bp downstream of the last possible start. If this default region is judged to be packed too tightly with annotated starts, the track will be further scaled to only show that region of the ORF with annotated starts. This action will be indicated by adding "Zoomed" to the title. For starts, yellow indicates the location of called starts comprised solely of Glimmer/GeneMark auto-annotations, green indicates the location of called starts with at least 1 manual gene annotation.

## Pham 158552 Report

This analysis was run 04/13/24 on database version 558.

Pham number 158552 has 4 members, 4 are drafts.

Phages represented in each track:

- Track 1 : GMA6\_81
- Track 2 : UBSmoodge\_126
- Track 3 : Odette\_154, Dove\_143

### ***Summary of Final Annotations (See graph section above for start numbers):***

This pham is comprised of all draft annotations. There are no annotations to summarize.

#### **Summary by start number:**

Start 12:

- Found in 1 of 4 ( 25.0% ) of genes in pham
- No Manual Annotations of this start.
- Called 100.0% of time when present
- Phage (with cluster) where this start called: UBSmoodge\_126 (DQ),

Start 14:

- Found in 1 of 4 ( 25.0% ) of genes in pham
- No Manual Annotations of this start.
- Called 100.0% of time when present
- Phage (with cluster) where this start called: GMA6\_81 (DQ),

Start 18:

- Found in 3 of 4 ( 75.0% ) of genes in pham
- No Manual Annotations of this start.
- Called 66.7% of time when present
- Phage (with cluster) where this start called: Dove\_143 (J), Odette\_154 (J),

#### **Summary by clusters:**

There are 2 clusters represented in this pham: J, DQ,

**Gene Information:**

Gene: Dove\_143 Start: 75459, Stop: 75830, Start Num: 18

Candidate Starts for Dove\_143:

(1, 75231), (3, 75333), (5, 75354), (6, 75357), (11, 75420), (15, 75450), (18, 75459), (23, 75492), (24, 75537), (28, 75624), (29, 75684), (31, 75720), (33, 75816),

Gene: GMA6\_81 Start: 64168, Stop: 64497, Start Num: 14

Candidate Starts for GMA6\_81:

(1, 63964), (2, 63982), (4, 64081), (6, 64090), (8, 64123), (9, 64126), (13, 64162), (14, 64168), (17, 64189), (18, 64195), (19, 64204), (22, 64222), (25, 64288), (27, 64336), (32, 64474),

Gene: Odette\_154 Start: 81698, Stop: 82069, Start Num: 18

Candidate Starts for Odette\_154:

(1, 81470), (3, 81572), (5, 81593), (6, 81596), (11, 81659), (15, 81689), (18, 81698), (23, 81731), (24, 81776), (28, 81863), (29, 81923), (31, 81959), (33, 82055),

Gene: UBSmoodge\_126 Start: 91583, Stop: 91951, Start Num: 12

Candidate Starts for UBSmoodge\_126:

(1, 91385), (3, 91484), (4, 91508), (7, 91541), (10, 91571), (12, 91583), (16, 91616), (20, 91637), (21, 91640), (26, 91754), (27, 91763), (30, 91889),