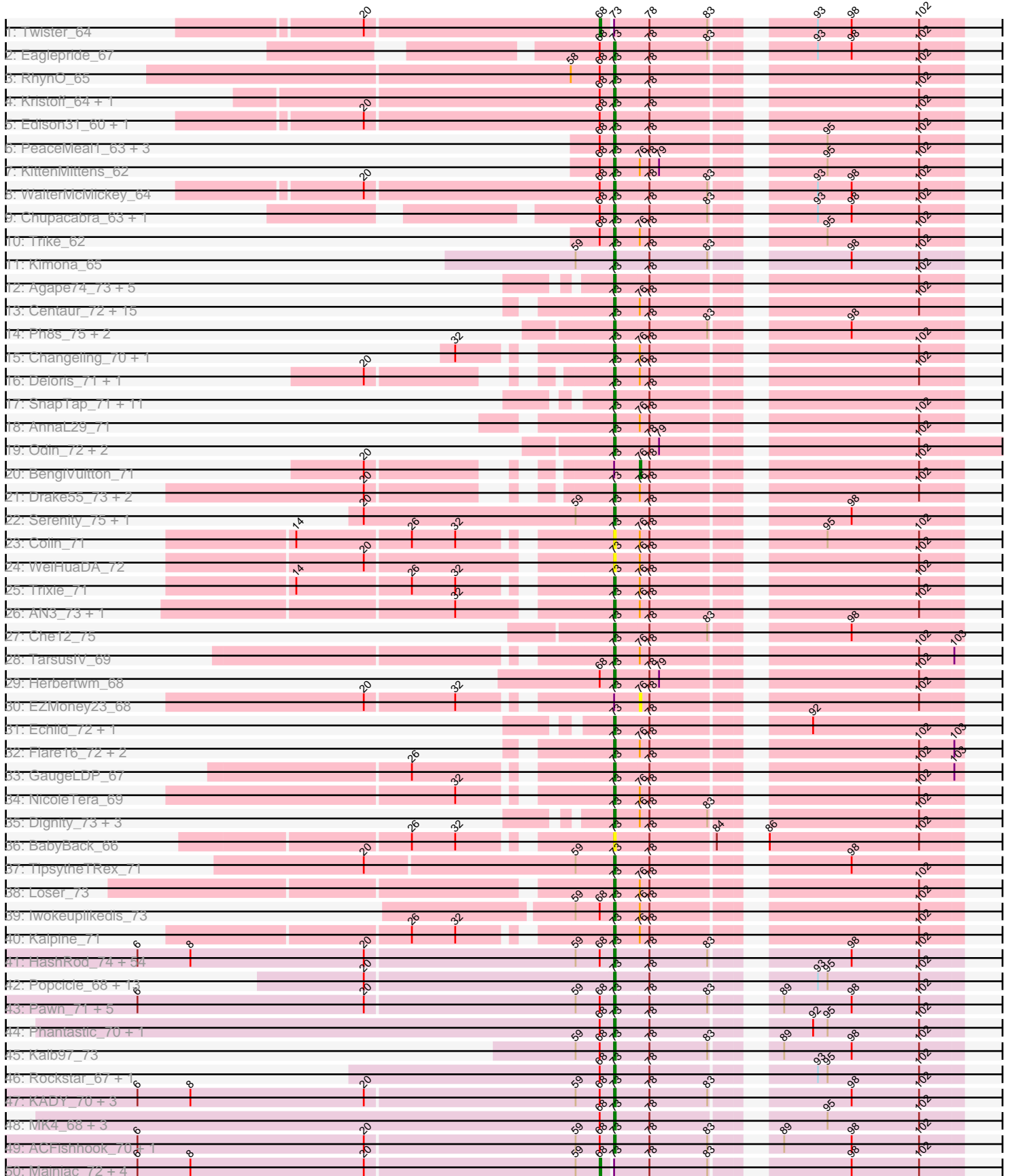
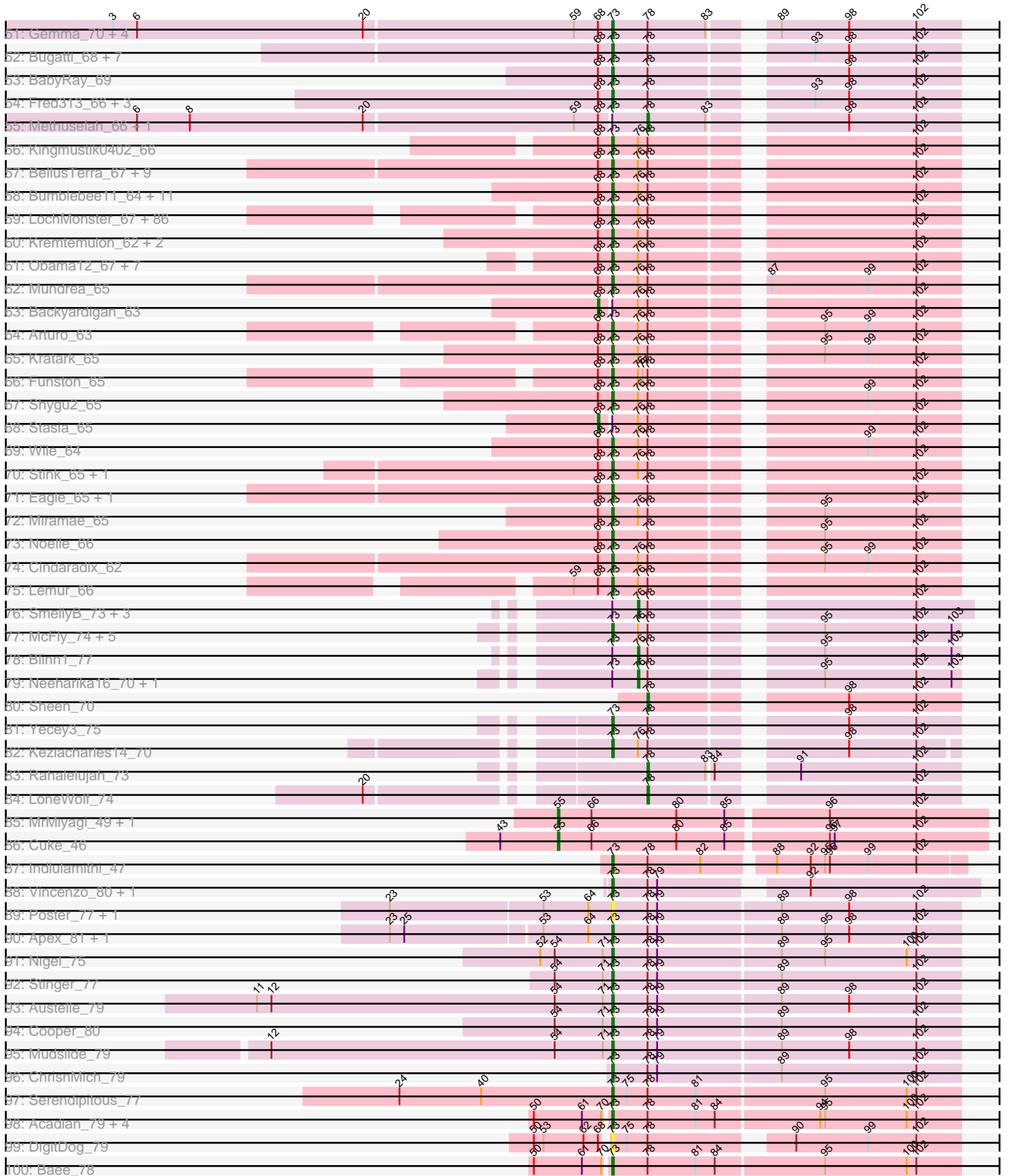


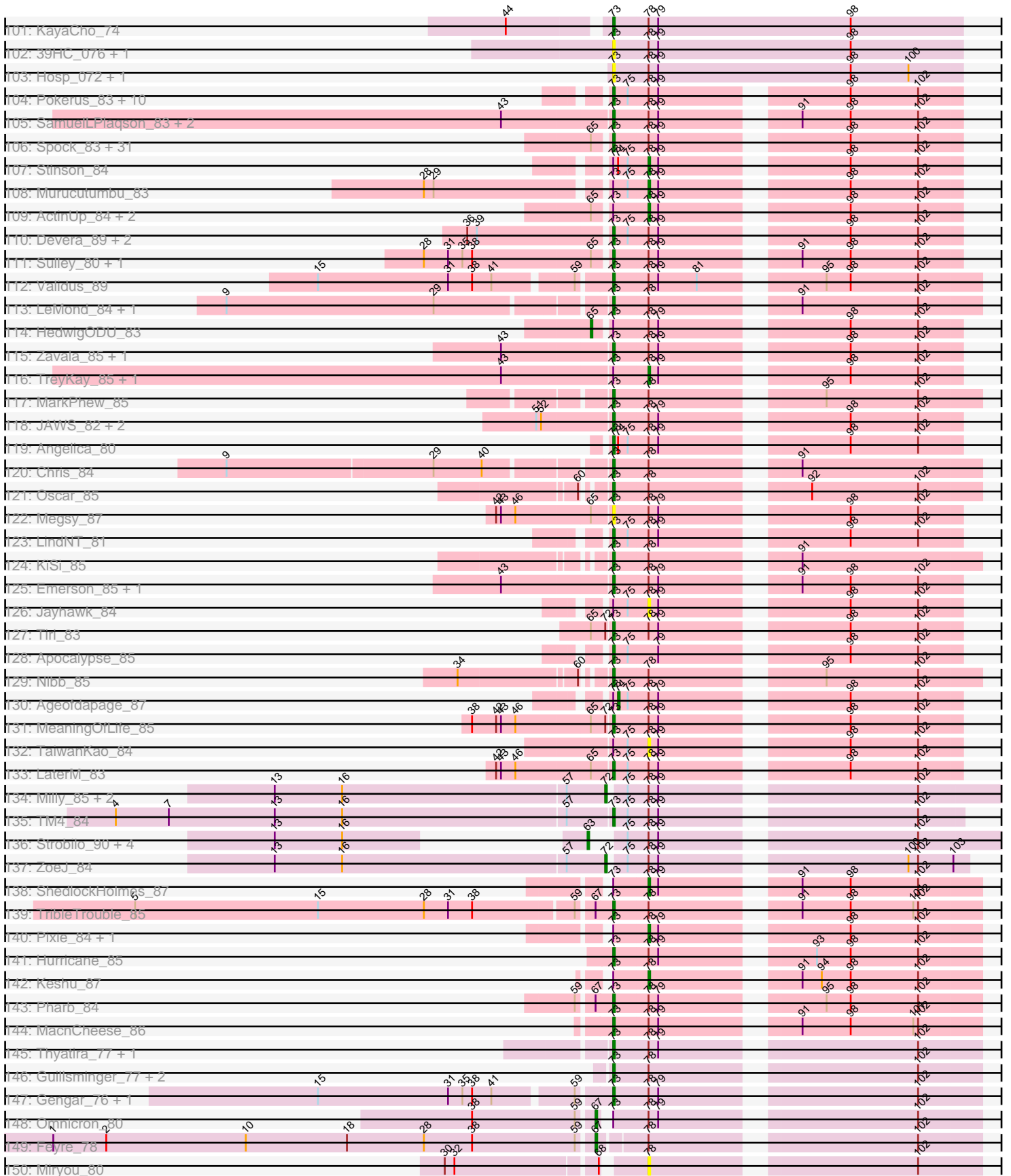
Pham 158894



Pham 158894



Pham 158894



Note: Tracks are now grouped by subcluster and scaled. Switching in subcluster is indicated by changes in track color. Track scale is now set by default to display the region 30 bp upstream of start 1 to 30 bp downstream of the last possible start. If this default region is judged to be packed too tightly with annotated starts, the track will be further scaled to only show that region of the ORF with annotated starts. This action will be indicated by adding "Zoomed" to the title. For starts, yellow indicates the location of called starts comprised solely of Glimmer/GeneMark auto-annotations, green indicates the location of called starts with at least 1 manual gene annotation.

Pham 158894 Report

This analysis was run 04/28/24 on database version 559.

Pham number 158894 has 525 members, 40 are drafts.

Phages represented in each track:

- Track 1 : Twister_64
- Track 2 : Eaglepride_67
- Track 3 : RhynO_65
- Track 4 : Kristoff_64, Rebeuca_66
- Track 5 : Edison31_60, Topanga_62
- Track 6 : PeaceMeal1_63, Drake94_63, Severus_63, Poompha_62
- Track 7 : KittenMittens_62
- Track 8 : WalterMcMickey_64
- Track 9 : Chupacabra_63, Goose_66
- Track 10 : Trike_62
- Track 11 : Kimona_65
- Track 12 : Agape74_73, Turbido_72, AbbyPaige_73, Buggy_73, Smeagan_74, Whabigail7_72
- Track 13 : Centaur_72, Kazan_74, 20ES_73, WideWale_72, GreedyLawyer_69, First_0072, Baehexic_70, Piro94_71, Kipper29_73, Candra_71, CRB1_73, Hoot_68, VohminGhazi_73, Updawg_72, Trooper_71, Equemioh13_71
- Track 14 : Ph8s_75, Adzzy_75, SwirlSquare_78
- Track 15 : Changeling_70, ArcherNM_65
- Track 16 : Deloris_71, LadyBird_75
- Track 17 : SnapTap_71, Dalmatian_72, Crucio_72, Retro23_72, QueenBeesly_72, DudeLittle_70, Anselm_73, Georgie2_73, FiringLine_72, Power_71, SemperFi_72, SweetiePie_71
- Track 18 : AnnaL29_71
- Track 19 : Odin_72, Superchunk_73, Caraxes_74
- Track 20 : BengiVuitton_71
- Track 21 : Drake55_73, JoshKayV_72, HarryHoudini_72
- Track 22 : Serenity_75, Jsquared_75
- Track 23 : Colin_71
- Track 24 : WeiHuaDA_72
- Track 25 : Trixie_71
- Track 26 : AN3_73, VA6_71
- Track 27 : Che12_75
- Track 28 : TarsusIV_69
- Track 29 : Herbertwm_68
- Track 30 : EZMoney23_68
- Track 31 : Echild_72, Benvolio_69
- Track 32 : Flare16_72, NaSiaTalie_72, MiculUcigas_72

- Track 33 : GaugeLDP_67
- Track 34 : NicoleTera_69
- Track 35 : Dignity_73, Jerm_73, Leviathan_73, LilTurb_72
- Track 36 : BabyBack_66
- Track 37 : TipsytheTRex_71
- Track 38 : Loser_73
- Track 39 : Iwokeuplikedis_73
- Track 40 : Kalpine_71
- Track 41 : HashRod_74, Penny1_73, Stagni_70, MoneyMay_72, Dieselweasel_73, Taurus_74, AgronaGT15_70, MarQuardt_73, Vix_69, Rummer_72, Aglet_74, GingkoMaracino_73, AugsMagnumOpus_76, Snickers_69, Beauxregard13_72, SoilDragon_72, Pembroke_73, Soshari_75, GtownJaz_73, Lilith_71, Sabia_71, Bxz2_68, Watson_72, Malinsilva_75, Phoxy_73, Wooldri_75, LBerry_74, Hercules11_73, Spike509_73, SoYo_70, JenCasNa_74, Cullens_73, Marie_71, Fernando_73, LugYA_76, Grub_71, DaHudson_72, MadMarie_71, LarryKay_73, PGHhamlin_75, PotatoSplit_74, Zetzy_70, P28Green_73, EpicPhail_74, Daishi_72, StepMih_72, Ollie_73, BreSam8_73, Grif_71, Sabinator_71, Colbster_69, MuchMore_76, Farber_73, Grum1_72, Phoebe_74
- Track 42 : Popcicle_68, Veracruz_65, Norbert_64, QuinnKiro_67, Caviar_68, Panamaxus_66, Lambert1_68, Todacoro_68, Hookmount_68, Pocahontas_67, Texage_66, Noella_68, ResDef_66, Margo_68
- Track 43 : Pawn_71, Heliosoles_70, Kalnoky_73, Marius_73, Groupthink_73, PurpleHaze_72
- Track 44 : Phantastic_70, Isca_66
- Track 45 : Kalb97_73
- Track 46 : Rockstar_67, MA5_68
- Track 47 : KADY_70, Louie6_72, BuzzBuzz_67, Misomonster_74
- Track 48 : MK4_68, B1_60, JF4_66, JF2_66
- Track 49 : ACFishhook_70, JeppNRM_73
- Track 50 : Mainiac_72, Jobu08_69, Anubis_76, JHC117_69, Tiffany_72
- Track 51 : Gemma_70, Manu_72, OlanP_71, PhishRPhriends_69, HaveUMetTed_73
- Track 52 : Bugatti_68, Giroux_67, TNguyen7_69, Idleandcovert_69, SaturnRing_68, Puppy_69, Pistachio_68, BlueBird_71
- Track 53 : BabyRay_69
- Track 54 : Fred313_66, Heathen_68, HelDan_68, Scout_67
- Track 55 : Methuselah_66, Microwolf_69
- Track 56 : Kingmustik0402_66
- Track 57 : BellusTerra_67, CentreCat_66, TroyPia_67, Eurydice_67, Ohfah_67, Polymorphads_66, Nebs_67, Morrow_67, Phelipe_67, LeoAvram_65
- Track 58 : Bumblebee11_64, AbbysRanger_65, PetiteSangsue_65, Wizard007_65, Morpher26_65, Xena_64, Katalie136_65, Cici_65, Datway_65, Perplexer_65, Achebe_64, Badger_64
- Track 59 : LochMonster_67, Sparxx_67, Eros_66, Romney_65, MeeZee_65, PeterPeter_66, NorthStar_64, Deano_63, Eapen_66, Alberto7_67, Kye_66, KFPoly_65, Connomayer_66, Palestino_65, Scamp_66, Camperdownii_64, LittleB_66, Wilbur_66, Phighter1804_66, Ulysses_65, Chaph_66, Holli_65, TygerBlood_66, Citius_66, NotAPhaseMom_65, Caelakin_65, Lunsford_66, Skipitt_65, Annyong_65, Phontbonne_66, Kampy_65, Medusa_66, Phacado_66, OKaNui_65, Sabertooth_66, JoongJeon_65, Mazhar510_66, Burger_64, LittleGuy_66, Millski_65, Peaches_64, Taquarus_65, Commander_64, Bartimeaus_66, Lorenzo_66, YoSam321_66, Relief_65, Wander_66, Albee_66, Maxo_67, Flux_66, Maverick_65, Eris_65, Blackmoor_65, Nemo27_65,

TiroTheta9_65, Clarenza_65, Shaka_64, Melvin_68, HamSlice_62,
Jaykayelowell_63, Broseidon_66, Abdiel_66, Koreni_65, Cocoaberry_66, Gadost_66,
Nyxis_65, Thanksgivukkah_65, Baby16_66, Tinybot_65, LappelDuVide_62,
Iracema64_66, DirtyDunning_65, Houdini22_65, Avle17_66, Druantia_65,
Iceman_65, Pumbaa_66, Spino_65, Bruiser_65, Roosevelt_64, TinaFeyge_64,
Ruin_66, Florean_66, Bombshell_66, Dhanush_66, Pipcraft_63

- Track 60 : Kremtemulon_62, ICleared_65, Cintron_66
- Track 61 : Obama12_67, LHTSCC_68, ChampagnePapi_68, Cerulean_67, Happiness_65, BangNhom_64, SheldonCooper_66, JetBlade_66
- Track 62 : Mundrea_65
- Track 63 : Backyardigan_63
- Track 64 : Arturo_63
- Track 65 : Kratak_65
- Track 66 : Funston_65
- Track 67 : Shygu2_65
- Track 68 : Stasia_65
- Track 69 : Wile_64
- Track 70 : Stink_65, AvatarAhPeg_65
- Track 71 : Eagle_65, BubbleTrouble_65
- Track 72 : Miramae_65
- Track 73 : Noelle_66
- Track 74 : Cindaradix_62
- Track 75 : Lemur_66
- Track 76 : SmellyB_73, EricB_72, Chartreuse_70, DaVinci_71
- Track 77 : McFly_74, Pmask_72, BABullseye_66, Dorothea_70, Cookiedough_73, SuperAwesome_73
- Track 78 : Blinn1_77
- Track 79 : Neeharika16_70, SuperCallie99_70
- Track 80 : Sheen_70
- Track 81 : Yecey3_75
- Track 82 : Keziacharles14_70
- Track 83 : Rahalelujah_73
- Track 84 : LoneWolf_74
- Track 85 : MrMiyagi_49, Fowlmouth_50
- Track 86 : Cuke_46
- Track 87 : Indlulamithi_47
- Track 88 : Vincenzo_80, AlanGrant_81
- Track 89 : Poster_77, Nanao_78
- Track 90 : Apex_81, BobbyK_78
- Track 91 : Nigel_75
- Track 92 : Stinger_77
- Track 93 : Austelle_79
- Track 94 : Cooper_80
- Track 95 : Mudslide_79
- Track 96 : ChrisnMich_79
- Track 97 : Serendipitous_77
- Track 98 : Acadian_79, Suigeneris_80, Rich_77, SirJeffery_77, EastView9101_80
- Track 99 : DigitDog_79
- Track 100 : Bae_78
- Track 101 : KayaCho_74
- Track 102 : 39HC_076, 40BC_076
- Track 103 : Hosp_072, Jolie1_074

- Track 104 : Pokerus_83, CrimD_83, BarrelRoll_83, Geraldini_85, BGlluviae_82, Mynx_84, CheetoDust_83, Ganymede_83, QuincyRose_81, YoureAdopted_82, Rapunzel97_85
- Track 105 : SamuelLPlaqson_83, DrHayes_83, Urkel_83
- Track 106 : Spock_83, Twitch_83, Rosmarinus_83, CaseJules_85, Padfoot_83, CREW_82, BaghaKamala_82, Asayake_83, Dalmuri_83, Capricorn_83, Tachez_83, Piatt_82, Atiba_84, Hyperbowlee_82, Adonis_83, Jarvi_83, Adephagia_82, Boiiii_83, ShiaSurprise_84, Peel_83, Topper_83, Joy99_84, Blizzard_83, BEEST_83, Homura_82, Lunahalos_83, Inky_83, Durfee_83, Ramen_84, Jeckyll_83, TruffulaTree_85, Belladonna_83
- Track 107 : Stinson_84
- Track 108 : Murucutumbu_83
- Track 109 : ActinUp_84, Llorens_82, Zabiza_79
- Track 110 : Devera_89, Illumine_87, Dole_86
- Track 111 : Sulley_80, Deby_83
- Track 112 : Validus_89
- Track 113 : LeMond_84, Scarlett_84
- Track 114 : HedwigODU_83
- Track 115 : Zavala_85, Beezoo_86
- Track 116 : TreyKay_85, Prithvi_85
- Track 117 : MarkPheW_85
- Track 118 : JAWS_82, Slimphazie_85, Veliki_84
- Track 119 : Angelica_80
- Track 120 : Chris_84
- Track 121 : Oscar_85
- Track 122 : Megsy_87
- Track 123 : LindNT_81
- Track 124 : KiSi_85
- Track 125 : Emerson_85, Padpat_86
- Track 126 : Jayhawk_84
- Track 127 : Tiri_83
- Track 128 : Apocalypse_85
- Track 129 : Nibb_85
- Track 130 : Ageofdapage_87
- Track 131 : MeaningOfLife_85
- Track 132 : TaiwanKao_84
- Track 133 : LaterM_83
- Track 134 : Milly_85, BoostSeason_84, Mufasa_84
- Track 135 : TM4_84
- Track 136 : Strobilo_90, Marcoliusprime_84, DismalFunk_85, DismalStressor_85, Findley_85
- Track 137 : ZoeJ_84
- Track 138 : ShedlockHolmes_87
- Track 139 : TribbleTrouble_85
- Track 140 : Pixie_84, TBond007_81
- Track 141 : Hurricane_85
- Track 142 : Keshu_87
- Track 143 : Pharb_84
- Track 144 : MacnCheese_86
- Track 145 : Thyatira_77, Waterfoul_76
- Track 146 : Guillsminger_77, Leston_76, Paola_76
- Track 147 : Gengar_76, OkiRoe_77
- Track 148 : Omnicron_80

- Track 149 : Feyre_78
- Track 150 : Miryou_80
- Track 151 : Rando14_78
- Track 152 : Marshawn_82
- Track 153 : Krueger_89, Sunflower1121_88
- Track 154 : Tierra_89
- Track 155 : SirPhilip_84
- Track 156 : TClif_84
- Track 157 : Shadow1_89
- Track 158 : Unicorn_89
- Track 159 : Amgine_83, Fefferhead_83
- Track 160 : Amohnition_81, Hammy_81, DARTH_P_81
- Track 161 : Ekdilam_78
- Track 162 : Syra333_88
- Track 163 : Ellie_81
- Track 164 : Yuna_86
- Track 165 : Cain_90, Phrank_90
- Track 166 : Ximenita_90

Summary of Final Annotations (See graph section above for start numbers):

The start number called the most often in the published annotations is 73, it was called in 435 of the 485 non-draft genes in the pham.

Genes that call this "Most Annotated" start:

- 20ES_73, 39HC_076, 40BC_076, ACFishhook_70, AN3_73, AbbyPaige_73, AbbysRanger_65, Abdiel_66, Acadian_79, Achebe_64, Adephagia_82, Adonis_83, Adzzy_75, Agape74_73, Aglet_74, AgronaGT15_70, AlanGrant_81, Albee_66, Alberto7_67, Angelica_80, AnnaL29_71, Annyong_65, Anselm_73, Apex_81, Apocalypse_85, ArcherNM_65, Arturo_63, Asayake_83, Atiba_84, AugsMagnumOpus_76, Austelle_79, AvatarAhPeg_65, Avle17_66, B1_60, BABullseye_66, BEEST_83, BGlluviae_82, Baby16_66, BabyBack_66, BabyRay_69, Badger_64, Bae_78, Baehexic_70, BaghaKamala_82, BangNhom_64, BarrelRoll_83, Bartimeaus_66, Beauxregard13_72, Beezoo_86, Belladonna_83, BellusTerra_67, Benvolio_69, Blackmoor_65, Blizzard_83, BlueBird_71, BobbyK_78, Boiiii_83, Bombshell_66, BreSam8_73, Broseidon_66, Bruiser_65, BubbleTrouble_65, Bugatti_68, Buggy_73, Bumblebee11_64, Burger_64, BuzzBuzz_67, Bxz2_68, CRB1_73, CREW_82, Caelakin_65, Cain_90, Camperdownii_64, Candra_71, Capricorn_83, Caraxes_74, CaseJules_85, Caviar_68, Centaur_72, CentreCat_66, Cerulean_67, ChampagnePapi_68, Changeling_70, Chaph_66, Che12_75, CheetoDust_83, Chris_84, ChrisnMich_79, Chupacabra_63, Cici_65, Cindaradix_62, Cintron_66, Citius_66, Clarenza_65, Cocoaberry_66, Colbster_69, Colin_71, Commander_64, Connomayer_66, Cookiedough_73, Cooper_80, CrimD_83, Crucio_72, Cullens_73, DaHudson_72, Daishi_72, Dalmatian_72, Dalmuri_83, Datway_65, Deano_63, Deby_83, Deloris_71, Devera_89, Dhanush_66, Dieselweasel_73, DigitDog_79, Dignity_73, DirtyDunning_65, Dole_86, Dorothea_70, DrHayes_83, Drake55_73, Drake94_63, Druantia_65, DudeLittle_70, Durfee_83, Eagle_65, Eaglepride_67, Eapen_66, EastView9101_80, Echidna_72, Edison31_60, Ekdilam_78, Ellie_81, Emerson_85, EpicPhail_74, Equemioh13_71, Eris_65, Eros_66, Eurydice_67, Farber_73,

Fernando_73, FiringLine_72, First_0072, Flare16_72, Florean_66, Flux_66, Fred313_66, Funston_65, Gadost_66, Ganymede_83, GaugeLDP_67, Gemma_70, Gengar_76, Georgie2_73, Geraldini_85, GingkoMaracino_73, Giroux_67, Goose_66, GreedyLawyer_69, Grif_71, Groupthink_73, Grub_71, Grum1_72, GtownJaz_73, Guillsminger_77, HamSlice_62, Happiness_65, HarryHoudini_72, HashRod_74, HaveUMetTed_73, Heathen_68, HelDan_68, Heliosoles_70, Herbertwm_68, Hercules11_73, Holli_65, Homura_82, Hookmount_68, Hoot_68, Hosp_072, Houdini22_65, Hurricane_85, Hyperbowlee_82, ICleared_65, Iceman_65, Idleandcovert_69, Illumine_87, Indulamithi_47, Inky_83, Iracema64_66, Isca_66, Iwokeuplikedis_73, JAWS_82, JF2_66, JF4_66, Jarvi_83, Jaykayelowell_63, Jeckyll_83, JenCasNa_74, JeppNRM_73, Jerm_73, JetBlade_66, Jolie1_074, JoongJeon_65, JoshKayV_72, Joy99_84, Jsquared_75, KADY_70, KFPoly_65, Kalb97_73, Kalnoky_73, Kalpine_71, Kampy_65, Katalie136_65, KayaCho_74, Kazan_74, Keziacharles14_70, KiSi_85, Kimona_65, Kingmustik0402_66, Kipper29_73, KittenMittens_62, Koreni_65, Kratak_65, Kremtemulon_62, Kristoff_64, Krueger_89, Kyee_66, LBerry_74, LHTSCC_68, LadyBird_75, Lambert1_68, LappelDuVide_62, LarryKay_73, LaterM_83, LeMond_84, Lemur_66, LeoAvram_65, Leston_76, Leviathan_73, LilTurb_72, Lilith_71, LindNT_81, LittleB_66, LittleGuy_66, LochMonster_67, Lorenzo_66, Loser_73, Louie6_72, LugYA_76, Lunahalos_83, Lunsford_66, MA5_68, MK4_68, MacnCheese_86, MadMarie_71, Malinsilva_75, Manu_72, MarQuardt_73, Margo_68, Marie_71, Marius_73, MarkPhew_85, Marshawn_82, Maverick_65, Maxo_67, Mazhar510_66, McFly_74, MeaningOfLife_85, Medusa_66, MeeZee_65, Megsy_87, Melvin_68, MiculUcigas_72, Millski_65, Miramae_65, Misomonster_74, MoneyMay_72, Morpher26_65, Morrow_67, MuchMore_76, Mudslide_79, Mundrea_65, Mynx_84, NaSiaTalie_72, Nanao_78, Nebs_67, Nemo27_65, Nibb_85, NicoleTera_69, Nigel_75, Noella_68, Noelle_66, Norbert_64, NorthStar_64, NotAPhaseMom_65, Nyxis_65, OKaNui_65, Obama12_67, Odin_72, Ohfah_67, OkiRoe_77, OlanP_71, Ollie_73, Oscar_85, P28Green_73, PGHhamlin_75, Padfoot_83, Padpat_86, Palestino_65, Panamaxus_66, Paola_76, Pawn_71, PeaceMeal1_63, Peaches_64, Peel_83, Pembroke_73, Penny1_73, Perplexer_65, PeterPeter_66, PetiteSangsue_65, Ph8s_75, Phacado_66, Phantastic_70, Pharb_84, Felipe_67, Phighter1804_66, PhishRPhriends_69, Phoebe_74, Phontbonne_66, Phoxy_73, Phrank_90, Piatt_82, Pipcraft_63, Piro94_71, Pistachio_68, Pmask_72, Pocahontas_67, Pokerus_83, Polymorphads_66, Poompha_62, Popcicle_68, Poster_77, PotatoSplit_74, Power_71, Pumbaa_66, Puppy_69, PurpleHaze_72, QueenBeesly_72, QuincyRose_81, QuinnKiro_67, Ramen_84, Rando14_78, Rapunzel97_85, Rebeuca_66, Relief_65, ResDef_66, Retro23_72, RhynO_65, Rich_77, Rockstar_67, Romney_65, Roosevelt_64, Rosmarinus_83, Ruin_66, Rummer_72, Sabertooth_66, Sabia_71, Sabinator_71, SamuelLPlaqson_83, SaturnRing_68, Scamp_66, Scarlett_84, Scout_67, SemperFi_72, Serendipitous_77, Serenity_75, Severus_63, Shadow1_89, Shaka_64, SheldonCooper_66, ShiaSurprise_84, Shygu2_65, SirJeffery_77, Skipitt_65, Slimphazie_85, Smeagan_74, SnapTap_71, Snickers_69, SoYo_70, SoilDragon_72, Soshari_75, Sparxx_67, Spike509_73, Spino_65, Spock_83, Stagni_70, StepMih_72, Stinger_77, Stink_65, Suigeneris_80, Sulley_80, Sunflower1121_88, SuperAwesome_73, Superchunk_73, SweetiePie_71, SwirlSquare_78, Syra333_88, TM4_84, TNguyen7_69, Tachez_83, Taquarus_65, TarsusIV_69, Taurus_74, Texage_66, Thanksgivukkah_65, Thyatira_77, Tierra_89, TinaFeyge_64, Tinybot_65, TipsytheTRex_71, Tiri_83, TiroTheta9_65, Todacoro_68, Topanga_62, Topper_83, TribbleTrouble_85, Trike_62, Trixie_71, Trooper_71, TroyPia_67, TruffulaTree_85, Turbido_72, Twitch_83, TygerBlood_66, Ulysses_65, Unicorn_89, Updawg_72, Urkel_83, VA6_71, Validus_89, Veliki_84, Veracruz_65, Vincenzo_80, Vix_69,

VohminGhazi_73, WalterMcMickey_64, Wander_66, Waterfoul_76, Watson_72, WeiHuaDA_72, Whabigail7_72, WideWale_72, Wilbur_66, Wile_64, Wizard007_65, Wooldri_75, Xena_64, Ximenita_90, Yecey3_75, YoSam321_66, YoureAdopted_82, Zavala_85, Zetzy_70,

Genes that have the "Most Annotated" start but do not call it:

- ActinUp_84, Ageofdapage_87, Amgine_83, Amohnition_81, Anubis_76, Backyardigan_63, BengiVuitton_71, Blinn1_77, Chartreuse_70, DaVinci_71, DarthP_81, EZMoney23_68, EricB_72, Fefferhead_83, Hammy_81, HedwigODU_83, JHC117_69, Jayhawk_84, Jobu08_69, Keshu_87, Llorens_82, Mainiac_72, Methuselah_66, Microwolf_69, Murucutumbu_83, Neeharika16_70, Omnicron_80, Pixie_84, Prithvi_85, ShedlockHolmes_87, SirPhilip_84, SmellyB_73, Stasia_65, Stinson_84, SuperCallie99_70, TBond007_81, TClif_84, TaiwanKao_84, Tiffany_72, TreyKay_85, Twister_64, Yuna_86, Zabiza_79,

Genes that do not have the "Most Annotated" start:

- BoostSeason_84, Cuke_46, DismalFunk_85, DismalStressor_85, Feyre_78, Findley_85, Fowlmouth_50, LoneWolf_74, Marcoliusprime_84, Milly_85, Miryou_80, MrMiyagi_49, Mufasa_84, Rahalelujah_73, Sheen_70, Strobilo_90, ZoeJ_84,

Summary by start number:

Start 55:

- Found in 4 of 525 (0.8%) of genes in pham
- Manual Annotations of this start: 3 of 485
- Called 75.0% of time when present
- Phage (with cluster) where this start called: Cuke_46 (AC), Fowlmouth_50 (AC), MrMiyagi_49 (AC),

Start 63:

- Found in 5 of 525 (1.0%) of genes in pham
- Manual Annotations of this start: 4 of 485
- Called 100.0% of time when present
- Phage (with cluster) where this start called: DismalFunk_85 (K2), DismalStressor_85 (K2), Findley_85 (K2), Marcoliusprime_84 (K2), Strobilo_90 (K2),

Start 65:

- Found in 42 of 525 (8.0%) of genes in pham
- Manual Annotations of this start: 1 of 485
- Called 2.4% of time when present
- Phage (with cluster) where this start called: HedwigODU_83 (K1),

Start 67:

- Found in 13 of 525 (2.5%) of genes in pham
- Manual Annotations of this start: 7 of 485
- Called 53.8% of time when present
- Phage (with cluster) where this start called: Amgine_83 (K6), Amohnition_81 (K6), DarthP_81 (K6), Fefferhead_83 (K6), Feyre_78 (K5), Hammy_81 (K6), Omnicron_80 (K5),

Start 68:

- Found in 258 of 525 (49.1%) of genes in pham
- Manual Annotations of this start: 8 of 485

- Called 3.1% of time when present
- Phage (with cluster) where this start called: Anubis_76 (A3), Backyardigan_63 (A4), JHC117_69 (A3), Jobu08_69 (A3), Mainiac_72 (A3), Stasia_65 (A4), Tiffany_72 (A3), Twister_64 (A10),

Start 72:

- Found in 6 of 525 (1.1%) of genes in pham
- Manual Annotations of this start: 4 of 485
- Called 66.7% of time when present
- Phage (with cluster) where this start called: BoostSeason_84 (K2), Milly_85 (K2), Mufasa_84 (K2), ZoeJ_84 (K2),

Start 73:

- Found in 508 of 525 (96.8%) of genes in pham
- Manual Annotations of this start: 435 of 485
- Called 91.5% of time when present
- Phage (with cluster) where this start called: 20ES_73 (A2), 39HC_076 (B6), 40BC_076 (B6), ACFishhook_70 (A3), AN3_73 (A2), AbbyPaige_73 (A2), AbbysRanger_65 (A4), Abdiel_66 (A4), Acadian_79 (B5), Achebe_64 (A4), Adephegia_82 (K1), Adonis_83 (K1), Adzzy_75 (A2), Agape74_73 (A2), Aglet_74 (A3), AgronaGT15_70 (A3), AlanGrant_81 (B4), Albee_66 (A4), Alberto7_67 (A4), Angelica_80 (K1), AnnaL29_71 (A2), Annyong_65 (A4), Anselm_73 (A2), Apex_81 (B4), Apocalypse_85 (K1), ArcherNM_65 (A2), Arturo_63 (A4), Asayake_83 (K1), Atiba_84 (K1), AugsMagnumOpus_76 (A3), Austelle_79 (B4), AvatarAhPeg_65 (A4), Avle17_66 (A4), B1_60 (A3), BABullseye_66 (A6), BEEEST_83 (K1), BGlluviae_82 (K1), Baby16_66 (A4), BabyBack_66 (A2), BabyRay_69 (A3), Badger_64 (A4), Bae_78 (B5), Baehexic_70 (A2), BaghaKamala_82 (K1), BangNhom_64 (A4), BarrelRoll_83 (K1), Bartimeaus_66 (A4), Beauxregard13_72 (A3), Beezoo_86 (K1), Belladonna_83 (K1), BellusTerra_67 (A4), Benvolio_69 (A2), Blackmoor_65 (A4), Blizzard_83 (K1), BlueBird_71 (A3), BobbyK_78 (B4), Boiiii_83 (K1), Bombshell_66 (A4), BreSam8_73 (A3), Broseidon_66 (A4), Bruiser_65 (A4), BubbleTrouble_65 (A4), Bugatti_68 (A3), Buggy_73 (A2), Bumblebee11_64 (A4), Burger_64 (A4), BuzzBuzz_67 (A3), Bxz2_68 (A3), CRB1_73 (A2), CREW_82 (K1), Caelakin_65 (A4), Cain_90 (K6), Camperdownii_64 (A4), Candra_71 (A6), Capricorn_83 (K1), Caraxes_74 (A2), CaseJules_85 (K1), Caviar_68 (A3), Centaur_72 (A2), CentreCat_66 (A4), Cerulean_67 (A4), ChampagnePapi_68 (A4), Changeling_70 (A2), Chaph_66 (A4), Che12_75 (A2), CheetoDust_83 (K1), Chris_84 (K1), ChrisnMich_79 (B4), Chupacabra_63 (A10), Cici_65 (A4), Cindaradix_62 (A4), Cintron_66 (A4), Citius_66 (A4), Clarenza_65 (A4), Cocoaberry_66 (A4), Colbster_69 (A3), Colin_71 (A2), Commander_64 (A4), Connomayer_66 (A4), Cookiedough_73 (A6), Cooper_80 (B4), CrimD_83 (K1), Crucio_72 (A2), Cullens_73 (A3), DaHudson_72 (A3), Daishi_72 (A3), Dalmatian_72 (A2), Dalmuri_83 (K1), Datway_65 (A4), Deano_63 (A4), Deby_83 (K1), Deloris_71 (A2), Devera_89 (K1), Dhanush_66 (A4), Dieselweasel_73 (A3), DigitDog_79 (B5), Dignity_73 (A2), DirtyDunning_65 (A4), Dole_86 (K1), Dorothea_70 (A6), DrHayes_83 (K1), Drake55_73 (A2), Drake94_63 (A10), Druantia_65 (A4), DudeLittle_70 (A2), Durfee_83 (K1), Eagle_65 (A4), Eaglepride_67 (A10), Eapen_66 (A4), EastView9101_80 (B5), Echild_72 (A2), Edison31_60 (A10), Ekdilam_78 (K6), Ellie_81 (K6), Emerson_85 (K1), EpicPhail_74 (A3), Equemioh13_71 (A2), Eris_65 (A4), Eros_66 (A4), Eurydice_67 (A4), Farber_73 (A3), Fernando_73 (A3), FiringLine_72 (A2), First_0072 (A2), Flare16_72 (A2), Florean_66 (A4), Flux_66 (A4), Fred313_66 (A3), Funston_65 (A4), Gadost_66 (A4), Ganymede_83 (K1), GaugeLDP_67 (A2), Gemma_70 (A3), Gengar_76 (K5), Georgie2_73 (A2),

Geraldini_85 (K1), GingkoMaracino_73 (A3), Giroux_67 (A3), Goose_66 (A10), GreedyLawyer_69 (A6), Grif_71 (A3), Groupthink_73 (A3), Grub_71 (A3), Grum1_72 (A3), GtownJaz_73 (A3), Guillsminger_77 (K5), HamSlice_62 (A4), Happiness_65 (A4), HarryHoudini_72 (A2), HashRod_74 (A3), HaveUMetTed_73 (A3), Heathen_68 (A3), HelDan_68 (A3), Heliosoles_70 (A3), Herbertwm_68 (A2), Hercules11_73 (A3), Holli_65 (A4), Homura_82 (K1), Hookmount_68 (A3), Hoot_68 (A6), Hosp_072 (B6), Houdini22_65 (A4), Hurricane_85 (K3), Hyperbowlee_82 (K1), ICleared_65 (A4), Iceman_65 (A4), Idleandcovert_69 (A3), Illumine_87 (K1), Indulamithi_47 (AC), Inky_83 (K1), Iracema64_66 (A4), Isca_66 (A3), Iwokeuplikedis_73 (A2), JAWS_82 (K1), JF2_66 (A3), JF4_66 (A3), Jarvi_83 (K1), Jaykayelowell_63 (A4), Jeckyll_83 (K1), JenCasNa_74 (A3), JeppNRM_73 (A3), Jerm_73 (A2), JetBlade_66 (A4), Jolie1_074 (B6), JoongJeon_65 (A4), JoshKayV_72 (A2), Joy99_84 (K1), Jsquared_75 (A2), KADY_70 (A3), KFPoly_65 (A4), Kalb97_73 (A3), Kainoky_73 (A3), Kalpine_71 (A2), Kampy_65 (A4), Katalie136_65 (A4), KayaCho_74 (B6), Kazan_74 (A6), Keziacharles14_70 (A9), KiSi_85 (K1), Kimona_65 (A19), Kingmustik0402_66 (A4), Kipper29_73 (A6), KittenMittens_62 (A10), Koreni_65 (A4), Kratak_65 (A4), Kremtemulon_62 (A4), Kristoff_64 (A10), Krueger_89 (K6), Kyee_66 (A4), LBerry_74 (A3), LHTSCC_68 (A4), LadyBird_75 (A2), Lambert1_68 (A3), LappelDuVide_62 (A4), LarryKay_73 (A3), LaterM_83 (K1), LeMond_84 (K1), Lemur_66 (A4), LeoAvram_65 (A4), Leston_76 (K5), Leviathan_73 (A2), LilTurb_72 (A2), Lilith_71 (A3), LindNT_81 (K1), LittleB_66 (A4), LittleGuy_66 (A4), LochMonster_67 (A4), Lorenzo_66 (A4), Loser_73 (A2), Louie6_72 (A3), LugYA_76 (A3), Lunahalos_83 (K1), Lunsford_66 (A4), MA5_68 (A3), MK4_68 (A3), MacnCheese_86 (K3), MadMarie_71 (A3), Malinsilva_75 (A3), Manu_72 (A3), MarQuardt_73 (A3), Margo_68 (A3), Marie_71 (A3), Marius_73 (A3), MarkPheW_85 (K1), Marshawn_82 (K6), Maverick_65 (A4), Maxo_67 (A4), Mazhar510_66 (A4), McFly_74 (A6), MeaningOfLife_85 (K1), Medusa_66 (A4), MeeZee_65 (A4), Megsy_87 (K1), Melvin_68 (A4), MiculUcigas_72 (A2), Millski_65 (A4), Miramae_65 (A4), Misomonster_74 (A3), MoneyMay_72 (A3), Morpher26_65 (A4), Morrow_67 (A4), MuchMore_76 (A3), Mudslide_79 (B4), Mundrea_65 (A4), Mynx_84 (K1), NaSiaTalie_72 (A2), Nanao_78 (B4), Nebs_67 (A4), Nemo27_65 (A4), Nibb_85 (K1), NicoleTera_69 (A2), Nigel_75 (B4), Noella_68 (A3), Noelle_66 (A4), Norbert_64 (A3), NorthStar_64 (A4), NotAPhaseMom_65 (A4), Nyxis_65 (A4), OKaNui_65 (A4), Obama12_67 (A4), Odin_72 (A2), Ohfah_67 (A4), OkiRoe_77 (K5), OlanP_71 (A3), Ollie_73 (A3), Oscar_85 (K1), P28Green_73 (A3), PGHhamlin_75 (A3), Padfoot_83 (K1), Padpat_86 (K1), Palestino_65 (A4), Panamaxus_66 (A3), Paola_76 (K5), Pawn_71 (A3), PeaceMeal1_63 (A10), Peaches_64 (A4), Peel_83 (K1), Pembroke_73 (A3), Penny1_73 (A3), Perplexer_65 (A4), PeterPeter_66 (A4), PetiteSangsue_65 (A4), Ph8s_75 (A2), Phacado_66 (A4), Phantastic_70 (A3), Pharb_84 (K3), Felipe_67 (A4), Phighter1804_66 (A4), PhishRPhriends_69 (A3), Phoebe_74 (A3), Phontbonne_66 (A4), Phoxy_73 (A3), Phrank_90 (K6), Piatt_82 (K1), Pipcraft_63 (A4), Piro94_71 (A2), Pistachio_68 (A3), Pmask_72 (A6), Pocahontas_67 (A3), Pokerus_83 (K1), Polymorphads_66 (A4), Poompha_62 (A10), Popcicle_68 (A3), Poster_77 (B4), PotatoSplit_74 (A3), Power_71 (A2), Pumbaa_66 (A4), Puppy_69 (A3), PurpleHaze_72 (A3), QueenBeesly_72 (A2), QuincyRose_81 (K1), QuinnKiro_67 (A3), Ramen_84 (K1), Rando14_78 (K5), Rapunzel97_85 (K1), Rebeuca_66 (A10), Relief_65 (A4), ResDef_66 (A3), Retro23_72 (A2), RhynO_65 (A10), Rich_77 (B5), Rockstar_67 (A3), Romney_65 (A4), Roosevelt_64 (A4), Rosmarinus_83 (K1), Ruin_66 (A4), Rummer_72 (A3), Sabertooth_66 (A4), Sabia_71 (A3), Sabinator_71 (A3), SamuelLPlaqson_83 (K1), SaturnRing_68 (A3), Scamp_66 (A4), Scarlett_84 (K1), Scout_67 (A3), SemperFi_72 (A2), Serendipitous_77 (B5), Serenity_75 (A2), Severus_63 (A10), Shadow1_89 (K6), Shaka_64 (A4), SheldonCooper_66 (A4), ShiaSurprise_84 (K1), Shygu2_65 (A4), SirJeffery_77 (B5),

Skipitt_65 (A4), Slimphazie_85 (K1), Smeagan_74 (A2), SnapTap_71 (A2), Snickers_69 (A3), SoYo_70 (A3), SoilDragon_72 (A3), Soshari_75 (A3), Sparxx_67 (A4), Spike509_73 (A3), Spino_65 (A4), Spock_83 (K1), Stagni_70 (A3), StepMih_72 (A3), Stinger_77 (B4), Stink_65 (A4), Suigeneris_80 (B5), Sulley_80 (K1), Sunflower1121_88 (K6), SuperAwesome_73 (A6), Superchunk_73 (A2), SweetiePie_71 (A2), SwirlSquare_78 (A2), Syra333_88 (K6), TM4_84 (K2), TNguyen7_69 (A3), Tachez_83 (K1), Taquarus_65 (A4), TarsusIV_69 (A2), Taurus_74 (A3), Texage_66 (A3), Thanksgivukkah_65 (A4), Thyatira_77 (K5), Tierra_89 (K6), TinaFeyge_64 (A4), Tinybot_65 (A4), TipsytheTRex_71 (A2), Tiri_83 (K1), TiroTheta9_65 (A4), Todacoro_68 (A3), Topanga_62 (A10), Topper_83 (K1), TripleTrouble_85 (K3), Trike_62 (A10), Trixie_71 (A2), Trooper_71 (A2), TroyPia_67 (A4), TruffulaTree_85 (K1), Turbido_72 (A2), Twitch_83 (K1), TygerBlood_66 (A4), Ulysses_65 (A4), Unicorn_89 (K6), Updawg_72 (A2), Urkel_83 (K1), VA6_71 (A2), Validus_89 (K1), Veliki_84 (K1), Veracruz_65 (A3), Vincenzo_80 (B4), Vix_69 (A3), VohminGhazi_73 (A6), WalterMcMickey_64 (A10), Wander_66 (A4), Waterfoul_76 (K5), Watson_72 (A3), WeiHuaDA_72 (A2), Whabigail7_72 (A2), WideWale_72 (A2), Wilbur_66 (A4), Wile_64 (A4), Wizard007_65 (A4), Wooldri_75 (A3), Xena_64 (A4), Ximenita_90 (K6), Yecey3_75 (A9), YoSam321_66 (A4), YoureAdopted_82 (K1), Zavala_85 (K1), Zetzy_70 (A3),

Start 74:

- Found in 3 of 525 (0.6%) of genes in pham
- Manual Annotations of this start: 1 of 485
- Called 33.3% of time when present
- Phage (with cluster) where this start called: Ageofdapage_87 (K1),

Start 76:

- Found in 193 of 525 (36.8%) of genes in pham
- Manual Annotations of this start: 6 of 485
- Called 4.7% of time when present
- Phage (with cluster) where this start called: BengiVuitton_71 (A2), Blinn1_77 (A6), Chartreuse_70 (A6), DaVinci_71 (A6), EZMoney23_68 (A2), EricB_72 (A6), Neeharika16_70 (A6), SmellyB_73 (A6), SuperCallie99_70 (A6),

Start 78:

- Found in 521 of 525 (99.2%) of genes in pham
- Manual Annotations of this start: 16 of 485
- Called 4.2% of time when present
- Phage (with cluster) where this start called: ActinUp_84 (K1), Jayhawk_84 (K1), Keshu_87 (K3), Llorens_82 (K1), LoneWolf_74 (A9), Methuselah_66 (A3), Microwolf_69 (A3), Miryou_80 (K5), Murucutumbu_83 (K1), Pixie_84 (K3), Prithvi_85 (K1), Rahalelujah_73 (A9), ShedlockHolmes_87 (K3), Sheen_70 (A7), SirPhilip_84 (K6), Stinson_84 (K1), TBond007_81 (K3), TClif_84 (K6), TaiwanKao_84 (K1), TreyKay_85 (K1), Yuna_86 (K6), Zabiza_79 (K1),

Summary by clusters:

There are 17 clusters represented in this pham: K3, AC, A10, A7, B5, A19, A3, B4, K2, K1, A2, A4, K5, A6, A9, B6, K6,

Info for manual annotations of cluster A10:

- Start number 68 was manually annotated 1 time for cluster A10.
- Start number 73 was manually annotated 14 times for cluster A10.

Info for manual annotations of cluster A19:

- Start number 73 was manually annotated 1 time for cluster A19.

Info for manual annotations of cluster A2:

- Start number 73 was manually annotated 60 times for cluster A2.
- Start number 76 was manually annotated 1 time for cluster A2.

Info for manual annotations of cluster A3:

- Start number 68 was manually annotated 5 times for cluster A3.
- Start number 73 was manually annotated 102 times for cluster A3.
- Start number 78 was manually annotated 2 times for cluster A3.

Info for manual annotations of cluster A4:

- Start number 68 was manually annotated 2 times for cluster A4.
- Start number 73 was manually annotated 133 times for cluster A4.

Info for manual annotations of cluster A6:

- Start number 73 was manually annotated 10 times for cluster A6.
- Start number 76 was manually annotated 5 times for cluster A6.

Info for manual annotations of cluster A7:

- Start number 78 was manually annotated 1 time for cluster A7.

Info for manual annotations of cluster A9:

- Start number 73 was manually annotated 2 times for cluster A9.
- Start number 78 was manually annotated 2 times for cluster A9.

Info for manual annotations of cluster AC:

- Start number 55 was manually annotated 3 times for cluster AC.
- Start number 73 was manually annotated 1 time for cluster AC.

Info for manual annotations of cluster B4:

- Start number 73 was manually annotated 9 times for cluster B4.

Info for manual annotations of cluster B5:

- Start number 73 was manually annotated 5 times for cluster B5.

Info for manual annotations of cluster B6:

- Start number 73 was manually annotated 1 time for cluster B6.

Info for manual annotations of cluster K1:

- Start number 65 was manually annotated 1 time for cluster K1.
- Start number 73 was manually annotated 72 times for cluster K1.
- Start number 74 was manually annotated 1 time for cluster K1.
- Start number 78 was manually annotated 5 times for cluster K1.

Info for manual annotations of cluster K2:

- Start number 63 was manually annotated 4 times for cluster K2.
- Start number 72 was manually annotated 4 times for cluster K2.
- Start number 73 was manually annotated 1 time for cluster K2.

Info for manual annotations of cluster K3:

- Start number 73 was manually annotated 4 times for cluster K3.
- Start number 78 was manually annotated 4 times for cluster K3.

Info for manual annotations of cluster K5:

- Start number 67 was manually annotated 2 times for cluster K5.
- Start number 73 was manually annotated 8 times for cluster K5.

Info for manual annotations of cluster K6:

- Start number 67 was manually annotated 5 times for cluster K6.
- Start number 73 was manually annotated 12 times for cluster K6.
- Start number 78 was manually annotated 2 times for cluster K6.

Gene Information:

Gene: 20ES_73 Start: 43296, Stop: 43102, Start Num: 73

Candidate Starts for 20ES_73:

(Start: 73 @43296 has 435 MA's), (Start: 76 @43281 has 6 MA's), (Start: 78 @43275 has 16 MA's), (102, 43128),

Gene: 39HC_076 Start: 62435, Stop: 62220, Start Num: 73

Candidate Starts for 39HC_076:

(Start: 73 @62435 has 435 MA's), (Start: 78 @62414 has 16 MA's), (79, 62408), (98, 62288),

Gene: 40BC_076 Start: 62435, Stop: 62220, Start Num: 73

Candidate Starts for 40BC_076:

(Start: 73 @62435 has 435 MA's), (Start: 78 @62414 has 16 MA's), (79, 62408), (98, 62288),

Gene: ACFishhook_70 Start: 42521, Stop: 42327, Start Num: 73

Candidate Starts for ACFishhook_70:

(6, 42812), (20, 42671), (59, 42542), (Start: 68 @42527 has 8 MA's), (Start: 73 @42521 has 435 MA's), (Start: 78 @42500 has 16 MA's), (83, 42464), (89, 42437), (98, 42395), (102, 42353),

Gene: AN3_73 Start: 42011, Stop: 41817, Start Num: 73

Candidate Starts for AN3_73:

(32, 42095), (Start: 73 @42011 has 435 MA's), (Start: 76 @41996 has 6 MA's), (Start: 78 @41990 has 16 MA's), (102, 41843),

Gene: AbbyPaige_73 Start: 43546, Stop: 43352, Start Num: 73

Candidate Starts for AbbyPaige_73:

(Start: 73 @43546 has 435 MA's), (Start: 78 @43525 has 16 MA's), (102, 43378),

Gene: AbbysRanger_65 Start: 42426, Stop: 42232, Start Num: 73

Candidate Starts for AbbysRanger_65:

(Start: 68 @42432 has 8 MA's), (Start: 73 @42426 has 435 MA's), (Start: 76 @42411 has 6 MA's), (Start: 78 @42405 has 16 MA's), (102, 42258),

Gene: Abdiel_66 Start: 42176, Stop: 41982, Start Num: 73

Candidate Starts for Abdiel_66:

(Start: 68 @42182 has 8 MA's), (Start: 73 @42176 has 435 MA's), (Start: 76 @42161 has 6 MA's), (Start: 78 @42155 has 16 MA's), (102, 42008),

Gene: Acadian_79 Start: 62704, Stop: 62492, Start Num: 73
Candidate Starts for Acadian_79:
(50, 62749), (61, 62719), (70, 62707), (Start: 73 @62704 has 435 MA's), (Start: 78 @62683 has 16 MA's), (81, 62653), (84, 62641), (94, 62578), (95, 62575), (100, 62524), (102, 62518),

Gene: Achebe_64 Start: 42409, Stop: 42215, Start Num: 73
Candidate Starts for Achebe_64:
(Start: 68 @42415 has 8 MA's), (Start: 73 @42409 has 435 MA's), (Start: 76 @42394 has 6 MA's), (Start: 78 @42388 has 16 MA's), (102, 42241),

Gene: ActinUp_84 Start: 53552, Stop: 53728, Start Num: 78
Candidate Starts for ActinUp_84:
(Start: 65 @53522 has 1 MA's), (Start: 73 @53531 has 435 MA's), (Start: 78 @53552 has 16 MA's), (79, 53558), (98, 53660), (102, 53702),

Gene: Adephagia_82 Start: 53368, Stop: 53565, Start Num: 73
Candidate Starts for Adephagia_82:
(Start: 65 @53359 has 1 MA's), (Start: 73 @53368 has 435 MA's), (Start: 78 @53389 has 16 MA's), (79, 53395), (98, 53497), (102, 53539),

Gene: Adonis_83 Start: 53563, Stop: 53760, Start Num: 73
Candidate Starts for Adonis_83:
(Start: 65 @53554 has 1 MA's), (Start: 73 @53563 has 435 MA's), (Start: 78 @53584 has 16 MA's), (79, 53590), (98, 53692), (102, 53734),

Gene: Adzzy_75 Start: 42168, Stop: 41974, Start Num: 73
Candidate Starts for Adzzy_75:
(Start: 73 @42168 has 435 MA's), (Start: 78 @42147 has 16 MA's), (83, 42111), (98, 42042),

Gene: Agape74_73 Start: 43540, Stop: 43346, Start Num: 73
Candidate Starts for Agape74_73:
(Start: 73 @43540 has 435 MA's), (Start: 78 @43519 has 16 MA's), (102, 43372),

Gene: Ageofdapage_87 Start: 54313, Stop: 54507, Start Num: 74
Candidate Starts for Ageofdapage_87:
(Start: 73 @54310 has 435 MA's), (Start: 74 @54313 has 1 MA's), (75, 54319), (Start: 78 @54331 has 16 MA's), (79, 54337), (98, 54439), (102, 54481),

Gene: Aglet_74 Start: 42633, Stop: 42439, Start Num: 73
Candidate Starts for Aglet_74:
(6, 42924), (8, 42891), (20, 42783), (59, 42654), (Start: 68 @42639 has 8 MA's), (Start: 73 @42633 has 435 MA's), (Start: 78 @42612 has 16 MA's), (83, 42576), (98, 42507), (102, 42465),

Gene: AgronaGT15_70 Start: 42481, Stop: 42287, Start Num: 73
Candidate Starts for AgronaGT15_70:
(6, 42772), (8, 42739), (20, 42631), (59, 42502), (Start: 68 @42487 has 8 MA's), (Start: 73 @42481 has 435 MA's), (Start: 78 @42460 has 16 MA's), (83, 42424), (98, 42355), (102, 42313),

Gene: AlanGrant_81 Start: 64893, Stop: 64684, Start Num: 73
Candidate Starts for AlanGrant_81:
(Start: 73 @64893 has 435 MA's), (Start: 78 @64872 has 16 MA's), (79, 64866), (92, 64788),

Gene: Albee_66 Start: 42163, Stop: 41969, Start Num: 73

Candidate Starts for Albee_66:

(Start: 68 @42169 has 8 MA's), (Start: 73 @42163 has 435 MA's), (Start: 76 @42148 has 6 MA's),
(Start: 78 @42142 has 16 MA's), (102, 41995),

Gene: Alberto7_67 Start: 42500, Stop: 42306, Start Num: 73

Candidate Starts for Alberto7_67:

(Start: 68 @42506 has 8 MA's), (Start: 73 @42500 has 435 MA's), (Start: 76 @42485 has 6 MA's),
(Start: 78 @42479 has 16 MA's), (102, 42332),

Gene: Amgine_83 Start: 54887, Stop: 55099, Start Num: 67

Candidate Starts for Amgine_83:

(59, 54878), (Start: 67 @54887 has 7 MA's), (Start: 73 @54890 has 435 MA's), (Start: 78 @54911 has
16 MA's), (79, 54917), (84, 54953), (95, 55004), (102, 55061),

Gene: Amohnition_81 Start: 53937, Stop: 54149, Start Num: 67

Candidate Starts for Amohnition_81:

(15, 53772), (28, 53838), (59, 53928), (Start: 67 @53937 has 7 MA's), (Start: 73 @53940 has 435
MA's), (Start: 78 @53961 has 16 MA's), (79, 53967), (98, 54069), (102, 54111),

Gene: Angelica_80 Start: 52740, Stop: 52937, Start Num: 73

Candidate Starts for Angelica_80:

(Start: 73 @52740 has 435 MA's), (Start: 74 @52743 has 1 MA's), (75, 52749), (Start: 78 @52761 has
16 MA's), (79, 52767), (98, 52869), (102, 52911),

Gene: AnnaL29_71 Start: 43496, Stop: 43302, Start Num: 73

Candidate Starts for AnnaL29_71:

(Start: 73 @43496 has 435 MA's), (Start: 76 @43481 has 6 MA's), (Start: 78 @43475 has 16 MA's),
(102, 43328),

Gene: Annyong_65 Start: 42208, Stop: 42014, Start Num: 73

Candidate Starts for Annyong_65:

(Start: 68 @42214 has 8 MA's), (Start: 73 @42208 has 435 MA's), (Start: 76 @42193 has 6 MA's),
(Start: 78 @42187 has 16 MA's), (102, 42040),

Gene: Anselm_73 Start: 43690, Stop: 43496, Start Num: 73

Candidate Starts for Anselm_73:

(Start: 73 @43690 has 435 MA's), (Start: 78 @43669 has 16 MA's),

Gene: Anubis_76 Start: 42525, Stop: 42325, Start Num: 68

Candidate Starts for Anubis_76:

(6, 42810), (8, 42777), (20, 42669), (59, 42540), (Start: 68 @42525 has 8 MA's), (Start: 73 @42519
has 435 MA's), (Start: 78 @42498 has 16 MA's), (83, 42462), (98, 42393), (102, 42351),

Gene: Apex_81 Start: 64322, Stop: 64110, Start Num: 73

Candidate Starts for Apex_81:

(23, 64454), (25, 64445), (53, 64364), (64, 64337), (Start: 73 @64322 has 435 MA's), (Start: 78
@64301 has 16 MA's), (79, 64295), (89, 64220), (95, 64193), (98, 64178), (102, 64136),

Gene: Apocalypse_85 Start: 53740, Stop: 53937, Start Num: 73

Candidate Starts for Apocalypse_85:

(Start: 73 @53740 has 435 MA's), (75, 53749), (79, 53767), (98, 53869), (102, 53911),

Gene: ArcherNM_65 Start: 42767, Stop: 42573, Start Num: 73

Candidate Starts for ArcherNM_65:

(32, 42845), (Start: 73 @42767 has 435 MA's), (Start: 76 @42752 has 6 MA's), (Start: 78 @42746 has 16 MA's), (102, 42599),

Gene: Arturo_63 Start: 42290, Stop: 42096, Start Num: 73

Candidate Starts for Arturo_63:

(Start: 68 @42296 has 8 MA's), (Start: 73 @42290 has 435 MA's), (Start: 76 @42275 has 6 MA's), (Start: 78 @42269 has 16 MA's), (95, 42179), (99, 42152), (102, 42122),

Gene: Asayake_83 Start: 53683, Stop: 53880, Start Num: 73

Candidate Starts for Asayake_83:

(Start: 65 @53674 has 1 MA's), (Start: 73 @53683 has 435 MA's), (Start: 78 @53704 has 16 MA's), (79, 53710), (98, 53812), (102, 53854),

Gene: Atiba_84 Start: 53331, Stop: 53528, Start Num: 73

Candidate Starts for Atiba_84:

(Start: 65 @53322 has 1 MA's), (Start: 73 @53331 has 435 MA's), (Start: 78 @53352 has 16 MA's), (79, 53358), (98, 53460), (102, 53502),

Gene: AugsMagnumOpus_76 Start: 42624, Stop: 42430, Start Num: 73

Candidate Starts for AugsMagnumOpus_76:

(6, 42915), (8, 42882), (20, 42774), (59, 42645), (Start: 68 @42630 has 8 MA's), (Start: 73 @42624 has 435 MA's), (Start: 78 @42603 has 16 MA's), (83, 42567), (98, 42498), (102, 42456),

Gene: Austelle_79 Start: 64615, Stop: 64403, Start Num: 73

Candidate Starts for Austelle_79:

(11, 64837), (12, 64828), (54, 64651), (71, 64621), (Start: 73 @64615 has 435 MA's), (Start: 78 @64594 has 16 MA's), (79, 64588), (89, 64513), (98, 64471), (102, 64429),

Gene: AvatarAhPeg_65 Start: 42296, Stop: 42102, Start Num: 73

Candidate Starts for AvatarAhPeg_65:

(Start: 68 @42302 has 8 MA's), (Start: 73 @42296 has 435 MA's), (Start: 76 @42281 has 6 MA's), (Start: 78 @42275 has 16 MA's), (102, 42128),

Gene: Avle17_66 Start: 42160, Stop: 41966, Start Num: 73

Candidate Starts for Avle17_66:

(Start: 68 @42166 has 8 MA's), (Start: 73 @42160 has 435 MA's), (Start: 76 @42145 has 6 MA's), (Start: 78 @42139 has 16 MA's), (102, 41992),

Gene: B1_60 Start: 40543, Stop: 40349, Start Num: 73

Candidate Starts for B1_60:

(Start: 68 @40549 has 8 MA's), (Start: 73 @40543 has 435 MA's), (Start: 78 @40522 has 16 MA's), (95, 40432), (102, 40375),

Gene: BABullseye_66 Start: 40017, Stop: 39823, Start Num: 73

Candidate Starts for BABullseye_66:

(Start: 73 @40017 has 435 MA's), (Start: 76 @40002 has 6 MA's), (Start: 78 @39996 has 16 MA's), (95, 39906), (102, 39849), (103, 39828),

Gene: BEEST_83 Start: 53683, Stop: 53880, Start Num: 73

Candidate Starts for BEEST_83:

(Start: 65 @53674 has 1 MA's), (Start: 73 @53683 has 435 MA's), (Start: 78 @53704 has 16 MA's), (79, 53710), (98, 53812), (102, 53854),

Gene: BGlluviae_82 Start: 53060, Stop: 53257, Start Num: 73

Candidate Starts for BGlluviae_82:

(Start: 73 @53060 has 435 MA's), (75, 53069), (Start: 78 @53081 has 16 MA's), (79, 53087), (98, 53189), (102, 53231),

Gene: Baby16_66 Start: 42174, Stop: 41980, Start Num: 73

Candidate Starts for Baby16_66:

(Start: 68 @42180 has 8 MA's), (Start: 73 @42174 has 435 MA's), (Start: 76 @42159 has 6 MA's), (Start: 78 @42153 has 16 MA's), (102, 42006),

Gene: BabyBack_66 Start: 43275, Stop: 43081, Start Num: 73

Candidate Starts for BabyBack_66:

(26, 43380), (32, 43353), (Start: 73 @43275 has 435 MA's), (Start: 78 @43254 has 16 MA's), (84, 43215), (86, 43200), (102, 43107),

Gene: BabyRay_69 Start: 42348, Stop: 42154, Start Num: 73

Candidate Starts for BabyRay_69:

(Start: 68 @42354 has 8 MA's), (Start: 73 @42348 has 435 MA's), (Start: 78 @42327 has 16 MA's), (98, 42222), (102, 42180),

Gene: Backyardigan_63 Start: 42448, Stop: 42248, Start Num: 68

Candidate Starts for Backyardigan_63:

(Start: 68 @42448 has 8 MA's), (Start: 73 @42442 has 435 MA's), (Start: 76 @42427 has 6 MA's), (Start: 78 @42421 has 16 MA's), (102, 42274),

Gene: Badger_64 Start: 42410, Stop: 42216, Start Num: 73

Candidate Starts for Badger_64:

(Start: 68 @42416 has 8 MA's), (Start: 73 @42410 has 435 MA's), (Start: 76 @42395 has 6 MA's), (Start: 78 @42389 has 16 MA's), (102, 42242),

Gene: Bae_78 Start: 63340, Stop: 63128, Start Num: 73

Candidate Starts for Bae_78:

(50, 63385), (61, 63355), (70, 63343), (Start: 73 @63340 has 435 MA's), (Start: 78 @63319 has 16 MA's), (81, 63289), (84, 63277), (95, 63211), (100, 63160), (102, 63154),

Gene: Baehexic_70 Start: 43018, Stop: 42824, Start Num: 73

Candidate Starts for Baehexic_70:

(Start: 73 @43018 has 435 MA's), (Start: 76 @43003 has 6 MA's), (Start: 78 @42997 has 16 MA's), (102, 42850),

Gene: BaghaKamala_82 Start: 52917, Stop: 53114, Start Num: 73

Candidate Starts for BaghaKamala_82:

(Start: 65 @52908 has 1 MA's), (Start: 73 @52917 has 435 MA's), (Start: 78 @52938 has 16 MA's), (79, 52944), (98, 53046), (102, 53088),

Gene: BangNhom_64 Start: 42575, Stop: 42381, Start Num: 73

Candidate Starts for BangNhom_64:

(Start: 68 @42581 has 8 MA's), (Start: 73 @42575 has 435 MA's), (Start: 76 @42560 has 6 MA's), (Start: 78 @42554 has 16 MA's), (102, 42407),

Gene: BarrelRoll_83 Start: 53457, Stop: 53654, Start Num: 73

Candidate Starts for BarrelRoll_83:

(Start: 73 @53457 has 435 MA's), (75, 53466), (Start: 78 @53478 has 16 MA's), (79, 53484), (98, 53586), (102, 53628),

Gene: Bartimeaus_66 Start: 42165, Stop: 41971, Start Num: 73

Candidate Starts for Bartimeaus_66:

(Start: 68 @42171 has 8 MA's), (Start: 73 @42165 has 435 MA's), (Start: 76 @42150 has 6 MA's), (Start: 78 @42144 has 16 MA's), (102, 41997),

Gene: Beauxregard13_72 Start: 42636, Stop: 42442, Start Num: 73

Candidate Starts for Beauxregard13_72:

(6, 42927), (8, 42894), (20, 42786), (59, 42657), (Start: 68 @42642 has 8 MA's), (Start: 73 @42636 has 435 MA's), (Start: 78 @42615 has 16 MA's), (83, 42579), (98, 42510), (102, 42468),

Gene: Beezoo_86 Start: 54272, Stop: 54469, Start Num: 73

Candidate Starts for Beezoo_86:

(43, 54206), (Start: 73 @54272 has 435 MA's), (Start: 78 @54293 has 16 MA's), (79, 54299), (98, 54401), (102, 54443),

Gene: Belladonna_83 Start: 53486, Stop: 53683, Start Num: 73

Candidate Starts for Belladonna_83:

(Start: 65 @53477 has 1 MA's), (Start: 73 @53486 has 435 MA's), (Start: 78 @53507 has 16 MA's), (79, 53513), (98, 53615), (102, 53657),

Gene: BellusTerra_67 Start: 42176, Stop: 41982, Start Num: 73

Candidate Starts for BellusTerra_67:

(Start: 68 @42182 has 8 MA's), (Start: 73 @42176 has 435 MA's), (Start: 76 @42161 has 6 MA's), (Start: 78 @42155 has 16 MA's), (102, 42008),

Gene: BengiVuitton_71 Start: 43258, Stop: 43079, Start Num: 76

Candidate Starts for BengiVuitton_71:

(20, 43384), (Start: 73 @43273 has 435 MA's), (Start: 76 @43258 has 6 MA's), (Start: 78 @43252 has 16 MA's), (102, 43105),

Gene: Benvolio_69 Start: 42930, Stop: 42736, Start Num: 73

Candidate Starts for Benvolio_69:

(Start: 73 @42930 has 435 MA's), (Start: 78 @42909 has 16 MA's), (92, 42828),

Gene: Blackmoor_65 Start: 42165, Stop: 41971, Start Num: 73

Candidate Starts for Blackmoor_65:

(Start: 68 @42171 has 8 MA's), (Start: 73 @42165 has 435 MA's), (Start: 76 @42150 has 6 MA's), (Start: 78 @42144 has 16 MA's), (102, 41997),

Gene: Blinn1_77 Start: 42621, Stop: 42442, Start Num: 76

Candidate Starts for Blinn1_77:

(Start: 73 @42636 has 435 MA's), (Start: 76 @42621 has 6 MA's), (Start: 78 @42615 has 16 MA's), (95, 42525), (102, 42468), (103, 42447),

Gene: Blizzard_83 Start: 53683, Stop: 53880, Start Num: 73

Candidate Starts for Blizzard_83:

(Start: 65 @53674 has 1 MA's), (Start: 73 @53683 has 435 MA's), (Start: 78 @53704 has 16 MA's), (79, 53710), (98, 53812), (102, 53854),

Gene: BlueBird_71 Start: 42395, Stop: 42201, Start Num: 73

Candidate Starts for BlueBird_71:

(Start: 68 @42401 has 8 MA's), (Start: 73 @42395 has 435 MA's), (Start: 78 @42374 has 16 MA's), (93, 42290), (98, 42269), (102, 42227),

Gene: BobbyK_78 Start: 63769, Stop: 63557, Start Num: 73

Candidate Starts for BobbyK_78:

(23, 63901), (25, 63892), (53, 63811), (64, 63784), (Start: 73 @63769 has 435 MA's), (Start: 78 @63748 has 16 MA's), (79, 63742), (89, 63667), (95, 63640), (98, 63625), (102, 63583),

Gene: Boiiii_83 Start: 53685, Stop: 53882, Start Num: 73

Candidate Starts for Boiiii_83:

(Start: 65 @53676 has 1 MA's), (Start: 73 @53685 has 435 MA's), (Start: 78 @53706 has 16 MA's), (79, 53712), (98, 53814), (102, 53856),

Gene: Bombshell_66 Start: 42160, Stop: 41966, Start Num: 73

Candidate Starts for Bombshell_66:

(Start: 68 @42166 has 8 MA's), (Start: 73 @42160 has 435 MA's), (Start: 76 @42145 has 6 MA's), (Start: 78 @42139 has 16 MA's), (102, 41992),

Gene: BoostSeason_84 Start: 54452, Stop: 54649, Start Num: 72

Candidate Starts for BoostSeason_84:

(13, 54248), (16, 54290), (57, 54428), (Start: 72 @54452 has 4 MA's), (75, 54461), (Start: 78 @54473 has 16 MA's), (79, 54479), (102, 54623),

Gene: BreSam8_73 Start: 42626, Stop: 42432, Start Num: 73

Candidate Starts for BreSam8_73:

(6, 42917), (8, 42884), (20, 42776), (59, 42647), (Start: 68 @42632 has 8 MA's), (Start: 73 @42626 has 435 MA's), (Start: 78 @42605 has 16 MA's), (83, 42569), (98, 42500), (102, 42458),

Gene: Broseidon_66 Start: 42165, Stop: 41971, Start Num: 73

Candidate Starts for Broseidon_66:

(Start: 68 @42171 has 8 MA's), (Start: 73 @42165 has 435 MA's), (Start: 76 @42150 has 6 MA's), (Start: 78 @42144 has 16 MA's), (102, 41997),

Gene: Bruiser_65 Start: 42163, Stop: 41969, Start Num: 73

Candidate Starts for Bruiser_65:

(Start: 68 @42169 has 8 MA's), (Start: 73 @42163 has 435 MA's), (Start: 76 @42148 has 6 MA's), (Start: 78 @42142 has 16 MA's), (102, 41995),

Gene: BubbleTrouble_65 Start: 42163, Stop: 41969, Start Num: 73

Candidate Starts for BubbleTrouble_65:

(Start: 68 @42169 has 8 MA's), (Start: 73 @42163 has 435 MA's), (Start: 78 @42142 has 16 MA's), (102, 41995),

Gene: Bugatti_68 Start: 42395, Stop: 42201, Start Num: 73

Candidate Starts for Bugatti_68:

(Start: 68 @42401 has 8 MA's), (Start: 73 @42395 has 435 MA's), (Start: 78 @42374 has 16 MA's), (93, 42290), (98, 42269), (102, 42227),

Gene: Buggy_73 Start: 43593, Stop: 43399, Start Num: 73

Candidate Starts for Buggy_73:

(Start: 73 @43593 has 435 MA's), (Start: 78 @43572 has 16 MA's), (102, 43425),

Gene: Bumblebee11_64 Start: 42412, Stop: 42218, Start Num: 73
Candidate Starts for Bumblebee11_64:
(Start: 68 @42418 has 8 MA's), (Start: 73 @42412 has 435 MA's), (Start: 76 @42397 has 6 MA's),
(Start: 78 @42391 has 16 MA's), (102, 42244),

Gene: Burger_64 Start: 42163, Stop: 41969, Start Num: 73
Candidate Starts for Burger_64:
(Start: 68 @42169 has 8 MA's), (Start: 73 @42163 has 435 MA's), (Start: 76 @42148 has 6 MA's),
(Start: 78 @42142 has 16 MA's), (102, 41995),

Gene: BuzzBuzz_67 Start: 42660, Stop: 42466, Start Num: 73
Candidate Starts for BuzzBuzz_67:
(6, 42951), (8, 42918), (20, 42810), (59, 42681), (Start: 68 @42666 has 8 MA's), (Start: 73 @42660
has 435 MA's), (Start: 78 @42639 has 16 MA's), (83, 42603), (98, 42534), (102, 42492),

Gene: Bxz2_68 Start: 42667, Stop: 42473, Start Num: 73
Candidate Starts for Bxz2_68:
(6, 42958), (8, 42925), (20, 42817), (59, 42688), (Start: 68 @42673 has 8 MA's), (Start: 73 @42667
has 435 MA's), (Start: 78 @42646 has 16 MA's), (83, 42610), (98, 42541), (102, 42499),

Gene: CRB1_73 Start: 43819, Stop: 43625, Start Num: 73
Candidate Starts for CRB1_73:
(Start: 73 @43819 has 435 MA's), (Start: 76 @43804 has 6 MA's), (Start: 78 @43798 has 16 MA's),
(102, 43651),

Gene: CREW_82 Start: 53486, Stop: 53683, Start Num: 73
Candidate Starts for CREW_82:
(Start: 65 @53477 has 1 MA's), (Start: 73 @53486 has 435 MA's), (Start: 78 @53507 has 16 MA's),
(79, 53513), (98, 53615), (102, 53657),

Gene: Caelakin_65 Start: 42163, Stop: 41969, Start Num: 73
Candidate Starts for Caelakin_65:
(Start: 68 @42169 has 8 MA's), (Start: 73 @42163 has 435 MA's), (Start: 76 @42148 has 6 MA's),
(Start: 78 @42142 has 16 MA's), (102, 41995),

Gene: Cain_90 Start: 54343, Stop: 54552, Start Num: 73
Candidate Starts for Cain_90:
(17, 54193), (33, 54262), (37, 54271), (Start: 73 @54343 has 435 MA's), (Start: 78 @54364 has 16
MA's), (79, 54370), (95, 54457), (98, 54472), (102, 54514),

Gene: Camperdownii_64 Start: 41837, Stop: 41643, Start Num: 73
Candidate Starts for Camperdownii_64:
(Start: 68 @41843 has 8 MA's), (Start: 73 @41837 has 435 MA's), (Start: 76 @41822 has 6 MA's),
(Start: 78 @41816 has 16 MA's), (102, 41669),

Gene: Candra_71 Start: 41713, Stop: 41510, Start Num: 73
Candidate Starts for Candra_71:
(Start: 73 @41713 has 435 MA's), (Start: 76 @41698 has 6 MA's), (Start: 78 @41692 has 16 MA's),
(102, 41545),

Gene: Capricorn_83 Start: 53486, Stop: 53683, Start Num: 73
Candidate Starts for Capricorn_83:

(Start: 65 @53477 has 1 MA's), (Start: 73 @53486 has 435 MA's), (Start: 78 @53507 has 16 MA's), (79, 53513), (98, 53615), (102, 53657),

Gene: Caraxes_74 Start: 41932, Stop: 41711, Start Num: 73

Candidate Starts for Caraxes_74:

(Start: 73 @41932 has 435 MA's), (Start: 78 @41911 has 16 MA's), (79, 41905), (102, 41764),

Gene: CaseJules_85 Start: 53683, Stop: 53880, Start Num: 73

Candidate Starts for CaseJules_85:

(Start: 65 @53674 has 1 MA's), (Start: 73 @53683 has 435 MA's), (Start: 78 @53704 has 16 MA's), (79, 53710), (98, 53812), (102, 53854),

Gene: Caviar_68 Start: 42351, Stop: 42157, Start Num: 73

Candidate Starts for Caviar_68:

(20, 42501), (Start: 73 @42351 has 435 MA's), (Start: 78 @42330 has 16 MA's), (93, 42246), (95, 42240), (102, 42183),

Gene: Centaur_72 Start: 43233, Stop: 43039, Start Num: 73

Candidate Starts for Centaur_72:

(Start: 73 @43233 has 435 MA's), (Start: 76 @43218 has 6 MA's), (Start: 78 @43212 has 16 MA's), (102, 43065),

Gene: CentreCat_66 Start: 42175, Stop: 41981, Start Num: 73

Candidate Starts for CentreCat_66:

(Start: 68 @42181 has 8 MA's), (Start: 73 @42175 has 435 MA's), (Start: 76 @42160 has 6 MA's), (Start: 78 @42154 has 16 MA's), (102, 42007),

Gene: Cerulean_67 Start: 42576, Stop: 42382, Start Num: 73

Candidate Starts for Cerulean_67:

(Start: 68 @42582 has 8 MA's), (Start: 73 @42576 has 435 MA's), (Start: 76 @42561 has 6 MA's), (Start: 78 @42555 has 16 MA's), (102, 42408),

Gene: ChampagnePapi_68 Start: 42575, Stop: 42381, Start Num: 73

Candidate Starts for ChampagnePapi_68:

(Start: 68 @42581 has 8 MA's), (Start: 73 @42575 has 435 MA's), (Start: 76 @42560 has 6 MA's), (Start: 78 @42554 has 16 MA's), (102, 42407),

Gene: Changeling_70 Start: 43475, Stop: 43281, Start Num: 73

Candidate Starts for Changeling_70:

(32, 43553), (Start: 73 @43475 has 435 MA's), (Start: 76 @43460 has 6 MA's), (Start: 78 @43454 has 16 MA's), (102, 43307),

Gene: Chaph_66 Start: 42174, Stop: 41980, Start Num: 73

Candidate Starts for Chaph_66:

(Start: 68 @42180 has 8 MA's), (Start: 73 @42174 has 435 MA's), (Start: 76 @42159 has 6 MA's), (Start: 78 @42153 has 16 MA's), (102, 42006),

Gene: Chartreuse_70 Start: 41009, Stop: 40821, Start Num: 76

Candidate Starts for Chartreuse_70:

(Start: 73 @41024 has 435 MA's), (Start: 76 @41009 has 6 MA's), (Start: 78 @41003 has 16 MA's), (102, 40856),

Gene: Che12_75 Start: 42052, Stop: 41858, Start Num: 73

Candidate Starts for Che12_75:

(Start: 73 @42052 has 435 MA's), (Start: 78 @42031 has 16 MA's), (83, 41995), (98, 41926),

Gene: CheetoDust_83 Start: 52878, Stop: 53075, Start Num: 73

Candidate Starts for CheetoDust_83:

(Start: 73 @52878 has 435 MA's), (75, 52887), (Start: 78 @52899 has 16 MA's), (79, 52905), (98, 53007), (102, 53049),

Gene: Chris_84 Start: 53731, Stop: 53940, Start Num: 73

Candidate Starts for Chris_84:

(9, 53506), (29, 53632), (40, 53662), (Start: 73 @53731 has 435 MA's), (Start: 78 @53752 has 16 MA's), (91, 53830),

Gene: ChrisnMich_79 Start: 62738, Stop: 62526, Start Num: 73

Candidate Starts for ChrisnMich_79:

(Start: 73 @62738 has 435 MA's), (Start: 78 @62717 has 16 MA's), (79, 62711), (89, 62636), (102, 62552),

Gene: Chupacabra_63 Start: 41503, Stop: 41309, Start Num: 73

Candidate Starts for Chupacabra_63:

(Start: 68 @41509 has 8 MA's), (Start: 73 @41503 has 435 MA's), (Start: 78 @41482 has 16 MA's), (83, 41446), (93, 41398), (98, 41377), (102, 41335),

Gene: Cici_65 Start: 42427, Stop: 42233, Start Num: 73

Candidate Starts for Cici_65:

(Start: 68 @42433 has 8 MA's), (Start: 73 @42427 has 435 MA's), (Start: 76 @42412 has 6 MA's), (Start: 78 @42406 has 16 MA's), (102, 42259),

Gene: Cindaradix_62 Start: 42038, Stop: 41844, Start Num: 73

Candidate Starts for Cindaradix_62:

(Start: 68 @42044 has 8 MA's), (Start: 73 @42038 has 435 MA's), (Start: 76 @42023 has 6 MA's), (Start: 78 @42017 has 16 MA's), (95, 41927), (99, 41900), (102, 41870),

Gene: Cintron_66 Start: 42286, Stop: 42092, Start Num: 73

Candidate Starts for Cintron_66:

(Start: 68 @42292 has 8 MA's), (Start: 73 @42286 has 435 MA's), (Start: 76 @42271 has 6 MA's), (Start: 78 @42265 has 16 MA's), (102, 42118),

Gene: Citius_66 Start: 42184, Stop: 41990, Start Num: 73

Candidate Starts for Citius_66:

(Start: 68 @42190 has 8 MA's), (Start: 73 @42184 has 435 MA's), (Start: 76 @42169 has 6 MA's), (Start: 78 @42163 has 16 MA's), (102, 42016),

Gene: Clarenza_65 Start: 42160, Stop: 41966, Start Num: 73

Candidate Starts for Clarenza_65:

(Start: 68 @42166 has 8 MA's), (Start: 73 @42160 has 435 MA's), (Start: 76 @42145 has 6 MA's), (Start: 78 @42139 has 16 MA's), (102, 41992),

Gene: Cocoaberry_66 Start: 42167, Stop: 41973, Start Num: 73

Candidate Starts for Cocoaberry_66:

(Start: 68 @42173 has 8 MA's), (Start: 73 @42167 has 435 MA's), (Start: 76 @42152 has 6 MA's), (Start: 78 @42146 has 16 MA's), (102, 41999),

Gene: Colbster_69 Start: 42636, Stop: 42442, Start Num: 73

Candidate Starts for Colbster_69:

(6, 42927), (8, 42894), (20, 42786), (59, 42657), (Start: 68 @42642 has 8 MA's), (Start: 73 @42636 has 435 MA's), (Start: 78 @42615 has 16 MA's), (83, 42579), (98, 42510), (102, 42468),

Gene: Colin_71 Start: 44222, Stop: 44028, Start Num: 73

Candidate Starts for Colin_71:

(14, 44396), (26, 44327), (32, 44300), (Start: 73 @44222 has 435 MA's), (Start: 76 @44207 has 6 MA's), (Start: 78 @44201 has 16 MA's), (95, 44111), (102, 44054),

Gene: Commander_64 Start: 42162, Stop: 41968, Start Num: 73

Candidate Starts for Commander_64:

(Start: 68 @42168 has 8 MA's), (Start: 73 @42162 has 435 MA's), (Start: 76 @42147 has 6 MA's), (Start: 78 @42141 has 16 MA's), (102, 41994),

Gene: Connomayer_66 Start: 42163, Stop: 41969, Start Num: 73

Candidate Starts for Connomayer_66:

(Start: 68 @42169 has 8 MA's), (Start: 73 @42163 has 435 MA's), (Start: 76 @42148 has 6 MA's), (Start: 78 @42142 has 16 MA's), (102, 41995),

Gene: Cookiedough_73 Start: 42325, Stop: 42131, Start Num: 73

Candidate Starts for Cookiedough_73:

(Start: 73 @42325 has 435 MA's), (Start: 76 @42310 has 6 MA's), (Start: 78 @42304 has 16 MA's), (95, 42214), (102, 42157), (103, 42136),

Gene: Cooper_80 Start: 63387, Stop: 63175, Start Num: 73

Candidate Starts for Cooper_80:

(54, 63423), (71, 63393), (Start: 73 @63387 has 435 MA's), (Start: 78 @63366 has 16 MA's), (79, 63360), (89, 63285), (102, 63201),

Gene: CrimD_83 Start: 53510, Stop: 53707, Start Num: 73

Candidate Starts for CrimD_83:

(Start: 73 @53510 has 435 MA's), (75, 53519), (Start: 78 @53531 has 16 MA's), (79, 53537), (98, 53639), (102, 53681),

Gene: Crucio_72 Start: 43590, Stop: 43396, Start Num: 73

Candidate Starts for Crucio_72:

(Start: 73 @43590 has 435 MA's), (Start: 78 @43569 has 16 MA's),

Gene: Cuke_46 Start: 33195, Stop: 33455, Start Num: 55

Candidate Starts for Cuke_46:

(43, 33159), (Start: 55 @33195 has 3 MA's), (66, 33216), (80, 33267), (85, 33297), (96, 33357), (97, 33360), (102, 33411),

Gene: Cullens_73 Start: 42632, Stop: 42438, Start Num: 73

Candidate Starts for Cullens_73:

(6, 42923), (8, 42890), (20, 42782), (59, 42653), (Start: 68 @42638 has 8 MA's), (Start: 73 @42632 has 435 MA's), (Start: 78 @42611 has 16 MA's), (83, 42575), (98, 42506), (102, 42464),

Gene: DaHudson_72 Start: 42625, Stop: 42431, Start Num: 73

Candidate Starts for DaHudson_72:

(6, 42916), (8, 42883), (20, 42775), (59, 42646), (Start: 68 @42631 has 8 MA's), (Start: 73 @42625 has 435 MA's), (Start: 78 @42604 has 16 MA's), (83, 42568), (98, 42499), (102, 42457),

Gene: DaVinci_71 Start: 41063, Stop: 40875, Start Num: 76
Candidate Starts for DaVinci_71:
(Start: 73 @41078 has 435 MA's), (Start: 76 @41063 has 6 MA's), (Start: 78 @41057 has 16 MA's),
(102, 40910),

Gene: Daishi_72 Start: 41500, Stop: 41306, Start Num: 73
Candidate Starts for Daishi_72:
(6, 41791), (8, 41758), (20, 41650), (59, 41521), (Start: 68 @41506 has 8 MA's), (Start: 73 @41500
has 435 MA's), (Start: 78 @41479 has 16 MA's), (83, 41443), (98, 41374), (102, 41332),

Gene: Dalmatian_72 Start: 43409, Stop: 43215, Start Num: 73
Candidate Starts for Dalmatian_72:
(Start: 73 @43409 has 435 MA's), (Start: 78 @43388 has 16 MA's),

Gene: Dalmuri_83 Start: 53486, Stop: 53683, Start Num: 73
Candidate Starts for Dalmuri_83:
(Start: 65 @53477 has 1 MA's), (Start: 73 @53486 has 435 MA's), (Start: 78 @53507 has 16 MA's),
(79, 53513), (98, 53615), (102, 53657),

Gene: DarthP_81 Start: 53790, Stop: 54002, Start Num: 67
Candidate Starts for DarthP_81:
(15, 53625), (28, 53691), (59, 53781), (Start: 67 @53790 has 7 MA's), (Start: 73 @53793 has 435
MA's), (Start: 78 @53814 has 16 MA's), (79, 53820), (98, 53922), (102, 53964),

Gene: Datway_65 Start: 42398, Stop: 42204, Start Num: 73
Candidate Starts for Datway_65:
(Start: 68 @42404 has 8 MA's), (Start: 73 @42398 has 435 MA's), (Start: 76 @42383 has 6 MA's),
(Start: 78 @42377 has 16 MA's), (102, 42230),

Gene: Deano_63 Start: 42171, Stop: 41977, Start Num: 73
Candidate Starts for Deano_63:
(Start: 68 @42177 has 8 MA's), (Start: 73 @42171 has 435 MA's), (Start: 76 @42156 has 6 MA's),
(Start: 78 @42150 has 16 MA's), (102, 42003),

Gene: Deby_83 Start: 53940, Stop: 54137, Start Num: 73
Candidate Starts for Deby_83:
(28, 53829), (31, 53844), (35, 53853), (38, 53859), (Start: 65 @53931 has 1 MA's), (Start: 73 @53940
has 435 MA's), (Start: 78 @53961 has 16 MA's), (79, 53967), (91, 54039), (98, 54069), (102, 54111),

Gene: Deloris_71 Start: 42969, Stop: 42775, Start Num: 73
Candidate Starts for Deloris_71:
(20, 43080), (Start: 73 @42969 has 435 MA's), (Start: 76 @42954 has 6 MA's), (Start: 78 @42948 has
16 MA's), (102, 42801),

Gene: Devera_89 Start: 54354, Stop: 54551, Start Num: 73
Candidate Starts for Devera_89:
(36, 54270), (39, 54276), (Start: 73 @54354 has 435 MA's), (75, 54363), (Start: 78 @54375 has 16
MA's), (79, 54381), (98, 54483), (102, 54525),

Gene: Dhanush_66 Start: 42166, Stop: 41972, Start Num: 73
Candidate Starts for Dhanush_66:

(Start: 68 @42172 has 8 MA's), (Start: 73 @42166 has 435 MA's), (Start: 76 @42151 has 6 MA's),
(Start: 78 @42145 has 16 MA's), (102, 41998),

Gene: Dieselweasel_73 Start: 42634, Stop: 42440, Start Num: 73

Candidate Starts for Dieselweasel_73:

(6, 42925), (8, 42892), (20, 42784), (59, 42655), (Start: 68 @42640 has 8 MA's), (Start: 73 @42634
has 435 MA's), (Start: 78 @42613 has 16 MA's), (83, 42577), (98, 42508), (102, 42466),

Gene: DigitDog_79 Start: 62820, Stop: 62623, Start Num: 73

Candidate Starts for DigitDog_79:

(50, 62862), (53, 62856), (62, 62832), (Start: 68 @62823 has 8 MA's), (Start: 73 @62820 has 435
MA's), (75, 62811), (Start: 78 @62799 has 16 MA's), (90, 62724), (99, 62679), (102, 62649),

Gene: Dignity_73 Start: 43631, Stop: 43437, Start Num: 73

Candidate Starts for Dignity_73:

(Start: 73 @43631 has 435 MA's), (Start: 76 @43616 has 6 MA's), (Start: 78 @43610 has 16 MA's),
(83, 43574), (102, 43463),

Gene: DirtyDunning_65 Start: 42178, Stop: 41984, Start Num: 73

Candidate Starts for DirtyDunning_65:

(Start: 68 @42184 has 8 MA's), (Start: 73 @42178 has 435 MA's), (Start: 76 @42163 has 6 MA's),
(Start: 78 @42157 has 16 MA's), (102, 42010),

Gene: DismalFunk_85 Start: 54874, Stop: 55095, Start Num: 63

Candidate Starts for DismalFunk_85:

(13, 54769), (16, 54811), (Start: 63 @54874 has 4 MA's), (75, 54883), (Start: 78 @54895 has 16
MA's), (79, 54901), (102, 55045),

Gene: DismalStressor_85 Start: 54874, Stop: 55095, Start Num: 63

Candidate Starts for DismalStressor_85:

(13, 54769), (16, 54811), (Start: 63 @54874 has 4 MA's), (75, 54883), (Start: 78 @54895 has 16
MA's), (79, 54901), (102, 55045),

Gene: Dole_86 Start: 54357, Stop: 54554, Start Num: 73

Candidate Starts for Dole_86:

(36, 54273), (39, 54279), (Start: 73 @54357 has 435 MA's), (75, 54366), (Start: 78 @54378 has 16
MA's), (79, 54384), (98, 54486), (102, 54528),

Gene: Dorothea_70 Start: 42323, Stop: 42129, Start Num: 73

Candidate Starts for Dorothea_70:

(Start: 73 @42323 has 435 MA's), (Start: 76 @42308 has 6 MA's), (Start: 78 @42302 has 16 MA's),
(95, 42212), (102, 42155), (103, 42134),

Gene: DrHayes_83 Start: 53754, Stop: 53951, Start Num: 73

Candidate Starts for DrHayes_83:

(43, 53688), (Start: 73 @53754 has 435 MA's), (Start: 78 @53775 has 16 MA's), (79, 53781), (91,
53853), (98, 53883), (102, 53925),

Gene: Drake55_73 Start: 43334, Stop: 43140, Start Num: 73

Candidate Starts for Drake55_73:

(20, 43445), (Start: 73 @43334 has 435 MA's), (Start: 76 @43319 has 6 MA's), (Start: 78 @43313 has
16 MA's), (102, 43166),

Gene: Drake94_63 Start: 40578, Stop: 40384, Start Num: 73
Candidate Starts for Drake94_63:
(Start: 68 @40584 has 8 MA's), (Start: 73 @40578 has 435 MA's), (Start: 78 @40557 has 16 MA's),
(95, 40467), (102, 40410),

Gene: Druantia_65 Start: 42166, Stop: 41972, Start Num: 73
Candidate Starts for Druantia_65:
(Start: 68 @42172 has 8 MA's), (Start: 73 @42166 has 435 MA's), (Start: 76 @42151 has 6 MA's),
(Start: 78 @42145 has 16 MA's), (102, 41998),

Gene: DudeLittle_70 Start: 43175, Stop: 42981, Start Num: 73
Candidate Starts for DudeLittle_70:
(Start: 73 @43175 has 435 MA's), (Start: 78 @43154 has 16 MA's),

Gene: Durfee_83 Start: 53683, Stop: 53880, Start Num: 73
Candidate Starts for Durfee_83:
(Start: 65 @53674 has 1 MA's), (Start: 73 @53683 has 435 MA's), (Start: 78 @53704 has 16 MA's),
(79, 53710), (98, 53812), (102, 53854),

Gene: EZMoney23_68 Start: 43002, Stop: 42823, Start Num: 76
Candidate Starts for EZMoney23_68:
(20, 43149), (32, 43095), (Start: 73 @43017 has 435 MA's), (Start: 76 @43002 has 6 MA's), (Start: 78
@42996 has 16 MA's), (102, 42849),

Gene: Eagle_65 Start: 42197, Stop: 42003, Start Num: 73
Candidate Starts for Eagle_65:
(Start: 68 @42203 has 8 MA's), (Start: 73 @42197 has 435 MA's), (Start: 78 @42176 has 16 MA's),
(102, 42029),

Gene: Eaglepride_67 Start: 41610, Stop: 41416, Start Num: 73
Candidate Starts for Eaglepride_67:
(Start: 68 @41616 has 8 MA's), (Start: 73 @41610 has 435 MA's), (Start: 78 @41589 has 16 MA's),
(83, 41553), (93, 41505), (98, 41484), (102, 41442),

Gene: Eapen_66 Start: 42158, Stop: 41964, Start Num: 73
Candidate Starts for Eapen_66:
(Start: 68 @42164 has 8 MA's), (Start: 73 @42158 has 435 MA's), (Start: 76 @42143 has 6 MA's),
(Start: 78 @42137 has 16 MA's), (102, 41990),

Gene: EastView9101_80 Start: 62448, Stop: 62236, Start Num: 73
Candidate Starts for EastView9101_80:
(50, 62493), (61, 62463), (70, 62451), (Start: 73 @62448 has 435 MA's), (Start: 78 @62427 has 16
MA's), (81, 62397), (84, 62385), (94, 62322), (95, 62319), (100, 62268), (102, 62262),

Gene: Echild_72 Start: 42954, Stop: 42760, Start Num: 73
Candidate Starts for Echild_72:
(Start: 73 @42954 has 435 MA's), (Start: 78 @42933 has 16 MA's), (92, 42852),

Gene: Edison31_60 Start: 41378, Stop: 41184, Start Num: 73
Candidate Starts for Edison31_60:
(20, 41528), (Start: 68 @41384 has 8 MA's), (Start: 73 @41378 has 435 MA's), (Start: 78 @41357 has
16 MA's), (102, 41210),

Gene: Ekdilam_78 Start: 53953, Stop: 54162, Start Num: 73

Candidate Starts for Ekdilam_78:

(21, 53809), (22, 53824), (27, 53842), (53, 53920), (Start: 55 @53929 has 3 MA's), (Start: 73 @53953 has 435 MA's), (Start: 78 @53974 has 16 MA's), (79, 53980), (89, 54040), (98, 54082), (102, 54124),

Gene: Ellie_81 Start: 54058, Stop: 54267, Start Num: 73

Candidate Starts for Ellie_81:

(59, 54046), (Start: 67 @54055 has 7 MA's), (Start: 73 @54058 has 435 MA's), (Start: 78 @54079 has 16 MA's), (79, 54085), (84, 54121), (95, 54172), (102, 54229),

Gene: Emerson_85 Start: 53678, Stop: 53875, Start Num: 73

Candidate Starts for Emerson_85:

(43, 53612), (Start: 73 @53678 has 435 MA's), (Start: 78 @53699 has 16 MA's), (79, 53705), (91, 53777), (98, 53807), (102, 53849),

Gene: EpicPhail_74 Start: 42636, Stop: 42442, Start Num: 73

Candidate Starts for EpicPhail_74:

(6, 42927), (8, 42894), (20, 42786), (59, 42657), (Start: 68 @42642 has 8 MA's), (Start: 73 @42636 has 435 MA's), (Start: 78 @42615 has 16 MA's), (83, 42579), (98, 42510), (102, 42468),

Gene: Equemioh13_71 Start: 43138, Stop: 42944, Start Num: 73

Candidate Starts for Equemioh13_71:

(Start: 73 @43138 has 435 MA's), (Start: 76 @43123 has 6 MA's), (Start: 78 @43117 has 16 MA's), (102, 42970),

Gene: EricB_72 Start: 41655, Stop: 41467, Start Num: 76

Candidate Starts for EricB_72:

(Start: 73 @41670 has 435 MA's), (Start: 76 @41655 has 6 MA's), (Start: 78 @41649 has 16 MA's), (102, 41502),

Gene: Eris_65 Start: 42178, Stop: 41984, Start Num: 73

Candidate Starts for Eris_65:

(Start: 68 @42184 has 8 MA's), (Start: 73 @42178 has 435 MA's), (Start: 76 @42163 has 6 MA's), (Start: 78 @42157 has 16 MA's), (102, 42010),

Gene: Eros_66 Start: 42165, Stop: 41971, Start Num: 73

Candidate Starts for Eros_66:

(Start: 68 @42171 has 8 MA's), (Start: 73 @42165 has 435 MA's), (Start: 76 @42150 has 6 MA's), (Start: 78 @42144 has 16 MA's), (102, 41997),

Gene: Eurydice_67 Start: 42172, Stop: 41978, Start Num: 73

Candidate Starts for Eurydice_67:

(Start: 68 @42178 has 8 MA's), (Start: 73 @42172 has 435 MA's), (Start: 76 @42157 has 6 MA's), (Start: 78 @42151 has 16 MA's), (102, 42004),

Gene: Farber_73 Start: 42622, Stop: 42428, Start Num: 73

Candidate Starts for Farber_73:

(6, 42913), (8, 42880), (20, 42772), (59, 42643), (Start: 68 @42628 has 8 MA's), (Start: 73 @42622 has 435 MA's), (Start: 78 @42601 has 16 MA's), (83, 42565), (98, 42496), (102, 42454),

Gene: Fefferhead_83 Start: 53851, Stop: 54063, Start Num: 67

Candidate Starts for Fefferhead_83:

(59, 53842), (Start: 67 @53851 has 7 MA's), (Start: 73 @53854 has 435 MA's), (Start: 78 @53875 has 16 MA's), (79, 53881), (84, 53917), (95, 53968), (102, 54025),

Gene: Fernando_73 Start: 42632, Stop: 42438, Start Num: 73

Candidate Starts for Fernando_73:

(6, 42923), (8, 42890), (20, 42782), (59, 42653), (Start: 68 @42638 has 8 MA's), (Start: 73 @42632 has 435 MA's), (Start: 78 @42611 has 16 MA's), (83, 42575), (98, 42506), (102, 42464),

Gene: Feyre_78 Start: 53791, Stop: 54006, Start Num: 67

Candidate Starts for Feyre_78:

(1, 53458), (2, 53491), (10, 53578), (18, 53641), (28, 53689), (38, 53719), (59, 53782), (Start: 67 @53791 has 7 MA's), (Start: 78 @53818 has 16 MA's), (102, 53968),

Gene: Findley_85 Start: 54892, Stop: 55113, Start Num: 63

Candidate Starts for Findley_85:

(13, 54787), (16, 54829), (Start: 63 @54892 has 4 MA's), (75, 54901), (Start: 78 @54913 has 16 MA's), (79, 54919), (102, 55063),

Gene: FiringLine_72 Start: 43572, Stop: 43378, Start Num: 73

Candidate Starts for FiringLine_72:

(Start: 73 @43572 has 435 MA's), (Start: 78 @43551 has 16 MA's),

Gene: First_0072 Start: 43196, Stop: 43002, Start Num: 73

Candidate Starts for First_0072:

(Start: 73 @43196 has 435 MA's), (Start: 76 @43181 has 6 MA's), (Start: 78 @43175 has 16 MA's), (102, 43028),

Gene: Flare16_72 Start: 43277, Stop: 43083, Start Num: 73

Candidate Starts for Flare16_72:

(Start: 73 @43277 has 435 MA's), (Start: 76 @43262 has 6 MA's), (Start: 78 @43256 has 16 MA's), (102, 43109), (103, 43088),

Gene: Florean_66 Start: 42162, Stop: 41968, Start Num: 73

Candidate Starts for Florean_66:

(Start: 68 @42168 has 8 MA's), (Start: 73 @42162 has 435 MA's), (Start: 76 @42147 has 6 MA's), (Start: 78 @42141 has 16 MA's), (102, 41994),

Gene: Flux_66 Start: 42162, Stop: 41968, Start Num: 73

Candidate Starts for Flux_66:

(Start: 68 @42168 has 8 MA's), (Start: 73 @42162 has 435 MA's), (Start: 76 @42147 has 6 MA's), (Start: 78 @42141 has 16 MA's), (102, 41994),

Gene: Fowlmouth_50 Start: 36597, Stop: 36857, Start Num: 55

Candidate Starts for Fowlmouth_50:

(Start: 55 @36597 has 3 MA's), (66, 36618), (80, 36669), (85, 36699), (96, 36759), (102, 36813),

Gene: Fred313_66 Start: 41988, Stop: 41794, Start Num: 73

Candidate Starts for Fred313_66:

(Start: 68 @41994 has 8 MA's), (Start: 73 @41988 has 435 MA's), (Start: 78 @41967 has 16 MA's), (93, 41883), (98, 41862), (102, 41820),

Gene: Funston_65 Start: 42163, Stop: 41969, Start Num: 73

Candidate Starts for Funston_65:

(Start: 68 @42169 has 8 MA's), (Start: 73 @42163 has 435 MA's), (Start: 76 @42148 has 6 MA's), (77, 42145), (Start: 78 @42142 has 16 MA's), (102, 41995),

Gene: Gadost_66 Start: 42167, Stop: 41973, Start Num: 73

Candidate Starts for Gadost_66:

(Start: 68 @42173 has 8 MA's), (Start: 73 @42167 has 435 MA's), (Start: 76 @42152 has 6 MA's), (Start: 78 @42146 has 16 MA's), (102, 41999),

Gene: Ganymede_83 Start: 53498, Stop: 53695, Start Num: 73

Candidate Starts for Ganymede_83:

(Start: 73 @53498 has 435 MA's), (75, 53507), (Start: 78 @53519 has 16 MA's), (79, 53525), (98, 53627), (102, 53669),

Gene: GaugeLDP_67 Start: 42843, Stop: 42649, Start Num: 73

Candidate Starts for GaugeLDP_67:

(26, 42948), (Start: 73 @42843 has 435 MA's), (Start: 78 @42822 has 16 MA's), (102, 42675), (103, 42654),

Gene: Gemma_70 Start: 42445, Stop: 42251, Start Num: 73

Candidate Starts for Gemma_70:

(3, 42751), (6, 42736), (20, 42595), (59, 42466), (Start: 68 @42451 has 8 MA's), (Start: 73 @42445 has 435 MA's), (Start: 78 @42424 has 16 MA's), (83, 42388), (89, 42361), (98, 42319), (102, 42277),

Gene: Gengar_76 Start: 52022, Stop: 52231, Start Num: 73

Candidate Starts for Gengar_76:

(15, 51857), (31, 51938), (35, 51947), (38, 51953), (41, 51965), (59, 52010), (Start: 73 @52022 has 435 MA's), (Start: 78 @52043 has 16 MA's), (79, 52049), (102, 52193),

Gene: Georgie2_73 Start: 43617, Stop: 43423, Start Num: 73

Candidate Starts for Georgie2_73:

(Start: 73 @43617 has 435 MA's), (Start: 78 @43596 has 16 MA's),

Gene: Geraldini_85 Start: 53518, Stop: 53715, Start Num: 73

Candidate Starts for Geraldini_85:

(Start: 73 @53518 has 435 MA's), (75, 53527), (Start: 78 @53539 has 16 MA's), (79, 53545), (98, 53647), (102, 53689),

Gene: GingkoMaracino_73 Start: 42518, Stop: 42324, Start Num: 73

Candidate Starts for GingkoMaracino_73:

(6, 42809), (8, 42776), (20, 42668), (59, 42539), (Start: 68 @42524 has 8 MA's), (Start: 73 @42518 has 435 MA's), (Start: 78 @42497 has 16 MA's), (83, 42461), (98, 42392), (102, 42350),

Gene: Giroux_67 Start: 42394, Stop: 42200, Start Num: 73

Candidate Starts for Giroux_67:

(Start: 68 @42400 has 8 MA's), (Start: 73 @42394 has 435 MA's), (Start: 78 @42373 has 16 MA's), (93, 42289), (98, 42268), (102, 42226),

Gene: Goose_66 Start: 41319, Stop: 41125, Start Num: 73

Candidate Starts for Goose_66:

(Start: 68 @41325 has 8 MA's), (Start: 73 @41319 has 435 MA's), (Start: 78 @41298 has 16 MA's), (83, 41262), (93, 41214), (98, 41193), (102, 41151),

Gene: GreedyLawyer_69 Start: 41643, Stop: 41440, Start Num: 73

Candidate Starts for GreedyLawyer_69:

(Start: 73 @41643 has 435 MA's), (Start: 76 @41628 has 6 MA's), (Start: 78 @41622 has 16 MA's), (102, 41475),

Gene: Grif_71 Start: 42706, Stop: 42512, Start Num: 73

Candidate Starts for Grif_71:

(6, 42997), (8, 42964), (20, 42856), (59, 42727), (Start: 68 @42712 has 8 MA's), (Start: 73 @42706 has 435 MA's), (Start: 78 @42685 has 16 MA's), (83, 42649), (98, 42580), (102, 42538),

Gene: Groupthink_73 Start: 42449, Stop: 42255, Start Num: 73

Candidate Starts for Groupthink_73:

(6, 42740), (20, 42599), (59, 42470), (Start: 68 @42455 has 8 MA's), (Start: 73 @42449 has 435 MA's), (Start: 78 @42428 has 16 MA's), (83, 42392), (89, 42365), (98, 42323), (102, 42281),

Gene: Grub_71 Start: 42624, Stop: 42430, Start Num: 73

Candidate Starts for Grub_71:

(6, 42915), (8, 42882), (20, 42774), (59, 42645), (Start: 68 @42630 has 8 MA's), (Start: 73 @42624 has 435 MA's), (Start: 78 @42603 has 16 MA's), (83, 42567), (98, 42498), (102, 42456),

Gene: Grum1_72 Start: 42632, Stop: 42438, Start Num: 73

Candidate Starts for Grum1_72:

(6, 42923), (8, 42890), (20, 42782), (59, 42653), (Start: 68 @42638 has 8 MA's), (Start: 73 @42632 has 435 MA's), (Start: 78 @42611 has 16 MA's), (83, 42575), (98, 42506), (102, 42464),

Gene: GtownJaz_73 Start: 42633, Stop: 42439, Start Num: 73

Candidate Starts for GtownJaz_73:

(6, 42924), (8, 42891), (20, 42783), (59, 42654), (Start: 68 @42639 has 8 MA's), (Start: 73 @42633 has 435 MA's), (Start: 78 @42612 has 16 MA's), (83, 42576), (98, 42507), (102, 42465),

Gene: Guillsminger_77 Start: 51877, Stop: 52086, Start Num: 73

Candidate Starts for Guillsminger_77:

(Start: 73 @51877 has 435 MA's), (Start: 78 @51898 has 16 MA's), (102, 52048),

Gene: HamSlice_62 Start: 42161, Stop: 41967, Start Num: 73

Candidate Starts for HamSlice_62:

(Start: 68 @42167 has 8 MA's), (Start: 73 @42161 has 435 MA's), (Start: 76 @42146 has 6 MA's), (Start: 78 @42140 has 16 MA's), (102, 41993),

Gene: Hammy_81 Start: 53780, Stop: 53992, Start Num: 67

Candidate Starts for Hammy_81:

(15, 53615), (28, 53681), (59, 53771), (Start: 67 @53780 has 7 MA's), (Start: 73 @53783 has 435 MA's), (Start: 78 @53804 has 16 MA's), (79, 53810), (98, 53912), (102, 53954),

Gene: Happiness_65 Start: 42158, Stop: 41964, Start Num: 73

Candidate Starts for Happiness_65:

(Start: 68 @42164 has 8 MA's), (Start: 73 @42158 has 435 MA's), (Start: 76 @42143 has 6 MA's), (Start: 78 @42137 has 16 MA's), (102, 41990),

Gene: HarryHoudini_72 Start: 43335, Stop: 43141, Start Num: 73

Candidate Starts for HarryHoudini_72:

(20, 43446), (Start: 73 @43335 has 435 MA's), (Start: 76 @43320 has 6 MA's), (Start: 78 @43314 has 16 MA's), (102, 43167),

Gene: HashRod_74 Start: 42660, Stop: 42466, Start Num: 73
Candidate Starts for HashRod_74:
(6, 42951), (8, 42918), (20, 42810), (59, 42681), (Start: 68 @42666 has 8 MA's), (Start: 73 @42660 has 435 MA's), (Start: 78 @42639 has 16 MA's), (83, 42603), (98, 42534), (102, 42492),

Gene: HaveUMetTed_73 Start: 42434, Stop: 42240, Start Num: 73
Candidate Starts for HaveUMetTed_73:
(3, 42740), (6, 42725), (20, 42584), (59, 42455), (Start: 68 @42440 has 8 MA's), (Start: 73 @42434 has 435 MA's), (Start: 78 @42413 has 16 MA's), (83, 42377), (89, 42350), (98, 42308), (102, 42266),

Gene: Heathen_68 Start: 42083, Stop: 41889, Start Num: 73
Candidate Starts for Heathen_68:
(Start: 68 @42089 has 8 MA's), (Start: 73 @42083 has 435 MA's), (Start: 78 @42062 has 16 MA's), (93, 41978), (98, 41957), (102, 41915),

Gene: HedwigODU_83 Start: 53522, Stop: 53728, Start Num: 65
Candidate Starts for HedwigODU_83:
(Start: 65 @53522 has 1 MA's), (Start: 73 @53531 has 435 MA's), (Start: 78 @53552 has 16 MA's), (79, 53558), (98, 53660), (102, 53702),

Gene: HelDan_68 Start: 42299, Stop: 42105, Start Num: 73
Candidate Starts for HelDan_68:
(Start: 68 @42305 has 8 MA's), (Start: 73 @42299 has 435 MA's), (Start: 78 @42278 has 16 MA's), (93, 42194), (98, 42173), (102, 42131),

Gene: Heliosoles_70 Start: 42452, Stop: 42258, Start Num: 73
Candidate Starts for Heliosoles_70:
(6, 42743), (20, 42602), (59, 42473), (Start: 68 @42458 has 8 MA's), (Start: 73 @42452 has 435 MA's), (Start: 78 @42431 has 16 MA's), (83, 42395), (89, 42368), (98, 42326), (102, 42284),

Gene: Herbertwm_68 Start: 42752, Stop: 42558, Start Num: 73
Candidate Starts for Herbertwm_68:
(Start: 68 @42761 has 8 MA's), (Start: 73 @42752 has 435 MA's), (Start: 78 @42731 has 16 MA's), (79, 42725), (102, 42584),

Gene: Hercules11_73 Start: 42641, Stop: 42447, Start Num: 73
Candidate Starts for Hercules11_73:
(6, 42932), (8, 42899), (20, 42791), (59, 42662), (Start: 68 @42647 has 8 MA's), (Start: 73 @42641 has 435 MA's), (Start: 78 @42620 has 16 MA's), (83, 42584), (98, 42515), (102, 42473),

Gene: Holli_65 Start: 41953, Stop: 41759, Start Num: 73
Candidate Starts for Holli_65:
(Start: 68 @41959 has 8 MA's), (Start: 73 @41953 has 435 MA's), (Start: 76 @41938 has 6 MA's), (Start: 78 @41932 has 16 MA's), (102, 41785),

Gene: Homura_82 Start: 53486, Stop: 53683, Start Num: 73
Candidate Starts for Homura_82:
(Start: 65 @53477 has 1 MA's), (Start: 73 @53486 has 435 MA's), (Start: 78 @53507 has 16 MA's), (79, 53513), (98, 53615), (102, 53657),

Gene: Hookmount_68 Start: 42352, Stop: 42158, Start Num: 73
Candidate Starts for Hookmount_68:

(20, 42502), (Start: 73 @42352 has 435 MA's), (Start: 78 @42331 has 16 MA's), (93, 42247), (95, 42241), (102, 42184),

Gene: Hoot_68 Start: 39528, Stop: 39325, Start Num: 73

Candidate Starts for Hoot_68:

(Start: 73 @39528 has 435 MA's), (Start: 76 @39513 has 6 MA's), (Start: 78 @39507 has 16 MA's), (102, 39360),

Gene: Hosp_072 Start: 59905, Stop: 59690, Start Num: 73

Candidate Starts for Hosp_072:

(Start: 73 @59905 has 435 MA's), (Start: 78 @59884 has 16 MA's), (79, 59878), (98, 59758), (100, 59722),

Gene: Houdini22_65 Start: 42167, Stop: 41973, Start Num: 73

Candidate Starts for Houdini22_65:

(Start: 68 @42173 has 8 MA's), (Start: 73 @42167 has 435 MA's), (Start: 76 @42152 has 6 MA's), (Start: 78 @42146 has 16 MA's), (102, 41999),

Gene: Hurricane_85 Start: 54418, Stop: 54627, Start Num: 73

Candidate Starts for Hurricane_85:

(Start: 73 @54418 has 435 MA's), (Start: 78 @54439 has 16 MA's), (79, 54445), (93, 54526), (98, 54547), (102, 54589),

Gene: Hyperbowlee_82 Start: 53683, Stop: 53880, Start Num: 73

Candidate Starts for Hyperbowlee_82:

(Start: 65 @53674 has 1 MA's), (Start: 73 @53683 has 435 MA's), (Start: 78 @53704 has 16 MA's), (79, 53710), (98, 53812), (102, 53854),

Gene: ICleared_65 Start: 42204, Stop: 42010, Start Num: 73

Candidate Starts for ICleared_65:

(Start: 68 @42210 has 8 MA's), (Start: 73 @42204 has 435 MA's), (Start: 76 @42189 has 6 MA's), (Start: 78 @42183 has 16 MA's), (102, 42036),

Gene: Iceman_65 Start: 42452, Stop: 42258, Start Num: 73

Candidate Starts for Iceman_65:

(Start: 68 @42458 has 8 MA's), (Start: 73 @42452 has 435 MA's), (Start: 76 @42437 has 6 MA's), (Start: 78 @42431 has 16 MA's), (102, 42284),

Gene: Idleandcovert_69 Start: 42395, Stop: 42201, Start Num: 73

Candidate Starts for Idleandcovert_69:

(Start: 68 @42401 has 8 MA's), (Start: 73 @42395 has 435 MA's), (Start: 78 @42374 has 16 MA's), (93, 42290), (98, 42269), (102, 42227),

Gene: Illumine_87 Start: 54356, Stop: 54553, Start Num: 73

Candidate Starts for Illumine_87:

(36, 54272), (39, 54278), (Start: 73 @54356 has 435 MA's), (75, 54365), (Start: 78 @54377 has 16 MA's), (79, 54383), (98, 54485), (102, 54527),

Gene: Indlulamithi_47 Start: 37804, Stop: 38013, Start Num: 73

Candidate Starts for Indlulamithi_47:

(Start: 73 @37804 has 435 MA's), (Start: 78 @37825 has 16 MA's), (82, 37858), (88, 37897), (92, 37918), (95, 37927), (96, 37930), (99, 37954), (102, 37984),

Gene: Inky_83 Start: 53486, Stop: 53683, Start Num: 73

Candidate Starts for Inky_83:

(Start: 65 @53477 has 1 MA's), (Start: 73 @53486 has 435 MA's), (Start: 78 @53507 has 16 MA's), (79, 53513), (98, 53615), (102, 53657),

Gene: Iracema64_66 Start: 42430, Stop: 42236, Start Num: 73

Candidate Starts for Iracema64_66:

(Start: 68 @42436 has 8 MA's), (Start: 73 @42430 has 435 MA's), (Start: 76 @42415 has 6 MA's), (Start: 78 @42409 has 16 MA's), (102, 42262),

Gene: Isca_66 Start: 41848, Stop: 41654, Start Num: 73

Candidate Starts for Isca_66:

(Start: 68 @41854 has 8 MA's), (Start: 73 @41848 has 435 MA's), (Start: 78 @41827 has 16 MA's), (92, 41746), (95, 41737), (102, 41680),

Gene: Iwokeuplikedis_73 Start: 43642, Stop: 43448, Start Num: 73

Candidate Starts for Iwokeuplikedis_73:

(59, 43666), (Start: 68 @43651 has 8 MA's), (Start: 73 @43642 has 435 MA's), (Start: 76 @43627 has 6 MA's), (Start: 78 @43621 has 16 MA's), (102, 43474),

Gene: JAWS_82 Start: 53478, Stop: 53675, Start Num: 73

Candidate Starts for JAWS_82:

(51, 53433), (52, 53436), (Start: 73 @53478 has 435 MA's), (Start: 78 @53499 has 16 MA's), (79, 53505), (98, 53607), (102, 53649),

Gene: JF2_66 Start: 40543, Stop: 40349, Start Num: 73

Candidate Starts for JF2_66:

(Start: 68 @40549 has 8 MA's), (Start: 73 @40543 has 435 MA's), (Start: 78 @40522 has 16 MA's), (95, 40432), (102, 40375),

Gene: JF4_66 Start: 40543, Stop: 40349, Start Num: 73

Candidate Starts for JF4_66:

(Start: 68 @40549 has 8 MA's), (Start: 73 @40543 has 435 MA's), (Start: 78 @40522 has 16 MA's), (95, 40432), (102, 40375),

Gene: JHC117_69 Start: 42636, Stop: 42436, Start Num: 68

Candidate Starts for JHC117_69:

(6, 42921), (8, 42888), (20, 42780), (59, 42651), (Start: 68 @42636 has 8 MA's), (Start: 73 @42630 has 435 MA's), (Start: 78 @42609 has 16 MA's), (83, 42573), (98, 42504), (102, 42462),

Gene: Jarvi_83 Start: 53486, Stop: 53683, Start Num: 73

Candidate Starts for Jarvi_83:

(Start: 65 @53477 has 1 MA's), (Start: 73 @53486 has 435 MA's), (Start: 78 @53507 has 16 MA's), (79, 53513), (98, 53615), (102, 53657),

Gene: Jayhawk_84 Start: 53538, Stop: 53714, Start Num: 78

Candidate Starts for Jayhawk_84:

(Start: 73 @53517 has 435 MA's), (75, 53526), (Start: 78 @53538 has 16 MA's), (79, 53544), (98, 53646), (102, 53688),

Gene: Jaykayelowell_63 Start: 42156, Stop: 41962, Start Num: 73

Candidate Starts for Jaykayelowell_63:

(Start: 68 @42162 has 8 MA's), (Start: 73 @42156 has 435 MA's), (Start: 76 @42141 has 6 MA's), (Start: 78 @42135 has 16 MA's), (102, 41988),

Gene: Jeckyll_83 Start: 53486, Stop: 53683, Start Num: 73

Candidate Starts for Jeckyll_83:

(Start: 65 @53477 has 1 MA's), (Start: 73 @53486 has 435 MA's), (Start: 78 @53507 has 16 MA's), (79, 53513), (98, 53615), (102, 53657),

Gene: JenCasNa_74 Start: 42632, Stop: 42438, Start Num: 73

Candidate Starts for JenCasNa_74:

(6, 42923), (8, 42890), (20, 42782), (59, 42653), (Start: 68 @42638 has 8 MA's), (Start: 73 @42632 has 435 MA's), (Start: 78 @42611 has 16 MA's), (83, 42575), (98, 42506), (102, 42464),

Gene: JeppNRM_73 Start: 42450, Stop: 42256, Start Num: 73

Candidate Starts for JeppNRM_73:

(6, 42741), (20, 42600), (59, 42471), (Start: 68 @42456 has 8 MA's), (Start: 73 @42450 has 435 MA's), (Start: 78 @42429 has 16 MA's), (83, 42393), (89, 42366), (98, 42324), (102, 42282),

Gene: Jerm_73 Start: 43613, Stop: 43419, Start Num: 73

Candidate Starts for Jerm_73:

(Start: 73 @43613 has 435 MA's), (Start: 76 @43598 has 6 MA's), (Start: 78 @43592 has 16 MA's), (83, 43556), (102, 43445),

Gene: JetBlade_66 Start: 42166, Stop: 41972, Start Num: 73

Candidate Starts for JetBlade_66:

(Start: 68 @42172 has 8 MA's), (Start: 73 @42166 has 435 MA's), (Start: 76 @42151 has 6 MA's), (Start: 78 @42145 has 16 MA's), (102, 41998),

Gene: Jobu08_69 Start: 42470, Stop: 42270, Start Num: 68

Candidate Starts for Jobu08_69:

(6, 42755), (8, 42722), (20, 42614), (59, 42485), (Start: 68 @42470 has 8 MA's), (Start: 73 @42464 has 435 MA's), (Start: 78 @42443 has 16 MA's), (83, 42407), (98, 42338), (102, 42296),

Gene: Jolie1_074 Start: 61939, Stop: 61724, Start Num: 73

Candidate Starts for Jolie1_074:

(Start: 73 @61939 has 435 MA's), (Start: 78 @61918 has 16 MA's), (79, 61912), (98, 61792), (100, 61756),

Gene: JoongJeon_65 Start: 42160, Stop: 41966, Start Num: 73

Candidate Starts for JoongJeon_65:

(Start: 68 @42166 has 8 MA's), (Start: 73 @42160 has 435 MA's), (Start: 76 @42145 has 6 MA's), (Start: 78 @42139 has 16 MA's), (102, 41992),

Gene: JoshKayV_72 Start: 43664, Stop: 43470, Start Num: 73

Candidate Starts for JoshKayV_72:

(20, 43775), (Start: 73 @43664 has 435 MA's), (Start: 76 @43649 has 6 MA's), (Start: 78 @43643 has 16 MA's), (102, 43496),

Gene: Joy99_84 Start: 53615, Stop: 53812, Start Num: 73

Candidate Starts for Joy99_84:

(Start: 65 @53606 has 1 MA's), (Start: 73 @53615 has 435 MA's), (Start: 78 @53636 has 16 MA's), (79, 53642), (98, 53744), (102, 53786),

Gene: Jsquared_75 Start: 42754, Stop: 42560, Start Num: 73

Candidate Starts for Jsquared_75:

(20, 42910), (59, 42778), (Start: 73 @42754 has 435 MA's), (Start: 78 @42733 has 16 MA's), (98, 42628),

Gene: KADY_70 Start: 42660, Stop: 42466, Start Num: 73

Candidate Starts for KADY_70:

(6, 42951), (8, 42918), (20, 42810), (59, 42681), (Start: 68 @42666 has 8 MA's), (Start: 73 @42660 has 435 MA's), (Start: 78 @42639 has 16 MA's), (83, 42603), (98, 42534), (102, 42492),

Gene: KFPoly_65 Start: 42157, Stop: 41963, Start Num: 73

Candidate Starts for KFPoly_65:

(Start: 68 @42163 has 8 MA's), (Start: 73 @42157 has 435 MA's), (Start: 76 @42142 has 6 MA's), (Start: 78 @42136 has 16 MA's), (102, 41989),

Gene: Kalb97_73 Start: 42448, Stop: 42254, Start Num: 73

Candidate Starts for Kalb97_73:

(59, 42469), (Start: 68 @42454 has 8 MA's), (Start: 73 @42448 has 435 MA's), (Start: 78 @42427 has 16 MA's), (83, 42391), (89, 42364), (98, 42322), (102, 42280),

Gene: Kalnoky_73 Start: 42446, Stop: 42252, Start Num: 73

Candidate Starts for Kalnoky_73:

(6, 42737), (20, 42596), (59, 42467), (Start: 68 @42452 has 8 MA's), (Start: 73 @42446 has 435 MA's), (Start: 78 @42425 has 16 MA's), (83, 42389), (89, 42362), (98, 42320), (102, 42278),

Gene: Kalpine_71 Start: 43640, Stop: 43446, Start Num: 73

Candidate Starts for Kalpine_71:

(26, 43745), (32, 43718), (Start: 73 @43640 has 435 MA's), (Start: 76 @43625 has 6 MA's), (Start: 78 @43619 has 16 MA's), (102, 43472),

Gene: Kamy_65 Start: 42165, Stop: 41971, Start Num: 73

Candidate Starts for Kamy_65:

(Start: 68 @42171 has 8 MA's), (Start: 73 @42165 has 435 MA's), (Start: 76 @42150 has 6 MA's), (Start: 78 @42144 has 16 MA's), (102, 41997),

Gene: Katalie136_65 Start: 42412, Stop: 42218, Start Num: 73

Candidate Starts for Katalie136_65:

(Start: 68 @42418 has 8 MA's), (Start: 73 @42412 has 435 MA's), (Start: 76 @42397 has 6 MA's), (Start: 78 @42391 has 16 MA's), (102, 42244),

Gene: KayaCho_74 Start: 62106, Stop: 61891, Start Num: 73

Candidate Starts for KayaCho_74:

(44, 62163), (Start: 73 @62106 has 435 MA's), (Start: 78 @62085 has 16 MA's), (79, 62079), (98, 61959),

Gene: Kazan_74 Start: 41683, Stop: 41480, Start Num: 73

Candidate Starts for Kazan_74:

(Start: 73 @41683 has 435 MA's), (Start: 76 @41668 has 6 MA's), (Start: 78 @41662 has 16 MA's), (102, 41515),

Gene: Keshu_87 Start: 54731, Stop: 54919, Start Num: 78

Candidate Starts for Keshu_87:

(Start: 73 @54710 has 435 MA's), (Start: 78 @54731 has 16 MA's), (91, 54809), (94, 54821), (98, 54839), (102, 54881),

Gene: Keziacharles14_70 Start: 43282, Stop: 43091, Start Num: 73

Candidate Starts for Keziacharles14_70:

(Start: 73 @43282 has 435 MA's), (Start: 76 @43267 has 6 MA's), (Start: 78 @43261 has 16 MA's), (98, 43156), (102, 43114),

Gene: KiSi_85 Start: 53692, Stop: 53901, Start Num: 73

Candidate Starts for KiSi_85:

(Start: 73 @53692 has 435 MA's), (Start: 78 @53713 has 16 MA's), (91, 53791),

Gene: Kimona_65 Start: 41239, Stop: 41045, Start Num: 73

Candidate Starts for Kimona_65:

(59, 41260), (Start: 73 @41239 has 435 MA's), (Start: 78 @41218 has 16 MA's), (83, 41182), (98, 41113), (102, 41071),

Gene: Kingmustik0402_66 Start: 42152, Stop: 41958, Start Num: 73

Candidate Starts for Kingmustik0402_66:

(Start: 68 @42158 has 8 MA's), (Start: 73 @42152 has 435 MA's), (Start: 76 @42137 has 6 MA's), (Start: 78 @42131 has 16 MA's), (102, 41984),

Gene: Kipper29_73 Start: 41696, Stop: 41493, Start Num: 73

Candidate Starts for Kipper29_73:

(Start: 73 @41696 has 435 MA's), (Start: 76 @41681 has 6 MA's), (Start: 78 @41675 has 16 MA's), (102, 41528),

Gene: KittenMittens_62 Start: 40586, Stop: 40392, Start Num: 73

Candidate Starts for KittenMittens_62:

(Start: 68 @40592 has 8 MA's), (Start: 73 @40586 has 435 MA's), (Start: 76 @40571 has 6 MA's), (Start: 78 @40565 has 16 MA's), (79, 40559), (95, 40475), (102, 40418),

Gene: Koreni_65 Start: 41844, Stop: 41650, Start Num: 73

Candidate Starts for Koreni_65:

(Start: 68 @41850 has 8 MA's), (Start: 73 @41844 has 435 MA's), (Start: 76 @41829 has 6 MA's), (Start: 78 @41823 has 16 MA's), (102, 41676),

Gene: Kratark_65 Start: 42173, Stop: 41979, Start Num: 73

Candidate Starts for Kratark_65:

(Start: 68 @42179 has 8 MA's), (Start: 73 @42173 has 435 MA's), (Start: 76 @42158 has 6 MA's), (Start: 78 @42152 has 16 MA's), (95, 42062), (99, 42035), (102, 42005),

Gene: Kremtemulon_62 Start: 42269, Stop: 42075, Start Num: 73

Candidate Starts for Kremtemulon_62:

(Start: 68 @42275 has 8 MA's), (Start: 73 @42269 has 435 MA's), (Start: 76 @42254 has 6 MA's), (Start: 78 @42248 has 16 MA's), (102, 42101),

Gene: Kristoff_64 Start: 41900, Stop: 41706, Start Num: 73

Candidate Starts for Kristoff_64:

(Start: 68 @41906 has 8 MA's), (Start: 73 @41900 has 435 MA's), (Start: 78 @41879 has 16 MA's), (102, 41732),

Gene: Krueger_89 Start: 54175, Stop: 54384, Start Num: 73

Candidate Starts for Krueger_89:

(9, 53977), (29, 54100), (Start: 73 @54175 has 435 MA's), (75, 54184), (Start: 78 @54196 has 16 MA's), (95, 54289), (102, 54346),

Gene: Kyee_66 Start: 42161, Stop: 41967, Start Num: 73

Candidate Starts for Kyee_66:

(Start: 68 @42167 has 8 MA's), (Start: 73 @42161 has 435 MA's), (Start: 76 @42146 has 6 MA's), (Start: 78 @42140 has 16 MA's), (102, 41993),

Gene: LBerry_74 Start: 42636, Stop: 42442, Start Num: 73

Candidate Starts for LBerry_74:

(6, 42927), (8, 42894), (20, 42786), (59, 42657), (Start: 68 @42642 has 8 MA's), (Start: 73 @42636 has 435 MA's), (Start: 78 @42615 has 16 MA's), (83, 42579), (98, 42510), (102, 42468),

Gene: LHTSCC_68 Start: 42575, Stop: 42381, Start Num: 73

Candidate Starts for LHTSCC_68:

(Start: 68 @42581 has 8 MA's), (Start: 73 @42575 has 435 MA's), (Start: 76 @42560 has 6 MA's), (Start: 78 @42554 has 16 MA's), (102, 42407),

Gene: LadyBird_75 Start: 43885, Stop: 43691, Start Num: 73

Candidate Starts for LadyBird_75:

(20, 43996), (Start: 73 @43885 has 435 MA's), (Start: 76 @43870 has 6 MA's), (Start: 78 @43864 has 16 MA's), (102, 43717),

Gene: Lambert1_68 Start: 42351, Stop: 42157, Start Num: 73

Candidate Starts for Lambert1_68:

(20, 42501), (Start: 73 @42351 has 435 MA's), (Start: 78 @42330 has 16 MA's), (93, 42246), (95, 42240), (102, 42183),

Gene: LappelDuVide_62 Start: 42162, Stop: 41968, Start Num: 73

Candidate Starts for LappelDuVide_62:

(Start: 68 @42168 has 8 MA's), (Start: 73 @42162 has 435 MA's), (Start: 76 @42147 has 6 MA's), (Start: 78 @42141 has 16 MA's), (102, 41994),

Gene: LarryKay_73 Start: 42661, Stop: 42467, Start Num: 73

Candidate Starts for LarryKay_73:

(6, 42952), (8, 42919), (20, 42811), (59, 42682), (Start: 68 @42667 has 8 MA's), (Start: 73 @42661 has 435 MA's), (Start: 78 @42640 has 16 MA's), (83, 42604), (98, 42535), (102, 42493),

Gene: LaterM_83 Start: 53857, Stop: 54054, Start Num: 73

Candidate Starts for LaterM_83:

(42, 53788), (43, 53791), (46, 53800), (Start: 65 @53845 has 1 MA's), (Start: 73 @53857 has 435 MA's), (75, 53866), (Start: 78 @53878 has 16 MA's), (79, 53884), (98, 53986), (102, 54028),

Gene: LeMond_84 Start: 53651, Stop: 53860, Start Num: 73

Candidate Starts for LeMond_84:

(9, 53423), (29, 53552), (Start: 73 @53651 has 435 MA's), (Start: 78 @53672 has 16 MA's), (91, 53750), (102, 53822),

Gene: Lemur_66 Start: 42160, Stop: 41966, Start Num: 73

Candidate Starts for Lemur_66:

(59, 42181), (Start: 68 @42166 has 8 MA's), (Start: 73 @42160 has 435 MA's), (Start: 76 @42145 has 6 MA's), (Start: 78 @42139 has 16 MA's), (102, 41992),

Gene: LeoAvram_65 Start: 42166, Stop: 41972, Start Num: 73

Candidate Starts for LeoAvram_65:

(Start: 68 @42172 has 8 MA's), (Start: 73 @42166 has 435 MA's), (Start: 76 @42151 has 6 MA's),
(Start: 78 @42145 has 16 MA's), (102, 41998),

Gene: Leston_76 Start: 51994, Stop: 52203, Start Num: 73

Candidate Starts for Leston_76:

(Start: 73 @51994 has 435 MA's), (Start: 78 @52015 has 16 MA's), (102, 52165),

Gene: Leviathan_73 Start: 43680, Stop: 43486, Start Num: 73

Candidate Starts for Leviathan_73:

(Start: 73 @43680 has 435 MA's), (Start: 76 @43665 has 6 MA's), (Start: 78 @43659 has 16 MA's),
(83, 43623), (102, 43512),

Gene: LilTurb_72 Start: 43494, Stop: 43300, Start Num: 73

Candidate Starts for LilTurb_72:

(Start: 73 @43494 has 435 MA's), (Start: 76 @43479 has 6 MA's), (Start: 78 @43473 has 16 MA's),
(83, 43437), (102, 43326),

Gene: Lilith_71 Start: 42625, Stop: 42431, Start Num: 73

Candidate Starts for Lilith_71:

(6, 42916), (8, 42883), (20, 42775), (59, 42646), (Start: 68 @42631 has 8 MA's), (Start: 73 @42625
has 435 MA's), (Start: 78 @42604 has 16 MA's), (83, 42568), (98, 42499), (102, 42457),

Gene: LindNT_81 Start: 53516, Stop: 53713, Start Num: 73

Candidate Starts for LindNT_81:

(Start: 73 @53516 has 435 MA's), (75, 53525), (Start: 78 @53537 has 16 MA's), (79, 53543), (98,
53645), (102, 53687),

Gene: LittleB_66 Start: 42164, Stop: 41970, Start Num: 73

Candidate Starts for LittleB_66:

(Start: 68 @42170 has 8 MA's), (Start: 73 @42164 has 435 MA's), (Start: 76 @42149 has 6 MA's),
(Start: 78 @42143 has 16 MA's), (102, 41996),

Gene: LittleGuy_66 Start: 42059, Stop: 41865, Start Num: 73

Candidate Starts for LittleGuy_66:

(Start: 68 @42065 has 8 MA's), (Start: 73 @42059 has 435 MA's), (Start: 76 @42044 has 6 MA's),
(Start: 78 @42038 has 16 MA's), (102, 41891),

Gene: Llorens_82 Start: 53507, Stop: 53683, Start Num: 78

Candidate Starts for Llorens_82:

(Start: 65 @53477 has 1 MA's), (Start: 73 @53486 has 435 MA's), (Start: 78 @53507 has 16 MA's),
(79, 53513), (98, 53615), (102, 53657),

Gene: LochMonster_67 Start: 42402, Stop: 42208, Start Num: 73

Candidate Starts for LochMonster_67:

(Start: 68 @42408 has 8 MA's), (Start: 73 @42402 has 435 MA's), (Start: 76 @42387 has 6 MA's),
(Start: 78 @42381 has 16 MA's), (102, 42234),

Gene: LoneWolf_74 Start: 42883, Stop: 42710, Start Num: 78

Candidate Starts for LoneWolf_74:

(20, 43036), (Start: 78 @42883 has 16 MA's), (102, 42736),

Gene: Lorenzo_66 Start: 42163, Stop: 41969, Start Num: 73

Candidate Starts for Lorenzo_66:

(Start: 68 @42169 has 8 MA's), (Start: 73 @42163 has 435 MA's), (Start: 76 @42148 has 6 MA's), (Start: 78 @42142 has 16 MA's), (102, 41995),

Gene: Loser_73 Start: 43737, Stop: 43543, Start Num: 73

Candidate Starts for Loser_73:

(Start: 73 @43737 has 435 MA's), (Start: 76 @43722 has 6 MA's), (Start: 78 @43716 has 16 MA's), (102, 43569),

Gene: Louie6_72 Start: 42662, Stop: 42468, Start Num: 73

Candidate Starts for Louie6_72:

(6, 42953), (8, 42920), (20, 42812), (59, 42683), (Start: 68 @42668 has 8 MA's), (Start: 73 @42662 has 435 MA's), (Start: 78 @42641 has 16 MA's), (83, 42605), (98, 42536), (102, 42494),

Gene: LugYA_76 Start: 42633, Stop: 42439, Start Num: 73

Candidate Starts for LugYA_76:

(6, 42924), (8, 42891), (20, 42783), (59, 42654), (Start: 68 @42639 has 8 MA's), (Start: 73 @42633 has 435 MA's), (Start: 78 @42612 has 16 MA's), (83, 42576), (98, 42507), (102, 42465),

Gene: Lunahalos_83 Start: 53486, Stop: 53683, Start Num: 73

Candidate Starts for Lunahalos_83:

(Start: 65 @53477 has 1 MA's), (Start: 73 @53486 has 435 MA's), (Start: 78 @53507 has 16 MA's), (79, 53513), (98, 53615), (102, 53657),

Gene: Lunsford_66 Start: 42157, Stop: 41963, Start Num: 73

Candidate Starts for Lunsford_66:

(Start: 68 @42163 has 8 MA's), (Start: 73 @42157 has 435 MA's), (Start: 76 @42142 has 6 MA's), (Start: 78 @42136 has 16 MA's), (102, 41989),

Gene: MA5_68 Start: 41752, Stop: 41558, Start Num: 73

Candidate Starts for MA5_68:

(Start: 68 @41758 has 8 MA's), (Start: 73 @41752 has 435 MA's), (Start: 78 @41731 has 16 MA's), (93, 41647), (95, 41641), (102, 41584),

Gene: MK4_68 Start: 41827, Stop: 41633, Start Num: 73

Candidate Starts for MK4_68:

(Start: 68 @41833 has 8 MA's), (Start: 73 @41827 has 435 MA's), (Start: 78 @41806 has 16 MA's), (95, 41716), (102, 41659),

Gene: MacnCheese_86 Start: 54969, Stop: 55178, Start Num: 73

Candidate Starts for MacnCheese_86:

(Start: 73 @54969 has 435 MA's), (Start: 78 @54990 has 16 MA's), (79, 54996), (91, 55068), (98, 55098), (101, 55137), (102, 55140),

Gene: MadMarie_71 Start: 42633, Stop: 42439, Start Num: 73

Candidate Starts for MadMarie_71:

(6, 42924), (8, 42891), (20, 42783), (59, 42654), (Start: 68 @42639 has 8 MA's), (Start: 73 @42633 has 435 MA's), (Start: 78 @42612 has 16 MA's), (83, 42576), (98, 42507), (102, 42465),

Gene: Mainiac_72 Start: 42631, Stop: 42431, Start Num: 68

Candidate Starts for Mainiac_72:

(6, 42916), (8, 42883), (20, 42775), (59, 42646), (Start: 68 @42631 has 8 MA's), (Start: 73 @42625 has 435 MA's), (Start: 78 @42604 has 16 MA's), (83, 42568), (98, 42499), (102, 42457),

Gene: Malinsilva_75 Start: 42624, Stop: 42430, Start Num: 73

Candidate Starts for Malinsilva_75:

(6, 42915), (8, 42882), (20, 42774), (59, 42645), (Start: 68 @42630 has 8 MA's), (Start: 73 @42624 has 435 MA's), (Start: 78 @42603 has 16 MA's), (83, 42567), (98, 42498), (102, 42456),

Gene: Manu_72 Start: 42449, Stop: 42255, Start Num: 73

Candidate Starts for Manu_72:

(3, 42755), (6, 42740), (20, 42599), (59, 42470), (Start: 68 @42455 has 8 MA's), (Start: 73 @42449 has 435 MA's), (Start: 78 @42428 has 16 MA's), (83, 42392), (89, 42365), (98, 42323), (102, 42281),

Gene: MarQuardt_73 Start: 42634, Stop: 42440, Start Num: 73

Candidate Starts for MarQuardt_73:

(6, 42925), (8, 42892), (20, 42784), (59, 42655), (Start: 68 @42640 has 8 MA's), (Start: 73 @42634 has 435 MA's), (Start: 78 @42613 has 16 MA's), (83, 42577), (98, 42508), (102, 42466),

Gene: Marcoliusprime_84 Start: 54874, Stop: 55095, Start Num: 63

Candidate Starts for Marcoliusprime_84:

(13, 54769), (16, 54811), (Start: 63 @54874 has 4 MA's), (75, 54883), (Start: 78 @54895 has 16 MA's), (79, 54901), (102, 55045),

Gene: Margo_68 Start: 42377, Stop: 42183, Start Num: 73

Candidate Starts for Margo_68:

(20, 42527), (Start: 73 @42377 has 435 MA's), (Start: 78 @42356 has 16 MA's), (93, 42272), (95, 42266), (102, 42209),

Gene: Marie_71 Start: 42632, Stop: 42438, Start Num: 73

Candidate Starts for Marie_71:

(6, 42923), (8, 42890), (20, 42782), (59, 42653), (Start: 68 @42638 has 8 MA's), (Start: 73 @42632 has 435 MA's), (Start: 78 @42611 has 16 MA's), (83, 42575), (98, 42506), (102, 42464),

Gene: Marius_73 Start: 42446, Stop: 42252, Start Num: 73

Candidate Starts for Marius_73:

(6, 42737), (20, 42596), (59, 42467), (Start: 68 @42452 has 8 MA's), (Start: 73 @42446 has 435 MA's), (Start: 78 @42425 has 16 MA's), (83, 42389), (89, 42362), (98, 42320), (102, 42278),

Gene: MarkPhew_85 Start: 53703, Stop: 53912, Start Num: 73

Candidate Starts for MarkPhew_85:

(Start: 73 @53703 has 435 MA's), (Start: 78 @53724 has 16 MA's), (95, 53817), (102, 53874),

Gene: Marshawn_82 Start: 54049, Stop: 54258, Start Num: 73

Candidate Starts for Marshawn_82:

(Start: 73 @54049 has 435 MA's), (Start: 78 @54070 has 16 MA's), (79, 54076), (91, 54148), (98, 54178), (99, 54190), (102, 54220),

Gene: Maverick_65 Start: 42163, Stop: 41969, Start Num: 73

Candidate Starts for Maverick_65:

(Start: 68 @42169 has 8 MA's), (Start: 73 @42163 has 435 MA's), (Start: 76 @42148 has 6 MA's), (Start: 78 @42142 has 16 MA's), (102, 41995),

Gene: Maxo_67 Start: 42165, Stop: 41971, Start Num: 73

Candidate Starts for Maxo_67:

(Start: 68 @42171 has 8 MA's), (Start: 73 @42165 has 435 MA's), (Start: 76 @42150 has 6 MA's),
(Start: 78 @42144 has 16 MA's), (102, 41997),

Gene: Mazhar510_66 Start: 42164, Stop: 41970, Start Num: 73

Candidate Starts for Mazhar510_66:

(Start: 68 @42170 has 8 MA's), (Start: 73 @42164 has 435 MA's), (Start: 76 @42149 has 6 MA's),
(Start: 78 @42143 has 16 MA's), (102, 41996),

Gene: McFly_74 Start: 42311, Stop: 42117, Start Num: 73

Candidate Starts for McFly_74:

(Start: 73 @42311 has 435 MA's), (Start: 76 @42296 has 6 MA's), (Start: 78 @42290 has 16 MA's),
(95, 42200), (102, 42143), (103, 42122),

Gene: MeaningOfLife_85 Start: 54180, Stop: 54377, Start Num: 73

Candidate Starts for MeaningOfLife_85:

(38, 54096), (42, 54111), (43, 54114), (46, 54123), (Start: 65 @54168 has 1 MA's), (Start: 72 @54177
has 4 MA's), (Start: 73 @54180 has 435 MA's), (Start: 78 @54201 has 16 MA's), (79, 54207), (98,
54309), (102, 54351),

Gene: Medusa_66 Start: 42177, Stop: 41983, Start Num: 73

Candidate Starts for Medusa_66:

(Start: 68 @42183 has 8 MA's), (Start: 73 @42177 has 435 MA's), (Start: 76 @42162 has 6 MA's),
(Start: 78 @42156 has 16 MA's), (102, 42009),

Gene: MeeZee_65 Start: 42160, Stop: 41966, Start Num: 73

Candidate Starts for MeeZee_65:

(Start: 68 @42166 has 8 MA's), (Start: 73 @42160 has 435 MA's), (Start: 76 @42145 has 6 MA's),
(Start: 78 @42139 has 16 MA's), (102, 41992),

Gene: Megsy_87 Start: 53805, Stop: 54002, Start Num: 73

Candidate Starts for Megsy_87:

(42, 53736), (43, 53739), (46, 53748), (Start: 65 @53793 has 1 MA's), (Start: 73 @53805 has 435
MA's), (Start: 78 @53826 has 16 MA's), (79, 53832), (98, 53934), (102, 53976),

Gene: Melvin_68 Start: 42158, Stop: 41964, Start Num: 73

Candidate Starts for Melvin_68:

(Start: 68 @42164 has 8 MA's), (Start: 73 @42158 has 435 MA's), (Start: 76 @42143 has 6 MA's),
(Start: 78 @42137 has 16 MA's), (102, 41990),

Gene: Methuselah_66 Start: 42635, Stop: 42462, Start Num: 78

Candidate Starts for Methuselah_66:

(6, 42947), (8, 42914), (20, 42806), (59, 42677), (Start: 68 @42662 has 8 MA's), (Start: 73 @42656
has 435 MA's), (Start: 78 @42635 has 16 MA's), (83, 42599), (98, 42530), (102, 42488),

Gene: Microwolf_69 Start: 42627, Stop: 42454, Start Num: 78

Candidate Starts for Microwolf_69:

(6, 42939), (8, 42906), (20, 42798), (59, 42669), (Start: 68 @42654 has 8 MA's), (Start: 73 @42648
has 435 MA's), (Start: 78 @42627 has 16 MA's), (83, 42591), (98, 42522), (102, 42480),

Gene: MiculUcigas_72 Start: 43180, Stop: 42986, Start Num: 73

Candidate Starts for MiculUcigas_72:

(Start: 73 @43180 has 435 MA's), (Start: 76 @43165 has 6 MA's), (Start: 78 @43159 has 16 MA's), (102, 43012), (103, 42991),

Gene: Millski_65 Start: 42164, Stop: 41970, Start Num: 73

Candidate Starts for Millski_65:

(Start: 68 @42170 has 8 MA's), (Start: 73 @42164 has 435 MA's), (Start: 76 @42149 has 6 MA's), (Start: 78 @42143 has 16 MA's), (102, 41996),

Gene: Milly_85 Start: 54955, Stop: 55176, Start Num: 72

Candidate Starts for Milly_85:

(13, 54751), (16, 54793), (57, 54931), (Start: 72 @54955 has 4 MA's), (75, 54964), (Start: 78 @54976 has 16 MA's), (79, 54982), (102, 55126),

Gene: Miramae_65 Start: 41958, Stop: 41764, Start Num: 73

Candidate Starts for Miramae_65:

(Start: 68 @41964 has 8 MA's), (Start: 73 @41958 has 435 MA's), (Start: 76 @41943 has 6 MA's), (Start: 78 @41937 has 16 MA's), (95, 41847), (102, 41790),

Gene: Miryou_80 Start: 54464, Stop: 54652, Start Num: 78

Candidate Starts for Miryou_80:

(30, 54353), (32, 54359), (Start: 68 @54443 has 8 MA's), (Start: 78 @54464 has 16 MA's), (102, 54614),

Gene: Misomonster_74 Start: 42659, Stop: 42465, Start Num: 73

Candidate Starts for Misomonster_74:

(6, 42950), (8, 42917), (20, 42809), (59, 42680), (Start: 68 @42665 has 8 MA's), (Start: 73 @42659 has 435 MA's), (Start: 78 @42638 has 16 MA's), (83, 42602), (98, 42533), (102, 42491),

Gene: MoneyMay_72 Start: 42632, Stop: 42438, Start Num: 73

Candidate Starts for MoneyMay_72:

(6, 42923), (8, 42890), (20, 42782), (59, 42653), (Start: 68 @42638 has 8 MA's), (Start: 73 @42632 has 435 MA's), (Start: 78 @42611 has 16 MA's), (83, 42575), (98, 42506), (102, 42464),

Gene: Morpher26_65 Start: 42433, Stop: 42239, Start Num: 73

Candidate Starts for Morpher26_65:

(Start: 68 @42439 has 8 MA's), (Start: 73 @42433 has 435 MA's), (Start: 76 @42418 has 6 MA's), (Start: 78 @42412 has 16 MA's), (102, 42265),

Gene: Morrow_67 Start: 42178, Stop: 41984, Start Num: 73

Candidate Starts for Morrow_67:

(Start: 68 @42184 has 8 MA's), (Start: 73 @42178 has 435 MA's), (Start: 76 @42163 has 6 MA's), (Start: 78 @42157 has 16 MA's), (102, 42010),

Gene: MrMiyagi_49 Start: 36981, Stop: 37241, Start Num: 55

Candidate Starts for MrMiyagi_49:

(Start: 55 @36981 has 3 MA's), (66, 37002), (80, 37053), (85, 37083), (96, 37143), (102, 37197),

Gene: MuchMore_76 Start: 42624, Stop: 42430, Start Num: 73

Candidate Starts for MuchMore_76:

(6, 42915), (8, 42882), (20, 42774), (59, 42645), (Start: 68 @42630 has 8 MA's), (Start: 73 @42624 has 435 MA's), (Start: 78 @42603 has 16 MA's), (83, 42567), (98, 42498), (102, 42456),

Gene: Mudslide_79 Start: 64155, Stop: 63943, Start Num: 73

Candidate Starts for Mudslide_79:

(12, 64368), (54, 64191), (71, 64161), (Start: 73 @64155 has 435 MA's), (Start: 78 @64134 has 16 MA's), (79, 64128), (89, 64053), (98, 64011), (102, 63969),

Gene: Mufasa_84 Start: 54439, Stop: 54636, Start Num: 72

Candidate Starts for Mufasa_84:

(13, 54235), (16, 54277), (57, 54415), (Start: 72 @54439 has 4 MA's), (75, 54448), (Start: 78 @54460 has 16 MA's), (79, 54466), (102, 54610),

Gene: Mundrea_65 Start: 42426, Stop: 42232, Start Num: 73

Candidate Starts for Mundrea_65:

(Start: 68 @42432 has 8 MA's), (Start: 73 @42426 has 435 MA's), (Start: 76 @42411 has 6 MA's), (Start: 78 @42405 has 16 MA's), (87, 42348), (99, 42288), (102, 42258),

Gene: Murucutumbu_83 Start: 54402, Stop: 54578, Start Num: 78

Candidate Starts for Murucutumbu_83:

(28, 54276), (29, 54282), (Start: 73 @54381 has 435 MA's), (75, 54390), (Start: 78 @54402 has 16 MA's), (79, 54408), (98, 54510), (102, 54552),

Gene: Mynx_84 Start: 53800, Stop: 53997, Start Num: 73

Candidate Starts for Mynx_84:

(Start: 73 @53800 has 435 MA's), (75, 53809), (Start: 78 @53821 has 16 MA's), (79, 53827), (98, 53929), (102, 53971),

Gene: NaSiaTalie_72 Start: 43274, Stop: 43080, Start Num: 73

Candidate Starts for NaSiaTalie_72:

(Start: 73 @43274 has 435 MA's), (Start: 76 @43259 has 6 MA's), (Start: 78 @43253 has 16 MA's), (102, 43106), (103, 43085),

Gene: Nanao_78 Start: 62948, Stop: 62736, Start Num: 73

Candidate Starts for Nanao_78:

(23, 63083), (53, 62990), (64, 62963), (Start: 73 @62948 has 435 MA's), (Start: 78 @62927 has 16 MA's), (79, 62921), (89, 62846), (98, 62804), (102, 62762),

Gene: Nebs_67 Start: 42175, Stop: 41981, Start Num: 73

Candidate Starts for Nebs_67:

(Start: 68 @42181 has 8 MA's), (Start: 73 @42175 has 435 MA's), (Start: 76 @42160 has 6 MA's), (Start: 78 @42154 has 16 MA's), (102, 42007),

Gene: Neeharika16_70 Start: 41762, Stop: 41583, Start Num: 76

Candidate Starts for Neeharika16_70:

(Start: 73 @41777 has 435 MA's), (Start: 76 @41762 has 6 MA's), (Start: 78 @41756 has 16 MA's), (95, 41666), (102, 41609), (103, 41588),

Gene: Nemo27_65 Start: 42162, Stop: 41968, Start Num: 73

Candidate Starts for Nemo27_65:

(Start: 68 @42168 has 8 MA's), (Start: 73 @42162 has 435 MA's), (Start: 76 @42147 has 6 MA's), (Start: 78 @42141 has 16 MA's), (102, 41994),

Gene: Nibb_85 Start: 53367, Stop: 53576, Start Num: 73

Candidate Starts for Nibb_85:

(34, 53286), (60, 53355), (Start: 73 @53367 has 435 MA's), (Start: 78 @53388 has 16 MA's), (95, 53481), (102, 53538),

Gene: NicoleTera_69 Start: 43300, Stop: 43106, Start Num: 73

Candidate Starts for NicoleTera_69:

(32, 43378), (Start: 73 @43300 has 435 MA's), (Start: 76 @43285 has 6 MA's), (Start: 78 @43279 has 16 MA's), (102, 43132),

Gene: Nigel_75 Start: 62302, Stop: 62090, Start Num: 73

Candidate Starts for Nigel_75:

(52, 62347), (54, 62338), (71, 62308), (Start: 73 @62302 has 435 MA's), (Start: 78 @62281 has 16 MA's), (79, 62275), (89, 62200), (95, 62173), (100, 62122), (102, 62116),

Gene: Noella_68 Start: 42352, Stop: 42158, Start Num: 73

Candidate Starts for Noella_68:

(20, 42502), (Start: 73 @42352 has 435 MA's), (Start: 78 @42331 has 16 MA's), (93, 42247), (95, 42241), (102, 42184),

Gene: Noelle_66 Start: 42741, Stop: 42547, Start Num: 73

Candidate Starts for Noelle_66:

(Start: 68 @42747 has 8 MA's), (Start: 73 @42741 has 435 MA's), (Start: 78 @42720 has 16 MA's), (95, 42630), (102, 42573),

Gene: Norbert_64 Start: 42351, Stop: 42157, Start Num: 73

Candidate Starts for Norbert_64:

(20, 42501), (Start: 73 @42351 has 435 MA's), (Start: 78 @42330 has 16 MA's), (93, 42246), (95, 42240), (102, 42183),

Gene: NorthStar_64 Start: 42163, Stop: 41969, Start Num: 73

Candidate Starts for NorthStar_64:

(Start: 68 @42169 has 8 MA's), (Start: 73 @42163 has 435 MA's), (Start: 76 @42148 has 6 MA's), (Start: 78 @42142 has 16 MA's), (102, 41995),

Gene: NotAPhaseMom_65 Start: 42167, Stop: 41973, Start Num: 73

Candidate Starts for NotAPhaseMom_65:

(Start: 68 @42173 has 8 MA's), (Start: 73 @42167 has 435 MA's), (Start: 76 @42152 has 6 MA's), (Start: 78 @42146 has 16 MA's), (102, 41999),

Gene: Nyxis_65 Start: 42053, Stop: 41859, Start Num: 73

Candidate Starts for Nyxis_65:

(Start: 68 @42059 has 8 MA's), (Start: 73 @42053 has 435 MA's), (Start: 76 @42038 has 6 MA's), (Start: 78 @42032 has 16 MA's), (102, 41885),

Gene: OKaNui_65 Start: 42213, Stop: 42019, Start Num: 73

Candidate Starts for OKaNui_65:

(Start: 68 @42219 has 8 MA's), (Start: 73 @42213 has 435 MA's), (Start: 76 @42198 has 6 MA's), (Start: 78 @42192 has 16 MA's), (102, 42045),

Gene: Obama12_67 Start: 42559, Stop: 42365, Start Num: 73

Candidate Starts for Obama12_67:

(Start: 68 @42565 has 8 MA's), (Start: 73 @42559 has 435 MA's), (Start: 76 @42544 has 6 MA's), (Start: 78 @42538 has 16 MA's), (102, 42391),

Gene: Odin_72 Start: 42320, Stop: 42099, Start Num: 73

Candidate Starts for Odin_72:

(Start: 73 @42320 has 435 MA's), (Start: 78 @42299 has 16 MA's), (79, 42293), (102, 42152),

Gene: Ohfah_67 Start: 42175, Stop: 41981, Start Num: 73

Candidate Starts for Ohfah_67:

(Start: 68 @42181 has 8 MA's), (Start: 73 @42175 has 435 MA's), (Start: 76 @42160 has 6 MA's), (Start: 78 @42154 has 16 MA's), (102, 42007),

Gene: OkiRoe_77 Start: 52364, Stop: 52573, Start Num: 73

Candidate Starts for OkiRoe_77:

(15, 52199), (31, 52280), (35, 52289), (38, 52295), (41, 52307), (59, 52352), (Start: 73 @52364 has 435 MA's), (Start: 78 @52385 has 16 MA's), (79, 52391), (102, 52535),

Gene: OlanP_71 Start: 42622, Stop: 42428, Start Num: 73

Candidate Starts for OlanP_71:

(3, 42928), (6, 42913), (20, 42772), (59, 42643), (Start: 68 @42628 has 8 MA's), (Start: 73 @42622 has 435 MA's), (Start: 78 @42601 has 16 MA's), (83, 42565), (89, 42538), (98, 42496), (102, 42454),

Gene: Ollie_73 Start: 42503, Stop: 42309, Start Num: 73

Candidate Starts for Ollie_73:

(6, 42794), (8, 42761), (20, 42653), (59, 42524), (Start: 68 @42509 has 8 MA's), (Start: 73 @42503 has 435 MA's), (Start: 78 @42482 has 16 MA's), (83, 42446), (98, 42377), (102, 42335),

Gene: Omnicron_80 Start: 53454, Stop: 53666, Start Num: 67

Candidate Starts for Omnicron_80:

(38, 53382), (59, 53445), (Start: 67 @53454 has 7 MA's), (Start: 73 @53457 has 435 MA's), (Start: 78 @53478 has 16 MA's), (79, 53484), (102, 53628),

Gene: Oscar_85 Start: 53572, Stop: 53781, Start Num: 73

Candidate Starts for Oscar_85:

(60, 53560), (Start: 73 @53572 has 435 MA's), (Start: 78 @53593 has 16 MA's), (92, 53677), (102, 53743),

Gene: P28Green_73 Start: 42635, Stop: 42441, Start Num: 73

Candidate Starts for P28Green_73:

(6, 42926), (8, 42893), (20, 42785), (59, 42656), (Start: 68 @42641 has 8 MA's), (Start: 73 @42635 has 435 MA's), (Start: 78 @42614 has 16 MA's), (83, 42578), (98, 42509), (102, 42467),

Gene: PGHhamlin_75 Start: 42624, Stop: 42430, Start Num: 73

Candidate Starts for PGHhamlin_75:

(6, 42915), (8, 42882), (20, 42774), (59, 42645), (Start: 68 @42630 has 8 MA's), (Start: 73 @42624 has 435 MA's), (Start: 78 @42603 has 16 MA's), (83, 42567), (98, 42498), (102, 42456),

Gene: Padfoot_83 Start: 53683, Stop: 53880, Start Num: 73

Candidate Starts for Padfoot_83:

(Start: 65 @53674 has 1 MA's), (Start: 73 @53683 has 435 MA's), (Start: 78 @53704 has 16 MA's), (79, 53710), (98, 53812), (102, 53854),

Gene: Padpat_86 Start: 53678, Stop: 53875, Start Num: 73

Candidate Starts for Padpat_86:

(43, 53612), (Start: 73 @53678 has 435 MA's), (Start: 78 @53699 has 16 MA's), (79, 53705), (91, 53777), (98, 53807), (102, 53849),

Gene: Palestino_65 Start: 42163, Stop: 41969, Start Num: 73

Candidate Starts for Palestino_65:

(Start: 68 @42169 has 8 MA's), (Start: 73 @42163 has 435 MA's), (Start: 76 @42148 has 6 MA's), (Start: 78 @42142 has 16 MA's), (102, 41995),

Gene: Panamaxus_66 Start: 42351, Stop: 42157, Start Num: 73

Candidate Starts for Panamaxus_66:

(20, 42501), (Start: 73 @42351 has 435 MA's), (Start: 78 @42330 has 16 MA's), (93, 42246), (95, 42240), (102, 42183),

Gene: Paola_76 Start: 51877, Stop: 52086, Start Num: 73

Candidate Starts for Paola_76:

(Start: 73 @51877 has 435 MA's), (Start: 78 @51898 has 16 MA's), (102, 52048),

Gene: Pawn_71 Start: 42453, Stop: 42259, Start Num: 73

Candidate Starts for Pawn_71:

(6, 42744), (20, 42603), (59, 42474), (Start: 68 @42459 has 8 MA's), (Start: 73 @42453 has 435 MA's), (Start: 78 @42432 has 16 MA's), (83, 42396), (89, 42369), (98, 42327), (102, 42285),

Gene: PeaceMeal1_63 Start: 40587, Stop: 40393, Start Num: 73

Candidate Starts for PeaceMeal1_63:

(Start: 68 @40593 has 8 MA's), (Start: 73 @40587 has 435 MA's), (Start: 78 @40566 has 16 MA's), (95, 40476), (102, 40419),

Gene: Peaches_64 Start: 42162, Stop: 41968, Start Num: 73

Candidate Starts for Peaches_64:

(Start: 68 @42168 has 8 MA's), (Start: 73 @42162 has 435 MA's), (Start: 76 @42147 has 6 MA's), (Start: 78 @42141 has 16 MA's), (102, 41994),

Gene: Peel_83 Start: 53488, Stop: 53685, Start Num: 73

Candidate Starts for Peel_83:

(Start: 65 @53479 has 1 MA's), (Start: 73 @53488 has 435 MA's), (Start: 78 @53509 has 16 MA's), (79, 53515), (98, 53617), (102, 53659),

Gene: Pembroke_73 Start: 42633, Stop: 42439, Start Num: 73

Candidate Starts for Pembroke_73:

(6, 42924), (8, 42891), (20, 42783), (59, 42654), (Start: 68 @42639 has 8 MA's), (Start: 73 @42633 has 435 MA's), (Start: 78 @42612 has 16 MA's), (83, 42576), (98, 42507), (102, 42465),

Gene: Penny1_73 Start: 42636, Stop: 42442, Start Num: 73

Candidate Starts for Penny1_73:

(6, 42927), (8, 42894), (20, 42786), (59, 42657), (Start: 68 @42642 has 8 MA's), (Start: 73 @42636 has 435 MA's), (Start: 78 @42615 has 16 MA's), (83, 42579), (98, 42510), (102, 42468),

Gene: Perplexer_65 Start: 42409, Stop: 42215, Start Num: 73

Candidate Starts for Perplexer_65:

(Start: 68 @42415 has 8 MA's), (Start: 73 @42409 has 435 MA's), (Start: 76 @42394 has 6 MA's), (Start: 78 @42388 has 16 MA's), (102, 42241),

Gene: PeterPeter_66 Start: 42160, Stop: 41966, Start Num: 73

Candidate Starts for PeterPeter_66:

(Start: 68 @42166 has 8 MA's), (Start: 73 @42160 has 435 MA's), (Start: 76 @42145 has 6 MA's), (Start: 78 @42139 has 16 MA's), (102, 41992),

Gene: PetiteSangsue_65 Start: 42412, Stop: 42218, Start Num: 73
Candidate Starts for PetiteSangsue_65:
(Start: 68 @42418 has 8 MA's), (Start: 73 @42412 has 435 MA's), (Start: 76 @42397 has 6 MA's),
(Start: 78 @42391 has 16 MA's), (102, 42244),

Gene: Ph8s_75 Start: 42385, Stop: 42191, Start Num: 73
Candidate Starts for Ph8s_75:
(Start: 73 @42385 has 435 MA's), (Start: 78 @42364 has 16 MA's), (83, 42328), (98, 42259),

Gene: Phacado_66 Start: 42162, Stop: 41968, Start Num: 73
Candidate Starts for Phacado_66:
(Start: 68 @42168 has 8 MA's), (Start: 73 @42162 has 435 MA's), (Start: 76 @42147 has 6 MA's),
(Start: 78 @42141 has 16 MA's), (102, 41994),

Gene: Phantastic_70 Start: 42013, Stop: 41819, Start Num: 73
Candidate Starts for Phantastic_70:
(Start: 68 @42019 has 8 MA's), (Start: 73 @42013 has 435 MA's), (Start: 78 @41992 has 16 MA's),
(92, 41911), (95, 41902), (102, 41845),

Gene: Pharb_84 Start: 53985, Stop: 54194, Start Num: 73
Candidate Starts for Pharb_84:
(59, 53973), (Start: 67 @53982 has 7 MA's), (Start: 73 @53985 has 435 MA's), (Start: 78 @54006 has
16 MA's), (79, 54012), (95, 54099), (98, 54114), (102, 54156),

Gene: Phelipe_67 Start: 42175, Stop: 41981, Start Num: 73
Candidate Starts for Phelipe_67:
(Start: 68 @42181 has 8 MA's), (Start: 73 @42175 has 435 MA's), (Start: 76 @42160 has 6 MA's),
(Start: 78 @42154 has 16 MA's), (102, 42007),

Gene: Phighter1804_66 Start: 42227, Stop: 42033, Start Num: 73
Candidate Starts for Phighter1804_66:
(Start: 68 @42233 has 8 MA's), (Start: 73 @42227 has 435 MA's), (Start: 76 @42212 has 6 MA's),
(Start: 78 @42206 has 16 MA's), (102, 42059),

Gene: PhishRPhriends_69 Start: 41630, Stop: 41436, Start Num: 73
Candidate Starts for PhishRPhriends_69:
(3, 41936), (6, 41921), (20, 41780), (59, 41651), (Start: 68 @41636 has 8 MA's), (Start: 73 @41630
has 435 MA's), (Start: 78 @41609 has 16 MA's), (83, 41573), (89, 41546), (98, 41504), (102, 41462),

Gene: Phoebe_74 Start: 42625, Stop: 42431, Start Num: 73
Candidate Starts for Phoebe_74:
(6, 42916), (8, 42883), (20, 42775), (59, 42646), (Start: 68 @42631 has 8 MA's), (Start: 73 @42625
has 435 MA's), (Start: 78 @42604 has 16 MA's), (83, 42568), (98, 42499), (102, 42457),

Gene: Phontbonne_66 Start: 42069, Stop: 41875, Start Num: 73
Candidate Starts for Phontbonne_66:
(Start: 68 @42075 has 8 MA's), (Start: 73 @42069 has 435 MA's), (Start: 76 @42054 has 6 MA's),
(Start: 78 @42048 has 16 MA's), (102, 41901),

Gene: Phoxy_73 Start: 42657, Stop: 42463, Start Num: 73
Candidate Starts for Phoxy_73:
(6, 42948), (8, 42915), (20, 42807), (59, 42678), (Start: 68 @42663 has 8 MA's), (Start: 73 @42657
has 435 MA's), (Start: 78 @42636 has 16 MA's), (83, 42600), (98, 42531), (102, 42489),

Gene: Phrank_90 Start: 54330, Stop: 54539, Start Num: 73
Candidate Starts for Phrank_90:
(17, 54180), (33, 54249), (37, 54258), (Start: 73 @54330 has 435 MA's), (Start: 78 @54351 has 16 MA's), (79, 54357), (95, 54444), (98, 54459), (102, 54501),

Gene: Piatt_82 Start: 53683, Stop: 53880, Start Num: 73
Candidate Starts for Piatt_82:
(Start: 65 @53674 has 1 MA's), (Start: 73 @53683 has 435 MA's), (Start: 78 @53704 has 16 MA's), (79, 53710), (98, 53812), (102, 53854),

Gene: Pipcraft_63 Start: 42163, Stop: 41969, Start Num: 73
Candidate Starts for Pipcraft_63:
(Start: 68 @42169 has 8 MA's), (Start: 73 @42163 has 435 MA's), (Start: 76 @42148 has 6 MA's), (Start: 78 @42142 has 16 MA's), (102, 41995),

Gene: Piro94_71 Start: 43242, Stop: 43048, Start Num: 73
Candidate Starts for Piro94_71:
(Start: 73 @43242 has 435 MA's), (Start: 76 @43227 has 6 MA's), (Start: 78 @43221 has 16 MA's), (102, 43074),

Gene: Pistachio_68 Start: 41942, Stop: 41748, Start Num: 73
Candidate Starts for Pistachio_68:
(Start: 68 @41948 has 8 MA's), (Start: 73 @41942 has 435 MA's), (Start: 78 @41921 has 16 MA's), (93, 41837), (98, 41816), (102, 41774),

Gene: Pixie_84 Start: 54143, Stop: 54331, Start Num: 78
Candidate Starts for Pixie_84:
(Start: 73 @54122 has 435 MA's), (Start: 78 @54143 has 16 MA's), (79, 54149), (98, 54251), (102, 54293),

Gene: Pmask_72 Start: 42313, Stop: 42119, Start Num: 73
Candidate Starts for Pmask_72:
(Start: 73 @42313 has 435 MA's), (Start: 76 @42298 has 6 MA's), (Start: 78 @42292 has 16 MA's), (95, 42202), (102, 42145), (103, 42124),

Gene: Pocahontas_67 Start: 42348, Stop: 42154, Start Num: 73
Candidate Starts for Pocahontas_67:
(20, 42498), (Start: 73 @42348 has 435 MA's), (Start: 78 @42327 has 16 MA's), (93, 42243), (95, 42237), (102, 42180),

Gene: Pokerus_83 Start: 53501, Stop: 53698, Start Num: 73
Candidate Starts for Pokerus_83:
(Start: 73 @53501 has 435 MA's), (75, 53510), (Start: 78 @53522 has 16 MA's), (79, 53528), (98, 53630), (102, 53672),

Gene: Polymorphads_66 Start: 42156, Stop: 41962, Start Num: 73
Candidate Starts for Polymorphads_66:
(Start: 68 @42162 has 8 MA's), (Start: 73 @42156 has 435 MA's), (Start: 76 @42141 has 6 MA's), (Start: 78 @42135 has 16 MA's), (102, 41988),

Gene: Poompha_62 Start: 40585, Stop: 40391, Start Num: 73
Candidate Starts for Poompha_62:

(Start: 68 @40591 has 8 MA's), (Start: 73 @40585 has 435 MA's), (Start: 78 @40564 has 16 MA's), (95, 40474), (102, 40417),

Gene: Popcicle_68 Start: 42348, Stop: 42154, Start Num: 73

Candidate Starts for Popcicle_68:

(20, 42498), (Start: 73 @42348 has 435 MA's), (Start: 78 @42327 has 16 MA's), (93, 42243), (95, 42237), (102, 42180),

Gene: Poster_77 Start: 62949, Stop: 62737, Start Num: 73

Candidate Starts for Poster_77:

(23, 63084), (53, 62991), (64, 62964), (Start: 73 @62949 has 435 MA's), (Start: 78 @62928 has 16 MA's), (79, 62922), (89, 62847), (98, 62805), (102, 62763),

Gene: PotatoSplit_74 Start: 42636, Stop: 42442, Start Num: 73

Candidate Starts for PotatoSplit_74:

(6, 42927), (8, 42894), (20, 42786), (59, 42657), (Start: 68 @42642 has 8 MA's), (Start: 73 @42636 has 435 MA's), (Start: 78 @42615 has 16 MA's), (83, 42579), (98, 42510), (102, 42468),

Gene: Power_71 Start: 43615, Stop: 43421, Start Num: 73

Candidate Starts for Power_71:

(Start: 73 @43615 has 435 MA's), (Start: 78 @43594 has 16 MA's),

Gene: Prithvi_85 Start: 53829, Stop: 54005, Start Num: 78

Candidate Starts for Prithvi_85:

(43, 53742), (Start: 73 @53808 has 435 MA's), (Start: 78 @53829 has 16 MA's), (79, 53835), (98, 53937), (102, 53979),

Gene: Pumbaa_66 Start: 42108, Stop: 41914, Start Num: 73

Candidate Starts for Pumbaa_66:

(Start: 68 @42114 has 8 MA's), (Start: 73 @42108 has 435 MA's), (Start: 76 @42093 has 6 MA's), (Start: 78 @42087 has 16 MA's), (102, 41940),

Gene: Puppy_69 Start: 42014, Stop: 41820, Start Num: 73

Candidate Starts for Puppy_69:

(Start: 68 @42020 has 8 MA's), (Start: 73 @42014 has 435 MA's), (Start: 78 @41993 has 16 MA's), (93, 41909), (98, 41888), (102, 41846),

Gene: PurpleHaze_72 Start: 42448, Stop: 42254, Start Num: 73

Candidate Starts for PurpleHaze_72:

(6, 42739), (20, 42598), (59, 42469), (Start: 68 @42454 has 8 MA's), (Start: 73 @42448 has 435 MA's), (Start: 78 @42427 has 16 MA's), (83, 42391), (89, 42364), (98, 42322), (102, 42280),

Gene: QueenBeesly_72 Start: 43572, Stop: 43378, Start Num: 73

Candidate Starts for QueenBeesly_72:

(Start: 73 @43572 has 435 MA's), (Start: 78 @43551 has 16 MA's),

Gene: QuincyRose_81 Start: 53498, Stop: 53695, Start Num: 73

Candidate Starts for QuincyRose_81:

(Start: 73 @53498 has 435 MA's), (75, 53507), (Start: 78 @53519 has 16 MA's), (79, 53525), (98, 53627), (102, 53669),

Gene: QuinnKiro_67 Start: 42351, Stop: 42157, Start Num: 73

Candidate Starts for QuinnKiro_67:

(20, 42501), (Start: 73 @42351 has 435 MA's), (Start: 78 @42330 has 16 MA's), (93, 42246), (95, 42240), (102, 42183),

Gene: Rahalelujah_73 Start: 42509, Stop: 42336, Start Num: 78

Candidate Starts for Rahalelujah_73:

(Start: 78 @42509 has 16 MA's), (83, 42473), (84, 42470), (91, 42434), (102, 42362),

Gene: Ramen_84 Start: 53256, Stop: 53453, Start Num: 73

Candidate Starts for Ramen_84:

(Start: 65 @53247 has 1 MA's), (Start: 73 @53256 has 435 MA's), (Start: 78 @53277 has 16 MA's), (79, 53283), (98, 53385), (102, 53427),

Gene: Rando14_78 Start: 51872, Stop: 52081, Start Num: 73

Candidate Starts for Rando14_78:

(38, 51797), (59, 51860), (Start: 67 @51869 has 7 MA's), (Start: 73 @51872 has 435 MA's), (Start: 78 @51893 has 16 MA's), (79, 51899), (102, 52043),

Gene: Rapunzel97_85 Start: 53472, Stop: 53669, Start Num: 73

Candidate Starts for Rapunzel97_85:

(Start: 73 @53472 has 435 MA's), (75, 53481), (Start: 78 @53493 has 16 MA's), (79, 53499), (98, 53601), (102, 53643),

Gene: Rebeuca_66 Start: 41901, Stop: 41707, Start Num: 73

Candidate Starts for Rebeuca_66:

(Start: 68 @41907 has 8 MA's), (Start: 73 @41901 has 435 MA's), (Start: 78 @41880 has 16 MA's), (102, 41733),

Gene: Relief_65 Start: 42160, Stop: 41966, Start Num: 73

Candidate Starts for Relief_65:

(Start: 68 @42166 has 8 MA's), (Start: 73 @42160 has 435 MA's), (Start: 76 @42145 has 6 MA's), (Start: 78 @42139 has 16 MA's), (102, 41992),

Gene: ResDef_66 Start: 42351, Stop: 42157, Start Num: 73

Candidate Starts for ResDef_66:

(20, 42501), (Start: 73 @42351 has 435 MA's), (Start: 78 @42330 has 16 MA's), (93, 42246), (95, 42240), (102, 42183),

Gene: Retro23_72 Start: 43303, Stop: 43109, Start Num: 73

Candidate Starts for Retro23_72:

(Start: 73 @43303 has 435 MA's), (Start: 78 @43282 has 16 MA's),

Gene: RhynO_65 Start: 41542, Stop: 41348, Start Num: 73

Candidate Starts for RhynO_65:

(58, 41566), (Start: 68 @41548 has 8 MA's), (Start: 73 @41542 has 435 MA's), (Start: 78 @41521 has 16 MA's), (102, 41374),

Gene: Rich_77 Start: 63385, Stop: 63173, Start Num: 73

Candidate Starts for Rich_77:

(50, 63430), (61, 63400), (70, 63388), (Start: 73 @63385 has 435 MA's), (Start: 78 @63364 has 16 MA's), (81, 63334), (84, 63322), (94, 63259), (95, 63256), (100, 63205), (102, 63199),

Gene: Rockstar_67 Start: 41836, Stop: 41642, Start Num: 73

Candidate Starts for Rockstar_67:

(Start: 68 @41842 has 8 MA's), (Start: 73 @41836 has 435 MA's), (Start: 78 @41815 has 16 MA's), (93, 41731), (95, 41725), (102, 41668),

Gene: Romney_65 Start: 42160, Stop: 41966, Start Num: 73

Candidate Starts for Romney_65:

(Start: 68 @42166 has 8 MA's), (Start: 73 @42160 has 435 MA's), (Start: 76 @42145 has 6 MA's), (Start: 78 @42139 has 16 MA's), (102, 41992),

Gene: Roosevelt_64 Start: 42165, Stop: 41971, Start Num: 73

Candidate Starts for Roosevelt_64:

(Start: 68 @42171 has 8 MA's), (Start: 73 @42165 has 435 MA's), (Start: 76 @42150 has 6 MA's), (Start: 78 @42144 has 16 MA's), (102, 41997),

Gene: Rosmarinus_83 Start: 53474, Stop: 53671, Start Num: 73

Candidate Starts for Rosmarinus_83:

(Start: 65 @53465 has 1 MA's), (Start: 73 @53474 has 435 MA's), (Start: 78 @53495 has 16 MA's), (79, 53501), (98, 53603), (102, 53645),

Gene: Ruin_66 Start: 42156, Stop: 41962, Start Num: 73

Candidate Starts for Ruin_66:

(Start: 68 @42162 has 8 MA's), (Start: 73 @42156 has 435 MA's), (Start: 76 @42141 has 6 MA's), (Start: 78 @42135 has 16 MA's), (102, 41988),

Gene: Rummer_72 Start: 42660, Stop: 42466, Start Num: 73

Candidate Starts for Rummer_72:

(6, 42951), (8, 42918), (20, 42810), (59, 42681), (Start: 68 @42666 has 8 MA's), (Start: 73 @42660 has 435 MA's), (Start: 78 @42639 has 16 MA's), (83, 42603), (98, 42534), (102, 42492),

Gene: Sabertooth_66 Start: 42165, Stop: 41971, Start Num: 73

Candidate Starts for Sabertooth_66:

(Start: 68 @42171 has 8 MA's), (Start: 73 @42165 has 435 MA's), (Start: 76 @42150 has 6 MA's), (Start: 78 @42144 has 16 MA's), (102, 41997),

Gene: Sabia_71 Start: 42640, Stop: 42446, Start Num: 73

Candidate Starts for Sabia_71:

(6, 42931), (8, 42898), (20, 42790), (59, 42661), (Start: 68 @42646 has 8 MA's), (Start: 73 @42640 has 435 MA's), (Start: 78 @42619 has 16 MA's), (83, 42583), (98, 42514), (102, 42472),

Gene: Sabinator_71 Start: 42631, Stop: 42437, Start Num: 73

Candidate Starts for Sabinator_71:

(6, 42922), (8, 42889), (20, 42781), (59, 42652), (Start: 68 @42637 has 8 MA's), (Start: 73 @42631 has 435 MA's), (Start: 78 @42610 has 16 MA's), (83, 42574), (98, 42505), (102, 42463),

Gene: SamuelLPlaqson_83 Start: 53754, Stop: 53951, Start Num: 73

Candidate Starts for SamuelLPlaqson_83:

(43, 53688), (Start: 73 @53754 has 435 MA's), (Start: 78 @53775 has 16 MA's), (79, 53781), (91, 53853), (98, 53883), (102, 53925),

Gene: SaturnRing_68 Start: 42395, Stop: 42201, Start Num: 73

Candidate Starts for SaturnRing_68:

(Start: 68 @42401 has 8 MA's), (Start: 73 @42395 has 435 MA's), (Start: 78 @42374 has 16 MA's), (93, 42290), (98, 42269), (102, 42227),

Gene: Scamp_66 Start: 42165, Stop: 41971, Start Num: 73
Candidate Starts for Scamp_66:
(Start: 68 @42171 has 8 MA's), (Start: 73 @42165 has 435 MA's), (Start: 76 @42150 has 6 MA's),
(Start: 78 @42144 has 16 MA's), (102, 41997),

Gene: Scarlett_84 Start: 53448, Stop: 53657, Start Num: 73
Candidate Starts for Scarlett_84:
(9, 53220), (29, 53349), (Start: 73 @53448 has 435 MA's), (Start: 78 @53469 has 16 MA's), (91,
53547), (102, 53619),

Gene: Scout_67 Start: 41546, Stop: 41352, Start Num: 73
Candidate Starts for Scout_67:
(Start: 68 @41552 has 8 MA's), (Start: 73 @41546 has 435 MA's), (Start: 78 @41525 has 16 MA's),
(93, 41441), (98, 41420), (102, 41378),

Gene: SemperFi_72 Start: 43460, Stop: 43266, Start Num: 73
Candidate Starts for SemperFi_72:
(Start: 73 @43460 has 435 MA's), (Start: 78 @43439 has 16 MA's),

Gene: Serendipitous_77 Start: 62084, Stop: 61872, Start Num: 73
Candidate Starts for Serendipitous_77:
(24, 62216), (40, 62165), (Start: 73 @62084 has 435 MA's), (75, 62075), (Start: 78 @62063 has 16
MA's), (81, 62033), (95, 61955), (100, 61904), (102, 61898),

Gene: Serenity_75 Start: 42821, Stop: 42627, Start Num: 73
Candidate Starts for Serenity_75:
(20, 42977), (59, 42845), (Start: 73 @42821 has 435 MA's), (Start: 78 @42800 has 16 MA's), (98,
42695),

Gene: Severus_63 Start: 40585, Stop: 40391, Start Num: 73
Candidate Starts for Severus_63:
(Start: 68 @40591 has 8 MA's), (Start: 73 @40585 has 435 MA's), (Start: 78 @40564 has 16 MA's),
(95, 40474), (102, 40417),

Gene: Shadow1_89 Start: 54315, Stop: 54524, Start Num: 73
Candidate Starts for Shadow1_89:
(9, 54117), (29, 54240), (Start: 73 @54315 has 435 MA's), (75, 54324), (Start: 78 @54336 has 16
MA's), (95, 54429), (99, 54456), (102, 54486),

Gene: Shaka_64 Start: 42160, Stop: 41966, Start Num: 73
Candidate Starts for Shaka_64:
(Start: 68 @42166 has 8 MA's), (Start: 73 @42160 has 435 MA's), (Start: 76 @42145 has 6 MA's),
(Start: 78 @42139 has 16 MA's), (102, 41992),

Gene: ShedlockHolmes_87 Start: 54566, Stop: 54754, Start Num: 78
Candidate Starts for ShedlockHolmes_87:
(Start: 73 @54545 has 435 MA's), (Start: 78 @54566 has 16 MA's), (79, 54572), (91, 54644), (98,
54674), (102, 54716),

Gene: Sheen_70 Start: 46024, Stop: 45851, Start Num: 78
Candidate Starts for Sheen_70:
(Start: 78 @46024 has 16 MA's), (98, 45919), (102, 45877),

Gene: SheldonCooper_66 Start: 42576, Stop: 42382, Start Num: 73

Candidate Starts for SheldonCooper_66:

(Start: 68 @42582 has 8 MA's), (Start: 73 @42576 has 435 MA's), (Start: 76 @42561 has 6 MA's), (Start: 78 @42555 has 16 MA's), (102, 42408),

Gene: ShiaSurprise_84 Start: 53683, Stop: 53880, Start Num: 73

Candidate Starts for ShiaSurprise_84:

(Start: 65 @53674 has 1 MA's), (Start: 73 @53683 has 435 MA's), (Start: 78 @53704 has 16 MA's), (79, 53710), (98, 53812), (102, 53854),

Gene: Shygu2_65 Start: 42463, Stop: 42269, Start Num: 73

Candidate Starts for Shygu2_65:

(Start: 68 @42469 has 8 MA's), (Start: 73 @42463 has 435 MA's), (Start: 76 @42448 has 6 MA's), (Start: 78 @42442 has 16 MA's), (99, 42325), (102, 42295),

Gene: SirJeffery_77 Start: 62488, Stop: 62276, Start Num: 73

Candidate Starts for SirJeffery_77:

(50, 62533), (61, 62503), (70, 62491), (Start: 73 @62488 has 435 MA's), (Start: 78 @62467 has 16 MA's), (81, 62437), (84, 62425), (94, 62362), (95, 62359), (100, 62308), (102, 62302),

Gene: SirPhilip_84 Start: 53843, Stop: 54031, Start Num: 78

Candidate Starts for SirPhilip_84:

(45, 53777), (48, 53783), (Start: 73 @53822 has 435 MA's), (Start: 78 @53843 has 16 MA's), (79, 53849), (95, 53936), (99, 53963), (102, 53993),

Gene: Skipitt_65 Start: 42157, Stop: 41963, Start Num: 73

Candidate Starts for Skipitt_65:

(Start: 68 @42163 has 8 MA's), (Start: 73 @42157 has 435 MA's), (Start: 76 @42142 has 6 MA's), (Start: 78 @42136 has 16 MA's), (102, 41989),

Gene: Slimphazie_85 Start: 53928, Stop: 54125, Start Num: 73

Candidate Starts for Slimphazie_85:

(51, 53883), (52, 53886), (Start: 73 @53928 has 435 MA's), (Start: 78 @53949 has 16 MA's), (79, 53955), (98, 54057), (102, 54099),

Gene: Smeagan_74 Start: 43771, Stop: 43577, Start Num: 73

Candidate Starts for Smeagan_74:

(Start: 73 @43771 has 435 MA's), (Start: 78 @43750 has 16 MA's), (102, 43603),

Gene: SmellyB_73 Start: 41662, Stop: 41474, Start Num: 76

Candidate Starts for SmellyB_73:

(Start: 73 @41677 has 435 MA's), (Start: 76 @41662 has 6 MA's), (Start: 78 @41656 has 16 MA's), (102, 41509),

Gene: SnapTap_71 Start: 43271, Stop: 43077, Start Num: 73

Candidate Starts for SnapTap_71:

(Start: 73 @43271 has 435 MA's), (Start: 78 @43250 has 16 MA's),

Gene: Snickers_69 Start: 42605, Stop: 42411, Start Num: 73

Candidate Starts for Snickers_69:

(6, 42896), (8, 42863), (20, 42755), (59, 42626), (Start: 68 @42611 has 8 MA's), (Start: 73 @42605 has 435 MA's), (Start: 78 @42584 has 16 MA's), (83, 42548), (98, 42479), (102, 42437),

Gene: SoYo_70 Start: 42544, Stop: 42350, Start Num: 73

Candidate Starts for SoYo_70:

(6, 42835), (8, 42802), (20, 42694), (59, 42565), (Start: 68 @42550 has 8 MA's), (Start: 73 @42544 has 435 MA's), (Start: 78 @42523 has 16 MA's), (83, 42487), (98, 42418), (102, 42376),

Gene: SoilDragon_72 Start: 42080, Stop: 41886, Start Num: 73

Candidate Starts for SoilDragon_72:

(6, 42371), (8, 42338), (20, 42230), (59, 42101), (Start: 68 @42086 has 8 MA's), (Start: 73 @42080 has 435 MA's), (Start: 78 @42059 has 16 MA's), (83, 42023), (98, 41954), (102, 41912),

Gene: Soshari_75 Start: 42656, Stop: 42462, Start Num: 73

Candidate Starts for Soshari_75:

(6, 42947), (8, 42914), (20, 42806), (59, 42677), (Start: 68 @42662 has 8 MA's), (Start: 73 @42656 has 435 MA's), (Start: 78 @42635 has 16 MA's), (83, 42599), (98, 42530), (102, 42488),

Gene: Sparxx_67 Start: 42158, Stop: 41964, Start Num: 73

Candidate Starts for Sparxx_67:

(Start: 68 @42164 has 8 MA's), (Start: 73 @42158 has 435 MA's), (Start: 76 @42143 has 6 MA's), (Start: 78 @42137 has 16 MA's), (102, 41990),

Gene: Spike509_73 Start: 42657, Stop: 42463, Start Num: 73

Candidate Starts for Spike509_73:

(6, 42948), (8, 42915), (20, 42807), (59, 42678), (Start: 68 @42663 has 8 MA's), (Start: 73 @42657 has 435 MA's), (Start: 78 @42636 has 16 MA's), (83, 42600), (98, 42531), (102, 42489),

Gene: Spino_65 Start: 42166, Stop: 41972, Start Num: 73

Candidate Starts for Spino_65:

(Start: 68 @42172 has 8 MA's), (Start: 73 @42166 has 435 MA's), (Start: 76 @42151 has 6 MA's), (Start: 78 @42145 has 16 MA's), (102, 41998),

Gene: Spock_83 Start: 53487, Stop: 53684, Start Num: 73

Candidate Starts for Spock_83:

(Start: 65 @53478 has 1 MA's), (Start: 73 @53487 has 435 MA's), (Start: 78 @53508 has 16 MA's), (79, 53514), (98, 53616), (102, 53658),

Gene: Stagni_70 Start: 42635, Stop: 42441, Start Num: 73

Candidate Starts for Stagni_70:

(6, 42926), (8, 42893), (20, 42785), (59, 42656), (Start: 68 @42641 has 8 MA's), (Start: 73 @42635 has 435 MA's), (Start: 78 @42614 has 16 MA's), (83, 42578), (98, 42509), (102, 42467),

Gene: Stasia_65 Start: 42352, Stop: 42152, Start Num: 68

Candidate Starts for Stasia_65:

(Start: 68 @42352 has 8 MA's), (Start: 73 @42346 has 435 MA's), (Start: 76 @42331 has 6 MA's), (Start: 78 @42325 has 16 MA's), (102, 42178),

Gene: StepMih_72 Start: 42626, Stop: 42432, Start Num: 73

Candidate Starts for StepMih_72:

(6, 42917), (8, 42884), (20, 42776), (59, 42647), (Start: 68 @42632 has 8 MA's), (Start: 73 @42626 has 435 MA's), (Start: 78 @42605 has 16 MA's), (83, 42569), (98, 42500), (102, 42458),

Gene: Stinger_77 Start: 62426, Stop: 62214, Start Num: 73

Candidate Starts for Stinger_77:

(54, 62462), (71, 62432), (Start: 73 @62426 has 435 MA's), (Start: 78 @62405 has 16 MA's), (79, 62399), (89, 62324), (102, 62240),

Gene: Stink_65 Start: 42238, Stop: 42044, Start Num: 73

Candidate Starts for Stink_65:

(Start: 68 @42244 has 8 MA's), (Start: 73 @42238 has 435 MA's), (Start: 76 @42223 has 6 MA's), (Start: 78 @42217 has 16 MA's), (102, 42070),

Gene: Stinson_84 Start: 53684, Stop: 53860, Start Num: 78

Candidate Starts for Stinson_84:

(Start: 73 @53663 has 435 MA's), (Start: 74 @53666 has 1 MA's), (75, 53672), (Start: 78 @53684 has 16 MA's), (79, 53690), (98, 53792), (102, 53834),

Gene: Strobilo_90 Start: 54871, Stop: 55092, Start Num: 63

Candidate Starts for Strobilo_90:

(13, 54766), (16, 54808), (Start: 63 @54871 has 4 MA's), (75, 54880), (Start: 78 @54892 has 16 MA's), (79, 54898), (102, 55042),

Gene: Suigeneris_80 Start: 62926, Stop: 62714, Start Num: 73

Candidate Starts for Suigeneris_80:

(50, 62971), (61, 62941), (70, 62929), (Start: 73 @62926 has 435 MA's), (Start: 78 @62905 has 16 MA's), (81, 62875), (84, 62863), (94, 62800), (95, 62797), (100, 62746), (102, 62740),

Gene: Sulley_80 Start: 53037, Stop: 53234, Start Num: 73

Candidate Starts for Sulley_80:

(28, 52926), (31, 52941), (35, 52950), (38, 52956), (Start: 65 @53028 has 1 MA's), (Start: 73 @53037 has 435 MA's), (Start: 78 @53058 has 16 MA's), (79, 53064), (91, 53136), (98, 53166), (102, 53208),

Gene: Sunflower1121_88 Start: 53859, Stop: 54068, Start Num: 73

Candidate Starts for Sunflower1121_88:

(9, 53661), (29, 53784), (Start: 73 @53859 has 435 MA's), (75, 53868), (Start: 78 @53880 has 16 MA's), (95, 53973), (102, 54030),

Gene: SuperAwesome_73 Start: 42355, Stop: 42161, Start Num: 73

Candidate Starts for SuperAwesome_73:

(Start: 73 @42355 has 435 MA's), (Start: 76 @42340 has 6 MA's), (Start: 78 @42334 has 16 MA's), (95, 42244), (102, 42187), (103, 42166),

Gene: SuperCallie99_70 Start: 42182, Stop: 42003, Start Num: 76

Candidate Starts for SuperCallie99_70:

(Start: 73 @42197 has 435 MA's), (Start: 76 @42182 has 6 MA's), (Start: 78 @42176 has 16 MA's), (95, 42086), (102, 42029), (103, 42008),

Gene: Superchunk_73 Start: 41932, Stop: 41711, Start Num: 73

Candidate Starts for Superchunk_73:

(Start: 73 @41932 has 435 MA's), (Start: 78 @41911 has 16 MA's), (79, 41905), (102, 41764),

Gene: SweetiePie_71 Start: 43403, Stop: 43209, Start Num: 73

Candidate Starts for SweetiePie_71:

(Start: 73 @43403 has 435 MA's), (Start: 78 @43382 has 16 MA's),

Gene: SwirlSquare_78 Start: 42654, Stop: 42460, Start Num: 73

Candidate Starts for SwirlSquare_78:

(Start: 73 @42654 has 435 MA's), (Start: 78 @42633 has 16 MA's), (83, 42597), (98, 42528),

Gene: Syra333_88 Start: 54228, Stop: 54437, Start Num: 73

Candidate Starts for Syra333_88:

(9, 54030), (29, 54153), (Start: 73 @54228 has 435 MA's), (Start: 78 @54249 has 16 MA's), (95, 54342), (99, 54369), (102, 54399),

Gene: TBond007_81 Start: 54141, Stop: 54329, Start Num: 78

Candidate Starts for TBond007_81:

(Start: 73 @54120 has 435 MA's), (Start: 78 @54141 has 16 MA's), (79, 54147), (98, 54249), (102, 54291),

Gene: TClif_84 Start: 53186, Stop: 53374, Start Num: 78

Candidate Starts for TClif_84:

(47, 53120), (56, 53141), (Start: 67 @53156 has 7 MA's), (69, 53159), (Start: 73 @53165 has 435 MA's), (Start: 78 @53186 has 16 MA's), (79, 53192), (95, 53279), (98, 53294), (102, 53336),

Gene: TM4_84 Start: 49737, Stop: 49934, Start Num: 73

Candidate Starts for TM4_84:

(4, 49431), (7, 49464), (13, 49530), (16, 49572), (57, 49710), (Start: 73 @49737 has 435 MA's), (75, 49746), (Start: 78 @49758 has 16 MA's), (79, 49764), (102, 49908),

Gene: TNguyen7_69 Start: 42355, Stop: 42161, Start Num: 73

Candidate Starts for TNguyen7_69:

(Start: 68 @42361 has 8 MA's), (Start: 73 @42355 has 435 MA's), (Start: 78 @42334 has 16 MA's), (93, 42250), (98, 42229), (102, 42187),

Gene: Tachez_83 Start: 53331, Stop: 53528, Start Num: 73

Candidate Starts for Tachez_83:

(Start: 65 @53322 has 1 MA's), (Start: 73 @53331 has 435 MA's), (Start: 78 @53352 has 16 MA's), (79, 53358), (98, 53460), (102, 53502),

Gene: TaiwanKao_84 Start: 53538, Stop: 53714, Start Num: 78

Candidate Starts for TaiwanKao_84:

(Start: 73 @53517 has 435 MA's), (75, 53526), (Start: 78 @53538 has 16 MA's), (79, 53544), (98, 53646), (102, 53688),

Gene: Taquarus_65 Start: 42166, Stop: 41972, Start Num: 73

Candidate Starts for Taquarus_65:

(Start: 68 @42172 has 8 MA's), (Start: 73 @42166 has 435 MA's), (Start: 76 @42151 has 6 MA's), (Start: 78 @42145 has 16 MA's), (102, 41998),

Gene: TarsusIV_69 Start: 43247, Stop: 43053, Start Num: 73

Candidate Starts for TarsusIV_69:

(Start: 73 @43247 has 435 MA's), (Start: 76 @43232 has 6 MA's), (Start: 78 @43226 has 16 MA's), (102, 43079), (103, 43058),

Gene: Taurus_74 Start: 42632, Stop: 42438, Start Num: 73

Candidate Starts for Taurus_74:

(6, 42923), (8, 42890), (20, 42782), (59, 42653), (Start: 68 @42638 has 8 MA's), (Start: 73 @42632 has 435 MA's), (Start: 78 @42611 has 16 MA's), (83, 42575), (98, 42506), (102, 42464),

Gene: Texage_66 Start: 42352, Stop: 42158, Start Num: 73

Candidate Starts for Texage_66:

(20, 42502), (Start: 73 @42352 has 435 MA's), (Start: 78 @42331 has 16 MA's), (93, 42247), (95, 42241), (102, 42184),

Gene: Thanksgivukkah_65 Start: 42161, Stop: 41967, Start Num: 73

Candidate Starts for Thanksgivukkah_65:

(Start: 68 @42167 has 8 MA's), (Start: 73 @42161 has 435 MA's), (Start: 76 @42146 has 6 MA's), (Start: 78 @42140 has 16 MA's), (102, 41993),

Gene: Thyatira_77 Start: 53582, Stop: 53791, Start Num: 73

Candidate Starts for Thyatira_77:

(Start: 73 @53582 has 435 MA's), (Start: 78 @53603 has 16 MA's), (79, 53609), (102, 53753),

Gene: Tierra_89 Start: 54747, Stop: 54956, Start Num: 73

Candidate Starts for Tierra_89:

(21, 54609), (33, 54666), (37, 54675), (Start: 73 @54747 has 435 MA's), (Start: 78 @54768 has 16 MA's), (79, 54774), (95, 54861), (98, 54876), (102, 54918),

Gene: Tiffany_72 Start: 42523, Stop: 42323, Start Num: 68

Candidate Starts for Tiffany_72:

(6, 42808), (8, 42775), (20, 42667), (59, 42538), (Start: 68 @42523 has 8 MA's), (Start: 73 @42517 has 435 MA's), (Start: 78 @42496 has 16 MA's), (83, 42460), (98, 42391), (102, 42349),

Gene: TinaFeyge_64 Start: 42158, Stop: 41964, Start Num: 73

Candidate Starts for TinaFeyge_64:

(Start: 68 @42164 has 8 MA's), (Start: 73 @42158 has 435 MA's), (Start: 76 @42143 has 6 MA's), (Start: 78 @42137 has 16 MA's), (102, 41990),

Gene: Tinybot_65 Start: 42193, Stop: 41999, Start Num: 73

Candidate Starts for Tinybot_65:

(Start: 68 @42199 has 8 MA's), (Start: 73 @42193 has 435 MA's), (Start: 76 @42178 has 6 MA's), (Start: 78 @42172 has 16 MA's), (102, 42025),

Gene: TopsytheTRex_71 Start: 42823, Stop: 42629, Start Num: 73

Candidate Starts for TopsytheTRex_71:

(20, 42976), (59, 42847), (Start: 73 @42823 has 435 MA's), (Start: 78 @42802 has 16 MA's), (98, 42697),

Gene: Tiri_83 Start: 53141, Stop: 53338, Start Num: 73

Candidate Starts for Tiri_83:

(Start: 65 @53129 has 1 MA's), (Start: 72 @53138 has 4 MA's), (Start: 73 @53141 has 435 MA's), (Start: 78 @53162 has 16 MA's), (79, 53168), (98, 53270), (102, 53312),

Gene: TiroTheta9_65 Start: 42157, Stop: 41963, Start Num: 73

Candidate Starts for TiroTheta9_65:

(Start: 68 @42163 has 8 MA's), (Start: 73 @42157 has 435 MA's), (Start: 76 @42142 has 6 MA's), (Start: 78 @42136 has 16 MA's), (102, 41989),

Gene: Todacoro_68 Start: 42351, Stop: 42157, Start Num: 73

Candidate Starts for Todacoro_68:

(20, 42501), (Start: 73 @42351 has 435 MA's), (Start: 78 @42330 has 16 MA's), (93, 42246), (95, 42240), (102, 42183),

Gene: Topanga_62 Start: 41381, Stop: 41187, Start Num: 73

Candidate Starts for Topanga_62:

(20, 41531), (Start: 68 @41387 has 8 MA's), (Start: 73 @41381 has 435 MA's), (Start: 78 @41360 has 16 MA's), (102, 41213),

Gene: Topper_83 Start: 53486, Stop: 53683, Start Num: 73

Candidate Starts for Topper_83:

(Start: 65 @53477 has 1 MA's), (Start: 73 @53486 has 435 MA's), (Start: 78 @53507 has 16 MA's), (79, 53513), (98, 53615), (102, 53657),

Gene: TreyKay_85 Start: 53829, Stop: 54005, Start Num: 78

Candidate Starts for TreyKay_85:

(43, 53742), (Start: 73 @53808 has 435 MA's), (Start: 78 @53829 has 16 MA's), (79, 53835), (98, 53937), (102, 53979),

Gene: TribelTrouble_85 Start: 54740, Stop: 54949, Start Num: 73

Candidate Starts for TribelTrouble_85:

(5, 54458), (15, 54572), (28, 54638), (31, 54653), (38, 54668), (59, 54728), (Start: 67 @54737 has 7 MA's), (Start: 73 @54740 has 435 MA's), (Start: 78 @54761 has 16 MA's), (91, 54839), (98, 54869), (101, 54908), (102, 54911),

Gene: Trike_62 Start: 40592, Stop: 40398, Start Num: 73

Candidate Starts for Trike_62:

(Start: 68 @40598 has 8 MA's), (Start: 73 @40592 has 435 MA's), (Start: 76 @40577 has 6 MA's), (Start: 78 @40571 has 16 MA's), (95, 40481), (102, 40424),

Gene: Trixie_71 Start: 44038, Stop: 43844, Start Num: 73

Candidate Starts for Trixie_71:

(14, 44212), (26, 44143), (32, 44116), (Start: 73 @44038 has 435 MA's), (Start: 76 @44023 has 6 MA's), (Start: 78 @44017 has 16 MA's), (102, 43870),

Gene: Trooper_71 Start: 43206, Stop: 43012, Start Num: 73

Candidate Starts for Trooper_71:

(Start: 73 @43206 has 435 MA's), (Start: 76 @43191 has 6 MA's), (Start: 78 @43185 has 16 MA's), (102, 43038),

Gene: TroyPia_67 Start: 42170, Stop: 41976, Start Num: 73

Candidate Starts for TroyPia_67:

(Start: 68 @42176 has 8 MA's), (Start: 73 @42170 has 435 MA's), (Start: 76 @42155 has 6 MA's), (Start: 78 @42149 has 16 MA's), (102, 42002),

Gene: TruffulaTree_85 Start: 53894, Stop: 54091, Start Num: 73

Candidate Starts for TruffulaTree_85:

(Start: 65 @53885 has 1 MA's), (Start: 73 @53894 has 435 MA's), (Start: 78 @53915 has 16 MA's), (79, 53921), (98, 54023), (102, 54065),

Gene: Turbido_72 Start: 43490, Stop: 43296, Start Num: 73

Candidate Starts for Turbido_72:

(Start: 73 @43490 has 435 MA's), (Start: 78 @43469 has 16 MA's), (102, 43322),

Gene: Twister_64 Start: 41508, Stop: 41308, Start Num: 68

Candidate Starts for Twister_64:

(20, 41652), (Start: 68 @41508 has 8 MA's), (Start: 73 @41502 has 435 MA's), (Start: 78 @41481 has 16 MA's), (83, 41445), (93, 41397), (98, 41376), (102, 41334),

Gene: Twitch_83 Start: 53488, Stop: 53685, Start Num: 73

Candidate Starts for Twitch_83:

(Start: 65 @53479 has 1 MA's), (Start: 73 @53488 has 435 MA's), (Start: 78 @53509 has 16 MA's), (79, 53515), (98, 53617), (102, 53659),

Gene: TygerBlood_66 Start: 42163, Stop: 41969, Start Num: 73

Candidate Starts for TygerBlood_66:

(Start: 68 @42169 has 8 MA's), (Start: 73 @42163 has 435 MA's), (Start: 76 @42148 has 6 MA's), (Start: 78 @42142 has 16 MA's), (102, 41995),

Gene: Ulysses_65 Start: 41849, Stop: 41655, Start Num: 73

Candidate Starts for Ulysses_65:

(Start: 68 @41855 has 8 MA's), (Start: 73 @41849 has 435 MA's), (Start: 76 @41834 has 6 MA's), (Start: 78 @41828 has 16 MA's), (102, 41681),

Gene: Unicorn_89 Start: 54470, Stop: 54679, Start Num: 73

Candidate Starts for Unicorn_89:

(17, 54320), (19, 54326), (33, 54389), (37, 54398), (Start: 73 @54470 has 435 MA's), (Start: 78 @54491 has 16 MA's), (79, 54497), (95, 54584), (98, 54599), (102, 54641),

Gene: Updawg_72 Start: 43138, Stop: 42944, Start Num: 73

Candidate Starts for Updawg_72:

(Start: 73 @43138 has 435 MA's), (Start: 76 @43123 has 6 MA's), (Start: 78 @43117 has 16 MA's), (102, 42970),

Gene: Urkel_83 Start: 53754, Stop: 53951, Start Num: 73

Candidate Starts for Urkel_83:

(43, 53688), (Start: 73 @53754 has 435 MA's), (Start: 78 @53775 has 16 MA's), (79, 53781), (91, 53853), (98, 53883), (102, 53925),

Gene: VA6_71 Start: 43189, Stop: 42995, Start Num: 73

Candidate Starts for VA6_71:

(32, 43273), (Start: 73 @43189 has 435 MA's), (Start: 76 @43174 has 6 MA's), (Start: 78 @43168 has 16 MA's), (102, 43021),

Gene: Validus_89 Start: 55221, Stop: 55430, Start Num: 73

Candidate Starts for Validus_89:

(15, 55056), (31, 55137), (38, 55152), (41, 55164), (59, 55209), (Start: 73 @55221 has 435 MA's), (Start: 78 @55242 has 16 MA's), (79, 55248), (81, 55272), (95, 55335), (98, 55350), (102, 55392),

Gene: Veliki_84 Start: 53463, Stop: 53660, Start Num: 73

Candidate Starts for Veliki_84:

(51, 53418), (52, 53421), (Start: 73 @53463 has 435 MA's), (Start: 78 @53484 has 16 MA's), (79, 53490), (98, 53592), (102, 53634),

Gene: Veracruz_65 Start: 42351, Stop: 42157, Start Num: 73

Candidate Starts for Veracruz_65:

(20, 42501), (Start: 73 @42351 has 435 MA's), (Start: 78 @42330 has 16 MA's), (93, 42246), (95, 42240), (102, 42183),

Gene: Vincenzo_80 Start: 64923, Stop: 64714, Start Num: 73
Candidate Starts for Vincenzo_80:
(Start: 73 @64923 has 435 MA's), (Start: 78 @64902 has 16 MA's), (79, 64896), (92, 64818),

Gene: Vix_69 Start: 42715, Stop: 42521, Start Num: 73
Candidate Starts for Vix_69:
(6, 43006), (8, 42973), (20, 42865), (59, 42736), (Start: 68 @42721 has 8 MA's), (Start: 73 @42715 has 435 MA's), (Start: 78 @42694 has 16 MA's), (83, 42658), (98, 42589), (102, 42547),

Gene: VohminGhazi_73 Start: 41678, Stop: 41475, Start Num: 73
Candidate Starts for VohminGhazi_73:
(Start: 73 @41678 has 435 MA's), (Start: 76 @41663 has 6 MA's), (Start: 78 @41657 has 16 MA's), (102, 41510),

Gene: WalterMcMickey_64 Start: 41502, Stop: 41308, Start Num: 73
Candidate Starts for WalterMcMickey_64:
(20, 41652), (Start: 68 @41508 has 8 MA's), (Start: 73 @41502 has 435 MA's), (Start: 78 @41481 has 16 MA's), (83, 41445), (93, 41397), (98, 41376), (102, 41334),

Gene: Wander_66 Start: 42160, Stop: 41966, Start Num: 73
Candidate Starts for Wander_66:
(Start: 68 @42166 has 8 MA's), (Start: 73 @42160 has 435 MA's), (Start: 76 @42145 has 6 MA's), (Start: 78 @42139 has 16 MA's), (102, 41992),

Gene: Waterfoul_76 Start: 51652, Stop: 51861, Start Num: 73
Candidate Starts for Waterfoul_76:
(Start: 73 @51652 has 435 MA's), (Start: 78 @51673 has 16 MA's), (79, 51679), (102, 51823),

Gene: Watson_72 Start: 42624, Stop: 42430, Start Num: 73
Candidate Starts for Watson_72:
(6, 42915), (8, 42882), (20, 42774), (59, 42645), (Start: 68 @42630 has 8 MA's), (Start: 73 @42624 has 435 MA's), (Start: 78 @42603 has 16 MA's), (83, 42567), (98, 42498), (102, 42456),

Gene: WeiHuaDA_72 Start: 44078, Stop: 43884, Start Num: 73
Candidate Starts for WeiHuaDA_72:
(20, 44216), (Start: 73 @44078 has 435 MA's), (Start: 76 @44063 has 6 MA's), (Start: 78 @44057 has 16 MA's), (102, 43910),

Gene: Whabigail7_72 Start: 43490, Stop: 43296, Start Num: 73
Candidate Starts for Whabigail7_72:
(Start: 73 @43490 has 435 MA's), (Start: 78 @43469 has 16 MA's), (102, 43322),

Gene: WideWale_72 Start: 43138, Stop: 42944, Start Num: 73
Candidate Starts for WideWale_72:
(Start: 73 @43138 has 435 MA's), (Start: 76 @43123 has 6 MA's), (Start: 78 @43117 has 16 MA's), (102, 42970),

Gene: Wilbur_66 Start: 42160, Stop: 41966, Start Num: 73
Candidate Starts for Wilbur_66:
(Start: 68 @42166 has 8 MA's), (Start: 73 @42160 has 435 MA's), (Start: 76 @42145 has 6 MA's), (Start: 78 @42139 has 16 MA's), (102, 41992),

Gene: Wile_64 Start: 42442, Stop: 42248, Start Num: 73

Candidate Starts for Wile_64:

(Start: 68 @42448 has 8 MA's), (Start: 73 @42442 has 435 MA's), (Start: 76 @42427 has 6 MA's),
(Start: 78 @42421 has 16 MA's), (99, 42304), (102, 42274),

Gene: Wizard007_65 Start: 42168, Stop: 41974, Start Num: 73

Candidate Starts for Wizard007_65:

(Start: 68 @42174 has 8 MA's), (Start: 73 @42168 has 435 MA's), (Start: 76 @42153 has 6 MA's),
(Start: 78 @42147 has 16 MA's), (102, 42000),

Gene: Wooldri_75 Start: 42544, Stop: 42350, Start Num: 73

Candidate Starts for Wooldri_75:

(6, 42835), (8, 42802), (20, 42694), (59, 42565), (Start: 68 @42550 has 8 MA's), (Start: 73 @42544
has 435 MA's), (Start: 78 @42523 has 16 MA's), (83, 42487), (98, 42418), (102, 42376),

Gene: Xena_64 Start: 42409, Stop: 42215, Start Num: 73

Candidate Starts for Xena_64:

(Start: 68 @42415 has 8 MA's), (Start: 73 @42409 has 435 MA's), (Start: 76 @42394 has 6 MA's),
(Start: 78 @42388 has 16 MA's), (102, 42241),

Gene: Ximenita_90 Start: 54552, Stop: 54761, Start Num: 73

Candidate Starts for Ximenita_90:

(9, 54354), (29, 54477), (Start: 73 @54552 has 435 MA's), (Start: 78 @54573 has 16 MA's), (95,
54666), (102, 54723),

Gene: Yecey3_75 Start: 42611, Stop: 42417, Start Num: 73

Candidate Starts for Yecey3_75:

(Start: 73 @42611 has 435 MA's), (Start: 78 @42590 has 16 MA's), (98, 42485), (102, 42443),

Gene: YoSam321_66 Start: 42157, Stop: 41963, Start Num: 73

Candidate Starts for YoSam321_66:

(Start: 68 @42163 has 8 MA's), (Start: 73 @42157 has 435 MA's), (Start: 76 @42142 has 6 MA's),
(Start: 78 @42136 has 16 MA's), (102, 41989),

Gene: YoureAdopted_82 Start: 53283, Stop: 53480, Start Num: 73

Candidate Starts for YoureAdopted_82:

(Start: 73 @53283 has 435 MA's), (75, 53292), (Start: 78 @53304 has 16 MA's), (79, 53310), (98,
53412), (102, 53454),

Gene: Yuna_86 Start: 55367, Stop: 55555, Start Num: 78

Candidate Starts for Yuna_86:

(49, 55307), (Start: 67 @55337 has 7 MA's), (69, 55340), (Start: 73 @55346 has 435 MA's), (Start: 78
@55367 has 16 MA's), (79, 55373), (95, 55460), (102, 55517),

Gene: Zabiza_79 Start: 49857, Stop: 50033, Start Num: 78

Candidate Starts for Zabiza_79:

(Start: 65 @49827 has 1 MA's), (Start: 73 @49836 has 435 MA's), (Start: 78 @49857 has 16 MA's),
(79, 49863), (98, 49965), (102, 50007),

Gene: Zavala_85 Start: 53748, Stop: 53945, Start Num: 73

Candidate Starts for Zavala_85:

(43, 53682), (Start: 73 @53748 has 435 MA's), (Start: 78 @53769 has 16 MA's), (79, 53775), (98,
53877), (102, 53919),

Gene: Zetzy_70 Start: 42195, Stop: 42001, Start Num: 73

Candidate Starts for Zetzy_70:

(6, 42486), (8, 42453), (20, 42345), (59, 42216), (Start: 68 @42201 has 8 MA's), (Start: 73 @42195 has 435 MA's), (Start: 78 @42174 has 16 MA's), (83, 42138), (98, 42069), (102, 42027),

Gene: ZoeJ_84 Start: 54414, Stop: 54614, Start Num: 72

Candidate Starts for ZoeJ_84:

(13, 54210), (16, 54252), (57, 54390), (Start: 72 @54414 has 4 MA's), (75, 54423), (Start: 78 @54435 has 16 MA's), (79, 54441), (100, 54579), (102, 54585), (103, 54606),