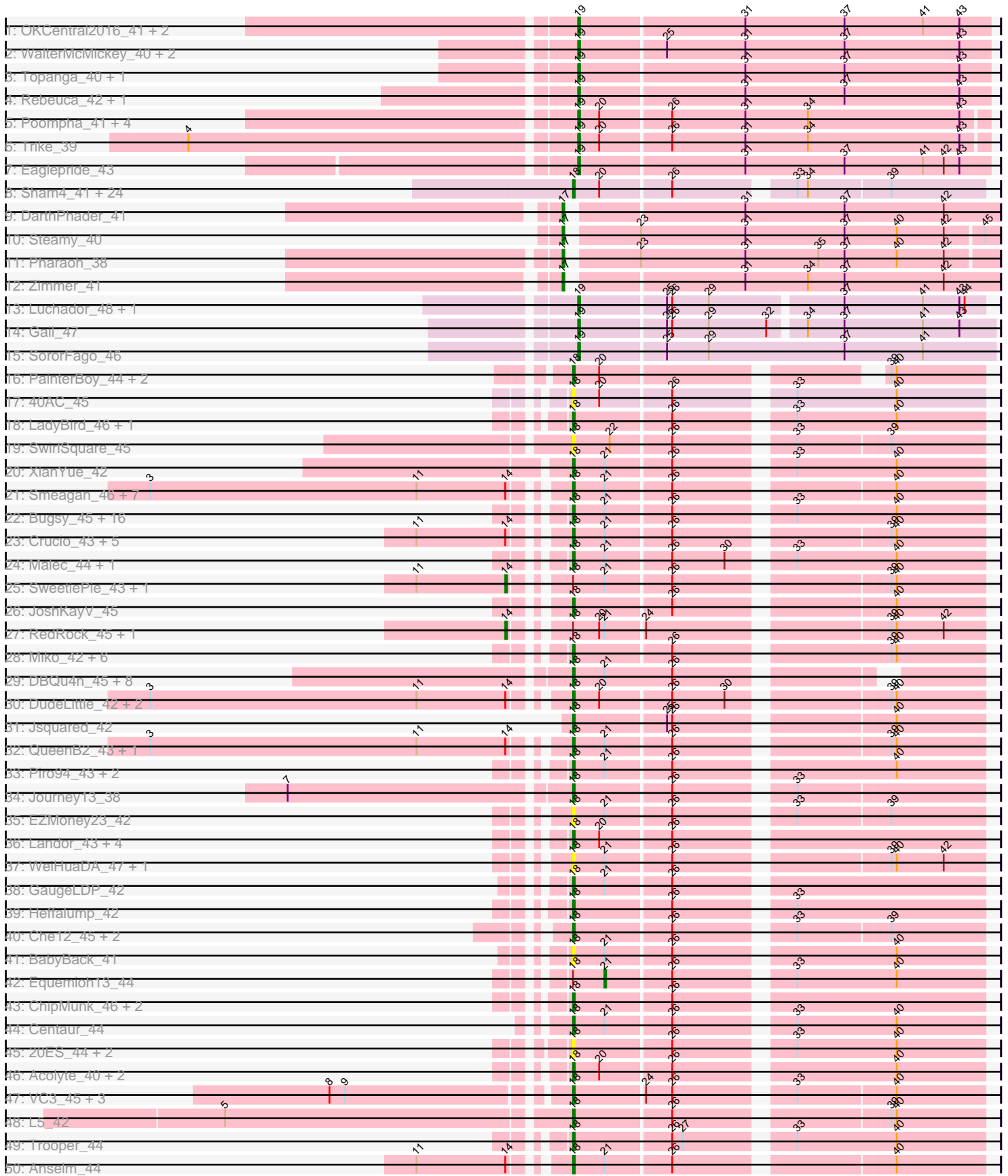
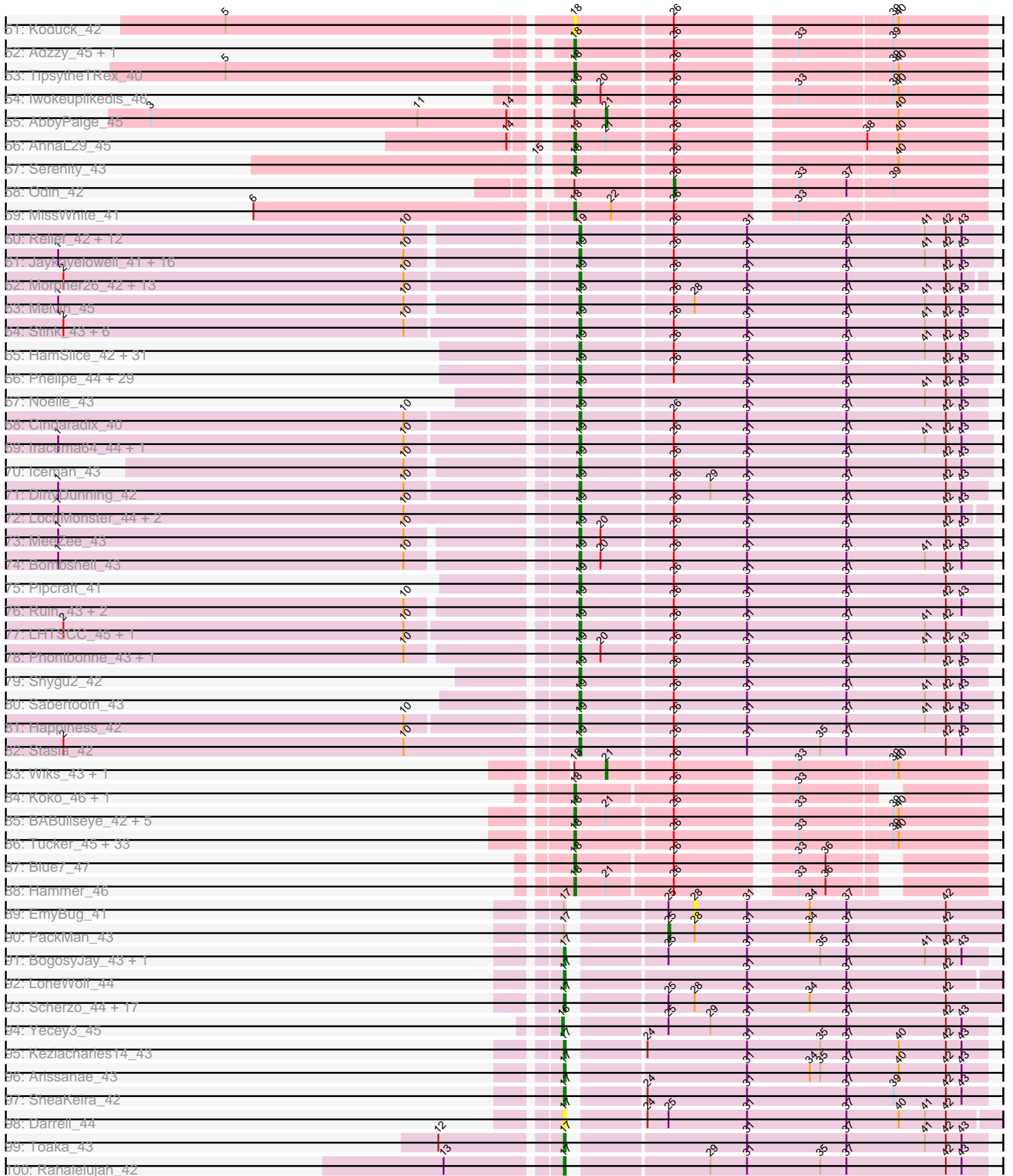


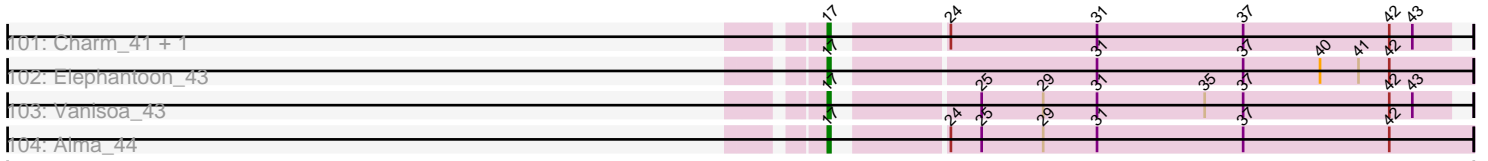
Pham 158919



Pham 158919



Pham 158919



Note: Tracks are now grouped by subcluster and scaled. Switching in subcluster is indicated by changes in track color. Track scale is now set by default to display the region 30 bp upstream of start 1 to 30 bp downstream of the last possible start. If this default region is judged to be packed too tightly with annotated starts, the track will be further scaled to only show that region of the ORF with annotated starts. This action will be indicated by adding "Zoomed" to the title. For starts, yellow indicates the location of called starts comprised solely of Glimmer/GeneMark auto-annotations, green indicates the location of called starts with at least 1 manual gene annotation.

Pham 158919 Report

This analysis was run 04/28/24 on database version 559.

Pham number 158919 has 382 members, 28 are drafts.

Phages represented in each track:

- Track 1 : OKCentral2016_41, Chupacabra_41, Goose_42
- Track 2 : WalterMcMickey_40, Twister_40, Edison31_40
- Track 3 : Topanga_40, RhynO_43
- Track 4 : Rebeuca_42, Kristoff_42
- Track 5 : Poompha_41, PeaceMeal1_40, Drake94_40, Severus_40, KittenMittens_39
- Track 6 : Trike_39
- Track 7 : Eaglepride_43
- Track 8 : Sham4_41, Bachome_43, Orange_41, Insomnia_41, Petersenfast_40, Mabel_42, TinyTimmy_41, Munch_42, Et2Brutus_41, Fibonacci_41, Bud_41, Lucivia_42, Bowtie_42, MaCh_42, Mulciber_41, Snape_41, Gilberta_42, Aneem_42, Flaverint_42, Hutc2_41, Ebony_42, Jabith_42, Timothy_42, Salz_41, Joselito_42
- Track 9 : DarthPhader_41
- Track 10 : Steamy_40
- Track 11 : Pharaoh_38
- Track 12 : Zimmer_41
- Track 13 : Luchador_48, Jeeves_48
- Track 14 : Gail_47
- Track 15 : SororFago_46
- Track 16 : PainterBoy_44, EagleEye_45, Lucyedi_44
- Track 17 : 40AC_45
- Track 18 : LadyBird_46, TarsusIV_41
- Track 19 : SwirlSquare_45
- Track 20 : XianYue_42
- Track 21 : Smeagan_46, Dignity_45, Leviathan_45, Turbido_44, LilTurb_44, Whabigail7_44, Agape74_45, Jerm_45
- Track 22 : Buggy_45, Baehexic_42, Updawg_44, Leogania_43, WideWale_44, MiculUcigas_43, Deloris_42, NaSiaTalie_43, BengiVuitton_43, Flare16_43, Kalpine_43, BiancaTri92_43, VA6_42, HarryHoudini_44, AN3_44, Trixie_43, Drake55_45
- Track 23 : Crucio_43, FiringLine_43, Power_42, SemperFi_44, QueenBeesly_43, Georgie2_44
- Track 24 : Malec_44, Larenn_43
- Track 25 : SweetiePie_43, SnapTap_43
- Track 26 : JoshKayV_45
- Track 27 : RedRock_45, Loser_45

- Track 28 : Miko_42, Rachaly_44, Lokk_44, Changeling_44, BobSwaget_43, ArcherNM_41, NicoleTera_44
- Track 29 : DBQu4n_45, D29_42, Naji_45, Pomar16_45, Tomathan_45, Kerberos_45, D32_45, Duplo_45, StarStuff_45
- Track 30 : DudeLittle_42, Retro23_44, Dalmatian_44
- Track 31 : Jsquared_42
- Track 32 : QueenB2_43, Fameo_43
- Track 33 : Piro94_43, Echild_43, Benvolio_40
- Track 34 : Journey13_38
- Track 35 : EZMoney23_42
- Track 36 : Landor_43, Jaan_44, Bactobuster_42, Phaded_45, IronMan_43
- Track 37 : WeiHuaDA_47, Colin_45
- Track 38 : GaugeLDP_42
- Track 39 : Heffalump_42
- Track 40 : Che12_45, Caraxes_43, Superchunk_42
- Track 41 : BabyBack_41
- Track 42 : Equemioh13_44
- Track 43 : ChipMunk_46, EvilGenius_46, KingCyrus_46
- Track 44 : Centaur_44
- Track 45 : 20ES_44, First_0043, CRB1_45
- Track 46 : Acolyte_40, NothingSpecial_42, Pukovnik_42
- Track 47 : VC3_45, AN9_45, C3_40, ANI8_45
- Track 48 : L5_42
- Track 49 : Trooper_44
- Track 50 : Anselm_44
- Track 51 : Koduck_42
- Track 52 : Adzzy_45, Ph8s_45
- Track 53 : TipsytheTRex_40
- Track 54 : Iwokeuplikedis_46
- Track 55 : AbbyPaige_45
- Track 56 : AnnaL29_45
- Track 57 : Serenity_43
- Track 58 : Odin_42
- Track 59 : MissWhite_41
- Track 60 : Relief_42, Annyong_43, Thanksgivukkah_42, Tinybot_42, Lunsford_44, Nyxis_43, Pumbaa_43, OKaNui_43, JoongJeon_42, Millski_42, Skipitt_42, Flux_43, TiroTheta9_43
- Track 61 : Jaykayelowell_41, Shaka_43, Avle17_43, JetBlade_43, Alberto7_44, Kingmustik0402_43, PeterPeter_43, Wander_43, KFPoly_42, Romney_43, LittleGuy_43, Eapen_43, Wilbur_43, Ulysses_42, Kremtemulon_41, Cintron_42, YoSam321_43
- Track 62 : Morpher26_42, Cici_42, Xena_41, Datway_42, Perplexer_42, Achebe_41, Badger_41, Bumblebee11_41, AbbysRanger_42, Mundrea_42, Backyardigan_41, PetiteSangsue_42, Wile_42, Katalie136_42
- Track 63 : Melvin_45
- Track 64 : Stink_43, BangNhom_44, SheldonCooper_45, AvatarAhPeg_42, ChampagnePapi_45, Cerulean_44, Miramae_42
- Track 65 : HamSlice_42, Blackmoor_43, Clarenza_42, Baby16_43, LappelDuVide_42, CentreCat_43, BubbleTrouble_42, TinaFeyge_43, Florean_43, Roosevelt_42, Spino_42, Dhanush_43, NorthStar_42, Camperdownii_41, Scamp_43, Druantia_43, Eros_43, Deano_42, Kampy_43, Kyee_43, Chaph_43, TygerBlood_43, TroyPia_44, LittleB_43, Peaches_43, Bartimeaus_43, Burger_41, Albee_43, Maxo_44, Medusa_43, Lorenzo_43, Taquarus_43

- Track 66 : Phelipe_44, Abdiel_43, Broseidon_43, Koreni_42, Polymorphads_44, Cocoaberry_43, Gadost_43, Nebs_44, NotAPhaseMom_43, Lemur_43, Morrow_44, Bruiser_42, Houdini22_43, Sparxx_44, LeoAvram_43, Nemo27_43, BellusTerra_44, Connomayer_43, Holli_42, Citius_43, Funston_42, Mazhar510_43, Ohfah_44, Caelakin_43, Phacado_43, Wizard007_43, Maverick_43, Eris_42, Eagle_43, Commander_43
- Track 67 : Noelle_43
- Track 68 : Cindaradix_40
- Track 69 : Iracema64_44, Phighter1804_43
- Track 70 : Iceman_43
- Track 71 : DirtyDunning_42
- Track 72 : LochMonster_44, Arturo_42, Kratak_43
- Track 73 : MeeZee_43
- Track 74 : Bombshell_43
- Track 75 : Pipcraft_41
- Track 76 : Ruin_43, Palestino_42, Eurydice_44
- Track 77 : LHTSCC_45, Obama12_44
- Track 78 : Phontbonne_43, ICleared_43
- Track 79 : Shygu2_42
- Track 80 : Sabertooth_43
- Track 81 : Happiness_42
- Track 82 : Stasia_42
- Track 83 : Wiks_43, Helmet_46
- Track 84 : Koko_46, Rifter_46
- Track 85 : BABullseye_42, Isiphiwo_42, Roksolana_45, Indra_47, Artemis2UCLA_44, Garak_46
- Track 86 : Tucker_45, Newrala_44, Zaka_44, Dorothea_43, Chartreuse_44, Yokurt_44, DaVinci_44, ToneTone_41, Jordennis_44, Gruunaga_44, SmellyB_44, SuperCallie99_44, McFly_44, Hoot_44, Zulu_45, Blinn1_47, Lilbunny_42, Jeffabunny_44, Neeharika16_44, WunderPhul_44, Priamo_46, GreedyLawyer_44, Kipper29_44, Cookiedough_44, JewelBug_46, CloudWang3_44, Hexamo_44, SuperAwesome_44, Candra_44, Gladiator_44, VohminGhazi_44, Kazan_45, EricB_44, Pmask_44
- Track 87 : Blue7_47
- Track 88 : Hammer_46
- Track 89 : EmyBug_41
- Track 90 : PackMan_43
- Track 91 : BogosyJay_43, Maminiaina_43
- Track 92 : LoneWolf_44
- Track 93 : Scherzo_44, Fayely_44, Eidsmoe_44, Myxus_44, Ugenie5_41, Conquerage_44, Phonnegut_44, Qobbit_44, Pioneer_44, Phaeder_44, ExplosioNervosa_44, HortumSL17_44, Tubs_44, Spouty_42, Beemo_44, Priya_44, Aliter_44, Catalina_45
- Track 94 : Yecey3_45
- Track 95 : Keziacharles14_43
- Track 96 : Arissanae_43
- Track 97 : SheaKeira_42
- Track 98 : Darrell_44
- Track 99 : Toaka_43
- Track 100 : Rahalelujah_42
- Track 101 : Charm_41, DreamTeam1_41
- Track 102 : Elephantoon_43
- Track 103 : Vanisoa_43

- Track 104 : Alma_44

Summary of Final Annotations (See graph section above for start numbers):

The start number called the most often in the published annotations is 18, it was called in 155 of the 354 non-draft genes in the pham.

Genes that call this "Most Annotated" start:

- 20ES_44, 40AC_45, AN3_44, AN9_45, ANI8_45, Acolyte_40, Adzzy_45, Agape74_45, Aneem_42, AnnaL29_45, Anselm_44, ArcherNM_41, Artemis2UCLA_44, BABullseye_42, BabyBack_41, Bachome_43, Bactobuster_42, Baehexic_42, BengiVuitton_43, Benvolio_40, BiancaTri92_43, Blinn1_47, Blue7_47, BobSwaget_43, Bowtie_42, Bud_41, Buggy_45, C3_40, CRB1_45, Candra_44, Caraxes_43, Centaur_44, Changeling_44, Chartreuse_44, Che12_45, ChipMunk_46, CloudWang3_44, Colin_45, Cookiedough_44, Crucio_43, D29_42, D32_45, DBQu4n_45, DaVinci_44, Dalmatian_44, Deloris_42, Dignity_45, Dorothea_43, Drake55_45, DudeLittle_42, Duplo_45, EZMoney23_42, EagleEye_45, Ebony_42, Echild_43, EricB_44, Et2Brutus_41, EvilGenius_46, Fameo_43, Fibonacci_41, FiringLine_43, First_0043, Flare16_43, Flaverint_42, Garak_46, GaugeLDP_42, Georgie2_44, Gilberta_42, Gladiator_44, GreedyLawyer_44, Gruunaga_44, Hammer_46, HarryHoudini_44, Heffalump_42, Hexamo_44, Hoot_44, Hutc2_41, Indra_47, Insomnia_41, IronMan_43, Isiphiwo_42, Iwokeuplikedis_46, Jaan_44, Jabith_42, Jeffabunny_44, Jerm_45, JewelBug_46, Jordennis_44, Joselito_42, JoshKayV_45, Journey13_38, Jsquared_42, Kalpine_43, Kazan_45, Kerberos_45, KingCyrus_46, Kipper29_44, Koduck_42, Koko_46, L5_42, LadyBird_46, Landor_43, Larenn_43, Leogania_43, Leviathan_45, LilTurb_44, Lilbunny_42, Lokk_44, Lucivia_42, Lucyedi_44, MaCh_42, Mabel_42, Malec_44, McFly_44, MiculUcigas_43, Miko_42, MissWhite_41, Mulciber_41, Munch_42, NaSiaTalie_43, Naji_45, Neeharika16_44, Newrala_44, NicoleTera_44, NothingSpecial_42, Orange_41, PainterBoy_44, Petersenfast_40, Ph8s_45, Phaded_45, Piro94_43, Pmask_44, Pomar16_45, Power_42, Priamo_46, Pukovnik_42, QueenB2_43, QueenBeesly_43, Rachaly_44, Retro23_44, Rifter_46, Roksolana_45, Salz_41, SemperFi_44, Serenity_43, Sham4_41, Smeagan_46, SmellyB_44, Snape_41, StarStuff_45, SuperAwesome_44, SuperCallie99_44, Superchunk_42, SwirlSquare_45, TarsusIV_41, Timothy_42, TinyTimmy_41, TipsytheTRex_40, Tomathan_45, ToneTone_41, Trixie_43, Trooper_44, Tucker_45, Turbido_44, Updawg_44, VA6_42, VC3_45, VohminGhazi_44, WeiHuaDA_47, Whabigail7_44, WideWale_44, WunderPhul_44, XianYue_42, Yokurt_44, Zaka_44, Zulu_45,

Genes that have the "Most Annotated" start but do not call it:

- AbbyPaige_45, Equemioh13_44, Helmet_46, Loser_45, Odin_42, RedRock_45, SnapTap_43, SweetiePie_43, Wiks_43,

Genes that do not have the "Most Annotated" start:

- AbbysRanger_42, Abdiel_43, Achebe_41, Albee_43, Alberto7_44, Aliter_44, Alma_44, Annyong_43, Arissanae_43, Arturo_42, AvatarAhPeg_42, Avle17_43, Baby16_43, Backyardigan_41, Badger_41, BangNhom_44, Bartimeaus_43, Beemo_44, BellusTerra_44, Blackmoor_43, BogosyJay_43, Bombshell_43, Broseidon_43, Bruiser_42, BubbleTrouble_42, Bumblebee11_41, Burger_41, Caelakin_43, Camperdownii_41, Catalina_45, CentreCat_43, Cerulean_44,

ChampagnePapi_45, Chaph_43, Charm_41, Chupacabra_41, Cici_42,
 Cindaradix_40, Cintron_42, Citius_43, Clarenza_42, Cocoaberry_43,
 Commander_43, Connomayer_43, Conquerage_44, Darrell_44, DarthPhader_41,
 Datway_42, Deano_42, Dhanush_43, DirtyDunning_42, Drake94_40,
 DreamTeam1_41, Druantia_43, Eagle_43, Eaglepride_43, Eapen_43, Edison31_40,
 Eidsmoe_44, Elephantoon_43, EmyBug_41, Eris_42, Eros_43, Eurydice_44,
 ExplosioNervosa_44, Fayely_44, Florean_43, Flux_43, Funston_42, Gadost_43,
 Gail_47, Goose_42, HamSlice_42, Happiness_42, Holli_42, HortumSL17_44,
 Houdini22_43, ICleared_43, Iceman_43, Iracema64_44, Jaykayelowell_41,
 Jeeves_48, JetBlade_43, JoongJeon_42, KFPoly_42, Kampy_43, Katalie136_42,
 Keziacharles14_43, Kingmustik0402_43, KittenMittens_39, Koreni_42, Kratark_43,
 Kremtemulon_41, Kristoff_42, Kye_43, LHTSCC_45, LappelDuVide_42, Lemur_43,
 LeoAvram_43, LittleB_43, LittleGuy_43, LochMonster_44, LoneWolf_44, Lorenzo_43,
 Luchador_48, Lunsford_44, Maminiaina_43, Maverick_43, Maxo_44, Mazhar510_43,
 Medusa_43, MeeZee_43, Melvin_45, Millski_42, Miramae_42, Morpher26_42,
 Morrow_44, Mundrea_42, Myxus_44, Nebs_44, Nemo27_43, Noelle_43,
 NorthStar_42, NotAPhaseMom_43, Nyxis_43, OKCentral2016_41, OKaNui_43,
 Obama12_44, Ohfah_44, PackMan_43, Palestino_42, PeaceMeal1_40, Peaches_43,
 Perplexer_42, PeterPeter_43, PetiteSangsue_42, Phacado_43, Phaeder_44,
 Pharaoh_38, Felipe_44, Phighter1804_43, Phonnegut_44, Phontbonne_43,
 Pioneer_44, Pipcraft_41, Polymorphads_44, Poompha_41, Priya_44, Pumbaa_43,
 Qobbit_44, Rahalelujah_42, Rebeuca_42, Relief_42, RhynO_43, Romney_43,
 Roosevelt_42, Ruin_43, Sabertooth_43, Scamp_43, Scherzo_44, Severus_40,
 Shaka_43, SheaKeira_42, SheldonCooper_45, Shygu2_42, Skipitt_42,
 SororFago_46, Sparxx_44, Spino_42, Spouty_42, Stasia_42, Steamy_40, Stink_43,
 Taquarus_43, Thanksgivukkah_42, TinaFeyge_43, Tinybot_42, TiroTheta9_43,
 Toaka_43, Topanga_40, Trike_39, TroyPia_44, Tubs_44, Twister_40,
 TygerBlood_43, Ugenie5_41, Ulysses_42, Vanisoa_43, WalterMcMickey_40,
 Wander_43, Wilbur_43, Wile_42, Wizard007_43, Xena_41, Yecey3_45,
 YoSam321_43, Zimmer_41,

Summary by start number:

Start 14:

- Found in 26 of 382 (6.8%) of genes in pham
- Manual Annotations of this start: 4 of 354
- Called 15.4% of time when present
- Phage (with cluster) where this start called: Loser_45 (A2), RedRock_45 (A2), SnapTap_43 (A2), SweetiePie_43 (A2),

Start 16:

- Found in 1 of 382 (0.3%) of genes in pham
- Manual Annotations of this start: 1 of 354
- Called 100.0% of time when present
- Phage (with cluster) where this start called: Yecey3_45 (A9),

Start 17:

- Found in 38 of 382 (9.9%) of genes in pham
- Manual Annotations of this start: 34 of 354
- Called 94.7% of time when present
- Phage (with cluster) where this start called: Aliter_44 (A9), Alma_44 (A9), Arissanae_43 (A9), Beemo_44 (A9), BogosyJay_43 (A9), Catalina_45 (A9), Charm_41 (A9), Conquerage_44 (A9), Darrell_44 (A9), DarthPhader_41 (A12),

DreamTeam1_41 (A9), Eidsmoe_44 (A9), Elephantoon_43 (A9), ExplosioNervosa_44 (A9), Fayely_44 (A9), HortumSL17_44 (A9), Keziacharles14_43 (A9), LoneWolf_44 (A9), Maminiaina_43 (A9), Myxus_44 (A9), Phaeder_44 (A9), Pharaoh_38 (A12), Phonnegut_44 (A9), Pioneer_44 (A9), Priya_44 (A9), Qobbit_44 (A9), Rahalelujah_42 (A9), Scherzo_44 (A9), SheaKeira_42 (A9), Spouty_42 (A9), Steamy_40 (A12), Toaka_43 (A9), Tubs_44 (A9), Ugenie5_41 (A9), Vanisoa_43 (A9), Zimmer_41 (A12),

Start 18:

- Found in 185 of 382 (48.4%) of genes in pham
- Manual Annotations of this start: 155 of 354
- Called 95.1% of time when present
- Phage (with cluster) where this start called: 20ES_44 (A2), 40AC_45 (A17), AN3_44 (A2), AN9_45 (A2), ANI8_45 (A2), Acolyte_40 (A2), Adzzy_45 (A2), Agape74_45 (A2), Aneem_42 (A11), AnnaL29_45 (A2), Anselm_44 (A2), ArcherNM_41 (A2), Artemis2UCLA_44 (A6), BABullseye_42 (A6), BabyBack_41 (A2), Bachome_43 (A11), Bactobuster_42 (A2), Baehexic_42 (A2), BengiVuitton_43 (A2), Benvolio_40 (A2), BiancaTri92_43 (A2), Blinn1_47 (A6), Blue7_47 (A6), BobSwaget_43 (A2), Bowtie_42 (A11), Bud_41 (A11), Bugsy_45 (A2), C3_40 (A2), CRB1_45 (A2), Candra_44 (A6), Caraxes_43 (A2), Centaur_44 (A2), Changeling_44 (A2), Chartreuse_44 (A6), Che12_45 (A2), ChipMunk_46 (A2), CloudWang3_44 (A6), Colin_45 (A2), Cookiedough_44 (A6), Crucio_43 (A2), D29_42 (A2), D32_45 (A2), DBQu4n_45 (A2), DaVinci_44 (A6), Dalmatian_44 (A2), Deloris_42 (A2), Dignity_45 (A2), Dorothea_43 (A6), Drake55_45 (A2), DudeLittle_42 (A2), Duplo_45 (A2), EZMoney23_42 (A2), EagleEye_45 (A16), Ebony_42 (A11), Echild_43 (A2), EricB_44 (A6), Et2Brutus_41 (A11), EvilGenius_46 (A2), Fameo_43 (A2), Fibonacci_41 (A11), FiringLine_43 (A2), First_0043 (A2), Flare16_43 (A2), Flaverint_42 (A11), Garak_46 (A6), GaugeLDP_42 (A2), Georgie2_44 (A2), Gilberta_42 (A11), Gladiator_44 (A6), GreedyLawyer_44 (A6), Gruunaga_44 (A6), Hammer_46 (A6), HarryHoudini_44 (A2), Heffalump_42 (A2), Hexamo_44 (A6), Hoot_44 (A6), Hutc2_41 (A11), Indra_47 (A6), Insomnia_41 (A11), IronMan_43 (A2), Isiphiwo_42 (A6), Iwokeuplikedis_46 (A2), Jaan_44 (A2), Jabith_42 (A11), Jeffabunny_44 (A6), Jerm_45 (A2), JewelBug_46 (A6), Jordennis_44 (A6), Joselito_42 (A11), JoshKayV_45 (A2), Journey13_38 (A2), Jsquared_42 (A2), Kalpine_43 (A2), Kazan_45 (A6), Kerberos_45 (A2), KingCyrus_46 (A2), Kipper29_44 (A6), Koduck_42 (A2), Koko_46 (A6), L5_42 (A2), LadyBird_46 (A2), Landor_43 (A2), Larenn_43 (A2), Leogania_43 (A2), Leviathan_45 (A2), LiITurb_44 (A2), Lilbunny_42 (A6), Lokk_44 (A2), Lucivia_42 (A11), Lucyedi_44 (A16), MaCh_42 (A11), Mabel_42 (A11), Malec_44 (A2), McFly_44 (A6), MiculUcigas_43 (A2), Miko_42 (A2), MissWhite_41 (A2), Mulciber_41 (A11), Munch_42 (A11), NaSiaTalie_43 (A2), Naji_45 (A2), Neeharika16_44 (A6), Newrala_44 (A6), NicoleTera_44 (A2), NothingSpecial_42 (A2), Orange_41 (A11), PainterBoy_44 (A16), Petersenfast_40 (A11), Ph8s_45 (A2), Phaded_45 (A2), Piro94_43 (A2), Pmask_44 (A6), Pomar16_45 (A2), Power_42 (A2), Priamo_46 (A6), Pukovnik_42 (A2), QueenB2_43 (A2), QueenBeesly_43 (A2), Rachaly_44 (A2), Retro23_44 (A2), Rifter_46 (A6), Roksolana_45 (A6), Salz_41 (A11), SemperFi_44 (A2), Serenity_43 (A2), Sham4_41 (A11), Smeagan_46 (A2), SmellyB_44 (A6), Snape_41 (A11), StarStuff_45 (A2), SuperAwesome_44 (A6), SuperCallie99_44 (A6), Superchunk_42 (A2), SwirlSquare_45 (A2), TarsusIV_41 (A2), Timothy_42 (A11), TinyTimmy_41 (A11), TipsytheTRex_40 (A2), Tomathan_45 (A2), ToneTone_41 (A6), Trixie_43 (A2), Trooper_44 (A2), Tucker_45 (A6), Turbido_44 (A2), Updawg_44 (A2), VA6_42 (A2), VC3_45 (A2), VohminGhazi_44 (A6), WeiHuaDA_47 (A2), Whabigail7_44 (A2), WideWale_44 (A2), WunderPhul_44 (A6), XianYue_42 (A2), Yokurt_44 (A6), Zaka_44 (A6), Zulu_45 (A6),

Start 19:

- Found in 158 of 382 (41.4%) of genes in pham
- Manual Annotations of this start: 155 of 354
- Called 100.0% of time when present
- Phage (with cluster) where this start called: AbbysRanger_42 (A4), Abdiel_43 (A4), Achebe_41 (A4), Albee_43 (A4), Alberto7_44 (A4), Annyong_43 (A4), Arturo_42 (A4), AvatarAhPeg_42 (A4), Avle17_43 (A4), Baby16_43 (A4), Backyardigan_41 (A4), Badger_41 (A4), BangNhom_44 (A4), Bartimeaus_43 (A4), BellusTerra_44 (A4), Blackmoor_43 (A4), Bombshell_43 (A4), Broseidon_43 (A4), Bruiser_42 (A4), BubbleTrouble_42 (A4), Bumblebee11_41 (A4), Burger_41 (A4), Caelakin_43 (A4), Camperdownii_41 (A4), CentreCat_43 (A4), Cerulean_44 (A4), ChampagnePapi_45 (A4), Chaph_43 (A4), Chupacabra_41 (A10), Cici_42 (A4), Cindaradix_40 (A4), Cintron_42 (A4), Citius_43 (A4), Clarenza_42 (A4), Cocoaberry_43 (A4), Commander_43 (A4), Connomayer_43 (A4), Datway_42 (A4), Deano_42 (A4), Dhanush_43 (A4), DirtyDunning_42 (A4), Drake94_40 (A10), Druantia_43 (A4), Eagle_43 (A4), Eaglepride_43 (A10), Eapen_43 (A4), Edison31_40 (A10), Eris_42 (A4), Eros_43 (A4), Eurydice_44 (A4), Florean_43 (A4), Flux_43 (A4), Funston_42 (A4), Gadost_43 (A4), Gail_47 (A14), Goose_42 (A10), HamSlice_42 (A4), Happiness_42 (A4), Holli_42 (A4), Houdini22_43 (A4), ICleared_43 (A4), Iceman_43 (A4), Iracema64_44 (A4), Jaykayelowell_41 (A4), Jeeves_48 (A14), JetBlade_43 (A4), JoongJeon_42 (A4), KFPoly_42 (A4), Kampy_43 (A4), Katalie136_42 (A4), Kingmustik0402_43 (A4), KittenMittens_39 (A10), Koreni_42 (A4), Kratark_43 (A4), Kremtemulon_41 (A4), Kristoff_42 (A10), Kyee_43 (A4), LHTSCC_45 (A4), LappelDuVide_42 (A4), Lemur_43 (A4), LeoAvram_43 (A4), LittleB_43 (A4), LittleGuy_43 (A4), LochMonster_44 (A4), Lorenzo_43 (A4), Luchador_48 (A14), Lunsford_44 (A4), Maverick_43 (A4), Maxo_44 (A4), Mazhar510_43 (A4), Medusa_43 (A4), MeeZee_43 (A4), Melvin_45 (A4), Millski_42 (A4), Miramae_42 (A4), Morpher26_42 (A4), Morrow_44 (A4), Mundrea_42 (A4), Nebs_44 (A4), Nemo27_43 (A4), Noelle_43 (A4), NorthStar_42 (A4), NotAPhaseMom_43 (A4), Nyxis_43 (A4), OKCentral2016_41 (A10), OKaNui_43 (A4), Obama12_44 (A4), Ohfah_44 (A4), Palestino_42 (A4), PeaceMeal1_40 (A10), Peaches_43 (A4), Perplexer_42 (A4), PeterPeter_43 (A4), PetiteSangsue_42 (A4), Phacado_43 (A4), Phelipe_44 (A4), Phighter1804_43 (A4), Phontbonne_43 (A4), Pipcraft_41 (A4), Polymorphads_44 (A4), Poompha_41 (A10), Pumbaa_43 (A4), Rebeuca_42 (A10), Relief_42 (A4), RhynO_43 (A10), Romney_43 (A4), Roosevelt_42 (A4), Ruin_43 (A4), Sabertooth_43 (A4), Scamp_43 (A4), Severus_40 (A10), Shaka_43 (A4), SheldonCooper_45 (A4), Shygu2_42 (A4), Skipitt_42 (A4), SororFago_46 (A14), Sparxx_44 (A4), Spino_42 (A4), Stasia_42 (A4), Stink_43 (A4), Taquarus_43 (A4), Thanksgivukkah_42 (A4), TinaFeyge_43 (A4), Tinybot_42 (A4), TiroTheta9_43 (A4), Topanga_40 (A10), Trike_39 (A10), TroyPia_44 (A4), Twister_40 (A10), TygerBlood_43 (A4), Ulysses_42 (A4), WalterMcMickey_40 (A10), Wander_43 (A4), Wilbur_43 (A4), Wile_42 (A4), Wizard007_43 (A4), Xena_41 (A4), YoSam321_43 (A4),

Start 21:

- Found in 71 of 382 (18.6%) of genes in pham
- Manual Annotations of this start: 3 of 354
- Called 5.6% of time when present
- Phage (with cluster) where this start called: AbbyPaige_45 (A2), Equemioh13_44 (A2), Helmet_46 (A6), Wiks_43 (A6),

Start 25:

- Found in 34 of 382 (8.9%) of genes in pham
- Manual Annotations of this start: 1 of 354
- Called 2.9% of time when present
- Phage (with cluster) where this start called: PackMan_43 (A9),

Start 26:

- Found in 325 of 382 (85.1%) of genes in pham
- Manual Annotations of this start: 1 of 354
- Called 0.3% of time when present
- Phage (with cluster) where this start called: Odin_42 (A2),

Start 28:

- Found in 21 of 382 (5.5%) of genes in pham
- No Manual Annotations of this start.
- Called 4.8% of time when present
- Phage (with cluster) where this start called: EmyBug_41 (A9),

Summary by clusters:

There are 10 clusters represented in this pham: A14, A17, A16, A11, A10, A12, A2, A4, A6, A9,

Info for manual annotations of cluster A10:

- Start number 19 was manually annotated 16 times for cluster A10.

Info for manual annotations of cluster A11:

- Start number 18 was manually annotated 22 times for cluster A11.

Info for manual annotations of cluster A12:

- Start number 17 was manually annotated 4 times for cluster A12.

Info for manual annotations of cluster A14:

- Start number 19 was manually annotated 4 times for cluster A14.

Info for manual annotations of cluster A16:

- Start number 18 was manually annotated 3 times for cluster A16.

Info for manual annotations of cluster A2:

- Start number 14 was manually annotated 4 times for cluster A2.
- Start number 18 was manually annotated 92 times for cluster A2.
- Start number 21 was manually annotated 2 times for cluster A2.
- Start number 26 was manually annotated 1 time for cluster A2.

Info for manual annotations of cluster A4:

- Start number 19 was manually annotated 135 times for cluster A4.

Info for manual annotations of cluster A6:

- Start number 18 was manually annotated 38 times for cluster A6.
- Start number 21 was manually annotated 1 time for cluster A6.

Info for manual annotations of cluster A9:

- Start number 16 was manually annotated 1 time for cluster A9.

- Start number 17 was manually annotated 30 times for cluster A9.
- Start number 25 was manually annotated 1 time for cluster A9.

Gene Information:

Gene: 20ES_44 Start: 29445, Stop: 29224, Start Num: 18

Candidate Starts for 20ES_44:

(Start: 18 @29445 has 155 MA's), (Start: 26 @29391 has 1 MA's), (33, 29331), (40, 29274),

Gene: 40AC_45 Start: 30946, Stop: 30725, Start Num: 18

Candidate Starts for 40AC_45:

(Start: 18 @30946 has 155 MA's), (20, 30931), (Start: 26 @30892 has 1 MA's), (33, 30832), (40, 30775),

Gene: AN3_44 Start: 29828, Stop: 29607, Start Num: 18

Candidate Starts for AN3_44:

(Start: 18 @29828 has 155 MA's), (Start: 21 @29810 has 3 MA's), (Start: 26 @29774 has 1 MA's), (33, 29714), (40, 29657),

Gene: AN9_45 Start: 29290, Stop: 29072, Start Num: 18

Candidate Starts for AN9_45:

(8, 29416), (9, 29407), (Start: 18 @29290 has 155 MA's), (24, 29251), (Start: 26 @29236 has 1 MA's), (33, 29176), (40, 29122),

Gene: ANI8_45 Start: 29290, Stop: 29072, Start Num: 18

Candidate Starts for ANI8_45:

(8, 29416), (9, 29407), (Start: 18 @29290 has 155 MA's), (24, 29251), (Start: 26 @29236 has 1 MA's), (33, 29176), (40, 29122),

Gene: AbbyPaige_45 Start: 29839, Stop: 29639, Start Num: 21

Candidate Starts for AbbyPaige_45:

(3, 30085), (11, 29932), (Start: 14 @29881 has 4 MA's), (Start: 18 @29857 has 155 MA's), (Start: 21 @29839 has 3 MA's), (Start: 26 @29803 has 1 MA's), (40, 29689),

Gene: AbbysRanger_42 Start: 29519, Stop: 29292, Start Num: 19

Candidate Starts for AbbysRanger_42:

(2, 29804), (10, 29609), (Start: 19 @29519 has 155 MA's), (Start: 26 @29468 has 1 MA's), (31, 29426), (37, 29369), (42, 29312), (43, 29303),

Gene: Abdiel_43 Start: 29557, Stop: 29324, Start Num: 19

Candidate Starts for Abdiel_43:

(Start: 19 @29557 has 155 MA's), (Start: 26 @29506 has 1 MA's), (31, 29464), (37, 29407), (42, 29350), (43, 29341),

Gene: Achebe_41 Start: 29502, Stop: 29275, Start Num: 19

Candidate Starts for Achebe_41:

(2, 29787), (10, 29592), (Start: 19 @29502 has 155 MA's), (Start: 26 @29451 has 1 MA's), (31, 29409), (37, 29352), (42, 29295), (43, 29286),

Gene: Acolyte_40 Start: 29150, Stop: 28929, Start Num: 18

Candidate Starts for Acolyte_40:

(Start: 18 @29150 has 155 MA's), (20, 29135), (Start: 26 @29096 has 1 MA's), (40, 28979),

Gene: Adzzy_45 Start: 28273, Stop: 28055, Start Num: 18

Candidate Starts for Adzzy_45:

(Start: 18 @28273 has 155 MA's), (Start: 26 @28219 has 1 MA's), (33, 28159), (39, 28108),

Gene: Agape74_45 Start: 29842, Stop: 29624, Start Num: 18

Candidate Starts for Agape74_45:

(3, 30070), (11, 29917), (Start: 14 @29866 has 4 MA's), (Start: 18 @29842 has 155 MA's), (Start: 21 @29824 has 3 MA's), (Start: 26 @29788 has 1 MA's), (40, 29674),

Gene: Albee_43 Start: 29556, Stop: 29323, Start Num: 19

Candidate Starts for Albee_43:

(Start: 19 @29556 has 155 MA's), (Start: 26 @29505 has 1 MA's), (31, 29463), (37, 29406), (41, 29361), (42, 29349), (43, 29340),

Gene: Alberto7_44 Start: 29896, Stop: 29663, Start Num: 19

Candidate Starts for Alberto7_44:

(1, 30181), (10, 29983), (Start: 19 @29896 has 155 MA's), (Start: 26 @29845 has 1 MA's), (31, 29803), (37, 29746), (41, 29701), (42, 29689), (43, 29680),

Gene: Aliter_44 Start: 29587, Stop: 29348, Start Num: 17

Candidate Starts for Aliter_44:

(Start: 17 @29587 has 34 MA's), (Start: 25 @29539 has 1 MA's), (28, 29524), (31, 29494), (34, 29458), (37, 29437), (42, 29380),

Gene: Alma_44 Start: 29671, Stop: 29432, Start Num: 17

Candidate Starts for Alma_44:

(Start: 17 @29671 has 34 MA's), (24, 29635), (Start: 25 @29623 has 1 MA's), (29, 29599), (31, 29578), (37, 29521), (42, 29464),

Gene: Aneem_42 Start: 28639, Stop: 28421, Start Num: 18

Candidate Starts for Aneem_42:

(Start: 18 @28639 has 155 MA's), (20, 28624), (Start: 26 @28585 has 1 MA's), (33, 28525), (34, 28519), (39, 28474),

Gene: AnnaL29_45 Start: 30497, Stop: 30276, Start Num: 18

Candidate Starts for AnnaL29_45:

(Start: 14 @30521 has 4 MA's), (Start: 18 @30497 has 155 MA's), (Start: 21 @30479 has 3 MA's), (Start: 26 @30443 has 1 MA's), (38, 30344), (40, 30326),

Gene: Annyong_43 Start: 29604, Stop: 29371, Start Num: 19

Candidate Starts for Annyong_43:

(10, 29691), (Start: 19 @29604 has 155 MA's), (Start: 26 @29553 has 1 MA's), (31, 29511), (37, 29454), (41, 29409), (42, 29397), (43, 29388),

Gene: Anselm_44 Start: 29883, Stop: 29665, Start Num: 18

Candidate Starts for Anselm_44:

(11, 29958), (Start: 14 @29907 has 4 MA's), (Start: 18 @29883 has 155 MA's), (Start: 21 @29865 has 3 MA's), (Start: 26 @29829 has 1 MA's), (40, 29715),

Gene: ArcherNM_41 Start: 29951, Stop: 29733, Start Num: 18

Candidate Starts for ArcherNM_41:

(Start: 18 @29951 has 155 MA's), (Start: 26 @29897 has 1 MA's), (39, 29786), (40, 29783),

Gene: Arissanae_43 Start: 30217, Stop: 29987, Start Num: 17

Candidate Starts for Arissanae_43:

(Start: 17 @30217 has 34 MA's), (31, 30124), (34, 30088), (35, 30082), (37, 30067), (40, 30037), (42, 30010), (43, 30001),

Gene: Artemis2UCLA_44 Start: 27460, Stop: 27242, Start Num: 18

Candidate Starts for Artemis2UCLA_44:

(Start: 18 @27460 has 155 MA's), (Start: 21 @27442 has 3 MA's), (Start: 26 @27406 has 1 MA's), (33, 27346), (39, 27295), (40, 27292),

Gene: Arturo_42 Start: 29812, Stop: 29582, Start Num: 19

Candidate Starts for Arturo_42:

(1, 30100), (10, 29902), (Start: 19 @29812 has 155 MA's), (Start: 26 @29761 has 1 MA's), (31, 29719), (37, 29662), (42, 29605), (43, 29596),

Gene: AvatarAhPeg_42 Start: 30031, Stop: 29801, Start Num: 19

Candidate Starts for AvatarAhPeg_42:

(2, 30316), (10, 30121), (Start: 19 @30031 has 155 MA's), (Start: 26 @29980 has 1 MA's), (31, 29938), (37, 29881), (41, 29836), (42, 29824), (43, 29815),

Gene: Avle17_43 Start: 29556, Stop: 29323, Start Num: 19

Candidate Starts for Avle17_43:

(1, 29841), (10, 29643), (Start: 19 @29556 has 155 MA's), (Start: 26 @29505 has 1 MA's), (31, 29463), (37, 29406), (41, 29361), (42, 29349), (43, 29340),

Gene: BABullseye_42 Start: 27306, Stop: 27088, Start Num: 18

Candidate Starts for BABullseye_42:

(Start: 18 @27306 has 155 MA's), (Start: 21 @27288 has 3 MA's), (Start: 26 @27252 has 1 MA's), (33, 27192), (39, 27141), (40, 27138),

Gene: Baby16_43 Start: 29567, Stop: 29334, Start Num: 19

Candidate Starts for Baby16_43:

(Start: 19 @29567 has 155 MA's), (Start: 26 @29516 has 1 MA's), (31, 29474), (37, 29417), (41, 29372), (42, 29360), (43, 29351),

Gene: BabyBack_41 Start: 30028, Stop: 29807, Start Num: 18

Candidate Starts for BabyBack_41:

(Start: 18 @30028 has 155 MA's), (Start: 21 @30010 has 3 MA's), (Start: 26 @29974 has 1 MA's), (40, 29857),

Gene: Bachome_43 Start: 28627, Stop: 28409, Start Num: 18

Candidate Starts for Bachome_43:

(Start: 18 @28627 has 155 MA's), (20, 28612), (Start: 26 @28573 has 1 MA's), (33, 28513), (34, 28507), (39, 28462),

Gene: Backyardigan_41 Start: 29535, Stop: 29308, Start Num: 19

Candidate Starts for Backyardigan_41:

(2, 29820), (10, 29625), (Start: 19 @29535 has 155 MA's), (Start: 26 @29484 has 1 MA's), (31, 29442), (37, 29385), (42, 29328), (43, 29319),

Gene: Bactobuster_42 Start: 30456, Stop: 30235, Start Num: 18

Candidate Starts for Bactobuster_42:

(Start: 18 @30456 has 155 MA's), (20, 30441), (Start: 26 @30402 has 1 MA's),

Gene: Badger_41 Start: 29503, Stop: 29276, Start Num: 19

Candidate Starts for Badger_41:

(2, 29788), (10, 29593), (Start: 19 @29503 has 155 MA's), (Start: 26 @29452 has 1 MA's), (31, 29410), (37, 29353), (42, 29296), (43, 29287),

Gene: Baehexic_42 Start: 29664, Stop: 29443, Start Num: 18

Candidate Starts for Baehexic_42:

(Start: 18 @29664 has 155 MA's), (Start: 21 @29646 has 3 MA's), (Start: 26 @29610 has 1 MA's), (33, 29550), (40, 29493),

Gene: BangNhom_44 Start: 29978, Stop: 29748, Start Num: 19

Candidate Starts for BangNhom_44:

(2, 30263), (10, 30068), (Start: 19 @29978 has 155 MA's), (Start: 26 @29927 has 1 MA's), (31, 29885), (37, 29828), (41, 29783), (42, 29771), (43, 29762),

Gene: Bartimeaus_43 Start: 29558, Stop: 29325, Start Num: 19

Candidate Starts for Bartimeaus_43:

(Start: 19 @29558 has 155 MA's), (Start: 26 @29507 has 1 MA's), (31, 29465), (37, 29408), (41, 29363), (42, 29351), (43, 29342),

Gene: Beemo_44 Start: 29715, Stop: 29476, Start Num: 17

Candidate Starts for Beemo_44:

(Start: 17 @29715 has 34 MA's), (Start: 25 @29667 has 1 MA's), (28, 29652), (31, 29622), (34, 29586), (37, 29565), (42, 29508),

Gene: BellusTerra_44 Start: 29557, Stop: 29324, Start Num: 19

Candidate Starts for BellusTerra_44:

(Start: 19 @29557 has 155 MA's), (Start: 26 @29506 has 1 MA's), (31, 29464), (37, 29407), (42, 29350), (43, 29341),

Gene: BengiVuitton_43 Start: 29410, Stop: 29189, Start Num: 18

Candidate Starts for BengiVuitton_43:

(Start: 18 @29410 has 155 MA's), (Start: 21 @29392 has 3 MA's), (Start: 26 @29356 has 1 MA's), (33, 29296), (40, 29239),

Gene: Benvolio_40 Start: 28936, Stop: 28718, Start Num: 18

Candidate Starts for Benvolio_40:

(Start: 18 @28936 has 155 MA's), (Start: 21 @28918 has 3 MA's), (Start: 26 @28882 has 1 MA's), (40, 28768),

Gene: BiancaTri92_43 Start: 30226, Stop: 30005, Start Num: 18

Candidate Starts for BiancaTri92_43:

(Start: 18 @30226 has 155 MA's), (Start: 21 @30208 has 3 MA's), (Start: 26 @30172 has 1 MA's), (33, 30112), (40, 30055),

Gene: Blackmoor_43 Start: 29558, Stop: 29325, Start Num: 19

Candidate Starts for Blackmoor_43:

(Start: 19 @29558 has 155 MA's), (Start: 26 @29507 has 1 MA's), (31, 29465), (37, 29408), (41, 29363), (42, 29351), (43, 29342),

Gene: Blinn1_47 Start: 28280, Stop: 28062, Start Num: 18

Candidate Starts for Blinn1_47:

(Start: 18 @28280 has 155 MA's), (Start: 26 @28226 has 1 MA's), (33, 28166), (39, 28115), (40, 28112),

Gene: Blue7_47 Start: 28156, Stop: 27953, Start Num: 18

Candidate Starts for Blue7_47:

(Start: 18 @28156 has 155 MA's), (Start: 26 @28102 has 1 MA's), (33, 28042), (36, 28027),

Gene: BobSwaget_43 Start: 29572, Stop: 29351, Start Num: 18

Candidate Starts for BobSwaget_43:

(Start: 18 @29572 has 155 MA's), (Start: 26 @29518 has 1 MA's), (39, 29404), (40, 29401),

Gene: BogosyJay_43 Start: 29518, Stop: 29288, Start Num: 17

Candidate Starts for BogosyJay_43:

(Start: 17 @29518 has 34 MA's), (Start: 25 @29470 has 1 MA's), (31, 29425), (35, 29383), (37, 29368), (41, 29323), (42, 29311), (43, 29302),

Gene: Bombshell_43 Start: 29556, Stop: 29323, Start Num: 19

Candidate Starts for Bombshell_43:

(1, 29841), (10, 29643), (Start: 19 @29556 has 155 MA's), (20, 29544), (Start: 26 @29505 has 1 MA's), (31, 29463), (37, 29406), (41, 29361), (42, 29349), (43, 29340),

Gene: Bowtie_42 Start: 28646, Stop: 28428, Start Num: 18

Candidate Starts for Bowtie_42:

(Start: 18 @28646 has 155 MA's), (20, 28631), (Start: 26 @28592 has 1 MA's), (33, 28532), (34, 28526), (39, 28481),

Gene: Broseidon_43 Start: 29558, Stop: 29325, Start Num: 19

Candidate Starts for Broseidon_43:

(Start: 19 @29558 has 155 MA's), (Start: 26 @29507 has 1 MA's), (31, 29465), (37, 29408), (42, 29351), (43, 29342),

Gene: Bruiser_42 Start: 29556, Stop: 29323, Start Num: 19

Candidate Starts for Bruiser_42:

(Start: 19 @29556 has 155 MA's), (Start: 26 @29505 has 1 MA's), (31, 29463), (37, 29406), (42, 29349), (43, 29340),

Gene: BubbleTrouble_42 Start: 29556, Stop: 29323, Start Num: 19

Candidate Starts for BubbleTrouble_42:

(Start: 19 @29556 has 155 MA's), (Start: 26 @29505 has 1 MA's), (31, 29463), (37, 29406), (41, 29361), (42, 29349), (43, 29340),

Gene: Bud_41 Start: 28201, Stop: 27983, Start Num: 18

Candidate Starts for Bud_41:

(Start: 18 @28201 has 155 MA's), (20, 28186), (Start: 26 @28147 has 1 MA's), (33, 28087), (34, 28081), (39, 28036),

Gene: Buggy_45 Start: 30034, Stop: 29813, Start Num: 18

Candidate Starts for Buggy_45:

(Start: 18 @30034 has 155 MA's), (Start: 21 @30016 has 3 MA's), (Start: 26 @29980 has 1 MA's), (33, 29920), (40, 29863),

Gene: Bumblebee11_41 Start: 29505, Stop: 29278, Start Num: 19

Candidate Starts for Bumblebee11_41:

(2, 29790), (10, 29595), (Start: 19 @29505 has 155 MA's), (Start: 26 @29454 has 1 MA's), (31, 29412), (37, 29355), (42, 29298), (43, 29289),

Gene: Burger_41 Start: 29556, Stop: 29323, Start Num: 19

Candidate Starts for Burger_41:

(Start: 19 @29556 has 155 MA's), (Start: 26 @29505 has 1 MA's), (31, 29463), (37, 29406), (41, 29361), (42, 29349), (43, 29340),

Gene: C3_40 Start: 29290, Stop: 29072, Start Num: 18

Candidate Starts for C3_40:

(8, 29416), (9, 29407), (Start: 18 @29290 has 155 MA's), (24, 29251), (Start: 26 @29236 has 1 MA's), (33, 29176), (40, 29122),

Gene: CRB1_45 Start: 29957, Stop: 29736, Start Num: 18

Candidate Starts for CRB1_45:

(Start: 18 @29957 has 155 MA's), (Start: 26 @29903 has 1 MA's), (33, 29843), (40, 29786),

Gene: Caelakin_43 Start: 29556, Stop: 29323, Start Num: 19

Candidate Starts for Caelakin_43:

(Start: 19 @29556 has 155 MA's), (Start: 26 @29505 has 1 MA's), (31, 29463), (37, 29406), (42, 29349), (43, 29340),

Gene: Camperdownii_41 Start: 29229, Stop: 28996, Start Num: 19

Candidate Starts for Camperdownii_41:

(Start: 19 @29229 has 155 MA's), (Start: 26 @29178 has 1 MA's), (31, 29136), (37, 29079), (41, 29034), (42, 29022), (43, 29013),

Gene: Candra_44 Start: 27799, Stop: 27581, Start Num: 18

Candidate Starts for Candra_44:

(Start: 18 @27799 has 155 MA's), (Start: 26 @27745 has 1 MA's), (33, 27685), (39, 27634), (40, 27631),

Gene: Caraxes_43 Start: 28002, Stop: 27784, Start Num: 18

Candidate Starts for Caraxes_43:

(Start: 18 @28002 has 155 MA's), (Start: 26 @27948 has 1 MA's), (33, 27888), (39, 27837),

Gene: Catalina_45 Start: 29660, Stop: 29421, Start Num: 17

Candidate Starts for Catalina_45:

(Start: 17 @29660 has 34 MA's), (Start: 25 @29612 has 1 MA's), (28, 29597), (31, 29567), (34, 29531), (37, 29510), (42, 29453),

Gene: Centaur_44 Start: 29879, Stop: 29658, Start Num: 18

Candidate Starts for Centaur_44:

(Start: 18 @29879 has 155 MA's), (Start: 21 @29861 has 3 MA's), (Start: 26 @29825 has 1 MA's), (33, 29765), (40, 29708),

Gene: CentreCat_43 Start: 29559, Stop: 29326, Start Num: 19

Candidate Starts for CentreCat_43:

(Start: 19 @29559 has 155 MA's), (Start: 26 @29508 has 1 MA's), (31, 29466), (37, 29409), (41, 29364), (42, 29352), (43, 29343),

Gene: Cerulean_44 Start: 29979, Stop: 29749, Start Num: 19

Candidate Starts for Cerulean_44:

(2, 30264), (10, 30069), (Start: 19 @29979 has 155 MA's), (Start: 26 @29928 has 1 MA's), (31, 29886), (37, 29829), (41, 29784), (42, 29772), (43, 29763),

Gene: ChampagnePapi_45 Start: 29978, Stop: 29748, Start Num: 19

Candidate Starts for ChampagnePapi_45:

(2, 30263), (10, 30068), (Start: 19 @29978 has 155 MA's), (Start: 26 @29927 has 1 MA's), (31, 29885), (37, 29828), (41, 29783), (42, 29771), (43, 29762),

Gene: Changeling_44 Start: 30485, Stop: 30267, Start Num: 18

Candidate Starts for Changeling_44:

(Start: 18 @30485 has 155 MA's), (Start: 26 @30431 has 1 MA's), (39, 30320), (40, 30317),

Gene: Chaph_43 Start: 29567, Stop: 29334, Start Num: 19

Candidate Starts for Chaph_43:

(Start: 19 @29567 has 155 MA's), (Start: 26 @29516 has 1 MA's), (31, 29474), (37, 29417), (41, 29372), (42, 29360), (43, 29351),

Gene: Charm_41 Start: 29010, Stop: 28780, Start Num: 17

Candidate Starts for Charm_41:

(Start: 17 @29010 has 34 MA's), (24, 28974), (31, 28917), (37, 28860), (42, 28803), (43, 28794),

Gene: Chartreuse_44 Start: 27710, Stop: 27492, Start Num: 18

Candidate Starts for Chartreuse_44:

(Start: 18 @27710 has 155 MA's), (Start: 26 @27656 has 1 MA's), (33, 27596), (39, 27545), (40, 27542),

Gene: Che12_45 Start: 28470, Stop: 28252, Start Num: 18

Candidate Starts for Che12_45:

(Start: 18 @28470 has 155 MA's), (Start: 26 @28416 has 1 MA's), (33, 28356), (39, 28305),

Gene: ChipMunk_46 Start: 31386, Stop: 31165, Start Num: 18

Candidate Starts for ChipMunk_46:

(Start: 18 @31386 has 155 MA's), (Start: 26 @31332 has 1 MA's),

Gene: Chupacabra_41 Start: 29108, Stop: 28875, Start Num: 19

Candidate Starts for Chupacabra_41:

(Start: 19 @29108 has 155 MA's), (31, 29015), (37, 28958), (41, 28913), (43, 28892),

Gene: Cici_42 Start: 29520, Stop: 29293, Start Num: 19

Candidate Starts for Cici_42:

(2, 29805), (10, 29610), (Start: 19 @29520 has 155 MA's), (Start: 26 @29469 has 1 MA's), (31, 29427), (37, 29370), (42, 29313), (43, 29304),

Gene: Cindaradix_40 Start: 29145, Stop: 28915, Start Num: 19

Candidate Starts for Cindaradix_40:

(10, 29235), (Start: 19 @29145 has 155 MA's), (Start: 26 @29094 has 1 MA's), (31, 29052), (37, 28995), (42, 28938), (43, 28929),

Gene: Cintron_42 Start: 29539, Stop: 29306, Start Num: 19

Candidate Starts for Cintron_42:

(1, 29824), (10, 29626), (Start: 19 @29539 has 155 MA's), (Start: 26 @29488 has 1 MA's), (31, 29446), (37, 29389), (41, 29344), (42, 29332), (43, 29323),

Gene: Citius_43 Start: 29577, Stop: 29344, Start Num: 19

Candidate Starts for Citius_43:

(Start: 19 @29577 has 155 MA's), (Start: 26 @29526 has 1 MA's), (31, 29484), (37, 29427), (42, 29370), (43, 29361),

Gene: Clarenza_42 Start: 29553, Stop: 29320, Start Num: 19

Candidate Starts for Clarenza_42:

(Start: 19 @29553 has 155 MA's), (Start: 26 @29502 has 1 MA's), (31, 29460), (37, 29403), (41, 29358), (42, 29346), (43, 29337),

Gene: CloudWang3_44 Start: 27560, Stop: 27342, Start Num: 18

Candidate Starts for CloudWang3_44:

(Start: 18 @27560 has 155 MA's), (Start: 26 @27506 has 1 MA's), (33, 27446), (39, 27395), (40, 27392),

Gene: Cocoaberry_43 Start: 29560, Stop: 29327, Start Num: 19

Candidate Starts for Cocoaberry_43:

(Start: 19 @29560 has 155 MA's), (Start: 26 @29509 has 1 MA's), (31, 29467), (37, 29410), (42, 29353), (43, 29344),

Gene: Colin_45 Start: 30257, Stop: 30039, Start Num: 18

Candidate Starts for Colin_45:

(Start: 18 @30257 has 155 MA's), (Start: 21 @30239 has 3 MA's), (Start: 26 @30203 has 1 MA's), (39, 30092), (40, 30089), (42, 30062),

Gene: Commander_43 Start: 29555, Stop: 29322, Start Num: 19

Candidate Starts for Commander_43:

(Start: 19 @29555 has 155 MA's), (Start: 26 @29504 has 1 MA's), (31, 29462), (37, 29405), (42, 29348), (43, 29339),

Gene: Connomayer_43 Start: 29556, Stop: 29323, Start Num: 19

Candidate Starts for Connomayer_43:

(Start: 19 @29556 has 155 MA's), (Start: 26 @29505 has 1 MA's), (31, 29463), (37, 29406), (42, 29349), (43, 29340),

Gene: Conquerage_44 Start: 29689, Stop: 29450, Start Num: 17

Candidate Starts for Conquerage_44:

(Start: 17 @29689 has 34 MA's), (Start: 25 @29641 has 1 MA's), (28, 29626), (31, 29596), (34, 29560), (37, 29539), (42, 29482),

Gene: Cookiedough_44 Start: 27775, Stop: 27557, Start Num: 18

Candidate Starts for Cookiedough_44:

(Start: 18 @27775 has 155 MA's), (Start: 26 @27721 has 1 MA's), (33, 27661), (39, 27610), (40, 27607),

Gene: Crucio_43 Start: 29466, Stop: 29248, Start Num: 18

Candidate Starts for Crucio_43:

(11, 29541), (Start: 14 @29490 has 4 MA's), (Start: 18 @29466 has 155 MA's), (Start: 21 @29448 has 3 MA's), (Start: 26 @29412 has 1 MA's), (39, 29301), (40, 29298),

Gene: D29_42 Start: 29179, Stop: 28973, Start Num: 18
Candidate Starts for D29_42:
(Start: 18 @29179 has 155 MA's), (Start: 21 @29161 has 3 MA's), (Start: 26 @29122 has 1 MA's),

Gene: D32_45 Start: 29179, Stop: 28973, Start Num: 18
Candidate Starts for D32_45:
(Start: 18 @29179 has 155 MA's), (Start: 21 @29161 has 3 MA's), (Start: 26 @29122 has 1 MA's),

Gene: DBQu4n_45 Start: 29179, Stop: 28973, Start Num: 18
Candidate Starts for DBQu4n_45:
(Start: 18 @29179 has 155 MA's), (Start: 21 @29161 has 3 MA's), (Start: 26 @29122 has 1 MA's),

Gene: DaVinci_44 Start: 27764, Stop: 27546, Start Num: 18
Candidate Starts for DaVinci_44:
(Start: 18 @27764 has 155 MA's), (Start: 26 @27710 has 1 MA's), (33, 27650), (39, 27599), (40, 27596),

Gene: Dalmatian_44 Start: 29859, Stop: 29641, Start Num: 18
Candidate Starts for Dalmatian_44:
(3, 30087), (11, 29934), (Start: 14 @29883 has 4 MA's), (Start: 18 @29859 has 155 MA's), (20, 29844), (Start: 26 @29805 has 1 MA's), (30, 29775), (39, 29694), (40, 29691),

Gene: Darrell_44 Start: 30026, Stop: 29790, Start Num: 17
Candidate Starts for Darrell_44:
(Start: 17 @30026 has 34 MA's), (24, 29990), (Start: 25 @29978 has 1 MA's), (31, 29933), (37, 29876), (40, 29846), (41, 29831), (42, 29819),

Gene: DARTHPhader_41 Start: 30405, Stop: 30166, Start Num: 17
Candidate Starts for DARTHPhader_41:
(Start: 17 @30405 has 34 MA's), (31, 30312), (37, 30255), (42, 30198),

Gene: Datway_42 Start: 29491, Stop: 29264, Start Num: 19
Candidate Starts for Datway_42:
(2, 29776), (10, 29581), (Start: 19 @29491 has 155 MA's), (Start: 26 @29440 has 1 MA's), (31, 29398), (37, 29341), (42, 29284), (43, 29275),

Gene: Deano_42 Start: 29564, Stop: 29331, Start Num: 19
Candidate Starts for Deano_42:
(Start: 19 @29564 has 155 MA's), (Start: 26 @29513 has 1 MA's), (31, 29471), (37, 29414), (41, 29369), (42, 29357), (43, 29348),

Gene: Deloris_42 Start: 29079, Stop: 28858, Start Num: 18
Candidate Starts for Deloris_42:
(Start: 18 @29079 has 155 MA's), (Start: 21 @29061 has 3 MA's), (Start: 26 @29025 has 1 MA's), (33, 28965), (40, 28908),

Gene: Dhanush_43 Start: 29559, Stop: 29326, Start Num: 19
Candidate Starts for Dhanush_43:
(Start: 19 @29559 has 155 MA's), (Start: 26 @29508 has 1 MA's), (31, 29466), (37, 29409), (41, 29364), (42, 29352), (43, 29343),

Gene: Dignity_45 Start: 29922, Stop: 29704, Start Num: 18
Candidate Starts for Dignity_45:

(3, 30150), (11, 29997), (Start: 14 @29946 has 4 MA's), (Start: 18 @29922 has 155 MA's), (Start: 21 @29904 has 3 MA's), (Start: 26 @29868 has 1 MA's), (40, 29754),

Gene: DirtyDunning_42 Start: 29553, Stop: 29323, Start Num: 19

Candidate Starts for DirtyDunning_42:

(1, 29841), (10, 29643), (Start: 19 @29553 has 155 MA's), (Start: 26 @29502 has 1 MA's), (29, 29481), (31, 29460), (37, 29403), (42, 29346), (43, 29337),

Gene: Dorothea_43 Start: 27782, Stop: 27564, Start Num: 18

Candidate Starts for Dorothea_43:

(Start: 18 @27782 has 155 MA's), (Start: 26 @27728 has 1 MA's), (33, 27668), (39, 27617), (40, 27614),

Gene: Drake55_45 Start: 29843, Stop: 29622, Start Num: 18

Candidate Starts for Drake55_45:

(Start: 18 @29843 has 155 MA's), (Start: 21 @29825 has 3 MA's), (Start: 26 @29789 has 1 MA's), (33, 29729), (40, 29672),

Gene: Drake94_40 Start: 28369, Stop: 28139, Start Num: 19

Candidate Starts for Drake94_40:

(Start: 19 @28369 has 155 MA's), (20, 28357), (Start: 26 @28318 has 1 MA's), (31, 28276), (34, 28240), (43, 28153),

Gene: DreamTeam1_41 Start: 28884, Stop: 28654, Start Num: 17

Candidate Starts for DreamTeam1_41:

(Start: 17 @28884 has 34 MA's), (24, 28848), (31, 28791), (37, 28734), (42, 28677), (43, 28668),

Gene: Druantia_43 Start: 29559, Stop: 29326, Start Num: 19

Candidate Starts for Druantia_43:

(Start: 19 @29559 has 155 MA's), (Start: 26 @29508 has 1 MA's), (31, 29466), (37, 29409), (41, 29364), (42, 29352), (43, 29343),

Gene: DudeLittle_42 Start: 29525, Stop: 29307, Start Num: 18

Candidate Starts for DudeLittle_42:

(3, 29753), (11, 29600), (Start: 14 @29549 has 4 MA's), (Start: 18 @29525 has 155 MA's), (20, 29510), (Start: 26 @29471 has 1 MA's), (30, 29441), (39, 29360), (40, 29357),

Gene: Duplo_45 Start: 29217, Stop: 29011, Start Num: 18

Candidate Starts for Duplo_45:

(Start: 18 @29217 has 155 MA's), (Start: 21 @29199 has 3 MA's), (Start: 26 @29160 has 1 MA's),

Gene: EZMoney23_42 Start: 29484, Stop: 29266, Start Num: 18

Candidate Starts for EZMoney23_42:

(Start: 18 @29484 has 155 MA's), (Start: 21 @29466 has 3 MA's), (Start: 26 @29430 has 1 MA's), (33, 29370), (39, 29319),

Gene: Eagle_43 Start: 29581, Stop: 29348, Start Num: 19

Candidate Starts for Eagle_43:

(Start: 19 @29581 has 155 MA's), (Start: 26 @29530 has 1 MA's), (31, 29488), (37, 29431), (42, 29374), (43, 29365),

Gene: EagleEye_45 Start: 28911, Stop: 28705, Start Num: 18

Candidate Starts for EagleEye_45:

(Start: 18 @28911 has 155 MA's), (20, 28896), (39, 28758), (40, 28755),

Gene: Eaglepride_43 Start: 29208, Stop: 28975, Start Num: 19

Candidate Starts for Eaglepride_43:

(Start: 19 @29208 has 155 MA's), (31, 29115), (37, 29058), (41, 29013), (42, 29001), (43, 28992),

Gene: Eapen_43 Start: 29554, Stop: 29321, Start Num: 19

Candidate Starts for Eapen_43:

(1, 29839), (10, 29641), (Start: 19 @29554 has 155 MA's), (Start: 26 @29503 has 1 MA's), (31, 29461), (37, 29404), (41, 29359), (42, 29347), (43, 29338),

Gene: Ebony_42 Start: 28601, Stop: 28383, Start Num: 18

Candidate Starts for Ebony_42:

(Start: 18 @28601 has 155 MA's), (20, 28586), (Start: 26 @28547 has 1 MA's), (33, 28487), (34, 28481), (39, 28436),

Gene: Echild_43 Start: 28960, Stop: 28742, Start Num: 18

Candidate Starts for Echild_43:

(Start: 18 @28960 has 155 MA's), (Start: 21 @28942 has 3 MA's), (Start: 26 @28906 has 1 MA's), (40, 28792),

Gene: Edison31_40 Start: 29131, Stop: 28898, Start Num: 19

Candidate Starts for Edison31_40:

(Start: 19 @29131 has 155 MA's), (Start: 25 @29083 has 1 MA's), (31, 29038), (37, 28981), (43, 28915),

Gene: Eidsmoe_44 Start: 29723, Stop: 29484, Start Num: 17

Candidate Starts for Eidsmoe_44:

(Start: 17 @29723 has 34 MA's), (Start: 25 @29675 has 1 MA's), (28, 29660), (31, 29630), (34, 29594), (37, 29573), (42, 29516),

Gene: Elephantoon_43 Start: 29006, Stop: 28767, Start Num: 17

Candidate Starts for Elephantoon_43:

(Start: 17 @29006 has 34 MA's), (31, 28913), (37, 28856), (40, 28826), (41, 28811), (42, 28799),

Gene: EmyBug_41 Start: 29662, Stop: 29486, Start Num: 28

Candidate Starts for EmyBug_41:

(Start: 17 @29725 has 34 MA's), (Start: 25 @29677 has 1 MA's), (28, 29662), (31, 29632), (34, 29596), (37, 29575), (42, 29518),

Gene: Equemioh13_44 Start: 29765, Stop: 29562, Start Num: 21

Candidate Starts for Equemioh13_44:

(Start: 18 @29783 has 155 MA's), (Start: 21 @29765 has 3 MA's), (Start: 26 @29729 has 1 MA's), (33, 29669), (40, 29612),

Gene: EricB_44 Start: 27756, Stop: 27538, Start Num: 18

Candidate Starts for EricB_44:

(Start: 18 @27756 has 155 MA's), (Start: 26 @27702 has 1 MA's), (33, 27642), (39, 27591), (40, 27588),

Gene: Eris_42 Start: 29556, Stop: 29323, Start Num: 19

Candidate Starts for Eris_42:

(Start: 19 @29556 has 155 MA's), (Start: 26 @29505 has 1 MA's), (31, 29463), (37, 29406), (42, 29349), (43, 29340),

Gene: Eros_43 Start: 29558, Stop: 29325, Start Num: 19

Candidate Starts for Eros_43:

(Start: 19 @29558 has 155 MA's), (Start: 26 @29507 has 1 MA's), (31, 29465), (37, 29408), (41, 29363), (42, 29351), (43, 29342),

Gene: Et2Brutus_41 Start: 28561, Stop: 28343, Start Num: 18

Candidate Starts for Et2Brutus_41:

(Start: 18 @28561 has 155 MA's), (20, 28546), (Start: 26 @28507 has 1 MA's), (33, 28447), (34, 28441), (39, 28396),

Gene: Eurydice_44 Start: 29556, Stop: 29323, Start Num: 19

Candidate Starts for Eurydice_44:

(10, 29643), (Start: 19 @29556 has 155 MA's), (Start: 26 @29505 has 1 MA's), (31, 29463), (37, 29406), (42, 29349), (43, 29340),

Gene: EvilGenius_46 Start: 31390, Stop: 31169, Start Num: 18

Candidate Starts for EvilGenius_46:

(Start: 18 @31390 has 155 MA's), (Start: 26 @31336 has 1 MA's),

Gene: ExplosioNervosa_44 Start: 29749, Stop: 29510, Start Num: 17

Candidate Starts for ExplosioNervosa_44:

(Start: 17 @29749 has 34 MA's), (Start: 25 @29701 has 1 MA's), (28, 29686), (31, 29656), (34, 29620), (37, 29599), (42, 29542),

Gene: Fameo_43 Start: 29653, Stop: 29435, Start Num: 18

Candidate Starts for Fameo_43:

(3, 29881), (11, 29728), (Start: 14 @29677 has 4 MA's), (Start: 18 @29653 has 155 MA's), (Start: 21 @29635 has 3 MA's), (Start: 26 @29599 has 1 MA's), (39, 29488), (40, 29485),

Gene: Fayely_44 Start: 29692, Stop: 29453, Start Num: 17

Candidate Starts for Fayely_44:

(Start: 17 @29692 has 34 MA's), (Start: 25 @29644 has 1 MA's), (28, 29629), (31, 29599), (34, 29563), (37, 29542), (42, 29485),

Gene: Fibonacci_41 Start: 28193, Stop: 27975, Start Num: 18

Candidate Starts for Fibonacci_41:

(Start: 18 @28193 has 155 MA's), (20, 28178), (Start: 26 @28139 has 1 MA's), (33, 28079), (34, 28073), (39, 28028),

Gene: FiringLine_43 Start: 29447, Stop: 29229, Start Num: 18

Candidate Starts for FiringLine_43:

(11, 29522), (Start: 14 @29471 has 4 MA's), (Start: 18 @29447 has 155 MA's), (Start: 21 @29429 has 3 MA's), (Start: 26 @29393 has 1 MA's), (39, 29282), (40, 29279),

Gene: First_0043 Start: 29321, Stop: 29100, Start Num: 18

Candidate Starts for First_0043:

(Start: 18 @29321 has 155 MA's), (Start: 26 @29267 has 1 MA's), (33, 29207), (40, 29150),

Gene: Flare16_43 Start: 29542, Stop: 29321, Start Num: 18

Candidate Starts for Flare16_43:

(Start: 18 @29542 has 155 MA's), (Start: 21 @29524 has 3 MA's), (Start: 26 @29488 has 1 MA's), (33, 29428), (40, 29371),

Gene: Flaverint_42 Start: 28640, Stop: 28422, Start Num: 18

Candidate Starts for Flaverint_42:

(Start: 18 @28640 has 155 MA's), (20, 28625), (Start: 26 @28586 has 1 MA's), (33, 28526), (34, 28520), (39, 28475),

Gene: Florean_43 Start: 29555, Stop: 29322, Start Num: 19

Candidate Starts for Florean_43:

(Start: 19 @29555 has 155 MA's), (Start: 26 @29504 has 1 MA's), (31, 29462), (37, 29405), (41, 29360), (42, 29348), (43, 29339),

Gene: Flux_43 Start: 29558, Stop: 29325, Start Num: 19

Candidate Starts for Flux_43:

(10, 29645), (Start: 19 @29558 has 155 MA's), (Start: 26 @29507 has 1 MA's), (31, 29465), (37, 29408), (41, 29363), (42, 29351), (43, 29342),

Gene: Funston_42 Start: 29556, Stop: 29323, Start Num: 19

Candidate Starts for Funston_42:

(Start: 19 @29556 has 155 MA's), (Start: 26 @29505 has 1 MA's), (31, 29463), (37, 29406), (42, 29349), (43, 29340),

Gene: Gadost_43 Start: 29560, Stop: 29327, Start Num: 19

Candidate Starts for Gadost_43:

(Start: 19 @29560 has 155 MA's), (Start: 26 @29509 has 1 MA's), (31, 29467), (37, 29410), (42, 29353), (43, 29344),

Gene: Gail_47 Start: 30879, Stop: 30649, Start Num: 19

Candidate Starts for Gail_47:

(Start: 19 @30879 has 155 MA's), (Start: 25 @30831 has 1 MA's), (Start: 26 @30828 has 1 MA's), (29, 30807), (32, 30774), (34, 30756), (37, 30735), (41, 30690), (43, 30669),

Gene: Garak_46 Start: 27927, Stop: 27709, Start Num: 18

Candidate Starts for Garak_46:

(Start: 18 @27927 has 155 MA's), (Start: 21 @27909 has 3 MA's), (Start: 26 @27873 has 1 MA's), (33, 27813), (39, 27762), (40, 27759),

Gene: GaugeLDP_42 Start: 29927, Stop: 29706, Start Num: 18

Candidate Starts for GaugeLDP_42:

(Start: 18 @29927 has 155 MA's), (Start: 21 @29909 has 3 MA's), (Start: 26 @29873 has 1 MA's),

Gene: Georgie2_44 Start: 29492, Stop: 29274, Start Num: 18

Candidate Starts for Georgie2_44:

(11, 29567), (Start: 14 @29516 has 4 MA's), (Start: 18 @29492 has 155 MA's), (Start: 21 @29474 has 3 MA's), (Start: 26 @29438 has 1 MA's), (39, 29327), (40, 29324),

Gene: Gilberta_42 Start: 28630, Stop: 28412, Start Num: 18

Candidate Starts for Gilberta_42:

(Start: 18 @28630 has 155 MA's), (20, 28615), (Start: 26 @28576 has 1 MA's), (33, 28516), (34, 28510), (39, 28465),

Gene: Gladiator_44 Start: 27764, Stop: 27546, Start Num: 18

Candidate Starts for Gladiator_44:

(Start: 18 @27764 has 155 MA's), (Start: 26 @27710 has 1 MA's), (33, 27650), (39, 27599), (40, 27596),

Gene: Goose_42 Start: 28912, Stop: 28679, Start Num: 19

Candidate Starts for Goose_42:

(Start: 19 @28912 has 155 MA's), (31, 28819), (37, 28762), (41, 28717), (43, 28696),

Gene: GreedyLawyer_44 Start: 27763, Stop: 27545, Start Num: 18

Candidate Starts for GreedyLawyer_44:

(Start: 18 @27763 has 155 MA's), (Start: 26 @27709 has 1 MA's), (33, 27649), (39, 27598), (40, 27595),

Gene: Gruunaga_44 Start: 27763, Stop: 27545, Start Num: 18

Candidate Starts for Gruunaga_44:

(Start: 18 @27763 has 155 MA's), (Start: 26 @27709 has 1 MA's), (33, 27649), (39, 27598), (40, 27595),

Gene: HamSlice_42 Start: 29554, Stop: 29321, Start Num: 19

Candidate Starts for HamSlice_42:

(Start: 19 @29554 has 155 MA's), (Start: 26 @29503 has 1 MA's), (31, 29461), (37, 29404), (41, 29359), (42, 29347), (43, 29338),

Gene: Hammer_46 Start: 27966, Stop: 27763, Start Num: 18

Candidate Starts for Hammer_46:

(Start: 18 @27966 has 155 MA's), (Start: 21 @27948 has 3 MA's), (Start: 26 @27912 has 1 MA's), (33, 27852), (36, 27837),

Gene: Happiness_42 Start: 29561, Stop: 29328, Start Num: 19

Candidate Starts for Happiness_42:

(10, 29651), (Start: 19 @29561 has 155 MA's), (Start: 26 @29510 has 1 MA's), (31, 29468), (37, 29411), (41, 29366), (42, 29354), (43, 29345),

Gene: HarryHoudini_44 Start: 29987, Stop: 29766, Start Num: 18

Candidate Starts for HarryHoudini_44:

(Start: 18 @29987 has 155 MA's), (Start: 21 @29969 has 3 MA's), (Start: 26 @29933 has 1 MA's), (33, 29873), (40, 29816),

Gene: Heffalump_42 Start: 30122, Stop: 29901, Start Num: 18

Candidate Starts for Heffalump_42:

(Start: 18 @30122 has 155 MA's), (Start: 26 @30068 has 1 MA's), (33, 30008),

Gene: Helmet_46 Start: 27909, Stop: 27709, Start Num: 21

Candidate Starts for Helmet_46:

(Start: 18 @27927 has 155 MA's), (Start: 21 @27909 has 3 MA's), (Start: 26 @27873 has 1 MA's), (33, 27813), (39, 27762), (40, 27759),

Gene: Hexamo_44 Start: 27548, Stop: 27330, Start Num: 18

Candidate Starts for Hexamo_44:

(Start: 18 @27548 has 155 MA's), (Start: 26 @27494 has 1 MA's), (33, 27434), (39, 27383), (40, 27380),

Gene: Holli_42 Start: 29346, Stop: 29113, Start Num: 19

Candidate Starts for Holli_42:

(Start: 19 @29346 has 155 MA's), (Start: 26 @29295 has 1 MA's), (31, 29253), (37, 29196), (42, 29139), (43, 29130),

Gene: Hoot_44 Start: 27741, Stop: 27523, Start Num: 18

Candidate Starts for Hoot_44:

(Start: 18 @27741 has 155 MA's), (Start: 26 @27687 has 1 MA's), (33, 27627), (39, 27576), (40, 27573),

Gene: HortumSL17_44 Start: 29659, Stop: 29420, Start Num: 17

Candidate Starts for HortumSL17_44:

(Start: 17 @29659 has 34 MA's), (Start: 25 @29611 has 1 MA's), (28, 29596), (31, 29566), (34, 29530), (37, 29509), (42, 29452),

Gene: Houdini22_43 Start: 29560, Stop: 29327, Start Num: 19

Candidate Starts for Houdini22_43:

(Start: 19 @29560 has 155 MA's), (Start: 26 @29509 has 1 MA's), (31, 29467), (37, 29410), (42, 29353), (43, 29344),

Gene: Hutc2_41 Start: 28193, Stop: 27975, Start Num: 18

Candidate Starts for Hutc2_41:

(Start: 18 @28193 has 155 MA's), (20, 28178), (Start: 26 @28139 has 1 MA's), (33, 28079), (34, 28073), (39, 28028),

Gene: ICleared_43 Start: 29588, Stop: 29355, Start Num: 19

Candidate Starts for ICleared_43:

(10, 29675), (Start: 19 @29588 has 155 MA's), (20, 29576), (Start: 26 @29537 has 1 MA's), (31, 29495), (37, 29438), (41, 29393), (42, 29381), (43, 29372),

Gene: Iceman_43 Start: 29845, Stop: 29612, Start Num: 19

Candidate Starts for Iceman_43:

(10, 29932), (Start: 19 @29845 has 155 MA's), (Start: 26 @29794 has 1 MA's), (31, 29752), (37, 29695), (42, 29638), (43, 29629),

Gene: Indra_47 Start: 27928, Stop: 27710, Start Num: 18

Candidate Starts for Indra_47:

(Start: 18 @27928 has 155 MA's), (Start: 21 @27910 has 3 MA's), (Start: 26 @27874 has 1 MA's), (33, 27814), (39, 27763), (40, 27760),

Gene: Insomnia_41 Start: 28698, Stop: 28480, Start Num: 18

Candidate Starts for Insomnia_41:

(Start: 18 @28698 has 155 MA's), (20, 28683), (Start: 26 @28644 has 1 MA's), (33, 28584), (34, 28578), (39, 28533),

Gene: Iracema64_44 Start: 29820, Stop: 29587, Start Num: 19

Candidate Starts for Iracema64_44:

(1, 30108), (10, 29910), (Start: 19 @29820 has 155 MA's), (Start: 26 @29769 has 1 MA's), (31, 29727), (37, 29670), (41, 29625), (42, 29613), (43, 29604),

Gene: IronMan_43 Start: 30639, Stop: 30418, Start Num: 18

Candidate Starts for IronMan_43:

(Start: 18 @30639 has 155 MA's), (20, 30624), (Start: 26 @30585 has 1 MA's),

Gene: Isiphiwo_42 Start: 27300, Stop: 27082, Start Num: 18
Candidate Starts for Isiphiwo_42:
(Start: 18 @27300 has 155 MA's), (Start: 21 @27282 has 3 MA's), (Start: 26 @27246 has 1 MA's),
(33, 27186), (39, 27135), (40, 27132),

Gene: Iwokeuplikedis_46 Start: 29558, Stop: 29340, Start Num: 18
Candidate Starts for Iwokeuplikedis_46:
(Start: 18 @29558 has 155 MA's), (20, 29543), (Start: 26 @29504 has 1 MA's), (33, 29444), (39,
29393), (40, 29390),

Gene: Jaan_44 Start: 30928, Stop: 30707, Start Num: 18
Candidate Starts for Jaan_44:
(Start: 18 @30928 has 155 MA's), (20, 30913), (Start: 26 @30874 has 1 MA's),

Gene: Jabith_42 Start: 28699, Stop: 28481, Start Num: 18
Candidate Starts for Jabith_42:
(Start: 18 @28699 has 155 MA's), (20, 28684), (Start: 26 @28645 has 1 MA's), (33, 28585), (34,
28579), (39, 28534),

Gene: Jaykayelowell_41 Start: 29552, Stop: 29319, Start Num: 19
Candidate Starts for Jaykayelowell_41:
(1, 29837), (10, 29639), (Start: 19 @29552 has 155 MA's), (Start: 26 @29501 has 1 MA's), (31,
29459), (37, 29402), (41, 29357), (42, 29345), (43, 29336),

Gene: Jeeves_48 Start: 29822, Stop: 29598, Start Num: 19
Candidate Starts for Jeeves_48:
(Start: 19 @29822 has 155 MA's), (Start: 25 @29774 has 1 MA's), (Start: 26 @29771 has 1 MA's),
(29, 29750), (37, 29678), (41, 29633), (43, 29612), (44, 29609),

Gene: Jeffabunny_44 Start: 27584, Stop: 27366, Start Num: 18
Candidate Starts for Jeffabunny_44:
(Start: 18 @27584 has 155 MA's), (Start: 26 @27530 has 1 MA's), (33, 27470), (39, 27419), (40,
27416),

Gene: Jerm_45 Start: 29915, Stop: 29697, Start Num: 18
Candidate Starts for Jerm_45:
(3, 30143), (11, 29990), (Start: 14 @29939 has 4 MA's), (Start: 18 @29915 has 155 MA's), (Start: 21
@29897 has 3 MA's), (Start: 26 @29861 has 1 MA's), (40, 29747),

Gene: JetBlade_43 Start: 29553, Stop: 29320, Start Num: 19
Candidate Starts for JetBlade_43:
(1, 29838), (10, 29640), (Start: 19 @29553 has 155 MA's), (Start: 26 @29502 has 1 MA's), (31,
29460), (37, 29403), (41, 29358), (42, 29346), (43, 29337),

Gene: JewelBug_46 Start: 27932, Stop: 27714, Start Num: 18
Candidate Starts for JewelBug_46:
(Start: 18 @27932 has 155 MA's), (Start: 26 @27878 has 1 MA's), (33, 27818), (39, 27767), (40,
27764),

Gene: JoongJeon_42 Start: 29556, Stop: 29323, Start Num: 19
Candidate Starts for JoongJeon_42:
(10, 29643), (Start: 19 @29556 has 155 MA's), (Start: 26 @29505 has 1 MA's), (31, 29463), (37,
29406), (41, 29361), (42, 29349), (43, 29340),

Gene: Jordennis_44 Start: 27771, Stop: 27553, Start Num: 18

Candidate Starts for Jordennis_44:

(Start: 18 @27771 has 155 MA's), (Start: 26 @27717 has 1 MA's), (33, 27657), (39, 27606), (40, 27603),

Gene: Joselito_42 Start: 28639, Stop: 28421, Start Num: 18

Candidate Starts for Joselito_42:

(Start: 18 @28639 has 155 MA's), (20, 28624), (Start: 26 @28585 has 1 MA's), (33, 28525), (34, 28519), (39, 28474),

Gene: JoshKayV_45 Start: 29974, Stop: 29756, Start Num: 18

Candidate Starts for JoshKayV_45:

(Start: 18 @29974 has 155 MA's), (Start: 26 @29920 has 1 MA's), (40, 29806),

Gene: Journey13_38 Start: 28092, Stop: 27874, Start Num: 18

Candidate Starts for Journey13_38:

(7, 28248), (Start: 18 @28092 has 155 MA's), (Start: 26 @28038 has 1 MA's), (33, 27978),

Gene: Jsquared_42 Start: 28494, Stop: 28276, Start Num: 18

Candidate Starts for Jsquared_42:

(Start: 18 @28494 has 155 MA's), (Start: 25 @28443 has 1 MA's), (Start: 26 @28440 has 1 MA's), (40, 28326),

Gene: KFPoly_42 Start: 29553, Stop: 29320, Start Num: 19

Candidate Starts for KFPoly_42:

(1, 29838), (10, 29640), (Start: 19 @29553 has 155 MA's), (Start: 26 @29502 has 1 MA's), (31, 29460), (37, 29403), (41, 29358), (42, 29346), (43, 29337),

Gene: Kalpine_43 Start: 30155, Stop: 29934, Start Num: 18

Candidate Starts for Kalpine_43:

(Start: 18 @30155 has 155 MA's), (Start: 21 @30137 has 3 MA's), (Start: 26 @30101 has 1 MA's), (33, 30041), (40, 29984),

Gene: Kamy_43 Start: 29558, Stop: 29325, Start Num: 19

Candidate Starts for Kamy_43:

(Start: 19 @29558 has 155 MA's), (Start: 26 @29507 has 1 MA's), (31, 29465), (37, 29408), (41, 29363), (42, 29351), (43, 29342),

Gene: Katalie136_42 Start: 29505, Stop: 29278, Start Num: 19

Candidate Starts for Katalie136_42:

(2, 29790), (10, 29595), (Start: 19 @29505 has 155 MA's), (Start: 26 @29454 has 1 MA's), (31, 29412), (37, 29355), (42, 29298), (43, 29289),

Gene: Kazan_45 Start: 27769, Stop: 27551, Start Num: 18

Candidate Starts for Kazan_45:

(Start: 18 @27769 has 155 MA's), (Start: 26 @27715 has 1 MA's), (33, 27655), (39, 27604), (40, 27601),

Gene: Kerberos_45 Start: 29179, Stop: 28973, Start Num: 18

Candidate Starts for Kerberos_45:

(Start: 18 @29179 has 155 MA's), (Start: 21 @29161 has 3 MA's), (Start: 26 @29122 has 1 MA's),

Gene: Keziacharles14_43 Start: 30333, Stop: 30103, Start Num: 17
Candidate Starts for Keziacharles14_43:
(Start: 17 @30333 has 34 MA's), (24, 30297), (31, 30240), (35, 30198), (37, 30183), (40, 30153), (42, 30126), (43, 30117),

Gene: KingCyrus_46 Start: 31385, Stop: 31164, Start Num: 18
Candidate Starts for KingCyrus_46:
(Start: 18 @31385 has 155 MA's), (Start: 26 @31331 has 1 MA's),

Gene: Kingmustik0402_43 Start: 29548, Stop: 29315, Start Num: 19
Candidate Starts for Kingmustik0402_43:
(1, 29833), (10, 29635), (Start: 19 @29548 has 155 MA's), (Start: 26 @29497 has 1 MA's), (31, 29455), (37, 29398), (41, 29353), (42, 29341), (43, 29332),

Gene: Kipper29_44 Start: 27782, Stop: 27564, Start Num: 18
Candidate Starts for Kipper29_44:
(Start: 18 @27782 has 155 MA's), (Start: 26 @27728 has 1 MA's), (33, 27668), (39, 27617), (40, 27614),

Gene: KittenMittens_39 Start: 28377, Stop: 28147, Start Num: 19
Candidate Starts for KittenMittens_39:
(Start: 19 @28377 has 155 MA's), (20, 28365), (Start: 26 @28326 has 1 MA's), (31, 28284), (34, 28248), (43, 28161),

Gene: Koduck_42 Start: 28297, Stop: 28079, Start Num: 18
Candidate Starts for Koduck_42:
(5, 28489), (Start: 18 @28297 has 155 MA's), (Start: 26 @28243 has 1 MA's), (39, 28132), (40, 28129),

Gene: Koko_46 Start: 28505, Stop: 28302, Start Num: 18
Candidate Starts for Koko_46:
(Start: 18 @28505 has 155 MA's), (Start: 26 @28451 has 1 MA's), (33, 28391),

Gene: Koreni_42 Start: 29237, Stop: 29004, Start Num: 19
Candidate Starts for Koreni_42:
(Start: 19 @29237 has 155 MA's), (Start: 26 @29186 has 1 MA's), (31, 29144), (37, 29087), (42, 29030), (43, 29021),

Gene: Kratak_43 Start: 29695, Stop: 29465, Start Num: 19
Candidate Starts for Kratak_43:
(1, 29983), (10, 29785), (Start: 19 @29695 has 155 MA's), (Start: 26 @29644 has 1 MA's), (31, 29602), (37, 29545), (42, 29488), (43, 29479),

Gene: Kremtemulon_41 Start: 29510, Stop: 29277, Start Num: 19
Candidate Starts for Kremtemulon_41:
(1, 29795), (10, 29597), (Start: 19 @29510 has 155 MA's), (Start: 26 @29459 has 1 MA's), (31, 29417), (37, 29360), (41, 29315), (42, 29303), (43, 29294),

Gene: Kristoff_42 Start: 29480, Stop: 29247, Start Num: 19
Candidate Starts for Kristoff_42:
(Start: 19 @29480 has 155 MA's), (31, 29387), (37, 29330), (43, 29264),

Gene: Kyee_43 Start: 29554, Stop: 29321, Start Num: 19

Candidate Starts for Kye_43:

(Start: 19 @29554 has 155 MA's), (Start: 26 @29503 has 1 MA's), (31, 29461), (37, 29404), (41, 29359), (42, 29347), (43, 29338),

Gene: L5_42 Start: 28266, Stop: 28048, Start Num: 18

Candidate Starts for L5_42:

(5, 28458), (Start: 18 @28266 has 155 MA's), (Start: 26 @28212 has 1 MA's), (39, 28101), (40, 28098),

Gene: LHTSCC_45 Start: 29978, Stop: 29748, Start Num: 19

Candidate Starts for LHTSCC_45:

(2, 30263), (10, 30068), (Start: 19 @29978 has 155 MA's), (Start: 26 @29927 has 1 MA's), (31, 29885), (37, 29828), (41, 29783), (42, 29771),

Gene: LadyBird_46 Start: 29919, Stop: 29698, Start Num: 18

Candidate Starts for LadyBird_46:

(Start: 18 @29919 has 155 MA's), (Start: 26 @29865 has 1 MA's), (33, 29805), (40, 29748),

Gene: Landor_43 Start: 30717, Stop: 30496, Start Num: 18

Candidate Starts for Landor_43:

(Start: 18 @30717 has 155 MA's), (20, 30702), (Start: 26 @30663 has 1 MA's),

Gene: LappelDuVide_42 Start: 29555, Stop: 29322, Start Num: 19

Candidate Starts for LappelDuVide_42:

(Start: 19 @29555 has 155 MA's), (Start: 26 @29504 has 1 MA's), (31, 29462), (37, 29405), (41, 29360), (42, 29348), (43, 29339),

Gene: Larenn_43 Start: 29776, Stop: 29555, Start Num: 18

Candidate Starts for Larenn_43:

(Start: 18 @29776 has 155 MA's), (Start: 21 @29758 has 3 MA's), (Start: 26 @29722 has 1 MA's), (30, 29692), (33, 29662), (40, 29605),

Gene: Lemur_43 Start: 29553, Stop: 29320, Start Num: 19

Candidate Starts for Lemur_43:

(Start: 19 @29553 has 155 MA's), (Start: 26 @29502 has 1 MA's), (31, 29460), (37, 29403), (42, 29346), (43, 29337),

Gene: LeoAvram_43 Start: 29556, Stop: 29323, Start Num: 19

Candidate Starts for LeoAvram_43:

(Start: 19 @29556 has 155 MA's), (Start: 26 @29505 has 1 MA's), (31, 29463), (37, 29406), (42, 29349), (43, 29340),

Gene: Leogania_43 Start: 30593, Stop: 30372, Start Num: 18

Candidate Starts for Leogania_43:

(Start: 18 @30593 has 155 MA's), (Start: 21 @30575 has 3 MA's), (Start: 26 @30539 has 1 MA's), (33, 30479), (40, 30422),

Gene: Leviathan_45 Start: 29971, Stop: 29753, Start Num: 18

Candidate Starts for Leviathan_45:

(3, 30199), (11, 30046), (Start: 14 @29995 has 4 MA's), (Start: 18 @29971 has 155 MA's), (Start: 21 @29953 has 3 MA's), (Start: 26 @29917 has 1 MA's), (40, 29803),

Gene: LilTurb_44 Start: 29804, Stop: 29586, Start Num: 18

Candidate Starts for LilTurb_44:

(3, 30032), (11, 29879), (Start: 14 @29828 has 4 MA's), (Start: 18 @29804 has 155 MA's), (Start: 21 @29786 has 3 MA's), (Start: 26 @29750 has 1 MA's), (40, 29636),

Gene: Lilbunny_42 Start: 27558, Stop: 27340, Start Num: 18

Candidate Starts for Lilbunny_42:

(Start: 18 @27558 has 155 MA's), (Start: 26 @27504 has 1 MA's), (33, 27444), (39, 27393), (40, 27390),

Gene: LittleB_43 Start: 29557, Stop: 29324, Start Num: 19

Candidate Starts for LittleB_43:

(Start: 19 @29557 has 155 MA's), (Start: 26 @29506 has 1 MA's), (31, 29464), (37, 29407), (41, 29362), (42, 29350), (43, 29341),

Gene: LittleGuy_43 Start: 29455, Stop: 29222, Start Num: 19

Candidate Starts for LittleGuy_43:

(1, 29740), (10, 29542), (Start: 19 @29455 has 155 MA's), (Start: 26 @29404 has 1 MA's), (31, 29362), (37, 29305), (41, 29260), (42, 29248), (43, 29239),

Gene: LochMonster_44 Start: 29792, Stop: 29562, Start Num: 19

Candidate Starts for LochMonster_44:

(1, 30080), (10, 29882), (Start: 19 @29792 has 155 MA's), (Start: 26 @29741 has 1 MA's), (31, 29699), (37, 29642), (42, 29585), (43, 29576),

Gene: Lokk_44 Start: 30097, Stop: 29876, Start Num: 18

Candidate Starts for Lokk_44:

(Start: 18 @30097 has 155 MA's), (Start: 26 @30043 has 1 MA's), (39, 29929), (40, 29926),

Gene: LoneWolf_44 Start: 29477, Stop: 29241, Start Num: 17

Candidate Starts for LoneWolf_44:

(Start: 17 @29477 has 34 MA's), (31, 29384), (37, 29327), (42, 29270),

Gene: Lorenzo_43 Start: 29556, Stop: 29323, Start Num: 19

Candidate Starts for Lorenzo_43:

(Start: 19 @29556 has 155 MA's), (Start: 26 @29505 has 1 MA's), (31, 29463), (37, 29406), (41, 29361), (42, 29349), (43, 29340),

Gene: Loser_45 Start: 30461, Stop: 30219, Start Num: 14

Candidate Starts for Loser_45:

(Start: 14 @30461 has 4 MA's), (Start: 18 @30437 has 155 MA's), (20, 30422), (Start: 21 @30419 has 3 MA's), (24, 30398), (39, 30272), (40, 30269), (42, 30242),

Gene: Luchador_48 Start: 31613, Stop: 31389, Start Num: 19

Candidate Starts for Luchador_48:

(Start: 19 @31613 has 155 MA's), (Start: 25 @31565 has 1 MA's), (Start: 26 @31562 has 1 MA's), (29, 31541), (37, 31469), (41, 31424), (43, 31403), (44, 31400),

Gene: Lucivia_42 Start: 28688, Stop: 28470, Start Num: 18

Candidate Starts for Lucivia_42:

(Start: 18 @28688 has 155 MA's), (20, 28673), (Start: 26 @28634 has 1 MA's), (33, 28574), (34, 28568), (39, 28523),

Gene: Lucyedi_44 Start: 29106, Stop: 28900, Start Num: 18

Candidate Starts for Lucyedi_44:

(Start: 18 @29106 has 155 MA's), (20, 29091), (39, 28953), (40, 28950),

Gene: Lunsford_44 Start: 29553, Stop: 29320, Start Num: 19

Candidate Starts for Lunsford_44:

(10, 29640), (Start: 19 @29553 has 155 MA's), (Start: 26 @29502 has 1 MA's), (31, 29460), (37, 29403), (41, 29358), (42, 29346), (43, 29337),

Gene: MaCh_42 Start: 28626, Stop: 28408, Start Num: 18

Candidate Starts for MaCh_42:

(Start: 18 @28626 has 155 MA's), (20, 28611), (Start: 26 @28572 has 1 MA's), (33, 28512), (34, 28506), (39, 28461),

Gene: Mabel_42 Start: 28611, Stop: 28393, Start Num: 18

Candidate Starts for Mabel_42:

(Start: 18 @28611 has 155 MA's), (20, 28596), (Start: 26 @28557 has 1 MA's), (33, 28497), (34, 28491), (39, 28446),

Gene: Malec_44 Start: 30340, Stop: 30119, Start Num: 18

Candidate Starts for Malec_44:

(Start: 18 @30340 has 155 MA's), (Start: 21 @30322 has 3 MA's), (Start: 26 @30286 has 1 MA's), (30, 30256), (33, 30226), (40, 30169),

Gene: Maminiaina_43 Start: 29500, Stop: 29270, Start Num: 17

Candidate Starts for Maminiaina_43:

(Start: 17 @29500 has 34 MA's), (Start: 25 @29452 has 1 MA's), (31, 29407), (35, 29365), (37, 29350), (41, 29305), (42, 29293), (43, 29284),

Gene: Maverick_43 Start: 29556, Stop: 29323, Start Num: 19

Candidate Starts for Maverick_43:

(Start: 19 @29556 has 155 MA's), (Start: 26 @29505 has 1 MA's), (31, 29463), (37, 29406), (42, 29349), (43, 29340),

Gene: Maxo_44 Start: 29558, Stop: 29325, Start Num: 19

Candidate Starts for Maxo_44:

(Start: 19 @29558 has 155 MA's), (Start: 26 @29507 has 1 MA's), (31, 29465), (37, 29408), (41, 29363), (42, 29351), (43, 29342),

Gene: Mazhar510_43 Start: 29557, Stop: 29324, Start Num: 19

Candidate Starts for Mazhar510_43:

(Start: 19 @29557 has 155 MA's), (Start: 26 @29506 has 1 MA's), (31, 29464), (37, 29407), (42, 29350), (43, 29341),

Gene: McFly_44 Start: 27763, Stop: 27545, Start Num: 18

Candidate Starts for McFly_44:

(Start: 18 @27763 has 155 MA's), (Start: 26 @27709 has 1 MA's), (33, 27649), (39, 27598), (40, 27595),

Gene: Medusa_43 Start: 29555, Stop: 29322, Start Num: 19

Candidate Starts for Medusa_43:

(Start: 19 @29555 has 155 MA's), (Start: 26 @29504 has 1 MA's), (31, 29462), (37, 29405), (41, 29360), (42, 29348), (43, 29339),

Gene: MeeZee_43 Start: 29556, Stop: 29323, Start Num: 19

Candidate Starts for MeeZee_43:

(1, 29841), (10, 29643), (Start: 19 @29556 has 155 MA's), (20, 29544), (Start: 26 @29505 has 1 MA's), (31, 29463), (37, 29406), (42, 29349), (43, 29340),

Gene: Melvin_45 Start: 29554, Stop: 29321, Start Num: 19

Candidate Starts for Melvin_45:

(1, 29839), (10, 29641), (Start: 19 @29554 has 155 MA's), (Start: 26 @29503 has 1 MA's), (28, 29491), (31, 29461), (37, 29404), (41, 29359), (42, 29347), (43, 29338),

Gene: MiculUcigas_43 Start: 29442, Stop: 29221, Start Num: 18

Candidate Starts for MiculUcigas_43:

(Start: 18 @29442 has 155 MA's), (Start: 21 @29424 has 3 MA's), (Start: 26 @29388 has 1 MA's), (33, 29328), (40, 29271),

Gene: Miko_42 Start: 29994, Stop: 29773, Start Num: 18

Candidate Starts for Miko_42:

(Start: 18 @29994 has 155 MA's), (Start: 26 @29940 has 1 MA's), (39, 29826), (40, 29823),

Gene: Millski_42 Start: 29560, Stop: 29327, Start Num: 19

Candidate Starts for Millski_42:

(10, 29647), (Start: 19 @29560 has 155 MA's), (Start: 26 @29509 has 1 MA's), (31, 29467), (37, 29410), (41, 29365), (42, 29353), (43, 29344),

Gene: Miramae_42 Start: 29693, Stop: 29463, Start Num: 19

Candidate Starts for Miramae_42:

(2, 29978), (10, 29783), (Start: 19 @29693 has 155 MA's), (Start: 26 @29642 has 1 MA's), (31, 29600), (37, 29543), (41, 29498), (42, 29486), (43, 29477),

Gene: MissWhite_41 Start: 27754, Stop: 27536, Start Num: 18

Candidate Starts for MissWhite_41:

(6, 27928), (Start: 18 @27754 has 155 MA's), (22, 27733), (Start: 26 @27700 has 1 MA's), (33, 27640),

Gene: Morpher26_42 Start: 29526, Stop: 29299, Start Num: 19

Candidate Starts for Morpher26_42:

(2, 29811), (10, 29616), (Start: 19 @29526 has 155 MA's), (Start: 26 @29475 has 1 MA's), (31, 29433), (37, 29376), (42, 29319), (43, 29310),

Gene: Morrow_44 Start: 29562, Stop: 29329, Start Num: 19

Candidate Starts for Morrow_44:

(Start: 19 @29562 has 155 MA's), (Start: 26 @29511 has 1 MA's), (31, 29469), (37, 29412), (42, 29355), (43, 29346),

Gene: Mulciber_41 Start: 28190, Stop: 27972, Start Num: 18

Candidate Starts for Mulciber_41:

(Start: 18 @28190 has 155 MA's), (20, 28175), (Start: 26 @28136 has 1 MA's), (33, 28076), (34, 28070), (39, 28025),

Gene: Munch_42 Start: 28639, Stop: 28421, Start Num: 18

Candidate Starts for Munch_42:

(Start: 18 @28639 has 155 MA's), (20, 28624), (Start: 26 @28585 has 1 MA's), (33, 28525), (34, 28519), (39, 28474),

Gene: Mundrea_42 Start: 29513, Stop: 29283, Start Num: 19

Candidate Starts for Mundrea_42:

(2, 29798), (10, 29603), (Start: 19 @29513 has 155 MA's), (Start: 26 @29462 has 1 MA's), (31, 29420), (37, 29363), (42, 29306), (43, 29297),

Gene: Myxus_44 Start: 29659, Stop: 29420, Start Num: 17

Candidate Starts for Myxus_44:

(Start: 17 @29659 has 34 MA's), (Start: 25 @29611 has 1 MA's), (28, 29596), (31, 29566), (34, 29530), (37, 29509), (42, 29452),

Gene: NaSiaTalie_43 Start: 29539, Stop: 29318, Start Num: 18

Candidate Starts for NaSiaTalie_43:

(Start: 18 @29539 has 155 MA's), (Start: 21 @29521 has 3 MA's), (Start: 26 @29485 has 1 MA's), (33, 29425), (40, 29368),

Gene: Naji_45 Start: 29179, Stop: 28973, Start Num: 18

Candidate Starts for Naji_45:

(Start: 18 @29179 has 155 MA's), (Start: 21 @29161 has 3 MA's), (Start: 26 @29122 has 1 MA's),

Gene: Nebs_44 Start: 29556, Stop: 29323, Start Num: 19

Candidate Starts for Nebs_44:

(Start: 19 @29556 has 155 MA's), (Start: 26 @29505 has 1 MA's), (31, 29463), (37, 29406), (42, 29349), (43, 29340),

Gene: Neeharika16_44 Start: 27774, Stop: 27556, Start Num: 18

Candidate Starts for Neeharika16_44:

(Start: 18 @27774 has 155 MA's), (Start: 26 @27720 has 1 MA's), (33, 27660), (39, 27609), (40, 27606),

Gene: Nemo27_43 Start: 29555, Stop: 29322, Start Num: 19

Candidate Starts for Nemo27_43:

(Start: 19 @29555 has 155 MA's), (Start: 26 @29504 has 1 MA's), (31, 29462), (37, 29405), (42, 29348), (43, 29339),

Gene: Newrala_44 Start: 27774, Stop: 27556, Start Num: 18

Candidate Starts for Newrala_44:

(Start: 18 @27774 has 155 MA's), (Start: 26 @27720 has 1 MA's), (33, 27660), (39, 27609), (40, 27606),

Gene: NicoleTera_44 Start: 30200, Stop: 29982, Start Num: 18

Candidate Starts for NicoleTera_44:

(Start: 18 @30200 has 155 MA's), (Start: 26 @30146 has 1 MA's), (39, 30035), (40, 30032),

Gene: Noelle_43 Start: 29818, Stop: 29588, Start Num: 19

Candidate Starts for Noelle_43:

(Start: 19 @29818 has 155 MA's), (31, 29725), (37, 29668), (41, 29623), (42, 29611), (43, 29602),

Gene: NorthStar_42 Start: 29556, Stop: 29323, Start Num: 19

Candidate Starts for NorthStar_42:

(Start: 19 @29556 has 155 MA's), (Start: 26 @29505 has 1 MA's), (31, 29463), (37, 29406), (41, 29361), (42, 29349), (43, 29340),

Gene: NotAPhaseMom_43 Start: 29560, Stop: 29327, Start Num: 19
Candidate Starts for NotAPhaseMom_43:
(Start: 19 @29560 has 155 MA's), (Start: 26 @29509 has 1 MA's), (31, 29467), (37, 29410), (42, 29353), (43, 29344),

Gene: NothingSpecial_42 Start: 30204, Stop: 29983, Start Num: 18
Candidate Starts for NothingSpecial_42:
(Start: 18 @30204 has 155 MA's), (20, 30189), (Start: 26 @30150 has 1 MA's), (40, 30033),

Gene: Nyxis_43 Start: 29449, Stop: 29216, Start Num: 19
Candidate Starts for Nyxis_43:
(10, 29536), (Start: 19 @29449 has 155 MA's), (Start: 26 @29398 has 1 MA's), (31, 29356), (37, 29299), (41, 29254), (42, 29242), (43, 29233),

Gene: OKCentral2016_41 Start: 28815, Stop: 28582, Start Num: 19
Candidate Starts for OKCentral2016_41:
(Start: 19 @28815 has 155 MA's), (31, 28722), (37, 28665), (41, 28620), (43, 28599),

Gene: OKaNui_43 Start: 29609, Stop: 29376, Start Num: 19
Candidate Starts for OKaNui_43:
(10, 29696), (Start: 19 @29609 has 155 MA's), (Start: 26 @29558 has 1 MA's), (31, 29516), (37, 29459), (41, 29414), (42, 29402), (43, 29393),

Gene: Obama12_44 Start: 29980, Stop: 29750, Start Num: 19
Candidate Starts for Obama12_44:
(2, 30265), (10, 30070), (Start: 19 @29980 has 155 MA's), (Start: 26 @29929 has 1 MA's), (31, 29887), (37, 29830), (41, 29785), (42, 29773),

Gene: Odin_42 Start: 28121, Stop: 27957, Start Num: 26
Candidate Starts for Odin_42:
(Start: 18 @28175 has 155 MA's), (Start: 26 @28121 has 1 MA's), (33, 28061), (37, 28034), (39, 28010),

Gene: Ohfah_44 Start: 29556, Stop: 29323, Start Num: 19
Candidate Starts for Ohfah_44:
(Start: 19 @29556 has 155 MA's), (Start: 26 @29505 has 1 MA's), (31, 29463), (37, 29406), (42, 29349), (43, 29340),

Gene: Orange_41 Start: 28188, Stop: 27970, Start Num: 18
Candidate Starts for Orange_41:
(Start: 18 @28188 has 155 MA's), (20, 28173), (Start: 26 @28134 has 1 MA's), (33, 28074), (34, 28068), (39, 28023),

Gene: PackMan_43 Start: 29611, Stop: 29420, Start Num: 25
Candidate Starts for PackMan_43:
(Start: 17 @29659 has 34 MA's), (Start: 25 @29611 has 1 MA's), (28, 29596), (31, 29566), (34, 29530), (37, 29509), (42, 29452),

Gene: PainterBoy_44 Start: 29042, Stop: 28836, Start Num: 18
Candidate Starts for PainterBoy_44:
(Start: 18 @29042 has 155 MA's), (20, 29027), (39, 28889), (40, 28886),

Gene: Palestino_42 Start: 29556, Stop: 29323, Start Num: 19

Candidate Starts for Palestino_42:

(10, 29643), (Start: 19 @29556 has 155 MA's), (Start: 26 @29505 has 1 MA's), (31, 29463), (37, 29406), (42, 29349), (43, 29340),

Gene: PeaceMeal1_40 Start: 28378, Stop: 28148, Start Num: 19

Candidate Starts for PeaceMeal1_40:

(Start: 19 @28378 has 155 MA's), (20, 28366), (Start: 26 @28327 has 1 MA's), (31, 28285), (34, 28249), (43, 28162),

Gene: Peaches_43 Start: 29555, Stop: 29322, Start Num: 19

Candidate Starts for Peaches_43:

(Start: 19 @29555 has 155 MA's), (Start: 26 @29504 has 1 MA's), (31, 29462), (37, 29405), (41, 29360), (42, 29348), (43, 29339),

Gene: Perplexer_42 Start: 29502, Stop: 29275, Start Num: 19

Candidate Starts for Perplexer_42:

(2, 29787), (10, 29592), (Start: 19 @29502 has 155 MA's), (Start: 26 @29451 has 1 MA's), (31, 29409), (37, 29352), (42, 29295), (43, 29286),

Gene: PeterPeter_43 Start: 29556, Stop: 29323, Start Num: 19

Candidate Starts for PeterPeter_43:

(1, 29841), (10, 29643), (Start: 19 @29556 has 155 MA's), (Start: 26 @29505 has 1 MA's), (31, 29463), (37, 29406), (41, 29361), (42, 29349), (43, 29340),

Gene: Petersenfast_40 Start: 28195, Stop: 27977, Start Num: 18

Candidate Starts for Petersenfast_40:

(Start: 18 @28195 has 155 MA's), (20, 28180), (Start: 26 @28141 has 1 MA's), (33, 28081), (34, 28075), (39, 28030),

Gene: PetiteSangsue_42 Start: 29505, Stop: 29278, Start Num: 19

Candidate Starts for PetiteSangsue_42:

(2, 29790), (10, 29595), (Start: 19 @29505 has 155 MA's), (Start: 26 @29454 has 1 MA's), (31, 29412), (37, 29355), (42, 29298), (43, 29289),

Gene: Ph8s_45 Start: 28708, Stop: 28490, Start Num: 18

Candidate Starts for Ph8s_45:

(Start: 18 @28708 has 155 MA's), (Start: 26 @28654 has 1 MA's), (33, 28594), (39, 28543),

Gene: Phacado_43 Start: 29555, Stop: 29322, Start Num: 19

Candidate Starts for Phacado_43:

(Start: 19 @29555 has 155 MA's), (Start: 26 @29504 has 1 MA's), (31, 29462), (37, 29405), (42, 29348), (43, 29339),

Gene: Phaded_45 Start: 30804, Stop: 30583, Start Num: 18

Candidate Starts for Phaded_45:

(Start: 18 @30804 has 155 MA's), (20, 30789), (Start: 26 @30750 has 1 MA's),

Gene: Phaeder_44 Start: 29659, Stop: 29420, Start Num: 17

Candidate Starts for Phaeder_44:

(Start: 17 @29659 has 34 MA's), (Start: 25 @29611 has 1 MA's), (28, 29596), (31, 29566), (34, 29530), (37, 29509), (42, 29452),

Gene: Pharaoh_38 Start: 29104, Stop: 28865, Start Num: 17

Candidate Starts for Pharaoh_38:

(Start: 17 @29104 has 34 MA's), (23, 29068), (31, 29008), (35, 28966), (37, 28951), (40, 28921), (42, 28894),

Gene: Phelipe_44 Start: 29556, Stop: 29323, Start Num: 19

Candidate Starts for Phelipe_44:

(Start: 19 @29556 has 155 MA's), (Start: 26 @29505 has 1 MA's), (31, 29463), (37, 29406), (42, 29349), (43, 29340),

Gene: Phighter1804_43 Start: 29598, Stop: 29365, Start Num: 19

Candidate Starts for Phighter1804_43:

(1, 29886), (10, 29688), (Start: 19 @29598 has 155 MA's), (Start: 26 @29547 has 1 MA's), (31, 29505), (37, 29448), (41, 29403), (42, 29391), (43, 29382),

Gene: Phonnegut_44 Start: 29714, Stop: 29475, Start Num: 17

Candidate Starts for Phonnegut_44:

(Start: 17 @29714 has 34 MA's), (Start: 25 @29666 has 1 MA's), (28, 29651), (31, 29621), (34, 29585), (37, 29564), (42, 29507),

Gene: Phontbonne_43 Start: 29450, Stop: 29217, Start Num: 19

Candidate Starts for Phontbonne_43:

(10, 29537), (Start: 19 @29450 has 155 MA's), (20, 29438), (Start: 26 @29399 has 1 MA's), (31, 29357), (37, 29300), (41, 29255), (42, 29243), (43, 29234),

Gene: Pioneer_44 Start: 29714, Stop: 29475, Start Num: 17

Candidate Starts for Pioneer_44:

(Start: 17 @29714 has 34 MA's), (Start: 25 @29666 has 1 MA's), (28, 29651), (31, 29621), (34, 29585), (37, 29564), (42, 29507),

Gene: Pipcraft_41 Start: 29556, Stop: 29323, Start Num: 19

Candidate Starts for Pipcraft_41:

(Start: 19 @29556 has 155 MA's), (Start: 26 @29505 has 1 MA's), (31, 29463), (37, 29406), (42, 29349),

Gene: Piro94_43 Start: 29904, Stop: 29683, Start Num: 18

Candidate Starts for Piro94_43:

(Start: 18 @29904 has 155 MA's), (Start: 21 @29886 has 3 MA's), (Start: 26 @29850 has 1 MA's), (40, 29733),

Gene: Pmask_44 Start: 27775, Stop: 27557, Start Num: 18

Candidate Starts for Pmask_44:

(Start: 18 @27775 has 155 MA's), (Start: 26 @27721 has 1 MA's), (33, 27661), (39, 27610), (40, 27607),

Gene: Polymorphads_44 Start: 29549, Stop: 29316, Start Num: 19

Candidate Starts for Polymorphads_44:

(Start: 19 @29549 has 155 MA's), (Start: 26 @29498 has 1 MA's), (31, 29456), (37, 29399), (42, 29342), (43, 29333),

Gene: Pomar16_45 Start: 29220, Stop: 29014, Start Num: 18

Candidate Starts for Pomar16_45:

(Start: 18 @29220 has 155 MA's), (Start: 21 @29202 has 3 MA's), (Start: 26 @29163 has 1 MA's),

Gene: Poompha_41 Start: 28376, Stop: 28146, Start Num: 19

Candidate Starts for Poompha_41:

(Start: 19 @28376 has 155 MA's), (20, 28364), (Start: 26 @28325 has 1 MA's), (31, 28283), (34, 28247), (43, 28160),

Gene: Power_42 Start: 29500, Stop: 29282, Start Num: 18

Candidate Starts for Power_42:

(11, 29575), (Start: 14 @29524 has 4 MA's), (Start: 18 @29500 has 155 MA's), (Start: 21 @29482 has 3 MA's), (Start: 26 @29446 has 1 MA's), (39, 29335), (40, 29332),

Gene: Priamo_46 Start: 28075, Stop: 27857, Start Num: 18

Candidate Starts for Priamo_46:

(Start: 18 @28075 has 155 MA's), (Start: 26 @28021 has 1 MA's), (33, 27961), (39, 27910), (40, 27907),

Gene: Priya_44 Start: 29726, Stop: 29487, Start Num: 17

Candidate Starts for Priya_44:

(Start: 17 @29726 has 34 MA's), (Start: 25 @29678 has 1 MA's), (28, 29663), (31, 29633), (34, 29597), (37, 29576), (42, 29519),

Gene: Pukovnik_42 Start: 30292, Stop: 30071, Start Num: 18

Candidate Starts for Pukovnik_42:

(Start: 18 @30292 has 155 MA's), (20, 30277), (Start: 26 @30238 has 1 MA's), (40, 30121),

Gene: Pumbaa_43 Start: 29501, Stop: 29268, Start Num: 19

Candidate Starts for Pumbaa_43:

(10, 29588), (Start: 19 @29501 has 155 MA's), (Start: 26 @29450 has 1 MA's), (31, 29408), (37, 29351), (41, 29306), (42, 29294), (43, 29285),

Gene: Qobbit_44 Start: 29688, Stop: 29449, Start Num: 17

Candidate Starts for Qobbit_44:

(Start: 17 @29688 has 34 MA's), (Start: 25 @29640 has 1 MA's), (28, 29625), (31, 29595), (34, 29559), (37, 29538), (42, 29481),

Gene: QueenB2_43 Start: 29571, Stop: 29353, Start Num: 18

Candidate Starts for QueenB2_43:

(3, 29799), (11, 29646), (Start: 14 @29595 has 4 MA's), (Start: 18 @29571 has 155 MA's), (Start: 21 @29553 has 3 MA's), (Start: 26 @29517 has 1 MA's), (39, 29406), (40, 29403),

Gene: QueenBeesly_43 Start: 29447, Stop: 29229, Start Num: 18

Candidate Starts for QueenBeesly_43:

(11, 29522), (Start: 14 @29471 has 4 MA's), (Start: 18 @29447 has 155 MA's), (Start: 21 @29429 has 3 MA's), (Start: 26 @29393 has 1 MA's), (39, 29282), (40, 29279),

Gene: Rachaly_44 Start: 30171, Stop: 29950, Start Num: 18

Candidate Starts for Rachaly_44:

(Start: 18 @30171 has 155 MA's), (Start: 26 @30117 has 1 MA's), (39, 30003), (40, 30000),

Gene: Rahalelujah_42 Start: 28664, Stop: 28434, Start Num: 17

Candidate Starts for Rahalelujah_42:

(13, 28724), (Start: 17 @28664 has 34 MA's), (29, 28592), (31, 28571), (35, 28529), (37, 28514), (42, 28457), (43, 28448),

Gene: Rebeuca_42 Start: 29481, Stop: 29248, Start Num: 19
Candidate Starts for Rebeuca_42:
(Start: 19 @29481 has 155 MA's), (31, 29388), (37, 29331), (43, 29265),

Gene: RedRock_45 Start: 30674, Stop: 30432, Start Num: 14
Candidate Starts for RedRock_45:
(Start: 14 @30674 has 4 MA's), (Start: 18 @30650 has 155 MA's), (20, 30635), (Start: 21 @30632 has 3 MA's), (24, 30611), (39, 30485), (40, 30482), (42, 30455),

Gene: Relief_42 Start: 29556, Stop: 29323, Start Num: 19
Candidate Starts for Relief_42:
(10, 29643), (Start: 19 @29556 has 155 MA's), (Start: 26 @29505 has 1 MA's), (31, 29463), (37, 29406), (41, 29361), (42, 29349), (43, 29340),

Gene: Retro23_44 Start: 29855, Stop: 29637, Start Num: 18
Candidate Starts for Retro23_44:
(3, 30083), (11, 29930), (Start: 14 @29879 has 4 MA's), (Start: 18 @29855 has 155 MA's), (20, 29840), (Start: 26 @29801 has 1 MA's), (30, 29771), (39, 29690), (40, 29687),

Gene: RhynO_43 Start: 29283, Stop: 29050, Start Num: 19
Candidate Starts for RhynO_43:
(Start: 19 @29283 has 155 MA's), (31, 29190), (37, 29133), (43, 29067),

Gene: Rifter_46 Start: 27929, Stop: 27726, Start Num: 18
Candidate Starts for Rifter_46:
(Start: 18 @27929 has 155 MA's), (Start: 26 @27875 has 1 MA's), (33, 27815),

Gene: Roksolana_45 Start: 27811, Stop: 27593, Start Num: 18
Candidate Starts for Roksolana_45:
(Start: 18 @27811 has 155 MA's), (Start: 21 @27793 has 3 MA's), (Start: 26 @27757 has 1 MA's), (33, 27697), (39, 27646), (40, 27643),

Gene: Romney_43 Start: 29556, Stop: 29323, Start Num: 19
Candidate Starts for Romney_43:
(1, 29841), (10, 29643), (Start: 19 @29556 has 155 MA's), (Start: 26 @29505 has 1 MA's), (31, 29463), (37, 29406), (41, 29361), (42, 29349), (43, 29340),

Gene: Roosevelt_42 Start: 29558, Stop: 29325, Start Num: 19
Candidate Starts for Roosevelt_42:
(Start: 19 @29558 has 155 MA's), (Start: 26 @29507 has 1 MA's), (31, 29465), (37, 29408), (41, 29363), (42, 29351), (43, 29342),

Gene: Ruin_43 Start: 29552, Stop: 29319, Start Num: 19
Candidate Starts for Ruin_43:
(10, 29639), (Start: 19 @29552 has 155 MA's), (Start: 26 @29501 has 1 MA's), (31, 29459), (37, 29402), (42, 29345), (43, 29336),

Gene: Sabertooth_43 Start: 29555, Stop: 29322, Start Num: 19
Candidate Starts for Sabertooth_43:
(Start: 19 @29555 has 155 MA's), (Start: 26 @29504 has 1 MA's), (31, 29462), (37, 29405), (41, 29360), (42, 29348), (43, 29339),

Gene: Salz_41 Start: 28549, Stop: 28331, Start Num: 18

Candidate Starts for Salz_41:

(Start: 18 @28549 has 155 MA's), (20, 28534), (Start: 26 @28495 has 1 MA's), (33, 28435), (34, 28429), (39, 28384),

Gene: Scamp_43 Start: 29558, Stop: 29325, Start Num: 19

Candidate Starts for Scamp_43:

(Start: 19 @29558 has 155 MA's), (Start: 26 @29507 has 1 MA's), (31, 29465), (37, 29408), (41, 29363), (42, 29351), (43, 29342),

Gene: Scherzo_44 Start: 29903, Stop: 29664, Start Num: 17

Candidate Starts for Scherzo_44:

(Start: 17 @29903 has 34 MA's), (Start: 25 @29855 has 1 MA's), (28, 29840), (31, 29810), (34, 29774), (37, 29753), (42, 29696),

Gene: SemperFi_44 Start: 29715, Stop: 29497, Start Num: 18

Candidate Starts for SemperFi_44:

(11, 29790), (Start: 14 @29739 has 4 MA's), (Start: 18 @29715 has 155 MA's), (Start: 21 @29697 has 3 MA's), (Start: 26 @29661 has 1 MA's), (39, 29550), (40, 29547),

Gene: Serenity_43 Start: 28480, Stop: 28262, Start Num: 18

Candidate Starts for Serenity_43:

(15, 28495), (Start: 18 @28480 has 155 MA's), (Start: 26 @28426 has 1 MA's), (40, 28312),

Gene: Severus_40 Start: 28376, Stop: 28146, Start Num: 19

Candidate Starts for Severus_40:

(Start: 19 @28376 has 155 MA's), (20, 28364), (Start: 26 @28325 has 1 MA's), (31, 28283), (34, 28247), (43, 28160),

Gene: Shaka_43 Start: 29556, Stop: 29323, Start Num: 19

Candidate Starts for Shaka_43:

(1, 29841), (10, 29643), (Start: 19 @29556 has 155 MA's), (Start: 26 @29505 has 1 MA's), (31, 29463), (37, 29406), (41, 29361), (42, 29349), (43, 29340),

Gene: Sham4_41 Start: 28194, Stop: 27976, Start Num: 18

Candidate Starts for Sham4_41:

(Start: 18 @28194 has 155 MA's), (20, 28179), (Start: 26 @28140 has 1 MA's), (33, 28080), (34, 28074), (39, 28029),

Gene: SheaKeira_42 Start: 28970, Stop: 28740, Start Num: 17

Candidate Starts for SheaKeira_42:

(Start: 17 @28970 has 34 MA's), (24, 28934), (31, 28877), (37, 28820), (39, 28793), (42, 28763), (43, 28754),

Gene: SheldonCooper_45 Start: 29979, Stop: 29749, Start Num: 19

Candidate Starts for SheldonCooper_45:

(2, 30264), (10, 30069), (Start: 19 @29979 has 155 MA's), (Start: 26 @29928 has 1 MA's), (31, 29886), (37, 29829), (41, 29784), (42, 29772), (43, 29763),

Gene: Shygu2_42 Start: 29508, Stop: 29278, Start Num: 19

Candidate Starts for Shygu2_42:

(Start: 19 @29508 has 155 MA's), (Start: 26 @29457 has 1 MA's), (31, 29415), (37, 29358), (42, 29301), (43, 29292),

Gene: Skipitt_42 Start: 29553, Stop: 29320, Start Num: 19

Candidate Starts for Skipitt_42:

(10, 29640), (Start: 19 @29553 has 155 MA's), (Start: 26 @29502 has 1 MA's), (31, 29460), (37, 29403), (41, 29358), (42, 29346), (43, 29337),

Gene: Smeagan_46 Start: 30058, Stop: 29840, Start Num: 18

Candidate Starts for Smeagan_46:

(3, 30286), (11, 30133), (Start: 14 @30082 has 4 MA's), (Start: 18 @30058 has 155 MA's), (Start: 21 @30040 has 3 MA's), (Start: 26 @30004 has 1 MA's), (40, 29890),

Gene: SmellyB_44 Start: 27763, Stop: 27545, Start Num: 18

Candidate Starts for SmellyB_44:

(Start: 18 @27763 has 155 MA's), (Start: 26 @27709 has 1 MA's), (33, 27649), (39, 27598), (40, 27595),

Gene: SnapTap_43 Start: 29550, Stop: 29308, Start Num: 14

Candidate Starts for SnapTap_43:

(11, 29601), (Start: 14 @29550 has 4 MA's), (Start: 18 @29526 has 155 MA's), (Start: 21 @29508 has 3 MA's), (Start: 26 @29472 has 1 MA's), (39, 29361), (40, 29358),

Gene: Snape_41 Start: 28192, Stop: 27974, Start Num: 18

Candidate Starts for Snape_41:

(Start: 18 @28192 has 155 MA's), (20, 28177), (Start: 26 @28138 has 1 MA's), (33, 28078), (34, 28072), (39, 28027),

Gene: SororFago_46 Start: 30934, Stop: 30698, Start Num: 19

Candidate Starts for SororFago_46:

(Start: 19 @30934 has 155 MA's), (Start: 25 @30886 has 1 MA's), (29, 30862), (37, 30784), (41, 30739),

Gene: Sparxx_44 Start: 29551, Stop: 29318, Start Num: 19

Candidate Starts for Sparxx_44:

(Start: 19 @29551 has 155 MA's), (Start: 26 @29500 has 1 MA's), (31, 29458), (37, 29401), (42, 29344), (43, 29335),

Gene: Spino_42 Start: 29556, Stop: 29323, Start Num: 19

Candidate Starts for Spino_42:

(Start: 19 @29556 has 155 MA's), (Start: 26 @29505 has 1 MA's), (31, 29463), (37, 29406), (41, 29361), (42, 29349), (43, 29340),

Gene: Spouty_42 Start: 29725, Stop: 29486, Start Num: 17

Candidate Starts for Spouty_42:

(Start: 17 @29725 has 34 MA's), (Start: 25 @29677 has 1 MA's), (28, 29662), (31, 29632), (34, 29596), (37, 29575), (42, 29518),

Gene: StarStuff_45 Start: 29182, Stop: 28976, Start Num: 18

Candidate Starts for StarStuff_45:

(Start: 18 @29182 has 155 MA's), (Start: 21 @29164 has 3 MA's), (Start: 26 @29125 has 1 MA's),

Gene: Stasia_42 Start: 29425, Stop: 29192, Start Num: 19

Candidate Starts for Stasia_42:

(2, 29710), (10, 29515), (Start: 19 @29425 has 155 MA's), (Start: 26 @29374 has 1 MA's), (31, 29332), (35, 29290), (37, 29275), (42, 29218), (43, 29209),

Gene: Steamy_40 Start: 29085, Stop: 28846, Start Num: 17

Candidate Starts for Steamy_40:

(Start: 17 @29085 has 34 MA's), (23, 29049), (31, 28989), (37, 28932), (40, 28902), (42, 28875), (45, 28854),

Gene: Stink_43 Start: 29973, Stop: 29743, Start Num: 19

Candidate Starts for Stink_43:

(2, 30258), (10, 30063), (Start: 19 @29973 has 155 MA's), (Start: 26 @29922 has 1 MA's), (31, 29880), (37, 29823), (41, 29778), (42, 29766), (43, 29757),

Gene: SuperAwesome_44 Start: 27774, Stop: 27556, Start Num: 18

Candidate Starts for SuperAwesome_44:

(Start: 18 @27774 has 155 MA's), (Start: 26 @27720 has 1 MA's), (33, 27660), (39, 27609), (40, 27606),

Gene: SuperCallie99_44 Start: 27773, Stop: 27555, Start Num: 18

Candidate Starts for SuperCallie99_44:

(Start: 18 @27773 has 155 MA's), (Start: 26 @27719 has 1 MA's), (33, 27659), (39, 27608), (40, 27605),

Gene: Superchunk_42 Start: 28002, Stop: 27784, Start Num: 18

Candidate Starts for Superchunk_42:

(Start: 18 @28002 has 155 MA's), (Start: 26 @27948 has 1 MA's), (33, 27888), (39, 27837),

Gene: SweetiePie_43 Start: 29550, Stop: 29308, Start Num: 14

Candidate Starts for SweetiePie_43:

(11, 29601), (Start: 14 @29550 has 4 MA's), (Start: 18 @29526 has 155 MA's), (Start: 21 @29508 has 3 MA's), (Start: 26 @29472 has 1 MA's), (39, 29361), (40, 29358),

Gene: SwirlSquare_45 Start: 28039, Stop: 27821, Start Num: 18

Candidate Starts for SwirlSquare_45:

(Start: 18 @28039 has 155 MA's), (22, 28018), (Start: 26 @27985 has 1 MA's), (33, 27925), (39, 27874),

Gene: Taquarus_43 Start: 29559, Stop: 29326, Start Num: 19

Candidate Starts for Taquarus_43:

(Start: 19 @29559 has 155 MA's), (Start: 26 @29508 has 1 MA's), (31, 29466), (37, 29409), (41, 29364), (42, 29352), (43, 29343),

Gene: TarsusIV_41 Start: 29209, Stop: 28988, Start Num: 18

Candidate Starts for TarsusIV_41:

(Start: 18 @29209 has 155 MA's), (Start: 26 @29155 has 1 MA's), (33, 29095), (40, 29038),

Gene: Thanksgivukkah_42 Start: 29557, Stop: 29324, Start Num: 19

Candidate Starts for Thanksgivukkah_42:

(10, 29644), (Start: 19 @29557 has 155 MA's), (Start: 26 @29506 has 1 MA's), (31, 29464), (37, 29407), (41, 29362), (42, 29350), (43, 29341),

Gene: Timothy_42 Start: 28552, Stop: 28334, Start Num: 18

Candidate Starts for Timothy_42:

(Start: 18 @28552 has 155 MA's), (20, 28537), (Start: 26 @28498 has 1 MA's), (33, 28438), (34, 28432), (39, 28387),

Gene: TinaFeyge_43 Start: 29551, Stop: 29318, Start Num: 19

Candidate Starts for TinaFeyge_43:

(Start: 19 @29551 has 155 MA's), (Start: 26 @29500 has 1 MA's), (31, 29458), (37, 29401), (41, 29356), (42, 29344), (43, 29335),

Gene: TinyTimmy_41 Start: 28595, Stop: 28377, Start Num: 18

Candidate Starts for TinyTimmy_41:

(Start: 18 @28595 has 155 MA's), (20, 28580), (Start: 26 @28541 has 1 MA's), (33, 28481), (34, 28475), (39, 28430),

Gene: Tinybot_42 Start: 29586, Stop: 29353, Start Num: 19

Candidate Starts for Tinybot_42:

(10, 29673), (Start: 19 @29586 has 155 MA's), (Start: 26 @29535 has 1 MA's), (31, 29493), (37, 29436), (41, 29391), (42, 29379), (43, 29370),

Gene: TopsytheTRex_40 Start: 28535, Stop: 28317, Start Num: 18

Candidate Starts for TopsytheTRex_40:

(5, 28727), (Start: 18 @28535 has 155 MA's), (Start: 26 @28481 has 1 MA's), (39, 28370), (40, 28367),

Gene: TiroTheta9_43 Start: 29553, Stop: 29320, Start Num: 19

Candidate Starts for TiroTheta9_43:

(10, 29640), (Start: 19 @29553 has 155 MA's), (Start: 26 @29502 has 1 MA's), (31, 29460), (37, 29403), (41, 29358), (42, 29346), (43, 29337),

Gene: Toaka_43 Start: 29156, Stop: 28926, Start Num: 17

Candidate Starts for Toaka_43:

(12, 29219), (Start: 17 @29156 has 34 MA's), (31, 29063), (37, 29006), (41, 28961), (42, 28949), (43, 28940),

Gene: Tomathan_45 Start: 29179, Stop: 28973, Start Num: 18

Candidate Starts for Tomathan_45:

(Start: 18 @29179 has 155 MA's), (Start: 21 @29161 has 3 MA's), (Start: 26 @29122 has 1 MA's),

Gene: ToneTone_41 Start: 27490, Stop: 27272, Start Num: 18

Candidate Starts for ToneTone_41:

(Start: 18 @27490 has 155 MA's), (Start: 26 @27436 has 1 MA's), (33, 27376), (39, 27325), (40, 27322),

Gene: Topanga_40 Start: 29133, Stop: 28900, Start Num: 19

Candidate Starts for Topanga_40:

(Start: 19 @29133 has 155 MA's), (31, 29040), (37, 28983), (43, 28917),

Gene: Trike_39 Start: 28209, Stop: 27979, Start Num: 19

Candidate Starts for Trike_39:

(4, 28425), (Start: 19 @28209 has 155 MA's), (20, 28197), (Start: 26 @28158 has 1 MA's), (31, 28116), (34, 28080), (43, 27993),

Gene: Trixie_43 Start: 29993, Stop: 29772, Start Num: 18

Candidate Starts for Trixie_43:

(Start: 18 @29993 has 155 MA's), (Start: 21 @29975 has 3 MA's), (Start: 26 @29939 has 1 MA's), (33, 29879), (40, 29822),

Gene: Trooper_44 Start: 29761, Stop: 29540, Start Num: 18

Candidate Starts for Trooper_44:

(Start: 18 @29761 has 155 MA's), (Start: 26 @29707 has 1 MA's), (27, 29701), (33, 29647), (40, 29590),

Gene: TroyPia_44 Start: 29554, Stop: 29321, Start Num: 19

Candidate Starts for TroyPia_44:

(Start: 19 @29554 has 155 MA's), (Start: 26 @29503 has 1 MA's), (31, 29461), (37, 29404), (41, 29359), (42, 29347), (43, 29338),

Gene: Tubs_44 Start: 29659, Stop: 29420, Start Num: 17

Candidate Starts for Tubs_44:

(Start: 17 @29659 has 34 MA's), (Start: 25 @29611 has 1 MA's), (28, 29596), (31, 29566), (34, 29530), (37, 29509), (42, 29452),

Gene: Tucker_45 Start: 27928, Stop: 27710, Start Num: 18

Candidate Starts for Tucker_45:

(Start: 18 @27928 has 155 MA's), (Start: 26 @27874 has 1 MA's), (33, 27814), (39, 27763), (40, 27760),

Gene: Turbido_44 Start: 29798, Stop: 29580, Start Num: 18

Candidate Starts for Turbido_44:

(3, 30026), (11, 29873), (Start: 14 @29822 has 4 MA's), (Start: 18 @29798 has 155 MA's), (Start: 21 @29780 has 3 MA's), (Start: 26 @29744 has 1 MA's), (40, 29630),

Gene: Twister_40 Start: 29044, Stop: 28811, Start Num: 19

Candidate Starts for Twister_40:

(Start: 19 @29044 has 155 MA's), (Start: 25 @28996 has 1 MA's), (31, 28951), (37, 28894), (43, 28828),

Gene: TygerBlood_43 Start: 29556, Stop: 29323, Start Num: 19

Candidate Starts for TygerBlood_43:

(Start: 19 @29556 has 155 MA's), (Start: 26 @29505 has 1 MA's), (31, 29463), (37, 29406), (41, 29361), (42, 29349), (43, 29340),

Gene: Ugenie5_41 Start: 29902, Stop: 29663, Start Num: 17

Candidate Starts for Ugenie5_41:

(Start: 17 @29902 has 34 MA's), (Start: 25 @29854 has 1 MA's), (28, 29839), (31, 29809), (34, 29773), (37, 29752), (42, 29695),

Gene: Ulysses_42 Start: 29236, Stop: 29003, Start Num: 19

Candidate Starts for Ulysses_42:

(1, 29521), (10, 29323), (Start: 19 @29236 has 155 MA's), (Start: 26 @29185 has 1 MA's), (31, 29143), (37, 29086), (41, 29041), (42, 29029), (43, 29020),

Gene: Updawg_44 Start: 29783, Stop: 29562, Start Num: 18

Candidate Starts for Updawg_44:

(Start: 18 @29783 has 155 MA's), (Start: 21 @29765 has 3 MA's), (Start: 26 @29729 has 1 MA's), (33, 29669), (40, 29612),

Gene: VA6_42 Start: 29302, Stop: 29084, Start Num: 18

Candidate Starts for VA6_42:

(Start: 18 @29302 has 155 MA's), (Start: 21 @29284 has 3 MA's), (Start: 26 @29248 has 1 MA's), (33, 29188), (40, 29134),

Gene: VC3_45 Start: 29290, Stop: 29072, Start Num: 18

Candidate Starts for VC3_45:

(8, 29416), (9, 29407), (Start: 18 @29290 has 155 MA's), (24, 29251), (Start: 26 @29236 has 1 MA's), (33, 29176), (40, 29122),

Gene: Vanisoa_43 Start: 30225, Stop: 29995, Start Num: 17

Candidate Starts for Vanisoa_43:

(Start: 17 @30225 has 34 MA's), (Start: 25 @30177 has 1 MA's), (29, 30153), (31, 30132), (35, 30090), (37, 30075), (42, 30018), (43, 30009),

Gene: VohminGhazi_44 Start: 27764, Stop: 27546, Start Num: 18

Candidate Starts for VohminGhazi_44:

(Start: 18 @27764 has 155 MA's), (Start: 26 @27710 has 1 MA's), (33, 27650), (39, 27599), (40, 27596),

Gene: WalterMcMickey_40 Start: 29044, Stop: 28811, Start Num: 19

Candidate Starts for WalterMcMickey_40:

(Start: 19 @29044 has 155 MA's), (Start: 25 @28996 has 1 MA's), (31, 28951), (37, 28894), (43, 28828),

Gene: Wander_43 Start: 29556, Stop: 29323, Start Num: 19

Candidate Starts for Wander_43:

(1, 29841), (10, 29643), (Start: 19 @29556 has 155 MA's), (Start: 26 @29505 has 1 MA's), (31, 29463), (37, 29406), (41, 29361), (42, 29349), (43, 29340),

Gene: WeiHuaDA_47 Start: 30879, Stop: 30661, Start Num: 18

Candidate Starts for WeiHuaDA_47:

(Start: 18 @30879 has 155 MA's), (Start: 21 @30861 has 3 MA's), (Start: 26 @30825 has 1 MA's), (39, 30714), (40, 30711), (42, 30684),

Gene: Whabigail7_44 Start: 29786, Stop: 29568, Start Num: 18

Candidate Starts for Whabigail7_44:

(3, 30014), (11, 29861), (Start: 14 @29810 has 4 MA's), (Start: 18 @29786 has 155 MA's), (Start: 21 @29768 has 3 MA's), (Start: 26 @29732 has 1 MA's), (40, 29618),

Gene: WideWale_44 Start: 29783, Stop: 29562, Start Num: 18

Candidate Starts for WideWale_44:

(Start: 18 @29783 has 155 MA's), (Start: 21 @29765 has 3 MA's), (Start: 26 @29729 has 1 MA's), (33, 29669), (40, 29612),

Gene: Wiks_43 Start: 27540, Stop: 27340, Start Num: 21

Candidate Starts for Wiks_43:

(Start: 18 @27558 has 155 MA's), (Start: 21 @27540 has 3 MA's), (Start: 26 @27504 has 1 MA's), (33, 27444), (39, 27393), (40, 27390),

Gene: Wilbur_43 Start: 29556, Stop: 29323, Start Num: 19

Candidate Starts for Wilbur_43:

(1, 29841), (10, 29643), (Start: 19 @29556 has 155 MA's), (Start: 26 @29505 has 1 MA's), (31, 29463), (37, 29406), (41, 29361), (42, 29349), (43, 29340),

Gene: Wile_42 Start: 29536, Stop: 29309, Start Num: 19

Candidate Starts for Wile_42:

(2, 29821), (10, 29626), (Start: 19 @29536 has 155 MA's), (Start: 26 @29485 has 1 MA's), (31, 29443), (37, 29386), (42, 29329), (43, 29320),

Gene: Wizard007_43 Start: 29561, Stop: 29328, Start Num: 19

Candidate Starts for Wizard007_43:

(Start: 19 @29561 has 155 MA's), (Start: 26 @29510 has 1 MA's), (31, 29468), (37, 29411), (42, 29354), (43, 29345),

Gene: WunderPhul_44 Start: 27556, Stop: 27338, Start Num: 18

Candidate Starts for WunderPhul_44:

(Start: 18 @27556 has 155 MA's), (Start: 26 @27502 has 1 MA's), (33, 27442), (39, 27391), (40, 27388),

Gene: Xena_41 Start: 29502, Stop: 29275, Start Num: 19

Candidate Starts for Xena_41:

(2, 29787), (10, 29592), (Start: 19 @29502 has 155 MA's), (Start: 26 @29451 has 1 MA's), (31, 29409), (37, 29352), (42, 29295), (43, 29286),

Gene: XianYue_42 Start: 29248, Stop: 29027, Start Num: 18

Candidate Starts for XianYue_42:

(Start: 18 @29248 has 155 MA's), (Start: 21 @29230 has 3 MA's), (Start: 26 @29194 has 1 MA's), (33, 29134), (40, 29077),

Gene: Yecey3_45 Start: 29175, Stop: 28945, Start Num: 16

Candidate Starts for Yecey3_45:

(Start: 16 @29175 has 1 MA's), (Start: 25 @29127 has 1 MA's), (29, 29103), (31, 29082), (37, 29025), (42, 28968), (43, 28959),

Gene: YoSam321_43 Start: 29553, Stop: 29320, Start Num: 19

Candidate Starts for YoSam321_43:

(1, 29838), (10, 29640), (Start: 19 @29553 has 155 MA's), (Start: 26 @29502 has 1 MA's), (31, 29460), (37, 29403), (41, 29358), (42, 29346), (43, 29337),

Gene: Yokurt_44 Start: 27558, Stop: 27340, Start Num: 18

Candidate Starts for Yokurt_44:

(Start: 18 @27558 has 155 MA's), (Start: 26 @27504 has 1 MA's), (33, 27444), (39, 27393), (40, 27390),

Gene: Zaka_44 Start: 27558, Stop: 27340, Start Num: 18

Candidate Starts for Zaka_44:

(Start: 18 @27558 has 155 MA's), (Start: 26 @27504 has 1 MA's), (33, 27444), (39, 27393), (40, 27390),

Gene: Zimmer_41 Start: 30268, Stop: 30029, Start Num: 17

Candidate Starts for Zimmer_41:

(Start: 17 @30268 has 34 MA's), (31, 30175), (34, 30139), (37, 30118), (42, 30061),

Gene: Zulu_45 Start: 27909, Stop: 27691, Start Num: 18

Candidate Starts for Zulu_45:

(Start: 18 @27909 has 155 MA's), (Start: 26 @27855 has 1 MA's), (33, 27795), (39, 27744), (40, 27741),

