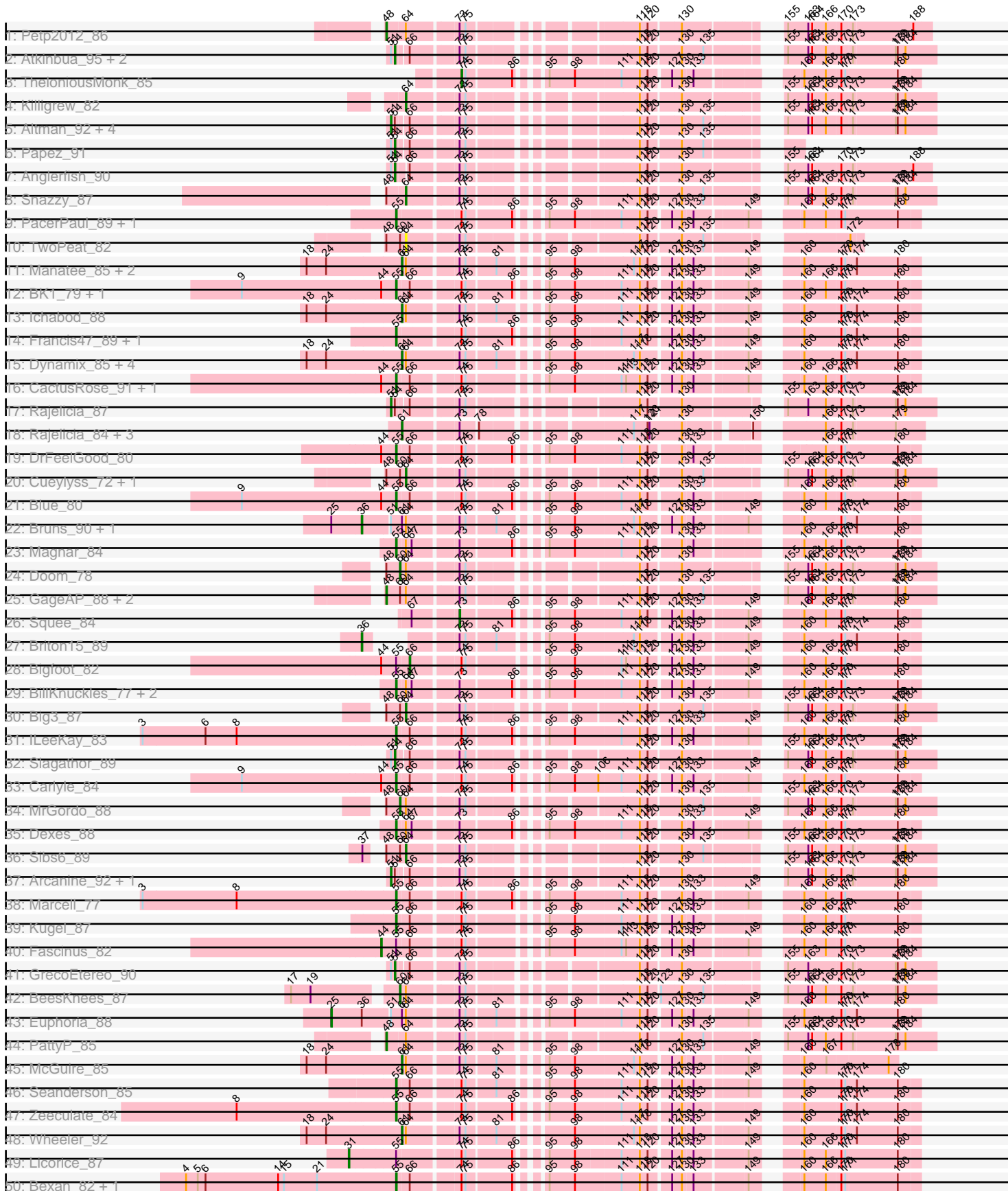
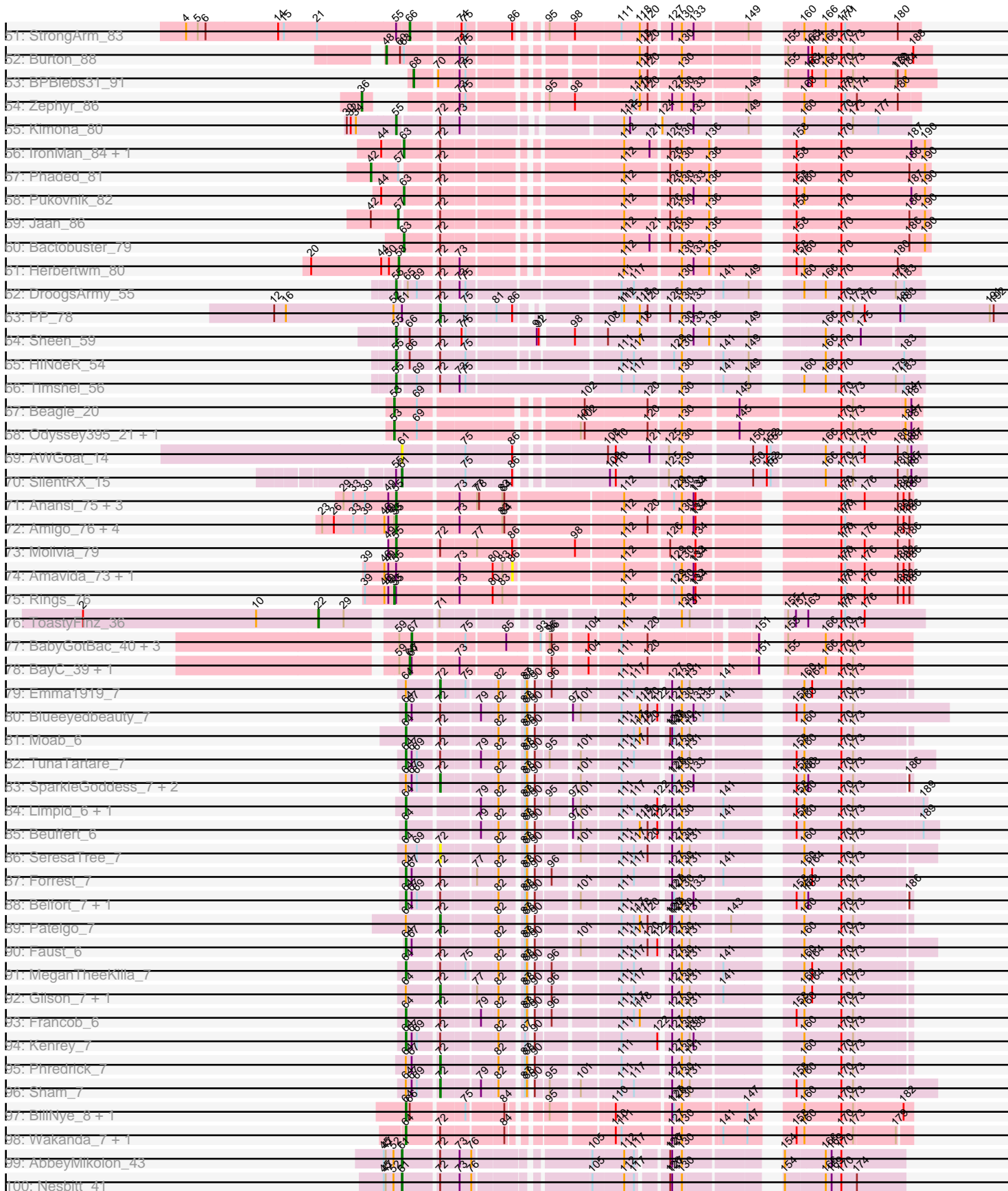


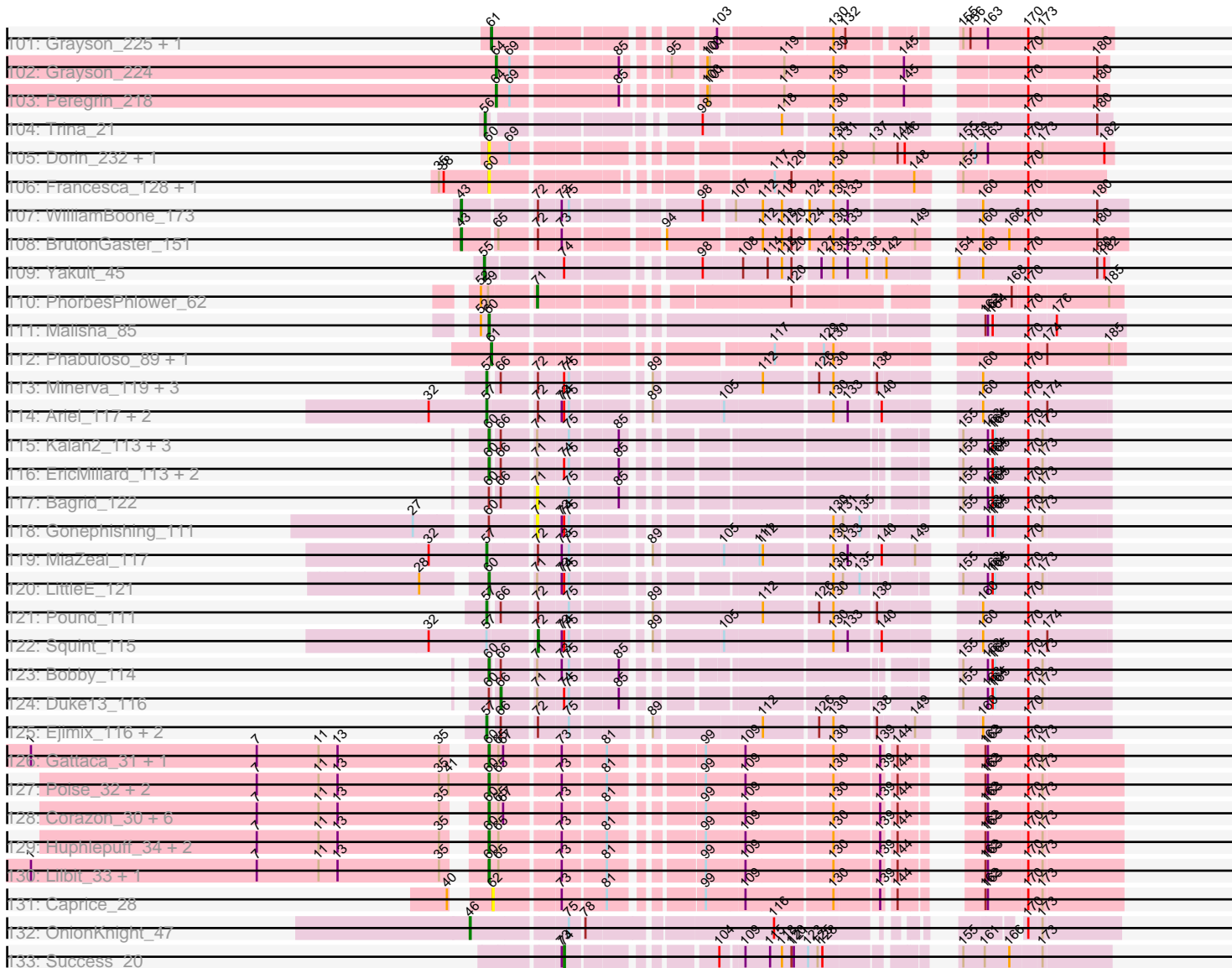
Pham 158987



Pham 158987



Pham 158987



Note: Tracks are now grouped by subcluster and scaled. Switching in subcluster is indicated by changes in track color. Track scale is now set by default to display the region 30 bp upstream of start 1 to 30 bp downstream of the last possible start. If this default region is judged to be packed too tightly with annotated starts, the track will be further scaled to only show that region of the ORF with annotated starts. This action will be indicated by adding "Zoomed" to the title. For starts, yellow indicates the location of called starts comprised solely of Glimmer/GeneMark auto-annotations, green indicates the location of called starts with at least 1 manual gene annotation.

Pham 158987 Report

This analysis was run 04/28/24 on database version 559.

Pham number 158987 has 209 members, 18 are drafts.

Phages represented in each track:

- Track 1 : Petp2012_86
- Track 2 : Atkinbua_95, Gwendoluna_88, Tripl3t_89
- Track 3 : TheloniousMonk_85
- Track 4 : Killigrew_82
- Track 5 : Altman_92, Ruotula_92, ConceptII_94, Pinto_85, Kanely_91
- Track 6 : Papez_91
- Track 7 : Anglerfish_90
- Track 8 : Snazzy_87
- Track 9 : PacerPaul_89, BigPaolini_83
- Track 10 : TwoPeat_82
- Track 11 : Manatee_85, Lockley_87, DD5_84
- Track 12 : BK1_79, A6_79
- Track 13 : Ichabod_88
- Track 14 : Francis47_89, Agaliana_82
- Track 15 : Dynamix_85, U2_78, KSSJEB_84, Seabiscuit_87, Switzer_84
- Track 16 : CactusRose_91, Maroc7_87
- Track 17 : Rajelicia_87
- Track 18 : Rajelicia_84, Dreamboat_83, PherrisBueller_82, Jasper_82
- Track 19 : DrFeelGood_80
- Track 20 : Cueylyss_72, ShortQueendom_79
- Track 21 : Blue_80
- Track 22 : Bruns_90, Lesedi_82
- Track 23 : Magnar_84
- Track 24 : Doom_78
- Track 25 : GageAP_88, Museum_87, Graduation_89
- Track 26 : Squee_84
- Track 27 : Briton15_89
- Track 28 : Bigfoot_82
- Track 29 : BillKnuckles_77, Naira_89, Fenn_90
- Track 30 : Big3_87
- Track 31 : ILeeKay_83
- Track 32 : Slagathor_89
- Track 33 : Carlyle_84
- Track 34 : MrGordo_88
- Track 35 : Dexes_88
- Track 36 : Sibs6_89
- Track 37 : Arcanine_92, Hope4ever_84

- Track 38 : Marcell_77
- Track 39 : Kugel_87
- Track 40 : Fascinus_82
- Track 41 : GrecoEtereo_90
- Track 42 : BeesKnees_87
- Track 43 : Euphoria_88
- Track 44 : PattyP_85
- Track 45 : McGuire_85
- Track 46 : Seanderson_85
- Track 47 : Zeeculate_84
- Track 48 : Wheeler_92
- Track 49 : Licorice_87
- Track 50 : Bexan_82, Beatrix_84
- Track 51 : StrongArm_83
- Track 52 : Burton_88
- Track 53 : BPBiebs31_91
- Track 54 : Zephyr_86
- Track 55 : Kimona_80
- Track 56 : IronMan_84, Landor_85
- Track 57 : Phaded_81
- Track 58 : Pukovnik_82
- Track 59 : Jaan_86
- Track 60 : Bactobuster_79
- Track 61 : Herbertwm_80
- Track 62 : DroogsArmy_55
- Track 63 : PP_78
- Track 64 : Sheen_59
- Track 65 : HINdeR_54
- Track 66 : Timshel_56
- Track 67 : Beagle_20
- Track 68 : Odyssey395_21, Pureglobe5_21
- Track 69 : AWGoat_14
- Track 70 : SilentRX_15
- Track 71 : Anansi_75, Thunderclap_75, SorJuana_75, Gorgeous_75
- Track 72 : Amigo_76, Yeezus_75, Boersma_78, Ichor_75, Jaek_75
- Track 73 : Molivia_79
- Track 74 : Amavida_73, Heylee_73
- Track 75 : Rings_76
- Track 76 : ToastyFinz_36
- Track 77 : BabyGotBac_40, Asis_39, Maih_38, TP1604_39
- Track 78 : BayC_39, Salete_39
- Track 79 : Emma1919_7
- Track 80 : Blueeyedbeauty_7
- Track 81 : Moab_6
- Track 82 : TunaTartare_7
- Track 83 : SparkleGoddess_7, Stigma_7, Comrade_7
- Track 84 : Limpid_6, Annadreamy_6
- Track 85 : Beuffert_6
- Track 86 : SeresaTree_7
- Track 87 : Forrest_7
- Track 88 : Belfort_7, Karp_7
- Track 89 : Patelgo_7
- Track 90 : Faust_6

- Track 91 : MeganTheeKilla_7
- Track 92 : Gilson_7, Jada_7
- Track 93 : Francob_6
- Track 94 : Kenrey_7
- Track 95 : Phredrick_7
- Track 96 : Sham_7
- Track 97 : BillNye_8, Circinus_9
- Track 98 : Wakanda_7, Muntaha_8
- Track 99 : AbbeyMikolon_43
- Track 100 : Nesbitt_41
- Track 101 : Grayson_225, Peregrin_219
- Track 102 : Grayson_224
- Track 103 : Peregrin_218
- Track 104 : Trina_21
- Track 105 : Dorin_232, Francesca_232
- Track 106 : Francesca_128, Dorin_125
- Track 107 : WilliamBoone_173
- Track 108 : BrutonGaster_151
- Track 109 : Yakult_45
- Track 110 : PhorbesPhlower_62
- Track 111 : Malisha_85
- Track 112 : Phabuloso_89, Kamaru_78
- Track 113 : Minerva_119, Zelink_116, Hughesyang_121, ThreeRngTarjay_117
- Track 114 : Ariel_117, Courthouse_112, Superphikiman_114
- Track 115 : Kalah2_113, Klein_118, DmpstrDiver_122, Wanda_121
- Track 116 : EricMillard_113, BAKA_121, Optimus_112
- Track 117 : Bagrid_122
- Track 118 : Gonephishing_111
- Track 119 : MiaZeal_117
- Track 120 : LittleE_121
- Track 121 : Pound_111
- Track 122 : Squint_115
- Track 123 : Bobby_114
- Track 124 : Duke13_116
- Track 125 : Ejimix_116, Redno2_115, Halley_124
- Track 126 : Gattaca_31, MosMoris_30
- Track 127 : Poise_32, Raela_32, Blackbeetle_32
- Track 128 : Corazon_30, Tesla_31, Pringar_32, JoieB_33, RedRaider77_32, VasuNzinga_32, Beelzebub_36
- Track 129 : Huphlepuuff_34, Clarkson_33, LittleLaf_32
- Track 130 : Lilbit_33, Marvin_30
- Track 131 : Caprice_28
- Track 132 : OnionKnight_47
- Track 133 : Success_20

Summary of Final Annotations (See graph section above for start numbers):

The start number called the most often in the published annotations is 55, it was called in 38 of the 191 non-draft genes in the pham.

Genes that call this "Most Annotated" start:

- A6_79, Agaliana_82, Amigo_76, Anansi_75, BK1_79, Beatrix_84, Bexan_82, BigPaolini_83, BillKnuckles_77, Blue_80, Boersma_78, CactusRose_91, Carlyle_84, Dexes_88, DrFeelGood_80, DroogsArmy_55, Fenn_90, Francis47_89, Gorgeous_75, HINdeR_54, ILeeKay_83, Ichor_75, Jaek_75, Kimona_80, Kugel_87, Magnar_84, Marcell_77, Maroc7_87, Molivia_79, Naira_89, PacerPaul_89, Seanderson_85, Sheen_59, SorJuana_75, Thunderclap_75, Timshel_56, Yakult_45, Yeezus_75, Zeeculate_84,

Genes that have the "Most Annotated" start but do not call it:

- Amavida_73, Bigfoot_82, Fascinus_82, Heylee_73, Licorice_87, Rings_76, SilentRX_15, StrongArm_83,

Genes that do not have the "Most Annotated" start:

- AWGoat_14, AbbeyMikolon_43, Altman_92, Anglerfish_90, Annadreamy_6, Arcanine_92, Ariel_117, Asis_39, Atkinbua_95, BAKA_121, BPBiebs31_91, BabyGotBac_40, Bactobuster_79, Bagrid_122, BayC_39, Beagle_20, Beelzebub_36, BeesKnees_87, Belfort_7, Beuffert_6, Big3_87, BillNye_8, Blackbeetle_32, Blueeyedbeauty_7, Bobby_114, Briton15_89, Bruns_90, BrutonGaster_151, Burton_88, Caprice_28, Circinus_9, Clarkson_33, Comrade_7, ConceptII_94, Corazon_30, Courthouse_112, Cueyllyss_72, DD5_84, DmpstrDiver_122, Doom_78, Dorin_125, Dorin_232, Dreamboat_83, Duke13_116, Dynamix_85, Ejimix_116, Emma1919_7, EricMillard_113, Euphoria_88, Faust_6, Forrest_7, Francesca_128, Francesca_232, Francob_6, GageAP_88, Gattaca_31, Gilson_7, Gonephishing_111, Graduation_89, Grayson_224, Grayson_225, GrecoEtereo_90, Gwendoluna_88, Halley_124, Herbertwm_80, Hope4ever_84, Hughesyang_121, Huphlebuff_34, Ichabod_88, IronMan_84, Jaan_86, Jada_7, Jasper_82, JoieB_33, KSSJEB_84, Kalah2_113, Kamaru_78, Kanely_91, Karp_7, Kenrey_7, Killigrew_82, Klein_118, Landor_85, Lesedi_82, Lilbit_33, Limpid_6, LittleE_121, LittleLaf_32, Lockley_87, Maih_38, Malisha_85, Manatee_85, Marvin_30, McGuire_85, MeganTheeKilla_7, MiaZeal_117, Minerva_119, Moab_6, MosMoris_30, MrGordo_88, Muntaha_8, Museum_87, Nesbitt_41, Odyssey395_21, OnionKnight_47, Optimus_112, PP_78, Papez_91, Patelgo_7, PattyP_85, Peregrin_218, Peregrin_219, Petp2012_86, Phabuloso_89, Phaded_81, PherrisBueller_82, PhorbesPhlower_62, Phredrick_7, Pinto_85, Poise_32, Pound_111, Pringar_32, Pukovnik_82, Pureglobe5_21, Raela_32, Rajelicia_84, Rajelicia_87, RedRaider77_32, Redno2_115, Ruotula_92, Salete_39, Seabiscuit_87, SeresaTree_7, Sham_7, ShortQueendom_79, Sibs6_89, Slagathor_89, Snazzy_87, SparkleGoddess_7, Squee_84, Squint_115, Stigma_7, Success_20, Superphikiman_114, Switzer_84, TP1604_39, Tesla_31, TheloniousMonk_85, ThreeRngTarjay_117, ToastyFinz_36, Trina_21, Trip13t_89, TunaTartare_7, TwoPeat_82, U2_78, VasuNzinga_32, Wakanda_7, Wanda_121, Wheeler_92, WilliamBoone_173, Zelink_116, Zephyr_86,

Summary by start number:

Start 22:

- Found in 1 of 209 (0.5%) of genes in pham
- Manual Annotations of this start: 1 of 191
- Called 100.0% of time when present
- Phage (with cluster) where this start called: ToastyFinz_36 (BC1),

Start 25:

- Found in 3 of 209 (1.4%) of genes in pham

- Manual Annotations of this start: 1 of 191
- Called 33.3% of time when present
- Phage (with cluster) where this start called: Euphoria_88 (A1),

Start 31:

- Found in 1 of 209 (0.5%) of genes in pham
- Manual Annotations of this start: 1 of 191
- Called 100.0% of time when present
- Phage (with cluster) where this start called: Licorice_87 (A1),

Start 36:

- Found in 5 of 209 (2.4%) of genes in pham
- Manual Annotations of this start: 4 of 191
- Called 80.0% of time when present
- Phage (with cluster) where this start called: Briton15_89 (A1), Bruns_90 (A1), Lesedi_82 (A1), Zephyr_86 (A1),

Start 42:

- Found in 2 of 209 (1.0%) of genes in pham
- Manual Annotations of this start: 1 of 191
- Called 50.0% of time when present
- Phage (with cluster) where this start called: Phaded_81 (A2),

Start 43:

- Found in 2 of 209 (1.0%) of genes in pham
- Manual Annotations of this start: 2 of 191
- Called 100.0% of time when present
- Phage (with cluster) where this start called: BrutonGaster_151 (CQ2), WilliamBoone_173 (CQ1),

Start 44:

- Found in 13 of 209 (6.2%) of genes in pham
- Manual Annotations of this start: 1 of 191
- Called 7.7% of time when present
- Phage (with cluster) where this start called: Fascinus_82 (A1),

Start 46:

- Found in 9 of 209 (4.3%) of genes in pham
- Manual Annotations of this start: 1 of 191
- Called 11.1% of time when present
- Phage (with cluster) where this start called: OnionKnight_47 (singleton),

Start 48:

- Found in 14 of 209 (6.7%) of genes in pham
- Manual Annotations of this start: 6 of 191
- Called 42.9% of time when present
- Phage (with cluster) where this start called: Burton_88 (A1), GageAP_88 (A1), Graduation_89 (A1), Museum_87 (A1), PattyP_85 (A1), Petp2012_86 (A1),

Start 51:

- Found in 18 of 209 (8.6%) of genes in pham
- Manual Annotations of this start: 8 of 191
- Called 44.4% of time when present

- Phage (with cluster) where this start called: Altman_92 (A1), Arcanine_92 (A1), ConceptII_94 (A1), Hope4ever_84 (A1), Kanely_91 (A1), Pinto_85 (A1), Rajelicia_87 (A1), Ruotula_92 (A1),

Start 53:

- Found in 9 of 209 (4.3%) of genes in pham
- Manual Annotations of this start: 4 of 191
- Called 44.4% of time when present
- Phage (with cluster) where this start called: Beagle_20 (AP2), Odyssey395_21 (AP2), Pureglobe5_21 (AP2), Rings_76 (AQ),

Start 54:

- Found in 15 of 209 (7.2%) of genes in pham
- Manual Annotations of this start: 6 of 191
- Called 46.7% of time when present
- Phage (with cluster) where this start called: Anglerfish_90 (A1), Atkinbua_95 (A1), GrecoEtereo_90 (A1), Gwendoluna_88 (A1), Papez_91 (A1), Slagathor_89 (A1), Tripl3t_89 (A1),

Start 55:

- Found in 47 of 209 (22.5%) of genes in pham
- Manual Annotations of this start: 38 of 191
- Called 83.0% of time when present
- Phage (with cluster) where this start called: A6_79 (A1), Agaliana_82 (A1), Amigo_76 (AQ), Anansi_75 (AQ), BK1_79 (A1), Beatrix_84 (A1), Bexan_82 (A1), BigPaolini_83 (A1), BillKnuckles_77 (A1), Blue_80 (A1), Boersma_78 (AQ), CactusRose_91 (A1), Carlyle_84 (A1), Dexes_88 (A1), DrFeelGood_80 (A1), DroogsArmy_55 (A7), Fenn_90 (A1), Francis47_89 (A1), Gorgeous_75 (AQ), HINdeR_54 (A7), ILeeKay_83 (A1), Ichor_75 (AQ), Jaek_75 (AQ), Kimona_80 (A19), Kugel_87 (A1), Magnar_84 (A1), Marcell_77 (A1), Maroc7_87 (A1), Molivia_79 (AQ), Naira_89 (A1), PacerPaul_89 (A1), Seanderson_85 (A1), Sheen_59 (A7), SorJuana_75 (AQ), Thunderclap_75 (AQ), Timshel_56 (A7), Yakult_45 (CT), Yeezus_75 (AQ), Zeeculate_84 (A1),

Start 56:

- Found in 1 of 209 (0.5%) of genes in pham
- Manual Annotations of this start: 1 of 191
- Called 100.0% of time when present
- Phage (with cluster) where this start called: Trina_21 (CE),

Start 57:

- Found in 15 of 209 (7.2%) of genes in pham
- Manual Annotations of this start: 13 of 191
- Called 86.7% of time when present
- Phage (with cluster) where this start called: Ariel_117 (J), Courthouse_112 (J), Ejimix_116 (J), Halley_124 (J), Hughesyang_121 (J), Jaan_86 (A2), MiaZeal_117 (J), Minerva_119 (J), Pound_111 (J), Redno2_115 (J), Superphikiman_114 (J), ThreeRngTarjay_117 (J), Zelink_116 (J),

Start 58:

- Found in 1 of 209 (0.5%) of genes in pham
- Manual Annotations of this start: 1 of 191
- Called 100.0% of time when present

- Phage (with cluster) where this start called: Herbertwm_80 (A2),

Start 60:

- Found in 46 of 209 (22.0%) of genes in pham
- Manual Annotations of this start: 29 of 191
- Called 73.9% of time when present
- Phage (with cluster) where this start called: BAKA_121 (J), Beelzebub_36 (S), BeesKnees_87 (A1), Blackbeetle_32 (S), Bobby_114 (J), Clarkson_33 (S), Corazon_30 (S), DmpstrDiver_122 (J), Doom_78 (A1), Dorin_125 (CG), Dorin_232 (CG), EricMillard_113 (J), Francesca_128 (CG), Francesca_232 (CG), Gattaca_31 (S), Huphlepuuff_34 (S), JoieB_33 (S), Kalah2_113 (J), Klein_118 (J), Lilbit_33 (S), LittleE_121 (J), LittleLaf_32 (S), Malisha_85 (DN), Marvin_30 (S), MosMoris_30 (S), MrGordo_88 (A1), Optimus_112 (J), Poise_32 (S), Pringar_32 (S), Raela_32 (S), RedRaider77_32 (S), Tesla_31 (S), VasuNzinga_32 (S), Wanda_121 (J),

Start 61:

- Found in 27 of 209 (12.9%) of genes in pham
- Manual Annotations of this start: 21 of 191
- Called 85.2% of time when present
- Phage (with cluster) where this start called: AWGoat_14 (AP4), AbbeyMikolon_43 (BL), DD5_84 (A1), Dreamboat_83 (A1), Dynamix_85 (A1), Grayson_225 (CB), Ichabod_88 (A1), Jasper_82 (A1), KSSJEB_84 (A1), Kamaru_78 (DN1), Lockley_87 (A1), Manatee_85 (A1), McGuire_85 (A1), Nesbitt_41 (BL), Peregrin_219 (CB), Phabuloso_89 (DN1), PherrisBueller_82 (A1), Rajelicia_84 (A1), Seabiscuit_87 (A1), SilentRX_15 (AP4), Switzer_84 (A1), U2_78 (A1), Wheeler_92 (A1),

Start 62:

- Found in 1 of 209 (0.5%) of genes in pham
- No Manual Annotations of this start.
- Called 100.0% of time when present
- Phage (with cluster) where this start called: Caprice_28 (S),

Start 63:

- Found in 5 of 209 (2.4%) of genes in pham
- Manual Annotations of this start: 3 of 191
- Called 80.0% of time when present
- Phage (with cluster) where this start called: Bactobuster_79 (A2), IronMan_84 (A2), Landor_85 (A2), Pukovnik_82 (A2),

Start 64:

- Found in 63 of 209 (30.1%) of genes in pham
- Manual Annotations of this start: 24 of 191
- Called 41.3% of time when present
- Phage (with cluster) where this start called: Annadreamy_6 (BK1), Belfort_7 (BK1), Beuffert_6 (BK1), Big3_87 (A1), BillNye_8 (BK2), Blueeyedbeauty_7 (BK1), Circinus_9 (BK2), Cueyllyss_72 (A1), Faust_6 (BK1), Forrest_7 (BK1), Francob_6 (BK1), Grayson_224 (CB), Karp_7 (BK1), Kenrey_7 (BK1), Killigrew_82 (A1), Limpid_6 (BK1), MeganTheeKilla_7 (BK1), Moab_6 (BK1), Muntaha_8 (BK2), Peregrin_218 (CB), ShortQueendom_79 (A1), Sibs6_89 (A1), Snazzy_87 (A1), TunaTartare_7 (BK1), TwoPeat_82 (A1), Wakanda_7 (BK2),

Start 66:

- Found in 56 of 209 (26.8%) of genes in pham

- Manual Annotations of this start: 5 of 191
- Called 8.9% of time when present
- Phage (with cluster) where this start called: BayC_39 (BG), Bigfoot_82 (A1), Duke13_116 (J), Salete_39 (BG), StrongArm_83 (A1),

Start 67:

- Found in 33 of 209 (15.8%) of genes in pham
- Manual Annotations of this start: 4 of 191
- Called 12.1% of time when present
- Phage (with cluster) where this start called: Asis_39 (BG), BabyGotBac_40 (BG), Maih_38 (BG), TP1604_39 (BG),

Start 68:

- Found in 1 of 209 (0.5%) of genes in pham
- Manual Annotations of this start: 1 of 191
- Called 100.0% of time when present
- Phage (with cluster) where this start called: BPBiebs31_91 (A1),

Start 71:

- Found in 14 of 209 (6.7%) of genes in pham
- Manual Annotations of this start: 1 of 191
- Called 21.4% of time when present
- Phage (with cluster) where this start called: Bagrid_122 (J), Gonephishing_111 (J), PhorbesPhlower_62 (DH),

Start 72:

- Found in 53 of 209 (25.4%) of genes in pham
- Manual Annotations of this start: 11 of 191
- Called 22.6% of time when present
- Phage (with cluster) where this start called: Comrade_7 (BK1), Emma1919_7 (BK1), Gilson_7 (BK1), Jada_7 (BK1), PP_78 (A7), Patelgo_7 (BK1), Phredrick_7 (BK1), SeresaTree_7 (BK1), Sham_7 (BK1), SparkleGoddess_7 (BK1), Squint_115 (J), Stigma_7 (BK1),

Start 73:

- Found in 107 of 209 (51.2%) of genes in pham
- Manual Annotations of this start: 1 of 191
- Called 0.9% of time when present
- Phage (with cluster) where this start called: Squee_84 (A1),

Start 74:

- Found in 40 of 209 (19.1%) of genes in pham
- Manual Annotations of this start: 2 of 191
- Called 5.0% of time when present
- Phage (with cluster) where this start called: Success_20 (singleton), TheloniousMonk_85 (A1),

Start 86:

- Found in 29 of 209 (13.9%) of genes in pham
- No Manual Annotations of this start.
- Called 6.9% of time when present
- Phage (with cluster) where this start called: Amavida_73 (AQ), Heylee_73 (AQ),

Summary by clusters:

There are 24 clusters represented in this pham: DN, singleton, BG, DH, AP2, AP4, A19, A1, BL, A2, DN1, A7, CQ2, CQ1, CB, J, CG, CE, AQ, S, BK1, BK2, CT, BC1,

Info for manual annotations of cluster A1:

- Start number 25 was manually annotated 1 time for cluster A1.
- Start number 31 was manually annotated 1 time for cluster A1.
- Start number 36 was manually annotated 4 times for cluster A1.
- Start number 44 was manually annotated 1 time for cluster A1.
- Start number 48 was manually annotated 6 times for cluster A1.
- Start number 51 was manually annotated 8 times for cluster A1.
- Start number 54 was manually annotated 6 times for cluster A1.
- Start number 55 was manually annotated 22 times for cluster A1.
- Start number 60 was manually annotated 3 times for cluster A1.
- Start number 61 was manually annotated 15 times for cluster A1.
- Start number 64 was manually annotated 5 times for cluster A1.
- Start number 66 was manually annotated 2 times for cluster A1.
- Start number 68 was manually annotated 1 time for cluster A1.
- Start number 73 was manually annotated 1 time for cluster A1.
- Start number 74 was manually annotated 1 time for cluster A1.

Info for manual annotations of cluster A19:

- Start number 55 was manually annotated 1 time for cluster A19.

Info for manual annotations of cluster A2:

- Start number 42 was manually annotated 1 time for cluster A2.
- Start number 57 was manually annotated 1 time for cluster A2.
- Start number 58 was manually annotated 1 time for cluster A2.
- Start number 63 was manually annotated 3 times for cluster A2.

Info for manual annotations of cluster A7:

- Start number 55 was manually annotated 4 times for cluster A7.
- Start number 72 was manually annotated 1 time for cluster A7.

Info for manual annotations of cluster AP2:

- Start number 53 was manually annotated 3 times for cluster AP2.

Info for manual annotations of cluster AP4:

- Start number 61 was manually annotated 1 time for cluster AP4.

Info for manual annotations of cluster AQ:

- Start number 53 was manually annotated 1 time for cluster AQ.
- Start number 55 was manually annotated 10 times for cluster AQ.

Info for manual annotations of cluster BC1:

- Start number 22 was manually annotated 1 time for cluster BC1.

Info for manual annotations of cluster BG:

- Start number 66 was manually annotated 2 times for cluster BG.
- Start number 67 was manually annotated 4 times for cluster BG.

Info for manual annotations of cluster BK1:

- Start number 64 was manually annotated 13 times for cluster BK1.
- Start number 72 was manually annotated 9 times for cluster BK1.

Info for manual annotations of cluster BK2:

- Start number 64 was manually annotated 4 times for cluster BK2.

Info for manual annotations of cluster BL:

- Start number 61 was manually annotated 2 times for cluster BL.

Info for manual annotations of cluster CB:

- Start number 61 was manually annotated 2 times for cluster CB.
- Start number 64 was manually annotated 2 times for cluster CB.

Info for manual annotations of cluster CE:

- Start number 56 was manually annotated 1 time for cluster CE.

Info for manual annotations of cluster CQ1:

- Start number 43 was manually annotated 1 time for cluster CQ1.

Info for manual annotations of cluster CQ2:

- Start number 43 was manually annotated 1 time for cluster CQ2.

Info for manual annotations of cluster CT:

- Start number 55 was manually annotated 1 time for cluster CT.

Info for manual annotations of cluster DH:

- Start number 71 was manually annotated 1 time for cluster DH.

Info for manual annotations of cluster DN:

- Start number 60 was manually annotated 1 time for cluster DN.

Info for manual annotations of cluster DN1:

- Start number 61 was manually annotated 1 time for cluster DN1.

Info for manual annotations of cluster J:

- Start number 57 was manually annotated 12 times for cluster J.
- Start number 60 was manually annotated 9 times for cluster J.
- Start number 66 was manually annotated 1 time for cluster J.
- Start number 72 was manually annotated 1 time for cluster J.

Info for manual annotations of cluster S:

- Start number 60 was manually annotated 16 times for cluster S.

Gene Information:

Gene: A6_79 Start: 46951, Stop: 46274, Start Num: 55

Candidate Starts for A6_79:

(9, 47182), (Start: 44 @46972 has 1 MA's), (Start: 55 @46951 has 38 MA's), (Start: 66 @46933 has 5 MA's), (Start: 74 @46867 has 2 MA's), (75, 46861), (86, 46795), (95, 46768), (98, 46729), (111, 46660), (118, 46633), (120, 46621), (127, 46591), (130, 46576), (133, 46561), (149, 46489), (160,

46441), (166, 46411), (170, 46390), (171, 46384), (180, 46306),

Gene: AWGoat_14 Start: 5930, Stop: 6646, Start Num: 61

Candidate Starts for AWGoat_14:

(Start: 61 @5930 has 21 MA's), (75, 6014), (86, 6083), (108, 6194), (110, 6206), (121, 6257), (125, 6281), (130, 6299), (150, 6395), (152, 6416), (153, 6422), (166, 6497), (170, 6521), (173, 6536), (176, 6551), (180, 6602), (185, 6617), (187, 6623),

Gene: AbbeyMikolon_43 Start: 29546, Stop: 30193, Start Num: 61

Candidate Starts for AbbeyMikolon_43:

(45, 29519), (47, 29522), (52, 29534), (Start: 61 @29546 has 21 MA's), (Start: 72 @29594 has 11 MA's), (Start: 73 @29624 has 1 MA's), (76, 29642), (105, 29792), (112, 29837), (117, 29852), (126, 29891), (127, 29894), (130, 29909), (154, 30020), (166, 30077), (169, 30086), (170, 30098),

Gene: Agaliana_82 Start: 48068, Stop: 47394, Start Num: 55

Candidate Starts for Agaliana_82:

(Start: 55 @48068 has 38 MA's), (Start: 74 @47984 has 2 MA's), (75, 47978), (86, 47912), (95, 47885), (98, 47846), (111, 47780), (118, 47753), (120, 47741), (127, 47711), (130, 47696), (133, 47681), (149, 47609), (160, 47561), (170, 47510), (171, 47504), (174, 47489), (180, 47426),

Gene: Altman_92 Start: 51336, Stop: 50647, Start Num: 51

Candidate Starts for Altman_92:

(Start: 51 @51336 has 8 MA's), (Start: 54 @51330 has 6 MA's), (Start: 66 @51315 has 5 MA's), (Start: 73 @51252 has 1 MA's), (75, 51243), (118, 51033), (120, 51021), (130, 50976), (135, 50943), (155, 50865), (163, 50835), (164, 50829), (166, 50808), (170, 50787), (173, 50772), (179, 50709), (180, 50706), (184, 50694),

Gene: Amavida_73 Start: 49371, Stop: 48835, Start Num: 86

Candidate Starts for Amavida_73:

(39, 49584), (Start: 46 @49554 has 1 MA's), (49, 49548), (Start: 55 @49536 has 38 MA's), (Start: 73 @49452 has 1 MA's), (80, 49401), (83, 49386), (86, 49371), (112, 49215), (129, 49146), (130, 49134), (133, 49119), (134, 49116), (170, 48942), (171, 48936), (176, 48909), (180, 48858), (182, 48849), (186, 48840),

Gene: Amigo_76 Start: 49754, Stop: 49053, Start Num: 55

Candidate Starts for Amigo_76:

(23, 49868), (26, 49850), (33, 49820), (39, 49802), (Start: 46 @49772 has 1 MA's), (49, 49766), (Start: 53 @49757 has 4 MA's), (Start: 55 @49754 has 38 MA's), (Start: 73 @49670 has 1 MA's), (83, 49604), (84, 49601), (112, 49433), (120, 49397), (130, 49352), (133, 49337), (134, 49334), (170, 49160), (171, 49154), (180, 49076), (182, 49067), (186, 49058),

Gene: Anansi_75 Start: 49355, Stop: 48654, Start Num: 55

Candidate Starts for Anansi_75:

(29, 49436), (33, 49421), (39, 49403), (49, 49367), (Start: 55 @49355 has 38 MA's), (Start: 73 @49271 has 1 MA's), (77, 49244), (78, 49241), (83, 49205), (84, 49202), (112, 49034), (129, 48965), (130, 48953), (133, 48938), (134, 48935), (170, 48761), (171, 48755), (176, 48728), (180, 48677), (182, 48668), (186, 48659),

Gene: Anglerfish_90 Start: 51186, Stop: 50512, Start Num: 54

Candidate Starts for Anglerfish_90:

(Start: 51 @51192 has 8 MA's), (Start: 54 @51186 has 6 MA's), (Start: 66 @51171 has 5 MA's), (Start: 73 @51108 has 1 MA's), (75, 51099), (118, 50889), (120, 50877), (130, 50832), (155, 50721), (163, 50691), (164, 50685), (170, 50643), (173, 50628), (188, 50538),

Gene: Annadreamy_6 Start: 2126, Stop: 1452, Start Num: 64

Candidate Starts for Annadreamy_6:

(Start: 64 @2126 has 24 MA's), (79, 2030), (82, 2006), (87, 1976), (88, 1973), (90, 1970), (95, 1952), (97, 1925), (101, 1913), (111, 1859), (117, 1841), (122, 1805), (127, 1790), (130, 1775), (141, 1721), (158, 1643), (160, 1631), (170, 1574), (173, 1559), (189, 1457),

Gene: Arcanine_92 Start: 51479, Stop: 50790, Start Num: 51

Candidate Starts for Arcanine_92:

(Start: 51 @51479 has 8 MA's), (Start: 54 @51473 has 6 MA's), (Start: 66 @51458 has 5 MA's), (Start: 73 @51395 has 1 MA's), (75, 51386), (118, 51176), (120, 51164), (130, 51119), (155, 51008), (163, 50978), (164, 50972), (166, 50951), (170, 50930), (173, 50915), (179, 50852), (180, 50849), (184, 50837),

Gene: Ariel_117 Start: 63532, Stop: 64182, Start Num: 57

Candidate Starts for Ariel_117:

(32, 63460), (Start: 57 @63532 has 13 MA's), (Start: 72 @63583 has 11 MA's), (Start: 73 @63610 has 1 MA's), (Start: 74 @63613 has 2 MA's), (75, 63619), (89, 63694), (105, 63772), (130, 63898), (133, 63913), (140, 63949), (160, 64033), (170, 64084), (174, 64105),

Gene: Asis_39 Start: 31643, Stop: 31008, Start Num: 67

Candidate Starts for Asis_39:

(59, 31661), (Start: 67 @31643 has 4 MA's), (75, 31574), (85, 31517), (93, 31475), (95, 31469), (96, 31466), (104, 31418), (111, 31376), (120, 31337), (151, 31193), (155, 31187), (166, 31130), (170, 31109), (173, 31094),

Gene: Atkinbua_95 Start: 51766, Stop: 51083, Start Num: 54

Candidate Starts for Atkinbua_95:

(Start: 51 @51772 has 8 MA's), (Start: 54 @51766 has 6 MA's), (Start: 66 @51751 has 5 MA's), (Start: 73 @51688 has 1 MA's), (75, 51679), (118, 51469), (120, 51457), (130, 51412), (135, 51379), (155, 51301), (163, 51271), (164, 51265), (166, 51244), (170, 51223), (173, 51208), (179, 51145), (180, 51142), (184, 51130),

Gene: BAKA_121 Start: 67154, Stop: 67777, Start Num: 60

Candidate Starts for BAKA_121:

(Start: 60 @67154 has 29 MA's), (Start: 66 @67163 has 5 MA's), (Start: 71 @67199 has 1 MA's), (Start: 74 @67229 has 2 MA's), (75, 67235), (85, 67289), (155, 67601), (163, 67631), (164, 67637), (165, 67640), (170, 67679), (173, 67694),

Gene: BK1_79 Start: 46951, Stop: 46274, Start Num: 55

Candidate Starts for BK1_79:

(9, 47182), (Start: 44 @46972 has 1 MA's), (Start: 55 @46951 has 38 MA's), (Start: 66 @46933 has 5 MA's), (Start: 74 @46867 has 2 MA's), (75, 46861), (86, 46795), (95, 46768), (98, 46729), (111, 46660), (118, 46633), (120, 46621), (127, 46591), (130, 46576), (133, 46561), (149, 46489), (160, 46441), (166, 46411), (170, 46390), (171, 46384), (180, 46306),

Gene: BPBiebs31_91 Start: 51295, Stop: 50630, Start Num: 68

Candidate Starts for BPBiebs31_91:

(Start: 68 @51295 has 1 MA's), (70, 51265), (Start: 73 @51235 has 1 MA's), (75, 51226), (118, 51016), (120, 51004), (130, 50959), (155, 50848), (163, 50818), (164, 50812), (166, 50791), (170, 50770), (173, 50755), (179, 50692), (180, 50689), (184, 50677),

Gene: BabyGotBac_40 Start: 31643, Stop: 31008, Start Num: 67

Candidate Starts for BabyGotBac_40:

(59, 31661), (Start: 67 @31643 has 4 MA's), (75, 31574), (85, 31517), (93, 31475), (95, 31469), (96, 31466), (104, 31418), (111, 31376), (120, 31337), (151, 31193), (155, 31187), (166, 31130), (170, 31109), (173, 31094),

Gene: Bactobuster_79 Start: 48348, Stop: 47665, Start Num: 63

Candidate Starts for Bactobuster_79:

(Start: 63 @48348 has 3 MA's), (Start: 72 @48303 has 11 MA's), (112, 48069), (121, 48030), (126, 48006), (130, 47988), (136, 47949), (158, 47856), (170, 47796), (186, 47694), (190, 47673),

Gene: Bagrid_122 Start: 67160, Stop: 67738, Start Num: 71

Candidate Starts for Bagrid_122:

(Start: 60 @67115 has 29 MA's), (Start: 66 @67124 has 5 MA's), (Start: 71 @67160 has 1 MA's), (75, 67196), (85, 67250), (155, 67562), (163, 67592), (164, 67598), (165, 67601), (170, 67640), (173, 67655),

Gene: BayC_39 Start: 31646, Stop: 31008, Start Num: 66

Candidate Starts for BayC_39:

(59, 31661), (Start: 66 @31646 has 5 MA's), (Start: 67 @31643 has 4 MA's), (Start: 73 @31583 has 1 MA's), (96, 31466), (104, 31418), (111, 31376), (120, 31337), (151, 31193), (155, 31187), (166, 31130), (170, 31109), (173, 31094),

Gene: Beagle_20 Start: 6529, Stop: 7245, Start Num: 53

Candidate Starts for Beagle_20:

(Start: 53 @6529 has 4 MA's), (69, 6562), (102, 6772), (120, 6865), (130, 6910), (145, 6985), (170, 7135), (173, 7150), (184, 7225), (187, 7231),

Gene: Beatrix_84 Start: 49764, Stop: 49084, Start Num: 55

Candidate Starts for Beatrix_84:

(4, 50085), (5, 50067), (6, 50055), (14, 49944), (15, 49935), (21, 49884), (Start: 55 @49764 has 38 MA's), (Start: 66 @49746 has 5 MA's), (Start: 74 @49680 has 2 MA's), (75, 49674), (86, 49608), (95, 49581), (98, 49542), (111, 49473), (118, 49446), (120, 49434), (127, 49404), (130, 49389), (133, 49374), (149, 49299), (160, 49251), (166, 49221), (170, 49200), (171, 49194), (180, 49116),

Gene: Beelzebub_36 Start: 10697, Stop: 10047, Start Num: 60

Candidate Starts for Beelzebub_36:

(7, 10961), (11, 10883), (13, 10859), (35, 10733), (Start: 60 @10697 has 29 MA's), (65, 10685), (Start: 67 @10679 has 4 MA's), (Start: 73 @10619 has 1 MA's), (81, 10568), (99, 10478), (109, 10433), (130, 10331), (139, 10280), (144, 10268), (162, 10211), (163, 10208), (170, 10160), (173, 10145),

Gene: BeesKnees_87 Start: 48684, Stop: 48004, Start Num: 60

Candidate Starts for BeesKnees_87:

(17, 48828), (19, 48798), (Start: 60 @48684 has 29 MA's), (Start: 64 @48678 has 24 MA's), (Start: 73 @48609 has 1 MA's), (75, 48600), (118, 48390), (120, 48378), (123, 48363), (130, 48333), (135, 48300), (155, 48222), (163, 48192), (164, 48186), (166, 48165), (170, 48144), (173, 48129), (179, 48066), (180, 48063), (184, 48051),

Gene: Belfort_7 Start: 2280, Stop: 1633, Start Num: 64

Candidate Starts for Belfort_7:

(Start: 64 @2280 has 24 MA's), (Start: 67 @2271 has 4 MA's), (69, 2265), (Start: 72 @2238 has 11 MA's), (82, 2160), (87, 2130), (88, 2127), (90, 2124), (101, 2067), (111, 2013), (127, 1947), (129, 1944), (130, 1932), (133, 1914), (158, 1797), (160, 1785), (163, 1779), (170, 1728), (173, 1713), (186, 1638),

Gene: Beuffert_6 Start: 2198, Stop: 1509, Start Num: 64

Candidate Starts for Beuffert_6:

(Start: 64 @2198 has 24 MA's), (79, 2102), (82, 2078), (87, 2048), (88, 2045), (90, 2042), (97, 1997), (101, 1985), (111, 1931), (118, 1904), (120, 1892), (122, 1877), (127, 1862), (130, 1847), (141, 1793), (158, 1715), (160, 1703), (170, 1646), (173, 1631), (189, 1532),

Gene: Bexan_82 Start: 49540, Stop: 48860, Start Num: 55

Candidate Starts for Bexan_82:

(4, 49861), (5, 49843), (6, 49831), (14, 49720), (15, 49711), (21, 49660), (Start: 55 @49540 has 38 MA's), (Start: 66 @49522 has 5 MA's), (Start: 74 @49456 has 2 MA's), (75, 49450), (86, 49384), (95, 49357), (98, 49318), (111, 49249), (118, 49222), (120, 49210), (127, 49180), (130, 49165), (133, 49150), (149, 49075), (160, 49027), (166, 48997), (170, 48976), (171, 48970), (180, 48892),

Gene: Big3_87 Start: 51481, Stop: 50807, Start Num: 64

Candidate Starts for Big3_87:

(Start: 48 @51505 has 6 MA's), (Start: 60 @51487 has 29 MA's), (Start: 64 @51481 has 24 MA's), (Start: 73 @51412 has 1 MA's), (75, 51403), (118, 51193), (120, 51181), (130, 51136), (135, 51103), (155, 51025), (163, 50995), (164, 50989), (166, 50968), (170, 50947), (173, 50932), (179, 50869), (180, 50866), (184, 50854),

Gene: BigPaolini_83 Start: 48463, Stop: 47786, Start Num: 55

Candidate Starts for BigPaolini_83:

(Start: 55 @48463 has 38 MA's), (Start: 74 @48379 has 2 MA's), (75, 48373), (86, 48307), (95, 48280), (98, 48241), (111, 48175), (118, 48148), (120, 48136), (127, 48106), (130, 48091), (133, 48076), (149, 48001), (160, 47953), (166, 47923), (170, 47902), (171, 47896), (180, 47818),

Gene: Bigfoot_82 Start: 49765, Stop: 49106, Start Num: 66

Candidate Starts for Bigfoot_82:

(Start: 44 @49804 has 1 MA's), (Start: 55 @49783 has 38 MA's), (Start: 66 @49765 has 5 MA's), (Start: 74 @49699 has 2 MA's), (75, 49693), (95, 49600), (98, 49561), (111, 49492), (113, 49486), (118, 49465), (120, 49453), (127, 49423), (130, 49408), (133, 49393), (149, 49321), (160, 49273), (166, 49243), (170, 49222), (171, 49216), (180, 49138),

Gene: BillKnuckles_77 Start: 48897, Stop: 48223, Start Num: 55

Candidate Starts for BillKnuckles_77:

(Start: 55 @48897 has 38 MA's), (Start: 64 @48885 has 24 MA's), (Start: 67 @48879 has 4 MA's), (Start: 73 @48819 has 1 MA's), (86, 48744), (95, 48717), (98, 48678), (111, 48609), (118, 48582), (120, 48570), (127, 48540), (130, 48525), (133, 48510), (149, 48438), (160, 48390), (166, 48360), (170, 48339), (171, 48333), (180, 48255),

Gene: BillNye_8 Start: 3730, Stop: 3080, Start Num: 64

Candidate Starts for BillNye_8:

(Start: 64 @3730 has 24 MA's), (Start: 66 @3724 has 5 MA's), (75, 3652), (84, 3601), (95, 3562), (110, 3478), (127, 3400), (129, 3397), (130, 3385), (147, 3295), (160, 3241), (170, 3184), (173, 3169), (182, 3094),

Gene: Blackbeetle_32 Start: 9689, Stop: 9039, Start Num: 60

Candidate Starts for Blackbeetle_32:

(7, 9980), (11, 9902), (13, 9878), (35, 9752), (41, 9740), (Start: 60 @9689 has 29 MA's), (65, 9677), (Start: 73 @9611 has 1 MA's), (81, 9560), (99, 9470), (109, 9425), (130, 9323), (139, 9272), (144, 9260), (162, 9203), (163, 9200), (170, 9152), (173, 9137),

Gene: Blue_80 Start: 48982, Stop: 48305, Start Num: 55

Candidate Starts for Blue_80:

(9, 49213), (Start: 44 @49003 has 1 MA's), (Start: 55 @48982 has 38 MA's), (Start: 66 @48964 has 5 MA's), (Start: 74 @48898 has 2 MA's), (75, 48892), (86, 48826), (95, 48799), (98, 48760), (111, 48691), (118, 48664), (120, 48652), (130, 48607), (133, 48592), (160, 48472), (166, 48442), (170, 48421), (171, 48415), (180, 48337),

Gene: Blueeyedbeauty_7 Start: 2331, Stop: 1621, Start Num: 64

Candidate Starts for Blueeyedbeauty_7:

(Start: 64 @2331 has 24 MA's), (Start: 67 @2322 has 4 MA's), (Start: 72 @2289 has 11 MA's), (79, 2235), (82, 2211), (87, 2181), (88, 2178), (90, 2175), (97, 2130), (101, 2118), (111, 2064), (118, 2037), (120, 2025), (122, 2010), (127, 1995), (130, 1980), (133, 1962), (135, 1947), (141, 1926), (158, 1848), (160, 1836), (170, 1779), (173, 1764),

Gene: Bobby_114 Start: 68576, Stop: 69196, Start Num: 60

Candidate Starts for Bobby_114:

(Start: 60 @68576 has 29 MA's), (Start: 66 @68585 has 5 MA's), (Start: 71 @68621 has 1 MA's), (Start: 73 @68648 has 1 MA's), (75, 68657), (85, 68711), (155, 69020), (163, 69050), (164, 69056), (165, 69059), (170, 69098), (173, 69113),

Gene: Boersma_78 Start: 49754, Stop: 49053, Start Num: 55

Candidate Starts for Boersma_78:

(23, 49868), (26, 49850), (33, 49820), (39, 49802), (Start: 46 @49772 has 1 MA's), (49, 49766), (Start: 53 @49757 has 4 MA's), (Start: 55 @49754 has 38 MA's), (Start: 73 @49670 has 1 MA's), (83, 49604), (84, 49601), (112, 49433), (120, 49397), (130, 49352), (133, 49337), (134, 49334), (170, 49160), (171, 49154), (180, 49076), (182, 49067), (186, 49058),

Gene: Briton15_89 Start: 50750, Stop: 50073, Start Num: 36

Candidate Starts for Briton15_89:

(Start: 36 @50750 has 4 MA's), (Start: 73 @50669 has 1 MA's), (75, 50660), (81, 50618), (95, 50567), (98, 50528), (117, 50441), (118, 50432), (127, 50390), (130, 50375), (133, 50360), (149, 50288), (160, 50240), (170, 50189), (171, 50183), (174, 50168), (180, 50105),

Gene: Bruns_90 Start: 50053, Stop: 49328, Start Num: 36

Candidate Starts for Bruns_90:

(Start: 25 @50098 has 1 MA's), (Start: 36 @50053 has 4 MA's), (Start: 51 @50014 has 8 MA's), (Start: 61 @49999 has 21 MA's), (Start: 64 @49993 has 24 MA's), (Start: 73 @49924 has 1 MA's), (75, 49915), (81, 49873), (95, 49822), (98, 49783), (117, 49696), (118, 49687), (127, 49645), (130, 49630), (133, 49615), (149, 49543), (160, 49495), (170, 49444), (171, 49438), (174, 49423), (180, 49360),

Gene: BrutonGaster_151 Start: 82896, Stop: 82189, Start Num: 43

Candidate Starts for BrutonGaster_151:

(Start: 43 @82896 has 2 MA's), (65, 82857), (Start: 72 @82818 has 11 MA's), (Start: 73 @82791 has 1 MA's), (94, 82689), (112, 82581), (118, 82557), (120, 82545), (124, 82530), (130, 82500), (133, 82485), (149, 82410), (160, 82362), (166, 82332), (170, 82311), (180, 82227),

Gene: Burton_88 Start: 51831, Stop: 51142, Start Num: 48

Candidate Starts for Burton_88:

(Start: 48 @51831 has 6 MA's), (Start: 60 @51813 has 29 MA's), (Start: 63 @51807 has 3 MA's), (Start: 73 @51738 has 1 MA's), (75, 51729), (118, 51519), (120, 51507), (130, 51462), (155, 51351), (163, 51321), (164, 51315), (166, 51294), (170, 51273), (173, 51258), (188, 51168),

Gene: CactusRose_91 Start: 50800, Stop: 50123, Start Num: 55

Candidate Starts for CactusRose_91:

(Start: 44 @50821 has 1 MA's), (Start: 55 @50800 has 38 MA's), (Start: 66 @50782 has 5 MA's), (Start: 74 @50716 has 2 MA's), (75, 50710), (95, 50617), (98, 50578), (111, 50509), (113, 50503), (118, 50482), (120, 50470), (127, 50440), (130, 50425), (133, 50410), (149, 50338), (160, 50290), (166, 50260), (170, 50239), (171, 50233), (180, 50155),

Gene: Caprice_28 Start: 9258, Stop: 8611, Start Num: 62

Candidate Starts for Caprice_28:

(40, 9288), (62, 9258), (Start: 73 @9183 has 1 MA's), (81, 9132), (99, 9042), (109, 8997), (130, 8895), (139, 8844), (144, 8832), (162, 8775), (163, 8772), (170, 8724), (173, 8709),

Gene: Carlyle_84 Start: 48483, Stop: 47806, Start Num: 55

Candidate Starts for Carlyle_84:

(9, 48714), (Start: 44 @48504 has 1 MA's), (Start: 55 @48483 has 38 MA's), (Start: 66 @48465 has 5 MA's), (Start: 74 @48399 has 2 MA's), (75, 48393), (86, 48327), (95, 48300), (98, 48261), (106, 48225), (111, 48192), (118, 48165), (120, 48153), (127, 48123), (130, 48108), (133, 48093), (149, 48021), (160, 47973), (166, 47943), (170, 47922), (171, 47916), (180, 47838),

Gene: Circinus_9 Start: 3611, Stop: 2961, Start Num: 64

Candidate Starts for Circinus_9:

(Start: 64 @3611 has 24 MA's), (Start: 66 @3605 has 5 MA's), (75, 3533), (84, 3482), (95, 3443), (110, 3359), (127, 3281), (129, 3278), (130, 3266), (147, 3176), (160, 3122), (170, 3065), (173, 3050), (182, 2975),

Gene: Clarkson_33 Start: 10398, Stop: 9748, Start Num: 60

Candidate Starts for Clarkson_33:

(7, 10662), (11, 10584), (13, 10560), (35, 10434), (Start: 60 @10398 has 29 MA's), (65, 10386), (Start: 73 @10320 has 1 MA's), (81, 10269), (99, 10179), (109, 10134), (130, 10032), (139, 9981), (144, 9969), (162, 9912), (163, 9909), (170, 9861), (173, 9846),

Gene: Comrade_7 Start: 2239, Stop: 1634, Start Num: 72

Candidate Starts for Comrade_7:

(Start: 64 @2281 has 24 MA's), (Start: 67 @2272 has 4 MA's), (69, 2266), (Start: 72 @2239 has 11 MA's), (82, 2161), (87, 2131), (88, 2128), (90, 2125), (101, 2068), (111, 2014), (127, 1948), (129, 1945), (130, 1933), (133, 1915), (158, 1798), (160, 1786), (163, 1780), (170, 1729), (173, 1714), (186, 1639),

Gene: ConceptII_94 Start: 52101, Stop: 51412, Start Num: 51

Candidate Starts for ConceptII_94:

(Start: 51 @52101 has 8 MA's), (Start: 54 @52095 has 6 MA's), (Start: 66 @52080 has 5 MA's), (Start: 73 @52017 has 1 MA's), (75, 52008), (118, 51798), (120, 51786), (130, 51741), (135, 51708), (155, 51630), (163, 51600), (164, 51594), (166, 51573), (170, 51552), (173, 51537), (179, 51474), (180, 51471), (184, 51459),

Gene: Corazon_30 Start: 10351, Stop: 9701, Start Num: 60

Candidate Starts for Corazon_30:

(7, 10615), (11, 10537), (13, 10513), (35, 10387), (Start: 60 @10351 has 29 MA's), (65, 10339), (Start: 67 @10333 has 4 MA's), (Start: 73 @10273 has 1 MA's), (81, 10222), (99, 10132), (109, 10087), (130, 9985), (139, 9934), (144, 9922), (162, 9865), (163, 9862), (170, 9814), (173, 9799),

Gene: Courthouse_112 Start: 63132, Stop: 63782, Start Num: 57

Candidate Starts for Courthouse_112:

(32, 63060), (Start: 57 @63132 has 13 MA's), (Start: 72 @63183 has 11 MA's), (Start: 73 @63210 has 1 MA's), (Start: 74 @63213 has 2 MA's), (75, 63219), (89, 63294), (105, 63372), (130, 63498), (133, 63513), (140, 63549), (160, 63633), (170, 63684), (174, 63705),

Gene: Cueyllyss_72 Start: 46773, Stop: 46099, Start Num: 64

Candidate Starts for Cueyllyss_72:

(Start: 48 @46797 has 6 MA's), (Start: 60 @46779 has 29 MA's), (Start: 64 @46773 has 24 MA's), (Start: 73 @46704 has 1 MA's), (75, 46695), (118, 46485), (120, 46473), (130, 46428), (135, 46395), (155, 46317), (163, 46287), (164, 46281), (166, 46260), (170, 46239), (173, 46224), (179, 46161), (180, 46158), (184, 46146),

Gene: DD5_84 Start: 50105, Stop: 49434, Start Num: 61

Candidate Starts for DD5_84:

(18, 50249), (24, 50219), (Start: 61 @50105 has 21 MA's), (Start: 64 @50099 has 24 MA's), (Start: 73 @50030 has 1 MA's), (75, 50021), (81, 49979), (95, 49928), (98, 49889), (117, 49802), (118, 49793), (120, 49781), (127, 49751), (130, 49736), (133, 49721), (149, 49649), (160, 49601), (170, 49550), (171, 49544), (174, 49529), (180, 49466),

Gene: Dexes_88 Start: 52469, Stop: 51795, Start Num: 55

Candidate Starts for Dexes_88:

(Start: 55 @52469 has 38 MA's), (Start: 64 @52457 has 24 MA's), (Start: 67 @52451 has 4 MA's), (Start: 73 @52391 has 1 MA's), (86, 52316), (95, 52289), (98, 52250), (111, 52181), (118, 52154), (120, 52142), (130, 52097), (133, 52082), (149, 52010), (160, 51962), (166, 51932), (170, 51911), (171, 51905), (180, 51827),

Gene: DmpstrDiver_122 Start: 67404, Stop: 68027, Start Num: 60

Candidate Starts for DmpstrDiver_122:

(Start: 60 @67404 has 29 MA's), (Start: 66 @67413 has 5 MA's), (Start: 71 @67449 has 1 MA's), (75, 67485), (85, 67539), (155, 67851), (163, 67881), (164, 67887), (165, 67890), (170, 67929), (173, 67944),

Gene: Doom_78 Start: 48519, Stop: 47839, Start Num: 60

Candidate Starts for Doom_78:

(Start: 48 @48537 has 6 MA's), (Start: 60 @48519 has 29 MA's), (Start: 64 @48513 has 24 MA's), (Start: 73 @48444 has 1 MA's), (75, 48435), (118, 48225), (120, 48213), (130, 48168), (155, 48057), (163, 48027), (164, 48021), (166, 48000), (170, 47979), (173, 47964), (179, 47901), (180, 47898), (184, 47886),

Gene: Dorin_232 Start: 119103, Stop: 119795, Start Num: 60

Candidate Starts for Dorin_232:

(Start: 60 @119103 has 29 MA's), (69, 119127), (130, 119457), (131, 119466), (137, 119505), (144, 119535), (146, 119544), (155, 119616), (159, 119631), (163, 119646), (170, 119694), (173, 119709), (182, 119784),

Gene: Dorin_125 Start: 82694, Stop: 83350, Start Num: 60

Candidate Starts for Dorin_125:

(35, 82631), (38, 82637), (Start: 60 @82694 has 29 MA's), (117, 82988), (120, 83009), (130, 83060), (148, 83153), (155, 83180), (170, 83258),

Gene: DrFeelGood_80 Start: 47764, Stop: 47084, Start Num: 55

Candidate Starts for DrFeelGood_80:

(Start: 44 @47785 has 1 MA's), (Start: 55 @47764 has 38 MA's), (Start: 66 @47746 has 5 MA's), (Start: 74 @47680 has 2 MA's), (75, 47674), (86, 47608), (95, 47581), (98, 47542), (111, 47473), (118,

47446), (120, 47434), (130, 47389), (133, 47374), (166, 47221), (170, 47200), (171, 47194), (180, 47116),

Gene: Dreamboat_83 Start: 47449, Stop: 46793, Start Num: 61

Candidate Starts for Dreamboat_83:

(Start: 61 @47449 has 21 MA's), (Start: 73 @47374 has 1 MA's), (78, 47350), (117, 47161), (120, 47140), (121, 47137), (130, 47089), (150, 47008), (166, 46933), (170, 46912), (173, 46897), (179, 46834),

Gene: DroogsArmy_55 Start: 40958, Stop: 40269, Start Num: 55

Candidate Starts for DroogsArmy_55:

(Start: 55 @40958 has 38 MA's), (65, 40946), (69, 40934), (Start: 72 @40907 has 11 MA's), (Start: 73 @40880 has 1 MA's), (75, 40871), (111, 40664), (117, 40646), (130, 40580), (141, 40526), (149, 40490), (160, 40442), (166, 40412), (170, 40391), (179, 40310), (183, 40298),

Gene: Duke13_116 Start: 64831, Stop: 65445, Start Num: 66

Candidate Starts for Duke13_116:

(Start: 60 @64822 has 29 MA's), (Start: 66 @64831 has 5 MA's), (Start: 71 @64867 has 1 MA's), (Start: 74 @64897 has 2 MA's), (75, 64903), (85, 64957), (155, 65269), (163, 65299), (164, 65305), (165, 65308), (170, 65347), (173, 65362),

Gene: Dynamix_85 Start: 48097, Stop: 47417, Start Num: 61

Candidate Starts for Dynamix_85:

(18, 48241), (24, 48211), (Start: 61 @48097 has 21 MA's), (Start: 64 @48091 has 24 MA's), (Start: 73 @48013 has 1 MA's), (75, 48004), (81, 47962), (95, 47911), (98, 47872), (117, 47785), (118, 47776), (127, 47734), (130, 47719), (133, 47704), (149, 47632), (160, 47584), (170, 47533), (171, 47527), (174, 47512), (180, 47449),

Gene: Ejimix_116 Start: 68532, Stop: 69179, Start Num: 57

Candidate Starts for Ejimix_116:

(Start: 57 @68532 has 13 MA's), (Start: 66 @68541 has 5 MA's), (Start: 72 @68577 has 11 MA's), (75, 68613), (89, 68688), (112, 68811), (126, 68874), (130, 68892), (138, 68937), (149, 68979), (160, 69027), (170, 69078),

Gene: Emma1919_7 Start: 2249, Stop: 1644, Start Num: 72

Candidate Starts for Emma1919_7:

(Start: 64 @2291 has 24 MA's), (Start: 72 @2249 has 11 MA's), (75, 2213), (82, 2171), (87, 2141), (88, 2138), (90, 2135), (96, 2114), (111, 2024), (117, 2006), (127, 1958), (130, 1943), (131, 1931), (141, 1886), (160, 1796), (164, 1784), (170, 1739), (173, 1724),

Gene: EricMillard_113 Start: 66791, Stop: 67414, Start Num: 60

Candidate Starts for EricMillard_113:

(Start: 60 @66791 has 29 MA's), (Start: 66 @66800 has 5 MA's), (Start: 71 @66836 has 1 MA's), (Start: 74 @66866 has 2 MA's), (75, 66872), (85, 66926), (155, 67238), (163, 67268), (164, 67274), (165, 67277), (170, 67316), (173, 67331),

Gene: Euphoria_88 Start: 50663, Stop: 49890, Start Num: 25

Candidate Starts for Euphoria_88:

(Start: 25 @50663 has 1 MA's), (Start: 36 @50618 has 4 MA's), (Start: 51 @50579 has 8 MA's), (Start: 61 @50564 has 21 MA's), (Start: 64 @50558 has 24 MA's), (Start: 73 @50489 has 1 MA's), (75, 50480), (81, 50438), (95, 50387), (98, 50348), (111, 50279), (118, 50252), (120, 50240), (127, 50210), (130, 50195), (133, 50180), (149, 50105), (160, 50057), (170, 50006), (171, 50000), (174, 49985), (180, 49922),

Gene: Fascinus_82 Start: 50318, Stop: 49620, Start Num: 44

Candidate Starts for Fascinus_82:

(Start: 44 @50318 has 1 MA's), (Start: 55 @50297 has 38 MA's), (Start: 66 @50279 has 5 MA's), (Start: 74 @50213 has 2 MA's), (75, 50207), (95, 50114), (98, 50075), (111, 50006), (113, 50000), (118, 49979), (120, 49967), (127, 49937), (130, 49922), (133, 49907), (149, 49835), (160, 49787), (166, 49757), (170, 49736), (171, 49730), (180, 49652),

Gene: Faust_6 Start: 2432, Stop: 1746, Start Num: 64

Candidate Starts for Faust_6:

(Start: 64 @2432 has 24 MA's), (Start: 67 @2423 has 4 MA's), (Start: 72 @2390 has 11 MA's), (82, 2312), (87, 2282), (88, 2279), (90, 2276), (101, 2219), (111, 2165), (117, 2147), (120, 2126), (122, 2111), (127, 2096), (130, 2081), (131, 2069), (160, 1937), (170, 1880), (173, 1865),

Gene: Fenn_90 Start: 50622, Stop: 49948, Start Num: 55

Candidate Starts for Fenn_90:

(Start: 55 @50622 has 38 MA's), (Start: 64 @50610 has 24 MA's), (Start: 67 @50604 has 4 MA's), (Start: 73 @50544 has 1 MA's), (86, 50469), (95, 50442), (98, 50403), (111, 50334), (118, 50307), (120, 50295), (127, 50265), (130, 50250), (133, 50235), (149, 50163), (160, 50115), (166, 50085), (170, 50064), (171, 50058), (180, 49980),

Gene: Forrest_7 Start: 2288, Stop: 1641, Start Num: 64

Candidate Starts for Forrest_7:

(Start: 64 @2288 has 24 MA's), (Start: 67 @2279 has 4 MA's), (Start: 72 @2246 has 11 MA's), (77, 2198), (82, 2168), (87, 2138), (88, 2135), (90, 2132), (96, 2111), (111, 2021), (117, 2003), (127, 1955), (130, 1940), (131, 1928), (141, 1883), (160, 1793), (164, 1781), (170, 1736), (173, 1721),

Gene: Francesca_232 Start: 119746, Stop: 120438, Start Num: 60

Candidate Starts for Francesca_232:

(Start: 60 @119746 has 29 MA's), (69, 119770), (130, 120100), (131, 120109), (137, 120148), (144, 120178), (146, 120187), (155, 120259), (159, 120274), (163, 120289), (170, 120337), (173, 120352), (182, 120427),

Gene: Francesca_128 Start: 83609, Stop: 84265, Start Num: 60

Candidate Starts for Francesca_128:

(35, 83546), (38, 83552), (Start: 60 @83609 has 29 MA's), (117, 83903), (120, 83924), (130, 83975), (148, 84068), (155, 84095), (170, 84173),

Gene: Francis47_89 Start: 52474, Stop: 51800, Start Num: 55

Candidate Starts for Francis47_89:

(Start: 55 @52474 has 38 MA's), (Start: 74 @52390 has 2 MA's), (75, 52384), (86, 52318), (95, 52291), (98, 52252), (111, 52186), (118, 52159), (120, 52147), (127, 52117), (130, 52102), (133, 52087), (149, 52015), (160, 51967), (170, 51916), (171, 51910), (174, 51895), (180, 51832),

Gene: Francob_6 Start: 2290, Stop: 1643, Start Num: 64

Candidate Starts for Francob_6:

(Start: 64 @2290 has 24 MA's), (Start: 72 @2248 has 11 MA's), (79, 2194), (82, 2170), (87, 2140), (88, 2137), (90, 2134), (96, 2113), (111, 2023), (117, 2005), (118, 1996), (127, 1954), (130, 1939), (131, 1927), (158, 1807), (160, 1795), (170, 1738), (173, 1723),

Gene: GageAP_88 Start: 51129, Stop: 50431, Start Num: 48

Candidate Starts for GageAP_88:

(Start: 48 @51129 has 6 MA's), (Start: 60 @51111 has 29 MA's), (Start: 64 @51105 has 24 MA's), (Start: 73 @51036 has 1 MA's), (75, 51027), (118, 50817), (120, 50805), (130, 50760), (135, 50727), (155, 50649), (163, 50619), (164, 50613), (166, 50592), (170, 50571), (173, 50556), (179, 50493), (180, 50490), (184, 50478),

Gene: Gattaca_31 Start: 9578, Stop: 8928, Start Num: 60

Candidate Starts for Gattaca_31:

(1, 10127), (7, 9842), (11, 9764), (13, 9740), (35, 9614), (Start: 60 @9578 has 29 MA's), (65, 9566), (Start: 67 @9560 has 4 MA's), (Start: 73 @9500 has 1 MA's), (81, 9449), (99, 9359), (109, 9314), (130, 9212), (139, 9161), (144, 9149), (162, 9092), (163, 9089), (170, 9041), (173, 9026),

Gene: Gilson_7 Start: 2246, Stop: 1641, Start Num: 72

Candidate Starts for Gilson_7:

(Start: 64 @2288 has 24 MA's), (Start: 72 @2246 has 11 MA's), (77, 2198), (82, 2168), (87, 2138), (88, 2135), (90, 2132), (96, 2111), (111, 2021), (117, 2003), (127, 1955), (130, 1940), (131, 1928), (141, 1883), (160, 1793), (164, 1781), (170, 1736), (173, 1721),

Gene: Gonephishing_111 Start: 62610, Stop: 63188, Start Num: 71

Candidate Starts for Gonephishing_111:

(27, 62487), (Start: 60 @62559 has 29 MA's), (Start: 71 @62610 has 1 MA's), (Start: 73 @62637 has 1 MA's), (Start: 74 @62640 has 2 MA's), (75, 62646), (130, 62913), (131, 62925), (135, 62946), (155, 63015), (163, 63045), (164, 63051), (165, 63054), (170, 63093), (173, 63108),

Gene: Gorgeous_75 Start: 49355, Stop: 48654, Start Num: 55

Candidate Starts for Gorgeous_75:

(29, 49436), (33, 49421), (39, 49403), (49, 49367), (Start: 55 @49355 has 38 MA's), (Start: 73 @49271 has 1 MA's), (77, 49244), (78, 49241), (83, 49205), (84, 49202), (112, 49034), (129, 48965), (130, 48953), (133, 48938), (134, 48935), (170, 48761), (171, 48755), (176, 48728), (180, 48677), (182, 48668), (186, 48659),

Gene: Graduation_89 Start: 50205, Stop: 49507, Start Num: 48

Candidate Starts for Graduation_89:

(Start: 48 @50205 has 6 MA's), (Start: 60 @50187 has 29 MA's), (Start: 64 @50181 has 24 MA's), (Start: 73 @50112 has 1 MA's), (75, 50103), (118, 49893), (120, 49881), (130, 49836), (135, 49803), (155, 49725), (163, 49695), (164, 49689), (166, 49668), (170, 49647), (173, 49632), (179, 49569), (180, 49566), (184, 49554),

Gene: Grayson_225 Start: 110700, Stop: 111323, Start Num: 61

Candidate Starts for Grayson_225:

(Start: 61 @110700 has 21 MA's), (103, 110922), (130, 111051), (132, 111063), (155, 111147), (156, 111156), (163, 111177), (170, 111225), (173, 111240),

Gene: Grayson_224 Start: 110034, Stop: 110687, Start Num: 64

Candidate Starts for Grayson_224:

(Start: 64 @110034 has 24 MA's), (69, 110049), (85, 110172), (95, 110208), (100, 110244), (101, 110247), (119, 110331), (130, 110391), (145, 110472), (170, 110589), (180, 110673),

Gene: GrecoEtereo_90 Start: 51375, Stop: 50692, Start Num: 54

Candidate Starts for GrecoEtereo_90:

(Start: 51 @51381 has 8 MA's), (Start: 54 @51375 has 6 MA's), (Start: 66 @51360 has 5 MA's), (Start: 73 @51297 has 1 MA's), (75, 51288), (118, 51078), (120, 51066), (130, 51021), (155, 50910), (163, 50880), (170, 50832), (173, 50817), (179, 50754), (180, 50751), (184, 50739),

Gene: Gwendoluna_88 Start: 50909, Stop: 50226, Start Num: 54

Candidate Starts for Gwendoluna_88:

(Start: 51 @50915 has 8 MA's), (Start: 54 @50909 has 6 MA's), (Start: 66 @50894 has 5 MA's), (Start: 73 @50831 has 1 MA's), (75, 50822), (118, 50612), (120, 50600), (130, 50555), (135, 50522), (155, 50444), (163, 50414), (164, 50408), (166, 50387), (170, 50366), (173, 50351), (179, 50288), (180, 50285), (184, 50273),

Gene: HINdeR_54 Start: 40614, Stop: 39931, Start Num: 55

Candidate Starts for HINdeR_54:

(Start: 55 @40614 has 38 MA's), (Start: 66 @40599 has 5 MA's), (Start: 72 @40563 has 11 MA's), (75, 40527), (111, 40326), (117, 40308), (129, 40254), (130, 40242), (141, 40188), (149, 40152), (166, 40074), (170, 40053), (183, 39960),

Gene: Halley_124 Start: 68848, Stop: 69495, Start Num: 57

Candidate Starts for Halley_124:

(Start: 57 @68848 has 13 MA's), (Start: 66 @68857 has 5 MA's), (Start: 72 @68893 has 11 MA's), (75, 68929), (89, 69004), (112, 69127), (126, 69190), (130, 69208), (138, 69253), (149, 69295), (160, 69343), (170, 69394),

Gene: Herbertwm_80 Start: 47646, Stop: 46972, Start Num: 58

Candidate Starts for Herbertwm_80:

(20, 47781), (Start: 44 @47673 has 1 MA's), (50, 47661), (Start: 58 @47646 has 1 MA's), (Start: 72 @47595 has 11 MA's), (Start: 73 @47568 has 1 MA's), (112, 47361), (130, 47280), (133, 47265), (136, 47241), (158, 47148), (160, 47139), (170, 47088), (180, 47004),

Gene: Heylee_73 Start: 49371, Stop: 48835, Start Num: 86

Candidate Starts for Heylee_73:

(39, 49584), (Start: 46 @49554 has 1 MA's), (49, 49548), (Start: 55 @49536 has 38 MA's), (Start: 73 @49452 has 1 MA's), (80, 49401), (83, 49386), (86, 49371), (112, 49215), (129, 49146), (130, 49134), (133, 49119), (134, 49116), (170, 48942), (171, 48936), (176, 48909), (180, 48858), (182, 48849), (186, 48840),

Gene: Hope4ever_84 Start: 49344, Stop: 48655, Start Num: 51

Candidate Starts for Hope4ever_84:

(Start: 51 @49344 has 8 MA's), (Start: 54 @49338 has 6 MA's), (Start: 66 @49323 has 5 MA's), (Start: 73 @49260 has 1 MA's), (75, 49251), (118, 49041), (120, 49029), (130, 48984), (155, 48873), (163, 48843), (164, 48837), (166, 48816), (170, 48795), (173, 48780), (179, 48717), (180, 48714), (184, 48702),

Gene: Hughesyang_121 Start: 68304, Stop: 68951, Start Num: 57

Candidate Starts for Hughesyang_121:

(Start: 57 @68304 has 13 MA's), (Start: 66 @68313 has 5 MA's), (Start: 72 @68349 has 11 MA's), (Start: 74 @68379 has 2 MA's), (75, 68385), (89, 68460), (112, 68583), (126, 68646), (130, 68664), (138, 68709), (160, 68799), (170, 68850),

Gene: Huphlebuff_34 Start: 10203, Stop: 9553, Start Num: 60

Candidate Starts for Huphlebuff_34:

(7, 10467), (11, 10389), (13, 10365), (35, 10239), (Start: 60 @10203 has 29 MA's), (65, 10191), (Start: 73 @10125 has 1 MA's), (81, 10074), (99, 9984), (109, 9939), (130, 9837), (139, 9786), (144, 9774), (162, 9717), (163, 9714), (170, 9666), (173, 9651),

Gene: ILeeKay_83 Start: 47940, Stop: 47263, Start Num: 55

Candidate Starts for ILeeKay_83:

(3, 48324), (6, 48228), (8, 48180), (Start: 55 @47940 has 38 MA's), (Start: 66 @47922 has 5 MA's), (Start: 74 @47856 has 2 MA's), (75, 47850), (86, 47784), (95, 47757), (98, 47718), (111, 47649), (118, 47622), (120, 47610), (127, 47580), (130, 47565), (133, 47550), (149, 47478), (160, 47430), (166, 47400), (170, 47379), (171, 47373), (180, 47295),

Gene: Ichabod_88 Start: 50257, Stop: 49586, Start Num: 61

Candidate Starts for Ichabod_88:

(18, 50401), (24, 50371), (Start: 61 @50257 has 21 MA's), (Start: 64 @50251 has 24 MA's), (Start: 73 @50182 has 1 MA's), (75, 50173), (81, 50131), (95, 50080), (98, 50041), (111, 49972), (118, 49945), (120, 49933), (127, 49903), (130, 49888), (133, 49873), (149, 49801), (160, 49753), (170, 49702), (171, 49696), (174, 49681), (180, 49618),

Gene: Ichor_75 Start: 49754, Stop: 49053, Start Num: 55

Candidate Starts for Ichor_75:

(23, 49868), (26, 49850), (33, 49820), (39, 49802), (Start: 46 @49772 has 1 MA's), (49, 49766), (Start: 53 @49757 has 4 MA's), (Start: 55 @49754 has 38 MA's), (Start: 73 @49670 has 1 MA's), (83, 49604), (84, 49601), (112, 49433), (120, 49397), (130, 49352), (133, 49337), (134, 49334), (170, 49160), (171, 49154), (180, 49076), (182, 49067), (186, 49058),

Gene: IronMan_84 Start: 49875, Stop: 49189, Start Num: 63

Candidate Starts for IronMan_84:

(Start: 44 @49902 has 1 MA's), (Start: 63 @49875 has 3 MA's), (Start: 72 @49830 has 11 MA's), (112, 49596), (121, 49557), (126, 49533), (130, 49515), (136, 49476), (158, 49383), (170, 49323), (187, 49218), (190, 49197),

Gene: Jaan_86 Start: 49980, Stop: 49297, Start Num: 57

Candidate Starts for Jaan_86:

(Start: 42 @50019 has 1 MA's), (Start: 57 @49980 has 13 MA's), (Start: 72 @49935 has 11 MA's), (112, 49701), (126, 49638), (130, 49620), (136, 49581), (158, 49488), (170, 49428), (186, 49326), (190, 49305),

Gene: Jada_7 Start: 2246, Stop: 1641, Start Num: 72

Candidate Starts for Jada_7:

(Start: 64 @2288 has 24 MA's), (Start: 72 @2246 has 11 MA's), (77, 2198), (82, 2168), (87, 2138), (88, 2135), (90, 2132), (96, 2111), (111, 2021), (117, 2003), (127, 1955), (130, 1940), (131, 1928), (141, 1883), (160, 1793), (164, 1781), (170, 1736), (173, 1721),

Gene: Jaek_75 Start: 49754, Stop: 49053, Start Num: 55

Candidate Starts for Jaek_75:

(23, 49868), (26, 49850), (33, 49820), (39, 49802), (Start: 46 @49772 has 1 MA's), (49, 49766), (Start: 53 @49757 has 4 MA's), (Start: 55 @49754 has 38 MA's), (Start: 73 @49670 has 1 MA's), (83, 49604), (84, 49601), (112, 49433), (120, 49397), (130, 49352), (133, 49337), (134, 49334), (170, 49160), (171, 49154), (180, 49076), (182, 49067), (186, 49058),

Gene: Jasper_82 Start: 47335, Stop: 46679, Start Num: 61

Candidate Starts for Jasper_82:

(Start: 61 @47335 has 21 MA's), (Start: 73 @47260 has 1 MA's), (78, 47236), (117, 47047), (120, 47026), (121, 47023), (130, 46975), (150, 46894), (166, 46819), (170, 46798), (173, 46783), (179, 46720),

Gene: JoieB_33 Start: 10422, Stop: 9772, Start Num: 60

Candidate Starts for JoieB_33:

(7, 10686), (11, 10608), (13, 10584), (35, 10458), (Start: 60 @10422 has 29 MA's), (65, 10410), (Start: 67 @10404 has 4 MA's), (Start: 73 @10344 has 1 MA's), (81, 10293), (99, 10203), (109, 10158), (130, 10056), (139, 10005), (144, 9993), (162, 9936), (163, 9933), (170, 9885), (173, 9870),

Gene: KSSJEB_84 Start: 48621, Stop: 47950, Start Num: 61

Candidate Starts for KSSJEB_84:

(18, 48765), (24, 48735), (Start: 61 @48621 has 21 MA's), (Start: 64 @48615 has 24 MA's), (Start: 73 @48546 has 1 MA's), (75, 48537), (81, 48495), (95, 48444), (98, 48405), (117, 48318), (118, 48309), (127, 48267), (130, 48252), (133, 48237), (149, 48165), (160, 48117), (170, 48066), (171, 48060), (174, 48045), (180, 47982),

Gene: Kalah2_113 Start: 67017, Stop: 67640, Start Num: 60

Candidate Starts for Kalah2_113:

(Start: 60 @67017 has 29 MA's), (Start: 66 @67026 has 5 MA's), (Start: 71 @67062 has 1 MA's), (75, 67098), (85, 67152), (155, 67464), (163, 67494), (164, 67500), (165, 67503), (170, 67542), (173, 67557),

Gene: Kamaru_78 Start: 44933, Stop: 45595, Start Num: 61

Candidate Starts for Kamaru_78:

(Start: 61 @44933 has 21 MA's), (117, 45224), (129, 45278), (130, 45290), (170, 45479), (174, 45500), (185, 45578),

Gene: Kanely_91 Start: 51113, Stop: 50424, Start Num: 51

Candidate Starts for Kanely_91:

(Start: 51 @51113 has 8 MA's), (Start: 54 @51107 has 6 MA's), (Start: 66 @51092 has 5 MA's), (Start: 73 @51029 has 1 MA's), (75, 51020), (118, 50810), (120, 50798), (130, 50753), (135, 50720), (155, 50642), (163, 50612), (164, 50606), (166, 50585), (170, 50564), (173, 50549), (179, 50486), (180, 50483), (184, 50471),

Gene: Karp_7 Start: 2281, Stop: 1634, Start Num: 64

Candidate Starts for Karp_7:

(Start: 64 @2281 has 24 MA's), (Start: 67 @2272 has 4 MA's), (69, 2266), (Start: 72 @2239 has 11 MA's), (82, 2161), (87, 2131), (88, 2128), (90, 2125), (101, 2068), (111, 2014), (127, 1948), (129, 1945), (130, 1933), (133, 1915), (158, 1798), (160, 1786), (163, 1780), (170, 1729), (173, 1714), (186, 1639),

Gene: Kenrey_7 Start: 2277, Stop: 1630, Start Num: 64

Candidate Starts for Kenrey_7:

(Start: 64 @2277 has 24 MA's), (Start: 67 @2268 has 4 MA's), (69, 2262), (Start: 72 @2235 has 11 MA's), (82, 2157), (87, 2127), (90, 2121), (111, 2010), (122, 1956), (127, 1944), (130, 1929), (131, 1917), (133, 1911), (160, 1782), (170, 1725), (173, 1710),

Gene: Killigrew_82 Start: 48701, Stop: 48027, Start Num: 64

Candidate Starts for Killigrew_82:

(Start: 64 @48701 has 24 MA's), (Start: 73 @48632 has 1 MA's), (75, 48623), (118, 48413), (120, 48401), (130, 48356), (155, 48245), (163, 48215), (164, 48209), (166, 48188), (170, 48167), (173, 48152), (179, 48089), (180, 48086), (184, 48074),

Gene: Kimona_80 Start: 46221, Stop: 45568, Start Num: 55

Candidate Starts for Kimona_80:

(30, 46290), (32, 46284), (34, 46278), (Start: 55 @46221 has 38 MA's), (Start: 72 @46170 has 11 MA's), (Start: 73 @46143 has 1 MA's), (112, 45942), (115, 45933), (124, 45891), (133, 45846), (149, 45771), (160, 45723), (170, 45672), (173, 45657), (177, 45618),

Gene: Klein_118 Start: 65374, Stop: 65997, Start Num: 60

Candidate Starts for Klein_118:

(Start: 60 @65374 has 29 MA's), (Start: 66 @65383 has 5 MA's), (Start: 71 @65419 has 1 MA's), (75, 65455), (85, 65509), (155, 65821), (163, 65851), (164, 65857), (165, 65860), (170, 65899), (173, 65914),

Gene: Kugel_87 Start: 50139, Stop: 49459, Start Num: 55

Candidate Starts for Kugel_87:

(Start: 55 @50139 has 38 MA's), (Start: 66 @50121 has 5 MA's), (Start: 74 @50055 has 2 MA's), (75, 50049), (95, 49956), (98, 49917), (111, 49848), (118, 49821), (120, 49809), (127, 49779), (130, 49764), (133, 49749), (160, 49626), (166, 49596), (170, 49575), (171, 49569), (180, 49491),

Gene: Landor_85 Start: 49908, Stop: 49222, Start Num: 63

Candidate Starts for Landor_85:

(Start: 44 @49935 has 1 MA's), (Start: 63 @49908 has 3 MA's), (Start: 72 @49863 has 11 MA's), (112, 49629), (121, 49590), (126, 49566), (130, 49548), (136, 49509), (158, 49416), (170, 49356), (187, 49251), (190, 49230),

Gene: Lesedi_82 Start: 48034, Stop: 47309, Start Num: 36

Candidate Starts for Lesedi_82:

(Start: 25 @48079 has 1 MA's), (Start: 36 @48034 has 4 MA's), (Start: 51 @47995 has 8 MA's), (Start: 61 @47980 has 21 MA's), (Start: 64 @47974 has 24 MA's), (Start: 73 @47905 has 1 MA's), (75, 47896), (81, 47854), (95, 47803), (98, 47764), (117, 47677), (118, 47668), (127, 47626), (130, 47611), (133, 47596), (149, 47524), (160, 47476), (170, 47425), (171, 47419), (174, 47404), (180, 47341),

Gene: Licorice_87 Start: 51728, Stop: 50982, Start Num: 31

Candidate Starts for Licorice_87:

(Start: 31 @51728 has 1 MA's), (Start: 55 @51659 has 38 MA's), (Start: 74 @51575 has 2 MA's), (75, 51569), (86, 51503), (95, 51476), (98, 51437), (111, 51371), (118, 51344), (120, 51332), (127, 51302), (130, 51287), (133, 51272), (149, 51197), (160, 51149), (166, 51119), (170, 51098), (171, 51092), (180, 51014),

Gene: Lilbit_33 Start: 10399, Stop: 9749, Start Num: 60

Candidate Starts for Lilbit_33:

(1, 10948), (7, 10663), (11, 10585), (13, 10561), (35, 10435), (Start: 60 @10399 has 29 MA's), (65, 10387), (Start: 73 @10321 has 1 MA's), (81, 10270), (99, 10180), (109, 10135), (130, 10033), (139, 9982), (144, 9970), (162, 9913), (163, 9910), (170, 9862), (173, 9847),

Gene: Limpid_6 Start: 2125, Stop: 1451, Start Num: 64

Candidate Starts for Limpid_6:

(Start: 64 @2125 has 24 MA's), (79, 2029), (82, 2005), (87, 1975), (88, 1972), (90, 1969), (95, 1951), (97, 1924), (101, 1912), (111, 1858), (117, 1840), (122, 1804), (127, 1789), (130, 1774), (141, 1720), (158, 1642), (160, 1630), (170, 1573), (173, 1558), (189, 1456),

Gene: LittleE_121 Start: 66758, Stop: 67387, Start Num: 60

Candidate Starts for LittleE_121:

(28, 66692), (Start: 60 @66758 has 29 MA's), (Start: 71 @66809 has 1 MA's), (Start: 73 @66836 has 1 MA's), (Start: 74 @66839 has 2 MA's), (75, 66845), (130, 67112), (131, 67124), (135, 67145), (155, 67214), (163, 67244), (164, 67250), (165, 67253), (170, 67292), (173, 67307),

Gene: LittleLaf_32 Start: 10128, Stop: 9478, Start Num: 60

Candidate Starts for LittleLaf_32:

(7, 10392), (11, 10314), (13, 10290), (35, 10164), (Start: 60 @10128 has 29 MA's), (65, 10116), (Start: 73 @10050 has 1 MA's), (81, 9999), (99, 9909), (109, 9864), (130, 9762), (139, 9711), (144, 9699), (162, 9642), (163, 9639), (170, 9591), (173, 9576),

Gene: Lockley_87 Start: 49860, Stop: 49189, Start Num: 61

Candidate Starts for Lockley_87:

(18, 50004), (24, 49974), (Start: 61 @49860 has 21 MA's), (Start: 64 @49854 has 24 MA's), (Start: 73 @49785 has 1 MA's), (75, 49776), (81, 49734), (95, 49683), (98, 49644), (117, 49557), (118, 49548), (120, 49536), (127, 49506), (130, 49491), (133, 49476), (149, 49404), (160, 49356), (170, 49305), (171, 49299), (174, 49284), (180, 49221),

Gene: Magnar_84 Start: 49011, Stop: 48337, Start Num: 55

Candidate Starts for Magnar_84:

(Start: 55 @49011 has 38 MA's), (Start: 64 @48999 has 24 MA's), (Start: 67 @48993 has 4 MA's), (Start: 73 @48933 has 1 MA's), (86, 48858), (95, 48831), (98, 48792), (111, 48723), (118, 48696), (120, 48684), (130, 48639), (133, 48624), (160, 48504), (166, 48474), (170, 48453), (171, 48447), (180, 48369),

Gene: Maih_38 Start: 31642, Stop: 31007, Start Num: 67

Candidate Starts for Maih_38:

(59, 31660), (Start: 67 @31642 has 4 MA's), (75, 31573), (85, 31516), (93, 31474), (95, 31468), (96, 31465), (104, 31417), (111, 31375), (120, 31336), (151, 31192), (155, 31186), (166, 31129), (170, 31108), (173, 31093),

Gene: Malisha_85 Start: 50278, Stop: 50961, Start Num: 60

Candidate Starts for Malisha_85:

(52, 50269), (Start: 60 @50278 has 29 MA's), (162, 50794), (163, 50797), (164, 50803), (170, 50845), (176, 50875),

Gene: Manatee_85 Start: 48517, Stop: 47846, Start Num: 61

Candidate Starts for Manatee_85:

(18, 48661), (24, 48631), (Start: 61 @48517 has 21 MA's), (Start: 64 @48511 has 24 MA's), (Start: 73 @48442 has 1 MA's), (75, 48433), (81, 48391), (95, 48340), (98, 48301), (117, 48214), (118, 48205), (120, 48193), (127, 48163), (130, 48148), (133, 48133), (149, 48061), (160, 48013), (170, 47962), (171, 47956), (174, 47941), (180, 47878),

Gene: Marcell_77 Start: 46764, Stop: 46087, Start Num: 55

Candidate Starts for Marcell_77:

(3, 47148), (8, 47004), (Start: 55 @46764 has 38 MA's), (Start: 66 @46746 has 5 MA's), (Start: 74 @46680 has 2 MA's), (75, 46674), (86, 46608), (95, 46581), (98, 46542), (111, 46473), (118, 46446), (120, 46434), (130, 46389), (133, 46374), (149, 46302), (160, 46254), (166, 46224), (170, 46203), (171, 46197), (180, 46119),

Gene: Maroc7_87 Start: 51516, Stop: 50839, Start Num: 55

Candidate Starts for Maroc7_87:

(Start: 44 @51537 has 1 MA's), (Start: 55 @51516 has 38 MA's), (Start: 66 @51498 has 5 MA's), (Start: 74 @51432 has 2 MA's), (75, 51426), (95, 51333), (98, 51294), (111, 51225), (113, 51219), (118, 51198), (120, 51186), (127, 51156), (130, 51141), (133, 51126), (149, 51054), (160, 51006), (166, 50976), (170, 50955), (171, 50949), (180, 50871),

Gene: Marvin_30 Start: 10398, Stop: 9748, Start Num: 60

Candidate Starts for Marvin_30:

(1, 10947), (7, 10662), (11, 10584), (13, 10560), (35, 10434), (Start: 60 @10398 has 29 MA's), (65, 10386), (Start: 73 @10320 has 1 MA's), (81, 10269), (99, 10179), (109, 10134), (130, 10032), (139, 9981), (144, 9969), (162, 9912), (163, 9909), (170, 9861), (173, 9846),

Gene: McGuire_85 Start: 48751, Stop: 48110, Start Num: 61

Candidate Starts for McGuire_85:

(18, 48895), (24, 48865), (Start: 61 @48751 has 21 MA's), (Start: 64 @48745 has 24 MA's), (Start: 73 @48676 has 1 MA's), (75, 48667), (81, 48625), (95, 48574), (98, 48535), (117, 48448), (118, 48439), (127, 48397), (130, 48382), (133, 48367), (149, 48295), (160, 48247), (167, 48214), (178, 48124),

Gene: MeganTheeKilla_7 Start: 2288, Stop: 1641, Start Num: 64

Candidate Starts for MeganTheeKilla_7:

(Start: 64 @2288 has 24 MA's), (Start: 72 @2246 has 11 MA's), (75, 2210), (82, 2168), (87, 2138), (88, 2135), (90, 2132), (96, 2111), (111, 2021), (117, 2003), (127, 1955), (130, 1940), (131, 1928), (141, 1883), (160, 1793), (164, 1781), (170, 1736), (173, 1721),

Gene: MiaZeal_117 Start: 64204, Stop: 64857, Start Num: 57

Candidate Starts for MiaZeal_117:

(32, 64132), (Start: 57 @64204 has 13 MA's), (Start: 72 @64255 has 11 MA's), (Start: 73 @64282 has 1 MA's), (75, 64291), (89, 64366), (105, 64444), (111, 64486), (112, 64489), (130, 64570), (133, 64585), (140, 64621), (149, 64657), (170, 64756),

Gene: Minerva_119 Start: 66905, Stop: 67552, Start Num: 57

Candidate Starts for Minerva_119:

(Start: 57 @66905 has 13 MA's), (Start: 66 @66914 has 5 MA's), (Start: 72 @66950 has 11 MA's), (Start: 74 @66980 has 2 MA's), (75, 66986), (89, 67061), (112, 67184), (126, 67247), (130, 67265), (138, 67310), (160, 67400), (170, 67451),

Gene: Moab_6 Start: 2241, Stop: 1594, Start Num: 64

Candidate Starts for Moab_6:

(Start: 64 @2241 has 24 MA's), (Start: 72 @2199 has 11 MA's), (82, 2121), (87, 2091), (88, 2088), (90, 2085), (111, 1974), (117, 1956), (118, 1947), (120, 1935), (126, 1911), (127, 1908), (129, 1905), (130, 1893), (131, 1881), (160, 1746), (170, 1689), (173, 1674),

Gene: Molivia_79 Start: 48343, Stop: 47642, Start Num: 55

Candidate Starts for Molivia_79:

(49, 48355), (Start: 55 @48343 has 38 MA's), (Start: 72 @48286 has 11 MA's), (77, 48232), (86, 48178), (98, 48088), (112, 48022), (126, 47959), (134, 47923), (170, 47749), (171, 47743), (176, 47716), (180, 47665), (186, 47647),

Gene: MosMoris_30 Start: 9578, Stop: 8928, Start Num: 60

Candidate Starts for MosMoris_30:

(1, 10127), (7, 9842), (11, 9764), (13, 9740), (35, 9614), (Start: 60 @9578 has 29 MA's), (65, 9566), (Start: 67 @9560 has 4 MA's), (Start: 73 @9500 has 1 MA's), (81, 9449), (99, 9359), (109, 9314), (130, 9212), (139, 9161), (144, 9149), (162, 9092), (163, 9089), (170, 9041), (173, 9026),

Gene: MrGordo_88 Start: 49233, Stop: 48553, Start Num: 60

Candidate Starts for MrGordo_88:

(Start: 48 @49251 has 6 MA's), (Start: 60 @49233 has 29 MA's), (Start: 64 @49227 has 24 MA's), (Start: 73 @49158 has 1 MA's), (75, 49149), (118, 48939), (120, 48927), (130, 48882), (135, 48849), (155, 48771), (163, 48741), (164, 48735), (166, 48714), (170, 48693), (173, 48678), (179, 48615), (180, 48612), (184, 48600),

Gene: Muntaha_8 Start: 3277, Stop: 2633, Start Num: 64

Candidate Starts for Muntaha_8:

(Start: 64 @3277 has 24 MA's), (Start: 72 @3235 has 11 MA's), (84, 3148), (110, 3025), (111, 3016), (127, 2947), (130, 2932), (141, 2878), (147, 2842), (158, 2800), (160, 2788), (170, 2731), (173, 2716), (179, 2653),

Gene: Museum_87 Start: 50254, Stop: 49556, Start Num: 48

Candidate Starts for Museum_87:

(Start: 48 @50254 has 6 MA's), (Start: 60 @50236 has 29 MA's), (Start: 64 @50230 has 24 MA's), (Start: 73 @50161 has 1 MA's), (75, 50152), (118, 49942), (120, 49930), (130, 49885), (135, 49852), (155, 49774), (163, 49744), (164, 49738), (166, 49717), (170, 49696), (173, 49681), (179, 49618), (180, 49615), (184, 49603),

Gene: Naira_89 Start: 50754, Stop: 50080, Start Num: 55

Candidate Starts for Naira_89:

(Start: 55 @50754 has 38 MA's), (Start: 64 @50742 has 24 MA's), (Start: 67 @50736 has 4 MA's), (Start: 73 @50676 has 1 MA's), (86, 50601), (95, 50574), (98, 50535), (111, 50466), (118, 50439), (120, 50427), (127, 50397), (130, 50382), (133, 50367), (149, 50295), (160, 50247), (166, 50217), (170, 50196), (171, 50190), (180, 50112),

Gene: Nesbitt_41 Start: 29441, Stop: 30088, Start Num: 61

Candidate Starts for Nesbitt_41:

(45, 29414), (47, 29417), (52, 29429), (Start: 61 @29441 has 21 MA's), (Start: 72 @29489 has 11 MA's), (Start: 73 @29519 has 1 MA's), (76, 29537), (105, 29687), (112, 29732), (117, 29747), (126, 29786), (127, 29789), (130, 29804), (154, 29915), (166, 29972), (169, 29981), (170, 29993), (174, 30014),

Gene: Odyssey395_21 Start: 6730, Stop: 7446, Start Num: 53

Candidate Starts for Odyssey395_21:

(Start: 53 @6730 has 4 MA's), (69, 6763), (101, 6967), (102, 6973), (120, 7066), (130, 7111), (145, 7186), (170, 7336), (173, 7351), (184, 7426), (187, 7432),

Gene: OnionKnight_47 Start: 32813, Stop: 33472, Start Num: 46

Candidate Starts for OnionKnight_47:

(Start: 46 @32813 has 1 MA's), (75, 32924), (78, 32939), (116, 33155), (170, 33362), (173, 33377),

Gene: Optimus_112 Start: 65325, Stop: 65948, Start Num: 60

Candidate Starts for Optimus_112:

(Start: 60 @65325 has 29 MA's), (Start: 66 @65334 has 5 MA's), (Start: 71 @65370 has 1 MA's), (Start: 74 @65400 has 2 MA's), (75, 65406), (85, 65460), (155, 65772), (163, 65802), (164, 65808), (165, 65811), (170, 65850), (173, 65865),

Gene: PP_78 Start: 50822, Stop: 50058, Start Num: 72

Candidate Starts for PP_78:

(12, 51065), (16, 51047), (52, 50882), (Start: 61 @50870 has 21 MA's), (Start: 72 @50822 has 11 MA's), (75, 50786), (81, 50747), (86, 50723), (111, 50597), (112, 50594), (118, 50570), (120, 50558), (126, 50531), (130, 50513), (133, 50498), (170, 50324), (173, 50309), (176, 50291), (181, 50237), (183, 50231), (191, 50099), (192, 50093),

Gene: PacerPaul_89 Start: 51271, Stop: 50597, Start Num: 55

Candidate Starts for PacerPaul_89:

(Start: 55 @51271 has 38 MA's), (Start: 74 @51187 has 2 MA's), (75, 51181), (86, 51115), (95, 51088), (98, 51049), (111, 50983), (118, 50956), (120, 50944), (127, 50914), (130, 50899), (133,

50884), (149, 50812), (160, 50764), (166, 50734), (170, 50713), (171, 50707), (180, 50629),

Gene: Papez_91 Start: 51123, Stop: 50632, Start Num: 54

Candidate Starts for Papez_91:

(Start: 51 @51129 has 8 MA's), (Start: 54 @51123 has 6 MA's), (Start: 66 @51108 has 5 MA's), (Start: 73 @51045 has 1 MA's), (75, 51036), (118, 50826), (120, 50814), (130, 50769), (135, 50736),

Gene: Patelgo_7 Start: 2199, Stop: 1594, Start Num: 72

Candidate Starts for Patelgo_7:

(Start: 64 @2241 has 24 MA's), (Start: 72 @2199 has 11 MA's), (82, 2121), (87, 2091), (88, 2088), (90, 2085), (111, 1974), (117, 1956), (118, 1947), (120, 1935), (126, 1911), (127, 1908), (129, 1905), (130, 1893), (131, 1881), (143, 1824), (160, 1746), (170, 1689), (173, 1674),

Gene: PattyP_85 Start: 49801, Stop: 49100, Start Num: 48

Candidate Starts for PattyP_85:

(Start: 48 @49801 has 6 MA's), (Start: 64 @49774 has 24 MA's), (Start: 73 @49705 has 1 MA's), (75, 49696), (118, 49486), (120, 49474), (130, 49429), (135, 49396), (155, 49318), (163, 49288), (164, 49282), (166, 49261), (170, 49240), (173, 49225), (179, 49162), (180, 49159), (184, 49147),

Gene: Peregrin_219 Start: 110361, Stop: 110984, Start Num: 61

Candidate Starts for Peregrin_219:

(Start: 61 @110361 has 21 MA's), (103, 110583), (130, 110712), (132, 110724), (155, 110808), (156, 110817), (163, 110838), (170, 110886), (173, 110901),

Gene: Peregrin_218 Start: 109695, Stop: 110348, Start Num: 64

Candidate Starts for Peregrin_218:

(Start: 64 @109695 has 24 MA's), (69, 109710), (85, 109833), (100, 109905), (101, 109908), (119, 109992), (130, 110052), (145, 110133), (170, 110250), (180, 110334),

Gene: Petp2012_86 Start: 50544, Stop: 49852, Start Num: 48

Candidate Starts for Petp2012_86:

(Start: 48 @50544 has 6 MA's), (Start: 64 @50517 has 24 MA's), (Start: 73 @50448 has 1 MA's), (75, 50439), (118, 50229), (120, 50217), (130, 50172), (155, 50061), (163, 50031), (164, 50025), (166, 50004), (170, 49983), (173, 49968), (188, 49878),

Gene: Phabuloso_89 Start: 47857, Stop: 48519, Start Num: 61

Candidate Starts for Phabuloso_89:

(Start: 61 @47857 has 21 MA's), (117, 48148), (129, 48202), (130, 48214), (170, 48403), (174, 48424), (185, 48502),

Gene: Phaded_81 Start: 49902, Stop: 49180, Start Num: 42

Candidate Starts for Phaded_81:

(Start: 42 @49902 has 1 MA's), (Start: 57 @49863 has 13 MA's), (Start: 72 @49818 has 11 MA's), (112, 49584), (126, 49521), (130, 49503), (136, 49464), (158, 49371), (170, 49311), (186, 49209), (190, 49188),

Gene: PherrisBueller_82 Start: 46986, Stop: 46330, Start Num: 61

Candidate Starts for PherrisBueller_82:

(Start: 61 @46986 has 21 MA's), (Start: 73 @46911 has 1 MA's), (78, 46887), (117, 46698), (120, 46677), (121, 46674), (130, 46626), (150, 46545), (166, 46470), (170, 46449), (173, 46434), (179, 46371),

Gene: PhorbesPhlower_62 Start: 36855, Stop: 37460, Start Num: 71

Candidate Starts for PhorbesPhlower_62:

(52, 36798), (59, 36807), (Start: 71 @36855 has 1 MA's), (120, 37122), (168, 37332), (170, 37347), (185, 37443),

Gene: Phredrick_7 Start: 2246, Stop: 1641, Start Num: 72

Candidate Starts for Phredrick_7:

(Start: 64 @2288 has 24 MA's), (Start: 67 @2279 has 4 MA's), (Start: 72 @2246 has 11 MA's), (82, 2168), (87, 2138), (88, 2135), (90, 2132), (111, 2021), (127, 1955), (130, 1940), (131, 1928), (160, 1793), (170, 1736), (173, 1721),

Gene: Pinto_85 Start: 49797, Stop: 49108, Start Num: 51

Candidate Starts for Pinto_85:

(Start: 51 @49797 has 8 MA's), (Start: 54 @49791 has 6 MA's), (Start: 66 @49776 has 5 MA's), (Start: 73 @49713 has 1 MA's), (75, 49704), (118, 49494), (120, 49482), (130, 49437), (135, 49404), (155, 49326), (163, 49296), (164, 49290), (166, 49269), (170, 49248), (173, 49233), (179, 49170), (180, 49167), (184, 49155),

Gene: Poise_32 Start: 9689, Stop: 9039, Start Num: 60

Candidate Starts for Poise_32:

(7, 9980), (11, 9902), (13, 9878), (35, 9752), (41, 9740), (Start: 60 @9689 has 29 MA's), (65, 9677), (Start: 73 @9611 has 1 MA's), (81, 9560), (99, 9470), (109, 9425), (130, 9323), (139, 9272), (144, 9260), (162, 9203), (163, 9200), (170, 9152), (173, 9137),

Gene: Pound_111 Start: 65924, Stop: 66571, Start Num: 57

Candidate Starts for Pound_111:

(Start: 57 @65924 has 13 MA's), (Start: 66 @65933 has 5 MA's), (Start: 72 @65969 has 11 MA's), (75, 66005), (89, 66080), (112, 66203), (126, 66266), (130, 66284), (138, 66329), (160, 66419), (170, 66470),

Gene: Pringar_32 Start: 10028, Stop: 9378, Start Num: 60

Candidate Starts for Pringar_32:

(7, 10292), (11, 10214), (13, 10190), (35, 10064), (Start: 60 @10028 has 29 MA's), (65, 10016), (Start: 67 @10010 has 4 MA's), (Start: 73 @9950 has 1 MA's), (81, 9899), (99, 9809), (109, 9764), (130, 9662), (139, 9611), (144, 9599), (162, 9542), (163, 9539), (170, 9491), (173, 9476),

Gene: Pukovnik_82 Start: 49336, Stop: 48650, Start Num: 63

Candidate Starts for Pukovnik_82:

(Start: 44 @49360 has 1 MA's), (Start: 63 @49336 has 3 MA's), (Start: 72 @49291 has 11 MA's), (112, 49057), (126, 48994), (130, 48976), (133, 48961), (136, 48937), (158, 48844), (160, 48835), (170, 48784), (187, 48679), (190, 48658),

Gene: Pureglobe5_21 Start: 6744, Stop: 7460, Start Num: 53

Candidate Starts for Pureglobe5_21:

(Start: 53 @6744 has 4 MA's), (69, 6777), (101, 6981), (102, 6987), (120, 7080), (130, 7125), (145, 7200), (170, 7350), (173, 7365), (184, 7440), (187, 7446),

Gene: Raela_32 Start: 10244, Stop: 9594, Start Num: 60

Candidate Starts for Raela_32:

(7, 10535), (11, 10457), (13, 10433), (35, 10307), (41, 10295), (Start: 60 @10244 has 29 MA's), (65, 10232), (Start: 73 @10166 has 1 MA's), (81, 10115), (99, 10025), (109, 9980), (130, 9878), (139, 9827), (144, 9815), (162, 9758), (163, 9755), (170, 9707), (173, 9692),

Gene: Rajelicia_87 Start: 52049, Stop: 51360, Start Num: 51

Candidate Starts for Rajelicia_87:

(Start: 51 @52049 has 8 MA's), (Start: 54 @52043 has 6 MA's), (Start: 66 @52028 has 5 MA's), (Start: 73 @51965 has 1 MA's), (75, 51956), (118, 51746), (120, 51734), (130, 51689), (155, 51578), (163, 51548), (166, 51521), (170, 51500), (173, 51485), (179, 51422), (180, 51419), (184, 51407),

Gene: Rajelicia_84 Start: 50923, Stop: 50267, Start Num: 61

Candidate Starts for Rajelicia_84:

(Start: 61 @50923 has 21 MA's), (Start: 73 @50848 has 1 MA's), (78, 50824), (117, 50635), (120, 50614), (121, 50611), (130, 50563), (150, 50482), (166, 50407), (170, 50386), (173, 50371), (179, 50308),

Gene: RedRaider77_32 Start: 10172, Stop: 9522, Start Num: 60

Candidate Starts for RedRaider77_32:

(7, 10436), (11, 10358), (13, 10334), (35, 10208), (Start: 60 @10172 has 29 MA's), (65, 10160), (Start: 67 @10154 has 4 MA's), (Start: 73 @10094 has 1 MA's), (81, 10043), (99, 9953), (109, 9908), (130, 9806), (139, 9755), (144, 9743), (162, 9686), (163, 9683), (170, 9635), (173, 9620),

Gene: Redno2_115 Start: 65360, Stop: 66007, Start Num: 57

Candidate Starts for Redno2_115:

(Start: 57 @65360 has 13 MA's), (Start: 66 @65369 has 5 MA's), (Start: 72 @65405 has 11 MA's), (75, 65441), (89, 65516), (112, 65639), (126, 65702), (130, 65720), (138, 65765), (149, 65807), (160, 65855), (170, 65906),

Gene: Rings_76 Start: 49802, Stop: 49098, Start Num: 53

Candidate Starts for Rings_76:

(39, 49847), (Start: 46 @49817 has 1 MA's), (49, 49811), (Start: 53 @49802 has 4 MA's), (Start: 55 @49799 has 38 MA's), (Start: 73 @49715 has 1 MA's), (80, 49664), (83, 49649), (112, 49478), (129, 49409), (130, 49397), (133, 49382), (134, 49379), (170, 49205), (171, 49199), (176, 49172), (180, 49121), (182, 49112), (186, 49103),

Gene: Ruotula_92 Start: 51789, Stop: 51100, Start Num: 51

Candidate Starts for Ruotula_92:

(Start: 51 @51789 has 8 MA's), (Start: 54 @51783 has 6 MA's), (Start: 66 @51768 has 5 MA's), (Start: 73 @51705 has 1 MA's), (75, 51696), (118, 51486), (120, 51474), (130, 51429), (135, 51396), (155, 51318), (163, 51288), (164, 51282), (166, 51261), (170, 51240), (173, 51225), (179, 51162), (180, 51159), (184, 51147),

Gene: Salete_39 Start: 31646, Stop: 31008, Start Num: 66

Candidate Starts for Salete_39:

(59, 31661), (Start: 66 @31646 has 5 MA's), (Start: 67 @31643 has 4 MA's), (Start: 73 @31583 has 1 MA's), (96, 31466), (104, 31418), (111, 31376), (120, 31337), (151, 31193), (155, 31187), (166, 31130), (170, 31109), (173, 31094),

Gene: Seabiscuit_87 Start: 48983, Stop: 48312, Start Num: 61

Candidate Starts for Seabiscuit_87:

(18, 49127), (24, 49097), (Start: 61 @48983 has 21 MA's), (Start: 64 @48977 has 24 MA's), (Start: 73 @48908 has 1 MA's), (75, 48899), (81, 48857), (95, 48806), (98, 48767), (117, 48680), (118, 48671), (127, 48629), (130, 48614), (133, 48599), (149, 48527), (160, 48479), (170, 48428), (171, 48422), (174, 48407), (180, 48344),

Gene: Seanderson_85 Start: 51237, Stop: 50560, Start Num: 55

Candidate Starts for Seanderson_85:

(Start: 55 @51237 has 38 MA's), (Start: 66 @51219 has 5 MA's), (Start: 74 @51153 has 2 MA's), (75, 51147), (81, 51105), (95, 51054), (98, 51015), (111, 50946), (118, 50919), (120, 50907), (127, 50877), (130, 50862), (133, 50847), (149, 50775), (160, 50727), (170, 50676), (171, 50670), (174, 50655), (180, 50592),

Gene: SeresaTree_7 Start: 2390, Stop: 1746, Start Num: 72

Candidate Starts for SeresaTree_7:

(Start: 64 @2432 has 24 MA's), (69, 2417), (Start: 72 @2390 has 11 MA's), (82, 2312), (87, 2282), (88, 2279), (90, 2276), (101, 2219), (111, 2165), (117, 2147), (120, 2126), (127, 2096), (130, 2081), (131, 2069), (160, 1937), (170, 1880), (173, 1865),

Gene: Sham_7 Start: 2371, Stop: 1727, Start Num: 72

Candidate Starts for Sham_7:

(Start: 64 @2413 has 24 MA's), (Start: 67 @2404 has 4 MA's), (69, 2398), (Start: 72 @2371 has 11 MA's), (79, 2317), (82, 2293), (87, 2263), (88, 2260), (90, 2257), (95, 2239), (101, 2200), (111, 2146), (117, 2128), (127, 2077), (130, 2062), (131, 2050), (158, 1930), (160, 1918), (170, 1861), (173, 1846),

Gene: Sheen_59 Start: 41732, Stop: 41055, Start Num: 55

Candidate Starts for Sheen_59:

(Start: 55 @41732 has 38 MA's), (Start: 66 @41717 has 5 MA's), (Start: 72 @41681 has 11 MA's), (Start: 74 @41651 has 2 MA's), (75, 41645), (91, 41552), (92, 41549), (98, 41504), (108, 41465), (118, 41417), (130, 41360), (133, 41345), (136, 41321), (149, 41270), (166, 41192), (170, 41171), (175, 41144),

Gene: ShortQueendom_79 Start: 47837, Stop: 47163, Start Num: 64

Candidate Starts for ShortQueendom_79:

(Start: 48 @47861 has 6 MA's), (Start: 60 @47843 has 29 MA's), (Start: 64 @47837 has 24 MA's), (Start: 73 @47768 has 1 MA's), (75, 47759), (118, 47549), (120, 47537), (130, 47492), (135, 47459), (155, 47381), (163, 47351), (164, 47345), (166, 47324), (170, 47303), (173, 47288), (179, 47225), (180, 47222), (184, 47210),

Gene: Sibs6_89 Start: 47701, Stop: 47027, Start Num: 64

Candidate Starts for Sibs6_89:

(37, 47737), (Start: 48 @47725 has 6 MA's), (Start: 60 @47707 has 29 MA's), (Start: 64 @47701 has 24 MA's), (Start: 73 @47632 has 1 MA's), (75, 47623), (118, 47413), (120, 47401), (130, 47356), (135, 47323), (155, 47245), (163, 47215), (164, 47209), (166, 47188), (170, 47167), (173, 47152), (179, 47089), (180, 47086), (184, 47074),

Gene: SilentRX_15 Start: 5723, Stop: 6439, Start Num: 61

Candidate Starts for SilentRX_15:

(Start: 55 @5714 has 38 MA's), (Start: 61 @5723 has 21 MA's), (75, 5807), (86, 5876), (109, 5990), (110, 5999), (125, 6074), (130, 6092), (150, 6188), (152, 6209), (153, 6215), (166, 6290), (170, 6314), (173, 6329), (180, 6395), (185, 6410), (187, 6416),

Gene: Slagathor_89 Start: 50784, Stop: 50101, Start Num: 54

Candidate Starts for Slagathor_89:

(Start: 51 @50790 has 8 MA's), (Start: 54 @50784 has 6 MA's), (Start: 66 @50769 has 5 MA's), (Start: 73 @50706 has 1 MA's), (75, 50697), (118, 50487), (120, 50475), (130, 50430), (155, 50319), (163, 50289), (164, 50283), (166, 50262), (170, 50241), (173, 50226), (179, 50163), (180, 50160), (184, 50148),

Gene: Snazzy_87 Start: 50092, Stop: 49418, Start Num: 64

Candidate Starts for Snazzy_87:

(Start: 48 @50119 has 6 MA's), (Start: 64 @50092 has 24 MA's), (Start: 73 @50023 has 1 MA's), (75, 50014), (118, 49804), (120, 49792), (130, 49747), (135, 49714), (155, 49636), (163, 49606), (164, 49600), (166, 49579), (170, 49558), (173, 49543), (179, 49480), (180, 49477), (184, 49465),

Gene: SorJuana_75 Start: 49355, Stop: 48654, Start Num: 55

Candidate Starts for SorJuana_75:

(29, 49436), (33, 49421), (39, 49403), (49, 49367), (Start: 55 @49355 has 38 MA's), (Start: 73 @49271 has 1 MA's), (77, 49244), (78, 49241), (83, 49205), (84, 49202), (112, 49034), (129, 48965), (130, 48953), (133, 48938), (134, 48935), (170, 48761), (171, 48755), (176, 48728), (180, 48677), (182, 48668), (186, 48659),

Gene: SparkleGoddess_7 Start: 2235, Stop: 1630, Start Num: 72

Candidate Starts for SparkleGoddess_7:

(Start: 64 @2277 has 24 MA's), (Start: 67 @2268 has 4 MA's), (69, 2262), (Start: 72 @2235 has 11 MA's), (82, 2157), (87, 2127), (88, 2124), (90, 2121), (101, 2064), (111, 2010), (127, 1944), (129, 1941), (130, 1929), (133, 1911), (158, 1794), (160, 1782), (163, 1776), (170, 1725), (173, 1710), (186, 1635),

Gene: Squee_84 Start: 49047, Stop: 48451, Start Num: 73

Candidate Starts for Squee_84:

(Start: 67 @49107 has 4 MA's), (Start: 73 @49047 has 1 MA's), (86, 48972), (95, 48945), (98, 48906), (111, 48837), (118, 48810), (120, 48798), (127, 48768), (130, 48753), (133, 48738), (149, 48666), (160, 48618), (166, 48588), (170, 48567), (171, 48561), (180, 48483),

Gene: Squint_115 Start: 64374, Stop: 64973, Start Num: 72

Candidate Starts for Squint_115:

(32, 64251), (Start: 57 @64323 has 13 MA's), (Start: 72 @64374 has 11 MA's), (Start: 73 @64401 has 1 MA's), (Start: 74 @64404 has 2 MA's), (75, 64410), (89, 64485), (105, 64563), (130, 64689), (133, 64704), (140, 64740), (160, 64824), (170, 64875), (174, 64896),

Gene: Stigma_7 Start: 2239, Stop: 1634, Start Num: 72

Candidate Starts for Stigma_7:

(Start: 64 @2281 has 24 MA's), (Start: 67 @2272 has 4 MA's), (69, 2266), (Start: 72 @2239 has 11 MA's), (82, 2161), (87, 2131), (88, 2128), (90, 2125), (101, 2068), (111, 2014), (127, 1948), (129, 1945), (130, 1933), (133, 1915), (158, 1798), (160, 1786), (163, 1780), (170, 1729), (173, 1714), (186, 1639),

Gene: StrongArm_83 Start: 49650, Stop: 48988, Start Num: 66

Candidate Starts for StrongArm_83:

(4, 49989), (5, 49971), (6, 49959), (14, 49848), (15, 49839), (21, 49788), (Start: 55 @49668 has 38 MA's), (Start: 66 @49650 has 5 MA's), (Start: 74 @49584 has 2 MA's), (75, 49578), (86, 49512), (95, 49485), (98, 49446), (111, 49377), (118, 49350), (120, 49338), (127, 49308), (130, 49293), (133, 49278), (149, 49203), (160, 49155), (166, 49125), (170, 49104), (171, 49098), (180, 49020),

Gene: Success_20 Start: 12404, Stop: 11850, Start Num: 74

Candidate Starts for Success_20:

(Start: 73 @12407 has 1 MA's), (Start: 74 @12404 has 2 MA's), (104, 12257), (109, 12233), (115, 12203), (118, 12188), (120, 12176), (121, 12173), (123, 12155), (125, 12143), (128, 12137), (155, 12026), (161, 11999), (166, 11969), (173, 11933),

Gene: Superphikiman_114 Start: 63414, Stop: 64064, Start Num: 57

Candidate Starts for Superphikiman_114:

(32, 63342), (Start: 57 @63414 has 13 MA's), (Start: 72 @63465 has 11 MA's), (Start: 73 @63492 has 1 MA's), (Start: 74 @63495 has 2 MA's), (75, 63501), (89, 63576), (105, 63654), (130, 63780), (133, 63795), (140, 63831), (160, 63915), (170, 63966), (174, 63987),

Gene: Switzer_84 Start: 49767, Stop: 49096, Start Num: 61

Candidate Starts for Switzer_84:

(18, 49911), (24, 49881), (Start: 61 @49767 has 21 MA's), (Start: 64 @49761 has 24 MA's), (Start: 73 @49692 has 1 MA's), (75, 49683), (81, 49641), (95, 49590), (98, 49551), (117, 49464), (118, 49455), (127, 49413), (130, 49398), (133, 49383), (149, 49311), (160, 49263), (170, 49212), (171, 49206), (174, 49191), (180, 49128),

Gene: TP1604_39 Start: 31643, Stop: 31008, Start Num: 67

Candidate Starts for TP1604_39:

(59, 31661), (Start: 67 @31643 has 4 MA's), (75, 31574), (85, 31517), (93, 31475), (95, 31469), (96, 31466), (104, 31418), (111, 31376), (120, 31337), (151, 31193), (155, 31187), (166, 31130), (170, 31109), (173, 31094),

Gene: Tesla_31 Start: 10021, Stop: 9371, Start Num: 60

Candidate Starts for Tesla_31:

(7, 10285), (11, 10207), (13, 10183), (35, 10057), (Start: 60 @10021 has 29 MA's), (65, 10009), (Start: 67 @10003 has 4 MA's), (Start: 73 @9943 has 1 MA's), (81, 9892), (99, 9802), (109, 9757), (130, 9655), (139, 9604), (144, 9592), (162, 9535), (163, 9532), (170, 9484), (173, 9469),

Gene: TheloniousMonk_85 Start: 50510, Stop: 49917, Start Num: 74

Candidate Starts for TheloniousMonk_85:

(Start: 74 @50510 has 2 MA's), (75, 50504), (86, 50438), (95, 50411), (98, 50372), (111, 50303), (118, 50276), (120, 50264), (127, 50234), (130, 50219), (133, 50204), (160, 50084), (166, 50054), (170, 50033), (171, 50027), (180, 49949),

Gene: ThreeRngTarjay_117 Start: 68249, Stop: 68896, Start Num: 57

Candidate Starts for ThreeRngTarjay_117:

(Start: 57 @68249 has 13 MA's), (Start: 66 @68258 has 5 MA's), (Start: 72 @68294 has 11 MA's), (Start: 74 @68324 has 2 MA's), (75, 68330), (89, 68405), (112, 68528), (126, 68591), (130, 68609), (138, 68654), (160, 68744), (170, 68795),

Gene: Thunderclap_75 Start: 49777, Stop: 49076, Start Num: 55

Candidate Starts for Thunderclap_75:

(29, 49858), (33, 49843), (39, 49825), (49, 49789), (Start: 55 @49777 has 38 MA's), (Start: 73 @49693 has 1 MA's), (77, 49666), (78, 49663), (83, 49627), (84, 49624), (112, 49456), (129, 49387), (130, 49375), (133, 49360), (134, 49357), (170, 49183), (171, 49177), (176, 49150), (180, 49099), (182, 49090), (186, 49081),

Gene: Timshel_56 Start: 41030, Stop: 40329, Start Num: 55

Candidate Starts for Timshel_56:

(Start: 55 @41030 has 38 MA's), (69, 41006), (Start: 72 @40979 has 11 MA's), (Start: 73 @40952 has 1 MA's), (75, 40943), (111, 40724), (117, 40706), (130, 40640), (141, 40586), (149, 40550), (160, 40502), (166, 40472), (170, 40451), (179, 40370), (183, 40358),

Gene: ToastyFinz_36 Start: 28865, Stop: 29620, Start Num: 22

Candidate Starts for ToastyFinz_36:

(2, 28502), (10, 28769), (Start: 22 @28865 has 1 MA's), (29, 28904), (Start: 71 @29021 has 1 MA's), (112, 29243), (130, 29324), (131, 29333), (155, 29420), (157, 29432), (163, 29450), (170, 29498), (171, 29504), (176, 29528),

Gene: Trina_21 Start: 7519, Stop: 6875, Start Num: 56

Candidate Starts for Trina_21:

(Start: 56 @7519 has 1 MA's), (98, 7309), (118, 7222), (130, 7165), (170, 6976), (180, 6892),

Gene: Tripl3t_89 Start: 52782, Stop: 52099, Start Num: 54

Candidate Starts for Tripl3t_89:

(Start: 51 @52788 has 8 MA's), (Start: 54 @52782 has 6 MA's), (Start: 66 @52767 has 5 MA's), (Start: 73 @52704 has 1 MA's), (75, 52695), (118, 52485), (120, 52473), (130, 52428), (135, 52395), (155, 52317), (163, 52287), (164, 52281), (166, 52260), (170, 52239), (173, 52224), (179, 52161), (180, 52158), (184, 52146),

Gene: TunaTartare_7 Start: 2413, Stop: 1730, Start Num: 64

Candidate Starts for TunaTartare_7:

(Start: 64 @2413 has 24 MA's), (Start: 67 @2404 has 4 MA's), (69, 2398), (Start: 72 @2371 has 11 MA's), (79, 2317), (82, 2293), (87, 2263), (88, 2260), (90, 2257), (95, 2239), (101, 2200), (111, 2146), (117, 2128), (127, 2077), (130, 2062), (131, 2050), (158, 1930), (160, 1918), (170, 1861), (173, 1846),

Gene: TwoPeat_82 Start: 49196, Stop: 48633, Start Num: 64

Candidate Starts for TwoPeat_82:

(Start: 48 @49220 has 6 MA's), (Start: 60 @49202 has 29 MA's), (Start: 64 @49196 has 24 MA's), (Start: 73 @49127 has 1 MA's), (75, 49118), (118, 48908), (120, 48896), (130, 48851), (135, 48818), (172, 48650),

Gene: U2_78 Start: 49972, Stop: 49301, Start Num: 61

Candidate Starts for U2_78:

(18, 50116), (24, 50086), (Start: 61 @49972 has 21 MA's), (Start: 64 @49966 has 24 MA's), (Start: 73 @49897 has 1 MA's), (75, 49888), (81, 49846), (95, 49795), (98, 49756), (117, 49669), (118, 49660), (127, 49618), (130, 49603), (133, 49588), (149, 49516), (160, 49468), (170, 49417), (171, 49411), (174, 49396), (180, 49333),

Gene: VasuNzinga_32 Start: 9605, Stop: 8955, Start Num: 60

Candidate Starts for VasuNzinga_32:

(7, 9869), (11, 9791), (13, 9767), (35, 9641), (Start: 60 @9605 has 29 MA's), (65, 9593), (Start: 67 @9587 has 4 MA's), (Start: 73 @9527 has 1 MA's), (81, 9476), (99, 9386), (109, 9341), (130, 9239), (139, 9188), (144, 9176), (162, 9119), (163, 9116), (170, 9068), (173, 9053),

Gene: Wakanda_7 Start: 3176, Stop: 2532, Start Num: 64

Candidate Starts for Wakanda_7:

(Start: 64 @3176 has 24 MA's), (Start: 72 @3134 has 11 MA's), (84, 3047), (110, 2924), (111, 2915), (127, 2846), (130, 2831), (141, 2777), (147, 2741), (158, 2699), (160, 2687), (170, 2630), (173, 2615), (179, 2552),

Gene: Wanda_121 Start: 65651, Stop: 66274, Start Num: 60

Candidate Starts for Wanda_121:

(Start: 60 @65651 has 29 MA's), (Start: 66 @65660 has 5 MA's), (Start: 71 @65696 has 1 MA's), (75, 65732), (85, 65786), (155, 66098), (163, 66128), (164, 66134), (165, 66137), (170, 66176), (173, 66191),

Gene: Wheeler_92 Start: 52122, Stop: 51451, Start Num: 61

Candidate Starts for Wheeler_92:

(18, 52266), (24, 52236), (Start: 61 @52122 has 21 MA's), (Start: 64 @52116 has 24 MA's), (Start: 73 @52047 has 1 MA's), (75, 52038), (81, 51996), (98, 51906), (117, 51819), (118, 51810), (127, 51768),

(130, 51753), (133, 51738), (149, 51666), (160, 51618), (170, 51567), (171, 51561), (174, 51546), (180, 51483),

Gene: WilliamBoone_173 Start: 85461, Stop: 84754, Start Num: 43

Candidate Starts for WilliamBoone_173:

(Start: 43 @85461 has 2 MA's), (Start: 72 @85383 has 11 MA's), (Start: 73 @85356 has 1 MA's), (75, 85347), (98, 85209), (107, 85176), (112, 85146), (118, 85122), (124, 85095), (130, 85065), (133, 85050), (160, 84927), (170, 84876), (180, 84792),

Gene: Yakult_45 Start: 31564, Stop: 30911, Start Num: 55

Candidate Starts for Yakult_45:

(Start: 55 @31564 has 38 MA's), (Start: 74 @31483 has 2 MA's), (98, 31345), (108, 31300), (114, 31270), (118, 31252), (120, 31240), (127, 31210), (130, 31195), (133, 31180), (136, 31156), (142, 31141), (154, 31087), (160, 31060), (170, 31009), (180, 30925), (182, 30916),

Gene: Yeezus_75 Start: 49753, Stop: 49052, Start Num: 55

Candidate Starts for Yeezus_75:

(23, 49867), (26, 49849), (33, 49819), (39, 49801), (Start: 46 @49771 has 1 MA's), (49, 49765), (Start: 53 @49756 has 4 MA's), (Start: 55 @49753 has 38 MA's), (Start: 73 @49669 has 1 MA's), (83, 49603), (84, 49600), (112, 49432), (120, 49396), (130, 49351), (133, 49336), (134, 49333), (170, 49159), (171, 49153), (180, 49075), (182, 49066), (186, 49057),

Gene: Zeeculate_84 Start: 50762, Stop: 50082, Start Num: 55

Candidate Starts for Zeeculate_84:

(8, 51002), (Start: 55 @50762 has 38 MA's), (Start: 66 @50744 has 5 MA's), (Start: 74 @50678 has 2 MA's), (75, 50672), (86, 50606), (95, 50579), (98, 50540), (111, 50471), (118, 50444), (120, 50432), (127, 50402), (130, 50387), (133, 50372), (160, 50249), (170, 50198), (171, 50192), (174, 50177), (180, 50114),

Gene: Zelink_116 Start: 68196, Stop: 68843, Start Num: 57

Candidate Starts for Zelink_116:

(Start: 57 @68196 has 13 MA's), (Start: 66 @68205 has 5 MA's), (Start: 72 @68241 has 11 MA's), (Start: 74 @68271 has 2 MA's), (75, 68277), (89, 68352), (112, 68475), (126, 68538), (130, 68556), (138, 68601), (160, 68691), (170, 68742),

Gene: Zephyr_86 Start: 49855, Stop: 49178, Start Num: 36

Candidate Starts for Zephyr_86:

(Start: 36 @49855 has 4 MA's), (Start: 73 @49774 has 1 MA's), (75, 49765), (95, 49672), (98, 49633), (117, 49546), (118, 49537), (120, 49525), (127, 49495), (130, 49480), (133, 49465), (149, 49393), (160, 49345), (170, 49294), (171, 49288), (174, 49273), (180, 49210),