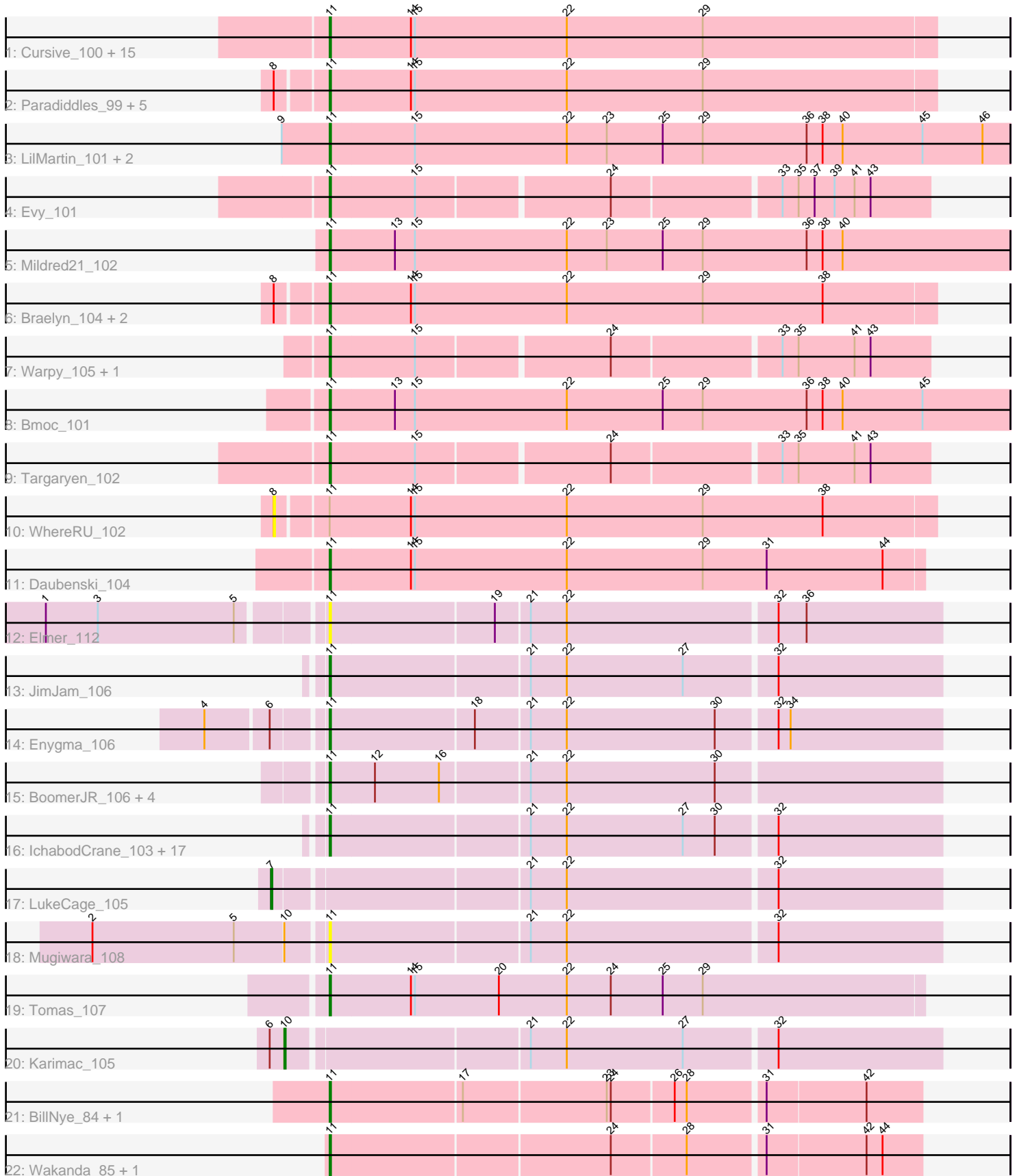


Pham 159172



Note: Tracks are now grouped by subcluster and scaled. Switching in subcluster is indicated by changes in track color. Track scale is now set by default to display the region 30 bp upstream of start 1 to 30 bp downstream of the last possible start. If this default region is judged to be packed too tightly with annotated starts, the track will be further scaled to only show that region of the ORF with annotated starts. This action will be indicated by adding "Zoomed" to the title. For starts, yellow indicates the location of called starts comprised solely of Glimmer/GeneMark auto-annotations, green indicates the location of called starts with at least 1 manual gene annotation.

Pham 159172 Report

This analysis was run 04/28/24 on database version 559.

Pham number 159172 has 70 members, 13 are drafts.

Phages represented in each track:

- Track 1 : Cursive_100, PacManQ_102, BlueOtter_104, Leo04_103, EGole_103, HangryHippo_104, Larnav_108, Lululemon_102, Sushi23_101, Cross_102, Samisti12_102, Tribute_101, Watermoore_101, Peebs_101, Teutsch_102, Pepperwood_102
- Track 2 : Paradiddles_99, Liandry_102, Squillium_103, Bartholomune_102, NootNoot_99, PinkiePie_102
- Track 3 : LilMartin_101, MulchMansion_101, Angela_101
- Track 4 : Evy_101
- Track 5 : Mildred21_102
- Track 6 : Braelyn_104, Persimmon_102, Navo_103
- Track 7 : Warpy_105, Jay2Jay_106
- Track 8 : Bmoc_101
- Track 9 : Targaryen_102
- Track 10 : WhereRU_102
- Track 11 : Daubenski_104
- Track 12 : Elmer_112
- Track 13 : JimJam_106
- Track 14 : Enygma_106
- Track 15 : BoomerJR_106, Genie2_106, Stanimal_106, Yaboi_106, Sollertia_106
- Track 16 : IchabodCrane_103, Wipeout_103, CeilingFan_108, SaltySpittoon_105, TomSawyer_104, Birchlyn_103, PumpkinSpice_105, Starbow_104, Bordeaux_104, Amabiko_106, KentuckyRacer_110, Spelly_106, Quaran19_105, Battuta_104, MindFlayer_103, Spilled_107, Gibbi_110, Jollison_110
- Track 17 : LukeCage_105
- Track 18 : Mugiwara_108
- Track 19 : Tomas_107
- Track 20 : Karimac_105
- Track 21 : BillNye_84, Circinus_85
- Track 22 : Wakanda_85, Muntaha_87

Summary of Final Annotations (See graph section above for start numbers):

The start number called the most often in the published annotations is 11, it was called in 55 of the 57 non-draft genes in the pham.

Genes that call this "Most Annotated" start:

- Amabiko_106, Angela_101, Bartholomune_102, Battuta_104, BillNye_84, Birchlyn_103, BlueOtter_104, Bmoc_101, BoomerJR_106, Bordeaux_104, Braelyn_104, CeilingFan_108, Circinus_85, Cross_102, Cursive_100, Daubenski_104, EGole_103, Elmer_112, Enygma_106, Evy_101, Genie2_106, Gibbi_110, HangryHippo_104, IchabodCrane_103, Jay2Jay_106, JimJam_106, Jollison_110, KentuckyRacer_110, Larnav_108, Leo04_103, Liandry_102, LilMartin_101, Lululemon_102, Mildred21_102, MindFlayer_103, Mugiwara_108, MulchMansion_101, Muntaha_87, Navo_103, NootNoot_99, PacManQ_102, Paradiddles_99, Peebs_101, Pepperwood_102, Persimmon_102, PinkiePie_102, PumpkinSpice_105, Quarant19_105, SaltySpittoon_105, Samisti12_102, Sollertia_106, Spelly_106, Spilled_107, Squillium_103, Stanimal_106, Starbow_104, Sushi23_101, Targaryen_102, Teutsch_102, TomSawyer_104, Tomas_107, Tribute_101, Wakanda_85, Warpy_105, Watermoore_101, Wipeout_103, Yaboi_106,

Genes that have the "Most Annotated" start but do not call it:

- WhereRU_102,

Genes that do not have the "Most Annotated" start:

- Karimac_105, LukeCage_105,

Summary by start number:

Start 7:

- Found in 1 of 70 (1.4%) of genes in pham
- Manual Annotations of this start: 1 of 57
- Called 100.0% of time when present
- Phage (with cluster) where this start called: LukeCage_105 (BE2),

Start 8:

- Found in 10 of 70 (14.3%) of genes in pham
- No Manual Annotations of this start.
- Called 10.0% of time when present
- Phage (with cluster) where this start called: WhereRU_102 (BE1),

Start 10:

- Found in 2 of 70 (2.9%) of genes in pham
- Manual Annotations of this start: 1 of 57
- Called 50.0% of time when present
- Phage (with cluster) where this start called: Karimac_105 (BE2),

Start 11:

- Found in 68 of 70 (97.1%) of genes in pham
- Manual Annotations of this start: 55 of 57
- Called 98.5% of time when present
- Phage (with cluster) where this start called: Amabiko_106 (BE2), Angela_101 (BE1), Bartholomune_102 (BE1), Battuta_104 (BE2), BillNye_84 (BK2), Birchlyn_103 (BE2), BlueOtter_104 (BE1), Bmoc_101 (BE1), BoomerJR_106 (BE2), Bordeaux_104 (BE2), Braelyn_104 (BE1), CeilingFan_108 (BE2), Circinus_85 (BK2), Cross_102 (BE1), Cursive_100 (BE1), Daubenski_104 (BE1), EGole_103 (BE1), Elmer_112 (BE2), Enygma_106 (BE2), Evy_101 (BE1), Genie2_106 (BE2), Gibbi_110 (BE2), HangryHippo_104 (BE1), IchabodCrane_103 (BE2), Jay2Jay_106 (BE1),

JimJam_106 (BE2), Jollison_110 (BE2), KentuckyRacer_110 (BE2), Larnav_108 (BE1), Leo04_103 (BE1), Liandry_102 (BE1), LilMartin_101 (BE1), Lululemon_102 (BE1), Mildred21_102 (BE1), MindFlayer_103 (BE2), Mugiwara_108 (BE2), MulchMansion_101 (BE1), Muntaha_87 (BK2), Navo_103 (BE1), NootNoot_99 (BE1), PacManQ_102 (BE1), Paradiddles_99 (BE1), Peebs_101 (BE1), Pepperwood_102 (BE1), Persimmon_102 (BE1), PinkiePie_102 (BE1), PumpkinSpice_105 (BE2), Quarant19_105 (BE2), SaltySpittoon_105 (BE2), Samisti12_102 (BE1), Sollertia_106 (BE2), Spelly_106 (BE2), Spilled_107 (BE2), Squillium_103 (BE1), Stanimal_106 (BE2), Starbow_104 (BE2), Sushi23_101 (BE1), Targaryen_102 (BE1), Teutsch_102 (BE1), TomSawyer_104 (BE2), Tomas_107 (BE2), Tribute_101 (BE1), Wakanda_85 (BK2), Warpy_105 (BE1), Watermoore_101 (BE1), Wipeout_103 (BE2), Yaboi_106 (BE2),

Summary by clusters:

There are 3 clusters represented in this pham: BE2, BE1, BK2,

Info for manual annotations of cluster BE1:

- Start number 11 was manually annotated 29 times for cluster BE1.

Info for manual annotations of cluster BE2:

- Start number 7 was manually annotated 1 time for cluster BE2.
- Start number 10 was manually annotated 1 time for cluster BE2.
- Start number 11 was manually annotated 22 times for cluster BE2.

Info for manual annotations of cluster BK2:

- Start number 11 was manually annotated 4 times for cluster BK2.

Gene Information:

Gene: Amabiko_106 Start: 72868, Stop: 73314, Start Num: 11

Candidate Starts for Amabiko_106:

(Start: 11 @72868 has 55 MA's), (21, 73012), (22, 73039), (27, 73126), (30, 73150), (32, 73192),

Gene: Angela_101 Start: 72019, Stop: 72528, Start Num: 11

Candidate Starts for Angela_101:

(9, 71983), (Start: 11 @72019 has 55 MA's), (15, 72082), (22, 72196), (23, 72226), (25, 72268), (29, 72298), (36, 72376), (38, 72388), (40, 72403), (45, 72463), (46, 72508),

Gene: Bartholomune_102 Start: 72412, Stop: 72864, Start Num: 11

Candidate Starts for Bartholomune_102:

(8, 72379), (Start: 11 @72412 has 55 MA's), (14, 72472), (15, 72475), (22, 72589), (29, 72691),

Gene: Battuta_104 Start: 72842, Stop: 73288, Start Num: 11

Candidate Starts for Battuta_104:

(Start: 11 @72842 has 55 MA's), (21, 72986), (22, 73013), (27, 73100), (30, 73124), (32, 73166),

Gene: BillNye_84 Start: 67275, Stop: 67700, Start Num: 11

Candidate Starts for BillNye_84:

(Start: 11 @67275 has 55 MA's), (17, 67371), (23, 67476), (24, 67479), (26, 67524), (28, 67533), (31, 67587), (42, 67659),

Gene: Birchlyn_103 Start: 70728, Stop: 71174, Start Num: 11
Candidate Starts for Birchlyn_103:
(Start: 11 @70728 has 55 MA's), (21, 70872), (22, 70899), (27, 70986), (30, 71010), (32, 71052),

Gene: BlueOtter_104 Start: 72816, Stop: 73268, Start Num: 11
Candidate Starts for BlueOtter_104:
(Start: 11 @72816 has 55 MA's), (14, 72876), (15, 72879), (22, 72993), (29, 73095),

Gene: Bmoc_101 Start: 72064, Stop: 72573, Start Num: 11
Candidate Starts for Bmoc_101:
(Start: 11 @72064 has 55 MA's), (13, 72112), (15, 72127), (22, 72241), (25, 72313), (29, 72343), (36, 72421), (38, 72433), (40, 72448), (45, 72508),

Gene: BoomerJR_106 Start: 72816, Stop: 73262, Start Num: 11
Candidate Starts for BoomerJR_106:
(Start: 11 @72816 has 55 MA's), (12, 72849), (16, 72897), (21, 72960), (22, 72987), (30, 73098),

Gene: Bordeaux_104 Start: 72997, Stop: 73443, Start Num: 11
Candidate Starts for Bordeaux_104:
(Start: 11 @72997 has 55 MA's), (21, 73141), (22, 73168), (27, 73255), (30, 73279), (32, 73321),

Gene: Braelyn_104 Start: 73301, Stop: 73753, Start Num: 11
Candidate Starts for Braelyn_104:
(8, 73268), (Start: 11 @73301 has 55 MA's), (14, 73361), (15, 73364), (22, 73478), (29, 73580), (38, 73670),

Gene: CeilingFan_108 Start: 72760, Stop: 73206, Start Num: 11
Candidate Starts for CeilingFan_108:
(Start: 11 @72760 has 55 MA's), (21, 72904), (22, 72931), (27, 73018), (30, 73042), (32, 73084),

Gene: Circinus_85 Start: 67263, Stop: 67688, Start Num: 11
Candidate Starts for Circinus_85:
(Start: 11 @67263 has 55 MA's), (17, 67359), (23, 67464), (24, 67467), (26, 67512), (28, 67521), (31, 67575), (42, 67647),

Gene: Cross_102 Start: 72817, Stop: 73269, Start Num: 11
Candidate Starts for Cross_102:
(Start: 11 @72817 has 55 MA's), (14, 72877), (15, 72880), (22, 72994), (29, 73096),

Gene: Cursive_100 Start: 72342, Stop: 72794, Start Num: 11
Candidate Starts for Cursive_100:
(Start: 11 @72342 has 55 MA's), (14, 72402), (15, 72405), (22, 72519), (29, 72621),

Gene: Daubenski_104 Start: 72431, Stop: 72874, Start Num: 11
Candidate Starts for Daubenski_104:
(Start: 11 @72431 has 55 MA's), (14, 72491), (15, 72494), (22, 72608), (29, 72710), (31, 72758), (44, 72845),

Gene: EGole_103 Start: 73664, Stop: 74116, Start Num: 11
Candidate Starts for EGole_103:
(Start: 11 @73664 has 55 MA's), (14, 73724), (15, 73727), (22, 73841), (29, 73943),

Gene: Elmer_112 Start: 73295, Stop: 73741, Start Num: 11

Candidate Starts for Elmer_112:

(1, 73097), (3, 73136), (5, 73238), (Start: 11 @73295 has 55 MA's), (19, 73415), (21, 73439), (22, 73466), (32, 73619), (36, 73640),

Gene: Enygma_106 Start: 74654, Stop: 75100, Start Num: 11

Candidate Starts for Enygma_106:

(4, 74573), (6, 74618), (Start: 11 @74654 has 55 MA's), (18, 74759), (21, 74798), (22, 74825), (30, 74936), (32, 74978), (34, 74987),

Gene: Evy_101 Start: 72801, Stop: 73232, Start Num: 11

Candidate Starts for Evy_101:

(Start: 11 @72801 has 55 MA's), (15, 72864), (24, 73002), (33, 73122), (35, 73134), (37, 73146), (39, 73161), (41, 73176), (43, 73188),

Gene: Genie2_106 Start: 72930, Stop: 73376, Start Num: 11

Candidate Starts for Genie2_106:

(Start: 11 @72930 has 55 MA's), (12, 72963), (16, 73011), (21, 73074), (22, 73101), (30, 73212),

Gene: Gibbi_110 Start: 72980, Stop: 73426, Start Num: 11

Candidate Starts for Gibbi_110:

(Start: 11 @72980 has 55 MA's), (21, 73124), (22, 73151), (27, 73238), (30, 73262), (32, 73304),

Gene: HangryHippo_104 Start: 72816, Stop: 73268, Start Num: 11

Candidate Starts for HangryHippo_104:

(Start: 11 @72816 has 55 MA's), (14, 72876), (15, 72879), (22, 72993), (29, 73095),

Gene: IchabodCrane_103 Start: 72569, Stop: 73015, Start Num: 11

Candidate Starts for IchabodCrane_103:

(Start: 11 @72569 has 55 MA's), (21, 72713), (22, 72740), (27, 72827), (30, 72851), (32, 72893),

Gene: Jay2Jay_106 Start: 73654, Stop: 74085, Start Num: 11

Candidate Starts for Jay2Jay_106:

(Start: 11 @73654 has 55 MA's), (15, 73717), (24, 73855), (33, 73975), (35, 73987), (41, 74029), (43, 74041),

Gene: JimJam_106 Start: 72946, Stop: 73392, Start Num: 11

Candidate Starts for JimJam_106:

(Start: 11 @72946 has 55 MA's), (21, 73090), (22, 73117), (27, 73204), (32, 73270),

Gene: Jollison_110 Start: 72825, Stop: 73271, Start Num: 11

Candidate Starts for Jollison_110:

(Start: 11 @72825 has 55 MA's), (21, 72969), (22, 72996), (27, 73083), (30, 73107), (32, 73149),

Gene: Karimac_105 Start: 73077, Stop: 73550, Start Num: 10

Candidate Starts for Karimac_105:

(6, 73068), (Start: 10 @73077 has 1 MA's), (21, 73248), (22, 73275), (27, 73362), (32, 73428),

Gene: KentuckyRacer_110 Start: 72761, Stop: 73207, Start Num: 11

Candidate Starts for KentuckyRacer_110:

(Start: 11 @72761 has 55 MA's), (21, 72905), (22, 72932), (27, 73019), (30, 73043), (32, 73085),

Gene: Larnav_108 Start: 72801, Stop: 73253, Start Num: 11

Candidate Starts for Larnav_108:

(Start: 11 @72801 has 55 MA's), (14, 72861), (15, 72864), (22, 72978), (29, 73080),

Gene: Leo04_103 Start: 73316, Stop: 73768, Start Num: 11

Candidate Starts for Leo04_103:

(Start: 11 @73316 has 55 MA's), (14, 73376), (15, 73379), (22, 73493), (29, 73595),

Gene: Liandry_102 Start: 73161, Stop: 73613, Start Num: 11

Candidate Starts for Liandry_102:

(8, 73128), (Start: 11 @73161 has 55 MA's), (14, 73221), (15, 73224), (22, 73338), (29, 73440),

Gene: LilMartin_101 Start: 71967, Stop: 72476, Start Num: 11

Candidate Starts for LilMartin_101:

(9, 71931), (Start: 11 @71967 has 55 MA's), (15, 72030), (22, 72144), (23, 72174), (25, 72216), (29, 72246), (36, 72324), (38, 72336), (40, 72351), (45, 72411), (46, 72456),

Gene: LukeCage_105 Start: 72820, Stop: 73302, Start Num: 7

Candidate Starts for LukeCage_105:

(Start: 7 @72820 has 1 MA's), (21, 73000), (22, 73027), (32, 73180),

Gene: Lululemon_102 Start: 72197, Stop: 72649, Start Num: 11

Candidate Starts for Lululemon_102:

(Start: 11 @72197 has 55 MA's), (14, 72257), (15, 72260), (22, 72374), (29, 72476),

Gene: Mildred21_102 Start: 72145, Stop: 72654, Start Num: 11

Candidate Starts for Mildred21_102:

(Start: 11 @72145 has 55 MA's), (13, 72193), (15, 72208), (22, 72322), (23, 72352), (25, 72394), (29, 72424), (36, 72502), (38, 72514), (40, 72529),

Gene: MindFlayer_103 Start: 72476, Stop: 72922, Start Num: 11

Candidate Starts for MindFlayer_103:

(Start: 11 @72476 has 55 MA's), (21, 72620), (22, 72647), (27, 72734), (30, 72758), (32, 72800),

Gene: Mugiwara_108 Start: 73360, Stop: 73806, Start Num: 11

Candidate Starts for Mugiwara_108:

(2, 73192), (5, 73297), (Start: 10 @73333 has 1 MA's), (Start: 11 @73360 has 55 MA's), (21, 73504), (22, 73531), (32, 73684),

Gene: MulchMansion_101 Start: 71967, Stop: 72476, Start Num: 11

Candidate Starts for MulchMansion_101:

(9, 71931), (Start: 11 @71967 has 55 MA's), (15, 72030), (22, 72144), (23, 72174), (25, 72216), (29, 72246), (36, 72324), (38, 72336), (40, 72351), (45, 72411), (46, 72456),

Gene: Muntaha_87 Start: 66081, Stop: 66506, Start Num: 11

Candidate Starts for Muntaha_87:

(Start: 11 @66081 has 55 MA's), (24, 66285), (28, 66339), (31, 66393), (42, 66465), (44, 66477),

Gene: Navo_103 Start: 72963, Stop: 73415, Start Num: 11

Candidate Starts for Navo_103:

(8, 72930), (Start: 11 @72963 has 55 MA's), (14, 73023), (15, 73026), (22, 73140), (29, 73242), (38, 73332),

Gene: NootNoot_99 Start: 72075, Stop: 72527, Start Num: 11

Candidate Starts for NootNoot_99:

(8, 72042), (Start: 11 @72075 has 55 MA's), (14, 72135), (15, 72138), (22, 72252), (29, 72354),

Gene: PacManQ_102 Start: 72197, Stop: 72649, Start Num: 11

Candidate Starts for PacManQ_102:

(Start: 11 @72197 has 55 MA's), (14, 72257), (15, 72260), (22, 72374), (29, 72476),

Gene: Paradiddles_99 Start: 72224, Stop: 72676, Start Num: 11

Candidate Starts for Paradiddles_99:

(8, 72191), (Start: 11 @72224 has 55 MA's), (14, 72284), (15, 72287), (22, 72401), (29, 72503),

Gene: Peebs_101 Start: 72615, Stop: 73067, Start Num: 11

Candidate Starts for Peebs_101:

(Start: 11 @72615 has 55 MA's), (14, 72675), (15, 72678), (22, 72792), (29, 72894),

Gene: Pepperwood_102 Start: 72748, Stop: 73200, Start Num: 11

Candidate Starts for Pepperwood_102:

(Start: 11 @72748 has 55 MA's), (14, 72808), (15, 72811), (22, 72925), (29, 73027),

Gene: Persimmon_102 Start: 72009, Stop: 72461, Start Num: 11

Candidate Starts for Persimmon_102:

(8, 71976), (Start: 11 @72009 has 55 MA's), (14, 72069), (15, 72072), (22, 72186), (29, 72288), (38, 72378),

Gene: PinkiePie_102 Start: 73161, Stop: 73613, Start Num: 11

Candidate Starts for PinkiePie_102:

(8, 73128), (Start: 11 @73161 has 55 MA's), (14, 73221), (15, 73224), (22, 73338), (29, 73440),

Gene: PumpkinSpice_105 Start: 72868, Stop: 73314, Start Num: 11

Candidate Starts for PumpkinSpice_105:

(Start: 11 @72868 has 55 MA's), (21, 73012), (22, 73039), (27, 73126), (30, 73150), (32, 73192),

Gene: Quaran19_105 Start: 72859, Stop: 73305, Start Num: 11

Candidate Starts for Quaran19_105:

(Start: 11 @72859 has 55 MA's), (21, 73003), (22, 73030), (27, 73117), (30, 73141), (32, 73183),

Gene: SaltySpittoon_105 Start: 72871, Stop: 73317, Start Num: 11

Candidate Starts for SaltySpittoon_105:

(Start: 11 @72871 has 55 MA's), (21, 73015), (22, 73042), (27, 73129), (30, 73153), (32, 73195),

Gene: Samisti12_102 Start: 73993, Stop: 74445, Start Num: 11

Candidate Starts for Samisti12_102:

(Start: 11 @73993 has 55 MA's), (14, 74053), (15, 74056), (22, 74170), (29, 74272),

Gene: Sollertia_106 Start: 72930, Stop: 73376, Start Num: 11

Candidate Starts for Sollertia_106:

(Start: 11 @72930 has 55 MA's), (12, 72963), (16, 73011), (21, 73074), (22, 73101), (30, 73212),

Gene: Spelly_106 Start: 72823, Stop: 73269, Start Num: 11

Candidate Starts for Spelly_106:

(Start: 11 @72823 has 55 MA's), (21, 72967), (22, 72994), (27, 73081), (30, 73105), (32, 73147),

Gene: Spilled_107 Start: 72940, Stop: 73386, Start Num: 11

Candidate Starts for Spilled_107:

(Start: 11 @72940 has 55 MA's), (21, 73084), (22, 73111), (27, 73198), (30, 73222), (32, 73264),

Gene: Squillium_103 Start: 73162, Stop: 73614, Start Num: 11

Candidate Starts for Squillium_103:

(8, 73129), (Start: 11 @73162 has 55 MA's), (14, 73222), (15, 73225), (22, 73339), (29, 73441),

Gene: Stanimal_106 Start: 72819, Stop: 73265, Start Num: 11

Candidate Starts for Stanimal_106:

(Start: 11 @72819 has 55 MA's), (12, 72852), (16, 72900), (21, 72963), (22, 72990), (30, 73101),

Gene: Starbow_104 Start: 72844, Stop: 73290, Start Num: 11

Candidate Starts for Starbow_104:

(Start: 11 @72844 has 55 MA's), (21, 72988), (22, 73015), (27, 73102), (30, 73126), (32, 73168),

Gene: Sushi23_101 Start: 72973, Stop: 73425, Start Num: 11

Candidate Starts for Sushi23_101:

(Start: 11 @72973 has 55 MA's), (14, 73033), (15, 73036), (22, 73150), (29, 73252),

Gene: Targaryen_102 Start: 73703, Stop: 74134, Start Num: 11

Candidate Starts for Targaryen_102:

(Start: 11 @73703 has 55 MA's), (15, 73766), (24, 73904), (33, 74024), (35, 74036), (41, 74078), (43, 74090),

Gene: Teutsch_102 Start: 73172, Stop: 73624, Start Num: 11

Candidate Starts for Teutsch_102:

(Start: 11 @73172 has 55 MA's), (14, 73232), (15, 73235), (22, 73349), (29, 73451),

Gene: TomSawyer_104 Start: 72462, Stop: 72908, Start Num: 11

Candidate Starts for TomSawyer_104:

(Start: 11 @72462 has 55 MA's), (21, 72606), (22, 72633), (27, 72720), (30, 72744), (32, 72786),

Gene: Tomas_107 Start: 74941, Stop: 75384, Start Num: 11

Candidate Starts for Tomas_107:

(Start: 11 @74941 has 55 MA's), (14, 75001), (15, 75004), (20, 75067), (22, 75118), (24, 75151), (25, 75190), (29, 75220),

Gene: Tribute_101 Start: 72859, Stop: 73311, Start Num: 11

Candidate Starts for Tribute_101:

(Start: 11 @72859 has 55 MA's), (14, 72919), (15, 72922), (22, 73036), (29, 73138),

Gene: Wakanda_85 Start: 65673, Stop: 66098, Start Num: 11

Candidate Starts for Wakanda_85:

(Start: 11 @65673 has 55 MA's), (24, 65877), (28, 65931), (31, 65985), (42, 66057), (44, 66069),

Gene: Warpy_105 Start: 73167, Stop: 73598, Start Num: 11

Candidate Starts for Warpy_105:

(Start: 11 @73167 has 55 MA's), (15, 73230), (24, 73368), (33, 73488), (35, 73500), (41, 73542), (43, 73554),

Gene: Watermoore_101 Start: 73388, Stop: 73840, Start Num: 11

Candidate Starts for Watermoore_101:

(Start: 11 @73388 has 55 MA's), (14, 73448), (15, 73451), (22, 73565), (29, 73667),

Gene: WhereRU_102 Start: 72322, Stop: 72807, Start Num: 8

Candidate Starts for WhereRU_102:

(8, 72322), (Start: 11 @72355 has 55 MA's), (14, 72415), (15, 72418), (22, 72532), (29, 72634), (38, 72724),

Gene: Wipeout_103 Start: 73213, Stop: 73659, Start Num: 11

Candidate Starts for Wipeout_103:

(Start: 11 @73213 has 55 MA's), (21, 73357), (22, 73384), (27, 73471), (30, 73495), (32, 73537),

Gene: Yaboi_106 Start: 72907, Stop: 73353, Start Num: 11

Candidate Starts for Yaboi_106:

(Start: 11 @72907 has 55 MA's), (12, 72940), (16, 72988), (21, 73051), (22, 73078), (30, 73189),