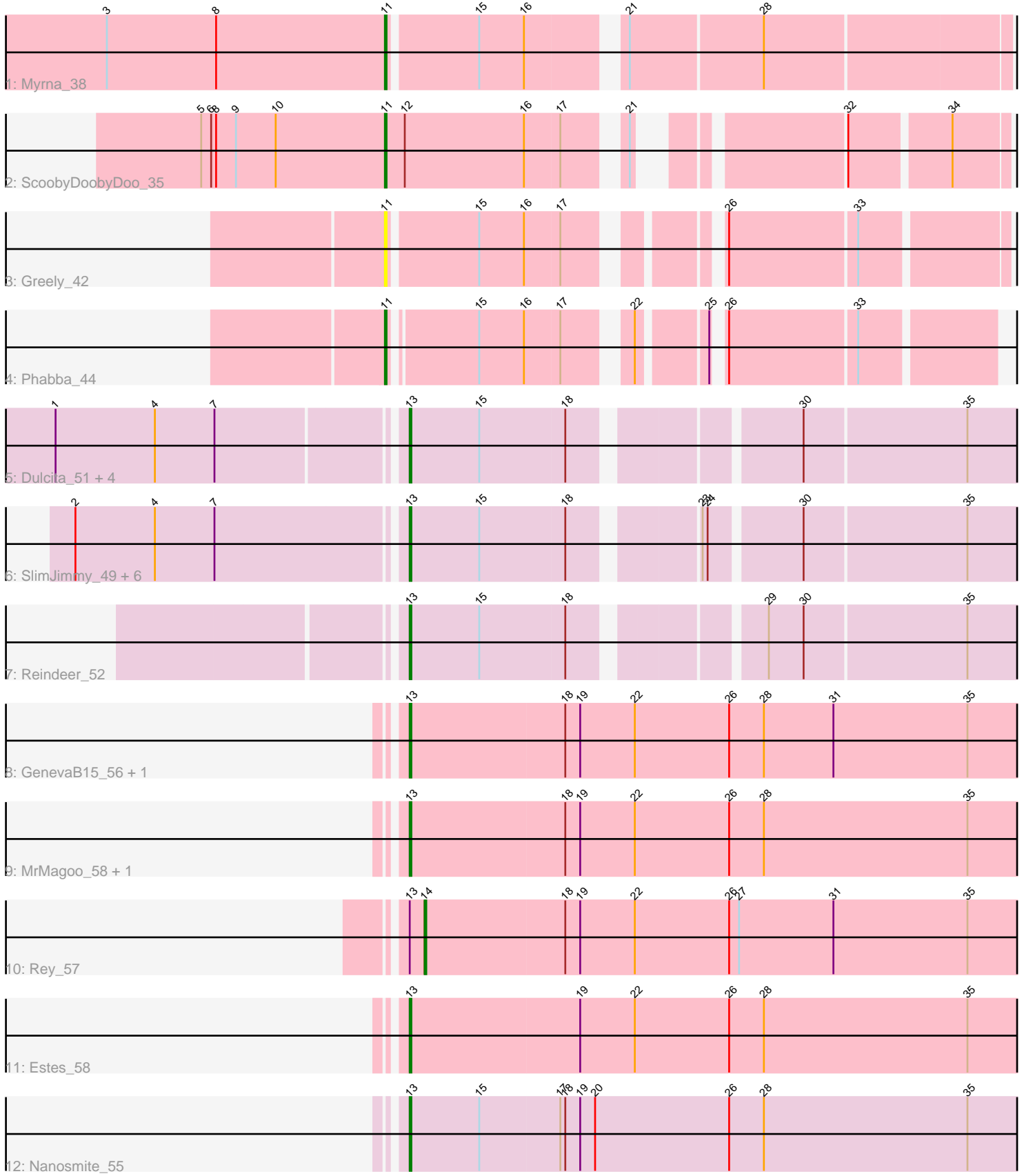


Pham 159386



Note: Tracks are now grouped by subcluster and scaled. Switching in subcluster is indicated by changes in track color. Track scale is now set by default to display the region 30 bp upstream of start 1 to 30 bp downstream of the last possible start. If this default region is judged to be packed too tightly with annotated starts, the track will be further scaled to only show that region of the ORF with annotated starts. This action will be indicated by adding "Zoomed" to the title. For starts, yellow indicates the location of called starts comprised solely of Glimmer/GeneMark auto-annotations, green indicates the location of called starts with at least 1 manual gene annotation.

Pham 159386 Report

This analysis was run 04/28/24 on database version 559.

Pham number 159386 has 24 members, 1 are drafts.

Phages represented in each track:

- Track 1 : Myrna_38
- Track 2 : ScoobyDoobyDoo_35
- Track 3 : Greely_42
- Track 4 : Phabba_44
- Track 5 : Dulcita_51, Bricole_50, Glaske16_51, Diminimus_51, Auspice_50
- Track 6 : SlimJimmy_49, Bongo_50, IPhane7_50, PegLeg_50, Skinny_51, LilhomieP_49, TyDawg_50
- Track 7 : Reindeer_52
- Track 8 : GenevaB15_56, Aziz_56
- Track 9 : MrMagoo_58, GardenSalsa_58
- Track 10 : Rey_57
- Track 11 : Estes_58
- Track 12 : Nanosmite_55

Summary of Final Annotations (See graph section above for start numbers):

The start number called the most often in the published annotations is 13, it was called in 19 of the 23 non-draft genes in the pham.

Genes that call this "Most Annotated" start:

- Auspice_50, Aziz_56, Bongo_50, Bricole_50, Diminimus_51, Dulcita_51, Estes_58, GardenSalsa_58, GenevaB15_56, Glaske16_51, IPhane7_50, LilhomieP_49, MrMagoo_58, Nanosmite_55, PegLeg_50, Reindeer_52, Skinny_51, SlimJimmy_49, TyDawg_50,

Genes that have the "Most Annotated" start but do not call it:

- Rey_57,

Genes that do not have the "Most Annotated" start:

- Greely_42, Myrna_38, Phabba_44, ScoobyDoobyDoo_35,

Summary by start number:

Start 11:

- Found in 4 of 24 (16.7%) of genes in pham
- Manual Annotations of this start: 3 of 23
- Called 100.0% of time when present
- Phage (with cluster) where this start called: Greely_42 (C2), Myrna_38 (C2), Phabba_44 (C2), ScoobyDoobyDoo_35 (C2),

Start 13:

- Found in 20 of 24 (83.3%) of genes in pham
- Manual Annotations of this start: 19 of 23
- Called 95.0% of time when present
- Phage (with cluster) where this start called: Auspice_50 (M1), Aziz_56 (M2), Bongo_50 (M1), Bricole_50 (M1), Diminimus_51 (M1), Dulcita_51 (M1), Estes_58 (M2), GardenSalsa_58 (M2), GenevaB15_56 (M2), Glaske16_51 (M1), IPhone7_50 (M1), LilhomieP_49 (M1), MrMagoo_58 (M2), Nanosmite_55 (M3), PegLeg_50 (M1), Reindeer_52 (M1), Skinny_51 (M1), SlimJimmy_49 (M1), TyDawg_50 (M1),

Start 14:

- Found in 1 of 24 (4.2%) of genes in pham
- Manual Annotations of this start: 1 of 23
- Called 100.0% of time when present
- Phage (with cluster) where this start called: Rey_57 (M2),

Summary by clusters:

There are 4 clusters represented in this pham: C2, M1, M3, M2,

Info for manual annotations of cluster C2:

- Start number 11 was manually annotated 3 times for cluster C2.

Info for manual annotations of cluster M1:

- Start number 13 was manually annotated 13 times for cluster M1.

Info for manual annotations of cluster M2:

- Start number 13 was manually annotated 5 times for cluster M2.
- Start number 14 was manually annotated 1 time for cluster M2.

Info for manual annotations of cluster M3:

- Start number 13 was manually annotated 1 time for cluster M3.

Gene Information:

Gene: Auspice_50 Start: 37254, Stop: 37604, Start Num: 13

Candidate Starts for Auspice_50:

(1, 37053), (4, 37113), (7, 37149), (Start: 13 @37254 has 19 MA's), (15, 37296), (18, 37347), (30, 37467), (35, 37563),

Gene: Aziz_56 Start: 39168, Stop: 39545, Start Num: 13

Candidate Starts for Aziz_56:

(Start: 13 @39168 has 19 MA's), (18, 39261), (19, 39270), (22, 39303), (26, 39360), (28, 39381), (31, 39423), (35, 39504),

Gene: Bongo_50 Start: 37258, Stop: 37608, Start Num: 13

Candidate Starts for Bongo_50:

(2, 37066), (4, 37114), (7, 37150), (Start: 13 @37258 has 19 MA's), (15, 37300), (18, 37351), (23, 37417), (24, 37420), (30, 37471), (35, 37567),

Gene: Bricole_50 Start: 37240, Stop: 37590, Start Num: 13

Candidate Starts for Bricole_50:

(1, 37039), (4, 37099), (7, 37135), (Start: 13 @37240 has 19 MA's), (15, 37282), (18, 37333), (30, 37453), (35, 37549),

Gene: Diminimus_51 Start: 37253, Stop: 37603, Start Num: 13

Candidate Starts for Diminimus_51:

(1, 37052), (4, 37112), (7, 37148), (Start: 13 @37253 has 19 MA's), (15, 37295), (18, 37346), (30, 37466), (35, 37562),

Gene: Dulcita_51 Start: 37254, Stop: 37604, Start Num: 13

Candidate Starts for Dulcita_51:

(1, 37053), (4, 37113), (7, 37149), (Start: 13 @37254 has 19 MA's), (15, 37296), (18, 37347), (30, 37467), (35, 37563),

Gene: Estes_58 Start: 39425, Stop: 39802, Start Num: 13

Candidate Starts for Estes_58:

(Start: 13 @39425 has 19 MA's), (19, 39527), (22, 39560), (26, 39617), (28, 39638), (35, 39761),

Gene: GardenSalsa_58 Start: 39575, Stop: 39952, Start Num: 13

Candidate Starts for GardenSalsa_58:

(Start: 13 @39575 has 19 MA's), (18, 39668), (19, 39677), (22, 39710), (26, 39767), (28, 39788), (35, 39911),

Gene: GenevaB15_56 Start: 39168, Stop: 39545, Start Num: 13

Candidate Starts for GenevaB15_56:

(Start: 13 @39168 has 19 MA's), (18, 39261), (19, 39270), (22, 39303), (26, 39360), (28, 39381), (31, 39423), (35, 39504),

Gene: Glaske16_51 Start: 37253, Stop: 37603, Start Num: 13

Candidate Starts for Glaske16_51:

(1, 37052), (4, 37112), (7, 37148), (Start: 13 @37253 has 19 MA's), (15, 37295), (18, 37346), (30, 37466), (35, 37562),

Gene: Greely_42 Start: 16620, Stop: 16946, Start Num: 11

Candidate Starts for Greely_42:

(Start: 11 @16620 has 3 MA's), (15, 16671), (16, 16698), (17, 16719), (26, 16788), (33, 16863),

Gene: IPHane7_50 Start: 37258, Stop: 37608, Start Num: 13

Candidate Starts for IPHane7_50:

(2, 37066), (4, 37114), (7, 37150), (Start: 13 @37258 has 19 MA's), (15, 37300), (18, 37351), (23, 37417), (24, 37420), (30, 37471), (35, 37567),

Gene: LilhomieP_49 Start: 37258, Stop: 37608, Start Num: 13

Candidate Starts for LilhomieP_49:

(2, 37066), (4, 37114), (7, 37150), (Start: 13 @37258 has 19 MA's), (15, 37300), (18, 37351), (23, 37417), (24, 37420), (30, 37471), (35, 37567),

Gene: MrMagoo_58 Start: 39575, Stop: 39952, Start Num: 13

Candidate Starts for MrMagoo_58:

(Start: 13 @39575 has 19 MA's), (18, 39668), (19, 39677), (22, 39710), (26, 39767), (28, 39788), (35, 39911),

Gene: Myrna_38 Start: 17055, Stop: 17402, Start Num: 11

Candidate Starts for Myrna_38:

(3, 16887), (8, 16953), (Start: 11 @17055 has 3 MA's), (15, 17106), (16, 17133), (21, 17181), (28, 17259),

Gene: Nanosmite_55 Start: 38885, Stop: 39262, Start Num: 13

Candidate Starts for Nanosmite_55:

(Start: 13 @38885 has 19 MA's), (15, 38927), (17, 38975), (18, 38978), (19, 38987), (20, 38996), (26, 39077), (28, 39098), (35, 39221),

Gene: PegLeg_50 Start: 37257, Stop: 37607, Start Num: 13

Candidate Starts for PegLeg_50:

(2, 37065), (4, 37113), (7, 37149), (Start: 13 @37257 has 19 MA's), (15, 37299), (18, 37350), (23, 37416), (24, 37419), (30, 37470), (35, 37566),

Gene: Phabba_44 Start: 16811, Stop: 17128, Start Num: 11

Candidate Starts for Phabba_44:

(Start: 11 @16811 has 3 MA's), (15, 16859), (16, 16886), (17, 16907), (22, 16937), (25, 16973), (26, 16976), (33, 17051),

Gene: Reindeer_52 Start: 38460, Stop: 38810, Start Num: 13

Candidate Starts for Reindeer_52:

(Start: 13 @38460 has 19 MA's), (15, 38502), (18, 38553), (29, 38652), (30, 38673), (35, 38769),

Gene: Rey_57 Start: 39459, Stop: 39827, Start Num: 14

Candidate Starts for Rey_57:

(Start: 13 @39450 has 19 MA's), (Start: 14 @39459 has 1 MA's), (18, 39543), (19, 39552), (22, 39585), (26, 39642), (27, 39648), (31, 39705), (35, 39786),

Gene: ScoobyDoobyDoo_35 Start: 13310, Stop: 13627, Start Num: 11

Candidate Starts for ScoobyDoobyDoo_35:

(5, 13199), (6, 13205), (8, 13208), (9, 13220), (10, 13244), (Start: 11 @13310 has 3 MA's), (12, 13322), (16, 13394), (17, 13415), (21, 13442), (32, 13538), (34, 13595),

Gene: Skinny_51 Start: 37687, Stop: 38037, Start Num: 13

Candidate Starts for Skinny_51:

(2, 37495), (4, 37543), (7, 37579), (Start: 13 @37687 has 19 MA's), (15, 37729), (18, 37780), (23, 37846), (24, 37849), (30, 37900), (35, 37996),

Gene: SlimJimmy_49 Start: 37241, Stop: 37591, Start Num: 13

Candidate Starts for SlimJimmy_49:

(2, 37049), (4, 37097), (7, 37133), (Start: 13 @37241 has 19 MA's), (15, 37283), (18, 37334), (23, 37400), (24, 37403), (30, 37454), (35, 37550),

Gene: TyDawg_50 Start: 37258, Stop: 37608, Start Num: 13

Candidate Starts for TyDawg_50:

(2, 37066), (4, 37114), (7, 37150), (Start: 13 @37258 has 19 MA's), (15, 37300), (18, 37351), (23, 37417), (24, 37420), (30, 37471), (35, 37567),

