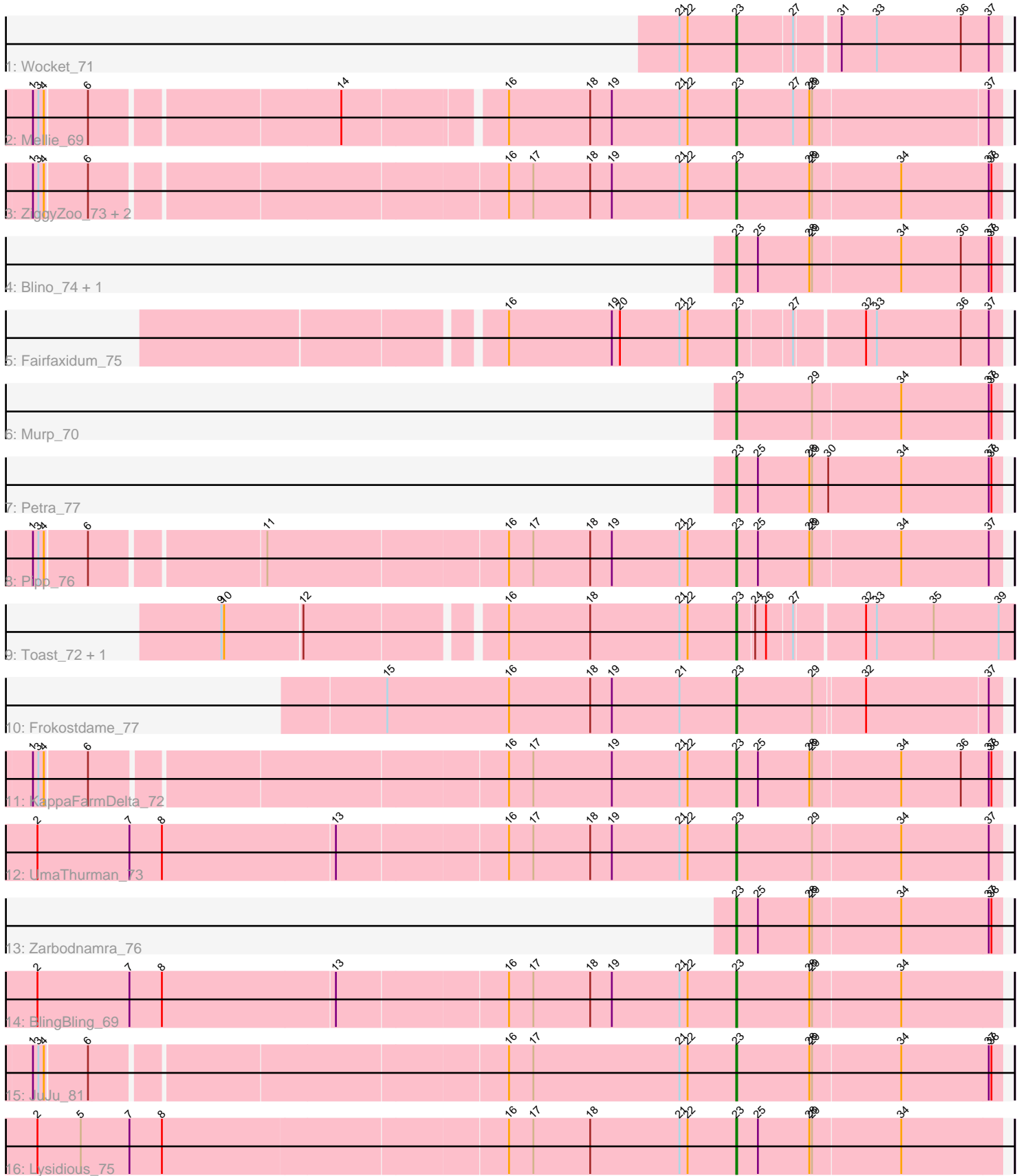


Pham 159426



Note: Tracks are now grouped by subcluster and scaled. Switching in subcluster is indicated by changes in track color. Track scale is now set by default to display the region 30 bp upstream of start 1 to 30 bp downstream of the last possible start. If this default region is judged to be packed too tightly with annotated starts, the track will be further scaled to only show that region of the ORF with annotated starts. This action will be indicated by adding "Zoomed" to the title. For starts, yellow indicates the location of called starts comprised solely of Glimmer/GeneMark auto-annotations, green indicates the location of called starts with at least 1 manual gene annotation.

Pham 159426 Report

This analysis was run 04/28/24 on database version 559.

Pham number 159426 has 20 members, 0 are drafts.

Phages represented in each track:

- Track 1 : Wocket_71
- Track 2 : Mellie_69
- Track 3 : ZiggyZoo_73, Obliviate_71, Archis_74
- Track 4 : Blino_74, CarolAnn_73
- Track 5 : Fairfaxidum_75
- Track 6 : Murp_70
- Track 7 : Petra_77
- Track 8 : Pipp_76
- Track 9 : Toast_72, PCoral7_72
- Track 10 : Frokostdame_77
- Track 11 : KappaFarmDelta_72
- Track 12 : UmaThurman_73
- Track 13 : Zarbodnamra_76
- Track 14 : BlingBling_69
- Track 15 : JuJu_81
- Track 16 : Lysidious_75

Summary of Final Annotations (See graph section above for start numbers):

The start number called the most often in the published annotations is 23, it was called in 20 of the 20 non-draft genes in the pham.

Genes that call this "Most Annotated" start:

- Archis_74, BlingBling_69, Blino_74, CarolAnn_73, Fairfaxidum_75, Frokostdame_77, JuJu_81, KappaFarmDelta_72, Lysidious_75, Mellie_69, Murp_70, Obliviate_71, PCoral7_72, Petra_77, Pipp_76, Toast_72, UmaThurman_73, Wocket_71, Zarbodnamra_76, ZiggyZoo_73,

Genes that have the "Most Annotated" start but do not call it:

-

Genes that do not have the "Most Annotated" start:

-

Summary by start number:

Start 23:

- Found in 20 of 20 (100.0%) of genes in pham
- Manual Annotations of this start: 20 of 20
- Called 100.0% of time when present
- Phage (with cluster) where this start called: Archis_74 (CV), BlingBling_69 (CV), Blino_74 (CV), CarolAnn_73 (CV), Fairfaxidum_75 (CV), Frokostdame_77 (CV), JuJu_81 (CV), KappaFarmDelta_72 (CV), Lysidious_75 (CV), Mellie_69 (CV), Murp_70 (CV), Oblivate_71 (CV), PCoral7_72 (CV), Petra_77 (CV), Pipp_76 (CV), Toast_72 (CV), UmaThurman_73 (CV), Wocket_71 (CV), Zarbodnamra_76 (CV), ZiggyZoo_73 (CV),

Summary by clusters:

There is one cluster represented in this pham: CV

Info for manual annotations of cluster CV:

- Start number 23 was manually annotated 20 times for cluster CV.

Gene Information:

Gene: Archis_74 Start: 44249, Stop: 44539, Start Num: 23

Candidate Starts for Archis_74:

(1, 43502), (3, 43508), (4, 43514), (6, 43559), (16, 43997), (17, 44024), (18, 44087), (19, 44111), (21, 44186), (22, 44195), (Start: 23 @44249 has 20 MA's), (28, 44330), (29, 44333), (34, 44429), (37, 44525), (38, 44528),

Gene: BlingBling_69 Start: 45058, Stop: 45348, Start Num: 23

Candidate Starts for BlingBling_69:

(2, 44296), (7, 44398), (8, 44434), (13, 44623), (16, 44806), (17, 44833), (18, 44896), (19, 44920), (21, 44995), (22, 45004), (Start: 23 @45058 has 20 MA's), (28, 45139), (29, 45142), (34, 45238),

Gene: Blino_74 Start: 49739, Stop: 50029, Start Num: 23

Candidate Starts for Blino_74:

(Start: 23 @49739 has 20 MA's), (25, 49763), (28, 49820), (29, 49823), (34, 49919), (36, 49985), (37, 50015), (38, 50018),

Gene: CarolAnn_73 Start: 49738, Stop: 50028, Start Num: 23

Candidate Starts for CarolAnn_73:

(Start: 23 @49738 has 20 MA's), (25, 49762), (28, 49819), (29, 49822), (34, 49918), (36, 49984), (37, 50014), (38, 50017),

Gene: Fairfaxidum_75 Start: 46200, Stop: 46478, Start Num: 23

Candidate Starts for Fairfaxidum_75:

(16, 45948), (19, 46062), (20, 46071), (21, 46137), (22, 46146), (Start: 23 @46200 has 20 MA's), (27, 46257), (32, 46329), (33, 46341), (36, 46434), (37, 46464),

Gene: Frokostdame_77 Start: 48052, Stop: 48336, Start Num: 23

Candidate Starts for Frokostdame_77:

(15, 47665), (16, 47800), (18, 47890), (19, 47914), (21, 47989), (Start: 23 @48052 has 20 MA's), (29, 48136), (32, 48190), (37, 48322),

Gene: JuJu_81 Start: 49884, Stop: 50174, Start Num: 23

Candidate Starts for JuJu_81:

(1, 49137), (3, 49143), (4, 49149), (6, 49194), (16, 49632), (17, 49659), (21, 49821), (22, 49830), (Start: 23 @49884 has 20 MA's), (28, 49965), (29, 49968), (34, 50064), (37, 50160), (38, 50163),

Gene: KappaFarmDelta_72 Start: 44721, Stop: 45011, Start Num: 23

Candidate Starts for KappaFarmDelta_72:

(1, 43974), (3, 43980), (4, 43986), (6, 44031), (16, 44469), (17, 44496), (19, 44583), (21, 44658), (22, 44667), (Start: 23 @44721 has 20 MA's), (25, 44745), (28, 44802), (29, 44805), (34, 44901), (36, 44967), (37, 44997), (38, 45000),

Gene: Lysidious_75 Start: 46689, Stop: 46979, Start Num: 23

Candidate Starts for Lysidious_75:

(2, 45927), (5, 45975), (7, 46029), (8, 46065), (16, 46437), (17, 46464), (18, 46527), (21, 46626), (22, 46635), (Start: 23 @46689 has 20 MA's), (25, 46713), (28, 46770), (29, 46773), (34, 46869),

Gene: Mellie_69 Start: 43931, Stop: 44218, Start Num: 23

Candidate Starts for Mellie_69:

(1, 43196), (3, 43202), (4, 43208), (6, 43253), (14, 43514), (16, 43679), (18, 43769), (19, 43793), (21, 43868), (22, 43877), (Start: 23 @43931 has 20 MA's), (27, 43994), (28, 44012), (29, 44015), (37, 44204),

Gene: Murp_70 Start: 47087, Stop: 47377, Start Num: 23

Candidate Starts for Murp_70:

(Start: 23 @47087 has 20 MA's), (29, 47171), (34, 47267), (37, 47363), (38, 47366),

Gene: Obliviate_71 Start: 44250, Stop: 44540, Start Num: 23

Candidate Starts for Obliviate_71:

(1, 43503), (3, 43509), (4, 43515), (6, 43560), (16, 43998), (17, 44025), (18, 44088), (19, 44112), (21, 44187), (22, 44196), (Start: 23 @44250 has 20 MA's), (28, 44331), (29, 44334), (34, 44430), (37, 44526), (38, 44529),

Gene: PCoral7_72 Start: 44973, Stop: 45266, Start Num: 23

Candidate Starts for PCoral7_72:

(9, 44433), (10, 44436), (12, 44520), (16, 44721), (18, 44811), (21, 44910), (22, 44919), (Start: 23 @44973 has 20 MA's), (24, 44991), (26, 45003), (27, 45030), (32, 45102), (33, 45114), (35, 45177), (39, 45249),

Gene: Petra_77 Start: 46403, Stop: 46696, Start Num: 23

Candidate Starts for Petra_77:

(Start: 23 @46403 has 20 MA's), (25, 46427), (28, 46484), (29, 46487), (30, 46505), (34, 46586), (37, 46682), (38, 46685),

Gene: Pipp_76 Start: 46298, Stop: 46588, Start Num: 23

Candidate Starts for Pipp_76:

(1, 45551), (3, 45557), (4, 45563), (6, 45608), (11, 45788), (16, 46046), (17, 46073), (18, 46136), (19, 46160), (21, 46235), (22, 46244), (Start: 23 @46298 has 20 MA's), (25, 46322), (28, 46379), (29, 46382), (34, 46478), (37, 46574),

Gene: Toast_72 Start: 44973, Stop: 45266, Start Num: 23

Candidate Starts for Toast_72:

(9, 44433), (10, 44436), (12, 44520), (16, 44721), (18, 44811), (21, 44910), (22, 44919), (Start: 23 @44973 has 20 MA's), (24, 44991), (26, 45003), (27, 45030), (32, 45102), (33, 45114), (35, 45177), (39, 45249),

Gene: UmaThurman_73 Start: 45529, Stop: 45819, Start Num: 23

Candidate Starts for UmaThurman_73:

(2, 44767), (7, 44869), (8, 44905), (13, 45094), (16, 45277), (17, 45304), (18, 45367), (19, 45391), (21, 45466), (22, 45475), (Start: 23 @45529 has 20 MA's), (29, 45613), (34, 45709), (37, 45805),

Gene: Wocket_71 Start: 45215, Stop: 45496, Start Num: 23

Candidate Starts for Wocket_71:

(21, 45152), (22, 45161), (Start: 23 @45215 has 20 MA's), (27, 45275), (31, 45320), (33, 45359), (36, 45452), (37, 45482),

Gene: Zarbodnamra_76 Start: 45341, Stop: 45631, Start Num: 23

Candidate Starts for Zarbodnamra_76:

(Start: 23 @45341 has 20 MA's), (25, 45365), (28, 45422), (29, 45425), (34, 45521), (37, 45617), (38, 45620),

Gene: ZiggyZoo_73 Start: 46713, Stop: 47003, Start Num: 23

Candidate Starts for ZiggyZoo_73:

(1, 45966), (3, 45972), (4, 45978), (6, 46023), (16, 46461), (17, 46488), (18, 46551), (19, 46575), (21, 46650), (22, 46659), (Start: 23 @46713 has 20 MA's), (28, 46794), (29, 46797), (34, 46893), (37, 46989), (38, 46992),