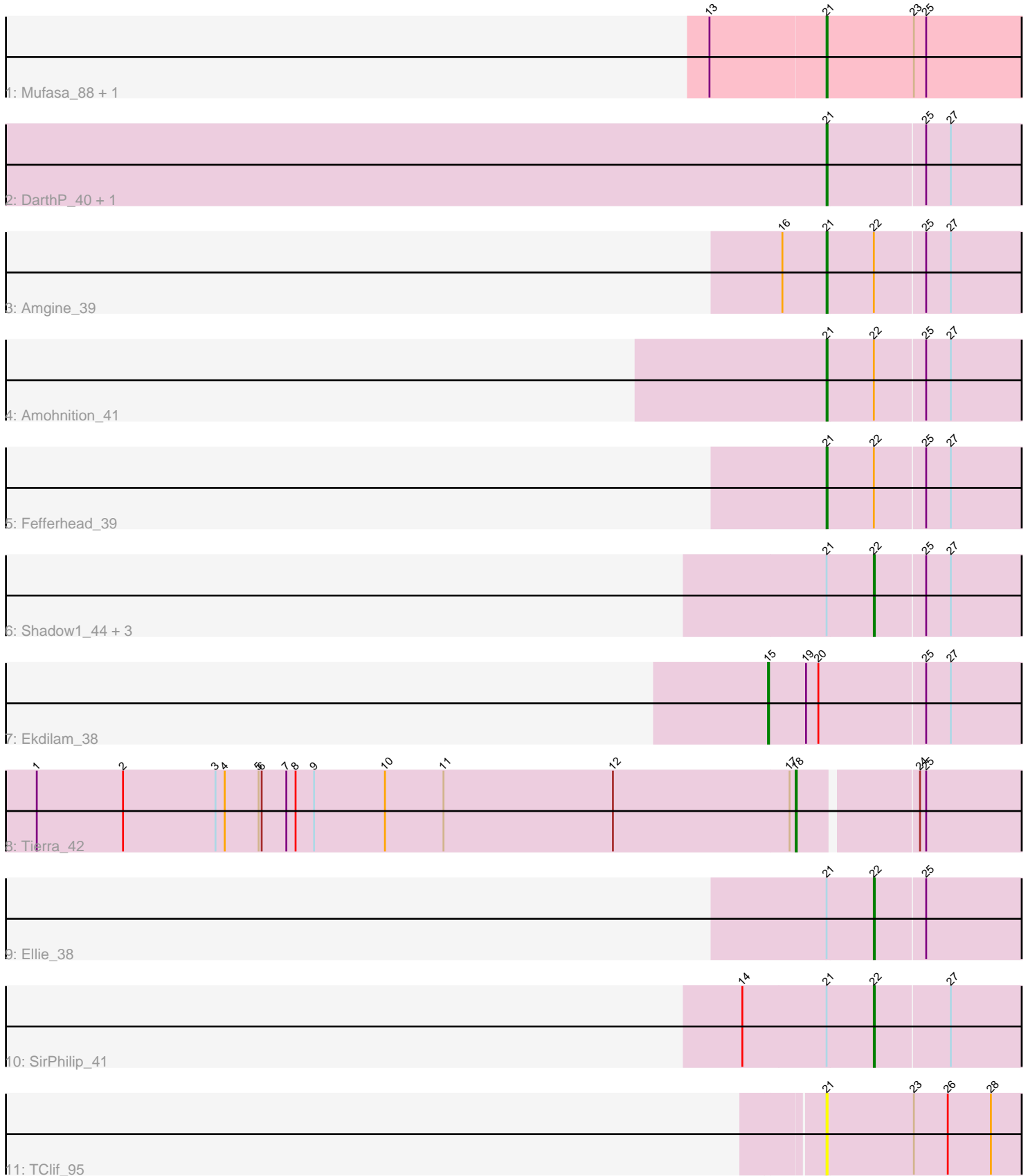


Pham 159464



Note: Tracks are now grouped by subcluster and scaled. Switching in subcluster is indicated by changes in track color. Track scale is now set by default to display the region 30 bp upstream of start 1 to 30 bp downstream of the last possible start. If this default region is judged to be packed too tightly with annotated starts, the track will be further scaled to only show that region of the ORF with annotated starts. This action will be indicated by adding "Zoomed" to the title. For starts, yellow indicates the location of called starts comprised solely of Glimmer/GeneMark auto-annotations, green indicates the location of called starts with at least 1 manual gene annotation.

Pham 159464 Report

This analysis was run 04/28/24 on database version 559.

Pham number 159464 has 16 members, 1 are drafts.

Phages represented in each track:

- Track 1 : Mufasa_88, BoostSeason_88
- Track 2 : DarthP_40, Hammy_40
- Track 3 : Amgine_39
- Track 4 : Amohnition_41
- Track 5 : Fefferhead_39
- Track 6 : Shadow1_44, Syra333_44, Sunflower1121_44, Ximenita_45
- Track 7 : Ekdilam_38
- Track 8 : Tierra_42
- Track 9 : Ellie_38
- Track 10 : SirPhilip_41
- Track 11 : TClif_95

Summary of Final Annotations (See graph section above for start numbers):

The start number called the most often in the published annotations is 21, it was called in 7 of the 15 non-draft genes in the pham.

Genes that call this "Most Annotated" start:

- Amgine_39, Amohnition_41, BoostSeason_88, DarthP_40, Fefferhead_39, Hammy_40, Mufasa_88, TClif_95,

Genes that have the "Most Annotated" start but do not call it:

- Ellie_38, Shadow1_44, SirPhilip_41, Sunflower1121_44, Syra333_44, Ximenita_45,

Genes that do not have the "Most Annotated" start:

- Ekdilam_38, Tierra_42,

Summary by start number:

Start 15:

- Found in 1 of 16 (6.2%) of genes in pham
- Manual Annotations of this start: 1 of 15
- Called 100.0% of time when present
- Phage (with cluster) where this start called: Ekdilam_38 (K6),

Start 18:

- Found in 1 of 16 (6.2%) of genes in pham
- Manual Annotations of this start: 1 of 15
- Called 100.0% of time when present
- Phage (with cluster) where this start called: Tierra_42 (K6),

Start 21:

- Found in 14 of 16 (87.5%) of genes in pham
- Manual Annotations of this start: 7 of 15
- Called 57.1% of time when present
- Phage (with cluster) where this start called: Amgine_39 (K6), Amohnition_41 (K6), BoostSeason_88 (K2), DarthP_40 (K6), Fefferhead_39 (K6), Hammy_40 (K6), Mufasa_88 (K2), TClif_95 (K6),

Start 22:

- Found in 9 of 16 (56.2%) of genes in pham
- Manual Annotations of this start: 6 of 15
- Called 66.7% of time when present
- Phage (with cluster) where this start called: Ellie_38 (K6), Shadow1_44 (K6), SirPhilip_41 (K6), Sunflower1121_44 (K6), Syra333_44 (K6), Ximenita_45 (K6),

Summary by clusters:

There are 2 clusters represented in this pham: K2, K6,

Info for manual annotations of cluster K2:

- Start number 21 was manually annotated 2 times for cluster K2.

Info for manual annotations of cluster K6:

- Start number 15 was manually annotated 1 time for cluster K6.
- Start number 18 was manually annotated 1 time for cluster K6.
- Start number 21 was manually annotated 5 times for cluster K6.
- Start number 22 was manually annotated 6 times for cluster K6.

Gene Information:

Gene: Amgine_39 Start: 33010, Stop: 32798, Start Num: 21

Candidate Starts for Amgine_39:

(16, 33052), (Start: 21 @33010 has 7 MA's), (Start: 22 @32965 has 6 MA's), (25, 32917), (27, 32893),

Gene: Amohnition_41 Start: 32710, Stop: 32498, Start Num: 21

Candidate Starts for Amohnition_41:

(Start: 21 @32710 has 7 MA's), (Start: 22 @32665 has 6 MA's), (25, 32617), (27, 32593),

Gene: BoostSeason_88 Start: 56098, Stop: 56313, Start Num: 21

Candidate Starts for BoostSeason_88:

(13, 55987), (Start: 21 @56098 has 7 MA's), (23, 56182), (25, 56194),

Gene: DarthP_40 Start: 32347, Stop: 32135, Start Num: 21

Candidate Starts for DarthP_40:

(Start: 21 @32347 has 7 MA's), (25, 32254), (27, 32230),

Gene: Ekdilam_38 Start: 32274, Stop: 32005, Start Num: 15

Candidate Starts for Ekdilam_38:

(Start: 15 @32274 has 1 MA's), (19, 32238), (20, 32226), (25, 32124), (27, 32100),

Gene: Ellie_38 Start: 32153, Stop: 31986, Start Num: 22

Candidate Starts for Ellie_38:

(Start: 21 @32198 has 7 MA's), (Start: 22 @32153 has 6 MA's), (25, 32105),

Gene: Fefferhead_39 Start: 32152, Stop: 31940, Start Num: 21

Candidate Starts for Fefferhead_39:

(Start: 21 @32152 has 7 MA's), (Start: 22 @32107 has 6 MA's), (25, 32059), (27, 32035),

Gene: Hammy_40 Start: 32335, Stop: 32123, Start Num: 21

Candidate Starts for Hammy_40:

(Start: 21 @32335 has 7 MA's), (25, 32242), (27, 32218),

Gene: Mufasa_88 Start: 56085, Stop: 56300, Start Num: 21

Candidate Starts for Mufasa_88:

(13, 55974), (Start: 21 @56085 has 7 MA's), (23, 56169), (25, 56181),

Gene: Shadow1_44 Start: 32514, Stop: 32347, Start Num: 22

Candidate Starts for Shadow1_44:

(Start: 21 @32559 has 7 MA's), (Start: 22 @32514 has 6 MA's), (25, 32466), (27, 32442),

Gene: SirPhilip_41 Start: 32747, Stop: 32580, Start Num: 22

Candidate Starts for SirPhilip_41:

(14, 32873), (Start: 21 @32792 has 7 MA's), (Start: 22 @32747 has 6 MA's), (27, 32675),

Gene: Sunflower1121_44 Start: 32609, Stop: 32442, Start Num: 22

Candidate Starts for Sunflower1121_44:

(Start: 21 @32654 has 7 MA's), (Start: 22 @32609 has 6 MA's), (25, 32561), (27, 32537),

Gene: Syra333_44 Start: 32270, Stop: 32103, Start Num: 22

Candidate Starts for Syra333_44:

(Start: 21 @32315 has 7 MA's), (Start: 22 @32270 has 6 MA's), (25, 32222), (27, 32198),

Gene: TClif_95 Start: 58904, Stop: 59119, Start Num: 21

Candidate Starts for TClif_95:

(Start: 21 @58904 has 7 MA's), (23, 58988), (26, 59021), (28, 59063),

Gene: Tierra_42 Start: 32376, Stop: 32137, Start Num: 18

Candidate Starts for Tierra_42:

(1, 33114), (2, 33030), (3, 32940), (4, 32931), (5, 32898), (6, 32895), (7, 32871), (8, 32862), (9, 32844), (10, 32775), (11, 32718), (12, 32553), (17, 32382), (Start: 18 @32376 has 1 MA's), (24, 32268), (25, 32262),

Gene: Ximenita_45 Start: 32454, Stop: 32287, Start Num: 22

Candidate Starts for Ximenita_45:

(Start: 21 @32499 has 7 MA's), (Start: 22 @32454 has 6 MA's), (25, 32406), (27, 32382),