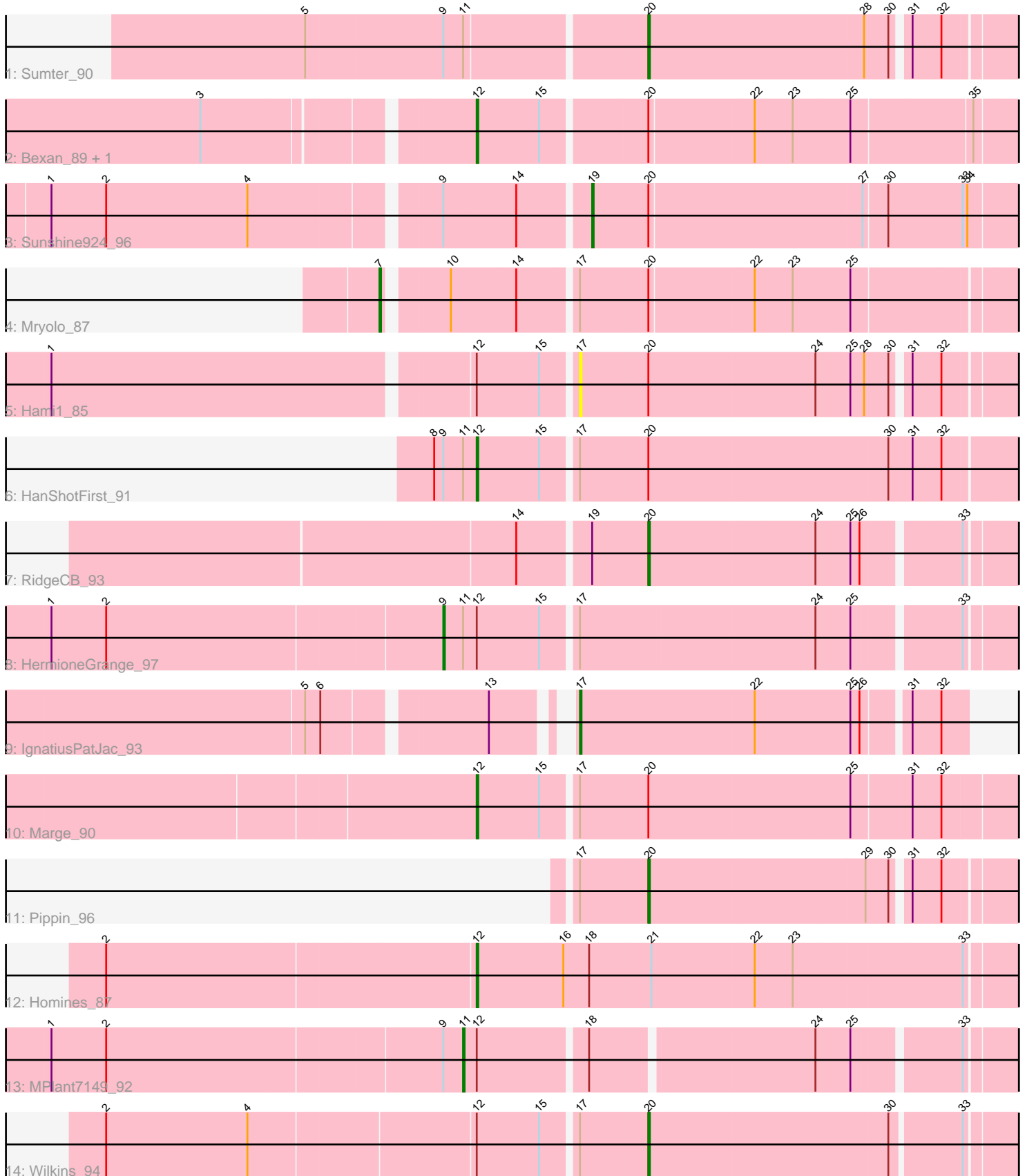


# Pham 159484



Note: Tracks are now grouped by subcluster and scaled. Switching in subcluster is indicated by changes in track color. Track scale is now set by default to display the region 30 bp upstream of start 1 to 30 bp downstream of the last possible start. If this default region is judged to be packed too tightly with annotated starts, the track will be further scaled to only show that region of the ORF with annotated starts. This action will be indicated by adding "Zoomed" to the title. For starts, yellow indicates the location of called starts comprised solely of Glimmer/GeneMark auto-annotations, green indicates the location of called starts with at least 1 manual gene annotation.

## Pham 159484 Report

This analysis was run 05/04/24 on database version 560.

Pham number 159484 has 15 members, 1 are drafts.

Phages represented in each track:

- Track 1 : Sumter\_90
- Track 2 : Bexan\_89, StrongArm\_90
- Track 3 : Sunshine924\_96
- Track 4 : Mryolo\_87
- Track 5 : Hami1\_85
- Track 6 : HanShotFirst\_91
- Track 7 : RidgeCB\_93
- Track 8 : HermioneGrange\_97
- Track 9 : IgnatiusPatJac\_93
- Track 10 : Marge\_90
- Track 11 : Pippin\_96
- Track 12 : Homines\_87
- Track 13 : MPlant7149\_92
- Track 14 : Wilkins\_94

### ***Summary of Final Annotations (See graph section above for start numbers):***

The start number called the most often in the published annotations is 12, it was called in 5 of the 14 non-draft genes in the pham.

Genes that call this "Most Annotated" start:

- Bexan\_89, HanShotFirst\_91, Homines\_87, Marge\_90, StrongArm\_90,

Genes that have the "Most Annotated" start but do not call it:

- Hami1\_85, HermioneGrange\_97, MPlant7149\_92, Wilkins\_94,

Genes that do not have the "Most Annotated" start:

- IgnatiusPatJac\_93, Mryolo\_87, Pippin\_96, RidgeCB\_93, Sumter\_90, Sunshine924\_96,

### **Summary by start number:**

Start 7:

- Found in 1 of 15 ( 6.7% ) of genes in pham

- Manual Annotations of this start: 1 of 14
- Called 100.0% of time when present
- Phage (with cluster) where this start called: Mryolo\_87 (A1),

Start 9:

- Found in 5 of 15 ( 33.3% ) of genes in pham
- Manual Annotations of this start: 1 of 14
- Called 20.0% of time when present
- Phage (with cluster) where this start called: HermioneGrange\_97 (A1),

Start 11:

- Found in 4 of 15 ( 26.7% ) of genes in pham
- Manual Annotations of this start: 1 of 14
- Called 25.0% of time when present
- Phage (with cluster) where this start called: MPlant7149\_92 (A1),

Start 12:

- Found in 9 of 15 ( 60.0% ) of genes in pham
- Manual Annotations of this start: 5 of 14
- Called 55.6% of time when present
- Phage (with cluster) where this start called: Bexan\_89 (A1), HanShotFirst\_91 (A1), Homines\_87 (A1), Marge\_90 (A1), StrongArm\_90 (A1),

Start 17:

- Found in 8 of 15 ( 53.3% ) of genes in pham
- Manual Annotations of this start: 1 of 14
- Called 25.0% of time when present
- Phage (with cluster) where this start called: Hami1\_85 (A1), IgnatiusPatJac\_93 (A1),

Start 19:

- Found in 2 of 15 ( 13.3% ) of genes in pham
- Manual Annotations of this start: 1 of 14
- Called 50.0% of time when present
- Phage (with cluster) where this start called: Sunshine924\_96 (A1),

Start 20:

- Found in 11 of 15 ( 73.3% ) of genes in pham
- Manual Annotations of this start: 4 of 14
- Called 36.4% of time when present
- Phage (with cluster) where this start called: Pippin\_96 (A1), RidgeCB\_93 (A1), Sumter\_90 (A1), Wilkins\_94 (A1),

### **Summary by clusters:**

There is one cluster represented in this pham: A1

Info for manual annotations of cluster A1:

- Start number 7 was manually annotated 1 time for cluster A1.
- Start number 9 was manually annotated 1 time for cluster A1.
- Start number 11 was manually annotated 1 time for cluster A1.
- Start number 12 was manually annotated 5 times for cluster A1.
- Start number 17 was manually annotated 1 time for cluster A1.
- Start number 19 was manually annotated 1 time for cluster A1.

- Start number 20 was manually annotated 4 times for cluster A1.

### **Gene Information:**

Gene: Bexan\_89 Start: 51788, Stop: 51432, Start Num: 12

Candidate Starts for Bexan\_89:

(3, 51947), (Start: 12 @51788 has 5 MA's), (15, 51749), (Start: 20 @51686 has 4 MA's), (22, 51620), (23, 51596), (25, 51560), (35, 51485),

Gene: Hami1\_85 Start: 47344, Stop: 47051, Start Num: 17

Candidate Starts for Hami1\_85:

(1, 47665), (Start: 12 @47401 has 5 MA's), (15, 47362), (Start: 17 @47344 has 1 MA's), (Start: 20 @47302 has 4 MA's), (24, 47197), (25, 47176), (28, 47167), (30, 47152), (31, 47143), (32, 47125),

Gene: HanShotFirst\_91 Start: 52097, Stop: 51714, Start Num: 12

Candidate Starts for HanShotFirst\_91:

(8, 52124), (Start: 9 @52118 has 1 MA's), (Start: 11 @52106 has 1 MA's), (Start: 12 @52097 has 5 MA's), (15, 52058), (Start: 17 @52040 has 1 MA's), (Start: 20 @51998 has 4 MA's), (30, 51848), (31, 51833), (32, 51815),

Gene: HermioneGrange\_97 Start: 52867, Stop: 52475, Start Num: 9

Candidate Starts for HermioneGrange\_97:

(1, 53116), (2, 53080), (Start: 9 @52867 has 1 MA's), (Start: 11 @52855 has 1 MA's), (Start: 12 @52846 has 5 MA's), (15, 52807), (Start: 17 @52789 has 1 MA's), (24, 52642), (25, 52621), (33, 52558),

Gene: Homines\_87 Start: 48201, Stop: 47815, Start Num: 12

Candidate Starts for Homines\_87:

(2, 48435), (Start: 12 @48201 has 5 MA's), (16, 48147), (18, 48132), (21, 48093), (22, 48027), (23, 48003), (33, 47898),

Gene: IgnatiusPatJac\_93 Start: 50828, Stop: 50589, Start Num: 17

Candidate Starts for IgnatiusPatJac\_93:

(5, 50969), (6, 50960), (13, 50864), (Start: 17 @50828 has 1 MA's), (22, 50717), (25, 50657), (26, 50651), (31, 50624), (32, 50606),

Gene: MPlant7149\_92 Start: 51080, Stop: 50706, Start Num: 11

Candidate Starts for MPlant7149\_92:

(1, 51341), (2, 51305), (Start: 9 @51092 has 1 MA's), (Start: 11 @51080 has 1 MA's), (Start: 12 @51071 has 5 MA's), (18, 51008), (24, 50873), (25, 50852), (33, 50789),

Gene: Marge\_90 Start: 50971, Stop: 50612, Start Num: 12

Candidate Starts for Marge\_90:

(Start: 12 @50971 has 5 MA's), (15, 50932), (Start: 17 @50914 has 1 MA's), (Start: 20 @50872 has 4 MA's), (25, 50746), (31, 50707), (32, 50689),

Gene: Mryolo\_87 Start: 50262, Stop: 49831, Start Num: 7

Candidate Starts for Mryolo\_87:

(Start: 7 @50262 has 1 MA's), (10, 50226), (14, 50184), (Start: 17 @50151 has 1 MA's), (Start: 20 @50109 has 4 MA's), (22, 50043), (23, 50019), (25, 49983),

Gene: Pippin\_96 Start: 51631, Stop: 51380, Start Num: 20

Candidate Starts for Pippin\_96:

(Start: 17 @51673 has 1 MA's), (Start: 20 @51631 has 4 MA's), (29, 51496), (30, 51481), (31, 51472), (32, 51454),

Gene: RidgeCB\_93 Start: 50441, Stop: 50169, Start Num: 20

Candidate Starts for RidgeCB\_93:

(14, 50516), (Start: 19 @50477 has 1 MA's), (Start: 20 @50441 has 4 MA's), (24, 50336), (25, 50315), (26, 50309), (33, 50252),

Gene: StrongArm\_90 Start: 51916, Stop: 51560, Start Num: 12

Candidate Starts for StrongArm\_90:

(3, 52075), (Start: 12 @51916 has 5 MA's), (15, 51877), (Start: 20 @51814 has 4 MA's), (22, 51748), (23, 51724), (25, 51688), (35, 51613),

Gene: Sumter\_90 Start: 52252, Stop: 52001, Start Num: 20

Candidate Starts for Sumter\_90:

(5, 52459), (Start: 9 @52372 has 1 MA's), (Start: 11 @52360 has 1 MA's), (Start: 20 @52252 has 4 MA's), (28, 52117), (30, 52102), (31, 52093), (32, 52075),

Gene: Sunshine924\_96 Start: 50991, Stop: 50692, Start Num: 19

Candidate Starts for Sunshine924\_96:

(1, 51318), (2, 51282), (4, 51189), (Start: 9 @51075 has 1 MA's), (14, 51030), (Start: 19 @50991 has 1 MA's), (Start: 20 @50955 has 4 MA's), (27, 50820), (30, 50805), (33, 50757), (34, 50754),

Gene: Wilkins\_94 Start: 50507, Stop: 50232, Start Num: 20

Candidate Starts for Wilkins\_94:

(2, 50840), (4, 50747), (Start: 12 @50606 has 5 MA's), (15, 50567), (Start: 17 @50549 has 1 MA's), (Start: 20 @50507 has 4 MA's), (30, 50357), (33, 50315),