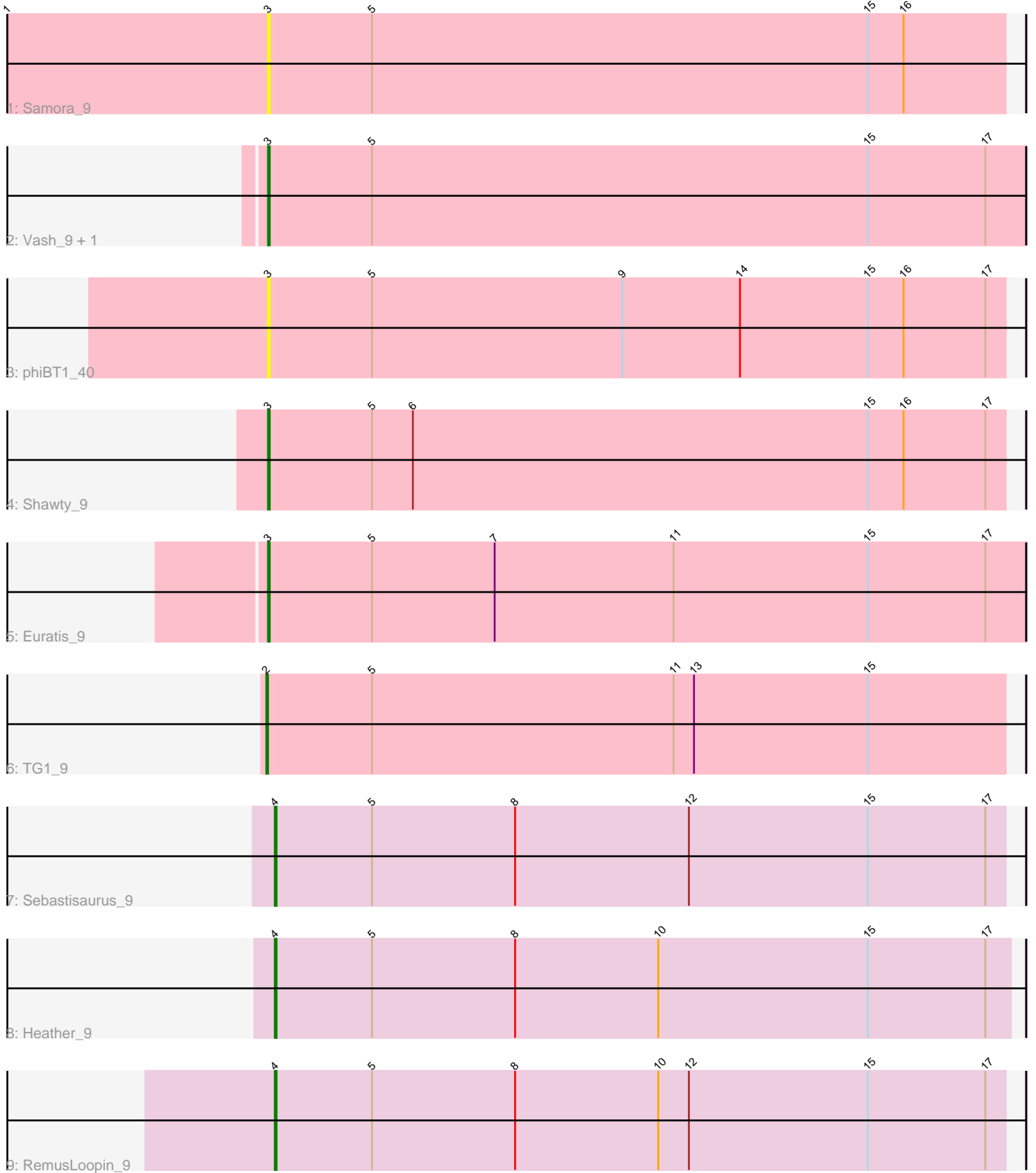


Pham 159538



Note: Tracks are now grouped by subcluster and scaled. Switching in subcluster is indicated by changes in track color. Track scale is now set by default to display the region 30 bp upstream of start 1 to 30 bp downstream of the last possible start. If this default region is judged to be packed too tightly with annotated starts, the track will be further scaled to only show that region of the ORF with annotated starts. This action will be indicated by adding "Zoomed" to the title. For starts, yellow indicates the location of called starts comprised solely of Glimmer/GeneMark auto-annotations, green indicates the location of called starts with at least 1 manual gene annotation.

Pham 159538 Report

This analysis was run 04/28/24 on database version 559.

WARNING: Pham size does not match number of genes in report. Either unphamerated genes have been added (by you) or starterator has removed genes due to invalid start codon.

Pham number 159538 has 10 members, 2 are drafts.

Phages represented in each track:

- Track 1 : Samora_9
- Track 2 : Vash_9, Lilbooboo_9
- Track 3 : phiBT1_40
- Track 4 : Shawty_9
- Track 5 : Euratis_9
- Track 6 : TG1_9
- Track 7 : Sebastisaurus_9
- Track 8 : Heather_9
- Track 9 : RemusLoopin_9

Summary of Final Annotations (See graph section above for start numbers):

The start number called the most often in the published annotations is 3, it was called in 4 of the 8 non-draft genes in the pham.

Genes that call this "Most Annotated" start:

- Euratis_9, Lilbooboo_9, Samora_9, Shawty_9, Vash_9, phiBT1_40,

Genes that have the "Most Annotated" start but do not call it:

-

Genes that do not have the "Most Annotated" start:

- Heather_9, RemusLoopin_9, Sebastisaurus_9, TG1_9,

Summary by start number:

Start 2:

- Found in 1 of 10 (10.0%) of genes in pham
- Manual Annotations of this start: 1 of 8
- Called 100.0% of time when present

- Phage (with cluster) where this start called: TG1_9 (BB1),

Start 3:

- Found in 6 of 10 (60.0%) of genes in pham
- Manual Annotations of this start: 4 of 8
- Called 100.0% of time when present
- Phage (with cluster) where this start called: Euratis_9 (BB1), Lilbooboo_9 (BB1), Samora_9 (BB1), Shawty_9 (BB1), Vash_9 (BB1), phiBT1_40 (BB1),

Start 4:

- Found in 3 of 10 (30.0%) of genes in pham
- Manual Annotations of this start: 3 of 8
- Called 100.0% of time when present
- Phage (with cluster) where this start called: Heather_9 (BB2), RemusLoopin_9 (BB2), Sebastisaurus_9 (BB2),

Summary by clusters:

There are 2 clusters represented in this pham: BB2, BB1,

Info for manual annotations of cluster BB1:

- Start number 2 was manually annotated 1 time for cluster BB1.
- Start number 3 was manually annotated 4 times for cluster BB1.

Info for manual annotations of cluster BB2:

- Start number 4 was manually annotated 3 times for cluster BB2.

Gene Information:

Gene: Euratis_9 Start: 7251, Stop: 7694, Start Num: 3

Candidate Starts for Euratis_9:

(Start: 3 @7251 has 4 MA's), (5, 7311), (7, 7383), (11, 7488), (15, 7602), (17, 7671),

Gene: Heather_9 Start: 7289, Stop: 7720, Start Num: 4

Candidate Starts for Heather_9:

(Start: 4 @7289 has 3 MA's), (5, 7346), (8, 7430), (10, 7514), (15, 7637), (17, 7706),

Gene: Lilbooboo_9 Start: 7270, Stop: 7713, Start Num: 3

Candidate Starts for Lilbooboo_9:

(Start: 3 @7270 has 4 MA's), (5, 7330), (15, 7621), (17, 7690),

Gene: RemusLoopin_9 Start: 7271, Stop: 7699, Start Num: 4

Candidate Starts for RemusLoopin_9:

(Start: 4 @7271 has 3 MA's), (5, 7328), (8, 7412), (10, 7496), (12, 7514), (15, 7619), (17, 7688),

Gene: Samora_9 Start: 7299, Stop: 7730, Start Num: 3

Candidate Starts for Samora_9:

(1, 7146), (Start: 3 @7299 has 4 MA's), (5, 7359), (15, 7650), (16, 7671),

Gene: Sebastisaurus_9 Start: 7297, Stop: 7725, Start Num: 4

Candidate Starts for Sebastisaurus_9:

(Start: 4 @7297 has 3 MA's), (5, 7354), (8, 7438), (12, 7540), (15, 7645), (17, 7714),

Gene: Shawty_9 Start: 7298, Stop: 7729, Start Num: 3

Candidate Starts for Shawty_9:

(Start: 3 @7298 has 4 MA's), (5, 7358), (6, 7382), (15, 7649), (16, 7670), (17, 7718),

Gene: TG1_9 Start: 7279, Stop: 7710, Start Num: 2

Candidate Starts for TG1_9:

(Start: 2 @7279 has 1 MA's), (5, 7339), (11, 7516), (13, 7528), (15, 7630),

Gene: Vash_9 Start: 7275, Stop: 7718, Start Num: 3

Candidate Starts for Vash_9:

(Start: 3 @7275 has 4 MA's), (5, 7335), (15, 7626), (17, 7695),

Gene: phiBT1_40 Start: 7299, Stop: 7730, Start Num: 3

Candidate Starts for phiBT1_40:

(Start: 3 @7299 has 4 MA's), (5, 7359), (9, 7506), (14, 7575), (15, 7650), (16, 7671), (17, 7719),