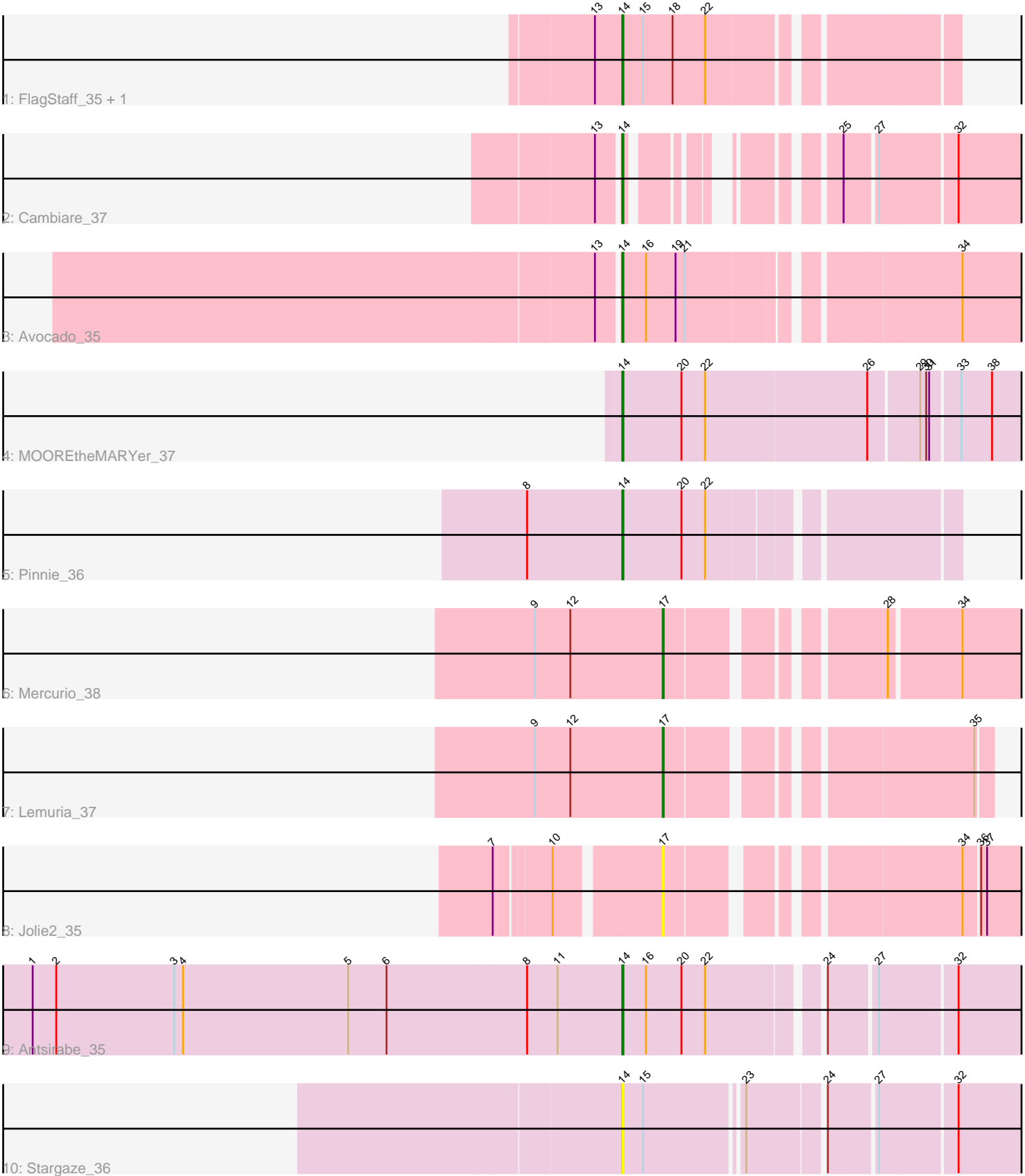


Pham 159540



Note: Tracks are now grouped by subcluster and scaled. Switching in subcluster is indicated by changes in track color. Track scale is now set by default to display the region 30 bp upstream of start 1 to 30 bp downstream of the last possible start. If this default region is judged to be packed too tightly with annotated starts, the track will be further scaled to only show that region of the ORF with annotated starts. This action will be indicated by adding "Zoomed" to the title. For starts, yellow indicates the location of called starts comprised solely of Glimmer/GeneMark auto-annotations, green indicates the location of called starts with at least 1 manual gene annotation.

Pham 159540 Report

This analysis was run 05/04/24 on database version 560.

Pham number 159540 has 11 members, 3 are drafts.

Phages represented in each track:

- Track 1 : FlagStaff_35, Pace1224_35
- Track 2 : Cambiare_37
- Track 3 : Avocado_35
- Track 4 : MOOREtheMARYer_37
- Track 5 : Pinnie_36
- Track 6 : Mercurio_38
- Track 7 : Lemuria_37
- Track 8 : Jolie2_35
- Track 9 : Antsirabe_35
- Track 10 : Stargaze_36

Summary of Final Annotations (See graph section above for start numbers):

The start number called the most often in the published annotations is 14, it was called in 6 of the 8 non-draft genes in the pham.

Genes that call this "Most Annotated" start:

- Antsirabe_35, Avocado_35, Cambiare_37, FlagStaff_35, MOOREtheMARYer_37, Pace1224_35, Pinnie_36, Stargaze_36,

Genes that have the "Most Annotated" start but do not call it:

-

Genes that do not have the "Most Annotated" start:

- Jolie2_35, Lemuria_37, Mercurio_38,

Summary by start number:

Start 14:

- Found in 8 of 11 (72.7%) of genes in pham
- Manual Annotations of this start: 6 of 8
- Called 100.0% of time when present
- Phage (with cluster) where this start called: Antsirabe_35 (G5), Avocado_35 (G2), Cambiare_37 (G2), FlagStaff_35 (G2), MOOREtheMARYer_37 (G3), Pace1224_35

(G2), Pinnie_36 (G3), Stargaze_36 (G5),

Start 17:

- Found in 3 of 11 (27.3%) of genes in pham
- Manual Annotations of this start: 2 of 8
- Called 100.0% of time when present
- Phage (with cluster) where this start called: Jolie2_35 (G4), Lemuria_37 (G4), Mercurio_38 (G4),

Summary by clusters:

There are 4 clusters represented in this pham: G5, G4, G3, G2,

Info for manual annotations of cluster G2:

- Start number 14 was manually annotated 3 times for cluster G2.

Info for manual annotations of cluster G3:

- Start number 14 was manually annotated 2 times for cluster G3.

Info for manual annotations of cluster G4:

- Start number 17 was manually annotated 2 times for cluster G4.

Info for manual annotations of cluster G5:

- Start number 14 was manually annotated 1 time for cluster G5.

Gene Information:

Gene: Antsirabe_35 Start: 30939, Stop: 31310, Start Num: 14

Candidate Starts for Antsirabe_35:

(1, 30342), (2, 30366), (3, 30486), (4, 30495), (5, 30663), (6, 30702), (8, 30843), (11, 30873), (Start: 14 @30939 has 6 MA's), (16, 30963), (20, 30999), (22, 31023), (24, 31125), (27, 31170), (32, 31245),

Gene: Avocado_35 Start: 31259, Stop: 31633, Start Num: 14

Candidate Starts for Avocado_35:

(13, 31238), (Start: 14 @31259 has 6 MA's), (16, 31283), (19, 31313), (21, 31322), (34, 31571),

Gene: Cambiare_37 Start: 31924, Stop: 32235, Start Num: 14

Candidate Starts for Cambiare_37:

(13, 31903), (Start: 14 @31924 has 6 MA's), (25, 32065), (27, 32095), (32, 32170),

Gene: FlagStaff_35 Start: 31073, Stop: 31381, Start Num: 14

Candidate Starts for FlagStaff_35:

(13, 31046), (Start: 14 @31073 has 6 MA's), (15, 31094), (18, 31124), (22, 31157),

Gene: Jolie2_35 Start: 29990, Stop: 30325, Start Num: 17

Candidate Starts for Jolie2_35:

(7, 29843), (10, 29894), (Start: 17 @29990 has 2 MA's), (34, 30242), (36, 30257), (37, 30263),

Gene: Lemuria_37 Start: 31386, Stop: 31667, Start Num: 17

Candidate Starts for Lemuria_37:

(9, 31257), (12, 31293), (Start: 17 @31386 has 2 MA's), (35, 31653),

Gene: MOOREtheMARYer_37 Start: 31546, Stop: 31938, Start Num: 14

Candidate Starts for MOOREtheMARYer_37:

(Start: 14 @31546 has 6 MA's), (20, 31606), (22, 31630), (26, 31792), (29, 31840), (30, 31846), (31, 31849), (33, 31876), (38, 31906),

Gene: Mercurio_38 Start: 31784, Stop: 32167, Start Num: 17

Candidate Starts for Mercurio_38:

(9, 31655), (12, 31691), (Start: 17 @31784 has 2 MA's), (28, 31964), (34, 32033),

Gene: Pace1224_35 Start: 31073, Stop: 31381, Start Num: 14

Candidate Starts for Pace1224_35:

(13, 31046), (Start: 14 @31073 has 6 MA's), (15, 31094), (18, 31124), (22, 31157),

Gene: Pinnie_36 Start: 31664, Stop: 31972, Start Num: 14

Candidate Starts for Pinnie_36:

(8, 31568), (Start: 14 @31664 has 6 MA's), (20, 31724), (22, 31748),

Gene: Stargaze_36 Start: 31262, Stop: 31633, Start Num: 14

Candidate Starts for Stargaze_36:

(Start: 14 @31262 has 6 MA's), (15, 31283), (23, 31376), (24, 31448), (27, 31493), (32, 31568),