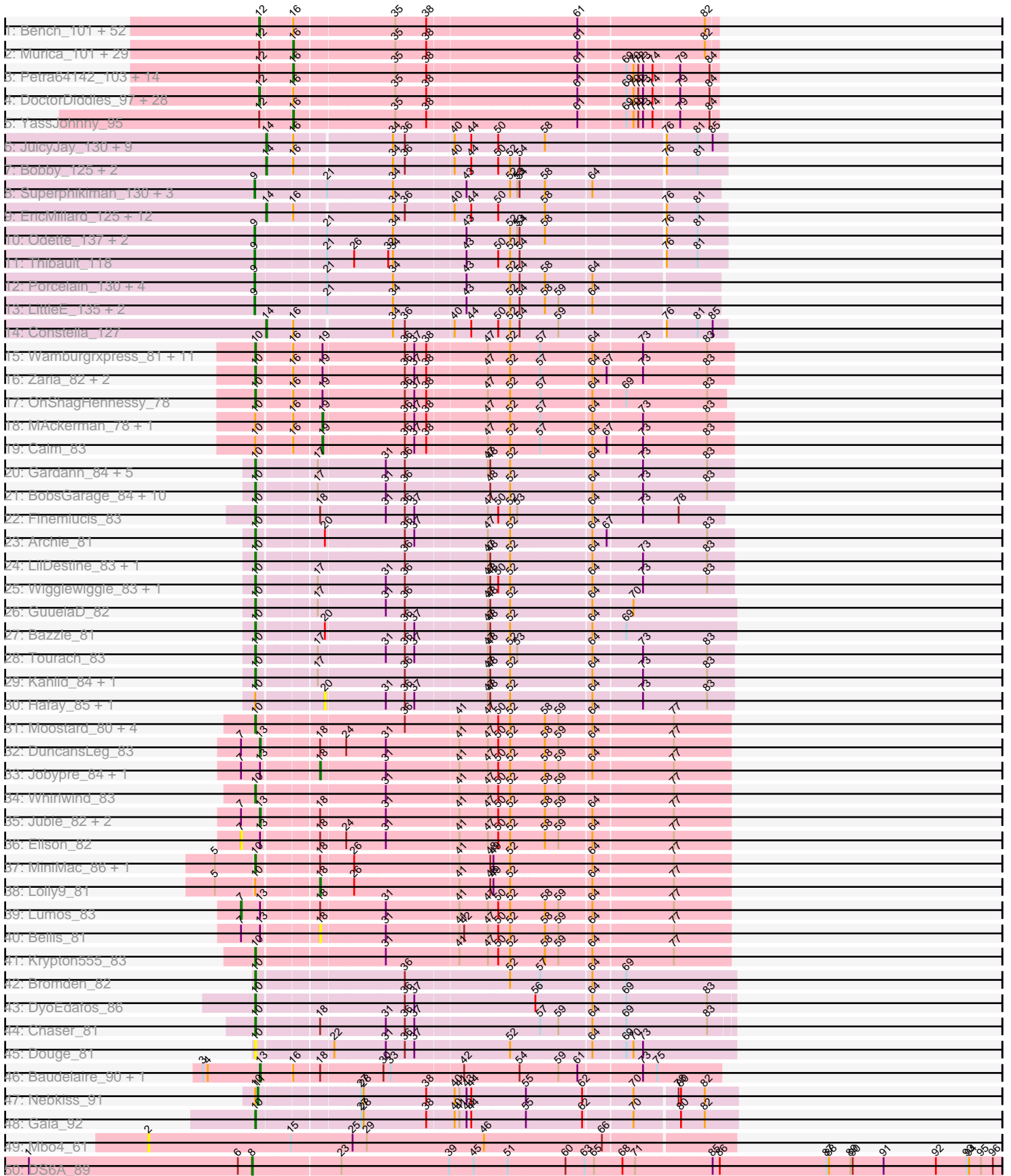


Pham 160110



Note: Tracks are now grouped by subcluster and scaled. Switching in subcluster is indicated by changes in track color. Track scale is now set by default to display the region 30 bp upstream of start 1 to 30 bp downstream of the last possible start. If this default region is judged to be packed too tightly with annotated starts, the track will be further scaled to only show that region of the ORF with annotated starts. This action will be indicated by adding "Zoomed" to the title. For starts, yellow indicates the location of called starts comprised solely of Glimmer/GeneMark auto-annotations, green indicates the location of called starts with at least 1 manual gene annotation.

Pham 160110 Report

This analysis was run 04/28/24 on database version 559.

Pham number 160110 has 249 members, 21 are drafts.

Phages represented in each track:

- Track 1 : Bench_101, Miniwave_93, Bruin_95, ShereKhan_96, HanKaySha_99, Hopey_99, Pat3_95, Contagion_94, Ukulele_93, Pharsalus_95, Quallification_99, ChotaBhai_98, Manda_100, Highbury_96, Lilizi_99, Misfit_99, Phaux_100, CrystalP_97, Mindy_97, Kanye_95, Tomaszewski_93, Moldemort_101, Cookies_95, Maxxinista_100, Eureka_97, Rimmer_96, ShamWow_98, Cactus_101, Buck_99, SophKB_95, Simpliphy_97, MISSy_99, Henry_95, Sotrice96_99, BaboJay_98, SirDuracell_98, RiverMonster_98, TeardropMSU_94, Murphy_98, MadamMonkfish_98, Terminus_101, BadStone_95, NoSleep_99, Thresher_100, MPhalcon_99, Saints25_96, Filch_100, DrDrey_98, Dumbo_98, Toto_96, Tuco_99, Tarkin_97, Phrux_95
- Track 2 : Murica_101, Lilpickle_97, Cjw1_98, Nala_100, Dusk_95, BugsBunny_97, PhatBacter_101, StellaBean_94, Palpatine_99, ABCat_95, Mosby_94, OrionPax_97, ChosenOne_98, Hoonter_101, FireRed_101, Lilac_100, Emmina_98, Goku_97, Goldilocks_101, Elite2014_97, BilboSwaggins_97, Paperbeatsrock_97, HufflyPuff_100, Policronamos_101, Sassay_93, Elph10_98, Amao_98, Willez_93, Porky_97, Stark_99
- Track 3 : Petra64142_103, GooberAzure_101, Balomoji_98, Gator_96, Rakim_99, Command613_100, Gage_100, Easy2Say_98, GoldenSpark_102, Flypotenuse_94, Daikon_99, Inca_95, Kostya_98, Youngblood_101, Asriel_96
- Track 4 : DoctorDiddles_97, BigBubba_98, Icee_99, Myrale_98, StolenFromERC_101, Adnama_102, Marshmallow_95, 244_99, Stank_100, Czyszczon1_99, Pumpkin_101, NelitzaMV_96, Nimrod_98, Wiggin_100, xkcd_101, Argent26_102, Gemini_103, Phaja_96, Xandras_97, IHOP_96, JeTaime_98, Bask21_98, Harella_98, Holt_103, Barbarian_97, TBrady12_101, Kimchi_102, Traaww1_94, Glexan_97
- Track 5 : YassJohnny_95
- Track 6 : JuicyJay_130, Halley_135, Ejimix_127, Pound_122, NihilNomen_135, Beem_135, Dallas_134, Bombitas_121, Kalah2_124, Optimus_124
- Track 7 : Bobby_125, Schatzie_129, DmpstrDiver_133
- Track 8 : Superphikiman_130, Hannaconda_126, Omega_142, Courthouse_128
- Track 9 : EricMillard_125, Hughesyang_133, Klein_130, ThreeRngTarjay_129, Minerva_132, Dove_126, Wanda_132, Redno2_125, BAKA_133, Duke13_128, Bagrid_134, Phoebus_134, Zelink_128
- Track 10 : Odette_137, HokkenD_125, Yeet_127
- Track 11 : Thibault_118
- Track 12 : Porcelain_130, Gonephishing_127, Ariel_132, Lucky2013_127, Squint_130

- Track 13 : LittleE_135, MiaZeal_132, KashFlow_130
- Track 14 : Constella_127
- Track 15 : Wamburggrxpress_81, Appletree2_80, LeBron_80, Rose5_82, Enceladus_78, Wyatt2_82, Silverleaf_81, UPIE_80, DirkDirk_78, AvadaKedavra_81, JoeDirt_82, Tyson_82
- Track 16 : Zaria_82, Acquire49_81, CicholasNage_78
- Track 17 : OhShagHennessy_78
- Track 18 : MAckerman_78, Halena_79
- Track 19 : Calm_83
- Track 20 : Gardann_84, Loadrie_82, Nicholasp3_84, Crossroads_84, Rumpelstiltskin_81, Zakai_85
- Track 21 : BobsGarage_84, Faith1_84, BigCheese_84, Winky_84, Miley16_84, DrSeegs_84, Itos_84, Lewan_85, Netyap_85, Gabriela_84, Breezona_84
- Track 22 : Finemlucis_83
- Track 23 : Archie_81
- Track 24 : LilDestine_83, Vetrix_83
- Track 25 : Wigglewiggles_83, MkaliMitinis3_85
- Track 26 : GuuelaD_82
- Track 27 : Bazzle_81
- Track 28 : Tourach_83
- Track 29 : Kahlid_84, Wilder_85
- Track 30 : Hafay_85, Claus_84
- Track 31 : Moostard_80, Kingsolomon_80, Finnry_82, Nicholas_80, Samty_81
- Track 32 : DuncansLeg_83
- Track 33 : Jobypre_84, Snenia_82
- Track 34 : Whirlwind_83
- Track 35 : Jubie_82, MsGreen_83, Clautastrophe_81
- Track 36 : Ellson_82
- Track 37 : MiniMac_86, MiniLon_86
- Track 38 : Lolly9_81
- Track 39 : Lumos_83
- Track 40 : Bellis_81
- Track 41 : Krypton555_83
- Track 42 : Bromden_82
- Track 43 : DyoEdafos_86
- Track 44 : Chaser_81
- Track 45 : Douge_81
- Track 46 : Baudelaire_90, Aegeus_90
- Track 47 : Nebkiss_91
- Track 48 : Gaia_92
- Track 49 : Mbo4_61
- Track 50 : DS6A_89

Summary of Final Annotations (See graph section above for start numbers):

The start number called the most often in the published annotations is 12, it was called in 82 of the 228 non-draft genes in the pham.

Genes that call this "Most Annotated" start:

- 244_99, Adnama_102, Argent26_102, BaboJay_98, BadStone_95, Barbarian_97, Bask21_98, Bench_101, BigBubba_98, Bruin_95, Buck_99, Cactus_101, ChotaBhai_98, Contagion_94, Cookies_95, CrystalP_97, Czyszczonek_99, DoctorDiddles_97, DrDrey_98, Dumbo_98, Eureka_97, Filch_100, Gemini_103, Glexan_97, HanKaySha_99, Harella_98, Henry_95, Highbury_96, Holt_103, Hopey_99, IHOP_96, Icee_99, JeTaime_98, Kanye_95, Kimchi_102, Lilizi_99, MISSy_99, MPhalcon_99, MadamMonkfish_98, Manda_100, Marshmallow_95, Maxxinista_100, Mindy_97, Miniwave_93, Misfit_99, Moldemort_101, Murphy_98, Myrale_98, NelitzaMV_96, Nimrod_98, NoSleep_99, Pat3_95, Phaja_96, Pharsalus_95, Phaux_100, Phrux_95, Pumpkin_101, Quallification_99, Rimmer_96, RiverMonster_98, Saints25_96, ShamWow_98, ShereKhan_96, Simpliphy_97, SirDuracell_98, SophKB_95, Sotrice96_99, Stank_100, StolenFromERC_101, TBrady12_101, Tarkin_97, TeardropMSU_94, Terminus_101, Thresher_100, Tomaszewski_93, Toto_96, Traaww1_94, Tuco_99, Ukulele_93, Wiggins_100, Xandras_97, xkcd_101,

Genes that have the "Most Annotated" start but do not call it:

- ABCat_95, Amao_98, Asriel_96, Balomoji_98, BilboSwaggins_97, BugsBunny_97, ChosenOne_98, Cjw1_98, Command613_100, Daikon_99, Dusk_95, Easy2Say_98, Elite2014_97, Elph10_98, Emmina_98, FireRed_101, Flypotenuse_94, Gage_100, Gator_96, Goku_97, GoldenSpark_102, Goldilocks_101, GooberAzure_101, Hoonter_101, HufflyPuff_100, Inca_95, Kostya_98, Lilac_100, Lilpickle_97, Mosby_94, Murica_101, Nala_100, OrionPax_97, Palpatine_99, Paperbeatsrock_97, Petra64142_103, PhatBacter_101, Policronamos_101, Porky_97, Rakim_99, Sassay_93, Stark_99, StellaBean_94, Willez_93, YassJohnny_95, Youngblood_101,

Genes that do not have the "Most Annotated" start:

- Acquire49_81, Aegeus_90, Appletree2_80, Archie_81, Ariel_132, AvadaKedavra_81, BAKA_133, Bagrid_134, Baudelaire_90, Bazzle_81, Beem_135, Bellis_81, BigCheese_84, Bobby_125, BobsGarage_84, Bombitas_121, Breezona_84, Bromden_82, Calm_83, Chaser_81, CicholasNage_78, Claus_84, Clautastrophe_81, Constella_127, Courthouse_128, Crossroads_84, DS6A_89, Dallas_134, DirkDirk_78, DmpstrDiver_133, Douge_81, Dove_126, DrSeegs_84, Duke13_128, DuncansLeg_83, DyoEdafos_86, Ejimix_127, Ellson_82, Enceladus_78, EricMillard_125, Faith1_84, Finemlucis_83, Finnry_82, Gabriela_84, Gaia_92, Gardann_84, Gonephishing_127, GuuelaD_82, Hafay_85, Halena_79, Halley_135, Hannaconda_126, HokkenD_125, Hughesyang_133, Itos_84, Jobypre_84, JoeDirt_82, Jubie_82, JuicyJay_130, Kahlid_84, Kalah2_124, KashFlow_130, Kingsolomon_80, Klein_130, Krypton555_83, LeBron_80, Lewan_85, LilDestine_83, LittleE_135, Loadrie_82, Lolly9_81, Lucky2013_127, Lumos_83, MAckerman_78, Mbo4_61, MiaZeal_132, Miley16_84, Minerva_132, MiniLon_86, MiniMac_86, MkaliMitinis3_85, Moostard_80, MsGreen_83, Nebkiss_91, Netyap_85, Nicholas_80, Nicholasp3_84, NihilNomen_135, Odette_137, OhShagHennessy_78, Omega_142, Optimus_124, Phoebus_134, Porcelain_130, Pound_122, Redno2_125, Rose5_82, Rumpelstiltskin_81, Samty_81, Schatzie_129, Silverleaf_81, Snenia_82, Squint_130, Superphikiman_130, Thibault_118, ThreeRngTarjay_129, Tourach_83, Tyson_82, UPIE_80, Vetrix_83, Wamburggrxpress_81, Wanda_132, Whirlwind_83, Wigglewiggles_83, Wilder_85, Winky_84, Wyatt2_82, Yeet_127, Zakai_85, Zaria_82, Zelink_128,

Summary by start number:

Start 2:

- Found in 1 of 249 (0.4%) of genes in pham
- No Manual Annotations of this start.
- Called 100.0% of time when present
- Phage (with cluster) where this start called: Mbo4_61 (singleton),

Start 7:

- Found in 9 of 249 (3.6%) of genes in pham
- Manual Annotations of this start: 1 of 228
- Called 22.2% of time when present
- Phage (with cluster) where this start called: Ellson_82 (L3), Lumos_83 (L3),

Start 8:

- Found in 1 of 249 (0.4%) of genes in pham
- Manual Annotations of this start: 1 of 228
- Called 100.0% of time when present
- Phage (with cluster) where this start called: DS6A_89 (singleton),

Start 9:

- Found in 16 of 249 (6.4%) of genes in pham
- Manual Annotations of this start: 14 of 228
- Called 100.0% of time when present
- Phage (with cluster) where this start called: Ariel_132 (J), Courthouse_128 (J), Gonephishing_127 (J), Hannaconda_126 (J), HokkenD_125 (J), KashFlow_130 (J), LittleE_135 (J), Lucky2013_127 (J), MiaZeal_132 (J), Odette_137 (J), Omega_142 (J), Porcelain_130 (J), Squint_130 (J), Superphikiman_130 (J), Thibault_118 (J), Yeet_127 (J),

Start 10:

- Found in 65 of 249 (26.1%) of genes in pham
- Manual Annotations of this start: 57 of 228
- Called 89.2% of time when present
- Phage (with cluster) where this start called: Acquire49_81 (L1), Appletree2_80 (L1), Archie_81 (L2), AvadaKedavra_81 (L1), Bazzle_81 (L2), BigCheese_84 (L2), BobsGarage_84 (L2), Breezona_84 (L2), Bromden_82 (L4), Chaser_81 (L4), CicholasNage_78 (L1), Crossroads_84 (L2), DirkDirk_78 (L1), Douge_81 (L4), DrSeegs_84 (L2), DyoEdafos_86 (L4), Enceladus_78 (L1), Faith1_84 (L2), Finemlucis_83 (L2), Finnry_82 (L3), Gabriela_84 (L2), Gaia_92 (X), Gardann_84 (L2), GuuelaD_82 (L2), Itos_84 (L2), JoeDirt_82 (L1), Kahlid_84 (L2), Kingsolomon_80 (L3), Krypton555_83 (L3), LeBron_80 (L1), Lewan_85 (L2), LilDestine_83 (L2), Loadrie_82 (L2), Miley16_84 (L2), MiniLon_86 (L3), MiniMac_86 (L3), MkaliMitinis3_85 (L2), Moostard_80 (L3), Netyap_85 (L2), Nicholas_80 (L3), Nicholasp3_84 (L2), OhShagHennessy_78 (L1), Rose5_82 (L1), Rumpelstiltskin_81 (L2), Samty_81 (L3), Silverleaf_81 (L1), Tourach_83 (L2), Tyson_82 (L1), UPIE_80 (L1), Vetrix_83 (L2), Wamburggrxpress_81 (L1), Whirlwind_83 (L3), Wigglewiggles_83 (L2), Wilder_85 (L2), Winky_84 (L2), Wyatt2_82 (L1), Zakai_85 (L2), Zaria_82 (L1),

Start 11:

- Found in 1 of 249 (0.4%) of genes in pham
- Manual Annotations of this start: 1 of 228
- Called 100.0% of time when present
- Phage (with cluster) where this start called: Nebkiss_91 (X),

Start 12:

- Found in 128 of 249 (51.4%) of genes in pham
- Manual Annotations of this start: 82 of 228
- Called 64.1% of time when present
- Phage (with cluster) where this start called: 244_99 (E), Adnama_102 (E), Argent26_102 (E), BaboJay_98 (E), BadStone_95 (E), Barbarian_97 (E), Bask21_98 (E), Bench_101 (E), BigBubba_98 (E), Bruin_95 (E), Buck_99 (E), Cactus_101 (E), ChotaBhai_98 (E), Contagion_94 (E), Cookies_95 (E), CrystalP_97 (E), Czystoczon1_99 (E), DoctorDiddles_97 (E), DrDrey_98 (E), Dumbo_98 (E), Eureka_97 (E), Filch_100 (E), Gemini_103 (E), Glexan_97 (E), HanKaySha_99 (E), Harella_98 (E), Henry_95 (E), Highbury_96 (E), Holt_103 (E), Hopey_99 (E), IHOP_96 (E), Icee_99 (E), JeTaimie_98 (E), Kanye_95 (E), Kimchi_102 (E), Lilizi_99 (E), MISSy_99 (E), MPhalcon_99 (E), MadamMonkfish_98 (E), Manda_100 (E), Marshmallow_95 (E), Maxxinista_100 (E), Mindy_97 (E), Miniwave_93 (E), Misfit_99 (E), Moldemort_101 (E), Murphy_98 (E), Myrale_98 (E), NelitzaMV_96 (E), Nimrod_98 (E), NoSleep_99 (E), Pat3_95 (E), Phaja_96 (E), Pharsalus_95 (E), Phaux_100 (E), Phrux_95 (E), Pumpkin_101 (E), Quallification_99 (E), Rimmer_96 (E), RiverMonster_98 (E), Saints25_96 (E), ShamWow_98 (E), ShereKhan_96 (E), Simpliphy_97 (E), SirDuracell_98 (E), SophKB_95 (E), Sotrice96_99 (E), Stank_100 (E), StolenFromERC_101 (E), TBrady12_101 (E), Tarkin_97 (E), TeardropMSU_94 (E), Terminus_101 (E), Thresher_100 (E), Tomaszewski_93 (E), Toto_96 (E), Traaww1_94 (E), Tuco_99 (E), Ukulele_93 (E), Wiggin_100 (E), Xandras_97 (E), xkcd_101 (E),

Start 13:

- Found in 11 of 249 (4.4%) of genes in pham
- Manual Annotations of this start: 6 of 228
- Called 54.5% of time when present
- Phage (with cluster) where this start called: Aegeus_90 (L5), Baudelaire_90 (L5), Clautastrophe_81 (L3), DuncansLeg_83 (L3), Jubie_82 (L3), MsGreen_83 (L3),

Start 14:

- Found in 27 of 249 (10.8%) of genes in pham
- Manual Annotations of this start: 25 of 228
- Called 100.0% of time when present
- Phage (with cluster) where this start called: BAKA_133 (J), Bagrid_134 (J), Beem_135 (J), Bobby_125 (J), Bombitas_121 (J), Constella_127 (J), Dallas_134 (J), DmpstrDiver_133 (J), Dove_126 (J), Duke13_128 (J), Ejimix_127 (J), EricMillard_125 (J), Halley_135 (J), Hughesyang_133 (J), JuicyJay_130 (J), Kalah2_124 (J), Klein_130 (J), Minerva_132 (J), NihilNomen_135 (J), Optimus_124 (J), Phoebus_134 (J), Pound_122 (J), Redno2_125 (J), Schatzie_129 (J), ThreeRngTarjay_129 (J), Wanda_132 (J), Zelink_128 (J),

Start 16:

- Found in 176 of 249 (70.7%) of genes in pham
- Manual Annotations of this start: 37 of 228
- Called 26.1% of time when present
- Phage (with cluster) where this start called: ABCat_95 (E), Amao_98 (E), Asriel_96 (E), Balomoji_98 (E), BilboSwaggins_97 (E), BugsBunny_97 (E), ChosenOne_98 (E), Cjw1_98 (E), Command613_100 (E), Daikon_99 (E), Dusk_95 (E), Easy2Say_98 (E), Elite2014_97 (E), Elph10_98 (E), Emmina_98 (E), FireRed_101 (E), Flypotenuse_94 (E), Gage_100 (E), Gator_96 (E), Goku_97 (E), GoldenSpark_102 (E), Goldilocks_101 (E), GooberAzure_101 (E), Hoonter_101 (E), HufflyPuff_100 (E), Inca_95 (E), Kostya_98 (E), Lilac_100 (E), Lilpickle_97 (E), Mosby_94 (E),

Murica_101 (E), Nala_100 (E), OrionPax_97 (E), Palpatine_99 (E), Paperbeatsrock_97 (E), Petra64142_103 (E), PhatBacter_101 (E), Policronamos_101 (E), Porky_97 (E), Rakim_99 (E), Sassay_93 (E), Stark_99 (E), StellaBean_94 (E), Willez_93 (E), YassJohnny_95 (E), Youngblood_101 (E),

Start 18:

- Found in 16 of 249 (6.4%) of genes in pham
- Manual Annotations of this start: 2 of 228
- Called 25.0% of time when present
- Phage (with cluster) where this start called: Bellis_81 (L3), Jobypre_84 (L3), Lolly9_81 (L3), Snenia_82 (L3),

Start 19:

- Found in 19 of 249 (7.6%) of genes in pham
- Manual Annotations of this start: 2 of 228
- Called 15.8% of time when present
- Phage (with cluster) where this start called: Calm_83 (L1), Halena_79 (L1), MAckerman_78 (L1),

Start 20:

- Found in 4 of 249 (1.6%) of genes in pham
- No Manual Annotations of this start.
- Called 50.0% of time when present
- Phage (with cluster) where this start called: Claus_84 (L2), Hafay_85 (L2),

Summary by clusters:

There are 9 clusters represented in this pham: singleton, E, J, L4, L5, L2, L3, L1, X,

Info for manual annotations of cluster E:

- Start number 12 was manually annotated 82 times for cluster E.
- Start number 16 was manually annotated 37 times for cluster E.

Info for manual annotations of cluster J:

- Start number 9 was manually annotated 14 times for cluster J.
- Start number 14 was manually annotated 25 times for cluster J.

Info for manual annotations of cluster L1:

- Start number 10 was manually annotated 16 times for cluster L1.
- Start number 19 was manually annotated 2 times for cluster L1.

Info for manual annotations of cluster L2:

- Start number 10 was manually annotated 28 times for cluster L2.

Info for manual annotations of cluster L3:

- Start number 7 was manually annotated 1 time for cluster L3.
- Start number 10 was manually annotated 9 times for cluster L3.
- Start number 13 was manually annotated 4 times for cluster L3.
- Start number 18 was manually annotated 2 times for cluster L3.

Info for manual annotations of cluster L4:

- Start number 10 was manually annotated 3 times for cluster L4.

Info for manual annotations of cluster L5:

- Start number 13 was manually annotated 2 times for cluster L5.

Info for manual annotations of cluster X:

- Start number 10 was manually annotated 1 time for cluster X.
- Start number 11 was manually annotated 1 time for cluster X.

Gene Information:

Gene: 244_99 Start: 58106, Stop: 58642, Start Num: 12

Candidate Starts for 244_99:

(Start: 12 @58106 has 82 MA's), (Start: 16 @58142 has 37 MA's), (35, 58262), (38, 58301), (61, 58481), (69, 58535), (70, 58544), (72, 58550), (73, 58556), (74, 58568), (79, 58598), (84, 58634),

Gene: ABCat_95 Start: 58508, Stop: 59014, Start Num: 16

Candidate Starts for ABCat_95:

(Start: 12 @58472 has 82 MA's), (Start: 16 @58508 has 37 MA's), (35, 58628), (38, 58667), (61, 58847), (82, 59000),

Gene: Acquire49_81 Start: 52966, Stop: 53532, Start Num: 10

Candidate Starts for Acquire49_81:

(Start: 10 @52966 has 57 MA's), (Start: 16 @53005 has 37 MA's), (Start: 19 @53038 has 2 MA's), (36, 53137), (37, 53149), (38, 53164), (47, 53236), (52, 53263), (57, 53299), (64, 53359), (67, 53377), (73, 53419), (83, 53500),

Gene: Adnama_102 Start: 58401, Stop: 58937, Start Num: 12

Candidate Starts for Adnama_102:

(Start: 12 @58401 has 82 MA's), (Start: 16 @58437 has 37 MA's), (35, 58557), (38, 58596), (61, 58776), (69, 58830), (70, 58839), (72, 58845), (73, 58851), (74, 58863), (79, 58893), (84, 58929),

Gene: Aegeus_90 Start: 55548, Stop: 56093, Start Num: 13

Candidate Starts for Aegeus_90:

(3, 55476), (4, 55482), (Start: 13 @55548 has 6 MA's), (Start: 16 @55584 has 37 MA's), (Start: 18 @55614 has 2 MA's), (30, 55689), (33, 55698), (42, 55782), (54, 55851), (59, 55896), (61, 55920), (73, 55995), (75, 56013),

Gene: Amao_98 Start: 57950, Stop: 58456, Start Num: 16

Candidate Starts for Amao_98:

(Start: 12 @57914 has 82 MA's), (Start: 16 @57950 has 37 MA's), (35, 58070), (38, 58109), (61, 58289), (82, 58442),

Gene: Appletree2_80 Start: 52577, Stop: 53143, Start Num: 10

Candidate Starts for Appletree2_80:

(Start: 10 @52577 has 57 MA's), (Start: 16 @52616 has 37 MA's), (Start: 19 @52649 has 2 MA's), (36, 52748), (37, 52760), (38, 52775), (47, 52847), (52, 52874), (57, 52910), (64, 52970), (73, 53030), (83, 53111),

Gene: Archie_81 Start: 54499, Stop: 55065, Start Num: 10

Candidate Starts for Archie_81:

(Start: 10 @54499 has 57 MA's), (20, 54574), (36, 54670), (37, 54682), (47, 54769), (52, 54796), (64, 54892), (67, 54910), (83, 55033),

Gene: Argent26_102 Start: 58325, Stop: 58861, Start Num: 12

Candidate Starts for Argent26_102:

(Start: 12 @58325 has 82 MA's), (Start: 16 @58361 has 37 MA's), (35, 58481), (38, 58520), (61, 58700), (69, 58754), (70, 58763), (72, 58769), (73, 58775), (74, 58787), (79, 58817), (84, 58853),

Gene: Ariel_132 Start: 69405, Stop: 69953, Start Num: 9

Candidate Starts for Ariel_132:

(Start: 9 @69405 has 14 MA's), (21, 69486), (34, 69567), (43, 69654), (52, 69708), (54, 69720), (58, 69750), (64, 69804),

Gene: Asriel_96 Start: 56774, Stop: 57274, Start Num: 16

Candidate Starts for Asriel_96:

(Start: 12 @56738 has 82 MA's), (Start: 16 @56774 has 37 MA's), (35, 56894), (38, 56933), (61, 57113), (69, 57167), (70, 57176), (72, 57182), (73, 57188), (74, 57200), (79, 57230), (84, 57266),

Gene: AvadaKedavra_81 Start: 53045, Stop: 53611, Start Num: 10

Candidate Starts for AvadaKedavra_81:

(Start: 10 @53045 has 57 MA's), (Start: 16 @53084 has 37 MA's), (Start: 19 @53117 has 2 MA's), (36, 53216), (37, 53228), (38, 53243), (47, 53315), (52, 53342), (57, 53378), (64, 53438), (73, 53498), (83, 53579),

Gene: BAKA_133 Start: 72125, Stop: 72664, Start Num: 14

Candidate Starts for BAKA_133:

(Start: 14 @72125 has 25 MA's), (Start: 16 @72155 has 37 MA's), (34, 72269), (36, 72284), (40, 72341), (44, 72362), (50, 72395), (58, 72452), (76, 72590), (81, 72629),

Gene: BaboJay_98 Start: 58663, Stop: 59205, Start Num: 12

Candidate Starts for BaboJay_98:

(Start: 12 @58663 has 82 MA's), (Start: 16 @58699 has 37 MA's), (35, 58819), (38, 58858), (61, 59038), (82, 59191),

Gene: BadStone_95 Start: 58041, Stop: 58583, Start Num: 12

Candidate Starts for BadStone_95:

(Start: 12 @58041 has 82 MA's), (Start: 16 @58077 has 37 MA's), (35, 58197), (38, 58236), (61, 58416), (82, 58569),

Gene: Bagrid_134 Start: 72248, Stop: 72787, Start Num: 14

Candidate Starts for Bagrid_134:

(Start: 14 @72248 has 25 MA's), (Start: 16 @72278 has 37 MA's), (34, 72392), (36, 72407), (40, 72464), (44, 72485), (50, 72518), (58, 72575), (76, 72713), (81, 72752),

Gene: Balomoji_98 Start: 58557, Stop: 59057, Start Num: 16

Candidate Starts for Balomoji_98:

(Start: 12 @58521 has 82 MA's), (Start: 16 @58557 has 37 MA's), (35, 58677), (38, 58716), (61, 58896), (69, 58950), (70, 58959), (72, 58965), (73, 58971), (74, 58983), (79, 59013), (84, 59049),

Gene: Barbarian_97 Start: 56738, Stop: 57274, Start Num: 12

Candidate Starts for Barbarian_97:

(Start: 12 @56738 has 82 MA's), (Start: 16 @56774 has 37 MA's), (35, 56894), (38, 56933), (61, 57113), (69, 57167), (70, 57176), (72, 57182), (73, 57188), (74, 57200), (79, 57230), (84, 57266),

Gene: Bask21_98 Start: 57377, Stop: 57913, Start Num: 12

Candidate Starts for Bask21_98:

(Start: 12 @57377 has 82 MA's), (Start: 16 @57413 has 37 MA's), (35, 57533), (38, 57572), (61, 57752), (69, 57806), (70, 57815), (72, 57821), (73, 57827), (74, 57839), (79, 57869), (84, 57905),

Gene: Baudelaire_90 Start: 55548, Stop: 56093, Start Num: 13

Candidate Starts for Baudelaire_90:

(3, 55476), (4, 55482), (Start: 13 @55548 has 6 MA's), (Start: 16 @55584 has 37 MA's), (Start: 18 @55614 has 2 MA's), (30, 55689), (33, 55698), (42, 55782), (54, 55851), (59, 55896), (61, 55920), (73, 55995), (75, 56013),

Gene: Bazzle_81 Start: 54688, Stop: 55257, Start Num: 10

Candidate Starts for Bazzle_81:

(Start: 10 @54688 has 57 MA's), (20, 54763), (36, 54859), (37, 54871), (47, 54958), (48, 54961), (52, 54985), (64, 55081), (69, 55120),

Gene: Beem_135 Start: 73723, Stop: 74262, Start Num: 14

Candidate Starts for Beem_135:

(Start: 14 @73723 has 25 MA's), (Start: 16 @73753 has 37 MA's), (34, 73867), (36, 73882), (40, 73939), (44, 73960), (50, 73993), (58, 74050), (76, 74188), (81, 74227), (85, 74245),

Gene: Bellis_81 Start: 54918, Stop: 55415, Start Num: 18

Candidate Starts for Bellis_81:

(Start: 7 @54831 has 1 MA's), (Start: 13 @54855 has 6 MA's), (Start: 18 @54918 has 2 MA's), (31, 54996), (41, 55086), (42, 55092), (47, 55122), (50, 55134), (52, 55149), (58, 55191), (59, 55206), (64, 55245), (77, 55344),

Gene: Bench_101 Start: 58457, Stop: 58999, Start Num: 12

Candidate Starts for Bench_101:

(Start: 12 @58457 has 82 MA's), (Start: 16 @58493 has 37 MA's), (35, 58613), (38, 58652), (61, 58832), (82, 58985),

Gene: BigBubba_98 Start: 57433, Stop: 57969, Start Num: 12

Candidate Starts for BigBubba_98:

(Start: 12 @57433 has 82 MA's), (Start: 16 @57469 has 37 MA's), (35, 57589), (38, 57628), (61, 57808), (69, 57862), (70, 57871), (72, 57877), (73, 57883), (74, 57895), (79, 57925), (84, 57961),

Gene: BigCheese_84 Start: 54918, Stop: 55484, Start Num: 10

Candidate Starts for BigCheese_84:

(Start: 10 @54918 has 57 MA's), (17, 54984), (31, 55065), (36, 55089), (48, 55191), (52, 55215), (64, 55311), (73, 55371), (83, 55452),

Gene: BilboSwaggins_97 Start: 58474, Stop: 58980, Start Num: 16

Candidate Starts for BilboSwaggins_97:

(Start: 12 @58438 has 82 MA's), (Start: 16 @58474 has 37 MA's), (35, 58594), (38, 58633), (61, 58813), (82, 58966),

Gene: Bobby_125 Start: 73824, Stop: 74363, Start Num: 14

Candidate Starts for Bobby_125:

(Start: 14 @73824 has 25 MA's), (Start: 16 @73854 has 37 MA's), (34, 73968), (36, 73983), (40, 74040), (44, 74061), (50, 74094), (52, 74109), (54, 74121), (76, 74289), (81, 74328),

Gene: BobsGarage_84 Start: 54918, Stop: 55484, Start Num: 10

Candidate Starts for BobsGarage_84:

(Start: 10 @54918 has 57 MA's), (17, 54984), (31, 55065), (36, 55089), (48, 55191), (52, 55215), (64, 55311), (73, 55371), (83, 55452),

Gene: Bombitas_121 Start: 71134, Stop: 71673, Start Num: 14

Candidate Starts for Bombitas_121:

(Start: 14 @71134 has 25 MA's), (Start: 16 @71164 has 37 MA's), (34, 71278), (36, 71293), (40, 71350), (44, 71371), (50, 71404), (58, 71461), (76, 71599), (81, 71638), (85, 71656),

Gene: Breezona_84 Start: 54918, Stop: 55484, Start Num: 10

Candidate Starts for Breezona_84:

(Start: 10 @54918 has 57 MA's), (17, 54984), (31, 55065), (36, 55089), (48, 55191), (52, 55215), (64, 55311), (73, 55371), (83, 55452),

Gene: Bromden_82 Start: 54314, Stop: 54883, Start Num: 10

Candidate Starts for Bromden_82:

(Start: 10 @54314 has 57 MA's), (36, 54485), (52, 54611), (57, 54647), (64, 54707), (69, 54746),

Gene: Bruin_95 Start: 57336, Stop: 57878, Start Num: 12

Candidate Starts for Bruin_95:

(Start: 12 @57336 has 82 MA's), (Start: 16 @57372 has 37 MA's), (35, 57492), (38, 57531), (61, 57711), (82, 57864),

Gene: Buck_99 Start: 59026, Stop: 59568, Start Num: 12

Candidate Starts for Buck_99:

(Start: 12 @59026 has 82 MA's), (Start: 16 @59062 has 37 MA's), (35, 59182), (38, 59221), (61, 59401), (82, 59554),

Gene: BugsBunny_97 Start: 58472, Stop: 58978, Start Num: 16

Candidate Starts for BugsBunny_97:

(Start: 12 @58436 has 82 MA's), (Start: 16 @58472 has 37 MA's), (35, 58592), (38, 58631), (61, 58811), (82, 58964),

Gene: Cactus_101 Start: 57402, Stop: 57944, Start Num: 12

Candidate Starts for Cactus_101:

(Start: 12 @57402 has 82 MA's), (Start: 16 @57438 has 37 MA's), (35, 57558), (38, 57597), (61, 57777), (82, 57930),

Gene: Calm_83 Start: 53360, Stop: 53854, Start Num: 19

Candidate Starts for Calm_83:

(Start: 10 @53288 has 57 MA's), (Start: 16 @53327 has 37 MA's), (Start: 19 @53360 has 2 MA's), (36, 53459), (37, 53471), (38, 53486), (47, 53558), (52, 53585), (57, 53621), (64, 53681), (67, 53699), (73, 53741), (83, 53822),

Gene: Chaser_81 Start: 53322, Stop: 53885, Start Num: 10

Candidate Starts for Chaser_81:

(Start: 10 @53322 has 57 MA's), (Start: 18 @53391 has 2 MA's), (31, 53469), (36, 53493), (37, 53505), (57, 53655), (59, 53676), (64, 53715), (69, 53754), (83, 53856),

Gene: ChosenOne_98 Start: 57532, Stop: 58038, Start Num: 16

Candidate Starts for ChosenOne_98:

(Start: 12 @57496 has 82 MA's), (Start: 16 @57532 has 37 MA's), (35, 57652), (38, 57691), (61, 57871), (82, 58024),

Gene: ChotaBhai_98 Start: 57739, Stop: 58281, Start Num: 12

Candidate Starts for ChotaBhai_98:

(Start: 12 @57739 has 82 MA's), (Start: 16 @57775 has 37 MA's), (35, 57895), (38, 57934), (61, 58114), (82, 58267),

Gene: CicholasNage_78 Start: 52630, Stop: 53196, Start Num: 10

Candidate Starts for CicholasNage_78:

(Start: 10 @52630 has 57 MA's), (Start: 16 @52669 has 37 MA's), (Start: 19 @52702 has 2 MA's), (36, 52801), (37, 52813), (38, 52828), (47, 52900), (52, 52927), (57, 52963), (64, 53023), (67, 53041), (73, 53083), (83, 53164),

Gene: Cjw1_98 Start: 59386, Stop: 59892, Start Num: 16

Candidate Starts for Cjw1_98:

(Start: 12 @59350 has 82 MA's), (Start: 16 @59386 has 37 MA's), (35, 59506), (38, 59545), (61, 59725), (82, 59878),

Gene: Claus_84 Start: 54928, Stop: 55419, Start Num: 20

Candidate Starts for Claus_84:

(Start: 10 @54853 has 57 MA's), (20, 54928), (31, 55000), (36, 55024), (37, 55036), (47, 55123), (48, 55126), (52, 55150), (64, 55246), (73, 55306), (83, 55387),

Gene: Clautastrophe_81 Start: 54853, Stop: 55413, Start Num: 13

Candidate Starts for Clautastrophe_81:

(Start: 7 @54829 has 1 MA's), (Start: 13 @54853 has 6 MA's), (Start: 18 @54916 has 2 MA's), (31, 54994), (41, 55084), (47, 55120), (50, 55132), (52, 55147), (58, 55189), (59, 55204), (64, 55243), (77, 55342),

Gene: Command613_100 Start: 58571, Stop: 59071, Start Num: 16

Candidate Starts for Command613_100:

(Start: 12 @58535 has 82 MA's), (Start: 16 @58571 has 37 MA's), (35, 58691), (38, 58730), (61, 58910), (69, 58964), (70, 58973), (72, 58979), (73, 58985), (74, 58997), (79, 59027), (84, 59063),

Gene: Constella_127 Start: 72376, Stop: 72915, Start Num: 14

Candidate Starts for Constella_127:

(Start: 14 @72376 has 25 MA's), (Start: 16 @72406 has 37 MA's), (34, 72520), (36, 72535), (40, 72592), (44, 72613), (50, 72646), (52, 72661), (54, 72673), (59, 72718), (76, 72841), (81, 72880), (85, 72898),

Gene: Contagion_94 Start: 57617, Stop: 58159, Start Num: 12

Candidate Starts for Contagion_94:

(Start: 12 @57617 has 82 MA's), (Start: 16 @57653 has 37 MA's), (35, 57773), (38, 57812), (61, 57992), (82, 58145),

Gene: Cookies_95 Start: 57596, Stop: 58138, Start Num: 12

Candidate Starts for Cookies_95:

(Start: 12 @57596 has 82 MA's), (Start: 16 @57632 has 37 MA's), (35, 57752), (38, 57791), (61, 57971), (82, 58124),

Gene: Courthouse_128 Start: 69263, Stop: 69811, Start Num: 9

Candidate Starts for Courthouse_128:

(Start: 9 @69263 has 14 MA's), (21, 69344), (34, 69425), (43, 69512), (52, 69566), (53, 69575), (54, 69578), (58, 69608), (64, 69662),

Gene: Crossroads_84 Start: 54993, Stop: 55559, Start Num: 10

Candidate Starts for Crossroads_84:

(Start: 10 @54993 has 57 MA's), (17, 55059), (31, 55140), (36, 55164), (47, 55263), (48, 55266), (52, 55290), (64, 55386), (73, 55446), (83, 55527),

Gene: CrystalP_97 Start: 58438, Stop: 58980, Start Num: 12

Candidate Starts for CrystalP_97:

(Start: 12 @58438 has 82 MA's), (Start: 16 @58474 has 37 MA's), (35, 58594), (38, 58633), (61, 58813), (82, 58966),

Gene: Czyszczone1_99 Start: 58320, Stop: 58856, Start Num: 12

Candidate Starts for Czyszczone1_99:

(Start: 12 @58320 has 82 MA's), (Start: 16 @58356 has 37 MA's), (35, 58476), (38, 58515), (61, 58695), (69, 58749), (70, 58758), (72, 58764), (73, 58770), (74, 58782), (79, 58812), (84, 58848),

Gene: DS6A_89 Start: 56826, Stop: 57761, Start Num: 8

Candidate Starts for DS6A_89:

(1, 56544), (6, 56808), (Start: 8 @56826 has 1 MA's), (23, 56934), (39, 57069), (45, 57099), (51, 57141), (60, 57213), (63, 57237), (65, 57249), (68, 57285), (71, 57300), (85, 57396), (86, 57405), (87, 57540), (88, 57543), (89, 57570), (90, 57573), (91, 57612), (92, 57678), (93, 57717), (94, 57720), (95, 57735), (96, 57750),

Gene: Daikon_99 Start: 58384, Stop: 58884, Start Num: 16

Candidate Starts for Daikon_99:

(Start: 12 @58348 has 82 MA's), (Start: 16 @58384 has 37 MA's), (35, 58504), (38, 58543), (61, 58723), (69, 58777), (70, 58786), (72, 58792), (73, 58798), (74, 58810), (79, 58840), (84, 58876),

Gene: Dallas_134 Start: 73190, Stop: 73729, Start Num: 14

Candidate Starts for Dallas_134:

(Start: 14 @73190 has 25 MA's), (Start: 16 @73220 has 37 MA's), (34, 73334), (36, 73349), (40, 73406), (44, 73427), (50, 73460), (58, 73517), (76, 73655), (81, 73694), (85, 73712),

Gene: DirkDirk_78 Start: 52157, Stop: 52723, Start Num: 10

Candidate Starts for DirkDirk_78:

(Start: 10 @52157 has 57 MA's), (Start: 16 @52196 has 37 MA's), (Start: 19 @52229 has 2 MA's), (36, 52328), (37, 52340), (38, 52355), (47, 52427), (52, 52454), (57, 52490), (64, 52550), (73, 52610), (83, 52691),

Gene: DmpstrDiver_133 Start: 72537, Stop: 73076, Start Num: 14

Candidate Starts for DmpstrDiver_133:

(Start: 14 @72537 has 25 MA's), (Start: 16 @72567 has 37 MA's), (34, 72681), (36, 72696), (40, 72753), (44, 72774), (50, 72807), (52, 72822), (54, 72834), (76, 73002), (81, 73041),

Gene: DoctorDiddles_97 Start: 57783, Stop: 58319, Start Num: 12

Candidate Starts for DoctorDiddles_97:

(Start: 12 @57783 has 82 MA's), (Start: 16 @57819 has 37 MA's), (35, 57939), (38, 57978), (61, 58158), (69, 58212), (70, 58221), (72, 58227), (73, 58233), (74, 58245), (79, 58275), (84, 58311),

Gene: Douge_81 Start: 53266, Stop: 53835, Start Num: 10

Candidate Starts for Douge_81:

(Start: 10 @53266 has 57 MA's), (22, 53350), (31, 53413), (36, 53437), (37, 53449), (52, 53563), (64, 53659), (69, 53698), (70, 53707), (73, 53719),

Gene: Dove_126 Start: 68136, Stop: 68675, Start Num: 14

Candidate Starts for Dove_126:

(Start: 14 @68136 has 25 MA's), (Start: 16 @68166 has 37 MA's), (34, 68280), (36, 68295), (40, 68352), (44, 68373), (50, 68406), (58, 68463), (76, 68601), (81, 68640),

Gene: DrDrey_98 Start: 58918, Stop: 59460, Start Num: 12

Candidate Starts for DrDrey_98:

(Start: 12 @58918 has 82 MA's), (Start: 16 @58954 has 37 MA's), (35, 59074), (38, 59113), (61, 59293), (82, 59446),

Gene: DrSeegs_84 Start: 54918, Stop: 55484, Start Num: 10

Candidate Starts for DrSeegs_84:

(Start: 10 @54918 has 57 MA's), (17, 54984), (31, 55065), (36, 55089), (48, 55191), (52, 55215), (64, 55311), (73, 55371), (83, 55452),

Gene: Duke13_128 Start: 69838, Stop: 70377, Start Num: 14

Candidate Starts for Duke13_128:

(Start: 14 @69838 has 25 MA's), (Start: 16 @69868 has 37 MA's), (34, 69982), (36, 69997), (40, 70054), (44, 70075), (50, 70108), (58, 70165), (76, 70303), (81, 70342),

Gene: Dumbo_98 Start: 57719, Stop: 58261, Start Num: 12

Candidate Starts for Dumbo_98:

(Start: 12 @57719 has 82 MA's), (Start: 16 @57755 has 37 MA's), (35, 57875), (38, 57914), (61, 58094), (82, 58247),

Gene: DuncansLeg_83 Start: 54872, Stop: 55432, Start Num: 13

Candidate Starts for DuncansLeg_83:

(Start: 7 @54848 has 1 MA's), (Start: 13 @54872 has 6 MA's), (Start: 18 @54935 has 2 MA's), (24, 54965), (31, 55013), (41, 55103), (47, 55139), (50, 55151), (52, 55166), (58, 55208), (59, 55223), (64, 55262), (77, 55361),

Gene: Dusk_95 Start: 57737, Stop: 58243, Start Num: 16

Candidate Starts for Dusk_95:

(Start: 12 @57701 has 82 MA's), (Start: 16 @57737 has 37 MA's), (35, 57857), (38, 57896), (61, 58076), (82, 58229),

Gene: DyoEdafos_86 Start: 54173, Stop: 54739, Start Num: 10

Candidate Starts for DyoEdafos_86:

(Start: 10 @54173 has 57 MA's), (36, 54344), (37, 54356), (56, 54500), (64, 54566), (69, 54605), (83, 54707),

Gene: Easy2Say_98 Start: 58828, Stop: 59328, Start Num: 16

Candidate Starts for Easy2Say_98:

(Start: 12 @58792 has 82 MA's), (Start: 16 @58828 has 37 MA's), (35, 58948), (38, 58987), (61, 59167), (69, 59221), (70, 59230), (72, 59236), (73, 59242), (74, 59254), (79, 59284), (84, 59320),

Gene: Ejimix_127 Start: 73258, Stop: 73797, Start Num: 14

Candidate Starts for Ejimix_127:

(Start: 14 @73258 has 25 MA's), (Start: 16 @73288 has 37 MA's), (34, 73402), (36, 73417), (40, 73474), (44, 73495), (50, 73528), (58, 73585), (76, 73723), (81, 73762), (85, 73780),

Gene: Elite2014_97 Start: 57531, Stop: 58037, Start Num: 16

Candidate Starts for Elite2014_97:

(Start: 12 @57495 has 82 MA's), (Start: 16 @57531 has 37 MA's), (35, 57651), (38, 57690), (61, 57870), (82, 58023),

Gene: Ellson_82 Start: 55163, Stop: 55747, Start Num: 7

Candidate Starts for Ellson_82:

(Start: 7 @55163 has 1 MA's), (Start: 13 @55187 has 6 MA's), (Start: 18 @55250 has 2 MA's), (24, 55280), (31, 55328), (41, 55418), (47, 55454), (50, 55466), (52, 55481), (58, 55523), (59, 55538), (64, 55577), (77, 55676),

Gene: Elph10_98 Start: 57416, Stop: 57922, Start Num: 16

Candidate Starts for Elph10_98:

(Start: 12 @57380 has 82 MA's), (Start: 16 @57416 has 37 MA's), (35, 57536), (38, 57575), (61, 57755), (82, 57908),

Gene: Emmina_98 Start: 57157, Stop: 57663, Start Num: 16

Candidate Starts for Emmina_98:

(Start: 12 @57121 has 82 MA's), (Start: 16 @57157 has 37 MA's), (35, 57277), (38, 57316), (61, 57496), (82, 57649),

Gene: Enceladus_78 Start: 52934, Stop: 53500, Start Num: 10

Candidate Starts for Enceladus_78:

(Start: 10 @52934 has 57 MA's), (Start: 16 @52973 has 37 MA's), (Start: 19 @53006 has 2 MA's), (36, 53105), (37, 53117), (38, 53132), (47, 53204), (52, 53231), (57, 53267), (64, 53327), (73, 53387), (83, 53468),

Gene: EricMillard_125 Start: 71762, Stop: 72301, Start Num: 14

Candidate Starts for EricMillard_125:

(Start: 14 @71762 has 25 MA's), (Start: 16 @71792 has 37 MA's), (34, 71906), (36, 71921), (40, 71978), (44, 71999), (50, 72032), (58, 72089), (76, 72227), (81, 72266),

Gene: Eureka_97 Start: 58408, Stop: 58950, Start Num: 12

Candidate Starts for Eureka_97:

(Start: 12 @58408 has 82 MA's), (Start: 16 @58444 has 37 MA's), (35, 58564), (38, 58603), (61, 58783), (82, 58936),

Gene: Faith1_84 Start: 54918, Stop: 55484, Start Num: 10

Candidate Starts for Faith1_84:

(Start: 10 @54918 has 57 MA's), (17, 54984), (31, 55065), (36, 55089), (48, 55191), (52, 55215), (64, 55311), (73, 55371), (83, 55452),

Gene: Filch_100 Start: 57693, Stop: 58235, Start Num: 12

Candidate Starts for Filch_100:

(Start: 12 @57693 has 82 MA's), (Start: 16 @57729 has 37 MA's), (35, 57849), (38, 57888), (61, 58068), (82, 58221),

Gene: Finemlucis_83 Start: 55392, Stop: 55946, Start Num: 10

Candidate Starts for Finemlucis_83:

(Start: 10 @55392 has 57 MA's), (Start: 18 @55461 has 2 MA's), (31, 55539), (36, 55563), (37, 55575), (47, 55662), (50, 55674), (52, 55689), (53, 55698), (64, 55785), (73, 55845), (78, 55890),

Gene: Finnry_82 Start: 54868, Stop: 55434, Start Num: 10

Candidate Starts for Finnry_82:

(Start: 10 @54868 has 57 MA's), (36, 55039), (41, 55105), (47, 55141), (50, 55153), (52, 55168), (58, 55210), (59, 55225), (64, 55264), (77, 55363),

Gene: FireRed_101 Start: 58612, Stop: 59118, Start Num: 16

Candidate Starts for FireRed_101:

(Start: 12 @58576 has 82 MA's), (Start: 16 @58612 has 37 MA's), (35, 58732), (38, 58771), (61, 58951), (82, 59104),

Gene: Flypotenuse_94 Start: 57428, Stop: 57928, Start Num: 16

Candidate Starts for Flypotenuse_94:

(Start: 12 @57392 has 82 MA's), (Start: 16 @57428 has 37 MA's), (35, 57548), (38, 57587), (61, 57767), (69, 57821), (70, 57830), (72, 57836), (73, 57842), (74, 57854), (79, 57884), (84, 57920),

Gene: Gabriela_84 Start: 54264, Stop: 54830, Start Num: 10

Candidate Starts for Gabriela_84:

(Start: 10 @54264 has 57 MA's), (17, 54330), (31, 54411), (36, 54435), (48, 54537), (52, 54561), (64, 54657), (73, 54717), (83, 54798),

Gene: Gage_100 Start: 58499, Stop: 58999, Start Num: 16

Candidate Starts for Gage_100:

(Start: 12 @58463 has 82 MA's), (Start: 16 @58499 has 37 MA's), (35, 58619), (38, 58658), (61, 58838), (69, 58892), (70, 58901), (72, 58907), (73, 58913), (74, 58925), (79, 58955), (84, 58991),

Gene: Gaia_92 Start: 54832, Stop: 55401, Start Num: 10

Candidate Starts for Gaia_92:

(Start: 10 @54832 has 57 MA's), (27, 54949), (28, 54952), (38, 55030), (40, 55063), (41, 55069), (43, 55078), (44, 55084), (55, 55150), (62, 55219), (70, 55276), (80, 55330), (82, 55360),

Gene: Gardann_84 Start: 54753, Stop: 55319, Start Num: 10

Candidate Starts for Gardann_84:

(Start: 10 @54753 has 57 MA's), (17, 54819), (31, 54900), (36, 54924), (47, 55023), (48, 55026), (52, 55050), (64, 55146), (73, 55206), (83, 55287),

Gene: Gator_96 Start: 58284, Stop: 58784, Start Num: 16

Candidate Starts for Gator_96:

(Start: 12 @58248 has 82 MA's), (Start: 16 @58284 has 37 MA's), (35, 58404), (38, 58443), (61, 58623), (69, 58677), (70, 58686), (72, 58692), (73, 58698), (74, 58710), (79, 58740), (84, 58776),

Gene: Gemini_103 Start: 58842, Stop: 59378, Start Num: 12

Candidate Starts for Gemini_103:

(Start: 12 @58842 has 82 MA's), (Start: 16 @58878 has 37 MA's), (35, 58998), (38, 59037), (61, 59217), (69, 59271), (70, 59280), (72, 59286), (73, 59292), (74, 59304), (79, 59334), (84, 59370),

Gene: Glexan_97 Start: 58522, Stop: 59058, Start Num: 12

Candidate Starts for Glexan_97:

(Start: 12 @58522 has 82 MA's), (Start: 16 @58558 has 37 MA's), (35, 58678), (38, 58717), (61, 58897), (69, 58951), (70, 58960), (72, 58966), (73, 58972), (74, 58984), (79, 59014), (84, 59050),

Gene: Goku_97 Start: 58173, Stop: 58679, Start Num: 16

Candidate Starts for Goku_97:

(Start: 12 @58137 has 82 MA's), (Start: 16 @58173 has 37 MA's), (35, 58293), (38, 58332), (61, 58512), (82, 58665),

Gene: GoldenSpark_102 Start: 58361, Stop: 58861, Start Num: 16

Candidate Starts for GoldenSpark_102:

(Start: 12 @58325 has 82 MA's), (Start: 16 @58361 has 37 MA's), (35, 58481), (38, 58520), (61, 58700), (69, 58754), (70, 58763), (72, 58769), (73, 58775), (74, 58787), (79, 58817), (84, 58853),

Gene: Goldilocks_101 Start: 57395, Stop: 57901, Start Num: 16

Candidate Starts for Goldilocks_101:

(Start: 12 @57359 has 82 MA's), (Start: 16 @57395 has 37 MA's), (35, 57515), (38, 57554), (61, 57734), (82, 57887),

Gene: Gonephishing_127 Start: 68906, Stop: 69454, Start Num: 9

Candidate Starts for Gonephishing_127:

(Start: 9 @68906 has 14 MA's), (21, 68987), (34, 69068), (43, 69155), (52, 69209), (54, 69221), (58, 69251), (64, 69305),

Gene: GooberAzure_101 Start: 58361, Stop: 58861, Start Num: 16

Candidate Starts for GooberAzure_101:

(Start: 12 @58325 has 82 MA's), (Start: 16 @58361 has 37 MA's), (35, 58481), (38, 58520), (61, 58700), (69, 58754), (70, 58763), (72, 58769), (73, 58775), (74, 58787), (79, 58817), (84, 58853),

Gene: GuuelaD_82 Start: 54813, Stop: 55382, Start Num: 10

Candidate Starts for GuuelaD_82:

(Start: 10 @54813 has 57 MA's), (17, 54879), (31, 54960), (36, 54984), (47, 55083), (48, 55086), (52, 55110), (64, 55206), (70, 55254),

Gene: Hafay_85 Start: 54923, Stop: 55414, Start Num: 20

Candidate Starts for Hafay_85:

(Start: 10 @54848 has 57 MA's), (20, 54923), (31, 54995), (36, 55019), (37, 55031), (47, 55118), (48, 55121), (52, 55145), (64, 55241), (73, 55301), (83, 55382),

Gene: Halena_79 Start: 52276, Stop: 52770, Start Num: 19

Candidate Starts for Halena_79:

(Start: 10 @52204 has 57 MA's), (Start: 16 @52243 has 37 MA's), (Start: 19 @52276 has 2 MA's), (36, 52375), (37, 52387), (38, 52402), (47, 52474), (52, 52501), (57, 52537), (64, 52597), (73, 52657), (83, 52738),

Gene: Halley_135 Start: 73574, Stop: 74113, Start Num: 14

Candidate Starts for Halley_135:

(Start: 14 @73574 has 25 MA's), (Start: 16 @73604 has 37 MA's), (34, 73718), (36, 73733), (40, 73790), (44, 73811), (50, 73844), (58, 73901), (76, 74039), (81, 74078), (85, 74096),

Gene: HanKaySha_99 Start: 57889, Stop: 58431, Start Num: 12

Candidate Starts for HanKaySha_99:

(Start: 12 @57889 has 82 MA's), (Start: 16 @57925 has 37 MA's), (35, 58045), (38, 58084), (61, 58264), (82, 58417),

Gene: Hannaconda_126 Start: 69559, Stop: 70107, Start Num: 9

Candidate Starts for Hannaconda_126:

(Start: 9 @69559 has 14 MA's), (21, 69640), (34, 69721), (43, 69808), (52, 69862), (53, 69871), (54, 69874), (58, 69904), (64, 69958),

Gene: Harella_98 Start: 59038, Stop: 59574, Start Num: 12

Candidate Starts for Harella_98:

(Start: 12 @59038 has 82 MA's), (Start: 16 @59074 has 37 MA's), (35, 59194), (38, 59233), (61, 59413), (69, 59467), (70, 59476), (72, 59482), (73, 59488), (74, 59500), (79, 59530), (84, 59566),

Gene: Henry_95 Start: 57743, Stop: 58285, Start Num: 12

Candidate Starts for Henry_95:

(Start: 12 @57743 has 82 MA's), (Start: 16 @57779 has 37 MA's), (35, 57899), (38, 57938), (61, 58118), (82, 58271),

Gene: Highbury_96 Start: 57460, Stop: 58005, Start Num: 12

Candidate Starts for Highbury_96:

(Start: 12 @57460 has 82 MA's), (Start: 16 @57496 has 37 MA's), (35, 57616), (38, 57655), (61, 57835), (82, 57988),

Gene: HokkenD_125 Start: 72440, Stop: 72997, Start Num: 9

Candidate Starts for HokkenD_125:

(Start: 9 @72440 has 14 MA's), (21, 72521), (34, 72602), (43, 72689), (52, 72743), (53, 72752), (54, 72755), (58, 72785), (76, 72923), (81, 72962),

Gene: Holt_103 Start: 58739, Stop: 59275, Start Num: 12

Candidate Starts for Holt_103:

(Start: 12 @58739 has 82 MA's), (Start: 16 @58775 has 37 MA's), (35, 58895), (38, 58934), (61, 59114), (69, 59168), (70, 59177), (72, 59183), (73, 59189), (74, 59201), (79, 59231), (84, 59267),

Gene: Hoonter_101 Start: 58230, Stop: 58736, Start Num: 16

Candidate Starts for Hoonter_101:

(Start: 12 @58194 has 82 MA's), (Start: 16 @58230 has 37 MA's), (35, 58350), (38, 58389), (61, 58569), (82, 58722),

Gene: Hokey_99 Start: 58700, Stop: 59242, Start Num: 12

Candidate Starts for Hokey_99:

(Start: 12 @58700 has 82 MA's), (Start: 16 @58736 has 37 MA's), (35, 58856), (38, 58895), (61, 59075), (82, 59228),

Gene: HufflyPuff_100 Start: 58820, Stop: 59326, Start Num: 16

Candidate Starts for HufflyPuff_100:

(Start: 12 @58784 has 82 MA's), (Start: 16 @58820 has 37 MA's), (35, 58940), (38, 58979), (61, 59159), (82, 59312),

Gene: Hughesyang_133 Start: 73344, Stop: 73883, Start Num: 14

Candidate Starts for Hughesyang_133:

(Start: 14 @73344 has 25 MA's), (Start: 16 @73374 has 37 MA's), (34, 73488), (36, 73503), (40, 73560), (44, 73581), (50, 73614), (58, 73671), (76, 73809), (81, 73848),

Gene: IHOP_96 Start: 58041, Stop: 58577, Start Num: 12

Candidate Starts for IHOP_96:

(Start: 12 @58041 has 82 MA's), (Start: 16 @58077 has 37 MA's), (35, 58197), (38, 58236), (61, 58416), (69, 58470), (70, 58479), (72, 58485), (73, 58491), (74, 58503), (79, 58533), (84, 58569),

Gene: Icee_99 Start: 57849, Stop: 58385, Start Num: 12

Candidate Starts for Icee_99:

(Start: 12 @57849 has 82 MA's), (Start: 16 @57885 has 37 MA's), (35, 58005), (38, 58044), (61, 58224), (69, 58278), (70, 58287), (72, 58293), (73, 58299), (74, 58311), (79, 58341), (84, 58377),

Gene: Inca_95 Start: 56566, Stop: 57066, Start Num: 16

Candidate Starts for Inca_95:

(Start: 12 @56530 has 82 MA's), (Start: 16 @56566 has 37 MA's), (35, 56686), (38, 56725), (61, 56905), (69, 56959), (70, 56968), (72, 56974), (73, 56980), (74, 56992), (79, 57022), (84, 57058),

Gene: Itos_84 Start: 53824, Stop: 54390, Start Num: 10

Candidate Starts for Itos_84:

(Start: 10 @53824 has 57 MA's), (17, 53890), (31, 53971), (36, 53995), (48, 54097), (52, 54121), (64, 54217), (73, 54277), (83, 54358),

Gene: JeTaime_98 Start: 58624, Stop: 59160, Start Num: 12

Candidate Starts for JeTaime_98:

(Start: 12 @58624 has 82 MA's), (Start: 16 @58660 has 37 MA's), (35, 58780), (38, 58819), (61, 58999), (69, 59053), (70, 59062), (72, 59068), (73, 59074), (74, 59086), (79, 59116), (84, 59152),

Gene: Jobypre_84 Start: 54916, Stop: 55413, Start Num: 18

Candidate Starts for Jobypre_84:

(Start: 7 @54829 has 1 MA's), (Start: 13 @54853 has 6 MA's), (Start: 18 @54916 has 2 MA's), (31, 54994), (41, 55084), (47, 55120), (50, 55132), (52, 55147), (58, 55189), (59, 55204), (64, 55243), (77, 55342),

Gene: JoeDirt_82 Start: 53532, Stop: 54098, Start Num: 10

Candidate Starts for JoeDirt_82:

(Start: 10 @53532 has 57 MA's), (Start: 16 @53571 has 37 MA's), (Start: 19 @53604 has 2 MA's), (36, 53703), (37, 53715), (38, 53730), (47, 53802), (52, 53829), (57, 53865), (64, 53925), (73, 53985), (83, 54066),

Gene: Jubie_82 Start: 54988, Stop: 55548, Start Num: 13

Candidate Starts for Jubie_82:

(Start: 7 @54964 has 1 MA's), (Start: 13 @54988 has 6 MA's), (Start: 18 @55051 has 2 MA's), (31, 55129), (41, 55219), (47, 55255), (50, 55267), (52, 55282), (58, 55324), (59, 55339), (64, 55378), (77, 55477),

Gene: JuicyJay_130 Start: 74859, Stop: 75398, Start Num: 14

Candidate Starts for JuicyJay_130:

(Start: 14 @74859 has 25 MA's), (Start: 16 @74889 has 37 MA's), (34, 75003), (36, 75018), (40, 75075), (44, 75096), (50, 75129), (58, 75186), (76, 75324), (81, 75363), (85, 75381),

Gene: Kahlid_84 Start: 54704, Stop: 55270, Start Num: 10

Candidate Starts for Kahlid_84:

(Start: 10 @54704 has 57 MA's), (17, 54770), (36, 54875), (47, 54974), (48, 54977), (52, 55001), (64, 55097), (73, 55157), (83, 55238),

Gene: Kalah2_124 Start: 72150, Stop: 72689, Start Num: 14

Candidate Starts for Kalah2_124:

(Start: 14 @72150 has 25 MA's), (Start: 16 @72180 has 37 MA's), (34, 72294), (36, 72309), (40, 72366), (44, 72387), (50, 72420), (58, 72477), (76, 72615), (81, 72654), (85, 72672),

Gene: Kanye_95 Start: 57946, Stop: 58488, Start Num: 12

Candidate Starts for Kanye_95:

(Start: 12 @57946 has 82 MA's), (Start: 16 @57982 has 37 MA's), (35, 58102), (38, 58141), (61, 58321), (82, 58474),

Gene: KashFlow_130 Start: 70994, Stop: 71542, Start Num: 9

Candidate Starts for KashFlow_130:

(Start: 9 @70994 has 14 MA's), (21, 71075), (34, 71156), (43, 71243), (52, 71297), (54, 71309), (58, 71339), (59, 71354), (64, 71393),

Gene: Kimchi_102 Start: 58466, Stop: 59002, Start Num: 12

Candidate Starts for Kimchi_102:

(Start: 12 @58466 has 82 MA's), (Start: 16 @58502 has 37 MA's), (35, 58622), (38, 58661), (61, 58841), (69, 58895), (70, 58904), (72, 58910), (73, 58916), (74, 58928), (79, 58958), (84, 58994),

Gene: Kingsolomon_80 Start: 54624, Stop: 55190, Start Num: 10

Candidate Starts for Kingsolomon_80:

(Start: 10 @54624 has 57 MA's), (36, 54795), (41, 54861), (47, 54897), (50, 54909), (52, 54924), (58, 54966), (59, 54981), (64, 55020), (77, 55119),

Gene: Klein_130 Start: 70495, Stop: 71034, Start Num: 14

Candidate Starts for Klein_130:

(Start: 14 @70495 has 25 MA's), (Start: 16 @70525 has 37 MA's), (34, 70639), (36, 70654), (40, 70711), (44, 70732), (50, 70765), (58, 70822), (76, 70960), (81, 70999),

Gene: Kostya_98 Start: 58179, Stop: 58679, Start Num: 16

Candidate Starts for Kostya_98:

(Start: 12 @58143 has 82 MA's), (Start: 16 @58179 has 37 MA's), (35, 58299), (38, 58338), (61, 58518), (69, 58572), (70, 58581), (72, 58587), (73, 58593), (74, 58605), (79, 58635), (84, 58671),

Gene: Krypton555_83 Start: 54893, Stop: 55459, Start Num: 10

Candidate Starts for Krypton555_83:

(Start: 10 @54893 has 57 MA's), (31, 55040), (41, 55130), (47, 55166), (50, 55178), (52, 55193), (58, 55235), (59, 55250), (64, 55289), (77, 55388),

Gene: LeBron_80 Start: 52203, Stop: 52769, Start Num: 10

Candidate Starts for LeBron_80:

(Start: 10 @52203 has 57 MA's), (Start: 16 @52242 has 37 MA's), (Start: 19 @52275 has 2 MA's), (36, 52374), (37, 52386), (38, 52401), (47, 52473), (52, 52500), (57, 52536), (64, 52596), (73, 52656), (83, 52737),

Gene: Lewan_85 Start: 54759, Stop: 55325, Start Num: 10

Candidate Starts for Lewan_85:

(Start: 10 @54759 has 57 MA's), (17, 54825), (31, 54906), (36, 54930), (48, 55032), (52, 55056), (64, 55152), (73, 55212), (83, 55293),

Gene: LilDestine_83 Start: 54608, Stop: 55174, Start Num: 10

Candidate Starts for LilDestine_83:

(Start: 10 @54608 has 57 MA's), (36, 54779), (47, 54878), (48, 54881), (52, 54905), (64, 55001), (73, 55061), (83, 55142),

Gene: Lilac_100 Start: 57898, Stop: 58404, Start Num: 16

Candidate Starts for Lilac_100:

(Start: 12 @57862 has 82 MA's), (Start: 16 @57898 has 37 MA's), (35, 58018), (38, 58057), (61, 58237), (82, 58390),

Gene: Lilizi_99 Start: 57928, Stop: 58470, Start Num: 12

Candidate Starts for Lilizi_99:

(Start: 12 @57928 has 82 MA's), (Start: 16 @57964 has 37 MA's), (35, 58084), (38, 58123), (61, 58303), (82, 58456),

Gene: Lilpickle_97 Start: 57531, Stop: 58037, Start Num: 16

Candidate Starts for Lilpickle_97:

(Start: 12 @57495 has 82 MA's), (Start: 16 @57531 has 37 MA's), (35, 57651), (38, 57690), (61, 57870), (82, 58023),

Gene: LittleE_135 Start: 72248, Stop: 72796, Start Num: 9

Candidate Starts for LittleE_135:

(Start: 9 @72248 has 14 MA's), (21, 72329), (34, 72410), (43, 72497), (52, 72551), (54, 72563), (58, 72593), (59, 72608), (64, 72647),

Gene: Loadrie_82 Start: 54783, Stop: 55349, Start Num: 10

Candidate Starts for Loadrie_82:

(Start: 10 @54783 has 57 MA's), (17, 54849), (31, 54930), (36, 54954), (47, 55053), (48, 55056), (52, 55080), (64, 55176), (73, 55236), (83, 55317),

Gene: Lolly9_81 Start: 54769, Stop: 55266, Start Num: 18

Candidate Starts for Lolly9_81:

(5, 54652), (Start: 10 @54700 has 57 MA's), (Start: 18 @54769 has 2 MA's), (26, 54808), (41, 54937), (48, 54976), (49, 54979), (52, 55000), (64, 55096), (77, 55195),

Gene: Lucky2013_127 Start: 69124, Stop: 69672, Start Num: 9

Candidate Starts for Lucky2013_127:

(Start: 9 @69124 has 14 MA's), (21, 69205), (34, 69286), (43, 69373), (52, 69427), (54, 69439), (58, 69469), (64, 69523),

Gene: Lumos_83 Start: 54826, Stop: 55410, Start Num: 7

Candidate Starts for Lumos_83:

(Start: 7 @54826 has 1 MA's), (Start: 13 @54850 has 6 MA's), (Start: 18 @54913 has 2 MA's), (31, 54991), (41, 55081), (47, 55117), (50, 55129), (52, 55144), (58, 55186), (59, 55201), (64, 55240), (77, 55339),

Gene: MAckerman_78 Start: 52269, Stop: 52763, Start Num: 19

Candidate Starts for MAckerman_78:

(Start: 10 @52197 has 57 MA's), (Start: 16 @52236 has 37 MA's), (Start: 19 @52269 has 2 MA's), (36, 52368), (37, 52380), (38, 52395), (47, 52467), (52, 52494), (57, 52530), (64, 52590), (73, 52650), (83, 52731),

Gene: MISSy_99 Start: 58044, Stop: 58586, Start Num: 12

Candidate Starts for MISSy_99:

(Start: 12 @58044 has 82 MA's), (Start: 16 @58080 has 37 MA's), (35, 58200), (38, 58239), (61, 58419), (82, 58572),

Gene: MPhalcon_99 Start: 58037, Stop: 58579, Start Num: 12

Candidate Starts for MPhalcon_99:

(Start: 12 @58037 has 82 MA's), (Start: 16 @58073 has 37 MA's), (35, 58193), (38, 58232), (61, 58412), (82, 58565),

Gene: MadamMonkfish_98 Start: 57543, Stop: 58085, Start Num: 12

Candidate Starts for MadamMonkfish_98:

(Start: 12 @57543 has 82 MA's), (Start: 16 @57579 has 37 MA's), (35, 57699), (38, 57738), (61, 57918), (82, 58071),

Gene: Manda_100 Start: 59299, Stop: 59841, Start Num: 12

Candidate Starts for Manda_100:

(Start: 12 @59299 has 82 MA's), (Start: 16 @59335 has 37 MA's), (35, 59455), (38, 59494), (61, 59674), (82, 59827),

Gene: Marshmallow_95 Start: 58663, Stop: 59199, Start Num: 12

Candidate Starts for Marshmallow_95:

(Start: 12 @58663 has 82 MA's), (Start: 16 @58699 has 37 MA's), (35, 58819), (38, 58858), (61, 59038), (69, 59092), (70, 59101), (72, 59107), (73, 59113), (74, 59125), (79, 59155), (84, 59191),

Gene: Maxxinista_100 Start: 58029, Stop: 58571, Start Num: 12

Candidate Starts for Maxxinista_100:

(Start: 12 @58029 has 82 MA's), (Start: 16 @58065 has 37 MA's), (35, 58185), (38, 58224), (61, 58404), (82, 58557),

Gene: Mbo4_61 Start: 43171, Stop: 43899, Start Num: 2

Candidate Starts for Mbo4_61:

(2, 43171), (15, 43351), (25, 43429), (29, 43447), (46, 43594), (66, 43741),

Gene: MiaZeal_132 Start: 70263, Stop: 70811, Start Num: 9

Candidate Starts for MiaZeal_132:

(Start: 9 @70263 has 14 MA's), (21, 70344), (34, 70425), (43, 70512), (52, 70566), (54, 70578), (58, 70608), (59, 70623), (64, 70662),

Gene: Miley16_84 Start: 54918, Stop: 55484, Start Num: 10

Candidate Starts for Miley16_84:

(Start: 10 @54918 has 57 MA's), (17, 54984), (31, 55065), (36, 55089), (48, 55191), (52, 55215), (64, 55311), (73, 55371), (83, 55452),

Gene: Mindy_97 Start: 57365, Stop: 57907, Start Num: 12

Candidate Starts for Mindy_97:

(Start: 12 @57365 has 82 MA's), (Start: 16 @57401 has 37 MA's), (35, 57521), (38, 57560), (61, 57740), (82, 57893),

Gene: Minerva_132 Start: 71945, Stop: 72484, Start Num: 14

Candidate Starts for Minerva_132:

(Start: 14 @71945 has 25 MA's), (Start: 16 @71975 has 37 MA's), (34, 72089), (36, 72104), (40, 72161), (44, 72182), (50, 72215), (58, 72272), (76, 72410), (81, 72449),

Gene: MiniLon_86 Start: 54701, Stop: 55267, Start Num: 10

Candidate Starts for MiniLon_86:

(5, 54653), (Start: 10 @54701 has 57 MA's), (Start: 18 @54770 has 2 MA's), (26, 54809), (41, 54938), (48, 54977), (49, 54980), (52, 55001), (64, 55097), (77, 55196),

Gene: MiniMac_86 Start: 54696, Stop: 55262, Start Num: 10

Candidate Starts for MiniMac_86:

(5, 54648), (Start: 10 @54696 has 57 MA's), (Start: 18 @54765 has 2 MA's), (26, 54804), (41, 54933), (48, 54972), (49, 54975), (52, 54996), (64, 55092), (77, 55191),

Gene: Miniwave_93 Start: 57539, Stop: 58081, Start Num: 12

Candidate Starts for Miniwave_93:

(Start: 12 @57539 has 82 MA's), (Start: 16 @57575 has 37 MA's), (35, 57695), (38, 57734), (61, 57914), (82, 58067),

Gene: Misfit_99 Start: 59334, Stop: 59876, Start Num: 12

Candidate Starts for Misfit_99:

(Start: 12 @59334 has 82 MA's), (Start: 16 @59370 has 37 MA's), (35, 59490), (38, 59529), (61, 59709), (82, 59862),

Gene: MkaliMitinis3_85 Start: 54767, Stop: 55333, Start Num: 10

Candidate Starts for MkaliMitinis3_85:

(Start: 10 @54767 has 57 MA's), (17, 54833), (31, 54914), (36, 54938), (47, 55037), (48, 55040), (50, 55049), (52, 55064), (64, 55160), (73, 55220), (83, 55301),

Gene: Moldemort_101 Start: 58001, Stop: 58543, Start Num: 12

Candidate Starts for Moldemort_101:

(Start: 12 @58001 has 82 MA's), (Start: 16 @58037 has 37 MA's), (35, 58157), (38, 58196), (61, 58376), (82, 58529),

Gene: Moostard_80 Start: 54619, Stop: 55185, Start Num: 10

Candidate Starts for Moostard_80:

(Start: 10 @54619 has 57 MA's), (36, 54790), (41, 54856), (47, 54892), (50, 54904), (52, 54919), (58, 54961), (59, 54976), (64, 55015), (77, 55114),

Gene: Mosby_94 Start: 57653, Stop: 58159, Start Num: 16

Candidate Starts for Mosby_94:

(Start: 12 @57617 has 82 MA's), (Start: 16 @57653 has 37 MA's), (35, 57773), (38, 57812), (61, 57992), (82, 58145),

Gene: MsGreen_83 Start: 54852, Stop: 55412, Start Num: 13

Candidate Starts for MsGreen_83:

(Start: 7 @54828 has 1 MA's), (Start: 13 @54852 has 6 MA's), (Start: 18 @54915 has 2 MA's), (31, 54993), (41, 55083), (47, 55119), (50, 55131), (52, 55146), (58, 55188), (59, 55203), (64, 55242), (77, 55341),

Gene: Murica_101 Start: 59296, Stop: 59802, Start Num: 16

Candidate Starts for Murica_101:

(Start: 12 @59260 has 82 MA's), (Start: 16 @59296 has 37 MA's), (35, 59416), (38, 59455), (61, 59635), (82, 59788),

Gene: Murphy_98 Start: 58380, Stop: 58922, Start Num: 12

Candidate Starts for Murphy_98:

(Start: 12 @58380 has 82 MA's), (Start: 16 @58416 has 37 MA's), (35, 58536), (38, 58575), (61, 58755), (82, 58908),

Gene: Myrale_98 Start: 58823, Stop: 59359, Start Num: 12

Candidate Starts for Myrale_98:

(Start: 12 @58823 has 82 MA's), (Start: 16 @58859 has 37 MA's), (35, 58979), (38, 59018), (61, 59198), (69, 59252), (70, 59261), (72, 59267), (73, 59273), (74, 59285), (79, 59315), (84, 59351),

Gene: Nala_100 Start: 58582, Stop: 59088, Start Num: 16

Candidate Starts for Nala_100:

(Start: 12 @58546 has 82 MA's), (Start: 16 @58582 has 37 MA's), (35, 58702), (38, 58741), (61, 58921), (82, 59074),

Gene: Nebkiss_91 Start: 53520, Stop: 54086, Start Num: 11

Candidate Starts for Nebkiss_91:

(Start: 10 @53517 has 57 MA's), (Start: 11 @53520 has 1 MA's), (27, 53634), (28, 53637), (38, 53715), (40, 53748), (41, 53754), (43, 53763), (44, 53769), (55, 53835), (62, 53904), (70, 53961), (78, 54012), (80, 54015), (82, 54045),

Gene: NelitzaMV_96 Start: 57585, Stop: 58121, Start Num: 12

Candidate Starts for NelitzaMV_96:

(Start: 12 @57585 has 82 MA's), (Start: 16 @57621 has 37 MA's), (35, 57741), (38, 57780), (61, 57960), (69, 58014), (70, 58023), (72, 58029), (73, 58035), (74, 58047), (79, 58077), (84, 58113),

Gene: Netyap_85 Start: 54919, Stop: 55485, Start Num: 10

Candidate Starts for Netyap_85:

(Start: 10 @54919 has 57 MA's), (17, 54985), (31, 55066), (36, 55090), (48, 55192), (52, 55216), (64, 55312), (73, 55372), (83, 55453),

Gene: Nicholas_80 Start: 54624, Stop: 55190, Start Num: 10

Candidate Starts for Nicholas_80:

(Start: 10 @54624 has 57 MA's), (36, 54795), (41, 54861), (47, 54897), (50, 54909), (52, 54924), (58, 54966), (59, 54981), (64, 55020), (77, 55119),

Gene: Nicholasp3_84 Start: 54753, Stop: 55319, Start Num: 10

Candidate Starts for Nicholasp3_84:

(Start: 10 @54753 has 57 MA's), (17, 54819), (31, 54900), (36, 54924), (47, 55023), (48, 55026), (52, 55050), (64, 55146), (73, 55206), (83, 55287),

Gene: NihilNomen_135 Start: 72804, Stop: 73343, Start Num: 14

Candidate Starts for NihilNomen_135:

(Start: 14 @72804 has 25 MA's), (Start: 16 @72834 has 37 MA's), (34, 72948), (36, 72963), (40, 73020), (44, 73041), (50, 73074), (58, 73131), (76, 73269), (81, 73308), (85, 73326),

Gene: Nimrod_98 Start: 58790, Stop: 59326, Start Num: 12

Candidate Starts for Nimrod_98:

(Start: 12 @58790 has 82 MA's), (Start: 16 @58826 has 37 MA's), (35, 58946), (38, 58985), (61, 59165), (69, 59219), (70, 59228), (72, 59234), (73, 59240), (74, 59252), (79, 59282), (84, 59318),

Gene: NoSleep_99 Start: 57562, Stop: 58104, Start Num: 12

Candidate Starts for NoSleep_99:

(Start: 12 @57562 has 82 MA's), (Start: 16 @57598 has 37 MA's), (35, 57718), (38, 57757), (61, 57937), (82, 58090),

Gene: Odette_137 Start: 74357, Stop: 74914, Start Num: 9

Candidate Starts for Odette_137:

(Start: 9 @74357 has 14 MA's), (21, 74438), (34, 74519), (43, 74606), (52, 74660), (53, 74669), (54, 74672), (58, 74702), (76, 74840), (81, 74879),

Gene: OhShagHennessy_78 Start: 52235, Stop: 52792, Start Num: 10

Candidate Starts for OhShagHennessy_78:

(Start: 10 @52235 has 57 MA's), (Start: 16 @52274 has 37 MA's), (Start: 19 @52307 has 2 MA's), (36, 52406), (37, 52418), (38, 52433), (47, 52505), (52, 52532), (57, 52568), (64, 52628), (69, 52667),

(83, 52769),

Gene: Omega_142 Start: 73929, Stop: 74477, Start Num: 9

Candidate Starts for Omega_142:

(Start: 9 @73929 has 14 MA's), (21, 74010), (34, 74091), (43, 74178), (52, 74232), (53, 74241), (54, 74244), (58, 74274), (64, 74328),

Gene: Optimus_124 Start: 70341, Stop: 70880, Start Num: 14

Candidate Starts for Optimus_124:

(Start: 14 @70341 has 25 MA's), (Start: 16 @70371 has 37 MA's), (34, 70485), (36, 70500), (40, 70557), (44, 70578), (50, 70611), (58, 70668), (76, 70806), (81, 70845), (85, 70863),

Gene: OrionPax_97 Start: 57670, Stop: 58176, Start Num: 16

Candidate Starts for OrionPax_97:

(Start: 12 @57634 has 82 MA's), (Start: 16 @57670 has 37 MA's), (35, 57790), (38, 57829), (61, 58009), (82, 58162),

Gene: Palpatine_99 Start: 58867, Stop: 59373, Start Num: 16

Candidate Starts for Palpatine_99:

(Start: 12 @58831 has 82 MA's), (Start: 16 @58867 has 37 MA's), (35, 58987), (38, 59026), (61, 59206), (82, 59359),

Gene: Paperbeatsrock_97 Start: 58253, Stop: 58759, Start Num: 16

Candidate Starts for Paperbeatsrock_97:

(Start: 12 @58217 has 82 MA's), (Start: 16 @58253 has 37 MA's), (35, 58373), (38, 58412), (61, 58592), (82, 58745),

Gene: Pat3_95 Start: 56740, Stop: 57282, Start Num: 12

Candidate Starts for Pat3_95:

(Start: 12 @56740 has 82 MA's), (Start: 16 @56776 has 37 MA's), (35, 56896), (38, 56935), (61, 57115), (82, 57268),

Gene: Petra64142_103 Start: 59778, Stop: 60278, Start Num: 16

Candidate Starts for Petra64142_103:

(Start: 12 @59742 has 82 MA's), (Start: 16 @59778 has 37 MA's), (35, 59898), (38, 59937), (61, 60117), (69, 60171), (70, 60180), (72, 60186), (73, 60192), (74, 60204), (79, 60234), (84, 60270),

Gene: Phaja_96 Start: 58043, Stop: 58579, Start Num: 12

Candidate Starts for Phaja_96:

(Start: 12 @58043 has 82 MA's), (Start: 16 @58079 has 37 MA's), (35, 58199), (38, 58238), (61, 58418), (69, 58472), (70, 58481), (72, 58487), (73, 58493), (74, 58505), (79, 58535), (84, 58571),

Gene: Pharsalus_95 Start: 58017, Stop: 58559, Start Num: 12

Candidate Starts for Pharsalus_95:

(Start: 12 @58017 has 82 MA's), (Start: 16 @58053 has 37 MA's), (35, 58173), (38, 58212), (61, 58392), (82, 58545),

Gene: PhatBacter_101 Start: 58612, Stop: 59118, Start Num: 16

Candidate Starts for PhatBacter_101:

(Start: 12 @58576 has 82 MA's), (Start: 16 @58612 has 37 MA's), (35, 58732), (38, 58771), (61, 58951), (82, 59104),

Gene: Phaux_100 Start: 59145, Stop: 59687, Start Num: 12

Candidate Starts for Phaux_100:

(Start: 12 @59145 has 82 MA's), (Start: 16 @59181 has 37 MA's), (35, 59301), (38, 59340), (61, 59520), (82, 59673),

Gene: Phoebus_134 Start: 74698, Stop: 75237, Start Num: 14

Candidate Starts for Phoebus_134:

(Start: 14 @74698 has 25 MA's), (Start: 16 @74728 has 37 MA's), (34, 74842), (36, 74857), (40, 74914), (44, 74935), (50, 74968), (58, 75025), (76, 75163), (81, 75202),

Gene: Phrux_95 Start: 57421, Stop: 57963, Start Num: 12

Candidate Starts for Phrux_95:

(Start: 12 @57421 has 82 MA's), (Start: 16 @57457 has 37 MA's), (35, 57577), (38, 57616), (61, 57796), (82, 57949),

Gene: Policronamos_101 Start: 58885, Stop: 59391, Start Num: 16

Candidate Starts for Policronamos_101:

(Start: 12 @58849 has 82 MA's), (Start: 16 @58885 has 37 MA's), (35, 59005), (38, 59044), (61, 59224), (82, 59377),

Gene: Porcelain_130 Start: 70070, Stop: 70618, Start Num: 9

Candidate Starts for Porcelain_130:

(Start: 9 @70070 has 14 MA's), (21, 70151), (34, 70232), (43, 70319), (52, 70373), (54, 70385), (58, 70415), (64, 70469),

Gene: Porky_97 Start: 57165, Stop: 57671, Start Num: 16

Candidate Starts for Porky_97:

(Start: 12 @57129 has 82 MA's), (Start: 16 @57165 has 37 MA's), (35, 57285), (38, 57324), (61, 57504), (82, 57657),

Gene: Pound_122 Start: 71081, Stop: 71620, Start Num: 14

Candidate Starts for Pound_122:

(Start: 14 @71081 has 25 MA's), (Start: 16 @71111 has 37 MA's), (34, 71225), (36, 71240), (40, 71297), (44, 71318), (50, 71351), (58, 71408), (76, 71546), (81, 71585), (85, 71603),

Gene: Pumpkin_101 Start: 58797, Stop: 59333, Start Num: 12

Candidate Starts for Pumpkin_101:

(Start: 12 @58797 has 82 MA's), (Start: 16 @58833 has 37 MA's), (35, 58953), (38, 58992), (61, 59172), (69, 59226), (70, 59235), (72, 59241), (73, 59247), (74, 59259), (79, 59289), (84, 59325),

Gene: Quallification_99 Start: 58625, Stop: 59167, Start Num: 12

Candidate Starts for Quallification_99:

(Start: 12 @58625 has 82 MA's), (Start: 16 @58661 has 37 MA's), (35, 58781), (38, 58820), (61, 59000), (82, 59153),

Gene: Rakim_99 Start: 58311, Stop: 58811, Start Num: 16

Candidate Starts for Rakim_99:

(Start: 12 @58275 has 82 MA's), (Start: 16 @58311 has 37 MA's), (35, 58431), (38, 58470), (61, 58650), (69, 58704), (70, 58713), (72, 58719), (73, 58725), (74, 58737), (79, 58767), (84, 58803),

Gene: Redno2_125 Start: 70086, Stop: 70625, Start Num: 14

Candidate Starts for Redno2_125:

(Start: 14 @70086 has 25 MA's), (Start: 16 @70116 has 37 MA's), (34, 70230), (36, 70245), (40, 70302), (44, 70323), (50, 70356), (58, 70413), (76, 70551), (81, 70590),

Gene: Rimmer_96 Start: 57851, Stop: 58393, Start Num: 12

Candidate Starts for Rimmer_96:

(Start: 12 @57851 has 82 MA's), (Start: 16 @57887 has 37 MA's), (35, 58007), (38, 58046), (61, 58226), (82, 58379),

Gene: RiverMonster_98 Start: 58317, Stop: 58859, Start Num: 12

Candidate Starts for RiverMonster_98:

(Start: 12 @58317 has 82 MA's), (Start: 16 @58353 has 37 MA's), (35, 58473), (38, 58512), (61, 58692), (82, 58845),

Gene: Rose5_82 Start: 53377, Stop: 53943, Start Num: 10

Candidate Starts for Rose5_82:

(Start: 10 @53377 has 57 MA's), (Start: 16 @53416 has 37 MA's), (Start: 19 @53449 has 2 MA's), (36, 53548), (37, 53560), (38, 53575), (47, 53647), (52, 53674), (57, 53710), (64, 53770), (73, 53830), (83, 53911),

Gene: Rumpelstiltskin_81 Start: 54546, Stop: 55112, Start Num: 10

Candidate Starts for Rumpelstiltskin_81:

(Start: 10 @54546 has 57 MA's), (17, 54612), (31, 54693), (36, 54717), (47, 54816), (48, 54819), (52, 54843), (64, 54939), (73, 54999), (83, 55080),

Gene: Saints25_96 Start: 57460, Stop: 58005, Start Num: 12

Candidate Starts for Saints25_96:

(Start: 12 @57460 has 82 MA's), (Start: 16 @57496 has 37 MA's), (35, 57616), (38, 57655), (61, 57835), (82, 57988),

Gene: Samty_81 Start: 54612, Stop: 55178, Start Num: 10

Candidate Starts for Samty_81:

(Start: 10 @54612 has 57 MA's), (36, 54783), (41, 54849), (47, 54885), (50, 54897), (52, 54912), (58, 54954), (59, 54969), (64, 55008), (77, 55107),

Gene: Sassay_93 Start: 56615, Stop: 57121, Start Num: 16

Candidate Starts for Sassay_93:

(Start: 12 @56579 has 82 MA's), (Start: 16 @56615 has 37 MA's), (35, 56735), (38, 56774), (61, 56954), (82, 57107),

Gene: Schatzie_129 Start: 72794, Stop: 73333, Start Num: 14

Candidate Starts for Schatzie_129:

(Start: 14 @72794 has 25 MA's), (Start: 16 @72824 has 37 MA's), (34, 72938), (36, 72953), (40, 73010), (44, 73031), (50, 73064), (52, 73079), (54, 73091), (76, 73259), (81, 73298),

Gene: ShamWow_98 Start: 58438, Stop: 58980, Start Num: 12

Candidate Starts for ShamWow_98:

(Start: 12 @58438 has 82 MA's), (Start: 16 @58474 has 37 MA's), (35, 58594), (38, 58633), (61, 58813), (82, 58966),

Gene: ShereKhan_96 Start: 58871, Stop: 59413, Start Num: 12

Candidate Starts for ShereKhan_96:

(Start: 12 @58871 has 82 MA's), (Start: 16 @58907 has 37 MA's), (35, 59027), (38, 59066), (61, 59246), (82, 59399),

Gene: Silverleaf_81 Start: 52833, Stop: 53399, Start Num: 10

Candidate Starts for Silverleaf_81:

(Start: 10 @52833 has 57 MA's), (Start: 16 @52872 has 37 MA's), (Start: 19 @52905 has 2 MA's), (36, 53004), (37, 53016), (38, 53031), (47, 53103), (52, 53130), (57, 53166), (64, 53226), (73, 53286), (83, 53367),

Gene: Simpliphy_97 Start: 57879, Stop: 58421, Start Num: 12

Candidate Starts for Simpliphy_97:

(Start: 12 @57879 has 82 MA's), (Start: 16 @57915 has 37 MA's), (35, 58035), (38, 58074), (61, 58254), (82, 58407),

Gene: SirDuracell_98 Start: 57255, Stop: 57797, Start Num: 12

Candidate Starts for SirDuracell_98:

(Start: 12 @57255 has 82 MA's), (Start: 16 @57291 has 37 MA's), (35, 57411), (38, 57450), (61, 57630), (82, 57783),

Gene: Snenia_82 Start: 54917, Stop: 55414, Start Num: 18

Candidate Starts for Snenia_82:

(Start: 7 @54830 has 1 MA's), (Start: 13 @54854 has 6 MA's), (Start: 18 @54917 has 2 MA's), (31, 54995), (41, 55085), (47, 55121), (50, 55133), (52, 55148), (58, 55190), (59, 55205), (64, 55244), (77, 55343),

Gene: SophKB_95 Start: 57236, Stop: 57778, Start Num: 12

Candidate Starts for SophKB_95:

(Start: 12 @57236 has 82 MA's), (Start: 16 @57272 has 37 MA's), (35, 57392), (38, 57431), (61, 57611), (82, 57764),

Gene: Sotrice96_99 Start: 58145, Stop: 58687, Start Num: 12

Candidate Starts for Sotrice96_99:

(Start: 12 @58145 has 82 MA's), (Start: 16 @58181 has 37 MA's), (35, 58301), (38, 58340), (61, 58520), (82, 58673),

Gene: Squint_130 Start: 70330, Stop: 70878, Start Num: 9

Candidate Starts for Squint_130:

(Start: 9 @70330 has 14 MA's), (21, 70411), (34, 70492), (43, 70579), (52, 70633), (54, 70645), (58, 70675), (64, 70729),

Gene: Stank_100 Start: 58538, Stop: 59074, Start Num: 12

Candidate Starts for Stank_100:

(Start: 12 @58538 has 82 MA's), (Start: 16 @58574 has 37 MA's), (35, 58694), (38, 58733), (61, 58913), (69, 58967), (70, 58976), (72, 58982), (73, 58988), (74, 59000), (79, 59030), (84, 59066),

Gene: Stark_99 Start: 58236, Stop: 58742, Start Num: 16

Candidate Starts for Stark_99:

(Start: 12 @58200 has 82 MA's), (Start: 16 @58236 has 37 MA's), (35, 58356), (38, 58395), (61, 58575), (82, 58728),

Gene: StellaBean_94 Start: 57798, Stop: 58304, Start Num: 16

Candidate Starts for StellaBean_94:

(Start: 12 @57762 has 82 MA's), (Start: 16 @57798 has 37 MA's), (35, 57918), (38, 57957), (61, 58137), (82, 58290),

Gene: StolenFromERC_101 Start: 58463, Stop: 58999, Start Num: 12

Candidate Starts for StolenFromERC_101:

(Start: 12 @58463 has 82 MA's), (Start: 16 @58499 has 37 MA's), (35, 58619), (38, 58658), (61, 58838), (69, 58892), (70, 58901), (72, 58907), (73, 58913), (74, 58925), (79, 58955), (84, 58991),

Gene: Superphikiman_130 Start: 69545, Stop: 70093, Start Num: 9

Candidate Starts for Superphikiman_130:

(Start: 9 @69545 has 14 MA's), (21, 69626), (34, 69707), (43, 69794), (52, 69848), (53, 69857), (54, 69860), (58, 69890), (64, 69944),

Gene: TBrady12_101 Start: 57978, Stop: 58514, Start Num: 12

Candidate Starts for TBrady12_101:

(Start: 12 @57978 has 82 MA's), (Start: 16 @58014 has 37 MA's), (35, 58134), (38, 58173), (61, 58353), (69, 58407), (70, 58416), (72, 58422), (73, 58428), (74, 58440), (79, 58470), (84, 58506),

Gene: Tarkin_97 Start: 58226, Stop: 58768, Start Num: 12

Candidate Starts for Tarkin_97:

(Start: 12 @58226 has 82 MA's), (Start: 16 @58262 has 37 MA's), (35, 58382), (38, 58421), (61, 58601), (82, 58754),

Gene: TeardropMSU_94 Start: 57226, Stop: 57768, Start Num: 12

Candidate Starts for TeardropMSU_94:

(Start: 12 @57226 has 82 MA's), (Start: 16 @57262 has 37 MA's), (35, 57382), (38, 57421), (61, 57601), (82, 57754),

Gene: Terminus_101 Start: 59334, Stop: 59876, Start Num: 12

Candidate Starts for Terminus_101:

(Start: 12 @59334 has 82 MA's), (Start: 16 @59370 has 37 MA's), (35, 59490), (38, 59529), (61, 59709), (82, 59862),

Gene: Thibault_118 Start: 69990, Stop: 70547, Start Num: 9

Candidate Starts for Thibault_118:

(Start: 9 @69990 has 14 MA's), (21, 70071), (26, 70104), (32, 70146), (34, 70152), (43, 70239), (50, 70278), (52, 70293), (54, 70305), (76, 70473), (81, 70512),

Gene: ThreeRngTarjay_129 Start: 73289, Stop: 73828, Start Num: 14

Candidate Starts for ThreeRngTarjay_129:

(Start: 14 @73289 has 25 MA's), (Start: 16 @73319 has 37 MA's), (34, 73433), (36, 73448), (40, 73505), (44, 73526), (50, 73559), (58, 73616), (76, 73754), (81, 73793),

Gene: Thresher_100 Start: 58980, Stop: 59522, Start Num: 12

Candidate Starts for Thresher_100:

(Start: 12 @58980 has 82 MA's), (Start: 16 @59016 has 37 MA's), (35, 59136), (38, 59175), (61, 59355), (82, 59508),

Gene: Tomaszewski_93 Start: 57710, Stop: 58252, Start Num: 12

Candidate Starts for Tomaszewski_93:

(Start: 12 @57710 has 82 MA's), (Start: 16 @57746 has 37 MA's), (35, 57866), (38, 57905), (61, 58085), (82, 58238),

Gene: Toto_96 Start: 58438, Stop: 58980, Start Num: 12

Candidate Starts for Toto_96:

(Start: 12 @58438 has 82 MA's), (Start: 16 @58474 has 37 MA's), (35, 58594), (38, 58633), (61, 58813), (82, 58966),

Gene: Tourach_83 Start: 55036, Stop: 55602, Start Num: 10

Candidate Starts for Tourach_83:

(Start: 10 @55036 has 57 MA's), (17, 55102), (31, 55183), (36, 55207), (37, 55219), (47, 55306), (48, 55309), (52, 55333), (53, 55342), (64, 55429), (73, 55489), (83, 55570),

Gene: Traaww1_94 Start: 57567, Stop: 58103, Start Num: 12

Candidate Starts for Traaww1_94:

(Start: 12 @57567 has 82 MA's), (Start: 16 @57603 has 37 MA's), (35, 57723), (38, 57762), (61, 57942), (69, 57996), (70, 58005), (72, 58011), (73, 58017), (74, 58029), (79, 58059), (84, 58095),

Gene: Tuco_99 Start: 59306, Stop: 59848, Start Num: 12

Candidate Starts for Tuco_99:

(Start: 12 @59306 has 82 MA's), (Start: 16 @59342 has 37 MA's), (35, 59462), (38, 59501), (61, 59681), (82, 59834),

Gene: Tyson_82 Start: 53303, Stop: 53869, Start Num: 10

Candidate Starts for Tyson_82:

(Start: 10 @53303 has 57 MA's), (Start: 16 @53342 has 37 MA's), (Start: 19 @53375 has 2 MA's), (36, 53474), (37, 53486), (38, 53501), (47, 53573), (52, 53600), (57, 53636), (64, 53696), (73, 53756), (83, 53837),

Gene: UPIE_80 Start: 52899, Stop: 53465, Start Num: 10

Candidate Starts for UPIE_80:

(Start: 10 @52899 has 57 MA's), (Start: 16 @52938 has 37 MA's), (Start: 19 @52971 has 2 MA's), (36, 53070), (37, 53082), (38, 53097), (47, 53169), (52, 53196), (57, 53232), (64, 53292), (73, 53352), (83, 53433),

Gene: Ukulele_93 Start: 57692, Stop: 58234, Start Num: 12

Candidate Starts for Ukulele_93:

(Start: 12 @57692 has 82 MA's), (Start: 16 @57728 has 37 MA's), (35, 57848), (38, 57887), (61, 58067), (82, 58220),

Gene: Vetrix_83 Start: 54615, Stop: 55181, Start Num: 10

Candidate Starts for Vetrix_83:

(Start: 10 @54615 has 57 MA's), (36, 54786), (47, 54885), (48, 54888), (52, 54912), (64, 55008), (73, 55068), (83, 55149),

Gene: Wamburgxpress_81 Start: 53338, Stop: 53904, Start Num: 10

Candidate Starts for Wamburgxpress_81:

(Start: 10 @53338 has 57 MA's), (Start: 16 @53377 has 37 MA's), (Start: 19 @53410 has 2 MA's), (36, 53509), (37, 53521), (38, 53536), (47, 53608), (52, 53635), (57, 53671), (64, 53731), (73, 53791), (83, 53872),

Gene: Wanda_132 Start: 70424, Stop: 70963, Start Num: 14

Candidate Starts for Wanda_132:

(Start: 14 @70424 has 25 MA's), (Start: 16 @70454 has 37 MA's), (34, 70568), (36, 70583), (40, 70640), (44, 70661), (50, 70694), (58, 70751), (76, 70889), (81, 70928),

Gene: Whirlwind_83 Start: 54856, Stop: 55422, Start Num: 10

Candidate Starts for Whirlwind_83:

(Start: 10 @54856 has 57 MA's), (31, 55003), (41, 55093), (47, 55129), (50, 55141), (52, 55156), (58, 55198), (59, 55213), (77, 55351),

Gene: Wiggin_100 Start: 57968, Stop: 58504, Start Num: 12

Candidate Starts for Wiggin_100:

(Start: 12 @57968 has 82 MA's), (Start: 16 @58004 has 37 MA's), (35, 58124), (38, 58163), (61, 58343), (69, 58397), (70, 58406), (72, 58412), (73, 58418), (74, 58430), (79, 58460), (84, 58496),

Gene: Wigglewigggle_83 Start: 54560, Stop: 55126, Start Num: 10

Candidate Starts for Wigglewigggle_83:

(Start: 10 @54560 has 57 MA's), (17, 54626), (31, 54707), (36, 54731), (47, 54830), (48, 54833), (50, 54842), (52, 54857), (64, 54953), (73, 55013), (83, 55094),

Gene: Wilder_85 Start: 54704, Stop: 55270, Start Num: 10

Candidate Starts for Wilder_85:

(Start: 10 @54704 has 57 MA's), (17, 54770), (36, 54875), (47, 54974), (48, 54977), (52, 55001), (64, 55097), (73, 55157), (83, 55238),

Gene: Willez_93 Start: 56615, Stop: 57121, Start Num: 16

Candidate Starts for Willez_93:

(Start: 12 @56579 has 82 MA's), (Start: 16 @56615 has 37 MA's), (35, 56735), (38, 56774), (61, 56954), (82, 57107),

Gene: Winky_84 Start: 54918, Stop: 55484, Start Num: 10

Candidate Starts for Winky_84:

(Start: 10 @54918 has 57 MA's), (17, 54984), (31, 55065), (36, 55089), (48, 55191), (52, 55215), (64, 55311), (73, 55371), (83, 55452),

Gene: Wyatt2_82 Start: 53301, Stop: 53867, Start Num: 10

Candidate Starts for Wyatt2_82:

(Start: 10 @53301 has 57 MA's), (Start: 16 @53340 has 37 MA's), (Start: 19 @53373 has 2 MA's), (36, 53472), (37, 53484), (38, 53499), (47, 53571), (52, 53598), (57, 53634), (64, 53694), (73, 53754), (83, 53835),

Gene: Xandras_97 Start: 57791, Stop: 58327, Start Num: 12

Candidate Starts for Xandras_97:

(Start: 12 @57791 has 82 MA's), (Start: 16 @57827 has 37 MA's), (35, 57947), (38, 57986), (61, 58166), (69, 58220), (70, 58229), (72, 58235), (73, 58241), (74, 58253), (79, 58283), (84, 58319),

Gene: YassJohnny_95 Start: 57147, Stop: 57647, Start Num: 16

Candidate Starts for YassJohnny_95:

(Start: 12 @57111 has 82 MA's), (Start: 16 @57147 has 37 MA's), (35, 57267), (38, 57306), (61, 57486), (69, 57540), (70, 57549), (72, 57555), (73, 57561), (74, 57573), (79, 57603), (84, 57639),

Gene: Yeet_127 Start: 72469, Stop: 73026, Start Num: 9

Candidate Starts for Yeet_127:

(Start: 9 @72469 has 14 MA's), (21, 72550), (34, 72631), (43, 72718), (52, 72772), (53, 72781), (54, 72784), (58, 72814), (76, 72952), (81, 72991),

Gene: Youngblood_101 Start: 59297, Stop: 59797, Start Num: 16

Candidate Starts for Youngblood_101:

(Start: 12 @59261 has 82 MA's), (Start: 16 @59297 has 37 MA's), (35, 59417), (38, 59456), (61, 59636), (69, 59690), (70, 59699), (72, 59705), (73, 59711), (74, 59723), (79, 59753), (84, 59789),

Gene: Zakai_85 Start: 55024, Stop: 55590, Start Num: 10

Candidate Starts for Zakai_85:

(Start: 10 @55024 has 57 MA's), (17, 55090), (31, 55171), (36, 55195), (47, 55294), (48, 55297), (52, 55321), (64, 55417), (73, 55477), (83, 55558),

Gene: Zaria_82 Start: 52753, Stop: 53319, Start Num: 10

Candidate Starts for Zaria_82:

(Start: 10 @52753 has 57 MA's), (Start: 16 @52792 has 37 MA's), (Start: 19 @52825 has 2 MA's), (36, 52924), (37, 52936), (38, 52951), (47, 53023), (52, 53050), (57, 53086), (64, 53146), (67, 53164), (73, 53206), (83, 53287),

Gene: Zelink_128 Start: 73236, Stop: 73775, Start Num: 14

Candidate Starts for Zelink_128:

(Start: 14 @73236 has 25 MA's), (Start: 16 @73266 has 37 MA's), (34, 73380), (36, 73395), (40, 73452), (44, 73473), (50, 73506), (58, 73563), (76, 73701), (81, 73740),

Gene: xkcd_101 Start: 59445, Stop: 59981, Start Num: 12

Candidate Starts for xkcd_101:

(Start: 12 @59445 has 82 MA's), (Start: 16 @59481 has 37 MA's), (35, 59601), (38, 59640), (61, 59820), (69, 59874), (70, 59883), (72, 59889), (73, 59895), (74, 59907), (79, 59937), (84, 59973),