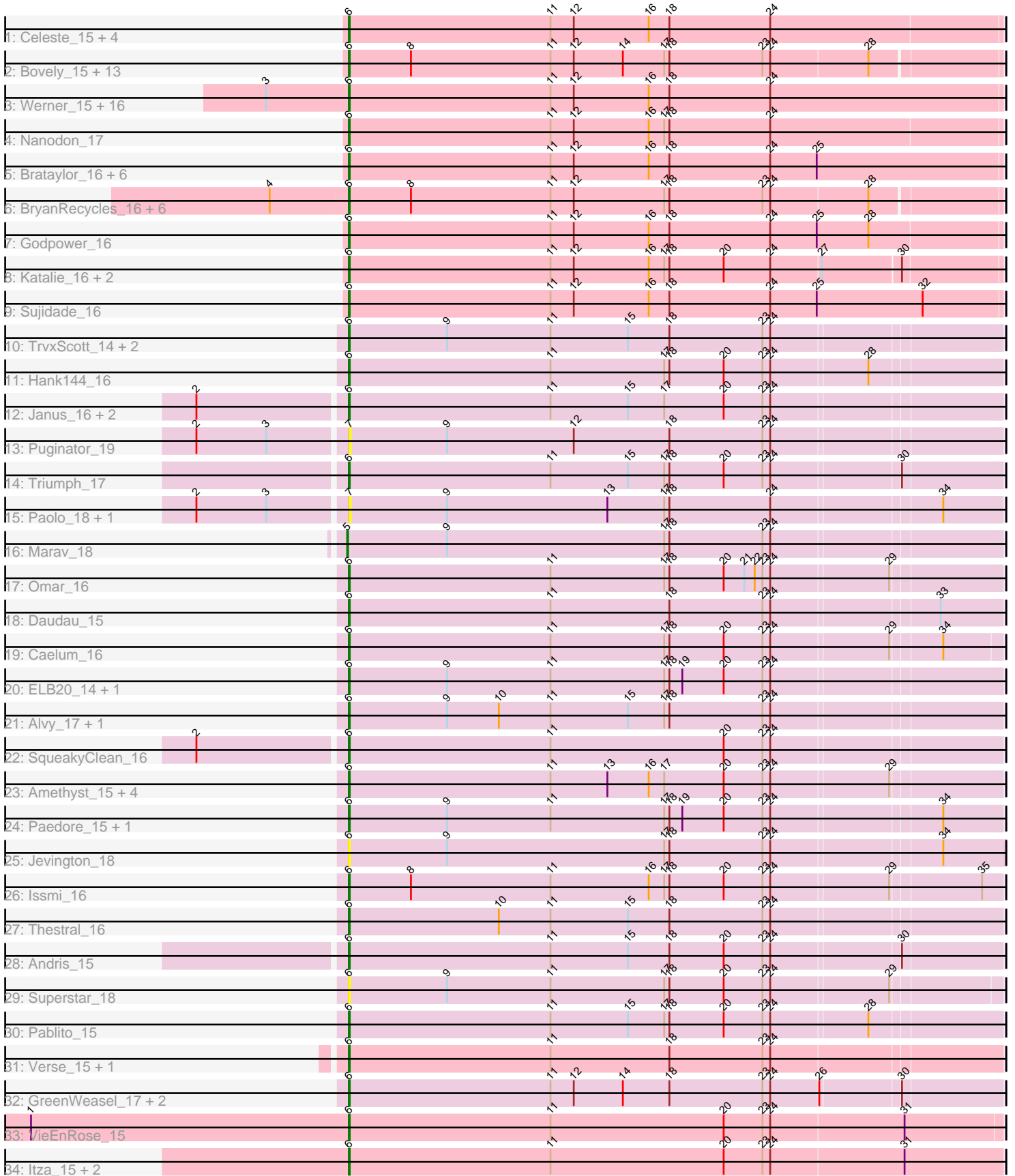


Pham 160300



Note: Tracks are now grouped by subcluster and scaled. Switching in subcluster is indicated by changes in track color. Track scale is now set by default to display the region 30 bp upstream of start 1 to 30 bp downstream of the last possible start. If this default region is judged to be packed too tightly with annotated starts, the track will be further scaled to only show that region of the ORF with annotated starts. This action will be indicated by adding "Zoomed" to the title. For starts, yellow indicates the location of called starts comprised solely of Glimmer/GeneMark auto-annotations, green indicates the location of called starts with at least 1 manual gene annotation.

Pham 160300 Report

This analysis was run 04/28/24 on database version 559.

WARNING: Pham size does not match number of genes in report. Either unphamerated genes have been added (by you) or starterator has removed genes due to invalid start codon.

Pham number 160300 has 98 members, 9 are drafts.

Phages represented in each track:

- Track 1 : Celeste_15, Lannister_16, Goby_15, Dattran_16, Toma_15
- Track 2 : Bovely_15, Esperer_15, SunsetPointe_15, Indigo_15, Nerdos_15, Ozzie_15, Caliburn_15, Hydra_17, Aaronocolus_15, Leviticus_15, Unstoppable_15, Legacy_15, BeardedLady_16, Phettuccine_15
- Track 3 : Werner_15, Yasdnil_15, Whatever_15, Chucky_15, OzzyJ_16, Hippo_15, Snorlax_15, TagePhighter_16, SarahRose_15, BarryBee_17, Emaanora_16, TuanPN_15, Asten_15, Dwayne_15, Maneekul_15, Triste_15, Ejemplo_15
- Track 4 : Nanodon_17
- Track 5 : Brataylor_16, Zemlya_16, Nabi_15, Lorelei_15, Rana_15, Lika_15, Danzina_16
- Track 6 : BryanRecycles_16, Oliynyk_16, Rusticus_16, Eddasa_16, Izzy_16, EnochSoames_16, Jash_16
- Track 7 : Godpower_16
- Track 8 : Katalie_16, RedBear_17, South40_16
- Track 9 : Sujidade_16
- Track 10 : TrvxScott_14, Bowden_16, TinaBelcher_15
- Track 11 : Hank144_16
- Track 12 : Janus_16, GirlDinner_16, Animus_16
- Track 13 : Puginator_19
- Track 14 : Triumph_17
- Track 15 : Paolo_18, Zainub_20
- Track 16 : Marav_18
- Track 17 : Omar_16
- Track 18 : Daudau_15
- Track 19 : Caelum_16
- Track 20 : ELB20_14, R4_15
- Track 21 : Alvy_17, BartholomewSD_17
- Track 22 : SqueakyClean_16
- Track 23 : Amethyst_15, Haizum_15, Tefunt_15, Nishikigoi_15, Diane_15
- Track 24 : Paedore_15, Loofah_16
- Track 25 : Jevington_18
- Track 26 : Issmi_16
- Track 27 : Thestral_16

- Track 28 : Andris_15
- Track 29 : Superstar_18
- Track 30 : Pablito_15
- Track 31 : Verse_15, Amela_15
- Track 32 : GreenWeasel_17, BroPlease_16, phiHau3_17
- Track 33 : VieEnRose_15
- Track 34 : Itza_15, Celia_15, Urza_15

Summary of Final Annotations (See graph section above for start numbers):

The start number called the most often in the published annotations is 6, it was called in 88 of the 89 non-draft genes in the pham.

Genes that call this "Most Annotated" start:

- Aaronocolus_15, Alvy_17, Amela_15, Amethyst_15, Andris_15, Animus_16, Asten_15, BarryBee_17, BartholomewSD_17, BeardedLady_16, Bovely_15, Bowden_16, Brataylor_16, BroPlease_16, BryanRecycles_16, Caelum_16, Caliburn_15, Celeste_15, Celia_15, Chucky_15, Danzina_16, Dattran_16, Daudau_15, Diane_15, Dwayne_15, ELB20_14, Eddasa_16, Ejemplo_15, Emaanora_16, EnochSoames_16, Esperer_15, GirlDinner_16, Goby_15, Godpower_16, GreenWeasel_17, Haizum_15, Hank144_16, Hippo_15, Hydra_17, Indigo_15, Issmi_16, Itza_15, Izzy_16, Janus_16, Jash_16, Jevington_18, Katalie_16, Lannister_16, Legacy_15, Leviticus_15, Lika_15, Loofah_16, Lorelei_15, Maneekul_15, Nabi_15, Nanodon_17, Nerdos_15, Nishikigoi_15, Oliynyk_16, Omar_16, Ozzie_15, OzzyJ_16, Pablito_15, Paedore_15, Phettuccine_15, R4_15, Rana_15, RedBear_17, Rusticus_16, SarahRose_15, Snorlax_15, South40_16, SqueakyClean_16, Sujidade_16, SunsetPointe_15, Superstar_18, TagePhighter_16, Tefunt_15, Thestral_16, TinaBelcher_15, Toma_15, Triste_15, Triumph_17, TrvxScott_14, TuanPN_15, Unstoppable_15, Urza_15, Verse_15, VieEnRose_15, Werner_15, Whatever_15, Yasdnil_15, Zemlya_16, phiHau3_17,

Genes that have the "Most Annotated" start but do not call it:

-

Genes that do not have the "Most Annotated" start:

- Marav_18, Paolo_18, Puginator_19, Zainub_20,

Summary by start number:

Start 5:

- Found in 1 of 98 (1.0%) of genes in pham
- Manual Annotations of this start: 1 of 89
- Called 100.0% of time when present
- Phage (with cluster) where this start called: Marav_18 (BD2),

Start 6:

- Found in 94 of 98 (95.9%) of genes in pham
- Manual Annotations of this start: 88 of 89
- Called 100.0% of time when present

- Phage (with cluster) where this start called: Aaronocolus_15 (BD1), Alvy_17 (BD2), Amela_15 (BD3), Amethyst_15 (BD2), Andris_15 (BD2), Animus_16 (BD2), Asten_15 (BD1), BarryBee_17 (BD1), BartholomewSD_17 (BD2), BeardedLady_16 (BD1), Bovely_15 (BD1), Bowden_16 (BD2), Brataylor_16 (BD1), BroPlease_16 (BD4), BryanRecycles_16 (BD1), Caelum_16 (BD2), Caliburn_15 (BD1), Celeste_15 (BD1), Celia_15 (BD6), Chucky_15 (BD1), Danzina_16 (BD1), Dattran_16 (BD1), Daudau_15 (BD2), Diane_15 (BD2), Dwayne_15 (BD1), ELB20_14 (BD2), Eddasa_16 (BD1), Ejemplo_15 (BD1), Emaanora_16 (BD1), EnochSoames_16 (BD1), Esperer_15 (BD1), GirlDinner_16 (BD2), Goby_15 (BD1), Godpower_16 (BD1), GreenWeasel_17 (BD4), Haizum_15 (BD2), Hank144_16 (BD2), Hippo_15 (BD1), Hydra_17 (BD1), Indigo_15 (BD1), Issmi_16 (BD2), Itza_15 (BD6), Izzy_16 (BD1), Janus_16 (BD2), Jash_16 (BD1), Jevington_18 (BD2), Katalie_16 (BD1), Lannister_16 (BD1), Legacy_15 (BD1), Leviticus_15 (BD1), Lika_15 (BD1), Loofah_16 (BD2), Lorelei_15 (BD1), Maneekul_15 (BD1), Nabi_15 (BD1), Nanodon_17 (BD1), Nerdos_15 (BD1), Nishikigoi_15 (BD2), Oliynyk_16 (BD1), Omar_16 (BD2), Ozzie_15 (BD1), OzzyJ_16 (BD1), Pablito_15 (BD2), Paedore_15 (BD2), Phettuccine_15 (BD1), R4_15 (BD2), Rana_15 (BD1), RedBear_17 (BD1), Rusticus_16 (BD1), SarahRose_15 (BD1), Snorlax_15 (BD1), South40_16 (BD1), SqueakyClean_16 (BD2), Sujidade_16 (BD1), SunsetPointe_15 (BD1), Superstar_18 (BD2), TagePhighter_16 (BD1), Tefunt_15 (BD2), Thestral_16 (BD2), TinaBelcher_15 (BD2), Toma_15 (BD1), Triste_15 (BD1), Triumph_17 (BD2), TrvxScott_14 (BD2), TuanPN_15 (BD1), Unstoppable_15 (BD1), Urza_15 (BD6), Verse_15 (BD3), VieEnRose_15 (BD6), Werner_15 (BD1), Whatever_15 (BD1), Yasdnil_15 (BD1), Zemlya_16 (BD1), phiHau3_17 (BD4),

Start 7:

- Found in 3 of 98 (3.1%) of genes in pham
- No Manual Annotations of this start.
- Called 100.0% of time when present
- Phage (with cluster) where this start called: Paolo_18 (BD2), Puginator_19 (BD2), Zainub_20 (BD2),

Summary by clusters:

There are 5 clusters represented in this pham: BD4, BD6, BD1, BD3, BD2,

Info for manual annotations of cluster BD1:

- Start number 6 was manually annotated 54 times for cluster BD1.

Info for manual annotations of cluster BD2:

- Start number 5 was manually annotated 1 time for cluster BD2.
- Start number 6 was manually annotated 25 times for cluster BD2.

Info for manual annotations of cluster BD3:

- Start number 6 was manually annotated 2 times for cluster BD3.

Info for manual annotations of cluster BD4:

- Start number 6 was manually annotated 3 times for cluster BD4.

Info for manual annotations of cluster BD6:

- Start number 6 was manually annotated 4 times for cluster BD6.

Gene Information:

Gene: Aaronocolus_15 Start: 10095, Stop: 10838, Start Num: 6

Candidate Starts for Aaronocolus_15:

(Start: 6 @10095 has 88 MA's), (8, 10167), (11, 10329), (12, 10356), (14, 10413), (17, 10461), (18, 10467), (23, 10575), (24, 10584), (28, 10695),

Gene: Alvy_17 Start: 10094, Stop: 10834, Start Num: 6

Candidate Starts for Alvy_17:

(Start: 6 @10094 has 88 MA's), (9, 10208), (10, 10268), (11, 10328), (15, 10418), (17, 10460), (18, 10466), (23, 10574), (24, 10583),

Gene: Amela_15 Start: 10262, Stop: 11005, Start Num: 6

Candidate Starts for Amela_15:

(Start: 6 @10262 has 88 MA's), (11, 10496), (18, 10634), (23, 10742), (24, 10751),

Gene: Amethyst_15 Start: 9916, Stop: 10656, Start Num: 6

Candidate Starts for Amethyst_15:

(Start: 6 @9916 has 88 MA's), (11, 10150), (13, 10216), (16, 10264), (17, 10282), (20, 10351), (23, 10396), (24, 10405), (29, 10537),

Gene: Andris_15 Start: 9902, Stop: 10642, Start Num: 6

Candidate Starts for Andris_15:

(Start: 6 @9902 has 88 MA's), (11, 10136), (15, 10226), (18, 10274), (20, 10337), (23, 10382), (24, 10391), (30, 10532),

Gene: Animus_16 Start: 10255, Stop: 10995, Start Num: 6

Candidate Starts for Animus_16:

(2, 10087), (Start: 6 @10255 has 88 MA's), (11, 10489), (15, 10579), (17, 10621), (20, 10690), (23, 10735), (24, 10744),

Gene: Asten_15 Start: 10053, Stop: 10805, Start Num: 6

Candidate Starts for Asten_15:

(3, 9957), (Start: 6 @10053 has 88 MA's), (11, 10287), (12, 10314), (16, 10401), (18, 10425), (24, 10542),

Gene: BarryBee_17 Start: 10060, Stop: 10815, Start Num: 6

Candidate Starts for BarryBee_17:

(3, 9964), (Start: 6 @10060 has 88 MA's), (11, 10294), (12, 10321), (16, 10408), (18, 10432), (24, 10549),

Gene: BartholomewSD_17 Start: 10094, Stop: 10834, Start Num: 6

Candidate Starts for BartholomewSD_17:

(Start: 6 @10094 has 88 MA's), (9, 10208), (10, 10268), (11, 10328), (15, 10418), (17, 10460), (18, 10466), (23, 10574), (24, 10583),

Gene: BeardedLady_16 Start: 10342, Stop: 11085, Start Num: 6

Candidate Starts for BeardedLady_16:

(Start: 6 @10342 has 88 MA's), (8, 10414), (11, 10576), (12, 10603), (14, 10660), (17, 10708), (18, 10714), (23, 10822), (24, 10831), (28, 10942),

Gene: Bovely_15 Start: 10101, Stop: 10844, Start Num: 6

Candidate Starts for Bovely_15:

(Start: 6 @10101 has 88 MA's), (8, 10173), (11, 10335), (12, 10362), (14, 10419), (17, 10467), (18, 10473), (23, 10581), (24, 10590), (28, 10701),

Gene: Bowden_16 Start: 10011, Stop: 10751, Start Num: 6

Candidate Starts for Bowden_16:

(Start: 6 @10011 has 88 MA's), (9, 10125), (11, 10245), (15, 10335), (18, 10383), (23, 10491), (24, 10500),

Gene: Brataylor_16 Start: 10066, Stop: 10821, Start Num: 6

Candidate Starts for Brataylor_16:

(Start: 6 @10066 has 88 MA's), (11, 10300), (12, 10327), (16, 10414), (18, 10438), (24, 10555), (25, 10609),

Gene: BroPlease_16 Start: 10267, Stop: 11007, Start Num: 6

Candidate Starts for BroPlease_16:

(Start: 6 @10267 has 88 MA's), (11, 10501), (12, 10528), (14, 10585), (18, 10639), (23, 10747), (24, 10756), (26, 10810), (30, 10897),

Gene: BryanRecycles_16 Start: 10258, Stop: 11001, Start Num: 6

Candidate Starts for BryanRecycles_16:

(4, 10168), (Start: 6 @10258 has 88 MA's), (8, 10330), (11, 10492), (12, 10519), (17, 10624), (18, 10630), (23, 10738), (24, 10747), (28, 10858),

Gene: Caelum_16 Start: 9887, Stop: 10624, Start Num: 6

Candidate Starts for Caelum_16:

(Start: 6 @9887 has 88 MA's), (11, 10121), (17, 10253), (18, 10259), (20, 10322), (23, 10367), (24, 10376), (29, 10508), (34, 10562),

Gene: Caliburn_15 Start: 10075, Stop: 10818, Start Num: 6

Candidate Starts for Caliburn_15:

(Start: 6 @10075 has 88 MA's), (8, 10147), (11, 10309), (12, 10336), (14, 10393), (17, 10441), (18, 10447), (23, 10555), (24, 10564), (28, 10675),

Gene: Celeste_15 Start: 10064, Stop: 10816, Start Num: 6

Candidate Starts for Celeste_15:

(Start: 6 @10064 has 88 MA's), (11, 10298), (12, 10325), (16, 10412), (18, 10436), (24, 10553),

Gene: Celia_15 Start: 10381, Stop: 11133, Start Num: 6

Candidate Starts for Celia_15:

(Start: 6 @10381 has 88 MA's), (11, 10615), (20, 10816), (23, 10861), (24, 10870), (31, 11023),

Gene: Chucky_15 Start: 10061, Stop: 10816, Start Num: 6

Candidate Starts for Chucky_15:

(3, 9965), (Start: 6 @10061 has 88 MA's), (11, 10295), (12, 10322), (16, 10409), (18, 10433), (24, 10550),

Gene: Danzina_16 Start: 10268, Stop: 11023, Start Num: 6

Candidate Starts for Danzina_16:

(Start: 6 @10268 has 88 MA's), (11, 10502), (12, 10529), (16, 10616), (18, 10640), (24, 10757), (25, 10811),

Gene: Dattran_16 Start: 10063, Stop: 10815, Start Num: 6

Candidate Starts for Dattran_16:

(Start: 6 @10063 has 88 MA's), (11, 10297), (12, 10324), (16, 10411), (18, 10435), (24, 10552),

Gene: Daudau_15 Start: 9998, Stop: 10738, Start Num: 6

Candidate Starts for Daudau_15:

(Start: 6 @9998 has 88 MA's), (11, 10232), (18, 10370), (23, 10478), (24, 10487), (33, 10670),

Gene: Diane_15 Start: 9915, Stop: 10655, Start Num: 6

Candidate Starts for Diane_15:

(Start: 6 @9915 has 88 MA's), (11, 10149), (13, 10215), (16, 10263), (17, 10281), (20, 10350), (23, 10395), (24, 10404), (29, 10536),

Gene: Dwayne_15 Start: 10060, Stop: 10812, Start Num: 6

Candidate Starts for Dwayne_15:

(3, 9964), (Start: 6 @10060 has 88 MA's), (11, 10294), (12, 10321), (16, 10408), (18, 10432), (24, 10549),

Gene: ELB20_14 Start: 10026, Stop: 10766, Start Num: 6

Candidate Starts for ELB20_14:

(Start: 6 @10026 has 88 MA's), (9, 10140), (11, 10260), (17, 10392), (18, 10398), (19, 10413), (20, 10461), (23, 10506), (24, 10515),

Gene: Eddasa_16 Start: 10258, Stop: 11001, Start Num: 6

Candidate Starts for Eddasa_16:

(4, 10168), (Start: 6 @10258 has 88 MA's), (8, 10330), (11, 10492), (12, 10519), (17, 10624), (18, 10630), (23, 10738), (24, 10747), (28, 10858),

Gene: Ejemplo_15 Start: 10063, Stop: 10815, Start Num: 6

Candidate Starts for Ejemplo_15:

(3, 9967), (Start: 6 @10063 has 88 MA's), (11, 10297), (12, 10324), (16, 10411), (18, 10435), (24, 10552),

Gene: Emaanora_16 Start: 10060, Stop: 10815, Start Num: 6

Candidate Starts for Emaanora_16:

(3, 9964), (Start: 6 @10060 has 88 MA's), (11, 10294), (12, 10321), (16, 10408), (18, 10432), (24, 10549),

Gene: EnochSoames_16 Start: 10254, Stop: 10997, Start Num: 6

Candidate Starts for EnochSoames_16:

(4, 10164), (Start: 6 @10254 has 88 MA's), (8, 10326), (11, 10488), (12, 10515), (17, 10620), (18, 10626), (23, 10734), (24, 10743), (28, 10854),

Gene: Esperer_15 Start: 10095, Stop: 10838, Start Num: 6

Candidate Starts for Esperer_15:

(Start: 6 @10095 has 88 MA's), (8, 10167), (11, 10329), (12, 10356), (14, 10413), (17, 10461), (18, 10467), (23, 10575), (24, 10584), (28, 10695),

Gene: GirlDinner_16 Start: 9917, Stop: 10657, Start Num: 6

Candidate Starts for GirlDinner_16:

(2, 9749), (Start: 6 @9917 has 88 MA's), (11, 10151), (15, 10241), (17, 10283), (20, 10352), (23, 10397), (24, 10406),

Gene: Goby_15 Start: 10066, Stop: 10818, Start Num: 6

Candidate Starts for Goby_15:

(Start: 6 @10066 has 88 MA's), (11, 10300), (12, 10327), (16, 10414), (18, 10438), (24, 10555),

Gene: Godpower_16 Start: 10081, Stop: 10833, Start Num: 6

Candidate Starts for Godpower_16:

(Start: 6 @10081 has 88 MA's), (11, 10315), (12, 10342), (16, 10429), (18, 10453), (24, 10570), (25, 10624), (28, 10684),

Gene: GreenWeasel_17 Start: 10276, Stop: 11016, Start Num: 6

Candidate Starts for GreenWeasel_17:

(Start: 6 @10276 has 88 MA's), (11, 10510), (12, 10537), (14, 10594), (18, 10648), (23, 10756), (24, 10765), (26, 10819), (30, 10906),

Gene: Haizum_15 Start: 9945, Stop: 10685, Start Num: 6

Candidate Starts for Haizum_15:

(Start: 6 @9945 has 88 MA's), (11, 10179), (13, 10245), (16, 10293), (17, 10311), (20, 10380), (23, 10425), (24, 10434), (29, 10566),

Gene: Hank144_16 Start: 10219, Stop: 10959, Start Num: 6

Candidate Starts for Hank144_16:

(Start: 6 @10219 has 88 MA's), (11, 10453), (17, 10585), (18, 10591), (20, 10654), (23, 10699), (24, 10708), (28, 10816),

Gene: Hippo_15 Start: 10060, Stop: 10815, Start Num: 6

Candidate Starts for Hippo_15:

(3, 9964), (Start: 6 @10060 has 88 MA's), (11, 10294), (12, 10321), (16, 10408), (18, 10432), (24, 10549),

Gene: Hydra_17 Start: 10623, Stop: 11366, Start Num: 6

Candidate Starts for Hydra_17:

(Start: 6 @10623 has 88 MA's), (8, 10695), (11, 10857), (12, 10884), (14, 10941), (17, 10989), (18, 10995), (23, 11103), (24, 11112), (28, 11223),

Gene: Indigo_15 Start: 10095, Stop: 10838, Start Num: 6

Candidate Starts for Indigo_15:

(Start: 6 @10095 has 88 MA's), (8, 10167), (11, 10329), (12, 10356), (14, 10413), (17, 10461), (18, 10467), (23, 10575), (24, 10584), (28, 10695),

Gene: Issmi_16 Start: 10216, Stop: 10956, Start Num: 6

Candidate Starts for Issmi_16:

(Start: 6 @10216 has 88 MA's), (8, 10288), (11, 10450), (16, 10564), (17, 10582), (18, 10588), (20, 10651), (23, 10696), (24, 10705), (29, 10837), (35, 10936),

Gene: Itza_15 Start: 10304, Stop: 11056, Start Num: 6

Candidate Starts for Itza_15:

(Start: 6 @10304 has 88 MA's), (11, 10538), (20, 10739), (23, 10784), (24, 10793), (31, 10946),

Gene: Izzy_16 Start: 10305, Stop: 11048, Start Num: 6

Candidate Starts for Izzy_16:

(4, 10215), (Start: 6 @10305 has 88 MA's), (8, 10377), (11, 10539), (12, 10566), (17, 10671), (18, 10677), (23, 10785), (24, 10794), (28, 10905),

Gene: Janus_16 Start: 10255, Stop: 10995, Start Num: 6

Candidate Starts for Janus_16:

(2, 10087), (Start: 6 @10255 has 88 MA's), (11, 10489), (15, 10579), (17, 10621), (20, 10690), (23, 10735), (24, 10744),

Gene: Jash_16 Start: 10258, Stop: 11001, Start Num: 6

Candidate Starts for Jash_16:

(4, 10168), (Start: 6 @10258 has 88 MA's), (8, 10330), (11, 10492), (12, 10519), (17, 10624), (18, 10630), (23, 10738), (24, 10747), (28, 10858),

Gene: Jevington_18 Start: 10542, Stop: 11288, Start Num: 6

Candidate Starts for Jevington_18:

(Start: 6 @10542 has 88 MA's), (9, 10656), (17, 10908), (18, 10914), (23, 11022), (24, 11031), (34, 11217),

Gene: Katalie_16 Start: 10336, Stop: 11079, Start Num: 6

Candidate Starts for Katalie_16:

(Start: 6 @10336 has 88 MA's), (11, 10570), (12, 10597), (16, 10684), (17, 10702), (18, 10708), (20, 10771), (24, 10825), (27, 10882), (30, 10969),

Gene: Lannister_16 Start: 10084, Stop: 10839, Start Num: 6

Candidate Starts for Lannister_16:

(Start: 6 @10084 has 88 MA's), (11, 10318), (12, 10345), (16, 10432), (18, 10456), (24, 10573),

Gene: Legacy_15 Start: 10066, Stop: 10809, Start Num: 6

Candidate Starts for Legacy_15:

(Start: 6 @10066 has 88 MA's), (8, 10138), (11, 10300), (12, 10327), (14, 10384), (17, 10432), (18, 10438), (23, 10546), (24, 10555), (28, 10666),

Gene: Leviticus_15 Start: 10095, Stop: 10838, Start Num: 6

Candidate Starts for Leviticus_15:

(Start: 6 @10095 has 88 MA's), (8, 10167), (11, 10329), (12, 10356), (14, 10413), (17, 10461), (18, 10467), (23, 10575), (24, 10584), (28, 10695),

Gene: Lika_15 Start: 10082, Stop: 10837, Start Num: 6

Candidate Starts for Lika_15:

(Start: 6 @10082 has 88 MA's), (11, 10316), (12, 10343), (16, 10430), (18, 10454), (24, 10571), (25, 10625),

Gene: Loofah_16 Start: 10057, Stop: 10797, Start Num: 6

Candidate Starts for Loofah_16:

(Start: 6 @10057 has 88 MA's), (9, 10171), (11, 10291), (17, 10423), (18, 10429), (19, 10444), (20, 10492), (23, 10537), (24, 10546), (34, 10732),

Gene: Lorelei_15 Start: 10054, Stop: 10806, Start Num: 6

Candidate Starts for Lorelei_15:

(Start: 6 @10054 has 88 MA's), (11, 10288), (12, 10315), (16, 10402), (18, 10426), (24, 10543), (25, 10597),

Gene: Maneekul_15 Start: 10062, Stop: 10814, Start Num: 6

Candidate Starts for Maneekul_15:

(3, 9966), (Start: 6 @10062 has 88 MA's), (11, 10296), (12, 10323), (16, 10410), (18, 10434), (24, 10551),

Gene: Marav_18 Start: 10892, Stop: 11632, Start Num: 5

Candidate Starts for Marav_18:

(Start: 5 @10892 has 1 MA's), (9, 11006), (17, 11258), (18, 11264), (23, 11372), (24, 11381),

Gene: Nabi_15 Start: 10054, Stop: 10806, Start Num: 6

Candidate Starts for Nabi_15:

(Start: 6 @10054 has 88 MA's), (11, 10288), (12, 10315), (16, 10402), (18, 10426), (24, 10543), (25, 10597),

Gene: Nanodon_17 Start: 10256, Stop: 11008, Start Num: 6

Candidate Starts for Nanodon_17:

(Start: 6 @10256 has 88 MA's), (11, 10490), (12, 10517), (16, 10604), (17, 10622), (18, 10628), (24, 10745),

Gene: Nerdos_15 Start: 10095, Stop: 10838, Start Num: 6

Candidate Starts for Nerdos_15:

(Start: 6 @10095 has 88 MA's), (8, 10167), (11, 10329), (12, 10356), (14, 10413), (17, 10461), (18, 10467), (23, 10575), (24, 10584), (28, 10695),

Gene: Nishikigoi_15 Start: 9945, Stop: 10685, Start Num: 6

Candidate Starts for Nishikigoi_15:

(Start: 6 @9945 has 88 MA's), (11, 10179), (13, 10245), (16, 10293), (17, 10311), (20, 10380), (23, 10425), (24, 10434), (29, 10566),

Gene: Oliynyk_16 Start: 10258, Stop: 11001, Start Num: 6

Candidate Starts for Oliynyk_16:

(4, 10168), (Start: 6 @10258 has 88 MA's), (8, 10330), (11, 10492), (12, 10519), (17, 10624), (18, 10630), (23, 10738), (24, 10747), (28, 10858),

Gene: Omar_16 Start: 10179, Stop: 10919, Start Num: 6

Candidate Starts for Omar_16:

(Start: 6 @10179 has 88 MA's), (11, 10413), (17, 10545), (18, 10551), (20, 10614), (21, 10638), (22, 10650), (23, 10659), (24, 10668), (29, 10800),

Gene: Ozzie_15 Start: 10075, Stop: 10818, Start Num: 6

Candidate Starts for Ozzie_15:

(Start: 6 @10075 has 88 MA's), (8, 10147), (11, 10309), (12, 10336), (14, 10393), (17, 10441), (18, 10447), (23, 10555), (24, 10564), (28, 10675),

Gene: OzzyJ_16 Start: 10054, Stop: 10806, Start Num: 6

Candidate Starts for OzzyJ_16:

(3, 9958), (Start: 6 @10054 has 88 MA's), (11, 10288), (12, 10315), (16, 10402), (18, 10426), (24, 10543),

Gene: Pablito_15 Start: 9915, Stop: 10655, Start Num: 6

Candidate Starts for Pablito_15:

(Start: 6 @9915 has 88 MA's), (11, 10149), (15, 10239), (17, 10281), (18, 10287), (20, 10350), (23, 10395), (24, 10404), (28, 10512),

Gene: Paedore_15 Start: 10057, Stop: 10797, Start Num: 6

Candidate Starts for Paedore_15:

(Start: 6 @10057 has 88 MA's), (9, 10171), (11, 10291), (17, 10423), (18, 10429), (19, 10444), (20, 10492), (23, 10537), (24, 10546), (34, 10732),

Gene: Paolo_18 Start: 10558, Stop: 11295, Start Num: 7
Candidate Starts for Paolo_18:
(2, 10390), (3, 10471), (7, 10558), (9, 10669), (13, 10855), (17, 10921), (18, 10927), (24, 11044), (34, 11230),

Gene: Phettuccine_15 Start: 10095, Stop: 10838, Start Num: 6
Candidate Starts for Phettuccine_15:
(Start: 6 @10095 has 88 MA's), (8, 10167), (11, 10329), (12, 10356), (14, 10413), (17, 10461), (18, 10467), (23, 10575), (24, 10584), (28, 10695),

Gene: Puginator_19 Start: 10516, Stop: 11253, Start Num: 7
Candidate Starts for Puginator_19:
(2, 10348), (3, 10429), (7, 10516), (9, 10627), (12, 10774), (18, 10885), (23, 10993), (24, 11002),

Gene: R4_15 Start: 10037, Stop: 10777, Start Num: 6
Candidate Starts for R4_15:
(Start: 6 @10037 has 88 MA's), (9, 10151), (11, 10271), (17, 10403), (18, 10409), (19, 10424), (20, 10472), (23, 10517), (24, 10526),

Gene: Rana_15 Start: 10054, Stop: 10806, Start Num: 6
Candidate Starts for Rana_15:
(Start: 6 @10054 has 88 MA's), (11, 10288), (12, 10315), (16, 10402), (18, 10426), (24, 10543), (25, 10597),

Gene: RedBear_17 Start: 10336, Stop: 11079, Start Num: 6
Candidate Starts for RedBear_17:
(Start: 6 @10336 has 88 MA's), (11, 10570), (12, 10597), (16, 10684), (17, 10702), (18, 10708), (20, 10771), (24, 10825), (27, 10882), (30, 10969),

Gene: Rusticus_16 Start: 10258, Stop: 11001, Start Num: 6
Candidate Starts for Rusticus_16:
(4, 10168), (Start: 6 @10258 has 88 MA's), (8, 10330), (11, 10492), (12, 10519), (17, 10624), (18, 10630), (23, 10738), (24, 10747), (28, 10858),

Gene: SarahRose_15 Start: 10060, Stop: 10812, Start Num: 6
Candidate Starts for SarahRose_15:
(3, 9964), (Start: 6 @10060 has 88 MA's), (11, 10294), (12, 10321), (16, 10408), (18, 10432), (24, 10549),

Gene: Snorlax_15 Start: 10060, Stop: 10815, Start Num: 6
Candidate Starts for Snorlax_15:
(3, 9964), (Start: 6 @10060 has 88 MA's), (11, 10294), (12, 10321), (16, 10408), (18, 10432), (24, 10549),

Gene: South40_16 Start: 10336, Stop: 11079, Start Num: 6
Candidate Starts for South40_16:
(Start: 6 @10336 has 88 MA's), (11, 10570), (12, 10597), (16, 10684), (17, 10702), (18, 10708), (20, 10771), (24, 10825), (27, 10882), (30, 10969),

Gene: SqueakyClean_16 Start: 10181, Stop: 10921, Start Num: 6
Candidate Starts for SqueakyClean_16:
(2, 10013), (Start: 6 @10181 has 88 MA's), (11, 10415), (20, 10616), (23, 10661), (24, 10670),

Gene: Sujidade_16 Start: 10358, Stop: 11113, Start Num: 6
Candidate Starts for Sujidade_16:
(Start: 6 @10358 has 88 MA's), (11, 10592), (12, 10619), (16, 10706), (18, 10730), (24, 10847), (25, 10901), (32, 11024),

Gene: SunsetPointe_15 Start: 10085, Stop: 10828, Start Num: 6
Candidate Starts for SunsetPointe_15:
(Start: 6 @10085 has 88 MA's), (8, 10157), (11, 10319), (12, 10346), (14, 10403), (17, 10451), (18, 10457), (23, 10565), (24, 10574), (28, 10685),

Gene: Superstar_18 Start: 11073, Stop: 11810, Start Num: 6
Candidate Starts for Superstar_18:
(Start: 6 @11073 has 88 MA's), (9, 11187), (11, 11307), (17, 11439), (18, 11445), (20, 11508), (23, 11553), (24, 11562), (29, 11694),

Gene: TagePhighter_16 Start: 10060, Stop: 10815, Start Num: 6
Candidate Starts for TagePhighter_16:
(3, 9964), (Start: 6 @10060 has 88 MA's), (11, 10294), (12, 10321), (16, 10408), (18, 10432), (24, 10549),

Gene: Tefunt_15 Start: 9945, Stop: 10685, Start Num: 6
Candidate Starts for Tefunt_15:
(Start: 6 @9945 has 88 MA's), (11, 10179), (13, 10245), (16, 10293), (17, 10311), (20, 10380), (23, 10425), (24, 10434), (29, 10566),

Gene: Thestral_16 Start: 10014, Stop: 10754, Start Num: 6
Candidate Starts for Thestral_16:
(Start: 6 @10014 has 88 MA's), (10, 10188), (11, 10248), (15, 10338), (18, 10386), (23, 10494), (24, 10503),

Gene: TinaBelcher_15 Start: 9962, Stop: 10702, Start Num: 6
Candidate Starts for TinaBelcher_15:
(Start: 6 @9962 has 88 MA's), (9, 10076), (11, 10196), (15, 10286), (18, 10334), (23, 10442), (24, 10451),

Gene: Toma_15 Start: 10066, Stop: 10818, Start Num: 6
Candidate Starts for Toma_15:
(Start: 6 @10066 has 88 MA's), (11, 10300), (12, 10327), (16, 10414), (18, 10438), (24, 10555),

Gene: Triste_15 Start: 10054, Stop: 10806, Start Num: 6
Candidate Starts for Triste_15:
(3, 9958), (Start: 6 @10054 has 88 MA's), (11, 10288), (12, 10315), (16, 10402), (18, 10426), (24, 10543),

Gene: Triumph_17 Start: 9970, Stop: 10710, Start Num: 6
Candidate Starts for Triumph_17:
(Start: 6 @9970 has 88 MA's), (11, 10204), (15, 10294), (17, 10336), (18, 10342), (20, 10405), (23, 10450), (24, 10459), (30, 10600),

Gene: TrvxScott_14 Start: 9963, Stop: 10703, Start Num: 6
Candidate Starts for TrvxScott_14:
(Start: 6 @9963 has 88 MA's), (9, 10077), (11, 10197), (15, 10287), (18, 10335), (23, 10443), (24, 10452),

Gene: TuanPN_15 Start: 10063, Stop: 10815, Start Num: 6

Candidate Starts for TuanPN_15:

(3, 9967), (Start: 6 @10063 has 88 MA's), (11, 10297), (12, 10324), (16, 10411), (18, 10435), (24, 10552),

Gene: Unstoppable_15 Start: 10086, Stop: 10829, Start Num: 6

Candidate Starts for Unstoppable_15:

(Start: 6 @10086 has 88 MA's), (8, 10158), (11, 10320), (12, 10347), (14, 10404), (17, 10452), (18, 10458), (23, 10566), (24, 10575), (28, 10686),

Gene: Urza_15 Start: 10316, Stop: 11068, Start Num: 6

Candidate Starts for Urza_15:

(Start: 6 @10316 has 88 MA's), (11, 10550), (20, 10751), (23, 10796), (24, 10805), (31, 10958),

Gene: Verse_15 Start: 10256, Stop: 10999, Start Num: 6

Candidate Starts for Verse_15:

(Start: 6 @10256 has 88 MA's), (11, 10490), (18, 10628), (23, 10736), (24, 10745),

Gene: VieEnRose_15 Start: 10386, Stop: 11135, Start Num: 6

Candidate Starts for VieEnRose_15:

(1, 10017), (Start: 6 @10386 has 88 MA's), (11, 10620), (20, 10821), (23, 10866), (24, 10875), (31, 11028),

Gene: Werner_15 Start: 10061, Stop: 10816, Start Num: 6

Candidate Starts for Werner_15:

(3, 9965), (Start: 6 @10061 has 88 MA's), (11, 10295), (12, 10322), (16, 10409), (18, 10433), (24, 10550),

Gene: Whatever_15 Start: 10061, Stop: 10816, Start Num: 6

Candidate Starts for Whatever_15:

(3, 9965), (Start: 6 @10061 has 88 MA's), (11, 10295), (12, 10322), (16, 10409), (18, 10433), (24, 10550),

Gene: Yasdni1_15 Start: 10059, Stop: 10811, Start Num: 6

Candidate Starts for Yasdni1_15:

(3, 9963), (Start: 6 @10059 has 88 MA's), (11, 10293), (12, 10320), (16, 10407), (18, 10431), (24, 10548),

Gene: Zainub_20 Start: 10516, Stop: 11253, Start Num: 7

Candidate Starts for Zainub_20:

(2, 10348), (3, 10429), (7, 10516), (9, 10627), (13, 10813), (17, 10879), (18, 10885), (24, 11002), (34, 11188),

Gene: Zemlya_16 Start: 10074, Stop: 10829, Start Num: 6

Candidate Starts for Zemlya_16:

(Start: 6 @10074 has 88 MA's), (11, 10308), (12, 10335), (16, 10422), (18, 10446), (24, 10563), (25, 10617),

Gene: phiHau3_17 Start: 10244, Stop: 10984, Start Num: 6

Candidate Starts for phiHau3_17:

(Start: 6 @10244 has 88 MA's), (11, 10478), (12, 10505), (14, 10562), (18, 10616), (23, 10724), (24, 10733), (26, 10787), (30, 10874),

