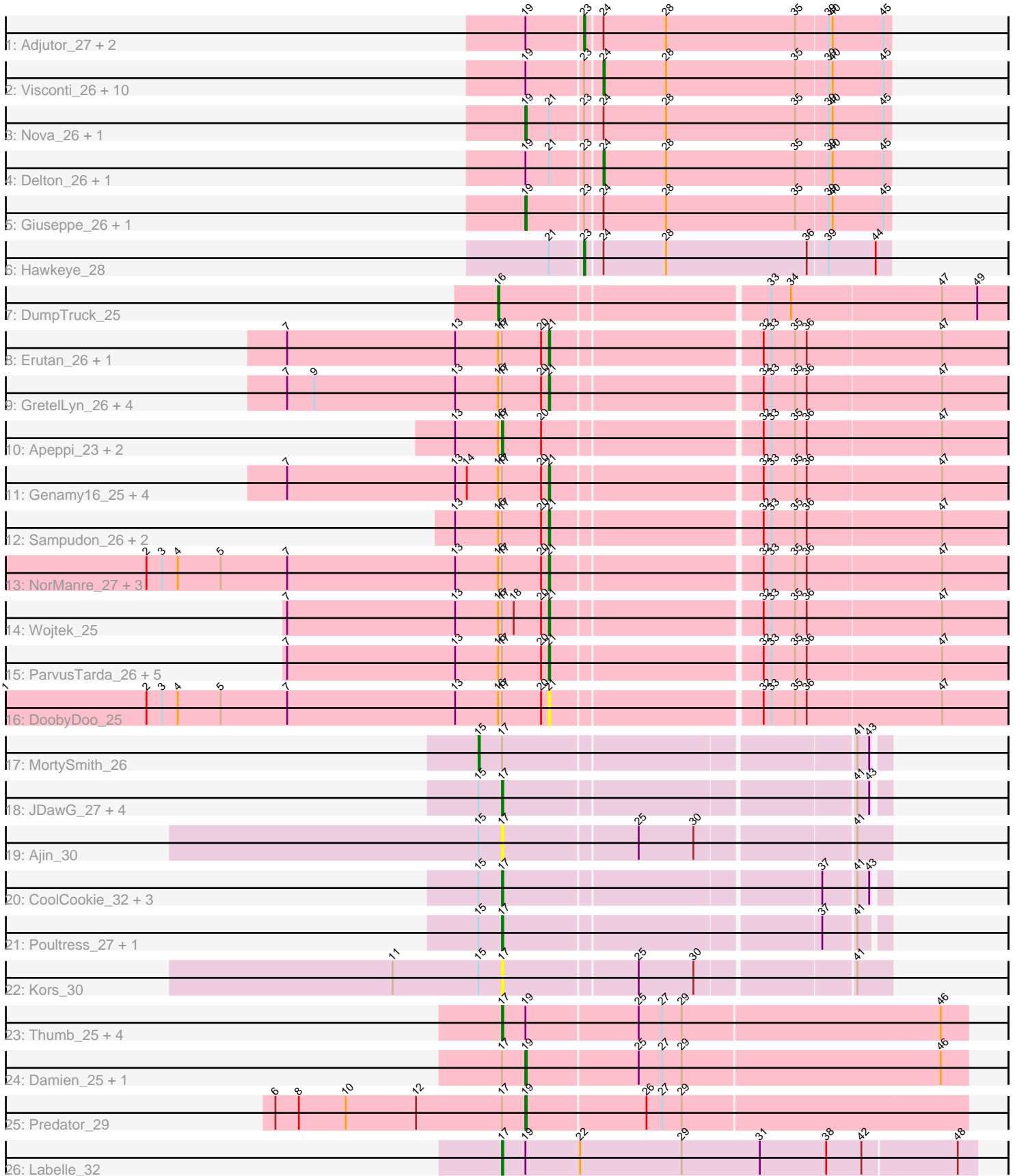


Pham 160368



Note: Tracks are now grouped by subcluster and scaled. Switching in subcluster is indicated by changes in track color. Track scale is now set by default to display the region 30 bp upstream of start 1 to 30 bp downstream of the last possible start. If this default region is judged to be packed too tightly with annotated starts, the track will be further scaled to only show that region of the ORF with annotated starts. This action will be indicated by adding "Zoomed" to the title. For starts, yellow indicates the location of called starts comprised solely of Glimmer/GeneMark auto-annotations, green indicates the location of called starts with at least 1 manual gene annotation.

Pham 160368 Report

This analysis was run 04/28/24 on database version 559.

Pham number 160368 has 75 members, 19 are drafts.

Phages represented in each track:

- Track 1 : Adjutor_27, Butterscotch_26, PLOT_27
- Track 2 : Visconti_26, Chill_27, KandZ_26, WaldoWhy_27, Troll4_26, Helpful_27, Prager_26, Penelope2018_26, BigMama_24, Thoth_26, Mopey_26
- Track 3 : Nova_26, SirHarley_25
- Track 4 : Delton_26, Erk16_26
- Track 5 : Giuseppe_26, Gumball_25
- Track 6 : Hawkeye_28
- Track 7 : DumpTruck_25
- Track 8 : Erutan_26, Ranch_26
- Track 9 : GretelLyn_26, Zany_24, Yikes_27, Sadboi_26, OtterstedtS21_26
- Track 10 : Apeppi_23, Tillicus_26, LuckyLeo_25
- Track 11 : Genamy16_25, Alyssamiracle_25, Avian_24, NovaSharks_25, Rumi_25
- Track 12 : Sampudon_26, Lila22_27, Jalebi_25
- Track 13 : NorManre_27, Gibbin_27, Penjamin420_27, Patos_27
- Track 14 : Wojtek_25
- Track 15 : ParvusTarda_26, BirthdayBoy_27, MoiGyank_28, Fulcrum_27, GOATification_27, Lambo_26
- Track 16 : DoobyDoo_25
- Track 17 : MortySmith_26
- Track 18 : JDawG_27, Dauntless_28, JingleBells_27, Crestdrop_28, Erudite_27
- Track 19 : Ajin_30
- Track 20 : CoolCookie_32, Rachella_28, OverHedge_28, Pharpay_28
- Track 21 : Poultruss_27, Hager_29
- Track 22 : Kors_30
- Track 23 : Thumb_25, Puissant_24, Beckerton_25, Phreeze_25, Megatron06_28
- Track 24 : Damien_25, Cborch11_26
- Track 25 : Predator_29
- Track 26 : Labelle_32

Summary of Final Annotations (See graph section above for start numbers):

The start number called the most often in the published annotations is 21, it was called in 22 of the 56 non-draft genes in the pham.

Genes that call this "Most Annotated" start:

- Alyssmiracle_25, Avian_24, BirthdayBoy_27, DoobyDoo_25, Erutan_26, Fulcrum_27, GOATification_27, Genamy16_25, Gibbin_27, Gretellyn_26, Jalebi_25, Lambo_26, Lila22_27, MoiGyank_28, NorManre_27, NovaSharks_25, OtterstedtS21_26, ParvusTarda_26, Patos_27, Penjamin420_27, Ranch_26, Rumi_25, Sadboi_26, Sampudon_26, Wojtek_25, Yikes_27, Zany_24,

Genes that have the "Most Annotated" start but do not call it:

- Delton_26, Erk16_26, Hawkeye_28, Nova_26, SirHarley_25,

Genes that do not have the "Most Annotated" start:

- Adjutor_27, Ajin_30, Apeppi_23, Beckerton_25, BigMama_24, Butterscotch_26, Cborch11_26, Chill_27, CoolCookie_32, Crestdrop_28, Damien_25, Dauntless_28, DumpTruck_25, Erudite_27, Giuseppe_26, Gumball_25, Hager_29, Helpful_27, JDawG_27, JingleBells_27, KandZ_26, Kors_30, Labelle_32, LuckyLeo_25, Megatron06_28, Mopey_26, MortySmith_26, OverHedge_28, PLOT_27, Penelope2018_26, Pharpay_28, Phreeze_25, Poultruss_27, Prager_26, Predator_29, Puissant_24, Rachella_28, Thoth_26, Thumb_25, Tillicus_26, Troll4_26, Visconti_26, WaldoWhy_27,

Summary by start number:

Start 15:

- Found in 14 of 75 (18.7%) of genes in pham
- Manual Annotations of this start: 1 of 56
- Called 7.1% of time when present
- Phage (with cluster) where this start called: MortySmith_26 (EF),

Start 16:

- Found in 31 of 75 (41.3%) of genes in pham
- Manual Annotations of this start: 1 of 56
- Called 3.2% of time when present
- Phage (with cluster) where this start called: DumpTruck_25 (DV),

Start 17:

- Found in 53 of 75 (70.7%) of genes in pham
- Manual Annotations of this start: 9 of 56
- Called 41.5% of time when present
- Phage (with cluster) where this start called: Ajin_30 (EF), Apeppi_23 (DV), Beckerton_25 (H1), CoolCookie_32 (EF), Crestdrop_28 (EF), Dauntless_28 (EF), Erudite_27 (EF), Hager_29 (EF), JDawG_27 (EF), JingleBells_27 (EF), Kors_30 (EF), Labelle_32 (U), LuckyLeo_25 (DV), Megatron06_28 (H1), OverHedge_28 (EF), Pharpay_28 (EF), Phreeze_25 (H1), Poultruss_27 (EF), Puissant_24 (H1), Rachella_28 (EF), Thumb_25 (H1), Tillicus_26 (DV),

Start 19:

- Found in 29 of 75 (38.7%) of genes in pham
- Manual Annotations of this start: 7 of 56
- Called 24.1% of time when present
- Phage (with cluster) where this start called: Cborch11_26 (H1), Damien_25 (H1), Giuseppe_26 (D1), Gumball_25 (D1), Nova_26 (D1), Predator_29 (H1), SirHarley_25 (D1),

Start 21:

- Found in 32 of 75 (42.7%) of genes in pham
- Manual Annotations of this start: 22 of 56
- Called 84.4% of time when present
- Phage (with cluster) where this start called: Alyssamiracle_25 (DV), Avian_24 (DV), BirthdayBoy_27 (DV), DoobyDoo_25 (DV), Erutan_26 (DV), Fulcrum_27 (DV), GOATification_27 (DV), Genamy16_25 (DV), Gibbin_27 (DV), GretelLyn_26 (DV), Jalebi_25 (DV), Lambo_26 (DV), Lila22_27 (DV), MoiGyank_28 (DV), NorManre_27 (DV), NovaSharks_25 (DV), OtterstedtS21_26 (DV), ParvusTarda_26 (DV), Patos_27 (DV), Penjamin420_27 (DV), Ranch_26 (DV), Rumi_25 (DV), Sadboi_26 (DV), Sampudon_26 (DV), Wojtek_25 (DV), Yikes_27 (DV), Zany_24 (DV),

Start 23:

- Found in 21 of 75 (28.0%) of genes in pham
- Manual Annotations of this start: 4 of 56
- Called 19.0% of time when present
- Phage (with cluster) where this start called: Adjutor_27 (D1), Butterscotch_26 (D1), Hawkeye_28 (D2), PLOT_27 (D1),

Start 24:

- Found in 21 of 75 (28.0%) of genes in pham
- Manual Annotations of this start: 12 of 56
- Called 61.9% of time when present
- Phage (with cluster) where this start called: BigMama_24 (D1), Chill_27 (D1), Delton_26 (D1), Erk16_26 (D1), Helpful_27 (D1), KandZ_26 (D1), Mopey_26 (D1), Penelope2018_26 (D1), Prager_26 (D1), Thoth_26 (D1), Troll4_26 (D1), Visconti_26 (D1), WaldoWhy_27 (D1),

Summary by clusters:

There are 6 clusters represented in this pham: EF, H1, U, DV, D2, D1,

Info for manual annotations of cluster D1:

- Start number 19 was manually annotated 4 times for cluster D1.
- Start number 23 was manually annotated 3 times for cluster D1.
- Start number 24 was manually annotated 12 times for cluster D1.

Info for manual annotations of cluster D2:

- Start number 23 was manually annotated 1 time for cluster D2.

Info for manual annotations of cluster DV:

- Start number 16 was manually annotated 1 time for cluster DV.
- Start number 17 was manually annotated 1 time for cluster DV.
- Start number 21 was manually annotated 22 times for cluster DV.

Info for manual annotations of cluster EF:

- Start number 15 was manually annotated 1 time for cluster EF.
- Start number 17 was manually annotated 4 times for cluster EF.

Info for manual annotations of cluster H1:

- Start number 17 was manually annotated 3 times for cluster H1.
- Start number 19 was manually annotated 3 times for cluster H1.

Info for manual annotations of cluster U:

•Start number 17 was manually annotated 1 time for cluster U.

Gene Information:

Gene: Adjutor_27 Start: 16090, Stop: 16320, Start Num: 23

Candidate Starts for Adjutor_27:

(Start: 19 @16048 has 7 MA's), (Start: 23 @16090 has 4 MA's), (Start: 24 @16102 has 12 MA's), (28, 16150), (35, 16249), (39, 16273), (40, 16276), (45, 16315),

Gene: Ajin_30 Start: 14515, Stop: 14796, Start Num: 17

Candidate Starts for Ajin_30:

(Start: 15 @14497 has 1 MA's), (Start: 17 @14515 has 9 MA's), (25, 14614), (30, 14656), (41, 14770),

Gene: Alyssamiracle_25 Start: 14805, Stop: 15143, Start Num: 21

Candidate Starts for Alyssamiracle_25:

(7, 14604), (13, 14733), (14, 14742), (Start: 16 @14766 has 1 MA's), (Start: 17 @14769 has 9 MA's), (20, 14799), (Start: 21 @14805 has 22 MA's), (32, 14958), (33, 14964), (35, 14982), (36, 14991), (47, 15093),

Gene: Apeppi_23 Start: 16506, Stop: 16880, Start Num: 17

Candidate Starts for Apeppi_23:

(13, 16470), (Start: 16 @16503 has 1 MA's), (Start: 17 @16506 has 9 MA's), (20, 16536), (32, 16695), (33, 16701), (35, 16719), (36, 16728), (47, 16830),

Gene: Avian_24 Start: 14805, Stop: 15143, Start Num: 21

Candidate Starts for Avian_24:

(7, 14604), (13, 14733), (14, 14742), (Start: 16 @14766 has 1 MA's), (Start: 17 @14769 has 9 MA's), (20, 14799), (Start: 21 @14805 has 22 MA's), (32, 14958), (33, 14964), (35, 14982), (36, 14991), (47, 15093),

Gene: Beckerton_25 Start: 16403, Stop: 16753, Start Num: 17

Candidate Starts for Beckerton_25:

(Start: 17 @16403 has 9 MA's), (Start: 19 @16421 has 7 MA's), (25, 16505), (27, 16523), (29, 16538), (46, 16733),

Gene: BigMama_24 Start: 16178, Stop: 16396, Start Num: 24

Candidate Starts for BigMama_24:

(Start: 19 @16124 has 7 MA's), (Start: 23 @16166 has 4 MA's), (Start: 24 @16178 has 12 MA's), (28, 16226), (35, 16325), (39, 16349), (40, 16352), (45, 16391),

Gene: BirthdayBoy_27 Start: 17252, Stop: 17590, Start Num: 21

Candidate Starts for BirthdayBoy_27:

(7, 17051), (13, 17180), (Start: 16 @17213 has 1 MA's), (Start: 17 @17216 has 9 MA's), (20, 17246), (Start: 21 @17252 has 22 MA's), (32, 17405), (33, 17411), (35, 17429), (36, 17438), (47, 17540),

Gene: Butterscotch_26 Start: 16150, Stop: 16380, Start Num: 23

Candidate Starts for Butterscotch_26:

(Start: 19 @16108 has 7 MA's), (Start: 23 @16150 has 4 MA's), (Start: 24 @16162 has 12 MA's), (28, 16210), (35, 16309), (39, 16333), (40, 16336), (45, 16375),

Gene: Cborch11_26 Start: 15883, Stop: 16215, Start Num: 19
Candidate Starts for Cborch11_26:
(Start: 17 @15865 has 9 MA's), (Start: 19 @15883 has 7 MA's), (25, 15967), (27, 15985), (29, 16000),
(46, 16195),

Gene: Chill_27 Start: 16168, Stop: 16386, Start Num: 24
Candidate Starts for Chill_27:
(Start: 19 @16114 has 7 MA's), (Start: 23 @16156 has 4 MA's), (Start: 24 @16168 has 12 MA's), (28,
16216), (35, 16315), (39, 16339), (40, 16342), (45, 16381),

Gene: CoolCookie_32 Start: 14637, Stop: 14912, Start Num: 17
Candidate Starts for CoolCookie_32:
(Start: 15 @14619 has 1 MA's), (Start: 17 @14637 has 9 MA's), (37, 14868), (41, 14892), (43, 14901),

Gene: Crestdrop_28 Start: 13703, Stop: 13978, Start Num: 17
Candidate Starts for Crestdrop_28:
(Start: 15 @13685 has 1 MA's), (Start: 17 @13703 has 9 MA's), (41, 13958), (43, 13967),

Gene: Damien_25 Start: 15884, Stop: 16216, Start Num: 19
Candidate Starts for Damien_25:
(Start: 17 @15866 has 9 MA's), (Start: 19 @15884 has 7 MA's), (25, 15968), (27, 15986), (29, 16001),
(46, 16196),

Gene: Dauntless_28 Start: 14346, Stop: 14621, Start Num: 17
Candidate Starts for Dauntless_28:
(Start: 15 @14328 has 1 MA's), (Start: 17 @14346 has 9 MA's), (41, 14601), (43, 14610),

Gene: Delton_26 Start: 16174, Stop: 16392, Start Num: 24
Candidate Starts for Delton_26:
(Start: 19 @16120 has 7 MA's), (Start: 21 @16138 has 22 MA's), (Start: 23 @16162 has 4 MA's),
(Start: 24 @16174 has 12 MA's), (28, 16222), (35, 16321), (39, 16345), (40, 16348), (45, 16387),

Gene: DoobyDoo_25 Start: 16186, Stop: 16524, Start Num: 21
Candidate Starts for DoobyDoo_25:
(1, 15769), (2, 15877), (3, 15889), (4, 15901), (5, 15934), (7, 15985), (13, 16114), (Start: 16 @16147
has 1 MA's), (Start: 17 @16150 has 9 MA's), (20, 16180), (Start: 21 @16186 has 22 MA's), (32,
16339), (33, 16345), (35, 16363), (36, 16372), (47, 16474),

Gene: DumpTruck_25 Start: 16400, Stop: 16777, Start Num: 16
Candidate Starts for DumpTruck_25:
(Start: 16 @16400 has 1 MA's), (33, 16598), (34, 16613), (47, 16727), (49, 16754),

Gene: Erk16_26 Start: 16165, Stop: 16383, Start Num: 24
Candidate Starts for Erk16_26:
(Start: 19 @16111 has 7 MA's), (Start: 21 @16129 has 22 MA's), (Start: 23 @16153 has 4 MA's),
(Start: 24 @16165 has 12 MA's), (28, 16213), (35, 16312), (39, 16336), (40, 16339), (45, 16378),

Gene: Erudite_27 Start: 14346, Stop: 14621, Start Num: 17
Candidate Starts for Erudite_27:
(Start: 15 @14328 has 1 MA's), (Start: 17 @14346 has 9 MA's), (41, 14601), (43, 14610),

Gene: Erutan_26 Start: 16699, Stop: 17037, Start Num: 21
Candidate Starts for Erutan_26:

(7, 16498), (13, 16627), (Start: 16 @16660 has 1 MA's), (Start: 17 @16663 has 9 MA's), (20, 16693), (Start: 21 @16699 has 22 MA's), (32, 16852), (33, 16858), (35, 16876), (36, 16885), (47, 16987),

Gene: Fulcrum_27 Start: 17232, Stop: 17570, Start Num: 21

Candidate Starts for Fulcrum_27:

(7, 17031), (13, 17160), (Start: 16 @17193 has 1 MA's), (Start: 17 @17196 has 9 MA's), (20, 17226), (Start: 21 @17232 has 22 MA's), (32, 17385), (33, 17391), (35, 17409), (36, 17418), (47, 17520),

Gene: GOATification_27 Start: 17232, Stop: 17570, Start Num: 21

Candidate Starts for GOATification_27:

(7, 17031), (13, 17160), (Start: 16 @17193 has 1 MA's), (Start: 17 @17196 has 9 MA's), (20, 17226), (Start: 21 @17232 has 22 MA's), (32, 17385), (33, 17391), (35, 17409), (36, 17418), (47, 17520),

Gene: Genamy16_25 Start: 14805, Stop: 15143, Start Num: 21

Candidate Starts for Genamy16_25:

(7, 14604), (13, 14733), (14, 14742), (Start: 16 @14766 has 1 MA's), (Start: 17 @14769 has 9 MA's), (20, 14799), (Start: 21 @14805 has 22 MA's), (32, 14958), (33, 14964), (35, 14982), (36, 14991), (47, 15093),

Gene: Gibbin_27 Start: 17304, Stop: 17642, Start Num: 21

Candidate Starts for Gibbin_27:

(2, 16995), (3, 17007), (4, 17019), (5, 17052), (7, 17103), (13, 17232), (Start: 16 @17265 has 1 MA's), (Start: 17 @17268 has 9 MA's), (20, 17298), (Start: 21 @17304 has 22 MA's), (32, 17457), (33, 17463), (35, 17481), (36, 17490), (47, 17592),

Gene: Giuseppe_26 Start: 16100, Stop: 16372, Start Num: 19

Candidate Starts for Giuseppe_26:

(Start: 19 @16100 has 7 MA's), (Start: 23 @16142 has 4 MA's), (Start: 24 @16154 has 12 MA's), (28, 16202), (35, 16301), (39, 16325), (40, 16328), (45, 16367),

Gene: Gretellyn_26 Start: 17566, Stop: 17904, Start Num: 21

Candidate Starts for Gretellyn_26:

(7, 17365), (9, 17386), (13, 17494), (Start: 16 @17527 has 1 MA's), (Start: 17 @17530 has 9 MA's), (20, 17560), (Start: 21 @17566 has 22 MA's), (32, 17719), (33, 17725), (35, 17743), (36, 17752), (47, 17854),

Gene: Gumball_25 Start: 16058, Stop: 16330, Start Num: 19

Candidate Starts for Gumball_25:

(Start: 19 @16058 has 7 MA's), (Start: 23 @16100 has 4 MA's), (Start: 24 @16112 has 12 MA's), (28, 16160), (35, 16259), (39, 16283), (40, 16286), (45, 16325),

Gene: Hager_29 Start: 14193, Stop: 14468, Start Num: 17

Candidate Starts for Hager_29:

(Start: 15 @14175 has 1 MA's), (Start: 17 @14193 has 9 MA's), (37, 14424), (41, 14448),

Gene: Hawkeye_28 Start: 16025, Stop: 16255, Start Num: 23

Candidate Starts for Hawkeye_28:

(Start: 21 @16001 has 22 MA's), (Start: 23 @16025 has 4 MA's), (Start: 24 @16037 has 12 MA's), (28, 16085), (36, 16193), (39, 16208), (44, 16244),

Gene: Helpful_27 Start: 16162, Stop: 16380, Start Num: 24

Candidate Starts for Helpful_27:

(Start: 19 @16108 has 7 MA's), (Start: 23 @16150 has 4 MA's), (Start: 24 @16162 has 12 MA's), (28, 16210), (35, 16309), (39, 16333), (40, 16336), (45, 16375),

Gene: JDawG_27 Start: 14376, Stop: 14651, Start Num: 17

Candidate Starts for JDawG_27:

(Start: 15 @14358 has 1 MA's), (Start: 17 @14376 has 9 MA's), (41, 14631), (43, 14640),

Gene: Jalebi_25 Start: 17742, Stop: 18080, Start Num: 21

Candidate Starts for Jalebi_25:

(13, 17670), (Start: 16 @17703 has 1 MA's), (Start: 17 @17706 has 9 MA's), (20, 17736), (Start: 21 @17742 has 22 MA's), (32, 17895), (33, 17901), (35, 17919), (36, 17928), (47, 18030),

Gene: JingleBells_27 Start: 13910, Stop: 14185, Start Num: 17

Candidate Starts for JingleBells_27:

(Start: 15 @13892 has 1 MA's), (Start: 17 @13910 has 9 MA's), (41, 14165), (43, 14174),

Gene: KandZ_26 Start: 16262, Stop: 16480, Start Num: 24

Candidate Starts for KandZ_26:

(Start: 19 @16208 has 7 MA's), (Start: 23 @16250 has 4 MA's), (Start: 24 @16262 has 12 MA's), (28, 16310), (35, 16409), (39, 16433), (40, 16436), (45, 16475),

Gene: Kors_30 Start: 14561, Stop: 14842, Start Num: 17

Candidate Starts for Kors_30:

(11, 14477), (Start: 15 @14543 has 1 MA's), (Start: 17 @14561 has 9 MA's), (25, 14660), (30, 14702), (41, 14816),

Gene: Labelle_32 Start: 19192, Stop: 19551, Start Num: 17

Candidate Starts for Labelle_32:

(Start: 17 @19192 has 9 MA's), (Start: 19 @19210 has 7 MA's), (22, 19252), (29, 19330), (31, 19390), (38, 19441), (42, 19468), (48, 19537),

Gene: Lambo_26 Start: 17244, Stop: 17582, Start Num: 21

Candidate Starts for Lambo_26:

(7, 17043), (13, 17172), (Start: 16 @17205 has 1 MA's), (Start: 17 @17208 has 9 MA's), (20, 17238), (Start: 21 @17244 has 22 MA's), (32, 17397), (33, 17403), (35, 17421), (36, 17430), (47, 17532),

Gene: Lila22_27 Start: 17190, Stop: 17528, Start Num: 21

Candidate Starts for Lila22_27:

(13, 17118), (Start: 16 @17151 has 1 MA's), (Start: 17 @17154 has 9 MA's), (20, 17184), (Start: 21 @17190 has 22 MA's), (32, 17343), (33, 17349), (35, 17367), (36, 17376), (47, 17478),

Gene: LuckyLeo_25 Start: 16506, Stop: 16880, Start Num: 17

Candidate Starts for LuckyLeo_25:

(13, 16470), (Start: 16 @16503 has 1 MA's), (Start: 17 @16506 has 9 MA's), (20, 16536), (32, 16695), (33, 16701), (35, 16719), (36, 16728), (47, 16830),

Gene: Megatron06_28 Start: 16399, Stop: 16749, Start Num: 17

Candidate Starts for Megatron06_28:

(Start: 17 @16399 has 9 MA's), (Start: 19 @16417 has 7 MA's), (25, 16501), (27, 16519), (29, 16534), (46, 16729),

Gene: MoiGyank_28 Start: 17603, Stop: 17941, Start Num: 21

Candidate Starts for MoiGyank_28:

(7, 17402), (13, 17531), (Start: 16 @17564 has 1 MA's), (Start: 17 @17567 has 9 MA's), (20, 17597), (Start: 21 @17603 has 22 MA's), (32, 17756), (33, 17762), (35, 17780), (36, 17789), (47, 17891),

Gene: Mopey_26 Start: 16162, Stop: 16380, Start Num: 24

Candidate Starts for Mopey_26:

(Start: 19 @16108 has 7 MA's), (Start: 23 @16150 has 4 MA's), (Start: 24 @16162 has 12 MA's), (28, 16210), (35, 16309), (39, 16333), (40, 16336), (45, 16375),

Gene: MortySmith_26 Start: 13751, Stop: 14044, Start Num: 15

Candidate Starts for MortySmith_26:

(Start: 15 @13751 has 1 MA's), (Start: 17 @13769 has 9 MA's), (41, 14024), (43, 14033),

Gene: NorManre_27 Start: 16810, Stop: 17148, Start Num: 21

Candidate Starts for NorManre_27:

(2, 16501), (3, 16513), (4, 16525), (5, 16558), (7, 16609), (13, 16738), (Start: 16 @16771 has 1 MA's), (Start: 17 @16774 has 9 MA's), (20, 16804), (Start: 21 @16810 has 22 MA's), (32, 16963), (33, 16969), (35, 16987), (36, 16996), (47, 17098),

Gene: Nova_26 Start: 16535, Stop: 16807, Start Num: 19

Candidate Starts for Nova_26:

(Start: 19 @16535 has 7 MA's), (Start: 21 @16553 has 22 MA's), (Start: 23 @16577 has 4 MA's), (Start: 24 @16589 has 12 MA's), (28, 16637), (35, 16736), (39, 16760), (40, 16763), (45, 16802),

Gene: NovaSharks_25 Start: 14805, Stop: 15143, Start Num: 21

Candidate Starts for NovaSharks_25:

(7, 14604), (13, 14733), (14, 14742), (Start: 16 @14766 has 1 MA's), (Start: 17 @14769 has 9 MA's), (20, 14799), (Start: 21 @14805 has 22 MA's), (32, 14958), (33, 14964), (35, 14982), (36, 14991), (47, 15093),

Gene: OtterstedtS21_26 Start: 16888, Stop: 17226, Start Num: 21

Candidate Starts for OtterstedtS21_26:

(7, 16687), (9, 16708), (13, 16816), (Start: 16 @16849 has 1 MA's), (Start: 17 @16852 has 9 MA's), (20, 16882), (Start: 21 @16888 has 22 MA's), (32, 17041), (33, 17047), (35, 17065), (36, 17074), (47, 17176),

Gene: OverHedge_28 Start: 14597, Stop: 14872, Start Num: 17

Candidate Starts for OverHedge_28:

(Start: 15 @14579 has 1 MA's), (Start: 17 @14597 has 9 MA's), (37, 14828), (41, 14852), (43, 14861),

Gene: PLOT_27 Start: 16153, Stop: 16383, Start Num: 23

Candidate Starts for PLOT_27:

(Start: 19 @16111 has 7 MA's), (Start: 23 @16153 has 4 MA's), (Start: 24 @16165 has 12 MA's), (28, 16213), (35, 16312), (39, 16336), (40, 16339), (45, 16378),

Gene: ParvusTarda_26 Start: 16370, Stop: 16708, Start Num: 21

Candidate Starts for ParvusTarda_26:

(7, 16169), (13, 16298), (Start: 16 @16331 has 1 MA's), (Start: 17 @16334 has 9 MA's), (20, 16364), (Start: 21 @16370 has 22 MA's), (32, 16523), (33, 16529), (35, 16547), (36, 16556), (47, 16658),

Gene: Patos_27 Start: 16810, Stop: 17148, Start Num: 21

Candidate Starts for Patos_27:

(2, 16501), (3, 16513), (4, 16525), (5, 16558), (7, 16609), (13, 16738), (Start: 16 @16771 has 1 MA's), (Start: 17 @16774 has 9 MA's), (20, 16804), (Start: 21 @16810 has 22 MA's), (32, 16963), (33,

16969), (35, 16987), (36, 16996), (47, 17098),

Gene: Penelope2018_26 Start: 16162, Stop: 16380, Start Num: 24

Candidate Starts for Penelope2018_26:

(Start: 19 @16108 has 7 MA's), (Start: 23 @16150 has 4 MA's), (Start: 24 @16162 has 12 MA's), (28, 16210), (35, 16309), (39, 16333), (40, 16336), (45, 16375),

Gene: Penjamin420_27 Start: 17021, Stop: 17359, Start Num: 21

Candidate Starts for Penjamin420_27:

(2, 16712), (3, 16724), (4, 16736), (5, 16769), (7, 16820), (13, 16949), (Start: 16 @16982 has 1 MA's), (Start: 17 @16985 has 9 MA's), (20, 17015), (Start: 21 @17021 has 22 MA's), (32, 17174), (33, 17180), (35, 17198), (36, 17207), (47, 17309),

Gene: Pharpay_28 Start: 14652, Stop: 14927, Start Num: 17

Candidate Starts for Pharpay_28:

(Start: 15 @14634 has 1 MA's), (Start: 17 @14652 has 9 MA's), (37, 14883), (41, 14907), (43, 14916),

Gene: Phreeze_25 Start: 15866, Stop: 16216, Start Num: 17

Candidate Starts for Phreeze_25:

(Start: 17 @15866 has 9 MA's), (Start: 19 @15884 has 7 MA's), (25, 15968), (27, 15986), (29, 16001), (46, 16196),

Gene: Poultruss_27 Start: 14394, Stop: 14669, Start Num: 17

Candidate Starts for Poultruss_27:

(Start: 15 @14376 has 1 MA's), (Start: 17 @14394 has 9 MA's), (37, 14625), (41, 14649),

Gene: Prager_26 Start: 16174, Stop: 16392, Start Num: 24

Candidate Starts for Prager_26:

(Start: 19 @16120 has 7 MA's), (Start: 23 @16162 has 4 MA's), (Start: 24 @16174 has 12 MA's), (28, 16222), (35, 16321), (39, 16345), (40, 16348), (45, 16387),

Gene: Predator_29 Start: 17401, Stop: 17733, Start Num: 19

Candidate Starts for Predator_29:

(6, 17209), (8, 17227), (10, 17263), (12, 17317), (Start: 17 @17383 has 9 MA's), (Start: 19 @17401 has 7 MA's), (26, 17491), (27, 17503), (29, 17518),

Gene: Puissant_24 Start: 16331, Stop: 16681, Start Num: 17

Candidate Starts for Puissant_24:

(Start: 17 @16331 has 9 MA's), (Start: 19 @16349 has 7 MA's), (25, 16433), (27, 16451), (29, 16466), (46, 16661),

Gene: Rachella_28 Start: 14633, Stop: 14908, Start Num: 17

Candidate Starts for Rachella_28:

(Start: 15 @14615 has 1 MA's), (Start: 17 @14633 has 9 MA's), (37, 14864), (41, 14888), (43, 14897),

Gene: Ranch_26 Start: 15736, Stop: 16074, Start Num: 21

Candidate Starts for Ranch_26:

(7, 15535), (13, 15664), (Start: 16 @15697 has 1 MA's), (Start: 17 @15700 has 9 MA's), (20, 15730), (Start: 21 @15736 has 22 MA's), (32, 15889), (33, 15895), (35, 15913), (36, 15922), (47, 16024),

Gene: Rumi_25 Start: 14805, Stop: 15143, Start Num: 21

Candidate Starts for Rumi_25:

(7, 14604), (13, 14733), (14, 14742), (Start: 16 @14766 has 1 MA's), (Start: 17 @14769 has 9 MA's), (20, 14799), (Start: 21 @14805 has 22 MA's), (32, 14958), (33, 14964), (35, 14982), (36, 14991), (47, 15093),

Gene: Sadboi_26 Start: 17566, Stop: 17904, Start Num: 21

Candidate Starts for Sadboi_26:

(7, 17365), (9, 17386), (13, 17494), (Start: 16 @17527 has 1 MA's), (Start: 17 @17530 has 9 MA's), (20, 17560), (Start: 21 @17566 has 22 MA's), (32, 17719), (33, 17725), (35, 17743), (36, 17752), (47, 17854),

Gene: Sampudon_26 Start: 17742, Stop: 18080, Start Num: 21

Candidate Starts for Sampudon_26:

(13, 17670), (Start: 16 @17703 has 1 MA's), (Start: 17 @17706 has 9 MA's), (20, 17736), (Start: 21 @17742 has 22 MA's), (32, 17895), (33, 17901), (35, 17919), (36, 17928), (47, 18030),

Gene: SirHarley_25 Start: 16040, Stop: 16312, Start Num: 19

Candidate Starts for SirHarley_25:

(Start: 19 @16040 has 7 MA's), (Start: 21 @16058 has 22 MA's), (Start: 23 @16082 has 4 MA's), (Start: 24 @16094 has 12 MA's), (28, 16142), (35, 16241), (39, 16265), (40, 16268), (45, 16307),

Gene: Thoth_26 Start: 16159, Stop: 16377, Start Num: 24

Candidate Starts for Thoth_26:

(Start: 19 @16105 has 7 MA's), (Start: 23 @16147 has 4 MA's), (Start: 24 @16159 has 12 MA's), (28, 16207), (35, 16306), (39, 16330), (40, 16333), (45, 16372),

Gene: Thumb_25 Start: 15866, Stop: 16216, Start Num: 17

Candidate Starts for Thumb_25:

(Start: 17 @15866 has 9 MA's), (Start: 19 @15884 has 7 MA's), (25, 15968), (27, 15986), (29, 16001), (46, 16196),

Gene: Tillicus_26 Start: 16100, Stop: 16474, Start Num: 17

Candidate Starts for Tillicus_26:

(13, 16064), (Start: 16 @16097 has 1 MA's), (Start: 17 @16100 has 9 MA's), (20, 16130), (32, 16289), (33, 16295), (35, 16313), (36, 16322), (47, 16424),

Gene: Troll4_26 Start: 16163, Stop: 16381, Start Num: 24

Candidate Starts for Troll4_26:

(Start: 19 @16109 has 7 MA's), (Start: 23 @16151 has 4 MA's), (Start: 24 @16163 has 12 MA's), (28, 16211), (35, 16310), (39, 16334), (40, 16337), (45, 16376),

Gene: Visconti_26 Start: 16172, Stop: 16390, Start Num: 24

Candidate Starts for Visconti_26:

(Start: 19 @16118 has 7 MA's), (Start: 23 @16160 has 4 MA's), (Start: 24 @16172 has 12 MA's), (28, 16220), (35, 16319), (39, 16343), (40, 16346), (45, 16385),

Gene: WaldoWhy_27 Start: 16168, Stop: 16386, Start Num: 24

Candidate Starts for WaldoWhy_27:

(Start: 19 @16114 has 7 MA's), (Start: 23 @16156 has 4 MA's), (Start: 24 @16168 has 12 MA's), (28, 16216), (35, 16315), (39, 16339), (40, 16342), (45, 16381),

Gene: Wojtek_25 Start: 16443, Stop: 16781, Start Num: 21

Candidate Starts for Wojtek_25:

(7, 16242), (13, 16371), (Start: 16 @16404 has 1 MA's), (Start: 17 @16407 has 9 MA's), (18, 16416), (20, 16437), (Start: 21 @16443 has 22 MA's), (32, 16596), (33, 16602), (35, 16620), (36, 16629), (47, 16731),

Gene: Yikes_27 Start: 17827, Stop: 18165, Start Num: 21

Candidate Starts for Yikes_27:

(7, 17626), (9, 17647), (13, 17755), (Start: 16 @17788 has 1 MA's), (Start: 17 @17791 has 9 MA's), (20, 17821), (Start: 21 @17827 has 22 MA's), (32, 17980), (33, 17986), (35, 18004), (36, 18013), (47, 18115),

Gene: Zany_24 Start: 16956, Stop: 17294, Start Num: 21

Candidate Starts for Zany_24:

(7, 16755), (9, 16776), (13, 16884), (Start: 16 @16917 has 1 MA's), (Start: 17 @16920 has 9 MA's), (20, 16950), (Start: 21 @16956 has 22 MA's), (32, 17109), (33, 17115), (35, 17133), (36, 17142), (47, 17244),