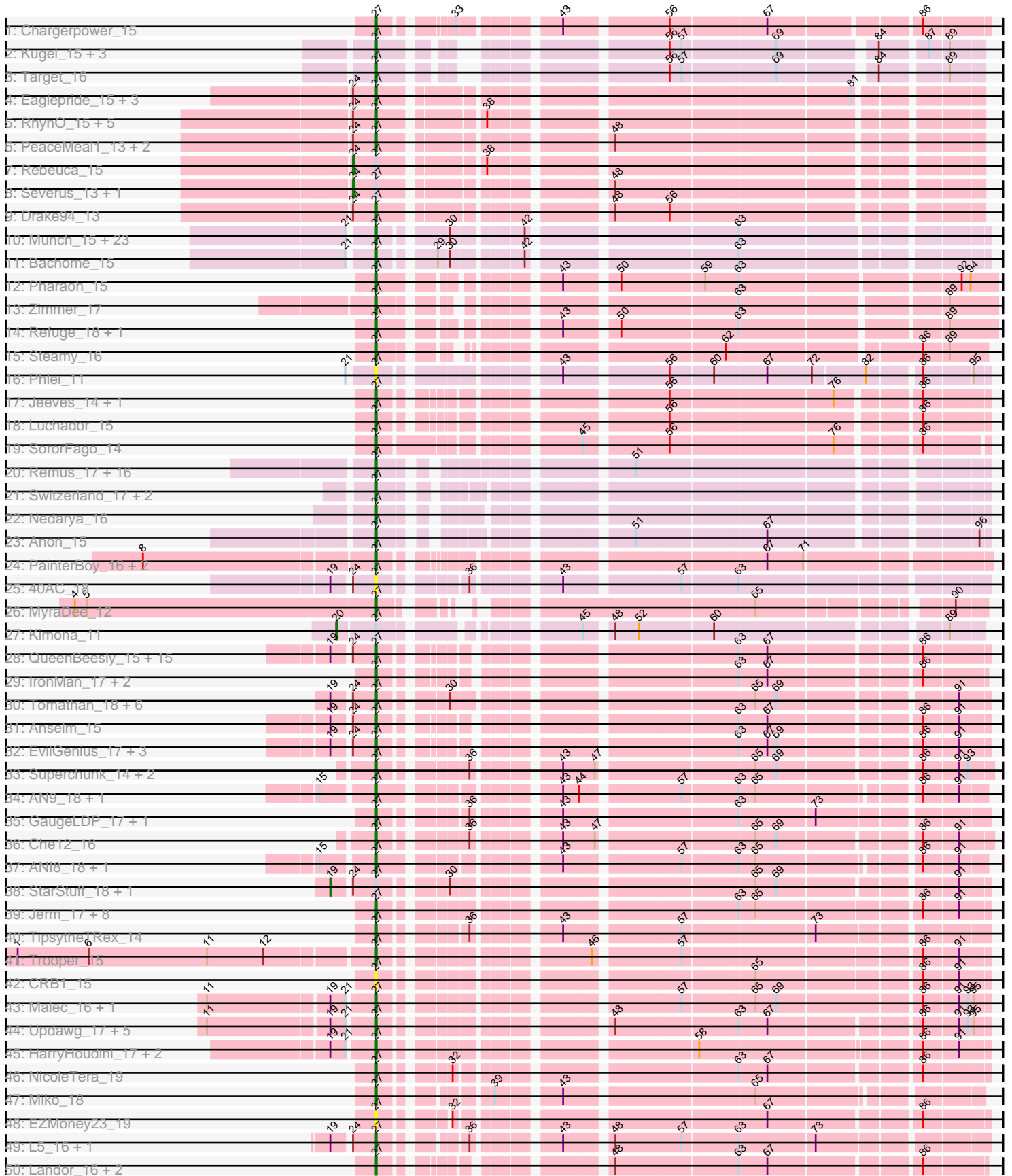
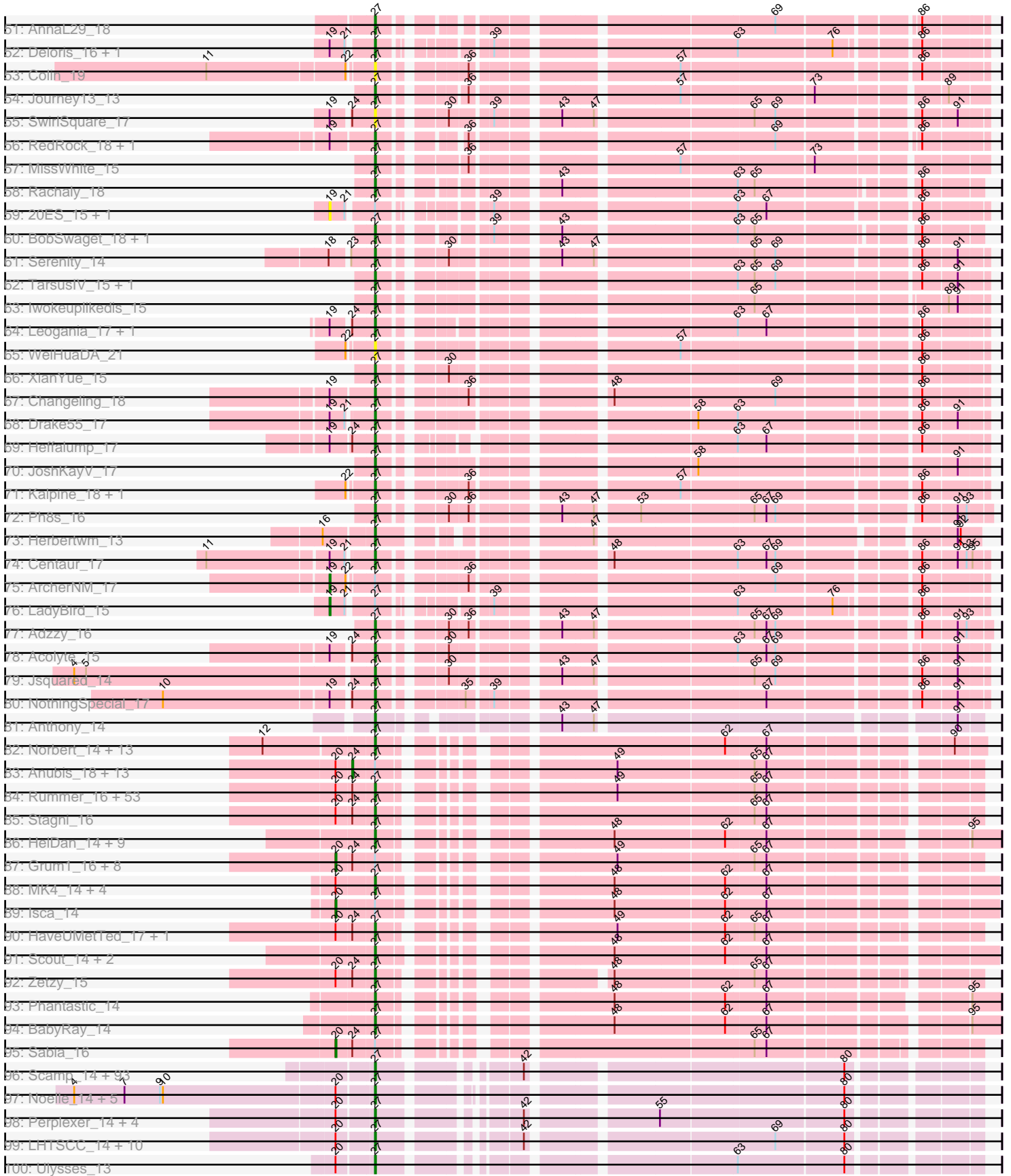


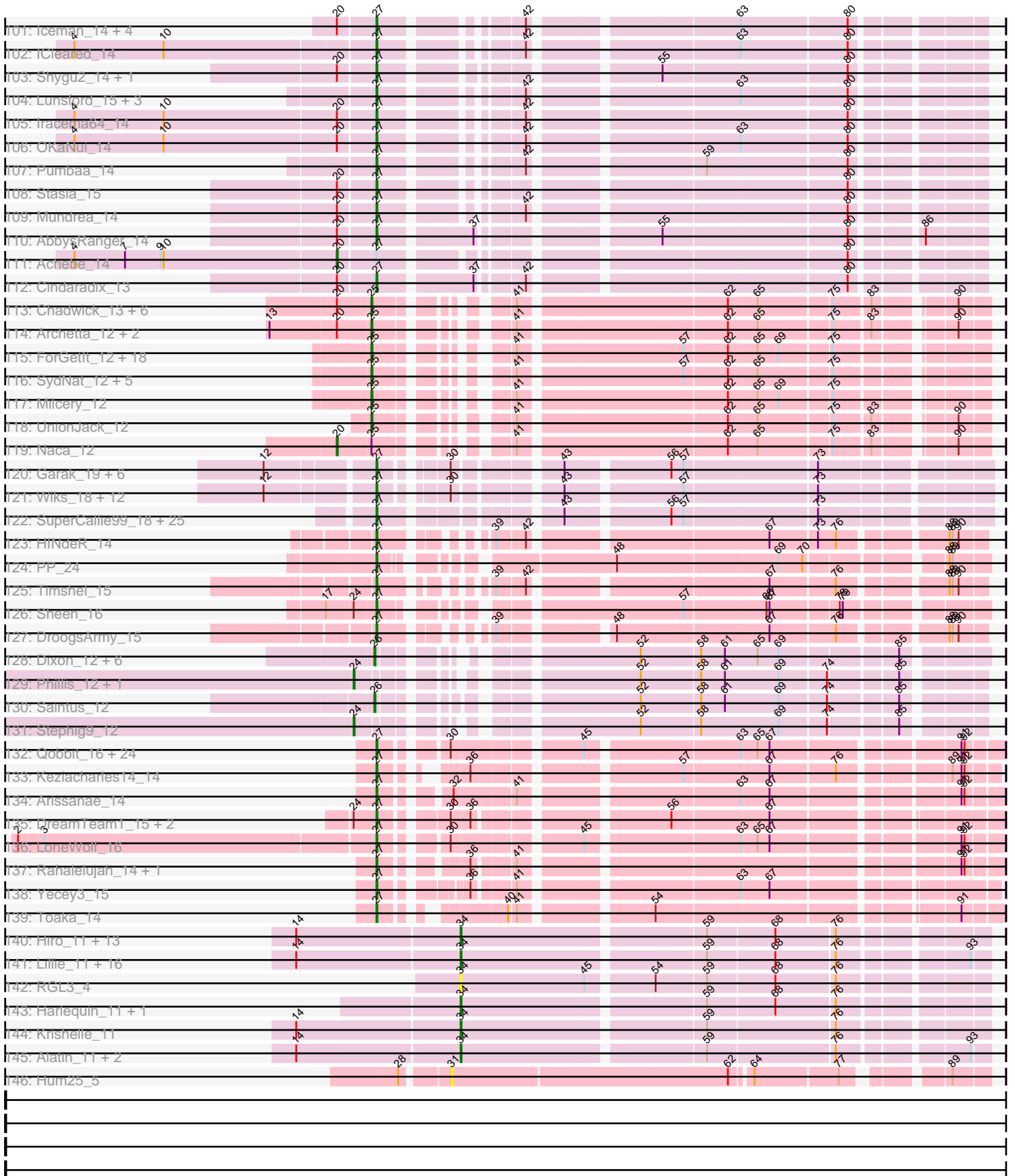
Pham 161442



Pham 161442



Pham 161442



Note: Tracks are now grouped by subcluster and scaled. Switching in subcluster is indicated by changes in track color. Track scale is now set by default to display the region 30 bp upstream of start 1 to 30 bp downstream of the last possible start. If this default region is judged to be packed too tightly with annotated starts, the track will be further scaled to only show that region of the ORF with annotated starts. This action will be indicated by adding "Zoomed" to the title. For starts, yellow indicates the location of called starts comprised solely of Glimmer/GeneMark auto-annotations, green indicates the location of called starts with at least 1 manual gene annotation.

Pham 161442 Report

This analysis was run 04/28/24 on database version 559.

Pham number 161442 has 626 members, 40 are drafts.

Phages represented in each track:

- Track 1 : Chargerpower_15
- Track 2 : Kugel_15, Kykar_12, Bxb1_13, BillKnuckles_15
- Track 3 : Target_16
- Track 4 : Eaglepride_15, Goose_14, OKCentral2016_14, Chupacabra_14
- Track 5 : RhynO_15, Twister_14, Topanga_14, WalterMcMickey_14, Kristoff_15, Edison31_13
- Track 6 : PeaceMeal1_13, KittenMittens_13, Poompha_13
- Track 7 : Rebeuca_15
- Track 8 : Severus_13, Trike_12
- Track 9 : Drake94_13
- Track 10 : Munch_15, Salz_15, Lucivia_15, Orange_15, Jabith_15, TinyTimmy_14, Et2Brutus_14, Flaverint_15, Fibonacci_15, Insomnia_14, Bowtie_15, Sham4_15, Petersenfast_14, Ebony_15, Gilberta_15, Timothy_15, MaCh_15, Joselito_15, Aneem_15, Mulciber_15, Bud_15, Mabel_15, Hutc2_15, Snape_15
- Track 11 : Bachome_15
- Track 12 : Pharaoh_15
- Track 13 : Zimmer_17
- Track 14 : Refuge_18, DARTHPhader_16
- Track 15 : Steamy_16
- Track 16 : Phlei_11
- Track 17 : Jeeves_14, Gail_14
- Track 18 : Luchador_15
- Track 19 : SororFago_14
- Track 20 : Remus_17, MinecraftSteve_18, LastResort_17, ShayRa_18, Rosalind_17, KatherineG_17, DekHockey33_17, Oofda_18, Waits_17, Nebulosus_17, ReMo_17, Epsocamisio_17, Looper_18, Anaysia_17, Strosahl_17, Soups_17, Boohoo_17
- Track 21 : Switzerland_17, Battleship_18, JSwag_17
- Track 22 : Nedarya_16
- Track 23 : Anon_15
- Track 24 : PainterBoy_16, Lucyedi_16, EagleEye_17
- Track 25 : 40AC_18
- Track 26 : MyraDee_12
- Track 27 : Kimona_11
- Track 28 : QueenBeesly_15, AN3_15, Georgie2_16, SweetiePie_15, Power_15, DudeLittle_15, VA6_15, Fameo_15, Retro23_15, Dalmatian_15, QueenB2_15, SnapTap_15, Benvolio_15, Echild_15, Crucio_15, FiringLine_15

- Track 29 : IronMan_17, Jaan_18, Phaded_18
- Track 30 : Tomathan_18, D29_16, Duplo_18, Kerberos_18, D32_18, DBQu4n_18, Naji_18
- Track 31 : Anselm_15
- Track 32 : EvilGenius_17, ChipMunk_17, SemperFi_17, KingCyrus_17
- Track 33 : Superchunk_14, Caraxes_14, Odin_14
- Track 34 : AN9_18, VC3_18
- Track 35 : GaugeLDP_17, BabyBack_16
- Track 36 : Che12_16
- Track 37 : ANI8_18, C3_13
- Track 38 : StarStuff_18, Pomar16_18
- Track 39 : Jerm_17, Dignity_17, AbbyPaige_17, Whabigail7_17, Bugsy_17, Smeagan_17, Leviathan_17, LilTurb_17, Agape74_17
- Track 40 : TopsytheTRex_14
- Track 41 : Trooper_15
- Track 42 : CRB1_15
- Track 43 : Malec_16, Larenn_16
- Track 44 : Updawg_17, NaSiaTalie_15, Flare16_15, Equemioh13_17, MiculUcigas_15, WideWale_17
- Track 45 : HarryHoudini_17, Baehexic_16, Piro94_16
- Track 46 : NicoleTera_19
- Track 47 : Miko_18
- Track 48 : EZMoney23_19
- Track 49 : L5_16, Koduck_15
- Track 50 : Landor_16, Pukovnik_17, Bactobuster_16
- Track 51 : AnnaL29_18
- Track 52 : Deloris_16, BengiVuitton_16
- Track 53 : Colin_19
- Track 54 : Journey13_13
- Track 55 : SwirlSquare_17
- Track 56 : RedRock_18, Loser_18
- Track 57 : MissWhite_15
- Track 58 : Rachaly_18
- Track 59 : 20ES_15, First_0015
- Track 60 : BobSwaget_18, Lokk_18
- Track 61 : Serenity_14
- Track 62 : TarsusIV_15, Turbido_17
- Track 63 : Iwokeuplikedis_15
- Track 64 : Leogania_17, BiancaTri92_17
- Track 65 : WeiHuaDA_21
- Track 66 : XianYue_15
- Track 67 : Changeling_18
- Track 68 : Drake55_17
- Track 69 : Heffalump_17
- Track 70 : JoshKayV_17
- Track 71 : Kalpine_18, Trixie_18
- Track 72 : Ph8s_16
- Track 73 : Herbertwm_13
- Track 74 : Centaur_17
- Track 75 : ArcherNM_17
- Track 76 : LadyBird_15
- Track 77 : Adzzy_16
- Track 78 : Acolyte_15

- Track 79 : Jsquared_14
- Track 80 : NothingSpecial_17
- Track 81 : Anthony_14
- Track 82 : Norbert_14, Popcicle_15, Veracruz_14, Noella_15, ResDef_15, Panamaxus_15, Caviar_15, Pocahontas_15, Todacoro_15, Hookmount_15, Texage_14, Margo_15, Lambert1_15, QuinnKiro_14
- Track 83 : Anubis_18, Misomonster_18, Louie6_16, Jobu08_16, Hercules11_16, Methuselah_16, LugYA_18, Beauxregard13_16, Aglet_16, Vix_16, Tiffany_16, Marie_16, Penny1_16, MarQuardt_16
- Track 84 : Rummer_16, JenCasNa_16, LarryKay_16, Spike509_16, P28Green_16, Heliosoles_16, SoYo_16, Grub_16, StepMih_16, KADY_17, HashRod_17, Bxz2_16, GingkoMaracino_16, PGHhamlin_18, LBerry_16, Ollie_16, MadMarie_16, Farber_16, ACFishhook_16, OlanP_16, Microwolf_16, AgronaGT15_16, AugsMagnumOpus_18, Dieselweasel_16, Gemma_16, MuchMore_18, Manu_17, BuzzBuzz_15, DaHudson_16, Colbster_16, GtownJaz_16, Phranny_17, Kalb97_17, Kalnok_17, Phoebe_16, Daishi_15, Taurus_16, JHC117_16, Soshari_18, Sabinator_16, Grif_16, PurpleHaze_16, JeppNRM_17, Pembroke_16, Snickers_16, Phoxy_16, Fernando_16, Lilith_16, EpicPhail_16, Marius_17, Grouptink_17, Pawn_17, Watson_16, Reba_17
- Track 85 : Stagni_16
- Track 86 : HelDan_14, Giroux_14, Bugatti_14, Puppy_15, Idleandcovert_14, Pistachio_15, Heathen_14, TNguyen7_14, BlueBird_15, SaturnRing_14
- Track 87 : Grum1_16, Wooldri_18, PotatoSplit_17, BreSam8_16, MoneyMay_16, Malinsilva_18, SoilDragon_16, Mainiac_16, Cullens_16
- Track 88 : MK4_14, JF4_14, Rockstar_14, B1_12, JF2_14
- Track 89 : Isca_14
- Track 90 : HaveUMetTed_17, PhishRPhriends_15
- Track 91 : Scout_14, Fred313_14, MA5_14
- Track 92 : Zetzy_15
- Track 93 : Phantastic_14
- Track 94 : BabyRay_14
- Track 95 : Sabia_16
- Track 96 : Scamp_14, Baby16_14, BubbleTrouble_14, Spino_14, Roosevelt_14, Eurydice_14, Kremtemulon_13, Romney_14, Taquarus_14, Kyee_14, Pipcraft_14, Maverick_14, Cocoaberry_14, NorthStar_14, Eagle_13, Commander_14, BellusTerra_14, Chaph_14, Connomayer_14, JetBlade_14, KFPoly_14, Funston_14, Shaka_14, Wizard007_14, LittleGuy_14, Ohfah_14, LeoAvram_14, Florean_14, MeeZee_14, Alberto7_15, Polymorphads_14, Dhanush_14, NotAPhaseMom_14, Gadost_14, Nebs_14, Medusa_14, Phacado_14, HamSlice_13, Bartimeaus_14, Morrow_14, Blackmoor_14, Bruiser_14, Arturo_13, Eros_14, Burger_13, Thanksgivukkah_14, Clarenza_14, Albee_14, Houdini22_14, Flux_14, YoSam321_14, Palestino_14, Anyyong_14, Sparxx_14, TiroTheta9_14, Maxo_14, Mazhar510_14, Citius_14, Melvin_14, LochMonster_14, Koreni_13, Ruin_14, TygerBlood_14, PeterPeter_14, Wilbur_14, Eapen_14, Avle17_14, Phelipe_14, Sabertooth_14, Abdiel_14, LappelDuVide_13, Eris_14, JoongJeon_14, Broseidon_14, Druantia_14, Lorenzo_14, Kratak_14, Holli_14, Relief_14, CentreCat_14, Millski_14, Kamy_14, TinaFeyge_14, Nyxis_14, Nemo27_14, Kingmustik0402_14, Jaykayelowell_14, LittleB_14, Wander_14, DirtyDunning_14, Bombshell_14, TroyPia_14, Caelakin_14, Skipitt_14
- Track 97 : Noelle_14, Backyardigan_14, Badger_14, Datway_14, Wile_14, Xena_14
- Track 98 : Perplexer_14, Bumblebee11_14, PetiteSangsue_14, Katalie136_14, Morpher26_14

- Track 99 : LHTSCC_14, ChampagnePapi_14, BangNhom_13, Obama12_14, Cerulean_14, Happiness_14, Stink_14, AvatarAhPeg_14, Tinybot_13, SheldonCooper_14, Miramae_14
- Track 100 : Ulysses_13
- Track 101 : Iceman_14, Peaches_14, Deano_14, Camperdownii_13, Phighter1804_14
- Track 102 : ICleared_14
- Track 103 : Shygu2_14, Cici_14
- Track 104 : Lunsford_15, Phontbonne_14, Cintron_14, Lemur_14
- Track 105 : Iracema64_14
- Track 106 : OKaNui_14
- Track 107 : Pumbaa_14
- Track 108 : Stasia_15
- Track 109 : Mundrea_14
- Track 110 : AbbysRanger_14
- Track 111 : Achebe_14
- Track 112 : Cindaradix_13
- Track 113 : Chadwick_13, PetterN_13, Benedict_12, Jabiru_12, Scorpia_13, Airmid_12, ElTiger69_12
- Track 114 : Archetta_12, PickleBack_12, Lev2_12
- Track 115 : ForGetIt_12, Jovo_12, Swirley_12, Phlorence_12, Cuco_12, Tarynearal_11, Dublin_11, HuhtaEnerson15_12, Theia_11, MarysWell_11, Coog_12, Tiger_12, LittleCherry_12, Midas2_12, George_11, Bonamassa_12, AgentM_12, Micasa_11, Conspiracy_12
- Track 116 : SydNat_12, Bluefalcon_11, Ghoulboy_12, Zolita_11, Discoknowium_12, Aragog_12
- Track 117 : Milcery_12
- Track 118 : UnionJack_12
- Track 119 : Naca_12
- Track 120 : Garak_19, Tucker_18, Roksolana_18, Helmet_19, Artemis2UCLA_18, Indra_18, Hexamo_18
- Track 121 : Wiks_18, Rifter_18, Koko_18, Gladiator_18, Blue7_18, Hammer_18, Yokurt_18, Gruunaga_18, WunderPhul_18, Zulu_18, Lilbunny_17, ToneTone_17, Zaka_18
- Track 122 : SuperCallie99_18, Cookiedough_18, Isiphiwo_18, JewelBug_18, CloudWang3_18, Pmask_18, VohminGhazi_18, Jeffabunny_18, Jordennis_18, SmellyB_18, Neeharika16_18, Newrala_18, Dorothea_17, Chartreuse_18, DaVinci_18, Blinn1_18, BABullseye_18, Candra_18, Kipper29_18, Priamo_18, EricB_18, Kazan_18, Hoot_18, SuperAwesome_18, GreedyLawyer_18, McFly_18
- Track 123 : HINdeR_14
- Track 124 : PP_24
- Track 125 : Timshel_15
- Track 126 : Sheen_16
- Track 127 : DroogsArmy_15
- Track 128 : Dixon_12, Smeadley_12, Danforth_11, Expelliarmus_11, Groundhog_11, Roary_12, Astro_12
- Track 129 : Phillis_12, NearlyHeadless_12
- Track 130 : Saintus_12
- Track 131 : Stephig9_12
- Track 132 : Qobbit_16, Tubs_16, Phaeder_16, Darrell_17, Priya_16, ExplosioNervosa_16, Aliter_16, Ugenie5_13, Fayely_16, Phonnegut_16, EmyBug_14, Maminiaina_16, Pioneer_16, Scherzo_16, Eidsmoe_16, BogosyJay_16, Myxus_16, HortumSL17_16, Conquerage_16, Catalina_16, Spouty_15, Alma_16,

- Beemo_16, Elephantoon_16, PackMan_16
- Track 133 : Keziacharles14_14
 - Track 134 : Arissanae_14
 - Track 135 : DreamTeam1_15, SheaKeira_15, Charm_15
 - Track 136 : LoneWolf_16
 - Track 137 : Rahalelujah_14, Vanisoa_14
 - Track 138 : Yecey3_15
 - Track 139 : Toaka_14
 - Track 140 : Hiro_11, Dinger_11, Rasputin_11, BobbyDazzler_11, Takoda_11, AngryOrchard_10, Bryce_11, AppleCloud_9, Yoncess_11, Bonanza_11, Partridge_11, Alpacados_10, Yogi_11, PhailMary_10
 - Track 141 : Lillie_11, Belenaria_11, RER2_4, Shuman_11, Bradshaw_11, Gollum_11, Rhodalysa_11, Swann_11, UhSalsa_11, Erik_11, Nancinator_11, Natosaleda_11, TWAMP_11, Espica_11, CosmicSans_11, RexFury_11, Phrankenstein_11
 - Track 142 : RGL3_4
 - Track 143 : Harlequin_11, Jester_11
 - Track 144 : Krishelle_11
 - Track 145 : Alatin_11, Naiad_11, StCroix_11
 - Track 146 : Hum25_5

Summary of Final Annotations (See graph section above for start numbers):

The start number called the most often in the published annotations is 27, it was called in 468 of the 586 non-draft genes in the pham.

Genes that call this "Most Annotated" start:

- 40AC_18, ACFishhook_16, AN3_15, AN9_18, ANI8_18, AbbyPaige_17, AbbysRanger_14, Abdiel_14, Acolyte_15, Adzzy_16, Agape74_17, AgronaGT15_16, Albee_14, Alberto7_15, Aliter_16, Alma_16, Anaysia_17, Aneem_15, AnnaL29_18, Annyong_14, Anon_15, Anselm_15, Anthony_14, Arissanae_14, Artemis2UCLA_18, Arturo_13, AugsMagnumOpus_18, AvatarAhPeg_14, Avle17_14, B1_12, BABullseye_18, Baby16_14, BabyBack_16, BabyRay_14, Bachome_15, Backyardigan_14, Bactobuster_16, Badger_14, Baehexic_16, BangNhom_13, Bartimeaus_14, Battleship_18, Beemo_16, BellusTerra_14, BengiVuitton_16, Benvolio_15, BiancaTri92_17, BillKnuckles_15, Blackmoor_14, Blinn1_18, Blue7_18, BlueBird_15, BobSwaget_18, BogosyJay_16, Bombshell_14, Boohoo_17, Bowtie_15, Broseidon_14, Bruiser_14, BubbleTrouble_14, Bud_15, Bugatti_14, Buggy_17, Bumblebee11_14, Burger_13, BuzzBuzz_15, Bxb1_13, Bxz2_16, C3_13, CRB1_15, Caelakin_14, Camperdownii_13, Candra_18, Caraxes_14, Catalina_16, Caviar_15, Centaur_17, CentreCat_14, Cerulean_14, ChampagnePapi_14, Changeling_18, Chaph_14, Chargerpower_15, Charm_15, Chartreuse_18, Che12_16, ChipMunk_17, Chupacabra_14, Cici_14, Cindaradix_13, Cintron_14, Citius_14, Clarenza_14, CloudWang3_18, Cocoaberry_14, Colbster_16, Colin_19, Commander_14, Connomayer_14, Conquerage_16, Cookiedough_18, Crucio_15, D29_16, D32_18, DBQu4n_18, DaHudson_16, DaVinci_18, Daishi_15, Dalmatian_15, Darrell_17, DarthPhader_16, Datway_14, Deano_14, DekHockey33_17, Deloris_16, Dhanush_14, Dieselweasel_16, Dignity_17, DirtyDunning_14, Dorothea_17, Drake55_17, Drake94_13, DreamTeam1_15, DroogsArmy_15, Druantia_14, DudeLittle_15, Duplo_18, EZMoney23_19, EagleEye_17, Eagle_13, Eaglepride_15,

Eapen_14, Ebony_15, Echild_15, Edison31_13, Eidsmoe_16, Elephantoan_16, EmyBug_14, EpicPhail_16, Epsocamisio_17, Equemioh13_17, EricB_18, Eris_14, Eros_14, Et2Brutus_14, Eurydice_14, EvilGenius_17, ExplosioNervosa_16, Fameo_15, Farber_16, Fayely_16, Fernando_16, Fibonacci_15, FiringLine_15, Flare16_15, Flaverint_15, Florean_14, Flux_14, Fred313_14, Funston_14, Gadost_14, Gail_14, Garak_19, GaugeLDP_17, Gemma_16, Georgie2_16, Gilberta_15, GingkoMaracino_16, Giroux_14, Gladiator_18, Goose_14, GreedyLawyer_18, Grif_16, Groupthink_17, Grub_16, Gruunaga_18, GtownJaz_16, HINdeR_14, HamSlice_13, Hammer_18, Happiness_14, HarryHoudini_17, HashRod_17, HaveUMetTed_17, Heathen_14, Heffalump_17, HelDan_14, Heliosoles_16, Helmet_19, Herbertwm_13, Hexamo_18, Holli_14, Hookmount_15, Hoot_18, HortumSL17_16, Houdini22_14, Hutc2_15, ICleared_14, Iceman_14, Idleandcovert_14, Indra_18, Insomnia_14, Iracema64_14, IronMan_17, Isiphiwo_18, Iwokeuplikedis_15, JF2_14, JF4_14, JHC117_16, JSwag_17, Jaan_18, Jabith_15, Jaykayelowell_14, Jeeves_14, Jeffabunny_18, JenCasNa_16, JeppNRM_17, Jerm_17, JetBlade_14, JewelBug_18, JoongJeon_14, Jordennis_18, Joselito_15, JoshKayV_17, Journey13_13, Jsquared_14, KADY_17, KFPoly_14, Kalb97_17, Kalnoky_17, Kalpine_18, Kämpy_14, Katalie136_14, KatherineG_17, Kazan_18, Kerberos_18, Keziacharles14_14, KingCyrus_17, Kingmustik0402_14, Kipper29_18, KittenMittens_13, Koduck_15, Koko_18, Koreni_13, Kratark_14, Kremtemulon_13, Kristoff_15, Kugel_15, Kyee_14, Kykar_12, L5_16, LBerry_16, LHTSCC_14, Lambert1_15, Landor_16, LappelDuVide_13, Larenn_16, LarryKay_16, LastResort_17, Lemur_14, LeoAvram_14, Leogania_17, Leviathan_17, LiITurb_17, Lilbunny_17, Lilith_16, LittleB_14, LittleGuy_14, LochMonster_14, Lokk_18, LoneWolf_16, Looper_18, Lorenzo_14, Loser_18, Luchador_15, Lucivia_15, Lucyedi_16, Lunsford_15, MA5_14, MK4_14, MaCh_15, Mabel_15, MadMarie_16, Malec_16, Maminiaina_16, Manu_17, Margo_15, Marius_17, Maverick_14, Maxo_14, Mazhar510_14, McFly_18, Medusa_14, MeeZee_14, Melvin_14, Microwolf_16, MiculUcigas_15, Miko_18, Millski_14, MinecraftSteve_18, Miramae_14, MissWhite_15, Morpher26_14, Morrow_14, MuchMore_18, Mulciber_15, Munch_15, Mundrea_14, MyraDee_12, Myxus_16, NaSiaTalie_15, Naji_18, Nebs_14, Nebulosus_17, Nedarya_16, Neeharika16_18, Nemo27_14, Newrala_18, NicoleTera_19, Noella_15, Noelle_14, Norbert_14, NorthStar_14, NotAPhaseMom_14, NothingSpecial_17, Nyxis_14, OKCentral2016_14, OKaNui_14, Obama12_14, Odin_14, Ohfah_14, OlanP_16, Ollie_16, Oofda_18, Orange_15, P28Green_16, PGHhamlin_18, PP_24, PackMan_16, PainterBoy_16, Palestino_14, Panamaxus_15, Pawn_17, PeaceMeal1_13, Peaches_14, Pembroke_16, Perplexer_14, PeterPeter_14, Petersenfast_14, PetiteSangsue_14, Ph8s_16, Phacado_14, Phaded_18, Phaeder_16, Phantastic_14, Pharaoh_15, Phelipe_14, Phighter1804_14, PhishRPhriends_15, Phlei_11, Phoebe_16, Phonnegut_16, Phontbonne_14, Phoxy_16, Phranny_17, Pioneer_16, Pipcraft_14, Piro94_16, Pistachio_15, Pmask_18, Pocahontas_15, Polymorphads_14, Poompha_13, Popcicle_15, Power_15, Priamo_18, Priya_16, Pukovnik_17, Pumbaa_14, Puppy_15, PurpleHaze_16, Qobbit_16, QueenB2_15, QueenBeesly_15, QuinnKiro_14, Rachaly_18, Rahalelujah_14, ReMo_17, Reba_17, RedRock_18, Refuge_18, Relief_14, Remus_17, ResDef_15, Retro23_15, RhynO_15, Rifter_18, Rockstar_14, Roksolana_18, Romney_14, Roosevelt_14, Rosalind_17, Ruin_14, Rummer_16, Sabertooth_14, Sabinator_16, Salz_15, SaturnRing_14, Scamp_14, Scherzo_16, Scout_14, SemperFi_17, Serenity_14, Shaka_14, Sham4_15, ShayRa_18, SheaKeira_15, Sheen_16, SheldonCooper_14, Shygu2_14, Skipitt_14, Smeagan_17, SmellyB_18, SnapTap_15, Snape_15, Snickers_16, SoYo_16, SororFago_14, Soshari_18, Soups_17, Sparxx_14, Spike509_16, Spino_14, Spouty_15, Stagni_16, Stasia_15, Steamy_16, StepMih_16, Stink_14, Strosahl_17, SuperAwesome_18,

SuperCallie99_18, Superchunk_14, SweetiePie_15, SwirlSquare_17, Switzerland_17, TNguyen7_14, Taquarus_14, Target_16, TarsusIV_15, Taurus_16, Texage_14, Thanksgivukkah_14, Timothy_15, Timshel_15, TinaFeyge_14, TinyTimmy_14, Tinybot_13, TipsytheTRex_14, TiroTheta9_14, Toaka_14, Todacoro_15, Tomathan_18, ToneTone_17, Topanga_14, Trixie_18, Trooper_15, TroyPia_14, Tubs_16, Tucker_18, Turbido_17, Twister_14, TygerBlood_14, Ugenie5_13, Ulysses_13, Updawn_17, VA6_15, VC3_18, Vanisoa_14, Veracruz_14, VohminGhazi_18, Waits_17, WalterMcMickey_14, Wander_14, Watson_16, WeiHuaDA_21, Whabigail7_17, WideWale_17, Wiks_18, Wilbur_14, Wile_14, Wizard007_14, WunderPhul_18, Xena_14, XianYue_15, Yecey3_15, YoSam321_14, Yokurt_18, Zaka_18, Zetzy_15, Zimmer_17, Zulu_18,

Genes that have the "Most Annotated" start but do not call it:

- 20ES_15, Achebe_14, Aglet_16, Anubis_18, ArcherNM_17, Beauxregard13_16, BreSam8_16, Cullens_16, First_0015, Grum1_16, Hercules11_16, Isca_14, Jobu08_16, Kimona_11, LadyBird_15, Louie6_16, LugYA_18, Mainiac_16, Malinsilva_18, MarQuardt_16, Marie_16, Methuselah_16, Misomonster_18, MoneyMay_16, Penny1_16, Pomar16_18, PotatoSplit_17, Rebeuca_15, Sabia_16, Severus_13, SoilDragon_16, StarStuff_18, Tiffany_16, Trike_12, Vix_16, Wooldri_18,

Genes that do not have the "Most Annotated" start:

- AgentM_12, Airmid_12, Alatin_11, Alpacados_10, AngryOrchard_10, AppleCloud_9, Aragog_12, Archetta_12, Astro_12, Belenaria_11, Benedict_12, Bluefalcon_11, BobbyDazzler_11, Bonamassa_12, Bonanza_11, Bradshaw_11, Bryce_11, Chadwick_13, Conspiracy_12, Coog_12, CosmicSans_11, Cuco_12, Danforth_11, Dinger_11, Discoknowium_12, Dixon_12, Dublin_11, ElTiger69_12, Erik_11, Espica_11, Expelliarmus_11, ForGetIt_12, George_11, Ghoulyboy_12, Gollum_11, Groundhog_11, Harlequin_11, Hiro_11, HuhtaEnerson15_12, Hum25_5, Jabiru_12, Jester_11, Jovo_12, Krishelle_11, Lev2_12, Lillie_11, LittleCherry_12, MarysWell_11, Micasa_11, Midas2_12, Milcery_12, Naca_12, Naiad_11, Nancinator_11, Natosaleda_11, NearlyHeadless_12, Partridge_11, PetterN_13, PhailMary_10, Phillis_12, Phlorence_12, Phrankenstien_11, PickleBack_12, RER2_4, RGL3_4, Rasputin_11, RexFury_11, Rhodalysa_11, Roary_12, Saintus_12, Scorpia_13, Shuman_11, Smeadley_12, StCroix_11, StepHig9_12, Swann_11, Swirley_12, SydNat_12, TWAMP_11, Takoda_11, Tarynearal_11, Theia_11, Tiger_12, UhSalsa_11, UnionJack_12, Yogi_11, Yoncess_11, Zolita_11,

Summary by start number:

Start 19:

- Found in 61 of 626 (9.7%) of genes in pham
- Manual Annotations of this start: 4 of 586
- Called 9.8% of time when present
- Phage (with cluster) where this start called: 20ES_15 (A2), ArcherNM_17 (A2), First_0015 (A2), LadyBird_15 (A2), Pomar16_18 (A2), StarStuff_18 (A2),

Start 20:

- Found in 137 of 626 (21.9%) of genes in pham
- Manual Annotations of this start: 14 of 586
- Called 10.2% of time when present
- Phage (with cluster) where this start called: Achebe_14 (A4), BreSam8_16 (A3), Cullens_16 (A3), Grum1_16 (A3), Isca_14 (A3), Kimona_11 (A19), Mainiac_16 (A3), Malinsilva_18 (A3), MoneyMay_16 (A3), Naca_12 (A5), PotatoSplit_17 (A3),

Sabia_16 (A3), SoilDragon_16 (A3), Wooldri_18 (A3),

Start 24:

- Found in 145 of 626 (23.2%) of genes in pham
- Manual Annotations of this start: 20 of 586
- Called 13.8% of time when present
- Phage (with cluster) where this start called: Aglet_16 (A3), Anubis_18 (A3), Beauxregard13_16 (A3), Hercules11_16 (A3), Jobu08_16 (A3), Louie6_16 (A3), LugYA_18 (A3), MarQuardt_16 (A3), Marie_16 (A3), Methuselah_16 (A3), Misomonster_18 (A3), NearlyHeadless_12 (A8), Penny1_16 (A3), Phillis_12 (A8), Rebeuca_15 (A10), Severus_13 (A10), Stephig9_12 (A8), Tiffany_16 (A3), Trike_12 (A10), Vix_16 (A3),

Start 25:

- Found in 38 of 626 (6.1%) of genes in pham
- Manual Annotations of this start: 36 of 586
- Called 97.4% of time when present
- Phage (with cluster) where this start called: AgentM_12 (A5), Airmid_12 (A5), Aragog_12 (A5), Archetta_12 (A5), Benedict_12 (A5), Bluefalcon_11 (A5), Bonamassa_12 (A5), Chadwick_13 (A5), Conspiracy_12 (A5), Coog_12 (A5), Cuco_12 (A5), Discoknowium_12 (A5), Dublin_11 (A5), ElTiger69_12 (A5), ForGetIt_12 (A5), George_11 (A5), Ghoulyboy_12 (A5), HuhtaEnerson15_12 (A5), Jabiru_12 (A5), Jovo_12 (A5), Lev2_12 (A5), LittleCherry_12 (A5), MarysWell_11 (A5), Micasa_11 (A5), Midas2_12 (A5), Milcery_12 (A5), PetterN_13 (A5), Phlorence_12 (A5), PickleBack_12 (A5), Scorpia_13 (A5), Swirley_12 (A5), SydNat_12 (A5), Tarynearal_11 (A5), Theia_11 (A5), Tiger_12 (A5), UnionJack_12 (A5), Zolita_11 (A5),

Start 26:

- Found in 8 of 626 (1.3%) of genes in pham
- Manual Annotations of this start: 8 of 586
- Called 100.0% of time when present
- Phage (with cluster) where this start called: Astro_12 (A8), Danforth_11 (A8), Dixon_12 (A8), Expelliarmus_11 (A8), Groundhog_11 (A8), Roary_12 (A8), Saintus_12 (A8), Smeadley_12 (A8),

Start 27:

- Found in 538 of 626 (85.9%) of genes in pham
- Manual Annotations of this start: 468 of 586
- Called 93.3% of time when present
- Phage (with cluster) where this start called: 40AC_18 (A17), ACFishhook_16 (A3), AN3_15 (A2), AN9_18 (A2), ANI8_18 (A2), AbbyPaige_17 (A2), AbbysRanger_14 (A4), Abdiel_14 (A4), Acolyte_15 (A2), Adzzy_16 (A2), Agape74_17 (A2), AgronaGT15_16 (A3), Albee_14 (A4), Alberto7_15 (A4), Aliter_16 (A9), Alma_16 (A9), Anaysia_17 (A15), Aneem_15 (A11), AnnaL29_18 (A2), Anyong_14 (A4), Anon_15 (A15), Anselm_15 (A2), Anthony_14 (A20), Arissanee_14 (A9), Artemis2UCLA_18 (A6), Arturo_13 (A4), AugsMagnumOpus_18 (A3), AvatarAhPeg_14 (A4), Avle17_14 (A4), B1_12 (A3), BABullseye_18 (A6), Baby16_14 (A4), BabyBack_16 (A2), BabyRay_14 (A3), Bachome_15 (A11), Backyardigan_14 (A4), Bactobuster_16 (A2), Badger_14 (A4), Baehexic_16 (A2), BangNhom_13 (A4), Bartimeaus_14 (A4), Battleship_18 (A15), Beemo_16 (A9), BellusTerra_14 (A4), BengiVuitton_16 (A2), Benvolio_15 (A2), BiancaTri92_17 (A2), BillKnuckles_15 (A1), Blackmoor_14 (A4), Blinn1_18 (A6), Blue7_18 (A6), BlueBird_15 (A3),

BobSwaget_18 (A2), BogosyJay_16 (A9), Bombshell_14 (A4), Boohoo_17 (A15), Bowtie_15 (A11), Broseidon_14 (A4), Bruiser_14 (A4), BubbleTrouble_14 (A4), Bud_15 (A11), Bugatti_14 (A3), Buggy_17 (A2), Bumblebee11_14 (A4), Burger_13 (A4), BuzzBuzz_15 (A3), Bxb1_13 (A1), Bxz2_16 (A3), C3_13 (A2), CRB1_15 (A2), Caelakin_14 (A4), Camperdownii_13 (A4), Candra_18 (A6), Caraxes_14 (A2), Catalina_16 (A9), Caviar_15 (A3), Centaur_17 (A2), CentreCat_14 (A4), Cerulean_14 (A4), ChampagnePapi_14 (A4), Changeling_18 (A2), Chaph_14 (A4), Chargerpower_15 (A), Charm_15 (A9), Chartreuse_18 (A6), Che12_16 (A2), ChipMunk_17 (A2), Chupacabra_14 (A10), Cici_14 (A4), Cindaradix_13 (A4), Cintron_14 (A4), Citius_14 (A4), Clarenza_14 (A4), CloudWang3_18 (A6), Cocoaberry_14 (A4), Colbster_16 (A3), Colin_19 (A2), Commander_14 (A4), Connomayer_14 (A4), Conquerage_16 (A9), Cookiedough_18 (A6), Crucio_15 (A2), D29_16 (A2), D32_18 (A2), DBQu4n_18 (A2), DaHudson_16 (A3), DaVinci_18 (A6), Daishi_15 (A3), Dalmatian_15 (A2), Darrell_17 (A9), DarthPhader_16 (A12), Datway_14 (A4), Deano_14 (A4), DekHockey33_17 (A15), Deloris_16 (A2), Dhanush_14 (A4), Dieselweasel_16 (A3), Dignity_17 (A2), DirtyDunning_14 (A4), Dorothea_17 (A6), Drake55_17 (A2), Drake94_13 (A10), DreamTeam1_15 (A9), DroogsArmy_15 (A7), Druantia_14 (A4), DudeLittle_15 (A2), Duplo_18 (A2), EZMoney23_19 (A2), EagleEye_17 (A16), Eagle_13 (A4), Eaglepride_15 (A10), Eapen_14 (A4), Ebony_15 (A11), Echild_15 (A2), Edison31_13 (A10), Eidsmoe_16 (A9), Elephantoon_16 (A9), EmyBug_14 (A9), EpicPhail_16 (A3), Epsocamisio_17 (A15), Equemioh13_17 (A2), EricB_18 (A6), Eris_14 (A4), Eros_14 (A4), Et2Brutus_14 (A11), Eurydice_14 (A4), EvilGenius_17 (A2), ExplosioNervosa_16 (A9), Fameo_15 (A2), Farber_16 (A3), Fayely_16 (A9), Fernando_16 (A3), Fibonacci_15 (A11), FiringLine_15 (A2), Flare16_15 (A2), Flaverint_15 (A11), Florean_14 (A4), Flux_14 (A4), Fred313_14 (A3), Funston_14 (A4), Gadost_14 (A4), Gail_14 (A14), Garak_19 (A6), GaugeLDP_17 (A2), Gemma_16 (A3), Georgie2_16 (A2), Gilberta_15 (A11), GingkoMaracino_16 (A3), Giroux_14 (A3), Gladiator_18 (A6), Goose_14 (A10), GreedyLawyer_18 (A6), Grif_16 (A3), Groupthink_17 (A3), Grub_16 (A3), Gruunaga_18 (A6), GtownJaz_16 (A3), HINdeR_14 (A7), HamSlice_13 (A4), Hammer_18 (A6), Happiness_14 (A4), HarryHoudini_17 (A2), HashRod_17 (A3), HaveUMetTed_17 (A3), Heathen_14 (A3), Heffalump_17 (A2), HelDan_14 (A3), Heliosoles_16 (A3), Helmet_19 (A6), Herbertwm_13 (A2), Hexamo_18 (A6), Holli_14 (A4), Hookmount_15 (A3), Hoot_18 (A6), HortumSL17_16 (A9), Houdini22_14 (A4), Hutc2_15 (A11), ICleared_14 (A4), Iceman_14 (A4), Idleandcovert_14 (A3), Indra_18 (A6), Insomnia_14 (A11), Iracema64_14 (A4), IronMan_17 (A2), Isiphiwo_18 (A6), Iwokeuplikedis_15 (A2), JF2_14 (A3), JF4_14 (A3), JHC117_16 (A3), JSwag_17 (A15), Jaan_18 (A2), Jabith_15 (A11), Jaykayelowell_14 (A4), Jeeves_14 (A14), Jeffabunny_18 (A6), JenCasNa_16 (A3), JeppNRM_17 (A3), Jerm_17 (A2), JetBlade_14 (A4), JewelBug_18 (A6), JoongJeon_14 (A4), Jordennis_18 (A6), Joselito_15 (A11), JoshKayV_17 (A2), Journey13_13 (A2), Jsquared_14 (A2), KADY_17 (A3), KFPoly_14 (A4), Kalb97_17 (A3), Kalnoky_17 (A3), Kalpine_18 (A2), Kampy_14 (A4), Katalie136_14 (A4), KatherineG_17 (A15), Kazan_18 (A6), Kerberos_18 (A2), Keziacharles14_14 (A9), KingCyrus_17 (A2), Kingmustik0402_14 (A4), Kipper29_18 (A6), KittenMittens_13 (A10), Koduck_15 (A2), Koko_18 (A6), Koreni_13 (A4), Kratark_14 (A4), Kremtemulon_13 (A4), Kristoff_15 (A10), Kugel_15 (A1), Kyee_14 (A4), Kykar_12 (A1), L5_16 (A2), LBerry_16 (A3), LHTSCC_14 (A4), Lambert1_15 (A3), Landor_16 (A2), LappelDuVide_13 (A4), Larenn_16 (A2), LarryKay_16 (A3), LastResort_17 (A15), Lemur_14 (A4), LeoAvram_14 (A4), Leogania_17 (A2), Leviathan_17 (A2), LilTurb_17 (A2), Lilbunny_17 (A6), Lilith_16 (A3), LittleB_14 (A4), LittleGuy_14 (A4), LochMonster_14 (A4), Lokk_18 (A2), LoneWolf_16 (A9), Looper_18 (A15), Lorenzo_14 (A4), Loser_18 (A2), Luchador_15 (A14), Lucivia_15 (A11), Lucyedi_16

(A16), Lunsford_15 (A4), MA5_14 (A3), MK4_14 (A3), MaCh_15 (A11), Mabel_15 (A11), MadMarie_16 (A3), Malec_16 (A2), Maminiaina_16 (A9), Manu_17 (A3), Margo_15 (A3), Marius_17 (A3), Maverick_14 (A4), Maxo_14 (A4), Mazhar510_14 (A4), McFly_18 (A6), Medusa_14 (A4), MeeZee_14 (A4), Melvin_14 (A4), Microwolf_16 (A3), MiculUcigas_15 (A2), Miko_18 (A2), Millski_14 (A4), MinecraftSteve_18 (A15), Miramae_14 (A4), MissWhite_15 (A2), Morpher26_14 (A4), Morrow_14 (A4), MuchMore_18 (A3), Mulciber_15 (A11), Munch_15 (A11), Mundrea_14 (A4), MyraDee_12 (A18), Myxus_16 (A9), NaSiaTalie_15 (A2), Naji_18 (A2), Nebs_14 (A4), Nebulosus_17 (A15), Nedarya_16 (A15), Neeharika16_18 (A6), Nemo27_14 (A4), Newrala_18 (A6), NicoleTera_19 (A2), Noella_15 (A3), Noelle_14 (A4), Norbert_14 (A3), NorthStar_14 (A4), NotAPhaseMom_14 (A4), NothingSpecial_17 (A2), Nyxis_14 (A4), OKCentral2016_14 (A10), OKaNui_14 (A4), Obama12_14 (A4), Odin_14 (A2), Ohfah_14 (A4), OlanP_16 (A3), Ollie_16 (A3), Oofda_18 (A15), Orange_15 (A11), P28Green_16 (A3), PGHhamlin_18 (A3), PP_24 (A7), PackMan_16 (A9), PainterBoy_16 (A16), Palestino_14 (A4), Panamaxus_15 (A3), Pawn_17 (A3), PeaceMeal1_13 (A10), Peaches_14 (A4), Pembroke_16 (A3), Perplexer_14 (A4), PeterPeter_14 (A4), Petersenfast_14 (A11), PetiteSangsue_14 (A4), Ph8s_16 (A2), Phacado_14 (A4), Phaded_18 (A2), Phaeder_16 (A9), Phantastic_14 (A3), Pharaoh_15 (A12), Phelipe_14 (A4), Phighter1804_14 (A4), PhishRPhriends_15 (A3), Phlei_11 (A13), Phoebe_16 (A3), Phonnegut_16 (A9), Phontbonne_14 (A4), Phoxy_16 (A3), Phranny_17 (A3), Pioneer_16 (A9), Pipcraft_14 (A4), Piro94_16 (A2), Pistachio_15 (A3), Pmask_18 (A6), Pocahontas_15 (A3), Polymorphads_14 (A4), Poompha_13 (A10), Popcicle_15 (A3), Power_15 (A2), Priamo_18 (A6), Priya_16 (A9), Pukovnik_17 (A2), Pumbaa_14 (A4), Puppy_15 (A3), PurpleHaze_16 (A3), Qobbit_16 (A9), QueenB2_15 (A2), QueenBeesly_15 (A2), QuinnKiro_14 (A3), Rachaly_18 (A2), Rahalelujah_14 (A9), ReMo_17 (A15), Reba_17 (A3), RedRock_18 (A2), Refuge_18 (A12), Relief_14 (A4), Remus_17 (A15), ResDef_15 (A3), Retro23_15 (A2), RhynO_15 (A10), Rifter_18 (A6), Rockstar_14 (A3), Roksolana_18 (A6), Romney_14 (A4), Roosevelt_14 (A4), Rosalind_17 (A15), Ruin_14 (A4), Rummer_16 (A3), Sabertooth_14 (A4), Sabinator_16 (A3), Salz_15 (A11), SaturnRing_14 (A3), Scamp_14 (A4), Scherzo_16 (A9), Scout_14 (A3), SemperFi_17 (A2), Serenity_14 (A2), Shaka_14 (A4), Sham4_15 (A11), ShayRa_18 (A15), SheaKeira_15 (A9), Sheen_16 (A7), SheldonCooper_14 (A4), Shygu2_14 (A4), Skipitt_14 (A4), Smeagan_17 (A2), SmellyB_18 (A6), SnapTap_15 (A2), Snape_15 (A11), Snickers_16 (A3), SoYo_16 (A3), SororFago_14 (A14), Soshari_18 (A3), Soups_17 (A15), Sparxx_14 (A4), Spike509_16 (A3), Spino_14 (A4), Spouty_15 (A9), Stagni_16 (A3), Stasia_15 (A4), Steamy_16 (A12), StepMih_16 (A3), Stink_14 (A4), Strosahl_17 (A15), SuperAwesome_18 (A6), SuperCallie99_18 (A6), Superchunk_14 (A2), SweetiePie_15 (A2), SwirlSquare_17 (A2), Switzerland_17 (A15), TNguyen7_14 (A3), Taquarus_14 (A4), Target_16 (A1), TarsusIV_15 (A2), Taurus_16 (A3), Texage_14 (A3), Thanksgivukkah_14 (A4), Timothy_15 (A11), Timshel_15 (A7), TinaFeyge_14 (A4), TinyTimmy_14 (A11), Tinybot_13 (A4), TopsytheTRex_14 (A2), TiroTheta9_14 (A4), Toaka_14 (A9), Todacoro_15 (A3), Tomathan_18 (A2), ToneTone_17 (A6), Topanga_14 (A10), Trixie_18 (A2), Trooper_15 (A2), TroyPia_14 (A4), Tubs_16 (A9), Tucker_18 (A6), Turbido_17 (A2), Twister_14 (A10), TygerBlood_14 (A4), Ugenie5_13 (A9), Ulysses_13 (A4), Updawg_17 (A2), VA6_15 (A2), VC3_18 (A2), Vanisoa_14 (A9), Veracruz_14 (A3), VohminGhazi_18 (A6), Waits_17 (A15), WalterMcMickey_14 (A10), Wander_14 (A4), Watson_16 (A3), WeiHuaDA_21 (A2), Whabigail7_17 (A2), WideWale_17 (A2), Wiks_18 (A6), Wilbur_14 (A4), Wile_14 (A4), Wizard007_14 (A4), WunderPhul_18 (A6), Xena_14 (A4), XianYue_15 (A2), Yecey3_15 (A9), YoSam321_14 (A4), Yokurt_18 (A6), Zaka_18 (A6), Zetzy_15 (A3), Zimmer_17 (A12), Zulu_18 (A6),

Start 31:

- Found in 1 of 626 (0.2%) of genes in pham
- No Manual Annotations of this start.
- Called 100.0% of time when present
- Phage (with cluster) where this start called: Hum25_5 (FQ),

Start 34:

- Found in 38 of 626 (6.1%) of genes in pham
- Manual Annotations of this start: 36 of 586
- Called 100.0% of time when present
- Phage (with cluster) where this start called: Alatin_11 (CA), Alpacados_10 (CA), AngryOrchard_10 (CA), AppleCloud_9 (CA), Belenaria_11 (CA), BobbyDazzler_11 (CA), Bonanza_11 (CA), Bradshaw_11 (CA), Bryce_11 (CA), CosmicSans_11 (CA), Dinger_11 (CA), Erik_11 (CA), Espica_11 (CA), Gollum_11 (CA), Harlequin_11 (CA), Hiro_11 (CA), Jester_11 (CA), Krishelle_11 (CA), Lillie_11 (CA), Naiad_11 (CA), Nancinator_11 (CA), Natosaleda_11 (CA), Partridge_11 (CA), PhailMary_10 (CA), Phrankenstein_11 (CA), RER2_4 (CA), RGL3_4 (CA), Rasputin_11 (CA), RexFury_11 (CA), Rhodalysa_11 (CA), Shuman_11 (CA), StCroix_11 (CA), Swann_11 (CA), TWAMP_11 (CA), Takoda_11 (CA), UhSalsa_11 (CA), Yogi_11 (CA), Yoncess_11 (CA),

Summary by clusters:

There are 23 clusters represented in this pham: FQ, A15, A14, A17, A16, A11, A10, A13, A12, A19, A18, A1, A3, A2, A5, A4, A7, A6, A9, A8, A, CA, A20,

Info for manual annotations of cluster A:

- Start number 27 was manually annotated 1 time for cluster A.

Info for manual annotations of cluster A1:

- Start number 27 was manually annotated 5 times for cluster A1.

Info for manual annotations of cluster A10:

- Start number 24 was manually annotated 3 times for cluster A10.
- Start number 27 was manually annotated 13 times for cluster A10.

Info for manual annotations of cluster A11:

- Start number 27 was manually annotated 22 times for cluster A11.

Info for manual annotations of cluster A12:

- Start number 27 was manually annotated 5 times for cluster A12.

Info for manual annotations of cluster A14:

- Start number 27 was manually annotated 4 times for cluster A14.

Info for manual annotations of cluster A15:

- Start number 27 was manually annotated 21 times for cluster A15.

Info for manual annotations of cluster A16:

- Start number 27 was manually annotated 3 times for cluster A16.

Info for manual annotations of cluster A18:

- Start number 27 was manually annotated 1 time for cluster A18.

Info for manual annotations of cluster A19:

- Start number 20 was manually annotated 1 time for cluster A19.

Info for manual annotations of cluster A2:

- Start number 19 was manually annotated 4 times for cluster A2.
- Start number 27 was manually annotated 96 times for cluster A2.

Info for manual annotations of cluster A20:

- Start number 27 was manually annotated 1 time for cluster A20.

Info for manual annotations of cluster A3:

- Start number 20 was manually annotated 11 times for cluster A3.
- Start number 24 was manually annotated 14 times for cluster A3.
- Start number 27 was manually annotated 86 times for cluster A3.

Info for manual annotations of cluster A4:

- Start number 20 was manually annotated 1 time for cluster A4.
- Start number 27 was manually annotated 134 times for cluster A4.

Info for manual annotations of cluster A5:

- Start number 20 was manually annotated 1 time for cluster A5.
- Start number 25 was manually annotated 36 times for cluster A5.

Info for manual annotations of cluster A6:

- Start number 27 was manually annotated 39 times for cluster A6.

Info for manual annotations of cluster A7:

- Start number 27 was manually annotated 5 times for cluster A7.

Info for manual annotations of cluster A8:

- Start number 24 was manually annotated 3 times for cluster A8.
- Start number 26 was manually annotated 8 times for cluster A8.

Info for manual annotations of cluster A9:

- Start number 27 was manually annotated 32 times for cluster A9.

Info for manual annotations of cluster CA:

- Start number 34 was manually annotated 36 times for cluster CA.

Gene Information:

Gene: 20ES_15 Start: 11599, Stop: 12150, Start Num: 19

Candidate Starts for 20ES_15:

(Start: 19 @11599 has 4 MA's), (21, 11614), (Start: 27 @11635 has 468 MA's), (39, 11713), (63, 11926), (67, 11953), (86, 12091),

Gene: 40AC_18 Start: 13636, Stop: 14160, Start Num: 27

Candidate Starts for 40AC_18:

(Start: 19 @13600 has 4 MA's), (Start: 24 @13615 has 20 MA's), (Start: 27 @13636 has 468 MA's), (36, 13702), (43, 13774), (57, 13879), (63, 13933),

Gene: ACFishhook_16 Start: 11156, Stop: 11659, Start Num: 27

Candidate Starts for ACFishhook_16:

(Start: 20 @11120 has 14 MA's), (Start: 24 @11135 has 20 MA's), (Start: 27 @11156 has 468 MA's), (49, 11333), (65, 11465), (67, 11477),

Gene: AN3_15 Start: 11619, Stop: 12140, Start Num: 27

Candidate Starts for AN3_15:

(Start: 19 @11583 has 4 MA's), (Start: 24 @11598 has 20 MA's), (Start: 27 @11619 has 468 MA's), (63, 11916), (67, 11943), (86, 12081),

Gene: AN9_18 Start: 11582, Stop: 12103, Start Num: 27

Candidate Starts for AN9_18:

(15, 11534), (Start: 27 @11582 has 468 MA's), (43, 11726), (44, 11741), (57, 11831), (63, 11885), (65, 11900), (86, 12044), (91, 12077),

Gene: ANI8_18 Start: 11582, Stop: 12103, Start Num: 27

Candidate Starts for ANI8_18:

(15, 11534), (Start: 27 @11582 has 468 MA's), (43, 11726), (57, 11831), (63, 11885), (65, 11900), (86, 12044), (91, 12077),

Gene: AbbyPaige_17 Start: 12068, Stop: 12595, Start Num: 27

Candidate Starts for AbbyPaige_17:

(Start: 27 @12068 has 468 MA's), (63, 12368), (65, 12383), (86, 12536), (91, 12569),

Gene: AbbysRanger_14 Start: 10955, Stop: 11479, Start Num: 27

Candidate Starts for AbbysRanger_14:

(Start: 20 @10922 has 14 MA's), (Start: 27 @10955 has 468 MA's), (37, 11039), (55, 11189), (80, 11366), (86, 11423),

Gene: Abdiel_14 Start: 10939, Stop: 11451, Start Num: 27

Candidate Starts for Abdiel_14:

(Start: 27 @10939 has 468 MA's), (42, 11050), (80, 11338),

Gene: Achebe_14 Start: 10910, Stop: 11458, Start Num: 20

Candidate Starts for Achebe_14:

(4, 10652), (7, 10703), (9, 10739), (10, 10742), (Start: 20 @10910 has 14 MA's), (Start: 27 @10943 has 468 MA's), (80, 11345),

Gene: Acolyte_15 Start: 11767, Stop: 12288, Start Num: 27

Candidate Starts for Acolyte_15:

(Start: 19 @11731 has 4 MA's), (Start: 24 @11746 has 20 MA's), (Start: 27 @11767 has 468 MA's), (30, 11818), (63, 12067), (67, 12094), (69, 12103), (91, 12262),

Gene: Adzzy_16 Start: 10383, Stop: 10907, Start Num: 27

Candidate Starts for Adzzy_16:

(Start: 27 @10383 has 468 MA's), (30, 10434), (36, 10452), (43, 10524), (47, 10554), (65, 10698), (67, 10710), (69, 10719), (86, 10845), (91, 10878), (93, 10887),

Gene: Agape74_17 Start: 12068, Stop: 12595, Start Num: 27

Candidate Starts for Agape74_17:

(Start: 27 @12068 has 468 MA's), (63, 12368), (65, 12383), (86, 12536), (91, 12569),

Gene: AgentM_12 Start: 10341, Stop: 10850, Start Num: 25

Candidate Starts for AgentM_12:

(Start: 25 @10341 has 36 MA's), (41, 10431), (57, 10584), (62, 10626), (65, 10653), (69, 10674), (75, 10722),

Gene: Aglet_16 Start: 10983, Stop: 11507, Start Num: 24

Candidate Starts for Aglet_16:

(Start: 20 @10968 has 14 MA's), (Start: 24 @10983 has 20 MA's), (Start: 27 @11004 has 468 MA's), (49, 11181), (65, 11313), (67, 11325),

Gene: AgronaGT15_16 Start: 10911, Stop: 11414, Start Num: 27

Candidate Starts for AgronaGT15_16:

(Start: 20 @10875 has 14 MA's), (Start: 24 @10890 has 20 MA's), (Start: 27 @10911 has 468 MA's), (49, 11088), (65, 11220), (67, 11232),

Gene: Airmid_12 Start: 10089, Stop: 10601, Start Num: 25

Candidate Starts for Airmid_12:

(Start: 20 @10056 has 14 MA's), (Start: 25 @10089 has 36 MA's), (41, 10182), (62, 10377), (65, 10404), (75, 10473), (83, 10506), (90, 10572),

Gene: Alatin_11 Start: 7218, Stop: 7703, Start Num: 34

Candidate Starts for Alatin_11:

(14, 7056), (Start: 34 @7218 has 36 MA's), (59, 7449), (76, 7572), (93, 7686),

Gene: Albee_14 Start: 10939, Stop: 11451, Start Num: 27

Candidate Starts for Albee_14:

(Start: 27 @10939 has 468 MA's), (42, 11050), (80, 11338),

Gene: Alberto7_15 Start: 11244, Stop: 11756, Start Num: 27

Candidate Starts for Alberto7_15:

(Start: 27 @11244 has 468 MA's), (42, 11355), (80, 11643),

Gene: Aliter_16 Start: 12195, Stop: 12728, Start Num: 27

Candidate Starts for Aliter_16:

(Start: 27 @12195 has 468 MA's), (30, 12243), (45, 12357), (63, 12498), (65, 12513), (67, 12525), (91, 12693), (92, 12696),

Gene: Alma_16 Start: 12274, Stop: 12807, Start Num: 27

Candidate Starts for Alma_16:

(Start: 27 @12274 has 468 MA's), (30, 12322), (45, 12436), (63, 12577), (65, 12592), (67, 12604), (91, 12772), (92, 12775),

Gene: Alpacados_10 Start: 7165, Stop: 7650, Start Num: 34

Candidate Starts for Alpacados_10:

(14, 7003), (Start: 34 @7165 has 36 MA's), (59, 7396), (68, 7462), (76, 7519),

Gene: Anaysia_17 Start: 10750, Stop: 11262, Start Num: 27

Candidate Starts for Anaysia_17:

(Start: 27 @10750 has 468 MA's), (51, 10945),

Gene: Aneem_15 Start: 12152, Stop: 12673, Start Num: 27
Candidate Starts for Aneem_15:
(21, 12131), (Start: 27 @12152 has 468 MA's), (30, 12203), (42, 12266), (63, 12452),

Gene: AngryOrchard_10 Start: 7148, Stop: 7633, Start Num: 34
Candidate Starts for AngryOrchard_10:
(14, 6986), (Start: 34 @7148 has 36 MA's), (59, 7379), (68, 7445), (76, 7502),

Gene: AnnaL29_18 Start: 13469, Stop: 13981, Start Num: 27
Candidate Starts for AnnaL29_18:
(Start: 27 @13469 has 468 MA's), (69, 13796), (86, 13922),

Gene: Annyong_14 Start: 10940, Stop: 11452, Start Num: 27
Candidate Starts for Annyong_14:
(Start: 27 @10940 has 468 MA's), (42, 11051), (80, 11339),

Gene: Anon_15 Start: 11108, Stop: 11614, Start Num: 27
Candidate Starts for Anon_15:
(Start: 27 @11108 has 468 MA's), (51, 11297), (67, 11423), (96, 11606),

Gene: Anselm_15 Start: 11730, Stop: 12242, Start Num: 27
Candidate Starts for Anselm_15:
(Start: 19 @11694 has 4 MA's), (Start: 24 @11709 has 20 MA's), (Start: 27 @11730 has 468 MA's),
(63, 12018), (67, 12045), (86, 12183), (91, 12216),

Gene: Anthony_14 Start: 9846, Stop: 10355, Start Num: 27
Candidate Starts for Anthony_14:
(Start: 27 @9846 has 468 MA's), (43, 9981), (47, 10011), (91, 10332),

Gene: Anubis_18 Start: 10868, Stop: 11392, Start Num: 24
Candidate Starts for Anubis_18:
(Start: 20 @10853 has 14 MA's), (Start: 24 @10868 has 20 MA's), (Start: 27 @10889 has 468 MA's),
(49, 11066), (65, 11198), (67, 11210),

Gene: AppleCloud_9 Start: 6912, Stop: 7397, Start Num: 34
Candidate Starts for AppleCloud_9:
(14, 6750), (Start: 34 @6912 has 36 MA's), (59, 7143), (68, 7209), (76, 7266),

Gene: Aragog_12 Start: 10371, Stop: 10880, Start Num: 25
Candidate Starts for Aragog_12:
(Start: 25 @10371 has 36 MA's), (41, 10461), (57, 10614), (62, 10656), (65, 10683), (75, 10752),

Gene: ArcherNM_17 Start: 13370, Stop: 13930, Start Num: 19
Candidate Starts for ArcherNM_17:
(Start: 19 @13370 has 4 MA's), (22, 13385), (Start: 27 @13406 has 468 MA's), (36, 13475), (69,
13742), (86, 13871),

Gene: Archetta_12 Start: 10081, Stop: 10593, Start Num: 25
Candidate Starts for Archetta_12:
(13, 9982), (Start: 20 @10048 has 14 MA's), (Start: 25 @10081 has 36 MA's), (41, 10174), (62,
10369), (65, 10396), (75, 10465), (83, 10498), (90, 10564),

Gene: Arissanae_14 Start: 10395, Stop: 10925, Start Num: 27
Candidate Starts for Arissanae_14:
(Start: 27 @10395 has 468 MA's), (32, 10443), (41, 10500), (63, 10695), (67, 10722), (91, 10890), (92, 10893),

Gene: Artemis2UCLA_18 Start: 11564, Stop: 12085, Start Num: 27
Candidate Starts for Artemis2UCLA_18:
(12, 11468), (Start: 27 @11564 has 468 MA's), (30, 11612), (43, 11699), (56, 11792), (57, 11804), (73, 11930),

Gene: Arturo_13 Start: 11053, Stop: 11565, Start Num: 27
Candidate Starts for Arturo_13:
(Start: 27 @11053 has 468 MA's), (42, 11164), (80, 11452),

Gene: Astro_12 Start: 9843, Stop: 10349, Start Num: 26
Candidate Starts for Astro_12:
(Start: 26 @9843 has 8 MA's), (52, 10035), (58, 10092), (61, 10116), (65, 10149), (69, 10170), (85, 10275),

Gene: AugsMagnumOpus_18 Start: 10995, Stop: 11498, Start Num: 27
Candidate Starts for AugsMagnumOpus_18:
(Start: 20 @10959 has 14 MA's), (Start: 24 @10974 has 20 MA's), (Start: 27 @10995 has 468 MA's), (49, 11172), (65, 11304), (67, 11316),

Gene: AvatarAhPeg_14 Start: 10907, Stop: 11419, Start Num: 27
Candidate Starts for AvatarAhPeg_14:
(Start: 20 @10874 has 14 MA's), (Start: 27 @10907 has 468 MA's), (42, 11018), (69, 11240), (80, 11306),

Gene: Avle17_14 Start: 10939, Stop: 11451, Start Num: 27
Candidate Starts for Avle17_14:
(Start: 27 @10939 has 468 MA's), (42, 11050), (80, 11338),

Gene: B1_12 Start: 10184, Stop: 10708, Start Num: 27
Candidate Starts for B1_12:
(Start: 20 @10148 has 14 MA's), (Start: 27 @10184 has 468 MA's), (48, 10361), (62, 10469), (67, 10508),

Gene: BABullseye_18 Start: 11667, Stop: 12197, Start Num: 27
Candidate Starts for BABullseye_18:
(Start: 27 @11667 has 468 MA's), (43, 11811), (56, 11904), (57, 11916), (73, 12042),

Gene: Baby16_14 Start: 10948, Stop: 11460, Start Num: 27
Candidate Starts for Baby16_14:
(Start: 27 @10948 has 468 MA's), (42, 11059), (80, 11347),

Gene: BabyBack_16 Start: 13261, Stop: 13785, Start Num: 27
Candidate Starts for BabyBack_16:
(Start: 27 @13261 has 468 MA's), (36, 13327), (43, 13399), (63, 13558), (73, 13630),

Gene: BabyRay_14 Start: 10770, Stop: 11294, Start Num: 27
Candidate Starts for BabyRay_14:
(Start: 27 @10770 has 468 MA's), (48, 10944), (62, 11052), (67, 11091), (95, 11265),

Gene: Bachome_15 Start: 12149, Stop: 12670, Start Num: 27
Candidate Starts for Bachome_15:
(21, 12128), (Start: 27 @12149 has 468 MA's), (29, 12191), (30, 12200), (42, 12263), (63, 12449),

Gene: Backyardigan_14 Start: 10955, Stop: 11470, Start Num: 27
Candidate Starts for Backyardigan_14:
(4, 10664), (7, 10715), (9, 10751), (10, 10754), (Start: 20 @10922 has 14 MA's), (Start: 27 @10955 has 468 MA's), (80, 11357),

Gene: Bactobuster_16 Start: 13356, Stop: 13865, Start Num: 27
Candidate Starts for Bactobuster_16:
(Start: 27 @13356 has 468 MA's), (48, 13524), (63, 13644), (67, 13671), (86, 13809),

Gene: Badger_14 Start: 10944, Stop: 11459, Start Num: 27
Candidate Starts for Badger_14:
(4, 10653), (7, 10704), (9, 10740), (10, 10743), (Start: 20 @10911 has 14 MA's), (Start: 27 @10944 has 468 MA's), (80, 11346),

Gene: Baehexic_16 Start: 12120, Stop: 12644, Start Num: 27
Candidate Starts for Baehexic_16:
(Start: 19 @12084 has 4 MA's), (21, 12099), (Start: 27 @12120 has 468 MA's), (58, 12381), (86, 12585), (91, 12618),

Gene: BangNhom_13 Start: 10917, Stop: 11429, Start Num: 27
Candidate Starts for BangNhom_13:
(Start: 20 @10884 has 14 MA's), (Start: 27 @10917 has 468 MA's), (42, 11028), (69, 11250), (80, 11316),

Gene: Bartimeaus_14 Start: 10939, Stop: 11451, Start Num: 27
Candidate Starts for Bartimeaus_14:
(Start: 27 @10939 has 468 MA's), (42, 11050), (80, 11338),

Gene: Battleship_18 Start: 10868, Stop: 11377, Start Num: 27
Candidate Starts for Battleship_18:
(Start: 27 @10868 has 468 MA's),

Gene: Beauxregard13_16 Start: 10982, Stop: 11506, Start Num: 24
Candidate Starts for Beauxregard13_16:
(Start: 20 @10967 has 14 MA's), (Start: 24 @10982 has 20 MA's), (Start: 27 @11003 has 468 MA's), (49, 11180), (65, 11312), (67, 11324),

Gene: Beemo_16 Start: 12301, Stop: 12834, Start Num: 27
Candidate Starts for Beemo_16:
(Start: 27 @12301 has 468 MA's), (30, 12349), (45, 12463), (63, 12604), (65, 12619), (67, 12631), (91, 12799), (92, 12802),

Gene: Belenaria_11 Start: 7218, Stop: 7703, Start Num: 34
Candidate Starts for Belenaria_11:
(14, 7056), (Start: 34 @7218 has 36 MA's), (59, 7449), (68, 7515), (76, 7572), (93, 7686),

Gene: BellusTerra_14 Start: 10939, Stop: 11451, Start Num: 27
Candidate Starts for BellusTerra_14:

(Start: 27 @10939 has 468 MA's), (42, 11050), (80, 11338),

Gene: Benedict_12 Start: 10091, Stop: 10603, Start Num: 25

Candidate Starts for Benedict_12:

(Start: 20 @10058 has 14 MA's), (Start: 25 @10091 has 36 MA's), (41, 10184), (62, 10379), (65, 10406), (75, 10475), (83, 10508), (90, 10574),

Gene: BengiVuitton_16 Start: 12045, Stop: 12557, Start Num: 27

Candidate Starts for BengiVuitton_16:

(Start: 19 @12009 has 4 MA's), (21, 12024), (Start: 27 @12045 has 468 MA's), (39, 12123), (63, 12336), (76, 12426), (86, 12498),

Gene: Benvolio_15 Start: 11720, Stop: 12232, Start Num: 27

Candidate Starts for Benvolio_15:

(Start: 19 @11684 has 4 MA's), (Start: 24 @11699 has 20 MA's), (Start: 27 @11720 has 468 MA's), (63, 12008), (67, 12035), (86, 12173),

Gene: BiancaTri92_17 Start: 13398, Stop: 13916, Start Num: 27

Candidate Starts for BiancaTri92_17:

(Start: 19 @13362 has 4 MA's), (Start: 24 @13377 has 20 MA's), (Start: 27 @13398 has 468 MA's), (63, 13695), (67, 13722), (86, 13857),

Gene: BillKnuckles_15 Start: 11758, Stop: 12255, Start Num: 27

Candidate Starts for BillKnuckles_15:

(Start: 27 @11758 has 468 MA's), (56, 11974), (57, 11986), (69, 12076), (84, 12163), (87, 12205), (89, 12223),

Gene: Blackmoor_14 Start: 10939, Stop: 11451, Start Num: 27

Candidate Starts for Blackmoor_14:

(Start: 27 @10939 has 468 MA's), (42, 11050), (80, 11338),

Gene: Blinn1_18 Start: 11710, Stop: 12240, Start Num: 27

Candidate Starts for Blinn1_18:

(Start: 27 @11710 has 468 MA's), (43, 11854), (56, 11947), (57, 11959), (73, 12085),

Gene: Blue7_18 Start: 11655, Stop: 12176, Start Num: 27

Candidate Starts for Blue7_18:

(12, 11559), (Start: 27 @11655 has 468 MA's), (30, 11703), (43, 11790), (57, 11895), (73, 12021),

Gene: BlueBird_15 Start: 10546, Stop: 11067, Start Num: 27

Candidate Starts for BlueBird_15:

(Start: 27 @10546 has 468 MA's), (48, 10720), (62, 10828), (67, 10867), (95, 11038),

Gene: Bluefalcon_11 Start: 10341, Stop: 10850, Start Num: 25

Candidate Starts for Bluefalcon_11:

(Start: 25 @10341 has 36 MA's), (41, 10431), (57, 10584), (62, 10626), (65, 10653), (75, 10722),

Gene: BobSwaget_18 Start: 13290, Stop: 13799, Start Num: 27

Candidate Starts for BobSwaget_18:

(Start: 27 @13290 has 468 MA's), (39, 13371), (43, 13425), (63, 13584), (65, 13599), (86, 13743),

Gene: BobbyDazzler_11 Start: 7274, Stop: 7759, Start Num: 34

Candidate Starts for BobbyDazzler_11:

(14, 7112), (Start: 34 @7274 has 36 MA's), (59, 7505), (68, 7571), (76, 7628),

Gene: BogosyJay_16 Start: 12052, Stop: 12585, Start Num: 27

Candidate Starts for BogosyJay_16:

(Start: 27 @12052 has 468 MA's), (30, 12100), (45, 12214), (63, 12355), (65, 12370), (67, 12382), (91, 12550), (92, 12553),

Gene: Bombshell_14 Start: 10939, Stop: 11451, Start Num: 27

Candidate Starts for Bombshell_14:

(Start: 27 @10939 has 468 MA's), (42, 11050), (80, 11338),

Gene: Bonamassa_12 Start: 10263, Stop: 10772, Start Num: 25

Candidate Starts for Bonamassa_12:

(Start: 25 @10263 has 36 MA's), (41, 10353), (57, 10506), (62, 10548), (65, 10575), (69, 10596), (75, 10644),

Gene: Bonanza_11 Start: 7203, Stop: 7688, Start Num: 34

Candidate Starts for Bonanza_11:

(14, 7041), (Start: 34 @7203 has 36 MA's), (59, 7434), (68, 7500), (76, 7557),

Gene: Boohoo_17 Start: 10750, Stop: 11262, Start Num: 27

Candidate Starts for Boohoo_17:

(Start: 27 @10750 has 468 MA's), (51, 10945),

Gene: Bowtie_15 Start: 12152, Stop: 12673, Start Num: 27

Candidate Starts for Bowtie_15:

(21, 12131), (Start: 27 @12152 has 468 MA's), (30, 12203), (42, 12266), (63, 12452),

Gene: Bradshaw_11 Start: 7218, Stop: 7703, Start Num: 34

Candidate Starts for Bradshaw_11:

(14, 7056), (Start: 34 @7218 has 36 MA's), (59, 7449), (68, 7515), (76, 7572), (93, 7686),

Gene: BreSam8_16 Start: 10960, Stop: 11499, Start Num: 20

Candidate Starts for BreSam8_16:

(Start: 20 @10960 has 14 MA's), (Start: 24 @10975 has 20 MA's), (Start: 27 @10996 has 468 MA's), (49, 11173), (65, 11305), (67, 11317),

Gene: Broseidon_14 Start: 10939, Stop: 11451, Start Num: 27

Candidate Starts for Broseidon_14:

(Start: 27 @10939 has 468 MA's), (42, 11050), (80, 11338),

Gene: Bruiser_14 Start: 10939, Stop: 11451, Start Num: 27

Candidate Starts for Bruiser_14:

(Start: 27 @10939 has 468 MA's), (42, 11050), (80, 11338),

Gene: Bryce_11 Start: 7203, Stop: 7688, Start Num: 34

Candidate Starts for Bryce_11:

(14, 7041), (Start: 34 @7203 has 36 MA's), (59, 7434), (68, 7500), (76, 7557),

Gene: BubbleTrouble_14 Start: 10939, Stop: 11451, Start Num: 27

Candidate Starts for BubbleTrouble_14:

(Start: 27 @10939 has 468 MA's), (42, 11050), (80, 11338),

Gene: Bud_15 Start: 12158, Stop: 12679, Start Num: 27
Candidate Starts for Bud_15:
(21, 12137), (Start: 27 @12158 has 468 MA's), (30, 12209), (42, 12272), (63, 12458),

Gene: Bugatti_14 Start: 10546, Stop: 11067, Start Num: 27
Candidate Starts for Bugatti_14:
(Start: 27 @10546 has 468 MA's), (48, 10720), (62, 10828), (67, 10867), (95, 11038),

Gene: Buggy_17 Start: 12067, Stop: 12594, Start Num: 27
Candidate Starts for Buggy_17:
(Start: 27 @12067 has 468 MA's), (63, 12367), (65, 12382), (86, 12535), (91, 12568),

Gene: Bumblebee11_14 Start: 10949, Stop: 11461, Start Num: 27
Candidate Starts for Bumblebee11_14:
(Start: 20 @10916 has 14 MA's), (Start: 27 @10949 has 468 MA's), (42, 11060), (55, 11171), (80, 11348),

Gene: Burger_13 Start: 10939, Stop: 11451, Start Num: 27
Candidate Starts for Burger_13:
(Start: 27 @10939 has 468 MA's), (42, 11050), (80, 11338),

Gene: BuzzBuzz_15 Start: 11087, Stop: 11590, Start Num: 27
Candidate Starts for BuzzBuzz_15:
(Start: 20 @11051 has 14 MA's), (Start: 24 @11066 has 20 MA's), (Start: 27 @11087 has 468 MA's),
(49, 11264), (65, 11396), (67, 11408),

Gene: Bxb1_13 Start: 11127, Stop: 11624, Start Num: 27
Candidate Starts for Bxb1_13:
(Start: 27 @11127 has 468 MA's), (56, 11343), (57, 11355), (69, 11445), (84, 11532), (87, 11574), (89, 11592),

Gene: Bxz2_16 Start: 11097, Stop: 11600, Start Num: 27
Candidate Starts for Bxz2_16:
(Start: 20 @11061 has 14 MA's), (Start: 24 @11076 has 20 MA's), (Start: 27 @11097 has 468 MA's),
(49, 11274), (65, 11406), (67, 11418),

Gene: C3_13 Start: 11582, Stop: 12103, Start Num: 27
Candidate Starts for C3_13:
(15, 11534), (Start: 27 @11582 has 468 MA's), (43, 11726), (57, 11831), (63, 11885), (65, 11900), (86, 12044), (91, 12077),

Gene: CRB1_15 Start: 11588, Stop: 12115, Start Num: 27
Candidate Starts for CRB1_15:
(Start: 27 @11588 has 468 MA's), (65, 11903), (86, 12056), (91, 12089),

Gene: Caelakin_14 Start: 10939, Stop: 11451, Start Num: 27
Candidate Starts for Caelakin_14:
(Start: 27 @10939 has 468 MA's), (42, 11050), (80, 11338),

Gene: Camperdownii_13 Start: 10561, Stop: 11073, Start Num: 27
Candidate Starts for Camperdownii_13:
(Start: 20 @10528 has 14 MA's), (Start: 27 @10561 has 468 MA's), (42, 10672), (63, 10858), (80, 10960),

Gene: Candra_18 Start: 11710, Stop: 12240, Start Num: 27

Candidate Starts for Candra_18:

(Start: 27 @11710 has 468 MA's), (43, 11854), (56, 11947), (57, 11959), (73, 12085),

Gene: Caraxes_14 Start: 10281, Stop: 10805, Start Num: 27

Candidate Starts for Caraxes_14:

(Start: 27 @10281 has 468 MA's), (36, 10350), (43, 10422), (47, 10452), (65, 10596), (69, 10617), (86, 10743), (91, 10776), (93, 10785),

Gene: Catalina_16 Start: 12268, Stop: 12801, Start Num: 27

Candidate Starts for Catalina_16:

(Start: 27 @12268 has 468 MA's), (30, 12316), (45, 12430), (63, 12571), (65, 12586), (67, 12598), (91, 12766), (92, 12769),

Gene: Caviar_15 Start: 11093, Stop: 11602, Start Num: 27

Candidate Starts for Caviar_15:

(12, 10988), (Start: 27 @11093 has 468 MA's), (62, 11375), (67, 11414), (90, 11573),

Gene: Centaur_17 Start: 12098, Stop: 12622, Start Num: 27

Candidate Starts for Centaur_17:

(11, 11945), (Start: 19 @12062 has 4 MA's), (21, 12077), (Start: 27 @12098 has 468 MA's), (48, 12278), (63, 12398), (67, 12425), (69, 12434), (86, 12563), (91, 12596), (93, 12605), (95, 12608),

Gene: CentreCat_14 Start: 10940, Stop: 11452, Start Num: 27

Candidate Starts for CentreCat_14:

(Start: 27 @10940 has 468 MA's), (42, 11051), (80, 11339),

Gene: Cerulean_14 Start: 10918, Stop: 11430, Start Num: 27

Candidate Starts for Cerulean_14:

(Start: 20 @10885 has 14 MA's), (Start: 27 @10918 has 468 MA's), (42, 11029), (69, 11251), (80, 11317),

Gene: Chadwick_13 Start: 10059, Stop: 10571, Start Num: 25

Candidate Starts for Chadwick_13:

(Start: 20 @10026 has 14 MA's), (Start: 25 @10059 has 36 MA's), (41, 10152), (62, 10347), (65, 10374), (75, 10443), (83, 10476), (90, 10542),

Gene: ChampagnePapi_14 Start: 10917, Stop: 11429, Start Num: 27

Candidate Starts for ChampagnePapi_14:

(Start: 20 @10884 has 14 MA's), (Start: 27 @10917 has 468 MA's), (42, 11028), (69, 11250), (80, 11316),

Gene: Changeling_18 Start: 13463, Stop: 13987, Start Num: 27

Candidate Starts for Changeling_18:

(Start: 19 @13424 has 4 MA's), (Start: 27 @13463 has 468 MA's), (36, 13532), (48, 13643), (69, 13799), (86, 13928),

Gene: Chaph_14 Start: 10948, Stop: 11460, Start Num: 27

Candidate Starts for Chaph_14:

(Start: 27 @10948 has 468 MA's), (42, 11059), (80, 11347),

Gene: Chargerpower_15 Start: 10766, Stop: 11284, Start Num: 27

Candidate Starts for Chargerpower_15:

(Start: 27 @10766 has 468 MA's), (33, 10820), (43, 10904), (56, 10997), (67, 11090), (86, 11225),

Gene: Charm_15 Start: 10498, Stop: 11028, Start Num: 27

Candidate Starts for Charm_15:

(Start: 24 @10477 has 20 MA's), (Start: 27 @10498 has 468 MA's), (30, 10549), (36, 10567), (56, 10732), (67, 10825),

Gene: Chartreuse_18 Start: 11624, Stop: 12154, Start Num: 27

Candidate Starts for Chartreuse_18:

(Start: 27 @11624 has 468 MA's), (43, 11768), (56, 11861), (57, 11873), (73, 11999),

Gene: Che12_16 Start: 10378, Stop: 10902, Start Num: 27

Candidate Starts for Che12_16:

(Start: 27 @10378 has 468 MA's), (36, 10447), (43, 10519), (47, 10549), (65, 10693), (69, 10714), (86, 10840), (91, 10873),

Gene: ChipMunk_17 Start: 12018, Stop: 12530, Start Num: 27

Candidate Starts for ChipMunk_17:

(Start: 19 @11982 has 4 MA's), (Start: 24 @11997 has 20 MA's), (Start: 27 @12018 has 468 MA's), (63, 12306), (67, 12333), (69, 12342), (86, 12471), (91, 12504),

Gene: Chupacabra_14 Start: 10702, Stop: 11223, Start Num: 27

Candidate Starts for Chupacabra_14:

(Start: 24 @10681 has 20 MA's), (Start: 27 @10702 has 468 MA's), (81, 11116),

Gene: Cici_14 Start: 10937, Stop: 11452, Start Num: 27

Candidate Starts for Cici_14:

(Start: 20 @10904 has 14 MA's), (Start: 27 @10937 has 468 MA's), (55, 11162), (80, 11339),

Gene: Cindaradix_13 Start: 10649, Stop: 11173, Start Num: 27

Candidate Starts for Cindaradix_13:

(Start: 20 @10616 has 14 MA's), (Start: 27 @10649 has 468 MA's), (37, 10733), (42, 10772), (80, 11060),

Gene: Cintron_14 Start: 10987, Stop: 11499, Start Num: 27

Candidate Starts for Cintron_14:

(Start: 27 @10987 has 468 MA's), (42, 11098), (63, 11284), (80, 11386),

Gene: Citius_14 Start: 10939, Stop: 11451, Start Num: 27

Candidate Starts for Citius_14:

(Start: 27 @10939 has 468 MA's), (42, 11050), (80, 11338),

Gene: Clarenza_14 Start: 10939, Stop: 11451, Start Num: 27

Candidate Starts for Clarenza_14:

(Start: 27 @10939 has 468 MA's), (42, 11050), (80, 11338),

Gene: CloudWang3_18 Start: 11655, Stop: 12185, Start Num: 27

Candidate Starts for CloudWang3_18:

(Start: 27 @11655 has 468 MA's), (43, 11799), (56, 11892), (57, 11904), (73, 12030),

Gene: Cocoaberry_14 Start: 10943, Stop: 11455, Start Num: 27

Candidate Starts for Cocoaberry_14:

(Start: 27 @10943 has 468 MA's), (42, 11054), (80, 11342),

Gene: Colbster_16 Start: 11003, Stop: 11506, Start Num: 27

Candidate Starts for Colbster_16:

(Start: 20 @10967 has 14 MA's), (Start: 24 @10982 has 20 MA's), (Start: 27 @11003 has 468 MA's), (49, 11180), (65, 11312), (67, 11324),

Gene: Colin_19 Start: 13279, Stop: 13803, Start Num: 27

Candidate Starts for Colin_19:

(11, 13123), (22, 13258), (Start: 27 @13279 has 468 MA's), (36, 13348), (57, 13525), (86, 13744),

Gene: Commander_14 Start: 10939, Stop: 11451, Start Num: 27

Candidate Starts for Commander_14:

(Start: 27 @10939 has 468 MA's), (42, 11050), (80, 11338),

Gene: Connomayer_14 Start: 10939, Stop: 11451, Start Num: 27

Candidate Starts for Connomayer_14:

(Start: 27 @10939 has 468 MA's), (42, 11050), (80, 11338),

Gene: Conquerage_16 Start: 12297, Stop: 12830, Start Num: 27

Candidate Starts for Conquerage_16:

(Start: 27 @12297 has 468 MA's), (30, 12345), (45, 12459), (63, 12600), (65, 12615), (67, 12627), (91, 12795), (92, 12798),

Gene: Conspiracy_12 Start: 10081, Stop: 10590, Start Num: 25

Candidate Starts for Conspiracy_12:

(Start: 25 @10081 has 36 MA's), (41, 10171), (57, 10324), (62, 10366), (65, 10393), (69, 10414), (75, 10462),

Gene: Coog_12 Start: 10231, Stop: 10740, Start Num: 25

Candidate Starts for Coog_12:

(Start: 25 @10231 has 36 MA's), (41, 10321), (57, 10474), (62, 10516), (65, 10543), (69, 10564), (75, 10612),

Gene: Cookiedough_18 Start: 11667, Stop: 12197, Start Num: 27

Candidate Starts for Cookiedough_18:

(Start: 27 @11667 has 468 MA's), (43, 11811), (56, 11904), (57, 11916), (73, 12042),

Gene: CosmicSans_11 Start: 7218, Stop: 7703, Start Num: 34

Candidate Starts for CosmicSans_11:

(14, 7056), (Start: 34 @7218 has 36 MA's), (59, 7449), (68, 7515), (76, 7572), (93, 7686),

Gene: Crucio_15 Start: 11565, Stop: 12077, Start Num: 27

Candidate Starts for Crucio_15:

(Start: 19 @11529 has 4 MA's), (Start: 24 @11544 has 20 MA's), (Start: 27 @11565 has 468 MA's), (63, 11853), (67, 11880), (86, 12018),

Gene: Cuco_12 Start: 10262, Stop: 10771, Start Num: 25

Candidate Starts for Cuco_12:

(Start: 25 @10262 has 36 MA's), (41, 10352), (57, 10505), (62, 10547), (65, 10574), (69, 10595), (75, 10643),

Gene: Cullens_16 Start: 10965, Stop: 11504, Start Num: 20

Candidate Starts for Cullens_16:

(Start: 20 @10965 has 14 MA's), (Start: 24 @10980 has 20 MA's), (Start: 27 @11001 has 468 MA's), (49, 11178), (65, 11310), (67, 11322),

Gene: D29_16 Start: 11525, Stop: 12046, Start Num: 27

Candidate Starts for D29_16:

(Start: 19 @11489 has 4 MA's), (Start: 24 @11504 has 20 MA's), (Start: 27 @11525 has 468 MA's), (30, 11576), (65, 11840), (69, 11861), (91, 12020),

Gene: D32_18 Start: 11525, Stop: 12046, Start Num: 27

Candidate Starts for D32_18:

(Start: 19 @11489 has 4 MA's), (Start: 24 @11504 has 20 MA's), (Start: 27 @11525 has 468 MA's), (30, 11576), (65, 11840), (69, 11861), (91, 12020),

Gene: DBQu4n_18 Start: 11525, Stop: 12046, Start Num: 27

Candidate Starts for DBQu4n_18:

(Start: 19 @11489 has 4 MA's), (Start: 24 @11504 has 20 MA's), (Start: 27 @11525 has 468 MA's), (30, 11576), (65, 11840), (69, 11861), (91, 12020),

Gene: DaHudson_16 Start: 10995, Stop: 11498, Start Num: 27

Candidate Starts for DaHudson_16:

(Start: 20 @10959 has 14 MA's), (Start: 24 @10974 has 20 MA's), (Start: 27 @10995 has 468 MA's), (49, 11172), (65, 11304), (67, 11316),

Gene: DaVinci_18 Start: 11678, Stop: 12208, Start Num: 27

Candidate Starts for DaVinci_18:

(Start: 27 @11678 has 468 MA's), (43, 11822), (56, 11915), (57, 11927), (73, 12053),

Gene: Daishi_15 Start: 9928, Stop: 10431, Start Num: 27

Candidate Starts for Daishi_15:

(Start: 20 @9892 has 14 MA's), (Start: 24 @9907 has 20 MA's), (Start: 27 @9928 has 468 MA's), (49, 10105), (65, 10237), (67, 10249),

Gene: Dalmatian_15 Start: 11715, Stop: 12227, Start Num: 27

Candidate Starts for Dalmatian_15:

(Start: 19 @11679 has 4 MA's), (Start: 24 @11694 has 20 MA's), (Start: 27 @11715 has 468 MA's), (63, 12003), (67, 12030), (86, 12168),

Gene: Danforth_11 Start: 9822, Stop: 10328, Start Num: 26

Candidate Starts for Danforth_11:

(Start: 26 @9822 has 8 MA's), (52, 10014), (58, 10071), (61, 10095), (65, 10128), (69, 10149), (85, 10254),

Gene: Darrell_17 Start: 12486, Stop: 13019, Start Num: 27

Candidate Starts for Darrell_17:

(Start: 27 @12486 has 468 MA's), (30, 12534), (45, 12648), (63, 12789), (65, 12804), (67, 12816), (91, 12984), (92, 12987),

Gene: DARTHPhader_16 Start: 12456, Stop: 12989, Start Num: 27

Candidate Starts for DARTHPhader_16:

(Start: 27 @12456 has 468 MA's), (43, 12594), (50, 12639), (63, 12753), (89, 12942),

Gene: Datway_14 Start: 10955, Stop: 11470, Start Num: 27

Candidate Starts for Datway_14:

(4, 10664), (7, 10715), (9, 10751), (10, 10754), (Start: 20 @10922 has 14 MA's), (Start: 27 @10955 has 468 MA's), (80, 11357),

Gene: Deano_14 Start: 10947, Stop: 11459, Start Num: 27

Candidate Starts for Deano_14:

(Start: 20 @10914 has 14 MA's), (Start: 27 @10947 has 468 MA's), (42, 11058), (63, 11244), (80, 11346),

Gene: DekHockey33_17 Start: 10872, Stop: 11384, Start Num: 27

Candidate Starts for DekHockey33_17:

(Start: 27 @10872 has 468 MA's), (51, 11067),

Gene: Deloris_16 Start: 12045, Stop: 12557, Start Num: 27

Candidate Starts for Deloris_16:

(Start: 19 @12009 has 4 MA's), (21, 12024), (Start: 27 @12045 has 468 MA's), (39, 12123), (63, 12336), (76, 12426), (86, 12498),

Gene: Dhanush_14 Start: 10942, Stop: 11454, Start Num: 27

Candidate Starts for Dhanush_14:

(Start: 27 @10942 has 468 MA's), (42, 11053), (80, 11341),

Gene: Dieselweasel_16 Start: 11004, Stop: 11507, Start Num: 27

Candidate Starts for Dieselweasel_16:

(Start: 20 @10968 has 14 MA's), (Start: 24 @10983 has 20 MA's), (Start: 27 @11004 has 468 MA's), (49, 11181), (65, 11313), (67, 11325),

Gene: Dignity_17 Start: 12012, Stop: 12539, Start Num: 27

Candidate Starts for Dignity_17:

(Start: 27 @12012 has 468 MA's), (63, 12312), (65, 12327), (86, 12480), (91, 12513),

Gene: Dinger_11 Start: 7199, Stop: 7684, Start Num: 34

Candidate Starts for Dinger_11:

(14, 7037), (Start: 34 @7199 has 36 MA's), (59, 7430), (68, 7496), (76, 7553),

Gene: DirtyDunning_14 Start: 10935, Stop: 11447, Start Num: 27

Candidate Starts for DirtyDunning_14:

(Start: 27 @10935 has 468 MA's), (42, 11046), (80, 11334),

Gene: Discoknowium_12 Start: 10371, Stop: 10880, Start Num: 25

Candidate Starts for Discoknowium_12:

(Start: 25 @10371 has 36 MA's), (41, 10461), (57, 10614), (62, 10656), (65, 10683), (75, 10752),

Gene: Dixon_12 Start: 9841, Stop: 10347, Start Num: 26

Candidate Starts for Dixon_12:

(Start: 26 @9841 has 8 MA's), (52, 10033), (58, 10090), (61, 10114), (65, 10147), (69, 10168), (85, 10273),

Gene: Dorothea_17 Start: 11677, Stop: 12207, Start Num: 27

Candidate Starts for Dorothea_17:

(Start: 27 @11677 has 468 MA's), (43, 11821), (56, 11914), (57, 11926), (73, 12052),

Gene: Drake55_17 Start: 12116, Stop: 12640, Start Num: 27

Candidate Starts for Drake55_17:

(Start: 19 @12080 has 4 MA's), (21, 12095), (Start: 27 @12116 has 468 MA's), (58, 12377), (63, 12416), (86, 12581), (91, 12614),

Gene: Drake94_13 Start: 8806, Stop: 9327, Start Num: 27

Candidate Starts for Drake94_13:

(Start: 24 @8785 has 20 MA's), (Start: 27 @8806 has 468 MA's), (48, 8992), (56, 9046),

Gene: DreamTeam1_15 Start: 10498, Stop: 11028, Start Num: 27

Candidate Starts for DreamTeam1_15:

(Start: 24 @10477 has 20 MA's), (Start: 27 @10498 has 468 MA's), (30, 10549), (36, 10567), (56, 10732), (67, 10825),

Gene: DroogsArmy_15 Start: 12278, Stop: 12781, Start Num: 27

Candidate Starts for DroogsArmy_15:

(Start: 27 @12278 has 468 MA's), (39, 12350), (48, 12443), (67, 12590), (76, 12653), (88, 12746), (89, 12749), (90, 12755),

Gene: Druantia_14 Start: 10940, Stop: 11452, Start Num: 27

Candidate Starts for Druantia_14:

(Start: 27 @10940 has 468 MA's), (42, 11051), (80, 11339),

Gene: Dublin_11 Start: 10230, Stop: 10739, Start Num: 25

Candidate Starts for Dublin_11:

(Start: 25 @10230 has 36 MA's), (41, 10320), (57, 10473), (62, 10515), (65, 10542), (69, 10563), (75, 10611),

Gene: DudeLittle_15 Start: 11717, Stop: 12229, Start Num: 27

Candidate Starts for DudeLittle_15:

(Start: 19 @11681 has 4 MA's), (Start: 24 @11696 has 20 MA's), (Start: 27 @11717 has 468 MA's), (63, 12005), (67, 12032), (86, 12170),

Gene: Duplo_18 Start: 11566, Stop: 12087, Start Num: 27

Candidate Starts for Duplo_18:

(Start: 19 @11530 has 4 MA's), (Start: 24 @11545 has 20 MA's), (Start: 27 @11566 has 468 MA's), (30, 11617), (65, 11881), (69, 11902), (91, 12061),

Gene: EZMoney23_19 Start: 13587, Stop: 14105, Start Num: 27

Candidate Starts for EZMoney23_19:

(Start: 27 @13587 has 468 MA's), (32, 13638), (67, 13908), (86, 14046),

Gene: Eagle_13 Start: 10939, Stop: 11451, Start Num: 27

Candidate Starts for Eagle_13:

(Start: 27 @10939 has 468 MA's), (42, 11050), (80, 11338),

Gene: EagleEye_17 Start: 11847, Stop: 12374, Start Num: 27

Candidate Starts for EagleEye_17:

(8, 11625), (Start: 27 @11847 has 468 MA's), (67, 12168), (71, 12204),

Gene: Eaglepride_15 Start: 10702, Stop: 11223, Start Num: 27

Candidate Starts for Eaglepride_15:

(Start: 24 @10681 has 20 MA's), (Start: 27 @10702 has 468 MA's), (81, 11116),

Gene: Eapen_14 Start: 10941, Stop: 11453, Start Num: 27
Candidate Starts for Eapen_14:
(Start: 27 @10941 has 468 MA's), (42, 11052), (80, 11340),

Gene: Ebony_15 Start: 12210, Stop: 12731, Start Num: 27
Candidate Starts for Ebony_15:
(21, 12189), (Start: 27 @12210 has 468 MA's), (30, 12261), (42, 12324), (63, 12510),

Gene: Echild_15 Start: 11720, Stop: 12232, Start Num: 27
Candidate Starts for Echild_15:
(Start: 19 @11684 has 4 MA's), (Start: 24 @11699 has 20 MA's), (Start: 27 @11720 has 468 MA's),
(63, 12008), (67, 12035), (86, 12173),

Gene: Edison31_13 Start: 10731, Stop: 11252, Start Num: 27
Candidate Starts for Edison31_13:
(Start: 24 @10710 has 20 MA's), (Start: 27 @10731 has 468 MA's), (38, 10818),

Gene: Eidsmoe_16 Start: 12297, Stop: 12830, Start Num: 27
Candidate Starts for Eidsmoe_16:
(Start: 27 @12297 has 468 MA's), (30, 12345), (45, 12459), (63, 12600), (65, 12615), (67, 12627), (91,
12795), (92, 12798),

Gene: EITiger69_12 Start: 10089, Stop: 10601, Start Num: 25
Candidate Starts for EITiger69_12:
(Start: 20 @10056 has 14 MA's), (Start: 25 @10089 has 36 MA's), (41, 10182), (62, 10377), (65,
10404), (75, 10473), (83, 10506), (90, 10572),

Gene: Elephantoon_16 Start: 11916, Stop: 12449, Start Num: 27
Candidate Starts for Elephantoon_16:
(Start: 27 @11916 has 468 MA's), (30, 11964), (45, 12078), (63, 12219), (65, 12234), (67, 12246), (91,
12414), (92, 12417),

Gene: EmyBug_14 Start: 12297, Stop: 12830, Start Num: 27
Candidate Starts for EmyBug_14:
(Start: 27 @12297 has 468 MA's), (30, 12345), (45, 12459), (63, 12600), (65, 12615), (67, 12627), (91,
12795), (92, 12798),

Gene: EpicPhail_16 Start: 11003, Stop: 11506, Start Num: 27
Candidate Starts for EpicPhail_16:
(Start: 20 @10967 has 14 MA's), (Start: 24 @10982 has 20 MA's), (Start: 27 @11003 has 468 MA's),
(49, 11180), (65, 11312), (67, 11324),

Gene: Epsocamisio_17 Start: 10750, Stop: 11262, Start Num: 27
Candidate Starts for Epsocamisio_17:
(Start: 27 @10750 has 468 MA's), (51, 10945),

Gene: Equemioh13_17 Start: 12101, Stop: 12625, Start Num: 27
Candidate Starts for Equemioh13_17:
(11, 11948), (Start: 19 @12065 has 4 MA's), (21, 12080), (Start: 27 @12101 has 468 MA's), (48,
12281), (63, 12401), (67, 12428), (86, 12566), (91, 12599), (93, 12608), (95, 12611),

Gene: EricB_18 Start: 11668, Stop: 12198, Start Num: 27
Candidate Starts for EricB_18:

(Start: 27 @11668 has 468 MA's), (43, 11812), (56, 11905), (57, 11917), (73, 12043),

Gene: Erik_11 Start: 7218, Stop: 7703, Start Num: 34

Candidate Starts for Erik_11:

(14, 7056), (Start: 34 @7218 has 36 MA's), (59, 7449), (68, 7515), (76, 7572), (93, 7686),

Gene: Eris_14 Start: 10939, Stop: 11451, Start Num: 27

Candidate Starts for Eris_14:

(Start: 27 @10939 has 468 MA's), (42, 11050), (80, 11338),

Gene: Eros_14 Start: 10939, Stop: 11451, Start Num: 27

Candidate Starts for Eros_14:

(Start: 27 @10939 has 468 MA's), (42, 11050), (80, 11338),

Gene: Espica_11 Start: 7218, Stop: 7703, Start Num: 34

Candidate Starts for Espica_11:

(14, 7056), (Start: 34 @7218 has 36 MA's), (59, 7449), (68, 7515), (76, 7572), (93, 7686),

Gene: Et2Brutus_14 Start: 12155, Stop: 12676, Start Num: 27

Candidate Starts for Et2Brutus_14:

(21, 12134), (Start: 27 @12155 has 468 MA's), (30, 12206), (42, 12269), (63, 12455),

Gene: Eurydice_14 Start: 10939, Stop: 11451, Start Num: 27

Candidate Starts for Eurydice_14:

(Start: 27 @10939 has 468 MA's), (42, 11050), (80, 11338),

Gene: EvilGenius_17 Start: 12028, Stop: 12540, Start Num: 27

Candidate Starts for EvilGenius_17:

(Start: 19 @11992 has 4 MA's), (Start: 24 @12007 has 20 MA's), (Start: 27 @12028 has 468 MA's), (63, 12316), (67, 12343), (69, 12352), (86, 12481), (91, 12514),

Gene: Expelliarmus_11 Start: 9808, Stop: 10314, Start Num: 26

Candidate Starts for Expelliarmus_11:

(Start: 26 @9808 has 8 MA's), (52, 10000), (58, 10057), (61, 10081), (65, 10114), (69, 10135), (85, 10240),

Gene: ExplosioNervosa_16 Start: 12300, Stop: 12833, Start Num: 27

Candidate Starts for ExplosioNervosa_16:

(Start: 27 @12300 has 468 MA's), (30, 12348), (45, 12462), (63, 12603), (65, 12618), (67, 12630), (91, 12798), (92, 12801),

Gene: Fameo_15 Start: 11633, Stop: 12145, Start Num: 27

Candidate Starts for Fameo_15:

(Start: 19 @11597 has 4 MA's), (Start: 24 @11612 has 20 MA's), (Start: 27 @11633 has 468 MA's), (63, 11921), (67, 11948), (86, 12086),

Gene: Farber_16 Start: 10996, Stop: 11499, Start Num: 27

Candidate Starts for Farber_16:

(Start: 20 @10960 has 14 MA's), (Start: 24 @10975 has 20 MA's), (Start: 27 @10996 has 468 MA's), (49, 11173), (65, 11305), (67, 11317),

Gene: Fayely_16 Start: 12300, Stop: 12833, Start Num: 27

Candidate Starts for Fayely_16:

(Start: 27 @12300 has 468 MA's), (30, 12348), (45, 12462), (63, 12603), (65, 12618), (67, 12630), (91, 12798), (92, 12801),

Gene: Fernando_16 Start: 11001, Stop: 11504, Start Num: 27

Candidate Starts for Fernando_16:

(Start: 20 @10965 has 14 MA's), (Start: 24 @10980 has 20 MA's), (Start: 27 @11001 has 468 MA's), (49, 11178), (65, 11310), (67, 11322),

Gene: Fibonacci_15 Start: 12155, Stop: 12676, Start Num: 27

Candidate Starts for Fibonacci_15:

(21, 12134), (Start: 27 @12155 has 468 MA's), (30, 12206), (42, 12269), (63, 12455),

Gene: FiringLine_15 Start: 11565, Stop: 12077, Start Num: 27

Candidate Starts for FiringLine_15:

(Start: 19 @11529 has 4 MA's), (Start: 24 @11544 has 20 MA's), (Start: 27 @11565 has 468 MA's), (63, 11853), (67, 11880), (86, 12018),

Gene: First_0015 Start: 11599, Stop: 12150, Start Num: 19

Candidate Starts for First_0015:

(Start: 19 @11599 has 4 MA's), (21, 11614), (Start: 27 @11635 has 468 MA's), (39, 11713), (63, 11926), (67, 11953), (86, 12091),

Gene: Flare16_15 Start: 11659, Stop: 12183, Start Num: 27

Candidate Starts for Flare16_15:

(11, 11506), (Start: 19 @11623 has 4 MA's), (21, 11638), (Start: 27 @11659 has 468 MA's), (48, 11839), (63, 11959), (67, 11986), (86, 12124), (91, 12157), (93, 12166), (95, 12169),

Gene: Flaverint_15 Start: 12152, Stop: 12673, Start Num: 27

Candidate Starts for Flaverint_15:

(21, 12131), (Start: 27 @12152 has 468 MA's), (30, 12203), (42, 12266), (63, 12452),

Gene: Florean_14 Start: 10939, Stop: 11451, Start Num: 27

Candidate Starts for Florean_14:

(Start: 27 @10939 has 468 MA's), (42, 11050), (80, 11338),

Gene: Flux_14 Start: 10939, Stop: 11451, Start Num: 27

Candidate Starts for Flux_14:

(Start: 27 @10939 has 468 MA's), (42, 11050), (80, 11338),

Gene: ForGetIt_12 Start: 10107, Stop: 10616, Start Num: 25

Candidate Starts for ForGetIt_12:

(Start: 25 @10107 has 36 MA's), (41, 10197), (57, 10350), (62, 10392), (65, 10419), (69, 10440), (75, 10488),

Gene: Fred313_14 Start: 10249, Stop: 10773, Start Num: 27

Candidate Starts for Fred313_14:

(Start: 27 @10249 has 468 MA's), (48, 10426), (62, 10534), (67, 10573),

Gene: Funston_14 Start: 10939, Stop: 11451, Start Num: 27

Candidate Starts for Funston_14:

(Start: 27 @10939 has 468 MA's), (42, 11050), (80, 11338),

Gene: Gadost_14 Start: 10943, Stop: 11455, Start Num: 27

Candidate Starts for Gadost_14:
(Start: 27 @10943 has 468 MA's), (42, 11054), (80, 11342),

Gene: Gail_14 Start: 10686, Stop: 11198, Start Num: 27
Candidate Starts for Gail_14:
(Start: 27 @10686 has 468 MA's), (56, 10914), (76, 11070), (86, 11142),

Gene: Garak_19 Start: 11681, Stop: 12202, Start Num: 27
Candidate Starts for Garak_19:
(12, 11585), (Start: 27 @11681 has 468 MA's), (30, 11729), (43, 11816), (56, 11909), (57, 11921), (73, 12047),

Gene: GaugeLDP_17 Start: 12926, Stop: 13450, Start Num: 27
Candidate Starts for GaugeLDP_17:
(Start: 27 @12926 has 468 MA's), (36, 12992), (43, 13064), (63, 13223), (73, 13295),

Gene: Gemma_16 Start: 11075, Stop: 11578, Start Num: 27
Candidate Starts for Gemma_16:
(Start: 20 @11039 has 14 MA's), (Start: 24 @11054 has 20 MA's), (Start: 27 @11075 has 468 MA's), (49, 11252), (65, 11384), (67, 11396),

Gene: George_11 Start: 10263, Stop: 10772, Start Num: 25
Candidate Starts for George_11:
(Start: 25 @10263 has 36 MA's), (41, 10353), (57, 10506), (62, 10548), (65, 10575), (69, 10596), (75, 10644),

Gene: Georgie2_16 Start: 11566, Stop: 12078, Start Num: 27
Candidate Starts for Georgie2_16:
(Start: 19 @11530 has 4 MA's), (Start: 24 @11545 has 20 MA's), (Start: 27 @11566 has 468 MA's), (63, 11854), (67, 11881), (86, 12019),

Gene: Ghoulboy_12 Start: 10340, Stop: 10849, Start Num: 25
Candidate Starts for Ghoulboy_12:
(Start: 25 @10340 has 36 MA's), (41, 10430), (57, 10583), (62, 10625), (65, 10652), (75, 10721),

Gene: Gilberta_15 Start: 12149, Stop: 12670, Start Num: 27
Candidate Starts for Gilberta_15:
(21, 12128), (Start: 27 @12149 has 468 MA's), (30, 12200), (42, 12263), (63, 12449),

Gene: GingkoMaracino_16 Start: 10889, Stop: 11392, Start Num: 27
Candidate Starts for GingkoMaracino_16:
(Start: 20 @10853 has 14 MA's), (Start: 24 @10868 has 20 MA's), (Start: 27 @10889 has 468 MA's), (49, 11066), (65, 11198), (67, 11210),

Gene: Giroux_14 Start: 10546, Stop: 11067, Start Num: 27
Candidate Starts for Giroux_14:
(Start: 27 @10546 has 468 MA's), (48, 10720), (62, 10828), (67, 10867), (95, 11038),

Gene: Gladiator_18 Start: 11655, Stop: 12176, Start Num: 27
Candidate Starts for Gladiator_18:
(12, 11559), (Start: 27 @11655 has 468 MA's), (30, 11703), (43, 11790), (57, 11895), (73, 12021),

Gene: Gollum_11 Start: 7218, Stop: 7703, Start Num: 34

Candidate Starts for Gollum_11:
(14, 7056), (Start: 34 @7218 has 36 MA's), (59, 7449), (68, 7515), (76, 7572), (93, 7686),

Gene: Goose_14 Start: 10703, Stop: 11224, Start Num: 27
Candidate Starts for Goose_14:
(Start: 24 @10682 has 20 MA's), (Start: 27 @10703 has 468 MA's), (81, 11117),

Gene: GreedyLawyer_18 Start: 11677, Stop: 12207, Start Num: 27
Candidate Starts for GreedyLawyer_18:
(Start: 27 @11677 has 468 MA's), (43, 11821), (56, 11914), (57, 11926), (73, 12052),

Gene: Grif_16 Start: 11086, Stop: 11589, Start Num: 27
Candidate Starts for Grif_16:
(Start: 20 @11050 has 14 MA's), (Start: 24 @11065 has 20 MA's), (Start: 27 @11086 has 468 MA's),
(49, 11263), (65, 11395), (67, 11407),

Gene: Groundhog_11 Start: 9809, Stop: 10315, Start Num: 26
Candidate Starts for Groundhog_11:
(Start: 26 @9809 has 8 MA's), (52, 10001), (58, 10058), (61, 10082), (65, 10115), (69, 10136), (85,
10241),

Gene: Groupthink_17 Start: 11075, Stop: 11578, Start Num: 27
Candidate Starts for Groupthink_17:
(Start: 20 @11039 has 14 MA's), (Start: 24 @11054 has 20 MA's), (Start: 27 @11075 has 468 MA's),
(49, 11252), (65, 11384), (67, 11396),

Gene: Grub_16 Start: 10995, Stop: 11498, Start Num: 27
Candidate Starts for Grub_16:
(Start: 20 @10959 has 14 MA's), (Start: 24 @10974 has 20 MA's), (Start: 27 @10995 has 468 MA's),
(49, 11172), (65, 11304), (67, 11316),

Gene: Grum1_16 Start: 10960, Stop: 11499, Start Num: 20
Candidate Starts for Grum1_16:
(Start: 20 @10960 has 14 MA's), (Start: 24 @10975 has 20 MA's), (Start: 27 @10996 has 468 MA's),
(49, 11173), (65, 11305), (67, 11317),

Gene: Gruunaga_18 Start: 11655, Stop: 12176, Start Num: 27
Candidate Starts for Gruunaga_18:
(12, 11559), (Start: 27 @11655 has 468 MA's), (30, 11703), (43, 11790), (57, 11895), (73, 12021),

Gene: GtownJaz_16 Start: 11004, Stop: 11507, Start Num: 27
Candidate Starts for GtownJaz_16:
(Start: 20 @10968 has 14 MA's), (Start: 24 @10983 has 20 MA's), (Start: 27 @11004 has 468 MA's),
(49, 11181), (65, 11313), (67, 11325),

Gene: HINdeR_14 Start: 12384, Stop: 12887, Start Num: 27
Candidate Starts for HINdeR_14:
(Start: 27 @12384 has 468 MA's), (39, 12456), (42, 12483), (67, 12696), (73, 12741), (76, 12759), (88,
12852), (89, 12855), (90, 12861),

Gene: HamSlice_13 Start: 10940, Stop: 11452, Start Num: 27
Candidate Starts for HamSlice_13:
(Start: 27 @10940 has 468 MA's), (42, 11051), (80, 11339),

Gene: Hammer_18 Start: 11655, Stop: 12176, Start Num: 27
Candidate Starts for Hammer_18:
(12, 11559), (Start: 27 @11655 has 468 MA's), (30, 11703), (43, 11790), (57, 11895), (73, 12021),

Gene: Happiness_14 Start: 10945, Stop: 11457, Start Num: 27
Candidate Starts for Happiness_14:
(Start: 20 @10912 has 14 MA's), (Start: 27 @10945 has 468 MA's), (42, 11056), (69, 11278), (80, 11344),

Gene: Harlequin_11 Start: 7203, Stop: 7688, Start Num: 34
Candidate Starts for Harlequin_11:
(Start: 34 @7203 has 36 MA's), (59, 7434), (68, 7500), (76, 7557),

Gene: HarryHoudini_17 Start: 12116, Stop: 12640, Start Num: 27
Candidate Starts for HarryHoudini_17:
(Start: 19 @12080 has 4 MA's), (21, 12095), (Start: 27 @12116 has 468 MA's), (58, 12377), (86, 12581), (91, 12614),

Gene: HashRod_17 Start: 11087, Stop: 11590, Start Num: 27
Candidate Starts for HashRod_17:
(Start: 20 @11051 has 14 MA's), (Start: 24 @11066 has 20 MA's), (Start: 27 @11087 has 468 MA's), (49, 11264), (65, 11396), (67, 11408),

Gene: HaveUMetTed_17 Start: 11075, Stop: 11578, Start Num: 27
Candidate Starts for HaveUMetTed_17:
(Start: 20 @11039 has 14 MA's), (Start: 24 @11054 has 20 MA's), (Start: 27 @11075 has 468 MA's), (49, 11252), (62, 11357), (65, 11384), (67, 11396),

Gene: Heathen_14 Start: 10347, Stop: 10868, Start Num: 27
Candidate Starts for Heathen_14:
(Start: 27 @10347 has 468 MA's), (48, 10521), (62, 10629), (67, 10668), (95, 10839),

Gene: Heffalump_17 Start: 13435, Stop: 13947, Start Num: 27
Candidate Starts for Heffalump_17:
(Start: 19 @13396 has 4 MA's), (Start: 24 @13414 has 20 MA's), (Start: 27 @13435 has 468 MA's), (63, 13723), (67, 13750), (86, 13888),

Gene: HelDan_14 Start: 10599, Stop: 11120, Start Num: 27
Candidate Starts for HelDan_14:
(Start: 27 @10599 has 468 MA's), (48, 10773), (62, 10881), (67, 10920), (95, 11091),

Gene: Heliosoles_16 Start: 11075, Stop: 11578, Start Num: 27
Candidate Starts for Heliosoles_16:
(Start: 20 @11039 has 14 MA's), (Start: 24 @11054 has 20 MA's), (Start: 27 @11075 has 468 MA's), (49, 11252), (65, 11384), (67, 11396),

Gene: Helmet_19 Start: 11681, Stop: 12202, Start Num: 27
Candidate Starts for Helmet_19:
(12, 11585), (Start: 27 @11681 has 468 MA's), (30, 11729), (43, 11816), (56, 11909), (57, 11921), (73, 12047),

Gene: Herbertwm_13 Start: 10459, Stop: 10968, Start Num: 27

Candidate Starts for Herbertwm_13:

(16, 10414), (Start: 27 @10459 has 468 MA's), (47, 10624), (91, 10945), (92, 10948),

Gene: Hercules11_16 Start: 10989, Stop: 11513, Start Num: 24

Candidate Starts for Hercules11_16:

(Start: 20 @10974 has 14 MA's), (Start: 24 @10989 has 20 MA's), (Start: 27 @11010 has 468 MA's), (49, 11187), (65, 11319), (67, 11331),

Gene: Hexamo_18 Start: 11636, Stop: 12157, Start Num: 27

Candidate Starts for Hexamo_18:

(12, 11540), (Start: 27 @11636 has 468 MA's), (30, 11684), (43, 11771), (56, 11864), (57, 11876), (73, 12002),

Gene: Hiro_11 Start: 7203, Stop: 7688, Start Num: 34

Candidate Starts for Hiro_11:

(14, 7041), (Start: 34 @7203 has 36 MA's), (59, 7434), (68, 7500), (76, 7557),

Gene: Holli_14 Start: 10732, Stop: 11244, Start Num: 27

Candidate Starts for Holli_14:

(Start: 27 @10732 has 468 MA's), (42, 10843), (80, 11131),

Gene: Hookmount_15 Start: 11093, Stop: 11602, Start Num: 27

Candidate Starts for Hookmount_15:

(12, 10988), (Start: 27 @11093 has 468 MA's), (62, 11375), (67, 11414), (90, 11573),

Gene: Hoot_18 Start: 11656, Stop: 12186, Start Num: 27

Candidate Starts for Hoot_18:

(Start: 27 @11656 has 468 MA's), (43, 11800), (56, 11893), (57, 11905), (73, 12031),

Gene: HortumSL17_16 Start: 12267, Stop: 12800, Start Num: 27

Candidate Starts for HortumSL17_16:

(Start: 27 @12267 has 468 MA's), (30, 12315), (45, 12429), (63, 12570), (65, 12585), (67, 12597), (91, 12765), (92, 12768),

Gene: Houdini22_14 Start: 10943, Stop: 11455, Start Num: 27

Candidate Starts for Houdini22_14:

(Start: 27 @10943 has 468 MA's), (42, 11054), (80, 11342),

Gene: HuhtaEnerson15_12 Start: 10263, Stop: 10772, Start Num: 25

Candidate Starts for HuhtaEnerson15_12:

(Start: 25 @10263 has 36 MA's), (41, 10353), (57, 10506), (62, 10548), (65, 10575), (69, 10596), (75, 10644),

Gene: Hum25_5 Start: 4509, Stop: 4997, Start Num: 31

Candidate Starts for Hum25_5:

(28, 4467), (31, 4509), (62, 4782), (64, 4800), (77, 4881), (89, 4962),

Gene: Hutc2_15 Start: 12155, Stop: 12676, Start Num: 27

Candidate Starts for Hutc2_15:

(21, 12134), (Start: 27 @12155 has 468 MA's), (30, 12206), (42, 12269), (63, 12455),

Gene: ICleared_14 Start: 10940, Stop: 11452, Start Num: 27

Candidate Starts for ICleared_14:

(4, 10649), (10, 10739), (Start: 27 @10940 has 468 MA's), (42, 11051), (63, 11237), (80, 11339),

Gene: Iceman_14 Start: 10941, Stop: 11453, Start Num: 27

Candidate Starts for Iceman_14:

(Start: 20 @10908 has 14 MA's), (Start: 27 @10941 has 468 MA's), (42, 11052), (63, 11238), (80, 11340),

Gene: Idleandcovert_14 Start: 10546, Stop: 11067, Start Num: 27

Candidate Starts for Idleandcovert_14:

(Start: 27 @10546 has 468 MA's), (48, 10720), (62, 10828), (67, 10867), (95, 11038),

Gene: Indra_18 Start: 11681, Stop: 12202, Start Num: 27

Candidate Starts for Indra_18:

(12, 11585), (Start: 27 @11681 has 468 MA's), (30, 11729), (43, 11816), (56, 11909), (57, 11921), (73, 12047),

Gene: Insomnia_14 Start: 12204, Stop: 12725, Start Num: 27

Candidate Starts for Insomnia_14:

(21, 12183), (Start: 27 @12204 has 468 MA's), (30, 12255), (42, 12318), (63, 12504),

Gene: Iracema64_14 Start: 10917, Stop: 11429, Start Num: 27

Candidate Starts for Iracema64_14:

(4, 10626), (10, 10716), (Start: 20 @10884 has 14 MA's), (Start: 27 @10917 has 468 MA's), (42, 11028), (80, 11316),

Gene: IronMan_17 Start: 13320, Stop: 13829, Start Num: 27

Candidate Starts for IronMan_17:

(Start: 27 @13320 has 468 MA's), (63, 13608), (67, 13635), (86, 13773),

Gene: Isca_14 Start: 10383, Stop: 10943, Start Num: 20

Candidate Starts for Isca_14:

(Start: 20 @10383 has 14 MA's), (Start: 27 @10419 has 468 MA's), (48, 10596), (62, 10704), (67, 10743),

Gene: Isiphiwo_18 Start: 11667, Stop: 12197, Start Num: 27

Candidate Starts for Isiphiwo_18:

(Start: 27 @11667 has 468 MA's), (43, 11811), (56, 11904), (57, 11916), (73, 12042),

Gene: Iwokeuplikedis_15 Start: 11360, Stop: 11884, Start Num: 27

Candidate Starts for Iwokeuplikedis_15:

(Start: 27 @11360 has 468 MA's), (65, 11675), (89, 11849), (91, 11858),

Gene: JF2_14 Start: 10184, Stop: 10708, Start Num: 27

Candidate Starts for JF2_14:

(Start: 20 @10148 has 14 MA's), (Start: 27 @10184 has 468 MA's), (48, 10361), (62, 10469), (67, 10508),

Gene: JF4_14 Start: 10184, Stop: 10708, Start Num: 27

Candidate Starts for JF4_14:

(Start: 20 @10148 has 14 MA's), (Start: 27 @10184 has 468 MA's), (48, 10361), (62, 10469), (67, 10508),

Gene: JHC117_16 Start: 11001, Stop: 11504, Start Num: 27

Candidate Starts for JHC117_16:

(Start: 20 @10965 has 14 MA's), (Start: 24 @10980 has 20 MA's), (Start: 27 @11001 has 468 MA's), (49, 11178), (65, 11310), (67, 11322),

Gene: JSwag_17 Start: 10739, Stop: 11248, Start Num: 27

Candidate Starts for JSwag_17:

(Start: 27 @10739 has 468 MA's),

Gene: Jaan_18 Start: 13710, Stop: 14219, Start Num: 27

Candidate Starts for Jaan_18:

(Start: 27 @13710 has 468 MA's), (63, 13998), (67, 14025), (86, 14163),

Gene: Jabiru_12 Start: 10140, Stop: 10652, Start Num: 25

Candidate Starts for Jabiru_12:

(Start: 20 @10107 has 14 MA's), (Start: 25 @10140 has 36 MA's), (41, 10233), (62, 10428), (65, 10455), (75, 10524), (83, 10557), (90, 10623),

Gene: Jabith_15 Start: 12204, Stop: 12725, Start Num: 27

Candidate Starts for Jabith_15:

(21, 12183), (Start: 27 @12204 has 468 MA's), (30, 12255), (42, 12318), (63, 12504),

Gene: Jaykayelowell_14 Start: 10938, Stop: 11450, Start Num: 27

Candidate Starts for Jaykayelowell_14:

(Start: 27 @10938 has 468 MA's), (42, 11049), (80, 11337),

Gene: Jeeves_14 Start: 10699, Stop: 11211, Start Num: 27

Candidate Starts for Jeeves_14:

(Start: 27 @10699 has 468 MA's), (56, 10924), (76, 11080), (86, 11152),

Gene: Jeffabunny_18 Start: 11680, Stop: 12210, Start Num: 27

Candidate Starts for Jeffabunny_18:

(Start: 27 @11680 has 468 MA's), (43, 11824), (56, 11917), (57, 11929), (73, 12055),

Gene: JenCasNa_16 Start: 11001, Stop: 11504, Start Num: 27

Candidate Starts for JenCasNa_16:

(Start: 20 @10965 has 14 MA's), (Start: 24 @10980 has 20 MA's), (Start: 27 @11001 has 468 MA's), (49, 11178), (65, 11310), (67, 11322),

Gene: JeppNRM_17 Start: 11073, Stop: 11576, Start Num: 27

Candidate Starts for JeppNRM_17:

(Start: 20 @11037 has 14 MA's), (Start: 24 @11052 has 20 MA's), (Start: 27 @11073 has 468 MA's), (49, 11250), (65, 11382), (67, 11394),

Gene: Jerm_17 Start: 12028, Stop: 12555, Start Num: 27

Candidate Starts for Jerm_17:

(Start: 27 @12028 has 468 MA's), (63, 12328), (65, 12343), (86, 12496), (91, 12529),

Gene: Jester_11 Start: 7203, Stop: 7688, Start Num: 34

Candidate Starts for Jester_11:

(Start: 34 @7203 has 36 MA's), (59, 7434), (68, 7500), (76, 7557),

Gene: JetBlade_14 Start: 10939, Stop: 11451, Start Num: 27

Candidate Starts for JetBlade_14:

(Start: 27 @10939 has 468 MA's), (42, 11050), (80, 11338),

Gene: JewelBug_18 Start: 11678, Stop: 12208, Start Num: 27

Candidate Starts for JewelBug_18:

(Start: 27 @11678 has 468 MA's), (43, 11822), (56, 11915), (57, 11927), (73, 12053),

Gene: Jobu08_16 Start: 11051, Stop: 11575, Start Num: 24

Candidate Starts for Jobu08_16:

(Start: 20 @11036 has 14 MA's), (Start: 24 @11051 has 20 MA's), (Start: 27 @11072 has 468 MA's), (49, 11249), (65, 11381), (67, 11393),

Gene: JoongJeon_14 Start: 10939, Stop: 11451, Start Num: 27

Candidate Starts for JoongJeon_14:

(Start: 27 @10939 has 468 MA's), (42, 11050), (80, 11338),

Gene: Jordennis_18 Start: 11667, Stop: 12197, Start Num: 27

Candidate Starts for Jordennis_18:

(Start: 27 @11667 has 468 MA's), (43, 11811), (56, 11904), (57, 11916), (73, 12042),

Gene: Joselito_15 Start: 12152, Stop: 12673, Start Num: 27

Candidate Starts for Joselito_15:

(21, 12131), (Start: 27 @12152 has 468 MA's), (30, 12203), (42, 12266), (63, 12452),

Gene: JoshKayV_17 Start: 12035, Stop: 12559, Start Num: 27

Candidate Starts for JoshKayV_17:

(Start: 27 @12035 has 468 MA's), (58, 12296), (91, 12533),

Gene: Journey13_13 Start: 10712, Stop: 11236, Start Num: 27

Candidate Starts for Journey13_13:

(Start: 27 @10712 has 468 MA's), (36, 10778), (57, 10955), (73, 11081), (89, 11198),

Gene: Jovo_12 Start: 10372, Stop: 10881, Start Num: 25

Candidate Starts for Jovo_12:

(Start: 25 @10372 has 36 MA's), (41, 10462), (57, 10615), (62, 10657), (65, 10684), (69, 10705), (75, 10753),

Gene: Jsquared_14 Start: 10477, Stop: 11001, Start Num: 27

Candidate Starts for Jsquared_14:

(4, 10186), (5, 10198), (Start: 27 @10477 has 468 MA's), (30, 10528), (43, 10618), (47, 10648), (65, 10792), (69, 10813), (86, 10942), (91, 10975),

Gene: KADY_17 Start: 11087, Stop: 11590, Start Num: 27

Candidate Starts for KADY_17:

(Start: 20 @11051 has 14 MA's), (Start: 24 @11066 has 20 MA's), (Start: 27 @11087 has 468 MA's), (49, 11264), (65, 11396), (67, 11408),

Gene: KFPoly_14 Start: 10939, Stop: 11451, Start Num: 27

Candidate Starts for KFPoly_14:

(Start: 27 @10939 has 468 MA's), (42, 11050), (80, 11338),

Gene: Kalb97_17 Start: 11073, Stop: 11576, Start Num: 27

Candidate Starts for Kalb97_17:

(Start: 20 @11037 has 14 MA's), (Start: 24 @11052 has 20 MA's), (Start: 27 @11073 has 468 MA's), (49, 11250), (65, 11382), (67, 11394),

Gene: Kalnok_17 Start: 11075, Stop: 11578, Start Num: 27

Candidate Starts for Kalnok_17:

(Start: 20 @11039 has 14 MA's), (Start: 24 @11054 has 20 MA's), (Start: 27 @11075 has 468 MA's), (49, 11252), (65, 11384), (67, 11396),

Gene: Kalpine_18 Start: 13392, Stop: 13916, Start Num: 27

Candidate Starts for Kalpine_18:

(22, 13371), (Start: 27 @13392 has 468 MA's), (36, 13461), (57, 13638), (86, 13857),

Gene: Kamy_14 Start: 10940, Stop: 11452, Start Num: 27

Candidate Starts for Kamy_14:

(Start: 27 @10940 has 468 MA's), (42, 11051), (80, 11339),

Gene: Katalie136_14 Start: 10949, Stop: 11461, Start Num: 27

Candidate Starts for Katalie136_14:

(Start: 20 @10916 has 14 MA's), (Start: 27 @10949 has 468 MA's), (42, 11060), (55, 11171), (80, 11348),

Gene: KatherineG_17 Start: 10872, Stop: 11384, Start Num: 27

Candidate Starts for KatherineG_17:

(Start: 27 @10872 has 468 MA's), (51, 11067),

Gene: Kazan_18 Start: 11683, Stop: 12213, Start Num: 27

Candidate Starts for Kazan_18:

(Start: 27 @11683 has 468 MA's), (43, 11827), (56, 11920), (57, 11932), (73, 12058),

Gene: Kerberos_18 Start: 11525, Stop: 12046, Start Num: 27

Candidate Starts for Kerberos_18:

(Start: 19 @11489 has 4 MA's), (Start: 24 @11504 has 20 MA's), (Start: 27 @11525 has 468 MA's), (30, 11576), (65, 11840), (69, 11861), (91, 12020),

Gene: Keziacharles14_14 Start: 10434, Stop: 10949, Start Num: 27

Candidate Starts for Keziacharles14_14:

(Start: 27 @10434 has 468 MA's), (36, 10485), (57, 10668), (67, 10749), (76, 10812), (89, 10908), (91, 10917), (92, 10920),

Gene: Kimona_11 Start: 8311, Stop: 8856, Start Num: 20

Candidate Starts for Kimona_11:

(Start: 20 @8311 has 14 MA's), (Start: 27 @8344 has 468 MA's), (45, 8500), (48, 8521), (52, 8545), (60, 8617), (89, 8824),

Gene: KingCyrus_17 Start: 12018, Stop: 12530, Start Num: 27

Candidate Starts for KingCyrus_17:

(Start: 19 @11982 has 4 MA's), (Start: 24 @11997 has 20 MA's), (Start: 27 @12018 has 468 MA's), (63, 12306), (67, 12333), (69, 12342), (86, 12471), (91, 12504),

Gene: Kingmustik0402_14 Start: 10931, Stop: 11443, Start Num: 27

Candidate Starts for Kingmustik0402_14:

(Start: 27 @10931 has 468 MA's), (42, 11042), (80, 11330),

Gene: Kipper29_18 Start: 11677, Stop: 12207, Start Num: 27
Candidate Starts for Kipper29_18:
(Start: 27 @11677 has 468 MA's), (43, 11821), (56, 11914), (57, 11926), (73, 12052),

Gene: KittenMittens_13 Start: 8814, Stop: 9335, Start Num: 27
Candidate Starts for KittenMittens_13:
(Start: 24 @8793 has 20 MA's), (Start: 27 @8814 has 468 MA's), (48, 9000),

Gene: Koduck_15 Start: 10789, Stop: 11310, Start Num: 27
Candidate Starts for Koduck_15:
(Start: 19 @10753 has 4 MA's), (Start: 24 @10768 has 20 MA's), (Start: 27 @10789 has 468 MA's),
(36, 10852), (43, 10924), (48, 10963), (57, 11029), (63, 11083), (73, 11155),

Gene: Koko_18 Start: 11681, Stop: 12202, Start Num: 27
Candidate Starts for Koko_18:
(12, 11585), (Start: 27 @11681 has 468 MA's), (30, 11729), (43, 11816), (57, 11921), (73, 12047),

Gene: Koreni_13 Start: 10588, Stop: 11100, Start Num: 27
Candidate Starts for Koreni_13:
(Start: 27 @10588 has 468 MA's), (42, 10699), (80, 10987),

Gene: Kratak_14 Start: 10934, Stop: 11446, Start Num: 27
Candidate Starts for Kratak_14:
(Start: 27 @10934 has 468 MA's), (42, 11045), (80, 11333),

Gene: Kremtemulon_13 Start: 10987, Stop: 11499, Start Num: 27
Candidate Starts for Kremtemulon_13:
(Start: 27 @10987 has 468 MA's), (42, 11098), (80, 11386),

Gene: Krishelle_11 Start: 7218, Stop: 7703, Start Num: 34
Candidate Starts for Krishelle_11:
(14, 7056), (Start: 34 @7218 has 36 MA's), (59, 7449), (76, 7572),

Gene: Kristoff_15 Start: 10882, Stop: 11403, Start Num: 27
Candidate Starts for Kristoff_15:
(Start: 24 @10861 has 20 MA's), (Start: 27 @10882 has 468 MA's), (38, 10969),

Gene: Kugel_15 Start: 11145, Stop: 11642, Start Num: 27
Candidate Starts for Kugel_15:
(Start: 27 @11145 has 468 MA's), (56, 11361), (57, 11373), (69, 11463), (84, 11550), (87, 11592), (89,
11610),

Gene: Kyee_14 Start: 10940, Stop: 11452, Start Num: 27
Candidate Starts for Kyee_14:
(Start: 27 @10940 has 468 MA's), (42, 11051), (80, 11339),

Gene: Kykar_12 Start: 10642, Stop: 11139, Start Num: 27
Candidate Starts for Kykar_12:
(Start: 27 @10642 has 468 MA's), (56, 10858), (57, 10870), (69, 10960), (84, 11047), (87, 11089), (89,
11107),

Gene: L5_16 Start: 10797, Stop: 11318, Start Num: 27
Candidate Starts for L5_16:

(Start: 19 @10761 has 4 MA's), (Start: 24 @10776 has 20 MA's), (Start: 27 @10797 has 468 MA's), (36, 10860), (43, 10932), (48, 10971), (57, 11037), (63, 11091), (73, 11163),

Gene: LBerry_16 Start: 11003, Stop: 11506, Start Num: 27

Candidate Starts for LBerry_16:

(Start: 20 @10967 has 14 MA's), (Start: 24 @10982 has 20 MA's), (Start: 27 @11003 has 468 MA's), (49, 11180), (65, 11312), (67, 11324),

Gene: LHTSCC_14 Start: 10917, Stop: 11429, Start Num: 27

Candidate Starts for LHTSCC_14:

(Start: 20 @10884 has 14 MA's), (Start: 27 @10917 has 468 MA's), (42, 11028), (69, 11250), (80, 11316),

Gene: LadyBird_15 Start: 11551, Stop: 12099, Start Num: 19

Candidate Starts for LadyBird_15:

(Start: 19 @11551 has 4 MA's), (21, 11566), (Start: 27 @11587 has 468 MA's), (39, 11665), (63, 11878), (76, 11968), (86, 12040),

Gene: Lambert1_15 Start: 11093, Stop: 11602, Start Num: 27

Candidate Starts for Lambert1_15:

(12, 10988), (Start: 27 @11093 has 468 MA's), (62, 11375), (67, 11414), (90, 11573),

Gene: Landor_16 Start: 13362, Stop: 13871, Start Num: 27

Candidate Starts for Landor_16:

(Start: 27 @13362 has 468 MA's), (48, 13530), (63, 13650), (67, 13677), (86, 13815),

Gene: LappelDuVide_13 Start: 10939, Stop: 11451, Start Num: 27

Candidate Starts for LappelDuVide_13:

(Start: 27 @10939 has 468 MA's), (42, 11050), (80, 11338),

Gene: Larenn_16 Start: 11884, Stop: 12414, Start Num: 27

Candidate Starts for Larenn_16:

(11, 11731), (Start: 19 @11848 has 4 MA's), (21, 11863), (Start: 27 @11884 has 468 MA's), (57, 12130), (65, 12199), (69, 12220), (86, 12355), (91, 12388), (93, 12397), (95, 12400),

Gene: LarryKay_16 Start: 11089, Stop: 11592, Start Num: 27

Candidate Starts for LarryKay_16:

(Start: 20 @11053 has 14 MA's), (Start: 24 @11068 has 20 MA's), (Start: 27 @11089 has 468 MA's), (49, 11266), (65, 11398), (67, 11410),

Gene: LastResort_17 Start: 10750, Stop: 11262, Start Num: 27

Candidate Starts for LastResort_17:

(Start: 27 @10750 has 468 MA's), (51, 10945),

Gene: Lemur_14 Start: 10939, Stop: 11451, Start Num: 27

Candidate Starts for Lemur_14:

(Start: 27 @10939 has 468 MA's), (42, 11050), (63, 11236), (80, 11338),

Gene: LeoAvram_14 Start: 10939, Stop: 11451, Start Num: 27

Candidate Starts for LeoAvram_14:

(Start: 27 @10939 has 468 MA's), (42, 11050), (80, 11338),

Gene: Leogania_17 Start: 13755, Stop: 14273, Start Num: 27

Candidate Starts for Leogania_17:

(Start: 19 @13719 has 4 MA's), (Start: 24 @13734 has 20 MA's), (Start: 27 @13755 has 468 MA's), (63, 14052), (67, 14079), (86, 14214),

Gene: Lev2_12 Start: 10081, Stop: 10593, Start Num: 25

Candidate Starts for Lev2_12:

(13, 9982), (Start: 20 @10048 has 14 MA's), (Start: 25 @10081 has 36 MA's), (41, 10174), (62, 10369), (65, 10396), (75, 10465), (83, 10498), (90, 10564),

Gene: Leviathan_17 Start: 12060, Stop: 12587, Start Num: 27

Candidate Starts for Leviathan_17:

(Start: 27 @12060 has 468 MA's), (63, 12360), (65, 12375), (86, 12528), (91, 12561),

Gene: LilTurb_17 Start: 12087, Stop: 12614, Start Num: 27

Candidate Starts for LilTurb_17:

(Start: 27 @12087 has 468 MA's), (63, 12387), (65, 12402), (86, 12555), (91, 12588),

Gene: Lilbunny_17 Start: 11662, Stop: 12183, Start Num: 27

Candidate Starts for Lilbunny_17:

(12, 11566), (Start: 27 @11662 has 468 MA's), (30, 11710), (43, 11797), (57, 11902), (73, 12028),

Gene: Lilith_16 Start: 10996, Stop: 11499, Start Num: 27

Candidate Starts for Lilith_16:

(Start: 20 @10960 has 14 MA's), (Start: 24 @10975 has 20 MA's), (Start: 27 @10996 has 468 MA's), (49, 11173), (65, 11305), (67, 11317),

Gene: Lillie_11 Start: 7218, Stop: 7703, Start Num: 34

Candidate Starts for Lillie_11:

(14, 7056), (Start: 34 @7218 has 36 MA's), (59, 7449), (68, 7515), (76, 7572), (93, 7686),

Gene: LittleB_14 Start: 10939, Stop: 11451, Start Num: 27

Candidate Starts for LittleB_14:

(Start: 27 @10939 has 468 MA's), (42, 11050), (80, 11338),

Gene: LittleCherry_12 Start: 10264, Stop: 10773, Start Num: 25

Candidate Starts for LittleCherry_12:

(Start: 25 @10264 has 36 MA's), (41, 10354), (57, 10507), (62, 10549), (65, 10576), (69, 10597), (75, 10645),

Gene: LittleGuy_14 Start: 10885, Stop: 11397, Start Num: 27

Candidate Starts for LittleGuy_14:

(Start: 27 @10885 has 468 MA's), (42, 10996), (80, 11284),

Gene: LochMonster_14 Start: 10914, Stop: 11426, Start Num: 27

Candidate Starts for LochMonster_14:

(Start: 27 @10914 has 468 MA's), (42, 11025), (80, 11313),

Gene: Lokk_18 Start: 13310, Stop: 13819, Start Num: 27

Candidate Starts for Lokk_18:

(Start: 27 @13310 has 468 MA's), (39, 13391), (43, 13445), (63, 13604), (65, 13619), (86, 13763),

Gene: LoneWolf_16 Start: 12107, Stop: 12640, Start Num: 27

Candidate Starts for LoneWolf_16:

(2, 11756), (3, 11783), (Start: 27 @12107 has 468 MA's), (30, 12155), (45, 12269), (63, 12410), (65, 12425), (67, 12437), (91, 12605), (92, 12608),

Gene: Looper_18 Start: 10750, Stop: 11262, Start Num: 27
Candidate Starts for Looper_18:
(Start: 27 @10750 has 468 MA's), (51, 10945),

Gene: Lorenzo_14 Start: 10939, Stop: 11451, Start Num: 27
Candidate Starts for Lorenzo_14:
(Start: 27 @10939 has 468 MA's), (42, 11050), (80, 11338),

Gene: Loser_18 Start: 13393, Stop: 13905, Start Num: 27
Candidate Starts for Loser_18:
(Start: 19 @13354 has 4 MA's), (Start: 27 @13393 has 468 MA's), (36, 13453), (69, 13720), (86, 13846),

Gene: Louie6_16 Start: 11069, Stop: 11593, Start Num: 24
Candidate Starts for Louie6_16:
(Start: 20 @11054 has 14 MA's), (Start: 24 @11069 has 20 MA's), (Start: 27 @11090 has 468 MA's), (49, 11267), (65, 11399), (67, 11411),

Gene: Luchador_15 Start: 11684, Stop: 12196, Start Num: 27
Candidate Starts for Luchador_15:
(Start: 27 @11684 has 468 MA's), (56, 11909), (86, 12137),

Gene: Lucivia_15 Start: 12201, Stop: 12722, Start Num: 27
Candidate Starts for Lucivia_15:
(21, 12180), (Start: 27 @12201 has 468 MA's), (30, 12252), (42, 12315), (63, 12501),

Gene: Lucyedi_16 Start: 11784, Stop: 12311, Start Num: 27
Candidate Starts for Lucyedi_16:
(8, 11562), (Start: 27 @11784 has 468 MA's), (67, 12105), (71, 12141),

Gene: LugYA_18 Start: 10980, Stop: 11504, Start Num: 24
Candidate Starts for LugYA_18:
(Start: 20 @10965 has 14 MA's), (Start: 24 @10980 has 20 MA's), (Start: 27 @11001 has 468 MA's), (49, 11178), (65, 11310), (67, 11322),

Gene: Lunsford_15 Start: 10939, Stop: 11451, Start Num: 27
Candidate Starts for Lunsford_15:
(Start: 27 @10939 has 468 MA's), (42, 11050), (63, 11236), (80, 11338),

Gene: MA5_14 Start: 10146, Stop: 10670, Start Num: 27
Candidate Starts for MA5_14:
(Start: 27 @10146 has 468 MA's), (48, 10323), (62, 10431), (67, 10470),

Gene: MK4_14 Start: 10418, Stop: 10942, Start Num: 27
Candidate Starts for MK4_14:
(Start: 20 @10382 has 14 MA's), (Start: 27 @10418 has 468 MA's), (48, 10595), (62, 10703), (67, 10742),

Gene: MaCh_15 Start: 12149, Stop: 12670, Start Num: 27
Candidate Starts for MaCh_15:

(21, 12128), (Start: 27 @12149 has 468 MA's), (30, 12200), (42, 12263), (63, 12449),

Gene: Mabel_15 Start: 12216, Stop: 12737, Start Num: 27

Candidate Starts for Mabel_15:

(21, 12195), (Start: 27 @12216 has 468 MA's), (30, 12267), (42, 12330), (63, 12516),

Gene: MadMarie_16 Start: 11005, Stop: 11508, Start Num: 27

Candidate Starts for MadMarie_16:

(Start: 20 @10969 has 14 MA's), (Start: 24 @10984 has 20 MA's), (Start: 27 @11005 has 468 MA's), (49, 11182), (65, 11314), (67, 11326),

Gene: Mainiac_16 Start: 10960, Stop: 11499, Start Num: 20

Candidate Starts for Mainiac_16:

(Start: 20 @10960 has 14 MA's), (Start: 24 @10975 has 20 MA's), (Start: 27 @10996 has 468 MA's), (49, 11173), (65, 11305), (67, 11317),

Gene: Malec_16 Start: 11889, Stop: 12419, Start Num: 27

Candidate Starts for Malec_16:

(11, 11736), (Start: 19 @11853 has 4 MA's), (21, 11868), (Start: 27 @11889 has 468 MA's), (57, 12135), (65, 12204), (69, 12225), (86, 12360), (91, 12393), (93, 12402), (95, 12405),

Gene: Malinsilva_18 Start: 10959, Stop: 11498, Start Num: 20

Candidate Starts for Malinsilva_18:

(Start: 20 @10959 has 14 MA's), (Start: 24 @10974 has 20 MA's), (Start: 27 @10995 has 468 MA's), (49, 11172), (65, 11304), (67, 11316),

Gene: Maminiaina_16 Start: 12031, Stop: 12564, Start Num: 27

Candidate Starts for Maminiaina_16:

(Start: 27 @12031 has 468 MA's), (30, 12079), (45, 12193), (63, 12334), (65, 12349), (67, 12361), (91, 12529), (92, 12532),

Gene: Manu_17 Start: 11075, Stop: 11578, Start Num: 27

Candidate Starts for Manu_17:

(Start: 20 @11039 has 14 MA's), (Start: 24 @11054 has 20 MA's), (Start: 27 @11075 has 468 MA's), (49, 11252), (65, 11384), (67, 11396),

Gene: MarQuardt_16 Start: 10983, Stop: 11507, Start Num: 24

Candidate Starts for MarQuardt_16:

(Start: 20 @10968 has 14 MA's), (Start: 24 @10983 has 20 MA's), (Start: 27 @11004 has 468 MA's), (49, 11181), (65, 11313), (67, 11325),

Gene: Margo_15 Start: 11118, Stop: 11627, Start Num: 27

Candidate Starts for Margo_15:

(12, 11013), (Start: 27 @11118 has 468 MA's), (62, 11400), (67, 11439), (90, 11598),

Gene: Marie_16 Start: 10980, Stop: 11504, Start Num: 24

Candidate Starts for Marie_16:

(Start: 20 @10965 has 14 MA's), (Start: 24 @10980 has 20 MA's), (Start: 27 @11001 has 468 MA's), (49, 11178), (65, 11310), (67, 11322),

Gene: Marius_17 Start: 11075, Stop: 11578, Start Num: 27

Candidate Starts for Marius_17:

(Start: 20 @11039 has 14 MA's), (Start: 24 @11054 has 20 MA's), (Start: 27 @11075 has 468 MA's), (49, 11252), (65, 11384), (67, 11396),

Gene: MarysWell_11 Start: 10231, Stop: 10740, Start Num: 25

Candidate Starts for MarysWell_11:

(Start: 25 @10231 has 36 MA's), (41, 10321), (57, 10474), (62, 10516), (65, 10543), (69, 10564), (75, 10612),

Gene: Maverick_14 Start: 10939, Stop: 11451, Start Num: 27

Candidate Starts for Maverick_14:

(Start: 27 @10939 has 468 MA's), (42, 11050), (80, 11338),

Gene: Maxo_14 Start: 10940, Stop: 11452, Start Num: 27

Candidate Starts for Maxo_14:

(Start: 27 @10940 has 468 MA's), (42, 11051), (80, 11339),

Gene: Mazhar510_14 Start: 10940, Stop: 11452, Start Num: 27

Candidate Starts for Mazhar510_14:

(Start: 27 @10940 has 468 MA's), (42, 11051), (80, 11339),

Gene: McFly_18 Start: 11677, Stop: 12207, Start Num: 27

Candidate Starts for McFly_18:

(Start: 27 @11677 has 468 MA's), (43, 11821), (56, 11914), (57, 11926), (73, 12052),

Gene: Medusa_14 Start: 10939, Stop: 11451, Start Num: 27

Candidate Starts for Medusa_14:

(Start: 27 @10939 has 468 MA's), (42, 11050), (80, 11338),

Gene: MeeZee_14 Start: 10939, Stop: 11451, Start Num: 27

Candidate Starts for MeeZee_14:

(Start: 27 @10939 has 468 MA's), (42, 11050), (80, 11338),

Gene: Melvin_14 Start: 10939, Stop: 11451, Start Num: 27

Candidate Starts for Melvin_14:

(Start: 27 @10939 has 468 MA's), (42, 11050), (80, 11338),

Gene: Methuselah_16 Start: 11065, Stop: 11589, Start Num: 24

Candidate Starts for Methuselah_16:

(Start: 20 @11050 has 14 MA's), (Start: 24 @11065 has 20 MA's), (Start: 27 @11086 has 468 MA's), (49, 11263), (65, 11395), (67, 11407),

Gene: Micasa_11 Start: 10232, Stop: 10741, Start Num: 25

Candidate Starts for Micasa_11:

(Start: 25 @10232 has 36 MA's), (41, 10322), (57, 10475), (62, 10517), (65, 10544), (69, 10565), (75, 10613),

Gene: Microwolf_16 Start: 11004, Stop: 11507, Start Num: 27

Candidate Starts for Microwolf_16:

(Start: 20 @10968 has 14 MA's), (Start: 24 @10983 has 20 MA's), (Start: 27 @11004 has 468 MA's), (49, 11181), (65, 11313), (67, 11325),

Gene: MiculUcigas_15 Start: 11659, Stop: 12183, Start Num: 27

Candidate Starts for MiculUcigas_15:

(11, 11506), (Start: 19 @11623 has 4 MA's), (21, 11638), (Start: 27 @11659 has 468 MA's), (48, 11839), (63, 11959), (67, 11986), (86, 12124), (91, 12157), (93, 12166), (95, 12169),

Gene: Midas2_12 Start: 10231, Stop: 10740, Start Num: 25

Candidate Starts for Midas2_12:

(Start: 25 @10231 has 36 MA's), (41, 10321), (57, 10474), (62, 10516), (65, 10543), (69, 10564), (75, 10612),

Gene: Miko_18 Start: 13279, Stop: 13788, Start Num: 27

Candidate Starts for Miko_18:

(Start: 27 @13279 has 468 MA's), (39, 13360), (43, 13414), (65, 13588),

Gene: Milcery_12 Start: 10268, Stop: 10777, Start Num: 25

Candidate Starts for Milcery_12:

(Start: 25 @10268 has 36 MA's), (41, 10358), (62, 10553), (65, 10580), (69, 10601), (75, 10649),

Gene: Millski_14 Start: 10942, Stop: 11454, Start Num: 27

Candidate Starts for Millski_14:

(Start: 27 @10942 has 468 MA's), (42, 11053), (80, 11341),

Gene: MinecraftSteve_18 Start: 10872, Stop: 11384, Start Num: 27

Candidate Starts for MinecraftSteve_18:

(Start: 27 @10872 has 468 MA's), (51, 11067),

Gene: Miramae_14 Start: 10897, Stop: 11409, Start Num: 27

Candidate Starts for Miramae_14:

(Start: 20 @10864 has 14 MA's), (Start: 27 @10897 has 468 MA's), (42, 11008), (69, 11230), (80, 11296),

Gene: Misomonster_18 Start: 11065, Stop: 11589, Start Num: 24

Candidate Starts for Misomonster_18:

(Start: 20 @11050 has 14 MA's), (Start: 24 @11065 has 20 MA's), (Start: 27 @11086 has 468 MA's), (49, 11263), (65, 11395), (67, 11407),

Gene: MissWhite_15 Start: 10643, Stop: 11170, Start Num: 27

Candidate Starts for MissWhite_15:

(Start: 27 @10643 has 468 MA's), (36, 10712), (57, 10889), (73, 11015),

Gene: MoneyMay_16 Start: 10965, Stop: 11504, Start Num: 20

Candidate Starts for MoneyMay_16:

(Start: 20 @10965 has 14 MA's), (Start: 24 @10980 has 20 MA's), (Start: 27 @11001 has 468 MA's), (49, 11178), (65, 11310), (67, 11322),

Gene: Morpher26_14 Start: 10949, Stop: 11461, Start Num: 27

Candidate Starts for Morpher26_14:

(Start: 20 @10916 has 14 MA's), (Start: 27 @10949 has 468 MA's), (42, 11060), (55, 11171), (80, 11348),

Gene: Morrow_14 Start: 10942, Stop: 11454, Start Num: 27

Candidate Starts for Morrow_14:

(Start: 27 @10942 has 468 MA's), (42, 11053), (80, 11341),

Gene: MuchMore_18 Start: 10995, Stop: 11498, Start Num: 27

Candidate Starts for MuchMore_18:

(Start: 20 @10959 has 14 MA's), (Start: 24 @10974 has 20 MA's), (Start: 27 @10995 has 468 MA's), (49, 11172), (65, 11304), (67, 11316),

Gene: Mulciber_15 Start: 12152, Stop: 12673, Start Num: 27

Candidate Starts for Mulciber_15:

(21, 12131), (Start: 27 @12152 has 468 MA's), (30, 12203), (42, 12266), (63, 12452),

Gene: Munch_15 Start: 12152, Stop: 12673, Start Num: 27

Candidate Starts for Munch_15:

(21, 12131), (Start: 27 @12152 has 468 MA's), (30, 12203), (42, 12266), (63, 12452),

Gene: Mundrea_14 Start: 10902, Stop: 11414, Start Num: 27

Candidate Starts for Mundrea_14:

(Start: 20 @10869 has 14 MA's), (Start: 27 @10902 has 468 MA's), (42, 11013), (80, 11301),

Gene: MyraDee_12 Start: 9070, Stop: 9564, Start Num: 27

Candidate Starts for MyraDee_12:

(4, 8770), (5, 8782), (Start: 27 @9070 has 468 MA's), (65, 9367), (90, 9535),

Gene: Myxus_16 Start: 12267, Stop: 12800, Start Num: 27

Candidate Starts for Myxus_16:

(Start: 27 @12267 has 468 MA's), (30, 12315), (45, 12429), (63, 12570), (65, 12585), (67, 12597), (91, 12765), (92, 12768),

Gene: NaSiaTalie_15 Start: 11656, Stop: 12180, Start Num: 27

Candidate Starts for NaSiaTalie_15:

(11, 11503), (Start: 19 @11620 has 4 MA's), (21, 11635), (Start: 27 @11656 has 468 MA's), (48, 11836), (63, 11956), (67, 11983), (86, 12121), (91, 12154), (93, 12163), (95, 12166),

Gene: Naca_12 Start: 10140, Stop: 10685, Start Num: 20

Candidate Starts for Naca_12:

(Start: 20 @10140 has 14 MA's), (Start: 25 @10173 has 36 MA's), (41, 10266), (62, 10461), (65, 10488), (75, 10557), (83, 10590), (90, 10656),

Gene: Naiad_11 Start: 7218, Stop: 7703, Start Num: 34

Candidate Starts for Naiad_11:

(14, 7056), (Start: 34 @7218 has 36 MA's), (59, 7449), (76, 7572), (93, 7686),

Gene: Naji_18 Start: 11525, Stop: 12046, Start Num: 27

Candidate Starts for Naji_18:

(Start: 19 @11489 has 4 MA's), (Start: 24 @11504 has 20 MA's), (Start: 27 @11525 has 468 MA's), (30, 11576), (65, 11840), (69, 11861), (91, 12020),

Gene: Nancinator_11 Start: 7218, Stop: 7703, Start Num: 34

Candidate Starts for Nancinator_11:

(14, 7056), (Start: 34 @7218 has 36 MA's), (59, 7449), (68, 7515), (76, 7572), (93, 7686),

Gene: Natosaleda_11 Start: 7218, Stop: 7703, Start Num: 34

Candidate Starts for Natosaleda_11:

(14, 7056), (Start: 34 @7218 has 36 MA's), (59, 7449), (68, 7515), (76, 7572), (93, 7686),

Gene: NearlyHeadless_12 Start: 9845, Stop: 10366, Start Num: 24

Candidate Starts for NearlyHeadless_12:

(Start: 24 @9845 has 20 MA's), (52, 10055), (58, 10112), (61, 10136), (69, 10190), (74, 10235), (85, 10295),

Gene: Nebs_14 Start: 10939, Stop: 11451, Start Num: 27

Candidate Starts for Nebs_14:

(Start: 27 @10939 has 468 MA's), (42, 11050), (80, 11338),

Gene: Nebulosus_17 Start: 10750, Stop: 11262, Start Num: 27

Candidate Starts for Nebulosus_17:

(Start: 27 @10750 has 468 MA's), (51, 10945),

Gene: Nedarya_16 Start: 11336, Stop: 11842, Start Num: 27

Candidate Starts for Nedarya_16:

(Start: 27 @11336 has 468 MA's),

Gene: Neeharika16_18 Start: 11667, Stop: 12197, Start Num: 27

Candidate Starts for Neeharika16_18:

(Start: 27 @11667 has 468 MA's), (43, 11811), (56, 11904), (57, 11916), (73, 12042),

Gene: Nemo27_14 Start: 10938, Stop: 11450, Start Num: 27

Candidate Starts for Nemo27_14:

(Start: 27 @10938 has 468 MA's), (42, 11049), (80, 11337),

Gene: Newrala_18 Start: 11667, Stop: 12197, Start Num: 27

Candidate Starts for Newrala_18:

(Start: 27 @11667 has 468 MA's), (43, 11811), (56, 11904), (57, 11916), (73, 12042),

Gene: NicoleTera_19 Start: 13368, Stop: 13889, Start Num: 27

Candidate Starts for NicoleTera_19:

(Start: 27 @13368 has 468 MA's), (32, 13422), (63, 13665), (67, 13692), (86, 13830),

Gene: Noella_15 Start: 11093, Stop: 11602, Start Num: 27

Candidate Starts for Noella_15:

(12, 10988), (Start: 27 @11093 has 468 MA's), (62, 11375), (67, 11414), (90, 11573),

Gene: Noelle_14 Start: 11003, Stop: 11515, Start Num: 27

Candidate Starts for Noelle_14:

(4, 10712), (7, 10763), (9, 10799), (10, 10802), (Start: 20 @10970 has 14 MA's), (Start: 27 @11003 has 468 MA's), (80, 11402),

Gene: Norbert_14 Start: 11093, Stop: 11602, Start Num: 27

Candidate Starts for Norbert_14:

(12, 10988), (Start: 27 @11093 has 468 MA's), (62, 11375), (67, 11414), (90, 11573),

Gene: NorthStar_14 Start: 10939, Stop: 11451, Start Num: 27

Candidate Starts for NorthStar_14:

(Start: 27 @10939 has 468 MA's), (42, 11050), (80, 11338),

Gene: NotAPhaseMom_14 Start: 10943, Stop: 11455, Start Num: 27

Candidate Starts for NotAPhaseMom_14:

(Start: 27 @10943 has 468 MA's), (42, 11054), (80, 11342),

Gene: NothingSpecial_17 Start: 13625, Stop: 14149, Start Num: 27
Candidate Starts for NothingSpecial_17:
(10, 13427), (Start: 19 @13589 has 4 MA's), (Start: 24 @13604 has 20 MA's), (Start: 27 @13625 has 468 MA's), (35, 13691), (39, 13712), (67, 13952), (86, 14090), (91, 14123),

Gene: Nyxis_14 Start: 10885, Stop: 11397, Start Num: 27
Candidate Starts for Nyxis_14:
(Start: 27 @10885 has 468 MA's), (42, 10996), (80, 11284),

Gene: OKCentral2016_14 Start: 10403, Stop: 10924, Start Num: 27
Candidate Starts for OKCentral2016_14:
(Start: 24 @10382 has 20 MA's), (Start: 27 @10403 has 468 MA's), (81, 10817),

Gene: OKaNui_14 Start: 10705, Stop: 11217, Start Num: 27
Candidate Starts for OKaNui_14:
(4, 10414), (10, 10504), (Start: 20 @10672 has 14 MA's), (Start: 27 @10705 has 468 MA's), (42, 10816), (63, 11002), (80, 11104),

Gene: Obama12_14 Start: 10919, Stop: 11431, Start Num: 27
Candidate Starts for Obama12_14:
(Start: 20 @10886 has 14 MA's), (Start: 27 @10919 has 468 MA's), (42, 11030), (69, 11252), (80, 11318),

Gene: Odin_14 Start: 10423, Stop: 10947, Start Num: 27
Candidate Starts for Odin_14:
(Start: 27 @10423 has 468 MA's), (36, 10492), (43, 10564), (47, 10594), (65, 10738), (69, 10759), (86, 10885), (91, 10918), (93, 10927),

Gene: Ohfah_14 Start: 10939, Stop: 11451, Start Num: 27
Candidate Starts for Ohfah_14:
(Start: 27 @10939 has 468 MA's), (42, 11050), (80, 11338),

Gene: OlanP_16 Start: 11255, Stop: 11758, Start Num: 27
Candidate Starts for OlanP_16:
(Start: 20 @11219 has 14 MA's), (Start: 24 @11234 has 20 MA's), (Start: 27 @11255 has 468 MA's), (49, 11432), (65, 11564), (67, 11576),

Gene: Ollie_16 Start: 10874, Stop: 11377, Start Num: 27
Candidate Starts for Ollie_16:
(Start: 20 @10838 has 14 MA's), (Start: 24 @10853 has 20 MA's), (Start: 27 @10874 has 468 MA's), (49, 11051), (65, 11183), (67, 11195),

Gene: Oofda_18 Start: 10721, Stop: 11233, Start Num: 27
Candidate Starts for Oofda_18:
(Start: 27 @10721 has 468 MA's), (51, 10916),

Gene: Orange_15 Start: 12152, Stop: 12673, Start Num: 27
Candidate Starts for Orange_15:
(21, 12131), (Start: 27 @12152 has 468 MA's), (30, 12203), (42, 12266), (63, 12452),

Gene: P28Green_16 Start: 11002, Stop: 11505, Start Num: 27
Candidate Starts for P28Green_16:

(Start: 20 @10966 has 14 MA's), (Start: 24 @10981 has 20 MA's), (Start: 27 @11002 has 468 MA's), (49, 11179), (65, 11311), (67, 11323),

Gene: PGHhamlin_18 Start: 10995, Stop: 11498, Start Num: 27

Candidate Starts for PGHhamlin_18:

(Start: 20 @10959 has 14 MA's), (Start: 24 @10974 has 20 MA's), (Start: 27 @10995 has 468 MA's), (49, 11172), (65, 11304), (67, 11316),

Gene: PP_24 Start: 16745, Stop: 17263, Start Num: 27

Candidate Starts for PP_24:

(Start: 27 @16745 has 468 MA's), (48, 16928), (69, 17084), (70, 17108), (88, 17225), (89, 17228),

Gene: PackMan_16 Start: 12267, Stop: 12800, Start Num: 27

Candidate Starts for PackMan_16:

(Start: 27 @12267 has 468 MA's), (30, 12315), (45, 12429), (63, 12570), (65, 12585), (67, 12597), (91, 12765), (92, 12768),

Gene: PainterBoy_16 Start: 11784, Stop: 12311, Start Num: 27

Candidate Starts for PainterBoy_16:

(8, 11562), (Start: 27 @11784 has 468 MA's), (67, 12105), (71, 12141),

Gene: Palestino_14 Start: 10939, Stop: 11451, Start Num: 27

Candidate Starts for Palestino_14:

(Start: 27 @10939 has 468 MA's), (42, 11050), (80, 11338),

Gene: Panamaxus_15 Start: 11093, Stop: 11602, Start Num: 27

Candidate Starts for Panamaxus_15:

(12, 10988), (Start: 27 @11093 has 468 MA's), (62, 11375), (67, 11414), (90, 11573),

Gene: Partridge_11 Start: 7262, Stop: 7747, Start Num: 34

Candidate Starts for Partridge_11:

(14, 7100), (Start: 34 @7262 has 36 MA's), (59, 7493), (68, 7559), (76, 7616),

Gene: Pawn_17 Start: 11075, Stop: 11578, Start Num: 27

Candidate Starts for Pawn_17:

(Start: 20 @11039 has 14 MA's), (Start: 24 @11054 has 20 MA's), (Start: 27 @11075 has 468 MA's), (49, 11252), (65, 11384), (67, 11396),

Gene: PeaceMeal1_13 Start: 8815, Stop: 9336, Start Num: 27

Candidate Starts for PeaceMeal1_13:

(Start: 24 @8794 has 20 MA's), (Start: 27 @8815 has 468 MA's), (48, 9001),

Gene: Peaches_14 Start: 10941, Stop: 11453, Start Num: 27

Candidate Starts for Peaches_14:

(Start: 20 @10908 has 14 MA's), (Start: 27 @10941 has 468 MA's), (42, 11052), (63, 11238), (80, 11340),

Gene: Pembroke_16 Start: 11004, Stop: 11507, Start Num: 27

Candidate Starts for Pembroke_16:

(Start: 20 @10968 has 14 MA's), (Start: 24 @10983 has 20 MA's), (Start: 27 @11004 has 468 MA's), (49, 11181), (65, 11313), (67, 11325),

Gene: Penny1_16 Start: 10982, Stop: 11506, Start Num: 24

Candidate Starts for Penny1_16:

(Start: 20 @10967 has 14 MA's), (Start: 24 @10982 has 20 MA's), (Start: 27 @11003 has 468 MA's), (49, 11180), (65, 11312), (67, 11324),

Gene: Perplexer_14 Start: 10943, Stop: 11455, Start Num: 27

Candidate Starts for Perplexer_14:

(Start: 20 @10910 has 14 MA's), (Start: 27 @10943 has 468 MA's), (42, 11054), (55, 11165), (80, 11342),

Gene: PeterPeter_14 Start: 10939, Stop: 11451, Start Num: 27

Candidate Starts for PeterPeter_14:

(Start: 27 @10939 has 468 MA's), (42, 11050), (80, 11338),

Gene: Petersenfast_14 Start: 12155, Stop: 12676, Start Num: 27

Candidate Starts for Petersenfast_14:

(21, 12134), (Start: 27 @12155 has 468 MA's), (30, 12206), (42, 12269), (63, 12455),

Gene: PetiteSangsue_14 Start: 10949, Stop: 11461, Start Num: 27

Candidate Starts for PetiteSangsue_14:

(Start: 20 @10916 has 14 MA's), (Start: 27 @10949 has 468 MA's), (42, 11060), (55, 11171), (80, 11348),

Gene: PetterN_13 Start: 10060, Stop: 10572, Start Num: 25

Candidate Starts for PetterN_13:

(Start: 20 @10027 has 14 MA's), (Start: 25 @10060 has 36 MA's), (41, 10153), (62, 10348), (65, 10375), (75, 10444), (83, 10477), (90, 10543),

Gene: Ph8s_16 Start: 10384, Stop: 10908, Start Num: 27

Candidate Starts for Ph8s_16:

(Start: 27 @10384 has 468 MA's), (30, 10435), (36, 10453), (43, 10525), (47, 10555), (53, 10591), (65, 10699), (67, 10711), (69, 10720), (86, 10846), (91, 10879), (93, 10888),

Gene: Phacado_14 Start: 10938, Stop: 11450, Start Num: 27

Candidate Starts for Phacado_14:

(Start: 27 @10938 has 468 MA's), (42, 11049), (80, 11337),

Gene: Phaded_18 Start: 13709, Stop: 14218, Start Num: 27

Candidate Starts for Phaded_18:

(Start: 27 @13709 has 468 MA's), (63, 13997), (67, 14024), (86, 14162),

Gene: Phaeder_16 Start: 12267, Stop: 12800, Start Num: 27

Candidate Starts for Phaeder_16:

(Start: 27 @12267 has 468 MA's), (30, 12315), (45, 12429), (63, 12570), (65, 12585), (67, 12597), (91, 12765), (92, 12768),

Gene: PhailMary_10 Start: 7269, Stop: 7754, Start Num: 34

Candidate Starts for PhailMary_10:

(14, 7107), (Start: 34 @7269 has 36 MA's), (59, 7500), (68, 7566), (76, 7623),

Gene: Phantastic_14 Start: 10509, Stop: 11030, Start Num: 27

Candidate Starts for Phantastic_14:

(Start: 27 @10509 has 468 MA's), (48, 10683), (62, 10791), (67, 10830), (95, 11001),

Gene: Pharaoh_15 Start: 12042, Stop: 12578, Start Num: 27

Candidate Starts for Pharaoh_15:

(Start: 27 @12042 has 468 MA's), (43, 12180), (50, 12225), (59, 12306), (63, 12339), (92, 12543), (94, 12552),

Gene: Phelipe_14 Start: 10939, Stop: 11451, Start Num: 27

Candidate Starts for Phelipe_14:

(Start: 27 @10939 has 468 MA's), (42, 11050), (80, 11338),

Gene: Phighter1804_14 Start: 10917, Stop: 11429, Start Num: 27

Candidate Starts for Phighter1804_14:

(Start: 20 @10884 has 14 MA's), (Start: 27 @10917 has 468 MA's), (42, 11028), (63, 11214), (80, 11316),

Gene: Phillis_12 Start: 9803, Stop: 10324, Start Num: 24

Candidate Starts for Phillis_12:

(Start: 24 @9803 has 20 MA's), (52, 10013), (58, 10070), (61, 10094), (69, 10148), (74, 10193), (85, 10253),

Gene: PhishRPhriends_15 Start: 10266, Stop: 10769, Start Num: 27

Candidate Starts for PhishRPhriends_15:

(Start: 20 @10230 has 14 MA's), (Start: 24 @10245 has 20 MA's), (Start: 27 @10266 has 468 MA's), (49, 10443), (62, 10548), (65, 10575), (67, 10587),

Gene: Phlei_11 Start: 12163, Stop: 12693, Start Num: 27

Candidate Starts for Phlei_11:

(21, 12142), (Start: 27 @12163 has 468 MA's), (43, 12307), (56, 12400), (60, 12442), (67, 12493), (72, 12538), (82, 12589), (86, 12634), (95, 12679),

Gene: Phlorence_12 Start: 10371, Stop: 10880, Start Num: 25

Candidate Starts for Phlorence_12:

(Start: 25 @10371 has 36 MA's), (41, 10461), (57, 10614), (62, 10656), (65, 10683), (69, 10704), (75, 10752),

Gene: Phoebe_16 Start: 11001, Stop: 11504, Start Num: 27

Candidate Starts for Phoebe_16:

(Start: 20 @10965 has 14 MA's), (Start: 24 @10980 has 20 MA's), (Start: 27 @11001 has 468 MA's), (49, 11178), (65, 11310), (67, 11322),

Gene: Phonnegut_16 Start: 12300, Stop: 12833, Start Num: 27

Candidate Starts for Phonnegut_16:

(Start: 27 @12300 has 468 MA's), (30, 12348), (45, 12462), (63, 12603), (65, 12618), (67, 12630), (91, 12798), (92, 12801),

Gene: Phontbonne_14 Start: 10886, Stop: 11398, Start Num: 27

Candidate Starts for Phontbonne_14:

(Start: 27 @10886 has 468 MA's), (42, 10997), (63, 11183), (80, 11285),

Gene: Phoxy_16 Start: 11087, Stop: 11590, Start Num: 27

Candidate Starts for Phoxy_16:

(Start: 20 @11051 has 14 MA's), (Start: 24 @11066 has 20 MA's), (Start: 27 @11087 has 468 MA's), (49, 11264), (65, 11396), (67, 11408),

Gene: Phrankenstein_11 Start: 7218, Stop: 7703, Start Num: 34
Candidate Starts for Phrankenstein_11:
(14, 7056), (Start: 34 @7218 has 36 MA's), (59, 7449), (68, 7515), (76, 7572), (93, 7686),

Gene: Phranny_17 Start: 11073, Stop: 11576, Start Num: 27
Candidate Starts for Phranny_17:
(Start: 20 @11037 has 14 MA's), (Start: 24 @11052 has 20 MA's), (Start: 27 @11073 has 468 MA's),
(49, 11250), (65, 11382), (67, 11394),

Gene: PickleBack_12 Start: 10082, Stop: 10594, Start Num: 25
Candidate Starts for PickleBack_12:
(13, 9983), (Start: 20 @10049 has 14 MA's), (Start: 25 @10082 has 36 MA's), (41, 10175), (62,
10370), (65, 10397), (75, 10466), (83, 10499), (90, 10565),

Gene: Pioneer_16 Start: 12300, Stop: 12833, Start Num: 27
Candidate Starts for Pioneer_16:
(Start: 27 @12300 has 468 MA's), (30, 12348), (45, 12462), (63, 12603), (65, 12618), (67, 12630), (91,
12798), (92, 12801),

Gene: Pipcraft_14 Start: 10939, Stop: 11451, Start Num: 27
Candidate Starts for Pipcraft_14:
(Start: 27 @10939 has 468 MA's), (42, 11050), (80, 11338),

Gene: Piro94_16 Start: 12117, Stop: 12641, Start Num: 27
Candidate Starts for Piro94_16:
(Start: 19 @12081 has 4 MA's), (21, 12096), (Start: 27 @12117 has 468 MA's), (58, 12378), (86,
12582), (91, 12615),

Gene: Pistachio_15 Start: 10093, Stop: 10614, Start Num: 27
Candidate Starts for Pistachio_15:
(Start: 27 @10093 has 468 MA's), (48, 10267), (62, 10375), (67, 10414), (95, 10585),

Gene: Pmask_18 Start: 11667, Stop: 12197, Start Num: 27
Candidate Starts for Pmask_18:
(Start: 27 @11667 has 468 MA's), (43, 11811), (56, 11904), (57, 11916), (73, 12042),

Gene: Pocahontas_15 Start: 11090, Stop: 11599, Start Num: 27
Candidate Starts for Pocahontas_15:
(12, 10985), (Start: 27 @11090 has 468 MA's), (62, 11372), (67, 11411), (90, 11570),

Gene: Polymorphads_14 Start: 10939, Stop: 11451, Start Num: 27
Candidate Starts for Polymorphads_14:
(Start: 27 @10939 has 468 MA's), (42, 11050), (80, 11338),

Gene: Pomar16_18 Start: 11530, Stop: 12087, Start Num: 19
Candidate Starts for Pomar16_18:
(Start: 19 @11530 has 4 MA's), (Start: 24 @11545 has 20 MA's), (Start: 27 @11566 has 468 MA's),
(30, 11617), (65, 11881), (69, 11902), (91, 12061),

Gene: Poompha_13 Start: 8813, Stop: 9334, Start Num: 27
Candidate Starts for Poompha_13:
(Start: 24 @8792 has 20 MA's), (Start: 27 @8813 has 468 MA's), (48, 8999),

Gene: Popcicle_15 Start: 11090, Stop: 11599, Start Num: 27
Candidate Starts for Popcicle_15:
(12, 10985), (Start: 27 @11090 has 468 MA's), (62, 11372), (67, 11411), (90, 11570),

Gene: PotatoSplit_17 Start: 10967, Stop: 11506, Start Num: 20
Candidate Starts for PotatoSplit_17:
(Start: 20 @10967 has 14 MA's), (Start: 24 @10982 has 20 MA's), (Start: 27 @11003 has 468 MA's),
(49, 11180), (65, 11312), (67, 11324),

Gene: Power_15 Start: 11565, Stop: 12077, Start Num: 27
Candidate Starts for Power_15:
(Start: 19 @11529 has 4 MA's), (Start: 24 @11544 has 20 MA's), (Start: 27 @11565 has 468 MA's),
(63, 11853), (67, 11880), (86, 12018),

Gene: Priamo_18 Start: 11695, Stop: 12225, Start Num: 27
Candidate Starts for Priamo_18:
(Start: 27 @11695 has 468 MA's), (43, 11839), (56, 11932), (57, 11944), (73, 12070),

Gene: Priya_16 Start: 12298, Stop: 12831, Start Num: 27
Candidate Starts for Priya_16:
(Start: 27 @12298 has 468 MA's), (30, 12346), (45, 12460), (63, 12601), (65, 12616), (67, 12628), (91,
12796), (92, 12799),

Gene: Pukovnik_17 Start: 13276, Stop: 13785, Start Num: 27
Candidate Starts for Pukovnik_17:
(Start: 27 @13276 has 468 MA's), (48, 13444), (63, 13564), (67, 13591), (86, 13729),

Gene: Pumbaa_14 Start: 10914, Stop: 11426, Start Num: 27
Candidate Starts for Pumbaa_14:
(Start: 27 @10914 has 468 MA's), (42, 11025), (59, 11178), (80, 11313),

Gene: Puppy_15 Start: 10165, Stop: 10686, Start Num: 27
Candidate Starts for Puppy_15:
(Start: 27 @10165 has 468 MA's), (48, 10339), (62, 10447), (67, 10486), (95, 10657),

Gene: PurpleHaze_16 Start: 11074, Stop: 11577, Start Num: 27
Candidate Starts for PurpleHaze_16:
(Start: 20 @11038 has 14 MA's), (Start: 24 @11053 has 20 MA's), (Start: 27 @11074 has 468 MA's),
(49, 11251), (65, 11383), (67, 11395),

Gene: Qobbit_16 Start: 12297, Stop: 12830, Start Num: 27
Candidate Starts for Qobbit_16:
(Start: 27 @12297 has 468 MA's), (30, 12345), (45, 12459), (63, 12600), (65, 12615), (67, 12627), (91,
12795), (92, 12798),

Gene: QueenB2_15 Start: 11633, Stop: 12145, Start Num: 27
Candidate Starts for QueenB2_15:
(Start: 19 @11597 has 4 MA's), (Start: 24 @11612 has 20 MA's), (Start: 27 @11633 has 468 MA's),
(63, 11921), (67, 11948), (86, 12086),

Gene: QueenBeesly_15 Start: 11565, Stop: 12077, Start Num: 27
Candidate Starts for QueenBeesly_15:

(Start: 19 @11529 has 4 MA's), (Start: 24 @11544 has 20 MA's), (Start: 27 @11565 has 468 MA's), (63, 11853), (67, 11880), (86, 12018),

Gene: QuinnKiro_14 Start: 11093, Stop: 11602, Start Num: 27

Candidate Starts for QuinnKiro_14:

(12, 10988), (Start: 27 @11093 has 468 MA's), (62, 11375), (67, 11414), (90, 11573),

Gene: RER2_4 Start: 4090, Stop: 4575, Start Num: 34

Candidate Starts for RER2_4:

(14, 3928), (Start: 34 @4090 has 36 MA's), (59, 4321), (68, 4387), (76, 4444), (93, 4558),

Gene: RGL3_4 Start: 4079, Stop: 4564, Start Num: 34

Candidate Starts for RGL3_4:

(Start: 34 @4079 has 36 MA's), (45, 4202), (54, 4262), (59, 4310), (68, 4376), (76, 4433),

Gene: Rachaly_18 Start: 13308, Stop: 13817, Start Num: 27

Candidate Starts for Rachaly_18:

(Start: 27 @13308 has 468 MA's), (43, 13443), (63, 13602), (65, 13617), (86, 13761),

Gene: Rahalelujah_14 Start: 10342, Stop: 10866, Start Num: 27

Candidate Starts for Rahalelujah_14:

(Start: 27 @10342 has 468 MA's), (36, 10405), (41, 10441), (91, 10831), (92, 10834),

Gene: Rasputin_11 Start: 7203, Stop: 7688, Start Num: 34

Candidate Starts for Rasputin_11:

(14, 7041), (Start: 34 @7203 has 36 MA's), (59, 7434), (68, 7500), (76, 7557),

Gene: ReMo_17 Start: 10750, Stop: 11262, Start Num: 27

Candidate Starts for ReMo_17:

(Start: 27 @10750 has 468 MA's), (51, 10945),

Gene: Reba_17 Start: 10746, Stop: 11249, Start Num: 27

Candidate Starts for Reba_17:

(Start: 20 @10710 has 14 MA's), (Start: 24 @10725 has 20 MA's), (Start: 27 @10746 has 468 MA's), (49, 10923), (65, 11055), (67, 11067),

Gene: Rebeuca_15 Start: 10862, Stop: 11404, Start Num: 24

Candidate Starts for Rebeuca_15:

(Start: 24 @10862 has 20 MA's), (Start: 27 @10883 has 468 MA's), (38, 10970),

Gene: RedRock_18 Start: 13548, Stop: 14060, Start Num: 27

Candidate Starts for RedRock_18:

(Start: 19 @13509 has 4 MA's), (Start: 27 @13548 has 468 MA's), (36, 13608), (69, 13875), (86, 14001),

Gene: Refuge_18 Start: 13883, Stop: 14416, Start Num: 27

Candidate Starts for Refuge_18:

(Start: 27 @13883 has 468 MA's), (43, 14021), (50, 14066), (63, 14180), (89, 14369),

Gene: Relief_14 Start: 10940, Stop: 11452, Start Num: 27

Candidate Starts for Relief_14:

(Start: 27 @10940 has 468 MA's), (42, 11051), (80, 11339),

Gene: Remus_17 Start: 10711, Stop: 11223, Start Num: 27

Candidate Starts for Remus_17:

(Start: 27 @10711 has 468 MA's), (51, 10906),

Gene: ResDef_15 Start: 11093, Stop: 11602, Start Num: 27

Candidate Starts for ResDef_15:

(12, 10988), (Start: 27 @11093 has 468 MA's), (62, 11375), (67, 11414), (90, 11573),

Gene: Retro23_15 Start: 11716, Stop: 12228, Start Num: 27

Candidate Starts for Retro23_15:

(Start: 19 @11680 has 4 MA's), (Start: 24 @11695 has 20 MA's), (Start: 27 @11716 has 468 MA's), (63, 12004), (67, 12031), (86, 12169),

Gene: RexFury_11 Start: 7249, Stop: 7734, Start Num: 34

Candidate Starts for RexFury_11:

(14, 7087), (Start: 34 @7249 has 36 MA's), (59, 7480), (68, 7546), (76, 7603), (93, 7717),

Gene: Rhodalysa_11 Start: 7218, Stop: 7703, Start Num: 34

Candidate Starts for Rhodalysa_11:

(14, 7056), (Start: 34 @7218 has 36 MA's), (59, 7449), (68, 7515), (76, 7572), (93, 7686),

Gene: RhynO_15 Start: 10861, Stop: 11382, Start Num: 27

Candidate Starts for RhynO_15:

(Start: 24 @10840 has 20 MA's), (Start: 27 @10861 has 468 MA's), (38, 10948),

Gene: Rifter_18 Start: 11654, Stop: 12175, Start Num: 27

Candidate Starts for Rifter_18:

(12, 11558), (Start: 27 @11654 has 468 MA's), (30, 11702), (43, 11789), (57, 11894), (73, 12020),

Gene: Roary_12 Start: 9807, Stop: 10313, Start Num: 26

Candidate Starts for Roary_12:

(Start: 26 @9807 has 8 MA's), (52, 9999), (58, 10056), (61, 10080), (65, 10113), (69, 10134), (85, 10239),

Gene: Rockstar_14 Start: 10418, Stop: 10942, Start Num: 27

Candidate Starts for Rockstar_14:

(Start: 20 @10382 has 14 MA's), (Start: 27 @10418 has 468 MA's), (48, 10595), (62, 10703), (67, 10742),

Gene: Roksolana_18 Start: 11681, Stop: 12202, Start Num: 27

Candidate Starts for Roksolana_18:

(12, 11585), (Start: 27 @11681 has 468 MA's), (30, 11729), (43, 11816), (56, 11909), (57, 11921), (73, 12047),

Gene: Romney_14 Start: 10938, Stop: 11450, Start Num: 27

Candidate Starts for Romney_14:

(Start: 27 @10938 has 468 MA's), (42, 11049), (80, 11337),

Gene: Roosevelt_14 Start: 10939, Stop: 11451, Start Num: 27

Candidate Starts for Roosevelt_14:

(Start: 27 @10939 has 468 MA's), (42, 11050), (80, 11338),

Gene: Rosalind_17 Start: 10872, Stop: 11384, Start Num: 27

Candidate Starts for Rosalind_17:
(Start: 27 @10872 has 468 MA's), (51, 11067),

Gene: Ruin_14 Start: 10938, Stop: 11450, Start Num: 27
Candidate Starts for Ruin_14:
(Start: 27 @10938 has 468 MA's), (42, 11049), (80, 11337),

Gene: Rummer_16 Start: 11087, Stop: 11590, Start Num: 27
Candidate Starts for Rummer_16:
(Start: 20 @11051 has 14 MA's), (Start: 24 @11066 has 20 MA's), (Start: 27 @11087 has 468 MA's),
(49, 11264), (65, 11396), (67, 11408),

Gene: Sabertooth_14 Start: 10939, Stop: 11451, Start Num: 27
Candidate Starts for Sabertooth_14:
(Start: 27 @10939 has 468 MA's), (42, 11050), (80, 11338),

Gene: Sabia_16 Start: 10960, Stop: 11499, Start Num: 20
Candidate Starts for Sabia_16:
(Start: 20 @10960 has 14 MA's), (Start: 24 @10975 has 20 MA's), (Start: 27 @10996 has 468 MA's),
(65, 11305), (67, 11317),

Gene: Sabinator_16 Start: 11001, Stop: 11504, Start Num: 27
Candidate Starts for Sabinator_16:
(Start: 20 @10965 has 14 MA's), (Start: 24 @10980 has 20 MA's), (Start: 27 @11001 has 468 MA's),
(49, 11178), (65, 11310), (67, 11322),

Gene: Saintus_12 Start: 9818, Stop: 10330, Start Num: 26
Candidate Starts for Saintus_12:
(Start: 26 @9818 has 8 MA's), (52, 10019), (58, 10076), (61, 10100), (69, 10154), (74, 10199), (85,
10259),

Gene: Salz_15 Start: 12149, Stop: 12670, Start Num: 27
Candidate Starts for Salz_15:
(21, 12128), (Start: 27 @12149 has 468 MA's), (30, 12200), (42, 12263), (63, 12449),

Gene: SaturnRing_14 Start: 10546, Stop: 11067, Start Num: 27
Candidate Starts for SaturnRing_14:
(Start: 27 @10546 has 468 MA's), (48, 10720), (62, 10828), (67, 10867), (95, 11038),

Gene: Scamp_14 Start: 10939, Stop: 11451, Start Num: 27
Candidate Starts for Scamp_14:
(Start: 27 @10939 has 468 MA's), (42, 11050), (80, 11338),

Gene: Scherzo_16 Start: 12300, Stop: 12833, Start Num: 27
Candidate Starts for Scherzo_16:
(Start: 27 @12300 has 468 MA's), (30, 12348), (45, 12462), (63, 12603), (65, 12618), (67, 12630), (91,
12798), (92, 12801),

Gene: Scorpia_13 Start: 10061, Stop: 10573, Start Num: 25
Candidate Starts for Scorpia_13:
(Start: 20 @10028 has 14 MA's), (Start: 25 @10061 has 36 MA's), (41, 10154), (62, 10349), (65,
10376), (75, 10445), (83, 10478), (90, 10544),

Gene: Scout_14 Start: 9841, Stop: 10365, Start Num: 27
Candidate Starts for Scout_14:
(Start: 27 @9841 has 468 MA's), (48, 10018), (62, 10126), (67, 10165),

Gene: SemperFi_17 Start: 11993, Stop: 12505, Start Num: 27
Candidate Starts for SemperFi_17:
(Start: 19 @11957 has 4 MA's), (Start: 24 @11972 has 20 MA's), (Start: 27 @11993 has 468 MA's),
(63, 12281), (67, 12308), (69, 12317), (86, 12446), (91, 12479),

Gene: Serenity_14 Start: 10524, Stop: 11048, Start Num: 27
Candidate Starts for Serenity_14:
(18, 10488), (23, 10503), (Start: 27 @10524 has 468 MA's), (30, 10575), (43, 10665), (47, 10695), (65,
10839), (69, 10860), (86, 10989), (91, 11022),

Gene: Severus_13 Start: 8792, Stop: 9334, Start Num: 24
Candidate Starts for Severus_13:
(Start: 24 @8792 has 20 MA's), (Start: 27 @8813 has 468 MA's), (48, 8999),

Gene: Shaka_14 Start: 10939, Stop: 11451, Start Num: 27
Candidate Starts for Shaka_14:
(Start: 27 @10939 has 468 MA's), (42, 11050), (80, 11338),

Gene: Sham4_15 Start: 12155, Stop: 12676, Start Num: 27
Candidate Starts for Sham4_15:
(21, 12134), (Start: 27 @12155 has 468 MA's), (30, 12206), (42, 12269), (63, 12455),

Gene: ShayRa_18 Start: 10872, Stop: 11384, Start Num: 27
Candidate Starts for ShayRa_18:
(Start: 27 @10872 has 468 MA's), (51, 11067),

Gene: SheaKeira_15 Start: 10521, Stop: 11054, Start Num: 27
Candidate Starts for SheaKeira_15:
(Start: 24 @10500 has 20 MA's), (Start: 27 @10521 has 468 MA's), (30, 10572), (36, 10590), (56,
10755), (67, 10848),

Gene: Sheen_16 Start: 12621, Stop: 13130, Start Num: 27
Candidate Starts for Sheen_16:
(17, 12576), (Start: 24 @12600 has 20 MA's), (Start: 27 @12621 has 468 MA's), (57, 12861), (66,
12939), (67, 12942), (78, 13005), (79, 13008),

Gene: SheldonCooper_14 Start: 10918, Stop: 11430, Start Num: 27
Candidate Starts for SheldonCooper_14:
(Start: 20 @10885 has 14 MA's), (Start: 27 @10918 has 468 MA's), (42, 11029), (69, 11251), (80,
11317),

Gene: Shuman_11 Start: 7218, Stop: 7703, Start Num: 34
Candidate Starts for Shuman_11:
(14, 7056), (Start: 34 @7218 has 36 MA's), (59, 7449), (68, 7515), (76, 7572), (93, 7686),

Gene: Shygu2_14 Start: 10943, Stop: 11458, Start Num: 27
Candidate Starts for Shygu2_14:
(Start: 20 @10910 has 14 MA's), (Start: 27 @10943 has 468 MA's), (55, 11168), (80, 11345),

Gene: Skipitt_14 Start: 10939, Stop: 11451, Start Num: 27

Candidate Starts for Skipitt_14:

(Start: 27 @10939 has 468 MA's), (42, 11050), (80, 11338),

Gene: Smeadley_12 Start: 9840, Stop: 10346, Start Num: 26

Candidate Starts for Smeadley_12:

(Start: 26 @9840 has 8 MA's), (52, 10032), (58, 10089), (61, 10113), (65, 10146), (69, 10167), (85, 10272),

Gene: Smeagan_17 Start: 12063, Stop: 12590, Start Num: 27

Candidate Starts for Smeagan_17:

(Start: 27 @12063 has 468 MA's), (63, 12363), (65, 12378), (86, 12531), (91, 12564),

Gene: SmellyB_18 Start: 11677, Stop: 12207, Start Num: 27

Candidate Starts for SmellyB_18:

(Start: 27 @11677 has 468 MA's), (43, 11821), (56, 11914), (57, 11926), (73, 12052),

Gene: SnapTap_15 Start: 11565, Stop: 12077, Start Num: 27

Candidate Starts for SnapTap_15:

(Start: 19 @11529 has 4 MA's), (Start: 24 @11544 has 20 MA's), (Start: 27 @11565 has 468 MA's), (63, 11853), (67, 11880), (86, 12018),

Gene: Snape_15 Start: 12155, Stop: 12676, Start Num: 27

Candidate Starts for Snape_15:

(21, 12134), (Start: 27 @12155 has 468 MA's), (30, 12206), (42, 12269), (63, 12455),

Gene: Snickers_16 Start: 10977, Stop: 11480, Start Num: 27

Candidate Starts for Snickers_16:

(Start: 20 @10941 has 14 MA's), (Start: 24 @10956 has 20 MA's), (Start: 27 @10977 has 468 MA's), (49, 11154), (65, 11286), (67, 11298),

Gene: SoYo_16 Start: 10914, Stop: 11417, Start Num: 27

Candidate Starts for SoYo_16:

(Start: 20 @10878 has 14 MA's), (Start: 24 @10893 has 20 MA's), (Start: 27 @10914 has 468 MA's), (49, 11091), (65, 11223), (67, 11235),

Gene: SoilDragon_16 Start: 10652, Stop: 11191, Start Num: 20

Candidate Starts for SoilDragon_16:

(Start: 20 @10652 has 14 MA's), (Start: 24 @10667 has 20 MA's), (Start: 27 @10688 has 468 MA's), (49, 10865), (65, 10997), (67, 11009),

Gene: SororFago_14 Start: 10687, Stop: 11214, Start Num: 27

Candidate Starts for SororFago_14:

(Start: 27 @10687 has 468 MA's), (45, 10855), (56, 10930), (76, 11086), (86, 11158),

Gene: Soshari_18 Start: 11086, Stop: 11589, Start Num: 27

Candidate Starts for Soshari_18:

(Start: 20 @11050 has 14 MA's), (Start: 24 @11065 has 20 MA's), (Start: 27 @11086 has 468 MA's), (49, 11263), (65, 11395), (67, 11407),

Gene: Soups_17 Start: 10872, Stop: 11384, Start Num: 27

Candidate Starts for Soups_17:

(Start: 27 @10872 has 468 MA's), (51, 11067),

Gene: Sparxx_14 Start: 10939, Stop: 11451, Start Num: 27

Candidate Starts for Sparxx_14:

(Start: 27 @10939 has 468 MA's), (42, 11050), (80, 11338),

Gene: Spike509_16 Start: 11087, Stop: 11590, Start Num: 27

Candidate Starts for Spike509_16:

(Start: 20 @11051 has 14 MA's), (Start: 24 @11066 has 20 MA's), (Start: 27 @11087 has 468 MA's), (49, 11264), (65, 11396), (67, 11408),

Gene: Spino_14 Start: 10939, Stop: 11451, Start Num: 27

Candidate Starts for Spino_14:

(Start: 27 @10939 has 468 MA's), (42, 11050), (80, 11338),

Gene: Spouty_15 Start: 12297, Stop: 12830, Start Num: 27

Candidate Starts for Spouty_15:

(Start: 27 @12297 has 468 MA's), (30, 12345), (45, 12459), (63, 12600), (65, 12615), (67, 12627), (91, 12795), (92, 12798),

Gene: StCroix_11 Start: 7218, Stop: 7703, Start Num: 34

Candidate Starts for StCroix_11:

(14, 7056), (Start: 34 @7218 has 36 MA's), (59, 7449), (76, 7572), (93, 7686),

Gene: Stagni_16 Start: 11005, Stop: 11508, Start Num: 27

Candidate Starts for Stagni_16:

(Start: 20 @10969 has 14 MA's), (Start: 24 @10984 has 20 MA's), (Start: 27 @11005 has 468 MA's), (65, 11314), (67, 11326),

Gene: StarStuff_18 Start: 11489, Stop: 12046, Start Num: 19

Candidate Starts for StarStuff_18:

(Start: 19 @11489 has 4 MA's), (Start: 24 @11504 has 20 MA's), (Start: 27 @11525 has 468 MA's), (30, 11576), (65, 11840), (69, 11861), (91, 12020),

Gene: Stasia_15 Start: 11385, Stop: 11897, Start Num: 27

Candidate Starts for Stasia_15:

(Start: 20 @11352 has 14 MA's), (Start: 27 @11385 has 468 MA's), (80, 11784),

Gene: Steamy_16 Start: 12092, Stop: 12607, Start Num: 27

Candidate Starts for Steamy_16:

(Start: 27 @12092 has 468 MA's), (62, 12365), (86, 12545), (89, 12569),

Gene: StepMih_16 Start: 10996, Stop: 11499, Start Num: 27

Candidate Starts for StepMih_16:

(Start: 20 @10960 has 14 MA's), (Start: 24 @10975 has 20 MA's), (Start: 27 @10996 has 468 MA's), (49, 11173), (65, 11305), (67, 11317),

Gene: Stephig9_12 Start: 9808, Stop: 10329, Start Num: 24

Candidate Starts for Stephig9_12:

(Start: 24 @9808 has 20 MA's), (52, 10018), (58, 10075), (69, 10153), (74, 10198), (85, 10258),

Gene: Stink_14 Start: 10908, Stop: 11420, Start Num: 27

Candidate Starts for Stink_14:

(Start: 20 @10875 has 14 MA's), (Start: 27 @10908 has 468 MA's), (42, 11019), (69, 11241), (80, 11307),

Gene: Strosahl_17 Start: 10711, Stop: 11223, Start Num: 27

Candidate Starts for Strosahl_17:

(Start: 27 @10711 has 468 MA's), (51, 10906),

Gene: SuperAwesome_18 Start: 11667, Stop: 12197, Start Num: 27

Candidate Starts for SuperAwesome_18:

(Start: 27 @11667 has 468 MA's), (43, 11811), (56, 11904), (57, 11916), (73, 12042),

Gene: SuperCallie99_18 Start: 11668, Stop: 12198, Start Num: 27

Candidate Starts for SuperCallie99_18:

(Start: 27 @11668 has 468 MA's), (43, 11812), (56, 11905), (57, 11917), (73, 12043),

Gene: Superchunk_14 Start: 10281, Stop: 10805, Start Num: 27

Candidate Starts for Superchunk_14:

(Start: 27 @10281 has 468 MA's), (36, 10350), (43, 10422), (47, 10452), (65, 10596), (69, 10617), (86, 10743), (91, 10776), (93, 10785),

Gene: Swann_11 Start: 7218, Stop: 7703, Start Num: 34

Candidate Starts for Swann_11:

(14, 7056), (Start: 34 @7218 has 36 MA's), (59, 7449), (68, 7515), (76, 7572), (93, 7686),

Gene: SweetiePie_15 Start: 11565, Stop: 12077, Start Num: 27

Candidate Starts for SweetiePie_15:

(Start: 19 @11529 has 4 MA's), (Start: 24 @11544 has 20 MA's), (Start: 27 @11565 has 468 MA's), (63, 11853), (67, 11880), (86, 12018),

Gene: SwirlSquare_17 Start: 10437, Stop: 10958, Start Num: 27

Candidate Starts for SwirlSquare_17:

(Start: 19 @10401 has 4 MA's), (Start: 24 @10416 has 20 MA's), (Start: 27 @10437 has 468 MA's), (30, 10488), (39, 10524), (43, 10578), (47, 10608), (65, 10752), (69, 10773), (86, 10899), (91, 10932),

Gene: Swirley_12 Start: 10233, Stop: 10742, Start Num: 25

Candidate Starts for Swirley_12:

(Start: 25 @10233 has 36 MA's), (41, 10323), (57, 10476), (62, 10518), (65, 10545), (69, 10566), (75, 10614),

Gene: Switzerland_17 Start: 10868, Stop: 11377, Start Num: 27

Candidate Starts for Switzerland_17:

(Start: 27 @10868 has 468 MA's),

Gene: SydNat_12 Start: 10340, Stop: 10849, Start Num: 25

Candidate Starts for SydNat_12:

(Start: 25 @10340 has 36 MA's), (41, 10430), (57, 10583), (62, 10625), (65, 10652), (75, 10721),

Gene: TNguyen7_14 Start: 10516, Stop: 11037, Start Num: 27

Candidate Starts for TNguyen7_14:

(Start: 27 @10516 has 468 MA's), (48, 10690), (62, 10798), (67, 10837), (95, 11008),

Gene: TWAMP_11 Start: 7218, Stop: 7703, Start Num: 34

Candidate Starts for TWAMP_11:

(14, 7056), (Start: 34 @7218 has 36 MA's), (59, 7449), (68, 7515), (76, 7572), (93, 7686),

Gene: Takoda_11 Start: 7195, Stop: 7680, Start Num: 34

Candidate Starts for Takoda_11:

(14, 7033), (Start: 34 @7195 has 36 MA's), (59, 7426), (68, 7492), (76, 7549),

Gene: Taquarus_14 Start: 10942, Stop: 11454, Start Num: 27

Candidate Starts for Taquarus_14:

(Start: 27 @10942 has 468 MA's), (42, 11053), (80, 11341),

Gene: Target_16 Start: 11865, Stop: 12362, Start Num: 27

Candidate Starts for Target_16:

(Start: 27 @11865 has 468 MA's), (56, 12081), (57, 12093), (69, 12183), (84, 12270), (89, 12330),

Gene: TarsusIV_15 Start: 11649, Stop: 12176, Start Num: 27

Candidate Starts for TarsusIV_15:

(Start: 27 @11649 has 468 MA's), (63, 11949), (65, 11964), (69, 11985), (86, 12117), (91, 12150),

Gene: Tarynearal_11 Start: 10260, Stop: 10769, Start Num: 25

Candidate Starts for Tarynearal_11:

(Start: 25 @10260 has 36 MA's), (41, 10350), (57, 10503), (62, 10545), (65, 10572), (69, 10593), (75, 10641),

Gene: Taurus_16 Start: 11001, Stop: 11504, Start Num: 27

Candidate Starts for Taurus_16:

(Start: 20 @10965 has 14 MA's), (Start: 24 @10980 has 20 MA's), (Start: 27 @11001 has 468 MA's), (49, 11178), (65, 11310), (67, 11322),

Gene: Texage_14 Start: 11093, Stop: 11602, Start Num: 27

Candidate Starts for Texage_14:

(12, 10988), (Start: 27 @11093 has 468 MA's), (62, 11375), (67, 11414), (90, 11573),

Gene: Thanksgivukkah_14 Start: 10944, Stop: 11456, Start Num: 27

Candidate Starts for Thanksgivukkah_14:

(Start: 27 @10944 has 468 MA's), (42, 11055), (80, 11343),

Gene: Theia_11 Start: 10199, Stop: 10708, Start Num: 25

Candidate Starts for Theia_11:

(Start: 25 @10199 has 36 MA's), (41, 10289), (57, 10442), (62, 10484), (65, 10511), (69, 10532), (75, 10580),

Gene: Tiffany_16 Start: 10876, Stop: 11400, Start Num: 24

Candidate Starts for Tiffany_16:

(Start: 20 @10861 has 14 MA's), (Start: 24 @10876 has 20 MA's), (Start: 27 @10897 has 468 MA's), (49, 11074), (65, 11206), (67, 11218),

Gene: Tiger_12 Start: 10080, Stop: 10589, Start Num: 25

Candidate Starts for Tiger_12:

(Start: 25 @10080 has 36 MA's), (41, 10170), (57, 10323), (62, 10365), (65, 10392), (69, 10413), (75, 10461),

Gene: Timothy_15 Start: 12152, Stop: 12673, Start Num: 27

Candidate Starts for Timothy_15:

(21, 12131), (Start: 27 @12152 has 468 MA's), (30, 12203), (42, 12266), (63, 12452),

Gene: Timshel_15 Start: 12520, Stop: 13020, Start Num: 27

Candidate Starts for Timshel_15:

(Start: 27 @12520 has 468 MA's), (39, 12589), (42, 12616), (67, 12829), (76, 12892), (88, 12985), (89, 12988), (90, 12994),

Gene: TinaFeyge_14 Start: 10939, Stop: 11451, Start Num: 27

Candidate Starts for TinaFeyge_14:

(Start: 27 @10939 has 468 MA's), (42, 11050), (80, 11338),

Gene: TinyTimmy_14 Start: 12204, Stop: 12725, Start Num: 27

Candidate Starts for TinyTimmy_14:

(21, 12183), (Start: 27 @12204 has 468 MA's), (30, 12255), (42, 12318), (63, 12504),

Gene: Tinybot_13 Start: 10920, Stop: 11432, Start Num: 27

Candidate Starts for Tinybot_13:

(Start: 20 @10887 has 14 MA's), (Start: 27 @10920 has 468 MA's), (42, 11031), (69, 11253), (80, 11319),

Gene: TipsytheTRex_14 Start: 10661, Stop: 11185, Start Num: 27

Candidate Starts for TipsytheTRex_14:

(Start: 27 @10661 has 468 MA's), (36, 10727), (43, 10799), (57, 10904), (73, 11030),

Gene: TiroTheta9_14 Start: 10939, Stop: 11451, Start Num: 27

Candidate Starts for TiroTheta9_14:

(Start: 27 @10939 has 468 MA's), (42, 11050), (80, 11338),

Gene: Toaka_14 Start: 10643, Stop: 11161, Start Num: 27

Candidate Starts for Toaka_14:

(Start: 27 @10643 has 468 MA's), (40, 10733), (41, 10739), (54, 10853), (91, 11126),

Gene: Todacoro_15 Start: 11093, Stop: 11602, Start Num: 27

Candidate Starts for Todacoro_15:

(12, 10988), (Start: 27 @11093 has 468 MA's), (62, 11375), (67, 11414), (90, 11573),

Gene: Tomathan_18 Start: 11525, Stop: 12046, Start Num: 27

Candidate Starts for Tomathan_18:

(Start: 19 @11489 has 4 MA's), (Start: 24 @11504 has 20 MA's), (Start: 27 @11525 has 468 MA's), (30, 11576), (65, 11840), (69, 11861), (91, 12020),

Gene: ToneTone_17 Start: 11594, Stop: 12115, Start Num: 27

Candidate Starts for ToneTone_17:

(12, 11498), (Start: 27 @11594 has 468 MA's), (30, 11642), (43, 11729), (57, 11834), (73, 11960),

Gene: Topanga_14 Start: 10833, Stop: 11354, Start Num: 27

Candidate Starts for Topanga_14:

(Start: 24 @10812 has 20 MA's), (Start: 27 @10833 has 468 MA's), (38, 10920),

Gene: Trike_12 Start: 8784, Stop: 9326, Start Num: 24

Candidate Starts for Trike_12:

(Start: 24 @8784 has 20 MA's), (Start: 27 @8805 has 468 MA's), (48, 8991),

Gene: Trixie_18 Start: 13264, Stop: 13788, Start Num: 27
Candidate Starts for Trixie_18:
(22, 13243), (Start: 27 @13264 has 468 MA's), (36, 13333), (57, 13510), (86, 13729),

Gene: Trooper_15 Start: 11440, Stop: 11967, Start Num: 27
Candidate Starts for Trooper_15:
(1, 11092), (6, 11164), (11, 11284), (12, 11341), (Start: 27 @11440 has 468 MA's), (46, 11608), (57, 11686), (86, 11908), (91, 11941),

Gene: TroyPia_14 Start: 10939, Stop: 11451, Start Num: 27
Candidate Starts for TroyPia_14:
(Start: 27 @10939 has 468 MA's), (42, 11050), (80, 11338),

Gene: Tubs_16 Start: 12267, Stop: 12800, Start Num: 27
Candidate Starts for Tubs_16:
(Start: 27 @12267 has 468 MA's), (30, 12315), (45, 12429), (63, 12570), (65, 12585), (67, 12597), (91, 12765), (92, 12768),

Gene: Tucker_18 Start: 11681, Stop: 12202, Start Num: 27
Candidate Starts for Tucker_18:
(12, 11585), (Start: 27 @11681 has 468 MA's), (30, 11729), (43, 11816), (56, 11909), (57, 11921), (73, 12047),

Gene: Turbido_17 Start: 12090, Stop: 12617, Start Num: 27
Candidate Starts for Turbido_17:
(Start: 27 @12090 has 468 MA's), (63, 12390), (65, 12405), (69, 12426), (86, 12558), (91, 12591),

Gene: Twister_14 Start: 10732, Stop: 11253, Start Num: 27
Candidate Starts for Twister_14:
(Start: 24 @10711 has 20 MA's), (Start: 27 @10732 has 468 MA's), (38, 10819),

Gene: TygerBlood_14 Start: 10941, Stop: 11453, Start Num: 27
Candidate Starts for TygerBlood_14:
(Start: 27 @10941 has 468 MA's), (42, 11052), (80, 11340),

Gene: Ugenie5_13 Start: 12300, Stop: 12833, Start Num: 27
Candidate Starts for Ugenie5_13:
(Start: 27 @12300 has 468 MA's), (30, 12348), (45, 12462), (63, 12603), (65, 12618), (67, 12630), (91, 12798), (92, 12801),

Gene: UhSalsa_11 Start: 7218, Stop: 7703, Start Num: 34
Candidate Starts for UhSalsa_11:
(14, 7056), (Start: 34 @7218 has 36 MA's), (59, 7449), (68, 7515), (76, 7572), (93, 7686),

Gene: Ulysses_13 Start: 10660, Stop: 11172, Start Num: 27
Candidate Starts for Ulysses_13:
(Start: 20 @10627 has 14 MA's), (Start: 27 @10660 has 468 MA's), (63, 10957), (80, 11059),

Gene: UnionJack_12 Start: 9800, Stop: 10312, Start Num: 25
Candidate Starts for UnionJack_12:
(Start: 25 @9800 has 36 MA's), (41, 9893), (62, 10088), (65, 10115), (75, 10184), (83, 10217), (90, 10283),

Gene: Updawg_17 Start: 12101, Stop: 12625, Start Num: 27

Candidate Starts for Updawg_17:

(11, 11948), (Start: 19 @12065 has 4 MA's), (21, 12080), (Start: 27 @12101 has 468 MA's), (48, 12281), (63, 12401), (67, 12428), (86, 12566), (91, 12599), (93, 12608), (95, 12611),

Gene: VA6_15 Start: 11619, Stop: 12140, Start Num: 27

Candidate Starts for VA6_15:

(Start: 19 @11583 has 4 MA's), (Start: 24 @11598 has 20 MA's), (Start: 27 @11619 has 468 MA's), (63, 11916), (67, 11943), (86, 12081),

Gene: VC3_18 Start: 11582, Stop: 12103, Start Num: 27

Candidate Starts for VC3_18:

(15, 11534), (Start: 27 @11582 has 468 MA's), (43, 11726), (44, 11741), (57, 11831), (63, 11885), (65, 11900), (86, 12044), (91, 12077),

Gene: Vanisoa_14 Start: 10356, Stop: 10880, Start Num: 27

Candidate Starts for Vanisoa_14:

(Start: 27 @10356 has 468 MA's), (36, 10419), (41, 10455), (91, 10845), (92, 10848),

Gene: Veracruz_14 Start: 11093, Stop: 11602, Start Num: 27

Candidate Starts for Veracruz_14:

(12, 10988), (Start: 27 @11093 has 468 MA's), (62, 11375), (67, 11414), (90, 11573),

Gene: Vix_16 Start: 11064, Stop: 11588, Start Num: 24

Candidate Starts for Vix_16:

(Start: 20 @11049 has 14 MA's), (Start: 24 @11064 has 20 MA's), (Start: 27 @11085 has 468 MA's), (49, 11262), (65, 11394), (67, 11406),

Gene: VohminGhazi_18 Start: 11677, Stop: 12207, Start Num: 27

Candidate Starts for VohminGhazi_18:

(Start: 27 @11677 has 468 MA's), (43, 11821), (56, 11914), (57, 11926), (73, 12052),

Gene: Waits_17 Start: 10717, Stop: 11229, Start Num: 27

Candidate Starts for Waits_17:

(Start: 27 @10717 has 468 MA's), (51, 10912),

Gene: WalterMcMickey_14 Start: 10732, Stop: 11253, Start Num: 27

Candidate Starts for WalterMcMickey_14:

(Start: 24 @10711 has 20 MA's), (Start: 27 @10732 has 468 MA's), (38, 10819),

Gene: Wander_14 Start: 10939, Stop: 11451, Start Num: 27

Candidate Starts for Wander_14:

(Start: 27 @10939 has 468 MA's), (42, 11050), (80, 11338),

Gene: Watson_16 Start: 10995, Stop: 11498, Start Num: 27

Candidate Starts for Watson_16:

(Start: 20 @10959 has 14 MA's), (Start: 24 @10974 has 20 MA's), (Start: 27 @10995 has 468 MA's), (49, 11172), (65, 11304), (67, 11316),

Gene: WeiHuaDA_21 Start: 13865, Stop: 14389, Start Num: 27

Candidate Starts for WeiHuaDA_21:

(22, 13844), (Start: 27 @13865 has 468 MA's), (57, 14111), (86, 14330),

Gene: Whabigail7_17 Start: 12078, Stop: 12605, Start Num: 27
Candidate Starts for Whabigail7_17:
(Start: 27 @12078 has 468 MA's), (63, 12378), (65, 12393), (86, 12546), (91, 12579),

Gene: WideWale_17 Start: 12101, Stop: 12625, Start Num: 27
Candidate Starts for WideWale_17:
(11, 11948), (Start: 19 @12065 has 4 MA's), (21, 12080), (Start: 27 @12101 has 468 MA's), (48, 12281), (63, 12401), (67, 12428), (86, 12566), (91, 12599), (93, 12608), (95, 12611),

Gene: Wiks_18 Start: 11662, Stop: 12183, Start Num: 27
Candidate Starts for Wiks_18:
(12, 11566), (Start: 27 @11662 has 468 MA's), (30, 11710), (43, 11797), (57, 11902), (73, 12028),

Gene: Wilbur_14 Start: 10938, Stop: 11450, Start Num: 27
Candidate Starts for Wilbur_14:
(Start: 27 @10938 has 468 MA's), (42, 11049), (80, 11337),

Gene: Wile_14 Start: 10956, Stop: 11471, Start Num: 27
Candidate Starts for Wile_14:
(4, 10665), (7, 10716), (9, 10752), (10, 10755), (Start: 20 @10923 has 14 MA's), (Start: 27 @10956 has 468 MA's), (80, 11358),

Gene: Wizard007_14 Start: 10941, Stop: 11453, Start Num: 27
Candidate Starts for Wizard007_14:
(Start: 27 @10941 has 468 MA's), (42, 11052), (80, 11340),

Gene: Wooldri_18 Start: 10878, Stop: 11417, Start Num: 20
Candidate Starts for Wooldri_18:
(Start: 20 @10878 has 14 MA's), (Start: 24 @10893 has 20 MA's), (Start: 27 @10914 has 468 MA's), (49, 11091), (65, 11223), (67, 11235),

Gene: WunderPhul_18 Start: 11662, Stop: 12183, Start Num: 27
Candidate Starts for WunderPhul_18:
(12, 11566), (Start: 27 @11662 has 468 MA's), (30, 11710), (43, 11797), (57, 11902), (73, 12028),

Gene: Xena_14 Start: 10943, Stop: 11458, Start Num: 27
Candidate Starts for Xena_14:
(4, 10652), (7, 10703), (9, 10739), (10, 10742), (Start: 20 @10910 has 14 MA's), (Start: 27 @10943 has 468 MA's), (80, 11345),

Gene: XianYue_15 Start: 11556, Stop: 12080, Start Num: 27
Candidate Starts for XianYue_15:
(Start: 27 @11556 has 468 MA's), (30, 11607), (86, 12021),

Gene: Yecey3_15 Start: 10453, Stop: 10974, Start Num: 27
Candidate Starts for Yecey3_15:
(Start: 27 @10453 has 468 MA's), (36, 10516), (41, 10552), (63, 10747), (67, 10774),

Gene: YoSam321_14 Start: 10939, Stop: 11451, Start Num: 27
Candidate Starts for YoSam321_14:
(Start: 27 @10939 has 468 MA's), (42, 11050), (80, 11338),

Gene: Yogi_11 Start: 7203, Stop: 7688, Start Num: 34

Candidate Starts for Yogi_11:

(14, 7041), (Start: 34 @7203 has 36 MA's), (59, 7434), (68, 7500), (76, 7557),

Gene: Yokurt_18 Start: 11662, Stop: 12183, Start Num: 27

Candidate Starts for Yokurt_18:

(12, 11566), (Start: 27 @11662 has 468 MA's), (30, 11710), (43, 11797), (57, 11902), (73, 12028),

Gene: Yoncess_11 Start: 7203, Stop: 7688, Start Num: 34

Candidate Starts for Yoncess_11:

(14, 7041), (Start: 34 @7203 has 36 MA's), (59, 7434), (68, 7500), (76, 7557),

Gene: Zaka_18 Start: 11662, Stop: 12183, Start Num: 27

Candidate Starts for Zaka_18:

(12, 11566), (Start: 27 @11662 has 468 MA's), (30, 11710), (43, 11797), (57, 11902), (73, 12028),

Gene: Zetzy_15 Start: 10568, Stop: 11059, Start Num: 27

Candidate Starts for Zetzy_15:

(Start: 20 @10532 has 14 MA's), (Start: 24 @10547 has 20 MA's), (Start: 27 @10568 has 468 MA's),
(48, 10730), (65, 10865), (67, 10877),

Gene: Zimmer_17 Start: 13146, Stop: 13670, Start Num: 27

Candidate Starts for Zimmer_17:

(Start: 27 @13146 has 468 MA's), (63, 13434), (89, 13623),

Gene: Zolita_11 Start: 10341, Stop: 10850, Start Num: 25

Candidate Starts for Zolita_11:

(Start: 25 @10341 has 36 MA's), (41, 10431), (57, 10584), (62, 10626), (65, 10653), (75, 10722),

Gene: Zulu_18 Start: 11661, Stop: 12182, Start Num: 27

Candidate Starts for Zulu_18:

(12, 11565), (Start: 27 @11661 has 468 MA's), (30, 11709), (43, 11796), (57, 11901), (73, 12027),