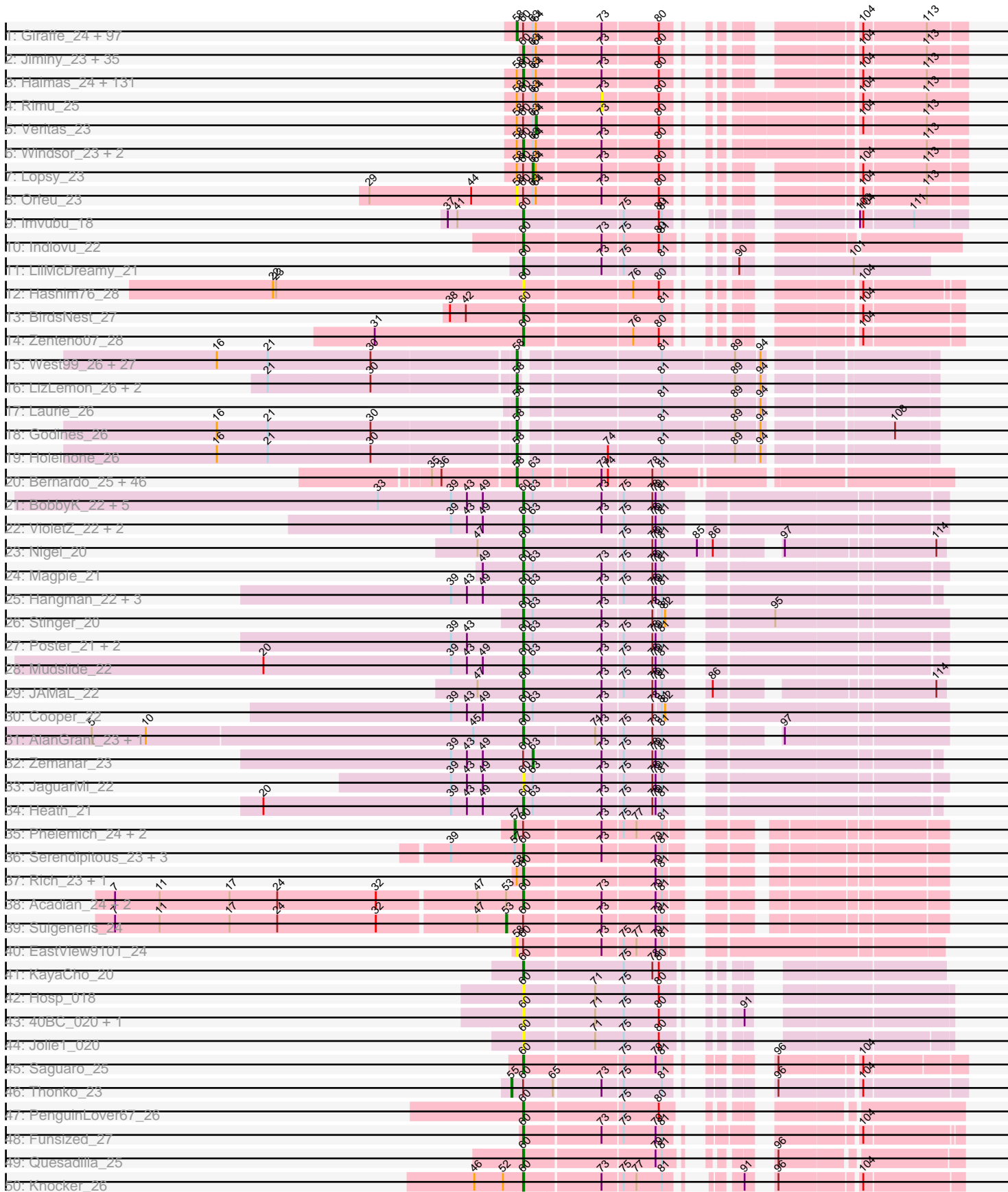
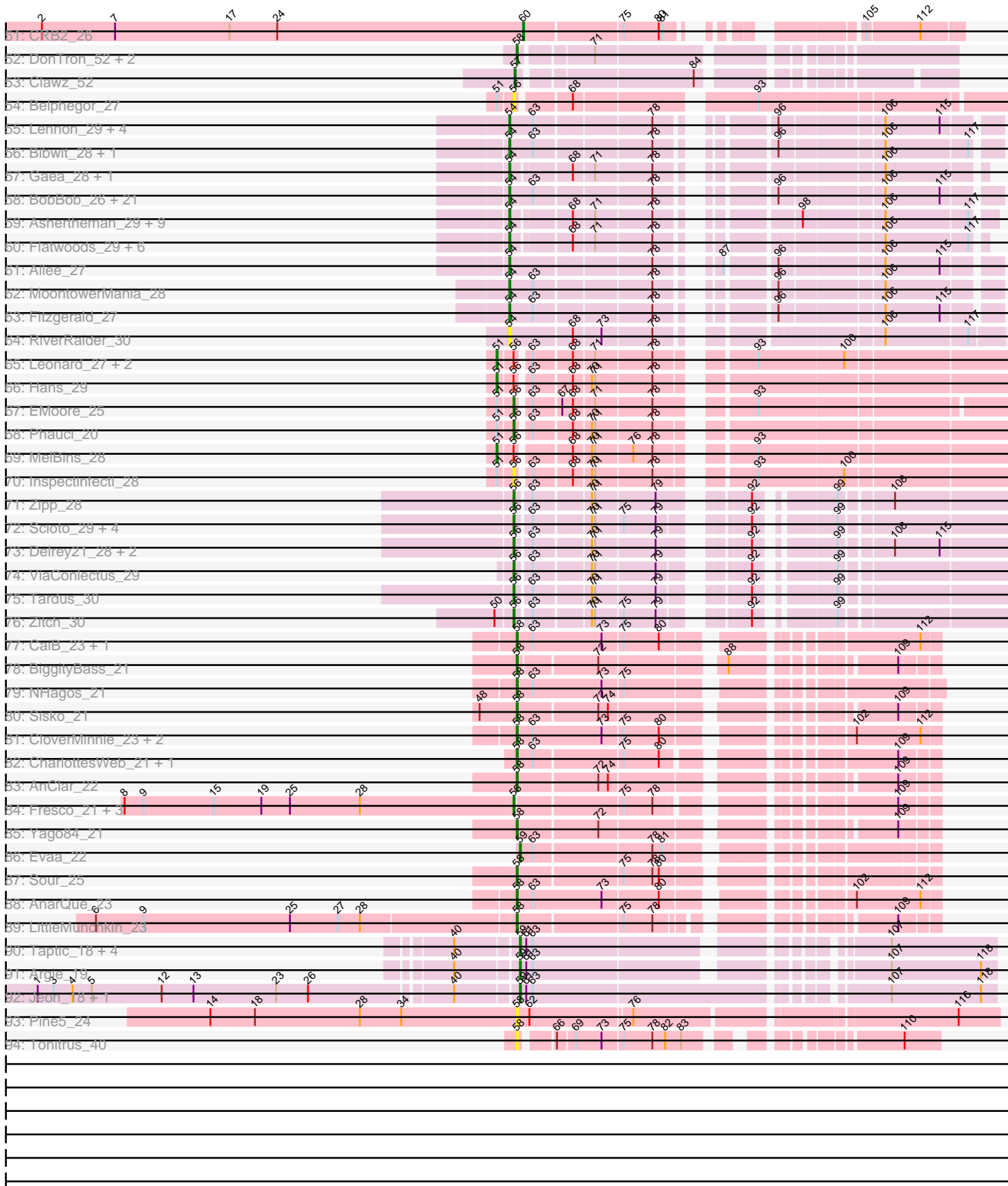


Pham 161467



Pham 161467



Note: Tracks are now grouped by subcluster and scaled. Switching in subcluster is indicated by changes in track color. Track scale is now set by default to display the region 30 bp upstream of start 1 to 30 bp downstream of the last possible start. If this default region is judged to be packed too tightly with annotated starts, the track will be further scaled to only show that region of the ORF with annotated starts. This action will be indicated by adding "Zoomed" to the title. For starts, yellow indicates the location of called starts comprised solely of Glimmer/GeneMark auto-annotations, green indicates the location of called starts with at least 1 manual gene annotation.

Pham 161467 Report

This analysis was run 04/28/24 on database version 559.

Pham number 161467 has 520 members, 72 are drafts.

Phages represented in each track:

- Track 1 : Giraffe_24, Serpentine_0024, Nacho_0024, Chunky_24, Hetaeria_24, Oosterbaan_24, Burr_23, Valjean_24, UncleHowie_24, BatteryCK_23, Mcshane_23, Prickles_24, Thora_24, Orwigg_24, Altwerkus_23, Basato_25, Cher_23, OSmaximus_24, KLucky39_24, Gwilliam_24, Pipsqueak_24, Toni_23, SDcharge11_24, Gareth_23, Megamind20_24, MichaelPhcott_23, Waterdiva_24, Manad_23, Squid_24, Olak_24, Chute_23, ABU_24, Numberberten_24, Scoot17C_24, Andre_24, Murdoc_24, Yoshand_24, Virgeve_23, MitKao_24, PhrankReynolds_23, Serendipity_24, Orion_24, Roy17_24, Cobra_24, Dingo_24, LeeLot_24, IsaacEli_24, PinheadLarry_24, Beaglebox_23, PhenghisKhan_23, Sophia_23, Jillium_23, Grand2040_23, Surely_24, Mosaic_23, ProfessorX_24, Roliet_24, Harvey_24, Kikipoo_24, Telesworld_23, Charles1_24, QueenBeane_24, Ricotta_24, Lego3393_24, Fang_24, YouGoGlencoco_24, Lulumae_23, ShiVal_24, DonSanchon_23, TallGrassMM_24, Morgushi_24, Dione_23, JacAttac_24, Carthage_22, Puhltonio_24, Riggan_24, Lasso_24, Mesh1_24, Timmi_23, Daka_24, TomBombadil_24, Phipps_24, Craff_24, PhatCats2014_24, Suffolk_24, Piglet_0023, CamL_24, Vaticameos_24, Podrick_24, Vista_24, Tooj_24, Pacifista_25, Anderson_24, Jiraiya_24, Colbert_24, PG1_24, Vortex_24, Chah_25
- Track 2 : Jiminy_23, Pinkman_23, DelRivs_23, DuchessDung_22, MrPhizzler_23, Oline_23, Maskar_23, Derpp_23, Ashraf_23, TyrionL_23, Zonia_24, Trypo_24, Hocus_23, Swiphy_25, Etaye_24, Doddsville_24, Duggie_23, JakeO_23, Schueller_24, ImtiyazSitla_23, Durga_24, GeneCoco_24, Dati_24, DaddyDaniels_24, Soile_24, Longacauda_23, Wallhey_23, Kwksand96_23, Brilliant_24, Struggle_23, Weher20_24, JDog_24, PhatLouie_24, Melc17_24, Labeouficaum_23, CharlieGBrown_23
- Track 3 : Haimas_24, Banjo_23, Mikota_24, Pops_24, Adriana_24, Nicole21_24, Phleuron_23, Kimbrough_24, Maru_23, Selr12_24, Inchworm_24, BlackStallion_24, Matalotodo_23, KingVeVeVe_24, Iridoclysis_24, Usavi_24, Gyarad_0024, Zelda_24, EmpTee_24, Eugenia_24, Mulan_23, FluffyNinja_24, Pherdinand_24, LuckyMarjie_23, DirtJuice_24, Phergie_23, Frankicide_24, Magic8_24, Thunderbird_24, Boehler_24, Buckeye_24, Skippy_24, Coletti_23, Antonia_23, Plmatters_24, Freya_23, Newman_24, Kwadwo_23, Kailash_24, Simielle_23, Mana_23, Cornobble_23, Hamish_24, Hertubise_24, MelsMeow_23, ThreeOh3D2_24, OliverWalter_24, Bishoperium_23, Mecca_23, LostAndPhound_23, Schadenfreude_23, HighStump_23, Scrick_24, Mag7_23, Haleema_23, Swish_24, Lumine_23, Mutante_23, Childish_23, Sigman_24, Lulwa_24, Xavier_23, CheetO_24, Emiris_24, Spartan300_24, Megatron_24, HenryJackson_23, Bluephacebaby_23, KlimbOn_24, PhrodoBaggins_23, Chorkpop_24, Slatt_24,

Solosis_23, Virapocalypse_24, Crownjwl_24, Dice_25, SassyCat97_23, Fozzie_23, Omniscient_24, MiniBoss_24, Badfish_24, Held_24, JangoPhett_24, Horchata_24, DoesntMatter_24, Nyala_23, Phareon_24, AbsoluteMadLad_23, Kahve_23, LeiMonet_24, Inverness_24, Quisquillae_24, Cosmolli16_23, LemonSlice_24, Olive_24, Legolas_23, Cannibal_24, Gophee_24, HSavage_24, Eremos_24, Apizium_23, LasagnaCat_24, MRabcd_23, UAch1_24, Sheila_24, Samaymay_24, True_23, Katniss_24, Squiggle_24, Daffy_24, AltPhacts_24, Kloppinator_24, Potter_23, Soto_24, Hartsy_23, Zaider_25, Morty_24, Roscoe_25, Phunky_24, Fringe_24, Phamished_24, FugateOSU_23, Vaishali24_23, BlueHusk_24, Robyn_23, FriarPreacher_24, CampRoach_23, RedMaple_23, Aelin_23, Tomlarah_24, Placalicious_23, Vivaldi_24

- Track 4 : Rimu_25
- Track 5 : Veritas_23
- Track 6 : Windsor_23, Keitherie_24, Chaelin_23
- Track 7 : Lopsy_23
- Track 8 : Orfeu_23
- Track 9 : Imvubu_18
- Track 10 : Indlovu_22
- Track 11 : LilMcDreamy_21
- Track 12 : Hashim76_28
- Track 13 : BirdsNest_27
- Track 14 : Zenteno07_28
- Track 15 : West99_26, Phantasmagoria_26, Allegro_26, Sabella_26, Kheth_26, Faze9_26, Coffee_26, Kaleb_26, TA17A_26, Calamitous_26, Brownie5_26, Opia_26, FrenchFry_26, Tinciduntolum_27, Tres_26, MasterPo_26, Lars_26, Bananafish_26, Eaglehorse_26, Boyle_26, Rosebush_26, Hedgerow_26, Glass_26, Blocker23_26, Ares_26, Lephleur_26, ItsyBitsy1_26, Rhinoforte_26
- Track 16 : LizLemon_26, Arbiter_26, Qyrzula_24
- Track 17 : Laurie_26
- Track 18 : Godines_26
- Track 19 : Holeinone_26
- Track 20 : Bernardo_25, Baloo_25, Briakila_25, OrangeOswald_25, Phlyer_25, Phayeta_25, Ben11_24, LestyG_25, Jackstina_23, Yinz_25, MmasiCarm_25, Phaedrus_23, GlenHope_26, RomaT_25, Audrey_25, Rita1961_25, ChaChing_25, Athena_26, Neos5_25, Yahalom_25, Nozo_25, Corofin_25, Tydolla_25, SlippinJimmy_25, HarveySr_25, Marley1013_25, Daisy_25, Devonte_25, RagingRooster_25, Heathcliff_25, Akoma_25, Philly_24, Kronus_24, Halfpint_24, Chandler_25, Gadget_26, Abinghost_25, Deenasa_25, Obutu_25, Morty007_25, Mortcellus_24, Gervas_25, SynergyX_25, Pipefish_25, Compostia_26, Casbah_24, Kamiyu_25
- Track 21 : BobbyK_22, RawrgerThat_22, Prince_23, Apex_22, Frederick_22, Austelle_23
- Track 22 : VioletZ_22, Hydro_22, Lolalove_22
- Track 23 : Nigel_20
- Track 24 : Magpie_21
- Track 25 : Hangman_22, Waleliano_22, BrownCNA_23, Mithril_22
- Track 26 : Stinger_20
- Track 27 : Poster_21, ChrisnMich_21, Nanao_21
- Track 28 : Mudslide_22
- Track 29 : JAMaL_22
- Track 30 : Cooper_22
- Track 31 : AlanGrant_23, Vincenzo_23
- Track 32 : Zemanar_23

- Track 33 : JaguarMi_22
- Track 34 : Heath_21
- Track 35 : Phelemich_24, Mysterious_25, Reprobate_24
- Track 36 : Serendipitous_23, StinkyVeggy_26, DigitDog_24, Nangang_24
- Track 37 : Rich_23, Bae_23
- Track 38 : Acadian_24, Donny_24, SirJeffery_24
- Track 39 : Suigeneris_24
- Track 40 : EastView9101_24
- Track 41 : KayaCho_20
- Track 42 : Hosp_018
- Track 43 : 40BC_020, 39HC_020
- Track 44 : Jolie1_020
- Track 45 : Saguaro_25
- Track 46 : Thonko_23
- Track 47 : PenguinLover67_26
- Track 48 : Funsized_27
- Track 49 : Quesadilla_25
- Track 50 : Knocker_26
- Track 51 : CRB2_26
- Track 52 : DonTron_52, Sting_52, Soos_48
- Track 53 : Clawz_52
- Track 54 : Belphegor_27
- Track 55 : Lennon_29, Stultus_27, Fosterous_27, Affeca_27, Sitar_29
- Track 56 : Bibwit_28, Sedona_29
- Track 57 : Gaea_28, JKSyngboy_26
- Track 58 : BobBob_26, Kewpiedoll_28, Sanjuju_27, Galadriel_29, Barsten_29, Shivanishola_30, Jabberwocky_27, ChadMasterC_29, Rofo_29, Nordenberg_23, Brandonk123_30, McKinley_31, Geodirt_26, Love_32, Kamashten_28, Charming_29, Tangent_29, Angelicage_27, Vivi2_31, Keitabear_29, Thing3_28, Paries_31
- Track 59 : Ashertheman_29, Tycho_28, Baumdotcom_28, Tangerine_28, Gustavo_28, LilHam_26, Kwobi_29, SchottB_27, Saronaya_28, StorminNorm_28
- Track 60 : Flatwoods_29, Bizzy_29, Derg_26, Kroos_29, Ribeye_29, YorkOnyx_29, Baddon_28
- Track 61 : Ailee_27
- Track 62 : MoontowerMania_28
- Track 63 : Fitzgerald_27
- Track 64 : RiverRaider_30
- Track 65 : Leonard_27, Ali17_25, Phinally_27
- Track 66 : Hans_29
- Track 67 : EMOore_25
- Track 68 : Phauci_20
- Track 69 : MelBins_28
- Track 70 : Inspectinfecti_28
- Track 71 : Zipp_28
- Track 72 : Scioto_29, Natkenzie_29, Sampson_29, Abblin_29, APunk_30
- Track 73 : Delrey21_28, DoctorFroggo_28, Verity_28
- Track 74 : ViaConlectus_29
- Track 75 : Tardus_30
- Track 76 : Zitch_30
- Track 77 : CaiB_23, Wooper_23
- Track 78 : BiggityBass_21
- Track 79 : NHagos_21
- Track 80 : Sisko_21

- Track 81 : CloverMinnie_23, MakoManhole_23, MossRose_23
- Track 82 : CharlottesWeb_21, Mariokart_21
- Track 83 : AnClar_22
- Track 84 : Fresco_21, Axumite_21, Shatter_21, Ligma_21
- Track 85 : Yago84_21
- Track 86 : Evaa_22
- Track 87 : Sour_25
- Track 88 : AnarQue_23
- Track 89 : LittleMunchkin_23
- Track 90 : Taptic_18, PR_18, Megabear_18, Cepens_18, D12_18
- Track 91 : Argie_19
- Track 92 : Jeon_18, GodPhather_19
- Track 93 : Pine5_24
- Track 94 : Tonitrus_40

Summary of Final Annotations (See graph section above for start numbers):

The start number called the most often in the published annotations is 60, it was called in 192 of the 448 non-draft genes in the pham.

Genes that call this "Most Annotated" start:

- 39HC_020, 40BC_020, AbsoluteMadLad_23, Acadian_24, Adriana_24, Aelin_23, AlanGrant_23, AltPhacts_24, Antonia_23, Apex_22, Apizium_23, Ashraf_23, Austelle_23, Badfish_24, Bae_23, Banjo_23, BirdsNest_27, Bishoperium_23, BlackStallion_24, BlueHusk_24, Bluephacebaby_23, BobbyK_22, Boehler_24, Brilliant_24, BrownCNA_23, Buckeye_24, CRB2_26, CampRoach_23, Cannibal_24, Chaelin_23, CharlieGBrown_23, CheetO_24, Childish_23, Chorkpop_24, ChrisnMich_21, Coletti_23, Cooper_22, Cornobble_23, Cosmolli16_23, Crownjwl_24, DaddyDaniels_24, Daffy_24, Dati_24, DelRivs_23, Derpp_23, Dice_25, DigitDog_24, DirtJuice_24, Doddsville_24, DoesntMatter_24, Donny_24, DuchessDung_22, Duggie_23, Durga_24, Emiris_24, EmpTee_24, Eremos_24, Etaye_24, Eugenia_24, FluffyNinja_24, Fozzie_23, Frankicide_24, Frederick_22, Freya_23, FriarPreacher_24, Fringe_24, FugateOSU_23, Funsized_27, GeneCoco_24, Gophee_24, Gyarad_0024, HSavage_24, Haimas_24, Haleema_23, Hamish_24, Hangman_22, Hartsy_23, Hashim76_28, Heath_21, Held_24, HenryJackson_23, Hertubise_24, HighStump_23, Hocus_23, Horchata_24, Hosp_018, Hydro_22, ImtiyazSitla_23, Imvubu_18, Inchworm_24, Indlovu_22, Inverness_24, Iridoclysis_24, JAMaL_22, JDog_24, JaguarMi_22, JakeO_23, JangoPhett_24, Jiminy_23, Jolie1_020, Kahve_23, Kailash_24, Katniss_24, KayaCho_20, Keitherie_24, Kimbrough_24, KingVeVeVe_24, KlimbOn_24, Kloppinator_24, Knocker_26, Kwadwo_23, Kwksand96_23, Labeouficaum_23, LasagnaCat_24, Legolas_23, LeiMonet_24, LemonSlice_24, LilMcDreamy_21, Lolalove_22, Longacauda_23, LostAndPhound_23, LuckyMarjie_23, Lulwa_24, Lumine_23, MRabcd_23, Mag7_23, Magic8_24, Magpie_21, Mana_23, Maru_23, Maskar_23, Matalotodo_23, Mecca_23, Megatron_24, Melc17_24, MelsMeow_23, Mikota_24, MiniBoss_24, Mithril_22, Morty_24, MrPhizzler_23, Mudslide_22, Mulan_23, Mutante_23, Nanao_21, Nangang_24, Newman_24, Nicole21_24, Nigel_20, Nyala_23, Oline_23, Olive_24, OliverWalter_24, Omniscient_24, PenguinLover67_26, Phamished_24, Phareon_24, PhatLouie_24, Pherdinand_24, Phergie_23, Phleuron_23, PhrodoBaggins_23, Phunky_24, Pinkman_23, Placalicious_23, Plmatters_24, Pops_24, Poster_21,

Potter_23, Prince_23, Quesadilla_25, Quisquilliae_24, RawrgerThat_22, RedMaple_23, Rich_23, Robyn_23, Roscoe_25, Saguaro_25, Samaymay_24, SassyCat97_23, Schadenfreude_23, Schueller_24, Scrick_24, Selr12_24, Serendipitous_23, Sheila_24, Sigman_24, Simielle_23, SirJeffery_24, Skippy_24, Slatt_24, Soile_24, Solosis_23, Soto_24, Spartan300_24, Squiggle_24, Stinger_20, StinkyVeggy_26, Struggle_23, Swiphy_25, Swish_24, ThreeOh3D2_24, Thunderbird_24, Tomlarah_24, True_23, Trypo_24, TyrionL_23, UAch1_24, Usavi_24, Vaishali24_23, Vincenzo_23, VioletZ_22, Virapocalypse_24, Vivaldi_24, Waleliano_22, Wallhey_23, Weher20_24, Windsor_23, Xavier_23, Zaider_25, Zelda_24, Zenteno07_28, Zonia_24,

Genes that have the "Most Annotated" start but do not call it:

- ABU_24, Altwerkus_23, Anderson_24, Andre_24, Basato_25, BatteryCK_23, Beaglebox_23, Burr_23, CamL_24, Carthage_22, Chah_25, Charles1_24, Cher_23, Chunky_24, Chute_23, Cobra_24, Colbert_24, Craff_24, Daka_24, Dingo_24, Dione_23, DonSanchon_23, EastView9101_24, Fang_24, Gareth_23, Giraffe_24, Grand2040_23, Gwilliam_24, Harvey_24, Hetaeria_24, IsaacEli_24, JacAttac_24, Jillium_23, Jiraiya_24, KLucky39_24, Kikipoo_24, Lasso_24, LeeLot_24, Lego3393_24, Lopsy_23, Lulumae_23, Manad_23, Mcshane_23, Megamind20_24, Mesh1_24, MichaelPhcott_23, MitKao_24, Morgushi_24, Mosaic_23, Murdoc_24, Mysterious_25, Nacho_0024, Numberten_24, OSmaximus_24, Olak_24, Oosterbaan_24, Orfeu_23, Orion_24, Orwigg_24, PG1_24, Pacifista_25, PhatCats2014_24, Phelemich_24, PhenghisKhan_23, Phipps_24, PhrankReynolds_23, Piglet_0023, PinheadLarry_24, Pipsqueak_24, Podrick_24, Prickles_24, ProfessorX_24, Puhltonio_24, QueenBeane_24, Reprobate_24, Ricotta_24, Riggan_24, Rimu_25, Roliet_24, Roy17_24, SDcharge11_24, Scoot17C_24, Serendipity_24, Serpentine_0024, ShiVal_24, Sophia_23, Squid_24, Suffolk_24, Suigeneris_24, Surely_24, TallGrassMM_24, Telesworld_23, Thonko_23, Thora_24, Timmi_23, TomBombadil_24, Toni_23, Tooj_24, UncleHowie_24, Valjean_24, Vaticameos_24, Veritas_23, Virgeve_23, Vista_24, Vortex_24, Waterdiva_24, Yoshand_24, YouGoGlencoco_24, Zemanar_23,

Genes that do not have the "Most Annotated" start:

- APunk_30, Abblin_29, Abinghost_25, Affeca_27, Ailee_27, Akoma_25, Ali17_25, Allegro_26, AnClar_22, AnarQue_23, Angelicage_27, Arbiter_26, Ares_26, Argie_19, Ashertheman_29, Athena_26, Audrey_25, Axumite_21, Baddon_28, Baloo_25, Bananafish_26, Barsten_29, Baumdotcom_28, Belphegor_27, Ben11_24, Bernardo_25, Bibwit_28, BiggityBass_21, Bizzy_29, Blocker23_26, BobBob_26, Boyle_26, Brandonk123_30, Briakila_25, Brownie5_26, CaiB_23, Calamitous_26, Casbah_24, Cepens_18, ChaChing_25, ChadMasterC_29, Chandler_25, CharlottesWeb_21, Charming_29, Clawz_52, CloverMinnie_23, Coffee_26, Compostia_26, Corofin_25, D12_18, Daisy_25, Deenasa_25, Delrey21_28, Derg_26, Devonte_25, DoctorFroggo_28, DonTron_52, EMoore_25, Eaglehorse_26, Evaa_22, Faze9_26, Fitzgerald_27, Flatwoods_29, Fosterous_27, FrenchFry_26, Fresco_21, Gadget_26, Gaea_28, Galadriel_29, Geodirt_26, Gervas_25, Glass_26, GlenHope_26, GodPhather_19, Godines_26, Gustavo_28, Halfpint_24, Hans_29, HarveySr_25, Heathcliff_25, Hedgerow_26, Holeinone_26, Inspectinfecti_28, ItsyBitsy1_26, JKSyngboy_26, Jabberwocky_27, Jackstina_23, Jeon_18, Kaleb_26, Kamashten_28, Kamiyu_25, Keitabear_29, Kewpiedoll_28, Kheth_26, Kronus_24, Kroos_29, Kwobi_29, Lars_26, Laurie_26, Lennon_29, Leonard_27, Lephleur_26, LestyG_25, Ligma_21, LilHam_26, LittleMunchkin_23, LizLemon_26, Love_32, MakoManhole_23, Mariokart_21, Marley1013_25, MasterPo_26, McKinley_31, Megabear_18, MelBins_28, MmasiCarm_25, MoontowerMania_28, Mortcellus_24,

Morty007_25, MossRose_23, NHagos_21, Natkenzie_29, Neos5_25, Nordenberg_23, Nozo_25, Obutu_25, Opia_26, OrangeOswald_25, PR_18, Paries_31, Phaedrus_23, Phantasmagoria_26, Phauci_20, Phayeta_25, Philly_24, Phinally_27, Phlyer_25, Pine5_24, Pipefish_25, Qyrzula_24, RagingRooster_25, Rhinoforte_26, Ribeye_29, Rita1961_25, RiverRaider_30, Rofo_29, RomaT_25, Rosebush_26, Sabella_26, Sampson_29, Sanjuju_27, Saronaya_28, SchottB_27, Scioto_29, Sedona_29, Shatter_21, Shivanishola_30, Sisko_21, Sitar_29, SlippinJimmy_25, Soos_48, Sour_25, Sting_52, StorminNorm_28, Stultus_27, SynergyX_25, TA17A_26, Tangent_29, Tangerine_28, Taptic_18, Tardus_30, Thing3_28, Tinciduntolum_27, Tonitrus_40, Tres_26, Tycho_28, Tydolla_25, Verity_28, ViaConlectus_29, Vivi2_31, West99_26, Wooper_23, Yago84_21, Yahalom_25, Yinz_25, YorkOnyx_29, Zipp_28, Zitch_30,

Summary by start number:

Start 51:

- Found in 9 of 520 (1.7%) of genes in pham
- Manual Annotations of this start: 5 of 448
- Called 55.6% of time when present
- Phage (with cluster) where this start called: Ali17_25 (DE2), Hans_29 (DE2), Leonard_27 (DE2), MelBins_28 (DE2), Phinally_27 (DE2),

Start 53:

- Found in 4 of 520 (0.8%) of genes in pham
- Manual Annotations of this start: 1 of 448
- Called 25.0% of time when present
- Phage (with cluster) where this start called: Suigeneris_24 (B5),

Start 54:

- Found in 52 of 520 (10.0%) of genes in pham
- Manual Annotations of this start: 42 of 448
- Called 100.0% of time when present
- Phage (with cluster) where this start called: Affeca_27 (DE1), Ailee_27 (DE1), Angelicage_27 (DE1), Ashertheman_29 (DE1), Baddon_28 (DE1), Barsten_29 (DE1), Baumdotcom_28 (DE1), Bibwit_28 (DE1), Bizzy_29 (DE1), BobBob_26 (DE1), Brandonk123_30 (DE1), ChadMasterC_29 (DE1), Charming_29 (DE1), Derg_26 (DE1), Fitzgerald_27 (DE1), Flatwoods_29 (DE1), Fosterous_27 (DE1), Gaea_28 (DE1), Galadriel_29 (DE1), Geodirt_26 (DE1), Gustavo_28 (DE1), JKSyngboy_26 (DE1), Jabberwocky_27 (DE1), Kamashten_28 (DE1), Keitabear_29 (DE1), Kewpiedoll_28 (DE1), Kroos_29 (DE1), Kwobi_29 (DE1), Lennon_29 (DE1), LilHam_26 (DE1), Love_32 (DE1), McKinley_31 (DE1), MoontowerMania_28 (DE1), Nordenberg_23 (DE1), Paries_31 (DE1), Ribeye_29 (DE1), RiverRaider_30 (DE1), Rofo_29 (DE1), Sanjuju_27 (DE1), Saronaya_28 (DE1), SchottB_27 (DE1), Sedona_29 (DE1), Shivanishola_30 (DE1), Sitar_29 (DE1), StorminNorm_28 (DE1), Stultus_27 (DE1), Tangent_29 (DE1), Tangerine_28 (DE1), Thing3_28 (DE1), Tycho_28 (DE1), Vivi2_31 (DE1), YorkOnyx_29 (DE1),

Start 55:

- Found in 1 of 520 (0.2%) of genes in pham
- Manual Annotations of this start: 1 of 448
- Called 100.0% of time when present
- Phage (with cluster) where this start called: Thonko_23 (B8),

Start 56:

- Found in 25 of 520 (4.8%) of genes in pham
- Manual Annotations of this start: 13 of 448
- Called 80.0% of time when present
- Phage (with cluster) where this start called: APunk_30 (DE4), Abblin_29 (DE4), Axumite_21 (DR), Belphegor_27 (DE), Delrey21_28 (DE4), DoctorFroggo_28 (DE4), EMOore_25 (DE2), Fresco_21 (DR), Inspectinfecti_28 (DE2), Ligma_21 (DR), Natkenzie_29 (DE4), Phauci_20 (DE2), Sampson_29 (DE4), Scioto_29 (DE4), Shatter_21 (DR), Tardus_30 (DE4), Verity_28 (DE4), ViaConlectus_29 (DE4), Zipp_28 (DE4), Zitch_30 (DE4),

Start 57:

- Found in 8 of 520 (1.5%) of genes in pham
- Manual Annotations of this start: 3 of 448
- Called 50.0% of time when present
- Phage (with cluster) where this start called: Clawz_52 (CP), Mysterious_25 (B5), Phelemich_24 (B5), Reprobate_24 (B5),

Start 58:

- Found in 341 of 520 (65.6%) of genes in pham
- Manual Annotations of this start: 179 of 448
- Called 58.9% of time when present
- Phage (with cluster) where this start called: ABU_24 (B1), Abinghost_25 (B3), Akoma_25 (B3), Allegro_26 (B2), Altwerkus_23 (B1), AnClar_22 (DR), AnarQue_23 (DR), Anderson_24 (B1), Andre_24 (B1), Arbitr_26 (B2), Ares_26 (B2), Athena_26 (B3), Audrey_25 (B3), Baloo_25 (B3), Bananafish_26 (B2), Basato_25 (B1), BatteryCK_23 (B1), Beaglebox_23 (B1), Ben11_24 (B3), Bernardo_25 (B3), BiggityBass_21 (DR), Blocker23_26 (B2), Boyle_26 (B2), Briakila_25 (B3), Brownie5_26 (B2), Burr_23 (B1), CaiB_23 (DR), Calamitous_26 (B2), CamL_24 (B1), Carthage_22 (B1), Casbah_24 (B3), ChaChing_25 (B3), Chah_25 (B1), Chandler_25 (B3), Charles1_24 (B1), CharlottesWeb_21 (DR), Cher_23 (B1), Chunky_24 (B1), Chute_23 (B1), CloverMinnie_23 (DR), Cobra_24 (B1), Coffee_26 (B2), Colbert_24 (B1), Compostia_26 (B3), Corofin_25 (B3), Craff_24 (B1), Daisy_25 (B3), Daka_24 (B1), Deenasa_25 (B3), Devonte_25 (B3), Dingo_24 (B1), Dione_23 (B1), DonSanchon_23 (B1), DonTron_52 (CP), Eaglehorse_26 (B2), EastView9101_24 (B5), Fang_24 (B1), Faze9_26 (B2), FrenchFry_26 (B2), Gadget_26 (B3), Gareth_23 (B1), Gervas_25 (B3), Giraffe_24 (B1), Glass_26 (B2), GlenHope_26 (B3), Godines_26 (B2), Grand2040_23 (B1), Gwilliam_24 (B1), Halfpint_24 (B3), HarveySr_25 (B3), Harvey_24 (B1), Heathcliff_25 (B3), Hedgerow_26 (B2), Hetaeria_24 (B1), Holeinone_26 (B2), IsaacEli_24 (B1), ItsyBitsy1_26 (B2), JacAttac_24 (B1), Jackstina_23 (B3), Jillium_23 (B1), Jiraiya_24 (B1), KLucky39_24 (B1), Kaleb_26 (B2), Kamiyu_25 (B3), Kheth_26 (B2), Kikipoo_24 (B1), Kronus_24 (B3), Lars_26 (B2), Lasso_24 (B1), Laurie_26 (B2), LeeLot_24 (B1), Lego3393_24 (B1), Lephleur_26 (B2), LestyG_25 (B3), LittleMunchkin_23 (DR), LizLemon_26 (B2), Lulumae_23 (B1), MakoManhole_23 (DR), Manad_23 (B1), Mariokart_21 (DR), Marley1013_25 (B3), MasterPo_26 (B2), Mcshane_23 (B1), Megamind20_24 (B1), Mesh1_24 (B1), MichaelPhcott_23 (B1), MitKao_24 (B1), MmasiCarm_25 (B3), Morgushi_24 (B1), Mortcellus_24 (B3), Morty007_25 (B3), Mosaic_23 (B1), MossRose_23 (DR), Murdoc_24 (B1), NHagos_21 (DR), Nacho_0024 (B1), Neos5_25 (B3), Nozo_25 (B3), Numberten_24 (B1), OSmaximus_24 (B1), Obutu_25 (B3), Olak_24 (B1), Oosterbaan_24 (B1), Opia_26 (B2), OrangeOswald_25 (B3), Orfeu_23 (B1), Orion_24 (B1), Orwigg_24 (B1), PG1_24 (B1), Pacifista_25 (B1), Phaedrus_23 (B3), Phantasmagoria_26 (B2), PhatCats2014_24 (B1), Phayeta_25

(B3), PhenghisKhan_23 (B1), Philly_24 (B3), Phipps_24 (B1), Phlyer_25 (B3), PhrankReynolds_23 (B1), Piglet_0023 (B1), Pine5_24 (singleton), PinheadLarry_24 (B1), Pipefish_25 (B3), Pipsqueak_24 (B1), Podrick_24 (B1), Prickles_24 (B1), ProfessorX_24 (B1), Puhltonio_24 (B1), QueenBeane_24 (B1), Qyrzula_24 (B2), RagingRooster_25 (B3), Rhinoforte_26 (B2), Ricotta_24 (B1), Riggan_24 (B1), Rita1961_25 (B3), Roliet_24 (B1), RomaT_25 (B3), Rosebush_26 (B2), Roy17_24 (B1), SDcharge11_24 (B1), Sabella_26 (B2), Scoot17C_24 (B1), Serendipity_24 (B1), Serpentine_0024 (B1), ShiVal_24 (B1), Sisko_21 (DR), SlippinJimmy_25 (B3), Soos_48 (CP), Sophia_23 (B1), Sour_25 (DR), Squid_24 (B1), Sting_52 (CP), Suffolk_24 (B1), Surely_24 (B1), SynergyX_25 (B3), TA17A_26 (B2), TallGrassMM_24 (B1), Telesworld_23 (B1), Thora_24 (B1), Timmi_23 (B1), Tinciduntolum_27 (B2), TomBombadil_24 (B1), Toni_23 (B1), Tonitrus_40 (singleton), Tooj_24 (B1), Tres_26 (B2), Tydolla_25 (B3), UncleHowie_24 (B1), Valjean_24 (B1), Vaticameos_24 (B1), Virgeve_23 (B1), Vista_24 (B1), Vortex_24 (B1), Waterdiva_24 (B1), West99_26 (B2), Wooper_23 (DR), Yago84_21 (DR), Yahalom_25 (B3), Yinz_25 (B3), Yoshand_24 (B1), YouGoGlencoco_24 (B1),

Start 59:

- Found in 9 of 520 (1.7%) of genes in pham
- Manual Annotations of this start: 9 of 448
- Called 100.0% of time when present
- Phage (with cluster) where this start called: Argie_19 (W), Cepens_18 (W), D12_18 (W), Evaa_22 (DR), GodPhather_19 (W), Jeon_18 (W), Megabear_18 (W), PR_18 (W), Taptic_18 (W),

Start 60:

- Found in 332 of 520 (63.8%) of genes in pham
- Manual Annotations of this start: 192 of 448
- Called 67.2% of time when present
- Phage (with cluster) where this start called: 39HC_020 (B6), 40BC_020 (B6), AbsoluteMadLad_23 (B1), Acadian_24 (B5), Adriana_24 (B1), Aelin_23 (B1), AlanGrant_23 (B4), AltPhacts_24 (B1), Antonia_23 (B1), Apex_22 (B4), Apizium_23 (B1), Ashraf_23 (B1), Austelle_23 (B4), Badfish_24 (B1), Baee_23 (B5), Banjo_23 (B1), BirdsNest_27 (B13), Bishoperium_23 (B1), BlackStallion_24 (B1), BlueHusk_24 (B1), Bluephacebaby_23 (B1), BobbyK_22 (B4), Boehler_24 (B1), Brilliant_24 (B1), BrownCNA_23 (B4), Buckeye_24 (B1), CRB2_26 (B9), CampRoach_23 (B1), Cannibal_24 (B1), Chaelin_23 (B1), CharlieGBrown_23 (B1), CheetO_24 (B1), Childish_23 (B1), Chorkpop_24 (B1), ChrisnMich_21 (B4), Coletti_23 (B1), Cooper_22 (B4), Cornobble_23 (B1), Cosmolli16_23 (B1), Crownjwl_24 (B1), DaddyDaniels_24 (B1), Daffy_24 (B1), Dati_24 (B1), DelRivs_23 (B1), Derpp_23 (B1), Dice_25 (B1), DigitDog_24 (B5), DirtJuice_24 (B1), Doddsville_24 (B1), DoesntMatter_24 (B1), Donny_24 (B5), DuchessDung_22 (B1), Duggie_23 (B1), Durga_24 (B1), Emiris_24 (B1), EmpTee_24 (B1), Eremos_24 (B1), Etaye_24 (B1), Eugenia_24 (B1), FluffyNinja_24 (B1), Fozzie_23 (B1), Frankicide_24 (B1), Frederick_22 (B4), Freya_23 (B1), FriarPreacher_24 (B1), Fringe_24 (B1), FugateOSU_23 (B1), Funsized_27 (B9), GeneCoco_24 (B1), Gophee_24 (B1), Gyarad_0024 (B1), HSavage_24 (B1), Haimas_24 (B1), Haleema_23 (B1), Hamish_24 (B1), Hangman_22 (B4), Hartsy_23 (B1), Hashim76_28 (B13), Heath_21 (B4), Held_24 (B1), HenryJackson_23 (B1), Hertubise_24 (B1), HighStump_23 (B1), Hocus_23 (B1), Horchata_24 (B1), Hosp_018 (B6), Hydro_22 (B4), ImtiyazSitla_23 (B1), Imvubu_18 (B10), Inchworm_24 (B1), Indlovu_22 (B11), Inverness_24 (B1), Iridoclysis_24 (B1), JAMaL_22 (B4), JDog_24 (B1), JaguarMi_22 (B4), JakeO_23 (B1), JangoPhett_24 (B1), Jiminy_23 (B1), Jolie1_020 (B6), Kahve_23 (B1),

Kailash_24 (B1), Katniss_24 (B1), KayaCho_20 (B6), Keitherie_24 (B1), Kimbrough_24 (B1), KingVeVeVe_24 (B1), KlimbOn_24 (B1), Kloppinator_24 (B1), Knocker_26 (B9), Kwadwo_23 (B1), Kwksand96_23 (B1), Labeouficaum_23 (B1), LasagnaCat_24 (B1), Legolas_23 (B1), LeiMonet_24 (B1), LemonSlice_24 (B1), LilMcDreamy_21 (B12), Lolalove_22 (B4), Longacauda_23 (B1), LostAndPhound_23 (B1), LuckyMarjie_23 (B1), Lulwa_24 (B1), Lumine_23 (B1), MRabcd_23 (B1), Mag7_23 (B1), Magic8_24 (B1), Magpie_21 (B4), Mana_23 (B1), Maru_23 (B1), Maskar_23 (B1), Matalotodo_23 (B1), Mecca_23 (B1), Megatron_24 (B1), Melc17_24 (B1), MelsMeow_23 (B1), Mikota_24 (B1), MiniBoss_24 (B1), Mithril_22 (B4), Morty_24 (B1), MrPhizzler_23 (B1), Mudslide_22 (B4), Mulan_23 (B1), Mutante_23 (B1), Nanao_21 (B4), Nangang_24 (B5), Newman_24 (B1), Nicole21_24 (B1), Nigel_20 (B4), Nyala_23 (B1), Oline_23 (B1), Olive_24 (B1), OliverWalter_24 (B1), Omniscient_24 (B1), PenguinLover67_26 (B9), Phamished_24 (B1), Phareon_24 (B1), PhatLouie_24 (B1), Pherdinand_24 (B1), Phergie_23 (B1), Phleuron_23 (B1), PhrodoBaggins_23 (B1), Phunky_24 (B1), Pinkman_23 (B1), Placalicious_23 (B1), Plmatters_24 (B1), Pops_24 (B1), Poster_21 (B4), Potter_23 (B1), Prince_23 (B4), Quesadilla_25 (B9), Quisquiliae_24 (B1), RawrgerThat_22 (B4), RedMaple_23 (B1), Rich_23 (B5), Robyn_23 (B1), Roscoe_25 (B1), Saguario_25 (B7), Samaymay_24 (B1), SassyCat97_23 (B1), Schadenfreude_23 (B1), Schueller_24 (B1), Scrick_24 (B1), Selr12_24 (B1), Serendipitous_23 (B5), Sheila_24 (B1), Sigman_24 (B1), Simielle_23 (B1), SirJeffery_24 (B5), Skippy_24 (B1), Slatt_24 (B1), Soile_24 (B1), Solosis_23 (B1), Soto_24 (B1), Spartan300_24 (B1), Squiggle_24 (B1), Stinger_20 (B4), StinkyVeggy_26 (B5), Struggle_23 (B1), Swiphy_25 (B1), Swish_24 (B1), ThreeOh3D2_24 (B1), Thunderbird_24 (B1), Tomlarah_24 (B1), True_23 (B1), Trypo_24 (B1), TyrionL_23 (B1), UAch1_24 (B1), Usavi_24 (B1), Vaishali24_23 (B1), Vincenzo_23 (B4), VioletZ_22 (B4), Virapocalypse_24 (B1), Vivaldi_24 (B1), Waleliano_22 (B4), Wallhey_23 (B1), Weher20_24 (B1), Windsor_23 (B1), Xavier_23 (B1), Zaider_25 (B1), Zelda_24 (B1), Zenteno07_28 (B13), Zonia_24 (B1),

Start 63:

- Found in 411 of 520 (79.0%) of genes in pham
- Manual Annotations of this start: 2 of 448
- Called 0.5% of time when present
- Phage (with cluster) where this start called: Lopsy_23 (B1), Zemanar_23 (B4),

Start 64:

- Found in 273 of 520 (52.5%) of genes in pham
- Manual Annotations of this start: 1 of 448
- Called 0.4% of time when present
- Phage (with cluster) where this start called: Veritas_23 (B1),

Start 73:

- Found in 372 of 520 (71.5%) of genes in pham
- No Manual Annotations of this start.
- Called 0.3% of time when present
- Phage (with cluster) where this start called: Rimu_25 (B1),

Summary by clusters:

There are 21 clusters represented in this pham: B8, singleton, W, B10, DE1, DE2, DE, DE4, B4, B5, B6, B7, B11, B1, B2, B3, B12, CP, DR, B9, B13,

Info for manual annotations of cluster B1:

- Start number 58 was manually annotated 89 times for cluster B1.
- Start number 60 was manually annotated 155 times for cluster B1.
- Start number 63 was manually annotated 1 time for cluster B1.
- Start number 64 was manually annotated 1 time for cluster B1.

Info for manual annotations of cluster B10:

- Start number 60 was manually annotated 1 time for cluster B10.

Info for manual annotations of cluster B11:

- Start number 60 was manually annotated 1 time for cluster B11.

Info for manual annotations of cluster B12:

- Start number 60 was manually annotated 1 time for cluster B12.

Info for manual annotations of cluster B13:

- Start number 60 was manually annotated 2 times for cluster B13.

Info for manual annotations of cluster B2:

- Start number 58 was manually annotated 32 times for cluster B2.

Info for manual annotations of cluster B3:

- Start number 58 was manually annotated 44 times for cluster B3.

Info for manual annotations of cluster B4:

- Start number 60 was manually annotated 20 times for cluster B4.
- Start number 63 was manually annotated 1 time for cluster B4.

Info for manual annotations of cluster B5:

- Start number 53 was manually annotated 1 time for cluster B5.
- Start number 57 was manually annotated 2 times for cluster B5.
- Start number 60 was manually annotated 5 times for cluster B5.

Info for manual annotations of cluster B6:

- Start number 60 was manually annotated 1 time for cluster B6.

Info for manual annotations of cluster B7:

- Start number 60 was manually annotated 1 time for cluster B7.

Info for manual annotations of cluster B8:

- Start number 55 was manually annotated 1 time for cluster B8.

Info for manual annotations of cluster B9:

- Start number 60 was manually annotated 5 times for cluster B9.

Info for manual annotations of cluster CP:

- Start number 57 was manually annotated 1 time for cluster CP.
- Start number 58 was manually annotated 1 time for cluster CP.

Info for manual annotations of cluster DE1:

- Start number 54 was manually annotated 42 times for cluster DE1.

Info for manual annotations of cluster DE2:

- Start number 51 was manually annotated 5 times for cluster DE2.
- Start number 56 was manually annotated 2 times for cluster DE2.

Info for manual annotations of cluster DE4:

- Start number 56 was manually annotated 9 times for cluster DE4.

Info for manual annotations of cluster DR:

- Start number 56 was manually annotated 2 times for cluster DR.
- Start number 58 was manually annotated 13 times for cluster DR.
- Start number 59 was manually annotated 1 time for cluster DR.

Info for manual annotations of cluster W:

- Start number 59 was manually annotated 8 times for cluster W.

Gene Information:

Gene: 39HC_020 Start: 17537, Stop: 17860, Start Num: 60

Candidate Starts for 39HC_020:

(Start: 60 @17537 has 192 MA's), (71, 17600), (75, 17627), (80, 17660), (91, 17699),

Gene: 40BC_020 Start: 17537, Stop: 17860, Start Num: 60

Candidate Starts for 40BC_020:

(Start: 60 @17537 has 192 MA's), (71, 17600), (75, 17627), (80, 17660), (91, 17699),

Gene: ABU_24 Start: 18329, Stop: 18664, Start Num: 58

Candidate Starts for ABU_24:

(Start: 58 @18329 has 179 MA's), (Start: 60 @18335 has 192 MA's), (Start: 63 @18344 has 2 MA's), (Start: 64 @18347 has 1 MA's), (73, 18404), (80, 18455), (104, 18572), (113, 18629),

Gene: APunk_30 Start: 21958, Stop: 22368, Start Num: 56

Candidate Starts for APunk_30:

(Start: 56 @21958 has 13 MA's), (Start: 63 @21970 has 2 MA's), (70, 22018), (71, 22021), (75, 22045), (79, 22075), (92, 22132), (99, 22192),

Gene: Abblin_29 Start: 22570, Stop: 22980, Start Num: 56

Candidate Starts for Abblin_29:

(Start: 56 @22570 has 13 MA's), (Start: 63 @22582 has 2 MA's), (70, 22630), (71, 22633), (75, 22657), (79, 22687), (92, 22744), (99, 22804),

Gene: Abinghost_25 Start: 19008, Stop: 19379, Start Num: 58

Candidate Starts for Abinghost_25:

(35, 18933), (36, 18942), (Start: 58 @19008 has 179 MA's), (Start: 63 @19023 has 2 MA's), (73, 19080), (74, 19086), (78, 19125), (81, 19134),

Gene: AbsoluteMadLad_23 Start: 18336, Stop: 18665, Start Num: 60

Candidate Starts for AbsoluteMadLad_23:

(Start: 58 @18330 has 179 MA's), (Start: 60 @18336 has 192 MA's), (Start: 63 @18345 has 2 MA's), (Start: 64 @18348 has 1 MA's), (73, 18405), (80, 18456), (104, 18573), (113, 18630),

Gene: Acadian_24 Start: 19057, Stop: 19389, Start Num: 60

Candidate Starts for Acadian_24:

(7, 18679), (11, 18721), (17, 18787), (24, 18832), (32, 18925), (47, 19015), (Start: 53 @19042 has 1 MA's), (Start: 60 @19057 has 192 MA's), (73, 19126), (79, 19174), (81, 19180),

Gene: Adriana_24 Start: 18338, Stop: 18667, Start Num: 60

Candidate Starts for Adriana_24:

(Start: 58 @18332 has 179 MA's), (Start: 60 @18338 has 192 MA's), (Start: 63 @18347 has 2 MA's), (Start: 64 @18350 has 1 MA's), (73, 18407), (80, 18458), (104, 18575), (113, 18632),

Gene: Aelin_23 Start: 17901, Stop: 18230, Start Num: 60

Candidate Starts for Aelin_23:

(Start: 58 @17895 has 179 MA's), (Start: 60 @17901 has 192 MA's), (Start: 63 @17910 has 2 MA's), (Start: 64 @17913 has 1 MA's), (73, 17970), (80, 18021), (104, 18138), (113, 18195),

Gene: Affeca_27 Start: 22464, Stop: 22871, Start Num: 54

Candidate Starts for Affeca_27:

(Start: 54 @22464 has 42 MA's), (Start: 63 @22485 has 2 MA's), (78, 22587), (96, 22662), (106, 22749), (115, 22800),

Gene: Ailee_27 Start: 23173, Stop: 23580, Start Num: 54

Candidate Starts for Ailee_27:

(Start: 54 @23173 has 42 MA's), (78, 23296), (87, 23332), (96, 23371), (106, 23458), (115, 23509),

Gene: Akoma_25 Start: 19006, Stop: 19380, Start Num: 58

Candidate Starts for Akoma_25:

(35, 18931), (36, 18940), (Start: 58 @19006 has 179 MA's), (Start: 63 @19021 has 2 MA's), (73, 19078), (74, 19084), (78, 19123), (81, 19132),

Gene: AlanGrant_23 Start: 19743, Stop: 20084, Start Num: 60

Candidate Starts for AlanGrant_23:

(5, 19341), (10, 19392), (45, 19698), (Start: 60 @19743 has 192 MA's), (71, 19806), (73, 19812), (75, 19830), (78, 19857), (81, 19866), (97, 19938),

Gene: Ali17_25 Start: 20316, Stop: 20762, Start Num: 51

Candidate Starts for Ali17_25:

(Start: 51 @20316 has 5 MA's), (Start: 56 @20328 has 13 MA's), (Start: 63 @20337 has 2 MA's), (68, 20370), (71, 20388), (78, 20439), (93, 20508), (100, 20586),

Gene: Allegro_26 Start: 20480, Stop: 20836, Start Num: 58

Candidate Starts for Allegro_26:

(16, 20207), (21, 20255), (30, 20351), (Start: 58 @20480 has 179 MA's), (81, 20600), (89, 20669), (94, 20690),

Gene: AltPhacts_24 Start: 18330, Stop: 18659, Start Num: 60

Candidate Starts for AltPhacts_24:

(Start: 58 @18324 has 179 MA's), (Start: 60 @18330 has 192 MA's), (Start: 63 @18339 has 2 MA's), (Start: 64 @18342 has 1 MA's), (73, 18399), (80, 18450), (104, 18567), (113, 18624),

Gene: Altwerkus_23 Start: 18024, Stop: 18359, Start Num: 58

Candidate Starts for Altwerkus_23:

(Start: 58 @18024 has 179 MA's), (Start: 60 @18030 has 192 MA's), (Start: 63 @18039 has 2 MA's), (Start: 64 @18042 has 1 MA's), (73, 18099), (80, 18150), (104, 18267), (113, 18324),

Gene: AnClar_22 Start: 19109, Stop: 19438, Start Num: 58

Candidate Starts for AnClar_22:

(Start: 58 @19109 has 179 MA's), (72, 19181), (74, 19190), (109, 19406),

Gene: AnarQue_23 Start: 18280, Stop: 18621, Start Num: 58

Candidate Starts for AnarQue_23:

(Start: 58 @18280 has 179 MA's), (Start: 63 @18295 has 2 MA's), (73, 18358), (80, 18409), (102, 18544), (112, 18604),

Gene: Anderson_24 Start: 18322, Stop: 18657, Start Num: 58

Candidate Starts for Anderson_24:

(Start: 58 @18322 has 179 MA's), (Start: 60 @18328 has 192 MA's), (Start: 63 @18337 has 2 MA's), (Start: 64 @18340 has 1 MA's), (73, 18397), (80, 18448), (104, 18565), (113, 18622),

Gene: Andre_24 Start: 18320, Stop: 18655, Start Num: 58

Candidate Starts for Andre_24:

(Start: 58 @18320 has 179 MA's), (Start: 60 @18326 has 192 MA's), (Start: 63 @18335 has 2 MA's), (Start: 64 @18338 has 1 MA's), (73, 18395), (80, 18446), (104, 18563), (113, 18620),

Gene: Angelicage_27 Start: 22881, Stop: 23288, Start Num: 54

Candidate Starts for Angelicage_27:

(Start: 54 @22881 has 42 MA's), (Start: 63 @22902 has 2 MA's), (78, 23004), (96, 23079), (106, 23166), (115, 23217),

Gene: Antonia_23 Start: 17901, Stop: 18230, Start Num: 60

Candidate Starts for Antonia_23:

(Start: 58 @17895 has 179 MA's), (Start: 60 @17901 has 192 MA's), (Start: 63 @17910 has 2 MA's), (Start: 64 @17913 has 1 MA's), (73, 17970), (80, 18021), (104, 18138), (113, 18195),

Gene: Apex_22 Start: 19157, Stop: 19513, Start Num: 60

Candidate Starts for Apex_22:

(33, 19022), (39, 19091), (43, 19106), (49, 19121), (Start: 60 @19157 has 192 MA's), (Start: 63 @19166 has 2 MA's), (73, 19229), (75, 19247), (78, 19274), (79, 19277), (81, 19283),

Gene: Apizium_23 Start: 18071, Stop: 18418, Start Num: 60

Candidate Starts for Apizium_23:

(Start: 58 @18065 has 179 MA's), (Start: 60 @18071 has 192 MA's), (Start: 63 @18080 has 2 MA's), (Start: 64 @18083 has 1 MA's), (73, 18140), (80, 18191), (104, 18326), (113, 18383),

Gene: Arbiter_26 Start: 20568, Stop: 20921, Start Num: 58

Candidate Starts for Arbiter_26:

(21, 20343), (30, 20439), (Start: 58 @20568 has 179 MA's), (81, 20688), (89, 20754), (94, 20775),

Gene: Ares_26 Start: 20484, Stop: 20837, Start Num: 58

Candidate Starts for Ares_26:

(16, 20211), (21, 20259), (30, 20355), (Start: 58 @20484 has 179 MA's), (81, 20604), (89, 20670), (94, 20691),

Gene: Argie_19 Start: 18094, Stop: 18480, Start Num: 59

Candidate Starts for Argie_19:

(40, 18040), (Start: 59 @18094 has 9 MA's), (61, 18100), (Start: 63 @18106 has 2 MA's), (107, 18382), (118, 18466),

Gene: Ashertheman_29 Start: 21770, Stop: 22165, Start Num: 54

Candidate Starts for Ashertheman_29:

(Start: 54 @21770 has 42 MA's), (68, 21818), (71, 21836), (78, 21887), (98, 21980), (106, 22049), (117, 22124),

Gene: Ashraf_23 Start: 17893, Stop: 18222, Start Num: 60

Candidate Starts for Ashraf_23:

(Start: 60 @17893 has 192 MA's), (Start: 63 @17902 has 2 MA's), (Start: 64 @17905 has 1 MA's), (73, 17962), (80, 18013), (104, 18130), (113, 18187),

Gene: Athena_26 Start: 19771, Stop: 20142, Start Num: 58

Candidate Starts for Athena_26:

(35, 19696), (36, 19705), (Start: 58 @19771 has 179 MA's), (Start: 63 @19786 has 2 MA's), (73, 19843), (74, 19849), (78, 19888), (81, 19897),

Gene: Audrey_25 Start: 19008, Stop: 19379, Start Num: 58

Candidate Starts for Audrey_25:

(35, 18933), (36, 18942), (Start: 58 @19008 has 179 MA's), (Start: 63 @19023 has 2 MA's), (73, 19080), (74, 19086), (78, 19125), (81, 19134),

Gene: Austelle_23 Start: 19613, Stop: 19969, Start Num: 60

Candidate Starts for Austelle_23:

(33, 19478), (39, 19547), (43, 19562), (49, 19577), (Start: 60 @19613 has 192 MA's), (Start: 63 @19622 has 2 MA's), (73, 19685), (75, 19703), (78, 19730), (79, 19733), (81, 19739),

Gene: Axumite_21 Start: 16902, Stop: 17228, Start Num: 56

Candidate Starts for Axumite_21:

(8, 16536), (9, 16554), (15, 16620), (19, 16665), (25, 16692), (28, 16758), (Start: 56 @16902 has 13 MA's), (75, 16995), (78, 17022), (109, 17196),

Gene: Baddon_28 Start: 22582, Stop: 22965, Start Num: 54

Candidate Starts for Baddon_28:

(Start: 54 @22582 has 42 MA's), (68, 22630), (71, 22648), (78, 22699), (106, 22861), (117, 22936),

Gene: Badfish_24 Start: 18360, Stop: 18689, Start Num: 60

Candidate Starts for Badfish_24:

(Start: 58 @18354 has 179 MA's), (Start: 60 @18360 has 192 MA's), (Start: 63 @18369 has 2 MA's), (Start: 64 @18372 has 1 MA's), (73, 18429), (80, 18480), (104, 18597), (113, 18654),

Gene: Bae_23 Start: 18813, Stop: 19145, Start Num: 60

Candidate Starts for Bae_23:

(Start: 58 @18807 has 179 MA's), (Start: 60 @18813 has 192 MA's), (79, 18930), (81, 18936),

Gene: Baloo_25 Start: 19005, Stop: 19379, Start Num: 58

Candidate Starts for Baloo_25:

(35, 18930), (36, 18939), (Start: 58 @19005 has 179 MA's), (Start: 63 @19020 has 2 MA's), (73, 19077), (74, 19083), (78, 19122), (81, 19131),

Gene: Bananafish_26 Start: 20477, Stop: 20833, Start Num: 58

Candidate Starts for Bananafish_26:

(16, 20204), (21, 20252), (30, 20348), (Start: 58 @20477 has 179 MA's), (81, 20597), (89, 20666), (94, 20687),

Gene: Banjo_23 Start: 18037, Stop: 18366, Start Num: 60

Candidate Starts for Banjo_23:

(Start: 58 @18031 has 179 MA's), (Start: 60 @18037 has 192 MA's), (Start: 63 @18046 has 2 MA's),
(Start: 64 @18049 has 1 MA's), (73, 18106), (80, 18157), (104, 18274), (113, 18331),

Gene: Barsten_29 Start: 22305, Stop: 22712, Start Num: 54

Candidate Starts for Barsten_29:

(Start: 54 @22305 has 42 MA's), (Start: 63 @22326 has 2 MA's), (78, 22428), (96, 22503), (106,
22590), (115, 22641),

Gene: Basato_25 Start: 18556, Stop: 18891, Start Num: 58

Candidate Starts for Basato_25:

(Start: 58 @18556 has 179 MA's), (Start: 60 @18562 has 192 MA's), (Start: 63 @18571 has 2 MA's),
(Start: 64 @18574 has 1 MA's), (73, 18631), (80, 18682), (104, 18799), (113, 18856),

Gene: BatteryCK_23 Start: 17888, Stop: 18244, Start Num: 58

Candidate Starts for BatteryCK_23:

(Start: 58 @17888 has 179 MA's), (Start: 60 @17894 has 192 MA's), (Start: 63 @17903 has 2 MA's),
(Start: 64 @17906 has 1 MA's), (73, 17963), (80, 18014), (104, 18149), (113, 18206),

Gene: Baumdotcom_28 Start: 21385, Stop: 21780, Start Num: 54

Candidate Starts for Baumdotcom_28:

(Start: 54 @21385 has 42 MA's), (68, 21433), (71, 21451), (78, 21502), (98, 21595), (106, 21664),
(117, 21739),

Gene: Beaglebox_23 Start: 18051, Stop: 18386, Start Num: 58

Candidate Starts for Beaglebox_23:

(Start: 58 @18051 has 179 MA's), (Start: 60 @18057 has 192 MA's), (Start: 63 @18066 has 2 MA's),
(Start: 64 @18069 has 1 MA's), (73, 18126), (80, 18177), (104, 18294), (113, 18351),

Gene: Belphegor_27 Start: 21877, Stop: 22314, Start Num: 56

Candidate Starts for Belphegor_27:

(Start: 51 @21865 has 5 MA's), (Start: 56 @21877 has 13 MA's), (68, 21919), (93, 22066),

Gene: Ben11_24 Start: 18830, Stop: 19201, Start Num: 58

Candidate Starts for Ben11_24:

(35, 18755), (36, 18764), (Start: 58 @18830 has 179 MA's), (Start: 63 @18845 has 2 MA's), (73,
18902), (74, 18908), (78, 18947), (81, 18956),

Gene: Bernardo_25 Start: 19005, Stop: 19379, Start Num: 58

Candidate Starts for Bernardo_25:

(35, 18930), (36, 18939), (Start: 58 @19005 has 179 MA's), (Start: 63 @19020 has 2 MA's), (73,
19077), (74, 19083), (78, 19122), (81, 19131),

Gene: Bibwit_28 Start: 22492, Stop: 22899, Start Num: 54

Candidate Starts for Bibwit_28:

(Start: 54 @22492 has 42 MA's), (Start: 63 @22513 has 2 MA's), (78, 22615), (96, 22690), (106,
22777), (117, 22852),

Gene: BiggityBass_21 Start: 19197, Stop: 19523, Start Num: 58

Candidate Starts for BiggityBass_21:

(Start: 58 @19197 has 179 MA's), (72, 19266), (88, 19368), (109, 19491),

Gene: BirdsNest_27 Start: 18407, Stop: 18733, Start Num: 60

Candidate Starts for BirdsNest_27:

(38, 18341), (42, 18356), (Start: 60 @18407 has 192 MA's), (81, 18530), (104, 18644),

Gene: Bishoperium_23 Start: 18043, Stop: 18372, Start Num: 60

Candidate Starts for Bishoperium_23:

(Start: 58 @18037 has 179 MA's), (Start: 60 @18043 has 192 MA's), (Start: 63 @18052 has 2 MA's),
(Start: 64 @18055 has 1 MA's), (73, 18112), (80, 18163), (104, 18280), (113, 18337),

Gene: Bizzy_29 Start: 21729, Stop: 22112, Start Num: 54

Candidate Starts for Bizzy_29:

(Start: 54 @21729 has 42 MA's), (68, 21777), (71, 21795), (78, 21846), (106, 22008), (117, 22083),

Gene: BlackStallion_24 Start: 18348, Stop: 18677, Start Num: 60

Candidate Starts for BlackStallion_24:

(Start: 58 @18342 has 179 MA's), (Start: 60 @18348 has 192 MA's), (Start: 63 @18357 has 2 MA's),
(Start: 64 @18360 has 1 MA's), (73, 18417), (80, 18468), (104, 18585), (113, 18642),

Gene: Blocker23_26 Start: 20601, Stop: 20954, Start Num: 58

Candidate Starts for Blocker23_26:

(16, 20328), (21, 20376), (30, 20472), (Start: 58 @20601 has 179 MA's), (81, 20721), (89, 20787), (94,
20808),

Gene: BlueHusk_24 Start: 17844, Stop: 18173, Start Num: 60

Candidate Starts for BlueHusk_24:

(Start: 58 @17838 has 179 MA's), (Start: 60 @17844 has 192 MA's), (Start: 63 @17853 has 2 MA's),
(Start: 64 @17856 has 1 MA's), (73, 17913), (80, 17964), (104, 18081), (113, 18138),

Gene: Bluephacebaby_23 Start: 18043, Stop: 18372, Start Num: 60

Candidate Starts for Bluephacebaby_23:

(Start: 58 @18037 has 179 MA's), (Start: 60 @18043 has 192 MA's), (Start: 63 @18052 has 2 MA's),
(Start: 64 @18055 has 1 MA's), (73, 18112), (80, 18163), (104, 18280), (113, 18337),

Gene: BobBob_26 Start: 21770, Stop: 22177, Start Num: 54

Candidate Starts for BobBob_26:

(Start: 54 @21770 has 42 MA's), (Start: 63 @21791 has 2 MA's), (78, 21893), (96, 21968), (106,
22055), (115, 22106),

Gene: BobbyK_22 Start: 18976, Stop: 19332, Start Num: 60

Candidate Starts for BobbyK_22:

(33, 18841), (39, 18910), (43, 18925), (49, 18940), (Start: 60 @18976 has 192 MA's), (Start: 63
@18985 has 2 MA's), (73, 19048), (75, 19066), (78, 19093), (79, 19096), (81, 19102),

Gene: Boehler_24 Start: 18353, Stop: 18682, Start Num: 60

Candidate Starts for Boehler_24:

(Start: 58 @18347 has 179 MA's), (Start: 60 @18353 has 192 MA's), (Start: 63 @18362 has 2 MA's),
(Start: 64 @18365 has 1 MA's), (73, 18422), (80, 18473), (104, 18590), (113, 18647),

Gene: Boyle_26 Start: 20602, Stop: 20955, Start Num: 58

Candidate Starts for Boyle_26:

(16, 20329), (21, 20377), (30, 20473), (Start: 58 @20602 has 179 MA's), (81, 20722), (89, 20788), (94,
20809),

Gene: Brandonk123_30 Start: 22839, Stop: 23246, Start Num: 54

Candidate Starts for Brandonk123_30:

(Start: 54 @22839 has 42 MA's), (Start: 63 @22860 has 2 MA's), (78, 22962), (96, 23037), (106, 23124), (115, 23175),

Gene: Briakila_25 Start: 19773, Stop: 20144, Start Num: 58

Candidate Starts for Briakila_25:

(35, 19698), (36, 19707), (Start: 58 @19773 has 179 MA's), (Start: 63 @19788 has 2 MA's), (73, 19845), (74, 19851), (78, 19890), (81, 19899),

Gene: Brilliant_24 Start: 18049, Stop: 18378, Start Num: 60

Candidate Starts for Brilliant_24:

(Start: 60 @18049 has 192 MA's), (Start: 63 @18058 has 2 MA's), (Start: 64 @18061 has 1 MA's), (73, 18118), (80, 18169), (104, 18286), (113, 18343),

Gene: BrownCNA_23 Start: 19228, Stop: 19584, Start Num: 60

Candidate Starts for BrownCNA_23:

(39, 19162), (43, 19177), (49, 19192), (Start: 60 @19228 has 192 MA's), (Start: 63 @19237 has 2 MA's), (73, 19300), (75, 19318), (78, 19345), (79, 19348), (81, 19354),

Gene: Brownie5_26 Start: 20601, Stop: 20954, Start Num: 58

Candidate Starts for Brownie5_26:

(16, 20328), (21, 20376), (30, 20472), (Start: 58 @20601 has 179 MA's), (81, 20721), (89, 20787), (94, 20808),

Gene: Buckeye_24 Start: 18367, Stop: 18696, Start Num: 60

Candidate Starts for Buckeye_24:

(Start: 58 @18361 has 179 MA's), (Start: 60 @18367 has 192 MA's), (Start: 63 @18376 has 2 MA's), (Start: 64 @18379 has 1 MA's), (73, 18436), (80, 18487), (104, 18604), (113, 18661),

Gene: Burr_23 Start: 18036, Stop: 18371, Start Num: 58

Candidate Starts for Burr_23:

(Start: 58 @18036 has 179 MA's), (Start: 60 @18042 has 192 MA's), (Start: 63 @18051 has 2 MA's), (Start: 64 @18054 has 1 MA's), (73, 18111), (80, 18162), (104, 18279), (113, 18336),

Gene: CRB2_26 Start: 20719, Stop: 21048, Start Num: 60

Candidate Starts for CRB2_26:

(2, 20266), (7, 20335), (17, 20443), (24, 20488), (Start: 60 @20719 has 192 MA's), (75, 20806), (80, 20839), (81, 20842), (105, 20962), (112, 21010),

Gene: CaiB_23 Start: 18266, Stop: 18607, Start Num: 58

Candidate Starts for CaiB_23:

(Start: 58 @18266 has 179 MA's), (Start: 63 @18281 has 2 MA's), (73, 18344), (75, 18362), (80, 18395), (112, 18590),

Gene: Calamitous_26 Start: 20481, Stop: 20834, Start Num: 58

Candidate Starts for Calamitous_26:

(16, 20208), (21, 20256), (30, 20352), (Start: 58 @20481 has 179 MA's), (81, 20601), (89, 20667), (94, 20688),

Gene: CamL_24 Start: 18335, Stop: 18670, Start Num: 58

Candidate Starts for CamL_24:

(Start: 58 @18335 has 179 MA's), (Start: 60 @18341 has 192 MA's), (Start: 63 @18350 has 2 MA's), (Start: 64 @18353 has 1 MA's), (73, 18410), (80, 18461), (104, 18578), (113, 18635),

Gene: CampRoach_23 Start: 18334, Stop: 18663, Start Num: 60

Candidate Starts for CampRoach_23:

(Start: 58 @18328 has 179 MA's), (Start: 60 @18334 has 192 MA's), (Start: 63 @18343 has 2 MA's),
(Start: 64 @18346 has 1 MA's), (73, 18403), (80, 18454), (104, 18571), (113, 18628),

Gene: Cannibal_24 Start: 18327, Stop: 18656, Start Num: 60

Candidate Starts for Cannibal_24:

(Start: 58 @18321 has 179 MA's), (Start: 60 @18327 has 192 MA's), (Start: 63 @18336 has 2 MA's),
(Start: 64 @18339 has 1 MA's), (73, 18396), (80, 18447), (104, 18564), (113, 18621),

Gene: Carthage_22 Start: 17247, Stop: 17582, Start Num: 58

Candidate Starts for Carthage_22:

(Start: 58 @17247 has 179 MA's), (Start: 60 @17253 has 192 MA's), (Start: 63 @17262 has 2 MA's),
(Start: 64 @17265 has 1 MA's), (73, 17322), (80, 17373), (104, 17490), (113, 17547),

Gene: Casbah_24 Start: 18860, Stop: 19231, Start Num: 58

Candidate Starts for Casbah_24:

(35, 18785), (36, 18794), (Start: 58 @18860 has 179 MA's), (Start: 63 @18875 has 2 MA's), (73,
18932), (74, 18938), (78, 18977), (81, 18986),

Gene: Cepens_18 Start: 17818, Stop: 18204, Start Num: 59

Candidate Starts for Cepens_18:

(40, 17764), (Start: 59 @17818 has 9 MA's), (61, 17824), (Start: 63 @17830 has 2 MA's), (107,
18106),

Gene: ChaChing_25 Start: 19023, Stop: 19394, Start Num: 58

Candidate Starts for ChaChing_25:

(35, 18948), (36, 18957), (Start: 58 @19023 has 179 MA's), (Start: 63 @19038 has 2 MA's), (73,
19095), (74, 19101), (78, 19140), (81, 19149),

Gene: ChadMasterC_29 Start: 23497, Stop: 23904, Start Num: 54

Candidate Starts for ChadMasterC_29:

(Start: 54 @23497 has 42 MA's), (Start: 63 @23518 has 2 MA's), (78, 23620), (96, 23695), (106,
23782), (115, 23833),

Gene: Chaelin_23 Start: 18010, Stop: 18357, Start Num: 60

Candidate Starts for Chaelin_23:

(Start: 58 @18004 has 179 MA's), (Start: 60 @18010 has 192 MA's), (Start: 63 @18019 has 2 MA's),
(Start: 64 @18022 has 1 MA's), (73, 18079), (80, 18130), (113, 18322),

Gene: Chah_25 Start: 18355, Stop: 18690, Start Num: 58

Candidate Starts for Chah_25:

(Start: 58 @18355 has 179 MA's), (Start: 60 @18361 has 192 MA's), (Start: 63 @18370 has 2 MA's),
(Start: 64 @18373 has 1 MA's), (73, 18430), (80, 18481), (104, 18598), (113, 18655),

Gene: Chandler_25 Start: 19782, Stop: 20153, Start Num: 58

Candidate Starts for Chandler_25:

(35, 19707), (36, 19716), (Start: 58 @19782 has 179 MA's), (Start: 63 @19797 has 2 MA's), (73,
19854), (74, 19860), (78, 19899), (81, 19908),

Gene: Charles1_24 Start: 18319, Stop: 18654, Start Num: 58

Candidate Starts for Charles1_24:

(Start: 58 @18319 has 179 MA's), (Start: 60 @18325 has 192 MA's), (Start: 63 @18334 has 2 MA's), (Start: 64 @18337 has 1 MA's), (73, 18394), (80, 18445), (104, 18562), (113, 18619),

Gene: CharlieGBrown_23 Start: 17913, Stop: 18242, Start Num: 60

Candidate Starts for CharlieGBrown_23:

(Start: 60 @17913 has 192 MA's), (Start: 63 @17922 has 2 MA's), (Start: 64 @17925 has 1 MA's), (73, 17982), (80, 18033), (104, 18150), (113, 18207),

Gene: CharlottesWeb_21 Start: 16794, Stop: 17123, Start Num: 58

Candidate Starts for CharlottesWeb_21:

(Start: 58 @16794 has 179 MA's), (Start: 63 @16809 has 2 MA's), (75, 16887), (80, 16920), (109, 17091),

Gene: Charming_29 Start: 22348, Stop: 22755, Start Num: 54

Candidate Starts for Charming_29:

(Start: 54 @22348 has 42 MA's), (Start: 63 @22369 has 2 MA's), (78, 22471), (96, 22546), (106, 22633), (115, 22684),

Gene: CheetO_24 Start: 18340, Stop: 18669, Start Num: 60

Candidate Starts for CheetO_24:

(Start: 58 @18334 has 179 MA's), (Start: 60 @18340 has 192 MA's), (Start: 63 @18349 has 2 MA's), (Start: 64 @18352 has 1 MA's), (73, 18409), (80, 18460), (104, 18577), (113, 18634),

Gene: Cher_23 Start: 18060, Stop: 18395, Start Num: 58

Candidate Starts for Cher_23:

(Start: 58 @18060 has 179 MA's), (Start: 60 @18066 has 192 MA's), (Start: 63 @18075 has 2 MA's), (Start: 64 @18078 has 1 MA's), (73, 18135), (80, 18186), (104, 18303), (113, 18360),

Gene: Childish_23 Start: 18054, Stop: 18383, Start Num: 60

Candidate Starts for Childish_23:

(Start: 58 @18048 has 179 MA's), (Start: 60 @18054 has 192 MA's), (Start: 63 @18063 has 2 MA's), (Start: 64 @18066 has 1 MA's), (73, 18123), (80, 18174), (104, 18291), (113, 18348),

Gene: Chorkpop_24 Start: 18065, Stop: 18394, Start Num: 60

Candidate Starts for Chorkpop_24:

(Start: 58 @18059 has 179 MA's), (Start: 60 @18065 has 192 MA's), (Start: 63 @18074 has 2 MA's), (Start: 64 @18077 has 1 MA's), (73, 18134), (80, 18185), (104, 18302), (113, 18359),

Gene: ChrisnMich_21 Start: 17933, Stop: 18289, Start Num: 60

Candidate Starts for ChrisnMich_21:

(39, 17867), (43, 17882), (Start: 60 @17933 has 192 MA's), (Start: 63 @17942 has 2 MA's), (73, 18005), (75, 18023), (78, 18050), (79, 18053), (81, 18059),

Gene: Chunky_24 Start: 18347, Stop: 18682, Start Num: 58

Candidate Starts for Chunky_24:

(Start: 58 @18347 has 179 MA's), (Start: 60 @18353 has 192 MA's), (Start: 63 @18362 has 2 MA's), (Start: 64 @18365 has 1 MA's), (73, 18422), (80, 18473), (104, 18590), (113, 18647),

Gene: Chute_23 Start: 18352, Stop: 18708, Start Num: 58

Candidate Starts for Chute_23:

(Start: 58 @18352 has 179 MA's), (Start: 60 @18358 has 192 MA's), (Start: 63 @18367 has 2 MA's), (Start: 64 @18370 has 1 MA's), (73, 18427), (80, 18478), (104, 18613), (113, 18670),

Gene: Clawz_52 Start: 29095, Stop: 29439, Start Num: 57

Candidate Starts for Clawz_52:

(Start: 57 @29095 has 3 MA's), (84, 29245),

Gene: CloverMinnie_23 Start: 18206, Stop: 18547, Start Num: 58

Candidate Starts for CloverMinnie_23:

(Start: 58 @18206 has 179 MA's), (Start: 63 @18221 has 2 MA's), (73, 18284), (75, 18302), (80, 18335), (102, 18470), (112, 18530),

Gene: Cobra_24 Start: 18340, Stop: 18675, Start Num: 58

Candidate Starts for Cobra_24:

(Start: 58 @18340 has 179 MA's), (Start: 60 @18346 has 192 MA's), (Start: 63 @18355 has 2 MA's), (Start: 64 @18358 has 1 MA's), (73, 18415), (80, 18466), (104, 18583), (113, 18640),

Gene: Coffee_26 Start: 20594, Stop: 20947, Start Num: 58

Candidate Starts for Coffee_26:

(16, 20321), (21, 20369), (30, 20465), (Start: 58 @20594 has 179 MA's), (81, 20714), (89, 20780), (94, 20801),

Gene: Colbert_24 Start: 18337, Stop: 18672, Start Num: 58

Candidate Starts for Colbert_24:

(Start: 58 @18337 has 179 MA's), (Start: 60 @18343 has 192 MA's), (Start: 63 @18352 has 2 MA's), (Start: 64 @18355 has 1 MA's), (73, 18412), (80, 18463), (104, 18580), (113, 18637),

Gene: Coletti_23 Start: 18358, Stop: 18708, Start Num: 60

Candidate Starts for Coletti_23:

(Start: 58 @18352 has 179 MA's), (Start: 60 @18358 has 192 MA's), (Start: 63 @18367 has 2 MA's), (Start: 64 @18370 has 1 MA's), (73, 18427), (80, 18478), (104, 18613), (113, 18670),

Gene: Compostia_26 Start: 19441, Stop: 19812, Start Num: 58

Candidate Starts for Compostia_26:

(35, 19366), (36, 19375), (Start: 58 @19441 has 179 MA's), (Start: 63 @19456 has 2 MA's), (73, 19513), (74, 19519), (78, 19558), (81, 19567),

Gene: Cooper_22 Start: 18047, Stop: 18406, Start Num: 60

Candidate Starts for Cooper_22:

(39, 17981), (43, 17996), (49, 18011), (Start: 60 @18047 has 192 MA's), (Start: 63 @18056 has 2 MA's), (73, 18119), (78, 18164), (81, 18170), (82, 18173),

Gene: Cornobble_23 Start: 17901, Stop: 18230, Start Num: 60

Candidate Starts for Cornobble_23:

(Start: 58 @17895 has 179 MA's), (Start: 60 @17901 has 192 MA's), (Start: 63 @17910 has 2 MA's), (Start: 64 @17913 has 1 MA's), (73, 17970), (80, 18021), (104, 18138), (113, 18195),

Gene: Corofin_25 Start: 19033, Stop: 19404, Start Num: 58

Candidate Starts for Corofin_25:

(35, 18958), (36, 18967), (Start: 58 @19033 has 179 MA's), (Start: 63 @19048 has 2 MA's), (73, 19105), (74, 19111), (78, 19150), (81, 19159),

Gene: Cosmolli16_23 Start: 18060, Stop: 18389, Start Num: 60

Candidate Starts for Cosmolli16_23:

(Start: 58 @18054 has 179 MA's), (Start: 60 @18060 has 192 MA's), (Start: 63 @18069 has 2 MA's), (Start: 64 @18072 has 1 MA's), (73, 18129), (80, 18180), (104, 18297), (113, 18354),

Gene: Craff_24 Start: 18341, Stop: 18676, Start Num: 58

Candidate Starts for Craff_24:

(Start: 58 @18341 has 179 MA's), (Start: 60 @18347 has 192 MA's), (Start: 63 @18356 has 2 MA's),
(Start: 64 @18359 has 1 MA's), (73, 18416), (80, 18467), (104, 18584), (113, 18641),

Gene: Crownjwl_24 Start: 18114, Stop: 18443, Start Num: 60

Candidate Starts for Crownjwl_24:

(Start: 58 @18108 has 179 MA's), (Start: 60 @18114 has 192 MA's), (Start: 63 @18123 has 2 MA's),
(Start: 64 @18126 has 1 MA's), (73, 18183), (80, 18234), (104, 18351), (113, 18408),

Gene: D12_18 Start: 17811, Stop: 18197, Start Num: 59

Candidate Starts for D12_18:

(40, 17757), (Start: 59 @17811 has 9 MA's), (61, 17817), (Start: 63 @17823 has 2 MA's), (107,
18099),

Gene: DaddyDaniels_24 Start: 18040, Stop: 18369, Start Num: 60

Candidate Starts for DaddyDaniels_24:

(Start: 60 @18040 has 192 MA's), (Start: 63 @18049 has 2 MA's), (Start: 64 @18052 has 1 MA's),
(73, 18109), (80, 18160), (104, 18277), (113, 18334),

Gene: Daffy_24 Start: 18066, Stop: 18395, Start Num: 60

Candidate Starts for Daffy_24:

(Start: 58 @18060 has 179 MA's), (Start: 60 @18066 has 192 MA's), (Start: 63 @18075 has 2 MA's),
(Start: 64 @18078 has 1 MA's), (73, 18135), (80, 18186), (104, 18303), (113, 18360),

Gene: Daisy_25 Start: 19029, Stop: 19400, Start Num: 58

Candidate Starts for Daisy_25:

(35, 18954), (36, 18963), (Start: 58 @19029 has 179 MA's), (Start: 63 @19044 has 2 MA's), (73,
19101), (74, 19107), (78, 19146), (81, 19155),

Gene: Daka_24 Start: 18337, Stop: 18672, Start Num: 58

Candidate Starts for Daka_24:

(Start: 58 @18337 has 179 MA's), (Start: 60 @18343 has 192 MA's), (Start: 63 @18352 has 2 MA's),
(Start: 64 @18355 has 1 MA's), (73, 18412), (80, 18463), (104, 18580), (113, 18637),

Gene: Dati_24 Start: 18057, Stop: 18386, Start Num: 60

Candidate Starts for Dati_24:

(Start: 60 @18057 has 192 MA's), (Start: 63 @18066 has 2 MA's), (Start: 64 @18069 has 1 MA's),
(73, 18126), (80, 18177), (104, 18294), (113, 18351),

Gene: Deenasa_25 Start: 19771, Stop: 20142, Start Num: 58

Candidate Starts for Deenasa_25:

(35, 19696), (36, 19705), (Start: 58 @19771 has 179 MA's), (Start: 63 @19786 has 2 MA's), (73,
19843), (74, 19849), (78, 19888), (81, 19897),

Gene: DelRivs_23 Start: 18056, Stop: 18385, Start Num: 60

Candidate Starts for DelRivs_23:

(Start: 60 @18056 has 192 MA's), (Start: 63 @18065 has 2 MA's), (Start: 64 @18068 has 1 MA's),
(73, 18125), (80, 18176), (104, 18293), (113, 18350),

Gene: Delrey21_28 Start: 22700, Stop: 23113, Start Num: 56

Candidate Starts for Delrey21_28:

(Start: 56 @22700 has 13 MA's), (Start: 63 @22712 has 2 MA's), (70, 22760), (71, 22763), (79, 22817), (92, 22877), (99, 22937), (108, 22979), (115, 23021),

Gene: Derg_26 Start: 21325, Stop: 21708, Start Num: 54

Candidate Starts for Derg_26:

(Start: 54 @21325 has 42 MA's), (68, 21373), (71, 21391), (78, 21442), (106, 21604), (117, 21679),

Gene: Derpp_23 Start: 17903, Stop: 18232, Start Num: 60

Candidate Starts for Derpp_23:

(Start: 60 @17903 has 192 MA's), (Start: 63 @17912 has 2 MA's), (Start: 64 @17915 has 1 MA's), (73, 17972), (80, 18023), (104, 18140), (113, 18197),

Gene: Devonte_25 Start: 19008, Stop: 19379, Start Num: 58

Candidate Starts for Devonte_25:

(35, 18933), (36, 18942), (Start: 58 @19008 has 179 MA's), (Start: 63 @19023 has 2 MA's), (73, 19080), (74, 19086), (78, 19125), (81, 19134),

Gene: Dice_25 Start: 18043, Stop: 18372, Start Num: 60

Candidate Starts for Dice_25:

(Start: 58 @18037 has 179 MA's), (Start: 60 @18043 has 192 MA's), (Start: 63 @18052 has 2 MA's), (Start: 64 @18055 has 1 MA's), (73, 18112), (80, 18163), (104, 18280), (113, 18337),

Gene: DigitDog_24 Start: 18646, Stop: 18981, Start Num: 60

Candidate Starts for DigitDog_24:

(39, 18580), (Start: 57 @18640 has 3 MA's), (Start: 60 @18646 has 192 MA's), (73, 18715), (79, 18763), (81, 18769),

Gene: Dingo_24 Start: 18321, Stop: 18656, Start Num: 58

Candidate Starts for Dingo_24:

(Start: 58 @18321 has 179 MA's), (Start: 60 @18327 has 192 MA's), (Start: 63 @18336 has 2 MA's), (Start: 64 @18339 has 1 MA's), (73, 18396), (80, 18447), (104, 18564), (113, 18621),

Gene: Dione_23 Start: 18038, Stop: 18373, Start Num: 58

Candidate Starts for Dione_23:

(Start: 58 @18038 has 179 MA's), (Start: 60 @18044 has 192 MA's), (Start: 63 @18053 has 2 MA's), (Start: 64 @18056 has 1 MA's), (73, 18113), (80, 18164), (104, 18281), (113, 18338),

Gene: DirtJuice_24 Start: 18329, Stop: 18658, Start Num: 60

Candidate Starts for DirtJuice_24:

(Start: 58 @18323 has 179 MA's), (Start: 60 @18329 has 192 MA's), (Start: 63 @18338 has 2 MA's), (Start: 64 @18341 has 1 MA's), (73, 18398), (80, 18449), (104, 18566), (113, 18623),

Gene: DoctorFroggo_28 Start: 22700, Stop: 23113, Start Num: 56

Candidate Starts for DoctorFroggo_28:

(Start: 56 @22700 has 13 MA's), (Start: 63 @22712 has 2 MA's), (70, 22760), (71, 22763), (79, 22817), (92, 22877), (99, 22937), (108, 22979), (115, 23021),

Gene: Doddsville_24 Start: 18057, Stop: 18386, Start Num: 60

Candidate Starts for Doddsville_24:

(Start: 60 @18057 has 192 MA's), (Start: 63 @18066 has 2 MA's), (Start: 64 @18069 has 1 MA's), (73, 18126), (80, 18177), (104, 18294), (113, 18351),

Gene: DoesntMatter_24 Start: 18325, Stop: 18654, Start Num: 60

Candidate Starts for DoesntMatter_24:

(Start: 58 @18319 has 179 MA's), (Start: 60 @18325 has 192 MA's), (Start: 63 @18334 has 2 MA's), (Start: 64 @18337 has 1 MA's), (73, 18394), (80, 18445), (104, 18562), (113, 18619),

Gene: DonSanchon_23 Start: 18036, Stop: 18371, Start Num: 58

Candidate Starts for DonSanchon_23:

(Start: 58 @18036 has 179 MA's), (Start: 60 @18042 has 192 MA's), (Start: 63 @18051 has 2 MA's), (Start: 64 @18054 has 1 MA's), (73, 18111), (80, 18162), (104, 18279), (113, 18336),

Gene: DonTron_52 Start: 29222, Stop: 29575, Start Num: 58

Candidate Starts for DonTron_52:

(Start: 58 @29222 has 179 MA's), (71, 29282),

Gene: Donny_24 Start: 19062, Stop: 19394, Start Num: 60

Candidate Starts for Donny_24:

(7, 18684), (11, 18726), (17, 18792), (24, 18837), (32, 18930), (47, 19020), (Start: 53 @19047 has 1 MA's), (Start: 60 @19062 has 192 MA's), (73, 19131), (79, 19179), (81, 19185),

Gene: DuchessDung_22 Start: 17194, Stop: 17523, Start Num: 60

Candidate Starts for DuchessDung_22:

(Start: 60 @17194 has 192 MA's), (Start: 63 @17203 has 2 MA's), (Start: 64 @17206 has 1 MA's), (73, 17263), (80, 17314), (104, 17431), (113, 17488),

Gene: Duggie_23 Start: 18059, Stop: 18388, Start Num: 60

Candidate Starts for Duggie_23:

(Start: 60 @18059 has 192 MA's), (Start: 63 @18068 has 2 MA's), (Start: 64 @18071 has 1 MA's), (73, 18128), (80, 18179), (104, 18296), (113, 18353),

Gene: Durga_24 Start: 18356, Stop: 18685, Start Num: 60

Candidate Starts for Durga_24:

(Start: 60 @18356 has 192 MA's), (Start: 63 @18365 has 2 MA's), (Start: 64 @18368 has 1 MA's), (73, 18425), (80, 18476), (104, 18593), (113, 18650),

Gene: EMoore_25 Start: 21172, Stop: 21603, Start Num: 56

Candidate Starts for EMoore_25:

(Start: 51 @21160 has 5 MA's), (Start: 56 @21172 has 13 MA's), (Start: 63 @21181 has 2 MA's), (67, 21205), (68, 21214), (71, 21232), (78, 21283), (93, 21355),

Gene: Eaglehorse_26 Start: 20502, Stop: 20855, Start Num: 58

Candidate Starts for Eaglehorse_26:

(16, 20229), (21, 20277), (30, 20373), (Start: 58 @20502 has 179 MA's), (81, 20622), (89, 20688), (94, 20709),

Gene: EastView9101_24 Start: 18684, Stop: 19040, Start Num: 58

Candidate Starts for EastView9101_24:

(Start: 58 @18684 has 179 MA's), (Start: 60 @18690 has 192 MA's), (73, 18759), (75, 18777), (77, 18789), (79, 18807), (81, 18813),

Gene: Emiris_24 Start: 18336, Stop: 18665, Start Num: 60

Candidate Starts for Emiris_24:

(Start: 58 @18330 has 179 MA's), (Start: 60 @18336 has 192 MA's), (Start: 63 @18345 has 2 MA's), (Start: 64 @18348 has 1 MA's), (73, 18405), (80, 18456), (104, 18573), (113, 18630),

Gene: EmpTee_24 Start: 18342, Stop: 18671, Start Num: 60

Candidate Starts for EmpTee_24:

(Start: 58 @18336 has 179 MA's), (Start: 60 @18342 has 192 MA's), (Start: 63 @18351 has 2 MA's), (Start: 64 @18354 has 1 MA's), (73, 18411), (80, 18462), (104, 18579), (113, 18636),

Gene: Eremos_24 Start: 18342, Stop: 18671, Start Num: 60

Candidate Starts for Eremos_24:

(Start: 58 @18336 has 179 MA's), (Start: 60 @18342 has 192 MA's), (Start: 63 @18351 has 2 MA's), (Start: 64 @18354 has 1 MA's), (73, 18411), (80, 18462), (104, 18579), (113, 18636),

Gene: Etaye_24 Start: 18329, Stop: 18658, Start Num: 60

Candidate Starts for Etaye_24:

(Start: 60 @18329 has 192 MA's), (Start: 63 @18338 has 2 MA's), (Start: 64 @18341 has 1 MA's), (73, 18398), (80, 18449), (104, 18566), (113, 18623),

Gene: Eugenia_24 Start: 18355, Stop: 18684, Start Num: 60

Candidate Starts for Eugenia_24:

(Start: 58 @18349 has 179 MA's), (Start: 60 @18355 has 192 MA's), (Start: 63 @18364 has 2 MA's), (Start: 64 @18367 has 1 MA's), (73, 18424), (80, 18475), (104, 18592), (113, 18649),

Gene: Evaa_22 Start: 18139, Stop: 18468, Start Num: 59

Candidate Starts for Evaa_22:

(Start: 59 @18139 has 9 MA's), (Start: 63 @18151 has 2 MA's), (78, 18256), (81, 18265),

Gene: Fang_24 Start: 18350, Stop: 18685, Start Num: 58

Candidate Starts for Fang_24:

(Start: 58 @18350 has 179 MA's), (Start: 60 @18356 has 192 MA's), (Start: 63 @18365 has 2 MA's), (Start: 64 @18368 has 1 MA's), (73, 18425), (80, 18476), (104, 18593), (113, 18650),

Gene: Faze9_26 Start: 20598, Stop: 20951, Start Num: 58

Candidate Starts for Faze9_26:

(16, 20325), (21, 20373), (30, 20469), (Start: 58 @20598 has 179 MA's), (81, 20718), (89, 20784), (94, 20805),

Gene: Fitzgerald_27 Start: 22931, Stop: 23338, Start Num: 54

Candidate Starts for Fitzgerald_27:

(Start: 54 @22931 has 42 MA's), (Start: 63 @22952 has 2 MA's), (78, 23054), (96, 23129), (106, 23216), (115, 23267),

Gene: Flatwoods_29 Start: 21686, Stop: 22069, Start Num: 54

Candidate Starts for Flatwoods_29:

(Start: 54 @21686 has 42 MA's), (68, 21734), (71, 21752), (78, 21803), (106, 21965), (117, 22040),

Gene: FluffyNinja_24 Start: 18348, Stop: 18677, Start Num: 60

Candidate Starts for FluffyNinja_24:

(Start: 58 @18342 has 179 MA's), (Start: 60 @18348 has 192 MA's), (Start: 63 @18357 has 2 MA's), (Start: 64 @18360 has 1 MA's), (73, 18417), (80, 18468), (104, 18585), (113, 18642),

Gene: Fosterous_27 Start: 22764, Stop: 23171, Start Num: 54

Candidate Starts for Fosterous_27:

(Start: 54 @22764 has 42 MA's), (Start: 63 @22785 has 2 MA's), (78, 22887), (96, 22962), (106, 23049), (115, 23100),

Gene: Fozzie_23 Start: 18351, Stop: 18680, Start Num: 60

Candidate Starts for Fozzie_23:

(Start: 58 @18345 has 179 MA's), (Start: 60 @18351 has 192 MA's), (Start: 63 @18360 has 2 MA's), (Start: 64 @18363 has 1 MA's), (73, 18420), (80, 18471), (104, 18588), (113, 18645),

Gene: Frankicide_24 Start: 18342, Stop: 18671, Start Num: 60

Candidate Starts for Frankicide_24:

(Start: 58 @18336 has 179 MA's), (Start: 60 @18342 has 192 MA's), (Start: 63 @18351 has 2 MA's), (Start: 64 @18354 has 1 MA's), (73, 18411), (80, 18462), (104, 18579), (113, 18636),

Gene: Frederick_22 Start: 18979, Stop: 19335, Start Num: 60

Candidate Starts for Frederick_22:

(33, 18844), (39, 18913), (43, 18928), (49, 18943), (Start: 60 @18979 has 192 MA's), (Start: 63 @18988 has 2 MA's), (73, 19051), (75, 19069), (78, 19096), (79, 19099), (81, 19105),

Gene: FrenchFry_26 Start: 20601, Stop: 20954, Start Num: 58

Candidate Starts for FrenchFry_26:

(16, 20328), (21, 20376), (30, 20472), (Start: 58 @20601 has 179 MA's), (81, 20721), (89, 20787), (94, 20808),

Gene: Fresco_21 Start: 16902, Stop: 17228, Start Num: 56

Candidate Starts for Fresco_21:

(8, 16536), (9, 16554), (15, 16620), (19, 16665), (25, 16692), (28, 16758), (Start: 56 @16902 has 13 MA's), (75, 16995), (78, 17022), (109, 17196),

Gene: Freya_23 Start: 18037, Stop: 18366, Start Num: 60

Candidate Starts for Freya_23:

(Start: 58 @18031 has 179 MA's), (Start: 60 @18037 has 192 MA's), (Start: 63 @18046 has 2 MA's), (Start: 64 @18049 has 1 MA's), (73, 18106), (80, 18157), (104, 18274), (113, 18331),

Gene: FriarPreacher_24 Start: 18362, Stop: 18691, Start Num: 60

Candidate Starts for FriarPreacher_24:

(Start: 58 @18356 has 179 MA's), (Start: 60 @18362 has 192 MA's), (Start: 63 @18371 has 2 MA's), (Start: 64 @18374 has 1 MA's), (73, 18431), (80, 18482), (104, 18599), (113, 18656),

Gene: Fringe_24 Start: 18326, Stop: 18655, Start Num: 60

Candidate Starts for Fringe_24:

(Start: 58 @18320 has 179 MA's), (Start: 60 @18326 has 192 MA's), (Start: 63 @18335 has 2 MA's), (Start: 64 @18338 has 1 MA's), (73, 18395), (80, 18446), (104, 18563), (113, 18620),

Gene: FugateOSU_23 Start: 18048, Stop: 18377, Start Num: 60

Candidate Starts for FugateOSU_23:

(Start: 58 @18042 has 179 MA's), (Start: 60 @18048 has 192 MA's), (Start: 63 @18057 has 2 MA's), (Start: 64 @18060 has 1 MA's), (73, 18117), (80, 18168), (104, 18285), (113, 18342),

Gene: Funsized_27 Start: 21423, Stop: 21755, Start Num: 60

Candidate Starts for Funsized_27:

(Start: 60 @21423 has 192 MA's), (73, 21492), (75, 21510), (79, 21540), (81, 21546), (104, 21669),

Gene: Gadget_26 Start: 19015, Stop: 19389, Start Num: 58

Candidate Starts for Gadget_26:

(35, 18940), (36, 18949), (Start: 58 @19015 has 179 MA's), (Start: 63 @19030 has 2 MA's), (73, 19087), (74, 19093), (78, 19132), (81, 19141),

Gene: Gaea_28 Start: 21337, Stop: 21720, Start Num: 54

Candidate Starts for Gaea_28:

(Start: 54 @21337 has 42 MA's), (68, 21385), (71, 21403), (78, 21454), (106, 21616),

Gene: Galadriel_29 Start: 23253, Stop: 23660, Start Num: 54

Candidate Starts for Galadriel_29:

(Start: 54 @23253 has 42 MA's), (Start: 63 @23274 has 2 MA's), (78, 23376), (96, 23451), (106, 23538), (115, 23589),

Gene: Gareth_23 Start: 18039, Stop: 18374, Start Num: 58

Candidate Starts for Gareth_23:

(Start: 58 @18039 has 179 MA's), (Start: 60 @18045 has 192 MA's), (Start: 63 @18054 has 2 MA's), (Start: 64 @18057 has 1 MA's), (73, 18114), (80, 18165), (104, 18282), (113, 18339),

Gene: GeneCoco_24 Start: 18348, Stop: 18677, Start Num: 60

Candidate Starts for GeneCoco_24:

(Start: 60 @18348 has 192 MA's), (Start: 63 @18357 has 2 MA's), (Start: 64 @18360 has 1 MA's), (73, 18417), (80, 18468), (104, 18585), (113, 18642),

Gene: Geodirt_26 Start: 22236, Stop: 22643, Start Num: 54

Candidate Starts for Geodirt_26:

(Start: 54 @22236 has 42 MA's), (Start: 63 @22257 has 2 MA's), (78, 22359), (96, 22434), (106, 22521), (115, 22572),

Gene: Gervas_25 Start: 18989, Stop: 19363, Start Num: 58

Candidate Starts for Gervas_25:

(35, 18914), (36, 18923), (Start: 58 @18989 has 179 MA's), (Start: 63 @19004 has 2 MA's), (73, 19061), (74, 19067), (78, 19106), (81, 19115),

Gene: Giraffe_24 Start: 18044, Stop: 18379, Start Num: 58

Candidate Starts for Giraffe_24:

(Start: 58 @18044 has 179 MA's), (Start: 60 @18050 has 192 MA's), (Start: 63 @18059 has 2 MA's), (Start: 64 @18062 has 1 MA's), (73, 18119), (80, 18170), (104, 18287), (113, 18344),

Gene: Glass_26 Start: 20601, Stop: 20954, Start Num: 58

Candidate Starts for Glass_26:

(16, 20328), (21, 20376), (30, 20472), (Start: 58 @20601 has 179 MA's), (81, 20721), (89, 20787), (94, 20808),

Gene: GlenHope_26 Start: 18998, Stop: 19372, Start Num: 58

Candidate Starts for GlenHope_26:

(35, 18923), (36, 18932), (Start: 58 @18998 has 179 MA's), (Start: 63 @19013 has 2 MA's), (73, 19070), (74, 19076), (78, 19115), (81, 19124),

Gene: GodPhather_19 Start: 18076, Stop: 18483, Start Num: 59

Candidate Starts for GodPhather_19:

(1, 17641), (3, 17656), (4, 17674), (5, 17692), (12, 17758), (13, 17788), (23, 17866), (26, 17896), (40, 18022), (Start: 59 @18076 has 9 MA's), (61, 18082), (Start: 63 @18088 has 2 MA's), (107, 18385), (118, 18469),

Gene: Godines_26 Start: 20494, Stop: 20847, Start Num: 58

Candidate Starts for Godines_26:

(16, 20221), (21, 20269), (30, 20365), (Start: 58 @20494 has 179 MA's), (81, 20614), (89, 20680), (94, 20701), (108, 20809),

Gene: Gophee_24 Start: 18328, Stop: 18657, Start Num: 60

Candidate Starts for Gophee_24:

(Start: 58 @18322 has 179 MA's), (Start: 60 @18328 has 192 MA's), (Start: 63 @18337 has 2 MA's), (Start: 64 @18340 has 1 MA's), (73, 18397), (80, 18448), (104, 18565), (113, 18622),

Gene: Grand2040_23 Start: 18059, Stop: 18394, Start Num: 58

Candidate Starts for Grand2040_23:

(Start: 58 @18059 has 179 MA's), (Start: 60 @18065 has 192 MA's), (Start: 63 @18074 has 2 MA's), (Start: 64 @18077 has 1 MA's), (73, 18134), (80, 18185), (104, 18302), (113, 18359),

Gene: Gustavo_28 Start: 21477, Stop: 21872, Start Num: 54

Candidate Starts for Gustavo_28:

(Start: 54 @21477 has 42 MA's), (68, 21525), (71, 21543), (78, 21594), (98, 21687), (106, 21756), (117, 21831),

Gene: Gwilliam_24 Start: 18332, Stop: 18667, Start Num: 58

Candidate Starts for Gwilliam_24:

(Start: 58 @18332 has 179 MA's), (Start: 60 @18338 has 192 MA's), (Start: 63 @18347 has 2 MA's), (Start: 64 @18350 has 1 MA's), (73, 18407), (80, 18458), (104, 18575), (113, 18632),

Gene: Gyarad_0024 Start: 18340, Stop: 18669, Start Num: 60

Candidate Starts for Gyarad_0024:

(Start: 58 @18334 has 179 MA's), (Start: 60 @18340 has 192 MA's), (Start: 63 @18349 has 2 MA's), (Start: 64 @18352 has 1 MA's), (73, 18409), (80, 18460), (104, 18577), (113, 18634),

Gene: HSavage_24 Start: 18348, Stop: 18677, Start Num: 60

Candidate Starts for HSavage_24:

(Start: 58 @18342 has 179 MA's), (Start: 60 @18348 has 192 MA's), (Start: 63 @18357 has 2 MA's), (Start: 64 @18360 has 1 MA's), (73, 18417), (80, 18468), (104, 18585), (113, 18642),

Gene: Haimas_24 Start: 18343, Stop: 18672, Start Num: 60

Candidate Starts for Haimas_24:

(Start: 58 @18337 has 179 MA's), (Start: 60 @18343 has 192 MA's), (Start: 63 @18352 has 2 MA's), (Start: 64 @18355 has 1 MA's), (73, 18412), (80, 18463), (104, 18580), (113, 18637),

Gene: Haleema_23 Start: 18065, Stop: 18394, Start Num: 60

Candidate Starts for Haleema_23:

(Start: 58 @18059 has 179 MA's), (Start: 60 @18065 has 192 MA's), (Start: 63 @18074 has 2 MA's), (Start: 64 @18077 has 1 MA's), (73, 18134), (80, 18185), (104, 18302), (113, 18359),

Gene: Halfpint_24 Start: 18833, Stop: 19204, Start Num: 58

Candidate Starts for Halfpint_24:

(35, 18758), (36, 18767), (Start: 58 @18833 has 179 MA's), (Start: 63 @18848 has 2 MA's), (73, 18905), (74, 18911), (78, 18950), (81, 18959),

Gene: Hamish_24 Start: 18335, Stop: 18664, Start Num: 60

Candidate Starts for Hamish_24:

(Start: 58 @18329 has 179 MA's), (Start: 60 @18335 has 192 MA's), (Start: 63 @18344 has 2 MA's), (Start: 64 @18347 has 1 MA's), (73, 18404), (80, 18455), (104, 18572), (113, 18629),

Gene: Hangman_22 Start: 18977, Stop: 19327, Start Num: 60

Candidate Starts for Hangman_22:

(39, 18911), (43, 18926), (49, 18941), (Start: 60 @18977 has 192 MA's), (Start: 63 @18986 has 2 MA's), (73, 19049), (75, 19067), (78, 19094), (79, 19097), (81, 19103),

Gene: Hans_29 Start: 20978, Stop: 21424, Start Num: 51

Candidate Starts for Hans_29:

(Start: 51 @20978 has 5 MA's), (Start: 56 @20990 has 13 MA's), (Start: 63 @20999 has 2 MA's), (68, 21032), (70, 21047), (71, 21050), (78, 21101),

Gene: Hartsy_23 Start: 18338, Stop: 18688, Start Num: 60

Candidate Starts for Hartsy_23:

(Start: 58 @18332 has 179 MA's), (Start: 60 @18338 has 192 MA's), (Start: 63 @18347 has 2 MA's), (Start: 64 @18350 has 1 MA's), (73, 18407), (80, 18458), (104, 18593), (113, 18650),

Gene: Harvey_24 Start: 18358, Stop: 18693, Start Num: 58

Candidate Starts for Harvey_24:

(Start: 58 @18358 has 179 MA's), (Start: 60 @18364 has 192 MA's), (Start: 63 @18373 has 2 MA's), (Start: 64 @18376 has 1 MA's), (73, 18433), (80, 18484), (104, 18601), (113, 18658),

Gene: HarveySr_25 Start: 18988, Stop: 19359, Start Num: 58

Candidate Starts for HarveySr_25:

(35, 18913), (36, 18922), (Start: 58 @18988 has 179 MA's), (Start: 63 @19003 has 2 MA's), (73, 19060), (74, 19066), (78, 19105), (81, 19114),

Gene: Hashim76_28 Start: 18827, Stop: 19150, Start Num: 60

Candidate Starts for Hashim76_28:

(22, 18593), (23, 18596), (Start: 60 @18827 has 192 MA's), (76, 18923), (80, 18947), (104, 19064),

Gene: Heath_21 Start: 18608, Stop: 18958, Start Num: 60

Candidate Starts for Heath_21:

(20, 18365), (39, 18542), (43, 18557), (49, 18572), (Start: 60 @18608 has 192 MA's), (Start: 63 @18617 has 2 MA's), (73, 18680), (75, 18698), (78, 18725), (79, 18728), (81, 18734),

Gene: Heathcliff_25 Start: 18970, Stop: 19341, Start Num: 58

Candidate Starts for Heathcliff_25:

(35, 18895), (36, 18904), (Start: 58 @18970 has 179 MA's), (Start: 63 @18985 has 2 MA's), (73, 19042), (74, 19048), (78, 19087), (81, 19096),

Gene: Hedgerow_26 Start: 20583, Stop: 20936, Start Num: 58

Candidate Starts for Hedgerow_26:

(16, 20310), (21, 20358), (30, 20454), (Start: 58 @20583 has 179 MA's), (81, 20703), (89, 20769), (94, 20790),

Gene: Held_24 Start: 18049, Stop: 18378, Start Num: 60

Candidate Starts for Held_24:

(Start: 58 @18043 has 179 MA's), (Start: 60 @18049 has 192 MA's), (Start: 63 @18058 has 2 MA's), (Start: 64 @18061 has 1 MA's), (73, 18118), (80, 18169), (104, 18286), (113, 18343),

Gene: HenryJackson_23 Start: 18065, Stop: 18394, Start Num: 60

Candidate Starts for HenryJackson_23:

(Start: 58 @18059 has 179 MA's), (Start: 60 @18065 has 192 MA's), (Start: 63 @18074 has 2 MA's), (Start: 64 @18077 has 1 MA's), (73, 18134), (80, 18185), (104, 18302), (113, 18359),

Gene: Hertubise_24 Start: 18357, Stop: 18686, Start Num: 60

Candidate Starts for Hertubise_24:

(Start: 58 @18351 has 179 MA's), (Start: 60 @18357 has 192 MA's), (Start: 63 @18366 has 2 MA's), (Start: 64 @18369 has 1 MA's), (73, 18426), (80, 18477), (104, 18594), (113, 18651),

Gene: Hetaeria_24 Start: 18352, Stop: 18687, Start Num: 58

Candidate Starts for Hetaeria_24:

(Start: 58 @18352 has 179 MA's), (Start: 60 @18358 has 192 MA's), (Start: 63 @18367 has 2 MA's), (Start: 64 @18370 has 1 MA's), (73, 18427), (80, 18478), (104, 18595), (113, 18652),

Gene: HighStump_23 Start: 18048, Stop: 18377, Start Num: 60

Candidate Starts for HighStump_23:

(Start: 58 @18042 has 179 MA's), (Start: 60 @18048 has 192 MA's), (Start: 63 @18057 has 2 MA's), (Start: 64 @18060 has 1 MA's), (73, 18117), (80, 18168), (104, 18285), (113, 18342),

Gene: Hocus_23 Start: 18052, Stop: 18381, Start Num: 60

Candidate Starts for Hocus_23:

(Start: 60 @18052 has 192 MA's), (Start: 63 @18061 has 2 MA's), (Start: 64 @18064 has 1 MA's), (73, 18121), (80, 18172), (104, 18289), (113, 18346),

Gene: Holeinone_26 Start: 20479, Stop: 20832, Start Num: 58

Candidate Starts for Holeinone_26:

(16, 20206), (21, 20254), (30, 20350), (Start: 58 @20479 has 179 MA's), (74, 20551), (81, 20599), (89, 20665), (94, 20686),

Gene: Horchata_24 Start: 18327, Stop: 18656, Start Num: 60

Candidate Starts for Horchata_24:

(Start: 58 @18321 has 179 MA's), (Start: 60 @18327 has 192 MA's), (Start: 63 @18336 has 2 MA's), (Start: 64 @18339 has 1 MA's), (73, 18396), (80, 18447), (104, 18564), (113, 18621),

Gene: Hosp_018 Start: 15739, Stop: 16062, Start Num: 60

Candidate Starts for Hosp_018:

(Start: 60 @15739 has 192 MA's), (71, 15802), (75, 15829), (80, 15862),

Gene: Hydro_22 Start: 18976, Stop: 19332, Start Num: 60

Candidate Starts for Hydro_22:

(39, 18910), (43, 18925), (49, 18940), (Start: 60 @18976 has 192 MA's), (Start: 63 @18985 has 2 MA's), (73, 19048), (75, 19066), (78, 19093), (79, 19096), (81, 19102),

Gene: ImtiyazSitla_23 Start: 17893, Stop: 18222, Start Num: 60

Candidate Starts for ImtiyazSitla_23:

(Start: 60 @17893 has 192 MA's), (Start: 63 @17902 has 2 MA's), (Start: 64 @17905 has 1 MA's), (73, 17962), (80, 18013), (104, 18130), (113, 18187),

Gene: Imvubu_18 Start: 16096, Stop: 16425, Start Num: 60

Candidate Starts for Imvubu_18:

(37, 16027), (41, 16036), (Start: 60 @16096 has 192 MA's), (75, 16183), (80, 16216), (81, 16219), (103, 16330), (104, 16333), (111, 16378),

Gene: Inchworm_24 Start: 18334, Stop: 18663, Start Num: 60

Candidate Starts for Inchworm_24:

(Start: 58 @18328 has 179 MA's), (Start: 60 @18334 has 192 MA's), (Start: 63 @18343 has 2 MA's), (Start: 64 @18346 has 1 MA's), (73, 18403), (80, 18454), (104, 18571), (113, 18628),

Gene: Indlovu_22 Start: 18708, Stop: 19040, Start Num: 60

Candidate Starts for Indlovu_22:

(Start: 60 @18708 has 192 MA's), (73, 18777), (75, 18795), (80, 18828), (81, 18831),

Gene: Inspectinfecti_28 Start: 21414, Stop: 21848, Start Num: 56

Candidate Starts for Inspectinfecti_28:

(Start: 51 @21402 has 5 MA's), (Start: 56 @21414 has 13 MA's), (Start: 63 @21423 has 2 MA's), (68, 21456), (70, 21471), (71, 21474), (78, 21525), (93, 21594), (100, 21672),

Gene: Inverness_24 Start: 18348, Stop: 18677, Start Num: 60

Candidate Starts for Inverness_24:

(Start: 58 @18342 has 179 MA's), (Start: 60 @18348 has 192 MA's), (Start: 63 @18357 has 2 MA's), (Start: 64 @18360 has 1 MA's), (73, 18417), (80, 18468), (104, 18585), (113, 18642),

Gene: Iridoclysis_24 Start: 18322, Stop: 18651, Start Num: 60

Candidate Starts for Iridoclysis_24:

(Start: 58 @18316 has 179 MA's), (Start: 60 @18322 has 192 MA's), (Start: 63 @18331 has 2 MA's), (Start: 64 @18334 has 1 MA's), (73, 18391), (80, 18442), (104, 18559), (113, 18616),

Gene: IsaacEli_24 Start: 18346, Stop: 18681, Start Num: 58

Candidate Starts for IsaacEli_24:

(Start: 58 @18346 has 179 MA's), (Start: 60 @18352 has 192 MA's), (Start: 63 @18361 has 2 MA's), (Start: 64 @18364 has 1 MA's), (73, 18421), (80, 18472), (104, 18589), (113, 18646),

Gene: ItsyBitsy1_26 Start: 20472, Stop: 20825, Start Num: 58

Candidate Starts for ItsyBitsy1_26:

(16, 20199), (21, 20247), (30, 20343), (Start: 58 @20472 has 179 MA's), (81, 20592), (89, 20658), (94, 20679),

Gene: JAMaL_22 Start: 19158, Stop: 19496, Start Num: 60

Candidate Starts for JAMaL_22:

(47, 19116), (Start: 60 @19158 has 192 MA's), (73, 19230), (75, 19248), (78, 19275), (79, 19278), (81, 19284), (86, 19311), (114, 19488),

Gene: JDog_24 Start: 18059, Stop: 18388, Start Num: 60

Candidate Starts for JDog_24:

(Start: 60 @18059 has 192 MA's), (Start: 63 @18068 has 2 MA's), (Start: 64 @18071 has 1 MA's), (73, 18128), (80, 18179), (104, 18296), (113, 18353),

Gene: JKSyngboy_26 Start: 22046, Stop: 22429, Start Num: 54

Candidate Starts for JKSyngboy_26:

(Start: 54 @22046 has 42 MA's), (68, 22094), (71, 22112), (78, 22163), (106, 22325),

Gene: Jabberwocky_27 Start: 23395, Stop: 23799, Start Num: 54

Candidate Starts for Jabberwocky_27:

(Start: 54 @23395 has 42 MA's), (Start: 63 @23416 has 2 MA's), (78, 23518), (96, 23593), (106, 23677), (115, 23728),

Gene: JacAttac_24 Start: 18328, Stop: 18663, Start Num: 58

Candidate Starts for JacAttac_24:

(Start: 58 @18328 has 179 MA's), (Start: 60 @18334 has 192 MA's), (Start: 63 @18343 has 2 MA's), (Start: 64 @18346 has 1 MA's), (73, 18403), (80, 18454), (104, 18571), (113, 18628),

Gene: Jackstina_23 Start: 18934, Stop: 19305, Start Num: 58

Candidate Starts for Jackstina_23:

(35, 18859), (36, 18868), (Start: 58 @18934 has 179 MA's), (Start: 63 @18949 has 2 MA's), (73, 19006), (74, 19012), (78, 19051), (81, 19060),

Gene: JaguarMi_22 Start: 18438, Stop: 18794, Start Num: 60

Candidate Starts for JaguarMi_22:

(39, 18372), (43, 18387), (49, 18402), (Start: 60 @18438 has 192 MA's), (Start: 63 @18447 has 2 MA's), (73, 18510), (75, 18528), (78, 18555), (79, 18558), (81, 18564),

Gene: JakeO_23 Start: 18059, Stop: 18388, Start Num: 60

Candidate Starts for JakeO_23:

(Start: 60 @18059 has 192 MA's), (Start: 63 @18068 has 2 MA's), (Start: 64 @18071 has 1 MA's), (73, 18128), (80, 18179), (104, 18296), (113, 18353),

Gene: JangoPhett_24 Start: 18332, Stop: 18661, Start Num: 60

Candidate Starts for JangoPhett_24:

(Start: 58 @18326 has 179 MA's), (Start: 60 @18332 has 192 MA's), (Start: 63 @18341 has 2 MA's), (Start: 64 @18344 has 1 MA's), (73, 18401), (80, 18452), (104, 18569), (113, 18626),

Gene: Jeon_18 Start: 17818, Stop: 18225, Start Num: 59

Candidate Starts for Jeon_18:

(1, 17383), (3, 17398), (4, 17416), (5, 17434), (12, 17500), (13, 17530), (23, 17608), (26, 17638), (40, 17764), (Start: 59 @17818 has 9 MA's), (61, 17824), (Start: 63 @17830 has 2 MA's), (107, 18127), (118, 18211),

Gene: Jillium_23 Start: 18052, Stop: 18387, Start Num: 58

Candidate Starts for Jillium_23:

(Start: 58 @18052 has 179 MA's), (Start: 60 @18058 has 192 MA's), (Start: 63 @18067 has 2 MA's), (Start: 64 @18070 has 1 MA's), (73, 18127), (80, 18178), (104, 18295), (113, 18352),

Gene: Jiminy_23 Start: 17897, Stop: 18226, Start Num: 60

Candidate Starts for Jiminy_23:

(Start: 60 @17897 has 192 MA's), (Start: 63 @17906 has 2 MA's), (Start: 64 @17909 has 1 MA's), (73, 17966), (80, 18017), (104, 18134), (113, 18191),

Gene: Jiraiya_24 Start: 18050, Stop: 18385, Start Num: 58

Candidate Starts for Jiraiya_24:

(Start: 58 @18050 has 179 MA's), (Start: 60 @18056 has 192 MA's), (Start: 63 @18065 has 2 MA's), (Start: 64 @18068 has 1 MA's), (73, 18125), (80, 18176), (104, 18293), (113, 18350),

Gene: Jolie1_020 Start: 17512, Stop: 17832, Start Num: 60

Candidate Starts for Jolie1_020:

(Start: 60 @17512 has 192 MA's), (71, 17575), (75, 17602), (80, 17635),

Gene: KLucky39_24 Start: 18334, Stop: 18669, Start Num: 58

Candidate Starts for KLucky39_24:

(Start: 58 @18334 has 179 MA's), (Start: 60 @18340 has 192 MA's), (Start: 63 @18349 has 2 MA's), (Start: 64 @18352 has 1 MA's), (73, 18409), (80, 18460), (104, 18577), (113, 18634),

Gene: Kahve_23 Start: 18062, Stop: 18391, Start Num: 60

Candidate Starts for Kahve_23:

(Start: 58 @18056 has 179 MA's), (Start: 60 @18062 has 192 MA's), (Start: 63 @18071 has 2 MA's), (Start: 64 @18074 has 1 MA's), (73, 18131), (80, 18182), (104, 18299), (113, 18356),

Gene: Kailash_24 Start: 18350, Stop: 18700, Start Num: 60

Candidate Starts for Kailash_24:

(Start: 58 @18344 has 179 MA's), (Start: 60 @18350 has 192 MA's), (Start: 63 @18359 has 2 MA's), (Start: 64 @18362 has 1 MA's), (73, 18419), (80, 18470), (104, 18605), (113, 18662),

Gene: Kaleb_26 Start: 20598, Stop: 20951, Start Num: 58

Candidate Starts for Kaleb_26:

(16, 20325), (21, 20373), (30, 20469), (Start: 58 @20598 has 179 MA's), (81, 20718), (89, 20784), (94, 20805),

Gene: Kamashten_28 Start: 22841, Stop: 23248, Start Num: 54

Candidate Starts for Kamashten_28:

(Start: 54 @22841 has 42 MA's), (Start: 63 @22862 has 2 MA's), (78, 22964), (96, 23039), (106, 23126), (115, 23177),

Gene: Kamiyu_25 Start: 18977, Stop: 19348, Start Num: 58

Candidate Starts for Kamiyu_25:

(35, 18902), (36, 18911), (Start: 58 @18977 has 179 MA's), (Start: 63 @18992 has 2 MA's), (73, 19049), (74, 19055), (78, 19094), (81, 19103),

Gene: Katniss_24 Start: 18360, Stop: 18689, Start Num: 60

Candidate Starts for Katniss_24:

(Start: 58 @18354 has 179 MA's), (Start: 60 @18360 has 192 MA's), (Start: 63 @18369 has 2 MA's), (Start: 64 @18372 has 1 MA's), (73, 18429), (80, 18480), (104, 18597), (113, 18654),

Gene: KayaCho_20 Start: 17522, Stop: 17839, Start Num: 60

Candidate Starts for KayaCho_20:

(Start: 60 @17522 has 192 MA's), (75, 17612), (78, 17639), (80, 17645),

Gene: Keitabear_29 Start: 24197, Stop: 24604, Start Num: 54

Candidate Starts for Keitabear_29:

(Start: 54 @24197 has 42 MA's), (Start: 63 @24218 has 2 MA's), (78, 24320), (96, 24395), (106, 24482), (115, 24533),

Gene: Keitherie_24 Start: 18363, Stop: 18710, Start Num: 60

Candidate Starts for Keitherie_24:

(Start: 58 @18357 has 179 MA's), (Start: 60 @18363 has 192 MA's), (Start: 63 @18372 has 2 MA's), (Start: 64 @18375 has 1 MA's), (73, 18432), (80, 18483), (113, 18675),

Gene: Kewpiedoll_28 Start: 22038, Stop: 22445, Start Num: 54

Candidate Starts for Kewpiedoll_28:

(Start: 54 @22038 has 42 MA's), (Start: 63 @22059 has 2 MA's), (78, 22161), (96, 22236), (106, 22323), (115, 22374),

Gene: Kheth_26 Start: 20484, Stop: 20837, Start Num: 58

Candidate Starts for Kheth_26:

(16, 20211), (21, 20259), (30, 20355), (Start: 58 @20484 has 179 MA's), (81, 20604), (89, 20670), (94, 20691),

Gene: Kikipoo_24 Start: 18346, Stop: 18681, Start Num: 58

Candidate Starts for Kikipoo_24:

(Start: 58 @18346 has 179 MA's), (Start: 60 @18352 has 192 MA's), (Start: 63 @18361 has 2 MA's),
(Start: 64 @18364 has 1 MA's), (73, 18421), (80, 18472), (104, 18589), (113, 18646),

Gene: Kimbrough_24 Start: 18054, Stop: 18383, Start Num: 60

Candidate Starts for Kimbrough_24:

(Start: 58 @18048 has 179 MA's), (Start: 60 @18054 has 192 MA's), (Start: 63 @18063 has 2 MA's),
(Start: 64 @18066 has 1 MA's), (73, 18123), (80, 18174), (104, 18291), (113, 18348),

Gene: KingVeVeVe_24 Start: 18331, Stop: 18660, Start Num: 60

Candidate Starts for KingVeVeVe_24:

(Start: 58 @18325 has 179 MA's), (Start: 60 @18331 has 192 MA's), (Start: 63 @18340 has 2 MA's),
(Start: 64 @18343 has 1 MA's), (73, 18400), (80, 18451), (104, 18568), (113, 18625),

Gene: KlimbOn_24 Start: 18340, Stop: 18669, Start Num: 60

Candidate Starts for KlimbOn_24:

(Start: 58 @18334 has 179 MA's), (Start: 60 @18340 has 192 MA's), (Start: 63 @18349 has 2 MA's),
(Start: 64 @18352 has 1 MA's), (73, 18409), (80, 18460), (104, 18577), (113, 18634),

Gene: Kloppinator_24 Start: 18360, Stop: 18689, Start Num: 60

Candidate Starts for Kloppinator_24:

(Start: 58 @18354 has 179 MA's), (Start: 60 @18360 has 192 MA's), (Start: 63 @18369 has 2 MA's),
(Start: 64 @18372 has 1 MA's), (73, 18429), (80, 18480), (104, 18597), (113, 18654),

Gene: Knocker_26 Start: 21465, Stop: 21791, Start Num: 60

Candidate Starts for Knocker_26:

(46, 21420), (52, 21447), (Start: 60 @21465 has 192 MA's), (73, 21534), (75, 21552), (77, 21564), (81,
21588), (91, 21621), (96, 21633), (104, 21702),

Gene: Kronus_24 Start: 19591, Stop: 19962, Start Num: 58

Candidate Starts for Kronus_24:

(35, 19516), (36, 19525), (Start: 58 @19591 has 179 MA's), (Start: 63 @19606 has 2 MA's), (73,
19663), (74, 19669), (78, 19708), (81, 19717),

Gene: Kroos_29 Start: 22230, Stop: 22625, Start Num: 54

Candidate Starts for Kroos_29:

(Start: 54 @22230 has 42 MA's), (68, 22278), (71, 22296), (78, 22347), (106, 22509), (117, 22584),

Gene: Kwadwo_23 Start: 18044, Stop: 18373, Start Num: 60

Candidate Starts for Kwadwo_23:

(Start: 58 @18038 has 179 MA's), (Start: 60 @18044 has 192 MA's), (Start: 63 @18053 has 2 MA's),
(Start: 64 @18056 has 1 MA's), (73, 18113), (80, 18164), (104, 18281), (113, 18338),

Gene: Kwksand96_23 Start: 17907, Stop: 18236, Start Num: 60

Candidate Starts for Kwksand96_23:

(Start: 60 @17907 has 192 MA's), (Start: 63 @17916 has 2 MA's), (Start: 64 @17919 has 1 MA's),
(73, 17976), (80, 18027), (104, 18144), (113, 18201),

Gene: Kwobi_29 Start: 22216, Stop: 22611, Start Num: 54

Candidate Starts for Kwobi_29:

(Start: 54 @22216 has 42 MA's), (68, 22264), (71, 22282), (78, 22333), (98, 22426), (106, 22495), (117, 22570),

Gene: Labeouficaum_23 Start: 17903, Stop: 18232, Start Num: 60

Candidate Starts for Labeouficaum_23:

(Start: 60 @17903 has 192 MA's), (Start: 63 @17912 has 2 MA's), (Start: 64 @17915 has 1 MA's), (73, 17972), (80, 18023), (104, 18140), (113, 18197),

Gene: Lars_26 Start: 20601, Stop: 20954, Start Num: 58

Candidate Starts for Lars_26:

(16, 20328), (21, 20376), (30, 20472), (Start: 58 @20601 has 179 MA's), (81, 20721), (89, 20787), (94, 20808),

Gene: LasagnaCat_24 Start: 18346, Stop: 18675, Start Num: 60

Candidate Starts for LasagnaCat_24:

(Start: 58 @18340 has 179 MA's), (Start: 60 @18346 has 192 MA's), (Start: 63 @18355 has 2 MA's), (Start: 64 @18358 has 1 MA's), (73, 18415), (80, 18466), (104, 18583), (113, 18640),

Gene: Lasso_24 Start: 18313, Stop: 18648, Start Num: 58

Candidate Starts for Lasso_24:

(Start: 58 @18313 has 179 MA's), (Start: 60 @18319 has 192 MA's), (Start: 63 @18328 has 2 MA's), (Start: 64 @18331 has 1 MA's), (73, 18388), (80, 18439), (104, 18556), (113, 18613),

Gene: Laurie_26 Start: 20476, Stop: 20832, Start Num: 58

Candidate Starts for Laurie_26:

(Start: 58 @20476 has 179 MA's), (81, 20596), (89, 20665), (94, 20686),

Gene: LeeLot_24 Start: 18338, Stop: 18673, Start Num: 58

Candidate Starts for LeeLot_24:

(Start: 58 @18338 has 179 MA's), (Start: 60 @18344 has 192 MA's), (Start: 63 @18353 has 2 MA's), (Start: 64 @18356 has 1 MA's), (73, 18413), (80, 18464), (104, 18581), (113, 18638),

Gene: Lego3393_24 Start: 18350, Stop: 18685, Start Num: 58

Candidate Starts for Lego3393_24:

(Start: 58 @18350 has 179 MA's), (Start: 60 @18356 has 192 MA's), (Start: 63 @18365 has 2 MA's), (Start: 64 @18368 has 1 MA's), (73, 18425), (80, 18476), (104, 18593), (113, 18650),

Gene: Legolas_23 Start: 18060, Stop: 18389, Start Num: 60

Candidate Starts for Legolas_23:

(Start: 58 @18054 has 179 MA's), (Start: 60 @18060 has 192 MA's), (Start: 63 @18069 has 2 MA's), (Start: 64 @18072 has 1 MA's), (73, 18129), (80, 18180), (104, 18297), (113, 18354),

Gene: LeiMonet_24 Start: 18051, Stop: 18380, Start Num: 60

Candidate Starts for LeiMonet_24:

(Start: 58 @18045 has 179 MA's), (Start: 60 @18051 has 192 MA's), (Start: 63 @18060 has 2 MA's), (Start: 64 @18063 has 1 MA's), (73, 18120), (80, 18171), (104, 18288), (113, 18345),

Gene: LemonSlice_24 Start: 18051, Stop: 18380, Start Num: 60

Candidate Starts for LemonSlice_24:

(Start: 58 @18045 has 179 MA's), (Start: 60 @18051 has 192 MA's), (Start: 63 @18060 has 2 MA's), (Start: 64 @18063 has 1 MA's), (73, 18120), (80, 18171), (104, 18288), (113, 18345),

Gene: Lennon_29 Start: 23999, Stop: 24406, Start Num: 54

Candidate Starts for Lennon_29:

(Start: 54 @23999 has 42 MA's), (Start: 63 @24020 has 2 MA's), (78, 24122), (96, 24197), (106, 24284), (115, 24335),

Gene: Leonard_27 Start: 20976, Stop: 21422, Start Num: 51

Candidate Starts for Leonard_27:

(Start: 51 @20976 has 5 MA's), (Start: 56 @20988 has 13 MA's), (Start: 63 @20997 has 2 MA's), (68, 21030), (71, 21048), (78, 21099), (93, 21168), (100, 21246),

Gene: Lephleur_26 Start: 20481, Stop: 20837, Start Num: 58

Candidate Starts for Lephleur_26:

(16, 20208), (21, 20256), (30, 20352), (Start: 58 @20481 has 179 MA's), (81, 20601), (89, 20670), (94, 20691),

Gene: LestyG_25 Start: 19012, Stop: 19383, Start Num: 58

Candidate Starts for LestyG_25:

(35, 18937), (36, 18946), (Start: 58 @19012 has 179 MA's), (Start: 63 @19027 has 2 MA's), (73, 19084), (74, 19090), (78, 19129), (81, 19138),

Gene: Ligma_21 Start: 16902, Stop: 17228, Start Num: 56

Candidate Starts for Ligma_21:

(8, 16536), (9, 16554), (15, 16620), (19, 16665), (25, 16692), (28, 16758), (Start: 56 @16902 has 13 MA's), (75, 16995), (78, 17022), (109, 17196),

Gene: LilHam_26 Start: 20810, Stop: 21205, Start Num: 54

Candidate Starts for LilHam_26:

(Start: 54 @20810 has 42 MA's), (68, 20858), (71, 20876), (78, 20927), (98, 21020), (106, 21089), (117, 21164),

Gene: LilMcDreamy_21 Start: 18995, Stop: 19306, Start Num: 60

Candidate Starts for LilMcDreamy_21:

(Start: 60 @18995 has 192 MA's), (73, 19064), (75, 19082), (81, 19118), (90, 19151), (101, 19235),

Gene: LittleMunchkin_23 Start: 19735, Stop: 20055, Start Num: 58

Candidate Starts for LittleMunchkin_23:

(6, 19348), (9, 19393), (25, 19531), (27, 19576), (28, 19597), (Start: 58 @19735 has 179 MA's), (75, 19828), (78, 19855), (109, 20023),

Gene: LizLemon_26 Start: 20598, Stop: 20954, Start Num: 58

Candidate Starts for LizLemon_26:

(21, 20373), (30, 20469), (Start: 58 @20598 has 179 MA's), (81, 20718), (89, 20787), (94, 20808),

Gene: Lolalove_22 Start: 18973, Stop: 19329, Start Num: 60

Candidate Starts for Lolalove_22:

(39, 18907), (43, 18922), (49, 18937), (Start: 60 @18973 has 192 MA's), (Start: 63 @18982 has 2 MA's), (73, 19045), (75, 19063), (78, 19090), (79, 19093), (81, 19099),

Gene: Longacauda_23 Start: 18047, Stop: 18376, Start Num: 60

Candidate Starts for Longacauda_23:

(Start: 60 @18047 has 192 MA's), (Start: 63 @18056 has 2 MA's), (Start: 64 @18059 has 1 MA's), (73, 18116), (80, 18167), (104, 18284), (113, 18341),

Gene: Lopsy_23 Start: 17911, Stop: 18231, Start Num: 63

Candidate Starts for Lopsy_23:

(Start: 58 @17896 has 179 MA's), (Start: 60 @17902 has 192 MA's), (Start: 63 @17911 has 2 MA's), (Start: 64 @17914 has 1 MA's), (73, 17971), (80, 18022), (104, 18139), (113, 18196),

Gene: LostAndPhound_23 Start: 18053, Stop: 18382, Start Num: 60

Candidate Starts for LostAndPhound_23:

(Start: 58 @18047 has 179 MA's), (Start: 60 @18053 has 192 MA's), (Start: 63 @18062 has 2 MA's), (Start: 64 @18065 has 1 MA's), (73, 18122), (80, 18173), (104, 18290), (113, 18347),

Gene: Love_32 Start: 23763, Stop: 24170, Start Num: 54

Candidate Starts for Love_32:

(Start: 54 @23763 has 42 MA's), (Start: 63 @23784 has 2 MA's), (78, 23886), (96, 23961), (106, 24048), (115, 24099),

Gene: LuckyMarjie_23 Start: 18066, Stop: 18395, Start Num: 60

Candidate Starts for LuckyMarjie_23:

(Start: 58 @18060 has 179 MA's), (Start: 60 @18066 has 192 MA's), (Start: 63 @18075 has 2 MA's), (Start: 64 @18078 has 1 MA's), (73, 18135), (80, 18186), (104, 18303), (113, 18360),

Gene: Lulumae_23 Start: 18038, Stop: 18373, Start Num: 58

Candidate Starts for Lulumae_23:

(Start: 58 @18038 has 179 MA's), (Start: 60 @18044 has 192 MA's), (Start: 63 @18053 has 2 MA's), (Start: 64 @18056 has 1 MA's), (73, 18113), (80, 18164), (104, 18281), (113, 18338),

Gene: Lulwa_24 Start: 18331, Stop: 18660, Start Num: 60

Candidate Starts for Lulwa_24:

(Start: 58 @18325 has 179 MA's), (Start: 60 @18331 has 192 MA's), (Start: 63 @18340 has 2 MA's), (Start: 64 @18343 has 1 MA's), (73, 18400), (80, 18451), (104, 18568), (113, 18625),

Gene: Lumine_23 Start: 18040, Stop: 18369, Start Num: 60

Candidate Starts for Lumine_23:

(Start: 58 @18034 has 179 MA's), (Start: 60 @18040 has 192 MA's), (Start: 63 @18049 has 2 MA's), (Start: 64 @18052 has 1 MA's), (73, 18109), (80, 18160), (104, 18277), (113, 18334),

Gene: MRabcd_23 Start: 18045, Stop: 18374, Start Num: 60

Candidate Starts for MRabcd_23:

(Start: 58 @18039 has 179 MA's), (Start: 60 @18045 has 192 MA's), (Start: 63 @18054 has 2 MA's), (Start: 64 @18057 has 1 MA's), (73, 18114), (80, 18165), (104, 18282), (113, 18339),

Gene: Mag7_23 Start: 17900, Stop: 18250, Start Num: 60

Candidate Starts for Mag7_23:

(Start: 58 @17894 has 179 MA's), (Start: 60 @17900 has 192 MA's), (Start: 63 @17909 has 2 MA's), (Start: 64 @17912 has 1 MA's), (73, 17969), (80, 18020), (104, 18155), (113, 18212),

Gene: Magic8_24 Start: 18338, Stop: 18688, Start Num: 60

Candidate Starts for Magic8_24:

(Start: 58 @18332 has 179 MA's), (Start: 60 @18338 has 192 MA's), (Start: 63 @18347 has 2 MA's), (Start: 64 @18350 has 1 MA's), (73, 18407), (80, 18458), (104, 18593), (113, 18650),

Gene: Magpie_21 Start: 18796, Stop: 19152, Start Num: 60

Candidate Starts for Magpie_21:

(49, 18760), (Start: 60 @18796 has 192 MA's), (Start: 63 @18805 has 2 MA's), (73, 18868), (75, 18886), (78, 18913), (79, 18916), (81, 18922),

Gene: MakoManhole_23 Start: 18284, Stop: 18625, Start Num: 58

Candidate Starts for MakoManhole_23:

(Start: 58 @18284 has 179 MA's), (Start: 63 @18299 has 2 MA's), (73, 18362), (75, 18380), (80, 18413), (102, 18548), (112, 18608),

Gene: Mana_23 Start: 18047, Stop: 18376, Start Num: 60

Candidate Starts for Mana_23:

(Start: 58 @18041 has 179 MA's), (Start: 60 @18047 has 192 MA's), (Start: 63 @18056 has 2 MA's), (Start: 64 @18059 has 1 MA's), (73, 18116), (80, 18167), (104, 18284), (113, 18341),

Gene: Manad_23 Start: 17891, Stop: 18226, Start Num: 58

Candidate Starts for Manad_23:

(Start: 58 @17891 has 179 MA's), (Start: 60 @17897 has 192 MA's), (Start: 63 @17906 has 2 MA's), (Start: 64 @17909 has 1 MA's), (73, 17966), (80, 18017), (104, 18134), (113, 18191),

Gene: Mariokart_21 Start: 16793, Stop: 17122, Start Num: 58

Candidate Starts for Mariokart_21:

(Start: 58 @16793 has 179 MA's), (Start: 63 @16808 has 2 MA's), (75, 16886), (80, 16919), (109, 17090),

Gene: Marley1013_25 Start: 19790, Stop: 20164, Start Num: 58

Candidate Starts for Marley1013_25:

(35, 19715), (36, 19724), (Start: 58 @19790 has 179 MA's), (Start: 63 @19805 has 2 MA's), (73, 19862), (74, 19868), (78, 19907), (81, 19916),

Gene: Maru_23 Start: 18046, Stop: 18375, Start Num: 60

Candidate Starts for Maru_23:

(Start: 58 @18040 has 179 MA's), (Start: 60 @18046 has 192 MA's), (Start: 63 @18055 has 2 MA's), (Start: 64 @18058 has 1 MA's), (73, 18115), (80, 18166), (104, 18283), (113, 18340),

Gene: Maskar_23 Start: 17893, Stop: 18222, Start Num: 60

Candidate Starts for Maskar_23:

(Start: 60 @17893 has 192 MA's), (Start: 63 @17902 has 2 MA's), (Start: 64 @17905 has 1 MA's), (73, 17962), (80, 18013), (104, 18130), (113, 18187),

Gene: MasterPo_26 Start: 20481, Stop: 20834, Start Num: 58

Candidate Starts for MasterPo_26:

(16, 20208), (21, 20256), (30, 20352), (Start: 58 @20481 has 179 MA's), (81, 20601), (89, 20667), (94, 20688),

Gene: Matalotodo_23 Start: 18339, Stop: 18668, Start Num: 60

Candidate Starts for Matalotodo_23:

(Start: 58 @18333 has 179 MA's), (Start: 60 @18339 has 192 MA's), (Start: 63 @18348 has 2 MA's), (Start: 64 @18351 has 1 MA's), (73, 18408), (80, 18459), (104, 18576), (113, 18633),

Gene: McKinley_31 Start: 23795, Stop: 24202, Start Num: 54

Candidate Starts for McKinley_31:

(Start: 54 @23795 has 42 MA's), (Start: 63 @23816 has 2 MA's), (78, 23918), (96, 23993), (106, 24080), (115, 24131),

Gene: Mcshane_23 Start: 18036, Stop: 18371, Start Num: 58

Candidate Starts for Mcshane_23:

(Start: 58 @18036 has 179 MA's), (Start: 60 @18042 has 192 MA's), (Start: 63 @18051 has 2 MA's), (Start: 64 @18054 has 1 MA's), (73, 18111), (80, 18162), (104, 18279), (113, 18336),

Gene: Mecca_23 Start: 18039, Stop: 18368, Start Num: 60

Candidate Starts for Mecca_23:

(Start: 58 @18033 has 179 MA's), (Start: 60 @18039 has 192 MA's), (Start: 63 @18048 has 2 MA's), (Start: 64 @18051 has 1 MA's), (73, 18108), (80, 18159), (104, 18276), (113, 18333),

Gene: Megabear_18 Start: 17761, Stop: 18147, Start Num: 59

Candidate Starts for Megabear_18:

(40, 17707), (Start: 59 @17761 has 9 MA's), (61, 17767), (Start: 63 @17773 has 2 MA's), (107, 18049),

Gene: Megamind20_24 Start: 18054, Stop: 18389, Start Num: 58

Candidate Starts for Megamind20_24:

(Start: 58 @18054 has 179 MA's), (Start: 60 @18060 has 192 MA's), (Start: 63 @18069 has 2 MA's), (Start: 64 @18072 has 1 MA's), (73, 18129), (80, 18180), (104, 18297), (113, 18354),

Gene: Megatron_24 Start: 18343, Stop: 18672, Start Num: 60

Candidate Starts for Megatron_24:

(Start: 58 @18337 has 179 MA's), (Start: 60 @18343 has 192 MA's), (Start: 63 @18352 has 2 MA's), (Start: 64 @18355 has 1 MA's), (73, 18412), (80, 18463), (104, 18580), (113, 18637),

Gene: MelBins_28 Start: 21184, Stop: 21630, Start Num: 51

Candidate Starts for MelBins_28:

(Start: 51 @21184 has 5 MA's), (Start: 56 @21196 has 13 MA's), (68, 21238), (70, 21253), (71, 21256), (76, 21289), (78, 21307), (93, 21376),

Gene: Melc17_24 Start: 18335, Stop: 18664, Start Num: 60

Candidate Starts for Melc17_24:

(Start: 60 @18335 has 192 MA's), (Start: 63 @18344 has 2 MA's), (Start: 64 @18347 has 1 MA's), (73, 18404), (80, 18455), (104, 18572), (113, 18629),

Gene: MelsMeow_23 Start: 17900, Stop: 18250, Start Num: 60

Candidate Starts for MelsMeow_23:

(Start: 58 @17894 has 179 MA's), (Start: 60 @17900 has 192 MA's), (Start: 63 @17909 has 2 MA's), (Start: 64 @17912 has 1 MA's), (73, 17969), (80, 18020), (104, 18155), (113, 18212),

Gene: Mesh1_24 Start: 18345, Stop: 18680, Start Num: 58

Candidate Starts for Mesh1_24:

(Start: 58 @18345 has 179 MA's), (Start: 60 @18351 has 192 MA's), (Start: 63 @18360 has 2 MA's), (Start: 64 @18363 has 1 MA's), (73, 18420), (80, 18471), (104, 18588), (113, 18645),

Gene: MichaelPhcott_23 Start: 17894, Stop: 18250, Start Num: 58

Candidate Starts for MichaelPhcott_23:

(Start: 58 @17894 has 179 MA's), (Start: 60 @17900 has 192 MA's), (Start: 63 @17909 has 2 MA's), (Start: 64 @17912 has 1 MA's), (73, 17969), (80, 18020), (104, 18155), (113, 18212),

Gene: Mikota_24 Start: 18327, Stop: 18656, Start Num: 60

Candidate Starts for Mikota_24:

(Start: 58 @18321 has 179 MA's), (Start: 60 @18327 has 192 MA's), (Start: 63 @18336 has 2 MA's), (Start: 64 @18339 has 1 MA's), (73, 18396), (80, 18447), (104, 18564), (113, 18621),

Gene: MiniBoss_24 Start: 18330, Stop: 18659, Start Num: 60

Candidate Starts for MiniBoss_24:

(Start: 58 @18324 has 179 MA's), (Start: 60 @18330 has 192 MA's), (Start: 63 @18339 has 2 MA's), (Start: 64 @18342 has 1 MA's), (73, 18399), (80, 18450), (104, 18567), (113, 18624),

Gene: MitKao_24 Start: 18042, Stop: 18377, Start Num: 58

Candidate Starts for MitKao_24:

(Start: 58 @18042 has 179 MA's), (Start: 60 @18048 has 192 MA's), (Start: 63 @18057 has 2 MA's), (Start: 64 @18060 has 1 MA's), (73, 18117), (80, 18168), (104, 18285), (113, 18342),

Gene: Mithril_22 Start: 18977, Stop: 19333, Start Num: 60

Candidate Starts for Mithril_22:

(39, 18911), (43, 18926), (49, 18941), (Start: 60 @18977 has 192 MA's), (Start: 63 @18986 has 2 MA's), (73, 19049), (75, 19067), (78, 19094), (79, 19097), (81, 19103),

Gene: MmasiCarm_25 Start: 19003, Stop: 19374, Start Num: 58

Candidate Starts for MmasiCarm_25:

(35, 18928), (36, 18937), (Start: 58 @19003 has 179 MA's), (Start: 63 @19018 has 2 MA's), (73, 19075), (74, 19081), (78, 19120), (81, 19129),

Gene: MoontowerMania_28 Start: 22606, Stop: 23013, Start Num: 54

Candidate Starts for MoontowerMania_28:

(Start: 54 @22606 has 42 MA's), (Start: 63 @22627 has 2 MA's), (78, 22729), (96, 22804), (106, 22891),

Gene: Morgushi_24 Start: 18047, Stop: 18382, Start Num: 58

Candidate Starts for Morgushi_24:

(Start: 58 @18047 has 179 MA's), (Start: 60 @18053 has 192 MA's), (Start: 63 @18062 has 2 MA's), (Start: 64 @18065 has 1 MA's), (73, 18122), (80, 18173), (104, 18290), (113, 18347),

Gene: Mortcellus_24 Start: 19646, Stop: 20017, Start Num: 58

Candidate Starts for Mortcellus_24:

(35, 19571), (36, 19580), (Start: 58 @19646 has 179 MA's), (Start: 63 @19661 has 2 MA's), (73, 19718), (74, 19724), (78, 19763), (81, 19772),

Gene: Morty_24 Start: 18352, Stop: 18681, Start Num: 60

Candidate Starts for Morty_24:

(Start: 58 @18346 has 179 MA's), (Start: 60 @18352 has 192 MA's), (Start: 63 @18361 has 2 MA's), (Start: 64 @18364 has 1 MA's), (73, 18421), (80, 18472), (104, 18589), (113, 18646),

Gene: Morty007_25 Start: 19790, Stop: 20164, Start Num: 58

Candidate Starts for Morty007_25:

(35, 19715), (36, 19724), (Start: 58 @19790 has 179 MA's), (Start: 63 @19805 has 2 MA's), (73, 19862), (74, 19868), (78, 19907), (81, 19916),

Gene: Mosaic_23 Start: 18048, Stop: 18383, Start Num: 58

Candidate Starts for Mosaic_23:

(Start: 58 @18048 has 179 MA's), (Start: 60 @18054 has 192 MA's), (Start: 63 @18063 has 2 MA's), (Start: 64 @18066 has 1 MA's), (73, 18123), (80, 18174), (104, 18291), (113, 18348),

Gene: MossRose_23 Start: 18263, Stop: 18604, Start Num: 58

Candidate Starts for MossRose_23:

(Start: 58 @18263 has 179 MA's), (Start: 63 @18278 has 2 MA's), (73, 18341), (75, 18359), (80, 18392), (102, 18527), (112, 18587),

Gene: MrPhizzler_23 Start: 18054, Stop: 18383, Start Num: 60

Candidate Starts for MrPhizzler_23:

(Start: 60 @18054 has 192 MA's), (Start: 63 @18063 has 2 MA's), (Start: 64 @18066 has 1 MA's), (73, 18123), (80, 18174), (104, 18291), (113, 18348),

Gene: Mudslide_22 Start: 19224, Stop: 19580, Start Num: 60

Candidate Starts for Mudslide_22:

(20, 18981), (39, 19158), (43, 19173), (49, 19188), (Start: 60 @19224 has 192 MA's), (Start: 63 @19233 has 2 MA's), (73, 19296), (75, 19314), (78, 19341), (79, 19344), (81, 19350),

Gene: Mulan_23 Start: 18048, Stop: 18377, Start Num: 60

Candidate Starts for Mulan_23:

(Start: 58 @18042 has 179 MA's), (Start: 60 @18048 has 192 MA's), (Start: 63 @18057 has 2 MA's), (Start: 64 @18060 has 1 MA's), (73, 18117), (80, 18168), (104, 18285), (113, 18342),

Gene: Murdoc_24 Start: 18335, Stop: 18670, Start Num: 58

Candidate Starts for Murdoc_24:

(Start: 58 @18335 has 179 MA's), (Start: 60 @18341 has 192 MA's), (Start: 63 @18350 has 2 MA's), (Start: 64 @18353 has 1 MA's), (73, 18410), (80, 18461), (104, 18578), (113, 18635),

Gene: Mutante_23 Start: 18051, Stop: 18380, Start Num: 60

Candidate Starts for Mutante_23:

(Start: 58 @18045 has 179 MA's), (Start: 60 @18051 has 192 MA's), (Start: 63 @18060 has 2 MA's), (Start: 64 @18063 has 1 MA's), (73, 18120), (80, 18171), (104, 18288), (113, 18345),

Gene: Mysterious_25 Start: 19302, Stop: 19640, Start Num: 57

Candidate Starts for Mysterious_25:

(Start: 57 @19302 has 3 MA's), (Start: 60 @19308 has 192 MA's), (73, 19377), (75, 19395), (77, 19407), (81, 19431),

Gene: NHagos_21 Start: 16805, Stop: 17149, Start Num: 58

Candidate Starts for NHagos_21:

(Start: 58 @16805 has 179 MA's), (Start: 63 @16820 has 2 MA's), (73, 16883), (75, 16901),

Gene: Nacho_0024 Start: 18334, Stop: 18669, Start Num: 58

Candidate Starts for Nacho_0024:

(Start: 58 @18334 has 179 MA's), (Start: 60 @18340 has 192 MA's), (Start: 63 @18349 has 2 MA's), (Start: 64 @18352 has 1 MA's), (73, 18409), (80, 18460), (104, 18577), (113, 18634),

Gene: Nanao_21 Start: 17943, Stop: 18299, Start Num: 60

Candidate Starts for Nanao_21:

(39, 17877), (43, 17892), (Start: 60 @17943 has 192 MA's), (Start: 63 @17952 has 2 MA's), (73, 18015), (75, 18033), (78, 18060), (79, 18063), (81, 18069),

Gene: Nangang_24 Start: 19007, Stop: 19342, Start Num: 60

Candidate Starts for Nangang_24:

(39, 18941), (Start: 57 @19001 has 3 MA's), (Start: 60 @19007 has 192 MA's), (73, 19076), (79, 19124), (81, 19130),

Gene: Natkenzie_29 Start: 22570, Stop: 22980, Start Num: 56

Candidate Starts for Natkenzie_29:

(Start: 56 @22570 has 13 MA's), (Start: 63 @22582 has 2 MA's), (70, 22630), (71, 22633), (75, 22657), (79, 22687), (92, 22744), (99, 22804),

Gene: Neos5_25 Start: 19800, Stop: 20171, Start Num: 58

Candidate Starts for Neos5_25:

(35, 19725), (36, 19734), (Start: 58 @19800 has 179 MA's), (Start: 63 @19815 has 2 MA's), (73, 19872), (74, 19878), (78, 19917), (81, 19926),

Gene: Newman_24 Start: 18340, Stop: 18669, Start Num: 60

Candidate Starts for Newman_24:

(Start: 58 @18334 has 179 MA's), (Start: 60 @18340 has 192 MA's), (Start: 63 @18349 has 2 MA's), (Start: 64 @18352 has 1 MA's), (73, 18409), (80, 18460), (104, 18577), (113, 18634),

Gene: Nicole21_24 Start: 18332, Stop: 18661, Start Num: 60

Candidate Starts for Nicole21_24:

(Start: 58 @18326 has 179 MA's), (Start: 60 @18332 has 192 MA's), (Start: 63 @18341 has 2 MA's), (Start: 64 @18344 has 1 MA's), (73, 18401), (80, 18452), (104, 18569), (113, 18626),

Gene: Nigel_20 Start: 17827, Stop: 18183, Start Num: 60

Candidate Starts for Nigel_20:

(47, 17785), (Start: 60 @17827 has 192 MA's), (75, 17917), (78, 17944), (79, 17947), (81, 17953), (85, 17986), (86, 17998), (97, 18043), (114, 18175),

Gene: Nordenberg_23 Start: 21965, Stop: 22372, Start Num: 54

Candidate Starts for Nordenberg_23:

(Start: 54 @21965 has 42 MA's), (Start: 63 @21986 has 2 MA's), (78, 22088), (96, 22163), (106, 22250), (115, 22301),

Gene: Nozo_25 Start: 19770, Stop: 20141, Start Num: 58

Candidate Starts for Nozo_25:

(35, 19695), (36, 19704), (Start: 58 @19770 has 179 MA's), (Start: 63 @19785 has 2 MA's), (73, 19842), (74, 19848), (78, 19887), (81, 19896),

Gene: Numberten_24 Start: 18339, Stop: 18674, Start Num: 58

Candidate Starts for Numberten_24:

(Start: 58 @18339 has 179 MA's), (Start: 60 @18345 has 192 MA's), (Start: 63 @18354 has 2 MA's), (Start: 64 @18357 has 1 MA's), (73, 18414), (80, 18465), (104, 18582), (113, 18639),

Gene: Nyala_23 Start: 18043, Stop: 18372, Start Num: 60

Candidate Starts for Nyala_23:

(Start: 58 @18037 has 179 MA's), (Start: 60 @18043 has 192 MA's), (Start: 63 @18052 has 2 MA's), (Start: 64 @18055 has 1 MA's), (73, 18112), (80, 18163), (104, 18280), (113, 18337),

Gene: OSmaximus_24 Start: 18346, Stop: 18699, Start Num: 58

Candidate Starts for OSmaximus_24:

(Start: 58 @18346 has 179 MA's), (Start: 60 @18352 has 192 MA's), (Start: 63 @18361 has 2 MA's), (Start: 64 @18364 has 1 MA's), (73, 18421), (80, 18472), (104, 18607), (113, 18664),

Gene: Obutu_25 Start: 19003, Stop: 19374, Start Num: 58

Candidate Starts for Obutu_25:

(35, 18928), (36, 18937), (Start: 58 @19003 has 179 MA's), (Start: 63 @19018 has 2 MA's), (73, 19075), (74, 19081), (78, 19120), (81, 19129),

Gene: Olak_24 Start: 18038, Stop: 18373, Start Num: 58

Candidate Starts for Olak_24:

(Start: 58 @18038 has 179 MA's), (Start: 60 @18044 has 192 MA's), (Start: 63 @18053 has 2 MA's), (Start: 64 @18056 has 1 MA's), (73, 18113), (80, 18164), (104, 18281), (113, 18338),

Gene: Oline_23 Start: 17907, Stop: 18236, Start Num: 60

Candidate Starts for Oline_23:

(Start: 60 @17907 has 192 MA's), (Start: 63 @17916 has 2 MA's), (Start: 64 @17919 has 1 MA's), (73, 17976), (80, 18027), (104, 18144), (113, 18201),

Gene: Olive_24 Start: 18333, Stop: 18662, Start Num: 60

Candidate Starts for Olive_24:

(Start: 58 @18327 has 179 MA's), (Start: 60 @18333 has 192 MA's), (Start: 63 @18342 has 2 MA's), (Start: 64 @18345 has 1 MA's), (73, 18402), (80, 18453), (104, 18570), (113, 18627),

Gene: OliverWalter_24 Start: 18349, Stop: 18678, Start Num: 60

Candidate Starts for OliverWalter_24:

(Start: 58 @18343 has 179 MA's), (Start: 60 @18349 has 192 MA's), (Start: 63 @18358 has 2 MA's), (Start: 64 @18361 has 1 MA's), (73, 18418), (80, 18469), (104, 18586), (113, 18643),

Gene: Omniscient_24 Start: 18352, Stop: 18681, Start Num: 60

Candidate Starts for Omniscient_24:

(Start: 58 @18346 has 179 MA's), (Start: 60 @18352 has 192 MA's), (Start: 63 @18361 has 2 MA's), (Start: 64 @18364 has 1 MA's), (73, 18421), (80, 18472), (104, 18589), (113, 18646),

Gene: Oosterbaan_24 Start: 18338, Stop: 18673, Start Num: 58

Candidate Starts for Oosterbaan_24:

(Start: 58 @18338 has 179 MA's), (Start: 60 @18344 has 192 MA's), (Start: 63 @18353 has 2 MA's), (Start: 64 @18356 has 1 MA's), (73, 18413), (80, 18464), (104, 18581), (113, 18638),

Gene: Opia_26 Start: 20481, Stop: 20834, Start Num: 58

Candidate Starts for Opia_26:

(16, 20208), (21, 20256), (30, 20352), (Start: 58 @20481 has 179 MA's), (81, 20601), (89, 20667), (94, 20688),

Gene: OrangeOswald_25 Start: 19008, Stop: 19379, Start Num: 58

Candidate Starts for OrangeOswald_25:

(35, 18933), (36, 18942), (Start: 58 @19008 has 179 MA's), (Start: 63 @19023 has 2 MA's), (73, 19080), (74, 19086), (78, 19125), (81, 19134),

Gene: Orfeu_23 Start: 18039, Stop: 18374, Start Num: 58

Candidate Starts for Orfeu_23:

(29, 17901), (44, 17997), (Start: 58 @18039 has 179 MA's), (Start: 60 @18045 has 192 MA's), (Start: 63 @18054 has 2 MA's), (Start: 64 @18057 has 1 MA's), (73, 18114), (80, 18165), (104, 18282), (113, 18339),

Gene: Orion_24 Start: 18335, Stop: 18670, Start Num: 58

Candidate Starts for Orion_24:

(Start: 58 @18335 has 179 MA's), (Start: 60 @18341 has 192 MA's), (Start: 63 @18350 has 2 MA's), (Start: 64 @18353 has 1 MA's), (73, 18410), (80, 18461), (104, 18578), (113, 18635),

Gene: Orwigg_24 Start: 18032, Stop: 18367, Start Num: 58

Candidate Starts for Orwigg_24:

(Start: 58 @18032 has 179 MA's), (Start: 60 @18038 has 192 MA's), (Start: 63 @18047 has 2 MA's), (Start: 64 @18050 has 1 MA's), (73, 18107), (80, 18158), (104, 18275), (113, 18332),

Gene: PG1_24 Start: 18348, Stop: 18683, Start Num: 58

Candidate Starts for PG1_24:

(Start: 58 @18348 has 179 MA's), (Start: 60 @18354 has 192 MA's), (Start: 63 @18363 has 2 MA's), (Start: 64 @18366 has 1 MA's), (73, 18423), (80, 18474), (104, 18591), (113, 18648),

Gene: PR_18 Start: 17788, Stop: 18174, Start Num: 59

Candidate Starts for PR_18:

(40, 17734), (Start: 59 @17788 has 9 MA's), (61, 17794), (Start: 63 @17800 has 2 MA's), (107, 18076),

Gene: Pacifista_25 Start: 18039, Stop: 18374, Start Num: 58

Candidate Starts for Pacifista_25:

(Start: 58 @18039 has 179 MA's), (Start: 60 @18045 has 192 MA's), (Start: 63 @18054 has 2 MA's), (Start: 64 @18057 has 1 MA's), (73, 18114), (80, 18165), (104, 18282), (113, 18339),

Gene: Paries_31 Start: 23422, Stop: 23838, Start Num: 54

Candidate Starts for Paries_31:

(Start: 54 @23422 has 42 MA's), (Start: 63 @23443 has 2 MA's), (78, 23545), (96, 23620), (106, 23707), (115, 23758),

Gene: PenguinLover67_26 Start: 20575, Stop: 20904, Start Num: 60

Candidate Starts for PenguinLover67_26:

(Start: 60 @20575 has 192 MA's), (75, 20662), (80, 20695),

Gene: Phaedrus_23 Start: 18924, Stop: 19295, Start Num: 58

Candidate Starts for Phaedrus_23:

(35, 18849), (36, 18858), (Start: 58 @18924 has 179 MA's), (Start: 63 @18939 has 2 MA's), (73, 18996), (74, 19002), (78, 19041), (81, 19050),

Gene: Phamished_24 Start: 18349, Stop: 18678, Start Num: 60

Candidate Starts for Phamished_24:

(Start: 58 @18343 has 179 MA's), (Start: 60 @18349 has 192 MA's), (Start: 63 @18358 has 2 MA's), (Start: 64 @18361 has 1 MA's), (73, 18418), (80, 18469), (104, 18586), (113, 18643),

Gene: Phantasmagoria_26 Start: 20477, Stop: 20830, Start Num: 58

Candidate Starts for Phantasmagoria_26:

(16, 20204), (21, 20252), (30, 20348), (Start: 58 @20477 has 179 MA's), (81, 20597), (89, 20663), (94, 20684),

Gene: Phareon_24 Start: 18049, Stop: 18378, Start Num: 60

Candidate Starts for Phareon_24:

(Start: 58 @18043 has 179 MA's), (Start: 60 @18049 has 192 MA's), (Start: 63 @18058 has 2 MA's), (Start: 64 @18061 has 1 MA's), (73, 18118), (80, 18169), (104, 18286), (113, 18343),

Gene: PhatCats2014_24 Start: 18353, Stop: 18688, Start Num: 58

Candidate Starts for PhatCats2014_24:

(Start: 58 @18353 has 179 MA's), (Start: 60 @18359 has 192 MA's), (Start: 63 @18368 has 2 MA's), (Start: 64 @18371 has 1 MA's), (73, 18428), (80, 18479), (104, 18596), (113, 18653),

Gene: PhatLouie_24 Start: 18342, Stop: 18671, Start Num: 60

Candidate Starts for PhatLouie_24:

(Start: 60 @18342 has 192 MA's), (Start: 63 @18351 has 2 MA's), (Start: 64 @18354 has 1 MA's), (73, 18411), (80, 18462), (104, 18579), (113, 18636),

Gene: Phauci_20 Start: 17577, Stop: 18011, Start Num: 56

Candidate Starts for Phauci_20:

(Start: 51 @17565 has 5 MA's), (Start: 56 @17577 has 13 MA's), (Start: 63 @17586 has 2 MA's), (68, 17619), (70, 17634), (71, 17637), (78, 17688),

Gene: Phayeta_25 Start: 18884, Stop: 19255, Start Num: 58

Candidate Starts for Phayeta_25:

(35, 18809), (36, 18818), (Start: 58 @18884 has 179 MA's), (Start: 63 @18899 has 2 MA's), (73, 18956), (74, 18962), (78, 19001), (81, 19010),

Gene: Phelemich_24 Start: 19298, Stop: 19636, Start Num: 57

Candidate Starts for Phelemich_24:

(Start: 57 @19298 has 3 MA's), (Start: 60 @19304 has 192 MA's), (73, 19373), (75, 19391), (77, 19403), (81, 19427),

Gene: PhenghisKhan_23 Start: 17894, Stop: 18250, Start Num: 58

Candidate Starts for PhenghisKhan_23:

(Start: 58 @17894 has 179 MA's), (Start: 60 @17900 has 192 MA's), (Start: 63 @17909 has 2 MA's), (Start: 64 @17912 has 1 MA's), (73, 17969), (80, 18020), (104, 18155), (113, 18212),

Gene: Pherdinand_24 Start: 18349, Stop: 18678, Start Num: 60

Candidate Starts for Pherdinand_24:

(Start: 58 @18343 has 179 MA's), (Start: 60 @18349 has 192 MA's), (Start: 63 @18358 has 2 MA's), (Start: 64 @18361 has 1 MA's), (73, 18418), (80, 18469), (104, 18586), (113, 18643),

Gene: Phergie_23 Start: 17894, Stop: 18244, Start Num: 60

Candidate Starts for Phergie_23:

(Start: 58 @17888 has 179 MA's), (Start: 60 @17894 has 192 MA's), (Start: 63 @17903 has 2 MA's), (Start: 64 @17906 has 1 MA's), (73, 17963), (80, 18014), (104, 18149), (113, 18206),

Gene: Philly_24 Start: 18874, Stop: 19245, Start Num: 58

Candidate Starts for Philly_24:

(35, 18799), (36, 18808), (Start: 58 @18874 has 179 MA's), (Start: 63 @18889 has 2 MA's), (73, 18946), (74, 18952), (78, 18991), (81, 19000),

Gene: Phinally_27 Start: 20973, Stop: 21419, Start Num: 51

Candidate Starts for Phinally_27:

(Start: 51 @20973 has 5 MA's), (Start: 56 @20985 has 13 MA's), (Start: 63 @20994 has 2 MA's), (68, 21027), (71, 21045), (78, 21096), (93, 21165), (100, 21243),

Gene: Phipps_24 Start: 18313, Stop: 18648, Start Num: 58

Candidate Starts for Phipps_24:

(Start: 58 @18313 has 179 MA's), (Start: 60 @18319 has 192 MA's), (Start: 63 @18328 has 2 MA's), (Start: 64 @18331 has 1 MA's), (73, 18388), (80, 18439), (104, 18556), (113, 18613),

Gene: Phleuron_23 Start: 17900, Stop: 18250, Start Num: 60

Candidate Starts for Phleuron_23:

(Start: 58 @17894 has 179 MA's), (Start: 60 @17900 has 192 MA's), (Start: 63 @17909 has 2 MA's), (Start: 64 @17912 has 1 MA's), (73, 17969), (80, 18020), (104, 18155), (113, 18212),

Gene: Phlyer_25 Start: 19743, Stop: 20114, Start Num: 58

Candidate Starts for Phlyer_25:

(35, 19668), (36, 19677), (Start: 58 @19743 has 179 MA's), (Start: 63 @19758 has 2 MA's), (73, 19815), (74, 19821), (78, 19860), (81, 19869),

Gene: PhrankReynolds_23 Start: 17894, Stop: 18250, Start Num: 58

Candidate Starts for PhrankReynolds_23:

(Start: 58 @17894 has 179 MA's), (Start: 60 @17900 has 192 MA's), (Start: 63 @17909 has 2 MA's), (Start: 64 @17912 has 1 MA's), (73, 17969), (80, 18020), (104, 18155), (113, 18212),

Gene: PhrodoBaggins_23 Start: 18337, Stop: 18666, Start Num: 60

Candidate Starts for PhrodoBaggins_23:

(Start: 58 @18331 has 179 MA's), (Start: 60 @18337 has 192 MA's), (Start: 63 @18346 has 2 MA's), (Start: 64 @18349 has 1 MA's), (73, 18406), (80, 18457), (104, 18574), (113, 18631),

Gene: Phunky_24 Start: 18343, Stop: 18672, Start Num: 60

Candidate Starts for Phunky_24:

(Start: 58 @18337 has 179 MA's), (Start: 60 @18343 has 192 MA's), (Start: 63 @18352 has 2 MA's), (Start: 64 @18355 has 1 MA's), (73, 18412), (80, 18463), (104, 18580), (113, 18637),

Gene: Piglet_0023 Start: 18337, Stop: 18672, Start Num: 58

Candidate Starts for Piglet_0023:

(Start: 58 @18337 has 179 MA's), (Start: 60 @18343 has 192 MA's), (Start: 63 @18352 has 2 MA's), (Start: 64 @18355 has 1 MA's), (73, 18412), (80, 18463), (104, 18580), (113, 18637),

Gene: Pine5_24 Start: 19184, Stop: 19603, Start Num: 58

Candidate Starts for Pine5_24:

(14, 18896), (18, 18938), (28, 19037), (34, 19076), (Start: 58 @19184 has 179 MA's), (62, 19196), (76, 19286), (116, 19565),

Gene: PinheadLarry_24 Start: 18054, Stop: 18389, Start Num: 58

Candidate Starts for PinheadLarry_24:

(Start: 58 @18054 has 179 MA's), (Start: 60 @18060 has 192 MA's), (Start: 63 @18069 has 2 MA's), (Start: 64 @18072 has 1 MA's), (73, 18129), (80, 18180), (104, 18297), (113, 18354),

Gene: Pinkman_23 Start: 17901, Stop: 18230, Start Num: 60

Candidate Starts for Pinkman_23:

(Start: 60 @17901 has 192 MA's), (Start: 63 @17910 has 2 MA's), (Start: 64 @17913 has 1 MA's), (73, 17970), (80, 18021), (104, 18138), (113, 18195),

Gene: Pipefish_25 Start: 19890, Stop: 20264, Start Num: 58

Candidate Starts for Pipefish_25:

(35, 19815), (36, 19824), (Start: 58 @19890 has 179 MA's), (Start: 63 @19905 has 2 MA's), (73, 19962), (74, 19968), (78, 20007), (81, 20016),

Gene: Pipsqueak_24 Start: 18343, Stop: 18678, Start Num: 58

Candidate Starts for Pipsqueak_24:

(Start: 58 @18343 has 179 MA's), (Start: 60 @18349 has 192 MA's), (Start: 63 @18358 has 2 MA's), (Start: 64 @18361 has 1 MA's), (73, 18418), (80, 18469), (104, 18586), (113, 18643),

Gene: Placalicious_23 Start: 18042, Stop: 18371, Start Num: 60

Candidate Starts for Placalicious_23:

(Start: 58 @18036 has 179 MA's), (Start: 60 @18042 has 192 MA's), (Start: 63 @18051 has 2 MA's), (Start: 64 @18054 has 1 MA's), (73, 18111), (80, 18162), (104, 18279), (113, 18336),

Gene: Plmatters_24 Start: 18346, Stop: 18675, Start Num: 60

Candidate Starts for Plmatters_24:

(Start: 58 @18340 has 179 MA's), (Start: 60 @18346 has 192 MA's), (Start: 63 @18355 has 2 MA's), (Start: 64 @18358 has 1 MA's), (73, 18415), (80, 18466), (104, 18583), (113, 18640),

Gene: Podrick_24 Start: 18332, Stop: 18667, Start Num: 58

Candidate Starts for Podrick_24:

(Start: 58 @18332 has 179 MA's), (Start: 60 @18338 has 192 MA's), (Start: 63 @18347 has 2 MA's), (Start: 64 @18350 has 1 MA's), (73, 18407), (80, 18458), (104, 18575), (113, 18632),

Gene: Pops_24 Start: 18346, Stop: 18675, Start Num: 60

Candidate Starts for Pops_24:

(Start: 58 @18340 has 179 MA's), (Start: 60 @18346 has 192 MA's), (Start: 63 @18355 has 2 MA's), (Start: 64 @18358 has 1 MA's), (73, 18415), (80, 18466), (104, 18583), (113, 18640),

Gene: Poster_21 Start: 17944, Stop: 18300, Start Num: 60

Candidate Starts for Poster_21:

(39, 17878), (43, 17893), (Start: 60 @17944 has 192 MA's), (Start: 63 @17953 has 2 MA's), (73, 18016), (75, 18034), (78, 18061), (79, 18064), (81, 18070),

Gene: Potter_23 Start: 18056, Stop: 18385, Start Num: 60

Candidate Starts for Potter_23:

(Start: 58 @18050 has 179 MA's), (Start: 60 @18056 has 192 MA's), (Start: 63 @18065 has 2 MA's), (Start: 64 @18068 has 1 MA's), (73, 18125), (80, 18176), (104, 18293), (113, 18350),

Gene: Prickles_24 Start: 18329, Stop: 18664, Start Num: 58

Candidate Starts for Prickles_24:

(Start: 58 @18329 has 179 MA's), (Start: 60 @18335 has 192 MA's), (Start: 63 @18344 has 2 MA's), (Start: 64 @18347 has 1 MA's), (73, 18404), (80, 18455), (104, 18572), (113, 18629),

Gene: Prince_23 Start: 19136, Stop: 19492, Start Num: 60

Candidate Starts for Prince_23:

(33, 19001), (39, 19070), (43, 19085), (49, 19100), (Start: 60 @19136 has 192 MA's), (Start: 63 @19145 has 2 MA's), (73, 19208), (75, 19226), (78, 19253), (79, 19256), (81, 19262),

Gene: ProfessorX_24 Start: 18327, Stop: 18662, Start Num: 58

Candidate Starts for ProfessorX_24:

(Start: 58 @18327 has 179 MA's), (Start: 60 @18333 has 192 MA's), (Start: 63 @18342 has 2 MA's), (Start: 64 @18345 has 1 MA's), (73, 18402), (80, 18453), (104, 18570), (113, 18627),

Gene: Puhltonio_24 Start: 18343, Stop: 18678, Start Num: 58

Candidate Starts for Puhltonio_24:

(Start: 58 @18343 has 179 MA's), (Start: 60 @18349 has 192 MA's), (Start: 63 @18358 has 2 MA's), (Start: 64 @18361 has 1 MA's), (73, 18418), (80, 18469), (104, 18586), (113, 18643),

Gene: QueenBeane_24 Start: 18335, Stop: 18670, Start Num: 58

Candidate Starts for QueenBeane_24:

(Start: 58 @18335 has 179 MA's), (Start: 60 @18341 has 192 MA's), (Start: 63 @18350 has 2 MA's), (Start: 64 @18353 has 1 MA's), (73, 18410), (80, 18461), (104, 18578), (113, 18635),

Gene: Quesadilla_25 Start: 20474, Stop: 20803, Start Num: 60

Candidate Starts for Quesadilla_25:

(Start: 60 @20474 has 192 MA's), (79, 20591), (81, 20597), (96, 20645),

Gene: Quisquilliae_24 Start: 18356, Stop: 18685, Start Num: 60

Candidate Starts for Quisquilliae_24:

(Start: 58 @18350 has 179 MA's), (Start: 60 @18356 has 192 MA's), (Start: 63 @18365 has 2 MA's), (Start: 64 @18368 has 1 MA's), (73, 18425), (80, 18476), (104, 18593), (113, 18650),

Gene: Qyrzula_24 Start: 20567, Stop: 20920, Start Num: 58

Candidate Starts for Qyrzula_24:

(21, 20342), (30, 20438), (Start: 58 @20567 has 179 MA's), (81, 20687), (89, 20753), (94, 20774),

Gene: RagingRooster_25 Start: 19009, Stop: 19380, Start Num: 58

Candidate Starts for RagingRooster_25:

(35, 18934), (36, 18943), (Start: 58 @19009 has 179 MA's), (Start: 63 @19024 has 2 MA's), (73, 19081), (74, 19087), (78, 19126), (81, 19135),

Gene: RawrgerThat_22 Start: 18973, Stop: 19329, Start Num: 60

Candidate Starts for RawrgerThat_22:

(33, 18838), (39, 18907), (43, 18922), (49, 18937), (Start: 60 @18973 has 192 MA's), (Start: 63 @18982 has 2 MA's), (73, 19045), (75, 19063), (78, 19090), (79, 19093), (81, 19099),

Gene: RedMaple_23 Start: 18352, Stop: 18681, Start Num: 60

Candidate Starts for RedMaple_23:

(Start: 58 @18346 has 179 MA's), (Start: 60 @18352 has 192 MA's), (Start: 63 @18361 has 2 MA's), (Start: 64 @18364 has 1 MA's), (73, 18421), (80, 18472), (104, 18589), (113, 18646),

Gene: Reprobate_24 Start: 19303, Stop: 19641, Start Num: 57

Candidate Starts for Reprobate_24:

(Start: 57 @19303 has 3 MA's), (Start: 60 @19309 has 192 MA's), (73, 19378), (75, 19396), (77, 19408), (81, 19432),

Gene: Rhinoforte_26 Start: 20598, Stop: 20951, Start Num: 58

Candidate Starts for Rhinoforte_26:

(16, 20325), (21, 20373), (30, 20469), (Start: 58 @20598 has 179 MA's), (81, 20718), (89, 20784), (94, 20805),

Gene: Ribeye_29 Start: 22643, Stop: 23026, Start Num: 54

Candidate Starts for Ribeye_29:

(Start: 54 @22643 has 42 MA's), (68, 22691), (71, 22709), (78, 22760), (106, 22922), (117, 22997),

Gene: Rich_23 Start: 18810, Stop: 19142, Start Num: 60

Candidate Starts for Rich_23:

(Start: 58 @18804 has 179 MA's), (Start: 60 @18810 has 192 MA's), (79, 18927), (81, 18933),

Gene: Ricotta_24 Start: 18058, Stop: 18393, Start Num: 58

Candidate Starts for Ricotta_24:

(Start: 58 @18058 has 179 MA's), (Start: 60 @18064 has 192 MA's), (Start: 63 @18073 has 2 MA's), (Start: 64 @18076 has 1 MA's), (73, 18133), (80, 18184), (104, 18301), (113, 18358),

Gene: Riggan_24 Start: 18318, Stop: 18653, Start Num: 58

Candidate Starts for Riggan_24:

(Start: 58 @18318 has 179 MA's), (Start: 60 @18324 has 192 MA's), (Start: 63 @18333 has 2 MA's), (Start: 64 @18336 has 1 MA's), (73, 18393), (80, 18444), (104, 18561), (113, 18618),

Gene: Rimu_25 Start: 18122, Stop: 18403, Start Num: 73

Candidate Starts for Rimu_25:

(Start: 58 @18047 has 179 MA's), (Start: 60 @18053 has 192 MA's), (Start: 63 @18062 has 2 MA's), (Start: 64 @18065 has 1 MA's), (73, 18122), (80, 18173), (104, 18308), (113, 18365),

Gene: Rita1961_25 Start: 19004, Stop: 19375, Start Num: 58

Candidate Starts for Rita1961_25:

(35, 18929), (36, 18938), (Start: 58 @19004 has 179 MA's), (Start: 63 @19019 has 2 MA's), (73, 19076), (74, 19082), (78, 19121), (81, 19130),

Gene: RiverRaider_30 Start: 21027, Stop: 21458, Start Num: 54

Candidate Starts for RiverRaider_30:

(Start: 54 @21027 has 42 MA's), (68, 21081), (73, 21105), (78, 21150), (106, 21318), (117, 21393),

Gene: Robyn_23 Start: 17915, Stop: 18244, Start Num: 60

Candidate Starts for Robyn_23:

(Start: 58 @17909 has 179 MA's), (Start: 60 @17915 has 192 MA's), (Start: 63 @17924 has 2 MA's), (Start: 64 @17927 has 1 MA's), (73, 17984), (80, 18035), (104, 18152), (113, 18209),

Gene: Rofo_29 Start: 22826, Stop: 23233, Start Num: 54

Candidate Starts for Rofo_29:

(Start: 54 @22826 has 42 MA's), (Start: 63 @22847 has 2 MA's), (78, 22949), (96, 23024), (106, 23111), (115, 23162),

Gene: Roliet_24 Start: 18334, Stop: 18669, Start Num: 58

Candidate Starts for Roliet_24:

(Start: 58 @18334 has 179 MA's), (Start: 60 @18340 has 192 MA's), (Start: 63 @18349 has 2 MA's), (Start: 64 @18352 has 1 MA's), (73, 18409), (80, 18460), (104, 18577), (113, 18634),

Gene: RomaT_25 Start: 19791, Stop: 20165, Start Num: 58

Candidate Starts for RomaT_25:

(35, 19716), (36, 19725), (Start: 58 @19791 has 179 MA's), (Start: 63 @19806 has 2 MA's), (73, 19863), (74, 19869), (78, 19908), (81, 19917),

Gene: Roscoe_25 Start: 18582, Stop: 18911, Start Num: 60

Candidate Starts for Roscoe_25:

(Start: 58 @18576 has 179 MA's), (Start: 60 @18582 has 192 MA's), (Start: 63 @18591 has 2 MA's), (Start: 64 @18594 has 1 MA's), (73, 18651), (80, 18702), (104, 18819), (113, 18876),

Gene: Rosebush_26 Start: 20598, Stop: 20951, Start Num: 58

Candidate Starts for Rosebush_26:

(16, 20325), (21, 20373), (30, 20469), (Start: 58 @20598 has 179 MA's), (81, 20718), (89, 20784), (94, 20805),

Gene: Roy17_24 Start: 18038, Stop: 18373, Start Num: 58

Candidate Starts for Roy17_24:

(Start: 58 @18038 has 179 MA's), (Start: 60 @18044 has 192 MA's), (Start: 63 @18053 has 2 MA's), (Start: 64 @18056 has 1 MA's), (73, 18113), (80, 18164), (104, 18281), (113, 18338),

Gene: SDcharge11_24 Start: 18316, Stop: 18651, Start Num: 58

Candidate Starts for SDcharge11_24:

(Start: 58 @18316 has 179 MA's), (Start: 60 @18322 has 192 MA's), (Start: 63 @18331 has 2 MA's), (Start: 64 @18334 has 1 MA's), (73, 18391), (80, 18442), (104, 18559), (113, 18616),

Gene: Sabella_26 Start: 20484, Stop: 20837, Start Num: 58

Candidate Starts for Sabella_26:

(16, 20211), (21, 20259), (30, 20355), (Start: 58 @20484 has 179 MA's), (81, 20604), (89, 20670), (94, 20691),

Gene: Saguaro_25 Start: 20382, Stop: 20711, Start Num: 60

Candidate Starts for Saguaro_25:

(Start: 60 @20382 has 192 MA's), (75, 20469), (79, 20499), (81, 20505), (96, 20553), (104, 20622),

Gene: Samaymay_24 Start: 18341, Stop: 18670, Start Num: 60

Candidate Starts for Samaymay_24:

(Start: 58 @18335 has 179 MA's), (Start: 60 @18341 has 192 MA's), (Start: 63 @18350 has 2 MA's), (Start: 64 @18353 has 1 MA's), (73, 18410), (80, 18461), (104, 18578), (113, 18635),

Gene: Sampson_29 Start: 22515, Stop: 22925, Start Num: 56

Candidate Starts for Sampson_29:

(Start: 56 @22515 has 13 MA's), (Start: 63 @22527 has 2 MA's), (70, 22575), (71, 22578), (75, 22602), (79, 22632), (92, 22689), (99, 22749),

Gene: Sanjuju_27 Start: 23007, Stop: 23414, Start Num: 54

Candidate Starts for Sanjuju_27:

(Start: 54 @23007 has 42 MA's), (Start: 63 @23028 has 2 MA's), (78, 23130), (96, 23205), (106, 23292), (115, 23343),

Gene: Saronaya_28 Start: 21477, Stop: 21872, Start Num: 54

Candidate Starts for Saronaya_28:

(Start: 54 @21477 has 42 MA's), (68, 21525), (71, 21543), (78, 21594), (98, 21687), (106, 21756), (117, 21831),

Gene: SassyCat97_23 Start: 18050, Stop: 18379, Start Num: 60

Candidate Starts for SassyCat97_23:

(Start: 58 @18044 has 179 MA's), (Start: 60 @18050 has 192 MA's), (Start: 63 @18059 has 2 MA's), (Start: 64 @18062 has 1 MA's), (73, 18119), (80, 18170), (104, 18287), (113, 18344),

Gene: Schadenfreude_23 Start: 17898, Stop: 18227, Start Num: 60

Candidate Starts for Schadenfreude_23:

(Start: 58 @17892 has 179 MA's), (Start: 60 @17898 has 192 MA's), (Start: 63 @17907 has 2 MA's), (Start: 64 @17910 has 1 MA's), (73, 17967), (80, 18018), (104, 18135), (113, 18192),

Gene: SchottB_27 Start: 22489, Stop: 22884, Start Num: 54

Candidate Starts for SchottB_27:

(Start: 54 @22489 has 42 MA's), (68, 22537), (71, 22555), (78, 22606), (98, 22699), (106, 22768), (117, 22843),

Gene: Schueller_24 Start: 18042, Stop: 18371, Start Num: 60

Candidate Starts for Schueller_24:

(Start: 60 @18042 has 192 MA's), (Start: 63 @18051 has 2 MA's), (Start: 64 @18054 has 1 MA's), (73, 18111), (80, 18162), (104, 18279), (113, 18336),

Gene: Scioto_29 Start: 22570, Stop: 22980, Start Num: 56

Candidate Starts for Scioto_29:

(Start: 56 @22570 has 13 MA's), (Start: 63 @22582 has 2 MA's), (70, 22630), (71, 22633), (75, 22657), (79, 22687), (92, 22744), (99, 22804),

Gene: Scoot17C_24 Start: 18337, Stop: 18672, Start Num: 58

Candidate Starts for Scoot17C_24:

(Start: 58 @18337 has 179 MA's), (Start: 60 @18343 has 192 MA's), (Start: 63 @18352 has 2 MA's), (Start: 64 @18355 has 1 MA's), (73, 18412), (80, 18463), (104, 18580), (113, 18637),

Gene: Scrick_24 Start: 18068, Stop: 18397, Start Num: 60

Candidate Starts for Scrick_24:

(Start: 58 @18062 has 179 MA's), (Start: 60 @18068 has 192 MA's), (Start: 63 @18077 has 2 MA's), (Start: 64 @18080 has 1 MA's), (73, 18137), (80, 18188), (104, 18305), (113, 18362),

Gene: Sedona_29 Start: 23932, Stop: 24339, Start Num: 54

Candidate Starts for Sedona_29:

(Start: 54 @23932 has 42 MA's), (Start: 63 @23953 has 2 MA's), (78, 24055), (96, 24130), (106, 24217), (117, 24292),

Gene: Selr12_24 Start: 18065, Stop: 18394, Start Num: 60

Candidate Starts for Selr12_24:

(Start: 58 @18059 has 179 MA's), (Start: 60 @18065 has 192 MA's), (Start: 63 @18074 has 2 MA's), (Start: 64 @18077 has 1 MA's), (73, 18134), (80, 18185), (104, 18302), (113, 18359),

Gene: Serendipitous_23 Start: 18867, Stop: 19199, Start Num: 60

Candidate Starts for Serendipitous_23:

(39, 18801), (Start: 57 @18861 has 3 MA's), (Start: 60 @18867 has 192 MA's), (73, 18936), (79, 18984), (81, 18990),

Gene: Serendipity_24 Start: 18357, Stop: 18692, Start Num: 58

Candidate Starts for Serendipity_24:

(Start: 58 @18357 has 179 MA's), (Start: 60 @18363 has 192 MA's), (Start: 63 @18372 has 2 MA's), (Start: 64 @18375 has 1 MA's), (73, 18432), (80, 18483), (104, 18600), (113, 18657),

Gene: Serpentine_0024 Start: 18337, Stop: 18672, Start Num: 58

Candidate Starts for Serpentine_0024:

(Start: 58 @18337 has 179 MA's), (Start: 60 @18343 has 192 MA's), (Start: 63 @18352 has 2 MA's), (Start: 64 @18355 has 1 MA's), (73, 18412), (80, 18463), (104, 18580), (113, 18637),

Gene: Shatter_21 Start: 16902, Stop: 17228, Start Num: 56

Candidate Starts for Shatter_21:

(8, 16536), (9, 16554), (15, 16620), (19, 16665), (25, 16692), (28, 16758), (Start: 56 @16902 has 13 MA's), (75, 16995), (78, 17022), (109, 17196),

Gene: Sheila_24 Start: 18335, Stop: 18664, Start Num: 60

Candidate Starts for Sheila_24:

(Start: 58 @18329 has 179 MA's), (Start: 60 @18335 has 192 MA's), (Start: 63 @18344 has 2 MA's), (Start: 64 @18347 has 1 MA's), (73, 18404), (80, 18455), (104, 18572), (113, 18629),

Gene: ShiVal_24 Start: 18329, Stop: 18664, Start Num: 58

Candidate Starts for ShiVal_24:

(Start: 58 @18329 has 179 MA's), (Start: 60 @18335 has 192 MA's), (Start: 63 @18344 has 2 MA's), (Start: 64 @18347 has 1 MA's), (73, 18404), (80, 18455), (104, 18572), (113, 18629),

Gene: Shivanishola_30 Start: 22906, Stop: 23313, Start Num: 54

Candidate Starts for Shivanishola_30:

(Start: 54 @22906 has 42 MA's), (Start: 63 @22927 has 2 MA's), (78, 23029), (96, 23104), (106, 23191), (115, 23242),

Gene: Sigman_24 Start: 18334, Stop: 18663, Start Num: 60

Candidate Starts for Sigman_24:

(Start: 58 @18328 has 179 MA's), (Start: 60 @18334 has 192 MA's), (Start: 63 @18343 has 2 MA's), (Start: 64 @18346 has 1 MA's), (73, 18403), (80, 18454), (104, 18571), (113, 18628),

Gene: Simielle_23 Start: 18033, Stop: 18362, Start Num: 60

Candidate Starts for Simielle_23:

(Start: 58 @18027 has 179 MA's), (Start: 60 @18033 has 192 MA's), (Start: 63 @18042 has 2 MA's), (Start: 64 @18045 has 1 MA's), (73, 18102), (80, 18153), (104, 18270), (113, 18327),

Gene: SirJeffery_24 Start: 19050, Stop: 19385, Start Num: 60

Candidate Starts for SirJeffery_24:

(7, 18672), (11, 18714), (17, 18780), (24, 18825), (32, 18918), (47, 19008), (Start: 53 @19035 has 1 MA's), (Start: 60 @19050 has 192 MA's), (73, 19119), (79, 19167), (81, 19173),

Gene: Sisko_21 Start: 17182, Stop: 17511, Start Num: 58

Candidate Starts for Sisko_21:

(48, 17149), (Start: 58 @17182 has 179 MA's), (72, 17254), (74, 17263), (109, 17479),

Gene: Sitar_29 Start: 23999, Stop: 24406, Start Num: 54

Candidate Starts for Sitar_29:

(Start: 54 @23999 has 42 MA's), (Start: 63 @24020 has 2 MA's), (78, 24122), (96, 24197), (106, 24284), (115, 24335),

Gene: Skippy_24 Start: 18328, Stop: 18657, Start Num: 60

Candidate Starts for Skippy_24:

(Start: 58 @18322 has 179 MA's), (Start: 60 @18328 has 192 MA's), (Start: 63 @18337 has 2 MA's), (Start: 64 @18340 has 1 MA's), (73, 18397), (80, 18448), (104, 18565), (113, 18622),

Gene: Slatt_24 Start: 18357, Stop: 18686, Start Num: 60

Candidate Starts for Slatt_24:

(Start: 58 @18351 has 179 MA's), (Start: 60 @18357 has 192 MA's), (Start: 63 @18366 has 2 MA's), (Start: 64 @18369 has 1 MA's), (73, 18426), (80, 18477), (104, 18594), (113, 18651),

Gene: SlippinJimmy_25 Start: 19773, Stop: 20144, Start Num: 58

Candidate Starts for SlippinJimmy_25:

(35, 19698), (36, 19707), (Start: 58 @19773 has 179 MA's), (Start: 63 @19788 has 2 MA's), (73, 19845), (74, 19851), (78, 19890), (81, 19899),

Gene: Soile_24 Start: 18056, Stop: 18385, Start Num: 60

Candidate Starts for Soile_24:

(Start: 60 @18056 has 192 MA's), (Start: 63 @18065 has 2 MA's), (Start: 64 @18068 has 1 MA's), (73, 18125), (80, 18176), (104, 18293), (113, 18350),

Gene: Solosis_23 Start: 18060, Stop: 18389, Start Num: 60

Candidate Starts for Solosis_23:

(Start: 58 @18054 has 179 MA's), (Start: 60 @18060 has 192 MA's), (Start: 63 @18069 has 2 MA's), (Start: 64 @18072 has 1 MA's), (73, 18129), (80, 18180), (104, 18297), (113, 18354),

Gene: Soos_48 Start: 28389, Stop: 28742, Start Num: 58

Candidate Starts for Soos_48:

(Start: 58 @28389 has 179 MA's), (71, 28449),

Gene: Sophia_23 Start: 18047, Stop: 18382, Start Num: 58

Candidate Starts for Sophia_23:

(Start: 58 @18047 has 179 MA's), (Start: 60 @18053 has 192 MA's), (Start: 63 @18062 has 2 MA's), (Start: 64 @18065 has 1 MA's), (73, 18122), (80, 18173), (104, 18290), (113, 18347),

Gene: Soto_24 Start: 18337, Stop: 18666, Start Num: 60

Candidate Starts for Soto_24:

(Start: 58 @18331 has 179 MA's), (Start: 60 @18337 has 192 MA's), (Start: 63 @18346 has 2 MA's), (Start: 64 @18349 has 1 MA's), (73, 18406), (80, 18457), (104, 18574), (113, 18631),

Gene: Sour_25 Start: 20893, Stop: 21228, Start Num: 58

Candidate Starts for Sour_25:

(Start: 58 @20893 has 179 MA's), (75, 20986), (78, 21013), (80, 21019),

Gene: Spartan300_24 Start: 18338, Stop: 18667, Start Num: 60

Candidate Starts for Spartan300_24:

(Start: 58 @18332 has 179 MA's), (Start: 60 @18338 has 192 MA's), (Start: 63 @18347 has 2 MA's), (Start: 64 @18350 has 1 MA's), (73, 18407), (80, 18458), (104, 18575), (113, 18632),

Gene: Squid_24 Start: 18044, Stop: 18379, Start Num: 58

Candidate Starts for Squid_24:

(Start: 58 @18044 has 179 MA's), (Start: 60 @18050 has 192 MA's), (Start: 63 @18059 has 2 MA's), (Start: 64 @18062 has 1 MA's), (73, 18119), (80, 18170), (104, 18287), (113, 18344),

Gene: Squiggle_24 Start: 18047, Stop: 18376, Start Num: 60

Candidate Starts for Squiggle_24:

(Start: 58 @18041 has 179 MA's), (Start: 60 @18047 has 192 MA's), (Start: 63 @18056 has 2 MA's), (Start: 64 @18059 has 1 MA's), (73, 18116), (80, 18167), (104, 18284), (113, 18341),

Gene: Sting_52 Start: 28828, Stop: 29181, Start Num: 58

Candidate Starts for Sting_52:

(Start: 58 @28828 has 179 MA's), (71, 28888),

Gene: Stinger_20 Start: 17517, Stop: 17876, Start Num: 60

Candidate Starts for Stinger_20:

(Start: 60 @17517 has 192 MA's), (Start: 63 @17526 has 2 MA's), (73, 17589), (78, 17634), (81, 17640), (82, 17643), (95, 17721),

Gene: StinkyVeggy_26 Start: 19179, Stop: 19514, Start Num: 60

Candidate Starts for StinkyVeggy_26:

(39, 19113), (Start: 57 @19173 has 3 MA's), (Start: 60 @19179 has 192 MA's), (73, 19248), (79, 19296), (81, 19302),

Gene: StorminNorm_28 Start: 21356, Stop: 21751, Start Num: 54

Candidate Starts for StorminNorm_28:

(Start: 54 @21356 has 42 MA's), (68, 21404), (71, 21422), (78, 21473), (98, 21566), (106, 21635), (117, 21710),

Gene: Struggle_23 Start: 17895, Stop: 18224, Start Num: 60

Candidate Starts for Struggle_23:

(Start: 60 @17895 has 192 MA's), (Start: 63 @17904 has 2 MA's), (Start: 64 @17907 has 1 MA's), (73, 17964), (80, 18015), (104, 18132), (113, 18189),

Gene: Stultus_27 Start: 21914, Stop: 22321, Start Num: 54

Candidate Starts for Stultus_27:

(Start: 54 @21914 has 42 MA's), (Start: 63 @21935 has 2 MA's), (78, 22037), (96, 22112), (106, 22199), (115, 22250),

Gene: Suffolk_24 Start: 18334, Stop: 18669, Start Num: 58

Candidate Starts for Suffolk_24:

(Start: 58 @18334 has 179 MA's), (Start: 60 @18340 has 192 MA's), (Start: 63 @18349 has 2 MA's), (Start: 64 @18352 has 1 MA's), (73, 18409), (80, 18460), (104, 18577), (113, 18634),

Gene: Suigeneris_24 Start: 19047, Stop: 19394, Start Num: 53

Candidate Starts for Suigeneris_24:

(7, 18684), (11, 18726), (17, 18792), (24, 18837), (32, 18930), (47, 19020), (Start: 53 @19047 has 1 MA's), (Start: 60 @19062 has 192 MA's), (73, 19131), (79, 19179), (81, 19185),

Gene: Surely_24 Start: 18346, Stop: 18681, Start Num: 58

Candidate Starts for Surely_24:

(Start: 58 @18346 has 179 MA's), (Start: 60 @18352 has 192 MA's), (Start: 63 @18361 has 2 MA's), (Start: 64 @18364 has 1 MA's), (73, 18421), (80, 18472), (104, 18589), (113, 18646),

Gene: Swiphy_25 Start: 18342, Stop: 18671, Start Num: 60

Candidate Starts for Swiphy_25:

(Start: 60 @18342 has 192 MA's), (Start: 63 @18351 has 2 MA's), (Start: 64 @18354 has 1 MA's), (73, 18411), (80, 18462), (104, 18579), (113, 18636),

Gene: Swish_24 Start: 18335, Stop: 18664, Start Num: 60

Candidate Starts for Swish_24:

(Start: 58 @18329 has 179 MA's), (Start: 60 @18335 has 192 MA's), (Start: 63 @18344 has 2 MA's), (Start: 64 @18347 has 1 MA's), (73, 18404), (80, 18455), (104, 18572), (113, 18629),

Gene: SynergyX_25 Start: 19009, Stop: 19380, Start Num: 58

Candidate Starts for SynergyX_25:

(35, 18934), (36, 18943), (Start: 58 @19009 has 179 MA's), (Start: 63 @19024 has 2 MA's), (73, 19081), (74, 19087), (78, 19126), (81, 19135),

Gene: TA17A_26 Start: 20478, Stop: 20831, Start Num: 58

Candidate Starts for TA17A_26:

(16, 20205), (21, 20253), (30, 20349), (Start: 58 @20478 has 179 MA's), (81, 20598), (89, 20664), (94, 20685),

Gene: TallGrassMM_24 Start: 18061, Stop: 18396, Start Num: 58
Candidate Starts for TallGrassMM_24:
(Start: 58 @18061 has 179 MA's), (Start: 60 @18067 has 192 MA's), (Start: 63 @18076 has 2 MA's),
(Start: 64 @18079 has 1 MA's), (73, 18136), (80, 18187), (104, 18304), (113, 18361),

Gene: Tangent_29 Start: 22348, Stop: 22755, Start Num: 54
Candidate Starts for Tangent_29:
(Start: 54 @22348 has 42 MA's), (Start: 63 @22369 has 2 MA's), (78, 22471), (96, 22546), (106,
22633), (115, 22684),

Gene: Tangerine_28 Start: 21362, Stop: 21757, Start Num: 54
Candidate Starts for Tangerine_28:
(Start: 54 @21362 has 42 MA's), (68, 21410), (71, 21428), (78, 21479), (98, 21572), (106, 21641),
(117, 21716),

Gene: Taptic_18 Start: 17761, Stop: 18147, Start Num: 59
Candidate Starts for Taptic_18:
(40, 17707), (Start: 59 @17761 has 9 MA's), (61, 17767), (Start: 63 @17773 has 2 MA's), (107,
18049),

Gene: Tardus_30 Start: 21851, Stop: 22261, Start Num: 56
Candidate Starts for Tardus_30:
(Start: 56 @21851 has 13 MA's), (Start: 63 @21863 has 2 MA's), (70, 21911), (71, 21914), (79,
21968), (92, 22025), (99, 22085),

Gene: Telesworld_23 Start: 18040, Stop: 18375, Start Num: 58
Candidate Starts for Telesworld_23:
(Start: 58 @18040 has 179 MA's), (Start: 60 @18046 has 192 MA's), (Start: 63 @18055 has 2 MA's),
(Start: 64 @18058 has 1 MA's), (73, 18115), (80, 18166), (104, 18283), (113, 18340),

Gene: Thing3_28 Start: 22841, Stop: 23248, Start Num: 54
Candidate Starts for Thing3_28:
(Start: 54 @22841 has 42 MA's), (Start: 63 @22862 has 2 MA's), (78, 22964), (96, 23039), (106,
23126), (115, 23177),

Gene: Thonko_23 Start: 16811, Stop: 17152, Start Num: 55
Candidate Starts for Thonko_23:
(Start: 55 @16811 has 1 MA's), (Start: 60 @16820 has 192 MA's), (65, 16847), (73, 16889), (75,
16907), (81, 16943), (96, 16991), (104, 17060),

Gene: Thora_24 Start: 18345, Stop: 18680, Start Num: 58
Candidate Starts for Thora_24:
(Start: 58 @18345 has 179 MA's), (Start: 60 @18351 has 192 MA's), (Start: 63 @18360 has 2 MA's),
(Start: 64 @18363 has 1 MA's), (73, 18420), (80, 18471), (104, 18588), (113, 18645),

Gene: ThreeOh3D2_24 Start: 18350, Stop: 18679, Start Num: 60
Candidate Starts for ThreeOh3D2_24:
(Start: 58 @18344 has 179 MA's), (Start: 60 @18350 has 192 MA's), (Start: 63 @18359 has 2 MA's),
(Start: 64 @18362 has 1 MA's), (73, 18419), (80, 18470), (104, 18587), (113, 18644),

Gene: Thunderbird_24 Start: 18050, Stop: 18379, Start Num: 60
Candidate Starts for Thunderbird_24:

(Start: 58 @18044 has 179 MA's), (Start: 60 @18050 has 192 MA's), (Start: 63 @18059 has 2 MA's), (Start: 64 @18062 has 1 MA's), (73, 18119), (80, 18170), (104, 18287), (113, 18344),

Gene: Timmi_23 Start: 18055, Stop: 18390, Start Num: 58

Candidate Starts for Timmi_23:

(Start: 58 @18055 has 179 MA's), (Start: 60 @18061 has 192 MA's), (Start: 63 @18070 has 2 MA's), (Start: 64 @18073 has 1 MA's), (73, 18130), (80, 18181), (104, 18298), (113, 18355),

Gene: Tinciduntolum_27 Start: 20600, Stop: 20953, Start Num: 58

Candidate Starts for Tinciduntolum_27:

(16, 20327), (21, 20375), (30, 20471), (Start: 58 @20600 has 179 MA's), (81, 20720), (89, 20786), (94, 20807),

Gene: TomBombadil_24 Start: 18340, Stop: 18675, Start Num: 58

Candidate Starts for TomBombadil_24:

(Start: 58 @18340 has 179 MA's), (Start: 60 @18346 has 192 MA's), (Start: 63 @18355 has 2 MA's), (Start: 64 @18358 has 1 MA's), (73, 18415), (80, 18466), (104, 18583), (113, 18640),

Gene: Tomlarah_24 Start: 18336, Stop: 18665, Start Num: 60

Candidate Starts for Tomlarah_24:

(Start: 58 @18330 has 179 MA's), (Start: 60 @18336 has 192 MA's), (Start: 63 @18345 has 2 MA's), (Start: 64 @18348 has 1 MA's), (73, 18405), (80, 18456), (104, 18573), (113, 18630),

Gene: Toni_23 Start: 18039, Stop: 18374, Start Num: 58

Candidate Starts for Toni_23:

(Start: 58 @18039 has 179 MA's), (Start: 60 @18045 has 192 MA's), (Start: 63 @18054 has 2 MA's), (Start: 64 @18057 has 1 MA's), (73, 18114), (80, 18165), (104, 18282), (113, 18339),

Gene: Tonitrus_40 Start: 27042, Stop: 27359, Start Num: 58

Candidate Starts for Tonitrus_40:

(Start: 58 @27042 has 179 MA's), (66, 27066), (69, 27081), (73, 27105), (75, 27123), (78, 27150), (82, 27162), (83, 27177), (110, 27327),

Gene: Tooj_24 Start: 18341, Stop: 18676, Start Num: 58

Candidate Starts for Tooj_24:

(Start: 58 @18341 has 179 MA's), (Start: 60 @18347 has 192 MA's), (Start: 63 @18356 has 2 MA's), (Start: 64 @18359 has 1 MA's), (73, 18416), (80, 18467), (104, 18584), (113, 18641),

Gene: Tres_26 Start: 20481, Stop: 20834, Start Num: 58

Candidate Starts for Tres_26:

(16, 20208), (21, 20256), (30, 20352), (Start: 58 @20481 has 179 MA's), (81, 20601), (89, 20667), (94, 20688),

Gene: True_23 Start: 18049, Stop: 18378, Start Num: 60

Candidate Starts for True_23:

(Start: 58 @18043 has 179 MA's), (Start: 60 @18049 has 192 MA's), (Start: 63 @18058 has 2 MA's), (Start: 64 @18061 has 1 MA's), (73, 18118), (80, 18169), (104, 18286), (113, 18343),

Gene: Trypo_24 Start: 18339, Stop: 18668, Start Num: 60

Candidate Starts for Trypo_24:

(Start: 60 @18339 has 192 MA's), (Start: 63 @18348 has 2 MA's), (Start: 64 @18351 has 1 MA's), (73, 18408), (80, 18459), (104, 18576), (113, 18633),

Gene: Tycho_28 Start: 21451, Stop: 21846, Start Num: 54
Candidate Starts for Tycho_28:
(Start: 54 @21451 has 42 MA's), (68, 21499), (71, 21517), (78, 21568), (98, 21661), (106, 21730),
(117, 21805),

Gene: Tydolla_25 Start: 19746, Stop: 20117, Start Num: 58
Candidate Starts for Tydolla_25:
(35, 19671), (36, 19680), (Start: 58 @19746 has 179 MA's), (Start: 63 @19761 has 2 MA's), (73,
19818), (74, 19824), (78, 19863), (81, 19872),

Gene: TyrionL_23 Start: 17903, Stop: 18232, Start Num: 60
Candidate Starts for TyrionL_23:
(Start: 60 @17903 has 192 MA's), (Start: 63 @17912 has 2 MA's), (Start: 64 @17915 has 1 MA's),
(73, 17972), (80, 18023), (104, 18140), (113, 18197),

Gene: UAch1_24 Start: 18358, Stop: 18687, Start Num: 60
Candidate Starts for UAch1_24:
(Start: 58 @18352 has 179 MA's), (Start: 60 @18358 has 192 MA's), (Start: 63 @18367 has 2 MA's),
(Start: 64 @18370 has 1 MA's), (73, 18427), (80, 18478), (104, 18595), (113, 18652),

Gene: UncleHowie_24 Start: 18042, Stop: 18377, Start Num: 58
Candidate Starts for UncleHowie_24:
(Start: 58 @18042 has 179 MA's), (Start: 60 @18048 has 192 MA's), (Start: 63 @18057 has 2 MA's),
(Start: 64 @18060 has 1 MA's), (73, 18117), (80, 18168), (104, 18285), (113, 18342),

Gene: Usavi_24 Start: 18349, Stop: 18678, Start Num: 60
Candidate Starts for Usavi_24:
(Start: 58 @18343 has 179 MA's), (Start: 60 @18349 has 192 MA's), (Start: 63 @18358 has 2 MA's),
(Start: 64 @18361 has 1 MA's), (73, 18418), (80, 18469), (104, 18586), (113, 18643),

Gene: Vaishali24_23 Start: 18002, Stop: 18337, Start Num: 60
Candidate Starts for Vaishali24_23:
(Start: 58 @17996 has 179 MA's), (Start: 60 @18002 has 192 MA's), (Start: 63 @18011 has 2 MA's),
(Start: 64 @18014 has 1 MA's), (73, 18071), (80, 18122), (104, 18242), (113, 18299),

Gene: Valjean_24 Start: 18335, Stop: 18670, Start Num: 58
Candidate Starts for Valjean_24:
(Start: 58 @18335 has 179 MA's), (Start: 60 @18341 has 192 MA's), (Start: 63 @18350 has 2 MA's),
(Start: 64 @18353 has 1 MA's), (73, 18410), (80, 18461), (104, 18578), (113, 18635),

Gene: Vaticameos_24 Start: 18033, Stop: 18368, Start Num: 58
Candidate Starts for Vaticameos_24:
(Start: 58 @18033 has 179 MA's), (Start: 60 @18039 has 192 MA's), (Start: 63 @18048 has 2 MA's),
(Start: 64 @18051 has 1 MA's), (73, 18108), (80, 18159), (104, 18276), (113, 18333),

Gene: Veritas_23 Start: 17900, Stop: 18238, Start Num: 64
Candidate Starts for Veritas_23:
(Start: 58 @17882 has 179 MA's), (Start: 60 @17888 has 192 MA's), (Start: 63 @17897 has 2 MA's),
(Start: 64 @17900 has 1 MA's), (73, 17957), (80, 18008), (104, 18143), (113, 18200),

Gene: Verity_28 Start: 22700, Stop: 23113, Start Num: 56
Candidate Starts for Verity_28:

(Start: 56 @22700 has 13 MA's), (Start: 63 @22712 has 2 MA's), (70, 22760), (71, 22763), (79, 22817), (92, 22877), (99, 22937), (108, 22979), (115, 23021),

Gene: ViaConlectus_29 Start: 21194, Stop: 21604, Start Num: 56

Candidate Starts for ViaConlectus_29:

(Start: 56 @21194 has 13 MA's), (Start: 63 @21206 has 2 MA's), (70, 21254), (71, 21257), (79, 21311), (92, 21368), (99, 21428),

Gene: Vincenzo_23 Start: 19743, Stop: 20084, Start Num: 60

Candidate Starts for Vincenzo_23:

(5, 19341), (10, 19392), (45, 19698), (Start: 60 @19743 has 192 MA's), (71, 19806), (73, 19812), (75, 19830), (78, 19857), (81, 19866), (97, 19938),

Gene: VioletZ_22 Start: 19032, Stop: 19388, Start Num: 60

Candidate Starts for VioletZ_22:

(39, 18966), (43, 18981), (49, 18996), (Start: 60 @19032 has 192 MA's), (Start: 63 @19041 has 2 MA's), (73, 19104), (75, 19122), (78, 19149), (79, 19152), (81, 19158),

Gene: Virapocalypse_24 Start: 18332, Stop: 18661, Start Num: 60

Candidate Starts for Virapocalypse_24:

(Start: 58 @18326 has 179 MA's), (Start: 60 @18332 has 192 MA's), (Start: 63 @18341 has 2 MA's), (Start: 64 @18344 has 1 MA's), (73, 18401), (80, 18452), (104, 18569), (113, 18626),

Gene: Virgeve_23 Start: 18048, Stop: 18404, Start Num: 58

Candidate Starts for Virgeve_23:

(Start: 58 @18048 has 179 MA's), (Start: 60 @18054 has 192 MA's), (Start: 63 @18063 has 2 MA's), (Start: 64 @18066 has 1 MA's), (73, 18123), (80, 18174), (104, 18309), (113, 18366),

Gene: Vista_24 Start: 18340, Stop: 18675, Start Num: 58

Candidate Starts for Vista_24:

(Start: 58 @18340 has 179 MA's), (Start: 60 @18346 has 192 MA's), (Start: 63 @18355 has 2 MA's), (Start: 64 @18358 has 1 MA's), (73, 18415), (80, 18466), (104, 18583), (113, 18640),

Gene: Vivaldi_24 Start: 18376, Stop: 18705, Start Num: 60

Candidate Starts for Vivaldi_24:

(Start: 58 @18370 has 179 MA's), (Start: 60 @18376 has 192 MA's), (Start: 63 @18385 has 2 MA's), (Start: 64 @18388 has 1 MA's), (73, 18445), (80, 18496), (104, 18613), (113, 18670),

Gene: Vivi2_31 Start: 23521, Stop: 23928, Start Num: 54

Candidate Starts for Vivi2_31:

(Start: 54 @23521 has 42 MA's), (Start: 63 @23542 has 2 MA's), (78, 23644), (96, 23719), (106, 23806), (115, 23857),

Gene: Vortex_24 Start: 18050, Stop: 18385, Start Num: 58

Candidate Starts for Vortex_24:

(Start: 58 @18050 has 179 MA's), (Start: 60 @18056 has 192 MA's), (Start: 63 @18065 has 2 MA's), (Start: 64 @18068 has 1 MA's), (73, 18125), (80, 18176), (104, 18293), (113, 18350),

Gene: Waleliano_22 Start: 18977, Stop: 19327, Start Num: 60

Candidate Starts for Waleliano_22:

(39, 18911), (43, 18926), (49, 18941), (Start: 60 @18977 has 192 MA's), (Start: 63 @18986 has 2 MA's), (73, 19049), (75, 19067), (78, 19094), (79, 19097), (81, 19103),

Gene: Wallhey_23 Start: 17907, Stop: 18236, Start Num: 60

Candidate Starts for Wallhey_23:

(Start: 60 @17907 has 192 MA's), (Start: 63 @17916 has 2 MA's), (Start: 64 @17919 has 1 MA's), (73, 17976), (80, 18027), (104, 18144), (113, 18201),

Gene: Waterdiva_24 Start: 18335, Stop: 18670, Start Num: 58

Candidate Starts for Waterdiva_24:

(Start: 58 @18335 has 179 MA's), (Start: 60 @18341 has 192 MA's), (Start: 63 @18350 has 2 MA's), (Start: 64 @18353 has 1 MA's), (73, 18410), (80, 18461), (104, 18578), (113, 18635),

Gene: Weher20_24 Start: 18335, Stop: 18664, Start Num: 60

Candidate Starts for Weher20_24:

(Start: 60 @18335 has 192 MA's), (Start: 63 @18344 has 2 MA's), (Start: 64 @18347 has 1 MA's), (73, 18404), (80, 18455), (104, 18572), (113, 18629),

Gene: West99_26 Start: 20601, Stop: 20954, Start Num: 58

Candidate Starts for West99_26:

(16, 20328), (21, 20376), (30, 20472), (Start: 58 @20601 has 179 MA's), (81, 20721), (89, 20787), (94, 20808),

Gene: Windsor_23 Start: 18009, Stop: 18356, Start Num: 60

Candidate Starts for Windsor_23:

(Start: 58 @18003 has 179 MA's), (Start: 60 @18009 has 192 MA's), (Start: 63 @18018 has 2 MA's), (Start: 64 @18021 has 1 MA's), (73, 18078), (80, 18129), (113, 18321),

Gene: Wooper_23 Start: 18275, Stop: 18616, Start Num: 58

Candidate Starts for Wooper_23:

(Start: 58 @18275 has 179 MA's), (Start: 63 @18290 has 2 MA's), (73, 18353), (75, 18371), (80, 18404), (112, 18599),

Gene: Xavier_23 Start: 18059, Stop: 18388, Start Num: 60

Candidate Starts for Xavier_23:

(Start: 58 @18053 has 179 MA's), (Start: 60 @18059 has 192 MA's), (Start: 63 @18068 has 2 MA's), (Start: 64 @18071 has 1 MA's), (73, 18128), (80, 18179), (104, 18296), (113, 18353),

Gene: Yago84_21 Start: 17190, Stop: 17519, Start Num: 58

Candidate Starts for Yago84_21:

(Start: 58 @17190 has 179 MA's), (72, 17262), (109, 17487),

Gene: Yahalom_25 Start: 19018, Stop: 19392, Start Num: 58

Candidate Starts for Yahalom_25:

(35, 18943), (36, 18952), (Start: 58 @19018 has 179 MA's), (Start: 63 @19033 has 2 MA's), (73, 19090), (74, 19096), (78, 19135), (81, 19144),

Gene: Yinz_25 Start: 19047, Stop: 19418, Start Num: 58

Candidate Starts for Yinz_25:

(35, 18972), (36, 18981), (Start: 58 @19047 has 179 MA's), (Start: 63 @19062 has 2 MA's), (73, 19119), (74, 19125), (78, 19164), (81, 19173),

Gene: YorkOnyx_29 Start: 21719, Stop: 22102, Start Num: 54

Candidate Starts for YorkOnyx_29:

(Start: 54 @21719 has 42 MA's), (68, 21767), (71, 21785), (78, 21836), (106, 21998), (117, 22073),

Gene: Yoshand_24 Start: 18342, Stop: 18677, Start Num: 58

Candidate Starts for Yoshand_24:

(Start: 58 @18342 has 179 MA's), (Start: 60 @18348 has 192 MA's), (Start: 63 @18357 has 2 MA's), (Start: 64 @18360 has 1 MA's), (73, 18417), (80, 18468), (104, 18585), (113, 18642),

Gene: YouGoGlencoco_24 Start: 18331, Stop: 18666, Start Num: 58

Candidate Starts for YouGoGlencoco_24:

(Start: 58 @18331 has 179 MA's), (Start: 60 @18337 has 192 MA's), (Start: 63 @18346 has 2 MA's), (Start: 64 @18349 has 1 MA's), (73, 18406), (80, 18457), (104, 18574), (113, 18631),

Gene: Zaider_25 Start: 18573, Stop: 18902, Start Num: 60

Candidate Starts for Zaider_25:

(Start: 58 @18567 has 179 MA's), (Start: 60 @18573 has 192 MA's), (Start: 63 @18582 has 2 MA's), (Start: 64 @18585 has 1 MA's), (73, 18642), (80, 18693), (104, 18810), (113, 18867),

Gene: Zelda_24 Start: 18342, Stop: 18671, Start Num: 60

Candidate Starts for Zelda_24:

(Start: 58 @18336 has 179 MA's), (Start: 60 @18342 has 192 MA's), (Start: 63 @18351 has 2 MA's), (Start: 64 @18354 has 1 MA's), (73, 18411), (80, 18462), (104, 18579), (113, 18636),

Gene: Zemanar_23 Start: 18986, Stop: 19327, Start Num: 63

Candidate Starts for Zemanar_23:

(39, 18911), (43, 18926), (49, 18941), (Start: 60 @18977 has 192 MA's), (Start: 63 @18986 has 2 MA's), (73, 19049), (75, 19067), (78, 19094), (79, 19097), (81, 19103),

Gene: Zenteno07_28 Start: 18782, Stop: 19108, Start Num: 60

Candidate Starts for Zenteno07_28:

(31, 18644), (Start: 60 @18782 has 192 MA's), (76, 18878), (80, 18902), (104, 19019),

Gene: Zipp_28 Start: 22597, Stop: 23010, Start Num: 56

Candidate Starts for Zipp_28:

(Start: 56 @22597 has 13 MA's), (Start: 63 @22609 has 2 MA's), (70, 22657), (71, 22660), (79, 22714), (92, 22774), (99, 22834), (108, 22876),

Gene: Zitch_30 Start: 20474, Stop: 20884, Start Num: 56

Candidate Starts for Zitch_30:

(50, 20459), (Start: 56 @20474 has 13 MA's), (Start: 63 @20486 has 2 MA's), (70, 20534), (71, 20537), (75, 20561), (79, 20591), (92, 20648), (99, 20708),

Gene: Zonia_24 Start: 18357, Stop: 18686, Start Num: 60

Candidate Starts for Zonia_24:

(Start: 60 @18357 has 192 MA's), (Start: 63 @18366 has 2 MA's), (Start: 64 @18369 has 1 MA's), (73, 18426), (80, 18477), (104, 18594), (113, 18651),