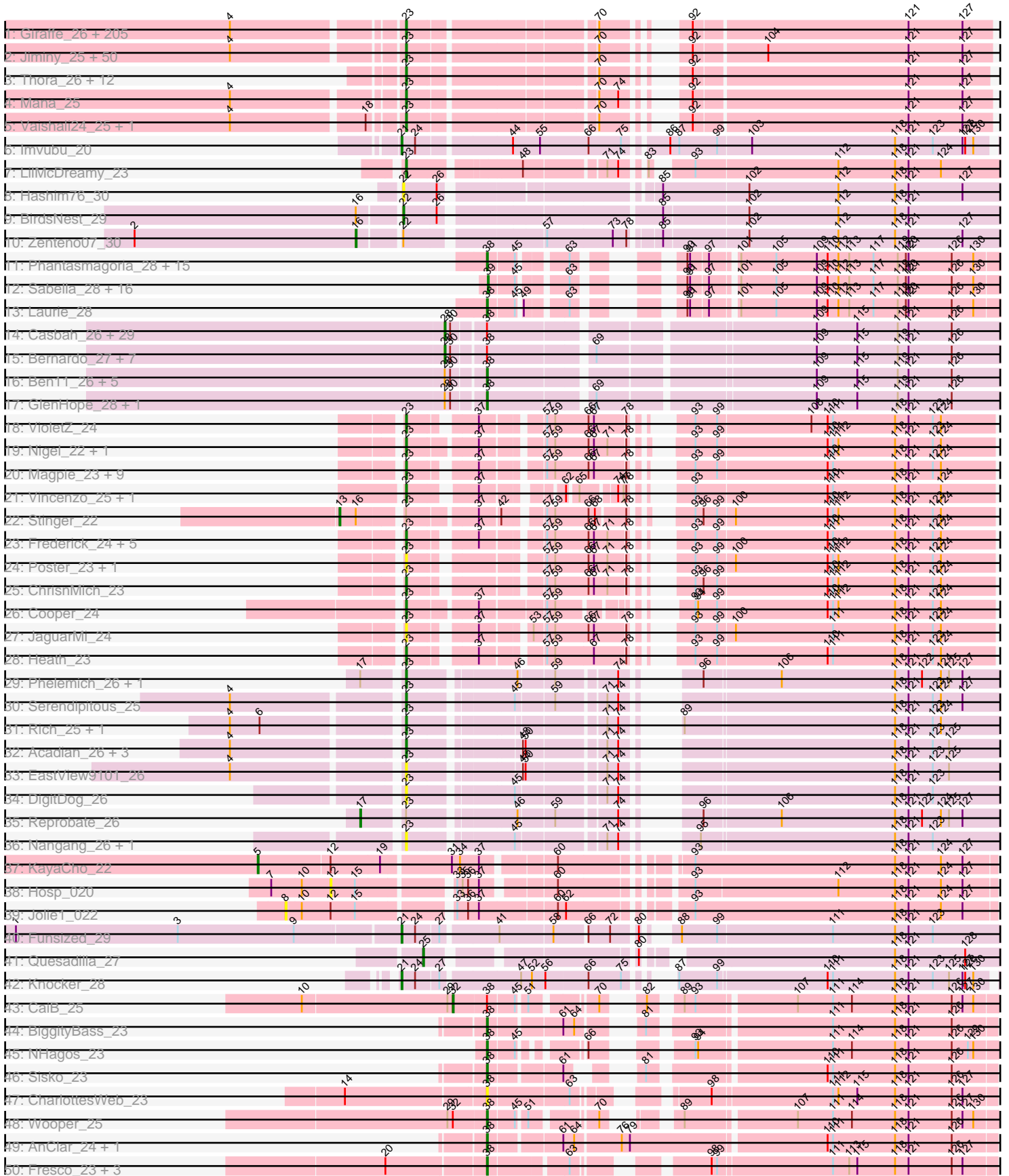
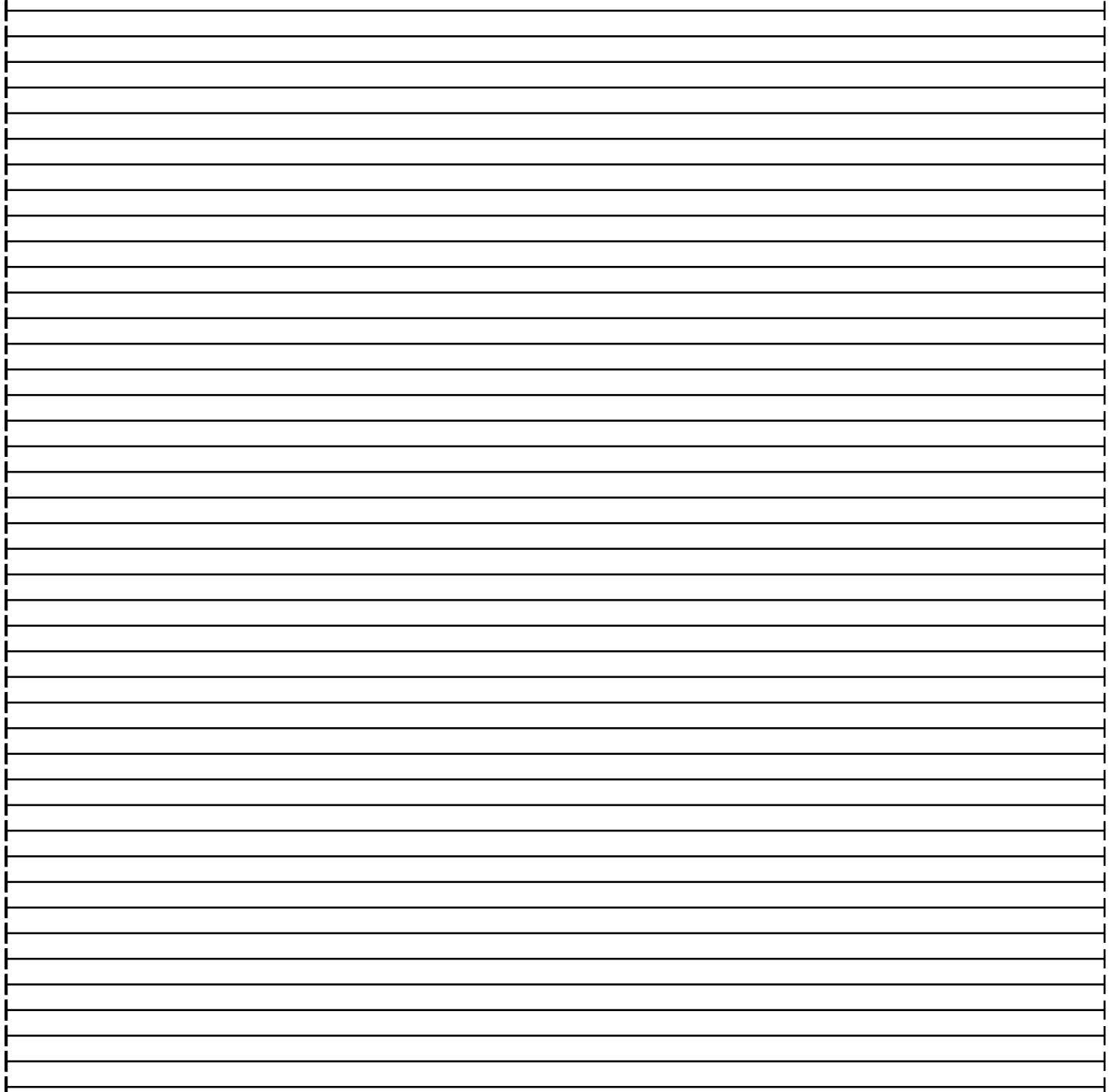
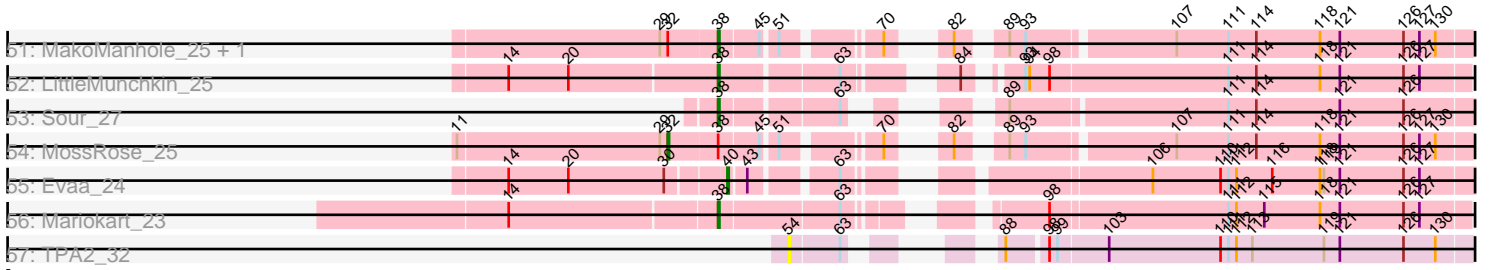


Pham 161488



Pham 161488



Note: Tracks are now grouped by subcluster and scaled. Switching in subcluster is indicated by changes in track color. Track scale is now set by default to display the region 30 bp upstream of start 1 to 30 bp downstream of the last possible start. If this default region is judged to be packed too tightly with annotated starts, the track will be further scaled to only show that region of the ORF with annotated starts. This action will be indicated by adding "Zoomed" to the title. For starts, yellow indicates the location of called starts comprised solely of Glimmer/GeneMark auto-annotations, green indicates the location of called starts with at least 1 manual gene annotation.

Pham 161488 Report

This analysis was run 04/28/24 on database version 559.

Pham number 161488 has 426 members, 52 are drafts.

Phages represented in each track:

- Track 1 : Giraffe_26, Haimas_26, Serpentine_0026, Banjo_25, Iridoclysis_26, Mikota_26, Nacho_0026, Pops_26, Chunky_26, Adriana_26, Mcshane_25, Nicole21_26, Hetaeria_26, Kimbrough_26, Lumine_25, Potter_25, Oosterbaan_26, Selr12_26, Burr_25, Inchworm_26, DaddyDaniels_26, Matalotodo_25, Valjean_26, OliverWalter_26, UncleHowie_26, Olive_26, Usavi_26, Gyarad_0026, Zelda_26, EmpTee_26, Eugenia_26, Mulan_25, Prickles_26, FluffyNinja_26, Pherdinand_26, LuckyMarjie_25, Altwerkus_25, DirtJuice_26, Basato_27, Frankicide_26, Morty_26, Boehler_26, Thunderbird_26, KLucky39_26, Cher_25, Haleema_25, Buckeye_26, HenryJackson_25, Gwilliam_26, Pipsqueak_26, SDcharge11_26, Etaye_26, Antonia_25, Gareth_25, Plmatters_26, Newman_26, Waterdiva_26, Kwadwo_25, Schueller_26, Simielle_25, Manad_25, Squid_26, Daffy_26, Olak_26, Freya_25, ABU_26, Hamish_26, Lulumae_25, Scoot17C_26, ThreeOh3D2_26, BlackStallion_26, Murdoc_26, Mecca_25, Yoshand_26, LostAndPhound_25, Schadenfreude_25, Scrick_26, MitKao_26, Swish_26, Orfeu_25, Bishoperium_25, Mutante_25, Serendipity_26, Orion_26, Sigman_26, Roy17_26, Lulwa_26, Xavier_25, CheetO_26, Emiris_26, Spartan300_26, Toni_25, Cobra_26, Megatron_26, Dingo_26, LeeLot_26, KlimbOn_26, PhrodoBaggins_25, IsaacEli_26, PinheadLarry_26, Beaglebox_25, Sophia_25, Jillium_25, Lopsy_25, Grand2040_25, Chorkpop_26, Mosaic_25, ProfessorX_26, Solosis_25, Maru_25, Virapocalypse_26, Crownjwl_26, Roliet_26, Harvey_26, Kikipoo_26, Telesworld_25, SassyCat97_25, Hertubise_26, Dati_26, QueenBeane_26, Childish_25, Fozzie_25, MiniBoss_26, Omniscient_26, Ricotta_26, Cornobble_25, Badfish_26, Held_26, JangoPhett_26, Lego3393_26, Horchata_26, Bluephacebaby_25, KingVeVeVe_26, Nyala_25, Colbert_26, Phareon_26, AbsoluteMadLad_25, Kahve_25, Fang_26, LeiMonet_26, Inverness_26, YouGoGlencoco_26, ShiVal_26, Cosmolli16_25, LemonSlice_26, DonSanchon_25, Legolas_25, Cannibal_26, HSavage_26, HighStump_25, TallGrassMM_26, Eremos_26, Morgushi_26, Suffolk_26, Dice_27, LasagnaCat_26, Carthage_24, JacAttac_26, MRabcd_25, Riggan_26, Dione_25, Lasso_26, UAch1_26, Mesh1_26, Sheila_26, Samaymay_26, Timmi_25, True_25, Katniss_26, Squiggle_26, TomBombadil_26, Phipps_26, AltPhacts_26, Craff_26, Kloppinator_26, PhatCats2014_26, Soto_26, DoesntMatter_26, Zaider_27, Piglet_0025, Daka_26, Roscoe_27, CamL_26, Phunky_26, Phamished_26, Weher20_26, FugateOSU_25, Vaticameos_26, Podrick_26, FriarPreacher_26, Vista_26, CampRoach_25, Tooj_26, RedMaple_25, Pacifista_27, Melc17_26, Surely_26, Aelin_25, Jiraiya_26, Tomlarah_26, Placalicious_25, Slatt_26, PG1_26, Vortex_26, Chah_27, Vivaldi_26
- Track 2 : Jiminy_25, Phergie_25, DuchessDung_24, DelRivs_25, Phleuron_25, Rimu_27, BatteryCK_25, MrPhizzler_25, Oline_25, Maskar_25, Derpp_25,

Magic8_26, TyrionL_25, Zonia_26, Hocus_25, Trypo_26, OSmaximus_26, Veritas_25, Swiphy_27, Coletti_25, Doddsville_26, Duggie_25, MichaelPhcott_25, Kailash_26, JakeO_25, Chute_25, Pinkman_25, MelsMeow_25, Windsor_25, Keitherie_26, Ashraf_25, ImtiyazSitla_25, Virgeve_25, PhrankReynolds_25, Durga_26, PhenghisKhan_25, GeneCoco_26, Soile_26, Longacauda_25, Wallhey_25, Apizium_25, Kwksand96_25, Brilliant_26, Hartsy_25, Struggle_25, JDog_26, Mag7_25, PhatLouie_26, Chaelin_25, Labeouficaum_25, CharlieGBrown_25

- Track 3 : Thora_26, Orwigg_26, Megamind20_26, Numberten_26, Andre_26, Charles1_26, Quisquiliae_26, Gophee_26, Puhltonio_26, Skippy_26, Fringe_26, BlueHusk_26, Anderson_26
- Track 4 : Mana_25
- Track 5 : Vaishali24_25, Robyn_25
- Track 6 : Imvubu_20
- Track 7 : LilMcDreamy_23
- Track 8 : Hashim76_30
- Track 9 : BirdsNest_29
- Track 10 : Zenteno07_30
- Track 11 : Phantasmagoria_28, Allegro_28, Kheth_28, LizLemon_28, Godines_28, Coffee_28, TA17A_28, Rhinoforte_28, Opia_28, Lars_28, Bananafish_28, Boyle_28, Holeinone_28, Blocker23_28, Qyrzula_26, ItsyBitsy1_28
- Track 12 : Sabella_28, Faze9_28, Brownie5_28, Rosebush_28, Kaleb_28, West99_28, Calamitous_28, Tinciduntolum_29, Tres_28, Arbiter_28, MasterPo_28, Eaglehorse_28, Hedgerow_28, Glass_28, Ares_28, Lephleur_28, FrenchFry_28
- Track 13 : Laurie_28
- Track 14 : Casbah_26, Baloo_27, Briakila_27, OrangeOswald_27, LestyG_27, Yinz_27, MmasiCarm_27, RagingRooster_27, RomaT_27, Phaedrus_25, ChaChing_27, Athena_28, Abinghost_27, Corofin_27, Phayeta_27, Tydolla_27, HarveySr_27, Marley1013_27, Daisy_27, Devonte_27, Philly_26, Gervas_27, Deenasa_27, Nozo_27, Obutu_27, Morty007_27, Audrey_27, Mortcellus_26, SynergyX_27, Kamiyu_27
- Track 15 : Bernardo_27, Phlyer_27, Neos5_27, Yahalom_27, Heathcliff_27, Akoma_27, Gadget_28, Pipefish_27
- Track 16 : Ben11_26, Rita1961_27, SlippinJimmy_27, Halfpint_26, Chandler_27, Compostia_28
- Track 17 : GlenHope_28, Kronus_26
- Track 18 : VioletZ_24
- Track 19 : Nigel_22, JAMaL_24
- Track 20 : Magpie_23, Hangman_24, Waleliano_24, BrownCNA_25, Mudslide_24, Mithril_24, Hydro_24, Lolalove_24, Zemanar_25, Austelle_25
- Track 21 : Vincenzo_25, AlanGrant_25
- Track 22 : Stinger_22
- Track 23 : Frederick_24, RawrgerThat_24, Prince_25, Fortunato_24, Apex_24, BobbyK_24
- Track 24 : Poster_23, Nanao_23
- Track 25 : ChrisnMich_23
- Track 26 : Cooper_24
- Track 27 : JaguarMi_24
- Track 28 : Heath_23
- Track 29 : Phelemich_26, Mysterious_27
- Track 30 : Serendipitous_25
- Track 31 : Rich_25, Bae_25
- Track 32 : Acadian_26, Donny_26, Suigeneris_26, SirJeffery_26

- Track 33 : EastView9101_26
- Track 34 : DigitDog_26
- Track 35 : Reprobate_26
- Track 36 : Nangang_26, StinkyVeggy_28
- Track 37 : KayaCho_22
- Track 38 : Hosp_020
- Track 39 : Jolie1_022
- Track 40 : Funsized_29
- Track 41 : Quesadilla_27
- Track 42 : Knocker_28
- Track 43 : CaiB_25
- Track 44 : BiggityBass_23
- Track 45 : NHagos_23
- Track 46 : Sisko_23
- Track 47 : CharlottesWeb_23
- Track 48 : Wooper_25
- Track 49 : AnClar_24, Yago84_23
- Track 50 : Fresco_23, Axumite_23, Shatter_23, Ligma_23
- Track 51 : MakoManhole_25, AnarQue_25
- Track 52 : LittleMunchkin_25
- Track 53 : Sour_27
- Track 54 : MossRose_25
- Track 55 : Evaa_24
- Track 56 : Mariokart_23
- Track 57 : TPA2_32

Summary of Final Annotations (See graph section above for start numbers):

The start number called the most often in the published annotations is 23, it was called in 275 of the 374 non-draft genes in the pham.

Genes that call this "Most Annotated" start:

• ABU_26, AbsoluteMadLad_25, Acadian_26, Adriana_26, Aelin_25, AlanGrant_25, AltPhacts_26, Altwerkus_25, Anderson_26, Andre_26, Antonia_25, Apex_24, Apizium_25, Ashraf_25, Austelle_25, Badfish_26, Bae_25, Banjo_25, Basato_27, BatteryCK_25, Beaglebox_25, Bishoperium_25, BlackStallion_26, BlueHusk_26, Bluephacebaby_25, BobbyK_24, Boehler_26, Brilliant_26, BrownCNA_25, Buckeye_26, Burr_25, CamL_26, CampRoach_25, Cannibal_26, Carthage_24, Chaelin_25, Chah_27, Charles1_26, CharlieGBrown_25, CheetO_26, Cher_25, Childish_25, Chorkpop_26, ChrisnMich_23, Chunky_26, Chute_25, Cobra_26, Colbert_26, Coletti_25, Cooper_24, Cornobble_25, Cosmolli16_25, Craff_26, Crownjwl_26, DaddyDaniels_26, Daffy_26, Daka_26, Dati_26, DelRivs_25, Derpp_25, Dice_27, DigitDog_26, Dingo_26, Dione_25, DirtJuice_26, Doddsville_26, DoesntMatter_26, DonSancho_25, Donny_26, DuchessDung_24, Duggie_25, Durga_26, EastView9101_26, Emiris_26, EmpTee_26, Eremos_26, Etaye_26, Eugenia_26, Fang_26, FluffyNinja_26, Fortunato_24, Fozzie_25, Frankicide_26, Frederick_24, Freya_25, FriarPreacher_26, Fringe_26, FugateOSU_25, Gareth_25, GeneCoco_26, Giraffe_26, Gophee_26, Grand2040_25, Gwilliam_26, Gyarad_0026, HSavage_26, Haimas_26, Haleema_25, Hamish_26, Hangman_24, Hartsy_25, Harvey_26, Heath_23, Held_26, HenryJackson_25, Hertubise_26, Hetaeria_26,

HighStump_25, Hocus_25, Horchata_26, Hydro_24, ImtiyazSitla_25, Inchworm_26, Inverness_26, Iridoclysis_26, IsaacEli_26, JAMaL_24, JDog_26, JacAttac_26, JaguarMi_24, JakeO_25, JangoPhett_26, Jillium_25, Jiminy_25, Jiraiya_26, KLucky39_26, Kahve_25, Kailash_26, Katniss_26, Keitherie_26, Kikipoo_26, Kimbrough_26, KingVeVeVe_26, KlimbOn_26, Kloppinator_26, Kwadwo_25, Kwksand96_25, Labeouficaum_25, LasagnaCat_26, Lasso_26, LeeLot_26, Lego3393_26, Legolas_25, LeiMonet_26, LemonSlice_26, LilMcDreamy_23, Lolalove_24, Longacauda_25, Lopsy_25, LostAndPhound_25, LuckyMarjie_25, Lulumae_25, Lulwa_26, Lumine_25, MRabcd_25, Mag7_25, Magic8_26, Magpie_23, Mana_25, Manad_25, Maru_25, Maskar_25, Matalotodo_25, Mcshane_25, Mecca_25, Megamind20_26, Megatron_26, Melc17_26, MelsMeow_25, Mesh1_26, MichaelPhcott_25, Mikota_26, MiniBoss_26, MitKao_26, Mithril_24, Morgushi_26, Morty_26, Mosaic_25, MrPhizzler_25, Mudslide_24, Mulan_25, Murdoc_26, Mutante_25, Mysterious_27, Nacho_0026, Nanao_23, Nangang_26, Newman_26, Nicole21_26, Nigel_22, Numberten_26, Nyala_25, OSmaximus_26, Olak_26, Oline_25, Olive_26, OliverWalter_26, Omniscient_26, Oosterbaan_26, Orfeu_25, Orion_26, Orwigg_26, PG1_26, Pacifista_27, Phamished_26, Phareon_26, PhatCats2014_26, PhatLouie_26, Phelemich_26, PhenghisKhan_25, Pherdinand_26, Phergie_25, Phipps_26, Phleuron_25, PhrankReynolds_25, PhrodoBaggins_25, Phunky_26, Piglet_0025, PinheadLarry_26, Pinkman_25, Pipsqueak_26, Placalicious_25, Plmatters_26, Podrick_26, Pops_26, Poster_23, Potter_25, Prickles_26, Prince_25, ProfessorX_26, Puhltonio_26, QueenBeane_26, Quisquilliae_26, RawrgerThat_24, RedMaple_25, Rich_25, Ricotta_26, Riggan_26, Rimu_27, Robyn_25, Roliet_26, Roscoe_27, Roy17_26, SDcharge11_26, Samaymay_26, SassyCat97_25, Schadenfreude_25, Schueller_26, Scoot17C_26, Scrick_26, Selr12_26, Serendipitous_25, Serendipity_26, Serpentine_0026, Sheila_26, ShiVal_26, Sigman_26, Simielle_25, SirJeffery_26, Skippy_26, Slatt_26, Soile_26, Solosis_25, Sophia_25, Soto_26, Spartan300_26, Squid_26, Squiggle_26, StinkyVeggy_28, Struggle_25, Suffolk_26, Suigeneris_26, Surely_26, Swiphy_27, Swish_26, TallGrassMM_26, Telesworld_25, Thora_26, ThreeOh3D2_26, Thunderbird_26, Timmi_25, TomBombadil_26, Tomlarah_26, Toni_25, Tooj_26, True_25, Trypo_26, TyrionL_25, UAch1_26, UncleHowie_26, Usavi_26, Vaishali24_25, Valjean_26, Vaticameos_26, Veritas_25, Vincenzo_25, VioletZ_24, Virapocalypse_26, Virgeve_25, Vista_26, Vivaldi_26, Vortex_26, Waleliano_24, Wallhey_25, Waterdiva_26, Weher20_26, Windsor_25, Xavier_25, Yoshand_26, YouGoGlencoco_26, Zaider_27, Zelda_26, Zemanar_25, Zonia_26,

Genes that have the "Most Annotated" start but do not call it:

- Reprobate_26, Stinger_22,

Genes that do not have the "Most Annotated" start:

- Abinghost_27, Akoma_27, Allegro_28, AnClar_24, AnarQue_25, Arbiter_28, Ares_28, Athena_28, Audrey_27, Axumite_23, Baloo_27, Bananafish_28, Ben11_26, Bernardo_27, BiggityBass_23, BirdsNest_29, Blocker23_28, Boyle_28, Briakila_27, Brownie5_28, CaiB_25, Calamitous_28, Casbah_26, ChaChing_27, Chandler_27, CharlottesWeb_23, Coffee_28, Compostia_28, Corofin_27, Daisy_27, Deenasa_27, Devonte_27, Eaglehorse_28, Evaa_24, Faze9_28, FrenchFry_28, Fresco_23, Funsized_29, Gadget_28, Gervas_27, Glass_28, GlenHope_28, Godines_28, Halfpint_26, HarveySr_27, Hashim76_30, Heathcliff_27, Hedgerow_28, Holeinone_28, Hosp_020, Imvubu_20, ItsyBitsy1_28, Jolie1_022, Kaleb_28, Kamiyu_27, KayaCho_22, Kheth_28, Knocker_28, Kronus_26, Lars_28, Laurie_28, Lephleur_28, LestyG_27, Ligma_23, LittleMunchkin_25, LizLemon_28, MakoManhole_25, Mariokart_23, Marley1013_27, MasterPo_28, MmasiCarm_27,

Mortcellus_26, Morty007_27, MossRose_25, NHagos_23, Neos5_27, Nozo_27, Obutu_27, Opia_28, OrangeOswald_27, Phaedrus_25, Phantasmagoria_28, Phayeta_27, Philly_26, Phlyer_27, Pipefish_27, Quesadilla_27, Qyrzula_26, RagingRooster_27, Rhinoforte_28, Rita1961_27, RomaT_27, Rosebush_28, Sabella_28, Shatter_23, Sisko_23, SlippinJimmy_27, Sour_27, SynergyX_27, TA17A_28, TPA2_32, Tinciduntolum_29, Tres_28, Tydolla_27, West99_28, Wooper_25, Yago84_23, Yahalom_27, Yinz_27, Zenteno07_30,

Summary by start number:

Start 5:

- Found in 1 of 426 (0.2%) of genes in pham
- Manual Annotations of this start: 1 of 374
- Called 100.0% of time when present
- Phage (with cluster) where this start called: KayaCho_22 (B6),

Start 8:

- Found in 1 of 426 (0.2%) of genes in pham
- No Manual Annotations of this start.
- Called 100.0% of time when present
- Phage (with cluster) where this start called: Jolie1_022 (B6),

Start 12:

- Found in 3 of 426 (0.7%) of genes in pham
- No Manual Annotations of this start.
- Called 33.3% of time when present
- Phage (with cluster) where this start called: Hosp_020 (B6),

Start 13:

- Found in 1 of 426 (0.2%) of genes in pham
- Manual Annotations of this start: 1 of 374
- Called 100.0% of time when present
- Phage (with cluster) where this start called: Stinger_22 (B4),

Start 16:

- Found in 3 of 426 (0.7%) of genes in pham
- Manual Annotations of this start: 1 of 374
- Called 33.3% of time when present
- Phage (with cluster) where this start called: Zenteno07_30 (B13),

Start 17:

- Found in 3 of 426 (0.7%) of genes in pham
- Manual Annotations of this start: 1 of 374
- Called 33.3% of time when present
- Phage (with cluster) where this start called: Reprobate_26 (B5),

Start 21:

- Found in 3 of 426 (0.7%) of genes in pham
- Manual Annotations of this start: 3 of 374
- Called 100.0% of time when present
- Phage (with cluster) where this start called: Funsized_29 (B9), Imvubu_20 (B10), Knocker_28 (B9),

Start 22:

- Found in 3 of 426 (0.7%) of genes in pham
- Manual Annotations of this start: 1 of 374
- Called 66.7% of time when present
- Phage (with cluster) where this start called: BirdsNest_29 (B13), Hashim76_30 (B13),

Start 23:

- Found in 316 of 426 (74.2%) of genes in pham
- Manual Annotations of this start: 275 of 374
- Called 99.4% of time when present
- Phage (with cluster) where this start called: ABU_26 (B1), AbsoluteMadLad_25 (B1), Acadian_26 (B5), Adriana_26 (B1), Aelin_25 (B1), AlanGrant_25 (B4), AltPhacts_26 (B1), Altwerkus_25 (B1), Anderson_26 (B1), Andre_26 (B1), Antonia_25 (B1), Apex_24 (B4), Apizium_25 (B1), Ashraf_25 (B1), Austelle_25 (B4), Badfish_26 (B1), Bae_25 (B5), Banjo_25 (B1), Basato_27 (B1), BatteryCK_25 (B1), Beaglebox_25 (B1), Bishoperium_25 (B1), BlackStallion_26 (B1), BlueHusk_26 (B1), Bluephacebaby_25 (B1), BobbyK_24 (B4), Boehler_26 (B1), Brilliant_26 (B1), BrownCNA_25 (B4), Buckeye_26 (B1), Burr_25 (B1), CamL_26 (B1), CampRoach_25 (B1), Cannibal_26 (B1), Carthage_24 (B1), Chaelin_25 (B1), Chah_27 (B1), Charles1_26 (B1), CharlieGBrown_25 (B1), CheetO_26 (B1), Cher_25 (B1), Childish_25 (B1), Chorkpop_26 (B1), ChrisnMich_23 (B4), Chunky_26 (B1), Chute_25 (B1), Cobra_26 (B1), Colbert_26 (B1), Coletti_25 (B1), Cooper_24 (B4), Cornobble_25 (B1), Cosmolli16_25 (B1), Craff_26 (B1), Crownjwl_26 (B1), DaddyDaniels_26 (B1), Daffy_26 (B1), Daka_26 (B1), Dati_26 (B1), DelRivs_25 (B1), Derpp_25 (B1), Dice_27 (B1), DigitDog_26 (B5), Dingo_26 (B1), Dione_25 (B1), DirtJuice_26 (B1), Doddsville_26 (B1), DoesntMatter_26 (B1), DonSanchon_25 (B1), Donny_26 (B5), DuchessDung_24 (B1), Duggie_25 (B1), Durga_26 (B1), EastView9101_26 (B5), Emiris_26 (B1), EmpTee_26 (B1), Eremos_26 (B1), Etaye_26 (B1), Eugenia_26 (B1), Fang_26 (B1), FluffyNinja_26 (B1), Fortunato_24 (B4), Fozzie_25 (B1), Frankicide_26 (B1), Frederick_24 (B4), Freya_25 (B1), FriarPreacher_26 (B1), Fringe_26 (B1), FugateOSU_25 (B1), Gareth_25 (B1), GeneCoco_26 (B1), Giraffe_26 (B1), Gophee_26 (B1), Grand2040_25 (B1), Gwilliam_26 (B1), Gyarad_0026 (B1), HSavage_26 (B1), Haimas_26 (B1), Haleema_25 (B1), Hamish_26 (B1), Hangman_24 (B4), Hartsy_25 (B1), Harvey_26 (B1), Heath_23 (B4), Held_26 (B1), HenryJackson_25 (B1), Hertubise_26 (B1), Hetaeria_26 (B1), HighStump_25 (B1), Hocus_25 (B1), Horchata_26 (B1), Hydro_24 (B4), ImtiyazSitla_25 (B1), Inchworm_26 (B1), Inverness_26 (B1), Iridoclysis_26 (B1), IsaacEli_26 (B1), JAMaL_24 (B4), JDog_26 (B1), JacAttac_26 (B1), JaguarMi_24 (B4), JakeO_25 (B1), JangoPhett_26 (B1), Jillium_25 (B1), Jiminy_25 (B1), Jiraiya_26 (B1), KLucky39_26 (B1), Kahve_25 (B1), Kailash_26 (B1), Katniss_26 (B1), Keitherie_26 (B1), Kikipoo_26 (B1), Kimbrough_26 (B1), KingVeVeVe_26 (B1), KlimbOn_26 (B1), Kloppinator_26 (B1), Kwadwo_25 (B1), Kwksand96_25 (B1), Labeouficaum_25 (B1), LasagnaCat_26 (B1), Lasso_26 (B1), LeeLot_26 (B1), Lego3393_26 (B1), Legolas_25 (B1), LeiMonet_26 (B1), LemonSlice_26 (B1), LilMcDreamy_23 (B12), Lolalove_24 (B4), Longacauda_25 (B1), Lopsy_25 (B1), LostAndPhound_25 (B1), LuckyMarjie_25 (B1), Lulumae_25 (B1), Lulwa_26 (B1), Lumine_25 (B1), MRabcd_25 (B1), Mag7_25 (B1), Magic8_26 (B1), Magpie_23 (B4), Mana_25 (B1), Manad_25 (B1), Maru_25 (B1), Maskar_25 (B1), Matalotodo_25 (B1), Mcshane_25 (B1), Mecca_25 (B1), Megamind20_26 (B1), Megatron_26 (B1), Melc17_26 (B1), MelsMeow_25 (B1), Mesh1_26 (B1), MichaelPhcott_25 (B1), Mikota_26 (B1), MiniBoss_26 (B1), MitKao_26 (B1), Mithril_24 (B4), Morgushi_26 (B1), Morty_26 (B1), Mosaic_25 (B1), MrPhizzler_25 (B1), Mudslide_24 (B4),

Mulan_25 (B1), Murdoc_26 (B1), Mutante_25 (B1), Mysterious_27 (B5), Nacho_0026 (B1), Nanao_23 (B4), Nangang_26 (B5), Newman_26 (B1), Nicole21_26 (B1), Nigel_22 (B4), Numberten_26 (B1), Nyala_25 (B1), OSmaximus_26 (B1), Olak_26 (B1), Oline_25 (B1), Olive_26 (B1), OliverWalter_26 (B1), Omniscient_26 (B1), Oosterbaan_26 (B1), Orfeu_25 (B1), Orion_26 (B1), Orwigg_26 (B1), PG1_26 (B1), Pacifista_27 (B1), Phamished_26 (B1), Phareon_26 (B1), PhatCats2014_26 (B1), PhatLouie_26 (B1), Phelemich_26 (B5), PhenghisKhan_25 (B1), Pherdinand_26 (B1), Phergie_25 (B1), Phipps_26 (B1), Phleuron_25 (B1), PhrankReynolds_25 (B1), PhrodoBaggins_25 (B1), Phunky_26 (B1), Piglet_0025 (B1), PinheadLarry_26 (B1), Pinkman_25 (B1), Pipsqueak_26 (B1), Placalicious_25 (B1), Plmatters_26 (B1), Podrick_26 (B1), Pops_26 (B1), Poster_23 (B4), Potter_25 (B1), Prickles_26 (B1), Prince_25 (B4), ProfessorX_26 (B1), Puhltonio_26 (B1), QueenBeane_26 (B1), Quisquillae_26 (B1), RawrgerThat_24 (B4), RedMaple_25 (B1), Rich_25 (B5), Ricotta_26 (B1), Riggan_26 (B1), Rimu_27 (B1), Robyn_25 (B1), Roliet_26 (B1), Roscoe_27 (B1), Roy17_26 (B1), SDcharge11_26 (B1), Samaymay_26 (B1), SassyCat97_25 (B1), Schadenfreude_25 (B1), Schueller_26 (B1), Scoot17C_26 (B1), Scrick_26 (B1), Selr12_26 (B1), Serendipitous_25 (B5), Serendipity_26 (B1), Serpentine_0026 (B1), Sheila_26 (B1), ShiVal_26 (B1), Sigman_26 (B1), Simielle_25 (B1), SirJeffery_26 (B5), Skippy_26 (B1), Slatt_26 (B1), Soile_26 (B1), Solosis_25 (B1), Sophia_25 (B1), Soto_26 (B1), Spartan300_26 (B1), Squid_26 (B1), Squiggle_26 (B1), StinkyVeggy_28 (B5), Struggle_25 (B1), Suffolk_26 (B1), Suigeneris_26 (B5), Surely_26 (B1), Swiphy_27 (B1), Swish_26 (B1), TallGrassMM_26 (B1), Telesworld_25 (B1), Thora_26 (B1), ThreeOh3D2_26 (B1), Thunderbird_26 (B1), Timmi_25 (B1), TomBombadil_26 (B1), Tomlarah_26 (B1), Toni_25 (B1), Tooj_26 (B1), True_25 (B1), Trypo_26 (B1), TyrionL_25 (B1), UAch1_26 (B1), UncleHowie_26 (B1), Usavi_26 (B1), Vaishali24_25 (B1), Valjean_26 (B1), Vaticameos_26 (B1), Veritas_25 (B1), Vincenzo_25 (B4), VioletZ_24 (B4), Virapocalypse_26 (B1), Virgeve_25 (B1), Vista_26 (B1), Vivaldi_26 (B1), Vortex_26 (B1), Waleliano_24 (B4), Wallhey_25 (B1), Waterdiva_26 (B1), Weher20_26 (B1), Windsor_25 (B1), Xavier_25 (B1), Yoshand_26 (B1), YouGoGlencoco_26 (B1), Zaider_27 (B1), Zelda_26 (B1), Zemanar_25 (B4), Zonia_26 (B1),

Start 25:

- Found in 1 of 426 (0.2%) of genes in pham
- Manual Annotations of this start: 1 of 374
- Called 100.0% of time when present
- Phage (with cluster) where this start called: Quesadilla_27 (B9),

Start 28:

- Found in 46 of 426 (10.8%) of genes in pham
- Manual Annotations of this start: 38 of 374
- Called 82.6% of time when present
- Phage (with cluster) where this start called: Abinghost_27 (B3), Akoma_27 (B3), Athena_28 (B3), Audrey_27 (B3), Baloo_27 (B3), Bernardo_27 (B3), Briakila_27 (B3), Casbah_26 (B3), ChaChing_27 (B3), Corofin_27 (B3), Daisy_27 (B3), Deenasa_27 (B3), Devonte_27 (B3), Gadget_28 (B3), Gervas_27 (B3), HarveySr_27 (B3), Heathcliff_27 (B3), Kamiyu_27 (B3), LestyG_27 (B3), Marley1013_27 (B3), MmasiCarm_27 (B3), Mortcellus_26 (B3), Morty007_27 (B3), Neos5_27 (B3), Nozo_27 (B3), Obutu_27 (B3), OrangeOswald_27 (B3), Phaedrus_25 (B3), Phayeta_27 (B3), Philly_26 (B3), Phlyer_27 (B3), Pipefish_27 (B3), RagingRooster_27 (B3), RomaT_27 (B3), SynergyX_27 (B3), Tydolla_27 (B3), Yahalom_27 (B3), Yinz_27 (B3),

Start 32:

- Found in 5 of 426 (1.2%) of genes in pham
- Manual Annotations of this start: 2 of 374
- Called 40.0% of time when present
- Phage (with cluster) where this start called: CaiB_25 (DR), MossRose_25 (DR),

Start 38:

- Found in 81 of 426 (19.0%) of genes in pham
- Manual Annotations of this start: 33 of 374
- Called 50.6% of time when present
- Phage (with cluster) where this start called: Allegro_28 (B2), AnClar_24 (DR), AnarQue_25 (DR), Axumite_23 (DR), Bananafish_28 (B2), Ben11_26 (B3), BiggityBass_23 (DR), Blocker23_28 (B2), Boyle_28 (B2), Chandler_27 (B3), CharlottesWeb_23 (DR), Coffee_28 (B2), Compostia_28 (B3), Fresco_23 (DR), GlenHope_28 (B3), Godines_28 (B2), Halfpint_26 (B3), Holeinone_28 (B2), ItsyBitsy1_28 (B2), Kheth_28 (B2), Kronus_26 (B3), Lars_28 (B2), Laurie_28 (B2), Ligma_23 (DR), LittleMunchkin_25 (DR), LizLemon_28 (B2), MakoManhole_25 (DR), Mariokart_23 (DR), NHagos_23 (DR), Opia_28 (B2), Phantasmagoria_28 (B2), Qyrzula_26 (B2), Rhinoforte_28 (B2), Rita1961_27 (B3), Shatter_23 (DR), Sisko_23 (DR), SlippinJimmy_27 (B3), Sour_27 (DR), TA17A_28 (B2), Wooper_25 (DR), Yago84_23 (DR),

Start 39:

- Found in 17 of 426 (4.0%) of genes in pham
- Manual Annotations of this start: 16 of 374
- Called 100.0% of time when present
- Phage (with cluster) where this start called: Arbiter_28 (B2), Ares_28 (B2), Brownie5_28 (B2), Calamitous_28 (B2), Eaglehorse_28 (B2), Faze9_28 (B2), FrenchFry_28 (B2), Glass_28 (B2), Hedgerow_28 (B2), Kaleb_28 (B2), Lephleur_28 (B2), MasterPo_28 (B2), Rosebush_28 (B2), Sabella_28 (B2), Tinciduntolum_29 (B2), Tres_28 (B2), West99_28 (B2),

Start 40:

- Found in 1 of 426 (0.2%) of genes in pham
- Manual Annotations of this start: 1 of 374
- Called 100.0% of time when present
- Phage (with cluster) where this start called: Evaa_24 (DR),

Start 54:

- Found in 1 of 426 (0.2%) of genes in pham
- No Manual Annotations of this start.
- Called 100.0% of time when present
- Phage (with cluster) where this start called: TPA2_32 (singleton),

Summary by clusters:

There are 12 clusters represented in this pham: singleton, B10, B4, B5, B6, B12, B13, B2, B3, DR, B9, B1,

Info for manual annotations of cluster B1:

- Start number 23 was manually annotated 246 times for cluster B1.

Info for manual annotations of cluster B10:

- Start number 21 was manually annotated 1 time for cluster B10.

Info for manual annotations of cluster B12:

- Start number 23 was manually annotated 1 time for cluster B12.

Info for manual annotations of cluster B13:

- Start number 16 was manually annotated 1 time for cluster B13.
- Start number 22 was manually annotated 1 time for cluster B13.

Info for manual annotations of cluster B2:

- Start number 38 was manually annotated 16 times for cluster B2.
- Start number 39 was manually annotated 16 times for cluster B2.

Info for manual annotations of cluster B3:

- Start number 28 was manually annotated 38 times for cluster B3.
- Start number 38 was manually annotated 5 times for cluster B3.

Info for manual annotations of cluster B4:

- Start number 13 was manually annotated 1 time for cluster B4.
- Start number 23 was manually annotated 21 times for cluster B4.

Info for manual annotations of cluster B5:

- Start number 17 was manually annotated 1 time for cluster B5.
- Start number 23 was manually annotated 7 times for cluster B5.

Info for manual annotations of cluster B6:

- Start number 5 was manually annotated 1 time for cluster B6.

Info for manual annotations of cluster B9:

- Start number 21 was manually annotated 2 times for cluster B9.
- Start number 25 was manually annotated 1 time for cluster B9.

Info for manual annotations of cluster DR:

- Start number 32 was manually annotated 2 times for cluster DR.
- Start number 38 was manually annotated 12 times for cluster DR.
- Start number 40 was manually annotated 1 time for cluster DR.

Gene Information:

Gene: ABU_26 Start: 19142, Stop: 19705, Start Num: 23

Candidate Starts for ABU_26:

(4, 18971), (Start: 23 @19142 has 275 MA's), (70, 19328), (92, 19382), (121, 19613), (127, 19673),

Gene: Abinghost_27 Start: 19776, Stop: 20369, Start Num: 28

Candidate Starts for Abinghost_27:

(Start: 28 @19776 has 38 MA's), (30, 19782), (Start: 38 @19815 has 33 MA's), (109, 20145), (115, 20190), (119, 20235), (121, 20247), (126, 20295),

Gene: AbsoluteMadLad_25 Start: 19143, Stop: 19706, Start Num: 23

Candidate Starts for AbsoluteMadLad_25:

(4, 18972), (Start: 23 @19143 has 275 MA's), (70, 19329), (92, 19383), (121, 19614), (127, 19674),

Gene: Acadian_26 Start: 19859, Stop: 20425, Start Num: 23

Candidate Starts for Acadian_26:

(4, 19685), (Start: 23 @19859 has 275 MA's), (48, 19964), (50, 19967), (71, 20045), (74, 20057), (118, 20303), (121, 20318), (123, 20345), (125, 20363),

Gene: Adriana_26 Start: 19145, Stop: 19705, Start Num: 23

Candidate Starts for Adriana_26:

(4, 18974), (Start: 23 @19145 has 275 MA's), (70, 19331), (92, 19385), (121, 19616), (127, 19676),

Gene: Aelin_25 Start: 18708, Stop: 19268, Start Num: 23

Candidate Starts for Aelin_25:

(4, 18537), (Start: 23 @18708 has 275 MA's), (70, 18894), (92, 18948), (121, 19179), (127, 19239),

Gene: Akoma_27 Start: 19777, Stop: 20370, Start Num: 28

Candidate Starts for Akoma_27:

(Start: 28 @19777 has 38 MA's), (30, 19783), (Start: 38 @19816 has 33 MA's), (69, 19921), (109, 20146), (115, 20191), (119, 20236), (121, 20248), (126, 20296),

Gene: AlanGrant_25 Start: 20564, Stop: 21106, Start Num: 23

Candidate Starts for AlanGrant_25:

(Start: 23 @20564 has 275 MA's), (37, 20627), (62, 20696), (65, 20705), (74, 20738), (77, 20744), (78, 20747), (93, 20777), (110, 20921), (111, 20927), (118, 20996), (121, 21011), (124, 21047),

Gene: Allegro_28 Start: 21319, Stop: 21804, Start Num: 38

Candidate Starts for Allegro_28:

(Start: 38 @21319 has 33 MA's), (45, 21346), (63, 21388), (90, 21454), (91, 21457), (97, 21475), (101, 21499), (105, 21538), (109, 21583), (110, 21595), (112, 21607), (113, 21619), (117, 21646), (119, 21673), (120, 21682), (121, 21685), (126, 21733), (130, 21757),

Gene: AltPhacts_26 Start: 19137, Stop: 19697, Start Num: 23

Candidate Starts for AltPhacts_26:

(4, 18966), (Start: 23 @19137 has 275 MA's), (70, 19323), (92, 19377), (121, 19608), (127, 19668),

Gene: Altwerkus_25 Start: 18837, Stop: 19397, Start Num: 23

Candidate Starts for Altwerkus_25:

(4, 18666), (Start: 23 @18837 has 275 MA's), (70, 19023), (92, 19077), (121, 19308), (127, 19368),

Gene: AnClar_24 Start: 19894, Stop: 20457, Start Num: 38

Candidate Starts for AnClar_24:

(Start: 38 @19894 has 33 MA's), (61, 19966), (64, 19978), (76, 20026), (79, 20035), (110, 20242), (111, 20248), (118, 20317), (121, 20332), (126, 20380),

Gene: AnarQue_25 Start: 19081, Stop: 19596, Start Num: 38

Candidate Starts for AnarQue_25:

(29, 19039), (Start: 32 @19045 has 2 MA's), (Start: 38 @19081 has 33 MA's), (45, 19108), (51, 19117), (70, 19174), (82, 19195), (89, 19219), (93, 19231), (107, 19333), (111, 19372), (114, 19393), (118, 19441), (121, 19456), (126, 19504), (127, 19516), (130, 19528),

Gene: Anderson_26 Start: 19136, Stop: 19699, Start Num: 23

Candidate Starts for Anderson_26:

(Start: 23 @19136 has 275 MA's), (70, 19322), (92, 19376), (121, 19607), (127, 19667),

Gene: Andre_26 Start: 19134, Stop: 19697, Start Num: 23

Candidate Starts for Andre_26:

(Start: 23 @19134 has 275 MA's), (70, 19320), (92, 19374), (121, 19605), (127, 19665),

Gene: Antonia_25 Start: 18708, Stop: 19268, Start Num: 23

Candidate Starts for Antonia_25:

(4, 18537), (Start: 23 @18708 has 275 MA's), (70, 18894), (92, 18948), (121, 19179), (127, 19239),

Gene: Apex_24 Start: 19986, Stop: 20546, Start Num: 23

Candidate Starts for Apex_24:

(Start: 23 @19986 has 275 MA's), (37, 20046), (57, 20103), (59, 20112), (66, 20148), (67, 20154), (71, 20169), (78, 20187), (93, 20217), (99, 20241), (110, 20361), (111, 20367), (118, 20436), (121, 20451), (123, 20478), (124, 20487),

Gene: Apizium_25 Start: 18895, Stop: 19458, Start Num: 23

Candidate Starts for Apizium_25:

(4, 18724), (Start: 23 @18895 has 275 MA's), (70, 19081), (92, 19135), (104, 19210), (121, 19366), (127, 19426),

Gene: Arbiter_28 Start: 21405, Stop: 21890, Start Num: 39

Candidate Starts for Arbiter_28:

(Start: 39 @21405 has 16 MA's), (45, 21432), (63, 21474), (90, 21540), (91, 21543), (97, 21561), (101, 21585), (105, 21624), (109, 21669), (110, 21681), (112, 21693), (113, 21705), (117, 21732), (119, 21759), (120, 21768), (121, 21771), (126, 21819), (130, 21843),

Gene: Ares_28 Start: 21321, Stop: 21806, Start Num: 39

Candidate Starts for Ares_28:

(Start: 39 @21321 has 16 MA's), (45, 21348), (63, 21390), (90, 21456), (91, 21459), (97, 21477), (101, 21501), (105, 21540), (109, 21585), (110, 21597), (112, 21609), (113, 21621), (117, 21648), (119, 21675), (120, 21684), (121, 21687), (126, 21735), (130, 21759),

Gene: Ashraf_25 Start: 18699, Stop: 19262, Start Num: 23

Candidate Starts for Ashraf_25:

(4, 18528), (Start: 23 @18699 has 275 MA's), (70, 18885), (92, 18939), (104, 19014), (121, 19170), (127, 19230),

Gene: Athena_28 Start: 20539, Stop: 21132, Start Num: 28

Candidate Starts for Athena_28:

(Start: 28 @20539 has 38 MA's), (30, 20545), (Start: 38 @20578 has 33 MA's), (109, 20908), (115, 20953), (119, 20998), (121, 21010), (126, 21058),

Gene: Audrey_27 Start: 19776, Stop: 20369, Start Num: 28

Candidate Starts for Audrey_27:

(Start: 28 @19776 has 38 MA's), (30, 19782), (Start: 38 @19815 has 33 MA's), (109, 20145), (115, 20190), (119, 20235), (121, 20247), (126, 20295),

Gene: Austelle_25 Start: 20442, Stop: 21002, Start Num: 23

Candidate Starts for Austelle_25:

(Start: 23 @20442 has 275 MA's), (37, 20502), (57, 20559), (59, 20568), (66, 20604), (67, 20610), (78, 20643), (93, 20673), (99, 20697), (110, 20817), (111, 20823), (118, 20892), (121, 20907), (123, 20934), (124, 20943),

Gene: Axumite_23 Start: 17682, Stop: 18221, Start Num: 38

Candidate Starts for Axumite_23:

(20, 17577), (Start: 38 @17682 has 33 MA's), (63, 17760), (98, 17868), (99, 17874), (111, 17997), (113, 18015), (115, 18024), (118, 18066), (121, 18081), (126, 18129), (127, 18141),

Gene: Badfish_26 Start: 19167, Stop: 19727, Start Num: 23

Candidate Starts for Badfish_26:

(4, 18996), (Start: 23 @19167 has 275 MA's), (70, 19353), (92, 19407), (121, 19638), (127, 19698),

Gene: Bae_25 Start: 19615, Stop: 20181, Start Num: 23

Candidate Starts for Bae_25:

(4, 19441), (6, 19474), (Start: 23 @19615 has 275 MA's), (71, 19801), (74, 19813), (89, 19831), (118, 20059), (121, 20074), (123, 20101), (124, 20110),

Gene: Baloo_27 Start: 19776, Stop: 20369, Start Num: 28

Candidate Starts for Baloo_27:

(Start: 28 @19776 has 38 MA's), (30, 19782), (Start: 38 @19815 has 33 MA's), (109, 20145), (115, 20190), (119, 20235), (121, 20247), (126, 20295),

Gene: Bananafish_28 Start: 21316, Stop: 21801, Start Num: 38

Candidate Starts for Bananafish_28:

(Start: 38 @21316 has 33 MA's), (45, 21343), (63, 21385), (90, 21451), (91, 21454), (97, 21472), (101, 21496), (105, 21535), (109, 21580), (110, 21592), (112, 21604), (113, 21616), (117, 21643), (119, 21670), (120, 21679), (121, 21682), (126, 21730), (130, 21754),

Gene: Banjo_25 Start: 18844, Stop: 19407, Start Num: 23

Candidate Starts for Banjo_25:

(4, 18673), (Start: 23 @18844 has 275 MA's), (70, 19030), (92, 19084), (121, 19315), (127, 19375),

Gene: Basato_27 Start: 19369, Stop: 19932, Start Num: 23

Candidate Starts for Basato_27:

(4, 19198), (Start: 23 @19369 has 275 MA's), (70, 19555), (92, 19609), (121, 19840), (127, 19900),

Gene: BatteryCK_25 Start: 18721, Stop: 19284, Start Num: 23

Candidate Starts for BatteryCK_25:

(4, 18550), (Start: 23 @18721 has 275 MA's), (70, 18907), (92, 18961), (104, 19036), (121, 19192), (127, 19252),

Gene: Beaglebox_25 Start: 18864, Stop: 19427, Start Num: 23

Candidate Starts for Beaglebox_25:

(4, 18693), (Start: 23 @18864 has 275 MA's), (70, 19050), (92, 19104), (121, 19335), (127, 19395),

Gene: Ben11_26 Start: 19637, Stop: 20191, Start Num: 38

Candidate Starts for Ben11_26:

(Start: 28 @19598 has 38 MA's), (30, 19604), (Start: 38 @19637 has 33 MA's), (109, 19967), (115, 20012), (119, 20057), (121, 20069), (126, 20117),

Gene: Bernardo_27 Start: 19776, Stop: 20369, Start Num: 28

Candidate Starts for Bernardo_27:

(Start: 28 @19776 has 38 MA's), (30, 19782), (Start: 38 @19815 has 33 MA's), (69, 19920), (109, 20145), (115, 20190), (119, 20235), (121, 20247), (126, 20295),

Gene: BiggityBass_23 Start: 19979, Stop: 20494, Start Num: 38

Candidate Starts for BiggityBass_23:

(Start: 38 @19979 has 33 MA's), (61, 20051), (64, 20063), (81, 20105), (111, 20285), (118, 20354), (121, 20369), (126, 20417),

Gene: BirdsNest_29 Start: 19215, Stop: 19856, Start Num: 22

Candidate Starts for BirdsNest_29:

(Start: 16 @19173 has 1 MA's), (Start: 22 @19215 has 1 MA's), (26, 19251), (85, 19473), (102, 19563), (112, 19662), (118, 19725), (121, 19740),

Gene: Bishoperium_25 Start: 18850, Stop: 19413, Start Num: 23

Candidate Starts for Bishoperium_25:

(4, 18679), (Start: 23 @18850 has 275 MA's), (70, 19036), (92, 19090), (121, 19321), (127, 19381),

Gene: BlackStallion_26 Start: 19155, Stop: 19718, Start Num: 23

Candidate Starts for BlackStallion_26:

(4, 18984), (Start: 23 @19155 has 275 MA's), (70, 19341), (92, 19395), (121, 19626), (127, 19686),

Gene: Blocker23_28 Start: 21437, Stop: 21922, Start Num: 38

Candidate Starts for Blocker23_28:

(Start: 38 @21437 has 33 MA's), (45, 21464), (63, 21506), (90, 21572), (91, 21575), (97, 21593), (101, 21617), (105, 21656), (109, 21701), (110, 21713), (112, 21725), (113, 21737), (117, 21764), (119, 21791), (120, 21800), (121, 21803), (126, 21851), (130, 21875),

Gene: BlueHusk_26 Start: 18652, Stop: 19215, Start Num: 23

Candidate Starts for BlueHusk_26:

(Start: 23 @18652 has 275 MA's), (70, 18838), (92, 18892), (121, 19123), (127, 19183),

Gene: Bluephacebaby_25 Start: 18850, Stop: 19413, Start Num: 23

Candidate Starts for Bluephacebaby_25:

(4, 18679), (Start: 23 @18850 has 275 MA's), (70, 19036), (92, 19090), (121, 19321), (127, 19381),

Gene: BobbyK_24 Start: 19805, Stop: 20365, Start Num: 23

Candidate Starts for BobbyK_24:

(Start: 23 @19805 has 275 MA's), (37, 19865), (57, 19922), (59, 19931), (66, 19967), (67, 19973), (71, 19988), (78, 20006), (93, 20036), (99, 20060), (110, 20180), (111, 20186), (118, 20255), (121, 20270), (123, 20297), (124, 20306),

Gene: Boehler_26 Start: 19160, Stop: 19720, Start Num: 23

Candidate Starts for Boehler_26:

(4, 18989), (Start: 23 @19160 has 275 MA's), (70, 19346), (92, 19400), (121, 19631), (127, 19691),

Gene: Boyle_28 Start: 21438, Stop: 21923, Start Num: 38

Candidate Starts for Boyle_28:

(Start: 38 @21438 has 33 MA's), (45, 21465), (63, 21507), (90, 21573), (91, 21576), (97, 21594), (101, 21618), (105, 21657), (109, 21702), (110, 21714), (112, 21726), (113, 21738), (117, 21765), (119, 21792), (120, 21801), (121, 21804), (126, 21852), (130, 21876),

Gene: Briakila_27 Start: 20541, Stop: 21134, Start Num: 28

Candidate Starts for Briakila_27:

(Start: 28 @20541 has 38 MA's), (30, 20547), (Start: 38 @20580 has 33 MA's), (109, 20910), (115, 20955), (119, 21000), (121, 21012), (126, 21060),

Gene: Brilliant_26 Start: 18855, Stop: 19418, Start Num: 23

Candidate Starts for Brilliant_26:

(4, 18684), (Start: 23 @18855 has 275 MA's), (70, 19041), (92, 19095), (104, 19170), (121, 19326), (127, 19386),

Gene: BrownCNA_25 Start: 20057, Stop: 20617, Start Num: 23

Candidate Starts for BrownCNA_25:

(Start: 23 @20057 has 275 MA's), (37, 20117), (57, 20174), (59, 20183), (66, 20219), (67, 20225), (78, 20258), (93, 20288), (99, 20312), (110, 20432), (111, 20438), (118, 20507), (121, 20522), (123, 20549), (124, 20558),

Gene: Brownie5_28 Start: 21438, Stop: 21923, Start Num: 39

Candidate Starts for Brownie5_28:

(Start: 39 @21438 has 16 MA's), (45, 21465), (63, 21507), (90, 21573), (91, 21576), (97, 21594), (101, 21618), (105, 21657), (109, 21702), (110, 21714), (112, 21726), (113, 21738), (117, 21765), (119, 21792), (120, 21801), (121, 21804), (126, 21852), (130, 21876),

Gene: Buckeye_26 Start: 19174, Stop: 19734, Start Num: 23

Candidate Starts for Buckeye_26:

(4, 19003), (Start: 23 @19174 has 275 MA's), (70, 19360), (92, 19414), (121, 19645), (127, 19705),

Gene: Burr_25 Start: 18849, Stop: 19412, Start Num: 23

Candidate Starts for Burr_25:

(4, 18678), (Start: 23 @18849 has 275 MA's), (70, 19035), (92, 19089), (121, 19320), (127, 19380),

Gene: CaiB_25 Start: 19031, Stop: 19582, Start Num: 32

Candidate Starts for CaiB_25:

(10, 18866), (29, 19025), (Start: 32 @19031 has 2 MA's), (Start: 38 @19067 has 33 MA's), (45, 19094), (51, 19103), (70, 19160), (82, 19181), (89, 19205), (93, 19217), (107, 19319), (111, 19358), (114, 19379), (118, 19427), (121, 19442), (126, 19490), (127, 19502), (130, 19514),

Gene: Calamitous_28 Start: 21318, Stop: 21803, Start Num: 39

Candidate Starts for Calamitous_28:

(Start: 39 @21318 has 16 MA's), (45, 21345), (63, 21387), (90, 21453), (91, 21456), (97, 21474), (101, 21498), (105, 21537), (109, 21582), (110, 21594), (112, 21606), (113, 21618), (117, 21645), (119, 21672), (120, 21681), (121, 21684), (126, 21732), (130, 21756),

Gene: CamL_26 Start: 19148, Stop: 19711, Start Num: 23

Candidate Starts for CamL_26:

(4, 18977), (Start: 23 @19148 has 275 MA's), (70, 19334), (92, 19388), (121, 19619), (127, 19679),

Gene: CampRoach_25 Start: 19141, Stop: 19704, Start Num: 23

Candidate Starts for CampRoach_25:

(4, 18970), (Start: 23 @19141 has 275 MA's), (70, 19327), (92, 19381), (121, 19612), (127, 19672),

Gene: Cannibal_26 Start: 19134, Stop: 19697, Start Num: 23

Candidate Starts for Cannibal_26:

(4, 18963), (Start: 23 @19134 has 275 MA's), (70, 19320), (92, 19374), (121, 19605), (127, 19665),

Gene: Carthage_24 Start: 18060, Stop: 18623, Start Num: 23

Candidate Starts for Carthage_24:

(4, 17889), (Start: 23 @18060 has 275 MA's), (70, 18246), (92, 18300), (121, 18531), (127, 18591),

Gene: Casbah_26 Start: 19628, Stop: 20221, Start Num: 28

Candidate Starts for Casbah_26:

(Start: 28 @19628 has 38 MA's), (30, 19634), (Start: 38 @19667 has 33 MA's), (109, 19997), (115, 20042), (119, 20087), (121, 20099), (126, 20147),

Gene: ChaChing_27 Start: 19791, Stop: 20384, Start Num: 28

Candidate Starts for ChaChing_27:

(Start: 28 @19791 has 38 MA's), (30, 19797), (Start: 38 @19830 has 33 MA's), (109, 20160), (115, 20205), (119, 20250), (121, 20262), (126, 20310),

Gene: Chaelin_25 Start: 18834, Stop: 19397, Start Num: 23

Candidate Starts for Chaelin_25:

(4, 18663), (Start: 23 @18834 has 275 MA's), (70, 19020), (92, 19074), (104, 19149), (121, 19305), (127, 19365),

Gene: Chah_27 Start: 19168, Stop: 19731, Start Num: 23

Candidate Starts for Chah_27:

(4, 18997), (Start: 23 @19168 has 275 MA's), (70, 19354), (92, 19408), (121, 19639), (127, 19699),

Gene: Chandler_27 Start: 20589, Stop: 21143, Start Num: 38

Candidate Starts for Chandler_27:

(Start: 28 @20550 has 38 MA's), (30, 20556), (Start: 38 @20589 has 33 MA's), (109, 20919), (115, 20964), (119, 21009), (121, 21021), (126, 21069),

Gene: Charles1_26 Start: 19133, Stop: 19696, Start Num: 23

Candidate Starts for Charles1_26:

(Start: 23 @19133 has 275 MA's), (70, 19319), (92, 19373), (121, 19604), (127, 19664),

Gene: CharlieGBrown_25 Start: 18719, Stop: 19282, Start Num: 23

Candidate Starts for CharlieGBrown_25:

(4, 18548), (Start: 23 @18719 has 275 MA's), (70, 18905), (92, 18959), (104, 19034), (121, 19190), (127, 19250),

Gene: CharlottesWeb_23 Start: 17577, Stop: 18101, Start Num: 38

Candidate Starts for CharlottesWeb_23:

(14, 17427), (Start: 38 @17577 has 33 MA's), (63, 17661), (98, 17763), (111, 17892), (112, 17898), (115, 17919), (118, 17961), (121, 17976), (126, 18024), (127, 18036),

Gene: CheetO_26 Start: 19147, Stop: 19710, Start Num: 23

Candidate Starts for CheetO_26:

(4, 18976), (Start: 23 @19147 has 275 MA's), (70, 19333), (92, 19387), (121, 19618), (127, 19678),

Gene: Cher_25 Start: 18873, Stop: 19436, Start Num: 23

Candidate Starts for Cher_25:

(4, 18702), (Start: 23 @18873 has 275 MA's), (70, 19059), (92, 19113), (121, 19344), (127, 19404),

Gene: Childish_25 Start: 18861, Stop: 19424, Start Num: 23

Candidate Starts for Childish_25:

(4, 18690), (Start: 23 @18861 has 275 MA's), (70, 19047), (92, 19101), (121, 19332), (127, 19392),

Gene: Chorkpop_26 Start: 18872, Stop: 19435, Start Num: 23

Candidate Starts for Chorkpop_26:

(4, 18701), (Start: 23 @18872 has 275 MA's), (70, 19058), (92, 19112), (121, 19343), (127, 19403),

Gene: ChrisnMich_23 Start: 18762, Stop: 19322, Start Num: 23

Candidate Starts for ChrisnMich_23:

(Start: 23 @18762 has 275 MA's), (57, 18879), (59, 18888), (66, 18924), (67, 18930), (71, 18945), (78, 18963), (93, 18993), (96, 19002), (99, 19017), (110, 19137), (111, 19143), (112, 19149), (118, 19212), (121, 19227), (123, 19254), (124, 19263),

Gene: Chunky_26 Start: 19160, Stop: 19720, Start Num: 23

Candidate Starts for Chunky_26:

(4, 18989), (Start: 23 @19160 has 275 MA's), (70, 19346), (92, 19400), (121, 19631), (127, 19691),

Gene: Chute_25 Start: 19185, Stop: 19748, Start Num: 23

Candidate Starts for Chute_25:

(4, 19014), (Start: 23 @19185 has 275 MA's), (70, 19371), (92, 19425), (104, 19500), (121, 19656), (127, 19716),

Gene: Cobra_26 Start: 19153, Stop: 19716, Start Num: 23

Candidate Starts for Cobra_26:

(4, 18982), (Start: 23 @19153 has 275 MA's), (70, 19339), (92, 19393), (121, 19624), (127, 19684),

Gene: Coffee_28 Start: 21430, Stop: 21915, Start Num: 38

Candidate Starts for Coffee_28:

(Start: 38 @21430 has 33 MA's), (45, 21457), (63, 21499), (90, 21565), (91, 21568), (97, 21586), (101, 21610), (105, 21649), (109, 21694), (110, 21706), (112, 21718), (113, 21730), (117, 21757), (119, 21784), (120, 21793), (121, 21796), (126, 21844), (130, 21868),

Gene: Colbert_26 Start: 19150, Stop: 19713, Start Num: 23

Candidate Starts for Colbert_26:

(4, 18979), (Start: 23 @19150 has 275 MA's), (70, 19336), (92, 19390), (121, 19621), (127, 19681),

Gene: Coletti_25 Start: 19185, Stop: 19748, Start Num: 23

Candidate Starts for Coletti_25:

(4, 19014), (Start: 23 @19185 has 275 MA's), (70, 19371), (92, 19425), (104, 19500), (121, 19656), (127, 19716),

Gene: Compostia_28 Start: 20248, Stop: 20802, Start Num: 38

Candidate Starts for Compostia_28:

(Start: 28 @20209 has 38 MA's), (30, 20215), (Start: 38 @20248 has 33 MA's), (109, 20578), (115, 20623), (119, 20668), (121, 20680), (126, 20728),

Gene: Cooper_24 Start: 18981, Stop: 19541, Start Num: 23

Candidate Starts for Cooper_24:

(Start: 23 @18981 has 275 MA's), (37, 19050), (57, 19116), (59, 19125), (93, 19212), (94, 19215), (99, 19236), (110, 19356), (111, 19362), (112, 19368), (118, 19431), (121, 19446), (123, 19473), (124, 19482),

Gene: Cornobble_25 Start: 18708, Stop: 19271, Start Num: 23

Candidate Starts for Cornobble_25:

(4, 18537), (Start: 23 @18708 has 275 MA's), (70, 18894), (92, 18948), (121, 19179), (127, 19239),

Gene: Corofin_27 Start: 19801, Stop: 20394, Start Num: 28

Candidate Starts for Corofin_27:

(Start: 28 @19801 has 38 MA's), (30, 19807), (Start: 38 @19840 has 33 MA's), (109, 20170), (115, 20215), (119, 20260), (121, 20272), (126, 20320),

Gene: Cosmolli16_25 Start: 18867, Stop: 19430, Start Num: 23

Candidate Starts for Cosmolli16_25:

(4, 18696), (Start: 23 @18867 has 275 MA's), (70, 19053), (92, 19107), (121, 19338), (127, 19398),

Gene: Craff_26 Start: 19154, Stop: 19717, Start Num: 23

Candidate Starts for Craff_26:

(4, 18983), (Start: 23 @19154 has 275 MA's), (70, 19340), (92, 19394), (121, 19625), (127, 19685),

Gene: Crownjwl_26 Start: 18921, Stop: 19481, Start Num: 23

Candidate Starts for Crownjwl_26:

(4, 18750), (Start: 23 @18921 has 275 MA's), (70, 19107), (92, 19161), (121, 19392), (127, 19452),

Gene: DaddyDaniels_26 Start: 18846, Stop: 19406, Start Num: 23

Candidate Starts for DaddyDaniels_26:

(4, 18675), (Start: 23 @18846 has 275 MA's), (70, 19032), (92, 19086), (121, 19317), (127, 19377),

Gene: Daffy_26 Start: 18873, Stop: 19436, Start Num: 23

Candidate Starts for Daffy_26:

(4, 18702), (Start: 23 @18873 has 275 MA's), (70, 19059), (92, 19113), (121, 19344), (127, 19404),

Gene: Daisy_27 Start: 19797, Stop: 20390, Start Num: 28

Candidate Starts for Daisy_27:

(Start: 28 @19797 has 38 MA's), (30, 19803), (Start: 38 @19836 has 33 MA's), (109, 20166), (115, 20211), (119, 20256), (121, 20268), (126, 20316),

Gene: Daka_26 Start: 19150, Stop: 19713, Start Num: 23

Candidate Starts for Daka_26:

(4, 18979), (Start: 23 @19150 has 275 MA's), (70, 19336), (92, 19390), (121, 19621), (127, 19681),

Gene: Dati_26 Start: 18863, Stop: 19426, Start Num: 23

Candidate Starts for Dati_26:

(4, 18692), (Start: 23 @18863 has 275 MA's), (70, 19049), (92, 19103), (121, 19334), (127, 19394),

Gene: Deenasa_27 Start: 20539, Stop: 21132, Start Num: 28

Candidate Starts for Deenasa_27:

(Start: 28 @20539 has 38 MA's), (30, 20545), (Start: 38 @20578 has 33 MA's), (109, 20908), (115, 20953), (119, 20998), (121, 21010), (126, 21058),

Gene: DelRivs_25 Start: 18862, Stop: 19425, Start Num: 23

Candidate Starts for DelRivs_25:

(4, 18691), (Start: 23 @18862 has 275 MA's), (70, 19048), (92, 19102), (104, 19177), (121, 19333), (127, 19393),

Gene: Derpp_25 Start: 18709, Stop: 19272, Start Num: 23

Candidate Starts for Derpp_25:

(4, 18538), (Start: 23 @18709 has 275 MA's), (70, 18895), (92, 18949), (104, 19024), (121, 19180), (127, 19240),

Gene: Devonte_27 Start: 19776, Stop: 20369, Start Num: 28

Candidate Starts for Devonte_27:

(Start: 28 @19776 has 38 MA's), (30, 19782), (Start: 38 @19815 has 33 MA's), (109, 20145), (115, 20190), (119, 20235), (121, 20247), (126, 20295),

Gene: Dice_27 Start: 18850, Stop: 19413, Start Num: 23

Candidate Starts for Dice_27:

(4, 18679), (Start: 23 @18850 has 275 MA's), (70, 19036), (92, 19090), (121, 19321), (127, 19381),

Gene: DigitDog_26 Start: 19451, Stop: 20020, Start Num: 23

Candidate Starts for DigitDog_26:

(Start: 23 @19451 has 275 MA's), (45, 19553), (71, 19640), (74, 19652), (118, 19898), (121, 19913), (123, 19940),

Gene: Dingo_26 Start: 19134, Stop: 19694, Start Num: 23

Candidate Starts for Dingo_26:

(4, 18963), (Start: 23 @19134 has 275 MA's), (70, 19320), (92, 19374), (121, 19605), (127, 19665),

Gene: Dione_25 Start: 18851, Stop: 19414, Start Num: 23

Candidate Starts for Dione_25:

(4, 18680), (Start: 23 @18851 has 275 MA's), (70, 19037), (92, 19091), (121, 19322), (127, 19382),

Gene: DirtJuice_26 Start: 19136, Stop: 19699, Start Num: 23

Candidate Starts for DirtJuice_26:

(4, 18965), (Start: 23 @19136 has 275 MA's), (70, 19322), (92, 19376), (121, 19607), (127, 19667),

Gene: Doddsville_26 Start: 18863, Stop: 19426, Start Num: 23

Candidate Starts for Doddsville_26:

(4, 18692), (Start: 23 @18863 has 275 MA's), (70, 19049), (92, 19103), (104, 19178), (121, 19334), (127, 19394),

Gene: DoesntMatter_26 Start: 19132, Stop: 19695, Start Num: 23

Candidate Starts for DoesntMatter_26:

(4, 18961), (Start: 23 @19132 has 275 MA's), (70, 19318), (92, 19372), (121, 19603), (127, 19663),

Gene: DonSanchon_25 Start: 18849, Stop: 19412, Start Num: 23

Candidate Starts for DonSanchon_25:

(4, 18678), (Start: 23 @18849 has 275 MA's), (70, 19035), (92, 19089), (121, 19320), (127, 19380),

Gene: Donny_26 Start: 19864, Stop: 20430, Start Num: 23

Candidate Starts for Donny_26:

(4, 19690), (Start: 23 @19864 has 275 MA's), (48, 19969), (50, 19972), (71, 20050), (74, 20062), (118, 20308), (121, 20323), (123, 20350), (125, 20368),

Gene: DuchessDung_24 Start: 18000, Stop: 18563, Start Num: 23

Candidate Starts for DuchessDung_24:

(4, 17829), (Start: 23 @18000 has 275 MA's), (70, 18186), (92, 18240), (104, 18315), (121, 18471), (127, 18531),

Gene: Duggie_25 Start: 18865, Stop: 19428, Start Num: 23

Candidate Starts for Duggie_25:

(4, 18694), (Start: 23 @18865 has 275 MA's), (70, 19051), (92, 19105), (104, 19180), (121, 19336), (127, 19396),

Gene: Durga_26 Start: 19162, Stop: 19725, Start Num: 23

Candidate Starts for Durga_26:

(4, 18991), (Start: 23 @19162 has 275 MA's), (70, 19348), (92, 19402), (104, 19477), (121, 19633), (127, 19693),

Gene: Eaglehorse_28 Start: 21339, Stop: 21824, Start Num: 39

Candidate Starts for Eaglehorse_28:

(Start: 39 @21339 has 16 MA's), (45, 21366), (63, 21408), (90, 21474), (91, 21477), (97, 21495), (101, 21519), (105, 21558), (109, 21603), (110, 21615), (112, 21627), (113, 21639), (117, 21666), (119, 21693), (120, 21702), (121, 21705), (126, 21753), (130, 21777),

Gene: EastView9101_26 Start: 19511, Stop: 20077, Start Num: 23

Candidate Starts for EastView9101_26:

(4, 19337), (Start: 23 @19511 has 275 MA's), (48, 19616), (50, 19619), (71, 19697), (74, 19709), (118, 19955), (121, 19970), (123, 19997), (125, 20015),

Gene: Emiris_26 Start: 19143, Stop: 19703, Start Num: 23

Candidate Starts for Emiris_26:

(4, 18972), (Start: 23 @19143 has 275 MA's), (70, 19329), (92, 19383), (121, 19614), (127, 19674),

Gene: EmpTee_26 Start: 19149, Stop: 19712, Start Num: 23

Candidate Starts for EmpTee_26:

(4, 18978), (Start: 23 @19149 has 275 MA's), (70, 19335), (92, 19389), (121, 19620), (127, 19680),

Gene: Eremos_26 Start: 19149, Stop: 19709, Start Num: 23

Candidate Starts for Eremos_26:

(4, 18978), (Start: 23 @19149 has 275 MA's), (70, 19335), (92, 19389), (121, 19620), (127, 19680),

Gene: Etaye_26 Start: 19135, Stop: 19698, Start Num: 23

Candidate Starts for Etaye_26:

(4, 18964), (Start: 23 @19135 has 275 MA's), (70, 19321), (92, 19375), (121, 19606), (127, 19666),

Gene: Eugenia_26 Start: 19162, Stop: 19722, Start Num: 23

Candidate Starts for Eugenia_26:

(4, 18991), (Start: 23 @19162 has 275 MA's), (70, 19348), (92, 19402), (121, 19633), (127, 19693),

Gene: Evaa_24 Start: 18931, Stop: 19455, Start Num: 40

Candidate Starts for Evaa_24:

(14, 18775), (20, 18820), (30, 18892), (Start: 40 @18931 has 1 MA's), (43, 18940), (63, 18994), (106, 19171), (110, 19222), (111, 19228), (112, 19234), (116, 19261), (118, 19297), (119, 19300), (121, 19312), (126, 19360), (127, 19372),

Gene: Fang_26 Start: 19163, Stop: 19723, Start Num: 23

Candidate Starts for Fang_26:

(4, 18992), (Start: 23 @19163 has 275 MA's), (70, 19349), (92, 19403), (121, 19634), (127, 19694),

Gene: Faze9_28 Start: 21435, Stop: 21920, Start Num: 39

Candidate Starts for Faze9_28:

(Start: 39 @21435 has 16 MA's), (45, 21462), (63, 21504), (90, 21570), (91, 21573), (97, 21591), (101, 21615), (105, 21654), (109, 21699), (110, 21711), (112, 21723), (113, 21735), (117, 21762), (119, 21789), (120, 21798), (121, 21801), (126, 21849), (130, 21873),

Gene: FluffyNinja_26 Start: 19155, Stop: 19718, Start Num: 23

Candidate Starts for FluffyNinja_26:

(4, 18984), (Start: 23 @19155 has 275 MA's), (70, 19341), (92, 19395), (121, 19626), (127, 19686),

Gene: Fortunato_24 Start: 19799, Stop: 20359, Start Num: 23

Candidate Starts for Fortunato_24:

(Start: 23 @19799 has 275 MA's), (37, 19859), (57, 19916), (59, 19925), (66, 19961), (67, 19967), (71, 19982), (78, 20000), (93, 20030), (99, 20054), (110, 20174), (111, 20180), (118, 20249), (121, 20264), (123, 20291), (124, 20300),

Gene: Fozzie_25 Start: 19158, Stop: 19721, Start Num: 23

Candidate Starts for Fozzie_25:

(4, 18987), (Start: 23 @19158 has 275 MA's), (70, 19344), (92, 19398), (121, 19629), (127, 19689),

Gene: Frankicide_26 Start: 19149, Stop: 19712, Start Num: 23

Candidate Starts for Frankicide_26:

(4, 18978), (Start: 23 @19149 has 275 MA's), (70, 19335), (92, 19389), (121, 19620), (127, 19680),

Gene: Frederick_24 Start: 19808, Stop: 20368, Start Num: 23

Candidate Starts for Frederick_24:

(Start: 23 @19808 has 275 MA's), (37, 19868), (57, 19925), (59, 19934), (66, 19970), (67, 19976), (71, 19991), (78, 20009), (93, 20039), (99, 20063), (110, 20183), (111, 20189), (118, 20258), (121, 20273), (123, 20300), (124, 20309),

Gene: FrenchFry_28 Start: 21438, Stop: 21923, Start Num: 39

Candidate Starts for FrenchFry_28:

(Start: 39 @21438 has 16 MA's), (45, 21465), (63, 21507), (90, 21573), (91, 21576), (97, 21594), (101, 21618), (105, 21657), (109, 21702), (110, 21714), (112, 21726), (113, 21738), (117, 21765), (119, 21792), (120, 21801), (121, 21804), (126, 21852), (130, 21876),

Gene: Fresco_23 Start: 17682, Stop: 18221, Start Num: 38

Candidate Starts for Fresco_23:

(20, 17577), (Start: 38 @17682 has 33 MA's), (63, 17760), (98, 17868), (99, 17874), (111, 17997), (113, 18015), (115, 18024), (118, 18066), (121, 18081), (126, 18129), (127, 18141),

Gene: Freya_25 Start: 18844, Stop: 19404, Start Num: 23

Candidate Starts for Freya_25:

(4, 18673), (Start: 23 @18844 has 275 MA's), (70, 19030), (92, 19084), (121, 19315), (127, 19375),

Gene: FriarPreacher_26 Start: 19169, Stop: 19732, Start Num: 23

Candidate Starts for FriarPreacher_26:

(4, 18998), (Start: 23 @19169 has 275 MA's), (70, 19355), (92, 19409), (121, 19640), (127, 19700),

Gene: Fringe_26 Start: 19134, Stop: 19697, Start Num: 23

Candidate Starts for Fringe_26:

(Start: 23 @19134 has 275 MA's), (70, 19320), (92, 19374), (121, 19605), (127, 19665),

Gene: FugateOSU_25 Start: 18855, Stop: 19415, Start Num: 23

Candidate Starts for FugateOSU_25:

(4, 18684), (Start: 23 @18855 has 275 MA's), (70, 19041), (92, 19095), (121, 19326), (127, 19386),

Gene: Funsized_29 Start: 22234, Stop: 22848, Start Num: 21

Candidate Starts for Funsized_29:

(1, 21817), (3, 21997), (9, 22126), (Start: 21 @22234 has 3 MA's), (24, 22249), (27, 22273), (41, 22330), (58, 22387), (66, 22420), (72, 22444), (80, 22468), (88, 22483), (99, 22522), (111, 22648), (118, 22717), (121, 22732), (123, 22759),

Gene: Gadget_28 Start: 19786, Stop: 20379, Start Num: 28

Candidate Starts for Gadget_28:

(Start: 28 @19786 has 38 MA's), (30, 19792), (Start: 38 @19825 has 33 MA's), (69, 19930), (109, 20155), (115, 20200), (119, 20245), (121, 20257), (126, 20305),

Gene: Gareth_25 Start: 18852, Stop: 19415, Start Num: 23

Candidate Starts for Gareth_25:

(4, 18681), (Start: 23 @18852 has 275 MA's), (70, 19038), (92, 19092), (121, 19323), (127, 19383),

Gene: GeneCoco_26 Start: 19154, Stop: 19717, Start Num: 23

Candidate Starts for GeneCoco_26:

(4, 18983), (Start: 23 @19154 has 275 MA's), (70, 19340), (92, 19394), (104, 19469), (121, 19625), (127, 19685),

Gene: Gervas_27 Start: 19760, Stop: 20353, Start Num: 28

Candidate Starts for Gervas_27:

(Start: 28 @19760 has 38 MA's), (30, 19766), (Start: 38 @19799 has 33 MA's), (109, 20129), (115, 20174), (119, 20219), (121, 20231), (126, 20279),

Gene: Giraffe_26 Start: 18857, Stop: 19420, Start Num: 23

Candidate Starts for Giraffe_26:

(4, 18686), (Start: 23 @18857 has 275 MA's), (70, 19043), (92, 19097), (121, 19328), (127, 19388),

Gene: Glass_28 Start: 21438, Stop: 21923, Start Num: 39

Candidate Starts for Glass_28:

(Start: 39 @21438 has 16 MA's), (45, 21465), (63, 21507), (90, 21573), (91, 21576), (97, 21594), (101, 21618), (105, 21657), (109, 21702), (110, 21714), (112, 21726), (113, 21738), (117, 21765), (119, 21792), (120, 21801), (121, 21804), (126, 21852), (130, 21876),

Gene: GlenHope_28 Start: 19808, Stop: 20362, Start Num: 38

Candidate Starts for GlenHope_28:

(Start: 28 @19769 has 38 MA's), (30, 19775), (Start: 38 @19808 has 33 MA's), (69, 19913), (109, 20138), (115, 20183), (119, 20228), (121, 20240), (126, 20288),

Gene: Godines_28 Start: 21330, Stop: 21815, Start Num: 38

Candidate Starts for Godines_28:

(Start: 38 @21330 has 33 MA's), (45, 21357), (63, 21399), (90, 21465), (91, 21468), (97, 21486), (101, 21510), (105, 21549), (109, 21594), (110, 21606), (112, 21618), (113, 21630), (117, 21657), (119, 21684), (120, 21693), (121, 21696), (126, 21744), (130, 21768),

Gene: Gophee_26 Start: 19136, Stop: 19699, Start Num: 23

Candidate Starts for Gophee_26:

(Start: 23 @19136 has 275 MA's), (70, 19322), (92, 19376), (121, 19607), (127, 19667),

Gene: Grand2040_25 Start: 18872, Stop: 19435, Start Num: 23

Candidate Starts for Grand2040_25:

(4, 18701), (Start: 23 @18872 has 275 MA's), (70, 19058), (92, 19112), (121, 19343), (127, 19403),

Gene: Gwilliam_26 Start: 19145, Stop: 19708, Start Num: 23

Candidate Starts for Gwilliam_26:

(4, 18974), (Start: 23 @19145 has 275 MA's), (70, 19331), (92, 19385), (121, 19616), (127, 19676),

Gene: Gyarad_0026 Start: 19147, Stop: 19710, Start Num: 23
Candidate Starts for Gyarad_0026:
(4, 18976), (Start: 23 @19147 has 275 MA's), (70, 19333), (92, 19387), (121, 19618), (127, 19678),

Gene: HSavage_26 Start: 19155, Stop: 19718, Start Num: 23
Candidate Starts for HSavage_26:
(4, 18984), (Start: 23 @19155 has 275 MA's), (70, 19341), (92, 19395), (121, 19626), (127, 19686),

Gene: Haimas_26 Start: 19150, Stop: 19710, Start Num: 23
Candidate Starts for Haimas_26:
(4, 18979), (Start: 23 @19150 has 275 MA's), (70, 19336), (92, 19390), (121, 19621), (127, 19681),

Gene: Haleema_25 Start: 18872, Stop: 19435, Start Num: 23
Candidate Starts for Haleema_25:
(4, 18701), (Start: 23 @18872 has 275 MA's), (70, 19058), (92, 19112), (121, 19343), (127, 19403),

Gene: Halfpint_26 Start: 19640, Stop: 20194, Start Num: 38
Candidate Starts for Halfpint_26:
(Start: 28 @19601 has 38 MA's), (30, 19607), (Start: 38 @19640 has 33 MA's), (109, 19970), (115, 20015), (119, 20060), (121, 20072), (126, 20120),

Gene: Hamish_26 Start: 19142, Stop: 19702, Start Num: 23
Candidate Starts for Hamish_26:
(4, 18971), (Start: 23 @19142 has 275 MA's), (70, 19328), (92, 19382), (121, 19613), (127, 19673),

Gene: Hangman_24 Start: 19800, Stop: 20360, Start Num: 23
Candidate Starts for Hangman_24:
(Start: 23 @19800 has 275 MA's), (37, 19860), (57, 19917), (59, 19926), (66, 19962), (67, 19968), (78, 20001), (93, 20031), (99, 20055), (110, 20175), (111, 20181), (118, 20250), (121, 20265), (123, 20292), (124, 20301),

Gene: Hartsy_25 Start: 19165, Stop: 19728, Start Num: 23
Candidate Starts for Hartsy_25:
(4, 18994), (Start: 23 @19165 has 275 MA's), (70, 19351), (92, 19405), (104, 19480), (121, 19636), (127, 19696),

Gene: Harvey_26 Start: 19171, Stop: 19731, Start Num: 23
Candidate Starts for Harvey_26:
(4, 19000), (Start: 23 @19171 has 275 MA's), (70, 19357), (92, 19411), (121, 19642), (127, 19702),

Gene: HarveySr_27 Start: 19756, Stop: 20349, Start Num: 28
Candidate Starts for HarveySr_27:
(Start: 28 @19756 has 38 MA's), (30, 19762), (Start: 38 @19795 has 33 MA's), (109, 20125), (115, 20170), (119, 20215), (121, 20227), (126, 20275),

Gene: Hashim76_30 Start: 19673, Stop: 20305, Start Num: 22
Candidate Starts for Hashim76_30:
(Start: 22 @19673 has 1 MA's), (26, 19709), (85, 19919), (102, 20012), (112, 20111), (118, 20174), (121, 20189), (127, 20249),

Gene: Heath_23 Start: 19431, Stop: 19991, Start Num: 23
Candidate Starts for Heath_23:

(Start: 23 @19431 has 275 MA's), (37, 19491), (57, 19548), (59, 19557), (67, 19599), (78, 19632), (93, 19662), (99, 19686), (110, 19806), (111, 19812), (118, 19881), (121, 19896), (123, 19923), (124, 19932),

Gene: Heathcliff_27 Start: 19738, Stop: 20331, Start Num: 28

Candidate Starts for Heathcliff_27:

(Start: 28 @19738 has 38 MA's), (30, 19744), (Start: 38 @19777 has 33 MA's), (69, 19882), (109, 20107), (115, 20152), (119, 20197), (121, 20209), (126, 20257),

Gene: Hedgerow_28 Start: 21420, Stop: 21905, Start Num: 39

Candidate Starts for Hedgerow_28:

(Start: 39 @21420 has 16 MA's), (45, 21447), (63, 21489), (90, 21555), (91, 21558), (97, 21576), (101, 21600), (105, 21639), (109, 21684), (110, 21696), (112, 21708), (113, 21720), (117, 21747), (119, 21774), (120, 21783), (121, 21786), (126, 21834), (130, 21858),

Gene: Held_26 Start: 18856, Stop: 19419, Start Num: 23

Candidate Starts for Held_26:

(4, 18685), (Start: 23 @18856 has 275 MA's), (70, 19042), (92, 19096), (121, 19327), (127, 19387),

Gene: HenryJackson_25 Start: 18872, Stop: 19435, Start Num: 23

Candidate Starts for HenryJackson_25:

(4, 18701), (Start: 23 @18872 has 275 MA's), (70, 19058), (92, 19112), (121, 19343), (127, 19403),

Gene: Hertubise_26 Start: 19164, Stop: 19724, Start Num: 23

Candidate Starts for Hertubise_26:

(4, 18993), (Start: 23 @19164 has 275 MA's), (70, 19350), (92, 19404), (121, 19635), (127, 19695),

Gene: Hetaeria_26 Start: 19165, Stop: 19728, Start Num: 23

Candidate Starts for Hetaeria_26:

(4, 18994), (Start: 23 @19165 has 275 MA's), (70, 19351), (92, 19405), (121, 19636), (127, 19696),

Gene: HighStump_25 Start: 18855, Stop: 19418, Start Num: 23

Candidate Starts for HighStump_25:

(4, 18684), (Start: 23 @18855 has 275 MA's), (70, 19041), (92, 19095), (121, 19326), (127, 19386),

Gene: Hocus_25 Start: 18858, Stop: 19421, Start Num: 23

Candidate Starts for Hocus_25:

(4, 18687), (Start: 23 @18858 has 275 MA's), (70, 19044), (92, 19098), (104, 19173), (121, 19329), (127, 19389),

Gene: Holeinone_28 Start: 21315, Stop: 21800, Start Num: 38

Candidate Starts for Holeinone_28:

(Start: 38 @21315 has 33 MA's), (45, 21342), (63, 21384), (90, 21450), (91, 21453), (97, 21471), (101, 21495), (105, 21534), (109, 21579), (110, 21591), (112, 21603), (113, 21615), (117, 21642), (119, 21669), (120, 21678), (121, 21681), (126, 21729), (130, 21753),

Gene: Horchata_26 Start: 19134, Stop: 19697, Start Num: 23

Candidate Starts for Horchata_26:

(4, 18963), (Start: 23 @19134 has 275 MA's), (70, 19320), (92, 19374), (121, 19605), (127, 19665),

Gene: Hosp_020 Start: 16572, Stop: 17234, Start Num: 12

Candidate Starts for Hosp_020:

(7, 16509), (10, 16542), (12, 16572), (15, 16599), (33, 16692), (35, 16698), (36, 16704), (37, 16716), (60, 16785), (93, 16905), (112, 17061), (118, 17124), (121, 17139), (124, 17175), (127, 17199),

Gene: Hydro_24 Start: 19805, Stop: 20365, Start Num: 23

Candidate Starts for Hydro_24:

(Start: 23 @19805 has 275 MA's), (37, 19865), (57, 19922), (59, 19931), (66, 19967), (67, 19973), (78, 20006), (93, 20036), (99, 20060), (110, 20180), (111, 20186), (118, 20255), (121, 20270), (123, 20297), (124, 20306),

Gene: ImtiyazSitla_25 Start: 18699, Stop: 19262, Start Num: 23

Candidate Starts for ImtiyazSitla_25:

(4, 18528), (Start: 23 @18699 has 275 MA's), (70, 18885), (92, 18939), (104, 19014), (121, 19170), (127, 19230),

Gene: Imvubu_20 Start: 16898, Stop: 17533, Start Num: 21

Candidate Starts for Imvubu_20:

(Start: 21 @16898 has 3 MA's), (24, 16913), (44, 17009), (55, 17039), (66, 17093), (75, 17129), (86, 17168), (87, 17177), (99, 17219), (103, 17255), (118, 17414), (121, 17429), (123, 17456), (127, 17489), (128, 17492), (130, 17501),

Gene: Inchworm_26 Start: 19141, Stop: 19704, Start Num: 23

Candidate Starts for Inchworm_26:

(4, 18970), (Start: 23 @19141 has 275 MA's), (70, 19327), (92, 19381), (121, 19612), (127, 19672),

Gene: Inverness_26 Start: 19155, Stop: 19718, Start Num: 23

Candidate Starts for Inverness_26:

(4, 18984), (Start: 23 @19155 has 275 MA's), (70, 19341), (92, 19395), (121, 19626), (127, 19686),

Gene: Iridoclysis_26 Start: 19129, Stop: 19692, Start Num: 23

Candidate Starts for Iridoclysis_26:

(4, 18958), (Start: 23 @19129 has 275 MA's), (70, 19315), (92, 19369), (121, 19600), (127, 19660),

Gene: IsaacEli_26 Start: 19159, Stop: 19722, Start Num: 23

Candidate Starts for IsaacEli_26:

(4, 18988), (Start: 23 @19159 has 275 MA's), (70, 19345), (92, 19399), (121, 19630), (127, 19690),

Gene: ItsyBitsy1_28 Start: 21308, Stop: 21793, Start Num: 38

Candidate Starts for ItsyBitsy1_28:

(Start: 38 @21308 has 33 MA's), (45, 21335), (63, 21377), (90, 21443), (91, 21446), (97, 21464), (101, 21488), (105, 21527), (109, 21572), (110, 21584), (112, 21596), (113, 21608), (117, 21635), (119, 21662), (120, 21671), (121, 21674), (126, 21722), (130, 21746),

Gene: JAMaL_24 Start: 19969, Stop: 20541, Start Num: 23

Candidate Starts for JAMaL_24:

(Start: 23 @19969 has 275 MA's), (37, 20038), (57, 20095), (59, 20104), (66, 20140), (67, 20146), (71, 20161), (78, 20179), (93, 20212), (99, 20236), (110, 20356), (111, 20362), (112, 20368), (118, 20431), (121, 20446), (123, 20473), (124, 20482),

Gene: JDog_26 Start: 18865, Stop: 19428, Start Num: 23

Candidate Starts for JDog_26:

(4, 18694), (Start: 23 @18865 has 275 MA's), (70, 19051), (92, 19105), (104, 19180), (121, 19336), (127, 19396),

Gene: JacAttac_26 Start: 19141, Stop: 19704, Start Num: 23
Candidate Starts for JacAttac_26:
(4, 18970), (Start: 23 @19141 has 275 MA's), (70, 19327), (92, 19381), (121, 19612), (127, 19672),

Gene: JaguarMi_24 Start: 19267, Stop: 19827, Start Num: 23
Candidate Starts for JaguarMi_24:
(Start: 23 @19267 has 275 MA's), (37, 19327), (53, 19372), (57, 19384), (59, 19393), (66, 19429), (67, 19435), (78, 19468), (93, 19498), (99, 19522), (100, 19540), (111, 19648), (118, 19717), (121, 19732), (123, 19759), (124, 19768),

Gene: JakeO_25 Start: 18865, Stop: 19428, Start Num: 23
Candidate Starts for JakeO_25:
(4, 18694), (Start: 23 @18865 has 275 MA's), (70, 19051), (92, 19105), (104, 19180), (121, 19336), (127, 19396),

Gene: JangoPhett_26 Start: 19139, Stop: 19702, Start Num: 23
Candidate Starts for JangoPhett_26:
(4, 18968), (Start: 23 @19139 has 275 MA's), (70, 19325), (92, 19379), (121, 19610), (127, 19670),

Gene: Jillium_25 Start: 18865, Stop: 19428, Start Num: 23
Candidate Starts for Jillium_25:
(4, 18694), (Start: 23 @18865 has 275 MA's), (70, 19051), (92, 19105), (121, 19336), (127, 19396),

Gene: Jiminy_25 Start: 18703, Stop: 19266, Start Num: 23
Candidate Starts for Jiminy_25:
(4, 18532), (Start: 23 @18703 has 275 MA's), (70, 18889), (92, 18943), (104, 19018), (121, 19174), (127, 19234),

Gene: Jiraiya_26 Start: 18863, Stop: 19423, Start Num: 23
Candidate Starts for Jiraiya_26:
(4, 18692), (Start: 23 @18863 has 275 MA's), (70, 19049), (92, 19103), (121, 19334), (127, 19394),

Gene: Jolie1_022 Start: 18308, Stop: 19030, Start Num: 8
Candidate Starts for Jolie1_022:
(8, 18308), (10, 18323), (12, 18353), (15, 18380), (33, 18473), (36, 18485), (37, 18497), (60, 18578), (62, 18587), (93, 18698), (118, 18920), (121, 18935), (124, 18971), (127, 18995),

Gene: KLucky39_26 Start: 19147, Stop: 19710, Start Num: 23
Candidate Starts for KLucky39_26:
(4, 18976), (Start: 23 @19147 has 275 MA's), (70, 19333), (92, 19387), (121, 19618), (127, 19678),

Gene: Kahve_25 Start: 18869, Stop: 19432, Start Num: 23
Candidate Starts for Kahve_25:
(4, 18698), (Start: 23 @18869 has 275 MA's), (70, 19055), (92, 19109), (121, 19340), (127, 19400),

Gene: Kailash_26 Start: 19177, Stop: 19740, Start Num: 23
Candidate Starts for Kailash_26:
(4, 19006), (Start: 23 @19177 has 275 MA's), (70, 19363), (92, 19417), (104, 19492), (121, 19648), (127, 19708),

Gene: Kaleb_28 Start: 21435, Stop: 21920, Start Num: 39
Candidate Starts for Kaleb_28:

(Start: 39 @21435 has 16 MA's), (45, 21462), (63, 21504), (90, 21570), (91, 21573), (97, 21591), (101, 21615), (105, 21654), (109, 21699), (110, 21711), (112, 21723), (113, 21735), (117, 21762), (119, 21789), (120, 21798), (121, 21801), (126, 21849), (130, 21873),

Gene: Kamiyu_27 Start: 19745, Stop: 20338, Start Num: 28

Candidate Starts for Kamiyu_27:

(Start: 28 @19745 has 38 MA's), (30, 19751), (Start: 38 @19784 has 33 MA's), (109, 20114), (115, 20159), (119, 20204), (121, 20216), (126, 20264),

Gene: Katniss_26 Start: 19167, Stop: 19727, Start Num: 23

Candidate Starts for Katniss_26:

(4, 18996), (Start: 23 @19167 has 275 MA's), (70, 19353), (92, 19407), (121, 19638), (127, 19698),

Gene: KayaCho_22 Start: 18287, Stop: 19042, Start Num: 5

Candidate Starts for KayaCho_22:

(Start: 5 @18287 has 1 MA's), (12, 18365), (19, 18419), (31, 18491), (34, 18500), (37, 18521), (60, 18593), (93, 18710), (118, 18932), (121, 18947), (124, 18983), (127, 19007),

Gene: Keitherie_26 Start: 19187, Stop: 19750, Start Num: 23

Candidate Starts for Keitherie_26:

(4, 19016), (Start: 23 @19187 has 275 MA's), (70, 19373), (92, 19427), (104, 19502), (121, 19658), (127, 19718),

Gene: Kheth_28 Start: 21320, Stop: 21805, Start Num: 38

Candidate Starts for Kheth_28:

(Start: 38 @21320 has 33 MA's), (45, 21347), (63, 21389), (90, 21455), (91, 21458), (97, 21476), (101, 21500), (105, 21539), (109, 21584), (110, 21596), (112, 21608), (113, 21620), (117, 21647), (119, 21674), (120, 21683), (121, 21686), (126, 21734), (130, 21758),

Gene: Kikipoo_26 Start: 19159, Stop: 19722, Start Num: 23

Candidate Starts for Kikipoo_26:

(4, 18988), (Start: 23 @19159 has 275 MA's), (70, 19345), (92, 19399), (121, 19630), (127, 19690),

Gene: Kimbrough_26 Start: 18861, Stop: 19424, Start Num: 23

Candidate Starts for Kimbrough_26:

(4, 18690), (Start: 23 @18861 has 275 MA's), (70, 19047), (92, 19101), (121, 19332), (127, 19392),

Gene: KingVeVeVe_26 Start: 19138, Stop: 19698, Start Num: 23

Candidate Starts for KingVeVeVe_26:

(4, 18967), (Start: 23 @19138 has 275 MA's), (70, 19324), (92, 19378), (121, 19609), (127, 19669),

Gene: KlimbOn_26 Start: 19147, Stop: 19710, Start Num: 23

Candidate Starts for KlimbOn_26:

(4, 18976), (Start: 23 @19147 has 275 MA's), (70, 19333), (92, 19387), (121, 19618), (127, 19678),

Gene: Kloppinator_26 Start: 19167, Stop: 19730, Start Num: 23

Candidate Starts for Kloppinator_26:

(4, 18996), (Start: 23 @19167 has 275 MA's), (70, 19353), (92, 19407), (121, 19638), (127, 19698),

Gene: Knocker_28 Start: 22251, Stop: 22850, Start Num: 21

Candidate Starts for Knocker_28:

(Start: 21 @22251 has 3 MA's), (24, 22266), (27, 22290), (47, 22371), (52, 22383), (56, 22398), (66, 22443), (75, 22479), (87, 22497), (99, 22539), (110, 22656), (111, 22662), (118, 22731), (121, 22746),

(123, 22773), (125, 22791), (127, 22806), (128, 22809), (130, 22818),

Gene: Kronus_26 Start: 20398, Stop: 20952, Start Num: 38

Candidate Starts for Kronus_26:

(Start: 28 @20359 has 38 MA's), (30, 20365), (Start: 38 @20398 has 33 MA's), (69, 20503), (109, 20728), (115, 20773), (119, 20818), (121, 20830), (126, 20878),

Gene: Kwadwo_25 Start: 18851, Stop: 19414, Start Num: 23

Candidate Starts for Kwadwo_25:

(4, 18680), (Start: 23 @18851 has 275 MA's), (70, 19037), (92, 19091), (121, 19322), (127, 19382),

Gene: Kwksand96_25 Start: 18713, Stop: 19276, Start Num: 23

Candidate Starts for Kwksand96_25:

(4, 18542), (Start: 23 @18713 has 275 MA's), (70, 18899), (92, 18953), (104, 19028), (121, 19184), (127, 19244),

Gene: Labeouficaum_25 Start: 18709, Stop: 19272, Start Num: 23

Candidate Starts for Labeouficaum_25:

(4, 18538), (Start: 23 @18709 has 275 MA's), (70, 18895), (92, 18949), (104, 19024), (121, 19180), (127, 19240),

Gene: Lars_28 Start: 21437, Stop: 21922, Start Num: 38

Candidate Starts for Lars_28:

(Start: 38 @21437 has 33 MA's), (45, 21464), (63, 21506), (90, 21572), (91, 21575), (97, 21593), (101, 21617), (105, 21656), (109, 21701), (110, 21713), (112, 21725), (113, 21737), (117, 21764), (119, 21791), (120, 21800), (121, 21803), (126, 21851), (130, 21875),

Gene: LasagnaCat_26 Start: 19153, Stop: 19716, Start Num: 23

Candidate Starts for LasagnaCat_26:

(4, 18982), (Start: 23 @19153 has 275 MA's), (70, 19339), (92, 19393), (121, 19624), (127, 19684),

Gene: Lasso_26 Start: 19126, Stop: 19689, Start Num: 23

Candidate Starts for Lasso_26:

(4, 18955), (Start: 23 @19126 has 275 MA's), (70, 19312), (92, 19366), (121, 19597), (127, 19657),

Gene: Laurie_28 Start: 21315, Stop: 21800, Start Num: 38

Candidate Starts for Laurie_28:

(Start: 38 @21315 has 33 MA's), (45, 21342), (49, 21345), (63, 21384), (90, 21450), (91, 21453), (97, 21471), (101, 21495), (105, 21534), (109, 21579), (110, 21591), (112, 21603), (113, 21615), (117, 21642), (119, 21669), (120, 21678), (121, 21681), (126, 21729), (130, 21753),

Gene: LeeLot_26 Start: 19151, Stop: 19714, Start Num: 23

Candidate Starts for LeeLot_26:

(4, 18980), (Start: 23 @19151 has 275 MA's), (70, 19337), (92, 19391), (121, 19622), (127, 19682),

Gene: Lego3393_26 Start: 19163, Stop: 19723, Start Num: 23

Candidate Starts for Lego3393_26:

(4, 18992), (Start: 23 @19163 has 275 MA's), (70, 19349), (92, 19403), (121, 19634), (127, 19694),

Gene: Legolas_25 Start: 18867, Stop: 19430, Start Num: 23

Candidate Starts for Legolas_25:

(4, 18696), (Start: 23 @18867 has 275 MA's), (70, 19053), (92, 19107), (121, 19338), (127, 19398),

Gene: LeiMonet_26 Start: 18858, Stop: 19421, Start Num: 23
Candidate Starts for LeiMonet_26:
(4, 18687), (Start: 23 @18858 has 275 MA's), (70, 19044), (92, 19098), (121, 19329), (127, 19389),

Gene: LemonSlice_26 Start: 18858, Stop: 19418, Start Num: 23
Candidate Starts for LemonSlice_26:
(4, 18687), (Start: 23 @18858 has 275 MA's), (70, 19044), (92, 19098), (121, 19329), (127, 19389),

Gene: Lephleur_28 Start: 21321, Stop: 21806, Start Num: 39
Candidate Starts for Lephleur_28:
(Start: 39 @21321 has 16 MA's), (45, 21348), (63, 21390), (90, 21456), (91, 21459), (97, 21477), (101, 21501), (105, 21540), (109, 21585), (110, 21597), (112, 21609), (113, 21621), (117, 21648), (119, 21675), (120, 21684), (121, 21687), (126, 21735), (130, 21759),

Gene: LestyG_27 Start: 19780, Stop: 20373, Start Num: 28
Candidate Starts for LestyG_27:
(Start: 28 @19780 has 38 MA's), (30, 19786), (Start: 38 @19819 has 33 MA's), (109, 20149), (115, 20194), (119, 20239), (121, 20251), (126, 20299),

Gene: Ligma_23 Start: 17682, Stop: 18221, Start Num: 38
Candidate Starts for Ligma_23:
(20, 17577), (Start: 38 @17682 has 33 MA's), (63, 17760), (98, 17868), (99, 17874), (111, 17997), (113, 18015), (115, 18024), (118, 18066), (121, 18081), (126, 18129), (127, 18141),

Gene: LilMcDreamy_23 Start: 19777, Stop: 20370, Start Num: 23
Candidate Starts for LilMcDreamy_23:
(Start: 23 @19777 has 275 MA's), (48, 19888), (71, 19969), (74, 19981), (83, 19999), (93, 20029), (112, 20185), (118, 20248), (121, 20263), (124, 20299),

Gene: LittleMunchkin_25 Start: 20512, Stop: 21039, Start Num: 38
Candidate Starts for LittleMunchkin_25:
(14, 20359), (20, 20404), (Start: 38 @20512 has 33 MA's), (63, 20593), (84, 20650), (93, 20677), (94, 20680), (98, 20695), (111, 20827), (114, 20848), (118, 20896), (121, 20911), (126, 20959), (127, 20971),

Gene: LizLemon_28 Start: 21437, Stop: 21922, Start Num: 38
Candidate Starts for LizLemon_28:
(Start: 38 @21437 has 33 MA's), (45, 21464), (63, 21506), (90, 21572), (91, 21575), (97, 21593), (101, 21617), (105, 21656), (109, 21701), (110, 21713), (112, 21725), (113, 21737), (117, 21764), (119, 21791), (120, 21800), (121, 21803), (126, 21851), (130, 21875),

Gene: Lolalove_24 Start: 19802, Stop: 20362, Start Num: 23
Candidate Starts for Lolalove_24:
(Start: 23 @19802 has 275 MA's), (37, 19862), (57, 19919), (59, 19928), (66, 19964), (67, 19970), (78, 20003), (93, 20033), (99, 20057), (110, 20177), (111, 20183), (118, 20252), (121, 20267), (123, 20294), (124, 20303),

Gene: Longacauda_25 Start: 18853, Stop: 19416, Start Num: 23
Candidate Starts for Longacauda_25:
(4, 18682), (Start: 23 @18853 has 275 MA's), (70, 19039), (92, 19093), (104, 19168), (121, 19324), (127, 19384),

Gene: Lopsy_25 Start: 18709, Stop: 19272, Start Num: 23

Candidate Starts for Lopsy_25:

(4, 18538), (Start: 23 @18709 has 275 MA's), (70, 18895), (92, 18949), (121, 19180), (127, 19240),

Gene: LostAndPhound_25 Start: 18860, Stop: 19423, Start Num: 23

Candidate Starts for LostAndPhound_25:

(4, 18689), (Start: 23 @18860 has 275 MA's), (70, 19046), (92, 19100), (121, 19331), (127, 19391),

Gene: LuckyMarjie_25 Start: 18873, Stop: 19433, Start Num: 23

Candidate Starts for LuckyMarjie_25:

(4, 18702), (Start: 23 @18873 has 275 MA's), (70, 19059), (92, 19113), (121, 19344), (127, 19404),

Gene: Lulumae_25 Start: 18851, Stop: 19414, Start Num: 23

Candidate Starts for Lulumae_25:

(4, 18680), (Start: 23 @18851 has 275 MA's), (70, 19037), (92, 19091), (121, 19322), (127, 19382),

Gene: Lulwa_26 Start: 19138, Stop: 19701, Start Num: 23

Candidate Starts for Lulwa_26:

(4, 18967), (Start: 23 @19138 has 275 MA's), (70, 19324), (92, 19378), (121, 19609), (127, 19669),

Gene: Lumine_25 Start: 18847, Stop: 19410, Start Num: 23

Candidate Starts for Lumine_25:

(4, 18676), (Start: 23 @18847 has 275 MA's), (70, 19033), (92, 19087), (121, 19318), (127, 19378),

Gene: MRabcd_25 Start: 18852, Stop: 19412, Start Num: 23

Candidate Starts for MRabcd_25:

(4, 18681), (Start: 23 @18852 has 275 MA's), (70, 19038), (92, 19092), (121, 19323), (127, 19383),

Gene: Mag7_25 Start: 18727, Stop: 19290, Start Num: 23

Candidate Starts for Mag7_25:

(4, 18556), (Start: 23 @18727 has 275 MA's), (70, 18913), (92, 18967), (104, 19042), (121, 19198),
(127, 19258),

Gene: Magic8_26 Start: 19165, Stop: 19728, Start Num: 23

Candidate Starts for Magic8_26:

(4, 18994), (Start: 23 @19165 has 275 MA's), (70, 19351), (92, 19405), (104, 19480), (121, 19636),
(127, 19696),

Gene: Magpie_23 Start: 19625, Stop: 20185, Start Num: 23

Candidate Starts for Magpie_23:

(Start: 23 @19625 has 275 MA's), (37, 19685), (57, 19742), (59, 19751), (66, 19787), (67, 19793), (78,
19826), (93, 19856), (99, 19880), (110, 20000), (111, 20006), (118, 20075), (121, 20090), (123,
20117), (124, 20126),

Gene: MakoManhole_25 Start: 19085, Stop: 19600, Start Num: 38

Candidate Starts for MakoManhole_25:

(29, 19043), (Start: 32 @19049 has 2 MA's), (Start: 38 @19085 has 33 MA's), (45, 19112), (51,
19121), (70, 19178), (82, 19199), (89, 19223), (93, 19235), (107, 19337), (111, 19376), (114, 19397),
(118, 19445), (121, 19460), (126, 19508), (127, 19520), (130, 19532),

Gene: Mana_25 Start: 18854, Stop: 19417, Start Num: 23

Candidate Starts for Mana_25:

(4, 18683), (Start: 23 @18854 has 275 MA's), (70, 19040), (74, 19061), (92, 19094), (121, 19325),
(127, 19385),

Gene: Manad_25 Start: 18704, Stop: 19264, Start Num: 23
Candidate Starts for Manad_25:
(4, 18533), (Start: 23 @18704 has 275 MA's), (70, 18890), (92, 18944), (121, 19175), (127, 19235),

Gene: Mariokart_23 Start: 17576, Stop: 18100, Start Num: 38
Candidate Starts for Mariokart_23:
(14, 17426), (Start: 38 @17576 has 33 MA's), (63, 17660), (98, 17762), (111, 17891), (112, 17897),
(115, 17918), (118, 17960), (121, 17975), (126, 18023), (127, 18035),

Gene: Marley1013_27 Start: 20561, Stop: 21154, Start Num: 28
Candidate Starts for Marley1013_27:
(Start: 28 @20561 has 38 MA's), (30, 20567), (Start: 38 @20600 has 33 MA's), (109, 20930), (115, 20975), (119, 21020), (121, 21032), (126, 21080),

Gene: Maru_25 Start: 18853, Stop: 19416, Start Num: 23
Candidate Starts for Maru_25:
(4, 18682), (Start: 23 @18853 has 275 MA's), (70, 19039), (92, 19093), (121, 19324), (127, 19384),

Gene: Maskar_25 Start: 18699, Stop: 19262, Start Num: 23
Candidate Starts for Maskar_25:
(4, 18528), (Start: 23 @18699 has 275 MA's), (70, 18885), (92, 18939), (104, 19014), (121, 19170),
(127, 19230),

Gene: MasterPo_28 Start: 21318, Stop: 21803, Start Num: 39
Candidate Starts for MasterPo_28:
(Start: 39 @21318 has 16 MA's), (45, 21345), (63, 21387), (90, 21453), (91, 21456), (97, 21474), (101, 21498), (105, 21537), (109, 21582), (110, 21594), (112, 21606), (113, 21618), (117, 21645), (119, 21672), (120, 21681), (121, 21684), (126, 21732), (130, 21756),

Gene: Matalotodo_25 Start: 19146, Stop: 19709, Start Num: 23
Candidate Starts for Matalotodo_25:
(4, 18975), (Start: 23 @19146 has 275 MA's), (70, 19332), (92, 19386), (121, 19617), (127, 19677),

Gene: Mcshane_25 Start: 18849, Stop: 19412, Start Num: 23
Candidate Starts for Mcshane_25:
(4, 18678), (Start: 23 @18849 has 275 MA's), (70, 19035), (92, 19089), (121, 19320), (127, 19380),

Gene: Mecca_25 Start: 18846, Stop: 19409, Start Num: 23
Candidate Starts for Mecca_25:
(4, 18675), (Start: 23 @18846 has 275 MA's), (70, 19032), (92, 19086), (121, 19317), (127, 19377),

Gene: Megamind20_26 Start: 18868, Stop: 19431, Start Num: 23
Candidate Starts for Megamind20_26:
(Start: 23 @18868 has 275 MA's), (70, 19054), (92, 19108), (121, 19339), (127, 19399),

Gene: Megatron_26 Start: 19150, Stop: 19713, Start Num: 23
Candidate Starts for Megatron_26:
(4, 18979), (Start: 23 @19150 has 275 MA's), (70, 19336), (92, 19390), (121, 19621), (127, 19681),

Gene: Melc17_26 Start: 19141, Stop: 19704, Start Num: 23
Candidate Starts for Melc17_26:
(4, 18970), (Start: 23 @19141 has 275 MA's), (70, 19327), (92, 19381), (121, 19612), (127, 19672),

Gene: MelsMeow_25 Start: 18727, Stop: 19290, Start Num: 23

Candidate Starts for MelsMeow_25:

(4, 18556), (Start: 23 @18727 has 275 MA's), (70, 18913), (92, 18967), (104, 19042), (121, 19198), (127, 19258),

Gene: Mesh1_26 Start: 19158, Stop: 19721, Start Num: 23

Candidate Starts for Mesh1_26:

(4, 18987), (Start: 23 @19158 has 275 MA's), (70, 19344), (92, 19398), (121, 19629), (127, 19689),

Gene: MichaelPhcott_25 Start: 18727, Stop: 19290, Start Num: 23

Candidate Starts for MichaelPhcott_25:

(4, 18556), (Start: 23 @18727 has 275 MA's), (70, 18913), (92, 18967), (104, 19042), (121, 19198), (127, 19258),

Gene: Mikota_26 Start: 19134, Stop: 19697, Start Num: 23

Candidate Starts for Mikota_26:

(4, 18963), (Start: 23 @19134 has 275 MA's), (70, 19320), (92, 19374), (121, 19605), (127, 19665),

Gene: MiniBoss_26 Start: 19137, Stop: 19700, Start Num: 23

Candidate Starts for MiniBoss_26:

(4, 18966), (Start: 23 @19137 has 275 MA's), (70, 19323), (92, 19377), (121, 19608), (127, 19668),

Gene: MitKao_26 Start: 18855, Stop: 19418, Start Num: 23

Candidate Starts for MitKao_26:

(4, 18684), (Start: 23 @18855 has 275 MA's), (70, 19041), (92, 19095), (121, 19326), (127, 19386),

Gene: Mithril_24 Start: 19806, Stop: 20366, Start Num: 23

Candidate Starts for Mithril_24:

(Start: 23 @19806 has 275 MA's), (37, 19866), (57, 19923), (59, 19932), (66, 19968), (67, 19974), (78, 20007), (93, 20037), (99, 20061), (110, 20181), (111, 20187), (118, 20256), (121, 20271), (123, 20298), (124, 20307),

Gene: MmasiCarm_27 Start: 19771, Stop: 20364, Start Num: 28

Candidate Starts for MmasiCarm_27:

(Start: 28 @19771 has 38 MA's), (30, 19777), (Start: 38 @19810 has 33 MA's), (109, 20140), (115, 20185), (119, 20230), (121, 20242), (126, 20290),

Gene: Morgushi_26 Start: 18860, Stop: 19420, Start Num: 23

Candidate Starts for Morgushi_26:

(4, 18689), (Start: 23 @18860 has 275 MA's), (70, 19046), (92, 19100), (121, 19331), (127, 19391),

Gene: Mortcellus_26 Start: 20414, Stop: 21007, Start Num: 28

Candidate Starts for Mortcellus_26:

(Start: 28 @20414 has 38 MA's), (30, 20420), (Start: 38 @20453 has 33 MA's), (109, 20783), (115, 20828), (119, 20873), (121, 20885), (126, 20933),

Gene: Morty_26 Start: 19159, Stop: 19722, Start Num: 23

Candidate Starts for Morty_26:

(4, 18988), (Start: 23 @19159 has 275 MA's), (70, 19345), (92, 19399), (121, 19630), (127, 19690),

Gene: Morty007_27 Start: 20561, Stop: 21154, Start Num: 28

Candidate Starts for Morty007_27:

(Start: 28 @20561 has 38 MA's), (30, 20567), (Start: 38 @20600 has 33 MA's), (109, 20930), (115, 20975), (119, 21020), (121, 21032), (126, 21080),

Gene: Mosaic_25 Start: 18861, Stop: 19424, Start Num: 23

Candidate Starts for Mosaic_25:

(4, 18690), (Start: 23 @18861 has 275 MA's), (70, 19047), (92, 19101), (121, 19332), (127, 19392),

Gene: MossRose_25 Start: 19028, Stop: 19579, Start Num: 32

Candidate Starts for MossRose_25:

(11, 18872), (29, 19022), (Start: 32 @19028 has 2 MA's), (Start: 38 @19064 has 33 MA's), (45, 19091), (51, 19100), (70, 19157), (82, 19178), (89, 19202), (93, 19214), (107, 19316), (111, 19355), (114, 19376), (118, 19424), (121, 19439), (126, 19487), (127, 19499), (130, 19511),

Gene: MrPhizzler_25 Start: 18860, Stop: 19423, Start Num: 23

Candidate Starts for MrPhizzler_25:

(4, 18689), (Start: 23 @18860 has 275 MA's), (70, 19046), (92, 19100), (104, 19175), (121, 19331), (127, 19391),

Gene: Mudslide_24 Start: 20053, Stop: 20613, Start Num: 23

Candidate Starts for Mudslide_24:

(Start: 23 @20053 has 275 MA's), (37, 20113), (57, 20170), (59, 20179), (66, 20215), (67, 20221), (78, 20254), (93, 20284), (99, 20308), (110, 20428), (111, 20434), (118, 20503), (121, 20518), (123, 20545), (124, 20554),

Gene: Mulan_25 Start: 18855, Stop: 19418, Start Num: 23

Candidate Starts for Mulan_25:

(4, 18684), (Start: 23 @18855 has 275 MA's), (70, 19041), (92, 19095), (121, 19326), (127, 19386),

Gene: Murdoc_26 Start: 19148, Stop: 19711, Start Num: 23

Candidate Starts for Murdoc_26:

(4, 18977), (Start: 23 @19148 has 275 MA's), (70, 19334), (92, 19388), (121, 19619), (127, 19679),

Gene: Mutante_25 Start: 18858, Stop: 19421, Start Num: 23

Candidate Starts for Mutante_25:

(4, 18687), (Start: 23 @18858 has 275 MA's), (70, 19044), (92, 19098), (121, 19329), (127, 19389),

Gene: Mysterious_27 Start: 20111, Stop: 20680, Start Num: 23

Candidate Starts for Mysterious_27:

(Start: 17 @20072 has 1 MA's), (Start: 23 @20111 has 275 MA's), (46, 20216), (59, 20252), (74, 20312), (96, 20351), (106, 20432), (118, 20558), (121, 20573), (122, 20588), (124, 20609), (125, 20618), (127, 20633),

Gene: NHagos_23 Start: 17615, Stop: 18115, Start Num: 38

Candidate Starts for NHagos_23:

(Start: 38 @17615 has 33 MA's), (45, 17642), (66, 17690), (93, 17759), (94, 17762), (111, 17900), (114, 17921), (118, 17969), (121, 17984), (126, 18032), (129, 18050), (130, 18056),

Gene: Nacho_0026 Start: 19147, Stop: 19710, Start Num: 23

Candidate Starts for Nacho_0026:

(4, 18976), (Start: 23 @19147 has 275 MA's), (70, 19333), (92, 19387), (121, 19618), (127, 19678),

Gene: Nanao_23 Start: 18772, Stop: 19332, Start Num: 23

Candidate Starts for Nanao_23:

(Start: 23 @18772 has 275 MA's), (57, 18889), (59, 18898), (66, 18934), (67, 18940), (71, 18955), (78, 18973), (93, 19003), (99, 19027), (100, 19045), (110, 19147), (111, 19153), (112, 19159), (118, 19222), (121, 19237), (123, 19264), (124, 19273),

Gene: Nangang_26 Start: 19812, Stop: 20381, Start Num: 23

Candidate Starts for Nangang_26:

(Start: 23 @19812 has 275 MA's), (45, 19914), (71, 20001), (74, 20013), (95, 20049), (118, 20259), (121, 20274), (123, 20301),

Gene: Neos5_27 Start: 20568, Stop: 21161, Start Num: 28

Candidate Starts for Neos5_27:

(Start: 28 @20568 has 38 MA's), (30, 20574), (Start: 38 @20607 has 33 MA's), (69, 20712), (109, 20937), (115, 20982), (119, 21027), (121, 21039), (126, 21087),

Gene: Newman_26 Start: 19147, Stop: 19707, Start Num: 23

Candidate Starts for Newman_26:

(4, 18976), (Start: 23 @19147 has 275 MA's), (70, 19333), (92, 19387), (121, 19618), (127, 19678),

Gene: Nicole21_26 Start: 19139, Stop: 19702, Start Num: 23

Candidate Starts for Nicole21_26:

(4, 18968), (Start: 23 @19139 has 275 MA's), (70, 19325), (92, 19379), (121, 19610), (127, 19670),

Gene: Nigel_22 Start: 18656, Stop: 19228, Start Num: 23

Candidate Starts for Nigel_22:

(Start: 23 @18656 has 275 MA's), (37, 18725), (57, 18782), (59, 18791), (66, 18827), (67, 18833), (71, 18848), (78, 18866), (93, 18899), (99, 18923), (110, 19043), (111, 19049), (112, 19055), (118, 19118), (121, 19133), (123, 19160), (124, 19169),

Gene: Nozo_27 Start: 20538, Stop: 21131, Start Num: 28

Candidate Starts for Nozo_27:

(Start: 28 @20538 has 38 MA's), (30, 20544), (Start: 38 @20577 has 33 MA's), (109, 20907), (115, 20952), (119, 20997), (121, 21009), (126, 21057),

Gene: Numberten_26 Start: 19153, Stop: 19716, Start Num: 23

Candidate Starts for Numberten_26:

(Start: 23 @19153 has 275 MA's), (70, 19339), (92, 19393), (121, 19624), (127, 19684),

Gene: Nyala_25 Start: 18850, Stop: 19413, Start Num: 23

Candidate Starts for Nyala_25:

(4, 18679), (Start: 23 @18850 has 275 MA's), (70, 19036), (92, 19090), (121, 19321), (127, 19381),

Gene: OSmaximus_26 Start: 19176, Stop: 19739, Start Num: 23

Candidate Starts for OSmaximus_26:

(4, 19005), (Start: 23 @19176 has 275 MA's), (70, 19362), (92, 19416), (104, 19491), (121, 19647), (127, 19707),

Gene: Obutu_27 Start: 19771, Stop: 20364, Start Num: 28

Candidate Starts for Obutu_27:

(Start: 28 @19771 has 38 MA's), (30, 19777), (Start: 38 @19810 has 33 MA's), (109, 20140), (115, 20185), (119, 20230), (121, 20242), (126, 20290),

Gene: Olak_26 Start: 18851, Stop: 19414, Start Num: 23

Candidate Starts for Olak_26:

(4, 18680), (Start: 23 @18851 has 275 MA's), (70, 19037), (92, 19091), (121, 19322), (127, 19382),

Gene: Oline_25 Start: 18713, Stop: 19276, Start Num: 23

Candidate Starts for Oline_25:

(4, 18542), (Start: 23 @18713 has 275 MA's), (70, 18899), (92, 18953), (104, 19028), (121, 19184), (127, 19244),

Gene: Olive_26 Start: 19140, Stop: 19703, Start Num: 23

Candidate Starts for Olive_26:

(4, 18969), (Start: 23 @19140 has 275 MA's), (70, 19326), (92, 19380), (121, 19611), (127, 19671),

Gene: OliverWalter_26 Start: 19156, Stop: 19719, Start Num: 23

Candidate Starts for OliverWalter_26:

(4, 18985), (Start: 23 @19156 has 275 MA's), (70, 19342), (92, 19396), (121, 19627), (127, 19687),

Gene: Omniscient_26 Start: 19159, Stop: 19722, Start Num: 23

Candidate Starts for Omniscient_26:

(4, 18988), (Start: 23 @19159 has 275 MA's), (70, 19345), (92, 19399), (121, 19630), (127, 19690),

Gene: Oosterbaan_26 Start: 19151, Stop: 19711, Start Num: 23

Candidate Starts for Oosterbaan_26:

(4, 18980), (Start: 23 @19151 has 275 MA's), (70, 19337), (92, 19391), (121, 19622), (127, 19682),

Gene: Opia_28 Start: 21317, Stop: 21802, Start Num: 38

Candidate Starts for Opia_28:

(Start: 38 @21317 has 33 MA's), (45, 21344), (63, 21386), (90, 21452), (91, 21455), (97, 21473), (101, 21497), (105, 21536), (109, 21581), (110, 21593), (112, 21605), (113, 21617), (117, 21644), (119, 21671), (120, 21680), (121, 21683), (126, 21731), (130, 21755),

Gene: OrangeOswald_27 Start: 19776, Stop: 20369, Start Num: 28

Candidate Starts for OrangeOswald_27:

(Start: 28 @19776 has 38 MA's), (30, 19782), (Start: 38 @19815 has 33 MA's), (109, 20145), (115, 20190), (119, 20235), (121, 20247), (126, 20295),

Gene: Orfeu_25 Start: 18852, Stop: 19415, Start Num: 23

Candidate Starts for Orfeu_25:

(4, 18681), (Start: 23 @18852 has 275 MA's), (70, 19038), (92, 19092), (121, 19323), (127, 19383),

Gene: Orion_26 Start: 19148, Stop: 19711, Start Num: 23

Candidate Starts for Orion_26:

(4, 18977), (Start: 23 @19148 has 275 MA's), (70, 19334), (92, 19388), (121, 19619), (127, 19679),

Gene: Orwigg_26 Start: 18846, Stop: 19409, Start Num: 23

Candidate Starts for Orwigg_26:

(Start: 23 @18846 has 275 MA's), (70, 19032), (92, 19086), (121, 19317), (127, 19377),

Gene: PG1_26 Start: 19161, Stop: 19724, Start Num: 23

Candidate Starts for PG1_26:

(4, 18990), (Start: 23 @19161 has 275 MA's), (70, 19347), (92, 19401), (121, 19632), (127, 19692),

Gene: Pacifista_27 Start: 18852, Stop: 19415, Start Num: 23

Candidate Starts for Pacifista_27:

(4, 18681), (Start: 23 @18852 has 275 MA's), (70, 19038), (92, 19092), (121, 19323), (127, 19383),

Gene: Phaedrus_25 Start: 19692, Stop: 20285, Start Num: 28

Candidate Starts for Phaedrus_25:

(Start: 28 @19692 has 38 MA's), (30, 19698), (Start: 38 @19731 has 33 MA's), (109, 20061), (115, 20106), (119, 20151), (121, 20163), (126, 20211),

Gene: Phamished_26 Start: 19156, Stop: 19719, Start Num: 23

Candidate Starts for Phamished_26:

(4, 18985), (Start: 23 @19156 has 275 MA's), (70, 19342), (92, 19396), (121, 19627), (127, 19687),

Gene: Phantasmagoria_28 Start: 21313, Stop: 21798, Start Num: 38

Candidate Starts for Phantasmagoria_28:

(Start: 38 @21313 has 33 MA's), (45, 21340), (63, 21382), (90, 21448), (91, 21451), (97, 21469), (101, 21493), (105, 21532), (109, 21577), (110, 21589), (112, 21601), (113, 21613), (117, 21640), (119, 21667), (120, 21676), (121, 21679), (126, 21727), (130, 21751),

Gene: Phareon_26 Start: 18856, Stop: 19419, Start Num: 23

Candidate Starts for Phareon_26:

(4, 18685), (Start: 23 @18856 has 275 MA's), (70, 19042), (92, 19096), (121, 19327), (127, 19387),

Gene: PhatCats2014_26 Start: 19166, Stop: 19726, Start Num: 23

Candidate Starts for PhatCats2014_26:

(4, 18995), (Start: 23 @19166 has 275 MA's), (70, 19352), (92, 19406), (121, 19637), (127, 19697),

Gene: PhatLouie_26 Start: 19148, Stop: 19711, Start Num: 23

Candidate Starts for PhatLouie_26:

(4, 18977), (Start: 23 @19148 has 275 MA's), (70, 19334), (92, 19388), (104, 19463), (121, 19619), (127, 19679),

Gene: Phayeta_27 Start: 19652, Stop: 20245, Start Num: 28

Candidate Starts for Phayeta_27:

(Start: 28 @19652 has 38 MA's), (30, 19658), (Start: 38 @19691 has 33 MA's), (109, 20021), (115, 20066), (119, 20111), (121, 20123), (126, 20171),

Gene: Phelemich_26 Start: 20107, Stop: 20676, Start Num: 23

Candidate Starts for Phelemich_26:

(Start: 17 @20068 has 1 MA's), (Start: 23 @20107 has 275 MA's), (46, 20212), (59, 20248), (74, 20308), (96, 20347), (106, 20428), (118, 20554), (121, 20569), (122, 20584), (124, 20605), (125, 20614), (127, 20629),

Gene: PhenghisKhan_25 Start: 18727, Stop: 19290, Start Num: 23

Candidate Starts for PhenghisKhan_25:

(4, 18556), (Start: 23 @18727 has 275 MA's), (70, 18913), (92, 18967), (104, 19042), (121, 19198), (127, 19258),

Gene: Pherdinand_26 Start: 19156, Stop: 19719, Start Num: 23

Candidate Starts for Pherdinand_26:

(4, 18985), (Start: 23 @19156 has 275 MA's), (70, 19342), (92, 19396), (121, 19627), (127, 19687),

Gene: Phergie_25 Start: 18721, Stop: 19284, Start Num: 23

Candidate Starts for Phergie_25:

(4, 18550), (Start: 23 @18721 has 275 MA's), (70, 18907), (92, 18961), (104, 19036), (121, 19192), (127, 19252),

Gene: Philly_26 Start: 19642, Stop: 20235, Start Num: 28

Candidate Starts for Philly_26:

(Start: 28 @19642 has 38 MA's), (30, 19648), (Start: 38 @19681 has 33 MA's), (109, 20011), (115, 20056), (119, 20101), (121, 20113), (126, 20161),

Gene: Phipps_26 Start: 19126, Stop: 19689, Start Num: 23

Candidate Starts for Phipps_26:

(4, 18955), (Start: 23 @19126 has 275 MA's), (70, 19312), (92, 19366), (121, 19597), (127, 19657),

Gene: Phleuron_25 Start: 18727, Stop: 19290, Start Num: 23

Candidate Starts for Phleuron_25:

(4, 18556), (Start: 23 @18727 has 275 MA's), (70, 18913), (92, 18967), (104, 19042), (121, 19198), (127, 19258),

Gene: Phlyer_27 Start: 20511, Stop: 21104, Start Num: 28

Candidate Starts for Phlyer_27:

(Start: 28 @20511 has 38 MA's), (30, 20517), (Start: 38 @20550 has 33 MA's), (69, 20655), (109, 20880), (115, 20925), (119, 20970), (121, 20982), (126, 21030),

Gene: PhrankReynolds_25 Start: 18727, Stop: 19290, Start Num: 23

Candidate Starts for PhrankReynolds_25:

(4, 18556), (Start: 23 @18727 has 275 MA's), (70, 18913), (92, 18967), (104, 19042), (121, 19198), (127, 19258),

Gene: PhrodoBaggins_25 Start: 19144, Stop: 19707, Start Num: 23

Candidate Starts for PhrodoBaggins_25:

(4, 18973), (Start: 23 @19144 has 275 MA's), (70, 19330), (92, 19384), (121, 19615), (127, 19675),

Gene: Phunky_26 Start: 19150, Stop: 19713, Start Num: 23

Candidate Starts for Phunky_26:

(4, 18979), (Start: 23 @19150 has 275 MA's), (70, 19336), (92, 19390), (121, 19621), (127, 19681),

Gene: Piglet_0025 Start: 19150, Stop: 19713, Start Num: 23

Candidate Starts for Piglet_0025:

(4, 18979), (Start: 23 @19150 has 275 MA's), (70, 19336), (92, 19390), (121, 19621), (127, 19681),

Gene: PinheadLarry_26 Start: 18867, Stop: 19430, Start Num: 23

Candidate Starts for PinheadLarry_26:

(4, 18696), (Start: 23 @18867 has 275 MA's), (70, 19053), (92, 19107), (121, 19338), (127, 19398),

Gene: Pinkman_25 Start: 18707, Stop: 19270, Start Num: 23

Candidate Starts for Pinkman_25:

(4, 18536), (Start: 23 @18707 has 275 MA's), (70, 18893), (92, 18947), (104, 19022), (121, 19178), (127, 19238),

Gene: Pipefish_27 Start: 20661, Stop: 21251, Start Num: 28

Candidate Starts for Pipefish_27:

(Start: 28 @20661 has 38 MA's), (30, 20667), (Start: 38 @20700 has 33 MA's), (69, 20805), (109, 21027), (115, 21072), (119, 21117), (121, 21129), (126, 21177),

Gene: Pipsqueak_26 Start: 19156, Stop: 19716, Start Num: 23

Candidate Starts for Pipsqueak_26:

(4, 18985), (Start: 23 @19156 has 275 MA's), (70, 19342), (92, 19396), (121, 19627), (127, 19687),

Gene: Placalicious_25 Start: 18849, Stop: 19409, Start Num: 23

Candidate Starts for Placalicious_25:

(4, 18678), (Start: 23 @18849 has 275 MA's), (70, 19035), (92, 19089), (121, 19320), (127, 19380),

Gene: Plmatters_26 Start: 19153, Stop: 19716, Start Num: 23

Candidate Starts for Plmatters_26:

(4, 18982), (Start: 23 @19153 has 275 MA's), (70, 19339), (92, 19393), (121, 19624), (127, 19684),

Gene: Podrick_26 Start: 19145, Stop: 19708, Start Num: 23

Candidate Starts for Podrick_26:

(4, 18974), (Start: 23 @19145 has 275 MA's), (70, 19331), (92, 19385), (121, 19616), (127, 19676),

Gene: Pops_26 Start: 19153, Stop: 19716, Start Num: 23

Candidate Starts for Pops_26:

(4, 18982), (Start: 23 @19153 has 275 MA's), (70, 19339), (92, 19393), (121, 19624), (127, 19684),

Gene: Poster_23 Start: 18773, Stop: 19333, Start Num: 23

Candidate Starts for Poster_23:

(Start: 23 @18773 has 275 MA's), (57, 18890), (59, 18899), (66, 18935), (67, 18941), (71, 18956), (78, 18974), (93, 19004), (99, 19028), (100, 19046), (110, 19148), (111, 19154), (112, 19160), (118, 19223), (121, 19238), (123, 19265), (124, 19274),

Gene: Potter_25 Start: 18863, Stop: 19426, Start Num: 23

Candidate Starts for Potter_25:

(4, 18692), (Start: 23 @18863 has 275 MA's), (70, 19049), (92, 19103), (121, 19334), (127, 19394),

Gene: Prickles_26 Start: 19142, Stop: 19705, Start Num: 23

Candidate Starts for Prickles_26:

(4, 18971), (Start: 23 @19142 has 275 MA's), (70, 19328), (92, 19382), (121, 19613), (127, 19673),

Gene: Prince_25 Start: 19965, Stop: 20525, Start Num: 23

Candidate Starts for Prince_25:

(Start: 23 @19965 has 275 MA's), (37, 20025), (57, 20082), (59, 20091), (66, 20127), (67, 20133), (71, 20148), (78, 20166), (93, 20196), (99, 20220), (110, 20340), (111, 20346), (118, 20415), (121, 20430), (123, 20457), (124, 20466),

Gene: ProfessorX_26 Start: 19140, Stop: 19703, Start Num: 23

Candidate Starts for ProfessorX_26:

(4, 18969), (Start: 23 @19140 has 275 MA's), (70, 19326), (92, 19380), (121, 19611), (127, 19671),

Gene: Puhltonio_26 Start: 19157, Stop: 19720, Start Num: 23

Candidate Starts for Puhltonio_26:

(Start: 23 @19157 has 275 MA's), (70, 19343), (92, 19397), (121, 19628), (127, 19688),

Gene: QueenBeane_26 Start: 19148, Stop: 19711, Start Num: 23

Candidate Starts for QueenBeane_26:

(4, 18977), (Start: 23 @19148 has 275 MA's), (70, 19334), (92, 19388), (121, 19619), (127, 19679),

Gene: Quesadilla_27 Start: 21307, Stop: 21885, Start Num: 25

Candidate Starts for Quesadilla_27:

(Start: 25 @21307 has 1 MA's), (80, 21505), (118, 21754), (121, 21769), (128, 21832),

Gene: Quisquilliae_26 Start: 19164, Stop: 19727, Start Num: 23

Candidate Starts for Quisquilliae_26:

(Start: 23 @19164 has 275 MA's), (70, 19350), (92, 19404), (121, 19635), (127, 19695),

Gene: Qyrzula_26 Start: 21403, Stop: 21888, Start Num: 38

Candidate Starts for Qyrzula_26:

(Start: 38 @21403 has 33 MA's), (45, 21430), (63, 21472), (90, 21538), (91, 21541), (97, 21559), (101, 21583), (105, 21622), (109, 21667), (110, 21679), (112, 21691), (113, 21703), (117, 21730), (119, 21757), (120, 21766), (121, 21769), (126, 21817), (130, 21841),

Gene: RagingRooster_27 Start: 19777, Stop: 20370, Start Num: 28

Candidate Starts for RagingRooster_27:

(Start: 28 @19777 has 38 MA's), (30, 19783), (Start: 38 @19816 has 33 MA's), (109, 20146), (115, 20191), (119, 20236), (121, 20248), (126, 20296),

Gene: RawrgerThat_24 Start: 19802, Stop: 20362, Start Num: 23

Candidate Starts for RawrgerThat_24:

(Start: 23 @19802 has 275 MA's), (37, 19862), (57, 19919), (59, 19928), (66, 19964), (67, 19970), (71, 19985), (78, 20003), (93, 20033), (99, 20057), (110, 20177), (111, 20183), (118, 20252), (121, 20267), (123, 20294), (124, 20303),

Gene: RedMaple_25 Start: 19159, Stop: 19719, Start Num: 23

Candidate Starts for RedMaple_25:

(4, 18988), (Start: 23 @19159 has 275 MA's), (70, 19345), (92, 19399), (121, 19630), (127, 19690),

Gene: Reprobate_26 Start: 20073, Stop: 20681, Start Num: 17

Candidate Starts for Reprobate_26:

(Start: 17 @20073 has 1 MA's), (Start: 23 @20112 has 275 MA's), (46, 20217), (59, 20253), (74, 20313), (96, 20352), (106, 20433), (118, 20559), (121, 20574), (122, 20589), (124, 20610), (125, 20619), (127, 20634),

Gene: Rhinoforte_28 Start: 21434, Stop: 21919, Start Num: 38

Candidate Starts for Rhinoforte_28:

(Start: 38 @21434 has 33 MA's), (45, 21461), (63, 21503), (90, 21569), (91, 21572), (97, 21590), (101, 21614), (105, 21653), (109, 21698), (110, 21710), (112, 21722), (113, 21734), (117, 21761), (119, 21788), (120, 21797), (121, 21800), (126, 21848), (130, 21872),

Gene: Rich_25 Start: 19612, Stop: 20178, Start Num: 23

Candidate Starts for Rich_25:

(4, 19438), (6, 19471), (Start: 23 @19612 has 275 MA's), (71, 19798), (74, 19810), (89, 19828), (118, 20056), (121, 20071), (123, 20098), (124, 20107),

Gene: Ricotta_26 Start: 18871, Stop: 19434, Start Num: 23

Candidate Starts for Ricotta_26:

(4, 18700), (Start: 23 @18871 has 275 MA's), (70, 19057), (92, 19111), (121, 19342), (127, 19402),

Gene: Riggan_26 Start: 19131, Stop: 19694, Start Num: 23

Candidate Starts for Riggan_26:

(4, 18960), (Start: 23 @19131 has 275 MA's), (70, 19317), (92, 19371), (121, 19602), (127, 19662),

Gene: Rimu_27 Start: 18880, Stop: 19443, Start Num: 23

Candidate Starts for Rimu_27:

(4, 18709), (Start: 23 @18880 has 275 MA's), (70, 19066), (92, 19120), (104, 19195), (121, 19351), (127, 19411),

Gene: Rita1961_27 Start: 19811, Stop: 20365, Start Num: 38

Candidate Starts for Rita1961_27:

(Start: 28 @19772 has 38 MA's), (30, 19778), (Start: 38 @19811 has 33 MA's), (109, 20141), (115, 20186), (119, 20231), (121, 20243), (126, 20291),

Gene: Robyn_25 Start: 18722, Stop: 19285, Start Num: 23

Candidate Starts for Robyn_25:

(4, 18551), (18, 18692), (Start: 23 @18722 has 275 MA's), (70, 18908), (92, 18962), (121, 19193), (127, 19253),

Gene: Roliet_26 Start: 19147, Stop: 19710, Start Num: 23

Candidate Starts for Roliet_26:

(4, 18976), (Start: 23 @19147 has 275 MA's), (70, 19333), (92, 19387), (121, 19618), (127, 19678),

Gene: RomaT_27 Start: 20562, Stop: 21155, Start Num: 28

Candidate Starts for RomaT_27:

(Start: 28 @20562 has 38 MA's), (30, 20568), (Start: 38 @20601 has 33 MA's), (109, 20931), (115, 20976), (119, 21021), (121, 21033), (126, 21081),

Gene: Roscoe_27 Start: 19389, Stop: 19949, Start Num: 23

Candidate Starts for Roscoe_27:

(4, 19218), (Start: 23 @19389 has 275 MA's), (70, 19575), (92, 19629), (121, 19860), (127, 19920),

Gene: Rosebush_28 Start: 21435, Stop: 21920, Start Num: 39

Candidate Starts for Rosebush_28:

(Start: 39 @21435 has 16 MA's), (45, 21462), (63, 21504), (90, 21570), (91, 21573), (97, 21591), (101, 21615), (105, 21654), (109, 21699), (110, 21711), (112, 21723), (113, 21735), (117, 21762), (119, 21789), (120, 21798), (121, 21801), (126, 21849), (130, 21873),

Gene: Roy17_26 Start: 18851, Stop: 19414, Start Num: 23

Candidate Starts for Roy17_26:

(4, 18680), (Start: 23 @18851 has 275 MA's), (70, 19037), (92, 19091), (121, 19322), (127, 19382),

Gene: SDcharge11_26 Start: 19129, Stop: 19689, Start Num: 23

Candidate Starts for SDcharge11_26:

(4, 18958), (Start: 23 @19129 has 275 MA's), (70, 19315), (92, 19369), (121, 19600), (127, 19660),

Gene: Sabella_28 Start: 21321, Stop: 21806, Start Num: 39

Candidate Starts for Sabella_28:

(Start: 39 @21321 has 16 MA's), (45, 21348), (63, 21390), (90, 21456), (91, 21459), (97, 21477), (101, 21501), (105, 21540), (109, 21585), (110, 21597), (112, 21609), (113, 21621), (117, 21648), (119, 21675), (120, 21684), (121, 21687), (126, 21735), (130, 21759),

Gene: Samaymay_26 Start: 19148, Stop: 19711, Start Num: 23

Candidate Starts for Samaymay_26:

(4, 18977), (Start: 23 @19148 has 275 MA's), (70, 19334), (92, 19388), (121, 19619), (127, 19679),

Gene: SassyCat97_25 Start: 18857, Stop: 19420, Start Num: 23

Candidate Starts for SassyCat97_25:

(4, 18686), (Start: 23 @18857 has 275 MA's), (70, 19043), (92, 19097), (121, 19328), (127, 19388),

Gene: Schadenfreude_25 Start: 18705, Stop: 19268, Start Num: 23
Candidate Starts for Schadenfreude_25:
(4, 18534), (Start: 23 @18705 has 275 MA's), (70, 18891), (92, 18945), (121, 19176), (127, 19236),

Gene: Schueller_26 Start: 18848, Stop: 19411, Start Num: 23
Candidate Starts for Schueller_26:
(4, 18677), (Start: 23 @18848 has 275 MA's), (70, 19034), (92, 19088), (121, 19319), (127, 19379),

Gene: Scoot17C_26 Start: 19150, Stop: 19713, Start Num: 23
Candidate Starts for Scoot17C_26:
(4, 18979), (Start: 23 @19150 has 275 MA's), (70, 19336), (92, 19390), (121, 19621), (127, 19681),

Gene: Scrick_26 Start: 18875, Stop: 19438, Start Num: 23
Candidate Starts for Scrick_26:
(4, 18704), (Start: 23 @18875 has 275 MA's), (70, 19061), (92, 19115), (121, 19346), (127, 19406),

Gene: Selr12_26 Start: 18872, Stop: 19435, Start Num: 23
Candidate Starts for Selr12_26:
(4, 18701), (Start: 23 @18872 has 275 MA's), (70, 19058), (92, 19112), (121, 19343), (127, 19403),

Gene: Serendipitous_25 Start: 19669, Stop: 20238, Start Num: 23
Candidate Starts for Serendipitous_25:
(4, 19495), (Start: 23 @19669 has 275 MA's), (45, 19771), (59, 19810), (71, 19858), (74, 19870), (118, 20116), (121, 20131), (123, 20158), (124, 20167), (127, 20191),

Gene: Serendipity_26 Start: 19170, Stop: 19730, Start Num: 23
Candidate Starts for Serendipity_26:
(4, 18999), (Start: 23 @19170 has 275 MA's), (70, 19356), (92, 19410), (121, 19641), (127, 19701),

Gene: Serpentine_0026 Start: 19150, Stop: 19713, Start Num: 23
Candidate Starts for Serpentine_0026:
(4, 18979), (Start: 23 @19150 has 275 MA's), (70, 19336), (92, 19390), (121, 19621), (127, 19681),

Gene: Shatter_23 Start: 17682, Stop: 18221, Start Num: 38
Candidate Starts for Shatter_23:
(20, 17577), (Start: 38 @17682 has 33 MA's), (63, 17760), (98, 17868), (99, 17874), (111, 17997), (113, 18015), (115, 18024), (118, 18066), (121, 18081), (126, 18129), (127, 18141),

Gene: Sheila_26 Start: 19142, Stop: 19705, Start Num: 23
Candidate Starts for Sheila_26:
(4, 18971), (Start: 23 @19142 has 275 MA's), (70, 19328), (92, 19382), (121, 19613), (127, 19673),

Gene: ShiVal_26 Start: 19142, Stop: 19705, Start Num: 23
Candidate Starts for ShiVal_26:
(4, 18971), (Start: 23 @19142 has 275 MA's), (70, 19328), (92, 19382), (121, 19613), (127, 19673),

Gene: Sigman_26 Start: 19141, Stop: 19704, Start Num: 23
Candidate Starts for Sigman_26:
(4, 18970), (Start: 23 @19141 has 275 MA's), (70, 19327), (92, 19381), (121, 19612), (127, 19672),

Gene: Simielle_25 Start: 18840, Stop: 19403, Start Num: 23
Candidate Starts for Simielle_25:

(4, 18669), (Start: 23 @18840 has 275 MA's), (70, 19026), (92, 19080), (121, 19311), (127, 19371),

Gene: SirJeffery_26 Start: 19855, Stop: 20421, Start Num: 23

Candidate Starts for SirJeffery_26:

(4, 19681), (Start: 23 @19855 has 275 MA's), (48, 19960), (50, 19963), (71, 20041), (74, 20053), (118, 20299), (121, 20314), (123, 20341), (125, 20359),

Gene: Sisko_23 Start: 17967, Stop: 18464, Start Num: 38

Candidate Starts for Sisko_23:

(Start: 38 @17967 has 33 MA's), (61, 18039), (81, 18075), (110, 18249), (111, 18255), (118, 18324), (121, 18339), (126, 18387),

Gene: Skippy_26 Start: 19136, Stop: 19699, Start Num: 23

Candidate Starts for Skippy_26:

(Start: 23 @19136 has 275 MA's), (70, 19322), (92, 19376), (121, 19607), (127, 19667),

Gene: Slatt_26 Start: 19164, Stop: 19727, Start Num: 23

Candidate Starts for Slatt_26:

(4, 18993), (Start: 23 @19164 has 275 MA's), (70, 19350), (92, 19404), (121, 19635), (127, 19695),

Gene: SlippinJimmy_27 Start: 20580, Stop: 21134, Start Num: 38

Candidate Starts for SlippinJimmy_27:

(Start: 28 @20541 has 38 MA's), (30, 20547), (Start: 38 @20580 has 33 MA's), (109, 20910), (115, 20955), (119, 21000), (121, 21012), (126, 21060),

Gene: Soile_26 Start: 18862, Stop: 19425, Start Num: 23

Candidate Starts for Soile_26:

(4, 18691), (Start: 23 @18862 has 275 MA's), (70, 19048), (92, 19102), (104, 19177), (121, 19333), (127, 19393),

Gene: Solosis_25 Start: 18867, Stop: 19427, Start Num: 23

Candidate Starts for Solosis_25:

(4, 18696), (Start: 23 @18867 has 275 MA's), (70, 19053), (92, 19107), (121, 19338), (127, 19398),

Gene: Sophia_25 Start: 18860, Stop: 19423, Start Num: 23

Candidate Starts for Sophia_25:

(4, 18689), (Start: 23 @18860 has 275 MA's), (70, 19046), (92, 19100), (121, 19331), (127, 19391),

Gene: Soto_26 Start: 19144, Stop: 19707, Start Num: 23

Candidate Starts for Soto_26:

(4, 18973), (Start: 23 @19144 has 275 MA's), (70, 19330), (92, 19384), (121, 19615), (127, 19675),

Gene: Sour_27 Start: 21685, Stop: 22194, Start Num: 38

Candidate Starts for Sour_27:

(Start: 38 @21685 has 33 MA's), (63, 21763), (89, 21817), (111, 21973), (114, 21994), (121, 22057), (126, 22105),

Gene: Spartan300_26 Start: 19145, Stop: 19708, Start Num: 23

Candidate Starts for Spartan300_26:

(4, 18974), (Start: 23 @19145 has 275 MA's), (70, 19331), (92, 19385), (121, 19616), (127, 19676),

Gene: Squid_26 Start: 18857, Stop: 19420, Start Num: 23

Candidate Starts for Squid_26:

(4, 18686), (Start: 23 @18857 has 275 MA's), (70, 19043), (92, 19097), (121, 19328), (127, 19388),

Gene: Squiggle_26 Start: 18854, Stop: 19417, Start Num: 23

Candidate Starts for Squiggle_26:

(4, 18683), (Start: 23 @18854 has 275 MA's), (70, 19040), (92, 19094), (121, 19325), (127, 19385),

Gene: Stinger_22 Start: 18290, Stop: 18919, Start Num: 13

Candidate Starts for Stinger_22:

(Start: 13 @18290 has 1 MA's), (Start: 16 @18308 has 1 MA's), (Start: 23 @18350 has 275 MA's), (37, 18419), (42, 18440), (57, 18476), (59, 18485), (66, 18521), (68, 18527), (78, 18557), (93, 18590), (96, 18599), (99, 18614), (100, 18632), (110, 18734), (111, 18740), (112, 18746), (118, 18809), (121, 18824), (123, 18851), (124, 18860),

Gene: StinkyVeggy_28 Start: 19984, Stop: 20553, Start Num: 23

Candidate Starts for StinkyVeggy_28:

(Start: 23 @19984 has 275 MA's), (45, 20086), (71, 20173), (74, 20185), (95, 20221), (118, 20431), (121, 20446), (123, 20473),

Gene: Struggle_25 Start: 18701, Stop: 19264, Start Num: 23

Candidate Starts for Struggle_25:

(4, 18530), (Start: 23 @18701 has 275 MA's), (70, 18887), (92, 18941), (104, 19016), (121, 19172), (127, 19232),

Gene: Suffolk_26 Start: 19147, Stop: 19710, Start Num: 23

Candidate Starts for Suffolk_26:

(4, 18976), (Start: 23 @19147 has 275 MA's), (70, 19333), (92, 19387), (121, 19618), (127, 19678),

Gene: Suigeneris_26 Start: 19864, Stop: 20430, Start Num: 23

Candidate Starts for Suigeneris_26:

(4, 19690), (Start: 23 @19864 has 275 MA's), (48, 19969), (50, 19972), (71, 20050), (74, 20062), (118, 20308), (121, 20323), (123, 20350), (125, 20368),

Gene: Surely_26 Start: 19159, Stop: 19722, Start Num: 23

Candidate Starts for Surely_26:

(4, 18988), (Start: 23 @19159 has 275 MA's), (70, 19345), (92, 19399), (121, 19630), (127, 19690),

Gene: Swiphy_27 Start: 19148, Stop: 19711, Start Num: 23

Candidate Starts for Swiphy_27:

(4, 18977), (Start: 23 @19148 has 275 MA's), (70, 19334), (92, 19388), (104, 19463), (121, 19619), (127, 19679),

Gene: Swish_26 Start: 19142, Stop: 19705, Start Num: 23

Candidate Starts for Swish_26:

(4, 18971), (Start: 23 @19142 has 275 MA's), (70, 19328), (92, 19382), (121, 19613), (127, 19673),

Gene: SynergyX_27 Start: 19777, Stop: 20370, Start Num: 28

Candidate Starts for SynergyX_27:

(Start: 28 @19777 has 38 MA's), (30, 19783), (Start: 38 @19816 has 33 MA's), (109, 20146), (115, 20191), (119, 20236), (121, 20248), (126, 20296),

Gene: TA17A_28 Start: 21314, Stop: 21799, Start Num: 38

Candidate Starts for TA17A_28:

(Start: 38 @21314 has 33 MA's), (45, 21341), (63, 21383), (90, 21449), (91, 21452), (97, 21470), (101, 21494), (105, 21533), (109, 21578), (110, 21590), (112, 21602), (113, 21614), (117, 21641), (119, 21668), (120, 21677), (121, 21680), (126, 21728), (130, 21752),

Gene: TPA2_32 Start: 20033, Stop: 20467, Start Num: 54

Candidate Starts for TPA2_32:

(54, 20033), (63, 20066), (88, 20117), (98, 20144), (99, 20150), (103, 20186), (110, 20270), (111, 20276), (112, 20282), (113, 20294), (119, 20348), (121, 20360), (126, 20408), (130, 20432),

Gene: TallGrassMM_26 Start: 18874, Stop: 19437, Start Num: 23

Candidate Starts for TallGrassMM_26:

(4, 18703), (Start: 23 @18874 has 275 MA's), (70, 19060), (92, 19114), (121, 19345), (127, 19405),

Gene: Telesworld_25 Start: 18853, Stop: 19416, Start Num: 23

Candidate Starts for Telesworld_25:

(4, 18682), (Start: 23 @18853 has 275 MA's), (70, 19039), (92, 19093), (121, 19324), (127, 19384),

Gene: Thora_26 Start: 19159, Stop: 19719, Start Num: 23

Candidate Starts for Thora_26:

(Start: 23 @19159 has 275 MA's), (70, 19345), (92, 19399), (121, 19630), (127, 19690),

Gene: ThreeOh3D2_26 Start: 19157, Stop: 19717, Start Num: 23

Candidate Starts for ThreeOh3D2_26:

(4, 18986), (Start: 23 @19157 has 275 MA's), (70, 19343), (92, 19397), (121, 19628), (127, 19688),

Gene: Thunderbird_26 Start: 18857, Stop: 19417, Start Num: 23

Candidate Starts for Thunderbird_26:

(4, 18686), (Start: 23 @18857 has 275 MA's), (70, 19043), (92, 19097), (121, 19328), (127, 19388),

Gene: Timmi_25 Start: 18868, Stop: 19428, Start Num: 23

Candidate Starts for Timmi_25:

(4, 18697), (Start: 23 @18868 has 275 MA's), (70, 19054), (92, 19108), (121, 19339), (127, 19399),

Gene: Tinciduntolum_29 Start: 21437, Stop: 21922, Start Num: 39

Candidate Starts for Tinciduntolum_29:

(Start: 39 @21437 has 16 MA's), (45, 21464), (63, 21506), (90, 21572), (91, 21575), (97, 21593), (101, 21617), (105, 21656), (109, 21701), (110, 21713), (112, 21725), (113, 21737), (117, 21764), (119, 21791), (120, 21800), (121, 21803), (126, 21851), (130, 21875),

Gene: TomBombadil_26 Start: 19153, Stop: 19713, Start Num: 23

Candidate Starts for TomBombadil_26:

(4, 18982), (Start: 23 @19153 has 275 MA's), (70, 19339), (92, 19393), (121, 19624), (127, 19684),

Gene: Tomlarah_26 Start: 19143, Stop: 19706, Start Num: 23

Candidate Starts for Tomlarah_26:

(4, 18972), (Start: 23 @19143 has 275 MA's), (70, 19329), (92, 19383), (121, 19614), (127, 19674),

Gene: Toni_25 Start: 18852, Stop: 19415, Start Num: 23

Candidate Starts for Toni_25:

(4, 18681), (Start: 23 @18852 has 275 MA's), (70, 19038), (92, 19092), (121, 19323), (127, 19383),

Gene: Tooj_26 Start: 19154, Stop: 19717, Start Num: 23

Candidate Starts for Tooj_26:

(4, 18983), (Start: 23 @19154 has 275 MA's), (70, 19340), (92, 19394), (121, 19625), (127, 19685),

Gene: Tres_28 Start: 21318, Stop: 21803, Start Num: 39

Candidate Starts for Tres_28:

(Start: 39 @21318 has 16 MA's), (45, 21345), (63, 21387), (90, 21453), (91, 21456), (97, 21474), (101, 21498), (105, 21537), (109, 21582), (110, 21594), (112, 21606), (113, 21618), (117, 21645), (119, 21672), (120, 21681), (121, 21684), (126, 21732), (130, 21756),

Gene: True_25 Start: 18856, Stop: 19419, Start Num: 23

Candidate Starts for True_25:

(4, 18685), (Start: 23 @18856 has 275 MA's), (70, 19042), (92, 19096), (121, 19327), (127, 19387),

Gene: Trypo_26 Start: 19145, Stop: 19708, Start Num: 23

Candidate Starts for Trypo_26:

(4, 18974), (Start: 23 @19145 has 275 MA's), (70, 19331), (92, 19385), (104, 19460), (121, 19616), (127, 19676),

Gene: Tydolla_27 Start: 20514, Stop: 21107, Start Num: 28

Candidate Starts for Tydolla_27:

(Start: 28 @20514 has 38 MA's), (30, 20520), (Start: 38 @20553 has 33 MA's), (109, 20883), (115, 20928), (119, 20973), (121, 20985), (126, 21033),

Gene: TyrionL_25 Start: 18709, Stop: 19272, Start Num: 23

Candidate Starts for TyrionL_25:

(4, 18538), (Start: 23 @18709 has 275 MA's), (70, 18895), (92, 18949), (104, 19024), (121, 19180), (127, 19240),

Gene: UAch1_26 Start: 19165, Stop: 19728, Start Num: 23

Candidate Starts for UAch1_26:

(4, 18994), (Start: 23 @19165 has 275 MA's), (70, 19351), (92, 19405), (121, 19636), (127, 19696),

Gene: UncleHowie_26 Start: 18855, Stop: 19418, Start Num: 23

Candidate Starts for UncleHowie_26:

(4, 18684), (Start: 23 @18855 has 275 MA's), (70, 19041), (92, 19095), (121, 19326), (127, 19386),

Gene: Usavi_26 Start: 19156, Stop: 19719, Start Num: 23

Candidate Starts for Usavi_26:

(4, 18985), (Start: 23 @19156 has 275 MA's), (70, 19342), (92, 19396), (121, 19627), (127, 19687),

Gene: Vaishali24_25 Start: 18814, Stop: 19377, Start Num: 23

Candidate Starts for Vaishali24_25:

(4, 18643), (18, 18784), (Start: 23 @18814 has 275 MA's), (70, 19000), (92, 19054), (121, 19285), (127, 19345),

Gene: Valjean_26 Start: 19148, Stop: 19711, Start Num: 23

Candidate Starts for Valjean_26:

(4, 18977), (Start: 23 @19148 has 275 MA's), (70, 19334), (92, 19388), (121, 19619), (127, 19679),

Gene: Vaticameos_26 Start: 18846, Stop: 19409, Start Num: 23

Candidate Starts for Vaticameos_26:

(4, 18675), (Start: 23 @18846 has 275 MA's), (70, 19032), (92, 19086), (121, 19317), (127, 19377),

Gene: Veritas_25 Start: 18715, Stop: 19278, Start Num: 23

Candidate Starts for Veritas_25:

(4, 18544), (Start: 23 @18715 has 275 MA's), (70, 18901), (92, 18955), (104, 19030), (121, 19186), (127, 19246),

Gene: Vincenzo_25 Start: 20564, Stop: 21106, Start Num: 23

Candidate Starts for Vincenzo_25:

(Start: 23 @20564 has 275 MA's), (37, 20627), (62, 20696), (65, 20705), (74, 20738), (77, 20744), (78, 20747), (93, 20777), (110, 20921), (111, 20927), (118, 20996), (121, 21011), (124, 21047),

Gene: VioletZ_24 Start: 19861, Stop: 20421, Start Num: 23

Candidate Starts for VioletZ_24:

(Start: 23 @19861 has 275 MA's), (37, 19921), (57, 19978), (59, 19987), (66, 20023), (67, 20029), (78, 20062), (93, 20092), (99, 20116), (108, 20218), (110, 20236), (111, 20242), (118, 20311), (121, 20326), (123, 20353), (124, 20362),

Gene: Virapocalypse_26 Start: 19139, Stop: 19702, Start Num: 23

Candidate Starts for Virapocalypse_26:

(4, 18968), (Start: 23 @19139 has 275 MA's), (70, 19325), (92, 19379), (121, 19610), (127, 19670),

Gene: Virgeve_25 Start: 18881, Stop: 19444, Start Num: 23

Candidate Starts for Virgeve_25:

(4, 18710), (Start: 23 @18881 has 275 MA's), (70, 19067), (92, 19121), (104, 19196), (121, 19352), (127, 19412),

Gene: Vista_26 Start: 19153, Stop: 19716, Start Num: 23

Candidate Starts for Vista_26:

(4, 18982), (Start: 23 @19153 has 275 MA's), (70, 19339), (92, 19393), (121, 19624), (127, 19684),

Gene: Vivaldi_26 Start: 19183, Stop: 19743, Start Num: 23

Candidate Starts for Vivaldi_26:

(4, 19012), (Start: 23 @19183 has 275 MA's), (70, 19369), (92, 19423), (121, 19654), (127, 19714),

Gene: Vortex_26 Start: 18863, Stop: 19423, Start Num: 23

Candidate Starts for Vortex_26:

(4, 18692), (Start: 23 @18863 has 275 MA's), (70, 19049), (92, 19103), (121, 19334), (127, 19394),

Gene: Waleliano_24 Start: 19800, Stop: 20360, Start Num: 23

Candidate Starts for Waleliano_24:

(Start: 23 @19800 has 275 MA's), (37, 19860), (57, 19917), (59, 19926), (66, 19962), (67, 19968), (78, 20001), (93, 20031), (99, 20055), (110, 20175), (111, 20181), (118, 20250), (121, 20265), (123, 20292), (124, 20301),

Gene: Wallhey_25 Start: 18713, Stop: 19276, Start Num: 23

Candidate Starts for Wallhey_25:

(4, 18542), (Start: 23 @18713 has 275 MA's), (70, 18899), (92, 18953), (104, 19028), (121, 19184), (127, 19244),

Gene: Waterdiva_26 Start: 19148, Stop: 19711, Start Num: 23

Candidate Starts for Waterdiva_26:

(4, 18977), (Start: 23 @19148 has 275 MA's), (70, 19334), (92, 19388), (121, 19619), (127, 19679),

Gene: Weher20_26 Start: 19141, Stop: 19704, Start Num: 23

Candidate Starts for Weher20_26:

(4, 18970), (Start: 23 @19141 has 275 MA's), (70, 19327), (92, 19381), (121, 19612), (127, 19672),

Gene: West99_28 Start: 21438, Stop: 21923, Start Num: 39

Candidate Starts for West99_28:

(Start: 39 @21438 has 16 MA's), (45, 21465), (63, 21507), (90, 21573), (91, 21576), (97, 21594), (101, 21618), (105, 21657), (109, 21702), (110, 21714), (112, 21726), (113, 21738), (117, 21765), (119, 21792), (120, 21801), (121, 21804), (126, 21852), (130, 21876),

Gene: Windsor_25 Start: 18833, Stop: 19396, Start Num: 23

Candidate Starts for Windsor_25:

(4, 18662), (Start: 23 @18833 has 275 MA's), (70, 19019), (92, 19073), (104, 19148), (121, 19304), (127, 19364),

Gene: Wooper_25 Start: 19076, Stop: 19591, Start Num: 38

Candidate Starts for Wooper_25:

(29, 19034), (Start: 32 @19040 has 2 MA's), (Start: 38 @19076 has 33 MA's), (45, 19103), (51, 19112), (70, 19172), (89, 19214), (107, 19328), (111, 19367), (114, 19388), (118, 19436), (121, 19451), (126, 19499), (127, 19511), (130, 19523),

Gene: Xavier_25 Start: 18866, Stop: 19429, Start Num: 23

Candidate Starts for Xavier_25:

(4, 18695), (Start: 23 @18866 has 275 MA's), (70, 19052), (92, 19106), (121, 19337), (127, 19397),

Gene: Yago84_23 Start: 17975, Stop: 18538, Start Num: 38

Candidate Starts for Yago84_23:

(Start: 38 @17975 has 33 MA's), (61, 18047), (64, 18059), (76, 18107), (79, 18116), (110, 18323), (111, 18329), (118, 18398), (121, 18413), (126, 18461),

Gene: Yahalom_27 Start: 19789, Stop: 20382, Start Num: 28

Candidate Starts for Yahalom_27:

(Start: 28 @19789 has 38 MA's), (30, 19795), (Start: 38 @19828 has 33 MA's), (69, 19933), (109, 20158), (115, 20203), (119, 20248), (121, 20260), (126, 20308),

Gene: Yinz_27 Start: 19815, Stop: 20408, Start Num: 28

Candidate Starts for Yinz_27:

(Start: 28 @19815 has 38 MA's), (30, 19821), (Start: 38 @19854 has 33 MA's), (109, 20184), (115, 20229), (119, 20274), (121, 20286), (126, 20334),

Gene: Yoshand_26 Start: 19155, Stop: 19718, Start Num: 23

Candidate Starts for Yoshand_26:

(4, 18984), (Start: 23 @19155 has 275 MA's), (70, 19341), (92, 19395), (121, 19626), (127, 19686),

Gene: YouGoGlencoco_26 Start: 19144, Stop: 19707, Start Num: 23

Candidate Starts for YouGoGlencoco_26:

(4, 18973), (Start: 23 @19144 has 275 MA's), (70, 19330), (92, 19384), (121, 19615), (127, 19675),

Gene: Zaider_27 Start: 19380, Stop: 19943, Start Num: 23

Candidate Starts for Zaider_27:

(4, 19209), (Start: 23 @19380 has 275 MA's), (70, 19566), (92, 19620), (121, 19851), (127, 19911),

Gene: Zelda_26 Start: 19149, Stop: 19712, Start Num: 23

Candidate Starts for Zelda_26:

(4, 18978), (Start: 23 @19149 has 275 MA's), (70, 19335), (92, 19389), (121, 19620), (127, 19680),

Gene: Zemanar_25 Start: 19800, Stop: 20360, Start Num: 23

Candidate Starts for Zemanar_25:

(Start: 23 @19800 has 275 MA's), (37, 19860), (57, 19917), (59, 19926), (66, 19962), (67, 19968), (78, 20001), (93, 20031), (99, 20055), (110, 20175), (111, 20181), (118, 20250), (121, 20265), (123, 20292), (124, 20301),

Gene: Zenteno07_30 Start: 19548, Stop: 20225, Start Num: 16

Candidate Starts for Zenteno07_30:

(2, 19302), (Start: 16 @19548 has 1 MA's), (Start: 22 @19590 has 1 MA's), (57, 19728), (73, 19800), (78, 19815), (85, 19842), (102, 19932), (112, 20031), (118, 20094), (121, 20109), (127, 20169),

Gene: Zonia_26 Start: 19163, Stop: 19726, Start Num: 23

Candidate Starts for Zonia_26:

(4, 18992), (Start: 23 @19163 has 275 MA's), (70, 19349), (92, 19403), (104, 19478), (121, 19634), (127, 19694),