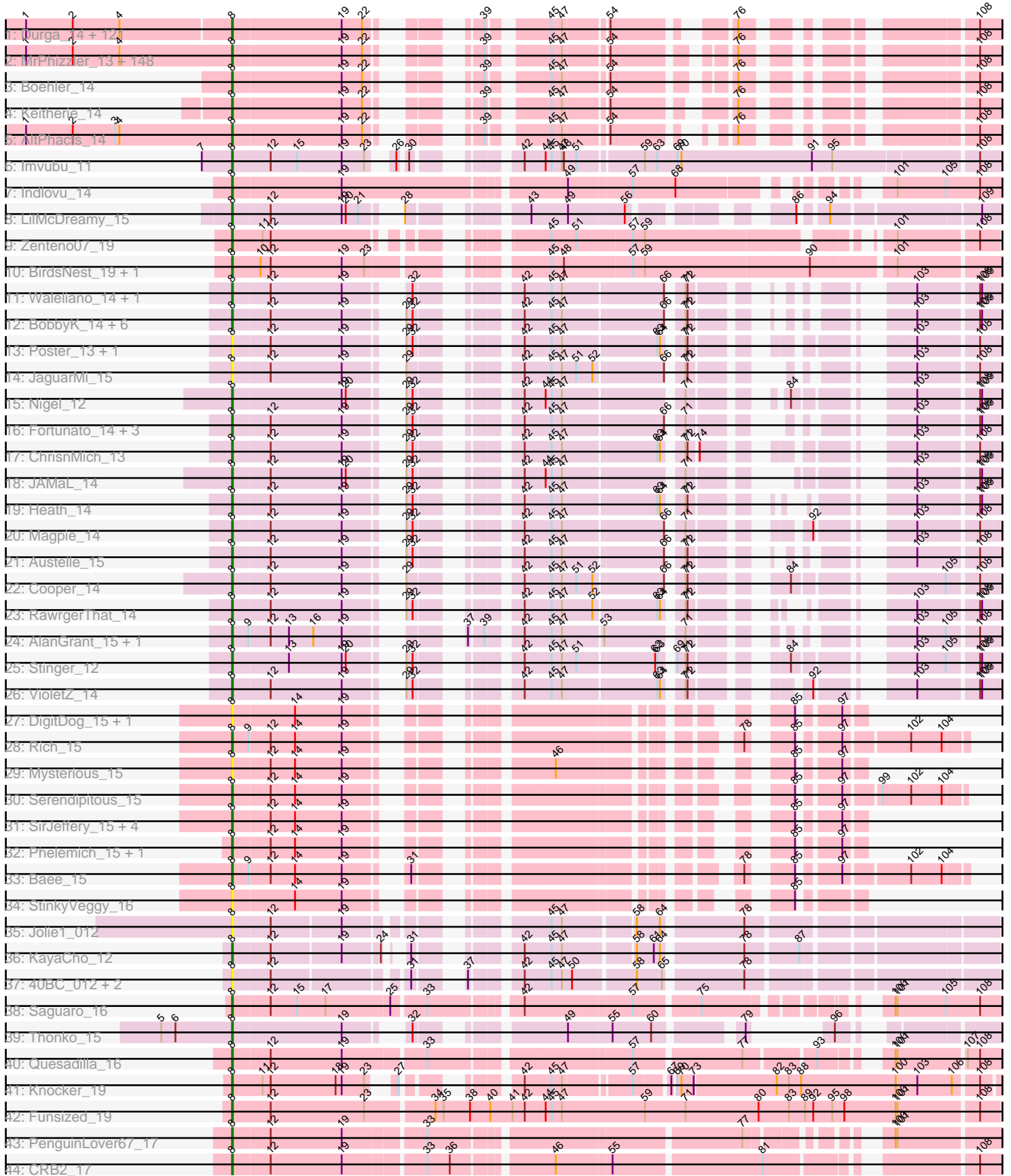


Pham 161511



Note: Tracks are now grouped by subcluster and scaled. Switching in subcluster is indicated by changes in track color. Track scale is now set by default to display the region 30 bp upstream of start 1 to 30 bp downstream of the last possible start. If this default region is judged to be packed too tightly with annotated starts, the track will be further scaled to only show that region of the ORF with annotated starts. This action will be indicated by adding "Zoomed" to the title. For starts, yellow indicates the location of called starts comprised solely of Glimmer/GeneMark auto-annotations, green indicates the location of called starts with at least 1 manual gene annotation.

Pham 161511 Report

This analysis was run 04/28/24 on database version 559.

Pham number 161511 has 334 members, 44 are drafts.

Phages represented in each track:

- Track 1 : Durga_14, Inchworm_14, MelsMeow_13, Maskar_13, Gophee_14, CharlieGBrown_13, Placalicious_13, Phergie_13, Bishoperium_13, Longacauda_13, Zaider_15, Mcshane_13, Fang_14, CampRoach_13, BatteryCK_13, Swish_14, Struggle_13, Phleuron_13, Fringe_14, Haimas_14, Oosterbaan_14, ImtiyazSitla_13, Gareth_13, Wallhey_13, JacAttac_14, Anderson_14, PhatLouie_14, Kwadwo_13, Tomlarah_14, Andre_14, Matalotodo_13, Waterdiva_14, Nyala_13, GeneCoco_14, Giraffe_14, LeeLot_14, PhrodoBaggins_13, Nicole21_14, Pinkman_13, Etaye_14, Orfeu_13, Toni_13, Hertubise_14, Derpp_13, Jiminy_13, Chute_13, Oline_13, Banjo_13, Zelda_14, Phunky_14, EmpTee_14, Melc17_14, Burr_13, Cannibal_14, Hocus_13, Bluephacebaby_13, Sigman_14, Adriana_14, Valjean_14, HighStump_13, Hartsy_13, Murdoc_14, DuchessDung_13, LasagnaCat_14, Spartan300_14, Squid_14, Samaymay_14, Ashraf_13, Virapocalypse_14, CamL_14, Roscoe_15, Freya_13, ProfessorX_14, Daka_14, JangoPhett_14, Dice_14, Weher20_14, Orwigg_14, Pacifista_15, Trypo_14, Mulan_13, Hamish_14, Lulumae_13, Dione_13, MichaelPhcott_13, Kailash_14, Mecca_13, Orion_14, Labeouficaum_13, SassyCat97_13, Schueller_13, Iridoclysis_14, Vista_14, Charles1_14, Olak_13, Riggan_14, Emiris_14, Veritas_13, Simielle_13, Skippy_14, PhenghisKhan_13, QueenBeane_14, Magic8_14, Coletti_13, Lumine_13, Swiphy_14, Zonia_14, TyrionL_13, True_13, Mag7_13, YouGoGlencoco_14, Squiggle_14, Eugenia_14, ABU_14, ShiVal_14, Vaticameos_14, DoesntMatter_14, PhrankReynolds_13, Sophia_13, Roy17_14, Brilliant_14, TomBombadil_14
- Track 2 : MrPhizzler_13, Chunky_14, BlackStallion_14, Puhltonio_14, Soto_14, TallGrassMM_14, HSavage_14, Held_14, Pops_14, PhatCats2014_14, Mesh1_14, DaddyDaniels_14, Lego3393_14, AbsoluteMadLad_13, KlimbOn_14, Kimbrough_14, HenryJackson_13, Dati_14, Dingo_14, CheetO_14, Cornobble_13, Windsor_13, FugateOSU_13, Numberberten_14, Vaishali24_13, DirtJuice_14, Roliet_14, Pherdinand_14, Carthage_13, Craff_14, Phipps_14, Harvey_14, Jiraiya_14, Legolas_13, Doddsville_14, Jillium_13, Manad_13, LemonSlice_14, Cher_13, Gwilliam_14, MitKao_14, Surely_14, Hetaeria_14, Chorkpop_14, Inverness_14, Virgeve_13, Fozzie_13, Vivaldi_14, Kwksand96_13, Phamished_14, JDog_13, Chaelin_13, Serpentine_0014, Plmatters_14, Newman_14, UAch1_14, Megatron_14, Mikota_14, Badfish_14, Podrick_14, Colbert_14, Kikipoo_14, FriarPreacher_14, Nacho_0014, OliverWalter_14, Scoot17C_14, MRabcd_13, JakeO_13, Lasso_14, Thora_14, Rimu_13, Frankicide_14, Soile_14, Altwerkus_13, Piglet_0013, Pipsqueak_14, Lopsy_13, Horchata_14, Daffy_14, UncleHowie_14, Morty_14, Tooj_14, Childish_13, Schadenfreude_13, Basato_15, Scrick_13, Slatt_14, Haleema_13, Antonia_13, LuckyMarjie_13, Eremos_14, Katniss_14, Phareon_14,

LostAndPhound_13, Gyarad_0014, Ricotta_14, BlueHusk_14, PinheadLarry_14, Prickles_14, Yoshand_14, Duggie_13, Aelin_13, Apizium_13, Suffolk_14, Buckeye_14, Xavier_13, Beaglebox_13, PG1_14, Lulwa_14, FluffyNinja_14, KingTut_13, ThreeOh3D2_14, DeIRivs_13, Robyn_13, Vortex_14, Grand2040_13, MiniBoss_14, KLucky39_14, RedMaple_13, DonSanchon_13, Cobra_14, Kahve_13, Mana_13, Usavi_14, SDcharge11_14, Telesworld_13, Morgushi_14, LeiMonet_14, Timmi_13, Omniscient_14, OSmaximus_14, Selr12_14, Thunderbird_14, Solosis_13, Mosaic_13, Mutante_13, Olive_14, Cosmolli16_13, KingVeVeVe_14, Megamind20_14, Potter_13, Chah_14, Crownjwl_14, IsaacEli_14, Kloppinator_14, Maru_13, Quisquilliae_14, Serendipity_14, Sheila_14

- Track 3 : Boehler_14
- Track 4 : Keitherie_14
- Track 5 : AltPhacts_14
- Track 6 : Imvubu_11
- Track 7 : Indlovu_14
- Track 8 : LiIMcDreamy_15
- Track 9 : Zenteno07_19
- Track 10 : BirdsNest_19, Hashim76_19
- Track 11 : Waleliano_14, Zemanar_15
- Track 12 : BobbyK_14, Hydro_14, Frederick_14, Hangman_14, Mithril_14, Lolalove_14, BrownCNA_15
- Track 13 : Poster_13, Nanao_13
- Track 14 : JaguarMi_15
- Track 15 : Nigel_12
- Track 16 : Fortunato_14, Apex_14, Prince_15, Mudslide_14
- Track 17 : ChrisnMich_13
- Track 18 : JAMaL_14
- Track 19 : Heath_14
- Track 20 : Magpie_14
- Track 21 : Austelle_15
- Track 22 : Cooper_14
- Track 23 : RawrgerThat_14
- Track 24 : AlanGrant_15, Vincenzo_15
- Track 25 : Stinger_12
- Track 26 : VioletZ_14
- Track 27 : DigitDog_15, Nangang_15
- Track 28 : Rich_15
- Track 29 : Mysterious_15
- Track 30 : Serendipitous_15
- Track 31 : SirJeffery_15, Donny_15, Suigeneris_15, EastView9101_15, Acadian_15
- Track 32 : Phelemich_15, Reprobate_15
- Track 33 : Bae_15
- Track 34 : StinkyVeggy_16
- Track 35 : Jolie1_012
- Track 36 : KayaCho_12
- Track 37 : 40BC_012, 39HC_012, Hosp_010
- Track 38 : Saguaro_16
- Track 39 : Thonko_15
- Track 40 : Quesadilla_16
- Track 41 : Knocker_19
- Track 42 : Funsized_19
- Track 43 : PenguinLover67_17
- Track 44 : CRB2_17

Summary of Final Annotations (See graph section above for start numbers):

The start number called the most often in the published annotations is 8, it was called in 290 of the 290 non-draft genes in the pham.

Genes that call this "Most Annotated" start:

• 39HC_012, 40BC_012, ABU_14, AbsoluteMadLad_13, Acadian_15, Adriana_14, Aelin_13, AlanGrant_15, AltPhacts_14, Altwerkus_13, Anderson_14, Andre_14, Antonia_13, Apex_14, Apizium_13, Ashraf_13, Austelle_15, Badfish_14, Bae_15, Banjo_13, Basato_15, BatteryCK_13, Beaglebox_13, BirdsNest_19, Bishoperium_13, BlackStallion_14, BlueHusk_14, Bluephacebaby_13, BobbyK_14, Boehler_14, Brilliant_14, BrownCNA_15, Buckeye_14, Burr_13, CRB2_17, CamL_14, CampRoach_13, Cannibal_14, Carthage_13, Chaelin_13, Chah_14, Charles1_14, CharlieGBrown_13, CheetO_14, Cher_13, Childish_13, Chorkpop_14, ChrisnMich_13, Chunky_14, Chute_13, Cobra_14, Colbert_14, Coletti_13, Cooper_14, Cornobble_13, Cosmolli16_13, Craff_14, Crownjwl_14, DaddyDaniels_14, Daffy_14, Daka_14, Dati_14, DelRivs_13, Derpp_13, Dice_14, DigitDog_15, Dingo_14, Dione_13, DirtJuice_14, Doddsville_14, DoesntMatter_14, DonSanchon_13, Donny_15, DuchessDung_13, Duggie_13, Durga_14, EastView9101_15, Emiris_14, EmpTee_14, Eremos_14, Etaye_14, Eugenia_14, Fang_14, FluffyNinja_14, Fortunato_14, Fozzie_13, Frankicide_14, Frederick_14, Freya_13, FriarPreacher_14, Fringe_14, FugateOSU_13, Funsized_19, Gareth_13, GeneCoco_14, Giraffe_14, Gophee_14, Grand2040_13, Gwilliam_14, Gyarad_0014, HSavage_14, Haimas_14, Haleema_13, Hamish_14, Hangman_14, Hartsy_13, Harvey_14, Hashim76_19, Heath_14, Held_14, HenryJackson_13, Hertubise_14, Hetaeria_14, HighStump_13, Hocus_13, Horchata_14, Hosp_010, Hydro_14, ImtiyazSitla_13, Imvubu_11, Inchworm_14, Indlovu_14, Inverness_14, Iridoclysis_14, IsaacEli_14, JAMaL_14, JDog_13, JacAttac_14, JaguarMi_15, JakeO_13, JangoPhett_14, Jillium_13, Jiminy_13, Jiraiya_14, Jolie1_012, KLucky39_14, Kahve_13, Kailash_14, Katniss_14, KayaCho_12, Keitherie_14, Kikipoo_14, Kimbrough_14, KingTut_13, KingVeVeVe_14, KlimbOn_14, Kloppinator_14, Knocker_19, Kwadwo_13, Kwksand96_13, Labeouficaum_13, LasagnaCat_14, Lasso_14, LeeLot_14, Lego3393_14, Legolas_13, LeiMonet_14, LemonSlice_14, LilMcDreamy_15, Lolalove_14, Longacauda_13, Lopsy_13, LostAndPhound_13, LuckyMarjie_13, Lulumae_13, Lulwa_14, Lumine_13, MRabcd_13, Mag7_13, Magic8_14, Magpie_14, Mana_13, Manad_13, Maru_13, Maskar_13, Matalotodo_13, Mcshane_13, Mecca_13, Megamind20_14, Megatron_14, Melc17_14, MelsMeow_13, Mesh1_14, MichaelPhcott_13, Mikota_14, MiniBoss_14, MitKao_14, Mithril_14, Morgushi_14, Morty_14, Mosaic_13, MrPhizzler_13, Mudslide_14, Mulan_13, Murdoc_14, Mutante_13, Mysterious_15, Nacho_0014, Nanao_13, Nangang_15, Newman_14, Nicole21_14, Nigel_12, Numberten_14, Nyala_13, OSmaximus_14, Olak_13, Oline_13, Olive_14, OliverWalter_14, Omniscient_14, Oosterbaan_14, Orfeu_13, Orion_14, Orwig_14, PG1_14, Pacifista_15, PenguinLover67_17, Phamished_14, Phareon_14, PhatCats2014_14, PhatLouie_14, Phelemich_15, PhenghisKhan_13, Pherdinand_14, Phergie_13, Phipps_14, Phleuron_13, PhrankReynolds_13, PhrodoBaggins_13, Phunky_14, Piglet_0013, PinheadLarry_14, Pinkman_13, Pipsqueak_14, Placalicious_13, Plmatters_14, Podrick_14, Pops_14, Poster_13, Potter_13, Prickles_14, Prince_15, ProfessorX_14, Puhltonio_14, QueenBeane_14, Quesadilla_16, Quisquiliae_14, RawrgerThat_14,

RedMaple_13, Reprobate_15, Rich_15, Ricotta_14, Riggan_14, Rimu_13, Robyn_13, Roliet_14, Roscoe_15, Roy17_14, SDcharge11_14, Saguaro_16, Samaymay_14, SassyCat97_13, Schadenfreude_13, Schueller_13, Scoot17C_14, Scrick_13, Selr12_14, Serendipitous_15, Serendipity_14, Serpentine_0014, Sheila_14, ShiVal_14, Sigman_14, Simielle_13, SirJeffery_15, Skippy_14, Slatt_14, Soile_14, Solosis_13, Sophia_13, Soto_14, Spartan300_14, Squid_14, Squiggle_14, Stinger_12, StinkyVeggy_16, Struggle_13, Suffolk_14, Suigeneris_15, Surely_14, Swiphy_14, Swish_14, TallGrassMM_14, Telesworld_13, Thonko_15, Thora_14, ThreeOh3D2_14, Thunderbird_14, Timmi_13, TomBombadil_14, Tomlarah_14, Toni_13, Tooj_14, True_13, Trypo_14, TyrionL_13, UAch1_14, UncleHowie_14, Usavi_14, Vaishali24_13, Valjean_14, Vaticameos_14, Veritas_13, Vincenzo_15, VioletZ_14, Virapocalypse_14, Virgeve_13, Vista_14, Vivaldi_14, Vortex_14, Waleliano_14, Wallhey_13, Waterdiva_14, Weher20_14, Windsor_13, Xavier_13, Yoshand_14, YouGoGlencoco_14, Zaider_15, Zelda_14, Zemanar_15, Zenteno07_19, Zonia_14,

Genes that have the "Most Annotated" start but do not call it:

-

Genes that do not have the "Most Annotated" start:

-

Summary by start number:

Start 8:

- Found in 334 of 334 (100.0%) of genes in pham
- Manual Annotations of this start: 290 of 290
- Called 100.0% of time when present
- Phage (with cluster) where this start called: 39HC_012 (B6), 40BC_012 (B6), ABU_14 (B1), AbsoluteMadLad_13 (B1), Acadian_15 (B5), Adriana_14 (B1), Aelin_13 (B1), AlanGrant_15 (B4), AltPhacts_14 (B1), Altwerkus_13 (B1), Anderson_14 (B1), Andre_14 (B1), Antonia_13 (B1), Apex_14 (B4), Apizium_13 (B1), Ashraf_13 (B1), Austelle_15 (B4), Badfish_14 (B1), Bae_15 (B5), Banjo_13 (B1), Basato_15 (B1), BatteryCK_13 (B1), Beaglebox_13 (B1), BirdsNest_19 (B13), Bishoperium_13 (B1), BlackStallion_14 (B1), BlueHusk_14 (B1), Bluephacebaby_13 (B1), BobbyK_14 (B4), Boehler_14 (B1), Brilliant_14 (B1), BrownCNA_15 (B4), Buckeye_14 (B1), Burr_13 (B1), CRB2_17 (B9), CamL_14 (B1), CampRoach_13 (B1), Cannibal_14 (B1), Carthage_13 (B1), Chaelin_13 (B1), Chah_14 (B1), Charles1_14 (B1), CharlieGBrown_13 (B1), CheetO_14 (B1), Cher_13 (B1), Childish_13 (B1), Chorkpop_14 (B1), ChrisnMich_13 (B4), Chunky_14 (B1), Chute_13 (B1), Cobra_14 (B1), Colbert_14 (B1), Coletti_13 (B1), Cooper_14 (B4), Cornobble_13 (B1), Cosmolli16_13 (B1), Craff_14 (B1), Crownjwl_14 (B1), DaddyDaniels_14 (B1), Daffy_14 (B1), Daka_14 (B1), Dati_14 (B1), DelRivs_13 (B1), Derpp_13 (B1), Dice_14 (B1), DigitDog_15 (B5), Dingo_14 (B1), Dione_13 (B1), DirtJuice_14 (B1), Doddsville_14 (B1), DoesntMatter_14 (B1), DonSanchon_13 (B1), Donny_15 (B5), DuchessDung_13 (B1), Duggie_13 (B1), Durga_14 (B1), EastView9101_15 (B5), Emiris_14 (B1), EmpTee_14 (B1), Eremos_14 (B1), Etaye_14 (B1), Eugenia_14 (B1), Fang_14 (B1), FluffyNinja_14 (B1), Fortunato_14 (B4), Fozzie_13 (B1), Frankicide_14 (B1), Frederick_14 (B4), Freya_13 (B1), FriarPreacher_14 (B1), Fringe_14 (B1), FugateOSU_13 (B1), Funsized_19 (B9), Gareth_13 (B1), GeneCoco_14 (B1), Giraffe_14 (B1), Gophee_14 (B1), Grand2040_13 (B1), Gwilliam_14 (B1), Gyrad_0014 (B1), HSavage_14 (B1), Haimas_14 (B1), Haleema_13 (B1), Hamish_14 (B1), Hangman_14 (B4), Hartsy_13

(B1), Harvey_14 (B1), Hashim76_19 (B13), Heath_14 (B4), Held_14 (B1), HenryJackson_13 (B1), Hertubise_14 (B1), Hetaeria_14 (B1), HighStump_13 (B1), Hocus_13 (B1), Horchata_14 (B1), Hosp_010 (B6), Hydro_14 (B4), ImtiyazSitla_13 (B1), Imvubu_11 (B10), Inchworm_14 (B1), Indlovu_14 (B11), Inverness_14 (B1), Iridoclysis_14 (B1), IsaacEli_14 (B1), JAMaL_14 (B4), JDog_13 (B1), JacAttac_14 (B1), JaguarMi_15 (B4), JakeO_13 (B1), JangoPhett_14 (B1), Jillium_13 (B1), Jiminy_13 (B1), Jiraiya_14 (B1), Jolie1_012 (B6), KLUcky39_14 (B1), Kahve_13 (B1), Kailash_14 (B1), Katniss_14 (B1), KayaCho_12 (B6), Keitherie_14 (B1), Kikipoo_14 (B1), Kimbrough_14 (B1), KingTut_13 (B1), KingVeVeVe_14 (B1), KlimbOn_14 (B1), Kloppinator_14 (B1), Knocker_19 (B9), Kwadwo_13 (B1), Kwksand96_13 (B1), Labeouficaum_13 (B1), LasagnaCat_14 (B1), Lasso_14 (B1), LeeLot_14 (B1), Lego3393_14 (B1), Legolas_13 (B1), LeiMonet_14 (B1), LemonSlice_14 (B1), LilMcDreamy_15 (B12), Lolalove_14 (B4), Longacauda_13 (B1), Lopsy_13 (B1), LostAndPhound_13 (B1), LuckyMarjie_13 (B1), Lulumae_13 (B1), Lulwa_14 (B1), Lumine_13 (B1), MRabcd_13 (B1), Mag7_13 (B1), Magic8_14 (B1), Magpie_14 (B4), Mana_13 (B1), Manad_13 (B1), Maru_13 (B1), Maskar_13 (B1), Matalotodo_13 (B1), Mcshane_13 (B1), Mecca_13 (B1), Megamind20_14 (B1), Megatron_14 (B1), Melc17_14 (B1), MelsMeow_13 (B1), Mesh1_14 (B1), MichaelPhcott_13 (B1), Mikota_14 (B1), MiniBoss_14 (B1), MitKao_14 (B1), Mithril_14 (B4), Morgushi_14 (B1), Morty_14 (B1), Mosaic_13 (B1), MrPhizzler_13 (B1), Mudslide_14 (B4), Mulan_13 (B1), Murdoc_14 (B1), Mutante_13 (B1), Mysterious_15 (B5), Nacho_0014 (B1), Nanao_13 (B4), Nangang_15 (B5), Newman_14 (B1), Nicole21_14 (B1), Nigel_12 (B4), Numberten_14 (B1), Nyala_13 (B1), OSmaximus_14 (B1), Olak_13 (B1), Oline_13 (B1), Olive_14 (B1), OliverWalter_14 (B1), Omniscient_14 (B1), Oosterbaan_14 (B1), Orfeu_13 (B1), Orion_14 (B1), Orwigg_14 (B1), PG1_14 (B1), Pacifista_15 (B1), PenguinLover67_17 (B9), Phamished_14 (B1), Phareon_14 (B1), PhatCats2014_14 (B1), PhatLouie_14 (B1), Phelemich_15 (B5), PhenghisKhan_13 (B1), Pherdinand_14 (B1), Phergie_13 (B1), Phipps_14 (B1), Phleuron_13 (B1), PhrankReynolds_13 (B1), PhrodoBaggins_13 (B1), Phunky_14 (B1), Piglet_0013 (B1), PinheadLarry_14 (B1), Pinkman_13 (B1), Pipsqueak_14 (B1), Placalicious_13 (B1), Plmatters_14 (B1), Podrick_14 (B1), Pops_14 (B1), Poster_13 (B4), Potter_13 (B1), Prickles_14 (B1), Prince_15 (B4), ProfessorX_14 (B1), Puhltonio_14 (B1), QueenBeane_14 (B1), Quesadilla_16 (B9), Quisquilliae_14 (B1), RawrgerThat_14 (B4), RedMaple_13 (B1), Reprobate_15 (B5), Rich_15 (B5), Ricotta_14 (B1), Riggan_14 (B1), Rimu_13 (B1), Robyn_13 (B1), Roliet_14 (B1), Roscoe_15 (B1), Roy17_14 (B1), SDcharge11_14 (B1), Saguaro_16 (B7), Samaymay_14 (B1), SassyCat97_13 (B1), Schadenfreude_13 (B1), Schueller_13 (B1), Scoot17C_14 (B1), Scrick_13 (B1), Selr12_14 (B1), Serendipitous_15 (B5), Serendipity_14 (B1), Serpentine_0014 (B1), Sheila_14 (B1), ShiVal_14 (B1), Sigman_14 (B1), Simielle_13 (B1), SirJeffery_15 (B5), Skippy_14 (B1), Slatt_14 (B1), Soile_14 (B1), Solosis_13 (B1), Sophia_13 (B1), Soto_14 (B1), Spartan300_14 (B1), Squid_14 (B1), Squiggle_14 (B1), Stinger_12 (B4), StinkyVeggy_16 (B5), Struggle_13 (B1), Suffolk_14 (B1), Suigeneris_15 (B5), Surely_14 (B1), Swiphy_14 (B1), Swish_14 (B1), TallGrassMM_14 (B1), Telesworld_13 (B1), Thonko_15 (B8), Thora_14 (B1), ThreeOh3D2_14 (B1), Thunderbird_14 (B1), Timmi_13 (B1), TomBombadil_14 (B1), Tomlarah_14 (B1), Toni_13 (B1), Tooj_14 (B1), True_13 (B1), Trypo_14 (B1), TyrionL_13 (B1), UAch1_14 (B1), UncleHowie_14 (B1), Usavi_14 (B1), Vaishali24_13 (B1), Valjean_14 (B1), Vaticameos_14 (B1), Veritas_13 (B1), Vincenzo_15 (B4), VioletZ_14 (B4), Virapocalypse_14 (B1), Virgeve_13 (B1), Vista_14 (B1), Vivaldi_14 (B1), Vortex_14 (B1), Waleliano_14 (B4), Wallhey_13 (B1), Waterdiva_14 (B1), Weher20_14 (B1), Windsor_13 (B1), Xavier_13 (B1), Yoshand_14 (B1), YouGoGlencoco_14 (B1), Zaider_15 (B1), Zelda_14 (B1), Zemanar_15 (B4), Zenteno07_19 (B13), Zonia_14 (B1),

Summary by clusters:

There are 11 clusters represented in this pham: B4, B5, B6, B7, B12, B1, B10, B11, B8, B9, B13,

Info for manual annotations of cluster B1:

- Start number 8 was manually annotated 247 times for cluster B1.

Info for manual annotations of cluster B10:

- Start number 8 was manually annotated 1 time for cluster B10.

Info for manual annotations of cluster B11:

- Start number 8 was manually annotated 1 time for cluster B11.

Info for manual annotations of cluster B12:

- Start number 8 was manually annotated 1 time for cluster B12.

Info for manual annotations of cluster B13:

- Start number 8 was manually annotated 2 times for cluster B13.

Info for manual annotations of cluster B4:

- Start number 8 was manually annotated 22 times for cluster B4.

Info for manual annotations of cluster B5:

- Start number 8 was manually annotated 8 times for cluster B5.

Info for manual annotations of cluster B6:

- Start number 8 was manually annotated 1 time for cluster B6.

Info for manual annotations of cluster B7:

- Start number 8 was manually annotated 1 time for cluster B7.

Info for manual annotations of cluster B8:

- Start number 8 was manually annotated 1 time for cluster B8.

Info for manual annotations of cluster B9:

- Start number 8 was manually annotated 5 times for cluster B9.

Gene Information:

Gene: 39HC_012 Start: 12612, Stop: 13553, Start Num: 8

Candidate Starts for 39HC_012:

(Start: 8 @12612 has 290 MA's), (12, 12666), (31, 12840), (37, 12882), (42, 12939), (45, 12978), (47, 12993), (50, 13005), (58, 13089), (65, 13122), (78, 13227),

Gene: 40BC_012 Start: 12612, Stop: 13553, Start Num: 8

Candidate Starts for 40BC_012:

(Start: 8 @12612 has 290 MA's), (12, 12666), (31, 12840), (37, 12882), (42, 12939), (45, 12978), (47, 12993), (50, 13005), (58, 13089), (65, 13122), (78, 13227),

Gene: ABU_14 Start: 12409, Stop: 13245, Start Num: 8

Candidate Starts for ABU_14:

(1, 12112), (2, 12181), (4, 12250), (Start: 8 @12409 has 290 MA's), (19, 12568), (22, 12598), (39, 12685), (45, 12754), (47, 12769), (54, 12826), (76, 12952), (108, 13198),

Gene: AbsoluteMadLad_13 Start: 12413, Stop: 13249, Start Num: 8

Candidate Starts for AbsoluteMadLad_13:

(1, 12110), (2, 12179), (4, 12248), (Start: 8 @12413 has 290 MA's), (19, 12572), (22, 12602), (39, 12689), (45, 12758), (47, 12773), (54, 12830), (76, 12956), (108, 13202),

Gene: Acadian_15 Start: 14167, Stop: 14832, Start Num: 8

Candidate Starts for Acadian_15:

(Start: 8 @14167 has 290 MA's), (12, 14221), (14, 14257), (19, 14326), (85, 14758), (97, 14803),

Gene: Adriana_14 Start: 12411, Stop: 13247, Start Num: 8

Candidate Starts for Adriana_14:

(1, 12114), (2, 12183), (4, 12252), (Start: 8 @12411 has 290 MA's), (19, 12570), (22, 12600), (39, 12687), (45, 12756), (47, 12771), (54, 12828), (76, 12954), (108, 13200),

Gene: Aelin_13 Start: 11964, Stop: 12812, Start Num: 8

Candidate Starts for Aelin_13:

(1, 11661), (2, 11730), (4, 11799), (Start: 8 @11964 has 290 MA's), (19, 12123), (22, 12153), (39, 12240), (45, 12309), (47, 12324), (54, 12381), (76, 12519), (108, 12765),

Gene: AlanGrant_15 Start: 14918, Stop: 15751, Start Num: 8

Candidate Starts for AlanGrant_15:

(Start: 8 @14918 has 290 MA's), (9, 14942), (12, 14972), (13, 14999), (16, 15035), (19, 15077), (37, 15176), (39, 15194), (42, 15233), (45, 15272), (47, 15287), (53, 15344), (71, 15443), (103, 15632), (105, 15674), (108, 15716),

Gene: AltPhacts_14 Start: 12418, Stop: 13242, Start Num: 8

Candidate Starts for AltPhacts_14:

(1, 12115), (2, 12184), (3, 12247), (4, 12253), (Start: 8 @12418 has 290 MA's), (19, 12577), (22, 12607), (39, 12694), (45, 12763), (47, 12778), (54, 12835), (76, 12949), (108, 13195),

Gene: Altwerkus_13 Start: 12124, Stop: 12942, Start Num: 8

Candidate Starts for Altwerkus_13:

(1, 11821), (2, 11890), (4, 11959), (Start: 8 @12124 has 290 MA's), (19, 12283), (22, 12313), (39, 12400), (45, 12469), (47, 12484), (54, 12541), (76, 12649), (108, 12895),

Gene: Anderson_14 Start: 12414, Stop: 13238, Start Num: 8

Candidate Starts for Anderson_14:

(1, 12117), (2, 12186), (4, 12255), (Start: 8 @12414 has 290 MA's), (19, 12573), (22, 12603), (39, 12690), (45, 12759), (47, 12774), (54, 12831), (76, 12945), (108, 13191),

Gene: Andre_14 Start: 12412, Stop: 13236, Start Num: 8

Candidate Starts for Andre_14:

(1, 12115), (2, 12184), (4, 12253), (Start: 8 @12412 has 290 MA's), (19, 12571), (22, 12601), (39, 12688), (45, 12757), (47, 12772), (54, 12829), (76, 12943), (108, 13189),

Gene: Antonia_13 Start: 11964, Stop: 12812, Start Num: 8

Candidate Starts for Antonia_13:

(1, 11661), (2, 11730), (4, 11799), (Start: 8 @11964 has 290 MA's), (19, 12123), (22, 12153), (39, 12240), (45, 12309), (47, 12324), (54, 12381), (76, 12519), (108, 12765),

Gene: Apex_14 Start: 14332, Stop: 15153, Start Num: 8

Candidate Starts for Apex_14:

(Start: 8 @14332 has 290 MA's), (12, 14386), (19, 14491), (29, 14539), (32, 14548), (42, 14647), (45, 14686), (47, 14701), (66, 14842), (71, 14857), (103, 15037), (108, 15121), (109, 15124),

Gene: Apizium_13 Start: 12122, Stop: 12982, Start Num: 8

Candidate Starts for Apizium_13:

(1, 11819), (2, 11888), (4, 11957), (Start: 8 @12122 has 290 MA's), (19, 12281), (22, 12311), (39, 12398), (45, 12467), (47, 12482), (54, 12539), (76, 12677), (108, 12923),

Gene: Ashraf_13 Start: 11958, Stop: 12800, Start Num: 8

Candidate Starts for Ashraf_13:

(1, 11661), (2, 11730), (4, 11799), (Start: 8 @11958 has 290 MA's), (19, 12117), (22, 12147), (39, 12234), (45, 12303), (47, 12318), (54, 12375), (76, 12507), (108, 12753),

Gene: Austelle_15 Start: 14785, Stop: 15609, Start Num: 8

Candidate Starts for Austelle_15:

(Start: 8 @14785 has 290 MA's), (12, 14839), (19, 14944), (29, 14992), (32, 15001), (42, 15100), (45, 15139), (47, 15154), (66, 15295), (71, 15310), (72, 15313), (103, 15493), (108, 15577),

Gene: Badfish_14 Start: 12417, Stop: 13271, Start Num: 8

Candidate Starts for Badfish_14:

(1, 12114), (2, 12183), (4, 12252), (Start: 8 @12417 has 290 MA's), (19, 12576), (22, 12606), (39, 12693), (45, 12762), (47, 12777), (54, 12834), (76, 12978), (108, 13224),

Gene: Bae_15 Start: 14169, Stop: 14978, Start Num: 8

Candidate Starts for Bae_15:

(Start: 8 @14169 has 290 MA's), (9, 14193), (12, 14223), (14, 14259), (19, 14328), (31, 14385), (78, 14727), (85, 14769), (97, 14814), (102, 14901), (104, 14946),

Gene: Banjo_13 Start: 12119, Stop: 12949, Start Num: 8

Candidate Starts for Banjo_13:

(1, 11822), (2, 11891), (4, 11960), (Start: 8 @12119 has 290 MA's), (19, 12278), (22, 12308), (39, 12395), (45, 12464), (47, 12479), (54, 12536), (76, 12656), (108, 12902),

Gene: Basato_15 Start: 12651, Stop: 13475, Start Num: 8

Candidate Starts for Basato_15:

(1, 12348), (2, 12417), (4, 12486), (Start: 8 @12651 has 290 MA's), (19, 12810), (22, 12840), (39, 12927), (45, 12996), (47, 13011), (54, 13068), (76, 13182), (108, 13428),

Gene: BatteryCK_13 Start: 11964, Stop: 12806, Start Num: 8

Candidate Starts for BatteryCK_13:

(1, 11667), (2, 11736), (4, 11805), (Start: 8 @11964 has 290 MA's), (19, 12123), (22, 12153), (39, 12240), (45, 12309), (47, 12324), (54, 12381), (76, 12513), (108, 12759),

Gene: Beaglebox_13 Start: 12124, Stop: 12966, Start Num: 8

Candidate Starts for Beaglebox_13:

(1, 11821), (2, 11890), (4, 11959), (Start: 8 @12124 has 290 MA's), (19, 12283), (22, 12313), (39, 12400), (45, 12469), (47, 12484), (54, 12541), (76, 12673), (108, 12919),

Gene: BirdsNest_19 Start: 13243, Stop: 14265, Start Num: 8

Candidate Starts for BirdsNest_19:

(Start: 8 @13243 has 290 MA's), (10, 13285), (12, 13300), (19, 13405), (23, 13438), (45, 13639), (48, 13657), (57, 13753), (59, 13771), (90, 14005), (101, 14119),

Gene: Bishoperium_13 Start: 12119, Stop: 12955, Start Num: 8

Candidate Starts for Bishoperium_13:

(1, 11822), (2, 11891), (4, 11960), (Start: 8 @12119 has 290 MA's), (19, 12278), (22, 12308), (39, 12395), (45, 12464), (47, 12479), (54, 12536), (76, 12662), (108, 12908),

Gene: BlackStallion_14 Start: 12415, Stop: 13257, Start Num: 8

Candidate Starts for BlackStallion_14:

(1, 12112), (2, 12181), (4, 12250), (Start: 8 @12415 has 290 MA's), (19, 12574), (22, 12604), (39, 12691), (45, 12760), (47, 12775), (54, 12832), (76, 12964), (108, 13210),

Gene: BlueHusk_14 Start: 12414, Stop: 13238, Start Num: 8

Candidate Starts for BlueHusk_14:

(1, 12111), (2, 12180), (4, 12249), (Start: 8 @12414 has 290 MA's), (19, 12573), (22, 12603), (39, 12690), (45, 12759), (47, 12774), (54, 12831), (76, 12945), (108, 13191),

Gene: Bluephacebaby_13 Start: 12119, Stop: 12955, Start Num: 8

Candidate Starts for Bluephacebaby_13:

(1, 11822), (2, 11891), (4, 11960), (Start: 8 @12119 has 290 MA's), (19, 12278), (22, 12308), (39, 12395), (45, 12464), (47, 12479), (54, 12536), (76, 12662), (108, 12908),

Gene: BobbyK_14 Start: 14148, Stop: 14972, Start Num: 8

Candidate Starts for BobbyK_14:

(Start: 8 @14148 has 290 MA's), (12, 14202), (19, 14307), (29, 14355), (32, 14364), (42, 14463), (45, 14502), (47, 14517), (66, 14658), (71, 14673), (72, 14676), (103, 14856), (108, 14940), (109, 14943),

Gene: Boehler_14 Start: 12417, Stop: 13265, Start Num: 8

Candidate Starts for Boehler_14:

(Start: 8 @12417 has 290 MA's), (19, 12576), (22, 12606), (39, 12693), (45, 12762), (47, 12777), (54, 12834), (76, 12972), (108, 13218),

Gene: Brilliant_14 Start: 12117, Stop: 12959, Start Num: 8

Candidate Starts for Brilliant_14:

(1, 11820), (2, 11889), (4, 11958), (Start: 8 @12117 has 290 MA's), (19, 12276), (22, 12306), (39, 12393), (45, 12462), (47, 12477), (54, 12534), (76, 12666), (108, 12912),

Gene: BrownCNA_15 Start: 14402, Stop: 15226, Start Num: 8

Candidate Starts for BrownCNA_15:

(Start: 8 @14402 has 290 MA's), (12, 14456), (19, 14561), (29, 14609), (32, 14618), (42, 14717), (45, 14756), (47, 14771), (66, 14912), (71, 14927), (72, 14930), (103, 15110), (108, 15194), (109, 15197),

Gene: Buckeye_14 Start: 12419, Stop: 13273, Start Num: 8

Candidate Starts for Buckeye_14:

(1, 12116), (2, 12185), (4, 12254), (Start: 8 @12419 has 290 MA's), (19, 12578), (22, 12608), (39, 12695), (45, 12764), (47, 12779), (54, 12836), (76, 12980), (108, 13226),

Gene: Burr_13 Start: 12119, Stop: 12955, Start Num: 8

Candidate Starts for Burr_13:

(1, 11822), (2, 11891), (4, 11960), (Start: 8 @12119 has 290 MA's), (19, 12278), (22, 12308), (39, 12395), (45, 12464), (47, 12479), (54, 12536), (76, 12662), (108, 12908),

Gene: CRB2_17 Start: 15034, Stop: 16038, Start Num: 8

Candidate Starts for CRB2_17:

(Start: 8 @15034 has 290 MA's), (12, 15088), (19, 15193), (33, 15304), (36, 15337), (46, 15466), (55, 15544), (81, 15754), (108, 16009),

Gene: CamL_14 Start: 12411, Stop: 13253, Start Num: 8

Candidate Starts for CamL_14:

(1, 12114), (2, 12183), (4, 12252), (Start: 8 @12411 has 290 MA's), (19, 12570), (22, 12600), (39, 12687), (45, 12756), (47, 12771), (54, 12828), (76, 12960), (108, 13206),

Gene: CampRoach_13 Start: 12408, Stop: 13244, Start Num: 8

Candidate Starts for CampRoach_13:

(1, 12111), (2, 12180), (4, 12249), (Start: 8 @12408 has 290 MA's), (19, 12567), (22, 12597), (39, 12684), (45, 12753), (47, 12768), (54, 12825), (76, 12951), (108, 13197),

Gene: Cannibal_14 Start: 12414, Stop: 13238, Start Num: 8

Candidate Starts for Cannibal_14:

(1, 12117), (2, 12186), (4, 12255), (Start: 8 @12414 has 290 MA's), (19, 12573), (22, 12603), (39, 12690), (45, 12759), (47, 12774), (54, 12831), (76, 12945), (108, 13191),

Gene: Carthage_13 Start: 12092, Stop: 12916, Start Num: 8

Candidate Starts for Carthage_13:

(1, 11789), (2, 11858), (4, 11927), (Start: 8 @12092 has 290 MA's), (19, 12251), (22, 12281), (39, 12368), (45, 12437), (47, 12452), (54, 12509), (76, 12623), (108, 12869),

Gene: Chaelin_13 Start: 12078, Stop: 12920, Start Num: 8

Candidate Starts for Chaelin_13:

(1, 11775), (2, 11844), (4, 11913), (Start: 8 @12078 has 290 MA's), (19, 12237), (22, 12267), (39, 12354), (45, 12423), (47, 12438), (54, 12495), (76, 12627), (108, 12873),

Gene: Chah_14 Start: 12418, Stop: 13272, Start Num: 8

Candidate Starts for Chah_14:

(1, 12115), (2, 12184), (4, 12253), (Start: 8 @12418 has 290 MA's), (19, 12577), (22, 12607), (39, 12694), (45, 12763), (47, 12778), (54, 12835), (76, 12979), (108, 13225),

Gene: Charles1_14 Start: 12411, Stop: 13235, Start Num: 8

Candidate Starts for Charles1_14:

(1, 12114), (2, 12183), (4, 12252), (Start: 8 @12411 has 290 MA's), (19, 12570), (22, 12600), (39, 12687), (45, 12756), (47, 12771), (54, 12828), (76, 12942), (108, 13188),

Gene: CharlieGBrown_13 Start: 11982, Stop: 12824, Start Num: 8

Candidate Starts for CharlieGBrown_13:

(1, 11685), (2, 11754), (4, 11823), (Start: 8 @11982 has 290 MA's), (19, 12141), (22, 12171), (39, 12258), (45, 12327), (47, 12342), (54, 12399), (76, 12531), (108, 12777),

Gene: CheetO_14 Start: 12417, Stop: 13253, Start Num: 8

Candidate Starts for CheetO_14:

(1, 12114), (2, 12183), (4, 12252), (Start: 8 @12417 has 290 MA's), (19, 12576), (22, 12606), (39, 12693), (45, 12762), (47, 12777), (54, 12834), (76, 12960), (108, 13206),

Gene: Cher_13 Start: 12124, Stop: 12978, Start Num: 8

Candidate Starts for Cher_13:

(1, 11821), (2, 11890), (4, 11959), (Start: 8 @12124 has 290 MA's), (19, 12283), (22, 12313), (39, 12400), (45, 12469), (47, 12484), (54, 12541), (76, 12685), (108, 12931),

Gene: Childish_13 Start: 12124, Stop: 12966, Start Num: 8

Candidate Starts for Childish_13:

(1, 11821), (2, 11890), (4, 11959), (Start: 8 @12124 has 290 MA's), (19, 12283), (22, 12313), (39, 12400), (45, 12469), (47, 12484), (54, 12541), (76, 12673), (108, 12919),

Gene: Chorkpop_14 Start: 12124, Stop: 12978, Start Num: 8

Candidate Starts for Chorkpop_14:

(1, 11821), (2, 11890), (4, 11959), (Start: 8 @12124 has 290 MA's), (19, 12283), (22, 12313), (39, 12400), (45, 12469), (47, 12484), (54, 12541), (76, 12685), (108, 12931),

Gene: ChrisnMich_13 Start: 13057, Stop: 13908, Start Num: 8

Candidate Starts for ChrisnMich_13:

(Start: 8 @13057 has 290 MA's), (12, 13111), (19, 13216), (29, 13264), (32, 13273), (42, 13372), (45, 13411), (47, 13426), (63, 13558), (64, 13561), (71, 13582), (72, 13585), (74, 13597), (103, 13792), (108, 13876),

Gene: Chunky_14 Start: 12417, Stop: 13265, Start Num: 8

Candidate Starts for Chunky_14:

(1, 12114), (2, 12183), (4, 12252), (Start: 8 @12417 has 290 MA's), (19, 12576), (22, 12606), (39, 12693), (45, 12762), (47, 12777), (54, 12834), (76, 12972), (108, 13218),

Gene: Chute_13 Start: 12426, Stop: 13268, Start Num: 8

Candidate Starts for Chute_13:

(1, 12129), (2, 12198), (4, 12267), (Start: 8 @12426 has 290 MA's), (19, 12585), (22, 12615), (39, 12702), (45, 12771), (47, 12786), (54, 12843), (76, 12975), (108, 13221),

Gene: Cobra_14 Start: 12414, Stop: 13256, Start Num: 8

Candidate Starts for Cobra_14:

(1, 12111), (2, 12180), (4, 12249), (Start: 8 @12414 has 290 MA's), (19, 12573), (22, 12603), (39, 12690), (45, 12759), (47, 12774), (54, 12831), (76, 12963), (108, 13209),

Gene: Colbert_14 Start: 12414, Stop: 13256, Start Num: 8

Candidate Starts for Colbert_14:

(1, 12111), (2, 12180), (4, 12249), (Start: 8 @12414 has 290 MA's), (19, 12573), (22, 12603), (39, 12690), (45, 12759), (47, 12774), (54, 12831), (76, 12963), (108, 13209),

Gene: Coletti_13 Start: 12426, Stop: 13268, Start Num: 8

Candidate Starts for Coletti_13:

(1, 12129), (2, 12198), (4, 12267), (Start: 8 @12426 has 290 MA's), (19, 12585), (22, 12615), (39, 12702), (45, 12771), (47, 12786), (54, 12843), (76, 12975), (108, 13221),

Gene: Cooper_14 Start: 13153, Stop: 14016, Start Num: 8

Candidate Starts for Cooper_14:

(Start: 8 @13153 has 290 MA's), (12, 13207), (19, 13312), (29, 13360), (42, 13468), (45, 13507), (47, 13522), (51, 13543), (52, 13567), (66, 13663), (71, 13678), (72, 13681), (84, 13780), (105, 13942), (108, 13984),

Gene: Cornobble_13 Start: 11965, Stop: 12813, Start Num: 8

Candidate Starts for Cornobble_13:

(1, 11662), (2, 11731), (4, 11800), (Start: 8 @11965 has 290 MA's), (19, 12124), (22, 12154), (39, 12241), (45, 12310), (47, 12325), (54, 12382), (76, 12520), (108, 12766),

Gene: Cosmolli16_13 Start: 12122, Stop: 12970, Start Num: 8

Candidate Starts for Cosmolli16_13:

(1, 11819), (2, 11888), (4, 11957), (Start: 8 @12122 has 290 MA's), (19, 12281), (22, 12311), (39, 12398), (45, 12467), (47, 12482), (54, 12539), (76, 12677), (108, 12923),

Gene: Craff_14 Start: 12417, Stop: 13259, Start Num: 8

Candidate Starts for Craff_14:

(1, 12114), (2, 12183), (4, 12252), (Start: 8 @12417 has 290 MA's), (19, 12576), (22, 12606), (39, 12693), (45, 12762), (47, 12777), (54, 12834), (76, 12966), (108, 13212),

Gene: Crownjwl_14 Start: 12202, Stop: 13026, Start Num: 8

Candidate Starts for Crownjwl_14:

(1, 11899), (2, 11968), (4, 12037), (Start: 8 @12202 has 290 MA's), (19, 12361), (22, 12391), (39, 12478), (45, 12547), (47, 12562), (54, 12619), (76, 12733), (108, 12979),

Gene: DaddyDaniels_14 Start: 12120, Stop: 12962, Start Num: 8

Candidate Starts for DaddyDaniels_14:

(1, 11817), (2, 11886), (4, 11955), (Start: 8 @12120 has 290 MA's), (19, 12279), (22, 12309), (39, 12396), (45, 12465), (47, 12480), (54, 12537), (76, 12669), (108, 12915),

Gene: Daffy_14 Start: 12124, Stop: 12978, Start Num: 8

Candidate Starts for Daffy_14:

(1, 11821), (2, 11890), (4, 11959), (Start: 8 @12124 has 290 MA's), (19, 12283), (22, 12313), (39, 12400), (45, 12469), (47, 12484), (54, 12541), (76, 12685), (108, 12931),

Gene: Daka_14 Start: 12414, Stop: 13256, Start Num: 8

Candidate Starts for Daka_14:

(1, 12117), (2, 12186), (4, 12255), (Start: 8 @12414 has 290 MA's), (19, 12573), (22, 12603), (39, 12690), (45, 12759), (47, 12774), (54, 12831), (76, 12963), (108, 13209),

Gene: Dati_14 Start: 12118, Stop: 12966, Start Num: 8

Candidate Starts for Dati_14:

(1, 11815), (2, 11884), (4, 11953), (Start: 8 @12118 has 290 MA's), (19, 12277), (22, 12307), (39, 12394), (45, 12463), (47, 12478), (54, 12535), (76, 12673), (108, 12919),

Gene: DelRivs_13 Start: 12123, Stop: 12965, Start Num: 8

Candidate Starts for DelRivs_13:

(1, 11820), (2, 11889), (4, 11958), (Start: 8 @12123 has 290 MA's), (19, 12282), (22, 12312), (39, 12399), (45, 12468), (47, 12483), (54, 12540), (76, 12672), (108, 12918),

Gene: Derpp_13 Start: 11970, Stop: 12812, Start Num: 8

Candidate Starts for Derpp_13:

(1, 11673), (2, 11742), (4, 11811), (Start: 8 @11970 has 290 MA's), (19, 12129), (22, 12159), (39, 12246), (45, 12315), (47, 12330), (54, 12387), (76, 12519), (108, 12765),

Gene: Dice_14 Start: 12117, Stop: 12953, Start Num: 8

Candidate Starts for Dice_14:

(1, 11820), (2, 11889), (4, 11958), (Start: 8 @12117 has 290 MA's), (19, 12276), (22, 12306), (39, 12393), (45, 12462), (47, 12477), (54, 12534), (76, 12660), (108, 12906),

Gene: DigitDog_15 Start: 14152, Stop: 14817, Start Num: 8

Candidate Starts for DigitDog_15:

(Start: 8 @14152 has 290 MA's), (14, 14242), (19, 14311), (85, 14743), (97, 14788),

Gene: Dingo_14 Start: 12414, Stop: 13238, Start Num: 8

Candidate Starts for Dingo_14:

(1, 12111), (2, 12180), (4, 12249), (Start: 8 @12414 has 290 MA's), (19, 12573), (22, 12603), (39, 12690), (45, 12759), (47, 12774), (54, 12831), (76, 12945), (108, 13191),

Gene: Dione_13 Start: 12118, Stop: 12954, Start Num: 8

Candidate Starts for Dione_13:

(1, 11821), (2, 11890), (4, 11959), (Start: 8 @12118 has 290 MA's), (19, 12277), (22, 12307), (39, 12394), (45, 12463), (47, 12478), (54, 12535), (76, 12661), (108, 12907),

Gene: DirtJuice_14 Start: 12417, Stop: 13241, Start Num: 8

Candidate Starts for DirtJuice_14:

(1, 12114), (2, 12183), (4, 12252), (Start: 8 @12417 has 290 MA's), (19, 12576), (22, 12606), (39, 12693), (45, 12762), (47, 12777), (54, 12834), (76, 12948), (108, 13194),

Gene: Doddsville_14 Start: 12118, Stop: 12966, Start Num: 8

Candidate Starts for Doddsville_14:

(1, 11815), (2, 11884), (4, 11953), (Start: 8 @12118 has 290 MA's), (19, 12277), (22, 12307), (39, 12394), (45, 12463), (47, 12478), (54, 12535), (76, 12673), (108, 12919),

Gene: DoesntMatter_14 Start: 12411, Stop: 13235, Start Num: 8

Candidate Starts for DoesntMatter_14:

(1, 12114), (2, 12183), (4, 12252), (Start: 8 @12411 has 290 MA's), (19, 12570), (22, 12600), (39, 12687), (45, 12756), (47, 12771), (54, 12828), (76, 12942), (108, 13188),

Gene: DonSanchon_13 Start: 12124, Stop: 12954, Start Num: 8

Candidate Starts for DonSanchon_13:

(1, 11821), (2, 11890), (4, 11959), (Start: 8 @12124 has 290 MA's), (19, 12283), (22, 12313), (39, 12400), (45, 12469), (47, 12484), (54, 12541), (76, 12661), (108, 12907),

Gene: Donny_15 Start: 14169, Stop: 14834, Start Num: 8

Candidate Starts for Donny_15:

(Start: 8 @14169 has 290 MA's), (12, 14223), (14, 14259), (19, 14328), (85, 14760), (97, 14805),

Gene: DuchessDung_13 Start: 11964, Stop: 12806, Start Num: 8

Candidate Starts for DuchessDung_13:

(1, 11667), (2, 11736), (4, 11805), (Start: 8 @11964 has 290 MA's), (19, 12123), (22, 12153), (39, 12240), (45, 12309), (47, 12324), (54, 12381), (76, 12513), (108, 12759),

Gene: Duggie_13 Start: 12120, Stop: 12968, Start Num: 8

Candidate Starts for Duggie_13:

(1, 11817), (2, 11886), (4, 11955), (Start: 8 @12120 has 290 MA's), (19, 12279), (22, 12309), (39, 12396), (45, 12465), (47, 12480), (54, 12537), (76, 12675), (108, 12921),

Gene: Durga_14 Start: 12425, Stop: 13267, Start Num: 8

Candidate Starts for Durga_14:

(1, 12128), (2, 12197), (4, 12266), (Start: 8 @12425 has 290 MA's), (19, 12584), (22, 12614), (39, 12701), (45, 12770), (47, 12785), (54, 12842), (76, 12974), (108, 13220),

Gene: EastView9101_15 Start: 14176, Stop: 14841, Start Num: 8
Candidate Starts for EastView9101_15:
(Start: 8 @14176 has 290 MA's), (12, 14230), (14, 14266), (19, 14335), (85, 14767), (97, 14812),

Gene: Emiris_14 Start: 12412, Stop: 13248, Start Num: 8
Candidate Starts for Emiris_14:
(1, 12115), (2, 12184), (4, 12253), (Start: 8 @12412 has 290 MA's), (19, 12571), (22, 12601), (39, 12688), (45, 12757), (47, 12772), (54, 12829), (76, 12955), (108, 13201),

Gene: EmpTee_14 Start: 12412, Stop: 13254, Start Num: 8
Candidate Starts for EmpTee_14:
(1, 12115), (2, 12184), (4, 12253), (Start: 8 @12412 has 290 MA's), (19, 12571), (22, 12601), (39, 12688), (45, 12757), (47, 12772), (54, 12829), (76, 12961), (108, 13207),

Gene: Eremos_14 Start: 12411, Stop: 13253, Start Num: 8
Candidate Starts for Eremos_14:
(1, 12108), (2, 12177), (4, 12246), (Start: 8 @12411 has 290 MA's), (19, 12570), (22, 12600), (39, 12687), (45, 12756), (47, 12771), (54, 12828), (76, 12960), (108, 13206),

Gene: Etaye_14 Start: 12408, Stop: 13238, Start Num: 8
Candidate Starts for Etaye_14:
(1, 12111), (2, 12180), (4, 12249), (Start: 8 @12408 has 290 MA's), (19, 12567), (22, 12597), (39, 12684), (45, 12753), (47, 12768), (54, 12825), (76, 12945), (108, 13191),

Gene: Eugenia_14 Start: 12412, Stop: 13266, Start Num: 8
Candidate Starts for Eugenia_14:
(1, 12115), (2, 12184), (4, 12253), (Start: 8 @12412 has 290 MA's), (19, 12571), (22, 12601), (39, 12688), (45, 12757), (47, 12772), (54, 12829), (76, 12973), (108, 13219),

Gene: Fang_14 Start: 12415, Stop: 13269, Start Num: 8
Candidate Starts for Fang_14:
(1, 12118), (2, 12187), (4, 12256), (Start: 8 @12415 has 290 MA's), (19, 12574), (22, 12604), (39, 12691), (45, 12760), (47, 12775), (54, 12832), (76, 12976), (108, 13222),

Gene: FluffyNinja_14 Start: 12415, Stop: 13257, Start Num: 8
Candidate Starts for FluffyNinja_14:
(1, 12112), (2, 12181), (4, 12250), (Start: 8 @12415 has 290 MA's), (19, 12574), (22, 12604), (39, 12691), (45, 12760), (47, 12775), (54, 12832), (76, 12964), (108, 13210),

Gene: Fortunato_14 Start: 14145, Stop: 14966, Start Num: 8
Candidate Starts for Fortunato_14:
(Start: 8 @14145 has 290 MA's), (12, 14199), (19, 14304), (29, 14352), (32, 14361), (42, 14460), (45, 14499), (47, 14514), (66, 14655), (71, 14670), (103, 14850), (108, 14934), (109, 14937),

Gene: Fozzie_13 Start: 12415, Stop: 13263, Start Num: 8
Candidate Starts for Fozzie_13:
(1, 12112), (2, 12181), (4, 12250), (Start: 8 @12415 has 290 MA's), (19, 12574), (22, 12604), (39, 12691), (45, 12760), (47, 12775), (54, 12832), (76, 12970), (108, 13216),

Gene: Frankicide_14 Start: 12419, Stop: 13255, Start Num: 8
Candidate Starts for Frankicide_14:

(1, 12116), (2, 12185), (4, 12254), (Start: 8 @12419 has 290 MA's), (19, 12578), (22, 12608), (39, 12695), (45, 12764), (47, 12779), (54, 12836), (76, 12962), (108, 13208),

Gene: Frederick_14 Start: 14151, Stop: 14975, Start Num: 8

Candidate Starts for Frederick_14:

(Start: 8 @14151 has 290 MA's), (12, 14205), (19, 14310), (29, 14358), (32, 14367), (42, 14466), (45, 14505), (47, 14520), (66, 14661), (71, 14676), (72, 14679), (103, 14859), (108, 14943), (109, 14946),

Gene: Freya_13 Start: 12119, Stop: 12949, Start Num: 8

Candidate Starts for Freya_13:

(1, 11822), (2, 11891), (4, 11960), (Start: 8 @12119 has 290 MA's), (19, 12278), (22, 12308), (39, 12395), (45, 12464), (47, 12479), (54, 12536), (76, 12656), (108, 12902),

Gene: FriarPreacher_14 Start: 12420, Stop: 13274, Start Num: 8

Candidate Starts for FriarPreacher_14:

(1, 12117), (2, 12186), (4, 12255), (Start: 8 @12420 has 290 MA's), (19, 12579), (22, 12609), (39, 12696), (45, 12765), (47, 12780), (54, 12837), (76, 12981), (108, 13227),

Gene: Fringe_14 Start: 12412, Stop: 13236, Start Num: 8

Candidate Starts for Fringe_14:

(1, 12115), (2, 12184), (4, 12253), (Start: 8 @12412 has 290 MA's), (19, 12571), (22, 12601), (39, 12688), (45, 12757), (47, 12772), (54, 12829), (76, 12943), (108, 13189),

Gene: FugateOSU_13 Start: 12124, Stop: 12960, Start Num: 8

Candidate Starts for FugateOSU_13:

(1, 11821), (2, 11890), (4, 11959), (Start: 8 @12124 has 290 MA's), (19, 12283), (22, 12313), (39, 12400), (45, 12469), (47, 12484), (54, 12541), (76, 12667), (108, 12913),

Gene: Funsized_19 Start: 16242, Stop: 17348, Start Num: 8

Candidate Starts for Funsized_19:

(Start: 8 @16242 has 290 MA's), (12, 16299), (23, 16437), (34, 16533), (35, 16545), (38, 16584), (40, 16614), (41, 16647), (42, 16665), (44, 16695), (45, 16704), (47, 16719), (59, 16842), (71, 16902), (80, 17010), (83, 17055), (89, 17079), (92, 17091), (95, 17118), (98, 17133), (100, 17208), (101, 17211), (108, 17322),

Gene: Gareth_13 Start: 12115, Stop: 12957, Start Num: 8

Candidate Starts for Gareth_13:

(1, 11818), (2, 11887), (4, 11956), (Start: 8 @12115 has 290 MA's), (19, 12274), (22, 12304), (39, 12391), (45, 12460), (47, 12475), (54, 12532), (76, 12664), (108, 12910),

Gene: GeneCoco_14 Start: 12417, Stop: 13259, Start Num: 8

Candidate Starts for GeneCoco_14:

(1, 12120), (2, 12189), (4, 12258), (Start: 8 @12417 has 290 MA's), (19, 12576), (22, 12606), (39, 12693), (45, 12762), (47, 12777), (54, 12834), (76, 12966), (108, 13212),

Gene: Giraffe_14 Start: 12119, Stop: 12961, Start Num: 8

Candidate Starts for Giraffe_14:

(1, 11822), (2, 11891), (4, 11960), (Start: 8 @12119 has 290 MA's), (19, 12278), (22, 12308), (39, 12395), (45, 12464), (47, 12479), (54, 12536), (76, 12668), (108, 12914),

Gene: Gophee_14 Start: 12414, Stop: 13238, Start Num: 8

Candidate Starts for Gophee_14:

(1, 12117), (2, 12186), (4, 12255), (Start: 8 @12414 has 290 MA's), (19, 12573), (22, 12603), (39, 12690), (45, 12759), (47, 12774), (54, 12831), (76, 12945), (108, 13191),

Gene: Grand2040_13 Start: 12122, Stop: 12976, Start Num: 8

Candidate Starts for Grand2040_13:

(1, 11819), (2, 11888), (4, 11957), (Start: 8 @12122 has 290 MA's), (19, 12281), (22, 12311), (39, 12398), (45, 12467), (47, 12482), (54, 12539), (76, 12683), (108, 12929),

Gene: Gwilliam_14 Start: 12414, Stop: 13250, Start Num: 8

Candidate Starts for Gwilliam_14:

(1, 12111), (2, 12180), (4, 12249), (Start: 8 @12414 has 290 MA's), (19, 12573), (22, 12603), (39, 12690), (45, 12759), (47, 12774), (54, 12831), (76, 12957), (108, 13203),

Gene: Gyarad_0014 Start: 12417, Stop: 13253, Start Num: 8

Candidate Starts for Gyarad_0014:

(1, 12114), (2, 12183), (4, 12252), (Start: 8 @12417 has 290 MA's), (19, 12576), (22, 12606), (39, 12693), (45, 12762), (47, 12777), (54, 12834), (76, 12960), (108, 13206),

Gene: HSavage_14 Start: 12419, Stop: 13261, Start Num: 8

Candidate Starts for HSavage_14:

(1, 12116), (2, 12185), (4, 12254), (Start: 8 @12419 has 290 MA's), (19, 12578), (22, 12608), (39, 12695), (45, 12764), (47, 12779), (54, 12836), (76, 12968), (108, 13214),

Gene: Haimas_14 Start: 12411, Stop: 13253, Start Num: 8

Candidate Starts for Haimas_14:

(1, 12114), (2, 12183), (4, 12252), (Start: 8 @12411 has 290 MA's), (19, 12570), (22, 12600), (39, 12687), (45, 12756), (47, 12771), (54, 12828), (76, 12960), (108, 13206),

Gene: Haleema_13 Start: 12124, Stop: 12978, Start Num: 8

Candidate Starts for Haleema_13:

(1, 11821), (2, 11890), (4, 11959), (Start: 8 @12124 has 290 MA's), (19, 12283), (22, 12313), (39, 12400), (45, 12469), (47, 12484), (54, 12541), (76, 12685), (108, 12931),

Gene: Hamish_14 Start: 12411, Stop: 13247, Start Num: 8

Candidate Starts for Hamish_14:

(1, 12114), (2, 12183), (4, 12252), (Start: 8 @12411 has 290 MA's), (19, 12570), (22, 12600), (39, 12687), (45, 12756), (47, 12771), (54, 12828), (76, 12954), (108, 13200),

Gene: Hangman_14 Start: 14151, Stop: 14975, Start Num: 8

Candidate Starts for Hangman_14:

(Start: 8 @14151 has 290 MA's), (12, 14205), (19, 14310), (29, 14358), (32, 14367), (42, 14466), (45, 14505), (47, 14520), (66, 14661), (71, 14676), (72, 14679), (103, 14859), (108, 14943), (109, 14946),

Gene: Hartsy_13 Start: 12408, Stop: 13250, Start Num: 8

Candidate Starts for Hartsy_13:

(1, 12111), (2, 12180), (4, 12249), (Start: 8 @12408 has 290 MA's), (19, 12567), (22, 12597), (39, 12684), (45, 12753), (47, 12768), (54, 12825), (76, 12957), (108, 13203),

Gene: Harvey_14 Start: 12421, Stop: 13275, Start Num: 8

Candidate Starts for Harvey_14:

(1, 12118), (2, 12187), (4, 12256), (Start: 8 @12421 has 290 MA's), (19, 12580), (22, 12610), (39, 12697), (45, 12766), (47, 12781), (54, 12838), (76, 12982), (108, 13228),

Gene: Hashim76_19 Start: 13526, Stop: 14509, Start Num: 8

Candidate Starts for Hashim76_19:

(Start: 8 @13526 has 290 MA's), (10, 13568), (12, 13583), (19, 13688), (23, 13721), (45, 13922), (48, 13940), (57, 14036), (59, 14054), (90, 14288), (101, 14372),

Gene: Heath_14 Start: 14151, Stop: 14972, Start Num: 8

Candidate Starts for Heath_14:

(Start: 8 @14151 has 290 MA's), (12, 14205), (19, 14310), (29, 14358), (32, 14367), (42, 14466), (45, 14505), (47, 14520), (63, 14652), (64, 14655), (71, 14676), (72, 14679), (103, 14856), (108, 14940), (109, 14943),

Gene: Held_14 Start: 12125, Stop: 12961, Start Num: 8

Candidate Starts for Held_14:

(1, 11822), (2, 11891), (4, 11960), (Start: 8 @12125 has 290 MA's), (19, 12284), (22, 12314), (39, 12401), (45, 12470), (47, 12485), (54, 12542), (76, 12668), (108, 12914),

Gene: HenryJackson_13 Start: 12127, Stop: 12975, Start Num: 8

Candidate Starts for HenryJackson_13:

(1, 11824), (2, 11893), (4, 11962), (Start: 8 @12127 has 290 MA's), (19, 12286), (22, 12316), (39, 12403), (45, 12472), (47, 12487), (54, 12544), (76, 12682), (108, 12928),

Gene: Hertubise_14 Start: 12414, Stop: 13268, Start Num: 8

Candidate Starts for Hertubise_14:

(1, 12117), (2, 12186), (4, 12255), (Start: 8 @12414 has 290 MA's), (19, 12573), (22, 12603), (39, 12690), (45, 12759), (47, 12774), (54, 12831), (76, 12975), (108, 13221),

Gene: Hetaeria_14 Start: 12417, Stop: 13271, Start Num: 8

Candidate Starts for Hetaeria_14:

(1, 12114), (2, 12183), (4, 12252), (Start: 8 @12417 has 290 MA's), (19, 12576), (22, 12606), (39, 12693), (45, 12762), (47, 12777), (54, 12834), (76, 12978), (108, 13224),

Gene: HighStump_13 Start: 12118, Stop: 12960, Start Num: 8

Candidate Starts for HighStump_13:

(1, 11821), (2, 11890), (4, 11959), (Start: 8 @12118 has 290 MA's), (19, 12277), (22, 12307), (39, 12394), (45, 12463), (47, 12478), (54, 12535), (76, 12667), (108, 12913),

Gene: Hocus_13 Start: 12118, Stop: 12960, Start Num: 8

Candidate Starts for Hocus_13:

(1, 11821), (2, 11890), (4, 11959), (Start: 8 @12118 has 290 MA's), (19, 12277), (22, 12307), (39, 12394), (45, 12463), (47, 12478), (54, 12535), (76, 12667), (108, 12913),

Gene: Horchata_14 Start: 12416, Stop: 13240, Start Num: 8

Candidate Starts for Horchata_14:

(1, 12113), (2, 12182), (4, 12251), (Start: 8 @12416 has 290 MA's), (19, 12575), (22, 12605), (39, 12692), (45, 12761), (47, 12776), (54, 12833), (76, 12947), (108, 13193),

Gene: Hosp_010 Start: 10814, Stop: 11755, Start Num: 8

Candidate Starts for Hosp_010:

(Start: 8 @10814 has 290 MA's), (12, 10868), (31, 11042), (37, 11084), (42, 11141), (45, 11180), (47, 11195), (50, 11207), (58, 11291), (65, 11324), (78, 11429),

Gene: Hydro_14 Start: 14148, Stop: 14972, Start Num: 8

Candidate Starts for Hydro_14:

(Start: 8 @14148 has 290 MA's), (12, 14202), (19, 14307), (29, 14355), (32, 14364), (42, 14463), (45, 14502), (47, 14517), (66, 14658), (71, 14673), (72, 14676), (103, 14856), (108, 14940), (109, 14943),

Gene: ImtiyazSitla_13 Start: 11958, Stop: 12800, Start Num: 8

Candidate Starts for ImtiyazSitla_13:

(1, 11661), (2, 11730), (4, 11799), (Start: 8 @11958 has 290 MA's), (19, 12117), (22, 12147), (39, 12234), (45, 12303), (47, 12318), (54, 12375), (76, 12507), (108, 12753),

Gene: Imvubu_11 Start: 11532, Stop: 12530, Start Num: 8

Candidate Starts for Imvubu_11:

(7, 11487), (Start: 8 @11532 has 290 MA's), (12, 11589), (15, 11628), (19, 11694), (23, 11727), (26, 11745), (30, 11754), (42, 11853), (44, 11883), (45, 11892), (47, 11907), (48, 11910), (51, 11925), (59, 12015), (63, 12033), (69, 12063), (70, 12069), (91, 12261), (95, 12291), (108, 12492),

Gene: Inchworm_14 Start: 12408, Stop: 13244, Start Num: 8

Candidate Starts for Inchworm_14:

(1, 12111), (2, 12180), (4, 12249), (Start: 8 @12408 has 290 MA's), (19, 12567), (22, 12597), (39, 12684), (45, 12753), (47, 12768), (54, 12825), (76, 12951), (108, 13197),

Gene: Indlovu_14 Start: 13853, Stop: 14830, Start Num: 8

Candidate Starts for Indlovu_14:

(Start: 8 @13853 has 290 MA's), (19, 14012), (49, 14318), (57, 14408), (68, 14471), (101, 14681), (105, 14750), (108, 14801),

Gene: Inverness_14 Start: 12419, Stop: 13261, Start Num: 8

Candidate Starts for Inverness_14:

(1, 12116), (2, 12185), (4, 12254), (Start: 8 @12419 has 290 MA's), (19, 12578), (22, 12608), (39, 12695), (45, 12764), (47, 12779), (54, 12836), (76, 12968), (108, 13214),

Gene: Iridoclysis_14 Start: 12415, Stop: 13233, Start Num: 8

Candidate Starts for Iridoclysis_14:

(1, 12118), (2, 12187), (4, 12256), (Start: 8 @12415 has 290 MA's), (19, 12574), (22, 12604), (39, 12691), (45, 12760), (47, 12775), (54, 12832), (76, 12940), (108, 13186),

Gene: IsaacEli_14 Start: 12417, Stop: 13265, Start Num: 8

Candidate Starts for IsaacEli_14:

(1, 12114), (2, 12183), (4, 12252), (Start: 8 @12417 has 290 MA's), (19, 12576), (22, 12606), (39, 12693), (45, 12762), (47, 12777), (54, 12834), (76, 12972), (108, 13218),

Gene: JAMaL_14 Start: 14326, Stop: 15156, Start Num: 8

Candidate Starts for JAMaL_14:

(Start: 8 @14326 has 290 MA's), (12, 14380), (19, 14485), (20, 14491), (29, 14533), (32, 14542), (42, 14641), (44, 14671), (45, 14680), (47, 14695), (71, 14851), (103, 15040), (108, 15124), (109, 15127),

Gene: JDog_13 Start: 12120, Stop: 12968, Start Num: 8

Candidate Starts for JDog_13:

(1, 11817), (2, 11886), (4, 11955), (Start: 8 @12120 has 290 MA's), (19, 12279), (22, 12309), (39, 12396), (45, 12465), (47, 12480), (54, 12537), (76, 12675), (108, 12921),

Gene: JacAttac_14 Start: 12408, Stop: 13244, Start Num: 8

Candidate Starts for JacAttac_14:

(1, 12111), (2, 12180), (4, 12249), (Start: 8 @12408 has 290 MA's), (19, 12567), (22, 12597), (39, 12684), (45, 12753), (47, 12768), (54, 12825), (76, 12951), (108, 13197),

Gene: JaguarMi_15 Start: 13981, Stop: 14802, Start Num: 8

Candidate Starts for JaguarMi_15:

(Start: 8 @13981 has 290 MA's), (12, 14035), (19, 14140), (29, 14188), (42, 14296), (45, 14335), (47, 14350), (51, 14371), (52, 14395), (66, 14491), (71, 14506), (72, 14509), (103, 14686), (108, 14770),

Gene: JakeO_13 Start: 12120, Stop: 12968, Start Num: 8

Candidate Starts for JakeO_13:

(1, 11817), (2, 11886), (4, 11955), (Start: 8 @12120 has 290 MA's), (19, 12279), (22, 12309), (39, 12396), (45, 12465), (47, 12480), (54, 12537), (76, 12675), (108, 12921),

Gene: JangoPhett_14 Start: 12409, Stop: 13245, Start Num: 8

Candidate Starts for JangoPhett_14:

(1, 12112), (2, 12181), (4, 12250), (Start: 8 @12409 has 290 MA's), (19, 12568), (22, 12598), (39, 12685), (45, 12754), (47, 12769), (54, 12826), (76, 12952), (108, 13198),

Gene: Jillium_13 Start: 12124, Stop: 12966, Start Num: 8

Candidate Starts for Jillium_13:

(1, 11821), (2, 11890), (4, 11959), (Start: 8 @12124 has 290 MA's), (19, 12283), (22, 12313), (39, 12400), (45, 12469), (47, 12484), (54, 12541), (76, 12673), (108, 12919),

Gene: Jiminy_13 Start: 11966, Stop: 12808, Start Num: 8

Candidate Starts for Jiminy_13:

(1, 11669), (2, 11738), (4, 11807), (Start: 8 @11966 has 290 MA's), (19, 12125), (22, 12155), (39, 12242), (45, 12311), (47, 12326), (54, 12383), (76, 12515), (108, 12761),

Gene: Jiraiya_14 Start: 12120, Stop: 12968, Start Num: 8

Candidate Starts for Jiraiya_14:

(1, 11817), (2, 11886), (4, 11955), (Start: 8 @12120 has 290 MA's), (19, 12279), (22, 12309), (39, 12396), (45, 12465), (47, 12480), (54, 12537), (76, 12675), (108, 12921),

Gene: Jolie1_012 Start: 12596, Stop: 13534, Start Num: 8

Candidate Starts for Jolie1_012:

(Start: 8 @12596 has 290 MA's), (12, 12650), (19, 12749), (45, 12962), (47, 12977), (58, 13067), (64, 13100), (78, 13208),

Gene: KLucky39_14 Start: 12417, Stop: 13253, Start Num: 8

Candidate Starts for KLucky39_14:

(1, 12114), (2, 12183), (4, 12252), (Start: 8 @12417 has 290 MA's), (19, 12576), (22, 12606), (39, 12693), (45, 12762), (47, 12777), (54, 12834), (76, 12960), (108, 13206),

Gene: Kahve_13 Start: 12127, Stop: 12975, Start Num: 8

Candidate Starts for Kahve_13:

(1, 11824), (2, 11893), (4, 11962), (Start: 8 @12127 has 290 MA's), (19, 12286), (22, 12316), (39, 12403), (45, 12472), (47, 12487), (54, 12544), (76, 12682), (108, 12928),

Gene: Kailash_14 Start: 12420, Stop: 13262, Start Num: 8

Candidate Starts for Kailash_14:

(1, 12123), (2, 12192), (4, 12261), (Start: 8 @12420 has 290 MA's), (19, 12579), (22, 12609), (39, 12696), (45, 12765), (47, 12780), (54, 12837), (76, 12969), (108, 13215),

Gene: Katniss_14 Start: 12418, Stop: 13272, Start Num: 8

Candidate Starts for Katniss_14:

(1, 12115), (2, 12184), (4, 12253), (Start: 8 @12418 has 290 MA's), (19, 12577), (22, 12607), (39, 12694), (45, 12763), (47, 12778), (54, 12835), (76, 12979), (108, 13225),

Gene: KayaCho_12 Start: 12607, Stop: 13527, Start Num: 8

Candidate Starts for KayaCho_12:

(Start: 8 @12607 has 290 MA's), (12, 12661), (19, 12760), (24, 12808), (31, 12817), (42, 12916), (45, 12955), (47, 12970), (58, 13060), (61, 13084), (64, 13093), (78, 13201), (87, 13270),

Gene: Keitherie_14 Start: 12425, Stop: 13273, Start Num: 8

Candidate Starts for Keitherie_14:

(Start: 8 @12425 has 290 MA's), (19, 12584), (22, 12614), (39, 12701), (45, 12770), (47, 12785), (54, 12842), (76, 12980), (108, 13226),

Gene: Kikipoo_14 Start: 12417, Stop: 13265, Start Num: 8

Candidate Starts for Kikipoo_14:

(1, 12114), (2, 12183), (4, 12252), (Start: 8 @12417 has 290 MA's), (19, 12576), (22, 12606), (39, 12693), (45, 12762), (47, 12777), (54, 12834), (76, 12972), (108, 13218),

Gene: Kimbrough_14 Start: 12127, Stop: 12963, Start Num: 8

Candidate Starts for Kimbrough_14:

(1, 11824), (2, 11893), (4, 11962), (Start: 8 @12127 has 290 MA's), (19, 12286), (22, 12316), (39, 12403), (45, 12472), (47, 12487), (54, 12544), (76, 12670), (108, 12916),

Gene: KingTut_13 Start: 12125, Stop: 12955, Start Num: 8

Candidate Starts for KingTut_13:

(1, 11822), (2, 11891), (4, 11960), (Start: 8 @12125 has 290 MA's), (19, 12284), (22, 12314), (39, 12401), (45, 12470), (47, 12485), (54, 12542), (76, 12662), (108, 12908),

Gene: KingVeVeVe_14 Start: 12418, Stop: 13242, Start Num: 8

Candidate Starts for KingVeVeVe_14:

(1, 12115), (2, 12184), (4, 12253), (Start: 8 @12418 has 290 MA's), (19, 12577), (22, 12607), (39, 12694), (45, 12763), (47, 12778), (54, 12835), (76, 12949), (108, 13195),

Gene: KlimbOn_14 Start: 12417, Stop: 13253, Start Num: 8

Candidate Starts for KlimbOn_14:

(1, 12114), (2, 12183), (4, 12252), (Start: 8 @12417 has 290 MA's), (19, 12576), (22, 12606), (39, 12693), (45, 12762), (47, 12777), (54, 12834), (76, 12960), (108, 13206),

Gene: Kloppinator_14 Start: 12415, Stop: 13269, Start Num: 8

Candidate Starts for Kloppinator_14:

(1, 12112), (2, 12181), (4, 12250), (Start: 8 @12415 has 290 MA's), (19, 12574), (22, 12604), (39, 12691), (45, 12760), (47, 12775), (54, 12832), (76, 12976), (108, 13222),

Gene: Knocker_19 Start: 16707, Stop: 17675, Start Num: 8

Candidate Starts for Knocker_19:

(Start: 8 @16707 has 290 MA's), (11, 16752), (12, 16764), (18, 16860), (19, 16869), (23, 16902), (27, 16920), (42, 17025), (45, 17064), (47, 17079), (57, 17169), (67, 17214), (69, 17217), (70, 17223), (73, 17241), (82, 17358), (83, 17376), (88, 17394), (100, 17529), (103, 17559), (106, 17610), (108, 17643),

Gene: Kwadwo_13 Start: 12118, Stop: 12954, Start Num: 8

Candidate Starts for Kwadwo_13:

(1, 11821), (2, 11890), (4, 11959), (Start: 8 @12118 has 290 MA's), (19, 12277), (22, 12307), (39, 12394), (45, 12463), (47, 12478), (54, 12535), (76, 12661), (108, 12907),

Gene: Kwksand96_13 Start: 11970, Stop: 12818, Start Num: 8

Candidate Starts for Kwksand96_13:

(1, 11667), (2, 11736), (4, 11805), (Start: 8 @11970 has 290 MA's), (19, 12129), (22, 12159), (39, 12246), (45, 12315), (47, 12330), (54, 12387), (76, 12525), (108, 12771),

Gene: Labeouficaum_13 Start: 11970, Stop: 12812, Start Num: 8

Candidate Starts for Labeouficaum_13:

(1, 11673), (2, 11742), (4, 11811), (Start: 8 @11970 has 290 MA's), (19, 12129), (22, 12159), (39, 12246), (45, 12315), (47, 12330), (54, 12387), (76, 12519), (108, 12765),

Gene: LasagnaCat_14 Start: 12420, Stop: 13256, Start Num: 8

Candidate Starts for LasagnaCat_14:

(1, 12123), (2, 12192), (4, 12261), (Start: 8 @12420 has 290 MA's), (19, 12579), (22, 12609), (39, 12696), (45, 12765), (47, 12780), (54, 12837), (76, 12963), (108, 13209),

Gene: Lasso_14 Start: 12408, Stop: 13232, Start Num: 8

Candidate Starts for Lasso_14:

(1, 12105), (2, 12174), (4, 12243), (Start: 8 @12408 has 290 MA's), (19, 12567), (22, 12597), (39, 12684), (45, 12753), (47, 12768), (54, 12825), (76, 12939), (108, 13185),

Gene: LeeLot_14 Start: 12411, Stop: 13253, Start Num: 8

Candidate Starts for LeeLot_14:

(1, 12114), (2, 12183), (4, 12252), (Start: 8 @12411 has 290 MA's), (19, 12570), (22, 12600), (39, 12687), (45, 12756), (47, 12771), (54, 12828), (76, 12960), (108, 13206),

Gene: Lego3393_14 Start: 12415, Stop: 13269, Start Num: 8

Candidate Starts for Lego3393_14:

(1, 12112), (2, 12181), (4, 12250), (Start: 8 @12415 has 290 MA's), (19, 12574), (22, 12604), (39, 12691), (45, 12760), (47, 12775), (54, 12832), (76, 12976), (108, 13222),

Gene: Legolas_13 Start: 12122, Stop: 12970, Start Num: 8

Candidate Starts for Legolas_13:

(1, 11819), (2, 11888), (4, 11957), (Start: 8 @12122 has 290 MA's), (19, 12281), (22, 12311), (39, 12398), (45, 12467), (47, 12482), (54, 12539), (76, 12677), (108, 12923),

Gene: LeiMonet_14 Start: 12120, Stop: 12962, Start Num: 8

Candidate Starts for LeiMonet_14:

(1, 11817), (2, 11886), (4, 11955), (Start: 8 @12120 has 290 MA's), (19, 12279), (22, 12309), (39, 12396), (45, 12465), (47, 12480), (54, 12537), (76, 12669), (108, 12915),

Gene: LemonSlice_14 Start: 12128, Stop: 12964, Start Num: 8

Candidate Starts for LemonSlice_14:

(1, 11825), (2, 11894), (4, 11963), (Start: 8 @12128 has 290 MA's), (19, 12287), (22, 12317), (39, 12404), (45, 12473), (47, 12488), (54, 12545), (76, 12671), (108, 12917),

Gene: LilMcDreamy_15 Start: 14910, Stop: 15785, Start Num: 8

Candidate Starts for LilMcDreamy_15:

(Start: 8 @14910 has 290 MA's), (12, 14964), (19, 15069), (20, 15075), (21, 15093), (28, 15117), (43, 15234), (49, 15288), (56, 15366), (86, 15525), (94, 15552), (109, 15753),

Gene: Lolalove_14 Start: 14148, Stop: 14972, Start Num: 8

Candidate Starts for Lolalove_14:

(Start: 8 @14148 has 290 MA's), (12, 14202), (19, 14307), (29, 14355), (32, 14364), (42, 14463), (45, 14502), (47, 14517), (66, 14658), (71, 14673), (72, 14676), (103, 14856), (108, 14940), (109, 14943),

Gene: Longacauda_13 Start: 12114, Stop: 12956, Start Num: 8

Candidate Starts for Longacauda_13:

(1, 11817), (2, 11886), (4, 11955), (Start: 8 @12114 has 290 MA's), (19, 12273), (22, 12303), (39, 12390), (45, 12459), (47, 12474), (54, 12531), (76, 12663), (108, 12909),

Gene: Lopsy_13 Start: 11964, Stop: 12812, Start Num: 8

Candidate Starts for Lopsy_13:

(1, 11661), (2, 11730), (4, 11799), (Start: 8 @11964 has 290 MA's), (19, 12123), (22, 12153), (39, 12240), (45, 12309), (47, 12324), (54, 12381), (76, 12519), (108, 12765),

Gene: LostAndPhound_13 Start: 12124, Stop: 12966, Start Num: 8

Candidate Starts for LostAndPhound_13:

(1, 11821), (2, 11890), (4, 11959), (Start: 8 @12124 has 290 MA's), (19, 12283), (22, 12313), (39, 12400), (45, 12469), (47, 12484), (54, 12541), (76, 12673), (108, 12919),

Gene: LuckyMarjie_13 Start: 12124, Stop: 12978, Start Num: 8

Candidate Starts for LuckyMarjie_13:

(1, 11821), (2, 11890), (4, 11959), (Start: 8 @12124 has 290 MA's), (19, 12283), (22, 12313), (39, 12400), (45, 12469), (47, 12484), (54, 12541), (76, 12685), (108, 12931),

Gene: Lulumae_13 Start: 12119, Stop: 12955, Start Num: 8

Candidate Starts for Lulumae_13:

(1, 11822), (2, 11891), (4, 11960), (Start: 8 @12119 has 290 MA's), (19, 12278), (22, 12308), (39, 12395), (45, 12464), (47, 12479), (54, 12536), (76, 12662), (108, 12908),

Gene: Lulwa_14 Start: 12420, Stop: 13244, Start Num: 8

Candidate Starts for Lulwa_14:

(1, 12117), (2, 12186), (4, 12255), (Start: 8 @12420 has 290 MA's), (19, 12579), (22, 12609), (39, 12696), (45, 12765), (47, 12780), (54, 12837), (76, 12951), (108, 13197),

Gene: Lumine_13 Start: 12106, Stop: 12948, Start Num: 8

Candidate Starts for Lumine_13:

(1, 11809), (2, 11878), (4, 11947), (Start: 8 @12106 has 290 MA's), (19, 12265), (22, 12295), (39, 12382), (45, 12451), (47, 12466), (54, 12523), (76, 12655), (108, 12901),

Gene: MRabcd_13 Start: 12121, Stop: 12957, Start Num: 8

Candidate Starts for MRabcd_13:

(1, 11818), (2, 11887), (4, 11956), (Start: 8 @12121 has 290 MA's), (19, 12280), (22, 12310), (39, 12397), (45, 12466), (47, 12481), (54, 12538), (76, 12664), (108, 12910),

Gene: Mag7_13 Start: 11970, Stop: 12812, Start Num: 8

Candidate Starts for Mag7_13:

(1, 11673), (2, 11742), (4, 11811), (Start: 8 @11970 has 290 MA's), (19, 12129), (22, 12159), (39, 12246), (45, 12315), (47, 12330), (54, 12387), (76, 12519), (108, 12765),

Gene: Magic8_14 Start: 12408, Stop: 13250, Start Num: 8

Candidate Starts for Magic8_14:

(1, 12111), (2, 12180), (4, 12249), (Start: 8 @12408 has 290 MA's), (19, 12567), (22, 12597), (39, 12684), (45, 12753), (47, 12768), (54, 12825), (76, 12957), (108, 13203),

Gene: Magpie_14 Start: 14306, Stop: 15157, Start Num: 8

Candidate Starts for Magpie_14:

(Start: 8 @14306 has 290 MA's), (12, 14360), (19, 14465), (29, 14513), (32, 14522), (42, 14621), (45, 14660), (47, 14675), (66, 14816), (71, 14831), (92, 14948), (103, 15041), (108, 15125),

Gene: Mana_13 Start: 12124, Stop: 12960, Start Num: 8

Candidate Starts for Mana_13:

(1, 11821), (2, 11890), (4, 11959), (Start: 8 @12124 has 290 MA's), (19, 12283), (22, 12313), (39, 12400), (45, 12469), (47, 12484), (54, 12541), (76, 12667), (108, 12913),

Gene: Manad_13 Start: 11968, Stop: 12810, Start Num: 8

Candidate Starts for Manad_13:

(1, 11665), (2, 11734), (4, 11803), (Start: 8 @11968 has 290 MA's), (19, 12127), (22, 12157), (39, 12244), (45, 12313), (47, 12328), (54, 12385), (76, 12517), (108, 12763),

Gene: Maru_13 Start: 12122, Stop: 12958, Start Num: 8

Candidate Starts for Maru_13:

(1, 11819), (2, 11888), (4, 11957), (Start: 8 @12122 has 290 MA's), (19, 12281), (22, 12311), (39, 12398), (45, 12467), (47, 12482), (54, 12539), (76, 12665), (108, 12911),

Gene: Maskar_13 Start: 11958, Stop: 12800, Start Num: 8

Candidate Starts for Maskar_13:

(1, 11661), (2, 11730), (4, 11799), (Start: 8 @11958 has 290 MA's), (19, 12117), (22, 12147), (39, 12234), (45, 12303), (47, 12318), (54, 12375), (76, 12507), (108, 12753),

Gene: Matalotodo_13 Start: 12412, Stop: 13248, Start Num: 8

Candidate Starts for Matalotodo_13:

(1, 12115), (2, 12184), (4, 12253), (Start: 8 @12412 has 290 MA's), (19, 12571), (22, 12601), (39, 12688), (45, 12757), (47, 12772), (54, 12829), (76, 12955), (108, 13201),

Gene: Mcshane_13 Start: 12118, Stop: 12954, Start Num: 8

Candidate Starts for Mcshane_13:

(1, 11821), (2, 11890), (4, 11959), (Start: 8 @12118 has 290 MA's), (19, 12277), (22, 12307), (39, 12394), (45, 12463), (47, 12478), (54, 12535), (76, 12661), (108, 12907),

Gene: Mecca_13 Start: 12115, Stop: 12951, Start Num: 8

Candidate Starts for Mecca_13:

(1, 11818), (2, 11887), (4, 11956), (Start: 8 @12115 has 290 MA's), (19, 12274), (22, 12304), (39, 12391), (45, 12460), (47, 12475), (54, 12532), (76, 12658), (108, 12904),

Gene: Megamind20_14 Start: 12125, Stop: 12973, Start Num: 8

Candidate Starts for Megamind20_14:

(1, 11822), (2, 11891), (4, 11960), (Start: 8 @12125 has 290 MA's), (19, 12284), (22, 12314), (39, 12401), (45, 12470), (47, 12485), (54, 12542), (76, 12680), (108, 12926),

Gene: Megatron_14 Start: 12417, Stop: 13253, Start Num: 8

Candidate Starts for Megatron_14:

(1, 12114), (2, 12183), (4, 12252), (Start: 8 @12417 has 290 MA's), (19, 12576), (22, 12606), (39, 12693), (45, 12762), (47, 12777), (54, 12834), (76, 12960), (108, 13206),

Gene: Melc17_14 Start: 12408, Stop: 13244, Start Num: 8

Candidate Starts for Melc17_14:

(1, 12111), (2, 12180), (4, 12249), (Start: 8 @12408 has 290 MA's), (19, 12567), (22, 12597), (39, 12684), (45, 12753), (47, 12768), (54, 12825), (76, 12951), (108, 13197),

Gene: MelsMeow_13 Start: 11964, Stop: 12812, Start Num: 8

Candidate Starts for MelsMeow_13:

(1, 11667), (2, 11736), (4, 11805), (Start: 8 @11964 has 290 MA's), (19, 12123), (22, 12153), (39, 12240), (45, 12309), (47, 12324), (54, 12381), (76, 12519), (108, 12765),

Gene: Mesh1_14 Start: 12420, Stop: 13262, Start Num: 8

Candidate Starts for Mesh1_14:

(1, 12117), (2, 12186), (4, 12255), (Start: 8 @12420 has 290 MA's), (19, 12579), (22, 12609), (39, 12696), (45, 12765), (47, 12780), (54, 12837), (76, 12969), (108, 13215),

Gene: MichaelPhcott_13 Start: 11970, Stop: 12812, Start Num: 8

Candidate Starts for MichaelPhcott_13:

(1, 11673), (2, 11742), (4, 11811), (Start: 8 @11970 has 290 MA's), (19, 12129), (22, 12159), (39, 12246), (45, 12315), (47, 12330), (54, 12387), (76, 12519), (108, 12765),

Gene: Mikota_14 Start: 12415, Stop: 13239, Start Num: 8

Candidate Starts for Mikota_14:

(1, 12112), (2, 12181), (4, 12250), (Start: 8 @12415 has 290 MA's), (19, 12574), (22, 12604), (39, 12691), (45, 12760), (47, 12775), (54, 12832), (76, 12946), (108, 13192),

Gene: MiniBoss_14 Start: 12417, Stop: 13241, Start Num: 8

Candidate Starts for MiniBoss_14:

(1, 12114), (2, 12183), (4, 12252), (Start: 8 @12417 has 290 MA's), (19, 12576), (22, 12606), (39, 12693), (45, 12762), (47, 12777), (54, 12834), (76, 12948), (108, 13194),

Gene: MitKao_14 Start: 12124, Stop: 12960, Start Num: 8

Candidate Starts for MitKao_14:

(1, 11821), (2, 11890), (4, 11959), (Start: 8 @12124 has 290 MA's), (19, 12283), (22, 12313), (39, 12400), (45, 12469), (47, 12484), (54, 12541), (76, 12667), (108, 12913),

Gene: Mithril_14 Start: 14151, Stop: 14975, Start Num: 8

Candidate Starts for Mithril_14:

(Start: 8 @14151 has 290 MA's), (12, 14205), (19, 14310), (29, 14358), (32, 14367), (42, 14466), (45, 14505), (47, 14520), (66, 14661), (71, 14676), (72, 14679), (103, 14859), (108, 14943), (109, 14946),

Gene: Morgushi_14 Start: 12122, Stop: 12964, Start Num: 8

Candidate Starts for Morgushi_14:

(1, 11819), (2, 11888), (4, 11957), (Start: 8 @12122 has 290 MA's), (19, 12281), (22, 12311), (39, 12398), (45, 12467), (47, 12482), (54, 12539), (76, 12671), (108, 12917),

Gene: Morty_14 Start: 12414, Stop: 13262, Start Num: 8

Candidate Starts for Morty_14:

(1, 12111), (2, 12180), (4, 12249), (Start: 8 @12414 has 290 MA's), (19, 12573), (22, 12603), (39, 12690), (45, 12759), (47, 12774), (54, 12831), (76, 12969), (108, 13215),

Gene: Mosaic_13 Start: 12125, Stop: 12967, Start Num: 8

Candidate Starts for Mosaic_13:

(1, 11822), (2, 11891), (4, 11960), (Start: 8 @12125 has 290 MA's), (19, 12284), (22, 12314), (39, 12401), (45, 12470), (47, 12485), (54, 12542), (76, 12674), (108, 12920),

Gene: MrPhizzler_13 Start: 12117, Stop: 12965, Start Num: 8

Candidate Starts for MrPhizzler_13:

(1, 11814), (2, 11883), (4, 11952), (Start: 8 @12117 has 290 MA's), (19, 12276), (22, 12306), (39, 12393), (45, 12462), (47, 12477), (54, 12534), (76, 12672), (108, 12918),

Gene: Mudslide_14 Start: 14399, Stop: 15220, Start Num: 8

Candidate Starts for Mudslide_14:

(Start: 8 @14399 has 290 MA's), (12, 14453), (19, 14558), (29, 14606), (32, 14615), (42, 14714), (45, 14753), (47, 14768), (66, 14909), (71, 14924), (103, 15104), (108, 15188), (109, 15191),

Gene: Mulan_13 Start: 12118, Stop: 12960, Start Num: 8

Candidate Starts for Mulan_13:

(1, 11821), (2, 11890), (4, 11959), (Start: 8 @12118 has 290 MA's), (19, 12277), (22, 12307), (39, 12394), (45, 12463), (47, 12478), (54, 12535), (76, 12667), (108, 12913),

Gene: Murdoc_14 Start: 12411, Stop: 13253, Start Num: 8

Candidate Starts for Murdoc_14:

(1, 12114), (2, 12183), (4, 12252), (Start: 8 @12411 has 290 MA's), (19, 12570), (22, 12600), (39, 12687), (45, 12756), (47, 12771), (54, 12828), (76, 12960), (108, 13206),

Gene: Mutante_13 Start: 12121, Stop: 12963, Start Num: 8

Candidate Starts for Mutante_13:

(1, 11818), (2, 11887), (4, 11956), (Start: 8 @12121 has 290 MA's), (19, 12280), (22, 12310), (39, 12397), (45, 12466), (47, 12481), (54, 12538), (76, 12670), (108, 12916),

Gene: Mysterious_15 Start: 14410, Stop: 15075, Start Num: 8

Candidate Starts for Mysterious_15:

(Start: 8 @14410 has 290 MA's), (12, 14464), (14, 14500), (19, 14569), (46, 14770), (85, 15001), (97, 15046),

Gene: Nacho_0014 Start: 12417, Stop: 13253, Start Num: 8

Candidate Starts for Nacho_0014:

(1, 12114), (2, 12183), (4, 12252), (Start: 8 @12417 has 290 MA's), (19, 12576), (22, 12606), (39, 12693), (45, 12762), (47, 12777), (54, 12834), (76, 12960), (108, 13206),

Gene: Nanao_13 Start: 13057, Stop: 13908, Start Num: 8

Candidate Starts for Nanao_13:

(Start: 8 @13057 has 290 MA's), (12, 13111), (19, 13216), (29, 13264), (32, 13273), (42, 13372), (45, 13411), (47, 13426), (63, 13558), (64, 13561), (71, 13582), (72, 13585), (103, 13792), (108, 13876),

Gene: Nangang_15 Start: 14152, Stop: 14817, Start Num: 8

Candidate Starts for Nangang_15:

(Start: 8 @14152 has 290 MA's), (14, 14242), (19, 14311), (85, 14743), (97, 14788),

Gene: Newman_14 Start: 12417, Stop: 13253, Start Num: 8

Candidate Starts for Newman_14:

(1, 12114), (2, 12183), (4, 12252), (Start: 8 @12417 has 290 MA's), (19, 12576), (22, 12606), (39, 12693), (45, 12762), (47, 12777), (54, 12834), (76, 12960), (108, 13206),

Gene: Nicole21_14 Start: 12409, Stop: 13245, Start Num: 8

Candidate Starts for Nicole21_14:

(1, 12112), (2, 12181), (4, 12250), (Start: 8 @12409 has 290 MA's), (19, 12568), (22, 12598), (39, 12685), (45, 12754), (47, 12769), (54, 12826), (76, 12952), (108, 13198),

Gene: Nigel_12 Start: 12973, Stop: 13824, Start Num: 8

Candidate Starts for Nigel_12:

(Start: 8 @12973 has 290 MA's), (19, 13132), (20, 13138), (29, 13180), (32, 13189), (42, 13288), (44, 13318), (45, 13327), (47, 13342), (71, 13498), (84, 13588), (103, 13708), (108, 13792), (109, 13795),

Gene: Numberten_14 Start: 12420, Stop: 13256, Start Num: 8

Candidate Starts for Numberten_14:

(1, 12117), (2, 12186), (4, 12255), (Start: 8 @12420 has 290 MA's), (19, 12579), (22, 12609), (39, 12696), (45, 12765), (47, 12780), (54, 12837), (76, 12963), (108, 13209),

Gene: Nyala_13 Start: 12119, Stop: 12955, Start Num: 8

Candidate Starts for Nyala_13:

(1, 11822), (2, 11891), (4, 11960), (Start: 8 @12119 has 290 MA's), (19, 12278), (22, 12308), (39, 12395), (45, 12464), (47, 12479), (54, 12536), (76, 12662), (108, 12908),

Gene: OSmaximus_14 Start: 12415, Stop: 13263, Start Num: 8

Candidate Starts for OSmaximus_14:

(1, 12112), (2, 12181), (4, 12250), (Start: 8 @12415 has 290 MA's), (19, 12574), (22, 12604), (39, 12691), (45, 12760), (47, 12775), (54, 12832), (76, 12970), (108, 13216),

Gene: Olak_13 Start: 12116, Stop: 12952, Start Num: 8

Candidate Starts for Olak_13:

(1, 11819), (2, 11888), (4, 11957), (Start: 8 @12116 has 290 MA's), (19, 12275), (22, 12305), (39, 12392), (45, 12461), (47, 12476), (54, 12533), (76, 12659), (108, 12905),

Gene: Oline_13 Start: 11970, Stop: 12812, Start Num: 8

Candidate Starts for Oline_13:

(1, 11673), (2, 11742), (4, 11811), (Start: 8 @11970 has 290 MA's), (19, 12129), (22, 12159), (39, 12246), (45, 12315), (47, 12330), (54, 12387), (76, 12519), (108, 12765),

Gene: Olive_14 Start: 12414, Stop: 13244, Start Num: 8

Candidate Starts for Olive_14:

(1, 12111), (2, 12180), (4, 12249), (Start: 8 @12414 has 290 MA's), (19, 12573), (22, 12603), (39, 12690), (45, 12759), (47, 12774), (54, 12831), (76, 12951), (108, 13197),

Gene: OliverWalter_14 Start: 12413, Stop: 13261, Start Num: 8

Candidate Starts for OliverWalter_14:

(1, 12110), (2, 12179), (4, 12248), (Start: 8 @12413 has 290 MA's), (19, 12572), (22, 12602), (39, 12689), (45, 12758), (47, 12773), (54, 12830), (76, 12968), (108, 13214),

Gene: Omniscient_14 Start: 12420, Stop: 13262, Start Num: 8

Candidate Starts for Omniscient_14:

(1, 12117), (2, 12186), (4, 12255), (Start: 8 @12420 has 290 MA's), (19, 12579), (22, 12609), (39, 12696), (45, 12765), (47, 12780), (54, 12837), (76, 12969), (108, 13215),

Gene: Oosterbaan_14 Start: 12412, Stop: 13254, Start Num: 8

Candidate Starts for Oosterbaan_14:

(1, 12115), (2, 12184), (4, 12253), (Start: 8 @12412 has 290 MA's), (19, 12571), (22, 12601), (39, 12688), (45, 12757), (47, 12772), (54, 12829), (76, 12961), (108, 13207),

Gene: Orfeu_13 Start: 12117, Stop: 12953, Start Num: 8

Candidate Starts for Orfeu_13:

(1, 11820), (2, 11889), (4, 11958), (Start: 8 @12117 has 290 MA's), (19, 12276), (22, 12306), (39, 12393), (45, 12462), (47, 12477), (54, 12534), (76, 12660), (108, 12906),

Gene: Orion_14 Start: 12412, Stop: 13254, Start Num: 8

Candidate Starts for Orion_14:

(1, 12115), (2, 12184), (4, 12253), (Start: 8 @12412 has 290 MA's), (19, 12571), (22, 12601), (39, 12688), (45, 12757), (47, 12772), (54, 12829), (76, 12961), (108, 13207),

Gene: Orwigg_14 Start: 12122, Stop: 12946, Start Num: 8

Candidate Starts for Orwigg_14:

(1, 11825), (2, 11894), (4, 11963), (Start: 8 @12122 has 290 MA's), (19, 12281), (22, 12311), (39, 12398), (45, 12467), (47, 12482), (54, 12539), (76, 12653), (108, 12899),

Gene: PG1_14 Start: 12418, Stop: 13266, Start Num: 8

Candidate Starts for PG1_14:

(1, 12115), (2, 12184), (4, 12253), (Start: 8 @12418 has 290 MA's), (19, 12577), (22, 12607), (39, 12694), (45, 12763), (47, 12778), (54, 12835), (76, 12973), (108, 13219),

Gene: Pacifista_15 Start: 12115, Stop: 12957, Start Num: 8

Candidate Starts for Pacifista_15:

(1, 11818), (2, 11887), (4, 11956), (Start: 8 @12115 has 290 MA's), (19, 12274), (22, 12304), (39, 12391), (45, 12460), (47, 12475), (54, 12532), (76, 12664), (108, 12910),

Gene: PenguinLover67_17 Start: 15047, Stop: 16012, Start Num: 8

Candidate Starts for PenguinLover67_17:

(Start: 8 @15047 has 290 MA's), (12, 15101), (19, 15206), (33, 15317), (77, 15737), (100, 15869), (101, 15872),

Gene: Phamished_14 Start: 12417, Stop: 13259, Start Num: 8

Candidate Starts for Phamished_14:

(1, 12114), (2, 12183), (4, 12252), (Start: 8 @12417 has 290 MA's), (19, 12576), (22, 12606), (39, 12693), (45, 12762), (47, 12777), (54, 12834), (76, 12966), (108, 13212),

Gene: Phareon_14 Start: 12124, Stop: 12960, Start Num: 8

Candidate Starts for Phareon_14:

(1, 11821), (2, 11890), (4, 11959), (Start: 8 @12124 has 290 MA's), (19, 12283), (22, 12313), (39, 12400), (45, 12469), (47, 12484), (54, 12541), (76, 12667), (108, 12913),

Gene: PhatCats2014_14 Start: 12421, Stop: 13269, Start Num: 8

Candidate Starts for PhatCats2014_14:

(1, 12118), (2, 12187), (4, 12256), (Start: 8 @12421 has 290 MA's), (19, 12580), (22, 12610), (39, 12697), (45, 12766), (47, 12781), (54, 12838), (76, 12976), (108, 13222),

Gene: PhatLouie_14 Start: 12411, Stop: 13253, Start Num: 8

Candidate Starts for PhatLouie_14:

(1, 12114), (2, 12183), (4, 12252), (Start: 8 @12411 has 290 MA's), (19, 12570), (22, 12600), (39, 12687), (45, 12756), (47, 12771), (54, 12828), (76, 12960), (108, 13206),

Gene: Phelemich_15 Start: 14414, Stop: 15079, Start Num: 8

Candidate Starts for Phelemich_15:

(Start: 8 @14414 has 290 MA's), (12, 14468), (14, 14504), (19, 14573), (85, 15005), (97, 15050),

Gene: PhenghisKhan_13 Start: 11970, Stop: 12812, Start Num: 8

Candidate Starts for PhenghisKhan_13:

(1, 11673), (2, 11742), (4, 11811), (Start: 8 @11970 has 290 MA's), (19, 12129), (22, 12159), (39, 12246), (45, 12315), (47, 12330), (54, 12387), (76, 12519), (108, 12765),

Gene: Pherdinand_14 Start: 12415, Stop: 13257, Start Num: 8

Candidate Starts for Pherdinand_14:

(1, 12112), (2, 12181), (4, 12250), (Start: 8 @12415 has 290 MA's), (19, 12574), (22, 12604), (39, 12691), (45, 12760), (47, 12775), (54, 12832), (76, 12964), (108, 13210),

Gene: Phergie_13 Start: 11964, Stop: 12806, Start Num: 8

Candidate Starts for Phergie_13:

(1, 11667), (2, 11736), (4, 11805), (Start: 8 @11964 has 290 MA's), (19, 12123), (22, 12153), (39, 12240), (45, 12309), (47, 12324), (54, 12381), (76, 12513), (108, 12759),

Gene: Phipps_14 Start: 12408, Stop: 13232, Start Num: 8

Candidate Starts for Phipps_14:

(1, 12105), (2, 12174), (4, 12243), (Start: 8 @12408 has 290 MA's), (19, 12567), (22, 12597), (39, 12684), (45, 12753), (47, 12768), (54, 12825), (76, 12939), (108, 13185),

Gene: Phleuron_13 Start: 11970, Stop: 12812, Start Num: 8

Candidate Starts for Phleuron_13:

(1, 11673), (2, 11742), (4, 11811), (Start: 8 @11970 has 290 MA's), (19, 12129), (22, 12159), (39, 12246), (45, 12315), (47, 12330), (54, 12387), (76, 12519), (108, 12765),

Gene: PhrankReynolds_13 Start: 11970, Stop: 12812, Start Num: 8

Candidate Starts for PhrankReynolds_13:

(1, 11673), (2, 11742), (4, 11811), (Start: 8 @11970 has 290 MA's), (19, 12129), (22, 12159), (39, 12246), (45, 12315), (47, 12330), (54, 12387), (76, 12519), (108, 12765),

Gene: PhrodoBaggins_13 Start: 12411, Stop: 13247, Start Num: 8

Candidate Starts for PhrodoBaggins_13:

(1, 12114), (2, 12183), (4, 12252), (Start: 8 @12411 has 290 MA's), (19, 12570), (22, 12600), (39, 12687), (45, 12756), (47, 12771), (54, 12828), (76, 12954), (108, 13200),

Gene: Phunky_14 Start: 12411, Stop: 13253, Start Num: 8

Candidate Starts for Phunky_14:

(1, 12114), (2, 12183), (4, 12252), (Start: 8 @12411 has 290 MA's), (19, 12570), (22, 12600), (39, 12687), (45, 12756), (47, 12771), (54, 12828), (76, 12960), (108, 13206),

Gene: Piglet_0013 Start: 12420, Stop: 13256, Start Num: 8

Candidate Starts for Piglet_0013:

(1, 12117), (2, 12186), (4, 12255), (Start: 8 @12420 has 290 MA's), (19, 12579), (22, 12609), (39, 12696), (45, 12765), (47, 12780), (54, 12837), (76, 12963), (108, 13209),

Gene: PinheadLarry_14 Start: 12124, Stop: 12972, Start Num: 8

Candidate Starts for PinheadLarry_14:

(1, 11821), (2, 11890), (4, 11959), (Start: 8 @12124 has 290 MA's), (19, 12283), (22, 12313), (39, 12400), (45, 12469), (47, 12484), (54, 12541), (76, 12679), (108, 12925),

Gene: Pinkman_13 Start: 11970, Stop: 12812, Start Num: 8

Candidate Starts for Pinkman_13:

(1, 11673), (2, 11742), (4, 11811), (Start: 8 @11970 has 290 MA's), (19, 12129), (22, 12159), (39, 12246), (45, 12315), (47, 12330), (54, 12387), (76, 12519), (108, 12765),

Gene: Pipsqueak_14 Start: 12417, Stop: 13259, Start Num: 8

Candidate Starts for Pipsqueak_14:

(1, 12114), (2, 12183), (4, 12252), (Start: 8 @12417 has 290 MA's), (19, 12576), (22, 12606), (39, 12693), (45, 12762), (47, 12777), (54, 12834), (76, 12966), (108, 13212),

Gene: Placalicious_13 Start: 12118, Stop: 12954, Start Num: 8

Candidate Starts for Placalicious_13:

(1, 11821), (2, 11890), (4, 11959), (Start: 8 @12118 has 290 MA's), (19, 12277), (22, 12307), (39, 12394), (45, 12463), (47, 12478), (54, 12535), (76, 12661), (108, 12907),

Gene: Plmatters_14 Start: 12417, Stop: 13253, Start Num: 8

Candidate Starts for Plmatters_14:

(1, 12114), (2, 12183), (4, 12252), (Start: 8 @12417 has 290 MA's), (19, 12576), (22, 12606), (39, 12693), (45, 12762), (47, 12777), (54, 12834), (76, 12960), (108, 13206),

Gene: Podrick_14 Start: 12420, Stop: 13244, Start Num: 8

Candidate Starts for Podrick_14:

(1, 12117), (2, 12186), (4, 12255), (Start: 8 @12420 has 290 MA's), (19, 12579), (22, 12609), (39, 12696), (45, 12765), (47, 12780), (54, 12837), (76, 12951), (108, 13197),

Gene: Pops_14 Start: 12414, Stop: 13256, Start Num: 8

Candidate Starts for Pops_14:

(1, 12111), (2, 12180), (4, 12249), (Start: 8 @12414 has 290 MA's), (19, 12573), (22, 12603), (39, 12690), (45, 12759), (47, 12774), (54, 12831), (76, 12963), (108, 13209),

Gene: Poster_13 Start: 13057, Stop: 13908, Start Num: 8

Candidate Starts for Poster_13:

(Start: 8 @13057 has 290 MA's), (12, 13111), (19, 13216), (29, 13264), (32, 13273), (42, 13372), (45, 13411), (47, 13426), (63, 13558), (64, 13561), (71, 13582), (72, 13585), (103, 13792), (108, 13876),

Gene: Potter_13 Start: 12125, Stop: 12967, Start Num: 8

Candidate Starts for Potter_13:

(1, 11822), (2, 11891), (4, 11960), (Start: 8 @12125 has 290 MA's), (19, 12284), (22, 12314), (39, 12401), (45, 12470), (47, 12485), (54, 12542), (76, 12674), (108, 12920),

Gene: Prickles_14 Start: 12423, Stop: 13247, Start Num: 8

Candidate Starts for Prickles_14:

(1, 12120), (2, 12189), (4, 12258), (Start: 8 @12423 has 290 MA's), (19, 12582), (22, 12612), (39, 12699), (45, 12768), (47, 12783), (54, 12840), (76, 12954), (108, 13200),

Gene: Prince_15 Start: 14311, Stop: 15132, Start Num: 8

Candidate Starts for Prince_15:

(Start: 8 @14311 has 290 MA's), (12, 14365), (19, 14470), (29, 14518), (32, 14527), (42, 14626), (45, 14665), (47, 14680), (66, 14821), (71, 14836), (103, 15016), (108, 15100), (109, 15103),

Gene: ProfessorX_14 Start: 12409, Stop: 13245, Start Num: 8

Candidate Starts for ProfessorX_14:

(1, 12112), (2, 12181), (4, 12250), (Start: 8 @12409 has 290 MA's), (19, 12568), (22, 12598), (39, 12685), (45, 12754), (47, 12769), (54, 12826), (76, 12952), (108, 13198),

Gene: Puhltonio_14 Start: 12408, Stop: 13262, Start Num: 8

Candidate Starts for Puhltonio_14:

(1, 12105), (2, 12174), (4, 12243), (Start: 8 @12408 has 290 MA's), (19, 12567), (22, 12597), (39, 12684), (45, 12753), (47, 12768), (54, 12825), (76, 12969), (108, 13215),

Gene: QueenBeane_14 Start: 12411, Stop: 13253, Start Num: 8

Candidate Starts for QueenBeane_14:

(1, 12114), (2, 12183), (4, 12252), (Start: 8 @12411 has 290 MA's), (19, 12570), (22, 12600), (39, 12687), (45, 12756), (47, 12771), (54, 12828), (76, 12960), (108, 13206),

Gene: Quesadilla_16 Start: 14845, Stop: 15846, Start Num: 8

Candidate Starts for Quesadilla_16:

(Start: 8 @14845 has 290 MA's), (12, 14899), (19, 15004), (33, 15118), (57, 15391), (77, 15541), (93, 15634), (100, 15703), (101, 15706), (107, 15799), (108, 15817),

Gene: Quisquilliae_14 Start: 12420, Stop: 13268, Start Num: 8

Candidate Starts for Quisquilliae_14:

(1, 12117), (2, 12186), (4, 12255), (Start: 8 @12420 has 290 MA's), (19, 12579), (22, 12609), (39, 12696), (45, 12765), (47, 12780), (54, 12837), (76, 12975), (108, 13221),

Gene: RawrgerThat_14 Start: 14145, Stop: 14969, Start Num: 8

Candidate Starts for RawrgerThat_14:

(Start: 8 @14145 has 290 MA's), (12, 14199), (19, 14304), (29, 14352), (32, 14361), (42, 14460), (45, 14499), (47, 14514), (52, 14559), (63, 14646), (64, 14649), (71, 14670), (72, 14673), (103, 14853), (108, 14937), (109, 14940),

Gene: RedMaple_13 Start: 12411, Stop: 13265, Start Num: 8

Candidate Starts for RedMaple_13:

(1, 12108), (2, 12177), (4, 12246), (Start: 8 @12411 has 290 MA's), (19, 12570), (22, 12600), (39, 12687), (45, 12756), (47, 12771), (54, 12828), (76, 12972), (108, 13218),

Gene: Reprobate_15 Start: 14411, Stop: 15076, Start Num: 8

Candidate Starts for Reprobate_15:

(Start: 8 @14411 has 290 MA's), (12, 14465), (14, 14501), (19, 14570), (85, 15002), (97, 15047),

Gene: Rich_15 Start: 14166, Stop: 14975, Start Num: 8

Candidate Starts for Rich_15:

(Start: 8 @14166 has 290 MA's), (9, 14190), (12, 14220), (14, 14256), (19, 14325), (78, 14724), (85, 14766), (97, 14811), (102, 14898), (104, 14943),

Gene: Ricotta_14 Start: 12123, Stop: 12977, Start Num: 8

Candidate Starts for Ricotta_14:

(1, 11820), (2, 11889), (4, 11958), (Start: 8 @12123 has 290 MA's), (19, 12282), (22, 12312), (39, 12399), (45, 12468), (47, 12483), (54, 12540), (76, 12684), (108, 12930),

Gene: Riggan_14 Start: 12415, Stop: 13233, Start Num: 8

Candidate Starts for Riggan_14:

(1, 12118), (2, 12187), (4, 12256), (Start: 8 @12415 has 290 MA's), (19, 12574), (22, 12604), (39, 12691), (45, 12760), (47, 12775), (54, 12832), (76, 12940), (108, 13186),

Gene: Rimu_13 Start: 12117, Stop: 12965, Start Num: 8

Candidate Starts for Rimu_13:

(1, 11814), (2, 11883), (4, 11952), (Start: 8 @12117 has 290 MA's), (19, 12276), (22, 12306), (39, 12393), (45, 12462), (47, 12477), (54, 12534), (76, 12672), (108, 12918),

Gene: Robyn_13 Start: 11972, Stop: 12826, Start Num: 8

Candidate Starts for Robyn_13:

(1, 11669), (2, 11738), (4, 11807), (Start: 8 @11972 has 290 MA's), (19, 12131), (22, 12161), (39, 12248), (45, 12317), (47, 12332), (54, 12389), (76, 12533), (108, 12779),

Gene: Roliet_14 Start: 12417, Stop: 13253, Start Num: 8

Candidate Starts for Roliet_14:

(1, 12114), (2, 12183), (4, 12252), (Start: 8 @12417 has 290 MA's), (19, 12576), (22, 12606), (39, 12693), (45, 12762), (47, 12777), (54, 12834), (76, 12960), (108, 13206),

Gene: Roscoe_15 Start: 12646, Stop: 13494, Start Num: 8

Candidate Starts for Roscoe_15:

(1, 12349), (2, 12418), (4, 12487), (Start: 8 @12646 has 290 MA's), (19, 12805), (22, 12835), (39, 12922), (45, 12991), (47, 13006), (54, 13063), (76, 13201), (108, 13447),

Gene: Roy17_14 Start: 12119, Stop: 12955, Start Num: 8

Candidate Starts for Roy17_14:

(1, 11822), (2, 11891), (4, 11960), (Start: 8 @12119 has 290 MA's), (19, 12278), (22, 12308), (39, 12395), (45, 12464), (47, 12479), (54, 12536), (76, 12662), (108, 12908),

Gene: SDcharge11_14 Start: 12410, Stop: 13234, Start Num: 8

Candidate Starts for SDcharge11_14:

(1, 12107), (2, 12176), (4, 12245), (Start: 8 @12410 has 290 MA's), (19, 12569), (22, 12599), (39, 12686), (45, 12755), (47, 12770), (54, 12827), (76, 12941), (108, 13187),

Gene: Saguaro_16 Start: 15049, Stop: 16023, Start Num: 8

Candidate Starts for Saguaro_16:

(Start: 8 @15049 has 290 MA's), (12, 15103), (15, 15142), (17, 15184), (25, 15277), (33, 15322), (42, 15439), (57, 15592), (75, 15682), (100, 15871), (101, 15874), (105, 15943), (108, 15994),

Gene: Samaymay_14 Start: 12411, Stop: 13253, Start Num: 8

Candidate Starts for Samaymay_14:

(1, 12114), (2, 12183), (4, 12252), (Start: 8 @12411 has 290 MA's), (19, 12570), (22, 12600), (39, 12687), (45, 12756), (47, 12771), (54, 12828), (76, 12960), (108, 13206),

Gene: SassyCat97_13 Start: 12118, Stop: 12960, Start Num: 8

Candidate Starts for SassyCat97_13:

(1, 11821), (2, 11890), (4, 11959), (Start: 8 @12118 has 290 MA's), (19, 12277), (22, 12307), (39, 12394), (45, 12463), (47, 12478), (54, 12535), (76, 12667), (108, 12913),

Gene: Schadenfreude_13 Start: 11962, Stop: 12810, Start Num: 8

Candidate Starts for Schadenfreude_13:

(1, 11659), (2, 11728), (4, 11797), (Start: 8 @11962 has 290 MA's), (19, 12121), (22, 12151), (39, 12238), (45, 12307), (47, 12322), (54, 12379), (76, 12517), (108, 12763),

Gene: Schueller_13 Start: 12115, Stop: 12951, Start Num: 8

Candidate Starts for Schueller_13:

(1, 11818), (2, 11887), (4, 11956), (Start: 8 @12115 has 290 MA's), (19, 12274), (22, 12304), (39, 12391), (45, 12460), (47, 12475), (54, 12532), (76, 12658), (108, 12904),

Gene: Scoot17C_14 Start: 12418, Stop: 13254, Start Num: 8

Candidate Starts for Scoot17C_14:

(1, 12115), (2, 12184), (4, 12253), (Start: 8 @12418 has 290 MA's), (19, 12577), (22, 12607), (39, 12694), (45, 12763), (47, 12778), (54, 12835), (76, 12961), (108, 13207),

Gene: Scrick_13 Start: 12125, Stop: 12973, Start Num: 8

Candidate Starts for Scrick_13:

(1, 11822), (2, 11891), (4, 11960), (Start: 8 @12125 has 290 MA's), (19, 12284), (22, 12314), (39, 12401), (45, 12470), (47, 12485), (54, 12542), (76, 12680), (108, 12926),

Gene: Selr12_14 Start: 12124, Stop: 12978, Start Num: 8

Candidate Starts for Selr12_14:

(1, 11821), (2, 11890), (4, 11959), (Start: 8 @12124 has 290 MA's), (19, 12283), (22, 12313), (39, 12400), (45, 12469), (47, 12484), (54, 12541), (76, 12685), (108, 12931),

Gene: Serendipitous_15 Start: 14216, Stop: 15022, Start Num: 8

Candidate Starts for Serendipitous_15:

(Start: 8 @14216 has 290 MA's), (12, 14270), (14, 14306), (19, 14375), (85, 14816), (97, 14861), (99, 14906), (102, 14948), (104, 14993),

Gene: Serendipity_14 Start: 12420, Stop: 13274, Start Num: 8

Candidate Starts for Serendipity_14:

(1, 12117), (2, 12186), (4, 12255), (Start: 8 @12420 has 290 MA's), (19, 12579), (22, 12609), (39, 12696), (45, 12765), (47, 12780), (54, 12837), (76, 12981), (108, 13227),

Gene: Serpentine_0014 Start: 12420, Stop: 13256, Start Num: 8

Candidate Starts for Serpentine_0014:

(1, 12117), (2, 12186), (4, 12255), (Start: 8 @12420 has 290 MA's), (19, 12579), (22, 12609), (39, 12696), (45, 12765), (47, 12780), (54, 12837), (76, 12963), (108, 13209),

Gene: Sheila_14 Start: 12415, Stop: 13245, Start Num: 8

Candidate Starts for Sheila_14:

(1, 12112), (2, 12181), (4, 12250), (Start: 8 @12415 has 290 MA's), (19, 12574), (22, 12604), (39, 12691), (45, 12760), (47, 12775), (54, 12832), (76, 12952), (108, 13198),

Gene: ShiVal_14 Start: 12411, Stop: 13247, Start Num: 8

Candidate Starts for ShiVal_14:

(1, 12114), (2, 12183), (4, 12252), (Start: 8 @12411 has 290 MA's), (19, 12570), (22, 12600), (39, 12687), (45, 12756), (47, 12771), (54, 12828), (76, 12954), (108, 13200),

Gene: Sigman_14 Start: 12408, Stop: 13244, Start Num: 8

Candidate Starts for Sigman_14:

(1, 12111), (2, 12180), (4, 12249), (Start: 8 @12408 has 290 MA's), (19, 12567), (22, 12597), (39, 12684), (45, 12753), (47, 12768), (54, 12825), (76, 12951), (108, 13197),

Gene: Simielle_13 Start: 12109, Stop: 12945, Start Num: 8

Candidate Starts for Simielle_13:

(1, 11812), (2, 11881), (4, 11950), (Start: 8 @12109 has 290 MA's), (19, 12268), (22, 12298), (39, 12385), (45, 12454), (47, 12469), (54, 12526), (76, 12652), (108, 12898),

Gene: SirJeffery_15 Start: 14169, Stop: 14834, Start Num: 8

Candidate Starts for SirJeffery_15:

(Start: 8 @14169 has 290 MA's), (12, 14223), (14, 14259), (19, 14328), (85, 14760), (97, 14805),

Gene: Skippy_14 Start: 12414, Stop: 13238, Start Num: 8

Candidate Starts for Skippy_14:

(1, 12117), (2, 12186), (4, 12255), (Start: 8 @12414 has 290 MA's), (19, 12573), (22, 12603), (39, 12690), (45, 12759), (47, 12774), (54, 12831), (76, 12945), (108, 13191),

Gene: Slatt_14 Start: 12422, Stop: 13270, Start Num: 8

Candidate Starts for Slatt_14:

(1, 12119), (2, 12188), (4, 12257), (Start: 8 @12422 has 290 MA's), (19, 12581), (22, 12611), (39, 12698), (45, 12767), (47, 12782), (54, 12839), (76, 12977), (108, 13223),

Gene: Soile_14 Start: 12123, Stop: 12965, Start Num: 8

Candidate Starts for Soile_14:

(1, 11820), (2, 11889), (4, 11958), (Start: 8 @12123 has 290 MA's), (19, 12282), (22, 12312), (39, 12399), (45, 12468), (47, 12483), (54, 12540), (76, 12672), (108, 12918),

Gene: Solosis_13 Start: 12124, Stop: 12972, Start Num: 8

Candidate Starts for Solosis_13:

(1, 11821), (2, 11890), (4, 11959), (Start: 8 @12124 has 290 MA's), (19, 12283), (22, 12313), (39, 12400), (45, 12469), (47, 12484), (54, 12541), (76, 12679), (108, 12925),

Gene: Sophia_13 Start: 12118, Stop: 12960, Start Num: 8

Candidate Starts for Sophia_13:

(1, 11821), (2, 11890), (4, 11959), (Start: 8 @12118 has 290 MA's), (19, 12277), (22, 12307), (39, 12394), (45, 12463), (47, 12478), (54, 12535), (76, 12667), (108, 12913),

Gene: Soto_14 Start: 12414, Stop: 13250, Start Num: 8

Candidate Starts for Soto_14:

(1, 12111), (2, 12180), (4, 12249), (Start: 8 @12414 has 290 MA's), (19, 12573), (22, 12603), (39, 12690), (45, 12759), (47, 12774), (54, 12831), (76, 12957), (108, 13203),

Gene: Spartan300_14 Start: 12408, Stop: 13250, Start Num: 8

Candidate Starts for Spartan300_14:

(1, 12111), (2, 12180), (4, 12249), (Start: 8 @12408 has 290 MA's), (19, 12567), (22, 12597), (39, 12684), (45, 12753), (47, 12768), (54, 12825), (76, 12957), (108, 13203),

Gene: Squid_14 Start: 12118, Stop: 12960, Start Num: 8

Candidate Starts for Squid_14:

(1, 11821), (2, 11890), (4, 11959), (Start: 8 @12118 has 290 MA's), (19, 12277), (22, 12307), (39, 12394), (45, 12463), (47, 12478), (54, 12535), (76, 12667), (108, 12913),

Gene: Squiggle_14 Start: 12118, Stop: 12960, Start Num: 8

Candidate Starts for Squiggle_14:

(1, 11821), (2, 11890), (4, 11959), (Start: 8 @12118 has 290 MA's), (19, 12277), (22, 12307), (39, 12394), (45, 12463), (47, 12478), (54, 12535), (76, 12667), (108, 12913),

Gene: Stinger_12 Start: 12611, Stop: 13471, Start Num: 8

Candidate Starts for Stinger_12:

(Start: 8 @12611 has 290 MA's), (13, 12692), (19, 12770), (20, 12776), (29, 12818), (32, 12827), (42, 12926), (45, 12965), (47, 12980), (51, 13001), (62, 13109), (63, 13112), (69, 13124), (71, 13136), (72, 13139), (84, 13235), (103, 13355), (105, 13397), (108, 13439), (109, 13442),

Gene: StinkyVeggy_16 Start: 14308, Stop: 14973, Start Num: 8

Candidate Starts for StinkyVeggy_16:

(Start: 8 @14308 has 290 MA's), (14, 14398), (19, 14467), (85, 14899),

Gene: Struggle_13 Start: 11964, Stop: 12806, Start Num: 8

Candidate Starts for Struggle_13:

(1, 11667), (2, 11736), (4, 11805), (Start: 8 @11964 has 290 MA's), (19, 12123), (22, 12153), (39, 12240), (45, 12309), (47, 12324), (54, 12381), (76, 12513), (108, 12759),

Gene: Suffolk_14 Start: 12416, Stop: 13252, Start Num: 8

Candidate Starts for Suffolk_14:

(1, 12113), (2, 12182), (4, 12251), (Start: 8 @12416 has 290 MA's), (19, 12575), (22, 12605), (39, 12692), (45, 12761), (47, 12776), (54, 12833), (76, 12959), (108, 13205),

Gene: Suigeneris_15 Start: 14169, Stop: 14834, Start Num: 8

Candidate Starts for Suigeneris_15:

(Start: 8 @14169 has 290 MA's), (12, 14223), (14, 14259), (19, 14328), (85, 14760), (97, 14805),

Gene: Surely_14 Start: 12420, Stop: 13262, Start Num: 8

Candidate Starts for Surely_14:

(1, 12117), (2, 12186), (4, 12255), (Start: 8 @12420 has 290 MA's), (19, 12579), (22, 12609), (39, 12696), (45, 12765), (47, 12780), (54, 12837), (76, 12969), (108, 13215),

Gene: Swiphy_14 Start: 12411, Stop: 13253, Start Num: 8

Candidate Starts for Swiphy_14:

(1, 12114), (2, 12183), (4, 12252), (Start: 8 @12411 has 290 MA's), (19, 12570), (22, 12600), (39, 12687), (45, 12756), (47, 12771), (54, 12828), (76, 12960), (108, 13206),

Gene: Swish_14 Start: 12412, Stop: 13248, Start Num: 8

Candidate Starts for Swish_14:

(1, 12115), (2, 12184), (4, 12253), (Start: 8 @12412 has 290 MA's), (19, 12571), (22, 12601), (39, 12688), (45, 12757), (47, 12772), (54, 12829), (76, 12955), (108, 13201),

Gene: TallGrassMM_14 Start: 12124, Stop: 12978, Start Num: 8

Candidate Starts for TallGrassMM_14:

(1, 11821), (2, 11890), (4, 11959), (Start: 8 @12124 has 290 MA's), (19, 12283), (22, 12313), (39, 12400), (45, 12469), (47, 12484), (54, 12541), (76, 12685), (108, 12931),

Gene: Telesworld_13 Start: 12124, Stop: 12960, Start Num: 8

Candidate Starts for Telesworld_13:

(1, 11821), (2, 11890), (4, 11959), (Start: 8 @12124 has 290 MA's), (19, 12283), (22, 12313), (39, 12400), (45, 12469), (47, 12484), (54, 12541), (76, 12667), (108, 12913),

Gene: Thonko_15 Start: 12057, Stop: 12863, Start Num: 8

Candidate Starts for Thonko_15:

(5, 11952), (6, 11973), (Start: 8 @12057 has 290 MA's), (19, 12216), (32, 12273), (49, 12435), (55, 12495), (60, 12552), (79, 12657), (96, 12681),

Gene: Thora_14 Start: 12414, Stop: 13262, Start Num: 8

Candidate Starts for Thora_14:

(1, 12111), (2, 12180), (4, 12249), (Start: 8 @12414 has 290 MA's), (19, 12573), (22, 12603), (39, 12690), (45, 12759), (47, 12774), (54, 12831), (76, 12969), (108, 13215),

Gene: ThreeOh3D2_14 Start: 12415, Stop: 13263, Start Num: 8

Candidate Starts for ThreeOh3D2_14:

(1, 12112), (2, 12181), (4, 12250), (Start: 8 @12415 has 290 MA's), (19, 12574), (22, 12604), (39, 12691), (45, 12760), (47, 12775), (54, 12832), (76, 12970), (108, 13216),

Gene: Thunderbird_14 Start: 12120, Stop: 12962, Start Num: 8

Candidate Starts for Thunderbird_14:

(1, 11817), (2, 11886), (4, 11955), (Start: 8 @12120 has 290 MA's), (19, 12279), (22, 12309), (39, 12396), (45, 12465), (47, 12480), (54, 12537), (76, 12669), (108, 12915),

Gene: Timmi_13 Start: 12124, Stop: 12972, Start Num: 8

Candidate Starts for Timmi_13:

(1, 11821), (2, 11890), (4, 11959), (Start: 8 @12124 has 290 MA's), (19, 12283), (22, 12313), (39, 12400), (45, 12469), (47, 12484), (54, 12541), (76, 12679), (108, 12925),

Gene: TomBombadil_14 Start: 12414, Stop: 13256, Start Num: 8

Candidate Starts for TomBombadil_14:

(1, 12117), (2, 12186), (4, 12255), (Start: 8 @12414 has 290 MA's), (19, 12573), (22, 12603), (39, 12690), (45, 12759), (47, 12774), (54, 12831), (76, 12963), (108, 13209),

Gene: Tomlarah_14 Start: 12411, Stop: 13247, Start Num: 8

Candidate Starts for Tomlarah_14:

(1, 12114), (2, 12183), (4, 12252), (Start: 8 @12411 has 290 MA's), (19, 12570), (22, 12600), (39, 12687), (45, 12756), (47, 12771), (54, 12828), (76, 12954), (108, 13200),

Gene: Toni_13 Start: 12122, Stop: 12958, Start Num: 8

Candidate Starts for Toni_13:

(1, 11825), (2, 11894), (4, 11963), (Start: 8 @12122 has 290 MA's), (19, 12281), (22, 12311), (39, 12398), (45, 12467), (47, 12482), (54, 12539), (76, 12665), (108, 12911),

Gene: Tooj_14 Start: 12418, Stop: 13260, Start Num: 8

Candidate Starts for Tooj_14:

(1, 12115), (2, 12184), (4, 12253), (Start: 8 @12418 has 290 MA's), (19, 12577), (22, 12607), (39, 12694), (45, 12763), (47, 12778), (54, 12835), (76, 12967), (108, 13213),

Gene: True_13 Start: 12119, Stop: 12961, Start Num: 8

Candidate Starts for True_13:

(1, 11822), (2, 11891), (4, 11960), (Start: 8 @12119 has 290 MA's), (19, 12278), (22, 12308), (39, 12395), (45, 12464), (47, 12479), (54, 12536), (76, 12668), (108, 12914),

Gene: Trypo_14 Start: 12408, Stop: 13250, Start Num: 8

Candidate Starts for Trypo_14:

(1, 12111), (2, 12180), (4, 12249), (Start: 8 @12408 has 290 MA's), (19, 12567), (22, 12597), (39, 12684), (45, 12753), (47, 12768), (54, 12825), (76, 12957), (108, 13203),

Gene: TyrionL_13 Start: 11970, Stop: 12812, Start Num: 8

Candidate Starts for TyrionL_13:

(1, 11673), (2, 11742), (4, 11811), (Start: 8 @11970 has 290 MA's), (19, 12129), (22, 12159), (39, 12246), (45, 12315), (47, 12330), (54, 12387), (76, 12519), (108, 12765),

Gene: UAch1_14 Start: 12417, Stop: 13271, Start Num: 8

Candidate Starts for UAch1_14:

(1, 12114), (2, 12183), (4, 12252), (Start: 8 @12417 has 290 MA's), (19, 12576), (22, 12606), (39, 12693), (45, 12762), (47, 12777), (54, 12834), (76, 12978), (108, 13224),

Gene: UncleHowie_14 Start: 12124, Stop: 12960, Start Num: 8

Candidate Starts for UncleHowie_14:

(1, 11821), (2, 11890), (4, 11959), (Start: 8 @12124 has 290 MA's), (19, 12283), (22, 12313), (39, 12400), (45, 12469), (47, 12484), (54, 12541), (76, 12667), (108, 12913),

Gene: Usavi_14 Start: 12414, Stop: 13262, Start Num: 8

Candidate Starts for Usavi_14:

(1, 12111), (2, 12180), (4, 12249), (Start: 8 @12414 has 290 MA's), (19, 12573), (22, 12603), (39, 12690), (45, 12759), (47, 12774), (54, 12831), (76, 12969), (108, 13215),

Gene: Vaishali24_13 Start: 12089, Stop: 12913, Start Num: 8

Candidate Starts for Vaishali24_13:

(1, 11786), (2, 11855), (4, 11924), (Start: 8 @12089 has 290 MA's), (19, 12248), (22, 12278), (39, 12365), (45, 12434), (47, 12449), (54, 12506), (76, 12620), (108, 12866),

Gene: Valjean_14 Start: 12411, Stop: 13253, Start Num: 8

Candidate Starts for Valjean_14:

(1, 12114), (2, 12183), (4, 12252), (Start: 8 @12411 has 290 MA's), (19, 12570), (22, 12600), (39, 12687), (45, 12756), (47, 12771), (54, 12828), (76, 12960), (108, 13206),

Gene: Vaticameos_14 Start: 12115, Stop: 12951, Start Num: 8

Candidate Starts for Vaticameos_14:

(1, 11818), (2, 11887), (4, 11956), (Start: 8 @12115 has 290 MA's), (19, 12274), (22, 12304), (39, 12391), (45, 12460), (47, 12475), (54, 12532), (76, 12658), (108, 12904),

Gene: Veritas_13 Start: 11958, Stop: 12800, Start Num: 8

Candidate Starts for Veritas_13:

(1, 11661), (2, 11730), (4, 11799), (Start: 8 @11958 has 290 MA's), (19, 12117), (22, 12147), (39, 12234), (45, 12303), (47, 12318), (54, 12375), (76, 12507), (108, 12753),

Gene: Vincenzo_15 Start: 14918, Stop: 15751, Start Num: 8

Candidate Starts for Vincenzo_15:

(Start: 8 @14918 has 290 MA's), (9, 14942), (12, 14972), (13, 14999), (16, 15035), (19, 15077), (37, 15176), (39, 15194), (42, 15233), (45, 15272), (47, 15287), (53, 15344), (71, 15443), (103, 15632), (105, 15674), (108, 15716),

Gene: VioletZ_14 Start: 14154, Stop: 15005, Start Num: 8

Candidate Starts for VioletZ_14:

(Start: 8 @14154 has 290 MA's), (12, 14208), (19, 14313), (29, 14361), (32, 14370), (42, 14469), (45, 14508), (47, 14523), (63, 14655), (64, 14658), (71, 14679), (72, 14682), (92, 14796), (103, 14889), (108, 14973), (109, 14976),

Gene: Virapocalypse_14 Start: 12409, Stop: 13245, Start Num: 8

Candidate Starts for Virapocalypse_14:

(1, 12112), (2, 12181), (4, 12250), (Start: 8 @12409 has 290 MA's), (19, 12568), (22, 12598), (39, 12685), (45, 12754), (47, 12769), (54, 12826), (76, 12952), (108, 13198),

Gene: Virgeve_13 Start: 12124, Stop: 12966, Start Num: 8

Candidate Starts for Virgeve_13:

(1, 11821), (2, 11890), (4, 11959), (Start: 8 @12124 has 290 MA's), (19, 12283), (22, 12313), (39, 12400), (45, 12469), (47, 12484), (54, 12541), (76, 12673), (108, 12919),

Gene: Vista_14 Start: 12414, Stop: 13256, Start Num: 8

Candidate Starts for Vista_14:

(1, 12117), (2, 12186), (4, 12255), (Start: 8 @12414 has 290 MA's), (19, 12573), (22, 12603), (39, 12690), (45, 12759), (47, 12774), (54, 12831), (76, 12963), (108, 13209),

Gene: Vivaldi_14 Start: 12415, Stop: 13287, Start Num: 8

Candidate Starts for Vivaldi_14:

(1, 12112), (2, 12181), (4, 12250), (Start: 8 @12415 has 290 MA's), (19, 12574), (22, 12604), (39, 12691), (45, 12760), (47, 12775), (54, 12832), (76, 12994), (108, 13240),

Gene: Vortex_14 Start: 12125, Stop: 12967, Start Num: 8

Candidate Starts for Vortex_14:

(1, 11822), (2, 11891), (4, 11960), (Start: 8 @12125 has 290 MA's), (19, 12284), (22, 12314), (39, 12401), (45, 12470), (47, 12485), (54, 12542), (76, 12674), (108, 12920),

Gene: Waleliano_14 Start: 14151, Stop: 14975, Start Num: 8

Candidate Starts for Waleliano_14:

(Start: 8 @14151 has 290 MA's), (12, 14205), (19, 14310), (32, 14367), (42, 14466), (45, 14505), (47, 14520), (66, 14661), (71, 14676), (72, 14679), (103, 14859), (108, 14943), (109, 14946),

Gene: Wallhey_13 Start: 11970, Stop: 12818, Start Num: 8

Candidate Starts for Wallhey_13:

(1, 11673), (2, 11742), (4, 11811), (Start: 8 @11970 has 290 MA's), (19, 12129), (22, 12159), (39, 12246), (45, 12315), (47, 12330), (54, 12387), (76, 12525), (108, 12771),

Gene: Waterdiva_14 Start: 12412, Stop: 13254, Start Num: 8

Candidate Starts for Waterdiva_14:

(1, 12115), (2, 12184), (4, 12253), (Start: 8 @12412 has 290 MA's), (19, 12571), (22, 12601), (39, 12688), (45, 12757), (47, 12772), (54, 12829), (76, 12961), (108, 13207),

Gene: Weher20_14 Start: 12408, Stop: 13244, Start Num: 8

Candidate Starts for Weher20_14:

(1, 12111), (2, 12180), (4, 12249), (Start: 8 @12408 has 290 MA's), (19, 12567), (22, 12597), (39, 12684), (45, 12753), (47, 12768), (54, 12825), (76, 12951), (108, 13197),

Gene: Windsor_13 Start: 12078, Stop: 12920, Start Num: 8

Candidate Starts for Windsor_13:

(1, 11775), (2, 11844), (4, 11913), (Start: 8 @12078 has 290 MA's), (19, 12237), (22, 12267), (39, 12354), (45, 12423), (47, 12438), (54, 12495), (76, 12627), (108, 12873),

Gene: Xavier_13 Start: 12124, Stop: 12972, Start Num: 8

Candidate Starts for Xavier_13:

(1, 11821), (2, 11890), (4, 11959), (Start: 8 @12124 has 290 MA's), (19, 12283), (22, 12313), (39, 12400), (45, 12469), (47, 12484), (54, 12541), (76, 12679), (108, 12925),

Gene: Yoshand_14 Start: 12415, Stop: 13257, Start Num: 8

Candidate Starts for Yoshand_14:

(1, 12112), (2, 12181), (4, 12250), (Start: 8 @12415 has 290 MA's), (19, 12574), (22, 12604), (39, 12691), (45, 12760), (47, 12775), (54, 12832), (76, 12964), (108, 13210),

Gene: YouGoGlencoco_14 Start: 12408, Stop: 13250, Start Num: 8

Candidate Starts for YouGoGlencoco_14:

(1, 12111), (2, 12180), (4, 12249), (Start: 8 @12408 has 290 MA's), (19, 12567), (22, 12597), (39, 12684), (45, 12753), (47, 12768), (54, 12825), (76, 12957), (108, 13203),

Gene: Zaider_15 Start: 12641, Stop: 13483, Start Num: 8

Candidate Starts for Zaider_15:

(1, 12344), (2, 12413), (4, 12482), (Start: 8 @12641 has 290 MA's), (19, 12800), (22, 12830), (39, 12917), (45, 12986), (47, 13001), (54, 13058), (76, 13190), (108, 13436),

Gene: Zelda_14 Start: 12411, Stop: 13253, Start Num: 8

Candidate Starts for Zelda_14:

(1, 12114), (2, 12183), (4, 12252), (Start: 8 @12411 has 290 MA's), (19, 12570), (22, 12600), (39, 12687), (45, 12756), (47, 12771), (54, 12828), (76, 12960), (108, 13206),

Gene: Zemanar_15 Start: 14151, Stop: 14975, Start Num: 8

Candidate Starts for Zemanar_15:

(Start: 8 @14151 has 290 MA's), (12, 14205), (19, 14310), (32, 14367), (42, 14466), (45, 14505), (47, 14520), (66, 14661), (71, 14676), (72, 14679), (103, 14859), (108, 14943), (109, 14946),

Gene: Zenteno07_19 Start: 13531, Stop: 14463, Start Num: 8

Candidate Starts for Zenteno07_19:

(Start: 8 @13531 has 290 MA's), (11, 13576), (12, 13588), (45, 13894), (51, 13930), (57, 14008), (59, 14026), (101, 14326), (108, 14437),

Gene: Zonia_14 Start: 12425, Stop: 13267, Start Num: 8

Candidate Starts for Zonia_14:

(1, 12128), (2, 12197), (4, 12266), (Start: 8 @12425 has 290 MA's), (19, 12584), (22, 12614), (39, 12701), (45, 12770), (47, 12785), (54, 12842), (76, 12974), (108, 13220),