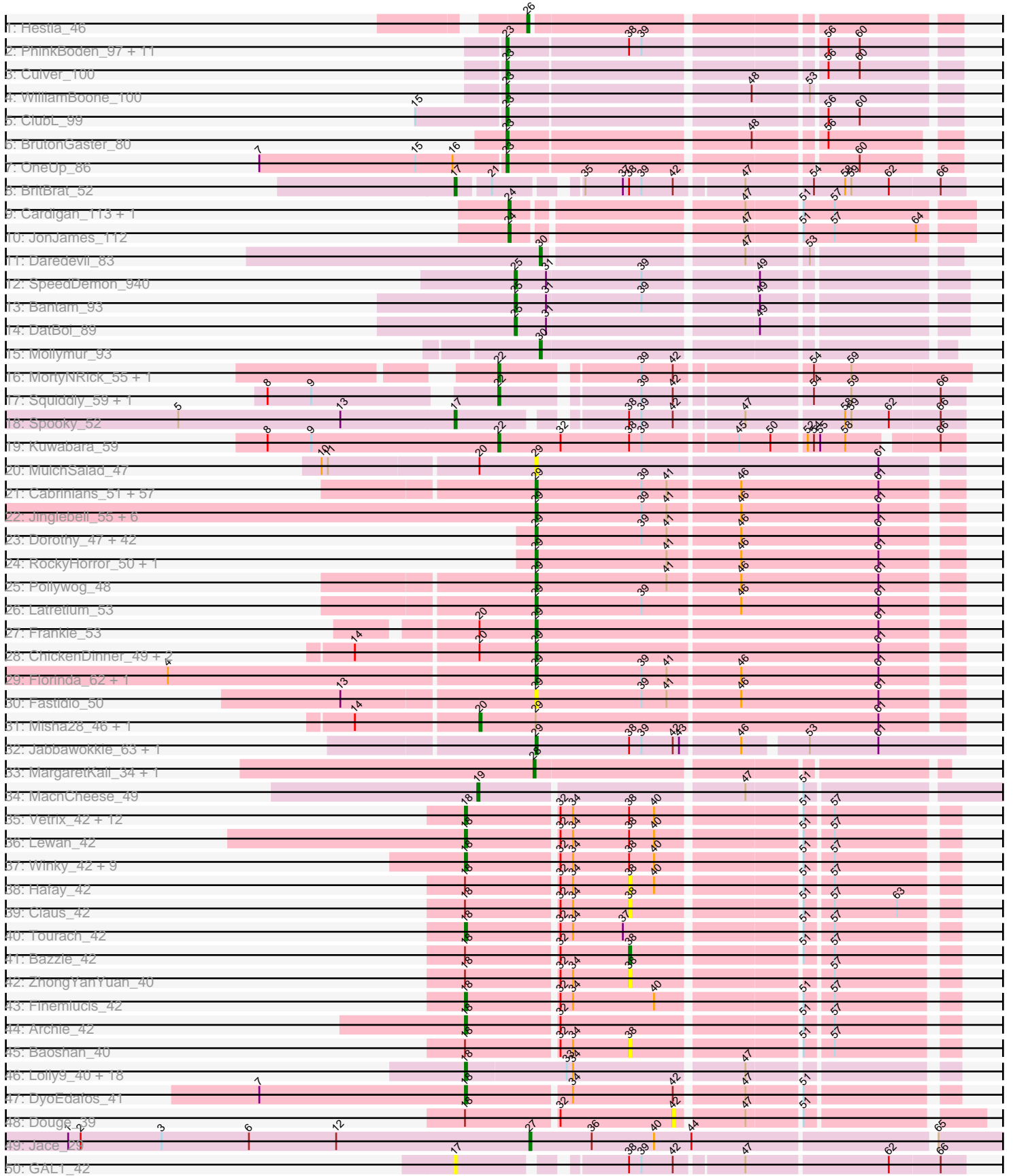


Pham 161565



Note: Tracks are now grouped by subcluster and scaled. Switching in subcluster is indicated by changes in track color. Track scale is now set by default to display the region 30 bp upstream of start 1 to 30 bp downstream of the last possible start. If this default region is judged to be packed too tightly with annotated starts, the track will be further scaled to only show that region of the ORF with annotated starts. This action will be indicated by adding "Zoomed" to the title. For starts, yellow indicates the location of called starts comprised solely of Glimmer/GeneMark auto-annotations, green indicates the location of called starts with at least 1 manual gene annotation.

Pham 161565 Report

This analysis was run 04/28/24 on database version 559.

Pham number 161565 has 215 members, 25 are drafts.

Phages represented in each track:

- Track 1 : Hestia_46
- Track 2 : PhinkBoden_97, Dusty_95, Cucurbita_99, Toniann_100, Abscondus_97, Aphelion_99, Smoothie_99, Engineer_99, Lozinak_98, Miskis_96, Bachita_100, Norvs_100
- Track 3 : Culver_100
- Track 4 : WilliamBoone_100
- Track 5 : ClubL_99
- Track 6 : BrutonGaster_80
- Track 7 : OneUp_86
- Track 8 : BritBrat_52
- Track 9 : Cardigan_113, Yvonnetastic_109
- Track 10 : JonJames_112
- Track 11 : Daredevil_83
- Track 12 : SpeedDemon_940
- Track 13 : Bantam_93
- Track 14 : DatBoi_89
- Track 15 : Mollymur_93
- Track 16 : MortyNRick_55, BearBQ_57
- Track 17 : Squiddly_59, Malisha_63
- Track 18 : Spooky_52
- Track 19 : Kuwabara_59
- Track 20 : MulchSalad_47
- Track 21 : Cabrinians_51, TDanisky_54, Yorick_49, Madiba_46, Jarcob_50, Seagreen_51, Eradicator_43, Dante_49, Avani_58, Llij_47, Girr_50, LilMoolah_49, Lizziana_56, Doug_52, Leozinho_51, Kimberlium_53, Karhdo_49, Drago_49, QuickMath_52, Martik_50, Koella_44, PopTart_45, Chevrolet_59, ShowerHandel_51, Nitzel_45, NormanBulbieJr_50, Maravista_52, DotProduct_46, Priscilla_50, Ibhubesi_49, SassyB_45, MadMen_44, Tweety_49, Ruby_48, Royals2015_52, ArcusAngelus_53, Sabbb_56, Burwell21_48, Mahavrat_48, Totinger_53, Bubbles123_47, ShiLan_49, Nivrat_47, JalFarm20_59, GigiOuiOui_47, Aubs_49, FreddyB_50, UncleRicky_50, Tootsieroll_53, Eish_50, Che8_52, Sparkdehlily_54, DirtMcgirt_50, LittleShirley_51, Phatniss_49, Plumbus_52, Starcevich_50, MisterCuddles_50
- Track 22 : Jinglebell_55, Ochi17_53, Llama_55, Modragons_54, AlpineSix_55, Seabastian_55, OfUltron_55
- Track 23 : Dorothy_47, Gandalph_51, OlympiaSaint_50, Doomphist_49, Job42_50, Harley_52, BuzzLyseyear_55, Spoonbill_48, Blexus_48, Leperchaun_43,

OwlsT2W_49, Kersh_53, Veteran_47, Daenerys_45, Stap_49, GUmbie_47, PMC_44, Rockne_48, PHappiness_46, Mantra_47, Radiance_50, BlueCrab_47, Boomer_52, JoeyJr_46, Krakatau_48, RitaG_46, DaddyRickover_50, Poenanya_49, Oksu_54, Scottish_49, IbOuu_52, Spikelee_56, Polka14_47, Nimbo_45, Hamulus_51, Empress_49, Ramsey_51, Pacc40_45, SiSi_49, BodEinwohner17_50, RedBird_47, KingMidas_50, Cornie_43

- Track 24 : RockyHorror_50, Zerg_49
- Track 25 : Pollywog_48
- Track 26 : Latretium_53
- Track 27 : Frankie_53
- Track 28 : ChickenDinner_49, Awesomesauce_48, Piper2020_48
- Track 29 : Florinda_62, Quico_59
- Track 30 : Fastidio_50
- Track 31 : Misha28_46, TootsiePop_46
- Track 32 : Jabbawokkie_63, Zapner_62
- Track 33 : MargaretKali_34, Kumotta_34
- Track 34 : MacnCheese_49
- Track 35 : Vetric_42, Nicholasp3_42, GuuelaD_42, Kahlid_42, Crossroads_42, Loadrie_42, Gabriela_42, Rumpelstiltskin_42, Gardann_42, Wilder_42, MkaliMitinis3_42, Zakai_42, Wigglewiggle_42
- Track 36 : Lewan_42
- Track 37 : Winky_42, Breezona_42, Miley16_42, Itos_41, BobsGarage_42, Netyap_42, BigCheese_42, Faith1_42, LilDestine_42, DrSeegs_42
- Track 38 : Hafay_42
- Track 39 : Claus_42
- Track 40 : Tourach_42
- Track 41 : Bazzle_42
- Track 42 : ZhongYanYuan_40
- Track 43 : Finemlucis_42
- Track 44 : Archie_42
- Track 45 : Baoshan_40
- Track 46 : Lolly9_40, MsGreen_40, Jobypre_40, Kingsolomon_40, MiniLon_40, Krypton555_40, Lumos_40, Samty_40, Clautastrophe_40, Bellis_40, Snenia_40, Ellson_40, Whirlwind_41, MiniMac_40, DuncansLeg_40, Jubie_40, Finnry_40, Nicholas_40, Moostard_40
- Track 47 : DyoEdafos_41
- Track 48 : Douge_39
- Track 49 : Jace_29
- Track 50 : GAL1_42

Summary of Final Annotations (See graph section above for start numbers):

The start number called the most often in the published annotations is 29, it was called in 111 of the 190 non-draft genes in the pham.

Genes that call this "Most Annotated" start:

- AlpineSix_55, ArcusAngelus_53, Aubs_49, Avani_58, Awesomesauce_48, Blexus_48, BlueCrab_47, BodEinwohner17_50, Boomer_52, Bubbles123_47, Burwell21_48, BuzzLyseyear_55, Cabrinians_51, Che8_52, Chevrolet_59, ChickenDinner_49, Cornie_43, DaddyRickover_50, Daenerys_45, Dante_49,

DirtMcgirt_50, Doomphist_49, Dorothy_47, DotProduct_46, Doug_52, Drago_49, Eish_50, Empress_49, Eradicator_43, Fastidio_50, Florinda_62, Frankie_53, FreddyB_50, GUmbie_47, Gandalph_51, GigiOuiOui_47, Girr_50, Hamulus_51, Harley_52, IbOuu_52, Ibhubesi_49, Jabbawokkie_63, JalFarm20_59, Jarcob_50, Jinglebell_55, Job42_50, JoeyJr_46, Karhdo_49, Kersh_53, Kimberlium_53, KingMidas_50, Koella_44, Krakatau_48, Latretium_53, Leozinho_51, Leperchaun_43, LilMoolah_49, LittleShirley_51, Lizziana_56, Llama_55, Llij_47, MadMen_44, Madiba_46, Mahavrat_48, Mantra_47, Maravista_52, Martik_50, MisterCuddles_50, Modragons_54, MulchSalad_47, Nimbo_45, Nitzel_45, Nivrat_47, NormanBulbieJr_50, Ochi17_53, OfUltron_55, Oksu_54, OlympiaSaint_50, OwlsT2W_49, PHappiness_46, PMC_44, Pacc40_45, Phatniss_49, Piper2020_48, Plumbus_52, Poenanya_49, Polka14_47, Pollywog_48, PopTart_45, Priscilla_50, QuickMath_52, Quico_59, Radiance_50, Ramsey_51, RedBird_47, RitaG_46, Rockne_48, RockyHorror_50, Royals2015_52, Ruby_48, Sabbb_56, SassyB_45, Scottish_49, Seabastian_55, Seagreen_51, ShiLan_49, ShowerHandel_51, SiSi_49, Sparkdehily_54, Spikelee_56, Spoonbill_48, Stap_49, Starcevich_50, TDanisky_54, Tootsieroll_53, Totinger_53, Tweety_49, UncleRicky_50, Veteran_47, Yorick_49, Zapner_62, Zerg_49,

Genes that have the "Most Annotated" start but do not call it:

- Misha28_46, TootsiePop_46,

Genes that do not have the "Most Annotated" start:

- Abscondus_97, Aphelion_99, Archie_42, Bachita_100, Bantam_93, Baoshan_40, Bazzle_42, BearBQ_57, Bellis_40, BigCheese_42, BobsGarage_42, Breezona_42, BritBrat_52, BrutonGaster_80, Cardigan_113, Claus_42, Clautastrophe_40, ClubL_99, Crossroads_42, Cucurbita_99, Culver_100, Daredevil_83, DatBoi_89, Douge_39, DrSeegs_42, DuncansLeg_40, Dusty_95, DyoEdafos_41, Ellson_40, Engineer_99, Faith1_42, Finemlucis_42, Finnry_40, GAL1_42, Gabriela_42, Gardann_42, GuuelaD_42, Hafay_42, Hestia_46, Itos_41, Jace_29, Jobypre_40, JonJames_112, Jubie_40, Kahlid_42, Kingsolomon_40, Krypton555_40, Kumotta_34, Kuwabara_59, Lewan_42, LilDestine_42, Loadrie_42, Lolly9_40, Lozinak_98, Lumos_40, MacnCheese_49, Malisha_63, MargaretKali_34, Miley16_42, MiniLon_40, MiniMac_40, Miskis_96, MkaliMitinis3_42, Mollymur_93, Moostard_40, MortyNRick_55, MsGreen_40, Netyap_42, Nicholas_40, Nicholasp3_42, Norvs_100, OneUp_86, PhinkBoden_97, Rumpelstiltskin_42, Samty_40, Smoothie_99, Snenia_40, SpeedDemon_940, Spooky_52, Squiddly_59, Toniann_100, Tourach_42, Vetrax_42, Whirlwind_41, Wigglewiggle_42, Wilder_42, WilliamBoone_100, Winky_42, Yvonnestic_109, Zakai_42, ZhongYanYuan_40,

Summary by start number:

Start 17:

- Found in 3 of 215 (1.4%) of genes in pham
- Manual Annotations of this start: 2 of 190
- Called 100.0% of time when present
- Phage (with cluster) where this start called: BritBrat_52 (CY2), GAL1_42 (singleton), Spooky_52 (DN2),

Start 18:

- Found in 53 of 215 (24.7%) of genes in pham
- Manual Annotations of this start: 44 of 190
- Called 88.7% of time when present

- Phage (with cluster) where this start called: Archie_42 (L2), Bellis_40 (L3), BigCheese_42 (L2), BobsGarage_42 (L2), Breezona_42 (L2), Clautastrophe_40 (L3), Crossroads_42 (L2), DrSeegs_42 (L2), DuncansLeg_40 (L3), DyoEdafos_41 (L4), Ellson_40 (L3), Faith1_42 (L2), Finemlucis_42 (L2), Finnry_40 (L3), Gabriela_42 (L2), Gardann_42 (L2), GuuelaD_42 (L2), Itos_41 (L2), Jobypre_40 (L3), Jubie_40 (L3), Kahlid_42 (L2), Kingsolomon_40 (L3), Krypton555_40 (L3), Lewan_42 (L2), LilDestine_42 (L2), Loadrie_42 (L2), Lolly9_40 (L3), Lumos_40 (L3), Miley16_42 (L2), MiniLon_40 (L3), MiniMac_40 (L3), MkaliMitinis3_42 (L2), Moostard_40 (L3), MsGreen_40 (L3), Netyap_42 (L2), Nicholas_40 (L3), Nicholasp3_42 (L2), Rumpelstiltskin_42 (L2), Samty_40 (L3), Snenia_40 (L3), Tourach_42 (L2), Vetric_42 (L2), Whirlwind_41 (L3), Wigglewobble_42 (L2), Wilder_42 (L2), Winky_42 (L2), Zakai_42 (L2),

Start 19:

- Found in 1 of 215 (0.5%) of genes in pham
- Manual Annotations of this start: 1 of 190
- Called 100.0% of time when present
- Phage (with cluster) where this start called: MacnCheese_49 (K3),

Start 20:

- Found in 7 of 215 (3.3%) of genes in pham
- Manual Annotations of this start: 2 of 190
- Called 28.6% of time when present
- Phage (with cluster) where this start called: Misha28_46 (F1), TootsiePop_46 (F1),

Start 22:

- Found in 5 of 215 (2.3%) of genes in pham
- Manual Annotations of this start: 4 of 190
- Called 100.0% of time when present
- Phage (with cluster) where this start called: BearBQ_57 (DN), Kuwabara_59 (DN4), Malisha_63 (DN), MortyNRick_55 (DN), Squiddly_59 (DN2),

Start 23:

- Found in 17 of 215 (7.9%) of genes in pham
- Manual Annotations of this start: 14 of 190
- Called 100.0% of time when present
- Phage (with cluster) where this start called: Abscondus_97 (CQ), Aphelion_99 (CQ1), Bachita_100 (CQ1), BrutonGaster_80 (CQ2), ClubL_99 (CQ1), Cucurbita_99 (CQ1), Culver_100 (CQ1), Dusty_95 (CQ), Engineer_99 (CQ1), Lozinak_98 (CQ1), Miskis_96 (CQ), Norvs_100 (CQ), OneUp_86 (CQ2), PhinkBoden_97 (CQ1), Smoothie_99 (CQ1), Toniann_100 (CQ1), WilliamBoone_100 (CQ1),

Start 24:

- Found in 3 of 215 (1.4%) of genes in pham
- Manual Annotations of this start: 2 of 190
- Called 100.0% of time when present
- Phage (with cluster) where this start called: Cardigan_113 (DD), JonJames_112 (DD), Yvonnestic_109 (DD),

Start 25:

- Found in 3 of 215 (1.4%) of genes in pham
- Manual Annotations of this start: 3 of 190
- Called 100.0% of time when present

- Phage (with cluster) where this start called: Bantam_93 (DL), DatBoi_89 (DL), SpeedDemon_940 (DL),

Start 26:

- Found in 1 of 215 (0.5%) of genes in pham
- Manual Annotations of this start: 1 of 190
- Called 100.0% of time when present
- Phage (with cluster) where this start called: Hestia_46 (AY),

Start 27:

- Found in 1 of 215 (0.5%) of genes in pham
- Manual Annotations of this start: 1 of 190
- Called 100.0% of time when present
- Phage (with cluster) where this start called: Jace_29 (singleton),

Start 28:

- Found in 2 of 215 (0.9%) of genes in pham
- Manual Annotations of this start: 2 of 190
- Called 100.0% of time when present
- Phage (with cluster) where this start called: Kumotta_34 (FB), MargaretKali_34 (FB),

Start 29:

- Found in 124 of 215 (57.7%) of genes in pham
- Manual Annotations of this start: 111 of 190
- Called 98.4% of time when present
- Phage (with cluster) where this start called: AlpineSix_55 (F1), ArcusAngelus_53 (F1), Aubs_49 (F1), Avani_58 (F2), Awesomesauce_48 (F1), Blexus_48 (F1), BlueCrab_47 (F1), BodEinwohner17_50 (F1), Boomer_52 (F1), Bubbles123_47 (F1), Burwell21_48 (F1), BuzzLyseyear_55 (F1), Cabrinians_51 (F1), Che8_52 (F1), Chevrolet_59 (F1), ChickenDinner_49 (F1), Cornie_43 (F5), DaddyRickover_50 (F1), Daenerys_45 (F1), Dante_49 (F1), DirtMcgirt_50 (F1), Doomphist_49 (F1), Dorothy_47 (F1), DotProduct_46 (F1), Doug_52 (F1), Drago_49 (F1), Eish_50 (F1), Empress_49 (F1), Eradicator_43 (F1), Fastidio_50 (F1), Florinda_62 (F1), Frankie_53 (F1), FreddyB_50 (F1), GUmby_47 (F1), Gandolph_51 (F1), GigiOuiOui_47 (F1), Girr_50 (F1), Hamulus_51 (F1), Harley_52 (F1), IbOuu_52 (F1), Ibhubes_49 (F1), Jabbawokkie_63 (F2), JalFarm20_59 (F1), Jarcob_50 (F1), Jinglebell_55 (F1), Job42_50 (F1), JoeyJr_46 (F1), Karhdo_49 (F1), Kersh_53 (F1), Kimberlium_53 (F1), KingMidas_50 (F1), Koella_44 (F1), Krakatau_48 (F1), Latretium_53 (F1), Leozinho_51 (F1), Leperchaun_43 (F1), LilMoolah_49 (F1), LittleShirley_51 (F1), Lizziana_56 (F1), Llama_55 (F1), Llij_47 (F1), MadMen_44 (F1), Madiba_46 (F1), Mahavrat_48 (F1), Mantra_47 (F1), Maravista_52 (F1), Martik_50 (F1), MisterCuddles_50 (F1), Modragons_54 (F1), MulchSalad_47 (F), Nimbo_45 (F1), Nitzel_45 (F1), Nivrat_47 (F1), NormanBulbieJr_50 (F1), Ochi17_53 (F1), OfUltron_55 (F1), Oksu_54 (F1), OlympiaSaint_50 (F1), OwlsT2W_49 (F1), PHappiness_46 (F1), PMC_44 (F1), Pacc40_45 (F1), Phatniss_49 (F1), Piper2020_48 (F1), Plumbus_52 (F1), Poenanya_49 (F1), Polka14_47 (F1), Pollywog_48 (F1), PopTart_45 (F1), Priscilla_50 (F1), QuickMath_52 (F1), Quico_59 (F1), Radiance_50 (F1), Ramsey_51 (F1), RedBird_47 (F1), RitaG_46 (F1), Rockne_48 (F1), RockyHorror_50 (F1), Royals2015_52 (F1), Ruby_48 (F1), Sabbb_56 (F1), SassyB_45 (F1), Scottish_49 (F1), Seabastian_55 (F1), Seagreen_51 (F1), ShiLan_49 (F1), ShowerHandel_51 (F1), SiSi_49 (F1), Sparkdehliiy_54 (F1), Spikelee_56 (F1), Spoonbill_48 (F1), Stap_49 (F1), Starcevich_50 (F1), TDanisky_54 (F1), Tootsieroll_53 (F1), Totinger_53 (F1),

Tweety_49 (F1), UncleRicky_50 (F1), Veteran_47 (F1), Yorick_49 (F1), Zapner_62 (F2), Zerg_49 (F1),

Start 30:

- Found in 2 of 215 (0.9%) of genes in pham
- Manual Annotations of this start: 2 of 190
- Called 100.0% of time when present
- Phage (with cluster) where this start called: Daredevil_83 (DL), Mollymur_93 (DL),

Start 38:

- Found in 47 of 215 (21.9%) of genes in pham
- Manual Annotations of this start: 1 of 190
- Called 10.6% of time when present
- Phage (with cluster) where this start called: Baoshan_40 (L2), Bazzle_42 (L2), Claus_42 (L2), Hafay_42 (L2), ZhongYanYuan_40 (L2),

Start 42:

- Found in 11 of 215 (5.1%) of genes in pham
- No Manual Annotations of this start.
- Called 9.1% of time when present
- Phage (with cluster) where this start called: Douge_39 (L4),

Summary by clusters:

There are 20 clusters represented in this pham: DN, F1, DL, F5, F, FB, DD, F2, singleton, K3, DN4, L4, L2, L3, DN2, AY, CQ2, CQ1, CY2, CQ,

Info for manual annotations of cluster AY:

- Start number 26 was manually annotated 1 time for cluster AY.

Info for manual annotations of cluster CQ:

- Start number 23 was manually annotated 1 time for cluster CQ.

Info for manual annotations of cluster CQ1:

- Start number 23 was manually annotated 11 times for cluster CQ1.

Info for manual annotations of cluster CQ2:

- Start number 23 was manually annotated 2 times for cluster CQ2.

Info for manual annotations of cluster CY2:

- Start number 17 was manually annotated 1 time for cluster CY2.

Info for manual annotations of cluster DD:

- Start number 24 was manually annotated 2 times for cluster DD.

Info for manual annotations of cluster DL:

- Start number 25 was manually annotated 3 times for cluster DL.
- Start number 30 was manually annotated 2 times for cluster DL.

Info for manual annotations of cluster DN:

- Start number 22 was manually annotated 2 times for cluster DN.

Info for manual annotations of cluster DN2:

- Start number 17 was manually annotated 1 time for cluster DN2.
- Start number 22 was manually annotated 1 time for cluster DN2.

Info for manual annotations of cluster DN4:

- Start number 22 was manually annotated 1 time for cluster DN4.

Info for manual annotations of cluster F1:

- Start number 20 was manually annotated 2 times for cluster F1.
- Start number 29 was manually annotated 107 times for cluster F1.

Info for manual annotations of cluster F2:

- Start number 29 was manually annotated 3 times for cluster F2.

Info for manual annotations of cluster F5:

- Start number 29 was manually annotated 1 time for cluster F5.

Info for manual annotations of cluster FB:

- Start number 28 was manually annotated 2 times for cluster FB.

Info for manual annotations of cluster K3:

- Start number 19 was manually annotated 1 time for cluster K3.

Info for manual annotations of cluster L2:

- Start number 18 was manually annotated 27 times for cluster L2.
- Start number 38 was manually annotated 1 time for cluster L2.

Info for manual annotations of cluster L3:

- Start number 18 was manually annotated 16 times for cluster L3.

Info for manual annotations of cluster L4:

- Start number 18 was manually annotated 1 time for cluster L4.

Gene Information:

Gene: Abscondus_97 Start: 58989, Stop: 59189, Start Num: 23

Candidate Starts for Abscondus_97:

(Start: 23 @58989 has 14 MA's), (Start: 38 @59046 has 1 MA's), (39, 59052), (56, 59130), (60, 59145),

Gene: AlpineSix_55 Start: 38663, Stop: 38860, Start Num: 29

Candidate Starts for AlpineSix_55:

(Start: 29 @38663 has 111 MA's), (39, 38714), (41, 38726), (46, 38759), (61, 38825),

Gene: Aphelion_99 Start: 60542, Stop: 60742, Start Num: 23

Candidate Starts for Aphelion_99:

(Start: 23 @60542 has 14 MA's), (Start: 38 @60599 has 1 MA's), (39, 60605), (56, 60683), (60, 60698),

Gene: Archie_42 Start: 34898, Stop: 35113, Start Num: 18

Candidate Starts for Archie_42:

(Start: 18 @34898 has 44 MA's), (32, 34940), (51, 35048), (57, 35060),

Gene: ArcusAngelus_53 Start: 37779, Stop: 37976, Start Num: 29

Candidate Starts for ArcusAngelus_53:

(Start: 29 @37779 has 111 MA's), (39, 37830), (41, 37842), (46, 37875), (61, 37941),

Gene: Aubs_49 Start: 36346, Stop: 36543, Start Num: 29

Candidate Starts for Aubs_49:

(Start: 29 @36346 has 111 MA's), (39, 36397), (41, 36409), (46, 36442), (61, 36508),

Gene: Avani_58 Start: 36654, Stop: 36851, Start Num: 29

Candidate Starts for Avani_58:

(Start: 29 @36654 has 111 MA's), (39, 36705), (41, 36717), (46, 36750), (61, 36816),

Gene: Awesomesauce_48 Start: 34991, Stop: 35188, Start Num: 29

Candidate Starts for Awesomesauce_48:

(14, 34907), (Start: 20 @34964 has 2 MA's), (Start: 29 @34991 has 111 MA's), (61, 35153),

Gene: Bachita_100 Start: 60200, Stop: 60400, Start Num: 23

Candidate Starts for Bachita_100:

(Start: 23 @60200 has 14 MA's), (Start: 38 @60257 has 1 MA's), (39, 60263), (56, 60341), (60, 60356),

Gene: Bantam_93 Start: 62206, Stop: 62006, Start Num: 25

Candidate Starts for Bantam_93:

(Start: 25 @62206 has 3 MA's), (31, 62191), (39, 62146), (49, 62095),

Gene: Baoshan_40 Start: 34630, Stop: 34770, Start Num: 38

Candidate Starts for Baoshan_40:

(Start: 18 @34555 has 44 MA's), (32, 34597), (34, 34603), (Start: 38 @34630 has 1 MA's), (51, 34705), (57, 34717),

Gene: Bazzle_42 Start: 35005, Stop: 35145, Start Num: 38

Candidate Starts for Bazzle_42:

(Start: 18 @34930 has 44 MA's), (32, 34972), (Start: 38 @35005 has 1 MA's), (51, 35080), (57, 35092),

Gene: BearBQ_57 Start: 39707, Stop: 39916, Start Num: 22

Candidate Starts for BearBQ_57:

(Start: 22 @39707 has 4 MA's), (39, 39767), (42, 39782), (54, 39842), (59, 39860),

Gene: Bellis_40 Start: 34953, Stop: 35168, Start Num: 18

Candidate Starts for Bellis_40:

(Start: 18 @34953 has 44 MA's), (33, 34998), (34, 35001), (47, 35079),

Gene: BigCheese_42 Start: 34694, Stop: 34909, Start Num: 18

Candidate Starts for BigCheese_42:

(Start: 18 @34694 has 44 MA's), (32, 34736), (34, 34742), (Start: 38 @34769 has 1 MA's), (40, 34781), (51, 34844), (57, 34856),

Gene: Blexus_48 Start: 36433, Stop: 36630, Start Num: 29

Candidate Starts for Blexus_48:

(Start: 29 @36433 has 111 MA's), (39, 36484), (41, 36496), (46, 36529), (61, 36595),

Gene: BlueCrab_47 Start: 36159, Stop: 36356, Start Num: 29

Candidate Starts for BlueCrab_47:

(Start: 29 @36159 has 111 MA's), (39, 36210), (41, 36222), (46, 36255), (61, 36321),

Gene: BobsGarage_42 Start: 34694, Stop: 34909, Start Num: 18

Candidate Starts for BobsGarage_42:

(Start: 18 @34694 has 44 MA's), (32, 34736), (34, 34742), (Start: 38 @34769 has 1 MA's), (40, 34781), (51, 34844), (57, 34856),

Gene: BodEinwohner17_50 Start: 36375, Stop: 36572, Start Num: 29

Candidate Starts for BodEinwohner17_50:

(Start: 29 @36375 has 111 MA's), (39, 36426), (41, 36438), (46, 36471), (61, 36537),

Gene: Boomer_52 Start: 37608, Stop: 37805, Start Num: 29

Candidate Starts for Boomer_52:

(Start: 29 @37608 has 111 MA's), (39, 37659), (41, 37671), (46, 37704), (61, 37770),

Gene: Breezona_42 Start: 34694, Stop: 34909, Start Num: 18

Candidate Starts for Breezona_42:

(Start: 18 @34694 has 44 MA's), (32, 34736), (34, 34742), (Start: 38 @34769 has 1 MA's), (40, 34781), (51, 34844), (57, 34856),

Gene: BritBrat_52 Start: 37915, Stop: 38136, Start Num: 17

Candidate Starts for BritBrat_52:

(Start: 17 @37915 has 2 MA's), (21, 37930), (35, 37963), (37, 37981), (Start: 38 @37984 has 1 MA's), (39, 37990), (42, 38005), (47, 38035), (54, 38065), (58, 38080), (59, 38083), (62, 38101), (66, 38125),

Gene: BrutonGaster_80 Start: 54552, Stop: 54749, Start Num: 23

Candidate Starts for BrutonGaster_80:

(Start: 23 @54552 has 14 MA's), (48, 54663), (56, 54693),

Gene: Bubbles123_47 Start: 37055, Stop: 37252, Start Num: 29

Candidate Starts for Bubbles123_47:

(Start: 29 @37055 has 111 MA's), (39, 37106), (41, 37118), (46, 37151), (61, 37217),

Gene: Burwell21_48 Start: 36717, Stop: 36914, Start Num: 29

Candidate Starts for Burwell21_48:

(Start: 29 @36717 has 111 MA's), (39, 36768), (41, 36780), (46, 36813), (61, 36879),

Gene: BuzzLyseyear_55 Start: 37985, Stop: 38182, Start Num: 29

Candidate Starts for BuzzLyseyear_55:

(Start: 29 @37985 has 111 MA's), (39, 38036), (41, 38048), (46, 38081), (61, 38147),

Gene: Cabrinians_51 Start: 36795, Stop: 36992, Start Num: 29

Candidate Starts for Cabrinians_51:

(Start: 29 @36795 has 111 MA's), (39, 36846), (41, 36858), (46, 36891), (61, 36957),

Gene: Cardigan_113 Start: 64662, Stop: 64865, Start Num: 24

Candidate Starts for Cardigan_113:

(Start: 24 @64662 has 2 MA's), (47, 64764), (51, 64788), (57, 64803),

Gene: Che8_52 Start: 37604, Stop: 37801, Start Num: 29

Candidate Starts for Che8_52:

(Start: 29 @37604 has 111 MA's), (39, 37655), (41, 37667), (46, 37700), (61, 37766),

Gene: Chevrolet_59 Start: 37780, Stop: 37977, Start Num: 29

Candidate Starts for Chevrolet_59:

(Start: 29 @37780 has 111 MA's), (39, 37831), (41, 37843), (46, 37876), (61, 37942),

Gene: ChickenDinner_49 Start: 35729, Stop: 35926, Start Num: 29

Candidate Starts for ChickenDinner_49:

(14, 35645), (Start: 20 @35702 has 2 MA's), (Start: 29 @35729 has 111 MA's), (61, 35891),

Gene: Claus_42 Start: 34788, Stop: 34928, Start Num: 38

Candidate Starts for Claus_42:

(Start: 18 @34713 has 44 MA's), (32, 34755), (34, 34761), (Start: 38 @34788 has 1 MA's), (51, 34863), (57, 34875), (63, 34905),

Gene: Clautastrophe_40 Start: 34951, Stop: 35166, Start Num: 18

Candidate Starts for Clautastrophe_40:

(Start: 18 @34951 has 44 MA's), (33, 34996), (34, 34999), (47, 35077),

Gene: ClubL_99 Start: 59132, Stop: 59332, Start Num: 23

Candidate Starts for ClubL_99:

(15, 59090), (Start: 23 @59132 has 14 MA's), (56, 59273), (60, 59288),

Gene: Cornie_43 Start: 34495, Stop: 34692, Start Num: 29

Candidate Starts for Cornie_43:

(Start: 29 @34495 has 111 MA's), (39, 34546), (41, 34558), (46, 34591), (61, 34657),

Gene: Crossroads_42 Start: 34696, Stop: 34911, Start Num: 18

Candidate Starts for Crossroads_42:

(Start: 18 @34696 has 44 MA's), (32, 34738), (34, 34744), (Start: 38 @34771 has 1 MA's), (40, 34783), (51, 34846), (57, 34858),

Gene: Cucurbita_99 Start: 60707, Stop: 60907, Start Num: 23

Candidate Starts for Cucurbita_99:

(Start: 23 @60707 has 14 MA's), (Start: 38 @60764 has 1 MA's), (39, 60770), (56, 60848), (60, 60863),

Gene: Culver_100 Start: 59032, Stop: 59232, Start Num: 23

Candidate Starts for Culver_100:

(Start: 23 @59032 has 14 MA's), (56, 59173), (60, 59188),

Gene: DaddyRickover_50 Start: 37291, Stop: 37488, Start Num: 29

Candidate Starts for DaddyRickover_50:

(Start: 29 @37291 has 111 MA's), (39, 37342), (41, 37354), (46, 37387), (61, 37453),

Gene: Daenerys_45 Start: 35102, Stop: 35299, Start Num: 29

Candidate Starts for Daenerys_45:

(Start: 29 @35102 has 111 MA's), (39, 35153), (41, 35165), (46, 35198), (61, 35264),

Gene: Dante_49 Start: 36138, Stop: 36335, Start Num: 29

Candidate Starts for Dante_49:

(Start: 29 @36138 has 111 MA's), (39, 36189), (41, 36201), (46, 36234), (61, 36300),

Gene: Daredevil_83 Start: 57872, Stop: 57690, Start Num: 30

Candidate Starts for Daredevil_83:

(Start: 30 @57872 has 2 MA's), (47, 57782), (53, 57755),

Gene: DatBoi_89 Start: 61354, Stop: 61154, Start Num: 25

Candidate Starts for DatBoi_89:

(Start: 25 @61354 has 3 MA's), (31, 61339), (49, 61243),

Gene: DirtMcgirt_50 Start: 35836, Stop: 36033, Start Num: 29

Candidate Starts for DirtMcgirt_50:

(Start: 29 @35836 has 111 MA's), (39, 35887), (41, 35899), (46, 35932), (61, 35998),

Gene: Doomphist_49 Start: 37373, Stop: 37570, Start Num: 29

Candidate Starts for Doomphist_49:

(Start: 29 @37373 has 111 MA's), (39, 37424), (41, 37436), (46, 37469), (61, 37535),

Gene: Dorothy_47 Start: 36172, Stop: 36369, Start Num: 29

Candidate Starts for Dorothy_47:

(Start: 29 @36172 has 111 MA's), (39, 36223), (41, 36235), (46, 36268), (61, 36334),

Gene: DotProduct_46 Start: 35833, Stop: 36027, Start Num: 29

Candidate Starts for DotProduct_46:

(Start: 29 @35833 has 111 MA's), (39, 35881), (41, 35893), (46, 35926), (61, 35992),

Gene: Doug_52 Start: 37491, Stop: 37688, Start Num: 29

Candidate Starts for Doug_52:

(Start: 29 @37491 has 111 MA's), (39, 37542), (41, 37554), (46, 37587), (61, 37653),

Gene: Douge_39 Start: 33466, Stop: 33597, Start Num: 42

Candidate Starts for Douge_39:

(Start: 18 @33370 has 44 MA's), (32, 33412), (42, 33466), (47, 33496), (51, 33520),

Gene: DrSeegs_42 Start: 34694, Stop: 34909, Start Num: 18

Candidate Starts for DrSeegs_42:

(Start: 18 @34694 has 44 MA's), (32, 34736), (34, 34742), (Start: 38 @34769 has 1 MA's), (40, 34781), (51, 34844), (57, 34856),

Gene: Drago_49 Start: 35839, Stop: 36036, Start Num: 29

Candidate Starts for Drago_49:

(Start: 29 @35839 has 111 MA's), (39, 35890), (41, 35902), (46, 35935), (61, 36001),

Gene: DuncansLeg_40 Start: 34969, Stop: 35187, Start Num: 18

Candidate Starts for DuncansLeg_40:

(Start: 18 @34969 has 44 MA's), (33, 35017), (34, 35020), (47, 35098),

Gene: Dusty_95 Start: 59048, Stop: 59248, Start Num: 23

Candidate Starts for Dusty_95:

(Start: 23 @59048 has 14 MA's), (Start: 38 @59105 has 1 MA's), (39, 59111), (56, 59189), (60, 59204),

Gene: DyoEdafos_41 Start: 33704, Stop: 33919, Start Num: 18

Candidate Starts for DyoEdafos_41:

(7, 33605), (Start: 18 @33704 has 44 MA's), (34, 33752), (42, 33800), (47, 33830), (51, 33854),

Gene: Eish_50 Start: 36718, Stop: 36915, Start Num: 29

Candidate Starts for Eish_50:

(Start: 29 @36718 has 111 MA's), (39, 36769), (41, 36781), (46, 36814), (61, 36880),

Gene: Ellson_40 Start: 34945, Stop: 35163, Start Num: 18

Candidate Starts for Ellson_40:

(Start: 18 @34945 has 44 MA's), (33, 34993), (34, 34996), (47, 35074),

Gene: Empress_49 Start: 36516, Stop: 36713, Start Num: 29

Candidate Starts for Empress_49:

(Start: 29 @36516 has 111 MA's), (39, 36567), (41, 36579), (46, 36612), (61, 36678),

Gene: Engineer_99 Start: 60173, Stop: 60373, Start Num: 23

Candidate Starts for Engineer_99:

(Start: 23 @60173 has 14 MA's), (Start: 38 @60230 has 1 MA's), (39, 60236), (56, 60314), (60, 60329),

Gene: Eradicator_43 Start: 35055, Stop: 35252, Start Num: 29

Candidate Starts for Eradicator_43:

(Start: 29 @35055 has 111 MA's), (39, 35106), (41, 35118), (46, 35151), (61, 35217),

Gene: Faith1_42 Start: 34694, Stop: 34909, Start Num: 18

Candidate Starts for Faith1_42:

(Start: 18 @34694 has 44 MA's), (32, 34736), (34, 34742), (Start: 38 @34769 has 1 MA's), (40, 34781), (51, 34844), (57, 34856),

Gene: Fastidio_50 Start: 35796, Stop: 35993, Start Num: 29

Candidate Starts for Fastidio_50:

(13, 35706), (Start: 29 @35796 has 111 MA's), (39, 35847), (41, 35859), (46, 35892), (61, 35958),

Gene: Finemlucis_42 Start: 34970, Stop: 35185, Start Num: 18

Candidate Starts for Finemlucis_42:

(Start: 18 @34970 has 44 MA's), (32, 35012), (34, 35018), (40, 35057), (51, 35120), (57, 35132),

Gene: Finnry_40 Start: 34954, Stop: 35169, Start Num: 18

Candidate Starts for Finnry_40:

(Start: 18 @34954 has 44 MA's), (33, 34999), (34, 35002), (47, 35080),

Gene: Florinda_62 Start: 38976, Stop: 39173, Start Num: 29

Candidate Starts for Florinda_62:

(4, 38802), (Start: 29 @38976 has 111 MA's), (39, 39027), (41, 39039), (46, 39072), (61, 39138),

Gene: Frankie_53 Start: 37777, Stop: 37974, Start Num: 29

Candidate Starts for Frankie_53:

(Start: 20 @37750 has 2 MA's), (Start: 29 @37777 has 111 MA's), (61, 37939),

Gene: FreddyB_50 Start: 35643, Stop: 35840, Start Num: 29

Candidate Starts for FreddyB_50:

(Start: 29 @35643 has 111 MA's), (39, 35694), (41, 35706), (46, 35739), (61, 35805),

Gene: GAL1_42 Start: 33753, Stop: 33974, Start Num: 17

Candidate Starts for GAL1_42:

(Start: 17 @33753 has 2 MA's), (Start: 38 @33822 has 1 MA's), (39, 33828), (42, 33843), (47, 33873), (62, 33939), (66, 33963),

Gene: GUmbie_47 Start: 36062, Stop: 36259, Start Num: 29

Candidate Starts for GUmbie_47:

(Start: 29 @36062 has 111 MA's), (39, 36113), (41, 36125), (46, 36158), (61, 36224),

Gene: Gabriela_42 Start: 34956, Stop: 35171, Start Num: 18

Candidate Starts for Gabriela_42:

(Start: 18 @34956 has 44 MA's), (32, 34998), (34, 35004), (Start: 38 @35031 has 1 MA's), (40, 35043), (51, 35106), (57, 35118),

Gene: Gandalph_51 Start: 36305, Stop: 36502, Start Num: 29

Candidate Starts for Gandalph_51:

(Start: 29 @36305 has 111 MA's), (39, 36356), (41, 36368), (46, 36401), (61, 36467),

Gene: Gardann_42 Start: 34695, Stop: 34910, Start Num: 18

Candidate Starts for Gardann_42:

(Start: 18 @34695 has 44 MA's), (32, 34737), (34, 34743), (Start: 38 @34770 has 1 MA's), (40, 34782), (51, 34845), (57, 34857),

Gene: GigiOuiOui_47 Start: 35975, Stop: 36172, Start Num: 29

Candidate Starts for GigiOuiOui_47:

(Start: 29 @35975 has 111 MA's), (39, 36026), (41, 36038), (46, 36071), (61, 36137),

Gene: Girr_50 Start: 37034, Stop: 37231, Start Num: 29

Candidate Starts for Girr_50:

(Start: 29 @37034 has 111 MA's), (39, 37085), (41, 37097), (46, 37130), (61, 37196),

Gene: GuuelaD_42 Start: 34733, Stop: 34948, Start Num: 18

Candidate Starts for GuuelaD_42:

(Start: 18 @34733 has 44 MA's), (32, 34775), (34, 34781), (Start: 38 @34808 has 1 MA's), (40, 34820), (51, 34883), (57, 34895),

Gene: Hafay_42 Start: 34803, Stop: 34943, Start Num: 38

Candidate Starts for Hafay_42:

(Start: 18 @34728 has 44 MA's), (32, 34770), (34, 34776), (Start: 38 @34803 has 1 MA's), (40, 34815), (51, 34878), (57, 34890),

Gene: Hamulus_51 Start: 37417, Stop: 37614, Start Num: 29

Candidate Starts for Hamulus_51:

(Start: 29 @37417 has 111 MA's), (39, 37468), (41, 37480), (46, 37513), (61, 37579),

Gene: Harley_52 Start: 36770, Stop: 36967, Start Num: 29

Candidate Starts for Harley_52:

(Start: 29 @36770 has 111 MA's), (39, 36821), (41, 36833), (46, 36866), (61, 36932),

Gene: Hestia_46 Start: 29789, Stop: 29977, Start Num: 26

Candidate Starts for Hestia_46:

(Start: 26 @29789 has 1 MA's),

Gene: lbOuu_52 Start: 37352, Stop: 37549, Start Num: 29

Candidate Starts for IbOuu_52:

(Start: 29 @37352 has 111 MA's), (39, 37403), (41, 37415), (46, 37448), (61, 37514),

Gene: lbhubesi_49 Start: 35857, Stop: 36054, Start Num: 29

Candidate Starts for lbhubesi_49:

(Start: 29 @35857 has 111 MA's), (39, 35908), (41, 35920), (46, 35953), (61, 36019),

Gene: Itos_41 Start: 33600, Stop: 33815, Start Num: 18

Candidate Starts for Itos_41:

(Start: 18 @33600 has 44 MA's), (32, 33642), (34, 33648), (Start: 38 @33675 has 1 MA's), (40, 33687), (51, 33750), (57, 33762),

Gene: Jabbawokkie_63 Start: 37588, Stop: 37785, Start Num: 29

Candidate Starts for Jabbawokkie_63:

(Start: 29 @37588 has 111 MA's), (Start: 38 @37633 has 1 MA's), (39, 37639), (42, 37654), (43, 37657), (46, 37684), (53, 37711), (61, 37744),

Gene: Jace_29 Start: 24871, Stop: 25110, Start Num: 27

Candidate Starts for Jace_29:

(1, 24649), (2, 24655), (3, 24694), (6, 24736), (12, 24778), (Start: 27 @24871 has 1 MA's), (36, 24901), (40, 24931), (44, 24949), (65, 25060),

Gene: JalFarm20_59 Start: 39334, Stop: 39531, Start Num: 29

Candidate Starts for JalFarm20_59:

(Start: 29 @39334 has 111 MA's), (39, 39385), (41, 39397), (46, 39430), (61, 39496),

Gene: Jacob_50 Start: 36763, Stop: 36960, Start Num: 29

Candidate Starts for Jacob_50:

(Start: 29 @36763 has 111 MA's), (39, 36814), (41, 36826), (46, 36859), (61, 36925),

Gene: Jinglebell_55 Start: 38662, Stop: 38859, Start Num: 29

Candidate Starts for Jinglebell_55:

(Start: 29 @38662 has 111 MA's), (39, 38713), (41, 38725), (46, 38758), (61, 38824),

Gene: Job42_50 Start: 38024, Stop: 38221, Start Num: 29

Candidate Starts for Job42_50:

(Start: 29 @38024 has 111 MA's), (39, 38075), (41, 38087), (46, 38120), (61, 38186),

Gene: Jobypre_40 Start: 34951, Stop: 35166, Start Num: 18

Candidate Starts for Jobypre_40:

(Start: 18 @34951 has 44 MA's), (33, 34996), (34, 34999), (47, 35077),

Gene: JoeyJr_46 Start: 35270, Stop: 35467, Start Num: 29

Candidate Starts for JoeyJr_46:

(Start: 29 @35270 has 111 MA's), (39, 35321), (41, 35333), (46, 35366), (61, 35432),

Gene: JonJames_112 Start: 65173, Stop: 65376, Start Num: 24

Candidate Starts for JonJames_112:

(Start: 24 @65173 has 2 MA's), (47, 65275), (51, 65299), (57, 65314), (64, 65353),

Gene: Jubie_40 Start: 34952, Stop: 35167, Start Num: 18

Candidate Starts for Jubie_40:

(Start: 18 @34952 has 44 MA's), (33, 34997), (34, 35000), (47, 35078),

Gene: Kahlid_42 Start: 34700, Stop: 34915, Start Num: 18

Candidate Starts for Kahlid_42:

(Start: 18 @34700 has 44 MA's), (32, 34742), (34, 34748), (Start: 38 @34775 has 1 MA's), (40, 34787), (51, 34850), (57, 34862),

Gene: Karhdo_49 Start: 36857, Stop: 37054, Start Num: 29

Candidate Starts for Karhdo_49:

(Start: 29 @36857 has 111 MA's), (39, 36908), (41, 36920), (46, 36953), (61, 37019),

Gene: Kersh_53 Start: 38807, Stop: 39004, Start Num: 29

Candidate Starts for Kersh_53:

(Start: 29 @38807 has 111 MA's), (39, 38858), (41, 38870), (46, 38903), (61, 38969),

Gene: Kimberlium_53 Start: 38669, Stop: 38866, Start Num: 29

Candidate Starts for Kimberlium_53:

(Start: 29 @38669 has 111 MA's), (39, 38720), (41, 38732), (46, 38765), (61, 38831),

Gene: KingMidas_50 Start: 36932, Stop: 37129, Start Num: 29

Candidate Starts for KingMidas_50:

(Start: 29 @36932 has 111 MA's), (39, 36983), (41, 36995), (46, 37028), (61, 37094),

Gene: Kingsolomon_40 Start: 34951, Stop: 35166, Start Num: 18

Candidate Starts for Kingsolomon_40:

(Start: 18 @34951 has 44 MA's), (33, 34996), (34, 34999), (47, 35077),

Gene: Koella_44 Start: 32693, Stop: 32890, Start Num: 29

Candidate Starts for Koella_44:

(Start: 29 @32693 has 111 MA's), (39, 32744), (41, 32756), (46, 32789), (61, 32855),

Gene: Krakatau_48 Start: 36504, Stop: 36701, Start Num: 29

Candidate Starts for Krakatau_48:

(Start: 29 @36504 has 111 MA's), (39, 36555), (41, 36567), (46, 36600), (61, 36666),

Gene: Krypton555_40 Start: 34868, Stop: 35083, Start Num: 18

Candidate Starts for Krypton555_40:

(Start: 18 @34868 has 44 MA's), (33, 34913), (34, 34916), (47, 34994),

Gene: Kumotta_34 Start: 26417, Stop: 26599, Start Num: 28

Candidate Starts for Kumotta_34:

(Start: 28 @26417 has 2 MA's),

Gene: Kuwabara_59 Start: 40035, Stop: 40244, Start Num: 22

Candidate Starts for Kuwabara_59:

(8, 39924), (9, 39945), (Start: 22 @40035 has 4 MA's), (32, 40065), (Start: 38 @40098 has 1 MA's), (39, 40104), (45, 40146), (50, 40161), (52, 40176), (54, 40179), (55, 40182), (58, 40194), (66, 40233),

Gene: Latretium_53 Start: 37646, Stop: 37843, Start Num: 29

Candidate Starts for Latretium_53:

(Start: 29 @37646 has 111 MA's), (39, 37697), (46, 37742), (61, 37808),

Gene: Leozinho_51 Start: 36607, Stop: 36804, Start Num: 29

Candidate Starts for Leozinho_51:

(Start: 29 @36607 has 111 MA's), (39, 36658), (41, 36670), (46, 36703), (61, 36769),

Gene: Leperchaun_43 Start: 34500, Stop: 34697, Start Num: 29

Candidate Starts for Leperchaun_43:

(Start: 29 @34500 has 111 MA's), (39, 34551), (41, 34563), (46, 34596), (61, 34662),

Gene: Lewan_42 Start: 34687, Stop: 34902, Start Num: 18

Candidate Starts for Lewan_42:

(Start: 18 @34687 has 44 MA's), (32, 34729), (34, 34735), (Start: 38 @34762 has 1 MA's), (40, 34774), (51, 34837), (57, 34849),

Gene: LilDestine_42 Start: 34692, Stop: 34907, Start Num: 18

Candidate Starts for LilDestine_42:

(Start: 18 @34692 has 44 MA's), (32, 34734), (34, 34740), (Start: 38 @34767 has 1 MA's), (40, 34779), (51, 34842), (57, 34854),

Gene: LilMoolah_49 Start: 36424, Stop: 36621, Start Num: 29

Candidate Starts for LilMoolah_49:

(Start: 29 @36424 has 111 MA's), (39, 36475), (41, 36487), (46, 36520), (61, 36586),

Gene: LittleShirley_51 Start: 37455, Stop: 37652, Start Num: 29

Candidate Starts for LittleShirley_51:

(Start: 29 @37455 has 111 MA's), (39, 37506), (41, 37518), (46, 37551), (61, 37617),

Gene: Lizziana_56 Start: 37766, Stop: 37963, Start Num: 29

Candidate Starts for Lizziana_56:

(Start: 29 @37766 has 111 MA's), (39, 37817), (41, 37829), (46, 37862), (61, 37928),

Gene: Llama_55 Start: 38660, Stop: 38857, Start Num: 29

Candidate Starts for Llama_55:

(Start: 29 @38660 has 111 MA's), (39, 38711), (41, 38723), (46, 38756), (61, 38822),

Gene: Llij_47 Start: 35993, Stop: 36190, Start Num: 29

Candidate Starts for Llij_47:

(Start: 29 @35993 has 111 MA's), (39, 36044), (41, 36056), (46, 36089), (61, 36155),

Gene: Loadrie_42 Start: 34726, Stop: 34941, Start Num: 18

Candidate Starts for Loadrie_42:

(Start: 18 @34726 has 44 MA's), (32, 34768), (34, 34774), (Start: 38 @34801 has 1 MA's), (40, 34813), (51, 34876), (57, 34888),

Gene: Lolly9_40 Start: 34759, Stop: 34977, Start Num: 18

Candidate Starts for Lolly9_40:

(Start: 18 @34759 has 44 MA's), (33, 34807), (34, 34810), (47, 34888),

Gene: Lozinak_98 Start: 60011, Stop: 60211, Start Num: 23

Candidate Starts for Lozinak_98:

(Start: 23 @60011 has 14 MA's), (Start: 38 @60068 has 1 MA's), (39, 60074), (56, 60152), (60, 60167),

Gene: Lumos_40 Start: 34948, Stop: 35163, Start Num: 18

Candidate Starts for Lumos_40:

(Start: 18 @34948 has 44 MA's), (33, 34993), (34, 34996), (47, 35074),

Gene: MacnCheese_49 Start: 37043, Stop: 37276, Start Num: 19

Candidate Starts for MacnCheese_49:

(Start: 19 @37043 has 1 MA's), (47, 37163), (51, 37187),

Gene: MadMen_44 Start: 35477, Stop: 35674, Start Num: 29

Candidate Starts for MadMen_44:

(Start: 29 @35477 has 111 MA's), (39, 35528), (41, 35540), (46, 35573), (61, 35639),

Gene: Madiba_46 Start: 34766, Stop: 34963, Start Num: 29

Candidate Starts for Madiba_46:

(Start: 29 @34766 has 111 MA's), (39, 34817), (41, 34829), (46, 34862), (61, 34928),

Gene: Mahavrat_48 Start: 35954, Stop: 36151, Start Num: 29

Candidate Starts for Mahavrat_48:

(Start: 29 @35954 has 111 MA's), (39, 36005), (41, 36017), (46, 36050), (61, 36116),

Gene: Malisha_63 Start: 40533, Stop: 40739, Start Num: 22

Candidate Starts for Malisha_63:

(8, 40434), (9, 40455), (Start: 22 @40533 has 4 MA's), (39, 40593), (42, 40608), (54, 40668), (59, 40686), (66, 40728),

Gene: Mantra_47 Start: 35945, Stop: 36142, Start Num: 29

Candidate Starts for Mantra_47:

(Start: 29 @35945 has 111 MA's), (39, 35996), (41, 36008), (46, 36041), (61, 36107),

Gene: Maravista_52 Start: 38428, Stop: 38625, Start Num: 29

Candidate Starts for Maravista_52:

(Start: 29 @38428 has 111 MA's), (39, 38479), (41, 38491), (46, 38524), (61, 38590),

Gene: MargaretKali_34 Start: 26052, Stop: 26234, Start Num: 28

Candidate Starts for MargaretKali_34:

(Start: 28 @26052 has 2 MA's),

Gene: Martik_50 Start: 36719, Stop: 36916, Start Num: 29

Candidate Starts for Martik_50:

(Start: 29 @36719 has 111 MA's), (39, 36770), (41, 36782), (46, 36815), (61, 36881),

Gene: Miley16_42 Start: 34694, Stop: 34909, Start Num: 18

Candidate Starts for Miley16_42:

(Start: 18 @34694 has 44 MA's), (32, 34736), (34, 34742), (Start: 38 @34769 has 1 MA's), (40, 34781), (51, 34844), (57, 34856),

Gene: MiniLon_40 Start: 34760, Stop: 34978, Start Num: 18

Candidate Starts for MiniLon_40:

(Start: 18 @34760 has 44 MA's), (33, 34808), (34, 34811), (47, 34889),

Gene: MiniMac_40 Start: 34757, Stop: 34975, Start Num: 18

Candidate Starts for MiniMac_40:

(Start: 18 @34757 has 44 MA's), (33, 34805), (34, 34808), (47, 34886),

Gene: Misha28_46 Start: 34969, Stop: 35193, Start Num: 20

Candidate Starts for Misha28_46:

(14, 34912), (Start: 20 @34969 has 2 MA's), (Start: 29 @34996 has 111 MA's), (61, 35158),

Gene: Miskis_96 Start: 58711, Stop: 58911, Start Num: 23

Candidate Starts for Miskis_96:

(Start: 23 @58711 has 14 MA's), (Start: 38 @58768 has 1 MA's), (39, 58774), (56, 58852), (60, 58867),

Gene: MisterCuddles_50 Start: 37034, Stop: 37231, Start Num: 29

Candidate Starts for MisterCuddles_50:

(Start: 29 @37034 has 111 MA's), (39, 37085), (41, 37097), (46, 37130), (61, 37196),

Gene: MkaliMitinis3_42 Start: 34696, Stop: 34911, Start Num: 18

Candidate Starts for MkaliMitinis3_42:

(Start: 18 @34696 has 44 MA's), (32, 34738), (34, 34744), (Start: 38 @34771 has 1 MA's), (40, 34783), (51, 34846), (57, 34858),

Gene: Modragons_54 Start: 38506, Stop: 38703, Start Num: 29

Candidate Starts for Modragons_54:

(Start: 29 @38506 has 111 MA's), (39, 38557), (41, 38569), (46, 38602), (61, 38668),

Gene: Mollymur_93 Start: 63027, Stop: 62845, Start Num: 30

Candidate Starts for Mollymur_93:

(Start: 30 @63027 has 2 MA's),

Gene: Moostard_40 Start: 34953, Stop: 35168, Start Num: 18

Candidate Starts for Moostard_40:

(Start: 18 @34953 has 44 MA's), (33, 34998), (34, 35001), (47, 35079),

Gene: MortyNRick_55 Start: 39746, Stop: 39955, Start Num: 22

Candidate Starts for MortyNRick_55:

(Start: 22 @39746 has 4 MA's), (39, 39806), (42, 39821), (54, 39881), (59, 39899),

Gene: MsGreen_40 Start: 34951, Stop: 35166, Start Num: 18

Candidate Starts for MsGreen_40:

(Start: 18 @34951 has 44 MA's), (33, 34996), (34, 34999), (47, 35077),

Gene: MulchSalad_47 Start: 33570, Stop: 33767, Start Num: 29

Candidate Starts for MulchSalad_47:

(10, 33471), (11, 33474), (Start: 20 @33543 has 2 MA's), (Start: 29 @33570 has 111 MA's), (61, 33732),

Gene: Netyap_42 Start: 34694, Stop: 34909, Start Num: 18

Candidate Starts for Netyap_42:

(Start: 18 @34694 has 44 MA's), (32, 34736), (34, 34742), (Start: 38 @34769 has 1 MA's), (40, 34781), (51, 34844), (57, 34856),

Gene: Nicholas_40 Start: 34951, Stop: 35166, Start Num: 18

Candidate Starts for Nicholas_40:

(Start: 18 @34951 has 44 MA's), (33, 34996), (34, 34999), (47, 35077),

Gene: Nicholasp3_42 Start: 34695, Stop: 34910, Start Num: 18

Candidate Starts for Nicholasp3_42:

(Start: 18 @34695 has 44 MA's), (32, 34737), (34, 34743), (Start: 38 @34770 has 1 MA's), (40, 34782), (51, 34845), (57, 34857),

Gene: Nimbo_45 Start: 35073, Stop: 35270, Start Num: 29

Candidate Starts for Nimbo_45:

(Start: 29 @35073 has 111 MA's), (39, 35124), (41, 35136), (46, 35169), (61, 35235),

Gene: Nitzel_45 Start: 35193, Stop: 35390, Start Num: 29

Candidate Starts for Nitzel_45:

(Start: 29 @35193 has 111 MA's), (39, 35244), (41, 35256), (46, 35289), (61, 35355),

Gene: Nivrat_47 Start: 36297, Stop: 36494, Start Num: 29

Candidate Starts for Nivrat_47:

(Start: 29 @36297 has 111 MA's), (39, 36348), (41, 36360), (46, 36393), (61, 36459),

Gene: NormanBulbieJr_50 Start: 36706, Stop: 36903, Start Num: 29

Candidate Starts for NormanBulbieJr_50:

(Start: 29 @36706 has 111 MA's), (39, 36757), (41, 36769), (46, 36802), (61, 36868),

Gene: Norvs_100 Start: 60040, Stop: 60240, Start Num: 23

Candidate Starts for Norvs_100:

(Start: 23 @60040 has 14 MA's), (Start: 38 @60097 has 1 MA's), (39, 60103), (56, 60181), (60, 60196),

Gene: Ochi17_53 Start: 38113, Stop: 38310, Start Num: 29

Candidate Starts for Ochi17_53:

(Start: 29 @38113 has 111 MA's), (39, 38164), (41, 38176), (46, 38209), (61, 38275),

Gene: OfUltron_55 Start: 38662, Stop: 38859, Start Num: 29

Candidate Starts for OfUltron_55:

(Start: 29 @38662 has 111 MA's), (39, 38713), (41, 38725), (46, 38758), (61, 38824),

Gene: Oksu_54 Start: 38558, Stop: 38755, Start Num: 29

Candidate Starts for Oksu_54:

(Start: 29 @38558 has 111 MA's), (39, 38609), (41, 38621), (46, 38654), (61, 38720),

Gene: OlympiaSaint_50 Start: 36632, Stop: 36829, Start Num: 29

Candidate Starts for OlympiaSaint_50:

(Start: 29 @36632 has 111 MA's), (39, 36683), (41, 36695), (46, 36728), (61, 36794),

Gene: OneUp_86 Start: 56418, Stop: 56615, Start Num: 23

Candidate Starts for OneUp_86:

(7, 56301), (15, 56376), (16, 56394), (Start: 23 @56418 has 14 MA's), (60, 56574),

Gene: OwlsT2W_49 Start: 36635, Stop: 36832, Start Num: 29

Candidate Starts for OwlsT2W_49:

(Start: 29 @36635 has 111 MA's), (39, 36686), (41, 36698), (46, 36731), (61, 36797),

Gene: PHappiness_46 Start: 35046, Stop: 35243, Start Num: 29

Candidate Starts for PHappiness_46:

(Start: 29 @35046 has 111 MA's), (39, 35097), (41, 35109), (46, 35142), (61, 35208),

Gene: PMC_44 Start: 35844, Stop: 36041, Start Num: 29

Candidate Starts for PMC_44:

(Start: 29 @35844 has 111 MA's), (39, 35895), (41, 35907), (46, 35940), (61, 36006),

Gene: Pacc40_45 Start: 35120, Stop: 35317, Start Num: 29

Candidate Starts for Pacc40_45:

(Start: 29 @35120 has 111 MA's), (39, 35171), (41, 35183), (46, 35216), (61, 35282),

Gene: Phatniss_49 Start: 37088, Stop: 37285, Start Num: 29

Candidate Starts for Phatniss_49:

(Start: 29 @37088 has 111 MA's), (39, 37139), (41, 37151), (46, 37184), (61, 37250),

Gene: PhinkBoden_97 Start: 59801, Stop: 60001, Start Num: 23

Candidate Starts for PhinkBoden_97:

(Start: 23 @59801 has 14 MA's), (Start: 38 @59858 has 1 MA's), (39, 59864), (56, 59942), (60, 59957),

Gene: Piper2020_48 Start: 35712, Stop: 35909, Start Num: 29

Candidate Starts for Piper2020_48:

(14, 35628), (Start: 20 @35685 has 2 MA's), (Start: 29 @35712 has 111 MA's), (61, 35874),

Gene: Plumbus_52 Start: 36835, Stop: 37032, Start Num: 29

Candidate Starts for Plumbus_52:

(Start: 29 @36835 has 111 MA's), (39, 36886), (41, 36898), (46, 36931), (61, 36997),

Gene: Poenanya_49 Start: 37373, Stop: 37570, Start Num: 29

Candidate Starts for Poenanya_49:

(Start: 29 @37373 has 111 MA's), (39, 37424), (41, 37436), (46, 37469), (61, 37535),

Gene: Polka14_47 Start: 35723, Stop: 35920, Start Num: 29

Candidate Starts for Polka14_47:

(Start: 29 @35723 has 111 MA's), (39, 35774), (41, 35786), (46, 35819), (61, 35885),

Gene: Pollywog_48 Start: 36551, Stop: 36748, Start Num: 29

Candidate Starts for Pollywog_48:

(Start: 29 @36551 has 111 MA's), (41, 36614), (46, 36647), (61, 36713),

Gene: PopTart_45 Start: 35859, Stop: 36056, Start Num: 29

Candidate Starts for PopTart_45:

(Start: 29 @35859 has 111 MA's), (39, 35910), (41, 35922), (46, 35955), (61, 36021),

Gene: Priscilla_50 Start: 36805, Stop: 37002, Start Num: 29

Candidate Starts for Priscilla_50:

(Start: 29 @36805 has 111 MA's), (39, 36856), (41, 36868), (46, 36901), (61, 36967),

Gene: QuickMath_52 Start: 38892, Stop: 39089, Start Num: 29

Candidate Starts for QuickMath_52:

(Start: 29 @38892 has 111 MA's), (39, 38943), (41, 38955), (46, 38988), (61, 39054),

Gene: Quico_59 Start: 38796, Stop: 38993, Start Num: 29

Candidate Starts for Quico_59:

(4, 38622), (Start: 29 @38796 has 111 MA's), (39, 38847), (41, 38859), (46, 38892), (61, 38958),

Gene: Radiance_50 Start: 36960, Stop: 37157, Start Num: 29

Candidate Starts for Radiance_50:

(Start: 29 @36960 has 111 MA's), (39, 37011), (41, 37023), (46, 37056), (61, 37122),

Gene: Ramsey_51 Start: 37587, Stop: 37784, Start Num: 29

Candidate Starts for Ramsey_51:

(Start: 29 @37587 has 111 MA's), (39, 37638), (41, 37650), (46, 37683), (61, 37749),

Gene: RedBird_47 Start: 36184, Stop: 36381, Start Num: 29

Candidate Starts for RedBird_47:

(Start: 29 @36184 has 111 MA's), (39, 36235), (41, 36247), (46, 36280), (61, 36346),

Gene: RitaG_46 Start: 35391, Stop: 35588, Start Num: 29

Candidate Starts for RitaG_46:

(Start: 29 @35391 has 111 MA's), (39, 35442), (41, 35454), (46, 35487), (61, 35553),

Gene: Rockne_48 Start: 35844, Stop: 36041, Start Num: 29

Candidate Starts for Rockne_48:

(Start: 29 @35844 has 111 MA's), (39, 35895), (41, 35907), (46, 35940), (61, 36006),

Gene: RockyHorror_50 Start: 36248, Stop: 36445, Start Num: 29

Candidate Starts for RockyHorror_50:

(Start: 29 @36248 has 111 MA's), (41, 36311), (46, 36344), (61, 36410),

Gene: Royals2015_52 Start: 36653, Stop: 36850, Start Num: 29

Candidate Starts for Royals2015_52:

(Start: 29 @36653 has 111 MA's), (39, 36704), (41, 36716), (46, 36749), (61, 36815),

Gene: Ruby_48 Start: 37035, Stop: 37232, Start Num: 29

Candidate Starts for Ruby_48:

(Start: 29 @37035 has 111 MA's), (39, 37086), (41, 37098), (46, 37131), (61, 37197),

Gene: Rumpelstiltskin_42 Start: 34961, Stop: 35173, Start Num: 18

Candidate Starts for Rumpelstiltskin_42:

(Start: 18 @34961 has 44 MA's), (32, 35003), (34, 35009), (Start: 38 @35036 has 1 MA's), (40, 35048), (51, 35111), (57, 35123),

Gene: Sabbb_56 Start: 38083, Stop: 38280, Start Num: 29

Candidate Starts for Sabbb_56:

(Start: 29 @38083 has 111 MA's), (39, 38134), (41, 38146), (46, 38179), (61, 38245),

Gene: Samty_40 Start: 34952, Stop: 35167, Start Num: 18

Candidate Starts for Samty_40:

(Start: 18 @34952 has 44 MA's), (33, 34997), (34, 35000), (47, 35078),

Gene: SassyB_45 Start: 35859, Stop: 36056, Start Num: 29

Candidate Starts for SassyB_45:

(Start: 29 @35859 has 111 MA's), (39, 35910), (41, 35922), (46, 35955), (61, 36021),

Gene: Scottish_49 Start: 36403, Stop: 36600, Start Num: 29

Candidate Starts for Scottish_49:

(Start: 29 @36403 has 111 MA's), (39, 36454), (41, 36466), (46, 36499), (61, 36565),

Gene: Seabastian_55 Start: 38663, Stop: 38860, Start Num: 29

Candidate Starts for Seabastian_55:

(Start: 29 @38663 has 111 MA's), (39, 38714), (41, 38726), (46, 38759), (61, 38825),

Gene: Seagreen_51 Start: 36587, Stop: 36784, Start Num: 29

Candidate Starts for Seagreen_51:

(Start: 29 @36587 has 111 MA's), (39, 36638), (41, 36650), (46, 36683), (61, 36749),

Gene: ShiLan_49 Start: 36752, Stop: 36949, Start Num: 29

Candidate Starts for ShiLan_49:

(Start: 29 @36752 has 111 MA's), (39, 36803), (41, 36815), (46, 36848), (61, 36914),

Gene: ShowerHandel_51 Start: 36719, Stop: 36916, Start Num: 29

Candidate Starts for ShowerHandel_51:

(Start: 29 @36719 has 111 MA's), (39, 36770), (41, 36782), (46, 36815), (61, 36881),

Gene: SiSi_49 Start: 36409, Stop: 36606, Start Num: 29

Candidate Starts for SiSi_49:

(Start: 29 @36409 has 111 MA's), (39, 36460), (41, 36472), (46, 36505), (61, 36571),

Gene: Smoothie_99 Start: 60011, Stop: 60211, Start Num: 23

Candidate Starts for Smoothie_99:

(Start: 23 @60011 has 14 MA's), (Start: 38 @60068 has 1 MA's), (39, 60074), (56, 60152), (60, 60167),

Gene: Snenia_40 Start: 34952, Stop: 35167, Start Num: 18

Candidate Starts for Snenia_40:

(Start: 18 @34952 has 44 MA's), (33, 34997), (34, 35000), (47, 35078),

Gene: Sparkdehlily_54 Start: 37405, Stop: 37602, Start Num: 29

Candidate Starts for Sparkdehlily_54:

(Start: 29 @37405 has 111 MA's), (39, 37456), (41, 37468), (46, 37501), (61, 37567),

Gene: SpeedDemon_940 Start: 64127, Stop: 63927, Start Num: 25

Candidate Starts for SpeedDemon_940:

(Start: 25 @64127 has 3 MA's), (31, 64112), (39, 64067), (49, 64016),

Gene: Spikelee_56 Start: 38143, Stop: 38340, Start Num: 29

Candidate Starts for Spikelee_56:

(Start: 29 @38143 has 111 MA's), (39, 38194), (41, 38206), (46, 38239), (61, 38305),

Gene: Spooky_52 Start: 37230, Stop: 37451, Start Num: 17

Candidate Starts for Spooky_52:

(5, 37110), (13, 37188), (Start: 17 @37230 has 2 MA's), (Start: 38 @37299 has 1 MA's), (39, 37305), (42, 37320), (47, 37350), (58, 37395), (59, 37398), (62, 37416), (66, 37440),

Gene: Spoonbill_48 Start: 35345, Stop: 35542, Start Num: 29

Candidate Starts for Spoonbill_48:

(Start: 29 @35345 has 111 MA's), (39, 35396), (41, 35408), (46, 35441), (61, 35507),

Gene: Squiddly_59 Start: 40046, Stop: 40252, Start Num: 22

Candidate Starts for Squiddly_59:

(8, 39947), (9, 39968), (Start: 22 @40046 has 4 MA's), (39, 40106), (42, 40121), (54, 40181), (59, 40199), (66, 40241),

Gene: Stap_49 Start: 36146, Stop: 36343, Start Num: 29

Candidate Starts for Stap_49:

(Start: 29 @36146 has 111 MA's), (39, 36197), (41, 36209), (46, 36242), (61, 36308),

Gene: Starcevich_50 Start: 37039, Stop: 37236, Start Num: 29

Candidate Starts for Starcevich_50:

(Start: 29 @37039 has 111 MA's), (39, 37090), (41, 37102), (46, 37135), (61, 37201),

Gene: TDanisky_54 Start: 37405, Stop: 37602, Start Num: 29

Candidate Starts for TDanisky_54:

(Start: 29 @37405 has 111 MA's), (39, 37456), (41, 37468), (46, 37501), (61, 37567),

Gene: Toniann_100 Start: 59980, Stop: 60180, Start Num: 23

Candidate Starts for Toniann_100:

(Start: 23 @59980 has 14 MA's), (Start: 38 @60037 has 1 MA's), (39, 60043), (56, 60121), (60, 60136),

Gene: TootsiePop_46 Start: 34969, Stop: 35193, Start Num: 20

Candidate Starts for TootsiePop_46:

(14, 34912), (Start: 20 @34969 has 2 MA's), (Start: 29 @34996 has 111 MA's), (61, 35158),

Gene: Tootsieroll_53 Start: 36596, Stop: 36793, Start Num: 29

Candidate Starts for Tootsieroll_53:

(Start: 29 @36596 has 111 MA's), (39, 36647), (41, 36659), (46, 36692), (61, 36758),

Gene: Totinger_53 Start: 36181, Stop: 36378, Start Num: 29

Candidate Starts for Totinger_53:

(Start: 29 @36181 has 111 MA's), (39, 36232), (41, 36244), (46, 36277), (61, 36343),

Gene: Tourach_42 Start: 34709, Stop: 34924, Start Num: 18

Candidate Starts for Tourach_42:

(Start: 18 @34709 has 44 MA's), (32, 34751), (34, 34757), (37, 34781), (51, 34859), (57, 34871),

Gene: Tweety_49 Start: 36917, Stop: 37114, Start Num: 29

Candidate Starts for Tweety_49:

(Start: 29 @36917 has 111 MA's), (39, 36968), (41, 36980), (46, 37013), (61, 37079),

Gene: UncleRicky_50 Start: 37336, Stop: 37533, Start Num: 29

Candidate Starts for UncleRicky_50:

(Start: 29 @37336 has 111 MA's), (39, 37387), (41, 37399), (46, 37432), (61, 37498),

Gene: Veteran_47 Start: 36053, Stop: 36250, Start Num: 29

Candidate Starts for Veteran_47:

(Start: 29 @36053 has 111 MA's), (39, 36104), (41, 36116), (46, 36149), (61, 36215),

Gene: Vetrix_42 Start: 34701, Stop: 34916, Start Num: 18

Candidate Starts for Vetrix_42:

(Start: 18 @34701 has 44 MA's), (32, 34743), (34, 34749), (Start: 38 @34776 has 1 MA's), (40, 34788), (51, 34851), (57, 34863),

Gene: Whirlwind_41 Start: 34710, Stop: 34925, Start Num: 18

Candidate Starts for Whirlwind_41:

(Start: 18 @34710 has 44 MA's), (33, 34755), (34, 34758), (47, 34836),

Gene: Wigglewiggles_42 Start: 34727, Stop: 34942, Start Num: 18

Candidate Starts for Wigglewiggles_42:

(Start: 18 @34727 has 44 MA's), (32, 34769), (34, 34775), (Start: 38 @34802 has 1 MA's), (40, 34814), (51, 34877), (57, 34889),

Gene: Wilder_42 Start: 34700, Stop: 34915, Start Num: 18

Candidate Starts for Wilder_42:

(Start: 18 @34700 has 44 MA's), (32, 34742), (34, 34748), (Start: 38 @34775 has 1 MA's), (40, 34787), (51, 34850), (57, 34862),

Gene: WilliamBoone_100 Start: 58743, Stop: 58943, Start Num: 23

Candidate Starts for WilliamBoone_100:

(Start: 23 @58743 has 14 MA's), (48, 58854), (53, 58878),

Gene: Winky_42 Start: 34694, Stop: 34909, Start Num: 18

Candidate Starts for Winky_42:

(Start: 18 @34694 has 44 MA's), (32, 34736), (34, 34742), (Start: 38 @34769 has 1 MA's), (40, 34781), (51, 34844), (57, 34856),

Gene: Yorick_49 Start: 37093, Stop: 37290, Start Num: 29

Candidate Starts for Yorick_49:

(Start: 29 @37093 has 111 MA's), (39, 37144), (41, 37156), (46, 37189), (61, 37255),

Gene: Yvonnetastic_109 Start: 62358, Stop: 62561, Start Num: 24

Candidate Starts for Yvonnetastic_109:

(Start: 24 @62358 has 2 MA's), (47, 62460), (51, 62484), (57, 62499),

Gene: Zakai_42 Start: 34952, Stop: 35167, Start Num: 18

Candidate Starts for Zakai_42:

(Start: 18 @34952 has 44 MA's), (32, 34994), (34, 35000), (Start: 38 @35027 has 1 MA's), (40, 35039), (51, 35102), (57, 35114),

Gene: Zapner_62 Start: 37589, Stop: 37786, Start Num: 29

Candidate Starts for Zapner_62:

(Start: 29 @37589 has 111 MA's), (Start: 38 @37634 has 1 MA's), (39, 37640), (42, 37655), (43, 37658), (46, 37685), (53, 37712), (61, 37745),

Gene: Zerg_49 Start: 36357, Stop: 36554, Start Num: 29

Candidate Starts for Zerg_49:

(Start: 29 @36357 has 111 MA's), (41, 36420), (46, 36453), (61, 36519),

Gene: ZhongYanYuan_40 Start: 34630, Stop: 34770, Start Num: 38

Candidate Starts for ZhongYanYuan_40:

(Start: 18 @34555 has 44 MA's), (32, 34597), (34, 34603), (Start: 38 @34630 has 1 MA's), (57, 34717),