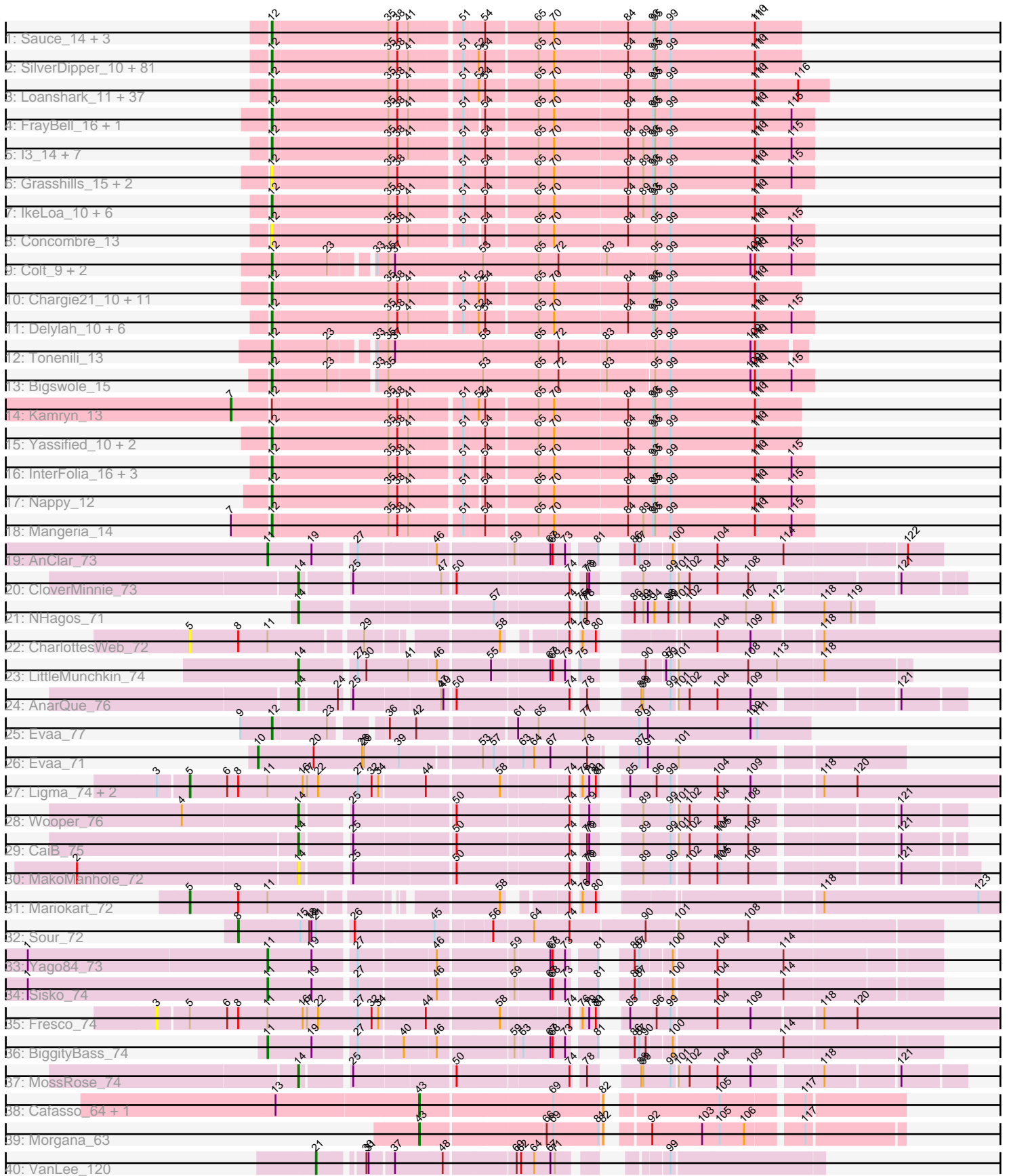


Pham 161594



Note: Tracks are now grouped by subcluster and scaled. Switching in subcluster is indicated by changes in track color. Track scale is now set by default to display the region 30 bp upstream of start 1 to 30 bp downstream of the last possible start. If this default region is judged to be packed too tightly with annotated starts, the track will be further scaled to only show that region of the ORF with annotated starts. This action will be indicated by adding "Zoomed" to the title. For starts, yellow indicates the location of called starts comprised solely of Glimmer/GeneMark auto-annotations, green indicates the location of called starts with at least 1 manual gene annotation.

Pham 161594 Report

This analysis was run 04/28/24 on database version 559.

Pham number 161594 has 204 members, 19 are drafts.

Phages represented in each track:

- Track 1 : Sauce_14, Cali_10, Ronan_10, Iota_10
- Track 2 : SilverDipper_10, CindyLou_10, Shnickers_10, Rizal_10, Alice_8, JPickles_10, Chomp_9, Halldule_10, Koguma_10, CharlieB_9, Pinkcreek_6, Ngannou_10, Babyland_10, FoxtrotP1_11, Atlantean_10, Momo_10, StubbySaigey_10, Roots515_11, Audrick_10, JulietS_10, BananaFence_10, Spec_9, Rahel_10, Catera_10, ShiaLabeouf_10, ArcherS7_10, LifeSavor_10, DTDevon_13, ValleyTerrace_10, Jedediah_10, EmmaElysia_10, Blackbrain_10, JustHall_10, Morizzled23_10, InigoMontoya_10, Amataga_10, Guwapp_10, Melpomini_10, LRRHood_10, Patter_10, Turret_10, Sprinklers_10, ET08_9, Willis_10, BadAgartude_10, Darko_10, Tortoise16_9, Matsumoto_9, Wally_10, Phlegm_10, Quasimodo_10, Trinitium_10, SmallFry_10, Shaqnato_10, Ghost_10, Janiyra_10, Jaygup_10, Latch_10, Derek_10, Cactojaque_9, Astraea_15, BackyardAgain_9, DirtMonster_14, Ading_10, Lukilu_10, Gamgam_10, Littleton_10, Pivoine_10, Pier_16, Gabriel_10, Bangla1971_10, Phox_10, Breeniome_10, Rabinovish_9, Jemmno_9, Phusco_10, Naija_10, Flabslab_10, Essence_10, BeanWater_9, Adlitam_10, Teardrop_10
- Track 3 : Loanshark_11, Delilah_11, Megamind_11, TinyTim_11, Khaleesi_11, Gizmo_11, ParkTD_11, Ewok_11, MikeLiesIn_11, YemiJoy2021_11, Asterius_11, Pleione_11, Bipolarisk_11, Bonray_11, Erdmann_11, DrPhinkDaddy_11, Jessibeth14_11, NedWong_11, Burrough_11, Zalkecks_11, FudgeTart_11, Bread_11, SrishMeg2525_11, ZygoTaiga_11, Norm_11, Ava3_11, Izajani_11, Yucca_10, Issimir_11, Daffodil_11, Maby2021_11, McWolfish_11, Zeenon_12, Capablanca_11, Salacia_11, Lee7_11, Shrimp_11, PurduePete_11
- Track 4 : FrayBell_16, LordLeafolot_16
- Track 5 : I3_14, Tyke_13, Bxz1_13, NuevoMundo_15, LolaVinca_13, Drazdys_13, Spud_14, Pio_14
- Track 6 : Grasshills_15, EggyFarm_15, BigCity_15
- Track 7 : IkeLoa_10, NoodleTree_13, StephanieG_15, Mikro_13, QBert_10, Fludd_10, RoMag_9
- Track 8 : Concombre_13
- Track 9 : Colt_9, Cane17_9, Blubba_9
- Track 10 : Chargie21_10, Napoleon13_10, Kboogie_10, ChaylaJr_10, HyRo_7, ChickenPhender_10, McGee_10, Shifa_7, Dietrick_9, Basquiat_10, YoungMoneyMata_10, EasyJones_10
- Track 11 : Delylah_10, Caravan_10, ScottMcG_10, EmToTheThree_11, Shelob_11, Stubby_8, ErnieJ_10
- Track 12 : Tonenili_13

- Track 13 : Bigswole_15
- Track 14 : Kamryn_13
- Track 15 : Yassified_10, Grungle_10, Dandelion_16
- Track 16 : InterFolia_16, Naval22_13, MoMoMixon_13, Nidhogg_13
- Track 17 : Nappy_12
- Track 18 : Mangeria_14
- Track 19 : AnClar_73
- Track 20 : CloverMinnie_73
- Track 21 : NHagos_71
- Track 22 : CharlottesWeb_72
- Track 23 : LittleMunchkin_74
- Track 24 : AnarQue_76
- Track 25 : Evaa_77
- Track 26 : Evaa_71
- Track 27 : Ligma_74, Axumite_74, Shatter_74
- Track 28 : Wooper_76
- Track 29 : CaiB_75
- Track 30 : MakoManhole_72
- Track 31 : Mariokart_72
- Track 32 : Sour_72
- Track 33 : Yago84_73
- Track 34 : Sisko_74
- Track 35 : Fresco_74
- Track 36 : BiggityBass_74
- Track 37 : MossRose_74
- Track 38 : Cafasso_64, Aleemily_62
- Track 39 : Morgana_63
- Track 40 : VanLee_120

Summary of Final Annotations (See graph section above for start numbers):

The start number called the most often in the published annotations is 12, it was called in 164 of the 185 non-draft genes in the pham.

Genes that call this "Most Annotated" start:

• Ading_10, Adlitam_10, Alice_8, Amataga_10, ArcherS7_10, Asterius_11, Astraea_15, Atlantean_10, Audrick_10, Ava3_11, Babyland_10, BackyardAgain_9, BadAgartude_10, BananaFence_10, Bangla1971_10, Basquiat_10, BeanWater_9, BigCity_15, Bigswole_15, Bipolarisk_11, Blackbrain_10, Blubba_9, Bonray_11, Bread_11, Breeniome_10, Burrough_11, Bxz1_13, Cactojaque_9, Cali_10, Cane17_9, Capablanca_11, Caravan_10, Catera_10, Chargie21_10, CharlieB_9, ChaylaJr_10, ChickenPhender_10, Chomp_9, CindyLou_10, Colt_9, Concombre_13, DTDevon_13, Daffodil_11, Dandelion_16, Darko_10, Delilah_11, Delylah_10, Derek_10, Dietrick_9, DirtMonster_14, DrPhinkDaddy_11, Drazdys_13, ET08_9, EasyJones_10, EggyFarm_15, EmToTheThree_11, EmmaElysia_10, Erdmann_11, ErnieJ_10, Essence_10, Evaa_77, Ewok_11, Flabslab_10, Fludd_10, FoxtrotP1_11, FrayBell_16, FudgeTart_11, Gabriel_10, Gamgam_10, Ghost_10, Gizmo_11, Grasshills_15, Grungle_10, Guwapp_10, Halldule_10, HyRo_7, I3_14, IkeLoa_10, InigoMontoya_10, InterFolia_16, Iota_10, Issimir_11, Izajani_11, JPickles_10, Janiyra_10, Jaygup_10, Jediah_10, Jemmno_9, Jessibeth14_11, JulietS_10,

JustHall_10, Kboogie_10, Khaleesi_11, Koguma_10, LRRHood_10, Latch_10, Lee7_11, LifeSavor_10, Littleton_10, Loanshark_11, LolaVinca_13, LordLeafolot_16, Lukilu_10, Maby2021_11, Mangeria_14, Matsumoto_9, McGee_10, McWolfish_11, Megamind_11, Melpomini_10, MikeLiesIn_11, Mikro_13, MoMoMixon_13, Momo_10, Morizzled23_10, Naija_10, Napoleon13_10, Nappy_12, Naval22_13, NedWong_11, Ngannou_10, Nidhogg_13, NoodleTree_13, Norm_11, NuevoMundo_15, ParkTD_11, Patter_10, Phlegm_10, Phox_10, Phusco_10, Pier_16, Pinkcreek_6, Pio_14, Pivoine_10, Pleione_11, PurduePete_11, QBert_10, Quasimodo_10, Rabinovish_9, Rahel_10, Rizal_10, RoMag_9, Ronan_10, Roots515_11, Salacia_11, Sauce_14, ScottMcG_10, Shaqnato_10, Shelob_11, ShiaLabeouf_10, Shifa_7, Shnickers_10, Shrimp_11, SilverDipper_10, SmallFry_10, Spec_9, Sprinklers_10, Spud_14, SrishMeg2525_11, StephanieG_15, StubbySaigey_10, Stubby_8, Teardrop_10, TinyTim_11, Tonenili_13, Tortoise16_9, Trinitium_10, Turret_10, Tyke_13, ValleyTerrace_10, Wally_10, Willis_10, Yassified_10, YemiJoy2021_11, YoungMoneyMata_10, Yucca_10, Zalkecks_11, Zeenon_12, ZygoTaiga_11,

Genes that have the "Most Annotated" start but do not call it:

- Kamryn_13,

Genes that do not have the "Most Annotated" start:

- Aleemily_62, AnClar_73, AnarQue_76, Axumite_74, BiggityBass_74, Cafasso_64, CaiB_75, CharlottesWeb_72, CloverMinnie_73, Evaa_71, Fresco_74, Ligma_74, LittleMunchkin_74, MakoManhole_72, Mariokart_72, Morgana_63, MossRose_74, NHagos_71, Shatter_74, Sisko_74, Sour_72, VanLee_120, Wooper_76, Yago84_73,

Summary by start number:

Start 3:

- Found in 4 of 204 (2.0%) of genes in pham
- No Manual Annotations of this start.
- Called 25.0% of time when present
- Phage (with cluster) where this start called: Fresco_74 (DR),

Start 5:

- Found in 6 of 204 (2.9%) of genes in pham
- Manual Annotations of this start: 3 of 185
- Called 83.3% of time when present
- Phage (with cluster) where this start called: Axumite_74 (DR), CharlottesWeb_72 (DR), Ligma_74 (DR), Mariokart_72 (DR), Shatter_74 (DR),

Start 7:

- Found in 2 of 204 (1.0%) of genes in pham
- Manual Annotations of this start: 1 of 185
- Called 50.0% of time when present
- Phage (with cluster) where this start called: Kamryn_13 (C1),

Start 8:

- Found in 7 of 204 (3.4%) of genes in pham
- Manual Annotations of this start: 1 of 185
- Called 14.3% of time when present
- Phage (with cluster) where this start called: Sour_72 (DR),

Start 10:

- Found in 1 of 204 (0.5%) of genes in pham
- Manual Annotations of this start: 1 of 185
- Called 100.0% of time when present
- Phage (with cluster) where this start called: Evaa_71 (DR),

Start 11:

- Found in 10 of 204 (4.9%) of genes in pham
- Manual Annotations of this start: 4 of 185
- Called 40.0% of time when present
- Phage (with cluster) where this start called: AnClar_73 (DR), BiggityBass_74 (DR), Sisko_74 (DR), Yago84_73 (DR),

Start 12:

- Found in 180 of 204 (88.2%) of genes in pham
- Manual Annotations of this start: 164 of 185
- Called 99.4% of time when present
- Phage (with cluster) where this start called: Ading_10 (C1), Adlitam_10 (C1), Alice_8 (C1), Amataga_10 (C1), ArcherS7_10 (C1), Asterius_11 (C1), Astraea_15 (C1), Atlantean_10 (C1), Audrick_10 (C1), Ava3_11 (C1), Babyland_10 (C1), BackyardAgain_9 (C1), BadAgartude_10 (C1), BananaFence_10 (C1), Bangla1971_10 (C1), Basquiat_10 (C1), BeanWater_9 (C1), BigCity_15 (C1), Bigswole_15 (C1), Bipolarisk_11 (C1), Blackbrain_10 (C1), Blubba_9 (C1), Bonray_11 (C1), Bread_11 (C1), Breeniome_10 (C1), Burrough_11 (C1), Bxz1_13 (C1), Cactojaque_9 (C1), Cali_10 (C1), Cane17_9 (C1), Capablanca_11 (C1), Caravan_10 (C1), Catera_10 (C1), Chargie21_10 (C1), CharlieB_9 (C1), ChaylaJr_10 (C1), ChickenPhender_10 (C1), Chomp_9 (C1), CindyLou_10 (C1), Colt_9 (C1), Concombre_13 (C1), DTDevon_13 (C1), Daffodil_11 (C1), Dandelion_16 (C1), Darko_10 (C1), Delilah_11 (C1), Delylah_10 (C1), Derek_10 (C1), Dietrick_9 (C1), DirtMonster_14 (C1), DrPhinkDaddy_11 (C1), Drazdys_13 (C1), ET08_9 (C1), EasyJones_10 (C1), EggyFarm_15 (C1), EmToTheThree_11 (C1), EmmaElysia_10 (C1), Erdmann_11 (C1), ErnieJ_10 (C1), Essence_10 (C1), Evaa_77 (DR), Ewok_11 (C1), Flabslab_10 (C1), Fludd_10 (C1), FoxtrotP1_11 (C1), FrayBell_16 (C1), FudgeTart_11 (C1), Gabriel_10 (C1), Gangam_10 (C1), Ghost_10 (C1), Gizmo_11 (C1), Grasshills_15 (C1), Grungle_10 (C1), Guwapp_10 (C1), Halldule_10 (C1), HyRo_7 (C1), I3_14 (C1), IkeLoa_10 (C1), InigoMontoya_10 (C1), InterFolia_16 (C1), Iota_10 (C1), Issimir_11 (C1), Izajani_11 (C1), JPickles_10 (C1), Janiyra_10 (C1), Jaygup_10 (C1), Jediah_10 (C1), Jemmno_9 (C1), Jessibeth14_11 (C1), JulietS_10 (C1), JustHall_10 (C1), Kboogie_10 (C1), Khaleesi_11 (C1), Koguma_10 (C1), LRRHood_10 (C1), Latch_10 (C1), Lee7_11 (C1), LifeSavor_10 (C1), Littleton_10 (C1), Loanshark_11 (C1), LolaVince_13 (C1), LordLeafolot_16 (C1), Lukilu_10 (C1), Maby2021_11 (C1), Mangeria_14 (C1), Matsumoto_9 (C1), McGee_10 (C1), McWolfish_11 (C1), Megamind_11 (C1), Melpomini_10 (C1), MikeLiesIn_11 (C1), Mikro_13 (C1), MoMoMixon_13 (C1), Momo_10 (C1), Morizzled23_10 (C1), Naija_10 (C1), Napoleon13_10 (C1), Nappy_12 (C1), Naval22_13 (C1), NedWong_11 (C1), Ngannou_10 (C1), Nidhogg_13 (C1), NoodleTree_13 (C1), Norm_11 (C1), NuevoMundo_15 (C1), ParkTD_11 (C1), Patter_10 (C1), Phlegm_10 (C1), Phox_10 (C1), Phusco_10 (C1), Pier_16 (C1), Pinkcreek_6 (C1), Pio_14 (C1), Pivoine_10 (C1), Pleione_11 (C1), PurduePete_11 (C1), QBert_10 (C1), Quasimodo_10 (C1), Rabinovish_9 (C1), Rahel_10 (C1), Rizal_10 (C1), RoMag_9 (C1), Ronan_10 (C1), Roots515_11 (C1), Salacia_11 (C1), Sauce_14 (C1), ScottMcG_10 (C1), Shaqnato_10 (C1), Shelob_11 (C1), ShiaLabeouf_10 (C1), Shifa_7 (C1), Shnickers_10 (C1), Shrimp_11 (C1), SilverDipper_10 (C1), SmallFry_10 (C1), Spec_9 (C1), Sprinklers_10 (C1), Spud_14

(C1), SrishMeg2525_11 (C1), StephanieG_15 (C1), StubbySaigey_10 (C1), Stubby_8 (C1), Teardrop_10 (C1), TinyTim_11 (C1), Tonenili_13 (C1), Tortoise16_9 (C1), Trinitium_10 (C1), Turret_10 (C1), Tyke_13 (C1), ValleyTerrace_10 (C1), Wally_10 (C1), Willis_10 (C1), Yassified_10 (C1), YemiJoy2021_11 (C1), YoungMoneyMata_10 (C1), Yucca_10 (C1), Zalkecks_11 (C1), Zeenon_12 (C1), ZygoTaiga_11 (C1),

Start 14:

- Found in 8 of 204 (3.9%) of genes in pham
- Manual Annotations of this start: 7 of 185
- Called 100.0% of time when present
- Phage (with cluster) where this start called: AnarQue_76 (DR), CaiB_75 (DR), CloverMinnie_73 (DR), LittleMunchkin_74 (DR), MakoManhole_72 (DR), MossRose_74 (DR), NHagos_71 (DR), Wooper_76 (DR),

Start 21:

- Found in 2 of 204 (1.0%) of genes in pham
- Manual Annotations of this start: 1 of 185
- Called 50.0% of time when present
- Phage (with cluster) where this start called: VanLee_120 (singleton),

Start 43:

- Found in 3 of 204 (1.5%) of genes in pham
- Manual Annotations of this start: 3 of 185
- Called 100.0% of time when present
- Phage (with cluster) where this start called: Aleemily_62 (DZ), Cafasso_64 (DZ), Morgana_63 (DZ),

Summary by clusters:

There are 4 clusters represented in this pham: DZ, C1, DR, singleton,

Info for manual annotations of cluster C1:

- Start number 7 was manually annotated 1 time for cluster C1.
- Start number 12 was manually annotated 163 times for cluster C1.

Info for manual annotations of cluster DR:

- Start number 5 was manually annotated 3 times for cluster DR.
- Start number 8 was manually annotated 1 time for cluster DR.
- Start number 10 was manually annotated 1 time for cluster DR.
- Start number 11 was manually annotated 4 times for cluster DR.
- Start number 12 was manually annotated 1 time for cluster DR.
- Start number 14 was manually annotated 7 times for cluster DR.

Info for manual annotations of cluster DZ:

- Start number 43 was manually annotated 3 times for cluster DZ.

Gene Information:

Gene: Ading_10 Start: 2709, Stop: 3392, Start Num: 12

Candidate Starts for Ading_10:

(Start: 12 @2709 has 164 MA's), (35, 2865), (38, 2877), (41, 2892), (51, 2955), (52, 2973), (54, 2982), (65, 3048), (70, 3069), (84, 3165), (93, 3198), (95, 3201), (99, 3222), (110, 3333), (111, 3336),

Gene: Adlitam_10 Start: 2726, Stop: 3409, Start Num: 12

Candidate Starts for Adlitam_10:

(Start: 12 @2726 has 164 MA's), (35, 2882), (38, 2894), (41, 2909), (51, 2972), (52, 2990), (54, 2999), (65, 3065), (70, 3086), (84, 3182), (93, 3215), (95, 3218), (99, 3239), (110, 3350), (111, 3353),

Gene: Aleemily_62 Start: 42673, Stop: 43269, Start Num: 43

Candidate Starts for Aleemily_62:

(13, 42481), (Start: 43 @42673 has 3 MA's), (69, 42847), (82, 42910), (105, 43039), (117, 43141),

Gene: Alice_8 Start: 3144, Stop: 3827, Start Num: 12

Candidate Starts for Alice_8:

(Start: 12 @3144 has 164 MA's), (35, 3300), (38, 3312), (41, 3327), (51, 3390), (52, 3408), (54, 3417), (65, 3483), (70, 3504), (84, 3600), (93, 3633), (95, 3636), (99, 3657), (110, 3768), (111, 3771),

Gene: Amataga_10 Start: 2730, Stop: 3413, Start Num: 12

Candidate Starts for Amataga_10:

(Start: 12 @2730 has 164 MA's), (35, 2886), (38, 2898), (41, 2913), (51, 2976), (52, 2994), (54, 3003), (65, 3069), (70, 3090), (84, 3186), (93, 3219), (95, 3222), (99, 3243), (110, 3354), (111, 3357),

Gene: AnClar_73 Start: 58343, Stop: 57537, Start Num: 11

Candidate Starts for AnClar_73:

(Start: 11 @58343 has 4 MA's), (19, 58283), (27, 58232), (46, 58133), (59, 58040), (67, 57995), (68, 57992), (73, 57977), (81, 57944), (86, 57923), (87, 57917), (100, 57878), (104, 57824), (114, 57734), (122, 57584),

Gene: AnarQue_76 Start: 57434, Stop: 56649, Start Num: 14

Candidate Starts for AnarQue_76:

(Start: 14 @57434 has 7 MA's), (24, 57386), (25, 57377), (47, 57263), (49, 57260), (50, 57248), (74, 57104), (78, 57092), (88, 57050), (89, 57047), (99, 57011), (101, 57005), (102, 56990), (104, 56954), (109, 56909), (121, 56732),

Gene: ArcherS7_10 Start: 2726, Stop: 3409, Start Num: 12

Candidate Starts for ArcherS7_10:

(Start: 12 @2726 has 164 MA's), (35, 2882), (38, 2894), (41, 2909), (51, 2972), (52, 2990), (54, 2999), (65, 3065), (70, 3086), (84, 3182), (93, 3215), (95, 3218), (99, 3239), (110, 3350), (111, 3353),

Gene: Asterius_11 Start: 3809, Stop: 4531, Start Num: 12

Candidate Starts for Asterius_11:

(Start: 12 @3809 has 164 MA's), (35, 3965), (38, 3977), (41, 3992), (51, 4055), (52, 4073), (54, 4082), (65, 4148), (70, 4169), (84, 4265), (93, 4298), (95, 4301), (99, 4322), (110, 4433), (111, 4436), (116, 4490),

Gene: Astraea_15 Start: 4224, Stop: 4907, Start Num: 12

Candidate Starts for Astraea_15:

(Start: 12 @4224 has 164 MA's), (35, 4380), (38, 4392), (41, 4407), (51, 4470), (52, 4488), (54, 4497), (65, 4563), (70, 4584), (84, 4680), (93, 4713), (95, 4716), (99, 4737), (110, 4848), (111, 4851),

Gene: Atlantean_10 Start: 2730, Stop: 3413, Start Num: 12

Candidate Starts for Atlantean_10:

(Start: 12 @2730 has 164 MA's), (35, 2886), (38, 2898), (41, 2913), (51, 2976), (52, 2994), (54, 3003), (65, 3069), (70, 3090), (84, 3186), (93, 3219), (95, 3222), (99, 3243), (110, 3354), (111, 3357),

Gene: Audrick_10 Start: 2709, Stop: 3392, Start Num: 12

Candidate Starts for Audrick_10:

(Start: 12 @2709 has 164 MA's), (35, 2865), (38, 2877), (41, 2892), (51, 2955), (52, 2973), (54, 2982), (65, 3048), (70, 3069), (84, 3165), (93, 3198), (95, 3201), (99, 3222), (110, 3333), (111, 3336),

Gene: Ava3_11 Start: 3809, Stop: 4531, Start Num: 12

Candidate Starts for Ava3_11:

(Start: 12 @3809 has 164 MA's), (35, 3965), (38, 3977), (41, 3992), (51, 4055), (52, 4073), (54, 4082), (65, 4148), (70, 4169), (84, 4265), (93, 4298), (95, 4301), (99, 4322), (110, 4433), (111, 4436), (116, 4490),

Gene: Axumite_74 Start: 56018, Stop: 55002, Start Num: 5

Candidate Starts for Axumite_74:

(3, 56057), (Start: 5 @56018 has 3 MA's), (6, 55967), (Start: 8 @55952 has 1 MA's), (Start: 11 @55913 has 4 MA's), (16, 55865), (17, 55859), (22, 55844), (27, 55790), (32, 55772), (34, 55763), (44, 55703), (58, 55610), (74, 55529), (76, 55523), (79, 55514), (80, 55505), (81, 55502), (85, 55490), (96, 55457), (99, 55439), (104, 55382), (109, 55337), (118, 55250), (120, 55205),

Gene: Babyland_10 Start: 2730, Stop: 3413, Start Num: 12

Candidate Starts for Babyland_10:

(Start: 12 @2730 has 164 MA's), (35, 2886), (38, 2898), (41, 2913), (51, 2976), (52, 2994), (54, 3003), (65, 3069), (70, 3090), (84, 3186), (93, 3219), (95, 3222), (99, 3243), (110, 3354), (111, 3357),

Gene: BackyardAgain_9 Start: 2726, Stop: 3409, Start Num: 12

Candidate Starts for BackyardAgain_9:

(Start: 12 @2726 has 164 MA's), (35, 2882), (38, 2894), (41, 2909), (51, 2972), (52, 2990), (54, 2999), (65, 3065), (70, 3086), (84, 3182), (93, 3215), (95, 3218), (99, 3239), (110, 3350), (111, 3353),

Gene: BadAgartude_10 Start: 2938, Stop: 3621, Start Num: 12

Candidate Starts for BadAgartude_10:

(Start: 12 @2938 has 164 MA's), (35, 3094), (38, 3106), (41, 3121), (51, 3184), (52, 3202), (54, 3211), (65, 3277), (70, 3298), (84, 3394), (93, 3427), (95, 3430), (99, 3451), (110, 3562), (111, 3565),

Gene: BananaFence_10 Start: 3731, Stop: 4414, Start Num: 12

Candidate Starts for BananaFence_10:

(Start: 12 @3731 has 164 MA's), (35, 3887), (38, 3899), (41, 3914), (51, 3977), (52, 3995), (54, 4004), (65, 4070), (70, 4091), (84, 4187), (93, 4220), (95, 4223), (99, 4244), (110, 4355), (111, 4358),

Gene: Bangla1971_10 Start: 2726, Stop: 3409, Start Num: 12

Candidate Starts for Bangla1971_10:

(Start: 12 @2726 has 164 MA's), (35, 2882), (38, 2894), (41, 2909), (51, 2972), (52, 2990), (54, 2999), (65, 3065), (70, 3086), (84, 3182), (93, 3215), (95, 3218), (99, 3239), (110, 3350), (111, 3353),

Gene: Basquiat_10 Start: 2711, Stop: 3394, Start Num: 12

Candidate Starts for Basquiat_10:

(Start: 12 @2711 has 164 MA's), (35, 2867), (38, 2879), (41, 2894), (51, 2957), (52, 2975), (54, 2984), (65, 3050), (70, 3071), (84, 3167), (93, 3200), (95, 3203), (99, 3224), (110, 3335), (111, 3338),

Gene: BeanWater_9 Start: 3745, Stop: 4428, Start Num: 12

Candidate Starts for BeanWater_9:

(Start: 12 @3745 has 164 MA's), (35, 3901), (38, 3913), (41, 3928), (51, 3991), (52, 4009), (54, 4018), (65, 4084), (70, 4105), (84, 4201), (93, 4234), (95, 4237), (99, 4258), (110, 4369), (111, 4372),

Gene: BigCity_15 Start: 5237, Stop: 5938, Start Num: 12

Candidate Starts for BigCity_15:

(Start: 12 @5237 has 164 MA's), (35, 5393), (38, 5405), (51, 5483), (54, 5510), (65, 5576), (70, 5597), (84, 5693), (89, 5714), (93, 5726), (95, 5729), (99, 5750), (110, 5861), (111, 5864), (115, 5909),

Gene: BiggityBass_74 Start: 58130, Stop: 57321, Start Num: 11

Candidate Starts for BiggityBass_74:

(Start: 11 @58130 has 4 MA's), (19, 58070), (27, 58019), (40, 57962), (46, 57920), (59, 57827), (63, 57818), (67, 57782), (68, 57779), (73, 57764), (81, 57731), (86, 57710), (87, 57704), (90, 57695), (100, 57665), (114, 57521),

Gene: Bigswole_15 Start: 4457, Stop: 5155, Start Num: 12

Candidate Starts for Bigswole_15:

(Start: 12 @4457 has 164 MA's), (23, 4529), (33, 4586), (35, 4601), (53, 4727), (65, 4802), (72, 4829), (83, 4892), (95, 4946), (99, 4967), (109, 5072), (110, 5078), (111, 5081), (115, 5126),

Gene: Bipolarisk_11 Start: 3809, Stop: 4531, Start Num: 12

Candidate Starts for Bipolarisk_11:

(Start: 12 @3809 has 164 MA's), (35, 3965), (38, 3977), (41, 3992), (51, 4055), (52, 4073), (54, 4082), (65, 4148), (70, 4169), (84, 4265), (93, 4298), (95, 4301), (99, 4322), (110, 4433), (111, 4436), (116, 4490),

Gene: Blackbrain_10 Start: 2726, Stop: 3409, Start Num: 12

Candidate Starts for Blackbrain_10:

(Start: 12 @2726 has 164 MA's), (35, 2882), (38, 2894), (41, 2909), (51, 2972), (52, 2990), (54, 2999), (65, 3065), (70, 3086), (84, 3182), (93, 3215), (95, 3218), (99, 3239), (110, 3350), (111, 3353),

Gene: Blubba_9 Start: 3514, Stop: 4206, Start Num: 12

Candidate Starts for Blubba_9:

(Start: 12 @3514 has 164 MA's), (23, 3586), (33, 3634), (35, 3649), (37, 3658), (53, 3775), (65, 3850), (72, 3877), (83, 3940), (95, 3997), (99, 4018), (109, 4123), (110, 4129), (111, 4132), (115, 4177),

Gene: Bonray_11 Start: 3803, Stop: 4525, Start Num: 12

Candidate Starts for Bonray_11:

(Start: 12 @3803 has 164 MA's), (35, 3959), (38, 3971), (41, 3986), (51, 4049), (52, 4067), (54, 4076), (65, 4142), (70, 4163), (84, 4259), (93, 4292), (95, 4295), (99, 4316), (110, 4427), (111, 4430), (116, 4484),

Gene: Bread_11 Start: 3809, Stop: 4531, Start Num: 12

Candidate Starts for Bread_11:

(Start: 12 @3809 has 164 MA's), (35, 3965), (38, 3977), (41, 3992), (51, 4055), (52, 4073), (54, 4082), (65, 4148), (70, 4169), (84, 4265), (93, 4298), (95, 4301), (99, 4322), (110, 4433), (111, 4436), (116, 4490),

Gene: Breeniome_10 Start: 2726, Stop: 3409, Start Num: 12

Candidate Starts for Breeniome_10:

(Start: 12 @2726 has 164 MA's), (35, 2882), (38, 2894), (41, 2909), (51, 2972), (52, 2990), (54, 2999), (65, 3065), (70, 3086), (84, 3182), (93, 3215), (95, 3218), (99, 3239), (110, 3350), (111, 3353),

Gene: Burrough_11 Start: 3809, Stop: 4531, Start Num: 12

Candidate Starts for Burrough_11:

(Start: 12 @3809 has 164 MA's), (35, 3965), (38, 3977), (41, 3992), (51, 4055), (52, 4073), (54, 4082), (65, 4148), (70, 4169), (84, 4265), (93, 4298), (95, 4301), (99, 4322), (110, 4433), (111, 4436), (116, 4490),

Gene: Bxz1_13 Start: 3914, Stop: 4615, Start Num: 12

Candidate Starts for Bxz1_13:

(Start: 12 @3914 has 164 MA's), (35, 4070), (38, 4082), (41, 4097), (51, 4160), (54, 4187), (65, 4253), (70, 4274), (84, 4370), (89, 4391), (93, 4403), (95, 4406), (99, 4427), (110, 4538), (111, 4541), (115, 4586),

Gene: Cactojaque_9 Start: 2660, Stop: 3343, Start Num: 12

Candidate Starts for Cactojaque_9:

(Start: 12 @2660 has 164 MA's), (35, 2816), (38, 2828), (41, 2843), (51, 2906), (52, 2924), (54, 2933), (65, 2999), (70, 3020), (84, 3116), (93, 3149), (95, 3152), (99, 3173), (110, 3284), (111, 3287),

Gene: Cafasso_64 Start: 43297, Stop: 43893, Start Num: 43

Candidate Starts for Cafasso_64:

(13, 43105), (Start: 43 @43297 has 3 MA's), (69, 43471), (82, 43534), (105, 43663), (117, 43765),

Gene: CaiB_75 Start: 57227, Stop: 56448, Start Num: 14

Candidate Starts for CaiB_75:

(Start: 14 @57227 has 7 MA's), (25, 57170), (50, 57041), (74, 56897), (78, 56885), (79, 56882), (89, 56840), (99, 56804), (101, 56798), (102, 56783), (104, 56747), (105, 56744), (108, 56705), (121, 56525),

Gene: Cali_10 Start: 3902, Stop: 4582, Start Num: 12

Candidate Starts for Cali_10:

(Start: 12 @3902 has 164 MA's), (35, 4058), (38, 4070), (41, 4085), (51, 4148), (54, 4175), (65, 4241), (70, 4262), (84, 4358), (93, 4391), (95, 4394), (99, 4415), (110, 4526), (111, 4529),

Gene: Cane17_9 Start: 3514, Stop: 4206, Start Num: 12

Candidate Starts for Cane17_9:

(Start: 12 @3514 has 164 MA's), (23, 3586), (33, 3634), (35, 3649), (37, 3658), (53, 3775), (65, 3850), (72, 3877), (83, 3940), (95, 3997), (99, 4018), (109, 4123), (110, 4129), (111, 4132), (115, 4177),

Gene: Capablanca_11 Start: 3809, Stop: 4531, Start Num: 12

Candidate Starts for Capablanca_11:

(Start: 12 @3809 has 164 MA's), (35, 3965), (38, 3977), (41, 3992), (51, 4055), (52, 4073), (54, 4082), (65, 4148), (70, 4169), (84, 4265), (93, 4298), (95, 4301), (99, 4322), (110, 4433), (111, 4436), (116, 4490),

Gene: Caravan_10 Start: 2662, Stop: 3363, Start Num: 12

Candidate Starts for Caravan_10:

(Start: 12 @2662 has 164 MA's), (35, 2818), (38, 2830), (41, 2845), (51, 2908), (52, 2926), (54, 2935), (65, 3001), (70, 3022), (84, 3118), (93, 3151), (95, 3154), (99, 3175), (110, 3286), (111, 3289), (115, 3334),

Gene: Catera_10 Start: 2730, Stop: 3413, Start Num: 12

Candidate Starts for Catera_10:

(Start: 12 @2730 has 164 MA's), (35, 2886), (38, 2898), (41, 2913), (51, 2976), (52, 2994), (54, 3003), (65, 3069), (70, 3090), (84, 3186), (93, 3219), (95, 3222), (99, 3243), (110, 3354), (111, 3357),

Gene: Chargie21_10 Start: 2711, Stop: 3394, Start Num: 12

Candidate Starts for Chargie21_10:

(Start: 12 @2711 has 164 MA's), (35, 2867), (38, 2879), (41, 2894), (51, 2957), (52, 2975), (54, 2984), (65, 3050), (70, 3071), (84, 3167), (93, 3200), (95, 3203), (99, 3224), (110, 3335), (111, 3338),

Gene: CharlieB_9 Start: 2763, Stop: 3446, Start Num: 12

Candidate Starts for CharlieB_9:

(Start: 12 @2763 has 164 MA's), (35, 2919), (38, 2931), (41, 2946), (51, 3009), (52, 3027), (54, 3036), (65, 3102), (70, 3123), (84, 3219), (93, 3252), (95, 3255), (99, 3276), (110, 3387), (111, 3390),

Gene: CharlottesWeb_72 Start: 55223, Stop: 54267, Start Num: 5

Candidate Starts for CharlottesWeb_72:

(Start: 5 @55223 has 3 MA's), (Start: 8 @55157 has 1 MA's), (Start: 11 @55118 has 4 MA's), (29, 55001), (58, 54848), (74, 54788), (76, 54782), (80, 54767), (104, 54650), (109, 54605), (118, 54518),

Gene: ChaylaJr_10 Start: 2753, Stop: 3436, Start Num: 12

Candidate Starts for ChaylaJr_10:

(Start: 12 @2753 has 164 MA's), (35, 2909), (38, 2921), (41, 2936), (51, 2999), (52, 3017), (54, 3026), (65, 3092), (70, 3113), (84, 3209), (93, 3242), (95, 3245), (99, 3266), (110, 3377), (111, 3380),

Gene: ChickenPhender_10 Start: 2711, Stop: 3394, Start Num: 12

Candidate Starts for ChickenPhender_10:

(Start: 12 @2711 has 164 MA's), (35, 2867), (38, 2879), (41, 2894), (51, 2957), (52, 2975), (54, 2984), (65, 3050), (70, 3071), (84, 3167), (93, 3200), (95, 3203), (99, 3224), (110, 3335), (111, 3338),

Gene: Chomp_9 Start: 2730, Stop: 3413, Start Num: 12

Candidate Starts for Chomp_9:

(Start: 12 @2730 has 164 MA's), (35, 2886), (38, 2898), (41, 2913), (51, 2976), (52, 2994), (54, 3003), (65, 3069), (70, 3090), (84, 3186), (93, 3219), (95, 3222), (99, 3243), (110, 3354), (111, 3357),

Gene: CindyLou_10 Start: 2730, Stop: 3413, Start Num: 12

Candidate Starts for CindyLou_10:

(Start: 12 @2730 has 164 MA's), (35, 2886), (38, 2898), (41, 2913), (51, 2976), (52, 2994), (54, 3003), (65, 3069), (70, 3090), (84, 3186), (93, 3219), (95, 3222), (99, 3243), (110, 3354), (111, 3357),

Gene: CloverMinnie_73 Start: 56396, Stop: 55614, Start Num: 14

Candidate Starts for CloverMinnie_73:

(Start: 14 @56396 has 7 MA's), (25, 56339), (47, 56225), (50, 56210), (74, 56066), (78, 56054), (79, 56051), (89, 56009), (99, 55973), (101, 55967), (102, 55952), (104, 55916), (108, 55874), (121, 55694),

Gene: Colt_9 Start: 3520, Stop: 4212, Start Num: 12

Candidate Starts for Colt_9:

(Start: 12 @3520 has 164 MA's), (23, 3592), (33, 3640), (35, 3655), (37, 3664), (53, 3781), (65, 3856), (72, 3883), (83, 3946), (95, 4003), (99, 4024), (109, 4129), (110, 4135), (111, 4138), (115, 4183),

Gene: Concombre_13 Start: 3893, Stop: 4588, Start Num: 12

Candidate Starts for Concombre_13:

(Start: 12 @3893 has 164 MA's), (35, 4049), (38, 4061), (41, 4076), (51, 4139), (54, 4160), (65, 4226), (70, 4247), (84, 4343), (95, 4379), (99, 4400), (110, 4511), (111, 4514), (115, 4559),

Gene: DTDevon_13 Start: 3779, Stop: 4462, Start Num: 12

Candidate Starts for DTDevon_13:

(Start: 12 @3779 has 164 MA's), (35, 3935), (38, 3947), (41, 3962), (51, 4025), (52, 4043), (54, 4052), (65, 4118), (70, 4139), (84, 4235), (93, 4268), (95, 4271), (99, 4292), (110, 4403), (111, 4406),

Gene: Daffodil_11 Start: 3809, Stop: 4531, Start Num: 12

Candidate Starts for Daffodil_11:

(Start: 12 @3809 has 164 MA's), (35, 3965), (38, 3977), (41, 3992), (51, 4055), (52, 4073), (54, 4082), (65, 4148), (70, 4169), (84, 4265), (93, 4298), (95, 4301), (99, 4322), (110, 4433), (111, 4436), (116, 4490),

Gene: Dandelion_16 Start: 4895, Stop: 5590, Start Num: 12

Candidate Starts for Dandelion_16:

(Start: 12 @4895 has 164 MA's), (35, 5051), (38, 5063), (41, 5078), (51, 5141), (54, 5162), (65, 5228), (70, 5249), (84, 5345), (93, 5378), (95, 5381), (99, 5402), (110, 5513), (111, 5516),

Gene: Darko_10 Start: 3700, Stop: 4383, Start Num: 12

Candidate Starts for Darko_10:

(Start: 12 @3700 has 164 MA's), (35, 3856), (38, 3868), (41, 3883), (51, 3946), (52, 3964), (54, 3973), (65, 4039), (70, 4060), (84, 4156), (93, 4189), (95, 4192), (99, 4213), (110, 4324), (111, 4327),

Gene: Delilah_11 Start: 3809, Stop: 4531, Start Num: 12

Candidate Starts for Delilah_11:

(Start: 12 @3809 has 164 MA's), (35, 3965), (38, 3977), (41, 3992), (51, 4055), (52, 4073), (54, 4082), (65, 4148), (70, 4169), (84, 4265), (93, 4298), (95, 4301), (99, 4322), (110, 4433), (111, 4436), (116, 4490),

Gene: Delylah_10 Start: 2662, Stop: 3363, Start Num: 12

Candidate Starts for Delylah_10:

(Start: 12 @2662 has 164 MA's), (35, 2818), (38, 2830), (41, 2845), (51, 2908), (52, 2926), (54, 2935), (65, 3001), (70, 3022), (84, 3118), (93, 3151), (95, 3154), (99, 3175), (110, 3286), (111, 3289), (115, 3334),

Gene: Derek_10 Start: 2726, Stop: 3409, Start Num: 12

Candidate Starts for Derek_10:

(Start: 12 @2726 has 164 MA's), (35, 2882), (38, 2894), (41, 2909), (51, 2972), (52, 2990), (54, 2999), (65, 3065), (70, 3086), (84, 3182), (93, 3215), (95, 3218), (99, 3239), (110, 3350), (111, 3353),

Gene: Dietrick_9 Start: 2728, Stop: 3411, Start Num: 12

Candidate Starts for Dietrick_9:

(Start: 12 @2728 has 164 MA's), (35, 2884), (38, 2896), (41, 2911), (51, 2974), (52, 2992), (54, 3001), (65, 3067), (70, 3088), (84, 3184), (93, 3217), (95, 3220), (99, 3241), (110, 3352), (111, 3355),

Gene: DirtMonster_14 Start: 5431, Stop: 6132, Start Num: 12

Candidate Starts for DirtMonster_14:

(Start: 12 @5431 has 164 MA's), (35, 5587), (38, 5599), (41, 5614), (51, 5677), (52, 5695), (54, 5704), (65, 5770), (70, 5791), (84, 5887), (93, 5920), (95, 5923), (99, 5944), (110, 6055), (111, 6058),

Gene: DrPhinkDaddy_11 Start: 3809, Stop: 4531, Start Num: 12

Candidate Starts for DrPhinkDaddy_11:

(Start: 12 @3809 has 164 MA's), (35, 3965), (38, 3977), (41, 3992), (51, 4055), (52, 4073), (54, 4082), (65, 4148), (70, 4169), (84, 4265), (93, 4298), (95, 4301), (99, 4322), (110, 4433), (111, 4436), (116, 4490),

Gene: Drazdys_13 Start: 4008, Stop: 4709, Start Num: 12

Candidate Starts for Drazdys_13:

(Start: 12 @4008 has 164 MA's), (35, 4164), (38, 4176), (41, 4191), (51, 4254), (54, 4281), (65, 4347), (70, 4368), (84, 4464), (89, 4485), (93, 4497), (95, 4500), (99, 4521), (110, 4632), (111, 4635), (115, 4680),

Gene: ET08_9 Start: 3751, Stop: 4434, Start Num: 12

Candidate Starts for ET08_9:

(Start: 12 @3751 has 164 MA's), (35, 3907), (38, 3919), (41, 3934), (51, 3997), (52, 4015), (54, 4024), (65, 4090), (70, 4111), (84, 4207), (93, 4240), (95, 4243), (99, 4264), (110, 4375), (111, 4378),

Gene: EasyJones_10 Start: 2711, Stop: 3394, Start Num: 12

Candidate Starts for EasyJones_10:

(Start: 12 @2711 has 164 MA's), (35, 2867), (38, 2879), (41, 2894), (51, 2957), (52, 2975), (54, 2984), (65, 3050), (70, 3071), (84, 3167), (93, 3200), (95, 3203), (99, 3224), (110, 3335), (111, 3338),

Gene: EggyFarm_15 Start: 5237, Stop: 5938, Start Num: 12

Candidate Starts for EggyFarm_15:

(Start: 12 @5237 has 164 MA's), (35, 5393), (38, 5405), (51, 5483), (54, 5510), (65, 5576), (70, 5597), (84, 5693), (89, 5714), (93, 5726), (95, 5729), (99, 5750), (110, 5861), (111, 5864), (115, 5909),

Gene: EmToTheThree_11 Start: 3809, Stop: 4510, Start Num: 12

Candidate Starts for EmToTheThree_11:

(Start: 12 @3809 has 164 MA's), (35, 3965), (38, 3977), (41, 3992), (51, 4055), (52, 4073), (54, 4082), (65, 4148), (70, 4169), (84, 4265), (93, 4298), (95, 4301), (99, 4322), (110, 4433), (111, 4436), (115, 4481),

Gene: EmmaElysia_10 Start: 2726, Stop: 3409, Start Num: 12

Candidate Starts for EmmaElysia_10:

(Start: 12 @2726 has 164 MA's), (35, 2882), (38, 2894), (41, 2909), (51, 2972), (52, 2990), (54, 2999), (65, 3065), (70, 3086), (84, 3182), (93, 3215), (95, 3218), (99, 3239), (110, 3350), (111, 3353),

Gene: Erdmann_11 Start: 3809, Stop: 4531, Start Num: 12

Candidate Starts for Erdmann_11:

(Start: 12 @3809 has 164 MA's), (35, 3965), (38, 3977), (41, 3992), (51, 4055), (52, 4073), (54, 4082), (65, 4148), (70, 4169), (84, 4265), (93, 4298), (95, 4301), (99, 4322), (110, 4433), (111, 4436), (116, 4490),

Gene: ErnieJ_10 Start: 2726, Stop: 3427, Start Num: 12

Candidate Starts for ErnieJ_10:

(Start: 12 @2726 has 164 MA's), (35, 2882), (38, 2894), (41, 2909), (51, 2972), (52, 2990), (54, 2999), (65, 3065), (70, 3086), (84, 3182), (93, 3215), (95, 3218), (99, 3239), (110, 3350), (111, 3353), (115, 3398),

Gene: Essence_10 Start: 2726, Stop: 3409, Start Num: 12

Candidate Starts for Essence_10:

(Start: 12 @2726 has 164 MA's), (35, 2882), (38, 2894), (41, 2909), (51, 2972), (52, 2990), (54, 2999), (65, 3065), (70, 3086), (84, 3182), (93, 3215), (95, 3218), (99, 3239), (110, 3350), (111, 3353),

Gene: Evaa_77 Start: 57028, Stop: 56354, Start Num: 12

Candidate Starts for Evaa_77:

(9, 57070), (Start: 12 @57028 has 164 MA's), (23, 56956), (36, 56896), (42, 56863), (61, 56743), (65, 56716), (77, 56653), (87, 56581), (91, 56569), (109, 56434), (111, 56425),

Gene: Evaa_71 Start: 54058, Stop: 53249, Start Num: 10

Candidate Starts for Evaa_71:

(Start: 10 @54058 has 1 MA's), (20, 53983), (28, 53917), (29, 53914), (39, 53869), (53, 53767), (57, 53752), (63, 53716), (64, 53701), (67, 53680), (78, 53632), (87, 53587), (91, 53575), (101, 53536),

Gene: Ewok_11 Start: 3809, Stop: 4531, Start Num: 12

Candidate Starts for Ewok_11:

(Start: 12 @3809 has 164 MA's), (35, 3965), (38, 3977), (41, 3992), (51, 4055), (52, 4073), (54, 4082), (65, 4148), (70, 4169), (84, 4265), (93, 4298), (95, 4301), (99, 4322), (110, 4433), (111, 4436), (116, 4490),

Gene: Flabslab_10 Start: 2726, Stop: 3409, Start Num: 12

Candidate Starts for Flabslab_10:

(Start: 12 @2726 has 164 MA's), (35, 2882), (38, 2894), (41, 2909), (51, 2972), (52, 2990), (54, 2999), (65, 3065), (70, 3086), (84, 3182), (93, 3215), (95, 3218), (99, 3239), (110, 3350), (111, 3353),

Gene: Fludd_10 Start: 2712, Stop: 3395, Start Num: 12

Candidate Starts for Fludd_10:

(Start: 12 @2712 has 164 MA's), (35, 2868), (38, 2880), (41, 2895), (51, 2958), (54, 2985), (65, 3051), (70, 3072), (84, 3168), (89, 3189), (93, 3201), (95, 3204), (99, 3225), (110, 3336), (111, 3339),

Gene: FoxtrotP1_11 Start: 3809, Stop: 4492, Start Num: 12

Candidate Starts for FoxtrotP1_11:

(Start: 12 @3809 has 164 MA's), (35, 3965), (38, 3977), (41, 3992), (51, 4055), (52, 4073), (54, 4082), (65, 4148), (70, 4169), (84, 4265), (93, 4298), (95, 4301), (99, 4322), (110, 4433), (111, 4436),

Gene: FrayBell_16 Start: 4717, Stop: 5412, Start Num: 12

Candidate Starts for FrayBell_16:

(Start: 12 @4717 has 164 MA's), (35, 4873), (38, 4885), (41, 4900), (51, 4963), (54, 4984), (65, 5050), (70, 5071), (84, 5167), (93, 5200), (95, 5203), (99, 5224), (110, 5335), (111, 5338), (115, 5383),

Gene: Fresco_74 Start: 56063, Stop: 55008, Start Num: 3

Candidate Starts for Fresco_74:

(3, 56063), (Start: 5 @56024 has 3 MA's), (6, 55973), (Start: 8 @55958 has 1 MA's), (Start: 11 @55919 has 4 MA's), (16, 55871), (17, 55865), (22, 55850), (27, 55796), (32, 55778), (34, 55769), (44, 55709), (58, 55616), (74, 55535), (76, 55529), (79, 55520), (80, 55511), (81, 55508), (85, 55496), (96, 55463), (99, 55445), (104, 55388), (109, 55343), (118, 55256), (120, 55211),

Gene: FudgeTart_11 Start: 3809, Stop: 4531, Start Num: 12

Candidate Starts for FudgeTart_11:

(Start: 12 @3809 has 164 MA's), (35, 3965), (38, 3977), (41, 3992), (51, 4055), (52, 4073), (54, 4082), (65, 4148), (70, 4169), (84, 4265), (93, 4298), (95, 4301), (99, 4322), (110, 4433), (111, 4436), (116, 4490),

Gene: Gabriel_10 Start: 2726, Stop: 3409, Start Num: 12

Candidate Starts for Gabriel_10:

(Start: 12 @2726 has 164 MA's), (35, 2882), (38, 2894), (41, 2909), (51, 2972), (52, 2990), (54, 2999), (65, 3065), (70, 3086), (84, 3182), (93, 3215), (95, 3218), (99, 3239), (110, 3350), (111, 3353),

Gene: Gamgam_10 Start: 2730, Stop: 3413, Start Num: 12

Candidate Starts for Gamgam_10:

(Start: 12 @2730 has 164 MA's), (35, 2886), (38, 2898), (41, 2913), (51, 2976), (52, 2994), (54, 3003), (65, 3069), (70, 3090), (84, 3186), (93, 3219), (95, 3222), (99, 3243), (110, 3354), (111, 3357),

Gene: Ghost_10 Start: 2730, Stop: 3413, Start Num: 12

Candidate Starts for Ghost_10:

(Start: 12 @2730 has 164 MA's), (35, 2886), (38, 2898), (41, 2913), (51, 2976), (52, 2994), (54, 3003), (65, 3069), (70, 3090), (84, 3186), (93, 3219), (95, 3222), (99, 3243), (110, 3354), (111, 3357),

Gene: Gizmo_11 Start: 3809, Stop: 4531, Start Num: 12

Candidate Starts for Gizmo_11:

(Start: 12 @3809 has 164 MA's), (35, 3965), (38, 3977), (41, 3992), (51, 4055), (52, 4073), (54, 4082), (65, 4148), (70, 4169), (84, 4265), (93, 4298), (95, 4301), (99, 4322), (110, 4433), (111, 4436), (116, 4490),

Gene: Grasshills_15 Start: 5237, Stop: 5938, Start Num: 12

Candidate Starts for Grasshills_15:

(Start: 12 @5237 has 164 MA's), (35, 5393), (38, 5405), (51, 5483), (54, 5510), (65, 5576), (70, 5597), (84, 5693), (89, 5714), (93, 5726), (95, 5729), (99, 5750), (110, 5861), (111, 5864), (115, 5909),

Gene: Grungle_10 Start: 2923, Stop: 3606, Start Num: 12

Candidate Starts for Grungle_10:

(Start: 12 @2923 has 164 MA's), (35, 3079), (38, 3091), (41, 3106), (51, 3169), (54, 3196), (65, 3262), (70, 3283), (84, 3379), (93, 3412), (95, 3415), (99, 3436), (110, 3547), (111, 3550),

Gene: Guwapp_10 Start: 2726, Stop: 3409, Start Num: 12

Candidate Starts for Guwapp_10:

(Start: 12 @2726 has 164 MA's), (35, 2882), (38, 2894), (41, 2909), (51, 2972), (52, 2990), (54, 2999), (65, 3065), (70, 3086), (84, 3182), (93, 3215), (95, 3218), (99, 3239), (110, 3350), (111, 3353),

Gene: Halldule_10 Start: 2917, Stop: 3600, Start Num: 12

Candidate Starts for Halldule_10:

(Start: 12 @2917 has 164 MA's), (35, 3073), (38, 3085), (41, 3100), (51, 3163), (52, 3181), (54, 3190), (65, 3256), (70, 3277), (84, 3373), (93, 3406), (95, 3409), (99, 3430), (110, 3541), (111, 3544),

Gene: HyRo_7 Start: 3062, Stop: 3745, Start Num: 12

Candidate Starts for HyRo_7:

(Start: 12 @3062 has 164 MA's), (35, 3218), (38, 3230), (41, 3245), (51, 3308), (52, 3326), (54, 3335), (65, 3401), (70, 3422), (84, 3518), (93, 3551), (95, 3554), (99, 3575), (110, 3686), (111, 3689),

Gene: I3_14 Start: 4591, Stop: 5292, Start Num: 12

Candidate Starts for I3_14:

(Start: 12 @4591 has 164 MA's), (35, 4747), (38, 4759), (41, 4774), (51, 4837), (54, 4864), (65, 4930), (70, 4951), (84, 5047), (89, 5068), (93, 5080), (95, 5083), (99, 5104), (110, 5215), (111, 5218), (115, 5263),

Gene: IkeLoa_10 Start: 3672, Stop: 4355, Start Num: 12

Candidate Starts for IkeLoa_10:

(Start: 12 @3672 has 164 MA's), (35, 3828), (38, 3840), (41, 3855), (51, 3918), (54, 3945), (65, 4011), (70, 4032), (84, 4128), (89, 4149), (93, 4161), (95, 4164), (99, 4185), (110, 4296), (111, 4299),

Gene: InigoMontoya_10 Start: 2730, Stop: 3413, Start Num: 12

Candidate Starts for InigoMontoya_10:

(Start: 12 @2730 has 164 MA's), (35, 2886), (38, 2898), (41, 2913), (51, 2976), (52, 2994), (54, 3003), (65, 3069), (70, 3090), (84, 3186), (93, 3219), (95, 3222), (99, 3243), (110, 3354), (111, 3357),

Gene: InterFolia_16 Start: 4714, Stop: 5409, Start Num: 12

Candidate Starts for InterFolia_16:

(Start: 12 @4714 has 164 MA's), (35, 4870), (38, 4882), (41, 4897), (51, 4960), (54, 4981), (65, 5047), (70, 5068), (84, 5164), (93, 5197), (95, 5200), (99, 5221), (110, 5332), (111, 5335), (115, 5380),

Gene: Iota_10 Start: 3655, Stop: 4335, Start Num: 12

Candidate Starts for Iota_10:

(Start: 12 @3655 has 164 MA's), (35, 3811), (38, 3823), (41, 3838), (51, 3901), (54, 3928), (65, 3994), (70, 4015), (84, 4111), (93, 4144), (95, 4147), (99, 4168), (110, 4279), (111, 4282),

Gene: Issimir_11 Start: 3803, Stop: 4525, Start Num: 12

Candidate Starts for Issimir_11:

(Start: 12 @3803 has 164 MA's), (35, 3959), (38, 3971), (41, 3986), (51, 4049), (52, 4067), (54, 4076), (65, 4142), (70, 4163), (84, 4259), (93, 4292), (95, 4295), (99, 4316), (110, 4427), (111, 4430), (116, 4484),

Gene: Izajani_11 Start: 3809, Stop: 4531, Start Num: 12

Candidate Starts for Izajani_11:

(Start: 12 @3809 has 164 MA's), (35, 3965), (38, 3977), (41, 3992), (51, 4055), (52, 4073), (54, 4082), (65, 4148), (70, 4169), (84, 4265), (93, 4298), (95, 4301), (99, 4322), (110, 4433), (111, 4436), (116, 4490),

Gene: JPickles_10 Start: 2730, Stop: 3413, Start Num: 12

Candidate Starts for JPickles_10:

(Start: 12 @2730 has 164 MA's), (35, 2886), (38, 2898), (41, 2913), (51, 2976), (52, 2994), (54, 3003), (65, 3069), (70, 3090), (84, 3186), (93, 3219), (95, 3222), (99, 3243), (110, 3354), (111, 3357),

Gene: Janiyra_10 Start: 2709, Stop: 3392, Start Num: 12

Candidate Starts for Janiyra_10:

(Start: 12 @2709 has 164 MA's), (35, 2865), (38, 2877), (41, 2892), (51, 2955), (52, 2973), (54, 2982), (65, 3048), (70, 3069), (84, 3165), (93, 3198), (95, 3201), (99, 3222), (110, 3333), (111, 3336),

Gene: Jaygup_10 Start: 2726, Stop: 3409, Start Num: 12

Candidate Starts for Jaygup_10:

(Start: 12 @2726 has 164 MA's), (35, 2882), (38, 2894), (41, 2909), (51, 2972), (52, 2990), (54, 2999), (65, 3065), (70, 3086), (84, 3182), (93, 3215), (95, 3218), (99, 3239), (110, 3350), (111, 3353),

Gene: Jedediah_10 Start: 2730, Stop: 3413, Start Num: 12

Candidate Starts for Jedediah_10:

(Start: 12 @2730 has 164 MA's), (35, 2886), (38, 2898), (41, 2913), (51, 2976), (52, 2994), (54, 3003), (65, 3069), (70, 3090), (84, 3186), (93, 3219), (95, 3222), (99, 3243), (110, 3354), (111, 3357),

Gene: Jemmno_9 Start: 2730, Stop: 3413, Start Num: 12

Candidate Starts for Jemmno_9:

(Start: 12 @2730 has 164 MA's), (35, 2886), (38, 2898), (41, 2913), (51, 2976), (52, 2994), (54, 3003), (65, 3069), (70, 3090), (84, 3186), (93, 3219), (95, 3222), (99, 3243), (110, 3354), (111, 3357),

Gene: Jessibeth14_11 Start: 3809, Stop: 4531, Start Num: 12

Candidate Starts for Jessibeth14_11:

(Start: 12 @3809 has 164 MA's), (35, 3965), (38, 3977), (41, 3992), (51, 4055), (52, 4073), (54, 4082), (65, 4148), (70, 4169), (84, 4265), (93, 4298), (95, 4301), (99, 4322), (110, 4433), (111, 4436), (116, 4490),

Gene: JulietS_10 Start: 2771, Stop: 3454, Start Num: 12

Candidate Starts for JulietS_10:

(Start: 12 @2771 has 164 MA's), (35, 2927), (38, 2939), (41, 2954), (51, 3017), (52, 3035), (54, 3044), (65, 3110), (70, 3131), (84, 3227), (93, 3260), (95, 3263), (99, 3284), (110, 3395), (111, 3398),

Gene: JustHall_10 Start: 3725, Stop: 4408, Start Num: 12

Candidate Starts for JustHall_10:

(Start: 12 @3725 has 164 MA's), (35, 3881), (38, 3893), (41, 3908), (51, 3971), (52, 3989), (54, 3998), (65, 4064), (70, 4085), (84, 4181), (93, 4214), (95, 4217), (99, 4238), (110, 4349), (111, 4352),

Gene: Kamryn_13 Start: 3825, Stop: 4559, Start Num: 7

Candidate Starts for Kamryn_13:

(Start: 7 @3825 has 1 MA's), (Start: 12 @3876 has 164 MA's), (35, 4032), (38, 4044), (41, 4059), (51, 4122), (52, 4140), (54, 4149), (65, 4215), (70, 4236), (84, 4332), (93, 4365), (95, 4368), (99, 4389), (110, 4500), (111, 4503),

Gene: Kboogie_10 Start: 2728, Stop: 3411, Start Num: 12

Candidate Starts for Kboogie_10:

(Start: 12 @2728 has 164 MA's), (35, 2884), (38, 2896), (41, 2911), (51, 2974), (52, 2992), (54, 3001), (65, 3067), (70, 3088), (84, 3184), (93, 3217), (95, 3220), (99, 3241), (110, 3352), (111, 3355),

Gene: Khaleesi_11 Start: 3809, Stop: 4531, Start Num: 12

Candidate Starts for Khaleesi_11:

(Start: 12 @3809 has 164 MA's), (35, 3965), (38, 3977), (41, 3992), (51, 4055), (52, 4073), (54, 4082), (65, 4148), (70, 4169), (84, 4265), (93, 4298), (95, 4301), (99, 4322), (110, 4433), (111, 4436), (116, 4490),

Gene: Koguma_10 Start: 2917, Stop: 3600, Start Num: 12

Candidate Starts for Koguma_10:

(Start: 12 @2917 has 164 MA's), (35, 3073), (38, 3085), (41, 3100), (51, 3163), (52, 3181), (54, 3190), (65, 3256), (70, 3277), (84, 3373), (93, 3406), (95, 3409), (99, 3430), (110, 3541), (111, 3544),

Gene: LRRHood_10 Start: 3902, Stop: 4585, Start Num: 12

Candidate Starts for LRRHood_10:

(Start: 12 @3902 has 164 MA's), (35, 4058), (38, 4070), (41, 4085), (51, 4148), (52, 4166), (54, 4175), (65, 4241), (70, 4262), (84, 4358), (93, 4391), (95, 4394), (99, 4415), (110, 4526), (111, 4529),

Gene: Latch_10 Start: 2730, Stop: 3413, Start Num: 12

Candidate Starts for Latch_10:

(Start: 12 @2730 has 164 MA's), (35, 2886), (38, 2898), (41, 2913), (51, 2976), (52, 2994), (54, 3003), (65, 3069), (70, 3090), (84, 3186), (93, 3219), (95, 3222), (99, 3243), (110, 3354), (111, 3357),

Gene: Lee7_11 Start: 3809, Stop: 4531, Start Num: 12

Candidate Starts for Lee7_11:

(Start: 12 @3809 has 164 MA's), (35, 3965), (38, 3977), (41, 3992), (51, 4055), (52, 4073), (54, 4082), (65, 4148), (70, 4169), (84, 4265), (93, 4298), (95, 4301), (99, 4322), (110, 4433), (111, 4436), (116, 4490),

Gene: LifeSavor_10 Start: 2726, Stop: 3409, Start Num: 12

Candidate Starts for LifeSavor_10:

(Start: 12 @2726 has 164 MA's), (35, 2882), (38, 2894), (41, 2909), (51, 2972), (52, 2990), (54, 2999), (65, 3065), (70, 3086), (84, 3182), (93, 3215), (95, 3218), (99, 3239), (110, 3350), (111, 3353),

Gene: Ligma_74 Start: 56018, Stop: 55002, Start Num: 5

Candidate Starts for Ligma_74:

(3, 56057), (Start: 5 @56018 has 3 MA's), (6, 55967), (Start: 8 @55952 has 1 MA's), (Start: 11 @55913 has 4 MA's), (16, 55865), (17, 55859), (22, 55844), (27, 55790), (32, 55772), (34, 55763), (44, 55703), (58, 55610), (74, 55529), (76, 55523), (79, 55514), (80, 55505), (81, 55502), (85, 55490), (96, 55457), (99, 55439), (104, 55382), (109, 55337), (118, 55250), (120, 55205),

Gene: LittleMunchkin_74 Start: 58287, Stop: 57553, Start Num: 14

Candidate Starts for LittleMunchkin_74:

(Start: 14 @58287 has 7 MA's), (27, 58218), (30, 58206), (41, 58149), (46, 58113), (55, 58047), (67, 57975), (68, 57972), (73, 57957), (75, 57948), (90, 57888), (97, 57867), (99, 57861), (101, 57855), (108, 57762), (113, 57723), (118, 57663),

Gene: Littleton_10 Start: 2730, Stop: 3413, Start Num: 12

Candidate Starts for Littleton_10:

(Start: 12 @2730 has 164 MA's), (35, 2886), (38, 2898), (41, 2913), (51, 2976), (52, 2994), (54, 3003), (65, 3069), (70, 3090), (84, 3186), (93, 3219), (95, 3222), (99, 3243), (110, 3354), (111, 3357),

Gene: Loanshark_11 Start: 3809, Stop: 4531, Start Num: 12

Candidate Starts for Loanshark_11:

(Start: 12 @3809 has 164 MA's), (35, 3965), (38, 3977), (41, 3992), (51, 4055), (52, 4073), (54, 4082), (65, 4148), (70, 4169), (84, 4265), (93, 4298), (95, 4301), (99, 4322), (110, 4433), (111, 4436), (116, 4490),

Gene: LolaVinca_13 Start: 3814, Stop: 4515, Start Num: 12

Candidate Starts for LolaVinca_13:

(Start: 12 @3814 has 164 MA's), (35, 3970), (38, 3982), (41, 3997), (51, 4060), (54, 4087), (65, 4153), (70, 4174), (84, 4270), (89, 4291), (93, 4303), (95, 4306), (99, 4327), (110, 4438), (111, 4441), (115, 4486),

Gene: LordLeafolot_16 Start: 4716, Stop: 5411, Start Num: 12

Candidate Starts for LordLeafolot_16:

(Start: 12 @4716 has 164 MA's), (35, 4872), (38, 4884), (41, 4899), (51, 4962), (54, 4983), (65, 5049), (70, 5070), (84, 5166), (93, 5199), (95, 5202), (99, 5223), (110, 5334), (111, 5337), (115, 5382),

Gene: Lukilu_10 Start: 3916, Stop: 4599, Start Num: 12

Candidate Starts for Lukilu_10:

(Start: 12 @3916 has 164 MA's), (35, 4072), (38, 4084), (41, 4099), (51, 4162), (52, 4180), (54, 4189), (65, 4255), (70, 4276), (84, 4372), (93, 4405), (95, 4408), (99, 4429), (110, 4540), (111, 4543),

Gene: Maby2021_11 Start: 3809, Stop: 4531, Start Num: 12

Candidate Starts for Maby2021_11:

(Start: 12 @3809 has 164 MA's), (35, 3965), (38, 3977), (41, 3992), (51, 4055), (52, 4073), (54, 4082), (65, 4148), (70, 4169), (84, 4265), (93, 4298), (95, 4301), (99, 4322), (110, 4433), (111, 4436), (116, 4490),

Gene: MakoManhole_72 Start: 55770, Stop: 54970, Start Num: 14

Candidate Starts for MakoManhole_72:

(2, 56064), (Start: 14 @55770 has 7 MA's), (25, 55713), (50, 55584), (74, 55440), (78, 55428), (79, 55425), (89, 55383), (99, 55347), (102, 55326), (104, 55290), (105, 55287), (108, 55248), (121, 55068),

Gene: Mangeria_14 Start: 4301, Stop: 5002, Start Num: 12

Candidate Starts for Mangeria_14:

(Start: 7 @4250 has 1 MA's), (Start: 12 @4301 has 164 MA's), (35, 4457), (38, 4469), (41, 4484), (51, 4547), (54, 4574), (65, 4640), (70, 4661), (84, 4757), (89, 4778), (93, 4790), (95, 4793), (99, 4814), (110, 4925), (111, 4928), (115, 4973),

Gene: Mariokart_72 Start: 55498, Stop: 54551, Start Num: 5

Candidate Starts for Mariokart_72:

(Start: 5 @55498 has 3 MA's), (Start: 8 @55432 has 1 MA's), (Start: 11 @55393 has 4 MA's), (58, 55132), (74, 55072), (76, 55066), (80, 55051), (118, 54802), (123, 54592),

Gene: Matsumoto_9 Start: 2730, Stop: 3413, Start Num: 12

Candidate Starts for Matsumoto_9:

(Start: 12 @2730 has 164 MA's), (35, 2886), (38, 2898), (41, 2913), (51, 2976), (52, 2994), (54, 3003), (65, 3069), (70, 3090), (84, 3186), (93, 3219), (95, 3222), (99, 3243), (110, 3354), (111, 3357),

Gene: McGee_10 Start: 2728, Stop: 3411, Start Num: 12

Candidate Starts for McGee_10:

(Start: 12 @2728 has 164 MA's), (35, 2884), (38, 2896), (41, 2911), (51, 2974), (52, 2992), (54, 3001), (65, 3067), (70, 3088), (84, 3184), (93, 3217), (95, 3220), (99, 3241), (110, 3352), (111, 3355),

Gene: McWolfish_11 Start: 3809, Stop: 4531, Start Num: 12

Candidate Starts for McWolfish_11:

(Start: 12 @3809 has 164 MA's), (35, 3965), (38, 3977), (41, 3992), (51, 4055), (52, 4073), (54, 4082), (65, 4148), (70, 4169), (84, 4265), (93, 4298), (95, 4301), (99, 4322), (110, 4433), (111, 4436), (116, 4490),

Gene: Megamind_11 Start: 3809, Stop: 4531, Start Num: 12

Candidate Starts for Megamind_11:

(Start: 12 @3809 has 164 MA's), (35, 3965), (38, 3977), (41, 3992), (51, 4055), (52, 4073), (54, 4082), (65, 4148), (70, 4169), (84, 4265), (93, 4298), (95, 4301), (99, 4322), (110, 4433), (111, 4436), (116, 4490),

Gene: Melpomini_10 Start: 2709, Stop: 3392, Start Num: 12

Candidate Starts for Melpomini_10:

(Start: 12 @2709 has 164 MA's), (35, 2865), (38, 2877), (41, 2892), (51, 2955), (52, 2973), (54, 2982), (65, 3048), (70, 3069), (84, 3165), (93, 3198), (95, 3201), (99, 3222), (110, 3333), (111, 3336),

Gene: MikeLiesIn_11 Start: 3809, Stop: 4531, Start Num: 12

Candidate Starts for MikeLiesIn_11:

(Start: 12 @3809 has 164 MA's), (35, 3965), (38, 3977), (41, 3992), (51, 4055), (52, 4073), (54, 4082), (65, 4148), (70, 4169), (84, 4265), (93, 4298), (95, 4301), (99, 4322), (110, 4433), (111, 4436), (116, 4490),

Gene: Mikro_13 Start: 4872, Stop: 5555, Start Num: 12

Candidate Starts for Mikro_13:

(Start: 12 @4872 has 164 MA's), (35, 5028), (38, 5040), (41, 5055), (51, 5118), (54, 5145), (65, 5211), (70, 5232), (84, 5328), (89, 5349), (93, 5361), (95, 5364), (99, 5385), (110, 5496), (111, 5499),

Gene: MoMoMixon_13 Start: 4149, Stop: 4844, Start Num: 12

Candidate Starts for MoMoMixon_13:

(Start: 12 @4149 has 164 MA's), (35, 4305), (38, 4317), (41, 4332), (51, 4395), (54, 4416), (65, 4482), (70, 4503), (84, 4599), (93, 4632), (95, 4635), (99, 4656), (110, 4767), (111, 4770), (115, 4815),

Gene: Momo_10 Start: 2730, Stop: 3413, Start Num: 12

Candidate Starts for Momo_10:

(Start: 12 @2730 has 164 MA's), (35, 2886), (38, 2898), (41, 2913), (51, 2976), (52, 2994), (54, 3003), (65, 3069), (70, 3090), (84, 3186), (93, 3219), (95, 3222), (99, 3243), (110, 3354), (111, 3357),

Gene: Morgana_63 Start: 43258, Stop: 43845, Start Num: 43

Candidate Starts for Morgana_63:

(Start: 43 @43258 has 3 MA's), (66, 43420), (69, 43429), (81, 43489), (82, 43492), (92, 43531), (103, 43597), (105, 43621), (106, 43654), (117, 43723),

Gene: Morizzled23_10 Start: 2709, Stop: 3392, Start Num: 12

Candidate Starts for Morizzled23_10:

(Start: 12 @2709 has 164 MA's), (35, 2865), (38, 2877), (41, 2892), (51, 2955), (52, 2973), (54, 2982), (65, 3048), (70, 3069), (84, 3165), (93, 3198), (95, 3201), (99, 3222), (110, 3333), (111, 3336),

Gene: MossRose_74 Start: 56682, Stop: 55897, Start Num: 14

Candidate Starts for MossRose_74:

(Start: 14 @56682 has 7 MA's), (25, 56625), (50, 56496), (74, 56352), (78, 56340), (88, 56298), (89, 56295), (99, 56259), (101, 56253), (102, 56238), (104, 56202), (109, 56157), (118, 56073), (121, 55980),

Gene: NHagos_71 Start: 54880, Stop: 54203, Start Num: 14

Candidate Starts for NHagos_71:

(Start: 14 @54880 has 7 MA's), (57, 54637), (74, 54544), (75, 54541), (77, 54535), (78, 54532), (86, 54499), (89, 54487), (91, 54481), (94, 54472), (98, 54454), (99, 54451), (101, 54445), (102, 54430), (107, 54355), (112, 54319), (118, 54262), (119, 54226),

Gene: Naija_10 Start: 2730, Stop: 3413, Start Num: 12

Candidate Starts for Naija_10:

(Start: 12 @2730 has 164 MA's), (35, 2886), (38, 2898), (41, 2913), (51, 2976), (52, 2994), (54, 3003), (65, 3069), (70, 3090), (84, 3186), (93, 3219), (95, 3222), (99, 3243), (110, 3354), (111, 3357),

Gene: Napoleon13_10 Start: 2728, Stop: 3411, Start Num: 12

Candidate Starts for Napoleon13_10:

(Start: 12 @2728 has 164 MA's), (35, 2884), (38, 2896), (41, 2911), (51, 2974), (52, 2992), (54, 3001), (65, 3067), (70, 3088), (84, 3184), (93, 3217), (95, 3220), (99, 3241), (110, 3352), (111, 3355),

Gene: Nappy_12 Start: 3543, Stop: 4238, Start Num: 12

Candidate Starts for Nappy_12:

(Start: 12 @3543 has 164 MA's), (35, 3699), (38, 3711), (41, 3726), (51, 3789), (54, 3810), (65, 3876), (70, 3897), (84, 3993), (93, 4026), (95, 4029), (99, 4050), (110, 4161), (111, 4164), (115, 4209),

Gene: Naval22_13 Start: 4149, Stop: 4844, Start Num: 12

Candidate Starts for Naval22_13:

(Start: 12 @4149 has 164 MA's), (35, 4305), (38, 4317), (41, 4332), (51, 4395), (54, 4416), (65, 4482), (70, 4503), (84, 4599), (93, 4632), (95, 4635), (99, 4656), (110, 4767), (111, 4770), (115, 4815),

Gene: NedWong_11 Start: 3809, Stop: 4531, Start Num: 12

Candidate Starts for NedWong_11:

(Start: 12 @3809 has 164 MA's), (35, 3965), (38, 3977), (41, 3992), (51, 4055), (52, 4073), (54, 4082), (65, 4148), (70, 4169), (84, 4265), (93, 4298), (95, 4301), (99, 4322), (110, 4433), (111, 4436), (116, 4490),

Gene: Ngannou_10 Start: 2709, Stop: 3392, Start Num: 12

Candidate Starts for Ngannou_10:

(Start: 12 @2709 has 164 MA's), (35, 2865), (38, 2877), (41, 2892), (51, 2955), (52, 2973), (54, 2982), (65, 3048), (70, 3069), (84, 3165), (93, 3198), (95, 3201), (99, 3222), (110, 3333), (111, 3336),

Gene: Nidhogg_13 Start: 4149, Stop: 4844, Start Num: 12

Candidate Starts for Nidhogg_13:

(Start: 12 @4149 has 164 MA's), (35, 4305), (38, 4317), (41, 4332), (51, 4395), (54, 4416), (65, 4482), (70, 4503), (84, 4599), (93, 4632), (95, 4635), (99, 4656), (110, 4767), (111, 4770), (115, 4815),

Gene: NoodleTree_13 Start: 3873, Stop: 4556, Start Num: 12

Candidate Starts for NoodleTree_13:

(Start: 12 @3873 has 164 MA's), (35, 4029), (38, 4041), (41, 4056), (51, 4119), (54, 4146), (65, 4212), (70, 4233), (84, 4329), (89, 4350), (93, 4362), (95, 4365), (99, 4386), (110, 4497), (111, 4500),

Gene: Norm_11 Start: 3809, Stop: 4531, Start Num: 12

Candidate Starts for Norm_11:

(Start: 12 @3809 has 164 MA's), (35, 3965), (38, 3977), (41, 3992), (51, 4055), (52, 4073), (54, 4082), (65, 4148), (70, 4169), (84, 4265), (93, 4298), (95, 4301), (99, 4322), (110, 4433), (111, 4436), (116, 4490),

Gene: NuevoMundo_15 Start: 4566, Stop: 5267, Start Num: 12

Candidate Starts for NuevoMundo_15:

(Start: 12 @4566 has 164 MA's), (35, 4722), (38, 4734), (41, 4749), (51, 4812), (54, 4839), (65, 4905), (70, 4926), (84, 5022), (89, 5043), (93, 5055), (95, 5058), (99, 5079), (110, 5190), (111, 5193), (115, 5238),

Gene: ParkTD_11 Start: 3809, Stop: 4531, Start Num: 12

Candidate Starts for ParkTD_11:

(Start: 12 @3809 has 164 MA's), (35, 3965), (38, 3977), (41, 3992), (51, 4055), (52, 4073), (54, 4082), (65, 4148), (70, 4169), (84, 4265), (93, 4298), (95, 4301), (99, 4322), (110, 4433), (111, 4436), (116, 4490),

Gene: Patter_10 Start: 2747, Stop: 3430, Start Num: 12

Candidate Starts for Patter_10:

(Start: 12 @2747 has 164 MA's), (35, 2903), (38, 2915), (41, 2930), (51, 2993), (52, 3011), (54, 3020), (65, 3086), (70, 3107), (84, 3203), (93, 3236), (95, 3239), (99, 3260), (110, 3371), (111, 3374),

Gene: Phlegm_10 Start: 2730, Stop: 3413, Start Num: 12

Candidate Starts for Phlegm_10:

(Start: 12 @2730 has 164 MA's), (35, 2886), (38, 2898), (41, 2913), (51, 2976), (52, 2994), (54, 3003), (65, 3069), (70, 3090), (84, 3186), (93, 3219), (95, 3222), (99, 3243), (110, 3354), (111, 3357),

Gene: Phox_10 Start: 3899, Stop: 4582, Start Num: 12

Candidate Starts for Phox_10:

(Start: 12 @3899 has 164 MA's), (35, 4055), (38, 4067), (41, 4082), (51, 4145), (52, 4163), (54, 4172), (65, 4238), (70, 4259), (84, 4355), (93, 4388), (95, 4391), (99, 4412), (110, 4523), (111, 4526),

Gene: Phusco_10 Start: 2726, Stop: 3409, Start Num: 12

Candidate Starts for Phusco_10:

(Start: 12 @2726 has 164 MA's), (35, 2882), (38, 2894), (41, 2909), (51, 2972), (52, 2990), (54, 2999), (65, 3065), (70, 3086), (84, 3182), (93, 3215), (95, 3218), (99, 3239), (110, 3350), (111, 3353),

Gene: Pier_16 Start: 4544, Stop: 5227, Start Num: 12

Candidate Starts for Pier_16:

(Start: 12 @4544 has 164 MA's), (35, 4700), (38, 4712), (41, 4727), (51, 4790), (52, 4808), (54, 4817), (65, 4883), (70, 4904), (84, 5000), (93, 5033), (95, 5036), (99, 5057), (110, 5168), (111, 5171),

Gene: Pinkcreek_6 Start: 2848, Stop: 3531, Start Num: 12

Candidate Starts for Pinkcreek_6:

(Start: 12 @2848 has 164 MA's), (35, 3004), (38, 3016), (41, 3031), (51, 3094), (52, 3112), (54, 3121), (65, 3187), (70, 3208), (84, 3304), (93, 3337), (95, 3340), (99, 3361), (110, 3472), (111, 3475),

Gene: Pio_14 Start: 4303, Stop: 5004, Start Num: 12

Candidate Starts for Pio_14:

(Start: 12 @4303 has 164 MA's), (35, 4459), (38, 4471), (41, 4486), (51, 4549), (54, 4576), (65, 4642), (70, 4663), (84, 4759), (89, 4780), (93, 4792), (95, 4795), (99, 4816), (110, 4927), (111, 4930), (115, 4975),

Gene: Pivoine_10 Start: 2730, Stop: 3413, Start Num: 12

Candidate Starts for Pivoine_10:

(Start: 12 @2730 has 164 MA's), (35, 2886), (38, 2898), (41, 2913), (51, 2976), (52, 2994), (54, 3003), (65, 3069), (70, 3090), (84, 3186), (93, 3219), (95, 3222), (99, 3243), (110, 3354), (111, 3357),

Gene: Pleione_11 Start: 3809, Stop: 4531, Start Num: 12

Candidate Starts for Pleione_11:

(Start: 12 @3809 has 164 MA's), (35, 3965), (38, 3977), (41, 3992), (51, 4055), (52, 4073), (54, 4082), (65, 4148), (70, 4169), (84, 4265), (93, 4298), (95, 4301), (99, 4322), (110, 4433), (111, 4436), (116, 4490),

Gene: PurduePete_11 Start: 3809, Stop: 4531, Start Num: 12

Candidate Starts for PurduePete_11:

(Start: 12 @3809 has 164 MA's), (35, 3965), (38, 3977), (41, 3992), (51, 4055), (52, 4073), (54, 4082), (65, 4148), (70, 4169), (84, 4265), (93, 4298), (95, 4301), (99, 4322), (110, 4433), (111, 4436), (116, 4490),

Gene: QBert_10 Start: 3774, Stop: 4457, Start Num: 12

Candidate Starts for QBert_10:

(Start: 12 @3774 has 164 MA's), (35, 3930), (38, 3942), (41, 3957), (51, 4020), (54, 4047), (65, 4113), (70, 4134), (84, 4230), (89, 4251), (93, 4263), (95, 4266), (99, 4287), (110, 4398), (111, 4401),

Gene: Quasimodo_10 Start: 3729, Stop: 4412, Start Num: 12

Candidate Starts for Quasimodo_10:

(Start: 12 @3729 has 164 MA's), (35, 3885), (38, 3897), (41, 3912), (51, 3975), (52, 3993), (54, 4002), (65, 4068), (70, 4089), (84, 4185), (93, 4218), (95, 4221), (99, 4242), (110, 4353), (111, 4356),

Gene: Rabinovish_9 Start: 3515, Stop: 4198, Start Num: 12

Candidate Starts for Rabinovish_9:

(Start: 12 @3515 has 164 MA's), (35, 3671), (38, 3683), (41, 3698), (51, 3761), (52, 3779), (54, 3788), (65, 3854), (70, 3875), (84, 3971), (93, 4004), (95, 4007), (99, 4028), (110, 4139), (111, 4142),

Gene: Rahel_10 Start: 2726, Stop: 3409, Start Num: 12

Candidate Starts for Rahel_10:

(Start: 12 @2726 has 164 MA's), (35, 2882), (38, 2894), (41, 2909), (51, 2972), (52, 2990), (54, 2999), (65, 3065), (70, 3086), (84, 3182), (93, 3215), (95, 3218), (99, 3239), (110, 3350), (111, 3353),

Gene: Rizal_10 Start: 2726, Stop: 3409, Start Num: 12

Candidate Starts for Rizal_10:

(Start: 12 @2726 has 164 MA's), (35, 2882), (38, 2894), (41, 2909), (51, 2972), (52, 2990), (54, 2999), (65, 3065), (70, 3086), (84, 3182), (93, 3215), (95, 3218), (99, 3239), (110, 3350), (111, 3353),

Gene: RoMag_9 Start: 3623, Stop: 4306, Start Num: 12

Candidate Starts for RoMag_9:

(Start: 12 @3623 has 164 MA's), (35, 3779), (38, 3791), (41, 3806), (51, 3869), (54, 3896), (65, 3962), (70, 3983), (84, 4079), (89, 4100), (93, 4112), (95, 4115), (99, 4136), (110, 4247), (111, 4250),

Gene: Ronan_10 Start: 2900, Stop: 3583, Start Num: 12

Candidate Starts for Ronan_10:

(Start: 12 @2900 has 164 MA's), (35, 3056), (38, 3068), (41, 3083), (51, 3146), (54, 3173), (65, 3239), (70, 3260), (84, 3356), (93, 3389), (95, 3392), (99, 3413), (110, 3524), (111, 3527),

Gene: Roots515_11 Start: 3809, Stop: 4492, Start Num: 12

Candidate Starts for Roots515_11:

(Start: 12 @3809 has 164 MA's), (35, 3965), (38, 3977), (41, 3992), (51, 4055), (52, 4073), (54, 4082), (65, 4148), (70, 4169), (84, 4265), (93, 4298), (95, 4301), (99, 4322), (110, 4433), (111, 4436),

Gene: Salacia_11 Start: 3809, Stop: 4531, Start Num: 12

Candidate Starts for Salacia_11:

(Start: 12 @3809 has 164 MA's), (35, 3965), (38, 3977), (41, 3992), (51, 4055), (52, 4073), (54, 4082), (65, 4148), (70, 4169), (84, 4265), (93, 4298), (95, 4301), (99, 4322), (110, 4433), (111, 4436), (116, 4490),

Gene: Sauce_14 Start: 4153, Stop: 4836, Start Num: 12

Candidate Starts for Sauce_14:

(Start: 12 @4153 has 164 MA's), (35, 4309), (38, 4321), (41, 4336), (51, 4399), (54, 4426), (65, 4492), (70, 4513), (84, 4609), (93, 4642), (95, 4645), (99, 4666), (110, 4777), (111, 4780),

Gene: ScottMcG_10 Start: 3102, Stop: 3803, Start Num: 12

Candidate Starts for ScottMcG_10:

(Start: 12 @3102 has 164 MA's), (35, 3258), (38, 3270), (41, 3285), (51, 3348), (52, 3366), (54, 3375), (65, 3441), (70, 3462), (84, 3558), (93, 3591), (95, 3594), (99, 3615), (110, 3726), (111, 3729), (115, 3774),

Gene: Shaqnato_10 Start: 2917, Stop: 3600, Start Num: 12

Candidate Starts for Shaqnato_10:

(Start: 12 @2917 has 164 MA's), (35, 3073), (38, 3085), (41, 3100), (51, 3163), (52, 3181), (54, 3190), (65, 3256), (70, 3277), (84, 3373), (93, 3406), (95, 3409), (99, 3430), (110, 3541), (111, 3544),

Gene: Shatter_74 Start: 56018, Stop: 55002, Start Num: 5

Candidate Starts for Shatter_74:

(3, 56057), (Start: 5 @56018 has 3 MA's), (6, 55967), (Start: 8 @55952 has 1 MA's), (Start: 11 @55913 has 4 MA's), (16, 55865), (17, 55859), (22, 55844), (27, 55790), (32, 55772), (34, 55763), (44, 55703), (58, 55610), (74, 55529), (76, 55523), (79, 55514), (80, 55505), (81, 55502), (85, 55490), (96, 55457), (99, 55439), (104, 55382), (109, 55337), (118, 55250), (120, 55205),

Gene: Shelob_11 Start: 3809, Stop: 4510, Start Num: 12

Candidate Starts for Shelob_11:

(Start: 12 @3809 has 164 MA's), (35, 3965), (38, 3977), (41, 3992), (51, 4055), (52, 4073), (54, 4082), (65, 4148), (70, 4169), (84, 4265), (93, 4298), (95, 4301), (99, 4322), (110, 4433), (111, 4436), (115,

4481),

Gene: ShiaLabeouf_10 Start: 2726, Stop: 3409, Start Num: 12

Candidate Starts for ShiaLabeouf_10:

(Start: 12 @2726 has 164 MA's), (35, 2882), (38, 2894), (41, 2909), (51, 2972), (52, 2990), (54, 2999), (65, 3065), (70, 3086), (84, 3182), (93, 3215), (95, 3218), (99, 3239), (110, 3350), (111, 3353),

Gene: Shifa_7 Start: 3083, Stop: 3766, Start Num: 12

Candidate Starts for Shifa_7:

(Start: 12 @3083 has 164 MA's), (35, 3239), (38, 3251), (41, 3266), (51, 3329), (52, 3347), (54, 3356), (65, 3422), (70, 3443), (84, 3539), (93, 3572), (95, 3575), (99, 3596), (110, 3707), (111, 3710),

Gene: Shnickers_10 Start: 2726, Stop: 3409, Start Num: 12

Candidate Starts for Shnickers_10:

(Start: 12 @2726 has 164 MA's), (35, 2882), (38, 2894), (41, 2909), (51, 2972), (52, 2990), (54, 2999), (65, 3065), (70, 3086), (84, 3182), (93, 3215), (95, 3218), (99, 3239), (110, 3350), (111, 3353),

Gene: Shrimp_11 Start: 3813, Stop: 4535, Start Num: 12

Candidate Starts for Shrimp_11:

(Start: 12 @3813 has 164 MA's), (35, 3969), (38, 3981), (41, 3996), (51, 4059), (52, 4077), (54, 4086), (65, 4152), (70, 4173), (84, 4269), (93, 4302), (95, 4305), (99, 4326), (110, 4437), (111, 4440), (116, 4494),

Gene: SilverDipper_10 Start: 2730, Stop: 3413, Start Num: 12

Candidate Starts for SilverDipper_10:

(Start: 12 @2730 has 164 MA's), (35, 2886), (38, 2898), (41, 2913), (51, 2976), (52, 2994), (54, 3003), (65, 3069), (70, 3090), (84, 3186), (93, 3219), (95, 3222), (99, 3243), (110, 3354), (111, 3357),

Gene: Sisko_74 Start: 56867, Stop: 56061, Start Num: 11

Candidate Starts for Sisko_74:

(1, 57194), (Start: 11 @56867 has 4 MA's), (19, 56807), (27, 56756), (46, 56657), (59, 56564), (67, 56519), (68, 56516), (73, 56501), (81, 56468), (86, 56447), (87, 56441), (100, 56402), (104, 56348), (114, 56258),

Gene: SmallFry_10 Start: 2726, Stop: 3409, Start Num: 12

Candidate Starts for SmallFry_10:

(Start: 12 @2726 has 164 MA's), (35, 2882), (38, 2894), (41, 2909), (51, 2972), (52, 2990), (54, 2999), (65, 3065), (70, 3086), (84, 3182), (93, 3215), (95, 3218), (99, 3239), (110, 3350), (111, 3353),

Gene: Sour_72 Start: 57600, Stop: 56710, Start Num: 8

Candidate Starts for Sour_72:

(Start: 8 @57600 has 1 MA's), (15, 57516), (18, 57504), (19, 57501), (Start: 21 @57495 has 1 MA's), (26, 57453), (45, 57351), (56, 57285), (64, 57234), (74, 57189), (90, 57090), (101, 57051), (108, 56958),

Gene: Spec_9 Start: 2726, Stop: 3409, Start Num: 12

Candidate Starts for Spec_9:

(Start: 12 @2726 has 164 MA's), (35, 2882), (38, 2894), (41, 2909), (51, 2972), (52, 2990), (54, 2999), (65, 3065), (70, 3086), (84, 3182), (93, 3215), (95, 3218), (99, 3239), (110, 3350), (111, 3353),

Gene: Sprinklers_10 Start: 2900, Stop: 3583, Start Num: 12

Candidate Starts for Sprinklers_10:

(Start: 12 @2900 has 164 MA's), (35, 3056), (38, 3068), (41, 3083), (51, 3146), (52, 3164), (54, 3173), (65, 3239), (70, 3260), (84, 3356), (93, 3389), (95, 3392), (99, 3413), (110, 3524), (111, 3527),

Gene: Spud_14 Start: 4303, Stop: 5004, Start Num: 12

Candidate Starts for Spud_14:

(Start: 12 @4303 has 164 MA's), (35, 4459), (38, 4471), (41, 4486), (51, 4549), (54, 4576), (65, 4642), (70, 4663), (84, 4759), (89, 4780), (93, 4792), (95, 4795), (99, 4816), (110, 4927), (111, 4930), (115, 4975),

Gene: SrishMeg2525_11 Start: 3809, Stop: 4531, Start Num: 12

Candidate Starts for SrishMeg2525_11:

(Start: 12 @3809 has 164 MA's), (35, 3965), (38, 3977), (41, 3992), (51, 4055), (52, 4073), (54, 4082), (65, 4148), (70, 4169), (84, 4265), (93, 4298), (95, 4301), (99, 4322), (110, 4433), (111, 4436), (116, 4490),

Gene: StephanieG_15 Start: 4569, Stop: 5252, Start Num: 12

Candidate Starts for StephanieG_15:

(Start: 12 @4569 has 164 MA's), (35, 4725), (38, 4737), (41, 4752), (51, 4815), (54, 4842), (65, 4908), (70, 4929), (84, 5025), (89, 5046), (93, 5058), (95, 5061), (99, 5082), (110, 5193), (111, 5196),

Gene: Stubby_8 Start: 3149, Stop: 3850, Start Num: 12

Candidate Starts for Stubby_8:

(Start: 12 @3149 has 164 MA's), (35, 3305), (38, 3317), (41, 3332), (51, 3395), (52, 3413), (54, 3422), (65, 3488), (70, 3509), (84, 3605), (93, 3638), (95, 3641), (99, 3662), (110, 3773), (111, 3776), (115, 3821),

Gene: StubbySaigey_10 Start: 2730, Stop: 3413, Start Num: 12

Candidate Starts for StubbySaigey_10:

(Start: 12 @2730 has 164 MA's), (35, 2886), (38, 2898), (41, 2913), (51, 2976), (52, 2994), (54, 3003), (65, 3069), (70, 3090), (84, 3186), (93, 3219), (95, 3222), (99, 3243), (110, 3354), (111, 3357),

Gene: Teardrop_10 Start: 2726, Stop: 3409, Start Num: 12

Candidate Starts for Teardrop_10:

(Start: 12 @2726 has 164 MA's), (35, 2882), (38, 2894), (41, 2909), (51, 2972), (52, 2990), (54, 2999), (65, 3065), (70, 3086), (84, 3182), (93, 3215), (95, 3218), (99, 3239), (110, 3350), (111, 3353),

Gene: TinyTim_11 Start: 3809, Stop: 4531, Start Num: 12

Candidate Starts for TinyTim_11:

(Start: 12 @3809 has 164 MA's), (35, 3965), (38, 3977), (41, 3992), (51, 4055), (52, 4073), (54, 4082), (65, 4148), (70, 4169), (84, 4265), (93, 4298), (95, 4301), (99, 4322), (110, 4433), (111, 4436), (116, 4490),

Gene: Tonenili_13 Start: 3681, Stop: 4358, Start Num: 12

Candidate Starts for Tonenili_13:

(Start: 12 @3681 has 164 MA's), (23, 3753), (33, 3801), (35, 3816), (37, 3825), (53, 3942), (65, 4017), (72, 4044), (83, 4107), (95, 4164), (99, 4185), (109, 4290), (110, 4296), (111, 4299),

Gene: Tortoise16_9 Start: 2726, Stop: 3409, Start Num: 12

Candidate Starts for Tortoise16_9:

(Start: 12 @2726 has 164 MA's), (35, 2882), (38, 2894), (41, 2909), (51, 2972), (52, 2990), (54, 2999), (65, 3065), (70, 3086), (84, 3182), (93, 3215), (95, 3218), (99, 3239), (110, 3350), (111, 3353),

Gene: Trinitium_10 Start: 2726, Stop: 3409, Start Num: 12

Candidate Starts for Trinitium_10:

(Start: 12 @2726 has 164 MA's), (35, 2882), (38, 2894), (41, 2909), (51, 2972), (52, 2990), (54, 2999), (65, 3065), (70, 3086), (84, 3182), (93, 3215), (95, 3218), (99, 3239), (110, 3350), (111, 3353),

Gene: Turret_10 Start: 2709, Stop: 3392, Start Num: 12

Candidate Starts for Turret_10:

(Start: 12 @2709 has 164 MA's), (35, 2865), (38, 2877), (41, 2892), (51, 2955), (52, 2973), (54, 2982), (65, 3048), (70, 3069), (84, 3165), (93, 3198), (95, 3201), (99, 3222), (110, 3333), (111, 3336),

Gene: Tyke_13 Start: 3779, Stop: 4480, Start Num: 12

Candidate Starts for Tyke_13:

(Start: 12 @3779 has 164 MA's), (35, 3935), (38, 3947), (41, 3962), (51, 4025), (54, 4052), (65, 4118), (70, 4139), (84, 4235), (89, 4256), (93, 4268), (95, 4271), (99, 4292), (110, 4403), (111, 4406), (115, 4451),

Gene: ValleyTerrace_10 Start: 2730, Stop: 3413, Start Num: 12

Candidate Starts for ValleyTerrace_10:

(Start: 12 @2730 has 164 MA's), (35, 2886), (38, 2898), (41, 2913), (51, 2976), (52, 2994), (54, 3003), (65, 3069), (70, 3090), (84, 3186), (93, 3219), (95, 3222), (99, 3243), (110, 3354), (111, 3357),

Gene: VanLee_120 Start: 62109, Stop: 61531, Start Num: 21

Candidate Starts for VanLee_120:

(Start: 21 @62109 has 1 MA's), (30, 62058), (31, 62055), (37, 62025), (48, 61962), (60, 61872), (62, 61866), (64, 61848), (67, 61827), (71, 61821), (99, 61731),

Gene: Wally_10 Start: 2730, Stop: 3413, Start Num: 12

Candidate Starts for Wally_10:

(Start: 12 @2730 has 164 MA's), (35, 2886), (38, 2898), (41, 2913), (51, 2976), (52, 2994), (54, 3003), (65, 3069), (70, 3090), (84, 3186), (93, 3219), (95, 3222), (99, 3243), (110, 3354), (111, 3357),

Gene: Willis_10 Start: 3735, Stop: 4418, Start Num: 12

Candidate Starts for Willis_10:

(Start: 12 @3735 has 164 MA's), (35, 3891), (38, 3903), (41, 3918), (51, 3981), (52, 3999), (54, 4008), (65, 4074), (70, 4095), (84, 4191), (93, 4224), (95, 4227), (99, 4248), (110, 4359), (111, 4362),

Gene: Wooper_76 Start: 56756, Stop: 55971, Start Num: 14

Candidate Starts for Wooper_76:

(4, 56912), (Start: 14 @56756 has 7 MA's), (25, 56699), (50, 56570), (74, 56426), (79, 56411), (89, 56369), (99, 56333), (101, 56327), (102, 56312), (104, 56276), (108, 56234), (121, 56054),

Gene: Yago84_73 Start: 56581, Stop: 55775, Start Num: 11

Candidate Starts for Yago84_73:

(1, 56905), (Start: 11 @56581 has 4 MA's), (19, 56521), (27, 56470), (46, 56371), (59, 56278), (67, 56233), (68, 56230), (73, 56215), (81, 56182), (86, 56161), (87, 56155), (100, 56116), (104, 56062), (114, 55972),

Gene: Yassified_10 Start: 2923, Stop: 3606, Start Num: 12

Candidate Starts for Yassified_10:

(Start: 12 @2923 has 164 MA's), (35, 3079), (38, 3091), (41, 3106), (51, 3169), (54, 3196), (65, 3262), (70, 3283), (84, 3379), (93, 3412), (95, 3415), (99, 3436), (110, 3547), (111, 3550),

Gene: YemiJoy2021_11 Start: 3809, Stop: 4531, Start Num: 12

Candidate Starts for YemiJoy2021_11:

(Start: 12 @3809 has 164 MA's), (35, 3965), (38, 3977), (41, 3992), (51, 4055), (52, 4073), (54, 4082), (65, 4148), (70, 4169), (84, 4265), (93, 4298), (95, 4301), (99, 4322), (110, 4433), (111, 4436), (116, 4490),

Gene: YoungMoneyMata_10 Start: 2728, Stop: 3411, Start Num: 12

Candidate Starts for YoungMoneyMata_10:

(Start: 12 @2728 has 164 MA's), (35, 2884), (38, 2896), (41, 2911), (51, 2974), (52, 2992), (54, 3001), (65, 3067), (70, 3088), (84, 3184), (93, 3217), (95, 3220), (99, 3241), (110, 3352), (111, 3355),

Gene: Yucca_10 Start: 3731, Stop: 4453, Start Num: 12

Candidate Starts for Yucca_10:

(Start: 12 @3731 has 164 MA's), (35, 3887), (38, 3899), (41, 3914), (51, 3977), (52, 3995), (54, 4004), (65, 4070), (70, 4091), (84, 4187), (93, 4220), (95, 4223), (99, 4244), (110, 4355), (111, 4358), (116, 4412),

Gene: Zalkecks_11 Start: 3809, Stop: 4531, Start Num: 12

Candidate Starts for Zalkecks_11:

(Start: 12 @3809 has 164 MA's), (35, 3965), (38, 3977), (41, 3992), (51, 4055), (52, 4073), (54, 4082), (65, 4148), (70, 4169), (84, 4265), (93, 4298), (95, 4301), (99, 4322), (110, 4433), (111, 4436), (116, 4490),

Gene: Zeenon_12 Start: 3810, Stop: 4532, Start Num: 12

Candidate Starts for Zeenon_12:

(Start: 12 @3810 has 164 MA's), (35, 3966), (38, 3978), (41, 3993), (51, 4056), (52, 4074), (54, 4083), (65, 4149), (70, 4170), (84, 4266), (93, 4299), (95, 4302), (99, 4323), (110, 4434), (111, 4437), (116, 4491),

Gene: ZygoTaiga_11 Start: 3809, Stop: 4531, Start Num: 12

Candidate Starts for ZygoTaiga_11:

(Start: 12 @3809 has 164 MA's), (35, 3965), (38, 3977), (41, 3992), (51, 4055), (52, 4073), (54, 4082), (65, 4148), (70, 4169), (84, 4265), (93, 4298), (95, 4301), (99, 4322), (110, 4433), (111, 4436), (116, 4490),