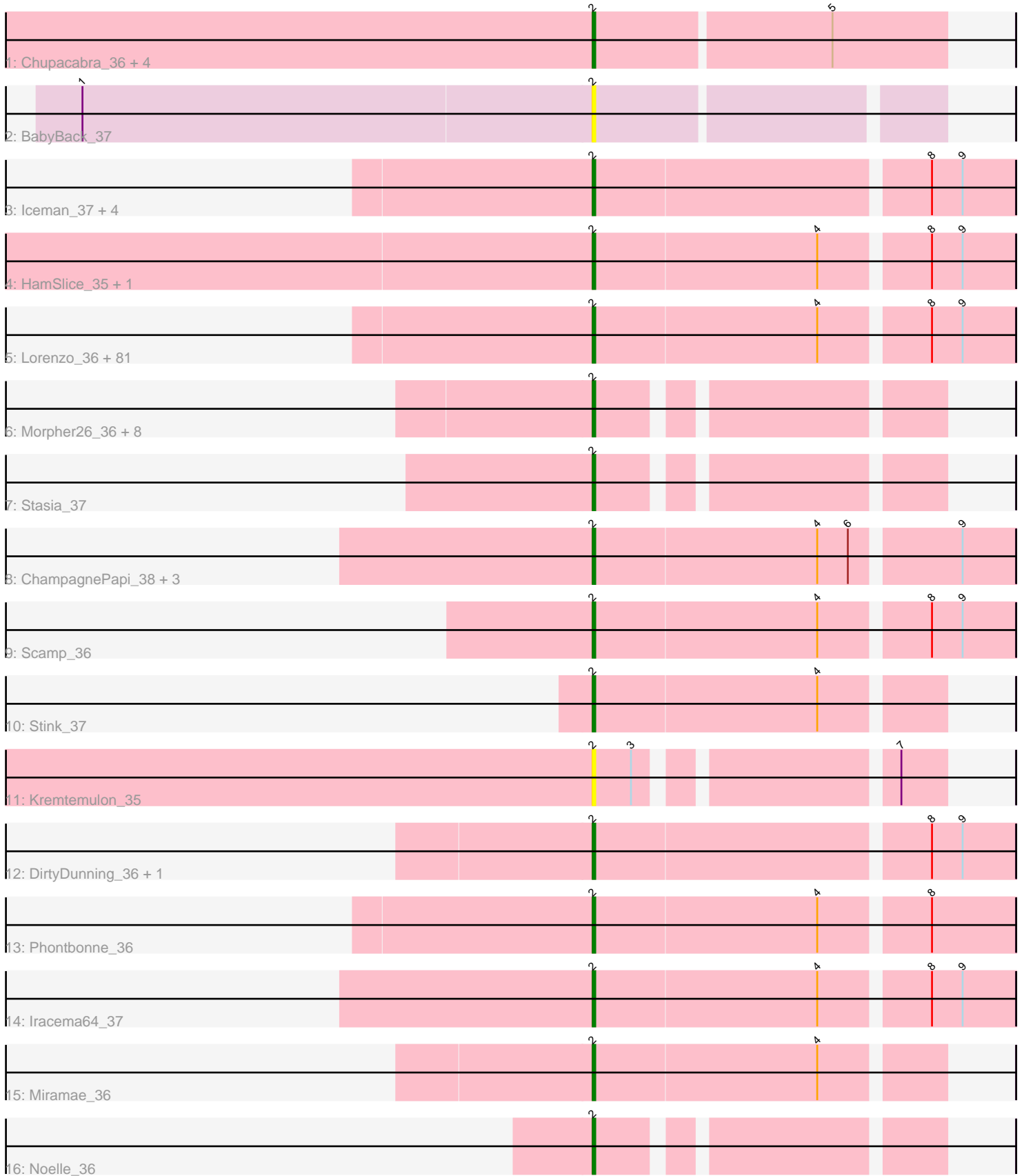


Pham 161653



Note: Tracks are now grouped by subcluster and scaled. Switching in subcluster is indicated by changes in track color. Track scale is now set by default to display the region 30 bp upstream of start 1 to 30 bp downstream of the last possible start. If this default region is judged to be packed too tightly with annotated starts, the track will be further scaled to only show that region of the ORF with annotated starts. This action will be indicated by adding "Zoomed" to the title. For starts, yellow indicates the location of called starts comprised solely of Glimmer/GeneMark auto-annotations, green indicates the location of called starts with at least 1 manual gene annotation.

Pham 161653 Report

This analysis was run 04/28/24 on database version 559.

Pham number 161653 has 118 members, 2 are drafts.

Phages represented in each track:

- Track 1 : Chupacabra_36, Goose_37, Eaglepride_38, OKCentral2016_36, RhynO_37
- Track 2 : BabyBack_37
- Track 3 : Iceman_37, Flux_36, Wilbur_36, Kratark_36, Romney_36
- Track 4 : HamSlice_35, Kingmustik0402_36
- Track 5 : Lorenzo_36, Cocoaberry_36, Floean_36, Pumbaa_36, Eapen_36, Bartimeaus_36, ICleared_36, Avle17_36, Gadost_36, Dhanush_36, Alberto7_37, Taquarus_36, Bruiser_35, Kyee_36, CentreCat_36, TinaFeyge_37, Thanksgivukkah_36, Funston_36, Polymorphads_37, Ruin_36, Koreni_35, TygerBlood_36, Maxo_37, Albee_36, Phighter1804_36, Nemo27_36, Camperdownii_35, Citius_36, Lemur_36, Wizard007_36, LittleGuy_36, JoongJeon_36, TroyPia_37, Caelakin_36, BellusTerra_37, NotAPhaseMom_36, Lunsford_37, LittleB_36, Eris_35, Eurydice_37, Ulysses_35, Annyong_36, Nebs_37, Chaph_36, Druantia_36, Bombshell_36, Wander_36, Sparxx_37, TiroTheta9_36, MeeZee_36, Sabertooth_36, Blackmoor_36, LochMonster_36, Morrow_37, Maverick_36, Houdini22_36, Happiness_36, Eagle_36, Phacado_36, Melvin_38, Mazhar510_36, Peaches_36, Eros_36, Abdiel_36, Nyxis_36, Baby16_36, Millski_35, Clarenza_36, BubbleTrouble_36, Cintron_36, PeterPeter_36, Shaka_36, Deano_36, Ohfah_37, YoSam321_36, Palestino_35, Spino_36, Connomayer_36, JetBlade_36, Broseidon_36, KFPoly_36, Phelipe_37
- Track 6 : Morpher26_36, Perplexer_36, Datway_36, PetiteSangsue_36, Katalie136_36, Wile_36, AbbysRanger_36, Cici_36, Achebe_35
- Track 7 : Stasia_37
- Track 8 : ChampagnePapi_38, SheldonCooper_38, BangNhom_37, LHTSCC_38
- Track 9 : Scamp_36
- Track 10 : Stink_37
- Track 11 : Kremtemulon_35
- Track 12 : DirtyDunning_36, Shygu2_36
- Track 13 : Phontbonne_36
- Track 14 : Iracema64_37
- Track 15 : Miramae_36
- Track 16 : Noelle_36

Summary of Final Annotations (See graph section above for start numbers):

The start number called the most often in the published annotations is 2, it was called in 116 of the 116 non-draft genes in the pham.

Genes that call this "Most Annotated" start:

- AbbysRanger_36, Abdiel_36, Achebe_35, Albee_36, Alberto7_37, Annyong_36, Avle17_36, Baby16_36, BabyBack_37, BangNhom_37, Bartimeaus_36, BellusTerra_37, Blackmoor_36, Bombshell_36, Broseidon_36, Bruiser_35, BubbleTrouble_36, Caelakin_36, Camperdownii_35, CentreCat_36, ChampagnePapi_38, Chaph_36, Chupacabra_36, Cici_36, Cintron_36, Citius_36, Clarenza_36, Cocoaberry_36, Connomayer_36, Datway_36, Deano_36, Dhanush_36, DirtyDunning_36, Druantia_36, Eagle_36, Eaglepride_38, Eapen_36, Eris_35, Eros_36, Eurydice_37, Florean_36, Flux_36, Funston_36, Gadost_36, Goose_37, HamSlice_35, Happiness_36, Houdini22_36, ICleared_36, Iceman_37, Iracema64_37, JetBlade_36, JoongJeon_36, KFPoly_36, Katalie136_36, Kingmustik0402_36, Koreni_35, Kratak_36, Kremtemulon_35, Kye_36, LHTSCC_38, Lemur_36, LittleB_36, LittleGuy_36, LochMonster_36, Lorenzo_36, Lunsford_37, Maverick_36, Maxo_37, Mazhar510_36, MeeZee_36, Melvin_38, Millski_35, Miramae_36, Morpher26_36, Morrow_37, Nebs_37, Nemo27_36, Noelle_36, NotAPhaseMom_36, Nyxis_36, OKCentral2016_36, Ohfah_37, Palestino_35, Peaches_36, Perplexer_36, PeterPeter_36, PetiteSangsue_36, Phacado_36, Phelipe_37, Phighter1804_36, Phontbonne_36, Polymorphads_37, Pumbaa_36, RhynO_37, Romney_36, Ruin_36, Sabertooth_36, Scamp_36, Shaka_36, SheldonCooper_38, Shygu2_36, Sparxx_37, Spino_36, Stasia_37, Stink_37, Taquarus_36, Thanksgivukkah_36, TinaFeyge_37, TiroTheta9_36, TroyPia_37, TygerBlood_36, Ulysses_35, Wander_36, Wilbur_36, Wile_36, Wizard007_36, YoSam321_36,

Genes that have the "Most Annotated" start but do not call it:

-

Genes that do not have the "Most Annotated" start:

-

Summary by start number:

Start 2:

- Found in 118 of 118 (100.0%) of genes in pham
- Manual Annotations of this start: 116 of 116
- Called 100.0% of time when present
- Phage (with cluster) where this start called: AbbysRanger_36 (A4), Abdiel_36 (A4), Achebe_35 (A4), Albee_36 (A4), Alberto7_37 (A4), Annyong_36 (A4), Avle17_36 (A4), Baby16_36 (A4), BabyBack_37 (A2), BangNhom_37 (A4), Bartimeaus_36 (A4), BellusTerra_37 (A4), Blackmoor_36 (A4), Bombshell_36 (A4), Broseidon_36 (A4), Bruiser_35 (A4), BubbleTrouble_36 (A4), Caelakin_36 (A4), Camperdownii_35 (A4), CentreCat_36 (A4), ChampagnePapi_38 (A4), Chaph_36 (A4), Chupacabra_36 (A10), Cici_36 (A4), Cintron_36 (A4), Citius_36 (A4), Clarenza_36 (A4), Cocoaberry_36 (A4), Connomayer_36 (A4), Datway_36 (A4), Deano_36 (A4), Dhanush_36 (A4), DirtyDunning_36 (A4), Druantia_36 (A4), Eagle_36 (A4), Eaglepride_38 (A10), Eapen_36 (A4), Eris_35 (A4), Eros_36 (A4), Eurydice_37 (A4), Florean_36 (A4), Flux_36 (A4), Funston_36 (A4), Gadost_36 (A4), Goose_37 (A10), HamSlice_35 (A4), Happiness_36 (A4), Houdini22_36 (A4), ICleared_36 (A4), Iceman_37 (A4), Iracema64_37 (A4), JetBlade_36 (A4), JoongJeon_36 (A4),

KFPoly_36 (A4), Katalie136_36 (A4), Kingmustik0402_36 (A4), Koreni_35 (A4), Kratark_36 (A4), Kremtemulon_35 (A4), Kyee_36 (A4), LHTSCC_38 (A4), Lemur_36 (A4), LittleB_36 (A4), LittleGuy_36 (A4), LochMonster_36 (A4), Lorenzo_36 (A4), Lunsford_37 (A4), Maverick_36 (A4), Maxo_37 (A4), Mazhar510_36 (A4), MeeZee_36 (A4), Melvin_38 (A4), Millski_35 (A4), Miramae_36 (A4), Morpher26_36 (A4), Morrow_37 (A4), Nebs_37 (A4), Nemo27_36 (A4), Noelle_36 (A4), NotAPhaseMom_36 (A4), Nyxis_36 (A4), OKCentral2016_36 (A10), Ohfah_37 (A4), Palestino_35 (A4), Peaches_36 (A4), Perplexer_36 (A4), PeterPeter_36 (A4), PetiteSangsue_36 (A4), Phacado_36 (A4), Felipe_37 (A4), Phighter1804_36 (A4), Phontbonne_36 (A4), Polymorphads_37 (A4), Pumbaa_36 (A4), RhynO_37 (A10), Romney_36 (A4), Ruin_36 (A4), Sabertooth_36 (A4), Scamp_36 (A4), Shaka_36 (A4), SheldonCooper_38 (A4), Shygu2_36 (A4), Sparxx_37 (A4), Spino_36 (A4), Stasia_37 (A4), Stink_37 (A4), Taquarus_36 (A4), Thanksgivukkah_36 (A4), TinaFeyge_37 (A4), TiroTheta9_36 (A4), TroyPia_37 (A4), TygerBlood_36 (A4), Ulysses_35 (A4), Wander_36 (A4), Wilbur_36 (A4), Wile_36 (A4), Wizard007_36 (A4), YoSam321_36 (A4),

Summary by clusters:

There are 3 clusters represented in this pham: A2, A4, A10,

Info for manual annotations of cluster A10:

- Start number 2 was manually annotated 5 times for cluster A10.

Info for manual annotations of cluster A4:

- Start number 2 was manually annotated 111 times for cluster A4.

Gene Information:

Gene: AbbysRanger_36 Start: 27967, Stop: 27848, Start Num: 2

Candidate Starts for AbbysRanger_36:

(Start: 2 @27967 has 116 MA's),

Gene: Abdiel_36 Start: 27954, Stop: 27796, Start Num: 2

Candidate Starts for Abdiel_36:

(Start: 2 @27954 has 116 MA's), (4, 27867), (8, 27828), (9, 27816),

Gene: Achebe_35 Start: 27950, Stop: 27831, Start Num: 2

Candidate Starts for Achebe_35:

(Start: 2 @27950 has 116 MA's),

Gene: Albee_36 Start: 27959, Stop: 27801, Start Num: 2

Candidate Starts for Albee_36:

(Start: 2 @27959 has 116 MA's), (4, 27872), (8, 27833), (9, 27821),

Gene: Alberto7_37 Start: 28299, Stop: 28141, Start Num: 2

Candidate Starts for Alberto7_37:

(Start: 2 @28299 has 116 MA's), (4, 28212), (8, 28173), (9, 28161),

Gene: Annyong_36 Start: 27960, Stop: 27802, Start Num: 2

Candidate Starts for Annyong_36:

(Start: 2 @27960 has 116 MA's), (4, 27873), (8, 27834), (9, 27822),

Gene: Avle17_36 Start: 27959, Stop: 27801, Start Num: 2

Candidate Starts for Avle17_36:

(Start: 2 @27959 has 116 MA's), (4, 27872), (8, 27833), (9, 27821),

Gene: Baby16_36 Start: 27970, Stop: 27812, Start Num: 2

Candidate Starts for Baby16_36:

(Start: 2 @27970 has 116 MA's), (4, 27883), (8, 27844), (9, 27832),

Gene: BabyBack_37 Start: 28936, Stop: 28808, Start Num: 2

Candidate Starts for BabyBack_37:

(1, 29131), (Start: 2 @28936 has 116 MA's),

Gene: BangNhom_37 Start: 28255, Stop: 28097, Start Num: 2

Candidate Starts for BangNhom_37:

(Start: 2 @28255 has 116 MA's), (4, 28168), (6, 28156), (9, 28117),

Gene: Bartimeaus_36 Start: 27961, Stop: 27803, Start Num: 2

Candidate Starts for Bartimeaus_36:

(Start: 2 @27961 has 116 MA's), (4, 27874), (8, 27835), (9, 27823),

Gene: BellusTerra_37 Start: 27954, Stop: 27796, Start Num: 2

Candidate Starts for BellusTerra_37:

(Start: 2 @27954 has 116 MA's), (4, 27867), (8, 27828), (9, 27816),

Gene: Blackmoor_36 Start: 27961, Stop: 27803, Start Num: 2

Candidate Starts for Blackmoor_36:

(Start: 2 @27961 has 116 MA's), (4, 27874), (8, 27835), (9, 27823),

Gene: Bombshell_36 Start: 27959, Stop: 27801, Start Num: 2

Candidate Starts for Bombshell_36:

(Start: 2 @27959 has 116 MA's), (4, 27872), (8, 27833), (9, 27821),

Gene: Broseidon_36 Start: 27961, Stop: 27803, Start Num: 2

Candidate Starts for Broseidon_36:

(Start: 2 @27961 has 116 MA's), (4, 27874), (8, 27835), (9, 27823),

Gene: Bruiser_35 Start: 27959, Stop: 27801, Start Num: 2

Candidate Starts for Bruiser_35:

(Start: 2 @27959 has 116 MA's), (4, 27872), (8, 27833), (9, 27821),

Gene: BubbleTrouble_36 Start: 27959, Stop: 27801, Start Num: 2

Candidate Starts for BubbleTrouble_36:

(Start: 2 @27959 has 116 MA's), (4, 27872), (8, 27833), (9, 27821),

Gene: Caelakin_36 Start: 27959, Stop: 27801, Start Num: 2

Candidate Starts for Caelakin_36:

(Start: 2 @27959 has 116 MA's), (4, 27872), (8, 27833), (9, 27821),

Gene: Camperdownii_35 Start: 27653, Stop: 27495, Start Num: 2

Candidate Starts for Camperdownii_35:

(Start: 2 @27653 has 116 MA's), (4, 27566), (8, 27527), (9, 27515),

Gene: CentreCat_36 Start: 27962, Stop: 27804, Start Num: 2

Candidate Starts for CentreCat_36:

(Start: 2 @27962 has 116 MA's), (4, 27875), (8, 27836), (9, 27824),

Gene: ChampagnePapi_38 Start: 28255, Stop: 28097, Start Num: 2

Candidate Starts for ChampagnePapi_38:

(Start: 2 @28255 has 116 MA's), (4, 28168), (6, 28156), (9, 28117),

Gene: Chaph_36 Start: 27970, Stop: 27812, Start Num: 2

Candidate Starts for Chaph_36:

(Start: 2 @27970 has 116 MA's), (4, 27883), (8, 27844), (9, 27832),

Gene: Chupacabra_36 Start: 27916, Stop: 27782, Start Num: 2

Candidate Starts for Chupacabra_36:

(Start: 2 @27916 has 116 MA's), (5, 27826),

Gene: Cici_36 Start: 27968, Stop: 27849, Start Num: 2

Candidate Starts for Cici_36:

(Start: 2 @27968 has 116 MA's),

Gene: Cintron_36 Start: 28025, Stop: 27867, Start Num: 2

Candidate Starts for Cintron_36:

(Start: 2 @28025 has 116 MA's), (4, 27938), (8, 27899), (9, 27887),

Gene: Citius_36 Start: 27974, Stop: 27816, Start Num: 2

Candidate Starts for Citius_36:

(Start: 2 @27974 has 116 MA's), (4, 27887), (8, 27848), (9, 27836),

Gene: Clarenza_36 Start: 27956, Stop: 27798, Start Num: 2

Candidate Starts for Clarenza_36:

(Start: 2 @27956 has 116 MA's), (4, 27869), (8, 27830), (9, 27818),

Gene: Cocoaberry_36 Start: 27963, Stop: 27805, Start Num: 2

Candidate Starts for Cocoaberry_36:

(Start: 2 @27963 has 116 MA's), (4, 27876), (8, 27837), (9, 27825),

Gene: Connomayer_36 Start: 27959, Stop: 27801, Start Num: 2

Candidate Starts for Connomayer_36:

(Start: 2 @27959 has 116 MA's), (4, 27872), (8, 27833), (9, 27821),

Gene: Datway_36 Start: 27939, Stop: 27820, Start Num: 2

Candidate Starts for Datway_36:

(Start: 2 @27939 has 116 MA's),

Gene: Deano_36 Start: 27967, Stop: 27809, Start Num: 2

Candidate Starts for Deano_36:

(Start: 2 @27967 has 116 MA's), (4, 27880), (8, 27841), (9, 27829),

Gene: Dhanush_36 Start: 27962, Stop: 27804, Start Num: 2

Candidate Starts for Dhanush_36:

(Start: 2 @27962 has 116 MA's), (4, 27875), (8, 27836), (9, 27824),

Gene: DirtyDunning_36 Start: 27998, Stop: 27840, Start Num: 2

Candidate Starts for DirtyDunning_36:

(Start: 2 @27998 has 116 MA's), (8, 27872), (9, 27860),

Gene: Druantia_36 Start: 27962, Stop: 27804, Start Num: 2

Candidate Starts for Druantia_36:

(Start: 2 @27962 has 116 MA's), (4, 27875), (8, 27836), (9, 27824),

Gene: Eagle_36 Start: 27978, Stop: 27820, Start Num: 2

Candidate Starts for Eagle_36:

(Start: 2 @27978 has 116 MA's), (4, 27891), (8, 27852), (9, 27840),

Gene: Eaglepride_38 Start: 28022, Stop: 27888, Start Num: 2

Candidate Starts for Eaglepride_38:

(Start: 2 @28022 has 116 MA's), (5, 27932),

Gene: Eapen_36 Start: 27957, Stop: 27799, Start Num: 2

Candidate Starts for Eapen_36:

(Start: 2 @27957 has 116 MA's), (4, 27870), (8, 27831), (9, 27819),

Gene: Eris_35 Start: 27959, Stop: 27801, Start Num: 2

Candidate Starts for Eris_35:

(Start: 2 @27959 has 116 MA's), (4, 27872), (8, 27833), (9, 27821),

Gene: Eros_36 Start: 27961, Stop: 27803, Start Num: 2

Candidate Starts for Eros_36:

(Start: 2 @27961 has 116 MA's), (4, 27874), (8, 27835), (9, 27823),

Gene: Eurydice_37 Start: 27953, Stop: 27795, Start Num: 2

Candidate Starts for Eurydice_37:

(Start: 2 @27953 has 116 MA's), (4, 27866), (8, 27827), (9, 27815),

Gene: Florean_36 Start: 27958, Stop: 27800, Start Num: 2

Candidate Starts for Florean_36:

(Start: 2 @27958 has 116 MA's), (4, 27871), (8, 27832), (9, 27820),

Gene: Flux_36 Start: 27961, Stop: 27803, Start Num: 2

Candidate Starts for Flux_36:

(Start: 2 @27961 has 116 MA's), (8, 27835), (9, 27823),

Gene: Funston_36 Start: 27959, Stop: 27801, Start Num: 2

Candidate Starts for Funston_36:

(Start: 2 @27959 has 116 MA's), (4, 27872), (8, 27833), (9, 27821),

Gene: Gadost_36 Start: 27963, Stop: 27805, Start Num: 2

Candidate Starts for Gadost_36:

(Start: 2 @27963 has 116 MA's), (4, 27876), (8, 27837), (9, 27825),

Gene: Goose_37 Start: 27720, Stop: 27586, Start Num: 2

Candidate Starts for Goose_37:

(Start: 2 @27720 has 116 MA's), (5, 27630),

Gene: HamSlice_35 Start: 27957, Stop: 27799, Start Num: 2
Candidate Starts for HamSlice_35:
(Start: 2 @27957 has 116 MA's), (4, 27870), (8, 27831), (9, 27819),

Gene: Happiness_36 Start: 27964, Stop: 27806, Start Num: 2
Candidate Starts for Happiness_36:
(Start: 2 @27964 has 116 MA's), (4, 27877), (8, 27838), (9, 27826),

Gene: Houdini22_36 Start: 27963, Stop: 27805, Start Num: 2
Candidate Starts for Houdini22_36:
(Start: 2 @27963 has 116 MA's), (4, 27876), (8, 27837), (9, 27825),

Gene: ICleared_36 Start: 27991, Stop: 27833, Start Num: 2
Candidate Starts for ICleared_36:
(Start: 2 @27991 has 116 MA's), (4, 27904), (8, 27865), (9, 27853),

Gene: Iceman_37 Start: 28248, Stop: 28090, Start Num: 2
Candidate Starts for Iceman_37:
(Start: 2 @28248 has 116 MA's), (8, 28122), (9, 28110),

Gene: Iracema64_37 Start: 28217, Stop: 28059, Start Num: 2
Candidate Starts for Iracema64_37:
(Start: 2 @28217 has 116 MA's), (4, 28130), (8, 28091), (9, 28079),

Gene: JetBlade_36 Start: 27956, Stop: 27798, Start Num: 2
Candidate Starts for JetBlade_36:
(Start: 2 @27956 has 116 MA's), (4, 27869), (8, 27830), (9, 27818),

Gene: JoongJeon_36 Start: 27959, Stop: 27801, Start Num: 2
Candidate Starts for JoongJeon_36:
(Start: 2 @27959 has 116 MA's), (4, 27872), (8, 27833), (9, 27821),

Gene: KFPoly_36 Start: 27956, Stop: 27798, Start Num: 2
Candidate Starts for KFPoly_36:
(Start: 2 @27956 has 116 MA's), (4, 27869), (8, 27830), (9, 27818),

Gene: Katalie136_36 Start: 27953, Stop: 27834, Start Num: 2
Candidate Starts for Katalie136_36:
(Start: 2 @27953 has 116 MA's),

Gene: Kingmustik0402_36 Start: 27951, Stop: 27793, Start Num: 2
Candidate Starts for Kingmustik0402_36:
(Start: 2 @27951 has 116 MA's), (4, 27864), (8, 27825), (9, 27813),

Gene: Koreni_35 Start: 27640, Stop: 27482, Start Num: 2
Candidate Starts for Koreni_35:
(Start: 2 @27640 has 116 MA's), (4, 27553), (8, 27514), (9, 27502),

Gene: Kratark_36 Start: 27901, Stop: 27743, Start Num: 2
Candidate Starts for Kratark_36:
(Start: 2 @27901 has 116 MA's), (8, 27775), (9, 27763),

Gene: Kremtemulon_35 Start: 27912, Stop: 27793, Start Num: 2

Candidate Starts for Kremtemulon_35:
(Start: 2 @27912 has 116 MA's), (3, 27897), (7, 27810),

Gene: Kyee_36 Start: 27957, Stop: 27799, Start Num: 2
Candidate Starts for Kyee_36:
(Start: 2 @27957 has 116 MA's), (4, 27870), (8, 27831), (9, 27819),

Gene: LHTSCC_38 Start: 28255, Stop: 28097, Start Num: 2
Candidate Starts for LHTSCC_38:
(Start: 2 @28255 has 116 MA's), (4, 28168), (6, 28156), (9, 28117),

Gene: Lemur_36 Start: 27956, Stop: 27798, Start Num: 2
Candidate Starts for Lemur_36:
(Start: 2 @27956 has 116 MA's), (4, 27869), (8, 27830), (9, 27818),

Gene: LittleB_36 Start: 27960, Stop: 27802, Start Num: 2
Candidate Starts for LittleB_36:
(Start: 2 @27960 has 116 MA's), (4, 27873), (8, 27834), (9, 27822),

Gene: LittleGuy_36 Start: 27858, Stop: 27700, Start Num: 2
Candidate Starts for LittleGuy_36:
(Start: 2 @27858 has 116 MA's), (4, 27771), (8, 27732), (9, 27720),

Gene: LochMonster_36 Start: 27998, Stop: 27840, Start Num: 2
Candidate Starts for LochMonster_36:
(Start: 2 @27998 has 116 MA's), (4, 27911), (8, 27872), (9, 27860),

Gene: Lorenzo_36 Start: 27959, Stop: 27801, Start Num: 2
Candidate Starts for Lorenzo_36:
(Start: 2 @27959 has 116 MA's), (4, 27872), (8, 27833), (9, 27821),

Gene: Lunsford_37 Start: 27956, Stop: 27798, Start Num: 2
Candidate Starts for Lunsford_37:
(Start: 2 @27956 has 116 MA's), (4, 27869), (8, 27830), (9, 27818),

Gene: Maverick_36 Start: 27959, Stop: 27801, Start Num: 2
Candidate Starts for Maverick_36:
(Start: 2 @27959 has 116 MA's), (4, 27872), (8, 27833), (9, 27821),

Gene: Maxo_37 Start: 27955, Stop: 27797, Start Num: 2
Candidate Starts for Maxo_37:
(Start: 2 @27955 has 116 MA's), (4, 27868), (8, 27829), (9, 27817),

Gene: Mazhar510_36 Start: 27960, Stop: 27802, Start Num: 2
Candidate Starts for Mazhar510_36:
(Start: 2 @27960 has 116 MA's), (4, 27873), (8, 27834), (9, 27822),

Gene: MeeZee_36 Start: 27959, Stop: 27801, Start Num: 2
Candidate Starts for MeeZee_36:
(Start: 2 @27959 has 116 MA's), (4, 27872), (8, 27833), (9, 27821),

Gene: Melvin_38 Start: 27957, Stop: 27799, Start Num: 2
Candidate Starts for Melvin_38:

(Start: 2 @27957 has 116 MA's), (4, 27870), (8, 27831), (9, 27819),

Gene: Millski_35 Start: 27963, Stop: 27805, Start Num: 2

Candidate Starts for Millski_35:

(Start: 2 @27963 has 116 MA's), (4, 27876), (8, 27837), (9, 27825),

Gene: Miramae_36 Start: 28144, Stop: 28013, Start Num: 2

Candidate Starts for Miramae_36:

(Start: 2 @28144 has 116 MA's), (4, 28057),

Gene: Morpher26_36 Start: 27974, Stop: 27855, Start Num: 2

Candidate Starts for Morpher26_36:

(Start: 2 @27974 has 116 MA's),

Gene: Morrow_37 Start: 27959, Stop: 27801, Start Num: 2

Candidate Starts for Morrow_37:

(Start: 2 @27959 has 116 MA's), (4, 27872), (8, 27833), (9, 27821),

Gene: Nebs_37 Start: 27953, Stop: 27795, Start Num: 2

Candidate Starts for Nebs_37:

(Start: 2 @27953 has 116 MA's), (4, 27866), (8, 27827), (9, 27815),

Gene: Nemo27_36 Start: 27958, Stop: 27800, Start Num: 2

Candidate Starts for Nemo27_36:

(Start: 2 @27958 has 116 MA's), (4, 27871), (8, 27832), (9, 27820),

Gene: Noelle_36 Start: 28018, Stop: 27899, Start Num: 2

Candidate Starts for Noelle_36:

(Start: 2 @28018 has 116 MA's),

Gene: NotAPhaseMom_36 Start: 27963, Stop: 27805, Start Num: 2

Candidate Starts for NotAPhaseMom_36:

(Start: 2 @27963 has 116 MA's), (4, 27876), (8, 27837), (9, 27825),

Gene: Nyxis_36 Start: 27852, Stop: 27694, Start Num: 2

Candidate Starts for Nyxis_36:

(Start: 2 @27852 has 116 MA's), (4, 27765), (8, 27726), (9, 27714),

Gene: OKCentral2016_36 Start: 27623, Stop: 27489, Start Num: 2

Candidate Starts for OKCentral2016_36:

(Start: 2 @27623 has 116 MA's), (5, 27533),

Gene: Ohfah_37 Start: 27953, Stop: 27795, Start Num: 2

Candidate Starts for Ohfah_37:

(Start: 2 @27953 has 116 MA's), (4, 27866), (8, 27827), (9, 27815),

Gene: Palestino_35 Start: 27959, Stop: 27801, Start Num: 2

Candidate Starts for Palestino_35:

(Start: 2 @27959 has 116 MA's), (4, 27872), (8, 27833), (9, 27821),

Gene: Peaches_36 Start: 27958, Stop: 27800, Start Num: 2

Candidate Starts for Peaches_36:

(Start: 2 @27958 has 116 MA's), (4, 27871), (8, 27832), (9, 27820),

Gene: Perplexer_36 Start: 27950, Stop: 27831, Start Num: 2
Candidate Starts for Perplexer_36:
(Start: 2 @27950 has 116 MA's),

Gene: PeterPeter_36 Start: 27959, Stop: 27801, Start Num: 2
Candidate Starts for PeterPeter_36:
(Start: 2 @27959 has 116 MA's), (4, 27872), (8, 27833), (9, 27821),

Gene: PetiteSangsue_36 Start: 27953, Stop: 27834, Start Num: 2
Candidate Starts for PetiteSangsue_36:
(Start: 2 @27953 has 116 MA's),

Gene: Phacado_36 Start: 27958, Stop: 27800, Start Num: 2
Candidate Starts for Phacado_36:
(Start: 2 @27958 has 116 MA's), (4, 27871), (8, 27832), (9, 27820),

Gene: Phelipe_37 Start: 27959, Stop: 27801, Start Num: 2
Candidate Starts for Phelipe_37:
(Start: 2 @27959 has 116 MA's), (4, 27872), (8, 27833), (9, 27821),

Gene: Phighter1804_36 Start: 28001, Stop: 27843, Start Num: 2
Candidate Starts for Phighter1804_36:
(Start: 2 @28001 has 116 MA's), (4, 27914), (8, 27875), (9, 27863),

Gene: Phontbonne_36 Start: 27853, Stop: 27695, Start Num: 2
Candidate Starts for Phontbonne_36:
(Start: 2 @27853 has 116 MA's), (4, 27766), (8, 27727),

Gene: Polymorphads_37 Start: 27952, Stop: 27794, Start Num: 2
Candidate Starts for Polymorphads_37:
(Start: 2 @27952 has 116 MA's), (4, 27865), (8, 27826), (9, 27814),

Gene: Pumbaa_36 Start: 27904, Stop: 27746, Start Num: 2
Candidate Starts for Pumbaa_36:
(Start: 2 @27904 has 116 MA's), (4, 27817), (8, 27778), (9, 27766),

Gene: RhynO_37 Start: 27804, Stop: 27670, Start Num: 2
Candidate Starts for RhynO_37:
(Start: 2 @27804 has 116 MA's), (5, 27714),

Gene: Romney_36 Start: 27959, Stop: 27801, Start Num: 2
Candidate Starts for Romney_36:
(Start: 2 @27959 has 116 MA's), (8, 27833), (9, 27821),

Gene: Ruin_36 Start: 27955, Stop: 27797, Start Num: 2
Candidate Starts for Ruin_36:
(Start: 2 @27955 has 116 MA's), (4, 27868), (8, 27829), (9, 27817),

Gene: Sabertooth_36 Start: 27958, Stop: 27800, Start Num: 2
Candidate Starts for Sabertooth_36:
(Start: 2 @27958 has 116 MA's), (4, 27871), (8, 27832), (9, 27820),

Gene: Scamp_36 Start: 27961, Stop: 27803, Start Num: 2
Candidate Starts for Scamp_36:
(Start: 2 @27961 has 116 MA's), (4, 27874), (8, 27835), (9, 27823),

Gene: Shaka_36 Start: 27959, Stop: 27801, Start Num: 2
Candidate Starts for Shaka_36:
(Start: 2 @27959 has 116 MA's), (4, 27872), (8, 27833), (9, 27821),

Gene: SheldonCooper_38 Start: 28256, Stop: 28098, Start Num: 2
Candidate Starts for SheldonCooper_38:
(Start: 2 @28256 has 116 MA's), (4, 28169), (6, 28157), (9, 28118),

Gene: Shygu2_36 Start: 27953, Stop: 27795, Start Num: 2
Candidate Starts for Shygu2_36:
(Start: 2 @27953 has 116 MA's), (8, 27827), (9, 27815),

Gene: Sparxx_37 Start: 27954, Stop: 27796, Start Num: 2
Candidate Starts for Sparxx_37:
(Start: 2 @27954 has 116 MA's), (4, 27867), (8, 27828), (9, 27816),

Gene: Spino_36 Start: 27959, Stop: 27801, Start Num: 2
Candidate Starts for Spino_36:
(Start: 2 @27959 has 116 MA's), (4, 27872), (8, 27833), (9, 27821),

Gene: Stasia_37 Start: 28244, Stop: 28125, Start Num: 2
Candidate Starts for Stasia_37:
(Start: 2 @28244 has 116 MA's),

Gene: Stink_37 Start: 28424, Stop: 28293, Start Num: 2
Candidate Starts for Stink_37:
(Start: 2 @28424 has 116 MA's), (4, 28337),

Gene: Taquarus_36 Start: 27962, Stop: 27804, Start Num: 2
Candidate Starts for Taquarus_36:
(Start: 2 @27962 has 116 MA's), (4, 27875), (8, 27836), (9, 27824),

Gene: Thanksgivukkah_36 Start: 27960, Stop: 27802, Start Num: 2
Candidate Starts for Thanksgivukkah_36:
(Start: 2 @27960 has 116 MA's), (4, 27873), (8, 27834), (9, 27822),

Gene: TinaFeyge_37 Start: 27954, Stop: 27796, Start Num: 2
Candidate Starts for TinaFeyge_37:
(Start: 2 @27954 has 116 MA's), (4, 27867), (8, 27828), (9, 27816),

Gene: TiroTheta9_36 Start: 27956, Stop: 27798, Start Num: 2
Candidate Starts for TiroTheta9_36:
(Start: 2 @27956 has 116 MA's), (4, 27869), (8, 27830), (9, 27818),

Gene: TroyPia_37 Start: 27957, Stop: 27799, Start Num: 2
Candidate Starts for TroyPia_37:
(Start: 2 @27957 has 116 MA's), (4, 27870), (8, 27831), (9, 27819),

Gene: TygerBlood_36 Start: 27959, Stop: 27801, Start Num: 2

Candidate Starts for TygerBlood_36:

(Start: 2 @27959 has 116 MA's), (4, 27872), (8, 27833), (9, 27821),

Gene: Ulysses_35 Start: 27639, Stop: 27481, Start Num: 2

Candidate Starts for Ulysses_35:

(Start: 2 @27639 has 116 MA's), (4, 27552), (8, 27513), (9, 27501),

Gene: Wander_36 Start: 27959, Stop: 27801, Start Num: 2

Candidate Starts for Wander_36:

(Start: 2 @27959 has 116 MA's), (4, 27872), (8, 27833), (9, 27821),

Gene: Wilbur_36 Start: 27959, Stop: 27801, Start Num: 2

Candidate Starts for Wilbur_36:

(Start: 2 @27959 has 116 MA's), (8, 27833), (9, 27821),

Gene: Wile_36 Start: 27984, Stop: 27865, Start Num: 2

Candidate Starts for Wile_36:

(Start: 2 @27984 has 116 MA's),

Gene: Wizard007_36 Start: 27964, Stop: 27806, Start Num: 2

Candidate Starts for Wizard007_36:

(Start: 2 @27964 has 116 MA's), (4, 27877), (8, 27838), (9, 27826),

Gene: YoSam321_36 Start: 27956, Stop: 27798, Start Num: 2

Candidate Starts for YoSam321_36:

(Start: 2 @27956 has 116 MA's), (4, 27869), (8, 27830), (9, 27818),