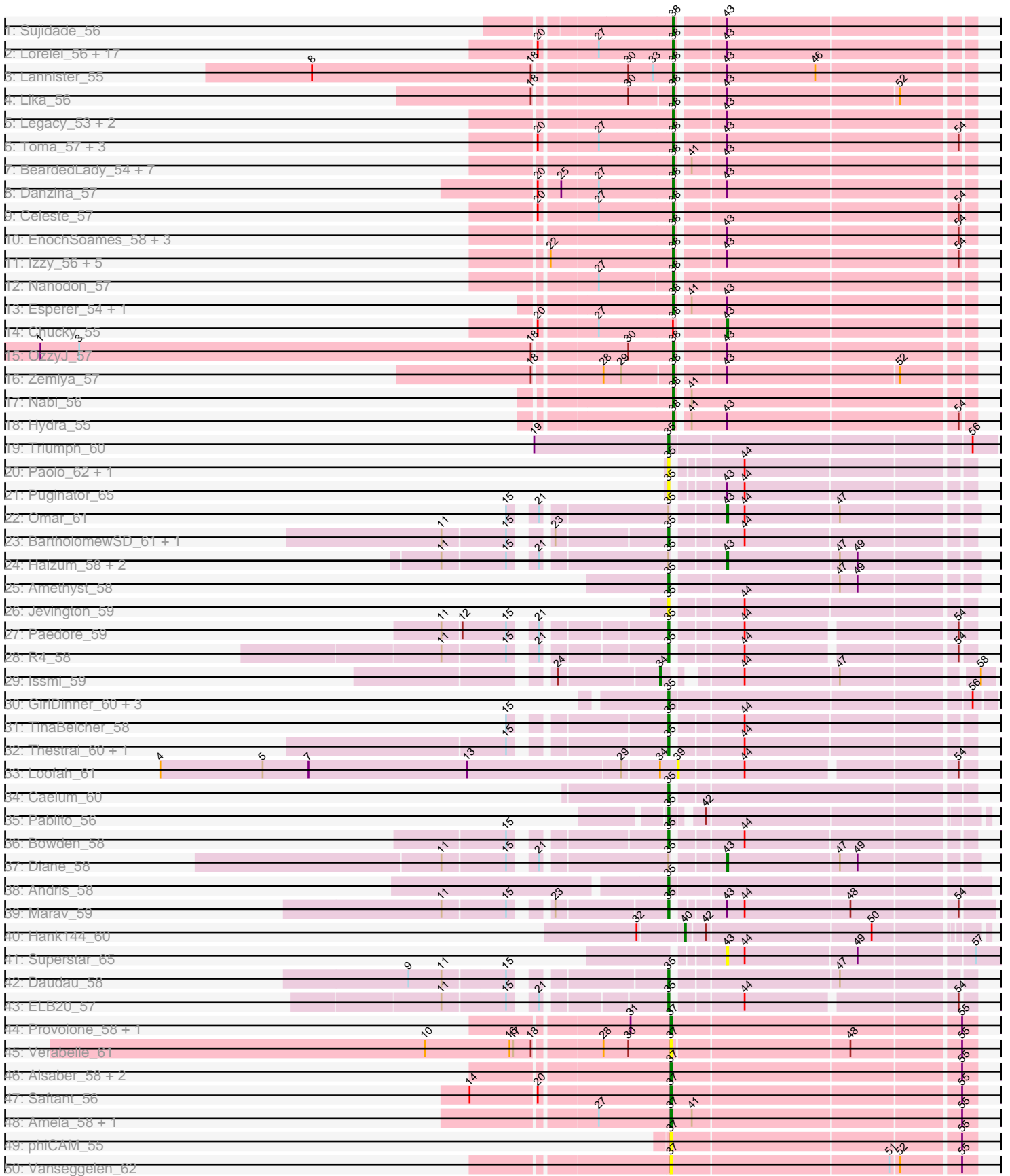


Pham 161738



Note: Tracks are now grouped by subcluster and scaled. Switching in subcluster is indicated by changes in track color. Track scale is now set by default to display the region 30 bp upstream of start 1 to 30 bp downstream of the last possible start. If this default region is judged to be packed too tightly with annotated starts, the track will be further scaled to only show that region of the ORF with annotated starts. This action will be indicated by adding "Zoomed" to the title. For starts, yellow indicates the location of called starts comprised solely of Glimmer/GeneMark auto-annotations, green indicates the location of called starts with at least 1 manual gene annotation.

Pham 161738 Report

This analysis was run 04/28/24 on database version 559.

WARNING: Pham size does not match number of genes in report. Either unphamerated genes have been added (by you) or starterator has removed genes due to invalid start codon.

Pham number 161738 has 109 members, 15 are drafts.

Phages represented in each track:

- Track 1 : Sujidade_56
- Track 2 : Lorelei_56, Asten_55, Ejemplo_53, Dwayne_55, Maneekul_55, Yasdnil_55, Werner_55, Brataylor_58, Whatever_55, Emaanora_58, Hippo_55, Snorlax_55, BarryBee_58, Triste_56, SarahRose_55, TuanPN_53, Rana_57, TajePhighter_57
- Track 3 : Lannister_55
- Track 4 : Lika_56
- Track 5 : Legacy_53, SunsetPointe_53, Ozzie_53
- Track 6 : Toma_57, Goby_57, Dattran_58, Godpower_57
- Track 7 : BeardedLady_54, Phettuccine_54, Indigo_53, Bovely_54, Nerdos_53, Caliburn_53, Unstoppable_54, Aaronocolus_54
- Track 8 : Danzina_57
- Track 9 : Celeste_57
- Track 10 : EnochSoames_58, South40_55, Katalie_55, RedBear_56
- Track 11 : Izzy_56, Jash_56, BryanRecycles_56, Eddasa_57, Oliynyk_56, Rusticus_56
- Track 12 : Nanodon_57
- Track 13 : Esperer_54, Leviticus_54
- Track 14 : Chucky_55
- Track 15 : OzzyJ_57
- Track 16 : Zemlya_57
- Track 17 : Nabi_56
- Track 18 : Hydra_55
- Track 19 : Triumph_60
- Track 20 : Paolo_62, Zainub_65
- Track 21 : Puginator_65
- Track 22 : Omar_61
- Track 23 : BartholomewSD_61, Alvy_61
- Track 24 : Haizum_58, Tefunt_58, Nishikigoi_59
- Track 25 : Amethyst_58
- Track 26 : Jevington_59
- Track 27 : Paedore_59
- Track 28 : R4_58

- Track 29 : Issmi_59
- Track 30 : GirlDinner_60, SqueakyClean_59, Janus_59, Animus_58
- Track 31 : TinaBelcher_58
- Track 32 : Thestral_60, TrvxScott_57
- Track 33 : Loofah_61
- Track 34 : Caelum_60
- Track 35 : Pablito_56
- Track 36 : Bowden_58
- Track 37 : Diane_58
- Track 38 : Andris_58
- Track 39 : Marav_59
- Track 40 : Hank144_60
- Track 41 : Superstar_65
- Track 42 : Daudau_58
- Track 43 : ELB20_57
- Track 44 : Provolone_58, ElGato_60
- Track 45 : Verabelle_61
- Track 46 : Alsaber_58, Conan_60, Dexers_56
- Track 47 : Saftant_56
- Track 48 : Amela_58, Verse_59
- Track 49 : phiCAM_55
- Track 50 : Vanseggelen_62
- Track 51 : Yosif_62
- Track 52 : Celery_61
- Track 53 : GreenWeasel_60, BroPlease_58
- Track 54 : phiHau3_59
- Track 55 : VieEnRose_57
- Track 56 : Itza_57, Celia_55, Urza_56

Summary of Final Annotations (See graph section above for start numbers):

The start number called the most often in the published annotations is 38, it was called in 57 of the 94 non-draft genes in the pham.

Genes that call this "Most Annotated" start:

- Aaronocolus_54, Asten_55, BarryBee_58, BeardedLady_54, Bovely_54, Brataylor_58, BryanRecycles_56, Caliburn_53, Celeste_57, Celia_55, Danzina_57, Dattran_58, Dwayne_55, Eddasa_57, Ejemplo_53, Emaanora_58, EnochSoames_58, Esperer_54, Goby_57, Godpower_57, Hippo_55, Hydra_55, Indigo_53, Itza_57, Izzy_56, Jash_56, Katalie_55, Lannister_55, Legacy_53, Leviticus_54, Lika_56, Lorelei_56, Maneekul_55, Nabi_56, Nanodon_57, Nerdos_53, Oliynyk_56, Ozzie_53, OzzyJ_57, Phettuccine_54, Rana_57, RedBear_56, Rusticus_56, SarahRose_55, Snorlax_55, South40_55, Sujidade_56, SunsetPointe_53, TagePhighter_57, Toma_57, Triste_56, TuanPN_53, Unstoppable_54, Urza_56, VieEnRose_57, Werner_55, Whatever_55, Yasdnil_55, Zemlya_57,

Genes that have the "Most Annotated" start but do not call it:

- Chucky_55,

Genes that do not have the "Most Annotated" start:

- Alsaber_58, Alvy_61, Amela_58, Amethyst_58, Andris_58, Animus_58, BartholomewSD_61, Bowden_58, BroPlease_58, Caelum_60, Celery_61, Conan_60, Daudau_58, Dexers_56, Diane_58, ELB20_57, ElGato_60, GirlDinner_60, GreenWeasel_60, Haizum_58, Hank144_60, Issmi_59, Janus_59, Jevington_59, Loofah_61, Marav_59, Nishikigoi_59, Omar_61, Pablito_56, Paedore_59, Paolo_62, Provolone_58, Puginator_65, R4_58, Saftant_56, SqueakyClean_59, Superstar_65, Tefunt_58, Thestral_60, TinaBelcher_58, Triumph_60, TrvxScott_57, Vanseggelen_62, Verabelle_61, Verse_59, Yosif_62, Zainub_65, phiCAM_55, phiHau3_59,

Summary by start number:

Start 34:

- Found in 2 of 109 (1.8%) of genes in pham
- Manual Annotations of this start: 1 of 94
- Called 50.0% of time when present
- Phage (with cluster) where this start called: Issmi_59 (BD2),

Start 35:

- Found in 29 of 109 (26.6%) of genes in pham
- Manual Annotations of this start: 19 of 94
- Called 82.8% of time when present
- Phage (with cluster) where this start called: Alvy_61 (BD2), Amethyst_58 (BD2), Andris_58 (BD2), Animus_58 (BD2), BartholomewSD_61 (BD2), Bowden_58 (BD2), Caelum_60 (BD2), Daudau_58 (BD2), ELB20_57 (BD2), GirlDinner_60 (BD2), Janus_59 (BD2), Jevington_59 (BD2), Marav_59 (BD2), Pablito_56 (BD2), Paedore_59 (BD2), Paolo_62 (BD2), Puginator_65 (BD2), R4_58 (BD2), SqueakyClean_59 (BD2), Thestral_60 (BD2), TinaBelcher_58 (BD2), Triumph_60 (BD2), TrvxScott_57 (BD2), Zainub_65 (BD2),

Start 36:

- Found in 3 of 109 (2.8%) of genes in pham
- Manual Annotations of this start: 3 of 94
- Called 100.0% of time when present
- Phage (with cluster) where this start called: BroPlease_58 (BD4), GreenWeasel_60 (BD4), phiHau3_59 (BD4),

Start 37:

- Found in 13 of 109 (11.9%) of genes in pham
- Manual Annotations of this start: 7 of 94
- Called 100.0% of time when present
- Phage (with cluster) where this start called: Alsaber_58 (BD3), Amela_58 (BD3), Celery_61 (BD3), Conan_60 (BD3), Dexers_56 (BD3), ElGato_60 (BD3), Provolone_58 (BD3), Saftant_56 (BD3), Vanseggelen_62 (BD3), Verabelle_61 (BD3), Verse_59 (BD3), Yosif_62 (BD3), phiCAM_55 (BD3),

Start 38:

- Found in 60 of 109 (55.0%) of genes in pham
- Manual Annotations of this start: 57 of 94
- Called 98.3% of time when present
- Phage (with cluster) where this start called: Aaronocolus_54 (BD1), Asten_55 (BD1), BarryBee_58 (BD1), BeardedLady_54 (BD1), Bovely_54 (BD1), Brataylor_58

(BD1), BryanRecycles_56 (BD1), Caliburn_53 (BD1), Celeste_57 (BD1), Celia_55 (BD6), Danzina_57 (BD1), Dattran_58 (BD1), Dwayne_55 (BD1), Eddasa_57 (BD1), Ejemplo_53 (BD1), Emaanora_58 (BD1), EnochSoames_58 (BD1), Esperer_54 (BD1), Goby_57 (BD1), Godpower_57 (BD1), Hippo_55 (BD1), Hydra_55 (BD1), Indigo_53 (BD1), Itza_57 (BD6), Izzy_56 (BD1), Jash_56 (BD1), Katalie_55 (BD1), Lannister_55 (BD1), Legacy_53 (BD1), Leviticus_54 (BD1), Lika_56 (BD1), Lorelei_56 (BD1), Maneekul_55 (BD1), Nabi_56 (BD1), Nanodon_57 (BD1), Nerdos_53 (BD1), Oliynyk_56 (BD1), Ozzie_53 (BD1), OzzyJ_57 (BD1), Phettuccine_54 (BD1), Rana_57 (BD1), RedBear_56 (BD1), Rusticus_56 (BD1), SarahRose_55 (BD1), Snorlax_55 (BD1), South40_55 (BD1), Sujidade_56 (BD1), SunsetPointe_53 (BD1), TagePhighter_57 (BD1), Toma_57 (BD1), Triste_56 (BD1), TuanPN_53 (BD1), Unstoppable_54 (BD1), Urza_56 (BD6), VieEnRose_57 (BD6), Werner_55 (BD1), Whatever_55 (BD1), Yasdnil_55 (BD1), Zemlya_57 (BD1),

Start 39:

- Found in 1 of 109 (0.9%) of genes in pham
- No Manual Annotations of this start.
- Called 100.0% of time when present
- Phage (with cluster) where this start called: Loofah_61 (BD2),

Start 40:

- Found in 1 of 109 (0.9%) of genes in pham
- Manual Annotations of this start: 1 of 94
- Called 100.0% of time when present
- Phage (with cluster) where this start called: Hank144_60 (BD2),

Start 43:

- Found in 66 of 109 (60.6%) of genes in pham
- Manual Annotations of this start: 6 of 94
- Called 10.6% of time when present
- Phage (with cluster) where this start called: Chucky_55 (BD1), Diane_58 (BD2), Haizum_58 (BD2), Nishikigoi_59 (BD2), Omar_61 (BD2), Superstar_65 (BD2), Tefunt_58 (BD2),

Summary by clusters:

There are 5 clusters represented in this pham: BD4, BD6, BD1, BD3, BD2,

Info for manual annotations of cluster BD1:

- Start number 38 was manually annotated 53 times for cluster BD1.
- Start number 43 was manually annotated 1 time for cluster BD1.

Info for manual annotations of cluster BD2:

- Start number 34 was manually annotated 1 time for cluster BD2.
- Start number 35 was manually annotated 19 times for cluster BD2.
- Start number 40 was manually annotated 1 time for cluster BD2.
- Start number 43 was manually annotated 5 times for cluster BD2.

Info for manual annotations of cluster BD3:

- Start number 37 was manually annotated 7 times for cluster BD3.

Info for manual annotations of cluster BD4:

- Start number 36 was manually annotated 3 times for cluster BD4.

Info for manual annotations of cluster BD6:

•Start number 38 was manually annotated 4 times for cluster BD6.

Gene Information:

Gene: Aaronocolus_54 Start: 40469, Stop: 40233, Start Num: 38

Candidate Starts for Aaronocolus_54:

(Start: 38 @40469 has 57 MA's), (41, 40460), (Start: 43 @40433 has 6 MA's),

Gene: Alsaber_58 Start: 40437, Stop: 40192, Start Num: 37

Candidate Starts for Alsaber_58:

(Start: 37 @40437 has 7 MA's), (55, 40203),

Gene: Alvy_61 Start: 42035, Stop: 41802, Start Num: 35

Candidate Starts for Alvy_61:

(11, 42197), (15, 42146), (23, 42125), (Start: 35 @42035 has 19 MA's), (44, 41984),

Gene: Amela_58 Start: 41420, Stop: 41175, Start Num: 37

Candidate Starts for Amela_58:

(27, 41480), (Start: 37 @41420 has 7 MA's), (41, 41402), (55, 41186),

Gene: Amethyst_58 Start: 40610, Stop: 40371, Start Num: 35

Candidate Starts for Amethyst_58:

(Start: 35 @40610 has 19 MA's), (47, 40478), (49, 40463),

Gene: Andris_58 Start: 40956, Stop: 40702, Start Num: 35

Candidate Starts for Andris_58:

(Start: 35 @40956 has 19 MA's),

Gene: Animus_58 Start: 41572, Stop: 41315, Start Num: 35

Candidate Starts for Animus_58:

(Start: 35 @41572 has 19 MA's), (56, 41332),

Gene: Asten_55 Start: 42688, Stop: 42452, Start Num: 38

Candidate Starts for Asten_55:

(20, 42793), (27, 42748), (Start: 38 @42688 has 57 MA's), (Start: 43 @42652 has 6 MA's),

Gene: BarryBee_58 Start: 42710, Stop: 42474, Start Num: 38

Candidate Starts for BarryBee_58:

(20, 42815), (27, 42770), (Start: 38 @42710 has 57 MA's), (Start: 43 @42674 has 6 MA's),

Gene: BartholomewSD_61 Start: 41154, Stop: 40921, Start Num: 35

Candidate Starts for BartholomewSD_61:

(11, 41316), (15, 41265), (23, 41244), (Start: 35 @41154 has 19 MA's), (44, 41103),

Gene: BeardedLady_54 Start: 40843, Stop: 40607, Start Num: 38

Candidate Starts for BeardedLady_54:

(Start: 38 @40843 has 57 MA's), (41, 40834), (Start: 43 @40807 has 6 MA's),

Gene: Bovely_54 Start: 40472, Stop: 40236, Start Num: 38

Candidate Starts for Bovely_54:
(Start: 38 @40472 has 57 MA's), (41, 40463), (Start: 43 @40436 has 6 MA's),

Gene: Bowden_58 Start: 41991, Stop: 41758, Start Num: 35
Candidate Starts for Bowden_58:
(15, 42102), (Start: 35 @41991 has 19 MA's), (44, 41940),

Gene: Brataylor_58 Start: 42252, Stop: 42016, Start Num: 38
Candidate Starts for Brataylor_58:
(20, 42357), (27, 42312), (Start: 38 @42252 has 57 MA's), (Start: 43 @42216 has 6 MA's),

Gene: BroPlease_58 Start: 40749, Stop: 40513, Start Num: 36
Candidate Starts for BroPlease_58:
(6, 41088), (15, 40887), (26, 40836), (Start: 36 @40749 has 3 MA's), (45, 40665), (49, 40599), (53, 40548),

Gene: BryanRecycles_56 Start: 40959, Stop: 40723, Start Num: 38
Candidate Starts for BryanRecycles_56:
(22, 41058), (Start: 38 @40959 has 57 MA's), (Start: 43 @40923 has 6 MA's), (54, 40734),

Gene: Caelum_60 Start: 40694, Stop: 40458, Start Num: 35
Candidate Starts for Caelum_60:
(Start: 35 @40694 has 19 MA's),

Gene: Caliburn_53 Start: 40573, Stop: 40337, Start Num: 38
Candidate Starts for Caliburn_53:
(Start: 38 @40573 has 57 MA's), (41, 40564), (Start: 43 @40537 has 6 MA's),

Gene: Celery_61 Start: 40408, Stop: 40163, Start Num: 37
Candidate Starts for Celery_61:
(2, 40903), (3, 40897), (18, 40513), (28, 40462), (Start: 37 @40408 has 7 MA's), (55, 40174),

Gene: Celeste_57 Start: 41721, Stop: 41485, Start Num: 38
Candidate Starts for Celeste_57:
(20, 41826), (27, 41781), (Start: 38 @41721 has 57 MA's), (54, 41496),

Gene: Celia_55 Start: 40296, Stop: 40063, Start Num: 38
Candidate Starts for Celia_55:
(Start: 38 @40296 has 57 MA's), (41, 40287), (Start: 43 @40260 has 6 MA's), (44, 40245),

Gene: Chucky_55 Start: 42691, Stop: 42491, Start Num: 43
Candidate Starts for Chucky_55:
(20, 42832), (27, 42787), (Start: 38 @42727 has 57 MA's), (Start: 43 @42691 has 6 MA's),

Gene: Conan_60 Start: 40397, Stop: 40152, Start Num: 37
Candidate Starts for Conan_60:
(Start: 37 @40397 has 7 MA's), (55, 40163),

Gene: Danzina_57 Start: 41966, Stop: 41730, Start Num: 38
Candidate Starts for Danzina_57:
(20, 42071), (25, 42056), (27, 42026), (Start: 38 @41966 has 57 MA's), (Start: 43 @41930 has 6 MA's),

Gene: Dattran_58 Start: 42112, Stop: 41876, Start Num: 38
Candidate Starts for Dattran_58:
(20, 42217), (27, 42172), (Start: 38 @42112 has 57 MA's), (Start: 43 @42076 has 6 MA's), (54, 41887),

Gene: Daudau_58 Start: 40574, Stop: 40341, Start Num: 35
Candidate Starts for Daudau_58:
(9, 40763), (11, 40736), (15, 40685), (Start: 35 @40574 has 19 MA's), (47, 40445),

Gene: Dexers_56 Start: 40679, Stop: 40434, Start Num: 37
Candidate Starts for Dexers_56:
(Start: 37 @40679 has 7 MA's), (55, 40445),

Gene: Diane_58 Start: 41306, Stop: 41106, Start Num: 43
Candidate Starts for Diane_58:
(11, 41507), (15, 41456), (21, 41441), (Start: 35 @41342 has 19 MA's), (Start: 43 @41306 has 6 MA's), (47, 41213), (49, 41198),

Gene: Dwayne_55 Start: 42715, Stop: 42479, Start Num: 38
Candidate Starts for Dwayne_55:
(20, 42820), (27, 42775), (Start: 38 @42715 has 57 MA's), (Start: 43 @42679 has 6 MA's),

Gene: ELB20_57 Start: 40920, Stop: 40693, Start Num: 35
Candidate Starts for ELB20_57:
(11, 41079), (15, 41028), (21, 41013), (Start: 35 @40920 has 19 MA's), (44, 40869), (54, 40704),

Gene: Eddasa_57 Start: 41498, Stop: 41262, Start Num: 38
Candidate Starts for Eddasa_57:
(22, 41597), (Start: 38 @41498 has 57 MA's), (Start: 43 @41462 has 6 MA's), (54, 41273),

Gene: Ejemplo_53 Start: 42653, Stop: 42417, Start Num: 38
Candidate Starts for Ejemplo_53:
(20, 42758), (27, 42713), (Start: 38 @42653 has 57 MA's), (Start: 43 @42617 has 6 MA's),

Gene: ElGato_60 Start: 40268, Stop: 40023, Start Num: 37
Candidate Starts for ElGato_60:
(31, 40301), (Start: 37 @40268 has 7 MA's), (55, 40034),

Gene: Emaanora_58 Start: 42638, Stop: 42402, Start Num: 38
Candidate Starts for Emaanora_58:
(20, 42743), (27, 42698), (Start: 38 @42638 has 57 MA's), (Start: 43 @42602 has 6 MA's),

Gene: EnochSoames_58 Start: 40755, Stop: 40519, Start Num: 38
Candidate Starts for EnochSoames_58:
(Start: 38 @40755 has 57 MA's), (Start: 43 @40719 has 6 MA's), (54, 40530),

Gene: Esperer_54 Start: 40288, Stop: 40049, Start Num: 38
Candidate Starts for Esperer_54:
(Start: 38 @40288 has 57 MA's), (41, 40279), (Start: 43 @40249 has 6 MA's),

Gene: GirlDinner_60 Start: 41073, Stop: 40816, Start Num: 35
Candidate Starts for GirlDinner_60:
(Start: 35 @41073 has 19 MA's), (56, 40833),

Gene: Goby_57 Start: 42538, Stop: 42302, Start Num: 38
Candidate Starts for Goby_57:
(20, 42643), (27, 42598), (Start: 38 @42538 has 57 MA's), (Start: 43 @42502 has 6 MA's), (54, 42313),

Gene: Godpower_57 Start: 41991, Stop: 41755, Start Num: 38
Candidate Starts for Godpower_57:
(20, 42096), (27, 42051), (Start: 38 @41991 has 57 MA's), (Start: 43 @41955 has 6 MA's), (54, 41766),

Gene: GreenWeasel_60 Start: 40754, Stop: 40518, Start Num: 36
Candidate Starts for GreenWeasel_60:
(6, 41093), (15, 40892), (26, 40841), (Start: 36 @40754 has 3 MA's), (45, 40670), (49, 40604), (53, 40553),

Gene: Haizum_58 Start: 41371, Stop: 41171, Start Num: 43
Candidate Starts for Haizum_58:
(11, 41572), (15, 41521), (21, 41506), (Start: 35 @41407 has 19 MA's), (Start: 43 @41371 has 6 MA's), (47, 41278), (49, 41263),

Gene: Hank144_60 Start: 41455, Stop: 41225, Start Num: 40
Candidate Starts for Hank144_60:
(32, 41491), (Start: 40 @41455 has 1 MA's), (42, 41440), (50, 41305),

Gene: Hippo_55 Start: 42701, Stop: 42465, Start Num: 38
Candidate Starts for Hippo_55:
(20, 42806), (27, 42761), (Start: 38 @42701 has 57 MA's), (Start: 43 @42665 has 6 MA's),

Gene: Hydra_55 Start: 41124, Stop: 40885, Start Num: 38
Candidate Starts for Hydra_55:
(Start: 38 @41124 has 57 MA's), (41, 41115), (Start: 43 @41085 has 6 MA's), (54, 40896),

Gene: Indigo_53 Start: 40465, Stop: 40229, Start Num: 38
Candidate Starts for Indigo_53:
(Start: 38 @40465 has 57 MA's), (41, 40456), (Start: 43 @40429 has 6 MA's),

Gene: Issmi_59 Start: 40976, Stop: 40734, Start Num: 34
Candidate Starts for Issmi_59:
(24, 41057), (Start: 34 @40976 has 1 MA's), (44, 40928), (47, 40850), (58, 40745),

Gene: Itza_57 Start: 40229, Stop: 39996, Start Num: 38
Candidate Starts for Itza_57:
(Start: 38 @40229 has 57 MA's), (41, 40220), (Start: 43 @40193 has 6 MA's), (44, 40178),

Gene: Izzy_56 Start: 41006, Stop: 40770, Start Num: 38
Candidate Starts for Izzy_56:
(22, 41105), (Start: 38 @41006 has 57 MA's), (Start: 43 @40970 has 6 MA's), (54, 40781),

Gene: Janus_59 Start: 41413, Stop: 41156, Start Num: 35
Candidate Starts for Janus_59:
(Start: 35 @41413 has 19 MA's), (56, 41173),

Gene: Jash_56 Start: 40959, Stop: 40723, Start Num: 38
Candidate Starts for Jash_56:
(22, 41058), (Start: 38 @40959 has 57 MA's), (Start: 43 @40923 has 6 MA's), (54, 40734),

Gene: Jevington_59 Start: 39340, Stop: 39107, Start Num: 35
Candidate Starts for Jevington_59:
(Start: 35 @39340 has 19 MA's), (44, 39289),

Gene: Katalie_55 Start: 42970, Stop: 42737, Start Num: 38
Candidate Starts for Katalie_55:
(Start: 38 @42970 has 57 MA's), (Start: 43 @42934 has 6 MA's), (54, 42748),

Gene: Lannister_55 Start: 41666, Stop: 41430, Start Num: 38
Candidate Starts for Lannister_55:
(8, 41960), (18, 41774), (30, 41702), (33, 41681), (Start: 38 @41666 has 57 MA's), (Start: 43 @41630 has 6 MA's), (46, 41555),

Gene: Legacy_53 Start: 40564, Stop: 40328, Start Num: 38
Candidate Starts for Legacy_53:
(Start: 38 @40564 has 57 MA's), (Start: 43 @40528 has 6 MA's),

Gene: Leviticus_54 Start: 40475, Stop: 40236, Start Num: 38
Candidate Starts for Leviticus_54:
(Start: 38 @40475 has 57 MA's), (41, 40466), (Start: 43 @40436 has 6 MA's),

Gene: Lika_56 Start: 42546, Stop: 42313, Start Num: 38
Candidate Starts for Lika_56:
(18, 42651), (30, 42579), (Start: 38 @42546 has 57 MA's), (Start: 43 @42510 has 6 MA's), (52, 42369),

Gene: Loofah_61 Start: 41340, Stop: 41113, Start Num: 39
Candidate Starts for Loofah_61:
(4, 41775), (5, 41688), (7, 41649), (13, 41514), (29, 41385), (Start: 34 @41355 has 1 MA's), (39, 41340), (44, 41289), (54, 41124),

Gene: Lorelei_56 Start: 41728, Stop: 41492, Start Num: 38
Candidate Starts for Lorelei_56:
(20, 41833), (27, 41788), (Start: 38 @41728 has 57 MA's), (Start: 43 @41692 has 6 MA's),

Gene: Maneekul_55 Start: 42731, Stop: 42495, Start Num: 38
Candidate Starts for Maneekul_55:
(20, 42836), (27, 42791), (Start: 38 @42731 has 57 MA's), (Start: 43 @42695 has 6 MA's),

Gene: Marav_59 Start: 39879, Stop: 39634, Start Num: 35
Candidate Starts for Marav_59:
(11, 40041), (15, 39990), (23, 39969), (Start: 35 @39879 has 19 MA's), (Start: 43 @39846 has 6 MA's), (44, 39831), (48, 39744), (54, 39660),

Gene: Nabi_56 Start: 41728, Stop: 41489, Start Num: 38
Candidate Starts for Nabi_56:
(Start: 38 @41728 has 57 MA's), (41, 41719),

Gene: Nanodon_57 Start: 41658, Stop: 41422, Start Num: 38

Candidate Starts for Nanodon_57:
(27, 41718), (Start: 38 @41658 has 57 MA's),

Gene: Nerdos_53 Start: 40464, Stop: 40228, Start Num: 38
Candidate Starts for Nerdos_53:
(Start: 38 @40464 has 57 MA's), (41, 40455), (Start: 43 @40428 has 6 MA's),

Gene: Nishikigoi_59 Start: 41371, Stop: 41171, Start Num: 43
Candidate Starts for Nishikigoi_59:
(11, 41572), (15, 41521), (21, 41506), (Start: 35 @41407 has 19 MA's), (Start: 43 @41371 has 6 MA's), (47, 41278), (49, 41263),

Gene: Oliynyk_56 Start: 40959, Stop: 40723, Start Num: 38
Candidate Starts for Oliynyk_56:
(22, 41058), (Start: 38 @40959 has 57 MA's), (Start: 43 @40923 has 6 MA's), (54, 40734),

Gene: Omar_61 Start: 39650, Stop: 39450, Start Num: 43
Candidate Starts for Omar_61:
(15, 39800), (21, 39785), (Start: 35 @39686 has 19 MA's), (Start: 43 @39650 has 6 MA's), (44, 39635), (47, 39557),

Gene: Ozzie_53 Start: 40573, Stop: 40337, Start Num: 38
Candidate Starts for Ozzie_53:
(Start: 38 @40573 has 57 MA's), (Start: 43 @40537 has 6 MA's),

Gene: OzzyJ_57 Start: 42627, Stop: 42391, Start Num: 38
Candidate Starts for OzzyJ_57:
(1, 43152), (3, 43119), (18, 42735), (30, 42663), (Start: 38 @42627 has 57 MA's), (Start: 43 @42591 has 6 MA's),

Gene: Pablito_56 Start: 39942, Stop: 39703, Start Num: 35
Candidate Starts for Pablito_56:
(Start: 35 @39942 has 19 MA's), (42, 39921),

Gene: Paedore_59 Start: 41325, Stop: 41098, Start Num: 35
Candidate Starts for Paedore_59:
(11, 41484), (12, 41469), (15, 41433), (21, 41418), (Start: 35 @41325 has 19 MA's), (44, 41274), (54, 41109),

Gene: Paolo_62 Start: 41043, Stop: 40813, Start Num: 35
Candidate Starts for Paolo_62:
(Start: 35 @41043 has 19 MA's), (44, 40995),

Gene: Phettuccine_54 Start: 40465, Stop: 40229, Start Num: 38
Candidate Starts for Phettuccine_54:
(Start: 38 @40465 has 57 MA's), (41, 40456), (Start: 43 @40429 has 6 MA's),

Gene: Provolone_58 Start: 40480, Stop: 40235, Start Num: 37
Candidate Starts for Provolone_58:
(31, 40513), (Start: 37 @40480 has 7 MA's), (55, 40246),

Gene: Puginator_65 Start: 41089, Stop: 40859, Start Num: 35
Candidate Starts for Puginator_65:

(Start: 35 @41089 has 19 MA's), (Start: 43 @41056 has 6 MA's), (44, 41041),

Gene: R4_58 Start: 41080, Stop: 40853, Start Num: 35

Candidate Starts for R4_58:

(11, 41239), (15, 41188), (21, 41173), (Start: 35 @41080 has 19 MA's), (44, 41029), (54, 40864),

Gene: Rana_57 Start: 42150, Stop: 41905, Start Num: 38

Candidate Starts for Rana_57:

(20, 42255), (27, 42210), (Start: 38 @42150 has 57 MA's), (Start: 43 @42114 has 6 MA's),

Gene: RedBear_56 Start: 42970, Stop: 42737, Start Num: 38

Candidate Starts for RedBear_56:

(Start: 38 @42970 has 57 MA's), (Start: 43 @42934 has 6 MA's), (54, 42748),

Gene: Rusticus_56 Start: 40959, Stop: 40723, Start Num: 38

Candidate Starts for Rusticus_56:

(22, 41058), (Start: 38 @40959 has 57 MA's), (Start: 43 @40923 has 6 MA's), (54, 40734),

Gene: Saftant_56 Start: 40553, Stop: 40308, Start Num: 37

Candidate Starts for Saftant_56:

(14, 40712), (20, 40658), (Start: 37 @40553 has 7 MA's), (55, 40319),

Gene: SarahRose_55 Start: 42700, Stop: 42464, Start Num: 38

Candidate Starts for SarahRose_55:

(20, 42805), (27, 42760), (Start: 38 @42700 has 57 MA's), (Start: 43 @42664 has 6 MA's),

Gene: Snorlax_55 Start: 42725, Stop: 42489, Start Num: 38

Candidate Starts for Snorlax_55:

(20, 42830), (27, 42785), (Start: 38 @42725 has 57 MA's), (Start: 43 @42689 has 6 MA's),

Gene: South40_55 Start: 42970, Stop: 42737, Start Num: 38

Candidate Starts for South40_55:

(Start: 38 @42970 has 57 MA's), (Start: 43 @42934 has 6 MA's), (54, 42748),

Gene: SqueakyClean_59 Start: 41591, Stop: 41334, Start Num: 35

Candidate Starts for SqueakyClean_59:

(Start: 35 @41591 has 19 MA's), (56, 41351),

Gene: Sujidade_56 Start: 42279, Stop: 42043, Start Num: 38

Candidate Starts for Sujidade_56:

(Start: 38 @42279 has 57 MA's), (Start: 43 @42243 has 6 MA's),

Gene: SunsetPointe_53 Start: 40580, Stop: 40344, Start Num: 38

Candidate Starts for SunsetPointe_53:

(Start: 38 @40580 has 57 MA's), (Start: 43 @40544 has 6 MA's),

Gene: Superstar_65 Start: 41700, Stop: 41482, Start Num: 43

Candidate Starts for Superstar_65:

(Start: 43 @41700 has 6 MA's), (44, 41685), (49, 41592), (57, 41502),

Gene: TagePighther_57 Start: 42701, Stop: 42465, Start Num: 38

Candidate Starts for TagePighther_57:

(20, 42806), (27, 42761), (Start: 38 @42701 has 57 MA's), (Start: 43 @42665 has 6 MA's),

Gene: Tefunt_58 Start: 41285, Stop: 41085, Start Num: 43
Candidate Starts for Tefunt_58:
(11, 41486), (15, 41435), (21, 41420), (Start: 35 @41321 has 19 MA's), (Start: 43 @41285 has 6 MA's), (47, 41192), (49, 41177),

Gene: Thestral_60 Start: 41982, Stop: 41749, Start Num: 35
Candidate Starts for Thestral_60:
(15, 42093), (Start: 35 @41982 has 19 MA's), (44, 41931),

Gene: TinaBelcher_58 Start: 41930, Stop: 41697, Start Num: 35
Candidate Starts for TinaBelcher_58:
(15, 42041), (Start: 35 @41930 has 19 MA's), (44, 41879),

Gene: Toma_57 Start: 42541, Stop: 42305, Start Num: 38
Candidate Starts for Toma_57:
(20, 42646), (27, 42601), (Start: 38 @42541 has 57 MA's), (Start: 43 @42505 has 6 MA's), (54, 42316),

Gene: Triste_56 Start: 42700, Stop: 42464, Start Num: 38
Candidate Starts for Triste_56:
(20, 42805), (27, 42760), (Start: 38 @42700 has 57 MA's), (Start: 43 @42664 has 6 MA's),

Gene: Triumph_60 Start: 41299, Stop: 41039, Start Num: 35
Candidate Starts for Triumph_60:
(19, 41413), (Start: 35 @41299 has 19 MA's), (56, 41059),

Gene: TrvxScott_57 Start: 41976, Stop: 41743, Start Num: 35
Candidate Starts for TrvxScott_57:
(15, 42087), (Start: 35 @41976 has 19 MA's), (44, 41925),

Gene: TuanPN_53 Start: 42653, Stop: 42417, Start Num: 38
Candidate Starts for TuanPN_53:
(20, 42758), (27, 42713), (Start: 38 @42653 has 57 MA's), (Start: 43 @42617 has 6 MA's),

Gene: Unstoppable_54 Start: 40463, Stop: 40227, Start Num: 38
Candidate Starts for Unstoppable_54:
(Start: 38 @40463 has 57 MA's), (41, 40454), (Start: 43 @40427 has 6 MA's),

Gene: Urza_56 Start: 40250, Stop: 40017, Start Num: 38
Candidate Starts for Urza_56:
(Start: 38 @40250 has 57 MA's), (41, 40241), (Start: 43 @40214 has 6 MA's), (44, 40199),

Gene: Vanseggelen_62 Start: 40293, Stop: 40048, Start Num: 37
Candidate Starts for Vanseggelen_62:
(Start: 37 @40293 has 7 MA's), (51, 40113), (52, 40107), (55, 40059),

Gene: Verabelle_61 Start: 40129, Stop: 39887, Start Num: 37
Candidate Starts for Verabelle_61:
(10, 40327), (16, 40255), (17, 40252), (18, 40237), (28, 40186), (30, 40165), (Start: 37 @40129 has 7 MA's), (48, 39985), (55, 39898),

Gene: Verse_59 Start: 41411, Stop: 41166, Start Num: 37

Candidate Starts for Verse_59:

(27, 41471), (Start: 37 @41411 has 7 MA's), (41, 41393), (55, 41177),

Gene: VieEnRose_57 Start: 40308, Stop: 40075, Start Num: 38

Candidate Starts for VieEnRose_57:

(14, 40479), (Start: 38 @40308 has 57 MA's), (41, 40299), (Start: 43 @40272 has 6 MA's), (44, 40257),

Gene: Werner_55 Start: 42698, Stop: 42462, Start Num: 38

Candidate Starts for Werner_55:

(20, 42803), (27, 42758), (Start: 38 @42698 has 57 MA's), (Start: 43 @42662 has 6 MA's),

Gene: Whatever_55 Start: 42724, Stop: 42488, Start Num: 38

Candidate Starts for Whatever_55:

(20, 42829), (27, 42784), (Start: 38 @42724 has 57 MA's), (Start: 43 @42688 has 6 MA's),

Gene: Yasdnil_55 Start: 42750, Stop: 42514, Start Num: 38

Candidate Starts for Yasdnil_55:

(20, 42855), (27, 42810), (Start: 38 @42750 has 57 MA's), (Start: 43 @42714 has 6 MA's),

Gene: Yosif_62 Start: 41552, Stop: 41316, Start Num: 37

Candidate Starts for Yosif_62:

(17, 41672), (28, 41606), (Start: 37 @41552 has 7 MA's), (Start: 43 @41516 has 6 MA's), (44, 41501), (52, 41375), (54, 41330), (55, 41327),

Gene: Zainub_65 Start: 41018, Stop: 40788, Start Num: 35

Candidate Starts for Zainub_65:

(Start: 35 @41018 has 19 MA's), (44, 40970),

Gene: Zemlya_57 Start: 42273, Stop: 42040, Start Num: 38

Candidate Starts for Zemlya_57:

(18, 42378), (28, 42327), (29, 42312), (Start: 38 @42273 has 57 MA's), (Start: 43 @42237 has 6 MA's), (52, 42096),

Gene: phiCAM_55 Start: 42218, Stop: 41973, Start Num: 37

Candidate Starts for phiCAM_55:

(Start: 37 @42218 has 7 MA's), (55, 41984),

Gene: phiHau3_59 Start: 40712, Stop: 40476, Start Num: 36

Candidate Starts for phiHau3_59:

(Start: 36 @40712 has 3 MA's), (45, 40628), (49, 40562), (53, 40511),