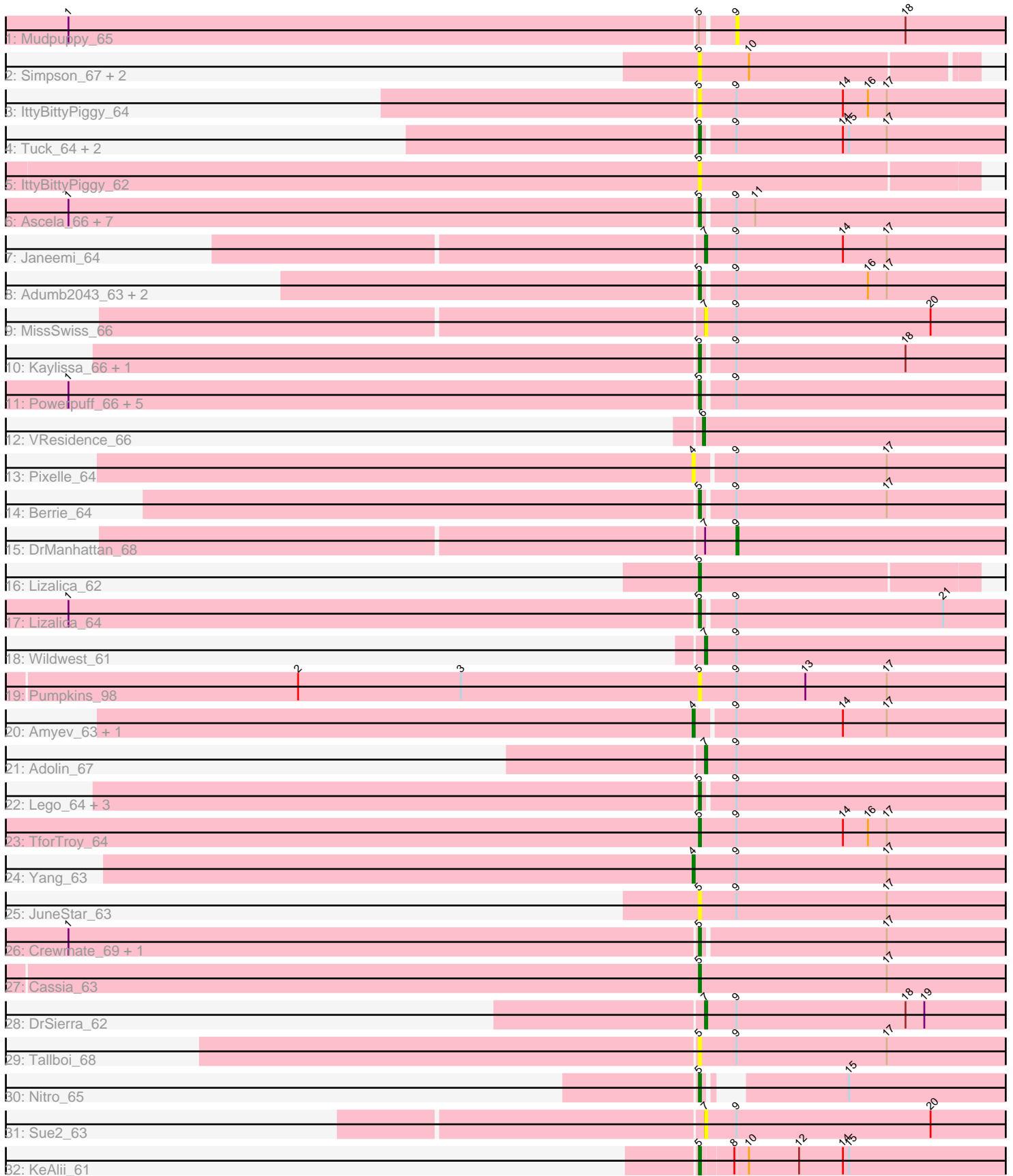


Pham 161895



Note: Tracks are now grouped by subcluster and scaled. Switching in subcluster is indicated by changes in track color. Track scale is now set by default to display the region 30 bp upstream of start 1 to 30 bp downstream of the last possible start. If this default region is judged to be packed too tightly with annotated starts, the track will be further scaled to only show that region of the ORF with annotated starts. This action will be indicated by adding "Zoomed" to the title. For starts, yellow indicates the location of called starts comprised solely of Glimmer/GeneMark auto-annotations, green indicates the location of called starts with at least 1 manual gene annotation.

Pham 161895 Report

This analysis was run 04/28/24 on database version 559.

Pham number 161895 has 56 members, 22 are drafts.

Phages represented in each track:

- Track 1 : Mudpuppy_65
- Track 2 : Simpson_67, Mudpuppy_63, Joemato_67
- Track 3 : IttyBittyPiggy_64
- Track 4 : Tuck_64, Phives_65, Community_64
- Track 5 : IttyBittyPiggy_62
- Track 6 : Ascela_66, Eraser_64, Asa16_64, London_64, Elezi_63, Niobe_64, Iter_65, Jstan_65
- Track 7 : Janeemi_64
- Track 8 : Adumb2043_63, Turab_63, AEgle_62
- Track 9 : MissSwiss_66
- Track 10 : Kaylissa_66, Warda_65
- Track 11 : Powerpuff_66, YesChef_64, Simpson_70, Tbone_64, AGrandiflora_66, Joemato_70
- Track 12 : VResidence_66
- Track 13 : Pixelle_64
- Track 14 : Berrie_64
- Track 15 : DrManhattan_68
- Track 16 : Lizalica_62
- Track 17 : Lizalica_64
- Track 18 : Wildwest_61
- Track 19 : Pumpkins_98
- Track 20 : Amyev_63, Tian_62
- Track 21 : Adolin_67
- Track 22 : Lego_64, Tutumahutu_66, Cyan_64, JohnDoe_65
- Track 23 : TforTroy_64
- Track 24 : Yang_63
- Track 25 : JuneStar_63
- Track 26 : Crewmate_69, ObiToo_69
- Track 27 : Cassia_63
- Track 28 : DrSierra_62
- Track 29 : Tallboi_68
- Track 30 : Nitro_65
- Track 31 : Sue2_63
- Track 32 : KeAlii_61

Summary of Final Annotations (See graph section above for start numbers):

The start number called the most often in the published annotations is 5, it was called in 26 of the 34 non-draft genes in the pham.

Genes that call this "Most Annotated" start:

- AEgle_62, AGrandiflora_66, Adumb2043_63, Asa16_64, Ascela_66, Berrie_64, Cassia_63, Community_64, Crewmate_69, Cyan_64, Elezi_63, Eraser_64, Iter_65, IttyBittyPiggy_62, IttyBittyPiggy_64, Joemato_67, Joemato_70, JohnDoe_65, Jstan_65, JuneStar_63, Kaylissa_66, KeAlii_61, Lego_64, Lizalica_62, Lizalica_64, London_64, Mudpuppy_63, Niobe_64, Nitro_65, ObiToo_69, Phives_65, Powerpuff_66, Pumpkins_98, Simpson_67, Simpson_70, Tallboi_68, Tbone_64, TforTroy_64, Tuck_64, Turab_63, Tutumahutu_66, Warda_65, YesChef_64,

Genes that have the "Most Annotated" start but do not call it:

- Mudpuppy_65,

Genes that do not have the "Most Annotated" start:

- Adolin_67, Amyev_63, DrManhattan_68, DrSierra_62, Janeemi_64, MissSwiss_66, Pixelle_64, Sue2_63, Tian_62, VResidence_66, Wildwest_61, Yang_63,

Summary by start number:

Start 4:

- Found in 4 of 56 (7.1%) of genes in pham
- Manual Annotations of this start: 2 of 34
- Called 100.0% of time when present
- Phage (with cluster) where this start called: Amyev_63 (AZ1), Pixelle_64 (AZ1), Tian_62 (AZ1), Yang_63 (AZ1),

Start 5:

- Found in 44 of 56 (78.6%) of genes in pham
- Manual Annotations of this start: 26 of 34
- Called 97.7% of time when present
- Phage (with cluster) where this start called: AEgle_62 (AZ1), AGrandiflora_66 (AZ1), Adumb2043_63 (AZ1), Asa16_64 (AZ1), Ascela_66 (AZ1), Berrie_64 (AZ1), Cassia_63 (AZ1), Community_64 (AZ1), Crewmate_69 (AZ1), Cyan_64 (AZ1), Elezi_63 (AZ1), Eraser_64 (AZ1), Iter_65 (AZ1), IttyBittyPiggy_62 (AZ1), IttyBittyPiggy_64 (AZ1), Joemato_67 (AZ1), Joemato_70 (AZ1), JohnDoe_65 (AZ1), Jstan_65 (AZ1), JuneStar_63 (AZ1), Kaylissa_66 (AZ1), KeAlii_61 (AZ1), Lego_64 (AZ1), Lizalica_62 (AZ1), Lizalica_64 (AZ1), London_64 (AZ1), Mudpuppy_63 (AZ1), Niobe_64 (AZ1), Nitro_65 (AZ1), ObiToo_69 (AZ1), Phives_65 (AZ1), Powerpuff_66 (AZ1), Pumpkins_98 (AZ1), Simpson_67 (AZ1), Simpson_70 (AZ1), Tallboi_68 (AZ1), Tbone_64 (AZ1), TforTroy_64 (AZ1), Tuck_64 (AZ1), Turab_63 (AZ1), Tutumahutu_66 (AZ1), Warda_65 (AZ1), YesChef_64 (AZ1),

Start 6:

- Found in 1 of 56 (1.8%) of genes in pham
- Manual Annotations of this start: 1 of 34
- Called 100.0% of time when present
- Phage (with cluster) where this start called: VResidence_66 (AZ1),

Start 7:

- Found in 7 of 56 (12.5%) of genes in pham
- Manual Annotations of this start: 4 of 34
- Called 85.7% of time when present
- Phage (with cluster) where this start called: Adolin_67 (AZ1), DrSierra_62 (AZ1), Janeemi_64 (AZ1), MissSwiss_66 (AZ1), Sue2_63 (AZ1), Wildwest_61 (AZ1),

Start 9:

- Found in 45 of 56 (80.4%) of genes in pham
- Manual Annotations of this start: 1 of 34
- Called 4.4% of time when present
- Phage (with cluster) where this start called: DrManhattan_68 (AZ1), Mudpuppy_65 (AZ1),

Summary by clusters:

There is one cluster represented in this pham: AZ1

Info for manual annotations of cluster AZ1:

- Start number 4 was manually annotated 2 times for cluster AZ1.
- Start number 5 was manually annotated 26 times for cluster AZ1.
- Start number 6 was manually annotated 1 time for cluster AZ1.
- Start number 7 was manually annotated 4 times for cluster AZ1.
- Start number 9 was manually annotated 1 time for cluster AZ1.

Gene Information:

Gene: AEgle_62 Start: 41494, Stop: 41667, Start Num: 5

Candidate Starts for AEgle_62:

(Start: 5 @41494 has 26 MA's), (Start: 9 @41509 has 1 MA's), (16, 41572), (17, 41581),

Gene: AGrandiflora_66 Start: 42390, Stop: 42566, Start Num: 5

Candidate Starts for AGrandiflora_66:

(1, 42090), (Start: 5 @42390 has 26 MA's), (Start: 9 @42405 has 1 MA's),

Gene: Adolin_67 Start: 41553, Stop: 41723, Start Num: 7

Candidate Starts for Adolin_67:

(Start: 7 @41553 has 4 MA's), (Start: 9 @41568 has 1 MA's),

Gene: Adumb2043_63 Start: 41518, Stop: 41691, Start Num: 5

Candidate Starts for Adumb2043_63:

(Start: 5 @41518 has 26 MA's), (Start: 9 @41533 has 1 MA's), (16, 41596), (17, 41605),

Gene: Amyev_63 Start: 42719, Stop: 42895, Start Num: 4

Candidate Starts for Amyev_63:

(Start: 4 @42719 has 2 MA's), (Start: 9 @42737 has 1 MA's), (14, 42788), (17, 42809),

Gene: Asa16_64 Start: 42079, Stop: 42252, Start Num: 5

Candidate Starts for Asa16_64:

(1, 41779), (Start: 5 @42079 has 26 MA's), (Start: 9 @42094 has 1 MA's), (11, 42103),

Gene: Ascela_66 Start: 42570, Stop: 42743, Start Num: 5

Candidate Starts for Ascela_66:

(1, 42270), (Start: 5 @42570 has 26 MA's), (Start: 9 @42585 has 1 MA's), (11, 42594),

Gene: Berrie_64 Start: 42174, Stop: 42350, Start Num: 5

Candidate Starts for Berrie_64:

(Start: 5 @42174 has 26 MA's), (Start: 9 @42189 has 1 MA's), (17, 42261),

Gene: Cassia_63 Start: 41839, Stop: 42015, Start Num: 5

Candidate Starts for Cassia_63:

(Start: 5 @41839 has 26 MA's), (17, 41929),

Gene: Community_64 Start: 42450, Stop: 42623, Start Num: 5

Candidate Starts for Community_64:

(Start: 5 @42450 has 26 MA's), (Start: 9 @42465 has 1 MA's), (14, 42516), (15, 42519), (17, 42537),

Gene: Crewmate_69 Start: 42801, Stop: 42974, Start Num: 5

Candidate Starts for Crewmate_69:

(1, 42501), (Start: 5 @42801 has 26 MA's), (17, 42888),

Gene: Cyan_64 Start: 42134, Stop: 42310, Start Num: 5

Candidate Starts for Cyan_64:

(Start: 5 @42134 has 26 MA's), (Start: 9 @42149 has 1 MA's),

Gene: DrManhattan_68 Start: 41122, Stop: 41277, Start Num: 9

Candidate Starts for DrManhattan_68:

(Start: 7 @41107 has 4 MA's), (Start: 9 @41122 has 1 MA's),

Gene: DrSierra_62 Start: 41236, Stop: 41409, Start Num: 7

Candidate Starts for DrSierra_62:

(Start: 7 @41236 has 4 MA's), (Start: 9 @41251 has 1 MA's), (18, 41332), (19, 41341),

Gene: Elezi_63 Start: 41836, Stop: 42009, Start Num: 5

Candidate Starts for Elezi_63:

(1, 41536), (Start: 5 @41836 has 26 MA's), (Start: 9 @41851 has 1 MA's), (11, 41860),

Gene: Eraser_64 Start: 42086, Stop: 42259, Start Num: 5

Candidate Starts for Eraser_64:

(1, 41786), (Start: 5 @42086 has 26 MA's), (Start: 9 @42101 has 1 MA's), (11, 42110),

Gene: Iter_65 Start: 42341, Stop: 42514, Start Num: 5

Candidate Starts for Iter_65:

(1, 42041), (Start: 5 @42341 has 26 MA's), (Start: 9 @42356 has 1 MA's), (11, 42365),

Gene: IttyBittyPiggy_64 Start: 40560, Stop: 40736, Start Num: 5

Candidate Starts for IttyBittyPiggy_64:

(Start: 5 @40560 has 26 MA's), (Start: 9 @40578 has 1 MA's), (14, 40629), (16, 40641), (17, 40650),

Gene: IttyBittyPiggy_62 Start: 40083, Stop: 40214, Start Num: 5

Candidate Starts for IttyBittyPiggy_62:

(Start: 5 @40083 has 26 MA's),

Gene: Janeemi_64 Start: 42220, Stop: 42393, Start Num: 7

Candidate Starts for Janeemi_64:
(Start: 7 @42220 has 4 MA's), (Start: 9 @42235 has 1 MA's), (14, 42286), (17, 42307),

Gene: Joemato_67 Start: 41834, Stop: 41962, Start Num: 5
Candidate Starts for Joemato_67:
(Start: 5 @41834 has 26 MA's), (10, 41858),

Gene: Joemato_70 Start: 42311, Stop: 42487, Start Num: 5
Candidate Starts for Joemato_70:
(1, 42011), (Start: 5 @42311 has 26 MA's), (Start: 9 @42326 has 1 MA's),

Gene: JohnDoe_65 Start: 42228, Stop: 42404, Start Num: 5
Candidate Starts for JohnDoe_65:
(Start: 5 @42228 has 26 MA's), (Start: 9 @42243 has 1 MA's),

Gene: Jstan_65 Start: 41840, Stop: 42013, Start Num: 5
Candidate Starts for Jstan_65:
(1, 41540), (Start: 5 @41840 has 26 MA's), (Start: 9 @41855 has 1 MA's), (11, 41864),

Gene: JuneStar_63 Start: 42934, Stop: 43110, Start Num: 5
Candidate Starts for JuneStar_63:
(Start: 5 @42934 has 26 MA's), (Start: 9 @42952 has 1 MA's), (17, 43024),

Gene: Kaylissa_66 Start: 42590, Stop: 42763, Start Num: 5
Candidate Starts for Kaylissa_66:
(Start: 5 @42590 has 26 MA's), (Start: 9 @42605 has 1 MA's), (18, 42686),

Gene: KeAlii_61 Start: 40177, Stop: 40347, Start Num: 5
Candidate Starts for KeAlii_61:
(Start: 5 @40177 has 26 MA's), (8, 40192), (10, 40198), (12, 40222), (14, 40243), (15, 40246),

Gene: Lego_64 Start: 41909, Stop: 42085, Start Num: 5
Candidate Starts for Lego_64:
(Start: 5 @41909 has 26 MA's), (Start: 9 @41924 has 1 MA's),

Gene: Lizalica_62 Start: 41025, Stop: 41156, Start Num: 5
Candidate Starts for Lizalica_62:
(Start: 5 @41025 has 26 MA's),

Gene: Lizalica_64 Start: 41505, Stop: 41687, Start Num: 5
Candidate Starts for Lizalica_64:
(1, 41205), (Start: 5 @41505 has 26 MA's), (Start: 9 @41520 has 1 MA's), (21, 41619),

Gene: London_64 Start: 42077, Stop: 42250, Start Num: 5
Candidate Starts for London_64:
(1, 41777), (Start: 5 @42077 has 26 MA's), (Start: 9 @42092 has 1 MA's), (11, 42101),

Gene: MissSwiss_66 Start: 41111, Stop: 41281, Start Num: 7
Candidate Starts for MissSwiss_66:
(Start: 7 @41111 has 4 MA's), (Start: 9 @41126 has 1 MA's), (20, 41219),

Gene: Mudpuppy_65 Start: 42292, Stop: 42450, Start Num: 9
Candidate Starts for Mudpuppy_65:

(1, 41977), (Start: 5 @42277 has 26 MA's), (Start: 9 @42292 has 1 MA's), (18, 42373),

Gene: Mudpuppy_63 Start: 41800, Stop: 41928, Start Num: 5

Candidate Starts for Mudpuppy_63:

(Start: 5 @41800 has 26 MA's), (10, 41824),

Gene: Niobe_64 Start: 42080, Stop: 42253, Start Num: 5

Candidate Starts for Niobe_64:

(1, 41780), (Start: 5 @42080 has 26 MA's), (Start: 9 @42095 has 1 MA's), (11, 42104),

Gene: Nitro_65 Start: 42777, Stop: 42935, Start Num: 5

Candidate Starts for Nitro_65:

(Start: 5 @42777 has 26 MA's), (15, 42831),

Gene: ObiToo_69 Start: 42417, Stop: 42590, Start Num: 5

Candidate Starts for ObiToo_69:

(1, 42117), (Start: 5 @42417 has 26 MA's), (17, 42504),

Gene: Phives_65 Start: 42565, Stop: 42738, Start Num: 5

Candidate Starts for Phives_65:

(Start: 5 @42565 has 26 MA's), (Start: 9 @42580 has 1 MA's), (14, 42631), (15, 42634), (17, 42652),

Gene: Pixelle_64 Start: 42820, Stop: 42996, Start Num: 4

Candidate Starts for Pixelle_64:

(Start: 4 @42820 has 2 MA's), (Start: 9 @42838 has 1 MA's), (17, 42910),

Gene: Powerpuff_66 Start: 43113, Stop: 43289, Start Num: 5

Candidate Starts for Powerpuff_66:

(1, 42813), (Start: 5 @43113 has 26 MA's), (Start: 9 @43128 has 1 MA's),

Gene: Pumpkins_98 Start: 42357, Stop: 42533, Start Num: 5

Candidate Starts for Pumpkins_98:

(2, 42165), (3, 42243), (Start: 5 @42357 has 26 MA's), (Start: 9 @42375 has 1 MA's), (13, 42408), (17, 42447),

Gene: Simpson_67 Start: 41838, Stop: 41966, Start Num: 5

Candidate Starts for Simpson_67:

(Start: 5 @41838 has 26 MA's), (10, 41862),

Gene: Simpson_70 Start: 42315, Stop: 42491, Start Num: 5

Candidate Starts for Simpson_70:

(1, 42015), (Start: 5 @42315 has 26 MA's), (Start: 9 @42330 has 1 MA's),

Gene: Sue2_63 Start: 40808, Stop: 40984, Start Num: 7

Candidate Starts for Sue2_63:

(Start: 7 @40808 has 4 MA's), (Start: 9 @40823 has 1 MA's), (20, 40916),

Gene: Tallboi_68 Start: 42082, Stop: 42258, Start Num: 5

Candidate Starts for Tallboi_68:

(Start: 5 @42082 has 26 MA's), (Start: 9 @42100 has 1 MA's), (17, 42172),

Gene: Tbone_64 Start: 42564, Stop: 42737, Start Num: 5

Candidate Starts for Tbone_64:

(1, 42264), (Start: 5 @42564 has 26 MA's), (Start: 9 @42579 has 1 MA's),

Gene: TforTroy_64 Start: 42011, Stop: 42187, Start Num: 5

Candidate Starts for TforTroy_64:

(Start: 5 @42011 has 26 MA's), (Start: 9 @42029 has 1 MA's), (14, 42080), (16, 42092), (17, 42101),

Gene: Tian_62 Start: 42718, Stop: 42894, Start Num: 4

Candidate Starts for Tian_62:

(Start: 4 @42718 has 2 MA's), (Start: 9 @42736 has 1 MA's), (14, 42787), (17, 42808),

Gene: Tuck_64 Start: 42353, Stop: 42526, Start Num: 5

Candidate Starts for Tuck_64:

(Start: 5 @42353 has 26 MA's), (Start: 9 @42368 has 1 MA's), (14, 42419), (15, 42422), (17, 42440),

Gene: Turab_63 Start: 41538, Stop: 41711, Start Num: 5

Candidate Starts for Turab_63:

(Start: 5 @41538 has 26 MA's), (Start: 9 @41553 has 1 MA's), (16, 41616), (17, 41625),

Gene: Tutumahutu_66 Start: 42156, Stop: 42332, Start Num: 5

Candidate Starts for Tutumahutu_66:

(Start: 5 @42156 has 26 MA's), (Start: 9 @42171 has 1 MA's),

Gene: VResidence_66 Start: 40516, Stop: 40692, Start Num: 6

Candidate Starts for VResidence_66:

(Start: 6 @40516 has 1 MA's),

Gene: Warda_65 Start: 42290, Stop: 42463, Start Num: 5

Candidate Starts for Warda_65:

(Start: 5 @42290 has 26 MA's), (Start: 9 @42305 has 1 MA's), (18, 42386),

Gene: Wildwest_61 Start: 42225, Stop: 42398, Start Num: 7

Candidate Starts for Wildwest_61:

(Start: 7 @42225 has 4 MA's), (Start: 9 @42240 has 1 MA's),

Gene: Yang_63 Start: 41651, Stop: 41830, Start Num: 4

Candidate Starts for Yang_63:

(Start: 4 @41651 has 2 MA's), (Start: 9 @41672 has 1 MA's), (17, 41744),

Gene: YesChef_64 Start: 41972, Stop: 42148, Start Num: 5

Candidate Starts for YesChef_64:

(1, 41672), (Start: 5 @41972 has 26 MA's), (Start: 9 @41987 has 1 MA's),