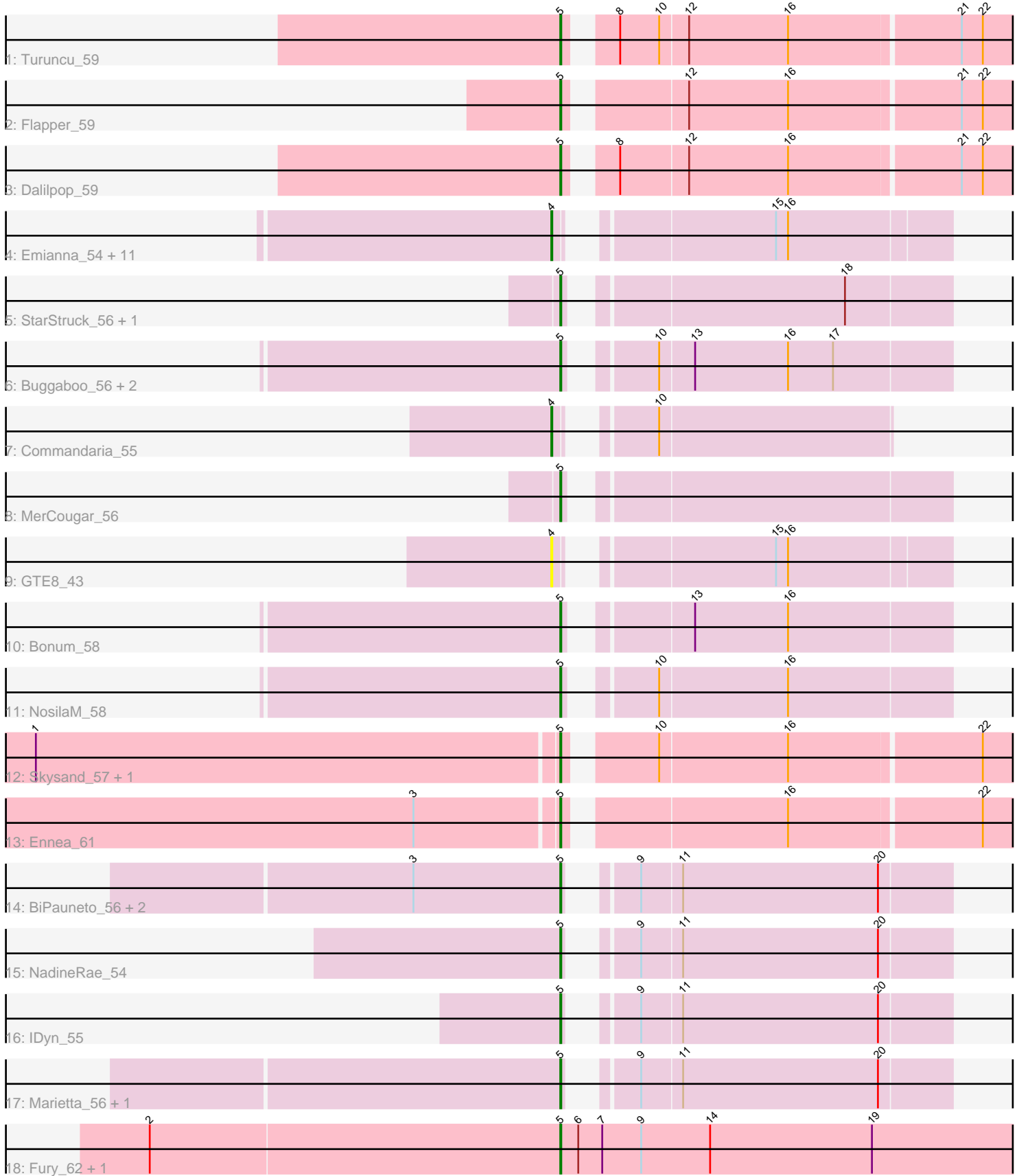


# Pham 162011



Note: Tracks are now grouped by subcluster and scaled. Switching in subcluster is indicated by changes in track color. Track scale is now set by default to display the region 30 bp upstream of start 1 to 30 bp downstream of the last possible start. If this default region is judged to be packed too tightly with annotated starts, the track will be further scaled to only show that region of the ORF with annotated starts. This action will be indicated by adding "Zoomed" to the title. For starts, yellow indicates the location of called starts comprised solely of Glimmer/GeneMark auto-annotations, green indicates the location of called starts with at least 1 manual gene annotation.

## Pham 162011 Report

This analysis was run 04/28/24 on database version 559.

Pham number 162011 has 37 members, 2 are drafts.

Phages represented in each track:

- Track 1 : Turuncu\_59
- Track 2 : Flapper\_59
- Track 3 : Dalilpop\_59
- Track 4 : Emianna\_54, Kurt\_54, NatB6\_54, KidneyBean\_54, GrootJr\_56, Wheezy\_54, NovumRegina\_54, Jifall16\_53, Tracker\_54, Arti\_54, Foxboro\_55, Phomeo\_53
- Track 5 : StarStruck\_56, Outis\_56
- Track 6 : Buggaboo\_56, Kabluna\_58, SuperSulley\_56
- Track 7 : Commandaria\_55
- Track 8 : MerCougar\_56
- Track 9 : GTE8\_43
- Track 10 : Bonum\_58
- Track 11 : NosilaM\_58
- Track 12 : Skysand\_57, Patio\_58
- Track 13 : Ennea\_61
- Track 14 : BiPauneto\_56, Sukkupi\_55, Yndexa\_55
- Track 15 : NadineRae\_54
- Track 16 : IDyn\_55
- Track 17 : Marietta\_56, WhoseManz\_55
- Track 18 : Fury\_62, Pleakley\_62

### ***Summary of Final Annotations (See graph section above for start numbers):***

The start number called the most often in the published annotations is 5, it was called in 23 of the 35 non-draft genes in the pham.

Genes that call this "Most Annotated" start:

- BiPauneto\_56, Bonum\_58, Buggaboo\_56, Dalilpop\_59, Ennea\_61, Flapper\_59, Fury\_62, IDyn\_55, Kabluna\_58, Marietta\_56, MerCougar\_56, NadineRae\_54, NosilaM\_58, Outis\_56, Patio\_58, Pleakley\_62, Skysand\_57, StarStruck\_56, Sukkupi\_55, SuperSulley\_56, Turuncu\_59, WhoseManz\_55, Yndexa\_55,

Genes that have the "Most Annotated" start but do not call it:

-

Genes that do not have the "Most Annotated" start:

- Arti\_54, Commandaria\_55, Emianna\_54, Foxboro\_55, GTE8\_43, GrootJr\_56, Jifall16\_53, KidneyBean\_54, Kurt\_54, NatB6\_54, NovumRegina\_54, Phomeo\_53, Tracker\_54, Wheezy\_54,

### **Summary by start number:**

Start 4:

- Found in 14 of 37 ( 37.8% ) of genes in pham
- Manual Annotations of this start: 12 of 35
- Called 100.0% of time when present
- Phage (with cluster) where this start called: Arti\_54 (CR2), Commandaria\_55 (CR2), Emianna\_54 (CR2), Foxboro\_55 (CR2), GTE8\_43 (CR2), GrootJr\_56 (CR2), Jifall16\_53 (CR2), KidneyBean\_54 (CR2), Kurt\_54 (CR2), NatB6\_54 (CR2), NovumRegina\_54 (CR2), Phomeo\_53 (CR2), Tracker\_54 (CR2), Wheezy\_54 (CR2),

Start 5:

- Found in 23 of 37 ( 62.2% ) of genes in pham
- Manual Annotations of this start: 23 of 35
- Called 100.0% of time when present
- Phage (with cluster) where this start called: BiPauneto\_56 (CR4), Bonum\_58 (CR2), Buggaboo\_56 (CR2), Dalilpop\_59 (CR1), Ennea\_61 (CR3), Flapper\_59 (CR1), Fury\_62 (CR5), IDyn\_55 (CR4), Kabluna\_58 (CR2), Marietta\_56 (CR4), MerCougar\_56 (CR2), NadineRae\_54 (CR4), NosilaM\_58 (CR2), Outis\_56 (CR2), Patio\_58 (CR3), Pleakley\_62 (CR5), Skysand\_57 (CR3), StarStruck\_56 (CR2), Sukkupi\_55 (CR4), SuperSulley\_56 (CR2), Turuncu\_59 (CR1), WhoseManz\_55 (CR4), Yndexa\_55 (CR4),

### **Summary by clusters:**

There are 5 clusters represented in this pham: CR2, CR3, CR1, CR4, CR5,

Info for manual annotations of cluster CR1:

- Start number 5 was manually annotated 3 times for cluster CR1.

Info for manual annotations of cluster CR2:

- Start number 4 was manually annotated 12 times for cluster CR2.
- Start number 5 was manually annotated 8 times for cluster CR2.

Info for manual annotations of cluster CR3:

- Start number 5 was manually annotated 3 times for cluster CR3.

Info for manual annotations of cluster CR4:

- Start number 5 was manually annotated 7 times for cluster CR4.

Info for manual annotations of cluster CR5:

- Start number 5 was manually annotated 2 times for cluster CR5.

### **Gene Information:**

Gene: Arti\_54 Start: 42850, Stop: 42503, Start Num: 4

Candidate Starts for Arti\_54:

(Start: 4 @42850 has 12 MA's), (15, 42673), (16, 42661),

Gene: BiPauneto\_56 Start: 42359, Stop: 42015, Start Num: 5

Candidate Starts for BiPauneto\_56:

(3, 42506), (Start: 5 @42359 has 23 MA's), (9, 42320), (11, 42281), (20, 42086),

Gene: Bonum\_58 Start: 43499, Stop: 43149, Start Num: 5

Candidate Starts for Bonum\_58:

(Start: 5 @43499 has 23 MA's), (13, 43403), (16, 43310),

Gene: Buggaboo\_56 Start: 43978, Stop: 43628, Start Num: 5

Candidate Starts for Buggaboo\_56:

(Start: 5 @43978 has 23 MA's), (10, 43915), (13, 43882), (16, 43789), (17, 43744),

Gene: Commandaria\_55 Start: 43971, Stop: 43681, Start Num: 4

Candidate Starts for Commandaria\_55:

(Start: 4 @43971 has 12 MA's), (10, 43908),

Gene: Dalilpop\_59 Start: 45148, Stop: 44726, Start Num: 5

Candidate Starts for Dalilpop\_59:

(Start: 5 @45148 has 23 MA's), (8, 45115), (12, 45049), (16, 44950), (21, 44785), (22, 44764),

Gene: Emianna\_54 Start: 43842, Stop: 43495, Start Num: 4

Candidate Starts for Emianna\_54:

(Start: 4 @43842 has 12 MA's), (15, 43665), (16, 43653),

Gene: Ennea\_61 Start: 44864, Stop: 44445, Start Num: 5

Candidate Starts for Ennea\_61:

(3, 45002), (Start: 5 @44864 has 23 MA's), (16, 44666), (22, 44480),

Gene: Flapper\_59 Start: 44580, Stop: 44158, Start Num: 5

Candidate Starts for Flapper\_59:

(Start: 5 @44580 has 23 MA's), (12, 44481), (16, 44382), (21, 44217), (22, 44196),

Gene: Foxboro\_55 Start: 44348, Stop: 44001, Start Num: 4

Candidate Starts for Foxboro\_55:

(Start: 4 @44348 has 12 MA's), (15, 44171), (16, 44159),

Gene: Fury\_62 Start: 43029, Stop: 42574, Start Num: 5

Candidate Starts for Fury\_62:

(2, 43437), (Start: 5 @43029 has 23 MA's), (6, 43011), (7, 42987), (9, 42948), (14, 42879), (19, 42717),

Gene: GTE8\_43 Start: 37105, Stop: 36758, Start Num: 4

Candidate Starts for GTE8\_43:

(Start: 4 @37105 has 12 MA's), (15, 36928), (16, 36916),

Gene: GrootJr\_56 Start: 43224, Stop: 42877, Start Num: 4

Candidate Starts for GrootJr\_56:

(Start: 4 @43224 has 12 MA's), (15, 43047), (16, 43035),

Gene: IDyn\_55 Start: 40800, Stop: 40456, Start Num: 5  
Candidate Starts for IDyn\_55:  
(Start: 5 @40800 has 23 MA's), (9, 40761), (11, 40722), (20, 40527),

Gene: Jifall16\_53 Start: 43496, Stop: 43149, Start Num: 4  
Candidate Starts for Jifall16\_53:  
(Start: 4 @43496 has 12 MA's), (15, 43319), (16, 43307),

Gene: Kabluna\_58 Start: 42914, Stop: 42564, Start Num: 5  
Candidate Starts for Kabluna\_58:  
(Start: 5 @42914 has 23 MA's), (10, 42851), (13, 42818), (16, 42725), (17, 42680),

Gene: KidneyBean\_54 Start: 43620, Stop: 43273, Start Num: 4  
Candidate Starts for KidneyBean\_54:  
(Start: 4 @43620 has 12 MA's), (15, 43443), (16, 43431),

Gene: Kurt\_54 Start: 43857, Stop: 43510, Start Num: 4  
Candidate Starts for Kurt\_54:  
(Start: 4 @43857 has 12 MA's), (15, 43680), (16, 43668),

Gene: Marietta\_56 Start: 40694, Stop: 40350, Start Num: 5  
Candidate Starts for Marietta\_56:  
(Start: 5 @40694 has 23 MA's), (9, 40655), (11, 40616), (20, 40421),

Gene: MerCougar\_56 Start: 44115, Stop: 43765, Start Num: 5  
Candidate Starts for MerCougar\_56:  
(Start: 5 @44115 has 23 MA's),

Gene: NadineRae\_54 Start: 39938, Stop: 39594, Start Num: 5  
Candidate Starts for NadineRae\_54:  
(Start: 5 @39938 has 23 MA's), (9, 39899), (11, 39860), (20, 39665),

Gene: NatB6\_54 Start: 42914, Stop: 42567, Start Num: 4  
Candidate Starts for NatB6\_54:  
(Start: 4 @42914 has 12 MA's), (15, 42737), (16, 42725),

Gene: NosilaM\_58 Start: 43812, Stop: 43462, Start Num: 5  
Candidate Starts for NosilaM\_58:  
(Start: 5 @43812 has 23 MA's), (10, 43749), (16, 43623),

Gene: NovumRegina\_54 Start: 43223, Stop: 42876, Start Num: 4  
Candidate Starts for NovumRegina\_54:  
(Start: 4 @43223 has 12 MA's), (15, 43046), (16, 43034),

Gene: Outis\_56 Start: 43809, Stop: 43459, Start Num: 5  
Candidate Starts for Outis\_56:  
(Start: 5 @43809 has 23 MA's), (18, 43563),

Gene: Patio\_58 Start: 44088, Stop: 43669, Start Num: 5  
Candidate Starts for Patio\_58:  
(1, 44604), (Start: 5 @44088 has 23 MA's), (10, 44016), (16, 43890), (22, 43704),

Gene: Phomeo\_53 Start: 43492, Stop: 43145, Start Num: 4

Candidate Starts for Phomeo\_53:  
(Start: 4 @43492 has 12 MA's), (15, 43315), (16, 43303),

Gene: Pleakley\_62 Start: 43030, Stop: 42575, Start Num: 5  
Candidate Starts for Pleakley\_62:  
(2, 43438), (Start: 5 @43030 has 23 MA's), (6, 43012), (7, 42988), (9, 42949), (14, 42880), (19, 42718),

Gene: Skysand\_57 Start: 44308, Stop: 43889, Start Num: 5  
Candidate Starts for Skysand\_57:  
(1, 44824), (Start: 5 @44308 has 23 MA's), (10, 44236), (16, 44110), (22, 43924),

Gene: StarStruck\_56 Start: 43809, Stop: 43459, Start Num: 5  
Candidate Starts for StarStruck\_56:  
(Start: 5 @43809 has 23 MA's), (18, 43563),

Gene: Sukkupi\_55 Start: 42250, Stop: 41906, Start Num: 5  
Candidate Starts for Sukkupi\_55:  
(3, 42397), (Start: 5 @42250 has 23 MA's), (9, 42211), (11, 42172), (20, 41977),

Gene: SuperSulley\_56 Start: 43978, Stop: 43628, Start Num: 5  
Candidate Starts for SuperSulley\_56:  
(Start: 5 @43978 has 23 MA's), (10, 43915), (13, 43882), (16, 43789), (17, 43744),

Gene: Tracker\_54 Start: 42638, Stop: 42291, Start Num: 4  
Candidate Starts for Tracker\_54:  
(Start: 4 @42638 has 12 MA's), (15, 42461), (16, 42449),

Gene: Turuncu\_59 Start: 44242, Stop: 43820, Start Num: 5  
Candidate Starts for Turuncu\_59:  
(Start: 5 @44242 has 23 MA's), (8, 44209), (10, 44170), (12, 44143), (16, 44044), (21, 43879), (22, 43858),

Gene: Wheezy\_54 Start: 42846, Stop: 42499, Start Num: 4  
Candidate Starts for Wheezy\_54:  
(Start: 4 @42846 has 12 MA's), (15, 42669), (16, 42657),

Gene: WhoseManz\_55 Start: 40307, Stop: 39963, Start Num: 5  
Candidate Starts for WhoseManz\_55:  
(Start: 5 @40307 has 23 MA's), (9, 40268), (11, 40229), (20, 40034),

Gene: Yndexa\_55 Start: 42250, Stop: 41906, Start Num: 5  
Candidate Starts for Yndexa\_55:  
(3, 42397), (Start: 5 @42250 has 23 MA's), (9, 42211), (11, 42172), (20, 41977),