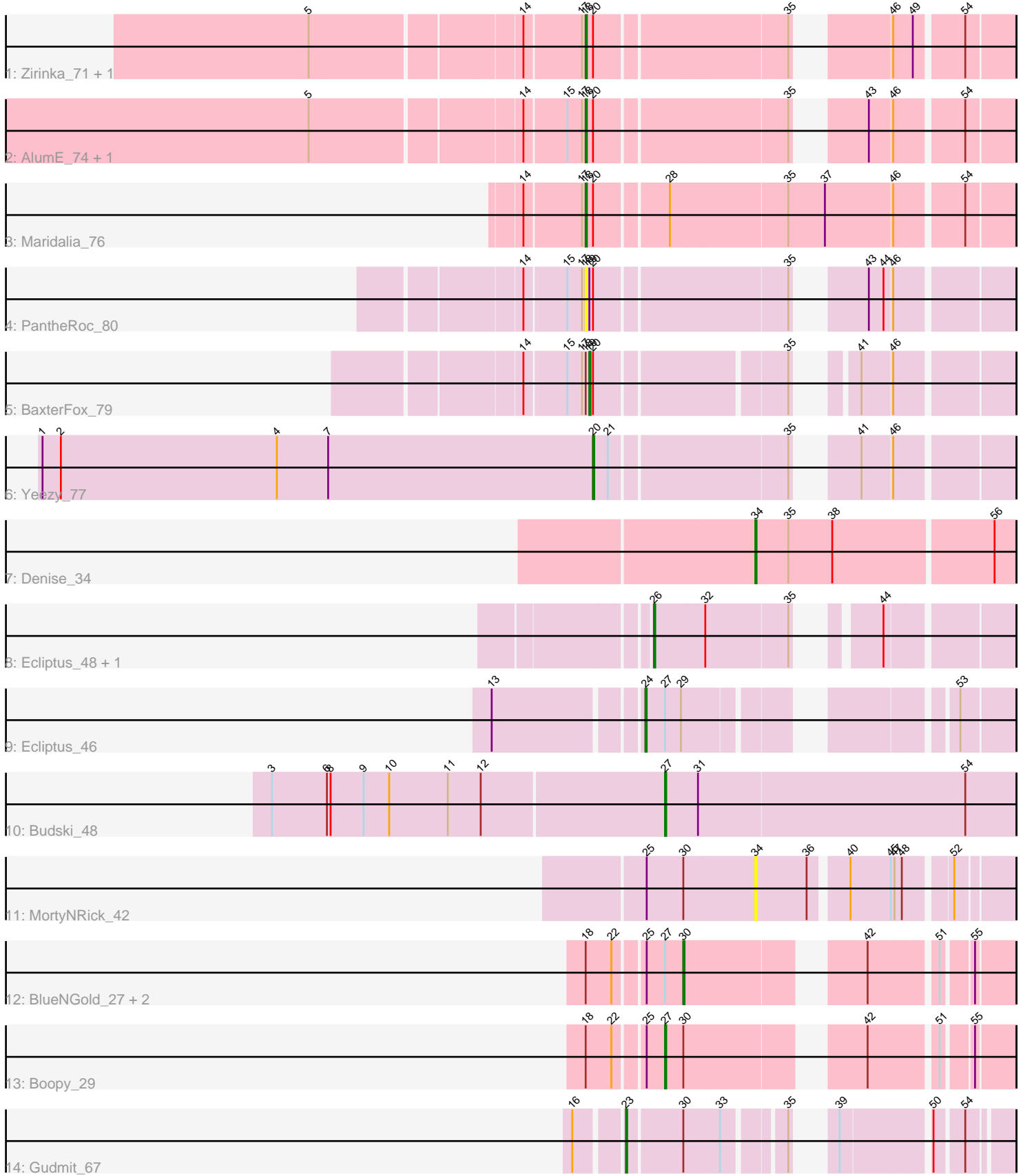


Pham 162206



Note: Tracks are now grouped by subcluster and scaled. Switching in subcluster is indicated by changes in track color. Track scale is now set by default to display the region 30 bp upstream of start 1 to 30 bp downstream of the last possible start. If this default region is judged to be packed too tightly with annotated starts, the track will be further scaled to only show that region of the ORF with annotated starts. This action will be indicated by adding "Zoomed" to the title. For starts, yellow indicates the location of called starts comprised solely of Glimmer/GeneMark auto-annotations, green indicates the location of called starts with at least 1 manual gene annotation.

Pham 162206 Report

This analysis was run 04/28/24 on database version 559.

Pham number 162206 has 19 members, 2 are drafts.

Phages represented in each track:

- Track 1 : Zirinka_71, Bialota_71
- Track 2 : AlumE_74, BoyNamedSue_74
- Track 3 : Maridalia_76
- Track 4 : PantheRoc_80
- Track 5 : BaxterFox_79
- Track 6 : Yeezy_77
- Track 7 : Denise_34
- Track 8 : Ecliptus_48, Apricot_47
- Track 9 : Ecliptus_46
- Track 10 : Budski_48
- Track 11 : MortyNRick_42
- Track 12 : BlueNGold_27, Forza_29, Mareelih_27
- Track 13 : Boopy_29
- Track 14 : Gudmit_67

Summary of Final Annotations (See graph section above for start numbers):

The start number called the most often in the published annotations is 18, it was called in 5 of the 17 non-draft genes in the pham.

Genes that call this "Most Annotated" start:

- AlumE_74, Bialota_71, BoyNamedSue_74, Maridalia_76, PantheRoc_80, Zirinka_71,

Genes that have the "Most Annotated" start but do not call it:

- BaxterFox_79, BlueNGold_27, Boopy_29, Forza_29, Mareelih_27,

Genes that do not have the "Most Annotated" start:

- Apricot_47, Budski_48, Denise_34, Ecliptus_46, Ecliptus_48, Gudmit_67, MortyNRick_42, Yeezy_77,

Summary by start number:

Start 18:

- Found in 11 of 19 (57.9%) of genes in pham
- Manual Annotations of this start: 5 of 17
- Called 54.5% of time when present
- Phage (with cluster) where this start called: AlumE_74 (CZ1), Bialota_71 (CZ1), BoyNamedSue_74 (CZ1), Maridalia_76 (CZ1), PantheRoc_80 (CZ3), Zirinka_71 (CZ1),

Start 19:

- Found in 2 of 19 (10.5%) of genes in pham
- Manual Annotations of this start: 1 of 17
- Called 50.0% of time when present
- Phage (with cluster) where this start called: BaxterFox_79 (CZ3),

Start 20:

- Found in 8 of 19 (42.1%) of genes in pham
- Manual Annotations of this start: 1 of 17
- Called 12.5% of time when present
- Phage (with cluster) where this start called: Yeezy_77 (CZ3),

Start 23:

- Found in 1 of 19 (5.3%) of genes in pham
- Manual Annotations of this start: 1 of 17
- Called 100.0% of time when present
- Phage (with cluster) where this start called: Gudmit_67 (singleton),

Start 24:

- Found in 1 of 19 (5.3%) of genes in pham
- Manual Annotations of this start: 1 of 17
- Called 100.0% of time when present
- Phage (with cluster) where this start called: Ecliptus_46 (DN),

Start 26:

- Found in 2 of 19 (10.5%) of genes in pham
- Manual Annotations of this start: 2 of 17
- Called 100.0% of time when present
- Phage (with cluster) where this start called: Apricot_47 (DN3), Ecliptus_48 (DN),

Start 27:

- Found in 6 of 19 (31.6%) of genes in pham
- Manual Annotations of this start: 2 of 17
- Called 33.3% of time when present
- Phage (with cluster) where this start called: Boopy_29 (DS), Budski_48 (DN),

Start 30:

- Found in 6 of 19 (31.6%) of genes in pham
- Manual Annotations of this start: 3 of 17
- Called 50.0% of time when present
- Phage (with cluster) where this start called: BlueNGold_27 (DS), Forza_29 (DS), Mareelih_27 (DS),

Start 34:

- Found in 2 of 19 (10.5%) of genes in pham
- Manual Annotations of this start: 1 of 17

- Called 100.0% of time when present
- Phage (with cluster) where this start called: Denise_34 (CZ5), MortyNRick_42 (DN),

Summary by clusters:

There are 7 clusters represented in this pham: DN, singleton, CZ3, CZ1, CZ5, DN3, DS,

Info for manual annotations of cluster CZ1:

- Start number 18 was manually annotated 5 times for cluster CZ1.

Info for manual annotations of cluster CZ3:

- Start number 19 was manually annotated 1 time for cluster CZ3.
- Start number 20 was manually annotated 1 time for cluster CZ3.

Info for manual annotations of cluster CZ5:

- Start number 34 was manually annotated 1 time for cluster CZ5.

Info for manual annotations of cluster DN:

- Start number 24 was manually annotated 1 time for cluster DN.
- Start number 26 was manually annotated 1 time for cluster DN.
- Start number 27 was manually annotated 1 time for cluster DN.

Info for manual annotations of cluster DN3:

- Start number 26 was manually annotated 1 time for cluster DN3.

Info for manual annotations of cluster DS:

- Start number 27 was manually annotated 1 time for cluster DS.
- Start number 30 was manually annotated 3 times for cluster DS.

Gene Information:

Gene: AlumE_74 Start: 49657, Stop: 49953, Start Num: 18

Candidate Starts for AlumE_74:

(5, 49447), (14, 49609), (15, 49642), (17, 49654), (Start: 18 @49657 has 5 MA's), (Start: 20 @49663 has 1 MA's), (35, 49810), (43, 49846), (46, 49864), (54, 49915),

Gene: Apricot_47 Start: 31166, Stop: 31405, Start Num: 26

Candidate Starts for Apricot_47:

(Start: 26 @31166 has 2 MA's), (32, 31205), (35, 31271), (44, 31310),

Gene: BaxterFox_79 Start: 50974, Stop: 51255, Start Num: 19

Candidate Starts for BaxterFox_79:

(14, 50923), (15, 50956), (17, 50968), (Start: 18 @50971 has 5 MA's), (Start: 19 @50974 has 1 MA's), (Start: 20 @50977 has 1 MA's), (35, 51118), (41, 51142), (46, 51166),

Gene: Bialota_71 Start: 49108, Stop: 49404, Start Num: 18

Candidate Starts for Bialota_71:

(5, 48898), (14, 49060), (17, 49105), (Start: 18 @49108 has 5 MA's), (Start: 20 @49114 has 1 MA's), (35, 49261), (46, 49315), (49, 49330), (54, 49366),

Gene: BlueNGold_27 Start: 9816, Stop: 9601, Start Num: 30
Candidate Starts for BlueNGold_27:
(Start: 18 @9888 has 5 MA's), (22, 9867), (25, 9846), (Start: 27 @9831 has 2 MA's), (Start: 30 @9816 has 3 MA's), (42, 9699), (51, 9651), (55, 9630),

Gene: Boopy_29 Start: 9843, Stop: 9613, Start Num: 27
Candidate Starts for Boopy_29:
(Start: 18 @9900 has 5 MA's), (22, 9879), (25, 9858), (Start: 27 @9843 has 2 MA's), (Start: 30 @9828 has 3 MA's), (42, 9711), (51, 9663), (55, 9642),

Gene: BoyNamedSue_74 Start: 49657, Stop: 49953, Start Num: 18
Candidate Starts for BoyNamedSue_74:
(5, 49447), (14, 49609), (15, 49642), (17, 49654), (Start: 18 @49657 has 5 MA's), (Start: 20 @49663 has 1 MA's), (35, 49810), (43, 49846), (46, 49864), (54, 49915),

Gene: Budski_48 Start: 33155, Stop: 33439, Start Num: 27
Candidate Starts for Budski_48:
(3, 32837), (6, 32882), (8, 32885), (9, 32912), (10, 32933), (11, 32981), (12, 33008), (Start: 27 @33155 has 2 MA's), (31, 33182), (54, 33398),

Gene: Denise_34 Start: 27066, Stop: 27272, Start Num: 34
Candidate Starts for Denise_34:
(Start: 34 @27066 has 1 MA's), (35, 27093), (38, 27129), (56, 27255),

Gene: Ecliptus_48 Start: 33429, Stop: 33668, Start Num: 26
Candidate Starts for Ecliptus_48:
(Start: 26 @33429 has 2 MA's), (32, 33468), (35, 33534), (44, 33573),

Gene: Ecliptus_46 Start: 32573, Stop: 32812, Start Num: 24
Candidate Starts for Ecliptus_46:
(13, 32462), (Start: 24 @32573 has 1 MA's), (Start: 27 @32588 has 2 MA's), (29, 32600), (53, 32771),

Gene: Forza_29 Start: 9868, Stop: 9653, Start Num: 30
Candidate Starts for Forza_29:
(Start: 18 @9940 has 5 MA's), (22, 9919), (25, 9898), (Start: 27 @9883 has 2 MA's), (Start: 30 @9868 has 3 MA's), (42, 9751), (51, 9703), (55, 9682),

Gene: Gudmit_67 Start: 40055, Stop: 40297, Start Num: 23
Candidate Starts for Gudmit_67:
(16, 40022), (Start: 23 @40055 has 1 MA's), (Start: 30 @40097 has 3 MA's), (33, 40124), (35, 40166), (39, 40178), (50, 40244), (54, 40265),

Gene: Mareelih_27 Start: 9273, Stop: 9058, Start Num: 30
Candidate Starts for Mareelih_27:
(Start: 18 @9345 has 5 MA's), (22, 9324), (25, 9303), (Start: 27 @9288 has 2 MA's), (Start: 30 @9273 has 3 MA's), (42, 9156), (51, 9108), (55, 9087),

Gene: Maridalia_76 Start: 48667, Stop: 48993, Start Num: 18
Candidate Starts for Maridalia_76:
(14, 48619), (17, 48664), (Start: 18 @48667 has 5 MA's), (Start: 20 @48673 has 1 MA's), (28, 48727), (35, 48820), (37, 48850), (46, 48904), (54, 48955),

Gene: MortyNRick_42 Start: 32315, Stop: 32503, Start Num: 34

Candidate Starts for MortyNRick_42:

(25, 32228), (Start: 30 @32258 has 3 MA's), (Start: 34 @32315 has 1 MA's), (36, 32357), (40, 32384), (45, 32417), (47, 32420), (48, 32426), (52, 32459),

Gene: PantheRoc_80 Start: 50122, Stop: 50418, Start Num: 18

Candidate Starts for PantheRoc_80:

(14, 50074), (15, 50107), (17, 50119), (Start: 18 @50122 has 5 MA's), (Start: 19 @50125 has 1 MA's), (Start: 20 @50128 has 1 MA's), (35, 50275), (43, 50311), (44, 50323), (46, 50329),

Gene: Yeezy_77 Start: 47836, Stop: 48126, Start Num: 20

Candidate Starts for Yeezy_77:

(1, 47386), (2, 47401), (4, 47578), (7, 47620), (Start: 20 @47836 has 1 MA's), (21, 47848), (35, 47983), (41, 48013), (46, 48037),

Gene: Zirinka_71 Start: 49096, Stop: 49392, Start Num: 18

Candidate Starts for Zirinka_71:

(5, 48886), (14, 49048), (17, 49093), (Start: 18 @49096 has 5 MA's), (Start: 20 @49102 has 1 MA's), (35, 49249), (46, 49303), (49, 49318), (54, 49354),