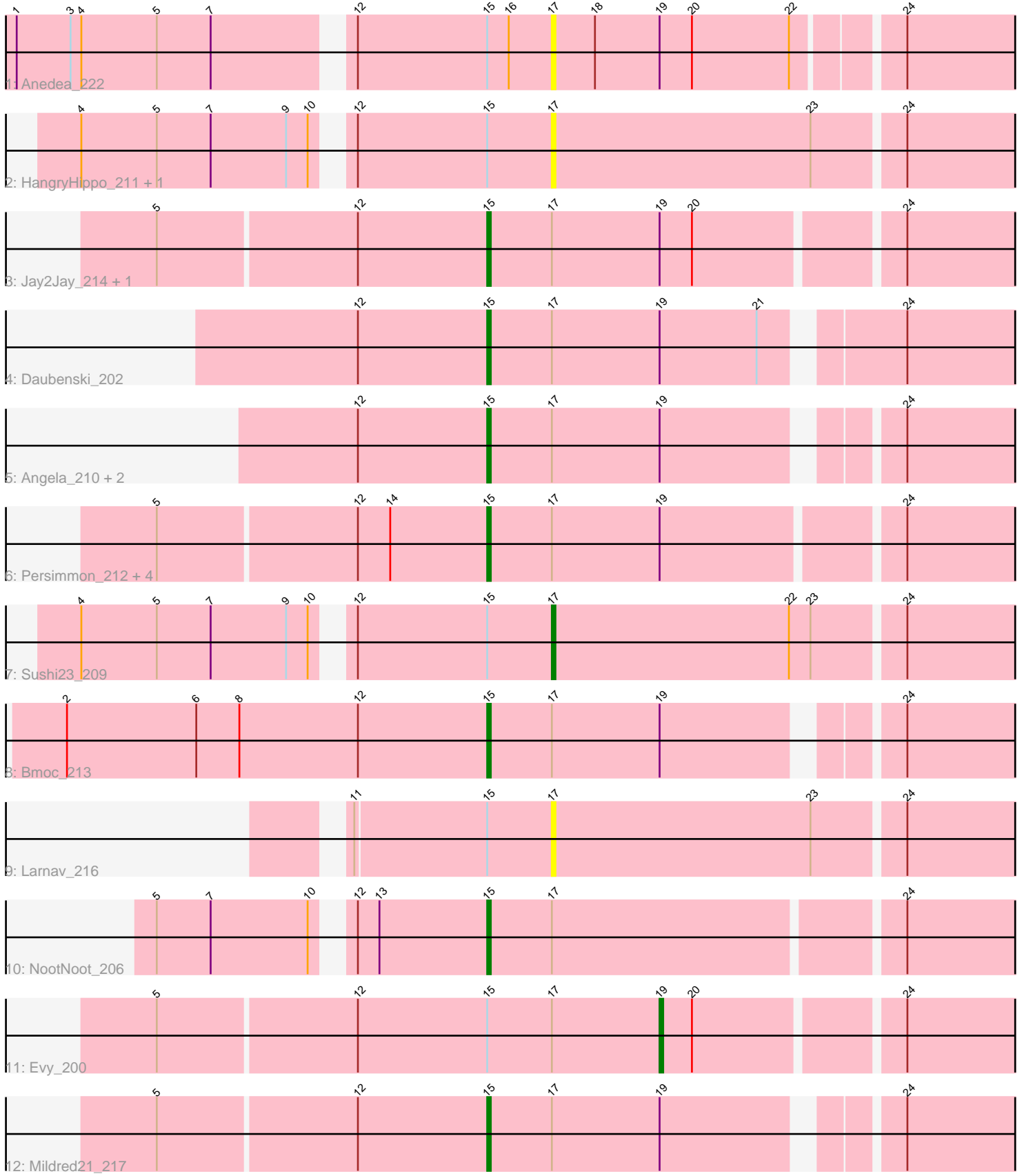


Pham 162220



Note: Tracks are now grouped by subcluster and scaled. Switching in subcluster is indicated by changes in track color. Track scale is now set by default to display the region 30 bp upstream of start 1 to 30 bp downstream of the last possible start. If this default region is judged to be packed too tightly with annotated starts, the track will be further scaled to only show that region of the ORF with annotated starts. This action will be indicated by adding "Zoomed" to the title. For starts, yellow indicates the location of called starts comprised solely of Glimmer/GeneMark auto-annotations, green indicates the location of called starts with at least 1 manual gene annotation.

## Pham 162220 Report

This analysis was run 04/28/24 on database version 559.

Pham number 162220 has 20 members, 6 are drafts.

Phages represented in each track:

- Track 1 : Anedea\_222
- Track 2 : HangryHippo\_211, BlueOtter\_211
- Track 3 : Jay2Jay\_214, Warpy\_212
- Track 4 : Daubenski\_202
- Track 5 : Angela\_210, LilMartin\_207, MulchMansion\_211
- Track 6 : Persimmon\_212, Navo\_211, Braelyn\_206, Bartholomune\_210, WhereRU\_214
- Track 7 : Sushi23\_209
- Track 8 : Bmoc\_213
- Track 9 : Larnav\_216
- Track 10 : NootNoot\_206
- Track 11 : Evy\_200
- Track 12 : Mildred21\_217

### ***Summary of Final Annotations (See graph section above for start numbers):***

The start number called the most often in the published annotations is 15, it was called in 12 of the 14 non-draft genes in the pham.

Genes that call this "Most Annotated" start:

- Angela\_210, Bartholomune\_210, Bmoc\_213, Braelyn\_206, Daubenski\_202, Jay2Jay\_214, LilMartin\_207, Mildred21\_217, MulchMansion\_211, Navo\_211, NootNoot\_206, Persimmon\_212, Warpy\_212, WhereRU\_214,

Genes that have the "Most Annotated" start but do not call it:

- Anedea\_222, BlueOtter\_211, Evy\_200, HangryHippo\_211, Larnav\_216, Sushi23\_209,

Genes that do not have the "Most Annotated" start:

- 

### **Summary by start number:**

Start 15:

- Found in 20 of 20 ( 100.0% ) of genes in pham
- Manual Annotations of this start: 12 of 14
- Called 70.0% of time when present
- Phage (with cluster) where this start called: Angela\_210 (BE1), Bartholomune\_210 (BE1), Bmoc\_213 (BE1), Braelyn\_206 (BE1), Daubenski\_202 (BE1), Jay2Jay\_214 (BE1), LilMartin\_207 (BE1), Mildred21\_217 (BE1), MulchMansion\_211 (BE1), Navo\_211 (BE1), NootNoot\_206 (BE1), Persimmon\_212 (BE1), Warpy\_212 (BE1), WhereRU\_214 (BE1),

Start 17:

- Found in 20 of 20 ( 100.0% ) of genes in pham
- Manual Annotations of this start: 1 of 14
- Called 25.0% of time when present
- Phage (with cluster) where this start called: Anedea\_222 (BE1), BlueOtter\_211 (BE1), HangryHippo\_211 (BE1), Larnav\_216 (BE1), Sushi23\_209 (BE1),

Start 19:

- Found in 15 of 20 ( 75.0% ) of genes in pham
- Manual Annotations of this start: 1 of 14
- Called 6.7% of time when present
- Phage (with cluster) where this start called: Evy\_200 (BE1),

### Summary by clusters:

There is one cluster represented in this pham: BE1

Info for manual annotations of cluster BE1:

- Start number 15 was manually annotated 12 times for cluster BE1.
- Start number 17 was manually annotated 1 time for cluster BE1.
- Start number 19 was manually annotated 1 time for cluster BE1.

### Gene Information:

Gene: Anedea\_222 Start: 108103, Stop: 108228, Start Num: 17

Candidate Starts for Anedea\_222:

(1, 107962), (3, 107977), (4, 107980), (5, 108001), (7, 108016), (12, 108049), (Start: 15 @108085 has 12 MA's), (16, 108091), (Start: 17 @108103 has 1 MA's), (18, 108115), (Start: 19 @108133 has 1 MA's), (20, 108142), (22, 108169), (24, 108196),

Gene: Angela\_210 Start: 105164, Stop: 105301, Start Num: 15

Candidate Starts for Angela\_210:

(12, 105128), (Start: 15 @105164 has 12 MA's), (Start: 17 @105182 has 1 MA's), (Start: 19 @105212 has 1 MA's), (24, 105269),

Gene: Bartholomune\_210 Start: 105719, Stop: 105883, Start Num: 15

Candidate Starts for Bartholomune\_210:

(5, 105629), (12, 105683), (14, 105692), (Start: 15 @105719 has 12 MA's), (Start: 17 @105737 has 1 MA's), (Start: 19 @105767 has 1 MA's), (24, 105830),

Gene: BlueOtter\_211 Start: 105874, Stop: 106023, Start Num: 17

Candidate Starts for BlueOtter\_211:

(4, 105751), (5, 105772), (7, 105787), (9, 105808), (10, 105814), (12, 105820), (Start: 15 @105856 has 12 MA's), (Start: 17 @105874 has 1 MA's), (23, 105946), (24, 105970),

Gene: Bmoc\_213 Start: 105977, Stop: 106114, Start Num: 15

Candidate Starts for Bmoc\_213:

(2, 105860), (6, 105896), (8, 105908), (12, 105941), (Start: 15 @105977 has 12 MA's), (Start: 17 @105995 has 1 MA's), (Start: 19 @106025 has 1 MA's), (24, 106082),

Gene: Braelyn\_206 Start: 105366, Stop: 105530, Start Num: 15

Candidate Starts for Braelyn\_206:

(5, 105276), (12, 105330), (14, 105339), (Start: 15 @105366 has 12 MA's), (Start: 17 @105384 has 1 MA's), (Start: 19 @105414 has 1 MA's), (24, 105477),

Gene: Daubenski\_202 Start: 106555, Stop: 106716, Start Num: 15

Candidate Starts for Daubenski\_202:

(12, 106519), (Start: 15 @106555 has 12 MA's), (Start: 17 @106573 has 1 MA's), (Start: 19 @106603 has 1 MA's), (21, 106630), (24, 106663),

Gene: Evy\_200 Start: 106705, Stop: 106821, Start Num: 19

Candidate Starts for Evy\_200:

(5, 106567), (12, 106621), (Start: 15 @106657 has 12 MA's), (Start: 17 @106675 has 1 MA's), (Start: 19 @106705 has 1 MA's), (20, 106714), (24, 106768),

Gene: HangryHippo\_211 Start: 105874, Stop: 106023, Start Num: 17

Candidate Starts for HangryHippo\_211:

(4, 105751), (5, 105772), (7, 105787), (9, 105808), (10, 105814), (12, 105820), (Start: 15 @105856 has 12 MA's), (Start: 17 @105874 has 1 MA's), (23, 105946), (24, 105970),

Gene: Jay2Jay\_214 Start: 106812, Stop: 106976, Start Num: 15

Candidate Starts for Jay2Jay\_214:

(5, 106722), (12, 106776), (Start: 15 @106812 has 12 MA's), (Start: 17 @106830 has 1 MA's), (Start: 19 @106860 has 1 MA's), (20, 106869), (24, 106923),

Gene: Larnav\_216 Start: 106335, Stop: 106484, Start Num: 17

Candidate Starts for Larnav\_216:

(11, 106281), (Start: 15 @106317 has 12 MA's), (Start: 17 @106335 has 1 MA's), (23, 106407), (24, 106431),

Gene: LilMartin\_207 Start: 104528, Stop: 104665, Start Num: 15

Candidate Starts for LilMartin\_207:

(12, 104492), (Start: 15 @104528 has 12 MA's), (Start: 17 @104546 has 1 MA's), (Start: 19 @104576 has 1 MA's), (24, 104633),

Gene: Mildred21\_217 Start: 104294, Stop: 104452, Start Num: 15

Candidate Starts for Mildred21\_217:

(5, 104204), (12, 104258), (Start: 15 @104294 has 12 MA's), (Start: 17 @104312 has 1 MA's), (Start: 19 @104342 has 1 MA's), (24, 104399),

Gene: MulchMansion\_211 Start: 106162, Stop: 106299, Start Num: 15

Candidate Starts for MulchMansion\_211:

(12, 106126), (Start: 15 @106162 has 12 MA's), (Start: 17 @106180 has 1 MA's), (Start: 19 @106210 has 1 MA's), (24, 106267),

Gene: Navo\_211 Start: 104570, Stop: 104734, Start Num: 15

Candidate Starts for Navo\_211:

(5, 104480), (12, 104534), (14, 104543), (Start: 15 @104570 has 12 MA's), (Start: 17 @104588 has 1 MA's), (Start: 19 @104618 has 1 MA's), (24, 104681),

Gene: NootNoot\_206 Start: 104774, Stop: 104938, Start Num: 15

Candidate Starts for NootNoot\_206:

(5, 104690), (7, 104705), (10, 104732), (12, 104738), (13, 104744), (Start: 15 @104774 has 12 MA's), (Start: 17 @104792 has 1 MA's), (24, 104885),

Gene: Persimmon\_212 Start: 105588, Stop: 105752, Start Num: 15

Candidate Starts for Persimmon\_212:

(5, 105498), (12, 105552), (14, 105561), (Start: 15 @105588 has 12 MA's), (Start: 17 @105606 has 1 MA's), (Start: 19 @105636 has 1 MA's), (24, 105699),

Gene: Sushi23\_209 Start: 107175, Stop: 107324, Start Num: 17

Candidate Starts for Sushi23\_209:

(4, 107052), (5, 107073), (7, 107088), (9, 107109), (10, 107115), (12, 107121), (Start: 15 @107157 has 12 MA's), (Start: 17 @107175 has 1 MA's), (22, 107241), (23, 107247), (24, 107271),

Gene: Warpy\_212 Start: 106250, Stop: 106414, Start Num: 15

Candidate Starts for Warpy\_212:

(5, 106160), (12, 106214), (Start: 15 @106250 has 12 MA's), (Start: 17 @106268 has 1 MA's), (Start: 19 @106298 has 1 MA's), (20, 106307), (24, 106361),

Gene: WhereRU\_214 Start: 105767, Stop: 105931, Start Num: 15

Candidate Starts for WhereRU\_214:

(5, 105677), (12, 105731), (14, 105740), (Start: 15 @105767 has 12 MA's), (Start: 17 @105785 has 1 MA's), (Start: 19 @105815 has 1 MA's), (24, 105878),