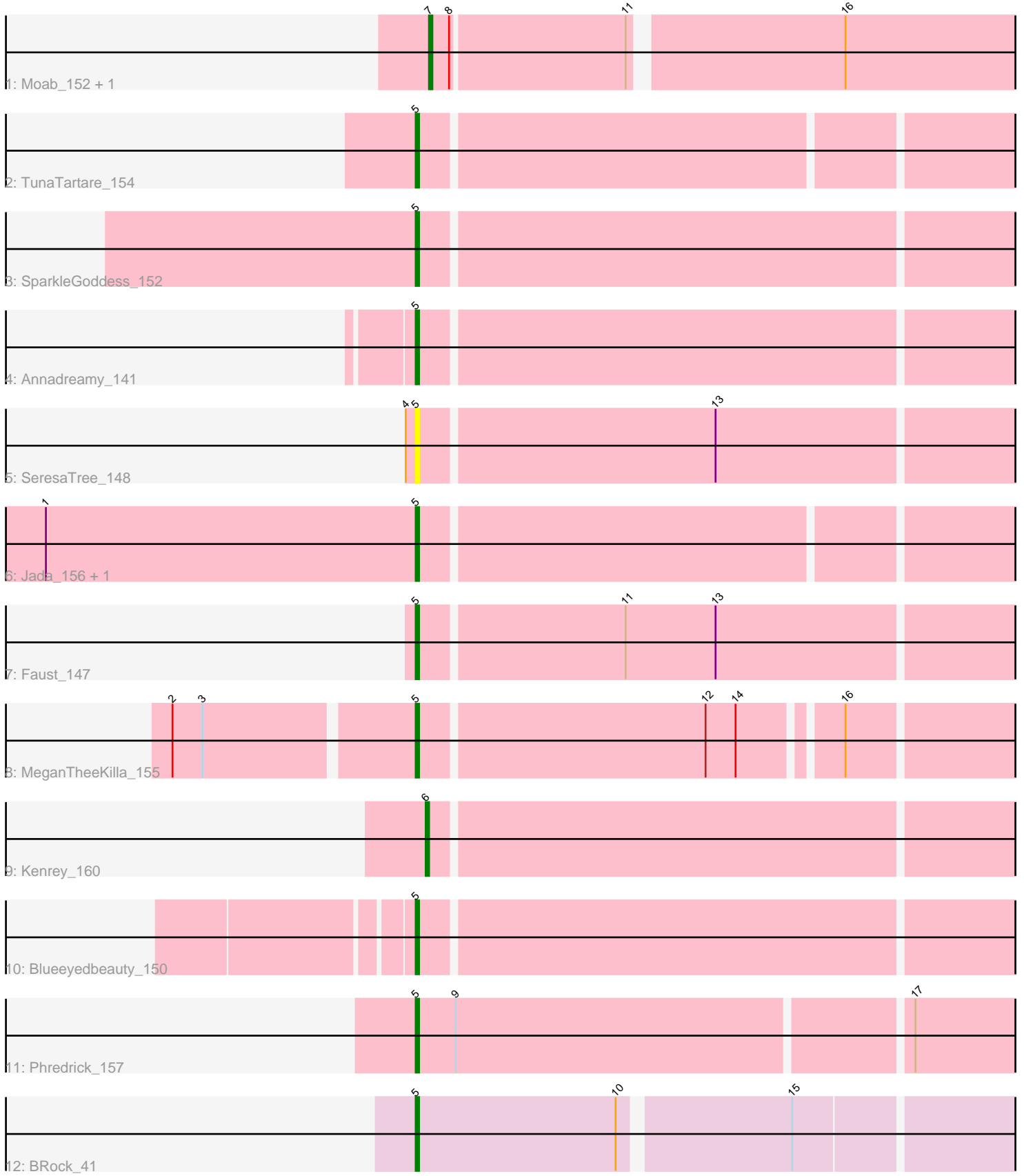


Pham 162281



Note: Tracks are now grouped by subcluster and scaled. Switching in subcluster is indicated by changes in track color. Track scale is now set by default to display the region 30 bp upstream of start 1 to 30 bp downstream of the last possible start. If this default region is judged to be packed too tightly with annotated starts, the track will be further scaled to only show that region of the ORF with annotated starts. This action will be indicated by adding "Zoomed" to the title. For starts, yellow indicates the location of called starts comprised solely of Glimmer/GeneMark auto-annotations, green indicates the location of called starts with at least 1 manual gene annotation.

## Pham 162281 Report

This analysis was run 04/28/24 on database version 559.

Pham number 162281 has 14 members, 1 are drafts.

Phages represented in each track:

- Track 1 : Moab\_152, Patelgo\_154
- Track 2 : TunaTartare\_154
- Track 3 : SparkleGoddess\_152
- Track 4 : Annadreamy\_141
- Track 5 : SeresaTree\_148
- Track 6 : Jada\_156, Forrest\_159
- Track 7 : Faust\_147
- Track 8 : MeganTheeKilla\_155
- Track 9 : Kenrey\_160
- Track 10 : Blueeyedbeauty\_150
- Track 11 : Phredrick\_157
- Track 12 : BRock\_41

### ***Summary of Final Annotations (See graph section above for start numbers):***

The start number called the most often in the published annotations is 5, it was called in 10 of the 13 non-draft genes in the pham.

Genes that call this "Most Annotated" start:

- Annadreamy\_141, BRock\_41, Blueeyedbeauty\_150, Faust\_147, Forrest\_159, Jada\_156, MeganTheeKilla\_155, Phredrick\_157, SeresaTree\_148, SparkleGoddess\_152, TunaTartare\_154,

Genes that have the "Most Annotated" start but do not call it:

- 

Genes that do not have the "Most Annotated" start:

- Kenrey\_160, Moab\_152, Patelgo\_154,

### **Summary by start number:**

Start 5:

- Found in 11 of 14 ( 78.6% ) of genes in pham
- Manual Annotations of this start: 10 of 13

- Called 100.0% of time when present
- Phage (with cluster) where this start called: Annadreamy\_141 (BK1), BRock\_41 (BS), Blueeyedbeauty\_150 (BK1), Faust\_147 (BK1), Forrest\_159 (BK1), Jada\_156 (BK1), MeganTheeKilla\_155 (BK1), Phredrick\_157 (BK1), SeresaTree\_148 (BK1), SparkleGoddess\_152 (BK1), TunaTartare\_154 (BK1),

Start 6:

- Found in 1 of 14 ( 7.1% ) of genes in pham
- Manual Annotations of this start: 1 of 13
- Called 100.0% of time when present
- Phage (with cluster) where this start called: Kenrey\_160 (BK1),

Start 7:

- Found in 2 of 14 ( 14.3% ) of genes in pham
- Manual Annotations of this start: 2 of 13
- Called 100.0% of time when present
- Phage (with cluster) where this start called: Moab\_152 (BK1), Patelgo\_154 (BK1),

### **Summary by clusters:**

There are 2 clusters represented in this pham: BK1, BS,

Info for manual annotations of cluster BK1:

- Start number 5 was manually annotated 9 times for cluster BK1.
- Start number 6 was manually annotated 1 time for cluster BK1.
- Start number 7 was manually annotated 2 times for cluster BK1.

Info for manual annotations of cluster BS:

- Start number 5 was manually annotated 1 time for cluster BS.

### **Gene Information:**

Gene: Annadreamy\_141 Start: 79572, Stop: 79751, Start Num: 5

Candidate Starts for Annadreamy\_141:

(Start: 5 @79572 has 10 MA's),

Gene: BRock\_41 Start: 14791, Stop: 14961, Start Num: 5

Candidate Starts for BRock\_41:

(Start: 5 @14791 has 10 MA's), (10, 14851), (15, 14899),

Gene: Blueeyedbeauty\_150 Start: 83996, Stop: 84175, Start Num: 5

Candidate Starts for Blueeyedbeauty\_150:

(Start: 5 @83996 has 10 MA's),

Gene: Faust\_147 Start: 85142, Stop: 85321, Start Num: 5

Candidate Starts for Faust\_147:

(Start: 5 @85142 has 10 MA's), (11, 85202), (13, 85229),

Gene: Forrest\_159 Start: 86104, Stop: 86274, Start Num: 5

Candidate Starts for Forrest\_159:

(1, 85993), (Start: 5 @86104 has 10 MA's),

Gene: Jada\_156 Start: 84801, Stop: 84971, Start Num: 5

Candidate Starts for Jada\_156:

(1, 84690), (Start: 5 @84801 has 10 MA's),

Gene: Kenrey\_160 Start: 86124, Stop: 86300, Start Num: 6

Candidate Starts for Kenrey\_160:

(Start: 6 @86124 has 1 MA's),

Gene: MeganTheeKilla\_155 Start: 84589, Stop: 84762, Start Num: 5

Candidate Starts for MeganTheeKilla\_155:

(2, 84520), (3, 84529), (Start: 5 @84589 has 10 MA's), (12, 84673), (14, 84682), (16, 84709),

Gene: Moab\_152 Start: 86604, Stop: 86774, Start Num: 7

Candidate Starts for Moab\_152:

(Start: 7 @86604 has 2 MA's), (8, 86610), (11, 86661), (16, 86721),

Gene: Patelgo\_154 Start: 87296, Stop: 87466, Start Num: 7

Candidate Starts for Patelgo\_154:

(Start: 7 @87296 has 2 MA's), (8, 87302), (11, 87353), (16, 87413),

Gene: Phredrick\_157 Start: 84468, Stop: 84644, Start Num: 5

Candidate Starts for Phredrick\_157:

(Start: 5 @84468 has 10 MA's), (9, 84480), (17, 84612),

Gene: SeresaTree\_148 Start: 84524, Stop: 84703, Start Num: 5

Candidate Starts for SeresaTree\_148:

(4, 84521), (Start: 5 @84524 has 10 MA's), (13, 84611),

Gene: SparkleGoddess\_152 Start: 85634, Stop: 85813, Start Num: 5

Candidate Starts for SparkleGoddess\_152:

(Start: 5 @85634 has 10 MA's),

Gene: TunaTartare\_154 Start: 88266, Stop: 88436, Start Num: 5

Candidate Starts for TunaTartare\_154:

(Start: 5 @88266 has 10 MA's),