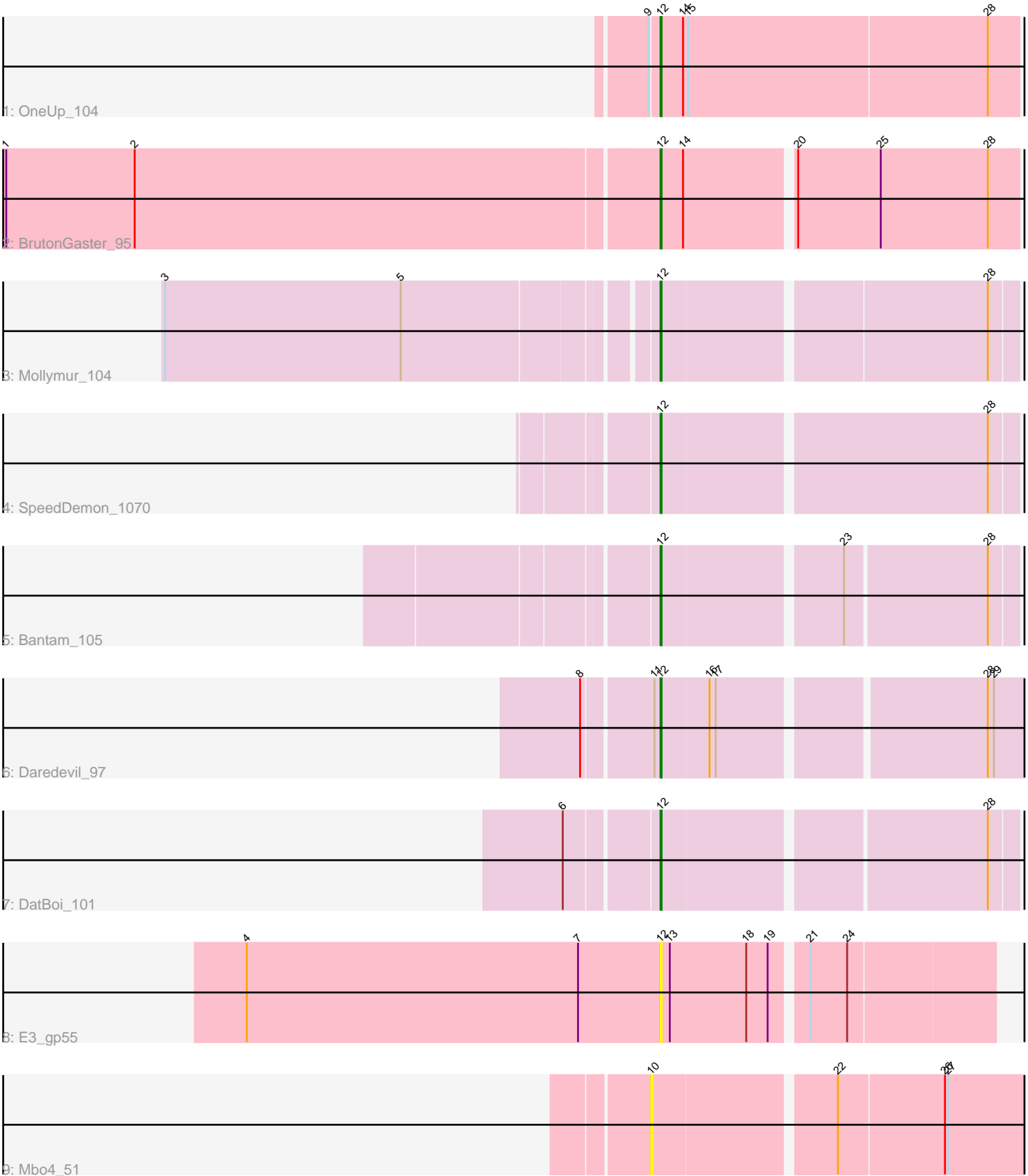


Pham 162405



Note: Tracks are now grouped by subcluster and scaled. Switching in subcluster is indicated by changes in track color. Track scale is now set by default to display the region 30 bp upstream of start 1 to 30 bp downstream of the last possible start. If this default region is judged to be packed too tightly with annotated starts, the track will be further scaled to only show that region of the ORF with annotated starts. This action will be indicated by adding "Zoomed" to the title. For starts, yellow indicates the location of called starts comprised solely of Glimmer/GeneMark auto-annotations, green indicates the location of called starts with at least 1 manual gene annotation.

## Pham 162405 Report

This analysis was run 05/04/24 on database version 560.

Pham number 162405 has 9 members, 2 are drafts.

Phages represented in each track:

- Track 1 : OneUp\_104
- Track 2 : BrutonGaster\_95
- Track 3 : Mollymur\_104
- Track 4 : SpeedDemon\_1070
- Track 5 : Bantam\_105
- Track 6 : Daredevil\_97
- Track 7 : DatBoi\_101
- Track 8 : E3\_gp55
- Track 9 : Mbo4\_51

### ***Summary of Final Annotations (See graph section above for start numbers):***

The start number called the most often in the published annotations is 12, it was called in 7 of the 7 non-draft genes in the pham.

Genes that call this "Most Annotated" start:

- Bantam\_105, BrutonGaster\_95, Daredevil\_97, DatBoi\_101, E3\_gp55, Mollymur\_104, OneUp\_104, SpeedDemon\_1070,

Genes that have the "Most Annotated" start but do not call it:

- 

Genes that do not have the "Most Annotated" start:

- Mbo4\_51,

### **Summary by start number:**

Start 10:

- Found in 1 of 9 ( 11.1% ) of genes in pham
- No Manual Annotations of this start.
- Called 100.0% of time when present
- Phage (with cluster) where this start called: Mbo4\_51 (singleton),

Start 12:

- Found in 8 of 9 ( 88.9% ) of genes in pham
- Manual Annotations of this start: 7 of 7
- Called 100.0% of time when present
- Phage (with cluster) where this start called: Bantam\_105 (DL), BrutonGaster\_95 (CQ2), Daredevil\_97 (DL), DatBoi\_101 (DL), E3\_gp55 (singleton), Mollymur\_104 (DL), OneUp\_104 (CQ2), SpeedDemon\_1070 (DL),

### **Summary by clusters:**

There are 3 clusters represented in this pham: CQ2, DL, singleton,

Info for manual annotations of cluster CQ2:

- Start number 12 was manually annotated 2 times for cluster CQ2.

Info for manual annotations of cluster DL:

- Start number 12 was manually annotated 5 times for cluster DL.

### **Gene Information:**

Gene: Bantam\_105 Start: 68901, Stop: 69227, Start Num: 12

Candidate Starts for Bantam\_105:

(Start: 12 @68901 has 7 MA's), (23, 69066), (28, 69201),

Gene: BrutonGaster\_95 Start: 62658, Stop: 62993, Start Num: 12

Candidate Starts for BrutonGaster\_95:

(1, 62028), (2, 62154), (Start: 12 @62658 has 7 MA's), (14, 62679), (20, 62778), (25, 62859), (28, 62964),

Gene: Daredevil\_97 Start: 64928, Stop: 65263, Start Num: 12

Candidate Starts for Daredevil\_97:

(8, 64859), (11, 64922), (Start: 12 @64928 has 7 MA's), (16, 64973), (17, 64979), (28, 65225), (29, 65231),

Gene: DatBoi\_101 Start: 68050, Stop: 68376, Start Num: 12

Candidate Starts for DatBoi\_101:

(6, 67969), (Start: 12 @68050 has 7 MA's), (28, 68350),

Gene: E3\_gp55 Start: 22695, Stop: 23006, Start Num: 12

Candidate Starts for E3\_gp55:

(4, 22290), (7, 22614), (Start: 12 @22695 has 7 MA's), (13, 22704), (18, 22779), (19, 22800), (21, 22830), (24, 22866),

Gene: Mbo4\_51 Start: 38577, Stop: 38924, Start Num: 10

Candidate Starts for Mbo4\_51:

(10, 38577), (22, 38745), (26, 38847), (27, 38850),

Gene: Mollymur\_104 Start: 69311, Stop: 69640, Start Num: 12

Candidate Starts for Mollymur\_104:

(3, 68855), (5, 69086), (Start: 12 @69311 has 7 MA's), (28, 69614),

Gene: OneUp\_104 Start: 66053, Stop: 66397, Start Num: 12

Candidate Starts for OneUp\_104:

(9, 66044), (Start: 12 @66053 has 7 MA's), (14, 66074), (15, 66077), (28, 66368),

Gene: SpeedDemon\_1070 Start: 71415, Stop: 71747, Start Num: 12

Candidate Starts for SpeedDemon\_1070:

(Start: 12 @71415 has 7 MA's), (28, 71721),