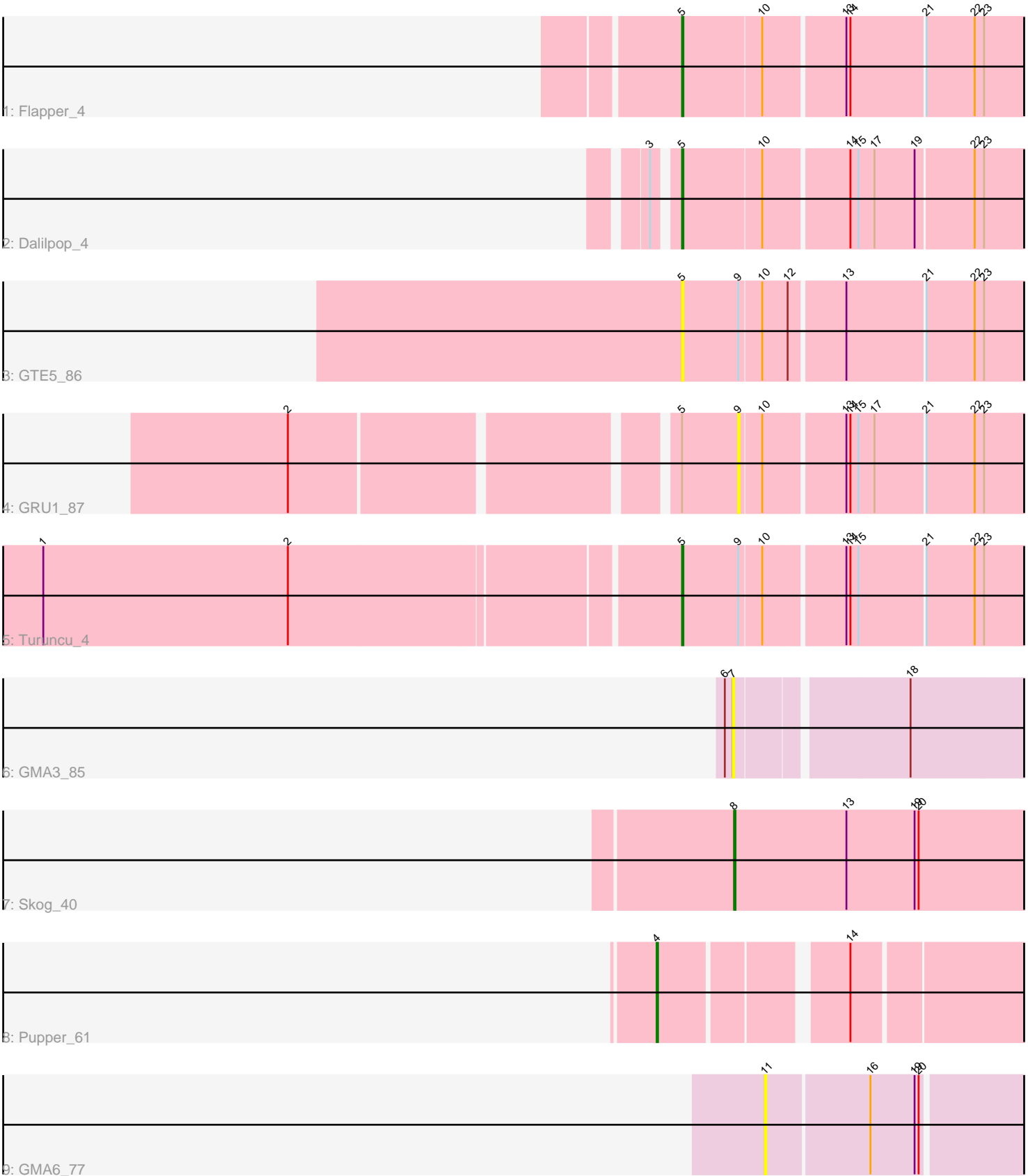


Pham 162419



Note: Tracks are now grouped by subcluster and scaled. Switching in subcluster is indicated by changes in track color. Track scale is now set by default to display the region 30 bp upstream of start 1 to 30 bp downstream of the last possible start. If this default region is judged to be packed too tightly with annotated starts, the track will be further scaled to only show that region of the ORF with annotated starts. This action will be indicated by adding "Zoomed" to the title. For starts, yellow indicates the location of called starts comprised solely of Glimmer/GeneMark auto-annotations, green indicates the location of called starts with at least 1 manual gene annotation.

Pham 162419 Report

This analysis was run 05/04/24 on database version 560.

Pham number 162419 has 9 members, 4 are drafts.

Phages represented in each track:

- Track 1 : Flapper_4
- Track 2 : Dalilpop_4
- Track 3 : GTE5_86
- Track 4 : GRU1_87
- Track 5 : Turuncu_4
- Track 6 : GMA3_85
- Track 7 : Skog_40
- Track 8 : Pupper_61
- Track 9 : GMA6_77

Summary of Final Annotations (See graph section above for start numbers):

The start number called the most often in the published annotations is 5, it was called in 3 of the 5 non-draft genes in the pham.

Genes that call this "Most Annotated" start:

- Dalilpop_4, Flapper_4, GTE5_86, Turuncu_4,

Genes that have the "Most Annotated" start but do not call it:

- GRU1_87,

Genes that do not have the "Most Annotated" start:

- GMA3_85, GMA6_77, Pupper_61, Skog_40,

Summary by start number:

Start 4:

- Found in 1 of 9 (11.1%) of genes in pham
- Manual Annotations of this start: 1 of 5
- Called 100.0% of time when present
- Phage (with cluster) where this start called: Pupper_61 (DO),

Start 5:

- Found in 5 of 9 (55.6%) of genes in pham

- Manual Annotations of this start: 3 of 5
- Called 80.0% of time when present
- Phage (with cluster) where this start called: Dalilpop_4 (CR1), Flapper_4 (CR1), GTE5_86 (CR1), Turuncu_4 (CR1),

Start 7:

- Found in 1 of 9 (11.1%) of genes in pham
- No Manual Annotations of this start.
- Called 100.0% of time when present
- Phage (with cluster) where this start called: GMA3_85 (DF2),

Start 8:

- Found in 1 of 9 (11.1%) of genes in pham
- Manual Annotations of this start: 1 of 5
- Called 100.0% of time when present
- Phage (with cluster) where this start called: Skog_40 (DO),

Start 9:

- Found in 3 of 9 (33.3%) of genes in pham
- No Manual Annotations of this start.
- Called 33.3% of time when present
- Phage (with cluster) where this start called: GRU1_87 (CR1),

Start 11:

- Found in 1 of 9 (11.1%) of genes in pham
- No Manual Annotations of this start.
- Called 100.0% of time when present
- Phage (with cluster) where this start called: GMA6_77 (DQ),

Summary by clusters:

There are 4 clusters represented in this pham: DO, CR1, DQ, DF2,

Info for manual annotations of cluster CR1:

- Start number 5 was manually annotated 3 times for cluster CR1.

Info for manual annotations of cluster DO:

- Start number 4 was manually annotated 1 time for cluster DO.
- Start number 8 was manually annotated 1 time for cluster DO.

Gene Information:

Gene: Dalilpop_4 Start: 4003, Stop: 4266, Start Num: 5

Candidate Starts for Dalilpop_4:

(3, 3988), (Start: 5 @4003 has 3 MA's), (10, 4060), (14, 4120), (15, 4126), (17, 4138), (19, 4168), (22, 4210), (23, 4216),

Gene: Flapper_4 Start: 3298, Stop: 3561, Start Num: 5

Candidate Starts for Flapper_4:

(Start: 5 @3298 has 3 MA's), (10, 3355), (13, 3412), (14, 3415), (21, 3469), (22, 3505), (23, 3511),

Gene: GMA3_85 Start: 62001, Stop: 61762, Start Num: 7

Candidate Starts for GMA3_85:

(6, 62007), (7, 62001), (18, 61881),

Gene: GMA6_77 Start: 60323, Stop: 60514, Start Num: 11

Candidate Starts for GMA6_77:

(11, 60323), (16, 60398), (19, 60431), (20, 60434),

Gene: GRU1_87 Start: 62358, Stop: 62579, Start Num: 9

Candidate Starts for GRU1_87:

(2, 62052), (Start: 5 @62316 has 3 MA's), (9, 62358), (10, 62373), (13, 62430), (14, 62433), (15, 62439), (17, 62451), (21, 62487), (22, 62523), (23, 62529),

Gene: GTE5_86 Start: 63211, Stop: 63474, Start Num: 5

Candidate Starts for GTE5_86:

(Start: 5 @63211 has 3 MA's), (9, 63253), (10, 63268), (12, 63286), (13, 63325), (21, 63382), (22, 63418), (23, 63424),

Gene: Pupper_61 Start: 21282, Stop: 21548, Start Num: 4

Candidate Starts for Pupper_61:

(Start: 4 @21282 has 1 MA's), (14, 21405),

Gene: Skog_40 Start: 18074, Stop: 18316, Start Num: 8

Candidate Starts for Skog_40:

(Start: 8 @18074 has 1 MA's), (13, 18158), (19, 18209), (20, 18212),

Gene: Turuncu_4 Start: 3194, Stop: 3457, Start Num: 5

Candidate Starts for Turuncu_4:

(1, 2732), (2, 2915), (Start: 5 @3194 has 3 MA's), (9, 3236), (10, 3251), (13, 3308), (14, 3311), (15, 3317), (21, 3365), (22, 3401), (23, 3407),