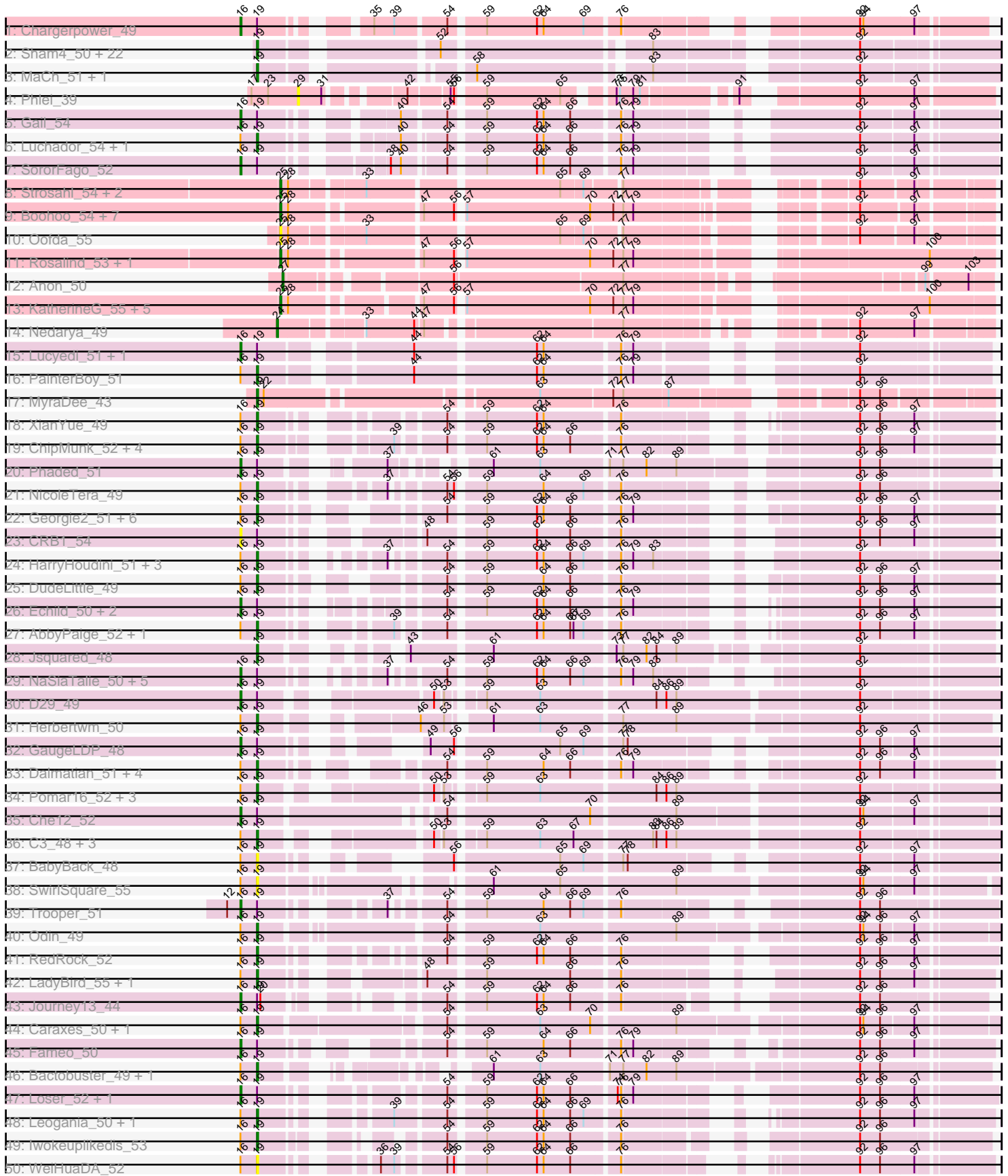
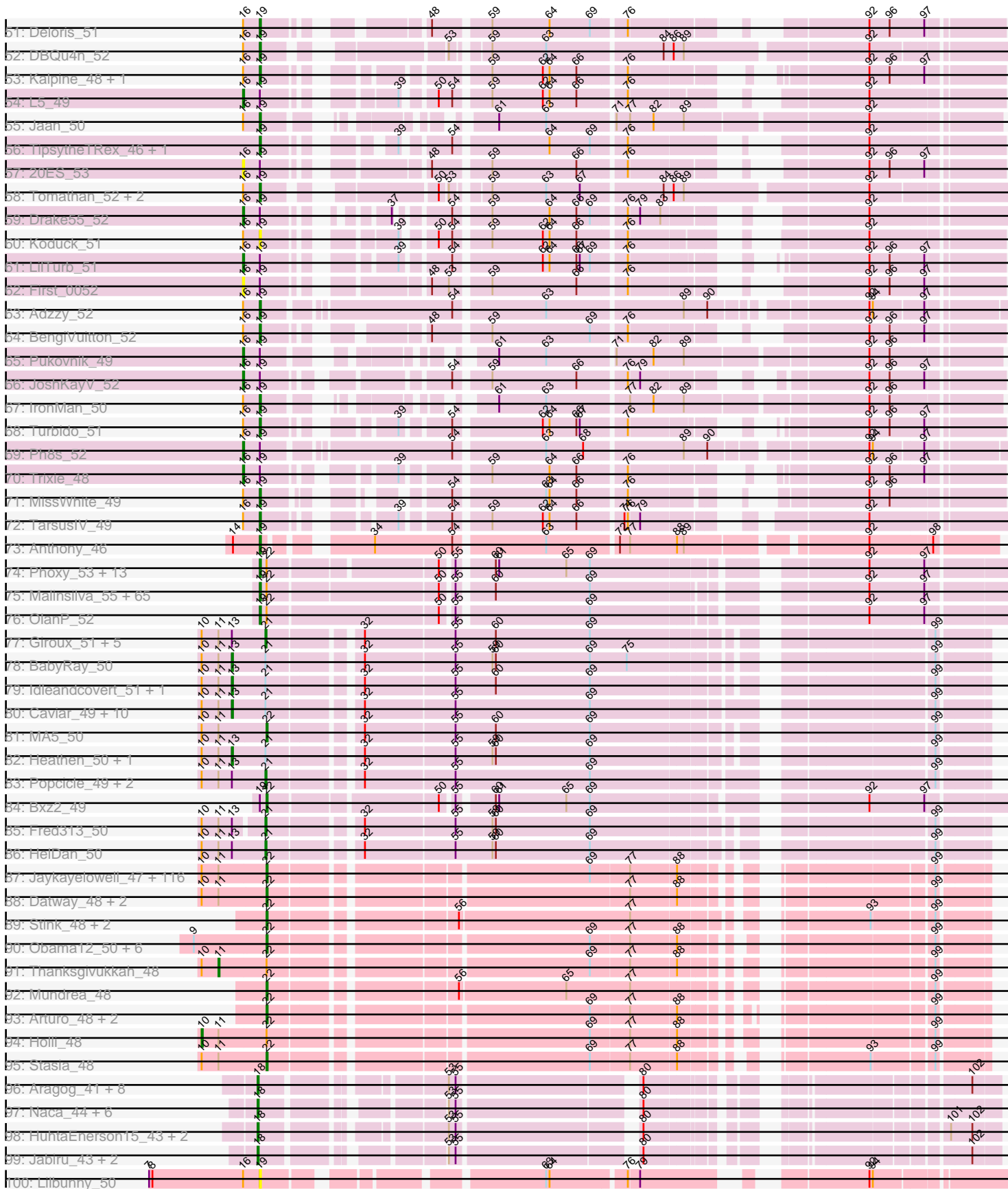


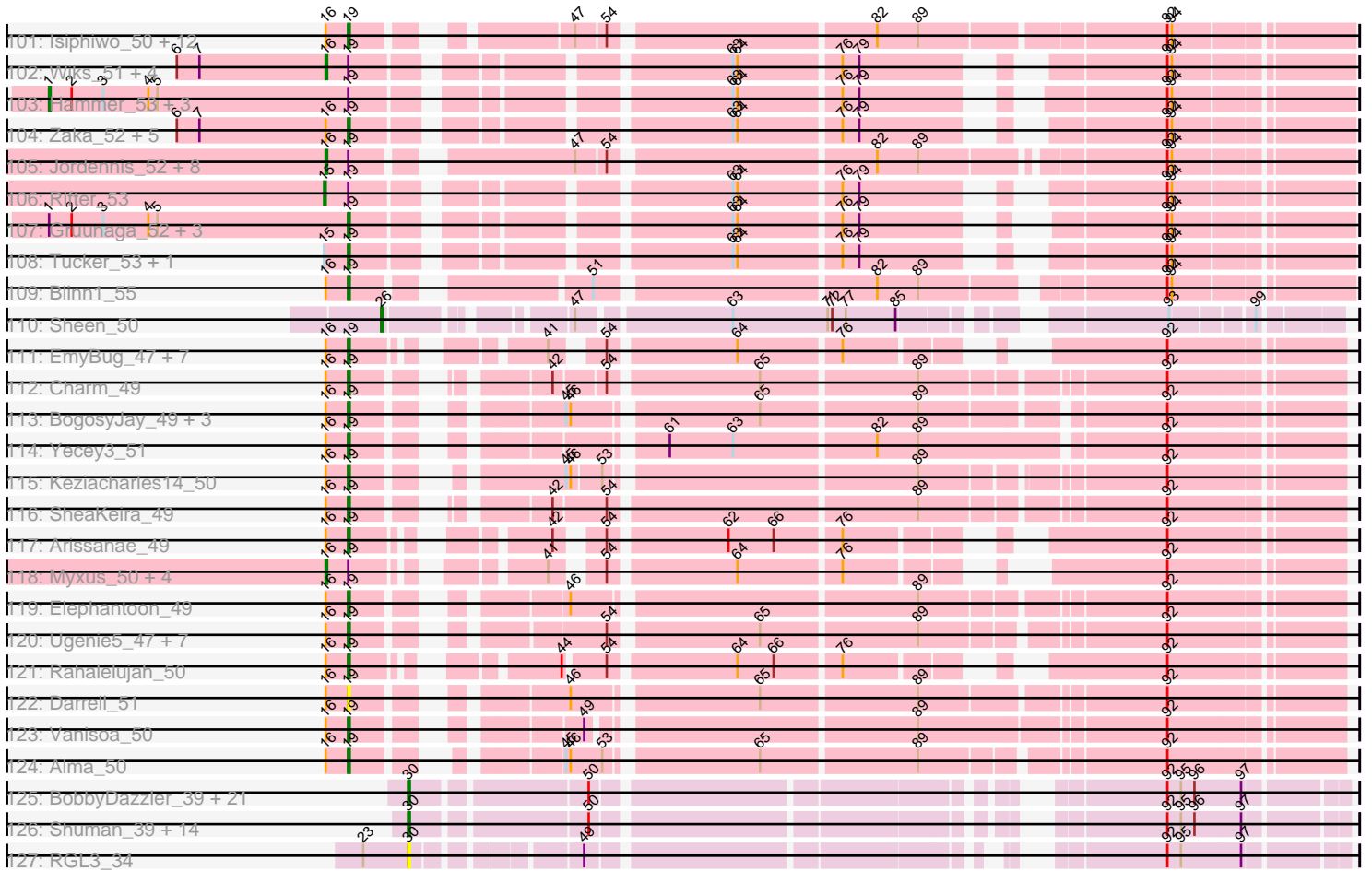
Pham 163247



Pham 163247



Pham 163247



Note: Tracks are now grouped by subcluster and scaled. Switching in subcluster is indicated by changes in track color. Track scale is now set by default to display the region 30 bp upstream of start 1 to 30 bp downstream of the last possible start. If this default region is judged to be packed too tightly with annotated starts, the track will be further scaled to only show that region of the ORF with annotated starts. This action will be indicated by adding "Zoomed" to the title. For starts, yellow indicates the location of called starts comprised solely of Glimmer/GeneMark auto-annotations, green indicates the location of called starts with at least 1 manual gene annotation.

Pham 163247 Report

This analysis was run 04/28/24 on database version 559.

Pham number 163247 has 542 members, 35 are drafts.

Phages represented in each track:

- Track 1 : Chargerpower_49
- Track 2 : Sham4_50, Orange_50, Insomnia_50, Gilberta_51, Snape_50, Mabel_50, Jabith_51, Et2Brutus_49, Flaverint_51, Fibonacci_50, Bud_50, Mulciber_50, Petersenfast_49, Bowtie_51, Timothy_50, Joselito_51, Hutc2_50, Ebony_50, Munch_51, Salz_49, TinyTimmy_49, Aneem_51, Lucivia_51
- Track 3 : MaCh_51, Bachome_52
- Track 4 : Phlei_39
- Track 5 : Gail_54
- Track 6 : Luchador_54, Jeeves_54
- Track 7 : SororFago_52
- Track 8 : Strosahl_54, Waits_54, Remus_54
- Track 9 : Boohoo_54, LastResort_53, JSwag_53, Nebulosus_53, Looper_54, ReMo_53, Epsocamisio_52, Anaysia_54
- Track 10 : Oofda_55
- Track 11 : Rosalind_53, ShayRa_55
- Track 12 : Anon_50
- Track 13 : KatherineG_55, Soups_55, MinecraftSteve_55, DekHockey33_54, Switzerland_54, Battleship_56
- Track 14 : Nedarya_49
- Track 15 : Lucyedi_51, EagleEye_52
- Track 16 : PainterBoy_51
- Track 17 : MyraDee_43
- Track 18 : XianYue_49
- Track 19 : ChipMunk_52, Dignity_52, Jerm_52, Smeagan_53, KingCyrus_52
- Track 20 : Phaded_51
- Track 21 : NicoleTera_49
- Track 22 : Georgie2_51, FiringLine_50, SweetiePie_50, Power_49, SnapTap_50, Crucio_50, QueenBeesly_50
- Track 23 : CRB1_54
- Track 24 : HarryHoudini_51, Buggy_52, Updawg_51, Equemioh13_51
- Track 25 : DudeLittle_49
- Track 26 : Echild_50, SemperFi_51, Benvolio_47
- Track 27 : AbbyPaige_52, Whabigail7_51
- Track 28 : Jsquared_48
- Track 29 : NaSiaTalie_50, MiculUcigas_50, Baehexic_49, Flare16_50, WideWale_51, Centaur_51
- Track 30 : D29_49

- Track 31 : Herbertwm_50
- Track 32 : GaugeLDP_48
- Track 33 : Dalmatian_51, Heffalump_49, QueenB2_49, Anselm_51, Retro23_51
- Track 34 : Pomar16_52, Naji_52, D32_51, StarStuff_52
- Track 35 : Che12_52
- Track 36 : C3_48, ANI8_53, VC3_53, AN9_53
- Track 37 : BabyBack_48
- Track 38 : SwirlSquare_55
- Track 39 : Trooper_51
- Track 40 : Odin_49
- Track 41 : RedRock_52
- Track 42 : LadyBird_55, VA6_51
- Track 43 : Journey13_44
- Track 44 : Caraxes_50, Superchunk_49
- Track 45 : Fameo_50
- Track 46 : Bactobuster_49, Landor_50
- Track 47 : Loser_52, AnnaL29_52
- Track 48 : Leogania_50, BiancaTri92_50
- Track 49 : Iwokeuplikedis_53
- Track 50 : WeiHuaDA_52
- Track 51 : Deloris_51
- Track 52 : DBQu4n_52
- Track 53 : Kalpine_48, Colin_50
- Track 54 : L5_49
- Track 55 : Jaan_50
- Track 56 : TipsytheTRex_46, Serenity_50
- Track 57 : 20ES_53
- Track 58 : Tomathan_52, Kerberos_52, Duplo_52
- Track 59 : Drake55_52
- Track 60 : Koduck_51
- Track 61 : LilTurb_51
- Track 62 : First_0052
- Track 63 : Adzzy_52
- Track 64 : BengiVuitton_52
- Track 65 : Pukovnik_49
- Track 66 : JoshKayV_52
- Track 67 : IronMan_50
- Track 68 : Turbido_51
- Track 69 : Ph8s_52
- Track 70 : Trixie_48
- Track 71 : MissWhite_49
- Track 72 : TarsusIV_49
- Track 73 : Anthony_46
- Track 74 : Phoxy_53, Spike509_53, Methuselah_49, BuzzBuzz_51, LarryKay_53, Daishi_52, KADY_53, HashRod_54, Misomonster_54, Farber_53, AgronaGT15_52, Rummer_52, Louie6_52, Soshari_55
- Track 75 : Malinsilva_55, Hercules11_53, Wooldri_55, SoilDragon_53, Fernando_53, Sabia_53, Lilith_54, Aglet_54, MadMarie_53, Watson_53, Snickers_53, Grub_53, Beauxregard13_53, Anubis_56, LugYA_56, BreSam8_53, PGHhamlin_55, PotatoSplit_55, Ollie_53, Zetzy_52, P28Green_54, Phranny_54, Reba_53, Vix_53, SoYo_53, DaHudson_53, StepMih_53, MuchMore_56, MoneyMay_53, Manu_53, HaveUMetTed_54, Marie_53, MarQuardt_53, Sabinator_52, Kalnoky_54, Phoebe_54, Dieselweasel_54, Microwolf_53,

Heliosoles_52, Taurus_54, JHC117_53, Penny1_54, Grif_53, Colbster_53,
 PurpleHaze_53, PhishRPhriends_51, EpicPhail_54, Kalb97_54, JeppNRM_54,
 Pembroke_53, Jobu08_52, GingkoMaracino_53, Grum1_53, ACFishhook_52,
 Marius_54, Groupthink_54, LBerry_54, Pawn_53, AugsMagnumOpus_56,
 Gemma_52, GtownJaz_53, Mainiac_53, Tiffany_53, Stagni_53, JenCasNa_54,
 Cullens_53
 • Track 76 : OlanP_52
 • Track 77 : Giroux_51, Pistachio_52, TNguyen7_51, SaturnRing_51, Bugatti_51,
 BlueBird_52
 • Track 78 : BabyRay_50
 • Track 79 : Idleandcovert_51, Puppy_52
 • Track 80 : Caviar_49, Pocahontas_49, Margo_49, QuinnKiro_48, Norbert_48,
 Veracruz_48, Lambert1_49, Noella_49, Hookmount_49, Todacoro_49, Texage_48
 • Track 81 : MA5_50
 • Track 82 : Heathen_50, Scout_50
 • Track 83 : Popcicle_49, ResDef_50, Panamaxus_47
 • Track 84 : Bxz2_49
 • Track 85 : Fred313_50
 • Track 86 : HelDan_50
 • Track 87 : Jaykayelowell_47, Morpher26_48, Cici_48, HamSlice_48,
 Bartimeaus_49, Deano_48, TroyPia_50, Relief_48, Wander_49, Blackmoor_49,
 Clarenza_48, Annyong_49, Eurydice_50, Baby16_49, Tinybot_48, LappelDuVide_48,
 Broseidon_49, Cocoaberry_49, Perplexer_48, Gadost_49, Avle17_49,
 NotAPhaseMom_49, Funston_48, Cindaradix_46, BellusTerra_50, Lemur_49,
 Bruiser_48, JetBlade_49, Houdini22_49, Citius_49, Iceman_49, Koreni_48,
 DirtyDunning_48, Achebe_47, Ohfah_50, Pumbaa_49, Badger_47,
 BubbleTrouble_48, Kingmustik0402_49, TinaFeyge_49, Kremtemulon_47,
 Florean_49, LeoAvram_49, PeterPeter_49, Roosevelt_48, MeeZee_49, Spino_48,
 Bombshell_49, Pipcraft_47, Dhanush_49, Polymorphads_50, Ruin_49, NorthStar_48,
 Nebs_50, Connomayer_49, Alberto7_50, Bumblebee11_47, KFPoly_48,
 Lunsford_50, Morrow_50, Romney_49, Camperdownii_47, Scamp_49,
 AbbysRanger_48, Backyardigan_47, Iracema64_50, Druantia_49, Maxo_50,
 Eros_49, LittleGuy_49, Eapen_49, CentreCat_49, PetiteSangsue_48, Sparxx_50,
 Phontbonne_49, Palestino_48, Shaka_49, Kampy_49, Kyee_49, Nyxis_49,
 LochMonster_50, OKaNui_49, ICleared_49, Melvin_51, Wilbur_49, Katalie136_48,
 Chaph_49, Ulysses_48, Mazhar510_49, JoongJeon_48, TygerBlood_49, Millski_48,
 Phelipe_50, LittleB_49, Caelakin_49, Medusa_49, Phacado_49, Peaches_49,
 Xena_47, Sabertooth_49, Wizard007_49, Skipitt_48, Burger_47, Nemo27_49,
 Albee_49, Wile_48, Flux_49, Cintron_48, Abdiel_49, Eris_48, Maverick_49,
 Eagle_49, Commander_49, Lorenzo_49, TiroTheta9_49, Taquarus_49,
 YoSam321_49
 • Track 88 : Datway_48, Noelle_49, Shygu2_48
 • Track 89 : Stink_48, AvatarAhPeg_47, Miramae_47
 • Track 90 : Obama12_50, LHTSCC_51, BangNhom_50, Cerulean_50,
 Happiness_48, ChampagnePapi_51, SheldonCooper_51
 • Track 91 : Thanksgivukkah_48
 • Track 92 : Mundrea_48
 • Track 93 : Arturo_48, Kratak_49, Phighter1804_49
 • Track 94 : Holli_48
 • Track 95 : Stasia_48
 • Track 96 : Aragog_41, Discoknowium_41, Milcery_43, Tarynearal_41, George_42,
 Phlorence_41, Cuco_42, Archetta_42, Swirley_45

- Track 97 : Naca_44, EITiger69_44, Airmid_43, PetterN_46, Scorpia_46, Chadwick_46, Benedict_45
- Track 98 : HuhtaEnerson15_43, LittleCherry_43, Bonamassa_43
- Track 99 : Jabiru_43, UnionJack_43, PickleBack_42
- Track 100 : Lilbunny_50
- Track 101 : Isiphiwo_50, Dorothea_51, Chartreuse_51, BABullseye_46, DaVinci_51, SuperCallie99_51, McFly_52, Kazan_53, Candra_52, VohminGhazi_52, EricB_52, Pmask_52, Neeharika16_51
- Track 102 : Wiks_51, Jeffabunny_52, Indra_55, Zulu_53, Hexamo_52
- Track 103 : Hammer_53, Blue7_54, Gladiator_50, Artemis2UCLA_52
- Track 104 : Zaka_52, Yokurt_52, WunderPhul_52, ToneTone_49, Helmet_54, Garak_54
- Track 105 : Jordennis_52, JewelBug_53, Hoot_47, SmellyB_52, Kipper29_52, GreedyLawyer_52, Cookiedough_52, Newrala_52, SuperAwesome_52
- Track 106 : Rifter_53
- Track 107 : Gruunaga_52, Koko_53, Roksolana_53, CloudWang3_52
- Track 108 : Tucker_53, Priamo_54
- Track 109 : Blinn1_55
- Track 110 : Sheen_50
- Track 111 : EmyBug_47, Fayely_50, Eidsmoe_50, Qobbit_50, Phaeder_50, Tubs_50, Spouty_48, Priya_50
- Track 112 : Charm_49
- Track 113 : BogosyJay_49, LoneWolf_51, Maminiaina_49, Toaka_50
- Track 114 : Yecey3_51
- Track 115 : Keziacharles14_50
- Track 116 : SheaKeira_49
- Track 117 : Arissanae_49
- Track 118 : Myxus_50, PackMan_49, HortumSL17_50, Catalina_51, Aliter_50
- Track 119 : Elephantoon_49
- Track 120 : Ugenie5_47, Conquerage_50, DreamTeam1_49, Phonnegut_50, Pioneer_50, ExplosioNervosa_50, Beemo_50, Scherzo_50
- Track 121 : Rahalelujah_50
- Track 122 : Darrell_51
- Track 123 : Vanisoa_50
- Track 124 : Alma_50
- Track 125 : BobbyDazzler_39, PhailMary_38, Bradshaw_39, Partridge_39, Lillie_39, Yogi_39, RexFury_39, Rhodalysa_39, Krishelle_39, Rasputin_39, Naiad_39, Gollum_39, RER2_32, Swann_39, CosmicSans_39, Hiro_39, Phrankenstein_39, TWAMP_39, Alpacados_38, StCroix_39, Bonanza_39, Alatin_39
- Track 126 : Shuman_39, AppleCloud_37, Bryce_39, Natosaleda_39, Erik_39, Nancinator_39, Jester_39, AngryOrchard_37, Espica_39, Belenaria_39, UhSalsa_39, Harlequin_39, Takoda_39, Yoncess_39, Dinger_39
- Track 127 : RGL3_34

Summary of Final Annotations (See graph section above for start numbers):

The start number called the most often in the published annotations is 19, it was called in 213 of the 507 non-draft genes in the pham.

Genes that call this "Most Annotated" start:

- ACFishhook_52, AN9_53, ANI8_53, AbbyPaige_52, Adzzy_52, Aglet_54, AgronaGT15_52, Alma_50, Aneem_51, Anselm_51, Anthony_46, Anubis_56, Arissanae_49, AugsMagnumOpus_56, BABullseye_46, BabyBack_48, Bachome_52, Bactobuster_49, Beauxregard13_53, Beemo_50, BengiVuitton_52, BiancaTri92_50, Blinn1_55, BogosyJay_49, Bowtie_51, BreSam8_53, Bud_50, Bugsy_52, BuzzBuzz_51, C3_48, Candra_52, Caraxes_50, Charm_49, Chartreuse_51, ChipMunk_52, CloudWang3_52, Colbster_53, Colin_50, Conquerage_50, Crucio_50, Cullens_53, D32_51, DBQu4n_52, DaHudson_53, DaVinci_51, Daishi_52, Dalmatian_51, Darrell_51, Deloris_51, Dieselweasel_54, Dignity_52, Dorothea_51, DreamTeam1_49, DudeLittle_49, Duplo_52, Ebony_50, Eidsmoe_50, Elephantoon_49, EmyBug_47, EpicPhail_54, Equemioh13_51, EricB_52, Et2Brutus_49, ExplosioNervosa_50, Farber_53, Fayely_50, Fernando_53, Fibonacci_50, FiringLine_50, Flaverint_51, Garak_54, Gemma_52, Georgie2_51, Gilberta_51, GingkoMaracino_53, Grif_53, Groupthink_54, Grub_53, Grum1_53, Gruunaga_52, GtownJaz_53, HarryHoudini_51, HashRod_54, HaveUMetTed_54, Heffalump_49, Heliosoles_52, Helmet_54, Herbertwm_50, Hercules11_53, Hutc2_50, Insomnia_50, IronMan_50, Isiphiwo_50, Iwokeuplikedis_53, JHC117_53, Jaan_50, Jabith_51, Jeeves_54, JenCasNa_54, JeppNRM_54, Jerm_52, Jobu08_52, Joselito_51, Jsquared_48, KADY_53, Kalb97_54, Kalnoky_54, Kalpine_48, Kazan_53, Kerberos_52, Keziacharles14_50, KingCyrus_52, Koduck_51, Koko_53, LBerry_54, LadyBird_55, Landor_50, LarryKay_53, Leogania_50, Lilbunny_50, Lilith_54, LoneWolf_51, Louie6_52, Luchador_54, Lucivia_51, LugYA_56, MaCh_51, Mabel_50, MadMarie_53, Mainiac_53, Malinsilva_55, Maminiaina_49, Manu_53, MarQuardt_53, Marie_53, Marius_54, McFly_52, Methuselah_49, Microwolf_53, Misomonster_54, MissWhite_49, MoneyMay_53, MuchMore_56, Mulciber_50, Munch_51, MyraDee_43, Naji_52, Neeharika16_51, NicoleTera_49, Odin_49, OlanP_52, Ollie_53, Orange_50, P28Green_54, PGHhamlin_55, PainterBoy_51, Pawn_53, Pembroke_53, Penny1_54, Petersenfast_49, Phaeder_50, PhishRPhriends_51, Phoebe_54, Phonnegut_50, Phoxy_53, Phranny_54, Pioneer_50, Pmask_52, Pomar16_52, PotatoSplit_55, Power_49, Priamo_54, Priya_50, PurpleHaze_53, Qobbit_50, QueenB2_49, QueenBeesly_50, Rahalelujah_50, Reba_53, RedRock_52, Retro23_51, Roksolana_53, Rummer_52, Sabia_53, Sabinator_52, Salz_49, Scherzo_50, Serenity_50, Sham4_50, SheaKeira_49, Smeagan_53, SnapTap_50, Snape_50, Snickers_53, SoYo_53, SoilDragon_53, Soshari_55, Spike509_53, Spouty_48, Stagni_53, StarStuff_52, StepMih_53, SuperCallie99_51, Superchunk_49, SweetiePie_50, SwirlSquare_55, TarsusIV_49, Taurus_54, Tiffany_53, Timothy_50, TinyTimmy_49, TopsytheTRex_46, Toaka_50, Tomathan_52, ToneTone_49, Tubs_50, Tucker_53, Turbido_51, Ugenie5_47, Updawg_51, VA6_51, VC3_53, Vanisoa_50, Vix_53, VohminGhazi_52, Watson_53, WeiHuaDA_52, Whabigail7_51, Wooldri_55, WunderPhul_52, XianYue_49, Yecey3_51, Yokurt_52, Zaka_52, Zetzy_52,

Genes that have the "Most Annotated" start but do not call it:

- 20ES_53, Aliter_50, AnnaL29_52, Artemis2UCLA_52, Baehexic_49, Benvolio_47, Blue7_54, Bxz2_49, CRB1_54, Catalina_51, Centaur_51, Chargerpower_49, Che12_52, Cookiedough_52, D29_49, Drake55_52, EagleEye_52, Echild_50, Fameo_50, First_0052, Flare16_50, Gail_54, GaugeLDP_48, Gladiator_50, GreedyLawyer_52, Hammer_53, Hexamo_52, Hoot_47, HortumSL17_50, Indra_55, Jeffabunny_52, JewelBug_53, Jordennis_52, JoshKayV_52, Journey13_44, Kipper29_52, L5_49, LilTurb_51, Loser_52, Lucyedi_51, MiculUcigas_50, Myxus_50, NaSiaTalie_50, Newrala_52, PackMan_49, Ph8s_52, Phaded_51, Pukovnik_49, Rifter_53, SemperFi_51, SmellyB_52, SororFago_52, SuperAwesome_52, Trixie_48, Trooper_51, WideWale_51, Wiks_51, Zulu_53,

Genes that do not have the "Most Annotated" start:

- AbbysRanger_48, Abdiel_49, Achebe_47, Airmid_43, Alatin_39, Albee_49, Alberto7_50, Alpacados_38, Anaysia_54, AngryOrchard_37, Annyong_49, Anon_50, AppleCloud_37, Aragog_41, Archetta_42, Arturo_48, AvatarAhPeg_47, Avle17_49, Baby16_49, BabyRay_50, Backyardigan_47, Badger_47, BangNhom_50, Bartimeaus_49, Battleship_56, Belenaria_39, BellusTerra_50, Benedict_45, Blackmoor_49, BlueBird_52, BobbyDazzler_39, Bombshell_49, Bonamassa_43, Bonanza_39, Boohoo_54, Bradshaw_39, Broseidon_49, Bruiser_48, Bryce_39, BubbleTrouble_48, Bugatti_51, Bumblebee11_47, Burger_47, Caelakin_49, Camperdownii_47, Caviar_49, CentreCat_49, Cerulean_50, Chadwick_46, ChampagnePapi_51, Chaph_49, Cici_48, Cindaradix_46, Cintron_48, Citius_49, Clarenza_48, Cocoaberry_49, Commander_49, Connomayer_49, CosmicSans_39, Cuco_42, Datway_48, Deano_48, DekHockey33_54, Dhanush_49, Dinger_39, DirtyDunning_48, Discoknowium_41, Druantia_49, Eagle_49, Eapen_49, EITiger69_44, Epsocamisio_52, Erik_39, Eris_48, Eros_49, Espica_39, Eurydice_50, Florean_49, Flux_49, Fred313_50, Funston_48, Gadost_49, George_42, Giroux_51, Gollum_39, HamSlice_48, Happiness_48, Harlequin_39, Heathen_50, HelDan_50, Hiro_39, Holli_48, Hookmount_49, Houdini22_49, HuhtaEnerson15_43, ICleared_49, Iceman_49, Idleandcovert_51, Iracema64_50, JSwag_53, Jabiru_43, Jaykayelowell_47, Jester_39, JetBlade_49, JoongJeon_48, KFPoly_48, Kampy_49, Katalie136_48, KatherineG_55, Kingmustik0402_49, Koreni_48, Kratark_49, Kremtemulon_47, Krishelle_39, Kyee_49, LHTSCC_51, Lambert1_49, LappelDuVide_48, LastResort_53, Lemur_49, LeoAvram_49, Lillie_39, LittleB_49, LittleCherry_43, LittleGuy_49, LochMonster_50, Looper_54, Lorenzo_49, Lunsford_50, MA5_50, Margo_49, Maverick_49, Maxo_50, Mazhar510_49, Medusa_49, MeeZee_49, Melvin_51, Milcery_43, Millski_48, MinecraftSteve_55, Miramae_47, Morpher26_48, Morrow_50, Mundrea_48, Naca_44, Naiad_39, Nancinator_39, Natosaleda_39, Nebs_50, Nebulosus_53, Nedarya_49, Nemo27_49, Noella_49, Noelle_49, Norbert_48, NorthStar_48, NotAPhaseMom_49, Nyxis_49, OKaNui_49, Obama12_50, Ohfah_50, Oofda_55, Palestino_48, Panamaxus_47, Partridge_39, Peaches_49, Perplexer_48, PeterPeter_49, PetiteSangsue_48, PetterN_46, Phacado_49, PhailMary_38, Phelipe_50, Phighter1804_49, Phlei_39, Phlorence_41, Phontbonne_49, Phrankenstein_39, PickleBack_42, Pipcraft_47, Pistachio_52, Pocahontas_49, Polymorphads_50, Popcicle_49, Pumbaa_49, Puppy_52, QuinnKiro_48, RER2_32, RGL3_34, Rasputin_39, ReMo_53, Relief_48, Remus_54, ResDef_50, RexFury_39, Rhodalysa_39, Romney_49, Roosevelt_48, Rosalind_53, Ruin_49, Sabertooth_49, SaturnRing_51, Scamp_49, Scorpia_46, Scout_50, Shaka_49, ShayRa_55, Sheen_50, SheldonCooper_51, Shuman_39, Shygu2_48, Skipitt_48, Soups_55, Sparxx_50, Spino_48, StCroix_39, Stasia_48, Stink_48, Strosahl_54, Swann_39, Swirley_45, Switzerland_54, TNguyen7_51, TWAMP_39, Takoda_39, Taquarus_49, Tarynearal_41, Texage_48, Thanksgivukkah_48, TinaFeyge_49, Tinybot_48, TiroTheta9_49, Todacoro_49, TroyPia_50, TygerBlood_49, UhSalsa_39, Ulysses_48, UnionJack_43, Veracruz_48, Waits_54, Wander_49, Wilbur_49, Wile_48, Wizard007_49, Xena_47, YoSam321_49, Yogi_39, Yoncess_39,

Summary by start number:

Start 1:

- Found in 8 of 542 (1.5%) of genes in pham
- Manual Annotations of this start: 4 of 507
- Called 50.0% of time when present

- Phage (with cluster) where this start called: Artemis2UCLA_52 (A6), Blue7_54 (A6), Gladiator_50 (A6), Hammer_53 (A6),

Start 10:

- Found in 151 of 542 (27.9%) of genes in pham
- Manual Annotations of this start: 1 of 507
- Called 0.7% of time when present
- Phage (with cluster) where this start called: Holli_48 (A4),

Start 11:

- Found in 151 of 542 (27.9%) of genes in pham
- Manual Annotations of this start: 1 of 507
- Called 0.7% of time when present
- Phage (with cluster) where this start called: Thanksgivukkah_48 (A4),

Start 13:

- Found in 27 of 542 (5.0%) of genes in pham
- Manual Annotations of this start: 16 of 507
- Called 59.3% of time when present
- Phage (with cluster) where this start called: BabyRay_50 (A3), Caviar_49 (A3), Heathen_50 (A3), Hookmount_49 (A3), Idleandcovert_51 (A3), Lambert1_49 (A3), Margo_49 (A3), Noella_49 (A3), Norbert_48 (A3), Pocahontas_49 (A3), Puppy_52 (A3), QuinnKiro_48 (A3), Scout_50 (A3), Texage_48 (A3), Todacoro_49 (A3), Veracruz_48 (A3),

Start 15:

- Found in 3 of 542 (0.6%) of genes in pham
- Manual Annotations of this start: 1 of 507
- Called 33.3% of time when present
- Phage (with cluster) where this start called: Rifter_53 (A6),

Start 16:

- Found in 170 of 542 (31.4%) of genes in pham
- Manual Annotations of this start: 49 of 507
- Called 30.6% of time when present
- Phage (with cluster) where this start called: 20ES_53 (A2), Aliter_50 (A9), AnnaL29_52 (A2), Baehexic_49 (A2), Benvolio_47 (A2), CRB1_54 (A2), Catalina_51 (A9), Centaur_51 (A2), Chargerpower_49 (A), Che12_52 (A2), Cookiedough_52 (A6), D29_49 (A2), Drake55_52 (A2), EagleEye_52 (A16), Echild_50 (A2), Fameo_50 (A2), First_0052 (A2), Flare16_50 (A2), Gail_54 (A14), GaugeLDP_48 (A2), GreedyLawyer_52 (A6), Hexamo_52 (A6), Hoot_47 (A6), HortumSL17_50 (A9), Indra_55 (A6), Jeffabunny_52 (A6), JewelBug_53 (A6), Jordennis_52 (A6), JoshKayV_52 (A2), Journey13_44 (A2), Kipper29_52 (A6), L5_49 (A2), LilTurb_51 (A2), Loser_52 (A2), Lucyedi_51 (A16), MiculUcigas_50 (A2), Myxus_50 (A9), NaSiaTalie_50 (A2), Newrala_52 (A6), PackMan_49 (A9), Ph8s_52 (A2), Phaded_51 (A2), Pukovnik_49 (A2), SemperFi_51 (A2), SmellyB_52 (A6), SororFago_52 (A14), SuperAwesome_52 (A6), Trixie_48 (A2), Trooper_51 (A2), WideWale_51 (A2), Wiks_51 (A6), Zulu_53 (A6),

Start 18:

- Found in 22 of 542 (4.1%) of genes in pham
- Manual Annotations of this start: 22 of 507
- Called 100.0% of time when present

- Phage (with cluster) where this start called: Airmid_43 (A5), Aragog_41 (A5), Archetta_42 (A5), Benedict_45 (A5), Bonamassa_43 (A5), Chadwick_46 (A5), Cuco_42 (A5), Discoknowium_41 (A5), ElTiger69_44 (A5), George_42 (A5), HuhtaEnerson15_43 (A5), Jabiru_43 (A5), LittleCherry_43 (A5), Milcery_43 (A5), Naca_44 (A5), PetterN_46 (A5), Phlorence_41 (A5), PickleBack_42 (A5), Scorpia_46 (A5), Swirley_45 (A5), Tarynearal_41 (A5), UnionJack_43 (A5),

Start 19:

- Found in 293 of 542 (54.1%) of genes in pham
- Manual Annotations of this start: 213 of 507
- Called 80.2% of time when present
- Phage (with cluster) where this start called: ACFishhook_52 (A3), AN9_53 (A2), ANI8_53 (A2), AbbyPaige_52 (A2), Adzzy_52 (A2), Aglet_54 (A3), AgronaGT15_52 (A3), Alma_50 (A9), Aneem_51 (A11), Anselm_51 (A2), Anthony_46 (A20), Anubis_56 (A3), Arissanae_49 (A9), AugsMagnumOpus_56 (A3), BABullseye_46 (A6), BabyBack_48 (A2), Bachome_52 (A11), Bactobuster_49 (A2), Beauxregard13_53 (A3), Beemo_50 (A9), BengiVuitton_52 (A2), BiancaTri92_50 (A2), Blinn1_55 (A6), BogosyJay_49 (A9), Bowtie_51 (A11), BreSam8_53 (A3), Bud_50 (A11), Buggy_52 (A2), BuzzBuzz_51 (A3), C3_48 (A2), Candra_52 (A6), Caraxes_50 (A2), Charm_49 (A9), Chartreuse_51 (A6), ChipMunk_52 (A2), CloudWang3_52 (A6), Colbster_53 (A3), Colin_50 (A2), Conquerage_50 (A9), Crucio_50 (A2), Cullens_53 (A3), D32_51 (A2), DBQu4n_52 (A2), DaHudson_53 (A3), DaVinci_51 (A6), Daishi_52 (A3), Dalmatian_51 (A2), Darrell_51 (A9), Deloris_51 (A2), Dieselweasel_54 (A3), Dignity_52 (A2), Dorothea_51 (A6), DreamTeam1_49 (A9), DudeLittle_49 (A2), Duplo_52 (A2), Ebony_50 (A11), Eidsmoe_50 (A9), Elephantoon_49 (A9), EmyBug_47 (A9), EpicPhail_54 (A3), Equemioh13_51 (A2), EricB_52 (A6), Et2Brutus_49 (A11), ExplosioNervosa_50 (A9), Farber_53 (A3), Fayely_50 (A9), Fernando_53 (A3), Fibonacci_50 (A11), FiringLine_50 (A2), Flaverint_51 (A11), Garak_54 (A6), Gemma_52 (A3), Georgie2_51 (A2), Gilberta_51 (A11), GingkoMaracino_53 (A3), Grif_53 (A3), Groupthink_54 (A3), Grub_53 (A3), Grum1_53 (A3), Gruunaga_52 (A6), GtownJaz_53 (A3), HarryHoudini_51 (A2), HashRod_54 (A3), HaveUMetTed_54 (A3), Heffalump_49 (A2), Heliosoles_52 (A3), Helmet_54 (A6), Herbertwm_50 (A2), Hercules11_53 (A3), Hutc2_50 (A11), Insomnia_50 (A11), IronMan_50 (A2), Isiphiwo_50 (A6), Iwokeuplikedis_53 (A2), JHC117_53 (A3), Jaan_50 (A2), Jabith_51 (A11), Jeeves_54 (A14), JenCasNa_54 (A3), JeppNRM_54 (A3), Jerm_52 (A2), Jobu08_52 (A3), Joselito_51 (A11), Jsquared_48 (A2), KADY_53 (A3), Kalb97_54 (A3), Kalnoky_54 (A3), Kalpine_48 (A2), Kazan_53 (A6), Kerberos_52 (A2), Keziacharles14_50 (A9), KingCyrus_52 (A2), Koduck_51 (A2), Koko_53 (A6), LBerry_54 (A3), LadyBird_55 (A2), Landor_50 (A2), LarryKay_53 (A3), Leogania_50 (A2), Lilbunny_50 (A6), Lilith_54 (A3), LoneWolf_51 (A9), Louie6_52 (A3), Luchador_54 (A14), Lucivia_51 (A11), LugYA_56 (A3), MaCh_51 (A11), Mabel_50 (A11), MadMarie_53 (A3), Mainiac_53 (A3), Malinsilva_55 (A3), Maminiaina_49 (A9), Manu_53 (A3), MarQuardt_53 (A3), Marie_53 (A3), Marius_54 (A3), McFly_52 (A6), Methuselah_49 (A3), Microwolf_53 (A3), Misomonster_54 (A3), MissWhite_49 (A2), MoneyMay_53 (A3), MuchMore_56 (A3), Mulciber_50 (A11), Munch_51 (A11), MyraDee_43 (A18), Naji_52 (A2), Neeharika16_51 (A6), NicoleTera_49 (A2), Odin_49 (A2), OlanP_52 (A3), Ollie_53 (A3), Orange_50 (A11), P28Green_54 (A3), PGHhamlin_55 (A3), PainterBoy_51 (A16), Pawn_53 (A3), Pembroke_53 (A3), Penny1_54 (A3), Petersenfast_49 (A11), Phaeder_50 (A9), PhishRPhriends_51 (A3), Phoebe_54 (A3), Phonnegut_50 (A9), Phoxy_53 (A3), Phranny_54 (A3), Pioneer_50 (A9), Pmask_52 (A6), Pomar16_52 (A2), PotatoSplit_55 (A3), Power_49 (A2), Priamo_54 (A6), Priya_50 (A9), PurpleHaze_53 (A3), Qobbit_50 (A9), QueenB2_49

(A2), QueenBeesly_50 (A2), Rahalelujah_50 (A9), Reba_53 (A3), RedRock_52 (A2), Retro23_51 (A2), Roksolana_53 (A6), Rummer_52 (A3), Sabia_53 (A3), Sabinator_52 (A3), Salz_49 (A11), Scherzo_50 (A9), Serenity_50 (A2), Sham4_50 (A11), SheaKeira_49 (A9), Smeagan_53 (A2), SnapTap_50 (A2), Snape_50 (A11), Snickers_53 (A3), SoYo_53 (A3), SoilDragon_53 (A3), Soshari_55 (A3), Spike509_53 (A3), Spouty_48 (A9), Stagni_53 (A3), StarStuff_52 (A2), StepMih_53 (A3), SuperCallie99_51 (A6), Superchunk_49 (A2), SweetiePie_50 (A2), SwirlSquare_55 (A2), TarsusIV_49 (A2), Taurus_54 (A3), Tiffany_53 (A3), Timothy_50 (A11), TinyTimmy_49 (A11), TopsytheTRex_46 (A2), Toaka_50 (A9), Tomathan_52 (A2), ToneTone_49 (A6), Tubs_50 (A9), Tucker_53 (A6), Turbido_51 (A2), Ugenie5_47 (A9), Updawg_51 (A2), VA6_51 (A2), VC3_53 (A2), Vanisoa_50 (A9), Vix_53 (A3), VohminGhazi_52 (A6), Watson_53 (A3), WeiHuaDA_52 (A2), Whabigail7_51 (A2), Wooldri_55 (A3), WunderPhul_52 (A6), XianYue_49 (A2), Yecey3_51 (A9), Yokurt_52 (A6), Zaka_52 (A6), Zetzy_52 (A3),

Start 21:

- Found in 27 of 542 (5.0%) of genes in pham
- Manual Annotations of this start: 7 of 507
- Called 40.7% of time when present
- Phage (with cluster) where this start called: BlueBird_52 (A3), Bugatti_51 (A3), Fred313_50 (A3), Giroux_51 (A3), HelDan_50 (A3), Panamaxus_47 (A3), Pistachio_52 (A3), Popcicle_49 (A3), ResDef_50 (A3), SaturnRing_51 (A3), TNguyen7_51 (A3),

Start 22:

- Found in 221 of 542 (40.8%) of genes in pham
- Manual Annotations of this start: 135 of 507
- Called 62.0% of time when present
- Phage (with cluster) where this start called: AbbysRanger_48 (A4), Abdiel_49 (A4), Achebe_47 (A4), Albee_49 (A4), Alberto7_50 (A4), Annyong_49 (A4), Arturo_48 (A4), AvatarAhPeg_47 (A4), Avle17_49 (A4), Baby16_49 (A4), Backyardigan_47 (A4), Badger_47 (A4), BangNhom_50 (A4), Bartimeaus_49 (A4), BellusTerra_50 (A4), Blackmoor_49 (A4), Bombshell_49 (A4), Broseidon_49 (A4), Bruiser_48 (A4), BubbleTrouble_48 (A4), Bumblebee11_47 (A4), Burger_47 (A4), Bxz2_49 (A3), Caelakin_49 (A4), Camperdownii_47 (A4), CentreCat_49 (A4), Cerulean_50 (A4), ChampagnePapi_51 (A4), Chaph_49 (A4), Cici_48 (A4), Cindaradix_46 (A4), Cintron_48 (A4), Citius_49 (A4), Clarenza_48 (A4), Cocoaberry_49 (A4), Commander_49 (A4), Connomayer_49 (A4), Datway_48 (A4), Deano_48 (A4), Dhanush_49 (A4), DirtyDunning_48 (A4), Druantia_49 (A4), Eagle_49 (A4), Eapen_49 (A4), Eris_48 (A4), Eros_49 (A4), Eurydice_50 (A4), Florean_49 (A4), Flux_49 (A4), Funston_48 (A4), Gadost_49 (A4), HamSlice_48 (A4), Happiness_48 (A4), Houdini22_49 (A4), ICleared_49 (A4), Iceman_49 (A4), Iracema64_50 (A4), Jaykayelowell_47 (A4), JetBlade_49 (A4), JoongJeon_48 (A4), KFPoly_48 (A4), Kamy_49 (A4), Katalie136_48 (A4), Kingmustik0402_49 (A4), Koreni_48 (A4), Kratark_49 (A4), Kremtemulon_47 (A4), Kyee_49 (A4), LHTSCC_51 (A4), LappelDuVide_48 (A4), Lemur_49 (A4), LeoAvram_49 (A4), LittleB_49 (A4), LittleGuy_49 (A4), LochMonster_50 (A4), Lorenzo_49 (A4), Lunsford_50 (A4), MA5_50 (A3), Maverick_49 (A4), Maxo_50 (A4), Mazhar510_49 (A4), Medusa_49 (A4), MeeZee_49 (A4), Melvin_51 (A4), Millski_48 (A4), Miramae_47 (A4), Morpher26_48 (A4), Morrow_50 (A4), Mundrea_48 (A4), Nebs_50 (A4), Nemo27_49 (A4), Noelle_49 (A4), NorthStar_48 (A4), NotAPhaseMom_49 (A4), Nyxis_49 (A4), OKaNui_49 (A4), Obama12_50 (A4), Ohfah_50 (A4), Palestino_48 (A4), Peaches_49 (A4), Perplexer_48 (A4), PeterPeter_49 (A4), PetiteSangsue_48 (A4), Phacado_49

(A4), Phelipe_50 (A4), Phighter1804_49 (A4), Phontbonne_49 (A4), Pipcraft_47 (A4), Polymorphads_50 (A4), Pumbaa_49 (A4), Relief_48 (A4), Romney_49 (A4), Roosevelt_48 (A4), Ruin_49 (A4), Sabertooth_49 (A4), Scamp_49 (A4), Shaka_49 (A4), SheldonCooper_51 (A4), Shygu2_48 (A4), Skipitt_48 (A4), Sparxx_50 (A4), Spino_48 (A4), Stasia_48 (A4), Stink_48 (A4), Taquarus_49 (A4), TinaFeyge_49 (A4), Tinybot_48 (A4), TiroTheta9_49 (A4), TroyPia_50 (A4), TygerBlood_49 (A4), Ulysses_48 (A4), Wander_49 (A4), Wilbur_49 (A4), Wile_48 (A4), Wizard007_49 (A4), Xena_47 (A4), YoSam321_49 (A4),

Start 24:

- Found in 1 of 542 (0.2%) of genes in pham
- Manual Annotations of this start: 1 of 507
- Called 100.0% of time when present
- Phage (with cluster) where this start called: Nedarya_49 (A15),

Start 25:

- Found in 20 of 542 (3.7%) of genes in pham
- Manual Annotations of this start: 19 of 507
- Called 100.0% of time when present
- Phage (with cluster) where this start called: Anaysia_54 (A15), Battleship_56 (A15), Boohoo_54 (A15), DekHockey33_54 (A15), Epsocamisio_52 (A15), JSwag_53 (A15), KatherineG_55 (A15), LastResort_53 (A15), Looper_54 (A15), MinecraftSteve_55 (A15), Nebulosus_53 (A15), Oofda_55 (A15), ReMo_53 (A15), Remus_54 (A15), Rosalind_53 (A15), ShayRa_55 (A15), Soups_55 (A15), Strosahl_54 (A15), Switzerland_54 (A15), Waits_54 (A15),

Start 26:

- Found in 1 of 542 (0.2%) of genes in pham
- Manual Annotations of this start: 1 of 507
- Called 100.0% of time when present
- Phage (with cluster) where this start called: Sheen_50 (A7),

Start 27:

- Found in 1 of 542 (0.2%) of genes in pham
- Manual Annotations of this start: 1 of 507
- Called 100.0% of time when present
- Phage (with cluster) where this start called: Anon_50 (A15),

Start 29:

- Found in 1 of 542 (0.2%) of genes in pham
- No Manual Annotations of this start.
- Called 100.0% of time when present
- Phage (with cluster) where this start called: Phlei_39 (A13),

Start 30:

- Found in 38 of 542 (7.0%) of genes in pham
- Manual Annotations of this start: 36 of 507
- Called 100.0% of time when present
- Phage (with cluster) where this start called: Alatin_39 (CA), Alpacados_38 (CA), AngryOrchard_37 (CA), AppleCloud_37 (CA), Belenaria_39 (CA), BobbyDazzler_39 (CA), Bonanza_39 (CA), Bradshaw_39 (CA), Bryce_39 (CA), CosmicSans_39 (CA), Dinger_39 (CA), Erik_39 (CA), Espica_39 (CA), Gollum_39 (CA), Harlequin_39 (CA), Hiro_39 (CA), Jester_39 (CA), Krishelle_39 (CA), Lillie_39 (CA), Naiad_39 (CA),

Nancinator_39 (CA), Natosaleda_39 (CA), Partridge_39 (CA), PhailMary_38 (CA), Phrankenstein_39 (CA), RER2_32 (CA), RGL3_34 (CA), Rasputin_39 (CA), RexFury_39 (CA), Rhodalysa_39 (CA), Shuman_39 (CA), StCroix_39 (CA), Swann_39 (CA), TWAMP_39 (CA), Takoda_39 (CA), UhSalsa_39 (CA), Yogi_39 (CA), Yoncess_39 (CA),

Summary by clusters:

There are 16 clusters represented in this pham: A15, A14, A16, A11, A, A13, CA, A18, A20, A3, A2, A5, A4, A7, A6, A9,

Info for manual annotations of cluster A:

- Start number 16 was manually annotated 1 time for cluster A.

Info for manual annotations of cluster A11:

- Start number 19 was manually annotated 22 times for cluster A11.

Info for manual annotations of cluster A14:

- Start number 16 was manually annotated 2 times for cluster A14.
- Start number 19 was manually annotated 2 times for cluster A14.

Info for manual annotations of cluster A15:

- Start number 24 was manually annotated 1 time for cluster A15.
- Start number 25 was manually annotated 19 times for cluster A15.
- Start number 27 was manually annotated 1 time for cluster A15.

Info for manual annotations of cluster A16:

- Start number 16 was manually annotated 2 times for cluster A16.
- Start number 19 was manually annotated 1 time for cluster A16.

Info for manual annotations of cluster A18:

- Start number 19 was manually annotated 1 time for cluster A18.

Info for manual annotations of cluster A2:

- Start number 16 was manually annotated 25 times for cluster A2.
- Start number 19 was manually annotated 60 times for cluster A2.

Info for manual annotations of cluster A20:

- Start number 19 was manually annotated 1 time for cluster A20.

Info for manual annotations of cluster A3:

- Start number 13 was manually annotated 16 times for cluster A3.
- Start number 19 was manually annotated 79 times for cluster A3.
- Start number 21 was manually annotated 7 times for cluster A3.
- Start number 22 was manually annotated 2 times for cluster A3.

Info for manual annotations of cluster A4:

- Start number 10 was manually annotated 1 time for cluster A4.
- Start number 11 was manually annotated 1 time for cluster A4.
- Start number 22 was manually annotated 133 times for cluster A4.

Info for manual annotations of cluster A5:

- Start number 18 was manually annotated 22 times for cluster A5.

Info for manual annotations of cluster A6:

- Start number 1 was manually annotated 4 times for cluster A6.
- Start number 15 was manually annotated 1 time for cluster A6.
- Start number 16 was manually annotated 14 times for cluster A6.
- Start number 19 was manually annotated 20 times for cluster A6.

Info for manual annotations of cluster A7:

- Start number 26 was manually annotated 1 time for cluster A7.

Info for manual annotations of cluster A9:

- Start number 16 was manually annotated 5 times for cluster A9.
- Start number 19 was manually annotated 27 times for cluster A9.

Info for manual annotations of cluster CA:

- Start number 30 was manually annotated 36 times for cluster CA.

Gene Information:

Gene: 20ES_53 Start: 34234, Stop: 33689, Start Num: 16

Candidate Starts for 20ES_53:

(Start: 16 @34234 has 49 MA's), (Start: 19 @34219 has 213 MA's), (48, 34108), (59, 34063), (66, 33988), (76, 33949), (92, 33799), (96, 33781), (97, 33751),

Gene: ACFishhook_52 Start: 33821, Stop: 33231, Start Num: 19

Candidate Starts for ACFishhook_52:

(Start: 19 @33821 has 213 MA's), (Start: 22 @33815 has 135 MA's), (50, 33671), (55, 33662), (60, 33635), (69, 33551), (92, 33347), (97, 33299),

Gene: AN9_53 Start: 33887, Stop: 33309, Start Num: 19

Candidate Starts for AN9_53:

(Start: 16 @33902 has 49 MA's), (Start: 19 @33887 has 213 MA's), (50, 33773), (53, 33767), (59, 33740), (63, 33692), (67, 33662), (83, 33596), (84, 33593), (86, 33584), (89, 33575), (92, 33422),

Gene: ANI8_53 Start: 33887, Stop: 33309, Start Num: 19

Candidate Starts for ANI8_53:

(Start: 16 @33902 has 49 MA's), (Start: 19 @33887 has 213 MA's), (50, 33773), (53, 33767), (59, 33740), (63, 33692), (67, 33662), (83, 33596), (84, 33593), (86, 33584), (89, 33575), (92, 33422),

Gene: AbbyPaige_52 Start: 34144, Stop: 33626, Start Num: 19

Candidate Starts for AbbyPaige_52:

(Start: 16 @34159 has 49 MA's), (Start: 19 @34144 has 213 MA's), (39, 34060), (54, 34024), (62, 33952), (64, 33946), (66, 33922), (67, 33919), (69, 33910), (76, 33883), (92, 33736), (96, 33718), (97, 33688),

Gene: AbbysRanger_48 Start: 33378, Stop: 32839, Start Num: 22

Candidate Starts for AbbysRanger_48:

(Start: 10 @33435 has 1 MA's), (Start: 11 @33420 has 1 MA's), (Start: 22 @33378 has 135 MA's), (69, 33120), (77, 33087), (88, 33048), (99, 32880),

Gene: Abdiel_49 Start: 33389, Stop: 32850, Start Num: 22

Candidate Starts for Abdiel_49:

(Start: 10 @33446 has 1 MA's), (Start: 11 @33431 has 1 MA's), (Start: 22 @33389 has 135 MA's), (69, 33131), (77, 33098), (88, 33059), (99, 32891),

Gene: Achebe_47 Start: 33361, Stop: 32822, Start Num: 22

Candidate Starts for Achebe_47:

(Start: 10 @33418 has 1 MA's), (Start: 11 @33403 has 1 MA's), (Start: 22 @33361 has 135 MA's), (69, 33103), (77, 33070), (88, 33031), (99, 32863),

Gene: Adzzy_52 Start: 32649, Stop: 32053, Start Num: 19

Candidate Starts for Adzzy_52:

(Start: 16 @32664 has 49 MA's), (Start: 19 @32649 has 213 MA's), (54, 32496), (63, 32421), (89, 32304), (90, 32283), (92, 32163), (94, 32160), (97, 32118),

Gene: Aglet_54 Start: 33857, Stop: 33267, Start Num: 19

Candidate Starts for Aglet_54:

(Start: 19 @33857 has 213 MA's), (Start: 22 @33851 has 135 MA's), (50, 33707), (55, 33698), (60, 33671), (69, 33587), (92, 33383), (97, 33335),

Gene: AgronaGT15_52 Start: 33705, Stop: 33118, Start Num: 19

Candidate Starts for AgronaGT15_52:

(Start: 19 @33705 has 213 MA's), (Start: 22 @33699 has 135 MA's), (50, 33561), (55, 33552), (60, 33525), (61, 33522), (65, 33462), (69, 33441), (92, 33234), (97, 33186),

Gene: Airmid_43 Start: 32100, Stop: 31576, Start Num: 18

Candidate Starts for Airmid_43:

(Start: 18 @32100 has 22 MA's), (53, 31968), (55, 31962), (80, 31818),

Gene: Alatin_39 Start: 29865, Stop: 29341, Start Num: 30

Candidate Starts for Alatin_39:

(Start: 30 @29865 has 36 MA's), (50, 29760), (92, 29448), (95, 29439), (96, 29430), (97, 29400),

Gene: Albee_49 Start: 33388, Stop: 32849, Start Num: 22

Candidate Starts for Albee_49:

(Start: 10 @33445 has 1 MA's), (Start: 11 @33430 has 1 MA's), (Start: 22 @33388 has 135 MA's), (69, 33130), (77, 33097), (88, 33058), (99, 32890),

Gene: Alberto7_50 Start: 33725, Stop: 33186, Start Num: 22

Candidate Starts for Alberto7_50:

(Start: 10 @33782 has 1 MA's), (Start: 11 @33767 has 1 MA's), (Start: 22 @33725 has 135 MA's), (69, 33467), (77, 33434), (88, 33395), (99, 33227),

Gene: Aliter_50 Start: 33562, Stop: 33032, Start Num: 16

Candidate Starts for Aliter_50:

(Start: 16 @33562 has 49 MA's), (Start: 19 @33547 has 213 MA's), (41, 33454), (54, 33430), (64, 33352), (76, 33289), (92, 33139),

Gene: Alma_50 Start: 33745, Stop: 33188, Start Num: 19

Candidate Starts for Alma_50:

(Start: 16 @33760 has 49 MA's), (Start: 19 @33745 has 213 MA's), (45, 33649), (46, 33646), (53, 33625), (65, 33535), (89, 33436), (92, 33295),

Gene: Alpacados_38 Start: 29770, Stop: 29246, Start Num: 30

Candidate Starts for Alpacados_38:

(Start: 30 @29770 has 36 MA's), (50, 29665), (92, 29353), (95, 29344), (96, 29335), (97, 29305),

Gene: Anaysia_54 Start: 32758, Stop: 32216, Start Num: 25

Candidate Starts for Anaysia_54:

(Start: 25 @32758 has 19 MA's), (28, 32752), (47, 32647), (56, 32620), (57, 32617), (70, 32506), (72, 32485), (77, 32476), (79, 32467), (92, 32320), (97, 32275),

Gene: Aneem_51 Start: 33271, Stop: 32702, Start Num: 19

Candidate Starts for Aneem_51:

(Start: 19 @33271 has 213 MA's), (52, 33136), (83, 32971), (92, 32815),

Gene: AngryOrchard_37 Start: 29729, Stop: 29205, Start Num: 30

Candidate Starts for AngryOrchard_37:

(Start: 30 @29729 has 36 MA's), (50, 29624), (92, 29312), (95, 29303), (96, 29294), (97, 29264),

Gene: AnnaL29_52 Start: 34705, Stop: 34160, Start Num: 16

Candidate Starts for AnnaL29_52:

(Start: 16 @34705 has 49 MA's), (Start: 19 @34690 has 213 MA's), (54, 34570), (59, 34543), (62, 34498), (64, 34492), (66, 34468), (74, 34432), (76, 34429), (79, 34420), (92, 34273), (96, 34255), (97, 34225),

Gene: Annyong_49 Start: 33433, Stop: 32894, Start Num: 22

Candidate Starts for Annyong_49:

(Start: 10 @33490 has 1 MA's), (Start: 11 @33475 has 1 MA's), (Start: 22 @33433 has 135 MA's), (69, 33175), (77, 33142), (88, 33103), (99, 32935),

Gene: Anon_50 Start: 32020, Stop: 31481, Start Num: 27

Candidate Starts for Anon_50:

(Start: 27 @32020 has 1 MA's), (56, 31894), (77, 31747), (99, 31534), (103, 31501),

Gene: Anselm_51 Start: 34069, Stop: 33545, Start Num: 19

Candidate Starts for Anselm_51:

(Start: 16 @34084 has 49 MA's), (Start: 19 @34069 has 213 MA's), (54, 33955), (59, 33928), (64, 33877), (66, 33853), (76, 33814), (79, 33805), (92, 33655), (96, 33637), (97, 33607),

Gene: Anthony_46 Start: 31582, Stop: 31001, Start Num: 19

Candidate Starts for Anthony_46:

(14, 31606), (Start: 19 @31582 has 213 MA's), (34, 31510), (54, 31441), (63, 31366), (72, 31306), (77, 31297), (88, 31255), (89, 31249), (92, 31108), (98, 31054),

Gene: Anubis_56 Start: 33743, Stop: 33153, Start Num: 19

Candidate Starts for Anubis_56:

(Start: 19 @33743 has 213 MA's), (Start: 22 @33737 has 135 MA's), (50, 33593), (55, 33584), (60, 33557), (69, 33473), (92, 33269), (97, 33221),

Gene: AppleCloud_37 Start: 29816, Stop: 29292, Start Num: 30

Candidate Starts for AppleCloud_37:

(Start: 30 @29816 has 36 MA's), (50, 29711), (92, 29399), (95, 29390), (96, 29381), (97, 29351),

Gene: Aragog_41 Start: 32083, Stop: 31556, Start Num: 18

Candidate Starts for Aragog_41:

(Start: 18 @32083 has 22 MA's), (53, 31948), (55, 31942), (80, 31798), (102, 31579),

Gene: Archetta_42 Start: 32613, Stop: 32086, Start Num: 18

Candidate Starts for Archetta_42:

(Start: 18 @32613 has 22 MA's), (53, 32478), (55, 32472), (80, 32328), (102, 32109),

Gene: Arissanae_49 Start: 34251, Stop: 33733, Start Num: 19

Candidate Starts for Arissanae_49:

(Start: 16 @34266 has 49 MA's), (Start: 19 @34251 has 213 MA's), (42, 34158), (54, 34137), (62, 34065), (66, 34035), (76, 33996), (92, 33840),

Gene: Artemis2UCLA_52 Start: 32678, Stop: 31923, Start Num: 1

Candidate Starts for Artemis2UCLA_52:

(Start: 1 @32678 has 4 MA's), (2, 32663), (3, 32642), (4, 32612), (5, 32606), (Start: 19 @32480 has 213 MA's), (63, 32270), (64, 32267), (76, 32204), (79, 32195), (92, 32033), (94, 32030),

Gene: Arturo_48 Start: 33662, Stop: 33129, Start Num: 22

Candidate Starts for Arturo_48:

(Start: 22 @33662 has 135 MA's), (69, 33404), (77, 33371), (88, 33332), (99, 33170),

Gene: AugsMagnumOpus_56 Start: 33848, Stop: 33258, Start Num: 19

Candidate Starts for AugsMagnumOpus_56:

(Start: 19 @33848 has 213 MA's), (Start: 22 @33842 has 135 MA's), (50, 33698), (55, 33689), (60, 33662), (69, 33578), (92, 33374), (97, 33326),

Gene: AvatarAhPeg_47 Start: 33169, Stop: 32621, Start Num: 22

Candidate Starts for AvatarAhPeg_47:

(Start: 22 @33169 has 135 MA's), (56, 33022), (77, 32872), (93, 32710), (99, 32662),

Gene: Avle17_49 Start: 33385, Stop: 32846, Start Num: 22

Candidate Starts for Avle17_49:

(Start: 10 @33442 has 1 MA's), (Start: 11 @33427 has 1 MA's), (Start: 22 @33385 has 135 MA's), (69, 33127), (77, 33094), (88, 33055), (99, 32887),

Gene: BABullseye_46 Start: 30456, Stop: 29878, Start Num: 19

Candidate Starts for BABullseye_46:

(Start: 16 @30471 has 49 MA's), (Start: 19 @30456 has 213 MA's), (47, 30345), (54, 30327), (82, 30165), (89, 30138), (92, 29988), (94, 29985),

Gene: Baby16_49 Start: 33399, Stop: 32860, Start Num: 22

Candidate Starts for Baby16_49:

(Start: 10 @33456 has 1 MA's), (Start: 11 @33441 has 1 MA's), (Start: 22 @33399 has 135 MA's), (69, 33141), (77, 33108), (88, 33069), (99, 32901),

Gene: BabyBack_48 Start: 34381, Stop: 33866, Start Num: 19

Candidate Starts for BabyBack_48:

(Start: 16 @34396 has 49 MA's), (Start: 19 @34381 has 213 MA's), (56, 34276), (65, 34189), (69, 34168), (77, 34138), (78, 34135), (92, 33976), (97, 33931),

Gene: BabyRay_50 Start: 33653, Stop: 33060, Start Num: 13

Candidate Starts for BabyRay_50:

(Start: 10 @33680 has 1 MA's), (Start: 11 @33665 has 1 MA's), (Start: 13 @33653 has 16 MA's), (Start: 21 @33623 has 7 MA's), (32, 33554), (55, 33476), (59, 33443), (60, 33440), (69, 33356), (75,

33323), (99, 33101),

Gene: Bachome_52 Start: 33251, Stop: 32685, Start Num: 19

Candidate Starts for Bachome_52:

(Start: 19 @33251 has 213 MA's), (58, 33098), (83, 32957), (92, 32798),

Gene: Backyardigan_47 Start: 33394, Stop: 32855, Start Num: 22

Candidate Starts for Backyardigan_47:

(Start: 10 @33451 has 1 MA's), (Start: 11 @33436 has 1 MA's), (Start: 22 @33394 has 135 MA's), (69, 33136), (77, 33103), (88, 33064), (99, 32896),

Gene: Bactobuster_49 Start: 34631, Stop: 34086, Start Num: 19

Candidate Starts for Bactobuster_49:

(Start: 16 @34646 has 49 MA's), (Start: 19 @34631 has 213 MA's), (61, 34502), (63, 34460), (71, 34403), (77, 34391), (82, 34370), (89, 34343), (92, 34193), (96, 34175),

Gene: Badger_47 Start: 33362, Stop: 32823, Start Num: 22

Candidate Starts for Badger_47:

(Start: 10 @33419 has 1 MA's), (Start: 11 @33404 has 1 MA's), (Start: 22 @33362 has 135 MA's), (69, 33104), (77, 33071), (88, 33032), (99, 32864),

Gene: Baehexic_49 Start: 33840, Stop: 33316, Start Num: 16

Candidate Starts for Baehexic_49:

(Start: 16 @33840 has 49 MA's), (Start: 19 @33825 has 213 MA's), (37, 33756), (54, 33720), (59, 33693), (62, 33648), (64, 33642), (66, 33618), (69, 33606), (76, 33579), (79, 33570), (83, 33552), (92, 33429),

Gene: BangNhom_50 Start: 33807, Stop: 33271, Start Num: 22

Candidate Starts for BangNhom_50:

(9, 33870), (Start: 22 @33807 has 135 MA's), (69, 33549), (77, 33516), (88, 33477), (99, 33312),

Gene: Bartimeaus_49 Start: 33390, Stop: 32851, Start Num: 22

Candidate Starts for Bartimeaus_49:

(Start: 10 @33447 has 1 MA's), (Start: 11 @33432 has 1 MA's), (Start: 22 @33390 has 135 MA's), (69, 33132), (77, 33099), (88, 33060), (99, 32892),

Gene: Battleship_56 Start: 33029, Stop: 32463, Start Num: 25

Candidate Starts for Battleship_56:

(Start: 25 @33029 has 19 MA's), (28, 33023), (47, 32918), (56, 32891), (57, 32888), (70, 32777), (72, 32756), (77, 32747), (79, 32738), (100, 32519),

Gene: Beauxregard13_53 Start: 33860, Stop: 33270, Start Num: 19

Candidate Starts for Beauxregard13_53:

(Start: 19 @33860 has 213 MA's), (Start: 22 @33854 has 135 MA's), (50, 33710), (55, 33701), (60, 33674), (69, 33590), (92, 33386), (97, 33338),

Gene: Beemo_50 Start: 33717, Stop: 33154, Start Num: 19

Candidate Starts for Beemo_50:

(Start: 16 @33732 has 49 MA's), (Start: 19 @33717 has 213 MA's), (54, 33591), (65, 33501), (89, 33402), (92, 33261),

Gene: Belenaria_39 Start: 29797, Stop: 29273, Start Num: 30

Candidate Starts for Belenaria_39:

(Start: 30 @29797 has 36 MA's), (50, 29692), (92, 29380), (95, 29371), (96, 29362), (97, 29332),

Gene: BellusTerra_50 Start: 33389, Stop: 32850, Start Num: 22

Candidate Starts for BellusTerra_50:

(Start: 10 @33446 has 1 MA's), (Start: 11 @33431 has 1 MA's), (Start: 22 @33389 has 135 MA's), (69, 33131), (77, 33098), (88, 33059), (99, 32891),

Gene: Benedict_45 Start: 32275, Stop: 31751, Start Num: 18

Candidate Starts for Benedict_45:

(Start: 18 @32275 has 22 MA's), (53, 32143), (55, 32137), (80, 31993),

Gene: BengiVuitton_52 Start: 34166, Stop: 33642, Start Num: 19

Candidate Starts for BengiVuitton_52:

(Start: 16 @34181 has 49 MA's), (Start: 19 @34166 has 213 MA's), (48, 34061), (59, 34016), (69, 33929), (76, 33902), (92, 33752), (96, 33734), (97, 33704),

Gene: Benvolio_47 Start: 33106, Stop: 32576, Start Num: 16

Candidate Starts for Benvolio_47:

(Start: 16 @33106 has 49 MA's), (Start: 19 @33091 has 213 MA's), (54, 32977), (59, 32950), (62, 32905), (64, 32899), (66, 32875), (76, 32836), (79, 32827), (92, 32686), (96, 32668), (97, 32638),

Gene: BiancaTri92_50 Start: 34471, Stop: 33944, Start Num: 19

Candidate Starts for BiancaTri92_50:

(Start: 16 @34486 has 49 MA's), (Start: 19 @34471 has 213 MA's), (39, 34387), (54, 34345), (59, 34318), (62, 34273), (64, 34267), (66, 34243), (69, 34231), (76, 34204), (92, 34054), (96, 34036), (97, 34006),

Gene: Blackmoor_49 Start: 33390, Stop: 32851, Start Num: 22

Candidate Starts for Blackmoor_49:

(Start: 10 @33447 has 1 MA's), (Start: 11 @33432 has 1 MA's), (Start: 22 @33390 has 135 MA's), (69, 33132), (77, 33099), (88, 33060), (99, 32892),

Gene: Blinn1_55 Start: 32877, Stop: 32299, Start Num: 19

Candidate Starts for Blinn1_55:

(Start: 16 @32892 has 49 MA's), (Start: 19 @32877 has 213 MA's), (51, 32748), (82, 32577), (89, 32550), (92, 32409), (94, 32406),

Gene: Blue7_54 Start: 32748, Stop: 32002, Start Num: 1

Candidate Starts for Blue7_54:

(Start: 1 @32748 has 4 MA's), (2, 32733), (3, 32712), (4, 32682), (5, 32676), (Start: 19 @32550 has 213 MA's), (63, 32340), (64, 32337), (76, 32274), (79, 32265), (92, 32112), (94, 32109),

Gene: BlueBird_52 Start: 33721, Stop: 33158, Start Num: 21

Candidate Starts for BlueBird_52:

(Start: 10 @33778 has 1 MA's), (Start: 11 @33763 has 1 MA's), (Start: 13 @33751 has 16 MA's), (Start: 21 @33721 has 7 MA's), (32, 33652), (55, 33574), (60, 33538), (69, 33454), (99, 33199),

Gene: BobbyDazzler_39 Start: 29844, Stop: 29320, Start Num: 30

Candidate Starts for BobbyDazzler_39:

(Start: 30 @29844 has 36 MA's), (50, 29739), (92, 29427), (95, 29418), (96, 29409), (97, 29379),

Gene: BogosyJay_49 Start: 33444, Stop: 32878, Start Num: 19

Candidate Starts for BogosyJay_49:

(Start: 16 @33459 has 49 MA's), (Start: 19 @33444 has 213 MA's), (45, 33342), (46, 33339), (65, 33228), (89, 33129), (92, 32985),

Gene: Bombshell_49 Start: 33385, Stop: 32846, Start Num: 22

Candidate Starts for Bombshell_49:

(Start: 10 @33442 has 1 MA's), (Start: 11 @33427 has 1 MA's), (Start: 22 @33385 has 135 MA's), (69, 33127), (77, 33094), (88, 33055), (99, 32887),

Gene: Bonamassa_43 Start: 32602, Stop: 32075, Start Num: 18

Candidate Starts for Bonamassa_43:

(Start: 18 @32602 has 22 MA's), (53, 32467), (55, 32461), (80, 32317), (101, 32116), (102, 32098),

Gene: Bonanza_39 Start: 29772, Stop: 29248, Start Num: 30

Candidate Starts for Bonanza_39:

(Start: 30 @29772 has 36 MA's), (50, 29667), (92, 29355), (95, 29346), (96, 29337), (97, 29307),

Gene: Boohoo_54 Start: 32758, Stop: 32216, Start Num: 25

Candidate Starts for Boohoo_54:

(Start: 25 @32758 has 19 MA's), (28, 32752), (47, 32647), (56, 32620), (57, 32617), (70, 32506), (72, 32485), (77, 32476), (79, 32467), (92, 32320), (97, 32275),

Gene: Bowtie_51 Start: 33278, Stop: 32709, Start Num: 19

Candidate Starts for Bowtie_51:

(Start: 19 @33278 has 213 MA's), (52, 33143), (83, 32978), (92, 32822),

Gene: Bradshaw_39 Start: 29798, Stop: 29274, Start Num: 30

Candidate Starts for Bradshaw_39:

(Start: 30 @29798 has 36 MA's), (50, 29693), (92, 29381), (95, 29372), (96, 29363), (97, 29333),

Gene: BreSam8_53 Start: 33850, Stop: 33260, Start Num: 19

Candidate Starts for BreSam8_53:

(Start: 19 @33850 has 213 MA's), (Start: 22 @33844 has 135 MA's), (50, 33700), (55, 33691), (60, 33664), (69, 33580), (92, 33376), (97, 33328),

Gene: Broseidon_49 Start: 33390, Stop: 32851, Start Num: 22

Candidate Starts for Broseidon_49:

(Start: 10 @33447 has 1 MA's), (Start: 11 @33432 has 1 MA's), (Start: 22 @33390 has 135 MA's), (69, 33132), (77, 33099), (88, 33060), (99, 32892),

Gene: Bruiser_48 Start: 33388, Stop: 32849, Start Num: 22

Candidate Starts for Bruiser_48:

(Start: 10 @33445 has 1 MA's), (Start: 11 @33430 has 1 MA's), (Start: 22 @33388 has 135 MA's), (69, 33130), (77, 33097), (88, 33058), (99, 32890),

Gene: Bryce_39 Start: 29773, Stop: 29249, Start Num: 30

Candidate Starts for Bryce_39:

(Start: 30 @29773 has 36 MA's), (50, 29668), (92, 29356), (95, 29347), (96, 29338), (97, 29308),

Gene: BubbleTrouble_48 Start: 33388, Stop: 32849, Start Num: 22

Candidate Starts for BubbleTrouble_48:

(Start: 10 @33445 has 1 MA's), (Start: 11 @33430 has 1 MA's), (Start: 22 @33388 has 135 MA's), (69, 33130), (77, 33097), (88, 33058), (99, 32890),

Gene: Bud_50 Start: 32828, Stop: 32259, Start Num: 19
Candidate Starts for Bud_50:
(Start: 19 @32828 has 213 MA's), (52, 32693), (83, 32528), (92, 32372),

Gene: Bugatti_51 Start: 33721, Stop: 33158, Start Num: 21
Candidate Starts for Bugatti_51:
(Start: 10 @33778 has 1 MA's), (Start: 11 @33763 has 1 MA's), (Start: 13 @33751 has 16 MA's),
(Start: 21 @33721 has 7 MA's), (32, 33652), (55, 33574), (60, 33538), (69, 33454), (99, 33199),

Gene: Buggy_52 Start: 34195, Stop: 33686, Start Num: 19
Candidate Starts for Buggy_52:
(Start: 16 @34210 has 49 MA's), (Start: 19 @34195 has 213 MA's), (37, 34126), (54, 34090), (59, 34063), (62, 34018), (64, 34012), (66, 33988), (69, 33976), (76, 33949), (79, 33940), (83, 33922), (92, 33799),

Gene: Bumblebee11_47 Start: 33364, Stop: 32825, Start Num: 22
Candidate Starts for Bumblebee11_47:
(Start: 10 @33421 has 1 MA's), (Start: 11 @33406 has 1 MA's), (Start: 22 @33364 has 135 MA's),
(69, 33106), (77, 33073), (88, 33034), (99, 32866),

Gene: Burger_47 Start: 33388, Stop: 32849, Start Num: 22
Candidate Starts for Burger_47:
(Start: 10 @33445 has 1 MA's), (Start: 11 @33430 has 1 MA's), (Start: 22 @33388 has 135 MA's),
(69, 33130), (77, 33097), (88, 33058), (99, 32890),

Gene: BuzzBuzz_51 Start: 33884, Stop: 33297, Start Num: 19
Candidate Starts for BuzzBuzz_51:
(Start: 19 @33884 has 213 MA's), (Start: 22 @33878 has 135 MA's), (50, 33740), (55, 33731), (60, 33704), (61, 33701), (65, 33641), (69, 33620), (92, 33413), (97, 33365),

Gene: Bxz2_49 Start: 33885, Stop: 33304, Start Num: 22
Candidate Starts for Bxz2_49:
(Start: 19 @33891 has 213 MA's), (Start: 22 @33885 has 135 MA's), (50, 33747), (55, 33738), (60, 33711), (61, 33708), (65, 33648), (69, 33627), (92, 33420), (97, 33372),

Gene: C3_48 Start: 33887, Stop: 33309, Start Num: 19
Candidate Starts for C3_48:
(Start: 16 @33902 has 49 MA's), (Start: 19 @33887 has 213 MA's), (50, 33773), (53, 33767), (59, 33740), (63, 33692), (67, 33662), (83, 33596), (84, 33593), (86, 33584), (89, 33575), (92, 33422),

Gene: CRB1_54 Start: 34574, Stop: 34032, Start Num: 16
Candidate Starts for CRB1_54:
(Start: 16 @34574 has 49 MA's), (Start: 19 @34559 has 213 MA's), (48, 34454), (59, 34409), (62, 34364), (66, 34334), (76, 34295), (92, 34142), (96, 34124), (97, 34094),

Gene: Caelakin_49 Start: 33388, Stop: 32849, Start Num: 22
Candidate Starts for Caelakin_49:
(Start: 10 @33445 has 1 MA's), (Start: 11 @33430 has 1 MA's), (Start: 22 @33388 has 135 MA's),
(69, 33130), (77, 33097), (88, 33058), (99, 32890),

Gene: Camperdownii_47 Start: 33062, Stop: 32523, Start Num: 22
Candidate Starts for Camperdownii_47:

(Start: 10 @33119 has 1 MA's), (Start: 11 @33104 has 1 MA's), (Start: 22 @33062 has 135 MA's), (69, 32804), (77, 32771), (88, 32732), (99, 32564),

Gene: Candra_52 Start: 32814, Stop: 32242, Start Num: 19

Candidate Starts for Candra_52:

(Start: 16 @32829 has 49 MA's), (Start: 19 @32814 has 213 MA's), (47, 32703), (54, 32685), (82, 32523), (89, 32496), (92, 32352), (94, 32349),

Gene: Caraxes_50 Start: 32358, Stop: 31759, Start Num: 19

Candidate Starts for Caraxes_50:

(Start: 16 @32373 has 49 MA's), (Start: 19 @32358 has 213 MA's), (54, 32208), (63, 32133), (70, 32088), (89, 32016), (92, 31869), (94, 31866), (96, 31851), (97, 31824),

Gene: Catalina_51 Start: 33635, Stop: 33105, Start Num: 16

Candidate Starts for Catalina_51:

(Start: 16 @33635 has 49 MA's), (Start: 19 @33620 has 213 MA's), (41, 33527), (54, 33503), (64, 33425), (76, 33362), (92, 33212),

Gene: Caviar_49 Start: 33695, Stop: 33096, Start Num: 13

Candidate Starts for Caviar_49:

(Start: 10 @33722 has 1 MA's), (Start: 11 @33707 has 1 MA's), (Start: 13 @33695 has 16 MA's), (Start: 21 @33665 has 7 MA's), (32, 33596), (55, 33518), (69, 33398), (99, 33137),

Gene: Centaur_51 Start: 34057, Stop: 33533, Start Num: 16

Candidate Starts for Centaur_51:

(Start: 16 @34057 has 49 MA's), (Start: 19 @34042 has 213 MA's), (37, 33973), (54, 33937), (59, 33910), (62, 33865), (64, 33859), (66, 33835), (69, 33823), (76, 33796), (79, 33787), (83, 33769), (92, 33646),

Gene: CentreCat_49 Start: 33391, Stop: 32852, Start Num: 22

Candidate Starts for CentreCat_49:

(Start: 10 @33448 has 1 MA's), (Start: 11 @33433 has 1 MA's), (Start: 22 @33391 has 135 MA's), (69, 33133), (77, 33100), (88, 33061), (99, 32893),

Gene: Cerulean_50 Start: 33808, Stop: 33272, Start Num: 22

Candidate Starts for Cerulean_50:

(9, 33871), (Start: 22 @33808 has 135 MA's), (69, 33550), (77, 33517), (88, 33478), (99, 33313),

Gene: Chadwick_46 Start: 32252, Stop: 31728, Start Num: 18

Candidate Starts for Chadwick_46:

(Start: 18 @32252 has 22 MA's), (53, 32120), (55, 32114), (80, 31970),

Gene: ChampagnePapi_51 Start: 33807, Stop: 33271, Start Num: 22

Candidate Starts for ChampagnePapi_51:

(9, 33870), (Start: 22 @33807 has 135 MA's), (69, 33549), (77, 33516), (88, 33477), (99, 33312),

Gene: Chaph_49 Start: 33399, Stop: 32860, Start Num: 22

Candidate Starts for Chaph_49:

(Start: 10 @33456 has 1 MA's), (Start: 11 @33441 has 1 MA's), (Start: 22 @33399 has 135 MA's), (69, 33141), (77, 33108), (88, 33069), (99, 32901),

Gene: Chargerpower_49 Start: 32641, Stop: 32096, Start Num: 16

Candidate Starts for Chargerpower_49:

(Start: 16 @32641 has 49 MA's), (Start: 19 @32626 has 213 MA's), (35, 32557), (39, 32539), (54, 32497), (59, 32470), (62, 32425), (64, 32419), (69, 32383), (76, 32356), (92, 32200), (94, 32197), (97, 32152),

Gene: Charm_49 Start: 33504, Stop: 32941, Start Num: 19

Candidate Starts for Charm_49:

(Start: 16 @33519 has 49 MA's), (Start: 19 @33504 has 213 MA's), (42, 33414), (54, 33384), (65, 33291), (89, 33192), (92, 33048),

Gene: Chartreuse_51 Start: 32174, Stop: 31602, Start Num: 19

Candidate Starts for Chartreuse_51:

(Start: 16 @32189 has 49 MA's), (Start: 19 @32174 has 213 MA's), (47, 32063), (54, 32045), (82, 31883), (89, 31856), (92, 31712), (94, 31709),

Gene: Che12_52 Start: 32805, Stop: 32197, Start Num: 16

Candidate Starts for Che12_52:

(Start: 16 @32805 has 49 MA's), (Start: 19 @32790 has 213 MA's), (54, 32649), (70, 32529), (89, 32457), (92, 32307), (94, 32304), (97, 32262),

Gene: ChipMunk_52 Start: 35413, Stop: 34883, Start Num: 19

Candidate Starts for ChipMunk_52:

(Start: 16 @35428 has 49 MA's), (Start: 19 @35413 has 213 MA's), (39, 35323), (54, 35287), (59, 35260), (62, 35215), (64, 35209), (66, 35185), (76, 35146), (92, 34993), (96, 34975), (97, 34945),

Gene: Cici_48 Start: 33379, Stop: 32840, Start Num: 22

Candidate Starts for Cici_48:

(Start: 10 @33436 has 1 MA's), (Start: 11 @33421 has 1 MA's), (Start: 22 @33379 has 135 MA's), (69, 33121), (77, 33088), (88, 33049), (99, 32881),

Gene: Cindaradix_46 Start: 33000, Stop: 32467, Start Num: 22

Candidate Starts for Cindaradix_46:

(Start: 10 @33057 has 1 MA's), (Start: 11 @33042 has 1 MA's), (Start: 22 @33000 has 135 MA's), (69, 32742), (77, 32709), (88, 32670), (99, 32508),

Gene: Cintron_48 Start: 33365, Stop: 32829, Start Num: 22

Candidate Starts for Cintron_48:

(Start: 10 @33422 has 1 MA's), (Start: 11 @33407 has 1 MA's), (Start: 22 @33365 has 135 MA's), (69, 33107), (77, 33074), (88, 33035), (99, 32870),

Gene: Citius_49 Start: 33409, Stop: 32870, Start Num: 22

Candidate Starts for Citius_49:

(Start: 10 @33466 has 1 MA's), (Start: 11 @33451 has 1 MA's), (Start: 22 @33409 has 135 MA's), (69, 33151), (77, 33118), (88, 33079), (99, 32911),

Gene: Clarenza_48 Start: 33385, Stop: 32846, Start Num: 22

Candidate Starts for Clarenza_48:

(Start: 10 @33442 has 1 MA's), (Start: 11 @33427 has 1 MA's), (Start: 22 @33385 has 135 MA's), (69, 33127), (77, 33094), (88, 33055), (99, 32887),

Gene: CloudWang3_52 Start: 32568, Stop: 32023, Start Num: 19

Candidate Starts for CloudWang3_52:

(Start: 1 @32766 has 4 MA's), (2, 32751), (3, 32730), (4, 32700), (5, 32694), (Start: 19 @32568 has 213 MA's), (63, 32358), (64, 32355), (76, 32292), (79, 32283), (92, 32133), (94, 32130),

Gene: Cocoaberry_49 Start: 33392, Stop: 32853, Start Num: 22

Candidate Starts for Cocoaberry_49:

(Start: 10 @33449 has 1 MA's), (Start: 11 @33434 has 1 MA's), (Start: 22 @33392 has 135 MA's), (69, 33134), (77, 33101), (88, 33062), (99, 32894),

Gene: Colbster_53 Start: 33860, Stop: 33270, Start Num: 19

Candidate Starts for Colbster_53:

(Start: 19 @33860 has 213 MA's), (Start: 22 @33854 has 135 MA's), (50, 33710), (55, 33701), (60, 33674), (69, 33590), (92, 33386), (97, 33338),

Gene: Colin_50 Start: 34033, Stop: 33509, Start Num: 19

Candidate Starts for Colin_50:

(Start: 16 @34048 has 49 MA's), (Start: 19 @34033 has 213 MA's), (59, 33886), (62, 33841), (64, 33835), (66, 33811), (76, 33772), (92, 33619), (96, 33601), (97, 33571),

Gene: Commander_49 Start: 33387, Stop: 32848, Start Num: 22

Candidate Starts for Commander_49:

(Start: 10 @33444 has 1 MA's), (Start: 11 @33429 has 1 MA's), (Start: 22 @33387 has 135 MA's), (69, 33129), (77, 33096), (88, 33057), (99, 32889),

Gene: Connomayer_49 Start: 33388, Stop: 32849, Start Num: 22

Candidate Starts for Connomayer_49:

(Start: 10 @33445 has 1 MA's), (Start: 11 @33430 has 1 MA's), (Start: 22 @33388 has 135 MA's), (69, 33130), (77, 33097), (88, 33058), (99, 32890),

Gene: Conquerage_50 Start: 33691, Stop: 33128, Start Num: 19

Candidate Starts for Conquerage_50:

(Start: 16 @33706 has 49 MA's), (Start: 19 @33691 has 213 MA's), (54, 33565), (65, 33475), (89, 33376), (92, 33235),

Gene: Cookiedough_52 Start: 32808, Stop: 32215, Start Num: 16

Candidate Starts for Cookiedough_52:

(Start: 16 @32808 has 49 MA's), (Start: 19 @32793 has 213 MA's), (47, 32682), (54, 32664), (82, 32502), (89, 32475), (92, 32325), (94, 32322),

Gene: CosmicSans_39 Start: 29798, Stop: 29274, Start Num: 30

Candidate Starts for CosmicSans_39:

(Start: 30 @29798 has 36 MA's), (50, 29693), (92, 29381), (95, 29372), (96, 29363), (97, 29333),

Gene: Crucio_50 Start: 33650, Stop: 33129, Start Num: 19

Candidate Starts for Crucio_50:

(Start: 16 @33665 has 49 MA's), (Start: 19 @33650 has 213 MA's), (54, 33536), (59, 33509), (62, 33464), (64, 33458), (66, 33434), (76, 33395), (79, 33386), (92, 33239), (96, 33221), (97, 33191),

Gene: Cuco_42 Start: 32356, Stop: 31829, Start Num: 18

Candidate Starts for Cuco_42:

(Start: 18 @32356 has 22 MA's), (53, 32221), (55, 32215), (80, 32071), (102, 31852),

Gene: Cullens_53 Start: 33856, Stop: 33266, Start Num: 19

Candidate Starts for Cullens_53:

(Start: 19 @33856 has 213 MA's), (Start: 22 @33850 has 135 MA's), (50, 33706), (55, 33697), (60, 33670), (69, 33586), (92, 33382), (97, 33334),

Gene: D29_49 Start: 33484, Stop: 32891, Start Num: 16

Candidate Starts for D29_49:

(Start: 16 @33484 has 49 MA's), (Start: 19 @33469 has 213 MA's), (50, 33352), (53, 33346), (59, 33322), (63, 33274), (84, 33175), (86, 33166), (89, 33157), (92, 33004),

Gene: D32_51 Start: 33469, Stop: 32891, Start Num: 19

Candidate Starts for D32_51:

(Start: 16 @33484 has 49 MA's), (Start: 19 @33469 has 213 MA's), (50, 33352), (53, 33346), (59, 33322), (63, 33274), (84, 33175), (86, 33166), (89, 33157), (92, 33004),

Gene: DBQu4n_52 Start: 33468, Stop: 32890, Start Num: 19

Candidate Starts for DBQu4n_52:

(Start: 16 @33483 has 49 MA's), (Start: 19 @33468 has 213 MA's), (53, 33345), (59, 33321), (63, 33273), (84, 33174), (86, 33165), (89, 33156), (92, 33003),

Gene: DaHudson_53 Start: 33849, Stop: 33259, Start Num: 19

Candidate Starts for DaHudson_53:

(Start: 19 @33849 has 213 MA's), (Start: 22 @33843 has 135 MA's), (50, 33699), (55, 33690), (60, 33663), (69, 33579), (92, 33375), (97, 33327),

Gene: DaVinci_51 Start: 32228, Stop: 31656, Start Num: 19

Candidate Starts for DaVinci_51:

(Start: 16 @32243 has 49 MA's), (Start: 19 @32228 has 213 MA's), (47, 32117), (54, 32099), (82, 31937), (89, 31910), (92, 31766), (94, 31763),

Gene: Daishi_52 Start: 32725, Stop: 32138, Start Num: 19

Candidate Starts for Daishi_52:

(Start: 19 @32725 has 213 MA's), (Start: 22 @32719 has 135 MA's), (50, 32581), (55, 32572), (60, 32545), (61, 32542), (65, 32482), (69, 32461), (92, 32254), (97, 32206),

Gene: Dalmatian_51 Start: 34042, Stop: 33521, Start Num: 19

Candidate Starts for Dalmatian_51:

(Start: 16 @34057 has 49 MA's), (Start: 19 @34042 has 213 MA's), (54, 33928), (59, 33901), (64, 33850), (66, 33826), (76, 33787), (79, 33778), (92, 33631), (96, 33613), (97, 33583),

Gene: Darrell_51 Start: 34320, Stop: 33751, Start Num: 19

Candidate Starts for Darrell_51:

(Start: 16 @34335 has 49 MA's), (Start: 19 @34320 has 213 MA's), (46, 34215), (65, 34104), (89, 34005), (92, 33858),

Gene: Datway_48 Start: 33350, Stop: 32811, Start Num: 22

Candidate Starts for Datway_48:

(Start: 10 @33407 has 1 MA's), (Start: 11 @33392 has 1 MA's), (Start: 22 @33350 has 135 MA's), (77, 33059), (88, 33020), (99, 32852),

Gene: Deano_48 Start: 33396, Stop: 32857, Start Num: 22

Candidate Starts for Deano_48:

(Start: 10 @33453 has 1 MA's), (Start: 11 @33438 has 1 MA's), (Start: 22 @33396 has 135 MA's), (69, 33138), (77, 33105), (88, 33066), (99, 32898),

Gene: DekHockey33_54 Start: 33050, Stop: 32484, Start Num: 25

Candidate Starts for DekHockey33_54:

(Start: 25 @33050 has 19 MA's), (28, 33044), (47, 32939), (56, 32912), (57, 32909), (70, 32798), (72, 32777), (77, 32768), (79, 32759), (100, 32540),

Gene: Deloris_51 Start: 33835, Stop: 33311, Start Num: 19

Candidate Starts for Deloris_51:

(Start: 16 @33850 has 49 MA's), (Start: 19 @33835 has 213 MA's), (48, 33730), (59, 33685), (64, 33634), (69, 33598), (76, 33571), (92, 33421), (96, 33403), (97, 33373),

Gene: Dhanush_49 Start: 33391, Stop: 32852, Start Num: 22

Candidate Starts for Dhanush_49:

(Start: 10 @33448 has 1 MA's), (Start: 11 @33433 has 1 MA's), (Start: 22 @33391 has 135 MA's), (69, 33133), (77, 33100), (88, 33061), (99, 32893),

Gene: Dieselweasel_54 Start: 33859, Stop: 33269, Start Num: 19

Candidate Starts for Dieselweasel_54:

(Start: 19 @33859 has 213 MA's), (Start: 22 @33853 has 135 MA's), (50, 33709), (55, 33700), (60, 33673), (69, 33589), (92, 33385), (97, 33337),

Gene: Dignity_52 Start: 34218, Stop: 33691, Start Num: 19

Candidate Starts for Dignity_52:

(Start: 16 @34233 has 49 MA's), (Start: 19 @34218 has 213 MA's), (39, 34131), (54, 34095), (59, 34068), (62, 34023), (64, 34017), (66, 33993), (76, 33954), (92, 33801), (96, 33783), (97, 33753),

Gene: Dinger_39 Start: 29859, Stop: 29335, Start Num: 30

Candidate Starts for Dinger_39:

(Start: 30 @29859 has 36 MA's), (50, 29754), (92, 29442), (95, 29433), (96, 29424), (97, 29394),

Gene: DirtyDunning_48 Start: 33403, Stop: 32870, Start Num: 22

Candidate Starts for DirtyDunning_48:

(Start: 10 @33460 has 1 MA's), (Start: 11 @33445 has 1 MA's), (Start: 22 @33403 has 135 MA's), (69, 33145), (77, 33112), (88, 33073), (99, 32911),

Gene: Discoknowium_41 Start: 32092, Stop: 31565, Start Num: 18

Candidate Starts for Discoknowium_41:

(Start: 18 @32092 has 22 MA's), (53, 31957), (55, 31951), (80, 31807), (102, 31588),

Gene: Dorothea_51 Start: 32797, Stop: 32225, Start Num: 19

Candidate Starts for Dorothea_51:

(Start: 16 @32812 has 49 MA's), (Start: 19 @32797 has 213 MA's), (47, 32686), (54, 32668), (82, 32506), (89, 32479), (92, 32335), (94, 32332),

Gene: Drake55_52 Start: 34136, Stop: 33609, Start Num: 16

Candidate Starts for Drake55_52:

(Start: 16 @34136 has 49 MA's), (Start: 19 @34121 has 213 MA's), (37, 34052), (54, 34016), (59, 33989), (64, 33938), (66, 33914), (69, 33902), (76, 33875), (79, 33866), (83, 33848), (92, 33722),

Gene: DreamTeam1_49 Start: 33360, Stop: 32815, Start Num: 19

Candidate Starts for DreamTeam1_49:

(Start: 16 @33375 has 49 MA's), (Start: 19 @33360 has 213 MA's), (54, 33258), (65, 33165), (89, 33066), (92, 32922),

Gene: Druantia_49 Start: 33391, Stop: 32852, Start Num: 22

Candidate Starts for Druantia_49:

(Start: 10 @33448 has 1 MA's), (Start: 11 @33433 has 1 MA's), (Start: 22 @33391 has 135 MA's), (69, 33133), (77, 33100), (88, 33061), (99, 32893),

Gene: DudeLittle_49 Start: 33784, Stop: 33263, Start Num: 19

Candidate Starts for DudeLittle_49:

(Start: 16 @33799 has 49 MA's), (Start: 19 @33784 has 213 MA's), (54, 33670), (59, 33643), (64, 33592), (66, 33568), (76, 33529), (92, 33373), (96, 33355), (97, 33325),

Gene: Duplo_52 Start: 33506, Stop: 32928, Start Num: 19

Candidate Starts for Duplo_52:

(Start: 16 @33521 has 49 MA's), (Start: 19 @33506 has 213 MA's), (50, 33389), (53, 33383), (59, 33359), (63, 33311), (67, 33281), (84, 33212), (86, 33203), (89, 33194), (92, 33041),

Gene: Eagle_49 Start: 33413, Stop: 32874, Start Num: 22

Candidate Starts for Eagle_49:

(Start: 10 @33470 has 1 MA's), (Start: 11 @33455 has 1 MA's), (Start: 22 @33413 has 135 MA's), (69, 33155), (77, 33122), (88, 33083), (99, 32915),

Gene: EagleEye_52 Start: 33301, Stop: 32738, Start Num: 16

Candidate Starts for EagleEye_52:

(Start: 16 @33301 has 49 MA's), (Start: 19 @33286 has 213 MA's), (44, 33169), (62, 33067), (64, 33061), (76, 32998), (79, 32989), (92, 32845),

Gene: Eapen_49 Start: 33383, Stop: 32844, Start Num: 22

Candidate Starts for Eapen_49:

(Start: 10 @33440 has 1 MA's), (Start: 11 @33425 has 1 MA's), (Start: 22 @33383 has 135 MA's), (69, 33125), (77, 33092), (88, 33053), (99, 32885),

Gene: Ebony_50 Start: 32845, Stop: 32276, Start Num: 19

Candidate Starts for Ebony_50:

(Start: 19 @32845 has 213 MA's), (52, 32710), (83, 32545), (92, 32389),

Gene: Echild_50 Start: 33130, Stop: 32600, Start Num: 16

Candidate Starts for Echild_50:

(Start: 16 @33130 has 49 MA's), (Start: 19 @33115 has 213 MA's), (54, 33001), (59, 32974), (62, 32929), (64, 32923), (66, 32899), (76, 32860), (79, 32851), (92, 32710), (96, 32692), (97, 32662),

Gene: Eidsmoe_50 Start: 33683, Stop: 33168, Start Num: 19

Candidate Starts for Eidsmoe_50:

(Start: 16 @33698 has 49 MA's), (Start: 19 @33683 has 213 MA's), (41, 33590), (54, 33566), (64, 33488), (76, 33425), (92, 33275),

Gene: EITiger69_44 Start: 32269, Stop: 31745, Start Num: 18

Candidate Starts for EITiger69_44:

(Start: 18 @32269 has 22 MA's), (53, 32137), (55, 32131), (80, 31987),

Gene: Elephantoon_49 Start: 33065, Stop: 32502, Start Num: 19

Candidate Starts for Elephantoon_49:

(Start: 16 @33080 has 49 MA's), (Start: 19 @33065 has 213 MA's), (46, 32963), (89, 32753), (92, 32609),

Gene: EmyBug_47 Start: 33685, Stop: 33170, Start Num: 19

Candidate Starts for EmyBug_47:

(Start: 16 @33700 has 49 MA's), (Start: 19 @33685 has 213 MA's), (41, 33592), (54, 33568), (64, 33490), (76, 33427), (92, 33277),

Gene: EpicPhail_54 Start: 33860, Stop: 33270, Start Num: 19

Candidate Starts for EpicPhail_54:

(Start: 19 @33860 has 213 MA's), (Start: 22 @33854 has 135 MA's), (50, 33710), (55, 33701), (60, 33674), (69, 33590), (92, 33386), (97, 33338),

Gene: Epsocamisio_52 Start: 32293, Stop: 31751, Start Num: 25

Candidate Starts for Epsocamisio_52:

(Start: 25 @32293 has 19 MA's), (28, 32287), (47, 32182), (56, 32155), (57, 32152), (70, 32041), (72, 32020), (77, 32011), (79, 32002), (92, 31855), (97, 31810),

Gene: Equemioh13_51 Start: 33944, Stop: 33435, Start Num: 19

Candidate Starts for Equemioh13_51:

(Start: 16 @33959 has 49 MA's), (Start: 19 @33944 has 213 MA's), (37, 33875), (54, 33839), (59, 33812), (62, 33767), (64, 33761), (66, 33737), (69, 33725), (76, 33698), (79, 33689), (83, 33671), (92, 33548),

Gene: EricB_52 Start: 32771, Stop: 32199, Start Num: 19

Candidate Starts for EricB_52:

(Start: 16 @32786 has 49 MA's), (Start: 19 @32771 has 213 MA's), (47, 32660), (54, 32642), (82, 32480), (89, 32453), (92, 32309), (94, 32306),

Gene: Erik_39 Start: 29796, Stop: 29272, Start Num: 30

Candidate Starts for Erik_39:

(Start: 30 @29796 has 36 MA's), (50, 29691), (92, 29379), (95, 29370), (96, 29361), (97, 29331),

Gene: Eris_48 Start: 33388, Stop: 32849, Start Num: 22

Candidate Starts for Eris_48:

(Start: 10 @33445 has 1 MA's), (Start: 11 @33430 has 1 MA's), (Start: 22 @33388 has 135 MA's), (69, 33130), (77, 33097), (88, 33058), (99, 32890),

Gene: Eros_49 Start: 33390, Stop: 32851, Start Num: 22

Candidate Starts for Eros_49:

(Start: 10 @33447 has 1 MA's), (Start: 11 @33432 has 1 MA's), (Start: 22 @33390 has 135 MA's), (69, 33132), (77, 33099), (88, 33060), (99, 32892),

Gene: Espica_39 Start: 29797, Stop: 29273, Start Num: 30

Candidate Starts for Espica_39:

(Start: 30 @29797 has 36 MA's), (50, 29692), (92, 29380), (95, 29371), (96, 29362), (97, 29332),

Gene: Et2Brutus_49 Start: 32805, Stop: 32236, Start Num: 19

Candidate Starts for Et2Brutus_49:

(Start: 19 @32805 has 213 MA's), (52, 32670), (83, 32505), (92, 32349),

Gene: Eurydice_50 Start: 33385, Stop: 32846, Start Num: 22

Candidate Starts for Eurydice_50:

(Start: 10 @33442 has 1 MA's), (Start: 11 @33427 has 1 MA's), (Start: 22 @33385 has 135 MA's), (69, 33127), (77, 33094), (88, 33055), (99, 32887),

Gene: ExplosioNervosa_50 Start: 33751, Stop: 33188, Start Num: 19

Candidate Starts for ExplosioNervosa_50:

(Start: 16 @33766 has 49 MA's), (Start: 19 @33751 has 213 MA's), (54, 33625), (65, 33535), (89, 33436), (92, 33295),

Gene: Fameo_50 Start: 33969, Stop: 33436, Start Num: 16

Candidate Starts for Fameo_50:

(Start: 16 @33969 has 49 MA's), (Start: 19 @33954 has 213 MA's), (54, 33840), (59, 33813), (64, 33762), (66, 33738), (76, 33699), (79, 33690), (92, 33546), (96, 33528), (97, 33498),

Gene: Farber_53 Start: 33846, Stop: 33259, Start Num: 19

Candidate Starts for Farber_53:

(Start: 19 @33846 has 213 MA's), (Start: 22 @33840 has 135 MA's), (50, 33702), (55, 33693), (60, 33666), (61, 33663), (65, 33603), (69, 33582), (92, 33375), (97, 33327),

Gene: Fayely_50 Start: 33652, Stop: 33137, Start Num: 19

Candidate Starts for Fayely_50:

(Start: 16 @33667 has 49 MA's), (Start: 19 @33652 has 213 MA's), (41, 33559), (54, 33535), (64, 33457), (76, 33394), (92, 33244),

Gene: Fernando_53 Start: 33856, Stop: 33266, Start Num: 19

Candidate Starts for Fernando_53:

(Start: 19 @33856 has 213 MA's), (Start: 22 @33850 has 135 MA's), (50, 33706), (55, 33697), (60, 33670), (69, 33586), (92, 33382), (97, 33334),

Gene: Fibonacci_50 Start: 32814, Stop: 32251, Start Num: 19

Candidate Starts for Fibonacci_50:

(Start: 19 @32814 has 213 MA's), (52, 32685), (83, 32520), (92, 32364),

Gene: FiringLine_50 Start: 33631, Stop: 33110, Start Num: 19

Candidate Starts for FiringLine_50:

(Start: 16 @33646 has 49 MA's), (Start: 19 @33631 has 213 MA's), (54, 33517), (59, 33490), (62, 33445), (64, 33439), (66, 33415), (76, 33376), (79, 33367), (92, 33220), (96, 33202), (97, 33172),

Gene: First_0052 Start: 34110, Stop: 33565, Start Num: 16

Candidate Starts for First_0052:

(Start: 16 @34110 has 49 MA's), (Start: 19 @34095 has 213 MA's), (48, 33984), (53, 33969), (59, 33939), (66, 33864), (76, 33825), (92, 33675), (96, 33657), (97, 33627),

Gene: Flare16_50 Start: 33718, Stop: 33194, Start Num: 16

Candidate Starts for Flare16_50:

(Start: 16 @33718 has 49 MA's), (Start: 19 @33703 has 213 MA's), (37, 33634), (54, 33598), (59, 33571), (62, 33526), (64, 33520), (66, 33496), (69, 33484), (76, 33457), (79, 33448), (83, 33430), (92, 33307),

Gene: Flaverint_51 Start: 33272, Stop: 32703, Start Num: 19

Candidate Starts for Flaverint_51:

(Start: 19 @33272 has 213 MA's), (52, 33137), (83, 32972), (92, 32816),

Gene: Florean_49 Start: 33387, Stop: 32848, Start Num: 22

Candidate Starts for Florean_49:

(Start: 10 @33444 has 1 MA's), (Start: 11 @33429 has 1 MA's), (Start: 22 @33387 has 135 MA's), (69, 33129), (77, 33096), (88, 33057), (99, 32889),

Gene: Flux_49 Start: 33387, Stop: 32848, Start Num: 22

Candidate Starts for Flux_49:

(Start: 10 @33444 has 1 MA's), (Start: 11 @33429 has 1 MA's), (Start: 22 @33387 has 135 MA's), (69, 33129), (77, 33096), (88, 33057), (99, 32889),

Gene: Fred313_50 Start: 33287, Stop: 32724, Start Num: 21

Candidate Starts for Fred313_50:

(Start: 10 @33338 has 1 MA's), (Start: 11 @33323 has 1 MA's), (Start: 13 @33311 has 16 MA's), (Start: 21 @33287 has 7 MA's), (32, 33218), (55, 33140), (59, 33107), (60, 33104), (69, 33020), (99, 32765),

Gene: Funston_48 Start: 33388, Stop: 32849, Start Num: 22

Candidate Starts for Funston_48:

(Start: 10 @33445 has 1 MA's), (Start: 11 @33430 has 1 MA's), (Start: 22 @33388 has 135 MA's), (69, 33130), (77, 33097), (88, 33058), (99, 32890),

Gene: Gadost_49 Start: 33392, Stop: 32853, Start Num: 22

Candidate Starts for Gadost_49:

(Start: 10 @33449 has 1 MA's), (Start: 11 @33434 has 1 MA's), (Start: 22 @33392 has 135 MA's), (69, 33134), (77, 33101), (88, 33062), (99, 32894),

Gene: Gail_54 Start: 34735, Stop: 34187, Start Num: 16

Candidate Starts for Gail_54:

(Start: 16 @34735 has 49 MA's), (Start: 19 @34720 has 213 MA's), (40, 34630), (54, 34594), (59, 34567), (62, 34522), (64, 34516), (66, 34492), (76, 34453), (79, 34444), (92, 34297), (97, 34252),

Gene: Garak_54 Start: 32912, Stop: 32364, Start Num: 19

Candidate Starts for Garak_54:

(6, 33026), (7, 33011), (Start: 16 @32927 has 49 MA's), (Start: 19 @32912 has 213 MA's), (63, 32702), (64, 32699), (76, 32636), (79, 32627), (92, 32474), (94, 32471),

Gene: GaugeLDP_48 Start: 33987, Stop: 33457, Start Num: 16

Candidate Starts for GaugeLDP_48:

(Start: 16 @33987 has 49 MA's), (Start: 19 @33972 has 213 MA's), (49, 33888), (56, 33867), (65, 33780), (69, 33759), (77, 33729), (78, 33726), (92, 33567), (96, 33549), (97, 33522),

Gene: Gemma_52 Start: 33745, Stop: 33155, Start Num: 19

Candidate Starts for Gemma_52:

(Start: 19 @33745 has 213 MA's), (Start: 22 @33739 has 135 MA's), (50, 33595), (55, 33586), (60, 33559), (69, 33475), (92, 33271), (97, 33223),

Gene: George_42 Start: 32544, Stop: 32017, Start Num: 18

Candidate Starts for George_42:

(Start: 18 @32544 has 22 MA's), (53, 32409), (55, 32403), (80, 32259), (102, 32040),

Gene: Georgie2_51 Start: 33676, Stop: 33155, Start Num: 19

Candidate Starts for Georgie2_51:

(Start: 16 @33691 has 49 MA's), (Start: 19 @33676 has 213 MA's), (54, 33562), (59, 33535), (62, 33490), (64, 33484), (66, 33460), (76, 33421), (79, 33412), (92, 33265), (96, 33247), (97, 33217),

Gene: Gilberta_51 Start: 33262, Stop: 32693, Start Num: 19

Candidate Starts for Gilberta_51:

(Start: 19 @33262 has 213 MA's), (52, 33127), (83, 32962), (92, 32806),

Gene: GingkoMaracino_53 Start: 33742, Stop: 33152, Start Num: 19

Candidate Starts for GingkoMaracino_53:

(Start: 19 @33742 has 213 MA's), (Start: 22 @33736 has 135 MA's), (50, 33592), (55, 33583), (60, 33556), (69, 33472), (92, 33268), (97, 33220),

Gene: Giroux_51 Start: 33720, Stop: 33157, Start Num: 21

Candidate Starts for Giroux_51:

(Start: 10 @33777 has 1 MA's), (Start: 11 @33762 has 1 MA's), (Start: 13 @33750 has 16 MA's), (Start: 21 @33720 has 7 MA's), (32, 33651), (55, 33573), (60, 33537), (69, 33453), (99, 33198),

Gene: Gladiator_50 Start: 32270, Stop: 31527, Start Num: 1

Candidate Starts for Gladiator_50:

(Start: 1 @32270 has 4 MA's), (2, 32255), (3, 32234), (4, 32204), (5, 32198), (Start: 19 @32072 has 213 MA's), (63, 31862), (64, 31859), (76, 31796), (79, 31787), (92, 31637), (94, 31634),

Gene: Gollum_39 Start: 29796, Stop: 29272, Start Num: 30

Candidate Starts for Gollum_39:

(Start: 30 @29796 has 36 MA's), (50, 29691), (92, 29379), (95, 29370), (96, 29361), (97, 29331),

Gene: GreedyLawyer_52 Start: 32793, Stop: 32206, Start Num: 16

Candidate Starts for GreedyLawyer_52:

(Start: 16 @32793 has 49 MA's), (Start: 19 @32778 has 213 MA's), (47, 32667), (54, 32649), (82, 32487), (89, 32460), (92, 32316), (94, 32313),

Gene: Grif_53 Start: 33931, Stop: 33341, Start Num: 19

Candidate Starts for Grif_53:

(Start: 19 @33931 has 213 MA's), (Start: 22 @33925 has 135 MA's), (50, 33781), (55, 33772), (60, 33745), (69, 33661), (92, 33457), (97, 33409),

Gene: Groupthink_54 Start: 33749, Stop: 33159, Start Num: 19

Candidate Starts for Groupthink_54:

(Start: 19 @33749 has 213 MA's), (Start: 22 @33743 has 135 MA's), (50, 33599), (55, 33590), (60, 33563), (69, 33479), (92, 33275), (97, 33227),

Gene: Grub_53 Start: 33848, Stop: 33258, Start Num: 19

Candidate Starts for Grub_53:

(Start: 19 @33848 has 213 MA's), (Start: 22 @33842 has 135 MA's), (50, 33698), (55, 33689), (60, 33662), (69, 33578), (92, 33374), (97, 33326),

Gene: Grum1_53 Start: 33856, Stop: 33266, Start Num: 19

Candidate Starts for Grum1_53:

(Start: 19 @33856 has 213 MA's), (Start: 22 @33850 has 135 MA's), (50, 33706), (55, 33697), (60, 33670), (69, 33586), (92, 33382), (97, 33334),

Gene: Gruunaga_52 Start: 32771, Stop: 32226, Start Num: 19

Candidate Starts for Gruunaga_52:

(Start: 1 @32969 has 4 MA's), (2, 32954), (3, 32933), (4, 32903), (5, 32897), (Start: 19 @32771 has 213 MA's), (63, 32561), (64, 32558), (76, 32495), (79, 32486), (92, 32336), (94, 32333),

Gene: GtownJaz_53 Start: 33858, Stop: 33268, Start Num: 19

Candidate Starts for GtownJaz_53:

(Start: 19 @33858 has 213 MA's), (Start: 22 @33852 has 135 MA's), (50, 33708), (55, 33699), (60, 33672), (69, 33588), (92, 33384), (97, 33336),

Gene: HamSlice_48 Start: 33386, Stop: 32847, Start Num: 22

Candidate Starts for HamSlice_48:

(Start: 10 @33443 has 1 MA's), (Start: 11 @33428 has 1 MA's), (Start: 22 @33386 has 135 MA's), (69, 33128), (77, 33095), (88, 33056), (99, 32888),

Gene: Hammer_53 Start: 32552, Stop: 31803, Start Num: 1

Candidate Starts for Hammer_53:

(Start: 1 @32552 has 4 MA's), (2, 32537), (3, 32516), (4, 32486), (5, 32480), (Start: 19 @32354 has 213 MA's), (63, 32144), (64, 32141), (76, 32078), (79, 32069), (92, 31913), (94, 31910),

Gene: Happiness_48 Start: 33390, Stop: 32854, Start Num: 22

Candidate Starts for Happiness_48:

(9, 33453), (Start: 22 @33390 has 135 MA's), (69, 33132), (77, 33099), (88, 33060), (99, 32895),

Gene: Harlequin_39 Start: 29803, Stop: 29279, Start Num: 30

Candidate Starts for Harlequin_39:

(Start: 30 @29803 has 36 MA's), (50, 29698), (92, 29386), (95, 29377), (96, 29368), (97, 29338),

Gene: HarryHoudini_51 Start: 34130, Stop: 33618, Start Num: 19

Candidate Starts for HarryHoudini_51:

(Start: 16 @34145 has 49 MA's), (Start: 19 @34130 has 213 MA's), (37, 34061), (54, 34025), (59, 33998), (62, 33953), (64, 33947), (66, 33923), (69, 33911), (76, 33884), (79, 33875), (83, 33857), (92, 33731),

Gene: HashRod_54 Start: 33884, Stop: 33297, Start Num: 19

Candidate Starts for HashRod_54:

(Start: 19 @33884 has 213 MA's), (Start: 22 @33878 has 135 MA's), (50, 33740), (55, 33731), (60, 33704), (61, 33701), (65, 33641), (69, 33620), (92, 33413), (97, 33365),

Gene: HaveUMetTed_54 Start: 33734, Stop: 33141, Start Num: 19

Candidate Starts for HaveUMetTed_54:

(Start: 19 @33734 has 213 MA's), (Start: 22 @33728 has 135 MA's), (50, 33581), (55, 33572), (60, 33545), (69, 33461), (92, 33257), (97, 33209),

Gene: Heathen_50 Start: 33373, Stop: 32780, Start Num: 13

Candidate Starts for Heathen_50:

(Start: 10 @33400 has 1 MA's), (Start: 11 @33385 has 1 MA's), (Start: 13 @33373 has 16 MA's), (Start: 21 @33343 has 7 MA's), (32, 33274), (55, 33196), (59, 33163), (60, 33160), (69, 33076), (99, 32821),

Gene: Heffalump_49 Start: 34422, Stop: 33904, Start Num: 19

Candidate Starts for Heffalump_49:

(Start: 16 @34437 has 49 MA's), (Start: 19 @34422 has 213 MA's), (54, 34308), (59, 34281), (64, 34230), (66, 34206), (76, 34167), (79, 34158), (92, 34014), (96, 33996), (97, 33966),

Gene: HelDan_50 Start: 33595, Stop: 33032, Start Num: 21

Candidate Starts for HelDan_50:

(Start: 10 @33652 has 1 MA's), (Start: 11 @33637 has 1 MA's), (Start: 13 @33625 has 16 MA's), (Start: 21 @33595 has 7 MA's), (32, 33526), (55, 33448), (59, 33415), (60, 33412), (69, 33328), (99, 33073),

Gene: Heliosoles_52 Start: 33752, Stop: 33162, Start Num: 19

Candidate Starts for Heliosoles_52:

(Start: 19 @33752 has 213 MA's), (Start: 22 @33746 has 135 MA's), (50, 33602), (55, 33593), (60, 33566), (69, 33482), (92, 33278), (97, 33230),

Gene: Helmet_54 Start: 32912, Stop: 32364, Start Num: 19

Candidate Starts for Helmet_54:

(6, 33026), (7, 33011), (Start: 16 @32927 has 49 MA's), (Start: 19 @32912 has 213 MA's), (63, 32702), (64, 32699), (76, 32636), (79, 32627), (92, 32474), (94, 32471),

Gene: Herbertwm_50 Start: 33563, Stop: 32988, Start Num: 19

Candidate Starts for Herbertwm_50:

(Start: 16 @33578 has 49 MA's), (Start: 19 @33563 has 213 MA's), (46, 33458), (53, 33437), (61, 33407), (63, 33365), (77, 33296), (89, 33248), (92, 33095),

Gene: Hercules11_53 Start: 33865, Stop: 33275, Start Num: 19

Candidate Starts for Hercules11_53:

(Start: 19 @33865 has 213 MA's), (Start: 22 @33859 has 135 MA's), (50, 33715), (55, 33706), (60, 33679), (69, 33595), (92, 33391), (97, 33343),

Gene: Hexamo_52 Start: 32557, Stop: 31985, Start Num: 16

Candidate Starts for Hexamo_52:

(6, 32656), (7, 32641), (Start: 16 @32557 has 49 MA's), (Start: 19 @32542 has 213 MA's), (63, 32332), (64, 32329), (76, 32266), (79, 32257), (92, 32095), (94, 32092),

Gene: Hiro_39 Start: 30058, Stop: 29534, Start Num: 30

Candidate Starts for Hiro_39:

(Start: 30 @30058 has 36 MA's), (50, 29953), (92, 29641), (95, 29632), (96, 29623), (97, 29593),

Gene: Holli_48 Start: 33235, Stop: 32639, Start Num: 10

Candidate Starts for Holli_48:

(Start: 10 @33235 has 1 MA's), (Start: 11 @33220 has 1 MA's), (Start: 22 @33178 has 135 MA's), (69, 32920), (77, 32887), (88, 32848), (99, 32680),

Gene: Hookmount_49 Start: 33696, Stop: 33097, Start Num: 13

Candidate Starts for Hookmount_49:

(Start: 10 @33723 has 1 MA's), (Start: 11 @33708 has 1 MA's), (Start: 13 @33696 has 16 MA's), (Start: 21 @33666 has 7 MA's), (32, 33597), (55, 33519), (69, 33399), (99, 33138),

Gene: Hoot_47 Start: 30644, Stop: 30057, Start Num: 16

Candidate Starts for Hoot_47:

(Start: 16 @30644 has 49 MA's), (Start: 19 @30629 has 213 MA's), (47, 30518), (54, 30500), (82, 30338), (89, 30311), (92, 30167), (94, 30164),

Gene: HortumSL17_50 Start: 33634, Stop: 33104, Start Num: 16

Candidate Starts for HortumSL17_50:

(Start: 16 @33634 has 49 MA's), (Start: 19 @33619 has 213 MA's), (41, 33526), (54, 33502), (64, 33424), (76, 33361), (92, 33211),

Gene: Houdini22_49 Start: 33392, Stop: 32853, Start Num: 22

Candidate Starts for Houdini22_49:

(Start: 10 @33449 has 1 MA's), (Start: 11 @33434 has 1 MA's), (Start: 22 @33392 has 135 MA's), (69, 33134), (77, 33101), (88, 33062), (99, 32894),

Gene: HuhtaEnerson15_43 Start: 32535, Stop: 32008, Start Num: 18
Candidate Starts for HuhtaEnerson15_43:
(Start: 18 @32535 has 22 MA's), (53, 32400), (55, 32394), (80, 32250), (101, 32049), (102, 32031),

Gene: Hutc2_50 Start: 32814, Stop: 32251, Start Num: 19
Candidate Starts for Hutc2_50:
(Start: 19 @32814 has 213 MA's), (52, 32685), (83, 32520), (92, 32364),

Gene: ICleared_49 Start: 33417, Stop: 32878, Start Num: 22
Candidate Starts for ICleared_49:
(Start: 10 @33474 has 1 MA's), (Start: 11 @33459 has 1 MA's), (Start: 22 @33417 has 135 MA's),
(69, 33159), (77, 33126), (88, 33087), (99, 32919),

Gene: Iceman_49 Start: 33674, Stop: 33135, Start Num: 22
Candidate Starts for Iceman_49:
(Start: 10 @33731 has 1 MA's), (Start: 11 @33716 has 1 MA's), (Start: 22 @33674 has 135 MA's),
(69, 33416), (77, 33383), (88, 33344), (99, 33176),

Gene: Idleandcovert_51 Start: 33751, Stop: 33158, Start Num: 13
Candidate Starts for Idleandcovert_51:
(Start: 10 @33778 has 1 MA's), (Start: 11 @33763 has 1 MA's), (Start: 13 @33751 has 16 MA's),
(Start: 21 @33721 has 7 MA's), (32, 33652), (55, 33574), (60, 33538), (69, 33454), (99, 33199),

Gene: Indra_55 Start: 32928, Stop: 32365, Start Num: 16
Candidate Starts for Indra_55:
(6, 33027), (7, 33012), (Start: 16 @32928 has 49 MA's), (Start: 19 @32913 has 213 MA's), (63,
32703), (64, 32700), (76, 32637), (79, 32628), (92, 32475), (94, 32472),

Gene: Insomnia_50 Start: 33325, Stop: 32756, Start Num: 19
Candidate Starts for Insomnia_50:
(Start: 19 @33325 has 213 MA's), (52, 33190), (83, 33025), (92, 32869),

Gene: Iracema64_50 Start: 33652, Stop: 33113, Start Num: 22
Candidate Starts for Iracema64_50:
(Start: 10 @33709 has 1 MA's), (Start: 11 @33694 has 1 MA's), (Start: 22 @33652 has 135 MA's),
(69, 33394), (77, 33361), (88, 33322), (99, 33154),

Gene: IronMan_50 Start: 34814, Stop: 34269, Start Num: 19
Candidate Starts for IronMan_50:
(Start: 16 @34829 has 49 MA's), (Start: 19 @34814 has 213 MA's), (61, 34685), (63, 34643), (77,
34574), (82, 34553), (89, 34526), (92, 34376), (96, 34358),

Gene: Isiphiwo_50 Start: 32318, Stop: 31740, Start Num: 19
Candidate Starts for Isiphiwo_50:
(Start: 16 @32333 has 49 MA's), (Start: 19 @32318 has 213 MA's), (47, 32207), (54, 32189), (82,
32027), (89, 32000), (92, 31850), (94, 31847),

Gene: Iwokeuplikedis_53 Start: 33759, Stop: 33244, Start Num: 19
Candidate Starts for Iwokeuplikedis_53:
(Start: 16 @33774 has 49 MA's), (Start: 19 @33759 has 213 MA's), (54, 33648), (59, 33621), (62,
33576), (64, 33570), (66, 33546), (76, 33507), (92, 33351), (96, 33333),

Gene: JHC117_53 Start: 33855, Stop: 33265, Start Num: 19

Candidate Starts for JHC117_53:

(Start: 19 @33855 has 213 MA's), (Start: 22 @33849 has 135 MA's), (50, 33705), (55, 33696), (60, 33669), (69, 33585), (92, 33381), (97, 33333),

Gene: JSwag_53 Start: 32482, Stop: 31940, Start Num: 25

Candidate Starts for JSwag_53:

(Start: 25 @32482 has 19 MA's), (28, 32476), (47, 32371), (56, 32344), (57, 32341), (70, 32230), (72, 32209), (77, 32200), (79, 32191), (92, 32044), (97, 31999),

Gene: Jaan_50 Start: 34986, Stop: 34435, Start Num: 19

Candidate Starts for Jaan_50:

(Start: 16 @35001 has 49 MA's), (Start: 19 @34986 has 213 MA's), (61, 34854), (63, 34812), (71, 34755), (77, 34743), (82, 34722), (89, 34695), (92, 34542),

Gene: Jabiru_43 Start: 32142, Stop: 31618, Start Num: 18

Candidate Starts for Jabiru_43:

(Start: 18 @32142 has 22 MA's), (53, 32010), (55, 32004), (80, 31860), (102, 31641),

Gene: Jabith_51 Start: 33326, Stop: 32757, Start Num: 19

Candidate Starts for Jabith_51:

(Start: 19 @33326 has 213 MA's), (52, 33191), (83, 33026), (92, 32870),

Gene: Jaykayelowell_47 Start: 33381, Stop: 32842, Start Num: 22

Candidate Starts for Jaykayelowell_47:

(Start: 10 @33438 has 1 MA's), (Start: 11 @33423 has 1 MA's), (Start: 22 @33381 has 135 MA's), (69, 33123), (77, 33090), (88, 33051), (99, 32883),

Gene: Jeeves_54 Start: 33492, Stop: 32962, Start Num: 19

Candidate Starts for Jeeves_54:

(Start: 16 @33507 has 49 MA's), (Start: 19 @33492 has 213 MA's), (40, 33405), (54, 33372), (59, 33345), (62, 33300), (64, 33294), (66, 33270), (76, 33231), (79, 33222), (92, 33072), (97, 33027),

Gene: Jeffabunny_52 Start: 32584, Stop: 32021, Start Num: 16

Candidate Starts for Jeffabunny_52:

(6, 32683), (7, 32668), (Start: 16 @32584 has 49 MA's), (Start: 19 @32569 has 213 MA's), (63, 32359), (64, 32356), (76, 32293), (79, 32284), (92, 32131), (94, 32128),

Gene: JenCasNa_54 Start: 33856, Stop: 33266, Start Num: 19

Candidate Starts for JenCasNa_54:

(Start: 19 @33856 has 213 MA's), (Start: 22 @33850 has 135 MA's), (50, 33706), (55, 33697), (60, 33670), (69, 33586), (92, 33382), (97, 33334),

Gene: JeppNRM_54 Start: 33750, Stop: 33160, Start Num: 19

Candidate Starts for JeppNRM_54:

(Start: 19 @33750 has 213 MA's), (Start: 22 @33744 has 135 MA's), (50, 33600), (55, 33591), (60, 33564), (69, 33480), (92, 33276), (97, 33228),

Gene: Jerm_52 Start: 34210, Stop: 33683, Start Num: 19

Candidate Starts for Jerm_52:

(Start: 16 @34225 has 49 MA's), (Start: 19 @34210 has 213 MA's), (39, 34123), (54, 34087), (59, 34060), (62, 34015), (64, 34009), (66, 33985), (76, 33946), (92, 33793), (96, 33775), (97, 33745),

Gene: Jester_39 Start: 29734, Stop: 29210, Start Num: 30

Candidate Starts for Jester_39:

(Start: 30 @29734 has 36 MA's), (50, 29629), (92, 29317), (95, 29308), (96, 29299), (97, 29269),

Gene: JetBlade_49 Start: 33382, Stop: 32843, Start Num: 22

Candidate Starts for JetBlade_49:

(Start: 10 @33439 has 1 MA's), (Start: 11 @33424 has 1 MA's), (Start: 22 @33382 has 135 MA's), (69, 33124), (77, 33091), (88, 33052), (99, 32884),

Gene: JewelBug_53 Start: 32963, Stop: 32376, Start Num: 16

Candidate Starts for JewelBug_53:

(Start: 16 @32963 has 49 MA's), (Start: 19 @32948 has 213 MA's), (47, 32837), (54, 32819), (82, 32657), (89, 32630), (92, 32486), (94, 32483),

Gene: Jobu08_52 Start: 33688, Stop: 33098, Start Num: 19

Candidate Starts for Jobu08_52:

(Start: 19 @33688 has 213 MA's), (Start: 22 @33682 has 135 MA's), (50, 33538), (55, 33529), (60, 33502), (69, 33418), (92, 33214), (97, 33166),

Gene: JoongJeon_48 Start: 33385, Stop: 32846, Start Num: 22

Candidate Starts for JoongJeon_48:

(Start: 10 @33442 has 1 MA's), (Start: 11 @33427 has 1 MA's), (Start: 22 @33385 has 135 MA's), (69, 33127), (77, 33094), (88, 33055), (99, 32887),

Gene: Jordennis_52 Start: 32489, Stop: 31890, Start Num: 16

Candidate Starts for Jordennis_52:

(Start: 16 @32489 has 49 MA's), (Start: 19 @32474 has 213 MA's), (47, 32351), (54, 32333), (82, 32171), (89, 32144), (92, 32000), (94, 31997),

Gene: Joselito_51 Start: 33271, Stop: 32702, Start Num: 19

Candidate Starts for Joselito_51:

(Start: 19 @33271 has 213 MA's), (52, 33136), (83, 32971), (92, 32815),

Gene: JoshKayV_52 Start: 34313, Stop: 33765, Start Num: 16

Candidate Starts for JoshKayV_52:

(Start: 16 @34313 has 49 MA's), (Start: 19 @34298 has 213 MA's), (54, 34169), (59, 34142), (66, 34067), (76, 34028), (79, 34019), (92, 33875), (96, 33857), (97, 33827),

Gene: Journey13_44 Start: 32029, Stop: 31511, Start Num: 16

Candidate Starts for Journey13_44:

(Start: 16 @32029 has 49 MA's), (Start: 19 @32014 has 213 MA's), (20, 32011), (54, 31906), (59, 31879), (62, 31834), (64, 31828), (66, 31804), (76, 31765), (92, 31615), (96, 31597),

Gene: Jsquared_48 Start: 32621, Stop: 32070, Start Num: 19

Candidate Starts for Jsquared_48:

(Start: 19 @32621 has 213 MA's), (43, 32543), (61, 32477), (73, 32372), (77, 32366), (82, 32345), (84, 32336), (89, 32318), (92, 32180),

Gene: KADY_53 Start: 33884, Stop: 33297, Start Num: 19

Candidate Starts for KADY_53:

(Start: 19 @33884 has 213 MA's), (Start: 22 @33878 has 135 MA's), (50, 33740), (55, 33731), (60, 33704), (61, 33701), (65, 33641), (69, 33620), (92, 33413), (97, 33365),

Gene: KFPoly_48 Start: 33382, Stop: 32843, Start Num: 22

Candidate Starts for KFPoly_48:

(Start: 10 @33439 has 1 MA's), (Start: 11 @33424 has 1 MA's), (Start: 22 @33382 has 135 MA's), (69, 33124), (77, 33091), (88, 33052), (99, 32884),

Gene: Kalb97_54 Start: 33748, Stop: 33158, Start Num: 19

Candidate Starts for Kalb97_54:

(Start: 19 @33748 has 213 MA's), (Start: 22 @33742 has 135 MA's), (50, 33598), (55, 33589), (60, 33562), (69, 33478), (92, 33274), (97, 33226),

Gene: Kalnoky_54 Start: 33746, Stop: 33156, Start Num: 19

Candidate Starts for Kalnoky_54:

(Start: 19 @33746 has 213 MA's), (Start: 22 @33740 has 135 MA's), (50, 33596), (55, 33587), (60, 33560), (69, 33476), (92, 33272), (97, 33224),

Gene: Kalpine_48 Start: 33928, Stop: 33407, Start Num: 19

Candidate Starts for Kalpine_48:

(Start: 16 @33943 has 49 MA's), (Start: 19 @33928 has 213 MA's), (59, 33781), (62, 33736), (64, 33730), (66, 33706), (76, 33667), (92, 33517), (96, 33499), (97, 33469),

Gene: Kamy_49 Start: 33390, Stop: 32851, Start Num: 22

Candidate Starts for Kamy_49:

(Start: 10 @33447 has 1 MA's), (Start: 11 @33432 has 1 MA's), (Start: 22 @33390 has 135 MA's), (69, 33132), (77, 33099), (88, 33060), (99, 32892),

Gene: Katalie136_48 Start: 33364, Stop: 32825, Start Num: 22

Candidate Starts for Katalie136_48:

(Start: 10 @33421 has 1 MA's), (Start: 11 @33406 has 1 MA's), (Start: 22 @33364 has 135 MA's), (69, 33106), (77, 33073), (88, 33034), (99, 32866),

Gene: KatherineG_55 Start: 33020, Stop: 32460, Start Num: 25

Candidate Starts for KatherineG_55:

(Start: 25 @33020 has 19 MA's), (28, 33014), (47, 32915), (56, 32888), (57, 32885), (70, 32774), (72, 32753), (77, 32744), (79, 32735), (100, 32516),

Gene: Kazan_53 Start: 32784, Stop: 32212, Start Num: 19

Candidate Starts for Kazan_53:

(Start: 16 @32799 has 49 MA's), (Start: 19 @32784 has 213 MA's), (47, 32673), (54, 32655), (82, 32493), (89, 32466), (92, 32322), (94, 32319),

Gene: Kerberos_52 Start: 33468, Stop: 32890, Start Num: 19

Candidate Starts for Kerberos_52:

(Start: 16 @33483 has 49 MA's), (Start: 19 @33468 has 213 MA's), (50, 33351), (53, 33345), (59, 33321), (63, 33273), (67, 33243), (84, 33174), (86, 33165), (89, 33156), (92, 33003),

Gene: Keziacharles14_50 Start: 34743, Stop: 34183, Start Num: 19

Candidate Starts for Keziacharles14_50:

(Start: 16 @34758 has 49 MA's), (Start: 19 @34743 has 213 MA's), (45, 34641), (46, 34638), (53, 34620), (89, 34431), (92, 34290),

Gene: KingCyrus_52 Start: 35409, Stop: 34882, Start Num: 19

Candidate Starts for KingCyrus_52:

(Start: 16 @35424 has 49 MA's), (Start: 19 @35409 has 213 MA's), (39, 35322), (54, 35286), (59, 35259), (62, 35214), (64, 35208), (66, 35184), (76, 35145), (92, 34992), (96, 34974), (97, 34944),

Gene: Kingmustik0402_49 Start: 33377, Stop: 32838, Start Num: 22

Candidate Starts for Kingmustik0402_49:

(Start: 10 @33434 has 1 MA's), (Start: 11 @33419 has 1 MA's), (Start: 22 @33377 has 135 MA's), (69, 33119), (77, 33086), (88, 33047), (99, 32879),

Gene: Kipper29_52 Start: 32812, Stop: 32225, Start Num: 16

Candidate Starts for Kipper29_52:

(Start: 16 @32812 has 49 MA's), (Start: 19 @32797 has 213 MA's), (47, 32686), (54, 32668), (82, 32506), (89, 32479), (92, 32335), (94, 32332),

Gene: Koduck_51 Start: 32906, Stop: 32382, Start Num: 19

Candidate Starts for Koduck_51:

(Start: 16 @32921 has 49 MA's), (Start: 19 @32906 has 213 MA's), (39, 32819), (50, 32798), (54, 32786), (59, 32759), (62, 32714), (64, 32708), (66, 32684), (76, 32645), (92, 32492),

Gene: Koko_53 Start: 32908, Stop: 32351, Start Num: 19

Candidate Starts for Koko_53:

(Start: 1 @33106 has 4 MA's), (2, 33091), (3, 33070), (4, 33040), (5, 33034), (Start: 19 @32908 has 213 MA's), (63, 32698), (64, 32695), (76, 32632), (79, 32623), (92, 32461), (94, 32458),

Gene: Koreni_48 Start: 33069, Stop: 32530, Start Num: 22

Candidate Starts for Koreni_48:

(Start: 10 @33126 has 1 MA's), (Start: 11 @33111 has 1 MA's), (Start: 22 @33069 has 135 MA's), (69, 32811), (77, 32778), (88, 32739), (99, 32571),

Gene: Kratak_49 Start: 33545, Stop: 33012, Start Num: 22

Candidate Starts for Kratak_49:

(Start: 22 @33545 has 135 MA's), (69, 33287), (77, 33254), (88, 33215), (99, 33053),

Gene: Kremtemulon_47 Start: 33336, Stop: 32800, Start Num: 22

Candidate Starts for Kremtemulon_47:

(Start: 10 @33393 has 1 MA's), (Start: 11 @33378 has 1 MA's), (Start: 22 @33336 has 135 MA's), (69, 33078), (77, 33045), (88, 33006), (99, 32841),

Gene: Krishelle_39 Start: 30158, Stop: 29634, Start Num: 30

Candidate Starts for Krishelle_39:

(Start: 30 @30158 has 36 MA's), (50, 30053), (92, 29741), (95, 29732), (96, 29723), (97, 29693),

Gene: Kyee_49 Start: 33386, Stop: 32847, Start Num: 22

Candidate Starts for Kyee_49:

(Start: 10 @33443 has 1 MA's), (Start: 11 @33428 has 1 MA's), (Start: 22 @33386 has 135 MA's), (69, 33128), (77, 33095), (88, 33056), (99, 32888),

Gene: L5_49 Start: 32996, Stop: 32457, Start Num: 16

Candidate Starts for L5_49:

(Start: 16 @32996 has 49 MA's), (Start: 19 @32981 has 213 MA's), (39, 32894), (50, 32873), (54, 32861), (59, 32834), (62, 32789), (64, 32783), (66, 32759), (76, 32720), (92, 32567),

Gene: LBerry_54 Start: 33860, Stop: 33270, Start Num: 19

Candidate Starts for LBerry_54:

(Start: 19 @33860 has 213 MA's), (Start: 22 @33854 has 135 MA's), (50, 33710), (55, 33701), (60, 33674), (69, 33590), (92, 33386), (97, 33338),

Gene: LHTSCC_51 Start: 33807, Stop: 33271, Start Num: 22

Candidate Starts for LHTSCC_51:

(9, 33870), (Start: 22 @33807 has 135 MA's), (69, 33549), (77, 33516), (88, 33477), (99, 33312),

Gene: LadyBird_55 Start: 34524, Stop: 34000, Start Num: 19

Candidate Starts for LadyBird_55:

(Start: 16 @34539 has 49 MA's), (Start: 19 @34524 has 213 MA's), (48, 34419), (59, 34374), (66, 34299), (76, 34260), (92, 34110), (96, 34092), (97, 34062),

Gene: Lambert1_49 Start: 33695, Stop: 33096, Start Num: 13

Candidate Starts for Lambert1_49:

(Start: 10 @33722 has 1 MA's), (Start: 11 @33707 has 1 MA's), (Start: 13 @33695 has 16 MA's), (Start: 21 @33665 has 7 MA's), (32, 33596), (55, 33518), (69, 33398), (99, 33137),

Gene: Landor_50 Start: 34892, Stop: 34347, Start Num: 19

Candidate Starts for Landor_50:

(Start: 16 @34907 has 49 MA's), (Start: 19 @34892 has 213 MA's), (61, 34763), (63, 34721), (71, 34664), (77, 34652), (82, 34631), (89, 34604), (92, 34454), (96, 34436),

Gene: LappelDuVide_48 Start: 33387, Stop: 32848, Start Num: 22

Candidate Starts for LappelDuVide_48:

(Start: 10 @33444 has 1 MA's), (Start: 11 @33429 has 1 MA's), (Start: 22 @33387 has 135 MA's), (69, 33129), (77, 33096), (88, 33057), (99, 32889),

Gene: LarryKay_53 Start: 33886, Stop: 33299, Start Num: 19

Candidate Starts for LarryKay_53:

(Start: 19 @33886 has 213 MA's), (Start: 22 @33880 has 135 MA's), (50, 33742), (55, 33733), (60, 33706), (61, 33703), (65, 33643), (69, 33622), (92, 33415), (97, 33367),

Gene: LastResort_53 Start: 32534, Stop: 31992, Start Num: 25

Candidate Starts for LastResort_53:

(Start: 25 @32534 has 19 MA's), (28, 32528), (47, 32423), (56, 32396), (57, 32393), (70, 32282), (72, 32261), (77, 32252), (79, 32243), (92, 32096), (97, 32051),

Gene: Lemur_49 Start: 33385, Stop: 32846, Start Num: 22

Candidate Starts for Lemur_49:

(Start: 10 @33442 has 1 MA's), (Start: 11 @33427 has 1 MA's), (Start: 22 @33385 has 135 MA's), (69, 33127), (77, 33094), (88, 33055), (99, 32887),

Gene: LeoAvram_49 Start: 33388, Stop: 32849, Start Num: 22

Candidate Starts for LeoAvram_49:

(Start: 10 @33445 has 1 MA's), (Start: 11 @33430 has 1 MA's), (Start: 22 @33388 has 135 MA's), (69, 33130), (77, 33097), (88, 33058), (99, 32890),

Gene: Leogania_50 Start: 34849, Stop: 34322, Start Num: 19

Candidate Starts for Leogania_50:

(Start: 16 @34864 has 49 MA's), (Start: 19 @34849 has 213 MA's), (39, 34765), (54, 34723), (59, 34696), (62, 34651), (64, 34645), (66, 34621), (69, 34609), (76, 34582), (92, 34432), (96, 34414), (97, 34384),

Gene: LilTurb_51 Start: 34106, Stop: 33573, Start Num: 16

Candidate Starts for LilTurb_51:

(Start: 16 @34106 has 49 MA's), (Start: 19 @34091 has 213 MA's), (39, 34007), (54, 33971), (62, 33899), (64, 33893), (66, 33869), (67, 33866), (69, 33857), (76, 33830), (92, 33683), (96, 33665), (97, 33635),

Gene: Lilbunny_50 Start: 32543, Stop: 31995, Start Num: 19

Candidate Starts for Lilbunny_50:

(7, 32642), (8, 32639), (Start: 16 @32558 has 49 MA's), (Start: 19 @32543 has 213 MA's), (63, 32333), (64, 32330), (76, 32267), (79, 32258), (92, 32105), (94, 32102),

Gene: Lilith_54 Start: 33849, Stop: 33259, Start Num: 19

Candidate Starts for Lilith_54:

(Start: 19 @33849 has 213 MA's), (Start: 22 @33843 has 135 MA's), (50, 33699), (55, 33690), (60, 33663), (69, 33579), (92, 33375), (97, 33327),

Gene: Lillie_39 Start: 29798, Stop: 29274, Start Num: 30

Candidate Starts for Lillie_39:

(Start: 30 @29798 has 36 MA's), (50, 29693), (92, 29381), (95, 29372), (96, 29363), (97, 29333),

Gene: LittleB_49 Start: 33389, Stop: 32850, Start Num: 22

Candidate Starts for LittleB_49:

(Start: 10 @33446 has 1 MA's), (Start: 11 @33431 has 1 MA's), (Start: 22 @33389 has 135 MA's), (69, 33131), (77, 33098), (88, 33059), (99, 32891),

Gene: LittleCherry_43 Start: 32555, Stop: 32028, Start Num: 18

Candidate Starts for LittleCherry_43:

(Start: 18 @32555 has 22 MA's), (53, 32420), (55, 32414), (80, 32270), (101, 32069), (102, 32051),

Gene: LittleGuy_49 Start: 33284, Stop: 32745, Start Num: 22

Candidate Starts for LittleGuy_49:

(Start: 10 @33341 has 1 MA's), (Start: 11 @33326 has 1 MA's), (Start: 22 @33284 has 135 MA's), (69, 33026), (77, 32993), (88, 32954), (99, 32786),

Gene: LochMonster_50 Start: 33624, Stop: 33085, Start Num: 22

Candidate Starts for LochMonster_50:

(Start: 10 @33681 has 1 MA's), (Start: 11 @33666 has 1 MA's), (Start: 22 @33624 has 135 MA's), (69, 33366), (77, 33333), (88, 33294), (99, 33126),

Gene: LoneWolf_51 Start: 33659, Stop: 33093, Start Num: 19

Candidate Starts for LoneWolf_51:

(Start: 16 @33674 has 49 MA's), (Start: 19 @33659 has 213 MA's), (45, 33557), (46, 33554), (65, 33443), (89, 33344), (92, 33200),

Gene: Looper_54 Start: 32511, Stop: 31969, Start Num: 25

Candidate Starts for Looper_54:

(Start: 25 @32511 has 19 MA's), (28, 32505), (47, 32400), (56, 32373), (57, 32370), (70, 32259), (72, 32238), (77, 32229), (79, 32220), (92, 32073), (97, 32028),

Gene: Lorenzo_49 Start: 33388, Stop: 32849, Start Num: 22

Candidate Starts for Lorenzo_49:

(Start: 10 @33445 has 1 MA's), (Start: 11 @33430 has 1 MA's), (Start: 22 @33388 has 135 MA's), (69, 33130), (77, 33097), (88, 33058), (99, 32890),

Gene: Loser_52 Start: 34655, Stop: 34110, Start Num: 16

Candidate Starts for Loser_52:

(Start: 16 @34655 has 49 MA's), (Start: 19 @34640 has 213 MA's), (54, 34520), (59, 34493), (62, 34448), (64, 34442), (66, 34418), (74, 34382), (76, 34379), (79, 34370), (92, 34223), (96, 34205), (97, 34175),

Gene: Louie6_52 Start: 33885, Stop: 33298, Start Num: 19

Candidate Starts for Louie6_52:

(Start: 19 @33885 has 213 MA's), (Start: 22 @33879 has 135 MA's), (50, 33741), (55, 33732), (60, 33705), (61, 33702), (65, 33642), (69, 33621), (92, 33414), (97, 33366),

Gene: Luchador_54 Start: 35277, Stop: 34750, Start Num: 19

Candidate Starts for Luchador_54:

(Start: 16 @35292 has 49 MA's), (Start: 19 @35277 has 213 MA's), (40, 35190), (54, 35157), (59, 35130), (62, 35085), (64, 35079), (66, 35055), (76, 35016), (79, 35007), (92, 34860), (97, 34815),

Gene: Lucivia_51 Start: 33320, Stop: 32751, Start Num: 19

Candidate Starts for Lucivia_51:

(Start: 19 @33320 has 213 MA's), (52, 33185), (83, 33020), (92, 32864),

Gene: Lucyedi_51 Start: 33497, Stop: 32934, Start Num: 16

Candidate Starts for Lucyedi_51:

(Start: 16 @33497 has 49 MA's), (Start: 19 @33482 has 213 MA's), (44, 33365), (62, 33263), (64, 33257), (76, 33194), (79, 33185), (92, 33041),

Gene: LugYA_56 Start: 33857, Stop: 33267, Start Num: 19

Candidate Starts for LugYA_56:

(Start: 19 @33857 has 213 MA's), (Start: 22 @33851 has 135 MA's), (50, 33707), (55, 33698), (60, 33671), (69, 33587), (92, 33383), (97, 33335),

Gene: Lunsford_50 Start: 33382, Stop: 32843, Start Num: 22

Candidate Starts for Lunsford_50:

(Start: 10 @33439 has 1 MA's), (Start: 11 @33424 has 1 MA's), (Start: 22 @33382 has 135 MA's), (69, 33124), (77, 33091), (88, 33052), (99, 32884),

Gene: MA5_50 Start: 33050, Stop: 32487, Start Num: 22

Candidate Starts for MA5_50:

(Start: 10 @33107 has 1 MA's), (Start: 11 @33092 has 1 MA's), (Start: 22 @33050 has 135 MA's), (32, 32981), (55, 32903), (60, 32867), (69, 32783), (99, 32528),

Gene: MaCh_51 Start: 33250, Stop: 32684, Start Num: 19

Candidate Starts for MaCh_51:

(Start: 19 @33250 has 213 MA's), (58, 33097), (83, 32956), (92, 32797),

Gene: Mabel_50 Start: 32855, Stop: 32286, Start Num: 19

Candidate Starts for Mabel_50:

(Start: 19 @32855 has 213 MA's), (52, 32720), (83, 32555), (92, 32399),

Gene: MadMarie_53 Start: 33858, Stop: 33268, Start Num: 19

Candidate Starts for MadMarie_53:

(Start: 19 @33858 has 213 MA's), (Start: 22 @33852 has 135 MA's), (50, 33708), (55, 33699), (60, 33672), (69, 33588), (92, 33384), (97, 33336),

Gene: Mainiac_53 Start: 33850, Stop: 33260, Start Num: 19

Candidate Starts for Mainiac_53:

(Start: 19 @33850 has 213 MA's), (Start: 22 @33844 has 135 MA's), (50, 33700), (55, 33691), (60, 33664), (69, 33580), (92, 33376), (97, 33328),

Gene: Malinsilva_55 Start: 33848, Stop: 33258, Start Num: 19

Candidate Starts for Malinsilva_55:

(Start: 19 @33848 has 213 MA's), (Start: 22 @33842 has 135 MA's), (50, 33698), (55, 33689), (60, 33662), (69, 33578), (92, 33374), (97, 33326),

Gene: Maminiaina_49 Start: 33426, Stop: 32860, Start Num: 19

Candidate Starts for Maminiaina_49:

(Start: 16 @33441 has 49 MA's), (Start: 19 @33426 has 213 MA's), (45, 33324), (46, 33321), (65, 33210), (89, 33111), (92, 32967),

Gene: Manu_53 Start: 33749, Stop: 33159, Start Num: 19

Candidate Starts for Manu_53:

(Start: 19 @33749 has 213 MA's), (Start: 22 @33743 has 135 MA's), (50, 33599), (55, 33590), (60, 33563), (69, 33479), (92, 33275), (97, 33227),

Gene: MarQuardt_53 Start: 33858, Stop: 33268, Start Num: 19

Candidate Starts for MarQuardt_53:

(Start: 19 @33858 has 213 MA's), (Start: 22 @33852 has 135 MA's), (50, 33708), (55, 33699), (60, 33672), (69, 33588), (92, 33384), (97, 33336),

Gene: Margo_49 Start: 33721, Stop: 33122, Start Num: 13

Candidate Starts for Margo_49:

(Start: 10 @33748 has 1 MA's), (Start: 11 @33733 has 1 MA's), (Start: 13 @33721 has 16 MA's), (Start: 21 @33691 has 7 MA's), (32, 33622), (55, 33544), (69, 33424), (99, 33163),

Gene: Marie_53 Start: 33856, Stop: 33266, Start Num: 19

Candidate Starts for Marie_53:

(Start: 19 @33856 has 213 MA's), (Start: 22 @33850 has 135 MA's), (50, 33706), (55, 33697), (60, 33670), (69, 33586), (92, 33382), (97, 33334),

Gene: Marius_54 Start: 33746, Stop: 33156, Start Num: 19

Candidate Starts for Marius_54:

(Start: 19 @33746 has 213 MA's), (Start: 22 @33740 has 135 MA's), (50, 33596), (55, 33587), (60, 33560), (69, 33476), (92, 33272), (97, 33224),

Gene: Maverick_49 Start: 33388, Stop: 32849, Start Num: 22

Candidate Starts for Maverick_49:

(Start: 10 @33445 has 1 MA's), (Start: 11 @33430 has 1 MA's), (Start: 22 @33388 has 135 MA's), (69, 33130), (77, 33097), (88, 33058), (99, 32890),

Gene: Maxo_50 Start: 33390, Stop: 32851, Start Num: 22

Candidate Starts for Maxo_50:

(Start: 10 @33447 has 1 MA's), (Start: 11 @33432 has 1 MA's), (Start: 22 @33390 has 135 MA's), (69, 33132), (77, 33099), (88, 33060), (99, 32892),

Gene: Mazhar510_49 Start: 33389, Stop: 32850, Start Num: 22

Candidate Starts for Mazhar510_49:

(Start: 10 @33446 has 1 MA's), (Start: 11 @33431 has 1 MA's), (Start: 22 @33389 has 135 MA's), (69, 33131), (77, 33098), (88, 33059), (99, 32891),

Gene: McFly_52 Start: 32778, Stop: 32206, Start Num: 19

Candidate Starts for McFly_52:

(Start: 16 @32793 has 49 MA's), (Start: 19 @32778 has 213 MA's), (47, 32667), (54, 32649), (82, 32487), (89, 32460), (92, 32316), (94, 32313),

Gene: Medusa_49 Start: 33387, Stop: 32848, Start Num: 22

Candidate Starts for Medusa_49:

(Start: 10 @33444 has 1 MA's), (Start: 11 @33429 has 1 MA's), (Start: 22 @33387 has 135 MA's), (69, 33129), (77, 33096), (88, 33057), (99, 32889),

Gene: MeeZee_49 Start: 33385, Stop: 32846, Start Num: 22

Candidate Starts for MeeZee_49:

(Start: 10 @33442 has 1 MA's), (Start: 11 @33427 has 1 MA's), (Start: 22 @33385 has 135 MA's), (69, 33127), (77, 33094), (88, 33055), (99, 32887),

Gene: Melvin_51 Start: 33383, Stop: 32844, Start Num: 22

Candidate Starts for Melvin_51:

(Start: 10 @33440 has 1 MA's), (Start: 11 @33425 has 1 MA's), (Start: 22 @33383 has 135 MA's), (69, 33125), (77, 33092), (88, 33053), (99, 32885),

Gene: Methuselah_49 Start: 33880, Stop: 33293, Start Num: 19

Candidate Starts for Methuselah_49:

(Start: 19 @33880 has 213 MA's), (Start: 22 @33874 has 135 MA's), (50, 33736), (55, 33727), (60, 33700), (61, 33697), (65, 33637), (69, 33616), (92, 33409), (97, 33361),

Gene: Microwolf_53 Start: 33872, Stop: 33267, Start Num: 19

Candidate Starts for Microwolf_53:

(Start: 19 @33872 has 213 MA's), (Start: 22 @33866 has 135 MA's), (50, 33722), (55, 33713), (60, 33686), (69, 33602), (92, 33383), (97, 33335),

Gene: MiculUcigas_50 Start: 33618, Stop: 33094, Start Num: 16

Candidate Starts for MiculUcigas_50:

(Start: 16 @33618 has 49 MA's), (Start: 19 @33603 has 213 MA's), (37, 33534), (54, 33498), (59, 33471), (62, 33426), (64, 33420), (66, 33396), (69, 33384), (76, 33357), (79, 33348), (83, 33330), (92, 33207),

Gene: Milcery_43 Start: 32512, Stop: 31985, Start Num: 18

Candidate Starts for Milcery_43:

(Start: 18 @32512 has 22 MA's), (53, 32377), (55, 32371), (80, 32227), (102, 32008),

Gene: Millski_48 Start: 33389, Stop: 32850, Start Num: 22

Candidate Starts for Millski_48:

(Start: 10 @33446 has 1 MA's), (Start: 11 @33431 has 1 MA's), (Start: 22 @33389 has 135 MA's), (69, 33131), (77, 33098), (88, 33059), (99, 32891),

Gene: MinecraftSteve_55 Start: 32820, Stop: 32260, Start Num: 25

Candidate Starts for MinecraftSteve_55:

(Start: 25 @32820 has 19 MA's), (28, 32814), (47, 32715), (56, 32688), (57, 32685), (70, 32574), (72, 32553), (77, 32544), (79, 32535), (100, 32316),

Gene: Miramae_47 Start: 32831, Stop: 32283, Start Num: 22

Candidate Starts for Miramae_47:

(Start: 22 @32831 has 135 MA's), (56, 32684), (77, 32534), (93, 32372), (99, 32324),

Gene: Misomonster_54 Start: 33883, Stop: 33296, Start Num: 19

Candidate Starts for Misomonster_54:

(Start: 19 @33883 has 213 MA's), (Start: 22 @33877 has 135 MA's), (50, 33739), (55, 33730), (60, 33703), (61, 33700), (65, 33640), (69, 33619), (92, 33412), (97, 33364),

Gene: MissWhite_49 Start: 32171, Stop: 31665, Start Num: 19

Candidate Starts for MissWhite_49:

(Start: 16 @32186 has 49 MA's), (Start: 19 @32171 has 213 MA's), (54, 32063), (63, 31988), (64, 31985), (66, 31961), (76, 31922), (92, 31775), (96, 31757),

Gene: MoneyMay_53 Start: 33856, Stop: 33266, Start Num: 19

Candidate Starts for MoneyMay_53:

(Start: 19 @33856 has 213 MA's), (Start: 22 @33850 has 135 MA's), (50, 33706), (55, 33697), (60, 33670), (69, 33586), (92, 33382), (97, 33334),

Gene: Morpher26_48 Start: 33385, Stop: 32846, Start Num: 22

Candidate Starts for Morpher26_48:

(Start: 10 @33442 has 1 MA's), (Start: 11 @33427 has 1 MA's), (Start: 22 @33385 has 135 MA's), (69, 33127), (77, 33094), (88, 33055), (99, 32887),

Gene: Morrow_50 Start: 33394, Stop: 32855, Start Num: 22

Candidate Starts for Morrow_50:

(Start: 10 @33451 has 1 MA's), (Start: 11 @33436 has 1 MA's), (Start: 22 @33394 has 135 MA's), (69, 33136), (77, 33103), (88, 33064), (99, 32896),

Gene: MuchMore_56 Start: 33848, Stop: 33258, Start Num: 19

Candidate Starts for MuchMore_56:

(Start: 19 @33848 has 213 MA's), (Start: 22 @33842 has 135 MA's), (50, 33698), (55, 33689), (60, 33662), (69, 33578), (92, 33374), (97, 33326),

Gene: Mulciber_50 Start: 32811, Stop: 32248, Start Num: 19

Candidate Starts for Mulciber_50:

(Start: 19 @32811 has 213 MA's), (52, 32682), (83, 32517), (92, 32361),

Gene: Munch_51 Start: 33271, Stop: 32702, Start Num: 19

Candidate Starts for Munch_51:

(Start: 19 @33271 has 213 MA's), (52, 33136), (83, 32971), (92, 32815),

Gene: Mundrea_48 Start: 33386, Stop: 32841, Start Num: 22

Candidate Starts for Mundrea_48:

(Start: 22 @33386 has 135 MA's), (56, 33239), (65, 33146), (77, 33089), (99, 32882),

Gene: MyraDee_43 Start: 29930, Stop: 29361, Start Num: 19

Candidate Starts for MyraDee_43:

(Start: 19 @29930 has 213 MA's), (Start: 22 @29924 has 135 MA's), (63, 29705), (72, 29642), (77, 29633), (87, 29594), (92, 29465), (96, 29447),

Gene: Myxus_50 Start: 33634, Stop: 33104, Start Num: 16

Candidate Starts for Myxus_50:

(Start: 16 @33634 has 49 MA's), (Start: 19 @33619 has 213 MA's), (41, 33526), (54, 33502), (64, 33424), (76, 33361), (92, 33211),

Gene: NaSiaTalie_50 Start: 33715, Stop: 33191, Start Num: 16

Candidate Starts for NaSiaTalie_50:

(Start: 16 @33715 has 49 MA's), (Start: 19 @33700 has 213 MA's), (37, 33631), (54, 33595), (59, 33568), (62, 33523), (64, 33517), (66, 33493), (69, 33481), (76, 33454), (79, 33445), (83, 33427), (92, 33304),

Gene: Naca_44 Start: 32823, Stop: 32299, Start Num: 18

Candidate Starts for Naca_44:

(Start: 18 @32823 has 22 MA's), (53, 32691), (55, 32685), (80, 32541),

Gene: Naiad_39 Start: 29811, Stop: 29287, Start Num: 30

Candidate Starts for Naiad_39:

(Start: 30 @29811 has 36 MA's), (50, 29706), (92, 29394), (95, 29385), (96, 29376), (97, 29346),

Gene: Naji_52 Start: 33469, Stop: 32891, Start Num: 19

Candidate Starts for Naji_52:

(Start: 16 @33484 has 49 MA's), (Start: 19 @33469 has 213 MA's), (50, 33352), (53, 33346), (59, 33322), (63, 33274), (84, 33175), (86, 33166), (89, 33157), (92, 33004),

Gene: Nancinator_39 Start: 29797, Stop: 29273, Start Num: 30

Candidate Starts for Nancinator_39:

(Start: 30 @29797 has 36 MA's), (50, 29692), (92, 29380), (95, 29371), (96, 29362), (97, 29332),

Gene: Natosaleda_39 Start: 29796, Stop: 29272, Start Num: 30

Candidate Starts for Natosaleda_39:

(Start: 30 @29796 has 36 MA's), (50, 29691), (92, 29379), (95, 29370), (96, 29361), (97, 29331),

Gene: Nebs_50 Start: 33388, Stop: 32849, Start Num: 22

Candidate Starts for Nebs_50:

(Start: 10 @33445 has 1 MA's), (Start: 11 @33430 has 1 MA's), (Start: 22 @33388 has 135 MA's), (69, 33130), (77, 33097), (88, 33058), (99, 32890),

Gene: Nebulosus_53 Start: 32530, Stop: 31988, Start Num: 25

Candidate Starts for Nebulosus_53:

(Start: 25 @32530 has 19 MA's), (28, 32524), (47, 32419), (56, 32392), (57, 32389), (70, 32278), (72, 32257), (77, 32248), (79, 32239), (92, 32092), (97, 32047),

Gene: Nedarya_49 Start: 31962, Stop: 31435, Start Num: 24

Candidate Starts for Nedarya_49:

(Start: 24 @31962 has 1 MA's), (33, 31896), (44, 31854), (47, 31848), (77, 31689), (92, 31542), (97, 31494),

Gene: Neeharika16_51 Start: 32238, Stop: 31666, Start Num: 19

Candidate Starts for Neeharika16_51:

(Start: 16 @32253 has 49 MA's), (Start: 19 @32238 has 213 MA's), (47, 32127), (54, 32109), (82, 31947), (89, 31920), (92, 31776), (94, 31773),

Gene: Nemo27_49 Start: 33387, Stop: 32848, Start Num: 22

Candidate Starts for Nemo27_49:

(Start: 10 @33444 has 1 MA's), (Start: 11 @33429 has 1 MA's), (Start: 22 @33387 has 135 MA's), (69, 33129), (77, 33096), (88, 33057), (99, 32889),

Gene: Newrala_52 Start: 32795, Stop: 32214, Start Num: 16

Candidate Starts for Newrala_52:

(Start: 16 @32795 has 49 MA's), (Start: 19 @32780 has 213 MA's), (47, 32669), (54, 32651), (82, 32489), (89, 32462), (92, 32324), (94, 32321),

Gene: NicoleTera_49 Start: 33986, Stop: 33456, Start Num: 19

Candidate Starts for NicoleTera_49:

(Start: 16 @34001 has 49 MA's), (Start: 19 @33986 has 213 MA's), (37, 33908), (54, 33872), (56, 33866), (59, 33845), (64, 33794), (69, 33758), (76, 33731), (92, 33569), (96, 33551),

Gene: Noella_49 Start: 33696, Stop: 33097, Start Num: 13

Candidate Starts for Noella_49:

(Start: 10 @33723 has 1 MA's), (Start: 11 @33708 has 1 MA's), (Start: 13 @33696 has 16 MA's), (Start: 21 @33666 has 7 MA's), (32, 33597), (55, 33519), (69, 33399), (99, 33138),

Gene: Noelle_49 Start: 33677, Stop: 33135, Start Num: 22

Candidate Starts for Noelle_49:

(Start: 10 @33734 has 1 MA's), (Start: 11 @33719 has 1 MA's), (Start: 22 @33677 has 135 MA's), (77, 33383), (88, 33344), (99, 33176),

Gene: Norbert_48 Start: 33695, Stop: 33096, Start Num: 13

Candidate Starts for Norbert_48:

(Start: 10 @33722 has 1 MA's), (Start: 11 @33707 has 1 MA's), (Start: 13 @33695 has 16 MA's), (Start: 21 @33665 has 7 MA's), (32, 33596), (55, 33518), (69, 33398), (99, 33137),

Gene: NorthStar_48 Start: 33388, Stop: 32849, Start Num: 22

Candidate Starts for NorthStar_48:

(Start: 10 @33445 has 1 MA's), (Start: 11 @33430 has 1 MA's), (Start: 22 @33388 has 135 MA's), (69, 33130), (77, 33097), (88, 33058), (99, 32890),

Gene: NotAPhaseMom_49 Start: 33392, Stop: 32853, Start Num: 22

Candidate Starts for NotAPhaseMom_49:

(Start: 10 @33449 has 1 MA's), (Start: 11 @33434 has 1 MA's), (Start: 22 @33392 has 135 MA's), (69, 33134), (77, 33101), (88, 33062), (99, 32894),

Gene: Nyxis_49 Start: 33278, Stop: 32739, Start Num: 22

Candidate Starts for Nyxis_49:

(Start: 10 @33335 has 1 MA's), (Start: 11 @33320 has 1 MA's), (Start: 22 @33278 has 135 MA's), (69, 33020), (77, 32987), (88, 32948), (99, 32780),

Gene: OKaNui_49 Start: 33438, Stop: 32899, Start Num: 22

Candidate Starts for OKaNui_49:

(Start: 10 @33495 has 1 MA's), (Start: 11 @33480 has 1 MA's), (Start: 22 @33438 has 135 MA's), (69, 33180), (77, 33147), (88, 33108), (99, 32940),

Gene: Obama12_50 Start: 33809, Stop: 33273, Start Num: 22

Candidate Starts for Obama12_50:

(9, 33872), (Start: 22 @33809 has 135 MA's), (69, 33551), (77, 33518), (88, 33479), (99, 33314),

Gene: Odin_49 Start: 32519, Stop: 31926, Start Num: 19

Candidate Starts for Odin_49:

(Start: 16 @32534 has 49 MA's), (Start: 19 @32519 has 213 MA's), (54, 32375), (63, 32300), (89, 32183), (92, 32036), (94, 32033), (96, 32018), (97, 31991),

Gene: Ohfah_50 Start: 33388, Stop: 32849, Start Num: 22

Candidate Starts for Ohfah_50:

(Start: 10 @33445 has 1 MA's), (Start: 11 @33430 has 1 MA's), (Start: 22 @33388 has 135 MA's), (69, 33130), (77, 33097), (88, 33058), (99, 32890),

Gene: OlanP_52 Start: 33922, Stop: 33329, Start Num: 19

Candidate Starts for OlanP_52:

(Start: 19 @33922 has 213 MA's), (Start: 22 @33916 has 135 MA's), (50, 33769), (55, 33760), (69, 33649), (92, 33445), (97, 33397),

Gene: Ollie_53 Start: 33727, Stop: 33137, Start Num: 19

Candidate Starts for Ollie_53:

(Start: 19 @33727 has 213 MA's), (Start: 22 @33721 has 135 MA's), (50, 33577), (55, 33568), (60, 33541), (69, 33457), (92, 33253), (97, 33205),

Gene: Oofda_55 Start: 32610, Stop: 32080, Start Num: 25

Candidate Starts for Oofda_55:

(Start: 25 @32610 has 19 MA's), (28, 32604), (33, 32544), (65, 32385), (69, 32367), (77, 32340), (92, 32184), (97, 32139),

Gene: Orange_50 Start: 32820, Stop: 32251, Start Num: 19

Candidate Starts for Orange_50:

(Start: 19 @32820 has 213 MA's), (52, 32685), (83, 32520), (92, 32364),

Gene: P28Green_54 Start: 33859, Stop: 33269, Start Num: 19

Candidate Starts for P28Green_54:

(Start: 19 @33859 has 213 MA's), (Start: 22 @33853 has 135 MA's), (50, 33709), (55, 33700), (60, 33673), (69, 33589), (92, 33385), (97, 33337),

Gene: PGHhamlin_55 Start: 33848, Stop: 33258, Start Num: 19

Candidate Starts for PGHhamlin_55:

(Start: 19 @33848 has 213 MA's), (Start: 22 @33842 has 135 MA's), (50, 33698), (55, 33689), (60, 33662), (69, 33578), (92, 33374), (97, 33326),

Gene: PackMan_49 Start: 33634, Stop: 33104, Start Num: 16

Candidate Starts for PackMan_49:

(Start: 16 @33634 has 49 MA's), (Start: 19 @33619 has 213 MA's), (41, 33526), (54, 33502), (64, 33424), (76, 33361), (92, 33211),

Gene: PainterBoy_51 Start: 33419, Stop: 32871, Start Num: 19

Candidate Starts for PainterBoy_51:

(Start: 16 @33434 has 49 MA's), (Start: 19 @33419 has 213 MA's), (44, 33302), (62, 33200), (64, 33194), (76, 33131), (79, 33122), (92, 32978),

Gene: Palestino_48 Start: 33388, Stop: 32849, Start Num: 22

Candidate Starts for Palestino_48:

(Start: 10 @33445 has 1 MA's), (Start: 11 @33430 has 1 MA's), (Start: 22 @33388 has 135 MA's), (69, 33130), (77, 33097), (88, 33058), (99, 32890),

Gene: Panamaxus_47 Start: 33665, Stop: 33096, Start Num: 21

Candidate Starts for Panamaxus_47:

(Start: 10 @33722 has 1 MA's), (Start: 11 @33707 has 1 MA's), (Start: 13 @33695 has 16 MA's),
(Start: 21 @33665 has 7 MA's), (32, 33596), (55, 33518), (69, 33398), (99, 33137),

Gene: Partridge_39 Start: 29958, Stop: 29434, Start Num: 30

Candidate Starts for Partridge_39:

(Start: 30 @29958 has 36 MA's), (50, 29853), (92, 29541), (95, 29532), (96, 29523), (97, 29493),

Gene: Pawn_53 Start: 33753, Stop: 33163, Start Num: 19

Candidate Starts for Pawn_53:

(Start: 19 @33753 has 213 MA's), (Start: 22 @33747 has 135 MA's), (50, 33603), (55, 33594), (60, 33567), (69, 33483), (92, 33279), (97, 33231),

Gene: Peaches_49 Start: 33387, Stop: 32848, Start Num: 22

Candidate Starts for Peaches_49:

(Start: 10 @33444 has 1 MA's), (Start: 11 @33429 has 1 MA's), (Start: 22 @33387 has 135 MA's),
(69, 33129), (77, 33096), (88, 33057), (99, 32889),

Gene: Pembroke_53 Start: 33857, Stop: 33267, Start Num: 19

Candidate Starts for Pembroke_53:

(Start: 19 @33857 has 213 MA's), (Start: 22 @33851 has 135 MA's), (50, 33707), (55, 33698), (60, 33671), (69, 33587), (92, 33383), (97, 33335),

Gene: Penny1_54 Start: 33860, Stop: 33270, Start Num: 19

Candidate Starts for Penny1_54:

(Start: 19 @33860 has 213 MA's), (Start: 22 @33854 has 135 MA's), (50, 33710), (55, 33701), (60, 33674), (69, 33590), (92, 33386), (97, 33338),

Gene: Perplexer_48 Start: 33361, Stop: 32822, Start Num: 22

Candidate Starts for Perplexer_48:

(Start: 10 @33418 has 1 MA's), (Start: 11 @33403 has 1 MA's), (Start: 22 @33361 has 135 MA's),
(69, 33103), (77, 33070), (88, 33031), (99, 32863),

Gene: PeterPeter_49 Start: 33385, Stop: 32846, Start Num: 22

Candidate Starts for PeterPeter_49:

(Start: 10 @33442 has 1 MA's), (Start: 11 @33427 has 1 MA's), (Start: 22 @33385 has 135 MA's),
(69, 33127), (77, 33094), (88, 33055), (99, 32887),

Gene: Petersenfast_49 Start: 32822, Stop: 32253, Start Num: 19

Candidate Starts for Petersenfast_49:

(Start: 19 @32822 has 213 MA's), (52, 32687), (83, 32522), (92, 32366),

Gene: PetiteSangsue_48 Start: 33364, Stop: 32825, Start Num: 22

Candidate Starts for PetiteSangsue_48:

(Start: 10 @33421 has 1 MA's), (Start: 11 @33406 has 1 MA's), (Start: 22 @33364 has 135 MA's),
(69, 33106), (77, 33073), (88, 33034), (99, 32866),

Gene: PetterN_46 Start: 32243, Stop: 31719, Start Num: 18

Candidate Starts for PetterN_46:

(Start: 18 @32243 has 22 MA's), (53, 32111), (55, 32105), (80, 31961),

Gene: Ph8s_52 Start: 33102, Stop: 32488, Start Num: 16

Candidate Starts for Ph8s_52:

(Start: 16 @33102 has 49 MA's), (Start: 19 @33087 has 213 MA's), (54, 32934), (63, 32859), (68, 32826), (89, 32742), (90, 32721), (92, 32598), (94, 32595), (97, 32553),

Gene: Phacado_49 Start: 33387, Stop: 32848, Start Num: 22

Candidate Starts for Phacado_49:

(Start: 10 @33444 has 1 MA's), (Start: 11 @33429 has 1 MA's), (Start: 22 @33387 has 135 MA's), (69, 33129), (77, 33096), (88, 33057), (99, 32889),

Gene: Phaded_51 Start: 34886, Stop: 34329, Start Num: 16

Candidate Starts for Phaded_51:

(Start: 16 @34886 has 49 MA's), (Start: 19 @34871 has 213 MA's), (37, 34793), (61, 34736), (63, 34694), (71, 34637), (77, 34625), (82, 34604), (89, 34577), (92, 34436), (96, 34418),

Gene: Phaeder_50 Start: 33619, Stop: 33104, Start Num: 19

Candidate Starts for Phaeder_50:

(Start: 16 @33634 has 49 MA's), (Start: 19 @33619 has 213 MA's), (41, 33526), (54, 33502), (64, 33424), (76, 33361), (92, 33211),

Gene: PhailMary_38 Start: 30120, Stop: 29596, Start Num: 30

Candidate Starts for PhailMary_38:

(Start: 30 @30120 has 36 MA's), (50, 30015), (92, 29703), (95, 29694), (96, 29685), (97, 29655),

Gene: Phelipe_50 Start: 33388, Stop: 32849, Start Num: 22

Candidate Starts for Phelipe_50:

(Start: 10 @33445 has 1 MA's), (Start: 11 @33430 has 1 MA's), (Start: 22 @33388 has 135 MA's), (69, 33130), (77, 33097), (88, 33058), (99, 32890),

Gene: Phighter1804_49 Start: 33451, Stop: 32915, Start Num: 22

Candidate Starts for Phighter1804_49:

(Start: 22 @33451 has 135 MA's), (69, 33193), (77, 33160), (88, 33121), (99, 32956),

Gene: PhishRPhriends_51 Start: 32930, Stop: 32337, Start Num: 19

Candidate Starts for PhishRPhriends_51:

(Start: 19 @32930 has 213 MA's), (Start: 22 @32924 has 135 MA's), (50, 32777), (55, 32768), (60, 32741), (69, 32657), (92, 32453), (97, 32405),

Gene: Phlei_39 Start: 33153, Stop: 32638, Start Num: 29

Candidate Starts for Phlei_39:

(17, 33195), (23, 33180), (29, 33153), (31, 33132), (42, 33078), (55, 33045), (56, 33042), (59, 33021), (65, 32955), (73, 32922), (75, 32919), (79, 32907), (81, 32901), (91, 32832), (92, 32751), (97, 32703),

Gene: Phlorence_41 Start: 32083, Stop: 31556, Start Num: 18

Candidate Starts for Phlorence_41:

(Start: 18 @32083 has 22 MA's), (53, 31948), (55, 31942), (80, 31798), (102, 31579),

Gene: Phoebe_54 Start: 33849, Stop: 33259, Start Num: 19

Candidate Starts for Phoebe_54:

(Start: 19 @33849 has 213 MA's), (Start: 22 @33843 has 135 MA's), (50, 33699), (55, 33690), (60, 33663), (69, 33579), (92, 33375), (97, 33327),

Gene: Phonnegut_50 Start: 33716, Stop: 33153, Start Num: 19

Candidate Starts for Phonnegut_50:

(Start: 16 @33731 has 49 MA's), (Start: 19 @33716 has 213 MA's), (54, 33590), (65, 33500), (89, 33401), (92, 33260),

Gene: Phontbonne_49 Start: 33279, Stop: 32740, Start Num: 22

Candidate Starts for Phontbonne_49:

(Start: 10 @33336 has 1 MA's), (Start: 11 @33321 has 1 MA's), (Start: 22 @33279 has 135 MA's), (69, 33021), (77, 32988), (88, 32949), (99, 32781),

Gene: Phoxy_53 Start: 33881, Stop: 33294, Start Num: 19

Candidate Starts for Phoxy_53:

(Start: 19 @33881 has 213 MA's), (Start: 22 @33875 has 135 MA's), (50, 33737), (55, 33728), (60, 33701), (61, 33698), (65, 33638), (69, 33617), (92, 33410), (97, 33362),

Gene: Phrankenstein_39 Start: 29744, Stop: 29220, Start Num: 30

Candidate Starts for Phrankenstein_39:

(Start: 30 @29744 has 36 MA's), (50, 29639), (92, 29327), (95, 29318), (96, 29309), (97, 29279),

Gene: Phranny_54 Start: 33735, Stop: 33145, Start Num: 19

Candidate Starts for Phranny_54:

(Start: 19 @33735 has 213 MA's), (Start: 22 @33729 has 135 MA's), (50, 33585), (55, 33576), (60, 33549), (69, 33465), (92, 33261), (97, 33213),

Gene: PickleBack_42 Start: 32212, Stop: 31688, Start Num: 18

Candidate Starts for PickleBack_42:

(Start: 18 @32212 has 22 MA's), (53, 32080), (55, 32074), (80, 31930), (102, 31711),

Gene: Pioneer_50 Start: 33716, Stop: 33153, Start Num: 19

Candidate Starts for Pioneer_50:

(Start: 16 @33731 has 49 MA's), (Start: 19 @33716 has 213 MA's), (54, 33590), (65, 33500), (89, 33401), (92, 33260),

Gene: Pipcraft_47 Start: 33388, Stop: 32849, Start Num: 22

Candidate Starts for Pipcraft_47:

(Start: 10 @33445 has 1 MA's), (Start: 11 @33430 has 1 MA's), (Start: 22 @33388 has 135 MA's), (69, 33130), (77, 33097), (88, 33058), (99, 32890),

Gene: Pistachio_52 Start: 33268, Stop: 32705, Start Num: 21

Candidate Starts for Pistachio_52:

(Start: 10 @33325 has 1 MA's), (Start: 11 @33310 has 1 MA's), (Start: 13 @33298 has 16 MA's), (Start: 21 @33268 has 7 MA's), (32, 33199), (55, 33121), (60, 33085), (69, 33001), (99, 32746),

Gene: Pmask_52 Start: 32781, Stop: 32215, Start Num: 19

Candidate Starts for Pmask_52:

(Start: 16 @32796 has 49 MA's), (Start: 19 @32781 has 213 MA's), (47, 32670), (54, 32652), (82, 32490), (89, 32463), (92, 32325), (94, 32322),

Gene: Pocahontas_49 Start: 33692, Stop: 33093, Start Num: 13

Candidate Starts for Pocahontas_49:

(Start: 10 @33719 has 1 MA's), (Start: 11 @33704 has 1 MA's), (Start: 13 @33692 has 16 MA's), (Start: 21 @33662 has 7 MA's), (32, 33593), (55, 33515), (69, 33395), (99, 33134),

Gene: Polymorphads_50 Start: 33381, Stop: 32842, Start Num: 22

Candidate Starts for Polymorphads_50:

(Start: 10 @33438 has 1 MA's), (Start: 11 @33423 has 1 MA's), (Start: 22 @33381 has 135 MA's), (69, 33123), (77, 33090), (88, 33051), (99, 32883),

Gene: Pomar16_52 Start: 33509, Stop: 32931, Start Num: 19

Candidate Starts for Pomar16_52:

(Start: 16 @33524 has 49 MA's), (Start: 19 @33509 has 213 MA's), (50, 33392), (53, 33386), (59, 33362), (63, 33314), (84, 33215), (86, 33206), (89, 33197), (92, 33044),

Gene: Popcicle_49 Start: 33662, Stop: 33093, Start Num: 21

Candidate Starts for Popcicle_49:

(Start: 10 @33719 has 1 MA's), (Start: 11 @33704 has 1 MA's), (Start: 13 @33692 has 16 MA's), (Start: 21 @33662 has 7 MA's), (32, 33593), (55, 33515), (69, 33395), (99, 33134),

Gene: PotatoSplit_55 Start: 33860, Stop: 33270, Start Num: 19

Candidate Starts for PotatoSplit_55:

(Start: 19 @33860 has 213 MA's), (Start: 22 @33854 has 135 MA's), (50, 33710), (55, 33701), (60, 33674), (69, 33590), (92, 33386), (97, 33338),

Gene: Power_49 Start: 33684, Stop: 33163, Start Num: 19

Candidate Starts for Power_49:

(Start: 16 @33699 has 49 MA's), (Start: 19 @33684 has 213 MA's), (54, 33570), (59, 33543), (62, 33498), (64, 33492), (66, 33468), (76, 33429), (79, 33420), (92, 33273), (96, 33255), (97, 33225),

Gene: Priamo_54 Start: 32522, Stop: 31971, Start Num: 19

Candidate Starts for Priamo_54:

(Start: 15 @32537 has 1 MA's), (Start: 19 @32522 has 213 MA's), (63, 32312), (64, 32309), (76, 32246), (79, 32237), (92, 32081), (94, 32078),

Gene: Priya_50 Start: 33686, Stop: 33171, Start Num: 19

Candidate Starts for Priya_50:

(Start: 16 @33701 has 49 MA's), (Start: 19 @33686 has 213 MA's), (41, 33593), (54, 33569), (64, 33491), (76, 33428), (92, 33278),

Gene: Pukovnik_49 Start: 34501, Stop: 33938, Start Num: 16

Candidate Starts for Pukovnik_49:

(Start: 16 @34501 has 49 MA's), (Start: 19 @34486 has 213 MA's), (61, 34354), (63, 34312), (71, 34255), (82, 34222), (89, 34195), (92, 34045), (96, 34027),

Gene: Pumbaa_49 Start: 33333, Stop: 32794, Start Num: 22

Candidate Starts for Pumbaa_49:

(Start: 10 @33390 has 1 MA's), (Start: 11 @33375 has 1 MA's), (Start: 22 @33333 has 135 MA's), (69, 33075), (77, 33042), (88, 33003), (99, 32835),

Gene: Puppy_52 Start: 33370, Stop: 32777, Start Num: 13

Candidate Starts for Puppy_52:

(Start: 10 @33397 has 1 MA's), (Start: 11 @33382 has 1 MA's), (Start: 13 @33370 has 16 MA's), (Start: 21 @33340 has 7 MA's), (32, 33271), (55, 33193), (60, 33157), (69, 33073), (99, 32818),

Gene: PurpleHaze_53 Start: 33748, Stop: 33158, Start Num: 19

Candidate Starts for PurpleHaze_53:

(Start: 19 @33748 has 213 MA's), (Start: 22 @33742 has 135 MA's), (50, 33598), (55, 33589), (60, 33562), (69, 33478), (92, 33274), (97, 33226),

Gene: Qobbit_50 Start: 33648, Stop: 33133, Start Num: 19

Candidate Starts for Qobbit_50:

(Start: 16 @33663 has 49 MA's), (Start: 19 @33648 has 213 MA's), (41, 33555), (54, 33531), (64, 33453), (76, 33390), (92, 33240),

Gene: QueenB2_49 Start: 33638, Stop: 33120, Start Num: 19

Candidate Starts for QueenB2_49:

(Start: 16 @33653 has 49 MA's), (Start: 19 @33638 has 213 MA's), (54, 33524), (59, 33497), (64, 33446), (66, 33422), (76, 33383), (79, 33374), (92, 33230), (96, 33212), (97, 33182),

Gene: QueenBeesly_50 Start: 33631, Stop: 33110, Start Num: 19

Candidate Starts for QueenBeesly_50:

(Start: 16 @33646 has 49 MA's), (Start: 19 @33631 has 213 MA's), (54, 33517), (59, 33490), (62, 33445), (64, 33439), (66, 33415), (76, 33376), (79, 33367), (92, 33220), (96, 33202), (97, 33172),

Gene: QuinnKiro_48 Start: 33695, Stop: 33096, Start Num: 13

Candidate Starts for QuinnKiro_48:

(Start: 10 @33722 has 1 MA's), (Start: 11 @33707 has 1 MA's), (Start: 13 @33695 has 16 MA's), (Start: 21 @33665 has 7 MA's), (32, 33596), (55, 33518), (69, 33398), (99, 33137),

Gene: RER2_32 Start: 26670, Stop: 26146, Start Num: 30

Candidate Starts for RER2_32:

(Start: 30 @26670 has 36 MA's), (50, 26565), (92, 26253), (95, 26244), (96, 26235), (97, 26205),

Gene: RGL3_34 Start: 27554, Stop: 27051, Start Num: 30

Candidate Starts for RGL3_34:

(23, 27584), (Start: 30 @27554 has 36 MA's), (49, 27464), (92, 27158), (95, 27149), (97, 27110),

Gene: Rahalelujah_50 Start: 33197, Stop: 32670, Start Num: 19

Candidate Starts for Rahalelujah_50:

(Start: 16 @33212 has 49 MA's), (Start: 19 @33197 has 213 MA's), (44, 33098), (54, 33074), (64, 32996), (66, 32972), (76, 32933), (92, 32777),

Gene: Rasputin_39 Start: 29768, Stop: 29244, Start Num: 30

Candidate Starts for Rasputin_39:

(Start: 30 @29768 has 36 MA's), (50, 29663), (92, 29351), (95, 29342), (96, 29333), (97, 29303),

Gene: ReMo_53 Start: 32531, Stop: 31989, Start Num: 25

Candidate Starts for ReMo_53:

(Start: 25 @32531 has 19 MA's), (28, 32525), (47, 32420), (56, 32393), (57, 32390), (70, 32279), (72, 32258), (77, 32249), (79, 32240), (92, 32093), (97, 32048),

Gene: Reba_53 Start: 33408, Stop: 32818, Start Num: 19

Candidate Starts for Reba_53:

(Start: 19 @33408 has 213 MA's), (Start: 22 @33402 has 135 MA's), (50, 33258), (55, 33249), (60, 33222), (69, 33138), (92, 32934), (97, 32886),

Gene: RedRock_52 Start: 34849, Stop: 34322, Start Num: 19

Candidate Starts for RedRock_52:

(Start: 16 @34864 has 49 MA's), (Start: 19 @34849 has 213 MA's), (54, 34735), (59, 34708), (62, 34663), (64, 34657), (66, 34633), (76, 34594), (92, 34435), (96, 34417), (97, 34387),

Gene: Relief_48 Start: 33385, Stop: 32846, Start Num: 22

Candidate Starts for Relief_48:

(Start: 10 @33442 has 1 MA's), (Start: 11 @33427 has 1 MA's), (Start: 22 @33385 has 135 MA's), (69, 33127), (77, 33094), (88, 33055), (99, 32887),

Gene: Remus_54 Start: 32444, Stop: 31914, Start Num: 25

Candidate Starts for Remus_54:

(Start: 25 @32444 has 19 MA's), (28, 32438), (33, 32378), (65, 32219), (69, 32201), (77, 32174), (92, 32018), (97, 31973),

Gene: ResDef_50 Start: 33665, Stop: 33096, Start Num: 21

Candidate Starts for ResDef_50:

(Start: 10 @33722 has 1 MA's), (Start: 11 @33707 has 1 MA's), (Start: 13 @33695 has 16 MA's), (Start: 21 @33665 has 7 MA's), (32, 33596), (55, 33518), (69, 33398), (99, 33137),

Gene: Retro23_51 Start: 34038, Stop: 33517, Start Num: 19

Candidate Starts for Retro23_51:

(Start: 16 @34053 has 49 MA's), (Start: 19 @34038 has 213 MA's), (54, 33924), (59, 33897), (64, 33846), (66, 33822), (76, 33783), (79, 33774), (92, 33627), (96, 33609), (97, 33579),

Gene: RexFury_39 Start: 29829, Stop: 29305, Start Num: 30

Candidate Starts for RexFury_39:

(Start: 30 @29829 has 36 MA's), (50, 29724), (92, 29412), (95, 29403), (96, 29394), (97, 29364),

Gene: Rhodalysa_39 Start: 29798, Stop: 29274, Start Num: 30

Candidate Starts for Rhodalysa_39:

(Start: 30 @29798 has 36 MA's), (50, 29693), (92, 29381), (95, 29372), (96, 29363), (97, 29333),

Gene: Rifter_53 Start: 32329, Stop: 31766, Start Num: 15

Candidate Starts for Rifter_53:

(Start: 15 @32329 has 1 MA's), (Start: 19 @32314 has 213 MA's), (63, 32104), (64, 32101), (76, 32038), (79, 32029), (92, 31876), (94, 31873),

Gene: Roksolana_53 Start: 32814, Stop: 32257, Start Num: 19

Candidate Starts for Roksolana_53:

(Start: 1 @33012 has 4 MA's), (2, 32997), (3, 32976), (4, 32946), (5, 32940), (Start: 19 @32814 has 213 MA's), (63, 32604), (64, 32601), (76, 32538), (79, 32529), (92, 32367), (94, 32364),

Gene: Romney_49 Start: 33385, Stop: 32846, Start Num: 22

Candidate Starts for Romney_49:

(Start: 10 @33442 has 1 MA's), (Start: 11 @33427 has 1 MA's), (Start: 22 @33385 has 135 MA's), (69, 33127), (77, 33094), (88, 33055), (99, 32887),

Gene: Roosevelt_48 Start: 33390, Stop: 32851, Start Num: 22

Candidate Starts for Roosevelt_48:

(Start: 10 @33447 has 1 MA's), (Start: 11 @33432 has 1 MA's), (Start: 22 @33390 has 135 MA's), (69, 33132), (77, 33099), (88, 33060), (99, 32892),

Gene: Rosalind_53 Start: 32742, Stop: 32176, Start Num: 25

Candidate Starts for Rosalind_53:

(Start: 25 @32742 has 19 MA's), (28, 32736), (47, 32631), (56, 32604), (57, 32601), (70, 32490), (72, 32469), (77, 32460), (79, 32451), (100, 32232),

Gene: Ruin_49 Start: 33381, Stop: 32842, Start Num: 22

Candidate Starts for Ruin_49:

(Start: 10 @33438 has 1 MA's), (Start: 11 @33423 has 1 MA's), (Start: 22 @33381 has 135 MA's), (69, 33123), (77, 33090), (88, 33051), (99, 32883),

Gene: Rummer_52 Start: 33884, Stop: 33297, Start Num: 19

Candidate Starts for Rummer_52:

(Start: 19 @33884 has 213 MA's), (Start: 22 @33878 has 135 MA's), (50, 33740), (55, 33731), (60, 33704), (61, 33701), (65, 33641), (69, 33620), (92, 33413), (97, 33365),

Gene: Sabertooth_49 Start: 33390, Stop: 32851, Start Num: 22

Candidate Starts for Sabertooth_49:

(Start: 10 @33447 has 1 MA's), (Start: 11 @33432 has 1 MA's), (Start: 22 @33390 has 135 MA's), (69, 33132), (77, 33099), (88, 33060), (99, 32892),

Gene: Sabia_53 Start: 33865, Stop: 33260, Start Num: 19

Candidate Starts for Sabia_53:

(Start: 19 @33865 has 213 MA's), (Start: 22 @33859 has 135 MA's), (50, 33715), (55, 33706), (60, 33679), (69, 33595), (92, 33376), (97, 33328),

Gene: Sabinator_52 Start: 33855, Stop: 33265, Start Num: 19

Candidate Starts for Sabinator_52:

(Start: 19 @33855 has 213 MA's), (Start: 22 @33849 has 135 MA's), (50, 33705), (55, 33696), (60, 33669), (69, 33585), (92, 33381), (97, 33333),

Gene: Salz_49 Start: 32793, Stop: 32224, Start Num: 19

Candidate Starts for Salz_49:

(Start: 19 @32793 has 213 MA's), (52, 32658), (83, 32493), (92, 32337),

Gene: SaturnRing_51 Start: 33721, Stop: 33158, Start Num: 21

Candidate Starts for SaturnRing_51:

(Start: 10 @33778 has 1 MA's), (Start: 11 @33763 has 1 MA's), (Start: 13 @33751 has 16 MA's), (Start: 21 @33721 has 7 MA's), (32, 33652), (55, 33574), (60, 33538), (69, 33454), (99, 33199),

Gene: Scamp_49 Start: 33390, Stop: 32851, Start Num: 22

Candidate Starts for Scamp_49:

(Start: 10 @33447 has 1 MA's), (Start: 11 @33432 has 1 MA's), (Start: 22 @33390 has 135 MA's), (69, 33132), (77, 33099), (88, 33060), (99, 32892),

Gene: Scherzo_50 Start: 33905, Stop: 33342, Start Num: 19

Candidate Starts for Scherzo_50:

(Start: 16 @33920 has 49 MA's), (Start: 19 @33905 has 213 MA's), (54, 33779), (65, 33689), (89, 33590), (92, 33449),

Gene: Scorpia_46 Start: 32329, Stop: 31805, Start Num: 18

Candidate Starts for Scorpia_46:

(Start: 18 @32329 has 22 MA's), (53, 32197), (55, 32191), (80, 32047),

Gene: Scout_50 Start: 32872, Stop: 32279, Start Num: 13

Candidate Starts for Scout_50:

(Start: 10 @32899 has 1 MA's), (Start: 11 @32884 has 1 MA's), (Start: 13 @32872 has 16 MA's), (Start: 21 @32842 has 7 MA's), (32, 32773), (55, 32695), (59, 32662), (60, 32659), (69, 32575), (99, 32320),

Gene: SemperFi_51 Start: 33914, Stop: 33378, Start Num: 16

Candidate Starts for SemperFi_51:

(Start: 16 @33914 has 49 MA's), (Start: 19 @33899 has 213 MA's), (54, 33785), (59, 33758), (62, 33713), (64, 33707), (66, 33683), (76, 33644), (79, 33635), (92, 33488), (96, 33470), (97, 33440),

Gene: Serenity_50 Start: 32842, Stop: 32324, Start Num: 19

Candidate Starts for Serenity_50:

(Start: 19 @32842 has 213 MA's), (39, 32764), (54, 32731), (64, 32653), (69, 32617), (76, 32590), (92, 32434),

Gene: Shaka_49 Start: 33385, Stop: 32846, Start Num: 22

Candidate Starts for Shaka_49:

(Start: 10 @33442 has 1 MA's), (Start: 11 @33427 has 1 MA's), (Start: 22 @33385 has 135 MA's), (69, 33127), (77, 33094), (88, 33055), (99, 32887),

Gene: Sham4_50 Start: 32821, Stop: 32252, Start Num: 19

Candidate Starts for Sham4_50:

(Start: 19 @32821 has 213 MA's), (52, 32686), (83, 32521), (92, 32365),

Gene: ShayRa_55 Start: 32786, Stop: 32223, Start Num: 25

Candidate Starts for ShayRa_55:

(Start: 25 @32786 has 19 MA's), (28, 32780), (47, 32678), (56, 32651), (57, 32648), (70, 32537), (72, 32516), (77, 32507), (79, 32498), (100, 32279),

Gene: SheaKeira_49 Start: 33305, Stop: 32739, Start Num: 19

Candidate Starts for SheaKeira_49:

(Start: 16 @33320 has 49 MA's), (Start: 19 @33305 has 213 MA's), (42, 33215), (54, 33182), (89, 32990), (92, 32846),

Gene: Sheen_50 Start: 35605, Stop: 35081, Start Num: 26

Candidate Starts for Sheen_50:

(Start: 26 @35605 has 1 MA's), (47, 35509), (63, 35416), (71, 35353), (72, 35350), (77, 35341), (85, 35308), (93, 35173), (99, 35128),

Gene: SheldonCooper_51 Start: 33808, Stop: 33272, Start Num: 22

Candidate Starts for SheldonCooper_51:

(9, 33871), (Start: 22 @33808 has 135 MA's), (69, 33550), (77, 33517), (88, 33478), (99, 33313),

Gene: Shuman_39 Start: 29809, Stop: 29285, Start Num: 30

Candidate Starts for Shuman_39:

(Start: 30 @29809 has 36 MA's), (50, 29704), (92, 29392), (95, 29383), (96, 29374), (97, 29344),

Gene: Shygu2_48 Start: 33364, Stop: 32825, Start Num: 22

Candidate Starts for Shygu2_48:

(Start: 10 @33421 has 1 MA's), (Start: 11 @33406 has 1 MA's), (Start: 22 @33364 has 135 MA's), (77, 33073), (88, 33034), (99, 32866),

Gene: Skipitt_48 Start: 33382, Stop: 32843, Start Num: 22

Candidate Starts for Skipitt_48:

(Start: 10 @33439 has 1 MA's), (Start: 11 @33424 has 1 MA's), (Start: 22 @33382 has 135 MA's), (69, 33124), (77, 33091), (88, 33052), (99, 32884),

Gene: Smeagan_53 Start: 34354, Stop: 33827, Start Num: 19

Candidate Starts for Smeagan_53:

(Start: 16 @34369 has 49 MA's), (Start: 19 @34354 has 213 MA's), (39, 34267), (54, 34231), (59, 34204), (62, 34159), (64, 34153), (66, 34129), (76, 34090), (92, 33937), (96, 33919), (97, 33889),

Gene: SmellyB_52 Start: 32793, Stop: 32206, Start Num: 16

Candidate Starts for SmellyB_52:

(Start: 16 @32793 has 49 MA's), (Start: 19 @32778 has 213 MA's), (47, 32667), (54, 32649), (82, 32487), (89, 32460), (92, 32316), (94, 32313),

Gene: SnapTap_50 Start: 33710, Stop: 33189, Start Num: 19

Candidate Starts for SnapTap_50:

(Start: 16 @33725 has 49 MA's), (Start: 19 @33710 has 213 MA's), (54, 33596), (59, 33569), (62, 33524), (64, 33518), (66, 33494), (76, 33455), (79, 33446), (92, 33299), (96, 33281), (97, 33251),

Gene: Snape_50 Start: 32813, Stop: 32250, Start Num: 19

Candidate Starts for Snape_50:

(Start: 19 @32813 has 213 MA's), (52, 32684), (83, 32519), (92, 32363),

Gene: Snickers_53 Start: 33830, Stop: 33240, Start Num: 19

Candidate Starts for Snickers_53:

(Start: 19 @33830 has 213 MA's), (Start: 22 @33824 has 135 MA's), (50, 33680), (55, 33671), (60, 33644), (69, 33560), (92, 33356), (97, 33308),

Gene: SoYo_53 Start: 33768, Stop: 33178, Start Num: 19

Candidate Starts for SoYo_53:

(Start: 19 @33768 has 213 MA's), (Start: 22 @33762 has 135 MA's), (50, 33618), (55, 33609), (60, 33582), (69, 33498), (92, 33294), (97, 33246),

Gene: SoilDragon_53 Start: 33304, Stop: 32714, Start Num: 19

Candidate Starts for SoilDragon_53:

(Start: 19 @33304 has 213 MA's), (Start: 22 @33298 has 135 MA's), (50, 33154), (55, 33145), (60, 33118), (69, 33034), (92, 32830), (97, 32782),

Gene: SororFago_52 Start: 34625, Stop: 34074, Start Num: 16

Candidate Starts for SororFago_52:

(Start: 16 @34625 has 49 MA's), (Start: 19 @34610 has 213 MA's), (38, 34526), (40, 34517), (54, 34484), (59, 34457), (62, 34412), (64, 34406), (66, 34382), (76, 34343), (79, 34334), (92, 34184), (97, 34139),

Gene: Soshari_55 Start: 33880, Stop: 33293, Start Num: 19

Candidate Starts for Soshari_55:

(Start: 19 @33880 has 213 MA's), (Start: 22 @33874 has 135 MA's), (50, 33736), (55, 33727), (60, 33700), (61, 33697), (65, 33637), (69, 33616), (92, 33409), (97, 33361),

Gene: Soups_55 Start: 33022, Stop: 32456, Start Num: 25

Candidate Starts for Soups_55:

(Start: 25 @33022 has 19 MA's), (28, 33016), (47, 32911), (56, 32884), (57, 32881), (70, 32770), (72, 32749), (77, 32740), (79, 32731), (100, 32512),

Gene: Sparxx_50 Start: 33383, Stop: 32844, Start Num: 22

Candidate Starts for Sparxx_50:

(Start: 10 @33440 has 1 MA's), (Start: 11 @33425 has 1 MA's), (Start: 22 @33383 has 135 MA's), (69, 33125), (77, 33092), (88, 33053), (99, 32885),

Gene: Spike509_53 Start: 33881, Stop: 33294, Start Num: 19

Candidate Starts for Spike509_53:

(Start: 19 @33881 has 213 MA's), (Start: 22 @33875 has 135 MA's), (50, 33737), (55, 33728), (60, 33701), (61, 33698), (65, 33638), (69, 33617), (92, 33410), (97, 33362),

Gene: Spino_48 Start: 33388, Stop: 32849, Start Num: 22

Candidate Starts for Spino_48:

(Start: 10 @33445 has 1 MA's), (Start: 11 @33430 has 1 MA's), (Start: 22 @33388 has 135 MA's), (69, 33130), (77, 33097), (88, 33058), (99, 32890),

Gene: Spouty_48 Start: 33685, Stop: 33170, Start Num: 19

Candidate Starts for Spouty_48:

(Start: 16 @33700 has 49 MA's), (Start: 19 @33685 has 213 MA's), (41, 33592), (54, 33568), (64, 33490), (76, 33427), (92, 33277),

Gene: StCroix_39 Start: 29811, Stop: 29287, Start Num: 30

Candidate Starts for StCroix_39:

(Start: 30 @29811 has 36 MA's), (50, 29706), (92, 29394), (95, 29385), (96, 29376), (97, 29346),

Gene: Stagni_53 Start: 33859, Stop: 33269, Start Num: 19

Candidate Starts for Stagni_53:

(Start: 19 @33859 has 213 MA's), (Start: 22 @33853 has 135 MA's), (50, 33709), (55, 33700), (60, 33673), (69, 33589), (92, 33385), (97, 33337),

Gene: StarStuff_52 Start: 33471, Stop: 32893, Start Num: 19

Candidate Starts for StarStuff_52:

(Start: 16 @33486 has 49 MA's), (Start: 19 @33471 has 213 MA's), (50, 33354), (53, 33348), (59, 33324), (63, 33276), (84, 33177), (86, 33168), (89, 33159), (92, 33006),

Gene: Stasia_48 Start: 33264, Stop: 32728, Start Num: 22

Candidate Starts for Stasia_48:

(Start: 10 @33321 has 1 MA's), (Start: 11 @33306 has 1 MA's), (Start: 22 @33264 has 135 MA's), (69, 33006), (77, 32973), (88, 32934), (93, 32817), (99, 32769),

Gene: StepMih_53 Start: 33850, Stop: 33260, Start Num: 19

Candidate Starts for StepMih_53:

(Start: 19 @33850 has 213 MA's), (Start: 22 @33844 has 135 MA's), (50, 33700), (55, 33691), (60, 33664), (69, 33580), (92, 33376), (97, 33328),

Gene: Stink_48 Start: 33111, Stop: 32563, Start Num: 22

Candidate Starts for Stink_48:

(Start: 22 @33111 has 135 MA's), (56, 32964), (77, 32814), (93, 32652), (99, 32604),

Gene: Strosahl_54 Start: 32444, Stop: 31914, Start Num: 25

Candidate Starts for Strosahl_54:

(Start: 25 @32444 has 19 MA's), (28, 32438), (33, 32378), (65, 32219), (69, 32201), (77, 32174), (92, 32018), (97, 31973),

Gene: SuperAwesome_52 Start: 32807, Stop: 32214, Start Num: 16

Candidate Starts for SuperAwesome_52:

(Start: 16 @32807 has 49 MA's), (Start: 19 @32792 has 213 MA's), (47, 32681), (54, 32663), (82, 32501), (89, 32474), (92, 32324), (94, 32321),

Gene: SuperCallie99_51 Start: 32665, Stop: 32087, Start Num: 19

Candidate Starts for SuperCallie99_51:

(Start: 16 @32680 has 49 MA's), (Start: 19 @32665 has 213 MA's), (47, 32554), (54, 32536), (82, 32374), (89, 32347), (92, 32197), (94, 32194),

Gene: Superchunk_49 Start: 32358, Stop: 31759, Start Num: 19

Candidate Starts for Superchunk_49:

(Start: 16 @32373 has 49 MA's), (Start: 19 @32358 has 213 MA's), (54, 32208), (63, 32133), (70, 32088), (89, 32016), (92, 31869), (94, 31866), (96, 31851), (97, 31824),

Gene: Swann_39 Start: 29796, Stop: 29272, Start Num: 30

Candidate Starts for Swann_39:

(Start: 30 @29796 has 36 MA's), (50, 29691), (92, 29379), (95, 29370), (96, 29361), (97, 29331),

Gene: SweetiePie_50 Start: 33842, Stop: 33318, Start Num: 19

Candidate Starts for SweetiePie_50:

(Start: 16 @33857 has 49 MA's), (Start: 19 @33842 has 213 MA's), (54, 33728), (59, 33701), (62, 33656), (64, 33650), (66, 33626), (76, 33587), (79, 33578), (92, 33428), (96, 33410), (97, 33380),

Gene: SwirlSquare_55 Start: 33014, Stop: 32430, Start Num: 19

Candidate Starts for SwirlSquare_55:

(Start: 16 @33029 has 49 MA's), (Start: 19 @33014 has 213 MA's), (61, 32849), (65, 32789), (89, 32690), (92, 32537), (94, 32534), (97, 32492),

Gene: Swirley_45 Start: 32876, Stop: 32349, Start Num: 18

Candidate Starts for Swirley_45:

(Start: 18 @32876 has 22 MA's), (53, 32741), (55, 32735), (80, 32591), (102, 32372),

Gene: Switzerland_54 Start: 32922, Stop: 32356, Start Num: 25

Candidate Starts for Switzerland_54:

(Start: 25 @32922 has 19 MA's), (28, 32916), (47, 32811), (56, 32784), (57, 32781), (70, 32670), (72, 32649), (77, 32640), (79, 32631), (100, 32412),

Gene: TNguyen7_51 Start: 33687, Stop: 33124, Start Num: 21

Candidate Starts for TNguyen7_51:

(Start: 10 @33744 has 1 MA's), (Start: 11 @33729 has 1 MA's), (Start: 13 @33717 has 16 MA's), (Start: 21 @33687 has 7 MA's), (32, 33618), (55, 33540), (60, 33504), (69, 33420), (99, 33165),

Gene: TWAMP_39 Start: 29798, Stop: 29274, Start Num: 30

Candidate Starts for TWAMP_39:

(Start: 30 @29798 has 36 MA's), (50, 29693), (92, 29381), (95, 29372), (96, 29363), (97, 29333),

Gene: Takoda_39 Start: 29771, Stop: 29247, Start Num: 30

Candidate Starts for Takoda_39:

(Start: 30 @29771 has 36 MA's), (50, 29666), (92, 29354), (95, 29345), (96, 29336), (97, 29306),

Gene: Taquarus_49 Start: 33391, Stop: 32852, Start Num: 22

Candidate Starts for Taquarus_49:

(Start: 10 @33448 has 1 MA's), (Start: 11 @33433 has 1 MA's), (Start: 22 @33391 has 135 MA's), (69, 33133), (77, 33100), (88, 33061), (99, 32893),

Gene: TarsusIV_49 Start: 33682, Stop: 33143, Start Num: 19

Candidate Starts for TarsusIV_49:

(Start: 16 @33697 has 49 MA's), (Start: 19 @33682 has 213 MA's), (39, 33598), (54, 33562), (59, 33535), (62, 33490), (64, 33484), (66, 33460), (74, 33424), (76, 33421), (79, 33412), (92, 33256),

Gene: Tarynearal_41 Start: 32318, Stop: 31791, Start Num: 18

Candidate Starts for Tarynearal_41:

(Start: 18 @32318 has 22 MA's), (53, 32183), (55, 32177), (80, 32033), (102, 31814),

Gene: Taurus_54 Start: 33856, Stop: 33266, Start Num: 19

Candidate Starts for Taurus_54:

(Start: 19 @33856 has 213 MA's), (Start: 22 @33850 has 135 MA's), (50, 33706), (55, 33697), (60, 33670), (69, 33586), (92, 33382), (97, 33334),

Gene: Texage_48 Start: 33696, Stop: 33097, Start Num: 13

Candidate Starts for Texage_48:

(Start: 10 @33723 has 1 MA's), (Start: 11 @33708 has 1 MA's), (Start: 13 @33696 has 16 MA's), (Start: 21 @33666 has 7 MA's), (32, 33597), (55, 33519), (69, 33399), (99, 33138),

Gene: Thanksgivukkah_48 Start: 33428, Stop: 32847, Start Num: 11

Candidate Starts for Thanksgivukkah_48:

(Start: 10 @33443 has 1 MA's), (Start: 11 @33428 has 1 MA's), (Start: 22 @33386 has 135 MA's), (69, 33128), (77, 33095), (88, 33056), (99, 32888),

Gene: Tiffany_53 Start: 33742, Stop: 33152, Start Num: 19

Candidate Starts for Tiffany_53:

(Start: 19 @33742 has 213 MA's), (Start: 22 @33736 has 135 MA's), (50, 33592), (55, 33583), (60, 33556), (69, 33472), (92, 33268), (97, 33220),

Gene: Timothy_50 Start: 32790, Stop: 32227, Start Num: 19

Candidate Starts for Timothy_50:

(Start: 19 @32790 has 213 MA's), (52, 32661), (83, 32496), (92, 32340),

Gene: TinaFeyge_49 Start: 33383, Stop: 32844, Start Num: 22

Candidate Starts for TinaFeyge_49:

(Start: 10 @33440 has 1 MA's), (Start: 11 @33425 has 1 MA's), (Start: 22 @33383 has 135 MA's), (69, 33125), (77, 33092), (88, 33053), (99, 32885),

Gene: TinyTimmy_49 Start: 32839, Stop: 32270, Start Num: 19

Candidate Starts for TinyTimmy_49:

(Start: 19 @32839 has 213 MA's), (52, 32704), (83, 32539), (92, 32383),

Gene: Tinybot_48 Start: 33415, Stop: 32876, Start Num: 22

Candidate Starts for Tinybot_48:

(Start: 10 @33472 has 1 MA's), (Start: 11 @33457 has 1 MA's), (Start: 22 @33415 has 135 MA's), (69, 33157), (77, 33124), (88, 33085), (99, 32917),

Gene: TipsytheTRex_46 Start: 32912, Stop: 32397, Start Num: 19

Candidate Starts for TipsytheTRex_46:

(Start: 19 @32912 has 213 MA's), (39, 32834), (54, 32801), (64, 32723), (69, 32687), (76, 32660), (92, 32507),

Gene: TiroTheta9_49 Start: 33382, Stop: 32843, Start Num: 22

Candidate Starts for TiroTheta9_49:

(Start: 10 @33439 has 1 MA's), (Start: 11 @33424 has 1 MA's), (Start: 22 @33382 has 135 MA's), (69, 33124), (77, 33091), (88, 33052), (99, 32884),

Gene: Toaka_50 Start: 33510, Stop: 32944, Start Num: 19

Candidate Starts for Toaka_50:

(Start: 16 @33525 has 49 MA's), (Start: 19 @33510 has 213 MA's), (45, 33411), (46, 33408), (65, 33297), (89, 33198), (92, 33051),

Gene: Todacoro_49 Start: 33695, Stop: 33096, Start Num: 13

Candidate Starts for Todacoro_49:

(Start: 10 @33722 has 1 MA's), (Start: 11 @33707 has 1 MA's), (Start: 13 @33695 has 16 MA's), (Start: 21 @33665 has 7 MA's), (32, 33596), (55, 33518), (69, 33398), (99, 33137),

Gene: Tomathan_52 Start: 33468, Stop: 32890, Start Num: 19

Candidate Starts for Tomathan_52:

(Start: 16 @33483 has 49 MA's), (Start: 19 @33468 has 213 MA's), (50, 33351), (53, 33345), (59, 33321), (63, 33273), (67, 33243), (84, 33174), (86, 33165), (89, 33156), (92, 33003),

Gene: ToneTone_49 Start: 32472, Stop: 31927, Start Num: 19

Candidate Starts for ToneTone_49:

(6, 32586), (7, 32571), (Start: 16 @32487 has 49 MA's), (Start: 19 @32472 has 213 MA's), (63, 32262), (64, 32259), (76, 32196), (79, 32187), (92, 32037), (94, 32034),

Gene: Trixie_48 Start: 33814, Stop: 33275, Start Num: 16

Candidate Starts for Trixie_48:

(Start: 16 @33814 has 49 MA's), (Start: 19 @33799 has 213 MA's), (39, 33712), (59, 33649), (64, 33598), (66, 33574), (76, 33535), (92, 33385), (96, 33367), (97, 33337),

Gene: Trooper_51 Start: 34077, Stop: 33538, Start Num: 16

Candidate Starts for Trooper_51:

(12, 34089), (Start: 16 @34077 has 49 MA's), (Start: 19 @34062 has 213 MA's), (37, 33984), (54, 33948), (59, 33921), (64, 33870), (66, 33846), (69, 33834), (76, 33807), (92, 33651), (96, 33633),

Gene: TroyPia_50 Start: 33386, Stop: 32847, Start Num: 22

Candidate Starts for TroyPia_50:

(Start: 10 @33443 has 1 MA's), (Start: 11 @33428 has 1 MA's), (Start: 22 @33386 has 135 MA's), (69, 33128), (77, 33095), (88, 33056), (99, 32888),

Gene: Tubs_50 Start: 33619, Stop: 33104, Start Num: 19

Candidate Starts for Tubs_50:

(Start: 16 @33634 has 49 MA's), (Start: 19 @33619 has 213 MA's), (41, 33526), (54, 33502), (64, 33424), (76, 33361), (92, 33211),

Gene: Tucker_53 Start: 32940, Stop: 32392, Start Num: 19

Candidate Starts for Tucker_53:

(Start: 15 @32955 has 1 MA's), (Start: 19 @32940 has 213 MA's), (63, 32730), (64, 32727), (76, 32664), (79, 32655), (92, 32502), (94, 32499),

Gene: Turbido_51 Start: 34088, Stop: 33570, Start Num: 19

Candidate Starts for Turbido_51:

(Start: 16 @34103 has 49 MA's), (Start: 19 @34088 has 213 MA's), (39, 34004), (54, 33968), (62, 33896), (64, 33890), (66, 33866), (67, 33863), (76, 33827), (92, 33680), (96, 33662), (97, 33632),

Gene: TygerBlood_49 Start: 33388, Stop: 32849, Start Num: 22
Candidate Starts for TygerBlood_49:
(Start: 10 @33445 has 1 MA's), (Start: 11 @33430 has 1 MA's), (Start: 22 @33388 has 135 MA's),
(69, 33130), (77, 33097), (88, 33058), (99, 32890),

Gene: Ugenie5_47 Start: 33904, Stop: 33341, Start Num: 19
Candidate Starts for Ugenie5_47:
(Start: 16 @33919 has 49 MA's), (Start: 19 @33904 has 213 MA's), (54, 33778), (65, 33688), (89,
33589), (92, 33448),

Gene: UhSalsa_39 Start: 29797, Stop: 29273, Start Num: 30
Candidate Starts for UhSalsa_39:
(Start: 30 @29797 has 36 MA's), (50, 29692), (92, 29380), (95, 29371), (96, 29362), (97, 29332),

Gene: Ulysses_48 Start: 33065, Stop: 32526, Start Num: 22
Candidate Starts for Ulysses_48:
(Start: 10 @33122 has 1 MA's), (Start: 11 @33107 has 1 MA's), (Start: 22 @33065 has 135 MA's),
(69, 32807), (77, 32774), (88, 32735), (99, 32567),

Gene: UnionJack_43 Start: 31830, Stop: 31306, Start Num: 18
Candidate Starts for UnionJack_43:
(Start: 18 @31830 has 22 MA's), (53, 31698), (55, 31692), (80, 31548), (102, 31329),

Gene: Updawg_51 Start: 33944, Stop: 33435, Start Num: 19
Candidate Starts for Updawg_51:
(Start: 16 @33959 has 49 MA's), (Start: 19 @33944 has 213 MA's), (37, 33875), (54, 33839), (59,
33812), (62, 33767), (64, 33761), (66, 33737), (69, 33725), (76, 33698), (79, 33689), (83, 33671), (92,
33548),

Gene: VA6_51 Start: 34058, Stop: 33534, Start Num: 19
Candidate Starts for VA6_51:
(Start: 16 @34073 has 49 MA's), (Start: 19 @34058 has 213 MA's), (48, 33953), (59, 33908), (66,
33833), (76, 33794), (92, 33644), (96, 33626), (97, 33596),

Gene: VC3_53 Start: 33887, Stop: 33309, Start Num: 19
Candidate Starts for VC3_53:
(Start: 16 @33902 has 49 MA's), (Start: 19 @33887 has 213 MA's), (50, 33773), (53, 33767), (59,
33740), (63, 33692), (67, 33662), (83, 33596), (84, 33593), (86, 33584), (89, 33575), (92, 33422),

Gene: Vanisoa_50 Start: 34540, Stop: 33974, Start Num: 19
Candidate Starts for Vanisoa_50:
(Start: 16 @34555 has 49 MA's), (Start: 19 @34540 has 213 MA's), (49, 34429), (89, 34234), (92,
34081),

Gene: Veracruz_48 Start: 33695, Stop: 33096, Start Num: 13
Candidate Starts for Veracruz_48:
(Start: 10 @33722 has 1 MA's), (Start: 11 @33707 has 1 MA's), (Start: 13 @33695 has 16 MA's),
(Start: 21 @33665 has 7 MA's), (32, 33596), (55, 33518), (69, 33398), (99, 33137),

Gene: Vix_53 Start: 33939, Stop: 33349, Start Num: 19
Candidate Starts for Vix_53:
(Start: 19 @33939 has 213 MA's), (Start: 22 @33933 has 135 MA's), (50, 33789), (55, 33780), (60,
33753), (69, 33669), (92, 33465), (97, 33417),

Gene: VohminGhazi_52 Start: 32779, Stop: 32207, Start Num: 19

Candidate Starts for VohminGhazi_52:

(Start: 16 @32794 has 49 MA's), (Start: 19 @32779 has 213 MA's), (47, 32668), (54, 32650), (82, 32488), (89, 32461), (92, 32317), (94, 32314),

Gene: Waits_54 Start: 32652, Stop: 32116, Start Num: 25

Candidate Starts for Waits_54:

(Start: 25 @32652 has 19 MA's), (28, 32646), (33, 32586), (65, 32427), (69, 32409), (77, 32382), (92, 32220), (97, 32175),

Gene: Wander_49 Start: 33385, Stop: 32846, Start Num: 22

Candidate Starts for Wander_49:

(Start: 10 @33442 has 1 MA's), (Start: 11 @33427 has 1 MA's), (Start: 22 @33385 has 135 MA's), (69, 33127), (77, 33094), (88, 33055), (99, 32887),

Gene: Watson_53 Start: 33848, Stop: 33258, Start Num: 19

Candidate Starts for Watson_53:

(Start: 19 @33848 has 213 MA's), (Start: 22 @33842 has 135 MA's), (50, 33698), (55, 33689), (60, 33662), (69, 33578), (92, 33374), (97, 33326),

Gene: WeiHuaDA_52 Start: 34601, Stop: 34083, Start Num: 19

Candidate Starts for WeiHuaDA_52:

(Start: 16 @34616 has 49 MA's), (Start: 19 @34601 has 213 MA's), (36, 34529), (39, 34517), (54, 34481), (56, 34475), (59, 34454), (62, 34409), (64, 34403), (66, 34379), (76, 34340), (92, 34193), (96, 34175), (97, 34145),

Gene: Whabigail7_51 Start: 34073, Stop: 33555, Start Num: 19

Candidate Starts for Whabigail7_51:

(Start: 16 @34088 has 49 MA's), (Start: 19 @34073 has 213 MA's), (39, 33989), (54, 33953), (62, 33881), (64, 33875), (66, 33851), (67, 33848), (69, 33839), (76, 33812), (92, 33665), (96, 33647), (97, 33617),

Gene: WideWale_51 Start: 33959, Stop: 33435, Start Num: 16

Candidate Starts for WideWale_51:

(Start: 16 @33959 has 49 MA's), (Start: 19 @33944 has 213 MA's), (37, 33875), (54, 33839), (59, 33812), (62, 33767), (64, 33761), (66, 33737), (69, 33725), (76, 33698), (79, 33689), (83, 33671), (92, 33548),

Gene: Wiks_51 Start: 32558, Stop: 31995, Start Num: 16

Candidate Starts for Wiks_51:

(6, 32657), (7, 32642), (Start: 16 @32558 has 49 MA's), (Start: 19 @32543 has 213 MA's), (63, 32333), (64, 32330), (76, 32267), (79, 32258), (92, 32105), (94, 32102),

Gene: Wilbur_49 Start: 33385, Stop: 32846, Start Num: 22

Candidate Starts for Wilbur_49:

(Start: 10 @33442 has 1 MA's), (Start: 11 @33427 has 1 MA's), (Start: 22 @33385 has 135 MA's), (69, 33127), (77, 33094), (88, 33055), (99, 32887),

Gene: Wile_48 Start: 33395, Stop: 32856, Start Num: 22

Candidate Starts for Wile_48:

(Start: 10 @33452 has 1 MA's), (Start: 11 @33437 has 1 MA's), (Start: 22 @33395 has 135 MA's), (69, 33137), (77, 33104), (88, 33065), (99, 32897),

Gene: Wizard007_49 Start: 33393, Stop: 32854, Start Num: 22

Candidate Starts for Wizard007_49:

(Start: 10 @33450 has 1 MA's), (Start: 11 @33435 has 1 MA's), (Start: 22 @33393 has 135 MA's), (69, 33135), (77, 33102), (88, 33063), (99, 32895),

Gene: Wooldri_55 Start: 33768, Stop: 33178, Start Num: 19

Candidate Starts for Wooldri_55:

(Start: 19 @33768 has 213 MA's), (Start: 22 @33762 has 135 MA's), (50, 33618), (55, 33609), (60, 33582), (69, 33498), (92, 33294), (97, 33246),

Gene: WunderPhul_52 Start: 32541, Stop: 31993, Start Num: 19

Candidate Starts for WunderPhul_52:

(6, 32655), (7, 32640), (Start: 16 @32556 has 49 MA's), (Start: 19 @32541 has 213 MA's), (63, 32331), (64, 32328), (76, 32265), (79, 32256), (92, 32103), (94, 32100),

Gene: Xena_47 Start: 33361, Stop: 32822, Start Num: 22

Candidate Starts for Xena_47:

(Start: 10 @33418 has 1 MA's), (Start: 11 @33403 has 1 MA's), (Start: 22 @33361 has 135 MA's), (69, 33103), (77, 33070), (88, 33031), (99, 32863),

Gene: XianYue_49 Start: 33430, Stop: 32909, Start Num: 19

Candidate Starts for XianYue_49:

(Start: 16 @33445 has 49 MA's), (Start: 19 @33430 has 213 MA's), (54, 33310), (59, 33283), (62, 33238), (64, 33232), (76, 33169), (92, 33019), (96, 33001), (97, 32971),

Gene: Yecey3_51 Start: 33196, Stop: 32624, Start Num: 19

Candidate Starts for Yecey3_51:

(Start: 16 @33211 has 49 MA's), (Start: 19 @33196 has 213 MA's), (61, 33043), (63, 33001), (82, 32911), (89, 32884), (92, 32731),

Gene: YoSam321_49 Start: 33382, Stop: 32843, Start Num: 22

Candidate Starts for YoSam321_49:

(Start: 10 @33439 has 1 MA's), (Start: 11 @33424 has 1 MA's), (Start: 22 @33382 has 135 MA's), (69, 33124), (77, 33091), (88, 33052), (99, 32884),

Gene: Yogi_39 Start: 29772, Stop: 29248, Start Num: 30

Candidate Starts for Yogi_39:

(Start: 30 @29772 has 36 MA's), (50, 29667), (92, 29355), (95, 29346), (96, 29337), (97, 29307),

Gene: Yokurt_52 Start: 32543, Stop: 31995, Start Num: 19

Candidate Starts for Yokurt_52:

(6, 32657), (7, 32642), (Start: 16 @32558 has 49 MA's), (Start: 19 @32543 has 213 MA's), (63, 32333), (64, 32330), (76, 32267), (79, 32258), (92, 32105), (94, 32102),

Gene: Yoncess_39 Start: 29773, Stop: 29249, Start Num: 30

Candidate Starts for Yoncess_39:

(Start: 30 @29773 has 36 MA's), (50, 29668), (92, 29356), (95, 29347), (96, 29338), (97, 29308),

Gene: Zaka_52 Start: 32543, Stop: 31995, Start Num: 19

Candidate Starts for Zaka_52:

(6, 32657), (7, 32642), (Start: 16 @32558 has 49 MA's), (Start: 19 @32543 has 213 MA's), (63, 32333), (64, 32330), (76, 32267), (79, 32258), (92, 32105), (94, 32102),

Gene: Zetzy_52 Start: 33419, Stop: 32829, Start Num: 19

Candidate Starts for Zetzy_52:

(Start: 19 @33419 has 213 MA's), (Start: 22 @33413 has 135 MA's), (50, 33269), (55, 33260), (60, 33233), (69, 33149), (92, 32945), (97, 32897),

Gene: Zulu_53 Start: 32936, Stop: 32373, Start Num: 16

Candidate Starts for Zulu_53:

(6, 33035), (7, 33020), (Start: 16 @32936 has 49 MA's), (Start: 19 @32921 has 213 MA's), (63, 32711), (64, 32708), (76, 32645), (79, 32636), (92, 32483), (94, 32480),