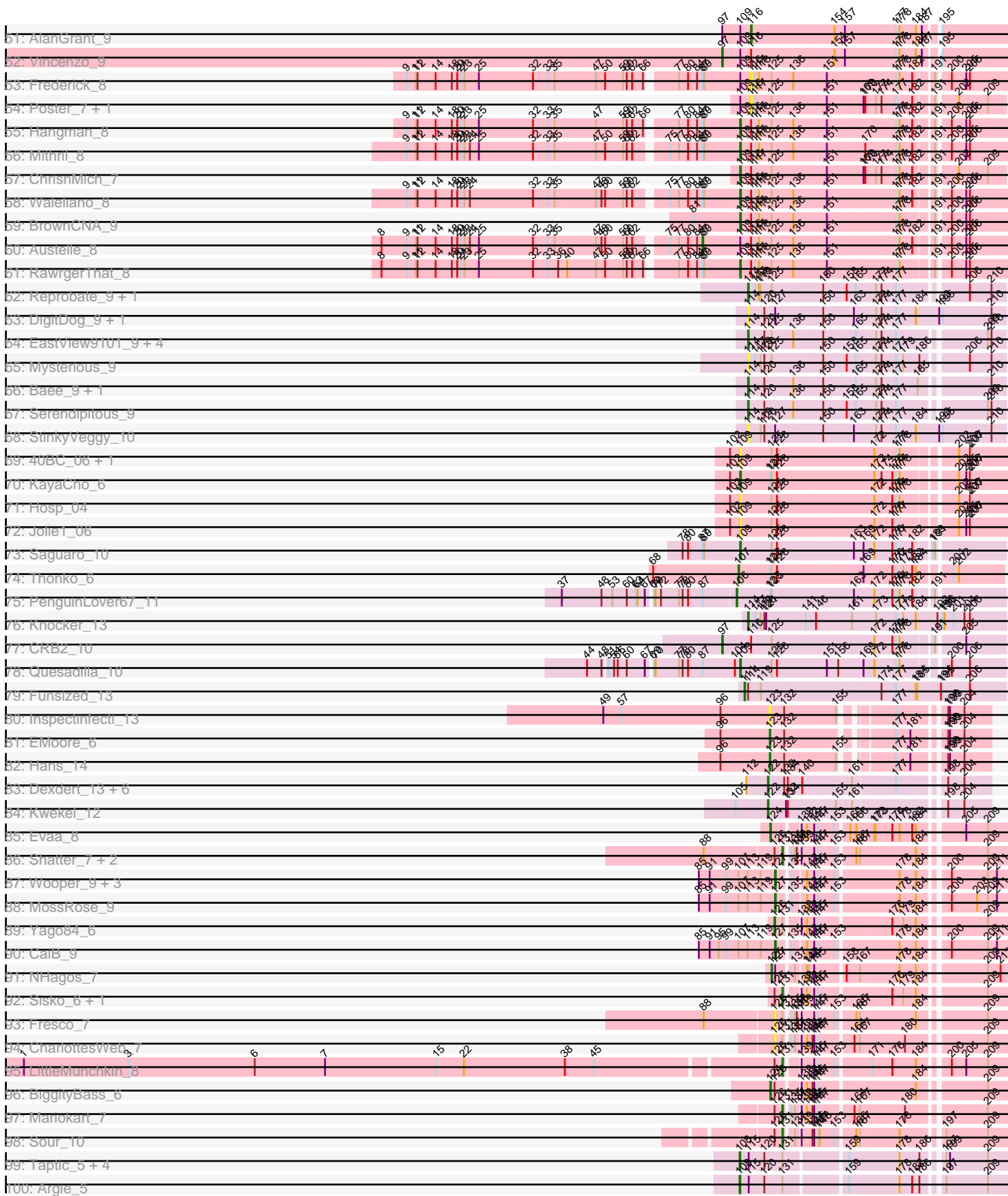
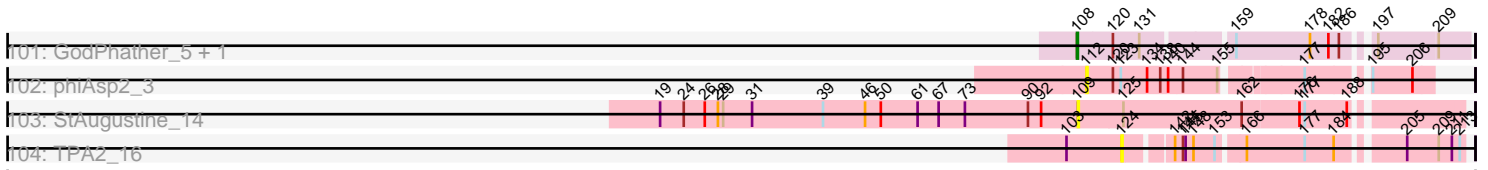


Pham 163253



Pham 163253



Note: Tracks are now grouped by subcluster and scaled. Switching in subcluster is indicated by changes in track color. Track scale is now set by default to display the region 30 bp upstream of start 1 to 30 bp downstream of the last possible start. If this default region is judged to be packed too tightly with annotated starts, the track will be further scaled to only show that region of the ORF with annotated starts. This action will be indicated by adding "Zoomed" to the title. For starts, yellow indicates the location of called starts comprised solely of Glimmer/GeneMark auto-annotations, green indicates the location of called starts with at least 1 manual gene annotation.

Pham 163253 Report

This analysis was run 04/28/24 on database version 559.

Pham number 163253 has 460 members, 60 are drafts.

Phages represented in each track:

- Track 1 : Mao1_5, Mask_6, Sejanus_6
- Track 2 : Dori_6
- Track 3 : Struggle_7, Veritas_7, MichaelPhcott_7, PhrankReynolds_7, Trypo_7, Wallhey_7, Pinkman_7, Mag7_7, Labeouficaum_7, Phleuron_7, Freya_7, Oline_7, Coletti_7, Derpp_7, PhenghisKhan_7, Doddsville_7, DuchessDung_7, BatteryCK_7, Chute_7, CharlieGBrown_7, TyrionL_7, Kailash_7, Phergie_7
- Track 4 : Selr12_7, MelsMeow_7, Plmatters_7, Windsor_7, Lumine_7, Roliet_7, Crownjwl_8, Phipps_7, Soto_7, Dione_7, Roscoe_8, Olak_7, Scrick_7, Haleema_7, Phunky_7, Dingo_7, MiniBoss_7, Kwksand96_7, Chaelin_7, LuckyMarjie_7
- Track 5 : Virgeve_7, Morty_7, HenryJackson_7, Orion_7, Weher20_7, Childish_7, Adriana_7, Skippy_7, Yoshand_7, LemonSlice_7, Kloppinator_7, Legolas_7, Puhltonio_7, ThreeOh3D2_7, ProfessorX_7, DonSanchon_7, Riggan_7, PhrodoBaggins_7, Pherdinand_7, ShiVal_7, Orwigg_8, Serendipity_7, Slatt_7, Craff_7, Vaishali24_7, Surely_7, True_7, Oosterbaan_7, Haimas_7, Megatron_7, Cobra_7, Burr_7, Iridoclysis_7, Mana_7, Gophee_7, DirtJuice_7, Usavi_7, Valjean_7, Thora_7, TomBombadil_7, Zaider_8, Inchworm_7, Placalicious_7, Boehler_7, Hamish_7, Xavier_7, Lulwa_7, Spartan300_7, TallGrassMM_7, Schadenfreude_7, Pipsqueak_7, Hocus_7, Colbert_7, UncleHowie_7, Squiggle_7, Simielle_7, BlackStallion_7, Vista_7, Solosis_7, Potter_7, Sigman_7, LeeLot_7, Samaymay_7, Sophia_7, Nyala_7, Altwerkus_7, Emiris_7, Zelda_7, Hartsy_7, Chah_7, Andre_8, ABU_7, Fang_7, Kahve_7, MRabcd_7, YouGoGlencoco_7, IsaacEli_7, AltPhacts_7, Omniscient_7, Mutante_7, QueenBeane_7, KLucky39_7, Bishoperium_7, Apizium_7, SassyCat97_7, Charles1_7, Piglet_007, Mesh1_7, Antonia_7, Banjo_7, Dice_8, LostAndPhound_7, FriarPreacher_7, Keitherie_7, Kikipoo_7, HighStump_7, Lego3393_7, Vortex_7, PG1_7, JacAttac_7, LasagnaCat_7, Mecca_7, PinheadLarry_7, Olive_7, Mosaic_7, Megamind20_8, Chorkpop_7, Hertubise_7, Gareth_7, Bluephacebaby_7, Serpentine_007, Phareon_7, CamL_7, Telesworld_7, Cannibal_7, Magic8_7, Jillium_7, Vaticameos_7, Sheila_7, Podrick_7, Fringe_7, Dati_7, Phamished_7, UAch1_7, Quisquiliae_8, Murdoc_7, Manad_7, Waterdiva_7, Hetaeria_7, Lasso_7, Schueller_7, Cher_7, Cornobble_7, Squid_7, Anderson_7, Vivaldi_7, Numberten_7, Mcshane_7, Horchata_7
- Track 6 : Fozzie_7, Swiphy_7, PhatLouie_7, GeneCoco_7, OSmaximus_7, Pacifista_8
- Track 7 : Brilliant_7, DaddyDaniels_7, LeiMonet_7, Longacauda_7, MrPhizzler_7, JakeO_7, Durga_7, Thunderbird_7, Jiminy_7, JDog_7, Zonia_7, Jiraiya_7, Duggie_7, Rimu_7
- Track 8 : RedMaple_7

- Track 9 : Swish_7, Katniss_7, Badfish_7
- Track 10 : EmpTee_7, Robyn_7, Pops_7, PhatCats2014_7, Matalotodo_7, Newman_7, Grand2040_7, Gwilliam_8, Aelin_7, Eremos_7, KingTut_7, Lulumae_7, MitKao_7, Gyarad_007, Nacho_007, Eugenia_8, Prickles_7, Roy17_7, Held_7, Lopsy_7, HSavage_7, Cosmolli16_7, Tooj_7, AbsoluteMadLad_7, OliverWalter_7, Nicole21_7, KlimbOn_7, Daffy_7, Suffolk_7, Carthage_7, Toni_7, CampRoach_7, Scoot17C_7, Virapocalypse_7, FugateOSU_7, JangoPhett_7, Frankicide_7, Giraffe_7, Mulan_7, CheetO_7, Maru_7, Daka_7, Inverness_7
- Track 11 : Chunky_7, Melc17_7
- Track 12 : Buckeye_7
- Track 13 : DoesntMatter_7, FluffyNinja_7, Beaglebox_7
- Track 14 : Basato_8
- Track 15 : KingVeVeVe_7, Ricotta_7, Kwadwo_7
- Track 16 : Tomlarah_7, Kimbrough_7
- Track 17 : Timmi_7
- Track 18 : Soile_7, DelRivs_7, Harvey_7, Orfeu_7
- Track 19 : Etaye_7
- Track 20 : Ashraf_7, Maskar_7, ImtiyazSitla_7
- Track 21 : SDcharge11_7
- Track 22 : Morgushi_7
- Track 23 : Mikota_7
- Track 24 : BlueHusk_7
- Track 25 : Imvubu_4
- Track 26 : Indlovu_8
- Track 27 : LilMcDreamy_9
- Track 28 : Zenteno07_12
- Track 29 : BirdsNest_11
- Track 30 : Hashim76_12
- Track 31 : Boyle_11, Kheth_11, Ares_11, Eaglehorse_11, ItsyBitsy1_11, Hedgerow_11, Lephleur_11, FrenchFry_11, Sabella_11, MasterPo_11, Phantasmagoria_11, Faze9_11, Tinciduntolum_12, Kaleb_11, Brownie5_11, Rosebush_11, Glass_11, West99_11, Bananafish_11, Opia_11, Coffee_11
- Track 32 : LizLemon_11, Blocker23_11, Lars_11, Tres_11, Godines_11, Qyrzula_11
- Track 33 : Arbiter_11, TA17A_11
- Track 34 : Calamitous_11, Laurie_11
- Track 35 : Rhinoforte_11, Allegro_11
- Track 36 : Holeinone_11
- Track 37 : Yinz_10, Kronus_9, GlenHope_11, RagingRooster_10, Audrey_10, Phaedrus_9, Pipefish_10, Bernardo_10, Compostia_10, Chandler_10, HarveySr_10, Briakila_10, Corofin_10, Heathcliff_10, Casbah_9, SynergyX_10, Baloo_10, Deenasa_10, Mortcellus_9, Ben11_9, Jackstina_9, Daisy_10, RomaT_10, Nozo_10, ChaChing_10, Gervas_10, Marley1013_10, Philly_9, Rita1961_10, Yahalom_10, Morty007_10, Neos5_10, Kamiyu_10, Akoma_10, OrangeOswald_10, Phlyer_10, Tydolla_10, SlippinJimmy_10, Abinghost_10, Halfpint_9, Gadget_11, Devonte_10, Obutu_10, MmasiCarm_10, Phayeta_10
- Track 38 : Athena_11, LestyG_10
- Track 39 : JAMaL_7
- Track 40 : Apex_7
- Track 41 : VioletZ_8, Zemanar_9, Heath_8
- Track 42 : JaguarMi_9
- Track 43 : Cooper_8
- Track 44 : BobbyK_8

- Track 45 : Magpie_8
- Track 46 : Stinger_6
- Track 47 : Mudslide_8
- Track 48 : Nigel_6
- Track 49 : Lolalove_8, Hydro_8
- Track 50 : Prince_9
- Track 51 : AlanGrant_9
- Track 52 : Vincenzo_9
- Track 53 : Frederick_8
- Track 54 : Poster_7, Nanao_7
- Track 55 : Hangman_8
- Track 56 : Mithril_8
- Track 57 : ChrisnMich_7
- Track 58 : Waleliano_8
- Track 59 : BrownCNA_9
- Track 60 : Austelle_8
- Track 61 : RawrgerThat_8
- Track 62 : Reprobate_9, Phelemich_9
- Track 63 : DigitDog_9, Nangang_9
- Track 64 : EastView9101_9, SirJeffery_9, Suigeneris_9, Acadian_9, Donny_9
- Track 65 : Mysterious_9
- Track 66 : Bae_9, Rich_9
- Track 67 : Serendipitous_9
- Track 68 : StinkyVeggy_10
- Track 69 : 40BC_06, 39HC_06
- Track 70 : KayaCho_6
- Track 71 : Hosp_04
- Track 72 : Jolie1_06
- Track 73 : Saguaro_10
- Track 74 : Thonko_6
- Track 75 : PenguinLover67_11
- Track 76 : Knocker_13
- Track 77 : CRB2_10
- Track 78 : Quesadilla_10
- Track 79 : Funsized_13
- Track 80 : Inspectinfecti_13
- Track 81 : EMOore_6
- Track 82 : Hans_14
- Track 83 : Dextert_13, Twonlo_10, Tiamoceli_13, Chickadee_12, EdmundFerry_11, GTE6_13, RoadKill_10
- Track 84 : Kwekel_12
- Track 85 : Evaa_8
- Track 86 : Shatter_7, Ligma_7, Axumite_7
- Track 87 : Wooper_9, AnarQue_9, MakoManhole_9, CloverMinnie_9
- Track 88 : MossRose_9
- Track 89 : Yago84_6
- Track 90 : CaiB_9
- Track 91 : NHagos_7
- Track 92 : Sisko_6, AnClar_6
- Track 93 : Fresco_7
- Track 94 : CharlottesWeb_7
- Track 95 : LittleMunchkin_8
- Track 96 : BiggityBass_6

- Track 97 : Mariokart_7
- Track 98 : Sour_10
- Track 99 : Taptic_5, PR_05, D12_05, Megabear_5, Cepens_5
- Track 100 : Argie_5
- Track 101 : GodPhather_5, Jeon_5
- Track 102 : phiAsp2_3
- Track 103 : StAugustine_14
- Track 104 : TPA2_16

Summary of Final Annotations (See graph section above for start numbers):

The start number called the most often in the published annotations is 104, it was called in 238 of the 400 non-draft genes in the pham.

Genes that call this "Most Annotated" start:

- ABU_7, AbsoluteMadLad_7, Adriana_7, Aelin_7, AltPhacts_7, Altwerkus_7, Anderson_7, Andre_8, Antonia_7, Apizium_7, Banjo_7, Basato_8, BatteryCK_7, BirdsNest_11, Bishoperium_7, BlackStallion_7, BlueHusk_7, Bluephacebaby_7, Boehler_7, Brilliant_7, Buckeye_7, Burr_7, CamL_7, CampRoach_7, Cannibal_7, Carthage_7, Chaelin_7, Chah_7, Charles1_7, CharlieGBrown_7, CheetO_7, Cher_7, Childish_7, Chorkpop_7, Chunky_7, Chute_7, Cobra_7, Colbert_7, Coletti_7, Cornobble_7, Cosmolli16_7, Craff_7, Crownjwl_8, DaddyDaniels_7, Daffy_7, Daka_7, Dati_7, DelRivs_7, Derpp_7, Dice_8, Dingo_7, Dione_7, DirtJuice_7, Doddsville_7, DonSanchon_7, DuchessDung_7, Duggie_7, Durga_7, Emiris_7, EmpTee_7, Eremos_7, Eugenia_8, Fang_7, Fozzie_7, Frankicide_7, Freya_7, FriarPreacher_7, Fringe_7, FugateOSU_7, Gareth_7, GeneCoco_7, Giraffe_7, Gophee_7, Grand2040_7, Gwilliam_8, Gyarad_007, HSavage_7, Haimas_7, Haleema_7, Hamish_7, Hartsy_7, Harvey_7, Hashim76_12, Held_7, HenryJackson_7, Hertubise_7, Hetaeria_7, HighStump_7, Hocus_7, Horchata_7, Inchworm_7, Inverness_7, Iridoclysis_7, IsaacEli_7, JDog_7, JacAttac_7, JakeO_7, JangoPhett_7, Jillium_7, Jiminy_7, Jiraiya_7, KLucky39_7, Kahve_7, Kailash_7, Keitherie_7, Kikipoo_7, Kimbrough_7, KingTut_7, KingVeVeVe_7, KlimbOn_7, Kloppinator_7, Kwadwo_7, Kwksand96_7, Labeouficaum_7, LasagnaCat_7, Lasso_7, LeeLot_7, Lego3393_7, Legolas_7, LeiMonet_7, LemonSlice_7, Longacauda_7, Lopsy_7, LostAndPhound_7, LuckyMarjie_7, Lulumae_7, Lulwa_7, Lumine_7, MRabcd_7, Mag7_7, Magic8_7, Mana_7, Manad_7, Maru_7, Matalotodo_7, Mcshane_7, Mecca_7, Megamind20_8, Megatron_7, Melc17_7, MelsMeow_7, Mesh1_7, MichaelPhcott_7, Mikota_7, MiniBoss_7, MitKao_7, Morgushi_7, Morty_7, Mosaic_7, MrPhizzler_7, Mulan_7, Murdoc_7, Mutante_7, Nacho_007, Newman_7, Nicole21_7, Numberten_7, Nyala_7, OSmaximus_7, Olak_7, Oline_7, Olive_7, OliverWalter_7, Omniscient_7, Oosterbaan_7, Orfeu_7, Orion_7, Orwigg_8, PG1_7, Pacifista_8, Phamished_7, Phareon_7, PhatCats2014_7, PhatLouie_7, PhenghisKhan_7, Pherdinand_7, Phergie_7, Phipps_7, Phleuron_7, PhrankReynolds_7, PhrodoBaggins_7, Phunky_7, Piglet_007, PinheadLarry_7, Pinkman_7, Pipsqueak_7, Placalicious_7, Plmatters_7, Podrick_7, Pops_7, Potter_7, Prickles_7, ProfessorX_7, Puhltonio_7, QueenBeane_7, Quisquiliae_8, RedMaple_7, Ricotta_7, Riggan_7, Rimu_7, Robyn_7, Roliet_7, Roscoe_8, Roy17_7, SDcharge11_7, Samaymay_7, SassyCat97_7, Schadenfreude_7, Schueller_7, Scoot17C_7, Scrick_7, Selr12_7, Serendipity_7, Serpentine_007, Sheila_7, ShiVal_7, Sigman_7, Simielle_7, Skippy_7, Slatt_7, Soile_7, Solosis_7, Sophia_7,

Soto_7, Spartan300_7, Squid_7, Squiggle_7, Struggle_7, Suffolk_7, Surely_7, Swiphy_7, TallGrassMM_7, Telesworld_7, Thora_7, ThreeOh3D2_7, Thunderbird_7, Timmi_7, TomBombadil_7, Tomlarah_7, Toni_7, Tooj_7, True_7, Trypo_7, TyrionL_7, UAch1_7, UncleHowie_7, Usavi_7, Vaishali24_7, Valjean_7, Vaticameos_7, Veritas_7, Virapocalypse_7, Virgeve_7, Vista_7, Vivaldi_7, Vortex_7, Wallhey_7, Waterdiva_7, Weher20_7, Windsor_7, Xavier_7, Yoshand_7, YouGoGlencoco_7, Zaider_8, Zelda_7, Zonia_7,

Genes that have the "Most Annotated" start but do not call it:

- Ashraf_7, Badfish_7, Beaglebox_7, DoesntMatter_7, Etaye_7, FluffyNinja_7, ImtiyazSitla_7, Indlovu_8, Katniss_7, Maskar_7, Quesadilla_10, Swish_7, Zenteno07_12,

Genes that do not have the "Most Annotated" start:

- 39HC_06, 40BC_06, Abinghost_10, Acadian_9, Akoma_10, AlanGrant_9, Allegro_11, AnClar_6, AnarQue_9, Apex_7, Arbiter_11, Ares_11, Argie_5, Athena_11, Audrey_10, Austelle_8, Axumite_7, Bae_9, Baloo_10, Bananafish_11, Ben11_9, Bernardo_10, BiggityBass_6, Blocker23_11, BobbyK_8, Boyle_11, Briakila_10, BrownCNA_9, Brownie5_11, CRB2_10, CaiB_9, Calamitous_11, Casbah_9, Cepens_5, ChaChing_10, Chandler_10, CharlottesWeb_7, Chickadee_12, ChrisnMich_7, CloverMinnie_9, Coffee_11, Compostia_10, Cooper_8, Corofin_10, D12_05, Daisy_10, Deenasa_10, Devonte_10, Dextert_13, DigitDog_9, Donny_9, Dori_6, EMOore_6, Eaglehorse_11, EastView9101_9, EdmundFerry_11, Evaa_8, Faze9_11, Frederick_8, FrenchFry_11, Fresco_7, Funsized_13, GTE6_13, Gadget_11, Gervas_10, Glass_11, GlenHope_11, GodPhather_5, Godines_11, Halfpint_9, Hangman_8, Hans_14, HarveySr_10, Heath_8, Heathcliff_10, Hedgerow_11, Holeinone_11, Hosp_04, Hydro_8, Imvubu_4, Inspectinfecti_13, ItsyBitsy1_11, JAMaL_7, Jackstina_9, JaguarMi_9, Jeon_5, Jolie1_06, Kaleb_11, Kamiyu_10, KayaCho_6, Kheth_11, Knocker_13, Kronus_9, Kwekel_12, Lars_11, Laurie_11, Lephleur_11, LestyG_10, Ligma_7, LilMcDreamy_9, LittleMunchkin_8, LizLemon_11, Lolalove_8, Magpie_8, MakoManhole_9, Mao1_5, Mariokart_7, Marley1013_10, Mask_6, MasterPo_11, Megabear_5, Mithril_8, MmasiCarm_10, Mortcellus_9, Morty007_10, MossRose_9, Mudslide_8, Mysterious_9, NHagos_7, Nanao_7, Nangang_9, Neos5_10, Nigel_6, Nozo_10, Obutu_10, Opia_11, OrangeOswald_10, PR_05, PenguinLover67_11, Phaedrus_9, Phantasmagoria_11, Phayeta_10, Phelemich_9, Philly_9, Phlyer_10, Pipefish_10, Poster_7, Prince_9, Qyrzula_11, RagingRooster_10, RawrgerThat_8, Reprobate_9, Rhinoforte_11, Rich_9, Rita1961_10, RoadKill_10, RomaT_10, Rosebush_11, Sabella_11, Saguaro_10, Sejanus_6, Serendipitous_9, Shatter_7, SirJeffery_9, Sisko_6, SlippinJimmy_10, Sour_10, StAugustine_14, Stinger_6, StinkyVeggy_10, Suigeneris_9, SynergyX_10, TA17A_11, TPA2_16, Taptic_5, Thonko_6, Tiamoceli_13, Tinciduntolum_12, Tres_11, Twonlo_10, Tydolla_10, Vincenzo_9, VioletZ_8, Waleliano_8, West99_11, Wooper_9, Yago84_6, Yahalom_10, Yinz_10, Zemanar_9, phiAsp2_3,

Summary by start number:

Start 53:

- Found in 53 of 460 (11.5%) of genes in pham
- Manual Annotations of this start: 3 of 400
- Called 5.7% of time when present
- Phage (with cluster) where this start called: Ashraf_7 (B1), ImtiyazSitla_7 (B1), Maskar_7 (B1),

Start 77:

- Found in 288 of 460 (62.6%) of genes in pham
- Manual Annotations of this start: 7 of 400
- Called 2.4% of time when present
- Phage (with cluster) where this start called: Badfish_7 (B1), Beaglebox_7 (B1), DoesntMatter_7 (B1), Etaye_7 (B1), FluffyNinja_7 (B1), Katniss_7 (B1), Swish_7 (B1),

Start 84:

- Found in 13 of 460 (2.8%) of genes in pham
- No Manual Annotations of this start.
- Called 7.7% of time when present
- Phage (with cluster) where this start called: BobbyK_8 (B4),

Start 87:

- Found in 18 of 460 (3.9%) of genes in pham
- Manual Annotations of this start: 1 of 400
- Called 5.6% of time when present
- Phage (with cluster) where this start called: Austelle_8 (B4),

Start 97:

- Found in 3 of 460 (0.7%) of genes in pham
- Manual Annotations of this start: 2 of 400
- Called 66.7% of time when present
- Phage (with cluster) where this start called: CRB2_10 (B9), Vincenzo_9 (B4),

Start 100:

- Found in 1 of 460 (0.2%) of genes in pham
- Manual Annotations of this start: 1 of 400
- Called 100.0% of time when present
- Phage (with cluster) where this start called: Zenteno07_12 (B13),

Start 104:

- Found in 279 of 460 (60.7%) of genes in pham
- Manual Annotations of this start: 238 of 400
- Called 95.3% of time when present
- Phage (with cluster) where this start called: ABU_7 (B1), AbsoluteMadLad_7 (B1), Adriana_7 (B1), Aelin_7 (B1), AltPhacts_7 (B1), Altwerkus_7 (B1), Anderson_7 (B1), Andre_8 (B1), Antonia_7 (B1), Apizium_7 (B1), Banjo_7 (B1), Basato_8 (B1), BatteryCK_7 (B1), BirdsNest_11 (B13), Bishoperium_7 (B1), BlackStallion_7 (B1), BlueHusk_7 (B1), Bluephacebaby_7 (B1), Boehler_7 (B1), Brilliant_7 (B1), Buckeye_7 (B1), Burr_7 (B1), CamL_7 (B1), CampRoach_7 (B1), Cannibal_7 (B1), Carthage_7 (B1), Chaelin_7 (B1), Chah_7 (B1), Charles1_7 (B1), CharlieGBrown_7 (B1), CheetO_7 (B1), Cher_7 (B1), Childish_7 (B1), Chorkpop_7 (B1), Chunky_7 (B1), Chute_7 (B1), Cobra_7 (B1), Colbert_7 (B1), Coletti_7 (B1), Cornobble_7 (B1), Cosmolli16_7 (B1), Craff_7 (B1), Crownjwl_8 (B1), DaddyDaniels_7 (B1), Daffy_7 (B1), Daka_7 (B1), Dati_7 (B1), DelRivs_7 (B1), Derpp_7 (B1), Dice_8 (B1), Dingo_7 (B1), Dione_7 (B1), DirtJuice_7 (B1), Doddsville_7 (B1), DonSanchon_7 (B1), DuchessDung_7 (B1), Duggie_7 (B1), Durga_7 (B1), Emiris_7 (B1), EmpTee_7 (B1), Eremos_7 (B1), Eugenia_8 (B1), Fang_7 (B1), Fozzie_7 (B1), Frankicide_7 (B1), Freya_7 (B1), FriarPreacher_7 (B1), Fringe_7 (B1), FugateOSU_7 (B1), Gareth_7 (B1), GeneCoco_7 (B1), Giraffe_7 (B1), Gophee_7 (B1), Grand2040_7 (B1),

Gwilliam_8 (B1), Gyarad_007 (B1), HSavage_7 (B1), Haimas_7 (B1), Haleema_7 (B1), Hamish_7 (B1), Hartsy_7 (B1), Harvey_7 (B1), Hashim76_12 (B13), Held_7 (B1), HenryJackson_7 (B1), Hertubise_7 (B1), Hetaeria_7 (B1), HighStump_7 (B1), Hocus_7 (B1), Horchata_7 (B1), Inchworm_7 (B1), Inverness_7 (B1), Iridoclysis_7 (B1), IsaacEli_7 (B1), JDog_7 (B1), JacAttac_7 (B1), JakeO_7 (B1), JangoPhett_7 (B1), Jillium_7 (B1), Jiminy_7 (B1), Jiraiya_7 (B1), KLucky39_7 (B1), Kahve_7 (B1), Kailash_7 (B1), Keitherie_7 (B1), Kikipoo_7 (B1), Kimbrough_7 (B1), KingTut_7 (B1), KingVeVeVe_7 (B1), KlimbOn_7 (B1), Kloppinator_7 (B1), Kwadwo_7 (B1), Kwksand96_7 (B1), Labeouficaum_7 (B1), LasagnaCat_7 (B1), Lasso_7 (B1), LeeLot_7 (B1), Lego3393_7 (B1), Legolas_7 (B1), LeiMonet_7 (B1), LemonSlice_7 (B1), Longacauda_7 (B1), Lopsy_7 (B1), LostAndPhound_7 (B1), LuckyMarjie_7 (B1), Lulumae_7 (B1), Lulwa_7 (B1), Lumine_7 (B1), MRabcd_7 (B1), Mag7_7 (B1), Magic8_7 (B1), Mana_7 (B1), Manad_7 (B1), Maru_7 (B1), Matalotodo_7 (B1), Mcshane_7 (B1), Mecca_7 (B1), Megamind20_8 (B1), Megatron_7 (B1), Melc17_7 (B1), MelsMeow_7 (B1), Mesh1_7 (B1), MichaelPhcott_7 (B1), Mikota_7 (B1), MiniBoss_7 (B1), MitKao_7 (B1), Morgushi_7 (B1), Morty_7 (B1), Mosaic_7 (B1), MrPhizzler_7 (B1), Mulan_7 (B1), Murdoc_7 (B1), Mutante_7 (B1), Nacho_007 (B1), Newman_7 (B1), Nicole21_7 (B1), Numberben_7 (B1), Nyala_7 (B1), OSmaximus_7 (B1), Olak_7 (B1), Oline_7 (B1), Olive_7 (B1), OliverWalter_7 (B1), Omniscient_7 (B1), Oosterbaan_7 (B1), Orfeu_7 (B1), Orion_7 (B1), Orwigg_8 (B1), PG1_7 (B1), Pacifista_8 (B1), Phamished_7 (B1), Phareon_7 (B1), PhatCats2014_7 (B1), PhatLouie_7 (B1), PhenghisKhan_7 (B1), Pherdinand_7 (B1), Phergie_7 (B1), Phipps_7 (B1), Phleuron_7 (B1), PhrankReynolds_7 (B1), PhrodoBaggins_7 (B1), Phunky_7 (B1), Piglet_007 (B1), PinheadLarry_7 (B1), Pinkman_7 (B1), Pipsqueak_7 (B1), Placalicious_7 (B1), Plmatters_7 (B1), Podrick_7 (B1), Pops_7 (B1), Potter_7 (B1), Prickles_7 (B1), ProfessorX_7 (B1), Puhltonio_7 (B1), QueenBeane_7 (B1), Quisquillae_8 (B1), RedMaple_7 (B1), Ricotta_7 (B1), Riggan_7 (B1), Rimu_7 (B1), Robyn_7 (B1), Roliet_7 (B1), Roscoe_8 (B1), Roy17_7 (B1), SDcharge11_7 (B1), Samaymay_7 (B1), SassyCat97_7 (B1), Schadenfreude_7 (B1), Schueller_7 (B1), Scoot17C_7 (B1), Scrick_7 (B1), Selr12_7 (B1), Serendipity_7 (B1), Serpentine_007 (B1), Sheila_7 (B1), ShiVal_7 (B1), Sigman_7 (B1), Simielle_7 (B1), Skippy_7 (B1), Slatt_7 (B1), Soile_7 (B1), Solosis_7 (B1), Sophia_7 (B1), Soto_7 (B1), Spartan300_7 (B1), Squid_7 (B1), Squiggle_7 (B1), Struggle_7 (B1), Suffolk_7 (B1), Surely_7 (B1), Swiphy_7 (B1), TallGrassMM_7 (B1), Telesworld_7 (B1), Thora_7 (B1), ThreeOh3D2_7 (B1), Thunderbird_7 (B1), Timmi_7 (B1), TomBombadil_7 (B1), Tomlarah_7 (B1), Toni_7 (B1), Tooj_7 (B1), True_7 (B1), Trypo_7 (B1), TyrionL_7 (B1), UAch1_7 (B1), UncleHowie_7 (B1), Usavi_7 (B1), Vaishali24_7 (B1), Valjean_7 (B1), Vaticameos_7 (B1), Veritas_7 (B1), Virapocalypse_7 (B1), Virgeve_7 (B1), Vista_7 (B1), Vivaldi_7 (B1), Vortex_7 (B1), Wallhey_7 (B1), Waterdiva_7 (B1), Weher20_7 (B1), Windsor_7 (B1), Xavier_7 (B1), Yoshand_7 (B1), YouGoGlencoco_7 (B1), Zaider_8 (B1), Zelda_7 (B1), Zonia_7 (B1),

Start 106:

- Found in 5 of 460 (1.1%) of genes in pham
- Manual Annotations of this start: 4 of 400
- Called 100.0% of time when present
- Phage (with cluster) where this start called: Dori_6 (AD), Mao1_5 (AD), Mask_6 (AD), PenguinLover67_11 (B9), Sejanus_6 (AD),

Start 107:

- Found in 7 of 460 (1.5%) of genes in pham
- Manual Annotations of this start: 1 of 400
- Called 14.3% of time when present

- Phage (with cluster) where this start called: Thonko_6 (B8),

Start 108:

- Found in 8 of 460 (1.7%) of genes in pham
- Manual Annotations of this start: 8 of 400
- Called 100.0% of time when present
- Phage (with cluster) where this start called: Argie_5 (W), Cepens_5 (W), D12_05 (W), GodPhather_5 (W), Jeon_5 (W), Megabear_5 (W), PR_05 (W), Taptic_5 (W),

Start 109:

- Found in 36 of 460 (7.8%) of genes in pham
- Manual Annotations of this start: 20 of 400
- Called 72.2% of time when present
- Phage (with cluster) where this start called: 39HC_06 (B6), 40BC_06 (B6), Apex_7 (B4), BrownCNA_9 (B4), ChrisnMich_7 (B4), Hangman_8 (B4), Heath_8 (B4), Hosp_04 (B6), Hydro_8 (B4), Indlovu_8 (B11), Jolie1_06 (B6), KayaCho_6 (B6), Lolalove_8 (B4), Magpie_8 (B4), Mithril_8 (B4), Mudslide_8 (B4), Nigel_6 (B4), Prince_9 (B4), Quesadilla_10 (B9), RawrgerThat_8 (B4), Saguaro_10 (B7), StAugustine_14 (singleton), Stinger_6 (B4), VioletZ_8 (B4), Waleliano_8 (B4), Zemanar_9 (B4),

Start 111:

- Found in 1 of 460 (0.2%) of genes in pham
- Manual Annotations of this start: 1 of 400
- Called 100.0% of time when present
- Phage (with cluster) where this start called: Funsized_13 (B9),

Start 112:

- Found in 8 of 460 (1.7%) of genes in pham
- No Manual Annotations of this start.
- Called 12.5% of time when present
- Phage (with cluster) where this start called: phiAsp2_3 (singleton),

Start 114:

- Found in 18 of 460 (3.9%) of genes in pham
- Manual Annotations of this start: 11 of 400
- Called 94.4% of time when present
- Phage (with cluster) where this start called: Acadian_9 (B5), Bae_9 (B5), DigitDog_9 (B5), Donny_9 (B5), EastView9101_9 (B5), Imvubu_4 (B10), Knocker_13 (B9), LiiMcDreamy_9 (B12), Mysterious_9 (B5), Nangang_9 (B5), Phelemich_9 (B5), Reprobate_9 (B5), Rich_9 (B5), Serendipitous_9 (B5), SirJeffery_9 (B5), StinkyVeggy_10 (B5), Suigeneris_9 (B5),

Start 116:

- Found in 29 of 460 (6.3%) of genes in pham
- Manual Annotations of this start: 1 of 400
- Called 17.2% of time when present
- Phage (with cluster) where this start called: AlanGrant_9 (B4), Frederick_8 (B4), JaguarMi_9 (B4), Nanao_7 (B4), Poster_7 (B4),

Start 117:

- Found in 30 of 460 (6.5%) of genes in pham
- Manual Annotations of this start: 2 of 400

- Called 6.7% of time when present
- Phage (with cluster) where this start called: Cooper_8 (B4), JAMaL_7 (B4),

Start 122:

- Found in 8 of 460 (1.7%) of genes in pham
- Manual Annotations of this start: 6 of 400
- Called 100.0% of time when present
- Phage (with cluster) where this start called: Chickadee_12 (DE3), Dextert_13 (DE3), EdmundFerry_11 (DE3), GTE6_13 (DE3), Kwekel_12 (DE3), RoadKill_10 (DE3), Tiamoceli_13 (DE3), Twonlo_10 (DE3),

Start 123:

- Found in 8 of 460 (1.7%) of genes in pham
- Manual Annotations of this start: 2 of 400
- Called 37.5% of time when present
- Phage (with cluster) where this start called: EMoore_6 (DE2), Hans_14 (DE2), Insectinfecti_13 (DE2),

Start 124:

- Found in 3 of 460 (0.7%) of genes in pham
- Manual Annotations of this start: 2 of 400
- Called 100.0% of time when present
- Phage (with cluster) where this start called: BiggityBass_6 (DR), Evaa_8 (DR), TPA2_16 (singleton),

Start 125:

- Found in 94 of 460 (20.4%) of genes in pham
- Manual Annotations of this start: 45 of 400
- Called 51.1% of time when present
- Phage (with cluster) where this start called: Abinghost_10 (B3), Akoma_10 (B3), Athena_11 (B3), Audrey_10 (B3), Baloo_10 (B3), Ben11_9 (B3), Bernardo_10 (B3), Briakila_10 (B3), Casbah_9 (B3), ChaChing_10 (B3), Chandler_10 (B3), Compostia_10 (B3), Corofin_10 (B3), Daisy_10 (B3), Deenasa_10 (B3), Devonte_10 (B3), Gadget_11 (B3), Gervas_10 (B3), GlenHope_11 (B3), Halfpint_9 (B3), HarveySr_10 (B3), Heathcliff_10 (B3), Jackstina_9 (B3), Kamiyu_10 (B3), Kronus_9 (B3), LestyG_10 (B3), Marley1013_10 (B3), MmasiCarm_10 (B3), Mortcellus_9 (B3), Morty007_10 (B3), NHagos_7 (DR), Neos5_10 (B3), Nozo_10 (B3), Obutu_10 (B3), OrangeOswald_10 (B3), Phaedrus_9 (B3), Phayeta_10 (B3), Philly_9 (B3), Phlyer_10 (B3), Pipefish_10 (B3), RagingRooster_10 (B3), Rita1961_10 (B3), RomaT_10 (B3), SlippinJimmy_10 (B3), SynergyX_10 (B3), Tydolla_10 (B3), Yahalom_10 (B3), Yinz_10 (B3),

Start 126:

- Found in 12 of 460 (2.6%) of genes in pham
- Manual Annotations of this start: 1 of 400
- Called 25.0% of time when present
- Phage (with cluster) where this start called: CharlottesWeb_7 (DR), Fresco_7 (DR), Yago84_6 (DR),

Start 127:

- Found in 14 of 460 (3.0%) of genes in pham
- Manual Annotations of this start: 5 of 400
- Called 42.9% of time when present

- Phage (with cluster) where this start called: AnarQue_9 (DR), CaiB_9 (DR), CloverMinnie_9 (DR), MakoManhole_9 (DR), MossRose_9 (DR), Wooper_9 (DR),

Start 130:

- Found in 34 of 460 (7.4%) of genes in pham
- Manual Annotations of this start: 32 of 400
- Called 100.0% of time when present
- Phage (with cluster) where this start called: Allegro_11 (B2), Arbiter_11 (B2), Ares_11 (B2), Bananafish_11 (B2), Blocker23_11 (B2), Boyle_11 (B2), Brownie5_11 (B2), Calamitous_11 (B2), Coffee_11 (B2), Eaglehorse_11 (B2), Faze9_11 (B2), FrenchFry_11 (B2), Glass_11 (B2), Godines_11 (B2), Hedgerow_11 (B2), Holeinone_11 (B2), ItsyBitsy1_11 (B2), Kaleb_11 (B2), Kheth_11 (B2), Lars_11 (B2), Laurie_11 (B2), Lephleur_11 (B2), LizLemon_11 (B2), MasterPo_11 (B2), Opia_11 (B2), Phantasmagoria_11 (B2), Qyrzula_11 (B2), Rhinoforte_11 (B2), Rosebush_11 (B2), Sabella_11 (B2), TA17A_11 (B2), Tinciduntolum_12 (B2), Tres_11 (B2), West99_11 (B2),

Start 131:

- Found in 19 of 460 (4.1%) of genes in pham
- Manual Annotations of this start: 7 of 400
- Called 42.1% of time when present
- Phage (with cluster) where this start called: AnClar_6 (DR), Axumite_7 (DR), Ligma_7 (DR), LittleMunchkin_8 (DR), Mariokart_7 (DR), Shatter_7 (DR), Sisko_6 (DR), Sour_10 (DR),

Summary by clusters:

There are 19 clusters represented in this pham: singleton, B2, B10, B11, B8, DE2, DE3, B4, B5, B6, B7, B12, B1, W, B3, AD, DR, B9, B13,

Info for manual annotations of cluster AD:

- Start number 106 was manually annotated 3 times for cluster AD.

Info for manual annotations of cluster B1:

- Start number 53 was manually annotated 3 times for cluster B1.
- Start number 77 was manually annotated 7 times for cluster B1.
- Start number 104 was manually annotated 237 times for cluster B1.

Info for manual annotations of cluster B10:

- Start number 114 was manually annotated 1 time for cluster B10.

Info for manual annotations of cluster B11:

- Start number 109 was manually annotated 1 time for cluster B11.

Info for manual annotations of cluster B12:

- Start number 114 was manually annotated 1 time for cluster B12.

Info for manual annotations of cluster B13:

- Start number 100 was manually annotated 1 time for cluster B13.
- Start number 104 was manually annotated 1 time for cluster B13.

Info for manual annotations of cluster B2:

- Start number 130 was manually annotated 32 times for cluster B2.

Info for manual annotations of cluster B3:

- Start number 125 was manually annotated 44 times for cluster B3.

Info for manual annotations of cluster B4:

- Start number 87 was manually annotated 1 time for cluster B4.
- Start number 97 was manually annotated 1 time for cluster B4.
- Start number 109 was manually annotated 16 times for cluster B4.
- Start number 116 was manually annotated 1 time for cluster B4.
- Start number 117 was manually annotated 2 times for cluster B4.

Info for manual annotations of cluster B5:

- Start number 114 was manually annotated 8 times for cluster B5.

Info for manual annotations of cluster B6:

- Start number 109 was manually annotated 1 time for cluster B6.

Info for manual annotations of cluster B7:

- Start number 109 was manually annotated 1 time for cluster B7.

Info for manual annotations of cluster B8:

- Start number 107 was manually annotated 1 time for cluster B8.

Info for manual annotations of cluster B9:

- Start number 97 was manually annotated 1 time for cluster B9.
- Start number 106 was manually annotated 1 time for cluster B9.
- Start number 109 was manually annotated 1 time for cluster B9.
- Start number 111 was manually annotated 1 time for cluster B9.
- Start number 114 was manually annotated 1 time for cluster B9.

Info for manual annotations of cluster DE2:

- Start number 123 was manually annotated 2 times for cluster DE2.

Info for manual annotations of cluster DE3:

- Start number 122 was manually annotated 6 times for cluster DE3.

Info for manual annotations of cluster DR:

- Start number 124 was manually annotated 2 times for cluster DR.
- Start number 125 was manually annotated 1 time for cluster DR.
- Start number 126 was manually annotated 1 time for cluster DR.
- Start number 127 was manually annotated 5 times for cluster DR.
- Start number 131 was manually annotated 7 times for cluster DR.

Info for manual annotations of cluster W:

- Start number 108 was manually annotated 8 times for cluster W.

Gene Information:

Gene: 39HC_06 Start: 4766, Stop: 5182, Start Num: 109

Candidate Starts for 39HC_06:

(102, 4751), (Start: 109 @4766 has 20 MA's), (Start: 125 @4817 has 45 MA's), (128, 4826), (172, 4982), (177, 5018), (178, 5024), (202, 5102), (206, 5120), (207, 5123),

Gene: 40BC_06 Start: 4766, Stop: 5182, Start Num: 109

Candidate Starts for 40BC_06:

(102, 4751), (Start: 109 @4766 has 20 MA's), (Start: 125 @4817 has 45 MA's), (128, 4826), (172, 4982), (177, 5018), (178, 5024), (202, 5102), (206, 5120), (207, 5123),

Gene: ABU_7 Start: 3963, Stop: 4409, Start Num: 104

Candidate Starts for ABU_7:

(Start: 77 @3876 has 7 MA's), (Start: 104 @3963 has 238 MA's), (140, 4074), (174, 4200), (177, 4224), (182, 4251), (184, 4257), (186, 4263), (206, 4338),

Gene: Abinghost_10 Start: 5949, Stop: 6284, Start Num: 125

Candidate Starts for Abinghost_10:

(Start: 125 @5949 has 45 MA's), (142, 5991), (145, 6003), (150, 6018), (153, 6036), (173, 6093), (184, 6159), (190, 6180), (203, 6216), (206, 6228), (210, 6264),

Gene: AbsoluteMadLad_7 Start: 3961, Stop: 4407, Start Num: 104

Candidate Starts for AbsoluteMadLad_7:

(Start: 77 @3874 has 7 MA's), (Start: 104 @3961 has 238 MA's), (140, 4072), (174, 4198), (177, 4222), (182, 4249), (184, 4255), (186, 4261),

Gene: Acadian_9 Start: 6265, Stop: 6666, Start Num: 114

Candidate Starts for Acadian_9:

(Start: 114 @6265 has 11 MA's), (120, 6292), (Start: 125 @6304 has 45 MA's), (136, 6340), (150, 6388), (165, 6439), (173, 6472), (174, 6481), (177, 6505), (209, 6637), (210, 6643),

Gene: Adriana_7 Start: 3965, Stop: 4411, Start Num: 104

Candidate Starts for Adriana_7:

(Start: 77 @3878 has 7 MA's), (Start: 104 @3965 has 238 MA's), (140, 4076), (174, 4202), (177, 4226), (182, 4253), (184, 4259), (186, 4265), (206, 4340),

Gene: Aelin_7 Start: 3965, Stop: 4411, Start Num: 104

Candidate Starts for Aelin_7:

(Start: 77 @3878 has 7 MA's), (Start: 104 @3965 has 238 MA's), (140, 4076), (174, 4202), (177, 4226), (182, 4253), (184, 4259), (186, 4265),

Gene: Akoma_10 Start: 5949, Stop: 6284, Start Num: 125

Candidate Starts for Akoma_10:

(Start: 125 @5949 has 45 MA's), (142, 5991), (145, 6003), (150, 6018), (153, 6036), (173, 6093), (184, 6159), (190, 6180), (203, 6216), (206, 6228), (210, 6264),

Gene: AlanGrant_9 Start: 7025, Stop: 7429, Start Num: 116

Candidate Starts for AlanGrant_9:

(Start: 97 @6977 has 2 MA's), (Start: 109 @7007 has 20 MA's), (Start: 116 @7025 has 1 MA's), (154, 7160), (157, 7175), (177, 7259), (178, 7265), (184, 7292), (187, 7298), (195, 7316),

Gene: Allegro_11 Start: 7363, Stop: 7701, Start Num: 130

Candidate Starts for Allegro_11:

(82, 7225), (86, 7234), (101, 7282), (Start: 130 @7363 has 32 MA's), (136, 7378), (147, 7417), (153, 7444), (160, 7462), (166, 7471), (167, 7477), (168, 7480), (171, 7495), (172, 7498), (173, 7501), (200, 7606), (202, 7618), (210, 7672),

Gene: AltPhacts_7 Start: 3966, Stop: 4412, Start Num: 104

Candidate Starts for AltPhacts_7:

(Start: 77 @3879 has 7 MA's), (Start: 104 @3966 has 238 MA's), (140, 4077), (174, 4203), (177, 4227), (182, 4254), (184, 4260), (186, 4266), (206, 4341),

Gene: Altwerkus_7 Start: 3965, Stop: 4411, Start Num: 104

Candidate Starts for Altwerkus_7:

(Start: 77 @3878 has 7 MA's), (Start: 104 @3965 has 238 MA's), (140, 4076), (174, 4202), (177, 4226), (182, 4253), (184, 4259), (186, 4265), (206, 4340),

Gene: AnClar_6 Start: 5256, Stop: 5579, Start Num: 131

Candidate Starts for AnClar_6:

(Start: 126 @5244 has 1 MA's), (Start: 131 @5256 has 7 MA's), (139, 5274), (142, 5283), (145, 5295), (147, 5301), (176, 5412), (179, 5430), (184, 5451), (209, 5550),

Gene: AnarQue_9 Start: 6416, Stop: 6754, Start Num: 127

Candidate Starts for AnarQue_9:

(85, 6293), (91, 6311), (99, 6338), (Start: 107 @6359 has 1 MA's), (113, 6371), (119, 6392), (Start: 127 @6416 has 5 MA's), (135, 6434), (142, 6455), (145, 6467), (147, 6473), (153, 6500), (178, 6599), (184, 6626), (200, 6665), (209, 6725), (211, 6740),

Gene: Anderson_7 Start: 3965, Stop: 4411, Start Num: 104

Candidate Starts for Anderson_7:

(Start: 77 @3878 has 7 MA's), (Start: 104 @3965 has 238 MA's), (140, 4076), (174, 4202), (177, 4226), (182, 4253), (184, 4259), (186, 4265), (206, 4340),

Gene: Andre_8 Start: 3966, Stop: 4412, Start Num: 104

Candidate Starts for Andre_8:

(Start: 77 @3879 has 7 MA's), (Start: 104 @3966 has 238 MA's), (140, 4077), (174, 4203), (177, 4227), (182, 4254), (184, 4260), (186, 4266), (206, 4341),

Gene: Antonia_7 Start: 3965, Stop: 4411, Start Num: 104

Candidate Starts for Antonia_7:

(Start: 77 @3878 has 7 MA's), (Start: 104 @3965 has 238 MA's), (140, 4076), (174, 4202), (177, 4226), (182, 4253), (184, 4259), (186, 4265), (206, 4340),

Gene: Apex_7 Start: 5846, Stop: 6265, Start Num: 109

Candidate Starts for Apex_7:

(8, 5255), (11, 5312), (12, 5315), (13, 5318), (14, 5345), (16, 5351), (18, 5372), (20, 5381), (23, 5393), (25, 5417), (26, 5426), (27, 5438), (30, 5462), (32, 5507), (34, 5537), (42, 5588), (48, 5621), (50, 5627), (52, 5636), (59, 5657), (Start: 77 @5750 has 7 MA's), (80, 5765), (84, 5780), (Start: 87 @5786 has 1 MA's), (89, 5789), (Start: 109 @5846 has 20 MA's), (Start: 116 @5864 has 1 MA's), (Start: 117 @5870 has 2 MA's), (118, 5876), (Start: 125 @5897 has 45 MA's), (136, 5933), (151, 5987), (177, 6098), (178, 6104), (182, 6125), (191, 6152), (200, 6170), (205, 6194), (206, 6200),

Gene: Apizium_7 Start: 3963, Stop: 4409, Start Num: 104

Candidate Starts for Apizium_7:

(Start: 77 @3876 has 7 MA's), (Start: 104 @3963 has 238 MA's), (140, 4074), (174, 4200), (177, 4224), (182, 4251), (184, 4257), (186, 4263), (206, 4338),

Gene: Arbiter_11 Start: 7453, Stop: 7791, Start Num: 130

Candidate Starts for Arbiter_11:

(82, 7315), (86, 7324), (101, 7372), (Start: 130 @7453 has 32 MA's), (136, 7468), (147, 7507), (153, 7534), (160, 7552), (166, 7561), (167, 7567), (168, 7570), (171, 7585), (173, 7591), (200, 7696), (202, 7708), (210, 7762),

Gene: Ares_11 Start: 7363, Stop: 7701, Start Num: 130

Candidate Starts for Ares_11:

(82, 7225), (86, 7234), (98, 7276), (101, 7282), (Start: 130 @7363 has 32 MA's), (136, 7378), (147, 7417), (153, 7444), (160, 7462), (166, 7471), (168, 7480), (171, 7495), (173, 7501), (200, 7606), (202, 7618), (210, 7672),

Gene: Argie_5 Start: 2882, Stop: 3286, Start Num: 108

Candidate Starts for Argie_5:

(Start: 108 @2882 has 8 MA's), (115, 2897), (120, 2921), (Start: 131 @2951 has 7 MA's), (159, 3044), (178, 3128), (182, 3149), (186, 3161), (197, 3185), (209, 3251),

Gene: Ashraf_7 Start: 3764, Stop: 4408, Start Num: 53

Candidate Starts for Ashraf_7:

(49, 3749), (Start: 53 @3764 has 3 MA's), (57, 3779), (60, 3788), (65, 3809), (76, 3869), (Start: 77 @3875 has 7 MA's), (Start: 104 @3962 has 238 MA's), (120, 4010), (140, 4073), (174, 4199), (177, 4223), (182, 4250), (184, 4256), (186, 4262), (206, 4337),

Gene: Athena_11 Start: 6712, Stop: 7047, Start Num: 125

Candidate Starts for Athena_11:

(Start: 125 @6712 has 45 MA's), (142, 6754), (145, 6766), (150, 6781), (153, 6799), (173, 6856), (184, 6922), (203, 6979), (206, 6991), (210, 7027),

Gene: Audrey_10 Start: 5949, Stop: 6284, Start Num: 125

Candidate Starts for Audrey_10:

(Start: 125 @5949 has 45 MA's), (142, 5991), (145, 6003), (150, 6018), (153, 6036), (173, 6093), (184, 6159), (190, 6180), (203, 6216), (206, 6228), (210, 6264),

Gene: Austelle_8 Start: 6242, Stop: 6721, Start Num: 87

Candidate Starts for Austelle_8:

(8, 5732), (9, 5774), (11, 5789), (12, 5792), (14, 5822), (18, 5849), (20, 5858), (21, 5864), (23, 5870), (24, 5879), (25, 5894), (32, 5984), (33, 6008), (35, 6020), (47, 6086), (48, 6095), (50, 6101), (59, 6131), (60, 6137), (62, 6146), (75, 6191), (Start: 77 @6206 has 7 MA's), (80, 6221), (84, 6236), (Start: 87 @6242 has 1 MA's), (89, 6245), (Start: 109 @6302 has 20 MA's), (Start: 116 @6320 has 1 MA's), (Start: 117 @6326 has 2 MA's), (118, 6332), (Start: 125 @6353 has 45 MA's), (136, 6389), (151, 6443), (177, 6554), (178, 6560), (182, 6581), (191, 6608), (200, 6626), (205, 6650), (206, 6656),

Gene: Axumite_7 Start: 4953, Stop: 5276, Start Num: 131

Candidate Starts for Axumite_7:

(88, 4833), (Start: 126 @4941 has 1 MA's), (Start: 131 @4953 has 7 MA's), (135, 4959), (137, 4965), (138, 4968), (139, 4971), (145, 4992), (147, 4998), (153, 5025), (166, 5052), (167, 5058), (184, 5148), (209, 5247),

Gene: Badfish_7 Start: 3878, Stop: 4411, Start Num: 77

Candidate Starts for Badfish_7:

(Start: 77 @3878 has 7 MA's), (Start: 104 @3965 has 238 MA's), (140, 4076), (174, 4202), (177, 4226), (182, 4253), (184, 4259), (186, 4265),

Gene: Bae_9 Start: 6271, Stop: 6672, Start Num: 114

Candidate Starts for Bae_9:

(Start: 114 @6271 has 11 MA's), (120, 6298), (136, 6346), (150, 6394), (165, 6445), (173, 6478), (174, 6487), (177, 6511), (185, 6547), (210, 6649),

Gene: Baloo_10 Start: 5949, Stop: 6284, Start Num: 125

Candidate Starts for Baloo_10:

(Start: 125 @5949 has 45 MA's), (142, 5991), (145, 6003), (150, 6018), (153, 6036), (173, 6093), (184, 6159), (190, 6180), (203, 6216), (206, 6228), (210, 6264),

Gene: Bananafish_11 Start: 7363, Stop: 7701, Start Num: 130

Candidate Starts for Bananafish_11:

(82, 7225), (86, 7234), (98, 7276), (101, 7282), (Start: 130 @7363 has 32 MA's), (136, 7378), (147, 7417), (153, 7444), (160, 7462), (166, 7471), (168, 7480), (171, 7495), (173, 7501), (200, 7606), (202, 7618), (210, 7672),

Gene: Banjo_7 Start: 3966, Stop: 4412, Start Num: 104

Candidate Starts for Banjo_7:

(Start: 77 @3879 has 7 MA's), (Start: 104 @3966 has 238 MA's), (140, 4077), (174, 4203), (177, 4227), (182, 4254), (184, 4260), (186, 4266), (206, 4341),

Gene: Basato_8 Start: 4199, Stop: 4645, Start Num: 104

Candidate Starts for Basato_8:

(Start: 77 @4112 has 7 MA's), (80, 4127), (Start: 104 @4199 has 238 MA's), (140, 4310), (174, 4436), (177, 4460), (182, 4487), (184, 4493), (186, 4499), (206, 4574),

Gene: BatteryCK_7 Start: 3962, Stop: 4408, Start Num: 104

Candidate Starts for BatteryCK_7:

(49, 3749), (Start: 53 @3764 has 3 MA's), (57, 3779), (60, 3788), (65, 3809), (76, 3869), (Start: 77 @3875 has 7 MA's), (Start: 104 @3962 has 238 MA's), (120, 4010), (140, 4073), (174, 4199), (177, 4223), (182, 4250), (184, 4256), (186, 4262), (206, 4337),

Gene: Beaglebox_7 Start: 3878, Stop: 4411, Start Num: 77

Candidate Starts for Beaglebox_7:

(Start: 77 @3878 has 7 MA's), (Start: 104 @3965 has 238 MA's), (140, 4076), (174, 4202), (177, 4226), (182, 4253), (184, 4259), (186, 4265), (206, 4340),

Gene: Ben11_9 Start: 5797, Stop: 6132, Start Num: 125

Candidate Starts for Ben11_9:

(Start: 125 @5797 has 45 MA's), (142, 5839), (145, 5851), (150, 5866), (153, 5884), (173, 5941), (184, 6007), (190, 6028), (203, 6064), (206, 6076), (210, 6112),

Gene: Bernardo_10 Start: 5977, Stop: 6312, Start Num: 125

Candidate Starts for Bernardo_10:

(Start: 125 @5977 has 45 MA's), (142, 6019), (145, 6031), (150, 6046), (153, 6064), (173, 6121), (184, 6187), (190, 6208), (203, 6244), (206, 6256), (210, 6292),

Gene: BiggityBass_6 Start: 4749, Stop: 5090, Start Num: 124

Candidate Starts for BiggityBass_6:

(Start: 124 @4749 has 2 MA's), (Start: 126 @4755 has 1 MA's), (139, 4785), (142, 4794), (144, 4803), (145, 4806), (147, 4812), (184, 4962), (209, 5061),

Gene: BirdsNest_11 Start: 4695, Stop: 5120, Start Num: 104

Candidate Starts for BirdsNest_11:

(55, 4506), (58, 4515), (79, 4617), (Start: 104 @4695 has 238 MA's), (120, 4740), (145, 4821), (164, 4884), (182, 4980), (197, 5016), (200, 5025), (206, 5055),

Gene: Bishoperium_7 Start: 3966, Stop: 4412, Start Num: 104

Candidate Starts for Bishoperium_7:

(Start: 77 @3879 has 7 MA's), (Start: 104 @3966 has 238 MA's), (140, 4077), (174, 4203), (177, 4227), (182, 4254), (184, 4260), (186, 4266), (206, 4341),

Gene: BlackStallion_7 Start: 3963, Stop: 4409, Start Num: 104

Candidate Starts for BlackStallion_7:

(Start: 77 @3876 has 7 MA's), (Start: 104 @3963 has 238 MA's), (140, 4074), (174, 4200), (177, 4224), (182, 4251), (184, 4257), (186, 4263), (206, 4338),

Gene: Blocker23_11 Start: 7480, Stop: 7818, Start Num: 130

Candidate Starts for Blocker23_11:

(82, 7342), (86, 7351), (101, 7399), (Start: 130 @7480 has 32 MA's), (136, 7495), (147, 7534), (153, 7561), (160, 7579), (166, 7588), (168, 7597), (171, 7612), (173, 7618), (200, 7723), (202, 7735), (210, 7789),

Gene: BlueHusk_7 Start: 3962, Stop: 4408, Start Num: 104

Candidate Starts for BlueHusk_7:

(76, 3869), (Start: 77 @3875 has 7 MA's), (Start: 104 @3962 has 238 MA's), (140, 4073), (174, 4199), (177, 4223), (182, 4250), (183, 4253), (184, 4256), (186, 4262), (206, 4337),

Gene: Bluephacebaby_7 Start: 3966, Stop: 4412, Start Num: 104

Candidate Starts for Bluephacebaby_7:

(Start: 77 @3879 has 7 MA's), (Start: 104 @3966 has 238 MA's), (140, 4077), (174, 4203), (177, 4227), (182, 4254), (184, 4260), (186, 4266), (206, 4341),

Gene: BobbyK_8 Start: 6233, Stop: 6718, Start Num: 84

Candidate Starts for BobbyK_8:

(9, 5771), (11, 5786), (12, 5789), (14, 5819), (18, 5846), (20, 5855), (21, 5861), (23, 5867), (25, 5891), (32, 5981), (33, 6005), (35, 6017), (47, 6083), (50, 6098), (59, 6128), (60, 6134), (62, 6143), (66, 6161), (Start: 77 @6203 has 7 MA's), (80, 6218), (84, 6233), (Start: 87 @6239 has 1 MA's), (89, 6242), (Start: 109 @6299 has 20 MA's), (Start: 116 @6317 has 1 MA's), (Start: 117 @6323 has 2 MA's), (118, 6329), (Start: 125 @6350 has 45 MA's), (136, 6386), (151, 6440), (177, 6551), (178, 6557), (182, 6578), (191, 6605), (200, 6623), (205, 6647), (206, 6653),

Gene: Boehler_7 Start: 3965, Stop: 4411, Start Num: 104

Candidate Starts for Boehler_7:

(Start: 77 @3878 has 7 MA's), (Start: 104 @3965 has 238 MA's), (140, 4076), (174, 4202), (177, 4226), (182, 4253), (184, 4259), (186, 4265), (206, 4340),

Gene: Boyle_11 Start: 7480, Stop: 7818, Start Num: 130

Candidate Starts for Boyle_11:

(82, 7342), (86, 7351), (98, 7393), (101, 7399), (Start: 130 @7480 has 32 MA's), (136, 7495), (147, 7534), (153, 7561), (160, 7579), (166, 7588), (168, 7597), (171, 7612), (173, 7618), (200, 7723), (202, 7735), (210, 7789),

Gene: Briakila_10 Start: 6738, Stop: 7073, Start Num: 125

Candidate Starts for Briakila_10:

(Start: 125 @6738 has 45 MA's), (142, 6780), (145, 6792), (150, 6807), (153, 6825), (173, 6882), (184, 6948), (190, 6969), (203, 7005), (206, 7017), (210, 7053),

Gene: Brilliant_7 Start: 3964, Stop: 4410, Start Num: 104

Candidate Starts for Brilliant_7:

(Start: 77 @3877 has 7 MA's), (Start: 104 @3964 has 238 MA's), (120, 4012), (174, 4201), (177, 4225), (182, 4252), (183, 4255), (184, 4258), (186, 4264), (206, 4339),

Gene: BrownCNA_9 Start: 6553, Stop: 6972, Start Num: 109

Candidate Starts for BrownCNA_9:

(81, 6481), (Start: 109 @6553 has 20 MA's), (Start: 116 @6571 has 1 MA's), (Start: 117 @6577 has 2 MA's), (118, 6583), (Start: 125 @6604 has 45 MA's), (136, 6640), (151, 6694), (177, 6805), (178, 6811), (191, 6859), (200, 6877), (205, 6901), (206, 6907),

Gene: Brownie5_11 Start: 7480, Stop: 7818, Start Num: 130

Candidate Starts for Brownie5_11:

(82, 7342), (86, 7351), (98, 7393), (101, 7399), (Start: 130 @7480 has 32 MA's), (136, 7495), (147, 7534), (153, 7561), (160, 7579), (166, 7588), (168, 7597), (171, 7612), (173, 7618), (200, 7723), (202, 7735), (210, 7789),

Gene: Buckeye_7 Start: 3967, Stop: 4413, Start Num: 104

Candidate Starts for Buckeye_7:

(74, 3853), (79, 3889), (Start: 104 @3967 has 238 MA's), (140, 4078), (174, 4204), (177, 4228), (182, 4255), (184, 4261), (186, 4267),

Gene: Burr_7 Start: 3966, Stop: 4412, Start Num: 104

Candidate Starts for Burr_7:

(Start: 77 @3879 has 7 MA's), (Start: 104 @3966 has 238 MA's), (140, 4077), (174, 4203), (177, 4227), (182, 4254), (184, 4260), (186, 4266), (206, 4341),

Gene: CRB2_10 Start: 6980, Stop: 7420, Start Num: 97

Candidate Starts for CRB2_10:

(Start: 97 @6980 has 2 MA's), (Start: 116 @7025 has 1 MA's), (Start: 125 @7058 has 45 MA's), (172, 7223), (176, 7253), (177, 7259), (178, 7265), (191, 7313), (205, 7355),

Gene: CaiB_9 Start: 6416, Stop: 6754, Start Num: 127

Candidate Starts for CaiB_9:

(85, 6293), (91, 6311), (95, 6326), (99, 6338), (Start: 107 @6359 has 1 MA's), (113, 6371), (119, 6392), (Start: 127 @6416 has 5 MA's), (135, 6434), (142, 6455), (145, 6467), (147, 6473), (153, 6500), (178, 6599), (184, 6626), (200, 6665), (209, 6725), (211, 6740),

Gene: Calamitous_11 Start: 7363, Stop: 7701, Start Num: 130

Candidate Starts for Calamitous_11:

(82, 7225), (86, 7234), (98, 7276), (101, 7282), (Start: 130 @7363 has 32 MA's), (136, 7378), (147, 7417), (153, 7444), (160, 7462), (166, 7471), (167, 7477), (168, 7480), (171, 7495), (173, 7501), (200, 7606), (202, 7618), (210, 7672),

Gene: CamL_7 Start: 3962, Stop: 4408, Start Num: 104

Candidate Starts for CamL_7:

(Start: 77 @3875 has 7 MA's), (Start: 104 @3962 has 238 MA's), (140, 4073), (174, 4199), (177, 4223), (182, 4250), (184, 4256), (186, 4262), (206, 4337),

Gene: CampRoach_7 Start: 3962, Stop: 4408, Start Num: 104

Candidate Starts for CampRoach_7:

(Start: 77 @3875 has 7 MA's), (Start: 104 @3962 has 238 MA's), (140, 4073), (174, 4199), (177, 4223), (182, 4250), (184, 4256), (186, 4262),

Gene: Cannibal_7 Start: 3965, Stop: 4411, Start Num: 104

Candidate Starts for Cannibal_7:

(Start: 77 @3878 has 7 MA's), (Start: 104 @3965 has 238 MA's), (140, 4076), (174, 4202), (177, 4226), (182, 4253), (184, 4259), (186, 4265), (206, 4340),

Gene: Carthage_7 Start: 3966, Stop: 4412, Start Num: 104

Candidate Starts for Carthage_7:

(Start: 77 @3879 has 7 MA's), (Start: 104 @3966 has 238 MA's), (140, 4077), (174, 4203), (177, 4227), (182, 4254), (184, 4260), (186, 4266),

Gene: Casbah_9 Start: 5798, Stop: 6133, Start Num: 125

Candidate Starts for Casbah_9:

(Start: 125 @5798 has 45 MA's), (142, 5840), (145, 5852), (150, 5867), (153, 5885), (173, 5942), (184, 6008), (190, 6029), (203, 6065), (206, 6077), (210, 6113),

Gene: Cepens_5 Start: 2882, Stop: 3286, Start Num: 108

Candidate Starts for Cepens_5:

(Start: 108 @2882 has 8 MA's), (115, 2897), (120, 2921), (Start: 131 @2951 has 7 MA's), (159, 3044), (178, 3128), (186, 3161), (197, 3185), (199, 3191), (209, 3251),

Gene: ChaChing_10 Start: 5964, Stop: 6299, Start Num: 125

Candidate Starts for ChaChing_10:

(Start: 125 @5964 has 45 MA's), (142, 6006), (145, 6018), (150, 6033), (153, 6051), (173, 6108), (184, 6174), (190, 6195), (203, 6231), (206, 6243), (210, 6279),

Gene: Chaelin_7 Start: 3963, Stop: 4409, Start Num: 104

Candidate Starts for Chaelin_7:

(49, 3750), (Start: 53 @3765 has 3 MA's), (57, 3780), (60, 3789), (65, 3810), (76, 3870), (Start: 77 @3876 has 7 MA's), (Start: 104 @3963 has 238 MA's), (120, 4011), (140, 4074), (174, 4200), (177, 4224), (182, 4251), (183, 4254), (184, 4257), (186, 4263), (206, 4338),

Gene: Chah_7 Start: 3963, Stop: 4409, Start Num: 104

Candidate Starts for Chah_7:

(Start: 77 @3876 has 7 MA's), (Start: 104 @3963 has 238 MA's), (140, 4074), (174, 4200), (177, 4224), (182, 4251), (184, 4257), (186, 4263), (206, 4338),

Gene: Chandler_10 Start: 6712, Stop: 7047, Start Num: 125

Candidate Starts for Chandler_10:

(Start: 125 @6712 has 45 MA's), (142, 6754), (145, 6766), (150, 6781), (153, 6799), (173, 6856), (184, 6922), (190, 6943), (203, 6979), (206, 6991), (210, 7027),

Gene: Charles1_7 Start: 3965, Stop: 4411, Start Num: 104

Candidate Starts for Charles1_7:

(Start: 77 @3878 has 7 MA's), (Start: 104 @3965 has 238 MA's), (140, 4076), (174, 4202), (177, 4226), (182, 4253), (184, 4259), (186, 4265), (206, 4340),

Gene: CharlieGBrown_7 Start: 3962, Stop: 4408, Start Num: 104

Candidate Starts for CharlieGBrown_7:

(49, 3749), (Start: 53 @3764 has 3 MA's), (57, 3779), (60, 3788), (65, 3809), (76, 3869), (Start: 77 @3875 has 7 MA's), (Start: 104 @3962 has 238 MA's), (120, 4010), (140, 4073), (174, 4199), (177,

4223), (182, 4250), (184, 4256), (186, 4262), (206, 4337),

Gene: CharlottesWeb_7 Start: 4948, Stop: 5283, Start Num: 126

Candidate Starts for CharlottesWeb_7:

(Start: 126 @4948 has 1 MA's), (Start: 131 @4960 has 7 MA's), (135, 4966), (137, 4972), (139, 4978), (142, 4987), (144, 4996), (145, 4999), (147, 5005), (164, 5056), (167, 5065), (180, 5137), (209, 5254),

Gene: CheetO_7 Start: 3965, Stop: 4411, Start Num: 104

Candidate Starts for CheetO_7:

(Start: 77 @3878 has 7 MA's), (Start: 104 @3965 has 238 MA's), (140, 4076), (174, 4202), (177, 4226), (182, 4253), (184, 4259), (186, 4265),

Gene: Cher_7 Start: 3965, Stop: 4411, Start Num: 104

Candidate Starts for Cher_7:

(Start: 77 @3878 has 7 MA's), (Start: 104 @3965 has 238 MA's), (140, 4076), (174, 4202), (177, 4226), (182, 4253), (184, 4259), (186, 4265), (206, 4340),

Gene: Chickadee_12 Start: 5433, Stop: 5771, Start Num: 122

Candidate Starts for Chickadee_12:

(112, 5397), (Start: 122 @5433 has 6 MA's), (132, 5460), (134, 5466), (140, 5490), (161, 5568), (177, 5634), (198, 5700), (204, 5727),

Gene: Childish_7 Start: 3965, Stop: 4411, Start Num: 104

Candidate Starts for Childish_7:

(Start: 77 @3878 has 7 MA's), (Start: 104 @3965 has 238 MA's), (140, 4076), (174, 4202), (177, 4226), (182, 4253), (184, 4259), (186, 4265), (206, 4340),

Gene: Chorkpop_7 Start: 3965, Stop: 4411, Start Num: 104

Candidate Starts for Chorkpop_7:

(Start: 77 @3878 has 7 MA's), (Start: 104 @3965 has 238 MA's), (140, 4076), (174, 4202), (177, 4226), (182, 4253), (184, 4259), (186, 4265), (206, 4340),

Gene: ChrisnMich_7 Start: 5203, Stop: 5616, Start Num: 109

Candidate Starts for ChrisnMich_7:

(Start: 109 @5203 has 20 MA's), (Start: 116 @5221 has 1 MA's), (Start: 117 @5227 has 2 MA's), (Start: 125 @5254 has 45 MA's), (151, 5344), (169, 5401), (170, 5404), (173, 5422), (174, 5431), (177, 5455), (178, 5461), (182, 5482), (191, 5509), (202, 5539), (209, 5587),

Gene: Chunky_7 Start: 3965, Stop: 4411, Start Num: 104

Candidate Starts for Chunky_7:

(49, 3752), (Start: 53 @3767 has 3 MA's), (57, 3782), (60, 3791), (65, 3812), (Start: 77 @3878 has 7 MA's), (Start: 104 @3965 has 238 MA's), (140, 4076), (174, 4202), (177, 4226), (182, 4253), (183, 4256), (184, 4259), (186, 4265), (206, 4340),

Gene: Chute_7 Start: 3962, Stop: 4408, Start Num: 104

Candidate Starts for Chute_7:

(49, 3749), (Start: 53 @3764 has 3 MA's), (57, 3779), (60, 3788), (65, 3809), (76, 3869), (Start: 77 @3875 has 7 MA's), (Start: 104 @3962 has 238 MA's), (120, 4010), (140, 4073), (174, 4199), (177, 4223), (182, 4250), (184, 4256), (186, 4262), (206, 4337),

Gene: CloverMinnie_9 Start: 6416, Stop: 6754, Start Num: 127

Candidate Starts for CloverMinnie_9:

(85, 6293), (91, 6311), (99, 6338), (Start: 107 @6359 has 1 MA's), (113, 6371), (119, 6392), (Start: 127 @6416 has 5 MA's), (135, 6434), (142, 6455), (145, 6467), (147, 6473), (153, 6500), (178, 6599), (184, 6626), (200, 6665), (209, 6725), (211, 6740),

Gene: Cobra_7 Start: 3962, Stop: 4408, Start Num: 104

Candidate Starts for Cobra_7:

(Start: 77 @3875 has 7 MA's), (Start: 104 @3962 has 238 MA's), (140, 4073), (174, 4199), (177, 4223), (182, 4250), (184, 4256), (186, 4262), (206, 4337),

Gene: Coffee_11 Start: 7480, Stop: 7818, Start Num: 130

Candidate Starts for Coffee_11:

(82, 7342), (86, 7351), (98, 7393), (101, 7399), (Start: 130 @7480 has 32 MA's), (136, 7495), (147, 7534), (153, 7561), (160, 7579), (166, 7588), (168, 7597), (171, 7612), (173, 7618), (200, 7723), (202, 7735), (210, 7789),

Gene: Colbert_7 Start: 3962, Stop: 4408, Start Num: 104

Candidate Starts for Colbert_7:

(Start: 77 @3875 has 7 MA's), (Start: 104 @3962 has 238 MA's), (140, 4073), (174, 4199), (177, 4223), (182, 4250), (184, 4256), (186, 4262), (206, 4337),

Gene: Coletti_7 Start: 3962, Stop: 4408, Start Num: 104

Candidate Starts for Coletti_7:

(49, 3749), (Start: 53 @3764 has 3 MA's), (57, 3779), (60, 3788), (65, 3809), (76, 3869), (Start: 77 @3875 has 7 MA's), (Start: 104 @3962 has 238 MA's), (120, 4010), (140, 4073), (174, 4199), (177, 4223), (182, 4250), (184, 4256), (186, 4262), (206, 4337),

Gene: Compostia_10 Start: 5957, Stop: 6292, Start Num: 125

Candidate Starts for Compostia_10:

(Start: 125 @5957 has 45 MA's), (142, 5999), (145, 6011), (150, 6026), (153, 6044), (173, 6101), (184, 6167), (190, 6188), (203, 6224), (206, 6236), (210, 6272),

Gene: Cooper_8 Start: 5288, Stop: 5677, Start Num: 117

Candidate Starts for Cooper_8:

(93, 5225), (Start: 109 @5264 has 20 MA's), (Start: 116 @5282 has 1 MA's), (Start: 117 @5288 has 2 MA's), (Start: 125 @5315 has 45 MA's), (129, 5330), (152, 5408), (163, 5447), (173, 5483), (177, 5516), (182, 5543), (191, 5570), (202, 5600),

Gene: Cornobble_7 Start: 3963, Stop: 4409, Start Num: 104

Candidate Starts for Cornobble_7:

(Start: 77 @3876 has 7 MA's), (Start: 104 @3963 has 238 MA's), (140, 4074), (174, 4200), (177, 4224), (182, 4251), (184, 4257), (186, 4263), (206, 4338),

Gene: Corofin_10 Start: 5974, Stop: 6309, Start Num: 125

Candidate Starts for Corofin_10:

(Start: 125 @5974 has 45 MA's), (142, 6016), (145, 6028), (150, 6043), (153, 6061), (173, 6118), (184, 6184), (190, 6205), (203, 6241), (206, 6253), (210, 6289),

Gene: Cosmolli16_7 Start: 3963, Stop: 4409, Start Num: 104

Candidate Starts for Cosmolli16_7:

(Start: 77 @3876 has 7 MA's), (Start: 104 @3963 has 238 MA's), (140, 4074), (174, 4200), (177, 4224), (182, 4251), (184, 4257), (186, 4263),

Gene: Craff_7 Start: 3965, Stop: 4411, Start Num: 104

Candidate Starts for Craff_7:

(Start: 77 @3878 has 7 MA's), (Start: 104 @3965 has 238 MA's), (140, 4076), (174, 4202), (177, 4226), (182, 4253), (184, 4259), (186, 4265), (206, 4340),

Gene: Crownjwl_8 Start: 4200, Stop: 4646, Start Num: 104

Candidate Starts for Crownjwl_8:

(49, 3987), (Start: 53 @4002 has 3 MA's), (57, 4017), (60, 4026), (65, 4047), (76, 4107), (Start: 77 @4113 has 7 MA's), (Start: 104 @4200 has 238 MA's), (120, 4248), (140, 4311), (174, 4437), (177, 4461), (182, 4488), (183, 4491), (184, 4494), (186, 4500), (206, 4575),

Gene: D12_05 Start: 2882, Stop: 3286, Start Num: 108

Candidate Starts for D12_05:

(Start: 108 @2882 has 8 MA's), (115, 2897), (120, 2921), (Start: 131 @2951 has 7 MA's), (159, 3044), (178, 3128), (186, 3161), (197, 3185), (199, 3191), (209, 3251),

Gene: DaddyDaniels_7 Start: 3964, Stop: 4410, Start Num: 104

Candidate Starts for DaddyDaniels_7:

(Start: 77 @3877 has 7 MA's), (Start: 104 @3964 has 238 MA's), (120, 4012), (174, 4201), (177, 4225), (182, 4252), (183, 4255), (184, 4258), (186, 4264), (206, 4339),

Gene: Daffy_7 Start: 3965, Stop: 4411, Start Num: 104

Candidate Starts for Daffy_7:

(Start: 77 @3878 has 7 MA's), (Start: 104 @3965 has 238 MA's), (140, 4076), (174, 4202), (177, 4226), (182, 4253), (184, 4259), (186, 4265),

Gene: Daisy_10 Start: 5952, Stop: 6287, Start Num: 125

Candidate Starts for Daisy_10:

(Start: 125 @5952 has 45 MA's), (142, 5994), (145, 6006), (150, 6021), (153, 6039), (173, 6096), (184, 6162), (190, 6183), (203, 6219), (206, 6231), (210, 6267),

Gene: Daka_7 Start: 3968, Stop: 4414, Start Num: 104

Candidate Starts for Daka_7:

(Start: 77 @3881 has 7 MA's), (Start: 104 @3968 has 238 MA's), (140, 4079), (174, 4205), (177, 4229), (182, 4256), (184, 4262), (186, 4268),

Gene: Dati_7 Start: 3962, Stop: 4408, Start Num: 104

Candidate Starts for Dati_7:

(Start: 77 @3875 has 7 MA's), (Start: 104 @3962 has 238 MA's), (140, 4073), (174, 4199), (177, 4223), (182, 4250), (184, 4256), (186, 4262), (206, 4337),

Gene: Deenasa_10 Start: 6712, Stop: 7047, Start Num: 125

Candidate Starts for Deenasa_10:

(Start: 125 @6712 has 45 MA's), (142, 6754), (145, 6766), (150, 6781), (153, 6799), (173, 6856), (184, 6922), (190, 6943), (203, 6979), (206, 6991), (210, 7027),

Gene: DelRivs_7 Start: 3964, Stop: 4410, Start Num: 104

Candidate Starts for DelRivs_7:

(Start: 77 @3877 has 7 MA's), (Start: 104 @3964 has 238 MA's), (120, 4012), (140, 4075), (174, 4201), (177, 4225), (182, 4252), (184, 4258), (186, 4264), (206, 4339),

Gene: Derpp_7 Start: 3962, Stop: 4408, Start Num: 104

Candidate Starts for Derpp_7:

(49, 3749), (Start: 53 @3764 has 3 MA's), (57, 3779), (60, 3788), (65, 3809), (76, 3869), (Start: 77 @3875 has 7 MA's), (Start: 104 @3962 has 238 MA's), (120, 4010), (140, 4073), (174, 4199), (177, 4223), (182, 4250), (184, 4256), (186, 4262), (206, 4337),

Gene: Devonte_10 Start: 5949, Stop: 6284, Start Num: 125

Candidate Starts for Devonte_10:

(Start: 125 @5949 has 45 MA's), (142, 5991), (145, 6003), (150, 6018), (153, 6036), (173, 6093), (184, 6159), (190, 6180), (203, 6216), (206, 6228), (210, 6264),

Gene: Dxdert_13 Start: 5891, Stop: 6229, Start Num: 122

Candidate Starts for Dxdert_13:

(112, 5855), (Start: 122 @5891 has 6 MA's), (132, 5918), (134, 5924), (140, 5948), (161, 6026), (177, 6092), (198, 6158), (204, 6185),

Gene: Dice_8 Start: 3964, Stop: 4410, Start Num: 104

Candidate Starts for Dice_8:

(Start: 77 @3877 has 7 MA's), (Start: 104 @3964 has 238 MA's), (140, 4075), (174, 4201), (177, 4225), (182, 4252), (184, 4258), (186, 4264), (206, 4339),

Gene: DigitDog_9 Start: 6253, Stop: 6675, Start Num: 114

Candidate Starts for DigitDog_9:

(Start: 114 @6253 has 11 MA's), (120, 6280), (Start: 127 @6298 has 5 MA's), (150, 6376), (163, 6424), (173, 6460), (174, 6469), (177, 6493), (184, 6526), (193, 6565), (195, 6571), (210, 6652),

Gene: Dingo_7 Start: 3962, Stop: 4408, Start Num: 104

Candidate Starts for Dingo_7:

(49, 3749), (Start: 53 @3764 has 3 MA's), (57, 3779), (60, 3788), (65, 3809), (76, 3869), (Start: 77 @3875 has 7 MA's), (Start: 104 @3962 has 238 MA's), (120, 4010), (140, 4073), (174, 4199), (177, 4223), (182, 4250), (183, 4253), (184, 4256), (186, 4262), (206, 4337),

Gene: Dione_7 Start: 3965, Stop: 4411, Start Num: 104

Candidate Starts for Dione_7:

(49, 3752), (Start: 53 @3767 has 3 MA's), (57, 3782), (60, 3791), (65, 3812), (76, 3872), (Start: 77 @3878 has 7 MA's), (Start: 104 @3965 has 238 MA's), (120, 4013), (140, 4076), (174, 4202), (177, 4226), (182, 4253), (183, 4256), (184, 4259), (186, 4265), (206, 4340),

Gene: DirtJuice_7 Start: 3965, Stop: 4411, Start Num: 104

Candidate Starts for DirtJuice_7:

(Start: 77 @3878 has 7 MA's), (Start: 104 @3965 has 238 MA's), (140, 4076), (174, 4202), (177, 4226), (182, 4253), (184, 4259), (186, 4265), (206, 4340),

Gene: Doddsville_7 Start: 3962, Stop: 4408, Start Num: 104

Candidate Starts for Doddsville_7:

(49, 3749), (Start: 53 @3764 has 3 MA's), (57, 3779), (60, 3788), (65, 3809), (76, 3869), (Start: 77 @3875 has 7 MA's), (Start: 104 @3962 has 238 MA's), (120, 4010), (140, 4073), (174, 4199), (177, 4223), (182, 4250), (184, 4256), (186, 4262), (206, 4337),

Gene: DoesntMatter_7 Start: 3875, Stop: 4408, Start Num: 77

Candidate Starts for DoesntMatter_7:

(Start: 77 @3875 has 7 MA's), (Start: 104 @3962 has 238 MA's), (140, 4073), (174, 4199), (177, 4223), (182, 4250), (184, 4256), (186, 4262), (206, 4337),

Gene: DonSanchon_7 Start: 3965, Stop: 4411, Start Num: 104

Candidate Starts for DonSancho_7:

(Start: 77 @3878 has 7 MA's), (Start: 104 @3965 has 238 MA's), (140, 4076), (174, 4202), (177, 4226), (182, 4253), (184, 4259), (186, 4265), (206, 4340),

Gene: Donny_9 Start: 6267, Stop: 6668, Start Num: 114

Candidate Starts for Donny_9:

(Start: 114 @6267 has 11 MA's), (120, 6294), (Start: 125 @6306 has 45 MA's), (136, 6342), (150, 6390), (165, 6441), (173, 6474), (174, 6483), (177, 6507), (209, 6639), (210, 6645),

Gene: Dori_6 Start: 3274, Stop: 3681, Start Num: 106

Candidate Starts for Dori_6:

(68, 3136), (71, 3145), (Start: 106 @3274 has 4 MA's), (120, 3319), (Start: 127 @3337 has 5 MA's), (129, 3346), (135, 3364), (136, 3367), (141, 3388), (149, 3412), (164, 3463), (172, 3496), (174, 3508), (181, 3556), (184, 3565), (186, 3571), (208, 3646),

Gene: DuchessDung_7 Start: 3962, Stop: 4408, Start Num: 104

Candidate Starts for DuchessDung_7:

(49, 3749), (Start: 53 @3764 has 3 MA's), (57, 3779), (60, 3788), (65, 3809), (76, 3869), (Start: 77 @3875 has 7 MA's), (Start: 104 @3962 has 238 MA's), (120, 4010), (140, 4073), (174, 4199), (177, 4223), (182, 4250), (184, 4256), (186, 4262), (206, 4337),

Gene: Duggie_7 Start: 3964, Stop: 4410, Start Num: 104

Candidate Starts for Duggie_7:

(Start: 77 @3877 has 7 MA's), (Start: 104 @3964 has 238 MA's), (120, 4012), (174, 4201), (177, 4225), (182, 4252), (183, 4255), (184, 4258), (186, 4264), (206, 4339),

Gene: Durga_7 Start: 3961, Stop: 4407, Start Num: 104

Candidate Starts for Durga_7:

(Start: 77 @3874 has 7 MA's), (Start: 104 @3961 has 238 MA's), (120, 4009), (174, 4198), (177, 4222), (182, 4249), (183, 4252), (184, 4255), (186, 4261), (206, 4336),

Gene: EMoore_6 Start: 4085, Stop: 4393, Start Num: 123

Candidate Starts for EMoore_6:

(96, 4004), (Start: 123 @4085 has 2 MA's), (132, 4109), (177, 4256), (181, 4280), (198, 4322), (199, 4325), (204, 4349),

Gene: Eaglehorse_11 Start: 7381, Stop: 7719, Start Num: 130

Candidate Starts for Eaglehorse_11:

(82, 7243), (86, 7252), (98, 7294), (101, 7300), (Start: 130 @7381 has 32 MA's), (136, 7396), (147, 7435), (153, 7462), (160, 7480), (166, 7489), (168, 7498), (171, 7513), (173, 7519), (200, 7624), (202, 7636), (210, 7690),

Gene: EastView9101_9 Start: 6267, Stop: 6668, Start Num: 114

Candidate Starts for EastView9101_9:

(Start: 114 @6267 has 11 MA's), (120, 6294), (Start: 125 @6306 has 45 MA's), (136, 6342), (150, 6390), (165, 6441), (173, 6474), (174, 6483), (177, 6507), (209, 6639), (210, 6645),

Gene: EdmundFerry_11 Start: 5448, Stop: 5786, Start Num: 122

Candidate Starts for EdmundFerry_11:

(112, 5412), (Start: 122 @5448 has 6 MA's), (132, 5475), (134, 5481), (140, 5505), (161, 5583), (177, 5649), (198, 5715), (204, 5742),

Gene: Emiris_7 Start: 3966, Stop: 4412, Start Num: 104

Candidate Starts for Emiris_7:

(Start: 77 @3879 has 7 MA's), (Start: 104 @3966 has 238 MA's), (140, 4077), (174, 4203), (177, 4227), (182, 4254), (184, 4260), (186, 4266), (206, 4341),

Gene: EmpTee_7 Start: 3966, Stop: 4412, Start Num: 104

Candidate Starts for EmpTee_7:

(Start: 77 @3879 has 7 MA's), (Start: 104 @3966 has 238 MA's), (140, 4077), (174, 4203), (177, 4227), (182, 4254), (184, 4260), (186, 4266),

Gene: Eremos_7 Start: 3965, Stop: 4411, Start Num: 104

Candidate Starts for Eremos_7:

(Start: 77 @3878 has 7 MA's), (Start: 104 @3965 has 238 MA's), (140, 4076), (174, 4202), (177, 4226), (182, 4253), (184, 4259), (186, 4265),

Gene: Etaye_7 Start: 3875, Stop: 4408, Start Num: 77

Candidate Starts for Etaye_7:

(49, 3749), (Start: 53 @3764 has 3 MA's), (57, 3779), (60, 3788), (65, 3809), (76, 3869), (Start: 77 @3875 has 7 MA's), (Start: 104 @3962 has 238 MA's), (120, 4010), (140, 4073), (174, 4199), (177, 4223), (182, 4250), (184, 4256), (186, 4262), (206, 4337),

Gene: Eugenia_8 Start: 3966, Stop: 4412, Start Num: 104

Candidate Starts for Eugenia_8:

(Start: 77 @3879 has 7 MA's), (Start: 104 @3966 has 238 MA's), (140, 4077), (174, 4203), (177, 4227), (182, 4254), (184, 4260), (186, 4266),

Gene: Evaa_8 Start: 6248, Stop: 6592, Start Num: 124

Candidate Starts for Evaa_8:

(Start: 124 @6248 has 2 MA's), (139, 6284), (142, 6293), (145, 6305), (147, 6311), (153, 6338), (160, 6356), (166, 6365), (172, 6392), (173, 6395), (176, 6422), (178, 6434), (182, 6455), (184, 6461), (205, 6524), (209, 6560),

Gene: Fang_7 Start: 3966, Stop: 4412, Start Num: 104

Candidate Starts for Fang_7:

(Start: 77 @3879 has 7 MA's), (Start: 104 @3966 has 238 MA's), (140, 4077), (174, 4203), (177, 4227), (182, 4254), (184, 4260), (186, 4266), (206, 4341),

Gene: Faze9_11 Start: 7480, Stop: 7818, Start Num: 130

Candidate Starts for Faze9_11:

(82, 7342), (86, 7351), (98, 7393), (101, 7399), (Start: 130 @7480 has 32 MA's), (136, 7495), (147, 7534), (153, 7561), (160, 7579), (166, 7588), (168, 7597), (171, 7612), (173, 7618), (200, 7723), (202, 7735), (210, 7789),

Gene: FluffyNinja_7 Start: 3876, Stop: 4409, Start Num: 77

Candidate Starts for FluffyNinja_7:

(Start: 77 @3876 has 7 MA's), (Start: 104 @3963 has 238 MA's), (140, 4074), (174, 4200), (177, 4224), (182, 4251), (184, 4257), (186, 4263), (206, 4338),

Gene: Fozzie_7 Start: 3963, Stop: 4409, Start Num: 104

Candidate Starts for Fozzie_7:

(Start: 77 @3876 has 7 MA's), (Start: 104 @3963 has 238 MA's), (140, 4074), (174, 4200), (177, 4224), (182, 4251), (183, 4254), (184, 4257), (186, 4263), (206, 4338),

Gene: Frankicide_7 Start: 3967, Stop: 4413, Start Num: 104

Candidate Starts for Frankicide_7:

(Start: 77 @3880 has 7 MA's), (Start: 104 @3967 has 238 MA's), (140, 4078), (174, 4204), (177, 4228), (182, 4255), (184, 4261), (186, 4267),

Gene: Frederick_8 Start: 6320, Stop: 6721, Start Num: 116

Candidate Starts for Frederick_8:

(9, 5774), (11, 5789), (12, 5792), (14, 5822), (18, 5849), (20, 5858), (21, 5864), (23, 5870), (25, 5894), (32, 5984), (33, 6008), (35, 6020), (47, 6086), (50, 6101), (59, 6131), (60, 6137), (62, 6146), (66, 6164), (Start: 77 @6206 has 7 MA's), (80, 6221), (84, 6236), (Start: 87 @6242 has 1 MA's), (89, 6245), (Start: 109 @6302 has 20 MA's), (Start: 116 @6320 has 1 MA's), (Start: 117 @6326 has 2 MA's), (118, 6332), (Start: 125 @6353 has 45 MA's), (136, 6389), (151, 6443), (177, 6554), (178, 6560), (182, 6581), (191, 6608), (200, 6626), (205, 6650), (206, 6656),

Gene: FrenchFry_11 Start: 7480, Stop: 7818, Start Num: 130

Candidate Starts for FrenchFry_11:

(82, 7342), (86, 7351), (98, 7393), (101, 7399), (Start: 130 @7480 has 32 MA's), (136, 7495), (147, 7534), (153, 7561), (160, 7579), (166, 7588), (168, 7597), (171, 7612), (173, 7618), (200, 7723), (202, 7735), (210, 7789),

Gene: Fresco_7 Start: 4941, Stop: 5276, Start Num: 126

Candidate Starts for Fresco_7:

(88, 4833), (Start: 126 @4941 has 1 MA's), (Start: 131 @4953 has 7 MA's), (135, 4959), (137, 4965), (138, 4968), (139, 4971), (145, 4992), (147, 4998), (153, 5025), (166, 5052), (167, 5058), (184, 5148), (209, 5247),

Gene: Freya_7 Start: 3966, Stop: 4412, Start Num: 104

Candidate Starts for Freya_7:

(49, 3753), (Start: 53 @3768 has 3 MA's), (57, 3783), (60, 3792), (65, 3813), (76, 3873), (Start: 77 @3879 has 7 MA's), (Start: 104 @3966 has 238 MA's), (120, 4014), (140, 4077), (174, 4203), (177, 4227), (182, 4254), (184, 4260), (186, 4266), (206, 4341),

Gene: FriarPreacher_7 Start: 3962, Stop: 4408, Start Num: 104

Candidate Starts for FriarPreacher_7:

(Start: 77 @3875 has 7 MA's), (Start: 104 @3962 has 238 MA's), (140, 4073), (174, 4199), (177, 4223), (182, 4250), (184, 4256), (186, 4262), (206, 4337),

Gene: Fringe_7 Start: 3963, Stop: 4409, Start Num: 104

Candidate Starts for Fringe_7:

(Start: 77 @3876 has 7 MA's), (Start: 104 @3963 has 238 MA's), (140, 4074), (174, 4200), (177, 4224), (182, 4251), (184, 4257), (186, 4263), (206, 4338),

Gene: FugateOSU_7 Start: 3965, Stop: 4411, Start Num: 104

Candidate Starts for FugateOSU_7:

(Start: 77 @3878 has 7 MA's), (Start: 104 @3965 has 238 MA's), (140, 4076), (174, 4202), (177, 4226), (182, 4253), (184, 4259), (186, 4265),

Gene: Funsized_13 Start: 8281, Stop: 8709, Start Num: 111

Candidate Starts for Funsized_13:

(Start: 111 @8281 has 1 MA's), (Start: 114 @8287 has 11 MA's), (119, 8308), (174, 8506), (177, 8530), (184, 8563), (185, 8566), (194, 8605), (195, 8608), (206, 8653),

Gene: GTE6_13 Start: 5949, Stop: 6287, Start Num: 122

Candidate Starts for GTE6_13:

(112, 5913), (Start: 122 @5949 has 6 MA's), (132, 5976), (134, 5982), (140, 6006), (161, 6084), (177, 6150), (198, 6216), (204, 6243),

Gene: Gadget_11 Start: 5953, Stop: 6288, Start Num: 125

Candidate Starts for Gadget_11:

(Start: 125 @5953 has 45 MA's), (142, 5995), (145, 6007), (150, 6022), (153, 6040), (173, 6097), (184, 6163), (190, 6184), (203, 6220), (206, 6232), (210, 6268),

Gene: Gareth_7 Start: 3962, Stop: 4408, Start Num: 104

Candidate Starts for Gareth_7:

(Start: 77 @3875 has 7 MA's), (Start: 104 @3962 has 238 MA's), (140, 4073), (174, 4199), (177, 4223), (182, 4250), (184, 4256), (186, 4262), (206, 4337),

Gene: GeneCoco_7 Start: 3965, Stop: 4411, Start Num: 104

Candidate Starts for GeneCoco_7:

(Start: 77 @3878 has 7 MA's), (Start: 104 @3965 has 238 MA's), (140, 4076), (174, 4202), (177, 4226), (182, 4253), (183, 4256), (184, 4259), (186, 4265), (206, 4340),

Gene: Gervas_10 Start: 5944, Stop: 6279, Start Num: 125

Candidate Starts for Gervas_10:

(Start: 125 @5944 has 45 MA's), (142, 5986), (145, 5998), (150, 6013), (153, 6031), (173, 6088), (184, 6154), (190, 6175), (203, 6211), (206, 6223), (210, 6259),

Gene: Giraffe_7 Start: 3966, Stop: 4412, Start Num: 104

Candidate Starts for Giraffe_7:

(Start: 77 @3879 has 7 MA's), (Start: 104 @3966 has 238 MA's), (140, 4077), (174, 4203), (177, 4227), (182, 4254), (184, 4260), (186, 4266),

Gene: Glass_11 Start: 7480, Stop: 7818, Start Num: 130

Candidate Starts for Glass_11:

(82, 7342), (86, 7351), (98, 7393), (101, 7399), (Start: 130 @7480 has 32 MA's), (136, 7495), (147, 7534), (153, 7561), (160, 7579), (166, 7588), (168, 7597), (171, 7612), (173, 7618), (200, 7723), (202, 7735), (210, 7789),

Gene: GlenHope_11 Start: 5963, Stop: 6298, Start Num: 125

Candidate Starts for GlenHope_11:

(Start: 125 @5963 has 45 MA's), (142, 6005), (145, 6017), (150, 6032), (153, 6050), (173, 6107), (184, 6173), (190, 6194), (203, 6230), (206, 6242), (210, 6278),

Gene: GodPhather_5 Start: 2882, Stop: 3286, Start Num: 108

Candidate Starts for GodPhather_5:

(Start: 108 @2882 has 8 MA's), (120, 2921), (Start: 131 @2951 has 7 MA's), (159, 3044), (178, 3128), (182, 3149), (186, 3161), (197, 3185), (209, 3251),

Gene: Godines_11 Start: 7363, Stop: 7701, Start Num: 130

Candidate Starts for Godines_11:

(82, 7225), (86, 7234), (101, 7282), (Start: 130 @7363 has 32 MA's), (136, 7378), (147, 7417), (153, 7444), (160, 7462), (166, 7471), (168, 7480), (171, 7495), (173, 7501), (200, 7606), (202, 7618), (210, 7672),

Gene: Gophee_7 Start: 3965, Stop: 4411, Start Num: 104

Candidate Starts for Gophee_7:

(Start: 77 @3878 has 7 MA's), (Start: 104 @3965 has 238 MA's), (140, 4076), (174, 4202), (177, 4226), (182, 4253), (184, 4259), (186, 4265), (206, 4340),

Gene: Grand2040_7 Start: 3963, Stop: 4409, Start Num: 104

Candidate Starts for Grand2040_7:

(Start: 77 @3876 has 7 MA's), (Start: 104 @3963 has 238 MA's), (140, 4074), (174, 4200), (177, 4224), (182, 4251), (184, 4257), (186, 4263),

Gene: Gwilliam_8 Start: 3962, Stop: 4408, Start Num: 104

Candidate Starts for Gwilliam_8:

(Start: 77 @3875 has 7 MA's), (Start: 104 @3962 has 238 MA's), (140, 4073), (174, 4199), (177, 4223), (182, 4250), (184, 4256), (186, 4262),

Gene: Gyarad_007 Start: 3965, Stop: 4411, Start Num: 104

Candidate Starts for Gyarad_007:

(Start: 77 @3878 has 7 MA's), (Start: 104 @3965 has 238 MA's), (140, 4076), (174, 4202), (177, 4226), (182, 4253), (184, 4259), (186, 4265),

Gene: HSavage_7 Start: 3967, Stop: 4413, Start Num: 104

Candidate Starts for HSavage_7:

(Start: 77 @3880 has 7 MA's), (Start: 104 @3967 has 238 MA's), (140, 4078), (174, 4204), (177, 4228), (182, 4255), (184, 4261), (186, 4267),

Gene: Haimas_7 Start: 3965, Stop: 4411, Start Num: 104

Candidate Starts for Haimas_7:

(Start: 77 @3878 has 7 MA's), (Start: 104 @3965 has 238 MA's), (140, 4076), (174, 4202), (177, 4226), (182, 4253), (184, 4259), (186, 4265), (206, 4340),

Gene: Haleema_7 Start: 3965, Stop: 4411, Start Num: 104

Candidate Starts for Haleema_7:

(49, 3752), (Start: 53 @3767 has 3 MA's), (57, 3782), (60, 3791), (65, 3812), (76, 3872), (Start: 77 @3878 has 7 MA's), (Start: 104 @3965 has 238 MA's), (120, 4013), (140, 4076), (174, 4202), (177, 4226), (182, 4253), (183, 4256), (184, 4259), (186, 4265), (206, 4340),

Gene: Halfpint_9 Start: 5798, Stop: 6133, Start Num: 125

Candidate Starts for Halfpint_9:

(Start: 125 @5798 has 45 MA's), (142, 5840), (145, 5852), (150, 5867), (153, 5885), (173, 5942), (184, 6008), (190, 6029), (203, 6065), (206, 6077), (210, 6113),

Gene: Hamish_7 Start: 3965, Stop: 4411, Start Num: 104

Candidate Starts for Hamish_7:

(Start: 77 @3878 has 7 MA's), (Start: 104 @3965 has 238 MA's), (140, 4076), (174, 4202), (177, 4226), (182, 4253), (184, 4259), (186, 4265), (206, 4340),

Gene: Hangman_8 Start: 6302, Stop: 6721, Start Num: 109

Candidate Starts for Hangman_8:

(9, 5774), (11, 5789), (12, 5792), (14, 5822), (18, 5849), (20, 5858), (21, 5864), (23, 5870), (25, 5894), (32, 5984), (33, 6008), (35, 6020), (47, 6086), (59, 6131), (60, 6137), (62, 6146), (66, 6164), (Start: 77 @6206 has 7 MA's), (80, 6221), (84, 6236), (Start: 87 @6242 has 1 MA's), (89, 6245), (Start: 109 @6302 has 20 MA's), (Start: 116 @6320 has 1 MA's), (Start: 117 @6326 has 2 MA's), (118, 6332), (Start: 125 @6353 has 45 MA's), (136, 6389), (151, 6443), (177, 6554), (178, 6560), (182, 6581), (191, 6608), (200, 6626), (205, 6650), (206, 6656),

Gene: Hans_14 Start: 6642, Stop: 6947, Start Num: 123

Candidate Starts for Hans_14:

(96, 6561), (Start: 123 @6642 has 2 MA's), (132, 6663), (155, 6747), (177, 6810), (181, 6834), (198, 6876), (199, 6879), (204, 6903),

Gene: Hartsy_7 Start: 3962, Stop: 4408, Start Num: 104

Candidate Starts for Hartsy_7:

(Start: 77 @3875 has 7 MA's), (Start: 104 @3962 has 238 MA's), (140, 4073), (174, 4199), (177, 4223), (182, 4250), (184, 4256), (186, 4262), (206, 4337),

Gene: Harvey_7 Start: 3966, Stop: 4412, Start Num: 104

Candidate Starts for Harvey_7:

(Start: 77 @3879 has 7 MA's), (Start: 104 @3966 has 238 MA's), (120, 4014), (140, 4077), (174, 4203), (177, 4227), (182, 4254), (184, 4260), (186, 4266), (206, 4341),

Gene: HarveySr_10 Start: 5950, Stop: 6285, Start Num: 125

Candidate Starts for HarveySr_10:

(Start: 125 @5950 has 45 MA's), (142, 5992), (145, 6004), (150, 6019), (153, 6037), (173, 6094), (184, 6160), (190, 6181), (203, 6217), (206, 6229), (210, 6265),

Gene: Hashim76_12 Start: 5115, Stop: 5540, Start Num: 104

Candidate Starts for Hashim76_12:

(79, 5037), (Start: 104 @5115 has 238 MA's), (120, 5160), (164, 5304), (182, 5400),

Gene: Heath_8 Start: 6302, Stop: 6721, Start Num: 109

Candidate Starts for Heath_8:

(9, 5774), (11, 5789), (12, 5792), (14, 5822), (18, 5849), (20, 5858), (21, 5864), (23, 5870), (25, 5894), (32, 5984), (33, 6008), (35, 6020), (47, 6086), (50, 6101), (59, 6131), (60, 6137), (62, 6146), (66, 6164), (Start: 77 @6206 has 7 MA's), (80, 6221), (84, 6236), (Start: 87 @6242 has 1 MA's), (89, 6245), (Start: 109 @6302 has 20 MA's), (Start: 116 @6320 has 1 MA's), (Start: 117 @6326 has 2 MA's), (118, 6332), (Start: 125 @6353 has 45 MA's), (136, 6389), (151, 6443), (177, 6554), (178, 6560), (182, 6581), (191, 6608), (200, 6626), (205, 6650), (206, 6656),

Gene: Heathcliff_10 Start: 5944, Stop: 6279, Start Num: 125

Candidate Starts for Heathcliff_10:

(Start: 125 @5944 has 45 MA's), (142, 5986), (145, 5998), (150, 6013), (153, 6031), (173, 6088), (184, 6154), (190, 6175), (203, 6211), (206, 6223), (210, 6259),

Gene: Hedgerow_11 Start: 7462, Stop: 7800, Start Num: 130

Candidate Starts for Hedgerow_11:

(82, 7324), (86, 7333), (98, 7375), (101, 7381), (Start: 130 @7462 has 32 MA's), (136, 7477), (147, 7516), (153, 7543), (160, 7561), (166, 7570), (168, 7579), (171, 7594), (173, 7600), (200, 7705), (202, 7717), (210, 7771),

Gene: Held_7 Start: 3966, Stop: 4412, Start Num: 104

Candidate Starts for Held_7:

(Start: 77 @3879 has 7 MA's), (Start: 104 @3966 has 238 MA's), (140, 4077), (174, 4203), (177, 4227), (182, 4254), (184, 4260), (186, 4266),

Gene: HenryJackson_7 Start: 3965, Stop: 4411, Start Num: 104

Candidate Starts for HenryJackson_7:

(Start: 77 @3878 has 7 MA's), (Start: 104 @3965 has 238 MA's), (140, 4076), (174, 4202), (177, 4226), (182, 4253), (184, 4259), (186, 4265), (206, 4340),

Gene: Hertubise_7 Start: 3965, Stop: 4411, Start Num: 104

Candidate Starts for Hertubise_7:

(Start: 77 @3878 has 7 MA's), (Start: 104 @3965 has 238 MA's), (140, 4076), (174, 4202), (177, 4226), (182, 4253), (184, 4259), (186, 4265), (206, 4340),

Gene: Hetaeria_7 Start: 3965, Stop: 4411, Start Num: 104

Candidate Starts for Hetaeria_7:

(Start: 77 @3878 has 7 MA's), (Start: 104 @3965 has 238 MA's), (140, 4076), (174, 4202), (177, 4226), (182, 4253), (184, 4259), (186, 4265), (206, 4340),

Gene: HighStump_7 Start: 3965, Stop: 4411, Start Num: 104

Candidate Starts for HighStump_7:

(Start: 77 @3878 has 7 MA's), (Start: 104 @3965 has 238 MA's), (140, 4076), (174, 4202), (177, 4226), (182, 4253), (184, 4259), (186, 4265), (206, 4340),

Gene: Hocus_7 Start: 3965, Stop: 4411, Start Num: 104

Candidate Starts for Hocus_7:

(Start: 77 @3878 has 7 MA's), (Start: 104 @3965 has 238 MA's), (140, 4076), (174, 4202), (177, 4226), (182, 4253), (184, 4259), (186, 4265), (206, 4340),

Gene: Holeinone_11 Start: 7362, Stop: 7700, Start Num: 130

Candidate Starts for Holeinone_11:

(Start: 130 @7362 has 32 MA's), (136, 7377), (147, 7416), (153, 7443), (160, 7461), (166, 7470), (167, 7476), (168, 7479), (171, 7494), (172, 7497), (173, 7500), (200, 7605), (202, 7617), (210, 7671),

Gene: Horchata_7 Start: 3964, Stop: 4410, Start Num: 104

Candidate Starts for Horchata_7:

(Start: 77 @3877 has 7 MA's), (Start: 104 @3964 has 238 MA's), (140, 4075), (174, 4201), (177, 4225), (182, 4252), (184, 4258), (186, 4264), (206, 4339),

Gene: Hosp_04 Start: 2968, Stop: 3384, Start Num: 109

Candidate Starts for Hosp_04:

(102, 2953), (Start: 109 @2968 has 20 MA's), (Start: 125 @3019 has 45 MA's), (128, 3028), (172, 3184), (176, 3214), (177, 3220), (178, 3226), (202, 3304), (206, 3322), (207, 3325),

Gene: Hydro_8 Start: 6299, Stop: 6718, Start Num: 109

Candidate Starts for Hydro_8:

(9, 5771), (11, 5786), (12, 5789), (14, 5819), (18, 5846), (20, 5855), (21, 5861), (23, 5867), (25, 5891), (32, 5981), (33, 6005), (35, 6017), (47, 6083), (50, 6098), (59, 6128), (60, 6134), (62, 6143), (66, 6161), (Start: 77 @6203 has 7 MA's), (80, 6218), (84, 6233), (Start: 87 @6239 has 1 MA's), (89, 6242), (Start: 109 @6299 has 20 MA's), (Start: 116 @6317 has 1 MA's), (Start: 117 @6323 has 2 MA's), (118, 6329), (Start: 125 @6350 has 45 MA's), (136, 6386), (151, 6440), (177, 6551), (178, 6557), (182, 6578), (191, 6605), (200, 6623), (205, 6647), (206, 6653),

Gene: ImtiyazSitla_7 Start: 3764, Stop: 4408, Start Num: 53

Candidate Starts for ImtiyazSitla_7:

(49, 3749), (Start: 53 @3764 has 3 MA's), (57, 3779), (60, 3788), (65, 3809), (76, 3869), (Start: 77 @3875 has 7 MA's), (Start: 104 @3962 has 238 MA's), (120, 4010), (140, 4073), (174, 4199), (177, 4223), (182, 4250), (184, 4256), (186, 4262), (206, 4337),

Gene: Imvubu_4 Start: 3089, Stop: 3511, Start Num: 114

Candidate Starts for Imvubu_4:

(Start: 114 @3089 has 11 MA's), (141, 3185), (161, 3257), (173, 3296), (177, 3329), (184, 3362), (194, 3404), (195, 3407), (206, 3452),

Gene: Inchworm_7 Start: 3962, Stop: 4408, Start Num: 104

Candidate Starts for Inchworm_7:

(Start: 77 @3875 has 7 MA's), (Start: 104 @3962 has 238 MA's), (140, 4073), (174, 4199), (177, 4223), (182, 4250), (184, 4256), (186, 4262), (206, 4337),

Gene: Indlovu_8 Start: 5946, Stop: 6359, Start Num: 109

Candidate Starts for Indlovu_8:

(2, 4827), (4, 5040), (5, 5112), (17, 5490), (Start: 104 @5937 has 238 MA's), (Start: 109 @5946 has 20 MA's), (Start: 116 @5964 has 1 MA's), (Start: 123 @5994 has 2 MA's), (Start: 125 @5997 has 45 MA's), (172, 6162), (176, 6192), (177, 6198), (182, 6225), (191, 6252), (200, 6270),

Gene: Inspectinfecti_13 Start: 7159, Stop: 7464, Start Num: 123

Candidate Starts for Inspectinfecti_13:

(49, 6883), (57, 6913), (96, 7078), (Start: 123 @7159 has 2 MA's), (132, 7180), (155, 7264), (177, 7327), (198, 7393), (199, 7396), (204, 7420),

Gene: Inverness_7 Start: 3967, Stop: 4413, Start Num: 104

Candidate Starts for Inverness_7:

(Start: 77 @3880 has 7 MA's), (Start: 104 @3967 has 238 MA's), (140, 4078), (174, 4204), (177, 4228), (182, 4255), (184, 4261), (186, 4267),

Gene: Iridoclysis_7 Start: 3969, Stop: 4415, Start Num: 104

Candidate Starts for Iridoclysis_7:

(Start: 77 @3882 has 7 MA's), (Start: 104 @3969 has 238 MA's), (140, 4080), (174, 4206), (177, 4230), (182, 4257), (184, 4263), (186, 4269), (206, 4344),

Gene: IsaacEli_7 Start: 3962, Stop: 4408, Start Num: 104

Candidate Starts for IsaacEli_7:

(Start: 77 @3875 has 7 MA's), (Start: 104 @3962 has 238 MA's), (140, 4073), (174, 4199), (177, 4223), (182, 4250), (184, 4256), (186, 4262), (206, 4337),

Gene: ItsyBitsy1_11 Start: 7354, Stop: 7692, Start Num: 130

Candidate Starts for ItsyBitsy1_11:

(82, 7216), (86, 7225), (98, 7267), (101, 7273), (Start: 130 @7354 has 32 MA's), (136, 7369), (147, 7408), (153, 7435), (160, 7453), (166, 7462), (168, 7471), (171, 7486), (173, 7492), (200, 7597), (202, 7609), (210, 7663),

Gene: JAMaL_7 Start: 5846, Stop: 6244, Start Num: 117

Candidate Starts for JAMaL_7:

(Start: 109 @5822 has 20 MA's), (Start: 116 @5840 has 1 MA's), (Start: 117 @5846 has 2 MA's), (Start: 125 @5873 has 45 MA's), (151, 5963), (158, 5993), (169, 6020), (170, 6023), (173, 6041), (177, 6074), (191, 6128), (209, 6206),

Gene: JDog_7 Start: 3964, Stop: 4410, Start Num: 104

Candidate Starts for JDog_7:

(Start: 77 @3877 has 7 MA's), (Start: 104 @3964 has 238 MA's), (120, 4012), (174, 4201), (177, 4225), (182, 4252), (183, 4255), (184, 4258), (186, 4264), (206, 4339),

Gene: JacAttac_7 Start: 3962, Stop: 4408, Start Num: 104

Candidate Starts for JacAttac_7:

(Start: 77 @3875 has 7 MA's), (Start: 104 @3962 has 238 MA's), (140, 4073), (174, 4199), (177, 4223), (182, 4250), (184, 4256), (186, 4262), (206, 4337),

Gene: Jackstina_9 Start: 5866, Stop: 6201, Start Num: 125

Candidate Starts for Jackstina_9:

(Start: 125 @5866 has 45 MA's), (142, 5908), (145, 5920), (150, 5935), (153, 5953), (173, 6010), (184, 6076), (190, 6097), (203, 6133), (206, 6145), (210, 6181),

Gene: JaguarMi_9 Start: 6144, Stop: 6545, Start Num: 116

Candidate Starts for JaguarMi_9:

(83, 6057), (Start: 87 @6066 has 1 MA's), (89, 6069), (Start: 109 @6126 has 20 MA's), (Start: 116 @6144 has 1 MA's), (Start: 117 @6150 has 2 MA's), (118, 6156), (Start: 125 @6177 has 45 MA's), (136, 6213), (151, 6267), (177, 6378), (178, 6384), (182, 6405), (191, 6432), (205, 6474), (206, 6480),

Gene: JakeO_7 Start: 3964, Stop: 4410, Start Num: 104

Candidate Starts for JakeO_7:

(Start: 77 @3877 has 7 MA's), (Start: 104 @3964 has 238 MA's), (120, 4012), (174, 4201), (177, 4225), (182, 4252), (183, 4255), (184, 4258), (186, 4264), (206, 4339),

Gene: JangoPhett_7 Start: 3963, Stop: 4409, Start Num: 104

Candidate Starts for JangoPhett_7:

(Start: 77 @3876 has 7 MA's), (Start: 104 @3963 has 238 MA's), (140, 4074), (174, 4200), (177, 4224), (182, 4251), (184, 4257), (186, 4263),

Gene: Jeon_5 Start: 2882, Stop: 3286, Start Num: 108

Candidate Starts for Jeon_5:

(Start: 108 @2882 has 8 MA's), (120, 2921), (Start: 131 @2951 has 7 MA's), (159, 3044), (178, 3128), (182, 3149), (186, 3161), (197, 3185), (209, 3251),

Gene: Jillium_7 Start: 3965, Stop: 4411, Start Num: 104

Candidate Starts for Jillium_7:

(Start: 77 @3878 has 7 MA's), (Start: 104 @3965 has 238 MA's), (140, 4076), (174, 4202), (177, 4226), (182, 4253), (184, 4259), (186, 4265), (206, 4340),

Gene: Jiminy_7 Start: 3964, Stop: 4410, Start Num: 104

Candidate Starts for Jiminy_7:

(Start: 77 @3877 has 7 MA's), (Start: 104 @3964 has 238 MA's), (120, 4012), (174, 4201), (177, 4225), (182, 4252), (183, 4255), (184, 4258), (186, 4264), (206, 4339),

Gene: Jiraiya_7 Start: 3964, Stop: 4410, Start Num: 104

Candidate Starts for Jiraiya_7:

(Start: 77 @3877 has 7 MA's), (Start: 104 @3964 has 238 MA's), (120, 4012), (174, 4201), (177, 4225), (182, 4252), (183, 4255), (184, 4258), (186, 4264), (206, 4339),

Gene: Jolie1_06 Start: 4766, Stop: 5182, Start Num: 109

Candidate Starts for Jolie1_06:

(102, 4751), (Start: 109 @4766 has 20 MA's), (Start: 125 @4817 has 45 MA's), (128, 4826), (172, 4982), (176, 5012), (177, 5018), (202, 5102), (205, 5114), (206, 5120), (207, 5123),

Gene: KLucky39_7 Start: 3965, Stop: 4411, Start Num: 104

Candidate Starts for KLucky39_7:

(Start: 77 @3878 has 7 MA's), (Start: 104 @3965 has 238 MA's), (140, 4076), (174, 4202), (177, 4226), (182, 4253), (184, 4259), (186, 4265), (206, 4340),

Gene: Kahve_7 Start: 3965, Stop: 4411, Start Num: 104

Candidate Starts for Kahve_7:

(Start: 77 @3878 has 7 MA's), (Start: 104 @3965 has 238 MA's), (140, 4076), (174, 4202), (177, 4226), (182, 4253), (184, 4259), (186, 4265), (206, 4340),

Gene: Kailash_7 Start: 3962, Stop: 4408, Start Num: 104

Candidate Starts for Kailash_7:

(49, 3749), (Start: 53 @3764 has 3 MA's), (57, 3779), (60, 3788), (65, 3809), (76, 3869), (Start: 77 @3875 has 7 MA's), (Start: 104 @3962 has 238 MA's), (120, 4010), (140, 4073), (174, 4199), (177, 4223), (182, 4250), (184, 4256), (186, 4262), (206, 4337),

Gene: Kaleb_11 Start: 7480, Stop: 7818, Start Num: 130

Candidate Starts for Kaleb_11:

(82, 7342), (86, 7351), (98, 7393), (101, 7399), (Start: 130 @7480 has 32 MA's), (136, 7495), (147, 7534), (153, 7561), (160, 7579), (166, 7588), (168, 7597), (171, 7612), (173, 7618), (200, 7723), (202, 7735), (210, 7789),

Gene: Kamiyu_10 Start: 5944, Stop: 6279, Start Num: 125

Candidate Starts for Kamiyu_10:

(Start: 125 @5944 has 45 MA's), (142, 5986), (145, 5998), (150, 6013), (153, 6031), (173, 6088), (184, 6154), (190, 6175), (203, 6211), (206, 6223), (210, 6259),

Gene: Katniss_7 Start: 3879, Stop: 4412, Start Num: 77

Candidate Starts for Katniss_7:

(Start: 77 @3879 has 7 MA's), (Start: 104 @3966 has 238 MA's), (140, 4077), (174, 4203), (177, 4227), (182, 4254), (184, 4260), (186, 4266),

Gene: KayaCho_6 Start: 4769, Stop: 5185, Start Num: 109

Candidate Starts for KayaCho_6:

(102, 4754), (Start: 109 @4769 has 20 MA's), (Start: 123 @4817 has 2 MA's), (Start: 125 @4820 has 45 MA's), (128, 4829), (172, 4985), (174, 4997), (176, 5015), (177, 5021), (178, 5027), (202, 5105), (205, 5117), (206, 5123), (207, 5126),

Gene: Keitherie_7 Start: 3961, Stop: 4407, Start Num: 104

Candidate Starts for Keitherie_7:

(Start: 77 @3874 has 7 MA's), (Start: 104 @3961 has 238 MA's), (140, 4072), (174, 4198), (177, 4222), (182, 4249), (184, 4255), (186, 4261), (206, 4336),

Gene: Kheth_11 Start: 7363, Stop: 7701, Start Num: 130

Candidate Starts for Kheth_11:

(82, 7225), (86, 7234), (98, 7276), (101, 7282), (Start: 130 @7363 has 32 MA's), (136, 7378), (147, 7417), (153, 7444), (160, 7462), (166, 7471), (168, 7480), (171, 7495), (173, 7501), (200, 7606), (202, 7618), (210, 7672),

Gene: Kikipoo_7 Start: 3962, Stop: 4408, Start Num: 104

Candidate Starts for Kikipoo_7:

(Start: 77 @3875 has 7 MA's), (Start: 104 @3962 has 238 MA's), (140, 4073), (174, 4199), (177, 4223), (182, 4250), (184, 4256), (186, 4262), (206, 4337),

Gene: Kimbrough_7 Start: 3965, Stop: 4411, Start Num: 104

Candidate Starts for Kimbrough_7:

(49, 3752), (Start: 53 @3767 has 3 MA's), (57, 3782), (60, 3791), (65, 3812), (76, 3872), (Start: 77 @3878 has 7 MA's), (Start: 104 @3965 has 238 MA's), (140, 4076), (174, 4202), (177, 4226), (182, 4253), (184, 4259), (186, 4265), (206, 4340),

Gene: KingTut_7 Start: 3966, Stop: 4412, Start Num: 104

Candidate Starts for KingTut_7:

(Start: 77 @3879 has 7 MA's), (Start: 104 @3966 has 238 MA's), (140, 4077), (174, 4203), (177, 4227), (182, 4254), (184, 4260), (186, 4266),

Gene: KingVeVeVe_7 Start: 3966, Stop: 4412, Start Num: 104

Candidate Starts for KingVeVeVe_7:

(Start: 77 @3879 has 7 MA's), (Start: 104 @3966 has 238 MA's), (120, 4014), (140, 4077), (174, 4203), (177, 4227), (182, 4254), (183, 4257), (184, 4260), (186, 4266), (206, 4341),

Gene: KlimbOn_7 Start: 3965, Stop: 4411, Start Num: 104

Candidate Starts for KlimbOn_7:

(Start: 77 @3878 has 7 MA's), (Start: 104 @3965 has 238 MA's), (140, 4076), (174, 4202), (177, 4226), (182, 4253), (184, 4259), (186, 4265),

Gene: Kloppinator_7 Start: 3963, Stop: 4409, Start Num: 104

Candidate Starts for Kloppinator_7:

(Start: 77 @3876 has 7 MA's), (Start: 104 @3963 has 238 MA's), (140, 4074), (174, 4200), (177, 4224), (182, 4251), (184, 4257), (186, 4263), (206, 4338),

Gene: Knocker_13 Start: 8739, Stop: 9161, Start Num: 114

Candidate Starts for Knocker_13:

(Start: 114 @8739 has 11 MA's), (Start: 117 @8751 has 2 MA's), (119, 8760), (120, 8766), (121, 8769), (141, 8835), (146, 8850), (161, 8907), (173, 8946), (177, 8979), (179, 8991), (184, 9012), (192, 9048), (195, 9057), (196, 9060), (201, 9075), (204, 9093), (206, 9102),

Gene: Kronus_9 Start: 6559, Stop: 6894, Start Num: 125

Candidate Starts for Kronus_9:

(Start: 125 @6559 has 45 MA's), (142, 6601), (145, 6613), (150, 6628), (153, 6646), (173, 6703), (184, 6769), (190, 6790), (203, 6826), (206, 6838), (210, 6874),

Gene: Kwadwo_7 Start: 3965, Stop: 4411, Start Num: 104

Candidate Starts for Kwadwo_7:

(Start: 77 @3878 has 7 MA's), (Start: 104 @3965 has 238 MA's), (120, 4013), (140, 4076), (174, 4202), (177, 4226), (182, 4253), (183, 4256), (184, 4259), (186, 4265), (206, 4340),

Gene: Kwekel_12 Start: 5442, Stop: 5780, Start Num: 122

Candidate Starts for Kwekel_12:

(105, 5388), (Start: 122 @5442 has 6 MA's), (133, 5472), (134, 5475), (155, 5553), (161, 5577), (198, 5709), (204, 5736),

Gene: Kwksand96_7 Start: 3962, Stop: 4408, Start Num: 104

Candidate Starts for Kwksand96_7:

(49, 3749), (Start: 53 @3764 has 3 MA's), (57, 3779), (60, 3788), (65, 3809), (76, 3869), (Start: 77 @3875 has 7 MA's), (Start: 104 @3962 has 238 MA's), (120, 4010), (140, 4073), (174, 4199), (177, 4223), (182, 4250), (183, 4253), (184, 4256), (186, 4262), (206, 4337),

Gene: Labeouficaum_7 Start: 3962, Stop: 4408, Start Num: 104

Candidate Starts for Labeouficaum_7:

(49, 3749), (Start: 53 @3764 has 3 MA's), (57, 3779), (60, 3788), (65, 3809), (76, 3869), (Start: 77 @3875 has 7 MA's), (Start: 104 @3962 has 238 MA's), (120, 4010), (140, 4073), (174, 4199), (177, 4223), (182, 4250), (184, 4256), (186, 4262), (206, 4337),

Gene: Lars_11 Start: 7480, Stop: 7818, Start Num: 130

Candidate Starts for Lars_11:

(82, 7342), (86, 7351), (101, 7399), (Start: 130 @7480 has 32 MA's), (136, 7495), (147, 7534), (153, 7561), (160, 7579), (166, 7588), (168, 7597), (171, 7612), (173, 7618), (200, 7723), (202, 7735), (210, 7789),

Gene: LasagnaCat_7 Start: 3962, Stop: 4408, Start Num: 104

Candidate Starts for LasagnaCat_7:

(Start: 77 @3875 has 7 MA's), (Start: 104 @3962 has 238 MA's), (140, 4073), (174, 4199), (177, 4223), (182, 4250), (184, 4256), (186, 4262), (206, 4337),

Gene: Lasso_7 Start: 3965, Stop: 4411, Start Num: 104

Candidate Starts for Lasso_7:

(Start: 77 @3878 has 7 MA's), (Start: 104 @3965 has 238 MA's), (140, 4076), (174, 4202), (177, 4226), (182, 4253), (184, 4259), (186, 4265), (206, 4340),

Gene: Laurie_11 Start: 7364, Stop: 7702, Start Num: 130

Candidate Starts for Laurie_11:

(82, 7226), (86, 7235), (98, 7277), (101, 7283), (Start: 130 @7364 has 32 MA's), (136, 7379), (147, 7418), (153, 7445), (160, 7463), (166, 7472), (167, 7478), (168, 7481), (171, 7496), (173, 7502), (200, 7607), (202, 7619), (210, 7673),

Gene: LeeLot_7 Start: 3965, Stop: 4411, Start Num: 104

Candidate Starts for LeeLot_7:

(Start: 77 @3878 has 7 MA's), (Start: 104 @3965 has 238 MA's), (140, 4076), (174, 4202), (177, 4226), (182, 4253), (184, 4259), (186, 4265), (206, 4340),

Gene: Lego3393_7 Start: 3963, Stop: 4409, Start Num: 104

Candidate Starts for Lego3393_7:

(Start: 77 @3876 has 7 MA's), (Start: 104 @3963 has 238 MA's), (140, 4074), (174, 4200), (177, 4224), (182, 4251), (184, 4257), (186, 4263), (206, 4338),

Gene: Legolas_7 Start: 3966, Stop: 4412, Start Num: 104

Candidate Starts for Legolas_7:

(Start: 77 @3879 has 7 MA's), (Start: 104 @3966 has 238 MA's), (140, 4077), (174, 4203), (177, 4227), (182, 4254), (184, 4260), (186, 4266), (206, 4341),

Gene: LeiMonet_7 Start: 3961, Stop: 4407, Start Num: 104

Candidate Starts for LeiMonet_7:

(Start: 77 @3874 has 7 MA's), (Start: 104 @3961 has 238 MA's), (120, 4009), (174, 4198), (177, 4222), (182, 4249), (183, 4252), (184, 4255), (186, 4261), (206, 4336),

Gene: LemonSlice_7 Start: 3966, Stop: 4412, Start Num: 104

Candidate Starts for LemonSlice_7:

(Start: 77 @3879 has 7 MA's), (Start: 104 @3966 has 238 MA's), (140, 4077), (174, 4203), (177, 4227), (182, 4254), (184, 4260), (186, 4266), (206, 4341),

Gene: Lephleur_11 Start: 7363, Stop: 7701, Start Num: 130

Candidate Starts for Lephleur_11:

(82, 7225), (86, 7234), (98, 7276), (101, 7282), (Start: 130 @7363 has 32 MA's), (136, 7378), (147, 7417), (153, 7444), (160, 7462), (166, 7471), (168, 7480), (171, 7495), (173, 7501), (200, 7606), (202, 7618), (210, 7672),

Gene: LestyG_10 Start: 5953, Stop: 6288, Start Num: 125

Candidate Starts for LestyG_10:

(Start: 125 @5953 has 45 MA's), (142, 5995), (145, 6007), (150, 6022), (153, 6040), (173, 6097), (184, 6163), (203, 6220), (206, 6232), (210, 6268),

Gene: Ligma_7 Start: 4953, Stop: 5276, Start Num: 131

Candidate Starts for Ligma_7:

(88, 4833), (Start: 126 @4941 has 1 MA's), (Start: 131 @4953 has 7 MA's), (135, 4959), (137, 4965), (138, 4968), (139, 4971), (145, 4992), (147, 4998), (153, 5025), (166, 5052), (167, 5058), (184, 5148), (209, 5247),

Gene: LilMcDreamy_9 Start: 7042, Stop: 7443, Start Num: 114

Candidate Starts for LilMcDreamy_9:

(10, 6490), (41, 6757), (43, 6775), (110, 7033), (Start: 114 @7042 has 11 MA's), (Start: 117 @7054 has 2 MA's), (120, 7069), (Start: 125 @7081 has 45 MA's), (150, 7165), (158, 7201), (177, 7282), (184, 7315), (186, 7321), (204, 7375),

Gene: LittleMunchkin_8 Start: 6237, Stop: 6560, Start Num: 131

Candidate Starts for LittleMunchkin_8:

(1, 4998), (3, 5172), (6, 5382), (7, 5499), (15, 5685), (22, 5730), (38, 5898), (45, 5946), (Start: 126 @6225 has 1 MA's), (Start: 131 @6237 has 7 MA's), (139, 6255), (145, 6276), (147, 6282), (153, 6309), (171, 6360), (176, 6393), (184, 6432), (200, 6471), (205, 6495), (209, 6531),

Gene: LizLemon_11 Start: 7480, Stop: 7818, Start Num: 130

Candidate Starts for LizLemon_11:

(82, 7342), (86, 7351), (101, 7399), (Start: 130 @7480 has 32 MA's), (136, 7495), (147, 7534), (153, 7561), (160, 7579), (166, 7588), (168, 7597), (171, 7612), (173, 7618), (200, 7723), (202, 7735), (210, 7789),

Gene: Lolalove_8 Start: 6299, Stop: 6718, Start Num: 109

Candidate Starts for Lolalove_8:

(9, 5771), (11, 5786), (12, 5789), (14, 5819), (18, 5846), (20, 5855), (21, 5861), (23, 5867), (25, 5891), (32, 5981), (33, 6005), (35, 6017), (47, 6083), (50, 6098), (59, 6128), (60, 6134), (62, 6143), (66, 6161), (Start: 77 @6203 has 7 MA's), (80, 6218), (84, 6233), (Start: 87 @6239 has 1 MA's), (89, 6242), (Start: 109 @6299 has 20 MA's), (Start: 116 @6317 has 1 MA's), (Start: 117 @6323 has 2 MA's), (118, 6329), (Start: 125 @6350 has 45 MA's), (136, 6386), (151, 6440), (177, 6551), (178, 6557), (182, 6578), (191, 6605), (200, 6623), (205, 6647), (206, 6653),

Gene: Longacauda_7 Start: 3964, Stop: 4410, Start Num: 104

Candidate Starts for Longacauda_7:

(Start: 77 @3877 has 7 MA's), (Start: 104 @3964 has 238 MA's), (120, 4012), (174, 4201), (177, 4225), (182, 4252), (183, 4255), (184, 4258), (186, 4264), (206, 4339),

Gene: Lopsy_7 Start: 3965, Stop: 4411, Start Num: 104

Candidate Starts for Lopsy_7:

(Start: 77 @3878 has 7 MA's), (Start: 104 @3965 has 238 MA's), (140, 4076), (174, 4202), (177, 4226), (182, 4253), (184, 4259), (186, 4265),

Gene: LostAndPhound_7 Start: 3965, Stop: 4411, Start Num: 104

Candidate Starts for LostAndPhound_7:

(Start: 77 @3878 has 7 MA's), (Start: 104 @3965 has 238 MA's), (140, 4076), (174, 4202), (177, 4226), (182, 4253), (184, 4259), (186, 4265), (206, 4340),

Gene: LuckyMarjie_7 Start: 3965, Stop: 4411, Start Num: 104

Candidate Starts for LuckyMarjie_7:

(49, 3752), (Start: 53 @3767 has 3 MA's), (57, 3782), (60, 3791), (65, 3812), (76, 3872), (Start: 77 @3878 has 7 MA's), (Start: 104 @3965 has 238 MA's), (120, 4013), (140, 4076), (174, 4202), (177, 4226), (182, 4253), (183, 4256), (184, 4259), (186, 4265), (206, 4340),

Gene: Lulumae_7 Start: 3966, Stop: 4412, Start Num: 104

Candidate Starts for Lulumae_7:

(Start: 77 @3879 has 7 MA's), (Start: 104 @3966 has 238 MA's), (140, 4077), (174, 4203), (177, 4227), (182, 4254), (184, 4260), (186, 4266),

Gene: Lulwa_7 Start: 3965, Stop: 4411, Start Num: 104

Candidate Starts for Lulwa_7:

(Start: 77 @3878 has 7 MA's), (Start: 104 @3965 has 238 MA's), (140, 4076), (174, 4202), (177, 4226), (182, 4253), (184, 4259), (186, 4265), (206, 4340),

Gene: Lumine_7 Start: 3965, Stop: 4411, Start Num: 104

Candidate Starts for Lumine_7:

(49, 3752), (Start: 53 @3767 has 3 MA's), (57, 3782), (60, 3791), (65, 3812), (76, 3872), (Start: 77 @3878 has 7 MA's), (Start: 104 @3965 has 238 MA's), (120, 4013), (140, 4076), (174, 4202), (177, 4226), (182, 4253), (183, 4256), (184, 4259), (186, 4265), (206, 4340),

Gene: MRabcd_7 Start: 3962, Stop: 4408, Start Num: 104

Candidate Starts for MRabcd_7:

(Start: 77 @3875 has 7 MA's), (Start: 104 @3962 has 238 MA's), (140, 4073), (174, 4199), (177, 4223), (182, 4250), (184, 4256), (186, 4262), (206, 4337),

Gene: Mag7_7 Start: 3962, Stop: 4408, Start Num: 104

Candidate Starts for Mag7_7:

(49, 3749), (Start: 53 @3764 has 3 MA's), (57, 3779), (60, 3788), (65, 3809), (76, 3869), (Start: 77 @3875 has 7 MA's), (Start: 104 @3962 has 238 MA's), (120, 4010), (140, 4073), (174, 4199), (177, 4223), (182, 4250), (184, 4256), (186, 4262), (206, 4337),

Gene: Magic8_7 Start: 3962, Stop: 4408, Start Num: 104

Candidate Starts for Magic8_7:

(Start: 77 @3875 has 7 MA's), (Start: 104 @3962 has 238 MA's), (140, 4073), (174, 4199), (177, 4223), (182, 4250), (184, 4256), (186, 4262), (206, 4337),

Gene: Magpie_8 Start: 6457, Stop: 6876, Start Num: 109

Candidate Starts for Magpie_8:

(83, 6388), (Start: 87 @6397 has 1 MA's), (89, 6400), (Start: 109 @6457 has 20 MA's), (Start: 116 @6475 has 1 MA's), (Start: 117 @6481 has 2 MA's), (118, 6487), (Start: 125 @6508 has 45 MA's), (136, 6544), (151, 6598), (177, 6709), (178, 6715), (182, 6736), (191, 6763), (200, 6781), (205, 6805), (206, 6811),

Gene: MakoManhole_9 Start: 6416, Stop: 6754, Start Num: 127

Candidate Starts for MakoManhole_9:

(85, 6293), (91, 6311), (99, 6338), (Start: 107 @6359 has 1 MA's), (113, 6371), (119, 6392), (Start: 127 @6416 has 5 MA's), (135, 6434), (142, 6455), (145, 6467), (147, 6473), (153, 6500), (178, 6599),

(184, 6626), (200, 6665), (209, 6725), (211, 6740),

Gene: Mana_7 Start: 3965, Stop: 4411, Start Num: 104

Candidate Starts for Mana_7:

(Start: 77 @3878 has 7 MA's), (Start: 104 @3965 has 238 MA's), (140, 4076), (174, 4202), (177, 4226), (182, 4253), (184, 4259), (186, 4265), (206, 4340),

Gene: Manad_7 Start: 3966, Stop: 4412, Start Num: 104

Candidate Starts for Manad_7:

(Start: 77 @3879 has 7 MA's), (Start: 104 @3966 has 238 MA's), (140, 4077), (174, 4203), (177, 4227), (182, 4254), (184, 4260), (186, 4266), (206, 4341),

Gene: Mao1_5 Start: 3670, Stop: 4077, Start Num: 106

Candidate Starts for Mao1_5:

(94, 3637), (Start: 106 @3670 has 4 MA's), (120, 3715), (Start: 127 @3733 has 5 MA's), (129, 3742), (135, 3760), (136, 3763), (140, 3778), (170, 3877), (172, 3892), (175, 3907), (181, 3952), (184, 3961), (186, 3967), (208, 4042),

Gene: Mariokart_7 Start: 4960, Stop: 5283, Start Num: 131

Candidate Starts for Mariokart_7:

(Start: 126 @4948 has 1 MA's), (Start: 131 @4960 has 7 MA's), (135, 4966), (137, 4972), (139, 4978), (142, 4987), (144, 4996), (145, 4999), (147, 5005), (164, 5056), (167, 5065), (180, 5137), (209, 5254),

Gene: Marley1013_10 Start: 6739, Stop: 7074, Start Num: 125

Candidate Starts for Marley1013_10:

(Start: 125 @6739 has 45 MA's), (142, 6781), (145, 6793), (150, 6808), (153, 6826), (173, 6883), (184, 6949), (190, 6970), (203, 7006), (206, 7018), (210, 7054),

Gene: Maru_7 Start: 3963, Stop: 4409, Start Num: 104

Candidate Starts for Maru_7:

(Start: 77 @3876 has 7 MA's), (Start: 104 @3963 has 238 MA's), (140, 4074), (174, 4200), (177, 4224), (182, 4251), (184, 4257), (186, 4263),

Gene: Mask_6 Start: 3671, Stop: 4078, Start Num: 106

Candidate Starts for Mask_6:

(94, 3638), (Start: 106 @3671 has 4 MA's), (120, 3716), (Start: 127 @3734 has 5 MA's), (129, 3743), (135, 3761), (136, 3764), (140, 3779), (170, 3878), (172, 3893), (175, 3908), (181, 3953), (184, 3962), (186, 3968), (208, 4043),

Gene: Maskar_7 Start: 3764, Stop: 4408, Start Num: 53

Candidate Starts for Maskar_7:

(49, 3749), (Start: 53 @3764 has 3 MA's), (57, 3779), (60, 3788), (65, 3809), (76, 3869), (Start: 77 @3875 has 7 MA's), (Start: 104 @3962 has 238 MA's), (120, 4010), (140, 4073), (174, 4199), (177, 4223), (182, 4250), (184, 4256), (186, 4262), (206, 4337),

Gene: MasterPo_11 Start: 7363, Stop: 7701, Start Num: 130

Candidate Starts for MasterPo_11:

(82, 7225), (86, 7234), (98, 7276), (101, 7282), (Start: 130 @7363 has 32 MA's), (136, 7378), (147, 7417), (153, 7444), (160, 7462), (166, 7471), (168, 7480), (171, 7495), (173, 7501), (200, 7606), (202, 7618), (210, 7672),

Gene: Matalotodo_7 Start: 3966, Stop: 4412, Start Num: 104

Candidate Starts for Matalotodo_7:

(Start: 77 @3879 has 7 MA's), (Start: 104 @3966 has 238 MA's), (140, 4077), (174, 4203), (177, 4227), (182, 4254), (184, 4260), (186, 4266),

Gene: Mcshane_7 Start: 3966, Stop: 4412, Start Num: 104

Candidate Starts for Mcshane_7:

(Start: 77 @3879 has 7 MA's), (Start: 104 @3966 has 238 MA's), (140, 4077), (174, 4203), (177, 4227), (182, 4254), (184, 4260), (186, 4266), (206, 4341),

Gene: Mecca_7 Start: 3962, Stop: 4408, Start Num: 104

Candidate Starts for Mecca_7:

(Start: 77 @3875 has 7 MA's), (Start: 104 @3962 has 238 MA's), (140, 4073), (174, 4199), (177, 4223), (182, 4250), (184, 4256), (186, 4262), (206, 4337),

Gene: Megabear_5 Start: 2882, Stop: 3286, Start Num: 108

Candidate Starts for Megabear_5:

(Start: 108 @2882 has 8 MA's), (115, 2897), (120, 2921), (Start: 131 @2951 has 7 MA's), (159, 3044), (178, 3128), (186, 3161), (197, 3185), (199, 3191), (209, 3251),

Gene: Megamind20_8 Start: 3966, Stop: 4412, Start Num: 104

Candidate Starts for Megamind20_8:

(Start: 77 @3879 has 7 MA's), (Start: 104 @3966 has 238 MA's), (140, 4077), (174, 4203), (177, 4227), (182, 4254), (184, 4260), (186, 4266), (206, 4341),

Gene: Megatron_7 Start: 3962, Stop: 4408, Start Num: 104

Candidate Starts for Megatron_7:

(Start: 77 @3875 has 7 MA's), (Start: 104 @3962 has 238 MA's), (140, 4073), (174, 4199), (177, 4223), (182, 4250), (184, 4256), (186, 4262), (206, 4337),

Gene: Melc17_7 Start: 3962, Stop: 4408, Start Num: 104

Candidate Starts for Melc17_7:

(49, 3749), (Start: 53 @3764 has 3 MA's), (57, 3779), (60, 3788), (65, 3809), (Start: 77 @3875 has 7 MA's), (Start: 104 @3962 has 238 MA's), (140, 4073), (174, 4199), (177, 4223), (182, 4250), (183, 4253), (184, 4256), (186, 4262), (206, 4337),

Gene: MelsMeow_7 Start: 3962, Stop: 4408, Start Num: 104

Candidate Starts for MelsMeow_7:

(49, 3749), (Start: 53 @3764 has 3 MA's), (57, 3779), (60, 3788), (65, 3809), (76, 3869), (Start: 77 @3875 has 7 MA's), (Start: 104 @3962 has 238 MA's), (120, 4010), (140, 4073), (174, 4199), (177, 4223), (182, 4250), (183, 4253), (184, 4256), (186, 4262), (206, 4337),

Gene: Mesh1_7 Start: 3965, Stop: 4411, Start Num: 104

Candidate Starts for Mesh1_7:

(Start: 77 @3878 has 7 MA's), (Start: 104 @3965 has 238 MA's), (140, 4076), (174, 4202), (177, 4226), (182, 4253), (184, 4259), (186, 4265), (206, 4340),

Gene: MichaelPhcott_7 Start: 3962, Stop: 4408, Start Num: 104

Candidate Starts for MichaelPhcott_7:

(49, 3749), (Start: 53 @3764 has 3 MA's), (57, 3779), (60, 3788), (65, 3809), (76, 3869), (Start: 77 @3875 has 7 MA's), (Start: 104 @3962 has 238 MA's), (120, 4010), (140, 4073), (174, 4199), (177, 4223), (182, 4250), (184, 4256), (186, 4262), (206, 4337),

Gene: Mikota_7 Start: 3963, Stop: 4409, Start Num: 104

Candidate Starts for Mikota_7:

(49, 3750), (Start: 53 @3765 has 3 MA's), (57, 3780), (60, 3789), (65, 3810), (76, 3870), (Start: 77 @3876 has 7 MA's), (Start: 104 @3963 has 238 MA's), (140, 4074), (174, 4200), (177, 4224), (182, 4251), (183, 4254), (184, 4257), (186, 4263), (206, 4338),

Gene: MiniBoss_7 Start: 3965, Stop: 4411, Start Num: 104

Candidate Starts for MiniBoss_7:

(49, 3752), (Start: 53 @3767 has 3 MA's), (57, 3782), (60, 3791), (65, 3812), (76, 3872), (Start: 77 @3878 has 7 MA's), (Start: 104 @3965 has 238 MA's), (120, 4013), (140, 4076), (174, 4202), (177, 4226), (182, 4253), (183, 4256), (184, 4259), (186, 4265), (206, 4340),

Gene: MitKao_7 Start: 3965, Stop: 4411, Start Num: 104

Candidate Starts for MitKao_7:

(Start: 77 @3878 has 7 MA's), (Start: 104 @3965 has 238 MA's), (140, 4076), (174, 4202), (177, 4226), (182, 4253), (184, 4259), (186, 4265),

Gene: Mithril_8 Start: 6302, Stop: 6721, Start Num: 109

Candidate Starts for Mithril_8:

(9, 5774), (11, 5789), (12, 5792), (14, 5822), (18, 5849), (20, 5858), (21, 5864), (23, 5870), (24, 5879), (25, 5894), (32, 5984), (33, 6008), (35, 6020), (47, 6086), (50, 6101), (59, 6131), (60, 6137), (62, 6146), (75, 6191), (Start: 77 @6206 has 7 MA's), (80, 6221), (84, 6236), (Start: 87 @6242 has 1 MA's), (89, 6245), (Start: 109 @6302 has 20 MA's), (Start: 116 @6320 has 1 MA's), (Start: 117 @6326 has 2 MA's), (118, 6332), (Start: 125 @6353 has 45 MA's), (136, 6389), (151, 6443), (170, 6503), (177, 6554), (178, 6560), (182, 6581), (191, 6608), (200, 6626), (205, 6650), (206, 6656),

Gene: MmasiCarm_10 Start: 5949, Stop: 6284, Start Num: 125

Candidate Starts for MmasiCarm_10:

(Start: 125 @5949 has 45 MA's), (142, 5991), (145, 6003), (150, 6018), (153, 6036), (173, 6093), (184, 6159), (190, 6180), (203, 6216), (206, 6228), (210, 6264),

Gene: Morgushi_7 Start: 3963, Stop: 4409, Start Num: 104

Candidate Starts for Morgushi_7:

(Start: 77 @3876 has 7 MA's), (Start: 104 @3963 has 238 MA's), (140, 4074), (174, 4200), (177, 4224), (182, 4251), (184, 4257), (206, 4338),

Gene: Mortcellus_9 Start: 6587, Stop: 6922, Start Num: 125

Candidate Starts for Mortcellus_9:

(Start: 125 @6587 has 45 MA's), (142, 6629), (145, 6641), (150, 6656), (153, 6674), (173, 6731), (184, 6797), (190, 6818), (203, 6854), (206, 6866), (210, 6902),

Gene: Morty_7 Start: 3962, Stop: 4408, Start Num: 104

Candidate Starts for Morty_7:

(Start: 77 @3875 has 7 MA's), (Start: 104 @3962 has 238 MA's), (140, 4073), (174, 4199), (177, 4223), (182, 4250), (184, 4256), (186, 4262), (206, 4337),

Gene: Morty007_10 Start: 6739, Stop: 7074, Start Num: 125

Candidate Starts for Morty007_10:

(Start: 125 @6739 has 45 MA's), (142, 6781), (145, 6793), (150, 6808), (153, 6826), (173, 6883), (184, 6949), (190, 6970), (203, 7006), (206, 7018), (210, 7054),

Gene: Mosaic_7 Start: 3966, Stop: 4412, Start Num: 104

Candidate Starts for Mosaic_7:

(Start: 77 @3879 has 7 MA's), (Start: 104 @3966 has 238 MA's), (140, 4077), (174, 4203), (177, 4227), (182, 4254), (184, 4260), (186, 4266), (206, 4341),

Gene: MossRose_9 Start: 6416, Stop: 6754, Start Num: 127

Candidate Starts for MossRose_9:

(85, 6293), (91, 6311), (99, 6338), (Start: 107 @6359 has 1 MA's), (113, 6371), (119, 6392), (Start: 127 @6416 has 5 MA's), (135, 6434), (142, 6455), (145, 6467), (147, 6473), (153, 6500), (178, 6599), (184, 6626), (200, 6665), (208, 6707), (209, 6725), (211, 6740),

Gene: MrPhizzler_7 Start: 3961, Stop: 4407, Start Num: 104

Candidate Starts for MrPhizzler_7:

(Start: 77 @3874 has 7 MA's), (Start: 104 @3961 has 238 MA's), (120, 4009), (174, 4198), (177, 4222), (182, 4249), (183, 4252), (184, 4255), (186, 4261), (206, 4336),

Gene: Mudslide_8 Start: 6550, Stop: 6969, Start Num: 109

Candidate Starts for Mudslide_8:

(81, 6478), (Start: 109 @6550 has 20 MA's), (Start: 116 @6568 has 1 MA's), (Start: 117 @6574 has 2 MA's), (118, 6580), (Start: 125 @6601 has 45 MA's), (136, 6637), (151, 6691), (177, 6802), (178, 6808), (182, 6829), (191, 6856), (200, 6874), (205, 6898), (206, 6904),

Gene: Mulan_7 Start: 3965, Stop: 4411, Start Num: 104

Candidate Starts for Mulan_7:

(Start: 77 @3878 has 7 MA's), (Start: 104 @3965 has 238 MA's), (140, 4076), (174, 4202), (177, 4226), (182, 4253), (184, 4259), (186, 4265),

Gene: Murdoc_7 Start: 3965, Stop: 4411, Start Num: 104

Candidate Starts for Murdoc_7:

(Start: 77 @3878 has 7 MA's), (Start: 104 @3965 has 238 MA's), (140, 4076), (174, 4202), (177, 4226), (182, 4253), (184, 4259), (186, 4265), (206, 4340),

Gene: Mutante_7 Start: 3962, Stop: 4408, Start Num: 104

Candidate Starts for Mutante_7:

(Start: 77 @3875 has 7 MA's), (Start: 104 @3962 has 238 MA's), (140, 4073), (174, 4199), (177, 4223), (182, 4250), (184, 4256), (186, 4262), (206, 4337),

Gene: Mysterious_9 Start: 6540, Stop: 6941, Start Num: 114

Candidate Starts for Mysterious_9:

(Start: 114 @6540 has 11 MA's), (Start: 117 @6552 has 2 MA's), (119, 6561), (120, 6567), (Start: 125 @6579 has 45 MA's), (150, 6663), (158, 6699), (165, 6714), (173, 6747), (174, 6756), (177, 6780), (179, 6792), (186, 6819), (206, 6882), (210, 6918),

Gene: NHagos_7 Start: 4896, Stop: 5237, Start Num: 125

Candidate Starts for NHagos_7:

(Start: 125 @4896 has 45 MA's), (Start: 127 @4902 has 5 MA's), (137, 4926), (142, 4941), (143, 4944), (145, 4953), (158, 4998), (167, 5019), (178, 5082), (184, 5109), (209, 5208), (212, 5226),

Gene: Nacho_007 Start: 3965, Stop: 4411, Start Num: 104

Candidate Starts for Nacho_007:

(Start: 77 @3878 has 7 MA's), (Start: 104 @3965 has 238 MA's), (140, 4076), (174, 4202), (177, 4226), (182, 4253), (184, 4259), (186, 4265),

Gene: Nanao_7 Start: 5221, Stop: 5616, Start Num: 116

Candidate Starts for Nanao_7:

(Start: 109 @5203 has 20 MA's), (Start: 116 @5221 has 1 MA's), (Start: 117 @5227 has 2 MA's), (Start: 125 @5254 has 45 MA's), (151, 5344), (169, 5401), (170, 5404), (173, 5422), (174, 5431), (177,

5455), (182, 5482), (191, 5509), (202, 5539), (209, 5587),

Gene: Nangang_9 Start: 6253, Stop: 6675, Start Num: 114

Candidate Starts for Nangang_9:

(Start: 114 @6253 has 11 MA's), (120, 6280), (Start: 127 @6298 has 5 MA's), (150, 6376), (163, 6424), (173, 6460), (174, 6469), (177, 6493), (184, 6526), (193, 6565), (195, 6571), (210, 6652),

Gene: Neos5_10 Start: 6739, Stop: 7074, Start Num: 125

Candidate Starts for Neos5_10:

(Start: 125 @6739 has 45 MA's), (142, 6781), (145, 6793), (150, 6808), (153, 6826), (173, 6883), (184, 6949), (190, 6970), (203, 7006), (206, 7018), (210, 7054),

Gene: Newman_7 Start: 3965, Stop: 4411, Start Num: 104

Candidate Starts for Newman_7:

(Start: 77 @3878 has 7 MA's), (Start: 104 @3965 has 238 MA's), (140, 4076), (174, 4202), (177, 4226), (182, 4253), (184, 4259), (186, 4265),

Gene: Nicole21_7 Start: 3963, Stop: 4409, Start Num: 104

Candidate Starts for Nicole21_7:

(Start: 77 @3876 has 7 MA's), (Start: 104 @3963 has 238 MA's), (140, 4074), (174, 4200), (177, 4224), (182, 4251), (184, 4257), (186, 4263),

Gene: Nigel_6 Start: 5100, Stop: 5522, Start Num: 109

Candidate Starts for Nigel_6:

(Start: 109 @5100 has 20 MA's), (Start: 116 @5118 has 1 MA's), (Start: 117 @5124 has 2 MA's), (Start: 125 @5151 has 45 MA's), (151, 5241), (158, 5271), (169, 5298), (170, 5301), (173, 5319), (177, 5352), (182, 5379), (191, 5406), (209, 5484),

Gene: Nozo_10 Start: 6711, Stop: 7046, Start Num: 125

Candidate Starts for Nozo_10:

(Start: 125 @6711 has 45 MA's), (142, 6753), (145, 6765), (150, 6780), (153, 6798), (173, 6855), (184, 6921), (190, 6942), (203, 6978), (206, 6990), (210, 7026),

Gene: Numberten_7 Start: 3965, Stop: 4411, Start Num: 104

Candidate Starts for Numberten_7:

(Start: 77 @3878 has 7 MA's), (Start: 104 @3965 has 238 MA's), (140, 4076), (174, 4202), (177, 4226), (182, 4253), (184, 4259), (186, 4265), (206, 4340),

Gene: Nyala_7 Start: 3966, Stop: 4412, Start Num: 104

Candidate Starts for Nyala_7:

(Start: 77 @3879 has 7 MA's), (Start: 104 @3966 has 238 MA's), (140, 4077), (174, 4203), (177, 4227), (182, 4254), (184, 4260), (186, 4266), (206, 4341),

Gene: OSmaximus_7 Start: 3963, Stop: 4409, Start Num: 104

Candidate Starts for OSmaximus_7:

(Start: 77 @3876 has 7 MA's), (Start: 104 @3963 has 238 MA's), (140, 4074), (174, 4200), (177, 4224), (182, 4251), (183, 4254), (184, 4257), (186, 4263), (206, 4338),

Gene: Obutu_10 Start: 5950, Stop: 6285, Start Num: 125

Candidate Starts for Obutu_10:

(Start: 125 @5950 has 45 MA's), (142, 5992), (145, 6004), (150, 6019), (153, 6037), (173, 6094), (184, 6160), (190, 6181), (203, 6217), (206, 6229), (210, 6265),

Gene: Olak_7 Start: 3963, Stop: 4409, Start Num: 104

Candidate Starts for Olak_7:

(49, 3750), (Start: 53 @3765 has 3 MA's), (57, 3780), (60, 3789), (65, 3810), (76, 3870), (Start: 77 @3876 has 7 MA's), (Start: 104 @3963 has 238 MA's), (120, 4011), (140, 4074), (174, 4200), (177, 4224), (182, 4251), (183, 4254), (184, 4257), (186, 4263), (206, 4338),

Gene: Oline_7 Start: 3962, Stop: 4408, Start Num: 104

Candidate Starts for Oline_7:

(49, 3749), (Start: 53 @3764 has 3 MA's), (57, 3779), (60, 3788), (65, 3809), (76, 3869), (Start: 77 @3875 has 7 MA's), (Start: 104 @3962 has 238 MA's), (120, 4010), (140, 4073), (174, 4199), (177, 4223), (182, 4250), (184, 4256), (186, 4262), (206, 4337),

Gene: Olive_7 Start: 3962, Stop: 4408, Start Num: 104

Candidate Starts for Olive_7:

(Start: 77 @3875 has 7 MA's), (Start: 104 @3962 has 238 MA's), (140, 4073), (174, 4199), (177, 4223), (182, 4250), (184, 4256), (186, 4262), (206, 4337),

Gene: OliverWalter_7 Start: 3961, Stop: 4407, Start Num: 104

Candidate Starts for OliverWalter_7:

(Start: 77 @3874 has 7 MA's), (Start: 104 @3961 has 238 MA's), (140, 4072), (174, 4198), (177, 4222), (182, 4249), (184, 4255), (186, 4261),

Gene: Omniscient_7 Start: 3965, Stop: 4411, Start Num: 104

Candidate Starts for Omniscient_7:

(Start: 77 @3878 has 7 MA's), (Start: 104 @3965 has 238 MA's), (140, 4076), (174, 4202), (177, 4226), (182, 4253), (184, 4259), (186, 4265), (206, 4340),

Gene: Oosterbaan_7 Start: 3966, Stop: 4412, Start Num: 104

Candidate Starts for Oosterbaan_7:

(Start: 77 @3879 has 7 MA's), (Start: 104 @3966 has 238 MA's), (140, 4077), (174, 4203), (177, 4227), (182, 4254), (184, 4260), (186, 4266), (206, 4341),

Gene: Opia_11 Start: 7363, Stop: 7701, Start Num: 130

Candidate Starts for Opia_11:

(82, 7225), (86, 7234), (98, 7276), (101, 7282), (Start: 130 @7363 has 32 MA's), (136, 7378), (147, 7417), (153, 7444), (160, 7462), (166, 7471), (168, 7480), (171, 7495), (173, 7501), (200, 7606), (202, 7618), (210, 7672),

Gene: OrangeOswald_10 Start: 5949, Stop: 6284, Start Num: 125

Candidate Starts for OrangeOswald_10:

(Start: 125 @5949 has 45 MA's), (142, 5991), (145, 6003), (150, 6018), (153, 6036), (173, 6093), (184, 6159), (190, 6180), (203, 6216), (206, 6228), (210, 6264),

Gene: Orfeu_7 Start: 3964, Stop: 4410, Start Num: 104

Candidate Starts for Orfeu_7:

(Start: 77 @3877 has 7 MA's), (Start: 104 @3964 has 238 MA's), (120, 4012), (140, 4075), (174, 4201), (177, 4225), (182, 4252), (184, 4258), (186, 4264), (206, 4339),

Gene: Orion_7 Start: 3963, Stop: 4409, Start Num: 104

Candidate Starts for Orion_7:

(Start: 77 @3876 has 7 MA's), (Start: 104 @3963 has 238 MA's), (140, 4074), (174, 4200), (177, 4224), (182, 4251), (184, 4257), (186, 4263), (206, 4338),

Gene: Orwigg_8 Start: 3966, Stop: 4412, Start Num: 104

Candidate Starts for Orwigg_8:

(Start: 77 @3879 has 7 MA's), (Start: 104 @3966 has 238 MA's), (140, 4077), (174, 4203), (177, 4227), (182, 4254), (184, 4260), (186, 4266), (206, 4341),

Gene: PG1_7 Start: 3963, Stop: 4409, Start Num: 104

Candidate Starts for PG1_7:

(Start: 77 @3876 has 7 MA's), (Start: 104 @3963 has 238 MA's), (140, 4074), (174, 4200), (177, 4224), (182, 4251), (184, 4257), (186, 4263), (206, 4338),

Gene: PR_05 Start: 2882, Stop: 3286, Start Num: 108

Candidate Starts for PR_05:

(Start: 108 @2882 has 8 MA's), (115, 2897), (120, 2921), (Start: 131 @2951 has 7 MA's), (159, 3044), (178, 3128), (186, 3161), (197, 3185), (199, 3191), (209, 3251),

Gene: Pacifista_8 Start: 3962, Stop: 4408, Start Num: 104

Candidate Starts for Pacifista_8:

(Start: 77 @3875 has 7 MA's), (Start: 104 @3962 has 238 MA's), (140, 4073), (174, 4199), (177, 4223), (182, 4250), (183, 4253), (184, 4256), (186, 4262), (206, 4337),

Gene: PenguinLover67_11 Start: 7154, Stop: 7573, Start Num: 106

Candidate Starts for PenguinLover67_11:

(37, 6878), (48, 6944), (Start: 53 @6962 has 3 MA's), (60, 6986), (63, 7001), (64, 7004), (67, 7016), (69, 7022), (70, 7025), (72, 7034), (Start: 77 @7064 has 7 MA's), (78, 7070), (80, 7079), (Start: 87 @7103 has 1 MA's), (Start: 106 @7154 has 4 MA's), (Start: 123 @7208 has 2 MA's), (Start: 125 @7211 has 45 MA's), (163, 7343), (172, 7376), (176, 7406), (177, 7412), (178, 7418), (182, 7439), (191, 7466),

Gene: Phaedrus_9 Start: 5866, Stop: 6201, Start Num: 125

Candidate Starts for Phaedrus_9:

(Start: 125 @5866 has 45 MA's), (142, 5908), (145, 5920), (150, 5935), (153, 5953), (173, 6010), (184, 6076), (190, 6097), (203, 6133), (206, 6145), (210, 6181),

Gene: Phamished_7 Start: 3962, Stop: 4408, Start Num: 104

Candidate Starts for Phamished_7:

(Start: 77 @3875 has 7 MA's), (Start: 104 @3962 has 238 MA's), (140, 4073), (174, 4199), (177, 4223), (182, 4250), (184, 4256), (186, 4262), (206, 4337),

Gene: Phantasmagoria_11 Start: 7363, Stop: 7701, Start Num: 130

Candidate Starts for Phantasmagoria_11:

(82, 7225), (86, 7234), (98, 7276), (101, 7282), (Start: 130 @7363 has 32 MA's), (136, 7378), (147, 7417), (153, 7444), (160, 7462), (166, 7471), (168, 7480), (171, 7495), (173, 7501), (200, 7606), (202, 7618), (210, 7672),

Gene: Phareon_7 Start: 3965, Stop: 4411, Start Num: 104

Candidate Starts for Phareon_7:

(Start: 77 @3878 has 7 MA's), (Start: 104 @3965 has 238 MA's), (140, 4076), (174, 4202), (177, 4226), (182, 4253), (184, 4259), (186, 4265), (206, 4340),

Gene: PhatCats2014_7 Start: 3966, Stop: 4412, Start Num: 104

Candidate Starts for PhatCats2014_7:

(Start: 77 @3879 has 7 MA's), (Start: 104 @3966 has 238 MA's), (140, 4077), (174, 4203), (177, 4227), (182, 4254), (184, 4260), (186, 4266),

Gene: PhatLouie_7 Start: 3965, Stop: 4411, Start Num: 104

Candidate Starts for PhatLouie_7:

(Start: 77 @3878 has 7 MA's), (Start: 104 @3965 has 238 MA's), (140, 4076), (174, 4202), (177, 4226), (182, 4253), (183, 4256), (184, 4259), (186, 4265), (206, 4340),

Gene: Phayeta_10 Start: 5825, Stop: 6160, Start Num: 125

Candidate Starts for Phayeta_10:

(Start: 125 @5825 has 45 MA's), (142, 5867), (145, 5879), (150, 5894), (153, 5912), (173, 5969), (184, 6035), (190, 6056), (203, 6092), (206, 6104), (210, 6140),

Gene: Phelemich_9 Start: 6543, Stop: 6944, Start Num: 114

Candidate Starts for Phelemich_9:

(Start: 114 @6543 has 11 MA's), (Start: 117 @6555 has 2 MA's), (118, 6561), (119, 6564), (Start: 125 @6582 has 45 MA's), (150, 6666), (158, 6702), (165, 6717), (173, 6750), (174, 6759), (177, 6783), (206, 6885), (210, 6921),

Gene: PhenghisKhan_7 Start: 3962, Stop: 4408, Start Num: 104

Candidate Starts for PhenghisKhan_7:

(49, 3749), (Start: 53 @3764 has 3 MA's), (57, 3779), (60, 3788), (65, 3809), (76, 3869), (Start: 77 @3875 has 7 MA's), (Start: 104 @3962 has 238 MA's), (120, 4010), (140, 4073), (174, 4199), (177, 4223), (182, 4250), (184, 4256), (186, 4262), (206, 4337),

Gene: Pherdinand_7 Start: 3963, Stop: 4409, Start Num: 104

Candidate Starts for Pherdinand_7:

(Start: 77 @3876 has 7 MA's), (Start: 104 @3963 has 238 MA's), (140, 4074), (174, 4200), (177, 4224), (182, 4251), (184, 4257), (186, 4263), (206, 4338),

Gene: Phergie_7 Start: 3962, Stop: 4408, Start Num: 104

Candidate Starts for Phergie_7:

(49, 3749), (Start: 53 @3764 has 3 MA's), (57, 3779), (60, 3788), (65, 3809), (76, 3869), (Start: 77 @3875 has 7 MA's), (Start: 104 @3962 has 238 MA's), (120, 4010), (140, 4073), (174, 4199), (177, 4223), (182, 4250), (184, 4256), (186, 4262), (206, 4337),

Gene: Philly_9 Start: 5839, Stop: 6174, Start Num: 125

Candidate Starts for Philly_9:

(Start: 125 @5839 has 45 MA's), (142, 5881), (145, 5893), (150, 5908), (153, 5926), (173, 5983), (184, 6049), (190, 6070), (203, 6106), (206, 6118), (210, 6154),

Gene: Phipps_7 Start: 3965, Stop: 4411, Start Num: 104

Candidate Starts for Phipps_7:

(49, 3752), (Start: 53 @3767 has 3 MA's), (57, 3782), (60, 3791), (65, 3812), (76, 3872), (Start: 77 @3878 has 7 MA's), (Start: 104 @3965 has 238 MA's), (120, 4013), (140, 4076), (174, 4202), (177, 4226), (182, 4253), (183, 4256), (184, 4259), (186, 4265), (206, 4340),

Gene: Phleuron_7 Start: 3962, Stop: 4408, Start Num: 104

Candidate Starts for Phleuron_7:

(49, 3749), (Start: 53 @3764 has 3 MA's), (57, 3779), (60, 3788), (65, 3809), (76, 3869), (Start: 77 @3875 has 7 MA's), (Start: 104 @3962 has 238 MA's), (120, 4010), (140, 4073), (174, 4199), (177, 4223), (182, 4250), (184, 4256), (186, 4262), (206, 4337),

Gene: Phlyer_10 Start: 6706, Stop: 7041, Start Num: 125

Candidate Starts for Phlyer_10:

(Start: 125 @6706 has 45 MA's), (142, 6748), (145, 6760), (150, 6775), (153, 6793), (173, 6850), (184, 6916), (190, 6937), (203, 6973), (206, 6985), (210, 7021),

Gene: PhrankReynolds_7 Start: 3962, Stop: 4408, Start Num: 104

Candidate Starts for PhrankReynolds_7:

(49, 3749), (Start: 53 @3764 has 3 MA's), (57, 3779), (60, 3788), (65, 3809), (76, 3869), (Start: 77 @3875 has 7 MA's), (Start: 104 @3962 has 238 MA's), (120, 4010), (140, 4073), (174, 4199), (177, 4223), (182, 4250), (184, 4256), (186, 4262), (206, 4337),

Gene: PhrodoBaggins_7 Start: 3965, Stop: 4411, Start Num: 104

Candidate Starts for PhrodoBaggins_7:

(Start: 77 @3878 has 7 MA's), (Start: 104 @3965 has 238 MA's), (140, 4076), (174, 4202), (177, 4226), (182, 4253), (184, 4259), (186, 4265), (206, 4340),

Gene: Phunky_7 Start: 3965, Stop: 4411, Start Num: 104

Candidate Starts for Phunky_7:

(49, 3752), (Start: 53 @3767 has 3 MA's), (57, 3782), (60, 3791), (65, 3812), (76, 3872), (Start: 77 @3878 has 7 MA's), (Start: 104 @3965 has 238 MA's), (120, 4013), (140, 4076), (174, 4202), (177, 4226), (182, 4253), (183, 4256), (184, 4259), (186, 4265), (206, 4340),

Gene: Piglet_007 Start: 3965, Stop: 4411, Start Num: 104

Candidate Starts for Piglet_007:

(Start: 77 @3878 has 7 MA's), (Start: 104 @3965 has 238 MA's), (140, 4076), (174, 4202), (177, 4226), (182, 4253), (184, 4259), (186, 4265), (206, 4340),

Gene: PinheadLarry_7 Start: 3965, Stop: 4411, Start Num: 104

Candidate Starts for PinheadLarry_7:

(Start: 77 @3878 has 7 MA's), (Start: 104 @3965 has 238 MA's), (140, 4076), (174, 4202), (177, 4226), (182, 4253), (184, 4259), (186, 4265), (206, 4340),

Gene: Pinkman_7 Start: 3962, Stop: 4408, Start Num: 104

Candidate Starts for Pinkman_7:

(49, 3749), (Start: 53 @3764 has 3 MA's), (57, 3779), (60, 3788), (65, 3809), (76, 3869), (Start: 77 @3875 has 7 MA's), (Start: 104 @3962 has 238 MA's), (120, 4010), (140, 4073), (174, 4199), (177, 4223), (182, 4250), (184, 4256), (186, 4262), (206, 4337),

Gene: Pipefish_10 Start: 6844, Stop: 7179, Start Num: 125

Candidate Starts for Pipefish_10:

(Start: 125 @6844 has 45 MA's), (142, 6886), (145, 6898), (150, 6913), (153, 6931), (173, 6988), (184, 7054), (190, 7075), (203, 7111), (206, 7123), (210, 7159),

Gene: Pipsqueak_7 Start: 3965, Stop: 4411, Start Num: 104

Candidate Starts for Pipsqueak_7:

(Start: 77 @3878 has 7 MA's), (Start: 104 @3965 has 238 MA's), (140, 4076), (174, 4202), (177, 4226), (182, 4253), (184, 4259), (186, 4265), (206, 4340),

Gene: Placalicious_7 Start: 3965, Stop: 4411, Start Num: 104

Candidate Starts for Placalicious_7:

(Start: 77 @3878 has 7 MA's), (Start: 104 @3965 has 238 MA's), (140, 4076), (174, 4202), (177, 4226), (182, 4253), (184, 4259), (186, 4265), (206, 4340),

Gene: Plmatters_7 Start: 3965, Stop: 4411, Start Num: 104

Candidate Starts for Plmatters_7:

(49, 3752), (Start: 53 @3767 has 3 MA's), (57, 3782), (60, 3791), (65, 3812), (76, 3872), (Start: 77 @3878 has 7 MA's), (Start: 104 @3965 has 238 MA's), (120, 4013), (140, 4076), (174, 4202), (177, 4226), (182, 4253), (183, 4256), (184, 4259), (186, 4265), (206, 4340),

Gene: Podrick_7 Start: 3965, Stop: 4411, Start Num: 104

Candidate Starts for Podrick_7:

(Start: 77 @3878 has 7 MA's), (Start: 104 @3965 has 238 MA's), (140, 4076), (174, 4202), (177, 4226), (182, 4253), (184, 4259), (186, 4265), (206, 4340),

Gene: Pops_7 Start: 3965, Stop: 4411, Start Num: 104

Candidate Starts for Pops_7:

(Start: 77 @3878 has 7 MA's), (Start: 104 @3965 has 238 MA's), (140, 4076), (174, 4202), (177, 4226), (182, 4253), (184, 4259), (186, 4265),

Gene: Poster_7 Start: 5221, Stop: 5616, Start Num: 116

Candidate Starts for Poster_7:

(Start: 109 @5203 has 20 MA's), (Start: 116 @5221 has 1 MA's), (Start: 117 @5227 has 2 MA's), (Start: 125 @5254 has 45 MA's), (151, 5344), (169, 5401), (170, 5404), (173, 5422), (174, 5431), (177, 5455), (182, 5482), (191, 5509), (202, 5539), (209, 5587),

Gene: Potter_7 Start: 3966, Stop: 4412, Start Num: 104

Candidate Starts for Potter_7:

(Start: 77 @3879 has 7 MA's), (Start: 104 @3966 has 238 MA's), (140, 4077), (174, 4203), (177, 4227), (182, 4254), (184, 4260), (186, 4266), (206, 4341),

Gene: Prickles_7 Start: 3971, Stop: 4417, Start Num: 104

Candidate Starts for Prickles_7:

(Start: 77 @3884 has 7 MA's), (Start: 104 @3971 has 238 MA's), (140, 4082), (174, 4208), (177, 4232), (182, 4259), (184, 4265), (186, 4271),

Gene: Prince_9 Start: 6462, Stop: 6881, Start Num: 109

Candidate Starts for Prince_9:

(76, 6366), (78, 6378), (Start: 109 @6462 has 20 MA's), (Start: 116 @6480 has 1 MA's), (Start: 117 @6486 has 2 MA's), (118, 6492), (Start: 125 @6513 has 45 MA's), (136, 6549), (151, 6603), (177, 6714), (178, 6720), (182, 6741), (191, 6768), (200, 6786), (205, 6810), (206, 6816),

Gene: ProfessorX_7 Start: 3963, Stop: 4409, Start Num: 104

Candidate Starts for ProfessorX_7:

(Start: 77 @3876 has 7 MA's), (Start: 104 @3963 has 238 MA's), (140, 4074), (174, 4200), (177, 4224), (182, 4251), (184, 4257), (186, 4263), (206, 4338),

Gene: Puhltonio_7 Start: 3965, Stop: 4411, Start Num: 104

Candidate Starts for Puhltonio_7:

(Start: 77 @3878 has 7 MA's), (Start: 104 @3965 has 238 MA's), (140, 4076), (174, 4202), (177, 4226), (182, 4253), (184, 4259), (186, 4265), (206, 4340),

Gene: QueenBeane_7 Start: 3962, Stop: 4408, Start Num: 104

Candidate Starts for QueenBeane_7:

(Start: 77 @3875 has 7 MA's), (Start: 104 @3962 has 238 MA's), (140, 4073), (174, 4199), (177, 4223), (182, 4250), (184, 4256), (186, 4262), (206, 4337),

Gene: Quesadilla_10 Start: 6979, Stop: 7392, Start Num: 109

Candidate Starts for Quesadilla_10:

(44, 6742), (48, 6766), (51, 6772), (54, 6781), (56, 6787), (60, 6802), (67, 6832), (69, 6838), (70, 6841), (Start: 77 @6880 has 7 MA's), (78, 6886), (80, 6895), (Start: 87 @6919 has 1 MA's), (Start: 104 @6970 has 238 MA's), (Start: 109 @6979 has 20 MA's), (Start: 125 @7030 has 45 MA's), (128, 7039), (151, 7120), (156, 7138), (169, 7177), (172, 7195), (177, 7231), (178, 7237), (200, 7303), (206, 7333),

Gene: Quisquilliae_8 Start: 3965, Stop: 4411, Start Num: 104

Candidate Starts for Quisquilliae_8:

(Start: 77 @3878 has 7 MA's), (Start: 104 @3965 has 238 MA's), (140, 4076), (174, 4202), (177, 4226), (182, 4253), (184, 4259), (186, 4265), (206, 4340),

Gene: Qyrzula_11 Start: 7453, Stop: 7791, Start Num: 130

Candidate Starts for Qyrzula_11:

(82, 7315), (86, 7324), (101, 7372), (Start: 130 @7453 has 32 MA's), (136, 7468), (147, 7507), (153, 7534), (160, 7552), (166, 7561), (168, 7570), (171, 7585), (173, 7591), (200, 7696), (202, 7708), (210, 7762),

Gene: RagingRooster_10 Start: 5950, Stop: 6285, Start Num: 125

Candidate Starts for RagingRooster_10:

(Start: 125 @5950 has 45 MA's), (142, 5992), (145, 6004), (150, 6019), (153, 6037), (173, 6094), (184, 6160), (190, 6181), (203, 6217), (206, 6229), (210, 6265),

Gene: RawrgerThat_8 Start: 6296, Stop: 6715, Start Num: 109

Candidate Starts for RawrgerThat_8:

(8, 5729), (9, 5771), (11, 5786), (12, 5789), (14, 5819), (18, 5846), (20, 5855), (21, 5861), (23, 5867), (25, 5891), (32, 5981), (33, 6005), (36, 6023), (40, 6032), (47, 6080), (50, 6095), (59, 6125), (60, 6131), (62, 6140), (66, 6158), (Start: 77 @6200 has 7 MA's), (80, 6215), (84, 6230), (Start: 87 @6236 has 1 MA's), (89, 6239), (Start: 109 @6296 has 20 MA's), (Start: 116 @6314 has 1 MA's), (Start: 117 @6320 has 2 MA's), (118, 6326), (Start: 125 @6347 has 45 MA's), (136, 6383), (151, 6437), (177, 6548), (178, 6554), (191, 6602), (200, 6620), (205, 6644), (206, 6650),

Gene: RedMaple_7 Start: 3962, Stop: 4408, Start Num: 104

Candidate Starts for RedMaple_7:

(Start: 77 @3875 has 7 MA's), (Start: 104 @3962 has 238 MA's), (140, 4073), (174, 4199), (177, 4223), (181, 4247), (182, 4250), (184, 4256), (186, 4262),

Gene: Reprobate_9 Start: 6540, Stop: 6941, Start Num: 114

Candidate Starts for Reprobate_9:

(Start: 114 @6540 has 11 MA's), (Start: 117 @6552 has 2 MA's), (118, 6558), (119, 6561), (Start: 125 @6579 has 45 MA's), (150, 6663), (158, 6699), (165, 6714), (173, 6747), (174, 6756), (177, 6780), (206, 6882), (210, 6918),

Gene: Rhinoforte_11 Start: 7480, Stop: 7818, Start Num: 130

Candidate Starts for Rhinoforte_11:

(82, 7342), (86, 7351), (101, 7399), (Start: 130 @7480 has 32 MA's), (136, 7495), (147, 7534), (153, 7561), (160, 7579), (166, 7588), (167, 7594), (168, 7597), (171, 7612), (172, 7615), (173, 7618), (200, 7723), (202, 7735), (210, 7789),

Gene: Rich_9 Start: 6268, Stop: 6669, Start Num: 114

Candidate Starts for Rich_9:

(Start: 114 @6268 has 11 MA's), (120, 6295), (136, 6343), (150, 6391), (165, 6442), (173, 6475), (174, 6484), (177, 6508), (185, 6544), (210, 6646),

Gene: Ricotta_7 Start: 3964, Stop: 4410, Start Num: 104

Candidate Starts for Ricotta_7:

(Start: 77 @3877 has 7 MA's), (Start: 104 @3964 has 238 MA's), (120, 4012), (140, 4075), (174, 4201), (177, 4225), (182, 4252), (183, 4255), (184, 4258), (186, 4264), (206, 4339),

Gene: Riggan_7 Start: 3969, Stop: 4415, Start Num: 104

Candidate Starts for Riggan_7:

(Start: 77 @3882 has 7 MA's), (Start: 104 @3969 has 238 MA's), (140, 4080), (174, 4206), (177, 4230), (182, 4257), (184, 4263), (186, 4269), (206, 4344),

Gene: Rimu_7 Start: 3961, Stop: 4407, Start Num: 104

Candidate Starts for Rimu_7:

(Start: 77 @3874 has 7 MA's), (Start: 104 @3961 has 238 MA's), (120, 4009), (174, 4198), (177, 4222), (182, 4249), (183, 4252), (184, 4255), (186, 4261), (206, 4336),

Gene: Rita1961_10 Start: 5950, Stop: 6285, Start Num: 125

Candidate Starts for Rita1961_10:

(Start: 125 @5950 has 45 MA's), (142, 5992), (145, 6004), (150, 6019), (153, 6037), (173, 6094), (184, 6160), (190, 6181), (203, 6217), (206, 6229), (210, 6265),

Gene: RoadKill_10 Start: 4904, Stop: 5242, Start Num: 122

Candidate Starts for RoadKill_10:

(112, 4868), (Start: 122 @4904 has 6 MA's), (132, 4931), (134, 4937), (140, 4961), (161, 5039), (177, 5105), (198, 5171), (204, 5198),

Gene: Robyn_7 Start: 3967, Stop: 4413, Start Num: 104

Candidate Starts for Robyn_7:

(Start: 77 @3880 has 7 MA's), (Start: 104 @3967 has 238 MA's), (140, 4078), (174, 4204), (177, 4228), (182, 4255), (184, 4261), (186, 4267),

Gene: Roliet_7 Start: 3965, Stop: 4411, Start Num: 104

Candidate Starts for Roliet_7:

(49, 3752), (Start: 53 @3767 has 3 MA's), (57, 3782), (60, 3791), (65, 3812), (76, 3872), (Start: 77 @3878 has 7 MA's), (Start: 104 @3965 has 238 MA's), (120, 4013), (140, 4076), (174, 4202), (177, 4226), (182, 4253), (183, 4256), (184, 4259), (186, 4265), (206, 4340),

Gene: RomaT_10 Start: 6712, Stop: 7047, Start Num: 125

Candidate Starts for RomaT_10:

(Start: 125 @6712 has 45 MA's), (142, 6754), (145, 6766), (150, 6781), (153, 6799), (173, 6856), (184, 6922), (190, 6943), (203, 6979), (206, 6991), (210, 7027),

Gene: Roscoe_8 Start: 4200, Stop: 4646, Start Num: 104

Candidate Starts for Roscoe_8:

(49, 3987), (Start: 53 @4002 has 3 MA's), (57, 4017), (60, 4026), (65, 4047), (76, 4107), (Start: 77 @4113 has 7 MA's), (Start: 104 @4200 has 238 MA's), (120, 4248), (140, 4311), (174, 4437), (177, 4461), (182, 4488), (183, 4491), (184, 4494), (186, 4500), (206, 4575),

Gene: Rosebush_11 Start: 7480, Stop: 7818, Start Num: 130

Candidate Starts for Rosebush_11:

(82, 7342), (86, 7351), (98, 7393), (101, 7399), (Start: 130 @7480 has 32 MA's), (136, 7495), (147, 7534), (153, 7561), (160, 7579), (166, 7588), (168, 7597), (171, 7612), (173, 7618), (200, 7723), (202, 7735), (210, 7789),

Gene: Roy17_7 Start: 3966, Stop: 4412, Start Num: 104

Candidate Starts for Roy17_7:

(Start: 77 @3879 has 7 MA's), (Start: 104 @3966 has 238 MA's), (140, 4077), (174, 4203), (177, 4227), (182, 4254), (184, 4260), (186, 4266),

Gene: SDcharge11_7 Start: 3964, Stop: 4410, Start Num: 104

Candidate Starts for SDcharge11_7:

(76, 3871), (Start: 77 @3877 has 7 MA's), (Start: 104 @3964 has 238 MA's), (120, 4012), (140, 4075), (174, 4201), (177, 4225), (182, 4252), (183, 4255), (184, 4258), (186, 4264), (206, 4339),

Gene: Sabella_11 Start: 7363, Stop: 7701, Start Num: 130

Candidate Starts for Sabella_11:

(82, 7225), (86, 7234), (98, 7276), (101, 7282), (Start: 130 @7363 has 32 MA's), (136, 7378), (147, 7417), (153, 7444), (160, 7462), (166, 7471), (168, 7480), (171, 7495), (173, 7501), (200, 7606), (202, 7618), (210, 7672),

Gene: Saguaro_10 Start: 7187, Stop: 7600, Start Num: 109

Candidate Starts for Saguaro_10:

(78, 7094), (80, 7103), (Start: 87 @7127 has 1 MA's), (89, 7130), (Start: 109 @7187 has 20 MA's), (Start: 125 @7238 has 45 MA's), (128, 7247), (163, 7370), (169, 7385), (172, 7403), (176, 7433), (177, 7439), (182, 7466), (189, 7490), (191, 7493),

Gene: Samaymay_7 Start: 3962, Stop: 4408, Start Num: 104

Candidate Starts for Samaymay_7:

(Start: 77 @3875 has 7 MA's), (Start: 104 @3962 has 238 MA's), (140, 4073), (174, 4199), (177, 4223), (182, 4250), (184, 4256), (186, 4262), (206, 4337),

Gene: SassyCat97_7 Start: 3962, Stop: 4408, Start Num: 104

Candidate Starts for SassyCat97_7:

(Start: 77 @3875 has 7 MA's), (Start: 104 @3962 has 238 MA's), (140, 4073), (174, 4199), (177, 4223), (182, 4250), (184, 4256), (186, 4262), (206, 4337),

Gene: Schadenfreude_7 Start: 3963, Stop: 4409, Start Num: 104

Candidate Starts for Schadenfreude_7:

(Start: 77 @3876 has 7 MA's), (Start: 104 @3963 has 238 MA's), (140, 4074), (174, 4200), (177, 4224), (182, 4251), (184, 4257), (186, 4263), (206, 4338),

Gene: Schueller_7 Start: 3965, Stop: 4411, Start Num: 104

Candidate Starts for Schueller_7:

(Start: 77 @3878 has 7 MA's), (Start: 104 @3965 has 238 MA's), (140, 4076), (174, 4202), (177, 4226), (182, 4253), (184, 4259), (186, 4265), (206, 4340),

Gene: Scoot17C_7 Start: 3966, Stop: 4412, Start Num: 104

Candidate Starts for Scoot17C_7:

(Start: 77 @3879 has 7 MA's), (Start: 104 @3966 has 238 MA's), (140, 4077), (174, 4203), (177, 4227), (182, 4254), (184, 4260), (186, 4266),

Gene: Scrick_7 Start: 3966, Stop: 4412, Start Num: 104

Candidate Starts for Scrick_7:

(49, 3753), (Start: 53 @3768 has 3 MA's), (57, 3783), (60, 3792), (65, 3813), (76, 3873), (Start: 77 @3879 has 7 MA's), (Start: 104 @3966 has 238 MA's), (120, 4014), (140, 4077), (174, 4203), (177, 4227), (182, 4254), (183, 4257), (184, 4260), (186, 4266), (206, 4341),

Gene: Sejanus_6 Start: 3671, Stop: 4078, Start Num: 106

Candidate Starts for Sejanus_6:

(94, 3638), (Start: 106 @3671 has 4 MA's), (120, 3716), (Start: 127 @3734 has 5 MA's), (129, 3743), (135, 3761), (136, 3764), (140, 3779), (170, 3878), (172, 3893), (175, 3908), (181, 3953), (184, 3962), (186, 3968), (208, 4043),

Gene: Selr12_7 Start: 3965, Stop: 4411, Start Num: 104

Candidate Starts for Selr12_7:

(49, 3752), (Start: 53 @3767 has 3 MA's), (57, 3782), (60, 3791), (65, 3812), (76, 3872), (Start: 77 @3878 has 7 MA's), (Start: 104 @3965 has 238 MA's), (120, 4013), (140, 4076), (174, 4202), (177, 4226), (182, 4253), (183, 4256), (184, 4259), (186, 4265), (206, 4340),

Gene: Serendipitous_9 Start: 6319, Stop: 6720, Start Num: 114

Candidate Starts for Serendipitous_9:

(Start: 114 @6319 has 11 MA's), (120, 6346), (136, 6394), (150, 6442), (158, 6478), (165, 6493), (173, 6526), (174, 6535), (177, 6559), (209, 6691), (210, 6697),

Gene: Serendipity_7 Start: 3965, Stop: 4411, Start Num: 104

Candidate Starts for Serendipity_7:

(Start: 77 @3878 has 7 MA's), (Start: 104 @3965 has 238 MA's), (140, 4076), (174, 4202), (177, 4226), (182, 4253), (184, 4259), (186, 4265), (206, 4340),

Gene: Serpentine_007 Start: 3965, Stop: 4411, Start Num: 104

Candidate Starts for Serpentine_007:

(Start: 77 @3878 has 7 MA's), (Start: 104 @3965 has 238 MA's), (140, 4076), (174, 4202), (177, 4226), (182, 4253), (184, 4259), (186, 4265), (206, 4340),

Gene: Shatter_7 Start: 4953, Stop: 5276, Start Num: 131

Candidate Starts for Shatter_7:

(88, 4833), (Start: 126 @4941 has 1 MA's), (Start: 131 @4953 has 7 MA's), (135, 4959), (137, 4965), (138, 4968), (139, 4971), (145, 4992), (147, 4998), (153, 5025), (166, 5052), (167, 5058), (184, 5148), (209, 5247),

Gene: Sheila_7 Start: 3963, Stop: 4409, Start Num: 104

Candidate Starts for Sheila_7:

(Start: 77 @3876 has 7 MA's), (Start: 104 @3963 has 238 MA's), (140, 4074), (174, 4200), (177, 4224), (182, 4251), (184, 4257), (186, 4263), (206, 4338),

Gene: ShiVal_7 Start: 3965, Stop: 4411, Start Num: 104

Candidate Starts for ShiVal_7:

(Start: 77 @3878 has 7 MA's), (Start: 104 @3965 has 238 MA's), (140, 4076), (174, 4202), (177, 4226), (182, 4253), (184, 4259), (186, 4265), (206, 4340),

Gene: Sigman_7 Start: 3962, Stop: 4408, Start Num: 104

Candidate Starts for Sigman_7:

(Start: 77 @3875 has 7 MA's), (Start: 104 @3962 has 238 MA's), (140, 4073), (174, 4199), (177, 4223), (182, 4250), (184, 4256), (186, 4262), (206, 4337),

Gene: Simielle_7 Start: 3965, Stop: 4411, Start Num: 104

Candidate Starts for Simielle_7:

(Start: 77 @3878 has 7 MA's), (Start: 104 @3965 has 238 MA's), (140, 4076), (174, 4202), (177, 4226), (182, 4253), (184, 4259), (186, 4265), (206, 4340),

Gene: SirJeffery_9 Start: 6267, Stop: 6668, Start Num: 114

Candidate Starts for SirJeffery_9:

(Start: 114 @6267 has 11 MA's), (120, 6294), (Start: 125 @6306 has 45 MA's), (136, 6342), (150, 6390), (165, 6441), (173, 6474), (174, 6483), (177, 6507), (209, 6639), (210, 6645),

Gene: Sisko_6 Start: 4758, Stop: 5081, Start Num: 131

Candidate Starts for Sisko_6:

(Start: 126 @4746 has 1 MA's), (Start: 131 @4758 has 7 MA's), (139, 4776), (142, 4785), (145, 4797), (147, 4803), (176, 4914), (179, 4932), (184, 4953), (209, 5052),

Gene: Skippy_7 Start: 3965, Stop: 4411, Start Num: 104

Candidate Starts for Skippy_7:

(Start: 77 @3878 has 7 MA's), (Start: 104 @3965 has 238 MA's), (140, 4076), (174, 4202), (177, 4226), (182, 4253), (184, 4259), (186, 4265), (206, 4340),

Gene: Slatt_7 Start: 3967, Stop: 4413, Start Num: 104

Candidate Starts for Slatt_7:

(Start: 77 @3880 has 7 MA's), (Start: 104 @3967 has 238 MA's), (140, 4078), (174, 4204), (177, 4228), (182, 4255), (184, 4261), (186, 4267), (206, 4342),

Gene: SlippinJimmy_10 Start: 6711, Stop: 7046, Start Num: 125

Candidate Starts for SlippinJimmy_10:

(Start: 125 @6711 has 45 MA's), (142, 6753), (145, 6765), (150, 6780), (153, 6798), (173, 6855), (184, 6921), (190, 6942), (203, 6978), (206, 6990), (210, 7026),

Gene: Soile_7 Start: 3964, Stop: 4410, Start Num: 104

Candidate Starts for Soile_7:

(Start: 77 @3877 has 7 MA's), (Start: 104 @3964 has 238 MA's), (120, 4012), (140, 4075), (174, 4201), (177, 4225), (182, 4252), (184, 4258), (186, 4264), (206, 4339),

Gene: Solosis_7 Start: 3965, Stop: 4411, Start Num: 104

Candidate Starts for Solosis_7:

(Start: 77 @3878 has 7 MA's), (Start: 104 @3965 has 238 MA's), (140, 4076), (174, 4202), (177, 4226), (182, 4253), (184, 4259), (186, 4265), (206, 4340),

Gene: Sophia_7 Start: 3965, Stop: 4411, Start Num: 104

Candidate Starts for Sophia_7:

(Start: 77 @3878 has 7 MA's), (Start: 104 @3965 has 238 MA's), (140, 4076), (174, 4202), (177, 4226), (182, 4253), (184, 4259), (186, 4265), (206, 4340),

Gene: Soto_7 Start: 3962, Stop: 4408, Start Num: 104

Candidate Starts for Soto_7:

(49, 3749), (Start: 53 @3764 has 3 MA's), (57, 3779), (60, 3788), (65, 3809), (76, 3869), (Start: 77 @3875 has 7 MA's), (Start: 104 @3962 has 238 MA's), (120, 4010), (140, 4073), (174, 4199), (177, 4223), (182, 4250), (183, 4253), (184, 4256), (186, 4262), (206, 4337),

Gene: Sour_10 Start: 6612, Stop: 6938, Start Num: 131

Candidate Starts for Sour_10:

(Start: 126 @6600 has 1 MA's), (Start: 131 @6612 has 7 MA's), (137, 6624), (139, 6630), (144, 6648), (145, 6651), (147, 6657), (148, 6660), (153, 6684), (166, 6711), (167, 6717), (178, 6780), (197, 6837), (209, 6906),

Gene: Spartan300_7 Start: 3962, Stop: 4408, Start Num: 104

Candidate Starts for Spartan300_7:

(Start: 77 @3875 has 7 MA's), (Start: 104 @3962 has 238 MA's), (140, 4073), (174, 4199), (177, 4223), (182, 4250), (184, 4256), (186, 4262), (206, 4337),

Gene: Squid_7 Start: 3962, Stop: 4408, Start Num: 104

Candidate Starts for Squid_7:

(Start: 77 @3875 has 7 MA's), (Start: 104 @3962 has 238 MA's), (140, 4073), (174, 4199), (177, 4223), (182, 4250), (184, 4256), (186, 4262), (206, 4337),

Gene: Squiggle_7 Start: 3965, Stop: 4411, Start Num: 104

Candidate Starts for Squiggle_7:

(Start: 77 @3878 has 7 MA's), (Start: 104 @3965 has 238 MA's), (140, 4076), (174, 4202), (177, 4226), (182, 4253), (184, 4259), (186, 4265), (206, 4340),

Gene: StAugustine_14 Start: 8961, Stop: 9371, Start Num: 109

Candidate Starts for StAugustine_14:

(19, 8484), (24, 8511), (26, 8535), (28, 8550), (29, 8556), (31, 8589), (39, 8670), (46, 8718), (50, 8736), (61, 8778), (67, 8802), (73, 8832), (90, 8904), (92, 8919), (Start: 109 @8961 has 20 MA's), (Start: 125 @9012 has 45 MA's), (162, 9144), (176, 9207), (177, 9213), (188, 9261),

Gene: Stinger_6 Start: 4739, Stop: 5161, Start Num: 109

Candidate Starts for Stinger_6:

(Start: 109 @4739 has 20 MA's), (Start: 116 @4757 has 1 MA's), (Start: 117 @4763 has 2 MA's), (Start: 125 @4790 has 45 MA's), (151, 4880), (158, 4910), (169, 4937), (170, 4940), (173, 4958), (177, 4991), (191, 5045), (206, 5093), (209, 5123),

Gene: StinkyVeggy_10 Start: 6414, Stop: 6836, Start Num: 114

Candidate Starts for StinkyVeggy_10:

(Start: 114 @6414 has 11 MA's), (119, 6435), (120, 6441), (Start: 127 @6459 has 5 MA's), (150, 6537), (163, 6585), (173, 6621), (174, 6630), (177, 6654), (184, 6687), (193, 6726), (195, 6732), (210, 6813),

Gene: Struggle_7 Start: 3962, Stop: 4408, Start Num: 104

Candidate Starts for Struggle_7:

(49, 3749), (Start: 53 @3764 has 3 MA's), (57, 3779), (60, 3788), (65, 3809), (76, 3869), (Start: 77 @3875 has 7 MA's), (Start: 104 @3962 has 238 MA's), (120, 4010), (140, 4073), (174, 4199), (177, 4223), (182, 4250), (184, 4256), (186, 4262), (206, 4337),

Gene: Suffolk_7 Start: 3964, Stop: 4410, Start Num: 104

Candidate Starts for Suffolk_7:

(Start: 77 @3877 has 7 MA's), (Start: 104 @3964 has 238 MA's), (140, 4075), (174, 4201), (177, 4225), (182, 4252), (184, 4258), (186, 4264),

Gene: Suigeneris_9 Start: 6267, Stop: 6668, Start Num: 114

Candidate Starts for Suigeneris_9:

(Start: 114 @6267 has 11 MA's), (120, 6294), (Start: 125 @6306 has 45 MA's), (136, 6342), (150, 6390), (165, 6441), (173, 6474), (174, 6483), (177, 6507), (209, 6639), (210, 6645),

Gene: Surely_7 Start: 3965, Stop: 4411, Start Num: 104

Candidate Starts for Surely_7:

(Start: 77 @3878 has 7 MA's), (Start: 104 @3965 has 238 MA's), (140, 4076), (174, 4202), (177, 4226), (182, 4253), (184, 4259), (186, 4265), (206, 4340),

Gene: Swiphy_7 Start: 3965, Stop: 4411, Start Num: 104

Candidate Starts for Swiphy_7:

(Start: 77 @3878 has 7 MA's), (Start: 104 @3965 has 238 MA's), (140, 4076), (174, 4202), (177, 4226), (182, 4253), (183, 4256), (184, 4259), (186, 4265), (206, 4340),

Gene: Swish_7 Start: 3879, Stop: 4412, Start Num: 77

Candidate Starts for Swish_7:

(Start: 77 @3879 has 7 MA's), (Start: 104 @3966 has 238 MA's), (140, 4077), (174, 4203), (177, 4227), (182, 4254), (184, 4260), (186, 4266),

Gene: SynergyX_10 Start: 5950, Stop: 6285, Start Num: 125

Candidate Starts for SynergyX_10:

(Start: 125 @5950 has 45 MA's), (142, 5992), (145, 6004), (150, 6019), (153, 6037), (173, 6094), (184, 6160), (190, 6181), (203, 6217), (206, 6229), (210, 6265),

Gene: TA17A_11 Start: 7363, Stop: 7701, Start Num: 130

Candidate Starts for TA17A_11:

(82, 7225), (86, 7234), (101, 7282), (Start: 130 @7363 has 32 MA's), (136, 7378), (147, 7417), (153, 7444), (160, 7462), (166, 7471), (167, 7477), (168, 7480), (171, 7495), (173, 7501), (200, 7606), (202, 7618), (210, 7672),

Gene: TPA2_16 Start: 7599, Stop: 7940, Start Num: 124

Candidate Starts for TPA2_16:

(103, 7536), (Start: 124 @7599 has 2 MA's), (142, 7644), (144, 7653), (145, 7656), (148, 7665), (153, 7689), (166, 7716), (177, 7782), (184, 7815), (205, 7878), (209, 7914), (211, 7929), (213, 7935),

Gene: TallGrassMM_7 Start: 3965, Stop: 4411, Start Num: 104

Candidate Starts for TallGrassMM_7:

(Start: 77 @3878 has 7 MA's), (Start: 104 @3965 has 238 MA's), (140, 4076), (174, 4202), (177, 4226), (182, 4253), (184, 4259), (186, 4265), (206, 4340),

Gene: Taptic_5 Start: 2882, Stop: 3286, Start Num: 108

Candidate Starts for Taptic_5:

(Start: 108 @2882 has 8 MA's), (115, 2897), (120, 2921), (Start: 131 @2951 has 7 MA's), (159, 3044), (178, 3128), (186, 3161), (197, 3185), (199, 3191), (209, 3251),

Gene: Telesworld_7 Start: 3965, Stop: 4411, Start Num: 104

Candidate Starts for Telesworld_7:

(Start: 77 @3878 has 7 MA's), (Start: 104 @3965 has 238 MA's), (140, 4076), (174, 4202), (177, 4226), (182, 4253), (184, 4259), (186, 4265), (206, 4340),

Gene: Thonko_6 Start: 3289, Stop: 3702, Start Num: 107

Candidate Starts for Thonko_6:

(68, 3148), (Start: 107 @3289 has 1 MA's), (Start: 123 @3340 has 2 MA's), (Start: 125 @3343 has 45 MA's), (128, 3352), (169, 3490), (176, 3538), (177, 3544), (179, 3556), (182, 3571), (184, 3577), (201, 3619), (202, 3628),

Gene: Thora_7 Start: 3962, Stop: 4408, Start Num: 104

Candidate Starts for Thora_7:

(Start: 77 @3875 has 7 MA's), (Start: 104 @3962 has 238 MA's), (140, 4073), (174, 4199), (177, 4223), (182, 4250), (184, 4256), (186, 4262), (206, 4337),

Gene: ThreeOh3D2_7 Start: 3963, Stop: 4409, Start Num: 104

Candidate Starts for ThreeOh3D2_7:

(Start: 77 @3876 has 7 MA's), (Start: 104 @3963 has 238 MA's), (140, 4074), (174, 4200), (177, 4224), (182, 4251), (184, 4257), (186, 4263), (206, 4338),

Gene: Thunderbird_7 Start: 3964, Stop: 4410, Start Num: 104

Candidate Starts for Thunderbird_7:

(Start: 77 @3877 has 7 MA's), (Start: 104 @3964 has 238 MA's), (120, 4012), (174, 4201), (177, 4225), (182, 4252), (183, 4255), (184, 4258), (186, 4264), (206, 4339),

Gene: Tiamoceli_13 Start: 6287, Stop: 6625, Start Num: 122

Candidate Starts for Tiamoceli_13:

(112, 6251), (Start: 122 @6287 has 6 MA's), (132, 6314), (134, 6320), (140, 6344), (161, 6422), (177, 6488), (198, 6554), (204, 6581),

Gene: Timmi_7 Start: 3965, Stop: 4411, Start Num: 104

Candidate Starts for Timmi_7:

(Start: 77 @3878 has 7 MA's), (Start: 104 @3965 has 238 MA's), (174, 4202), (177, 4226), (182, 4253), (184, 4259), (186, 4265), (206, 4340),

Gene: Tinciduntolum_12 Start: 7479, Stop: 7817, Start Num: 130

Candidate Starts for Tinciduntolum_12:

(82, 7341), (86, 7350), (98, 7392), (101, 7398), (Start: 130 @7479 has 32 MA's), (136, 7494), (147, 7533), (153, 7560), (160, 7578), (166, 7587), (168, 7596), (171, 7611), (173, 7617), (200, 7722), (202, 7734), (210, 7788),

Gene: TomBombadil_7 Start: 3965, Stop: 4411, Start Num: 104

Candidate Starts for TomBombadil_7:

(Start: 77 @3878 has 7 MA's), (Start: 104 @3965 has 238 MA's), (140, 4076), (174, 4202), (177, 4226), (182, 4253), (184, 4259), (186, 4265), (206, 4340),

Gene: Tomlarah_7 Start: 3965, Stop: 4411, Start Num: 104

Candidate Starts for Tomlarah_7:

(49, 3752), (Start: 53 @3767 has 3 MA's), (57, 3782), (60, 3791), (65, 3812), (76, 3872), (Start: 77 @3878 has 7 MA's), (Start: 104 @3965 has 238 MA's), (140, 4076), (174, 4202), (177, 4226), (182, 4253), (184, 4259), (186, 4265), (206, 4340),

Gene: Toni_7 Start: 3966, Stop: 4412, Start Num: 104

Candidate Starts for Toni_7:

(Start: 77 @3879 has 7 MA's), (Start: 104 @3966 has 238 MA's), (140, 4077), (174, 4203), (177, 4227), (182, 4254), (184, 4260), (186, 4266),

Gene: Tooj_7 Start: 3963, Stop: 4409, Start Num: 104

Candidate Starts for Tooj_7:

(Start: 77 @3876 has 7 MA's), (Start: 104 @3963 has 238 MA's), (140, 4074), (174, 4200), (177, 4224), (182, 4251), (184, 4257), (186, 4263),

Gene: Tres_11 Start: 7363, Stop: 7701, Start Num: 130

Candidate Starts for Tres_11:

(82, 7225), (86, 7234), (101, 7282), (Start: 130 @7363 has 32 MA's), (136, 7378), (147, 7417), (153, 7444), (160, 7462), (166, 7471), (168, 7480), (171, 7495), (173, 7501), (200, 7606), (202, 7618), (210, 7672),

Gene: True_7 Start: 3963, Stop: 4409, Start Num: 104

Candidate Starts for True_7:

(Start: 77 @3876 has 7 MA's), (Start: 104 @3963 has 238 MA's), (140, 4074), (174, 4200), (177, 4224), (182, 4251), (184, 4257), (186, 4263), (206, 4338),

Gene: Trypo_7 Start: 3962, Stop: 4408, Start Num: 104

Candidate Starts for Trypo_7:

(49, 3749), (Start: 53 @3764 has 3 MA's), (57, 3779), (60, 3788), (65, 3809), (76, 3869), (Start: 77 @3875 has 7 MA's), (Start: 104 @3962 has 238 MA's), (120, 4010), (140, 4073), (174, 4199), (177, 4223), (182, 4250), (184, 4256), (186, 4262), (206, 4337),

Gene: Twonlo_10 Start: 4904, Stop: 5242, Start Num: 122

Candidate Starts for Twonlo_10:

(112, 4868), (Start: 122 @4904 has 6 MA's), (132, 4931), (134, 4937), (140, 4961), (161, 5039), (177, 5105), (198, 5171), (204, 5198),

Gene: Tydolla_10 Start: 6711, Stop: 7046, Start Num: 125

Candidate Starts for Tydolla_10:

(Start: 125 @6711 has 45 MA's), (142, 6753), (145, 6765), (150, 6780), (153, 6798), (173, 6855), (184, 6921), (190, 6942), (203, 6978), (206, 6990), (210, 7026),

Gene: TyrionL_7 Start: 3962, Stop: 4408, Start Num: 104

Candidate Starts for TyrionL_7:

(49, 3749), (Start: 53 @3764 has 3 MA's), (57, 3779), (60, 3788), (65, 3809), (76, 3869), (Start: 77 @3875 has 7 MA's), (Start: 104 @3962 has 238 MA's), (120, 4010), (140, 4073), (174, 4199), (177, 4223), (182, 4250), (184, 4256), (186, 4262), (206, 4337),

Gene: UAch1_7 Start: 3965, Stop: 4411, Start Num: 104

Candidate Starts for UAch1_7:

(Start: 77 @3878 has 7 MA's), (Start: 104 @3965 has 238 MA's), (140, 4076), (174, 4202), (177, 4226), (182, 4253), (184, 4259), (186, 4265), (206, 4340),

Gene: UncleHowie_7 Start: 3965, Stop: 4411, Start Num: 104

Candidate Starts for UncleHowie_7:

(Start: 77 @3878 has 7 MA's), (Start: 104 @3965 has 238 MA's), (140, 4076), (174, 4202), (177, 4226), (182, 4253), (184, 4259), (186, 4265), (206, 4340),

Gene: Usavi_7 Start: 3962, Stop: 4408, Start Num: 104

Candidate Starts for Usavi_7:

(Start: 77 @3875 has 7 MA's), (Start: 104 @3962 has 238 MA's), (140, 4073), (174, 4199), (177, 4223), (182, 4250), (184, 4256), (186, 4262), (206, 4337),

Gene: Vaishali24_7 Start: 3966, Stop: 4412, Start Num: 104

Candidate Starts for Vaishali24_7:

(Start: 77 @3879 has 7 MA's), (Start: 104 @3966 has 238 MA's), (140, 4077), (174, 4203), (177, 4227), (182, 4254), (184, 4260), (186, 4266), (206, 4341),

Gene: Valjean_7 Start: 3965, Stop: 4411, Start Num: 104

Candidate Starts for Valjean_7:

(Start: 77 @3878 has 7 MA's), (Start: 104 @3965 has 238 MA's), (140, 4076), (174, 4202), (177, 4226), (182, 4253), (184, 4259), (186, 4265), (206, 4340),

Gene: Vaticameos_7 Start: 3962, Stop: 4408, Start Num: 104

Candidate Starts for Vaticameos_7:

(Start: 77 @3875 has 7 MA's), (Start: 104 @3962 has 238 MA's), (140, 4073), (174, 4199), (177, 4223), (182, 4250), (184, 4256), (186, 4262), (206, 4337),

Gene: Veritas_7 Start: 3962, Stop: 4408, Start Num: 104

Candidate Starts for Veritas_7:

(49, 3749), (Start: 53 @3764 has 3 MA's), (57, 3779), (60, 3788), (65, 3809), (76, 3869), (Start: 77 @3875 has 7 MA's), (Start: 104 @3962 has 238 MA's), (120, 4010), (140, 4073), (174, 4199), (177, 4223), (182, 4250), (184, 4256), (186, 4262), (206, 4337),

Gene: Vincenzo_9 Start: 6977, Stop: 7429, Start Num: 97

Candidate Starts for Vincenzo_9:

(Start: 97 @6977 has 2 MA's), (Start: 109 @7007 has 20 MA's), (Start: 116 @7025 has 1 MA's), (154, 7160), (157, 7175), (177, 7259), (178, 7265), (184, 7292), (187, 7298), (195, 7316),

Gene: VioletZ_8 Start: 6302, Stop: 6721, Start Num: 109

Candidate Starts for VioletZ_8:

(9, 5774), (11, 5789), (12, 5792), (14, 5822), (18, 5849), (20, 5858), (21, 5864), (23, 5870), (25, 5894), (32, 5984), (33, 6008), (35, 6020), (47, 6086), (50, 6101), (59, 6131), (60, 6137), (62, 6146), (66, 6164), (Start: 77 @6206 has 7 MA's), (80, 6221), (84, 6236), (Start: 87 @6242 has 1 MA's), (89, 6245), (Start: 109 @6302 has 20 MA's), (Start: 116 @6320 has 1 MA's), (Start: 117 @6326 has 2 MA's), (118, 6332), (Start: 125 @6353 has 45 MA's), (136, 6389), (151, 6443), (177, 6554), (178, 6560), (182, 6581), (191, 6608), (200, 6626), (205, 6650), (206, 6656),

Gene: Virapocalypse_7 Start: 3963, Stop: 4409, Start Num: 104

Candidate Starts for Virapocalypse_7:

(Start: 77 @3876 has 7 MA's), (Start: 104 @3963 has 238 MA's), (140, 4074), (174, 4200), (177, 4224), (182, 4251), (184, 4257), (186, 4263),

Gene: Virgeve_7 Start: 3965, Stop: 4411, Start Num: 104

Candidate Starts for Virgeve_7:

(Start: 77 @3878 has 7 MA's), (Start: 104 @3965 has 238 MA's), (140, 4076), (174, 4202), (177, 4226), (182, 4253), (184, 4259), (186, 4265), (206, 4340),

Gene: Vista_7 Start: 3965, Stop: 4411, Start Num: 104

Candidate Starts for Vista_7:

(Start: 77 @3878 has 7 MA's), (Start: 104 @3965 has 238 MA's), (140, 4076), (174, 4202), (177, 4226), (182, 4253), (184, 4259), (186, 4265), (206, 4340),

Gene: Vivaldi_7 Start: 3963, Stop: 4409, Start Num: 104

Candidate Starts for Vivaldi_7:

(Start: 77 @3876 has 7 MA's), (Start: 104 @3963 has 238 MA's), (140, 4074), (174, 4200), (177, 4224), (182, 4251), (184, 4257), (186, 4263), (206, 4338),

Gene: Vortex_7 Start: 3966, Stop: 4412, Start Num: 104

Candidate Starts for Vortex_7:

(Start: 77 @3879 has 7 MA's), (Start: 104 @3966 has 238 MA's), (140, 4077), (174, 4203), (177, 4227), (182, 4254), (184, 4260), (186, 4266), (206, 4341),

Gene: Waleliano_8 Start: 6302, Stop: 6721, Start Num: 109

Candidate Starts for Waleliano_8:

(9, 5774), (11, 5789), (12, 5792), (14, 5822), (18, 5849), (20, 5858), (21, 5864), (23, 5870), (24, 5879), (32, 5984), (33, 6008), (35, 6020), (47, 6086), (48, 6095), (50, 6101), (59, 6131), (60, 6137), (62, 6146), (75, 6191), (Start: 77 @6206 has 7 MA's), (80, 6221), (84, 6236), (Start: 87 @6242 has 1

MA's), (89, 6245), (Start: 109 @6302 has 20 MA's), (Start: 116 @6320 has 1 MA's), (Start: 117 @6326 has 2 MA's), (118, 6332), (Start: 125 @6353 has 45 MA's), (136, 6389), (151, 6443), (177, 6554), (178, 6560), (182, 6581), (191, 6608), (200, 6626), (205, 6650), (206, 6656),

Gene: Wallhey_7 Start: 3962, Stop: 4408, Start Num: 104

Candidate Starts for Wallhey_7:

(49, 3749), (Start: 53 @3764 has 3 MA's), (57, 3779), (60, 3788), (65, 3809), (76, 3869), (Start: 77 @3875 has 7 MA's), (Start: 104 @3962 has 238 MA's), (120, 4010), (140, 4073), (174, 4199), (177, 4223), (182, 4250), (184, 4256), (186, 4262), (206, 4337),

Gene: Waterdiva_7 Start: 3966, Stop: 4412, Start Num: 104

Candidate Starts for Waterdiva_7:

(Start: 77 @3879 has 7 MA's), (Start: 104 @3966 has 238 MA's), (140, 4077), (174, 4203), (177, 4227), (182, 4254), (184, 4260), (186, 4266), (206, 4341),

Gene: Weher20_7 Start: 3962, Stop: 4408, Start Num: 104

Candidate Starts for Weher20_7:

(Start: 77 @3875 has 7 MA's), (Start: 104 @3962 has 238 MA's), (140, 4073), (174, 4199), (177, 4223), (182, 4250), (184, 4256), (186, 4262), (206, 4337),

Gene: West99_11 Start: 7480, Stop: 7818, Start Num: 130

Candidate Starts for West99_11:

(82, 7342), (86, 7351), (98, 7393), (101, 7399), (Start: 130 @7480 has 32 MA's), (136, 7495), (147, 7534), (153, 7561), (160, 7579), (166, 7588), (168, 7597), (171, 7612), (173, 7618), (200, 7723), (202, 7735), (210, 7789),

Gene: Windsor_7 Start: 3963, Stop: 4409, Start Num: 104

Candidate Starts for Windsor_7:

(49, 3750), (Start: 53 @3765 has 3 MA's), (57, 3780), (60, 3789), (65, 3810), (76, 3870), (Start: 77 @3876 has 7 MA's), (Start: 104 @3963 has 238 MA's), (120, 4011), (140, 4074), (174, 4200), (177, 4224), (182, 4251), (183, 4254), (184, 4257), (186, 4263), (206, 4338),

Gene: Wooper_9 Start: 6416, Stop: 6754, Start Num: 127

Candidate Starts for Wooper_9:

(85, 6293), (91, 6311), (99, 6338), (Start: 107 @6359 has 1 MA's), (113, 6371), (119, 6392), (Start: 127 @6416 has 5 MA's), (135, 6434), (142, 6455), (145, 6467), (147, 6473), (153, 6500), (178, 6599), (184, 6626), (200, 6665), (209, 6725), (211, 6740),

Gene: Xavier_7 Start: 3965, Stop: 4411, Start Num: 104

Candidate Starts for Xavier_7:

(Start: 77 @3878 has 7 MA's), (Start: 104 @3965 has 238 MA's), (140, 4076), (174, 4202), (177, 4226), (182, 4253), (184, 4259), (186, 4265), (206, 4340),

Gene: Yago84_6 Start: 4755, Stop: 5090, Start Num: 126

Candidate Starts for Yago84_6:

(Start: 126 @4755 has 1 MA's), (Start: 131 @4767 has 7 MA's), (139, 4785), (142, 4794), (145, 4806), (147, 4812), (176, 4923), (179, 4941), (184, 4962), (209, 5061),

Gene: Yahalom_10 Start: 5950, Stop: 6285, Start Num: 125

Candidate Starts for Yahalom_10:

(Start: 125 @5950 has 45 MA's), (142, 5992), (145, 6004), (150, 6019), (153, 6037), (173, 6094), (184, 6160), (190, 6181), (203, 6217), (206, 6229), (210, 6265),

Gene: Yinz_10 Start: 5976, Stop: 6311, Start Num: 125

Candidate Starts for Yinz_10:

(Start: 125 @5976 has 45 MA's), (142, 6018), (145, 6030), (150, 6045), (153, 6063), (173, 6120), (184, 6186), (190, 6207), (203, 6243), (206, 6255), (210, 6291),

Gene: Yoshand_7 Start: 3963, Stop: 4409, Start Num: 104

Candidate Starts for Yoshand_7:

(Start: 77 @3876 has 7 MA's), (Start: 104 @3963 has 238 MA's), (140, 4074), (174, 4200), (177, 4224), (182, 4251), (184, 4257), (186, 4263), (206, 4338),

Gene: YouGoGlencoco_7 Start: 3962, Stop: 4408, Start Num: 104

Candidate Starts for YouGoGlencoco_7:

(Start: 77 @3875 has 7 MA's), (Start: 104 @3962 has 238 MA's), (140, 4073), (174, 4199), (177, 4223), (182, 4250), (184, 4256), (186, 4262), (206, 4337),

Gene: Zaider_8 Start: 4195, Stop: 4641, Start Num: 104

Candidate Starts for Zaider_8:

(Start: 77 @4108 has 7 MA's), (Start: 104 @4195 has 238 MA's), (140, 4306), (174, 4432), (177, 4456), (182, 4483), (184, 4489), (186, 4495), (206, 4570),

Gene: Zelda_7 Start: 3965, Stop: 4411, Start Num: 104

Candidate Starts for Zelda_7:

(Start: 77 @3878 has 7 MA's), (Start: 104 @3965 has 238 MA's), (140, 4076), (174, 4202), (177, 4226), (182, 4253), (184, 4259), (186, 4265), (206, 4340),

Gene: Zemanar_9 Start: 6302, Stop: 6721, Start Num: 109

Candidate Starts for Zemanar_9:

(9, 5774), (11, 5789), (12, 5792), (14, 5822), (18, 5849), (20, 5858), (21, 5864), (23, 5870), (25, 5894), (32, 5984), (33, 6008), (35, 6020), (47, 6086), (50, 6101), (59, 6131), (60, 6137), (62, 6146), (66, 6164), (Start: 77 @6206 has 7 MA's), (80, 6221), (84, 6236), (Start: 87 @6242 has 1 MA's), (89, 6245), (Start: 109 @6302 has 20 MA's), (Start: 116 @6320 has 1 MA's), (Start: 117 @6326 has 2 MA's), (118, 6332), (Start: 125 @6353 has 45 MA's), (136, 6389), (151, 6443), (177, 6554), (178, 6560), (182, 6581), (191, 6608), (200, 6626), (205, 6650), (206, 6656),

Gene: Zenteno07_12 Start: 5148, Stop: 5579, Start Num: 100

Candidate Starts for Zenteno07_12:

(58, 4974), (Start: 100 @5148 has 1 MA's), (Start: 104 @5154 has 238 MA's), (120, 5199), (164, 5343), (182, 5439), (200, 5484), (206, 5514),

Gene: Zonia_7 Start: 3961, Stop: 4407, Start Num: 104

Candidate Starts for Zonia_7:

(Start: 77 @3874 has 7 MA's), (Start: 104 @3961 has 238 MA's), (120, 4009), (174, 4198), (177, 4222), (182, 4249), (183, 4252), (184, 4255), (186, 4261), (206, 4336),

Gene: phiAsp2_3 Start: 663, Stop: 1013, Start Num: 112

Candidate Starts for phiAsp2_3:

(112, 663), (120, 693), (Start: 123 @702 has 2 MA's), (134, 732), (138, 747), (140, 756), (144, 771), (155, 810), (177, 888), (195, 945), (206, 990),