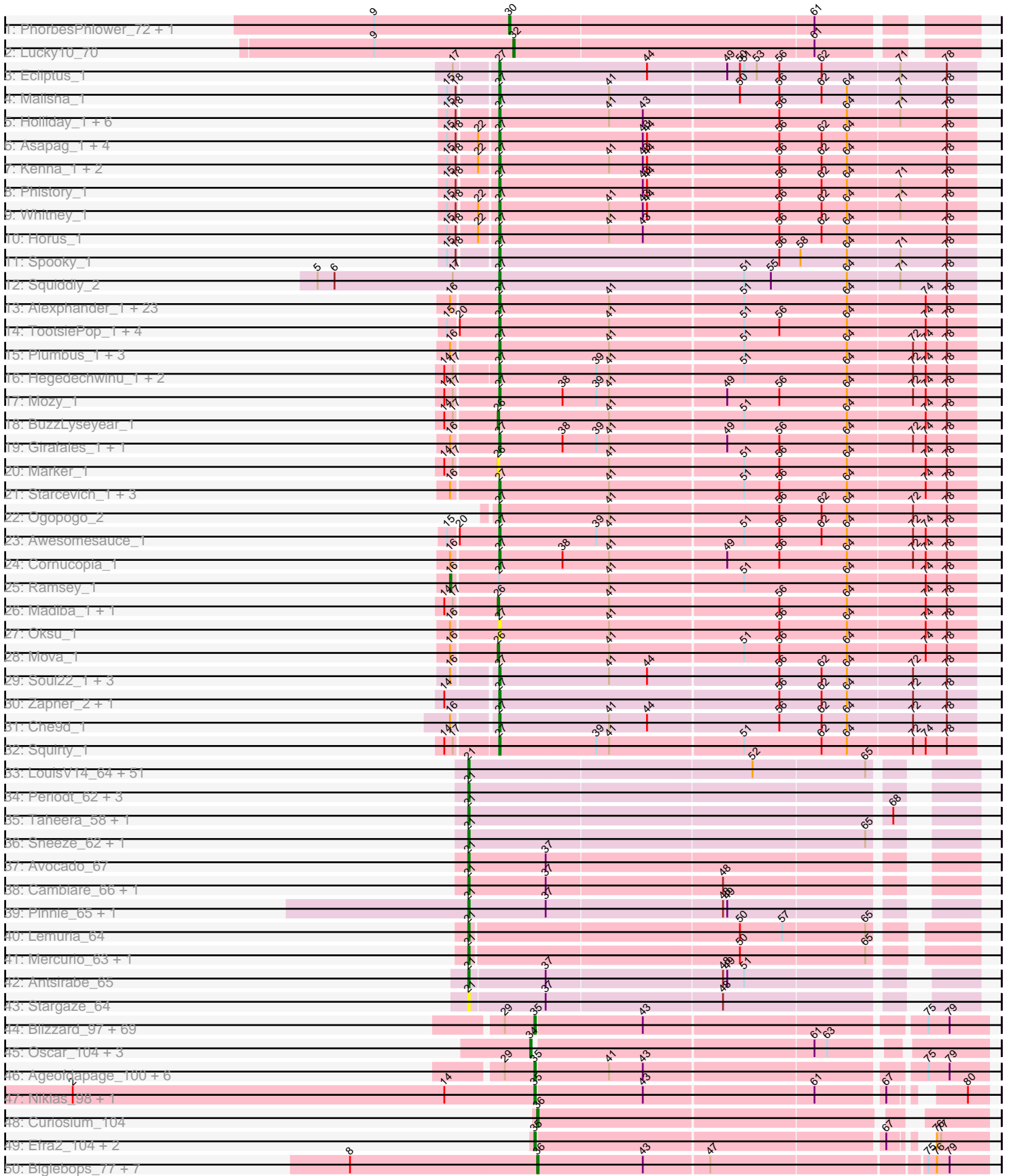
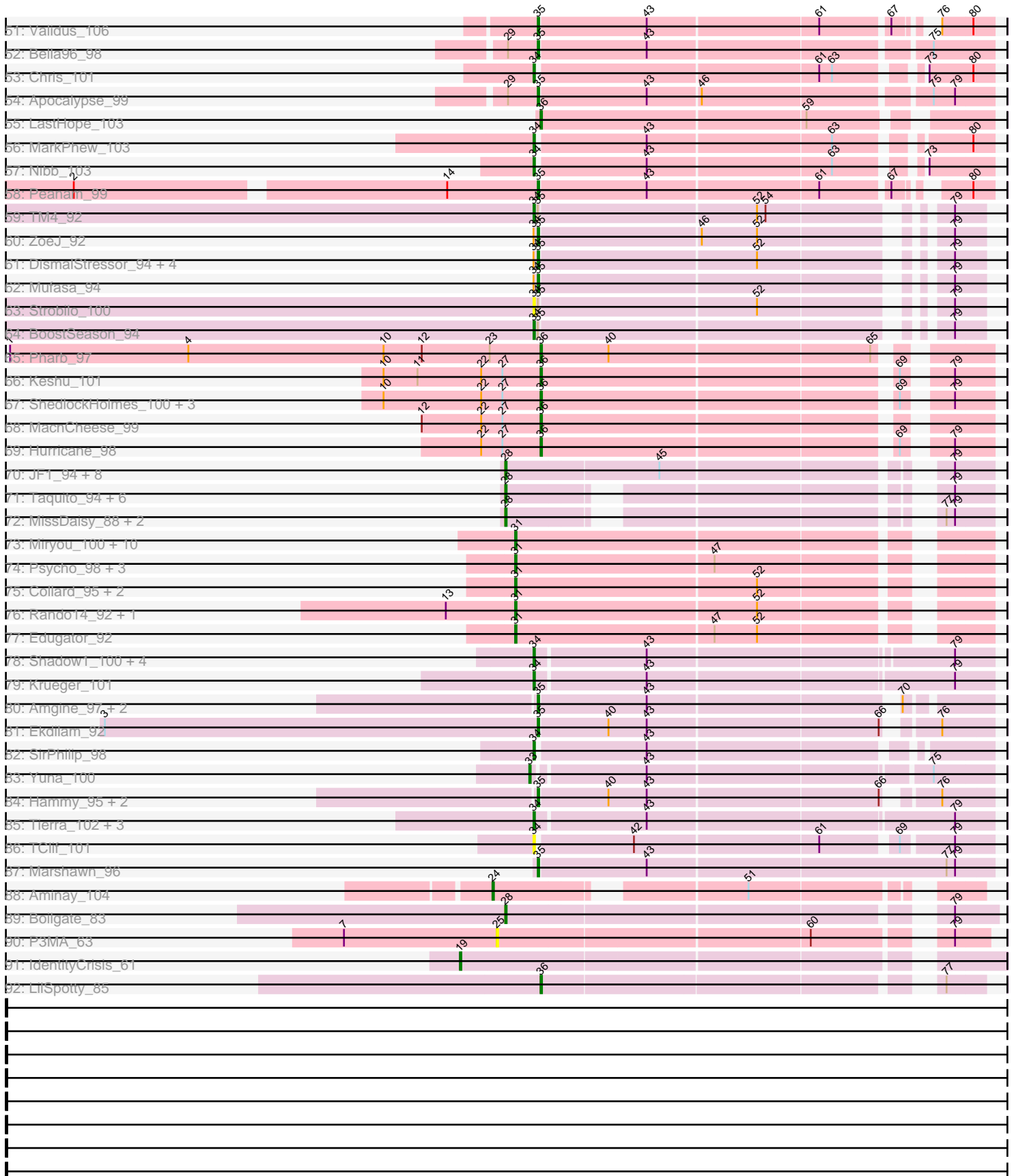


Pham 163283



Pham 163283



Note: Tracks are now grouped by subcluster and scaled. Switching in subcluster is indicated by changes in track color. Track scale is now set by default to display the region 30 bp upstream of start 1 to 30 bp downstream of the last possible start. If this default region is judged to be packed too tightly with annotated starts, the track will be further scaled to only show that region of the ORF with annotated starts. This action will be indicated by adding "Zoomed" to the title. For starts, yellow indicates the location of called starts comprised solely of Glimmer/GeneMark auto-annotations, green indicates the location of called starts with at least 1 manual gene annotation.

Pham 163283 Report

This analysis was run 04/28/24 on database version 559.

Pham number 163283 has 343 members, 21 are drafts.

Phages represented in each track:

- Track 1 : PhorbesPhlower_72, Morkie_74
- Track 2 : Lucky10_70
- Track 3 : Ecliptus_1
- Track 4 : Malisha_1
- Track 5 : Holliday_1, LitninMcQueen_1, Kamaru_1, Budski_1, CheeseTouch_1, Phabuloso_1, ODay_1
- Track 6 : Asapag_1, Getalong_1, BENtherdunthat_1, Leroy_1, Frickyeah_1
- Track 7 : Kenna_1, Periwinkle_1, Lutum_1
- Track 8 : Phistory_1
- Track 9 : Whitney_1
- Track 10 : Horus_1
- Track 11 : Spooky_1
- Track 12 : Squiddly_2
- Track 13 : Alexphander_1, Leozinho_1, Spikelee_1, Bobi_1, Kingsley_1, Stap_1, Cerasum_1, UncleRicky_1, Drago_1, Boomer_1, Enby_1, Sarma624_1, DosHalletts_1, Beakin_1, DaWorst_1, Velveteen_1, Coco12_1, BigPhil_1, OwlsT2W_1, RockyHorror_1, Lorde_1, JalFarm20_1, DirtMcgirt_1, Tootsieroll_1
- Track 14 : TootsiePop_1, DocMcStuffins_1, Misha28_1, Piper2020_1, ChickenDinner_1
- Track 15 : Plumbus_1, Job42_1, Kimberlium_1, Juice456_1
- Track 16 : Hegedechwinu_1, Frankie_1, Flathead_1
- Track 17 : Mozy_1
- Track 18 : BuzzLyseyear_1
- Track 19 : Girafales_1, Quico_1
- Track 20 : Marker_1
- Track 21 : Starcevich_1, Totinger_1, Rialto_1, LittleShirley_1
- Track 22 : Ogopogo_2
- Track 23 : Awesomesauce_1
- Track 24 : Cornucopia_1
- Track 25 : Ramsey_1
- Track 26 : Madiba_1, Pollywog_1
- Track 27 : Oksu_1
- Track 28 : Mova_1
- Track 29 : Soul22_1, Yoshi_1, Avani_1, Demsculpinboyz_1
- Track 30 : Zapner_2, Jabbawokkie_2
- Track 31 : Che9d_1
- Track 32 : Squirty_1

- Track 33 : LouisV14_64, Marmie_62, PinkYoshi_62, CassieYates_62, Remy19_62, Kareem_63, Jane_63, Hope_62, OctaviousRex_61, Renaissance_61, Aroostook_62, Jonghyun_60, Phreak_62, Hotshotbaby7_62, Mowgli_62, CLED96_61, Cedasite_62, BruceB_62, Sweets_62, Cherrybomb426_61, Frosty24_62, DNAllI_0059, TomBrady_62, Chance64_62, DMoney_61, Phish_61, Gideon_62, Kasen3_63, Sizemore_63, Gomashi_61, JorRay_63, Coleslaw_61, Halo_63, Crespo_61, Darionha_62, Angel_60, Olga_63, Plagueis_62, Peeb_61, Annihilator_61, ShaboiShabazz_61, BPs_62, ECartman_60, Grizzly_61, BQuat_61, Avrafan_61, ZoMa_61, Schiebel_60, Camri_62, Jolene_62, Zombie_62, GoldenAsh_60
- Track 34 : Periodt_62, Barkley26_59, Liefie_59, Paito_63
- Track 35 : Taheera_58, Terror_58
- Track 36 : Sneeze_62, Rabbs_63
- Track 37 : Avocado_67
- Track 38 : Cambiare_66, FlagStaff_64
- Track 39 : Pinnie_65, MOOREtheMARYer_66
- Track 40 : Lemuria_64
- Track 41 : Mercurio_63, Jolie2_61
- Track 42 : Antsirabe_65
- Track 43 : Stargaze_64
- Track 44 : Blizzard_97, Adonis_96, TreyKay_98, Capricorn_97, Homura_95, Beezoo_100, Adephagia_95, JAWS_95, MeaningOfLife_98, Megsy_101, Deby_96, Geraldini_97, BGlluviae_96, Boiii_97, LindNT_94, Jeckyll_97, Belladonna_97, Veliki_97, YoureAdopted_95, Spock_96, Angelica_95, Tachez_97, Jayhawk_97, ActinUp_97, TruffulaTree_98, Atiba_97, BEEST_96, BaghaKamala_96, Lunahalos_96, Emerson_101, HedwigODU_96, ShiaSurprise_99, TaiwanKao_98, Durfee_97, Anaya_99, DrHayes_98, Ramen_97, Sulley_95, Rapunzel97_99, AlishaPH_89, Piatt_95, TiniBug_95, Prithvi_98, Hyperbowlee_95, Jarvi_96, Zabiza_92, Pokerus_96, Slimphazie_99, SamuelLPlaqson_98, Mynx_97, CheetoDust_96, Ganymede_96, Padpat_101, CrimD_96, Twitch_97, QuincyRose_94, Rosmarinus_97, CaseJules_100, BarrelRoll_96, Padfoot_96, Peel_96, CREW_95, Tiri_97, Asayake_97, Urkel_98, Inky_96, Dalmuri_97, Topper_96, Joy99_98, Zavala_98
- Track 45 : Oscar_104, KiSi_104, Scarlett_103, LeMond_103
- Track 46 : Ageofdapage_100, Illumine_100, Murucutumbu_96, Stinson_97, Devera_103, LaterM_96, Dole_99
- Track 47 : Niklas_98, Shaobing_96
- Track 48 : Curiosium_104
- Track 49 : Efra2_104, Guanica15_103, Yunkel11_101
- Track 50 : Binglebops_77, SgtBeansprout_78, LilPharaoh_78, Enkosi_79, Amelie_77, Nutello_77, Mdavu_78, Nikao_80
- Track 51 : Validus_106
- Track 52 : Bella96_98
- Track 53 : Chris_101
- Track 54 : Apocalypse_99
- Track 55 : LastHope_103
- Track 56 : MarkPhew_103
- Track 57 : Nibb_103
- Track 58 : Peanam_99
- Track 59 : TM4_92
- Track 60 : ZoeJ_92
- Track 61 : DismalStressor_94, Findley_94, Marcoliusprime_92, DismalFunk_94, Milly_94
- Track 62 : Mufasa_94

- Track 63 : Strobilo_100
- Track 64 : BoostSeason_94
- Track 65 : Pharb_97
- Track 66 : Keshu_101
- Track 67 : ShedlockHolmes_100, TBond007_97, TribbleTrouble_97, Pixie_100
- Track 68 : MacnCheese_99
- Track 69 : Hurricane_98
- Track 70 : JF1_94, Malthus_95, Y2_90, Fionnbharth_94, Juliette_96, Ruthiejr_96, Y10_90, Wintermute_94, Eponine_96
- Track 71 : Taquito_94, Chancellor_94, Slarp_92, Cheetobro_92, SamScheppers_93, OmniCritical_94, Mitti_94
- Track 72 : MissDaisy_88, Reptar3000_88, Patt_87
- Track 73 : Miryou_100, OkiRoe_97, Waterfoul_95, Guillsminger_96, Thyatira_97, SoSeph_96, Heftyboy_96, Leston_95, Gengar_96, Paola_93, Feyre_98
- Track 74 : Psycho_98, Dadosky_100, Larva_98, AlleyCat_100
- Track 75 : Collard_95, InvictusManeo_97, Kratio_100
- Track 76 : Rando14_92, Omnicron_96
- Track 77 : Edugator_92
- Track 78 : Shadow1_100, Cain_102, Bryler_94, Phrank_103, Sunflower1121_100
- Track 79 : Krueger_101
- Track 80 : Amgine_97, Ellie_96, Fefferhead_98
- Track 81 : Ekdilam_92
- Track 82 : SirPhilip_98
- Track 83 : Yuna_100
- Track 84 : Hammy_95, DarthP_95, Amohnition_95
- Track 85 : Tierra_102, PhelpsODU_92, Ximenita_103, Syra333_99
- Track 86 : TClif_101
- Track 87 : Marshawn_96
- Track 88 : Aminay_104
- Track 89 : Boilgate_83
- Track 90 : P3MA_63
- Track 91 : IdentityCrisis_61
- Track 92 : LilSpotty_85

Summary of Final Annotations (See graph section above for start numbers):

The start number called the most often in the published annotations is 35, it was called in 97 of the 322 non-draft genes in the pham.

Genes that call this "Most Annotated" start:

- ActinUp_97, Adephegia_95, Adonis_96, Ageofdapage_100, AlishaPH_89, Amgine_97, Amohnition_95, Anaya_99, Angelica_95, Apocalypse_99, Asayake_97, Atiba_97, BEEST_96, BGlluviae_96, BaghaKamala_96, BarrelRoll_96, Beezoo_100, Bella96_98, Belladonna_97, Blizzard_97, Boiiii_97, CREW_95, Capricorn_97, CaseJules_100, CheetoDust_96, CrimD_96, Dalmuri_97, DarthP_95, Deby_96, Devera_103, DismalFunk_94, DismalStressor_94, Dole_99, DrHayes_98, Durfee_97, Efra2_104, Ekdilam_92, Ellie_96, Emerson_101, Fefferhead_98, Findley_94, Ganymede_96, Geraldini_97, Guanica15_103, Hammy_95, HedwigODU_96, Homura_95, Hyperbowlee_95, Illumine_100, Inky_96, JAWS_95, Jarvi_96, Jayhawk_97, Jeckyll_97, Joy99_98, LaterM_96, LindNT_94, Lunahalos_96,

Marcoliusprime_92, Marshawn_96, MeaningOfLife_98, Megsy_101, Milly_94, Mufasa_94, Murucutumbu_96, Mynx_97, Niklas_98, Padfoot_96, Padpat_101, Peanam_99, Peel_96, Piatt_95, Pokerus_96, Prithvi_98, QuincyRose_94, Ramen_97, Rapunzel97_99, Rosmarinus_97, SamuelLPlaqson_98, Shaobing_96, ShiaSurprise_99, Slimphazie_99, Spock_96, Stinson_97, Sulley_95, Tachez_97, TaiwanKao_98, TiniBug_95, Tiri_97, Topper_96, TreyKay_98, TruffulaTree_98, Twitch_97, Urkel_98, Validus_106, Veliki_97, YoureAdopted_95, Yunkel11_101, Zabiza_92, Zavala_98, ZoeJ_92,

Genes that have the "Most Annotated" start but do not call it:

- BoostSeason_94, Strobilo_100, TM4_92,

Genes that do not have the "Most Annotated" start:

- Alexphander_1, AlleyCat_100, Amelie_77, Aminay_104, Angel_60, Annihilator_61, Antsirabe_65, Aroostook_62, Asapag_1, Avani_1, Avocado_67, Avrafan_61, Awesomesauce_1, BENtherdunthat_1, BPs_62, BQuat_61, Barkley26_59, Beakin_1, BigPhil_1, Binglebops_77, Bobi_1, Boilgate_83, Boomer_1, BruceB_62, Bryler_94, Budski_1, BuzzLyseyear_1, CLED96_61, Cain_102, Cambiare_66, Camri_62, CassieYates_62, Cedasite_62, Cerasum_1, Chance64_62, Chancellor_94, Che9d_1, CheeseTouch_1, Cheetobro_92, Cherrybomb426_61, ChickenDinner_1, Chris_101, Coco12_1, Coleslaw_61, Collard_95, Cornucopia_1, Crespo_61, Curiosium_104, DMoney_61, DNAIII_0059, DaWorst_1, Dadosky_100, Darionha_62, Demsculpinboyz_1, DirtMcgirt_1, DocMcStuffins_1, DosHalletts_1, Drago_1, ECartman_60, Ecliptus_1, Edugator_92, Enby_1, Enkosi_79, Eponine_96, Feyre_98, Fionnbharth_94, FlagStaff_64, Flathead_1, Frankie_1, Frickyeah_1, Frosty24_62, Gengar_96, Getalong_1, Gideon_62, Girafales_1, GoldenAsh_60, Gomashi_61, Grizzly_61, Guillsminger_96, Halo_63, Heftyboy_96, Hegedechwinu_1, Holliday_1, Hope_62, Horus_1, Hotshotbaby7_62, Hurricane_98, IdentityCrisis_61, InvictusManeo_97, JF1_94, Jabbawokkie_2, JalFarm20_1, Jane_63, Job42_1, Jolene_62, Jolie2_61, Jonghyun_60, JorRay_63, Juice456_1, Juliette_96, Kamaru_1, Kareem_63, Kasen3_63, Kenna_1, Keshu_101, KiSi_104, Kimberlium_1, Kingsley_1, Kratio_100, Krueger_101, Larva_98, LastHope_103, LeMond_103, Lemuria_64, Leozinho_1, Leroy_1, Leston_95, Liefie_59, LilPharaoh_78, LilSpotty_85, LitninMcQueen_1, LittleShirley_1, Lorde_1, LouisV14_64, Lucky10_70, Lutum_1, MOOREtheMARYer_66, MacnCheese_99, Madiba_1, Malisha_1, Malthus_95, MarkPhew_103, Marker_1, Marmie_62, Mdavu_78, Mercurio_63, Miryou_100, Misha28_1, MissDaisy_88, Mitti_94, Morkie_74, Mova_1, Mowgli_62, Mozy_1, Nibb_103, Nikao_80, Nutello_77, ODay_1, OctaviousRex_61, Ogopogo_2, OkiRoe_97, Oksu_1, Olga_63, OmniCritical_94, Omnicron_96, Oscar_104, OwlsT2W_1, P3MA_63, Paito_63, Paola_93, Patt_87, Peeb_61, Periodt_62, Periwinkle_1, Phabuloso_1, Pharb_97, PhelpsODU_92, Phish_61, Phistory_1, PhorbesPhlower_72, Phrank_103, Phreak_62, PinkYoshi_62, Pinnie_65, Piper2020_1, Pixie_100, Plagueis_62, Plumbus_1, Pollywog_1, Psycho_98, Quico_1, Rabbs_63, Ramsey_1, Rando14_92, Remy19_62, Renaissance_61, Reptar3000_88, Rialto_1, RockyHorror_1, Ruthiejr_96, SamScheppers_93, Sarma624_1, Scarlett_103, Schiebel_60, SgtBeansprout_78, ShaboiShabazz_61, Shadow1_100, ShedlockHolmes_100, SirPhilip_98, Sizemore_63, Slarp_92, Sneeze_62, SoSeph_96, Soul22_1, Spikelee_1, Spooky_1, Squiddly_2, Squirty_1, Stap_1, Starcevich_1, Stargaze_64, Sunflower1121_100, Sweets_62, Syra333_99, TBond007_97, TClif_101, Taheera_58, Taquito_94, Terror_58, Thyatira_97, Tierra_102, TomBrady_62, TootsiePop_1, Tootsieroll_1, Totinger_1, TribbleTrouble_97, UncleRicky_1, Velveteen_1, Waterfoul_95, Whitney_1, Wintermute_94, Ximenita_103, Y10_90, Y2_90, Yoshi_1, Yuna_100, Zapner_2,

ZoMa_61, Zombie_62,

Summary by start number:

Start 16:

- Found in 43 of 343 (12.5%) of genes in pham
- Manual Annotations of this start: 1 of 322
- Called 2.3% of time when present
- Phage (with cluster) where this start called: Ramsey_1 (F1),

Start 19:

- Found in 1 of 343 (0.3%) of genes in pham
- Manual Annotations of this start: 1 of 322
- Called 100.0% of time when present
- Phage (with cluster) where this start called: IdentityCrisis_61 (singleton),

Start 21:

- Found in 70 of 343 (20.4%) of genes in pham
- Manual Annotations of this start: 66 of 322
- Called 100.0% of time when present
- Phage (with cluster) where this start called: Angel_60 (G1), Annihilator_61 (G1), Antsirabe_65 (G5), Aroostook_62 (G1), Avocado_67 (G2), Avrafan_61 (G1), BPs_62 (G1), BQuat_61 (G1), Barkley26_59 (G1), BruceB_62 (G1), CLED96_61 (G1), Cambiare_66 (G2), Camri_62 (G1), CassieYates_62 (G1), Cedasite_62 (G1), Chance64_62 (G1), Cherrybomb426_61 (G1), Coleslaw_61 (G1), Crespo_61 (G1), DMoney_61 (G1), DNAIII_0059 (G1), Darionha_62 (G1), ECartman_60 (G1), FlagStaff_64 (G2), Frosty24_62 (G1), Gideon_62 (G1), GoldenAsh_60 (G1), Gomashi_61 (G1), Grizzly_61 (G1), Halo_63 (G1), Hope_62 (G1), Hotshotbaby7_62 (G1), Jane_63 (G1), Jolene_62 (G1), Jolie2_61 (G4), Jonghyun_60 (G1), JorRay_63 (G1), Kareem_63 (G1), Kasen3_63 (G1), Lemuria_64 (G4), Liefie_59 (G1), LouisV14_64 (G1), MOOREtheMARYer_66 (G3), Marmie_62 (G1), Mercurio_63 (G4), Mowgli_62 (G1), OctaviousRex_61 (G1), Olga_63 (G1), Paito_63 (G1), Peeb_61 (G1), Periodt_62 (G1), Phish_61 (G1), Phreak_62 (G1), PinkYoshi_62 (G1), Pinnie_65 (G3), Plagueis_62 (G1), Rabbs_63 (G1), Remy19_62 (G1), Renaissance_61 (G1), Schiebel_60 (G1), ShaboiShabazz_61 (G1), Sizemore_63 (G1), Sneeze_62 (G1), Stargaze_64 (G5), Sweets_62 (G1), Taheera_58 (G1), Terror_58 (G1), TomBrady_62 (G1), ZoMa_61 (G1), Zombie_62 (G1),

Start 24:

- Found in 1 of 343 (0.3%) of genes in pham
- Manual Annotations of this start: 1 of 322
- Called 100.0% of time when present
- Phage (with cluster) where this start called: Aminay_104 (K7),

Start 25:

- Found in 1 of 343 (0.3%) of genes in pham
- No Manual Annotations of this start.
- Called 100.0% of time when present
- Phage (with cluster) where this start called: P3MA_63 (UNK),

Start 26:

- Found in 5 of 343 (1.5%) of genes in pham
- Manual Annotations of this start: 4 of 322

- Called 100.0% of time when present
- Phage (with cluster) where this start called: BuzzLyseyear_1 (F1), Madiba_1 (F1), Marker_1 (F1), Mova_1 (F1), Pollywog_1 (F1),

Start 27:

- Found in 85 of 343 (24.8%) of genes in pham
- Manual Annotations of this start: 69 of 322
- Called 90.6% of time when present
- Phage (with cluster) where this start called: Alexphander_1 (F1), Asapag_1 (DN1), Avani_1 (F2), Awesomesauce_1 (F1), BENtherdunthat_1 (DN1), Beakin_1 (F1), BigPhil_1 (F1), Bobi_1 (F1), Boomer_1 (F1), Budski_1 (DN), Cerasum_1 (F1), Che9d_1 (F2), CheeseTouch_1 (DN1), ChickenDinner_1 (F1), Coco12_1 (F1), Cornucopia_1 (F1), DaWorst_1 (F1), Demsculpinboyz_1 (F2), DirtMcgirt_1 (F1), DocMcStuffins_1 (F1), DosHalletts_1 (F1), Drago_1 (F1), Ecliptus_1 (DN), Enby_1 (F1), Flathead_1 (F1), Frankie_1 (F1), Frickyeah_1 (DN1), Getalong_1 (DN1), Girafales_1 (F1), Hegedechwinu_1 (F1), Holliday_1 (DN1), Horus_1 (DN1), Jabbawokkie_2 (F2), JalFarm20_1 (F1), Job42_1 (F1), Juice456_1 (F1), Kamaru_1 (DN1), Kenna_1 (DN1), Kimberlium_1 (F1), Kingsley_1 (F1), Leozinho_1 (F1), Leroy_1 (DN1), LitninMcQueen_1 (DN1), LittleShirley_1 (F1), Lorde_1 (F1), Lutum_1 (DN1), Malisha_1 (DN), Misha28_1 (F1), Mozy_1 (F1), ODay_1 (DN), Ogotogo_2 (F1), Oksu_1 (F1), OwlsT2W_1 (F1), Periwinkle_1 (DN1), Phabuloso_1 (DN1), Phistory_1 (DN1), Piper2020_1 (F1), Plumbus_1 (F1), Quico_1 (F1), Rialto_1 (F1), RockyHorror_1 (F1), Sarma624_1 (F1), Soul22_1 (F2), Spikelee_1 (F1), Spooky_1 (DN2), Squiddly_2 (DN2), Squirty_1 (F3), Stap_1 (F1), Starcevich_1 (F1), TootsiePop_1 (F1), Tootsieroll_1 (F1), Totinger_1 (F1), UncleRicky_1 (F1), Velveteen_1 (F1), Whitney_1 (DN1), Yoshi_1 (F2), Zapner_2 (F2),

Start 28:

- Found in 20 of 343 (5.8%) of genes in pham
- Manual Annotations of this start: 20 of 322
- Called 100.0% of time when present
- Phage (with cluster) where this start called: Boilgate_83 (K8), Chancellor_94 (K4), Cheetobro_92 (K4), Eponine_96 (K4), Fionnbharth_94 (K4), JF1_94 (K4), Juliette_96 (K4), Malthus_95 (K4), MissDaisy_88 (K4), Mitti_94 (K4), OmniCritical_94 (K4), Patt_87 (K4), Reptar3000_88 (K4), Ruthiejr_96 (K4), SamScheppers_93 (K4), Slarp_92 (K4), Taquito_94 (K4), Wintermute_94 (K4), Y10_90 (K4), Y2_90 (K4),

Start 30:

- Found in 2 of 343 (0.6%) of genes in pham
- Manual Annotations of this start: 2 of 322
- Called 100.0% of time when present
- Phage (with cluster) where this start called: Morkie_74 (DH), PhorbesPhlower_72 (DH),

Start 31:

- Found in 21 of 343 (6.1%) of genes in pham
- Manual Annotations of this start: 20 of 322
- Called 100.0% of time when present
- Phage (with cluster) where this start called: AlleyCat_100 (K5), Collard_95 (K5), Dadosky_100 (K5), Edugator_92 (K5), Feyre_98 (K5), Gengar_96 (K5), Guillsminger_96 (K5), Heftyboy_96 (K5), InvictusManeo_97 (K5), Kratio_100 (K5), Larva_98 (K5), Leston_95 (K5), Miryou_100 (K5), OkiRoe_97 (K5), Omnicron_96 (K5), Paola_93 (K5), Psycho_98 (K5), Rando14_92 (K5), SoSeph_96 (K5),

Thyatira_97 (K5), Waterfoul_95 (K5),

Start 32:

- Found in 1 of 343 (0.3%) of genes in pham
- Manual Annotations of this start: 1 of 322
- Called 100.0% of time when present
- Phage (with cluster) where this start called: Lucky10_70 (DH),

Start 33:

- Found in 1 of 343 (0.3%) of genes in pham
- Manual Annotations of this start: 1 of 322
- Called 100.0% of time when present
- Phage (with cluster) where this start called: Yuna_100 (K6),

Start 34:

- Found in 29 of 343 (8.5%) of genes in pham
- Manual Annotations of this start: 20 of 322
- Called 75.9% of time when present
- Phage (with cluster) where this start called: BoostSeason_94 (K2), Bryler_94 (K6), Cain_102 (K6), Chris_101 (K1), KiSi_104 (K1), Krueger_101 (K6), LeMond_103 (K1), MarkPhew_103 (K1), Nibb_103 (K1), Oscar_104 (K1), PhelpsODU_92 (K6), Phrank_103 (K6), Scarlett_103 (K1), Shadow1_100 (K6), SirPhilip_98 (K6), Strobilo_100 (K2), Sunflower1121_100 (K6), Syra333_99 (K6), TClif_101 (K6), TM4_92 (K2), Tierra_102 (K6), Ximenita_103 (K6),

Start 35:

- Found in 104 of 343 (30.3%) of genes in pham
- Manual Annotations of this start: 97 of 322
- Called 97.1% of time when present
- Phage (with cluster) where this start called: ActinUp_97 (K1), Adephegia_95 (K1), Adonis_96 (K1), Ageofdapage_100 (K1), AlishaPH_89 (K1), Amgine_97 (K6), Amohntion_95 (K6), Anaya_99 (K1), Angelica_95 (K1), Apocalypse_99 (K1), Asayake_97 (K1), Atiba_97 (K1), BEEEST_96 (K1), BGIluviae_96 (K1), BaghaKamala_96 (K1), BarrelRoll_96 (K1), Beezoo_100 (K1), Bella96_98 (K1), Belladonna_97 (K1), Blizzard_97 (K1), Boiiii_97 (K1), CREW_95 (K1), Capricorn_97 (K1), CaseJules_100 (K1), CheetoDust_96 (K1), CrimD_96 (K1), Dalmuri_97 (K1), DARTH_95 (K6), Deby_96 (K1), Devera_103 (K1), DismalFunk_94 (K2), DismalStressor_94 (K2), Dole_99 (K1), DrHayes_98 (K1), Durfee_97 (K1), Efra2_104 (K1), Ekdilam_92 (K6), Ellie_96 (K6), Emerson_101 (K1), Fefferhead_98 (K6), Findley_94 (K2), Ganymede_96 (K1), Geraldini_97 (K1), Guanica15_103 (K1), Hammy_95 (K6), HedwigODU_96 (K1), Homura_95 (K1), Hyperbowlee_95 (K1), Illumine_100 (K1), Inky_96 (K1), JAWS_95 (K1), Jarvi_96 (K1), Jayhawk_97 (K1), Jeckyll_97 (K1), Joy99_98 (K1), LaterM_96 (K1), LindNT_94 (K1), Lunahalos_96 (K1), Marcoliusprime_92 (K2), Marshawn_96 (K6), MeaningOfLife_98 (K1), Megsy_101 (K1), Milly_94 (K2), Mufasa_94 (K2), Murucutumbu_96 (K1), Mynx_97 (K1), Niklas_98 (K1), Padfoot_96 (K1), Padpat_101 (K1), Peanam_99 (K1), Peel_96 (K1), Piatt_95 (K1), Pokerus_96 (K1), Prithvi_98 (K1), QuincyRose_94 (K1), Ramen_97 (K1), Rapunzel97_99 (K1), Rosmarinus_97 (K1), SamuelLPlaqson_98 (K1), Shaobing_96 (K1), ShiaSurprise_99 (K1), Slimphazie_99 (K1), Spock_96 (K1), Stinson_97 (K1), Sulley_95 (K1), Tachez_97 (K1), TaiwanKao_98 (K1), TiniBug_95 (K1), Tiri_97 (K1), Topper_96 (K1), TreyKay_98 (K1), TruffulaTree_98 (K1), Twitch_97 (K1), Urkel_98 (K1), Validus_106 (K1), Veliki_97 (K1), YoureAdopted_95 (K1), Yunkel11_101 (K1), Zabiza_92 (K1), Zavala_98 (K1), ZoeJ_92 (K2),

Start 36:

- Found in 19 of 343 (5.5%) of genes in pham
- Manual Annotations of this start: 19 of 322
- Called 100.0% of time when present
- Phage (with cluster) where this start called: Amelie_77 (K1), Binglebops_77 (K1), Curiosium_104 (K1), Enkosi_79 (K1), Hurricane_98 (K3), Keshu_101 (K3), LastHope_103 (K1), LilPharaoh_78 (K1), LilSpotty_85 (singleton), MacnCheese_99 (K3), Mdavu_78 (K1), Nikao_80 (K1), Nutello_77 (K1), Pharb_97 (K3), Pixie_100 (K3), SgtBeansprout_78 (K1), ShedlockHolmes_100 (K3), TBond007_97 (K3), TribbleTrouble_97 (K3),

Summary by clusters:

There are 22 clusters represented in this pham: DN, singleton, DH, K3, K2, K1, K7, K6, K5, K4, K8, G5, G4, G3, G2, G1, DN1, DN2, UNK, F1, F2, F3,

Info for manual annotations of cluster DH:

- Start number 30 was manually annotated 2 times for cluster DH.
- Start number 32 was manually annotated 1 time for cluster DH.

Info for manual annotations of cluster DN:

- Start number 27 was manually annotated 4 times for cluster DN.

Info for manual annotations of cluster DN1:

- Start number 27 was manually annotated 14 times for cluster DN1.

Info for manual annotations of cluster DN2:

- Start number 27 was manually annotated 2 times for cluster DN2.

Info for manual annotations of cluster F1:

- Start number 16 was manually annotated 1 time for cluster F1.
- Start number 26 was manually annotated 4 times for cluster F1.
- Start number 27 was manually annotated 41 times for cluster F1.

Info for manual annotations of cluster F2:

- Start number 27 was manually annotated 7 times for cluster F2.

Info for manual annotations of cluster F3:

- Start number 27 was manually annotated 1 time for cluster F3.

Info for manual annotations of cluster G1:

- Start number 21 was manually annotated 58 times for cluster G1.

Info for manual annotations of cluster G2:

- Start number 21 was manually annotated 3 times for cluster G2.

Info for manual annotations of cluster G3:

- Start number 21 was manually annotated 2 times for cluster G3.

Info for manual annotations of cluster G4:

- Start number 21 was manually annotated 2 times for cluster G4.

Info for manual annotations of cluster G5:

- Start number 21 was manually annotated 1 time for cluster G5.

Info for manual annotations of cluster K1:

- Start number 34 was manually annotated 7 times for cluster K1.
- Start number 35 was manually annotated 82 times for cluster K1.
- Start number 36 was manually annotated 10 times for cluster K1.

Info for manual annotations of cluster K2:

- Start number 34 was manually annotated 2 times for cluster K2.
- Start number 35 was manually annotated 7 times for cluster K2.

Info for manual annotations of cluster K3:

- Start number 36 was manually annotated 8 times for cluster K3.

Info for manual annotations of cluster K4:

- Start number 28 was manually annotated 19 times for cluster K4.

Info for manual annotations of cluster K5:

- Start number 31 was manually annotated 20 times for cluster K5.

Info for manual annotations of cluster K6:

- Start number 33 was manually annotated 1 time for cluster K6.
- Start number 34 was manually annotated 11 times for cluster K6.
- Start number 35 was manually annotated 8 times for cluster K6.

Info for manual annotations of cluster K7:

- Start number 24 was manually annotated 1 time for cluster K7.

Info for manual annotations of cluster K8:

- Start number 28 was manually annotated 1 time for cluster K8.

Gene Information:

Gene: ActinUp_97 Start: 59451, Stop: 59753, Start Num: 35

Candidate Starts for ActinUp_97:

(29, 59430), (Start: 35 @59451 has 97 MA's), (43, 59526), (75, 59712), (79, 59727),

Gene: Adephagia_95 Start: 59285, Stop: 59587, Start Num: 35

Candidate Starts for Adephagia_95:

(29, 59264), (Start: 35 @59285 has 97 MA's), (43, 59360), (75, 59546), (79, 59561),

Gene: Adonis_96 Start: 59670, Stop: 59972, Start Num: 35

Candidate Starts for Adonis_96:

(29, 59649), (Start: 35 @59670 has 97 MA's), (43, 59745), (75, 59931), (79, 59946),

Gene: Ageofdapage_100 Start: 60254, Stop: 60556, Start Num: 35

Candidate Starts for Ageofdapage_100:

(29, 60233), (Start: 35 @60254 has 97 MA's), (41, 60305), (43, 60329), (75, 60515), (79, 60530),

Gene: Alexphander_1 Start: 41, Stop: 373, Start Num: 27
Candidate Starts for Alexphander_1:
(Start: 16 @11 has 1 MA's), (Start: 27 @41 has 69 MA's), (41, 119), (51, 212), (64, 284), (74, 338),
(78, 353),

Gene: AlishaPH_89 Start: 56673, Stop: 56975, Start Num: 35
Candidate Starts for AlishaPH_89:
(29, 56652), (Start: 35 @56673 has 97 MA's), (43, 56748), (75, 56934), (79, 56949),

Gene: AlleyCat_100 Start: 61692, Stop: 61997, Start Num: 31
Candidate Starts for AlleyCat_100:
(Start: 31 @61692 has 20 MA's), (47, 61830),

Gene: Amelie_77 Start: 56074, Stop: 56379, Start Num: 36
Candidate Starts for Amelie_77:
(8, 55942), (Start: 36 @56074 has 19 MA's), (43, 56149), (47, 56194), (75, 56338), (76, 56344), (79,
56353),

Gene: Amgine_97 Start: 61886, Stop: 62176, Start Num: 35
Candidate Starts for Amgine_97:
(Start: 35 @61886 has 97 MA's), (43, 61961), (70, 62123),

Gene: Aminay_104 Start: 59192, Stop: 59479, Start Num: 24
Candidate Starts for Aminay_104:
(Start: 24 @59192 has 1 MA's), (51, 59342),

Gene: Amohndition_95 Start: 61401, Stop: 61697, Start Num: 35
Candidate Starts for Amohndition_95:
(Start: 35 @61401 has 97 MA's), (40, 61449), (43, 61476), (66, 61635), (76, 61662),

Gene: Anaya_99 Start: 60473, Stop: 60775, Start Num: 35
Candidate Starts for Anaya_99:
(29, 60452), (Start: 35 @60473 has 97 MA's), (43, 60548), (75, 60734), (79, 60749),

Gene: Angel_60 Start: 40665, Stop: 40991, Start Num: 21
Candidate Starts for Angel_60:
(Start: 21 @40665 has 66 MA's), (52, 40860), (65, 40938),

Gene: Angelica_95 Start: 59237, Stop: 59539, Start Num: 35
Candidate Starts for Angelica_95:
(29, 59216), (Start: 35 @59237 has 97 MA's), (43, 59312), (75, 59498), (79, 59513),

Gene: Annihilator_61 Start: 41117, Stop: 41443, Start Num: 21
Candidate Starts for Annihilator_61:
(Start: 21 @41117 has 66 MA's), (52, 41312), (65, 41390),

Gene: Antsirabe_65 Start: 44050, Stop: 44373, Start Num: 21
Candidate Starts for Antsirabe_65:
(Start: 21 @44050 has 66 MA's), (37, 44101), (48, 44221), (49, 44224), (51, 44236),

Gene: Apocalypse_99 Start: 59588, Stop: 59890, Start Num: 35
Candidate Starts for Apocalypse_99:
(29, 59567), (Start: 35 @59588 has 97 MA's), (43, 59663), (46, 59699), (75, 59849), (79, 59864),

Gene: Aroostook_62 Start: 41127, Stop: 41453, Start Num: 21

Candidate Starts for Aroostook_62:

(Start: 21 @41127 has 66 MA's), (52, 41322), (65, 41400),

Gene: Asapag_1 Start: 39, Stop: 371, Start Num: 27

Candidate Starts for Asapag_1:

(15, 9), (18, 15), (22, 27), (Start: 27 @39 has 69 MA's), (43, 141), (44, 144), (56, 234), (62, 264), (64, 282), (78, 351),

Gene: Asayake_97 Start: 59544, Stop: 59846, Start Num: 35

Candidate Starts for Asayake_97:

(29, 59523), (Start: 35 @59544 has 97 MA's), (43, 59619), (75, 59805), (79, 59820),

Gene: Atiba_97 Start: 59195, Stop: 59497, Start Num: 35

Candidate Starts for Atiba_97:

(29, 59174), (Start: 35 @59195 has 97 MA's), (43, 59270), (75, 59456), (79, 59471),

Gene: Avani_1 Start: 38, Stop: 370, Start Num: 27

Candidate Starts for Avani_1:

(Start: 16 @11 has 1 MA's), (Start: 27 @38 has 69 MA's), (41, 116), (44, 143), (56, 233), (62, 263), (64, 281), (72, 326), (78, 350),

Gene: Avocado_67 Start: 44700, Stop: 45026, Start Num: 21

Candidate Starts for Avocado_67:

(Start: 21 @44700 has 66 MA's), (37, 44754),

Gene: Avrafan_61 Start: 41125, Stop: 41451, Start Num: 21

Candidate Starts for Avrafan_61:

(Start: 21 @41125 has 66 MA's), (52, 41320), (65, 41398),

Gene: Awesomesauce_1 Start: 42, Stop: 374, Start Num: 27

Candidate Starts for Awesomesauce_1:

(15, 9), (20, 15), (Start: 27 @42 has 69 MA's), (39, 111), (41, 120), (51, 213), (56, 237), (62, 267), (64, 285), (72, 330), (74, 339), (78, 354),

Gene: BEEST_96 Start: 59545, Stop: 59847, Start Num: 35

Candidate Starts for BEEST_96:

(29, 59524), (Start: 35 @59545 has 97 MA's), (43, 59620), (75, 59806), (79, 59821),

Gene: BENtherdunthat_1 Start: 39, Stop: 371, Start Num: 27

Candidate Starts for BENtherdunthat_1:

(15, 9), (18, 15), (22, 27), (Start: 27 @39 has 69 MA's), (43, 141), (44, 144), (56, 234), (62, 264), (64, 282), (78, 351),

Gene: BGlluviae_96 Start: 58947, Stop: 59249, Start Num: 35

Candidate Starts for BGlluviae_96:

(29, 58926), (Start: 35 @58947 has 97 MA's), (43, 59022), (75, 59208), (79, 59223),

Gene: BPs_62 Start: 41125, Stop: 41451, Start Num: 21

Candidate Starts for BPs_62:

(Start: 21 @41125 has 66 MA's), (52, 41320), (65, 41398),

Gene: BQuat_61 Start: 41117, Stop: 41443, Start Num: 21
Candidate Starts for BQuat_61:
(Start: 21 @41117 has 66 MA's), (52, 41312), (65, 41390),

Gene: BaghaKamala_96 Start: 58771, Stop: 59073, Start Num: 35
Candidate Starts for BaghaKamala_96:
(29, 58750), (Start: 35 @58771 has 97 MA's), (43, 58846), (75, 59032), (79, 59047),

Gene: Barkley26_59 Start: 40570, Stop: 40896, Start Num: 21
Candidate Starts for Barkley26_59:
(Start: 21 @40570 has 66 MA's),

Gene: BarrelRoll_96 Start: 59311, Stop: 59613, Start Num: 35
Candidate Starts for BarrelRoll_96:
(29, 59290), (Start: 35 @59311 has 97 MA's), (43, 59386), (75, 59572), (79, 59587),

Gene: Beakin_1 Start: 41, Stop: 373, Start Num: 27
Candidate Starts for Beakin_1:
(Start: 16 @11 has 1 MA's), (Start: 27 @41 has 69 MA's), (41, 119), (51, 212), (64, 284), (74, 338),
(78, 353),

Gene: Beezoo_100 Start: 60133, Stop: 60435, Start Num: 35
Candidate Starts for Beezoo_100:
(29, 60112), (Start: 35 @60133 has 97 MA's), (43, 60208), (75, 60394), (79, 60409),

Gene: Bella96_98 Start: 60366, Stop: 60668, Start Num: 35
Candidate Starts for Bella96_98:
(29, 60345), (Start: 35 @60366 has 97 MA's), (43, 60441), (75, 60627),

Gene: Belladonna_97 Start: 59347, Stop: 59649, Start Num: 35
Candidate Starts for Belladonna_97:
(29, 59326), (Start: 35 @59347 has 97 MA's), (43, 59422), (75, 59608), (79, 59623),

Gene: BigPhil_1 Start: 41, Stop: 373, Start Num: 27
Candidate Starts for BigPhil_1:
(Start: 16 @11 has 1 MA's), (Start: 27 @41 has 69 MA's), (41, 119), (51, 212), (64, 284), (74, 338),
(78, 353),

Gene: Biglebops_77 Start: 56089, Stop: 56394, Start Num: 36
Candidate Starts for Biglebops_77:
(8, 55957), (Start: 36 @56089 has 19 MA's), (43, 56164), (47, 56209), (75, 56353), (76, 56359), (79, 56368),

Gene: Blizzard_97 Start: 59544, Stop: 59846, Start Num: 35
Candidate Starts for Blizzard_97:
(29, 59523), (Start: 35 @59544 has 97 MA's), (43, 59619), (75, 59805), (79, 59820),

Gene: Bobi_1 Start: 41, Stop: 373, Start Num: 27
Candidate Starts for Bobi_1:
(Start: 16 @11 has 1 MA's), (Start: 27 @41 has 69 MA's), (41, 119), (51, 212), (64, 284), (74, 338),
(78, 353),

Gene: Boiiii_97 Start: 59546, Stop: 59848, Start Num: 35

Candidate Starts for Boiiii_97:

(29, 59525), (Start: 35 @59546 has 97 MA's), (43, 59621), (75, 59807), (79, 59822),

Gene: Boilgate_83 Start: 56925, Stop: 57236, Start Num: 28

Candidate Starts for Boilgate_83:

(Start: 28 @56925 has 20 MA's), (79, 57207),

Gene: Boomer_1 Start: 41, Stop: 373, Start Num: 27

Candidate Starts for Boomer_1:

(Start: 16 @11 has 1 MA's), (Start: 27 @41 has 69 MA's), (41, 119), (51, 212), (64, 284), (74, 338), (78, 353),

Gene: BoostSeason_94 Start: 57637, Stop: 57918, Start Num: 34

Candidate Starts for BoostSeason_94:

(Start: 34 @57637 has 20 MA's), (Start: 35 @57640 has 97 MA's), (79, 57898),

Gene: BruceB_62 Start: 41125, Stop: 41451, Start Num: 21

Candidate Starts for BruceB_62:

(Start: 21 @41125 has 66 MA's), (52, 41320), (65, 41398),

Gene: Bryler_94 Start: 57308, Stop: 57616, Start Num: 34

Candidate Starts for Bryler_94:

(Start: 34 @57308 has 20 MA's), (43, 57383), (79, 57590),

Gene: Budski_1 Start: 39, Stop: 371, Start Num: 27

Candidate Starts for Budski_1:

(15, 9), (18, 15), (Start: 27 @39 has 69 MA's), (41, 117), (43, 141), (56, 234), (64, 282), (71, 318), (78, 351),

Gene: BuzzLyseyear_1 Start: 40, Stop: 372, Start Num: 26

Candidate Starts for BuzzLyseyear_1:

(14, 7), (17, 13), (Start: 26 @40 has 4 MA's), (41, 118), (51, 211), (64, 283), (74, 337), (78, 352),

Gene: CLED96_61 Start: 40680, Stop: 41006, Start Num: 21

Candidate Starts for CLED96_61:

(Start: 21 @40680 has 66 MA's), (52, 40875), (65, 40953),

Gene: CREW_95 Start: 59346, Stop: 59648, Start Num: 35

Candidate Starts for CREW_95:

(29, 59325), (Start: 35 @59346 has 97 MA's), (43, 59421), (75, 59607), (79, 59622),

Gene: Cain_102 Start: 60455, Stop: 60763, Start Num: 34

Candidate Starts for Cain_102:

(Start: 34 @60455 has 20 MA's), (43, 60530), (79, 60737),

Gene: Cambiare_66 Start: 44472, Stop: 44798, Start Num: 21

Candidate Starts for Cambiare_66:

(Start: 21 @44472 has 66 MA's), (37, 44526), (48, 44646),

Gene: Camri_62 Start: 41125, Stop: 41451, Start Num: 21

Candidate Starts for Camri_62:

(Start: 21 @41125 has 66 MA's), (52, 41320), (65, 41398),

Gene: Capricorn_97 Start: 59347, Stop: 59649, Start Num: 35
Candidate Starts for Capricorn_97:
(29, 59326), (Start: 35 @59347 has 97 MA's), (43, 59422), (75, 59608), (79, 59623),

Gene: CaseJules_100 Start: 59544, Stop: 59846, Start Num: 35
Candidate Starts for CaseJules_100:
(29, 59523), (Start: 35 @59544 has 97 MA's), (43, 59619), (75, 59805), (79, 59820),

Gene: CassieYates_62 Start: 41125, Stop: 41451, Start Num: 21
Candidate Starts for CassieYates_62:
(Start: 21 @41125 has 66 MA's), (52, 41320), (65, 41398),

Gene: Cedasite_62 Start: 41125, Stop: 41451, Start Num: 21
Candidate Starts for Cedasite_62:
(Start: 21 @41125 has 66 MA's), (52, 41320), (65, 41398),

Gene: Cerasum_1 Start: 41, Stop: 373, Start Num: 27
Candidate Starts for Cerasum_1:
(Start: 16 @11 has 1 MA's), (Start: 27 @41 has 69 MA's), (41, 119), (51, 212), (64, 284), (74, 338),
(78, 353),

Gene: Chance64_62 Start: 41127, Stop: 41453, Start Num: 21
Candidate Starts for Chance64_62:
(Start: 21 @41127 has 66 MA's), (52, 41322), (65, 41400),

Gene: Chancellor_94 Start: 56785, Stop: 57090, Start Num: 28
Candidate Starts for Chancellor_94:
(Start: 28 @56785 has 20 MA's), (79, 57064),

Gene: Che9d_1 Start: 48, Stop: 380, Start Num: 27
Candidate Starts for Che9d_1:
(Start: 16 @21 has 1 MA's), (Start: 27 @48 has 69 MA's), (41, 126), (44, 153), (56, 243), (62, 273),
(64, 291), (72, 336), (78, 360),

Gene: CheeseTouch_1 Start: 39, Stop: 371, Start Num: 27
Candidate Starts for CheeseTouch_1:
(15, 9), (18, 15), (Start: 27 @39 has 69 MA's), (41, 117), (43, 141), (56, 234), (64, 282), (71, 318), (78,
351),

Gene: CheetoDust_96 Start: 58941, Stop: 59243, Start Num: 35
Candidate Starts for CheetoDust_96:
(29, 58920), (Start: 35 @58941 has 97 MA's), (43, 59016), (75, 59202), (79, 59217),

Gene: Cheetobro_92 Start: 56341, Stop: 56646, Start Num: 28
Candidate Starts for Cheetobro_92:
(Start: 28 @56341 has 20 MA's), (79, 56620),

Gene: Cherrybomb426_61 Start: 40680, Stop: 41006, Start Num: 21
Candidate Starts for Cherrybomb426_61:
(Start: 21 @40680 has 66 MA's), (52, 40875), (65, 40953),

Gene: ChickenDinner_1 Start: 42, Stop: 374, Start Num: 27
Candidate Starts for ChickenDinner_1:

(15, 9), (20, 15), (Start: 27 @42 has 69 MA's), (41, 120), (51, 213), (56, 237), (64, 285), (74, 339), (78, 354),

Gene: Chris_101 Start: 61722, Stop: 62015, Start Num: 34

Candidate Starts for Chris_101:

(Start: 34 @61722 has 20 MA's), (61, 61914), (63, 61923), (73, 61971), (80, 62001),

Gene: Coco12_1 Start: 41, Stop: 373, Start Num: 27

Candidate Starts for Coco12_1:

(Start: 16 @11 has 1 MA's), (Start: 27 @41 has 69 MA's), (41, 119), (51, 212), (64, 284), (74, 338), (78, 353),

Gene: Coleslaw_61 Start: 41117, Stop: 41443, Start Num: 21

Candidate Starts for Coleslaw_61:

(Start: 21 @41117 has 66 MA's), (52, 41312), (65, 41390),

Gene: Collard_95 Start: 60975, Stop: 61280, Start Num: 31

Candidate Starts for Collard_95:

(Start: 31 @60975 has 20 MA's), (52, 61143),

Gene: Cornucopia_1 Start: 41, Stop: 373, Start Num: 27

Candidate Starts for Cornucopia_1:

(Start: 16 @11 has 1 MA's), (Start: 27 @41 has 69 MA's), (38, 86), (41, 119), (49, 200), (56, 236), (64, 284), (72, 329), (74, 338), (78, 353),

Gene: Crespo_61 Start: 41126, Stop: 41452, Start Num: 21

Candidate Starts for Crespo_61:

(Start: 21 @41126 has 66 MA's), (52, 41321), (65, 41399),

Gene: CrimD_96 Start: 59439, Stop: 59741, Start Num: 35

Candidate Starts for CrimD_96:

(29, 59418), (Start: 35 @59439 has 97 MA's), (43, 59514), (75, 59700), (79, 59715),

Gene: Curiosium_104 Start: 60864, Stop: 61154, Start Num: 36

Candidate Starts for Curiosium_104:

(Start: 36 @60864 has 19 MA's),

Gene: DMoney_61 Start: 41104, Stop: 41430, Start Num: 21

Candidate Starts for DMoney_61:

(Start: 21 @41104 has 66 MA's), (52, 41299), (65, 41377),

Gene: DNAIII_0059 Start: 38754, Stop: 39080, Start Num: 21

Candidate Starts for DNAIII_0059:

(Start: 21 @38754 has 66 MA's), (52, 38949), (65, 39027),

Gene: DaWorst_1 Start: 41, Stop: 373, Start Num: 27

Candidate Starts for DaWorst_1:

(Start: 16 @11 has 1 MA's), (Start: 27 @41 has 69 MA's), (41, 119), (51, 212), (64, 284), (74, 338), (78, 353),

Gene: Dadosky_100 Start: 61693, Stop: 61998, Start Num: 31

Candidate Starts for Dadosky_100:

(Start: 31 @61693 has 20 MA's), (47, 61831),

Gene: Dalmuri_97 Start: 59347, Stop: 59649, Start Num: 35

Candidate Starts for Dalmuri_97:

(29, 59326), (Start: 35 @59347 has 97 MA's), (43, 59422), (75, 59608), (79, 59623),

Gene: Darionha_62 Start: 41125, Stop: 41451, Start Num: 21

Candidate Starts for Darionha_62:

(Start: 21 @41125 has 66 MA's), (52, 41320), (65, 41398),

Gene: DarthP_95 Start: 61234, Stop: 61530, Start Num: 35

Candidate Starts for DarthP_95:

(Start: 35 @61234 has 97 MA's), (40, 61282), (43, 61309), (66, 61468), (76, 61495),

Gene: Deby_96 Start: 60102, Stop: 60404, Start Num: 35

Candidate Starts for Deby_96:

(29, 60081), (Start: 35 @60102 has 97 MA's), (43, 60177), (75, 60363), (79, 60378),

Gene: Demsculpinboyz_1 Start: 38, Stop: 370, Start Num: 27

Candidate Starts for Demsculpinboyz_1:

(Start: 16 @11 has 1 MA's), (Start: 27 @38 has 69 MA's), (41, 116), (44, 143), (56, 233), (62, 263), (64, 281), (72, 326), (78, 350),

Gene: Devera_103 Start: 60259, Stop: 60561, Start Num: 35

Candidate Starts for Devera_103:

(29, 60238), (Start: 35 @60259 has 97 MA's), (41, 60310), (43, 60334), (75, 60520), (79, 60535),

Gene: DirtMcgirt_1 Start: 41, Stop: 373, Start Num: 27

Candidate Starts for DirtMcgirt_1:

(Start: 16 @11 has 1 MA's), (Start: 27 @41 has 69 MA's), (41, 119), (51, 212), (64, 284), (74, 338), (78, 353),

Gene: DismalFunk_94 Start: 57690, Stop: 57968, Start Num: 35

Candidate Starts for DismalFunk_94:

(Start: 34 @57687 has 20 MA's), (Start: 35 @57690 has 97 MA's), (52, 57840), (79, 57948),

Gene: DismalStressor_94 Start: 57690, Stop: 57968, Start Num: 35

Candidate Starts for DismalStressor_94:

(Start: 34 @57687 has 20 MA's), (Start: 35 @57690 has 97 MA's), (52, 57840), (79, 57948),

Gene: DocMcStuffins_1 Start: 42, Stop: 374, Start Num: 27

Candidate Starts for DocMcStuffins_1:

(15, 9), (20, 15), (Start: 27 @42 has 69 MA's), (41, 120), (51, 213), (56, 237), (64, 285), (74, 339), (78, 354),

Gene: Dole_99 Start: 60262, Stop: 60564, Start Num: 35

Candidate Starts for Dole_99:

(29, 60241), (Start: 35 @60262 has 97 MA's), (41, 60313), (43, 60337), (75, 60523), (79, 60538),

Gene: DosHalletts_1 Start: 41, Stop: 373, Start Num: 27

Candidate Starts for DosHalletts_1:

(Start: 16 @11 has 1 MA's), (Start: 27 @41 has 69 MA's), (41, 119), (51, 212), (64, 284), (74, 338), (78, 353),

Gene: DrHayes_98 Start: 60168, Stop: 60470, Start Num: 35
Candidate Starts for DrHayes_98:
(29, 60147), (Start: 35 @60168 has 97 MA's), (43, 60243), (75, 60429), (79, 60444),

Gene: Drago_1 Start: 41, Stop: 373, Start Num: 27
Candidate Starts for Drago_1:
(Start: 16 @11 has 1 MA's), (Start: 27 @41 has 69 MA's), (41, 119), (51, 212), (64, 284), (74, 338),
(78, 353),

Gene: Durfee_97 Start: 59544, Stop: 59846, Start Num: 35
Candidate Starts for Durfee_97:
(29, 59523), (Start: 35 @59544 has 97 MA's), (43, 59619), (75, 59805), (79, 59820),

Gene: ECartman_60 Start: 41125, Stop: 41451, Start Num: 21
Candidate Starts for ECartman_60:
(Start: 21 @41125 has 66 MA's), (52, 41320), (65, 41398),

Gene: Ecliptus_1 Start: 40, Stop: 372, Start Num: 27
Candidate Starts for Ecliptus_1:
(17, 13), (Start: 27 @40 has 69 MA's), (44, 145), (49, 199), (50, 208), (51, 211), (53, 220), (56, 235),
(62, 265), (71, 319), (78, 352),

Gene: Edugator_92 Start: 62924, Stop: 63229, Start Num: 31
Candidate Starts for Edugator_92:
(Start: 31 @62924 has 20 MA's), (47, 63062), (52, 63092),

Gene: Efra2_104 Start: 60929, Stop: 61216, Start Num: 35
Candidate Starts for Efra2_104:
(Start: 35 @60929 has 97 MA's), (67, 61166), (76, 61181), (77, 61184),

Gene: Ekdilam_92 Start: 61413, Stop: 61709, Start Num: 35
Candidate Starts for Ekdilam_92:
(3, 61107), (Start: 35 @61413 has 97 MA's), (40, 61461), (43, 61488), (66, 61647), (76, 61674),

Gene: Ellie_96 Start: 61595, Stop: 61885, Start Num: 35
Candidate Starts for Ellie_96:
(Start: 35 @61595 has 97 MA's), (43, 61670), (70, 61832),

Gene: Emerson_101 Start: 59949, Stop: 60251, Start Num: 35
Candidate Starts for Emerson_101:
(29, 59928), (Start: 35 @59949 has 97 MA's), (43, 60024), (75, 60210), (79, 60225),

Gene: Enby_1 Start: 41, Stop: 373, Start Num: 27
Candidate Starts for Enby_1:
(Start: 16 @11 has 1 MA's), (Start: 27 @41 has 69 MA's), (41, 119), (51, 212), (64, 284), (74, 338),
(78, 353),

Gene: Enkosi_79 Start: 58687, Stop: 58992, Start Num: 36
Candidate Starts for Enkosi_79:
(8, 58555), (Start: 36 @58687 has 19 MA's), (43, 58762), (47, 58807), (75, 58951), (76, 58957), (79, 58966),

Gene: Eponine_96 Start: 57765, Stop: 58070, Start Num: 28

Candidate Starts for Eponine_96:
(Start: 28 @57765 has 20 MA's), (45, 57870), (79, 58044),

Gene: Fefferhead_98 Start: 61016, Stop: 61306, Start Num: 35
Candidate Starts for Fefferhead_98:
(Start: 35 @61016 has 97 MA's), (43, 61091), (70, 61253),

Gene: Feyre_98 Start: 63125, Stop: 63430, Start Num: 31
Candidate Starts for Feyre_98:
(Start: 31 @63125 has 20 MA's),

Gene: Findley_94 Start: 57711, Stop: 57989, Start Num: 35
Candidate Starts for Findley_94:
(Start: 34 @57708 has 20 MA's), (Start: 35 @57711 has 97 MA's), (52, 57861), (79, 57969),

Gene: Fionnbharth_94 Start: 57163, Stop: 57468, Start Num: 28
Candidate Starts for Fionnbharth_94:
(Start: 28 @57163 has 20 MA's), (45, 57268), (79, 57442),

Gene: FlagStaff_64 Start: 43887, Stop: 44213, Start Num: 21
Candidate Starts for FlagStaff_64:
(Start: 21 @43887 has 66 MA's), (37, 43941), (48, 44061),

Gene: Flathead_1 Start: 40, Stop: 372, Start Num: 27
Candidate Starts for Flathead_1:
(14, 7), (17, 13), (Start: 27 @40 has 69 MA's), (39, 109), (41, 118), (51, 211), (64, 283), (72, 328), (74, 337), (78, 352),

Gene: Frankie_1 Start: 40, Stop: 372, Start Num: 27
Candidate Starts for Frankie_1:
(14, 7), (17, 13), (Start: 27 @40 has 69 MA's), (39, 109), (41, 118), (51, 211), (64, 283), (72, 328), (74, 337), (78, 352),

Gene: Frickyeah_1 Start: 39, Stop: 371, Start Num: 27
Candidate Starts for Frickyeah_1:
(15, 9), (18, 15), (22, 27), (Start: 27 @39 has 69 MA's), (43, 141), (44, 144), (56, 234), (62, 264), (64, 282), (78, 351),

Gene: Frosty24_62 Start: 41125, Stop: 41451, Start Num: 21
Candidate Starts for Frosty24_62:
(Start: 21 @41125 has 66 MA's), (52, 41320), (65, 41398),

Gene: Ganymede_96 Start: 59358, Stop: 59660, Start Num: 35
Candidate Starts for Ganymede_96:
(29, 59337), (Start: 35 @59358 has 97 MA's), (43, 59433), (75, 59619), (79, 59634),

Gene: Gengar_96 Start: 61193, Stop: 61498, Start Num: 31
Candidate Starts for Gengar_96:
(Start: 31 @61193 has 20 MA's),

Gene: Geraldini_97 Start: 59457, Stop: 59759, Start Num: 35
Candidate Starts for Geraldini_97:
(29, 59436), (Start: 35 @59457 has 97 MA's), (43, 59532), (75, 59718), (79, 59733),

Gene: Getalong_1 Start: 39, Stop: 371, Start Num: 27

Candidate Starts for Getalong_1:

(15, 9), (18, 15), (22, 27), (Start: 27 @39 has 69 MA's), (43, 141), (44, 144), (56, 234), (62, 264), (64, 282), (78, 351),

Gene: Gideon_62 Start: 41127, Stop: 41453, Start Num: 21

Candidate Starts for Gideon_62:

(Start: 21 @41127 has 66 MA's), (52, 41322), (65, 41400),

Gene: Girafales_1 Start: 41, Stop: 373, Start Num: 27

Candidate Starts for Girafales_1:

(Start: 16 @11 has 1 MA's), (Start: 27 @41 has 69 MA's), (38, 86), (39, 110), (41, 119), (49, 200), (56, 236), (64, 284), (72, 329), (74, 338), (78, 353),

Gene: GoldenAsh_60 Start: 40665, Stop: 40991, Start Num: 21

Candidate Starts for GoldenAsh_60:

(Start: 21 @40665 has 66 MA's), (52, 40860), (65, 40938),

Gene: Gomashi_61 Start: 41127, Stop: 41453, Start Num: 21

Candidate Starts for Gomashi_61:

(Start: 21 @41127 has 66 MA's), (52, 41322), (65, 41400),

Gene: Grizzly_61 Start: 40976, Stop: 41302, Start Num: 21

Candidate Starts for Grizzly_61:

(Start: 21 @40976 has 66 MA's), (52, 41171), (65, 41249),

Gene: Guanica15_103 Start: 60618, Stop: 60905, Start Num: 35

Candidate Starts for Guanica15_103:

(Start: 35 @60618 has 97 MA's), (67, 60855), (76, 60870), (77, 60873),

Gene: Guillsminger_96 Start: 62720, Stop: 63025, Start Num: 31

Candidate Starts for Guillsminger_96:

(Start: 31 @62720 has 20 MA's),

Gene: Halo_63 Start: 41673, Stop: 41999, Start Num: 21

Candidate Starts for Halo_63:

(Start: 21 @41673 has 66 MA's), (52, 41868), (65, 41946),

Gene: Hammy_95 Start: 61452, Stop: 61748, Start Num: 35

Candidate Starts for Hammy_95:

(Start: 35 @61452 has 97 MA's), (40, 61500), (43, 61527), (66, 61686), (76, 61713),

Gene: HedwigODU_96 Start: 59451, Stop: 59753, Start Num: 35

Candidate Starts for HedwigODU_96:

(29, 59430), (Start: 35 @59451 has 97 MA's), (43, 59526), (75, 59712), (79, 59727),

Gene: Heftyboy_96 Start: 61535, Stop: 61840, Start Num: 31

Candidate Starts for Heftyboy_96:

(Start: 31 @61535 has 20 MA's),

Gene: Hegedechwinu_1 Start: 40, Stop: 372, Start Num: 27

Candidate Starts for Hegedechwinu_1:

(14, 7), (17, 13), (Start: 27 @40 has 69 MA's), (39, 109), (41, 118), (51, 211), (64, 283), (72, 328), (74, 337), (78, 352),

Gene: Holliday_1 Start: 39, Stop: 371, Start Num: 27

Candidate Starts for Holliday_1:

(15, 9), (18, 15), (Start: 27 @39 has 69 MA's), (41, 117), (43, 141), (56, 234), (64, 282), (71, 318), (78, 351),

Gene: Homura_95 Start: 59347, Stop: 59649, Start Num: 35

Candidate Starts for Homura_95:

(29, 59326), (Start: 35 @59347 has 97 MA's), (43, 59422), (75, 59608), (79, 59623),

Gene: Hope_62 Start: 41125, Stop: 41451, Start Num: 21

Candidate Starts for Hope_62:

(Start: 21 @41125 has 66 MA's), (52, 41320), (65, 41398),

Gene: Horus_1 Start: 39, Stop: 371, Start Num: 27

Candidate Starts for Horus_1:

(15, 9), (18, 15), (22, 27), (Start: 27 @39 has 69 MA's), (41, 117), (43, 141), (56, 234), (62, 264), (64, 282), (78, 351),

Gene: Hotshotbaby7_62 Start: 41127, Stop: 41453, Start Num: 21

Candidate Starts for Hotshotbaby7_62:

(Start: 21 @41127 has 66 MA's), (52, 41322), (65, 41400),

Gene: Hurricane_98 Start: 60965, Stop: 61252, Start Num: 36

Candidate Starts for Hurricane_98:

(22, 60923), (Start: 27 @60938 has 69 MA's), (Start: 36 @60965 has 19 MA's), (69, 61202), (79, 61226),

Gene: Hyperbowlee_95 Start: 59544, Stop: 59846, Start Num: 35

Candidate Starts for Hyperbowlee_95:

(29, 59523), (Start: 35 @59544 has 97 MA's), (43, 59619), (75, 59805), (79, 59820),

Gene: IdentityCrisis_61 Start: 37798, Stop: 38148, Start Num: 19

Candidate Starts for IdentityCrisis_61:

(Start: 19 @37798 has 1 MA's),

Gene: Illumine_100 Start: 60261, Stop: 60563, Start Num: 35

Candidate Starts for Illumine_100:

(29, 60240), (Start: 35 @60261 has 97 MA's), (41, 60312), (43, 60336), (75, 60522), (79, 60537),

Gene: Inky_96 Start: 59347, Stop: 59649, Start Num: 35

Candidate Starts for Inky_96:

(29, 59326), (Start: 35 @59347 has 97 MA's), (43, 59422), (75, 59608), (79, 59623),

Gene: InvictusManeo_97 Start: 60727, Stop: 61032, Start Num: 31

Candidate Starts for InvictusManeo_97:

(Start: 31 @60727 has 20 MA's), (52, 60895),

Gene: JAWS_95 Start: 59388, Stop: 59690, Start Num: 35

Candidate Starts for JAWS_95:

(29, 59367), (Start: 35 @59388 has 97 MA's), (43, 59463), (75, 59649), (79, 59664),

Gene: JF1_94 Start: 57078, Stop: 57383, Start Num: 28

Candidate Starts for JF1_94:

(Start: 28 @57078 has 20 MA's), (45, 57183), (79, 57357),

Gene: Jabbawokkie_2 Start: 561, Stop: 893, Start Num: 27

Candidate Starts for Jabbawokkie_2:

(14, 528), (Start: 27 @561 has 69 MA's), (56, 756), (62, 786), (64, 804), (72, 849), (78, 873),

Gene: JalFarm20_1 Start: 41, Stop: 373, Start Num: 27

Candidate Starts for JalFarm20_1:

(Start: 16 @11 has 1 MA's), (Start: 27 @41 has 69 MA's), (41, 119), (51, 212), (64, 284), (74, 338), (78, 353),

Gene: Jane_63 Start: 41125, Stop: 41451, Start Num: 21

Candidate Starts for Jane_63:

(Start: 21 @41125 has 66 MA's), (52, 41320), (65, 41398),

Gene: Jarvi_96 Start: 59347, Stop: 59649, Start Num: 35

Candidate Starts for Jarvi_96:

(29, 59326), (Start: 35 @59347 has 97 MA's), (43, 59422), (75, 59608), (79, 59623),

Gene: Jayhawk_97 Start: 59371, Stop: 59673, Start Num: 35

Candidate Starts for Jayhawk_97:

(29, 59350), (Start: 35 @59371 has 97 MA's), (43, 59446), (75, 59632), (79, 59647),

Gene: Jeckyll_97 Start: 59347, Stop: 59649, Start Num: 35

Candidate Starts for Jeckyll_97:

(29, 59326), (Start: 35 @59347 has 97 MA's), (43, 59422), (75, 59608), (79, 59623),

Gene: Job42_1 Start: 41, Stop: 373, Start Num: 27

Candidate Starts for Job42_1:

(Start: 16 @11 has 1 MA's), (Start: 27 @41 has 69 MA's), (41, 119), (51, 212), (64, 284), (72, 329), (74, 338), (78, 353),

Gene: Jolene_62 Start: 41529, Stop: 41855, Start Num: 21

Candidate Starts for Jolene_62:

(Start: 21 @41529 has 66 MA's), (52, 41724), (65, 41802),

Gene: Jolie2_61 Start: 43385, Stop: 43714, Start Num: 21

Candidate Starts for Jolie2_61:

(Start: 21 @43385 has 66 MA's), (50, 43568), (65, 43655),

Gene: Jonghyun_60 Start: 41128, Stop: 41454, Start Num: 21

Candidate Starts for Jonghyun_60:

(Start: 21 @41128 has 66 MA's), (52, 41323), (65, 41401),

Gene: JorRay_63 Start: 41125, Stop: 41451, Start Num: 21

Candidate Starts for JorRay_63:

(Start: 21 @41125 has 66 MA's), (52, 41320), (65, 41398),

Gene: Joy99_98 Start: 59476, Stop: 59778, Start Num: 35

Candidate Starts for Joy99_98:

(29, 59455), (Start: 35 @59476 has 97 MA's), (43, 59551), (75, 59737), (79, 59752),

Gene: Juice456_1 Start: 41, Stop: 373, Start Num: 27

Candidate Starts for Juice456_1:

(Start: 16 @11 has 1 MA's), (Start: 27 @41 has 69 MA's), (41, 119), (51, 212), (64, 284), (72, 329), (74, 338), (78, 353),

Gene: Juliette_96 Start: 57159, Stop: 57464, Start Num: 28

Candidate Starts for Juliette_96:

(Start: 28 @57159 has 20 MA's), (45, 57264), (79, 57438),

Gene: Kamaru_1 Start: 39, Stop: 371, Start Num: 27

Candidate Starts for Kamaru_1:

(15, 9), (18, 15), (Start: 27 @39 has 69 MA's), (41, 117), (43, 141), (56, 234), (64, 282), (71, 318), (78, 351),

Gene: Kareem_63 Start: 41125, Stop: 41451, Start Num: 21

Candidate Starts for Kareem_63:

(Start: 21 @41125 has 66 MA's), (52, 41320), (65, 41398),

Gene: Kasen3_63 Start: 41114, Stop: 41440, Start Num: 21

Candidate Starts for Kasen3_63:

(Start: 21 @41114 has 66 MA's), (52, 41309), (65, 41387),

Gene: Kenna_1 Start: 39, Stop: 371, Start Num: 27

Candidate Starts for Kenna_1:

(15, 9), (18, 15), (22, 27), (Start: 27 @39 has 69 MA's), (41, 117), (43, 141), (44, 144), (56, 234), (62, 264), (64, 282), (78, 351),

Gene: Keshu_101 Start: 60898, Stop: 61185, Start Num: 36

Candidate Starts for Keshu_101:

(10, 60787), (11, 60811), (22, 60856), (Start: 27 @60871 has 69 MA's), (Start: 36 @60898 has 19 MA's), (69, 61135), (79, 61159),

Gene: KiSi_104 Start: 62208, Stop: 62504, Start Num: 34

Candidate Starts for KiSi_104:

(Start: 34 @62208 has 20 MA's), (61, 62400), (63, 62409),

Gene: Kimberlium_1 Start: 41, Stop: 373, Start Num: 27

Candidate Starts for Kimberlium_1:

(Start: 16 @11 has 1 MA's), (Start: 27 @41 has 69 MA's), (41, 119), (51, 212), (64, 284), (72, 329), (74, 338), (78, 353),

Gene: Kingsley_1 Start: 41, Stop: 373, Start Num: 27

Candidate Starts for Kingsley_1:

(Start: 16 @11 has 1 MA's), (Start: 27 @41 has 69 MA's), (41, 119), (51, 212), (64, 284), (74, 338), (78, 353),

Gene: Kratio_100 Start: 62318, Stop: 62623, Start Num: 31

Candidate Starts for Kratio_100:

(Start: 31 @62318 has 20 MA's), (52, 62486),

Gene: Krueger_101 Start: 59962, Stop: 60270, Start Num: 34

Candidate Starts for Krueger_101:
(Start: 34 @59962 has 20 MA's), (43, 60037), (79, 60244),

Gene: Larva_98 Start: 62571, Stop: 62876, Start Num: 31
Candidate Starts for Larva_98:
(Start: 31 @62571 has 20 MA's), (47, 62709),

Gene: LastHope_103 Start: 60575, Stop: 60865, Start Num: 36
Candidate Starts for LastHope_103:
(Start: 36 @60575 has 19 MA's), (59, 60758),

Gene: LaterM_96 Start: 59784, Stop: 60086, Start Num: 35
Candidate Starts for LaterM_96:
(29, 59763), (Start: 35 @59784 has 97 MA's), (41, 59835), (43, 59859), (75, 60045), (79, 60060),

Gene: LeMond_103 Start: 62165, Stop: 62461, Start Num: 34
Candidate Starts for LeMond_103:
(Start: 34 @62165 has 20 MA's), (61, 62357), (63, 62366),

Gene: Lemuria_64 Start: 44074, Stop: 44403, Start Num: 21
Candidate Starts for Lemuria_64:
(Start: 21 @44074 has 66 MA's), (50, 44257), (57, 44287), (65, 44344),

Gene: Leozinho_1 Start: 41, Stop: 373, Start Num: 27
Candidate Starts for Leozinho_1:
(Start: 16 @11 has 1 MA's), (Start: 27 @41 has 69 MA's), (41, 119), (51, 212), (64, 284), (74, 338),
(78, 353),

Gene: Leroy_1 Start: 39, Stop: 371, Start Num: 27
Candidate Starts for Leroy_1:
(15, 9), (18, 15), (22, 27), (Start: 27 @39 has 69 MA's), (43, 141), (44, 144), (56, 234), (62, 264), (64,
282), (78, 351),

Gene: Leston_95 Start: 61375, Stop: 61680, Start Num: 31
Candidate Starts for Leston_95:
(Start: 31 @61375 has 20 MA's),

Gene: Liefie_59 Start: 40764, Stop: 41090, Start Num: 21
Candidate Starts for Liefie_59:
(Start: 21 @40764 has 66 MA's),

Gene: LilPharaoh_78 Start: 55802, Stop: 56107, Start Num: 36
Candidate Starts for LilPharaoh_78:
(8, 55670), (Start: 36 @55802 has 19 MA's), (43, 55877), (47, 55922), (75, 56066), (76, 56072), (79,
56081),

Gene: LilSpotty_85 Start: 49411, Stop: 49689, Start Num: 36
Candidate Starts for LilSpotty_85:
(Start: 36 @49411 has 19 MA's), (77, 49663),

Gene: LindNT_94 Start: 59694, Stop: 59996, Start Num: 35
Candidate Starts for LindNT_94:
(29, 59673), (Start: 35 @59694 has 97 MA's), (43, 59769), (75, 59955), (79, 59970),

Gene: LitninMcQueen_1 Start: 39, Stop: 371, Start Num: 27

Candidate Starts for LitninMcQueen_1:

(15, 9), (18, 15), (Start: 27 @39 has 69 MA's), (41, 117), (43, 141), (56, 234), (64, 282), (71, 318), (78, 351),

Gene: LittleShirley_1 Start: 41, Stop: 373, Start Num: 27

Candidate Starts for LittleShirley_1:

(Start: 16 @11 has 1 MA's), (Start: 27 @41 has 69 MA's), (41, 119), (51, 212), (56, 236), (64, 284), (74, 338), (78, 353),

Gene: Lorde_1 Start: 41, Stop: 373, Start Num: 27

Candidate Starts for Lorde_1:

(Start: 16 @11 has 1 MA's), (Start: 27 @41 has 69 MA's), (41, 119), (51, 212), (64, 284), (74, 338), (78, 353),

Gene: LouisV14_64 Start: 43369, Stop: 43695, Start Num: 21

Candidate Starts for LouisV14_64:

(Start: 21 @43369 has 66 MA's), (52, 43564), (65, 43642),

Gene: Lucky10_70 Start: 42595, Stop: 42897, Start Num: 32

Candidate Starts for Lucky10_70:

(9, 42496), (Start: 32 @42595 has 1 MA's), (61, 42802),

Gene: Lunahalos_96 Start: 59347, Stop: 59649, Start Num: 35

Candidate Starts for Lunahalos_96:

(29, 59326), (Start: 35 @59347 has 97 MA's), (43, 59422), (75, 59608), (79, 59623),

Gene: Lutum_1 Start: 39, Stop: 371, Start Num: 27

Candidate Starts for Lutum_1:

(15, 9), (18, 15), (22, 27), (Start: 27 @39 has 69 MA's), (41, 117), (43, 141), (44, 144), (56, 234), (62, 264), (64, 282), (78, 351),

Gene: MOOREtheMARYer_66 Start: 43647, Stop: 43973, Start Num: 21

Candidate Starts for MOOREtheMARYer_66:

(Start: 21 @43647 has 66 MA's), (37, 43701), (48, 43821), (49, 43824),

Gene: MacnCheese_99 Start: 61214, Stop: 61501, Start Num: 36

Candidate Starts for MacnCheese_99:

(12, 61130), (22, 61172), (Start: 27 @61187 has 69 MA's), (Start: 36 @61214 has 19 MA's),

Gene: Madiba_1 Start: 40, Stop: 372, Start Num: 26

Candidate Starts for Madiba_1:

(14, 7), (17, 13), (Start: 26 @40 has 4 MA's), (41, 118), (56, 235), (64, 283), (74, 337), (78, 352),

Gene: Malisha_1 Start: 39, Stop: 371, Start Num: 27

Candidate Starts for Malisha_1:

(15, 9), (18, 15), (Start: 27 @39 has 69 MA's), (41, 117), (50, 207), (56, 234), (62, 264), (64, 282), (71, 318), (78, 351),

Gene: Malthus_95 Start: 56888, Stop: 57193, Start Num: 28

Candidate Starts for Malthus_95:

(Start: 28 @56888 has 20 MA's), (45, 56993), (79, 57167),

Gene: Marcoliusprime_92 Start: 57690, Stop: 57968, Start Num: 35

Candidate Starts for Marcoliusprime_92:

(Start: 34 @57687 has 20 MA's), (Start: 35 @57690 has 97 MA's), (52, 57840), (79, 57948),

Gene: MarkPhew_103 Start: 61805, Stop: 62098, Start Num: 34

Candidate Starts for MarkPhew_103:

(Start: 34 @61805 has 20 MA's), (43, 61880), (63, 62006), (80, 62084),

Gene: Marker_1 Start: 40, Stop: 372, Start Num: 26

Candidate Starts for Marker_1:

(14, 7), (17, 13), (Start: 26 @40 has 4 MA's), (41, 118), (51, 211), (56, 235), (64, 283), (74, 337), (78, 352),

Gene: Marmie_62 Start: 41126, Stop: 41452, Start Num: 21

Candidate Starts for Marmie_62:

(Start: 21 @41126 has 66 MA's), (52, 41321), (65, 41399),

Gene: Marshawn_96 Start: 61097, Stop: 61411, Start Num: 35

Candidate Starts for Marshawn_96:

(Start: 35 @61097 has 97 MA's), (43, 61172), (77, 61379), (79, 61385),

Gene: Mdavu_78 Start: 56078, Stop: 56383, Start Num: 36

Candidate Starts for Mdavu_78:

(8, 55946), (Start: 36 @56078 has 19 MA's), (43, 56153), (47, 56198), (75, 56342), (76, 56348), (79, 56357),

Gene: MeaningOfLife_98 Start: 60071, Stop: 60373, Start Num: 35

Candidate Starts for MeaningOfLife_98:

(29, 60050), (Start: 35 @60071 has 97 MA's), (43, 60146), (75, 60332), (79, 60347),

Gene: Megsy_101 Start: 59832, Stop: 60134, Start Num: 35

Candidate Starts for Megsy_101:

(29, 59811), (Start: 35 @59832 has 97 MA's), (43, 59907), (75, 60093), (79, 60108),

Gene: Mercurio_63 Start: 43953, Stop: 44282, Start Num: 21

Candidate Starts for Mercurio_63:

(Start: 21 @43953 has 66 MA's), (50, 44136), (65, 44223),

Gene: Milly_94 Start: 57772, Stop: 58050, Start Num: 35

Candidate Starts for Milly_94:

(Start: 34 @57769 has 20 MA's), (Start: 35 @57772 has 97 MA's), (52, 57922), (79, 58030),

Gene: Miryou_100 Start: 62747, Stop: 63052, Start Num: 31

Candidate Starts for Miryou_100:

(Start: 31 @62747 has 20 MA's),

Gene: Misha28_1 Start: 42, Stop: 374, Start Num: 27

Candidate Starts for Misha28_1:

(15, 9), (20, 15), (Start: 27 @42 has 69 MA's), (41, 120), (51, 213), (56, 237), (64, 285), (74, 339), (78, 354),

Gene: MissDaisy_88 Start: 53576, Stop: 53857, Start Num: 28

Candidate Starts for MissDaisy_88:
(Start: 28 @53576 has 20 MA's), (77, 53825), (79, 53831),

Gene: Mitti_94 Start: 56983, Stop: 57288, Start Num: 28
Candidate Starts for Mitti_94:
(Start: 28 @56983 has 20 MA's), (79, 57262),

Gene: Morkie_74 Start: 41703, Stop: 42008, Start Num: 30
Candidate Starts for Morkie_74:
(9, 41607), (Start: 30 @41703 has 2 MA's), (61, 41913),

Gene: Mova_1 Start: 41, Stop: 373, Start Num: 26
Candidate Starts for Mova_1:
(Start: 16 @11 has 1 MA's), (Start: 26 @41 has 4 MA's), (41, 119), (51, 212), (56, 236), (64, 284), (74, 338), (78, 353),

Gene: Mowgli_62 Start: 41126, Stop: 41452, Start Num: 21
Candidate Starts for Mowgli_62:
(Start: 21 @41126 has 66 MA's), (52, 41321), (65, 41399),

Gene: Mozy_1 Start: 40, Stop: 372, Start Num: 27
Candidate Starts for Mozy_1:
(14, 7), (17, 13), (Start: 27 @40 has 69 MA's), (38, 85), (39, 109), (41, 118), (49, 199), (56, 235), (64, 283), (72, 328), (74, 337), (78, 352),

Gene: Mufasa_94 Start: 57627, Stop: 57905, Start Num: 35
Candidate Starts for Mufasa_94:
(Start: 34 @57624 has 20 MA's), (Start: 35 @57627 has 97 MA's), (79, 57885),

Gene: Murucutumbu_96 Start: 60249, Stop: 60551, Start Num: 35
Candidate Starts for Murucutumbu_96:
(29, 60228), (Start: 35 @60249 has 97 MA's), (41, 60300), (43, 60324), (75, 60510), (79, 60525),

Gene: Mynx_97 Start: 59694, Stop: 59996, Start Num: 35
Candidate Starts for Mynx_97:
(29, 59673), (Start: 35 @59694 has 97 MA's), (43, 59769), (75, 59955), (79, 59970),

Gene: Nibb_103 Start: 61945, Stop: 62238, Start Num: 34
Candidate Starts for Nibb_103:
(Start: 34 @61945 has 20 MA's), (43, 62020), (63, 62146), (73, 62194),

Gene: Nikao_80 Start: 58687, Stop: 58992, Start Num: 36
Candidate Starts for Nikao_80:
(8, 58555), (Start: 36 @58687 has 19 MA's), (43, 58762), (47, 58807), (75, 58951), (76, 58957), (79, 58966),

Gene: Niklas_98 Start: 60655, Stop: 60942, Start Num: 35
Candidate Starts for Niklas_98:
(2, 60328), (14, 60592), (Start: 35 @60655 has 97 MA's), (43, 60730), (61, 60847), (67, 60892), (80, 60928),

Gene: Nutello_77 Start: 56074, Stop: 56379, Start Num: 36
Candidate Starts for Nutello_77:

(8, 55942), (Start: 36 @56074 has 19 MA's), (43, 56149), (47, 56194), (75, 56338), (76, 56344), (79, 56353),

Gene: ODay_1 Start: 39, Stop: 371, Start Num: 27

Candidate Starts for ODay_1:

(15, 9), (18, 15), (Start: 27 @39 has 69 MA's), (41, 117), (43, 141), (56, 234), (64, 282), (71, 318), (78, 351),

Gene: OctaviousRex_61 Start: 41104, Stop: 41430, Start Num: 21

Candidate Starts for OctaviousRex_61:

(Start: 21 @41104 has 66 MA's), (52, 41299), (65, 41377),

Gene: Ogotopogo_2 Start: 299, Stop: 631, Start Num: 27

Candidate Starts for Ogotopogo_2:

(Start: 27 @299 has 69 MA's), (41, 377), (56, 494), (62, 524), (64, 542), (72, 587), (78, 611),

Gene: OkiRoe_97 Start: 62228, Stop: 62533, Start Num: 31

Candidate Starts for OkiRoe_97:

(Start: 31 @62228 has 20 MA's),

Gene: Oksu_1 Start: 41, Stop: 373, Start Num: 27

Candidate Starts for Oksu_1:

(Start: 16 @11 has 1 MA's), (Start: 27 @41 has 69 MA's), (41, 119), (56, 236), (64, 284), (74, 338), (78, 353),

Gene: Olga_63 Start: 41126, Stop: 41452, Start Num: 21

Candidate Starts for Olga_63:

(Start: 21 @41126 has 66 MA's), (52, 41321), (65, 41399),

Gene: OmniCritical_94 Start: 57061, Stop: 57366, Start Num: 28

Candidate Starts for OmniCritical_94:

(Start: 28 @57061 has 20 MA's), (79, 57340),

Gene: Omnicron_96 Start: 61077, Stop: 61382, Start Num: 31

Candidate Starts for Omnicron_96:

(13, 61029), (Start: 31 @61077 has 20 MA's), (52, 61245),

Gene: Oscar_104 Start: 62087, Stop: 62383, Start Num: 34

Candidate Starts for Oscar_104:

(Start: 34 @62087 has 20 MA's), (61, 62279), (63, 62288),

Gene: OwlsT2W_1 Start: 41, Stop: 373, Start Num: 27

Candidate Starts for OwlsT2W_1:

(Start: 16 @11 has 1 MA's), (Start: 27 @41 has 69 MA's), (41, 119), (51, 212), (64, 284), (74, 338), (78, 353),

Gene: P3MA_63 Start: 40580, Stop: 40894, Start Num: 25

Candidate Starts for P3MA_63:

(7, 40472), (25, 40580), (60, 40793), (79, 40871),

Gene: Padfoot_96 Start: 59544, Stop: 59846, Start Num: 35

Candidate Starts for Padfoot_96:

(29, 59523), (Start: 35 @59544 has 97 MA's), (43, 59619), (75, 59805), (79, 59820),

Gene: Padpat_101 Start: 59949, Stop: 60251, Start Num: 35
Candidate Starts for Padpat_101:
(29, 59928), (Start: 35 @59949 has 97 MA's), (43, 60024), (75, 60210), (79, 60225),

Gene: Paito_63 Start: 40764, Stop: 41090, Start Num: 21
Candidate Starts for Paito_63:
(Start: 21 @40764 has 66 MA's),

Gene: Paola_93 Start: 61102, Stop: 61407, Start Num: 31
Candidate Starts for Paola_93:
(Start: 31 @61102 has 20 MA's),

Gene: Patt_87 Start: 53723, Stop: 54004, Start Num: 28
Candidate Starts for Patt_87:
(Start: 28 @53723 has 20 MA's), (77, 53972), (79, 53978),

Gene: Peanam_99 Start: 60707, Stop: 60994, Start Num: 35
Candidate Starts for Peanam_99:
(2, 60395), (14, 60644), (Start: 35 @60707 has 97 MA's), (43, 60782), (61, 60899), (67, 60944), (80, 60980),

Gene: Peeb_61 Start: 41100, Stop: 41426, Start Num: 21
Candidate Starts for Peeb_61:
(Start: 21 @41100 has 66 MA's), (52, 41295), (65, 41373),

Gene: Peel_96 Start: 59350, Stop: 59652, Start Num: 35
Candidate Starts for Peel_96:
(29, 59329), (Start: 35 @59350 has 97 MA's), (43, 59425), (75, 59611), (79, 59626),

Gene: Periodt_62 Start: 41518, Stop: 41844, Start Num: 21
Candidate Starts for Periodt_62:
(Start: 21 @41518 has 66 MA's),

Gene: Periwinkle_1 Start: 39, Stop: 371, Start Num: 27
Candidate Starts for Periwinkle_1:
(15, 9), (18, 15), (22, 27), (Start: 27 @39 has 69 MA's), (41, 117), (43, 141), (44, 144), (56, 234), (62, 264), (64, 282), (78, 351),

Gene: Phabuloso_1 Start: 39, Stop: 371, Start Num: 27
Candidate Starts for Phabuloso_1:
(15, 9), (18, 15), (Start: 27 @39 has 69 MA's), (41, 117), (43, 141), (56, 234), (64, 282), (71, 318), (78, 351),

Gene: Pharb_97 Start: 60473, Stop: 60760, Start Num: 36
Candidate Starts for Pharb_97:
(1, 60098), (4, 60224), (10, 60362), (12, 60389), (23, 60437), (Start: 36 @60473 has 19 MA's), (40, 60521), (65, 60701),

Gene: PhelpsODU_92 Start: 56221, Stop: 56529, Start Num: 34
Candidate Starts for PhelpsODU_92:
(Start: 34 @56221 has 20 MA's), (43, 56296), (79, 56503),

Gene: Phish_61 Start: 41125, Stop: 41451, Start Num: 21
Candidate Starts for Phish_61:
(Start: 21 @41125 has 66 MA's), (52, 41320), (65, 41398),

Gene: Phistory_1 Start: 39, Stop: 371, Start Num: 27
Candidate Starts for Phistory_1:
(15, 9), (18, 15), (Start: 27 @39 has 69 MA's), (43, 141), (44, 144), (56, 234), (62, 264), (64, 282), (71, 318), (78, 351),

Gene: PhorbesPhlower_72 Start: 41098, Stop: 41403, Start Num: 30
Candidate Starts for PhorbesPhlower_72:
(9, 41002), (Start: 30 @41098 has 2 MA's), (61, 41308),

Gene: Phrank_103 Start: 60753, Stop: 61058, Start Num: 34
Candidate Starts for Phrank_103:
(Start: 34 @60753 has 20 MA's), (43, 60828), (79, 61032),

Gene: Phreak_62 Start: 41125, Stop: 41451, Start Num: 21
Candidate Starts for Phreak_62:
(Start: 21 @41125 has 66 MA's), (52, 41320), (65, 41398),

Gene: Piatt_95 Start: 59544, Stop: 59846, Start Num: 35
Candidate Starts for Piatt_95:
(29, 59523), (Start: 35 @59544 has 97 MA's), (43, 59619), (75, 59805), (79, 59820),

Gene: PinkYoshi_62 Start: 41117, Stop: 41443, Start Num: 21
Candidate Starts for PinkYoshi_62:
(Start: 21 @41117 has 66 MA's), (52, 41312), (65, 41390),

Gene: Pinnie_65 Start: 44002, Stop: 44328, Start Num: 21
Candidate Starts for Pinnie_65:
(Start: 21 @44002 has 66 MA's), (37, 44056), (48, 44176), (49, 44179),

Gene: Piper2020_1 Start: 42, Stop: 374, Start Num: 27
Candidate Starts for Piper2020_1:
(15, 9), (20, 15), (Start: 27 @42 has 69 MA's), (41, 120), (51, 213), (56, 237), (64, 285), (74, 339), (78, 354),

Gene: Pixie_100 Start: 60794, Stop: 61081, Start Num: 36
Candidate Starts for Pixie_100:
(10, 60683), (22, 60752), (Start: 27 @60767 has 69 MA's), (Start: 36 @60794 has 19 MA's), (69, 61031), (79, 61055),

Gene: Plagueis_62 Start: 40946, Stop: 41272, Start Num: 21
Candidate Starts for Plagueis_62:
(Start: 21 @40946 has 66 MA's), (52, 41141), (65, 41219),

Gene: Plumbus_1 Start: 41, Stop: 373, Start Num: 27
Candidate Starts for Plumbus_1:
(Start: 16 @11 has 1 MA's), (Start: 27 @41 has 69 MA's), (41, 119), (51, 212), (64, 284), (72, 329), (74, 338), (78, 353),

Gene: Pokerus_96 Start: 59414, Stop: 59716, Start Num: 35

Candidate Starts for Pokerus_96:

(29, 59393), (Start: 35 @59414 has 97 MA's), (43, 59489), (75, 59675), (79, 59690),

Gene: Pollywog_1 Start: 40, Stop: 372, Start Num: 26

Candidate Starts for Pollywog_1:

(14, 7), (17, 13), (Start: 26 @40 has 4 MA's), (41, 118), (56, 235), (64, 283), (74, 337), (78, 352),

Gene: Prithvi_98 Start: 59952, Stop: 60254, Start Num: 35

Candidate Starts for Prithvi_98:

(29, 59931), (Start: 35 @59952 has 97 MA's), (43, 60027), (75, 60213), (79, 60228),

Gene: Psycho_98 Start: 61690, Stop: 61995, Start Num: 31

Candidate Starts for Psycho_98:

(Start: 31 @61690 has 20 MA's), (47, 61828),

Gene: Quico_1 Start: 41, Stop: 373, Start Num: 27

Candidate Starts for Quico_1:

(Start: 16 @11 has 1 MA's), (Start: 27 @41 has 69 MA's), (38, 86), (39, 110), (41, 119), (49, 200), (56, 236), (64, 284), (72, 329), (74, 338), (78, 353),

Gene: QuincyRose_94 Start: 59358, Stop: 59660, Start Num: 35

Candidate Starts for QuincyRose_94:

(29, 59337), (Start: 35 @59358 has 97 MA's), (43, 59433), (75, 59619), (79, 59634),

Gene: Rabbs_63 Start: 41200, Stop: 41526, Start Num: 21

Candidate Starts for Rabbs_63:

(Start: 21 @41200 has 66 MA's), (65, 41473),

Gene: Ramen_97 Start: 59101, Stop: 59403, Start Num: 35

Candidate Starts for Ramen_97:

(29, 59080), (Start: 35 @59101 has 97 MA's), (43, 59176), (75, 59362), (79, 59377),

Gene: Ramsey_1 Start: 11, Stop: 373, Start Num: 16

Candidate Starts for Ramsey_1:

(Start: 16 @11 has 1 MA's), (Start: 27 @41 has 69 MA's), (41, 119), (51, 212), (64, 284), (74, 338), (78, 353),

Gene: Rando14_92 Start: 59491, Stop: 59796, Start Num: 31

Candidate Starts for Rando14_92:

(13, 59443), (Start: 31 @59491 has 20 MA's), (52, 59659),

Gene: Rapunzel97_99 Start: 59326, Stop: 59628, Start Num: 35

Candidate Starts for Rapunzel97_99:

(29, 59305), (Start: 35 @59326 has 97 MA's), (43, 59401), (75, 59587), (79, 59602),

Gene: Remy19_62 Start: 41125, Stop: 41451, Start Num: 21

Candidate Starts for Remy19_62:

(Start: 21 @41125 has 66 MA's), (52, 41320), (65, 41398),

Gene: Renaissance_61 Start: 41103, Stop: 41429, Start Num: 21

Candidate Starts for Renaissance_61:

(Start: 21 @41103 has 66 MA's), (52, 41298), (65, 41376),

Gene: Reptar3000_88 Start: 53713, Stop: 53994, Start Num: 28

Candidate Starts for Reptar3000_88:

(Start: 28 @53713 has 20 MA's), (77, 53962), (79, 53968),

Gene: Rialto_1 Start: 41, Stop: 373, Start Num: 27

Candidate Starts for Rialto_1:

(Start: 16 @11 has 1 MA's), (Start: 27 @41 has 69 MA's), (41, 119), (51, 212), (56, 236), (64, 284), (74, 338), (78, 353),

Gene: RockyHorror_1 Start: 41, Stop: 373, Start Num: 27

Candidate Starts for RockyHorror_1:

(Start: 16 @11 has 1 MA's), (Start: 27 @41 has 69 MA's), (41, 119), (51, 212), (64, 284), (74, 338), (78, 353),

Gene: Rosmarinus_97 Start: 59335, Stop: 59637, Start Num: 35

Candidate Starts for Rosmarinus_97:

(29, 59314), (Start: 35 @59335 has 97 MA's), (43, 59410), (75, 59596), (79, 59611),

Gene: Ruthiejr_96 Start: 56946, Stop: 57251, Start Num: 28

Candidate Starts for Ruthiejr_96:

(Start: 28 @56946 has 20 MA's), (45, 57051), (79, 57225),

Gene: SamScheppers_93 Start: 57439, Stop: 57744, Start Num: 28

Candidate Starts for SamScheppers_93:

(Start: 28 @57439 has 20 MA's), (79, 57718),

Gene: SamuelLPlaqson_98 Start: 60168, Stop: 60470, Start Num: 35

Candidate Starts for SamuelLPlaqson_98:

(29, 60147), (Start: 35 @60168 has 97 MA's), (43, 60243), (75, 60429), (79, 60444),

Gene: Sarma624_1 Start: 41, Stop: 373, Start Num: 27

Candidate Starts for Sarma624_1:

(Start: 16 @11 has 1 MA's), (Start: 27 @41 has 69 MA's), (41, 119), (51, 212), (64, 284), (74, 338), (78, 353),

Gene: Scarlett_103 Start: 61956, Stop: 62252, Start Num: 34

Candidate Starts for Scarlett_103:

(Start: 34 @61956 has 20 MA's), (61, 62148), (63, 62157),

Gene: Schiebel_60 Start: 40665, Stop: 40991, Start Num: 21

Candidate Starts for Schiebel_60:

(Start: 21 @40665 has 66 MA's), (52, 40860), (65, 40938),

Gene: SgtBeansprout_78 Start: 56074, Stop: 56379, Start Num: 36

Candidate Starts for SgtBeansprout_78:

(8, 55942), (Start: 36 @56074 has 19 MA's), (43, 56149), (47, 56194), (75, 56338), (76, 56344), (79, 56353),

Gene: ShaboiShabazz_61 Start: 41125, Stop: 41451, Start Num: 21

Candidate Starts for ShaboiShabazz_61:

(Start: 21 @41125 has 66 MA's), (52, 41320), (65, 41398),

Gene: Shadow1_100 Start: 60099, Stop: 60404, Start Num: 34

Candidate Starts for Shadow1_100:
(Start: 34 @60099 has 20 MA's), (43, 60174), (79, 60378),

Gene: Shaobing_96 Start: 60696, Stop: 60983, Start Num: 35
Candidate Starts for Shaobing_96:
(2, 60369), (14, 60633), (Start: 35 @60696 has 97 MA's), (43, 60771), (61, 60888), (67, 60933), (80, 60969),

Gene: ShedlockHolmes_100 Start: 60729, Stop: 61016, Start Num: 36
Candidate Starts for ShedlockHolmes_100:
(10, 60618), (22, 60687), (Start: 27 @60702 has 69 MA's), (Start: 36 @60729 has 19 MA's), (69, 60966), (79, 60990),

Gene: ShiaSurprise_99 Start: 59544, Stop: 59846, Start Num: 35
Candidate Starts for ShiaSurprise_99:
(29, 59523), (Start: 35 @59544 has 97 MA's), (43, 59619), (75, 59805), (79, 59820),

Gene: SirPhilip_98 Start: 61540, Stop: 61833, Start Num: 34
Candidate Starts for SirPhilip_98:
(Start: 34 @61540 has 20 MA's), (43, 61615),

Gene: Sizemore_63 Start: 41114, Stop: 41440, Start Num: 21
Candidate Starts for Sizemore_63:
(Start: 21 @41114 has 66 MA's), (52, 41309), (65, 41387),

Gene: Slarp_92 Start: 56344, Stop: 56649, Start Num: 28
Candidate Starts for Slarp_92:
(Start: 28 @56344 has 20 MA's), (79, 56623),

Gene: Slimphazie_99 Start: 59782, Stop: 60084, Start Num: 35
Candidate Starts for Slimphazie_99:
(29, 59761), (Start: 35 @59782 has 97 MA's), (43, 59857), (75, 60043), (79, 60058),

Gene: Sneeze_62 Start: 41199, Stop: 41525, Start Num: 21
Candidate Starts for Sneeze_62:
(Start: 21 @41199 has 66 MA's), (65, 41472),

Gene: SoSeph_96 Start: 61535, Stop: 61840, Start Num: 31
Candidate Starts for SoSeph_96:
(Start: 31 @61535 has 20 MA's),

Gene: Soul22_1 Start: 38, Stop: 370, Start Num: 27
Candidate Starts for Soul22_1:
(Start: 16 @11 has 1 MA's), (Start: 27 @38 has 69 MA's), (41, 116), (44, 143), (56, 233), (62, 263), (64, 281), (72, 326), (78, 350),

Gene: Spikelee_1 Start: 41, Stop: 373, Start Num: 27
Candidate Starts for Spikelee_1:
(Start: 16 @11 has 1 MA's), (Start: 27 @41 has 69 MA's), (41, 119), (51, 212), (64, 284), (74, 338), (78, 353),

Gene: Spock_96 Start: 59348, Stop: 59650, Start Num: 35
Candidate Starts for Spock_96:

(29, 59327), (Start: 35 @59348 has 97 MA's), (43, 59423), (75, 59609), (79, 59624),

Gene: Spooky_1 Start: 39, Stop: 371, Start Num: 27

Candidate Starts for Spooky_1:

(15, 9), (18, 15), (Start: 27 @39 has 69 MA's), (56, 234), (58, 249), (64, 282), (71, 318), (78, 351),

Gene: Squiddly_2 Start: 730, Stop: 1062, Start Num: 27

Candidate Starts for Squiddly_2:

(5, 601), (6, 613), (17, 697), (Start: 27 @730 has 69 MA's), (51, 901), (55, 919), (64, 973), (71, 1009), (78, 1042),

Gene: Squirty_1 Start: 40, Stop: 372, Start Num: 27

Candidate Starts for Squirty_1:

(14, 7), (17, 13), (Start: 27 @40 has 69 MA's), (39, 109), (41, 118), (51, 211), (62, 265), (64, 283), (72, 328), (74, 337), (78, 352),

Gene: Stap_1 Start: 41, Stop: 373, Start Num: 27

Candidate Starts for Stap_1:

(Start: 16 @11 has 1 MA's), (Start: 27 @41 has 69 MA's), (41, 119), (51, 212), (64, 284), (74, 338), (78, 353),

Gene: Starcevich_1 Start: 41, Stop: 373, Start Num: 27

Candidate Starts for Starcevich_1:

(Start: 16 @11 has 1 MA's), (Start: 27 @41 has 69 MA's), (41, 119), (51, 212), (56, 236), (64, 284), (74, 338), (78, 353),

Gene: Stargaze_64 Start: 44492, Stop: 44815, Start Num: 21

Candidate Starts for Stargaze_64:

(Start: 21 @44492 has 66 MA's), (37, 44543), (48, 44663),

Gene: Stinson_97 Start: 59559, Stop: 59861, Start Num: 35

Candidate Starts for Stinson_97:

(29, 59538), (Start: 35 @59559 has 97 MA's), (41, 59610), (43, 59634), (75, 59820), (79, 59835),

Gene: Strobilo_100 Start: 57685, Stop: 57966, Start Num: 34

Candidate Starts for Strobilo_100:

(Start: 34 @57685 has 20 MA's), (Start: 35 @57688 has 97 MA's), (52, 57838), (79, 57946),

Gene: Sulley_95 Start: 59512, Stop: 59814, Start Num: 35

Candidate Starts for Sulley_95:

(29, 59491), (Start: 35 @59512 has 97 MA's), (43, 59587), (75, 59773), (79, 59788),

Gene: Sunflower1121_100 Start: 59857, Stop: 60162, Start Num: 34

Candidate Starts for Sunflower1121_100:

(Start: 34 @59857 has 20 MA's), (43, 59932), (79, 60136),

Gene: Sweets_62 Start: 41120, Stop: 41446, Start Num: 21

Candidate Starts for Sweets_62:

(Start: 21 @41120 has 66 MA's), (52, 41315), (65, 41393),

Gene: Syra333_99 Start: 59939, Stop: 60244, Start Num: 34

Candidate Starts for Syra333_99:

(Start: 34 @59939 has 20 MA's), (43, 60014), (79, 60218),

Gene: TBond007_97 Start: 60792, Stop: 61079, Start Num: 36

Candidate Starts for TBond007_97:

(10, 60681), (22, 60750), (Start: 27 @60765 has 69 MA's), (Start: 36 @60792 has 19 MA's), (69, 61029), (79, 61053),

Gene: TClif_101 Start: 61109, Stop: 61408, Start Num: 34

Candidate Starts for TClif_101:

(Start: 34 @61109 has 20 MA's), (42, 61175), (61, 61301), (69, 61349), (79, 61382),

Gene: TM4_92 Start: 52356, Stop: 52637, Start Num: 34

Candidate Starts for TM4_92:

(Start: 34 @52356 has 20 MA's), (Start: 35 @52359 has 97 MA's), (52, 52509), (54, 52515), (79, 52617),

Gene: Tachez_97 Start: 59195, Stop: 59497, Start Num: 35

Candidate Starts for Tachez_97:

(29, 59174), (Start: 35 @59195 has 97 MA's), (43, 59270), (75, 59456), (79, 59471),

Gene: Taheera_58 Start: 40097, Stop: 40423, Start Num: 21

Candidate Starts for Taheera_58:

(Start: 21 @40097 has 66 MA's), (68, 40382),

Gene: TaiwanKao_98 Start: 59607, Stop: 59909, Start Num: 35

Candidate Starts for TaiwanKao_98:

(29, 59586), (Start: 35 @59607 has 97 MA's), (43, 59682), (75, 59868), (79, 59883),

Gene: Taquito_94 Start: 57502, Stop: 57783, Start Num: 28

Candidate Starts for Taquito_94:

(Start: 28 @57502 has 20 MA's), (79, 57757),

Gene: Terror_58 Start: 40097, Stop: 40423, Start Num: 21

Candidate Starts for Terror_58:

(Start: 21 @40097 has 66 MA's), (68, 40382),

Gene: Thyatira_97 Start: 63441, Stop: 63746, Start Num: 31

Candidate Starts for Thyatira_97:

(Start: 31 @63441 has 20 MA's),

Gene: Tierra_102 Start: 61060, Stop: 61368, Start Num: 34

Candidate Starts for Tierra_102:

(Start: 34 @61060 has 20 MA's), (43, 61135), (79, 61342),

Gene: TiniBug_95 Start: 59943, Stop: 60245, Start Num: 35

Candidate Starts for TiniBug_95:

(29, 59922), (Start: 35 @59943 has 97 MA's), (43, 60018), (75, 60204), (79, 60219),

Gene: Tiri_97 Start: 59088, Stop: 59390, Start Num: 35

Candidate Starts for Tiri_97:

(29, 59067), (Start: 35 @59088 has 97 MA's), (43, 59163), (75, 59349), (79, 59364),

Gene: TomBrady_62 Start: 41126, Stop: 41452, Start Num: 21

Candidate Starts for TomBrady_62:

(Start: 21 @41126 has 66 MA's), (52, 41321), (65, 41399),

Gene: TootsiePop_1 Start: 42, Stop: 374, Start Num: 27

Candidate Starts for TootsiePop_1:

(15, 9), (20, 15), (Start: 27 @42 has 69 MA's), (41, 120), (51, 213), (56, 237), (64, 285), (74, 339), (78, 354),

Gene: Tootsieroll_1 Start: 41, Stop: 373, Start Num: 27

Candidate Starts for Tootsieroll_1:

(Start: 16 @11 has 1 MA's), (Start: 27 @41 has 69 MA's), (41, 119), (51, 212), (64, 284), (74, 338), (78, 353),

Gene: Topper_96 Start: 59347, Stop: 59649, Start Num: 35

Candidate Starts for Topper_96:

(29, 59326), (Start: 35 @59347 has 97 MA's), (43, 59422), (75, 59608), (79, 59623),

Gene: Totinger_1 Start: 41, Stop: 373, Start Num: 27

Candidate Starts for Totinger_1:

(Start: 16 @11 has 1 MA's), (Start: 27 @41 has 69 MA's), (41, 119), (51, 212), (56, 236), (64, 284), (74, 338), (78, 353),

Gene: TreyKay_98 Start: 59952, Stop: 60254, Start Num: 35

Candidate Starts for TreyKay_98:

(29, 59931), (Start: 35 @59952 has 97 MA's), (43, 60027), (75, 60213), (79, 60228),

Gene: TribelTrouble_97 Start: 61312, Stop: 61599, Start Num: 36

Candidate Starts for TribelTrouble_97:

(10, 61201), (22, 61270), (Start: 27 @61285 has 69 MA's), (Start: 36 @61312 has 19 MA's), (69, 61549), (79, 61573),

Gene: TruffulaTree_98 Start: 59748, Stop: 60050, Start Num: 35

Candidate Starts for TruffulaTree_98:

(29, 59727), (Start: 35 @59748 has 97 MA's), (43, 59823), (75, 60009), (79, 60024),

Gene: Twitch_97 Start: 59350, Stop: 59652, Start Num: 35

Candidate Starts for Twitch_97:

(29, 59329), (Start: 35 @59350 has 97 MA's), (43, 59425), (75, 59611), (79, 59626),

Gene: UncleRicky_1 Start: 41, Stop: 373, Start Num: 27

Candidate Starts for UncleRicky_1:

(Start: 16 @11 has 1 MA's), (Start: 27 @41 has 69 MA's), (41, 119), (51, 212), (64, 284), (74, 338), (78, 353),

Gene: Urkel_98 Start: 60168, Stop: 60470, Start Num: 35

Candidate Starts for Urkel_98:

(29, 60147), (Start: 35 @60168 has 97 MA's), (43, 60243), (75, 60429), (79, 60444),

Gene: Validus_106 Start: 62130, Stop: 62417, Start Num: 35

Candidate Starts for Validus_106:

(Start: 35 @62130 has 97 MA's), (43, 62205), (61, 62322), (67, 62367), (76, 62382), (80, 62403),

Gene: Veliki_97 Start: 59373, Stop: 59675, Start Num: 35

Candidate Starts for Veliki_97:

(29, 59352), (Start: 35 @59373 has 97 MA's), (43, 59448), (75, 59634), (79, 59649),

Gene: Velveteen_1 Start: 41, Stop: 373, Start Num: 27

Candidate Starts for Velveteen_1:

(Start: 16 @11 has 1 MA's), (Start: 27 @41 has 69 MA's), (41, 119), (51, 212), (64, 284), (74, 338), (78, 353),

Gene: Waterfoul_95 Start: 60815, Stop: 61120, Start Num: 31

Candidate Starts for Waterfoul_95:

(Start: 31 @60815 has 20 MA's),

Gene: Whitney_1 Start: 39, Stop: 371, Start Num: 27

Candidate Starts for Whitney_1:

(15, 9), (18, 15), (22, 27), (Start: 27 @39 has 69 MA's), (41, 117), (43, 141), (44, 144), (56, 234), (62, 264), (64, 282), (71, 318), (78, 351),

Gene: Wintermute_94 Start: 57134, Stop: 57439, Start Num: 28

Candidate Starts for Wintermute_94:

(Start: 28 @57134 has 20 MA's), (45, 57239), (79, 57413),

Gene: Ximenita_103 Start: 60672, Stop: 60977, Start Num: 34

Candidate Starts for Ximenita_103:

(Start: 34 @60672 has 20 MA's), (43, 60747), (79, 60951),

Gene: Y10_90 Start: 57078, Stop: 57383, Start Num: 28

Candidate Starts for Y10_90:

(Start: 28 @57078 has 20 MA's), (45, 57183), (79, 57357),

Gene: Y2_90 Start: 57078, Stop: 57383, Start Num: 28

Candidate Starts for Y2_90:

(Start: 28 @57078 has 20 MA's), (45, 57183), (79, 57357),

Gene: Yoshi_1 Start: 38, Stop: 370, Start Num: 27

Candidate Starts for Yoshi_1:

(Start: 16 @11 has 1 MA's), (Start: 27 @38 has 69 MA's), (41, 116), (44, 143), (56, 233), (62, 263), (64, 281), (72, 326), (78, 350),

Gene: YoureAdopted_95 Start: 59143, Stop: 59445, Start Num: 35

Candidate Starts for YoureAdopted_95:

(29, 59122), (Start: 35 @59143 has 97 MA's), (43, 59218), (75, 59404), (79, 59419),

Gene: Yuna_100 Start: 61837, Stop: 62139, Start Num: 33

Candidate Starts for Yuna_100:

(Start: 33 @61837 has 1 MA's), (43, 61912), (75, 62098),

Gene: Yunkel11_101 Start: 60401, Stop: 60688, Start Num: 35

Candidate Starts for Yunkel11_101:

(Start: 35 @60401 has 97 MA's), (67, 60638), (76, 60653), (77, 60656),

Gene: Zabiza_92 Start: 55756, Stop: 56058, Start Num: 35

Candidate Starts for Zabiza_92:

(29, 55735), (Start: 35 @55756 has 97 MA's), (43, 55831), (75, 56017), (79, 56032),

Gene: Zapner_2 Start: 562, Stop: 894, Start Num: 27

Candidate Starts for Zapner_2:

(14, 529), (Start: 27 @562 has 69 MA's), (56, 757), (62, 787), (64, 805), (72, 850), (78, 874),

Gene: Zavala_98 Start: 59608, Stop: 59910, Start Num: 35

Candidate Starts for Zavala_98:

(29, 59587), (Start: 35 @59608 has 97 MA's), (43, 59683), (75, 59869), (79, 59884),

Gene: ZoMa_61 Start: 41125, Stop: 41451, Start Num: 21

Candidate Starts for ZoMa_61:

(Start: 21 @41125 has 66 MA's), (52, 41320), (65, 41398),

Gene: ZoeJ_92 Start: 56879, Stop: 57157, Start Num: 35

Candidate Starts for ZoeJ_92:

(Start: 34 @56876 has 20 MA's), (Start: 35 @56879 has 97 MA's), (46, 56990), (52, 57029), (79, 57137),

Gene: Zombie_62 Start: 41125, Stop: 41451, Start Num: 21

Candidate Starts for Zombie_62:

(Start: 21 @41125 has 66 MA's), (52, 41320), (65, 41398),