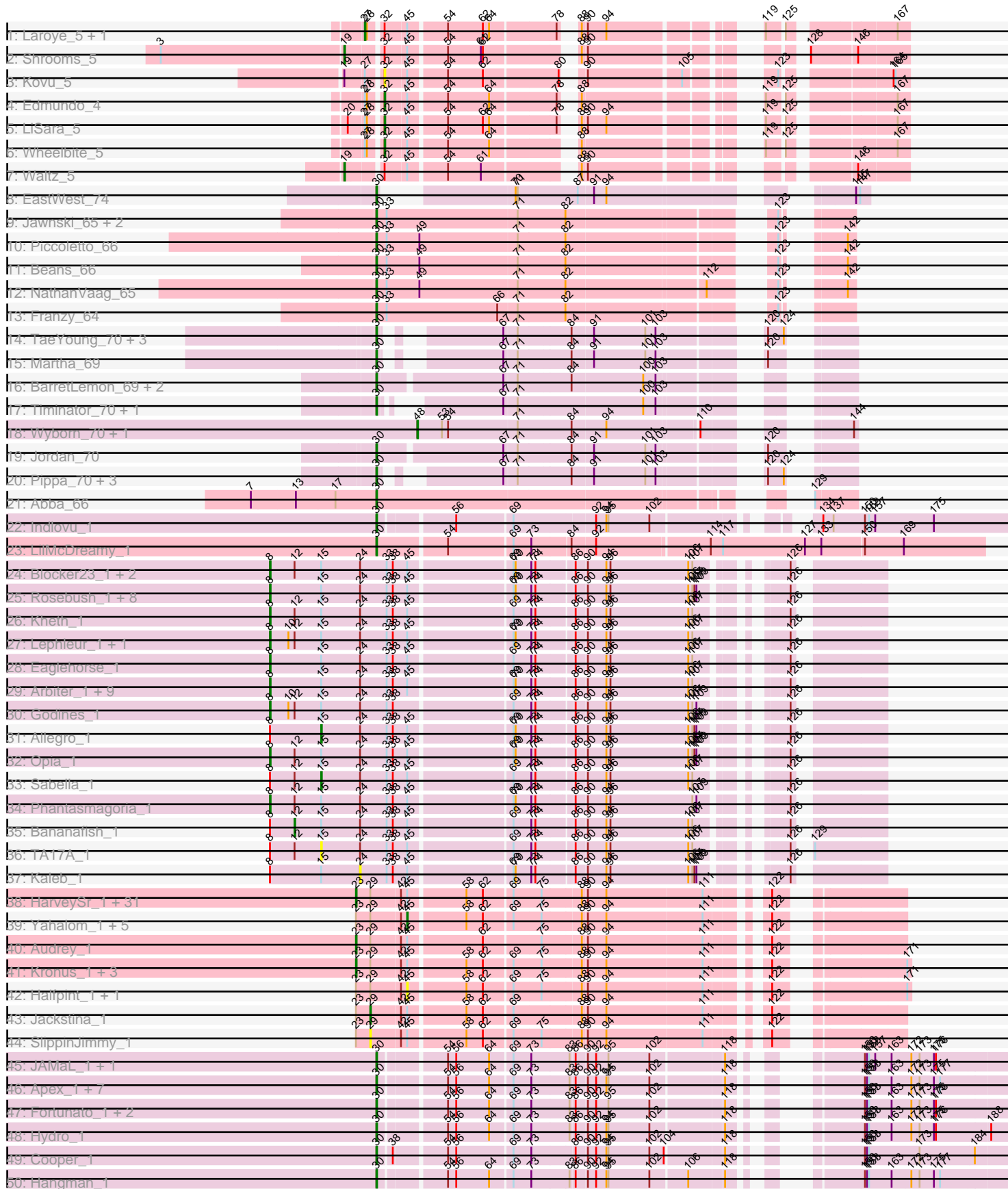
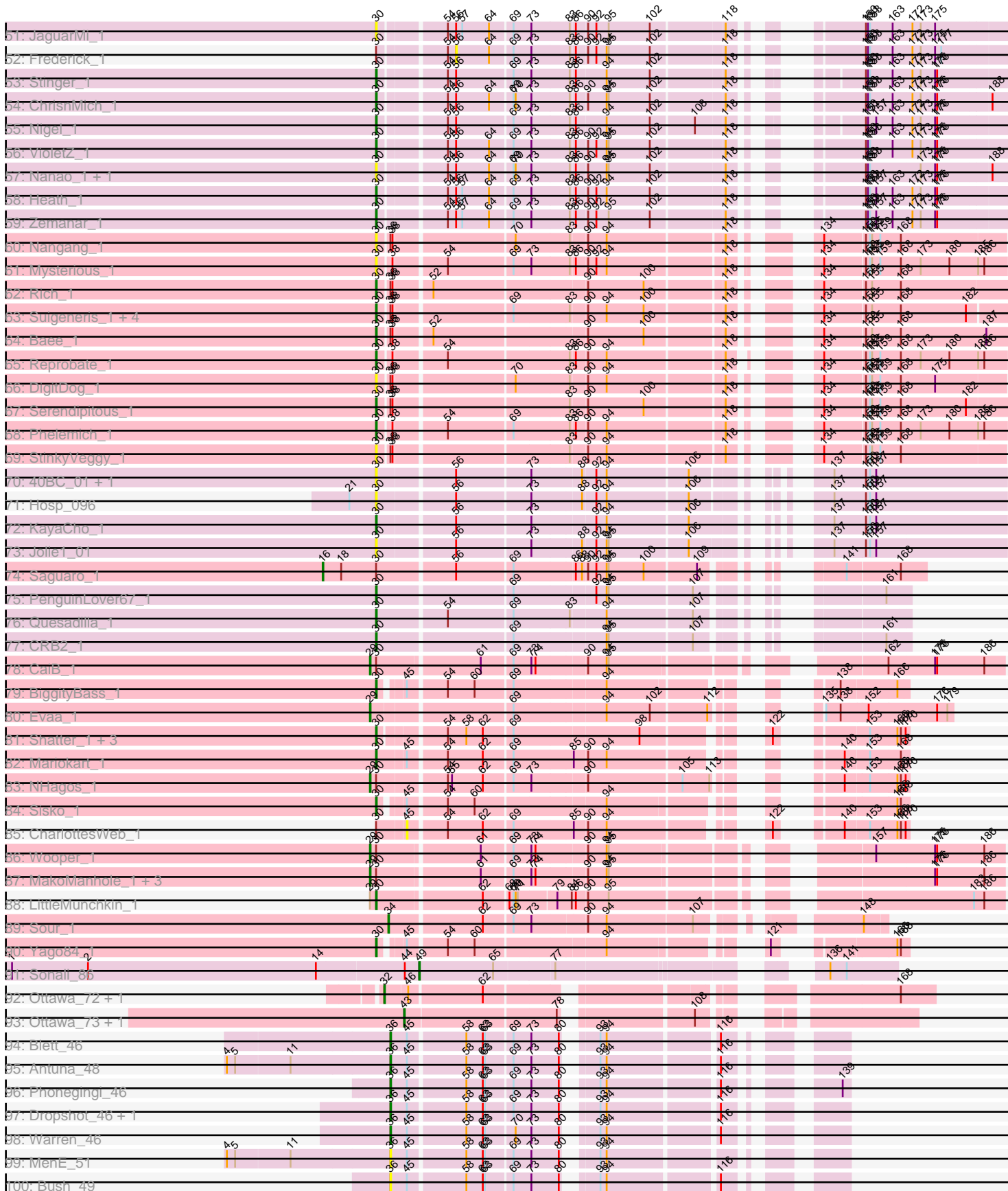


Pham 163349



Pham 163349



Note: Tracks are now grouped by subcluster and scaled. Switching in subcluster is indicated by changes in track color. Track scale is now set by default to display the region 30 bp upstream of start 1 to 30 bp downstream of the last possible start. If this default region is judged to be packed too tightly with annotated starts, the track will be further scaled to only show that region of the ORF with annotated starts. This action will be indicated by adding "Zoomed" to the title. For starts, yellow indicates the location of called starts comprised solely of Glimmer/GeneMark auto-annotations, green indicates the location of called starts with at least 1 manual gene annotation.

Pham 163349 Report

This analysis was run 04/28/24 on database version 559.

Pham number 163349 has 208 members, 31 are drafts.

Phages represented in each track:

- Track 1 : Laroye_5, Salgado_5
- Track 2 : Shrooms_5
- Track 3 : Kovu_5
- Track 4 : Edmundo_4
- Track 5 : LiSara_5
- Track 6 : Wheelbite_5
- Track 7 : Waltz_5
- Track 8 : EastWest_74
- Track 9 : Jawnski_65, King2_64, Brent_66
- Track 10 : Piccoletto_66
- Track 11 : Beans_66
- Track 12 : NathanVaag_65
- Track 13 : Franzy_64
- Track 14 : TaeYoung_70, Grekaycon_70, JKerns_69, BossLady_71
- Track 15 : Martha_69
- Track 16 : BarretLemon_69, GravityBall_69, StevieBAY_70
- Track 17 : Timinator_70, LeeroyJ_70
- Track 18 : Wyborn_70, Sicarius2_71
- Track 19 : Jordan_70
- Track 20 : Pippa_70, Shade_69, Sonny_69, Zartrosa_71
- Track 21 : Abba_66
- Track 22 : Indlovu_1
- Track 23 : LilMcDreamy_1
- Track 24 : Blocker23_1, Laurie_1, Tres_1
- Track 25 : Rosebush_1, Hedgerow_1, Boyle_1, Faze9_1, Brownie5_1, FrenchFry_1, Coffee_1, Tinciduntolum_1, West99_1
- Track 26 : Kheth_1
- Track 27 : Lephleur_1, MasterPo_1
- Track 28 : Eaglehorse_1
- Track 29 : Arbiter_1, Ares_1, Calamitous_1, Qyrzula_1, Glass_1, Rhinoforte_1, LizLemon_1, ItsyBitsy1_1, Holeinone_1, Lars_1
- Track 30 : Godines_1
- Track 31 : Allegro_1
- Track 32 : Opia_1
- Track 33 : Sabella_1
- Track 34 : Phantasmagoria_1
- Track 35 : Bananafish_1

- Track 36 : TA17A_1
- Track 37 : Kaleb_1
- Track 38 : HarveySr_1, Briakila_1, Phlyer_1, Compostia_1, Devonte_1, ChaChing_1, Gadget_1, Deenasa_1, Akoma_1, Neos5_1, MmasiCarm_1, GlenHope_1, SynergyX_1, Rita1961_1, Pipefish_1, Heathcliff_1, Philly_1, Abinghost_1, Marley1013_1, Baloo_1, RagingRooster_1, RomaT_1, Nozo_1, Corofin_1, Obutu_1, Yinz_1, Chandler_1, Athena_1, Gervas_1, OrangeOswald_1, LestyG_1, Daisy_1
- Track 39 : Yahalom_1, Morty007_1, Bernardo_1, Tydolla_1, Phaedrus_1, Kamiyu_1
- Track 40 : Audrey_1
- Track 41 : Kronus_1, Casbah_1, Phayeta_1, Mortcellus_1
- Track 42 : Halfpint_1, Ben11_1
- Track 43 : Jackstina_1
- Track 44 : SlippinJimmy_1
- Track 45 : JAMaL_1, BobbyK_1
- Track 46 : Apex_1, Lolalove_1, Prince_1, Mudslide_1, Waleliano_1, BrownCNA_1, Austelle_1, Mithril_1
- Track 47 : Fortunato_1, Magpie_1, RawrgerThat_1
- Track 48 : Hydro_1
- Track 49 : Cooper_1
- Track 50 : Hangman_1
- Track 51 : JaguarMi_1
- Track 52 : Frederick_1
- Track 53 : Stinger_1
- Track 54 : ChrisnMich_1
- Track 55 : Nigel_1
- Track 56 : VioletZ_1
- Track 57 : Nanao_1, Poster_1
- Track 58 : Heath_1
- Track 59 : Zemanar_1
- Track 60 : Nangang_1
- Track 61 : Mysterious_1
- Track 62 : Rich_1
- Track 63 : Suigeneris_1, EastView9101_1, Acadian_1, SirJeffery_1, Donny_1
- Track 64 : Bae_1
- Track 65 : Reprobate_1
- Track 66 : DigitDog_1
- Track 67 : Serendipitous_1
- Track 68 : Phelemich_1
- Track 69 : StinkyVeggy_1
- Track 70 : 40BC_01, 39HC_01
- Track 71 : Hosp_096
- Track 72 : KayaCho_1
- Track 73 : Jolie1_01
- Track 74 : Saguaro_1
- Track 75 : PenguinLover67_1
- Track 76 : Quesadilla_1
- Track 77 : CRB2_1
- Track 78 : CaiB_1
- Track 79 : BiggityBass_1
- Track 80 : Evaa_1
- Track 81 : Shatter_1, Fresco_1, Axumite_1, Ligma_1
- Track 82 : Mariokart_1

- Track 83 : NHagos_1
- Track 84 : Sisko_1
- Track 85 : CharlottesWeb_1
- Track 86 : Wooper_1
- Track 87 : MakoManhole_1, MossRose_1, CloverMinnie_1, AnarQue_1
- Track 88 : LittleMunchkin_1
- Track 89 : Sour_1
- Track 90 : Yago84_1
- Track 91 : Sonali_86
- Track 92 : Ottawa_72, Kharcho_72
- Track 93 : Ottawa_73, Kharcho_73
- Track 94 : Blett_46
- Track 95 : Antuna_48
- Track 96 : Phonegingi_46
- Track 97 : Dropshot_46, Appa_46
- Track 98 : Warren_46
- Track 99 : MenE_51
- Track 100 : Bush_49
- Track 101 : Pickles13_45
- Track 102 : Bipper_1
- Track 103 : Typha_1
- Track 104 : Hilltopfarm_1
- Track 105 : Cracklewink_1
- Track 106 : TurkishDelight_122
- Track 107 : Jace_85
- Track 108 : Tonitrus_1
- Track 109 : StAugustine_2
- Track 110 : Finch_210

Summary of Final Annotations (See graph section above for start numbers):

The start number called the most often in the published annotations is 30, it was called in 64 of the 177 non-draft genes in the pham.

Genes that call this "Most Annotated" start:

- 39HC_01, 40BC_01, Abba_66, Acadian_1, Apex_1, Austelle_1, Axumite_1, Bae_1, BarretLemon_69, Beans_66, BiggityBass_1, BobbyK_1, BossLady_71, Brent_66, BrownCNA_1, CRB2_1, ChrisnMich_1, Cooper_1, DigitDog_1, Donny_1, EastView9101_1, EastWest_74, Fortunato_1, Franzy_64, Fresco_1, GravityBall_69, Grekaycon_70, Hangman_1, Heath_1, Hosp_096, Hydro_1, Indlovu_1, JAMaL_1, JKerns_69, JaguarMi_1, Jawnski_65, Jolie1_01, Jordan_70, KayaCho_1, King2_64, LeeroyJ_70, Ligma_1, LilMcDreamy_1, LittleMunchkin_1, Lolalove_1, Magpie_1, Mariokart_1, Martha_69, Mithril_1, Mudslide_1, Mysterious_1, Nanao_1, Nangang_1, NathanVaag_65, Nigel_1, PenguinLover67_1, Phelemich_1, Piccoletto_66, Pippa_70, Poster_1, Prince_1, Quesadilla_1, RawrgerThat_1, Reprobate_1, Rich_1, Serendipitous_1, Shade_69, Shatter_1, SirJeffery_1, Sisko_1, Sonny_69, StevieBAY_70, Stinger_1, StinkyVeggy_1, Suigeneris_1, TaeYoung_70, Timinator_70, VioletZ_1, Waleliano_1, Yago84_1, Zartrosa_71, Zemanar_1,

Genes that have the "Most Annotated" start but do not call it:

- AnarQue_1, CaiB_1, CharlottesWeb_1, CloverMinnie_1, Frederick_1, MakoManhole_1, MossRose_1, NHagos_1, Saguaro_1, TurkishDelight_122, Wooper_1,

Genes that do not have the "Most Annotated" start:

- Abinghost_1, Akoma_1, Allegro_1, Antuna_48, Appa_46, Arbiter_1, Ares_1, Athena_1, Audrey_1, Baloo_1, Bananafish_1, Ben11_1, Bernardo_1, Bipper_1, Blett_46, Blocker23_1, Boyle_1, Briakila_1, Brownie5_1, Bush_49, Calamitous_1, Casbah_1, ChaChing_1, Chandler_1, Coffee_1, Compostia_1, Corofin_1, Cracklewink_1, Daisy_1, Deenasa_1, Devonte_1, Dropshot_46, Eaglehorse_1, Edmundo_4, Evaa_1, Faze9_1, Finch_210, FrenchFry_1, Gadget_1, Gervas_1, Glass_1, GlenHope_1, Godines_1, Halfpint_1, HarveySr_1, Heathcliff_1, Hedgerow_1, Hilltopfarm_1, Holeinone_1, ItsyBitsy1_1, Jace_85, Jackstina_1, Kaleb_1, Kamiyu_1, Kharcho_72, Kharcho_73, Kheth_1, Kovu_5, Kronus_1, Laroye_5, Lars_1, Laurie_1, Lephleur_1, LestyG_1, LiSara_5, LizLemon_1, Marley1013_1, MasterPo_1, MenE_51, MmasiCarm_1, Mortcellus_1, Morty007_1, Neos5_1, Nozo_1, Obutu_1, Opia_1, OrangeOswald_1, Ottawa_72, Ottawa_73, Phaedrus_1, Phantasmagoria_1, Phayeta_1, Philly_1, Phlyer_1, Phonegingi_46, Pickles13_45, Pipefish_1, Qyrzula_1, RagingRooster_1, Rhinoforte_1, Rita1961_1, RomaT_1, Rosebush_1, Sabella_1, Salgado_5, Shrooms_5, Sicarius2_71, SlippinJimmy_1, Sonali_86, Sour_1, StAugustine_2, SynergyX_1, TA17A_1, Tinciduntolum_1, Tonitrus_1, Tres_1, Tydolla_1, Typha_1, Waltz_5, Warren_46, West99_1, Wheelbite_5, Wyborn_70, Yahalom_1, Yinz_1,

Summary by start number:

Start 8:

- Found in 34 of 208 (16.3%) of genes in pham
- Manual Annotations of this start: 29 of 177
- Called 85.3% of time when present
- Phage (with cluster) where this start called: Arbiter_1 (B2), Ares_1 (B2), Blocker23_1 (B2), Boyle_1 (B2), Brownie5_1 (B2), Calamitous_1 (B2), Coffee_1 (B2), Eaglehorse_1 (B2), Faze9_1 (B2), FrenchFry_1 (B2), Glass_1 (B2), Godines_1 (B2), Hedgerow_1 (B2), Holeinone_1 (B2), ItsyBitsy1_1 (B2), Kheth_1 (B2), Lars_1 (B2), Laurie_1 (B2), Lephleur_1 (B2), LizLemon_1 (B2), MasterPo_1 (B2), Opia_1 (B2), Phantasmagoria_1 (B2), Qyrzula_1 (B2), Rhinoforte_1 (B2), Rosebush_1 (B2), Tinciduntolum_1 (B2), Tres_1 (B2), West99_1 (B2),

Start 12:

- Found in 12 of 208 (5.8%) of genes in pham
- Manual Annotations of this start: 1 of 177
- Called 8.3% of time when present
- Phage (with cluster) where this start called: Bananafish_1 (B2),

Start 15:

- Found in 34 of 208 (16.3%) of genes in pham
- Manual Annotations of this start: 2 of 177
- Called 8.8% of time when present
- Phage (with cluster) where this start called: Allegro_1 (B2), Sabella_1 (B2), TA17A_1 (B2),

Start 16:

- Found in 1 of 208 (0.5%) of genes in pham

- Manual Annotations of this start: 1 of 177
- Called 100.0% of time when present
- Phage (with cluster) where this start called: Saguaro_1 (B7),

Start 19:

- Found in 3 of 208 (1.4%) of genes in pham
- Manual Annotations of this start: 2 of 177
- Called 66.7% of time when present
- Phage (with cluster) where this start called: Shrooms_5 (AL), Waltz_5 (AL),

Start 23:

- Found in 47 of 208 (22.6%) of genes in pham
- Manual Annotations of this start: 37 of 177
- Called 78.7% of time when present
- Phage (with cluster) where this start called: Abinghost_1 (B3), Akoma_1 (B3), Athena_1 (B3), Audrey_1 (B3), Baloo_1 (B3), Briakila_1 (B3), Casbah_1 (B3), ChaChing_1 (B3), Chandler_1 (B3), Compostia_1 (B3), Corofin_1 (B3), Daisy_1 (B3), Deenasa_1 (B3), Devonte_1 (B3), Gadget_1 (B3), Gervas_1 (B3), GlenHope_1 (B3), HarveySr_1 (B3), Heathcliff_1 (B3), Kronus_1 (B3), LestyG_1 (B3), Marley1013_1 (B3), MmasiCarm_1 (B3), Mortcellus_1 (B3), Neos5_1 (B3), Nozo_1 (B3), Obutu_1 (B3), OrangeOswald_1 (B3), Phayeta_1 (B3), Philly_1 (B3), Phlyer_1 (B3), Pipefish_1 (B3), RagingRooster_1 (B3), Rita1961_1 (B3), RomaT_1 (B3), SynergyX_1 (B3), Yinz_1 (B3),

Start 24:

- Found in 34 of 208 (16.3%) of genes in pham
- No Manual Annotations of this start.
- Called 2.9% of time when present
- Phage (with cluster) where this start called: Kaleb_1 (B2),

Start 25:

- Found in 1 of 208 (0.5%) of genes in pham
- Manual Annotations of this start: 1 of 177
- Called 100.0% of time when present
- Phage (with cluster) where this start called: TurkishDelight_122 (singleton),

Start 26:

- Found in 4 of 208 (1.9%) of genes in pham
- Manual Annotations of this start: 4 of 177
- Called 100.0% of time when present
- Phage (with cluster) where this start called: Bipper_1 (Y), Cracklewink_1 (Y), Hilltopfarm_1 (Y), Typha_1 (Y),

Start 27:

- Found in 6 of 208 (2.9%) of genes in pham
- Manual Annotations of this start: 2 of 177
- Called 33.3% of time when present
- Phage (with cluster) where this start called: Laroye_5 (AL), Salgado_5 (AL),

Start 29:

- Found in 56 of 208 (26.9%) of genes in pham
- Manual Annotations of this start: 8 of 177
- Called 17.9% of time when present

- Phage (with cluster) where this start called: AnarQue_1 (DR), CaiB_1 (DR), CloverMinnie_1 (DR), Evaa_1 (DR), Jackstina_1 (B3), MakoManhole_1 (DR), MossRose_1 (DR), NHagos_1 (DR), SlippinJimmy_1 (B3), Wooper_1 (DR),

Start 30:

- Found in 93 of 208 (44.7%) of genes in pham
- Manual Annotations of this start: 64 of 177
- Called 88.2% of time when present
- Phage (with cluster) where this start called: 39HC_01 (B6), 40BC_01 (B6), Abba_66 (AO3), Acadian_1 (B5), Apex_1 (B4), Austelle_1 (B4), Axumite_1 (DR), Bae_1 (B5), BarretLemon_69 (AO2), Beans_66 (AO1), BiggityBass_1 (DR), BobbyK_1 (B4), BossLady_71 (AO2), Brent_66 (AO1), BrownCNA_1 (B4), CRB2_1 (B9), ChrisnMich_1 (B4), Cooper_1 (B4), DigitDog_1 (B5), Donny_1 (B5), EastView9101_1 (B5), EastWest_74 (AO), Fortunato_1 (B4), Franzy_64 (AO1), Fresco_1 (DR), GravityBall_69 (AO2), Grekaycon_70 (AO2), Hangman_1 (B4), Heath_1 (B4), Hosp_096 (B6), Hydro_1 (B4), Indlovu_1 (B11), JAMaL_1 (B4), JKerns_69 (AO2), JaguarMi_1 (B4), Jawnski_65 (AO1), Jolie1_01 (B6), Jordan_70 (AO2), KayaCho_1 (B6), King2_64 (AO1), LeeroyJ_70 (AO2), Ligma_1 (DR), LilMcDreamy_1 (B12), LittleMunchkin_1 (DR), Lolalove_1 (B4), Magpie_1 (B4), Mariokart_1 (DR), Martha_69 (AO2), Mithril_1 (B4), Mudslide_1 (B4), Mysterious_1 (B5), Nanao_1 (B4), Nangang_1 (B5), NathanVaag_65 (AO1), Nigel_1 (B4), PenguinLover67_1 (B9), Phelemich_1 (B5), Piccoletto_66 (AO1), Pippa_70 (AO2), Poster_1 (B4), Prince_1 (B4), Quesadilla_1 (B9), RawrgerThat_1 (B4), Reprobate_1 (B5), Rich_1 (B5), Serendipitous_1 (B5), Shade_69 (AO2), Shatter_1 (DR), SirJeffery_1 (B5), Sisko_1 (DR), Sonny_69 (AO2), StevieBAY_70 (AO2), Stinger_1 (B4), StinkyVeggy_1 (B5), Suigeneris_1 (B5), TaeYoung_70 (AO2), Timinator_70 (AO2), VioletZ_1 (B4), Waleliano_1 (B4), Yago84_1 (DR), Zartrosa_71 (AO2), Zemanar_1 (B4),

Start 31:

- Found in 1 of 208 (0.5%) of genes in pham
- Manual Annotations of this start: 1 of 177
- Called 100.0% of time when present
- Phage (with cluster) where this start called: Finch_210 (singleton),

Start 32:

- Found in 10 of 208 (4.8%) of genes in pham
- Manual Annotations of this start: 5 of 177
- Called 60.0% of time when present
- Phage (with cluster) where this start called: Edmundo_4 (AL), Kharcho_72 (FM), Kovu_5 (AL), LiSara_5 (AL), Ottawa_72 (FM), Wheelbite_5 (AL),

Start 34:

- Found in 1 of 208 (0.5%) of genes in pham
- Manual Annotations of this start: 1 of 177
- Called 100.0% of time when present
- Phage (with cluster) where this start called: Sour_1 (DR),

Start 36:

- Found in 20 of 208 (9.6%) of genes in pham
- Manual Annotations of this start: 7 of 177
- Called 45.0% of time when present
- Phage (with cluster) where this start called: Antuna_48 (GA), Appa_46 (GA), Blett_46 (GA), Bush_49 (GA), Dropshot_46 (GA), MenE_51 (GA), Phonegingi_46

(GA), Pickles13_45 (GA), Warren_46 (GA),

Start 40:

- Found in 1 of 208 (0.5%) of genes in pham
- No Manual Annotations of this start.
- Called 100.0% of time when present
- Phage (with cluster) where this start called: Tonitrus_1 (singleton),

Start 41:

- Found in 1 of 208 (0.5%) of genes in pham
- Manual Annotations of this start: 1 of 177
- Called 100.0% of time when present
- Phage (with cluster) where this start called: Jace_85 (singleton),

Start 42:

- Found in 48 of 208 (23.1%) of genes in pham
- No Manual Annotations of this start.
- Called 2.1% of time when present
- Phage (with cluster) where this start called: StAugustine_2 (singleton),

Start 43:

- Found in 2 of 208 (1.0%) of genes in pham
- Manual Annotations of this start: 2 of 177
- Called 100.0% of time when present
- Phage (with cluster) where this start called: Kharcho_73 (FM), Ottawa_73 (FM),

Start 45:

- Found in 103 of 208 (49.5%) of genes in pham
- Manual Annotations of this start: 6 of 177
- Called 8.7% of time when present
- Phage (with cluster) where this start called: Ben11_1 (B3), Bernardo_1 (B3), CharlottesWeb_1 (DR), Halfpint_1 (B3), Kamiyu_1 (B3), Morty007_1 (B3), Phaedrus_1 (B3), Tydolla_1 (B3), Yahalom_1 (B3),

Start 48:

- Found in 2 of 208 (1.0%) of genes in pham
- Manual Annotations of this start: 2 of 177
- Called 100.0% of time when present
- Phage (with cluster) where this start called: Sicarius2_71 (AO2), Wyborn_70 (AO2),

Start 49:

- Found in 4 of 208 (1.9%) of genes in pham
- Manual Annotations of this start: 1 of 177
- Called 25.0% of time when present
- Phage (with cluster) where this start called: Sonali_86 (FG),

Start 56:

- Found in 33 of 208 (15.9%) of genes in pham
- No Manual Annotations of this start.
- Called 3.0% of time when present
- Phage (with cluster) where this start called: Frederick_1 (B4),

Summary by clusters:

There are 20 clusters represented in this pham: FG, singleton, B2, DR, B11, AL, AO, B9, B4, B5, B6, B7, B12, AO2, AO1, B3, Y, AO3, GA, FM,

Info for manual annotations of cluster AL:

- Start number 19 was manually annotated 2 times for cluster AL.
- Start number 27 was manually annotated 2 times for cluster AL.
- Start number 32 was manually annotated 3 times for cluster AL.

Info for manual annotations of cluster AO:

- Start number 30 was manually annotated 1 time for cluster AO.

Info for manual annotations of cluster AO1:

- Start number 30 was manually annotated 7 times for cluster AO1.

Info for manual annotations of cluster AO2:

- Start number 30 was manually annotated 14 times for cluster AO2.
- Start number 48 was manually annotated 2 times for cluster AO2.

Info for manual annotations of cluster AO3:

- Start number 30 was manually annotated 1 time for cluster AO3.

Info for manual annotations of cluster B11:

- Start number 30 was manually annotated 1 time for cluster B11.

Info for manual annotations of cluster B12:

- Start number 30 was manually annotated 1 time for cluster B12.

Info for manual annotations of cluster B2:

- Start number 8 was manually annotated 29 times for cluster B2.
- Start number 12 was manually annotated 1 time for cluster B2.
- Start number 15 was manually annotated 2 times for cluster B2.

Info for manual annotations of cluster B3:

- Start number 23 was manually annotated 37 times for cluster B3.
- Start number 29 was manually annotated 1 time for cluster B3.
- Start number 45 was manually annotated 6 times for cluster B3.

Info for manual annotations of cluster B4:

- Start number 30 was manually annotated 20 times for cluster B4.

Info for manual annotations of cluster B5:

- Start number 30 was manually annotated 8 times for cluster B5.

Info for manual annotations of cluster B6:

- Start number 30 was manually annotated 1 time for cluster B6.

Info for manual annotations of cluster B7:

- Start number 16 was manually annotated 1 time for cluster B7.

Info for manual annotations of cluster B9:

- Start number 30 was manually annotated 3 times for cluster B9.

Info for manual annotations of cluster DR:

- Start number 29 was manually annotated 7 times for cluster DR.
- Start number 30 was manually annotated 7 times for cluster DR.
- Start number 34 was manually annotated 1 time for cluster DR.

Info for manual annotations of cluster FG:

- Start number 49 was manually annotated 1 time for cluster FG.

Info for manual annotations of cluster FM:

- Start number 32 was manually annotated 2 times for cluster FM.
- Start number 43 was manually annotated 2 times for cluster FM.

Info for manual annotations of cluster GA:

- Start number 36 was manually annotated 7 times for cluster GA.

Info for manual annotations of cluster Y:

- Start number 26 was manually annotated 4 times for cluster Y.

Gene Information:

Gene: 39HC_01 Start: 1, Stop: 810, Start Num: 30

Candidate Starts for 39HC_01:

(Start: 30 @1 has 64 MA's), (56, 106), (73, 208), (88, 277), (92, 295), (94, 310), (106, 424), (137, 541), (150, 586), (153, 592), (157, 601),

Gene: 40BC_01 Start: 1, Stop: 810, Start Num: 30

Candidate Starts for 40BC_01:

(Start: 30 @1 has 64 MA's), (56, 106), (73, 208), (88, 277), (92, 295), (94, 310), (106, 424), (137, 541), (150, 586), (153, 592), (157, 601),

Gene: Abba_66 Start: 41901, Stop: 42479, Start Num: 30

Candidate Starts for Abba_66:

(7, 41721), (13, 41784), (17, 41841), (Start: 30 @41901 has 64 MA's), (129, 42423),

Gene: Abinghost_1 Start: 1, Stop: 693, Start Num: 23

Candidate Starts for Abinghost_1:

(Start: 23 @1 has 37 MA's), (Start: 29 @22 has 8 MA's), (42, 64), (Start: 45 @73 has 6 MA's), (58, 151), (62, 175), (69, 214), (75, 253), (88, 307), (90, 313), (94, 340), (111, 478), (122, 541),

Gene: Acadian_1 Start: 1, Stop: 816, Start Num: 30

Candidate Starts for Acadian_1:

(Start: 30 @1 has 64 MA's), (Start: 36 @16 has 7 MA's), (38, 19), (69, 178), (83, 256), (90, 277), (94, 304), (100, 358), (118, 463), (134, 538), (150, 595), (155, 604), (168, 646), (182, 739),

Gene: Akoma_1 Start: 1, Stop: 693, Start Num: 23

Candidate Starts for Akoma_1:

(Start: 23 @1 has 37 MA's), (Start: 29 @22 has 8 MA's), (42, 64), (Start: 45 @73 has 6 MA's), (58, 151), (62, 175), (69, 214), (75, 253), (88, 307), (90, 313), (94, 340), (111, 478), (122, 541),

Gene: Allegro_1 Start: 76, Stop: 792, Start Num: 15

Candidate Starts for Allegro_1:

(Start: 8 @1 has 29 MA's), (Start: 15 @76 has 2 MA's), (24, 133), (33, 172), (38, 181), (Start: 45 @202 has 6 MA's), (69, 343), (70, 346), (73, 367), (74, 373), (86, 421), (90, 436), (94, 463), (96, 469), (106, 583), (107, 589), (108, 592), (109, 595), (126, 679),

Gene: AnarQue_1 Start: 1, Stop: 804, Start Num: 29

Candidate Starts for AnarQue_1:

(Start: 29 @1 has 8 MA's), (Start: 30 @10 has 64 MA's), (61, 151), (69, 193), (73, 217), (74, 223), (90, 292), (94, 319), (95, 322), (175, 703), (176, 706), (186, 775),

Gene: Antuna_48 Start: 29370, Stop: 29903, Start Num: 36

Candidate Starts for Antuna_48:

(4, 29136), (5, 29148), (11, 29226), (Start: 36 @29370 has 7 MA's), (Start: 45 @29394 has 6 MA's), (58, 29472), (62, 29496), (63, 29499), (69, 29535), (73, 29559), (80, 29598), (93, 29628), (94, 29637), (116, 29784),

Gene: Apex_1 Start: 1, Stop: 798, Start Num: 30

Candidate Starts for Apex_1:

(Start: 30 @1 has 64 MA's), (54, 88), (56, 100), (64, 148), (69, 178), (73, 202), (83, 256), (86, 262), (90, 277), (92, 289), (94, 304), (95, 307), (102, 367), (118, 466), (150, 577), (151, 580), (153, 583), (163, 616), (172, 643), (173, 655), (175, 676), (177, 685),

Gene: Appa_46 Start: 29135, Stop: 29668, Start Num: 36

Candidate Starts for Appa_46:

(Start: 36 @29135 has 7 MA's), (Start: 45 @29159 has 6 MA's), (58, 29237), (62, 29261), (63, 29264), (69, 29300), (73, 29324), (80, 29363), (93, 29393), (94, 29402), (116, 29549),

Gene: Arbiter_1 Start: 1, Stop: 792, Start Num: 8

Candidate Starts for Arbiter_1:

(Start: 8 @1 has 29 MA's), (Start: 15 @76 has 2 MA's), (24, 133), (33, 172), (38, 181), (Start: 45 @202 has 6 MA's), (69, 343), (70, 346), (73, 367), (74, 373), (86, 421), (90, 436), (94, 463), (96, 469), (106, 583), (107, 589), (126, 679),

Gene: Ares_1 Start: 1, Stop: 792, Start Num: 8

Candidate Starts for Ares_1:

(Start: 8 @1 has 29 MA's), (Start: 15 @76 has 2 MA's), (24, 133), (33, 172), (38, 181), (Start: 45 @202 has 6 MA's), (69, 343), (70, 346), (73, 367), (74, 373), (86, 421), (90, 436), (94, 463), (96, 469), (106, 583), (107, 589), (126, 679),

Gene: Athena_1 Start: 1, Stop: 693, Start Num: 23

Candidate Starts for Athena_1:

(Start: 23 @1 has 37 MA's), (Start: 29 @22 has 8 MA's), (42, 64), (Start: 45 @73 has 6 MA's), (58, 151), (62, 175), (69, 214), (75, 253), (88, 307), (90, 313), (94, 340), (111, 478), (122, 541),

Gene: Audrey_1 Start: 1, Stop: 693, Start Num: 23

Candidate Starts for Audrey_1:

(Start: 23 @1 has 37 MA's), (Start: 29 @22 has 8 MA's), (42, 64), (Start: 45 @73 has 6 MA's), (62, 175), (75, 253), (88, 307), (90, 313), (94, 340), (111, 478), (122, 541),

Gene: Austelle_1 Start: 1, Stop: 798, Start Num: 30

Candidate Starts for Austelle_1:

(Start: 30 @1 has 64 MA's), (54, 88), (56, 100), (64, 148), (69, 178), (73, 202), (83, 256), (86, 262), (90, 277), (92, 289), (94, 304), (95, 307), (102, 367), (118, 466), (150, 577), (151, 580), (153, 583), (163, 616), (172, 643), (173, 655), (175, 676), (177, 685),

Gene: Axumite_1 Start: 1, Stop: 606, Start Num: 30

Candidate Starts for Axumite_1:

(Start: 30 @1 has 64 MA's), (54, 85), (58, 112), (62, 136), (69, 175), (98, 349), (122, 472), (153, 553), (166, 592), (168, 595), (170, 601),

Gene: Bae_1 Start: 1, Stop: 822, Start Num: 30

Candidate Starts for Bae_1:

(Start: 30 @1 has 64 MA's), (Start: 36 @16 has 7 MA's), (38, 19), (52, 67), (90, 277), (100, 358), (118, 463), (134, 538), (150, 595), (155, 604), (168, 646), (187, 769),

Gene: Baloo_1 Start: 1, Stop: 693, Start Num: 23

Candidate Starts for Baloo_1:

(Start: 23 @1 has 37 MA's), (Start: 29 @22 has 8 MA's), (42, 64), (Start: 45 @73 has 6 MA's), (58, 151), (62, 175), (69, 214), (75, 253), (88, 307), (90, 313), (94, 340), (111, 478), (122, 541),

Gene: Bananafish_1 Start: 37, Stop: 792, Start Num: 12

Candidate Starts for Bananafish_1:

(Start: 8 @1 has 29 MA's), (Start: 12 @37 has 1 MA's), (Start: 15 @76 has 2 MA's), (24, 133), (33, 172), (38, 181), (Start: 45 @202 has 6 MA's), (69, 343), (73, 367), (74, 373), (86, 421), (90, 436), (94, 463), (96, 469), (106, 583), (107, 589), (126, 679),

Gene: BarretLemon_69 Start: 44545, Stop: 45120, Start Num: 30

Candidate Starts for BarretLemon_69:

(Start: 30 @44545 has 64 MA's), (67, 44716), (71, 44734), (84, 44809), (100, 44911), (103, 44929),

Gene: Beans_66 Start: 44464, Stop: 45042, Start Num: 30

Candidate Starts for Beans_66:

(Start: 30 @44464 has 64 MA's), (33, 44479), (Start: 49 @44527 has 1 MA's), (71, 44668), (82, 44737), (123, 44980), (142, 45031),

Gene: Ben11_1 Start: 73, Stop: 699, Start Num: 45

Candidate Starts for Ben11_1:

(Start: 23 @1 has 37 MA's), (Start: 29 @22 has 8 MA's), (42, 64), (Start: 45 @73 has 6 MA's), (58, 151), (62, 175), (69, 214), (75, 253), (88, 307), (90, 313), (94, 340), (111, 478), (122, 541), (171, 694),

Gene: Bernardo_1 Start: 73, Stop: 693, Start Num: 45

Candidate Starts for Bernardo_1:

(Start: 23 @1 has 37 MA's), (Start: 29 @22 has 8 MA's), (42, 64), (Start: 45 @73 has 6 MA's), (58, 151), (62, 175), (69, 214), (75, 253), (88, 307), (90, 313), (94, 340), (111, 478), (122, 541),

Gene: BiggityBass_1 Start: 1, Stop: 600, Start Num: 30

Candidate Starts for BiggityBass_1:

(Start: 30 @1 has 64 MA's), (Start: 45 @28 has 6 MA's), (54, 79), (60, 118), (69, 169), (94, 295), (138, 508), (166, 586),

Gene: Bipper_1 Start: 202, Stop: 861, Start Num: 26

Candidate Starts for Bipper_1:

(6, 25), (Start: 26 @202 has 4 MA's), (39, 247), (47, 271), (59, 352), (61, 364), (62, 367), (69, 406), (73, 430), (81, 472), (90, 481), (99, 559), (102, 571), (132, 763), (134, 766), (145, 814), (158, 844),

Gene: Blett_46 Start: 29321, Stop: 29854, Start Num: 36

Candidate Starts for Blett_46:

(Start: 36 @29321 has 7 MA's), (Start: 45 @29345 has 6 MA's), (58, 29423), (62, 29447), (63, 29450), (69, 29486), (73, 29510), (80, 29549), (93, 29579), (94, 29588), (116, 29735),

Gene: Blocker23_1 Start: 1, Stop: 792, Start Num: 8

Candidate Starts for Blocker23_1:

(Start: 8 @1 has 29 MA's), (Start: 12 @37 has 1 MA's), (Start: 15 @76 has 2 MA's), (24, 133), (33, 172), (38, 181), (Start: 45 @202 has 6 MA's), (69, 343), (70, 346), (73, 367), (74, 373), (86, 421), (90, 436), (94, 463), (96, 469), (106, 583), (107, 589), (126, 679),

Gene: BobbyK_1 Start: 1, Stop: 798, Start Num: 30

Candidate Starts for BobbyK_1:

(Start: 30 @1 has 64 MA's), (54, 88), (56, 100), (64, 148), (69, 178), (73, 202), (83, 256), (86, 262), (90, 277), (92, 289), (95, 307), (102, 367), (118, 466), (150, 577), (151, 580), (153, 583), (157, 592), (163, 616), (172, 643), (173, 655), (175, 676), (176, 679),

Gene: BossLady_71 Start: 45159, Stop: 45689, Start Num: 30

Candidate Starts for BossLady_71:

(Start: 30 @45159 has 64 MA's), (67, 45285), (71, 45303), (84, 45378), (91, 45408), (101, 45483), (103, 45498), (120, 45606), (124, 45627),

Gene: Boyle_1 Start: 1, Stop: 792, Start Num: 8

Candidate Starts for Boyle_1:

(Start: 8 @1 has 29 MA's), (Start: 15 @76 has 2 MA's), (24, 133), (33, 172), (38, 181), (Start: 45 @202 has 6 MA's), (69, 343), (70, 346), (73, 367), (74, 373), (86, 421), (90, 436), (94, 463), (96, 469), (106, 583), (107, 589), (108, 592), (109, 595), (126, 679),

Gene: Brent_66 Start: 44549, Stop: 45127, Start Num: 30

Candidate Starts for Brent_66:

(Start: 30 @44549 has 64 MA's), (33, 44564), (71, 44753), (82, 44822), (123, 45065),

Gene: Briakila_1 Start: 1, Stop: 693, Start Num: 23

Candidate Starts for Briakila_1:

(Start: 23 @1 has 37 MA's), (Start: 29 @22 has 8 MA's), (42, 64), (Start: 45 @73 has 6 MA's), (58, 151), (62, 175), (69, 214), (75, 253), (88, 307), (90, 313), (94, 340), (111, 478), (122, 541),

Gene: BrownCNA_1 Start: 1, Stop: 798, Start Num: 30

Candidate Starts for BrownCNA_1:

(Start: 30 @1 has 64 MA's), (54, 88), (56, 100), (64, 148), (69, 178), (73, 202), (83, 256), (86, 262), (90, 277), (92, 289), (94, 304), (95, 307), (102, 367), (118, 466), (150, 577), (151, 580), (153, 583), (163, 616), (172, 643), (173, 655), (175, 676), (177, 685),

Gene: Brownie5_1 Start: 1, Stop: 792, Start Num: 8

Candidate Starts for Brownie5_1:

(Start: 8 @1 has 29 MA's), (Start: 15 @76 has 2 MA's), (24, 133), (33, 172), (38, 181), (Start: 45 @202 has 6 MA's), (69, 343), (70, 346), (73, 367), (74, 373), (86, 421), (90, 436), (94, 463), (96, 469), (106, 583), (107, 589), (108, 592), (109, 595), (126, 679),

Gene: Bush_49 Start: 29269, Stop: 29802, Start Num: 36

Candidate Starts for Bush_49:

(Start: 36 @29269 has 7 MA's), (Start: 45 @29293 has 6 MA's), (58, 29371), (62, 29395), (63, 29398), (69, 29434), (73, 29458), (80, 29497), (93, 29527), (94, 29536), (116, 29683),

Gene: CRB2_1 Start: 1, Stop: 633, Start Num: 30

Candidate Starts for CRB2_1:

(Start: 30 @1 has 64 MA's), (69, 187), (94, 313), (95, 316), (107, 433), (161, 601),

Gene: CaiB_1 Start: 1, Stop: 804, Start Num: 29

Candidate Starts for CaiB_1:

(Start: 29 @1 has 8 MA's), (Start: 30 @10 has 64 MA's), (61, 151), (69, 193), (73, 217), (74, 223), (90, 292), (94, 319), (95, 322), (162, 637), (175, 703), (176, 706), (186, 775),

Gene: Calamitous_1 Start: 1, Stop: 792, Start Num: 8

Candidate Starts for Calamitous_1:

(Start: 8 @1 has 29 MA's), (Start: 15 @76 has 2 MA's), (24, 133), (33, 172), (38, 181), (Start: 45 @202 has 6 MA's), (69, 343), (70, 346), (73, 367), (74, 373), (86, 421), (90, 436), (94, 463), (96, 469), (106, 583), (107, 589), (126, 679),

Gene: Casbah_1 Start: 1, Stop: 699, Start Num: 23

Candidate Starts for Casbah_1:

(Start: 23 @1 has 37 MA's), (Start: 29 @22 has 8 MA's), (42, 64), (Start: 45 @73 has 6 MA's), (58, 151), (62, 175), (69, 214), (75, 253), (88, 307), (90, 313), (94, 340), (111, 478), (122, 541), (171, 694),

Gene: ChaChing_1 Start: 1, Stop: 693, Start Num: 23

Candidate Starts for ChaChing_1:

(Start: 23 @1 has 37 MA's), (Start: 29 @22 has 8 MA's), (42, 64), (Start: 45 @73 has 6 MA's), (58, 151), (62, 175), (69, 214), (75, 253), (88, 307), (90, 313), (94, 340), (111, 478), (122, 541),

Gene: Chandler_1 Start: 1, Stop: 693, Start Num: 23

Candidate Starts for Chandler_1:

(Start: 23 @1 has 37 MA's), (Start: 29 @22 has 8 MA's), (42, 64), (Start: 45 @73 has 6 MA's), (58, 151), (62, 175), (69, 214), (75, 253), (88, 307), (90, 313), (94, 340), (111, 478), (122, 541),

Gene: CharlottesWeb_1 Start: 40, Stop: 612, Start Num: 45

Candidate Starts for CharlottesWeb_1:

(Start: 30 @1 has 64 MA's), (Start: 45 @40 has 6 MA's), (54, 91), (62, 142), (69, 181), (85, 262), (90, 280), (94, 307), (122, 478), (140, 526), (153, 559), (166, 598), (168, 601), (170, 607),

Gene: ChrisnMich_1 Start: 1, Stop: 798, Start Num: 30

Candidate Starts for ChrisnMich_1:

(Start: 30 @1 has 64 MA's), (54, 88), (56, 100), (64, 148), (69, 178), (70, 181), (73, 202), (83, 256), (86, 262), (90, 277), (94, 304), (95, 307), (102, 367), (118, 466), (150, 577), (151, 580), (153, 583), (163, 616), (172, 643), (173, 655), (175, 676), (176, 679), (188, 754),

Gene: CloverMinnie_1 Start: 1, Stop: 804, Start Num: 29

Candidate Starts for CloverMinnie_1:

(Start: 29 @1 has 8 MA's), (Start: 30 @10 has 64 MA's), (61, 151), (69, 193), (73, 217), (74, 223), (90, 292), (94, 319), (95, 322), (175, 703), (176, 706), (186, 775),

Gene: Coffee_1 Start: 1, Stop: 792, Start Num: 8

Candidate Starts for Coffee_1:

(Start: 8 @1 has 29 MA's), (Start: 15 @76 has 2 MA's), (24, 133), (33, 172), (38, 181), (Start: 45 @202 has 6 MA's), (69, 343), (70, 346), (73, 367), (74, 373), (86, 421), (90, 436), (94, 463), (96, 469), (106, 583), (107, 589), (108, 592), (109, 595), (126, 679),

Gene: Compostia_1 Start: 1, Stop: 693, Start Num: 23

Candidate Starts for Compostia_1:

(Start: 23 @1 has 37 MA's), (Start: 29 @22 has 8 MA's), (42, 64), (Start: 45 @73 has 6 MA's), (58, 151), (62, 175), (69, 214), (75, 253), (88, 307), (90, 313), (94, 340), (111, 478), (122, 541),

Gene: Cooper_1 Start: 1, Stop: 798, Start Num: 30

Candidate Starts for Cooper_1:

(Start: 30 @1 has 64 MA's), (38, 19), (54, 88), (56, 100), (69, 178), (73, 202), (86, 262), (90, 277), (92, 289), (94, 304), (95, 307), (102, 367), (104, 388), (118, 466), (150, 577), (151, 580), (153, 583), (173, 655), (184, 733),

Gene: Corofin_1 Start: 1, Stop: 693, Start Num: 23

Candidate Starts for Corofin_1:

(Start: 23 @1 has 37 MA's), (Start: 29 @22 has 8 MA's), (42, 64), (Start: 45 @73 has 6 MA's), (58, 151), (62, 175), (69, 214), (75, 253), (88, 307), (90, 313), (94, 340), (111, 478), (122, 541),

Gene: Cracklewink_1 Start: 202, Stop: 861, Start Num: 26

Candidate Starts for Cracklewink_1:

(6, 25), (Start: 26 @202 has 4 MA's), (39, 247), (47, 271), (57, 337), (59, 352), (61, 364), (62, 367), (69, 406), (73, 430), (81, 472), (90, 481), (99, 559), (102, 571), (132, 763), (134, 766), (145, 814), (158, 844),

Gene: Daisy_1 Start: 1, Stop: 693, Start Num: 23

Candidate Starts for Daisy_1:

(Start: 23 @1 has 37 MA's), (Start: 29 @22 has 8 MA's), (42, 64), (Start: 45 @73 has 6 MA's), (58, 151), (62, 175), (69, 214), (75, 253), (88, 307), (90, 313), (94, 340), (111, 478), (122, 541),

Gene: Deenasa_1 Start: 1, Stop: 693, Start Num: 23

Candidate Starts for Deenasa_1:

(Start: 23 @1 has 37 MA's), (Start: 29 @22 has 8 MA's), (42, 64), (Start: 45 @73 has 6 MA's), (58, 151), (62, 175), (69, 214), (75, 253), (88, 307), (90, 313), (94, 340), (111, 478), (122, 541),

Gene: Devonte_1 Start: 1, Stop: 693, Start Num: 23

Candidate Starts for Devonte_1:

(Start: 23 @1 has 37 MA's), (Start: 29 @22 has 8 MA's), (42, 64), (Start: 45 @73 has 6 MA's), (58, 151), (62, 175), (69, 214), (75, 253), (88, 307), (90, 313), (94, 340), (111, 478), (122, 541),

Gene: DigitDog_1 Start: 1, Stop: 807, Start Num: 30

Candidate Starts for DigitDog_1:

(Start: 30 @1 has 64 MA's), (Start: 36 @16 has 7 MA's), (38, 19), (70, 181), (83, 256), (90, 277), (94, 304), (118, 463), (134, 538), (150, 595), (153, 601), (155, 604), (159, 616), (168, 646), (175, 694),

Gene: Donny_1 Start: 1, Stop: 816, Start Num: 30

Candidate Starts for Donny_1:

(Start: 30 @1 has 64 MA's), (Start: 36 @16 has 7 MA's), (38, 19), (69, 178), (83, 256), (90, 277), (94, 304), (100, 358), (118, 463), (134, 538), (150, 595), (155, 604), (168, 646), (182, 739),

Gene: Dropshot_46 Start: 28970, Stop: 29503, Start Num: 36

Candidate Starts for Dropshot_46:

(Start: 36 @28970 has 7 MA's), (Start: 45 @28994 has 6 MA's), (58, 29072), (62, 29096), (63, 29099), (69, 29135), (73, 29159), (80, 29198), (93, 29228), (94, 29237), (116, 29384),

Gene: Eaglehorse_1 Start: 1, Stop: 792, Start Num: 8

Candidate Starts for Eaglehorse_1:

(Start: 8 @1 has 29 MA's), (Start: 15 @76 has 2 MA's), (24, 133), (33, 172), (38, 181), (Start: 45 @202 has 6 MA's), (69, 343), (73, 367), (74, 373), (86, 421), (90, 436), (94, 463), (96, 469), (106, 583), (107, 589), (126, 679),

Gene: EastView9101_1 Start: 1, Stop: 816, Start Num: 30

Candidate Starts for EastView9101_1:

(Start: 30 @1 has 64 MA's), (Start: 36 @16 has 7 MA's), (38, 19), (69, 178), (83, 256), (90, 277), (94, 304), (100, 358), (118, 463), (134, 538), (150, 595), (155, 604), (168, 646), (182, 739),

Gene: EastWest_74 Start: 43726, Stop: 44280, Start Num: 30

Candidate Starts for EastWest_74:

(Start: 30 @43726 has 64 MA's), (70, 43861), (71, 43864), (87, 43951), (91, 43972), (94, 43990), (145, 44260), (147, 44266),

Gene: Edmundo_4 Start: 3516, Stop: 4121, Start Num: 32

Candidate Starts for Edmundo_4:

(Start: 27 @3498 has 2 MA's), (28, 3501), (Start: 32 @3516 has 5 MA's), (Start: 45 @3546 has 6 MA's), (54, 3597), (64, 3657), (78, 3747), (88, 3756), (119, 3951), (125, 3972), (167, 4104),

Gene: Evaa_1 Start: 1, Stop: 699, Start Num: 29

Candidate Starts for Evaa_1:

(Start: 29 @1 has 8 MA's), (69, 190), (94, 316), (102, 379), (112, 457), (135, 517), (138, 538), (152, 577), (176, 676), (179, 691),

Gene: Faze9_1 Start: 1, Stop: 792, Start Num: 8

Candidate Starts for Faze9_1:

(Start: 8 @1 has 29 MA's), (Start: 15 @76 has 2 MA's), (24, 133), (33, 172), (38, 181), (Start: 45 @202 has 6 MA's), (69, 343), (70, 346), (73, 367), (74, 373), (86, 421), (90, 436), (94, 463), (96, 469), (106, 583), (107, 589), (108, 592), (109, 595), (126, 679),

Gene: Finch_210 Start: 122277, Stop: 122888, Start Num: 31

Candidate Starts for Finch_210:

(Start: 31 @122277 has 1 MA's), (35, 122289), (37, 122292), (50, 122322), (53, 122343), (61, 122400), (69, 122442), (73, 122466), (89, 122535), (90, 122541), (94, 122568), (126, 122775), (130, 122787), (134, 122796),

Gene: Fortunato_1 Start: 1, Stop: 798, Start Num: 30

Candidate Starts for Fortunato_1:

(Start: 30 @1 has 64 MA's), (54, 88), (56, 100), (64, 148), (69, 178), (73, 202), (83, 256), (86, 262), (90, 277), (92, 289), (95, 307), (102, 367), (118, 466), (150, 577), (151, 580), (153, 583), (163, 616), (172, 643), (173, 655), (175, 676), (176, 679),

Gene: Franzy_64 Start: 44565, Stop: 45143, Start Num: 30

Candidate Starts for Franzy_64:

(Start: 30 @44565 has 64 MA's), (33, 44580), (66, 44742), (71, 44769), (82, 44838), (123, 45081),

Gene: Frederick_1 Start: 100, Stop: 798, Start Num: 56

Candidate Starts for Frederick_1:

(Start: 30 @1 has 64 MA's), (54, 88), (56, 100), (64, 148), (69, 178), (73, 202), (83, 256), (86, 262), (90, 277), (92, 289), (94, 304), (95, 307), (102, 367), (118, 466), (150, 577), (151, 580), (153, 583), (163, 616), (172, 643), (173, 655), (175, 676), (177, 685),

Gene: FrenchFry_1 Start: 1, Stop: 792, Start Num: 8

Candidate Starts for FrenchFry_1:

(Start: 8 @1 has 29 MA's), (Start: 15 @76 has 2 MA's), (24, 133), (33, 172), (38, 181), (Start: 45 @202 has 6 MA's), (69, 343), (70, 346), (73, 367), (74, 373), (86, 421), (90, 436), (94, 463), (96, 469), (106, 583), (107, 589), (108, 592), (109, 595), (126, 679),

Gene: Fresco_1 Start: 1, Stop: 606, Start Num: 30

Candidate Starts for Fresco_1:

(Start: 30 @1 has 64 MA's), (54, 85), (58, 112), (62, 136), (69, 175), (98, 349), (122, 472), (153, 553), (166, 592), (168, 595), (170, 601),

Gene: Gadget_1 Start: 1, Stop: 693, Start Num: 23

Candidate Starts for Gadget_1:

(Start: 23 @1 has 37 MA's), (Start: 29 @22 has 8 MA's), (42, 64), (Start: 45 @73 has 6 MA's), (58, 151), (62, 175), (69, 214), (75, 253), (88, 307), (90, 313), (94, 340), (111, 478), (122, 541),

Gene: Gervas_1 Start: 1, Stop: 693, Start Num: 23

Candidate Starts for Gervas_1:

(Start: 23 @1 has 37 MA's), (Start: 29 @22 has 8 MA's), (42, 64), (Start: 45 @73 has 6 MA's), (58, 151), (62, 175), (69, 214), (75, 253), (88, 307), (90, 313), (94, 340), (111, 478), (122, 541),

Gene: Glass_1 Start: 1, Stop: 792, Start Num: 8

Candidate Starts for Glass_1:

(Start: 8 @1 has 29 MA's), (Start: 15 @76 has 2 MA's), (24, 133), (33, 172), (38, 181), (Start: 45 @202 has 6 MA's), (69, 343), (70, 346), (73, 367), (74, 373), (86, 421), (90, 436), (94, 463), (96, 469), (106, 583), (107, 589), (126, 679),

Gene: GlenHope_1 Start: 1, Stop: 693, Start Num: 23

Candidate Starts for GlenHope_1:

(Start: 23 @1 has 37 MA's), (Start: 29 @22 has 8 MA's), (42, 64), (Start: 45 @73 has 6 MA's), (58, 151), (62, 175), (69, 214), (75, 253), (88, 307), (90, 313), (94, 340), (111, 478), (122, 541),

Gene: Godines_1 Start: 1, Stop: 792, Start Num: 8

Candidate Starts for Godines_1:

(Start: 8 @1 has 29 MA's), (10, 28), (Start: 12 @37 has 1 MA's), (Start: 15 @76 has 2 MA's), (24, 133), (33, 172), (38, 181), (69, 343), (73, 367), (74, 373), (86, 421), (90, 436), (94, 463), (96, 469), (106, 583), (107, 589), (109, 595), (126, 679),

Gene: GravityBall_69 Start: 44845, Stop: 45375, Start Num: 30

Candidate Starts for GravityBall_69:

(Start: 30 @44845 has 64 MA's), (67, 44971), (71, 44989), (84, 45064), (100, 45166), (103, 45184),

Gene: Grekaycon_70 Start: 45072, Stop: 45602, Start Num: 30

Candidate Starts for Grekaycon_70:

(Start: 30 @45072 has 64 MA's), (67, 45198), (71, 45216), (84, 45291), (91, 45321), (101, 45396), (103, 45411), (120, 45519), (124, 45540),

Gene: Halfpint_1 Start: 73, Stop: 699, Start Num: 45

Candidate Starts for Halfpint_1:

(Start: 23 @1 has 37 MA's), (Start: 29 @22 has 8 MA's), (42, 64), (Start: 45 @73 has 6 MA's), (58, 151), (62, 175), (69, 214), (75, 253), (88, 307), (90, 313), (94, 340), (111, 478), (122, 541), (171, 694),

Gene: Hangman_1 Start: 1, Stop: 798, Start Num: 30

Candidate Starts for Hangman_1:

(Start: 30 @1 has 64 MA's), (54, 88), (56, 100), (64, 148), (69, 178), (73, 202), (83, 256), (86, 262), (90, 277), (92, 289), (94, 304), (95, 307), (102, 367), (106, 418), (118, 466), (150, 577), (151, 580), (153, 583), (163, 616), (172, 643), (173, 655), (175, 676), (177, 685),

Gene: HarveySr_1 Start: 1, Stop: 693, Start Num: 23

Candidate Starts for HarveySr_1:

(Start: 23 @1 has 37 MA's), (Start: 29 @22 has 8 MA's), (42, 64), (Start: 45 @73 has 6 MA's), (58, 151), (62, 175), (69, 214), (75, 253), (88, 307), (90, 313), (94, 340), (111, 478), (122, 541),

Gene: Heath_1 Start: 1, Stop: 798, Start Num: 30

Candidate Starts for Heath_1:

(Start: 30 @1 has 64 MA's), (54, 88), (56, 100), (57, 109), (64, 148), (69, 178), (73, 202), (83, 256), (86, 262), (90, 277), (92, 289), (94, 304), (102, 367), (118, 466), (150, 577), (151, 580), (153, 583), (157, 592), (163, 616), (172, 643), (173, 655), (175, 676), (176, 679),

Gene: Heathcliff_1 Start: 1, Stop: 693, Start Num: 23

Candidate Starts for Heathcliff_1:

(Start: 23 @1 has 37 MA's), (Start: 29 @22 has 8 MA's), (42, 64), (Start: 45 @73 has 6 MA's), (58, 151), (62, 175), (69, 214), (75, 253), (88, 307), (90, 313), (94, 340), (111, 478), (122, 541),

Gene: Hedgerow_1 Start: 1, Stop: 792, Start Num: 8

Candidate Starts for Hedgerow_1:

(Start: 8 @1 has 29 MA's), (Start: 15 @76 has 2 MA's), (24, 133), (33, 172), (38, 181), (Start: 45 @202 has 6 MA's), (69, 343), (70, 346), (73, 367), (74, 373), (86, 421), (90, 436), (94, 463), (96, 469), (106, 583), (107, 589), (108, 592), (109, 595), (126, 679),

Gene: Hilltopfarm_1 Start: 202, Stop: 861, Start Num: 26

Candidate Starts for Hilltopfarm_1:

(Start: 26 @202 has 4 MA's), (33, 235), (39, 247), (59, 352), (62, 367), (69, 406), (70, 409), (73, 430), (75, 445), (90, 481), (99, 559), (102, 571), (115, 652), (131, 760), (132, 763), (134, 766), (145, 814), (160, 850),

Gene: Holeinone_1 Start: 1, Stop: 792, Start Num: 8

Candidate Starts for Holeinone_1:

(Start: 8 @1 has 29 MA's), (Start: 15 @76 has 2 MA's), (24, 133), (33, 172), (38, 181), (Start: 45 @202 has 6 MA's), (69, 343), (70, 346), (73, 367), (74, 373), (86, 421), (90, 436), (94, 463), (96, 469), (106, 583), (107, 589), (126, 679),

Gene: Hosp_096 Start: 68870, Stop: 69679, Start Num: 30

Candidate Starts for Hosp_096:

(21, 68831), (Start: 30 @68870 has 64 MA's), (56, 68975), (73, 69077), (88, 69146), (92, 69164), (94, 69179), (106, 69293), (137, 69410), (150, 69455), (153, 69461), (157, 69470),

Gene: Hydro_1 Start: 1, Stop: 798, Start Num: 30

Candidate Starts for Hydro_1:

(Start: 30 @1 has 64 MA's), (54, 88), (56, 100), (64, 148), (69, 178), (73, 202), (83, 256), (86, 262), (90, 277), (92, 289), (94, 304), (95, 307), (102, 367), (118, 466), (150, 577), (151, 580), (153, 583), (163, 616), (172, 643), (173, 655), (175, 676), (176, 679), (188, 754),

Gene: Indlovu_1 Start: 1, Stop: 825, Start Num: 30

Candidate Starts for Indlovu_1:

(Start: 30 @1 has 64 MA's), (56, 100), (69, 178), (92, 289), (94, 304), (95, 307), (102, 367), (134, 538), (137, 553), (150, 598), (153, 604), (157, 613), (175, 697),

Gene: ItsyBitsy1_1 Start: 1, Stop: 792, Start Num: 8

Candidate Starts for ItsyBitsy1_1:

(Start: 8 @1 has 29 MA's), (Start: 15 @76 has 2 MA's), (24, 133), (33, 172), (38, 181), (Start: 45 @202 has 6 MA's), (69, 343), (70, 346), (73, 367), (74, 373), (86, 421), (90, 436), (94, 463), (96, 469), (106, 583), (107, 589), (126, 679),

Gene: JAMaL_1 Start: 1, Stop: 798, Start Num: 30

Candidate Starts for JAMaL_1:

(Start: 30 @1 has 64 MA's), (54, 88), (56, 100), (64, 148), (69, 178), (73, 202), (83, 256), (86, 262), (90, 277), (92, 289), (95, 307), (102, 367), (118, 466), (150, 577), (151, 580), (153, 583), (157, 592), (163, 616), (172, 643), (173, 655), (175, 676), (176, 679),

Gene: JKerns_69 Start: 45051, Stop: 45626, Start Num: 30

Candidate Starts for JKerns_69:

(Start: 30 @45051 has 64 MA's), (67, 45222), (71, 45240), (84, 45315), (91, 45345), (101, 45420), (103, 45435), (120, 45543), (124, 45564),

Gene: Jace_85 Start: 47046, Stop: 47594, Start Num: 41

Candidate Starts for Jace_85:

(Start: 41 @47046 has 1 MA's), (69, 47202), (72, 47223), (94, 47304), (95, 47307), (102, 47367), (143, 47559), (149, 47577), (154, 47586), (156, 47589),

Gene: Jackstina_1 Start: 22, Stop: 693, Start Num: 29

Candidate Starts for Jackstina_1:

(Start: 23 @1 has 37 MA's), (Start: 29 @22 has 8 MA's), (42, 64), (Start: 45 @73 has 6 MA's), (58, 151), (62, 175), (69, 214), (88, 307), (90, 313), (94, 340), (111, 478), (122, 541),

Gene: JaguarMi_1 Start: 1, Stop: 798, Start Num: 30

Candidate Starts for JaguarMi_1:

(Start: 30 @1 has 64 MA's), (54, 88), (56, 100), (57, 109), (64, 148), (69, 178), (73, 202), (83, 256), (86, 262), (90, 277), (92, 289), (95, 307), (102, 367), (118, 466), (150, 577), (151, 580), (153, 583), (163, 616), (172, 643), (173, 655), (175, 676),

Gene: Jawnski_65 Start: 44074, Stop: 44652, Start Num: 30

Candidate Starts for Jawnski_65:

(Start: 30 @44074 has 64 MA's), (33, 44089), (71, 44278), (82, 44347), (123, 44590),

Gene: Jolie1_01 Start: 1, Stop: 810, Start Num: 30

Candidate Starts for Jolie1_01:

(Start: 30 @1 has 64 MA's), (56, 106), (73, 208), (88, 277), (92, 295), (94, 310), (95, 313), (106, 424), (137, 541), (150, 586), (153, 592), (157, 601),

Gene: Jordan_70 Start: 45176, Stop: 45751, Start Num: 30

Candidate Starts for Jordan_70:

(Start: 30 @45176 has 64 MA's), (67, 45347), (71, 45365), (84, 45440), (91, 45470), (101, 45545), (103, 45560), (120, 45668),

Gene: Kaleb_1 Start: 133, Stop: 792, Start Num: 24

Candidate Starts for Kaleb_1:

(Start: 8 @1 has 29 MA's), (Start: 15 @76 has 2 MA's), (24, 133), (33, 172), (38, 181), (Start: 45 @202 has 6 MA's), (69, 343), (70, 346), (73, 367), (74, 373), (86, 421), (90, 436), (94, 463), (96, 469), (106, 583), (107, 589), (108, 592), (109, 595), (126, 679),

Gene: Kamiyu_1 Start: 73, Stop: 693, Start Num: 45

Candidate Starts for Kamiyu_1:

(Start: 23 @1 has 37 MA's), (Start: 29 @22 has 8 MA's), (42, 64), (Start: 45 @73 has 6 MA's), (58, 151), (62, 175), (69, 214), (75, 253), (88, 307), (90, 313), (94, 340), (111, 478), (122, 541),

Gene: KayaCho_1 Start: 1, Stop: 813, Start Num: 30

Candidate Starts for KayaCho_1:

(Start: 30 @1 has 64 MA's), (56, 106), (73, 208), (92, 295), (94, 310), (106, 424), (137, 544), (150, 589), (153, 595), (157, 604),

Gene: Kharcho_73 Start: 42919, Stop: 43530, Start Num: 43

Candidate Starts for Kharcho_73:

(Start: 43 @42919 has 2 MA's), (78, 43129), (108, 43291),

Gene: Kharcho_72 Start: 42263, Stop: 42922, Start Num: 32

Candidate Starts for Kharcho_72:

(Start: 32 @42263 has 5 MA's), (46, 42293), (62, 42395), (168, 42872),

Gene: Kheth_1 Start: 1, Stop: 792, Start Num: 8

Candidate Starts for Kheth_1:

(Start: 8 @1 has 29 MA's), (Start: 12 @37 has 1 MA's), (Start: 15 @76 has 2 MA's), (24, 133), (33, 172), (38, 181), (Start: 45 @202 has 6 MA's), (69, 343), (73, 367), (74, 373), (86, 421), (90, 436), (94, 463), (96, 469), (106, 583), (107, 589), (126, 679),

Gene: King2_64 Start: 44610, Stop: 45188, Start Num: 30

Candidate Starts for King2_64:

(Start: 30 @44610 has 64 MA's), (33, 44625), (71, 44814), (82, 44883), (123, 45126),

Gene: Kovu_5 Start: 3470, Stop: 4075, Start Num: 32

Candidate Starts for Kovu_5:

(Start: 19 @3425 has 2 MA's), (Start: 27 @3452 has 2 MA's), (Start: 32 @3470 has 5 MA's), (Start: 45 @3500 has 6 MA's), (54, 3551), (62, 3602), (80, 3704), (90, 3716), (105, 3845), (123, 3923), (164, 4052), (165, 4055),

Gene: Kronus_1 Start: 1, Stop: 699, Start Num: 23

Candidate Starts for Kronus_1:

(Start: 23 @1 has 37 MA's), (Start: 29 @22 has 8 MA's), (42, 64), (Start: 45 @73 has 6 MA's), (58, 151), (62, 175), (69, 214), (75, 253), (88, 307), (90, 313), (94, 340), (111, 478), (122, 541), (171, 694),

Gene: Laroye_5 Start: 3276, Stop: 3899, Start Num: 27

Candidate Starts for Laroye_5:

(Start: 27 @3276 has 2 MA's), (28, 3279), (Start: 32 @3294 has 5 MA's), (Start: 45 @3324 has 6 MA's), (54, 3375), (62, 3426), (64, 3435), (78, 3525), (88, 3534), (90, 3540), (94, 3567), (119, 3729), (125, 3750), (167, 3882),

Gene: Lars_1 Start: 1, Stop: 792, Start Num: 8

Candidate Starts for Lars_1:

(Start: 8 @1 has 29 MA's), (Start: 15 @76 has 2 MA's), (24, 133), (33, 172), (38, 181), (Start: 45 @202 has 6 MA's), (69, 343), (70, 346), (73, 367), (74, 373), (86, 421), (90, 436), (94, 463), (96, 469), (106, 583), (107, 589), (126, 679),

Gene: Laurie_1 Start: 1, Stop: 792, Start Num: 8

Candidate Starts for Laurie_1:

(Start: 8 @1 has 29 MA's), (Start: 12 @37 has 1 MA's), (Start: 15 @76 has 2 MA's), (24, 133), (33, 172), (38, 181), (Start: 45 @202 has 6 MA's), (69, 343), (70, 346), (73, 367), (74, 373), (86, 421), (90, 436), (94, 463), (96, 469), (106, 583), (107, 589), (126, 679),

Gene: LeeroyJ_70 Start: 44774, Stop: 45304, Start Num: 30

Candidate Starts for LeeroyJ_70:

(Start: 30 @44774 has 64 MA's), (67, 44900), (71, 44918), (100, 45095), (103, 45113),

Gene: Lephleur_1 Start: 1, Stop: 792, Start Num: 8

Candidate Starts for Lephleur_1:

(Start: 8 @1 has 29 MA's), (10, 28), (Start: 12 @37 has 1 MA's), (Start: 15 @76 has 2 MA's), (24, 133), (33, 172), (38, 181), (Start: 45 @202 has 6 MA's), (69, 343), (70, 346), (73, 367), (74, 373), (86, 421), (90, 436), (94, 463), (96, 469), (106, 583), (107, 589), (126, 679),

Gene: LestyG_1 Start: 1, Stop: 693, Start Num: 23

Candidate Starts for LestyG_1:

(Start: 23 @1 has 37 MA's), (Start: 29 @22 has 8 MA's), (42, 64), (Start: 45 @73 has 6 MA's), (58, 151), (62, 175), (69, 214), (75, 253), (88, 307), (90, 313), (94, 340), (111, 478), (122, 541),

Gene: LiSara_5 Start: 3325, Stop: 3930, Start Num: 32

Candidate Starts for LiSara_5:

(20, 3286), (Start: 27 @3307 has 2 MA's), (28, 3310), (Start: 32 @3325 has 5 MA's), (Start: 45 @3355 has 6 MA's), (54, 3406), (62, 3457), (64, 3466), (78, 3556), (88, 3565), (90, 3571), (94, 3598), (119, 3760), (125, 3781), (167, 3913),

Gene: Ligma_1 Start: 1, Stop: 606, Start Num: 30

Candidate Starts for Ligma_1:

(Start: 30 @1 has 64 MA's), (54, 85), (58, 112), (62, 136), (69, 175), (98, 349), (122, 472), (153, 553), (166, 592), (168, 595), (170, 601),

Gene: LilMcDreamy_1 Start: 1, Stop: 852, Start Num: 30

Candidate Starts for LilMcDreamy_1:

(Start: 30 @1 has 64 MA's), (54, 97), (69, 187), (73, 211), (84, 265), (92, 298), (114, 457), (117, 475), (127, 595), (133, 619), (150, 679), (169, 736),

Gene: LittleMunchkin_1 Start: 10, Stop: 807, Start Num: 30

Candidate Starts for LittleMunchkin_1:

(Start: 29 @1 has 8 MA's), (Start: 30 @10 has 64 MA's), (62, 154), (68, 187), (69, 193), (70, 196), (71, 199), (79, 250), (84, 271), (86, 277), (90, 292), (95, 322), (183, 763), (186, 778),

Gene: LizLemon_1 Start: 1, Stop: 792, Start Num: 8

Candidate Starts for LizLemon_1:

(Start: 8 @1 has 29 MA's), (Start: 15 @76 has 2 MA's), (24, 133), (33, 172), (38, 181), (Start: 45 @202 has 6 MA's), (69, 343), (70, 346), (73, 367), (74, 373), (86, 421), (90, 436), (94, 463), (96, 469), (106, 583), (107, 589), (126, 679),

Gene: Lolalove_1 Start: 1, Stop: 798, Start Num: 30

Candidate Starts for Lolalove_1:

(Start: 30 @1 has 64 MA's), (54, 88), (56, 100), (64, 148), (69, 178), (73, 202), (83, 256), (86, 262), (90, 277), (92, 289), (94, 304), (95, 307), (102, 367), (118, 466), (150, 577), (151, 580), (153, 583), (163, 616), (172, 643), (173, 655), (175, 676), (177, 685),

Gene: Magpie_1 Start: 1, Stop: 798, Start Num: 30

Candidate Starts for Magpie_1:

(Start: 30 @1 has 64 MA's), (54, 88), (56, 100), (64, 148), (69, 178), (73, 202), (83, 256), (86, 262), (90, 277), (92, 289), (95, 307), (102, 367), (118, 466), (150, 577), (151, 580), (153, 583), (163, 616), (172, 643), (173, 655), (175, 676), (176, 679),

Gene: MakoManhole_1 Start: 1, Stop: 804, Start Num: 29

Candidate Starts for MakoManhole_1:

(Start: 29 @1 has 8 MA's), (Start: 30 @10 has 64 MA's), (61, 151), (69, 193), (73, 217), (74, 223), (90, 292), (94, 319), (95, 322), (175, 703), (176, 706), (186, 775),

Gene: Mariokart_1 Start: 1, Stop: 612, Start Num: 30

Candidate Starts for Mariokart_1:

(Start: 30 @1 has 64 MA's), (Start: 45 @40 has 6 MA's), (54, 91), (62, 142), (69, 181), (85, 262), (90, 280), (94, 307), (140, 526), (153, 559), (168, 601),

Gene: Marley1013_1 Start: 1, Stop: 693, Start Num: 23

Candidate Starts for Marley1013_1:

(Start: 23 @1 has 37 MA's), (Start: 29 @22 has 8 MA's), (42, 64), (Start: 45 @73 has 6 MA's), (58, 151), (62, 175), (69, 214), (75, 253), (88, 307), (90, 313), (94, 340), (111, 478), (122, 541),

Gene: Martha_69 Start: 45008, Stop: 45538, Start Num: 30

Candidate Starts for Martha_69:

(Start: 30 @45008 has 64 MA's), (67, 45134), (71, 45152), (84, 45227), (91, 45257), (101, 45332), (103, 45347), (120, 45455),

Gene: MasterPo_1 Start: 1, Stop: 792, Start Num: 8

Candidate Starts for MasterPo_1:

(Start: 8 @1 has 29 MA's), (10, 28), (Start: 12 @37 has 1 MA's), (Start: 15 @76 has 2 MA's), (24, 133), (33, 172), (38, 181), (Start: 45 @202 has 6 MA's), (69, 343), (70, 346), (73, 367), (74, 373), (86, 421), (90, 436), (94, 463), (96, 469), (106, 583), (107, 589), (126, 679),

Gene: MenE_51 Start: 29392, Stop: 29925, Start Num: 36

Candidate Starts for MenE_51:

(4, 29158), (5, 29170), (11, 29248), (Start: 36 @29392 has 7 MA's), (Start: 45 @29416 has 6 MA's), (58, 29494), (62, 29518), (63, 29521), (69, 29557), (73, 29581), (80, 29620), (93, 29650), (94, 29659),

Gene: Mithril_1 Start: 1, Stop: 798, Start Num: 30

Candidate Starts for Mithril_1:

(Start: 30 @1 has 64 MA's), (54, 88), (56, 100), (64, 148), (69, 178), (73, 202), (83, 256), (86, 262), (90, 277), (92, 289), (94, 304), (95, 307), (102, 367), (118, 466), (150, 577), (151, 580), (153, 583), (163, 616), (172, 643), (173, 655), (175, 676), (177, 685),

Gene: MmasiCarm_1 Start: 1, Stop: 693, Start Num: 23

Candidate Starts for MmasiCarm_1:

(Start: 23 @1 has 37 MA's), (Start: 29 @22 has 8 MA's), (42, 64), (Start: 45 @73 has 6 MA's), (58, 151), (62, 175), (69, 214), (75, 253), (88, 307), (90, 313), (94, 340), (111, 478), (122, 541),

Gene: Mortcellus_1 Start: 1, Stop: 699, Start Num: 23

Candidate Starts for Mortcellus_1:

(Start: 23 @1 has 37 MA's), (Start: 29 @22 has 8 MA's), (42, 64), (Start: 45 @73 has 6 MA's), (58, 151), (62, 175), (69, 214), (75, 253), (88, 307), (90, 313), (94, 340), (111, 478), (122, 541), (171, 694),

Gene: Morty007_1 Start: 73, Stop: 693, Start Num: 45

Candidate Starts for Morty007_1:

(Start: 23 @1 has 37 MA's), (Start: 29 @22 has 8 MA's), (42, 64), (Start: 45 @73 has 6 MA's), (58, 151), (62, 175), (69, 214), (75, 253), (88, 307), (90, 313), (94, 340), (111, 478), (122, 541),

Gene: MossRose_1 Start: 1, Stop: 804, Start Num: 29

Candidate Starts for MossRose_1:

(Start: 29 @1 has 8 MA's), (Start: 30 @10 has 64 MA's), (61, 151), (69, 193), (73, 217), (74, 223), (90, 292), (94, 319), (95, 322), (175, 703), (176, 706), (186, 775),

Gene: Mudslide_1 Start: 1, Stop: 798, Start Num: 30

Candidate Starts for Mudslide_1:

(Start: 30 @1 has 64 MA's), (54, 88), (56, 100), (64, 148), (69, 178), (73, 202), (83, 256), (86, 262), (90, 277), (92, 289), (94, 304), (95, 307), (102, 367), (118, 466), (150, 577), (151, 580), (153, 583), (163, 616), (172, 643), (173, 655), (175, 676), (177, 685),

Gene: Mysterious_1 Start: 1, Stop: 813, Start Num: 30

Candidate Starts for Mysterious_1:

(Start: 30 @1 has 64 MA's), (38, 19), (54, 88), (69, 178), (73, 202), (83, 256), (86, 262), (90, 277), (92, 289), (94, 304), (118, 463), (134, 535), (150, 592), (153, 598), (155, 601), (159, 613), (168, 643), (173, 670), (180, 712), (185, 754), (186, 763),

Gene: NHagos_1 Start: 1, Stop: 633, Start Num: 29

Candidate Starts for NHagos_1:

(Start: 29 @1 has 8 MA's), (Start: 30 @10 has 64 MA's), (54, 103), (55, 109), (62, 154), (69, 193), (73, 217), (90, 292), (105, 424), (113, 463), (140, 547), (153, 580), (166, 619), (168, 622), (170, 628),

Gene: Nanao_1 Start: 1, Stop: 798, Start Num: 30

Candidate Starts for Nanao_1:

(Start: 30 @1 has 64 MA's), (54, 88), (56, 100), (64, 148), (69, 178), (70, 181), (73, 202), (83, 256), (86, 262), (90, 277), (94, 304), (95, 307), (102, 367), (118, 466), (150, 577), (151, 580), (153, 583), (173, 655), (175, 676), (176, 679), (188, 754),

Gene: Nangang_1 Start: 1, Stop: 807, Start Num: 30

Candidate Starts for Nangang_1:

(Start: 30 @1 has 64 MA's), (Start: 36 @16 has 7 MA's), (38, 19), (70, 181), (83, 256), (90, 277), (94, 304), (118, 463), (134, 538), (150, 595), (153, 601), (155, 604), (159, 616), (168, 646),

Gene: NathanVaag_65 Start: 44298, Stop: 44876, Start Num: 30

Candidate Starts for NathanVaag_65:

(Start: 30 @44298 has 64 MA's), (33, 44313), (Start: 49 @44361 has 1 MA's), (71, 44502), (82, 44571), (112, 44763), (123, 44814), (142, 44865),

Gene: Neos5_1 Start: 1, Stop: 693, Start Num: 23

Candidate Starts for Neos5_1:

(Start: 23 @1 has 37 MA's), (Start: 29 @22 has 8 MA's), (42, 64), (Start: 45 @73 has 6 MA's), (58, 151), (62, 175), (69, 214), (75, 253), (88, 307), (90, 313), (94, 340), (111, 478), (122, 541),

Gene: Nigel_1 Start: 1, Stop: 789, Start Num: 30

Candidate Starts for Nigel_1:

(Start: 30 @1 has 64 MA's), (54, 88), (56, 100), (69, 178), (73, 202), (83, 256), (86, 262), (94, 304), (102, 367), (108, 427), (118, 466), (150, 568), (151, 571), (157, 583), (163, 607), (172, 634), (173, 646), (175, 667), (176, 670),

Gene: Nozo_1 Start: 1, Stop: 693, Start Num: 23

Candidate Starts for Nozo_1:

(Start: 23 @1 has 37 MA's), (Start: 29 @22 has 8 MA's), (42, 64), (Start: 45 @73 has 6 MA's), (58, 151), (62, 175), (69, 214), (75, 253), (88, 307), (90, 313), (94, 340), (111, 478), (122, 541),

Gene: Obutu_1 Start: 1, Stop: 693, Start Num: 23

Candidate Starts for Obutu_1:

(Start: 23 @1 has 37 MA's), (Start: 29 @22 has 8 MA's), (42, 64), (Start: 45 @73 has 6 MA's), (58, 151), (62, 175), (69, 214), (75, 253), (88, 307), (90, 313), (94, 340), (111, 478), (122, 541),

Gene: Opia_1 Start: 1, Stop: 792, Start Num: 8

Candidate Starts for Opia_1:

(Start: 8 @1 has 29 MA's), (Start: 12 @37 has 1 MA's), (Start: 15 @76 has 2 MA's), (24, 133), (33, 172), (38, 181), (Start: 45 @202 has 6 MA's), (69, 343), (70, 346), (73, 367), (74, 373), (86, 421), (90, 436), (94, 463), (96, 469), (106, 583), (107, 589), (108, 592), (109, 595), (126, 679),

Gene: OrangeOswald_1 Start: 1, Stop: 693, Start Num: 23

Candidate Starts for OrangeOswald_1:

(Start: 23 @1 has 37 MA's), (Start: 29 @22 has 8 MA's), (42, 64), (Start: 45 @73 has 6 MA's), (58, 151), (62, 175), (69, 214), (75, 253), (88, 307), (90, 313), (94, 340), (111, 478), (122, 541),

Gene: Ottawa_72 Start: 42213, Stop: 42872, Start Num: 32

Candidate Starts for Ottawa_72:

(Start: 32 @42213 has 5 MA's), (46, 42243), (62, 42345), (168, 42822),

Gene: Ottawa_73 Start: 42869, Stop: 43480, Start Num: 43

Candidate Starts for Ottawa_73:

(Start: 43 @42869 has 2 MA's), (78, 43079), (108, 43241),

Gene: PenguinLover67_1 Start: 1, Stop: 633, Start Num: 30

Candidate Starts for PenguinLover67_1:

(Start: 30 @1 has 64 MA's), (69, 187), (92, 298), (94, 313), (95, 316), (107, 433), (161, 601),

Gene: Phaedrus_1 Start: 73, Stop: 693, Start Num: 45

Candidate Starts for Phaedrus_1:

(Start: 23 @1 has 37 MA's), (Start: 29 @22 has 8 MA's), (42, 64), (Start: 45 @73 has 6 MA's), (58, 151), (62, 175), (69, 214), (75, 253), (88, 307), (90, 313), (94, 340), (111, 478), (122, 541),

Gene: Phantasmagoria_1 Start: 1, Stop: 792, Start Num: 8

Candidate Starts for Phantasmagoria_1:

(Start: 8 @1 has 29 MA's), (Start: 12 @37 has 1 MA's), (Start: 15 @76 has 2 MA's), (24, 133), (33, 172), (38, 181), (Start: 45 @202 has 6 MA's), (69, 343), (70, 346), (73, 367), (74, 373), (86, 421), (90, 436), (94, 463), (96, 469), (107, 589), (109, 595), (126, 679),

Gene: Phayeta_1 Start: 1, Stop: 699, Start Num: 23

Candidate Starts for Phayeta_1:

(Start: 23 @1 has 37 MA's), (Start: 29 @22 has 8 MA's), (42, 64), (Start: 45 @73 has 6 MA's), (58, 151), (62, 175), (69, 214), (75, 253), (88, 307), (90, 313), (94, 340), (111, 478), (122, 541), (171, 694),

Gene: Phelemich_1 Start: 1, Stop: 813, Start Num: 30

Candidate Starts for Phelemich_1:

(Start: 30 @1 has 64 MA's), (38, 19), (54, 88), (69, 178), (83, 256), (86, 262), (90, 277), (94, 304), (118, 463), (134, 535), (150, 592), (153, 598), (155, 601), (159, 613), (168, 643), (173, 670), (180, 712), (185, 754), (186, 763),

Gene: Philly_1 Start: 1, Stop: 693, Start Num: 23

Candidate Starts for Philly_1:

(Start: 23 @1 has 37 MA's), (Start: 29 @22 has 8 MA's), (42, 64), (Start: 45 @73 has 6 MA's), (58, 151), (62, 175), (69, 214), (75, 253), (88, 307), (90, 313), (94, 340), (111, 478), (122, 541),

Gene: Phlyer_1 Start: 1, Stop: 693, Start Num: 23

Candidate Starts for Phlyer_1:

(Start: 23 @1 has 37 MA's), (Start: 29 @22 has 8 MA's), (42, 64), (Start: 45 @73 has 6 MA's), (58, 151), (62, 175), (69, 214), (75, 253), (88, 307), (90, 313), (94, 340), (111, 478), (122, 541),

Gene: Phonegingi_46 Start: 29171, Stop: 29704, Start Num: 36

Candidate Starts for Phonegingi_46:

(Start: 36 @29171 has 7 MA's), (Start: 45 @29195 has 6 MA's), (58, 29273), (62, 29297), (63, 29300), (69, 29336), (73, 29360), (80, 29399), (93, 29429), (94, 29438), (116, 29585), (139, 29693),

Gene: Piccoletto_66 Start: 44460, Stop: 45038, Start Num: 30

Candidate Starts for Piccoletto_66:

(Start: 30 @44460 has 64 MA's), (33, 44475), (Start: 49 @44523 has 1 MA's), (71, 44664), (82, 44733), (123, 44976), (142, 45027),

Gene: Pickles13_45 Start: 29439, Stop: 29972, Start Num: 36

Candidate Starts for Pickles13_45:

(4, 29202), (9, 29286), (Start: 36 @29439 has 7 MA's), (Start: 45 @29463 has 6 MA's), (58, 29541), (62, 29565), (63, 29568), (69, 29604), (73, 29628), (80, 29667), (93, 29697), (116, 29853),

Gene: Pipefish_1 Start: 1, Stop: 693, Start Num: 23

Candidate Starts for Pipefish_1:

(Start: 23 @1 has 37 MA's), (Start: 29 @22 has 8 MA's), (42, 64), (Start: 45 @73 has 6 MA's), (58, 151), (62, 175), (69, 214), (75, 253), (88, 307), (90, 313), (94, 340), (111, 478), (122, 541),

Gene: Pippa_70 Start: 45043, Stop: 45573, Start Num: 30

Candidate Starts for Pippa_70:

(Start: 30 @45043 has 64 MA's), (67, 45169), (71, 45187), (84, 45262), (91, 45292), (101, 45367), (103, 45382), (120, 45490), (124, 45511),

Gene: Poster_1 Start: 1, Stop: 798, Start Num: 30

Candidate Starts for Poster_1:

(Start: 30 @1 has 64 MA's), (54, 88), (56, 100), (64, 148), (69, 178), (70, 181), (73, 202), (83, 256), (86, 262), (90, 277), (94, 304), (95, 307), (102, 367), (118, 466), (150, 577), (151, 580), (153, 583), (173, 655), (175, 676), (176, 679), (188, 754),

Gene: Prince_1 Start: 1, Stop: 798, Start Num: 30

Candidate Starts for Prince_1:

(Start: 30 @1 has 64 MA's), (54, 88), (56, 100), (64, 148), (69, 178), (73, 202), (83, 256), (86, 262), (90, 277), (92, 289), (94, 304), (95, 307), (102, 367), (118, 466), (150, 577), (151, 580), (153, 583), (163, 616), (172, 643), (173, 655), (175, 676), (177, 685),

Gene: Quesadilla_1 Start: 1, Stop: 633, Start Num: 30

Candidate Starts for Quesadilla_1:

(Start: 30 @1 has 64 MA's), (54, 97), (69, 187), (83, 265), (94, 313), (107, 433),

Gene: Qyrzula_1 Start: 1, Stop: 792, Start Num: 8

Candidate Starts for Qyrzula_1:

(Start: 8 @1 has 29 MA's), (Start: 15 @76 has 2 MA's), (24, 133), (33, 172), (38, 181), (Start: 45 @202 has 6 MA's), (69, 343), (70, 346), (73, 367), (74, 373), (86, 421), (90, 436), (94, 463), (96, 469), (106, 583), (107, 589), (126, 679),

Gene: RagingRooster_1 Start: 1, Stop: 693, Start Num: 23

Candidate Starts for RagingRooster_1:

(Start: 23 @1 has 37 MA's), (Start: 29 @22 has 8 MA's), (42, 64), (Start: 45 @73 has 6 MA's), (58, 151), (62, 175), (69, 214), (75, 253), (88, 307), (90, 313), (94, 340), (111, 478), (122, 541),

Gene: RawrgerThat_1 Start: 1, Stop: 798, Start Num: 30

Candidate Starts for RawrgerThat_1:

(Start: 30 @1 has 64 MA's), (54, 88), (56, 100), (64, 148), (69, 178), (73, 202), (83, 256), (86, 262), (90, 277), (92, 289), (95, 307), (102, 367), (118, 466), (150, 577), (151, 580), (153, 583), (163, 616), (172, 643), (173, 655), (175, 676), (176, 679),

Gene: Reprobate_1 Start: 1, Stop: 810, Start Num: 30

Candidate Starts for Reprobate_1:

(Start: 30 @1 has 64 MA's), (38, 19), (54, 88), (83, 256), (86, 262), (90, 277), (94, 304), (118, 463), (134, 532), (150, 589), (153, 595), (155, 598), (159, 610), (168, 640), (173, 667), (180, 709), (185, 751), (186, 760),

Gene: Rhinoforte_1 Start: 1, Stop: 792, Start Num: 8

Candidate Starts for Rhinoforte_1:

(Start: 8 @1 has 29 MA's), (Start: 15 @76 has 2 MA's), (24, 133), (33, 172), (38, 181), (Start: 45 @202 has 6 MA's), (69, 343), (70, 346), (73, 367), (74, 373), (86, 421), (90, 436), (94, 463), (96, 469), (106, 583), (107, 589), (126, 679),

Gene: Rich_1 Start: 1, Stop: 819, Start Num: 30

Candidate Starts for Rich_1:

(Start: 30 @1 has 64 MA's), (Start: 36 @16 has 7 MA's), (38, 19), (52, 67), (90, 277), (100, 358), (118, 463), (134, 538), (150, 595), (155, 604), (168, 646),

Gene: Rita1961_1 Start: 1, Stop: 693, Start Num: 23

Candidate Starts for Rita1961_1:

(Start: 23 @1 has 37 MA's), (Start: 29 @22 has 8 MA's), (42, 64), (Start: 45 @73 has 6 MA's), (58, 151), (62, 175), (69, 214), (75, 253), (88, 307), (90, 313), (94, 340), (111, 478), (122, 541),

Gene: RomaT_1 Start: 1, Stop: 693, Start Num: 23

Candidate Starts for RomaT_1:

(Start: 23 @1 has 37 MA's), (Start: 29 @22 has 8 MA's), (42, 64), (Start: 45 @73 has 6 MA's), (58, 151), (62, 175), (69, 214), (75, 253), (88, 307), (90, 313), (94, 340), (111, 478), (122, 541),

Gene: Rosebush_1 Start: 1, Stop: 792, Start Num: 8

Candidate Starts for Rosebush_1:

(Start: 8 @1 has 29 MA's), (Start: 15 @76 has 2 MA's), (24, 133), (33, 172), (38, 181), (Start: 45 @202 has 6 MA's), (69, 343), (70, 346), (73, 367), (74, 373), (86, 421), (90, 436), (94, 463), (96, 469), (106, 583), (107, 589), (108, 592), (109, 595), (126, 679),

Gene: Sabella_1 Start: 76, Stop: 792, Start Num: 15

Candidate Starts for Sabella_1:

(Start: 8 @1 has 29 MA's), (Start: 12 @37 has 1 MA's), (Start: 15 @76 has 2 MA's), (24, 133), (33, 172), (38, 181), (Start: 45 @202 has 6 MA's), (69, 343), (73, 367), (74, 373), (86, 421), (90, 436), (94, 463), (96, 469), (106, 583), (107, 589), (126, 679),

Gene: Saguaro_1 Start: 1, Stop: 735, Start Num: 16

Candidate Starts for Saguaro_1:

(Start: 16 @1 has 1 MA's), (18, 28), (Start: 30 @79 has 64 MA's), (56, 187), (69, 265), (86, 349), (88, 358), (90, 364), (92, 376), (94, 391), (95, 394), (100, 445), (109, 517), (141, 625), (168, 700),

Gene: Salgado_5 Start: 3284, Stop: 3907, Start Num: 27

Candidate Starts for Salgado_5:

(Start: 27 @3284 has 2 MA's), (28, 3287), (Start: 32 @3302 has 5 MA's), (Start: 45 @3332 has 6 MA's), (54, 3383), (62, 3434), (64, 3443), (78, 3533), (88, 3542), (90, 3548), (94, 3575), (119, 3737), (125, 3758), (167, 3890),

Gene: Serendipitous_1 Start: 1, Stop: 816, Start Num: 30

Candidate Starts for Serendipitous_1:

(Start: 30 @1 has 64 MA's), (Start: 36 @16 has 7 MA's), (38, 19), (83, 256), (90, 277), (100, 358), (118, 463), (134, 538), (150, 595), (153, 601), (155, 604), (159, 616), (168, 646), (182, 739),

Gene: Shade_69 Start: 44814, Stop: 45389, Start Num: 30

Candidate Starts for Shade_69:

(Start: 30 @44814 has 64 MA's), (67, 44985), (71, 45003), (84, 45078), (91, 45108), (101, 45183), (103, 45198), (120, 45306), (124, 45327),

Gene: Shatter_1 Start: 1, Stop: 606, Start Num: 30

Candidate Starts for Shatter_1:

(Start: 30 @1 has 64 MA's), (54, 85), (58, 112), (62, 136), (69, 175), (98, 349), (122, 472), (153, 553), (166, 592), (168, 595), (170, 601),

Gene: Shrooms_5 Start: 3310, Stop: 3960, Start Num: 19

Candidate Starts for Shrooms_5:

(3, 3046), (Start: 19 @3310 has 2 MA's), (Start: 32 @3355 has 5 MA's), (Start: 45 @3385 has 6 MA's), (54, 3436), (61, 3484), (62, 3487), (88, 3595), (90, 3601), (128, 3826), (146, 3889),

Gene: Sicarius2_71 Start: 43199, Stop: 43729, Start Num: 48

Candidate Starts for Sicarius2_71:

(Start: 48 @43199 has 2 MA's), (53, 43235), (54, 43244), (71, 43343), (84, 43421), (94, 43469), (110, 43592), (144, 43724),

Gene: SirJeffery_1 Start: 1, Stop: 816, Start Num: 30

Candidate Starts for SirJeffery_1:

(Start: 30 @1 has 64 MA's), (Start: 36 @16 has 7 MA's), (38, 19), (69, 178), (83, 256), (90, 277), (94, 304), (100, 358), (118, 463), (134, 538), (150, 595), (155, 604), (168, 646), (182, 739),

Gene: Sisko_1 Start: 1, Stop: 600, Start Num: 30

Candidate Starts for Sisko_1:

(Start: 30 @1 has 64 MA's), (Start: 45 @28 has 6 MA's), (54, 79), (60, 118), (94, 295), (166, 586), (168, 589),

Gene: SlippinJimmy_1 Start: 22, Stop: 693, Start Num: 29

Candidate Starts for SlippinJimmy_1:

(Start: 23 @1 has 37 MA's), (Start: 29 @22 has 8 MA's), (42, 64), (Start: 45 @73 has 6 MA's), (58, 151), (62, 175), (69, 214), (75, 253), (88, 307), (90, 313), (94, 340), (111, 478), (122, 541),

Gene: Sonali_86 Start: 53450, Stop: 54043, Start Num: 49

Candidate Starts for Sonali_86:

(1, 52859), (2, 52970), (14, 53303), (44, 53429), (Start: 49 @53450 has 1 MA's), (65, 53558), (77, 53642), (136, 53945), (141, 53969),

Gene: Sonny_69 Start: 44737, Stop: 45312, Start Num: 30

Candidate Starts for Sonny_69:

(Start: 30 @44737 has 64 MA's), (67, 44908), (71, 44926), (84, 45001), (91, 45031), (101, 45106), (103, 45121), (120, 45229), (124, 45250),

Gene: Sour_1 Start: 1, Stop: 615, Start Num: 34

Candidate Starts for Sour_1:

(Start: 34 @1 has 1 MA's), (62, 130), (69, 169), (73, 193), (90, 268), (94, 295), (107, 415), (148, 583),

Gene: StAugustine_2 Start: 428, Stop: 1015, Start Num: 42

Candidate Starts for StAugustine_2:

(22, 359), (38, 416), (39, 419), (42, 428), (Start: 45 @437 has 6 MA's), (63, 542), (69, 578), (76, 626), (86, 662), (92, 689), (97, 740), (111, 836), (148, 989),

Gene: StevieBAY_70 Start: 45067, Stop: 45597, Start Num: 30

Candidate Starts for StevieBAY_70:

(Start: 30 @45067 has 64 MA's), (67, 45193), (71, 45211), (84, 45286), (100, 45388), (103, 45406),

Gene: Stinger_1 Start: 1, Stop: 789, Start Num: 30

Candidate Starts for Stinger_1:

(Start: 30 @1 has 64 MA's), (54, 88), (56, 100), (69, 178), (73, 202), (83, 256), (86, 262), (94, 304), (102, 367), (118, 466), (150, 568), (151, 571), (153, 574), (163, 607), (172, 634), (173, 646), (175, 667), (176, 670),

Gene: StinkyVeggy_1 Start: 1, Stop: 807, Start Num: 30

Candidate Starts for StinkyVeggy_1:

(Start: 30 @1 has 64 MA's), (Start: 36 @16 has 7 MA's), (38, 19), (83, 256), (90, 277), (94, 304), (118, 463), (134, 538), (150, 595), (153, 601), (155, 604), (159, 616), (168, 646),

Gene: Suigeneris_1 Start: 1, Stop: 816, Start Num: 30

Candidate Starts for Suigeneris_1:

(Start: 30 @1 has 64 MA's), (Start: 36 @16 has 7 MA's), (38, 19), (69, 178), (83, 256), (90, 277), (94, 304), (100, 358), (118, 463), (134, 538), (150, 595), (155, 604), (168, 646), (182, 739),

Gene: SynergyX_1 Start: 1, Stop: 693, Start Num: 23

Candidate Starts for SynergyX_1:

(Start: 23 @1 has 37 MA's), (Start: 29 @22 has 8 MA's), (42, 64), (Start: 45 @73 has 6 MA's), (58, 151), (62, 175), (69, 214), (75, 253), (88, 307), (90, 313), (94, 340), (111, 478), (122, 541),

Gene: TA17A_1 Start: 76, Stop: 792, Start Num: 15

Candidate Starts for TA17A_1:

(Start: 8 @1 has 29 MA's), (Start: 12 @37 has 1 MA's), (Start: 15 @76 has 2 MA's), (24, 133), (33, 172), (38, 181), (Start: 45 @202 has 6 MA's), (69, 343), (73, 367), (74, 373), (86, 421), (90, 436), (94, 463), (96, 469), (106, 583), (107, 589), (126, 679), (129, 688),

Gene: TaeYoung_70 Start: 44980, Stop: 45510, Start Num: 30

Candidate Starts for TaeYoung_70:

(Start: 30 @44980 has 64 MA's), (67, 45106), (71, 45124), (84, 45199), (91, 45229), (101, 45304), (103, 45319), (120, 45427), (124, 45448),

Gene: Timinator_70 Start: 44887, Stop: 45417, Start Num: 30

Candidate Starts for Timinator_70:

(Start: 30 @44887 has 64 MA's), (67, 45013), (71, 45031), (100, 45208), (103, 45226),

Gene: Tinciduntolum_1 Start: 1, Stop: 792, Start Num: 8

Candidate Starts for Tinciduntolum_1:

(Start: 8 @1 has 29 MA's), (Start: 15 @76 has 2 MA's), (24, 133), (33, 172), (38, 181), (Start: 45 @202 has 6 MA's), (69, 343), (70, 346), (73, 367), (74, 373), (86, 421), (90, 436), (94, 463), (96, 469), (106, 583), (107, 589), (108, 592), (109, 595), (126, 679),

Gene: Tonitrus_1 Start: 16, Stop: 750, Start Num: 40

Candidate Starts for Tonitrus_1:

(33, 1), (40, 16), (62, 127), (63, 130), (68, 160), (69, 166), (70, 169), (73, 190), (83, 244), (87, 253), (94, 292), (102, 355), (133, 496), (137, 514), (151, 559), (153, 562), (163, 595), (168, 607), (174, 652), (176, 658), (178, 667), (181, 685),

Gene: Tres_1 Start: 1, Stop: 792, Start Num: 8

Candidate Starts for Tres_1:

(Start: 8 @1 has 29 MA's), (Start: 12 @37 has 1 MA's), (Start: 15 @76 has 2 MA's), (24, 133), (33, 172), (38, 181), (Start: 45 @202 has 6 MA's), (69, 343), (70, 346), (73, 367), (74, 373), (86, 421), (90, 436), (94, 463), (96, 469), (106, 583), (107, 589), (126, 679),

Gene: TurkishDelight_122 Start: 89500, Stop: 90093, Start Num: 25

Candidate Starts for TurkishDelight_122:

(Start: 25 @89500 has 1 MA's), (Start: 30 @89518 has 64 MA's), (51, 89584), (66, 89689),

Gene: Tydolla_1 Start: 73, Stop: 693, Start Num: 45

Candidate Starts for Tydolla_1:

(Start: 23 @1 has 37 MA's), (Start: 29 @22 has 8 MA's), (42, 64), (Start: 45 @73 has 6 MA's), (58, 151), (62, 175), (69, 214), (75, 253), (88, 307), (90, 313), (94, 340), (111, 478), (122, 541),

Gene: Typha_1 Start: 202, Stop: 861, Start Num: 26

Candidate Starts for Typha_1:

(Start: 26 @202 has 4 MA's), (33, 235), (39, 247), (59, 352), (61, 364), (62, 367), (69, 406), (70, 409), (73, 430), (75, 445), (90, 481), (99, 559), (115, 652), (131, 760), (132, 763), (134, 766), (145, 814), (160, 850),

Gene: VioletZ_1 Start: 1, Stop: 798, Start Num: 30

Candidate Starts for VioletZ_1:

(Start: 30 @1 has 64 MA's), (54, 88), (56, 100), (64, 148), (69, 178), (73, 202), (83, 256), (86, 262), (90, 277), (92, 289), (94, 304), (95, 307), (102, 367), (118, 466), (150, 577), (151, 580), (153, 583), (163, 616), (172, 643), (173, 655), (175, 676), (176, 679),

Gene: Waleliano_1 Start: 1, Stop: 798, Start Num: 30

Candidate Starts for Waleliano_1:

(Start: 30 @1 has 64 MA's), (54, 88), (56, 100), (64, 148), (69, 178), (73, 202), (83, 256), (86, 262), (90, 277), (92, 289), (94, 304), (95, 307), (102, 367), (118, 466), (150, 577), (151, 580), (153, 583), (163, 616), (172, 643), (173, 655), (175, 676), (177, 685),

Gene: Waltz_5 Start: 3398, Stop: 4048, Start Num: 19

Candidate Starts for Waltz_5:

(Start: 19 @3398 has 2 MA's), (Start: 32 @3443 has 5 MA's), (Start: 45 @3473 has 6 MA's), (54, 3524), (61, 3572), (88, 3683), (90, 3689), (146, 3977),

Gene: Warren_46 Start: 29178, Stop: 29711, Start Num: 36

Candidate Starts for Warren_46:

(Start: 36 @29178 has 7 MA's), (Start: 45 @29202 has 6 MA's), (58, 29280), (62, 29304), (63, 29307), (70, 29346), (73, 29367), (80, 29406), (93, 29436), (94, 29445), (116, 29592),

Gene: West99_1 Start: 1, Stop: 792, Start Num: 8

Candidate Starts for West99_1:

(Start: 8 @1 has 29 MA's), (Start: 15 @76 has 2 MA's), (24, 133), (33, 172), (38, 181), (Start: 45 @202 has 6 MA's), (69, 343), (70, 346), (73, 367), (74, 373), (86, 421), (90, 436), (94, 463), (96, 469), (106, 583), (107, 589), (108, 592), (109, 595), (126, 679),

Gene: Wheelbite_5 Start: 3393, Stop: 3998, Start Num: 32

Candidate Starts for Wheelbite_5:

(Start: 27 @3375 has 2 MA's), (28, 3378), (Start: 32 @3393 has 5 MA's), (Start: 45 @3423 has 6 MA's), (54, 3474), (64, 3534), (88, 3633), (119, 3828), (125, 3849), (167, 3981),

Gene: Wooper_1 Start: 1, Stop: 804, Start Num: 29

Candidate Starts for Wooper_1:

(Start: 29 @1 has 8 MA's), (Start: 30 @10 has 64 MA's), (61, 151), (69, 193), (73, 217), (74, 223), (90, 292), (94, 319), (95, 322), (157, 619), (175, 703), (176, 706), (186, 775),

Gene: Wyborn_70 Start: 43934, Stop: 44464, Start Num: 48

Candidate Starts for Wyborn_70:

(Start: 48 @43934 has 2 MA's), (53, 43970), (54, 43979), (71, 44078), (84, 44156), (94, 44204), (110, 44327), (144, 44459),

Gene: Yago84_1 Start: 1, Stop: 600, Start Num: 30

Candidate Starts for Yago84_1:

(Start: 30 @1 has 64 MA's), (Start: 45 @28 has 6 MA's), (54, 79), (60, 118), (94, 295), (121, 463), (166, 586), (168, 589),

Gene: Yahalom_1 Start: 73, Stop: 693, Start Num: 45

Candidate Starts for Yahalom_1:

(Start: 23 @1 has 37 MA's), (Start: 29 @22 has 8 MA's), (42, 64), (Start: 45 @73 has 6 MA's), (58, 151), (62, 175), (69, 214), (75, 253), (88, 307), (90, 313), (94, 340), (111, 478), (122, 541),

Gene: Yinz_1 Start: 1, Stop: 693, Start Num: 23

Candidate Starts for Yinz_1:

(Start: 23 @1 has 37 MA's), (Start: 29 @22 has 8 MA's), (42, 64), (Start: 45 @73 has 6 MA's), (58, 151), (62, 175), (69, 214), (75, 253), (88, 307), (90, 313), (94, 340), (111, 478), (122, 541),

Gene: Zartrosa_71 Start: 45067, Stop: 45642, Start Num: 30

Candidate Starts for Zartrosa_71:

(Start: 30 @45067 has 64 MA's), (67, 45238), (71, 45256), (84, 45331), (91, 45361), (101, 45436), (103, 45451), (120, 45559), (124, 45580),

Gene: Zemanar_1 Start: 1, Stop: 798, Start Num: 30

Candidate Starts for Zemanar_1:

(Start: 30 @1 has 64 MA's), (54, 88), (56, 100), (57, 109), (64, 148), (69, 178), (73, 202), (83, 256), (86, 262), (90, 277), (92, 289), (95, 307), (102, 367), (118, 466), (150, 577), (151, 580), (153, 583), (157, 592), (163, 616), (172, 643), (173, 655), (175, 676), (176, 679),