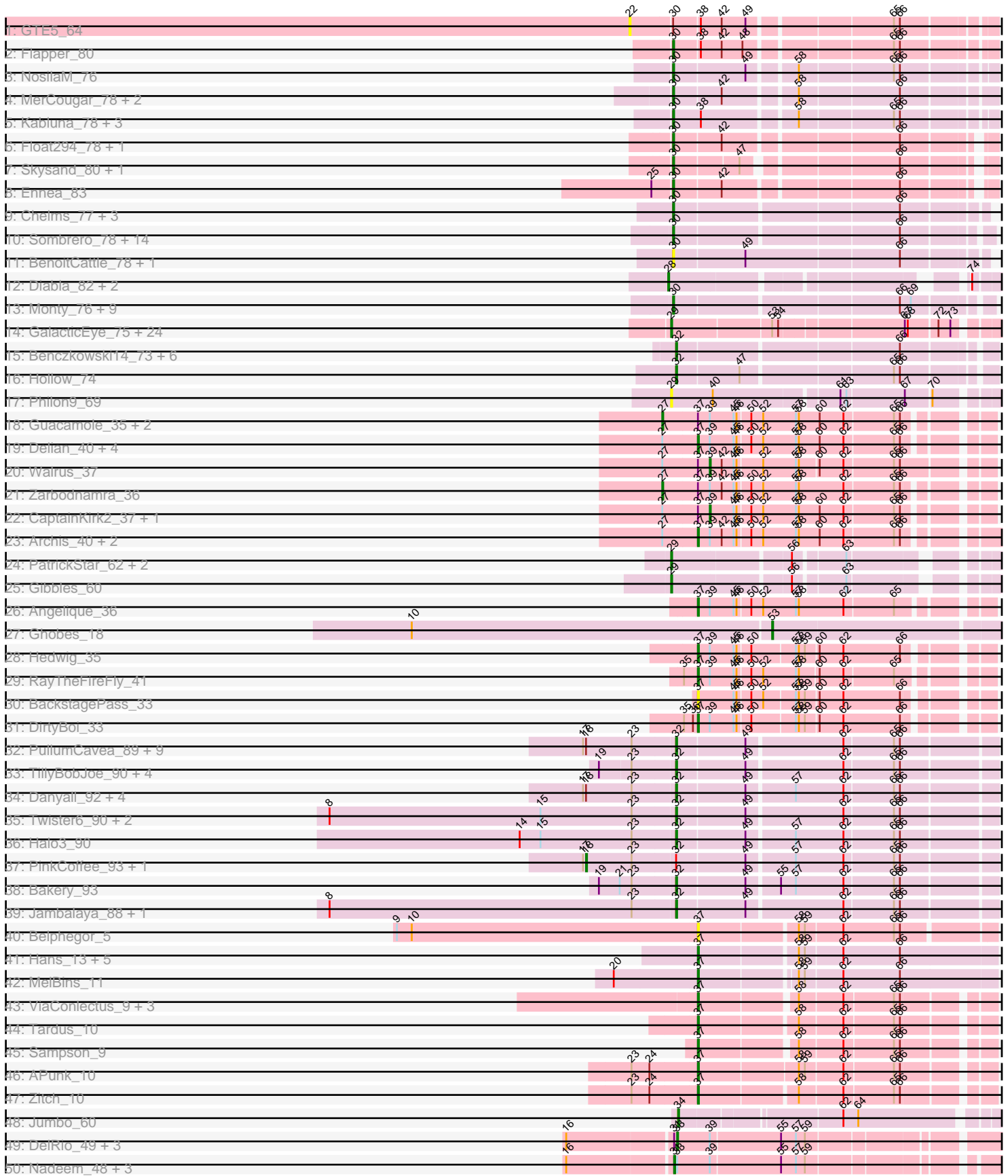
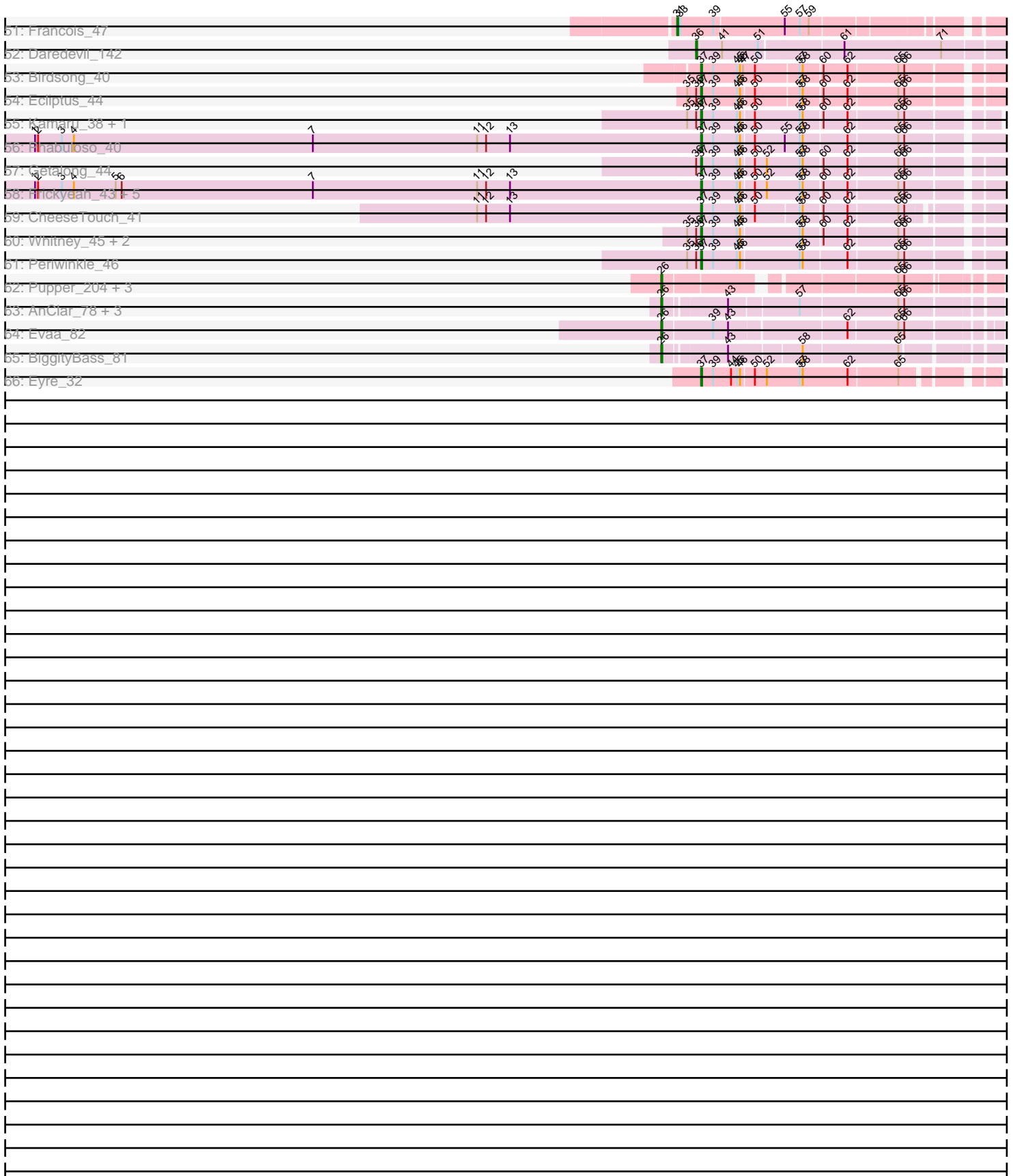


Pham 163365



Pham 163365



Note: Tracks are now grouped by subcluster and scaled. Switching in subcluster is indicated by changes in track color. Track scale is now set by default to display the region 30 bp upstream of start 1 to 30 bp downstream of the last possible start. If this default region is judged to be packed too tightly with annotated starts, the track will be further scaled to only show that region of the ORF with annotated starts. This action will be indicated by adding "Zoomed" to the title. For starts, yellow indicates the location of called starts comprised solely of Glimmer/GeneMark auto-annotations, green indicates the location of called starts with at least 1 manual gene annotation.

Pham 163365 Report

This analysis was run 04/28/24 on database version 559.

Pham number 163365 has 192 members, 26 are drafts.

Phages represented in each track:

- Track 1 : GTE5_64
- Track 2 : Flapper_80
- Track 3 : NosilaM_76
- Track 4 : MerCougar_78, Outis_76, StarStruck_76
- Track 5 : Kabluna_78, SuperSulley_77, Buggaboo_77, Bonum_79
- Track 6 : Float294_78, Lollipop1437_79
- Track 7 : Skysand_80, Patio_78
- Track 8 : Ennea_83
- Track 9 : Chelms_77, Linetti_77, Dakiti_78, PierreThree_76
- Track 10 : Sombrero_78, BirksAndSocks_81, Sam12_76, Adgers_80, Exiguo_76, Gorko_76, Butterball_79, Poland_82, Beaver_80, Jellybones_78, FelixAlejandro_81, Squibbles_76, Boneham_80, Msay19_81, RemRem_78
- Track 11 : BenoitCattle_78, BigShaq_77
- Track 12 : Diabla_82, RoyalG_77, SteveFrench_76
- Track 13 : Monty_76, CathyBurgh_76, Barbochs_76, Hotorobo_77, Breezic_77, John316_80, Flakey_76, Ekhein_77, Lizzo_77, GourdThymes_77
- Track 14 : GalacticEye_75, Berries_75, Hello_74, Guillaume_74, Charianelly_74, Damp_72, MrWormie_75, Kaseim_74, Lidong_75, Bianmat_75, Teal_74, Newt_76, Luker_76, Jams_75, Woes_74, Minos_76, Sticker17_75, Harambe_74, Anamika_74, Nimi13_74, Jormungandr_74, Lahirium_74, Hail2Pitt_73, Neoevie_74, Shelley_75
- Track 15 : Benczkowski14_73, Niagara_73, Kvothe_72, Tredge_73, Teech_71, Katyusha_72, Teatealatte_74
- Track 16 : Hollow_74
- Track 17 : Philon9_69
- Track 18 : Guacamole_35, MintFen_37, Hitter_38
- Track 19 : Delian_40, Mellie_34, JasperJr_35, Obliviate_33, PhrostedPhlake_40
- Track 20 : Walrus_37
- Track 21 : Zarbodnamra_36
- Track 22 : CaptainKirk2_37, UmaThurman_32
- Track 23 : Archis_40, Melba_36, BlingBling_34
- Track 24 : PatrickStar_62, Orchid_61, Kampe_62
- Track 25 : Gibbles_60
- Track 26 : Angelique_36
- Track 27 : Ghobes_18
- Track 28 : Hedwig_35
- Track 29 : RayTheFireFly_41
- Track 30 : BackstagePass_33

- Track 31 : DirtyBoi_33
- Track 32 : PullumCavea_89, Wizard_86, Fireball_94, Arri_91, Gezellig_90, Phlop_88, KimmyK_89, Valary_92, Portcullis_91, Shinji_90
- Track 33 : TillyBobJoe_90, SmokingBunny_92, Salvador_91, Evamon_91, Togo_91
- Track 34 : Danyall_92, YungMoney_91, Nubi_94, Mutzi_91, Barb_95
- Track 35 : Twister6_90, VanDeWege_93, RogerDodger_94
- Track 36 : Halo3_90
- Track 37 : PinkCoffee_93, ClamChowder_94
- Track 38 : Bakery_93
- Track 39 : Jambalaya_88, Savbucketdawg_86
- Track 40 : Belphegor_5
- Track 41 : Hans_13, Phauci_4, Ali17_9, Phinally_11, Leonard_11, Inspectinfecti_12
- Track 42 : MelBins_11
- Track 43 : ViaConlectus_9, Scioto_9, Natkenzie_9, Abblin_9
- Track 44 : Tardus_10
- Track 45 : Sampson_9
- Track 46 : APunk_10
- Track 47 : Zitch_10
- Track 48 : Jumbo_60
- Track 49 : DelRio_49, GrandSlam_48, Chop_48, Parada_48
- Track 50 : Nadeem_48, Ayotoya_48, Pimento_50, Hamood_49
- Track 51 : Francois_47
- Track 52 : Daredevil_142
- Track 53 : Birdsong_40
- Track 54 : Ecliptus_44
- Track 55 : Kamaru_38, LitninMcQueen_37
- Track 56 : Phabuloso_40
- Track 57 : Getalong_44
- Track 58 : Frickyeah_43, Holliday_42, Phistory_43, Crater_40, Lutum_43, Kenna_42
- Track 59 : CheeseTouch_41
- Track 60 : Whitney_45, Budski_42, BENtherdunthat_42
- Track 61 : Periwinkle_46
- Track 62 : Pupper_204, Skog_33, SCentae_203, CherryTomatoes_211
- Track 63 : AnClar_78, Sisko_81, LittleMunchkin_81, Yago84_80
- Track 64 : Evaa_82
- Track 65 : BiggityBass_81
- Track 66 : Eyre_32

Summary of Final Annotations (See graph section above for start numbers):

The start number called the most often in the published annotations is 30, it was called in 39 of the 166 non-draft genes in the pham.

Genes that call this "Most Annotated" start:

- Adgers_80, Barbochs_76, Beaver_80, BenoitCattle_78, BigShaq_77, BirksAndSocks_81, Boneham_80, Bonum_79, Breezic_77, Buggaboo_77, Butterball_79, CathyBurgh_76, Chelms_77, Dakiti_78, Ekhein_77, Ennea_83, Exiguo_76, FelixAlejandro_81, Flakey_76, Flapper_80, Float294_78, Gorko_76, GourdThymes_77, Hotorobo_77, Jellybones_78, John316_80, Kabluna_78,

Linetti_77, Lizzo_77, Lollipop1437_79, MerCougar_78, Monty_76, Msay19_81, NosilaM_76, Outis_76, Patio_78, PierreThree_76, Poland_82, RemRem_78, Sam12_76, Skysand_80, Sombrero_78, Squibbles_76, StarStruck_76, SuperSulley_77,

Genes that have the "Most Annotated" start but do not call it:

- GTE5_64,

Genes that do not have the "Most Annotated" start:

- APunk_10, Abblin_9, Ali17_9, AnClar_78, Anamika_74, Angelique_36, Archis_40, Arri_91, Ayotoya_48, BENtherdunthat_42, BackstagePass_33, Bakery_93, Barb_95, Belphegor_5, Benczkowski14_73, Berries_75, Bianmat_75, BiggityBass_81, Birdsong_40, BlingBling_34, Budski_42, CaptainKirk2_37, Charianelly_74, CheeseTouch_41, CherryTomatoes_211, Chop_48, ClamChowder_94, Crater_40, Damp_72, Danyall_92, Daredevil_142, DelRio_49, Delian_40, Diabla_82, DirtyBoi_33, Ecliptus_44, Evaa_82, Evamon_91, Eyre_32, Fireball_94, Francois_47, Frickyeah_43, GalacticEye_75, Getalong_44, Gezellig_90, Ghobes_18, Gibbles_60, GrandSlam_48, Guacamole_35, Guillaume_74, Hail2Pitt_73, Halo3_90, Hamood_49, Hans_13, Harambe_74, Hedwig_35, Hello_74, Hitter_38, Holliday_42, Hollow_74, Inspectinfecti_12, Jambalaya_88, Jams_75, JasperJr_35, Jormungandr_74, Jumbo_60, Kamaru_38, Kampe_62, Kaseim_74, Katyusha_72, Kenna_42, KimmyK_89, Kvothe_72, Lahirium_74, Leonard_11, Lidong_75, LitninMcQueen_37, LittleMunchkin_81, Luker_76, Lutum_43, MelBins_11, Melba_36, Mellie_34, Minos_76, MintFen_37, MrWormie_75, Mutzi_91, Nadeem_48, Natkenzie_9, Neevie_74, Newt_76, Niagara_73, Nimi13_74, Nubi_94, Obliviate_33, Orchid_61, Parada_48, PatrickStar_62, Periwinkle_46, Phabuloso_40, Phauci_4, Philon9_69, Phinally_11, Phistory_43, Phlop_88, PhrostedPhlake_40, Pimento_50, PinkCoffee_93, Portcullis_91, PullumCavea_89, Pupper_204, RayTheFireFly_41, RogerDodger_94, RoyalG_77, SCentae_203, Salvador_91, Sampson_9, Savbucketdawg_86, Scioto_9, Shelley_75, Shinji_90, Sisko_81, Skog_33, SmokingBunny_92, SteveFrench_76, Sticker17_75, Tardus_10, Teal_74, Teatealatte_74, Teech_71, TillyBobJoe_90, Togo_91, Tredge_73, Twister6_90, UmaThurman_32, Valary_92, VanDeWege_93, ViaConlectus_9, Walrus_37, Whitney_45, Wizard_86, Woes_74, Yago84_80, YungMoney_91, Zarbodnamra_36, Zitch_10,

Summary by start number:

Start 18:

- Found in 17 of 192 (8.9%) of genes in pham
- Manual Annotations of this start: 2 of 166
- Called 11.8% of time when present
- Phage (with cluster) where this start called: ClamChowder_94 (DC1), PinkCoffee_93 (DC1),

Start 22:

- Found in 1 of 192 (0.5%) of genes in pham
- No Manual Annotations of this start.
- Called 100.0% of time when present
- Phage (with cluster) where this start called: GTE5_64 (CR1),

Start 26:

- Found in 10 of 192 (5.2%) of genes in pham

- Manual Annotations of this start: 9 of 166
- Called 100.0% of time when present
- Phage (with cluster) where this start called: AnClar_78 (DR), BiggityBass_81 (DR), CherryTomatoes_211 (DO), Evaa_82 (DR), LittleMunchkin_81 (DR), Pupper_204 (DO), SCentae_203 (DO), Sisko_81 (DR), Skog_33 (DO), Yago84_80 (DR),

Start 27:

- Found in 15 of 192 (7.8%) of genes in pham
- Manual Annotations of this start: 4 of 166
- Called 26.7% of time when present
- Phage (with cluster) where this start called: Guacamole_35 (CV), Hitter_38 (CV), MintFen_37 (CV), Zarbodnamra_36 (CV),

Start 28:

- Found in 3 of 192 (1.6%) of genes in pham
- Manual Annotations of this start: 3 of 166
- Called 100.0% of time when present
- Phage (with cluster) where this start called: Diabla_82 (CS2), RoyalG_77 (CS2), SteveFrench_76 (CS2),

Start 29:

- Found in 30 of 192 (15.6%) of genes in pham
- Manual Annotations of this start: 25 of 166
- Called 100.0% of time when present
- Phage (with cluster) where this start called: Anamika_74 (CS3), Berries_75 (CS3), Bianmat_75 (CS3), Charianelly_74 (CS3), Damp_72 (CS3), GalacticEye_75 (CS3), Gibbles_60 (CX), Guillaume_74 (CS3), Hail2Pitt_73 (CS3), Harambe_74 (CS3), Hello_74 (CS3), Jams_75 (CS3), Jormungandr_74 (CS3), Kampe_62 (CX), Kaseim_74 (CS3), Lahirium_74 (CS3), Lidong_75 (CS3), Luker_76 (CS3), Minos_76 (CS3), MrWormie_75 (CS3), Neoevie_74 (CS3), Newt_76 (CS3), Nimi13_74 (CS3), Orchid_61 (CX), PatrickStar_62 (CX), Philon9_69 (CS4), Shelley_75 (CS3), Sticker17_75 (CS3), Teal_74 (CS3), Woes_74 (CS3),

Start 30:

- Found in 46 of 192 (24.0%) of genes in pham
- Manual Annotations of this start: 39 of 166
- Called 97.8% of time when present
- Phage (with cluster) where this start called: Adgers_80 (CS2), Barbochs_76 (CS2), Beaver_80 (CS2), BenoitCattle_78 (CS2), BigShaq_77 (CS2), BirksAndSocks_81 (CS2), Boneham_80 (CS2), Bonum_79 (CR2), Breezic_77 (CS2), Buggaboo_77 (CR2), Butterball_79 (CS2), CathyBurgh_76 (CS2), Chelms_77 (CS2), Dakiti_78 (CS2), Ekhein_77 (CS2), Ennea_83 (CR3), Exiguo_76 (CS2), FelixAlejandro_81 (CS2), Flakey_76 (CS2), Flapper_80 (CR1), Float294_78 (CR3), Gorko_76 (CS2), GourdThymes_77 (CS2), Hotorobo_77 (CS2), Jellybones_78 (CS2), John316_80 (CS2), Kabluna_78 (CR2), Linetti_77 (CS2), Lizzo_77 (CS2), Lollipop1437_79 (CR3), MerCougar_78 (CR2), Monty_76 (CS2), Msay19_81 (CS2), NosilaM_76 (CR2), Outis_76 (CR2), Patio_78 (CR3), PierreThree_76 (CS2), Poland_82 (CS2), RemRem_78 (CS2), Sam12_76 (CS2), Skysand_80 (CR3), Sombrero_78 (CS2), Squibbles_76 (CS2), StarStruck_76 (CR2), SuperSulley_77 (CR2),

Start 31:

- Found in 9 of 192 (4.7%) of genes in pham
- Manual Annotations of this start: 3 of 166

- Called 55.6% of time when present
- Phage (with cluster) where this start called: Ayotoya_48 (DI), Francois_47 (DI), Hamood_49 (DI), Nadeem_48 (DI), Pimento_50 (DI),

Start 32:

- Found in 37 of 192 (19.3%) of genes in pham
- Manual Annotations of this start: 32 of 166
- Called 94.6% of time when present
- Phage (with cluster) where this start called: Arri_91 (DC1), Bakery_93 (DC1), Barb_95 (DC1), Benczkowski14_73 (CS4), Danyall_92 (DC1), Evamon_91 (DC1), Fireball_94 (DC1), Gezellig_90 (DC1), Halo3_90 (DC1), Hollow_74 (CS4), Jambalaya_88 (DC1), Katyusha_72 (CS4), KimmyK_89 (DC1), Kvothe_72 (CS4), Mutzi_91 (DC1), Niagara_73 (CS4), Nubi_94 (DC1), Phlop_88 (DC1), Portcullis_91 (DC1), PullumCavea_89 (DC1), RogerDodger_94 (DC1), Salvador_91 (DC1), Savbucketdawg_86 (DC1), Shinji_90 (DC1), SmokingBunny_92 (DC1), Teatealatte_74 (CS4), Teech_71 (CS4), TillyBobJoe_90 (DC1), Togo_91 (DC1), Tredge_73 (CS4), Twister6_90 (DC1), Valary_92 (DC1), VanDeWege_93 (DC1), Wizard_86 (DC1), YungMoney_91 (DC1),

Start 33:

- Found in 9 of 192 (4.7%) of genes in pham
- Manual Annotations of this start: 4 of 166
- Called 44.4% of time when present
- Phage (with cluster) where this start called: Chop_48 (DI), DelRio_49 (DI), GrandSlam_48 (DI), Parada_48 (DI),

Start 34:

- Found in 1 of 192 (0.5%) of genes in pham
- Manual Annotations of this start: 1 of 166
- Called 100.0% of time when present
- Phage (with cluster) where this start called: Jumbo_60 (DF3),

Start 36:

- Found in 10 of 192 (5.2%) of genes in pham
- Manual Annotations of this start: 1 of 166
- Called 10.0% of time when present
- Phage (with cluster) where this start called: Daredevil_142 (DL),

Start 37:

- Found in 54 of 192 (28.1%) of genes in pham
- Manual Annotations of this start: 39 of 166
- Called 87.0% of time when present
- Phage (with cluster) where this start called: APunk_10 (DE4), Abblin_9 (DE4), Ali17_9 (DE2), Angelique_36 (CY1), Archis_40 (CV), BENtherdunthat_42 (DN1), BackstagePass_33 (DB), Belphegor_5 (DE), Birdsong_40 (DN), BlingBling_34 (CV), Budski_42 (DN), CheeseTouch_41 (DN1), Crater_40 (DN3), Delian_40 (CV), DirtyBoi_33 (DB), Ecliptus_44 (DN), Eyre_32 (singleton), Frickyeah_43 (DN1), Getalong_44 (DN1), Hans_13 (DE2), Hedwig_35 (DB), Holliday_42 (DN1), Inspectinfecti_12 (DE2), JasperJr_35 (CV), Kamaru_38 (DN1), Kenna_42 (DN1), Leonard_11 (DE2), LitninMcQueen_37 (DN1), Lutum_43 (DN1), MelBins_11 (DE2), Melba_36 (CV), Mellie_34 (CV), Natkenzie_9 (DE4), Obliviate_33 (CV), Periwinkle_46 (DN1), Phabuloso_40 (DN1), Phauci_4 (DE2), Phinally_11 (DE2), Phistory_43 (DN1), PhrostedPhlake_40 (CV), RayTheFireFly_41 (DB), Sampson_9

(DE4), Scioto_9 (DE4), Tardus_10 (DE4), ViaConlectus_9 (DE4), Whitney_45 (DN1), Zitch_10 (DE4),

Start 39:

- Found in 47 of 192 (24.5%) of genes in pham
- Manual Annotations of this start: 3 of 166
- Called 6.4% of time when present
- Phage (with cluster) where this start called: CaptainKirk2_37 (CV), UmaThurman_32 (CV), Walrus_37 (CV),

Start 53:

- Found in 26 of 192 (13.5%) of genes in pham
- Manual Annotations of this start: 1 of 166
- Called 3.8% of time when present
- Phage (with cluster) where this start called: Ghobes_18 (DA),

Summary by clusters:

There are 24 clusters represented in this pham: DN, DO, singleton, DI, DE, DB, DL, DA, DR, DF3, DN1, DN3, CS4, CS3, CS2, CY1, CX, CV, DC1, CR2, CR3, CR1, DE2, DE4,

Info for manual annotations of cluster CR1:

- Start number 30 was manually annotated 1 time for cluster CR1.

Info for manual annotations of cluster CR2:

- Start number 30 was manually annotated 8 times for cluster CR2.

Info for manual annotations of cluster CR3:

- Start number 30 was manually annotated 5 times for cluster CR3.

Info for manual annotations of cluster CS2:

- Start number 28 was manually annotated 3 times for cluster CS2.
- Start number 30 was manually annotated 25 times for cluster CS2.

Info for manual annotations of cluster CS3:

- Start number 29 was manually annotated 21 times for cluster CS3.

Info for manual annotations of cluster CS4:

- Start number 32 was manually annotated 7 times for cluster CS4.

Info for manual annotations of cluster CV:

- Start number 27 was manually annotated 4 times for cluster CV.
- Start number 37 was manually annotated 8 times for cluster CV.
- Start number 39 was manually annotated 3 times for cluster CV.

Info for manual annotations of cluster CX:

- Start number 29 was manually annotated 4 times for cluster CX.

Info for manual annotations of cluster CY1:

- Start number 37 was manually annotated 1 time for cluster CY1.

Info for manual annotations of cluster DA:

- Start number 53 was manually annotated 1 time for cluster DA.

Info for manual annotations of cluster DB:

- Start number 37 was manually annotated 3 times for cluster DB.

Info for manual annotations of cluster DC1:

- Start number 18 was manually annotated 2 times for cluster DC1.
- Start number 32 was manually annotated 25 times for cluster DC1.

Info for manual annotations of cluster DE2:

- Start number 37 was manually annotated 6 times for cluster DE2.

Info for manual annotations of cluster DE4:

- Start number 37 was manually annotated 5 times for cluster DE4.

Info for manual annotations of cluster DF3:

- Start number 34 was manually annotated 1 time for cluster DF3.

Info for manual annotations of cluster DI:

- Start number 31 was manually annotated 3 times for cluster DI.
- Start number 33 was manually annotated 4 times for cluster DI.

Info for manual annotations of cluster DL:

- Start number 36 was manually annotated 1 time for cluster DL.

Info for manual annotations of cluster DN:

- Start number 37 was manually annotated 3 times for cluster DN.

Info for manual annotations of cluster DN1:

- Start number 37 was manually annotated 11 times for cluster DN1.

Info for manual annotations of cluster DN3:

- Start number 37 was manually annotated 1 time for cluster DN3.

Info for manual annotations of cluster DO:

- Start number 26 was manually annotated 3 times for cluster DO.

Info for manual annotations of cluster DR:

- Start number 26 was manually annotated 6 times for cluster DR.

Gene Information:

Gene: APunk_10 Start: 5832, Stop: 6140, Start Num: 37

Candidate Starts for APunk_10:

(23, 5769), (24, 5787), (Start: 37 @5832 has 39 MA's), (58, 5928), (59, 5934), (62, 5970), (65, 6018), (66, 6024),

Gene: Abblin_9 Start: 5353, Stop: 5655, Start Num: 37

Candidate Starts for Abblin_9:

(Start: 37 @5353 has 39 MA's), (58, 5443), (62, 5485), (65, 5533), (66, 5539),

Gene: Adgers_80 Start: 60593, Stop: 60273, Start Num: 30

Candidate Starts for Adgers_80:

(Start: 30 @60593 has 39 MA's), (66, 60380),

Gene: Ali17_9 Start: 5663, Stop: 5983, Start Num: 37

Candidate Starts for Ali17_9:

(Start: 37 @5663 has 39 MA's), (58, 5753), (59, 5759), (62, 5795), (66, 5852),

Gene: AnClar_78 Start: 60612, Stop: 60265, Start Num: 26

Candidate Starts for AnClar_78:

(Start: 26 @60612 has 9 MA's), (43, 60555), (57, 60489), (65, 60393), (66, 60387),

Gene: Anamika_74 Start: 60867, Stop: 60544, Start Num: 29

Candidate Starts for Anamika_74:

(Start: 29 @60867 has 25 MA's), (Start: 53 @60771 has 1 MA's), (54, 60765), (67, 60651), (68, 60648), (72, 60621), (73, 60609),

Gene: Angelique_36 Start: 29622, Stop: 29323, Start Num: 37

Candidate Starts for Angelique_36:

(Start: 37 @29622 has 39 MA's), (Start: 39 @29610 has 3 MA's), (45, 29586), (46, 29583), (50, 29571), (52, 29559), (57, 29526), (58, 29523), (62, 29478), (65, 29430),

Gene: Archis_40 Start: 30536, Stop: 30222, Start Num: 37

Candidate Starts for Archis_40:

(Start: 27 @30569 has 4 MA's), (Start: 37 @30536 has 39 MA's), (Start: 39 @30524 has 3 MA's), (42, 30512), (45, 30500), (46, 30497), (50, 30485), (52, 30473), (57, 30440), (58, 30437), (60, 30416), (62, 30392), (65, 30344), (66, 30338),

Gene: Arri_91 Start: 57646, Stop: 57308, Start Num: 32

Candidate Starts for Arri_91:

(17, 57736), (Start: 18 @57733 has 2 MA's), (23, 57688), (Start: 32 @57646 has 32 MA's), (49, 57580), (62, 57487), (65, 57439), (66, 57433),

Gene: Ayotoya_48 Start: 35650, Stop: 35985, Start Num: 31

Candidate Starts for Ayotoya_48:

(16, 35548), (Start: 31 @35650 has 3 MA's), (Start: 33 @35653 has 4 MA's), (Start: 39 @35686 has 3 MA's), (55, 35755), (57, 35770), (59, 35779),

Gene: BENtherdunthat_42 Start: 29776, Stop: 29441, Start Num: 37

Candidate Starts for BENtherdunthat_42:

(35, 29788), (Start: 36 @29779 has 1 MA's), (Start: 37 @29776 has 39 MA's), (Start: 39 @29764 has 3 MA's), (45, 29740), (46, 29737), (57, 29680), (58, 29677), (60, 29659), (62, 29635), (65, 29587), (66, 29581),

Gene: BackstagePass_33 Start: 28562, Stop: 28269, Start Num: 37

Candidate Starts for BackstagePass_33:

(Start: 37 @28562 has 39 MA's), (45, 28526), (46, 28523), (50, 28511), (52, 28499), (57, 28469), (58, 28466), (59, 28460), (60, 28448), (62, 28424), (66, 28367),

Gene: Bakery_93 Start: 59467, Stop: 59129, Start Num: 32

Candidate Starts for Bakery_93:

(19, 59542), (21, 59521), (23, 59509), (Start: 32 @59467 has 32 MA's), (49, 59401), (55, 59371), (57, 59356), (62, 59308), (65, 59260), (66, 59254),

Gene: Barb_95 Start: 58510, Stop: 58172, Start Num: 32

Candidate Starts for Barb_95:

(17, 58600), (Start: 18 @58597 has 2 MA's), (23, 58552), (Start: 32 @58510 has 32 MA's), (49, 58444), (57, 58399), (62, 58351), (65, 58303), (66, 58297),

Gene: Barbochs_76 Start: 59970, Stop: 59629, Start Num: 30

Candidate Starts for Barbochs_76:

(Start: 30 @59970 has 39 MA's), (66, 59757), (69, 59748),

Gene: Beaver_80 Start: 61914, Stop: 61585, Start Num: 30

Candidate Starts for Beaver_80:

(Start: 30 @61914 has 39 MA's), (66, 61701),

Gene: Belphegor_5 Start: 2778, Stop: 3092, Start Num: 37

Candidate Starts for Belphegor_5:

(9, 2478), (10, 2493), (Start: 37 @2778 has 39 MA's), (58, 2871), (59, 2877), (62, 2913), (65, 2964), (66, 2970),

Gene: Benczkowski14_73 Start: 60661, Stop: 60341, Start Num: 32

Candidate Starts for Benczkowski14_73:

(Start: 32 @60661 has 32 MA's), (66, 60451),

Gene: BenoitCattle_78 Start: 60565, Stop: 60242, Start Num: 30

Candidate Starts for BenoitCattle_78:

(Start: 30 @60565 has 39 MA's), (49, 60496), (66, 60346),

Gene: Berries_75 Start: 60839, Stop: 60516, Start Num: 29

Candidate Starts for Berries_75:

(Start: 29 @60839 has 25 MA's), (Start: 53 @60743 has 1 MA's), (54, 60737), (67, 60623), (68, 60620), (72, 60593), (73, 60581),

Gene: Bianmat_75 Start: 60879, Stop: 60556, Start Num: 29

Candidate Starts for Bianmat_75:

(Start: 29 @60879 has 25 MA's), (Start: 53 @60783 has 1 MA's), (54, 60777), (67, 60663), (68, 60660), (72, 60633), (73, 60621),

Gene: BigShaq_77 Start: 60737, Stop: 60411, Start Num: 30

Candidate Starts for BigShaq_77:

(Start: 30 @60737 has 39 MA's), (49, 60668), (66, 60524),

Gene: BiggityBass_81 Start: 62080, Stop: 61751, Start Num: 26

Candidate Starts for BiggityBass_81:

(Start: 26 @62080 has 9 MA's), (43, 62023), (58, 61954), (65, 61861),

Gene: Birdsong_40 Start: 30587, Stop: 30261, Start Num: 37

Candidate Starts for Birdsong_40:

(Start: 37 @30587 has 39 MA's), (Start: 39 @30575 has 3 MA's), (45, 30551), (46, 30548), (47, 30545), (50, 30533), (57, 30491), (58, 30488), (60, 30470), (62, 30446), (65, 30398), (66, 30392),

Gene: BirksAndSocks_81 Start: 62036, Stop: 61731, Start Num: 30

Candidate Starts for BirksAndSocks_81:
(Start: 30 @62036 has 39 MA's), (66, 61823),

Gene: BlingBling_34 Start: 30550, Stop: 30248, Start Num: 37
Candidate Starts for BlingBling_34:
(Start: 27 @30583 has 4 MA's), (Start: 37 @30550 has 39 MA's), (Start: 39 @30538 has 3 MA's), (42, 30526), (45, 30514), (46, 30511), (50, 30499), (52, 30487), (57, 30454), (58, 30451), (60, 30430), (62, 30406), (65, 30358), (66, 30352),

Gene: Boneham_80 Start: 61961, Stop: 61656, Start Num: 30
Candidate Starts for Boneham_80:
(Start: 30 @61961 has 39 MA's), (66, 61748),

Gene: Bonum_79 Start: 57724, Stop: 57392, Start Num: 30
Candidate Starts for Bonum_79:
(Start: 30 @57724 has 39 MA's), (38, 57697), (58, 57610), (65, 57520), (66, 57514),

Gene: Breezic_77 Start: 60181, Stop: 59828, Start Num: 30
Candidate Starts for Breezic_77:
(Start: 30 @60181 has 39 MA's), (66, 59968), (69, 59959),

Gene: Budski_42 Start: 31521, Stop: 31192, Start Num: 37
Candidate Starts for Budski_42:
(35, 31533), (Start: 36 @31524 has 1 MA's), (Start: 37 @31521 has 39 MA's), (Start: 39 @31509 has 3 MA's), (45, 31485), (46, 31482), (57, 31425), (58, 31422), (60, 31404), (62, 31380), (65, 31332), (66, 31326),

Gene: Buggaboo_77 Start: 58290, Stop: 57958, Start Num: 30
Candidate Starts for Buggaboo_77:
(Start: 30 @58290 has 39 MA's), (38, 58263), (58, 58176), (65, 58086), (66, 58080),

Gene: Butterball_79 Start: 61966, Stop: 61661, Start Num: 30
Candidate Starts for Butterball_79:
(Start: 30 @61966 has 39 MA's), (66, 61753),

Gene: CaptainKirk2_37 Start: 29823, Stop: 29527, Start Num: 39
Candidate Starts for CaptainKirk2_37:
(Start: 27 @29868 has 4 MA's), (Start: 37 @29835 has 39 MA's), (Start: 39 @29823 has 3 MA's), (45, 29799), (46, 29796), (50, 29784), (52, 29772), (57, 29739), (58, 29736), (60, 29715), (62, 29691), (65, 29643), (66, 29637),

Gene: CathyBurgh_76 Start: 60701, Stop: 60336, Start Num: 30
Candidate Starts for CathyBurgh_76:
(Start: 30 @60701 has 39 MA's), (66, 60488), (69, 60479),

Gene: Charianelly_74 Start: 60589, Stop: 60266, Start Num: 29
Candidate Starts for Charianelly_74:
(Start: 29 @60589 has 25 MA's), (Start: 53 @60493 has 1 MA's), (54, 60487), (67, 60373), (68, 60370), (72, 60343), (73, 60331),

Gene: CheeseTouch_41 Start: 28097, Stop: 27792, Start Num: 37
Candidate Starts for CheeseTouch_41:

(11, 28319), (12, 28310), (13, 28286), (Start: 37 @28097 has 39 MA's), (Start: 39 @28085 has 3 MA's), (45, 28061), (46, 28058), (50, 28046), (57, 28004), (58, 28001), (60, 27983), (62, 27959), (65, 27911), (66, 27905),

Gene: Chelms_77 Start: 60667, Stop: 60350, Start Num: 30

Candidate Starts for Chelms_77:

(Start: 30 @60667 has 39 MA's), (66, 60454),

Gene: CherryTomatoes_211 Start: 140218, Stop: 140541, Start Num: 26

Candidate Starts for CherryTomatoes_211:

(Start: 26 @140218 has 9 MA's), (65, 140422), (66, 140428),

Gene: Chop_48 Start: 35400, Stop: 35738, Start Num: 33

Candidate Starts for Chop_48:

(16, 35295), (Start: 31 @35397 has 3 MA's), (Start: 33 @35400 has 4 MA's), (Start: 39 @35433 has 3 MA's), (55, 35502), (57, 35517), (59, 35526),

Gene: ClamChowder_94 Start: 58597, Stop: 58172, Start Num: 18

Candidate Starts for ClamChowder_94:

(17, 58600), (Start: 18 @58597 has 2 MA's), (23, 58552), (Start: 32 @58510 has 32 MA's), (49, 58444), (57, 58399), (62, 58351), (65, 58303), (66, 58297),

Gene: Crater_40 Start: 29695, Stop: 29378, Start Num: 37

Candidate Starts for Crater_40:

(1, 30361), (2, 30358), (3, 30334), (4, 30322), (5, 30280), (6, 30274), (7, 30082), (11, 29917), (12, 29908), (13, 29884), (Start: 37 @29695 has 39 MA's), (Start: 39 @29683 has 3 MA's), (45, 29659), (46, 29656), (50, 29644), (52, 29632), (57, 29599), (58, 29596), (60, 29578), (62, 29554), (65, 29506), (66, 29500),

Gene: Dakiti_78 Start: 61535, Stop: 61218, Start Num: 30

Candidate Starts for Dakiti_78:

(Start: 30 @61535 has 39 MA's), (66, 61322),

Gene: Damp_72 Start: 59753, Stop: 59430, Start Num: 29

Candidate Starts for Damp_72:

(Start: 29 @59753 has 25 MA's), (Start: 53 @59657 has 1 MA's), (54, 59651), (67, 59537), (68, 59534), (72, 59507), (73, 59495),

Gene: Danyall_92 Start: 57691, Stop: 57353, Start Num: 32

Candidate Starts for Danyall_92:

(17, 57781), (Start: 18 @57778 has 2 MA's), (23, 57733), (Start: 32 @57691 has 32 MA's), (49, 57625), (57, 57580), (62, 57532), (65, 57484), (66, 57478),

Gene: Daredevil_142 Start: 80942, Stop: 80583, Start Num: 36

Candidate Starts for Daredevil_142:

(Start: 36 @80942 has 1 MA's), (41, 80918), (51, 80882), (61, 80804), (71, 80708),

Gene: DelRio_49 Start: 36105, Stop: 36449, Start Num: 33

Candidate Starts for DelRio_49:

(16, 36000), (Start: 31 @36102 has 3 MA's), (Start: 33 @36105 has 4 MA's), (Start: 39 @36138 has 3 MA's), (55, 36207), (57, 36222), (59, 36231),

Gene: Delian_40 Start: 29833, Stop: 29525, Start Num: 37

Candidate Starts for Delian_40:

(Start: 27 @29866 has 4 MA's), (Start: 37 @29833 has 39 MA's), (Start: 39 @29821 has 3 MA's), (45, 29797), (46, 29794), (50, 29782), (52, 29770), (57, 29737), (58, 29734), (60, 29713), (62, 29689), (65, 29641), (66, 29635),

Gene: Diabla_82 Start: 62036, Stop: 61740, Start Num: 28

Candidate Starts for Diabla_82:

(Start: 28 @62036 has 3 MA's), (74, 61790),

Gene: DirtyBoi_33 Start: 28465, Stop: 28172, Start Num: 37

Candidate Starts for DirtyBoi_33:

(35, 28477), (Start: 36 @28468 has 1 MA's), (Start: 37 @28465 has 39 MA's), (Start: 39 @28453 has 3 MA's), (45, 28429), (46, 28426), (50, 28414), (57, 28372), (58, 28369), (59, 28363), (60, 28351), (62, 28327), (66, 28270),

Gene: Ecliptus_44 Start: 32044, Stop: 31706, Start Num: 37

Candidate Starts for Ecliptus_44:

(35, 32056), (Start: 36 @32047 has 1 MA's), (Start: 37 @32044 has 39 MA's), (Start: 39 @32032 has 3 MA's), (45, 32008), (46, 32005), (50, 31993), (57, 31951), (58, 31948), (60, 31930), (62, 31906), (65, 31858), (66, 31852),

Gene: Ekhein_77 Start: 59871, Stop: 59527, Start Num: 30

Candidate Starts for Ekhein_77:

(Start: 30 @59871 has 39 MA's), (66, 59658), (69, 59649),

Gene: Ennea_83 Start: 59022, Stop: 58708, Start Num: 30

Candidate Starts for Ennea_83:

(25, 59040), (Start: 30 @59022 has 39 MA's), (42, 58977), (66, 58815),

Gene: Evaa_82 Start: 60219, Stop: 59869, Start Num: 26

Candidate Starts for Evaa_82:

(Start: 26 @60219 has 9 MA's), (Start: 39 @60171 has 3 MA's), (43, 60156), (62, 60045), (65, 59997), (66, 59991),

Gene: Evamon_91 Start: 57458, Stop: 57120, Start Num: 32

Candidate Starts for Evamon_91:

(19, 57530), (23, 57500), (Start: 32 @57458 has 32 MA's), (49, 57392), (62, 57299), (65, 57251), (66, 57245),

Gene: Exiguo_76 Start: 59877, Stop: 59545, Start Num: 30

Candidate Starts for Exiguo_76:

(Start: 30 @59877 has 39 MA's), (66, 59664),

Gene: Eyre_32 Start: 25507, Stop: 25208, Start Num: 37

Candidate Starts for Eyre_32:

(Start: 37 @25507 has 39 MA's), (Start: 39 @25495 has 3 MA's), (44, 25477), (45, 25471), (46, 25468), (50, 25456), (52, 25444), (57, 25411), (58, 25408), (62, 25363), (65, 25315),

Gene: FelixAlejandro_81 Start: 62391, Stop: 62059, Start Num: 30

Candidate Starts for FelixAlejandro_81:

(Start: 30 @62391 has 39 MA's), (66, 62178),

Gene: Fireball_94 Start: 57920, Stop: 57582, Start Num: 32

Candidate Starts for Fireball_94:

(17, 58010), (Start: 18 @58007 has 2 MA's), (23, 57962), (Start: 32 @57920 has 32 MA's), (49, 57854), (62, 57761), (65, 57713), (66, 57707),

Gene: Flakey_76 Start: 60687, Stop: 60322, Start Num: 30

Candidate Starts for Flakey_76:

(Start: 30 @60687 has 39 MA's), (66, 60474), (69, 60465),

Gene: Flapper_80 Start: 58306, Stop: 57980, Start Num: 30

Candidate Starts for Flapper_80:

(Start: 30 @58306 has 39 MA's), (38, 58282), (42, 58261), (48, 58240), (65, 58105), (66, 58099),

Gene: Float294_78 Start: 58928, Stop: 58614, Start Num: 30

Candidate Starts for Float294_78:

(Start: 30 @58928 has 39 MA's), (42, 58883), (66, 58721),

Gene: Francois_47 Start: 34916, Stop: 35251, Start Num: 31

Candidate Starts for Francois_47:

(Start: 31 @34916 has 3 MA's), (Start: 33 @34919 has 4 MA's), (Start: 39 @34952 has 3 MA's), (55, 35021), (57, 35036), (59, 35045),

Gene: Frickyeah_43 Start: 29647, Stop: 29330, Start Num: 37

Candidate Starts for Frickyeah_43:

(1, 30313), (2, 30310), (3, 30286), (4, 30274), (5, 30232), (6, 30226), (7, 30034), (11, 29869), (12, 29860), (13, 29836), (Start: 37 @29647 has 39 MA's), (Start: 39 @29635 has 3 MA's), (45, 29611), (46, 29608), (50, 29596), (52, 29584), (57, 29551), (58, 29548), (60, 29530), (62, 29506), (65, 29458), (66, 29452),

Gene: GTE5_64 Start: 50838, Stop: 50473, Start Num: 22

Candidate Starts for GTE5_64:

(22, 50838), (Start: 30 @50799 has 39 MA's), (38, 50775), (42, 50754), (49, 50730), (65, 50598), (66, 50592),

Gene: GalacticEye_75 Start: 60550, Stop: 60227, Start Num: 29

Candidate Starts for GalacticEye_75:

(Start: 29 @60550 has 25 MA's), (Start: 53 @60454 has 1 MA's), (54, 60448), (67, 60334), (68, 60331), (72, 60304), (73, 60292),

Gene: Getalong_44 Start: 32367, Stop: 32050, Start Num: 37

Candidate Starts for Getalong_44:

(Start: 36 @32370 has 1 MA's), (Start: 37 @32367 has 39 MA's), (Start: 39 @32355 has 3 MA's), (45, 32331), (46, 32328), (50, 32316), (52, 32304), (57, 32271), (58, 32268), (60, 32250), (62, 32226), (65, 32178), (66, 32172),

Gene: Gezellig_90 Start: 57304, Stop: 56966, Start Num: 32

Candidate Starts for Gezellig_90:

(17, 57394), (Start: 18 @57391 has 2 MA's), (23, 57346), (Start: 32 @57304 has 32 MA's), (49, 57238), (62, 57145), (65, 57097), (66, 57091),

Gene: Ghobes_18 Start: 16697, Stop: 16407, Start Num: 53

Candidate Starts for Ghobes_18:

(10, 17057), (Start: 53 @16697 has 1 MA's),

Gene: Gibbles_60 Start: 52361, Stop: 52059, Start Num: 29
Candidate Starts for Gibbles_60:
(Start: 29 @52361 has 25 MA's), (56, 52250), (63, 52205),

Gene: Gorko_76 Start: 59788, Stop: 59468, Start Num: 30
Candidate Starts for Gorko_76:
(Start: 30 @59788 has 39 MA's), (66, 59575),

Gene: GourdThymes_77 Start: 60728, Stop: 60423, Start Num: 30
Candidate Starts for GourdThymes_77:
(Start: 30 @60728 has 39 MA's), (66, 60515), (69, 60506),

Gene: GrandSlam_48 Start: 35400, Stop: 35738, Start Num: 33
Candidate Starts for GrandSlam_48:
(16, 35295), (Start: 31 @35397 has 3 MA's), (Start: 33 @35400 has 4 MA's), (Start: 39 @35433 has 3 MA's), (55, 35502), (57, 35517), (59, 35526),

Gene: Guacamole_35 Start: 30431, Stop: 30090, Start Num: 27
Candidate Starts for Guacamole_35:
(Start: 27 @30431 has 4 MA's), (Start: 37 @30398 has 39 MA's), (Start: 39 @30386 has 3 MA's), (45, 30362), (46, 30359), (50, 30347), (52, 30335), (57, 30302), (58, 30299), (60, 30278), (62, 30254), (65, 30206), (66, 30200),

Gene: Guillaume_74 Start: 60600, Stop: 60277, Start Num: 29
Candidate Starts for Guillaume_74:
(Start: 29 @60600 has 25 MA's), (Start: 53 @60504 has 1 MA's), (54, 60498), (67, 60384), (68, 60381), (72, 60354), (73, 60342),

Gene: Hail2Pitt_73 Start: 61076, Stop: 60753, Start Num: 29
Candidate Starts for Hail2Pitt_73:
(Start: 29 @61076 has 25 MA's), (Start: 53 @60980 has 1 MA's), (54, 60974), (67, 60860), (68, 60857), (72, 60830), (73, 60818),

Gene: Halo3_90 Start: 58179, Stop: 57841, Start Num: 32
Candidate Starts for Halo3_90:
(14, 58332), (15, 58311), (23, 58221), (Start: 32 @58179 has 32 MA's), (49, 58113), (57, 58068), (62, 58020), (65, 57972), (66, 57966),

Gene: Hamood_49 Start: 35397, Stop: 35738, Start Num: 31
Candidate Starts for Hamood_49:
(16, 35295), (Start: 31 @35397 has 3 MA's), (Start: 33 @35400 has 4 MA's), (Start: 39 @35433 has 3 MA's), (55, 35502), (57, 35517), (59, 35526),

Gene: Hans_13 Start: 6198, Stop: 6524, Start Num: 37
Candidate Starts for Hans_13:
(Start: 37 @6198 has 39 MA's), (58, 6291), (59, 6297), (62, 6333), (66, 6390),

Gene: Harambe_74 Start: 60867, Stop: 60544, Start Num: 29
Candidate Starts for Harambe_74:
(Start: 29 @60867 has 25 MA's), (Start: 53 @60771 has 1 MA's), (54, 60765), (67, 60651), (68, 60648), (72, 60621), (73, 60609),

Gene: Hedwig_35 Start: 28932, Stop: 28639, Start Num: 37

Candidate Starts for Hedwig_35:

(Start: 37 @28932 has 39 MA's), (Start: 39 @28920 has 3 MA's), (45, 28896), (46, 28893), (50, 28881), (57, 28839), (58, 28836), (59, 28830), (60, 28818), (62, 28794), (66, 28737),

Gene: Hello_74 Start: 60829, Stop: 60506, Start Num: 29

Candidate Starts for Hello_74:

(Start: 29 @60829 has 25 MA's), (Start: 53 @60733 has 1 MA's), (54, 60727), (67, 60613), (68, 60610), (72, 60583), (73, 60571),

Gene: Hitter_38 Start: 30165, Stop: 29812, Start Num: 27

Candidate Starts for Hitter_38:

(Start: 27 @30165 has 4 MA's), (Start: 37 @30132 has 39 MA's), (Start: 39 @30120 has 3 MA's), (45, 30096), (46, 30093), (50, 30081), (52, 30069), (57, 30036), (58, 30033), (60, 30012), (62, 29988), (65, 29940), (66, 29934),

Gene: Holliday_42 Start: 30222, Stop: 29905, Start Num: 37

Candidate Starts for Holliday_42:

(1, 30888), (2, 30885), (3, 30861), (4, 30849), (5, 30807), (6, 30801), (7, 30609), (11, 30444), (12, 30435), (13, 30411), (Start: 37 @30222 has 39 MA's), (Start: 39 @30210 has 3 MA's), (45, 30186), (46, 30183), (50, 30171), (52, 30159), (57, 30126), (58, 30123), (60, 30105), (62, 30081), (65, 30033), (66, 30027),

Gene: Hollow_74 Start: 60832, Stop: 60512, Start Num: 32

Candidate Starts for Hollow_74:

(Start: 32 @60832 has 32 MA's), (47, 60772), (65, 60628), (66, 60622),

Gene: Hotorobo_77 Start: 60751, Stop: 60410, Start Num: 30

Candidate Starts for Hotorobo_77:

(Start: 30 @60751 has 39 MA's), (66, 60538), (69, 60529),

Gene: Inspectinfecti_12 Start: 6720, Stop: 7040, Start Num: 37

Candidate Starts for Inspectinfecti_12:

(Start: 37 @6720 has 39 MA's), (58, 6810), (59, 6816), (62, 6852), (66, 6909),

Gene: Jambalaya_88 Start: 56761, Stop: 56423, Start Num: 32

Candidate Starts for Jambalaya_88:

(8, 57106), (23, 56803), (Start: 32 @56761 has 32 MA's), (49, 56695), (62, 56602), (65, 56554), (66, 56548),

Gene: Jams_75 Start: 60039, Stop: 59716, Start Num: 29

Candidate Starts for Jams_75:

(Start: 29 @60039 has 25 MA's), (Start: 53 @59943 has 1 MA's), (54, 59937), (67, 59823), (68, 59820), (72, 59793), (73, 59781),

Gene: JasperJr_35 Start: 30398, Stop: 30090, Start Num: 37

Candidate Starts for JasperJr_35:

(Start: 27 @30431 has 4 MA's), (Start: 37 @30398 has 39 MA's), (Start: 39 @30386 has 3 MA's), (45, 30362), (46, 30359), (50, 30347), (52, 30335), (57, 30302), (58, 30299), (60, 30278), (62, 30254), (65, 30206), (66, 30200),

Gene: Jellybones_78 Start: 61675, Stop: 61343, Start Num: 30

Candidate Starts for Jellybones_78:

(Start: 30 @61675 has 39 MA's), (66, 61462),

Gene: John316_80 Start: 61839, Stop: 61486, Start Num: 30
Candidate Starts for John316_80:
(Start: 30 @61839 has 39 MA's), (66, 61626), (69, 61617),

Gene: Jormungandr_74 Start: 60582, Stop: 60259, Start Num: 29
Candidate Starts for Jormungandr_74:
(Start: 29 @60582 has 25 MA's), (Start: 53 @60486 has 1 MA's), (54, 60480), (67, 60366), (68, 60363), (72, 60336), (73, 60324),

Gene: Jumbo_60 Start: 54431, Stop: 54102, Start Num: 34
Candidate Starts for Jumbo_60:
(Start: 34 @54431 has 1 MA's), (62, 54281), (64, 54266),

Gene: Kabluna_78 Start: 57062, Stop: 56721, Start Num: 30
Candidate Starts for Kabluna_78:
(Start: 30 @57062 has 39 MA's), (38, 57035), (58, 56948), (65, 56858), (66, 56852),

Gene: Kamaru_38 Start: 29300, Stop: 28986, Start Num: 37
Candidate Starts for Kamaru_38:
(35, 29312), (Start: 36 @29303 has 1 MA's), (Start: 37 @29300 has 39 MA's), (Start: 39 @29288 has 3 MA's), (45, 29264), (46, 29261), (50, 29249), (57, 29204), (58, 29201), (60, 29183), (62, 29159), (65, 29111), (66, 29105),

Gene: Kampe_62 Start: 52344, Stop: 52042, Start Num: 29
Candidate Starts for Kampe_62:
(Start: 29 @52344 has 25 MA's), (56, 52233), (63, 52188),

Gene: Kaseim_74 Start: 60024, Stop: 59701, Start Num: 29
Candidate Starts for Kaseim_74:
(Start: 29 @60024 has 25 MA's), (Start: 53 @59928 has 1 MA's), (54, 59922), (67, 59808), (68, 59805), (72, 59778), (73, 59766),

Gene: Katyusha_72 Start: 60661, Stop: 60341, Start Num: 32
Candidate Starts for Katyusha_72:
(Start: 32 @60661 has 32 MA's), (66, 60451),

Gene: Kenna_42 Start: 30558, Stop: 30241, Start Num: 37
Candidate Starts for Kenna_42:
(1, 31224), (2, 31221), (3, 31197), (4, 31185), (5, 31143), (6, 31137), (7, 30945), (11, 30780), (12, 30771), (13, 30747), (Start: 37 @30558 has 39 MA's), (Start: 39 @30546 has 3 MA's), (45, 30522), (46, 30519), (50, 30507), (52, 30495), (57, 30462), (58, 30459), (60, 30441), (62, 30417), (65, 30369), (66, 30363),

Gene: KimmyK_89 Start: 57751, Stop: 57413, Start Num: 32
Candidate Starts for KimmyK_89:
(17, 57841), (Start: 18 @57838 has 2 MA's), (23, 57793), (Start: 32 @57751 has 32 MA's), (49, 57685), (62, 57592), (65, 57544), (66, 57538),

Gene: Kvothe_72 Start: 60503, Stop: 60183, Start Num: 32
Candidate Starts for Kvothe_72:
(Start: 32 @60503 has 32 MA's), (66, 60293),

Gene: Lahirium_74 Start: 61104, Stop: 60781, Start Num: 29

Candidate Starts for Lahirium_74:

(Start: 29 @61104 has 25 MA's), (Start: 53 @61008 has 1 MA's), (54, 61002), (67, 60888), (68, 60885), (72, 60858), (73, 60846),

Gene: Leonard_11 Start: 6315, Stop: 6635, Start Num: 37

Candidate Starts for Leonard_11:

(Start: 37 @6315 has 39 MA's), (58, 6405), (59, 6411), (62, 6447), (66, 6504),

Gene: Lidong_75 Start: 60839, Stop: 60516, Start Num: 29

Candidate Starts for Lidong_75:

(Start: 29 @60839 has 25 MA's), (Start: 53 @60743 has 1 MA's), (54, 60737), (67, 60623), (68, 60620), (72, 60593), (73, 60581),

Gene: Linetti_77 Start: 61689, Stop: 61372, Start Num: 30

Candidate Starts for Linetti_77:

(Start: 30 @61689 has 39 MA's), (66, 61476),

Gene: LitninMcQueen_37 Start: 29049, Stop: 28729, Start Num: 37

Candidate Starts for LitninMcQueen_37:

(35, 29061), (Start: 36 @29052 has 1 MA's), (Start: 37 @29049 has 39 MA's), (Start: 39 @29037 has 3 MA's), (45, 29013), (46, 29010), (50, 28998), (57, 28953), (58, 28950), (60, 28932), (62, 28908), (65, 28860), (66, 28854),

Gene: LittleMunchkin_81 Start: 61979, Stop: 61644, Start Num: 26

Candidate Starts for LittleMunchkin_81:

(Start: 26 @61979 has 9 MA's), (43, 61922), (57, 61856), (65, 61760), (66, 61754),

Gene: Lizzo_77 Start: 60701, Stop: 60336, Start Num: 30

Candidate Starts for Lizzo_77:

(Start: 30 @60701 has 39 MA's), (66, 60488), (69, 60479),

Gene: Lollipop1437_79 Start: 58702, Stop: 58388, Start Num: 30

Candidate Starts for Lollipop1437_79:

(Start: 30 @58702 has 39 MA's), (42, 58657), (66, 58495),

Gene: Luker_76 Start: 61057, Stop: 60734, Start Num: 29

Candidate Starts for Luker_76:

(Start: 29 @61057 has 25 MA's), (Start: 53 @60961 has 1 MA's), (54, 60955), (67, 60841), (68, 60838), (72, 60811), (73, 60799),

Gene: Lutum_43 Start: 30558, Stop: 30241, Start Num: 37

Candidate Starts for Lutum_43:

(1, 31224), (2, 31221), (3, 31197), (4, 31185), (5, 31143), (6, 31137), (7, 30945), (11, 30780), (12, 30771), (13, 30747), (Start: 37 @30558 has 39 MA's), (Start: 39 @30546 has 3 MA's), (45, 30522), (46, 30519), (50, 30507), (52, 30495), (57, 30462), (58, 30459), (60, 30441), (62, 30417), (65, 30369), (66, 30363),

Gene: MelBins_11 Start: 6093, Stop: 6413, Start Num: 37

Candidate Starts for MelBins_11:

(20, 6012), (Start: 37 @6093 has 39 MA's), (58, 6183), (59, 6189), (62, 6225), (66, 6282),

Gene: Melba_36 Start: 30375, Stop: 30085, Start Num: 37

Candidate Starts for Melba_36:

(Start: 27 @30408 has 4 MA's), (Start: 37 @30375 has 39 MA's), (Start: 39 @30363 has 3 MA's), (42, 30351), (45, 30339), (46, 30336), (50, 30324), (52, 30312), (57, 30279), (58, 30276), (60, 30255), (62, 30231), (65, 30183), (66, 30177),

Gene: Mellie_34 Start: 28646, Stop: 28332, Start Num: 37

Candidate Starts for Mellie_34:

(Start: 27 @28679 has 4 MA's), (Start: 37 @28646 has 39 MA's), (Start: 39 @28634 has 3 MA's), (45, 28610), (46, 28607), (50, 28595), (52, 28583), (57, 28550), (58, 28547), (60, 28529), (62, 28505), (65, 28457), (66, 28451),

Gene: MerCougar_78 Start: 58752, Stop: 58420, Start Num: 30

Candidate Starts for MerCougar_78:

(Start: 30 @58752 has 39 MA's), (42, 58707), (58, 58641), (66, 58545),

Gene: Minos_76 Start: 60581, Stop: 60258, Start Num: 29

Candidate Starts for Minos_76:

(Start: 29 @60581 has 25 MA's), (Start: 53 @60485 has 1 MA's), (54, 60479), (67, 60365), (68, 60362), (72, 60335), (73, 60323),

Gene: MintFen_37 Start: 30482, Stop: 30147, Start Num: 27

Candidate Starts for MintFen_37:

(Start: 27 @30482 has 4 MA's), (Start: 37 @30449 has 39 MA's), (Start: 39 @30437 has 3 MA's), (45, 30413), (46, 30410), (50, 30398), (52, 30386), (57, 30353), (58, 30350), (60, 30329), (62, 30305), (65, 30257), (66, 30251),

Gene: Monty_76 Start: 59914, Stop: 59549, Start Num: 30

Candidate Starts for Monty_76:

(Start: 30 @59914 has 39 MA's), (66, 59701), (69, 59692),

Gene: MrWormie_75 Start: 59742, Stop: 59419, Start Num: 29

Candidate Starts for MrWormie_75:

(Start: 29 @59742 has 25 MA's), (Start: 53 @59646 has 1 MA's), (54, 59640), (67, 59526), (68, 59523), (72, 59496), (73, 59484),

Gene: Msay19_81 Start: 62277, Stop: 61945, Start Num: 30

Candidate Starts for Msay19_81:

(Start: 30 @62277 has 39 MA's), (66, 62064),

Gene: Mutzi_91 Start: 58651, Stop: 58313, Start Num: 32

Candidate Starts for Mutzi_91:

(17, 58741), (Start: 18 @58738 has 2 MA's), (23, 58693), (Start: 32 @58651 has 32 MA's), (49, 58585), (57, 58540), (62, 58492), (65, 58444), (66, 58438),

Gene: Nadeem_48 Start: 34920, Stop: 35255, Start Num: 31

Candidate Starts for Nadeem_48:

(16, 34818), (Start: 31 @34920 has 3 MA's), (Start: 33 @34923 has 4 MA's), (Start: 39 @34956 has 3 MA's), (55, 35025), (57, 35040), (59, 35049),

Gene: Natkenzie_9 Start: 5353, Stop: 5655, Start Num: 37

Candidate Starts for Natkenzie_9:

(Start: 37 @5353 has 39 MA's), (58, 5443), (62, 5485), (65, 5533), (66, 5539),

Gene: Neoevie_74 Start: 60843, Stop: 60520, Start Num: 29
Candidate Starts for Neoevie_74:
(Start: 29 @60843 has 25 MA's), (Start: 53 @60747 has 1 MA's), (54, 60741), (67, 60627), (68, 60624), (72, 60597), (73, 60585),

Gene: Newt_76 Start: 61071, Stop: 60748, Start Num: 29
Candidate Starts for Newt_76:
(Start: 29 @61071 has 25 MA's), (Start: 53 @60975 has 1 MA's), (54, 60969), (67, 60855), (68, 60852), (72, 60825), (73, 60813),

Gene: Niagara_73 Start: 60594, Stop: 60274, Start Num: 32
Candidate Starts for Niagara_73:
(Start: 32 @60594 has 32 MA's), (66, 60384),

Gene: Nimi13_74 Start: 60590, Stop: 60267, Start Num: 29
Candidate Starts for Nimi13_74:
(Start: 29 @60590 has 25 MA's), (Start: 53 @60494 has 1 MA's), (54, 60488), (67, 60374), (68, 60371), (72, 60344), (73, 60332),

Gene: NosilaM_76 Start: 57364, Stop: 57035, Start Num: 30
Candidate Starts for NosilaM_76:
(Start: 30 @57364 has 39 MA's), (49, 57295), (58, 57253), (65, 57163), (66, 57157),

Gene: Nubi_94 Start: 57714, Stop: 57376, Start Num: 32
Candidate Starts for Nubi_94:
(17, 57804), (Start: 18 @57801 has 2 MA's), (23, 57756), (Start: 32 @57714 has 32 MA's), (49, 57648), (57, 57603), (62, 57555), (65, 57507), (66, 57501),

Gene: Obliviate_33 Start: 28822, Stop: 28514, Start Num: 37
Candidate Starts for Obliviate_33:
(Start: 27 @28855 has 4 MA's), (Start: 37 @28822 has 39 MA's), (Start: 39 @28810 has 3 MA's), (45, 28786), (46, 28783), (50, 28771), (52, 28759), (57, 28726), (58, 28723), (60, 28702), (62, 28678), (65, 28630), (66, 28624),

Gene: Orchid_61 Start: 52345, Stop: 52043, Start Num: 29
Candidate Starts for Orchid_61:
(Start: 29 @52345 has 25 MA's), (56, 52234), (63, 52189),

Gene: Outis_76 Start: 57844, Stop: 57512, Start Num: 30
Candidate Starts for Outis_76:
(Start: 30 @57844 has 39 MA's), (42, 57799), (58, 57733), (66, 57637),

Gene: Parada_48 Start: 34923, Stop: 35255, Start Num: 33
Candidate Starts for Parada_48:
(16, 34818), (Start: 31 @34920 has 3 MA's), (Start: 33 @34923 has 4 MA's), (Start: 39 @34956 has 3 MA's), (55, 35025), (57, 35040), (59, 35049),

Gene: Patio_78 Start: 57925, Stop: 57620, Start Num: 30
Candidate Starts for Patio_78:
(Start: 30 @57925 has 39 MA's), (47, 57865), (66, 57727),

Gene: PatrickStar_62 Start: 52344, Stop: 52042, Start Num: 29
Candidate Starts for PatrickStar_62:

(Start: 29 @52344 has 25 MA's), (56, 52233), (63, 52188),

Gene: Periwinkle_46 Start: 32013, Stop: 31696, Start Num: 37

Candidate Starts for Periwinkle_46:

(35, 32025), (Start: 36 @32016 has 1 MA's), (Start: 37 @32013 has 39 MA's), (Start: 39 @32001 has 3 MA's), (45, 31977), (46, 31974), (57, 31917), (58, 31914), (62, 31872), (65, 31824), (66, 31818),

Gene: Phabuloso_40 Start: 30274, Stop: 29954, Start Num: 37

Candidate Starts for Phabuloso_40:

(1, 30940), (2, 30937), (3, 30913), (4, 30901), (7, 30661), (11, 30496), (12, 30487), (13, 30463), (Start: 37 @30274 has 39 MA's), (Start: 39 @30262 has 3 MA's), (45, 30238), (46, 30235), (50, 30223), (55, 30193), (57, 30178), (58, 30175), (62, 30133), (65, 30085), (66, 30079),

Gene: Phauci_4 Start: 2839, Stop: 3165, Start Num: 37

Candidate Starts for Phauci_4:

(Start: 37 @2839 has 39 MA's), (58, 2932), (59, 2938), (62, 2974), (66, 3031),

Gene: Philon9_69 Start: 61064, Stop: 60738, Start Num: 29

Candidate Starts for Philon9_69:

(Start: 29 @61064 has 25 MA's), (40, 61022), (61, 60905), (63, 60899), (67, 60845), (70, 60821),

Gene: Phinally_11 Start: 6312, Stop: 6632, Start Num: 37

Candidate Starts for Phinally_11:

(Start: 37 @6312 has 39 MA's), (58, 6402), (59, 6408), (62, 6444), (66, 6501),

Gene: Phistory_43 Start: 30909, Stop: 30592, Start Num: 37

Candidate Starts for Phistory_43:

(1, 31575), (2, 31572), (3, 31548), (4, 31536), (5, 31494), (6, 31488), (7, 31296), (11, 31131), (12, 31122), (13, 31098), (Start: 37 @30909 has 39 MA's), (Start: 39 @30897 has 3 MA's), (45, 30873), (46, 30870), (50, 30858), (52, 30846), (57, 30813), (58, 30810), (60, 30792), (62, 30768), (65, 30720), (66, 30714),

Gene: Phlop_88 Start: 57354, Stop: 57016, Start Num: 32

Candidate Starts for Phlop_88:

(17, 57444), (Start: 18 @57441 has 2 MA's), (23, 57396), (Start: 32 @57354 has 32 MA's), (49, 57288), (62, 57195), (65, 57147), (66, 57141),

Gene: PhrostedPhlake_40 Start: 30630, Stop: 30334, Start Num: 37

Candidate Starts for PhrostedPhlake_40:

(Start: 27 @30663 has 4 MA's), (Start: 37 @30630 has 39 MA's), (Start: 39 @30618 has 3 MA's), (45, 30594), (46, 30591), (50, 30579), (52, 30567), (57, 30534), (58, 30531), (60, 30510), (62, 30486), (65, 30438), (66, 30432),

Gene: PierreThree_76 Start: 61166, Stop: 60849, Start Num: 30

Candidate Starts for PierreThree_76:

(Start: 30 @61166 has 39 MA's), (66, 60953),

Gene: Pimento_50 Start: 34511, Stop: 34852, Start Num: 31

Candidate Starts for Pimento_50:

(16, 34409), (Start: 31 @34511 has 3 MA's), (Start: 33 @34514 has 4 MA's), (Start: 39 @34547 has 3 MA's), (55, 34616), (57, 34631), (59, 34640),

Gene: PinkCoffee_93 Start: 57642, Stop: 57217, Start Num: 18

Candidate Starts for PinkCoffee_93:

(17, 57645), (Start: 18 @57642 has 2 MA's), (23, 57597), (Start: 32 @57555 has 32 MA's), (49, 57489), (57, 57444), (62, 57396), (65, 57348), (66, 57342),

Gene: Poland_82 Start: 62256, Stop: 61924, Start Num: 30

Candidate Starts for Poland_82:

(Start: 30 @62256 has 39 MA's), (66, 62043),

Gene: Portcullis_91 Start: 57360, Stop: 57022, Start Num: 32

Candidate Starts for Portcullis_91:

(17, 57450), (Start: 18 @57447 has 2 MA's), (23, 57402), (Start: 32 @57360 has 32 MA's), (49, 57294), (62, 57201), (65, 57153), (66, 57147),

Gene: PullumCavea_89 Start: 57531, Stop: 57193, Start Num: 32

Candidate Starts for PullumCavea_89:

(17, 57621), (Start: 18 @57618 has 2 MA's), (23, 57573), (Start: 32 @57531 has 32 MA's), (49, 57465), (62, 57372), (65, 57324), (66, 57318),

Gene: Pupper_204 Start: 140080, Stop: 140403, Start Num: 26

Candidate Starts for Pupper_204:

(Start: 26 @140080 has 9 MA's), (65, 140284), (66, 140290),

Gene: RayTheFireFly_41 Start: 30859, Stop: 30572, Start Num: 37

Candidate Starts for RayTheFireFly_41:

(35, 30871), (Start: 37 @30859 has 39 MA's), (Start: 39 @30847 has 3 MA's), (45, 30823), (46, 30820), (50, 30808), (52, 30796), (57, 30763), (58, 30760), (60, 30742), (62, 30718), (65, 30670),

Gene: RemRem_78 Start: 59853, Stop: 59521, Start Num: 30

Candidate Starts for RemRem_78:

(Start: 30 @59853 has 39 MA's), (66, 59640),

Gene: RogerDodger_94 Start: 58119, Stop: 57781, Start Num: 32

Candidate Starts for RogerDodger_94:

(8, 58464), (15, 58251), (23, 58161), (Start: 32 @58119 has 32 MA's), (49, 58053), (62, 57960), (65, 57912), (66, 57906),

Gene: RoyalG_77 Start: 60476, Stop: 60180, Start Num: 28

Candidate Starts for RoyalG_77:

(Start: 28 @60476 has 3 MA's), (74, 60230),

Gene: SCentae_203 Start: 140271, Stop: 140594, Start Num: 26

Candidate Starts for SCentae_203:

(Start: 26 @140271 has 9 MA's), (65, 140475), (66, 140481),

Gene: Salvador_91 Start: 57456, Stop: 57118, Start Num: 32

Candidate Starts for Salvador_91:

(19, 57528), (23, 57498), (Start: 32 @57456 has 32 MA's), (49, 57390), (62, 57297), (65, 57249), (66, 57243),

Gene: Sam12_76 Start: 59877, Stop: 59545, Start Num: 30

Candidate Starts for Sam12_76:

(Start: 30 @59877 has 39 MA's), (66, 59664),

Gene: Sampson_9 Start: 5298, Stop: 5600, Start Num: 37
Candidate Starts for Sampson_9:
(Start: 37 @5298 has 39 MA's), (58, 5388), (62, 5430), (65, 5478), (66, 5484),

Gene: Savbucketdawg_86 Start: 56798, Stop: 56460, Start Num: 32
Candidate Starts for Savbucketdawg_86:
(8, 57143), (23, 56840), (Start: 32 @56798 has 32 MA's), (49, 56732), (62, 56639), (65, 56591), (66, 56585),

Gene: Scioto_9 Start: 5353, Stop: 5655, Start Num: 37
Candidate Starts for Scioto_9:
(Start: 37 @5353 has 39 MA's), (58, 5443), (62, 5485), (65, 5533), (66, 5539),

Gene: Shelley_75 Start: 60066, Stop: 59743, Start Num: 29
Candidate Starts for Shelley_75:
(Start: 29 @60066 has 25 MA's), (Start: 53 @59970 has 1 MA's), (54, 59964), (67, 59850), (68, 59847), (72, 59820), (73, 59808),

Gene: Shinji_90 Start: 57537, Stop: 57199, Start Num: 32
Candidate Starts for Shinji_90:
(17, 57627), (Start: 18 @57624 has 2 MA's), (23, 57579), (Start: 32 @57537 has 32 MA's), (49, 57471), (62, 57378), (65, 57330), (66, 57324),

Gene: Sisko_81 Start: 60938, Stop: 60591, Start Num: 26
Candidate Starts for Sisko_81:
(Start: 26 @60938 has 9 MA's), (43, 60881), (57, 60815), (65, 60719), (66, 60713),

Gene: Skog_33 Start: 15580, Stop: 15906, Start Num: 26
Candidate Starts for Skog_33:
(Start: 26 @15580 has 9 MA's), (65, 15784), (66, 15790),

Gene: Skysand_80 Start: 58588, Stop: 58283, Start Num: 30
Candidate Starts for Skysand_80:
(Start: 30 @58588 has 39 MA's), (47, 58528), (66, 58390),

Gene: SmokingBunny_92 Start: 58452, Stop: 58114, Start Num: 32
Candidate Starts for SmokingBunny_92:
(19, 58524), (23, 58494), (Start: 32 @58452 has 32 MA's), (49, 58386), (62, 58293), (65, 58245), (66, 58239),

Gene: Sombrero_78 Start: 60468, Stop: 60136, Start Num: 30
Candidate Starts for Sombrero_78:
(Start: 30 @60468 has 39 MA's), (66, 60255),

Gene: Squibbles_76 Start: 60731, Stop: 60402, Start Num: 30
Candidate Starts for Squibbles_76:
(Start: 30 @60731 has 39 MA's), (66, 60518),

Gene: StarStruck_76 Start: 57844, Stop: 57512, Start Num: 30
Candidate Starts for StarStruck_76:
(Start: 30 @57844 has 39 MA's), (42, 57799), (58, 57733), (66, 57637),

Gene: SteveFrench_76 Start: 60716, Stop: 60420, Start Num: 28

Candidate Starts for SteveFrench_76:
(Start: 28 @60716 has 3 MA's), (74, 60470),

Gene: Sticker17_75 Start: 60554, Stop: 60231, Start Num: 29
Candidate Starts for Sticker17_75:
(Start: 29 @60554 has 25 MA's), (Start: 53 @60458 has 1 MA's), (54, 60452), (67, 60338), (68, 60335), (72, 60308), (73, 60296),

Gene: SuperSulley_77 Start: 58290, Stop: 57958, Start Num: 30
Candidate Starts for SuperSulley_77:
(Start: 30 @58290 has 39 MA's), (38, 58263), (58, 58176), (65, 58086), (66, 58080),

Gene: Tardus_10 Start: 4552, Stop: 4857, Start Num: 37
Candidate Starts for Tardus_10:
(Start: 37 @4552 has 39 MA's), (58, 4645), (62, 4687), (65, 4735), (66, 4741),

Gene: Teal_74 Start: 61048, Stop: 60725, Start Num: 29
Candidate Starts for Teal_74:
(Start: 29 @61048 has 25 MA's), (Start: 53 @60952 has 1 MA's), (54, 60946), (67, 60832), (68, 60829), (72, 60802), (73, 60790),

Gene: Teatealatte_74 Start: 60491, Stop: 60171, Start Num: 32
Candidate Starts for Teatealatte_74:
(Start: 32 @60491 has 32 MA's), (66, 60281),

Gene: Teech_71 Start: 60307, Stop: 59987, Start Num: 32
Candidate Starts for Teech_71:
(Start: 32 @60307 has 32 MA's), (66, 60097),

Gene: TillyBobJoe_90 Start: 57675, Stop: 57337, Start Num: 32
Candidate Starts for TillyBobJoe_90:
(19, 57747), (23, 57717), (Start: 32 @57675 has 32 MA's), (49, 57609), (62, 57516), (65, 57468), (66, 57462),

Gene: Togo_91 Start: 58452, Stop: 58114, Start Num: 32
Candidate Starts for Togo_91:
(19, 58524), (23, 58494), (Start: 32 @58452 has 32 MA's), (49, 58386), (62, 58293), (65, 58245), (66, 58239),

Gene: Tredge_73 Start: 60491, Stop: 60171, Start Num: 32
Candidate Starts for Tredge_73:
(Start: 32 @60491 has 32 MA's), (66, 60281),

Gene: Twister6_90 Start: 56801, Stop: 56463, Start Num: 32
Candidate Starts for Twister6_90:
(8, 57146), (15, 56933), (23, 56843), (Start: 32 @56801 has 32 MA's), (49, 56735), (62, 56642), (65, 56594), (66, 56588),

Gene: UmaThurman_32 Start: 29419, Stop: 29123, Start Num: 39
Candidate Starts for UmaThurman_32:
(Start: 27 @29464 has 4 MA's), (Start: 37 @29431 has 39 MA's), (Start: 39 @29419 has 3 MA's), (45, 29395), (46, 29392), (50, 29380), (52, 29368), (57, 29335), (58, 29332), (60, 29311), (62, 29287), (65, 29239), (66, 29233),

Gene: Valary_92 Start: 58444, Stop: 58106, Start Num: 32

Candidate Starts for Valary_92:

(17, 58534), (Start: 18 @58531 has 2 MA's), (23, 58486), (Start: 32 @58444 has 32 MA's), (49, 58378), (62, 58285), (65, 58237), (66, 58231),

Gene: VanDeWege_93 Start: 57969, Stop: 57631, Start Num: 32

Candidate Starts for VanDeWege_93:

(8, 58314), (15, 58101), (23, 58011), (Start: 32 @57969 has 32 MA's), (49, 57903), (62, 57810), (65, 57762), (66, 57756),

Gene: ViaConlectus_9 Start: 5353, Stop: 5655, Start Num: 37

Candidate Starts for ViaConlectus_9:

(Start: 37 @5353 has 39 MA's), (58, 5443), (62, 5485), (65, 5533), (66, 5539),

Gene: Walrus_37 Start: 30012, Stop: 29710, Start Num: 39

Candidate Starts for Walrus_37:

(Start: 27 @30057 has 4 MA's), (Start: 37 @30024 has 39 MA's), (Start: 39 @30012 has 3 MA's), (42, 30000), (45, 29988), (46, 29985), (52, 29961), (57, 29928), (58, 29925), (60, 29907), (62, 29883), (65, 29835), (66, 29829),

Gene: Whitney_45 Start: 33551, Stop: 33234, Start Num: 37

Candidate Starts for Whitney_45:

(35, 33563), (Start: 36 @33554 has 1 MA's), (Start: 37 @33551 has 39 MA's), (Start: 39 @33539 has 3 MA's), (45, 33515), (46, 33512), (57, 33455), (58, 33452), (60, 33434), (62, 33410), (65, 33362), (66, 33356),

Gene: Wizard_86 Start: 57304, Stop: 56966, Start Num: 32

Candidate Starts for Wizard_86:

(17, 57394), (Start: 18 @57391 has 2 MA's), (23, 57346), (Start: 32 @57304 has 32 MA's), (49, 57238), (62, 57145), (65, 57097), (66, 57091),

Gene: Woes_74 Start: 61099, Stop: 60776, Start Num: 29

Candidate Starts for Woes_74:

(Start: 29 @61099 has 25 MA's), (Start: 53 @61003 has 1 MA's), (54, 60997), (67, 60883), (68, 60880), (72, 60853), (73, 60841),

Gene: Yago84_80 Start: 60646, Stop: 60299, Start Num: 26

Candidate Starts for Yago84_80:

(Start: 26 @60646 has 9 MA's), (43, 60589), (57, 60523), (65, 60427), (66, 60421),

Gene: YungMoney_91 Start: 59491, Stop: 59153, Start Num: 32

Candidate Starts for YungMoney_91:

(17, 59581), (Start: 18 @59578 has 2 MA's), (23, 59533), (Start: 32 @59491 has 32 MA's), (49, 59425), (57, 59380), (62, 59332), (65, 59284), (66, 59278),

Gene: Zarbodnamra_36 Start: 29888, Stop: 29547, Start Num: 27

Candidate Starts for Zarbodnamra_36:

(Start: 27 @29888 has 4 MA's), (Start: 37 @29855 has 39 MA's), (Start: 39 @29843 has 3 MA's), (42, 29831), (45, 29819), (46, 29816), (50, 29804), (52, 29792), (57, 29759), (58, 29756), (62, 29711), (65, 29663), (66, 29657),

Gene: Zitch_10 Start: 5089, Stop: 5394, Start Num: 37

Candidate Starts for Zitch_10:

(23, 5026), (24, 5044), (Start: 37 @5089 has 39 MA's), (58, 5182), (62, 5224), (65, 5272), (66, 5278),