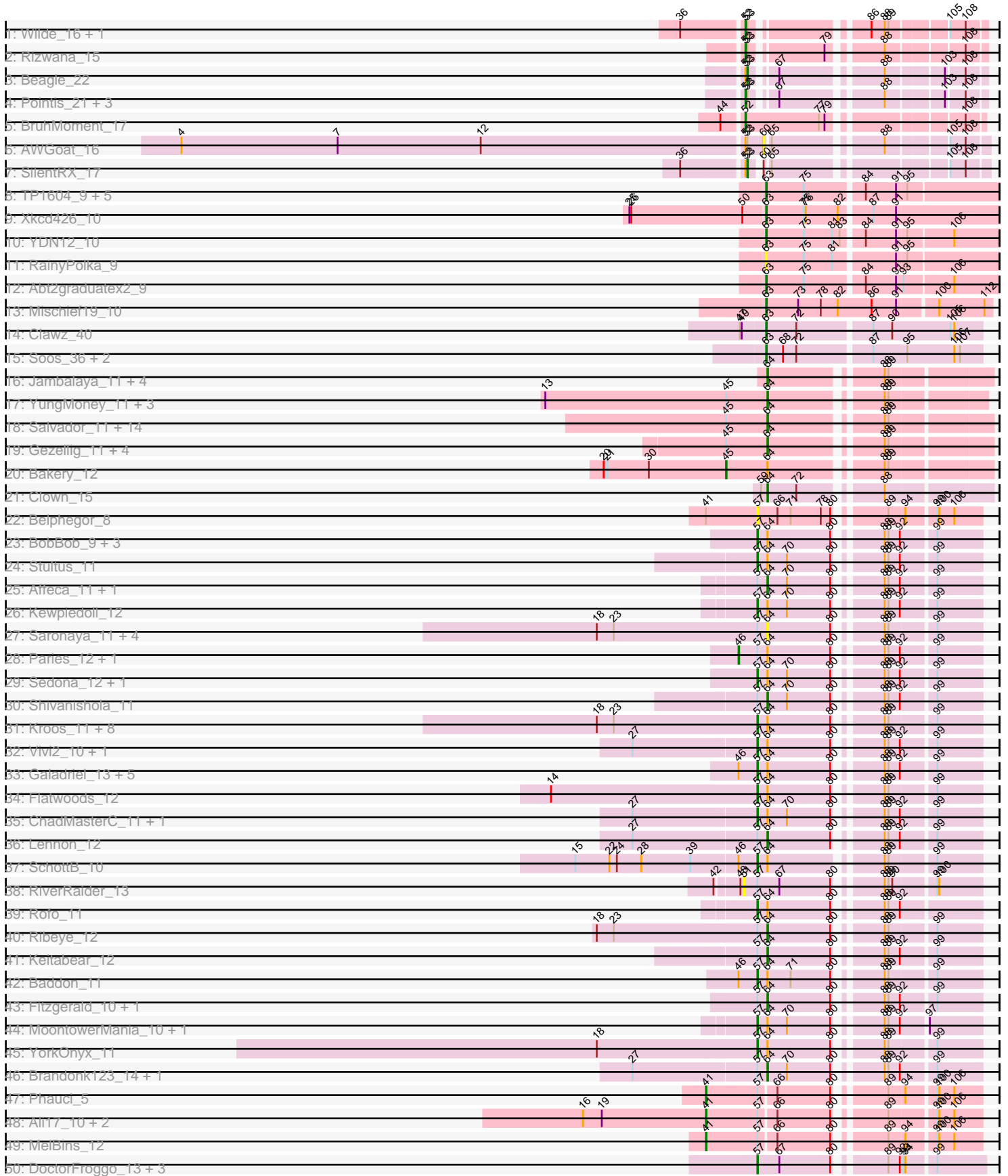
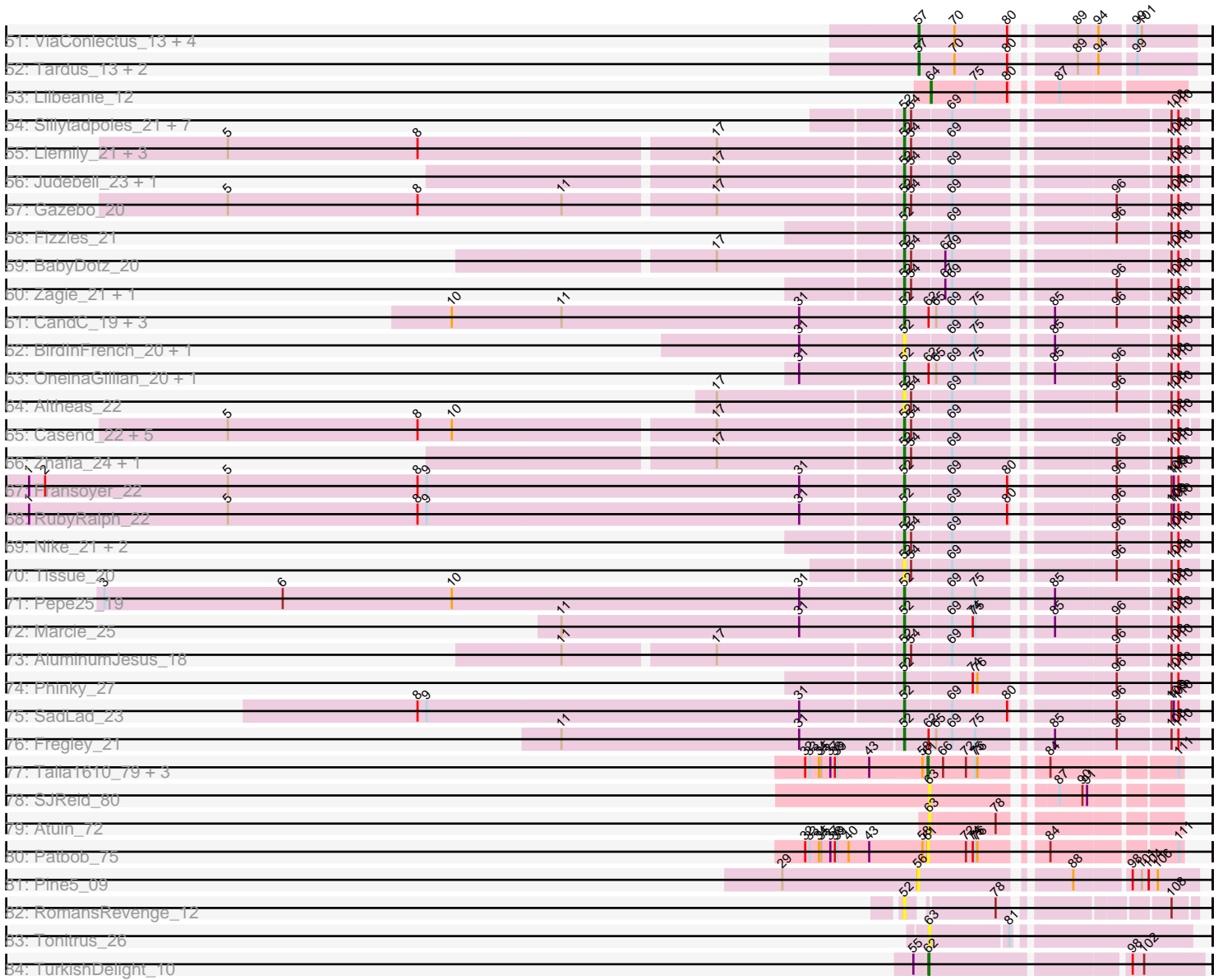


Pham 163370



Pham 163370



Note: Tracks are now grouped by subcluster and scaled. Switching in subcluster is indicated by changes in track color. Track scale is now set by default to display the region 30 bp upstream of start 1 to 30 bp downstream of the last possible start. If this default region is judged to be packed too tightly with annotated starts, the track will be further scaled to only show that region of the ORF with annotated starts. This action will be indicated by adding "Zoomed" to the title. For starts, yellow indicates the location of called starts comprised solely of Glimmer/GeneMark auto-annotations, green indicates the location of called starts with at least 1 manual gene annotation.

Pham 163370 Report

This analysis was run 04/28/24 on database version 559.

Pham number 163370 has 187 members, 43 are drafts.

Phages represented in each track:

- Track 1 : Wilde_16, Tank_16
- Track 2 : Rizwana_15
- Track 3 : Beagle_22
- Track 4 : Pointis_21, Odyssey395_23, MellowYellow_17, Pureglobe5_23
- Track 5 : BruhMoment_17
- Track 6 : AWGoat_16
- Track 7 : SilentRX_17
- Track 8 : TP1604_9, Asis_9, Salete_9, BabyGotBac_9, Maih_9, BayC_9
- Track 9 : Xkcd426_10
- Track 10 : YDN12_10
- Track 11 : RainyPolka_9
- Track 12 : Abt2graduatex2_9
- Track 13 : Mischief19_10
- Track 14 : Clawz_40
- Track 15 : Soos_36, Sting_39, DonTron_40
- Track 16 : Jambalaya_11, Savbucketdawg_11, TillyBobJoe_11, Shinji_11, Portcullis_11
- Track 17 : YungMoney_11, RogerDodger_12, Valary_12, Halo3_12
- Track 18 : Salvador_11, Twister6_11, Arri_12, Danyall_11, Fugax_11, VanDeWege_12, SmokingBunny_11, Nubi_11, Togo_11, Mutzi_11, Evamon_11, PinkCoffee_11, KimmyK_11, ClamChowder_11, Barb_11
- Track 19 : Gezellig_11, Phlop_11, Wizard_11, Fireball_12, PullumCavea_11
- Track 20 : Bakery_12
- Track 21 : Clown_15
- Track 22 : Belphegor_8
- Track 23 : BobBob_9, Sanjuju_10, Angelicage_11, Jabberwocky_10
- Track 24 : Stultus_11
- Track 25 : Affeca_11, McKinley_12
- Track 26 : Kewpiedoll_12
- Track 27 : Saronaya_11, Tycho_11, Kwobi_11, Derg_9, Gustavo_11
- Track 28 : Paries_12, Tangent_9
- Track 29 : Sedona_12, Bibwit_11
- Track 30 : Shivanishola_11
- Track 31 : Kroos_11, Tangerine_11, Gaea_11, StorminNorm_11, Baumdotcom_11, LilHam_9, Bizzy_12, Ashertheman_11, JKSyngboy_10
- Track 32 : Vivi2_10, Sitar_12

- Track 33 : Galadriel_13, Kamashten_12, Charming_9, Fosterous_9, Thing3_12, Nordenberg_6
- Track 34 : Flatwoods_12
- Track 35 : ChadMasterC_11, Barsten_12
- Track 36 : Lennon_12
- Track 37 : SchottB_10
- Track 38 : RiverRaider_13
- Track 39 : Rofo_11
- Track 40 : Ribeye_12
- Track 41 : Keitabear_12
- Track 42 : Baddon_11
- Track 43 : Fitzgerald_10, Ailee_11
- Track 44 : MoontowerMania_10, Love_13
- Track 45 : YorkOnyx_11
- Track 46 : Brandonk123_14, Geodirt_11
- Track 47 : Phauci_5
- Track 48 : Ali17_10, Phinally_12, Leonard_12
- Track 49 : MelBins_12
- Track 50 : DoctorFroggo_13, Verity_13, Zipp_13, Delrey21_13
- Track 51 : ViaConlectus_13, Abblin_13, Natkenzie_13, Sampson_13, Scioto_13
- Track 52 : Tardus_13, APunk_14, Zitch_14
- Track 53 : Lilbeanie_12
- Track 54 : Sillytadpoles_21, StrawberryJamm_23, Rudy_19, Quammi_19, Teehee_22, Viceroy_20, Kyva_23, Grassboy_22
- Track 55 : Llemily_21, Mashley_18, Hyperion_19, SallyK_22
- Track 56 : Judebell_23, Phabia_21
- Track 57 : Gazebo_20
- Track 58 : Fizzles_21
- Track 59 : BabyDotz_20
- Track 60 : Zagie_21, Rowlf_18
- Track 61 : CandC_19, RobinRose_21, Kelcole_19, Romm_21
- Track 62 : BirdInFrench_20, Wilca_20
- Track 63 : OneinaGillian_20, Tempo_20
- Track 64 : Altheas_22
- Track 65 : Casend_22, Wheelie_20, Jehoshaphat_23, DonaldDuck_21, Lonelysoil_20, Wayne3_22
- Track 66 : Zhafia_24, Namago_21
- Track 67 : Fransoyer_22
- Track 68 : RubyRalph_22
- Track 69 : Nike_21, Squash_23, Blab_18
- Track 70 : Tissue_20
- Track 71 : Pepe25_19
- Track 72 : Marcie_25
- Track 73 : AluminumJesus_18
- Track 74 : Phinky_27
- Track 75 : SadLad_23
- Track 76 : Fregley_21
- Track 77 : Talia1610_79, Racecar_76, Mimi_82, Bloom_79
- Track 78 : SJReid_80
- Track 79 : Atuin_72
- Track 80 : Patbob_75
- Track 81 : Pine5_09
- Track 82 : RomansRevenge_12

- Track 83 : Tonitrus_26
- Track 84 : TurkishDelight_10

Summary of Final Annotations (See graph section above for start numbers):

The start number called the most often in the published annotations is 52, it was called in 42 of the 144 non-draft genes in the pham.

Genes that call this "Most Annotated" start:

- Altheas_22, AluminumJesus_18, BabyDotz_20, BirdInFrench_20, Blab_18, BruhMoment_17, CandC_19, Casend_22, DonaldDuck_21, Fizzles_21, Fransoyer_22, Fregley_21, Gazebo_20, Grassboy_22, Hyperion_19, Jehoshaphat_23, Judebell_23, Kelcole_19, Kyva_23, Lemily_21, Lonelysoil_20, Marcie_25, Mashley_18, MellowYellow_17, Namago_21, Nike_21, Odyssey395_23, OneinaGillian_20, Pepe25_19, Phabia_21, Phinky_27, Pointis_21, Pureglobe5_23, Quammi_19, Rizwana_15, RobinRose_21, RomansRevenge_12, Romm_21, Rowlf_18, RubyRalph_22, Rudy_19, SadLad_23, SallyK_22, Sillytadpoles_21, Squash_23, StrawberryJamm_23, Tank_16, Teehee_22, Tempo_20, Tissue_20, Viceroy_20, Wayne3_22, Wheelie_20, Wilca_20, Wilde_16, Zagie_21, Zhafia_24,

Genes that have the "Most Annotated" start but do not call it:

- AWGoat_16, Beagle_22, SilentRX_17,

Genes that do not have the "Most Annotated" start:

- APunk_14, Abblin_13, Abt2graduatex2_9, Affeca_11, Ailee_11, Ali17_10, Angelicage_11, Arri_12, Ashertheman_11, Asis_9, Atuin_72, BabyGotBac_9, Baddon_11, Bakery_12, Barb_11, Barsten_12, Baumdotcom_11, BayC_9, Belphegor_8, Bibwit_11, Bizzy_12, Bloom_79, BobBob_9, Brandonk123_14, ChadMasterC_11, Charming_9, ClamChowder_11, Clawz_40, Clown_15, Danyall_11, Delrey21_13, Derg_9, DoctorFroggo_13, DonTron_40, Evamon_11, Fireball_12, Fitzgerald_10, Flatwoods_12, Fosterous_9, Fugax_11, Gaea_11, Galadriel_13, Geodirt_11, Gezellig_11, Gustavo_11, Halo3_12, JKSyngboy_10, Jabberwocky_10, Jambalaya_11, Kamashten_12, Keitabear_12, Kewpiedoll_12, KimmyK_11, Kroos_11, Kwobi_11, Lennon_12, Leonard_12, LilHam_9, Lilbeanie_12, Love_13, Maih_9, McKinley_12, MelBins_12, Mimi_82, Mischief19_10, MoontowerMania_10, Mutzi_11, Natkenzie_13, Nordenberg_6, Nubi_11, Paries_12, Patbob_75, Phauci_5, Phinally_12, Phlop_11, Pine5_09, PinkCoffee_11, Portcullis_11, PullumCavea_11, Racecar_76, RainyPolka_9, Ribeye_12, RiverRaider_13, Rofo_11, RogerDodger_12, SJReid_80, Salete_9, Salvador_11, Sampson_13, Sanjuju_10, Saronaya_11, Savbucketdawg_11, SchottB_10, Scioto_13, Sedona_12, Shinji_11, Shivanishola_11, Sitar_12, SmokingBunny_11, Soos_36, Sting_39, StorminNorm_11, Stultus_11, TP1604_9, Talia1610_79, Tangent_9, Tangerine_11, Tardus_13, Thing3_12, TillyBobJoe_11, Togo_11, Tonitrus_26, TurkishDelight_10, Twister6_11, Tycho_11, Valary_12, VanDeWege_12, Verity_13, ViaConlectus_13, Vivi2_10, Wizard_11, Xkcd426_10, YDN12_10, YorkOnyx_11, YungMoney_11, Zipp_13, Zitch_14,

Summary by start number:

Start 41:

- Found in 6 of 187 (3.2%) of genes in pham
- Manual Annotations of this start: 5 of 144
- Called 83.3% of time when present
- Phage (with cluster) where this start called: Ali17_10 (DE2), Leonard_12 (DE2), MelBins_12 (DE2), Phauci_5 (DE2), Phinally_12 (DE2),

Start 45:

- Found in 25 of 187 (13.4%) of genes in pham
- Manual Annotations of this start: 1 of 144
- Called 4.0% of time when present
- Phage (with cluster) where this start called: Bakery_12 (DC1),

Start 46:

- Found in 10 of 187 (5.3%) of genes in pham
- Manual Annotations of this start: 2 of 144
- Called 20.0% of time when present
- Phage (with cluster) where this start called: Paries_12 (DE1), Tangent_9 (DE1),

Start 51:

- Found in 1 of 187 (0.5%) of genes in pham
- No Manual Annotations of this start.
- Called 100.0% of time when present
- Phage (with cluster) where this start called: RiverRaider_13 (DE1),

Start 52:

- Found in 60 of 187 (32.1%) of genes in pham
- Manual Annotations of this start: 42 of 144
- Called 95.0% of time when present
- Phage (with cluster) where this start called: Altheas_22 (EG), AluminumJesus_18 (EG), BabyDotz_20 (EG), BirdInFrench_20 (EG), Blab_18 (EG), BruhMoment_17 (AP3), CandC_19 (EG), Casend_22 (EG), DonaldDuck_21 (EG), Fizzles_21 (EG), Fransoyer_22 (EG), Fregley_21 (EG), Gazebo_20 (EG), Grassboy_22 (EG), Hyperion_19 (EG), Jehoshaphat_23 (EG), Judebell_23 (EG), Kelcole_19 (EG), Kyva_23 (EG), Lemily_21 (EG), Lonelysoil_20 (EG), Marcie_25 (EG), Mashley_18 (EG), MellowYellow_17 (AP2), Namago_21 (EG), Nike_21 (EG), Odyssey395_23 (AP2), OneinaGillian_20 (EG), Pepe25_19 (EG), Phabia_21 (EG), Phinky_27 (EG), Pointis_21 (AP2), Pureglobe5_23 (AP2), Quammi_19 (EG), Rizwana_15 (AP1), RobinRose_21 (EG), RomansRevenge_12 (singleton), Romm_21 (EG), Rowlf_18 (EG), RubyRalph_22 (EG), Rudy_19 (EG), SadLad_23 (EG), SallyK_22 (EG), Sillytadpoles_21 (EG), Squash_23 (EG), StrawberryJamm_23 (EG), Tank_16 (AP1), Teehee_22 (EG), Tempo_20 (EG), Tissue_20 (EG), Viceroy_20 (EG), Wayne3_22 (EG), Wheelie_20 (EG), Wilca_20 (EG), Wilde_16 (AP1), Zagie_21 (EG), Zhafia_24 (EG),

Start 53:

- Found in 10 of 187 (5.3%) of genes in pham
- Manual Annotations of this start: 2 of 144
- Called 20.0% of time when present
- Phage (with cluster) where this start called: Beagle_22 (AP2), SilentRX_17 (AP4),

Start 56:

- Found in 1 of 187 (0.5%) of genes in pham
- No Manual Annotations of this start.

- Called 100.0% of time when present
- Phage (with cluster) where this start called: Pine5_09 (singleton),

Start 57:

- Found in 70 of 187 (37.4%) of genes in pham
- Manual Annotations of this start: 39 of 144
- Called 67.1% of time when present
- Phage (with cluster) where this start called: APunk_14 (DE4), Abblin_13 (DE4), Angelicage_11 (DE1), Ashertheman_11 (DE1), Baddon_11 (DE1), Barsten_12 (DE1), Baumdotcom_11 (DE1), Belphegor_8 (DE), Bibwit_11 (DE1), Bizzy_12 (DE1), BobBob_9 (DE1), ChadMasterC_11 (DE1), Charming_9 (DE1), Delrey21_13 (DE4), DoctorFroggo_13 (DE4), Flatwoods_12 (DE1), Fosterous_9 (DE1), Gaea_11 (DE1), Galadriel_13 (DE1), JKSyngboy_10 (DE1), Jabberwocky_10 (DE1), Kamashten_12 (DE1), Kewpiedoll_12 (DE1), Kroos_11 (DE1), LilHam_9 (DE1), Love_13 (DE1), MoontowerMania_10 (DE1), Natkenzie_13 (DE4), Nordenberg_6 (DE1), Rofo_11 (DE1), Sampson_13 (DE4), Sanjuju_10 (DE1), SchottB_10 (DE1), Scioto_13 (DE4), Sedona_12 (DE1), Sitar_12 (DE1), StorminNorm_11 (DE1), Stultus_11 (DE1), Tangerine_11 (DE1), Tardus_13 (DE4), Thing3_12 (DE1), Verity_13 (DE4), ViaConlectus_13 (DE4), Vivi2_10 (DE1), YorkOnyx_11 (DE1), Zipp_13 (DE4), Zitch_14 (DE4),

Start 60:

- Found in 2 of 187 (1.1%) of genes in pham
- No Manual Annotations of this start.
- Called 50.0% of time when present
- Phage (with cluster) where this start called: AWGoat_16 (AP4),

Start 61:

- Found in 5 of 187 (2.7%) of genes in pham
- Manual Annotations of this start: 1 of 144
- Called 100.0% of time when present
- Phage (with cluster) where this start called: Bloom_79 (FC), Mimi_82 (FC), Patbob_75 (FC), Racecar_76 (FC), Talia1610_79 (FC),

Start 62:

- Found in 8 of 187 (4.3%) of genes in pham
- Manual Annotations of this start: 1 of 144
- Called 12.5% of time when present
- Phage (with cluster) where this start called: TurkishDelight_10 (singleton),

Start 63:

- Found in 18 of 187 (9.6%) of genes in pham
- Manual Annotations of this start: 12 of 144
- Called 100.0% of time when present
- Phage (with cluster) where this start called: Abt2graduatex2_9 (BG), Asis_9 (BG), Atuin_72 (FC), BabyGotBac_9 (BG), BayC_9 (BG), Clawz_40 (CP), DonTron_40 (CP), Maih_9 (BG), Mischief19_10 (BG), RainyPolka_9 (BG), SJReid_80 (FC), Salete_9 (BG), Soos_36 (CP), Sting_39 (CP), TP1604_9 (BG), Tonitrus_26 (singleton), Xkcd426_10 (BG), YDN12_10 (BG),

Start 64:

- Found in 83 of 187 (44.4%) of genes in pham
- Manual Annotations of this start: 39 of 144

- Called 55.4% of time when present
- Phage (with cluster) where this start called: Affeca_11 (DE1), Ailee_11 (DE1), Arri_12 (DC1), Barb_11 (DC1), Brandonk123_14 (DE1), ClamChowder_11 (DC1), Clown_15 (DC2), Danyall_11 (DC1), Derg_9 (DE1), Evamon_11 (DC1), Fireball_12 (DC1), Fitzgerald_10 (DE1), Fugax_11 (DC1), Geodirt_11 (DE1), Gezellig_11 (DC1), Gustavo_11 (DE1), Halo3_12 (DC1), Jambalaya_11 (DC1), Keitabear_12 (DE1), KimmyK_11 (DC1), Kwobi_11 (DE1), Lennon_12 (DE1), Lilbeanie_12 (DE5), McKinley_12 (DE1), Mutzi_11 (DC1), Nubi_11 (DC1), Phlop_11 (DC1), PinkCoffee_11 (DC1), Portcullis_11 (DC1), PullumCavea_11 (DC1), Ribeye_12 (DE1), RogerDodger_12 (DC1), Salvador_11 (DC1), Saronaya_11 (DE1), Savbucketdawg_11 (DC1), Shinji_11 (DC1), Shivanishola_11 (DE1), SmokingBunny_11 (DC1), TillyBobJoe_11 (DC1), Togo_11 (DC1), Twister6_11 (DC1), Tycho_11 (DE1), Valary_12 (DC1), VanDeWege_12 (DC1), Wizard_11 (DC1), YungMoney_11 (DC1),

Summary by clusters:

There are 16 clusters represented in this pham: singleton, BG, AP2, DE1, EG, AP1, DE4, DE5, AP4, DE, FC, AP3, CP, DC2, DE2, DC1,

Info for manual annotations of cluster AP1:

- Start number 52 was manually annotated 3 times for cluster AP1.

Info for manual annotations of cluster AP2:

- Start number 52 was manually annotated 2 times for cluster AP2.
- Start number 53 was manually annotated 1 time for cluster AP2.

Info for manual annotations of cluster AP3:

- Start number 52 was manually annotated 1 time for cluster AP3.

Info for manual annotations of cluster AP4:

- Start number 53 was manually annotated 1 time for cluster AP4.

Info for manual annotations of cluster BG:

- Start number 63 was manually annotated 10 times for cluster BG.

Info for manual annotations of cluster CP:

- Start number 63 was manually annotated 2 times for cluster CP.

Info for manual annotations of cluster DC1:

- Start number 45 was manually annotated 1 time for cluster DC1.
- Start number 64 was manually annotated 27 times for cluster DC1.

Info for manual annotations of cluster DC2:

- Start number 64 was manually annotated 1 time for cluster DC2.

Info for manual annotations of cluster DE1:

- Start number 46 was manually annotated 2 times for cluster DE1.
- Start number 57 was manually annotated 30 times for cluster DE1.
- Start number 64 was manually annotated 10 times for cluster DE1.

Info for manual annotations of cluster DE2:

- Start number 41 was manually annotated 5 times for cluster DE2.

Info for manual annotations of cluster DE4:

- Start number 57 was manually annotated 9 times for cluster DE4.

Info for manual annotations of cluster DE5:

- Start number 64 was manually annotated 1 time for cluster DE5.

Info for manual annotations of cluster EG:

- Start number 52 was manually annotated 36 times for cluster EG.

Info for manual annotations of cluster FC:

- Start number 61 was manually annotated 1 time for cluster FC.

Gene Information:

Gene: APunk_14 Start: 7109, Stop: 7426, Start Num: 57

Candidate Starts for APunk_14:

(Start: 57 @7109 has 39 MA's), (70, 7151), (80, 7220), (89, 7283), (94, 7307), (99, 7349),

Gene: AWGoat_16 Start: 8424, Stop: 8723, Start Num: 60

Candidate Starts for AWGoat_16:

(4, 7521), (7, 7770), (12, 7998), (Start: 52 @8409 has 42 MA's), (Start: 53 @8412 has 2 MA's), (60, 8424), (65, 8430), (88, 8583), (105, 8667), (108, 8691),

Gene: Abblin_13 Start: 6625, Stop: 6942, Start Num: 57

Candidate Starts for Abblin_13:

(Start: 57 @6625 has 39 MA's), (70, 6667), (80, 6736), (89, 6799), (94, 6823), (99, 6865), (101, 6871),

Gene: Abt2graduatex2_9 Start: 7673, Stop: 8023, Start Num: 63

Candidate Starts for Abt2graduatex2_9:

(Start: 63 @7673 has 12 MA's), (75, 7733), (84, 7820), (91, 7868), (93, 7877), (106, 7952),

Gene: Affeca_11 Start: 6351, Stop: 6650, Start Num: 64

Candidate Starts for Affeca_11:

(Start: 57 @6342 has 39 MA's), (Start: 64 @6351 has 39 MA's), (70, 6381), (80, 6450), (88, 6507), (89, 6513), (92, 6531), (99, 6579),

Gene: Ailee_11 Start: 7213, Stop: 7512, Start Num: 64

Candidate Starts for Ailee_11:

(Start: 57 @7204 has 39 MA's), (Start: 64 @7213 has 39 MA's), (80, 7312), (88, 7369), (89, 7375), (92, 7393), (99, 7441),

Gene: Ali17_10 Start: 6021, Stop: 6407, Start Num: 41

Candidate Starts for Ali17_10:

(16, 5826), (19, 5856), (Start: 41 @6021 has 5 MA's), (Start: 57 @6102 has 39 MA's), (66, 6123), (80, 6207), (89, 6270), (99, 6336), (100, 6339), (106, 6363),

Gene: Altheas_22 Start: 8371, Stop: 8715, Start Num: 52

Candidate Starts for Altheas_22:

(17, 8140), (Start: 52 @8371 has 42 MA's), (54, 8380), (69, 8428), (96, 8614), (108, 8680), (110, 8689),

Gene: AluminumJesus_18 Start: 7735, Stop: 8079, Start Num: 52

Candidate Starts for AluminumJesus_18:

(11, 7315), (17, 7504), (Start: 52 @7735 has 42 MA's), (54, 7744), (69, 7792), (96, 7978), (108, 8044), (110, 8053),

Gene: Angelicage_11 Start: 6771, Stop: 7079, Start Num: 57

Candidate Starts for Angelicage_11:

(Start: 57 @6771 has 39 MA's), (Start: 64 @6780 has 39 MA's), (80, 6879), (88, 6936), (89, 6942), (92, 6960), (99, 7008),

Gene: Arri_12 Start: 5316, Stop: 5630, Start Num: 64

Candidate Starts for Arri_12:

(Start: 45 @5253 has 1 MA's), (Start: 64 @5316 has 39 MA's), (88, 5472), (89, 5478),

Gene: Ashertheman_11 Start: 5950, Stop: 6258, Start Num: 57

Candidate Starts for Ashertheman_11:

(18, 5698), (23, 5725), (Start: 57 @5950 has 39 MA's), (Start: 64 @5959 has 39 MA's), (80, 6058), (88, 6115), (89, 6121), (99, 6187),

Gene: Asis_9 Start: 7730, Stop: 8080, Start Num: 63

Candidate Starts for Asis_9:

(Start: 63 @7730 has 12 MA's), (75, 7790), (84, 7877), (91, 7925), (95, 7940),

Gene: Atuin_72 Start: 30721, Stop: 31002, Start Num: 63

Candidate Starts for Atuin_72:

(Start: 63 @30721 has 12 MA's), (78, 30805),

Gene: BabyDotz_20 Start: 8186, Stop: 8524, Start Num: 52

Candidate Starts for BabyDotz_20:

(17, 7955), (Start: 52 @8186 has 42 MA's), (54, 8195), (67, 8234), (69, 8243), (108, 8495), (110, 8504),

Gene: BabyGotBac_9 Start: 7730, Stop: 8080, Start Num: 63

Candidate Starts for BabyGotBac_9:

(Start: 63 @7730 has 12 MA's), (75, 7790), (84, 7877), (91, 7925), (95, 7940),

Gene: Baddon_11 Start: 6660, Stop: 6968, Start Num: 57

Candidate Starts for Baddon_11:

(Start: 46 @6630 has 2 MA's), (Start: 57 @6660 has 39 MA's), (Start: 64 @6669 has 39 MA's), (71, 6705), (80, 6768), (88, 6825), (89, 6831), (99, 6897),

Gene: Bakery_12 Start: 4954, Stop: 5331, Start Num: 45

Candidate Starts for Bakery_12:

(20, 4762), (21, 4768), (30, 4834), (Start: 45 @4954 has 1 MA's), (Start: 64 @5017 has 39 MA's), (88, 5173), (89, 5179),

Gene: Barb_11 Start: 5272, Stop: 5586, Start Num: 64

Candidate Starts for Barb_11:

(Start: 45 @5209 has 1 MA's), (Start: 64 @5272 has 39 MA's), (88, 5428), (89, 5434),

Gene: Barsten_12 Start: 6156, Stop: 6464, Start Num: 57

Candidate Starts for Barsten_12:

(27, 5964), (Start: 57 @6156 has 39 MA's), (Start: 64 @6165 has 39 MA's), (70, 6195), (80, 6264), (88, 6321), (89, 6327), (92, 6345), (99, 6393),

Gene: Baumdotcom_11 Start: 5973, Stop: 6281, Start Num: 57

Candidate Starts for Baumdotcom_11:

(18, 5721), (23, 5748), (Start: 57 @5973 has 39 MA's), (Start: 64 @5982 has 39 MA's), (80, 6081), (88, 6138), (89, 6144), (99, 6210),

Gene: BayC_9 Start: 7730, Stop: 8080, Start Num: 63

Candidate Starts for BayC_9:

(Start: 63 @7730 has 12 MA's), (75, 7790), (84, 7877), (91, 7925), (95, 7940),

Gene: Beagle_22 Start: 8934, Stop: 9242, Start Num: 53

Candidate Starts for Beagle_22:

(Start: 52 @8931 has 42 MA's), (Start: 53 @8934 has 2 MA's), (67, 8964), (88, 9105), (103, 9186), (108, 9213),

Gene: Belphegor_8 Start: 3927, Stop: 4235, Start Num: 57

Candidate Starts for Belphegor_8:

(Start: 41 @3846 has 5 MA's), (Start: 57 @3927 has 39 MA's), (66, 3951), (71, 3972), (78, 4020), (80, 4035), (89, 4098), (94, 4122), (99, 4164), (100, 4167), (106, 4191),

Gene: Bibwit_11 Start: 7027, Stop: 7335, Start Num: 57

Candidate Starts for Bibwit_11:

(Start: 57 @7027 has 39 MA's), (Start: 64 @7036 has 39 MA's), (70, 7066), (80, 7135), (88, 7192), (89, 7198), (92, 7216), (99, 7264),

Gene: BirdInFrench_20 Start: 7061, Stop: 7405, Start Num: 52

Candidate Starts for BirdInFrench_20:

(31, 6932), (Start: 52 @7061 has 42 MA's), (69, 7118), (75, 7148), (85, 7226), (108, 7370), (110, 7379),

Gene: Bizzy_12 Start: 6147, Stop: 6455, Start Num: 57

Candidate Starts for Bizzy_12:

(18, 5895), (23, 5922), (Start: 57 @6147 has 39 MA's), (Start: 64 @6156 has 39 MA's), (80, 6255), (88, 6312), (89, 6318), (99, 6384),

Gene: Blab_18 Start: 7511, Stop: 7855, Start Num: 52

Candidate Starts for Blab_18:

(Start: 52 @7511 has 42 MA's), (54, 7520), (69, 7568), (96, 7754), (108, 7820), (110, 7829),

Gene: Bloom_79 Start: 33362, Stop: 33646, Start Num: 61

Candidate Starts for Bloom_79:

(32, 33203), (33, 33209), (34, 33221), (35, 33224), (37, 33236), (38, 33242), (39, 33245), (43, 33287), (58, 33356), (Start: 61 @33362 has 1 MA's), (66, 33380), (72, 33410), (75, 33422), (76, 33425), (84, 33491), (111, 33641),

Gene: BobBob_9 Start: 5693, Stop: 6001, Start Num: 57

Candidate Starts for BobBob_9:

(Start: 57 @5693 has 39 MA's), (Start: 64 @5702 has 39 MA's), (80, 5801), (88, 5858), (89, 5864), (92, 5882), (99, 5930),

Gene: Brandonk123_14 Start: 6849, Stop: 7148, Start Num: 64

Candidate Starts for Brandonk123_14:

(27, 6648), (Start: 57 @6840 has 39 MA's), (Start: 64 @6849 has 39 MA's), (70, 6879), (80, 6948), (88, 7005), (89, 7011), (92, 7029), (99, 7077),

Gene: BruhMoment_17 Start: 8281, Stop: 8610, Start Num: 52

Candidate Starts for BruhMoment_17:

(44, 8251), (Start: 52 @8281 has 42 MA's), (77, 8398), (79, 8407), (108, 8584),

Gene: CandC_19 Start: 6747, Stop: 7091, Start Num: 52

Candidate Starts for CandC_19:

(10, 6162), (11, 6306), (31, 6618), (Start: 52 @6747 has 42 MA's), (Start: 62 @6777 has 1 MA's), (65, 6783), (69, 6804), (75, 6834), (85, 6912), (96, 6990), (108, 7056), (110, 7065),

Gene: Casend_22 Start: 8510, Stop: 8848, Start Num: 52

Candidate Starts for Casend_22:

(5, 7655), (8, 7904), (10, 7949), (17, 8279), (Start: 52 @8510 has 42 MA's), (54, 8519), (69, 8567), (108, 8819), (110, 8828),

Gene: ChadMasterC_11 Start: 6428, Stop: 6736, Start Num: 57

Candidate Starts for ChadMasterC_11:

(27, 6236), (Start: 57 @6428 has 39 MA's), (Start: 64 @6437 has 39 MA's), (70, 6467), (80, 6536), (88, 6593), (89, 6599), (92, 6617), (99, 6665),

Gene: Charming_9 Start: 5695, Stop: 6003, Start Num: 57

Candidate Starts for Charming_9:

(Start: 46 @5665 has 2 MA's), (Start: 57 @5695 has 39 MA's), (Start: 64 @5704 has 39 MA's), (80, 5803), (88, 5860), (89, 5866), (92, 5884), (99, 5932),

Gene: ClamChowder_11 Start: 5272, Stop: 5586, Start Num: 64

Candidate Starts for ClamChowder_11:

(Start: 45 @5209 has 1 MA's), (Start: 64 @5272 has 39 MA's), (88, 5428), (89, 5434),

Gene: Clawz_40 Start: 17751, Stop: 18077, Start Num: 63

Candidate Starts for Clawz_40:

(47, 17715), (49, 17718), (Start: 63 @17751 has 12 MA's), (72, 17799), (87, 17910), (90, 17940), (105, 18030), (106, 18036),

Gene: Clown_15 Start: 8549, Stop: 8863, Start Num: 64

Candidate Starts for Clown_15:

(59, 8540), (Start: 64 @8549 has 39 MA's), (72, 8594), (88, 8705),

Gene: Danyall_11 Start: 5144, Stop: 5458, Start Num: 64

Candidate Starts for Danyall_11:

(Start: 45 @5081 has 1 MA's), (Start: 64 @5144 has 39 MA's), (88, 5300), (89, 5306),

Gene: Delrey21_13 Start: 6898, Stop: 7215, Start Num: 57

Candidate Starts for Delrey21_13:

(Start: 57 @6898 has 39 MA's), (67, 6928), (80, 7009), (89, 7072), (92, 7090), (93, 7093), (94, 7096), (99, 7138),

Gene: Derg_9 Start: 5286, Stop: 5585, Start Num: 64

Candidate Starts for Derg_9:

(18, 5025), (23, 5052), (Start: 57 @5277 has 39 MA's), (Start: 64 @5286 has 39 MA's), (80, 5385), (88, 5442), (89, 5448), (99, 5514),

Gene: DoctorFroggo_13 Start: 6898, Stop: 7215, Start Num: 57

Candidate Starts for DoctorFroggo_13:

(Start: 57 @6898 has 39 MA's), (67, 6928), (80, 7009), (89, 7072), (92, 7090), (93, 7093), (94, 7096), (99, 7138),

Gene: DonTron_40 Start: 17923, Stop: 18249, Start Num: 63

Candidate Starts for DonTron_40:

(Start: 63 @17923 has 12 MA's), (68, 17950), (72, 17971), (87, 18082), (95, 18136), (106, 18208), (107, 18217),

Gene: DonaldDuck_21 Start: 7856, Stop: 8194, Start Num: 52

Candidate Starts for DonaldDuck_21:

(5, 7001), (8, 7250), (10, 7295), (17, 7625), (Start: 52 @7856 has 42 MA's), (54, 7865), (69, 7913), (108, 8165), (110, 8174),

Gene: Evamon_11 Start: 5125, Stop: 5439, Start Num: 64

Candidate Starts for Evamon_11:

(Start: 45 @5062 has 1 MA's), (Start: 64 @5125 has 39 MA's), (88, 5281), (89, 5287),

Gene: Fireball_12 Start: 5251, Stop: 5565, Start Num: 64

Candidate Starts for Fireball_12:

(Start: 45 @5188 has 1 MA's), (Start: 64 @5251 has 39 MA's), (88, 5407), (89, 5413),

Gene: Fitzgerald_10 Start: 6630, Stop: 6929, Start Num: 64

Candidate Starts for Fitzgerald_10:

(Start: 57 @6621 has 39 MA's), (Start: 64 @6630 has 39 MA's), (80, 6729), (88, 6786), (89, 6792), (92, 6810), (99, 6858),

Gene: Fizzles_21 Start: 7811, Stop: 8155, Start Num: 52

Candidate Starts for Fizzles_21:

(Start: 52 @7811 has 42 MA's), (69, 7868), (96, 8054), (108, 8120), (110, 8129),

Gene: Flatwoods_12 Start: 6151, Stop: 6459, Start Num: 57

Candidate Starts for Flatwoods_12:

(14, 5824), (Start: 57 @6151 has 39 MA's), (Start: 64 @6160 has 39 MA's), (80, 6259), (88, 6316), (89, 6322), (99, 6388),

Gene: Fosterous_9 Start: 5693, Stop: 6001, Start Num: 57

Candidate Starts for Fosterous_9:

(Start: 46 @5663 has 2 MA's), (Start: 57 @5693 has 39 MA's), (Start: 64 @5702 has 39 MA's), (80, 5801), (88, 5858), (89, 5864), (92, 5882), (99, 5930),

Gene: Fransoyer_22 Start: 8000, Stop: 8341, Start Num: 52

Candidate Starts for Fransoyer_22:

(1, 6860), (2, 6881), (5, 7121), (8, 7370), (9, 7382), (31, 7868), (Start: 52 @8000 has 42 MA's), (69, 8057), (80, 8129), (96, 8243), (108, 8309), (109, 8312), (110, 8318),

Gene: Fregley_21 Start: 7285, Stop: 7629, Start Num: 52

Candidate Starts for Fregley_21:

(11, 6844), (31, 7156), (Start: 52 @7285 has 42 MA's), (Start: 62 @7315 has 1 MA's), (65, 7321), (69, 7342), (75, 7372), (85, 7450), (96, 7528), (108, 7594), (110, 7603),

Gene: Fugax_11 Start: 5272, Stop: 5586, Start Num: 64

Candidate Starts for Fugax_11:

(Start: 45 @5209 has 1 MA's), (Start: 64 @5272 has 39 MA's), (88, 5428), (89, 5434),

Gene: Gaea_11 Start: 5953, Stop: 6261, Start Num: 57

Candidate Starts for Gaea_11:

(18, 5701), (23, 5728), (Start: 57 @5953 has 39 MA's), (Start: 64 @5962 has 39 MA's), (80, 6061), (88, 6118), (89, 6124), (99, 6190),

Gene: Galadriel_13 Start: 6461, Stop: 6769, Start Num: 57

Candidate Starts for Galadriel_13:

(Start: 46 @6431 has 2 MA's), (Start: 57 @6461 has 39 MA's), (Start: 64 @6470 has 39 MA's), (80, 6569), (88, 6626), (89, 6632), (92, 6650), (99, 6698),

Gene: Gazebo_20 Start: 8077, Stop: 8421, Start Num: 52

Candidate Starts for Gazebo_20:

(5, 7222), (8, 7471), (11, 7657), (17, 7846), (Start: 52 @8077 has 42 MA's), (54, 8086), (69, 8134), (96, 8320), (108, 8386), (110, 8395),

Gene: Geodirt_11 Start: 6477, Stop: 6776, Start Num: 64

Candidate Starts for Geodirt_11:

(27, 6276), (Start: 57 @6468 has 39 MA's), (Start: 64 @6477 has 39 MA's), (70, 6507), (80, 6576), (88, 6633), (89, 6639), (92, 6657), (99, 6705),

Gene: Gezellig_11 Start: 5251, Stop: 5565, Start Num: 64

Candidate Starts for Gezellig_11:

(Start: 45 @5188 has 1 MA's), (Start: 64 @5251 has 39 MA's), (88, 5407), (89, 5413),

Gene: Grassboy_22 Start: 8532, Stop: 8870, Start Num: 52

Candidate Starts for Grassboy_22:

(Start: 52 @8532 has 42 MA's), (54, 8541), (69, 8589), (108, 8841), (110, 8850),

Gene: Gustavo_11 Start: 5959, Stop: 6258, Start Num: 64

Candidate Starts for Gustavo_11:

(18, 5698), (23, 5725), (Start: 57 @5950 has 39 MA's), (Start: 64 @5959 has 39 MA's), (80, 6058), (88, 6115), (89, 6121), (99, 6187),

Gene: Halo3_12 Start: 5583, Stop: 5888, Start Num: 64

Candidate Starts for Halo3_12:

(13, 5232), (Start: 45 @5520 has 1 MA's), (Start: 64 @5583 has 39 MA's), (88, 5739), (89, 5745),

Gene: Hyperion_19 Start: 7780, Stop: 8124, Start Num: 52

Candidate Starts for Hyperion_19:

(5, 6925), (8, 7174), (17, 7549), (Start: 52 @7780 has 42 MA's), (54, 7789), (69, 7837), (108, 8089), (110, 8098),

Gene: JKSyngboy_10 Start: 6461, Stop: 6769, Start Num: 57

Candidate Starts for JKSyngboy_10:

(18, 6209), (23, 6236), (Start: 57 @6461 has 39 MA's), (Start: 64 @6470 has 39 MA's), (80, 6569), (88, 6626), (89, 6632), (99, 6698),

Gene: Jabberwocky_10 Start: 6623, Stop: 6931, Start Num: 57

Candidate Starts for Jabberwocky_10:

(Start: 57 @6623 has 39 MA's), (Start: 64 @6632 has 39 MA's), (80, 6731), (88, 6788), (89, 6794), (92, 6812), (99, 6860),

Gene: Jambalaya_11 Start: 4956, Stop: 5270, Start Num: 64

Candidate Starts for Jambalaya_11:

(Start: 64 @4956 has 39 MA's), (88, 5112), (89, 5118),

Gene: Jehoshaphat_23 Start: 8775, Stop: 9113, Start Num: 52

Candidate Starts for Jehoshaphat_23:

(5, 7920), (8, 8169), (10, 8214), (17, 8544), (Start: 52 @8775 has 42 MA's), (54, 8784), (69, 8832), (108, 9084), (110, 9093),

Gene: Judebell_23 Start: 8316, Stop: 8654, Start Num: 52

Candidate Starts for Judebell_23:

(17, 8085), (Start: 52 @8316 has 42 MA's), (54, 8325), (69, 8373), (108, 8625), (110, 8634),

Gene: Kamashten_12 Start: 6782, Stop: 7090, Start Num: 57

Candidate Starts for Kamashten_12:

(Start: 46 @6752 has 2 MA's), (Start: 57 @6782 has 39 MA's), (Start: 64 @6791 has 39 MA's), (80, 6890), (88, 6947), (89, 6953), (92, 6971), (99, 7019),

Gene: Keitabear_12 Start: 7843, Stop: 8142, Start Num: 64

Candidate Starts for Keitabear_12:

(Start: 57 @7834 has 39 MA's), (Start: 64 @7843 has 39 MA's), (80, 7942), (88, 7999), (89, 8005), (92, 8023), (99, 8071),

Gene: Kelcole_19 Start: 7138, Stop: 7482, Start Num: 52

Candidate Starts for Kelcole_19:

(10, 6553), (11, 6697), (31, 7009), (Start: 52 @7138 has 42 MA's), (Start: 62 @7168 has 1 MA's), (65, 7174), (69, 7195), (75, 7225), (85, 7303), (96, 7381), (108, 7447), (110, 7456),

Gene: Kewpiedoll_12 Start: 6184, Stop: 6492, Start Num: 57

Candidate Starts for Kewpiedoll_12:

(Start: 57 @6184 has 39 MA's), (Start: 64 @6193 has 39 MA's), (70, 6223), (80, 6292), (88, 6349), (89, 6355), (92, 6373), (99, 6421),

Gene: KimmyK_11 Start: 5272, Stop: 5586, Start Num: 64

Candidate Starts for KimmyK_11:

(Start: 45 @5209 has 1 MA's), (Start: 64 @5272 has 39 MA's), (88, 5428), (89, 5434),

Gene: Kroos_11 Start: 6114, Stop: 6422, Start Num: 57

Candidate Starts for Kroos_11:

(18, 5862), (23, 5889), (Start: 57 @6114 has 39 MA's), (Start: 64 @6123 has 39 MA's), (80, 6222), (88, 6279), (89, 6285), (99, 6351),

Gene: Kwobi_11 Start: 5962, Stop: 6261, Start Num: 64

Candidate Starts for Kwobi_11:

(18, 5701), (23, 5728), (Start: 57 @5953 has 39 MA's), (Start: 64 @5962 has 39 MA's), (80, 6061), (88, 6118), (89, 6124), (99, 6190),

Gene: Kyva_23 Start: 8567, Stop: 8905, Start Num: 52
Candidate Starts for Kyva_23:
(Start: 52 @8567 has 42 MA's), (54, 8576), (69, 8624), (108, 8876), (110, 8885),

Gene: Lennon_12 Start: 7052, Stop: 7351, Start Num: 64
Candidate Starts for Lennon_12:
(27, 6851), (Start: 57 @7043 has 39 MA's), (Start: 64 @7052 has 39 MA's), (80, 7151), (88, 7208),
(89, 7214), (92, 7232), (99, 7280),

Gene: Leonard_12 Start: 6673, Stop: 7059, Start Num: 41
Candidate Starts for Leonard_12:
(16, 6478), (19, 6508), (Start: 41 @6673 has 5 MA's), (Start: 57 @6754 has 39 MA's), (66, 6775), (80,
6859), (89, 6922), (99, 6988), (100, 6991), (106, 7015),

Gene: LilHam_9 Start: 5269, Stop: 5577, Start Num: 57
Candidate Starts for LilHam_9:
(18, 5017), (23, 5044), (Start: 57 @5269 has 39 MA's), (Start: 64 @5278 has 39 MA's), (80, 5377),
(88, 5434), (89, 5440), (99, 5506),

Gene: Lilbeanie_12 Start: 4954, Stop: 5247, Start Num: 64
Candidate Starts for Lilbeanie_12:
(Start: 64 @4954 has 39 MA's), (75, 5011), (80, 5053), (87, 5092),

Gene: Llemily_21 Start: 7551, Stop: 7889, Start Num: 52
Candidate Starts for Llemily_21:
(5, 6696), (8, 6945), (17, 7320), (Start: 52 @7551 has 42 MA's), (54, 7560), (69, 7608), (108, 7860),
(110, 7869),

Gene: Lonelysoil_20 Start: 7796, Stop: 8134, Start Num: 52
Candidate Starts for Lonelysoil_20:
(5, 6941), (8, 7190), (10, 7235), (17, 7565), (Start: 52 @7796 has 42 MA's), (54, 7805), (69, 7853),
(108, 8105), (110, 8114),

Gene: Love_13 Start: 6772, Stop: 7080, Start Num: 57
Candidate Starts for Love_13:
(Start: 57 @6772 has 39 MA's), (Start: 64 @6781 has 39 MA's), (70, 6811), (80, 6880), (88, 6937),
(89, 6943), (92, 6961), (97, 6997),

Gene: Maih_9 Start: 7729, Stop: 8079, Start Num: 63
Candidate Starts for Maih_9:
(Start: 63 @7729 has 12 MA's), (75, 7789), (84, 7876), (91, 7924), (95, 7939),

Gene: Marcie_25 Start: 7843, Stop: 8187, Start Num: 52
Candidate Starts for Marcie_25:
(11, 7402), (31, 7714), (Start: 52 @7843 has 42 MA's), (69, 7900), (74, 7927), (75, 7930), (85, 8008),
(96, 8086), (108, 8152), (110, 8161),

Gene: Mashley_18 Start: 7591, Stop: 7935, Start Num: 52
Candidate Starts for Mashley_18:
(5, 6736), (8, 6985), (17, 7360), (Start: 52 @7591 has 42 MA's), (54, 7600), (69, 7648), (108, 7900),
(110, 7909),

Gene: McKinley_12 Start: 7140, Stop: 7439, Start Num: 64

Candidate Starts for McKinley_12:

(Start: 57 @7131 has 39 MA's), (Start: 64 @7140 has 39 MA's), (70, 7170), (80, 7239), (88, 7296), (89, 7302), (92, 7320), (99, 7368),

Gene: MelBins_12 Start: 6449, Stop: 6835, Start Num: 41

Candidate Starts for MelBins_12:

(Start: 41 @6449 has 5 MA's), (Start: 57 @6530 has 39 MA's), (66, 6551), (80, 6635), (89, 6698), (94, 6722), (99, 6764), (100, 6767), (106, 6791),

Gene: MellowYellow_17 Start: 7675, Stop: 7986, Start Num: 52

Candidate Starts for MellowYellow_17:

(Start: 52 @7675 has 42 MA's), (Start: 53 @7678 has 2 MA's), (67, 7708), (88, 7849), (103, 7930), (108, 7957),

Gene: Mimi_82 Start: 32709, Stop: 32993, Start Num: 61

Candidate Starts for Mimi_82:

(32, 32550), (33, 32556), (34, 32568), (35, 32571), (37, 32583), (38, 32589), (39, 32592), (43, 32634), (58, 32703), (Start: 61 @32709 has 1 MA's), (66, 32727), (72, 32757), (75, 32769), (76, 32772), (84, 32838), (111, 32988),

Gene: Mischief19_10 Start: 9272, Stop: 9619, Start Num: 63

Candidate Starts for Mischief19_10:

(Start: 63 @9272 has 12 MA's), (73, 9323), (78, 9359), (82, 9386), (86, 9440), (91, 9479), (100, 9536), (112, 9608),

Gene: MoontowerMania_10 Start: 6171, Stop: 6479, Start Num: 57

Candidate Starts for MoontowerMania_10:

(Start: 57 @6171 has 39 MA's), (Start: 64 @6180 has 39 MA's), (70, 6210), (80, 6279), (88, 6336), (89, 6342), (92, 6360), (97, 6396),

Gene: Mutzi_11 Start: 5144, Stop: 5458, Start Num: 64

Candidate Starts for Mutzi_11:

(Start: 45 @5081 has 1 MA's), (Start: 64 @5144 has 39 MA's), (88, 5300), (89, 5306),

Gene: Namago_21 Start: 7611, Stop: 7955, Start Num: 52

Candidate Starts for Namago_21:

(17, 7380), (Start: 52 @7611 has 42 MA's), (54, 7620), (69, 7668), (96, 7854), (108, 7920), (110, 7929),

Gene: Natkenzie_13 Start: 6625, Stop: 6942, Start Num: 57

Candidate Starts for Natkenzie_13:

(Start: 57 @6625 has 39 MA's), (70, 6667), (80, 6736), (89, 6799), (94, 6823), (99, 6865), (101, 6871),

Gene: Nike_21 Start: 8517, Stop: 8861, Start Num: 52

Candidate Starts for Nike_21:

(Start: 52 @8517 has 42 MA's), (54, 8526), (69, 8574), (96, 8760), (108, 8826), (110, 8835),

Gene: Nordenberg_6 Start: 4315, Stop: 4623, Start Num: 57

Candidate Starts for Nordenberg_6:

(Start: 46 @4285 has 2 MA's), (Start: 57 @4315 has 39 MA's), (Start: 64 @4324 has 39 MA's), (80, 4423), (88, 4480), (89, 4486), (92, 4504), (99, 4552),

Gene: Nubi_11 Start: 5144, Stop: 5449, Start Num: 64

Candidate Starts for Nubi_11:

(Start: 45 @5081 has 1 MA's), (Start: 64 @5144 has 39 MA's), (88, 5300), (89, 5306),

Gene: Odyssey395_23 Start: 9132, Stop: 9443, Start Num: 52

Candidate Starts for Odyssey395_23:

(Start: 52 @9132 has 42 MA's), (Start: 53 @9135 has 2 MA's), (67, 9165), (88, 9306), (103, 9387), (108, 9414),

Gene: OneinaGillian_20 Start: 6820, Stop: 7164, Start Num: 52

Candidate Starts for OneinaGillian_20:

(31, 6691), (Start: 52 @6820 has 42 MA's), (Start: 62 @6850 has 1 MA's), (65, 6856), (69, 6877), (75, 6907), (85, 6985), (96, 7063), (108, 7129), (110, 7138),

Gene: Paries_12 Start: 6433, Stop: 6771, Start Num: 46

Candidate Starts for Paries_12:

(Start: 46 @6433 has 2 MA's), (Start: 57 @6463 has 39 MA's), (Start: 64 @6472 has 39 MA's), (80, 6571), (88, 6628), (89, 6634), (92, 6652), (99, 6700),

Gene: Patbob_75 Start: 33002, Stop: 33286, Start Num: 61

Candidate Starts for Patbob_75:

(32, 32843), (33, 32849), (34, 32861), (35, 32864), (37, 32876), (38, 32882), (39, 32885), (40, 32900), (43, 32927), (58, 32996), (Start: 61 @33002 has 1 MA's), (72, 33050), (74, 33059), (75, 33062), (76, 33065), (84, 33131), (111, 33281),

Gene: Pepe25_19 Start: 7078, Stop: 7422, Start Num: 52

Candidate Starts for Pepe25_19:

(3, 6037), (6, 6271), (10, 6493), (31, 6949), (Start: 52 @7078 has 42 MA's), (69, 7135), (75, 7165), (85, 7243), (108, 7387), (110, 7396),

Gene: Phabia_21 Start: 7969, Stop: 8307, Start Num: 52

Candidate Starts for Phabia_21:

(17, 7738), (Start: 52 @7969 has 42 MA's), (54, 7978), (69, 8026), (108, 8278), (110, 8287),

Gene: Phauci_5 Start: 3202, Stop: 3588, Start Num: 41

Candidate Starts for Phauci_5:

(Start: 41 @3202 has 5 MA's), (Start: 57 @3283 has 39 MA's), (66, 3304), (80, 3388), (89, 3451), (94, 3475), (99, 3517), (100, 3520), (106, 3544),

Gene: Phinally_12 Start: 6670, Stop: 7056, Start Num: 41

Candidate Starts for Phinally_12:

(16, 6475), (19, 6505), (Start: 41 @6670 has 5 MA's), (Start: 57 @6751 has 39 MA's), (66, 6772), (80, 6856), (89, 6919), (99, 6985), (100, 6988), (106, 7012),

Gene: Phinky_27 Start: 8832, Stop: 9176, Start Num: 52

Candidate Starts for Phinky_27:

(Start: 52 @8832 has 42 MA's), (74, 8916), (76, 8922), (96, 9075), (108, 9141), (110, 9150),

Gene: Phlop_11 Start: 5251, Stop: 5565, Start Num: 64

Candidate Starts for Phlop_11:

(Start: 45 @5188 has 1 MA's), (Start: 64 @5251 has 39 MA's), (88, 5407), (89, 5413),

Gene: Pine5_09 Start: 5622, Stop: 5945, Start Num: 56

Candidate Starts for Pine5_09:

(29, 5445), (56, 5622), (88, 5793), (98, 5859), (101, 5871), (104, 5880), (106, 5892),

Gene: PinkCoffee_11 Start: 5281, Stop: 5595, Start Num: 64

Candidate Starts for PinkCoffee_11:

(Start: 45 @5218 has 1 MA's), (Start: 64 @5281 has 39 MA's), (88, 5437), (89, 5443),

Gene: Pointis_21 Start: 9130, Stop: 9441, Start Num: 52

Candidate Starts for Pointis_21:

(Start: 52 @9130 has 42 MA's), (Start: 53 @9133 has 2 MA's), (67, 9163), (88, 9304), (103, 9385), (108, 9412),

Gene: Portcullis_11 Start: 5204, Stop: 5518, Start Num: 64

Candidate Starts for Portcullis_11:

(Start: 64 @5204 has 39 MA's), (88, 5360), (89, 5366),

Gene: PullumCavea_11 Start: 5251, Stop: 5565, Start Num: 64

Candidate Starts for PullumCavea_11:

(Start: 45 @5188 has 1 MA's), (Start: 64 @5251 has 39 MA's), (88, 5407), (89, 5413),

Gene: Pureglobe5_23 Start: 9146, Stop: 9457, Start Num: 52

Candidate Starts for Pureglobe5_23:

(Start: 52 @9146 has 42 MA's), (Start: 53 @9149 has 2 MA's), (67, 9179), (88, 9320), (103, 9401), (108, 9428),

Gene: Quammi_19 Start: 7540, Stop: 7878, Start Num: 52

Candidate Starts for Quammi_19:

(Start: 52 @7540 has 42 MA's), (54, 7549), (69, 7597), (108, 7849), (110, 7858),

Gene: Racecar_76 Start: 33362, Stop: 33646, Start Num: 61

Candidate Starts for Racecar_76:

(32, 33203), (33, 33209), (34, 33221), (35, 33224), (37, 33236), (38, 33242), (39, 33245), (43, 33287), (58, 33356), (Start: 61 @33362 has 1 MA's), (66, 33380), (72, 33410), (75, 33422), (76, 33425), (84, 33491), (111, 33641),

Gene: RainyPolka_9 Start: 7682, Stop: 8032, Start Num: 63

Candidate Starts for RainyPolka_9:

(Start: 63 @7682 has 12 MA's), (75, 7742), (81, 7787), (91, 7877), (95, 7892),

Gene: Ribeye_12 Start: 6157, Stop: 6456, Start Num: 64

Candidate Starts for Ribeye_12:

(18, 5896), (23, 5923), (Start: 57 @6148 has 39 MA's), (Start: 64 @6157 has 39 MA's), (80, 6256), (88, 6313), (89, 6319), (99, 6385),

Gene: RiverRaider_13 Start: 5683, Stop: 6012, Start Num: 51

Candidate Starts for RiverRaider_13:

(42, 5644), (48, 5677), (51, 5683), (Start: 57 @5704 has 39 MA's), (67, 5731), (80, 5812), (88, 5869), (89, 5875), (90, 5881), (99, 5941), (100, 5944),

Gene: Rizwana_15 Start: 8050, Stop: 8361, Start Num: 52

Candidate Starts for Rizwana_15:

(Start: 52 @8050 has 42 MA's), (Start: 53 @8053 has 2 MA's), (79, 8155), (88, 8224), (108, 8332),

Gene: RobinRose_21 Start: 6973, Stop: 7317, Start Num: 52

Candidate Starts for RobinRose_21:

(10, 6388), (11, 6532), (31, 6844), (Start: 52 @6973 has 42 MA's), (Start: 62 @7003 has 1 MA's), (65, 7009), (69, 7030), (75, 7060), (85, 7138), (96, 7216), (108, 7282), (110, 7291),

Gene: Rofo_11 Start: 6703, Stop: 7011, Start Num: 57

Candidate Starts for Rofo_11:

(Start: 57 @6703 has 39 MA's), (Start: 64 @6712 has 39 MA's), (80, 6811), (88, 6868), (89, 6874), (92, 6892),

Gene: RogerDodger_12 Start: 5508, Stop: 5822, Start Num: 64

Candidate Starts for RogerDodger_12:

(13, 5157), (Start: 45 @5445 has 1 MA's), (Start: 64 @5508 has 39 MA's), (88, 5664), (89, 5670),

Gene: RomansRevenge_12 Start: 6049, Stop: 6360, Start Num: 52

Candidate Starts for RomansRevenge_12:

(Start: 52 @6049 has 42 MA's), (78, 6148), (108, 6331),

Gene: Romm_21 Start: 6973, Stop: 7317, Start Num: 52

Candidate Starts for Romm_21:

(10, 6388), (11, 6532), (31, 6844), (Start: 52 @6973 has 42 MA's), (Start: 62 @7003 has 1 MA's), (65, 7009), (69, 7030), (75, 7060), (85, 7138), (96, 7216), (108, 7282), (110, 7291),

Gene: Rowlf_18 Start: 7306, Stop: 7644, Start Num: 52

Candidate Starts for Rowlf_18:

(Start: 52 @7306 has 42 MA's), (54, 7315), (67, 7354), (69, 7363), (96, 7549), (108, 7615), (110, 7624),

Gene: RubyRalph_22 Start: 7934, Stop: 8275, Start Num: 52

Candidate Starts for RubyRalph_22:

(1, 6794), (5, 7055), (8, 7304), (9, 7316), (31, 7802), (Start: 52 @7934 has 42 MA's), (69, 7991), (80, 8063), (96, 8177), (108, 8243), (109, 8246), (110, 8252),

Gene: Rudy_19 Start: 7540, Stop: 7878, Start Num: 52

Candidate Starts for Rudy_19:

(Start: 52 @7540 has 42 MA's), (54, 7549), (69, 7597), (108, 7849), (110, 7858),

Gene: SJReid_80 Start: 34582, Stop: 34863, Start Num: 63

Candidate Starts for SJReid_80:

(Start: 63 @34582 has 12 MA's), (87, 34720), (90, 34750), (91, 34756),

Gene: SadLad_23 Start: 8391, Stop: 8732, Start Num: 52

Candidate Starts for SadLad_23:

(8, 7761), (9, 7773), (31, 8259), (Start: 52 @8391 has 42 MA's), (69, 8448), (80, 8520), (96, 8634), (108, 8700), (109, 8703), (110, 8709),

Gene: Salete_9 Start: 7730, Stop: 8080, Start Num: 63

Candidate Starts for Salete_9:

(Start: 63 @7730 has 12 MA's), (75, 7790), (84, 7877), (91, 7925), (95, 7940),

Gene: SallyK_22 Start: 8701, Stop: 9039, Start Num: 52

Candidate Starts for SallyK_22:

(5, 7846), (8, 8095), (17, 8470), (Start: 52 @8701 has 42 MA's), (54, 8710), (69, 8758), (108, 9010), (110, 9019),

Gene: Salvador_11 Start: 5123, Stop: 5437, Start Num: 64

Candidate Starts for Salvador_11:

(Start: 45 @5060 has 1 MA's), (Start: 64 @5123 has 39 MA's), (88, 5279), (89, 5285),

Gene: Sampson_13 Start: 6570, Stop: 6887, Start Num: 57

Candidate Starts for Sampson_13:

(Start: 57 @6570 has 39 MA's), (70, 6612), (80, 6681), (89, 6744), (94, 6768), (99, 6810), (101, 6816),

Gene: Sanjuju_10 Start: 6661, Stop: 6969, Start Num: 57

Candidate Starts for Sanjuju_10:

(Start: 57 @6661 has 39 MA's), (Start: 64 @6670 has 39 MA's), (80, 6769), (88, 6826), (89, 6832), (92, 6850), (99, 6898),

Gene: Saronaya_11 Start: 5959, Stop: 6258, Start Num: 64

Candidate Starts for Saronaya_11:

(18, 5698), (23, 5725), (Start: 57 @5950 has 39 MA's), (Start: 64 @5959 has 39 MA's), (80, 6058), (88, 6115), (89, 6121), (99, 6187),

Gene: Savbucketdawg_11 Start: 4956, Stop: 5270, Start Num: 64

Candidate Starts for Savbucketdawg_11:

(Start: 64 @4956 has 39 MA's), (88, 5112), (89, 5118),

Gene: SchottB_10 Start: 6126, Stop: 6434, Start Num: 57

Candidate Starts for SchottB_10:

(15, 5841), (22, 5895), (24, 5907), (28, 5946), (39, 6024), (Start: 46 @6096 has 2 MA's), (Start: 57 @6126 has 39 MA's), (Start: 64 @6135 has 39 MA's), (88, 6291), (89, 6297), (99, 6363),

Gene: Scioto_13 Start: 6625, Stop: 6942, Start Num: 57

Candidate Starts for Scioto_13:

(Start: 57 @6625 has 39 MA's), (70, 6667), (80, 6736), (89, 6799), (94, 6823), (99, 6865), (101, 6871),

Gene: Sedona_12 Start: 7669, Stop: 7977, Start Num: 57

Candidate Starts for Sedona_12:

(Start: 57 @7669 has 39 MA's), (Start: 64 @7678 has 39 MA's), (70, 7708), (80, 7777), (88, 7834), (89, 7840), (92, 7858), (99, 7906),

Gene: Shinji_11 Start: 5145, Stop: 5459, Start Num: 64

Candidate Starts for Shinji_11:

(Start: 64 @5145 has 39 MA's), (88, 5301), (89, 5307),

Gene: Shivanishola_11 Start: 6886, Stop: 7185, Start Num: 64

Candidate Starts for Shivanishola_11:

(Start: 57 @6877 has 39 MA's), (Start: 64 @6886 has 39 MA's), (70, 6916), (80, 6985), (88, 7042), (89, 7048), (92, 7066), (99, 7114),

Gene: SilentRX_17 Start: 8205, Stop: 8516, Start Num: 53

Candidate Starts for SilentRX_17:

(36, 8109), (Start: 52 @8202 has 42 MA's), (Start: 53 @8205 has 2 MA's), (60, 8217), (65, 8223), (105, 8460), (108, 8484),

Gene: Sillytadpoles_21 Start: 7538, Stop: 7876, Start Num: 52

Candidate Starts for Sillytadpoles_21:

(Start: 52 @7538 has 42 MA's), (54, 7547), (69, 7595), (108, 7847), (110, 7856),

Gene: Sitar_12 Start: 7043, Stop: 7351, Start Num: 57

Candidate Starts for Sitar_12:

(27, 6851), (Start: 57 @7043 has 39 MA's), (Start: 64 @7052 has 39 MA's), (80, 7151), (88, 7208), (89, 7214), (92, 7232), (99, 7280),

Gene: SmokingBunny_11 Start: 5123, Stop: 5437, Start Num: 64

Candidate Starts for SmokingBunny_11:

(Start: 45 @5060 has 1 MA's), (Start: 64 @5123 has 39 MA's), (88, 5279), (89, 5285),

Gene: Soos_36 Start: 17090, Stop: 17416, Start Num: 63

Candidate Starts for Soos_36:

(Start: 63 @17090 has 12 MA's), (68, 17117), (72, 17138), (87, 17249), (95, 17303), (106, 17375), (107, 17384),

Gene: Squash_23 Start: 8572, Stop: 8916, Start Num: 52

Candidate Starts for Squash_23:

(Start: 52 @8572 has 42 MA's), (54, 8581), (69, 8629), (96, 8815), (108, 8881), (110, 8890),

Gene: Sting_39 Start: 17529, Stop: 17855, Start Num: 63

Candidate Starts for Sting_39:

(Start: 63 @17529 has 12 MA's), (68, 17556), (72, 17577), (87, 17688), (95, 17742), (106, 17814), (107, 17823),

Gene: StorminNorm_11 Start: 5953, Stop: 6261, Start Num: 57

Candidate Starts for StorminNorm_11:

(18, 5701), (23, 5728), (Start: 57 @5953 has 39 MA's), (Start: 64 @5962 has 39 MA's), (80, 6061), (88, 6118), (89, 6124), (99, 6190),

Gene: StrawberryJamm_23 Start: 7840, Stop: 8178, Start Num: 52

Candidate Starts for StrawberryJamm_23:

(Start: 52 @7840 has 42 MA's), (54, 7849), (69, 7897), (108, 8149), (110, 8158),

Gene: Stultus_11 Start: 6867, Stop: 7175, Start Num: 57

Candidate Starts for Stultus_11:

(Start: 57 @6867 has 39 MA's), (Start: 64 @6876 has 39 MA's), (70, 6906), (80, 6975), (88, 7032), (89, 7038), (92, 7056), (99, 7104),

Gene: TP1604_9 Start: 7730, Stop: 8080, Start Num: 63

Candidate Starts for TP1604_9:

(Start: 63 @7730 has 12 MA's), (75, 7790), (84, 7877), (91, 7925), (95, 7940),

Gene: Talia1610_79 Start: 32727, Stop: 33011, Start Num: 61

Candidate Starts for Talia1610_79:

(32, 32568), (33, 32574), (34, 32586), (35, 32589), (37, 32601), (38, 32607), (39, 32610), (43, 32652), (58, 32721), (Start: 61 @32727 has 1 MA's), (66, 32745), (72, 32775), (75, 32787), (76, 32790), (84, 32856), (111, 33006),

Gene: Tangent_9 Start: 5665, Stop: 6003, Start Num: 46

Candidate Starts for Tangent_9:

(Start: 46 @5665 has 2 MA's), (Start: 57 @5695 has 39 MA's), (Start: 64 @5704 has 39 MA's), (80, 5803), (88, 5860), (89, 5866), (92, 5884), (99, 5932),

Gene: Tangerine_11 Start: 5962, Stop: 6270, Start Num: 57

Candidate Starts for Tangerine_11:

(18, 5710), (23, 5737), (Start: 57 @5962 has 39 MA's), (Start: 64 @5971 has 39 MA's), (80, 6070), (88, 6127), (89, 6133), (99, 6199),

Gene: Tank_16 Start: 8065, Stop: 8376, Start Num: 52

Candidate Starts for Tank_16:

(36, 7972), (Start: 52 @8065 has 42 MA's), (Start: 53 @8068 has 2 MA's), (86, 8218), (88, 8239), (89, 8245), (105, 8323), (108, 8347),

Gene: Tardus_13 Start: 5665, Stop: 5982, Start Num: 57

Candidate Starts for Tardus_13:

(Start: 57 @5665 has 39 MA's), (70, 5707), (80, 5776), (89, 5839), (94, 5863), (99, 5905),

Gene: Teehee_22 Start: 8775, Stop: 9113, Start Num: 52

Candidate Starts for Teehee_22:

(Start: 52 @8775 has 42 MA's), (54, 8784), (69, 8832), (108, 9084), (110, 9093),

Gene: Tempo_20 Start: 7165, Stop: 7509, Start Num: 52

Candidate Starts for Tempo_20:

(31, 7036), (Start: 52 @7165 has 42 MA's), (Start: 62 @7195 has 1 MA's), (65, 7201), (69, 7222), (75, 7252), (85, 7330), (96, 7408), (108, 7474), (110, 7483),

Gene: Thing3_12 Start: 6782, Stop: 7090, Start Num: 57

Candidate Starts for Thing3_12:

(Start: 46 @6752 has 2 MA's), (Start: 57 @6782 has 39 MA's), (Start: 64 @6791 has 39 MA's), (80, 6890), (88, 6947), (89, 6953), (92, 6971), (99, 7019),

Gene: TillyBobJoe_11 Start: 4959, Stop: 5273, Start Num: 64

Candidate Starts for TillyBobJoe_11:

(Start: 64 @4959 has 39 MA's), (88, 5115), (89, 5121),

Gene: Tissue_20 Start: 7909, Stop: 8253, Start Num: 52

Candidate Starts for Tissue_20:

(Start: 52 @7909 has 42 MA's), (54, 7918), (69, 7966), (96, 8152), (108, 8218), (110, 8227),

Gene: Togo_11 Start: 5123, Stop: 5437, Start Num: 64

Candidate Starts for Togo_11:

(Start: 45 @5060 has 1 MA's), (Start: 64 @5123 has 39 MA's), (88, 5279), (89, 5285),

Gene: Tonitrus_26 Start: 14059, Stop: 14370, Start Num: 63

Candidate Starts for Tonitrus_26:

(Start: 63 @14059 has 12 MA's), (81, 14158),

Gene: TurkishDelight_10 Start: 6065, Stop: 6391, Start Num: 62

Candidate Starts for TurkishDelight_10:

(55, 6050), (Start: 62 @6065 has 1 MA's), (98, 6305), (102, 6317),

Gene: Twister6_11 Start: 5055, Stop: 5369, Start Num: 64

Candidate Starts for Twister6_11:

(Start: 45 @4992 has 1 MA's), (Start: 64 @5055 has 39 MA's), (88, 5211), (89, 5217),

Gene: Tycho_11 Start: 5971, Stop: 6270, Start Num: 64
Candidate Starts for Tycho_11:
(18, 5710), (23, 5737), (Start: 57 @5962 has 39 MA's), (Start: 64 @5971 has 39 MA's), (80, 6070),
(88, 6127), (89, 6133), (99, 6199),

Gene: Valary_12 Start: 5508, Stop: 5822, Start Num: 64
Candidate Starts for Valary_12:
(13, 5157), (Start: 45 @5445 has 1 MA's), (Start: 64 @5508 has 39 MA's), (88, 5664), (89, 5670),

Gene: VanDeWege_12 Start: 5436, Stop: 5750, Start Num: 64
Candidate Starts for VanDeWege_12:
(Start: 45 @5373 has 1 MA's), (Start: 64 @5436 has 39 MA's), (88, 5592), (89, 5598),

Gene: Verity_13 Start: 6898, Stop: 7215, Start Num: 57
Candidate Starts for Verity_13:
(Start: 57 @6898 has 39 MA's), (67, 6928), (80, 7009), (89, 7072), (92, 7090), (93, 7093), (94, 7096),
(99, 7138),

Gene: ViaConlectus_13 Start: 6625, Stop: 6942, Start Num: 57
Candidate Starts for ViaConlectus_13:
(Start: 57 @6625 has 39 MA's), (70, 6667), (80, 6736), (89, 6799), (94, 6823), (99, 6865), (101, 6871),

Gene: Viceroy_20 Start: 7540, Stop: 7878, Start Num: 52
Candidate Starts for Viceroy_20:
(Start: 52 @7540 has 42 MA's), (54, 7549), (69, 7597), (108, 7849), (110, 7858),

Gene: Vivi2_10 Start: 5856, Stop: 6164, Start Num: 57
Candidate Starts for Vivi2_10:
(27, 5664), (Start: 57 @5856 has 39 MA's), (Start: 64 @5865 has 39 MA's), (80, 5964), (88, 6021),
(89, 6027), (92, 6045), (99, 6093),

Gene: Wayne3_22 Start: 8505, Stop: 8843, Start Num: 52
Candidate Starts for Wayne3_22:
(5, 7650), (8, 7899), (10, 7944), (17, 8274), (Start: 52 @8505 has 42 MA's), (54, 8514), (69, 8562),
(108, 8814), (110, 8823),

Gene: Wheelie_20 Start: 7856, Stop: 8194, Start Num: 52
Candidate Starts for Wheelie_20:
(5, 7001), (8, 7250), (10, 7295), (17, 7625), (Start: 52 @7856 has 42 MA's), (54, 7865), (69, 7913),
(108, 8165), (110, 8174),

Gene: Wilca_20 Start: 7061, Stop: 7405, Start Num: 52
Candidate Starts for Wilca_20:
(31, 6932), (Start: 52 @7061 has 42 MA's), (69, 7118), (75, 7148), (85, 7226), (108, 7370), (110,
7379),

Gene: Wilde_16 Start: 7993, Stop: 8304, Start Num: 52
Candidate Starts for Wilde_16:
(36, 7900), (Start: 52 @7993 has 42 MA's), (Start: 53 @7996 has 2 MA's), (86, 8146), (88, 8167), (89,
8173), (105, 8251), (108, 8275),

Gene: Wizard_11 Start: 5251, Stop: 5565, Start Num: 64
Candidate Starts for Wizard_11:

(Start: 45 @5188 has 1 MA's), (Start: 64 @5251 has 39 MA's), (88, 5407), (89, 5413),

Gene: Xkcd426_10 Start: 8759, Stop: 9115, Start Num: 63

Candidate Starts for Xkcd426_10:

(25, 8549), (26, 8552), (50, 8729), (Start: 63 @8759 has 12 MA's), (75, 8819), (76, 8822), (82, 8873), (87, 8918), (91, 8954),

Gene: YDN12_10 Start: 7676, Stop: 8026, Start Num: 63

Candidate Starts for YDN12_10:

(Start: 63 @7676 has 12 MA's), (75, 7736), (81, 7781), (83, 7793), (84, 7823), (91, 7871), (95, 7886), (106, 7955),

Gene: YorkOnyx_11 Start: 5911, Stop: 6219, Start Num: 57

Candidate Starts for YorkOnyx_11:

(18, 5659), (Start: 57 @5911 has 39 MA's), (Start: 64 @5920 has 39 MA's), (80, 6019), (88, 6076), (89, 6082), (99, 6148),

Gene: YungMoney_11 Start: 6205, Stop: 6510, Start Num: 64

Candidate Starts for YungMoney_11:

(13, 5854), (Start: 45 @6142 has 1 MA's), (Start: 64 @6205 has 39 MA's), (88, 6361), (89, 6367),

Gene: Zagie_21 Start: 8043, Stop: 8381, Start Num: 52

Candidate Starts for Zagie_21:

(Start: 52 @8043 has 42 MA's), (54, 8052), (67, 8091), (69, 8100), (96, 8286), (108, 8352), (110, 8361),

Gene: Zhafia_24 Start: 8281, Stop: 8625, Start Num: 52

Candidate Starts for Zhafia_24:

(17, 8050), (Start: 52 @8281 has 42 MA's), (54, 8290), (69, 8338), (96, 8524), (108, 8590), (110, 8599),

Gene: Zipp_13 Start: 7043, Stop: 7360, Start Num: 57

Candidate Starts for Zipp_13:

(Start: 57 @7043 has 39 MA's), (67, 7073), (80, 7154), (89, 7217), (92, 7235), (93, 7238), (94, 7241), (99, 7283),

Gene: Zitch_14 Start: 6362, Stop: 6679, Start Num: 57

Candidate Starts for Zitch_14:

(Start: 57 @6362 has 39 MA's), (70, 6404), (80, 6473), (89, 6536), (94, 6560), (99, 6602),