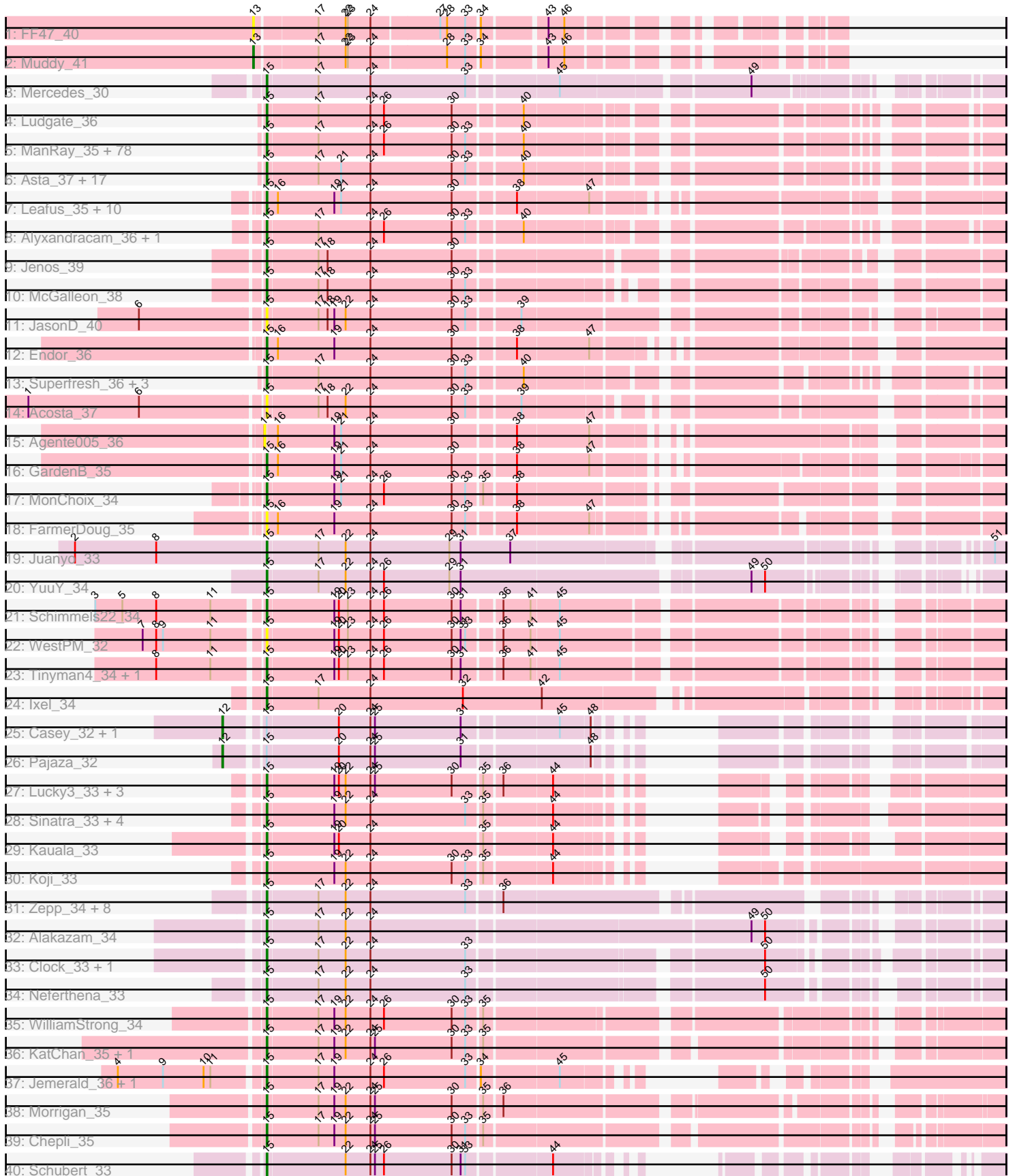


Pham 163381



Note: Tracks are now grouped by subcluster and scaled. Switching in subcluster is indicated by changes in track color. Track scale is now set by default to display the region 30 bp upstream of start 1 to 30 bp downstream of the last possible start. If this default region is judged to be packed too tightly with annotated starts, the track will be further scaled to only show that region of the ORF with annotated starts. This action will be indicated by adding "Zoomed" to the title. For starts, yellow indicates the location of called starts comprised solely of Glimmer/GeneMark auto-annotations, green indicates the location of called starts with at least 1 manual gene annotation.

Pham 163381 Report

This analysis was run 04/28/24 on database version 559.

Pham number 163381 has 169 members, 27 are drafts.

Phages represented in each track:

- Track 1 : FF47_40
- Track 2 : Muddy_41
- Track 3 : Mercedes_30
- Track 4 : Ludgate_36
- Track 5 : ManRay_35, Thorongil_36, Strathdee_36, Velene_36, BonesMcCoy_36, Phiderman_37, Christoph_35, Duocatuli_35, Inventa_36, MrWorldwide_36, Phireproof_36, Oxtober96_36, Espinosa_35, AlexAdler_36, Blage_36, MillyPhilly_36, StirfryIV_36, HankSprout_37, Jerbirus_36, Kurt1_36, Robinson_36, Ilzat_35, Antoinette_36, TatarkaPM_36, AranulaLuti_35, Janus167_35, TinSulphur_36, Clancy_35, JeriBeth_36, Phriends_36, MaeLinda_36, BigRedClifford_36, AxiPup_36, ParleG_36, Teagan_36, Aubergine_35, Pherferi_36, Gargoyle_36, Byron23_36, Rog141_36, Garey24_35, Delphidian_37, Rapheph_36, HanSolo_35, Gubbabump_35, ShaiHulud_36, Winzigespinne_35, Stanktossa_36, PuppyEggo_36, Vispistious_36, Tenda_35, Shee_36, Martin_37, Convict_36, Bandik_36, HungryHenry_36, Chako_35, OldNelly_36, Sedgewig_35, WildNOut_36, NickSell_37, Den3_36, Thompsone_36, PhredFlintston_36, Ioannes_36, StingRay_35, Benjalauen_36, Knox_36, Oats_35, Dothraki_36, Papafritta_35, BeautPeep30_36, JasperRussell_35, Lovelyunicorn_36, Greys_36, Figueroism_36, KannH_35, Zada_36, SoilGremlin_36
- Track 6 : Asta_37, SonOfLevi_35, Nattles_35, TeddyBear_35, Etta_35, Erla_35, Raptor_36, Calix_35, Nagem_36, Gershwin_35, Chamuel_35, Baines_35, Kale_35, Pocket_35, Bonino_35, SJay_36, Gelo_35, Klimt_35
- Track 7 : Leafus_35, BeeBee8_36, Peppino_35, Raccoon_35, Redfield_35, Etna_35, KingJulien_35, Stormbreaker8_35, Balsa_35, Hamlet_35, Schnapsidee_35
- Track 8 : Alyxandracam_36, Riyhil_36
- Track 9 : Jenos_39
- Track 10 : McGalleon_38
- Track 11 : JasonD_40
- Track 12 : Endor_36
- Track 13 : Superfresh_36, Peep_36, Dave_36, Renzie_36
- Track 14 : Acosta_37
- Track 15 : Agente005_36
- Track 16 : GardenB_35
- Track 17 : MonChoix_34
- Track 18 : FarmerDoug_35
- Track 19 : Juanyo_33
- Track 20 : YuuY_34

- Track 21 : Schimmels22_34
- Track 22 : WestPM_32
- Track 23 : Tinyman4_34, HerculesXL_34
- Track 24 : Ixel_34
- Track 25 : Casey_32, Pikmin_32
- Track 26 : Pajaza_32
- Track 27 : Lucky3_33, SirVictor_33, Golden_33, Guetzie_33
- Track 28 : Sinatra_33, Pherbot_33, Bustleton_33, PrincePhergus_33, BouleyBill_34
- Track 29 : Kauala_33
- Track 30 : Koji_33
- Track 31 : Zepp_34, Librie_33, Zayuliv_33, LilTerminator_34, CaptainRex_33, Greenlvy_34, Fulton_34, QuadZero_33, Hasitha_33
- Track 32 : Alakazam_34
- Track 33 : Clock_33, Nebulous_33
- Track 34 : Neferthena_33
- Track 35 : WilliamStrong_34
- Track 36 : KatChan_35, Luna18_35
- Track 37 : Jemerald_36, Juicer_36
- Track 38 : Morrigan_35
- Track 39 : Chepli_35
- Track 40 : Schubert_33

Summary of Final Annotations (See graph section above for start numbers):

The start number called the most often in the published annotations is 15, it was called in 138 of the 142 non-draft genes in the pham.

Genes that call this "Most Annotated" start:

- Acosta_37, Alakazam_34, AlexAdler_36, Alyxandracam_36, Antoinette_36, AranulaLuti_35, Asta_37, Aubergine_35, AxiPup_36, Baines_35, Balsa_35, Bandik_36, BeautPeep30_36, BeeBee8_36, Benjalauren_36, BigRedClifford_36, Blage_36, BonesMcCoy_36, Bonino_35, BouleyBill_34, Bustleton_33, Byron23_36, Calix_35, CaptainRex_33, Chako_35, Chamuel_35, Chepli_35, Christoph_35, Clancy_35, Clock_33, Convict_36, Dave_36, Delphidian_37, Den3_36, Dothraki_36, Duocatuli_35, Endor_36, Erla_35, Espinosa_35, Etna_35, Etta_35, FarmerDoug_35, Figueroism_36, Fulton_34, GardenB_35, Garey24_35, Gargoyle_36, Gelo_35, Gershwin_35, Golden_33, Greenlvy_34, Greys_36, Gubbabump_35, Guetzie_33, Hamlet_35, HanSolo_35, HankSprout_37, Hasitha_33, HerculesXL_34, HungryHenry_36, Ilzat_35, Inventa_36, Ioannes_36, Ixel_34, Janus167_35, JasonD_40, JasperRussell_35, Jemerald_36, Jenos_39, Jerbirus_36, JeriBeth_36, Juanyo_33, Juicer_36, Kale_35, KannH_35, KatChan_35, Kauala_33, KingJulien_35, Klimt_35, Knox_36, Koji_33, Kurt1_36, Leafus_35, Librie_33, LilTerminator_34, Lovelyunicorn_36, Lucky3_33, Ludgate_36, Luna18_35, MaeLinda_36, ManRay_35, Martin_37, McGalleon_38, Mercedes_30, MillyPhilly_36, MonChoix_34, Morrigan_35, MrWorldwide_36, Nagem_36, Nattles_35, Nebulous_33, Neferthena_33, NickSell_37, Oats_35, OldNelly_36, Oxtober96_36, Papafritta_35, ParleG_36, Peep_36, Peppino_35, Pherbot_33, Pherferi_36, Phiderman_37, Phireproof_36, PhredFlintston_36, Phriends_36, Pocket_35, PrincePhergus_33, PuppyEggo_36, QuadZero_33, Raccoon_35, Rappheph_36, Raptor_36, Redfield_35, Renzie_36, Riyhil_36, Robinson_36, Rog141_36, SJay_36, Schimmels22_34, Schnapsidee_35,

Schubert_33, Sedgewig_35, ShaiHulud_36, Shee_36, Sinatra_33, SirVictor_33, SoilGremlin_36, SonOfLevi_35, Stanktossa_36, StingRay_35, StirfryIV_36, Stormbreaker8_35, Strathdee_36, Superfresh_36, TatarkaPM_36, Teagan_36, TeddyBear_35, Tenda_35, Thompsone_36, Thorongil_36, TinSulphur_36, Tinyman4_34, Velene_36, Vispistious_36, WestPM_32, WildNOut_36, WilliamStrong_34, Winzigespinne_35, YuuY_34, Zada_36, Zayuliv_33, Zepp_34,

Genes that have the "Most Annotated" start but do not call it:

- Casey_32, Pajaza_32, Pikmin_32,

Genes that do not have the "Most Annotated" start:

- Agente005_36, FF47_40, Muddy_41,

Summary by start number:

Start 12:

- Found in 3 of 169 (1.8%) of genes in pham
- Manual Annotations of this start: 3 of 142
- Called 100.0% of time when present
- Phage (with cluster) where this start called: Casey_32 (EA3), Pajaza_32 (EA3), Pikmin_32 (EA3),

Start 13:

- Found in 2 of 169 (1.2%) of genes in pham
- Manual Annotations of this start: 1 of 142
- Called 100.0% of time when present
- Phage (with cluster) where this start called: FF47_40 (AB), Muddy_41 (AB),

Start 14:

- Found in 1 of 169 (0.6%) of genes in pham
- No Manual Annotations of this start.
- Called 100.0% of time when present
- Phage (with cluster) where this start called: Agente005_36 (EA1),

Start 15:

- Found in 166 of 169 (98.2%) of genes in pham
- Manual Annotations of this start: 138 of 142
- Called 98.2% of time when present
- Phage (with cluster) where this start called: Acosta_37 (EA1), Alakazam_34 (EA5), AlexAdler_36 (EA1), Alyxandracam_36 (EA1), Antoinette_36 (EA1), AranulaLuti_35 (EA1), Asta_37 (EA1), Aubergine_35 (EA1), AxiPup_36 (EA1), Baines_35 (EA1), Balsa_35 (EA1), Bandik_36 (EA1), BeautPeep30_36 (EA1), BeeBee8_36 (EA1), Benjalauren_36 (EA1), BigRedClifford_36 (EA1), Blage_36 (EA1), BonesMcCoy_36 (EA1), Bonino_35 (EA1), BouleyBill_34 (EA4), Bustleton_33 (EA4), Byron23_36 (EA1), Calix_35 (EA1), CaptainRex_33 (EA5), Chako_35 (EA1), Chamuel_35 (EA1), Chepli_35 (EA6), Christoph_35 (EA1), Clancy_35 (EA1), Clock_33 (EA5), Convict_36 (EA1), Dave_36 (EA1), Delphidian_37 (EA1), Den3_36 (EA1), Dothraki_36 (EA1), Duocatuli_35 (EA1), Endor_36 (EA1), Erla_35 (EA1), Espinosa_35 (EA1), Etna_35 (EA1), Etta_35 (EA1), FarmerDoug_35 (EA1), Figueroism_36 (EA1), Fulton_34 (EA5), GardenB_35 (EA1), Garey24_35 (EA1), Gargoyle_36 (EA1), Gelo_35 (EA1), Gershwin_35 (EA1), Golden_33 (EA4), Greenlvy_34 (EA5), Greys_36 (EA1), Gubbabump_35 (EA1), Guetzie_33 (EA4), Hamlet_35 (EA1), HanSolo_35 (EA1), HankSprout_37 (EA1), Hasitha_33 (EA5), HerculesXL_34 (EA11), HungryHenry_36

(EA1), Ilzat_35 (EA1), Inventa_36 (EA1), Ioannes_36 (EA1), Ixel_34 (EA11), Janus167_35 (EA1), JasonD_40 (EA1), JasperRussell_35 (EA1), Jemerald_36 (EA6), Jenos_39 (EA1), Jerbirus_36 (EA1), JeriBeth_36 (EA1), Juanyo_33 (EA10), Juicer_36 (EA6), Kale_35 (EA1), KannH_35 (EA1), KatChan_35 (EA6), Kauala_33 (EA4), KingJulien_35 (EA1), Klimt_35 (EA1), Knox_36 (EA1), Koji_33 (EA4), Kurt1_36 (EA1), Leafus_35 (EA1), Librie_33 (EA5), LilTerminator_34 (EA5), Lovelyunicorn_36 (EA1), Lucky3_33 (EA4), Ludgate_36 (EA1), Luna18_35 (EA6), MaeLinda_36 (EA1), ManRay_35 (EA1), Martin_37 (EA1), McGalleon_38 (EA1), Mercedes_30 (EA), MillyPhilly_36 (EA1), MonChoix_34 (EA1), Morrigan_35 (EA6), MrWorldwide_36 (EA1), Nagem_36 (EA1), Nattles_35 (EA1), Nebulous_33 (EA5), Neferthena_33 (EA5), NickSell_37 (EA1), Oats_35 (EA1), OldNelly_36 (EA1), Oxtober96_36 (EA1), Papafritta_35 (EA1), ParleG_36 (EA1), Peep_36 (EA1), Peppino_35 (EA1), Pherbot_33 (EA4), Pherferi_36 (EA1), Phiderman_37 (EA1), Phireproof_36 (EA1), PhredFlintston_36 (EA1), Phriends_36 (EA1), Pocket_35 (EA1), PrincePhergus_33 (EA4), PuppyEggo_36 (EA1), QuadZero_33 (EA5), Raccoon_35 (EA1), Rappheph_36 (EA1), Raptor_36 (EA1), Redfield_35 (EA1), Renzie_36 (EA1), Riyhil_36 (EA1), Robinson_36 (EA1), Rog141_36 (EA1), SJay_36 (EA1), Schimmels22_34 (EA11), Schnapsidee_35 (EA1), Schubert_33 (EA8), Sedgewig_35 (EA1), ShaiHulud_36 (EA1), Shee_36 (EA1), Sinatra_33 (EA4), SirVictor_33 (EA4), SoilGremlin_36 (EA1), SonOfLevi_35 (EA1), Stanktossa_36 (EA1), StingRay_35 (EA1), StirfryIV_36 (EA1), Stormbreaker8_35 (EA1), Strathdee_36 (EA1), Superfresh_36 (EA1), TatarkaPM_36 (EA1), Teagan_36 (EA1), TeddyBear_35 (EA1), Tenda_35 (EA1), Thompsone_36 (EA1), Thorongil_36 (EA1), TinSulphur_36 (EA1), Tinyman4_34 (EA11), Velene_36 (EA1), Vispistious_36 (EA1), WestPM_32 (EA11), WildNOut_36 (EA1), WilliamStrong_34 (EA6), Winzigespinne_35 (EA1), YuuY_34 (EA10), Zada_36 (EA1), Zayuliv_33 (EA5), Zepp_34 (EA5),

Summary by clusters:

There are 10 clusters represented in this pham: AB, EA11, EA10, EA, EA8, EA1, EA3, EA5, EA4, EA6,

Info for manual annotations of cluster AB:

- Start number 13 was manually annotated 1 time for cluster AB.

Info for manual annotations of cluster EA:

- Start number 15 was manually annotated 1 time for cluster EA.

Info for manual annotations of cluster EA1:

- Start number 15 was manually annotated 104 times for cluster EA1.

Info for manual annotations of cluster EA10:

- Start number 15 was manually annotated 2 times for cluster EA10.

Info for manual annotations of cluster EA11:

- Start number 15 was manually annotated 4 times for cluster EA11.

Info for manual annotations of cluster EA3:

- Start number 12 was manually annotated 3 times for cluster EA3.

Info for manual annotations of cluster EA4:

- Start number 15 was manually annotated 10 times for cluster EA4.

Info for manual annotations of cluster EA5:

- Start number 15 was manually annotated 9 times for cluster EA5.

Info for manual annotations of cluster EA6:

- Start number 15 was manually annotated 7 times for cluster EA6.

Info for manual annotations of cluster EA8:

- Start number 15 was manually annotated 1 time for cluster EA8.

Gene Information:

Gene: Acosta_37 Start: 25604, Stop: 24759, Start Num: 15

Candidate Starts for Acosta_37:

(1, 25907), (6, 25760), (Start: 15 @25604 has 138 MA's), (17, 25538), (18, 25526), (22, 25502), (24, 25469), (30, 25361), (33, 25343), (39, 25280),

Gene: Agente005_36 Start: 25439, Stop: 24585, Start Num: 14

Candidate Starts for Agente005_36:

(14, 25439), (16, 25424), (19, 25349), (21, 25340), (24, 25301), (30, 25193), (38, 25118), (47, 25025),

Gene: Alakazam_34 Start: 24747, Stop: 23875, Start Num: 15

Candidate Starts for Alakazam_34:

(Start: 15 @24747 has 138 MA's), (17, 24681), (22, 24645), (24, 24612), (49, 24129), (50, 24111),

Gene: AlexAdler_36 Start: 25200, Stop: 24361, Start Num: 15

Candidate Starts for AlexAdler_36:

(Start: 15 @25200 has 138 MA's), (17, 25134), (24, 25065), (26, 25047), (30, 24957), (33, 24939), (40, 24873),

Gene: Alyxandracam_36 Start: 25209, Stop: 24370, Start Num: 15

Candidate Starts for Alyxandracam_36:

(Start: 15 @25209 has 138 MA's), (17, 25143), (24, 25074), (26, 25056), (30, 24966), (33, 24948), (40, 24882),

Gene: Antoinette_36 Start: 25197, Stop: 24358, Start Num: 15

Candidate Starts for Antoinette_36:

(Start: 15 @25197 has 138 MA's), (17, 25131), (24, 25062), (26, 25044), (30, 24954), (33, 24936), (40, 24870),

Gene: AranulaLuti_35 Start: 24894, Stop: 24055, Start Num: 15

Candidate Starts for AranulaLuti_35:

(Start: 15 @24894 has 138 MA's), (17, 24828), (24, 24759), (26, 24741), (30, 24651), (33, 24633), (40, 24567),

Gene: Asta_37 Start: 24907, Stop: 24068, Start Num: 15

Candidate Starts for Asta_37:

(Start: 15 @24907 has 138 MA's), (17, 24841), (21, 24811), (24, 24772), (30, 24664), (33, 24646), (40, 24580),

Gene: Aubergine_35 Start: 24907, Stop: 24068, Start Num: 15

Candidate Starts for Aubergine_35:

(Start: 15 @24907 has 138 MA's), (17, 24841), (24, 24772), (26, 24754), (30, 24664), (33, 24646), (40, 24580),

Gene: AxiPup_36 Start: 25179, Stop: 24370, Start Num: 15

Candidate Starts for AxiPup_36:

(Start: 15 @25179 has 138 MA's), (17, 25113), (24, 25044), (26, 25026), (30, 24936), (33, 24918), (40, 24852),

Gene: Baines_35 Start: 24897, Stop: 24055, Start Num: 15

Candidate Starts for Baines_35:

(Start: 15 @24897 has 138 MA's), (17, 24831), (21, 24801), (24, 24762), (30, 24654), (33, 24636), (40, 24570),

Gene: Balsa_35 Start: 25329, Stop: 24475, Start Num: 15

Candidate Starts for Balsa_35:

(Start: 15 @25329 has 138 MA's), (16, 25314), (19, 25239), (21, 25230), (24, 25191), (30, 25083), (38, 25008), (47, 24915),

Gene: Bandik_36 Start: 25205, Stop: 24366, Start Num: 15

Candidate Starts for Bandik_36:

(Start: 15 @25205 has 138 MA's), (17, 25139), (24, 25070), (26, 25052), (30, 24962), (33, 24944), (40, 24878),

Gene: BeautPeep30_36 Start: 25211, Stop: 24372, Start Num: 15

Candidate Starts for BeautPeep30_36:

(Start: 15 @25211 has 138 MA's), (17, 25145), (24, 25076), (26, 25058), (30, 24968), (33, 24950), (40, 24884),

Gene: BeeBee8_36 Start: 25499, Stop: 24642, Start Num: 15

Candidate Starts for BeeBee8_36:

(Start: 15 @25499 has 138 MA's), (16, 25484), (19, 25409), (21, 25400), (24, 25361), (30, 25253), (38, 25178), (47, 25085),

Gene: Benjalauren_36 Start: 24910, Stop: 24065, Start Num: 15

Candidate Starts for Benjalauren_36:

(Start: 15 @24910 has 138 MA's), (17, 24844), (24, 24775), (26, 24757), (30, 24667), (33, 24649), (40, 24583),

Gene: BigRedClifford_36 Start: 25209, Stop: 24370, Start Num: 15

Candidate Starts for BigRedClifford_36:

(Start: 15 @25209 has 138 MA's), (17, 25143), (24, 25074), (26, 25056), (30, 24966), (33, 24948), (40, 24882),

Gene: Blage_36 Start: 25209, Stop: 24370, Start Num: 15

Candidate Starts for Blage_36:

(Start: 15 @25209 has 138 MA's), (17, 25143), (24, 25074), (26, 25056), (30, 24966), (33, 24948), (40, 24882),

Gene: BonesMcCoy_36 Start: 25209, Stop: 24370, Start Num: 15

Candidate Starts for BonesMcCoy_36:

(Start: 15 @25209 has 138 MA's), (17, 25143), (24, 25074), (26, 25056), (30, 24966), (33, 24948), (40, 24882),

Gene: Bonino_35 Start: 24883, Stop: 24044, Start Num: 15

Candidate Starts for Bonino_35:

(Start: 15 @24883 has 138 MA's), (17, 24817), (21, 24787), (24, 24748), (30, 24640), (33, 24622), (40, 24556),

Gene: BouleyBill_34 Start: 24669, Stop: 23935, Start Num: 15

Candidate Starts for BouleyBill_34:

(Start: 15 @24669 has 138 MA's), (19, 24582), (22, 24567), (24, 24534), (33, 24408), (35, 24390), (44, 24306),

Gene: Bustleton_33 Start: 24672, Stop: 23935, Start Num: 15

Candidate Starts for Bustleton_33:

(Start: 15 @24672 has 138 MA's), (19, 24585), (22, 24570), (24, 24537), (33, 24411), (35, 24393), (44, 24309),

Gene: Byron23_36 Start: 25208, Stop: 24375, Start Num: 15

Candidate Starts for Byron23_36:

(Start: 15 @25208 has 138 MA's), (17, 25142), (24, 25073), (26, 25055), (30, 24965), (33, 24947), (40, 24881),

Gene: Calix_35 Start: 24890, Stop: 24048, Start Num: 15

Candidate Starts for Calix_35:

(Start: 15 @24890 has 138 MA's), (17, 24824), (21, 24794), (24, 24755), (30, 24647), (33, 24629), (40, 24563),

Gene: CaptainRex_33 Start: 23072, Stop: 22209, Start Num: 15

Candidate Starts for CaptainRex_33:

(Start: 15 @23072 has 138 MA's), (17, 23006), (22, 22970), (24, 22937), (33, 22811), (36, 22772),

Gene: Casey_32 Start: 24108, Stop: 23335, Start Num: 12

Candidate Starts for Casey_32:

(Start: 12 @24108 has 3 MA's), (Start: 15 @24066 has 138 MA's), (20, 23973), (24, 23931), (25, 23925), (31, 23811), (45, 23694), (48, 23658),

Gene: Chako_35 Start: 24894, Stop: 24055, Start Num: 15

Candidate Starts for Chako_35:

(Start: 15 @24894 has 138 MA's), (17, 24828), (24, 24759), (26, 24741), (30, 24651), (33, 24633), (40, 24567),

Gene: Chamuel_35 Start: 24883, Stop: 24050, Start Num: 15

Candidate Starts for Chamuel_35:

(Start: 15 @24883 has 138 MA's), (17, 24817), (21, 24787), (24, 24748), (30, 24640), (33, 24622), (40, 24556),

Gene: Chepli_35 Start: 24293, Stop: 23439, Start Num: 15

Candidate Starts for Chepli_35:

(Start: 15 @24293 has 138 MA's), (17, 24227), (19, 24206), (22, 24191), (24, 24158), (25, 24152), (30, 24050), (33, 24032), (35, 24014),

Gene: Christoph_35 Start: 24905, Stop: 24066, Start Num: 15

Candidate Starts for Christoph_35:

(Start: 15 @24905 has 138 MA's), (17, 24839), (24, 24770), (26, 24752), (30, 24662), (33, 24644), (40, 24578),

Gene: Clancy_35 Start: 24939, Stop: 24100, Start Num: 15

Candidate Starts for Clancy_35:

(Start: 15 @24939 has 138 MA's), (17, 24873), (24, 24804), (26, 24786), (30, 24696), (33, 24678), (40, 24612),

Gene: Clock_33 Start: 25904, Stop: 25053, Start Num: 15

Candidate Starts for Clock_33:

(Start: 15 @25904 has 138 MA's), (17, 25838), (22, 25802), (24, 25769), (33, 25643), (50, 25292),

Gene: Convict_36 Start: 25209, Stop: 24370, Start Num: 15

Candidate Starts for Convict_36:

(Start: 15 @25209 has 138 MA's), (17, 25143), (24, 25074), (26, 25056), (30, 24966), (33, 24948), (40, 24882),

Gene: Dave_36 Start: 25197, Stop: 24358, Start Num: 15

Candidate Starts for Dave_36:

(Start: 15 @25197 has 138 MA's), (17, 25131), (24, 25062), (30, 24954), (33, 24936), (40, 24870),

Gene: Delphidian_37 Start: 25208, Stop: 24369, Start Num: 15

Candidate Starts for Delphidian_37:

(Start: 15 @25208 has 138 MA's), (17, 25142), (24, 25073), (26, 25055), (30, 24965), (33, 24947), (40, 24881),

Gene: Den3_36 Start: 25214, Stop: 24375, Start Num: 15

Candidate Starts for Den3_36:

(Start: 15 @25214 has 138 MA's), (17, 25148), (24, 25079), (26, 25061), (30, 24971), (33, 24953), (40, 24887),

Gene: Dothraki_36 Start: 25205, Stop: 24372, Start Num: 15

Candidate Starts for Dothraki_36:

(Start: 15 @25205 has 138 MA's), (17, 25139), (24, 25070), (26, 25052), (30, 24962), (33, 24944), (40, 24878),

Gene: Duocatuli_35 Start: 24894, Stop: 24055, Start Num: 15

Candidate Starts for Duocatuli_35:

(Start: 15 @24894 has 138 MA's), (17, 24828), (24, 24759), (26, 24741), (30, 24651), (33, 24633), (40, 24567),

Gene: Endor_36 Start: 25556, Stop: 24702, Start Num: 15

Candidate Starts for Endor_36:

(Start: 15 @25556 has 138 MA's), (16, 25541), (19, 25466), (24, 25418), (30, 25310), (38, 25235), (47, 25142),

Gene: Erla_35 Start: 24887, Stop: 24048, Start Num: 15

Candidate Starts for Erla_35:

(Start: 15 @24887 has 138 MA's), (17, 24821), (21, 24791), (24, 24752), (30, 24644), (33, 24626), (40, 24560),

Gene: Espinosa_35 Start: 24905, Stop: 24066, Start Num: 15

Candidate Starts for Espinosa_35:

(Start: 15 @24905 has 138 MA's), (17, 24839), (24, 24770), (26, 24752), (30, 24662), (33, 24644), (40, 24578),

Gene: Etna_35 Start: 25340, Stop: 24477, Start Num: 15

Candidate Starts for Etna_35:

(Start: 15 @25340 has 138 MA's), (16, 25325), (19, 25250), (21, 25241), (24, 25202), (30, 25094), (38, 25019), (47, 24926),

Gene: Etta_35 Start: 24891, Stop: 24052, Start Num: 15

Candidate Starts for Etta_35:

(Start: 15 @24891 has 138 MA's), (17, 24825), (21, 24795), (24, 24756), (30, 24648), (33, 24630), (40, 24564),

Gene: FF47_40 Start: 30004, Stop: 29357, Start Num: 13

Candidate Starts for FF47_40:

(Start: 13 @30004 has 1 MA's), (17, 29926), (22, 29890), (23, 29887), (24, 29857), (27, 29770), (28, 29761), (33, 29737), (34, 29722), (43, 29647), (46, 29626),

Gene: FarmerDoug_35 Start: 25191, Stop: 24343, Start Num: 15

Candidate Starts for FarmerDoug_35:

(Start: 15 @25191 has 138 MA's), (16, 25176), (19, 25101), (24, 25053), (30, 24945), (33, 24927), (38, 24870), (47, 24777),

Gene: Figueroism_36 Start: 25199, Stop: 24357, Start Num: 15

Candidate Starts for Figueroism_36:

(Start: 15 @25199 has 138 MA's), (17, 25133), (24, 25064), (26, 25046), (30, 24956), (33, 24938), (40, 24872),

Gene: Fulton_34 Start: 23073, Stop: 22213, Start Num: 15

Candidate Starts for Fulton_34:

(Start: 15 @23073 has 138 MA's), (17, 23007), (22, 22971), (24, 22938), (33, 22812), (36, 22773),

Gene: GardenB_35 Start: 25305, Stop: 24466, Start Num: 15

Candidate Starts for GardenB_35:

(Start: 15 @25305 has 138 MA's), (16, 25290), (19, 25215), (21, 25206), (24, 25167), (30, 25059), (38, 24984), (47, 24891),

Gene: Garey24_35 Start: 24873, Stop: 24031, Start Num: 15

Candidate Starts for Garey24_35:

(Start: 15 @24873 has 138 MA's), (17, 24807), (24, 24738), (26, 24720), (30, 24630), (33, 24612), (40, 24546),

Gene: Gargoyle_36 Start: 25214, Stop: 24372, Start Num: 15

Candidate Starts for Gargoyle_36:

(Start: 15 @25214 has 138 MA's), (17, 25148), (24, 25079), (26, 25061), (30, 24971), (33, 24953), (40, 24887),

Gene: Gelo_35 Start: 24897, Stop: 24052, Start Num: 15

Candidate Starts for Gelo_35:

(Start: 15 @24897 has 138 MA's), (17, 24831), (21, 24801), (24, 24762), (30, 24654), (33, 24636), (40, 24570),

Gene: Gershwin_35 Start: 24907, Stop: 24068, Start Num: 15

Candidate Starts for Gershwin_35:

(Start: 15 @24907 has 138 MA's), (17, 24841), (21, 24811), (24, 24772), (30, 24664), (33, 24646), (40, 24580),

Gene: Golden_33 Start: 24767, Stop: 24036, Start Num: 15

Candidate Starts for Golden_33:

(Start: 15 @24767 has 138 MA's), (19, 24680), (20, 24674), (22, 24665), (24, 24632), (25, 24626), (30, 24524), (35, 24488), (36, 24467), (44, 24404),

Gene: Greenlvy_34 Start: 23662, Stop: 22799, Start Num: 15

Candidate Starts for Greenlvy_34:

(Start: 15 @23662 has 138 MA's), (17, 23596), (22, 23560), (24, 23527), (33, 23401), (36, 23362),

Gene: Greys_36 Start: 25207, Stop: 24368, Start Num: 15

Candidate Starts for Greys_36:

(Start: 15 @25207 has 138 MA's), (17, 25141), (24, 25072), (26, 25054), (30, 24964), (33, 24946), (40, 24880),

Gene: Gubbabump_35 Start: 24887, Stop: 24057, Start Num: 15

Candidate Starts for Gubbabump_35:

(Start: 15 @24887 has 138 MA's), (17, 24821), (24, 24752), (26, 24734), (30, 24644), (33, 24626), (40, 24560),

Gene: Guetzie_33 Start: 24752, Stop: 24024, Start Num: 15

Candidate Starts for Guetzie_33:

(Start: 15 @24752 has 138 MA's), (19, 24665), (20, 24659), (22, 24650), (24, 24617), (25, 24611), (30, 24509), (35, 24473), (36, 24452), (44, 24389),

Gene: Hamlet_35 Start: 25338, Stop: 24475, Start Num: 15

Candidate Starts for Hamlet_35:

(Start: 15 @25338 has 138 MA's), (16, 25323), (19, 25248), (21, 25239), (24, 25200), (30, 25092), (38, 25017), (47, 24924),

Gene: HanSolo_35 Start: 24894, Stop: 24055, Start Num: 15

Candidate Starts for HanSolo_35:

(Start: 15 @24894 has 138 MA's), (17, 24828), (24, 24759), (26, 24741), (30, 24651), (33, 24633), (40, 24567),

Gene: HankSprout_37 Start: 24774, Stop: 23935, Start Num: 15

Candidate Starts for HankSprout_37:

(Start: 15 @24774 has 138 MA's), (17, 24708), (24, 24639), (26, 24621), (30, 24531), (33, 24513), (40, 24447),

Gene: Hasitha_33 Start: 23085, Stop: 22225, Start Num: 15

Candidate Starts for Hasitha_33:

(Start: 15 @23085 has 138 MA's), (17, 23019), (22, 22983), (24, 22950), (33, 22824), (36, 22785),

Gene: HerculesXL_34 Start: 23550, Stop: 22687, Start Num: 15

Candidate Starts for HerculesXL_34:

(8, 23682), (11, 23610), (Start: 15 @23550 has 138 MA's), (19, 23463), (20, 23457), (23, 23445), (24, 23415), (26, 23397), (30, 23307), (31, 23295), (36, 23250), (41, 23214), (45, 23178),

Gene: HungryHenry_36 Start: 24899, Stop: 24066, Start Num: 15

Candidate Starts for HungryHenry_36:

(Start: 15 @24899 has 138 MA's), (17, 24833), (24, 24764), (26, 24746), (30, 24656), (33, 24638), (40, 24572),

Gene: Ilzat_35 Start: 24910, Stop: 24065, Start Num: 15

Candidate Starts for Ilzat_35:

(Start: 15 @24910 has 138 MA's), (17, 24844), (24, 24775), (26, 24757), (30, 24667), (33, 24649), (40, 24583),

Gene: Inventa_36 Start: 25205, Stop: 24372, Start Num: 15

Candidate Starts for Inventa_36:

(Start: 15 @25205 has 138 MA's), (17, 25139), (24, 25070), (26, 25052), (30, 24962), (33, 24944), (40, 24878),

Gene: loannes_36 Start: 25209, Stop: 24370, Start Num: 15

Candidate Starts for loannes_36:

(Start: 15 @25209 has 138 MA's), (17, 25143), (24, 25074), (26, 25056), (30, 24966), (33, 24948), (40, 24882),

Gene: Ixel_34 Start: 23501, Stop: 22647, Start Num: 15

Candidate Starts for Ixel_34:

(Start: 15 @23501 has 138 MA's), (17, 23435), (24, 23366), (32, 23243), (42, 23138),

Gene: Janus167_35 Start: 24894, Stop: 24055, Start Num: 15

Candidate Starts for Janus167_35:

(Start: 15 @24894 has 138 MA's), (17, 24828), (24, 24759), (26, 24741), (30, 24651), (33, 24633), (40, 24567),

Gene: JasonD_40 Start: 25754, Stop: 24891, Start Num: 15

Candidate Starts for JasonD_40:

(6, 25910), (Start: 15 @25754 has 138 MA's), (17, 25688), (18, 25676), (19, 25667), (22, 25652), (24, 25619), (30, 25511), (33, 25493), (39, 25430),

Gene: JasperRussell_35 Start: 24894, Stop: 24055, Start Num: 15

Candidate Starts for JasperRussell_35:

(Start: 15 @24894 has 138 MA's), (17, 24828), (24, 24759), (26, 24741), (30, 24651), (33, 24633), (40, 24567),

Gene: Jemerald_36 Start: 25457, Stop: 24711, Start Num: 15

Candidate Starts for Jemerald_36:

(4, 25640), (9, 25580), (10, 25526), (11, 25517), (Start: 15 @25457 has 138 MA's), (17, 25391), (19, 25370), (24, 25322), (26, 25304), (33, 25196), (34, 25181), (45, 25085),

Gene: Jenos_39 Start: 26401, Stop: 25553, Start Num: 15

Candidate Starts for Jenos_39:

(Start: 15 @26401 has 138 MA's), (17, 26335), (18, 26323), (24, 26266), (30, 26158),

Gene: Jerbirus_36 Start: 24894, Stop: 24055, Start Num: 15

Candidate Starts for Jerbirus_36:

(Start: 15 @24894 has 138 MA's), (17, 24828), (24, 24759), (26, 24741), (30, 24651), (33, 24633), (40, 24567),

Gene: JeriBeth_36 Start: 24757, Stop: 23912, Start Num: 15

Candidate Starts for JeriBeth_36:

(Start: 15 @24757 has 138 MA's), (17, 24691), (24, 24622), (26, 24604), (30, 24514), (33, 24496), (40, 24430),

Gene: Juanyo_33 Start: 24567, Stop: 23710, Start Num: 15

Candidate Starts for Juanyo_33:

(2, 24819), (8, 24711), (Start: 15 @24567 has 138 MA's), (17, 24501), (22, 24465), (24, 24432), (29, 24327), (31, 24312), (37, 24246), (51, 23724),

Gene: Juicer_36 Start: 25457, Stop: 24711, Start Num: 15

Candidate Starts for Juicer_36:

(4, 25640), (9, 25580), (10, 25526), (11, 25517), (Start: 15 @25457 has 138 MA's), (17, 25391), (19, 25370), (24, 25322), (26, 25304), (33, 25196), (34, 25181), (45, 25085),

Gene: Kale_35 Start: 24909, Stop: 24070, Start Num: 15

Candidate Starts for Kale_35:

(Start: 15 @24909 has 138 MA's), (17, 24843), (21, 24813), (24, 24774), (30, 24666), (33, 24648), (40, 24582),

Gene: KannH_35 Start: 24894, Stop: 24055, Start Num: 15

Candidate Starts for KannH_35:

(Start: 15 @24894 has 138 MA's), (17, 24828), (24, 24759), (26, 24741), (30, 24651), (33, 24633), (40, 24567),

Gene: KatChan_35 Start: 24305, Stop: 23445, Start Num: 15

Candidate Starts for KatChan_35:

(Start: 15 @24305 has 138 MA's), (17, 24239), (19, 24218), (22, 24203), (24, 24170), (25, 24164), (30, 24062), (33, 24044), (35, 24026),

Gene: Kauala_33 Start: 24653, Stop: 23928, Start Num: 15

Candidate Starts for Kauala_33:

(Start: 15 @24653 has 138 MA's), (19, 24566), (20, 24560), (24, 24518), (35, 24374), (44, 24290),

Gene: KingJulien_35 Start: 25328, Stop: 24468, Start Num: 15

Candidate Starts for KingJulien_35:

(Start: 15 @25328 has 138 MA's), (16, 25313), (19, 25238), (21, 25229), (24, 25190), (30, 25082), (38, 25007), (47, 24914),

Gene: Klimt_35 Start: 24889, Stop: 24050, Start Num: 15

Candidate Starts for Klimt_35:

(Start: 15 @24889 has 138 MA's), (17, 24823), (21, 24793), (24, 24754), (30, 24646), (33, 24628), (40, 24562),

Gene: Knox_36 Start: 25209, Stop: 24370, Start Num: 15

Candidate Starts for Knox_36:

(Start: 15 @25209 has 138 MA's), (17, 25143), (24, 25074), (26, 25056), (30, 24966), (33, 24948), (40, 24882),

Gene: Koji_33 Start: 24845, Stop: 24063, Start Num: 15

Candidate Starts for Koji_33:

(Start: 15 @24845 has 138 MA's), (19, 24758), (22, 24743), (24, 24710), (30, 24602), (33, 24584), (35, 24566), (44, 24482),

Gene: Kurt1_36 Start: 25205, Stop: 24372, Start Num: 15
Candidate Starts for Kurt1_36:
(Start: 15 @25205 has 138 MA's), (17, 25139), (24, 25070), (26, 25052), (30, 24962), (33, 24944), (40, 24878),

Gene: Leafus_35 Start: 25473, Stop: 24610, Start Num: 15
Candidate Starts for Leafus_35:
(Start: 15 @25473 has 138 MA's), (16, 25458), (19, 25383), (21, 25374), (24, 25335), (30, 25227), (38, 25152), (47, 25059),

Gene: Librie_33 Start: 23072, Stop: 22209, Start Num: 15
Candidate Starts for Librie_33:
(Start: 15 @23072 has 138 MA's), (17, 23006), (22, 22970), (24, 22937), (33, 22811), (36, 22772),

Gene: LilTerminator_34 Start: 23094, Stop: 22231, Start Num: 15
Candidate Starts for LilTerminator_34:
(Start: 15 @23094 has 138 MA's), (17, 23028), (22, 22992), (24, 22959), (33, 22833), (36, 22794),

Gene: Lovelyunicorn_36 Start: 25210, Stop: 24371, Start Num: 15
Candidate Starts for Lovelyunicorn_36:
(Start: 15 @25210 has 138 MA's), (17, 25144), (24, 25075), (26, 25057), (30, 24967), (33, 24949), (40, 24883),

Gene: Lucky3_33 Start: 24767, Stop: 24036, Start Num: 15
Candidate Starts for Lucky3_33:
(Start: 15 @24767 has 138 MA's), (19, 24680), (20, 24674), (22, 24665), (24, 24632), (25, 24626), (30, 24524), (35, 24488), (36, 24467), (44, 24404),

Gene: Ludgate_36 Start: 25205, Stop: 24366, Start Num: 15
Candidate Starts for Ludgate_36:
(Start: 15 @25205 has 138 MA's), (17, 25139), (24, 25070), (26, 25052), (30, 24962), (40, 24878),

Gene: Luna18_35 Start: 24305, Stop: 23445, Start Num: 15
Candidate Starts for Luna18_35:
(Start: 15 @24305 has 138 MA's), (17, 24239), (19, 24218), (22, 24203), (24, 24170), (25, 24164), (30, 24062), (33, 24044), (35, 24026),

Gene: MaeLinda_36 Start: 25209, Stop: 24373, Start Num: 15
Candidate Starts for MaeLinda_36:
(Start: 15 @25209 has 138 MA's), (17, 25143), (24, 25074), (26, 25056), (30, 24966), (33, 24948), (40, 24882),

Gene: ManRay_35 Start: 24907, Stop: 24068, Start Num: 15
Candidate Starts for ManRay_35:
(Start: 15 @24907 has 138 MA's), (17, 24841), (24, 24772), (26, 24754), (30, 24664), (33, 24646), (40, 24580),

Gene: Martin_37 Start: 25214, Stop: 24372, Start Num: 15
Candidate Starts for Martin_37:
(Start: 15 @25214 has 138 MA's), (17, 25148), (24, 25079), (26, 25061), (30, 24971), (33, 24953), (40, 24887),

Gene: McGalleon_38 Start: 26612, Stop: 25770, Start Num: 15

Candidate Starts for McGalleon_38:

(Start: 15 @26612 has 138 MA's), (17, 26546), (18, 26534), (24, 26477), (30, 26369), (33, 26351),

Gene: Mercedes_30 Start: 22076, Stop: 21222, Start Num: 15

Candidate Starts for Mercedes_30:

(Start: 15 @22076 has 138 MA's), (17, 22010), (24, 21941), (33, 21815), (45, 21704), (49, 21473),

Gene: MillyPhilly_36 Start: 25202, Stop: 24369, Start Num: 15

Candidate Starts for MillyPhilly_36:

(Start: 15 @25202 has 138 MA's), (17, 25136), (24, 25067), (26, 25049), (30, 24959), (33, 24941), (40, 24875),

Gene: MonChoix_34 Start: 25226, Stop: 24372, Start Num: 15

Candidate Starts for MonChoix_34:

(Start: 15 @25226 has 138 MA's), (19, 25139), (21, 25130), (24, 25091), (26, 25073), (30, 24983), (33, 24965), (35, 24947), (38, 24908),

Gene: Morrigan_35 Start: 24326, Stop: 23475, Start Num: 15

Candidate Starts for Morrigan_35:

(Start: 15 @24326 has 138 MA's), (17, 24260), (19, 24239), (22, 24224), (24, 24191), (25, 24185), (30, 24083), (35, 24047), (36, 24026),

Gene: MrWorldwide_36 Start: 25212, Stop: 24373, Start Num: 15

Candidate Starts for MrWorldwide_36:

(Start: 15 @25212 has 138 MA's), (17, 25146), (24, 25077), (26, 25059), (30, 24969), (33, 24951), (40, 24885),

Gene: Muddy_41 Start: 30576, Stop: 29920, Start Num: 13

Candidate Starts for Muddy_41:

(Start: 13 @30576 has 1 MA's), (17, 30498), (22, 30462), (23, 30459), (24, 30429), (28, 30333), (33, 30309), (34, 30294), (43, 30219), (46, 30198),

Gene: Nagem_36 Start: 25205, Stop: 24366, Start Num: 15

Candidate Starts for Nagem_36:

(Start: 15 @25205 has 138 MA's), (17, 25139), (21, 25109), (24, 25070), (30, 24962), (33, 24944), (40, 24878),

Gene: Nattles_35 Start: 24894, Stop: 24055, Start Num: 15

Candidate Starts for Nattles_35:

(Start: 15 @24894 has 138 MA's), (17, 24828), (21, 24798), (24, 24759), (30, 24651), (33, 24633), (40, 24567),

Gene: Nebulous_33 Start: 26085, Stop: 25234, Start Num: 15

Candidate Starts for Nebulous_33:

(Start: 15 @26085 has 138 MA's), (17, 26019), (22, 25983), (24, 25950), (33, 25824), (50, 25473),

Gene: Neferthema_33 Start: 25172, Stop: 24324, Start Num: 15

Candidate Starts for Neferthema_33:

(Start: 15 @25172 has 138 MA's), (17, 25106), (22, 25070), (24, 25037), (33, 24911), (50, 24560),

Gene: NickSell_37 Start: 25211, Stop: 24372, Start Num: 15

Candidate Starts for NickSell_37:

(Start: 15 @25211 has 138 MA's), (17, 25145), (24, 25076), (26, 25058), (30, 24968), (33, 24950), (40, 24884),

Gene: Oats_35 Start: 24907, Stop: 24068, Start Num: 15

Candidate Starts for Oats_35:

(Start: 15 @24907 has 138 MA's), (17, 24841), (24, 24772), (26, 24754), (30, 24664), (33, 24646), (40, 24580),

Gene: OldNelly_36 Start: 25211, Stop: 24372, Start Num: 15

Candidate Starts for OldNelly_36:

(Start: 15 @25211 has 138 MA's), (17, 25145), (24, 25076), (26, 25058), (30, 24968), (33, 24950), (40, 24884),

Gene: Oxtober96_36 Start: 25210, Stop: 24371, Start Num: 15

Candidate Starts for Oxtober96_36:

(Start: 15 @25210 has 138 MA's), (17, 25144), (24, 25075), (26, 25057), (30, 24967), (33, 24949), (40, 24883),

Gene: Pajaza_32 Start: 24108, Stop: 23335, Start Num: 12

Candidate Starts for Pajaza_32:

(Start: 12 @24108 has 3 MA's), (Start: 15 @24066 has 138 MA's), (20, 23973), (24, 23931), (25, 23925), (31, 23811), (48, 23658),

Gene: Papafritta_35 Start: 24915, Stop: 24064, Start Num: 15

Candidate Starts for Papafritta_35:

(Start: 15 @24915 has 138 MA's), (17, 24849), (24, 24780), (26, 24762), (30, 24672), (33, 24654), (40, 24588),

Gene: ParleG_36 Start: 25212, Stop: 24373, Start Num: 15

Candidate Starts for ParleG_36:

(Start: 15 @25212 has 138 MA's), (17, 25146), (24, 25077), (26, 25059), (30, 24969), (33, 24951), (40, 24885),

Gene: Peep_36 Start: 25197, Stop: 24358, Start Num: 15

Candidate Starts for Peep_36:

(Start: 15 @25197 has 138 MA's), (17, 25131), (24, 25062), (30, 24954), (33, 24936), (40, 24870),

Gene: Peppino_35 Start: 25321, Stop: 24467, Start Num: 15

Candidate Starts for Peppino_35:

(Start: 15 @25321 has 138 MA's), (16, 25306), (19, 25231), (21, 25222), (24, 25183), (30, 25075), (38, 25000), (47, 24907),

Gene: Pherbot_33 Start: 24659, Stop: 23934, Start Num: 15

Candidate Starts for Pherbot_33:

(Start: 15 @24659 has 138 MA's), (19, 24572), (22, 24557), (24, 24524), (33, 24398), (35, 24380), (44, 24296),

Gene: Pherferi_36 Start: 25205, Stop: 24372, Start Num: 15

Candidate Starts for Pherferi_36:

(Start: 15 @25205 has 138 MA's), (17, 25139), (24, 25070), (26, 25052), (30, 24962), (33, 24944), (40, 24878),

Gene: Phiderman_37 Start: 25202, Stop: 24369, Start Num: 15

Candidate Starts for Phiderman_37:

(Start: 15 @25202 has 138 MA's), (17, 25136), (24, 25067), (26, 25049), (30, 24959), (33, 24941), (40, 24875),

Gene: Phireproof_36 Start: 25211, Stop: 24372, Start Num: 15

Candidate Starts for Phireproof_36:

(Start: 15 @25211 has 138 MA's), (17, 25145), (24, 25076), (26, 25058), (30, 24968), (33, 24950), (40, 24884),

Gene: PhredFlintston_36 Start: 25205, Stop: 24372, Start Num: 15

Candidate Starts for PhredFlintston_36:

(Start: 15 @25205 has 138 MA's), (17, 25139), (24, 25070), (26, 25052), (30, 24962), (33, 24944), (40, 24878),

Gene: Phriends_36 Start: 25211, Stop: 24372, Start Num: 15

Candidate Starts for Phriends_36:

(Start: 15 @25211 has 138 MA's), (17, 25145), (24, 25076), (26, 25058), (30, 24968), (33, 24950), (40, 24884),

Gene: Pikmin_32 Start: 24108, Stop: 23335, Start Num: 12

Candidate Starts for Pikmin_32:

(Start: 12 @24108 has 3 MA's), (Start: 15 @24066 has 138 MA's), (20, 23973), (24, 23931), (25, 23925), (31, 23811), (45, 23694), (48, 23658),

Gene: Pocket_35 Start: 24898, Stop: 24053, Start Num: 15

Candidate Starts for Pocket_35:

(Start: 15 @24898 has 138 MA's), (17, 24832), (21, 24802), (24, 24763), (30, 24655), (33, 24637), (40, 24571),

Gene: PrincePhergus_33 Start: 24674, Stop: 23937, Start Num: 15

Candidate Starts for PrincePhergus_33:

(Start: 15 @24674 has 138 MA's), (19, 24587), (22, 24572), (24, 24539), (33, 24413), (35, 24395), (44, 24311),

Gene: PuppyEggo_36 Start: 25212, Stop: 24370, Start Num: 15

Candidate Starts for PuppyEggo_36:

(Start: 15 @25212 has 138 MA's), (17, 25146), (24, 25077), (26, 25059), (30, 24969), (33, 24951), (40, 24885),

Gene: QuadZero_33 Start: 23099, Stop: 22239, Start Num: 15

Candidate Starts for QuadZero_33:

(Start: 15 @23099 has 138 MA's), (17, 23033), (22, 22997), (24, 22964), (33, 22838), (36, 22799),

Gene: Raccoon_35 Start: 25296, Stop: 24433, Start Num: 15

Candidate Starts for Raccoon_35:

(Start: 15 @25296 has 138 MA's), (16, 25281), (19, 25206), (21, 25197), (24, 25158), (30, 25050), (38, 24975), (47, 24882),

Gene: Rapheph_36 Start: 25205, Stop: 24372, Start Num: 15

Candidate Starts for Rapheph_36:

(Start: 15 @25205 has 138 MA's), (17, 25139), (24, 25070), (26, 25052), (30, 24962), (33, 24944), (40, 24878),

Gene: Raptor_36 Start: 25209, Stop: 24370, Start Num: 15
Candidate Starts for Raptor_36:
(Start: 15 @25209 has 138 MA's), (17, 25143), (21, 25113), (24, 25074), (30, 24966), (33, 24948), (40, 24882),

Gene: Redfield_35 Start: 25328, Stop: 24474, Start Num: 15
Candidate Starts for Redfield_35:
(Start: 15 @25328 has 138 MA's), (16, 25313), (19, 25238), (21, 25229), (24, 25190), (30, 25082), (38, 25007), (47, 24914),

Gene: Renzie_36 Start: 25197, Stop: 24358, Start Num: 15
Candidate Starts for Renzie_36:
(Start: 15 @25197 has 138 MA's), (17, 25131), (24, 25062), (30, 24954), (33, 24936), (40, 24870),

Gene: Riyhil_36 Start: 25214, Stop: 24372, Start Num: 15
Candidate Starts for Riyhil_36:
(Start: 15 @25214 has 138 MA's), (17, 25148), (24, 25079), (26, 25061), (30, 24971), (33, 24953), (40, 24887),

Gene: Robinson_36 Start: 25203, Stop: 24364, Start Num: 15
Candidate Starts for Robinson_36:
(Start: 15 @25203 has 138 MA's), (17, 25137), (24, 25068), (26, 25050), (30, 24960), (33, 24942), (40, 24876),

Gene: Rog141_36 Start: 24894, Stop: 24055, Start Num: 15
Candidate Starts for Rog141_36:
(Start: 15 @24894 has 138 MA's), (17, 24828), (24, 24759), (26, 24741), (30, 24651), (33, 24633), (40, 24567),

Gene: SJay_36 Start: 25206, Stop: 24367, Start Num: 15
Candidate Starts for SJay_36:
(Start: 15 @25206 has 138 MA's), (17, 25140), (21, 25110), (24, 25071), (30, 24963), (33, 24945), (40, 24879),

Gene: Schimmels22_34 Start: 23924, Stop: 23061, Start Num: 15
Candidate Starts for Schimmels22_34:
(3, 24137), (5, 24101), (8, 24056), (11, 23984), (Start: 15 @23924 has 138 MA's), (19, 23837), (20, 23831), (23, 23819), (24, 23789), (26, 23771), (30, 23681), (31, 23669), (36, 23624), (41, 23588), (45, 23552),

Gene: Schnapsidee_35 Start: 25334, Stop: 24468, Start Num: 15
Candidate Starts for Schnapsidee_35:
(Start: 15 @25334 has 138 MA's), (16, 25319), (19, 25244), (21, 25235), (24, 25196), (30, 25088), (38, 25013), (47, 24920),

Gene: Schubert_33 Start: 24621, Stop: 23938, Start Num: 15
Candidate Starts for Schubert_33:
(Start: 15 @24621 has 138 MA's), (22, 24519), (24, 24486), (25, 24480), (26, 24468), (30, 24378), (31, 24366), (33, 24360), (44, 24258),

Gene: Sedgewig_35 Start: 24892, Stop: 24047, Start Num: 15
Candidate Starts for Sedgewig_35:

(Start: 15 @24892 has 138 MA's), (17, 24826), (24, 24757), (26, 24739), (30, 24649), (33, 24631), (40, 24565),

Gene: ShaiHulud_36 Start: 25209, Stop: 24370, Start Num: 15

Candidate Starts for ShaiHulud_36:

(Start: 15 @25209 has 138 MA's), (17, 25143), (24, 25074), (26, 25056), (30, 24966), (33, 24948), (40, 24882),

Gene: Shee_36 Start: 25202, Stop: 24369, Start Num: 15

Candidate Starts for Shee_36:

(Start: 15 @25202 has 138 MA's), (17, 25136), (24, 25067), (26, 25049), (30, 24959), (33, 24941), (40, 24875),

Gene: Sinatra_33 Start: 24670, Stop: 23933, Start Num: 15

Candidate Starts for Sinatra_33:

(Start: 15 @24670 has 138 MA's), (19, 24583), (22, 24568), (24, 24535), (33, 24409), (35, 24391), (44, 24307),

Gene: SirVictor_33 Start: 24752, Stop: 24024, Start Num: 15

Candidate Starts for SirVictor_33:

(Start: 15 @24752 has 138 MA's), (19, 24665), (20, 24659), (22, 24650), (24, 24617), (25, 24611), (30, 24509), (35, 24473), (36, 24452), (44, 24389),

Gene: SoilGremlin_36 Start: 25208, Stop: 24369, Start Num: 15

Candidate Starts for SoilGremlin_36:

(Start: 15 @25208 has 138 MA's), (17, 25142), (24, 25073), (26, 25055), (30, 24965), (33, 24947), (40, 24881),

Gene: SonOfLevi_35 Start: 24889, Stop: 24050, Start Num: 15

Candidate Starts for SonOfLevi_35:

(Start: 15 @24889 has 138 MA's), (17, 24823), (21, 24793), (24, 24754), (30, 24646), (33, 24628), (40, 24562),

Gene: Stanktossa_36 Start: 25205, Stop: 24372, Start Num: 15

Candidate Starts for Stanktossa_36:

(Start: 15 @25205 has 138 MA's), (17, 25139), (24, 25070), (26, 25052), (30, 24962), (33, 24944), (40, 24878),

Gene: StingRay_35 Start: 24910, Stop: 24065, Start Num: 15

Candidate Starts for StingRay_35:

(Start: 15 @24910 has 138 MA's), (17, 24844), (24, 24775), (26, 24757), (30, 24667), (33, 24649), (40, 24583),

Gene: StirfryIV_36 Start: 24903, Stop: 24055, Start Num: 15

Candidate Starts for StirfryIV_36:

(Start: 15 @24903 has 138 MA's), (17, 24837), (24, 24768), (26, 24750), (30, 24660), (33, 24642), (40, 24576),

Gene: Stormbreaker8_35 Start: 25328, Stop: 24468, Start Num: 15

Candidate Starts for Stormbreaker8_35:

(Start: 15 @25328 has 138 MA's), (16, 25313), (19, 25238), (21, 25229), (24, 25190), (30, 25082), (38, 25007), (47, 24914),

Gene: Strathdee_36 Start: 25210, Stop: 24371, Start Num: 15

Candidate Starts for Strathdee_36:

(Start: 15 @25210 has 138 MA's), (17, 25144), (24, 25075), (26, 25057), (30, 24967), (33, 24949), (40, 24883),

Gene: Superfresh_36 Start: 25197, Stop: 24358, Start Num: 15

Candidate Starts for Superfresh_36:

(Start: 15 @25197 has 138 MA's), (17, 25131), (24, 25062), (30, 24954), (33, 24936), (40, 24870),

Gene: TatarkaPM_36 Start: 25211, Stop: 24372, Start Num: 15

Candidate Starts for TatarkaPM_36:

(Start: 15 @25211 has 138 MA's), (17, 25145), (24, 25076), (26, 25058), (30, 24968), (33, 24950), (40, 24884),

Gene: Teagan_36 Start: 25205, Stop: 24366, Start Num: 15

Candidate Starts for Teagan_36:

(Start: 15 @25205 has 138 MA's), (17, 25139), (24, 25070), (26, 25052), (30, 24962), (33, 24944), (40, 24878),

Gene: TeddyBear_35 Start: 24907, Stop: 24068, Start Num: 15

Candidate Starts for TeddyBear_35:

(Start: 15 @24907 has 138 MA's), (17, 24841), (21, 24811), (24, 24772), (30, 24664), (33, 24646), (40, 24580),

Gene: Tenda_35 Start: 24905, Stop: 24066, Start Num: 15

Candidate Starts for Tenda_35:

(Start: 15 @24905 has 138 MA's), (17, 24839), (24, 24770), (26, 24752), (30, 24662), (33, 24644), (40, 24578),

Gene: Thompsone_36 Start: 25212, Stop: 24370, Start Num: 15

Candidate Starts for Thompsone_36:

(Start: 15 @25212 has 138 MA's), (17, 25146), (24, 25077), (26, 25059), (30, 24969), (33, 24951), (40, 24885),

Gene: Thorongil_36 Start: 25212, Stop: 24370, Start Num: 15

Candidate Starts for Thorongil_36:

(Start: 15 @25212 has 138 MA's), (17, 25146), (24, 25077), (26, 25059), (30, 24969), (33, 24951), (40, 24885),

Gene: TinSulphur_36 Start: 25211, Stop: 24372, Start Num: 15

Candidate Starts for TinSulphur_36:

(Start: 15 @25211 has 138 MA's), (17, 25145), (24, 25076), (26, 25058), (30, 24968), (33, 24950), (40, 24884),

Gene: Tinyman4_34 Start: 23550, Stop: 22687, Start Num: 15

Candidate Starts for Tinyman4_34:

(8, 23682), (11, 23610), (Start: 15 @23550 has 138 MA's), (19, 23463), (20, 23457), (23, 23445), (24, 23415), (26, 23397), (30, 23307), (31, 23295), (36, 23250), (41, 23214), (45, 23178),

Gene: Velene_36 Start: 25210, Stop: 24371, Start Num: 15

Candidate Starts for Velene_36:

(Start: 15 @25210 has 138 MA's), (17, 25144), (24, 25075), (26, 25057), (30, 24967), (33, 24949), (40, 24883),

Gene: Vispistious_36 Start: 25212, Stop: 24370, Start Num: 15

Candidate Starts for Vispistious_36:

(Start: 15 @25212 has 138 MA's), (17, 25146), (24, 25077), (26, 25059), (30, 24969), (33, 24951), (40, 24885),

Gene: WestPM_32 Start: 23407, Stop: 22544, Start Num: 15

Candidate Starts for WestPM_32:

(7, 23557), (8, 23539), (9, 23530), (11, 23467), (Start: 15 @23407 has 138 MA's), (19, 23320), (20, 23314), (23, 23302), (24, 23272), (26, 23254), (30, 23164), (31, 23152), (33, 23146), (36, 23107), (41, 23071), (45, 23035),

Gene: WildNOut_36 Start: 25209, Stop: 24370, Start Num: 15

Candidate Starts for WildNOut_36:

(Start: 15 @25209 has 138 MA's), (17, 25143), (24, 25074), (26, 25056), (30, 24966), (33, 24948), (40, 24882),

Gene: WilliamStrong_34 Start: 24626, Stop: 23769, Start Num: 15

Candidate Starts for WilliamStrong_34:

(Start: 15 @24626 has 138 MA's), (17, 24560), (19, 24539), (22, 24524), (24, 24491), (26, 24473), (30, 24383), (33, 24365), (35, 24347),

Gene: Winzigespinne_35 Start: 24893, Stop: 24054, Start Num: 15

Candidate Starts for Winzigespinne_35:

(Start: 15 @24893 has 138 MA's), (17, 24827), (24, 24758), (26, 24740), (30, 24650), (33, 24632), (40, 24566),

Gene: YuuY_34 Start: 25236, Stop: 24385, Start Num: 15

Candidate Starts for YuuY_34:

(Start: 15 @25236 has 138 MA's), (17, 25170), (22, 25134), (24, 25101), (26, 25083), (29, 24996), (31, 24981), (49, 24624), (50, 24606),

Gene: Zada_36 Start: 25181, Stop: 24351, Start Num: 15

Candidate Starts for Zada_36:

(Start: 15 @25181 has 138 MA's), (17, 25115), (24, 25046), (26, 25028), (30, 24938), (33, 24920), (40, 24854),

Gene: Zayuliv_33 Start: 23672, Stop: 22821, Start Num: 15

Candidate Starts for Zayuliv_33:

(Start: 15 @23672 has 138 MA's), (17, 23606), (22, 23570), (24, 23537), (33, 23411), (36, 23372),

Gene: Zepp_34 Start: 23131, Stop: 22289, Start Num: 15

Candidate Starts for Zepp_34:

(Start: 15 @23131 has 138 MA's), (17, 23065), (22, 23029), (24, 22996), (33, 22870), (36, 22831),