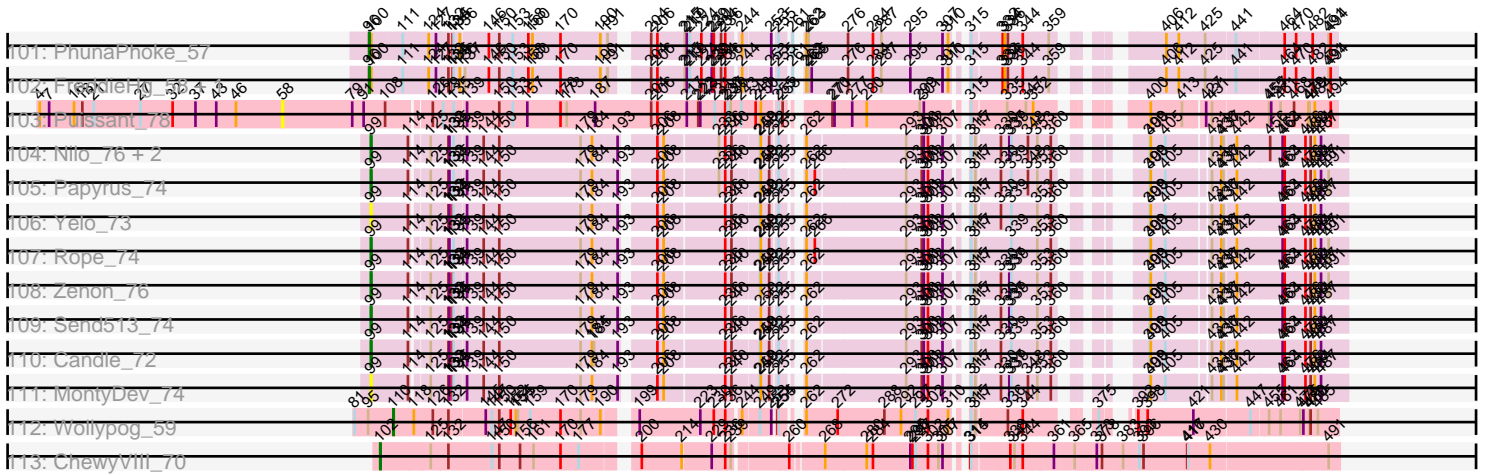


Pham 163384



Note: Tracks are now grouped by subcluster and scaled. Switching in subcluster is indicated by changes in track color. Track scale is now set by default to display the region 30 bp upstream of start 1 to 30 bp downstream of the last possible start. If this default region is judged to be packed too tightly with annotated starts, the track will be further scaled to only show that region of the ORF with annotated starts. This action will be indicated by adding "Zoomed" to the title. For starts, yellow indicates the location of called starts comprised solely of Glimmer/GeneMark auto-annotations, green indicates the location of called starts with at least 1 manual gene annotation.

Pham 163384 Report

This analysis was run 04/28/24 on database version 559.

Pham number 163384 has 166 members, 30 are drafts.

Phages represented in each track:

- Track 1 : Aikoy_85
- Track 2 : Leopard_84, Onyinye_84
- Track 3 : Daubenski_81
- Track 4 : Liandry_78, Squillium_79, Persimmon_77, Bartholomune_78, PinkiePie_78
- Track 5 : Cursive_78, Lululemon_81, Watermoore_80, PacManQ_81, Leo04_81, BlueOtter_82, Cross_80, HangryHippo_82
- Track 6 : Paradiddles_75
- Track 7 : EGole_81
- Track 8 : Mildred21_78
- Track 9 : Tribute_78, Larnav_85
- Track 10 : Targaryen_80
- Track 11 : Anedea_78
- Track 12 : Evy_80
- Track 13 : Braelyn_79
- Track 14 : MulchMansion_77, LilMartin_77, Angela_76
- Track 15 : Teutsch_80
- Track 16 : NootNoot_75
- Track 17 : Bmoc_78
- Track 18 : Pepperwood_80
- Track 19 : Peebs_79
- Track 20 : Navo_79
- Track 21 : WhereRU_79
- Track 22 : Sushi23_79
- Track 23 : Warpy_83
- Track 24 : Samisti12_80
- Track 25 : Jay2Jay_84
- Track 26 : Starbow_80, Battuta_80
- Track 27 : Amabiko_82, MindFlayer_79
- Track 28 : KentuckyRacer_85
- Track 29 : CeilingFan_84, Gibbi_86, Karimac_81, JimJam_82
- Track 30 : Birchlyn_79
- Track 31 : Spelly_82
- Track 32 : BoomerJR_82, Genie2_82, Stanimal_82
- Track 33 : Quarant19_81, PumpkinSpice_81, Jollison_86
- Track 34 : Sollertia_82
- Track 35 : Bordeaux_80

- Track 36 : TomSawyer_80
- Track 37 : Enygma_82
- Track 38 : Elmer_90
- Track 39 : IchabodCrane_79, Spilled_83
- Track 40 : StarPlatinum_82
- Track 41 : SaltySpittoon_81
- Track 42 : Wofford_81
- Track 43 : Yaboi_82
- Track 44 : LukeCage_81
- Track 45 : Tomas_84
- Track 46 : Mugiwara_83
- Track 47 : Wipeout_79
- Track 48 : Jada_60, Forrest_62, MeganTheeKilla_59, Gilson_61
- Track 49 : Phredrick_60, Kenrey_62
- Track 50 : Moab_61
- Track 51 : Annadreamy_58, Limpid_57
- Track 52 : Beuffert_58
- Track 53 : Belfort_62, SparkleGoddess_61
- Track 54 : Emma1919_62
- Track 55 : SeresaTree_61
- Track 56 : Sham_57
- Track 57 : Patelgo_60
- Track 58 : Blueeyedbeauty_60
- Track 59 : Comrade_61
- Track 60 : Francob_59
- Track 61 : Karp_59
- Track 62 : TunaTartare_59
- Track 63 : Stigma_60
- Track 64 : Faust_61
- Track 65 : BillNye_56
- Track 66 : Circinus_58
- Track 67 : Muntaha_58
- Track 68 : Wakanda_57
- Track 69 : Weasels2_102
- Track 70 : Grayson_103
- Track 71 : Peregrin_100
- Track 72 : Trina_102
- Track 73 : NiceHouse_90
- Track 74 : Francesca_76
- Track 75 : Dorin_75
- Track 76 : MacGully_67
- Track 77 : Beyoncage_66, Djokovic_66, BiteSize_66, Terapin_67, Sienna_66
- Track 78 : Madi_65
- Track 79 : Suzy_65
- Track 80 : LilyPad_66
- Track 81 : LittleFella_70
- Track 82 : Kors_64, Sparcetus_63, RikSengupta_63
- Track 83 : NarutoRun_57, Pharpay_56, AnnaSerena_57, Gilda_57, Kate_57, Anakin_57, Rachella_57, Krampus_57
- Track 84 : OverHedge_57
- Track 85 : Karate_56
- Track 86 : JDawG_56, Aesir_56
- Track 87 : Snakehole_58, Hiddenleaf_58, Chivey_58

- Track 88 : Cybele_57, Neptune_57, Potty_56
- Track 89 : TinyMiny_63
- Track 90 : Erudite_56, Dauntless_57
- Track 91 : JingleBells_58
- Track 92 : Crestdrop_59
- Track 93 : Tedro_57
- Track 94 : Poultruss_57
- Track 95 : MortySmith_55
- Track 96 : Haunter_57
- Track 97 : Hager_58
- Track 98 : CoolCookie_62
- Track 99 : Ajin_64
- Track 100 : Rie18_57
- Track 101 : PhunaPhoke_57
- Track 102 : FreddieHg_58, DannyDe_58
- Track 103 : Puissant_78
- Track 104 : Nilo_76, Weiss13_74, Riparian_76
- Track 105 : Papyrus_74
- Track 106 : Yelo_73
- Track 107 : Rope_74
- Track 108 : Zenon_76
- Track 109 : Send513_74
- Track 110 : Candle_72
- Track 111 : MontyDev_74
- Track 112 : Wolypog_59
- Track 113 : ChewyVIII_70

Summary of Final Annotations (See graph section above for start numbers):

The start number called the most often in the published annotations is 10, it was called in 54 of the 136 non-draft genes in the pham.

Genes that call this "Most Annotated" start:

• Anedeaa_78, Angela_76, Annadreamy_58, Bartholomune_78, Belfort_62, Beuffert_58, BillNye_56, BlueOtter_82, Bmoc_78, Braelyn_79, Circinus_58, Comrade_61, Cross_80, Cursive_78, Daubenski_81, EGole_81, Emma1919_62, Evy_80, Faust_61, Forrest_62, Francob_59, Gilson_61, HangryHippo_82, Jada_60, Jay2Jay_84, Karp_59, Kenrey_62, Larnav_85, Leo04_81, Liandry_78, LilMartin_77, Limpid_57, Lululemon_81, MeganTheeKilla_59, Mildred21_78, Moab_61, MulchMansion_77, Muntaha_58, Navo_79, NootNoot_75, PacManQ_81, Paradiddles_75, Patelgo_60, Peebs_79, Pepperwood_80, Persimmon_77, Phredrick_60, PinkiePie_78, Samisti12_80, SeresaTree_61, Sham_57, SparkleGoddess_61, Squillium_79, Stigma_60, Sushi23_79, Targaryen_80, Teutsch_80, Tribute_78, TunaTartare_59, Wakanda_57, Warpy_83, Watermoore_80, WhereRU_79,

Genes that have the "Most Annotated" start but do not call it:

• Blueeyedbeauty_60,

Genes that do not have the "Most Annotated" start:

- Aesir_56, Aikoy_85, Ajin_64, Amabiko_82, Anakin_57, AnnaSerena_57, Battuta_80, BeyonCage_66, Birchlyn_79, BiteSize_66, BoomerJR_82, Bordeaux_80, Candle_72, CeilingFan_84, ChewyVIII_70, Chivey_58, CoolCookie_62, Crestdrop_59, Cybele_57, DannyDe_58, Dauntless_57, Djokovic_66, Dorin_75, Elmer_90, Enygma_82, Erudite_56, Francesca_76, FreddieHg_58, Genie2_82, Gibbi_86, Gilda_57, Grayson_103, Hager_58, Haunter_57, Hiddenleaf_58, IchabodCrane_79, JDawG_56, JimJam_82, JingleBells_58, Jollison_86, Karate_56, Karimac_81, Kate_57, KentuckyRacer_85, Kors_64, Krampus_57, Leopard_84, LilyPad_66, LittleFella_70, LukeCage_81, MacGully_67, Madi_65, MindFlayer_79, MontyDev_74, MortySmith_55, Mugiwara_83, NarutoRun_57, Neptune_57, NiceHouse_90, Nilo_76, Onyinye_84, OverHedge_57, Papyrus_74, Peregrin_100, Pharpay_56, PhunaPhoke_57, Potty_56, Poultruss_57, Puissant_78, PumpkinSpice_81, Quaran19_81, Rachella_57, Rie18_57, RikSengupta_63, Riparian_76, Rope_74, SaltySpitooon_81, Send513_74, Sienna_66, Snakehole_58, Sollertia_82, Sparcetus_63, Spelly_82, Spilled_83, Stanimal_82, StarPlatinum_82, Starbow_80, Suzy_65, Tedro_57, Terapin_67, TinyMiny_63, TomSawyer_80, Tomas_84, Trina_102, Weasels2_102, Weiss13_74, Wipeout_79, Wofford_81, Wollypog_59, Yaboi_82, Yelo_73, Zenon_76,

Summary by start number:

Start 8:

- Found in 2 of 166 (1.2%) of genes in pham
- No Manual Annotations of this start.
- Called 100.0% of time when present
- Phage (with cluster) where this start called: Dorin_75 (CG), Francesca_76 (CG),

Start 9:

- Found in 32 of 166 (19.3%) of genes in pham
- Manual Annotations of this start: 26 of 136
- Called 100.0% of time when present
- Phage (with cluster) where this start called: Amabiko_82 (BE2), Battuta_80 (BE2), Birchlyn_79 (BE2), BoomerJR_82 (BE2), Bordeaux_80 (BE2), CeilingFan_84 (BE2), Elmer_90 (BE2), Enygma_82 (BE2), Genie2_82 (BE2), Gibbi_86 (BE2), IchabodCrane_79 (BE2), JimJam_82 (BE2), Jollison_86 (BE2), Karimac_81 (BE2), KentuckyRacer_85 (BE2), LukeCage_81 (BE2), MindFlayer_79 (BE2), Mugiwara_83 (BE2), PumpkinSpice_81 (BE2), Quaran19_81 (BE2), SaltySpitooon_81 (BE2), Sollertia_82 (BE2), Spelly_82 (BE2), Spilled_83 (BE2), Stanimal_82 (BE2), StarPlatinum_82 (BE2), Starbow_80 (BE2), TomSawyer_80 (BE2), Tomas_84 (BE2), Wipeout_79 (BE2), Wofford_81 (BE2), Yaboi_82 (BE2),

Start 10:

- Found in 64 of 166 (38.6%) of genes in pham
- Manual Annotations of this start: 54 of 136
- Called 98.4% of time when present
- Phage (with cluster) where this start called: Anedea_78 (BE1), Angela_76 (BE1), Annadreamy_58 (BK1), Bartholomune_78 (BE1), Belfort_62 (BK1), Beuffert_58 (BK1), BillNye_56 (BK2), BlueOtter_82 (BE1), Bmoc_78 (BE1), Braelyn_79 (BE1), Circinus_58 (BK2), Comrade_61 (BK1), Cross_80 (BE1), Cursive_78 (BE1), Daubenski_81 (BE1), EGole_81 (BE1), Emma1919_62 (BK1), Evy_80 (BE1), Faust_61 (BK1), Forrest_62 (BK1), Francob_59 (BK1), Gilson_61 (BK1), HangryHippo_82 (BE1), Jada_60 (BK1), Jay2Jay_84 (BE1), Karp_59 (BK1), Kenrey_62 (BK1), Larnav_85 (BE1), Leo04_81 (BE1), Liandry_78 (BE1), LilMartin_77

(BE1), Limpid_57 (BK1), Lululemon_81 (BE1), MeganTheeKilla_59 (BK1), Mildred21_78 (BE1), Moab_61 (BK1), MulchMansion_77 (BE1), Muntaha_58 (BK2), Navo_79 (BE1), NootNoot_75 (BE1), PacManQ_81 (BE1), Paradiddles_75 (BE1), Patelgo_60 (BK1), Peebs_79 (BE1), Pepperwood_80 (BE1), Persimmon_77 (BE1), Phredrick_60 (BK1), PinkiePie_78 (BE1), Samisti12_80 (BE1), SeresaTree_61 (BK1), Sham_57 (BK1), SparkleGoddess_61 (BK1), Squillium_79 (BE1), Stigma_60 (BK1), Sushi23_79 (BE1), Targaryen_80 (BE1), Teutsch_80 (BE1), Tribute_78 (BE1), TunaTartare_59 (BK1), Wakanda_57 (BK2), Warpy_83 (BE1), Watermoore_80 (BE1), WhereRU_79 (BE1),

Start 11:

- Found in 3 of 166 (1.8%) of genes in pham
- Manual Annotations of this start: 1 of 136
- Called 33.3% of time when present
- Phage (with cluster) where this start called: NiceHouse_90 (CE),

Start 20:

- Found in 96 of 166 (57.8%) of genes in pham
- Manual Annotations of this start: 1 of 136
- Called 1.0% of time when present
- Phage (with cluster) where this start called: Blueeyedbeauty_60 (BK1),

Start 58:

- Found in 97 of 166 (58.4%) of genes in pham
- No Manual Annotations of this start.
- Called 1.0% of time when present
- Phage (with cluster) where this start called: Puissant_78 (H1),

Start 88:

- Found in 1 of 166 (0.6%) of genes in pham
- Manual Annotations of this start: 1 of 136
- Called 100.0% of time when present
- Phage (with cluster) where this start called: LittleFella_70 (DG2),

Start 92:

- Found in 3 of 166 (1.8%) of genes in pham
- Manual Annotations of this start: 3 of 136
- Called 100.0% of time when present
- Phage (with cluster) where this start called: Grayson_103 (CB), Peregrin_100 (CB), Weasels2_102 (CB),

Start 93:

- Found in 1 of 166 (0.6%) of genes in pham
- Manual Annotations of this start: 1 of 136
- Called 100.0% of time when present
- Phage (with cluster) where this start called: Trina_102 (CE),

Start 94:

- Found in 8 of 166 (4.8%) of genes in pham
- Manual Annotations of this start: 8 of 136
- Called 100.0% of time when present
- Phage (with cluster) where this start called: Beyoncage_66 (DG1), BiteSize_66 (DG1), Djokovic_66 (DG1), LilyPad_66 (DG1), Madi_65 (DG1), Sienna_66 (DG1),

Suzy_65 (DG1), Terapin_67 (DG1),

Start 96:

- Found in 30 of 166 (18.1%) of genes in pham
- Manual Annotations of this start: 22 of 136
- Called 93.3% of time when present
- Phage (with cluster) where this start called: Aesir_56 (EF), Anakin_57 (EF), AnnaSerena_57 (EF), Chivey_58 (EF), Crestdrop_59 (EF), Cybele_57 (EF), DannyDe_58 (EF), Dauntless_57 (EF), Erudite_56 (EF), FreddieHg_58 (EF), Gilda_57 (EF), Haunter_57 (EF), Hiddenleaf_58 (EF), JDawG_56 (EF), JingleBells_58 (EF), Karate_56 (EF), Kate_57 (EF), Krampus_57 (EF), MortySmith_55 (EF), NarutoRun_57 (EF), Neptune_57 (EF), OverHedge_57 (EF), Pharpay_56 (EF), PhunaPhoke_57 (EF), Potty_56 (EF), Rachella_57 (EF), Snakehole_58 (EF), Tedro_57 (EF),

Start 97:

- Found in 3 of 166 (1.8%) of genes in pham
- Manual Annotations of this start: 3 of 136
- Called 100.0% of time when present
- Phage (with cluster) where this start called: Aikoy_85 (AE), Leopard_84 (AE), Onyinye_84 (AE),

Start 98:

- Found in 1 of 166 (0.6%) of genes in pham
- Manual Annotations of this start: 1 of 136
- Called 100.0% of time when present
- Phage (with cluster) where this start called: MacGully_67 (CR),

Start 99:

- Found in 10 of 166 (6.0%) of genes in pham
- Manual Annotations of this start: 8 of 136
- Called 100.0% of time when present
- Phage (with cluster) where this start called: Candle_72 (R), MontyDev_74 (R), Nilo_76 (R), Papyrus_74 (R), Riparian_76 (R), Rope_74 (R), Send513_74 (R), Weiss13_74 (R), Yelo_73 (R), Zenon_76 (R),

Start 100:

- Found in 37 of 166 (22.3%) of genes in pham
- Manual Annotations of this start: 5 of 136
- Called 24.3% of time when present
- Phage (with cluster) where this start called: Ajin_64 (EF), CoolCookie_62 (EF), Hager_58 (EF), Kors_64 (EF), Poultruss_57 (EF), Rie18_57 (EF), RikSengupta_63 (EF), Sparcetus_63 (EF), TinyMiny_63 (EF),

Start 102:

- Found in 1 of 166 (0.6%) of genes in pham
- Manual Annotations of this start: 1 of 136
- Called 100.0% of time when present
- Phage (with cluster) where this start called: ChewyVIII_70 (singleton),

Start 110:

- Found in 3 of 166 (1.8%) of genes in pham
- Manual Annotations of this start: 1 of 136

- Called 33.3% of time when present
- Phage (with cluster) where this start called: Wollypog_59 (singleton),

Summary by clusters:

There are 15 clusters represented in this pham: singleton, H1, AE, CB, EF, CG, CE, DG2, R, BK1, BK2, BE2, CR, DG1, BE1,

Info for manual annotations of cluster AE:

- Start number 97 was manually annotated 3 times for cluster AE.

Info for manual annotations of cluster BE1:

- Start number 10 was manually annotated 29 times for cluster BE1.

Info for manual annotations of cluster BE2:

- Start number 9 was manually annotated 26 times for cluster BE2.

Info for manual annotations of cluster BK1:

- Start number 10 was manually annotated 21 times for cluster BK1.
- Start number 20 was manually annotated 1 time for cluster BK1.

Info for manual annotations of cluster BK2:

- Start number 10 was manually annotated 4 times for cluster BK2.

Info for manual annotations of cluster CB:

- Start number 92 was manually annotated 3 times for cluster CB.

Info for manual annotations of cluster CE:

- Start number 11 was manually annotated 1 time for cluster CE.
- Start number 93 was manually annotated 1 time for cluster CE.

Info for manual annotations of cluster CR:

- Start number 98 was manually annotated 1 time for cluster CR.

Info for manual annotations of cluster DG1:

- Start number 94 was manually annotated 8 times for cluster DG1.

Info for manual annotations of cluster DG2:

- Start number 88 was manually annotated 1 time for cluster DG2.

Info for manual annotations of cluster EF:

- Start number 96 was manually annotated 22 times for cluster EF.
- Start number 100 was manually annotated 5 times for cluster EF.

Info for manual annotations of cluster R:

- Start number 99 was manually annotated 8 times for cluster R.

Gene Information:

Gene: Aesir_56 Start: 40899, Stop: 43199, Start Num: 96

Candidate Starts for Aesir_56:

(75, 40809), (Start: 96 @40899 has 22 MA's), (Start: 100 @40905 has 5 MA's), (111, 40980), (124, 41052), (127, 41073), (132, 41106), (133, 41109), (134, 41118), (136, 41139), (137, 41145), (146, 41214), (150, 41238), (153, 41277), (160, 41334), (170, 41415), (190, 41529), (191, 41541), (195, 41571), (204, 41616), (206, 41634), (215, 41712), (217, 41718), (219, 41727), (224, 41760), (229, 41790), (230, 41796), (234, 41817), (236, 41826), (244, 41856), (253, 41931), (255, 41940), (262, 41970), (265, 41985), (276, 42087), (284, 42159), (287, 42183), (295, 42267), (307, 42357), (310, 42369), (315, 42387), (334, 42471), (336, 42480), (344, 42513), (359, 42585), (406, 42765), (412, 42795), (425, 42858), (441, 42930), (464, 43053), (470, 43086), (482, 43131), (491, 43176), (494, 43182),

Gene: Aikoy_85 Start: 57850, Stop: 60138, Start Num: 97

Candidate Starts for Aikoy_85:

(Start: 97 @57850 has 3 MA's), (104, 57883), (105, 57889), (119, 57979), (124, 58012), (128, 58036), (131, 58063), (142, 58147), (143, 58156), (144, 58159), (150, 58198), (151, 58201), (155, 58252), (163, 58330), (165, 58342), (203, 58570), (205, 58591), (212, 58654), (217, 58666), (229, 58738), (230, 58744), (235, 58768), (236, 58774), (239, 58789), (244, 58804), (246, 58822), (249, 58846), (255, 58888), (264, 58927), (267, 58960), (286, 59122), (287, 59131), (302, 59266), (304, 59293), (315, 59338), (344, 59452), (356, 59512), (411, 59728), (433, 59815), (434, 59818), (442, 59860), (471, 60025), (477, 60055), (488, 60103), (491, 60115), (498, 60130),

Gene: Ajin_64 Start: 42544, Stop: 44799, Start Num: 100

Candidate Starts for Ajin_64:

(95, 42535), (Start: 100 @42544 has 5 MA's), (127, 42679), (132, 42712), (135, 42727), (147, 42829), (150, 42844), (160, 42940), (170, 43021), (171, 43030), (190, 43135), (204, 43222), (206, 43240), (211, 43291), (212, 43303), (215, 43318), (219, 43333), (224, 43366), (229, 43396), (230, 43402), (234, 43423), (236, 43432), (244, 43462), (254, 43543), (258, 43558), (262, 43576), (265, 43591), (275, 43690), (302, 43921), (310, 43975), (315, 43993), (317, 44005), (334, 44077), (336, 44086), (387, 44275), (388, 44278), (393, 44296), (400, 44329), (407, 44374), (422, 44437), (425, 44461), (433, 44491), (449, 44581), (464, 44653), (470, 44686), (482, 44731), (489, 44767), (491, 44776), (494, 44782),

Gene: Amabiko_82 Start: 58443, Stop: 61763, Start Num: 9

Candidate Starts for Amabiko_82:

(Start: 9 @58443 has 26 MA's), (15, 58494), (17, 58515), (Start: 20 @58539 has 1 MA's), (25, 58620), (33, 58818), (50, 58998), (55, 59046), (56, 59049), (58, 59103), (61, 59154), (62, 59172), (64, 59181), (69, 59217), (86, 59325), (90, 59334), (134, 59544), (142, 59613), (162, 59778), (174, 59856), (203, 60018), (212, 60105), (220, 60141), (234, 60225), (245, 60288), (247, 60297), (276, 60501), (280, 60555), (282, 60564), (285, 60582), (286, 60588), (308, 60771), (310, 60780), (316, 60804), (322, 60831), (348, 60939), (364, 61038), (374, 61128), (385, 61206), (395, 61248), (400, 61266), (407, 61308), (413, 61347), (414, 61353), (421, 61380), (428, 61419), (437, 61467), (439, 61476), (450, 61548), (454, 61569), (459, 61596), (460, 61599), (463, 61614), (468, 61647), (486, 61716),

Gene: Anakin_57 Start: 41234, Stop: 43537, Start Num: 96

Candidate Starts for Anakin_57:

(Start: 96 @41234 has 22 MA's), (Start: 100 @41240 has 5 MA's), (111, 41318), (124, 41390), (127, 41411), (132, 41444), (134, 41456), (135, 41459), (136, 41477), (146, 41552), (150, 41576), (153, 41615), (158, 41660), (160, 41672), (170, 41753), (190, 41867), (191, 41879), (204, 41954), (206, 41972), (215, 42050), (217, 42056), (219, 42065), (224, 42098), (229, 42128), (230, 42134), (234, 42155), (236, 42164), (244, 42194), (253, 42269), (255, 42278), (261, 42302), (262, 42308), (265, 42323), (267, 42350), (276, 42425), (284, 42497), (287, 42521), (295, 42605), (307, 42695), (310, 42707), (315, 42725), (332, 42803), (334, 42809), (336, 42818), (344, 42851), (359, 42923), (406,

43103), (412, 43133), (425, 43196), (441, 43268), (464, 43391), (470, 43424), (482, 43469), (491, 43514), (494, 43520),

Gene: Anedeia_78 Start: 57982, Stop: 61266, Start Num: 10

Candidate Starts for Anedeia_78:

(Start: 10 @57982 has 54 MA's), (14, 58027), (17, 58057), (Start: 20 @58081 has 1 MA's), (33, 58360), (39, 58399), (44, 58462), (50, 58540), (51, 58552), (58, 58645), (62, 58708), (63, 58714), (69, 58753), (90, 58870), (117, 58969), (134, 59080), (142, 59149), (148, 59188), (175, 59401), (204, 59536), (205, 59551), (218, 59641), (219, 59647), (220, 59653), (234, 59737), (245, 59800), (247, 59809), (251, 59836), (257, 59881), (267, 59944), (276, 60016), (280, 60070), (282, 60079), (284, 60088), (285, 60097), (286, 60103), (322, 60346), (337, 60397), (342, 60415), (344, 60427), (345, 60430), (407, 60811), (421, 60883), (428, 60922), (437, 60970), (450, 61051), (451, 61060), (460, 61102), (468, 61150), (472, 61165), (483, 61204),

Gene: Angela_76 Start: 57448, Stop: 60732, Start Num: 10

Candidate Starts for Angela_76:

(2, 57364), (3, 57391), (Start: 10 @57448 has 54 MA's), (14, 57493), (17, 57523), (19, 57541), (Start: 20 @57547 has 1 MA's), (33, 57826), (44, 57928), (50, 58006), (51, 58018), (58, 58111), (62, 58174), (63, 58180), (69, 58219), (90, 58336), (107, 58375), (117, 58435), (134, 58546), (138, 58576), (148, 58654), (171, 58843), (175, 58867), (178, 58888), (204, 59002), (205, 59017), (218, 59107), (219, 59113), (220, 59119), (223, 59143), (224, 59146), (234, 59203), (241, 59236), (245, 59266), (247, 59275), (257, 59347), (259, 59356), (267, 59410), (276, 59482), (280, 59536), (282, 59545), (284, 59554), (285, 59563), (286, 59569), (293, 59650), (322, 59812), (342, 59881), (344, 59893), (364, 60007), (405, 60268), (407, 60277), (428, 60388), (437, 60436), (450, 60517), (460, 60568), (468, 60616), (472, 60631),

Gene: AnnaSerena_57 Start: 41268, Stop: 43571, Start Num: 96

Candidate Starts for AnnaSerena_57:

(Start: 96 @41268 has 22 MA's), (Start: 100 @41274 has 5 MA's), (111, 41352), (124, 41424), (127, 41445), (132, 41478), (134, 41490), (135, 41493), (136, 41511), (146, 41586), (150, 41610), (153, 41649), (158, 41694), (160, 41706), (170, 41787), (190, 41901), (191, 41913), (204, 41988), (206, 42006), (215, 42084), (217, 42090), (219, 42099), (224, 42132), (229, 42162), (230, 42168), (234, 42189), (236, 42198), (244, 42228), (253, 42303), (255, 42312), (261, 42336), (262, 42342), (265, 42357), (267, 42384), (276, 42459), (284, 42531), (287, 42555), (295, 42639), (307, 42729), (310, 42741), (315, 42759), (332, 42837), (334, 42843), (336, 42852), (344, 42885), (359, 42957), (406, 43137), (412, 43167), (425, 43230), (441, 43302), (464, 43425), (470, 43458), (482, 43503), (491, 43548), (494, 43554),

Gene: Annadreamy_58 Start: 47706, Stop: 50996, Start Num: 10

Candidate Starts for Annadreamy_58:

(Start: 10 @47706 has 54 MA's), (17, 47778), (19, 47796), (Start: 20 @47802 has 1 MA's), (33, 48081), (41, 48141), (58, 48366), (62, 48429), (65, 48456), (68, 48471), (69, 48474), (134, 48801), (200, 49230), (204, 49257), (210, 49311), (219, 49368), (220, 49374), (247, 49530), (251, 49557), (257, 49602), (267, 49665), (275, 49734), (276, 49737), (280, 49791), (282, 49800), (284, 49809), (285, 49818), (286, 49824), (299, 49938), (310, 50016), (316, 50040), (324, 50076), (342, 50136), (343, 50142), (363, 50259), (369, 50328), (391, 50457), (394, 50469), (406, 50526), (407, 50532), (428, 50643), (430, 50652), (432, 50673), (440, 50703), (444, 50727), (445, 50736), (460, 50823), (469, 50874), (472, 50886), (493, 50973),

Gene: Bartholomune_78 Start: 57817, Stop: 61101, Start Num: 10

Candidate Starts for Bartholomune_78:

(Start: 10 @57817 has 54 MA's), (14, 57862), (17, 57892), (19, 57910), (Start: 20 @57916 has 1 MA's), (24, 57982), (33, 58195), (34, 58201), (44, 58297), (50, 58375), (58, 58480), (62, 58543), (63,

58549), (69, 58588), (90, 58705), (117, 58804), (134, 58915), (138, 58945), (142, 58984), (174, 59227), (204, 59371), (205, 59386), (219, 59482), (220, 59488), (223, 59512), (234, 59572), (245, 59635), (247, 59644), (257, 59716), (267, 59779), (276, 59851), (280, 59905), (282, 59914), (284, 59923), (285, 59932), (286, 59938), (293, 60019), (307, 60118), (322, 60181), (342, 60250), (344, 60262), (370, 60448), (374, 60466), (390, 60562), (397, 60595), (407, 60646), (413, 60685), (414, 60691), (428, 60757), (432, 60787), (437, 60805), (444, 60841), (450, 60886), (451, 60895), (455, 60916), (460, 60937), (468, 60985), (472, 61000),

Gene: Battuta_80 Start: 58417, Stop: 61737, Start Num: 9

Candidate Starts for Battuta_80:

(Start: 9 @58417 has 26 MA's), (15, 58468), (17, 58489), (Start: 20 @58513 has 1 MA's), (25, 58594), (33, 58792), (50, 58972), (55, 59020), (58, 59077), (59, 59080), (61, 59128), (62, 59146), (64, 59155), (69, 59191), (86, 59299), (90, 59308), (134, 59518), (142, 59587), (162, 59752), (174, 59830), (203, 59992), (220, 60115), (234, 60199), (245, 60262), (247, 60271), (276, 60475), (280, 60529), (282, 60538), (285, 60556), (286, 60562), (308, 60745), (310, 60754), (316, 60778), (322, 60805), (348, 60913), (374, 61102), (385, 61180), (395, 61222), (400, 61240), (407, 61282), (413, 61321), (414, 61327), (421, 61354), (428, 61393), (437, 61441), (439, 61450), (450, 61522), (454, 61543), (459, 61570), (460, 61573), (463, 61588), (468, 61621), (486, 61690),

Gene: Belfort_62 Start: 50235, Stop: 53525, Start Num: 10

Candidate Starts for Belfort_62:

(6, 50217), (Start: 10 @50235 has 54 MA's), (12, 50250), (13, 50256), (15, 50286), (17, 50307), (19, 50325), (Start: 20 @50331 has 1 MA's), (28, 50499), (30, 50541), (33, 50610), (41, 50670), (49, 50784), (50, 50790), (58, 50895), (62, 50958), (63, 50964), (69, 51003), (112, 51192), (122, 51249), (126, 51276), (133, 51321), (171, 51627), (176, 51663), (198, 51747), (204, 51786), (218, 51891), (220, 51903), (225, 51936), (230, 51966), (231, 51969), (233, 51981), (234, 51987), (247, 52059), (256, 52125), (257, 52131), (267, 52194), (276, 52266), (280, 52320), (282, 52329), (285, 52347), (286, 52353), (299, 52467), (307, 52533), (310, 52545), (316, 52569), (324, 52605), (325, 52608), (342, 52665), (343, 52671), (346, 52683), (353, 52719), (363, 52788), (391, 52986), (400, 53019), (406, 53055), (407, 53061), (410, 53073), (428, 53172), (430, 53181), (432, 53202), (440, 53232), (448, 53289), (460, 53352), (469, 53403), (472, 53415),

Gene: Beuffert_58 Start: 48843, Stop: 52133, Start Num: 10

Candidate Starts for Beuffert_58:

(Start: 10 @48843 has 54 MA's), (17, 48915), (Start: 20 @48939 has 1 MA's), (33, 49218), (41, 49278), (55, 49446), (58, 49503), (62, 49566), (68, 49608), (69, 49611), (134, 49938), (141, 50004), (142, 50007), (200, 50367), (204, 50394), (210, 50448), (219, 50505), (220, 50511), (247, 50667), (251, 50694), (257, 50739), (267, 50802), (276, 50874), (280, 50928), (282, 50937), (284, 50946), (285, 50955), (286, 50961), (299, 51075), (310, 51153), (324, 51213), (342, 51273), (343, 51279), (346, 51291), (363, 51396), (369, 51465), (391, 51594), (404, 51657), (405, 51660), (406, 51663), (407, 51669), (428, 51780), (430, 51789), (432, 51810), (440, 51840), (444, 51864), (445, 51873), (460, 51960), (462, 51972), (469, 52011), (472, 52023), (493, 52110),

Gene: Beyoncage_66 Start: 47716, Stop: 50151, Start Num: 94

Candidate Starts for Beyoncage_66:

(Start: 94 @47716 has 8 MA's), (101, 47734), (133, 47914), (147, 48028), (150, 48043), (190, 48334), (204, 48421), (222, 48550), (229, 48589), (230, 48595), (234, 48616), (236, 48625), (268, 48823), (269, 48838), (270, 48844), (276, 48886), (282, 48949), (286, 48973), (290, 49030), (293, 49054), (299, 49093), (307, 49159), (310, 49171), (315, 49189), (337, 49282), (341, 49297), (349, 49333), (368, 49435), (402, 49627), (403, 49630), (415, 49705), (416, 49711), (430, 49768), (434, 49795), (437, 49807), (450, 49891), (455, 49921), (467, 49990), (474, 50014), (477, 50029), (489, 50080), (492, 50092), (494, 50095), (499, 50110), (501, 50146),

Gene: BillNye_56 Start: 51723, Stop: 55010, Start Num: 10

Candidate Starts for BillNye_56:

(Start: 10 @51723 has 54 MA's), (13, 51744), (17, 51795), (Start: 20 @51819 has 1 MA's), (26, 51915), (33, 52098), (41, 52158), (46, 52248), (50, 52278), (54, 52320), (55, 52326), (58, 52383), (62, 52446), (69, 52491), (76, 52539), (134, 52818), (142, 52887), (158, 53019), (162, 53052), (175, 53139), (198, 53235), (204, 53274), (205, 53289), (219, 53385), (220, 53391), (225, 53424), (233, 53469), (234, 53475), (240, 53505), (247, 53547), (252, 53592), (257, 53619), (267, 53682), (276, 53754), (280, 53808), (282, 53817), (285, 53835), (286, 53841), (301, 53967), (307, 54021), (310, 54033), (322, 54084), (344, 54165), (346, 54171), (367, 54327), (407, 54549), (408, 54552), (428, 54660), (430, 54669), (437, 54708), (451, 54798), (460, 54840), (463, 54855), (472, 54903), (490, 54981),

Gene: Birchlyn_79 Start: 56300, Stop: 59620, Start Num: 9

Candidate Starts for Birchlyn_79:

(Start: 9 @56300 has 26 MA's), (15, 56351), (17, 56372), (Start: 20 @56396 has 1 MA's), (25, 56477), (33, 56675), (50, 56855), (55, 56903), (58, 56960), (61, 57011), (62, 57029), (64, 57038), (69, 57074), (86, 57182), (90, 57191), (134, 57401), (142, 57470), (162, 57635), (174, 57713), (203, 57875), (220, 57998), (234, 58082), (245, 58145), (247, 58154), (276, 58358), (280, 58412), (282, 58421), (285, 58439), (286, 58445), (308, 58628), (310, 58637), (316, 58661), (322, 58688), (348, 58796), (374, 58985), (385, 59063), (395, 59105), (400, 59123), (407, 59165), (413, 59204), (414, 59210), (421, 59237), (428, 59276), (437, 59324), (439, 59333), (450, 59405), (454, 59426), (459, 59453), (460, 59456), (463, 59471), (468, 59504), (486, 59573),

Gene: BiteSize_66 Start: 47802, Stop: 50237, Start Num: 94

Candidate Starts for BiteSize_66:

(Start: 94 @47802 has 8 MA's), (101, 47820), (133, 48000), (147, 48114), (150, 48129), (190, 48420), (204, 48507), (222, 48636), (229, 48675), (230, 48681), (234, 48702), (236, 48711), (268, 48909), (269, 48924), (270, 48930), (276, 48972), (282, 49035), (286, 49059), (290, 49116), (293, 49140), (299, 49179), (307, 49245), (310, 49257), (315, 49275), (337, 49368), (341, 49383), (349, 49419), (368, 49521), (402, 49713), (403, 49716), (415, 49791), (416, 49797), (430, 49854), (434, 49881), (437, 49893), (450, 49977), (455, 50007), (467, 50076), (474, 50100), (477, 50115), (489, 50166), (492, 50178), (494, 50181), (499, 50196), (501, 50232),

Gene: BlueOtter_82 Start: 59162, Stop: 62446, Start Num: 10

Candidate Starts for BlueOtter_82:

(Start: 10 @59162 has 54 MA's), (14, 59207), (17, 59237), (19, 59255), (Start: 20 @59261 has 1 MA's), (33, 59540), (44, 59642), (50, 59720), (58, 59825), (62, 59888), (63, 59894), (69, 59933), (90, 60050), (113, 60134), (134, 60260), (138, 60290), (142, 60329), (143, 60338), (168, 60536), (204, 60716), (218, 60821), (219, 60827), (220, 60833), (234, 60917), (240, 60947), (247, 60989), (251, 61016), (254, 61049), (257, 61061), (267, 61124), (276, 61196), (280, 61250), (282, 61259), (284, 61268), (285, 61277), (286, 61283), (322, 61526), (342, 61595), (344, 61607), (362, 61712), (390, 61907), (397, 61940), (407, 61991), (413, 62030), (414, 62036), (428, 62102), (437, 62150), (444, 62186), (450, 62231), (451, 62240), (460, 62282), (467, 62327), (468, 62330), (472, 62345),

Gene: Blueeyedbeauty_60 Start: 48314, Stop: 51508, Start Num: 20

Candidate Starts for Blueeyedbeauty_60:

(Start: 10 @48218 has 54 MA's), (17, 48290), (Start: 20 @48314 has 1 MA's), (33, 48593), (36, 48623), (41, 48653), (56, 48824), (58, 48878), (62, 48941), (68, 48983), (69, 48986), (134, 49313), (141, 49379), (162, 49547), (197, 49727), (200, 49742), (204, 49769), (210, 49823), (219, 49880), (220, 49886), (230, 49949), (241, 50003), (247, 50042), (257, 50114), (267, 50177), (274, 50237), (275, 50246), (276, 50249), (280, 50303), (282, 50312), (284, 50321), (285, 50330), (286, 50336), (299, 50450), (310, 50528), (316, 50552), (324, 50588), (342, 50648), (343, 50654), (346, 50666), (363, 50771), (391, 50969), (405, 51035), (406, 51038), (407, 51044), (428, 51155), (429, 51161),

(430, 51164), (432, 51185), (440, 51215), (445, 51248), (448, 51272), (460, 51335), (462, 51347), (469, 51386), (472, 51398), (493, 51485),

Gene: Bmoc_78 Start: 57819, Stop: 61103, Start Num: 10

Candidate Starts for Bmoc_78:

(Start: 10 @57819 has 54 MA's), (14, 57864), (17, 57894), (Start: 20 @57918 has 1 MA's), (33, 58197), (44, 58299), (50, 58377), (58, 58482), (62, 58545), (63, 58551), (69, 58590), (90, 58707), (117, 58806), (134, 58917), (142, 58986), (148, 59025), (167, 59190), (175, 59238), (178, 59259), (204, 59373), (205, 59388), (218, 59478), (219, 59484), (220, 59490), (234, 59574), (245, 59637), (247, 59646), (251, 59673), (257, 59718), (267, 59781), (276, 59853), (280, 59907), (282, 59916), (284, 59925), (285, 59934), (286, 59940), (322, 60183), (342, 60252), (344, 60264), (345, 60267), (364, 60378), (407, 60648), (421, 60720), (428, 60759), (437, 60807), (450, 60888), (451, 60897), (460, 60939), (468, 60987), (472, 61002), (483, 61041),

Gene: BoomerJR_82 Start: 58278, Stop: 61598, Start Num: 9

Candidate Starts for BoomerJR_82:

(Start: 9 @58278 has 26 MA's), (17, 58350), (Start: 20 @58374 has 1 MA's), (25, 58455), (33, 58653), (50, 58833), (55, 58881), (58, 58938), (61, 58989), (62, 59007), (64, 59016), (69, 59052), (86, 59160), (90, 59169), (112, 59241), (134, 59379), (142, 59448), (162, 59613), (174, 59691), (203, 59853), (206, 59877), (220, 59976), (234, 60060), (247, 60132), (276, 60336), (280, 60390), (282, 60399), (285, 60417), (286, 60423), (299, 60537), (310, 60615), (316, 60639), (322, 60666), (366, 60918), (367, 60921), (369, 60939), (371, 60951), (385, 61041), (400, 61101), (407, 61143), (413, 61182), (414, 61188), (421, 61215), (428, 61254), (437, 61302), (439, 61311), (450, 61383), (452, 61395), (454, 61404), (459, 61431), (460, 61434), (463, 61449), (468, 61482), (483, 61536), (486, 61551),

Gene: Bordeaux_80 Start: 58572, Stop: 61892, Start Num: 9

Candidate Starts for Bordeaux_80:

(Start: 9 @58572 has 26 MA's), (15, 58623), (17, 58644), (Start: 20 @58668 has 1 MA's), (25, 58749), (33, 58947), (50, 59127), (53, 59160), (55, 59175), (58, 59232), (61, 59283), (62, 59301), (64, 59310), (69, 59346), (86, 59454), (90, 59463), (134, 59673), (142, 59742), (162, 59907), (174, 59985), (203, 60147), (220, 60270), (223, 60294), (234, 60354), (247, 60426), (276, 60630), (280, 60684), (282, 60693), (285, 60711), (286, 60717), (308, 60900), (310, 60909), (316, 60933), (322, 60960), (348, 61068), (374, 61257), (385, 61335), (395, 61377), (400, 61395), (407, 61437), (413, 61476), (414, 61482), (421, 61509), (428, 61548), (437, 61596), (439, 61605), (450, 61677), (454, 61698), (459, 61725), (460, 61728), (463, 61743), (468, 61776), (486, 61845),

Gene: Braelyn_79 Start: 58581, Stop: 61865, Start Num: 10

Candidate Starts for Braelyn_79:

(Start: 10 @58581 has 54 MA's), (14, 58626), (17, 58656), (19, 58674), (Start: 20 @58680 has 1 MA's), (33, 58959), (34, 58965), (44, 59061), (50, 59139), (58, 59244), (62, 59307), (63, 59313), (69, 59352), (90, 59469), (117, 59568), (134, 59679), (138, 59709), (142, 59748), (174, 59991), (178, 60021), (204, 60135), (205, 60150), (218, 60240), (219, 60246), (220, 60252), (234, 60336), (245, 60399), (247, 60408), (257, 60480), (267, 60543), (276, 60615), (280, 60669), (282, 60678), (284, 60687), (285, 60696), (286, 60702), (293, 60783), (307, 60882), (322, 60945), (342, 61014), (344, 61026), (370, 61212), (374, 61230), (390, 61326), (397, 61359), (407, 61410), (414, 61455), (428, 61521), (432, 61551), (437, 61569), (450, 61650), (455, 61680), (460, 61701), (468, 61749), (472, 61764),

Gene: Candle_72 Start: 55921, Stop: 58233, Start Num: 99

Candidate Starts for Candle_72:

(Start: 99 @55921 has 8 MA's), (114, 56017), (125, 56056), (132, 56107), (133, 56110), (134, 56119), (135, 56122), (139, 56152), (144, 56200), (150, 56236), (179, 56470), (184, 56503), (185, 56509), (193, 56569), (206, 56647), (208, 56665), (236, 56830), (240, 56848), (249, 56920), (250, 56923),

(252, 56947), (255, 56962), (262, 56992), (293, 57265), (300, 57307), (301, 57313), (302, 57325), (307, 57367), (315, 57397), (317, 57409), (330, 57469), (339, 57493), (353, 57562), (360, 57598), (399, 57721), (400, 57724), (405, 57760), (431, 57859), (436, 57886), (437, 57892), (442, 57922), (463, 58051), (464, 58057), (476, 58114), (480, 58129), (484, 58141), (487, 58159),

Gene: CeilingFan_84 Start: 58332, Stop: 61652, Start Num: 9

Candidate Starts for CeilingFan_84:

(Start: 9 @58332 has 26 MA's), (15, 58383), (17, 58404), (Start: 20 @58428 has 1 MA's), (25, 58509), (33, 58707), (50, 58887), (55, 58935), (56, 58938), (58, 58992), (61, 59043), (62, 59061), (64, 59070), (69, 59106), (86, 59214), (90, 59223), (134, 59433), (142, 59502), (162, 59667), (174, 59745), (186, 59814), (203, 59907), (220, 60030), (234, 60114), (245, 60177), (247, 60186), (276, 60390), (280, 60444), (282, 60453), (285, 60471), (286, 60477), (310, 60669), (316, 60693), (322, 60720), (348, 60828), (374, 61017), (385, 61095), (395, 61137), (400, 61155), (407, 61197), (413, 61236), (414, 61242), (421, 61269), (428, 61308), (437, 61356), (450, 61437), (454, 61458), (459, 61485), (460, 61488), (463, 61503), (468, 61536), (486, 61605),

Gene: ChewyVIII_70 Start: 52283, Stop: 49815, Start Num: 102

Candidate Starts for ChewyVIII_70:

(Start: 102 @52283 has 1 MA's), (125, 52151), (132, 52103), (147, 51977), (150, 51962), (156, 51902), (161, 51863), (170, 51785), (177, 51734), (200, 51611), (214, 51497), (229, 51419), (236, 51380), (239, 51365), (260, 51233), (268, 51152), (280, 51035), (284, 51017), (295, 50909), (296, 50903), (297, 50894), (302, 50858), (305, 50828), (307, 50816), (314, 50789), (315, 50786), (338, 50693), (341, 50681), (344, 50663), (361, 50576), (365, 50534), (373, 50477), (378, 50462), (383, 50408), (393, 50366), (396, 50354), (416, 50234), (417, 50231), (430, 50168), (491, 49844),

Gene: Chivey_58 Start: 40699, Stop: 43002, Start Num: 96

Candidate Starts for Chivey_58:

(Start: 96 @40699 has 22 MA's), (Start: 100 @40705 has 5 MA's), (111, 40783), (124, 40855), (127, 40876), (132, 40909), (134, 40921), (135, 40924), (136, 40942), (137, 40948), (146, 41017), (150, 41041), (153, 41080), (158, 41125), (160, 41137), (170, 41218), (190, 41332), (191, 41344), (204, 41419), (206, 41437), (215, 41515), (217, 41521), (219, 41530), (224, 41563), (229, 41593), (230, 41599), (234, 41620), (236, 41629), (244, 41659), (253, 41734), (255, 41743), (258, 41755), (262, 41773), (265, 41788), (276, 41890), (284, 41962), (287, 41986), (295, 42070), (307, 42160), (310, 42172), (315, 42190), (332, 42268), (334, 42274), (336, 42283), (344, 42316), (359, 42388), (406, 42568), (412, 42598), (425, 42661), (441, 42733), (464, 42856), (470, 42889), (482, 42934), (491, 42979), (494, 42985),

Gene: Circinus_58 Start: 51862, Stop: 55149, Start Num: 10

Candidate Starts for Circinus_58:

(Start: 10 @51862 has 54 MA's), (13, 51883), (17, 51934), (Start: 20 @51958 has 1 MA's), (26, 52054), (33, 52237), (41, 52297), (46, 52387), (50, 52417), (53, 52450), (54, 52459), (55, 52465), (58, 52522), (62, 52585), (69, 52630), (76, 52678), (134, 52957), (142, 53026), (158, 53158), (162, 53191), (175, 53278), (198, 53374), (204, 53413), (205, 53428), (219, 53524), (220, 53530), (225, 53563), (233, 53608), (234, 53614), (240, 53644), (247, 53686), (252, 53731), (257, 53758), (267, 53821), (276, 53893), (280, 53947), (282, 53956), (285, 53974), (286, 53980), (301, 54106), (307, 54160), (310, 54172), (322, 54223), (344, 54304), (346, 54310), (367, 54466), (407, 54688), (408, 54691), (428, 54799), (430, 54808), (437, 54847), (451, 54937), (460, 54979), (463, 54994), (472, 55042), (490, 55120),

Gene: Comrade_61 Start: 49851, Stop: 53141, Start Num: 10

Candidate Starts for Comrade_61:

(6, 49833), (Start: 10 @49851 has 54 MA's), (13, 49872), (15, 49902), (17, 49923), (19, 49941), (Start: 20 @49947 has 1 MA's), (28, 50115), (30, 50157), (33, 50226), (41, 50286), (49, 50400), (50, 50406),

(58, 50511), (62, 50574), (63, 50580), (69, 50619), (112, 50808), (117, 50835), (133, 50937), (142, 51015), (171, 51243), (176, 51279), (198, 51363), (204, 51402), (218, 51507), (220, 51519), (225, 51552), (230, 51582), (231, 51585), (233, 51597), (234, 51603), (247, 51675), (256, 51741), (257, 51747), (267, 51810), (276, 51882), (280, 51936), (282, 51945), (285, 51963), (286, 51969), (299, 52083), (307, 52149), (310, 52161), (324, 52221), (325, 52224), (342, 52281), (343, 52287), (346, 52299), (353, 52335), (363, 52404), (391, 52602), (400, 52635), (406, 52671), (407, 52677), (410, 52689), (428, 52788), (430, 52797), (432, 52818), (440, 52848), (448, 52905), (460, 52968), (469, 53019), (472, 53031),

Gene: CoolCookie_62 Start: 41285, Stop: 43582, Start Num: 100

Candidate Starts for CoolCookie_62:

(Start: 96 @41279 has 22 MA's), (Start: 100 @41285 has 5 MA's), (111, 41363), (124, 41435), (127, 41456), (132, 41489), (134, 41501), (135, 41504), (136, 41522), (146, 41597), (150, 41621), (153, 41660), (158, 41705), (160, 41717), (170, 41798), (190, 41912), (191, 41924), (204, 41999), (206, 42017), (215, 42095), (217, 42101), (219, 42110), (224, 42143), (229, 42173), (230, 42179), (234, 42200), (236, 42209), (244, 42239), (253, 42314), (255, 42323), (261, 42347), (262, 42353), (263, 42359), (265, 42368), (276, 42470), (284, 42542), (287, 42566), (295, 42650), (307, 42740), (310, 42752), (315, 42770), (332, 42848), (334, 42854), (336, 42863), (344, 42896), (359, 42968), (406, 43148), (412, 43178), (425, 43241), (441, 43313), (464, 43436), (470, 43469), (482, 43514), (491, 43559), (494, 43565),

Gene: Crestdrop_59 Start: 40973, Stop: 43273, Start Num: 96

Candidate Starts for Crestdrop_59:

(Start: 96 @40973 has 22 MA's), (Start: 100 @40979 has 5 MA's), (111, 41054), (124, 41126), (127, 41147), (132, 41180), (134, 41192), (136, 41213), (137, 41219), (146, 41288), (150, 41312), (153, 41351), (160, 41408), (170, 41489), (190, 41603), (191, 41615), (204, 41690), (206, 41708), (215, 41786), (217, 41792), (219, 41801), (224, 41834), (229, 41864), (230, 41870), (234, 41891), (236, 41900), (244, 41930), (253, 42005), (255, 42014), (261, 42038), (262, 42044), (265, 42059), (276, 42161), (284, 42233), (287, 42257), (295, 42341), (307, 42431), (310, 42443), (315, 42461), (332, 42539), (334, 42545), (336, 42554), (344, 42587), (359, 42659), (406, 42839), (412, 42869), (425, 42932), (441, 43004), (464, 43127), (470, 43160), (482, 43205), (491, 43250), (494, 43256),

Gene: Cross_80 Start: 59163, Stop: 62447, Start Num: 10

Candidate Starts for Cross_80:

(Start: 10 @59163 has 54 MA's), (14, 59208), (17, 59238), (19, 59256), (Start: 20 @59262 has 1 MA's), (33, 59541), (44, 59643), (50, 59721), (58, 59826), (62, 59889), (63, 59895), (69, 59934), (90, 60051), (113, 60135), (134, 60261), (138, 60291), (142, 60330), (143, 60339), (168, 60537), (204, 60717), (218, 60822), (219, 60828), (220, 60834), (234, 60918), (240, 60948), (247, 60990), (251, 61017), (254, 61050), (257, 61062), (267, 61125), (276, 61197), (280, 61251), (282, 61260), (284, 61269), (285, 61278), (286, 61284), (322, 61527), (342, 61596), (344, 61608), (362, 61713), (390, 61908), (397, 61941), (407, 61992), (413, 62031), (414, 62037), (428, 62103), (437, 62151), (444, 62187), (450, 62232), (451, 62241), (460, 62283), (467, 62328), (468, 62331), (472, 62346),

Gene: Cursive_78 Start: 58688, Stop: 61972, Start Num: 10

Candidate Starts for Cursive_78:

(Start: 10 @58688 has 54 MA's), (14, 58733), (17, 58763), (19, 58781), (Start: 20 @58787 has 1 MA's), (33, 59066), (44, 59168), (50, 59246), (58, 59351), (62, 59414), (63, 59420), (69, 59459), (90, 59576), (113, 59660), (134, 59786), (138, 59816), (142, 59855), (143, 59864), (168, 60062), (204, 60242), (218, 60347), (219, 60353), (220, 60359), (234, 60443), (240, 60473), (247, 60515), (251, 60542), (254, 60575), (257, 60587), (267, 60650), (276, 60722), (280, 60776), (282, 60785), (284, 60794), (285, 60803), (286, 60809), (322, 61052), (342, 61121), (344, 61133), (362, 61238), (390, 61433), (397, 61466), (407, 61517), (413, 61556), (414, 61562), (428, 61628), (437, 61676), (444, 61712), (450, 61757), (451, 61766), (460, 61808), (467, 61853), (468, 61856), (472, 61871),

Gene: Cybele_57 Start: 41252, Stop: 43555, Start Num: 96

Candidate Starts for Cybele_57:

(Start: 96 @41252 has 22 MA's), (Start: 100 @41258 has 5 MA's), (111, 41336), (124, 41408), (127, 41429), (132, 41462), (134, 41474), (135, 41477), (136, 41495), (146, 41570), (150, 41594), (153, 41633), (158, 41678), (160, 41690), (170, 41771), (190, 41885), (191, 41897), (204, 41972), (206, 41990), (215, 42068), (217, 42074), (219, 42083), (224, 42116), (229, 42146), (230, 42152), (234, 42173), (236, 42182), (244, 42212), (253, 42287), (255, 42296), (261, 42320), (262, 42326), (263, 42332), (265, 42341), (276, 42443), (284, 42515), (287, 42539), (295, 42623), (307, 42713), (310, 42725), (315, 42743), (332, 42821), (334, 42827), (336, 42836), (344, 42869), (359, 42941), (406, 43121), (412, 43151), (425, 43214), (441, 43286), (464, 43409), (470, 43442), (482, 43487), (491, 43532), (494, 43538),

Gene: DannyDe_58 Start: 40700, Stop: 43003, Start Num: 96

Candidate Starts for DannyDe_58:

(Start: 96 @40700 has 22 MA's), (Start: 100 @40706 has 5 MA's), (111, 40784), (124, 40856), (127, 40877), (132, 40910), (134, 40922), (135, 40925), (136, 40943), (137, 40949), (146, 41018), (150, 41042), (153, 41081), (158, 41126), (160, 41138), (170, 41219), (190, 41333), (191, 41345), (204, 41420), (206, 41438), (215, 41516), (217, 41522), (219, 41531), (224, 41564), (229, 41594), (230, 41600), (234, 41621), (236, 41630), (244, 41660), (253, 41735), (255, 41744), (261, 41768), (262, 41774), (263, 41780), (265, 41789), (276, 41891), (284, 41963), (287, 41987), (295, 42071), (307, 42161), (310, 42173), (315, 42191), (332, 42269), (334, 42275), (336, 42284), (344, 42317), (359, 42389), (406, 42569), (412, 42599), (425, 42662), (441, 42734), (464, 42857), (470, 42890), (482, 42935), (491, 42980), (494, 42986),

Gene: Daubenski_81 Start: 58913, Stop: 62197, Start Num: 10

Candidate Starts for Daubenski_81:

(1, 58784), (3, 58856), (Start: 10 @58913 has 54 MA's), (14, 58958), (17, 58988), (Start: 20 @59012 has 1 MA's), (33, 59291), (44, 59393), (45, 59420), (50, 59471), (51, 59483), (58, 59576), (62, 59639), (63, 59645), (69, 59684), (76, 59732), (90, 59801), (112, 59873), (117, 59900), (134, 60011), (142, 60080), (167, 60284), (182, 60374), (195, 60419), (204, 60467), (205, 60482), (218, 60572), (219, 60578), (220, 60584), (234, 60668), (245, 60731), (247, 60740), (257, 60812), (267, 60875), (276, 60947), (280, 61001), (282, 61010), (284, 61019), (285, 61028), (286, 61034), (293, 61115), (322, 61277), (342, 61346), (344, 61358), (364, 61472), (390, 61658), (397, 61691), (400, 61700), (407, 61742), (414, 61787), (428, 61853), (437, 61901), (444, 61937), (450, 61982), (459, 62030), (460, 62033), (465, 62069), (468, 62081), (472, 62096),

Gene: Dauntless_57 Start: 40834, Stop: 43134, Start Num: 96

Candidate Starts for Dauntless_57:

(Start: 96 @40834 has 22 MA's), (Start: 100 @40840 has 5 MA's), (111, 40915), (124, 40987), (127, 41008), (132, 41041), (134, 41053), (135, 41056), (136, 41074), (137, 41080), (146, 41149), (150, 41173), (153, 41212), (160, 41269), (170, 41350), (190, 41464), (191, 41476), (204, 41551), (206, 41569), (215, 41647), (217, 41653), (219, 41662), (224, 41695), (229, 41725), (230, 41731), (234, 41752), (236, 41761), (244, 41791), (253, 41866), (255, 41875), (261, 41899), (262, 41905), (265, 41920), (276, 42022), (284, 42094), (287, 42118), (295, 42202), (307, 42292), (310, 42304), (315, 42322), (332, 42400), (334, 42406), (336, 42415), (344, 42448), (359, 42520), (406, 42700), (412, 42730), (425, 42793), (441, 42865), (457, 42949), (464, 42988), (470, 43021), (482, 43066), (491, 43111), (494, 43117),

Gene: Djokovic_66 Start: 47715, Stop: 50150, Start Num: 94

Candidate Starts for Djokovic_66:

(Start: 94 @47715 has 8 MA's), (101, 47733), (133, 47913), (147, 48027), (150, 48042), (190, 48333), (204, 48420), (222, 48549), (229, 48588), (230, 48594), (234, 48615), (236, 48624), (268, 48822),

(269, 48837), (270, 48843), (276, 48885), (282, 48948), (286, 48972), (290, 49029), (293, 49053), (299, 49092), (307, 49158), (310, 49170), (315, 49188), (337, 49281), (341, 49296), (349, 49332), (368, 49434), (402, 49626), (403, 49629), (415, 49704), (416, 49710), (430, 49767), (434, 49794), (437, 49806), (450, 49890), (455, 49920), (467, 49989), (474, 50013), (477, 50028), (489, 50079), (492, 50091), (494, 50094), (499, 50109), (501, 50145),

Gene: Dorin_75 Start: 60424, Stop: 64227, Start Num: 8

Candidate Starts for Dorin_75:

(8, 60424), (Start: 11 @60433 has 1 MA's), (19, 60523), (23, 60583), (26, 60625), (38, 60844), (40, 60859), (61, 61144), (64, 61171), (69, 61207), (86, 61315), (Start: 110 @61372 has 1 MA's), (115, 61417), (117, 61426), (130, 61513), (133, 61528), (135, 61540), (140, 61576), (144, 61618), (149, 61654), (171, 61840), (172, 61843), (188, 61930), (196, 61987), (210, 62086), (214, 62113), (231, 62209), (234, 62227), (242, 62269), (247, 62299), (257, 62371), (263, 62395), (278, 62539), (280, 62557), (285, 62584), (291, 62650), (293, 62671), (298, 62698), (301, 62716), (319, 62827), (320, 62833), (333, 62890), (351, 62968), (357, 63001), (366, 63103), (386, 63238), (394, 63274), (409, 63352), (413, 63382), (423, 63436), (424, 63445), (429, 63460), (445, 63562), (465, 63691), (469, 63706), (473, 63721), (475, 63727), (484, 63760), (496, 63814), (503, 63889), (505, 63916), (506, 63922), (507, 63928), (510, 63967), (511, 63979), (513, 64000), (518, 64069), (520, 64102), (524, 64126), (530, 64195),

Gene: EGole_81 Start: 60108, Stop: 63392, Start Num: 10

Candidate Starts for EGole_81:

(Start: 10 @60108 has 54 MA's), (14, 60153), (17, 60183), (19, 60201), (Start: 20 @60207 has 1 MA's), (33, 60486), (44, 60588), (50, 60666), (58, 60771), (62, 60834), (63, 60840), (69, 60879), (90, 60996), (113, 61080), (134, 61206), (138, 61236), (142, 61275), (204, 61662), (218, 61767), (219, 61773), (220, 61779), (223, 61803), (234, 61863), (240, 61893), (241, 61896), (247, 61935), (251, 61962), (254, 61995), (257, 62007), (267, 62070), (276, 62142), (280, 62196), (282, 62205), (284, 62214), (285, 62223), (286, 62229), (322, 62472), (342, 62541), (344, 62553), (350, 62574), (362, 62658), (390, 62853), (397, 62886), (407, 62937), (414, 62982), (428, 63048), (437, 63096), (444, 63132), (450, 63177), (451, 63186), (460, 63228), (467, 63273), (468, 63276), (472, 63291),

Gene: Elmer_90 Start: 59515, Stop: 62835, Start Num: 9

Candidate Starts for Elmer_90:

(5, 59485), (Start: 9 @59515 has 26 MA's), (15, 59566), (17, 59587), (Start: 20 @59611 has 1 MA's), (25, 59692), (33, 59890), (50, 60070), (55, 60118), (58, 60175), (61, 60226), (62, 60244), (64, 60253), (69, 60289), (90, 60406), (112, 60478), (134, 60616), (142, 60685), (162, 60850), (174, 60928), (203, 61090), (207, 61117), (220, 61213), (223, 61237), (234, 61297), (247, 61369), (276, 61573), (280, 61627), (282, 61636), (285, 61654), (286, 61660), (308, 61843), (310, 61852), (316, 61876), (322, 61903), (374, 62200), (385, 62278), (395, 62320), (407, 62380), (413, 62419), (414, 62425), (421, 62452), (428, 62491), (437, 62539), (439, 62548), (450, 62620), (459, 62668), (460, 62671), (467, 62716), (468, 62719), (483, 62773), (486, 62788),

Gene: Emma1919_62 Start: 48644, Stop: 51934, Start Num: 10

Candidate Starts for Emma1919_62:

(Start: 10 @48644 has 54 MA's), (12, 48659), (13, 48665), (17, 48716), (Start: 20 @48740 has 1 MA's), (29, 48929), (33, 49019), (41, 49079), (50, 49199), (58, 49304), (62, 49367), (63, 49373), (69, 49412), (126, 49685), (134, 49739), (138, 49769), (142, 49808), (149, 49856), (198, 50156), (204, 50195), (218, 50300), (219, 50306), (220, 50312), (225, 50345), (228, 50360), (231, 50378), (233, 50390), (234, 50396), (241, 50429), (245, 50459), (247, 50468), (256, 50534), (257, 50540), (259, 50549), (267, 50603), (276, 50675), (280, 50729), (282, 50738), (285, 50756), (286, 50762), (299, 50876), (307, 50942), (310, 50954), (324, 51014), (325, 51017), (343, 51080), (344, 51086), (346, 51092), (363, 51197), (367, 51248), (380, 51317), (390, 51386), (391, 51395), (406, 51464), (407, 51470), (410, 51482), (414, 51515), (415, 51518), (428, 51581), (430, 51590), (432, 51611), (436,

51623), (444, 51665), (460, 51761), (465, 51797), (467, 51806), (472, 51824), (496, 51920),

Gene: Enygma_82 Start: 60218, Stop: 63538, Start Num: 9

Candidate Starts for Enygma_82:

(Start: 9 @60218 has 26 MA's), (17, 60290), (Start: 20 @60314 has 1 MA's), (33, 60593), (50, 60773), (55, 60821), (58, 60878), (61, 60929), (62, 60947), (64, 60956), (69, 60992), (90, 61109), (134, 61319), (142, 61388), (162, 61553), (174, 61631), (203, 61793), (220, 61916), (229, 61973), (234, 62000), (247, 62072), (276, 62276), (280, 62330), (282, 62339), (285, 62357), (286, 62363), (299, 62477), (310, 62555), (316, 62579), (322, 62606), (348, 62714), (374, 62903), (385, 62981), (395, 63023), (400, 63041), (407, 63083), (414, 63128), (421, 63155), (428, 63194), (437, 63242), (439, 63251), (450, 63323), (452, 63335), (454, 63344), (459, 63371), (460, 63374), (467, 63419), (468, 63422), (483, 63476), (486, 63491),

Gene: Erudite_56 Start: 40834, Stop: 43134, Start Num: 96

Candidate Starts for Erudite_56:

(Start: 96 @40834 has 22 MA's), (Start: 100 @40840 has 5 MA's), (111, 40915), (124, 40987), (127, 41008), (132, 41041), (134, 41053), (135, 41056), (136, 41074), (137, 41080), (146, 41149), (150, 41173), (153, 41212), (160, 41269), (170, 41350), (190, 41464), (191, 41476), (204, 41551), (206, 41569), (215, 41647), (217, 41653), (219, 41662), (224, 41695), (229, 41725), (230, 41731), (234, 41752), (236, 41761), (244, 41791), (253, 41866), (255, 41875), (261, 41899), (262, 41905), (265, 41920), (276, 42022), (284, 42094), (287, 42118), (295, 42202), (307, 42292), (310, 42304), (315, 42322), (332, 42400), (334, 42406), (336, 42415), (344, 42448), (359, 42520), (406, 42700), (412, 42730), (425, 42793), (441, 42865), (457, 42949), (464, 42988), (470, 43021), (482, 43066), (491, 43111), (494, 43117),

Gene: Evy_80 Start: 59063, Stop: 62347, Start Num: 10

Candidate Starts for Evy_80:

(Start: 10 @59063 has 54 MA's), (14, 59108), (17, 59138), (19, 59156), (Start: 20 @59162 has 1 MA's), (24, 59228), (33, 59441), (50, 59621), (58, 59726), (62, 59789), (63, 59795), (69, 59834), (80, 59924), (90, 59951), (117, 60050), (134, 60161), (138, 60191), (139, 60194), (142, 60230), (174, 60473), (178, 60503), (204, 60617), (205, 60632), (218, 60722), (219, 60728), (220, 60734), (234, 60818), (245, 60881), (247, 60890), (251, 60917), (257, 60962), (267, 61025), (276, 61097), (280, 61151), (282, 61160), (284, 61169), (285, 61178), (286, 61184), (322, 61427), (342, 61496), (362, 61613), (372, 61703), (381, 61745), (390, 61808), (397, 61841), (407, 61892), (414, 61937), (428, 62003), (437, 62051), (450, 62132), (451, 62141), (460, 62183), (468, 62231), (472, 62246),

Gene: Faust_61 Start: 49769, Stop: 53059, Start Num: 10

Candidate Starts for Faust_61:

(Start: 10 @49769 has 54 MA's), (12, 49784), (13, 49790), (17, 49841), (Start: 20 @49865 has 1 MA's), (33, 50144), (41, 50204), (49, 50318), (50, 50324), (58, 50429), (62, 50492), (63, 50498), (69, 50537), (164, 51116), (198, 51281), (204, 51320), (218, 51425), (219, 51431), (220, 51437), (223, 51461), (231, 51503), (241, 51554), (247, 51593), (257, 51665), (267, 51728), (276, 51800), (280, 51854), (282, 51863), (284, 51872), (285, 51881), (286, 51887), (307, 52067), (310, 52079), (316, 52103), (324, 52139), (325, 52142), (342, 52199), (343, 52205), (346, 52217), (363, 52322), (374, 52415), (391, 52520), (394, 52532), (406, 52589), (407, 52595), (414, 52640), (428, 52706), (430, 52715), (440, 52766), (460, 52886), (469, 52937), (472, 52949), (493, 53036),

Gene: Forrest_62 Start: 49341, Stop: 52631, Start Num: 10

Candidate Starts for Forrest_62:

(Start: 10 @49341 has 54 MA's), (12, 49356), (13, 49362), (17, 49413), (Start: 20 @49437 has 1 MA's), (29, 49626), (33, 49716), (41, 49776), (50, 49896), (58, 50001), (62, 50064), (63, 50070), (69, 50109), (126, 50382), (134, 50436), (138, 50466), (142, 50505), (149, 50553), (198, 50853), (204, 50892), (218, 50997), (219, 51003), (220, 51009), (225, 51042), (228, 51057), (231, 51075), (233,

51087), (234, 51093), (241, 51126), (245, 51156), (247, 51165), (256, 51231), (257, 51237), (259, 51246), (267, 51300), (276, 51372), (280, 51426), (282, 51435), (285, 51453), (286, 51459), (299, 51573), (307, 51639), (310, 51651), (324, 51711), (325, 51714), (343, 51777), (344, 51783), (346, 51789), (363, 51894), (366, 51942), (367, 51945), (380, 52014), (390, 52083), (391, 52092), (406, 52161), (407, 52167), (410, 52179), (414, 52212), (415, 52215), (428, 52278), (430, 52287), (432, 52308), (436, 52320), (444, 52362), (460, 52458), (465, 52494), (467, 52503), (472, 52521), (496, 52617),

Gene: Francesca_76 Start: 61162, Stop: 64965, Start Num: 8

Candidate Starts for Francesca_76:

(8, 61162), (Start: 11 @61171 has 1 MA's), (19, 61261), (23, 61321), (26, 61363), (38, 61582), (40, 61597), (46, 61696), (49, 61720), (61, 61882), (64, 61909), (69, 61945), (86, 62053), (Start: 110 @62110 has 1 MA's), (115, 62155), (117, 62164), (130, 62251), (135, 62278), (140, 62314), (144, 62356), (149, 62392), (171, 62578), (172, 62581), (188, 62668), (196, 62725), (210, 62824), (214, 62851), (234, 62965), (242, 63007), (247, 63037), (257, 63109), (278, 63277), (280, 63295), (285, 63322), (291, 63388), (293, 63409), (298, 63436), (301, 63454), (319, 63565), (320, 63571), (333, 63628), (351, 63706), (357, 63739), (366, 63841), (386, 63976), (394, 64012), (409, 64090), (413, 64120), (423, 64174), (424, 64183), (445, 64300), (465, 64429), (469, 64444), (473, 64459), (496, 64552), (503, 64627), (505, 64654), (506, 64660), (507, 64666), (510, 64705), (511, 64717), (513, 64738), (518, 64807), (520, 64840), (524, 64864), (530, 64933),

Gene: Francob_59 Start: 48697, Stop: 51987, Start Num: 10

Candidate Starts for Francob_59:

(Start: 10 @48697 has 54 MA's), (13, 48718), (17, 48769), (Start: 20 @48793 has 1 MA's), (33, 49072), (41, 49132), (50, 49252), (58, 49357), (62, 49420), (63, 49426), (69, 49465), (80, 49555), (143, 49870), (149, 49909), (198, 50209), (204, 50248), (220, 50365), (225, 50398), (231, 50431), (234, 50449), (241, 50482), (247, 50521), (256, 50587), (257, 50593), (267, 50656), (276, 50728), (280, 50782), (282, 50791), (284, 50800), (285, 50809), (286, 50815), (299, 50929), (307, 50995), (310, 51007), (324, 51067), (325, 51070), (342, 51127), (343, 51133), (344, 51139), (346, 51145), (363, 51250), (367, 51301), (391, 51448), (406, 51517), (407, 51523), (410, 51535), (428, 51634), (430, 51643), (440, 51694), (445, 51727), (460, 51814), (469, 51865), (472, 51877),

Gene: FreddieHg_58 Start: 40716, Stop: 43019, Start Num: 96

Candidate Starts for FreddieHg_58:

(Start: 96 @40716 has 22 MA's), (Start: 100 @40722 has 5 MA's), (111, 40800), (124, 40872), (127, 40893), (132, 40926), (134, 40938), (135, 40941), (136, 40959), (137, 40965), (146, 41034), (150, 41058), (153, 41097), (158, 41142), (160, 41154), (170, 41235), (190, 41349), (191, 41361), (204, 41436), (206, 41454), (215, 41532), (217, 41538), (219, 41547), (224, 41580), (229, 41610), (230, 41616), (234, 41637), (236, 41646), (244, 41676), (253, 41751), (255, 41760), (261, 41784), (262, 41790), (263, 41796), (265, 41805), (276, 41907), (284, 41979), (287, 42003), (295, 42087), (307, 42177), (310, 42189), (315, 42207), (332, 42285), (334, 42291), (336, 42300), (344, 42333), (359, 42405), (406, 42585), (412, 42615), (425, 42678), (441, 42750), (464, 42873), (470, 42906), (482, 42951), (491, 42996), (494, 43002),

Gene: Genie2_82 Start: 58392, Stop: 61712, Start Num: 9

Candidate Starts for Genie2_82:

(Start: 9 @58392 has 26 MA's), (17, 58464), (Start: 20 @58488 has 1 MA's), (25, 58569), (33, 58767), (50, 58947), (55, 58995), (58, 59052), (61, 59103), (62, 59121), (64, 59130), (69, 59166), (86, 59274), (90, 59283), (112, 59355), (134, 59493), (142, 59562), (162, 59727), (174, 59805), (203, 59967), (206, 59991), (220, 60090), (234, 60174), (247, 60246), (276, 60450), (280, 60504), (282, 60513), (285, 60531), (286, 60537), (299, 60651), (310, 60729), (316, 60753), (322, 60780), (366, 61032), (367, 61035), (369, 61053), (371, 61065), (385, 61155), (400, 61215), (407, 61257), (413, 61296), (414, 61302), (421, 61329), (428, 61368), (437, 61416), (439, 61425), (450, 61497), (452, 61509), (454,

61518), (459, 61545), (460, 61548), (463, 61563), (468, 61596), (483, 61650), (486, 61665),

Gene: Gibbi_86 Start: 58555, Stop: 61875, Start Num: 9

Candidate Starts for Gibbi_86:

(Start: 9 @58555 has 26 MA's), (15, 58606), (17, 58627), (Start: 20 @58651 has 1 MA's), (25, 58732), (33, 58930), (50, 59110), (55, 59158), (56, 59161), (58, 59215), (61, 59266), (62, 59284), (64, 59293), (69, 59329), (86, 59437), (90, 59446), (134, 59656), (142, 59725), (162, 59890), (174, 59968), (186, 60037), (203, 60130), (220, 60253), (234, 60337), (245, 60400), (247, 60409), (276, 60613), (280, 60667), (282, 60676), (285, 60694), (286, 60700), (310, 60892), (316, 60916), (322, 60943), (348, 61051), (374, 61240), (385, 61318), (395, 61360), (400, 61378), (407, 61420), (413, 61459), (414, 61465), (421, 61492), (428, 61531), (437, 61579), (450, 61660), (454, 61681), (459, 61708), (460, 61711), (463, 61726), (468, 61759), (486, 61828),

Gene: Gilda_57 Start: 41255, Stop: 43558, Start Num: 96

Candidate Starts for Gilda_57:

(Start: 96 @41255 has 22 MA's), (Start: 100 @41261 has 5 MA's), (111, 41339), (124, 41411), (127, 41432), (132, 41465), (134, 41477), (135, 41480), (136, 41498), (146, 41573), (150, 41597), (153, 41636), (158, 41681), (160, 41693), (170, 41774), (190, 41888), (191, 41900), (204, 41975), (206, 41993), (215, 42071), (217, 42077), (219, 42086), (224, 42119), (229, 42149), (230, 42155), (234, 42176), (236, 42185), (244, 42215), (253, 42290), (255, 42299), (261, 42323), (262, 42329), (265, 42344), (267, 42371), (276, 42446), (284, 42518), (287, 42542), (295, 42626), (307, 42716), (310, 42728), (315, 42746), (332, 42824), (334, 42830), (336, 42839), (344, 42872), (359, 42944), (406, 43124), (412, 43154), (425, 43217), (441, 43289), (464, 43412), (470, 43445), (482, 43490), (491, 43535), (494, 43541),

Gene: Gilson_61 Start: 48597, Stop: 51887, Start Num: 10

Candidate Starts for Gilson_61:

(Start: 10 @48597 has 54 MA's), (12, 48612), (13, 48618), (17, 48669), (Start: 20 @48693 has 1 MA's), (29, 48882), (33, 48972), (41, 49032), (50, 49152), (58, 49257), (62, 49320), (63, 49326), (69, 49365), (126, 49638), (134, 49692), (138, 49722), (142, 49761), (149, 49809), (198, 50109), (204, 50148), (218, 50253), (219, 50259), (220, 50265), (225, 50298), (228, 50313), (231, 50331), (233, 50343), (234, 50349), (241, 50382), (245, 50412), (247, 50421), (256, 50487), (257, 50493), (259, 50502), (267, 50556), (276, 50628), (280, 50682), (282, 50691), (285, 50709), (286, 50715), (299, 50829), (307, 50895), (310, 50907), (324, 50967), (325, 50970), (343, 51033), (344, 51039), (346, 51045), (363, 51150), (366, 51198), (367, 51201), (380, 51270), (390, 51339), (391, 51348), (406, 51417), (407, 51423), (410, 51435), (414, 51468), (415, 51471), (428, 51534), (430, 51543), (432, 51564), (436, 51576), (444, 51618), (460, 51714), (465, 51750), (467, 51759), (472, 51777), (496, 51873),

Gene: Grayson_103 Start: 62973, Stop: 65801, Start Num: 92

Candidate Starts for Grayson_103:

(78, 62925), (84, 62955), (87, 62961), (Start: 92 @62973 has 3 MA's), (112, 63051), (116, 63078), (141, 63255), (144, 63270), (171, 63492), (172, 63495), (181, 63528), (229, 63816), (231, 63825), (234, 63843), (238, 63867), (247, 63915), (257, 63987), (263, 64011), (280, 64173), (309, 64398), (326, 64473), (416, 64998), (424, 65046), (440, 65130), (443, 65145), (449, 65196), (455, 65232), (469, 65307), (475, 65328), (506, 65523), (507, 65529), (511, 65577), (514, 65637), (515, 65646), (520, 65700), (522, 65706), (529, 65778),

Gene: Hager_58 Start: 40653, Stop: 42950, Start Num: 100

Candidate Starts for Hager_58:

(Start: 100 @40653 has 5 MA's), (111, 40731), (127, 40824), (132, 40857), (134, 40869), (136, 40890), (137, 40896), (146, 40965), (150, 40989), (153, 41028), (160, 41085), (170, 41166), (190, 41280), (191, 41292), (206, 41385), (213, 41451), (215, 41463), (217, 41469), (224, 41511), (229,

41541), (230, 41547), (234, 41568), (236, 41577), (244, 41607), (249, 41649), (253, 41682), (255, 41691), (262, 41721), (284, 41910), (287, 41934), (307, 42108), (310, 42120), (315, 42138), (334, 42222), (336, 42231), (344, 42264), (354, 42309), (366, 42378), (406, 42516), (412, 42546), (419, 42579), (425, 42609), (441, 42681), (464, 42804), (470, 42837), (482, 42882), (491, 42927), (494, 42933),

Gene: HangryHippo_82 Start: 59162, Stop: 62446, Start Num: 10

Candidate Starts for HangryHippo_82:

(Start: 10 @59162 has 54 MA's), (14, 59207), (17, 59237), (19, 59255), (Start: 20 @59261 has 1 MA's), (33, 59540), (44, 59642), (50, 59720), (58, 59825), (62, 59888), (63, 59894), (69, 59933), (90, 60050), (113, 60134), (134, 60260), (138, 60290), (142, 60329), (143, 60338), (168, 60536), (204, 60716), (218, 60821), (219, 60827), (220, 60833), (234, 60917), (240, 60947), (247, 60989), (251, 61016), (254, 61049), (257, 61061), (267, 61124), (276, 61196), (280, 61250), (282, 61259), (284, 61268), (285, 61277), (286, 61283), (322, 61526), (342, 61595), (344, 61607), (362, 61712), (390, 61907), (397, 61940), (407, 61991), (413, 62030), (414, 62036), (428, 62102), (437, 62150), (444, 62186), (450, 62231), (451, 62240), (460, 62282), (467, 62327), (468, 62330), (472, 62345),

Gene: Haunter_57 Start: 40472, Stop: 42772, Start Num: 96

Candidate Starts for Haunter_57:

(Start: 96 @40472 has 22 MA's), (Start: 100 @40478 has 5 MA's), (111, 40553), (124, 40625), (127, 40646), (132, 40679), (134, 40691), (135, 40694), (136, 40712), (137, 40718), (146, 40787), (150, 40811), (151, 40814), (153, 40850), (158, 40895), (160, 40907), (170, 40988), (190, 41102), (191, 41114), (204, 41189), (206, 41207), (215, 41285), (217, 41291), (219, 41300), (224, 41333), (229, 41363), (230, 41369), (234, 41390), (236, 41399), (244, 41429), (253, 41504), (255, 41513), (261, 41537), (262, 41543), (263, 41549), (265, 41558), (276, 41660), (284, 41732), (287, 41756), (295, 41840), (307, 41930), (310, 41942), (315, 41960), (332, 42038), (334, 42044), (336, 42053), (344, 42086), (359, 42158), (406, 42338), (412, 42368), (425, 42431), (441, 42503), (457, 42587), (461, 42614), (464, 42626), (470, 42659), (482, 42704), (491, 42749), (494, 42755),

Gene: Hiddenleaf_58 Start: 40699, Stop: 43002, Start Num: 96

Candidate Starts for Hiddenleaf_58:

(Start: 96 @40699 has 22 MA's), (Start: 100 @40705 has 5 MA's), (111, 40783), (124, 40855), (127, 40876), (132, 40909), (134, 40921), (135, 40924), (136, 40942), (137, 40948), (146, 41017), (150, 41041), (153, 41080), (158, 41125), (160, 41137), (170, 41218), (190, 41332), (191, 41344), (204, 41419), (206, 41437), (215, 41515), (217, 41521), (219, 41530), (224, 41563), (229, 41593), (230, 41599), (234, 41620), (236, 41629), (244, 41659), (253, 41734), (255, 41743), (258, 41755), (262, 41773), (265, 41788), (276, 41890), (284, 41962), (287, 41986), (295, 42070), (307, 42160), (310, 42172), (315, 42190), (332, 42268), (334, 42274), (336, 42283), (344, 42316), (359, 42388), (406, 42568), (412, 42598), (425, 42661), (441, 42733), (464, 42856), (470, 42889), (482, 42934), (491, 42979), (494, 42985),

Gene: IchabodCrane_79 Start: 58144, Stop: 61464, Start Num: 9

Candidate Starts for IchabodCrane_79:

(Start: 9 @58144 has 26 MA's), (15, 58195), (17, 58216), (Start: 20 @58240 has 1 MA's), (25, 58321), (33, 58519), (50, 58699), (55, 58747), (56, 58750), (58, 58804), (59, 58807), (61, 58855), (62, 58873), (64, 58882), (69, 58918), (86, 59026), (90, 59035), (134, 59245), (142, 59314), (162, 59479), (174, 59557), (186, 59626), (203, 59719), (220, 59842), (234, 59926), (245, 59989), (247, 59998), (276, 60202), (280, 60256), (282, 60265), (285, 60283), (286, 60289), (310, 60481), (316, 60505), (322, 60532), (348, 60640), (374, 60829), (385, 60907), (395, 60949), (400, 60967), (407, 61009), (413, 61048), (414, 61054), (421, 61081), (428, 61120), (437, 61168), (450, 61249), (454, 61270), (459, 61297), (460, 61300), (463, 61315), (468, 61348), (486, 61417),

Gene: JDawG_56 Start: 40894, Stop: 43194, Start Num: 96

Candidate Starts for JDawG_56:

(75, 40804), (Start: 96 @40894 has 22 MA's), (Start: 100 @40900 has 5 MA's), (111, 40975), (124, 41047), (127, 41068), (132, 41101), (133, 41104), (134, 41113), (136, 41134), (137, 41140), (146, 41209), (150, 41233), (153, 41272), (160, 41329), (170, 41410), (190, 41524), (191, 41536), (195, 41566), (204, 41611), (206, 41629), (215, 41707), (217, 41713), (219, 41722), (224, 41755), (229, 41785), (230, 41791), (234, 41812), (236, 41821), (244, 41851), (253, 41926), (255, 41935), (262, 41965), (265, 41980), (276, 42082), (284, 42154), (287, 42178), (295, 42262), (307, 42352), (310, 42364), (315, 42382), (334, 42466), (336, 42475), (344, 42508), (359, 42580), (406, 42760), (412, 42790), (425, 42853), (441, 42925), (464, 43048), (470, 43081), (482, 43126), (491, 43171), (494, 43177),

Gene: Jada_60 Start: 48523, Stop: 51813, Start Num: 10

Candidate Starts for Jada_60:

(Start: 10 @48523 has 54 MA's), (12, 48538), (13, 48544), (17, 48595), (Start: 20 @48619 has 1 MA's), (29, 48808), (33, 48898), (41, 48958), (50, 49078), (58, 49183), (62, 49246), (63, 49252), (69, 49291), (126, 49564), (134, 49618), (138, 49648), (142, 49687), (149, 49735), (198, 50035), (204, 50074), (218, 50179), (219, 50185), (220, 50191), (225, 50224), (228, 50239), (231, 50257), (233, 50269), (234, 50275), (241, 50308), (245, 50338), (247, 50347), (256, 50413), (257, 50419), (259, 50428), (267, 50482), (276, 50554), (280, 50608), (282, 50617), (285, 50635), (286, 50641), (299, 50755), (307, 50821), (310, 50833), (324, 50893), (325, 50896), (343, 50959), (344, 50965), (346, 50971), (363, 51076), (366, 51124), (367, 51127), (380, 51196), (390, 51265), (391, 51274), (406, 51343), (407, 51349), (410, 51361), (414, 51394), (415, 51397), (428, 51460), (430, 51469), (432, 51490), (436, 51502), (444, 51544), (460, 51640), (465, 51676), (467, 51685), (472, 51703), (496, 51799),

Gene: Jay2Jay_84 Start: 59915, Stop: 63199, Start Num: 10

Candidate Starts for Jay2Jay_84:

(Start: 10 @59915 has 54 MA's), (14, 59960), (17, 59990), (19, 60008), (Start: 20 @60014 has 1 MA's), (24, 60080), (33, 60293), (50, 60473), (58, 60578), (62, 60641), (63, 60647), (69, 60686), (80, 60776), (90, 60803), (117, 60902), (134, 61013), (138, 61043), (142, 61082), (174, 61325), (178, 61355), (204, 61469), (205, 61484), (219, 61580), (220, 61586), (234, 61670), (245, 61733), (247, 61742), (251, 61769), (257, 61814), (267, 61877), (276, 61949), (280, 62003), (282, 62012), (284, 62021), (285, 62030), (286, 62036), (307, 62216), (322, 62279), (342, 62348), (362, 62465), (372, 62555), (381, 62597), (390, 62660), (397, 62693), (407, 62744), (413, 62783), (414, 62789), (428, 62855), (437, 62903), (444, 62939), (450, 62984), (451, 62993), (460, 63035), (468, 63083), (472, 63098),

Gene: JimJam_82 Start: 58518, Stop: 61838, Start Num: 9

Candidate Starts for JimJam_82:

(Start: 9 @58518 has 26 MA's), (15, 58569), (17, 58590), (Start: 20 @58614 has 1 MA's), (25, 58695), (33, 58893), (50, 59073), (55, 59121), (56, 59124), (58, 59178), (61, 59229), (62, 59247), (64, 59256), (69, 59292), (86, 59400), (90, 59409), (134, 59619), (142, 59688), (162, 59853), (174, 59931), (186, 60000), (203, 60093), (220, 60216), (234, 60300), (245, 60363), (247, 60372), (276, 60576), (280, 60630), (282, 60639), (285, 60657), (286, 60663), (310, 60855), (316, 60879), (322, 60906), (348, 61014), (374, 61203), (385, 61281), (395, 61323), (400, 61341), (407, 61383), (413, 61422), (414, 61428), (421, 61455), (428, 61494), (437, 61542), (450, 61623), (454, 61644), (459, 61671), (460, 61674), (463, 61689), (468, 61722), (486, 61791),

Gene: JingleBells_58 Start: 40808, Stop: 43108, Start Num: 96

Candidate Starts for JingleBells_58:

(Start: 96 @40808 has 22 MA's), (Start: 100 @40814 has 5 MA's), (111, 40889), (124, 40961), (127, 40982), (132, 41015), (134, 41027), (135, 41030), (136, 41048), (137, 41054), (146, 41123), (150, 41147), (153, 41186), (160, 41243), (170, 41324), (190, 41438), (191, 41450), (204, 41525), (206,

41543), (215, 41621), (217, 41627), (224, 41669), (229, 41699), (230, 41705), (234, 41726), (236, 41735), (244, 41765), (253, 41840), (255, 41849), (261, 41873), (262, 41879), (263, 41885), (265, 41894), (276, 41996), (284, 42068), (287, 42092), (295, 42176), (307, 42266), (310, 42278), (315, 42296), (332, 42374), (334, 42380), (336, 42389), (344, 42422), (359, 42494), (406, 42674), (412, 42704), (425, 42767), (441, 42839), (464, 42962), (470, 42995), (482, 43040), (491, 43085), (494, 43091),

Gene: Jollison_86 Start: 58400, Stop: 61720, Start Num: 9

Candidate Starts for Jollison_86:

(Start: 9 @58400 has 26 MA's), (15, 58451), (17, 58472), (Start: 20 @58496 has 1 MA's), (25, 58577), (33, 58775), (50, 58955), (55, 59003), (58, 59060), (61, 59111), (62, 59129), (64, 59138), (69, 59174), (86, 59282), (90, 59291), (134, 59501), (142, 59570), (162, 59735), (174, 59813), (203, 59975), (220, 60098), (223, 60122), (234, 60182), (245, 60245), (247, 60254), (276, 60458), (280, 60512), (282, 60521), (285, 60539), (286, 60545), (308, 60728), (310, 60737), (316, 60761), (322, 60788), (348, 60896), (374, 61085), (385, 61163), (395, 61205), (400, 61223), (407, 61265), (413, 61304), (414, 61310), (421, 61337), (428, 61376), (437, 61424), (439, 61433), (450, 61505), (454, 61526), (459, 61553), (460, 61556), (463, 61571), (468, 61604), (486, 61673),

Gene: Karate_56 Start: 41072, Stop: 43375, Start Num: 96

Candidate Starts for Karate_56:

(Start: 96 @41072 has 22 MA's), (Start: 100 @41078 has 5 MA's), (111, 41156), (124, 41228), (127, 41249), (132, 41282), (134, 41294), (135, 41297), (136, 41315), (146, 41390), (150, 41414), (153, 41453), (160, 41510), (170, 41591), (190, 41705), (191, 41717), (204, 41792), (206, 41810), (215, 41888), (217, 41894), (219, 41903), (224, 41936), (229, 41966), (230, 41972), (234, 41993), (236, 42002), (244, 42032), (253, 42107), (261, 42140), (262, 42146), (265, 42161), (276, 42263), (284, 42335), (287, 42359), (295, 42443), (307, 42533), (310, 42545), (315, 42563), (332, 42641), (334, 42647), (336, 42656), (344, 42689), (359, 42761), (406, 42941), (412, 42971), (425, 43034), (441, 43106), (464, 43229), (470, 43262), (482, 43307), (491, 43352), (494, 43358),

Gene: Karimac_81 Start: 58549, Stop: 61869, Start Num: 9

Candidate Starts for Karimac_81:

(Start: 9 @58549 has 26 MA's), (15, 58600), (17, 58621), (Start: 20 @58645 has 1 MA's), (25, 58726), (33, 58924), (50, 59104), (55, 59152), (56, 59155), (58, 59209), (61, 59260), (62, 59278), (64, 59287), (69, 59323), (86, 59431), (90, 59440), (134, 59650), (142, 59719), (162, 59884), (174, 59962), (186, 60031), (203, 60124), (220, 60247), (234, 60331), (245, 60394), (247, 60403), (276, 60607), (280, 60661), (282, 60670), (285, 60688), (286, 60694), (310, 60886), (316, 60910), (322, 60937), (348, 61045), (374, 61234), (385, 61312), (395, 61354), (400, 61372), (407, 61414), (413, 61453), (414, 61459), (421, 61486), (428, 61525), (437, 61573), (450, 61654), (454, 61675), (459, 61702), (460, 61705), (463, 61720), (468, 61753), (486, 61822),

Gene: Karp_59 Start: 49450, Stop: 52740, Start Num: 10

Candidate Starts for Karp_59:

(6, 49432), (Start: 10 @49450 has 54 MA's), (12, 49465), (13, 49471), (15, 49501), (17, 49522), (19, 49540), (Start: 20 @49546 has 1 MA's), (28, 49714), (30, 49756), (33, 49825), (41, 49885), (49, 49999), (50, 50005), (58, 50110), (62, 50173), (63, 50179), (69, 50218), (112, 50407), (122, 50464), (126, 50491), (133, 50536), (171, 50842), (176, 50878), (198, 50962), (204, 51001), (218, 51106), (220, 51118), (225, 51151), (230, 51181), (231, 51184), (233, 51196), (234, 51202), (247, 51274), (256, 51340), (257, 51346), (267, 51409), (276, 51481), (280, 51535), (282, 51544), (285, 51562), (286, 51568), (299, 51682), (307, 51748), (310, 51760), (324, 51820), (325, 51823), (342, 51880), (343, 51886), (346, 51898), (353, 51934), (363, 52003), (391, 52201), (400, 52234), (406, 52270), (407, 52276), (410, 52288), (423, 52369), (428, 52387), (430, 52396), (432, 52417), (440, 52447), (448, 52504), (460, 52567), (472, 52630),

Gene: Kate_57 Start: 41173, Stop: 43476, Start Num: 96

Candidate Starts for Kate_57:

(Start: 96 @41173 has 22 MA's), (Start: 100 @41179 has 5 MA's), (111, 41257), (124, 41329), (127, 41350), (132, 41383), (134, 41395), (135, 41398), (136, 41416), (146, 41491), (150, 41515), (153, 41554), (158, 41599), (160, 41611), (170, 41692), (190, 41806), (191, 41818), (204, 41893), (206, 41911), (215, 41989), (217, 41995), (219, 42004), (224, 42037), (229, 42067), (230, 42073), (234, 42094), (236, 42103), (244, 42133), (253, 42208), (255, 42217), (261, 42241), (262, 42247), (265, 42262), (267, 42289), (276, 42364), (284, 42436), (287, 42460), (295, 42544), (307, 42634), (310, 42646), (315, 42664), (332, 42742), (334, 42748), (336, 42757), (344, 42790), (359, 42862), (406, 43042), (412, 43072), (425, 43135), (441, 43207), (464, 43330), (470, 43363), (482, 43408), (491, 43453), (494, 43459),

Gene: Kenrey_62 Start: 48788, Stop: 52078, Start Num: 10

Candidate Starts for Kenrey_62:

(Start: 10 @48788 has 54 MA's), (13, 48809), (15, 48839), (17, 48860), (Start: 20 @48884 has 1 MA's), (33, 49163), (41, 49223), (49, 49337), (50, 49343), (51, 49355), (58, 49448), (62, 49511), (63, 49517), (69, 49556), (73, 49583), (117, 49772), (120, 49787), (142, 49952), (149, 50000), (198, 50300), (204, 50339), (220, 50456), (225, 50489), (231, 50522), (234, 50540), (241, 50573), (247, 50612), (256, 50678), (257, 50684), (267, 50747), (276, 50819), (280, 50873), (282, 50882), (285, 50900), (286, 50906), (299, 51020), (307, 51086), (310, 51098), (324, 51158), (325, 51161), (346, 51236), (358, 51299), (363, 51341), (380, 51461), (391, 51539), (406, 51608), (407, 51614), (423, 51707), (428, 51725), (430, 51734), (432, 51755), (440, 51785), (445, 51818), (460, 51905), (462, 51917), (465, 51941), (472, 51968),

Gene: KentuckyRacer_85 Start: 58333, Stop: 61653, Start Num: 9

Candidate Starts for KentuckyRacer_85:

(Start: 9 @58333 has 26 MA's), (15, 58384), (17, 58405), (Start: 20 @58429 has 1 MA's), (25, 58510), (33, 58708), (50, 58888), (55, 58936), (58, 58993), (61, 59044), (62, 59062), (64, 59071), (69, 59107), (86, 59215), (90, 59224), (134, 59434), (142, 59503), (162, 59668), (174, 59746), (186, 59815), (203, 59908), (220, 60031), (234, 60115), (245, 60178), (247, 60187), (276, 60391), (280, 60445), (282, 60454), (285, 60472), (286, 60478), (310, 60670), (316, 60694), (322, 60721), (348, 60829), (374, 61018), (385, 61096), (395, 61138), (400, 61156), (407, 61198), (413, 61237), (414, 61243), (421, 61270), (428, 61309), (437, 61357), (450, 61438), (454, 61459), (459, 61486), (460, 61489), (463, 61504), (468, 61537), (486, 61606),

Gene: Kors_64 Start: 42629, Stop: 44884, Start Num: 100

Candidate Starts for Kors_64:

(95, 42620), (Start: 100 @42629 has 5 MA's), (127, 42764), (132, 42797), (135, 42812), (147, 42914), (150, 42929), (160, 43025), (170, 43106), (171, 43115), (189, 43214), (190, 43220), (204, 43307), (206, 43325), (209, 43355), (211, 43376), (212, 43388), (215, 43403), (219, 43418), (224, 43451), (229, 43481), (230, 43487), (234, 43508), (236, 43517), (244, 43547), (254, 43628), (258, 43643), (262, 43661), (265, 43676), (275, 43775), (302, 44006), (303, 44009), (310, 44060), (315, 44078), (317, 44090), (328, 44132), (334, 44162), (336, 44171), (355, 44261), (388, 44363), (400, 44414), (407, 44459), (422, 44522), (425, 44546), (433, 44576), (436, 44582), (470, 44771), (482, 44816), (491, 44861), (494, 44867),

Gene: Krampus_57 Start: 41269, Stop: 43572, Start Num: 96

Candidate Starts for Krampus_57:

(Start: 96 @41269 has 22 MA's), (Start: 100 @41275 has 5 MA's), (111, 41353), (124, 41425), (127, 41446), (132, 41479), (134, 41491), (135, 41494), (136, 41512), (146, 41587), (150, 41611), (153, 41650), (158, 41695), (160, 41707), (170, 41788), (190, 41902), (191, 41914), (204, 41989), (206, 42007), (215, 42085), (217, 42091), (219, 42100), (224, 42133), (229, 42163), (230, 42169), (234, 42190), (236, 42199), (244, 42229), (253, 42304), (255, 42313), (261, 42337), (262, 42343), (265,

42358), (267, 42385), (276, 42460), (284, 42532), (287, 42556), (295, 42640), (307, 42730), (310, 42742), (315, 42760), (332, 42838), (334, 42844), (336, 42853), (344, 42886), (359, 42958), (406, 43138), (412, 43168), (425, 43231), (441, 43303), (464, 43426), (470, 43459), (482, 43504), (491, 43549), (494, 43555),

Gene: Larnav_85 Start: 59147, Stop: 62431, Start Num: 10

Candidate Starts for Larnav_85:

(Start: 10 @59147 has 54 MA's), (14, 59192), (17, 59222), (19, 59240), (Start: 20 @59246 has 1 MA's), (33, 59525), (44, 59627), (50, 59705), (58, 59810), (62, 59873), (63, 59879), (69, 59918), (90, 60035), (113, 60119), (134, 60245), (138, 60275), (142, 60314), (168, 60521), (204, 60701), (218, 60806), (219, 60812), (220, 60818), (234, 60902), (240, 60932), (247, 60974), (251, 61001), (254, 61034), (257, 61046), (267, 61109), (276, 61181), (280, 61235), (282, 61244), (284, 61253), (285, 61262), (286, 61268), (322, 61511), (342, 61580), (344, 61592), (362, 61697), (390, 61892), (397, 61925), (407, 61976), (414, 62021), (428, 62087), (437, 62135), (450, 62216), (451, 62225), (460, 62267), (467, 62312), (468, 62315), (472, 62330),

Gene: Leo04_81 Start: 59662, Stop: 62946, Start Num: 10

Candidate Starts for Leo04_81:

(Start: 10 @59662 has 54 MA's), (14, 59707), (17, 59737), (19, 59755), (Start: 20 @59761 has 1 MA's), (33, 60040), (44, 60142), (50, 60220), (58, 60325), (62, 60388), (63, 60394), (69, 60433), (90, 60550), (113, 60634), (134, 60760), (138, 60790), (142, 60829), (143, 60838), (168, 61036), (204, 61216), (218, 61321), (219, 61327), (220, 61333), (234, 61417), (240, 61447), (247, 61489), (251, 61516), (254, 61549), (257, 61561), (267, 61624), (276, 61696), (280, 61750), (282, 61759), (284, 61768), (285, 61777), (286, 61783), (322, 62026), (342, 62095), (344, 62107), (362, 62212), (390, 62407), (397, 62440), (407, 62491), (413, 62530), (414, 62536), (428, 62602), (437, 62650), (444, 62686), (450, 62731), (451, 62740), (460, 62782), (467, 62827), (468, 62830), (472, 62845),

Gene: Leopard_84 Start: 58148, Stop: 60436, Start Num: 97

Candidate Starts for Leopard_84:

(71, 58025), (Start: 97 @58148 has 3 MA's), (104, 58181), (105, 58187), (119, 58277), (124, 58310), (128, 58334), (131, 58361), (142, 58445), (143, 58454), (144, 58457), (150, 58496), (151, 58499), (155, 58550), (163, 58628), (165, 58640), (203, 58868), (205, 58889), (212, 58952), (217, 58964), (229, 59036), (230, 59042), (235, 59066), (236, 59072), (239, 59087), (244, 59102), (246, 59120), (249, 59144), (255, 59186), (264, 59225), (267, 59258), (286, 59420), (287, 59429), (302, 59564), (304, 59591), (315, 59636), (344, 59750), (356, 59810), (411, 60026), (433, 60113), (434, 60116), (442, 60158), (471, 60323), (477, 60353), (488, 60401), (491, 60413), (498, 60428),

Gene: Liandry_78 Start: 58566, Stop: 61850, Start Num: 10

Candidate Starts for Liandry_78:

(Start: 10 @58566 has 54 MA's), (14, 58611), (17, 58641), (19, 58659), (Start: 20 @58665 has 1 MA's), (24, 58731), (33, 58944), (34, 58950), (44, 59046), (50, 59124), (58, 59229), (62, 59292), (63, 59298), (69, 59337), (90, 59454), (117, 59553), (134, 59664), (138, 59694), (142, 59733), (174, 59976), (204, 60120), (205, 60135), (219, 60231), (220, 60237), (223, 60261), (234, 60321), (245, 60384), (247, 60393), (257, 60465), (267, 60528), (276, 60600), (280, 60654), (282, 60663), (284, 60672), (285, 60681), (286, 60687), (293, 60768), (307, 60867), (322, 60930), (342, 60999), (344, 61011), (370, 61197), (374, 61215), (390, 61311), (397, 61344), (407, 61395), (413, 61434), (414, 61440), (428, 61506), (432, 61536), (437, 61554), (444, 61590), (450, 61635), (451, 61644), (455, 61665), (460, 61686), (468, 61734), (472, 61749),

Gene: LilMartin_77 Start: 57396, Stop: 60680, Start Num: 10

Candidate Starts for LilMartin_77:

(2, 57312), (3, 57339), (Start: 10 @57396 has 54 MA's), (14, 57441), (17, 57471), (19, 57489), (Start: 20 @57495 has 1 MA's), (33, 57774), (44, 57876), (50, 57954), (51, 57966), (58, 58059), (62, 58122),

(63, 58128), (69, 58167), (90, 58284), (107, 58323), (117, 58383), (134, 58494), (138, 58524), (148, 58602), (171, 58791), (175, 58815), (178, 58836), (204, 58950), (205, 58965), (218, 59055), (219, 59061), (220, 59067), (223, 59091), (224, 59094), (234, 59151), (241, 59184), (245, 59214), (247, 59223), (257, 59295), (259, 59304), (267, 59358), (276, 59430), (280, 59484), (282, 59493), (284, 59502), (285, 59511), (286, 59517), (293, 59598), (322, 59760), (342, 59829), (344, 59841), (364, 59955), (405, 60216), (407, 60225), (428, 60336), (437, 60384), (450, 60465), (460, 60516), (468, 60564), (472, 60579),

Gene: LilyPad_66 Start: 48330, Stop: 50759, Start Num: 94

Candidate Starts for LilyPad_66:

(Start: 94 @48330 has 8 MA's), (101, 48348), (106, 48381), (147, 48642), (150, 48657), (162, 48780), (190, 48948), (229, 49203), (230, 49209), (234, 49230), (236, 49239), (250, 49314), (251, 49320), (268, 49437), (269, 49452), (270, 49458), (275, 49497), (279, 49551), (290, 49644), (310, 49785), (315, 49803), (331, 49878), (337, 49896), (339, 49902), (341, 49911), (345, 49932), (348, 49944), (393, 50199), (401, 50235), (402, 50241), (403, 50244), (415, 50319), (416, 50325), (430, 50382), (437, 50421), (442, 50451), (450, 50505), (453, 50520), (461, 50568), (474, 50628), (481, 50655), (492, 50706), (499, 50724),

Gene: Limpid_57 Start: 47705, Stop: 50995, Start Num: 10

Candidate Starts for Limpid_57:

(Start: 10 @47705 has 54 MA's), (17, 47777), (19, 47795), (Start: 20 @47801 has 1 MA's), (33, 48080), (41, 48140), (58, 48365), (62, 48428), (65, 48455), (68, 48470), (69, 48473), (134, 48800), (200, 49229), (204, 49256), (210, 49310), (219, 49367), (220, 49373), (247, 49529), (251, 49556), (257, 49601), (267, 49664), (275, 49733), (276, 49736), (280, 49790), (282, 49799), (284, 49808), (285, 49817), (286, 49823), (299, 49937), (310, 50015), (316, 50039), (324, 50075), (342, 50135), (343, 50141), (363, 50258), (369, 50327), (391, 50456), (394, 50468), (406, 50525), (407, 50531), (428, 50642), (430, 50651), (432, 50672), (440, 50702), (444, 50726), (445, 50735), (460, 50822), (469, 50873), (472, 50885), (493, 50972),

Gene: LittleFella_70 Start: 49071, Stop: 51476, Start Num: 88

Candidate Starts for LittleFella_70:

(74, 48999), (83, 49056), (Start: 88 @49071 has 1 MA's), (109, 49152), (132, 49299), (147, 49416), (150, 49431), (190, 49722), (192, 49752), (200, 49782), (206, 49827), (215, 49899), (229, 49977), (230, 49983), (234, 50004), (236, 50013), (268, 50211), (289, 50412), (290, 50418), (310, 50559), (311, 50562), (315, 50577), (331, 50652), (337, 50670), (339, 50676), (344, 50703), (345, 50706), (348, 50718), (373, 50859), (395, 50979), (401, 51006), (437, 51165), (438, 51177), (442, 51195), (450, 51249), (455, 51279), (456, 51282), (477, 51387), (494, 51453), (495, 51456), (497, 51462),

Gene: LukeCage_81 Start: 58309, Stop: 61629, Start Num: 9

Candidate Starts for LukeCage_81:

(Start: 9 @58309 has 26 MA's), (15, 58360), (17, 58381), (Start: 20 @58405 has 1 MA's), (25, 58486), (33, 58684), (50, 58864), (55, 58912), (56, 58915), (58, 58969), (61, 59020), (62, 59038), (64, 59047), (69, 59083), (90, 59200), (134, 59410), (142, 59479), (174, 59722), (178, 59752), (203, 59884), (220, 60007), (234, 60091), (247, 60163), (276, 60367), (280, 60421), (282, 60430), (285, 60448), (286, 60454), (310, 60646), (316, 60670), (322, 60697), (348, 60805), (364, 60904), (366, 60949), (371, 60982), (374, 60994), (385, 61072), (395, 61114), (400, 61132), (407, 61174), (413, 61213), (414, 61219), (421, 61246), (428, 61285), (437, 61333), (439, 61342), (450, 61414), (452, 61426), (454, 61435), (459, 61462), (460, 61465), (467, 61510), (468, 61513), (483, 61567), (486, 61582),

Gene: Lululemon_81 Start: 58543, Stop: 61827, Start Num: 10

Candidate Starts for Lululemon_81:

(Start: 10 @58543 has 54 MA's), (14, 58588), (17, 58618), (19, 58636), (Start: 20 @58642 has 1 MA's), (33, 58921), (44, 59023), (50, 59101), (58, 59206), (62, 59269), (63, 59275), (69, 59314), (90,

59431), (113, 59515), (134, 59641), (138, 59671), (142, 59710), (143, 59719), (168, 59917), (204, 60097), (218, 60202), (219, 60208), (220, 60214), (234, 60298), (240, 60328), (247, 60370), (251, 60397), (254, 60430), (257, 60442), (267, 60505), (276, 60577), (280, 60631), (282, 60640), (284, 60649), (285, 60658), (286, 60664), (322, 60907), (342, 60976), (344, 60988), (362, 61093), (390, 61288), (397, 61321), (407, 61372), (413, 61411), (414, 61417), (428, 61483), (437, 61531), (444, 61567), (450, 61612), (451, 61621), (460, 61663), (467, 61708), (468, 61711), (472, 61726),

Gene: MacGully_67 Start: 47987, Stop: 45444, Start Num: 98

Candidate Starts for MacGully_67:

(22, 48773), (35, 48497), (47, 48371), (57, 48290), (Start: 98 @47987 has 1 MA's), (120, 47864), (121, 47858), (147, 47660), (150, 47645), (169, 47483), (170, 47474), (179, 47417), (205, 47258), (229, 47108), (232, 47090), (234, 47081), (242, 47045), (245, 47024), (248, 47009), (268, 46808), (276, 46742), (279, 46691), (280, 46688), (281, 46682), (285, 46664), (294, 46568), (297, 46550), (302, 46514), (310, 46460), (315, 46442), (316, 46436), (320, 46418), (338, 46349), (341, 46337), (344, 46319), (361, 46229), (376, 46097), (381, 46064), (389, 46001), (401, 45947), (433, 45761), (441, 45719), (458, 45620), (461, 45599), (463, 45593), (477, 45524), (500, 45449),

Gene: Madi_65 Start: 47552, Stop: 49987, Start Num: 94

Candidate Starts for Madi_65:

(89, 47537), (Start: 94 @47552 has 8 MA's), (101, 47570), (124, 47693), (133, 47750), (147, 47864), (150, 47879), (190, 48170), (204, 48257), (222, 48386), (229, 48425), (230, 48431), (234, 48452), (236, 48461), (268, 48659), (269, 48674), (270, 48680), (276, 48722), (282, 48785), (286, 48809), (290, 48866), (293, 48890), (299, 48929), (307, 48995), (310, 49007), (315, 49025), (337, 49118), (341, 49133), (349, 49169), (368, 49271), (402, 49463), (403, 49466), (415, 49541), (416, 49547), (430, 49604), (434, 49631), (437, 49643), (450, 49727), (455, 49757), (467, 49826), (474, 49850), (477, 49865), (489, 49916), (492, 49928), (494, 49931), (499, 49946), (501, 49982),

Gene: MeganTheeKilla_59 Start: 47958, Stop: 51248, Start Num: 10

Candidate Starts for MeganTheeKilla_59:

(Start: 10 @47958 has 54 MA's), (12, 47973), (13, 47979), (17, 48030), (Start: 20 @48054 has 1 MA's), (29, 48243), (33, 48333), (41, 48393), (50, 48513), (58, 48618), (62, 48681), (63, 48687), (69, 48726), (126, 48999), (134, 49053), (138, 49083), (142, 49122), (149, 49170), (198, 49470), (204, 49509), (218, 49614), (219, 49620), (220, 49626), (225, 49659), (228, 49674), (231, 49692), (233, 49704), (234, 49710), (241, 49743), (245, 49773), (247, 49782), (256, 49848), (257, 49854), (259, 49863), (267, 49917), (276, 49989), (280, 50043), (282, 50052), (285, 50070), (286, 50076), (299, 50190), (307, 50256), (310, 50268), (324, 50328), (325, 50331), (343, 50394), (344, 50400), (346, 50406), (363, 50511), (366, 50559), (367, 50562), (380, 50631), (390, 50700), (391, 50709), (406, 50778), (407, 50784), (410, 50796), (414, 50829), (415, 50832), (428, 50895), (430, 50904), (432, 50925), (436, 50937), (444, 50979), (460, 51075), (465, 51111), (467, 51120), (472, 51138), (496, 51234),

Gene: Mildred21_78 Start: 57592, Stop: 60879, Start Num: 10

Candidate Starts for Mildred21_78:

(Start: 10 @57592 has 54 MA's), (14, 57640), (17, 57670), (19, 57688), (Start: 20 @57694 has 1 MA's), (24, 57760), (33, 57973), (34, 57979), (44, 58075), (50, 58153), (58, 58258), (62, 58321), (63, 58327), (69, 58366), (90, 58483), (117, 58582), (134, 58693), (138, 58723), (142, 58762), (148, 58801), (174, 59005), (178, 59035), (204, 59149), (205, 59164), (219, 59260), (220, 59266), (228, 59314), (234, 59350), (245, 59413), (247, 59422), (257, 59494), (267, 59557), (273, 59608), (276, 59629), (280, 59683), (282, 59692), (284, 59701), (285, 59710), (286, 59716), (322, 59959), (342, 60028), (344, 60040), (362, 60145), (397, 60373), (407, 60424), (414, 60469), (428, 60535), (432, 60565), (437, 60583), (444, 60619), (450, 60664), (460, 60715), (468, 60763), (472, 60778),

Gene: MindFlayer_79 Start: 58051, Stop: 61371, Start Num: 9

Candidate Starts for MindFlayer_79:

(Start: 9 @58051 has 26 MA's), (15, 58102), (17, 58123), (Start: 20 @58147 has 1 MA's), (25, 58228), (33, 58426), (50, 58606), (55, 58654), (56, 58657), (58, 58711), (61, 58762), (62, 58780), (64, 58789), (69, 58825), (86, 58933), (90, 58942), (134, 59152), (142, 59221), (162, 59386), (174, 59464), (203, 59626), (212, 59713), (220, 59749), (234, 59833), (245, 59896), (247, 59905), (276, 60109), (280, 60163), (282, 60172), (285, 60190), (286, 60196), (308, 60379), (310, 60388), (316, 60412), (322, 60439), (348, 60547), (364, 60646), (374, 60736), (385, 60814), (395, 60856), (400, 60874), (407, 60916), (413, 60955), (414, 60961), (421, 60988), (428, 61027), (437, 61075), (439, 61084), (450, 61156), (454, 61177), (459, 61204), (460, 61207), (463, 61222), (468, 61255), (486, 61324),

Gene: Moab_61 Start: 49797, Stop: 53087, Start Num: 10

Candidate Starts for Moab_61:

(Start: 10 @49797 has 54 MA's), (12, 49812), (17, 49869), (19, 49887), (Start: 20 @49893 has 1 MA's), (30, 50103), (33, 50172), (34, 50178), (36, 50202), (41, 50232), (49, 50346), (50, 50352), (51, 50364), (58, 50457), (62, 50520), (63, 50526), (69, 50565), (80, 50655), (117, 50781), (134, 50892), (142, 50961), (146, 50988), (160, 51105), (198, 51309), (204, 51348), (216, 51447), (219, 51459), (220, 51465), (225, 51498), (231, 51531), (234, 51549), (245, 51612), (247, 51621), (256, 51687), (257, 51693), (267, 51756), (276, 51828), (280, 51882), (282, 51891), (284, 51900), (285, 51909), (286, 51915), (301, 52041), (310, 52107), (324, 52167), (325, 52170), (342, 52227), (346, 52245), (363, 52350), (366, 52398), (374, 52443), (391, 52548), (406, 52617), (407, 52623), (428, 52734), (430, 52743), (432, 52764), (445, 52827), (460, 52914), (469, 52965), (472, 52977), (486, 53031),

Gene: MontyDev_74 Start: 55561, Stop: 57873, Start Num: 99

Candidate Starts for MontyDev_74:

(Start: 99 @55561 has 8 MA's), (114, 55657), (125, 55696), (132, 55747), (133, 55750), (134, 55759), (135, 55762), (139, 55792), (144, 55840), (150, 55876), (179, 56110), (184, 56143), (193, 56209), (206, 56287), (208, 56305), (236, 56470), (240, 56488), (249, 56560), (250, 56563), (252, 56587), (255, 56602), (262, 56632), (293, 56905), (300, 56947), (301, 56953), (302, 56965), (307, 57007), (315, 57037), (317, 57049), (330, 57109), (337, 57127), (339, 57133), (348, 57175), (353, 57202), (360, 57238), (399, 57361), (400, 57364), (405, 57400), (431, 57499), (436, 57526), (437, 57532), (442, 57562), (463, 57691), (464, 57697), (476, 57754), (480, 57769), (484, 57781), (487, 57799),

Gene: MortySmith_55 Start: 40308, Stop: 42608, Start Num: 96

Candidate Starts for MortySmith_55:

(Start: 96 @40308 has 22 MA's), (Start: 100 @40314 has 5 MA's), (111, 40389), (124, 40461), (127, 40482), (132, 40515), (134, 40527), (135, 40530), (136, 40548), (137, 40554), (146, 40623), (150, 40647), (153, 40686), (160, 40743), (170, 40824), (190, 40938), (191, 40950), (204, 41025), (206, 41043), (215, 41121), (217, 41127), (219, 41136), (224, 41169), (229, 41199), (230, 41205), (234, 41226), (236, 41235), (244, 41265), (253, 41340), (255, 41349), (261, 41373), (262, 41379), (265, 41394), (276, 41496), (284, 41568), (287, 41592), (295, 41676), (307, 41766), (310, 41778), (315, 41796), (332, 41874), (334, 41880), (336, 41889), (344, 41922), (359, 41994), (406, 42174), (412, 42204), (425, 42267), (441, 42339), (464, 42462), (482, 42540), (491, 42585), (494, 42591),

Gene: Mugiwara_83 Start: 58808, Stop: 62128, Start Num: 9

Candidate Starts for Mugiwara_83:

(Start: 9 @58808 has 26 MA's), (15, 58859), (17, 58880), (Start: 20 @58904 has 1 MA's), (25, 58985), (33, 59183), (50, 59363), (55, 59411), (58, 59468), (59, 59471), (61, 59519), (62, 59537), (64, 59546), (69, 59582), (90, 59699), (134, 59909), (142, 59978), (162, 60143), (174, 60221), (203, 60383), (220, 60506), (234, 60590), (247, 60662), (276, 60866), (280, 60920), (282, 60929), (285, 60947), (286, 60953), (310, 61145), (316, 61169), (322, 61196), (348, 61304), (366, 61448), (371, 61481), (374, 61493), (385, 61571), (395, 61613), (400, 61631), (407, 61673), (413, 61712), (414, 61718), (421, 61745), (428, 61784), (437, 61832), (439, 61841), (450, 61913), (454, 61934), (459, 61961), (460, 61964), (467, 62009), (468, 62012), (483, 62066), (486, 62081),

Gene: MulchMansion_77 Start: 57396, Stop: 60680, Start Num: 10

Candidate Starts for MulchMansion_77:

(2, 57312), (3, 57339), (Start: 10 @57396 has 54 MA's), (14, 57441), (17, 57471), (19, 57489), (Start: 20 @57495 has 1 MA's), (33, 57774), (44, 57876), (50, 57954), (51, 57966), (58, 58059), (62, 58122), (63, 58128), (69, 58167), (90, 58284), (107, 58323), (117, 58383), (134, 58494), (138, 58524), (148, 58602), (171, 58791), (175, 58815), (178, 58836), (204, 58950), (205, 58965), (218, 59055), (219, 59061), (220, 59067), (223, 59091), (224, 59094), (234, 59151), (241, 59184), (245, 59214), (247, 59223), (257, 59295), (259, 59304), (267, 59358), (276, 59430), (280, 59484), (282, 59493), (284, 59502), (285, 59511), (286, 59517), (293, 59598), (322, 59760), (342, 59829), (344, 59841), (364, 59955), (405, 60216), (407, 60225), (428, 60336), (437, 60384), (450, 60465), (460, 60516), (468, 60564), (472, 60579),

Gene: Muntaha_58 Start: 50102, Stop: 53389, Start Num: 10

Candidate Starts for Muntaha_58:

(Start: 10 @50102 has 54 MA's), (17, 50174), (Start: 20 @50198 has 1 MA's), (26, 50294), (33, 50477), (41, 50537), (46, 50627), (50, 50657), (52, 50672), (54, 50699), (55, 50705), (58, 50762), (62, 50825), (69, 50870), (76, 50918), (123, 51122), (133, 51188), (134, 51197), (158, 51398), (162, 51431), (174, 51509), (178, 51539), (198, 51614), (204, 51653), (205, 51668), (219, 51764), (220, 51770), (225, 51803), (233, 51848), (234, 51854), (244, 51902), (247, 51926), (251, 51953), (252, 51971), (257, 51998), (267, 52061), (276, 52133), (280, 52187), (282, 52196), (285, 52214), (286, 52220), (301, 52346), (307, 52400), (310, 52412), (322, 52463), (324, 52472), (342, 52532), (367, 52706), (377, 52757), (394, 52865), (406, 52922), (407, 52928), (415, 52976), (428, 53039), (430, 53048), (451, 53177), (460, 53219), (463, 53234), (472, 53282),

Gene: NarutoRun_57 Start: 41234, Stop: 43537, Start Num: 96

Candidate Starts for NarutoRun_57:

(Start: 96 @41234 has 22 MA's), (Start: 100 @41240 has 5 MA's), (111, 41318), (124, 41390), (127, 41411), (132, 41444), (134, 41456), (135, 41459), (136, 41477), (146, 41552), (150, 41576), (153, 41615), (158, 41660), (160, 41672), (170, 41753), (190, 41867), (191, 41879), (204, 41954), (206, 41972), (215, 42050), (217, 42056), (219, 42065), (224, 42098), (229, 42128), (230, 42134), (234, 42155), (236, 42164), (244, 42194), (253, 42269), (255, 42278), (261, 42302), (262, 42308), (265, 42323), (267, 42350), (276, 42425), (284, 42497), (287, 42521), (295, 42605), (307, 42695), (310, 42707), (315, 42725), (332, 42803), (334, 42809), (336, 42818), (344, 42851), (359, 42923), (406, 43103), (412, 43133), (425, 43196), (441, 43268), (464, 43391), (470, 43424), (482, 43469), (491, 43514), (494, 43520),

Gene: Navo_79 Start: 58485, Stop: 61769, Start Num: 10

Candidate Starts for Navo_79:

(Start: 10 @58485 has 54 MA's), (14, 58530), (17, 58560), (19, 58578), (Start: 20 @58584 has 1 MA's), (33, 58863), (34, 58869), (44, 58965), (50, 59043), (58, 59148), (62, 59211), (63, 59217), (69, 59256), (90, 59373), (117, 59472), (134, 59583), (138, 59613), (142, 59652), (174, 59895), (178, 59925), (204, 60039), (205, 60054), (218, 60144), (219, 60150), (220, 60156), (234, 60240), (245, 60303), (247, 60312), (257, 60384), (267, 60447), (276, 60519), (280, 60573), (282, 60582), (284, 60591), (285, 60600), (286, 60606), (293, 60687), (307, 60786), (322, 60849), (342, 60918), (344, 60930), (370, 61116), (374, 61134), (390, 61230), (397, 61263), (407, 61314), (414, 61359), (428, 61425), (432, 61455), (437, 61473), (444, 61509), (450, 61554), (455, 61584), (460, 61605), (468, 61653), (472, 61668),

Gene: Neptune_57 Start: 41252, Stop: 43555, Start Num: 96

Candidate Starts for Neptune_57:

(Start: 96 @41252 has 22 MA's), (Start: 100 @41258 has 5 MA's), (111, 41336), (124, 41408), (127, 41429), (132, 41462), (134, 41474), (135, 41477), (136, 41495), (146, 41570), (150, 41594), (153,

41633), (158, 41678), (160, 41690), (170, 41771), (190, 41885), (191, 41897), (204, 41972), (206, 41990), (215, 42068), (217, 42074), (219, 42083), (224, 42116), (229, 42146), (230, 42152), (234, 42173), (236, 42182), (244, 42212), (253, 42287), (255, 42296), (261, 42320), (262, 42326), (263, 42332), (265, 42341), (276, 42443), (284, 42515), (287, 42539), (295, 42623), (307, 42713), (310, 42725), (315, 42743), (332, 42821), (334, 42827), (336, 42836), (344, 42869), (359, 42941), (406, 43121), (412, 43151), (425, 43214), (441, 43286), (464, 43409), (470, 43442), (482, 43487), (491, 43532), (494, 43538),

Gene: NiceHouse_90 Start: 64900, Stop: 68652, Start Num: 11

Candidate Starts for NiceHouse_90:

(Start: 11 @64900 has 1 MA's), (14, 64942), (39, 65314), (40, 65326), (46, 65425), (50, 65455), (52, 65470), (55, 65503), (56, 65506), (59, 65563), (60, 65581), (61, 65605), (63, 65629), (69, 65668), (70, 65683), (72, 65689), (73, 65695), (79, 65755), (107, 65824), (116, 65881), (123, 65917), (126, 65938), (144, 66073), (153, 66148), (166, 66256), (186, 66379), (200, 66457), (202, 66469), (205, 66499), (208, 66520), (222, 66613), (223, 66619), (227, 66637), (238, 66703), (242, 66721), (247, 66751), (251, 66778), (257, 66823), (280, 67009), (283, 67024), (285, 67036), (319, 67279), (325, 67306), (327, 67312), (370, 67564), (374, 67588), (379, 67612), (382, 67651), (394, 67708), (396, 67714), (400, 67735), (402, 67744), (410, 67798), (411, 67813), (413, 67825), (424, 67888), (426, 67894), (437, 67945), (440, 67972), (466, 68137), (469, 68149), (502, 68308), (503, 68332), (504, 68353), (507, 68371), (508, 68398), (509, 68401), (511, 68422), (515, 68491), (516, 68494), (525, 68590), (526, 68596), (528, 68620), (529, 68626),

Gene: Nilo_76 Start: 55918, Stop: 58230, Start Num: 99

Candidate Starts for Nilo_76:

(Start: 99 @55918 has 8 MA's), (114, 56014), (125, 56053), (132, 56104), (133, 56107), (135, 56119), (139, 56149), (144, 56197), (150, 56233), (179, 56467), (184, 56500), (193, 56566), (206, 56644), (208, 56662), (233, 56809), (236, 56827), (240, 56845), (249, 56917), (250, 56920), (252, 56944), (255, 56959), (262, 56989), (293, 57262), (300, 57304), (301, 57310), (302, 57322), (307, 57364), (315, 57394), (317, 57406), (330, 57466), (337, 57484), (339, 57490), (348, 57532), (353, 57559), (360, 57595), (399, 57718), (400, 57721), (405, 57757), (431, 57856), (436, 57883), (437, 57889), (442, 57919), (456, 58012), (463, 58048), (464, 58054), (476, 58111), (480, 58126), (484, 58138), (487, 58156),

Gene: NootNoot_75 Start: 57480, Stop: 60764, Start Num: 10

Candidate Starts for NootNoot_75:

(Start: 10 @57480 has 54 MA's), (14, 57525), (17, 57555), (19, 57573), (Start: 20 @57579 has 1 MA's), (24, 57645), (33, 57858), (34, 57864), (44, 57960), (50, 58038), (58, 58143), (62, 58206), (63, 58212), (69, 58251), (90, 58368), (117, 58467), (134, 58578), (138, 58608), (142, 58647), (174, 58890), (204, 59034), (205, 59049), (219, 59145), (220, 59151), (223, 59175), (234, 59235), (245, 59298), (247, 59307), (257, 59379), (267, 59442), (276, 59514), (280, 59568), (282, 59577), (284, 59586), (285, 59595), (286, 59601), (293, 59682), (307, 59781), (322, 59844), (342, 59913), (344, 59925), (370, 60111), (374, 60129), (390, 60225), (397, 60258), (407, 60309), (414, 60354), (428, 60420), (432, 60450), (437, 60468), (444, 60504), (450, 60549), (451, 60558), (455, 60579), (460, 60600), (468, 60648), (472, 60663),

Gene: Onyinye_84 Start: 57643, Stop: 59931, Start Num: 97

Candidate Starts for Onyinye_84:

(71, 57520), (Start: 97 @57643 has 3 MA's), (104, 57676), (105, 57682), (119, 57772), (124, 57805), (128, 57829), (131, 57856), (142, 57940), (143, 57949), (144, 57952), (150, 57991), (151, 57994), (155, 58045), (163, 58123), (165, 58135), (203, 58363), (205, 58384), (212, 58447), (217, 58459), (229, 58531), (230, 58537), (235, 58561), (236, 58567), (239, 58582), (244, 58597), (246, 58615), (249, 58639), (255, 58681), (264, 58720), (267, 58753), (286, 58915), (287, 58924), (302, 59059), (304, 59086), (315, 59131), (344, 59245), (356, 59305), (411, 59521), (433, 59608), (434, 59611),

(442, 59653), (471, 59818), (477, 59848), (488, 59896), (491, 59908), (498, 59923),

Gene: OverHedge_57 Start: 41131, Stop: 43434, Start Num: 96

Candidate Starts for OverHedge_57:

(Start: 96 @41131 has 22 MA's), (Start: 100 @41137 has 5 MA's), (111, 41215), (124, 41287), (127, 41308), (132, 41341), (135, 41356), (136, 41374), (146, 41449), (150, 41473), (153, 41512), (158, 41557), (160, 41569), (170, 41650), (190, 41764), (191, 41776), (204, 41851), (206, 41869), (215, 41947), (217, 41953), (219, 41962), (224, 41995), (229, 42025), (230, 42031), (234, 42052), (236, 42061), (244, 42091), (253, 42166), (255, 42175), (261, 42199), (262, 42205), (263, 42211), (265, 42220), (276, 42322), (284, 42394), (287, 42418), (295, 42502), (307, 42592), (310, 42604), (315, 42622), (332, 42700), (334, 42706), (336, 42715), (344, 42748), (359, 42820), (406, 43000), (412, 43030), (425, 43093), (441, 43165), (464, 43288), (470, 43321), (482, 43366), (491, 43411), (494, 43417),

Gene: PacManQ_81 Start: 58543, Stop: 61827, Start Num: 10

Candidate Starts for PacManQ_81:

(Start: 10 @58543 has 54 MA's), (14, 58588), (17, 58618), (19, 58636), (Start: 20 @58642 has 1 MA's), (33, 58921), (44, 59023), (50, 59101), (58, 59206), (62, 59269), (63, 59275), (69, 59314), (90, 59431), (113, 59515), (134, 59641), (138, 59671), (142, 59710), (143, 59719), (168, 59917), (204, 60097), (218, 60202), (219, 60208), (220, 60214), (234, 60298), (240, 60328), (247, 60370), (251, 60397), (254, 60430), (257, 60442), (267, 60505), (276, 60577), (280, 60631), (282, 60640), (284, 60649), (285, 60658), (286, 60664), (322, 60907), (342, 60976), (344, 60988), (362, 61093), (390, 61288), (397, 61321), (407, 61372), (413, 61411), (414, 61417), (428, 61483), (437, 61531), (444, 61567), (450, 61612), (451, 61621), (460, 61663), (467, 61708), (468, 61711), (472, 61726),

Gene: Papyrus_74 Start: 55529, Stop: 57841, Start Num: 99

Candidate Starts for Papyrus_74:

(Start: 99 @55529 has 8 MA's), (114, 55625), (125, 55664), (132, 55715), (133, 55718), (135, 55730), (139, 55760), (144, 55808), (150, 55844), (179, 56078), (184, 56111), (193, 56177), (206, 56255), (208, 56273), (233, 56420), (236, 56438), (240, 56456), (249, 56528), (250, 56531), (252, 56555), (255, 56570), (262, 56600), (266, 56624), (293, 56873), (300, 56915), (301, 56921), (302, 56933), (307, 56975), (315, 57005), (317, 57017), (330, 57077), (339, 57101), (348, 57143), (353, 57170), (360, 57206), (399, 57329), (400, 57332), (405, 57368), (431, 57467), (436, 57494), (437, 57500), (442, 57530), (463, 57659), (464, 57665), (476, 57722), (480, 57737), (484, 57749), (487, 57767), (491, 57788),

Gene: Paradiddles_75 Start: 57744, Stop: 61028, Start Num: 10

Candidate Starts for Paradiddles_75:

(Start: 10 @57744 has 54 MA's), (14, 57789), (17, 57819), (19, 57837), (Start: 20 @57843 has 1 MA's), (24, 57909), (33, 58122), (34, 58128), (44, 58224), (50, 58302), (58, 58407), (62, 58470), (63, 58476), (69, 58515), (90, 58632), (117, 58731), (134, 58842), (138, 58872), (142, 58911), (174, 59154), (204, 59298), (205, 59313), (218, 59403), (219, 59409), (220, 59415), (223, 59439), (234, 59499), (245, 59562), (247, 59571), (257, 59643), (267, 59706), (276, 59778), (280, 59832), (282, 59841), (284, 59850), (285, 59859), (286, 59865), (293, 59946), (307, 60045), (322, 60108), (342, 60177), (344, 60189), (370, 60375), (374, 60393), (390, 60489), (397, 60522), (407, 60573), (413, 60612), (414, 60618), (428, 60684), (432, 60714), (437, 60732), (444, 60768), (450, 60813), (451, 60822), (455, 60843), (460, 60864), (468, 60912), (472, 60927),

Gene: Patelgo_60 Start: 49984, Stop: 53274, Start Num: 10

Candidate Starts for Patelgo_60:

(Start: 10 @49984 has 54 MA's), (12, 49999), (17, 50056), (19, 50074), (Start: 20 @50080 has 1 MA's), (30, 50290), (33, 50359), (34, 50365), (36, 50389), (41, 50419), (49, 50533), (50, 50539), (51, 50551), (58, 50644), (62, 50707), (63, 50713), (69, 50752), (80, 50842), (117, 50968), (134, 51079),

(142, 51148), (146, 51175), (198, 51496), (204, 51535), (216, 51634), (219, 51646), (220, 51652), (223, 51676), (225, 51685), (231, 51718), (234, 51736), (245, 51799), (247, 51808), (256, 51874), (257, 51880), (267, 51943), (276, 52015), (280, 52069), (282, 52078), (284, 52087), (285, 52096), (286, 52102), (301, 52228), (310, 52294), (324, 52354), (325, 52357), (342, 52414), (346, 52432), (358, 52495), (363, 52537), (366, 52585), (391, 52735), (406, 52804), (407, 52810), (428, 52921), (430, 52930), (432, 52951), (445, 53014), (460, 53101), (469, 53152), (472, 53164), (486, 53218),

Gene: Peebs_79 Start: 58897, Stop: 62181, Start Num: 10

Candidate Starts for Peebs_79:

(Start: 10 @58897 has 54 MA's), (14, 58942), (17, 58972), (19, 58990), (Start: 20 @58996 has 1 MA's), (33, 59275), (44, 59377), (50, 59455), (58, 59560), (62, 59623), (63, 59629), (69, 59668), (90, 59785), (113, 59869), (134, 59995), (138, 60025), (142, 60064), (143, 60073), (204, 60451), (218, 60556), (219, 60562), (220, 60568), (223, 60592), (234, 60652), (240, 60682), (241, 60685), (247, 60724), (251, 60751), (257, 60796), (267, 60859), (276, 60931), (280, 60985), (282, 60994), (284, 61003), (285, 61012), (286, 61018), (322, 61261), (342, 61330), (344, 61342), (362, 61447), (390, 61642), (397, 61675), (407, 61726), (414, 61771), (428, 61837), (437, 61885), (444, 61921), (450, 61966), (451, 61975), (460, 62017), (467, 62062), (468, 62065), (472, 62080),

Gene: Pepperwood_80 Start: 59030, Stop: 62314, Start Num: 10

Candidate Starts for Pepperwood_80:

(Start: 10 @59030 has 54 MA's), (14, 59075), (17, 59105), (19, 59123), (Start: 20 @59129 has 1 MA's), (33, 59408), (50, 59588), (58, 59693), (62, 59756), (63, 59762), (69, 59801), (90, 59918), (113, 60002), (134, 60128), (138, 60158), (142, 60197), (143, 60206), (168, 60404), (204, 60584), (218, 60689), (219, 60695), (220, 60701), (234, 60785), (240, 60815), (247, 60857), (251, 60884), (254, 60917), (257, 60929), (267, 60992), (276, 61064), (280, 61118), (282, 61127), (284, 61136), (285, 61145), (286, 61151), (322, 61394), (342, 61463), (344, 61475), (362, 61580), (390, 61775), (397, 61808), (407, 61859), (414, 61904), (428, 61970), (437, 62018), (444, 62054), (450, 62099), (451, 62108), (460, 62150), (467, 62195), (468, 62198), (472, 62213),

Gene: Peregrin_100 Start: 61340, Stop: 64219, Start Num: 92

Candidate Starts for Peregrin_100:

(78, 61292), (84, 61322), (87, 61328), (Start: 92 @61340 has 3 MA's), (112, 61418), (116, 61445), (144, 61637), (171, 61859), (172, 61862), (181, 61895), (229, 62183), (234, 62210), (238, 62234), (247, 62282), (257, 62354), (263, 62378), (280, 62540), (285, 62567), (313, 62825), (318, 62849), (321, 62876), (333, 62921), (340, 62948), (351, 62987), (368, 63128), (374, 63173), (382, 63236), (391, 63281), (416, 63416), (424, 63464), (435, 63512), (440, 63548), (443, 63563), (455, 63650), (465, 63710), (469, 63725), (475, 63746), (506, 63941), (507, 63947), (509, 63974), (511, 63995), (513, 64016), (514, 64055), (515, 64064), (520, 64118), (522, 64124), (529, 64196),

Gene: Persimmon_77 Start: 57413, Stop: 60697, Start Num: 10

Candidate Starts for Persimmon_77:

(Start: 10 @57413 has 54 MA's), (14, 57458), (17, 57488), (19, 57506), (Start: 20 @57512 has 1 MA's), (24, 57578), (33, 57791), (34, 57797), (44, 57893), (50, 57971), (58, 58076), (62, 58139), (63, 58145), (69, 58184), (90, 58301), (117, 58400), (134, 58511), (138, 58541), (142, 58580), (174, 58823), (204, 58967), (205, 58982), (219, 59078), (220, 59084), (223, 59108), (234, 59168), (245, 59231), (247, 59240), (257, 59312), (267, 59375), (276, 59447), (280, 59501), (282, 59510), (284, 59519), (285, 59528), (286, 59534), (293, 59615), (307, 59714), (322, 59777), (342, 59846), (344, 59858), (370, 60044), (374, 60062), (390, 60158), (397, 60191), (407, 60242), (413, 60281), (414, 60287), (428, 60353), (432, 60383), (437, 60401), (444, 60437), (450, 60482), (451, 60491), (455, 60512), (460, 60533), (468, 60581), (472, 60596),

Gene: Pharpay_56 Start: 41279, Stop: 43582, Start Num: 96

Candidate Starts for Pharpay_56:

(Start: 96 @41279 has 22 MA's), (Start: 100 @41285 has 5 MA's), (111, 41363), (124, 41435), (127, 41456), (132, 41489), (134, 41501), (135, 41504), (136, 41522), (146, 41597), (150, 41621), (153, 41660), (158, 41705), (160, 41717), (170, 41798), (190, 41912), (191, 41924), (204, 41999), (206, 42017), (215, 42095), (217, 42101), (219, 42110), (224, 42143), (229, 42173), (230, 42179), (234, 42200), (236, 42209), (244, 42239), (253, 42314), (255, 42323), (261, 42347), (262, 42353), (265, 42368), (267, 42395), (276, 42470), (284, 42542), (287, 42566), (295, 42650), (307, 42740), (310, 42752), (315, 42770), (332, 42848), (334, 42854), (336, 42863), (344, 42896), (359, 42968), (406, 43148), (412, 43178), (425, 43241), (441, 43313), (464, 43436), (470, 43469), (482, 43514), (491, 43559), (494, 43565),

Gene: Phredrick_60 Start: 47859, Stop: 51149, Start Num: 10

Candidate Starts for Phredrick_60:

(Start: 10 @47859 has 54 MA's), (13, 47880), (15, 47910), (17, 47931), (Start: 20 @47955 has 1 MA's), (33, 48234), (41, 48294), (49, 48408), (50, 48414), (51, 48426), (58, 48519), (62, 48582), (63, 48588), (69, 48627), (73, 48654), (117, 48843), (120, 48858), (142, 49023), (149, 49071), (198, 49371), (204, 49410), (220, 49527), (225, 49560), (231, 49593), (234, 49611), (241, 49644), (247, 49683), (256, 49749), (257, 49755), (267, 49818), (276, 49890), (280, 49944), (282, 49953), (285, 49971), (286, 49977), (299, 50091), (307, 50157), (310, 50169), (324, 50229), (325, 50232), (346, 50307), (358, 50370), (363, 50412), (380, 50532), (391, 50610), (406, 50679), (407, 50685), (423, 50778), (428, 50796), (430, 50805), (432, 50826), (440, 50856), (445, 50889), (460, 50976), (462, 50988), (465, 51012), (472, 51039),

Gene: PhunaPhoke_57 Start: 41249, Stop: 43552, Start Num: 96

Candidate Starts for PhunaPhoke_57:

(Start: 96 @41249 has 22 MA's), (Start: 100 @41255 has 5 MA's), (111, 41333), (124, 41405), (127, 41426), (132, 41459), (134, 41471), (135, 41474), (136, 41492), (146, 41567), (150, 41591), (153, 41630), (158, 41675), (160, 41687), (170, 41768), (190, 41882), (191, 41894), (204, 41969), (206, 41987), (215, 42065), (217, 42071), (219, 42080), (224, 42113), (229, 42143), (230, 42149), (234, 42170), (236, 42179), (244, 42209), (253, 42284), (255, 42293), (261, 42317), (262, 42323), (263, 42329), (276, 42440), (284, 42512), (287, 42536), (295, 42620), (307, 42710), (310, 42722), (315, 42740), (332, 42818), (334, 42824), (336, 42833), (344, 42866), (359, 42938), (406, 43118), (412, 43148), (425, 43211), (441, 43283), (464, 43406), (470, 43439), (482, 43484), (491, 43529), (494, 43535),

Gene: PinkiePie_78 Start: 58566, Stop: 61850, Start Num: 10

Candidate Starts for PinkiePie_78:

(Start: 10 @58566 has 54 MA's), (14, 58611), (17, 58641), (19, 58659), (Start: 20 @58665 has 1 MA's), (24, 58731), (33, 58944), (34, 58950), (44, 59046), (50, 59124), (58, 59229), (62, 59292), (63, 59298), (69, 59337), (90, 59454), (117, 59553), (134, 59664), (138, 59694), (142, 59733), (174, 59976), (204, 60120), (205, 60135), (219, 60231), (220, 60237), (223, 60261), (234, 60321), (245, 60384), (247, 60393), (257, 60465), (267, 60528), (276, 60600), (280, 60654), (282, 60663), (284, 60672), (285, 60681), (286, 60687), (293, 60768), (307, 60867), (322, 60930), (342, 60999), (344, 61011), (370, 61197), (374, 61215), (390, 61311), (397, 61344), (407, 61395), (413, 61434), (414, 61440), (428, 61506), (432, 61536), (437, 61554), (444, 61590), (450, 61635), (451, 61644), (455, 61665), (460, 61686), (468, 61734), (472, 61749),

Gene: Potty_56 Start: 41179, Stop: 43482, Start Num: 96

Candidate Starts for Potty_56:

(Start: 96 @41179 has 22 MA's), (Start: 100 @41185 has 5 MA's), (111, 41263), (124, 41335), (127, 41356), (132, 41389), (134, 41401), (135, 41404), (136, 41422), (146, 41497), (150, 41521), (153, 41560), (158, 41605), (160, 41617), (170, 41698), (190, 41812), (191, 41824), (204, 41899), (206, 41917), (215, 41995), (217, 42001), (219, 42010), (224, 42043), (229, 42073), (230, 42079), (234, 42100), (236, 42109), (244, 42139), (253, 42214), (255, 42223), (261, 42247), (262, 42253), (263,

42259), (265, 42268), (276, 42370), (284, 42442), (287, 42466), (295, 42550), (307, 42640), (310, 42652), (315, 42670), (332, 42748), (334, 42754), (336, 42763), (344, 42796), (359, 42868), (406, 43048), (412, 43078), (425, 43141), (441, 43213), (464, 43336), (470, 43369), (482, 43414), (491, 43459), (494, 43465),

Gene: Poultress_57 Start: 41482, Stop: 43779, Start Num: 100

Candidate Starts for Poultress_57:

(Start: 96 @41476 has 22 MA's), (Start: 100 @41482 has 5 MA's), (111, 41560), (124, 41632), (127, 41653), (132, 41686), (134, 41698), (135, 41701), (136, 41719), (137, 41725), (146, 41794), (150, 41818), (153, 41857), (158, 41902), (160, 41914), (170, 41995), (190, 42109), (191, 42121), (204, 42196), (206, 42214), (215, 42292), (217, 42298), (219, 42307), (224, 42340), (229, 42370), (230, 42376), (234, 42397), (236, 42406), (244, 42436), (253, 42511), (255, 42520), (261, 42544), (262, 42550), (263, 42556), (265, 42565), (276, 42667), (284, 42739), (287, 42763), (295, 42847), (307, 42937), (310, 42949), (315, 42967), (332, 43045), (334, 43051), (336, 43060), (344, 43093), (359, 43165), (406, 43345), (412, 43375), (425, 43438), (441, 43510), (464, 43633), (470, 43666), (482, 43711), (491, 43756), (494, 43762),

Gene: Puissant_78 Start: 55929, Stop: 58568, Start Num: 58

Candidate Starts for Puissant_78:

(4, 55227), (7, 55254), (16, 55326), (18, 55350), (21, 55383), (27, 55518), (32, 55611), (37, 55677), (43, 55737), (46, 55794), (58, 55929), (79, 56130), (91, 56163), (108, 56220), (126, 56319), (129, 56346), (135, 56376), (139, 56406), (150, 56499), (153, 56538), (157, 56580), (170, 56676), (173, 56694), (187, 56775), (204, 56937), (206, 56955), (217, 57039), (222, 57072), (223, 57078), (231, 57120), (236, 57147), (237, 57153), (239, 57162), (243, 57192), (248, 57234), (250, 57249), (255, 57288), (258, 57300), (270, 57393), (271, 57399), (277, 57447), (280, 57489), (299, 57639), (301, 57651), (315, 57735), (335, 57828), (347, 57876), (352, 57897), (400, 58089), (413, 58167), (427, 58221), (431, 58233), (455, 58377), (457, 58383), (461, 58410), (468, 58449), (478, 58488), (479, 58491), (484, 58506), (494, 58551),

Gene: PumpkinSpice_81 Start: 58443, Stop: 61763, Start Num: 9

Candidate Starts for PumpkinSpice_81:

(Start: 9 @58443 has 26 MA's), (15, 58494), (17, 58515), (Start: 20 @58539 has 1 MA's), (25, 58620), (33, 58818), (50, 58998), (55, 59046), (58, 59103), (61, 59154), (62, 59172), (64, 59181), (69, 59217), (86, 59325), (90, 59334), (134, 59544), (142, 59613), (162, 59778), (174, 59856), (203, 60018), (220, 60141), (223, 60165), (234, 60225), (245, 60288), (247, 60297), (276, 60501), (280, 60555), (282, 60564), (285, 60582), (286, 60588), (308, 60771), (310, 60780), (316, 60804), (322, 60831), (348, 60939), (374, 61128), (385, 61206), (395, 61248), (400, 61266), (407, 61308), (413, 61347), (414, 61353), (421, 61380), (428, 61419), (437, 61467), (439, 61476), (450, 61548), (454, 61569), (459, 61596), (460, 61599), (463, 61614), (468, 61647), (486, 61716),

Gene: Quaran19_81 Start: 58434, Stop: 61754, Start Num: 9

Candidate Starts for Quaran19_81:

(Start: 9 @58434 has 26 MA's), (15, 58485), (17, 58506), (Start: 20 @58530 has 1 MA's), (25, 58611), (33, 58809), (50, 58989), (55, 59037), (58, 59094), (61, 59145), (62, 59163), (64, 59172), (69, 59208), (86, 59316), (90, 59325), (134, 59535), (142, 59604), (162, 59769), (174, 59847), (203, 60009), (220, 60132), (223, 60156), (234, 60216), (245, 60279), (247, 60288), (276, 60492), (280, 60546), (282, 60555), (285, 60573), (286, 60579), (308, 60762), (310, 60771), (316, 60795), (322, 60822), (348, 60930), (374, 61119), (385, 61197), (395, 61239), (400, 61257), (407, 61299), (413, 61338), (414, 61344), (421, 61371), (428, 61410), (437, 61458), (439, 61467), (450, 61539), (454, 61560), (459, 61587), (460, 61590), (463, 61605), (468, 61638), (486, 61707),

Gene: Rachella_57 Start: 41260, Stop: 43563, Start Num: 96

Candidate Starts for Rachella_57:

(Start: 96 @41260 has 22 MA's), (Start: 100 @41266 has 5 MA's), (111, 41344), (124, 41416), (127, 41437), (132, 41470), (134, 41482), (135, 41485), (136, 41503), (146, 41578), (150, 41602), (153, 41641), (158, 41686), (160, 41698), (170, 41779), (190, 41893), (191, 41905), (204, 41980), (206, 41998), (215, 42076), (217, 42082), (219, 42091), (224, 42124), (229, 42154), (230, 42160), (234, 42181), (236, 42190), (244, 42220), (253, 42295), (255, 42304), (261, 42328), (262, 42334), (265, 42349), (267, 42376), (276, 42451), (284, 42523), (287, 42547), (295, 42631), (307, 42721), (310, 42733), (315, 42751), (332, 42829), (334, 42835), (336, 42844), (344, 42877), (359, 42949), (406, 43129), (412, 43159), (425, 43222), (441, 43294), (464, 43417), (470, 43450), (482, 43495), (491, 43540), (494, 43546),

Gene: Rie18_57 Start: 41055, Stop: 43352, Start Num: 100

Candidate Starts for Rie18_57:

(Start: 100 @41055 has 5 MA's), (111, 41133), (127, 41226), (132, 41259), (134, 41271), (135, 41274), (136, 41292), (146, 41367), (150, 41391), (153, 41430), (160, 41487), (170, 41568), (190, 41682), (191, 41694), (206, 41787), (213, 41853), (217, 41871), (224, 41913), (229, 41943), (230, 41949), (234, 41970), (236, 41979), (244, 42009), (249, 42051), (253, 42084), (262, 42123), (284, 42312), (287, 42336), (307, 42510), (310, 42522), (315, 42540), (325, 42585), (334, 42624), (336, 42633), (354, 42711), (359, 42738), (366, 42780), (406, 42918), (412, 42948), (419, 42981), (425, 43011), (441, 43083), (447, 43119), (463, 43200), (464, 43206), (470, 43239), (482, 43284), (491, 43329), (494, 43335),

Gene: RikSengupta_63 Start: 42657, Stop: 44912, Start Num: 100

Candidate Starts for RikSengupta_63:

(95, 42648), (Start: 100 @42657 has 5 MA's), (127, 42792), (132, 42825), (135, 42840), (147, 42942), (150, 42957), (160, 43053), (170, 43134), (171, 43143), (189, 43242), (190, 43248), (204, 43335), (206, 43353), (209, 43383), (211, 43404), (212, 43416), (215, 43431), (219, 43446), (224, 43479), (229, 43509), (230, 43515), (234, 43536), (236, 43545), (244, 43575), (254, 43656), (258, 43671), (262, 43689), (265, 43704), (275, 43803), (302, 44034), (303, 44037), (310, 44088), (315, 44106), (317, 44118), (328, 44160), (334, 44190), (336, 44199), (355, 44289), (388, 44391), (400, 44442), (407, 44487), (422, 44550), (425, 44574), (433, 44604), (436, 44610), (470, 44799), (482, 44844), (491, 44889), (494, 44895),

Gene: Riparian_76 Start: 55365, Stop: 57677, Start Num: 99

Candidate Starts for Riparian_76:

(Start: 99 @55365 has 8 MA's), (114, 55461), (125, 55500), (132, 55551), (133, 55554), (135, 55566), (139, 55596), (144, 55644), (150, 55680), (179, 55914), (184, 55947), (193, 56013), (206, 56091), (208, 56109), (233, 56256), (236, 56274), (240, 56292), (249, 56364), (250, 56367), (252, 56391), (255, 56406), (262, 56436), (293, 56709), (300, 56751), (301, 56757), (302, 56769), (307, 56811), (315, 56841), (317, 56853), (330, 56913), (337, 56931), (339, 56937), (348, 56979), (353, 57006), (360, 57042), (399, 57165), (400, 57168), (405, 57204), (431, 57303), (436, 57330), (437, 57336), (442, 57366), (456, 57459), (463, 57495), (464, 57501), (476, 57558), (480, 57573), (484, 57585), (487, 57603),

Gene: Rope_74 Start: 55521, Stop: 57833, Start Num: 99

Candidate Starts for Rope_74:

(Start: 99 @55521 has 8 MA's), (114, 55617), (125, 55656), (132, 55707), (133, 55710), (135, 55722), (139, 55752), (144, 55800), (150, 55836), (179, 56070), (184, 56103), (193, 56169), (206, 56247), (208, 56265), (236, 56430), (240, 56448), (249, 56520), (250, 56523), (252, 56547), (255, 56562), (262, 56592), (266, 56616), (293, 56865), (300, 56907), (301, 56913), (302, 56925), (307, 56967), (315, 56997), (317, 57009), (339, 57093), (353, 57162), (360, 57198), (399, 57321), (400, 57324), (405, 57360), (431, 57459), (436, 57486), (437, 57492), (442, 57522), (463, 57651), (464, 57657), (476, 57714), (480, 57729), (484, 57741), (487, 57759), (491, 57780),

Gene: SaltySpittoon_81 Start: 58443, Stop: 61763, Start Num: 9

Candidate Starts for SaltySpittoon_81:

(Start: 9 @58443 has 26 MA's), (15, 58494), (17, 58515), (Start: 20 @58539 has 1 MA's), (25, 58620), (33, 58818), (50, 58998), (55, 59046), (56, 59049), (58, 59103), (61, 59154), (62, 59172), (64, 59181), (69, 59217), (86, 59325), (90, 59334), (134, 59544), (142, 59613), (162, 59778), (174, 59856), (203, 60018), (220, 60141), (223, 60165), (234, 60225), (245, 60288), (247, 60297), (276, 60501), (280, 60555), (282, 60564), (285, 60582), (286, 60588), (308, 60771), (310, 60780), (316, 60804), (322, 60831), (348, 60939), (374, 61128), (385, 61206), (395, 61248), (400, 61266), (407, 61308), (413, 61347), (414, 61353), (421, 61380), (428, 61419), (437, 61467), (439, 61476), (450, 61548), (454, 61569), (459, 61596), (460, 61599), (463, 61614), (468, 61647), (486, 61716),

Gene: Samisti12_80 Start: 60339, Stop: 63623, Start Num: 10

Candidate Starts for Samisti12_80:

(Start: 10 @60339 has 54 MA's), (14, 60384), (17, 60414), (19, 60432), (Start: 20 @60438 has 1 MA's), (33, 60717), (44, 60819), (50, 60897), (51, 60909), (58, 61002), (62, 61065), (63, 61071), (69, 61110), (90, 61227), (113, 61311), (134, 61437), (138, 61467), (142, 61506), (204, 61893), (218, 61998), (219, 62004), (220, 62010), (224, 62037), (234, 62094), (240, 62124), (247, 62166), (251, 62193), (257, 62238), (267, 62301), (276, 62373), (280, 62427), (282, 62436), (284, 62445), (285, 62454), (286, 62460), (322, 62703), (342, 62772), (344, 62784), (362, 62889), (390, 63084), (397, 63117), (407, 63168), (413, 63207), (414, 63213), (428, 63279), (437, 63327), (444, 63363), (450, 63408), (451, 63417), (460, 63459), (467, 63504), (468, 63507), (472, 63522),

Gene: Send513_74 Start: 55899, Stop: 58211, Start Num: 99

Candidate Starts for Send513_74:

(Start: 99 @55899 has 8 MA's), (114, 55995), (125, 56034), (132, 56085), (133, 56088), (134, 56097), (135, 56100), (139, 56130), (144, 56178), (150, 56214), (179, 56448), (184, 56481), (193, 56547), (206, 56625), (208, 56643), (236, 56808), (240, 56826), (250, 56901), (252, 56925), (255, 56940), (262, 56970), (293, 57243), (300, 57285), (301, 57291), (302, 57303), (307, 57345), (315, 57375), (317, 57387), (330, 57447), (337, 57465), (339, 57471), (353, 57540), (360, 57576), (399, 57699), (400, 57702), (405, 57738), (431, 57837), (436, 57864), (437, 57870), (442, 57900), (463, 58029), (464, 58035), (476, 58092), (480, 58107), (484, 58119), (487, 58137),

Gene: SeresaTree_61 Start: 49159, Stop: 52449, Start Num: 10

Candidate Starts for SeresaTree_61:

(Start: 10 @49159 has 54 MA's), (12, 49174), (13, 49180), (17, 49231), (Start: 20 @49255 has 1 MA's), (33, 49534), (41, 49594), (49, 49708), (50, 49714), (58, 49819), (62, 49882), (63, 49888), (69, 49927), (164, 50506), (198, 50671), (204, 50710), (218, 50815), (219, 50821), (220, 50827), (223, 50851), (231, 50893), (241, 50944), (247, 50983), (257, 51055), (267, 51118), (276, 51190), (280, 51244), (282, 51253), (284, 51262), (285, 51271), (286, 51277), (307, 51457), (310, 51469), (316, 51493), (324, 51529), (325, 51532), (342, 51589), (343, 51595), (346, 51607), (363, 51712), (374, 51805), (391, 51910), (394, 51922), (406, 51979), (407, 51985), (414, 52030), (428, 52096), (430, 52105), (440, 52156), (445, 52189), (460, 52276), (469, 52327), (472, 52339), (493, 52426),

Gene: Sham_57 Start: 49701, Stop: 52991, Start Num: 10

Candidate Starts for Sham_57:

(Start: 10 @49701 has 54 MA's), (12, 49716), (13, 49722), (15, 49752), (17, 49773), (19, 49791), (Start: 20 @49797 has 1 MA's), (31, 50025), (33, 50076), (36, 50106), (41, 50136), (42, 50139), (49, 50250), (50, 50256), (58, 50361), (62, 50424), (63, 50430), (69, 50469), (134, 50796), (138, 50826), (142, 50865), (164, 51048), (198, 51213), (204, 51252), (206, 51270), (219, 51363), (220, 51369), (225, 51402), (231, 51435), (233, 51447), (240, 51483), (241, 51486), (247, 51525), (257, 51597), (267, 51660), (273, 51711), (276, 51732), (280, 51786), (282, 51795), (284, 51804), (285, 51813), (286, 51819), (310, 52011), (324, 52071), (325, 52074), (342, 52131), (343, 52137), (346, 52149), (353, 52185), (363, 52254), (374, 52347), (391, 52452), (406, 52521), (407, 52527), (410, 52539),

(428, 52638), (430, 52647), (432, 52668), (440, 52698), (445, 52731), (460, 52818), (461, 52827), (469, 52869), (472, 52881),

Gene: Sienna_66 Start: 47793, Stop: 50228, Start Num: 94

Candidate Starts for Sienna_66:

(Start: 94 @47793 has 8 MA's), (101, 47811), (133, 47991), (147, 48105), (150, 48120), (190, 48411), (204, 48498), (222, 48627), (229, 48666), (230, 48672), (234, 48693), (236, 48702), (268, 48900), (269, 48915), (270, 48921), (276, 48963), (282, 49026), (286, 49050), (290, 49107), (293, 49131), (299, 49170), (307, 49236), (310, 49248), (315, 49266), (337, 49359), (341, 49374), (349, 49410), (368, 49512), (402, 49704), (403, 49707), (415, 49782), (416, 49788), (430, 49845), (434, 49872), (437, 49884), (450, 49968), (455, 49998), (467, 50067), (474, 50091), (477, 50106), (489, 50157), (492, 50169), (494, 50172), (499, 50187), (501, 50223),

Gene: Snakehole_58 Start: 40677, Stop: 42980, Start Num: 96

Candidate Starts for Snakehole_58:

(Start: 96 @40677 has 22 MA's), (Start: 100 @40683 has 5 MA's), (111, 40761), (124, 40833), (127, 40854), (132, 40887), (134, 40899), (135, 40902), (136, 40920), (137, 40926), (146, 40995), (150, 41019), (153, 41058), (158, 41103), (160, 41115), (170, 41196), (190, 41310), (191, 41322), (204, 41397), (206, 41415), (215, 41493), (217, 41499), (219, 41508), (224, 41541), (229, 41571), (230, 41577), (234, 41598), (236, 41607), (244, 41637), (253, 41712), (255, 41721), (258, 41733), (262, 41751), (265, 41766), (276, 41868), (284, 41940), (287, 41964), (295, 42048), (307, 42138), (310, 42150), (315, 42168), (332, 42246), (334, 42252), (336, 42261), (344, 42294), (359, 42366), (406, 42546), (412, 42576), (425, 42639), (441, 42711), (464, 42834), (470, 42867), (482, 42912), (491, 42957), (494, 42963),

Gene: Sollertia_82 Start: 58392, Stop: 61712, Start Num: 9

Candidate Starts for Sollertia_82:

(Start: 9 @58392 has 26 MA's), (17, 58464), (Start: 20 @58488 has 1 MA's), (25, 58569), (33, 58767), (50, 58947), (55, 58995), (58, 59052), (61, 59103), (62, 59121), (64, 59130), (69, 59166), (90, 59283), (112, 59355), (131, 59478), (134, 59493), (162, 59727), (174, 59805), (203, 59967), (206, 59991), (220, 60090), (234, 60174), (247, 60246), (276, 60450), (280, 60504), (282, 60513), (285, 60531), (286, 60537), (299, 60651), (310, 60729), (316, 60753), (322, 60780), (367, 61035), (369, 61053), (371, 61065), (385, 61155), (400, 61215), (407, 61257), (414, 61302), (421, 61329), (428, 61368), (437, 61416), (439, 61425), (450, 61497), (454, 61518), (459, 61545), (460, 61548), (468, 61596), (485, 61662), (486, 61665),

Gene: Sparcetus_63 Start: 42534, Stop: 44789, Start Num: 100

Candidate Starts for Sparcetus_63:

(95, 42525), (Start: 100 @42534 has 5 MA's), (127, 42669), (132, 42702), (135, 42717), (147, 42819), (150, 42834), (160, 42930), (170, 43011), (171, 43020), (189, 43119), (190, 43125), (204, 43212), (206, 43230), (209, 43260), (211, 43281), (212, 43293), (215, 43308), (219, 43323), (224, 43356), (229, 43386), (230, 43392), (234, 43413), (236, 43422), (244, 43452), (254, 43533), (258, 43548), (262, 43566), (265, 43581), (275, 43680), (302, 43911), (303, 43914), (310, 43965), (315, 43983), (317, 43995), (328, 44037), (334, 44067), (336, 44076), (355, 44166), (388, 44268), (400, 44319), (407, 44364), (422, 44427), (425, 44451), (433, 44481), (436, 44487), (470, 44676), (482, 44721), (491, 44766), (494, 44772),

Gene: SparkleGoddess_61 Start: 49852, Stop: 53142, Start Num: 10

Candidate Starts for SparkleGoddess_61:

(6, 49834), (Start: 10 @49852 has 54 MA's), (12, 49867), (13, 49873), (15, 49903), (17, 49924), (19, 49942), (Start: 20 @49948 has 1 MA's), (28, 50116), (30, 50158), (33, 50227), (41, 50287), (49, 50401), (50, 50407), (58, 50512), (62, 50575), (63, 50581), (69, 50620), (112, 50809), (122, 50866), (126, 50893), (133, 50938), (171, 51244), (176, 51280), (198, 51364), (204, 51403), (218, 51508),

(220, 51520), (225, 51553), (230, 51583), (231, 51586), (233, 51598), (234, 51604), (247, 51676), (256, 51742), (257, 51748), (267, 51811), (276, 51883), (280, 51937), (282, 51946), (285, 51964), (286, 51970), (299, 52084), (307, 52150), (310, 52162), (316, 52186), (324, 52222), (325, 52225), (342, 52282), (343, 52288), (346, 52300), (353, 52336), (363, 52405), (391, 52603), (400, 52636), (406, 52672), (407, 52678), (410, 52690), (428, 52789), (430, 52798), (432, 52819), (440, 52849), (448, 52906), (460, 52969), (469, 53020), (472, 53032),

Gene: Spelly_82 Start: 58398, Stop: 61718, Start Num: 9

Candidate Starts for Spelly_82:

(Start: 9 @58398 has 26 MA's), (15, 58449), (17, 58470), (Start: 20 @58494 has 1 MA's), (25, 58575), (33, 58773), (50, 58953), (55, 59001), (58, 59058), (59, 59061), (61, 59109), (62, 59127), (64, 59136), (69, 59172), (86, 59280), (90, 59289), (134, 59499), (142, 59568), (162, 59733), (174, 59811), (203, 59973), (220, 60096), (223, 60120), (234, 60180), (245, 60243), (247, 60252), (276, 60456), (280, 60510), (282, 60519), (285, 60537), (286, 60543), (308, 60726), (310, 60735), (316, 60759), (322, 60786), (348, 60894), (374, 61083), (385, 61161), (395, 61203), (400, 61221), (407, 61263), (413, 61302), (414, 61308), (421, 61335), (428, 61374), (437, 61422), (439, 61431), (450, 61503), (454, 61524), (459, 61551), (460, 61554), (463, 61569), (468, 61602), (486, 61671),

Gene: Spilled_83 Start: 58515, Stop: 61835, Start Num: 9

Candidate Starts for Spilled_83:

(Start: 9 @58515 has 26 MA's), (15, 58566), (17, 58587), (Start: 20 @58611 has 1 MA's), (25, 58692), (33, 58890), (50, 59070), (55, 59118), (56, 59121), (58, 59175), (59, 59178), (61, 59226), (62, 59244), (64, 59253), (69, 59289), (86, 59397), (90, 59406), (134, 59616), (142, 59685), (162, 59850), (174, 59928), (186, 59997), (203, 60090), (220, 60213), (234, 60297), (245, 60360), (247, 60369), (276, 60573), (280, 60627), (282, 60636), (285, 60654), (286, 60660), (310, 60852), (316, 60876), (322, 60903), (348, 61011), (374, 61200), (385, 61278), (395, 61320), (400, 61338), (407, 61380), (413, 61419), (414, 61425), (421, 61452), (428, 61491), (437, 61539), (450, 61620), (454, 61641), (459, 61668), (460, 61671), (463, 61686), (468, 61719), (486, 61788),

Gene: Squillium_79 Start: 58567, Stop: 61851, Start Num: 10

Candidate Starts for Squillium_79:

(Start: 10 @58567 has 54 MA's), (14, 58612), (17, 58642), (19, 58660), (Start: 20 @58666 has 1 MA's), (24, 58732), (33, 58945), (34, 58951), (44, 59047), (50, 59125), (58, 59230), (62, 59293), (63, 59299), (69, 59338), (90, 59455), (117, 59554), (134, 59665), (138, 59695), (142, 59734), (174, 59977), (204, 60121), (205, 60136), (219, 60232), (220, 60238), (223, 60262), (234, 60322), (245, 60385), (247, 60394), (257, 60466), (267, 60529), (276, 60601), (280, 60655), (282, 60664), (284, 60673), (285, 60682), (286, 60688), (293, 60769), (307, 60868), (322, 60931), (342, 61000), (344, 61012), (370, 61198), (374, 61216), (390, 61312), (397, 61345), (407, 61396), (413, 61435), (414, 61441), (428, 61507), (432, 61537), (437, 61555), (444, 61591), (450, 61636), (451, 61645), (455, 61666), (460, 61687), (468, 61735), (472, 61750),

Gene: Stanimal_82 Start: 58281, Stop: 61601, Start Num: 9

Candidate Starts for Stanimal_82:

(Start: 9 @58281 has 26 MA's), (17, 58353), (Start: 20 @58377 has 1 MA's), (25, 58458), (33, 58656), (50, 58836), (55, 58884), (58, 58941), (61, 58992), (62, 59010), (64, 59019), (69, 59055), (86, 59163), (90, 59172), (112, 59244), (134, 59382), (142, 59451), (162, 59616), (174, 59694), (203, 59856), (206, 59880), (220, 59979), (234, 60063), (247, 60135), (276, 60339), (280, 60393), (282, 60402), (285, 60420), (286, 60426), (299, 60540), (310, 60618), (316, 60642), (322, 60669), (366, 60921), (367, 60924), (369, 60942), (371, 60954), (385, 61044), (400, 61104), (407, 61146), (413, 61185), (414, 61191), (421, 61218), (428, 61257), (437, 61305), (439, 61314), (450, 61386), (452, 61398), (454, 61407), (459, 61434), (460, 61437), (463, 61452), (468, 61485), (483, 61539), (486, 61554),

Gene: StarPlatinum_82 Start: 58954, Stop: 62274, Start Num: 9

Candidate Starts for StarPlatinum_82:

(Start: 9 @58954 has 26 MA's), (15, 59005), (17, 59026), (Start: 20 @59050 has 1 MA's), (25, 59131), (33, 59329), (48, 59485), (50, 59509), (55, 59557), (56, 59560), (58, 59614), (61, 59665), (62, 59683), (64, 59692), (69, 59728), (86, 59836), (90, 59845), (112, 59917), (134, 60055), (142, 60124), (162, 60289), (174, 60367), (203, 60529), (220, 60652), (234, 60736), (247, 60808), (276, 61012), (280, 61066), (282, 61075), (285, 61093), (286, 61099), (310, 61291), (316, 61315), (322, 61342), (342, 61423), (348, 61450), (366, 61594), (367, 61597), (369, 61615), (371, 61627), (385, 61717), (400, 61777), (407, 61819), (413, 61858), (414, 61864), (421, 61891), (428, 61930), (437, 61978), (439, 61987), (450, 62059), (452, 62071), (454, 62080), (459, 62107), (460, 62110), (467, 62155), (468, 62158), (483, 62212), (486, 62227),

Gene: Starbow_80 Start: 58419, Stop: 61739, Start Num: 9

Candidate Starts for Starbow_80:

(Start: 9 @58419 has 26 MA's), (15, 58470), (17, 58491), (Start: 20 @58515 has 1 MA's), (25, 58596), (33, 58794), (50, 58974), (55, 59022), (58, 59079), (59, 59082), (61, 59130), (62, 59148), (64, 59157), (69, 59193), (86, 59301), (90, 59310), (134, 59520), (142, 59589), (162, 59754), (174, 59832), (203, 59994), (220, 60117), (234, 60201), (245, 60264), (247, 60273), (276, 60477), (280, 60531), (282, 60540), (285, 60558), (286, 60564), (308, 60747), (310, 60756), (316, 60780), (322, 60807), (348, 60915), (374, 61104), (385, 61182), (395, 61224), (400, 61242), (407, 61284), (413, 61323), (414, 61329), (421, 61356), (428, 61395), (437, 61443), (439, 61452), (450, 61524), (454, 61545), (459, 61572), (460, 61575), (463, 61590), (468, 61623), (486, 61692),

Gene: Stigma_60 Start: 49866, Stop: 53156, Start Num: 10

Candidate Starts for Stigma_60:

(6, 49848), (Start: 10 @49866 has 54 MA's), (13, 49887), (15, 49917), (17, 49938), (19, 49956), (Start: 20 @49962 has 1 MA's), (28, 50130), (30, 50172), (33, 50241), (41, 50301), (49, 50415), (50, 50421), (58, 50526), (62, 50589), (63, 50595), (69, 50634), (112, 50823), (122, 50880), (126, 50907), (133, 50952), (171, 51258), (176, 51294), (198, 51378), (204, 51417), (218, 51522), (220, 51534), (223, 51558), (225, 51567), (230, 51597), (231, 51600), (234, 51618), (247, 51690), (256, 51756), (257, 51762), (267, 51825), (276, 51897), (280, 51951), (282, 51960), (285, 51978), (286, 51984), (299, 52098), (307, 52164), (310, 52176), (324, 52236), (325, 52239), (342, 52296), (343, 52302), (346, 52314), (353, 52350), (363, 52419), (384, 52587), (391, 52617), (400, 52650), (406, 52686), (407, 52692), (410, 52704), (428, 52803), (430, 52812), (432, 52833), (440, 52863), (448, 52920), (460, 52983), (469, 53034), (472, 53046),

Gene: Sushi23_79 Start: 59255, Stop: 62539, Start Num: 10

Candidate Starts for Sushi23_79:

(Start: 10 @59255 has 54 MA's), (14, 59300), (17, 59330), (19, 59348), (Start: 20 @59354 has 1 MA's), (33, 59633), (44, 59735), (50, 59813), (58, 59918), (62, 59981), (63, 59987), (69, 60026), (90, 60143), (113, 60227), (134, 60353), (138, 60383), (142, 60422), (143, 60431), (168, 60629), (204, 60809), (218, 60914), (219, 60920), (220, 60926), (234, 61010), (240, 61040), (247, 61082), (251, 61109), (254, 61142), (257, 61154), (267, 61217), (276, 61289), (280, 61343), (282, 61352), (284, 61361), (285, 61370), (286, 61376), (322, 61619), (342, 61688), (344, 61700), (362, 61805), (390, 62000), (397, 62033), (407, 62084), (414, 62129), (428, 62195), (437, 62243), (444, 62279), (450, 62324), (451, 62333), (460, 62375), (467, 62420), (468, 62423), (472, 62438),

Gene: Suzy_65 Start: 48746, Stop: 51181, Start Num: 94

Candidate Starts for Suzy_65:

(Start: 94 @48746 has 8 MA's), (101, 48764), (133, 48944), (147, 49058), (150, 49073), (190, 49364), (194, 49403), (203, 49445), (204, 49451), (229, 49619), (230, 49625), (234, 49646), (236, 49655), (266, 49823), (268, 49853), (269, 49868), (276, 49916), (278, 49952), (282, 49979), (286, 50003), (290, 50060), (293, 50084), (299, 50123), (307, 50189), (310, 50201), (315, 50219), (337, 50312), (341, 50327), (349, 50363), (360, 50423), (368, 50465), (402, 50657), (403, 50660), (415, 50735),

(416, 50741), (430, 50798), (434, 50825), (437, 50837), (450, 50921), (467, 51020), (474, 51044), (477, 51059), (489, 51110), (492, 51122), (494, 51125), (499, 51140), (501, 51176),

Gene: Targaryen_80 Start: 59965, Stop: 63249, Start Num: 10

Candidate Starts for Targaryen_80:

(Start: 10 @59965 has 54 MA's), (14, 60010), (17, 60040), (19, 60058), (Start: 20 @60064 has 1 MA's), (24, 60130), (33, 60343), (50, 60523), (58, 60628), (62, 60691), (63, 60697), (69, 60736), (80, 60826), (90, 60853), (117, 60952), (134, 61063), (138, 61093), (139, 61096), (142, 61132), (174, 61375), (178, 61405), (204, 61519), (205, 61534), (218, 61624), (219, 61630), (220, 61636), (234, 61720), (245, 61783), (247, 61792), (257, 61864), (267, 61927), (276, 61999), (280, 62053), (282, 62062), (284, 62071), (285, 62080), (286, 62086), (322, 62329), (342, 62398), (362, 62515), (370, 62596), (372, 62605), (381, 62647), (390, 62710), (397, 62743), (407, 62794), (414, 62839), (428, 62905), (437, 62953), (450, 63034), (451, 63043), (460, 63085), (468, 63133), (472, 63148),

Gene: Tedro_57 Start: 40690, Stop: 42990, Start Num: 96

Candidate Starts for Tedro_57:

(Start: 96 @40690 has 22 MA's), (Start: 100 @40696 has 5 MA's), (111, 40771), (124, 40843), (127, 40864), (132, 40897), (134, 40909), (135, 40912), (136, 40930), (137, 40936), (146, 41005), (150, 41029), (153, 41068), (158, 41113), (160, 41125), (170, 41206), (190, 41320), (191, 41332), (204, 41407), (206, 41425), (215, 41503), (217, 41509), (219, 41518), (224, 41551), (229, 41581), (230, 41587), (234, 41608), (236, 41617), (244, 41647), (253, 41722), (255, 41731), (262, 41761), (263, 41767), (265, 41776), (276, 41878), (284, 41950), (287, 41974), (307, 42148), (310, 42160), (315, 42178), (332, 42256), (334, 42262), (336, 42271), (344, 42304), (359, 42376), (406, 42556), (412, 42586), (425, 42649), (441, 42721), (457, 42805), (464, 42844), (470, 42877), (482, 42922), (491, 42967), (494, 42973),

Gene: Terapin_67 Start: 47717, Stop: 50152, Start Num: 94

Candidate Starts for Terapin_67:

(Start: 94 @47717 has 8 MA's), (101, 47735), (133, 47915), (147, 48029), (150, 48044), (190, 48335), (204, 48422), (222, 48551), (229, 48590), (230, 48596), (234, 48617), (236, 48626), (268, 48824), (269, 48839), (270, 48845), (276, 48887), (282, 48950), (286, 48974), (290, 49031), (293, 49055), (299, 49094), (307, 49160), (310, 49172), (315, 49190), (337, 49283), (341, 49298), (349, 49334), (368, 49436), (402, 49628), (403, 49631), (415, 49706), (416, 49712), (430, 49769), (434, 49796), (437, 49808), (450, 49892), (455, 49922), (467, 49991), (474, 50015), (477, 50030), (489, 50081), (492, 50093), (494, 50096), (499, 50111), (501, 50147),

Gene: Teutsch_80 Start: 59518, Stop: 62802, Start Num: 10

Candidate Starts for Teutsch_80:

(Start: 10 @59518 has 54 MA's), (14, 59563), (17, 59593), (19, 59611), (Start: 20 @59617 has 1 MA's), (33, 59896), (44, 59998), (50, 60076), (58, 60181), (62, 60244), (63, 60250), (69, 60289), (90, 60406), (113, 60490), (134, 60616), (138, 60646), (142, 60685), (168, 60892), (204, 61072), (218, 61177), (219, 61183), (220, 61189), (223, 61213), (234, 61273), (240, 61303), (241, 61306), (247, 61345), (251, 61372), (257, 61417), (267, 61480), (276, 61552), (280, 61606), (282, 61615), (284, 61624), (285, 61633), (286, 61639), (322, 61882), (342, 61951), (344, 61963), (362, 62068), (390, 62263), (397, 62296), (407, 62347), (414, 62392), (428, 62458), (437, 62506), (450, 62587), (451, 62596), (460, 62638), (467, 62683), (468, 62686), (472, 62701),

Gene: TinyMiny_63 Start: 42556, Stop: 44817, Start Num: 100

Candidate Starts for TinyMiny_63:

(66, 42403), (67, 42406), (77, 42469), (82, 42511), (85, 42520), (95, 42547), (Start: 100 @42556 has 5 MA's), (127, 42697), (132, 42730), (135, 42745), (147, 42847), (150, 42862), (160, 42958), (170, 43039), (171, 43048), (179, 43096), (190, 43153), (204, 43240), (206, 43258), (211, 43309), (212, 43321), (215, 43336), (219, 43351), (224, 43384), (229, 43414), (230, 43420), (234, 43441), (236,

43450), (244, 43480), (254, 43561), (258, 43576), (262, 43594), (275, 43708), (302, 43939), (310, 43993), (315, 44011), (317, 44023), (334, 44095), (336, 44104), (387, 44293), (388, 44296), (393, 44314), (400, 44347), (407, 44392), (422, 44455), (425, 44479), (433, 44509), (449, 44599), (464, 44671), (470, 44704), (482, 44749), (489, 44785), (491, 44794), (494, 44800),

Gene: TomSawyer_80 Start: 58037, Stop: 61357, Start Num: 9

Candidate Starts for TomSawyer_80:

(Start: 9 @58037 has 26 MA's), (15, 58088), (17, 58109), (Start: 20 @58133 has 1 MA's), (25, 58214), (33, 58412), (48, 58568), (50, 58592), (55, 58640), (56, 58643), (58, 58697), (61, 58748), (62, 58766), (64, 58775), (69, 58811), (90, 58928), (112, 59000), (134, 59138), (142, 59207), (162, 59372), (174, 59450), (203, 59612), (220, 59735), (234, 59819), (244, 59867), (247, 59891), (276, 60095), (280, 60149), (282, 60158), (285, 60176), (286, 60182), (310, 60374), (316, 60398), (322, 60425), (348, 60533), (374, 60722), (385, 60800), (395, 60842), (400, 60860), (407, 60902), (413, 60941), (414, 60947), (421, 60974), (428, 61013), (437, 61061), (439, 61070), (450, 61142), (454, 61163), (459, 61190), (460, 61193), (463, 61208), (468, 61241), (486, 61310),

Gene: Tomas_84 Start: 60777, Stop: 64097, Start Num: 9

Candidate Starts for Tomas_84:

(Start: 9 @60777 has 26 MA's), (15, 60828), (17, 60849), (Start: 20 @60873 has 1 MA's), (33, 61152), (44, 61254), (48, 61308), (49, 61326), (50, 61332), (55, 61380), (58, 61437), (61, 61488), (62, 61506), (69, 61551), (86, 61659), (90, 61668), (134, 61878), (203, 62352), (220, 62475), (234, 62559), (245, 62622), (247, 62631), (276, 62835), (278, 62871), (280, 62889), (282, 62898), (285, 62916), (286, 62922), (293, 63003), (299, 63036), (310, 63114), (322, 63165), (348, 63273), (366, 63417), (367, 63420), (369, 63438), (371, 63450), (374, 63462), (385, 63540), (394, 63579), (395, 63582), (400, 63600), (407, 63642), (413, 63681), (414, 63687), (428, 63753), (437, 63801), (439, 63810), (450, 63882), (459, 63930), (460, 63933), (466, 63972), (486, 64050),

Gene: Tribute_78 Start: 58724, Stop: 62008, Start Num: 10

Candidate Starts for Tribute_78:

(Start: 10 @58724 has 54 MA's), (14, 58769), (17, 58799), (19, 58817), (Start: 20 @58823 has 1 MA's), (33, 59102), (44, 59204), (50, 59282), (58, 59387), (62, 59450), (63, 59456), (69, 59495), (90, 59612), (113, 59696), (134, 59822), (138, 59852), (142, 59891), (168, 60098), (204, 60278), (218, 60383), (219, 60389), (220, 60395), (234, 60479), (240, 60509), (247, 60551), (251, 60578), (254, 60611), (257, 60623), (267, 60686), (276, 60758), (280, 60812), (282, 60821), (284, 60830), (285, 60839), (286, 60845), (322, 61088), (342, 61157), (344, 61169), (362, 61274), (390, 61469), (397, 61502), (407, 61553), (414, 61598), (428, 61664), (437, 61712), (450, 61793), (451, 61802), (460, 61844), (467, 61889), (468, 61892), (472, 61907),

Gene: Trina_102 Start: 68795, Stop: 71665, Start Num: 93

Candidate Starts for Trina_102:

(Start: 93 @68795 has 1 MA's), (103, 68840), (117, 68930), (130, 69017), (134, 69041), (135, 69044), (143, 69119), (149, 69158), (160, 69254), (204, 69503), (205, 69518), (206, 69521), (221, 69620), (226, 69653), (245, 69761), (247, 69770), (257, 69842), (264, 69869), (277, 69986), (278, 70010), (280, 70028), (281, 70034), (285, 70055), (286, 70061), (288, 70079), (306, 70235), (322, 70301), (323, 70307), (329, 70325), (363, 70508), (377, 70616), (392, 70718), (394, 70727), (400, 70754), (402, 70763), (409, 70805), (413, 70835), (418, 70856), (420, 70865), (426, 70904), (440, 70982), (442, 70994), (443, 70997), (460, 71105), (465, 71144), (469, 71159), (472, 71171), (483, 71210), (502, 71318), (503, 71342), (504, 71363), (510, 71420), (512, 71450), (515, 71501), (517, 71516), (519, 71537), (527, 71612), (529, 71633),

Gene: TunaTartare_59 Start: 50008, Stop: 53298, Start Num: 10

Candidate Starts for TunaTartare_59:

(Start: 10 @50008 has 54 MA's), (12, 50023), (13, 50029), (15, 50059), (17, 50080), (19, 50098), (Start: 20 @50104 has 1 MA's), (33, 50383), (41, 50443), (50, 50563), (58, 50668), (62, 50731), (63, 50737), (69, 50776), (120, 51007), (149, 51220), (164, 51355), (198, 51520), (204, 51559), (216, 51658), (218, 51664), (219, 51670), (220, 51676), (223, 51700), (225, 51709), (231, 51742), (244, 51808), (245, 51823), (247, 51832), (256, 51898), (257, 51904), (267, 51967), (273, 52018), (276, 52039), (280, 52093), (282, 52102), (285, 52120), (286, 52126), (301, 52252), (310, 52318), (324, 52378), (325, 52381), (342, 52438), (343, 52444), (346, 52456), (348, 52465), (363, 52561), (366, 52609), (370, 52636), (374, 52654), (391, 52759), (406, 52828), (407, 52834), (428, 52945), (430, 52954), (440, 53005), (444, 53029), (460, 53125), (461, 53134), (469, 53176), (472, 53188),

Gene: Wakanda_57 Start: 50039, Stop: 53326, Start Num: 10

Candidate Starts for Wakanda_57:

(Start: 10 @50039 has 54 MA's), (17, 50111), (Start: 20 @50135 has 1 MA's), (26, 50231), (33, 50414), (41, 50474), (46, 50564), (50, 50594), (52, 50609), (54, 50636), (55, 50642), (58, 50699), (62, 50762), (69, 50807), (76, 50855), (123, 51059), (133, 51125), (134, 51134), (141, 51200), (158, 51335), (162, 51368), (174, 51446), (198, 51551), (204, 51590), (205, 51605), (219, 51701), (220, 51707), (225, 51740), (233, 51785), (234, 51791), (244, 51839), (247, 51863), (251, 51890), (252, 51908), (257, 51935), (267, 51998), (276, 52070), (280, 52124), (282, 52133), (285, 52151), (286, 52157), (301, 52283), (307, 52337), (310, 52349), (322, 52400), (324, 52409), (342, 52469), (367, 52643), (377, 52694), (394, 52802), (406, 52859), (407, 52865), (415, 52913), (428, 52976), (430, 52985), (451, 53114), (460, 53156), (463, 53171), (472, 53219),

Gene: Warpy_83 Start: 59428, Stop: 62712, Start Num: 10

Candidate Starts for Warpy_83:

(Start: 10 @59428 has 54 MA's), (14, 59473), (17, 59503), (19, 59521), (Start: 20 @59527 has 1 MA's), (24, 59593), (33, 59806), (50, 59986), (58, 60091), (62, 60154), (63, 60160), (69, 60199), (80, 60289), (90, 60316), (117, 60415), (134, 60526), (138, 60556), (139, 60559), (142, 60595), (174, 60838), (178, 60868), (204, 60982), (205, 60997), (219, 61093), (220, 61099), (234, 61183), (245, 61246), (247, 61255), (251, 61282), (257, 61327), (267, 61390), (276, 61462), (280, 61516), (282, 61525), (284, 61534), (285, 61543), (286, 61549), (307, 61729), (322, 61792), (342, 61861), (362, 61978), (372, 62068), (381, 62110), (390, 62173), (397, 62206), (407, 62257), (413, 62296), (414, 62302), (428, 62368), (437, 62416), (444, 62452), (450, 62497), (451, 62506), (460, 62548), (468, 62596), (472, 62611),

Gene: Watermoore_80 Start: 59734, Stop: 63018, Start Num: 10

Candidate Starts for Watermoore_80:

(Start: 10 @59734 has 54 MA's), (14, 59779), (17, 59809), (19, 59827), (Start: 20 @59833 has 1 MA's), (33, 60112), (44, 60214), (50, 60292), (58, 60397), (62, 60460), (63, 60466), (69, 60505), (90, 60622), (113, 60706), (134, 60832), (138, 60862), (142, 60901), (143, 60910), (168, 61108), (204, 61288), (218, 61393), (219, 61399), (220, 61405), (234, 61489), (240, 61519), (247, 61561), (251, 61588), (254, 61621), (257, 61633), (267, 61696), (276, 61768), (280, 61822), (282, 61831), (284, 61840), (285, 61849), (286, 61855), (322, 62098), (342, 62167), (344, 62179), (362, 62284), (390, 62479), (397, 62512), (407, 62563), (413, 62602), (414, 62608), (428, 62674), (437, 62722), (444, 62758), (450, 62803), (451, 62812), (460, 62854), (467, 62899), (468, 62902), (472, 62917),

Gene: Weasels2_102 Start: 62486, Stop: 65329, Start Num: 92

Candidate Starts for Weasels2_102:

(78, 62438), (87, 62474), (Start: 92 @62486 has 3 MA's), (116, 62594), (144, 62786), (172, 63011), (180, 63041), (181, 63044), (183, 63062), (201, 63146), (230, 63338), (234, 63359), (245, 63422), (247, 63431), (257, 63503), (264, 63530), (278, 63671), (280, 63689), (312, 63923), (374, 64277), (386, 64361), (400, 64424), (402, 64433), (403, 64436), (416, 64520), (437, 64625), (440, 64652), (442, 64664), (443, 64667), (446, 64697), (469, 64829), (484, 64883), (504, 65030), (511, 65096), (514, 65156), (515, 65165), (520, 65219), (521, 65222), (522, 65225), (523, 65228), (526, 65270),

Gene: Weiss13_74 Start: 55602, Stop: 57914, Start Num: 99

Candidate Starts for Weiss13_74:

(Start: 99 @55602 has 8 MA's), (114, 55698), (125, 55737), (132, 55788), (133, 55791), (135, 55803), (139, 55833), (144, 55881), (150, 55917), (179, 56151), (184, 56184), (193, 56250), (206, 56328), (208, 56346), (233, 56493), (236, 56511), (240, 56529), (249, 56601), (250, 56604), (252, 56628), (255, 56643), (262, 56673), (293, 56946), (300, 56988), (301, 56994), (302, 57006), (307, 57048), (315, 57078), (317, 57090), (330, 57150), (337, 57168), (339, 57174), (348, 57216), (353, 57243), (360, 57279), (399, 57402), (400, 57405), (405, 57441), (431, 57540), (436, 57567), (437, 57573), (442, 57603), (456, 57696), (463, 57732), (464, 57738), (476, 57795), (480, 57810), (484, 57822), (487, 57840),

Gene: WhereRU_79 Start: 58001, Stop: 61285, Start Num: 10

Candidate Starts for WhereRU_79:

(Start: 10 @58001 has 54 MA's), (14, 58046), (17, 58076), (19, 58094), (Start: 20 @58100 has 1 MA's), (24, 58166), (33, 58379), (34, 58385), (44, 58481), (50, 58559), (58, 58664), (62, 58727), (63, 58733), (69, 58772), (90, 58889), (117, 58988), (134, 59099), (138, 59129), (142, 59168), (174, 59411), (204, 59555), (205, 59570), (218, 59660), (219, 59666), (220, 59672), (223, 59696), (234, 59756), (244, 59804), (245, 59819), (247, 59828), (257, 59900), (267, 59963), (276, 60035), (280, 60089), (282, 60098), (284, 60107), (285, 60116), (286, 60122), (293, 60203), (307, 60302), (322, 60365), (342, 60434), (344, 60446), (370, 60632), (374, 60650), (390, 60746), (397, 60779), (407, 60830), (414, 60875), (428, 60941), (432, 60971), (437, 60989), (444, 61025), (450, 61070), (451, 61079), (455, 61100), (460, 61121), (468, 61169), (472, 61184),

Gene: Wipeout_79 Start: 58788, Stop: 62108, Start Num: 9

Candidate Starts for Wipeout_79:

(Start: 9 @58788 has 26 MA's), (15, 58839), (17, 58860), (Start: 20 @58884 has 1 MA's), (25, 58965), (33, 59163), (50, 59343), (55, 59391), (58, 59448), (61, 59499), (62, 59517), (64, 59526), (69, 59562), (86, 59670), (90, 59679), (134, 59889), (142, 59958), (162, 60123), (174, 60201), (203, 60363), (220, 60486), (223, 60510), (234, 60570), (245, 60633), (247, 60642), (276, 60846), (280, 60900), (282, 60909), (285, 60927), (286, 60933), (310, 61125), (316, 61149), (322, 61176), (348, 61284), (374, 61473), (385, 61551), (395, 61593), (400, 61611), (407, 61653), (413, 61692), (414, 61698), (421, 61725), (428, 61764), (437, 61812), (439, 61821), (450, 61893), (454, 61914), (459, 61941), (460, 61944), (463, 61959), (468, 61992), (486, 62061),

Gene: Wofford_81 Start: 59478, Stop: 62798, Start Num: 9

Candidate Starts for Wofford_81:

(5, 59448), (Start: 9 @59478 has 26 MA's), (15, 59529), (17, 59550), (Start: 20 @59574 has 1 MA's), (25, 59655), (33, 59853), (50, 60033), (55, 60081), (58, 60138), (61, 60189), (62, 60207), (64, 60216), (69, 60252), (90, 60369), (112, 60441), (134, 60579), (142, 60648), (162, 60813), (174, 60891), (203, 61053), (207, 61080), (220, 61176), (223, 61200), (234, 61260), (247, 61332), (276, 61536), (280, 61590), (282, 61599), (285, 61617), (286, 61623), (308, 61806), (310, 61815), (316, 61839), (322, 61866), (374, 62163), (384, 62238), (385, 62241), (395, 62283), (407, 62343), (413, 62382), (414, 62388), (421, 62415), (428, 62454), (437, 62502), (439, 62511), (450, 62583), (459, 62631), (460, 62634), (467, 62679), (468, 62682), (483, 62736), (486, 62751),

Gene: Wollypog_59 Start: 44236, Stop: 46455, Start Num: 110

Candidate Starts for Wollypog_59:

(81, 44131), (95, 44170), (Start: 110 @44236 has 1 MA's), (118, 44287), (126, 44335), (132, 44377), (145, 44476), (147, 44494), (150, 44509), (152, 44542), (154, 44557), (155, 44563), (159, 44599), (170, 44686), (179, 44743), (190, 44800), (199, 44854), (223, 45022), (230, 45061), (236, 45091), (244, 45121), (249, 45163), (253, 45196), (254, 45202), (255, 45205), (262, 45235), (272, 45325), (288, 45457), (292, 45505), (297, 45547), (302, 45583), (310, 45637), (315, 45655), (317, 45667),

(336, 45748), (344, 45781), (375, 45913), (392, 45946), (398, 45973), (421, 46090), (447, 46219), (455, 46261), (461, 46294), (473, 46351), (475, 46357), (479, 46375), (480, 46378), (485, 46399),

Gene: Yaboi_82 Start: 58369, Stop: 61689, Start Num: 9

Candidate Starts for Yaboi_82:

(Start: 9 @58369 has 26 MA's), (17, 58441), (Start: 20 @58465 has 1 MA's), (25, 58546), (33, 58744), (50, 58924), (55, 58972), (58, 59029), (61, 59080), (62, 59098), (64, 59107), (69, 59143), (90, 59260), (112, 59332), (131, 59455), (134, 59470), (142, 59539), (162, 59704), (174, 59782), (203, 59944), (206, 59968), (220, 60067), (234, 60151), (247, 60223), (276, 60427), (280, 60481), (282, 60490), (285, 60508), (286, 60514), (299, 60628), (310, 60706), (316, 60730), (322, 60757), (367, 61012), (369, 61030), (371, 61042), (385, 61132), (400, 61192), (407, 61234), (414, 61279), (421, 61306), (428, 61345), (437, 61393), (439, 61402), (450, 61474), (452, 61486), (454, 61495), (459, 61522), (460, 61525), (463, 61540), (468, 61573), (483, 61627), (486, 61642),

Gene: Yelo_73 Start: 55981, Stop: 58293, Start Num: 99

Candidate Starts for Yelo_73:

(Start: 99 @55981 has 8 MA's), (114, 56077), (125, 56116), (132, 56167), (133, 56170), (134, 56179), (135, 56182), (139, 56212), (144, 56260), (150, 56296), (179, 56530), (184, 56563), (193, 56629), (206, 56707), (208, 56725), (236, 56890), (240, 56908), (249, 56980), (250, 56983), (252, 57007), (255, 57022), (262, 57052), (293, 57325), (300, 57367), (301, 57373), (302, 57385), (307, 57427), (315, 57457), (317, 57469), (330, 57529), (339, 57553), (353, 57622), (360, 57658), (399, 57781), (400, 57784), (405, 57820), (431, 57919), (436, 57946), (437, 57952), (442, 57982), (463, 58111), (464, 58117), (476, 58174), (480, 58189), (484, 58201), (487, 58219),

Gene: Zenon_76 Start: 55925, Stop: 58237, Start Num: 99

Candidate Starts for Zenon_76:

(Start: 99 @55925 has 8 MA's), (114, 56021), (125, 56060), (132, 56111), (133, 56114), (134, 56123), (135, 56126), (139, 56156), (144, 56204), (150, 56240), (179, 56474), (184, 56507), (193, 56573), (206, 56651), (208, 56669), (236, 56834), (240, 56852), (249, 56924), (250, 56927), (252, 56951), (255, 56966), (262, 56996), (293, 57269), (300, 57311), (301, 57317), (302, 57329), (307, 57371), (315, 57401), (317, 57413), (330, 57473), (337, 57491), (339, 57497), (353, 57566), (360, 57602), (399, 57725), (400, 57728), (405, 57764), (431, 57863), (436, 57890), (437, 57896), (442, 57926), (463, 58055), (464, 58061), (476, 58118), (480, 58133), (484, 58145), (487, 58163), (491, 58184),