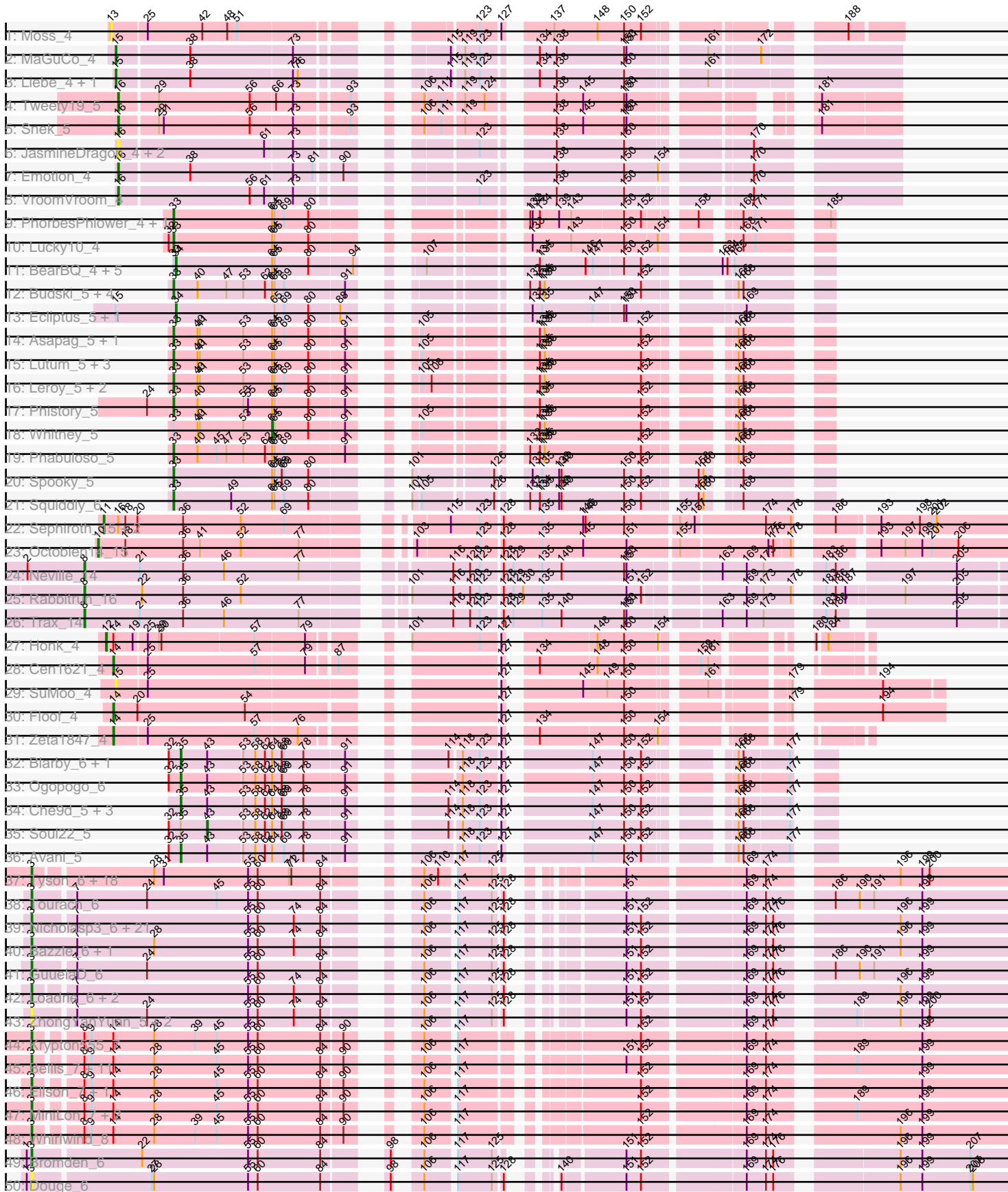
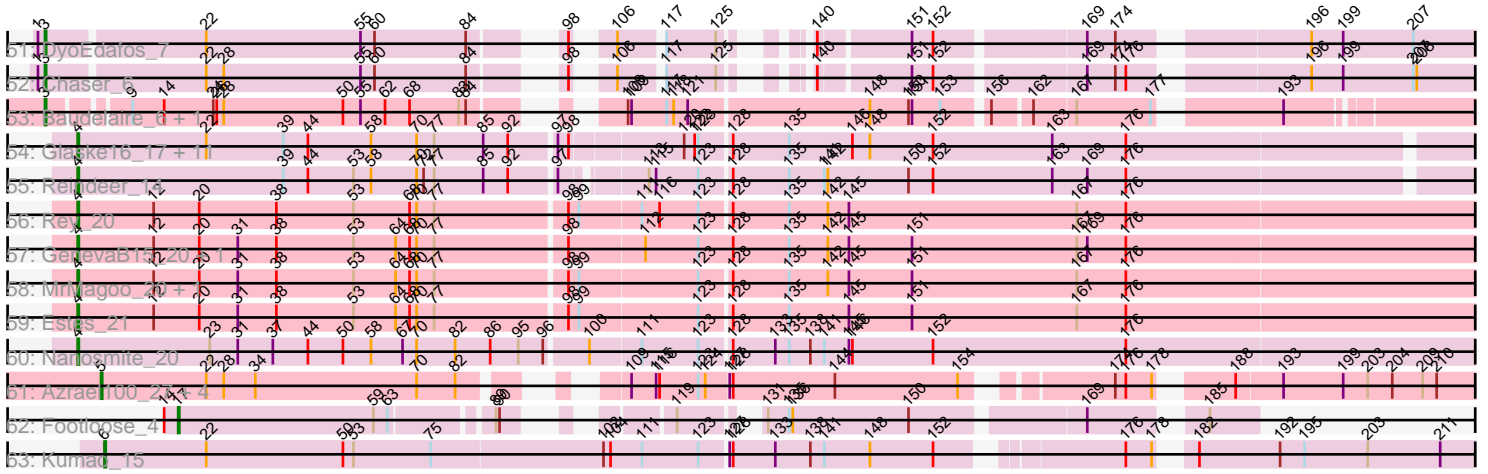


Pham 163387



Pham 163387



Note: Tracks are now grouped by subcluster and scaled. Switching in subcluster is indicated by changes in track color. Track scale is now set by default to display the region 30 bp upstream of start 1 to 30 bp downstream of the last possible start. If this default region is judged to be packed too tightly with annotated starts, the track will be further scaled to only show that region of the ORF with annotated starts. This action will be indicated by adding "Zoomed" to the title. For starts, yellow indicates the location of called starts comprised solely of Glimmer/GeneMark auto-annotations, green indicates the location of called starts with at least 1 manual gene annotation.

Pham 163387 Report

This analysis was run 04/28/24 on database version 559.

Pham number 163387 has 165 members, 18 are drafts.

Phages represented in each track:

- Track 1 : Moss_4
- Track 2 : MaGuCo_4
- Track 3 : Liebe_4, Maureen_4
- Track 4 : Tweety19_5
- Track 5 : Snek_5
- Track 6 : JasmineDragon_4, ShakeltOph_4, MiniMommy_4
- Track 7 : Emotion_4
- Track 8 : VroomVroom_4
- Track 9 : PhorbesPhlower_4, Morkie_4
- Track 10 : Lucky10_4
- Track 11 : BearBQ_4, MortyNRick_4, Apricot_4, Kuwabara_4, Crater_4, Birdsong_4
- Track 12 : Budski_5, CheeseTouch_5, Kamaru_5, Holliday_5, LitninMcQueen_5
- Track 13 : Ecliptus_5, ODay_5
- Track 14 : Asapag_5, BENtherdunthat_5
- Track 15 : Lutum_5, Getalong_5, Periwinkle_5, Kenna_5
- Track 16 : Leroy_5, Horus_5, Frickyeah_5
- Track 17 : Phistory_5
- Track 18 : Whitney_5
- Track 19 : Phabuloso_5
- Track 20 : Spooky_5
- Track 21 : Squiddly_6
- Track 22 : Sephiroth_15, Kudefre_14, Syleon_15
- Track 23 : Octobien14_15
- Track 24 : Neville_14
- Track 25 : Rabbitrun_16
- Track 26 : Trax_14
- Track 27 : Honk_4
- Track 28 : Cen1621_4
- Track 29 : SuMoo_4
- Track 30 : Floof_4
- Track 31 : Zeta1847_4
- Track 32 : Blarby_6, Demsculpinboyz_5
- Track 33 : Ogopogo_6
- Track 34 : Che9d_5, Zapner_6, Jabbawokkie_6, Yoshi_5
- Track 35 : Soul22_5
- Track 36 : Avani_5

- Track 37 : Tyson_6, Wyatt2_6, Zaria_6, CicholasNage_6, LeBron_6, AvadaKedavra_6, JoeDirt_6, UPIE_6, Wamburggrxpress_6, Appletree2_6, Rose5_6, Calm_6, MAckerman_6, DirkDirk_6, Silverleaf_6, Enceladus_6, Halena_6, Acquire49_6, OhShagHennessy_6
- Track 38 : Tourach_6
- Track 39 : Nicholasp3_6, Vetrix_6, BobsGarage_6, Kahlid_6, Netyap_6, Miley16_6, Gabriela_6, LilDestine_6, Faith1_6, Gardann_6, Finemlucis_6, Zakai_6, Lewan_6, Winky_6, DrSeegs_6, Wilder_6, Breezona_6, MkaliMitinis3_6, Itos_6, BigCheese_6, Crossroads_6, Rumpelstiltskin_6
- Track 40 : Bazzle_6, Archie_6
- Track 41 : GuuelaD_6
- Track 42 : Loadrie_6, Hafay_6, Wigglewiggle_6
- Track 43 : ZhongYanYuan_5, Claus_6, Baoshan_5
- Track 44 : Krypton555_7
- Track 45 : Bellis_7, Jobypre_7, Kingsolomon_7, Lumos_7, Nicholas_7, Moostard_7, Snenia_7, MsGreen_7, Finnry_7, Jubie_7, Samty_7, Clautastrophe_7
- Track 46 : Ellson_7, DuncansLeg_7
- Track 47 : MiniLon_7, Lolly9_7, MiniMac_7
- Track 48 : Whirlwind_8
- Track 49 : Bromden_6
- Track 50 : Douge_6
- Track 51 : DyoEdafos_7
- Track 52 : Chaser_6
- Track 53 : Baudelaire_6, Aegeus_6
- Track 54 : Glaske16_17, Auspice_16, Dulcita_17, IPhane7_16, Diminimus_17, Bricole_16, Skinny_17, LilhomieP_15, PegLeg_16, TyDawg_16, Bongo_16, SlimJimmy_15
- Track 55 : Reindeer_14
- Track 56 : Rey_20
- Track 57 : GenevaB15_20, Aziz_20
- Track 58 : MrMagoo_20, GardenSalsa_20
- Track 59 : Estes_21
- Track 60 : Nanosmite_20
- Track 61 : Azrael100_27, MaryV_28, EniyanLRS_25, Cosmo_28, Wildcat_28
- Track 62 : Footloose_4
- Track 63 : Kumao_15

Summary of Final Annotations (See graph section above for start numbers):

The start number called the most often in the published annotations is 3, it was called in 67 of the 147 non-draft genes in the pham.

Genes that call this "Most Annotated" start:

- Acquire49_6, Aegeus_6, Appletree2_6, Archie_6, AvadaKedavra_6, Baoshan_5, Baudelaire_6, Bazzle_6, Bellis_7, BigCheese_6, BobsGarage_6, Breezona_6, Bromden_6, Calm_6, Chaser_6, CicholasNage_6, Claus_6, Clautastrophe_7, Crossroads_6, DirkDirk_6, Douge_6, DrSeegs_6, DuncansLeg_7, DyoEdafos_7, Ellson_7, Enceladus_6, Faith1_6, Finemlucis_6, Finnry_7, Gabriela_6, Gardann_6, GuuelaD_6, Hafay_6, Halena_6, Itos_6, Jobypre_7, JoeDirt_6, Jubie_7, Kahlid_6, Kingsolomon_7, Krypton555_7, LeBron_6, Lewan_6, LilDestine_6, Loadrie_6,

Lolly9_7, Lumos_7, MAckerman_6, Miley16_6, MiniLon_7, MiniMac_7, MkaliMitinis3_6, Moostard_7, MsGreen_7, Netyap_6, Nicholas_7, Nicholasp3_6, OhShagHennessy_6, Rose5_6, Rumpelstiltskin_6, Samty_7, Silverleaf_6, Snenia_7, Tourach_6, Tyson_6, UPIE_6, Vetrix_6, Wamburgrxpress_6, Whirlwind_8, Wigglewiggles_6, Wilder_6, Winky_6, Wyatt2_6, Zakai_6, Zaria_6, ZhongYanYuan_5,

Genes that have the "Most Annotated" start but do not call it:

-

Genes that do not have the "Most Annotated" start:

- Apricot_4, Asapag_5, Auspice_16, Avani_5, Aziz_20, Azrael100_27, BENtherdunthat_5, BearBQ_4, Birdsong_4, Blarby_6, Bongo_16, Bricole_16, Budski_5, Cen1621_4, Che9d_5, CheeseTouch_5, Cosmo_28, Crater_4, Demsculpinboyz_5, Diminimus_17, Dulcita_17, Ecliptus_5, Emotion_4, EniyanLRS_25, Estes_21, Floof_4, Footloose_4, Frickyeah_5, GardenSalsa_20, GenevaB15_20, Getalong_5, Glaske16_17, Holliday_5, Honk_4, Horus_5, IPhane7_16, Jabbawokkie_6, JasmineDragon_4, Kamaru_5, Kenna_5, Kudrefre_14, Kumao_15, Kuwabara_4, Leroy_5, Liebe_4, LilhomieP_15, LitninMcQueen_5, Lucky10_4, Lutum_5, MaGuCo_4, MaryV_28, Maureen_4, MiniMommy_4, Morkie_4, MortyNRick_4, Moss_4, MrMagoo_20, Nanosmite_20, Neville_14, ODay_5, Octobien14_15, Ogopogo_6, PegLeg_16, Periwinkle_5, Phabuloso_5, Phistory_5, PhorbesPhlower_4, Rabbitrun_16, Reindeer_14, Rey_20, Sephiroth_15, ShakeltOph_4, Skinny_17, SlimJimmy_15, Snek_5, Soul22_5, Spooky_5, Squiddly_6, SuMoo_4, Syleon_15, Trax_14, Tweety19_5, TyDawg_16, VroomVroom_4, Whitney_5, Wildcat_28, Yoshi_5, Zapner_6, Zeta1847_4,

Summary by start number:

Start 3:

- Found in 76 of 165 (46.1%) of genes in pham
- Manual Annotations of this start: 67 of 147
- Called 100.0% of time when present
- Phage (with cluster) where this start called: Acquire49_6 (L1), Aegeus_6 (L5), Appletree2_6 (L1), Archie_6 (L2), AvadaKedavra_6 (L1), Baoshan_5 (L2), Baudelaire_6 (L5), Bazzle_6 (L2), Bellis_7 (L3), BigCheese_6 (L2), BobsGarage_6 (L2), Breezona_6 (L2), Bromden_6 (L4), Calm_6 (L1), Chaser_6 (L4), CicholasNage_6 (L1), Claus_6 (L2), Clautastrophe_7 (L3), Crossroads_6 (L2), DirkDirk_6 (L1), Douge_6 (L4), DrSeegs_6 (L2), DuncansLeg_7 (L3), DyoEdafos_7 (L4), Ellson_7 (L3), Enceladus_6 (L1), Faith1_6 (L2), Finemlucis_6 (L2), Finnry_7 (L3), Gabriela_6 (L2), Gardann_6 (L2), GuuelaD_6 (L2), Hafay_6 (L2), Halena_6 (L1), Itos_6 (L2), Jobypre_7 (L3), JoeDirt_6 (L1), Jubie_7 (L3), Kahlid_6 (L2), Kingsolomon_7 (L3), Krypton555_7 (L3), LeBron_6 (L1), Lewan_6 (L2), LilDestine_6 (L2), Loadrie_6 (L2), Lolly9_7 (L3), Lumos_7 (L3), MAckerman_6 (L1), Miley16_6 (L2), MiniLon_7 (L3), MiniMac_7 (L3), MkaliMitinis3_6 (L2), Moostard_7 (L3), MsGreen_7 (L3), Netyap_6 (L2), Nicholas_7 (L3), Nicholasp3_6 (L2), OhShagHennessy_6 (L1), Rose5_6 (L1), Rumpelstiltskin_6 (L2), Samty_7 (L3), Silverleaf_6 (L1), Snenia_7 (L3), Tourach_6 (L2), Tyson_6 (L1), UPIE_6 (L1), Vetrix_6 (L2), Wamburgrxpress_6 (L1), Whirlwind_8 (L3), Wigglewiggles_6 (L2), Wilder_6 (L2), Winky_6 (L2), Wyatt2_6 (L1), Zakai_6 (L2), Zaria_6 (L1), ZhongYanYuan_5 (L2),

Start 4:

- Found in 20 of 165 (12.1%) of genes in pham

- Manual Annotations of this start: 20 of 147
- Called 100.0% of time when present
- Phage (with cluster) where this start called: Auspice_16 (M1), Aziz_20 (M2), Bongo_16 (M1), Bricole_16 (M1), Diminimus_17 (M1), Dulcita_17 (M1), Estes_21 (M2), GardenSalsa_20 (M2), GenevaB15_20 (M2), Glaske16_17 (M1), IPhone7_16 (M1), LilhomieP_15 (M1), MrMagoo_20 (M2), Nanosmite_20 (M3), PegLeg_16 (M1), Reindeer_14 (M1), Rey_20 (M2), Skinny_17 (M1), SlimJimmy_15 (M1), TyDawg_16 (M1),

Start 5:

- Found in 5 of 165 (3.0%) of genes in pham
- Manual Annotations of this start: 5 of 147
- Called 100.0% of time when present
- Phage (with cluster) where this start called: Azrael100_27 (V), Cosmo_28 (V), EniyanLRS_25 (V), MaryV_28 (V), Wildcat_28 (V),

Start 6:

- Found in 1 of 165 (0.6%) of genes in pham
- Manual Annotations of this start: 1 of 147
- Called 100.0% of time when present
- Phage (with cluster) where this start called: Kumao_15 (singleton),

Start 8:

- Found in 22 of 165 (13.3%) of genes in pham
- Manual Annotations of this start: 3 of 147
- Called 13.6% of time when present
- Phage (with cluster) where this start called: Neville_14 (DU2), Rabbitrun_16 (DU2), Trax_14 (DU2),

Start 10:

- Found in 1 of 165 (0.6%) of genes in pham
- Manual Annotations of this start: 1 of 147
- Called 100.0% of time when present
- Phage (with cluster) where this start called: Octobien14_15 (DU1),

Start 11:

- Found in 3 of 165 (1.8%) of genes in pham
- Manual Annotations of this start: 3 of 147
- Called 100.0% of time when present
- Phage (with cluster) where this start called: Kudrefre_14 (DU1), Sephiroth_15 (DU1), Syleon_15 (DU1),

Start 12:

- Found in 7 of 165 (4.2%) of genes in pham
- Manual Annotations of this start: 1 of 147
- Called 14.3% of time when present
- Phage (with cluster) where this start called: Honk_4 (EH),

Start 13:

- Found in 1 of 165 (0.6%) of genes in pham
- No Manual Annotations of this start.
- Called 100.0% of time when present
- Phage (with cluster) where this start called: Moss_4 (AZ),

Start 14:

- Found in 26 of 165 (15.8%) of genes in pham
- Manual Annotations of this start: 3 of 147
- Called 11.5% of time when present
- Phage (with cluster) where this start called: Cen1621_4 (EH), Floof_4 (EH), Zeta1847_4 (EH),

Start 15:

- Found in 6 of 165 (3.6%) of genes in pham
- Manual Annotations of this start: 3 of 147
- Called 66.7% of time when present
- Phage (with cluster) where this start called: Liebe_4 (AZ2), MaGuCo_4 (AZ2), Maureen_4 (AZ2), SuMoo_4 (EH),

Start 16:

- Found in 10 of 165 (6.1%) of genes in pham
- Manual Annotations of this start: 4 of 147
- Called 70.0% of time when present
- Phage (with cluster) where this start called: Emotion_4 (AZ4), JasmineDragon_4 (AZ4), MiniMommy_4 (AZ4), ShakeltOph_4 (AZ4), Snek_5 (AZ3), Tweety19_5 (AZ3), VroomVroom_4 (AZ4),

Start 17:

- Found in 1 of 165 (0.6%) of genes in pham
- Manual Annotations of this start: 1 of 147
- Called 100.0% of time when present
- Phage (with cluster) where this start called: Footloose_4 (singleton),

Start 33:

- Found in 28 of 165 (17.0%) of genes in pham
- Manual Annotations of this start: 19 of 147
- Called 75.0% of time when present
- Phage (with cluster) where this start called: Asapag_5 (DN1), BENtherdunthat_5 (DN1), Budski_5 (DN), CheeseTouch_5 (DN1), Frickyeah_5 (DN1), Getalong_5 (DN1), Holliday_5 (DN1), Horus_5 (DN1), Kamaru_5 (DN1), Kenna_5 (DN1), Leroy_5 (DN1), LitninMcQueen_5 (DN1), Lucky10_4 (DH), Lutum_5 (DN1), Morkie_4 (DH), Periwinkle_5 (DN1), Phabuloso_5 (DN1), Phistory_5 (DN1), PhorbesPhlower_4 (DH), Spooky_5 (DN2), Squiddly_6 (DN2),

Start 34:

- Found in 13 of 165 (7.9%) of genes in pham
- Manual Annotations of this start: 7 of 147
- Called 61.5% of time when present
- Phage (with cluster) where this start called: Apricot_4 (DN3), BearBQ_4 (DN), Birdsong_4 (DN), Crater_4 (DN3), Ecliptus_5 (DN), Kuwabara_4 (DN4), MortyNRick_4 (DN), ODay_5 (DN),

Start 35:

- Found in 9 of 165 (5.5%) of genes in pham
- Manual Annotations of this start: 7 of 147
- Called 88.9% of time when present

- Phage (with cluster) where this start called: Avani_5 (F2), Blarby_6 (F), Che9d_5 (F2), Demsculpinboyz_5 (F2), Jabbawokkie_6 (F2), Ogopogo_6 (F1), Yoshi_5 (F2), Zapner_6 (F2),

Start 43:

- Found in 9 of 165 (5.5%) of genes in pham
- Manual Annotations of this start: 1 of 147
- Called 11.1% of time when present
- Phage (with cluster) where this start called: Soul22_5 (F2),

Start 64:

- Found in 42 of 165 (25.5%) of genes in pham
- Manual Annotations of this start: 1 of 147
- Called 2.4% of time when present
- Phage (with cluster) where this start called: Whitney_5 (DN1),

Summary by clusters:

There are 26 clusters represented in this pham: DN, singleton, DH, V, M1, M3, M2, DN4, DN1, DN3, DN2, DU1, DU2, EH, F, L4, L5, L2, L3, L1, AZ, F1, F2, AZ2, AZ3, AZ4,

Info for manual annotations of cluster AZ2:

- Start number 15 was manually annotated 3 times for cluster AZ2.

Info for manual annotations of cluster AZ3:

- Start number 16 was manually annotated 2 times for cluster AZ3.

Info for manual annotations of cluster AZ4:

- Start number 16 was manually annotated 2 times for cluster AZ4.

Info for manual annotations of cluster DH:

- Start number 33 was manually annotated 3 times for cluster DH.

Info for manual annotations of cluster DN:

- Start number 33 was manually annotated 1 time for cluster DN.
- Start number 34 was manually annotated 4 times for cluster DN.

Info for manual annotations of cluster DN1:

- Start number 33 was manually annotated 13 times for cluster DN1.
- Start number 64 was manually annotated 1 time for cluster DN1.

Info for manual annotations of cluster DN2:

- Start number 33 was manually annotated 2 times for cluster DN2.

Info for manual annotations of cluster DN3:

- Start number 34 was manually annotated 2 times for cluster DN3.

Info for manual annotations of cluster DN4:

- Start number 34 was manually annotated 1 time for cluster DN4.

Info for manual annotations of cluster DU1:

- Start number 10 was manually annotated 1 time for cluster DU1.
- Start number 11 was manually annotated 3 times for cluster DU1.

Info for manual annotations of cluster DU2:

- Start number 8 was manually annotated 3 times for cluster DU2.

Info for manual annotations of cluster EH:

- Start number 12 was manually annotated 1 time for cluster EH.
- Start number 14 was manually annotated 3 times for cluster EH.

Info for manual annotations of cluster F1:

- Start number 35 was manually annotated 1 time for cluster F1.

Info for manual annotations of cluster F2:

- Start number 35 was manually annotated 6 times for cluster F2.
- Start number 43 was manually annotated 1 time for cluster F2.

Info for manual annotations of cluster L1:

- Start number 3 was manually annotated 18 times for cluster L1.

Info for manual annotations of cluster L2:

- Start number 3 was manually annotated 28 times for cluster L2.

Info for manual annotations of cluster L3:

- Start number 3 was manually annotated 16 times for cluster L3.

Info for manual annotations of cluster L4:

- Start number 3 was manually annotated 3 times for cluster L4.

Info for manual annotations of cluster L5:

- Start number 3 was manually annotated 2 times for cluster L5.

Info for manual annotations of cluster M1:

- Start number 4 was manually annotated 13 times for cluster M1.

Info for manual annotations of cluster M2:

- Start number 4 was manually annotated 6 times for cluster M2.

Info for manual annotations of cluster M3:

- Start number 4 was manually annotated 1 time for cluster M3.

Info for manual annotations of cluster V:

- Start number 5 was manually annotated 5 times for cluster V.

Gene Information:

Gene: Acquire49_6 Start: 4320, Stop: 5375, Start Num: 3

Candidate Starts for Acquire49_6:

(Start: 3 @4320 has 67 MA's), (28, 4458), (31, 4470), (55, 4575), (60, 4587), (71, 4626), (72, 4629), (84, 4665), (106, 4731), (110, 4746), (117, 4761), (125, 4803), (151, 4905), (169, 5040), (174, 5064),

(196, 5205), (199, 5232), (200, 5241),

Gene: Aegeus_6 Start: 3860, Stop: 4954, Start Num: 3

Candidate Starts for Aegeus_6:

(Start: 3 @3860 has 67 MA's), (9, 3914), (Start: 14 @3941 has 3 MA's), (24, 3983), (26, 3986), (28, 3992), (50, 4094), (55, 4109), (62, 4130), (68, 4151), (83, 4193), (84, 4199), (108, 4274), (109, 4277), (117, 4307), (118, 4313), (121, 4325), (148, 4475), (150, 4508), (151, 4511), (153, 4535), (156, 4568), (162, 4598), (167, 4631), (177, 4694), (193, 4781),

Gene: Appletree2_6 Start: 4294, Stop: 5349, Start Num: 3

Candidate Starts for Appletree2_6:

(Start: 3 @4294 has 67 MA's), (28, 4432), (31, 4444), (55, 4549), (60, 4561), (71, 4600), (72, 4603), (84, 4639), (106, 4705), (110, 4720), (117, 4735), (125, 4777), (151, 4879), (169, 5014), (174, 5038), (196, 5179), (199, 5206), (200, 5215),

Gene: Apricot_4 Start: 3576, Stop: 4232, Start Num: 34

Candidate Starts for Apricot_4:

(Start: 33 @3573 has 19 MA's), (Start: 34 @3576 has 7 MA's), (Start: 64 @3696 has 1 MA's), (65, 3699), (80, 3741), (94, 3792), (107, 3822), (134, 3918), (135, 3921), (146, 3975), (147, 3984), (150, 4020), (152, 4041), (163, 4125), (164, 4128), (165, 4134),

Gene: Archie_6 Start: 4276, Stop: 5343, Start Num: 3

Candidate Starts for Archie_6:

(Start: 3 @4276 has 67 MA's), (7, 4333), (28, 4429), (55, 4546), (60, 4558), (74, 4603), (84, 4636), (106, 4702), (117, 4732), (125, 4774), (128, 4783), (151, 4876), (152, 4894), (169, 5011), (174, 5035), (176, 5044), (196, 5176), (199, 5203),

Gene: Asapag_5 Start: 3599, Stop: 4243, Start Num: 33

Candidate Starts for Asapag_5:

(Start: 33 @3599 has 19 MA's), (40, 3629), (41, 3632), (53, 3686), (Start: 64 @3722 has 1 MA's), (65, 3725), (69, 3737), (80, 3767), (91, 3809), (105, 3842), (134, 3944), (135, 3947), (136, 3950), (152, 4070), (166, 4154), (168, 4160),

Gene: Auspice_16 Start: 7882, Stop: 9042, Start Num: 4

Candidate Starts for Auspice_16:

(Start: 4 @7882 has 20 MA's), (22, 7990), (39, 8056), (44, 8077), (58, 8131), (70, 8170), (77, 8185), (85, 8227), (92, 8248), (97, 8284), (98, 8293), (120, 8383), (122, 8392), (123, 8395), (128, 8419), (135, 8467), (146, 8521), (148, 8536), (152, 8590), (163, 8692), (176, 8755),

Gene: AvadaKedavra_6 Start: 4320, Stop: 5375, Start Num: 3

Candidate Starts for AvadaKedavra_6:

(Start: 3 @4320 has 67 MA's), (28, 4458), (31, 4470), (55, 4575), (60, 4587), (71, 4626), (72, 4629), (84, 4665), (106, 4731), (110, 4746), (117, 4761), (125, 4803), (151, 4905), (169, 5040), (174, 5064), (196, 5205), (199, 5232), (200, 5241),

Gene: Avani_5 Start: 3585, Stop: 4229, Start Num: 35

Candidate Starts for Avani_5:

(32, 3570), (Start: 35 @3585 has 7 MA's), (Start: 43 @3618 has 1 MA's), (53, 3660), (58, 3675), (62, 3687), (Start: 64 @3696 has 1 MA's), (69, 3711), (78, 3735), (91, 3783), (118, 3864), (123, 3885), (127, 3906), (147, 3996), (150, 4035), (152, 4056), (166, 4137), (168, 4143), (177, 4197),

Gene: Aziz_20 Start: 8460, Stop: 9641, Start Num: 4

Candidate Starts for Aziz_20:

(Start: 4 @8460 has 20 MA's), (Start: 12 @8523 has 1 MA's), (20, 8562), (31, 8595), (38, 8628), (53, 8694), (Start: 64 @8730 has 1 MA's), (68, 8742), (70, 8748), (77, 8763), (98, 8871), (112, 8934), (123, 8979), (128, 9009), (135, 9057), (142, 9090), (145, 9108), (151, 9162), (167, 9303), (169, 9312), (176, 9345),

Gene: Azrael100_27 Start: 11178, Stop: 12212, Start Num: 5

Candidate Starts for Azrael100_27:

(Start: 5 @11178 has 5 MA's), (22, 11268), (28, 11283), (Start: 34 @11310 has 7 MA's), (70, 11448), (82, 11481), (109, 11559), (115, 11580), (116, 11583), (123, 11616), (124, 11622), (127, 11640), (128, 11643), (144, 11730), (154, 11835), (174, 11934), (176, 11943), (178, 11964), (188, 12009), (193, 12045), (199, 12096), (203, 12117), (204, 12138), (209, 12162), (210, 12174),

Gene: BENtherdunthat_5 Start: 3599, Stop: 4243, Start Num: 33

Candidate Starts for BENtherdunthat_5:

(Start: 33 @3599 has 19 MA's), (40, 3629), (41, 3632), (53, 3686), (Start: 64 @3722 has 1 MA's), (65, 3725), (69, 3737), (80, 3767), (91, 3809), (105, 3842), (134, 3944), (135, 3947), (136, 3950), (152, 4070), (166, 4154), (168, 4160),

Gene: Baoshan_5 Start: 4143, Stop: 5198, Start Num: 3

Candidate Starts for Baoshan_5:

(Start: 3 @4143 has 67 MA's), (7, 4191), (24, 4278), (55, 4404), (60, 4416), (74, 4461), (84, 4494), (106, 4560), (117, 4590), (125, 4632), (128, 4641), (151, 4734), (152, 4752), (169, 4869), (174, 4893), (176, 4902), (189, 4980), (196, 5031), (199, 5058), (200, 5067),

Gene: Baudelaire_6 Start: 3860, Stop: 4954, Start Num: 3

Candidate Starts for Baudelaire_6:

(Start: 3 @3860 has 67 MA's), (9, 3914), (Start: 14 @3941 has 3 MA's), (24, 3983), (26, 3986), (28, 3992), (50, 4094), (55, 4109), (62, 4130), (68, 4151), (83, 4193), (84, 4199), (108, 4274), (109, 4277), (117, 4307), (118, 4313), (121, 4325), (148, 4475), (150, 4508), (151, 4511), (153, 4535), (156, 4568), (162, 4598), (167, 4631), (177, 4694), (193, 4781),

Gene: Bazzle_6 Start: 4252, Stop: 5319, Start Num: 3

Candidate Starts for Bazzle_6:

(Start: 3 @4252 has 67 MA's), (7, 4309), (28, 4405), (55, 4522), (60, 4534), (74, 4579), (84, 4612), (106, 4678), (117, 4708), (125, 4750), (128, 4759), (151, 4852), (152, 4870), (169, 4987), (174, 5011), (176, 5020), (196, 5152), (199, 5179),

Gene: BearBQ_4 Start: 3576, Stop: 4232, Start Num: 34

Candidate Starts for BearBQ_4:

(Start: 33 @3573 has 19 MA's), (Start: 34 @3576 has 7 MA's), (Start: 64 @3696 has 1 MA's), (65, 3699), (80, 3741), (94, 3792), (107, 3822), (134, 3918), (135, 3921), (146, 3975), (147, 3984), (150, 4020), (152, 4041), (163, 4125), (164, 4128), (165, 4134),

Gene: Bellis_7 Start: 4412, Stop: 5482, Start Num: 3

Candidate Starts for Bellis_7:

(Start: 3 @4412 has 67 MA's), (Start: 8 @4460 has 3 MA's), (9, 4469), (Start: 14 @4496 has 3 MA's), (28, 4547), (45, 4625), (55, 4664), (60, 4676), (84, 4754), (90, 4778), (106, 4820), (117, 4850), (151, 5018), (152, 5036), (169, 5153), (174, 5177), (189, 5264), (199, 5345),

Gene: BigCheese_6 Start: 4311, Stop: 5369, Start Num: 3

Candidate Starts for BigCheese_6:

(Start: 3 @4311 has 67 MA's), (7, 4359), (55, 4572), (60, 4584), (74, 4629), (84, 4662), (106, 4728), (117, 4758), (125, 4800), (128, 4809), (151, 4902), (152, 4920), (169, 5037), (174, 5061), (176, 5070),

(196, 5202), (199, 5229),

Gene: Birdsong_4 Start: 3576, Stop: 4232, Start Num: 34

Candidate Starts for Birdsong_4:

(Start: 33 @3573 has 19 MA's), (Start: 34 @3576 has 7 MA's), (Start: 64 @3696 has 1 MA's), (65, 3699), (80, 3741), (94, 3792), (107, 3822), (134, 3918), (135, 3921), (146, 3975), (147, 3984), (150, 4020), (152, 4041), (163, 4125), (164, 4128), (165, 4134),

Gene: Blarby_6 Start: 4110, Stop: 4754, Start Num: 35

Candidate Starts for Blarby_6:

(32, 4095), (Start: 35 @4110 has 7 MA's), (Start: 43 @4143 has 1 MA's), (53, 4185), (58, 4200), (62, 4212), (Start: 64 @4221 has 1 MA's), (68, 4233), (69, 4236), (78, 4260), (91, 4308), (114, 4377), (118, 4389), (123, 4410), (127, 4431), (147, 4521), (150, 4560), (152, 4581), (166, 4662), (168, 4668), (177, 4722),

Gene: BobsGarage_6 Start: 4311, Stop: 5369, Start Num: 3

Candidate Starts for BobsGarage_6:

(Start: 3 @4311 has 67 MA's), (7, 4359), (55, 4572), (60, 4584), (74, 4629), (84, 4662), (106, 4728), (117, 4758), (125, 4800), (128, 4809), (151, 4902), (152, 4920), (169, 5037), (174, 5061), (176, 5070), (196, 5202), (199, 5229),

Gene: Bongo_16 Start: 7882, Stop: 9042, Start Num: 4

Candidate Starts for Bongo_16:

(Start: 4 @7882 has 20 MA's), (22, 7990), (39, 8056), (44, 8077), (58, 8131), (70, 8170), (77, 8185), (85, 8227), (92, 8248), (97, 8284), (98, 8293), (120, 8383), (122, 8392), (123, 8395), (128, 8419), (135, 8467), (146, 8521), (148, 8536), (152, 8590), (163, 8692), (176, 8755),

Gene: Breezona_6 Start: 4311, Stop: 5369, Start Num: 3

Candidate Starts for Breezona_6:

(Start: 3 @4311 has 67 MA's), (7, 4359), (55, 4572), (60, 4584), (74, 4629), (84, 4662), (106, 4728), (117, 4758), (125, 4800), (128, 4809), (151, 4902), (152, 4920), (169, 5037), (174, 5061), (176, 5070), (196, 5202), (199, 5229),

Gene: Bricole_16 Start: 7881, Stop: 9041, Start Num: 4

Candidate Starts for Bricole_16:

(Start: 4 @7881 has 20 MA's), (22, 7989), (39, 8055), (44, 8076), (58, 8130), (70, 8169), (77, 8184), (85, 8226), (92, 8247), (97, 8283), (98, 8292), (120, 8382), (122, 8391), (123, 8394), (128, 8418), (135, 8466), (146, 8520), (148, 8535), (152, 8589), (163, 8691), (176, 8754),

Gene: Bromden_6 Start: 4032, Stop: 5087, Start Num: 3

Candidate Starts for Bromden_6:

(1, 4026), (Start: 3 @4032 has 67 MA's), (22, 4161), (55, 4293), (60, 4305), (84, 4383), (98, 4431), (106, 4449), (117, 4479), (125, 4521), (151, 4623), (152, 4641), (169, 4758), (174, 4782), (176, 4791), (196, 4920), (199, 4947), (207, 5007),

Gene: Budski_5 Start: 3597, Stop: 4241, Start Num: 33

Candidate Starts for Budski_5:

(Start: 33 @3597 has 19 MA's), (40, 3627), (47, 3663), (53, 3684), (62, 3711), (Start: 64 @3720 has 1 MA's), (65, 3723), (69, 3735), (91, 3807), (132, 3930), (134, 3942), (135, 3945), (136, 3948), (152, 4068), (166, 4152), (168, 4158),

Gene: Calm_6 Start: 4321, Stop: 5376, Start Num: 3

Candidate Starts for Calm_6:

(Start: 3 @4321 has 67 MA's), (28, 4459), (31, 4471), (55, 4576), (60, 4588), (71, 4627), (72, 4630), (84, 4666), (106, 4732), (110, 4747), (117, 4762), (125, 4804), (151, 4906), (169, 5041), (174, 5065), (196, 5206), (199, 5233), (200, 5242),

Gene: Cen1621_4 Start: 3740, Stop: 4483, Start Num: 14

Candidate Starts for Cen1621_4:

(Start: 14 @3740 has 3 MA's), (25, 3779), (57, 3908), (79, 3968), (87, 3998), (127, 4136), (134, 4160), (148, 4229), (150, 4262), (159, 4337), (161, 4346),

Gene: Chaser_6 Start: 4033, Stop: 5088, Start Num: 3

Candidate Starts for Chaser_6:

(1, 4027), (Start: 3 @4033 has 67 MA's), (22, 4162), (28, 4177), (55, 4294), (60, 4306), (84, 4384), (98, 4432), (106, 4450), (117, 4480), (125, 4522), (140, 4555), (151, 4624), (152, 4642), (169, 4759), (174, 4783), (176, 4792), (196, 4921), (199, 4948), (207, 5008), (208, 5011),

Gene: Che9d_5 Start: 3595, Stop: 4239, Start Num: 35

Candidate Starts for Che9d_5:

(Start: 35 @3595 has 7 MA's), (Start: 43 @3628 has 1 MA's), (53, 3670), (58, 3685), (62, 3697), (Start: 64 @3706 has 1 MA's), (68, 3718), (69, 3721), (78, 3745), (91, 3793), (114, 3862), (118, 3874), (123, 3895), (127, 3916), (147, 4006), (150, 4045), (152, 4066), (166, 4147), (168, 4153), (177, 4207),

Gene: CheeseTouch_5 Start: 3597, Stop: 4241, Start Num: 33

Candidate Starts for CheeseTouch_5:

(Start: 33 @3597 has 19 MA's), (40, 3627), (47, 3663), (53, 3684), (62, 3711), (Start: 64 @3720 has 1 MA's), (65, 3723), (69, 3735), (91, 3807), (132, 3930), (134, 3942), (135, 3945), (136, 3948), (152, 4068), (166, 4152), (168, 4158),

Gene: CicholasNage_6 Start: 4321, Stop: 5376, Start Num: 3

Candidate Starts for CicholasNage_6:

(Start: 3 @4321 has 67 MA's), (28, 4459), (31, 4471), (55, 4576), (60, 4588), (71, 4627), (72, 4630), (84, 4666), (106, 4732), (110, 4747), (117, 4762), (125, 4804), (151, 4906), (169, 5041), (174, 5065), (196, 5206), (199, 5233), (200, 5242),

Gene: Claus_6 Start: 4323, Stop: 5378, Start Num: 3

Candidate Starts for Claus_6:

(Start: 3 @4323 has 67 MA's), (7, 4371), (24, 4458), (55, 4584), (60, 4596), (74, 4641), (84, 4674), (106, 4740), (117, 4770), (125, 4812), (128, 4821), (151, 4914), (152, 4932), (169, 5049), (174, 5073), (176, 5082), (189, 5160), (196, 5211), (199, 5238), (200, 5247),

Gene: Clautastrophe_7 Start: 4416, Stop: 5486, Start Num: 3

Candidate Starts for Clautastrophe_7:

(Start: 3 @4416 has 67 MA's), (Start: 8 @4464 has 3 MA's), (9, 4473), (Start: 14 @4500 has 3 MA's), (28, 4551), (45, 4629), (55, 4668), (60, 4680), (84, 4758), (90, 4782), (106, 4824), (117, 4854), (151, 5022), (152, 5040), (169, 5157), (174, 5181), (189, 5268), (199, 5349),

Gene: Cosmo_28 Start: 11185, Stop: 12219, Start Num: 5

Candidate Starts for Cosmo_28:

(Start: 5 @11185 has 5 MA's), (22, 11275), (28, 11290), (Start: 34 @11317 has 7 MA's), (70, 11455), (82, 11488), (109, 11566), (115, 11587), (116, 11590), (123, 11623), (124, 11629), (127, 11647), (128, 11650), (144, 11737), (154, 11842), (174, 11941), (176, 11950), (178, 11971), (188, 12016), (193, 12052), (199, 12103), (203, 12124), (204, 12145), (209, 12169), (210, 12181),

Gene: Crater_4 Start: 3576, Stop: 4232, Start Num: 34

Candidate Starts for Crater_4:

(Start: 33 @3573 has 19 MA's), (Start: 34 @3576 has 7 MA's), (Start: 64 @3696 has 1 MA's), (65, 3699), (80, 3741), (94, 3792), (107, 3822), (134, 3918), (135, 3921), (146, 3975), (147, 3984), (150, 4020), (152, 4041), (163, 4125), (164, 4128), (165, 4134),

Gene: Crossroads_6 Start: 4311, Stop: 5369, Start Num: 3

Candidate Starts for Crossroads_6:

(Start: 3 @4311 has 67 MA's), (7, 4359), (55, 4572), (60, 4584), (74, 4629), (84, 4662), (106, 4728), (117, 4758), (125, 4800), (128, 4809), (151, 4902), (152, 4920), (169, 5037), (174, 5061), (176, 5070), (196, 5202), (199, 5229),

Gene: Demsculpinboyz_5 Start: 3586, Stop: 4230, Start Num: 35

Candidate Starts for Demsculpinboyz_5:

(32, 3571), (Start: 35 @3586 has 7 MA's), (Start: 43 @3619 has 1 MA's), (53, 3661), (58, 3676), (62, 3688), (Start: 64 @3697 has 1 MA's), (68, 3709), (69, 3712), (78, 3736), (91, 3784), (114, 3853), (118, 3865), (123, 3886), (127, 3907), (147, 3997), (150, 4036), (152, 4057), (166, 4138), (168, 4144), (177, 4198),

Gene: Diminimus_17 Start: 7881, Stop: 9041, Start Num: 4

Candidate Starts for Diminimus_17:

(Start: 4 @7881 has 20 MA's), (22, 7989), (39, 8055), (44, 8076), (58, 8130), (70, 8169), (77, 8184), (85, 8226), (92, 8247), (97, 8283), (98, 8292), (120, 8382), (122, 8391), (123, 8394), (128, 8418), (135, 8466), (146, 8520), (148, 8535), (152, 8589), (163, 8691), (176, 8754),

Gene: DirkDirk_6 Start: 4322, Stop: 5377, Start Num: 3

Candidate Starts for DirkDirk_6:

(Start: 3 @4322 has 67 MA's), (28, 4460), (31, 4472), (55, 4577), (60, 4589), (71, 4628), (72, 4631), (84, 4667), (106, 4733), (110, 4748), (117, 4763), (125, 4805), (151, 4907), (169, 5042), (174, 5066), (196, 5207), (199, 5234), (200, 5243),

Gene: Douge_6 Start: 3988, Stop: 5043, Start Num: 3

Candidate Starts for Douge_6:

(1, 3982), (Start: 3 @3988 has 67 MA's), (27, 4129), (28, 4132), (55, 4249), (60, 4261), (84, 4339), (98, 4387), (106, 4405), (117, 4435), (125, 4477), (128, 4486), (140, 4510), (151, 4579), (152, 4597), (169, 4714), (174, 4738), (176, 4747), (196, 4876), (199, 4903), (207, 4963), (208, 4966),

Gene: DrSeegs_6 Start: 4311, Stop: 5369, Start Num: 3

Candidate Starts for DrSeegs_6:

(Start: 3 @4311 has 67 MA's), (7, 4359), (55, 4572), (60, 4584), (74, 4629), (84, 4662), (106, 4728), (117, 4758), (125, 4800), (128, 4809), (151, 4902), (152, 4920), (169, 5037), (174, 5061), (176, 5070), (196, 5202), (199, 5229),

Gene: Dulcita_17 Start: 7881, Stop: 9041, Start Num: 4

Candidate Starts for Dulcita_17:

(Start: 4 @7881 has 20 MA's), (22, 7989), (39, 8055), (44, 8076), (58, 8130), (70, 8169), (77, 8184), (85, 8226), (92, 8247), (97, 8283), (98, 8292), (120, 8382), (122, 8391), (123, 8394), (128, 8418), (135, 8466), (146, 8520), (148, 8535), (152, 8589), (163, 8691), (176, 8754),

Gene: DuncansLeg_7 Start: 4419, Stop: 5489, Start Num: 3

Candidate Starts for DuncansLeg_7:

(Start: 3 @4419 has 67 MA's), (Start: 8 @4467 has 3 MA's), (9, 4476), (Start: 14 @4503 has 3 MA's), (28, 4554), (45, 4632), (55, 4671), (60, 4683), (84, 4761), (90, 4785), (106, 4827), (117, 4857), (152, 5043), (169, 5160), (174, 5184), (199, 5352),

Gene: DyoEdafos_7 Start: 4176, Stop: 5231, Start Num: 3

Candidate Starts for DyoEdafos_7:

(1, 4170), (Start: 3 @4176 has 67 MA's), (22, 4305), (55, 4437), (60, 4449), (84, 4527), (98, 4575), (106, 4593), (117, 4623), (125, 4665), (140, 4698), (151, 4767), (152, 4785), (169, 4902), (174, 4926), (196, 5064), (199, 5091), (207, 5151),

Gene: Ecliptus_5 Start: 3608, Stop: 4267, Start Num: 34

Candidate Starts for Ecliptus_5:

(Start: 15 @3533 has 3 MA's), (Start: 34 @3608 has 7 MA's), (65, 3731), (69, 3743), (80, 3773), (88, 3809), (133, 3944), (135, 3956), (147, 4019), (150, 4055), (151, 4058), (169, 4184),

Gene: Ellson_7 Start: 4428, Stop: 5498, Start Num: 3

Candidate Starts for Ellson_7:

(Start: 3 @4428 has 67 MA's), (Start: 8 @4476 has 3 MA's), (9, 4485), (Start: 14 @4512 has 3 MA's), (28, 4563), (45, 4641), (55, 4680), (60, 4692), (84, 4770), (90, 4794), (106, 4836), (117, 4866), (152, 5052), (169, 5169), (174, 5193), (199, 5361),

Gene: Emotion_4 Start: 3677, Stop: 4474, Start Num: 16

Candidate Starts for Emotion_4:

(Start: 16 @3677 has 4 MA's), (38, 3761), (73, 3884), (81, 3908), (90, 3935), (138, 4103), (150, 4187), (154, 4226), (170, 4319),

Gene: Enceladus_6 Start: 4322, Stop: 5377, Start Num: 3

Candidate Starts for Enceladus_6:

(Start: 3 @4322 has 67 MA's), (28, 4460), (31, 4472), (55, 4577), (60, 4589), (71, 4628), (72, 4631), (84, 4667), (106, 4733), (110, 4748), (117, 4763), (125, 4805), (151, 4907), (169, 5042), (174, 5066), (196, 5207), (199, 5234), (200, 5243),

Gene: EniyanLRS_25 Start: 10876, Stop: 11910, Start Num: 5

Candidate Starts for EniyanLRS_25:

(Start: 5 @10876 has 5 MA's), (22, 10966), (28, 10981), (Start: 34 @11008 has 7 MA's), (70, 11146), (82, 11179), (109, 11257), (115, 11278), (116, 11281), (123, 11314), (124, 11320), (127, 11338), (128, 11341), (144, 11428), (154, 11533), (174, 11632), (176, 11641), (178, 11662), (188, 11707), (193, 11743), (199, 11794), (203, 11815), (204, 11836), (209, 11860), (210, 11872),

Gene: Estes_21 Start: 8605, Stop: 9780, Start Num: 4

Candidate Starts for Estes_21:

(Start: 4 @8605 has 20 MA's), (Start: 12 @8668 has 1 MA's), (20, 8707), (31, 8740), (38, 8773), (53, 8839), (Start: 64 @8875 has 1 MA's), (68, 8887), (70, 8893), (77, 8908), (98, 9016), (99, 9025), (123, 9124), (128, 9148), (135, 9196), (145, 9247), (151, 9301), (167, 9442), (176, 9484),

Gene: Faith1_6 Start: 4311, Stop: 5369, Start Num: 3

Candidate Starts for Faith1_6:

(Start: 3 @4311 has 67 MA's), (7, 4359), (55, 4572), (60, 4584), (74, 4629), (84, 4662), (106, 4728), (117, 4758), (125, 4800), (128, 4809), (151, 4902), (152, 4920), (169, 5037), (174, 5061), (176, 5070), (196, 5202), (199, 5229),

Gene: Finemlucis_6 Start: 4311, Stop: 5369, Start Num: 3

Candidate Starts for Finemlucis_6:

(Start: 3 @4311 has 67 MA's), (7, 4359), (55, 4572), (60, 4584), (74, 4629), (84, 4662), (106, 4728), (117, 4758), (125, 4800), (128, 4809), (151, 4902), (152, 4920), (169, 5037), (174, 5061), (176, 5070), (196, 5202), (199, 5229),

Gene: Finnry_7 Start: 4413, Stop: 5483, Start Num: 3

Candidate Starts for Finnry_7:

(Start: 3 @4413 has 67 MA's), (Start: 8 @4461 has 3 MA's), (9, 4470), (Start: 14 @4497 has 3 MA's), (28, 4548), (45, 4626), (55, 4665), (60, 4677), (84, 4755), (90, 4779), (106, 4821), (117, 4851), (151, 5019), (152, 5037), (169, 5154), (174, 5178), (189, 5265), (199, 5346),

Gene: Floof_4 Start: 4029, Stop: 4892, Start Num: 14

Candidate Starts for Floof_4:

(Start: 14 @4029 has 3 MA's), (20, 4059), (54, 4191), (127, 4434), (150, 4563), (179, 4731), (194, 4815),

Gene: Footloose_4 Start: 3515, Stop: 4273, Start Num: 17

Candidate Starts for Footloose_4:

(Start: 14 @3503 has 3 MA's), (Start: 17 @3515 has 1 MA's), (59, 3680), (63, 3692), (89, 3767), (90, 3770), (119, 3851), (131, 3899), (135, 3917), (136, 3920), (150, 4019), (169, 4154), (185, 4232),

Gene: Frickyeah_5 Start: 3599, Stop: 4243, Start Num: 33

Candidate Starts for Frickyeah_5:

(Start: 33 @3599 has 19 MA's), (40, 3629), (41, 3632), (53, 3686), (Start: 64 @3722 has 1 MA's), (65, 3725), (69, 3737), (80, 3767), (91, 3809), (105, 3842), (108, 3854), (134, 3944), (135, 3947), (136, 3950), (152, 4070), (166, 4154), (168, 4160),

Gene: Gabriela_6 Start: 4311, Stop: 5369, Start Num: 3

Candidate Starts for Gabriela_6:

(Start: 3 @4311 has 67 MA's), (7, 4359), (55, 4572), (60, 4584), (74, 4629), (84, 4662), (106, 4728), (117, 4758), (125, 4800), (128, 4809), (151, 4902), (152, 4920), (169, 5037), (174, 5061), (176, 5070), (196, 5202), (199, 5229),

Gene: Gardann_6 Start: 4311, Stop: 5369, Start Num: 3

Candidate Starts for Gardann_6:

(Start: 3 @4311 has 67 MA's), (7, 4359), (55, 4572), (60, 4584), (74, 4629), (84, 4662), (106, 4728), (117, 4758), (125, 4800), (128, 4809), (151, 4902), (152, 4920), (169, 5037), (174, 5061), (176, 5070), (196, 5202), (199, 5229),

Gene: GardenSalsa_20 Start: 8439, Stop: 9614, Start Num: 4

Candidate Starts for GardenSalsa_20:

(Start: 4 @8439 has 20 MA's), (Start: 12 @8502 has 1 MA's), (20, 8541), (31, 8574), (38, 8607), (53, 8673), (Start: 64 @8709 has 1 MA's), (68, 8721), (70, 8727), (77, 8742), (98, 8850), (99, 8859), (123, 8958), (128, 8982), (135, 9030), (142, 9063), (145, 9081), (151, 9135), (167, 9276), (176, 9318),

Gene: GenevaB15_20 Start: 8460, Stop: 9641, Start Num: 4

Candidate Starts for GenevaB15_20:

(Start: 4 @8460 has 20 MA's), (Start: 12 @8523 has 1 MA's), (20, 8562), (31, 8595), (38, 8628), (53, 8694), (Start: 64 @8730 has 1 MA's), (68, 8742), (70, 8748), (77, 8763), (98, 8871), (112, 8934), (123, 8979), (128, 9009), (135, 9057), (142, 9090), (145, 9108), (151, 9162), (167, 9303), (169, 9312), (176, 9345),

Gene: Getalong_5 Start: 3599, Stop: 4243, Start Num: 33

Candidate Starts for Getalong_5:

(Start: 33 @3599 has 19 MA's), (40, 3629), (41, 3632), (53, 3686), (Start: 64 @3722 has 1 MA's), (65, 3725), (80, 3767), (91, 3809), (105, 3842), (134, 3944), (135, 3947), (136, 3950), (152, 4070), (166, 4154), (168, 4160),

Gene: Glaske16_17 Start: 7881, Stop: 9041, Start Num: 4

Candidate Starts for Glaske16_17:

(Start: 4 @7881 has 20 MA's), (22, 7989), (39, 8055), (44, 8076), (58, 8130), (70, 8169), (77, 8184), (85, 8226), (92, 8247), (97, 8283), (98, 8292), (120, 8382), (122, 8391), (123, 8394), (128, 8418), (135, 8466), (146, 8520), (148, 8535), (152, 8589), (163, 8691), (176, 8754),

Gene: GuuelaD_6 Start: 4356, Stop: 5411, Start Num: 3

Candidate Starts for GuuelaD_6:

(Start: 3 @4356 has 67 MA's), (7, 4404), (24, 4491), (55, 4617), (60, 4629), (84, 4707), (106, 4773), (117, 4803), (125, 4845), (128, 4854), (151, 4947), (152, 4965), (169, 5082), (174, 5106), (176, 5115), (186, 5166), (190, 5196), (191, 5211), (199, 5271),

Gene: Hafay_6 Start: 4350, Stop: 5402, Start Num: 3

Candidate Starts for Hafay_6:

(Start: 3 @4350 has 67 MA's), (7, 4392), (55, 4605), (60, 4617), (74, 4662), (84, 4695), (106, 4761), (117, 4791), (125, 4833), (128, 4842), (151, 4935), (152, 4953), (169, 5070), (174, 5094), (176, 5103), (196, 5235), (199, 5262),

Gene: Halena_6 Start: 4321, Stop: 5376, Start Num: 3

Candidate Starts for Halena_6:

(Start: 3 @4321 has 67 MA's), (28, 4459), (31, 4471), (55, 4576), (60, 4588), (71, 4627), (72, 4630), (84, 4666), (106, 4732), (110, 4747), (117, 4762), (125, 4804), (151, 4906), (169, 5041), (174, 5065), (196, 5206), (199, 5233), (200, 5242),

Gene: Holliday_5 Start: 3597, Stop: 4241, Start Num: 33

Candidate Starts for Holliday_5:

(Start: 33 @3597 has 19 MA's), (40, 3627), (47, 3663), (53, 3684), (62, 3711), (Start: 64 @3720 has 1 MA's), (65, 3723), (69, 3735), (91, 3807), (132, 3930), (134, 3942), (135, 3945), (136, 3948), (152, 4068), (166, 4152), (168, 4158),

Gene: Honk_4 Start: 3779, Stop: 4525, Start Num: 12

Candidate Starts for Honk_4:

(Start: 12 @3779 has 1 MA's), (Start: 14 @3788 has 3 MA's), (19, 3812), (25, 3827), (29, 3839), (30, 3842), (57, 3953), (79, 4013), (101, 4076), (123, 4160), (127, 4181), (148, 4274), (150, 4307), (154, 4346), (180, 4469), (184, 4478),

Gene: Horus_5 Start: 3599, Stop: 4243, Start Num: 33

Candidate Starts for Horus_5:

(Start: 33 @3599 has 19 MA's), (40, 3629), (41, 3632), (53, 3686), (Start: 64 @3722 has 1 MA's), (65, 3725), (69, 3737), (80, 3767), (91, 3809), (105, 3842), (108, 3854), (134, 3944), (135, 3947), (136, 3950), (152, 4070), (166, 4154), (168, 4160),

Gene: IPHane7_16 Start: 7882, Stop: 9042, Start Num: 4

Candidate Starts for IPHane7_16:

(Start: 4 @7882 has 20 MA's), (22, 7990), (39, 8056), (44, 8077), (58, 8131), (70, 8170), (77, 8185), (85, 8227), (92, 8248), (97, 8284), (98, 8293), (120, 8383), (122, 8392), (123, 8395), (128, 8419), (135, 8467), (146, 8521), (148, 8536), (152, 8590), (163, 8692), (176, 8755),

Gene: Itos_6 Start: 4311, Stop: 5369, Start Num: 3

Candidate Starts for Itos_6:

(Start: 3 @4311 has 67 MA's), (7, 4359), (55, 4572), (60, 4584), (74, 4629), (84, 4662), (106, 4728), (117, 4758), (125, 4800), (128, 4809), (151, 4902), (152, 4920), (169, 5037), (174, 5061), (176, 5070),

(196, 5202), (199, 5229),

Gene: Jabbawokkie_6 Start: 4109, Stop: 4753, Start Num: 35

Candidate Starts for Jabbawokkie_6:

(Start: 35 @4109 has 7 MA's), (Start: 43 @4142 has 1 MA's), (53, 4184), (58, 4199), (62, 4211), (Start: 64 @4220 has 1 MA's), (68, 4232), (69, 4235), (78, 4259), (91, 4307), (114, 4376), (118, 4388), (123, 4409), (127, 4430), (147, 4520), (150, 4559), (152, 4580), (166, 4661), (168, 4667), (177, 4721),

Gene: JasmineDragon_4 Start: 3667, Stop: 4464, Start Num: 16

Candidate Starts for JasmineDragon_4:

(Start: 16 @3667 has 4 MA's), (61, 3841), (73, 3874), (123, 4027), (138, 4093), (150, 4177), (170, 4309),

Gene: Jobypre_7 Start: 4416, Stop: 5486, Start Num: 3

Candidate Starts for Jobypre_7:

(Start: 3 @4416 has 67 MA's), (Start: 8 @4464 has 3 MA's), (9, 4473), (Start: 14 @4500 has 3 MA's), (28, 4551), (45, 4629), (55, 4668), (60, 4680), (84, 4758), (90, 4782), (106, 4824), (117, 4854), (151, 5022), (152, 5040), (169, 5157), (174, 5181), (189, 5268), (199, 5349),

Gene: JoeDirt_6 Start: 4321, Stop: 5376, Start Num: 3

Candidate Starts for JoeDirt_6:

(Start: 3 @4321 has 67 MA's), (28, 4459), (31, 4471), (55, 4576), (60, 4588), (71, 4627), (72, 4630), (84, 4666), (106, 4732), (110, 4747), (117, 4762), (125, 4804), (151, 4906), (169, 5041), (174, 5065), (196, 5206), (199, 5233), (200, 5242),

Gene: Jubie_7 Start: 4416, Stop: 5486, Start Num: 3

Candidate Starts for Jubie_7:

(Start: 3 @4416 has 67 MA's), (Start: 8 @4464 has 3 MA's), (9, 4473), (Start: 14 @4500 has 3 MA's), (28, 4551), (45, 4629), (55, 4668), (60, 4680), (84, 4758), (90, 4782), (106, 4824), (117, 4854), (151, 5022), (152, 5040), (169, 5157), (174, 5181), (189, 5268), (199, 5349),

Gene: Kahlid_6 Start: 4311, Stop: 5369, Start Num: 3

Candidate Starts for Kahlid_6:

(Start: 3 @4311 has 67 MA's), (7, 4359), (55, 4572), (60, 4584), (74, 4629), (84, 4662), (106, 4728), (117, 4758), (125, 4800), (128, 4809), (151, 4902), (152, 4920), (169, 5037), (174, 5061), (176, 5070), (196, 5202), (199, 5229),

Gene: Kamaru_5 Start: 3597, Stop: 4241, Start Num: 33

Candidate Starts for Kamaru_5:

(Start: 33 @3597 has 19 MA's), (40, 3627), (47, 3663), (53, 3684), (62, 3711), (Start: 64 @3720 has 1 MA's), (65, 3723), (69, 3735), (91, 3807), (132, 3930), (134, 3942), (135, 3945), (136, 3948), (152, 4068), (166, 4152), (168, 4158),

Gene: Kenna_5 Start: 3599, Stop: 4243, Start Num: 33

Candidate Starts for Kenna_5:

(Start: 33 @3599 has 19 MA's), (40, 3629), (41, 3632), (53, 3686), (Start: 64 @3722 has 1 MA's), (65, 3725), (80, 3767), (91, 3809), (105, 3842), (134, 3944), (135, 3947), (136, 3950), (152, 4070), (166, 4154), (168, 4160),

Gene: Kingsolomon_7 Start: 4416, Stop: 5486, Start Num: 3

Candidate Starts for Kingsolomon_7:

(Start: 3 @4416 has 67 MA's), (Start: 8 @4464 has 3 MA's), (9, 4473), (Start: 14 @4500 has 3 MA's), (28, 4551), (45, 4629), (55, 4668), (60, 4680), (84, 4758), (90, 4782), (106, 4824), (117, 4854), (151,

5022), (152, 5040), (169, 5157), (174, 5181), (189, 5268), (199, 5349),

Gene: Krypton555_7 Start: 4408, Stop: 5478, Start Num: 3

Candidate Starts for Krypton555_7:

(Start: 3 @4408 has 67 MA's), (Start: 8 @4456 has 3 MA's), (9, 4465), (Start: 14 @4492 has 3 MA's), (28, 4543), (39, 4594), (45, 4621), (55, 4660), (60, 4672), (84, 4750), (90, 4774), (106, 4816), (117, 4846), (152, 5032), (169, 5149), (174, 5173), (199, 5341),

Gene: Kudrefre_14 Start: 7918, Stop: 8928, Start Num: 11

Candidate Starts for Kudrefre_14:

(Start: 11 @7918 has 3 MA's), (Start: 16 @7936 has 4 MA's), (18, 7945), (20, 7960), (36, 8017), (52, 8089), (69, 8143), (115, 8293), (123, 8329), (128, 8353), (135, 8401), (145, 8452), (146, 8455), (150, 8503), (155, 8566), (157, 8584), (174, 8668), (178, 8698), (186, 8728), (193, 8776), (198, 8824), (201, 8839), (202, 8845),

Gene: Kumao_15 Start: 7305, Stop: 8408, Start Num: 6

Candidate Starts for Kumao_15:

(Start: 6 @7305 has 1 MA's), (22, 7392), (50, 7509), (53, 7518), (75, 7584), (102, 7728), (104, 7734), (111, 7761), (123, 7809), (127, 7830), (128, 7833), (133, 7869), (138, 7899), (141, 7911), (148, 7950), (152, 8004), (176, 8133), (178, 8154), (182, 8169), (192, 8238), (195, 8259), (203, 8313), (211, 8373),

Gene: Kuwabara_4 Start: 3576, Stop: 4232, Start Num: 34

Candidate Starts for Kuwabara_4:

(Start: 33 @3573 has 19 MA's), (Start: 34 @3576 has 7 MA's), (Start: 64 @3696 has 1 MA's), (65, 3699), (80, 3741), (94, 3792), (107, 3822), (134, 3918), (135, 3921), (146, 3975), (147, 3984), (150, 4020), (152, 4041), (163, 4125), (164, 4128), (165, 4134),

Gene: LeBron_6 Start: 4321, Stop: 5376, Start Num: 3

Candidate Starts for LeBron_6:

(Start: 3 @4321 has 67 MA's), (28, 4459), (31, 4471), (55, 4576), (60, 4588), (71, 4627), (72, 4630), (84, 4666), (106, 4732), (110, 4747), (117, 4762), (125, 4804), (151, 4906), (169, 5041), (174, 5065), (196, 5206), (199, 5233), (200, 5242),

Gene: Leroy_5 Start: 3600, Stop: 4244, Start Num: 33

Candidate Starts for Leroy_5:

(Start: 33 @3600 has 19 MA's), (40, 3630), (41, 3633), (53, 3687), (Start: 64 @3723 has 1 MA's), (65, 3726), (69, 3738), (80, 3768), (91, 3810), (105, 3843), (108, 3855), (134, 3945), (135, 3948), (136, 3951), (152, 4071), (166, 4155), (168, 4161),

Gene: Lewan_6 Start: 4311, Stop: 5369, Start Num: 3

Candidate Starts for Lewan_6:

(Start: 3 @4311 has 67 MA's), (7, 4359), (55, 4572), (60, 4584), (74, 4629), (84, 4662), (106, 4728), (117, 4758), (125, 4800), (128, 4809), (151, 4902), (152, 4920), (169, 5037), (174, 5061), (176, 5070), (196, 5202), (199, 5229),

Gene: Liebe_4 Start: 3813, Stop: 4607, Start Num: 15

Candidate Starts for Liebe_4:

(Start: 15 @3813 has 3 MA's), (38, 3897), (73, 4020), (76, 4026), (115, 4143), (119, 4155), (123, 4173), (134, 4218), (138, 4239), (150, 4323), (161, 4407),

Gene: LilDestine_6 Start: 4311, Stop: 5369, Start Num: 3

Candidate Starts for LilDestine_6:

(Start: 3 @4311 has 67 MA's), (7, 4359), (55, 4572), (60, 4584), (74, 4629), (84, 4662), (106, 4728), (117, 4758), (125, 4800), (128, 4809), (151, 4902), (152, 4920), (169, 5037), (174, 5061), (176, 5070), (196, 5202), (199, 5229),

Gene: LilhomieP_15 Start: 7882, Stop: 9042, Start Num: 4

Candidate Starts for LilhomieP_15:

(Start: 4 @7882 has 20 MA's), (22, 7990), (39, 8056), (44, 8077), (58, 8131), (70, 8170), (77, 8185), (85, 8227), (92, 8248), (97, 8284), (98, 8293), (120, 8383), (122, 8392), (123, 8395), (128, 8419), (135, 8467), (146, 8521), (148, 8536), (152, 8590), (163, 8692), (176, 8755),

Gene: LitninMcQueen_5 Start: 3597, Stop: 4241, Start Num: 33

Candidate Starts for LitninMcQueen_5:

(Start: 33 @3597 has 19 MA's), (40, 3627), (47, 3663), (53, 3684), (62, 3711), (Start: 64 @3720 has 1 MA's), (65, 3723), (69, 3735), (91, 3807), (132, 3930), (134, 3942), (135, 3945), (136, 3948), (152, 4068), (166, 4152), (168, 4158),

Gene: Loadrie_6 Start: 4350, Stop: 5402, Start Num: 3

Candidate Starts for Loadrie_6:

(Start: 3 @4350 has 67 MA's), (7, 4392), (55, 4605), (60, 4617), (74, 4662), (84, 4695), (106, 4761), (117, 4791), (125, 4833), (128, 4842), (151, 4935), (152, 4953), (169, 5070), (174, 5094), (176, 5103), (196, 5235), (199, 5262),

Gene: Lolly9_7 Start: 4422, Stop: 5492, Start Num: 3

Candidate Starts for Lolly9_7:

(Start: 3 @4422 has 67 MA's), (Start: 8 @4470 has 3 MA's), (9, 4479), (Start: 14 @4506 has 3 MA's), (28, 4557), (45, 4635), (55, 4674), (60, 4686), (84, 4764), (90, 4788), (106, 4830), (117, 4860), (152, 5046), (169, 5163), (174, 5187), (189, 5274), (199, 5355),

Gene: Lucky10_4 Start: 3151, Stop: 3789, Start Num: 33

Candidate Starts for Lucky10_4:

(32, 3145), (Start: 33 @3151 has 19 MA's), (Start: 64 @3271 has 1 MA's), (65, 3274), (80, 3316), (133, 3487), (143, 3535), (150, 3598), (154, 3637), (168, 3706), (171, 3721),

Gene: Lumos_7 Start: 4416, Stop: 5486, Start Num: 3

Candidate Starts for Lumos_7:

(Start: 3 @4416 has 67 MA's), (Start: 8 @4464 has 3 MA's), (9, 4473), (Start: 14 @4500 has 3 MA's), (28, 4551), (45, 4629), (55, 4668), (60, 4680), (84, 4758), (90, 4782), (106, 4824), (117, 4854), (151, 5022), (152, 5040), (169, 5157), (174, 5181), (189, 5268), (199, 5349),

Gene: Lutum_5 Start: 3599, Stop: 4243, Start Num: 33

Candidate Starts for Lutum_5:

(Start: 33 @3599 has 19 MA's), (40, 3629), (41, 3632), (53, 3686), (Start: 64 @3722 has 1 MA's), (65, 3725), (80, 3767), (91, 3809), (105, 3842), (134, 3944), (135, 3947), (136, 3950), (152, 4070), (166, 4154), (168, 4160),

Gene: MAckerman_6 Start: 4320, Stop: 5375, Start Num: 3

Candidate Starts for MAckerman_6:

(Start: 3 @4320 has 67 MA's), (28, 4458), (31, 4470), (55, 4575), (60, 4587), (71, 4626), (72, 4629), (84, 4665), (106, 4731), (110, 4746), (117, 4761), (125, 4803), (151, 4905), (169, 5040), (174, 5064), (196, 5205), (199, 5232), (200, 5241),

Gene: MaGuCo_4 Start: 3672, Stop: 4466, Start Num: 15

Candidate Starts for MaGuCo_4:

(Start: 15 @3672 has 3 MA's), (38, 3756), (73, 3879), (115, 4002), (119, 4014), (123, 4032), (134, 4077), (138, 4098), (150, 4182), (151, 4185), (161, 4266), (172, 4323),

Gene: MaryV_28 Start: 11148, Stop: 12182, Start Num: 5

Candidate Starts for MaryV_28:

(Start: 5 @11148 has 5 MA's), (22, 11238), (28, 11253), (Start: 34 @11280 has 7 MA's), (70, 11418), (82, 11451), (109, 11529), (115, 11550), (116, 11553), (123, 11586), (124, 11592), (127, 11610), (128, 11613), (144, 11700), (154, 11805), (174, 11904), (176, 11913), (178, 11934), (188, 11979), (193, 12015), (199, 12066), (203, 12087), (204, 12108), (209, 12132), (210, 12144),

Gene: Maureen_4 Start: 3813, Stop: 4607, Start Num: 15

Candidate Starts for Maureen_4:

(Start: 15 @3813 has 3 MA's), (38, 3897), (73, 4020), (76, 4026), (115, 4143), (119, 4155), (123, 4173), (134, 4218), (138, 4239), (150, 4323), (161, 4407),

Gene: Miley16_6 Start: 4311, Stop: 5369, Start Num: 3

Candidate Starts for Miley16_6:

(Start: 3 @4311 has 67 MA's), (7, 4359), (55, 4572), (60, 4584), (74, 4629), (84, 4662), (106, 4728), (117, 4758), (125, 4800), (128, 4809), (151, 4902), (152, 4920), (169, 5037), (174, 5061), (176, 5070), (196, 5202), (199, 5229),

Gene: MiniLon_7 Start: 4422, Stop: 5492, Start Num: 3

Candidate Starts for MiniLon_7:

(Start: 3 @4422 has 67 MA's), (Start: 8 @4470 has 3 MA's), (9, 4479), (Start: 14 @4506 has 3 MA's), (28, 4557), (45, 4635), (55, 4674), (60, 4686), (84, 4764), (90, 4788), (106, 4830), (117, 4860), (152, 5046), (169, 5163), (174, 5187), (189, 5274), (199, 5355),

Gene: MiniMac_7 Start: 4422, Stop: 5492, Start Num: 3

Candidate Starts for MiniMac_7:

(Start: 3 @4422 has 67 MA's), (Start: 8 @4470 has 3 MA's), (9, 4479), (Start: 14 @4506 has 3 MA's), (28, 4557), (45, 4635), (55, 4674), (60, 4686), (84, 4764), (90, 4788), (106, 4830), (117, 4860), (152, 5046), (169, 5163), (174, 5187), (189, 5274), (199, 5355),

Gene: MiniMommy_4 Start: 3667, Stop: 4464, Start Num: 16

Candidate Starts for MiniMommy_4:

(Start: 16 @3667 has 4 MA's), (61, 3841), (73, 3874), (123, 4027), (138, 4093), (150, 4177), (170, 4309),

Gene: MkaliMitinis3_6 Start: 4311, Stop: 5369, Start Num: 3

Candidate Starts for MkaliMitinis3_6:

(Start: 3 @4311 has 67 MA's), (7, 4359), (55, 4572), (60, 4584), (74, 4629), (84, 4662), (106, 4728), (117, 4758), (125, 4800), (128, 4809), (151, 4902), (152, 4920), (169, 5037), (174, 5061), (176, 5070), (196, 5202), (199, 5229),

Gene: Moostard_7 Start: 4412, Stop: 5482, Start Num: 3

Candidate Starts for Moostard_7:

(Start: 3 @4412 has 67 MA's), (Start: 8 @4460 has 3 MA's), (9, 4469), (Start: 14 @4496 has 3 MA's), (28, 4547), (45, 4625), (55, 4664), (60, 4676), (84, 4754), (90, 4778), (106, 4820), (117, 4850), (151, 5018), (152, 5036), (169, 5153), (174, 5177), (189, 5264), (199, 5345),

Gene: Morkie_4 Start: 3159, Stop: 3800, Start Num: 33

Candidate Starts for Morkie_4:

(Start: 33 @3159 has 19 MA's), (Start: 64 @3282 has 1 MA's), (65, 3285), (69, 3297), (80, 3327), (132, 3495), (133, 3498), (134, 3507), (139, 3531), (143, 3546), (150, 3609), (152, 3630), (158, 3681), (168, 3717), (171, 3732), (185, 3795),

Gene: MortyNRick_4 Start: 3576, Stop: 4232, Start Num: 34

Candidate Starts for MortyNRick_4:

(Start: 33 @3573 has 19 MA's), (Start: 34 @3576 has 7 MA's), (Start: 64 @3696 has 1 MA's), (65, 3699), (80, 3741), (94, 3792), (107, 3822), (134, 3918), (135, 3921), (146, 3975), (147, 3984), (150, 4020), (152, 4041), (163, 4125), (164, 4128), (165, 4134),

Gene: Moss_4 Start: 3879, Stop: 4673, Start Num: 13

Candidate Starts for Moss_4:

(13, 3879), (25, 3921), (42, 3987), (48, 4017), (51, 4029), (123, 4248), (127, 4269), (137, 4311), (148, 4365), (150, 4398), (152, 4419), (188, 4611),

Gene: MrMagoo_20 Start: 8439, Stop: 9614, Start Num: 4

Candidate Starts for MrMagoo_20:

(Start: 4 @8439 has 20 MA's), (Start: 12 @8502 has 1 MA's), (20, 8541), (31, 8574), (38, 8607), (53, 8673), (Start: 64 @8709 has 1 MA's), (68, 8721), (70, 8727), (77, 8742), (98, 8850), (99, 8859), (123, 8958), (128, 8982), (135, 9030), (142, 9063), (145, 9081), (151, 9135), (167, 9276), (176, 9318),

Gene: MsGreen_7 Start: 4416, Stop: 5486, Start Num: 3

Candidate Starts for MsGreen_7:

(Start: 3 @4416 has 67 MA's), (Start: 8 @4464 has 3 MA's), (9, 4473), (Start: 14 @4500 has 3 MA's), (28, 4551), (45, 4629), (55, 4668), (60, 4680), (84, 4758), (90, 4782), (106, 4824), (117, 4854), (151, 5022), (152, 5040), (169, 5157), (174, 5181), (189, 5268), (199, 5349),

Gene: Nanosmite_20 Start: 8660, Stop: 9835, Start Num: 4

Candidate Starts for Nanosmite_20:

(Start: 4 @8660 has 20 MA's), (23, 8771), (31, 8795), (37, 8825), (44, 8855), (50, 8885), (58, 8909), (67, 8936), (70, 8948), (82, 8981), (86, 9011), (95, 9035), (96, 9056), (100, 9089), (111, 9131), (123, 9179), (128, 9203), (133, 9239), (135, 9251), (138, 9269), (141, 9281), (145, 9302), (146, 9305), (152, 9374), (176, 9539),

Gene: Netyap_6 Start: 4311, Stop: 5369, Start Num: 3

Candidate Starts for Netyap_6:

(Start: 3 @4311 has 67 MA's), (7, 4359), (55, 4572), (60, 4584), (74, 4629), (84, 4662), (106, 4728), (117, 4758), (125, 4800), (128, 4809), (151, 4902), (152, 4920), (169, 5037), (174, 5061), (176, 5070), (196, 5202), (199, 5229),

Gene: Neville_14 Start: 7752, Stop: 8771, Start Num: 8

Candidate Starts for Neville_14:

(2, 7683), (Start: 8 @7752 has 3 MA's), (21, 7821), (36, 7875), (46, 7926), (77, 8019), (116, 8166), (120, 8187), (123, 8199), (128, 8223), (129, 8235), (135, 8271), (140, 8295), (150, 8373), (151, 8376), (163, 8481), (169, 8511), (173, 8532), (183, 8583), (186, 8595), (205, 8718),

Gene: Nicholas_7 Start: 4416, Stop: 5486, Start Num: 3

Candidate Starts for Nicholas_7:

(Start: 3 @4416 has 67 MA's), (Start: 8 @4464 has 3 MA's), (9, 4473), (Start: 14 @4500 has 3 MA's), (28, 4551), (45, 4629), (55, 4668), (60, 4680), (84, 4758), (90, 4782), (106, 4824), (117, 4854), (151, 5022), (152, 5040), (169, 5157), (174, 5181), (189, 5268), (199, 5349),

Gene: Nicholasp3_6 Start: 4311, Stop: 5369, Start Num: 3

Candidate Starts for Nicholasp3_6:

(Start: 3 @4311 has 67 MA's), (7, 4359), (55, 4572), (60, 4584), (74, 4629), (84, 4662), (106, 4728), (117, 4758), (125, 4800), (128, 4809), (151, 4902), (152, 4920), (169, 5037), (174, 5061), (176, 5070), (196, 5202), (199, 5229),

Gene: ODay_5 Start: 3606, Stop: 4265, Start Num: 34

Candidate Starts for ODay_5:

(Start: 15 @3531 has 3 MA's), (Start: 34 @3606 has 7 MA's), (65, 3729), (69, 3741), (80, 3771), (88, 3807), (133, 3942), (135, 3954), (147, 4017), (150, 4053), (151, 4056), (169, 4182),

Gene: Octobien14_15 Start: 8989, Stop: 9996, Start Num: 10

Candidate Starts for Octobien14_15:

(Start: 10 @8989 has 1 MA's), (18, 9022), (36, 9094), (41, 9115), (52, 9166), (77, 9238), (103, 9331), (123, 9406), (128, 9430), (135, 9478), (145, 9529), (151, 9583), (155, 9643), (175, 9748), (176, 9754), (178, 9772), (193, 9844), (197, 9874), (199, 9895), (201, 9907), (206, 9937),

Gene: Ogotopogo_6 Start: 3847, Stop: 4491, Start Num: 35

Candidate Starts for Ogotopogo_6:

(32, 3832), (Start: 35 @3847 has 7 MA's), (Start: 43 @3880 has 1 MA's), (53, 3922), (58, 3937), (62, 3949), (Start: 64 @3958 has 1 MA's), (68, 3970), (69, 3973), (78, 3997), (91, 4045), (118, 4126), (123, 4147), (127, 4168), (147, 4258), (150, 4297), (152, 4318), (166, 4399), (168, 4405), (177, 4459),

Gene: OhShagHennessy_6 Start: 4294, Stop: 5349, Start Num: 3

Candidate Starts for OhShagHennessy_6:

(Start: 3 @4294 has 67 MA's), (28, 4432), (31, 4444), (55, 4549), (60, 4561), (71, 4600), (72, 4603), (84, 4639), (106, 4705), (110, 4720), (117, 4735), (125, 4777), (151, 4879), (169, 5014), (174, 5038), (196, 5179), (199, 5206), (200, 5215),

Gene: PegLeg_16 Start: 7881, Stop: 9041, Start Num: 4

Candidate Starts for PegLeg_16:

(Start: 4 @7881 has 20 MA's), (22, 7989), (39, 8055), (44, 8076), (58, 8130), (70, 8169), (77, 8184), (85, 8226), (92, 8247), (97, 8283), (98, 8292), (120, 8382), (122, 8391), (123, 8394), (128, 8418), (135, 8466), (146, 8520), (148, 8535), (152, 8589), (163, 8691), (176, 8754),

Gene: Periwinkle_5 Start: 3599, Stop: 4243, Start Num: 33

Candidate Starts for Periwinkle_5:

(Start: 33 @3599 has 19 MA's), (40, 3629), (41, 3632), (53, 3686), (Start: 64 @3722 has 1 MA's), (65, 3725), (80, 3767), (91, 3809), (105, 3842), (134, 3944), (135, 3947), (136, 3950), (152, 4070), (166, 4154), (168, 4160),

Gene: Phabuloso_5 Start: 3597, Stop: 4241, Start Num: 33

Candidate Starts for Phabuloso_5:

(Start: 33 @3597 has 19 MA's), (40, 3627), (45, 3651), (47, 3663), (53, 3684), (62, 3711), (Start: 64 @3720 has 1 MA's), (65, 3723), (69, 3735), (91, 3807), (132, 3930), (134, 3942), (135, 3945), (136, 3948), (152, 4068), (166, 4152), (168, 4158),

Gene: Phistory_5 Start: 3598, Stop: 4242, Start Num: 33

Candidate Starts for Phistory_5:

(24, 3565), (Start: 33 @3598 has 19 MA's), (40, 3628), (53, 3685), (55, 3691), (Start: 64 @3721 has 1 MA's), (65, 3724), (80, 3766), (91, 3808), (134, 3943), (135, 3946), (152, 4069), (166, 4153), (168, 4159),

Gene: PhorbesPhlower_4 Start: 3159, Stop: 3800, Start Num: 33

Candidate Starts for PhorbesPhlower_4:

(Start: 33 @3159 has 19 MA's), (Start: 64 @3282 has 1 MA's), (65, 3285), (69, 3297), (80, 3327), (132, 3495), (133, 3498), (134, 3507), (139, 3531), (143, 3546), (150, 3609), (152, 3630), (158, 3681), (168, 3717), (171, 3732), (185, 3795),

Gene: Rabbitrun_16 Start: 8261, Stop: 9289, Start Num: 8

Candidate Starts for Rabbitrun_16:

(Start: 8 @8261 has 3 MA's), (22, 8333), (36, 8384), (52, 8456), (101, 8621), (116, 8672), (120, 8693), (123, 8705), (128, 8729), (129, 8741), (130, 8753), (135, 8777), (151, 8882), (152, 8900), (169, 9011), (173, 9032), (178, 9065), (183, 9083), (186, 9095), (187, 9107), (197, 9176), (205, 9236),

Gene: Reindeer_14 Start: 7753, Stop: 8904, Start Num: 4

Candidate Starts for Reindeer_14:

(Start: 4 @7753 has 20 MA's), (39, 7927), (44, 7948), (53, 7987), (58, 8002), (70, 8041), (72, 8047), (77, 8056), (85, 8098), (92, 8119), (97, 8155), (113, 8215), (115, 8221), (123, 8257), (128, 8281), (135, 8329), (141, 8359), (142, 8362), (150, 8431), (152, 8452), (163, 8554), (169, 8584), (176, 8617),

Gene: Rey_20 Start: 8671, Stop: 9846, Start Num: 4

Candidate Starts for Rey_20:

(Start: 4 @8671 has 20 MA's), (Start: 12 @8734 has 1 MA's), (20, 8773), (38, 8839), (53, 8905), (68, 8953), (70, 8959), (77, 8974), (98, 9082), (99, 9091), (111, 9142), (116, 9157), (123, 9190), (128, 9214), (135, 9262), (142, 9295), (145, 9313), (167, 9508), (176, 9550),

Gene: Rose5_6 Start: 4320, Stop: 5375, Start Num: 3

Candidate Starts for Rose5_6:

(Start: 3 @4320 has 67 MA's), (28, 4458), (31, 4470), (55, 4575), (60, 4587), (71, 4626), (72, 4629), (84, 4665), (106, 4731), (110, 4746), (117, 4761), (125, 4803), (151, 4905), (169, 5040), (174, 5064), (196, 5205), (199, 5232), (200, 5241),

Gene: Rumpelstiltskin_6 Start: 4311, Stop: 5369, Start Num: 3

Candidate Starts for Rumpelstiltskin_6:

(Start: 3 @4311 has 67 MA's), (7, 4359), (55, 4572), (60, 4584), (74, 4629), (84, 4662), (106, 4728), (117, 4758), (125, 4800), (128, 4809), (151, 4902), (152, 4920), (169, 5037), (174, 5061), (176, 5070), (196, 5202), (199, 5229),

Gene: Samty_7 Start: 4412, Stop: 5482, Start Num: 3

Candidate Starts for Samty_7:

(Start: 3 @4412 has 67 MA's), (Start: 8 @4460 has 3 MA's), (9, 4469), (Start: 14 @4496 has 3 MA's), (28, 4547), (45, 4625), (55, 4664), (60, 4676), (84, 4754), (90, 4778), (106, 4820), (117, 4850), (151, 5018), (152, 5036), (169, 5153), (174, 5177), (189, 5264), (199, 5345),

Gene: Sephiroth_15 Start: 8089, Stop: 9099, Start Num: 11

Candidate Starts for Sephiroth_15:

(Start: 11 @8089 has 3 MA's), (Start: 16 @8107 has 4 MA's), (18, 8116), (20, 8131), (36, 8188), (52, 8260), (69, 8314), (115, 8464), (123, 8500), (128, 8524), (135, 8572), (145, 8623), (146, 8626), (150, 8674), (155, 8737), (157, 8755), (174, 8839), (178, 8869), (186, 8899), (193, 8947), (198, 8995), (201, 9010), (202, 9016),

Gene: ShakeltOph_4 Start: 3667, Stop: 4464, Start Num: 16

Candidate Starts for ShakeltOph_4:

(Start: 16 @3667 has 4 MA's), (61, 3841), (73, 3874), (123, 4027), (138, 4093), (150, 4177), (170, 4309),

Gene: Silverleaf_6 Start: 4320, Stop: 5375, Start Num: 3

Candidate Starts for Silverleaf_6:

(Start: 3 @4320 has 67 MA's), (28, 4458), (31, 4470), (55, 4575), (60, 4587), (71, 4626), (72, 4629), (84, 4665), (106, 4731), (110, 4746), (117, 4761), (125, 4803), (151, 4905), (169, 5040), (174, 5064), (196, 5205), (199, 5232), (200, 5241),

Gene: Skinny_17 Start: 7881, Stop: 9041, Start Num: 4

Candidate Starts for Skinny_17:

(Start: 4 @7881 has 20 MA's), (22, 7989), (39, 8055), (44, 8076), (58, 8130), (70, 8169), (77, 8184), (85, 8226), (92, 8247), (97, 8283), (98, 8292), (120, 8382), (122, 8391), (123, 8394), (128, 8418), (135, 8466), (146, 8520), (148, 8535), (152, 8589), (163, 8691), (176, 8754),

Gene: SlimJimmy_15 Start: 7881, Stop: 9041, Start Num: 4

Candidate Starts for SlimJimmy_15:

(Start: 4 @7881 has 20 MA's), (22, 7989), (39, 8055), (44, 8076), (58, 8130), (70, 8169), (77, 8184), (85, 8226), (92, 8247), (97, 8283), (98, 8292), (120, 8382), (122, 8391), (123, 8394), (128, 8418), (135, 8466), (146, 8520), (148, 8535), (152, 8589), (163, 8691), (176, 8754),

Gene: Snek_5 Start: 4503, Stop: 5270, Start Num: 16

Candidate Starts for Snek_5:

(Start: 16 @4503 has 4 MA's), (29, 4548), (31, 4554), (56, 4659), (73, 4710), (93, 4770), (106, 4803), (111, 4821), (119, 4845), (138, 4929), (145, 4962), (150, 5013), (151, 5016), (181, 5175),

Gene: Snenia_7 Start: 4416, Stop: 5486, Start Num: 3

Candidate Starts for Snenia_7:

(Start: 3 @4416 has 67 MA's), (Start: 8 @4464 has 3 MA's), (9, 4473), (Start: 14 @4500 has 3 MA's), (28, 4551), (45, 4629), (55, 4668), (60, 4680), (84, 4758), (90, 4782), (106, 4824), (117, 4854), (151, 5022), (152, 5040), (169, 5157), (174, 5181), (189, 5268), (199, 5349),

Gene: Soul22_5 Start: 3618, Stop: 4229, Start Num: 43

Candidate Starts for Soul22_5:

(32, 3570), (Start: 35 @3585 has 7 MA's), (Start: 43 @3618 has 1 MA's), (53, 3660), (58, 3675), (62, 3687), (Start: 64 @3696 has 1 MA's), (68, 3708), (69, 3711), (78, 3735), (91, 3783), (114, 3852), (118, 3864), (123, 3885), (127, 3906), (147, 3996), (150, 4035), (152, 4056), (166, 4137), (168, 4143), (177, 4197),

Gene: Spooky_5 Start: 3598, Stop: 4242, Start Num: 33

Candidate Starts for Spooky_5:

(Start: 33 @3598 has 19 MA's), (Start: 64 @3721 has 1 MA's), (65, 3724), (68, 3733), (69, 3736), (80, 3766), (101, 3832), (126, 3916), (133, 3934), (135, 3946), (139, 3967), (140, 3970), (150, 4048), (152, 4069), (158, 4123), (160, 4129), (168, 4159),

Gene: Squiddly_6 Start: 4291, Stop: 4935, Start Num: 33

Candidate Starts for Squiddly_6:

(Start: 33 @4291 has 19 MA's), (49, 4363), (Start: 64 @4414 has 1 MA's), (65, 4417), (69, 4429), (80, 4459), (101, 4525), (105, 4534), (126, 4609), (132, 4624), (134, 4636), (135, 4639), (139, 4660), (140, 4663), (150, 4741), (152, 4762), (158, 4816), (160, 4822), (168, 4852),

Gene: SuMoo_4 Start: 3785, Stop: 4639, Start Num: 15

Candidate Starts for SuMoo_4:

(Start: 15 @3785 has 3 MA's), (25, 3821), (127, 4187), (145, 4265), (149, 4295), (150, 4316), (161, 4400), (179, 4484), (194, 4568),

Gene: Syleon_15 Start: 8011, Stop: 9021, Start Num: 11

Candidate Starts for Syleon_15:

(Start: 11 @8011 has 3 MA's), (Start: 16 @8029 has 4 MA's), (18, 8038), (20, 8053), (36, 8110), (52, 8182), (69, 8236), (115, 8386), (123, 8422), (128, 8446), (135, 8494), (145, 8545), (146, 8548), (150, 8596), (155, 8659), (157, 8677), (174, 8761), (178, 8791), (186, 8821), (193, 8869), (198, 8917), (201, 8932), (202, 8938),

Gene: Tourach_6 Start: 4327, Stop: 5382, Start Num: 3

Candidate Starts for Tourach_6:

(Start: 3 @4327 has 67 MA's), (7, 4375), (24, 4462), (45, 4549), (55, 4588), (60, 4600), (84, 4678), (106, 4744), (117, 4774), (125, 4816), (128, 4825), (151, 4918), (169, 5053), (174, 5077), (186, 5137), (190, 5167), (191, 5182), (199, 5242),

Gene: Trax_14 Start: 7752, Stop: 8771, Start Num: 8

Candidate Starts for Trax_14:

(Start: 8 @7752 has 3 MA's), (21, 7821), (36, 7875), (46, 7926), (77, 8019), (116, 8166), (120, 8187), (123, 8199), (128, 8223), (129, 8235), (135, 8271), (140, 8295), (150, 8373), (151, 8376), (163, 8481), (169, 8511), (173, 8532), (183, 8583), (186, 8595), (205, 8718),

Gene: Tweety19_5 Start: 4503, Stop: 5270, Start Num: 16

Candidate Starts for Tweety19_5:

(Start: 16 @4503 has 4 MA's), (29, 4548), (56, 4659), (66, 4689), (73, 4710), (93, 4770), (106, 4803), (111, 4821), (119, 4845), (124, 4869), (138, 4929), (145, 4962), (150, 5013), (151, 5016), (181, 5175),

Gene: TyDawg_16 Start: 7882, Stop: 9042, Start Num: 4

Candidate Starts for TyDawg_16:

(Start: 4 @7882 has 20 MA's), (22, 7990), (39, 8056), (44, 8077), (58, 8131), (70, 8170), (77, 8185), (85, 8227), (92, 8248), (97, 8284), (98, 8293), (120, 8383), (122, 8392), (123, 8395), (128, 8419), (135, 8467), (146, 8521), (148, 8536), (152, 8590), (163, 8692), (176, 8755),

Gene: Tyson_6 Start: 4320, Stop: 5375, Start Num: 3

Candidate Starts for Tyson_6:

(Start: 3 @4320 has 67 MA's), (28, 4458), (31, 4470), (55, 4575), (60, 4587), (71, 4626), (72, 4629), (84, 4665), (106, 4731), (110, 4746), (117, 4761), (125, 4803), (151, 4905), (169, 5040), (174, 5064), (196, 5205), (199, 5232), (200, 5241),

Gene: UPIE_6 Start: 4318, Stop: 5373, Start Num: 3

Candidate Starts for UPIE_6:

(Start: 3 @4318 has 67 MA's), (28, 4456), (31, 4468), (55, 4573), (60, 4585), (71, 4624), (72, 4627), (84, 4663), (106, 4729), (110, 4744), (117, 4759), (125, 4801), (151, 4903), (169, 5038), (174, 5062), (196, 5203), (199, 5230), (200, 5239),

Gene: Vetrix_6 Start: 4311, Stop: 5369, Start Num: 3

Candidate Starts for Vetrix_6:

(Start: 3 @4311 has 67 MA's), (7, 4359), (55, 4572), (60, 4584), (74, 4629), (84, 4662), (106, 4728), (117, 4758), (125, 4800), (128, 4809), (151, 4902), (152, 4920), (169, 5037), (174, 5061), (176, 5070), (196, 5202), (199, 5229),

Gene: VroomVroom_4 Start: 3676, Stop: 4473, Start Num: 16

Candidate Starts for VroomVroom_4:

(Start: 16 @3676 has 4 MA's), (56, 3832), (61, 3850), (73, 3883), (123, 4036), (138, 4102), (150, 4186), (170, 4318),

Gene: Wamburgrxpress_6 Start: 4320, Stop: 5375, Start Num: 3

Candidate Starts for Wamburgrxpress_6:

(Start: 3 @4320 has 67 MA's), (28, 4458), (31, 4470), (55, 4575), (60, 4587), (71, 4626), (72, 4629), (84, 4665), (106, 4731), (110, 4746), (117, 4761), (125, 4803), (151, 4905), (169, 5040), (174, 5064), (196, 5205), (199, 5232), (200, 5241),

Gene: Whirlwind_8 Start: 4408, Stop: 5478, Start Num: 3

Candidate Starts for Whirlwind_8:

(Start: 3 @4408 has 67 MA's), (Start: 8 @4456 has 3 MA's), (9, 4465), (Start: 14 @4492 has 3 MA's), (28, 4543), (39, 4594), (45, 4621), (55, 4660), (60, 4672), (84, 4750), (90, 4774), (106, 4816), (117, 4846), (152, 5032), (169, 5149), (174, 5173), (196, 5314), (199, 5341),

Gene: Whitney_5 Start: 3722, Stop: 4243, Start Num: 64

Candidate Starts for Whitney_5:

(Start: 33 @3599 has 19 MA's), (40, 3629), (41, 3632), (53, 3686), (Start: 64 @3722 has 1 MA's), (65, 3725), (80, 3767), (91, 3809), (105, 3842), (134, 3944), (135, 3947), (136, 3950), (152, 4070), (166, 4154), (168, 4160),

Gene: Wigglewigggle_6 Start: 4350, Stop: 5402, Start Num: 3

Candidate Starts for Wigglewigggle_6:

(Start: 3 @4350 has 67 MA's), (7, 4392), (55, 4605), (60, 4617), (74, 4662), (84, 4695), (106, 4761), (117, 4791), (125, 4833), (128, 4842), (151, 4935), (152, 4953), (169, 5070), (174, 5094), (176, 5103), (196, 5235), (199, 5262),

Gene: Wildcat_28 Start: 11158, Stop: 12192, Start Num: 5

Candidate Starts for Wildcat_28:

(Start: 5 @11158 has 5 MA's), (22, 11248), (28, 11263), (Start: 34 @11290 has 7 MA's), (70, 11428), (82, 11461), (109, 11539), (115, 11560), (116, 11563), (123, 11596), (124, 11602), (127, 11620), (128, 11623), (144, 11710), (154, 11815), (174, 11914), (176, 11923), (178, 11944), (188, 11989), (193, 12025), (199, 12076), (203, 12097), (204, 12118), (209, 12142), (210, 12154),

Gene: Wilder_6 Start: 4311, Stop: 5369, Start Num: 3

Candidate Starts for Wilder_6:

(Start: 3 @4311 has 67 MA's), (7, 4359), (55, 4572), (60, 4584), (74, 4629), (84, 4662), (106, 4728), (117, 4758), (125, 4800), (128, 4809), (151, 4902), (152, 4920), (169, 5037), (174, 5061), (176, 5070), (196, 5202), (199, 5229),

Gene: Winky_6 Start: 4311, Stop: 5369, Start Num: 3

Candidate Starts for Winky_6:

(Start: 3 @4311 has 67 MA's), (7, 4359), (55, 4572), (60, 4584), (74, 4629), (84, 4662), (106, 4728), (117, 4758), (125, 4800), (128, 4809), (151, 4902), (152, 4920), (169, 5037), (174, 5061), (176, 5070), (196, 5202), (199, 5229),

Gene: Wyatt2_6 Start: 4320, Stop: 5375, Start Num: 3

Candidate Starts for Wyatt2_6:

(Start: 3 @4320 has 67 MA's), (28, 4458), (31, 4470), (55, 4575), (60, 4587), (71, 4626), (72, 4629), (84, 4665), (106, 4731), (110, 4746), (117, 4761), (125, 4803), (151, 4905), (169, 5040), (174, 5064), (196, 5205), (199, 5232), (200, 5241),

Gene: Yoshi_5 Start: 3585, Stop: 4229, Start Num: 35

Candidate Starts for Yoshi_5:

(Start: 35 @3585 has 7 MA's), (Start: 43 @3618 has 1 MA's), (53, 3660), (58, 3675), (62, 3687), (Start: 64 @3696 has 1 MA's), (68, 3708), (69, 3711), (78, 3735), (91, 3783), (114, 3852), (118, 3864), (123,

3885), (127, 3906), (147, 3996), (150, 4035), (152, 4056), (166, 4137), (168, 4143), (177, 4197),

Gene: Zakai_6 Start: 4299, Stop: 5357, Start Num: 3

Candidate Starts for Zakai_6:

(Start: 3 @4299 has 67 MA's), (7, 4347), (55, 4560), (60, 4572), (74, 4617), (84, 4650), (106, 4716), (117, 4746), (125, 4788), (128, 4797), (151, 4890), (152, 4908), (169, 5025), (174, 5049), (176, 5058), (196, 5190), (199, 5217),

Gene: Zapner_6 Start: 4110, Stop: 4754, Start Num: 35

Candidate Starts for Zapner_6:

(Start: 35 @4110 has 7 MA's), (Start: 43 @4143 has 1 MA's), (53, 4185), (58, 4200), (62, 4212), (Start: 64 @4221 has 1 MA's), (68, 4233), (69, 4236), (78, 4260), (91, 4308), (114, 4377), (118, 4389), (123, 4410), (127, 4431), (147, 4521), (150, 4560), (152, 4581), (166, 4662), (168, 4668), (177, 4722),

Gene: Zaria_6 Start: 4321, Stop: 5376, Start Num: 3

Candidate Starts for Zaria_6:

(Start: 3 @4321 has 67 MA's), (28, 4459), (31, 4471), (55, 4576), (60, 4588), (71, 4627), (72, 4630), (84, 4666), (106, 4732), (110, 4747), (117, 4762), (125, 4804), (151, 4906), (169, 5041), (174, 5065), (196, 5206), (199, 5233), (200, 5242),

Gene: Zeta1847_4 Start: 3665, Stop: 4408, Start Num: 14

Candidate Starts for Zeta1847_4:

(Start: 14 @3665 has 3 MA's), (25, 3704), (57, 3833), (76, 3884), (127, 4061), (134, 4085), (150, 4187), (154, 4226),

Gene: ZhongYanYuan_5 Start: 4143, Stop: 5198, Start Num: 3

Candidate Starts for ZhongYanYuan_5:

(Start: 3 @4143 has 67 MA's), (7, 4191), (24, 4278), (55, 4404), (60, 4416), (74, 4461), (84, 4494), (106, 4560), (117, 4590), (125, 4632), (128, 4641), (151, 4734), (152, 4752), (169, 4869), (174, 4893), (176, 4902), (189, 4980), (196, 5031), (199, 5058), (200, 5067),