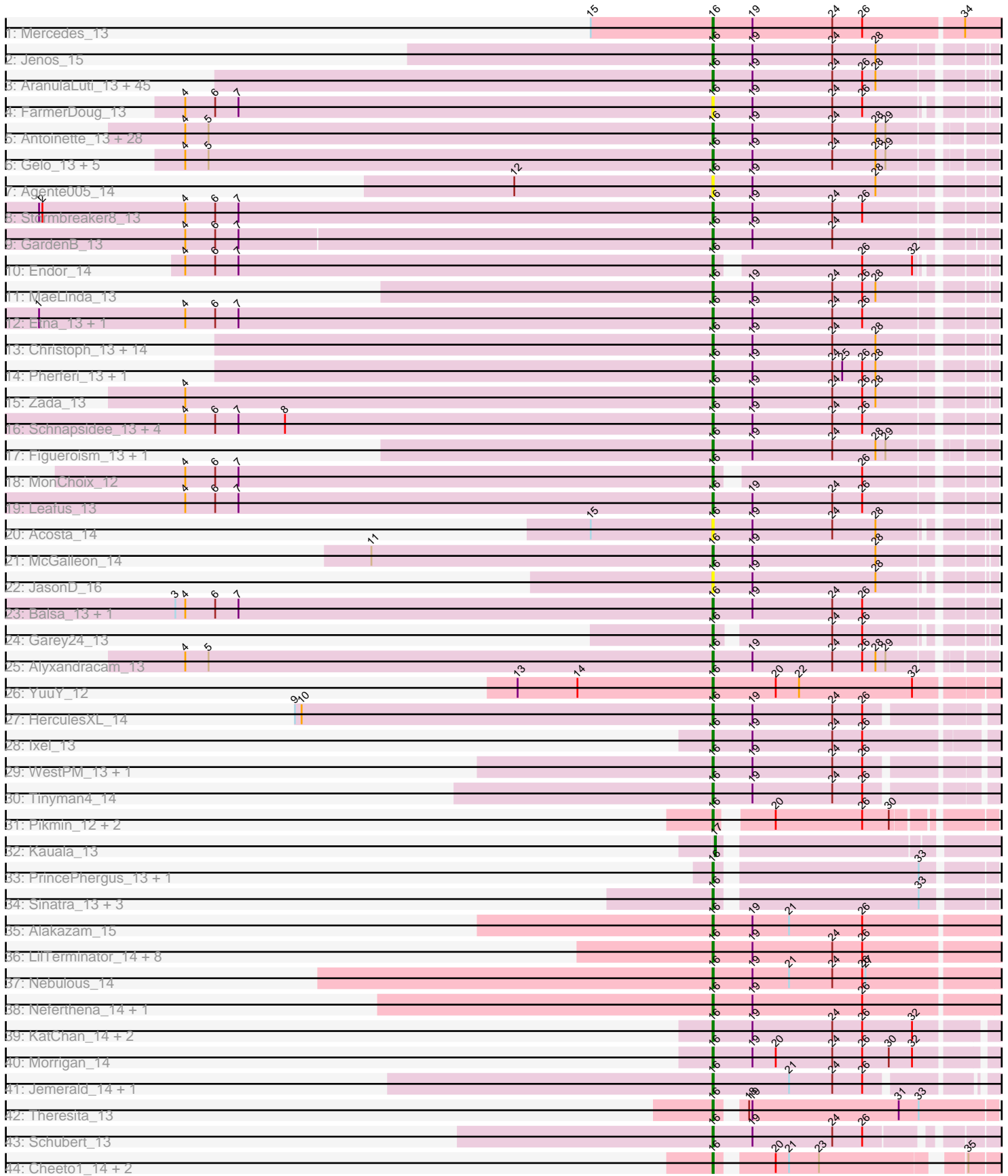


Pham 163388



Note: Tracks are now grouped by subcluster and scaled. Switching in subcluster is indicated by changes in track color. Track scale is now set by default to display the region 30 bp upstream of start 1 to 30 bp downstream of the last possible start. If this default region is judged to be packed too tightly with annotated starts, the track will be further scaled to only show that region of the ORF with annotated starts. This action will be indicated by adding "Zoomed" to the title. For starts, yellow indicates the location of called starts comprised solely of Glimmer/GeneMark auto-annotations, green indicates the location of called starts with at least 1 manual gene annotation.

Pham 163388 Report

This analysis was run 04/28/24 on database version 559.

Pham number 163388 has 165 members, 26 are drafts.

Phages represented in each track:

- Track 1 : Mercedes_13
- Track 2 : Jenos_15
- Track 3 : AranulaLuti_13, Ilzat_13, Teagan_13, Janus167_13, KannH_13, Duocatuli_13, Phriends_13, JasperRussell_13, Byron23_12, HanSolo_13, Rog141_13, Sedgewig_13, MrWorldwide_13, Rapheph_13, Nagem_13, Shee_13, Gargoyle_13, Gubbabump_13, NickSell_13, Martin_14, Jerbirus_13, HankSprout_14, Chako_13, Bandik_13, Ludgate_13, Benjalauen_13, TatarkaPM_13, SJay_13, PhredFlintston_13, TinSulphur_13, StingRay_13, Riyhil_13, Inventa_13, JeriBeth_13, Dothraki_13, OldNelly_13, Papafritta_13, StirfryIV_13, ParleG_13, BeautPeep30_13, Stanktossa_13, Clancy_13, Winzigespinne_13, HungryHenry_13, Phiderman_13, Phireproof_13
- Track 4 : FarmerDoug_13
- Track 5 : Antoinette_13, Knox_13, WildNOut_13, PuppyEggo_13, ShaiHulud_13, AlexAdler_13, Etta_13, Den3_13, Lovelyunicorn_13, Convict_13, Renzie_13, Blage_13, Thompsone_13, Ioannes_13, AxiPup_13, Superfresh_13, Greys_13, Strathdee_13, Nattles_13, BonesMcCoy_13, Thorongil_13, Peep_13, Velene_13, Vispistious_13, Baines_13, BigRedClifford_13, Dave_13, Raptor_13, Oxtober96_13
- Track 6 : Gelo_13, Chamuel_13, Calix_13, SonOfLevi_13, Erla_13, Klimt_13
- Track 7 : Agente005_14
- Track 8 : Stormbreaker8_13
- Track 9 : GardenB_13
- Track 10 : Endor_14
- Track 11 : MaeLinda_13
- Track 12 : Etna_13, KingJulien_13
- Track 13 : Christoph_13, Delphidian_13, Tenda_13, Oats_13, Kale_13, Bonino_13, SoilGremlin_13, ManRay_13, Gershwin_13, Asta_14, TeddyBear_13, Aubergine_13, MillyPhilly_13, Espinosa_13, Pocket_13
- Track 14 : Pherferi_13, Kurt1_13
- Track 15 : Zada_13
- Track 16 : Schnapsidee_13, Peppino_13, Raccoon_13, BeeBee8_14, Redfield_13
- Track 17 : Figueroism_13, Robinson_13
- Track 18 : MonChoix_12
- Track 19 : Leafus_13
- Track 20 : Acosta_14
- Track 21 : McGalleon_14
- Track 22 : JasonD_16
- Track 23 : Balsa_13, Hamlet_13

- Track 24 : Garey24_13
- Track 25 : Alyxandracam_13
- Track 26 : YuuY_12
- Track 27 : HerculesXL_14
- Track 28 : Ixel_13
- Track 29 : WestPM_13, Schimmels22_14
- Track 30 : Tinyman4_14
- Track 31 : Pikmin_12, Pajaza_12, Casey_12
- Track 32 : Kauala_13
- Track 33 : PrincePhergus_13, Koji_13
- Track 34 : Sinatra_13, Pherbot_13, Bustleton_13, BouleyBill_13
- Track 35 : Alakazam_15
- Track 36 : LilTerminator_14, Hasitha_14, CaptainRex_14, Fulton_14, Librie_14, QuadZero_14, Zayuliv_14, Greenlvy_14, Zepp_15
- Track 37 : Nebulous_14
- Track 38 : Neferthena_14, Clock_14
- Track 39 : KatChan_14, Chepli_14, Luna18_14
- Track 40 : Morigan_14
- Track 41 : Jemerald_14, Juicer_14
- Track 42 : Theresita_13
- Track 43 : Schubert_13
- Track 44 : Cheeto1_14, GaeCeo_14, ChickenKing_13

Summary of Final Annotations (See graph section above for start numbers):

The start number called the most often in the published annotations is 16, it was called in 138 of the 139 non-draft genes in the pham.

Genes that call this "Most Annotated" start:

- Acosta_14, Agente005_14, Alakazam_15, AlexAdler_13, Alyxandracam_13, Antoinette_13, AranulaLuti_13, Asta_14, Aubergine_13, AxiPup_13, Baines_13, Balsa_13, Bandik_13, BeautPeep30_13, BeeBee8_14, Benjalauren_13, BigRedClifford_13, Blage_13, BonesMcCoy_13, Bonino_13, BouleyBill_13, Bustleton_13, Byron23_12, Calix_13, CaptainRex_14, Casey_12, Chako_13, Chamuel_13, Cheeto1_14, Chepli_14, ChickenKing_13, Christoph_13, Clancy_13, Clock_14, Convict_13, Dave_13, Delphidian_13, Den3_13, Dothraki_13, Duocatuli_13, Endor_14, Erla_13, Espinosa_13, Etna_13, Etta_13, FarmerDoug_13, Figueroism_13, Fulton_14, GaeCeo_14, GardenB_13, Garey24_13, Gargoyle_13, Gelo_13, Gershwin_13, Greenlvy_14, Greys_13, Gubbabump_13, Hamlet_13, HanSolo_13, HankSprout_14, Hasitha_14, HerculesXL_14, HungryHenry_13, Ilzat_13, Inventa_13, Ioannes_13, Ixel_13, Janus167_13, JasonD_16, JasperRussell_13, Jemerald_14, Jenos_15, Jerbirus_13, JeriBeth_13, Juicer_14, Kale_13, KannH_13, KatChan_14, KingJulien_13, Klimt_13, Knox_13, Koji_13, Kurt1_13, Leafus_13, Librie_14, LilTerminator_14, Lovelyunicorn_13, Ludgate_13, Luna18_14, MaeLinda_13, ManRay_13, Martin_14, McGalleon_14, Mercedes_13, MillyPhilly_13, MonChoix_12, Morigan_14, MrWorldwide_13, Nagem_13, Nattles_13, Nebulous_14, Neferthena_14, NickSell_13, Oats_13, OldNelly_13, Oxtober96_13, Pajaza_12, Papafritta_13, ParleG_13, Peep_13, Peppino_13, Pherbot_13, Pherferi_13, Phiderman_13, Phireproof_13, PhredFlintston_13, Phriends_13, Pikmin_12, Pocket_13, PrincePhergus_13, PuppyEggo_13,

QuadZero_14, Raccoon_13, Rapheph_13, Raptor_13, Redfield_13, Renzie_13, Rihhil_13, Robinson_13, Rog141_13, SJay_13, Schimmels22_14, Schnapsidee_13, Schubert_13, Sedgewig_13, ShaiHulud_13, Shee_13, Sinatra_13, SoilGremlin_13, SonOfLevi_13, Stanktossa_13, StingRay_13, StirfryIV_13, Stormbreaker8_13, Strathdee_13, Superfresh_13, TatarkaPM_13, Teagan_13, TeddyBear_13, Tenda_13, Theresita_13, Thompsone_13, Thorongil_13, TinSulphur_13, Tinyman4_14, Velene_13, Vispistious_13, WestPM_13, WildNOut_13, Winzigespinne_13, YuuY_12, Zada_13, Zayuliv_14, Zepp_15,

Genes that have the "Most Annotated" start but do not call it:

-

Genes that do not have the "Most Annotated" start:

- Kauala_13,

Summary by start number:

Start 16:

- Found in 164 of 165 (99.4%) of genes in pham
- Manual Annotations of this start: 138 of 139
- Called 100.0% of time when present
- Phage (with cluster) where this start called: Acosta_14 (EA1), Agente005_14 (EA1), Alakazam_15 (EA5), AlexAdler_13 (EA1), Alyxandracam_13 (EA1), Antoinette_13 (EA1), AranulaLuti_13 (EA1), Asta_14 (EA1), Aubergine_13 (EA1), AxiPup_13 (EA1), Baines_13 (EA1), Balsa_13 (EA1), Bandik_13 (EA1), BeautPeep30_13 (EA1), BeeBee8_14 (EA1), Benjalauren_13 (EA1), BigRedClifford_13 (EA1), Blage_13 (EA1), BonesMcCoy_13 (EA1), Bonino_13 (EA1), BouleyBill_13 (EA4), Bustleton_13 (EA4), Byron23_12 (EA1), Calix_13 (EA1), CaptainRex_14 (EA5), Casey_12 (EA3), Chako_13 (EA1), Chamuel_13 (EA1), Cheeto1_14 (EA9), Chepli_14 (EA6), ChickenKing_13 (EA9), Christoph_13 (EA1), Clancy_13 (EA1), Clock_14 (EA5), Convict_13 (EA1), Dave_13 (EA1), Delphidian_13 (EA1), Den3_13 (EA1), Dothraki_13 (EA1), Duocatuli_13 (EA1), Endor_14 (EA1), Erla_13 (EA1), Espinosa_13 (EA1), Etna_13 (EA1), Etta_13 (EA1), FarmerDoug_13 (EA1), Figueroism_13 (EA1), Fulton_14 (EA5), GaeCeo_14 (EA9), GardenB_13 (EA1), Garey24_13 (EA1), Gargoyle_13 (EA1), Gelo_13 (EA1), Gershwin_13 (EA1), Greenlvy_14 (EA5), Greys_13 (EA1), Gubbabump_13 (EA1), Hamlet_13 (EA1), HanSolo_13 (EA1), HankSprout_14 (EA1), Hasitha_14 (EA5), HerculesXL_14 (EA11), HungryHenry_13 (EA1), Ilzat_13 (EA1), Inventa_13 (EA1), Ioannes_13 (EA1), Ixel_13 (EA11), Janus167_13 (EA1), JasonD_16 (EA1), JasperRussell_13 (EA1), Jemerald_14 (EA6), Jenos_15 (EA1), Jerbirus_13 (EA1), JeriBeth_13 (EA1), Juicer_14 (EA6), Kale_13 (EA1), KannH_13 (EA1), KatChan_14 (EA6), KingJulien_13 (EA1), Klimt_13 (EA1), Knox_13 (EA1), Koji_13 (EA4), Kurt1_13 (EA1), Leafus_13 (EA1), Librie_14 (EA5), LiTerminator_14 (EA5), Lovelyunicorn_13 (EA1), Ludgate_13 (EA1), Luna18_14 (EA6), MaeLinda_13 (EA1), ManRay_13 (EA1), Martin_14 (EA1), McGalleon_14 (EA1), Mercedes_13 (EA), MillyPhilly_13 (EA1), MonChoix_12 (EA1), Morrigan_14 (EA6), MrWorldwide_13 (EA1), Nagem_13 (EA1), Nattles_13 (EA1), Nebulous_14 (EA5), Neferthena_14 (EA5), NickSell_13 (EA1), Oats_13 (EA1), OldNelly_13 (EA1), Oxtober96_13 (EA1), Pajaza_12 (EA3), Papafritta_13 (EA1), ParleG_13 (EA1), Peep_13 (EA1), Peppino_13 (EA1), Pherbot_13 (EA4), Pherferi_13 (EA1), Phiderman_13 (EA1), Phireproof_13 (EA1), PhredFlintston_13 (EA1), Phriends_13 (EA1), Pikmin_12 (EA3), Pocket_13 (EA1), PrincePhergus_13 (EA4), PuppyEggo_13 (EA1), QuadZero_14 (EA5), Raccoon_13 (EA1), Rapheph_13 (EA1), Raptor_13 (EA1), Redfield_13 (EA1), Renzie_13 (EA1),

Riyhil_13 (EA1), Robinson_13 (EA1), Rog141_13 (EA1), SJay_13 (EA1), Schimmels22_14 (EA11), Schnapsidee_13 (EA1), Schubert_13 (EA8), Sedgewig_13 (EA1), ShaiHulud_13 (EA1), Shee_13 (EA1), Sinatra_13 (EA4), SoilGremlin_13 (EA1), SonOfLevi_13 (EA1), Stanktossa_13 (EA1), StingRay_13 (EA1), StirfryIV_13 (EA1), Stormbreaker8_13 (EA1), Strathdee_13 (EA1), Superfresh_13 (EA1), TatarkaPM_13 (EA1), Teagan_13 (EA1), TeddyBear_13 (EA1), Tenda_13 (EA1), Theresita_13 (EA7), Thompsone_13 (EA1), Thorongil_13 (EA1), TinSulphur_13 (EA1), Tinyman4_14 (EA11), Velene_13 (EA1), Vispistious_13 (EA1), WestPM_13 (EA11), WildNOut_13 (EA1), Winzigespinne_13 (EA1), YuuY_12 (EA10), Zada_13 (EA1), Zayuliv_14 (EA5), Zepp_15 (EA5),

Start 17:

- Found in 1 of 165 (0.6%) of genes in pham
- Manual Annotations of this start: 1 of 139
- Called 100.0% of time when present
- Phage (with cluster) where this start called: Kauala_13 (EA4),

Summary by clusters:

There are 11 clusters represented in this pham: EA11, EA10, EA, EA9, EA8, EA1, EA3, EA5, EA4, EA7, EA6,

Info for manual annotations of cluster EA:

- Start number 16 was manually annotated 1 time for cluster EA.

Info for manual annotations of cluster EA1:

- Start number 16 was manually annotated 104 times for cluster EA1.

Info for manual annotations of cluster EA10:

- Start number 16 was manually annotated 1 time for cluster EA10.

Info for manual annotations of cluster EA11:

- Start number 16 was manually annotated 4 times for cluster EA11.

Info for manual annotations of cluster EA3:

- Start number 16 was manually annotated 3 times for cluster EA3.

Info for manual annotations of cluster EA4:

- Start number 16 was manually annotated 5 times for cluster EA4.
- Start number 17 was manually annotated 1 time for cluster EA4.

Info for manual annotations of cluster EA5:

- Start number 16 was manually annotated 9 times for cluster EA5.

Info for manual annotations of cluster EA6:

- Start number 16 was manually annotated 6 times for cluster EA6.

Info for manual annotations of cluster EA7:

- Start number 16 was manually annotated 1 time for cluster EA7.

Info for manual annotations of cluster EA8:

- Start number 16 was manually annotated 1 time for cluster EA8.

Info for manual annotations of cluster EA9:

•Start number 16 was manually annotated 3 times for cluster EA9.

Gene Information:

Gene: Acosta_14 Start: 7873, Stop: 8103, Start Num: 16

Candidate Starts for Acosta_14:

(15, 7765), (Start: 16 @7873 has 138 MA's), (19, 7909), (24, 7981), (28, 8020),

Gene: Agente005_14 Start: 8160, Stop: 8399, Start Num: 16

Candidate Starts for Agente005_14:

(12, 7983), (Start: 16 @8160 has 138 MA's), (19, 8196), (28, 8307),

Gene: Alakazam_15 Start: 8832, Stop: 9137, Start Num: 16

Candidate Starts for Alakazam_15:

(Start: 16 @8832 has 138 MA's), (19, 8868), (21, 8901), (26, 8967),

Gene: AlexAdler_13 Start: 7594, Stop: 7830, Start Num: 16

Candidate Starts for AlexAdler_13:

(4, 7120), (5, 7141), (Start: 16 @7594 has 138 MA's), (19, 7630), (24, 7702), (28, 7741), (29, 7750),

Gene: Alyxandracam_13 Start: 7603, Stop: 7839, Start Num: 16

Candidate Starts for Alyxandracam_13:

(4, 7129), (5, 7150), (Start: 16 @7603 has 138 MA's), (19, 7639), (24, 7711), (26, 7738), (28, 7750), (29, 7759),

Gene: Antoinette_13 Start: 7594, Stop: 7830, Start Num: 16

Candidate Starts for Antoinette_13:

(4, 7120), (5, 7141), (Start: 16 @7594 has 138 MA's), (19, 7630), (24, 7702), (28, 7741), (29, 7750),

Gene: AranulaLuti_13 Start: 7896, Stop: 8132, Start Num: 16

Candidate Starts for AranulaLuti_13:

(Start: 16 @7896 has 138 MA's), (19, 7932), (24, 8004), (26, 8031), (28, 8043),

Gene: Asta_14 Start: 7909, Stop: 8145, Start Num: 16

Candidate Starts for Asta_14:

(Start: 16 @7909 has 138 MA's), (19, 7945), (24, 8017), (28, 8056),

Gene: Aubergine_13 Start: 7909, Stop: 8145, Start Num: 16

Candidate Starts for Aubergine_13:

(Start: 16 @7909 has 138 MA's), (19, 7945), (24, 8017), (28, 8056),

Gene: AxiPup_13 Start: 7603, Stop: 7839, Start Num: 16

Candidate Starts for AxiPup_13:

(4, 7129), (5, 7150), (Start: 16 @7603 has 138 MA's), (19, 7639), (24, 7711), (28, 7750), (29, 7759),

Gene: Baines_13 Start: 7893, Stop: 8129, Start Num: 16

Candidate Starts for Baines_13:

(4, 7419), (5, 7440), (Start: 16 @7893 has 138 MA's), (19, 7929), (24, 8001), (28, 8040), (29, 8049),

Gene: Balsa_13 Start: 8011, Stop: 8250, Start Num: 16

Candidate Starts for Balsa_13:

(3, 7528), (4, 7537), (6, 7564), (7, 7585), (Start: 16 @8011 has 138 MA's), (19, 8047), (24, 8119), (26, 8146),

Gene: Bandik_13 Start: 7600, Stop: 7836, Start Num: 16

Candidate Starts for Bandik_13:

(Start: 16 @7600 has 138 MA's), (19, 7636), (24, 7708), (26, 7735), (28, 7747),

Gene: BeautPeep30_13 Start: 7606, Stop: 7842, Start Num: 16

Candidate Starts for BeautPeep30_13:

(Start: 16 @7606 has 138 MA's), (19, 7642), (24, 7714), (26, 7741), (28, 7753),

Gene: BeeBee8_14 Start: 8174, Stop: 8413, Start Num: 16

Candidate Starts for BeeBee8_14:

(4, 7700), (6, 7727), (7, 7748), (8, 7790), (Start: 16 @8174 has 138 MA's), (19, 8210), (24, 8282), (26, 8309),

Gene: Benjalauren_13 Start: 7896, Stop: 8132, Start Num: 16

Candidate Starts for Benjalauren_13:

(Start: 16 @7896 has 138 MA's), (19, 7932), (24, 8004), (26, 8031), (28, 8043),

Gene: BigRedClifford_13 Start: 7603, Stop: 7839, Start Num: 16

Candidate Starts for BigRedClifford_13:

(4, 7129), (5, 7150), (Start: 16 @7603 has 138 MA's), (19, 7639), (24, 7711), (28, 7750), (29, 7759),

Gene: Blage_13 Start: 7603, Stop: 7839, Start Num: 16

Candidate Starts for Blage_13:

(4, 7129), (5, 7150), (Start: 16 @7603 has 138 MA's), (19, 7639), (24, 7711), (28, 7750), (29, 7759),

Gene: BonesMcCoy_13 Start: 7603, Stop: 7839, Start Num: 16

Candidate Starts for BonesMcCoy_13:

(4, 7129), (5, 7150), (Start: 16 @7603 has 138 MA's), (19, 7639), (24, 7711), (28, 7750), (29, 7759),

Gene: Bonino_13 Start: 7886, Stop: 8122, Start Num: 16

Candidate Starts for Bonino_13:

(Start: 16 @7886 has 138 MA's), (19, 7922), (24, 7994), (28, 8033),

Gene: BouleyBill_13 Start: 7871, Stop: 8098, Start Num: 16

Candidate Starts for BouleyBill_13:

(Start: 16 @7871 has 138 MA's), (33, 8039),

Gene: Bustleton_13 Start: 7859, Stop: 8086, Start Num: 16

Candidate Starts for Bustleton_13:

(Start: 16 @7859 has 138 MA's), (33, 8027),

Gene: Byron23_12 Start: 7609, Stop: 7845, Start Num: 16

Candidate Starts for Byron23_12:

(Start: 16 @7609 has 138 MA's), (19, 7645), (24, 7717), (26, 7744), (28, 7756),

Gene: Calix_13 Start: 7886, Stop: 8122, Start Num: 16

Candidate Starts for Calix_13:

(4, 7412), (5, 7433), (Start: 16 @7886 has 138 MA's), (19, 7922), (24, 7994), (28, 8033), (29, 8042),

Gene: CaptainRex_14 Start: 8035, Stop: 8367, Start Num: 16
Candidate Starts for CaptainRex_14:
(Start: 16 @8035 has 138 MA's), (19, 8071), (24, 8143), (26, 8170),

Gene: Casey_12 Start: 7906, Stop: 8121, Start Num: 16
Candidate Starts for Casey_12:
(Start: 16 @7906 has 138 MA's), (20, 7942), (26, 8020), (30, 8044),

Gene: Chako_13 Start: 7896, Stop: 8132, Start Num: 16
Candidate Starts for Chako_13:
(Start: 16 @7896 has 138 MA's), (19, 7932), (24, 8004), (26, 8031), (28, 8043),

Gene: Chamuel_13 Start: 7888, Stop: 8124, Start Num: 16
Candidate Starts for Chamuel_13:
(4, 7414), (5, 7435), (Start: 16 @7888 has 138 MA's), (19, 7924), (24, 7996), (28, 8035), (29, 8044),

Gene: Cheeto1_14 Start: 7774, Stop: 8001, Start Num: 16
Candidate Starts for Cheeto1_14:
(Start: 16 @7774 has 138 MA's), (20, 7813), (21, 7825), (23, 7852), (35, 7966),

Gene: Chepli_14 Start: 8030, Stop: 8344, Start Num: 16
Candidate Starts for Chepli_14:
(Start: 16 @8030 has 138 MA's), (19, 8066), (24, 8138), (26, 8165), (32, 8210),

Gene: ChickenKing_13 Start: 7594, Stop: 7821, Start Num: 16
Candidate Starts for ChickenKing_13:
(Start: 16 @7594 has 138 MA's), (20, 7633), (21, 7645), (23, 7672), (35, 7786),

Gene: Christoph_13 Start: 7907, Stop: 8143, Start Num: 16
Candidate Starts for Christoph_13:
(Start: 16 @7907 has 138 MA's), (19, 7943), (24, 8015), (28, 8054),

Gene: Clancy_13 Start: 7896, Stop: 8132, Start Num: 16
Candidate Starts for Clancy_13:
(Start: 16 @7896 has 138 MA's), (19, 7932), (24, 8004), (26, 8031), (28, 8043),

Gene: Clock_14 Start: 8762, Stop: 9085, Start Num: 16
Candidate Starts for Clock_14:
(Start: 16 @8762 has 138 MA's), (19, 8798), (26, 8897),

Gene: Convict_13 Start: 7603, Stop: 7839, Start Num: 16
Candidate Starts for Convict_13:
(4, 7129), (5, 7150), (Start: 16 @7603 has 138 MA's), (19, 7639), (24, 7711), (28, 7750), (29, 7759),

Gene: Dave_13 Start: 7594, Stop: 7830, Start Num: 16
Candidate Starts for Dave_13:
(4, 7120), (5, 7141), (Start: 16 @7594 has 138 MA's), (19, 7630), (24, 7702), (28, 7741), (29, 7750),

Gene: Delphidian_13 Start: 7603, Stop: 7839, Start Num: 16
Candidate Starts for Delphidian_13:
(Start: 16 @7603 has 138 MA's), (19, 7639), (24, 7711), (28, 7750),

Gene: Den3_13 Start: 7607, Stop: 7843, Start Num: 16

Candidate Starts for Den3_13:

(4, 7133), (5, 7154), (Start: 16 @7607 has 138 MA's), (19, 7643), (24, 7715), (28, 7754), (29, 7763),

Gene: Dothraki_13 Start: 7606, Stop: 7842, Start Num: 16

Candidate Starts for Dothraki_13:

(Start: 16 @7606 has 138 MA's), (19, 7642), (24, 7714), (26, 7741), (28, 7753),

Gene: Duocatuli_13 Start: 7896, Stop: 8132, Start Num: 16

Candidate Starts for Duocatuli_13:

(Start: 16 @7896 has 138 MA's), (19, 7932), (24, 8004), (26, 8031), (28, 8043),

Gene: Endor_14 Start: 8172, Stop: 8384, Start Num: 16

Candidate Starts for Endor_14:

(4, 7698), (6, 7725), (7, 7746), (Start: 16 @8172 has 138 MA's), (26, 8289), (32, 8334),

Gene: Erla_13 Start: 7886, Stop: 8122, Start Num: 16

Candidate Starts for Erla_13:

(4, 7412), (5, 7433), (Start: 16 @7886 has 138 MA's), (19, 7922), (24, 7994), (28, 8033), (29, 8042),

Gene: Espinosa_13 Start: 7907, Stop: 8143, Start Num: 16

Candidate Starts for Espinosa_13:

(Start: 16 @7907 has 138 MA's), (19, 7943), (24, 8015), (28, 8054),

Gene: Etna_13 Start: 8002, Stop: 8241, Start Num: 16

Candidate Starts for Etna_13:

(1, 7396), (4, 7528), (6, 7555), (7, 7576), (Start: 16 @8002 has 138 MA's), (19, 8038), (24, 8110), (26, 8137),

Gene: Etta_13 Start: 7890, Stop: 8126, Start Num: 16

Candidate Starts for Etta_13:

(4, 7416), (5, 7437), (Start: 16 @7890 has 138 MA's), (19, 7926), (24, 7998), (28, 8037), (29, 8046),

Gene: FarmerDoug_13 Start: 7731, Stop: 7961, Start Num: 16

Candidate Starts for FarmerDoug_13:

(4, 7257), (6, 7284), (7, 7305), (Start: 16 @7731 has 138 MA's), (19, 7767), (24, 7839), (26, 7866),

Gene: Figueroism_13 Start: 7594, Stop: 7830, Start Num: 16

Candidate Starts for Figueroism_13:

(Start: 16 @7594 has 138 MA's), (19, 7630), (24, 7702), (28, 7741), (29, 7750),

Gene: Fulton_14 Start: 8017, Stop: 8349, Start Num: 16

Candidate Starts for Fulton_14:

(Start: 16 @8017 has 138 MA's), (19, 8053), (24, 8125), (26, 8152),

Gene: GaeCeo_14 Start: 7764, Stop: 7991, Start Num: 16

Candidate Starts for GaeCeo_14:

(Start: 16 @7764 has 138 MA's), (20, 7803), (21, 7815), (23, 7842), (35, 7956),

Gene: GardenB_13 Start: 8002, Stop: 8238, Start Num: 16

Candidate Starts for GardenB_13:

(4, 7531), (6, 7558), (7, 7579), (Start: 16 @8002 has 138 MA's), (19, 8038), (24, 8110),

Gene: Garey24_13 Start: 7889, Stop: 8104, Start Num: 16

Candidate Starts for Garey24_13:

(Start: 16 @7889 has 138 MA's), (24, 7982), (26, 8009),

Gene: Gargoyle_13 Start: 7606, Stop: 7842, Start Num: 16

Candidate Starts for Gargoyle_13:

(Start: 16 @7606 has 138 MA's), (19, 7642), (24, 7714), (26, 7741), (28, 7753),

Gene: Gelo_13 Start: 7890, Stop: 8126, Start Num: 16

Candidate Starts for Gelo_13:

(4, 7416), (5, 7437), (Start: 16 @7890 has 138 MA's), (19, 7926), (24, 7998), (28, 8037), (29, 8046),

Gene: Gershwin_13 Start: 7909, Stop: 8145, Start Num: 16

Candidate Starts for Gershwin_13:

(Start: 16 @7909 has 138 MA's), (19, 7945), (24, 8017), (28, 8056),

Gene: Greenlvy_14 Start: 8034, Stop: 8366, Start Num: 16

Candidate Starts for Greenlvy_14:

(Start: 16 @8034 has 138 MA's), (19, 8070), (24, 8142), (26, 8169),

Gene: Greys_13 Start: 7603, Stop: 7839, Start Num: 16

Candidate Starts for Greys_13:

(4, 7129), (5, 7150), (Start: 16 @7603 has 138 MA's), (19, 7639), (24, 7711), (28, 7750), (29, 7759),

Gene: Gubbabump_13 Start: 7898, Stop: 8134, Start Num: 16

Candidate Starts for Gubbabump_13:

(Start: 16 @7898 has 138 MA's), (19, 7934), (24, 8006), (26, 8033), (28, 8045),

Gene: Hamlet_13 Start: 8011, Stop: 8250, Start Num: 16

Candidate Starts for Hamlet_13:

(3, 7528), (4, 7537), (6, 7564), (7, 7585), (Start: 16 @8011 has 138 MA's), (19, 8047), (24, 8119), (26, 8146),

Gene: HanSolo_13 Start: 7896, Stop: 8132, Start Num: 16

Candidate Starts for HanSolo_13:

(Start: 16 @7896 has 138 MA's), (19, 7932), (24, 8004), (26, 8031), (28, 8043),

Gene: HankSprout_14 Start: 7776, Stop: 8012, Start Num: 16

Candidate Starts for HankSprout_14:

(Start: 16 @7776 has 138 MA's), (19, 7812), (24, 7884), (26, 7911), (28, 7923),

Gene: Hasitha_14 Start: 8035, Stop: 8367, Start Num: 16

Candidate Starts for Hasitha_14:

(Start: 16 @8035 has 138 MA's), (19, 8071), (24, 8143), (26, 8170),

Gene: HerculesXL_14 Start: 8142, Stop: 8444, Start Num: 16

Candidate Starts for HerculesXL_14:

(9, 7767), (10, 7773), (Start: 16 @8142 has 138 MA's), (19, 8178), (24, 8250), (26, 8277),

Gene: HungryHenry_13 Start: 7897, Stop: 8133, Start Num: 16

Candidate Starts for HungryHenry_13:

(Start: 16 @7897 has 138 MA's), (19, 7933), (24, 8005), (26, 8032), (28, 8044),

Gene: Ilzat_13 Start: 7896, Stop: 8132, Start Num: 16

Candidate Starts for Ilzat_13:

(Start: 16 @7896 has 138 MA's), (19, 7932), (24, 8004), (26, 8031), (28, 8043),

Gene: Inventa_13 Start: 7606, Stop: 7842, Start Num: 16

Candidate Starts for Inventa_13:

(Start: 16 @7606 has 138 MA's), (19, 7642), (24, 7714), (26, 7741), (28, 7753),

Gene: loannes_13 Start: 7603, Stop: 7839, Start Num: 16

Candidate Starts for loannes_13:

(4, 7129), (5, 7150), (Start: 16 @7603 has 138 MA's), (19, 7639), (24, 7711), (28, 7750), (29, 7759),

Gene: Ixel_13 Start: 7700, Stop: 8020, Start Num: 16

Candidate Starts for Ixel_13:

(Start: 16 @7700 has 138 MA's), (19, 7736), (24, 7808), (26, 7835),

Gene: Janus167_13 Start: 7896, Stop: 8132, Start Num: 16

Candidate Starts for Janus167_13:

(Start: 16 @7896 has 138 MA's), (19, 7932), (24, 8004), (26, 8031), (28, 8043),

Gene: JasonD_16 Start: 8034, Stop: 8264, Start Num: 16

Candidate Starts for JasonD_16:

(Start: 16 @8034 has 138 MA's), (19, 8070), (28, 8181),

Gene: JasperRussell_13 Start: 7896, Stop: 8132, Start Num: 16

Candidate Starts for JasperRussell_13:

(Start: 16 @7896 has 138 MA's), (19, 7932), (24, 8004), (26, 8031), (28, 8043),

Gene: Jemerald_14 Start: 8998, Stop: 9297, Start Num: 16

Candidate Starts for Jemerald_14:

(Start: 16 @8998 has 138 MA's), (21, 9067), (24, 9106), (26, 9133),

Gene: Jenos_15 Start: 8355, Stop: 8591, Start Num: 16

Candidate Starts for Jenos_15:

(Start: 16 @8355 has 138 MA's), (19, 8391), (24, 8463), (28, 8502),

Gene: Jerbirus_13 Start: 7896, Stop: 8132, Start Num: 16

Candidate Starts for Jerbirus_13:

(Start: 16 @7896 has 138 MA's), (19, 7932), (24, 8004), (26, 8031), (28, 8043),

Gene: JeriBeth_13 Start: 7743, Stop: 7979, Start Num: 16

Candidate Starts for JeriBeth_13:

(Start: 16 @7743 has 138 MA's), (19, 7779), (24, 7851), (26, 7878), (28, 7890),

Gene: Juicer_14 Start: 8998, Stop: 9297, Start Num: 16

Candidate Starts for Juicer_14:

(Start: 16 @8998 has 138 MA's), (21, 9067), (24, 9106), (26, 9133),

Gene: Kale_13 Start: 7911, Stop: 8147, Start Num: 16

Candidate Starts for Kale_13:

(Start: 16 @7911 has 138 MA's), (19, 7947), (24, 8019), (28, 8058),

Gene: KannH_13 Start: 7896, Stop: 8132, Start Num: 16

Candidate Starts for KannH_13:

(Start: 16 @7896 has 138 MA's), (19, 7932), (24, 8004), (26, 8031), (28, 8043),

Gene: KatChan_14 Start: 8036, Stop: 8350, Start Num: 16

Candidate Starts for KatChan_14:

(Start: 16 @8036 has 138 MA's), (19, 8072), (24, 8144), (26, 8171), (32, 8216),

Gene: Kauala_13 Start: 7869, Stop: 8105, Start Num: 17

Candidate Starts for Kauala_13:

(Start: 17 @7869 has 1 MA's),

Gene: KingJulien_13 Start: 8002, Stop: 8241, Start Num: 16

Candidate Starts for KingJulien_13:

(1, 7396), (4, 7528), (6, 7555), (7, 7576), (Start: 16 @8002 has 138 MA's), (19, 8038), (24, 8110), (26, 8137),

Gene: Klimt_13 Start: 7888, Stop: 8124, Start Num: 16

Candidate Starts for Klimt_13:

(4, 7414), (5, 7435), (Start: 16 @7888 has 138 MA's), (19, 7924), (24, 7996), (28, 8035), (29, 8044),

Gene: Knox_13 Start: 7603, Stop: 7839, Start Num: 16

Candidate Starts for Knox_13:

(4, 7129), (5, 7150), (Start: 16 @7603 has 138 MA's), (19, 7639), (24, 7711), (28, 7750), (29, 7759),

Gene: Koji_13 Start: 7992, Stop: 8219, Start Num: 16

Candidate Starts for Koji_13:

(Start: 16 @7992 has 138 MA's), (33, 8160),

Gene: Kurt1_13 Start: 7606, Stop: 7842, Start Num: 16

Candidate Starts for Kurt1_13:

(Start: 16 @7606 has 138 MA's), (19, 7642), (24, 7714), (25, 7723), (26, 7741), (28, 7753),

Gene: Leafus_13 Start: 8149, Stop: 8388, Start Num: 16

Candidate Starts for Leafus_13:

(4, 7675), (6, 7702), (7, 7723), (Start: 16 @8149 has 138 MA's), (19, 8185), (24, 8257), (26, 8284),

Gene: Librie_14 Start: 8035, Stop: 8367, Start Num: 16

Candidate Starts for Librie_14:

(Start: 16 @8035 has 138 MA's), (19, 8071), (24, 8143), (26, 8170),

Gene: LilTerminator_14 Start: 8041, Stop: 8373, Start Num: 16

Candidate Starts for LilTerminator_14:

(Start: 16 @8041 has 138 MA's), (19, 8077), (24, 8149), (26, 8176),

Gene: Lovelyunicorn_13 Start: 7603, Stop: 7839, Start Num: 16

Candidate Starts for Lovelyunicorn_13:

(4, 7129), (5, 7150), (Start: 16 @7603 has 138 MA's), (19, 7639), (24, 7711), (28, 7750), (29, 7759),

Gene: Ludgate_13 Start: 7600, Stop: 7836, Start Num: 16

Candidate Starts for Ludgate_13:

(Start: 16 @7600 has 138 MA's), (19, 7636), (24, 7708), (26, 7735), (28, 7747),

Gene: Luna18_14 Start: 8036, Stop: 8350, Start Num: 16

Candidate Starts for Luna18_14:

(Start: 16 @8036 has 138 MA's), (19, 8072), (24, 8144), (26, 8171), (32, 8216),

Gene: MaeLinda_13 Start: 7606, Stop: 7842, Start Num: 16

Candidate Starts for MaeLinda_13:

(Start: 16 @7606 has 138 MA's), (19, 7642), (24, 7714), (26, 7741), (28, 7753),

Gene: ManRay_13 Start: 7909, Stop: 8145, Start Num: 16

Candidate Starts for ManRay_13:

(Start: 16 @7909 has 138 MA's), (19, 7945), (24, 8017), (28, 8056),

Gene: Martin_14 Start: 7606, Stop: 7842, Start Num: 16

Candidate Starts for Martin_14:

(Start: 16 @7606 has 138 MA's), (19, 7642), (24, 7714), (26, 7741), (28, 7753),

Gene: McGalleon_14 Start: 8474, Stop: 8710, Start Num: 16

Candidate Starts for McGalleon_14:

(11, 8168), (Start: 16 @8474 has 138 MA's), (19, 8510), (28, 8621),

Gene: Mercedes_13 Start: 7790, Stop: 8113, Start Num: 16

Candidate Starts for Mercedes_13:

(15, 7682), (Start: 16 @7790 has 138 MA's), (19, 7826), (24, 7898), (26, 7925), (34, 8012),

Gene: MillyPhilly_13 Start: 7603, Stop: 7839, Start Num: 16

Candidate Starts for MillyPhilly_13:

(Start: 16 @7603 has 138 MA's), (19, 7639), (24, 7711), (28, 7750),

Gene: MonChoix_12 Start: 7676, Stop: 7897, Start Num: 16

Candidate Starts for MonChoix_12:

(4, 7202), (6, 7229), (7, 7250), (Start: 16 @7676 has 138 MA's), (26, 7793),

Gene: Morrigan_14 Start: 8937, Stop: 9251, Start Num: 16

Candidate Starts for Morrigan_14:

(Start: 16 @8937 has 138 MA's), (19, 8973), (20, 8994), (24, 9045), (26, 9072), (30, 9096), (32, 9117),

Gene: MrWorldwide_13 Start: 7606, Stop: 7842, Start Num: 16

Candidate Starts for MrWorldwide_13:

(Start: 16 @7606 has 138 MA's), (19, 7642), (24, 7714), (26, 7741), (28, 7753),

Gene: Nagem_13 Start: 7600, Stop: 7836, Start Num: 16

Candidate Starts for Nagem_13:

(Start: 16 @7600 has 138 MA's), (19, 7636), (24, 7708), (26, 7735), (28, 7747),

Gene: Nattles_13 Start: 7892, Stop: 8128, Start Num: 16

Candidate Starts for Nattles_13:

(4, 7418), (5, 7439), (Start: 16 @7892 has 138 MA's), (19, 7928), (24, 8000), (28, 8039), (29, 8048),

Gene: Nebulous_14 Start: 8771, Stop: 9094, Start Num: 16

Candidate Starts for Nebulous_14:

(Start: 16 @8771 has 138 MA's), (19, 8807), (21, 8840), (24, 8879), (26, 8906), (27, 8909),

Gene: Neferthema_14 Start: 8782, Stop: 9105, Start Num: 16

Candidate Starts for Neferthema_14:

(Start: 16 @8782 has 138 MA's), (19, 8818), (26, 8917),

Gene: NickSell_13 Start: 7606, Stop: 7842, Start Num: 16

Candidate Starts for NickSell_13:

(Start: 16 @7606 has 138 MA's), (19, 7642), (24, 7714), (26, 7741), (28, 7753),

Gene: Oats_13 Start: 7909, Stop: 8145, Start Num: 16

Candidate Starts for Oats_13:

(Start: 16 @7909 has 138 MA's), (19, 7945), (24, 8017), (28, 8056),

Gene: OldNelly_13 Start: 7606, Stop: 7842, Start Num: 16

Candidate Starts for OldNelly_13:

(Start: 16 @7606 has 138 MA's), (19, 7642), (24, 7714), (26, 7741), (28, 7753),

Gene: Oxtober96_13 Start: 7603, Stop: 7839, Start Num: 16

Candidate Starts for Oxtober96_13:

(4, 7129), (5, 7150), (Start: 16 @7603 has 138 MA's), (19, 7639), (24, 7711), (28, 7750), (29, 7759),

Gene: Pajaza_12 Start: 7906, Stop: 8121, Start Num: 16

Candidate Starts for Pajaza_12:

(Start: 16 @7906 has 138 MA's), (20, 7942), (26, 8020), (30, 8044),

Gene: Papafritta_13 Start: 7896, Stop: 8132, Start Num: 16

Candidate Starts for Papafritta_13:

(Start: 16 @7896 has 138 MA's), (19, 7932), (24, 8004), (26, 8031), (28, 8043),

Gene: ParleG_13 Start: 7606, Stop: 7842, Start Num: 16

Candidate Starts for ParleG_13:

(Start: 16 @7606 has 138 MA's), (19, 7642), (24, 7714), (26, 7741), (28, 7753),

Gene: Peep_13 Start: 7594, Stop: 7830, Start Num: 16

Candidate Starts for Peep_13:

(4, 7120), (5, 7141), (Start: 16 @7594 has 138 MA's), (19, 7630), (24, 7702), (28, 7741), (29, 7750),

Gene: Peppino_13 Start: 8002, Stop: 8241, Start Num: 16

Candidate Starts for Peppino_13:

(4, 7528), (6, 7555), (7, 7576), (8, 7618), (Start: 16 @8002 has 138 MA's), (19, 8038), (24, 8110), (26, 8137),

Gene: Pherbot_13 Start: 7858, Stop: 8085, Start Num: 16

Candidate Starts for Pherbot_13:

(Start: 16 @7858 has 138 MA's), (33, 8026),

Gene: Pherferi_13 Start: 7606, Stop: 7842, Start Num: 16

Candidate Starts for Pherferi_13:

(Start: 16 @7606 has 138 MA's), (19, 7642), (24, 7714), (25, 7723), (26, 7741), (28, 7753),

Gene: Phiderman_13 Start: 7603, Stop: 7839, Start Num: 16

Candidate Starts for Phiderman_13:

(Start: 16 @7603 has 138 MA's), (19, 7639), (24, 7711), (26, 7738), (28, 7750),

Gene: Phireproof_13 Start: 7606, Stop: 7842, Start Num: 16

Candidate Starts for Phireproof_13:

(Start: 16 @7606 has 138 MA's), (19, 7642), (24, 7714), (26, 7741), (28, 7753),

Gene: PhredFlintston_13 Start: 7606, Stop: 7842, Start Num: 16
Candidate Starts for PhredFlintston_13:
(Start: 16 @7606 has 138 MA's), (19, 7642), (24, 7714), (26, 7741), (28, 7753),

Gene: Phriends_13 Start: 7606, Stop: 7842, Start Num: 16
Candidate Starts for Phriends_13:
(Start: 16 @7606 has 138 MA's), (19, 7642), (24, 7714), (26, 7741), (28, 7753),

Gene: Pikmin_12 Start: 7906, Stop: 8121, Start Num: 16
Candidate Starts for Pikmin_12:
(Start: 16 @7906 has 138 MA's), (20, 7942), (26, 8020), (30, 8044),

Gene: Pocket_13 Start: 7894, Stop: 8130, Start Num: 16
Candidate Starts for Pocket_13:
(Start: 16 @7894 has 138 MA's), (19, 7930), (24, 8002), (28, 8041),

Gene: PrincePhergus_13 Start: 7862, Stop: 8089, Start Num: 16
Candidate Starts for PrincePhergus_13:
(Start: 16 @7862 has 138 MA's), (33, 8030),

Gene: PuppyEggo_13 Start: 7603, Stop: 7839, Start Num: 16
Candidate Starts for PuppyEggo_13:
(4, 7129), (5, 7150), (Start: 16 @7603 has 138 MA's), (19, 7639), (24, 7711), (28, 7750), (29, 7759),

Gene: QuadZero_14 Start: 8047, Stop: 8379, Start Num: 16
Candidate Starts for QuadZero_14:
(Start: 16 @8047 has 138 MA's), (19, 8083), (24, 8155), (26, 8182),

Gene: Raccoon_13 Start: 8008, Stop: 8247, Start Num: 16
Candidate Starts for Raccoon_13:
(4, 7534), (6, 7561), (7, 7582), (8, 7624), (Start: 16 @8008 has 138 MA's), (19, 8044), (24, 8116), (26, 8143),

Gene: Rapheph_13 Start: 7606, Stop: 7842, Start Num: 16
Candidate Starts for Rapheph_13:
(Start: 16 @7606 has 138 MA's), (19, 7642), (24, 7714), (26, 7741), (28, 7753),

Gene: Raptor_13 Start: 7603, Stop: 7839, Start Num: 16
Candidate Starts for Raptor_13:
(4, 7129), (5, 7150), (Start: 16 @7603 has 138 MA's), (19, 7639), (24, 7711), (28, 7750), (29, 7759),

Gene: Redfield_13 Start: 8010, Stop: 8249, Start Num: 16
Candidate Starts for Redfield_13:
(4, 7536), (6, 7563), (7, 7584), (8, 7626), (Start: 16 @8010 has 138 MA's), (19, 8046), (24, 8118), (26, 8145),

Gene: Renzie_13 Start: 7594, Stop: 7830, Start Num: 16
Candidate Starts for Renzie_13:
(4, 7120), (5, 7141), (Start: 16 @7594 has 138 MA's), (19, 7630), (24, 7702), (28, 7741), (29, 7750),

Gene: Riyhil_13 Start: 7606, Stop: 7842, Start Num: 16
Candidate Starts for Riyhil_13:

(Start: 16 @7606 has 138 MA's), (19, 7642), (24, 7714), (26, 7741), (28, 7753),

Gene: Robinson_13 Start: 7597, Stop: 7833, Start Num: 16

Candidate Starts for Robinson_13:

(Start: 16 @7597 has 138 MA's), (19, 7633), (24, 7705), (28, 7744), (29, 7753),

Gene: Rog141_13 Start: 7896, Stop: 8132, Start Num: 16

Candidate Starts for Rog141_13:

(Start: 16 @7896 has 138 MA's), (19, 7932), (24, 8004), (26, 8031), (28, 8043),

Gene: SJay_13 Start: 7601, Stop: 7837, Start Num: 16

Candidate Starts for SJay_13:

(Start: 16 @7601 has 138 MA's), (19, 7637), (24, 7709), (26, 7736), (28, 7748),

Gene: Schimmels22_14 Start: 8501, Stop: 8803, Start Num: 16

Candidate Starts for Schimmels22_14:

(Start: 16 @8501 has 138 MA's), (19, 8537), (24, 8609), (26, 8636),

Gene: Schnapsidee_13 Start: 8001, Stop: 8240, Start Num: 16

Candidate Starts for Schnapsidee_13:

(4, 7527), (6, 7554), (7, 7575), (8, 7617), (Start: 16 @8001 has 138 MA's), (19, 8037), (24, 8109), (26, 8136),

Gene: Schubert_13 Start: 8046, Stop: 8288, Start Num: 16

Candidate Starts for Schubert_13:

(Start: 16 @8046 has 138 MA's), (19, 8082), (24, 8154), (26, 8181),

Gene: Sedgewig_13 Start: 7896, Stop: 8132, Start Num: 16

Candidate Starts for Sedgewig_13:

(Start: 16 @7896 has 138 MA's), (19, 7932), (24, 8004), (26, 8031), (28, 8043),

Gene: ShaiHulud_13 Start: 7603, Stop: 7839, Start Num: 16

Candidate Starts for ShaiHulud_13:

(4, 7129), (5, 7150), (Start: 16 @7603 has 138 MA's), (19, 7639), (24, 7711), (28, 7750), (29, 7759),

Gene: Shee_13 Start: 7603, Stop: 7839, Start Num: 16

Candidate Starts for Shee_13:

(Start: 16 @7603 has 138 MA's), (19, 7639), (24, 7711), (26, 7738), (28, 7750),

Gene: Sinatra_13 Start: 7859, Stop: 8086, Start Num: 16

Candidate Starts for Sinatra_13:

(Start: 16 @7859 has 138 MA's), (33, 8027),

Gene: SoilGremlin_13 Start: 7603, Stop: 7839, Start Num: 16

Candidate Starts for SoilGremlin_13:

(Start: 16 @7603 has 138 MA's), (19, 7639), (24, 7711), (28, 7750),

Gene: SonOfLevi_13 Start: 7888, Stop: 8124, Start Num: 16

Candidate Starts for SonOfLevi_13:

(4, 7414), (5, 7435), (Start: 16 @7888 has 138 MA's), (19, 7924), (24, 7996), (28, 8035), (29, 8044),

Gene: Stanktossa_13 Start: 7606, Stop: 7842, Start Num: 16

Candidate Starts for Stanktossa_13:

(Start: 16 @7606 has 138 MA's), (19, 7642), (24, 7714), (26, 7741), (28, 7753),

Gene: StingRay_13 Start: 7896, Stop: 8132, Start Num: 16

Candidate Starts for StingRay_13:

(Start: 16 @7896 has 138 MA's), (19, 7932), (24, 8004), (26, 8031), (28, 8043),

Gene: StirfryIV_13 Start: 7896, Stop: 8132, Start Num: 16

Candidate Starts for StirfryIV_13:

(Start: 16 @7896 has 138 MA's), (19, 7932), (24, 8004), (26, 8031), (28, 8043),

Gene: Stormbreaker8_13 Start: 8002, Stop: 8241, Start Num: 16

Candidate Starts for Stormbreaker8_13:

(1, 7396), (2, 7399), (4, 7528), (6, 7555), (7, 7576), (Start: 16 @8002 has 138 MA's), (19, 8038), (24, 8110), (26, 8137),

Gene: Strathdee_13 Start: 7604, Stop: 7840, Start Num: 16

Candidate Starts for Strathdee_13:

(4, 7130), (5, 7151), (Start: 16 @7604 has 138 MA's), (19, 7640), (24, 7712), (28, 7751), (29, 7760),

Gene: Superfresh_13 Start: 7594, Stop: 7830, Start Num: 16

Candidate Starts for Superfresh_13:

(4, 7120), (5, 7141), (Start: 16 @7594 has 138 MA's), (19, 7630), (24, 7702), (28, 7741), (29, 7750),

Gene: TatarkaPM_13 Start: 7606, Stop: 7842, Start Num: 16

Candidate Starts for TatarkaPM_13:

(Start: 16 @7606 has 138 MA's), (19, 7642), (24, 7714), (26, 7741), (28, 7753),

Gene: Teagan_13 Start: 7600, Stop: 7836, Start Num: 16

Candidate Starts for Teagan_13:

(Start: 16 @7600 has 138 MA's), (19, 7636), (24, 7708), (26, 7735), (28, 7747),

Gene: TeddyBear_13 Start: 7909, Stop: 8145, Start Num: 16

Candidate Starts for TeddyBear_13:

(Start: 16 @7909 has 138 MA's), (19, 7945), (24, 8017), (28, 8056),

Gene: Tenda_13 Start: 7907, Stop: 8143, Start Num: 16

Candidate Starts for Tenda_13:

(Start: 16 @7907 has 138 MA's), (19, 7943), (24, 8015), (28, 8054),

Gene: Theresita_13 Start: 7443, Stop: 7679, Start Num: 16

Candidate Starts for Theresita_13:

(Start: 16 @7443 has 138 MA's), (18, 7458), (19, 7461), (31, 7593), (33, 7611),

Gene: Thompsone_13 Start: 7603, Stop: 7839, Start Num: 16

Candidate Starts for Thompsone_13:

(4, 7129), (5, 7150), (Start: 16 @7603 has 138 MA's), (19, 7639), (24, 7711), (28, 7750), (29, 7759),

Gene: Thorongil_13 Start: 7603, Stop: 7839, Start Num: 16

Candidate Starts for Thorongil_13:

(4, 7129), (5, 7150), (Start: 16 @7603 has 138 MA's), (19, 7639), (24, 7711), (28, 7750), (29, 7759),

Gene: TinSulphur_13 Start: 7606, Stop: 7842, Start Num: 16

Candidate Starts for TinSulphur_13:

(Start: 16 @7606 has 138 MA's), (19, 7642), (24, 7714), (26, 7741), (28, 7753),

Gene: Tinyman4_14 Start: 8142, Stop: 8444, Start Num: 16

Candidate Starts for Tinyman4_14:

(Start: 16 @8142 has 138 MA's), (19, 8178), (24, 8250), (26, 8277),

Gene: Velene_13 Start: 7603, Stop: 7839, Start Num: 16

Candidate Starts for Velene_13:

(4, 7129), (5, 7150), (Start: 16 @7603 has 138 MA's), (19, 7639), (24, 7711), (28, 7750), (29, 7759),

Gene: Vispistious_13 Start: 7603, Stop: 7839, Start Num: 16

Candidate Starts for Vispistious_13:

(4, 7129), (5, 7150), (Start: 16 @7603 has 138 MA's), (19, 7639), (24, 7711), (28, 7750), (29, 7759),

Gene: WestPM_13 Start: 7980, Stop: 8282, Start Num: 16

Candidate Starts for WestPM_13:

(Start: 16 @7980 has 138 MA's), (19, 8016), (24, 8088), (26, 8115),

Gene: WildNOut_13 Start: 7603, Stop: 7839, Start Num: 16

Candidate Starts for WildNOut_13:

(4, 7129), (5, 7150), (Start: 16 @7603 has 138 MA's), (19, 7639), (24, 7711), (28, 7750), (29, 7759),

Gene: Winzigespinne_13 Start: 7895, Stop: 8131, Start Num: 16

Candidate Starts for Winzigespinne_13:

(Start: 16 @7895 has 138 MA's), (19, 7931), (24, 8003), (26, 8030), (28, 8042),

Gene: YuuY_12 Start: 7805, Stop: 8095, Start Num: 16

Candidate Starts for YuuY_12:

(13, 7631), (14, 7685), (Start: 16 @7805 has 138 MA's), (20, 7862), (22, 7883), (32, 7985),

Gene: Zada_13 Start: 7597, Stop: 7833, Start Num: 16

Candidate Starts for Zada_13:

(4, 7123), (Start: 16 @7597 has 138 MA's), (19, 7633), (24, 7705), (26, 7732), (28, 7744),

Gene: Zayuliv_14 Start: 8023, Stop: 8355, Start Num: 16

Candidate Starts for Zayuliv_14:

(Start: 16 @8023 has 138 MA's), (19, 8059), (24, 8131), (26, 8158),

Gene: Zepp_15 Start: 8032, Stop: 8364, Start Num: 16

Candidate Starts for Zepp_15:

(Start: 16 @8032 has 138 MA's), (19, 8068), (24, 8140), (26, 8167),