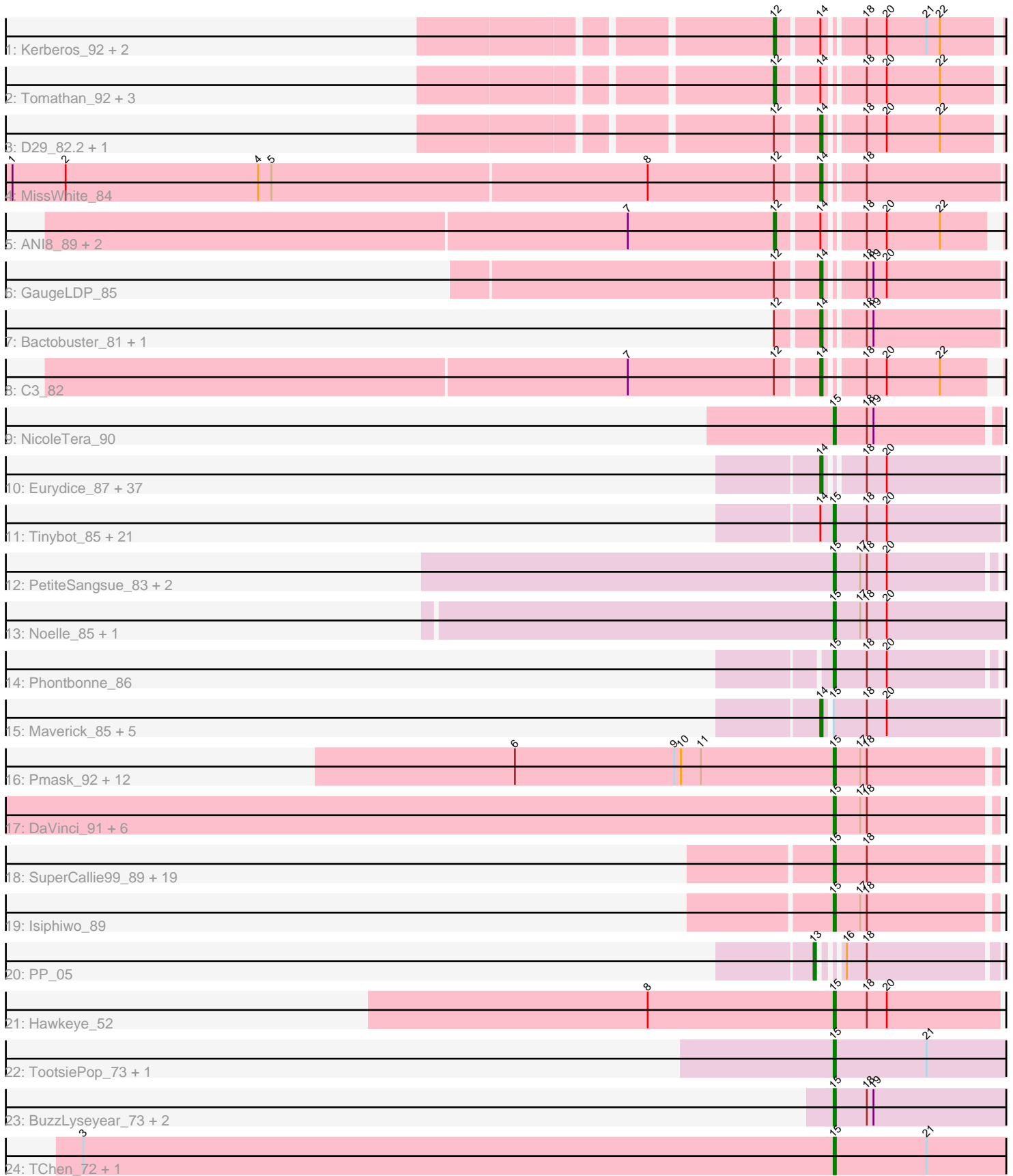


Pham 163416



Note: Tracks are now grouped by subcluster and scaled. Switching in subcluster is indicated by changes in track color. Track scale is now set by default to display the region 30 bp upstream of start 1 to 30 bp downstream of the last possible start. If this default region is judged to be packed too tightly with annotated starts, the track will be further scaled to only show that region of the ORF with annotated starts. This action will be indicated by adding "Zoomed" to the title. For starts, yellow indicates the location of called starts comprised solely of Glimmer/GeneMark auto-annotations, green indicates the location of called starts with at least 1 manual gene annotation.

Pham 163416 Report

This analysis was run 04/28/24 on database version 559.

Pham number 163416 has 140 members, 9 are drafts.

Phages represented in each track:

- Track 1 : Kerberos_92, Pomar16_92, StarStuff_92
- Track 2 : Tomathan_92, D32_80, DBQu4n_92, Najj_81
- Track 3 : D29_82.2, Duplo_93
- Track 4 : MissWhite_84
- Track 5 : ANI8_89, VC3_88, AN9_89
- Track 6 : GaugeLDP_85
- Track 7 : Bactobuster_81, IronMan_86
- Track 8 : C3_82
- Track 9 : NicoleTera_90
- Track 10 : Eurydice_87, Eapen_86, Happiness_85, JoongJeon_85, KFPoly_85, DirtyDunning_85, Ohfah_87, BubbleTrouble_85, Holli_85, Kratark_85, Baby16_86, Thanksgivukkah_85, LochMonster_87, Kye_86, Sparxx_87, ICleared_85, Taquarus_85, PeterPeter_86, Chaph_86, Mazhar510_86, Nebs_87, CentreCat_86, Polymorphads_87, SheldonCooper_86, TygerBlood_86, TroyPia_87, Connomayer_86, Cerulean_88, JetBlade_87, Morrow_88, Alberto7_87, Pumbaa_86, Eros_86, Bartimeaus_86, Felipe_86, BellusTerra_86, Lunsford_86, Scamp_86
- Track 11 : Tinybot_85, Kremtemulon_80, Funston_85, YoSam321_86, Kamy_85, Miramae_86, Nemo27_85, Phighter1804_86, Koreni_85, NorthStar_83, Kingmustik0402_86, Maxo_88, Cintron_86, AvatarAhPeg_86, NotAPhaseMom_85, Ulysses_85, Lorenzo_86, Stink_86, Cocoaberry_86, Cindaradix_81, Houdini22_85, Clarenza_85
- Track 12 : PetiteSangsue_83, Bumblebee11_82, Datway_83
- Track 13 : Noelle_85, Shygu2_84
- Track 14 : Phontbonne_86
- Track 15 : Maverick_85, Bombshell_86, Melvin_88, Pipcraft_82, Mundrea_84, Caelakin_84
- Track 16 : Pmask_92, JewelBug_85, Dorothea_90, Hoot_88, Neeharika16_92, EricB_91, Jordennis_91, BABullseye_86, SuperAwesome_93, Cookiedough_93, Kipper29_93, Priamo_93, Newrala_92
- Track 17 : DaVinci_91, VohminGhazi_93, Chartreuse_91, Kazan_94, Candra_91, SmellyB_93, McFly_93
- Track 18 : SuperCallie99_89, Zaka_95, Hammer_95, Roksolana_95, Yokurt_94, Hexamo_94, Artemis2UCLA_94, Zulu_96, Rifter_95, CloudWang3_95, Jeffabunny_83, Gruunaga_95, Blue7_96, Wiks_94, Koko_96, Lilbunny_89, Helmet_96, Tucker_95, Gladiator_91, Garak_96
- Track 19 : Isiphiwo_89
- Track 20 : PP_05

- Track 21 : Hawkeye_52
- Track 22 : TootsiePop_73, Misha28_73
- Track 23 : BuzzLyseyear_73, Andies_53, Tapioca_57
- Track 24 : TChen_72, LunaStella_64

Summary of Final Annotations (See graph section above for start numbers):

The start number called the most often in the published annotations is 15, it was called in 69 of the 131 non-draft genes in the pham.

Genes that call this "Most Annotated" start:

- Andies_53, Artemis2UCLA_94, AvatarAhPeg_86, BABullseye_86, Blue7_96, Bumblebee11_82, BuzzLyseyear_73, Candra_91, Chartreuse_91, Cindaradix_81, Cintron_86, Clarenza_85, CloudWang3_95, Cocoaberry_86, Cookiedough_93, DaVinci_91, Datway_83, Dorothea_90, EricB_91, Funston_85, Garak_96, Gladiator_91, Gruunaga_95, Hammer_95, Hawkeye_52, Helmet_96, Hexamo_94, Hoot_88, Houdini22_85, Isiphiwo_89, Jeffabunny_83, JewelBug_85, Jordennis_91, Kampy_85, Kazan_94, Kingmustik0402_86, Kipper29_93, Koko_96, Koreni_85, Kremtemulon_80, Lilbunny_89, Lorenzo_86, LunaStella_64, Maxo_88, McFly_93, Miramae_86, Misha28_73, Neeharika16_92, Nemo27_85, Newrala_92, NicoleTera_90, Noelle_85, NorthStar_83, NotAPhaseMom_85, PetiteSangsue_83, Phighter1804_86, Phontbonne_86, Pmask_92, Priamo_93, Rifter_95, Roksolana_95, Shygu2_84, SmellyB_93, Stink_86, SuperAwesome_93, SuperCallie99_89, TChen_72, Tapioca_57, Tinybot_85, TootsiePop_73, Tucker_95, Ulysses_85, VohminGhazi_93, Wiks_94, YoSam321_86, Yokurt_94, Zaka_95, Zulu_96,

Genes that have the "Most Annotated" start but do not call it:

- Bombshell_86, Caelakin_84, Maverick_85, Melvin_88, Mundrea_84, Pipcraft_82,

Genes that do not have the "Most Annotated" start:

- AN9_89, ANI8_89, Alberto7_87, Baby16_86, Bactobuster_81, Bartimeaus_86, BellusTerra_86, BubbleTrouble_85, C3_82, CentreCat_86, Cerulean_88, Chaph_86, Connomayer_86, D29_82.2, D32_80, DBQu4n_92, DirtyDunning_85, Duplo_93, Eapen_86, Eros_86, Eurydice_87, GaugeLDP_85, Happiness_85, Holli_85, ICleared_85, IronMan_86, JetBlade_87, JoongJeon_85, KFPoly_85, Kerberos_92, Kratak_85, Kye_86, LochMonster_87, Lunsford_86, Mazhar510_86, MissWhite_84, Morrow_88, Naji_81, Nebs_87, Ohfah_87, PP_05, PeterPeter_86, Phelipe_86, Polymorphads_87, Pomar16_92, Pumbaa_86, Scamp_86, SheldonCooper_86, Sparxx_87, StarStuff_92, Taquarus_85, Thanksgivukkah_85, Tomathan_92, TroyPia_87, TygerBlood_86, VC3_88,

Summary by start number:

Start 12:

- Found in 17 of 140 (12.1%) of genes in pham
- Manual Annotations of this start: 10 of 131
- Called 58.8% of time when present
- Phage (with cluster) where this start called: AN9_89 (A2), ANI8_89 (A2), D32_80 (A2), DBQu4n_92 (A2), Kerberos_92 (A2), Naji_81 (A2), Pomar16_92 (A2), StarStuff_92 (A2), Tomathan_92 (A2), VC3_88 (A2),

Start 13:

- Found in 1 of 140 (0.7%) of genes in pham
- Manual Annotations of this start: 1 of 131
- Called 100.0% of time when present
- Phage (with cluster) where this start called: PP_05 (A7),

Start 14:

- Found in 83 of 140 (59.3%) of genes in pham
- Manual Annotations of this start: 51 of 131
- Called 61.4% of time when present
- Phage (with cluster) where this start called: Alberto7_87 (A4), Baby16_86 (A4), Bactobuster_81 (A2), Bartimeaus_86 (A4), BellusTerra_86 (A4), Bombshell_86 (A4), BubbleTrouble_85 (A4), C3_82 (A2), Caelakin_84 (A4), CentreCat_86 (A4), Cerulean_88 (A4), Chaph_86 (A4), Connomayer_86 (A4), D29_82.2 (A2), DirtyDunning_85 (A4), Duplo_93 (A2), Eapen_86 (A4), Eros_86 (A4), Eurydice_87 (A4), GaugeLDP_85 (A2), Happiness_85 (A4), Holli_85 (A4), ICleared_85 (A4), IronMan_86 (A2), JetBlade_87 (A4), JoongJeon_85 (A4), KFPoly_85 (A4), Kratark_85 (A4), Kyee_86 (A4), LochMonster_87 (A4), Lunsford_86 (A4), Maverick_85 (A4), Mazhar510_86 (A4), Melvin_88 (A4), MissWhite_84 (A2), Morrow_88 (A4), Mundrea_84 (A4), Nebs_87 (A4), Ohfah_87 (A4), PeterPeter_86 (A4), Phelipe_86 (A4), Pipcraft_82 (A4), Polymorphads_87 (A4), Pumbaa_86 (A4), Scamp_86 (A4), SheldonCooper_86 (A4), Sparxx_87 (A4), Taquarus_85 (A4), Thanksgivukkah_85 (A4), TroyPia_87 (A4), TygerBlood_86 (A4),

Start 15:

- Found in 84 of 140 (60.0%) of genes in pham
- Manual Annotations of this start: 69 of 131
- Called 92.9% of time when present
- Phage (with cluster) where this start called: Andies_53 (N), Artemis2UCLA_94 (A6), AvatarAhPeg_86 (A4), BABullseye_86 (A6), Blue7_96 (A6), Bumblebee11_82 (A4), BuzzLyseyear_73 (F1), Candra_91 (A6), Chartreuse_91 (A6), Cindaradix_81 (A4), Cintron_86 (A4), Clarenza_85 (A4), CloudWang3_95 (A6), Cocoaberry_86 (A4), Cookiedough_93 (A6), DaVinci_91 (A6), Datway_83 (A4), Dorothea_90 (A6), EricB_91 (A6), Funston_85 (A4), Garak_96 (A6), Gladiator_91 (A6), Gruunaga_95 (A6), Hammer_95 (A6), Hawkeye_52 (D2), Helmet_96 (A6), Hexamo_94 (A6), Hoot_88 (A6), Houdini22_85 (A4), Isiphiwo_89 (A6), Jeffabunny_83 (A6), JewelBug_85 (A6), Jordennis_91 (A6), Kampy_85 (A4), Kazan_94 (A6), Kingmustik0402_86 (A4), Kipper29_93 (A6), Koko_96 (A6), Koreni_85 (A4), Kremtemulon_80 (A4), Lilbunny_89 (A6), Lorenzo_86 (A4), LunaStella_64 (F4), Maxo_88 (A4), McFly_93 (A6), Miramae_86 (A4), Misha28_73 (F1), Neeharika16_92 (A6), Nemo27_85 (A4), Newrala_92 (A6), NicoleTera_90 (A2), Noelle_85 (A4), NorthStar_83 (A4), NotAPhaseMom_85 (A4), PetiteSangsue_83 (A4), Phighter1804_86 (A4), Phontbonne_86 (A4), Pmask_92 (A6), Priamo_93 (A6), Rifter_95 (A6), Roksolana_95 (A6), Shygu2_84 (A4), SmellyB_93 (A6), Stink_86 (A4), SuperAwesome_93 (A6), SuperCallie99_89 (A6), TChen_72 (F4), Tapioca_57 (N), Tinybot_85 (A4), TootsiePop_73 (F1), Tucker_95 (A6), Ulysses_85 (A4), VohminGhazi_93 (A6), Wiks_94 (A6), YoSam321_86 (A4), Yokurt_94 (A6), Zaka_95 (A6), Zulu_96 (A6),

Summary by clusters:

There are 8 clusters represented in this pham: F1, F4, N, A2, A4, A7, A6, D2,

Info for manual annotations of cluster A2:

- Start number 12 was manually annotated 10 times for cluster A2.
- Start number 14 was manually annotated 7 times for cluster A2.
- Start number 15 was manually annotated 1 time for cluster A2.

Info for manual annotations of cluster A4:

- Start number 14 was manually annotated 44 times for cluster A4.
- Start number 15 was manually annotated 27 times for cluster A4.

Info for manual annotations of cluster A6:

- Start number 15 was manually annotated 34 times for cluster A6.

Info for manual annotations of cluster A7:

- Start number 13 was manually annotated 1 time for cluster A7.

Info for manual annotations of cluster D2:

- Start number 15 was manually annotated 1 time for cluster D2.

Info for manual annotations of cluster F1:

- Start number 15 was manually annotated 3 times for cluster F1.

Info for manual annotations of cluster F4:

- Start number 15 was manually annotated 1 time for cluster F4.

Info for manual annotations of cluster N:

- Start number 15 was manually annotated 2 times for cluster N.

Gene Information:

Gene: AN9_89 Start: 48160, Stop: 48047, Start Num: 12

Candidate Starts for AN9_89:

(7, 48226), (Start: 12 @48160 has 10 MA's), (Start: 14 @48142 has 51 MA's), (18, 48127), (20, 48118), (22, 48094),

Gene: ANI8_89 Start: 48160, Stop: 48047, Start Num: 12

Candidate Starts for ANI8_89:

(7, 48226), (Start: 12 @48160 has 10 MA's), (Start: 14 @48142 has 51 MA's), (18, 48127), (20, 48118), (22, 48094),

Gene: Alberto7_87 Start: 49235, Stop: 49137, Start Num: 14

Candidate Starts for Alberto7_87:

(Start: 14 @49235 has 51 MA's), (18, 49220), (20, 49211),

Gene: Andies_53 Start: 38224, Stop: 38349, Start Num: 15

Candidate Starts for Andies_53:

(Start: 15 @38224 has 69 MA's), (18, 38239), (19, 38242),

Gene: Artemis2UCLA_94 Start: 48593, Stop: 48501, Start Num: 15

Candidate Starts for Artemis2UCLA_94:

(Start: 15 @48593 has 69 MA's), (18, 48578),

Gene: AvatarAhPeg_86 Start: 49151, Stop: 49053, Start Num: 15
Candidate Starts for AvatarAhPeg_86:
(Start: 14 @49154 has 51 MA's), (Start: 15 @49151 has 69 MA's), (18, 49136), (20, 49127),

Gene: BABullseye_86 Start: 46928, Stop: 46836, Start Num: 15
Candidate Starts for BABullseye_86:
(6, 47072), (9, 47000), (10, 46997), (11, 46988), (Start: 15 @46928 has 69 MA's), (17, 46916), (18, 46913),

Gene: Baby16_86 Start: 48909, Stop: 48811, Start Num: 14
Candidate Starts for Baby16_86:
(Start: 14 @48909 has 51 MA's), (18, 48894), (20, 48885),

Gene: Bactobuster_81 Start: 48864, Stop: 48763, Start Num: 14
Candidate Starts for Bactobuster_81:
(Start: 12 @48882 has 10 MA's), (Start: 14 @48864 has 51 MA's), (18, 48849), (19, 48846),

Gene: Bartimeaus_86 Start: 48900, Stop: 48802, Start Num: 14
Candidate Starts for Bartimeaus_86:
(Start: 14 @48900 has 51 MA's), (18, 48885), (20, 48876),

Gene: BellusTerra_86 Start: 48763, Stop: 48665, Start Num: 14
Candidate Starts for BellusTerra_86:
(Start: 14 @48763 has 51 MA's), (18, 48748), (20, 48739),

Gene: Blue7_96 Start: 48827, Stop: 48735, Start Num: 15
Candidate Starts for Blue7_96:
(Start: 15 @48827 has 69 MA's), (18, 48812),

Gene: Bombshell_86 Start: 48898, Stop: 48797, Start Num: 14
Candidate Starts for Bombshell_86:
(Start: 14 @48898 has 51 MA's), (Start: 15 @48895 has 69 MA's), (18, 48880), (20, 48871),

Gene: BubbleTrouble_85 Start: 48925, Stop: 48827, Start Num: 14
Candidate Starts for BubbleTrouble_85:
(Start: 14 @48925 has 51 MA's), (18, 48910), (20, 48901),

Gene: Bumblebee11_82 Start: 48676, Stop: 48578, Start Num: 15
Candidate Starts for Bumblebee11_82:
(Start: 15 @48676 has 69 MA's), (17, 48664), (18, 48661), (20, 48652),

Gene: BuzzLyseyear_73 Start: 47467, Stop: 47583, Start Num: 15
Candidate Starts for BuzzLyseyear_73:
(Start: 15 @47467 has 69 MA's), (18, 47482), (19, 47485),

Gene: C3_82 Start: 48142, Stop: 48047, Start Num: 14
Candidate Starts for C3_82:
(7, 48226), (Start: 12 @48160 has 10 MA's), (Start: 14 @48142 has 51 MA's), (18, 48127), (20, 48118), (22, 48094),

Gene: Caelakin_84 Start: 48901, Stop: 48800, Start Num: 14
Candidate Starts for Caelakin_84:

(Start: 14 @48901 has 51 MA's), (Start: 15 @48898 has 69 MA's), (18, 48883), (20, 48874),

Gene: Candra_91 Start: 48632, Stop: 48540, Start Num: 15

Candidate Starts for Candra_91:

(Start: 15 @48632 has 69 MA's), (17, 48620), (18, 48617),

Gene: CentreCat_86 Start: 48938, Stop: 48840, Start Num: 14

Candidate Starts for CentreCat_86:

(Start: 14 @48938 has 51 MA's), (18, 48923), (20, 48914),

Gene: Cerulean_88 Start: 49336, Stop: 49238, Start Num: 14

Candidate Starts for Cerulean_88:

(Start: 14 @49336 has 51 MA's), (18, 49321), (20, 49312),

Gene: Chaph_86 Start: 48909, Stop: 48811, Start Num: 14

Candidate Starts for Chaph_86:

(Start: 14 @48909 has 51 MA's), (18, 48894), (20, 48885),

Gene: Chartreuse_91 Start: 47933, Stop: 47841, Start Num: 15

Candidate Starts for Chartreuse_91:

(Start: 15 @47933 has 69 MA's), (17, 47921), (18, 47918),

Gene: Cindaradix_81 Start: 49097, Stop: 48999, Start Num: 15

Candidate Starts for Cindaradix_81:

(Start: 14 @49100 has 51 MA's), (Start: 15 @49097 has 69 MA's), (18, 49082), (20, 49073),

Gene: Cintron_86 Start: 48973, Stop: 48869, Start Num: 15

Candidate Starts for Cintron_86:

(Start: 14 @48976 has 51 MA's), (Start: 15 @48973 has 69 MA's), (18, 48958), (20, 48949),

Gene: Clarenza_85 Start: 48895, Stop: 48797, Start Num: 15

Candidate Starts for Clarenza_85:

(Start: 14 @48898 has 51 MA's), (Start: 15 @48895 has 69 MA's), (18, 48880), (20, 48871),

Gene: CloudWang3_95 Start: 49122, Stop: 49030, Start Num: 15

Candidate Starts for CloudWang3_95:

(Start: 15 @49122 has 69 MA's), (18, 49107),

Gene: Cocoaberry_86 Start: 48899, Stop: 48801, Start Num: 15

Candidate Starts for Cocoaberry_86:

(Start: 14 @48902 has 51 MA's), (Start: 15 @48899 has 69 MA's), (18, 48884), (20, 48875),

Gene: Connomayer_86 Start: 48898, Stop: 48800, Start Num: 14

Candidate Starts for Connomayer_86:

(Start: 14 @48898 has 51 MA's), (18, 48883), (20, 48874),

Gene: Cookiedough_93 Start: 49247, Stop: 49155, Start Num: 15

Candidate Starts for Cookiedough_93:

(6, 49391), (9, 49319), (10, 49316), (11, 49307), (Start: 15 @49247 has 69 MA's), (17, 49235), (18, 49232),

Gene: D29_82.2 Start: 46114, Stop: 46019, Start Num: 14

Candidate Starts for D29_82.2:

(Start: 12 @46132 has 10 MA's), (Start: 14 @46114 has 51 MA's), (18, 46099), (20, 46090), (22, 46066),

Gene: D32_80 Start: 46132, Stop: 46019, Start Num: 12

Candidate Starts for D32_80:

(Start: 12 @46132 has 10 MA's), (Start: 14 @46114 has 51 MA's), (18, 46099), (20, 46090), (22, 46066),

Gene: DBQu4n_92 Start: 49747, Stop: 49634, Start Num: 12

Candidate Starts for DBQu4n_92:

(Start: 12 @49747 has 10 MA's), (Start: 14 @49729 has 51 MA's), (18, 49714), (20, 49705), (22, 49681),

Gene: DaVinci_91 Start: 47987, Stop: 47895, Start Num: 15

Candidate Starts for DaVinci_91:

(Start: 15 @47987 has 69 MA's), (17, 47975), (18, 47972),

Gene: Datway_83 Start: 48706, Stop: 48611, Start Num: 15

Candidate Starts for Datway_83:

(Start: 15 @48706 has 69 MA's), (17, 48694), (18, 48691), (20, 48682),

Gene: DirtyDunning_85 Start: 48910, Stop: 48812, Start Num: 14

Candidate Starts for DirtyDunning_85:

(Start: 14 @48910 has 51 MA's), (18, 48895), (20, 48886),

Gene: Dorothea_90 Start: 49239, Stop: 49147, Start Num: 15

Candidate Starts for Dorothea_90:

(6, 49383), (9, 49311), (10, 49308), (11, 49299), (Start: 15 @49239 has 69 MA's), (17, 49227), (18, 49224),

Gene: Duplo_93 Start: 49786, Stop: 49691, Start Num: 14

Candidate Starts for Duplo_93:

(Start: 12 @49804 has 10 MA's), (Start: 14 @49786 has 51 MA's), (18, 49771), (20, 49762), (22, 49738),

Gene: Eapen_86 Start: 48893, Stop: 48795, Start Num: 14

Candidate Starts for Eapen_86:

(Start: 14 @48893 has 51 MA's), (18, 48878), (20, 48869),

Gene: EricB_91 Start: 48136, Stop: 48044, Start Num: 15

Candidate Starts for EricB_91:

(6, 48280), (9, 48208), (10, 48205), (11, 48196), (Start: 15 @48136 has 69 MA's), (17, 48124), (18, 48121),

Gene: Eros_86 Start: 48906, Stop: 48808, Start Num: 14

Candidate Starts for Eros_86:

(Start: 14 @48906 has 51 MA's), (18, 48891), (20, 48882),

Gene: Eurydice_87 Start: 48935, Stop: 48837, Start Num: 14

Candidate Starts for Eurydice_87:

(Start: 14 @48935 has 51 MA's), (18, 48920), (20, 48911),

Gene: Funston_85 Start: 48895, Stop: 48797, Start Num: 15

Candidate Starts for Funston_85:

(Start: 14 @48898 has 51 MA's), (Start: 15 @48895 has 69 MA's), (18, 48880), (20, 48871),

Gene: Garak_96 Start: 49067, Stop: 48975, Start Num: 15

Candidate Starts for Garak_96:

(Start: 15 @49067 has 69 MA's), (18, 49052),

Gene: GaugeLDP_85 Start: 49917, Stop: 49816, Start Num: 14

Candidate Starts for GaugeLDP_85:

(Start: 12 @49935 has 10 MA's), (Start: 14 @49917 has 51 MA's), (18, 49902), (19, 49899), (20, 49893),

Gene: Gladiator_91 Start: 48787, Stop: 48695, Start Num: 15

Candidate Starts for Gladiator_91:

(Start: 15 @48787 has 69 MA's), (18, 48772),

Gene: Gruunaga_95 Start: 48743, Stop: 48651, Start Num: 15

Candidate Starts for Gruunaga_95:

(Start: 15 @48743 has 69 MA's), (18, 48728),

Gene: Hammer_95 Start: 48440, Stop: 48348, Start Num: 15

Candidate Starts for Hammer_95:

(Start: 15 @48440 has 69 MA's), (18, 48425),

Gene: Happiness_85 Start: 48921, Stop: 48823, Start Num: 14

Candidate Starts for Happiness_85:

(Start: 14 @48921 has 51 MA's), (18, 48906), (20, 48897),

Gene: Hawkeye_52 Start: 38301, Stop: 38384, Start Num: 15

Candidate Starts for Hawkeye_52:

(8, 38220), (Start: 15 @38301 has 69 MA's), (18, 38316), (20, 38325),

Gene: Helmet_96 Start: 49067, Stop: 48975, Start Num: 15

Candidate Starts for Helmet_96:

(Start: 15 @49067 has 69 MA's), (18, 49052),

Gene: Hexamo_94 Start: 48608, Stop: 48516, Start Num: 15

Candidate Starts for Hexamo_94:

(Start: 15 @48608 has 69 MA's), (18, 48593),

Gene: Holli_85 Start: 48688, Stop: 48590, Start Num: 14

Candidate Starts for Holli_85:

(Start: 14 @48688 has 51 MA's), (18, 48673), (20, 48664),

Gene: Hoot_88 Start: 46453, Stop: 46361, Start Num: 15

Candidate Starts for Hoot_88:

(6, 46597), (9, 46525), (10, 46522), (11, 46513), (Start: 15 @46453 has 69 MA's), (17, 46441), (18, 46438),

Gene: Houdini22_85 Start: 48899, Stop: 48801, Start Num: 15

Candidate Starts for Houdini22_85:

(Start: 14 @48902 has 51 MA's), (Start: 15 @48899 has 69 MA's), (18, 48884), (20, 48875),

Gene: ICleared_85 Start: 48966, Stop: 48868, Start Num: 14
Candidate Starts for ICleared_85:
(Start: 14 @48966 has 51 MA's), (18, 48951), (20, 48942),

Gene: IronMan_86 Start: 50377, Stop: 50276, Start Num: 14
Candidate Starts for IronMan_86:
(Start: 12 @50395 has 10 MA's), (Start: 14 @50377 has 51 MA's), (18, 50362), (19, 50359),

Gene: Isiphiwo_89 Start: 48158, Stop: 48066, Start Num: 15
Candidate Starts for Isiphiwo_89:
(Start: 15 @48158 has 69 MA's), (17, 48146), (18, 48143),

Gene: Jeffabunny_83 Start: 45211, Stop: 45119, Start Num: 15
Candidate Starts for Jeffabunny_83:
(Start: 15 @45211 has 69 MA's), (18, 45196),

Gene: JetBlade_87 Start: 48926, Stop: 48828, Start Num: 14
Candidate Starts for JetBlade_87:
(Start: 14 @48926 has 51 MA's), (18, 48911), (20, 48902),

Gene: JewelBug_85 Start: 46932, Stop: 46840, Start Num: 15
Candidate Starts for JewelBug_85:
(6, 47076), (9, 47004), (10, 47001), (11, 46992), (Start: 15 @46932 has 69 MA's), (17, 46920), (18, 46917),

Gene: JoongJeon_85 Start: 48892, Stop: 48794, Start Num: 14
Candidate Starts for JoongJeon_85:
(Start: 14 @48892 has 51 MA's), (18, 48877), (20, 48868),

Gene: Jordennis_91 Start: 48836, Stop: 48744, Start Num: 15
Candidate Starts for Jordennis_91:
(6, 48980), (9, 48908), (10, 48905), (11, 48896), (Start: 15 @48836 has 69 MA's), (17, 48824), (18, 48821),

Gene: KFPoly_85 Start: 48892, Stop: 48794, Start Num: 14
Candidate Starts for KFPoly_85:
(Start: 14 @48892 has 51 MA's), (18, 48877), (20, 48868),

Gene: Kampy_85 Start: 48901, Stop: 48803, Start Num: 15
Candidate Starts for Kampy_85:
(Start: 14 @48904 has 51 MA's), (Start: 15 @48901 has 69 MA's), (18, 48886), (20, 48877),

Gene: Kazan_94 Start: 48602, Stop: 48510, Start Num: 15
Candidate Starts for Kazan_94:
(Start: 15 @48602 has 69 MA's), (17, 48590), (18, 48587),

Gene: Kerberos_92 Start: 49767, Stop: 49654, Start Num: 12
Candidate Starts for Kerberos_92:
(Start: 12 @49767 has 10 MA's), (Start: 14 @49749 has 51 MA's), (18, 49734), (20, 49725), (21, 49707), (22, 49701),

Gene: Kingmustik0402_86 Start: 48887, Stop: 48789, Start Num: 15
Candidate Starts for Kingmustik0402_86:

(Start: 14 @48890 has 51 MA's), (Start: 15 @48887 has 69 MA's), (18, 48872), (20, 48863),

Gene: Kipper29_93 Start: 48611, Stop: 48519, Start Num: 15

Candidate Starts for Kipper29_93:

(6, 48755), (9, 48683), (10, 48680), (11, 48671), (Start: 15 @48611 has 69 MA's), (17, 48599), (18, 48596),

Gene: Koko_96 Start: 49457, Stop: 49365, Start Num: 15

Candidate Starts for Koko_96:

(Start: 15 @49457 has 69 MA's), (18, 49442),

Gene: Koreni_85 Start: 48579, Stop: 48481, Start Num: 15

Candidate Starts for Koreni_85:

(Start: 14 @48582 has 51 MA's), (Start: 15 @48579 has 69 MA's), (18, 48564), (20, 48555),

Gene: Kratak_85 Start: 48932, Stop: 48834, Start Num: 14

Candidate Starts for Kratak_85:

(Start: 14 @48932 has 51 MA's), (18, 48917), (20, 48908),

Gene: Kremtemulon_80 Start: 48731, Stop: 48633, Start Num: 15

Candidate Starts for Kremtemulon_80:

(Start: 14 @48734 has 51 MA's), (Start: 15 @48731 has 69 MA's), (18, 48716), (20, 48707),

Gene: Kyee_86 Start: 48893, Stop: 48795, Start Num: 14

Candidate Starts for Kyee_86:

(Start: 14 @48893 has 51 MA's), (18, 48878), (20, 48869),

Gene: Lilbunny_89 Start: 47315, Stop: 47223, Start Num: 15

Candidate Starts for Lilbunny_89:

(Start: 15 @47315 has 69 MA's), (18, 47300),

Gene: LochMonster_87 Start: 49135, Stop: 49037, Start Num: 14

Candidate Starts for LochMonster_87:

(Start: 14 @49135 has 51 MA's), (18, 49120), (20, 49111),

Gene: Lorenzo_86 Start: 48896, Stop: 48798, Start Num: 15

Candidate Starts for Lorenzo_86:

(Start: 14 @48899 has 51 MA's), (Start: 15 @48896 has 69 MA's), (18, 48881), (20, 48872),

Gene: LunaStella_64 Start: 45241, Stop: 45366, Start Num: 15

Candidate Starts for LunaStella_64:

(3, 44905), (Start: 15 @45241 has 69 MA's), (21, 45283),

Gene: Lunsford_86 Start: 48891, Stop: 48793, Start Num: 14

Candidate Starts for Lunsford_86:

(Start: 14 @48891 has 51 MA's), (18, 48876), (20, 48867),

Gene: Maverick_85 Start: 48898, Stop: 48797, Start Num: 14

Candidate Starts for Maverick_85:

(Start: 14 @48898 has 51 MA's), (Start: 15 @48895 has 69 MA's), (18, 48880), (20, 48871),

Gene: Maxo_88 Start: 48901, Stop: 48803, Start Num: 15

Candidate Starts for Maxo_88:

(Start: 14 @48904 has 51 MA's), (Start: 15 @48901 has 69 MA's), (18, 48886), (20, 48877),

Gene: Mazhar510_86 Start: 48896, Stop: 48798, Start Num: 14

Candidate Starts for Mazhar510_86:

(Start: 14 @48896 has 51 MA's), (18, 48881), (20, 48872),

Gene: McFly_93 Start: 48941, Stop: 48849, Start Num: 15

Candidate Starts for McFly_93:

(Start: 15 @48941 has 69 MA's), (17, 48929), (18, 48926),

Gene: Melvin_88 Start: 48896, Stop: 48795, Start Num: 14

Candidate Starts for Melvin_88:

(Start: 14 @48896 has 51 MA's), (Start: 15 @48893 has 69 MA's), (18, 48878), (20, 48869),

Gene: Miramae_86 Start: 48814, Stop: 48716, Start Num: 15

Candidate Starts for Miramae_86:

(Start: 14 @48817 has 51 MA's), (Start: 15 @48814 has 69 MA's), (18, 48799), (20, 48790),

Gene: Misha28_73 Start: 45868, Stop: 45993, Start Num: 15

Candidate Starts for Misha28_73:

(Start: 15 @45868 has 69 MA's), (21, 45910),

Gene: MissWhite_84 Start: 46424, Stop: 46323, Start Num: 14

Candidate Starts for MissWhite_84:

(1, 46784), (2, 46760), (4, 46673), (5, 46667), (8, 46499), (Start: 12 @46442 has 10 MA's), (Start: 14 @46424 has 51 MA's), (18, 46409),

Gene: Morrow_88 Start: 48938, Stop: 48840, Start Num: 14

Candidate Starts for Morrow_88:

(Start: 14 @48938 has 51 MA's), (18, 48923), (20, 48914),

Gene: Mundrea_84 Start: 48776, Stop: 48678, Start Num: 14

Candidate Starts for Mundrea_84:

(Start: 14 @48776 has 51 MA's), (Start: 15 @48773 has 69 MA's), (18, 48758), (20, 48749),

Gene: Naji_81 Start: 46132, Stop: 46019, Start Num: 12

Candidate Starts for Naji_81:

(Start: 12 @46132 has 10 MA's), (Start: 14 @46114 has 51 MA's), (18, 46099), (20, 46090), (22, 46066),

Gene: Nebs_87 Start: 48938, Stop: 48840, Start Num: 14

Candidate Starts for Nebs_87:

(Start: 14 @48938 has 51 MA's), (18, 48923), (20, 48914),

Gene: Neeharika16_92 Start: 48698, Stop: 48606, Start Num: 15

Candidate Starts for Neeharika16_92:

(6, 48842), (9, 48770), (10, 48767), (11, 48758), (Start: 15 @48698 has 69 MA's), (17, 48686), (18, 48683),

Gene: Nemo27_85 Start: 48894, Stop: 48796, Start Num: 15

Candidate Starts for Nemo27_85:

(Start: 14 @48897 has 51 MA's), (Start: 15 @48894 has 69 MA's), (18, 48879), (20, 48870),

Gene: Newrala_92 Start: 49044, Stop: 48952, Start Num: 15
Candidate Starts for Newrala_92:
(6, 49188), (9, 49116), (10, 49113), (11, 49104), (Start: 15 @49044 has 69 MA's), (17, 49032), (18, 49029),

Gene: NicoleTera_90 Start: 49767, Stop: 49672, Start Num: 15
Candidate Starts for NicoleTera_90:
(Start: 15 @49767 has 69 MA's), (18, 49752), (19, 49749),

Gene: Noelle_85 Start: 49016, Stop: 48912, Start Num: 15
Candidate Starts for Noelle_85:
(Start: 15 @49016 has 69 MA's), (17, 49004), (18, 49001), (20, 48992),

Gene: NorthStar_83 Start: 48898, Stop: 48800, Start Num: 15
Candidate Starts for NorthStar_83:
(Start: 14 @48901 has 51 MA's), (Start: 15 @48898 has 69 MA's), (18, 48883), (20, 48874),

Gene: NotAPhaseMom_85 Start: 48899, Stop: 48801, Start Num: 15
Candidate Starts for NotAPhaseMom_85:
(Start: 14 @48902 has 51 MA's), (Start: 15 @48899 has 69 MA's), (18, 48884), (20, 48875),

Gene: Ohfah_87 Start: 48938, Stop: 48840, Start Num: 14
Candidate Starts for Ohfah_87:
(Start: 14 @48938 has 51 MA's), (18, 48923), (20, 48914),

Gene: PP_05 Start: 1199, Stop: 1101, Start Num: 13
Candidate Starts for PP_05:
(Start: 13 @1199 has 1 MA's), (16, 1193), (18, 1184),

Gene: PeterPeter_86 Start: 48892, Stop: 48794, Start Num: 14
Candidate Starts for PeterPeter_86:
(Start: 14 @48892 has 51 MA's), (18, 48877), (20, 48868),

Gene: PetiteSangsue_83 Start: 48680, Stop: 48582, Start Num: 15
Candidate Starts for PetiteSangsue_83:
(Start: 15 @48680 has 69 MA's), (17, 48668), (18, 48665), (20, 48656),

Gene: Phelipe_86 Start: 48859, Stop: 48761, Start Num: 14
Candidate Starts for Phelipe_86:
(Start: 14 @48859 has 51 MA's), (18, 48844), (20, 48835),

Gene: Phighter1804_86 Start: 48959, Stop: 48861, Start Num: 15
Candidate Starts for Phighter1804_86:
(Start: 14 @48962 has 51 MA's), (Start: 15 @48959 has 69 MA's), (18, 48944), (20, 48935),

Gene: Phontbonne_86 Start: 48796, Stop: 48701, Start Num: 15
Candidate Starts for Phontbonne_86:
(Start: 15 @48796 has 69 MA's), (18, 48781), (20, 48772),

Gene: Pipcraft_82 Start: 48902, Stop: 48801, Start Num: 14
Candidate Starts for Pipcraft_82:
(Start: 14 @48902 has 51 MA's), (Start: 15 @48899 has 69 MA's), (18, 48884), (20, 48875),

Gene: Pmask_92 Start: 49245, Stop: 49153, Start Num: 15
Candidate Starts for Pmask_92:
(6, 49389), (9, 49317), (10, 49314), (11, 49305), (Start: 15 @49245 has 69 MA's), (17, 49233), (18, 49230),

Gene: Polymorphads_87 Start: 48919, Stop: 48821, Start Num: 14
Candidate Starts for Polymorphads_87:
(Start: 14 @48919 has 51 MA's), (18, 48904), (20, 48895),

Gene: Pomar16_92 Start: 49840, Stop: 49727, Start Num: 12
Candidate Starts for Pomar16_92:
(Start: 12 @49840 has 10 MA's), (Start: 14 @49822 has 51 MA's), (18, 49807), (20, 49798), (21, 49780), (22, 49774),

Gene: Priamo_93 Start: 48288, Stop: 48196, Start Num: 15
Candidate Starts for Priamo_93:
(6, 48432), (9, 48360), (10, 48357), (11, 48348), (Start: 15 @48288 has 69 MA's), (17, 48276), (18, 48273),

Gene: Pumbaa_86 Start: 48843, Stop: 48745, Start Num: 14
Candidate Starts for Pumbaa_86:
(Start: 14 @48843 has 51 MA's), (18, 48828), (20, 48819),

Gene: Rifter_95 Start: 48235, Stop: 48143, Start Num: 15
Candidate Starts for Rifter_95:
(Start: 15 @48235 has 69 MA's), (18, 48220),

Gene: Roksolana_95 Start: 48951, Stop: 48859, Start Num: 15
Candidate Starts for Roksolana_95:
(Start: 15 @48951 has 69 MA's), (18, 48936),

Gene: Scamp_86 Start: 48900, Stop: 48802, Start Num: 14
Candidate Starts for Scamp_86:
(Start: 14 @48900 has 51 MA's), (18, 48885), (20, 48876),

Gene: SheldonCooper_86 Start: 49336, Stop: 49238, Start Num: 14
Candidate Starts for SheldonCooper_86:
(Start: 14 @49336 has 51 MA's), (18, 49321), (20, 49312),

Gene: Shygu2_84 Start: 48839, Stop: 48744, Start Num: 15
Candidate Starts for Shygu2_84:
(Start: 15 @48839 has 69 MA's), (17, 48827), (18, 48824), (20, 48815),

Gene: SmellyB_93 Start: 48596, Stop: 48504, Start Num: 15
Candidate Starts for SmellyB_93:
(Start: 15 @48596 has 69 MA's), (17, 48584), (18, 48581),

Gene: Sparxx_87 Start: 48894, Stop: 48796, Start Num: 14
Candidate Starts for Sparxx_87:
(Start: 14 @48894 has 51 MA's), (18, 48879), (20, 48870),

Gene: StarStuff_92 Start: 49802, Stop: 49689, Start Num: 12
Candidate Starts for StarStuff_92:

(Start: 12 @49802 has 10 MA's), (Start: 14 @49784 has 51 MA's), (18, 49769), (20, 49760), (21, 49742), (22, 49736),

Gene: Stink_86 Start: 49122, Stop: 49024, Start Num: 15

Candidate Starts for Stink_86:

(Start: 14 @49125 has 51 MA's), (Start: 15 @49122 has 69 MA's), (18, 49107), (20, 49098),

Gene: SuperAwesome_93 Start: 49284, Stop: 49192, Start Num: 15

Candidate Starts for SuperAwesome_93:

(6, 49428), (9, 49356), (10, 49353), (11, 49344), (Start: 15 @49284 has 69 MA's), (17, 49272), (18, 49269),

Gene: SuperCallie99_89 Start: 48659, Stop: 48567, Start Num: 15

Candidate Starts for SuperCallie99_89:

(Start: 15 @48659 has 69 MA's), (18, 48644),

Gene: TChen_72 Start: 47192, Stop: 47317, Start Num: 15

Candidate Starts for TChen_72:

(3, 46856), (Start: 15 @47192 has 69 MA's), (21, 47234),

Gene: Tapioca_57 Start: 38663, Stop: 38788, Start Num: 15

Candidate Starts for Tapioca_57:

(Start: 15 @38663 has 69 MA's), (18, 38678), (19, 38681),

Gene: Taquarus_85 Start: 48907, Stop: 48809, Start Num: 14

Candidate Starts for Taquarus_85:

(Start: 14 @48907 has 51 MA's), (18, 48892), (20, 48883),

Gene: Thanksgivukkah_85 Start: 48896, Stop: 48798, Start Num: 14

Candidate Starts for Thanksgivukkah_85:

(Start: 14 @48896 has 51 MA's), (18, 48881), (20, 48872),

Gene: Tinybot_85 Start: 48925, Stop: 48827, Start Num: 15

Candidate Starts for Tinybot_85:

(Start: 14 @48928 has 51 MA's), (Start: 15 @48925 has 69 MA's), (18, 48910), (20, 48901),

Gene: Tomathan_92 Start: 49881, Stop: 49768, Start Num: 12

Candidate Starts for Tomathan_92:

(Start: 12 @49881 has 10 MA's), (Start: 14 @49863 has 51 MA's), (18, 49848), (20, 49839), (22, 49815),

Gene: TootsiePop_73 Start: 45868, Stop: 45993, Start Num: 15

Candidate Starts for TootsiePop_73:

(Start: 15 @45868 has 69 MA's), (21, 45910),

Gene: TroyPia_87 Start: 48933, Stop: 48835, Start Num: 14

Candidate Starts for TroyPia_87:

(Start: 14 @48933 has 51 MA's), (18, 48918), (20, 48909),

Gene: Tucker_95 Start: 48821, Stop: 48729, Start Num: 15

Candidate Starts for Tucker_95:

(Start: 15 @48821 has 69 MA's), (18, 48806),

Gene: TygerBlood_86 Start: 48898, Stop: 48800, Start Num: 14

Candidate Starts for TygerBlood_86:

(Start: 14 @48898 has 51 MA's), (18, 48883), (20, 48874),

Gene: Ulysses_85 Start: 48581, Stop: 48483, Start Num: 15

Candidate Starts for Ulysses_85:

(Start: 14 @48584 has 51 MA's), (Start: 15 @48581 has 69 MA's), (18, 48566), (20, 48557),

Gene: VC3_88 Start: 48160, Stop: 48047, Start Num: 12

Candidate Starts for VC3_88:

(7, 48226), (Start: 12 @48160 has 10 MA's), (Start: 14 @48142 has 51 MA's), (18, 48127), (20, 48118), (22, 48094),

Gene: VohminGhazi_93 Start: 48597, Stop: 48505, Start Num: 15

Candidate Starts for VohminGhazi_93:

(Start: 15 @48597 has 69 MA's), (17, 48585), (18, 48582),

Gene: Wiks_94 Start: 48698, Stop: 48606, Start Num: 15

Candidate Starts for Wiks_94:

(Start: 15 @48698 has 69 MA's), (18, 48683),

Gene: YoSam321_86 Start: 48893, Stop: 48795, Start Num: 15

Candidate Starts for YoSam321_86:

(Start: 14 @48896 has 51 MA's), (Start: 15 @48893 has 69 MA's), (18, 48878), (20, 48869),

Gene: Yokurt_94 Start: 48698, Stop: 48606, Start Num: 15

Candidate Starts for Yokurt_94:

(Start: 15 @48698 has 69 MA's), (18, 48683),

Gene: Zaka_95 Start: 48698, Stop: 48606, Start Num: 15

Candidate Starts for Zaka_95:

(Start: 15 @48698 has 69 MA's), (18, 48683),

Gene: Zulu_96 Start: 49075, Stop: 48983, Start Num: 15

Candidate Starts for Zulu_96:

(Start: 15 @49075 has 69 MA's), (18, 49060),