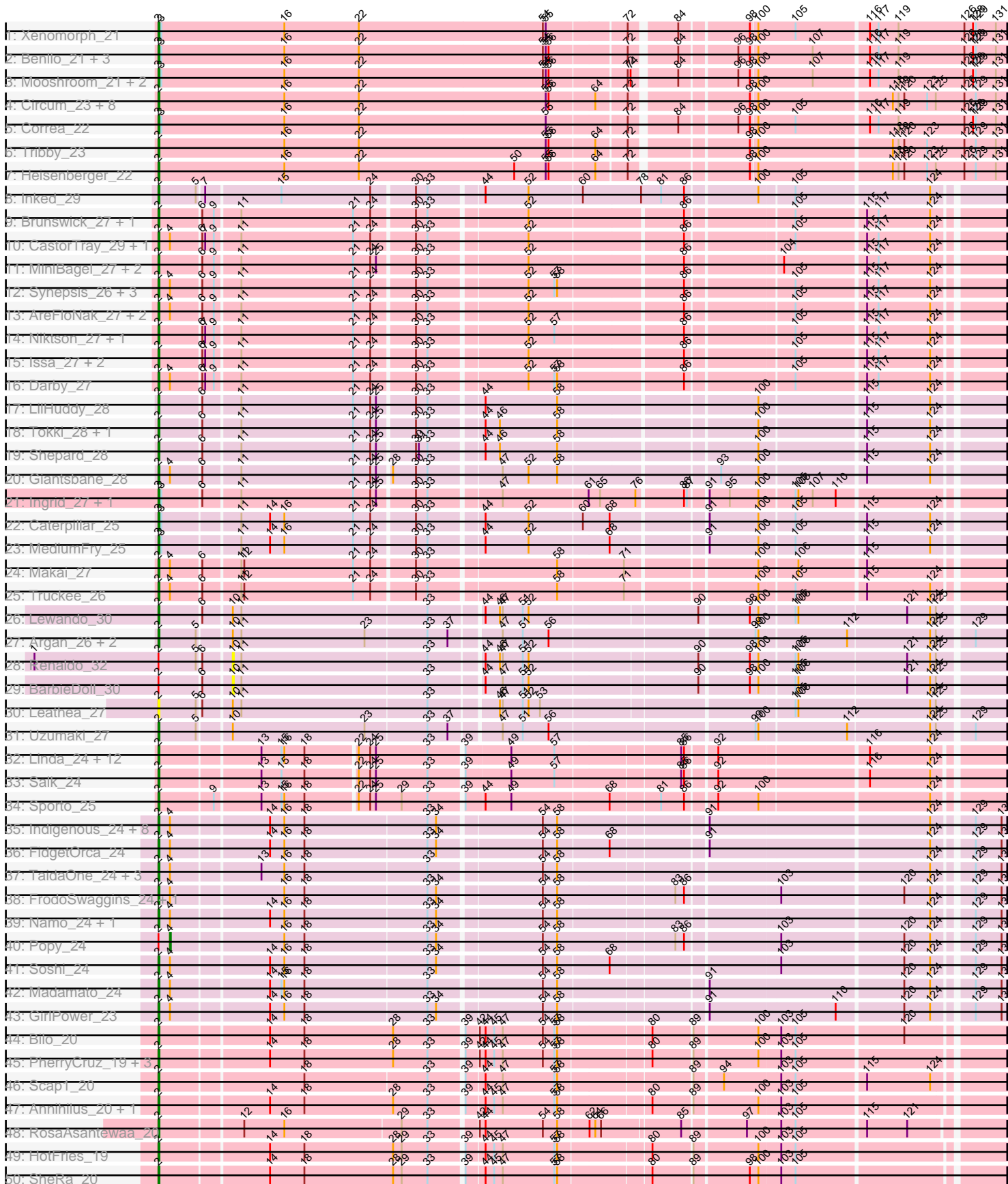
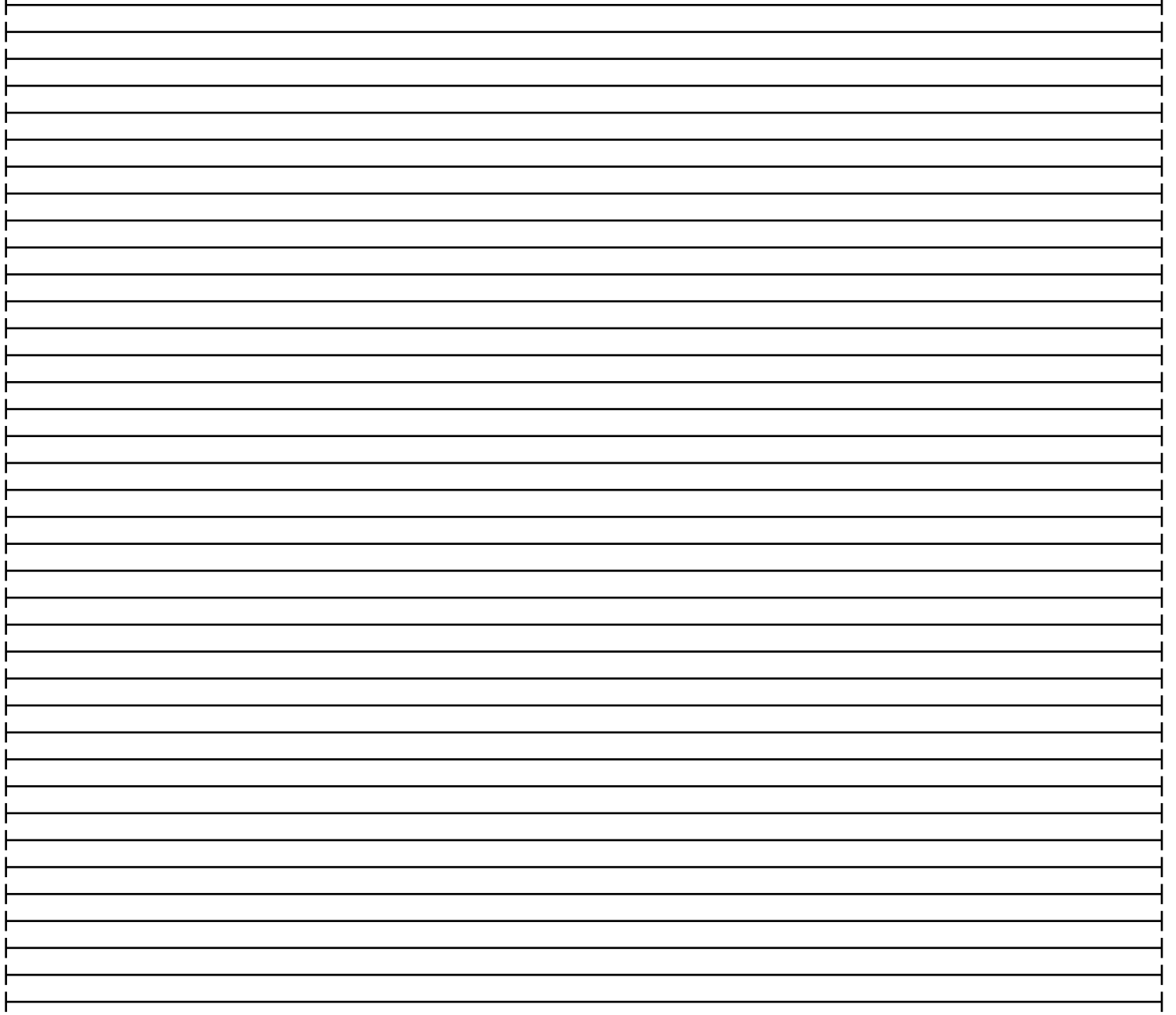
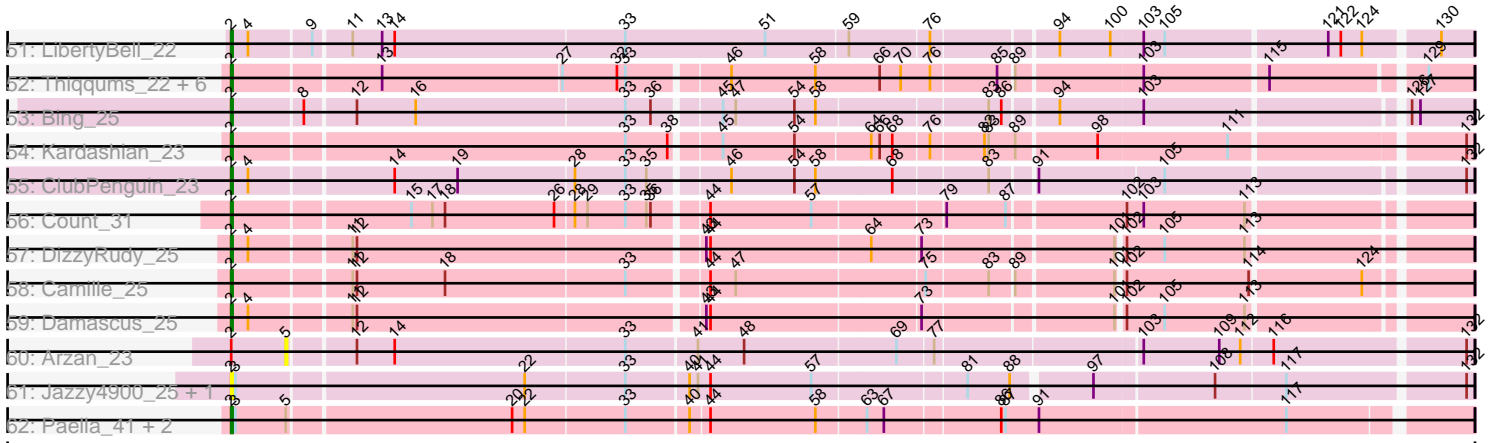


Pham 163440



Pham 163440



Note: Tracks are now grouped by subcluster and scaled. Switching in subcluster is indicated by changes in track color. Track scale is now set by default to display the region 30 bp upstream of start 1 to 30 bp downstream of the last possible start. If this default region is judged to be packed too tightly with annotated starts, the track will be further scaled to only show that region of the ORF with annotated starts. This action will be indicated by adding "Zoomed" to the title. For starts, yellow indicates the location of called starts comprised solely of Glimmer/GeneMark auto-annotations, green indicates the location of called starts with at least 1 manual gene annotation.

Pham 163440 Report

This analysis was run 04/28/24 on database version 559.

Pham number 163440 has 129 members, 20 are drafts.

Phages represented in each track:

- Track 1 : Xenomorph_21
- Track 2 : Benllo_21, KeaneyLin_21, GoCrazy_21, Hankly_21
- Track 3 : Mooshroom_21, Kardesai_21, Cheesy_23
- Track 4 : Circum_23, Elsa_23, BenitoAntonio_23, Arcadia_23, Dynamite_22, NapoleonB_22, Nason_23, JEGGS_22, Mudcat_22
- Track 5 : Correa_22
- Track 6 : Tribby_23
- Track 7 : Heisenberger_22
- Track 8 : Inked_29
- Track 9 : Brunswick_27, Teacup_27
- Track 10 : CastorTray_29, Trustiboi_28
- Track 11 : MiniBagel_27, CapnMurica_27, Tenno_28
- Track 12 : Synopsis_26, Gordon_27, ScienceWizSam_29, Tatanka_27
- Track 13 : AreFloNak_27, Nivinsha_27, Breylor17_28
- Track 14 : Niktson_27, ElephantMan_27
- Track 15 : Issa_27, DevitoJr_27, Nightmare_28
- Track 16 : Darby_27
- Track 17 : LilHuddy_28
- Track 18 : Tokki_28, Phaby_28
- Track 19 : Shepard_28
- Track 20 : Giantsbane_28
- Track 21 : Ingrid_27, Loretta_27
- Track 22 : Caterpillar_25
- Track 23 : MediumFry_25
- Track 24 : Makai_27
- Track 25 : Truckee_26
- Track 26 : Lewando_30
- Track 27 : Argan_26, Zeina_27, GantcherGoblin_26
- Track 28 : Renaldo_32
- Track 29 : BarbieDoll_30
- Track 30 : Leathea_27
- Track 31 : Uzumaki_27
- Track 32 : Linda_24, ProfFrink_24, Stayer_24, StarLord_24, DoctorPepper_24, Egad_24, Raunak_24, BronxBay_24, Shiba_24, MrAaronian_24, Michelle_24, Sloopyjoe_24, Djungelskog_24
- Track 33 : Salk_24
- Track 34 : Sporto_25

- Track 35 : Indigenous_24, Maya_24, Jaylociraptor_24, Meibysrarus_24, Hoshi_24, CherryBlossom_24, Esketit_24, Spectropatronm_24, IceWarrior_24
- Track 36 : FidgetOrca_24
- Track 37 : TaidaOne_24, TonyStarch_24, TieDye_23, OlympicHelado_24
- Track 38 : FrodoSwaggins_24, DrGrey_24
- Track 39 : Namu_24, Rima_24
- Track 40 : Popy_24
- Track 41 : Soshi_24
- Track 42 : Madamato_24
- Track 43 : GirlPower_23
- Track 44 : Bilo_20
- Track 45 : PherryCruz_19, GoblinVoyage_20, Doxi13_20, RavenPuff_19
- Track 46 : Scap1_20
- Track 47 : Annihilus_20, Moozy_20
- Track 48 : RosaAsantewaa_20
- Track 49 : HotFries_19
- Track 50 : SheRa_20
- Track 51 : LibertyBell_22
- Track 52 : Thiqqums_22, Miek_22, SendItCS_21, FromIndy_23, CricKo_22, Regigigas_23, Rainydai_22
- Track 53 : Bing_25
- Track 54 : Kardashian_23
- Track 55 : ClubPenguin_23
- Track 56 : Count_31
- Track 57 : DizzyRudy_25
- Track 58 : Camille_25
- Track 59 : Damascus_25
- Track 60 : Arzan_23
- Track 61 : Jazzy4900_25, Sunny4976_24
- Track 62 : Paella_41, Qui_41, Elver_40

Summary of Final Annotations (See graph section above for start numbers):

The start number called the most often in the published annotations is 2, it was called in 108 of the 109 non-draft genes in the pham.

Genes that call this "Most Annotated" start:

- Annihilus_20, Arcadia_23, AreFloNak_27, Argan_26, BenitoAntonio_23, Benllo_21, Bilo_20, Bing_25, Breylor17_28, BronxBay_24, Brunswick_27, Camille_25, CapnMurica_27, CastorTray_29, Caterpillar_25, Cheesy_23, CherryBlossom_24, Circum_23, ClubPenguin_23, Correa_22, Count_31, CricKo_22, Damascus_25, Darby_27, DevitoJr_27, DizzyRudy_25, Djungelskog_24, DoctorPepper_24, Doxi13_20, DrGrey_24, Dynamite_22, Egad_24, ElephantMan_27, Elsa_23, Elver_40, Esketit_24, FidgetOrca_24, FrodoSwaggins_24, FromIndy_23, GantcherGoblin_26, Giantsbane_28, GirlPower_23, GoCrazy_21, GoblinVoyage_20, Gordon_27, Hankly_21, Heisenberger_22, Hoshi_24, HotFries_19, IceWarrior_24, Indigenous_24, Ingrid_27, Inked_29, Issa_27, JEGGS_22, Jaylociraptor_24, Jazzy4900_25, Kardashian_23, Kardesai_21, KeaneyLin_21, Leatheia_27, Lewando_30, LibertyBell_22, LilHuddy_28, Linda_24, Loretta_27, Madamato_24, Makai_27, Maya_24, MediumFry_25, Meibysrarus_24, Michelle_24, Miek_22,

MiniBagel_27, Mooshroom_21, Moozy_20, MrAaronian_24, Mudcat_22, Namo_24, NapoleonB_22, Nason_23, Nightmare_28, Niktson_27, Nivinsha_27, OlympicHelado_24, Paella_41, Phaby_28, PherryCruz_19, ProfFrink_24, Qui_41, Rainydai_22, Raunak_24, RavenPuff_19, Regigigas_23, Rima_24, RosaAsantewaa_20, Salk_24, Scap1_20, ScienceWizSam_29, SendItCS_21, SheRa_20, Shepard_28, Shiba_24, Sloopyjoe_24, Soshi_24, Spectropatronm_24, Sporto_25, StarLord_24, Stayer_24, Sunny4976_24, Synepsis_26, TaidaOne_24, Tatanka_27, Teacup_27, Tenno_28, Thiqqums_22, TieDye_23, Tokki_28, TonyStarch_24, Tribby_23, Truckee_26, Trustiboi_28, Uzumaki_27, Xenomorph_21, Zeina_27,

Genes that have the "Most Annotated" start but do not call it:

- Arzan_23, BarbieDoll_30, Popy_24, Renaldo_32,

Genes that do not have the "Most Annotated" start:

-

Summary by start number:

Start 2:

- Found in 129 of 129 (100.0%) of genes in pham
- Manual Annotations of this start: 108 of 109
- Called 96.9% of time when present
- Phage (with cluster) where this start called: Annihilus_20 (BI2), Arcadia_23 (AM), AreFloNak_27 (AU1), Argan_26 (AU6), BenitoAntonio_23 (AM), Benllo_21 (AM), Bilo_20 (BI2), Bing_25 (BI5), Breylor17_28 (AU1), BronxBay_24 (AW), Brunswick_27 (AU1), Camille_25 (EL), CapnMurica_27 (AU1), CastorTray_29 (AU1), Caterpillar_25 (AU4), Cheesy_23 (AM), CherryBlossom_24 (BI1), Circum_23 (AM), ClubPenguin_23 (BI7), Correa_22 (AM), Count_31 (EL), CricKo_22 (BI4), Damascus_25 (EL), Darby_27 (AU1), DevitoJr_27 (AU1), DizzyRudy_25 (EL), Djungelskog_24 (AW), DoctorPepper_24 (AW), Doxi13_20 (BI2), DrGrey_24 (BI1), Dynamite_22 (AM), Egad_24 (AW), ElephantMan_27 (AU1), Elsa_23 (AM), Elver_40 (FK), Esketit_24 (BI1), FidgetOrca_24 (BI1), FrodoSwaggins_24 (BI1), FromIndy_23 (BI4), GantcherGoblin_26 (AU6), Giantsbane_28 (AU2), GirlPower_23 (BI1), GoCrazy_21 (AM), GoblinVoyage_20 (BI2), Gordon_27 (AU1), Hankly_21 (AM), Heisenberger_22 (AM), Hoshi_24 (BI1), HotFries_19 (BI2), IceWarrior_24 (BI1), Indigenous_24 (BI1), Ingrid_27 (AU3), Inked_29 (AU), Issa_27 (AU1), JEGGS_22 (AM), Jaylociraptor_24 (BI1), Jazzy4900_25 (FI), Kardashian_23 (BI6), Kardesai_21 (AM), KeaneyLin_21 (AM), Leatheia_27 (AU6), Lewando_30 (AU6), LibertyBell_22 (BI3), LilHuddy_28 (AU2), Linda_24 (AW), Loretta_27 (AU3), Madamato_24 (BI1), Makai_27 (AU5), Maya_24 (BI1), MediumFry_25 (AU4), Meibysrarus_24 (BI1), Michelle_24 (AW), Miek_22 (BI4), MiniBagel_27 (AU1), Mooshroom_21 (AM), Moozy_20 (BI2), MrAaronian_24 (AW), Mudcat_22 (AM), Namo_24 (BI1), NapoleonB_22 (AM), Nason_23 (AM), Nightmare_28 (AU1), Niktson_27 (AU1), Nivinsha_27 (AU1), OlympicHelado_24 (BI1), Paella_41 (FK), Phaby_28 (AU2), PherryCruz_19 (BI2), ProfFrink_24 (AW), Qui_41 (FK), Rainydai_22 (BI4), Raunak_24 (AW), RavenPuff_19 (BI2), Regigigas_23 (BI4), Rima_24 (BI1), RosaAsantewaa_20 (BI2), Salk_24 (AW), Scap1_20 (BI2), ScienceWizSam_29 (AU1), SendItCS_21 (BI4), SheRa_20 (BI2), Shepard_28 (AU2), Shiba_24 (AW), Sloopyjoe_24 (AW), Soshi_24 (BI1), Spectropatronm_24 (BI1), Sporto_25 (AW), StarLord_24 (AW), Stayer_24 (AW), Sunny4976_24 (FI), Synepsis_26 (AU1), TaidaOne_24 (BI1), Tatanka_27 (AU1), Teacup_27 (AU1), Tenno_28 (AU1), Thiqqums_22 (BI4), TieDye_23 (BI1), Tokki_28 (AU2), TonyStarch_24 (BI1), Tribby_23 (AM), Truckee_26 (AU5), Trustiboi_28 (AU1),

Uzumaki_27 (AU6), Xenomorph_21 (AM), Zeina_27 (AU6),

Start 4:

- Found in 39 of 129 (30.2%) of genes in pham
- Manual Annotations of this start: 1 of 109
- Called 2.6% of time when present
- Phage (with cluster) where this start called: Popy_24 (BI1),

Start 5:

- Found in 11 of 129 (8.5%) of genes in pham
- No Manual Annotations of this start.
- Called 9.1% of time when present
- Phage (with cluster) where this start called: Arzan_23 (FI),

Start 10:

- Found in 8 of 129 (6.2%) of genes in pham
- No Manual Annotations of this start.
- Called 25.0% of time when present
- Phage (with cluster) where this start called: BarbieDoll_30 (AU6), Renaldo_32 (AU6),

Summary by clusters:

There are 19 clusters represented in this pham: EL, AU, FK, AM, AU1, AU3, AU2, AU5, AU4, AW, AU6, BI6, FI, BI4, BI5, BI2, BI3, BI7, BI1,

Info for manual annotations of cluster AM:

- Start number 2 was manually annotated 18 times for cluster AM.

Info for manual annotations of cluster AU:

- Start number 2 was manually annotated 1 time for cluster AU.

Info for manual annotations of cluster AU1:

- Start number 2 was manually annotated 15 times for cluster AU1.

Info for manual annotations of cluster AU2:

- Start number 2 was manually annotated 4 times for cluster AU2.

Info for manual annotations of cluster AU3:

- Start number 2 was manually annotated 2 times for cluster AU3.

Info for manual annotations of cluster AU4:

- Start number 2 was manually annotated 2 times for cluster AU4.

Info for manual annotations of cluster AU5:

- Start number 2 was manually annotated 2 times for cluster AU5.

Info for manual annotations of cluster AU6:

- Start number 2 was manually annotated 5 times for cluster AU6.

Info for manual annotations of cluster AW:

- Start number 2 was manually annotated 12 times for cluster AW.

Info for manual annotations of cluster BI1:

- Start number 2 was manually annotated 21 times for cluster BI1.
- Start number 4 was manually annotated 1 time for cluster BI1.

Info for manual annotations of cluster BI2:

- Start number 2 was manually annotated 11 times for cluster BI2.

Info for manual annotations of cluster BI3:

- Start number 2 was manually annotated 1 time for cluster BI3.

Info for manual annotations of cluster BI4:

- Start number 2 was manually annotated 5 times for cluster BI4.

Info for manual annotations of cluster BI5:

- Start number 2 was manually annotated 1 time for cluster BI5.

Info for manual annotations of cluster BI6:

- Start number 2 was manually annotated 1 time for cluster BI6.

Info for manual annotations of cluster BI7:

- Start number 2 was manually annotated 1 time for cluster BI7.

Info for manual annotations of cluster EL:

- Start number 2 was manually annotated 4 times for cluster EL.

Info for manual annotations of cluster FK:

- Start number 2 was manually annotated 2 times for cluster FK.

Gene Information:

Gene: Annihilus_20 Start: 18728, Stop: 19555, Start Num: 2

Candidate Starts for Annihilus_20:

(Start: 2 @18728 has 108 MA's), (14, 18836), (18, 18872), (28, 18965), (33, 19001), (39, 19034), (44, 19052), (45, 19061), (47, 19070), (57, 19124), (58, 19127), (80, 19217), (89, 19256), (100, 19319), (103, 19340), (105, 19355),

Gene: Arcadia_23 Start: 22148, Stop: 22999, Start Num: 2

Candidate Starts for Arcadia_23:

(Start: 2 @22148 has 108 MA's), (16, 22280), (22, 22358), (55, 22553), (56, 22556), (64, 22601), (72, 22631), (98, 22739), (100, 22745), (118, 22880), (119, 22886), (120, 22892), (123, 22916), (125, 22925), (126, 22955), (129, 22967), (131, 22988),

Gene: AreFloNak_27 Start: 24653, Stop: 25471, Start Num: 2

Candidate Starts for AreFloNak_27:

(Start: 2 @24653 has 108 MA's), (Start: 4 @24665 has 1 MA's), (6, 24695), (9, 24707), (11, 24731), (21, 24848), (24, 24866), (30, 24908), (33, 24920), (52, 25016), (86, 25169), (105, 25271), (115, 25340), (117, 25352), (124, 25406),

Gene: Argan_26 Start: 23584, Stop: 24420, Start Num: 2

Candidate Starts for Argan_26:

(Start: 2 @23584 has 108 MA's), (5, 23623), (10, 23653), (11, 23662), (23, 23791), (33, 23854), (37, 23875), (47, 23923), (51, 23944), (56, 23971), (99, 24175), (100, 24178), (112, 24265), (124, 24349), (125, 24355), (129, 24388),

Gene: Arzan_23 Start: 22341, Stop: 23144, Start Num: 5

Candidate Starts for Arzan_23:

(Start: 2 @22302 has 108 MA's), (5, 22341), (12, 22383), (14, 22410), (33, 22572), (41, 22620), (48, 22653), (69, 22758), (77, 22782), (103, 22920), (109, 22974), (112, 22989), (116, 23010), (132, 23139),

Gene: BarbieDoll_30 Start: 25632, Stop: 26396, Start Num: 10

Candidate Starts for BarbieDoll_30:

(Start: 2 @25563 has 108 MA's), (6, 25605), (10, 25632), (11, 25641), (33, 25833), (44, 25884), (47, 25902), (51, 25923), (52, 25929), (90, 26097), (98, 26145), (100, 26154), (105, 26187), (106, 26190), (121, 26301), (124, 26325), (125, 26331),

Gene: BenitoAntonio_23 Start: 21764, Stop: 22615, Start Num: 2

Candidate Starts for BenitoAntonio_23:

(Start: 2 @21764 has 108 MA's), (16, 21896), (22, 21974), (55, 22169), (56, 22172), (64, 22217), (72, 22247), (98, 22355), (100, 22361), (118, 22496), (119, 22502), (120, 22508), (123, 22532), (125, 22541), (126, 22571), (129, 22583), (131, 22604),

Gene: Benllo_21 Start: 22048, Stop: 22899, Start Num: 2

Candidate Starts for Benllo_21:

(Start: 2 @22048 has 108 MA's), (3, 22051), (16, 22180), (22, 22258), (54, 22450), (55, 22453), (56, 22456), (72, 22531), (84, 22573), (96, 22627), (98, 22639), (100, 22645), (107, 22702), (116, 22756), (117, 22765), (119, 22786), (126, 22855), (128, 22864), (129, 22867), (131, 22888),

Gene: Bilo_20 Start: 19219, Stop: 20046, Start Num: 2

Candidate Starts for Bilo_20:

(Start: 2 @19219 has 108 MA's), (14, 19327), (18, 19363), (28, 19456), (33, 19492), (39, 19525), (42, 19537), (44, 19543), (45, 19552), (47, 19561), (54, 19603), (57, 19615), (58, 19618), (80, 19708), (89, 19747), (100, 19810), (103, 19831), (105, 19846), (120, 19954),

Gene: Bing_25 Start: 21496, Stop: 22320, Start Num: 2

Candidate Starts for Bing_25:

(Start: 2 @21496 has 108 MA's), (8, 21544), (12, 21577), (16, 21619), (33, 21766), (36, 21784), (45, 21826), (47, 21835), (54, 21877), (58, 21892), (83, 22006), (86, 22015), (94, 22048), (103, 22105), (126, 22276), (127, 22282),

Gene: Breylor17_28 Start: 25259, Stop: 26077, Start Num: 2

Candidate Starts for Breylor17_28:

(Start: 2 @25259 has 108 MA's), (Start: 4 @25271 has 1 MA's), (6, 25301), (9, 25313), (11, 25337), (21, 25454), (24, 25472), (30, 25514), (33, 25526), (52, 25622), (86, 25775), (105, 25877), (115, 25946), (117, 25958), (124, 26012),

Gene: BronxBay_24 Start: 21790, Stop: 22608, Start Num: 2

Candidate Starts for BronxBay_24:

(Start: 2 @21790 has 108 MA's), (13, 21889), (15, 21910), (16, 21913), (18, 21934), (22, 21985), (24, 21997), (25, 22003), (33, 22057), (39, 22090), (49, 22135), (57, 22180), (85, 22303), (86, 22306), (92, 22333), (116, 22480), (124, 22543),

Gene: Brunswick_27 Start: 24725, Stop: 25543, Start Num: 2

Candidate Starts for Brunswick_27:

(Start: 2 @24725 has 108 MA's), (6, 24767), (9, 24779), (11, 24803), (21, 24920), (24, 24938), (30, 24980), (33, 24992), (52, 25088), (86, 25241), (105, 25343), (115, 25412), (117, 25424), (124, 25478),

Gene: Camille_25 Start: 20447, Stop: 21268, Start Num: 2

Candidate Starts for Camille_25:

(Start: 2 @20447 has 108 MA's), (11, 20525), (12, 20528), (18, 20591), (33, 20717), (44, 20768), (47, 20786), (75, 20915), (83, 20957), (89, 20972), (101, 21038), (102, 21041), (114, 21128), (124, 21203),

Gene: CapnMurica_27 Start: 25814, Stop: 26632, Start Num: 2

Candidate Starts for CapnMurica_27:

(Start: 2 @25814 has 108 MA's), (6, 25856), (9, 25868), (11, 25892), (21, 26009), (24, 26027), (25, 26033), (30, 26069), (33, 26081), (52, 26177), (86, 26330), (104, 26420), (115, 26501), (117, 26513), (124, 26567),

Gene: CastorTray_29 Start: 25117, Stop: 25935, Start Num: 2

Candidate Starts for CastorTray_29:

(Start: 2 @25117 has 108 MA's), (Start: 4 @25129 has 1 MA's), (6, 25159), (7, 25162), (9, 25171), (11, 25195), (21, 25312), (24, 25330), (30, 25372), (33, 25384), (52, 25480), (86, 25633), (105, 25735), (115, 25804), (117, 25816), (124, 25870),

Gene: Caterpillar_25 Start: 23897, Stop: 24715, Start Num: 2

Candidate Starts for Caterpillar_25:

(Start: 2 @23897 has 108 MA's), (3, 23900), (11, 23975), (14, 24005), (16, 24020), (21, 24092), (24, 24110), (30, 24152), (33, 24164), (44, 24215), (52, 24260), (60, 24314), (68, 24341), (91, 24431), (100, 24482), (105, 24515), (115, 24584), (124, 24650),

Gene: Cheesy_23 Start: 21863, Stop: 22714, Start Num: 2

Candidate Starts for Cheesy_23:

(Start: 2 @21863 has 108 MA's), (3, 21866), (16, 21995), (22, 22073), (54, 22265), (55, 22268), (56, 22271), (72, 22346), (74, 22349), (84, 22388), (96, 22442), (98, 22454), (100, 22460), (107, 22517), (116, 22571), (117, 22580), (119, 22601), (126, 22670), (128, 22679), (129, 22682), (131, 22703),

Gene: CherryBlossom_24 Start: 21638, Stop: 22462, Start Num: 2

Candidate Starts for CherryBlossom_24:

(Start: 2 @21638 has 108 MA's), (Start: 4 @21650 has 1 MA's), (14, 21746), (16, 21761), (18, 21782), (33, 21908), (34, 21917), (54, 22019), (58, 22034), (91, 22175), (124, 22397), (129, 22430), (132, 22457),

Gene: Circum_23 Start: 21870, Stop: 22721, Start Num: 2

Candidate Starts for Circum_23:

(Start: 2 @21870 has 108 MA's), (16, 22002), (22, 22080), (55, 22275), (56, 22278), (64, 22323), (72, 22353), (98, 22461), (100, 22467), (118, 22602), (119, 22608), (120, 22614), (123, 22638), (125, 22647), (126, 22677), (129, 22689), (131, 22710),

Gene: ClubPenguin_23 Start: 21222, Stop: 22046, Start Num: 2

Candidate Starts for ClubPenguin_23:

(Start: 2 @21222 has 108 MA's), (Start: 4 @21234 has 1 MA's), (14, 21330), (19, 21375), (28, 21456), (33, 21492), (35, 21507), (46, 21558), (54, 21603), (58, 21618), (68, 21672), (83, 21735), (91, 21762), (105, 21846), (132, 22041),

Gene: Correa_22 Start: 21378, Stop: 22229, Start Num: 2

Candidate Starts for Correa_22:

(Start: 2 @21378 has 108 MA's), (3, 21381), (16, 21510), (22, 21588), (55, 21783), (72, 21861), (84, 21903), (96, 21957), (98, 21969), (100, 21975), (105, 22014), (116, 22086), (117, 22095), (119, 22116), (126, 22185), (128, 22194), (129, 22197), (131, 22218),

Gene: Count_31 Start: 27657, Stop: 28484, Start Num: 2

Candidate Starts for Count_31:

(Start: 2 @27657 has 108 MA's), (15, 27777), (17, 27792), (18, 27801), (26, 27879), (28, 27891), (29, 27900), (33, 27927), (35, 27942), (36, 27945), (44, 27978), (57, 28050), (79, 28137), (87, 28179), (102, 28257), (103, 28269), (113, 28341),

Gene: CricKo_22 Start: 20533, Stop: 21363, Start Num: 2

Candidate Starts for CricKo_22:

(Start: 2 @20533 has 108 MA's), (13, 20632), (27, 20758), (32, 20797), (33, 20803), (46, 20869), (58, 20929), (66, 20974), (70, 20989), (76, 21010), (85, 21055), (89, 21064), (103, 21148), (115, 21232), (129, 21331),

Gene: Damascus_25 Start: 21129, Stop: 21950, Start Num: 2

Candidate Starts for Damascus_25:

(Start: 2 @21129 has 108 MA's), (Start: 4 @21141 has 1 MA's), (11, 21207), (12, 21210), (43, 21447), (44, 21450), (73, 21594), (101, 21720), (102, 21723), (105, 21750), (113, 21807),

Gene: Darby_27 Start: 24563, Stop: 25381, Start Num: 2

Candidate Starts for Darby_27:

(Start: 2 @24563 has 108 MA's), (Start: 4 @24575 has 1 MA's), (6, 24605), (7, 24608), (9, 24617), (11, 24641), (21, 24758), (24, 24776), (30, 24818), (33, 24830), (52, 24926), (57, 24953), (58, 24956), (86, 25079), (105, 25181), (115, 25250), (117, 25262), (124, 25316),

Gene: DevitoJr_27 Start: 24734, Stop: 25552, Start Num: 2

Candidate Starts for DevitoJr_27:

(Start: 2 @24734 has 108 MA's), (6, 24776), (7, 24779), (9, 24788), (11, 24812), (21, 24929), (24, 24947), (30, 24989), (33, 25001), (52, 25097), (86, 25250), (105, 25352), (115, 25421), (117, 25433), (124, 25487),

Gene: DizzyRudy_25 Start: 21058, Stop: 21879, Start Num: 2

Candidate Starts for DizzyRudy_25:

(Start: 2 @21058 has 108 MA's), (Start: 4 @21070 has 1 MA's), (11, 21136), (12, 21139), (43, 21376), (44, 21379), (64, 21490), (73, 21523), (101, 21649), (102, 21652), (105, 21679), (113, 21736),

Gene: Djungelskog_24 Start: 21790, Stop: 22608, Start Num: 2

Candidate Starts for Djungelskog_24:

(Start: 2 @21790 has 108 MA's), (13, 21889), (15, 21910), (16, 21913), (18, 21934), (22, 21985), (24, 21997), (25, 22003), (33, 22057), (39, 22090), (49, 22135), (57, 22180), (85, 22303), (86, 22306), (92, 22333), (116, 22480), (124, 22543),

Gene: DoctorPepper_24 Start: 21790, Stop: 22608, Start Num: 2

Candidate Starts for DoctorPepper_24:

(Start: 2 @21790 has 108 MA's), (13, 21889), (15, 21910), (16, 21913), (18, 21934), (22, 21985), (24, 21997), (25, 22003), (33, 22057), (39, 22090), (49, 22135), (57, 22180), (85, 22303), (86, 22306), (92, 22333), (116, 22480), (124, 22543),

Gene: Doxi13_20 Start: 18700, Stop: 19527, Start Num: 2

Candidate Starts for Doxi13_20:

(Start: 2 @18700 has 108 MA's), (14, 18808), (18, 18844), (28, 18937), (33, 18973), (39, 19006), (42, 19018), (44, 19024), (45, 19033), (47, 19042), (54, 19084), (57, 19096), (58, 19099), (80, 19189), (89, 19228), (100, 19291), (103, 19312), (105, 19327),

Gene: DrGrey_24 Start: 22131, Stop: 22958, Start Num: 2

Candidate Starts for DrGrey_24:

(Start: 2 @22131 has 108 MA's), (Start: 4 @22143 has 1 MA's), (16, 22254), (18, 22275), (33, 22401), (34, 22410), (54, 22512), (58, 22527), (83, 22644), (86, 22653), (103, 22743), (120, 22866), (124, 22893), (129, 22926), (132, 22953),

Gene: Dynamite_22 Start: 21671, Stop: 22522, Start Num: 2

Candidate Starts for Dynamite_22:

(Start: 2 @21671 has 108 MA's), (16, 21803), (22, 21881), (55, 22076), (56, 22079), (64, 22124), (72, 22154), (98, 22262), (100, 22268), (118, 22403), (119, 22409), (120, 22415), (123, 22439), (125, 22448), (126, 22478), (129, 22490), (131, 22511),

Gene: Egad_24 Start: 21791, Stop: 22609, Start Num: 2

Candidate Starts for Egad_24:

(Start: 2 @21791 has 108 MA's), (13, 21890), (15, 21911), (16, 21914), (18, 21935), (22, 21986), (24, 21998), (25, 22004), (33, 22058), (39, 22091), (49, 22136), (57, 22181), (85, 22304), (86, 22307), (92, 22334), (116, 22481), (124, 22544),

Gene: ElephantMan_27 Start: 25265, Stop: 26083, Start Num: 2

Candidate Starts for ElephantMan_27:

(Start: 2 @25265 has 108 MA's), (6, 25307), (7, 25310), (9, 25319), (11, 25343), (21, 25460), (24, 25478), (30, 25520), (33, 25532), (52, 25628), (57, 25655), (86, 25781), (105, 25883), (115, 25952), (117, 25964), (124, 26018),

Gene: Elsa_23 Start: 22148, Stop: 22999, Start Num: 2

Candidate Starts for Elsa_23:

(Start: 2 @22148 has 108 MA's), (16, 22280), (22, 22358), (55, 22553), (56, 22556), (64, 22601), (72, 22631), (98, 22739), (100, 22745), (118, 22880), (119, 22886), (120, 22892), (123, 22916), (125, 22925), (126, 22955), (129, 22967), (131, 22988),

Gene: Elver_40 Start: 33769, Stop: 34608, Start Num: 2

Candidate Starts for Elver_40:

(Start: 2 @33769 has 108 MA's), (3, 33772), (5, 33808), (20, 33961), (22, 33970), (33, 34039), (40, 34081), (44, 34093), (58, 34168), (63, 34201), (67, 34213), (86, 34291), (87, 34294), (91, 34318), (117, 34489),

Gene: Esketit_24 Start: 21621, Stop: 22445, Start Num: 2

Candidate Starts for Esketit_24:

(Start: 2 @21621 has 108 MA's), (Start: 4 @21633 has 1 MA's), (14, 21729), (16, 21744), (18, 21765), (33, 21891), (34, 21900), (54, 22002), (58, 22017), (91, 22158), (124, 22380), (129, 22413), (132, 22440),

Gene: FidgetOrca_24 Start: 21627, Stop: 22451, Start Num: 2

Candidate Starts for FidgetOrca_24:

(Start: 2 @21627 has 108 MA's), (Start: 4 @21639 has 1 MA's), (14, 21735), (16, 21750), (18, 21771), (33, 21897), (34, 21906), (54, 22008), (58, 22023), (68, 22074), (91, 22164), (124, 22386), (129, 22419), (132, 22446),

Gene: FrodoSwaggins_24 Start: 22131, Stop: 22958, Start Num: 2

Candidate Starts for FrodoSwaggins_24:

(Start: 2 @22131 has 108 MA's), (Start: 4 @22143 has 1 MA's), (16, 22254), (18, 22275), (33, 22401), (34, 22410), (54, 22512), (58, 22527), (83, 22644), (86, 22653), (103, 22743), (120, 22866), (124, 22893), (129, 22926), (132, 22953),

Gene: FromIndy_23 Start: 20521, Stop: 21351, Start Num: 2

Candidate Starts for FromIndy_23:

(Start: 2 @20521 has 108 MA's), (13, 20620), (27, 20746), (32, 20785), (33, 20791), (46, 20857), (58, 20917), (66, 20962), (70, 20977), (76, 20998), (85, 21043), (89, 21052), (103, 21136), (115, 21220), (129, 21319),

Gene: GantcherGoblin_26 Start: 23623, Stop: 24459, Start Num: 2

Candidate Starts for GantcherGoblin_26:

(Start: 2 @23623 has 108 MA's), (5, 23662), (10, 23692), (11, 23701), (23, 23830), (33, 23893), (37, 23914), (47, 23962), (51, 23983), (56, 24010), (99, 24214), (100, 24217), (112, 24304), (124, 24388), (125, 24394), (129, 24427),

Gene: Giantsbane_28 Start: 23728, Stop: 24546, Start Num: 2

Candidate Starts for Giantsbane_28:

(Start: 2 @23728 has 108 MA's), (Start: 4 @23740 has 1 MA's), (6, 23770), (11, 23806), (21, 23923), (24, 23941), (25, 23947), (28, 23959), (30, 23983), (33, 23995), (47, 24064), (52, 24091), (58, 24121), (93, 24274), (100, 24313), (115, 24415), (124, 24481),

Gene: GirlPower_23 Start: 23105, Stop: 23929, Start Num: 2

Candidate Starts for GirlPower_23:

(Start: 2 @23105 has 108 MA's), (Start: 4 @23117 has 1 MA's), (14, 23213), (16, 23228), (18, 23249), (33, 23375), (34, 23384), (54, 23486), (58, 23501), (91, 23642), (110, 23771), (120, 23837), (124, 23864), (129, 23897), (132, 23924),

Gene: GoCrazy_21 Start: 21671, Stop: 22522, Start Num: 2

Candidate Starts for GoCrazy_21:

(Start: 2 @21671 has 108 MA's), (3, 21674), (16, 21803), (22, 21881), (54, 22073), (55, 22076), (56, 22079), (72, 22154), (84, 22196), (96, 22250), (98, 22262), (100, 22268), (107, 22325), (116, 22379), (117, 22388), (119, 22409), (126, 22478), (128, 22487), (129, 22490), (131, 22511),

Gene: GoblinVoyage_20 Start: 18700, Stop: 19527, Start Num: 2

Candidate Starts for GoblinVoyage_20:

(Start: 2 @18700 has 108 MA's), (14, 18808), (18, 18844), (28, 18937), (33, 18973), (39, 19006), (42, 19018), (44, 19024), (45, 19033), (47, 19042), (54, 19084), (57, 19096), (58, 19099), (80, 19189), (89, 19228), (100, 19291), (103, 19312), (105, 19327),

Gene: Gordon_27 Start: 25839, Stop: 26657, Start Num: 2

Candidate Starts for Gordon_27:

(Start: 2 @25839 has 108 MA's), (Start: 4 @25851 has 1 MA's), (6, 25881), (9, 25893), (11, 25917), (21, 26034), (24, 26052), (30, 26094), (33, 26106), (52, 26202), (57, 26229), (58, 26232), (86, 26355), (105, 26457), (115, 26526), (117, 26538), (124, 26592),

Gene: Hankly_21 Start: 20893, Stop: 21744, Start Num: 2

Candidate Starts for Hankly_21:

(Start: 2 @20893 has 108 MA's), (3, 20896), (16, 21025), (22, 21103), (54, 21295), (55, 21298), (56, 21301), (72, 21376), (84, 21418), (96, 21472), (98, 21484), (100, 21490), (107, 21547), (116, 21601), (117, 21610), (119, 21631), (126, 21700), (128, 21709), (129, 21712), (131, 21733),

Gene: Heisenberger_22 Start: 21541, Stop: 22392, Start Num: 2

Candidate Starts for Heisenberger_22:

(Start: 2 @21541 has 108 MA's), (16, 21673), (22, 21751), (50, 21913), (55, 21946), (56, 21949), (64, 21994), (72, 22024), (98, 22132), (100, 22138), (118, 22273), (119, 22279), (120, 22285), (123, 22309), (125, 22318), (126, 22348), (129, 22360), (131, 22381),

Gene: Hoshi_24 Start: 21621, Stop: 22445, Start Num: 2

Candidate Starts for Hoshi_24:

(Start: 2 @21621 has 108 MA's), (Start: 4 @21633 has 1 MA's), (14, 21729), (16, 21744), (18, 21765), (33, 21891), (34, 21900), (54, 22002), (58, 22017), (91, 22158), (124, 22380), (129, 22413), (132, 22440),

Gene: HotFries_19 Start: 18698, Stop: 19525, Start Num: 2

Candidate Starts for HotFries_19:

(Start: 2 @18698 has 108 MA's), (14, 18806), (18, 18842), (28, 18935), (29, 18944), (33, 18971), (39, 19004), (44, 19022), (45, 19031), (47, 19040), (57, 19094), (58, 19097), (80, 19187), (89, 19226), (100, 19289), (103, 19310), (105, 19325),

Gene: IceWarrior_24 Start: 21621, Stop: 22445, Start Num: 2

Candidate Starts for IceWarrior_24:

(Start: 2 @21621 has 108 MA's), (Start: 4 @21633 has 1 MA's), (14, 21729), (16, 21744), (18, 21765), (33, 21891), (34, 21900), (54, 22002), (58, 22017), (91, 22158), (124, 22380), (129, 22413), (132, 22440),

Gene: Indigenous_24 Start: 21621, Stop: 22445, Start Num: 2

Candidate Starts for Indigenous_24:

(Start: 2 @21621 has 108 MA's), (Start: 4 @21633 has 1 MA's), (14, 21729), (16, 21744), (18, 21765), (33, 21891), (34, 21900), (54, 22002), (58, 22017), (91, 22158), (124, 22380), (129, 22413), (132, 22440),

Gene: Ingrid_27 Start: 24453, Stop: 25271, Start Num: 2

Candidate Starts for Ingrid_27:

(Start: 2 @24453 has 108 MA's), (3, 24456), (6, 24495), (11, 24531), (21, 24648), (24, 24666), (25, 24672), (30, 24708), (33, 24720), (47, 24789), (61, 24876), (65, 24888), (76, 24924), (86, 24969), (87, 24972), (91, 24987), (95, 25008), (100, 25038), (105, 25071), (106, 25074), (107, 25089), (110, 25113),

Gene: Inked_29 Start: 25464, Stop: 26288, Start Num: 2

Candidate Starts for Inked_29:

(Start: 2 @25464 has 108 MA's), (5, 25503), (7, 25509), (15, 25584), (24, 25677), (30, 25719), (33, 25731), (44, 25782), (52, 25827), (60, 25881), (78, 25941), (81, 25962), (86, 25986), (100, 26055), (105, 26088), (124, 26223),

Gene: Issa_27 Start: 24543, Stop: 25361, Start Num: 2

Candidate Starts for Issa_27:

(Start: 2 @24543 has 108 MA's), (6, 24585), (7, 24588), (9, 24597), (11, 24621), (21, 24738), (24, 24756), (30, 24798), (33, 24810), (52, 24906), (86, 25059), (105, 25161), (115, 25230), (117, 25242), (124, 25296),

Gene: JEGGS_22 Start: 21595, Stop: 22446, Start Num: 2

Candidate Starts for JEGGS_22:

(Start: 2 @21595 has 108 MA's), (16, 21727), (22, 21805), (55, 22000), (56, 22003), (64, 22048), (72, 22078), (98, 22186), (100, 22192), (118, 22327), (119, 22333), (120, 22339), (123, 22363), (125,

22372), (126, 22402), (129, 22414), (131, 22435),

Gene: Jaylociraptor_24 Start: 21621, Stop: 22445, Start Num: 2

Candidate Starts for Jaylociraptor_24:

(Start: 2 @21621 has 108 MA's), (Start: 4 @21633 has 1 MA's), (14, 21729), (16, 21744), (18, 21765), (33, 21891), (34, 21900), (54, 22002), (58, 22017), (91, 22158), (124, 22380), (129, 22413), (132, 22440),

Gene: Jazzy4900_25 Start: 23560, Stop: 24396, Start Num: 2

Candidate Starts for Jazzy4900_25:

(Start: 2 @23560 has 108 MA's), (3, 23563), (22, 23761), (33, 23830), (40, 23872), (41, 23878), (44, 23887), (57, 23959), (81, 24061), (88, 24091), (97, 24142), (108, 24223), (117, 24271), (132, 24391),

Gene: Kardashian_23 Start: 21569, Stop: 22402, Start Num: 2

Candidate Starts for Kardashian_23:

(Start: 2 @21569 has 108 MA's), (33, 21842), (38, 21872), (45, 21902), (54, 21953), (64, 22004), (66, 22010), (68, 22019), (76, 22043), (82, 22079), (83, 22082), (89, 22100), (98, 22154), (111, 22244), (132, 22397),

Gene: Kardesai_21 Start: 21274, Stop: 22125, Start Num: 2

Candidate Starts for Kardesai_21:

(Start: 2 @21274 has 108 MA's), (3, 21277), (16, 21406), (22, 21484), (54, 21676), (55, 21679), (56, 21682), (72, 21757), (74, 21760), (84, 21799), (96, 21853), (98, 21865), (100, 21871), (107, 21928), (116, 21982), (117, 21991), (119, 22012), (126, 22081), (128, 22090), (129, 22093), (131, 22114),

Gene: KeaneyLin_21 Start: 21671, Stop: 22522, Start Num: 2

Candidate Starts for KeaneyLin_21:

(Start: 2 @21671 has 108 MA's), (3, 21674), (16, 21803), (22, 21881), (54, 22073), (55, 22076), (56, 22079), (72, 22154), (84, 22196), (96, 22250), (98, 22262), (100, 22268), (107, 22325), (116, 22379), (117, 22388), (119, 22409), (126, 22478), (128, 22487), (129, 22490), (131, 22511),

Gene: Leathea_27 Start: 23520, Stop: 24353, Start Num: 2

Candidate Starts for Leathea_27:

(Start: 2 @23520 has 108 MA's), (5, 23559), (6, 23562), (10, 23589), (11, 23598), (33, 23790), (46, 23856), (47, 23859), (51, 23880), (52, 23886), (53, 23898), (105, 24144), (106, 24147), (124, 24282), (125, 24288),

Gene: Lewando_30 Start: 25545, Stop: 26378, Start Num: 2

Candidate Starts for Lewando_30:

(Start: 2 @25545 has 108 MA's), (6, 25587), (10, 25614), (11, 25623), (33, 25815), (44, 25866), (46, 25881), (47, 25884), (51, 25905), (52, 25911), (90, 26079), (98, 26127), (100, 26136), (105, 26169), (106, 26172), (121, 26283), (124, 26307), (125, 26313),

Gene: LibertyBell_22 Start: 20467, Stop: 21306, Start Num: 2

Candidate Starts for LibertyBell_22:

(Start: 2 @20467 has 108 MA's), (Start: 4 @20479 has 1 MA's), (9, 20521), (11, 20545), (13, 20566), (14, 20575), (33, 20737), (51, 20836), (59, 20893), (76, 20947), (94, 21028), (100, 21064), (103, 21085), (105, 21100), (121, 21211), (122, 21220), (124, 21235), (130, 21283),

Gene: LilHuddy_28 Start: 24911, Stop: 25729, Start Num: 2

Candidate Starts for LilHuddy_28:

(Start: 2 @24911 has 108 MA's), (6, 24953), (11, 24989), (21, 25106), (24, 25124), (25, 25130), (30, 25166), (33, 25178), (44, 25229), (58, 25304), (100, 25496), (115, 25598), (124, 25664),

Gene: Linda_24 Start: 21790, Stop: 22608, Start Num: 2

Candidate Starts for Linda_24:

(Start: 2 @21790 has 108 MA's), (13, 21889), (15, 21910), (16, 21913), (18, 21934), (22, 21985), (24, 21997), (25, 22003), (33, 22057), (39, 22090), (49, 22135), (57, 22180), (85, 22303), (86, 22306), (92, 22333), (116, 22480), (124, 22543),

Gene: Loretta_27 Start: 24453, Stop: 25271, Start Num: 2

Candidate Starts for Loretta_27:

(Start: 2 @24453 has 108 MA's), (3, 24456), (6, 24495), (11, 24531), (21, 24648), (24, 24666), (25, 24672), (30, 24708), (33, 24720), (47, 24789), (61, 24876), (65, 24888), (76, 24924), (86, 24969), (87, 24972), (91, 24987), (95, 25008), (100, 25038), (105, 25071), (106, 25074), (107, 25089), (110, 25113),

Gene: Madamoto_24 Start: 21597, Stop: 22421, Start Num: 2

Candidate Starts for Madamoto_24:

(Start: 2 @21597 has 108 MA's), (Start: 4 @21609 has 1 MA's), (14, 21705), (15, 21717), (16, 21720), (18, 21741), (33, 21867), (54, 21978), (58, 21993), (91, 22134), (120, 22329), (124, 22356), (129, 22389), (132, 22416),

Gene: Makai_27 Start: 24700, Stop: 25518, Start Num: 2

Candidate Starts for Makai_27:

(Start: 2 @24700 has 108 MA's), (Start: 4 @24712 has 1 MA's), (6, 24742), (11, 24778), (12, 24781), (21, 24895), (24, 24913), (30, 24955), (33, 24967), (58, 25093), (71, 25159), (100, 25285), (106, 25321), (115, 25387),

Gene: Maya_24 Start: 21635, Stop: 22459, Start Num: 2

Candidate Starts for Maya_24:

(Start: 2 @21635 has 108 MA's), (Start: 4 @21647 has 1 MA's), (14, 21743), (16, 21758), (18, 21779), (33, 21905), (34, 21914), (54, 22016), (58, 22031), (91, 22172), (124, 22394), (129, 22427), (132, 22454),

Gene: MediumFry_25 Start: 23899, Stop: 24717, Start Num: 2

Candidate Starts for MediumFry_25:

(Start: 2 @23899 has 108 MA's), (3, 23902), (11, 23977), (14, 24007), (16, 24022), (21, 24094), (24, 24112), (30, 24154), (33, 24166), (44, 24217), (52, 24262), (68, 24343), (91, 24433), (100, 24484), (105, 24517), (115, 24586), (124, 24652),

Gene: Meibysrarus_24 Start: 21621, Stop: 22445, Start Num: 2

Candidate Starts for Meibysrarus_24:

(Start: 2 @21621 has 108 MA's), (Start: 4 @21633 has 1 MA's), (14, 21729), (16, 21744), (18, 21765), (33, 21891), (34, 21900), (54, 22002), (58, 22017), (91, 22158), (124, 22380), (129, 22413), (132, 22440),

Gene: Michelle_24 Start: 21790, Stop: 22608, Start Num: 2

Candidate Starts for Michelle_24:

(Start: 2 @21790 has 108 MA's), (13, 21889), (15, 21910), (16, 21913), (18, 21934), (22, 21985), (24, 21997), (25, 22003), (33, 22057), (39, 22090), (49, 22135), (57, 22180), (85, 22303), (86, 22306), (92, 22333), (116, 22480), (124, 22543),

Gene: Miek_22 Start: 20533, Stop: 21363, Start Num: 2

Candidate Starts for Miek_22:

(Start: 2 @20533 has 108 MA's), (13, 20632), (27, 20758), (32, 20797), (33, 20803), (46, 20869), (58, 20929), (66, 20974), (70, 20989), (76, 21010), (85, 21055), (89, 21064), (103, 21148), (115, 21232), (129, 21331),

Gene: MiniBagel_27 Start: 25793, Stop: 26611, Start Num: 2

Candidate Starts for MiniBagel_27:

(Start: 2 @25793 has 108 MA's), (6, 25835), (9, 25847), (11, 25871), (21, 25988), (24, 26006), (25, 26012), (30, 26048), (33, 26060), (52, 26156), (86, 26309), (104, 26399), (115, 26480), (117, 26492), (124, 26546),

Gene: Mooshroom_21 Start: 21274, Stop: 22125, Start Num: 2

Candidate Starts for Mooshroom_21:

(Start: 2 @21274 has 108 MA's), (3, 21277), (16, 21406), (22, 21484), (54, 21676), (55, 21679), (56, 21682), (72, 21757), (74, 21760), (84, 21799), (96, 21853), (98, 21865), (100, 21871), (107, 21928), (116, 21982), (117, 21991), (119, 22012), (126, 22081), (128, 22090), (129, 22093), (131, 22114),

Gene: Moozy_20 Start: 18715, Stop: 19542, Start Num: 2

Candidate Starts for Moozy_20:

(Start: 2 @18715 has 108 MA's), (14, 18823), (18, 18859), (28, 18952), (33, 18988), (39, 19021), (44, 19039), (45, 19048), (47, 19057), (57, 19111), (58, 19114), (80, 19204), (89, 19243), (100, 19306), (103, 19327), (105, 19342),

Gene: MrAaronian_24 Start: 21790, Stop: 22608, Start Num: 2

Candidate Starts for MrAaronian_24:

(Start: 2 @21790 has 108 MA's), (13, 21889), (15, 21910), (16, 21913), (18, 21934), (22, 21985), (24, 21997), (25, 22003), (33, 22057), (39, 22090), (49, 22135), (57, 22180), (85, 22303), (86, 22306), (92, 22333), (116, 22480), (124, 22543),

Gene: Mudcat_22 Start: 23572, Stop: 24423, Start Num: 2

Candidate Starts for Mudcat_22:

(Start: 2 @23572 has 108 MA's), (16, 23704), (22, 23782), (55, 23977), (56, 23980), (64, 24025), (72, 24055), (98, 24163), (100, 24169), (118, 24304), (119, 24310), (120, 24316), (123, 24340), (125, 24349), (126, 24379), (129, 24391), (131, 24412),

Gene: Namo_24 Start: 21627, Stop: 22451, Start Num: 2

Candidate Starts for Namo_24:

(Start: 2 @21627 has 108 MA's), (Start: 4 @21639 has 1 MA's), (14, 21735), (16, 21750), (18, 21771), (33, 21897), (34, 21906), (54, 22008), (58, 22023), (124, 22386), (129, 22419), (132, 22446),

Gene: NapoleonB_22 Start: 21671, Stop: 22522, Start Num: 2

Candidate Starts for NapoleonB_22:

(Start: 2 @21671 has 108 MA's), (16, 21803), (22, 21881), (55, 22076), (56, 22079), (64, 22124), (72, 22154), (98, 22262), (100, 22268), (118, 22403), (119, 22409), (120, 22415), (123, 22439), (125, 22448), (126, 22478), (129, 22490), (131, 22511),

Gene: Nason_23 Start: 22148, Stop: 22999, Start Num: 2

Candidate Starts for Nason_23:

(Start: 2 @22148 has 108 MA's), (16, 22280), (22, 22358), (55, 22553), (56, 22556), (64, 22601), (72, 22631), (98, 22739), (100, 22745), (118, 22880), (119, 22886), (120, 22892), (123, 22916), (125, 22925), (126, 22955), (129, 22967), (131, 22988),

Gene: Nightmare_28 Start: 25103, Stop: 25921, Start Num: 2

Candidate Starts for Nightmare_28:

(Start: 2 @25103 has 108 MA's), (6, 25145), (7, 25148), (9, 25157), (11, 25181), (21, 25298), (24, 25316), (30, 25358), (33, 25370), (52, 25466), (86, 25619), (105, 25721), (115, 25790), (117, 25802), (124, 25856),

Gene: Niktson_27 Start: 25265, Stop: 26083, Start Num: 2

Candidate Starts for Niktson_27:

(Start: 2 @25265 has 108 MA's), (6, 25307), (7, 25310), (9, 25319), (11, 25343), (21, 25460), (24, 25478), (30, 25520), (33, 25532), (52, 25628), (57, 25655), (86, 25781), (105, 25883), (115, 25952), (117, 25964), (124, 26018),

Gene: Nivinsha_27 Start: 24653, Stop: 25471, Start Num: 2

Candidate Starts for Nivinsha_27:

(Start: 2 @24653 has 108 MA's), (Start: 4 @24665 has 1 MA's), (6, 24695), (9, 24707), (11, 24731), (21, 24848), (24, 24866), (30, 24908), (33, 24920), (52, 25016), (86, 25169), (105, 25271), (115, 25340), (117, 25352), (124, 25406),

Gene: OlympicHelado_24 Start: 21627, Stop: 22451, Start Num: 2

Candidate Starts for OlympicHelado_24:

(Start: 2 @21627 has 108 MA's), (Start: 4 @21639 has 1 MA's), (13, 21726), (16, 21750), (18, 21771), (33, 21897), (54, 22008), (58, 22023), (124, 22386), (129, 22419), (132, 22446),

Gene: Paella_41 Start: 33771, Stop: 34610, Start Num: 2

Candidate Starts for Paella_41:

(Start: 2 @33771 has 108 MA's), (3, 33774), (5, 33810), (20, 33963), (22, 33972), (33, 34041), (40, 34083), (44, 34095), (58, 34170), (63, 34203), (67, 34215), (86, 34293), (87, 34296), (91, 34320), (117, 34491),

Gene: Phaby_28 Start: 24840, Stop: 25658, Start Num: 2

Candidate Starts for Phaby_28:

(Start: 2 @24840 has 108 MA's), (6, 24882), (11, 24918), (21, 25035), (24, 25053), (25, 25059), (30, 25095), (33, 25107), (44, 25158), (46, 25173), (58, 25233), (100, 25425), (115, 25527), (124, 25593),

Gene: PherryCruz_19 Start: 18700, Stop: 19527, Start Num: 2

Candidate Starts for PherryCruz_19:

(Start: 2 @18700 has 108 MA's), (14, 18808), (18, 18844), (28, 18937), (33, 18973), (39, 19006), (42, 19018), (44, 19024), (45, 19033), (47, 19042), (54, 19084), (57, 19096), (58, 19099), (80, 19189), (89, 19228), (100, 19291), (103, 19312), (105, 19327),

Gene: Popy_24 Start: 22143, Stop: 22958, Start Num: 4

Candidate Starts for Popy_24:

(Start: 2 @22131 has 108 MA's), (Start: 4 @22143 has 1 MA's), (16, 22254), (18, 22275), (33, 22401), (34, 22410), (54, 22512), (58, 22527), (83, 22644), (86, 22653), (103, 22743), (120, 22866), (124, 22893), (129, 22926), (132, 22953),

Gene: ProfFrink_24 Start: 21790, Stop: 22608, Start Num: 2

Candidate Starts for ProfFrink_24:

(Start: 2 @21790 has 108 MA's), (13, 21889), (15, 21910), (16, 21913), (18, 21934), (22, 21985), (24, 21997), (25, 22003), (33, 22057), (39, 22090), (49, 22135), (57, 22180), (85, 22303), (86, 22306), (92, 22333), (116, 22480), (124, 22543),

Gene: Qui_41 Start: 33771, Stop: 34610, Start Num: 2

Candidate Starts for Qui_41:

(Start: 2 @33771 has 108 MA's), (3, 33774), (5, 33810), (20, 33963), (22, 33972), (33, 34041), (40, 34083), (44, 34095), (58, 34170), (63, 34203), (67, 34215), (86, 34293), (87, 34296), (91, 34320), (117, 34491),

Gene: Rainydai_22 Start: 20533, Stop: 21363, Start Num: 2

Candidate Starts for Rainydai_22:

(Start: 2 @20533 has 108 MA's), (13, 20632), (27, 20758), (32, 20797), (33, 20803), (46, 20869), (58, 20929), (66, 20974), (70, 20989), (76, 21010), (85, 21055), (89, 21064), (103, 21148), (115, 21232), (129, 21331),

Gene: Raunak_24 Start: 21790, Stop: 22608, Start Num: 2

Candidate Starts for Raunak_24:

(Start: 2 @21790 has 108 MA's), (13, 21889), (15, 21910), (16, 21913), (18, 21934), (22, 21985), (24, 21997), (25, 22003), (33, 22057), (39, 22090), (49, 22135), (57, 22180), (85, 22303), (86, 22306), (92, 22333), (116, 22480), (124, 22543),

Gene: RavenPuff_19 Start: 18700, Stop: 19527, Start Num: 2

Candidate Starts for RavenPuff_19:

(Start: 2 @18700 has 108 MA's), (14, 18808), (18, 18844), (28, 18937), (33, 18973), (39, 19006), (42, 19018), (44, 19024), (45, 19033), (47, 19042), (54, 19084), (57, 19096), (58, 19099), (80, 19189), (89, 19228), (100, 19291), (103, 19312), (105, 19327),

Gene: Regigigas_23 Start: 20533, Stop: 21363, Start Num: 2

Candidate Starts for Regigigas_23:

(Start: 2 @20533 has 108 MA's), (13, 20632), (27, 20758), (32, 20797), (33, 20803), (46, 20869), (58, 20929), (66, 20974), (70, 20989), (76, 21010), (85, 21055), (89, 21064), (103, 21148), (115, 21232), (129, 21331),

Gene: Renaldo_32 Start: 25623, Stop: 26387, Start Num: 10

Candidate Starts for Renaldo_32:

(1, 25425), (Start: 2 @25554 has 108 MA's), (5, 25593), (6, 25596), (10, 25623), (11, 25632), (33, 25824), (44, 25875), (46, 25890), (47, 25893), (51, 25914), (52, 25920), (90, 26088), (98, 26136), (100, 26145), (105, 26178), (106, 26181), (121, 26292), (124, 26316), (125, 26322),

Gene: Rima_24 Start: 21627, Stop: 22451, Start Num: 2

Candidate Starts for Rima_24:

(Start: 2 @21627 has 108 MA's), (Start: 4 @21639 has 1 MA's), (14, 21735), (16, 21750), (18, 21771), (33, 21897), (34, 21906), (54, 22008), (58, 22023), (124, 22386), (129, 22419), (132, 22446),

Gene: RosaAsantewaa_20 Start: 18511, Stop: 19335, Start Num: 2

Candidate Starts for RosaAsantewaa_20:

(Start: 2 @18511 has 108 MA's), (12, 18592), (16, 18634), (29, 18754), (33, 18781), (42, 18826), (44, 18832), (54, 18892), (58, 18907), (62, 18937), (64, 18943), (66, 18949), (85, 19027), (97, 19087), (103, 19120), (105, 19135), (115, 19204), (121, 19246),

Gene: Salk_24 Start: 21790, Stop: 22608, Start Num: 2

Candidate Starts for Salk_24:

(Start: 2 @21790 has 108 MA's), (13, 21889), (15, 21910), (18, 21934), (22, 21985), (24, 21997), (25, 22003), (33, 22057), (39, 22090), (49, 22135), (57, 22180), (85, 22303), (86, 22306), (92, 22333), (116, 22480), (124, 22543),

Gene: Scap1_20 Start: 18655, Stop: 19479, Start Num: 2

Candidate Starts for Scap1_20:

(Start: 2 @18655 has 108 MA's), (18, 18799), (33, 18925), (39, 18958), (44, 18976), (47, 18994), (57, 19048), (58, 19051), (89, 19180), (94, 19207), (103, 19264), (105, 19279), (115, 19348), (124, 19414),

Gene: ScienceWizSam_29 Start: 25054, Stop: 25872, Start Num: 2

Candidate Starts for ScienceWizSam_29:

(Start: 2 @25054 has 108 MA's), (Start: 4 @25066 has 1 MA's), (6, 25096), (9, 25108), (11, 25132), (21, 25249), (24, 25267), (30, 25309), (33, 25321), (52, 25417), (57, 25444), (58, 25447), (86, 25570), (105, 25672), (115, 25741), (117, 25753), (124, 25807),

Gene: SendItCS_21 Start: 20533, Stop: 21363, Start Num: 2

Candidate Starts for SendItCS_21:

(Start: 2 @20533 has 108 MA's), (13, 20632), (27, 20758), (32, 20797), (33, 20803), (46, 20869), (58, 20929), (66, 20974), (70, 20989), (76, 21010), (85, 21055), (89, 21064), (103, 21148), (115, 21232), (129, 21331),

Gene: SheRa_20 Start: 18699, Stop: 19526, Start Num: 2

Candidate Starts for SheRa_20:

(Start: 2 @18699 has 108 MA's), (14, 18807), (18, 18843), (28, 18936), (29, 18945), (33, 18972), (39, 19005), (44, 19023), (45, 19032), (47, 19041), (57, 19095), (58, 19098), (80, 19188), (89, 19227), (98, 19281), (100, 19290), (103, 19311), (105, 19326),

Gene: Shepard_28 Start: 24908, Stop: 25726, Start Num: 2

Candidate Starts for Shepard_28:

(Start: 2 @24908 has 108 MA's), (6, 24950), (11, 24986), (21, 25103), (24, 25121), (25, 25127), (30, 25163), (31, 25166), (33, 25175), (44, 25226), (46, 25241), (58, 25301), (100, 25493), (115, 25595), (124, 25661),

Gene: Shiba_24 Start: 21790, Stop: 22608, Start Num: 2

Candidate Starts for Shiba_24:

(Start: 2 @21790 has 108 MA's), (13, 21889), (15, 21910), (16, 21913), (18, 21934), (22, 21985), (24, 21997), (25, 22003), (33, 22057), (39, 22090), (49, 22135), (57, 22180), (85, 22303), (86, 22306), (92, 22333), (116, 22480), (124, 22543),

Gene: Sloopyjoe_24 Start: 21791, Stop: 22609, Start Num: 2

Candidate Starts for Sloopyjoe_24:

(Start: 2 @21791 has 108 MA's), (13, 21890), (15, 21911), (16, 21914), (18, 21935), (22, 21986), (24, 21998), (25, 22004), (33, 22058), (39, 22091), (49, 22136), (57, 22181), (85, 22304), (86, 22307), (92, 22334), (116, 22481), (124, 22544),

Gene: Soshi_24 Start: 22140, Stop: 22964, Start Num: 2

Candidate Starts for Soshi_24:

(Start: 2 @22140 has 108 MA's), (Start: 4 @22152 has 1 MA's), (14, 22248), (16, 22263), (18, 22284), (33, 22410), (34, 22419), (54, 22521), (58, 22536), (68, 22587), (103, 22749), (120, 22872), (124, 22899), (129, 22932), (132, 22959),

Gene: Spectropatronm_24 Start: 21621, Stop: 22445, Start Num: 2

Candidate Starts for Spectropatronm_24:

(Start: 2 @21621 has 108 MA's), (Start: 4 @21633 has 1 MA's), (14, 21729), (16, 21744), (18, 21765), (33, 21891), (34, 21900), (54, 22002), (58, 22017), (91, 22158), (124, 22380), (129, 22413), (132, 22440),

Gene: Sporto_25 Start: 23001, Stop: 23819, Start Num: 2

Candidate Starts for Sporto_25:

(Start: 2 @23001 has 108 MA's), (9, 23055), (13, 23100), (15, 23121), (16, 23124), (18, 23145), (22, 23196), (24, 23208), (25, 23214), (29, 23241), (33, 23268), (39, 23301), (44, 23319), (49, 23346), (68, 23445), (81, 23493), (86, 23517), (92, 23544), (100, 23586), (124, 23754),

Gene: StarLord_24 Start: 21791, Stop: 22609, Start Num: 2

Candidate Starts for StarLord_24:

(Start: 2 @21791 has 108 MA's), (13, 21890), (15, 21911), (16, 21914), (18, 21935), (22, 21986), (24, 21998), (25, 22004), (33, 22058), (39, 22091), (49, 22136), (57, 22181), (85, 22304), (86, 22307), (92, 22334), (116, 22481), (124, 22544),

Gene: Stayer_24 Start: 21790, Stop: 22608, Start Num: 2

Candidate Starts for Stayer_24:

(Start: 2 @21790 has 108 MA's), (13, 21889), (15, 21910), (16, 21913), (18, 21934), (22, 21985), (24, 21997), (25, 22003), (33, 22057), (39, 22090), (49, 22135), (57, 22180), (85, 22303), (86, 22306), (92, 22333), (116, 22480), (124, 22543),

Gene: Sunny4976_24 Start: 23560, Stop: 24396, Start Num: 2

Candidate Starts for Sunny4976_24:

(Start: 2 @23560 has 108 MA's), (3, 23563), (22, 23761), (33, 23830), (40, 23872), (41, 23878), (44, 23887), (57, 23959), (81, 24061), (88, 24091), (97, 24142), (108, 24223), (117, 24271), (132, 24391),

Gene: Synopsis_26 Start: 24717, Stop: 25535, Start Num: 2

Candidate Starts for Synopsis_26:

(Start: 2 @24717 has 108 MA's), (Start: 4 @24729 has 1 MA's), (6, 24759), (9, 24771), (11, 24795), (21, 24912), (24, 24930), (30, 24972), (33, 24984), (52, 25080), (57, 25107), (58, 25110), (86, 25233), (105, 25335), (115, 25404), (117, 25416), (124, 25470),

Gene: TaidaOne_24 Start: 22269, Stop: 23093, Start Num: 2

Candidate Starts for TaidaOne_24:

(Start: 2 @22269 has 108 MA's), (Start: 4 @22281 has 1 MA's), (13, 22368), (16, 22392), (18, 22413), (33, 22539), (54, 22650), (58, 22665), (124, 23028), (129, 23061), (132, 23088),

Gene: Tatanka_27 Start: 25201, Stop: 26019, Start Num: 2

Candidate Starts for Tatanka_27:

(Start: 2 @25201 has 108 MA's), (Start: 4 @25213 has 1 MA's), (6, 25243), (9, 25255), (11, 25279), (21, 25396), (24, 25414), (30, 25456), (33, 25468), (52, 25564), (57, 25591), (58, 25594), (86, 25717), (105, 25819), (115, 25888), (117, 25900), (124, 25954),

Gene: Teacup_27 Start: 24573, Stop: 25391, Start Num: 2

Candidate Starts for Teacup_27:

(Start: 2 @24573 has 108 MA's), (6, 24615), (9, 24627), (11, 24651), (21, 24768), (24, 24786), (30, 24828), (33, 24840), (52, 24936), (86, 25089), (105, 25191), (115, 25260), (117, 25272), (124, 25326),

Gene: Tenno_28 Start: 25802, Stop: 26620, Start Num: 2

Candidate Starts for Tenno_28:

(Start: 2 @25802 has 108 MA's), (6, 25844), (9, 25856), (11, 25880), (21, 25997), (24, 26015), (25, 26021), (30, 26057), (33, 26069), (52, 26165), (86, 26318), (104, 26408), (115, 26489), (117, 26501), (124, 26555),

Gene: Thiqqums_22 Start: 20533, Stop: 21363, Start Num: 2

Candidate Starts for Thiqqums_22:

(Start: 2 @20533 has 108 MA's), (13, 20632), (27, 20758), (32, 20797), (33, 20803), (46, 20869), (58, 20929), (66, 20974), (70, 20989), (76, 21010), (85, 21055), (89, 21064), (103, 21148), (115, 21232),

(129, 21331),

Gene: TieDye_23 Start: 21313, Stop: 22137, Start Num: 2

Candidate Starts for TieDye_23:

(Start: 2 @21313 has 108 MA's), (Start: 4 @21325 has 1 MA's), (13, 21412), (16, 21436), (18, 21457), (33, 21583), (54, 21694), (58, 21709), (124, 22072), (129, 22105), (132, 22132),

Gene: Tokki_28 Start: 24856, Stop: 25674, Start Num: 2

Candidate Starts for Tokki_28:

(Start: 2 @24856 has 108 MA's), (6, 24898), (11, 24934), (21, 25051), (24, 25069), (25, 25075), (30, 25111), (33, 25123), (44, 25174), (46, 25189), (58, 25249), (100, 25441), (115, 25543), (124, 25609),

Gene: TonyStarch_24 Start: 21627, Stop: 22451, Start Num: 2

Candidate Starts for TonyStarch_24:

(Start: 2 @21627 has 108 MA's), (Start: 4 @21639 has 1 MA's), (13, 21726), (16, 21750), (18, 21771), (33, 21897), (54, 22008), (58, 22023), (124, 22386), (129, 22419), (132, 22446),

Gene: Tribby_23 Start: 21863, Stop: 22714, Start Num: 2

Candidate Starts for Tribby_23:

(Start: 2 @21863 has 108 MA's), (16, 21995), (22, 22073), (55, 22268), (56, 22271), (64, 22316), (72, 22346), (98, 22454), (100, 22460), (118, 22595), (119, 22601), (120, 22607), (123, 22631), (126, 22670), (129, 22682), (131, 22703),

Gene: Truckee_26 Start: 24745, Stop: 25563, Start Num: 2

Candidate Starts for Truckee_26:

(Start: 2 @24745 has 108 MA's), (Start: 4 @24757 has 1 MA's), (6, 24787), (11, 24823), (12, 24826), (21, 24940), (24, 24958), (30, 25000), (33, 25012), (58, 25138), (71, 25204), (100, 25330), (105, 25363), (115, 25432), (124, 25498),

Gene: Trustiboi_28 Start: 25270, Stop: 26088, Start Num: 2

Candidate Starts for Trustiboi_28:

(Start: 2 @25270 has 108 MA's), (Start: 4 @25282 has 1 MA's), (6, 25312), (7, 25315), (9, 25324), (11, 25348), (21, 25465), (24, 25483), (30, 25525), (33, 25537), (52, 25633), (86, 25786), (105, 25888), (115, 25957), (117, 25969), (124, 26023),

Gene: Uzumaki_27 Start: 24442, Stop: 25278, Start Num: 2

Candidate Starts for Uzumaki_27:

(Start: 2 @24442 has 108 MA's), (5, 24481), (10, 24511), (23, 24649), (33, 24712), (37, 24733), (47, 24781), (51, 24802), (56, 24829), (99, 25033), (100, 25036), (112, 25123), (124, 25207), (125, 25213), (129, 25246),

Gene: Xenomorph_21 Start: 21881, Stop: 22732, Start Num: 2

Candidate Starts for Xenomorph_21:

(Start: 2 @21881 has 108 MA's), (3, 21884), (16, 22013), (22, 22091), (54, 22283), (55, 22286), (72, 22364), (84, 22406), (98, 22472), (100, 22478), (105, 22517), (116, 22589), (117, 22598), (119, 22619), (126, 22688), (128, 22697), (129, 22700), (131, 22721),

Gene: Zeina_27 Start: 23823, Stop: 24659, Start Num: 2

Candidate Starts for Zeina_27:

(Start: 2 @23823 has 108 MA's), (5, 23862), (10, 23892), (11, 23901), (23, 24030), (33, 24093), (37, 24114), (47, 24162), (51, 24183), (56, 24210), (99, 24414), (100, 24417), (112, 24504), (124, 24588), (125, 24594), (129, 24627),