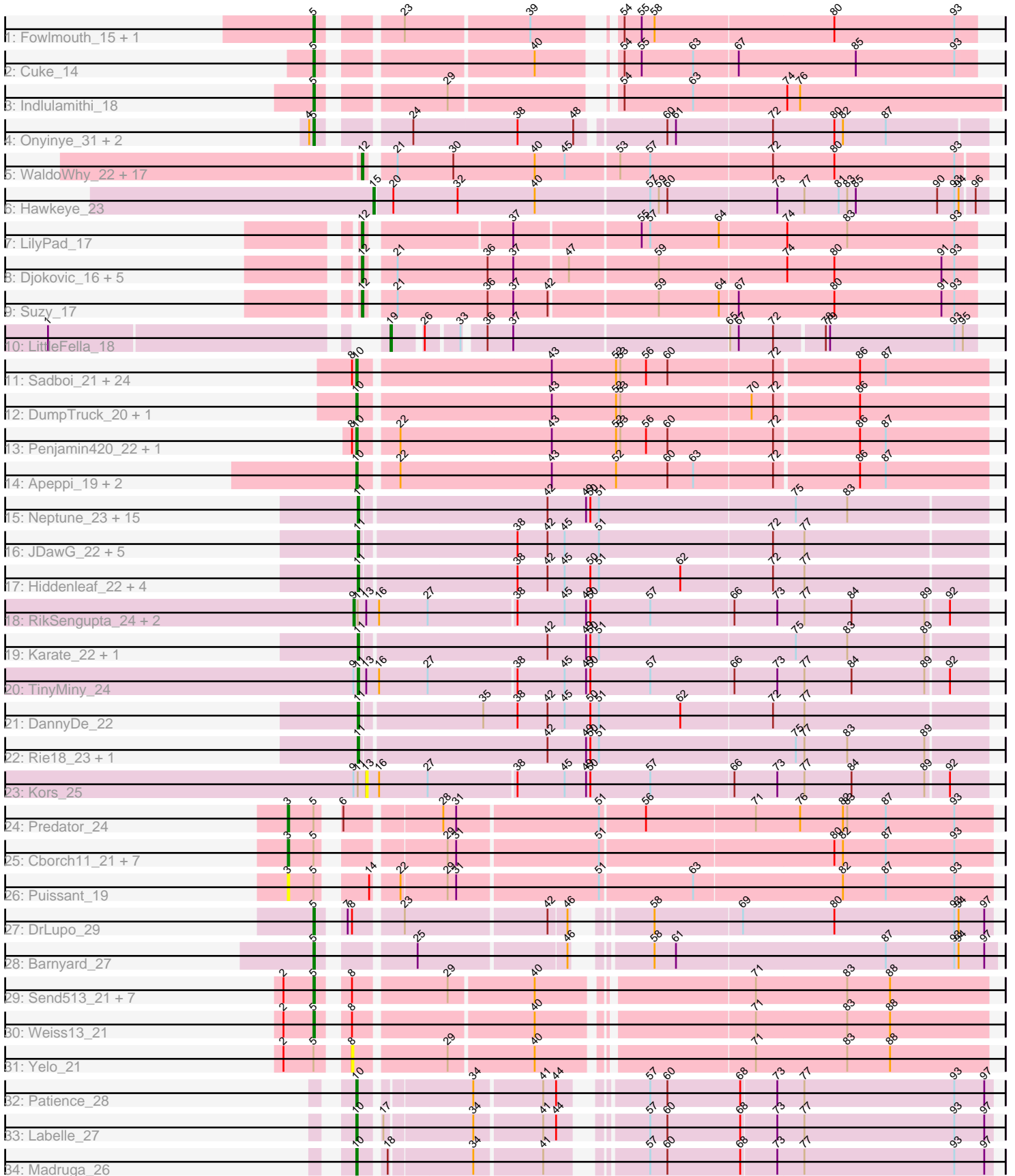


Pham 163443



Note: Tracks are now grouped by subcluster and scaled. Switching in subcluster is indicated by changes in track color. Track scale is now set by default to display the region 30 bp upstream of start 1 to 30 bp downstream of the last possible start. If this default region is judged to be packed too tightly with annotated starts, the track will be further scaled to only show that region of the ORF with annotated starts. This action will be indicated by adding "Zoomed" to the title. For starts, yellow indicates the location of called starts comprised solely of Glimmer/GeneMark auto-annotations, green indicates the location of called starts with at least 1 manual gene annotation.

Pham 163443 Report

This analysis was run 04/28/24 on database version 559.

Pham number 163443 has 129 members, 22 are drafts.

Phages represented in each track:

- Track 1 : Fowlmouth_15, MrMiyagi_15
- Track 2 : Cuke_14
- Track 3 : Indlulamithi_18
- Track 4 : Onyinye_31, Leopard_30, Aikoy_30
- Track 5 : WaldoWhy_22, Nova_21, Butterscotch_21, SirHarley_20, Penelope2018_21, Thoth_21, Chill_22, Giuseppe_21, Mopey_21, Prager_21, PLOT_22, Troll4_21, Adjutor_22, Visconti_21, Gumball_20, Helpful_22, Delton_21, PBI1_22
- Track 6 : Hawkeye_23
- Track 7 : LilyPad_17
- Track 8 : Djokovic_16, Madi_16, Terapin_16, BiteSize_16, Sienna_16, Beyoncage_16
- Track 9 : Suzy_17
- Track 10 : LittleFella_18
- Track 11 : Sadboi_21, Sampudon_21, Yikes_22, Gibbin_22, ParvusTarda_21, Lambo_21, OtterstedtS21_21, Fulcrum_22, Alyssamiracle_20, Lila22_22, Genamy16_20, MoiGyank_22, Rumi_20, Avian_19, GretelLyn_21, BirthdayBoy_22, Patos_22, GOATification_22, Erutan_21, Ranch_21, Wojtek_20, NovaSharks_20, NorManre_22, Jalebi_21, DoobyDoo_20
- Track 12 : DumpTruck_20, Xenia2_21
- Track 13 : Penjamin420_22, Zany_20
- Track 14 : Apeppi_19, LuckyLeo_20, Tillicus_21
- Track 15 : Neptune_23, Krampus_23, Pharpay_23, Gilda_23, Anakin_23, Rachella_23, Poultruss_22, Kate_23, AnnaSerena_23, CoolCookie_27, Potty_23, PhunaPhoke_23, Tedro_23, Cybele_23, OverHedge_23, NarutoRun_23
- Track 16 : JDawG_22, Crestdrop_23, Dauntless_23, Aesir_22, Erudite_22, MortySmith_21
- Track 17 : Hiddenleaf_22, Snakehole_24, FreddieHg_22, Chivey_22, JingleBells_22
- Track 18 : RikSengupta_24, Ajin_25, Sparcetus_24
- Track 19 : Karate_22, Haunter_23
- Track 20 : TinyMiny_24
- Track 21 : DannyDe_22
- Track 22 : Rie18_23, Hager_24
- Track 23 : Kors_25
- Track 24 : Predator_24
- Track 25 : Cborch11_21, Phreeze_20, Damien_20, Beckerton_20, Oaker_20, Konstantine_25, Thumb_20, Megatron06_23

- Track 26 : Puissant_19
- Track 27 : DrLupo_29
- Track 28 : Barnyard_27
- Track 29 : Send513_21, MontyDev_21, Candle_21, Nilo_22, Papyrus_21, Riparian_21, Zenon_22, Rope_21
- Track 30 : Weiss13_21
- Track 31 : Yelo_21
- Track 32 : Patience_28
- Track 33 : Labelle_27
- Track 34 : Madruga_26

Summary of Final Annotations (See graph section above for start numbers):

The start number called the most often in the published annotations is 10, it was called in 28 of the 107 non-draft genes in the pham.

Genes that call this "Most Annotated" start:

- Alyssmiracle_20, Apeppi_19, Avian_19, BirthdayBoy_22, DoobyDoo_20, DumpTruck_20, Erutan_21, Fulcrum_22, GOATification_22, Genamy16_20, Gibbin_22, Gretellyn_21, Jalebi_21, Labelle_27, Lambo_21, Lila22_22, LuckyLeo_20, Madruga_26, MoiGyank_22, NorManre_22, NovaSharks_20, OtterstedtS21_21, ParvusTarda_21, Patience_28, Patos_22, Penjamin420_22, Ranch_21, Rumi_20, Sadboi_21, Sampudon_21, Tillicus_21, Wojtek_20, Xenia2_21, Yikes_22, Zany_20,

Genes that have the "Most Annotated" start but do not call it:

-

Genes that do not have the "Most Annotated" start:

- Adjutor_22, Aesir_22, Aikoy_30, Ajin_25, Anakin_23, AnnaSerena_23, Barnyard_27, Beckerton_20, Beyoncage_16, BiteSize_16, Butterscotch_21, Candle_21, Cborch11_21, Chill_22, Chivey_22, CoolCookie_27, Crestdrop_23, Cuke_14, Cybele_23, Damien_20, DannyDe_22, Dauntless_23, Delton_21, Djokovic_16, DrLupo_29, Erudite_22, Fowlmouth_15, FreddieHg_22, Gilda_23, Giuseppe_21, Gumball_20, Hager_24, Haunter_23, Hawkeye_23, Helpful_22, Hiddenleaf_22, Indlulamithi_18, JDawG_22, JingleBells_22, Karate_22, Kate_23, Konstantine_25, Kors_25, Krampus_23, Leopard_30, LilyPad_17, LittleFella_18, Madi_16, Megatron06_23, MontyDev_21, Mopey_21, MortySmith_21, MrMiyagi_15, NarutoRun_23, Neptune_23, Nilo_22, Nova_21, Oaker_20, Onyinye_31, OverHedge_23, PBI1_22, PLOT_22, Papyrus_21, Penelope2018_21, Pharpay_23, Phreeze_20, PhunaPhoke_23, Potty_23, Poultruss_22, Prager_21, Predator_24, Puissant_19, Rachella_23, Rie18_23, RikSengupta_24, Riparian_21, Rope_21, Send513_21, Sienna_16, SirHarley_20, Snakehole_24, Sparcetus_24, Suzy_17, Tedro_23, Terapin_16, Thoth_21, Thumb_20, TinyMiny_24, Troll4_21, Visconti_21, WaldoWhy_22, Weiss13_21, Yelo_21, Zenon_22,

Summary by start number:

Start 3:

- Found in 10 of 129 (7.8%) of genes in pham

- Manual Annotations of this start: 8 of 107
- Called 100.0% of time when present
- Phage (with cluster) where this start called: Beckerton_20 (H1), Cborch11_21 (H1), Damien_20 (H1), Konstantine_25 (H1), Megatron06_23 (H1), Oaker_20 (H1), Phreeze_20 (H1), Predator_24 (H1), Puissant_19 (H1), Thumb_20 (H1),

Start 5:

- Found in 29 of 129 (22.5%) of genes in pham
- Manual Annotations of this start: 17 of 107
- Called 62.1% of time when present
- Phage (with cluster) where this start called: Aikoy_30 (AE), Barnyard_27 (H2), Candle_21 (R), Cuke_14 (AC), DrLupo_29 (H2), Fowlmouth_15 (AC), Indlulamithi_18 (AC), Leopard_30 (AE), MontyDev_21 (R), MrMiyagi_15 (AC), Nilo_22 (R), Onyinye_31 (AE), Papyrus_21 (R), Riparian_21 (R), Rope_21 (R), Send513_21 (R), Weiss13_21 (R), Zenon_22 (R),

Start 8:

- Found in 38 of 129 (29.5%) of genes in pham
- No Manual Annotations of this start.
- Called 2.6% of time when present
- Phage (with cluster) where this start called: Yelo_21 (R),

Start 9:

- Found in 5 of 129 (3.9%) of genes in pham
- Manual Annotations of this start: 2 of 107
- Called 60.0% of time when present
- Phage (with cluster) where this start called: Ajin_25 (EF), RikSengupta_24 (EF), Sparcetus_24 (EF),

Start 10:

- Found in 35 of 129 (27.1%) of genes in pham
- Manual Annotations of this start: 28 of 107
- Called 100.0% of time when present
- Phage (with cluster) where this start called: Alyssamiracle_20 (DV), Apeppi_19 (DV), Avian_19 (DV), BirthdayBoy_22 (DV), DoobyDoo_20 (DV), DumpTruck_20 (DV), Erutan_21 (DV), Fulcrum_22 (DV), GOATification_22 (DV), Genamy16_20 (DV), Gibbin_22 (DV), GretelLyn_21 (DV), Jalebi_21 (DV), Labelle_27 (U), Lambo_21 (DV), Lila22_22 (DV), LuckyLeo_20 (DV), Madruga_26 (U), MoiGyank_22 (DV), NorManre_22 (DV), NovaSharks_20 (DV), OtterstedtS21_21 (DV), ParvusTarda_21 (DV), Patience_28 (U), Patos_22 (DV), Penjamin420_22 (DV), Ranch_21 (DV), Rumi_20 (DV), Sadboi_21 (DV), Sampudon_21 (DV), Tillicus_21 (DV), Wojtek_20 (DV), Xenia2_21 (DV), Yikes_22 (DV), Zany_20 (DV),

Start 11:

- Found in 37 of 129 (28.7%) of genes in pham
- Manual Annotations of this start: 25 of 107
- Called 89.2% of time when present
- Phage (with cluster) where this start called: Aesir_22 (EF), Anakin_23 (EF), AnnaSerena_23 (EF), Chivey_22 (EF), CoolCookie_27 (EF), Crestdrop_23 (EF), Cybele_23 (EF), DannyDe_22 (EF), Dauntless_23 (EF), Erudite_22 (EF), FreddieHg_22 (EF), Gilda_23 (EF), Hager_24 (EF), Haunter_23 (EF), Hiddenleaf_22 (EF), JDawG_22 (EF), JingleBells_22 (EF), Karate_22 (EF), Kate_23 (EF), Krampus_23 (EF), MortySmith_21 (EF), NarutoRun_23 (EF), Neptune_23 (EF),

OverHedge_23 (EF), Pharpay_23 (EF), PhunaPhoke_23 (EF), Potty_23 (EF), Poultruss_22 (EF), Rachella_23 (EF), Rie18_23 (EF), Snakehole_24 (EF), Tedro_23 (EF), TinyMiny_24 (EF),

Start 12:

- Found in 26 of 129 (20.2%) of genes in pham
- Manual Annotations of this start: 25 of 107
- Called 100.0% of time when present
- Phage (with cluster) where this start called: Adjutor_22 (D1), Beyoncage_16 (DG1), BiteSize_16 (DG1), Butterscotch_21 (D1), Chill_22 (D1), Delton_21 (D1), Djokovic_16 (DG1), Giuseppe_21 (D1), Gumball_20 (D1), Helpful_22 (D1), LilyPad_17 (DG1), Madi_16 (DG1), Mopey_21 (D1), Nova_21 (D1), PBI1_22 (D1), PLOT_22 (D1), Penelope2018_21 (D1), Prager_21 (D1), Sienna_16 (DG1), SirHarley_20 (D1), Suzy_17 (DG1), Terapin_16 (DG1), Thoth_21 (D1), Troll4_21 (D1), Visconti_21 (D1), WaldoWhy_22 (D1),

Start 13:

- Found in 5 of 129 (3.9%) of genes in pham
- No Manual Annotations of this start.
- Called 20.0% of time when present
- Phage (with cluster) where this start called: Kors_25 (EF),

Start 15:

- Found in 1 of 129 (0.8%) of genes in pham
- Manual Annotations of this start: 1 of 107
- Called 100.0% of time when present
- Phage (with cluster) where this start called: Hawkeye_23 (D2),

Start 19:

- Found in 1 of 129 (0.8%) of genes in pham
- Manual Annotations of this start: 1 of 107
- Called 100.0% of time when present
- Phage (with cluster) where this start called: LittleFella_18 (DG2),

Summary by clusters:

There are 12 clusters represented in this pham: AC, EF, AE, H2, H1, DG2, DG1, U, DV, R, D2, D1,

Info for manual annotations of cluster AC:

- Start number 5 was manually annotated 4 times for cluster AC.

Info for manual annotations of cluster AE:

- Start number 5 was manually annotated 3 times for cluster AE.

Info for manual annotations of cluster D1:

- Start number 12 was manually annotated 17 times for cluster D1.

Info for manual annotations of cluster D2:

- Start number 15 was manually annotated 1 time for cluster D2.

Info for manual annotations of cluster DG1:

- Start number 12 was manually annotated 8 times for cluster DG1.

Info for manual annotations of cluster DG2:

- Start number 19 was manually annotated 1 time for cluster DG2.

Info for manual annotations of cluster DV:

- Start number 10 was manually annotated 25 times for cluster DV.

Info for manual annotations of cluster EF:

- Start number 9 was manually annotated 2 times for cluster EF.
- Start number 11 was manually annotated 25 times for cluster EF.

Info for manual annotations of cluster H1:

- Start number 3 was manually annotated 8 times for cluster H1.

Info for manual annotations of cluster H2:

- Start number 5 was manually annotated 2 times for cluster H2.

Info for manual annotations of cluster R:

- Start number 5 was manually annotated 8 times for cluster R.

Info for manual annotations of cluster U:

- Start number 10 was manually annotated 3 times for cluster U.

Gene Information:

Gene: Adjutor_22 Start: 13488, Stop: 13907, Start Num: 12

Candidate Starts for Adjutor_22:

(Start: 12 @13488 has 25 MA's), (21, 13503), (30, 13542), (40, 13599), (45, 13620), (53, 13656), (57, 13677), (72, 13761), (80, 13803), (93, 13887),

Gene: Aesir_22 Start: 12181, Stop: 12609, Start Num: 11

Candidate Starts for Aesir_22:

(Start: 11 @12181 has 25 MA's), (38, 12286), (42, 12307), (45, 12319), (51, 12343), (72, 12463), (77, 12484),

Gene: Aikoy_30 Start: 19005, Stop: 19439, Start Num: 5

Candidate Starts for Aikoy_30:

(4, 19002), (Start: 5 @19005 has 17 MA's), (24, 19056), (38, 19128), (48, 19167), (60, 19221), (61, 19227), (72, 19293), (80, 19335), (82, 19341), (87, 19371),

Gene: Ajin_25 Start: 12376, Stop: 12810, Start Num: 9

Candidate Starts for Ajin_25:

(Start: 9 @12376 has 2 MA's), (Start: 11 @12379 has 25 MA's), (13, 12385), (16, 12394), (27, 12427), (38, 12487), (45, 12520), (49, 12535), (50, 12538), (57, 12580), (66, 12637), (73, 12667), (77, 12685), (84, 12718), (89, 12769), (92, 12784),

Gene: Alyssamiracle_20 Start: 12378, Stop: 12806, Start Num: 10

Candidate Starts for Alyssamiracle_20:

(8, 12375), (Start: 10 @12378 has 28 MA's), (43, 12507), (52, 12552), (53, 12555), (56, 12573), (60, 12588), (72, 12660), (86, 12717), (87, 12735),

Gene: Anakin_23 Start: 12391, Stop: 12819, Start Num: 11
Candidate Starts for Anakin_23:
(Start: 11 @12391 has 25 MA's), (42, 12517), (49, 12544), (50, 12547), (51, 12553), (75, 12688), (83, 12724),

Gene: AnnaSerena_23 Start: 12400, Stop: 12828, Start Num: 11
Candidate Starts for AnnaSerena_23:
(Start: 11 @12400 has 25 MA's), (42, 12526), (49, 12553), (50, 12556), (51, 12562), (75, 12697), (83, 12733),

Gene: Apeppi_19 Start: 14093, Stop: 14521, Start Num: 10
Candidate Starts for Apeppi_19:
(Start: 10 @14093 has 28 MA's), (22, 14117), (43, 14222), (52, 14267), (60, 14303), (63, 14321), (72, 14375), (86, 14432), (87, 14450),

Gene: Avian_19 Start: 12378, Stop: 12806, Start Num: 10
Candidate Starts for Avian_19:
(8, 12375), (Start: 10 @12378 has 28 MA's), (43, 12507), (52, 12552), (53, 12555), (56, 12573), (60, 12588), (72, 12660), (86, 12717), (87, 12735),

Gene: Barnyard_27 Start: 15178, Stop: 15603, Start Num: 5
Candidate Starts for Barnyard_27:
(Start: 5 @15178 has 17 MA's), (25, 15232), (46, 15331), (58, 15367), (61, 15382), (87, 15526), (93, 15574), (94, 15577), (97, 15595),

Gene: Beckerton_20 Start: 13898, Stop: 14365, Start Num: 3
Candidate Starts for Beckerton_20:
(Start: 3 @13898 has 8 MA's), (Start: 5 @13916 has 17 MA's), (29, 13985), (31, 13991), (51, 14087), (80, 14246), (82, 14252), (87, 14282), (93, 14330),

Gene: Beyoncage_16 Start: 9866, Stop: 10276, Start Num: 12
Candidate Starts for Beyoncage_16:
(Start: 12 @9866 has 25 MA's), (21, 9881), (36, 9944), (37, 9962), (47, 9998), (59, 10058), (74, 10145), (80, 10178), (91, 10253), (93, 10262),

Gene: BirthdayBoy_22 Start: 14824, Stop: 15252, Start Num: 10
Candidate Starts for BirthdayBoy_22:
(8, 14821), (Start: 10 @14824 has 28 MA's), (43, 14953), (52, 14998), (53, 15001), (56, 15019), (60, 15034), (72, 15106), (86, 15163), (87, 15181),

Gene: BiteSize_16 Start: 9866, Stop: 10276, Start Num: 12
Candidate Starts for BiteSize_16:
(Start: 12 @9866 has 25 MA's), (21, 9881), (36, 9944), (37, 9962), (47, 9998), (59, 10058), (74, 10145), (80, 10178), (91, 10253), (93, 10262),

Gene: Butterscotch_21 Start: 13548, Stop: 13967, Start Num: 12
Candidate Starts for Butterscotch_21:
(Start: 12 @13548 has 25 MA's), (21, 13563), (30, 13602), (40, 13659), (45, 13680), (53, 13716), (57, 13737), (72, 13821), (80, 13863), (93, 13947),

Gene: Candle_21 Start: 13912, Stop: 14340, Start Num: 5
Candidate Starts for Candle_21:

(2, 13891), (Start: 5 @13912 has 17 MA's), (8, 13927), (29, 13987), (40, 14044), (71, 14179), (83, 14242), (88, 14272),

Gene: Cborch11_21 Start: 13361, Stop: 13819, Start Num: 3

Candidate Starts for Cborch11_21:

(Start: 3 @13361 has 8 MA's), (Start: 5 @13379 has 17 MA's), (29, 13448), (31, 13454), (51, 13550), (80, 13709), (82, 13715), (87, 13745), (93, 13793),

Gene: Chill_22 Start: 13554, Stop: 13973, Start Num: 12

Candidate Starts for Chill_22:

(Start: 12 @13554 has 25 MA's), (21, 13569), (30, 13608), (40, 13665), (45, 13686), (53, 13722), (57, 13743), (72, 13827), (80, 13869), (93, 13953),

Gene: Chivey_22 Start: 11593, Stop: 12021, Start Num: 11

Candidate Starts for Chivey_22:

(Start: 11 @11593 has 25 MA's), (38, 11698), (42, 11719), (45, 11731), (50, 11749), (51, 11755), (62, 11812), (72, 11875), (77, 11896),

Gene: CoolCookie_27 Start: 12398, Stop: 12826, Start Num: 11

Candidate Starts for CoolCookie_27:

(Start: 11 @12398 has 25 MA's), (42, 12524), (49, 12551), (50, 12554), (51, 12560), (75, 12695), (83, 12731),

Gene: Crestdrop_23 Start: 11467, Stop: 11895, Start Num: 11

Candidate Starts for Crestdrop_23:

(Start: 11 @11467 has 25 MA's), (38, 11572), (42, 11593), (45, 11605), (51, 11629), (72, 11749), (77, 11770),

Gene: Cuke_14 Start: 9111, Stop: 9524, Start Num: 5

Candidate Starts for Cuke_14:

(Start: 5 @9111 has 17 MA's), (40, 9243), (54, 9282), (55, 9294), (63, 9330), (67, 9360), (85, 9441), (93, 9510),

Gene: Cybele_23 Start: 12368, Stop: 12796, Start Num: 11

Candidate Starts for Cybele_23:

(Start: 11 @12368 has 25 MA's), (42, 12494), (49, 12521), (50, 12524), (51, 12530), (75, 12665), (83, 12701),

Gene: Damien_20 Start: 13360, Stop: 13827, Start Num: 3

Candidate Starts for Damien_20:

(Start: 3 @13360 has 8 MA's), (Start: 5 @13378 has 17 MA's), (29, 13447), (31, 13453), (51, 13549), (80, 13708), (82, 13714), (87, 13744), (93, 13792),

Gene: DannyDe_22 Start: 11585, Stop: 12013, Start Num: 11

Candidate Starts for DannyDe_22:

(Start: 11 @11585 has 25 MA's), (35, 11666), (38, 11690), (42, 11711), (45, 11723), (50, 11741), (51, 11747), (62, 11804), (72, 11867), (77, 11888),

Gene: Dauntless_23 Start: 12110, Stop: 12538, Start Num: 11

Candidate Starts for Dauntless_23:

(Start: 11 @12110 has 25 MA's), (38, 12215), (42, 12236), (45, 12248), (51, 12272), (72, 12392), (77, 12413),

Gene: Delton_21 Start: 13560, Stop: 13979, Start Num: 12

Candidate Starts for Delton_21:

(Start: 12 @13560 has 25 MA's), (21, 13575), (30, 13614), (40, 13671), (45, 13692), (53, 13728), (57, 13749), (72, 13833), (80, 13875), (93, 13959),

Gene: Djokovic_16 Start: 9866, Stop: 10276, Start Num: 12

Candidate Starts for Djokovic_16:

(Start: 12 @9866 has 25 MA's), (21, 9881), (36, 9944), (37, 9962), (47, 9998), (59, 10058), (74, 10145), (80, 10178), (91, 10253), (93, 10262),

Gene: DoobyDoo_20 Start: 13758, Stop: 14186, Start Num: 10

Candidate Starts for DoobyDoo_20:

(8, 13755), (Start: 10 @13758 has 28 MA's), (43, 13887), (52, 13932), (53, 13935), (56, 13953), (60, 13968), (72, 14040), (86, 14097), (87, 14115),

Gene: DrLupo_29 Start: 15577, Stop: 15999, Start Num: 5

Candidate Starts for DrLupo_29:

(Start: 5 @15577 has 17 MA's), (7, 15589), (8, 15592), (23, 15622), (42, 15718), (46, 15730), (58, 15766), (69, 15826), (80, 15889), (93, 15973), (94, 15976), (97, 15994),

Gene: DumpTruck_20 Start: 14012, Stop: 14440, Start Num: 10

Candidate Starts for DumpTruck_20:

(Start: 10 @14012 has 28 MA's), (43, 14141), (52, 14186), (53, 14189), (70, 14279), (72, 14294), (86, 14351),

Gene: Erudite_22 Start: 12110, Stop: 12538, Start Num: 11

Candidate Starts for Erudite_22:

(Start: 11 @12110 has 25 MA's), (38, 12215), (42, 12236), (45, 12248), (51, 12272), (72, 12392), (77, 12413),

Gene: Erutan_21 Start: 14271, Stop: 14699, Start Num: 10

Candidate Starts for Erutan_21:

(8, 14268), (Start: 10 @14271 has 28 MA's), (43, 14400), (52, 14445), (53, 14448), (56, 14466), (60, 14481), (72, 14553), (86, 14610), (87, 14628),

Gene: Fowlmouth_15 Start: 9282, Stop: 9695, Start Num: 5

Candidate Starts for Fowlmouth_15:

(Start: 5 @9282 has 17 MA's), (23, 9327), (39, 9411), (54, 9453), (55, 9465), (58, 9474), (80, 9597), (93, 9681),

Gene: FreddieHg_22 Start: 11609, Stop: 12037, Start Num: 11

Candidate Starts for FreddieHg_22:

(Start: 11 @11609 has 25 MA's), (38, 11714), (42, 11735), (45, 11747), (50, 11765), (51, 11771), (62, 11828), (72, 11891), (77, 11912),

Gene: Fulcrum_22 Start: 14804, Stop: 15232, Start Num: 10

Candidate Starts for Fulcrum_22:

(8, 14801), (Start: 10 @14804 has 28 MA's), (43, 14933), (52, 14978), (53, 14981), (56, 14999), (60, 15014), (72, 15086), (86, 15143), (87, 15161),

Gene: GOATification_22 Start: 14804, Stop: 15232, Start Num: 10

Candidate Starts for GOATification_22:

(8, 14801), (Start: 10 @14804 has 28 MA's), (43, 14933), (52, 14978), (53, 14981), (56, 14999), (60, 15014), (72, 15086), (86, 15143), (87, 15161),

Gene: Genamy16_20 Start: 12378, Stop: 12806, Start Num: 10

Candidate Starts for Genamy16_20:

(8, 12375), (Start: 10 @12378 has 28 MA's), (43, 12507), (52, 12552), (53, 12555), (56, 12573), (60, 12588), (72, 12660), (86, 12717), (87, 12735),

Gene: Gibbin_22 Start: 14864, Stop: 15292, Start Num: 10

Candidate Starts for Gibbin_22:

(8, 14861), (Start: 10 @14864 has 28 MA's), (43, 14993), (52, 15038), (53, 15041), (56, 15059), (60, 15074), (72, 15146), (86, 15203), (87, 15221),

Gene: Gilda_23 Start: 12392, Stop: 12820, Start Num: 11

Candidate Starts for Gilda_23:

(Start: 11 @12392 has 25 MA's), (42, 12518), (49, 12545), (50, 12548), (51, 12554), (75, 12689), (83, 12725),

Gene: Giuseppe_21 Start: 13540, Stop: 13959, Start Num: 12

Candidate Starts for Giuseppe_21:

(Start: 12 @13540 has 25 MA's), (21, 13555), (30, 13594), (40, 13651), (45, 13672), (53, 13708), (57, 13729), (72, 13813), (80, 13855), (93, 13939),

Gene: Gretellyn_21 Start: 15138, Stop: 15566, Start Num: 10

Candidate Starts for Gretellyn_21:

(8, 15135), (Start: 10 @15138 has 28 MA's), (43, 15267), (52, 15312), (53, 15315), (56, 15333), (60, 15348), (72, 15420), (86, 15477), (87, 15495),

Gene: Gumball_20 Start: 13498, Stop: 13917, Start Num: 12

Candidate Starts for Gumball_20:

(Start: 12 @13498 has 25 MA's), (21, 13513), (30, 13552), (40, 13609), (45, 13630), (53, 13666), (57, 13687), (72, 13771), (80, 13813), (93, 13897),

Gene: Hager_24 Start: 11963, Stop: 12391, Start Num: 11

Candidate Starts for Hager_24:

(Start: 11 @11963 has 25 MA's), (42, 12089), (49, 12116), (50, 12119), (51, 12125), (75, 12260), (77, 12266), (83, 12296), (89, 12350),

Gene: Haunter_23 Start: 11805, Stop: 12233, Start Num: 11

Candidate Starts for Haunter_23:

(Start: 11 @11805 has 25 MA's), (42, 11931), (49, 11958), (50, 11961), (51, 11967), (75, 12102), (83, 12138), (89, 12192),

Gene: Hawkeye_23 Start: 13446, Stop: 13865, Start Num: 15

Candidate Starts for Hawkeye_23:

(Start: 15 @13446 has 1 MA's), (20, 13458), (32, 13503), (40, 13557), (57, 13635), (59, 13641), (60, 13647), (73, 13722), (77, 13740), (81, 13764), (83, 13770), (85, 13776), (90, 13833), (93, 13845), (94, 13848), (96, 13857),

Gene: Helpful_22 Start: 13548, Stop: 13967, Start Num: 12

Candidate Starts for Helpful_22:

(Start: 12 @13548 has 25 MA's), (21, 13563), (30, 13602), (40, 13659), (45, 13680), (53, 13716), (57, 13737), (72, 13821), (80, 13863), (93, 13947),

Gene: Hiddenleaf_22 Start: 11593, Stop: 12021, Start Num: 11

Candidate Starts for Hiddenleaf_22:

(Start: 11 @11593 has 25 MA's), (38, 11698), (42, 11719), (45, 11731), (50, 11749), (51, 11755), (62, 11812), (72, 11875), (77, 11896),

Gene: Indlulamithi_18 Start: 11372, Stop: 11803, Start Num: 5

Candidate Starts for Indlulamithi_18:

(Start: 5 @11372 has 17 MA's), (29, 11447), (54, 11543), (63, 11591), (74, 11654), (76, 11663),

Gene: JDawG_22 Start: 12175, Stop: 12603, Start Num: 11

Candidate Starts for JDawG_22:

(Start: 11 @12175 has 25 MA's), (38, 12280), (42, 12301), (45, 12313), (51, 12337), (72, 12457), (77, 12478),

Gene: Jalebi_21 Start: 15314, Stop: 15742, Start Num: 10

Candidate Starts for Jalebi_21:

(8, 15311), (Start: 10 @15314 has 28 MA's), (43, 15443), (52, 15488), (53, 15491), (56, 15509), (60, 15524), (72, 15596), (86, 15653), (87, 15671),

Gene: JingleBells_22 Start: 11674, Stop: 12102, Start Num: 11

Candidate Starts for JingleBells_22:

(Start: 11 @11674 has 25 MA's), (38, 11779), (42, 11800), (45, 11812), (50, 11830), (51, 11836), (62, 11893), (72, 11956), (77, 11977),

Gene: Karate_22 Start: 11813, Stop: 12241, Start Num: 11

Candidate Starts for Karate_22:

(Start: 11 @11813 has 25 MA's), (42, 11939), (49, 11966), (50, 11969), (51, 11975), (75, 12110), (83, 12146), (89, 12200),

Gene: Kate_23 Start: 12400, Stop: 12828, Start Num: 11

Candidate Starts for Kate_23:

(Start: 11 @12400 has 25 MA's), (42, 12526), (49, 12553), (50, 12556), (51, 12562), (75, 12697), (83, 12733),

Gene: Konstantine_25 Start: 14562, Stop: 15029, Start Num: 3

Candidate Starts for Konstantine_25:

(Start: 3 @14562 has 8 MA's), (Start: 5 @14580 has 17 MA's), (29, 14649), (31, 14655), (51, 14751), (80, 14910), (82, 14916), (87, 14946), (93, 14994),

Gene: Kors_25 Start: 12431, Stop: 12856, Start Num: 13

Candidate Starts for Kors_25:

(Start: 9 @12422 has 2 MA's), (Start: 11 @12425 has 25 MA's), (13, 12431), (16, 12440), (27, 12473), (38, 12533), (45, 12566), (49, 12581), (50, 12584), (57, 12626), (66, 12683), (73, 12713), (77, 12731), (84, 12764), (89, 12815), (92, 12830),

Gene: Krampus_23 Start: 12398, Stop: 12826, Start Num: 11

Candidate Starts for Krampus_23:

(Start: 11 @12398 has 25 MA's), (42, 12524), (49, 12551), (50, 12554), (51, 12560), (75, 12695), (83, 12731),

Gene: Labelle_27 Start: 16745, Stop: 17146, Start Num: 10

Candidate Starts for Labelle_27:

(Start: 10 @16745 has 28 MA's), (17, 16757), (34, 16814), (41, 16859), (44, 16868), (57, 16910), (60, 16922), (68, 16973), (73, 16997), (77, 17015), (93, 17120), (97, 17141),

Gene: Lambo_21 Start: 14808, Stop: 15236, Start Num: 10

Candidate Starts for Lambo_21:

(8, 14805), (Start: 10 @14808 has 28 MA's), (43, 14937), (52, 14982), (53, 14985), (56, 15003), (60, 15018), (72, 15090), (86, 15147), (87, 15165),

Gene: Leopard_30 Start: 19290, Stop: 19724, Start Num: 5

Candidate Starts for Leopard_30:

(4, 19287), (Start: 5 @19290 has 17 MA's), (24, 19341), (38, 19413), (48, 19452), (60, 19506), (61, 19512), (72, 19578), (80, 19620), (82, 19626), (87, 19656),

Gene: Lila22_22 Start: 14762, Stop: 15190, Start Num: 10

Candidate Starts for Lila22_22:

(8, 14759), (Start: 10 @14762 has 28 MA's), (43, 14891), (52, 14936), (53, 14939), (56, 14957), (60, 14972), (72, 15044), (86, 15101), (87, 15119),

Gene: LilyPad_17 Start: 10585, Stop: 10992, Start Num: 12

Candidate Starts for LilyPad_17:

(Start: 12 @10585 has 25 MA's), (37, 10678), (55, 10762), (57, 10768), (64, 10816), (74, 10861), (83, 10903), (93, 10978),

Gene: LittleFella_18 Start: 12477, Stop: 12860, Start Num: 19

Candidate Starts for LittleFella_18:

(1, 12273), (Start: 19 @12477 has 1 MA's), (26, 12495), (33, 12516), (36, 12528), (37, 12546), (65, 12693), (67, 12699), (72, 12723), (78, 12756), (79, 12759), (93, 12846), (95, 12852),

Gene: LuckyLeo_20 Start: 14093, Stop: 14521, Start Num: 10

Candidate Starts for LuckyLeo_20:

(Start: 10 @14093 has 28 MA's), (22, 14117), (43, 14222), (52, 14267), (60, 14303), (63, 14321), (72, 14375), (86, 14432), (87, 14450),

Gene: Madi_16 Start: 9866, Stop: 10276, Start Num: 12

Candidate Starts for Madi_16:

(Start: 12 @9866 has 25 MA's), (21, 9881), (36, 9944), (37, 9962), (47, 9998), (59, 10058), (74, 10145), (80, 10178), (91, 10253), (93, 10262),

Gene: Madruga_26 Start: 16414, Stop: 16815, Start Num: 10

Candidate Starts for Madruga_26:

(Start: 10 @16414 has 28 MA's), (18, 16429), (34, 16483), (41, 16528), (57, 16579), (60, 16591), (68, 16642), (73, 16666), (77, 16684), (93, 16789), (97, 16810),

Gene: Megatron06_23 Start: 13895, Stop: 14353, Start Num: 3

Candidate Starts for Megatron06_23:

(Start: 3 @13895 has 8 MA's), (Start: 5 @13913 has 17 MA's), (29, 13982), (31, 13988), (51, 14084), (80, 14243), (82, 14249), (87, 14279), (93, 14327),

Gene: MoiGyank_22 Start: 15175, Stop: 15603, Start Num: 10

Candidate Starts for MoiGyank_22:

(8, 15172), (Start: 10 @15175 has 28 MA's), (43, 15304), (52, 15349), (53, 15352), (56, 15370), (60, 15385), (72, 15457), (86, 15514), (87, 15532),

Gene: MontyDev_21 Start: 13570, Stop: 13998, Start Num: 5

Candidate Starts for MontyDev_21:

(2, 13549), (Start: 5 @13570 has 17 MA's), (8, 13585), (29, 13645), (40, 13702), (71, 13837), (83, 13900), (88, 13930),

Gene: Mopey_21 Start: 13548, Stop: 13967, Start Num: 12

Candidate Starts for Mopey_21:

(Start: 12 @13548 has 25 MA's), (21, 13563), (30, 13602), (40, 13659), (45, 13680), (53, 13716), (57, 13737), (72, 13821), (80, 13863), (93, 13947),

Gene: MortySmith_21 Start: 11572, Stop: 12000, Start Num: 11

Candidate Starts for MortySmith_21:

(Start: 11 @11572 has 25 MA's), (38, 11677), (42, 11698), (45, 11710), (51, 11734), (72, 11854), (77, 11875),

Gene: MrMiyagi_15 Start: 9282, Stop: 9695, Start Num: 5

Candidate Starts for MrMiyagi_15:

(Start: 5 @9282 has 17 MA's), (23, 9327), (39, 9411), (54, 9453), (55, 9465), (58, 9474), (80, 9597), (93, 9681),

Gene: NarutoRun_23 Start: 12391, Stop: 12819, Start Num: 11

Candidate Starts for NarutoRun_23:

(Start: 11 @12391 has 25 MA's), (42, 12517), (49, 12544), (50, 12547), (51, 12553), (75, 12688), (83, 12724),

Gene: Neptune_23 Start: 12368, Stop: 12796, Start Num: 11

Candidate Starts for Neptune_23:

(Start: 11 @12368 has 25 MA's), (42, 12494), (49, 12521), (50, 12524), (51, 12530), (75, 12665), (83, 12701),

Gene: Nilo_22 Start: 13909, Stop: 14337, Start Num: 5

Candidate Starts for Nilo_22:

(2, 13888), (Start: 5 @13909 has 17 MA's), (8, 13924), (29, 13984), (40, 14041), (71, 14176), (83, 14239), (88, 14269),

Gene: NorManre_22 Start: 14370, Stop: 14798, Start Num: 10

Candidate Starts for NorManre_22:

(8, 14367), (Start: 10 @14370 has 28 MA's), (43, 14499), (52, 14544), (53, 14547), (56, 14565), (60, 14580), (72, 14652), (86, 14709), (87, 14727),

Gene: Nova_21 Start: 13975, Stop: 14394, Start Num: 12

Candidate Starts for Nova_21:

(Start: 12 @13975 has 25 MA's), (21, 13990), (30, 14029), (40, 14086), (45, 14107), (53, 14143), (57, 14164), (72, 14248), (80, 14290), (93, 14374),

Gene: NovaSharks_20 Start: 12378, Stop: 12806, Start Num: 10

Candidate Starts for NovaSharks_20:

(8, 12375), (Start: 10 @12378 has 28 MA's), (43, 12507), (52, 12552), (53, 12555), (56, 12573), (60, 12588), (72, 12660), (86, 12717), (87, 12735),

Gene: Oaker_20 Start: 13619, Stop: 14077, Start Num: 3

Candidate Starts for Oaker_20:

(Start: 3 @13619 has 8 MA's), (Start: 5 @13637 has 17 MA's), (29, 13706), (31, 13712), (51, 13808), (80, 13967), (82, 13973), (87, 14003), (93, 14051),

Gene: Onyinye_31 Start: 19171, Stop: 19605, Start Num: 5

Candidate Starts for Onyinye_31:

(4, 19168), (Start: 5 @19171 has 17 MA's), (24, 19222), (38, 19294), (48, 19333), (60, 19387), (61, 19393), (72, 19459), (80, 19501), (82, 19507), (87, 19537),

Gene: OtterstedtS21_21 Start: 14460, Stop: 14888, Start Num: 10

Candidate Starts for OtterstedtS21_21:

(8, 14457), (Start: 10 @14460 has 28 MA's), (43, 14589), (52, 14634), (53, 14637), (56, 14655), (60, 14670), (72, 14742), (86, 14799), (87, 14817),

Gene: OverHedge_23 Start: 12365, Stop: 12793, Start Num: 11

Candidate Starts for OverHedge_23:

(Start: 11 @12365 has 25 MA's), (42, 12491), (49, 12518), (50, 12521), (51, 12527), (75, 12662), (83, 12698),

Gene: PBI1_22 Start: 13479, Stop: 13898, Start Num: 12

Candidate Starts for PBI1_22:

(Start: 12 @13479 has 25 MA's), (21, 13494), (30, 13533), (40, 13590), (45, 13611), (53, 13647), (57, 13668), (72, 13752), (80, 13794), (93, 13878),

Gene: PLOT_22 Start: 13551, Stop: 13970, Start Num: 12

Candidate Starts for PLOT_22:

(Start: 12 @13551 has 25 MA's), (21, 13566), (30, 13605), (40, 13662), (45, 13683), (53, 13719), (57, 13740), (72, 13824), (80, 13866), (93, 13950),

Gene: Papyrus_21 Start: 13571, Stop: 13999, Start Num: 5

Candidate Starts for Papyrus_21:

(2, 13550), (Start: 5 @13571 has 17 MA's), (8, 13586), (29, 13646), (40, 13703), (71, 13838), (83, 13901), (88, 13931),

Gene: ParvusTarda_21 Start: 13942, Stop: 14370, Start Num: 10

Candidate Starts for ParvusTarda_21:

(8, 13939), (Start: 10 @13942 has 28 MA's), (43, 14071), (52, 14116), (53, 14119), (56, 14137), (60, 14152), (72, 14224), (86, 14281), (87, 14299),

Gene: Patience_28 Start: 17304, Stop: 17705, Start Num: 10

Candidate Starts for Patience_28:

(Start: 10 @17304 has 28 MA's), (34, 17373), (41, 17418), (44, 17427), (57, 17469), (60, 17481), (68, 17532), (73, 17556), (77, 17574), (93, 17679), (97, 17700),

Gene: Patos_22 Start: 14370, Stop: 14798, Start Num: 10

Candidate Starts for Patos_22:

(8, 14367), (Start: 10 @14370 has 28 MA's), (43, 14499), (52, 14544), (53, 14547), (56, 14565), (60, 14580), (72, 14652), (86, 14709), (87, 14727),

Gene: Penelope2018_21 Start: 13548, Stop: 13967, Start Num: 12

Candidate Starts for Penelope2018_21:

(Start: 12 @13548 has 25 MA's), (21, 13563), (30, 13602), (40, 13659), (45, 13680), (53, 13716), (57, 13737), (72, 13821), (80, 13863), (93, 13947),

Gene: Penjamin420_22 Start: 14581, Stop: 15009, Start Num: 10

Candidate Starts for Penjamin420_22:

(8, 14578), (Start: 10 @14581 has 28 MA's), (22, 14605), (43, 14710), (52, 14755), (53, 14758), (56, 14776), (60, 14791), (72, 14863), (86, 14920), (87, 14938),

Gene: Pharpay_23 Start: 12413, Stop: 12841, Start Num: 11

Candidate Starts for Pharpay_23:

(Start: 11 @12413 has 25 MA's), (42, 12539), (49, 12566), (50, 12569), (51, 12575), (75, 12710), (83, 12746),

Gene: Phreeze_20 Start: 13360, Stop: 13818, Start Num: 3

Candidate Starts for Phreeze_20:

(Start: 3 @13360 has 8 MA's), (Start: 5 @13378 has 17 MA's), (29, 13447), (31, 13453), (51, 13549), (80, 13708), (82, 13714), (87, 13744), (93, 13792),

Gene: PhunaPhoke_23 Start: 12386, Stop: 12814, Start Num: 11

Candidate Starts for PhunaPhoke_23:

(Start: 11 @12386 has 25 MA's), (42, 12512), (49, 12539), (50, 12542), (51, 12548), (75, 12683), (83, 12719),

Gene: Potty_23 Start: 12391, Stop: 12819, Start Num: 11

Candidate Starts for Potty_23:

(Start: 11 @12391 has 25 MA's), (42, 12517), (49, 12544), (50, 12547), (51, 12553), (75, 12688), (83, 12724),

Gene: Poultruss_22 Start: 12164, Stop: 12592, Start Num: 11

Candidate Starts for Poultruss_22:

(Start: 11 @12164 has 25 MA's), (42, 12290), (49, 12317), (50, 12320), (51, 12326), (75, 12461), (83, 12497),

Gene: Prager_21 Start: 13560, Stop: 13979, Start Num: 12

Candidate Starts for Prager_21:

(Start: 12 @13560 has 25 MA's), (21, 13575), (30, 13614), (40, 13671), (45, 13692), (53, 13728), (57, 13749), (72, 13833), (80, 13875), (93, 13959),

Gene: Predator_24 Start: 14885, Stop: 15343, Start Num: 3

Candidate Starts for Predator_24:

(Start: 3 @14885 has 8 MA's), (Start: 5 @14903 has 17 MA's), (6, 14909), (28, 14969), (31, 14978), (51, 15074), (56, 15104), (71, 15179), (76, 15209), (82, 15239), (83, 15242), (87, 15269), (93, 15317),

Gene: Puissant_19 Start: 13816, Stop: 14274, Start Num: 3

Candidate Starts for Puissant_19:

(Start: 3 @13816 has 8 MA's), (Start: 5 @13834 has 17 MA's), (14, 13858), (22, 13873), (29, 13903), (31, 13909), (51, 14005), (63, 14068), (82, 14170), (87, 14200), (93, 14248),

Gene: Rachella_23 Start: 12394, Stop: 12822, Start Num: 11

Candidate Starts for Rachella_23:

(Start: 11 @12394 has 25 MA's), (42, 12520), (49, 12547), (50, 12550), (51, 12556), (75, 12691), (83, 12727),

Gene: Ranch_21 Start: 13308, Stop: 13736, Start Num: 10

Candidate Starts for Ranch_21:

(8, 13305), (Start: 10 @13308 has 28 MA's), (43, 13437), (52, 13482), (53, 13485), (56, 13503), (60, 13518), (72, 13590), (86, 13647), (87, 13665),

Gene: Rie18_23 Start: 11745, Stop: 12173, Start Num: 11

Candidate Starts for Rie18_23:

(Start: 11 @11745 has 25 MA's), (42, 11871), (49, 11898), (50, 11901), (51, 11907), (75, 12042), (77, 12048), (83, 12078), (89, 12132),

Gene: RikSengupta_24 Start: 12459, Stop: 12893, Start Num: 9

Candidate Starts for RikSengupta_24:

(Start: 9 @12459 has 2 MA's), (Start: 11 @12462 has 25 MA's), (13, 12468), (16, 12477), (27, 12510), (38, 12570), (45, 12603), (49, 12618), (50, 12621), (57, 12663), (66, 12720), (73, 12750), (77, 12768), (84, 12801), (89, 12852), (92, 12867),

Gene: Riparian_21 Start: 13370, Stop: 13798, Start Num: 5

Candidate Starts for Riparian_21:

(2, 13349), (Start: 5 @13370 has 17 MA's), (8, 13385), (29, 13445), (40, 13502), (71, 13637), (83, 13700), (88, 13730),

Gene: Rope_21 Start: 13562, Stop: 13990, Start Num: 5

Candidate Starts for Rope_21:

(2, 13541), (Start: 5 @13562 has 17 MA's), (8, 13577), (29, 13637), (40, 13694), (71, 13829), (83, 13892), (88, 13922),

Gene: Rumi_20 Start: 12378, Stop: 12806, Start Num: 10

Candidate Starts for Rumi_20:

(8, 12375), (Start: 10 @12378 has 28 MA's), (43, 12507), (52, 12552), (53, 12555), (56, 12573), (60, 12588), (72, 12660), (86, 12717), (87, 12735),

Gene: Sadboi_21 Start: 15138, Stop: 15566, Start Num: 10

Candidate Starts for Sadboi_21:

(8, 15135), (Start: 10 @15138 has 28 MA's), (43, 15267), (52, 15312), (53, 15315), (56, 15333), (60, 15348), (72, 15420), (86, 15477), (87, 15495),

Gene: Sampudon_21 Start: 15314, Stop: 15742, Start Num: 10

Candidate Starts for Sampudon_21:

(8, 15311), (Start: 10 @15314 has 28 MA's), (43, 15443), (52, 15488), (53, 15491), (56, 15509), (60, 15524), (72, 15596), (86, 15653), (87, 15671),

Gene: Send513_21 Start: 13912, Stop: 14340, Start Num: 5

Candidate Starts for Send513_21:

(2, 13891), (Start: 5 @13912 has 17 MA's), (8, 13927), (29, 13987), (40, 14044), (71, 14179), (83, 14242), (88, 14272),

Gene: Sienna_16 Start: 9866, Stop: 10276, Start Num: 12

Candidate Starts for Sienna_16:

(Start: 12 @9866 has 25 MA's), (21, 9881), (36, 9944), (37, 9962), (47, 9998), (59, 10058), (74, 10145), (80, 10178), (91, 10253), (93, 10262),

Gene: SirHarley_20 Start: 13480, Stop: 13899, Start Num: 12

Candidate Starts for SirHarley_20:

(Start: 12 @13480 has 25 MA's), (21, 13495), (30, 13534), (40, 13591), (45, 13612), (53, 13648), (57, 13669), (72, 13753), (80, 13795), (93, 13879),

Gene: Snakehole_24 Start: 11690, Stop: 12118, Start Num: 11

Candidate Starts for Snakehole_24:

(Start: 11 @11690 has 25 MA's), (38, 11795), (42, 11816), (45, 11828), (50, 11846), (51, 11852), (62, 11909), (72, 11972), (77, 11993),

Gene: Sparcetus_24 Start: 12338, Stop: 12772, Start Num: 9

Candidate Starts for Sparcetus_24:

(Start: 9 @12338 has 2 MA's), (Start: 11 @12341 has 25 MA's), (13, 12347), (16, 12356), (27, 12389), (38, 12449), (45, 12482), (49, 12497), (50, 12500), (57, 12542), (66, 12599), (73, 12629), (77, 12647), (84, 12680), (89, 12731), (92, 12746),

Gene: Suzy_17 Start: 11094, Stop: 11504, Start Num: 12

Candidate Starts for Suzy_17:

(Start: 12 @11094 has 25 MA's), (21, 11109), (36, 11172), (37, 11190), (42, 11214), (59, 11286), (64, 11328), (67, 11340), (80, 11406), (91, 11481), (93, 11490),

Gene: Tedro_23 Start: 11864, Stop: 12292, Start Num: 11

Candidate Starts for Tedro_23:

(Start: 11 @11864 has 25 MA's), (42, 11990), (49, 12017), (50, 12020), (51, 12026), (75, 12161), (83, 12197),

Gene: Terapin_16 Start: 9866, Stop: 10276, Start Num: 12

Candidate Starts for Terapin_16:

(Start: 12 @9866 has 25 MA's), (21, 9881), (36, 9944), (37, 9962), (47, 9998), (59, 10058), (74, 10145), (80, 10178), (91, 10253), (93, 10262),

Gene: Thoth_21 Start: 13545, Stop: 13964, Start Num: 12

Candidate Starts for Thoth_21:

(Start: 12 @13545 has 25 MA's), (21, 13560), (30, 13599), (40, 13656), (45, 13677), (53, 13713), (57, 13734), (72, 13818), (80, 13860), (93, 13944),

Gene: Thumb_20 Start: 13361, Stop: 13819, Start Num: 3

Candidate Starts for Thumb_20:

(Start: 3 @13361 has 8 MA's), (Start: 5 @13379 has 17 MA's), (29, 13448), (31, 13454), (51, 13550), (80, 13709), (82, 13715), (87, 13745), (93, 13793),

Gene: Tillicus_21 Start: 13687, Stop: 14115, Start Num: 10

Candidate Starts for Tillicus_21:

(Start: 10 @13687 has 28 MA's), (22, 13711), (43, 13816), (52, 13861), (60, 13897), (63, 13915), (72, 13969), (86, 14026), (87, 14044),

Gene: TinyMiny_24 Start: 12360, Stop: 12791, Start Num: 11

Candidate Starts for TinyMiny_24:

(Start: 9 @12357 has 2 MA's), (Start: 11 @12360 has 25 MA's), (13, 12366), (16, 12375), (27, 12408), (38, 12468), (45, 12501), (49, 12516), (50, 12519), (57, 12561), (66, 12618), (73, 12648), (77, 12666), (84, 12699), (89, 12750), (92, 12765),

Gene: Troll4_21 Start: 13549, Stop: 13968, Start Num: 12

Candidate Starts for Troll4_21:

(Start: 12 @13549 has 25 MA's), (21, 13564), (30, 13603), (40, 13660), (45, 13681), (53, 13717), (57, 13738), (72, 13822), (80, 13864), (93, 13948),

Gene: Visconti_21 Start: 13558, Stop: 13977, Start Num: 12

Candidate Starts for Visconti_21:

(Start: 12 @13558 has 25 MA's), (21, 13573), (30, 13612), (40, 13669), (45, 13690), (53, 13726), (57, 13747), (72, 13831), (80, 13873), (93, 13957),

Gene: WaldoWhy_22 Start: 13554, Stop: 13973, Start Num: 12

Candidate Starts for WaldoWhy_22:

(Start: 12 @13554 has 25 MA's), (21, 13569), (30, 13608), (40, 13665), (45, 13686), (53, 13722), (57, 13743), (72, 13827), (80, 13869), (93, 13953),

Gene: Weiss13_21 Start: 13602, Stop: 14030, Start Num: 5

Candidate Starts for Weiss13_21:

(2, 13581), (Start: 5 @13602 has 17 MA's), (8, 13617), (40, 13734), (71, 13869), (83, 13932), (88, 13962),

Gene: Wojtek_20 Start: 14015, Stop: 14443, Start Num: 10

Candidate Starts for Wojtek_20:

(8, 14012), (Start: 10 @14015 has 28 MA's), (43, 14144), (52, 14189), (53, 14192), (56, 14210), (60, 14225), (72, 14297), (86, 14354), (87, 14372),

Gene: Xenia2_21 Start: 14054, Stop: 14482, Start Num: 10

Candidate Starts for Xenia2_21:

(Start: 10 @14054 has 28 MA's), (43, 14183), (52, 14228), (53, 14231), (70, 14321), (72, 14336), (86, 14393),

Gene: Yelo_21 Start: 13927, Stop: 14340, Start Num: 8

Candidate Starts for Yelo_21:

(2, 13891), (Start: 5 @13912 has 17 MA's), (8, 13927), (29, 13987), (40, 14044), (71, 14179), (83, 14242), (88, 14272),

Gene: Yikes_22 Start: 15399, Stop: 15827, Start Num: 10

Candidate Starts for Yikes_22:

(8, 15396), (Start: 10 @15399 has 28 MA's), (43, 15528), (52, 15573), (53, 15576), (56, 15594), (60, 15609), (72, 15681), (86, 15738), (87, 15756),

Gene: Zany_20 Start: 14528, Stop: 14956, Start Num: 10

Candidate Starts for Zany_20:

(8, 14525), (Start: 10 @14528 has 28 MA's), (22, 14552), (43, 14657), (52, 14702), (53, 14705), (56, 14723), (60, 14738), (72, 14810), (86, 14867), (87, 14885),

Gene: Zenon_22 Start: 13914, Stop: 14342, Start Num: 5

Candidate Starts for Zenon_22:

(2, 13893), (Start: 5 @13914 has 17 MA's), (8, 13929), (29, 13989), (40, 14046), (71, 14181), (83, 14244), (88, 14274),