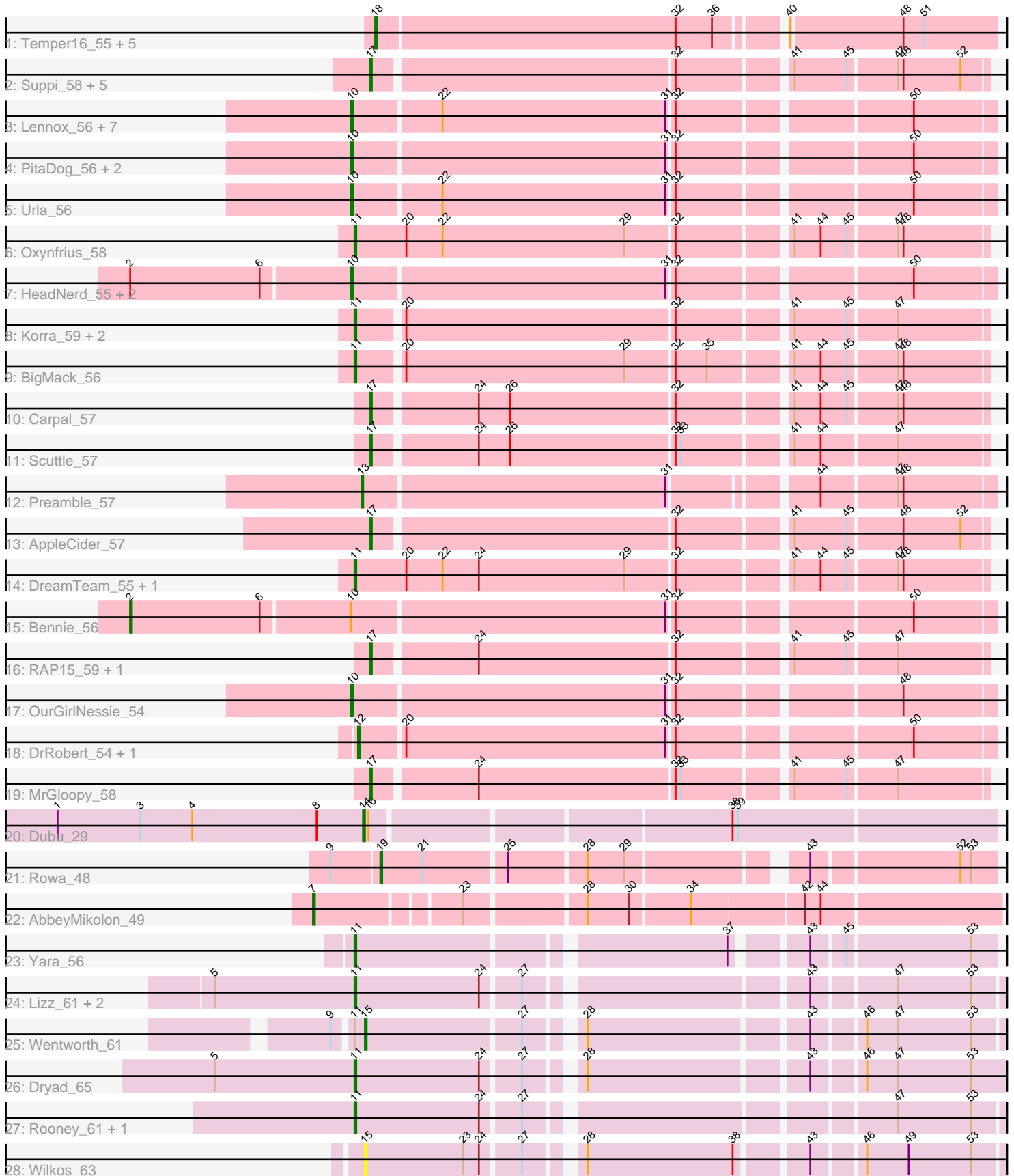


Pham 163633



Note: Tracks are now grouped by subcluster and scaled. Switching in subcluster is indicated by changes in track color. Track scale is now set by default to display the region 30 bp upstream of start 1 to 30 bp downstream of the last possible start. If this default region is judged to be packed too tightly with annotated starts, the track will be further scaled to only show that region of the ORF with annotated starts. This action will be indicated by adding "Zoomed" to the title. For starts, yellow indicates the location of called starts comprised solely of Glimmer/GeneMark auto-annotations, green indicates the location of called starts with at least 1 manual gene annotation.

Pham 163633 Report

This analysis was run 04/28/24 on database version 559.

Pham number 163633 has 57 members, 2 are drafts.

Phages represented in each track:

- Track 1 : Temper16_55, Sergei_55, Maria1952_54, Herb_55, Daiboju_55, KingBob_55
- Track 2 : Suppi_58, Litotes_57, CallieOMalley_58, Wayne_60, Canowicakte_58, PartyCup_63
- Track 3 : Lennox_56, ChewChew_56, Bodacious_56, CristinaYang_56, Lasagna_54, LilStuart_55, Nancia_56, Lucy_55
- Track 4 : PitaDog_56, Pterodactyl_56, Christian_56
- Track 5 : Urla_56
- Track 6 : Oxyfrius_58
- Track 7 : HeadNerd_55, Moki_55, Huckleberry_55
- Track 8 : Korra_59, Glenn_59, Fluke_58
- Track 9 : BigMack_56
- Track 10 : Carpal_57
- Track 11 : Scuttle_57
- Track 12 : Preamble_57
- Track 13 : AppleCider_57
- Track 14 : DreamTeam_55, Gisselle_55
- Track 15 : Bennie_56
- Track 16 : RAP15_59, MeganNoll_58
- Track 17 : OurGirlNessie_54
- Track 18 : DrRobert_54, Makoto_55
- Track 19 : MrGloopy_58
- Track 20 : Dubu_29
- Track 21 : Rowa_48
- Track 22 : AbbeyMikolon_49
- Track 23 : Yara_56
- Track 24 : Lizz_61, PHTown_61, ShakeNBake_61
- Track 25 : Wentworth_61
- Track 26 : Dryad_65
- Track 27 : Rooney_61, Gibson_61
- Track 28 : Wilkos_63

Summary of Final Annotations (See graph section above for start numbers):

The start number called the most often in the published annotations is 10, it was called in 16 of the 55 non-draft genes in the pham.

Genes that call this "Most Annotated" start:

- Bodacious_56, ChewChew_56, Christian_56, CristinaYang_56, HeadNerd_55, Huckleberry_55, Lasagna_54, Lennox_56, LilStuart_55, Lucy_55, Moki_55, Nancia_56, OurGirlNessie_54, PitaDog_56, Pterodactyl_56, Urla_56,

Genes that have the "Most Annotated" start but do not call it:

- Bennie_56,

Genes that do not have the "Most Annotated" start:

- AbbeyMikolon_49, AppleCider_57, BigMack_56, CallieOMalley_58, Canowicakte_58, Carpal_57, Daiboju_55, DrRobert_54, DreamTeam_55, Dryad_65, Dubu_29, Fluke_58, Gibson_61, Gisselle_55, Glenn_59, Herb_55, KingBob_55, Korra_59, Litotes_57, Lizz_61, Makoto_55, Maria1952_54, MeganNoll_58, MrGloopy_58, Oxyfrius_58, PHTowN_61, PartyCup_63, Preamble_57, RAP15_59, Rooney_61, Rowa_48, Scuttle_57, Sergei_55, ShakeNBake_61, Suppi_58, Temper16_55, Wayne_60, Wentworth_61, Wilkos_63, Yara_56,

Summary by start number:

Start 2:

- Found in 4 of 57 (7.0%) of genes in pham
- Manual Annotations of this start: 1 of 55
- Called 25.0% of time when present
- Phage (with cluster) where this start called: Bennie_56 (AK),

Start 7:

- Found in 1 of 57 (1.8%) of genes in pham
- Manual Annotations of this start: 1 of 55
- Called 100.0% of time when present
- Phage (with cluster) where this start called: AbbeyMikolon_49 (BL),

Start 10:

- Found in 17 of 57 (29.8%) of genes in pham
- Manual Annotations of this start: 16 of 55
- Called 94.1% of time when present
- Phage (with cluster) where this start called: Bodacious_56 (AK), ChewChew_56 (AK), Christian_56 (AK), CristinaYang_56 (AK), HeadNerd_55 (AK), Huckleberry_55 (AK), Lasagna_54 (AK), Lennox_56 (AK), LilStuart_55 (AK), Lucy_55 (AK), Moki_55 (AK), Nancia_56 (AK), OurGirlNessie_54 (AK), PitaDog_56 (AK), Pterodactyl_56 (AK), Urla_56 (AK),

Start 11:

- Found in 15 of 57 (26.3%) of genes in pham
- Manual Annotations of this start: 14 of 55
- Called 93.3% of time when present
- Phage (with cluster) where this start called: BigMack_56 (AK), DreamTeam_55 (AK), Dryad_65 (BN), Fluke_58 (AK), Gibson_61 (BN), Gisselle_55 (AK), Glenn_59 (AK), Korra_59 (AK), Lizz_61 (BN), Oxyfrius_58 (AK), PHTowN_61 (BN), Rooney_61 (BN), ShakeNBake_61 (BN), Yara_56 (BN),

Start 12:

- Found in 2 of 57 (3.5%) of genes in pham
- Manual Annotations of this start: 2 of 55
- Called 100.0% of time when present
- Phage (with cluster) where this start called: DrRobert_54 (AK), Makoto_55 (AK),

Start 13:

- Found in 1 of 57 (1.8%) of genes in pham
- Manual Annotations of this start: 1 of 55
- Called 100.0% of time when present
- Phage (with cluster) where this start called: Preamble_57 (AK),

Start 14:

- Found in 1 of 57 (1.8%) of genes in pham
- Manual Annotations of this start: 1 of 55
- Called 100.0% of time when present
- Phage (with cluster) where this start called: Dubu_29 (BJ),

Start 15:

- Found in 2 of 57 (3.5%) of genes in pham
- Manual Annotations of this start: 1 of 55
- Called 100.0% of time when present
- Phage (with cluster) where this start called: Wentworth_61 (BN), Wilkos_63 (BN),

Start 17:

- Found in 12 of 57 (21.1%) of genes in pham
- Manual Annotations of this start: 11 of 55
- Called 100.0% of time when present
- Phage (with cluster) where this start called: AppleCider_57 (AK), CallieOMalley_58 (AK), Canowicakte_58 (AK), Carpal_57 (AK), Litotes_57 (AK), MeganNoll_58 (AK), MrGloopy_58 (AK), PartyCup_63 (AK), RAP15_59 (AK), Scuttle_57 (AK), Suppi_58 (AK), Wayne_60 (AK),

Start 18:

- Found in 6 of 57 (10.5%) of genes in pham
- Manual Annotations of this start: 6 of 55
- Called 100.0% of time when present
- Phage (with cluster) where this start called: Daiboju_55 (AK), Herb_55 (AK), KingBob_55 (AK), Maria1952_54 (AK), Sergei_55 (AK), Temper16_55 (AK),

Start 19:

- Found in 1 of 57 (1.8%) of genes in pham
- Manual Annotations of this start: 1 of 55
- Called 100.0% of time when present
- Phage (with cluster) where this start called: Rowa_48 (BL),

Summary by clusters:

There are 4 clusters represented in this pham: BL, BN, AK, BJ,

Info for manual annotations of cluster AK:

- Start number 2 was manually annotated 1 time for cluster AK.
- Start number 10 was manually annotated 16 times for cluster AK.

- Start number 11 was manually annotated 7 times for cluster AK.
- Start number 12 was manually annotated 2 times for cluster AK.
- Start number 13 was manually annotated 1 time for cluster AK.
- Start number 17 was manually annotated 11 times for cluster AK.
- Start number 18 was manually annotated 6 times for cluster AK.

Info for manual annotations of cluster BJ:

- Start number 14 was manually annotated 1 time for cluster BJ.

Info for manual annotations of cluster BL:

- Start number 7 was manually annotated 1 time for cluster BL.
- Start number 19 was manually annotated 1 time for cluster BL.

Info for manual annotations of cluster BN:

- Start number 11 was manually annotated 7 times for cluster BN.
- Start number 15 was manually annotated 1 time for cluster BN.

Gene Information:

Gene: AbbeyMikolon_49 Start: 34450, Stop: 34821, Start Num: 7

Candidate Starts for AbbeyMikolon_49:

(Start: 7 @34450 has 1 MA's), (23, 34528), (28, 34591), (30, 34615), (34, 34648), (42, 34711), (44, 34720),

Gene: AppleCider_57 Start: 41677, Stop: 42012, Start Num: 17

Candidate Starts for AppleCider_57:

(Start: 17 @41677 has 11 MA's), (32, 41845), (41, 41905), (45, 41935), (48, 41965), (52, 41998),

Gene: Bennie_56 Start: 40399, Stop: 40872, Start Num: 2

Candidate Starts for Bennie_56:

(Start: 2 @40399 has 1 MA's), (6, 40474), (Start: 10 @40522 has 16 MA's), (31, 40699), (32, 40702), (50, 40828),

Gene: BigMack_56 Start: 40973, Stop: 41317, Start Num: 11

Candidate Starts for BigMack_56:

(Start: 11 @40973 has 14 MA's), (20, 40997), (29, 41123), (32, 41150), (35, 41168), (41, 41210), (44, 41225), (45, 41240), (47, 41267), (48, 41270),

Gene: Bodacious_56 Start: 40944, Stop: 41294, Start Num: 10

Candidate Starts for Bodacious_56:

(Start: 10 @40944 has 16 MA's), (22, 40992), (31, 41121), (32, 41124), (50, 41250),

Gene: CallieOMalley_58 Start: 41865, Stop: 42200, Start Num: 17

Candidate Starts for CallieOMalley_58:

(Start: 17 @41865 has 11 MA's), (32, 42033), (41, 42093), (45, 42123), (47, 42150), (48, 42153), (52, 42186),

Gene: Canowicakte_58 Start: 41917, Stop: 42252, Start Num: 17

Candidate Starts for Canowicakte_58:

(Start: 17 @41917 has 11 MA's), (32, 42085), (41, 42145), (45, 42175), (47, 42202), (48, 42205), (52, 42238),

Gene: Carpal_57 Start: 41744, Stop: 42079, Start Num: 17

Candidate Starts for Carpal_57:

(Start: 17 @41744 has 11 MA's), (24, 41801), (26, 41819), (32, 41912), (41, 41972), (44, 41987), (45, 42002), (47, 42029), (48, 42032),

Gene: ChewChew_56 Start: 41074, Stop: 41424, Start Num: 10

Candidate Starts for ChewChew_56:

(Start: 10 @41074 has 16 MA's), (22, 41122), (31, 41251), (32, 41254), (50, 41380),

Gene: Christian_56 Start: 40786, Stop: 41136, Start Num: 10

Candidate Starts for Christian_56:

(Start: 10 @40786 has 16 MA's), (31, 40963), (32, 40966), (50, 41092),

Gene: CristinaYang_56 Start: 41071, Stop: 41421, Start Num: 10

Candidate Starts for CristinaYang_56:

(Start: 10 @41071 has 16 MA's), (22, 41119), (31, 41248), (32, 41251), (50, 41377),

Gene: Daiboju_55 Start: 41677, Stop: 42018, Start Num: 18

Candidate Starts for Daiboju_55:

(Start: 18 @41677 has 6 MA's), (32, 41848), (36, 41869), (40, 41902), (48, 41965), (51, 41977),

Gene: DrRobert_54 Start: 40308, Stop: 40655, Start Num: 12

Candidate Starts for DrRobert_54:

(Start: 12 @40308 has 2 MA's), (20, 40332), (31, 40482), (32, 40485), (50, 40611),

Gene: DreamTeam_55 Start: 40683, Stop: 41033, Start Num: 11

Candidate Starts for DreamTeam_55:

(Start: 11 @40683 has 14 MA's), (20, 40713), (22, 40734), (24, 40755), (29, 40839), (32, 40866), (41, 40926), (44, 40941), (45, 40956), (47, 40983), (48, 40986),

Gene: Dryad_65 Start: 44270, Stop: 43926, Start Num: 11

Candidate Starts for Dryad_65:

(5, 44351), (Start: 11 @44270 has 14 MA's), (24, 44198), (27, 44177), (28, 44153), (43, 44033), (46, 44006), (47, 43988), (53, 43946),

Gene: Dubu_29 Start: 22724, Stop: 23071, Start Num: 14

Candidate Starts for Dubu_29:

(1, 22547), (3, 22595), (4, 22625), (8, 22697), (Start: 14 @22724 has 1 MA's), (16, 22727), (38, 22922), (39, 22925),

Gene: Fluke_58 Start: 42001, Stop: 42345, Start Num: 11

Candidate Starts for Fluke_58:

(Start: 11 @42001 has 14 MA's), (20, 42025), (32, 42178), (41, 42238), (45, 42268), (47, 42295),

Gene: Gibson_61 Start: 43510, Stop: 43169, Start Num: 11

Candidate Starts for Gibson_61:

(Start: 11 @43510 has 14 MA's), (24, 43438), (27, 43417), (47, 43228), (53, 43186),

Gene: Gisselle_55 Start: 40683, Stop: 41033, Start Num: 11

Candidate Starts for Gisselle_55:

(Start: 11 @40683 has 14 MA's), (20, 40713), (22, 40734), (24, 40755), (29, 40839), (32, 40866), (41, 40926), (44, 40941), (45, 40956), (47, 40983), (48, 40986),

Gene: Glenn_59 Start: 42462, Stop: 42806, Start Num: 11

Candidate Starts for Glenn_59:

(Start: 11 @42462 has 14 MA's), (20, 42486), (32, 42639), (41, 42699), (45, 42729), (47, 42756),

Gene: HeadNerd_55 Start: 40416, Stop: 40766, Start Num: 10

Candidate Starts for HeadNerd_55:

(Start: 2 @40293 has 1 MA's), (6, 40368), (Start: 10 @40416 has 16 MA's), (31, 40593), (32, 40596), (50, 40722),

Gene: Herb_55 Start: 41676, Stop: 42017, Start Num: 18

Candidate Starts for Herb_55:

(Start: 18 @41676 has 6 MA's), (32, 41847), (36, 41868), (40, 41901), (48, 41964), (51, 41976),

Gene: Huckleberry_55 Start: 40420, Stop: 40770, Start Num: 10

Candidate Starts for Huckleberry_55:

(Start: 2 @40297 has 1 MA's), (6, 40372), (Start: 10 @40420 has 16 MA's), (31, 40597), (32, 40600), (50, 40726),

Gene: KingBob_55 Start: 41677, Stop: 42018, Start Num: 18

Candidate Starts for KingBob_55:

(Start: 18 @41677 has 6 MA's), (32, 41848), (36, 41869), (40, 41902), (48, 41965), (51, 41977),

Gene: Korra_59 Start: 41736, Stop: 42080, Start Num: 11

Candidate Starts for Korra_59:

(Start: 11 @41736 has 14 MA's), (20, 41760), (32, 41913), (41, 41973), (45, 42003), (47, 42030),

Gene: Lasagna_54 Start: 40307, Stop: 40657, Start Num: 10

Candidate Starts for Lasagna_54:

(Start: 10 @40307 has 16 MA's), (22, 40355), (31, 40484), (32, 40487), (50, 40613),

Gene: Lennox_56 Start: 40792, Stop: 41142, Start Num: 10

Candidate Starts for Lennox_56:

(Start: 10 @40792 has 16 MA's), (22, 40840), (31, 40969), (32, 40972), (50, 41098),

Gene: LilStuart_55 Start: 40655, Stop: 41005, Start Num: 10

Candidate Starts for LilStuart_55:

(Start: 10 @40655 has 16 MA's), (22, 40703), (31, 40832), (32, 40835), (50, 40961),

Gene: Litotes_57 Start: 41464, Stop: 41799, Start Num: 17

Candidate Starts for Litotes_57:

(Start: 17 @41464 has 11 MA's), (32, 41632), (41, 41692), (45, 41722), (47, 41749), (48, 41752), (52, 41785),

Gene: Lizz_61 Start: 43350, Stop: 43009, Start Num: 11

Candidate Starts for Lizz_61:

(5, 43431), (Start: 11 @43350 has 14 MA's), (24, 43278), (27, 43257), (43, 43113), (47, 43068), (53, 43026),

Gene: Lucy_55 Start: 40650, Stop: 41000, Start Num: 10

Candidate Starts for Lucy_55:

(Start: 10 @40650 has 16 MA's), (22, 40698), (31, 40827), (32, 40830), (50, 40956),

Gene: Makoto_55 Start: 40551, Stop: 40898, Start Num: 12

Candidate Starts for Makoto_55:

(Start: 12 @40551 has 2 MA's), (20, 40575), (31, 40725), (32, 40728), (50, 40854),

Gene: Maria1952_54 Start: 41676, Stop: 42017, Start Num: 18

Candidate Starts for Maria1952_54:

(Start: 18 @41676 has 6 MA's), (32, 41847), (36, 41868), (40, 41901), (48, 41964), (51, 41976),

Gene: MeganNoll_58 Start: 42247, Stop: 42582, Start Num: 17

Candidate Starts for MeganNoll_58:

(Start: 17 @42247 has 11 MA's), (24, 42304), (32, 42415), (41, 42475), (45, 42505), (47, 42532),

Gene: Moki_55 Start: 40609, Stop: 40959, Start Num: 10

Candidate Starts for Moki_55:

(Start: 2 @40486 has 1 MA's), (6, 40561), (Start: 10 @40609 has 16 MA's), (31, 40786), (32, 40789), (50, 40915),

Gene: MrGloopy_58 Start: 41899, Stop: 42234, Start Num: 17

Candidate Starts for MrGloopy_58:

(Start: 17 @41899 has 11 MA's), (24, 41956), (32, 42067), (33, 42070), (41, 42127), (45, 42157), (47, 42184),

Gene: Nancia_56 Start: 40943, Stop: 41293, Start Num: 10

Candidate Starts for Nancia_56:

(Start: 10 @40943 has 16 MA's), (22, 40991), (31, 41120), (32, 41123), (50, 41249),

Gene: OurGirlNessie_54 Start: 40272, Stop: 40622, Start Num: 10

Candidate Starts for OurGirlNessie_54:

(Start: 10 @40272 has 16 MA's), (31, 40449), (32, 40452), (48, 40572),

Gene: Oxynfrius_58 Start: 42154, Stop: 42504, Start Num: 11

Candidate Starts for Oxynfrius_58:

(Start: 11 @42154 has 14 MA's), (20, 42184), (22, 42205), (29, 42310), (32, 42337), (41, 42397), (44, 42412), (45, 42427), (47, 42454), (48, 42457),

Gene: PHTowN_61 Start: 43348, Stop: 43007, Start Num: 11

Candidate Starts for PHTowN_61:

(5, 43429), (Start: 11 @43348 has 14 MA's), (24, 43276), (27, 43255), (43, 43111), (47, 43066), (53, 43024),

Gene: PartyCup_63 Start: 42112, Stop: 42447, Start Num: 17

Candidate Starts for PartyCup_63:

(Start: 17 @42112 has 11 MA's), (32, 42280), (41, 42340), (45, 42370), (47, 42397), (48, 42400), (52, 42433),

Gene: PitaDog_56 Start: 40668, Stop: 41018, Start Num: 10

Candidate Starts for PitaDog_56:

(Start: 10 @40668 has 16 MA's), (31, 40845), (32, 40848), (50, 40974),

Gene: Preamble_57 Start: 40868, Stop: 41209, Start Num: 13

Candidate Starts for Preamble_57:

(Start: 13 @40868 has 1 MA's), (31, 41039), (44, 41114), (47, 41156), (48, 41159),

Gene: Pterodactyl_56 Start: 40909, Stop: 41259, Start Num: 10
Candidate Starts for Pterodactyl_56:
(Start: 10 @40909 has 16 MA's), (31, 41086), (32, 41089), (50, 41215),

Gene: RAP15_59 Start: 42248, Stop: 42583, Start Num: 17
Candidate Starts for RAP15_59:
(Start: 17 @42248 has 11 MA's), (24, 42305), (32, 42416), (41, 42476), (45, 42506), (47, 42533),

Gene: Rooney_61 Start: 43507, Stop: 43166, Start Num: 11
Candidate Starts for Rooney_61:
(Start: 11 @43507 has 14 MA's), (24, 43435), (27, 43414), (47, 43225), (53, 43183),

Gene: Rowa_48 Start: 34719, Stop: 35042, Start Num: 19
Candidate Starts for Rowa_48:
(9, 34692), (Start: 19 @34719 has 1 MA's), (21, 34743), (25, 34788), (28, 34830), (29, 34851), (43, 34941), (52, 35022), (53, 35028),

Gene: Scuttle_57 Start: 41927, Stop: 42262, Start Num: 17
Candidate Starts for Scuttle_57:
(Start: 17 @41927 has 11 MA's), (24, 41984), (26, 42002), (32, 42095), (33, 42098), (41, 42155), (44, 42170), (47, 42212),

Gene: Sergei_55 Start: 41677, Stop: 42018, Start Num: 18
Candidate Starts for Sergei_55:
(Start: 18 @41677 has 6 MA's), (32, 41848), (36, 41869), (40, 41902), (48, 41965), (51, 41977),

Gene: ShakeNBake_61 Start: 43366, Stop: 43025, Start Num: 11
Candidate Starts for ShakeNBake_61:
(5, 43447), (Start: 11 @43366 has 14 MA's), (24, 43294), (27, 43273), (43, 43129), (47, 43084), (53, 43042),

Gene: Suppi_58 Start: 41917, Stop: 42252, Start Num: 17
Candidate Starts for Suppi_58:
(Start: 17 @41917 has 11 MA's), (32, 42085), (41, 42145), (45, 42175), (47, 42202), (48, 42205), (52, 42238),

Gene: Temper16_55 Start: 41677, Stop: 42018, Start Num: 18
Candidate Starts for Temper16_55:
(Start: 18 @41677 has 6 MA's), (32, 41848), (36, 41869), (40, 41902), (48, 41965), (51, 41977),

Gene: Urla_56 Start: 41609, Stop: 41959, Start Num: 10
Candidate Starts for Urla_56:
(Start: 10 @41609 has 16 MA's), (22, 41657), (31, 41786), (32, 41789), (50, 41915),

Gene: Wayne_60 Start: 42374, Stop: 42709, Start Num: 17
Candidate Starts for Wayne_60:
(Start: 17 @42374 has 11 MA's), (32, 42542), (41, 42602), (45, 42632), (47, 42659), (48, 42662), (52, 42695),

Gene: Wentworth_61 Start: 43514, Stop: 43179, Start Num: 15
Candidate Starts for Wentworth_61:
(9, 43529), (Start: 11 @43520 has 14 MA's), (Start: 15 @43514 has 1 MA's), (27, 43427), (28, 43403), (43, 43283), (46, 43256), (47, 43238), (53, 43196),

Gene: Wilkos_63 Start: 43658, Stop: 43323, Start Num: 15

Candidate Starts for Wilkos_63:

(Start: 15 @43658 has 1 MA's), (23, 43601), (24, 43592), (27, 43571), (28, 43547), (38, 43463), (43, 43427), (46, 43400), (49, 43376), (53, 43340),

Gene: Yara_56 Start: 41985, Stop: 41650, Start Num: 11

Candidate Starts for Yara_56:

(Start: 11 @41985 has 14 MA's), (37, 41787), (43, 41751), (45, 41733), (53, 41664),