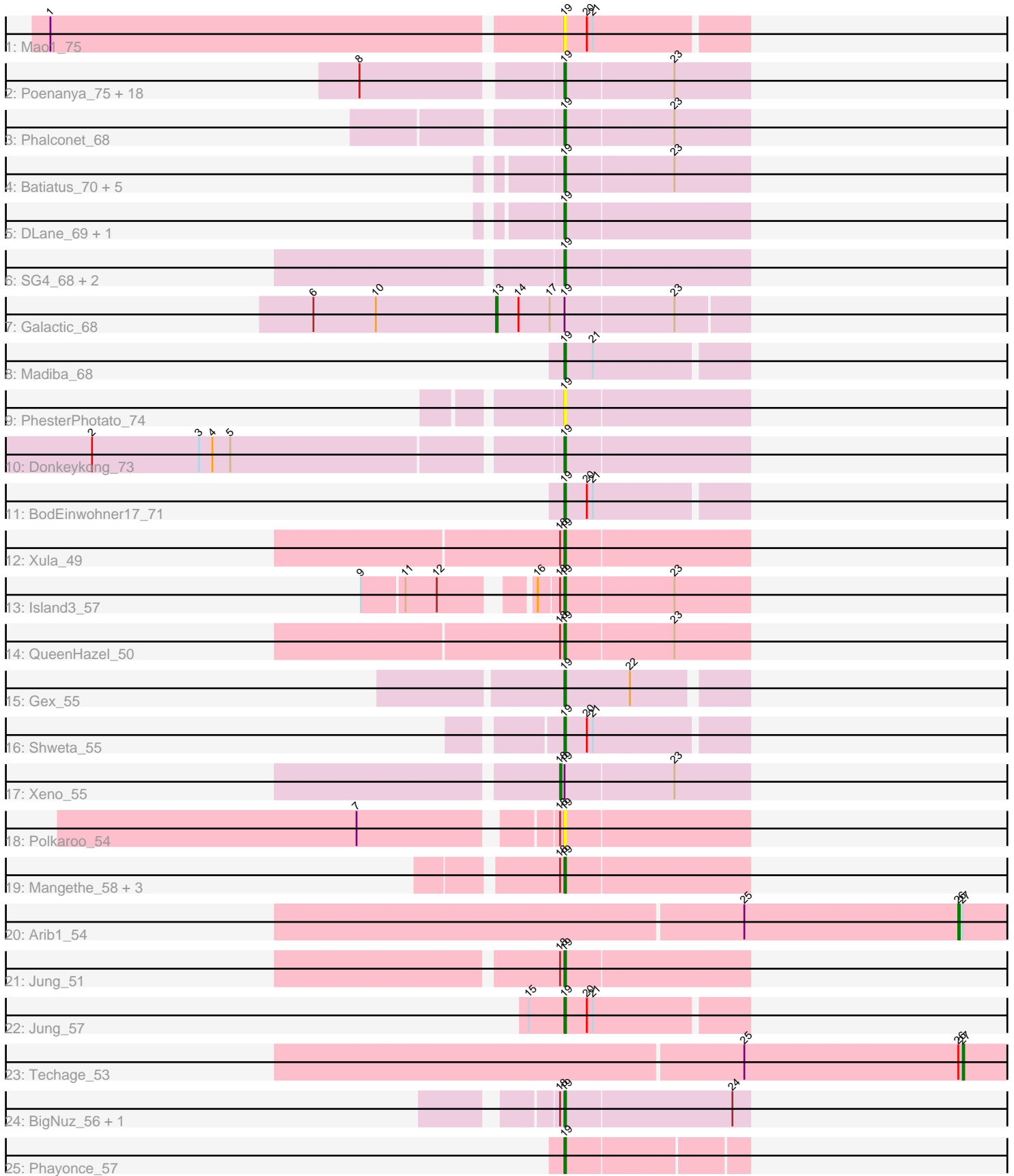


Pham 163644



Note: Tracks are now grouped by subcluster and scaled. Switching in subcluster is indicated by changes in track color. Track scale is now set by default to display the region 30 bp upstream of start 1 to 30 bp downstream of the last possible start. If this default region is judged to be packed too tightly with annotated starts, the track will be further scaled to only show that region of the ORF with annotated starts. This action will be indicated by adding "Zoomed" to the title. For starts, yellow indicates the location of called starts comprised solely of Glimmer/GeneMark auto-annotations, green indicates the location of called starts with at least 1 manual gene annotation.

Pham 163644 Report

This analysis was run 04/28/24 on database version 559.

Pham number 163644 has 55 members, 5 are drafts.

Phages represented in each track:

- Track 1 : Mao1_75
- Track 2 : Poenanya_75, Deb65_65, Nimbo_64, Daenerys_71, Inventum_70, JoeyJr_72, RedBird_73, RitaG_72, Doomphist_75, Dorothy_73, Scottish_70, Sassafras_73, OldBen_69, Polka14_76, Leperchaun_70, Empress_70, KingMidas_71, Geralt_65, PHappiness_72
- Track 3 : Phalconet_68
- Track 4 : Batiatus_70, Kingsley_75, Babsiella_59, Ovechkin_74, Quico_81, Florinda_84
- Track 5 : DLane_69, Ms6_70
- Track 6 : SG4_68, Hegedechwinu_71, StAnnes_69
- Track 7 : Galactic_68
- Track 8 : Madiba_68
- Track 9 : PhesterPhotato_74
- Track 10 : Donkeykong_73
- Track 11 : BodEinwohner17_71
- Track 12 : Xula_49
- Track 13 : Island3_57
- Track 14 : QueenHazel_50
- Track 15 : Gex_55
- Track 16 : Shweta_55
- Track 17 : Xen0_55
- Track 18 : Polkaroo_54
- Track 19 : Mangethe_58, Zilizebeth_58, Majeke_58, Phegasus_58
- Track 20 : Arib1_54
- Track 21 : Jung_51
- Track 22 : Jung_57
- Track 23 : Techage_53
- Track 24 : BigNuz_56, Nazo_57
- Track 25 : Phayonce_57

Summary of Final Annotations (See graph section above for start numbers):

The start number called the most often in the published annotations is 19, it was called in 46 of the 50 non-draft genes in the pham.

Genes that call this "Most Annotated" start:

- Babsiella_59, Batiatus_70, BigNuz_56, BodEinwohner17_71, DLane_69, Daenerys_71, Deb65_65, Donkeykong_73, Doomphist_75, Dorothy_73, Empress_70, Florinda_84, Geralt_65, Gex_55, Hegedechwinu_71, Inventum_70, Island3_57, JoeyJr_72, Jung_51, Jung_57, KingMidas_71, Kingsley_75, Leperchaun_70, Madiba_68, Majeke_58, Mangethe_58, Mao1_75, Ms6_70, Nazo_57, Nimbo_64, OldBen_69, Ovechkin_74, PHappiness_72, Phalconet_68, Phayonce_57, Phegasus_58, PhesterPhotato_74, Poenanya_75, Polka14_76, Polkaroo_54, QueenHazel_50, Quico_81, RedBird_73, RitaG_72, SG4_68, Sassafras_73, Scottish_70, Shweta_55, StAnnes_69, Xula_49, Zilizebeth_58,

Genes that have the "Most Annotated" start but do not call it:

- Galactic_68, Xeno_55,

Genes that do not have the "Most Annotated" start:

- Arib1_54, Techage_53,

Summary by start number:

Start 13:

- Found in 1 of 55 (1.8%) of genes in pham
- Manual Annotations of this start: 1 of 50
- Called 100.0% of time when present
- Phage (with cluster) where this start called: Galactic_68 (F1),

Start 18:

- Found in 12 of 55 (21.8%) of genes in pham
- Manual Annotations of this start: 1 of 50
- Called 8.3% of time when present
- Phage (with cluster) where this start called: Xeno_55 (N),

Start 19:

- Found in 53 of 55 (96.4%) of genes in pham
- Manual Annotations of this start: 46 of 50
- Called 96.2% of time when present
- Phage (with cluster) where this start called: Babsiella_59 (I1), Batiatus_70 (F1), BigNuz_56 (P4), BodEinwohner17_71 (F1), DLane_69 (F1), Daenerys_71 (F1), Deb65_65 (F1), Donkeykong_73 (F1), Doomphist_75 (F1), Dorothy_73 (F1), Empress_70 (F1), Florinda_84 (F1), Geralt_65 (F1), Gex_55 (N), Hegedechwinu_71 (F1), Inventum_70 (F1), Island3_57 (I1), JoeyJr_72 (F1), Jung_51 (P1), Jung_57 (P1), KingMidas_71 (F1), Kingsley_75 (F1), Leperchaun_70 (F1), Madiba_68 (F1), Majeke_58 (P1), Mangethe_58 (P1), Mao1_75 (AD), Ms6_70 (F1), Nazo_57 (P4), Nimbo_64 (F1), OldBen_69 (F1), Ovechkin_74 (F1), PHappiness_72 (F1), Phalconet_68 (F1), Phayonce_57 (P5), Phegasus_58 (P1), PhesterPhotato_74 (F1), Poenanya_75 (F1), Polka14_76 (F1), Polkaroo_54 (P1), QueenHazel_50 (I1), Quico_81 (F1), RedBird_73 (F1), RitaG_72 (F1), SG4_68 (F1), Sassafras_73 (F1), Scottish_70 (F1), Shweta_55 (N), StAnnes_69 (F1), Xula_49 (I1), Zilizebeth_58 (P1),

Start 26:

- Found in 2 of 55 (3.6%) of genes in pham
- Manual Annotations of this start: 1 of 50
- Called 50.0% of time when present

- Phage (with cluster) where this start called: Arib1_54 (P1),

Start 27:

- Found in 2 of 55 (3.6%) of genes in pham
- Manual Annotations of this start: 1 of 50
- Called 50.0% of time when present
- Phage (with cluster) where this start called: Techage_53 (P1),

Summary by clusters:

There are 7 clusters represented in this pham: F1, P1, AD, P4, P5, I1, N,

Info for manual annotations of cluster F1:

- Start number 13 was manually annotated 1 time for cluster F1.
- Start number 19 was manually annotated 31 times for cluster F1.

Info for manual annotations of cluster I1:

- Start number 19 was manually annotated 4 times for cluster I1.

Info for manual annotations of cluster N:

- Start number 18 was manually annotated 1 time for cluster N.
- Start number 19 was manually annotated 2 times for cluster N.

Info for manual annotations of cluster P1:

- Start number 19 was manually annotated 6 times for cluster P1.
- Start number 26 was manually annotated 1 time for cluster P1.
- Start number 27 was manually annotated 1 time for cluster P1.

Info for manual annotations of cluster P4:

- Start number 19 was manually annotated 2 times for cluster P4.

Info for manual annotations of cluster P5:

- Start number 19 was manually annotated 1 time for cluster P5.

Gene Information:

Gene: Arib1_54 Start: 36196, Stop: 36321, Start Num: 26

Candidate Starts for Arib1_54:

(25, 36052), (Start: 26 @36196 has 1 MA's), (Start: 27 @36199 has 1 MA's),

Gene: Babsiella_59 Start: 39433, Stop: 39555, Start Num: 19

Candidate Starts for Babsiella_59:

(Start: 19 @39433 has 46 MA's), (23, 39505),

Gene: Batiatus_70 Start: 44968, Stop: 45090, Start Num: 19

Candidate Starts for Batiatus_70:

(Start: 19 @44968 has 46 MA's), (23, 45040),

Gene: BigNuz_56 Start: 39756, Stop: 39878, Start Num: 19

Candidate Starts for BigNuz_56:

(Start: 18 @39753 has 1 MA's), (Start: 19 @39756 has 46 MA's), (24, 39867),

Gene: BodEinwohner17_71 Start: 45997, Stop: 46113, Start Num: 19

Candidate Starts for BodEinwohner17_71:

(Start: 19 @45997 has 46 MA's), (20, 46012), (21, 46015),

Gene: DLane_69 Start: 44902, Stop: 45024, Start Num: 19

Candidate Starts for DLane_69:

(Start: 19 @44902 has 46 MA's),

Gene: Daenerys_71 Start: 46948, Stop: 47070, Start Num: 19

Candidate Starts for Daenerys_71:

(8, 46825), (Start: 19 @46948 has 46 MA's), (23, 47020),

Gene: Deb65_65 Start: 44669, Stop: 44791, Start Num: 19

Candidate Starts for Deb65_65:

(8, 44546), (Start: 19 @44669 has 46 MA's), (23, 44741),

Gene: Donkeykong_73 Start: 46520, Stop: 46642, Start Num: 19

Candidate Starts for Donkeykong_73:

(2, 46217), (3, 46289), (4, 46298), (5, 46310), (Start: 19 @46520 has 46 MA's),

Gene: Doomphist_75 Start: 46761, Stop: 46883, Start Num: 19

Candidate Starts for Doomphist_75:

(8, 46638), (Start: 19 @46761 has 46 MA's), (23, 46833),

Gene: Dorothy_73 Start: 45386, Stop: 45508, Start Num: 19

Candidate Starts for Dorothy_73:

(8, 45263), (Start: 19 @45386 has 46 MA's), (23, 45458),

Gene: Empress_70 Start: 45572, Stop: 45694, Start Num: 19

Candidate Starts for Empress_70:

(8, 45449), (Start: 19 @45572 has 46 MA's), (23, 45644),

Gene: Florinda_84 Start: 47608, Stop: 47730, Start Num: 19

Candidate Starts for Florinda_84:

(Start: 19 @47608 has 46 MA's), (23, 47680),

Gene: Galactic_68 Start: 45071, Stop: 45235, Start Num: 13

Candidate Starts for Galactic_68:

(6, 44948), (10, 44990), (Start: 13 @45071 has 1 MA's), (14, 45086), (17, 45107), (Start: 19 @45116 has 46 MA's), (23, 45188),

Gene: Geralt_65 Start: 44668, Stop: 44790, Start Num: 19

Candidate Starts for Geralt_65:

(8, 44545), (Start: 19 @44668 has 46 MA's), (23, 44740),

Gene: Gex_55 Start: 36173, Stop: 36286, Start Num: 19

Candidate Starts for Gex_55:

(Start: 19 @36173 has 46 MA's), (22, 36215),

Gene: Hegedechwinu_71 Start: 42986, Stop: 43108, Start Num: 19

Candidate Starts for Hegedechwinu_71:

(Start: 19 @42986 has 46 MA's),

Gene: Inventum_70 Start: 45584, Stop: 45706, Start Num: 19

Candidate Starts for Inventum_70:

(8, 45461), (Start: 19 @45584 has 46 MA's), (23, 45656),

Gene: Island3_57 Start: 38289, Stop: 38411, Start Num: 19

Candidate Starts for Island3_57:

(9, 38178), (11, 38205), (12, 38226), (16, 38274), (Start: 18 @38286 has 1 MA's), (Start: 19 @38289 has 46 MA's), (23, 38361),

Gene: JoeyJr_72 Start: 46573, Stop: 46695, Start Num: 19

Candidate Starts for JoeyJr_72:

(8, 46450), (Start: 19 @46573 has 46 MA's), (23, 46645),

Gene: Jung_51 Start: 35878, Stop: 36000, Start Num: 19

Candidate Starts for Jung_51:

(Start: 18 @35875 has 1 MA's), (Start: 19 @35878 has 46 MA's),

Gene: Jung_57 Start: 38107, Stop: 38223, Start Num: 19

Candidate Starts for Jung_57:

(15, 38083), (Start: 19 @38107 has 46 MA's), (20, 38122), (21, 38125),

Gene: KingMidas_71 Start: 45987, Stop: 46109, Start Num: 19

Candidate Starts for KingMidas_71:

(8, 45864), (Start: 19 @45987 has 46 MA's), (23, 46059),

Gene: Kingsley_75 Start: 48363, Stop: 48485, Start Num: 19

Candidate Starts for Kingsley_75:

(Start: 19 @48363 has 46 MA's), (23, 48435),

Gene: Leperchaun_70 Start: 45807, Stop: 45929, Start Num: 19

Candidate Starts for Leperchaun_70:

(8, 45684), (Start: 19 @45807 has 46 MA's), (23, 45879),

Gene: Madiba_68 Start: 44600, Stop: 44716, Start Num: 19

Candidate Starts for Madiba_68:

(Start: 19 @44600 has 46 MA's), (21, 44618),

Gene: Majeke_58 Start: 37716, Stop: 37838, Start Num: 19

Candidate Starts for Majeke_58:

(Start: 18 @37713 has 1 MA's), (Start: 19 @37716 has 46 MA's),

Gene: Mangethe_58 Start: 37716, Stop: 37838, Start Num: 19

Candidate Starts for Mangethe_58:

(Start: 18 @37713 has 1 MA's), (Start: 19 @37716 has 46 MA's),

Gene: Mao1_75 Start: 53391, Stop: 53507, Start Num: 19

Candidate Starts for Mao1_75:

(1, 53055), (Start: 19 @53391 has 46 MA's), (20, 53406), (21, 53409),

Gene: Ms6_70 Start: 41131, Stop: 41253, Start Num: 19

Candidate Starts for Ms6_70:

(Start: 19 @41131 has 46 MA's),

Gene: Nazo_57 Start: 39956, Stop: 40078, Start Num: 19

Candidate Starts for Nazo_57:

(Start: 18 @39953 has 1 MA's), (Start: 19 @39956 has 46 MA's), (24, 40067),

Gene: Nimbo_64 Start: 44671, Stop: 44793, Start Num: 19

Candidate Starts for Nimbo_64:

(8, 44548), (Start: 19 @44671 has 46 MA's), (23, 44743),

Gene: OldBen_69 Start: 46063, Stop: 46185, Start Num: 19

Candidate Starts for OldBen_69:

(8, 45940), (Start: 19 @46063 has 46 MA's), (23, 46135),

Gene: Ovechkin_74 Start: 46191, Stop: 46313, Start Num: 19

Candidate Starts for Ovechkin_74:

(Start: 19 @46191 has 46 MA's), (23, 46263),

Gene: PHappiness_72 Start: 46892, Stop: 47014, Start Num: 19

Candidate Starts for PHappiness_72:

(8, 46769), (Start: 19 @46892 has 46 MA's), (23, 46964),

Gene: Phalconet_68 Start: 43304, Stop: 43426, Start Num: 19

Candidate Starts for Phalconet_68:

(Start: 19 @43304 has 46 MA's), (23, 43376),

Gene: Phayonce_57 Start: 40353, Stop: 40469, Start Num: 19

Candidate Starts for Phayonce_57:

(Start: 19 @40353 has 46 MA's),

Gene: Phegasus_58 Start: 37683, Stop: 37805, Start Num: 19

Candidate Starts for Phegasus_58:

(Start: 18 @37680 has 1 MA's), (Start: 19 @37683 has 46 MA's),

Gene: PhesterPhotato_74 Start: 45630, Stop: 45752, Start Num: 19

Candidate Starts for PhesterPhotato_74:

(Start: 19 @45630 has 46 MA's),

Gene: Poenanya_75 Start: 46761, Stop: 46883, Start Num: 19

Candidate Starts for Poenanya_75:

(8, 46638), (Start: 19 @46761 has 46 MA's), (23, 46833),

Gene: Polka14_76 Start: 47551, Stop: 47673, Start Num: 19

Candidate Starts for Polka14_76:

(8, 47428), (Start: 19 @47551 has 46 MA's), (23, 47623),

Gene: Polkaroo_54 Start: 37256, Stop: 37378, Start Num: 19

Candidate Starts for Polkaroo_54:

(7, 37136), (Start: 18 @37253 has 1 MA's), (Start: 19 @37256 has 46 MA's),

Gene: QueenHazel_50 Start: 36087, Stop: 36209, Start Num: 19

Candidate Starts for QueenHazel_50:

(Start: 18 @36084 has 1 MA's), (Start: 19 @36087 has 46 MA's), (23, 36159),

Gene: Quico_81 Start: 47428, Stop: 47550, Start Num: 19
Candidate Starts for Quico_81:
(Start: 19 @47428 has 46 MA's), (23, 47500),

Gene: RedBird_73 Start: 45253, Stop: 45375, Start Num: 19
Candidate Starts for RedBird_73:
(8, 45130), (Start: 19 @45253 has 46 MA's), (23, 45325),

Gene: RitaG_72 Start: 46694, Stop: 46816, Start Num: 19
Candidate Starts for RitaG_72:
(8, 46571), (Start: 19 @46694 has 46 MA's), (23, 46766),

Gene: SG4_68 Start: 43359, Stop: 43481, Start Num: 19
Candidate Starts for SG4_68:
(Start: 19 @43359 has 46 MA's),

Gene: Sassafras_73 Start: 45583, Stop: 45705, Start Num: 19
Candidate Starts for Sassafras_73:
(8, 45460), (Start: 19 @45583 has 46 MA's), (23, 45655),

Gene: Scottish_70 Start: 45242, Stop: 45364, Start Num: 19
Candidate Starts for Scottish_70:
(8, 45119), (Start: 19 @45242 has 46 MA's), (23, 45314),

Gene: Shweta_55 Start: 36817, Stop: 36933, Start Num: 19
Candidate Starts for Shweta_55:
(Start: 19 @36817 has 46 MA's), (20, 36832), (21, 36835),

Gene: StAnnes_69 Start: 44436, Stop: 44558, Start Num: 19
Candidate Starts for StAnnes_69:
(Start: 19 @44436 has 46 MA's),

Gene: Techage_53 Start: 36249, Stop: 36371, Start Num: 27
Candidate Starts for Techage_53:
(25, 36102), (Start: 26 @36246 has 1 MA's), (Start: 27 @36249 has 1 MA's),

Gene: Xeno_55 Start: 35530, Stop: 35655, Start Num: 18
Candidate Starts for Xeno_55:
(Start: 18 @35530 has 1 MA's), (Start: 19 @35533 has 46 MA's), (23, 35605),

Gene: Xula_49 Start: 35689, Stop: 35811, Start Num: 19
Candidate Starts for Xula_49:
(Start: 18 @35686 has 1 MA's), (Start: 19 @35689 has 46 MA's),

Gene: Zilizebeth_58 Start: 37707, Stop: 37829, Start Num: 19
Candidate Starts for Zilizebeth_58:
(Start: 18 @37704 has 1 MA's), (Start: 19 @37707 has 46 MA's),