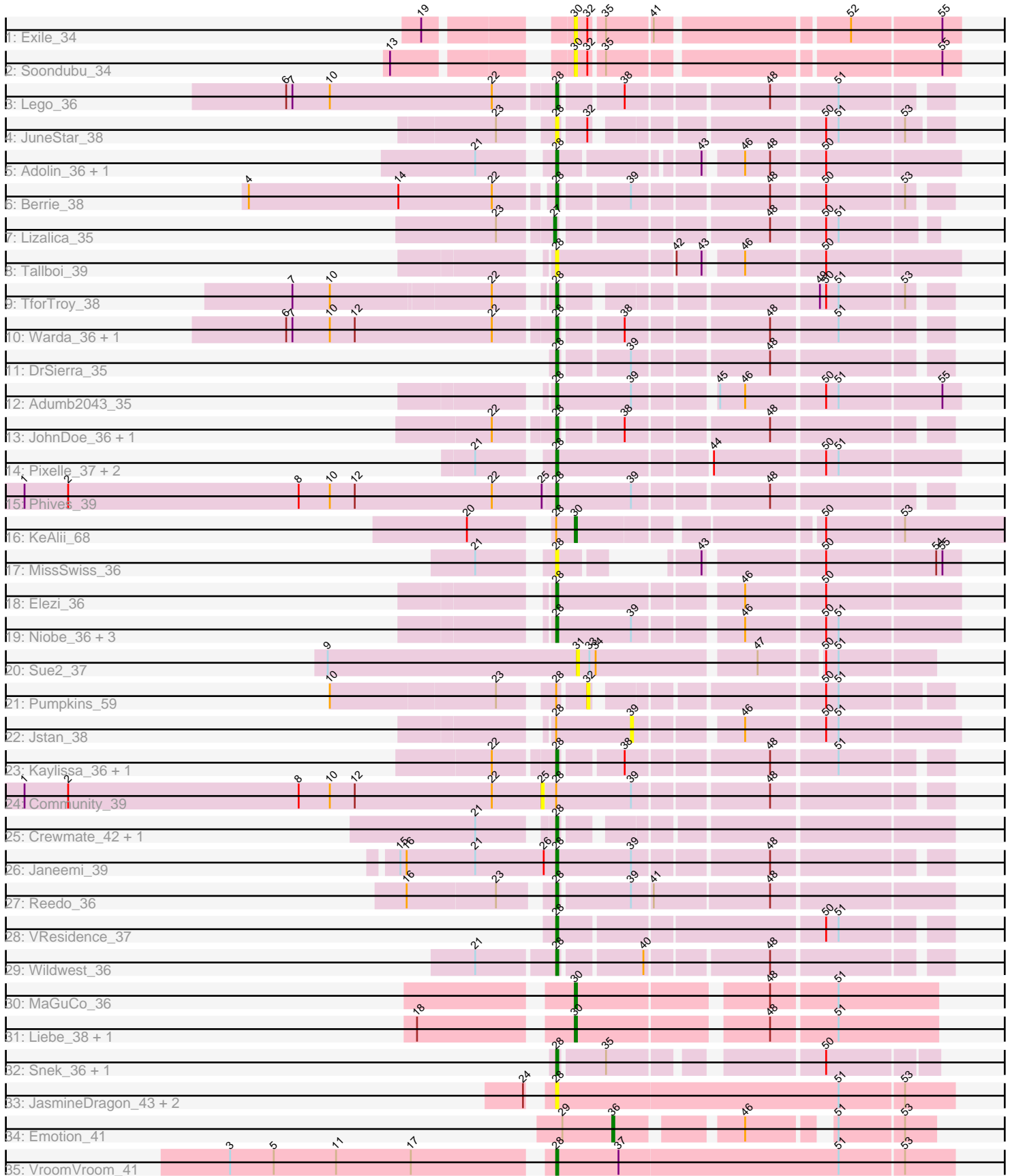


Pham 163674



Note: Tracks are now grouped by subcluster and scaled. Switching in subcluster is indicated by changes in track color. Track scale is now set by default to display the region 30 bp upstream of start 1 to 30 bp downstream of the last possible start. If this default region is judged to be packed too tightly with annotated starts, the track will be further scaled to only show that region of the ORF with annotated starts. This action will be indicated by adding "Zoomed" to the title. For starts, yellow indicates the location of called starts comprised solely of Glimmer/GeneMark auto-annotations, green indicates the location of called starts with at least 1 manual gene annotation.

Pham 163674 Report

This analysis was run 04/28/24 on database version 559.

Pham number 163674 has 49 members, 15 are drafts.

Phages represented in each track:

- Track 1 : Exile_34
- Track 2 : Soondubu_34
- Track 3 : Lego_36
- Track 4 : JuneStar_38
- Track 5 : Adolin_36, DrManhattan_36
- Track 6 : Berrie_38
- Track 7 : Lizalica_35
- Track 8 : Tallboi_39
- Track 9 : TforTroy_38
- Track 10 : Warda_36, Tbone_35
- Track 11 : DrSierra_35
- Track 12 : Adumb2043_35
- Track 13 : JohnDoe_36, Simpson_38
- Track 14 : Pixelle_37, Tian_36, Amyev_36
- Track 15 : Phives_39
- Track 16 : KeAlii_68
- Track 17 : MissSwiss_36
- Track 18 : Elezi_36
- Track 19 : Niobe_36, Eraser_36, Asa16_36, London_36
- Track 20 : Sue2_37
- Track 21 : Pumpkins_59
- Track 22 : Jstan_38
- Track 23 : Kaylissa_36, YesChef_36
- Track 24 : Community_39
- Track 25 : Crewmate_42, ObiToo_41
- Track 26 : Janeemi_39
- Track 27 : Reedo_36
- Track 28 : VResidence_37
- Track 29 : Wildwest_36
- Track 30 : MaGuCo_36
- Track 31 : Liebe_38, Maureen_38
- Track 32 : Snek_36, Tweety19_36
- Track 33 : JasmineDragon_43, ShakeltOph_43, MiniMommy_43
- Track 34 : Emotion_41
- Track 35 : VroomVroom_41

Summary of Final Annotations (See graph section above for start numbers):

The start number called the most often in the published annotations is 28, it was called in 28 of the 34 non-draft genes in the pham.

Genes that call this "Most Annotated" start:

- Adolin_36, Adumb2043_35, Amyev_36, Asa16_36, Berrie_38, Crewmate_42, DrManhattan_36, DrSierra_35, Elezi_36, Eraser_36, Janeemi_39, JasmineDragon_43, JohnDoe_36, JuneStar_38, Kaylissa_36, Lego_36, London_36, MiniMommy_43, MissSwiss_36, Niobe_36, ObiToo_41, Phives_39, Pixelle_37, Reedo_36, ShakeltOph_43, Simpson_38, Snek_36, Tallboi_39, Tbone_35, TforTroy_38, Tian_36, Tweety19_36, VResidence_37, VroomVroom_41, Warda_36, Wildwest_36, YesChef_36,

Genes that have the "Most Annotated" start but do not call it:

- Community_39, Jstan_38, KeAlii_68, Pumpkins_59,

Genes that do not have the "Most Annotated" start:

- Emotion_41, Exile_34, Liebe_38, Lizalica_35, MaGuCo_36, Maureen_38, Soondubu_34, Sue2_37,

Summary by start number:

Start 25:

- Found in 2 of 49 (4.1%) of genes in pham
- No Manual Annotations of this start.
- Called 50.0% of time when present
- Phage (with cluster) where this start called: Community_39 (AZ1),

Start 27:

- Found in 1 of 49 (2.0%) of genes in pham
- Manual Annotations of this start: 1 of 34
- Called 100.0% of time when present
- Phage (with cluster) where this start called: Lizalica_35 (AZ1),

Start 28:

- Found in 41 of 49 (83.7%) of genes in pham
- Manual Annotations of this start: 28 of 34
- Called 90.2% of time when present
- Phage (with cluster) where this start called: Adolin_36 (AZ1), Adumb2043_35 (AZ1), Amyev_36 (AZ1), Asa16_36 (AZ1), Berrie_38 (AZ1), Crewmate_42 (AZ1), DrManhattan_36 (AZ1), DrSierra_35 (AZ1), Elezi_36 (AZ1), Eraser_36 (AZ1), Janeemi_39 (AZ1), JasmineDragon_43 (AZ4), JohnDoe_36 (AZ1), JuneStar_38 (AZ1), Kaylissa_36 (AZ1), Lego_36 (AZ1), London_36 (AZ1), MiniMommy_43 (AZ4), MissSwiss_36 (AZ1), Niobe_36 (AZ1), ObiToo_41 (AZ1), Phives_39 (AZ1), Pixelle_37 (AZ1), Reedo_36 (AZ1), ShakeltOph_43 (AZ4), Simpson_38 (AZ1), Snek_36 (AZ3), Tallboi_39 (AZ1), Tbone_35 (AZ1), TforTroy_38 (AZ1), Tian_36 (AZ1), Tweety19_36 (AZ3), VResidence_37 (AZ1), VroomVroom_41 (AZ4), Warda_36 (AZ1), Wildwest_36 (AZ1), YesChef_36 (AZ1),

Start 30:

- Found in 6 of 49 (12.2%) of genes in pham

- Manual Annotations of this start: 4 of 34
- Called 100.0% of time when present
- Phage (with cluster) where this start called: Exile_34 (AZ), KeAlii_68 (AZ1), Liebe_38 (AZ2), MaGuCo_36 (AZ2), Maureen_38 (AZ2), Soondubu_34 (AZ),

Start 31:

- Found in 1 of 49 (2.0%) of genes in pham
- No Manual Annotations of this start.
- Called 100.0% of time when present
- Phage (with cluster) where this start called: Sue2_37 (AZ1),

Start 32:

- Found in 4 of 49 (8.2%) of genes in pham
- No Manual Annotations of this start.
- Called 25.0% of time when present
- Phage (with cluster) where this start called: Pumpkins_59 (AZ1),

Start 36:

- Found in 1 of 49 (2.0%) of genes in pham
- Manual Annotations of this start: 1 of 34
- Called 100.0% of time when present
- Phage (with cluster) where this start called: Emotion_41 (AZ4),

Start 39:

- Found in 12 of 49 (24.5%) of genes in pham
- No Manual Annotations of this start.
- Called 8.3% of time when present
- Phage (with cluster) where this start called: Jstan_38 (AZ1),

Summary by clusters:

There are 5 clusters represented in this pham: AZ1, AZ2, AZ3, AZ4, AZ,

Info for manual annotations of cluster AZ1:

- Start number 27 was manually annotated 1 time for cluster AZ1.
- Start number 28 was manually annotated 25 times for cluster AZ1.
- Start number 30 was manually annotated 1 time for cluster AZ1.

Info for manual annotations of cluster AZ2:

- Start number 30 was manually annotated 3 times for cluster AZ2.

Info for manual annotations of cluster AZ3:

- Start number 28 was manually annotated 2 times for cluster AZ3.

Info for manual annotations of cluster AZ4:

- Start number 28 was manually annotated 1 time for cluster AZ4.
- Start number 36 was manually annotated 1 time for cluster AZ4.

Gene Information:

Gene: Adolin_36 Start: 24646, Stop: 24473, Start Num: 28
Candidate Starts for Adolin_36:
(21, 24676), (Start: 28 @24646 has 28 MA's), (43, 24586), (46, 24571), (48, 24559), (50, 24535),

Gene: Adumb2043_35 Start: 25817, Stop: 25638, Start Num: 28
Candidate Starts for Adumb2043_35:
(Start: 28 @25817 has 28 MA's), (39, 25781), (45, 25748), (46, 25736), (50, 25700), (51, 25694), (55, 25646),

Gene: Amyev_36 Start: 27343, Stop: 27161, Start Num: 28
Candidate Starts for Amyev_36:
(21, 27373), (Start: 28 @27343 has 28 MA's), (44, 27274), (50, 27223), (51, 27217),

Gene: Asa16_36 Start: 27387, Stop: 27208, Start Num: 28
Candidate Starts for Asa16_36:
(Start: 28 @27387 has 28 MA's), (39, 27351), (46, 27306), (50, 27270), (51, 27264),

Gene: Berrie_38 Start: 27347, Stop: 27180, Start Num: 28
Candidate Starts for Berrie_38:
(4, 27488), (14, 27416), (22, 27371), (Start: 28 @27347 has 28 MA's), (39, 27317), (48, 27257), (50, 27233), (53, 27197),

Gene: Community_39 Start: 28086, Stop: 27907, Start Num: 25
Candidate Starts for Community_39:
(1, 28335), (2, 28314), (8, 28203), (10, 28188), (12, 28176), (22, 28110), (25, 28086), (Start: 28 @28080 has 28 MA's), (39, 28044), (48, 27984),

Gene: Crewmate_42 Start: 26882, Stop: 26715, Start Num: 28
Candidate Starts for Crewmate_42:
(21, 26912), (Start: 28 @26882 has 28 MA's),

Gene: DrManhattan_36 Start: 24637, Stop: 24464, Start Num: 28
Candidate Starts for DrManhattan_36:
(21, 24667), (Start: 28 @24637 has 28 MA's), (43, 24577), (46, 24562), (48, 24550), (50, 24526),

Gene: DrSierra_35 Start: 24646, Stop: 24479, Start Num: 28
Candidate Starts for DrSierra_35:
(Start: 28 @24646 has 28 MA's), (39, 24616), (48, 24556),

Gene: Elezi_36 Start: 27403, Stop: 27224, Start Num: 28
Candidate Starts for Elezi_36:
(Start: 28 @27403 has 28 MA's), (46, 27322), (50, 27286),

Gene: Emotion_41 Start: 27364, Stop: 27236, Start Num: 36
Candidate Starts for Emotion_41:
(29, 27388), (Start: 36 @27364 has 1 MA's), (46, 27313), (51, 27280), (53, 27250),

Gene: Eraser_36 Start: 27394, Stop: 27215, Start Num: 28
Candidate Starts for Eraser_36:
(Start: 28 @27394 has 28 MA's), (39, 27358), (46, 27313), (50, 27277), (51, 27271),

Gene: Exile_34 Start: 27957, Stop: 27790, Start Num: 30
Candidate Starts for Exile_34:

(19, 28011), (Start: 30 @27957 has 4 MA's), (32, 27951), (35, 27945), (41, 27924), (52, 27840), (55, 27798),

Gene: Janeemi_39 Start: 28091, Stop: 27918, Start Num: 28

Candidate Starts for Janeemi_39:

(15, 28166), (16, 28163), (21, 28130), (26, 28097), (Start: 28 @28091 has 28 MA's), (39, 28055), (48, 27995),

Gene: JasmineDragon_43 Start: 27365, Stop: 27177, Start Num: 28

Candidate Starts for JasmineDragon_43:

(24, 27371), (Start: 28 @27365 has 28 MA's), (51, 27230), (53, 27200),

Gene: JohnDoe_36 Start: 25809, Stop: 25642, Start Num: 28

Candidate Starts for JohnDoe_36:

(22, 25836), (Start: 28 @25809 has 28 MA's), (38, 25782), (48, 25719),

Gene: Jstan_38 Start: 27352, Stop: 27209, Start Num: 39

Candidate Starts for Jstan_38:

(Start: 28 @27388 has 28 MA's), (39, 27352), (46, 27307), (50, 27271), (51, 27265),

Gene: JuneStar_38 Start: 28123, Stop: 27959, Start Num: 28

Candidate Starts for JuneStar_38:

(23, 28144), (Start: 28 @28123 has 28 MA's), (32, 28111), (50, 28015), (51, 28009), (53, 27979),

Gene: Kaylissa_36 Start: 25754, Stop: 25587, Start Num: 28

Candidate Starts for Kaylissa_36:

(22, 25781), (Start: 28 @25754 has 28 MA's), (38, 25727), (48, 25664), (51, 25634),

Gene: KeAlii_68 Start: 26504, Stop: 26304, Start Num: 30

Candidate Starts for KeAlii_68:

(20, 26543), (Start: 28 @26513 has 28 MA's), (Start: 30 @26504 has 4 MA's), (50, 26399), (53, 26363),

Gene: Lego_36 Start: 25700, Stop: 25533, Start Num: 28

Candidate Starts for Lego_36:

(6, 25826), (7, 25823), (10, 25805), (22, 25727), (Start: 28 @25700 has 28 MA's), (38, 25673), (48, 25610), (51, 25580),

Gene: Liebe_38 Start: 27588, Stop: 27427, Start Num: 30

Candidate Starts for Liebe_38:

(18, 27654), (Start: 30 @27588 has 4 MA's), (48, 27504), (51, 27474),

Gene: Lizalica_35 Start: 25602, Stop: 25441, Start Num: 27

Candidate Starts for Lizalica_35:

(23, 25626), (Start: 27 @25602 has 1 MA's), (48, 25512), (50, 25488), (51, 25482),

Gene: London_36 Start: 27403, Stop: 27224, Start Num: 28

Candidate Starts for London_36:

(Start: 28 @27403 has 28 MA's), (39, 27367), (46, 27322), (50, 27286), (51, 27280),

Gene: MaGuCo_36 Start: 26435, Stop: 26274, Start Num: 30

Candidate Starts for MaGuCo_36:

(Start: 30 @26435 has 4 MA's), (48, 26351), (51, 26321),

Gene: Maureen_38 Start: 27588, Stop: 27427, Start Num: 30
Candidate Starts for Maureen_38:
(18, 27654), (Start: 30 @27588 has 4 MA's), (48, 27504), (51, 27474),

Gene: MiniMommy_43 Start: 27366, Stop: 27178, Start Num: 28
Candidate Starts for MiniMommy_43:
(24, 27372), (Start: 28 @27366 has 28 MA's), (51, 27231), (53, 27201),

Gene: MissSwiss_36 Start: 24686, Stop: 24537, Start Num: 28
Candidate Starts for MissSwiss_36:
(21, 24716), (Start: 28 @24686 has 28 MA's), (43, 24650), (50, 24599), (54, 24548), (55, 24545),

Gene: Niobe_36 Start: 27388, Stop: 27209, Start Num: 28
Candidate Starts for Niobe_36:
(Start: 28 @27388 has 28 MA's), (39, 27352), (46, 27307), (50, 27271), (51, 27265),

Gene: ObiToo_41 Start: 26622, Stop: 26455, Start Num: 28
Candidate Starts for ObiToo_41:
(21, 26652), (Start: 28 @26622 has 28 MA's),

Gene: Phives_39 Start: 27908, Stop: 27735, Start Num: 28
Candidate Starts for Phives_39:
(1, 28163), (2, 28142), (8, 28031), (10, 28016), (12, 28004), (22, 27938), (25, 27914), (Start: 28 @27908 has 28 MA's), (39, 27872), (48, 27812),

Gene: Pixelle_37 Start: 27363, Stop: 27181, Start Num: 28
Candidate Starts for Pixelle_37:
(21, 27393), (Start: 28 @27363 has 28 MA's), (44, 27294), (50, 27243), (51, 27237),

Gene: Pumpkins_59 Start: 26658, Stop: 26506, Start Num: 32
Candidate Starts for Pumpkins_59:
(10, 26769), (23, 26691), (Start: 28 @26670 has 28 MA's), (32, 26658), (50, 26562), (51, 26556),

Gene: Reedo_36 Start: 24760, Stop: 24581, Start Num: 28
Candidate Starts for Reedo_36:
(16, 24823), (23, 24781), (Start: 28 @24760 has 28 MA's), (39, 24727), (41, 24718), (48, 24664),

Gene: ShakeltOph_43 Start: 27365, Stop: 27177, Start Num: 28
Candidate Starts for ShakeltOph_43:
(24, 27371), (Start: 28 @27365 has 28 MA's), (51, 27230), (53, 27200),

Gene: Simpson_38 Start: 25818, Stop: 25651, Start Num: 28
Candidate Starts for Simpson_38:
(22, 25845), (Start: 28 @25818 has 28 MA's), (38, 25791), (48, 25728),

Gene: Snek_36 Start: 25070, Stop: 24912, Start Num: 28
Candidate Starts for Snek_36:
(Start: 28 @25070 has 28 MA's), (35, 25049), (50, 24962),

Gene: Soondubu_34 Start: 27961, Stop: 27794, Start Num: 30
Candidate Starts for Soondubu_34:
(13, 28030), (Start: 30 @27961 has 4 MA's), (32, 27955), (35, 27949), (55, 27802),

Gene: Sue2_37 Start: 26877, Stop: 26719, Start Num: 31

Candidate Starts for Sue2_37:

(9, 26997), (31, 26877), (33, 26871), (34, 26868), (47, 26796), (50, 26769), (51, 26763),

Gene: Tallboi_39 Start: 27555, Stop: 27376, Start Num: 28

Candidate Starts for Tallboi_39:

(Start: 28 @27555 has 28 MA's), (42, 27501), (43, 27489), (46, 27474), (50, 27438),

Gene: Tbone_35 Start: 25613, Stop: 25446, Start Num: 28

Candidate Starts for Tbone_35:

(6, 25739), (7, 25736), (10, 25718), (12, 25706), (22, 25640), (Start: 28 @25613 has 28 MA's), (38, 25586), (48, 25523), (51, 25493),

Gene: TforTroy_38 Start: 26539, Stop: 26378, Start Num: 28

Candidate Starts for TforTroy_38:

(7, 26653), (10, 26635), (22, 26560), (Start: 28 @26539 has 28 MA's), (49, 26434), (50, 26431), (51, 26425), (53, 26395),

Gene: Tian_36 Start: 27343, Stop: 27161, Start Num: 28

Candidate Starts for Tian_36:

(21, 27373), (Start: 28 @27343 has 28 MA's), (44, 27274), (50, 27223), (51, 27217),

Gene: Tweety19_36 Start: 25069, Stop: 24911, Start Num: 28

Candidate Starts for Tweety19_36:

(Start: 28 @25069 has 28 MA's), (35, 25048), (50, 24961),

Gene: VResidence_37 Start: 25954, Stop: 25781, Start Num: 28

Candidate Starts for VResidence_37:

(Start: 28 @25954 has 28 MA's), (50, 25834), (51, 25828),

Gene: VroomVroom_41 Start: 27510, Stop: 27322, Start Num: 28

Candidate Starts for VroomVroom_41:

(3, 27657), (5, 27636), (11, 27606), (17, 27570), (Start: 28 @27510 has 28 MA's), (37, 27480), (51, 27375), (53, 27345),

Gene: Warda_36 Start: 25789, Stop: 25622, Start Num: 28

Candidate Starts for Warda_36:

(6, 25915), (7, 25912), (10, 25894), (12, 25882), (22, 25816), (Start: 28 @25789 has 28 MA's), (38, 25762), (48, 25699), (51, 25669),

Gene: Wildwest_36 Start: 25977, Stop: 25810, Start Num: 28

Candidate Starts for Wildwest_36:

(21, 26013), (Start: 28 @25977 has 28 MA's), (40, 25941), (48, 25887),

Gene: YesChef_36 Start: 25762, Stop: 25595, Start Num: 28

Candidate Starts for YesChef_36:

(22, 25789), (Start: 28 @25762 has 28 MA's), (38, 25735), (48, 25672), (51, 25642),