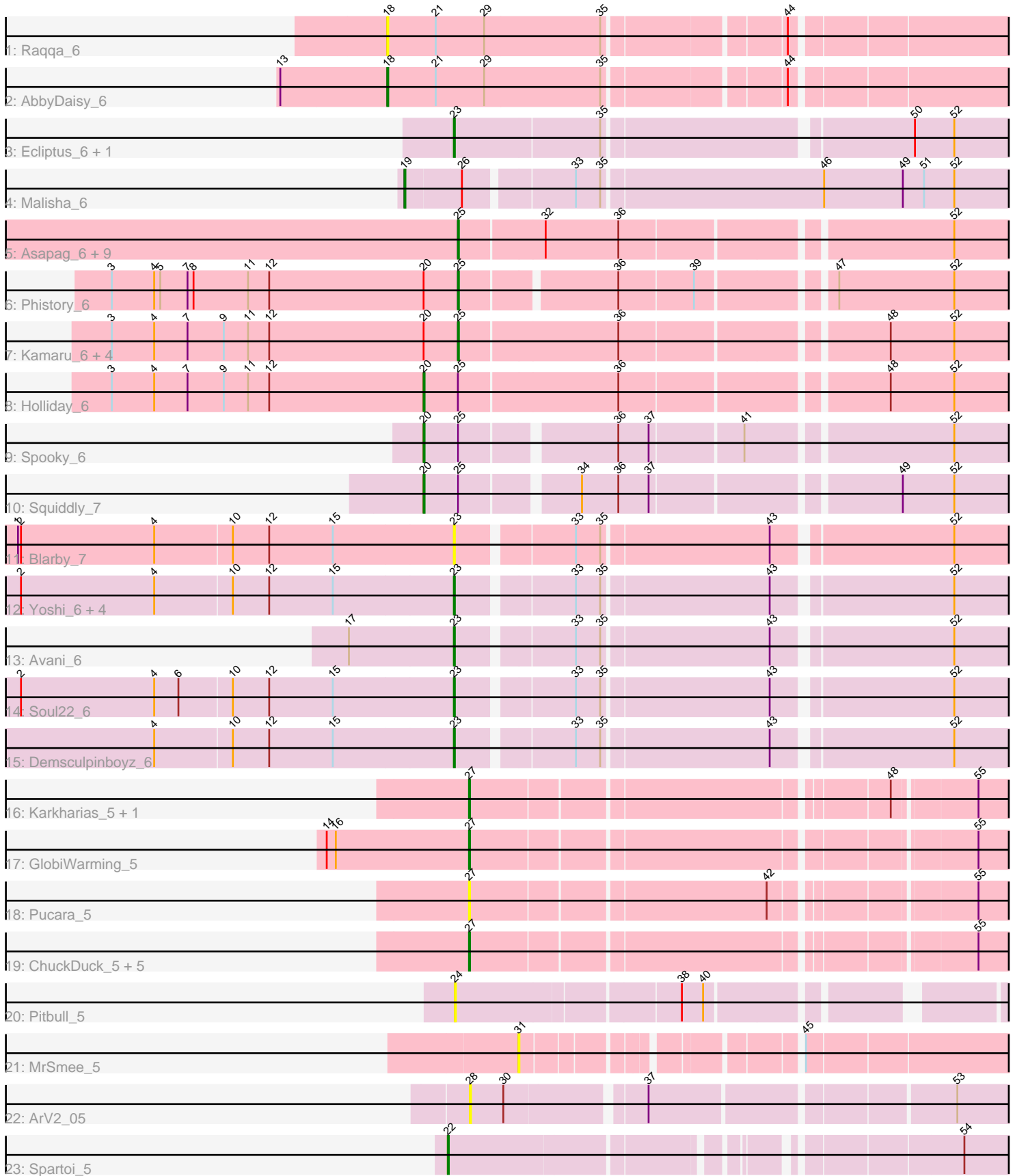


Pham 163691



Note: Tracks are now grouped by subcluster and scaled. Switching in subcluster is indicated by changes in track color. Track scale is now set by default to display the region 30 bp upstream of start 1 to 30 bp downstream of the last possible start. If this default region is judged to be packed too tightly with annotated starts, the track will be further scaled to only show that region of the ORF with annotated starts. This action will be indicated by adding "Zoomed" to the title. For starts, yellow indicates the location of called starts comprised solely of Glimmer/GeneMark auto-annotations, green indicates the location of called starts with at least 1 manual gene annotation.

Pham 163691 Report

This analysis was run 04/28/24 on database version 559.

Pham number 163691 has 47 members, 10 are drafts.

Phages represented in each track:

- Track 1 : Raqqa_6
- Track 2 : AbbyDaisy_6
- Track 3 : Ecliptus_6, ODay_6
- Track 4 : Malisha_6
- Track 5 : Asapag_6, Getalong_6, Lutum_6, BENtherdunthat_6, Kenna_6, Periwinkle_6, Leroy_6, Frickyeah_6, Horus_6, Whitney_6
- Track 6 : Phistory_6
- Track 7 : Kamaru_6, Budski_6, Phabuloso_6, LitninMcQueen_6, CheeseTouch_6
- Track 8 : Holliday_6
- Track 9 : Spooky_6
- Track 10 : Squiddly_7
- Track 11 : Blarby_7
- Track 12 : Yoshi_6, Jabbawokkie_7, Zapner_7, Che9d_6, Ogopogo_7
- Track 13 : Avani_6
- Track 14 : Soul22_6
- Track 15 : Demsculpinboyz_6
- Track 16 : Karkharias_5, Bridgette_5
- Track 17 : GlobiWarming_5
- Track 18 : Pucara_5
- Track 19 : ChuckDuck_5, PeggyLeg03_5, Judy_5, Eileen_5, Constance_5, Peas_5
- Track 20 : Pitbull_5
- Track 21 : MrSmee_5
- Track 22 : ArV2_05
- Track 23 : Spartoi_5

Summary of Final Annotations (See graph section above for start numbers):

The start number called the most often in the published annotations is 25, it was called in 14 of the 37 non-draft genes in the pham.

Genes that call this "Most Annotated" start:

- Asapag_6, BENtherdunthat_6, Budski_6, CheeseTouch_6, Frickyeah_6, Getalong_6, Horus_6, Kamaru_6, Kenna_6, Leroy_6, LitninMcQueen_6, Lutum_6, Periwinkle_6, Phabuloso_6, Phistory_6, Whitney_6,

Genes that have the "Most Annotated" start but do not call it:

- Holliday_6, Spooky_6, Squiddly_7,

Genes that do not have the "Most Annotated" start:

- AbbyDaisy_6, ArV2_05, Avani_6, Blarby_7, Bridgette_5, Che9d_6, ChuckDuck_5, Constance_5, Demsculpinboyz_6, Ecliptus_6, Eileen_5, GlobiWarming_5, Jabbawokkie_7, Judy_5, Karkharias_5, Malisha_6, MrSmee_5, ODay_6, Ogopogo_7, Peas_5, PeggyLeg03_5, Pitbull_5, Pucara_5, Raqqa_6, Soul22_6, Spartoi_5, Yoshi_6, Zapner_7,

Summary by start number:

Start 18:

- Found in 2 of 47 (4.3%) of genes in pham
- Manual Annotations of this start: 1 of 37
- Called 100.0% of time when present
- Phage (with cluster) where this start called: AbbyDaisy_6 (AY), Raqqa_6 (AY),

Start 19:

- Found in 1 of 47 (2.1%) of genes in pham
- Manual Annotations of this start: 1 of 37
- Called 100.0% of time when present
- Phage (with cluster) where this start called: Malisha_6 (DN),

Start 20:

- Found in 9 of 47 (19.1%) of genes in pham
- Manual Annotations of this start: 3 of 37
- Called 33.3% of time when present
- Phage (with cluster) where this start called: Holliday_6 (DN1), Spooky_6 (DN2), Squiddly_7 (DN2),

Start 22:

- Found in 1 of 47 (2.1%) of genes in pham
- Manual Annotations of this start: 1 of 37
- Called 100.0% of time when present
- Phage (with cluster) where this start called: Spartoi_5 (singleton),

Start 23:

- Found in 11 of 47 (23.4%) of genes in pham
- Manual Annotations of this start: 10 of 37
- Called 100.0% of time when present
- Phage (with cluster) where this start called: Avani_6 (F2), Blarby_7 (F), Che9d_6 (F2), Demsculpinboyz_6 (F2), Ecliptus_6 (DN), Jabbawokkie_7 (F2), ODay_6 (DN), Ogopogo_7 (F1), Soul22_6 (F2), Yoshi_6 (F2), Zapner_7 (F2),

Start 24:

- Found in 1 of 47 (2.1%) of genes in pham
- No Manual Annotations of this start.
- Called 100.0% of time when present
- Phage (with cluster) where this start called: Pitbull_5 (FQ),

Start 25:

- Found in 19 of 47 (40.4%) of genes in pham
- Manual Annotations of this start: 14 of 37
- Called 84.2% of time when present
- Phage (with cluster) where this start called: Asapag_6 (DN1), BENTherdunthat_6 (DN1), Budski_6 (DN), CheeseTouch_6 (DN1), Frickyeah_6 (DN1), Getalong_6 (DN1), Horus_6 (DN1), Kamaru_6 (DN1), Kenna_6 (DN1), Leroy_6 (DN1), LitninMcQueen_6 (DN1), Lutum_6 (DN1), Periwinkle_6 (DN1), Phabuloso_6 (DN1), Phistory_6 (DN1), Whitney_6 (DN1),

Start 27:

- Found in 10 of 47 (21.3%) of genes in pham
- Manual Annotations of this start: 7 of 37
- Called 100.0% of time when present
- Phage (with cluster) where this start called: Bridgette_5 (FA), ChuckDuck_5 (FA), Constance_5 (FA), Eileen_5 (FA), GlobiWarming_5 (FA), Judy_5 (FA), Karkharias_5 (FA), Peas_5 (FA), PeggyLeg03_5 (FA), Pucara_5 (FA),

Start 28:

- Found in 1 of 47 (2.1%) of genes in pham
- No Manual Annotations of this start.
- Called 100.0% of time when present
- Phage (with cluster) where this start called: ArV2_05 (singleton),

Start 31:

- Found in 1 of 47 (2.1%) of genes in pham
- No Manual Annotations of this start.
- Called 100.0% of time when present
- Phage (with cluster) where this start called: MrSmee_5 (UNK),

Summary by clusters:

There are 11 clusters represented in this pham: DN, FQ, F2, F, singleton, F1, FA, DN1, DN2, AY, UNK,

Info for manual annotations of cluster AY:

- Start number 18 was manually annotated 1 time for cluster AY.

Info for manual annotations of cluster DN:

- Start number 19 was manually annotated 1 time for cluster DN.
- Start number 23 was manually annotated 2 times for cluster DN.
- Start number 25 was manually annotated 1 time for cluster DN.

Info for manual annotations of cluster DN1:

- Start number 20 was manually annotated 1 time for cluster DN1.
- Start number 25 was manually annotated 13 times for cluster DN1.

Info for manual annotations of cluster DN2:

- Start number 20 was manually annotated 2 times for cluster DN2.

Info for manual annotations of cluster F1:

- Start number 23 was manually annotated 1 time for cluster F1.

Info for manual annotations of cluster F2:

- Start number 23 was manually annotated 7 times for cluster F2.

Info for manual annotations of cluster FA:

- Start number 27 was manually annotated 7 times for cluster FA.

Gene Information:

Gene: AbbyDaisy_6 Start: 4441, Stop: 5022, Start Num: 18

Candidate Starts for AbbyDaisy_6:

(13, 4336), (Start: 18 @4441 has 1 MA's), (21, 4489), (29, 4537), (35, 4651), (44, 4813),

Gene: ArV2_05 Start: 4203, Stop: 4730, Start Num: 28

Candidate Starts for ArV2_05:

(28, 4203), (30, 4236), (37, 4362), (53, 4641),

Gene: Asapag_6 Start: 4327, Stop: 4878, Start Num: 25

Candidate Starts for Asapag_6:

(Start: 25 @4327 has 14 MA's), (32, 4408), (36, 4480), (52, 4786),

Gene: Avani_6 Start: 4307, Stop: 4855, Start Num: 23

Candidate Starts for Avani_6:

(17, 4205), (Start: 23 @4307 has 10 MA's), (33, 4412), (35, 4436), (43, 4595), (52, 4760),

Gene: BENtherdunthat_6 Start: 4327, Stop: 4878, Start Num: 25

Candidate Starts for BENtherdunthat_6:

(Start: 25 @4327 has 14 MA's), (32, 4408), (36, 4480), (52, 4786),

Gene: Blarby_7 Start: 4831, Stop: 5379, Start Num: 23

Candidate Starts for Blarby_7:

(1, 4405), (2, 4408), (4, 4540), (10, 4615), (12, 4651), (15, 4714), (Start: 23 @4831 has 10 MA's), (33, 4936), (35, 4960), (43, 5119), (52, 5284),

Gene: Bridgette_5 Start: 5076, Stop: 5570, Start Num: 27

Candidate Starts for Bridgette_5:

(Start: 27 @5076 has 7 MA's), (48, 5457), (55, 5532),

Gene: Budski_6 Start: 4327, Stop: 4875, Start Num: 25

Candidate Starts for Budski_6:

(3, 3985), (4, 4027), (7, 4060), (9, 4096), (11, 4120), (12, 4141), (Start: 20 @4294 has 3 MA's), (Start: 25 @4327 has 14 MA's), (36, 4480), (48, 4723), (52, 4786),

Gene: Che9d_6 Start: 4316, Stop: 4864, Start Num: 23

Candidate Starts for Che9d_6:

(2, 3893), (4, 4025), (10, 4100), (12, 4136), (15, 4199), (Start: 23 @4316 has 10 MA's), (33, 4421), (35, 4445), (43, 4604), (52, 4769),

Gene: CheeseTouch_6 Start: 4327, Stop: 4875, Start Num: 25

Candidate Starts for CheeseTouch_6:

(3, 3985), (4, 4027), (7, 4060), (9, 4096), (11, 4120), (12, 4141), (Start: 20 @4294 has 3 MA's), (Start: 25 @4327 has 14 MA's), (36, 4480), (48, 4723), (52, 4786),

Gene: ChuckDuck_5 Start: 5037, Stop: 5531, Start Num: 27
Candidate Starts for ChuckDuck_5:
(Start: 27 @5037 has 7 MA's), (55, 5493),

Gene: Constance_5 Start: 5077, Stop: 5574, Start Num: 27
Candidate Starts for Constance_5:
(Start: 27 @5077 has 7 MA's), (55, 5536),

Gene: Demsculpinboyz_6 Start: 4307, Stop: 4855, Start Num: 23
Candidate Starts for Demsculpinboyz_6:
(4, 4016), (10, 4091), (12, 4127), (15, 4190), (Start: 23 @4307 has 10 MA's), (33, 4412), (35, 4436), (43, 4595), (52, 4760),

Gene: Ecliptus_6 Start: 4342, Stop: 4902, Start Num: 23
Candidate Starts for Ecliptus_6:
(Start: 23 @4342 has 10 MA's), (35, 4483), (50, 4768), (52, 4807),

Gene: Eileen_5 Start: 5037, Stop: 5534, Start Num: 27
Candidate Starts for Eileen_5:
(Start: 27 @5037 has 7 MA's), (55, 5496),

Gene: Frickyeah_6 Start: 4327, Stop: 4878, Start Num: 25
Candidate Starts for Frickyeah_6:
(Start: 25 @4327 has 14 MA's), (32, 4408), (36, 4480), (52, 4786),

Gene: Getalong_6 Start: 4327, Stop: 4878, Start Num: 25
Candidate Starts for Getalong_6:
(Start: 25 @4327 has 14 MA's), (32, 4408), (36, 4480), (52, 4786),

Gene: GlobiWarming_5 Start: 5032, Stop: 5529, Start Num: 27
Candidate Starts for GlobiWarming_5:
(14, 4891), (16, 4900), (Start: 27 @5032 has 7 MA's), (55, 5491),

Gene: Holliday_6 Start: 4294, Stop: 4875, Start Num: 20
Candidate Starts for Holliday_6:
(3, 3985), (4, 4027), (7, 4060), (9, 4096), (11, 4120), (12, 4141), (Start: 20 @4294 has 3 MA's), (Start: 25 @4327 has 14 MA's), (36, 4480), (48, 4723), (52, 4786),

Gene: Horus_6 Start: 4327, Stop: 4878, Start Num: 25
Candidate Starts for Horus_6:
(Start: 25 @4327 has 14 MA's), (32, 4408), (36, 4480), (52, 4786),

Gene: Jabbawokkie_7 Start: 4830, Stop: 5378, Start Num: 23
Candidate Starts for Jabbawokkie_7:
(2, 4407), (4, 4539), (10, 4614), (12, 4650), (15, 4713), (Start: 23 @4830 has 10 MA's), (33, 4935), (35, 4959), (43, 5118), (52, 5283),

Gene: Judy_5 Start: 5076, Stop: 5573, Start Num: 27
Candidate Starts for Judy_5:
(Start: 27 @5076 has 7 MA's), (55, 5535),

Gene: Kamaru_6 Start: 4327, Stop: 4875, Start Num: 25

Candidate Starts for Kamaru_6:

(3, 3985), (4, 4027), (7, 4060), (9, 4096), (11, 4120), (12, 4141), (Start: 20 @4294 has 3 MA's), (Start: 25 @4327 has 14 MA's), (36, 4480), (48, 4723), (52, 4786),

Gene: Karkharias_5 Start: 5037, Stop: 5531, Start Num: 27

Candidate Starts for Karkharias_5:

(Start: 27 @5037 has 7 MA's), (48, 5418), (55, 5493),

Gene: Kenna_6 Start: 4327, Stop: 4878, Start Num: 25

Candidate Starts for Kenna_6:

(Start: 25 @4327 has 14 MA's), (32, 4408), (36, 4480), (52, 4786),

Gene: Leroy_6 Start: 4328, Stop: 4879, Start Num: 25

Candidate Starts for Leroy_6:

(Start: 25 @4328 has 14 MA's), (32, 4409), (36, 4481), (52, 4787),

Gene: LitninMcQueen_6 Start: 4327, Stop: 4875, Start Num: 25

Candidate Starts for LitninMcQueen_6:

(3, 3985), (4, 4027), (7, 4060), (9, 4096), (11, 4120), (12, 4141), (Start: 20 @4294 has 3 MA's), (Start: 25 @4327 has 14 MA's), (36, 4480), (48, 4723), (52, 4786),

Gene: Lutum_6 Start: 4327, Stop: 4878, Start Num: 25

Candidate Starts for Lutum_6:

(Start: 25 @4327 has 14 MA's), (32, 4408), (36, 4480), (52, 4786),

Gene: Malisha_6 Start: 5305, Stop: 5919, Start Num: 19

Candidate Starts for Malisha_6:

(Start: 19 @5305 has 1 MA's), (26, 5359), (33, 5458), (35, 5482), (46, 5695), (49, 5773), (51, 5794), (52, 5824),

Gene: MrSmee_5 Start: 3961, Stop: 4389, Start Num: 31

Candidate Starts for MrSmee_5:

(31, 3961), (45, 4189),

Gene: ODay_6 Start: 4340, Stop: 4900, Start Num: 23

Candidate Starts for ODay_6:

(Start: 23 @4340 has 10 MA's), (35, 4481), (50, 4766), (52, 4805),

Gene: Ogopogo_7 Start: 4568, Stop: 5116, Start Num: 23

Candidate Starts for Ogopogo_7:

(2, 4145), (4, 4277), (10, 4352), (12, 4388), (15, 4451), (Start: 23 @4568 has 10 MA's), (33, 4673), (35, 4697), (43, 4856), (52, 5021),

Gene: Peas_5 Start: 5037, Stop: 5534, Start Num: 27

Candidate Starts for Peas_5:

(Start: 27 @5037 has 7 MA's), (55, 5496),

Gene: PeggyLeg03_5 Start: 5077, Stop: 5574, Start Num: 27

Candidate Starts for PeggyLeg03_5:

(Start: 27 @5077 has 7 MA's), (55, 5536),

Gene: Periwinkle_6 Start: 4327, Stop: 4878, Start Num: 25
Candidate Starts for Periwinkle_6:
(Start: 25 @4327 has 14 MA's), (32, 4408), (36, 4480), (52, 4786),

Gene: Phabuloso_6 Start: 4327, Stop: 4875, Start Num: 25
Candidate Starts for Phabuloso_6:
(3, 3985), (4, 4027), (7, 4060), (9, 4096), (11, 4120), (12, 4141), (Start: 20 @4294 has 3 MA's), (Start: 25 @4327 has 14 MA's), (36, 4480), (48, 4723), (52, 4786),

Gene: Phistory_6 Start: 4325, Stop: 4867, Start Num: 25
Candidate Starts for Phistory_6:
(3, 3986), (4, 4028), (5, 4034), (7, 4061), (8, 4067), (11, 4121), (12, 4142), (Start: 20 @4295 has 3 MA's), (Start: 25 @4325 has 14 MA's), (36, 4469), (39, 4541), (47, 4661), (52, 4775),

Gene: Pitbull_5 Start: 3934, Stop: 4455, Start Num: 24
Candidate Starts for Pitbull_5:
(24, 3934), (38, 4144), (40, 4165),

Gene: Pucara_5 Start: 5039, Stop: 5533, Start Num: 27
Candidate Starts for Pucara_5:
(Start: 27 @5039 has 7 MA's), (42, 5318), (55, 5495),

Gene: Raqqa_6 Start: 4752, Stop: 5333, Start Num: 18
Candidate Starts for Raqqa_6:
(Start: 18 @4752 has 1 MA's), (21, 4800), (29, 4848), (35, 4962), (44, 5124),

Gene: Soul22_6 Start: 4306, Stop: 4854, Start Num: 23
Candidate Starts for Soul22_6:
(2, 3883), (4, 4015), (6, 4039), (10, 4090), (12, 4126), (15, 4189), (Start: 23 @4306 has 10 MA's), (33, 4411), (35, 4435), (43, 4594), (52, 4759),

Gene: Spartoi_5 Start: 4178, Stop: 4681, Start Num: 22
Candidate Starts for Spartoi_5:
(Start: 22 @4178 has 1 MA's), (54, 4622),

Gene: Spooky_6 Start: 4301, Stop: 4870, Start Num: 20
Candidate Starts for Spooky_6:
(Start: 20 @4301 has 3 MA's), (Start: 25 @4331 has 14 MA's), (36, 4472), (37, 4502), (41, 4589), (52, 4778),

Gene: Squiddly_7 Start: 4994, Stop: 5563, Start Num: 20
Candidate Starts for Squiddly_7:
(Start: 20 @4994 has 3 MA's), (Start: 25 @5024 has 14 MA's), (34, 5129), (36, 5165), (37, 5195), (49, 5420), (52, 5471),

Gene: Whitney_6 Start: 4327, Stop: 4878, Start Num: 25
Candidate Starts for Whitney_6:
(Start: 25 @4327 has 14 MA's), (32, 4408), (36, 4480), (52, 4786),

Gene: Yoshi_6 Start: 4306, Stop: 4854, Start Num: 23
Candidate Starts for Yoshi_6:
(2, 3883), (4, 4015), (10, 4090), (12, 4126), (15, 4189), (Start: 23 @4306 has 10 MA's), (33, 4411), (35, 4435), (43, 4594), (52, 4759),

Gene: Zapner_7 Start: 4831, Stop: 5379, Start Num: 23

Candidate Starts for Zapner_7:

(2, 4408), (4, 4540), (10, 4615), (12, 4651), (15, 4714), (Start: 23 @4831 has 10 MA's), (33, 4936), (35, 4960), (43, 5119), (52, 5284),