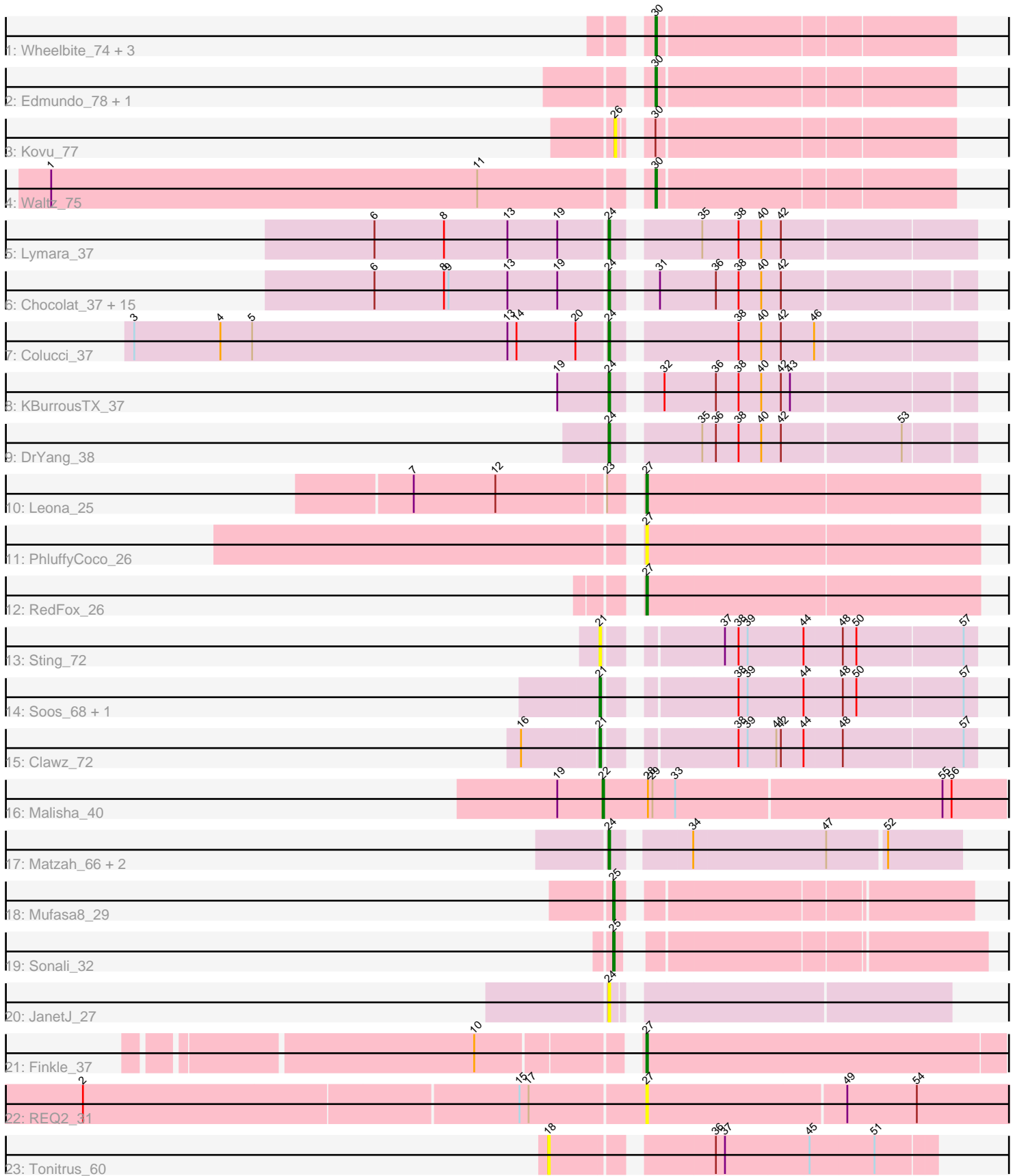


Pham 163705



Note: Tracks are now grouped by subcluster and scaled. Switching in subcluster is indicated by changes in track color. Track scale is now set by default to display the region 30 bp upstream of start 1 to 30 bp downstream of the last possible start. If this default region is judged to be packed too tightly with annotated starts, the track will be further scaled to only show that region of the ORF with annotated starts. This action will be indicated by adding "Zoomed" to the title. For starts, yellow indicates the location of called starts comprised solely of Glimmer/GeneMark auto-annotations, green indicates the location of called starts with at least 1 manual gene annotation.

Pham 163705 Report

This analysis was run 04/28/24 on database version 559.

Pham number 163705 has 45 members, 9 are drafts.

Phages represented in each track:

- Track 1 : Wheelbite_74, LiSara_75, Laroye_78, Salgado_78
- Track 2 : Edmundo_78, Shrooms_76
- Track 3 : Kovu_77
- Track 4 : Waltz_75
- Track 5 : Lymara_37
- Track 6 : Chocolat_37, EdgarPoe_37, Mordred_37, Linus_37, Tophat_37, JayCookie_37, HumptyDumpty_37, MoyaNatalis_37, RosiePosie_37, Kabreeze_37, Conboy_37, Scavito_37, Chipper1996_370, PrincessTrina_37, JaNo_37, Chubster_37
- Track 7 : Colucci_37
- Track 8 : KBurrousTX_37
- Track 9 : DrYang_38
- Track 10 : Leona_25
- Track 11 : PhluffyCoco_26
- Track 12 : RedFox_26
- Track 13 : Sting_72
- Track 14 : Soos_68, DonTron_72
- Track 15 : Clawz_72
- Track 16 : Malisha_40
- Track 17 : Matzah_66, MementoMori_65, Cinna_64
- Track 18 : Mufasa8_29
- Track 19 : Sonali_32
- Track 20 : JanetJ_27
- Track 21 : Finkle_37
- Track 22 : REQ2_31
- Track 23 : Tonitrus_60

Summary of Final Annotations (See graph section above for start numbers):

The start number called the most often in the published annotations is 24, it was called in 21 of the 36 non-draft genes in the pham.

Genes that call this "Most Annotated" start:

- Chipper1996_370, Chocolat_37, Chubster_37, Cinna_64, Colucci_37, Conboy_37, DrYang_38, EdgarPoe_37, HumptyDumpty_37, JaNo_37, JanetJ_27, JayCookie_37, KBurrousTX_37, Kabreeze_37, Linus_37, Lymara_37, Matzah_66, MementoMori_65, Mordred_37, MoyaNatalis_37, PrincessTrina_37, RosiePosie_37, Scavito_37, Tophat_37,

Genes that have the "Most Annotated" start but do not call it:

-

Genes that do not have the "Most Annotated" start:

- Clawz_72, DonTron_72, Edmundo_78, Finkle_37, Kovu_77, Laroye_78, Leona_25, LiSara_75, Malisha_40, Mufasa8_29, PhluffyCoco_26, REQ2_31, RedFox_26, Salgado_78, Shrooms_76, Sonali_32, Soos_68, Sting_72, Tonitrus_60, Waltz_75, Wheelbite_74,

Summary by start number:

Start 18:

- Found in 1 of 45 (2.2%) of genes in pham
- No Manual Annotations of this start.
- Called 100.0% of time when present
- Phage (with cluster) where this start called: Tonitrus_60 (singleton),

Start 21:

- Found in 4 of 45 (8.9%) of genes in pham
- Manual Annotations of this start: 2 of 36
- Called 100.0% of time when present
- Phage (with cluster) where this start called: Clawz_72 (CP), DonTron_72 (CP), Soos_68 (CP), Sting_72 (CP),

Start 22:

- Found in 1 of 45 (2.2%) of genes in pham
- Manual Annotations of this start: 1 of 36
- Called 100.0% of time when present
- Phage (with cluster) where this start called: Malisha_40 (DN),

Start 24:

- Found in 24 of 45 (53.3%) of genes in pham
- Manual Annotations of this start: 21 of 36
- Called 100.0% of time when present
- Phage (with cluster) where this start called: Chipper1996_370 (AR), Chocolat_37 (AR), Chubster_37 (AR), Cinna_64 (EI), Colucci_37 (AR), Conboy_37 (AR), DrYang_38 (AR), EdgarPoe_37 (AR), HumptyDumpty_37 (AR), JaNo_37 (AR), JanetJ_27 (FO), JayCookie_37 (AR), KBurrousTX_37 (AR), Kabreeze_37 (AR), Linus_37 (AR), Lymara_37 (AR), Matzah_66 (EI), MementoMori_65 (EI), Mordred_37 (AR), MoyaNatalis_37 (AR), PrincessTrina_37 (AR), RosiePosie_37 (AR), Scavito_37 (AR), Tophat_37 (AR),

Start 25:

- Found in 2 of 45 (4.4%) of genes in pham
- Manual Annotations of this start: 2 of 36
- Called 100.0% of time when present
- Phage (with cluster) where this start called: Mufasa8_29 (FG), Sonali_32 (FG),

Start 26:

- Found in 1 of 45 (2.2%) of genes in pham
- No Manual Annotations of this start.
- Called 100.0% of time when present
- Phage (with cluster) where this start called: Kovu_77 (AL),

Start 27:

- Found in 5 of 45 (11.1%) of genes in pham
- Manual Annotations of this start: 3 of 36
- Called 100.0% of time when present
- Phage (with cluster) where this start called: Finkle_37 (singleton), Leona_25 (AS3), PhluffyCoco_26 (AS3), REQ2_31 (singleton), RedFox_26 (AS3),

Start 30:

- Found in 8 of 45 (17.8%) of genes in pham
- Manual Annotations of this start: 7 of 36
- Called 87.5% of time when present
- Phage (with cluster) where this start called: Edmundo_78 (AL), Laroye_78 (AL), LiSara_75 (AL), Salgado_78 (AL), Shrooms_76 (AL), Waltz_75 (AL), Wheelbite_74 (AL),

Summary by clusters:

There are 9 clusters represented in this pham: DN, AS3, singleton, EI, AL, AR, FG, CP, FO,

Info for manual annotations of cluster AL:

- Start number 30 was manually annotated 7 times for cluster AL.

Info for manual annotations of cluster AR:

- Start number 24 was manually annotated 18 times for cluster AR.

Info for manual annotations of cluster AS3:

- Start number 27 was manually annotated 2 times for cluster AS3.

Info for manual annotations of cluster CP:

- Start number 21 was manually annotated 2 times for cluster CP.

Info for manual annotations of cluster DN:

- Start number 22 was manually annotated 1 time for cluster DN.

Info for manual annotations of cluster EI:

- Start number 24 was manually annotated 3 times for cluster EI.

Info for manual annotations of cluster FG:

- Start number 25 was manually annotated 2 times for cluster FG.

Gene Information:

Gene: Chipper1996_370 Start: 30385, Stop: 30167, Start Num: 24

Candidate Starts for Chipper1996_370:

(6, 30535), (8, 30490), (9, 30487), (13, 30448), (19, 30415), (Start: 24 @30385 has 21 MA's), (31, 30364), (36, 30328), (38, 30313), (40, 30298), (42, 30286),

Gene: Chocolat_37 Start: 30385, Stop: 30167, Start Num: 24

Candidate Starts for Chocolat_37:

(6, 30535), (8, 30490), (9, 30487), (13, 30448), (19, 30415), (Start: 24 @30385 has 21 MA's), (31, 30364), (36, 30328), (38, 30313), (40, 30298), (42, 30286),

Gene: Chubster_37 Start: 30157, Stop: 29939, Start Num: 24

Candidate Starts for Chubster_37:

(6, 30307), (8, 30262), (9, 30259), (13, 30220), (19, 30187), (Start: 24 @30157 has 21 MA's), (31, 30136), (36, 30100), (38, 30085), (40, 30070), (42, 30058),

Gene: Cinna_64 Start: 43061, Stop: 43273, Start Num: 24

Candidate Starts for Cinna_64:

(Start: 24 @43061 has 21 MA's), (34, 43103), (47, 43190), (52, 43226),

Gene: Clawz_72 Start: 48155, Stop: 48379, Start Num: 21

Candidate Starts for Clawz_72:

(16, 48107), (Start: 21 @48155 has 2 MA's), (38, 48227), (39, 48233), (41, 48251), (42, 48254), (44, 48269), (48, 48293), (57, 48371),

Gene: Colucci_37 Start: 29963, Stop: 29742, Start Num: 24

Candidate Starts for Colucci_37:

(3, 30272), (4, 30215), (5, 30194), (13, 30026), (14, 30020), (20, 29981), (Start: 24 @29963 has 21 MA's), (38, 29891), (40, 29876), (42, 29864), (46, 29843),

Gene: Conboy_37 Start: 30384, Stop: 30166, Start Num: 24

Candidate Starts for Conboy_37:

(6, 30534), (8, 30489), (9, 30486), (13, 30447), (19, 30414), (Start: 24 @30384 has 21 MA's), (31, 30363), (36, 30327), (38, 30312), (40, 30297), (42, 30285),

Gene: DonTron_72 Start: 48395, Stop: 48619, Start Num: 21

Candidate Starts for DonTron_72:

(Start: 21 @48395 has 2 MA's), (38, 48467), (39, 48473), (44, 48509), (48, 48533), (50, 48542), (57, 48611),

Gene: DrYang_38 Start: 31723, Stop: 31505, Start Num: 24

Candidate Starts for DrYang_38:

(Start: 24 @31723 has 21 MA's), (35, 31675), (36, 31666), (38, 31651), (40, 31636), (42, 31624), (53, 31549),

Gene: EdgarPoe_37 Start: 30384, Stop: 30166, Start Num: 24

Candidate Starts for EdgarPoe_37:

(6, 30534), (8, 30489), (9, 30486), (13, 30447), (19, 30414), (Start: 24 @30384 has 21 MA's), (31, 30363), (36, 30327), (38, 30312), (40, 30297), (42, 30285),

Gene: Edmundo_78 Start: 47501, Stop: 47316, Start Num: 30

Candidate Starts for Edmundo_78:

(Start: 30 @47501 has 7 MA's),

Gene: Finkle_37 Start: 29834, Stop: 29601, Start Num: 27

Candidate Starts for Finkle_37:

(10, 29927), (Start: 27 @29834 has 3 MA's),

Gene: HumptyDumpty_37 Start: 30383, Stop: 30165, Start Num: 24

Candidate Starts for HumptyDumpty_37:

(6, 30533), (8, 30488), (9, 30485), (13, 30446), (19, 30413), (Start: 24 @30383 has 21 MA's), (31, 30362), (36, 30326), (38, 30311), (40, 30296), (42, 30284),

Gene: JaNo_37 Start: 30383, Stop: 30165, Start Num: 24

Candidate Starts for JaNo_37:

(6, 30533), (8, 30488), (9, 30485), (13, 30446), (19, 30413), (Start: 24 @30383 has 21 MA's), (31, 30362), (36, 30326), (38, 30311), (40, 30296), (42, 30284),

Gene: JanetJ_27 Start: 24007, Stop: 23804, Start Num: 24

Candidate Starts for JanetJ_27:

(Start: 24 @24007 has 21 MA's),

Gene: JayCookie_37 Start: 30387, Stop: 30169, Start Num: 24

Candidate Starts for JayCookie_37:

(6, 30537), (8, 30492), (9, 30489), (13, 30450), (19, 30417), (Start: 24 @30387 has 21 MA's), (31, 30366), (36, 30330), (38, 30315), (40, 30300), (42, 30288),

Gene: KBurrousTX_37 Start: 31486, Stop: 31268, Start Num: 24

Candidate Starts for KBurrousTX_37:

(19, 31513), (Start: 24 @31486 has 21 MA's), (32, 31462), (36, 31429), (38, 31414), (40, 31399), (42, 31387), (43, 31381),

Gene: Kabreeze_37 Start: 30383, Stop: 30165, Start Num: 24

Candidate Starts for Kabreeze_37:

(6, 30533), (8, 30488), (9, 30485), (13, 30446), (19, 30413), (Start: 24 @30383 has 21 MA's), (31, 30362), (36, 30326), (38, 30311), (40, 30296), (42, 30284),

Gene: Kovu_77 Start: 47520, Stop: 47323, Start Num: 26

Candidate Starts for Kovu_77:

(26, 47520), (Start: 30 @47508 has 7 MA's),

Gene: Laroye_78 Start: 46919, Stop: 46734, Start Num: 30

Candidate Starts for Laroye_78:

(Start: 30 @46919 has 7 MA's),

Gene: Leona_25 Start: 18655, Stop: 18440, Start Num: 27

Candidate Starts for Leona_25:

(7, 18790), (12, 18736), (23, 18667), (Start: 27 @18655 has 3 MA's),

Gene: LiSara_75 Start: 47053, Stop: 46868, Start Num: 30

Candidate Starts for LiSara_75:

(Start: 30 @47053 has 7 MA's),

Gene: Linus_37 Start: 30384, Stop: 30166, Start Num: 24

Candidate Starts for Linus_37:

(6, 30534), (8, 30489), (9, 30486), (13, 30447), (19, 30414), (Start: 24 @30384 has 21 MA's), (31, 30363), (36, 30327), (38, 30312), (40, 30297), (42, 30285),

Gene: Lymara_37 Start: 30202, Stop: 29981, Start Num: 24

Candidate Starts for Lymara_37:

(6, 30352), (8, 30307), (13, 30265), (19, 30232), (Start: 24 @30202 has 21 MA's), (35, 30154), (38, 30130), (40, 30115), (42, 30103),

Gene: Malisha_40 Start: 30125, Stop: 29862, Start Num: 22

Candidate Starts for Malisha_40:

(19, 30155), (Start: 22 @30125 has 1 MA's), (28, 30095), (29, 30092), (33, 30077), (55, 29903), (56, 29897),

Gene: Matzah_66 Start: 43128, Stop: 43340, Start Num: 24

Candidate Starts for Matzah_66:

(Start: 24 @43128 has 21 MA's), (34, 43170), (47, 43257), (52, 43293),

Gene: MementoMori_65 Start: 42723, Stop: 42935, Start Num: 24

Candidate Starts for MementoMori_65:

(Start: 24 @42723 has 21 MA's), (34, 42765), (47, 42852), (52, 42888),

Gene: Mordred_37 Start: 30383, Stop: 30165, Start Num: 24

Candidate Starts for Mordred_37:

(6, 30533), (8, 30488), (9, 30485), (13, 30446), (19, 30413), (Start: 24 @30383 has 21 MA's), (31, 30362), (36, 30326), (38, 30311), (40, 30296), (42, 30284),

Gene: MoyaNatalis_37 Start: 30387, Stop: 30169, Start Num: 24

Candidate Starts for MoyaNatalis_37:

(6, 30537), (8, 30492), (9, 30489), (13, 30450), (19, 30417), (Start: 24 @30387 has 21 MA's), (31, 30366), (36, 30330), (38, 30315), (40, 30300), (42, 30288),

Gene: Mufasa8_29 Start: 27032, Stop: 26823, Start Num: 25

Candidate Starts for Mufasa8_29:

(Start: 25 @27032 has 2 MA's),

Gene: PhluffyCoco_26 Start: 18717, Stop: 18502, Start Num: 27

Candidate Starts for PhluffyCoco_26:

(Start: 27 @18717 has 3 MA's),

Gene: PrincessTrina_37 Start: 30387, Stop: 30169, Start Num: 24

Candidate Starts for PrincessTrina_37:

(6, 30537), (8, 30492), (9, 30489), (13, 30450), (19, 30417), (Start: 24 @30387 has 21 MA's), (31, 30366), (36, 30330), (38, 30315), (40, 30300), (42, 30288),

Gene: REQ2_31 Start: 26798, Stop: 26559, Start Num: 27

Candidate Starts for REQ2_31:

(2, 27161), (15, 26879), (17, 26873), (Start: 27 @26798 has 3 MA's), (49, 26669), (54, 26624),

Gene: RedFox_26 Start: 18732, Stop: 18517, Start Num: 27

Candidate Starts for RedFox_26:

(Start: 27 @18732 has 3 MA's),

Gene: RosiePosie_37 Start: 30386, Stop: 30168, Start Num: 24

Candidate Starts for RosiePosie_37:

(6, 30536), (8, 30491), (9, 30488), (13, 30449), (19, 30416), (Start: 24 @30386 has 21 MA's), (31, 30365), (36, 30329), (38, 30314), (40, 30299), (42, 30287),

Gene: Salgado_78 Start: 46723, Stop: 46538, Start Num: 30
Candidate Starts for Salgado_78:
(Start: 30 @46723 has 7 MA's),

Gene: Scavito_37 Start: 30384, Stop: 30166, Start Num: 24
Candidate Starts for Scavito_37:
(6, 30534), (8, 30489), (9, 30486), (13, 30447), (19, 30414), (Start: 24 @30384 has 21 MA's), (31, 30363), (36, 30327), (38, 30312), (40, 30297), (42, 30285),

Gene: Shrooms_76 Start: 45176, Stop: 44991, Start Num: 30
Candidate Starts for Shrooms_76:
(Start: 30 @45176 has 7 MA's),

Gene: Sonali_32 Start: 30335, Stop: 30120, Start Num: 25
Candidate Starts for Sonali_32:
(Start: 25 @30335 has 2 MA's),

Gene: Soos_68 Start: 47562, Stop: 47786, Start Num: 21
Candidate Starts for Soos_68:
(Start: 21 @47562 has 2 MA's), (38, 47634), (39, 47640), (44, 47676), (48, 47700), (50, 47709), (57, 47778),

Gene: Sting_72 Start: 48001, Stop: 48225, Start Num: 21
Candidate Starts for Sting_72:
(Start: 21 @48001 has 2 MA's), (37, 48064), (38, 48073), (39, 48079), (44, 48115), (48, 48139), (50, 48148), (57, 48217),

Gene: Tonitrus_60 Start: 44270, Stop: 44503, Start Num: 18
Candidate Starts for Tonitrus_60:
(18, 44270), (36, 44363), (37, 44369), (45, 44423), (51, 44465),

Gene: Tophat_37 Start: 30385, Stop: 30167, Start Num: 24
Candidate Starts for Tophat_37:
(6, 30535), (8, 30490), (9, 30487), (13, 30448), (19, 30415), (Start: 24 @30385 has 21 MA's), (31, 30364), (36, 30328), (38, 30313), (40, 30298), (42, 30286),

Gene: Waltz_75 Start: 45186, Stop: 45001, Start Num: 30
Candidate Starts for Waltz_75:
(1, 45570), (11, 45288), (Start: 30 @45186 has 7 MA's),

Gene: Wheelbite_74 Start: 46857, Stop: 46672, Start Num: 30
Candidate Starts for Wheelbite_74:
(Start: 30 @46857 has 7 MA's),